

Georgia Southern University

## Digital Commons@Georgia Southern

---

The George-Anne

Student Media

---

4-23-2015

### The George-Anne

Georgia Southern University

Follow this and additional works at: <https://digitalcommons.georgiasouthern.edu/george-anne>

---

#### Recommended Citation

Georgia Southern University, "The George-Anne" (2015). *The George-Anne*. 2637.  
<https://digitalcommons.georgiasouthern.edu/george-anne/2637>

This newspaper is brought to you for free and open access by the Student Media at Digital Commons@Georgia Southern. It has been accepted for inclusion in The George-Anne by an authorized administrator of Digital Commons@Georgia Southern. For more information, please contact [digitalcommons@georgiasouthern.edu](mailto:digitalcommons@georgiasouthern.edu).



# GA

THE GEORGE-ANNE

**Caitlyn Baggett**

**Morgan Bass**

**Emily Clark**

**Abbie Deloach**

**Catherine “McKay” Pittman**

Campus grieves over the loss of five Georgia Southern University students in a fatal car accident; two students recovering in hospital

**SEE PAGE 2, 3, 4 & 7**





BRANDON WARNOCK THE GEORGE-ANNE

Kappa Kappa Gamma cancelled an event and instead offered free food to any student in need of comfort Wednesday afternoon. Jordan Flagg, Brooke Johnson and Courtney Rome volunteered their services in front of the Sigma Nu house.



BRANDON WARNOCK THE GEORGE-ANNE

Marissa Rubin finds comfort with a friend at the KKG barbeque.



BRANDON WARNOCK THE GEORGE-ANNE

Brothers of Alpha Sigma Phi offer their support to the victims' friends on Greek Row.

## Campus mourns student deaths

BY THE GEORGE-ANNE

News slowly spread the morning of April 22 of a large pile-up on I-16 heading towards Savannah. It seemed like another bad accident, but then students started hearing that their fellow students were casualties in the wreck.

Photos and stories were posted across social media. Friends texted friends, parents texted their children and the Georgia Southern community grew concerned.

2:30 p.m. Tweets and Facebook posts hinted that students were involved, but no names had been released.

Shortly after, President Brooks Keel sent out a letter informing students that five of their classmates had died and two remained hospitalized.

The rest of Georgia Southern students only had numbers and news stories at this point, but no names. However, on Olympic Boulevard, it was clear that the inhabitants of these houses already know who they had lost.

Olympic Boulevard was awash with waves of quiet students.

A girl slowed by traffic on her way out leaned against the steering wheel of her car, arm across her eyes as her shoulders began to shake.

On the porch of one house, a girl in a blue shirt began to sob, her cries echoing down the street.

Further down the row, a group of men poured out of the Kappa Delta house, dozen after dozen, more than 50 in all; brothers came to give their condolences.

Some of them stood, some of them sat, some of them frantically called parents on their phones, some were in groups and others were alone but no eye was dry as the sounds of unparalleled grief and loss reverberated through the Nursing Building.

Grief could first be

seen on the faces of GSU's administration as they worked tirelessly to come to terms with delivering a message which no one is prepared to hear. Then, professors consoled students, sorority sisters of the fallen women clung together and friends helped each other through incredible loss. The university was consumed with unmatched grief, for unmatched young women.

4:30 p.m. President Keel sent out another update, delivering the final piece of news that no one was ready to read: the names of the deceased.

Emily, Morgan, Abbie, Catherine and Caitlyn were

all junior nursing majors on their way to the last clinical of the semester. While the rest of campus was asleep, these five young women were giving up their day to take care of others.

They were sisters, daughters, friends and classmates. The five of them wanted to dedicate their lives to others but unfortunately, their lives were taken in the process.

Nadia Dreid, Erinn Williams and Lauren Gorla contributed to this report. We thank everyone on our staff who made phone calls, ran around campus and offered help and support in any way they could.





PHOTOS COURTESY of Emmie Sanders

**“They were doing this for no pay, out of the goodness of their hearts, and for their passion of Nursing.”**

**Abbie Deloach**  
Junior  
Savannah, GA

**Morgan Bass**  
Junior  
Leesburg, GA

**Catherine “McKay”  
Pittman**  
Junior  
Alpharetta, GA

**Emily Clark**  
Junior  
Powder Springs, GA

**Caitlyn Baggett**  
Junior  
Millen, GA

## Letter From the Editor



**WILL PRICE**

Will is a senior journalism major from Atlanta, Ga.

What we are reporting on in these first pages of today's paper is something we prayed we'd never have to tell you all again. Confirmed yesterday, late in the afternoon, Georgia Southern University lost five of its students.

Emily Clark from Powder Springs, Morgan Bass from Leesburg, Abbie Deloach from Savannah, Catherine Pittman from Alpharetta and Caitlyn Baggett from Millen have been declared deceased

after a complication at a car accident in Bryan County.

Looking around our newsroom, a group of young men and women are calling coroners, police officials, friends, classmates, presidents and parents. Young men and women holding back a tidal wave of emotion and confusion are calling the friends of deceased asking if they'd like to talk about them; some of them hadn't heard the news yet. There is nothing more

painful for us to report on and there is nothing more difficult for us to tell you about.

I understand our covering of an issue as agonizing as this one will not always be comfortable or pleasant. We will do our complete and absolute best to remember these young women in a compassionate and honest manner.

When something as horrific as this occurs, gossip, rumors and seemingly harmless jokes serve as blades in the sides of the

friends, sorority sisters, family, professors and anyone else who had a relationship with one of the women who lost their lives.

Our deepest condolences, thoughts and prayers go out to Emily, Morgan, Abbie, Catherine and Caitlyn's family, sorority sisters, friends and whoever else loved them.

Holding back tears and speaking for the entirety of the Student Media staff in the office, in the field or at home: We are so, so sorry.

## Letter to the Editor

George-Anne and the GSU Family,

I, as a representative of the Georgia Southern Nursing program, feel its important the student population understands just how special the 5 young women who were killed in the I-16 accident were. Morgan Bass, Emily Clark, Abbie Deloach, Caitlyn Bagget, and McKay Pittman were killed while traveling in the early morning hours to a hospital in Savannah to participate in clinicals. These women woke up at the break of dawn when most college students are sleeping to travel nearly an hour away to bathe, feed, and provide care to their patients. They were doing this for no pay, out of the goodness of their hearts, and for their passion of Nursing. These students were training for a career in saving and changing lives in a program thats known to be incredibly difficult and time-consuming. It is absolutely heartbreaking to hear of their passing. The Nursing Program, a group of about 200 men and women, are a family who understand what it takes to provide self-less care day in and day out. We will miss these loving and devoted young women dearly and are so proud of their accomplishments and their roles in the Nursing program. We will continue to hope for the complete recovery of Megan Richards and Brittney McDaniel and wish peace for the affected friends and families during this time of suffering.

God bless Georgia Southern,  
Kymberly Smith  
Nursing Senior Class

## The Facts

A fatal accident occurred yesterday at 5:45 a.m. on I-16 eastbound near Savannah claiming the lives of five Georgia Southern University students.

The list of names has officially been released by the Dean of Students. The five women killed in the crash were all juniors.

Brittney McDaniel and Megan Richards are being treated for injuries.

All five students were nursing majors heading to participate in their final clinical of the semester at a hospital in Savannah.

According to Bryan County News, it was a seven car pile up. The accident occurred near mile marker 140 and two of the injured were flown straight to Memorial University Medical Center.

According to Freddy Howell, Bryan County Emergency Services, around 1:45 a.m. a crash between a tractor trailer and RV occurred. Later that morning around 5:45 a.m. one to two semi trucks failed to slow down for traffic and rear-ended the cars in front of them.

Officials say that three tractor-trailers, one being a tanker truck,

and four other vehicles were involved in the accident. Four of the victims were pronounced dead at the scene and another died at the hospital. Two others were taken to the Memorial Hospital in Savannah and are in unknown condition.

“You could see the car that got the worst of it, I assume, because it just looked like a ball of steel wool. Literally just a ball of metal. I couldn't even tell what it used to be,” Nick Jewett, sophomore undeclared major, said.

The accident occurred between the Highway 119 exit and the Highway 280 exit.

“Every one of our students contributes in no small measure, to the Eagle Nation. The loss of any student, especially in a tragic way, is particularly painful. Losing five students is almost incomprehensible,” Georgia Southern University President Brooks Keel said in a press release.

Nadia Dreid, Chris Rossmann, Will Price, Lauren Gorla, Erinn Williams, Tayler Critchlow, Caitlyn Oliver, Macy Holloway and more Student Media staff contributed to this report



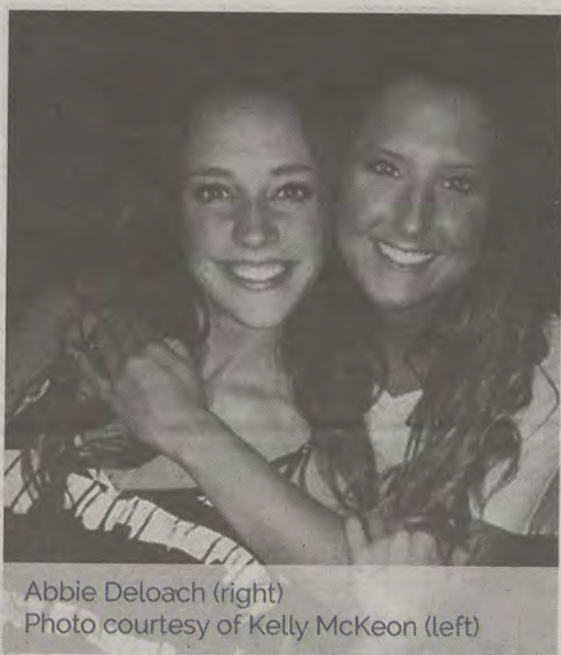
# #GSUStrong



McKay Pittman (right)  
Photo courtesy of Becca Reynolds (left)

"I am so thankful for the moments that I spent with her and all the memories we made together. I know that she is in a better place and celebrating in heaven with the Lord! Heaven gained a new eagle!"

Becca Reynolds, junior early childhood and special education major, said about her friend McKay Pittman.



Abbie DeLoach (right)  
Photo courtesy of Kelly McKeon (left)

"She was an amazing person inside and out. I admire how she lived life with such intention and was a genuine friend to many. She could connect with just about anyone, it's just the person she was. Her ability to make people laugh is something she will be remembered by."

Kelly McKeon, junior marketing major, said of her friend Abbie DeLoach.

Our thoughts are with them

@gsuSGA

No words can truly express the depth of our feelings, all we can do is support each other through this tragedy as one Eagle Nation.

"They all had the best personalities and they could lighten my mood in a heart beat. They were really awesome girls,"

Emmie Sanders, junior in the nursing program, said about all five of her late friends.

@CoachWEFritz (Willie Fritz)

Our thoughts and prayers go out to the families and friends of our fallen eagles! Eagle nation mourns.

@abudd82 (Alan Candler Budd)

We're more than a university; we're a family.

"Caitlyn was a nursing major, it was what she's wanted to do since she was a little kid. She's always wanted to be a nurse, which I always thought was funny because she always showed me a lot of tough love, but if she was around anyone else, she was very caring, especially with kids. She was definitely really good at what she did. She loved being in Savannah and being in the hospital," Rebecca Rich said. Caitlyn Baggett was the maid of honor for Rebecca Rich, who planned for the wedding to happen in May.

"I'm still in disbelief about it, and I feel kind of numb."



@Smiley\_Trini

(Azelle Francis)

May they soar eternally! Sending love to our Eagles who have left us so suddenly. To their family, friends, and loved ones, we stand with you.



Emily Clark (left)  
Photo courtesy of Neal Hollis (right)

"She was beautiful in every way possible, the smartest person I've ever known, and had a love for God and her family like no other."

- Neal W. Hollis said of his girlfriend Emily Clark.



# ISLANDS LIVING IS A BREEZE!

The Islands Statesboro  
104 Aruba Avenue  
Statesboro, GA 30458  
912-225-1387



WE OFFER FULL UNITS AND INDIVIDUAL LEASES

• ALL UNITS PET FRIENDLY.

• WE ARE ALL INCLUSIVE FOR TRASH PICK-UP, LAWN MAINTENANCE, INTERNET, CABLE AND HAVE GENEROUS UTILITY CAPS.

• EASY CLOSE DRAWERS, GRANITE COUNTERTOPS, FREE PARKING, WALK IN CLOSETS, EXTRA STORAGE SPACE, UPDATED APPLIANCES AND CUSTOM FINISHING'S

2/2 SUITES 938 SQFT • 3/3 DUPLEXS 1250 SQFT • 3/3 HOUSES 1300 SQFT

## Fall 2015 IFC Recruitment



**Fraternity Formal Recruitment will be held**

**Thursday, September 3 - Saturday, September 12, 2015**

**Registration will open June 1st!**

**To Sign up, visit: <http://bit.ly/1cAqoUj>**

Email: [Greeks@georgiasouthern.edu](mailto:Greeks@georgiasouthern.edu)  
Phone: (912) 478-5185



Follow us:  
[Twitter.com/GSUIFC](https://twitter.com/GSUIFC)  
[Facebook.com/GSUIFC](https://facebook.com/GSUIFC)

- ✓ Academic Excellence
- ✓ Leadership Development
- ✓ High Campus Involvement
- ✓ Lifetime Commitment





# Coming Fall 2015...

## PHA Sorority Formal Recruitment

Monday, August 10 - Saturday, August 15, 2015

**REGISTRATION WILL OPEN JUNE 1ST!**

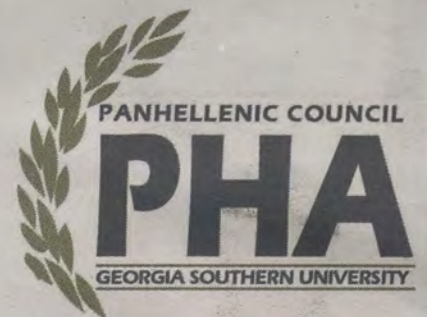
Register online at:

<http://students.georgiasouthern.edu/greklife/governing-councils/pha/>



Email: [Greeks@georgiasouthern.edu](mailto:Greeks@georgiasouthern.edu)  
Phone: (912) 478-5185

- ✓ Sisterhood
- ✓ Leadership
- ✓ Philanthropy
- ✓ Honor
- ✓ Community
- ✓ Encouragement
- ✓ Friendship
- ✓ Trust



## YOU ARE INVITED

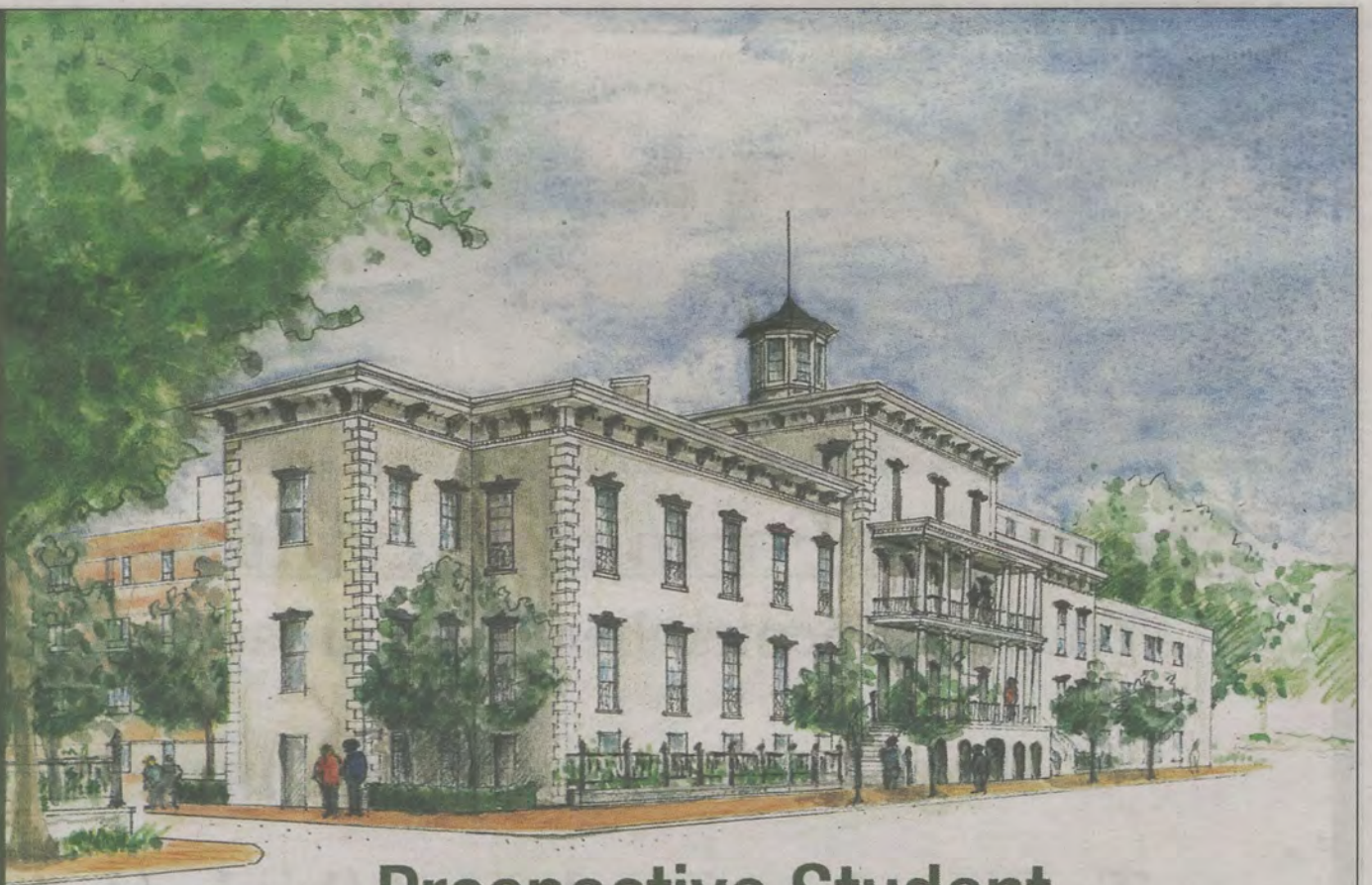
to learn about the law school,  
meet professors, staff,  
and current students.



**SAVANNAH**  
LAW SCHOOL

A branch of Atlanta's John Marshall Law School

To register for these events,  
please visit or email:  
[savannahlawschool.org](http://savannahlawschool.org)  
[admissions@savannahlawschool.org](mailto:admissions@savannahlawschool.org)



## Prospective Student Spring Open Houses

Saturday, April 25, 2015 from 10:00 a.m. to 1:00 p.m.  
(all programs discussed)

or

Wednesday, May 6, 2015 from 6:00 p.m. to 7:30 p.m.  
(all programs discussed with special emphasis on part-time evening)  
516 Drayton Street, Savannah, GA 31401



# Unmatchable grief, for unmatchable young women



**ERINN WILLIAMS**

Williams is the opinion editor for the George-Anne

Some of them stood, some of them sat, some of them frantically called parents on their phones, some were in groups and others were alone but no eye was dry as the sounds of unparalleled grief and loss reverberated through the Nursing Building.

Selflessly rising in the morning before many of us would dare be awake, they set out. They were going to do what few would do, and what few could do. They worked hard gaining admission into one of the most rigorous majors

not only at Georgia Southern, but also in the entire world.

But who could have imagined that yesterday as five nursing students traveled to their last clinical, that it would be their last trip—that on the way to help save the lives of others, they would lose theirs?

Grief could first be seen on the faces of GSU's administration as they worked tirelessly to come to terms with delivering a message which no one is prepared to hear. Then, professors consoled students, sorority sisters of the fallen

girls clung together and friends helped each other through incredible loss, a pain that I pray few will ever experience. The university is consumed with unmatchable grief, for unmatchable young women.

Yesterday, I spent my afternoon in the Nursing Building. I saw many heartbroken eagles. But, I also saw the resilience of our student body. I watched as the entire School of Nursing used the skills of care and nurturing that will one day help them aid patients, to care for each other.

The same selfless nature that their friends and students had was exhibited through them. A true testament to the fact that though Emily Clark, Morgan Bass, Abbie Deloach, Catherine Pittman and Caitlyn Baggett are no longer with us, they live on.

And as we join together as a family to mourn and to celebrate the lives of these bright women, I encourage those closest to this tragedy to continue to support each other and to not be afraid to seek counseling services if need be.

## Grief on Greek Row



**NADIA DRIED**

Senior multimedia major

car, moving her arm across her eyes as her shoulders started to shake.

The rest of Georgia Southern students only had numbers and news stories at this point, but no names. However, on Olympic Boulevard, it was clear to me that the inhabitants of those houses already knew who they had lost.

On the porch of one house, a girl in a blue shirt began to sob, her cries echoing all the way across the street. She was quickly embraced by her sisters and brought inside.

Further down the row, a group of men poured out of the Kappa Delta house, dozen after dozen, more than 50 in all. I stepped off the sidewalk to let them pass. Brothers come to give their condolences, they moved quietly without stopping down to the next house on their list.

Another house was packed with visitors, their cars filling up every spare inch of the circular driveway and space out front. On the porch, three men stood huddled in the farthest corner, away from the crowd. They grasped each other's hands and bowed their heads.

Wednesday afternoon, as I entered Olympic Boulevard, it was awash with waves of quiet students. They walked up and down the sidewalks alongside the manicured lawns, their cars lined up like ants along Chandler Road to gain access inside.

A girl slowed by traffic on her way out had tear tracks down her face. Her eyes met mine for a brief moment, and then she leaned against the steering wheel of her

## LETTER TO THE EDITOR

It's crazy how just a few short days ago, people all over the nation were criticizing Georgia Southern for the debacle that was our Spring Bling concert.

Yet today, they are all standing with us and behind us in remembrance of the members of Eagle Nation who unfortunately left this earth way too early.

Though I did not know any of the girls personally, I know that they worked as hard as they could to get into nursing school. And it doesn't seem fair that everything they worked for is lost now.

They were awake at 5 a.m. headed to do what they love; to learn how to save people's lives. But what they didn't know was that they would need the ones

that they were striving to be on that same day.

Not a lot in this world makes sense. But what does make sense is that Emily, Morgan, Abbie, Catherine and Caitlyn, along with all of their families and friends are receiving the utmost attention, love and sympathy today. And rightfully so.

These events have truly made me think about the people around me. And like I said, although I didn't know these girls, I do know many people.

So today, I'm holding onto the people I love. And I urge you to do the same.

There's a reason we sing "It is Well" at the end of football games. Because those words are what get the Eagle Nation through the good times and the bad

times. Whether we win or lose a game – it is well. Whether we gain or lose an Eagle – it is well.

So I leave you with this Eagle Nation. Cling to these words and truly let them comfort you, your friends and your families today and in the coming weeks as we all deal with this tragedy.

"When peace, like a river, attendeth my way,

When sorrows like sea billows roll;

Whatever my lot, Thou hast taught me to say,

It is well, it is well with my soul."

Layne Saliba  
Sophomore Journalism major  
Gainesville, Georgia

## A CANDLELIGHT VIGIL WILL BE HELD AT SWEETHEART CIRCLE AT 7P.M.

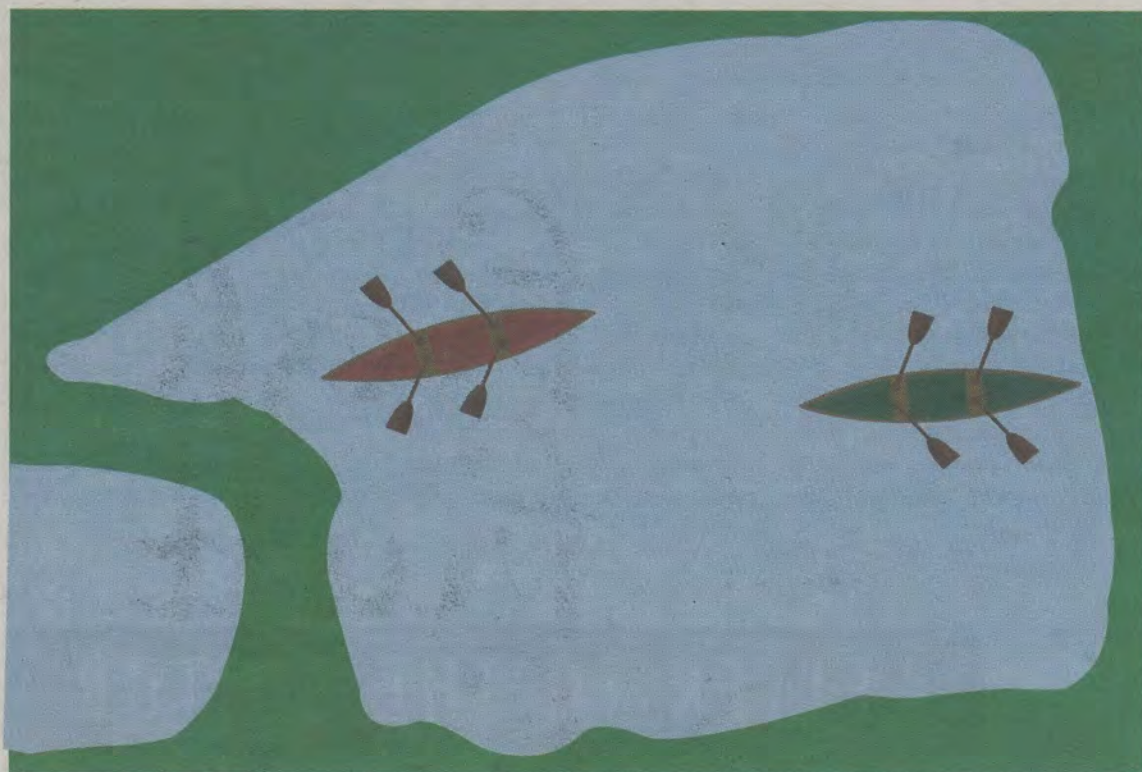
-The Counseling Center is open Monday through Friday from 8 a.m. to 5 a.m.

-The Counseling Center is located on Forest Drive between the Health Services building and the Forest Drive Classroom building.

-To arrange an appointment, visit the Counseling Center or call (912) 478-5541



## CLASH of the Canoes



BY KAT SHUMAN

The George-Anne contributor

This Thursday, the University Programming Board will be hosting its first canoe race on Lake Wells from 3:00 p.m. to 5:00 p.m. The race will be divided into five segments with four organizations competing in each segment. Four members from each organization will be divided into two canoes. After the first canoe makes it across Lake Wells, the second canoe will make their journey across. The three teams with the fastest times will receive prizes. "I am really excited about the canoe race. No other organization has ever done an event like this. I really hope that UPB will continue

it next year, so it can become a tradition here at Georgia Southern," Carlissa Hill, UPB Spirit and Traditions Chair, Carlissa Hill, said.

The canoes for the event have been purchased by UPB from Southern Adventures. Hill also made sure to note that lifeguards will be present at the event.

Where:  
Lake Wells

When: 3:00 p.m.  
to 5:00 p.m.

The  
Competitors

The first twenty organizations to submit an application for this event have been granted permission to compete in the canoe race. The organizations that will be competing this year are:

- Adrenaline Show Choir
- Alpha Kappa Alpha
- Centennial Place
- Circle K International
- Institute of Electric and Electrical Engineers
- Justice Studies Club
- Millionaire Mindset Club
- Mock Mediation
- Omega Psi Phi Fraternity Inc.
- Phi Mu
- Phi Sigma Pi National Honors Fraternity
- Pre-Optometry Association
- ProActive
- Pushing for Success
- Residence Hall Association
- Sigma Alpha Pi
- Sigma Chi
- Southern Eagles Archery
- Student African American Brotherhood
- Theta Xi.

# PETER BROOKS' SHOP

LADIES, LADIES  
TOTE BAGS, SUMMER  
AND SPRING BAGS AND  
COIN PURSE ETC.

ATTENTION LADIES OF  
GEORGIA SOUTHERN

Visit the website for hundreds of  
options for ladies' bags and  
purses!

CHECK US OUT!

[ [www.mythirtyone.com/  
peterbrooks](http://www.mythirtyone.com/peterbrooks) ]

**Hungry Howie's**  
FLAVORED CRUST PIZZA

<b>Hungry Howie's Pizza</b> <b>PIZZA &amp; WINGS</b> <b>\$12.99</b> <small>CODE 1905</small> 1 Medium Pizza With Cheese and Any 1 Topping 10 Howie Wings* Buffalo Style or Boneless (Your Choice of Dipping Sauce or Hand Tossed in Asian, BBQ or Spicy Buffalo Sauce) <small>*Toppings not included. Excludes all other toppings. Excludes all other toppings. Excludes all other toppings.</small>	<b>Hungry Howie's Pizza</b> <b>PIZZA COMBO</b> <b>\$19.99</b> <small>CODE 1906</small> 1 Deep Dish Pizza With Cheese and Any 2 Toppings 1 Large Round Pizza With Cheese and Any 1 Topping ADDITIONAL TOPPINGS EXTRA <small>Excludes all other toppings. Excludes all other toppings. Excludes all other toppings.</small>
<b>Hungry Howie's Pizza</b> <b>1-2-3 SPECIAL</b> <b>\$13.99</b> <small>CODE 2002</small> 1 Large Pizza With Cheese and Any 2 Toppings 3 Cheeser Howie Bread*, Dipping Sauce ADDITIONAL TOPPINGS EXTRA <small>*Excludes all other toppings. Excludes all other toppings. Excludes all other toppings.</small>	<b>Hungry Howie's Pizza</b> <b>FREE</b> <b>HOWIE BREAD*</b> with Purchase of a Large 3-Topping Pizza at Regular Menu Price <small>CODE 3305</small>

607 Brannen Street, Unit #4  
Statesboro, GA 30458  
(912) 764 -6565



# Binge-worthy Television

BY RASHIDA OTUNBA  
The George-Anne staff



PHOTO COURTESY OF  
HOLLYWOOD REPORTER

"Unbreakable Kimmy Schmidt," left, a Netflix Original is dark humor at its finest.

PHOTO COURTESY OF VIKING-  
HISTORY.COM

"Vikings," shown below, is History Channels claim to scripted TV fame.



"Unbreakable Kimmy Schmidt"-Netflix

This show takes the number one spot on this list because it's just that amazing. This dark comedy show opens with an autotuned news song that introduces us to our naive heroine Kimmy Schmidt ("The Office" alum Ellie Kemper) who, along with three other cult members has just been rescued from an underground bunker that they were trapped in for 15 years by a manipulative Reverend (Jon Hamm) who told them that the Earth had been destroyed. Vowing to never return back to her small town life in Indiana, Schmidt chooses to move to NYC and live out her new life as an adult. The show follows Kimmy through her successes and failures (mostly failures) as she tries to adapt to life in the Big Apple after her traumatic incident. Sounds heavy, but it's actually the funniest show since "30 Rock."

"Orphan Black"-Amazon Prime

Sarah (Tatiana Maslany) is a young woman who has lived the majority of her life on the wrong side of the law. This changes one night after she watches her identical twin Beth, an FBI agent, jump in front of train. The plot twist? She and Beth are complete strangers. Chaos ensues when Sarah steals Beth's identity and tries to uncover the mysterious incidents surrounding her suicide. Mystery plus adventure, fight scenes, crime, secret organizations and... soccer moms? This show makes for the perfect TV binge-watching session.

"Vikings"-Amazon Prime

Probably the most interesting historical drama to air since "The Tudors," "Vikings" packs a huge

punch. The show takes you back in time to an oft-ignored period in history when Viking warriors sailed the seas in search of land and treasure. Calvin Klein model turned actor Travis Fimmel plays the legendary Viking warrior Ragnar Lothbrok along with his shieldmaiden (the ancient term for "fierce female warrior") wife Lagertha (Katheryn Winnick).

"Call the Midwife"-Netflix

"Downton Abbey" fans will love this British drama. "Call the Midwife" is a small screen retelling of the memoirs of the famous nurse Jennifer Worth, who worked in an impoverished area of London during the post World War II baby boom era. A BBC original, the show features a cast of memorable characters led by Jenny Lee (Jessica Raine), a young nurse who comes to East End to work at a convent that specializes in helping expectant mothers. Not hooked yet? Trust me, after the first episode you will be. In addition to spectacular performances by the nurses and nuns, there is a love story between a nurse and a doctor reminiscent of "The Sound of Music." Unfortunately, though, there are no Von Trapp children to sing "Do Re Mi."

"Black Mirror"-Netflix

Looking for a show to watch in your "American Horror Story" withdrawal? Look no further. Call it a thriller for the age of technology, fans of "The Twilight Zone" will enjoy this twenty-first century psychological thriller. Each episode contains a different cast and storyline with its own twists and turns.

BE WELL.  
DO WELL.



fresh  
fruit  
friday

APRIL 24

RUSSELL UNION COMMONS

10AM – NOON

The Office of Health Education & Promotion will provide free cups of seasonal fresh fruit throughout Spring Semester. Nutritional tips and information on the fruits' health benefits will accompany the savory snacks.



HEALTH SERVICES

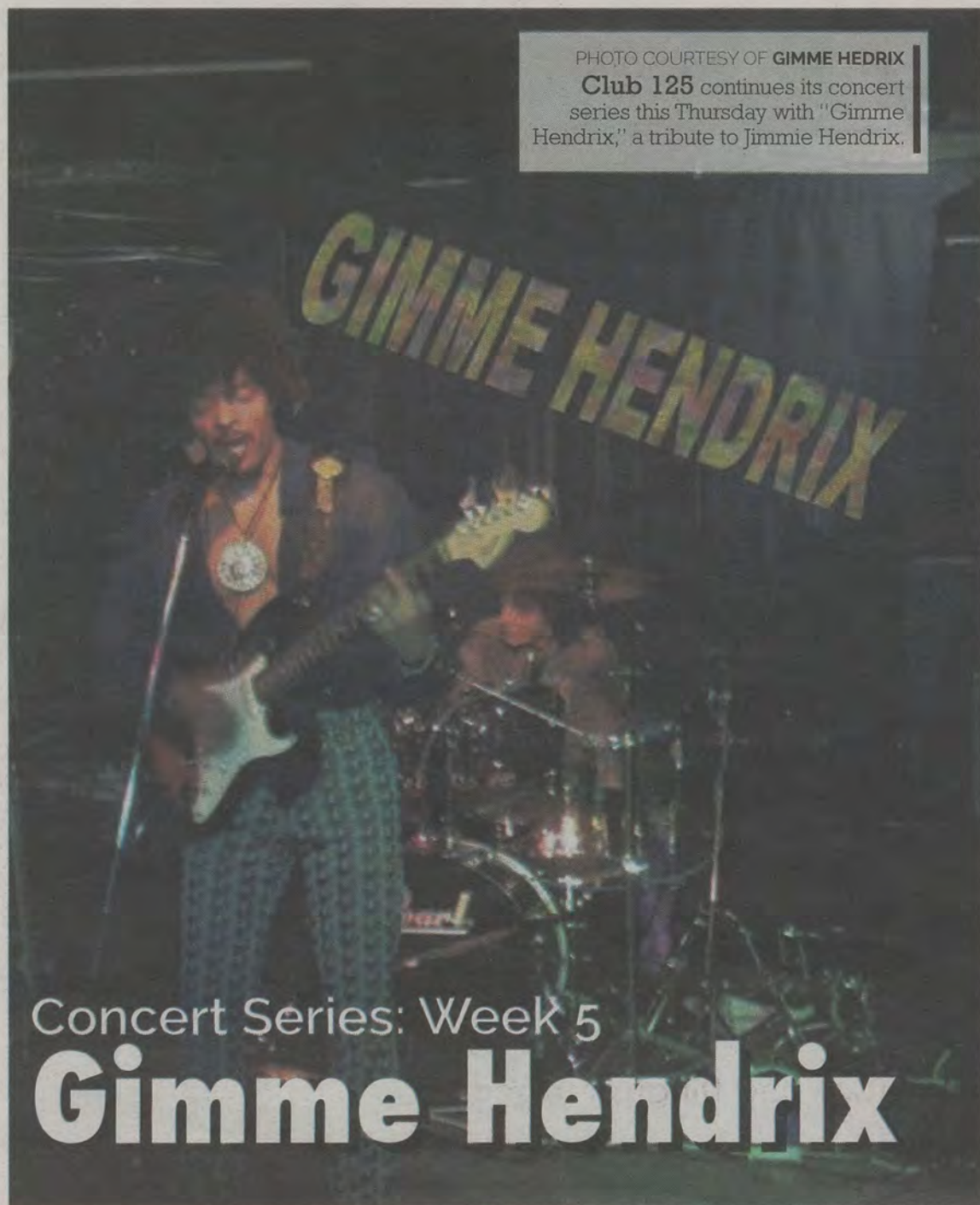
LEARN MORE AT [GEORGIASouthern.edu/HEALTH](http://GEORGIASouthern.edu/HEALTH)



GSUHEP | GSUHEALTHED



PHOTO COURTESY OF GIMME HENDRIX  
**Club 125** continues its concert series this Thursday with "Gimme Hendrix," a tribute to Jimmie Hendrix.



Concert Series: Week 5

# Gimme Hendrix

BY MEG ELWOOD  
 The George-Anne staff

AirBound Entertainment and Club 125's month long concert series continues with the throwback tribute band, Gimme Hendrix.

"We're just keepin' the music alive man," said guitarist Eric Keaton. Only three years ago in Athens Georgia, the trio known as Gimme Hendrix formed through jam sessions and a love of music by the one and only, Jimi Hendrix. Through the years, they've performed in small college towns and large concert halls of Georgia and other southeastern states like Tennessee and South Carolina.

The band gives audiences a blast from the past performance by dressing the part, capturing the vibes of the 60's and sounding like the live versions of the classic Hendrix Experience songs. The solid, grinding guitar riffs and chest pounding drum beats send audiences through a time warp, away from the rap and pop music of today to the pure

instrumental connection of psychedelic rock.

"We try to connect with the audience through the music, not the flashy lights. It's similar to how Jimi would connect with his audiences too," said Keaton.

Today, the sound may be unattractive to the ear. Our population today finds good music to be filled with electronic beeps and base drops, rappers yelling and cursing, pop voices filtered through recording machines, and artists somehow always finding a way to make a music video have some sort of sexual content. Like riding on a gigantic wrecking ball. Unfortunately, many of these artists will not be remembered 50 years from now and have cover bands like Jimi Hendrix has today. So give it a chance, get your tie-dye on, and live the Jimi Hendrix Experience in 2015.

The band will perform at Club 125 on Thursday, April 23 at 10 p.m.

More information on the band at [www.gimnehendrix.com](http://www.gimnehendrix.com).

## The Members:

Eric Keaton - Guitar/Vocals  
 Matt Garrison - Bass/Vocals  
 Brandon Hicks - Drums/Vocals

rents starting at  
**\$299**

710 Georgia Ave  
 Statesboro

**S**  
**SOUTHERN**  
**DOWN**  
**APARTMENTS**

**1 MONTH FREE RENT!**  
 when you mention this ad!

(912) 871-6501

[southerndownsapartments.com](http://southerndownsapartments.com)



• free roommate matching  
 • 0.38 miles to "The Plaza"  
 • furnished options  
 • washer/dryer included  
 • all utilities included



**3 BEDROOM**  
**PRICE REDUCED**  
**NOW ONLY**  
**\$350/BR!**



**CARIBE**  
**COURT**

**912-681-7873**  
 210 Caribe Court  
 Statesboro, GA 30458



**STUDIO**

**2BR**

**3BR**

**FREE Internet FREE Cable Pets Welcome Washer & Dryer** [www.CaribeCourt.com](http://www.CaribeCourt.com)



# TEXTBOOK BUYBACK & SALES

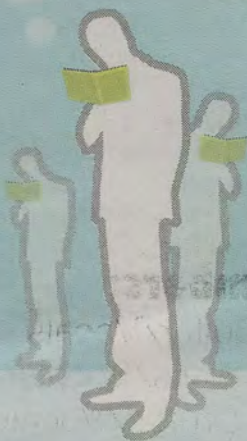
We try to buy all books. Even books that our competitors turn away and say are worthless!

We also pay the same or better for a book than the competitors do.

**The store is seasonal,  
Open April 27 - Sept / Dec-Feb**

Open extended hours during finals week.

We Sell Books At The Beginning Of Each Semester.  
Including summer sessions  
Books at online prices!



TextBook BuyBack & Sales  
1596 Chandler Rd  
Statesboro GA 30458

Next to Barefoot and Dingus Magees



[www.facebook.com/gsutextbookbuyback](http://www.facebook.com/gsutextbookbuyback)

COTTAGES BY CAMPUS • THE HAMPTONS, STATESBORO GA • NEW FOR FALL

**Get A 50" TV when  
you fill a 4BR in April**



**RATES AS LOW AS  
\$565 ALL-INCLUSIVE**

\*our lowest rate that will be offered for 2015. Ask about our Best Deal Guarantee.

address: 815 S. Main St. Statesboro, GA 30458

website: [www.hamptonsgsu.com](http://www.hamptonsgsu.com)

phone: 912-290-9595



## GREEN LEADS PITCHING TO HISTORIC HIGHS

BY COLIN RITSICK  
The George-Anne staff

Pitching coach BJ Green credits his battle with leukemia for bringing him to Georgia Southern; where he is leading the baseball team to one of its most successful pitching runs in history.



**B.J. GREEN**

Assistant Head Coach for Pitching

"If I would have never got leukemia I probably wouldn't be here. I met my wife here, we've got two kids. As bad as things get, there's always something good that comes out of it if you look for it," Green said.

Green was born in Gardendale, Ala. and pitched

at the University of Alabama. He set the school record for most wins by a freshman in 1998 before becoming a coach for the Crimson Tide. In 2006, he was diagnosed with cancer and had to take a year off of coaching in 2008 after receiving a successful stem cell transplant.

"I was looking to get back in to coaching and there was an opportunity here that I interviewed for and was lucky enough to land the job," Green said.

He took over the GS pitching staff in July 2009 and has had eight players drafted into the MLB since his arrival. Last season, the Eagles posted a team-ERA of 3.15, the lowest team-ERA since 1978 and third lowest of all time. If the season ended today, the Eagles 3.89 mark would be fourth lowest of all time.

Green says that his battle with cancer made him a more patient man and a better coach.

"It helps you put things into perspective. I definitely think it made me a better coach... you kind of slow down and try to appreciate where you're at, what you're doing," Green said.

That slow-down-and-breathe attitude is reflected in his players. Green likes his pitchers to be relaxed. He doesn't like to change up mechanics a whole lot and he values having individuals on the mound with different styles of pitching.

"I feel like if we recruited them and tried to bring them here, there's something that made them successful. I definitely don't want to take that away from them," Green said. "I kind of try to individualize programs to the pitcher rather than having a pitching staff full of the same guys, the same arm slot, the same looking windup...I feel like to build a pitching staff, you need a lot of different looks that you can throw at the opponent."

However, if something is wrong, he's going to make a change.

In 2011, Georgia Southern pitcher Matt Murray was having trouble locating pitches on one side of the plate leading up to the season, and his velocity was down.

Green, although he admits he should've noticed it sooner, told Murray to make a small, but specific change.

"The week of the first game we moved him from one side of the rubber to the other, and he ended up being the conference pitcher of the year," Green said.

Murray led the Eagles to the 2011 SoCon Championship out of the bullpen and finished the year with a 1.99 ERA, a 4-2 record and eight saves. He was drafted in the 10th round to the Kansas City Royals.

"He would probably tell you it's cause he moved to the other side of the rubber," Green said.

Green doesn't like to do a whole lot of critiquing in practice because he can't do that when it matters - in the game.

"I really don't do a whole lot of talking to them in the bullpen," Green said. "My view on the bullpen... is that's where the preparation

starts for on the field. And I'm not going to be out there with them in the game."

**“**The week of the first game we moved him from one side of the rubber to the other, and he ended up being the conference pitcher of the year.**”**

**B.J. GREEN**

Assistant Head Coach for Pitching

"If you want to be critiqued, he'll give his insight on what he thinks is best," LHP Evan Challenger said. "During this stage when we're late in the season, it's not as much about critiquing as it is about keeping your stuff sharp. If he notices something little then he'll let you know about it."

The bulk of the adjustments he makes come in the fall, when pitchers are narrowing down their focus heading into the holiday break before the season.

Green was an accomplished pitcher himself, so he had his sights on playing ball after college. But, that dream becomes a reality only for a very select few. He knew that his career was winding down when he played his senior season for Alabama in 2002.

"I had some coaches that had pulled me aside before and thought I'd make a good coach. I always prided myself on kind of being a coach on

the field. I just didn't really want to get out of the game; I've always loved the game. It was a natural fit," Green said.

A natural fit, indeed. In five years of coaching at GS, he's had two conference pitchers of the year, and LHP Jason Richman was the SoCon Tournament MVP last season. Challenger, who holds the lowest ERA in the Sun Belt with a 1.19 mark and is 4-0 in nine starts, is making a strong case for the Sun Belt Pitcher of the Year this season.

Green feels like his staff is more complete this year than last year. In 2014, he had a few dominant pitchers in Richman, LHP Sam Howard (3rd round draft pick - Rockies), RHP Josh Wirsu (SoCon Pitcher of the Year, 30th round draft pick - Cardinals) and RHP Matt McCall out of the bullpen.

"Last year Sam and Josh were at the front of the rotation as our 1 and 2, but they were both kind of 1's. This year, I feel like Connor [Simmons] has done a really good job on Sunday," Green said. "I don't know if we had that last year so I feel like we have three solid guys."

Simmons, a freshman, has a 3.29 ERA a 2-3 record in ten starts. He's caught some bad breaks and his record doesn't reflect how he's pitched, especially for a freshman.

"I feel like our depth in our bullpen is better this year. We've used more guys than we did last year," Green said. "Last year we kind of used Jason and McCall a lot, they had a lot of appearances. Now having more guys that we've used, hopefully everybody will be a little fresher for the stretch run."

The stretch run starts tomorrow. The Eagles play four more weekend series, three of which are conference games. The Sun Belt Tournament starts May 20 in New Orleans, La.



RYAN WOODHAM THE GEORGE-ANNE

Junior **Jason Richman** has a 2.79 ERA with five wins and no losses. Last weekend, Richman got the win against UALR in the second game of the series.

LOOK ON THE BRIGHT SIDE. SHOW NEW ARRIVALS

**The Sir Shop**  
Statesboro Mall  
912.764.6924

SOUTHERN PROPER



# Mens golf took first at Sun Belt

BY LAYNE SALIBA  
The George-Anne Staff

The Georgia Southern men's golf team took first place at the Sun Belt Men's Championship in its inaugural season in the league. This marks the team's second straight conference championship after winning the Southern Conference championship last year. It also marks their ninth overall conference championship.

"It feels good. It was a good team win and everyone was able to contribute to a nice victory. It was nice for everyone to accomplish one of our big team goals this season," head coach Carter Collins said.

The Eagles [-3] held a 20 stroke lead headed into the third round after shooting 279 in the first round and 275 in the second. However, the weather gave them trouble in the final round of play as they shot 11-over-par on Tuesday. Nevertheless, they were the only team in the tournament to finish under par, winning by a total of 16 strokes.

Senior Kim Koivu [-6] received medalist honors after he carded a total score of 207 for the tournament. His score is the lowest score posted since 2008 and his first individual win while as an Eagle.

Following close behind Koivu was senior Scott Wolfes who shot 4-under-par after starting the tournament shooting 68 in the opening round. Wolfes ended up finishing second place, but carded 12 birdies throughout the tournament.

"I'm very impressed with them [Koivu, Wolfes]. They played well all week. They were anchoring our team every day and did a great job with it. Every time we needed them to step up and get a good stretch of holes, they did it. So they really held us in there and helped us achieve our goal," Collins said.

The Eagles were not familiar with the Raven Golf Club course, so they had to make a few changes in preparation for the tournament. The team was not sure what to expect, and they knew that the weather would most likely play a negative factor over the weekend on Florida's gulf coast.

"We came to a course that we had never been to before. So we put more emphasis on short game," Collins said. "But the guys have been working hard this whole season, so nothing was really different for this tournament."

With the championship victory, the Eagles receive the Sun Belt's automatic bid to the NCAA Regionals. They will find out the location they will be playing on May 4 during the NCAA Championship Selection Show.

"We're just going to practice being sharp. It's hard to prepare for a course you don't know, so we are just going to try our best to stay fresh and stay sharp. When they tell us what course we're going to be at, we will start preparing for it. But until then we are just going to try and stay ready," Collins said.



PHOTO COURTESY OF GSEAGLES.COM  
Senior Kim Koivu shot 71 in the final round of the championships and received media list honors. He has one top-5 and one top-10 finish this season. The Eagle team was proud to win the Sun Belt in its debut season, but it is looking ahead to the NCAA Regionals in May.



# Classifieds & Puzzles

4-23-15

14

		4	6		1	8		3
1			2	5		4		
	4	6						5
				7				
7						3	2	
		8		1				4
		1	8		7	2		
2								

	8			4				
	4		7	3		5		
7				6				
	2	6				3		
1								2
		7				6	8	
4				2				1
	7	2		1	8		4	
							5	

## STATEMENT OF OPERATIONS

The George-Anne is the official student newspaper of Georgia Southern University, operated by GSU students using facilities provided by the university. The newspaper is the oldest continuously published newspaper in Bulloch County.

The newspaper is published twice weekly, on Tuesdays and Thursdays, during most of the academic year. Any questions regarding content should be directed to the student editor by phone at 912.478.5246 or at [gaeditor@georgiasouthern.edu](mailto:gaeditor@georgiasouthern.edu).

**ADVERTISING:** The newspaper accepts advertising. Inquiries may be made by calling 912.478.5418 or 912.478.0566. For questions e-mail [ads1@georgiasouthern.edu](mailto:ads1@georgiasouthern.edu).

The George-Anne receives additional support, in part, from the Student Activities Budget Committee. For more information, rate cards, or sample publications, contact the advertising manager or student media director. The advertiser is responsible for any errors in advertisements and its liability for adjustments is limited to the amount of space the error occupied in the ad. Further, the newspaper is not responsible for any damages caused due to an ad's omission from a particular edition and its responsibility solely is to reschedule the ad in the next regular edition at the regular advertising rates.

**STUDENTS BEWARE:** The George-Anne screens all advertisements prior to publication. The newspaper strives to accept ads for legitimate products and services only. Students are urged to exercise caution when replying to ads-- particularly those that require personal information. Students are also urged to report to the newspaper any suspicious offers which they might see in an ad.

### PUBLICATION INFORMATION:

The newspaper is printed by The Brunswick News in Brunswick, Ga.

**NOTICE:** Unauthorized removal of multiple copies from a distribution site constitutes theft under Georgia law, a misdemeanor offense punishable by a fine and/or jail time.

**CORRECTIONS:** Contact the editor at [gaeditor@georgiasouthern.edu](mailto:gaeditor@georgiasouthern.edu) for corrections and errors.

## STAFF LIST

**Editor-in-Chief** William Price

**Managing Editor** Lauren Gorta

**Enterprise Managing Editor**

William Peebles

**News Editor** Macy Holloway

**Features Editor** Matt Sowell

**Sports Editor** Katie Tolbert

**Daily Editor** Casey Cargle

**Opinions Editor** Erin Williams

**Creative Manager**

Heather Yeomans

**Photo Editor** Maya Gleason

**Design Editor** Alexandra Tobia

**Features Designer** Erin Fortenberry

**News Designer** Alex Smith

**Sports Designer** Hailey Smith

**Opinion Designer** Lauren Grizzell

**Ads Design Chief** Kelly Slyfield

**Junior Ads Designer** Brandon Coe

**Distribution Manager**

Manuel Girbal

**Marketing Manager** Emily Skolrood

**Business Manager** Virginia Byrd

### Across

- 1 Goat god
- 4 Goldbrick
- 8 Type of fixture
- 13 Extinct bird
- 14 "Dancing Queen" group
- 15 Ice house
- 16 Bread spread
- 17 Wheedle
- 18 Timid
- 19 Tears
- 20 "Is it soup?"
- 21 Rich cakes
- 22 Particles
- 24 Positions
- 26 Hydromassage facility
- 28 Wimple wearer
- 29 Hounds
- 33 Commotion
- 36 True up
- 38 Man of morals
- 39 Workshops
- 41 1967 Oscar winner Parsons
- 43 Court employee
- 44 Leans, like a ship
- 46 Anomalous
- 47 King
- 48 "Wanna?"
- 49 "Uh-huh"
- 51 Tablelands
- 53 West Wing workers
- 57 It's souped up
- 61 Youth
- 63 Manitoba native
- 64 Gallic goodbye
- 65 Eight furlongs
- 66 Curly cabbage
- 67 Certain missile
- 68 Woodworking tool

	1	2	3		4	5	6	7		8	9	10	11	12
13					14					15				
16					17					18				
19					20				21					
22				23		24		25						
			26		27		28				29	30	31	32
33	34	35		36		37				38				
39			40					41	42					
43						44	45					46		
47					48				49		50			
				51				52		53		54	55	56
57	58	59	60				61		62		63			
64						65					66			
67						68					69			
70						71					72			

Copyright ©2015 PuzzleJunction.com

- 69 Hawaiian strings
- 70 Sound of contempt
- 71 Go bananas
- 72 Via
- 11 Water carrier
- 12 Playthings
- 13 Quad building
- 21 Perfect rating
- 23 Incite
- 25 Ditties
- 27 Drink in a mug
- 29 Sandra of "Gidget"
- 30 Kon-Tiki Museum site
- 31 Precious metal
- 32 Went like the dickens
- 33 Rainbows
- 34 Pastrami purveyor
- 35 In the past
- 37 Florida Keys, e.g.
- 38 On the briny
- 40 Before, of yore
- 42 Hog haven
- 45 Kind of dressing
- 48 Hospital unit
- 50 Kind of truck
- 51 Riding horse
- 52 Chip dip
- 54 Golden Hind captain
- 55 Conger catcher
- 56 Gets the picture
- 57 Millinery
- 58 Thor's father
- 59 Former Yugoslav statesman
- 60 Paddler's target
- 62 Johnny of "Sleepy Hollow"
- 65 Lady's title





# STATESBORO CONCERT SERIES

March 26 - The Steppin Stones

April 2 - Atlas Road Crew

Opener: PIANO.

April 9 - Archnemesis

Opener: DJ Animosity

April 16 - Dank (formerly Dank Sinatra)

Opener: The Orange Constant

April 23 - Gimme Hendrix (Jimi Hendrix  
Tribute)

April 30 - Ryan Kinder Band

Opener: Nate Kenyon

## COUNTER POINT

OFFICIAL  
PRE-PARTIES



HOSTED BY:

125







# \$499

3 | 4 | 5 BR ONLY  
3 | 4 | 5 PM ONLY

10 DAYS ONLY



3BR | ~~\$554~~



4BR | ~~\$559~~



5BR | ~~\$544~~

✉ 17358 GA Hwy 67 S. ☎ 912.681.9703 📺 /AspenHeightsStatesboro 📺 @AspenHeightsGSU