

Georgia Southern University

Digital Commons@Georgia Southern

---

The George-Anne

Student Media

---

1-29-2015

## The George-Anne

Georgia Southern University

Follow this and additional works at: <https://digitalcommons.georgiasouthern.edu/george-anne>

---

### Recommended Citation

Georgia Southern University, "The George-Anne" (2015). *The George-Anne*. 2618.  
<https://digitalcommons.georgiasouthern.edu/george-anne/2618>

This newspaper is brought to you for free and open access by the Student Media at Digital Commons@Georgia Southern. It has been accepted for inclusion in The George-Anne by an authorized administrator of Digital Commons@Georgia Southern. For more information, please contact [digitalcommons@georgiasouthern.edu](mailto:digitalcommons@georgiasouthern.edu).



# GA GSU vs. APP

BASKETBALL BEGINS  
ITS FIVE HOME  
GAME STAND

SEE PAGE 11

THE GEORGE-ANNE

## DEVELOPMENT PROJECT

expected to bring

2,000+  
JOBS TO STATESBORO

SEE PAGE 4

## BARBER SHOP SENSATIONS take the prize

Harmonize on PAGE 8

## CONTINUUM ART EXHIBITION

Q&A

with Judge  
NICK NELSON

SEE PAGE 6





IAN LEONARD  
The George-Anne staff

## Empty Bowl PROJECT

The Empty Bowl Project is a national charity program where the local community can donate to the Statesboro Food Bank.

For this specific charity, local community members design and submit bowls to be sold full of chili for \$10 at the rotunda outside the Russell Union Center on February 11.

The Statesboro Food Bank estimates that \$1 can pay for seven meals, which means that each bowl purchased provides 70 meals for someone in need.

All you need to do to participate is visit Free Spirit

Pottery down on 42 Main Street, and if you mention the Empty Bowl Project, you will be provided with all the materials you need to design your own bowl, completely free of charge.

They will be accepting both cash and checks at the sale of the pottery on Feb. 11. Both meat and vegetarian chili options, along with a host of free toppings and water, will be available.

The final deadline for submissions is February 6.

## Galactic Comics Moves to a New Location

IAN LEONARD  
The George-Anne staff

Statesboro's resident geek haven, Galactic Comics, officially moved in to its new location this past Saturday.

The merchandise in the store had been moved in since December 2, however, it wasn't until January 24 that the owners officially celebrated.

The square footage of the store nearly doubled. There's enough room to hang a plethora of different pop culture paraphernalia, such as a replica of Captain America's shield, limited edition comic books and artwork by one of our very own Georgia Southern Eagles.

So if you fancy yourself a comic aficionado, a card game wiz, or even just someone who enjoys a good old fashioned board game, be sure to give Galactic Games & Comics over on 20 East Vine St. a look.

## APP UPDATE SNAPCHAT



ARAYA JACKSON  
The George-Anne staff

Snapchat introduced 'Discover' in a recent app update which will allow millions of users to stay connected with other companies and events from around the world.

Discover is a right swipe away from your stories page (the old contact page). Companies such as Cosmopolitan, CNN and ESPN are using it in a way a magazine app would work. It allows you to view videos, pictures, articles and other teasers that the editors want to share.

Snapchat is the third most popular app for adults 18-35, falling behind Facebook and Instagram. After the company turned down a \$3 billion buyout offer from Facebook, the 24 hour stories and now Discover aspects of Snapchat will allow it to continue to skyrocket into financial success.

## WEATHER BAR

Friday



High: 58°  
Low: 29°

Saturday



High: 55°  
Low: 37°

Sunday



High: 66°  
Low: 46°

## WEATHER CATS



"MEOW IT'S YOUR TURN"

## SPORTS SHORTS

JOZSEF PAPP  
The George-Anne Staff

-Thursday, January 29 vs Appalachian State is a #TRUEBLUE Out

-Women tip at 5 p.m., Men tip at 7:30 p.m.

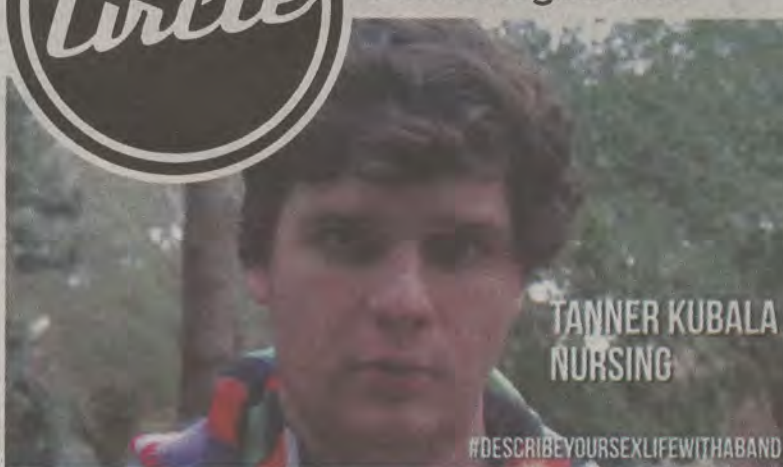
-The first 500 students get a free blue rally towel

-Women's Basketball will face the ULAR Trojans on Saturday (1/31) at 4:30pm in Hanner Field house then later the Men's Basketball team will take on the Trojans at 7:30pm

-GSU Basketball's home-stand will stretch from Jan. 29 through Feb. 12



thecirclegsu.com



TANNER KUBALA  
NURSING

### What's Trending #DescribeYourSexLifeWithABand

"Marvin Gaye, because he is wonderful."

In this week's episode of What's Trending, we asked nursing major Tanner Kubala to describe his sex life with a band. Check out what more people had to say and follow us on twitter @TheCircleGSU for updates on our next What's Trending episode.



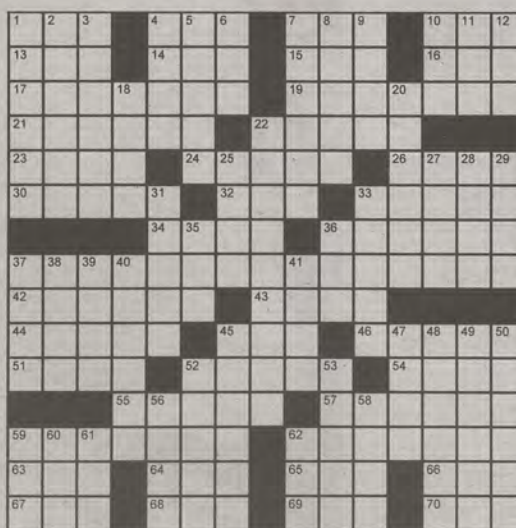
The Creative Writing Club

### Club Feature: The Creative Writing Club

The Creative Writing Club is accepting anyone who loves to write. Check out thecirclegsu.com for more information.

### Across

- 1 Sapphire, e.g.
- 4 Newspaper div.
- 7 Pants part
- 10 Elevator part
- 13 It's next to nothing
- 14 Samurai's sash
- 15 Gardner of film
- 16 "To Autumn," e.g.
- 17 Mexican shawls
- 19 Governed
- 21 Beams
- 22 One of Columbus's ships
- 23 Charged particles
- 24 Plaudits
- 26 Duration
- 30 Liquor designation
- 32 Cereal grain
- 33 Nairobi's land
- 34 Butts
- 36 Wreath for the head
- 37 Rich dessert
- 42 Salad leaves
- 43 Playwright
- 44 Bogosian
- 45 Stockpile
- 46 Work unit
- 47 NZ flightless birds
- 51 Cry of pain
- 52 King of Thebes
- 54 Emergency CB channel
- 55 Boo-boo
- 57 Docket
- 59 Ordained
- 62 Dynamic
- 63 In the style of
- 64 King Kong, e.g.

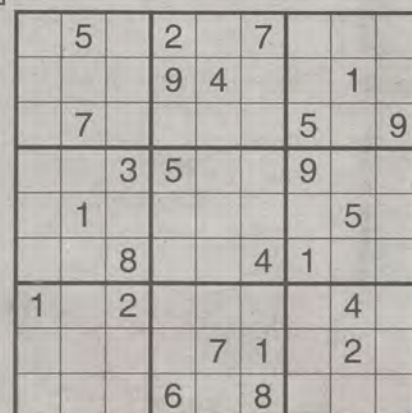


- 65 Historic period
- 66 Conceit
- 67 Smidgen
- 68 Cayes, Haiti
- 69 Deviation
- 70 Commotion
- 11 Fruity drink
- 12 Traffic stopper
- 18 Likewise
- 20 Rich and elaborate cake
- 22 Construction worker
- 25 Unwakeupable state
- 27 Brings to a close
- 28 Deli loaves
- 29 Jerry Herman musical
- 31 Little amphibians
- 33 Criticize
- 35 Hearty brew
- 36 French friend
- 37 Pottery material
- 38 Before spun or run
- 39 Like an oxeye window
- 40 City on the North Platte
- 41 Therefore
- 45 Wears away
- 47 Arrow poison
- 48 Season
- 49 Deep blue
- 50 Manatee
- 52 Brunch serving
- 53 Nigerian money
- 56 Down-to-earth
- 58 Bite like a beaver
- 59 Apply gently
- 60 Actor Wallach
- 61 Mouse catcher
- 62 Essential

## CLASSIFIEDS

**Certified Math teacher with 10+ years experience available for tutoring! Services include:** Algebra 1 and 2, Geometry, College Algebra, Trigonometry, PreCalculus, Calculus as well as organization and study skills. Flexible schedule. Call 843-214-0548 TODAY / or email info@mathmadesimple.com for rates and to set up your first session.

**FOR LEASE 417 S Main Street 6 bedroom house AVAILABLE NOW or AUGUST**  
Also 4 bedroom at GSU entrance - Marvin Avenue AVAILABLE AUGUST (912) 682-7468





## WHAT'S FOR LUNCH?

STATESBORO RESTAURANTS DISCUSS THEIR IDENTITY AND RELATIONSHIP WITH GSU

BY OZZIE BUNBURY AND WHITT VAN TASSELL

The George-Anne staff

### COULD YOU GIVE US SOME BACKGROUND INFO ON YOUR RESTAURANT?

**SON'S**- "In Germany, these things are always sold on the street, this is street food, people buy these...often on the way home from work, on the way home from a long night out and so it's cheap food...it's not really expensive. You see the youth eat it a lot, you see everyone eat it a lot, but you know, it strikes a special chord with students," Nguyen said.

**40 EAST**- The owner wanted to go after a Savannah-like clientele and atmosphere but he wanted it to be in Statesboro. He wanted a modern yet antique feel to it, all while having it be a very comfortable spot. So you come in, feel a little upscale but at the same time like you belong.

**EL RINCONCITO**- "It started

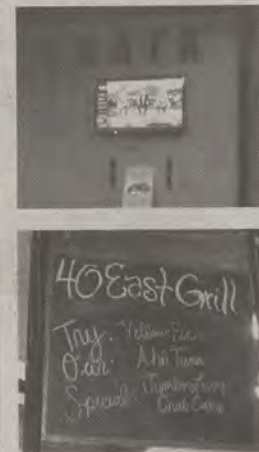
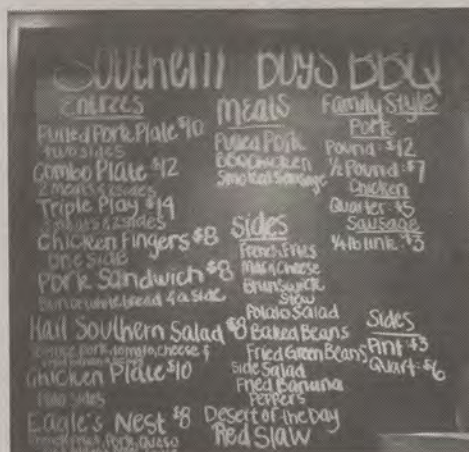
as a little place, and it's been expanding ever since as it has been getting popular... Compared to El Som or any other place this is the closest to Mexican food that you can find here. In Mexico, they have stores with little restaurants next to them, it brings more people into the place. It's the authentic way," Maria said.

**SOUTHERN BOY'S**- "I moved back to Statesboro after working at various restaurants and traveling. [Once back here], I aided Heath Robinson, (the former GM of the Holiday Inn) in opening the New York City Pizzeria. We came up with the name pretty quickly. Southern Boys, we're in Statesboro, Georgia Southern Grad, so most of it came pretty painless," Maenpaa said.

### WHAT KIND OF RESTAURANT DO YOU SEE YOUR RESTAURANT AS?

**SON'S** - "The food itself is what's known as Turkish German. Döner Kebab is technically a Turkish origin dish, but the way it's presented here and the way we package it is the way it was invented in Berlin to sell to German people. So it's a Turkish food made by Turkish immigrants to Germany," Nguyen said.

**SOUTHERN BOY'S BBQ**- "Other BBQ restaurants do different kind of food businesses, I do a lot of pulled pork business. I think our specialties are different; I would say mine is definitely more college orientated. We do wedding receptions, rehearsal dinners, fraternity and sorority events, small luncheons, anything anybody needs catered and they want BBQ," Maenpaa said.



### COULD YOU SPEAK TO YOUR RELATIONSHIP WITH THE GEORGIA SOUTHERN COMMUNITY?

**SPIKES SPORTS BAR & GRILL**- "Well, I'm a graduate of Georgia Southern, I have a father who was a professor at Georgia Southern, all kinds of siblings who are part of that alumni...I feel incredibly linked to the student body and both the alumni groups that are part of that and all the folks that will soon come to be. I think every business owner in Statesboro recognizes that Georgia Southern is the heartbeat of everything that allows those businesses to exist, so finding ways to serve that group is good business sense," Darin Van Tassell, owner, said.

**40 EAST GRILL**- "I think we have a fairly decent relationship with the Georgia Southern Community. We have a banquet hall right behind the building, and they do a lot of events, semi-formals, meetings, luncheons. I wouldn't say we have a lot of students come in here and actually eat; at night time for date nights and what not we see a lot more students," Samantha Thompson, general manager, said.

**SON'S DÖNER KEBAB**- "These [types of food] are all over universities [in Europe].

So being this close to the University is a natural sort of thing. A lot of our main clientele at first, because we didn't advertise it much, have been students who've studied abroad in Germany, France and the United Kingdom and then professors who have been abroad to Europe, because they've all had this stuff, and they all love it," Son Nguyen, owner, said. Translated by employee Carson Downs.

**EL RINCONCITO**- "We help [the Spanish department] out, and that brings more people in here, more new students to learn about the place and eventually brings more new people in here other than our regular customers... [La Mesa de Conversación] is for students that want to learn Spanish or are taking classes, they come here and we talk to them in Spanish and we're not allowed to talk to them in English," Maria Arteaga, waitress, said.

**SOUTHERN BOY'S BBQ**- "I'm a huge supporter of Southern, the better Southern does, the better I do. I want to have a Georgia Southern themed restaurant. It takes sometime for people to adopt you, and for people to figure out we're

gonna be here for the long haul, and this isn't an open up and close down in six months type of spot, we're gonna be here a long time," Stephen Maenpaa, owner, said.

#### HOW LONG HAVE THEY BEEN HERE?

**SPIKE'S SPORTS BAR & GRILL**  
5 Years

**SON'S DONER KEBAB**  
4 Months

**EL RINCONCITO**  
6 Years

**40 EAST**  
2 Years

**SOUTHERN BOY'S BBQ**  
6 Months

KELLY LOWERY THE GEORGE-ANNE

All of these restaurants are staples in the Georgia Southern community and contribute to Statesboro's local brand.



# INDUSTRIAL PARK HERALDS NEW JOB OPPORTUNITIES

BY WHITT VAN TASSELL  
The George-Anne staff

Georgia Southern students will soon enjoy another infusion of jobs to the Greater Statesboro area thanks to the industrial recruitment efforts of The Development Authority of Bulloch County (DABC).

The DABC hopes to emulate the success of the Gateway Industrial Park through their current project, developing DABC-owned land at the intersection of Highway 301 South and Interstate-16 (I-16).

The Gateway Industrial Park is home to a majority of Greater Statesboro's largest employers, including Briggs & Stratton, the third largest with over 950 employees; Great Dane, employing 400; and the largest Wal-Mart Distribution Center in the United States.

All told, the park's expected employment rate gives Georgia Southern University a run for its No. 1 employer status, sustaining an excess of 2,000 jobs a year. Bulloch County estimates that the proposed I-16 park will directly create up to 2,500 jobs in total.

Industrial recruitment, the process of attracting industry jobs to a location, is largely based on two factors: proximity to interstate and reliability of utilities. The DABC is currently working to create a dream scenario at the I-16 industrial park site. Statesboro's proximity to the Port of Savannah, the 4th busiest port in the United States according to the Georgia Ports Authority, is a great asset to the site, while the Highway 301 interchange provides an ease-of-use not found anywhere

closer to Savannah.

"We've missed opportunities by not having [an industrial park] available at the interstate supported by infrastructure," Benjy Thompson, Chief Executive Officer of DABC, said.

The City of Statesboro and Bulloch County have partnered to bring city utilities to the site, streamlining the estimated \$49.45 million project.

"It took a little while and a lot of conversations for the City and the County to come together and agree to do this jointly, but they made that decision, and that shows well for the community," Thompson said.

Water, Wastewater and Natural Gas utilities will be at the interchange the end of the year, completely contained and maintained in the same capacity as all other city utilities. Residents need not worry about sewage smells during or after construction.

Options existed for standalone utilities at the site, but Thompson felt that the expertise of Statesboro in the utilities realm and possibility of revitalization of Highway 301 influenced the decision to extend the City's current system.

"I would not be surprised... part of the strategy for extending utilities from south of the city to the interstate was to allow for the possibility of development along that corridor," Thompson said, but warned against getting hopes up in the near future. "Redevelopment is in a lot of ways more difficult than development... you have to destroy and then re-create."

# TO CLICK OR NOT TO CLICK: PROFESSORS SHARE iCLICKER PREFERENCE

BY NADIA DREID  
The George-Anne staff

Earlier this month, 64 Dartmouth College students faced disciplinary action for using their electronic clickers to cheat on in-class quizzes. The clickers are registered to the individual, but Dartmouth administration said students were passing their clickers on to their classmates, who would answer questions for them, according to the Boston Globe.

Dr. Jacque Kelly, professor of geology at Georgia Southern University, has been using electronic clickers in her introductory classes for three years now, and she's a fan.

"I can ask a question and see right away if students are getting the concepts or not," Kelly said. "If an answer comes up 50/50, then I will have the students debate the answer... so it also increases student learning in that respect."

Kelly uses clickers almost exclusively in her introductory classes, having her students use them to complete exams as well. It allows students to receive their grades almost immediately. To prevent cheating, Kelly passes out different copies of the exam, but so far, she has not had many problems.

"I've caught one person cheating before, but the one thing I have going for me is that I always learn my student's names. So after about the first three weeks, I will know if they're there or not," Kelly said.

Although the clickers help improve student learning, one of the downsides of using them is that it reduces the amount of material she can cover in a semester due to having to stop and explain answers after each question is completed, Kelly said.

Dr. James Reichard, professor of geology, said that the reduced subject matter is why he chooses not to use the clickers in his classes, despite the fact that some of his sections have nearly 300 students.



"That's one of the main reasons I don't use them, because I don't want to cut down my material," Reichard said. "Students have the opportunity to make the material more understandable by reading the text, doing the online activities and other things."

For some, it may be a generational gap. Dr. Fredrick Rich, also a professor in the geology department, said professors tend to stick with what they are used to.

Rich's first experience with clickers was in the late 90s, when GSU began to use them in the Department of Education, where he worked at the time. Today, Rich chooses not to use them in his classes, because he teaches small sections and prefers to communicate with students one-on-one.

"Younger faculty... they're using clickers," Rich said. "Part of it I think is just frame of mind - you've got gadgets, you use gadgets."

## STATEMENT OF OPERATIONS

The George-Anne is the official student newspaper of Georgia Southern University, operated by GSU students using facilities provided by the university. The newspaper is the oldest continuously published newspaper in Bulloch County.

The newspaper is published twice weekly, on Tuesdays and Thursdays, during most of the academic year. Any questions regarding content should be directed to the student editor by phone at 912.478.5246 or at gaeditor@georgiasouthern.edu.

**ADVERTISING:** The newspaper accepts advertising. Inquiries may be made by calling 912.478.5418 or 912.478.0566. Fax any questions to 912.478.7113 or e-mail adst1@georgiasouthern.edu.

The George-Anne receives additional support, in part, from the Student Activities Budget Committee. For more information, rate cards, or sample publications, contact the advertising manager or student media director. The advertiser is responsible for any errors in advertisements and its liability for adjustments is limited to the amount of space the error occupied in the ad. Further, the newspaper is not responsible for any damages caused due to an ad's omission from a particular edition and its responsibility solely is to reschedule the ad in the next regular edition at the regular advertising rates.

**STUDENTS BEWARE:** The George-Anne screens all advertisements prior to publication. The newspaper strives to accept ads for legitimate products and services only. Students are urged to exercise caution when replying to ads-- particularly those that require personal information. Students are also urged to report to the newspaper any suspicious offers which they might see in an ad.

**PUBLICATION INFORMATION:** The newspaper is printed by The Brunswick News in Brunswick, Ga.

**NOTICE:** Unauthorized removal of multiple copies from a distribution site constitutes theft under Georgia law, a misdemeanor offense punishable by a fine and/or jail time.

## STAFF LIST

**Editor-in-Chief** William Price  
**Managing Editor** Lauren Gorla  
**Enterprise Managing Editor** William Peebles  
**News Editor** Macy Holloway  
**Features Editor** Matt Sowell  
**Sports Editor** Katie Tolbert  
**Daily Editor** Casey Cargle  
**Opinions Editor** Erinn Williams

**Creative Manager** Heather Yeomans  
**Photo Editor** Maya Gleason  
**Design Editor** Alexandra Tobia  
**Features Designer** Erin Fortenberry  
**News Designer** Alex Smith  
**Sports Designer** Hailey Smith  
**Opinion Designer** Lauren Grizzell

**Ads Design Chief** Kelly Slyfield  
**Junior Ads Designer** Brandon Coe

**Distribution Manager** Manuel Girbal  
**Marketing Manager** Emily Skolrood  
**Business Manager** Virginia Byrd



# THE WEEKLY BUZZ

JAN. 29 - FEB. 4

A WEEKLY STUDENT AFFAIRS AND ENROLLMENT MANAGEMENT CALENDAR OF EVENTS SPONSORED BY THE DIVISION OF STUDENT AFFAIRS AND ENROLLMENT MANAGEMENT

## 01/29

THURSDAY

Brown Bag Luncheon  
11:00 a.m. - 2:00 p.m. Russell Union Ballroom  
1042 C  
Multicultural Student Center  
The Diversity Peer Educators (DPE) program will have a Brown Bag Luncheon for students to come eat and discuss various social justice issues including, but not limited to topics such as race, sexual orientation, gender, ability, religion and socioeconomic status in an open and relaxed setting. The goal of this event is to create dialogue about these issues among Georgia Southern students, faculty and staff in a way that may promote positive change.

## 01/30

FRIDAY

Student Activities/UPB  
Title: New Organization Chartering Workshop  
3:30-5:00 pm Russell Union 2044  
Interested in starting a new student organization? Attend this workshop to see how!  
OSA@GeorgiaSouthern.edu

UPB  
Dracula Untold  
6:00 pm & 8:00 pm  
Russell Union Theater  
Description: The University Programming Board sponsors a weekly movie series every Friday in the Russell Union Theater. You can enjoy the newest, hottest and most popular pre-home releases for FREE. With concessions going for as little as \$1.00 each, you can't beat the value of UPB Cinema. It's easily the best way to start off your Friday nights.  
OSA@GeorgiaSouthern.edu

## 01/31

SATURDAY

NO EVENTS

## 02/01

SUNDAY

NO EVENTS

## 02/02

MONDAY

NO EVENTS

## 02/03

TUESDAY

New Organization Chartering Workshop  
5:30 - 7:00 pm Russell Union 2044  
Interested in starting a new student organization? Attend this workshop to see how!  
OSA@GeorgiaSouthern.edu

Student Leadership and Civic Engagement Events/Student Activities  
Translating Leadership to Your Resume  
5:30 - 6:30 pm  
Russell Union 2047  
The SOLD Workshop Series is designed for any student seeking to develop their individual leadership capabilities and for students who currently or aspire to hold a leadership position within a student organization. This series is an excellent way for student organizations to train their next leaders. The cost of attending this outstanding workshop series is FREE!  
OSA@GeorgiaSouthern.edu

Career Services  
Graduate School Fair  
February 3rd  
11am to 2pm  
Russell Union Ballroom

815 S. MAIN STREET  
STATESBORO, GA  
912-290-9595  
HAMPTONSGSU.COM

MODEL  
NOW OPEN!



THE HAMPTONS  
STATESBORO

# WE BELIEVE YOU DESERVE THE BEST!

10,000 SQUARE FOOT 24 HOUR CLUBHOUSE:

- TANNING BEDS
- STARBUCKS CAFE
- CARDIO CENTER
- LOCKER ROOMS
- BUSINESS CENTER
- RESORT-STYLE POOL
- LAZY RIVER & ISLAND
- RESIDENT LOUNGE
- CONCIERGE SERVICE
- BICYCLE RENTALS



## CONTINUUM

*Exhibition is a homecoming for GSU Alumni*

**BY RASHIDA OTUNBA**  
The George-Anne staff

This spring, Georgia Southern art alumni have graced students with their creative genius by submitting their artwork to be showcased in the Continuum: Alumni Biennial Exhibition.

"We have an invitational exhibition with our alumni to keep up with their creative journey. It's sort of a homecoming," Anthony Faris, interim gallery director, said.

Alumni from all across America were alerted of the exhibition last year and were asked to submit five pieces for judging. This year's exhibition was judged by GSU alumnus and director of the Springfield Art Museum Nick Nelson.

The exhibition features not only painting pieces, but ceramics, prints and art installments. Students are highly encouraged to view the alumni artwork.

"[Current student's] education here at the Betty Foy Sanders Department of Art is an introduction to techniques and how to be creative thinkers but this continues, of course. So when they come to visit the Continuum exhibition, I want students to see that this is part of an ongoing journey of exploration and creativity," Faris said.

"Continuum" will be showcased at the CAT until Feb. 21.

### Q&A WITH THE JUDGE: NICK NELSON

WHEN DID YOU BECOME INTERESTED IN ART?

"I've had an interest in art ever since I was a child. I was always encouraged to make things and draw things. I had sort of a natural ability for it. I think I really got into it when I went off to college as a freshman and I was trying to figure out what I wanted to do, and the one class that really got me hooked was art appreciation. After taking art appreciation, I realized that it was something I really wanted to pursue. I had done art in high school and had been in the art club, but I didn't really consider it to be a career path until taking art appreciation and realizing that it was something I really liked to do."

WHAT MADE YOU WANT TO COME TO SOUTHERN FOR YOUR MASTER'S?

"I went around and visited other schools, and honestly it was just the people being really interested in what I was doing. Our art department used to do Youth Arts Festival which turned into ArtsFest. My first visit to Georgia Southern was the ArtsFest. I came down and students were there, kids were drawing and everyone was just having fun and it seemed like a great place to be because the people were so wonderful."

DID YOU EVER THINK THAT YOU WOULD HAVE A CAREER IN THE ART FIELD?

"When I changed my major to study art, I thought that I was going to be a painter and that's what my goal was. Whenever you go into the arts, you always hope that you'll be doing something like that. It's a tough thing to do to build a career, but that's true whether you're studying

law or medicine or anything, really. There's always that idea of the starving artist, and there are always doubts where you think "Am I going to be able to do this? Am I going to be able to make a living in the field when I get out of school?" But I had faith in myself and I have been very fortunate, and I don't think that I would have the career that I have if I did not get my master's degree, especially from the department [at Southern]. They were very supportive and fostered the skills I needed and gave me a lot of opportunities."

DO YOU HAVE ANY ADVICE FOR GEORGIA SOUTHERN STUDENTS?

"Work outward and go and see art and travel if you are able to and go and see as much art as you possibly can. However, look inward and build your network where you are because the people you are going to school with are also going to be your peers. It's not just about looking to bigger

places. Of course, you want to look outward and connect to a wider world but you also want to look at the people who are surrounding you, which I think is incredibly important.

My other advice is to take advantage of every opportunity you can and connect with other people to build skills. Many times when I talk to students, they have this preconceived "path" that they want to follow, and it's lucky if that goes the way you planned it, but more often than not, you're presented with a number of opportunities and you have to jump to one opportunity which will lead to another. It's all about exploring new opportunities and building new skills and trying to build a network both in your community and outward."

*Nick Nelson is a GSU alumnus and the director of the Springfield Art Museum.*

**BRANDON WARNOCK**  
THE GEORGE-ANNE



# Way TOO Funny

From the Laundry Room to Youtube

BY MICHELLE NORSWORTHY  
The George-Anne staff

It's raunchy, it's ridiculous and it's completely Georgia Southern University.

It's Way T00 Funny, the YouTube comedy channel founded by seniors Dwight Bonner and Brian Hogan. The duo found their start three years ago when they met as freshmen, both living in Kennedy.

According to Bonner, the idea hatched in a laundry room.

"We were sitting in the laundry room, just coming up with dumb acronyms [for a name]," Bonner said.

Hogan proposed "The Guys Who Make Those Videos" as a potential name.

"On campus, [people] could be like 'Hey, aren't you the guys who make those videos?'" Hogan said.

Unfortunately for him, the name elicited a response that would stick with them for years. "When he said that I was like what the fuck?" Bonner said, "W.T.F. Way Too Funny, and that was it!"

The two began with a low quality camera and a stream of self-described "poor" videos. As the two grew as comedians, so did the channel. Adding in guest comedians and sketches, Way T00 Funny found itself with over a thousand followers and gaining more and more recognition with each video.

In addition to its sketches, Way T00 Funny offers parodies, music videos and a special segment they call "Questions" where Bonner and Hogan take to GSU's campus, asking unsuspecting students and faculty their takes on the some pretty particular issues: how to know if she wants the D, and what it means to be a Ho.

“When he said that I was like what the f---? W.T.F. Way Too funny, and that was it!”

Dwight Bonner

Senior at Georgia Southern University

The duo keeps comedy in each new project they tackle, and music is no exception. Recently, Way T00 Funny and Georgia Southern's Comedy Club released a mix-tape entitled "A Trip to the Clinic" by their hip-hop and R&B group STD. The mix-tape is available through AudioMack.

According to both Bonner and Hogan, one word describes their brand of humor best: inappropriate.

But, despite the raunchiness of their comedy, Hogan describes himself as "lovably awkward." As far as life after graduation goes, Hogan still plans to continue with YouTube videos, but the computer science major says he does have other plans.

"I'm going into animation and video game programming, so I plan on doing that," Hogan said, "but I plan on making and uploading that once I figure out how to do it."

Bonner, who writes the scripts for Way T00 Funny, is optimistic about the future of the YouTube channel – and also sees a future in screenwriting.

"We would love if this thing blew up," Bonner said, "so I think I'll stick with that until some other stuff comes up."

In the meantime, Bonner and Hogan are working on a new project.

"There's a reality show in the works for campus," Bonner said, "and we're going to incorporate people from the Comedy Club – it's a scripted show. I talked to Chris [Pugh] about it...that's coming. That's a fact."

Bonner and Hogan hope filming will start this semester, and interested parties can e-mail in submissions.

LAWAYNE HAYES THE  
GEORGE-ANNE

Dwight Bonner and Brian Hogan operate the hit YouTube channel Way Too Funny, bringing laughs to the Georgia Southern campus.



**HENDLEY PROPERTIES**  
EST **HP** 1968  
STATESBORO, GEORGIA

**PLANTERS ROW**  
STARTING AT \$365

[www.hendleyproperties.com](http://www.hendleyproperties.com)  
912-681-1170

**GATA'S**  
SPORTS BAR & GRILLE

**\*UNDER NEW OWNERSHIP!\***

- 2 Medium Pizza's for \$9.99
- 10% Student Discount with ID

IT'S A NEW YEAR FOR GATA'S  
TRY US OUT TODAY!

**f** GATA Nation **t** @Gatasbar-grille





**FREE EARLY BIRD SUBMISSION  
JAN 12-30**

..... \$5 submission fee  
jan 31- feb 6

**3 SUBMISSION LIMIT ♦ 700 WORD LIMIT**

**WE ACCEPT ALL  
PRINTABLE MEDIUMS.**

**SEND TO [GSUMISCELLANY.SUBMITTABLE.COM/SUBMIT](http://GSUMISCELLANY.SUBMITTABLE.COM/SUBMIT)**

**ALL GSU STUDENTS,  
FACULTY, AND STAFF  
WELCOME TO SUBMIT**



## GSU SOUTHERN GENTLEMEN WINS NEW ORLEANS BARBERSHOP COMPETITION

**BY KENNETH LEE**  
The George-Anne staff

New Orleans, the birthplace of jazz, mardi gras beads and Reese Witherspoon, was host to Georgia Southern University's very own recently formed barbershop group, Southern Gentlemen, for its Barbershop Harmony Society Midwinter Convention.

The singers of Southern Gentlemen came back as champions, and having won in their category, received the second highest score out of every choir that participated, despite the group only having been formed in Spring 2014.

The convention was held from Jan. 6 to Jan. 11 and celebrated the rich history and genre of barbershop, an

a cappella form of music that dates back to the 1890s, with singing and competition from youth choruses all over the world.

"Our group nailed our set when the time came. The energy with our group right before we went on stage was incredible. Everyone was really excited and ready to go and it led to one of our best performances of our songs. It was a great feeling receiving standing ovations on each song. We couldn't believe the reaction we received from the audience. It was awesome," Colin Harrison, assistant director and sophomore music education major, said.

"The group has more than just exceeded my expectations that I had for the ensemble. My intention to go to Midwinter was just to immerse the guys in the barbershop community and for them to really get a feel for what barbershop music really is while listening to some of the best choirs and quartets from around the country and world," David Hopkins, student director and senior music performance major, said. "Yet, these guys, having only sung barbershop for less than a

full year, went into one of the biggest barbershop competitions in the world and won their division. I was completely blown away."

The group was formed and led by Hopkins and Harrison. Having both participated in barbershop choruses in high school, they were the only members at the time with experience about the genre. Wanting to bring this style of musical

performance to GSU, they encouraged members of the a cappella group, Southern Chorale to attend workshops and practices, forming the group today.

"It's almost like a hangout every time we meet. It's a special group that enjoys making beautiful music. Everyone enjoyed learning about the style and then we began teaching them a few song excerpts and the guys were hooked. Nobody dreads coming to

rehearsal. Our director of Chorale, Dr. Shannon Jeffreys, was very supportive and allowed us to create a class ensemble. That very next semester we got a group going. By the next year, we came back to Statesboro as champions of our category," Harrison said.

With a recent victory intact, Southern Gentlemen plan to continue practicing for future competitions, as well as increase their understanding of barbershop and choral singing. More notably, they were invited to sing in an international competition this summer in Pittsburgh. There will be a live broadcast of the competitions available free for students.

"Being together as a choir, the guys and I have formed a bond like none other. We create an environment where all we want to do is make great music with some great friends. It's almost like a brotherhood where we are all each other's friends, and I've found that when you are in a group of performers and are really close friends with them all, it makes the experience that much more meaningful and powerful for both you as the performer and the audience," Hopkins said.

**“The group has more than exceeded my expectations that I had for the ensemble.”**

**DAVID HOPKINS**

Student Director and Senior Music Performance Major



PHOTO COURTESY OF SOUTHERN GENTLEMEN  
The Georgia Southern Gentlemen, GSU's own barbershop group, won at the Barbershop Harmony Society Midwinter Convention



## MARVEL'S CINEMATIC UNIVERSE AND WHAT IT MEANS FOR HOLLYWOOD



**CONNOR WHITE**

White is a senior multimedia communications major from Fayetteville, Ga.

If you asked any comic book fan ten years ago if they believed their favorite hobby would grow into the entertainment juggernaut it has today, they'd probably roll their eyes in disbelief before delving back into their latest issue of Captain America. But the Marvel Cinematic Universe (or MCU) has established itself as the most powerful film and television franchise (thanks to their shared universe) in history since Iron Man was first released in 2008. The Harry Potter films still outweigh Marvel's total gross by several hundred million, but with at least a dozen other projects in the pipeline, The Boy Who Lived is certain to lose his title before the end of the year.

This all sounds like heaven on earth for anyone who proudly calls themselves nerd or geek, who are now blessed with more content than they know what to do with. And as someone firmly entrenched in the former camp, it's all the more surprising to say that the MCU's success is starting to worry me, more than any Star Wars re-release ever could.

Don't get me wrong; with only a few films stumbling in their direction, the vast majority of Marvel's work has been a delight and a half, including both of last year's offerings, "Captain America: The Winter Soldier" and "Guardians of the Galaxy." They've had an amazing track record, all things considered. And the rest of Hollywood has taken notice.

Unfortunately, several other studios are in possession of the rights to other Marvel characters from older negotiations, including Spiderman being owned by Sony, and the X-Men/Fantastic Four going to 20th Century Fox. Both Fox and Sony, seeing first-hand what kind of outrageous figures these characters pull in, are attempting to recreate their own version of the MCU with what little pieces of the Marvel pie they have. While the past several X-Men films have been successful, the already-wide ensemble cast they've assembled leaves them with little room to explore, and Sony's reboot of Spidey's world has fallen short of expectations. In a perfect world, where the integrity of these characters and stories is held sacred, Sony and Fox returns the rights to Marvel so they have full access to their considerable stable, as well as the freedom to explore every major storyline the comic company has written. But the truth is that Sony and Fox will likely hold onto those characters as long as possible, squeezing out every ounce of cash they can, i.e. pulling a George Lucas.

The proof is in the profits. While the X-Men franchise has pulled in over three billion dollars, that's still less than half

of Marvel's total gross of over seven billion, despite an eight year head start. While the next few films, the continuity first established in "X-Men: First Class," is bound to pull in more cash, most large-scale Marvel stories that feature the X-Men also include characters outside Fox's control, requiring either highly unlikely negotiations or a bastardization of the story. Fox is welcome to risk it, if they're fine with stomping out dog crap on their porches.

**MARVEL'S CINEMATIC UNIVERSE IS THE EQUIVALENT OF A FOSSIL FUEL IN HOLLYWOOD: THE LONGER THE INDUSTRY RELIES ON IT, THE MORE DAMAGE IT INEVITABLY CAUSES."**

Spiderman's films crawled a little higher with nearly \$4 billion in revenue, but that's namely due to Sam Raimi's time with the character, whose films are arguably better in every way (except for Spiderman 3. We pretend that one didn't happen). In fact, the newest film, "The Amazing Spider-Man 2," is considered the worst both critically (53 percent score on Rotten

Tomatoes) and financially (pulling in around \$700 million, a 250 percent profit margin compared to the previous trilogy's average of 350-400 percent) in the franchise's history, casting considerable doubt over Spiderman's future on the silver screen.

However, there have been exploratory talks between Sony and Marvel to allow Spidey to appear in later Marvel films, an exciting prospect considering his major role in many of Marvel's largest story arcs. This is arguably the smartest strategy for Sony to take; they're likely to make more sharing the character than they are hoarding it, and Marvel can create even bigger films with the added star-power. Spidey's got good buzz.

Marvel's characters aren't the only ones in jeopardy. They've been competing against DC comic for decades, and now DC will attempt to create their own 'megafranchise' riding on the coattails of Nolan's wildly popular Batman trilogy. However, "Man of Steel," technically considered the first film in the newly connected franchise, failed to live up to Marvel's standards, with a Rotten Tomatoes score of 55 percent, and a profit margin of around 200 percent. Considering that a cornerstone of Marvel's success banks on not taking themselves too seriously, DC's solemn interpretation could very well end up a humorless mess. You know, like "Green Lantern."

There's plenty of room in the Marvel and DC universes to

explore, and plenty of stories to tell, so perhaps the collapse is further out than I fear, but it only raises another question:

### WHAT DOES THIS MEAN FOR OTHER FRANCHISES?

It's no secret that Hollywood prefers sequels and remakes to original content (à la BuzzFeed and their insufferable clickbait), counting on previous successes, but as Marvel's budgets go higher and higher, and the expectation for these enormous storylines and huge casts become more the industry standard and less the miracle child, intimate, more personal projects will struggle to find their place. Producers will seek out other universes to exploit as they've done in the past many times before. Consider "Harry Potter": after the legendary series had concluded, studios desperately searched for another young adult series to attract the same hordes of loyal fans. "The Hunger Games" got the closest, but don't forget "Divergent," "Maze Runner," "The Giver," "Ender's Game"; all of them failed to reach the heights of Potter, with lukewarm reviews and modest returns. It's like comparing Louis C.K. or George Carlin to Dane Cook.

Marvel's Cinematic Universe is the equivalent of a fossil fuel in Hollywood: the longer the industry relies on it, the more damage it inevitably causes. They're gettin' what they can while the gettin's good. No one wanted Jaws 4. I doubt they'll want Iron Man 6.

For reference, a 100 percent profit margin equals twice the film's budget (and so on and so forth), since breaking even is hardly considered a success these days. Also, with expensive marketing and publishing costs, blockbusters of this caliber usually aren't considered successful without raking in at least three times it's budget.

## Letter to the Editor

Dear Editor,

Lewis' opinion piece "Sugar Babies: what's your worth" presupposes several important aspects of a discussion on sex work. And let's be clear that is what the discussion is about: sex work.

Lewis believes those involved in sex work are naive to their own circumstances as well as the players involved. Lewis assumes there are parents, or even guardians, in the economic equation of the students who work in the sex industry, much less other forms of financial assistance. Lewis infers sugar babies are only female. According to the application, Lewis assumes that sugar daddies are only old, ugly, pervy, and rich, men. Lewis writes that she feels female students who choose to participate in a sugar daddy arrangement will find their "morals" compromised. Suggesting in one breath, that all women share one set of morals. Lewis goes on to write she learned the lesson of being "priceless" from her father; a story that retells in no uncertain terms the cultural ideal that women are either angels or whores. By doing so, Lewis is iterating that the worth of a woman lies in her chastity, alone.

Lewis writes "There's no amount of money to make me do something I don't want to do." I am glad Ms. Lewis has the freedom to make that personal distinction, but not everyone has the economic privilege of choice. However, that economic marginalization does not weaken the dimension of their humanity.

Instead of having a laugh, I'd challenge Ms. Lewis to consider the real-time outcomes of a for-profit academia, and the many who have to fight for their education.

Sincerely,

**BARBARA JAYNE MCGAUGHEY**

McGaughey is a senior writing and linguistics major from Macon, Georgia.

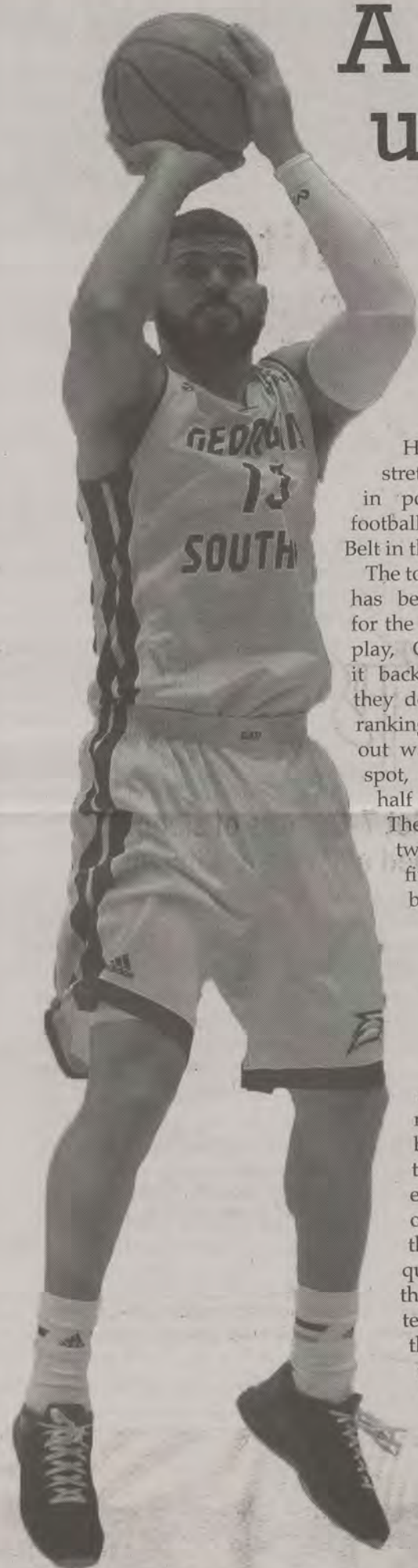
The George-Anne welcomes letters to the editor and appropriate guest columns. All copy submitted should be 350 words or fewer, typed, and sent via email in Microsoft Word (.doc/.docx) format to letters@georgiasouthern.edu. All submissions must be signed and include phone number for verification. GSU students should include their academic major, year and hometown. The editors reserve the right to reject any submission and edit submissions for length. Opinions expressed herein are those of the Board of Opinions, or columnists themselves and DO NOT necessarily reflect those of the faculty, staff, or administration of GSU, the Student Media Advisory, Student Media or the University System of Georgia.



# GSU BASKETBALL

## A look into the upcoming Eagle games

BY HAYDEN BOUDREAUX  
The George-Anne staff



BRANDON WARNOCK THE GEORGE-ANNE

### MEN'S (13-4)

As the Eagle basketball team returns home to Hanner for a five game stretch, they find themselves in position to match the football team and win the Sun Belt in their inaugural season.

The top spot in the conference has been a volatile position for the first third of conference play, GS having to wrestle it back twice already. While they do sit atop the Sun Belt rankings it will still be an all-out war for the number one spot, with three teams only half a game out of the lead. The Eagles will have to face two of those teams in the five game home streak back-to-back.

GS has been powered

by key players like senior guard Jelani Hewitt who has hit nearly 39 percent of his shots, averaged 19.8 points a game and 3.9 assists. Additionally, Hewitt has the highest 3-point percentage and free throw percentage on the team, with 37 percent and 89 percent respectively. He is in the top three of nearly every statistical category in the conference. It is also important to remember the contributions of senior forwards Trent Wiedemen and Eric Ferguson. Wiedemen has compiled 12.8 points per game along with an all time-high 16 blocks. Ferguson, who has only played in 11 of the 17 games and started none, has averaged 8.6 points and 17 total steals.

Before the Eagles take on the top teams in the conference, they have to tangle with Appalachian State. While App State has had a shaky start to their season, rivalry games can swing either way. They are averaging 64.3 points per game compared to 70.7 of GS and have the worst field goal percentage in the conference. The key to beating App will be slowing down their quick junior guard Frank Eaves that averages over 18 points per game and is 36 percent from beyond the arc. Another

lethal member of the Mountaineers is senior forward Tommy Spagnolo who is grabbing 7.5 rebounds per game along with 11.2 points.

Two days after the rivalry match-up, the Eagles will get a tune up match against Arkansas-Little Rock who is at the bottom of the conference. Then things start to crank up against in-state rival Georgia State, whom are currently only half a game behind the Eagles with the two top scorers in the Sun Belt. There will be little turn-around time because only three two days later the Eagles take on ULM who are only half a game behind. They will get another breather against Arkansas State who sits at eighth in the standings.

It is projected that the game tonight against App will be another sellout crowd. The athletic program is asking that fans attending wear blue in their #TrueBlue Out. The first 500 fans in the doors will receive free rally towels to support their Eagles.

After playing 11 of their 17 games away from home, the Lady Eagles return to Hanner for a five game stretch beginning this Thursday against long-time rival Appalachian State. Through eight games of Sun Belt play, they have only won one contest, which has placed them in tenth place out of 11 teams. To qualify for the Sun Belt Tournament, they will need to break into the top eight teams. Using the average results over the last six years, a team would need to have seven conference wins to be in the top eight.

The good news for the Lady Eagles is that they have 12 games left to grab the six or seven wins they will need to make it into the tournament. The bad news is that the remaining games include top conference teams. Winning at least three of the upcoming games with home court advantage is crucial to their success and postseason hopes.

Junior forward Patrice Butler has been on a hot streak, scoring in the double digits in three straight games including 23 points in the loss to ULM. The Lady Eagles will also rely on sophomore guard Angel McGowan who has been the top scorer for the team, scoring double digits in 13 of the 17 games. However, the team will have to look to their lone senior Anna Claire Knight to not only score points but to keep the team headed in the right direction through the five games,

which begins with App State.

The rivalry game is sure to excite the fans in Hanner as both teams are playing at around the same level. App State has won four games in the conference. Defending Maryah Stydnor will be the key to the game for GSU. She averages 18 points per game and has been the backbone of the team.

App does score eight points per game more than their opponents, but the Lady Eagles have three players who average in the double digits compared to two Mountaineers. As a whole, GSU has a better distribution of talent and if they can hold off the heavy hitters from App they will be able to walk away with a victory.

Things begin to heat up after App State as the best team in the conference is up next. The University of Arkansas Little Rock will give the Lady Eagles a run for their money but upsets can happen in Hanner. Georgia State will make a road trip to Statesboro with their seventh ranked spot in the Sun Belt, with a win propelling GS into the middle of the pack. There will be no break as they will face off against ULM again after their overtime loss last weekend. The stretch ends with the second ranked Arkansas State Wolfpack making the trip, which could be a potential statement game for the home team.



BRANDON WARNOCK THE GEORGE-ANNE

### WOMEN'S (4-13)

It has been a year of adjustment for the head coach Chris Vozab and Lady Eagles in their inaugural season in the conference. However, there is still time for a revival.



# TAKES ON APP ST

## Eagles striving to stay No. 1

BY LAYNE SALIBA  
The George-Anne staff

The Georgia Southern men's basketball team (13-4, 6-2 SBC) will take on Appalachian State (8-10, 5-4 SBC) today in Hanner Field House. The last time the two teams met was last season in the Southern Conference when Georgia Southern fell to the Mountaineers 81-68. Now, the two teams have made the transition to the Sun Belt for a renewed rivalry among heightened competition.

Georgia Southern's redshirt senior guard Jelani Hewitt has stepped up and become a leader for this team. He averages 20 points per game and boasts a substantial 48 steals on the season. These numbers are what this team needs, and the Eagles will benefit from this as they seek to settle the score after last season's loss.

While The Eagles did graduate a few star players from last season, they were able to find replacements that have exceeded expectations. Redshirt senior forward Trent Wiedeman will be a nice

addition as a big man down low to compete with this team.

Freshman guard Jake Allsmiller will bring his shooting ability to keep the Mountaineers on their heels, while freshman guard Mike Hughes will be able to shoot from anywhere on the court, as well as offer explosive drives to the basket. Having senior forward Eric Ferguson back, who was redshirted last season, will also increase the Eagles' level of play.

App State returns most of their starters from last season including junior guard Frank Eaves. Eaves is averaging 18 points per game this season and scored the game-winning basket in an upset against ACC opponent Virginia Tech. He also led the team to a win over No. 2 ranked Georgia State in the Sun Belt. Eaves is definitely App State's most dangerous weapon outside the perimeter and will be someone that the Eagles must guard throughout the entire contest.

Down low is six-foot seven Tommy Spagnolo. The senior forward is the second leading scorer on the team with 11

points each game along with eight boards. Wiedeman will have his hands full, but should be able to stand his ground with a one inch and 30 pound advantage.

No matter what conference these two teams are in, it will always be a rivalry. So fans should be in for a treat. And with App State on a four-game winning streak, they won't be willing to go down easy.

Georgia Southern will have to shut down Eaves and force turnovers like they have been doing so well recently. Defense will be key as the Eagles try to keep the Mountaineers at their .395 field goal percentage. On the other hand, attack should be the mantra of this game so the Eagles can increase their .424 field goal percentage. However, this may prove to be a game that is won beyond the arc in a battle of Eaves versus Hewitt.

Every game is crucial from here on out as the top four teams in the league are separated by a game or less. The Eagles hold the No. 1 spot and hope to keep it with a win over the Mountaineers. Tipoff is set for 7:30 p.m. EST.

## Looking to Hanner after GSU loses three road games

BY ROBERT GEORGE  
The George-Anne staff

The Georgia Southern Lady Eagles will return home following a three-game road trip in which the Eagles went 0-3, with their latest loss coming in overtime to UL Monroe, a match that saw the Eagles blow a late lead and fall in the extra period 66-72. But, the Eagles have returned home for a five-game home stand, which begins with a showdown with rival Appalachian State.

The Eagles (4-13) have been anchored offensively this season by sophomore Angel McGowan, who averages 12.5 points per game to go along with a team high 2.6 assists per game. She has hit a bit of a rough stretch, shooting only 6-33 and averaging six points

over the road trip. So, she will look to return to form on her home floor.

Sophomore Patrice Butler is another Eagle having a strong season, as she averages 11.6 points per game, while shooting a respectable 45 percent from the field. She is one of the team's best free throw shooters, knocking down 82 percent of her foul shots. She did not play much at the beginning of the season, but, eventually, cracked the rotation and has hit double-digit points in 10 of the 15 games she has played this season. The Eagles will need her to continue her strong play if they want to pull out some wins.

Senior Anna Claire Knight has not had the shooting season like she did in her junior season, but she has

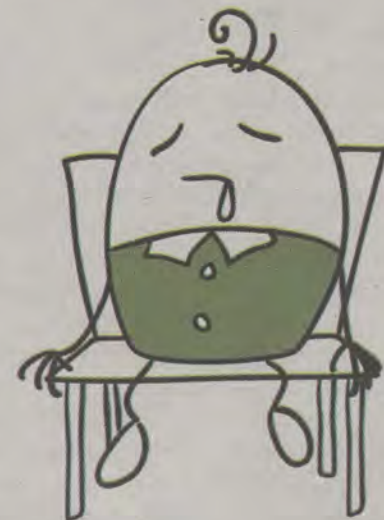
been a key contributor for the Eagles on both ends of the floor. She is averaging 11.6 points per game while grabbing 5.5 rebounds and 1.4 steals per game. She has come on strong of late, putting up double-digit points in five of her past six games.

Appalachian State (9-9) is led by Maryah Sydnor, who leads the Sun Belt in scoring, averaging 18 points per game while shooting 47 percent from the field. She also averages nine rebounds and 1.2 steals per game. The Eagles will have to slow Sydnor down if they hope to stay in the game.

The Eagles take on Appalachian State in a double header tonight, beginning with the women's game, which will tip off at 5 p.m.

### College Health Tip #10

Don't pull  
all-nighters.



Get 7-8 hours of sleep.  
In bed at night, not in class.



SOUTH GEORGIA  
IMMEDIATE  
CARE CENTER

1096 Bermuda Run Road  
in Statesboro's Market District  
p - 912-871-5150  
getIMMEDIATEcare.com

Monday - Friday 9:00 am - 8:00 pm  
Saturday 9:00 am - 5:00 pm  
Sunday 12:00 pm - 5:00 pm

Walk-in medical care close to campus.  
Caring and confidential treatment.  
Most insurance, cash and credit cards accepted.

125  
Statesboro's Premier Venue for Live Music & Entertainment  
Wednesday \$11 Drinks  
Thursday Greek Night  
f



# TRACK AND FIELD FINDS EARLY SUCCESS

BY ROBERT GEORGE  
The George-Anne staff

The Georgia Southern track and field season has just kicked off indoor competition, and the Eagles are already enjoying early success in the new conference. The Eagles have just begun their new journey in the Sun Belt, but head coach Kelly Carter is excited about what the season holds.

The Eagles have been in a massive transition period with both a new coaching staff and the move to the new conference. But, according to Carter, the change hasn't caused many problems.

"The transition has been fairly smooth. I really have enjoyed myself, and it seems like the girls are responding," Carter said. "We're putting a heavy workload on the girls, and they're responding well."

The Eagles strength will be in their throws, which

is anchored by sophomore standout Kelsey Arnold. Arnold just recently broke her own school record for the weight throw in a competition just before the holiday break. Coach Carter is excited for what she can accomplish in just her second season.

"She's making great progress towards trying to be ready for conference and to get to nationals," Carter said.

Coach Carter is not shy about saying what he hopes to accomplish in his tenure at Georgia Southern. "I'd like to win conference. I'd like to get some All-Americans here, and compete for nationals," Carter said. And with the way the season has started off, he might be on the right track.

The girls have competed well in their competitions thus far, and should only get better as the season goes along. The Eagles had a great competition this past weekend, as seven Eagles posted top-10 finishes

at the Bob Pollock Invitational in Clemson.

Competition in the Sun Belt will be tough. Coach Carter singled out Arkansas State and Texas State as very good teams. He also praised Georgia State's distance program.

"Stacking up against them I think that we'll be comparable," Carter said.

While Georgia Southern will get a look at most of the teams in the conference, they won't see Arkansas State until the Sun Belt Championships.

Coach Carter hopes to get the program to a place where the Eagles are a household name for track and field. He has the campus, the staff and the experience to do it. It is why the inaugural season in the Sun Belt will be a important step in becoming that powerhouse.

The Eagles will travel to North Carolina this weekend to compete in the Hilton Garden Invite.

## BOB POLLOCK INVITATIONAL RESULTS

KELSEY  
ARNOLD



WEIGHT  
THROW

16.18M

KARLI  
KONING



3000M  
RUN

10:54.67

LEIGHA  
LONG



800M  
RUN

2:29.58

CAMRYN  
COLEMAN



LONG  
JUMP

5.23M

KEYANNA  
HARRIS



HIGH  
JUMP

1.68M

PHOTO COURTESY OF [gseagles.com](http://gseagles.com)

## ISLANDS LIVING IS A BREEZE!

The Islands Statesboro  
104 Aruba Avenue  
Statesboro, GA 30458  
912-225-1387



WE OFFER FULL UNITS AND INDIVIDUAL LEASES

ALL UNITS PET FRIENDLY.

WE ARE ALL INCLUSIVE FOR TRASH PICK-UP, LAWN MAINTENANCE, INTERNET, CABLE AND HAVE GENEROUS UTILITY CAPS.

EASY CLOSE DRAWERS, GRANITE COUNTERTOPS, FREE PARKING, WALK IN CLOSETS, EXTRA STORAGE SPACE, UPDATED APPLIANCES AND CUSTOM FINISHING'S

2/2 SUITES 938 SQFT • 3/3 DUPLEXS 1258 SQFT • 3/3 HOUSES 1308 SQFT