

Georgia Southern University

Digital Commons@Georgia Southern

The George-Anne

Student Media

4-16-2013

The George-Anne

Georgia Southern University

Follow this and additional works at: <https://digitalcommons.georgiasouthern.edu/george-anne>

Recommended Citation

Georgia Southern University, "The George-Anne" (2013). *The George-Anne*. 2608.
<https://digitalcommons.georgiasouthern.edu/george-anne/2608>

This newspaper is brought to you for free and open access by the Student Media at Digital Commons@Georgia Southern. It has been accepted for inclusion in The George-Anne by an authorized administrator of Digital Commons@Georgia Southern. For more information, please contact digitalcommons@georgiasouthern.edu.

**POLANT BOTS
TAKE
OVER**
PAGE 9



**BYINGTON
HIRES
STAFF**
PAGE 18



150
Employees
@
JOB FAIR

PAGE 7

Tuesday, April 16, 2013
Georgia Southern University
www.thegeorgeanne.com
Volume 83 • Issue 69

THE GEORGE-ANNE

'KKK' letters on KA lawn cause uproar

BY LAUREN GORLA
The George-Anne staff

The arrangement of yard letters to spell out "KKK" in front of a fraternity house is currently under investigation by Georgia Southern University officials.

It is still unknown who exactly moved the letters to the Kappa Alpha lawn Sunday morning. The yard letters are from the Kappa Kappa Gamma and Kappa Delta sororities.

"It could result in criminal charges. It's technically theft, but it could also be criminal trespass when you put things onto others'

property without permission," Chief Mike Russell, director of Public Safety, said.

"We just installed cameras, and fortunately we saw four people bring the KD 'K' and the KKG 'K's and take pictures with them," Chase Joiner, KA president, said.

The timestamp on the security camera showed that the letters were placed on the lawn at 6:20 a.m., and they were removed by 9 a.m., Joiner said.

"We're still investigating, so we don't have any specifics to share at this point," Amy Zieziula,

See LETTERS, Page 7

GSU adds women's rifling

BY KATIE TOLBERT
The George-Anne staff

Athletic Director Tom Kleinlein announced that women's rifling will be added as a Georgia Southern University varsity sport in the 2013-2014 season.

The women's rifling team will use the shooting range behind the Recreational Activity Center until the Georgia Southern Shooting Education Center is complete in the fall of 2014. This facility will be 20,000-25,000 square-feet and will host indoor firing ranges and archery as well as outdoor archery,

according to the news release

This 16th collegiate sport addition was necessary for the upcoming move to the FBS. Kleinlein also acknowledges that the addition of more female scholarship opportunities is positive for GSU.

Master Sgt. Tim Parks has been designated as the first head coach, and tryouts for the women's rifling team will be held on May 1 from 3-6 p.m. at the shooting range behind the RAC.

The first competition the women's

See RIFLING, Page 19

'ERK the movie'



Andy Morales/The George-Anne

Students dressed up in 80's attire and cheered on the Eagles at the Blue and White game on Saturday. "Erk the Movie" directors instructed students on when to cheer or boo for their upcoming movie.



thegeorge
anne.com



Follow us on Twitter
@TheGeorgeAnne



Newsroom 478-5246
Advertising 478-5418
Fax 478-7113

PO Box 8001
Statesboro, GA
30460

INTRODUCING

OUR NEW

Domino's™
÷ HANDMADE ÷
PAN
PIZZA

MADE FROM FRESH
NEVER FROZEN
DOUGH

2 LAYERS of REAL CHEESE
IN EVERY BITE

CRISPY GOLDEN CRUST
AND A
BUTTERY TASTE

TOPPINGS ALL THE WAY
TO THE EDGE

GET A
**MEDIUM 2-TOPPING
HANDMADE PAN PIZZA** FOR

\$7⁹⁹
9184

ORDER. TRACK. REVIEW.

DOMINOS.COM

OH YES WE DID.™

STATESBORO

912-681-4326

1550 Chandler Rd.

(Next to Gray's Bookstore)

Police Beat

Tuesday, April 9

9:59 a.m.: An incident report was taken for a stolen bike at University Villas. The case was turned over to criminal investigations.

12:53 p.m.: Officers and the Statesboro Fire Department responded to a fire alarm at Southern Courtyard. The facility was checked and found that a moderate amount of smoke in the kitchen of an apartment. It was determined that it was caused by a small electrical fire.

1:07 p.m.: An incident report was taken for criminal trespass in J-Parking lot. Case turned over to criminal investigations.

1:48 p.m.: Officers responded to a motor vehicle accident on Malneck Drive.

1:53 p.m.: Officers responded to an accident near the Psychology Clinic.

5:21 p.m.: An incident report was taken for the theft of a bicycle at the Biology Building. Case was turned over to criminal investigations.

9:10 p.m.: Officers responded to a burglar alarm at the University Store. The building was checked and everything appeared to be in order.

Wednesday, April 10

11:20 a.m.: Officers performed a welfare check for a concerned student at Eagle Village. The student was located and was fine.

1:06 p.m.: Officers responded to a motor vehicle accident in parking lot 13. An accident report was issued.

2:36 p.m.: Officers responded to Southern courtyard for a report of a suspicious person who appeared to be tampering with

bicycles at the bike rack. The subject had already left the area when officers arrived.

2:46 p.m.: Officers assisted the Statesboro Police Department with a subject at Parkers #20.

3:10 p.m.: A custodian reported finding what appeared to be marijuana in a room at Freedom's Landing. Case turned over to criminal investigations.

6:07 p.m.: Officers responded to a report of sexual battery at the Henderson Library. Patrick Marcel McKeever, 26, was charged with sexual battery and simple battery.

8:50 p.m.: An incident report was taken for the theft of a bicycle at the College of Education bike rack. Case turned over to criminal investigations.

8:57 p.m.: An incident report was taken for found property at the Nursing/Chemistry Building.

Thursday, April 11

7:56 a.m.: Officers responded to multiple panic alarms going off in Kennedy Hall. The alarms were due to a malfunction.

9:09 a.m. Officers responded to an alarm at Marvin Pittman Administration Building. The alarm was caused by high temperatures in an electrical room.

10:39 a.m.: Officers conducted a welfare check on a student. Officers spoke with the student and determined the student was fine.

12:49 a.m.: Theft of a bicycle was reported at Southern Courtyard. The case was turned over to Criminal Investigations.

2:01 a.m.: Officers conducted a welfare check on a student. Officers made contact with the student and determined all was fine.

9:06 p.m.: Officers responded to a fire alarm at the College of Education Building. SFD responded and found no fire.

3:06 a.m.: Officers responded to a fire alarm at Southern Courtyard. The alarms was set off when someone bumped into the alarm and set it off.

Friday, April 12

5:12 p.m.: Officers responded to a motor vehicle accident on Sweetheart Circle. A motor vehicle accident report was taken.

7:37 p.m.: An incident report was taken for a theft at the RAC. This case was assigned to criminal investigations.

11:51 p.m.: Officers conducted a traffic stop on Georgia Avenue at O'Neal Drive. The driver of the vehicle, Fries, Christopher Earl, 31 years old, Statesboro, Georgia, was arrested and charged with headlights required & DUI 1-refusal.

Saturday, April 13

6:05 a.m.: An incident report was taken for a criminal trespass in G-Lot. This case was assigned over to criminal investigations.

2:10 p.m.: Officers responded to the Sigma Chi House on Olympic Blvd in reference to a large party with loud music, alcoholic beverages, no security and no party form permit to conduct a party. The alcohol was put away and the party concluded.

6:11 p.m.: Officers responded to a panic alarm at Kennedy Hall. Maintenance responded. The occupant was unaware how the panic alarm had been activated.

10:58 p.m.: Officers responded to Eagle Village in reference to an alcohol violation. Six occupants were judicially referred.

Statement of Operations

The George-Anne is the official student newspaper of Georgia Southern University, owned and operated by GSU students using facilities provided by the university. The newspaper is the oldest continuously published newspaper in Bulloch County. The newspaper is a designated public forum for the Georgia Southern community.

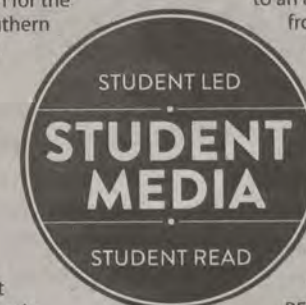
The newspaper is published twice weekly, on Tuesdays and Thursdays, during most of the academic year. Any questions regarding content should be directed to the student editor by phone at 912.478.5246 or at gaeditor@georgiasouthern.edu.

ADVERTISING: The newspaper accepts advertising. Inquiries may be made by calling 912.478.5418 or 912.478-0566. Fax any questions to 912.478.7113 or e-mail ads1@georgiasouthern.edu.

The George-Anne receives additional support, in part, from the Student Activities Budget Committee.

The deadline for reserving space and submitting advertising copy is noon, one week prior to the intended publication date. For more information, rate cards, sample publications, contact

the advertising manager or student media director. The advertiser is responsible for any errors in advertisements and its liability for adjustments is limited to the amount of space the error occupied in the ad. Further, the newspaper is not responsible for any damages caused due to an ad's omission from a particular edition and its responsibility solely is to reschedule the ad in the next regular edition at the regular advertising rates.



STUDENTS
BEWARE: The

George-Anne screens all advertisements prior to publication. The newspaper strives to accept ads for legitimate products and services only. Students are urged to exercise caution when replying to ads-particularly those that require personal information. Students are also urged to report to the newspaper any suspicious offers which they might see in an ad.

PUBLICATION INFORMATION: The newspaper is printed by The Brunswick News in Brunswick, Ga.

NOTICE: Unauthorized removal of multiple copies from a distribution site constitutes theft under Georgia law, a misdemeanor offense punishable by a fine and/or jail time.

Editorial Staff

Editor-in-Chief Arielle Coambes
Managing Editor Shelby Farmer
Multimedia Editor Gianna Carme
Opinions Editor Taylor Cooper
News Editor Tayler Critchlow
News Chief Alanna Navin
A&E Editor Marissa Martin
A&E Chief Alex LaSalle
Sports Editor Jackie Gutknecht
Sports Chief Trevor McNaboe

Copy Chief Courtney Tielking
Copy Editor James Farmer
Business Manager Chloe Douglas
Sales Manager Phillip Scroggin
Marketing Manager TJ Jackson
Distribution Manager Nick Garcia
Production Manager Kelsey Paone
Photo Editor Tasha Lund
Design Editor Jose Gil
Web Editor Darius Alexander

Corrections

Contact the editor at gaeditor@georgiasouthern.edu for corrections and errors.

Our View

No concert exhibits no preparation

As reported in last Tuesday's edition, there will not be a concert at Georgia Southern University this year. The University Programming Board and the Division of Student Affairs and Enrollment Management are responsible for planning and hosting the acts that come to campus. The official word is that there were no suitable musicians coming close enough to campus to make a concert feasible.

The Programming Board and Student Affairs should be more prepared when planning for a concert on the scale of what has been hosted over the last few years. They shouldn't wait until a musician's appearance locations are released to start planning a concert. GSU should be a planned stop from the beginning instead of an artist's detour.

Because of the lack of a concert, many incoming freshmen and outgoing seniors do not have a concert to start off or bookend their college career. Freshmen won't be able to have the experience of a big concert during their first year like many of their older peers. Our departing seniors won't have a concert to end their time here either. College is a great place to create good memories, for freshmen and seniors especially. They aren't going to be given that opportunity this year.

According to the article, the money that is not spent on a concert is saved until the next year, but it seems farfetched that all of the money set aside for a concert will just go unused for an entire year. Where does that money go? The school has many projects going on now that require heavy funding.

Perhaps the university could work on making GSU a regular concert stop. It would take time and effort but would ensure that we would not have to take whatever is in the area at the time and nothing if no musicians are in the area.

The George-Anne welcomes letters to the editor and appropriate guest columns. All copy submitted should be 350 words or fewer, typed, and sent via e-mail in Microsoft Word format to letters@georgiasouthern.edu. All submissions must be signed and include phone number for verification. GSU students should include their academic major, year and hometown. The editors reserve the right to reject any submission and edit submissions for length. Opinions expressed herein are those of the Board of Opinions or columnists themselves and DO NOT necessarily reflect those of the faculty, staff or administration of GSU, the Student Media Advisory Board, Student Media or the University System of Georgia.



Governor Deal plays with politics

By now, most of you have probably heard about the issue of Wilcox County High School. Most of you are also familiar with our wonderful governor, Nathan Deal.

Wilcox County High School has made headlines recently when a group of students began to push for the school to hold its first integrated prom. Granted, most of the attention came not from the push for a mixed-race prom, but from people realizing, "What the heck? We still have segregated proms?"

The segregated proms are not officially, technically, legally endorsed by the school, which is why it hasn't been outlawed yet.

Governor Deal, in all his infinite wisdom, has responded by making an astute political statement.

One of the groups attempting to rally support for a desegregated prom – I can't believe I'm writing this in 2013 – is Better Georgia. A progressive political group, Better Georgia, has called for local politicians to publicly speak out against

ALEX THE PRETTY GOOD



ALEX LASALLE

the segregated proms.

Luckily, Governor Deal has seen through the sham of what his office calls a "leftist front group for the state Democratic party." He has declined to pick sides or offer support for either side in the issue, calling Better Georgia's push for politicians to denounce segregation a publicity stunt.

Yes, this is a brilliant political move.

As a Republican, Governor Deal needs to ensure that he can retain a major segment of his supporters: racists. A notoriously choosy demographic, Georgia's racist population needs to be kept under the Deal umbrella lest they

switch to voting for the Democratic candidate. What better way to please that voting bloc than to refuse to stand up to the idea that racism and segregation are wrong.

Governor Deal has also set himself apart from potential Republican primary opponents, such as State House Majority Whip Edward Lindsey (R-Atlanta). Clearly falling for the trap set by Better Georgia, Lindsey said, "If there is one thing I have learned in politics, it is that you get a whole lot more done if you do not care who gets the credit."

Governor Deal has managed to appear spineless enough not to really anger any voters, and he will retain the always-necessary voting bloc of racist jerks who would have otherwise voted Democrat. Brilliant politics, Governor.

LaSalle is a senior writing and linguistics major from Cumming. He is the current Arts & Entertainment Chief and former Opinions Editor.

No Impact Week's impact

Georgia Southern is holding its annual No Impact Week this week, as you've probably seen in numerous promotions around campus. In addition to environmentally-themed events all throughout the week, everyone who registers for No Impact Week will be challenged to reduce their impact a little more each day. Each day is themed differently. In brief, Monday is trash reduction day, Tuesday is local food only day, Wednesday challenges you to use sustainable methods of transportation, Thursday is energy reduction, Friday is water reduction, Saturday is volunteering day and Sunday is for reflection.

It would be easy to view this week as only beneficial to the environment. As an exasperating sacrifice we must make to save the whales and trees and whatever else. While I am all for striving to save the environment

THE GREEN VIEW



BRITTNEY WALKER

on a grand scale, No Impact Week's purpose is meant to benefit us as individuals as well. American society is all about convenience, consumption and commercialism. This mentality causes a great detriment to our earth, health and wallet. Do we need the extra-large slushie in a Styrofoam cup? Do we really need to get in the car and drive when we could walk to get there? Do we enjoy wasting money on plastic water bottles that fill up landfills, when we could just fill up a reusable one? We don't. These

seemingly trivial actions accumulate, and they do matter. A detox cleanses your body of the things that slow it down and make it less efficient. No Impact Week is like a detox for your life.

So contrary to popular belief, it doesn't have to be a choice between personal benefits or environmental benefits. If you want to participate in No Impact Week, there is a link on the online campus calendar to sign up. They will send you an email detailing the challenges of each day. After this week long experiment, I hope participants will know firsthand that what is good and balanced for the environment is often good and balanced for us as well.

Walker is a senior sociology major with a concentration in sustainability from Brunswick. She is an officer of the Green Ambassadors.

Fembots sexist and not creative

Probably since the dawn of advertising, women have been used to sell products. A large majority of commercials today feature women pushing

cars, beers, clothes, cologne, shaving cream and a whole slew of other items that oftentimes don't have anything to do with women or their bodies. However, a trend that I thought was over appears to be making a comeback.

Many companies use the fembot, or female robot, to sell their products to males. Most recently, I saw the Kia ads featuring a thin, very human-like, red-head fembot. This android, who Kia has dubbed "Hotbot," uses her strength and looks to defend and protect the vehicle while trying to entice the male to love the car. In the ad playing this month, the Kia fembot rides along with the male until they reach his home to do who knows what, but before walking up to the door the fembot lifts a nearby light pole and turns it away from the vehicle to prevent bird droppings from landing on it. The guy smiles at her and she smiles at him—the perfect relationship.

Fembot advertising was really popular a few years ago, with the robots appearing in shower, beer and vodka commercials. In a Heineken keg ad a fembot used what looked like her uterus to store and serve beer. The unfortunate thing is that these ads are popular; they tap into the world of science fiction where historically these female androids were made as slaves to men and their desires. This vision of fembots is misogynistic and disturbing. Oftentimes these robots don't talk, they always obey and they seem to only be there to make a man's life easier.

I dislike the sexualization of women in ads to sell a product, but at least the women were real. With fembots the idea is pushed that everything about a woman can be manipulated and changed to fit a male's needs; she will be a sexy and mute slave to her male companion and if he gets tired of her, all he has to do is flip the off switch. I feel like it's time for the advertising world to get a little more creative and stop falling back on the old adage that sex sells.

Pulley is a junior English major from Florence, S.C. Adriana is also the vice-president of International Club.

FROM THE MARGINS



ADRIANA PULLEY

Genome not patentable

A pharmaceutical corporation called Myriad Genetics is attempting to win a case in the Supreme Court. There's a myriad of things that a pharmaceutical company could sue or be sued for, but this isn't one of the things that usually comes to mind. Myriad is the unfortunate target of the American Civil Liberties Union in the case of whether or not the human genome can be patented as intellectual property.

This may seem like an unusual case, but pharmaceutical companies have been patenting genome sequences for the last 30 years in the U.S. Who the guilty party is is still up for debate. Many believe that it's the fault of the U.S. Patent Office and not the big pharm companies. You can't patent something without going through the Patent Office, of course.

Patenting human genome sequences is said to ensure that research sponsors can get back the money that they pour into

THE COOP SCOOP

TAYLOR COOPER
OPINIONS EDITOR

genetics. The human genome is a massive thing, and even the smallest breakthroughs are the product of years of work. Myriad argues that if they cannot patent the genomes that they catalogue, they risk losing the millions that they contribute to the research. The company also makes the case that any sequences catalogued are the result of the effort and ingenuity of the researcher, and should be treated as intellectual property.

The ACLU argues that patenting any part of the genome is ridiculous, as Myriad did not create the genome;

they only catalogued and decoded some of the sequences.

Myriad trying to patent a genome sequence is like a miner trying to patent gold. The ACLU's statement that Myriad didn't create the genome should be enough to win the case for them. A miner cannot patent gold because he discovered it, regardless of how much effort or ingenuity the act required. A miner may patent the design for a ring or decoration that he makes from the hold, because that is the product of his own intellect, not just effort.

Both of the cases have their merit, and a decision in favor of either party will make an impact on the pharmaceutical industry and genetics research. I encourage the Supreme Court to use their own intellect and remove the ability to patent genome sequences.

Cooper is a junior journalism major from Rincon. He is the Opinions Editor.

Nixon got in trouble, why not Kentucky Dems?

This past week Senator Mitch McConnell of Kentucky has come under fire about comments he made about a then-probable Democratic opponent, actress Ashley Judd. From the evidence we've seen Democrats really don't have too much of an argument against him. If anything, this could come back to hurt them in the long run. Within the last week alone, left-leaning organizations have released the recording of his opponent's strategy meeting, filed complaints with the Senate ethics committee and released a television ad trying to link him to Al-Qaeda. The absurdity of these claims is such that I don't see how any of them can

IN MY HUMBLE OPINION



BLAIR MUTIMER

be taken with any sort of credibility.

For those trying to run to the rescue of Ashley Judd, I have some news for you – welcome to reality. There is nothing in that recording that should have surprised anybody. Opponent strategy meetings occur on both sides, Republican and Democrat. If you honestly think that emotional weakness and instability

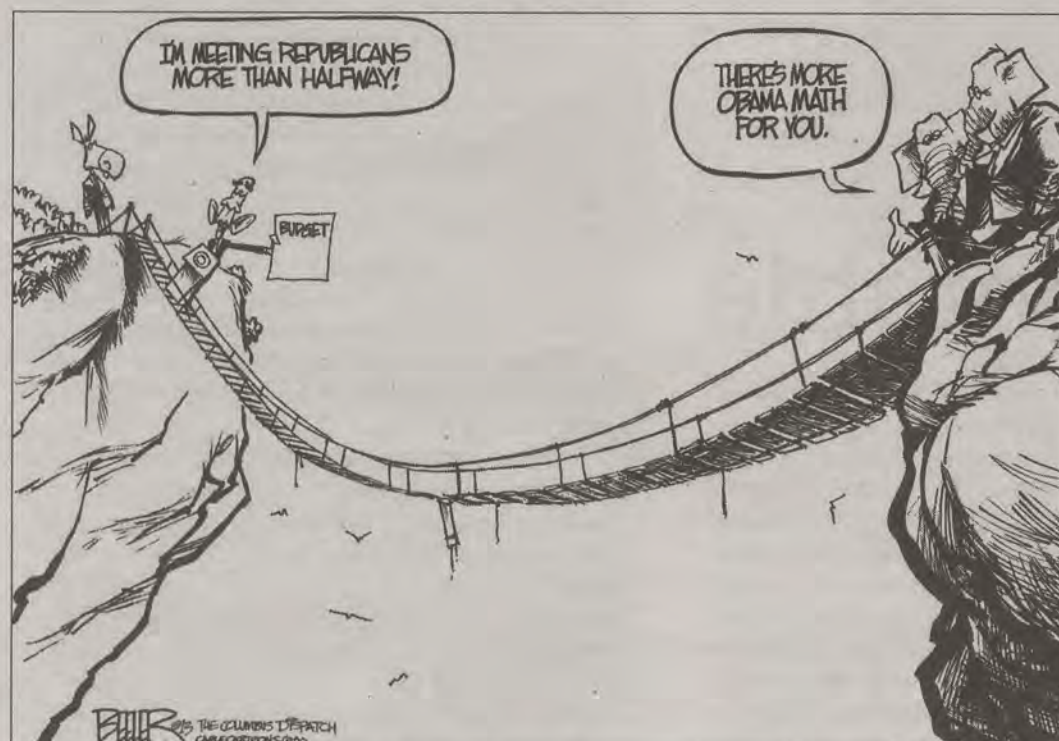
of your opponent is not discussed at the meetings, then you are either naive or just plain stupid. When the nature of her issues is being discussed by her opponent she especially has no reason to get upset when her problems are open to the public. Everything McConnell and his panel were discussing was published in her autobiography. Part of her own book states that one time at an airport she “flipped out” when she saw some pink fuzzy socks hanging on the rack. It is absolutely acceptable for the McConnell strategy committee to poke fun by saying that pink fuzzy socks are of concern. I'm sorry Ashley but the old saying applies, if

you can't take the heat then get out of the kitchen.

But what is really troubling is the fact that that some media, as well as left-leaning organizations, are actually focusing on what McConnell was talking about in his private meeting rather than focusing on how it was obtained. This sounds rather similar to a history lesson we learned about as kids: a summer evening in 1972 when the Democratic headquarters was broken into and a string of investigations led to officials finding out about President Nixon recording conversations within their offices. Watergate. It's in every US history textbook. What makes what this

group did to Mitch McConnell any different? When it's a liberal organization in the wrong do the media just forget about what the history books teach us? Instead they insist on calling Senator McConnell a “bully” for saying the things he said about Ashley Judd. I see a rather big double standard here, I for one would be very interested to see the reactions had it been a Republican organization recording one of Nancy Pelosi's meetings. campaigns in Augusta.

Mutimer is a senior construction management major from Augusta. He is involved in the College Republicans and has worked on political



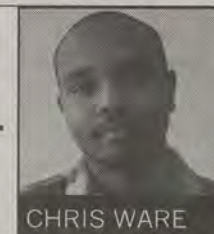
Liberals want the right immigrants

Sometime last week, the Associated Press decided to stop using the term “illegal immigrants.” Some have seen this as a maneuver by the liberal media to throw indirect support behind immigration reform. After reading some extremely opinionated and at times extremely ignorant comments about the AP's decision and immigration as a whole, it is apparent that some schooling should be done on this issue.

This land we live on never really has belonged to us. We took this land we call the United States from the indigenous Native Americans. This is why I find it laughable when I hear conservatives say other people don't belong here in America. Our founding fathers took this land from Native Americans which make our founding fathers the original illegal immigrants. Our country was founded on illegal immigration and to say someone who wants to better themselves here in America has no right to be here is slightly ignorant because that is the exact reason why your founding fathers came here.

Conservatives use language to describe these people as moochers who don't know anything about what it means to be an American when in actuality, many of these

A LIBERAL DOSE



CHRIS WARE

immigrants know and love this country more than any of us could imagine. This country is a beacon of hope for millions of people across the globe and they don't take the opportunities they get here for granted like many of us do. They value the possibility of achieving a better living for their families and I find it ridiculous that our politicians would deny anyone the opportunity to better themselves.

And for the record, liberals don't want to grant all undocumented workers amnesty. This liberal wants to see a fair and educational path to citizenship so we can take the smartest, strongest, hardest-working people around the world and make them Americans.

Ware is a freshman political science major from Griffin. He is involved in the Young Democrats and has worked on political campaigns in Griffin and Statesboro.

Beautiful Black Creek Golf Club

All College Students
(with student i.d.)

Monday-Thursday
after 2 p.m.



18 holes including cart

ONLY \$25

912-858-GOLF

277 Canterwood Drive, Black Creek, GA 31308

Less than 30 minutes from Georgia Southern (just off I-16 East/Exit 143)

Also now open: Bogey's Bar & Grill (inside club house)

Eagle Dining to host job fair for fall 2013

BY LAUREN GORLA

The George-Anne staff

Eagle Dining Services will be hosting a job fair on April 23 from 5 – 8 p.m. in the Russell Union with representatives from Lakeside, Landrum and other dining locations on campus.

Currently, Eagle Dining Services employs approximately 450 student employees. At the Eagle Dining Services Job Fair, Eagle Dining Services plans to fill approximately 150 positions, Demetrius Bynes, director of the office of Human Resources, said.

“Eagle Dining is actually the second largest employer of students on campus,” Greg Crawford, assistant director of Eagle Dining Services, said.

Jeffery Yawn confirmed that The NEST would close once Landrum and Lakeside are open for business in Fall 2013, Bynes said.

Those employed by The NEST are hired under Landrum and Lakeside, so they will be moving back to their original jobs, Bynes said.

Along with new jobs, there will be new dining plans and facilities that will be implemented in Fall 2013.

Eagle Dining Services and the Eagle Card Center presented these changes at the ‘Feed the Eagle in You’ event that was held Thursday.

“Through joint efforts between (Eagle Dining Services) and the Eagle Card Center, we’re trying to develop something that improves dining on-campus and creates the best environment for everyone,” Michael Murphy, marketing coordinator for Eagle Dining Services, said.

The development of the new dining plans and facilities came from a survey of 3,000 students on what they wanted in their dining facilities and from their dining plans, Murphy said.



Matt Veal/The George-Anne

Starting in fall 2013, there will be four new dining plans that students will be able to purchase.

The Eagle Unlimited Blue will cost \$1650 per semester with \$100 Dining Dollars and five guest passes to use at Lakeside and Landrum for family and friends per semester.

The Eagle Unlimited Gold will cost \$1800

per semester and will have \$300 Dining Dollars and eight guest passes per semester.

Dining Dollars can be used at any location on-campus like Chick-fil-a or Talons Grille.

Both of these plans feature complete unlimited access to Lakeside and Landrum.

“If you want to go into Landrum fifteen times in one day, you can go into Landrum fifteen times in one day,” Murphy said.

Students who do not wish to purchase one of the dining plans will be able to choose two Eagle Express packages, Eaglexpress 350 and Eaglexpress 700.

Eaglexpress 350 will cost \$350 and include \$35 Dining Dollars and Eaglexpress 700 will cost \$700 and include \$70 Dining Dollars.

For those who are not on a dining or Eaglexpress plan and still wish to eat at Lakeside or Landrum, the price of entry will depend on the time of day, Wynn said.

Breakfast will cost \$8.50, lunch will cost \$11 and dinner will cost \$13. But those paying with Eagle Express will always be charged on \$8.50, Wynn said.

The Lakeside and Landrum facilities have undergone renovation to accommodate the new dining plans.

“We wanted to create the kind of atmosphere that fosters education and gives every person that sense of community. We wanted to make certain kinds of food that you wanted us to serve,” Murphy said.

Lakeside and Landrum previously housed a combined 600 seats but will now have a total of 1,600 seats, Landrum being the larger facility with 1,100 seats, Murphy said.

Each new dining location will also use iris cameras instead of a card swipe for access, making it faster for more students to enter the building and eat, Richard Wynn, director of the Eagle Card Center, said.

Along with the new facilities, students will receive a wider variety of food choices at each location.

Jason Pickard, executive chef for Eagle Dining Services, said that a few of the new options in Landrum will be an international cuisine station called Traces of Places, and a brick pizza oven. Lakeside will have a salad station called Field of Greens and Wok and Roll for stir-fry.

LETTERS, from page 1

judicial officer for the Dean of Students, said.

Once information is gathered and a report is made, the Student

Conduct board will determine if an organization or individuals will be held responsible for the incident, Zieziula said.

“We hope to have the information gathered by the end of this week,”

Zieziula said.

GSUProblems reposted a photo of the letters onto its Facebook page from an anonymous twitter account called Statesboro Sass. The post was later removed because KA brothers

feared for their safety, according to a GSUProblems post explaining the photo’s removal.

The photo being posted online created a larger attack against all of Greek Life, not just KA, Joiner said.

Joiner said, “It’s just been a rat-race rush trying to cover up what these people have come and tried to make it look like we are portraying.”

Megan George, Lilly McCann and Cydney Long contributed to this report.

Students to take flight

VFT Aviation to offer discounted flying rates to GSU students

CYDNEY LONG

The George-Anne contributor

Students should expect to see more planes flying over Statesboro in the upcoming months when Veteran Flight Training Aviation begins offering students and military members flight programs and discounted flying rates.

"VFT currently offers flight training from sport pilot rating to commercial pilot rating," Vince Van Ness, manager of VFT Aviation, said.

VFT, which operates out of Reidsville, flies single engineer planes and will offer the same planes to students and those with military IDs, Van Ness said.

Normally, VFT charges \$100 per flight hour in the plane and \$45 per hour for the flight instructor. For students, however, the plane would only cost \$95 per flight hour, with the instructor price being the same, Van Ness said.

"We will take students from never having flown to learning how to fly, take-off, land and everything else, all in various weather conditions," Van Ness said.

"One of our goals is to teach



Courtesy of sxc.hu

Veteran Flight Training Aviation will start offering students and military members discounted rates in the upcoming months. VFT Aviation is based in Reidsville but will hold classes at the Statesboro Municipal Airport.

students to evaluate weather patterns and other factors such as health and fatigue, affecting flight to enable students to make smart decisions," Van Ness said.

VFT Aviation will hold classes at the Statesboro Municipal Airport, Van Ness said.

"Some of our programs require cross-country flight, so we might

go up to Augusta or down to Jacksonville," Van Ness said.

"A lot of people don't have the opportunity to do things like this. I think it's great," Ricky

Veasley, freshman multimedia communications major, said.

"If students buy ten hours of flight instruction, the price will be ninety dollars per flight hour," Van Ness said.

VFT will also offer an introductory flight for students who just want to get a feel of whether or not flying is something they want to try, Van Ness said.

"The introductory flight will cost seventy-five dollars, which will cover an hour of flight and a flight instructor," Van Ness said.

"I think students would be interested in trying it out for only seventy-five dollars," Deonte Smith, sophomore mechanical engineering major, said.

"We understand what it's like to be students, so we want to make flying affordable, enjoyable and accessible," Van Ness said.

"Our planes are fuel-efficient, so the operational cost is relatively cheap," Van Ness said.

Van Ness said that commercial aviation expands beyond airlines. Skydiving, newsgathering and other related activities are all ways in which a person can make money by knowing how to fly a plane.

GSU police officer completes FBI program



BY SARAH RYNIKER

The George-Anne staff

Major Laura McCullough, administrative assistant director of the Georgia Southern University Department of Public Safety, is the first GSU police officer to graduate from the FBI National Academy.

"I loved this experience and learned a lot of new techniques and skills that can be put into practice by our officers," McCullough said

in a news release.

Participation is by invitation only through a nomination process, according to the FBI's website.

McCullough was recommended for the National Academy by FBI Special Agent Ed Sutcliff and was one of 268 local law enforcement officers to graduate from the training program in March, according to the news release.

McCullough is excited to share the information she learned in

the courses with her fellow GSU officers.

"One class taught us to not only listen to what someone says, but how they say it or what they don't say at all. That can tell us a lot about what may have happened in an incident," McCullough said in the news release.

At the academy McCullough had the chance to make many lasting relationships, according to the news release.

"My FBI instructors and

classmates told me 'anytime you need something, call or email because we are here for you,'" McCullough said in the news release.

The mission of the FBI academy program is to foster ideas and partnerships between members across national lines, according to the FBI website.

McCullough said in the news release, "This is a huge bonus to help our department move forward and become stronger."



Courtesy of Jeff Schmuki

A member of PlantBots Genetics Inc. releases her plant robot into the wild. The group tries to point out the "humor" of GMOs with its PlantBots campaign.

Robo-plants to invade rotunda

Culture

BY WILLIAM PRICE

The George-Anne staff

PlantBot Genetics Inc. will unleash the EcoBot, a plant robot, under the rotunda tomorrow as the company begins promoting discussion on genetically modified food sources.

Students have the opportunity to operate remote controlled EcoBots and discuss GMOs at the rotunda from 11:30 a.m. – 12:30 p.m.

"The EcoBots are essentially weird, animatronic toys that we've repurposed to show the irrationality of real biotech products," Jeff Schmuki, PlantBot Genetics co-founder and ceramics professor at Georgia Southern University, said.

PlantBot Genetics is an organization striving to raise awareness on transparency and sustainability in the food industry. The event is free and open

to the public.

An artist talk was held yesterday to begin the discussion on GSU's campus of PlantBot with Wendy DesChene, co-founder of PlantBot Genetics and art professor at Auburn University. She spoke to art students on how to create and sculpt PalntBots.

"We're using humor as a backdoor to promote important discussions on what goes into our food and where it's coming from. We want to know what we're eating," Schmuki said.

All of the EcoBots at the demonstration are made in collaboration with ceramics students at GSU.

"College students are the perfect audience for discussions like these. They're the younger generation. They have so much time to fix problems like these," Erick Clark, student EcoBot creator and ceramics graduate student at GSU, said.

The event is part of the Monsantra project, based off of the Monsanto

Company, the world's largest producer of genetically modified seed.

"Consumers are really kept in the dark about genetics and food by the large corporations that use these techniques to increase crop yield," DesChene said.

Foods with GMOs in them are not required to put a notification of the presence of GMOs on the labeling. This makes it impossible for consumers to know what is in the food, Schmuki said.

GMOs are organisms created through gene splicing and biotechnology with the purpose of mass production and disease resistance.

The FDA does not require safety regulations, evaluations or labeling for GMO products.

DesChene said, "Everyone is wondering why all these bad things are happening to our food chain. The truth is a lot of it might be linked to GMOs and distribution inefficiency. Why do I have to buy tomatoes grown in Canada at a store in the Southeast?"

Album review: "Dear Miss Lonelyhearts" – Cold War Kids

Music



Cold War Kids' biggest single hit to date is 2007's "Hang Me Up to Dry," a simple, sparsely arranged rock song that sounded like it was recorded in someone's bathroom.

Six years later, they put out a song like "Jailbirds" that sounds ready for a concert hall instead of a run-down bar.

"Dear Miss Lonelyhearts," the band's fourth album, manages to mix-n-match genres while still sounding like a Cold War Kids album. This also makes it the group's strongest album since its 2007 debut.

Cold War Kids is one of the few bands that has the distinction of owning the descriptions of its own sound.

The most distinct part of Cold War Kids' sound is the wailing voice of singer Nathan Willett, and it is the one consistency through the whole album. Lead track "Miracle Mile" starts off with rapid-fire piano and a snare drum, which lasts about seven seconds before Willett starts singing and a guitar

TUNED IN



ALEX LASALLE

starts punching out chords. Soon enough, Willett is repeating "Come up for air, come up for air." The result is something like The Killers, but without all the teenage romanticizing.

The driving sound of "Miracle Mile" would be enough for some bands to build an entire album on, but the next two tracks, "Lost That Easy" and "Loner Phase," both start off with a dark-synth rhythm. Of course, Willett's wail brings it back to something familiar sounding.

The one downside is how the guitar takes a back seat to pianos and synth-led choruses. Part of this might be due to the addition of new guitarist Dann Gallucci, but it's not a fatal flaw because

guitars were never the centerpiece of Cold War Kids' music.

Whatever stylistic shifts are experienced when listening to "Dear Miss Lonelyhearts" from

beginning to end, the result is a solid album. It's all anchored by Willett's soulful singing, and it still sounds like a Cold War Kids album all the way through.



Jose Gil/The George-Anne

'42' gives Boseman grand slam role

Film

★★★★☆

Sports movies are a breed of their own, most following a similar formula with players overcoming hardship backed by a grandiose soundtrack and a few cheesy lines about success and drive.

"42," the story of Jackie Robinson, who was the first black man in Major League Baseball, is no different from its predecessors. It has its fair share of cliché moments that are meant to pull at your heartstrings, even when you know in the end that Robinson succeeds. Strong acting and an unflinching representation of racism keep that old formula looking fresh.

The soul of this movie is found within the rapport between its two lead actors, Harrison Ford ("Star Wars," "Indiana Jones") as Branch Rickey, the Brooklyn Dodgers executive, and Chadwick Boseman ("Lincoln Heights") as Robinson.

THE REEL LIFE

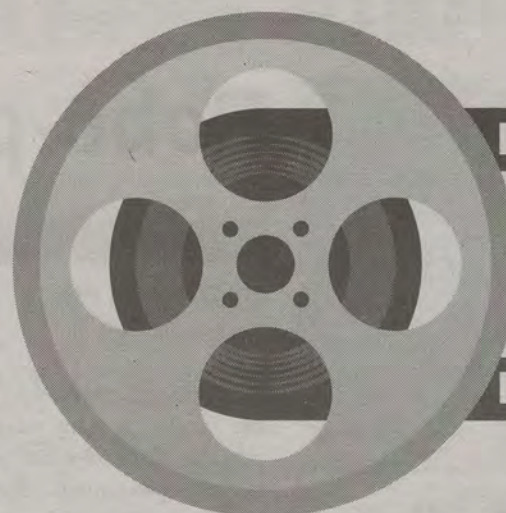


PEYTON CALLANAN

The movie starts out a bit clunky but really hits its stride when Boseman dances across the field as Robinson for the first time.

The movie did not shy away from the racial slurs Robinson heard when he took the field. The way Boseman played the verbally abused Robinson is powerful against such strong words.

It is riveting to watch two actors at very different stages in their careers immerse themselves into these characters – one an aging Hollywood A-lister and the other a nearly-unknown with his whole career ahead of him.


<http://www.filmofilia.com/>

Jose Gil/The George-Anne

and more about his character.

If the soul of the movie is the relationship between Rickey and Robinson, then the heart is the love story between Robinson and his wife Rachel, played by Nicole Beharie ("Shame").

The two actors ooze chemistry that makes even the cheesiest of lines easy to swallow.

Bottom line is this is a great movie for people who love sports movies even if it doesn't do anything to break the mold. Hopefully though, it will be the movie everyone remembers as Boseman's breakout role on his way to dominating Hollywood.

There are moments when Ford is walking a fine line of over-the-top in this portrayal of Rickey. He acts as if he is a theater actor playing for the people in the back seats, but he brings so much to life in his portrayal of Rickey, a wise miser who was the puppet master behind Robinson's rise to fame. It is nice to know that his greatest roles are not all behind him.

Boseman is the yin to Ford's yang. He doesn't have as many great lines as Ford, but he has more presence on screen that a simple smile or crinkle in his brow says everything

Tired of apartment life?

Escape to The Islands!

104 Aruba Avenue
Statesboro, GA 30458

Just one mile from Georgia Southern

\$200 Refurbish fee will be WAIVED for any 3 people who come in and sign for a duplex or any 2 people who sign for a suite in addition to our current special rates.

Website: www.theislandsstatesboro.com

Phone: 912-225-1387

NOW LEASING



The Buzz List

■ This past weekend, Hugh Jackman experienced one of the less thrilling sides of fame and fortune. A woman, hysterically crying about her love for the actor broke into his gym and threw a razor full of her pubic hair at him. First off, girls need to remember that throwing pubic hair at a guy will probably not gain his affections. Second, if you're trying to win over Hugh Jackman, just go ahead and give up.



Alex LaSalle

■ Justin Bieber is once again in the news. This time, it comes on the heels of his visit to the Anne Frank House in Amsterdam. Apparently, he signed the guestbook with a message reading "Truly inspiring to be able to come here. Anne was a great girl. Hopefully she would have been a believer."

■ Personally, I can barely believe that he would write something so silly. Anne Frankly... even if she wasn't busy being as quiet as possible in fear of her life, she probably had better taste in music.

■ Sharon and Ozzy Osbourne have been married for more than 30 years, but recent reports recently claim that their marriage is fading, and the two are currently living separately. Ozzy was reached for comment, but nobody had a clue what he was saying.

■ Faith Hill will no longer be singing the intro theme to NBC's Sunday Night Football broadcast. Music fans will miss her singing and football fans everywhere will miss her legs. In my opinion, both are great American traditions.

Information compiled by Arts & Entertainment Chief Alex LaSalle from TMZ.com.

FREE

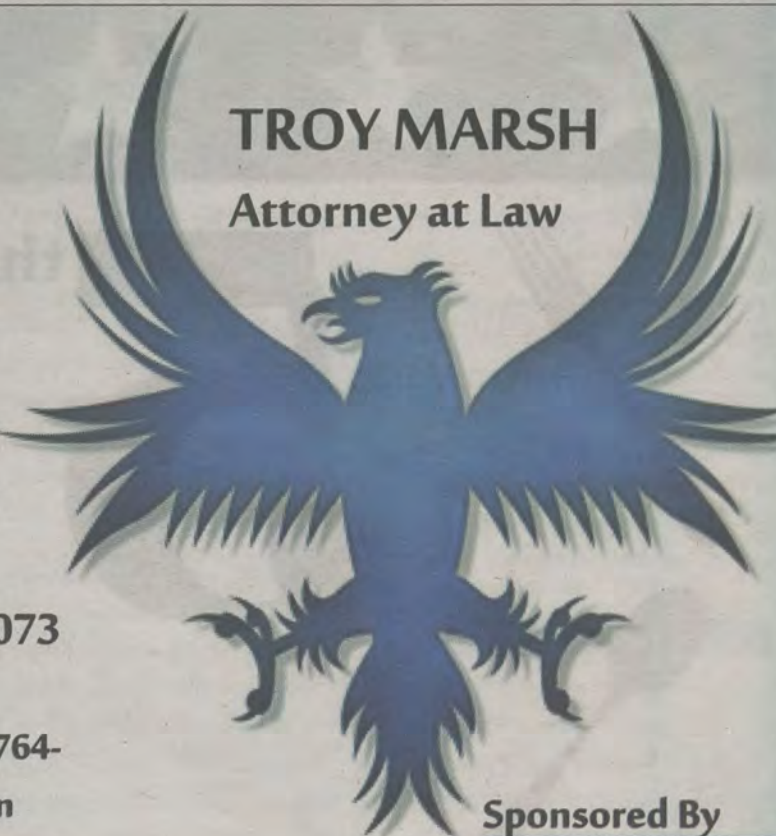
Legal
AdviceEvery
Tuesday

3-5 p.m.

Russell

Union 2073

Call (912)764-

7388 for an
appointmentTROY MARSH
Attorney at Law

Sponsored By

now leasing
for 2013-14CAMBRIDGE
SOUTHERN\$0
DOWN
no deposit, no fees
LIMITED TIME

perfect location.

912.681.1300

Cambridge-Southern.com

Step up the pace.
Be Fearless.

Transient summer student
Lindsay Little enrolled in an
online accounting course
while studying abroad.

Move closer to graduation.
Take classes at GPC this summer.Full- and half-term classes start May 29.
Second half-term classes start June 27.

admissions.gpc.edu/transient





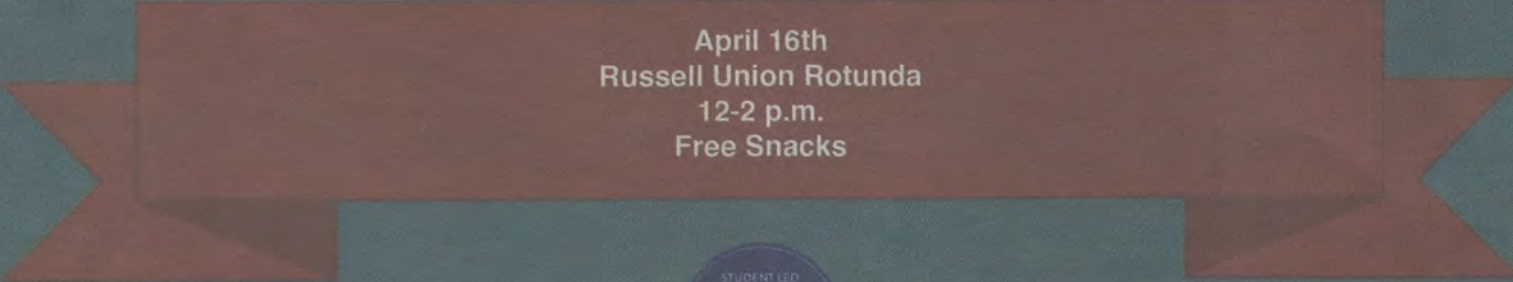
**5th ANNUAL
1ST AMENDMENT
FREE FOOD
FESTIVAL**

Thursday, April 25, 2013
11 a.m. - 1 p.m.



REFLECTOR

Release Party



April 16th
Russell Union Rotunda
12-2 p.m.
Free Snacks



CLASSIFIEDS

This page brought to you by Career Services
Explore • Experience • Excel

www.thegeorgeanne.com

Tuesday, April 16, 2013 13

Miscellaneous

Having trouble in your classes? Do you find yourself wasting your time studying on your own and need help studying effectively? Check out McGraw-Hill's Connect and LearnSmart programs. They have guided studying, practice quizzes, flash cards and more. Stop wasting your time and check out <http://connect.customer.mcgraw-hill.com/today!>

! Bartenders Wanted !
\$250 a day Potential. No Experience Necessary. Training Provided. Age 18+ OK Call 1-800-965-6520 ext 296.

Housing

Looking for 1 male roommate. 4BR/4BTH in Copper Beech. Rent is \$410 with utilities. 12 month lease starting May 1st, 2013. If interested contact Ben Smith 770-826-6589 or bsmith2191@gmail.com.

Housing

Apartment in Campus Crossings that I am looking to sublease for the summer 2013. The rent for MAY will already be paid and I am willing to negotiate rent costs for the months of June and July. It is a 4 bedroom apartment with your own bathroom, full kitchen, and washer and dryer are in the room. Please let me know ASAP if you are interested! Contact Kaylah Ibidapo 678-612-1087.

Summer sublease at the Woodlands. 2bd/2ba. Female roommate, but males or females can sublease. Rent is \$420/month. Utilities average less than \$50/month. May rent has been paid. Pet friendly. Move in as early as May 12. If interested or would like to see the apartment contact Anna-Marie at 770-546-6560 or at01770@georgiasouthern.edu.

Housing

1, 2, 3, 4, 5, 6 and 7 bedroom houses for rent. Repairs in 24 hours. Contact 912-682-7468 or 912-764-6076. Available Aug. 1st.

Looking for a female sublease, spring/summer semester 2013! 4BR/4BT. \$400/month (price neg.) Brand new apartments with great amenities. The Forum at Statesboro. Amazing roommates! Call/text and or email Ketonnia 706-201-1035 ka01879@georgiasouthern.edu.

Summer sublease at the Grove. The entire 2bd/2bt is available. The apartment is very clean and fully furnished. Everything inclusive, \$505/month per person. Lease is available May-July 2013 and May rent is free. Please email sk00363@georgiasouthern.edu with any questions.

Housing

Summer 2013 sublease at The Avenue unfurnished 1bd available in a 4bd/2bt. Located 10 mins from the campus. It includes pool, tanning bed, gym, computer lab, theatre, basketball/volleyball court. \$309/month (price is neg.) everything included. The room will be available by May 15th. Contact Leatitia at is00398@georgiasouthern.edu.

Townhouse for Rent. The village at Mill Creek. No roommate for sublease! Rent is \$363/month. March rent is already paid for, so its free! Located at 552 E. Main St. Phone: 478-918-5837 Email: ng00515@georgiasouthern.edu Craigslist ad with pictures: <http://statesboro.craigslist.org/roo/3657317419.html>.

Housing

Looking for a male to take over my apartment! 2 bedroom 2 bath in The Woodlands. \$485/month, but I can give you a discount! Call 912-682-8364 for more information.

Female sublease available for Summer 2013 (May, June and July) in Campus Crossings. 3BD/3BT - one room available. Rent is only \$494/month with utilities, cable INCLUDED! Two great roommates! With a spacious bedroom and closet. Personal bathroom as well. Price neg. Contact Lindsay Barnett for more info. Call/text 404-401-3752.

Jobs

Assistant Finance Manager is highly wanted. Requirements: Good typing and computer skills doesn't matter as any job experience can apply. Salary is \$3300 monthly. Email karenjefferysupply@gmail.com if interested.



LAST CHANCE CAREER FAIR

APRIL 23 | 1 PM - 4 PM

RUSSELL UNION BALLROOM
PROFESSIONAL DRESS REQUIRED!



(912)478-5197 | www.GeorgiaSouthern.edu/Career

Employers for Last Chance Career Fair

AT&T
Brasfield & Gorrie
Bullock Academy
Darden
DeKalb County School District
Enterprise Rent-A-Car
Ethica Health & Retirement Communities
GEICO
Georgia-Pacific
Internal Data Resources, Inc.
Monarch 301
Norfolk Southern Corporation
PLS Logistics Services
Sherwin-Williams
Sogeti
Troy University - Brunswick Site
Turner Furniture
Vidalia Brands, Inc.
Woodmen of The World
Zapata Technology, Inc.

PUZZLES/COMICS

14 Tuesday, April 16, 2013

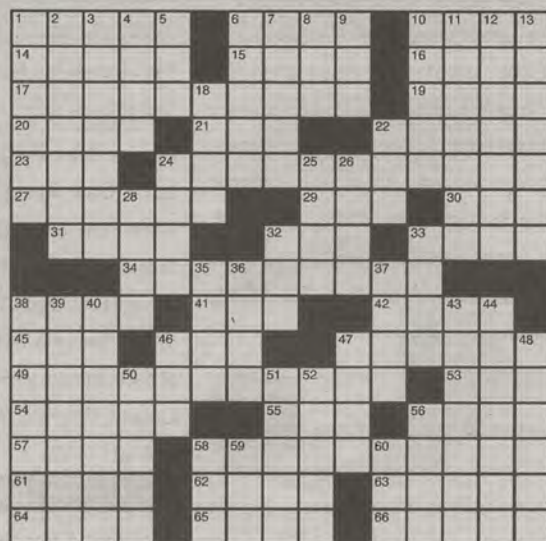
The George-Anne

Los Angeles Times Daily Crossword Puzzle

Edited by Rich Norris and Joyce Lewis

ACROSS

- 1 1983 movie about a taxi company
- 6 Place for a sala
- 10 Home on the range
- 14 Kukla's dragon friend
- 15 Israeli weapons
- 16 Optic layer
- 17 Leader for whom Houston's airport is named
- 19 Really tired
- 20 Highlands honey
- 21 Narrow-bodied river fish
- 22 Intrinsically
- 23 Christmas
- 24 "The Chimpanzees of Gombe" writer
- 27 Fixed, in a way
- 29 Farm feed item
- 30 Salon supply
- 31 Saloon orders
- 32 Hot tub reaction
- 33 Bit of background in a Road Runner cartoon
- 34 "Superfudge" novelist
- 38 Nick and Nora's pooch
- 41 Cold War agcy.
- 42 Shell propellers
- 45 Starfish arm
- 46 WWII craft
- 47 Not a good thing to be at the wheel
- 49 Pro Football Hall of Famer nicknamed "Crazylegs"
- 53 Traffic cops gp.?
- 54 Maxim
- 55 Do lunch, e.g.
- 56 Speaker with a .345 career batting average
- 57 Stallion feature
- 58 TV series that first aired 9/23/1962 whose family shares first names with 17-, 24-, 34- and 49-Across
- 61 Henry VIII's fourth
- 62 Verdi slave
- 63 Squander
- 64 Ponies up
- 65 Office furnishing



By Gareth Bain

66 Some McFlurry ingredients

DOWN

- 1 Zigzag hole feature
- 2 Chop chopper
- 3 held: in few hands, as stock
- 4 Snob's affectations
- 5 Avoid, as an issue
- 6 Like many Miamians, by birth
- 7 Clear blue
- 8 Girl sib
- 9 Campfire remains
- 10 Like ice or dice
- 11 Run-of-the-mill
- 12 Spotty condition?
- 13 Kneecap
- 18 "I say!"
- 22 Patio planter
- 24 Savior in a Bach cantata
- 25 Purpose
- 26 Interstate H-1 locale
- 28 vu
- 32 "Modern Family" network
- 33 Square food?
- 35 Salt sprinkle
- 36 Himalayan myth
- 37 Dance in a pit
- 38 Visitors center handout
- 39 Zoe of "Avatar"
- 40 Abuse of power
- 43 Flower for one's honey
- 44 Foreknow, as the future
- 46 Caustic stuff
- 47 Part of a Molière comédie
- 48 Avoids an F
- 50 Arches with pointed tops
- 51 Oboist's supply
- 52 Noted vowel seller
- 56 Nicholas II, e.g.
- 58 Wee bit
- 59 Hotfoot it, old-style
- 60 Pair

Last Edition's Puzzle Solved

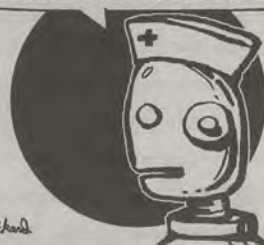
L	B	J		R	A	P	T		L	E	A	P	T
I	O	U	S	O	P	I	E		E	X	T	R	A
R	U	N	U	P	A	T	A	B		G	O	R	E
A	T	O	N	E	D		N	O	R		R	I	O
				N	A	R	R	O	W	E	S	C	A
D	E	L	I	L	A	H		P	H	I			
A	D	A		G	E	N	E		O	S	H	E	A
I	N	C	O	M	E	T	A	X	R	E	T	U	R
S	A	Y	H	I		T	W	E	E		N	I	T
				B	F	A		R	A	V	A	G	E
O	U	T	O	F	C	O	N	T	R	O	L		
I	N	I	T		E	X	E		S	U	P	R	A
L	I	T	H	O		L	A	T	E	S	H	I	F
U	T	L	E	Y		I	T	Z	A		A	S	E
P	E	E	R	S		P	O	U	T		K	E	Y

THE GALACTIC EMERGENCY CLINIC

MY ALIEN SON HAS AN UPSET STOMACH. WHAT CAN YOU DO FOR HIM?



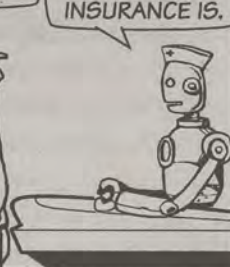
HE MAY JUST NEED AN ANTACID, OR THIS MAY REQUIRE LOTS OF EXPENSIVE TESTS AND PROCEDURES.



WHICH DO YOU THINK IT WILL BE?



DEPENDS ON HOW GOOD YOUR INSURANCE IS.



HEY CHUCK, WHEN IS THAT BIG TEST YOU SAID YOU WERE TAKING THIS WEEK?



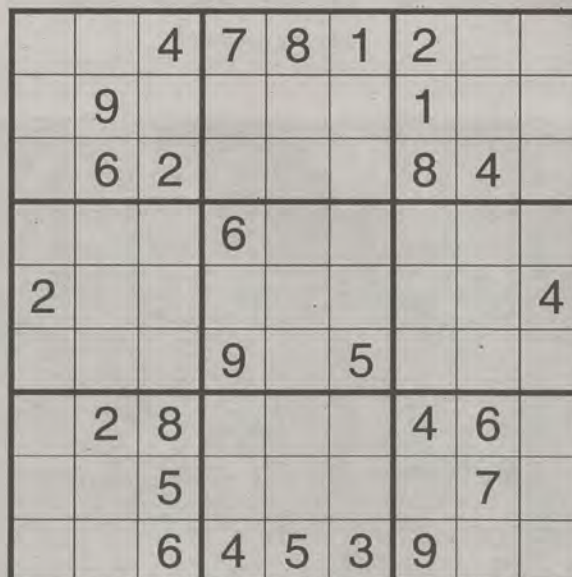
OH, THAT'S IN AN HOUR.



BUT YOU HAVEN'T EVEN STARTED STUDYING.



DIDN'T YOU HEAR ME? I HAVE A WHOLE HOUR.



Sudoku

	9					1		
	6	2				8	4	
2								4
	2	8				4	6	
		5					7	
		6	4	5	3	9		

Sports Talk

with The George-Anne

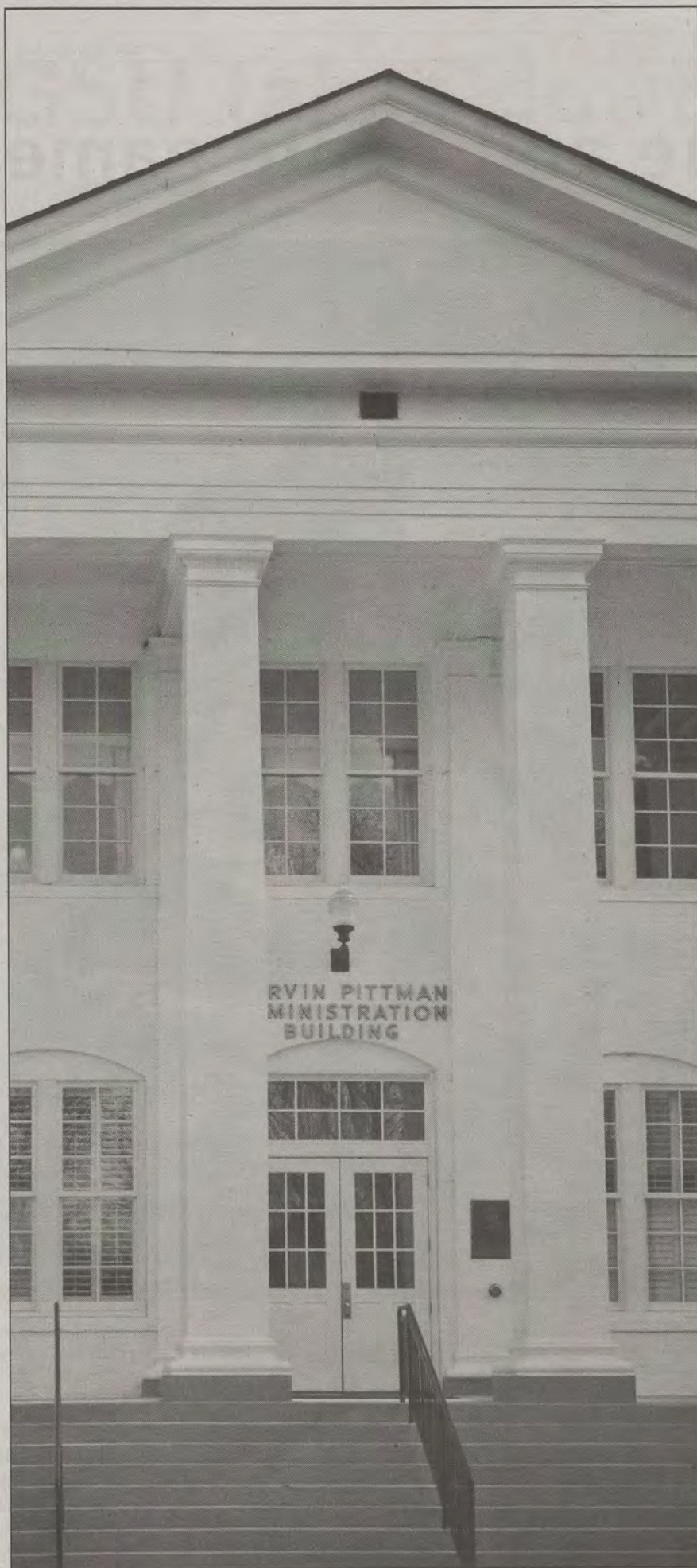
Georgia Southern Sports
News and Analysis



Airing on Channel 99 daily
at 12:20 and 6:50 p.m.
or watch online at
TheGeorgeAnne.com
new episodes Wednesday at 1 p.m.

Join Katie Tolbert and
Shakeem Holloway





GEORGIA SOUTHERN
UNIVERSITY

TOWN HALL MEETINGS FOR THE SACSCOC REACCREDITATION PROCESS

Help develop the Quality Enhancement Plan (QEP) to improve the academic experience of students at Georgia Southern.

APRIL 17

Staff, Nessmith-Lane Conference Center, #1909, 3 - 4 p.m.

SGA meeting, Russell Union Ballroom, 6:30 p.m.

APRIL 18

Faculty Senate, Russell Union Ballroom, 4 p.m.

APRIL 22

Faculty, Williams Center Multipurpose Room, 10 - 11 a.m.

APRIL 23

Students, Russell Union #2080, 3:30 - 4:30 p.m.

APRIL 25

Staff, Nessmith-Lane Conference Center, #1909, 10 - 11 a.m.

APRIL 30

Faculty, Williams Center Multipurpose Room, 2 - 3 p.m.

All the town hall meetings are open to everyone, and you can attend any meeting at any of the scheduled times.

For more information, contact the QEP Steering Committee at QEP@georgiasouthern.edu.

GSU limps through Blue and White game

Football

BY RANDALL HAMPTON

The George-Anne staff

The annual Blue and White spring football game saw the blue team pull out a 14-12 win over the white team with some of the most recognizable Eagles sidelined.

With rising senior starting quarterback Jerick McKinnon and rising junio running back Dominique Swope out, the offense looked a bit different from the bruising triple option attack GSU rode to the semi-finals of the FCS playoffs last year.

"We got in the shotgun a lot more because we didn't want our quarterbacks to get hit every single play. We were down to one b-back at one point, and when you're under center he is going to get tackled every play whether he's got the ball or not," head football coach Jeff Monken said.

The laundry list of injuries that have hit the team this spring had Monken looking further down the depth chart than normal for this year's game.

"You can go down the list, and there are a lot of guys we had to try and play that really aren't in the top two or three at their position, and that is going to be frustrating. I just wish we were executing a little bit better on both sides," Monken said.

Sloppy play and injuries were not enough to keep some younger players from ceasing their opportunity to make an impact on the field.

Rising sophomore quarterback Vegas Harley connected on a couple of curl routes on the way to completing 6-11 passes.

"I personally feel like I need to work on every phase of my game. Perfection is always out of reach, but on the way we achieve greatness," Harley said.



Andy Morales/The George-Anne

Rising junior running back Devin Scott (28) turns the corner and runs the ball up field. Rising senior defensive back Javonte Martin (20) and rising junior line backer Edwin Jackson (40) elude a blocker in pursuit of the ball carrier.

The defense was also noticeably different with former starters J.J. Wilcox and Brent Russell no longer leading the charge.

Rising senior linebacker Kyle Oehlbeck finished the game with eight tackles and put his signature

on the game with a big hit on special teams. He could help fill the leadership void that losing the two best players on the defense creates.

"It's always the obligation of the seniors to take on that leadership role," Oehlbeck said.

Circumstances forced Monken to try a lot of different things on offense in the spring game, but the triple option will remain his team's bread and butter.

Monken said, "The advantage is being able to run the option

because it's just not something that everybody does and everybody defends. That's my philosophy. Other people have got different philosophies, but that's mine and as long as I'm the coach here that will be our philosophy."

GSU takes down Bulldogs

Softball

BY KATIE TOLBERT

The George-Anne staff

Georgia Southern University's softball team found success at home in its weekend series going 3-0 against Samford University in the series.

"We've done a great job defensively at practice, driving the ball great, hitting great all week at practice. I think we just came out focused. We are determined right now and I like that," head coach Annie Smith said.

In both of the games on Saturday, the Eagles started out strong and kept their momentum going throughout the entire doubleheader. In the first game of the doubleheader, GSU held the Bulldogs to no runs, and junior pitcher Sarah Purvis threw her second one-hitter game at home of the conference-play season.

The Eagles were performing with excellence behind the plate, defeating the Bulldogs 6-0. In the second inning, several singles and sacrifice flies led to three runs added to the Eagles' two-run lead, bringing GSU to a 5-0 lead.

Sophomore Kaitlyn Johnson contributed to this performance with two runs, two hits and one RBI in three times at bat. Her success did not end there as Johnson got two more hits and one more RBI in the second game of the doubleheader.

The Eagles took down the Bulldogs 4-2 in their second game, taking an early lead in the first inning. Two walks and an error by the Bulldogs allowed junior infielder/outfielder Shelby Morrill's hit to right field to bring in two runs, and later she also was able to score a run.

Sophomore pitcher Shelby Scott stepped up for the Bulldogs in the sixth inning and got a solo home run to cut their deficit down to two runs. But junior pitcher Allie Miles for the Eagles immediately shut down Samford's momentum by retiring the next six batters and closing the game for a victory.

Sophomore pitcher Brooke Red led the Eagles by pitching a two-hit shutout in third and final game of the series. The beginning of the game was not comparable to the previous two, considering the Eagles did not score a run until the sixth inning.



Demario Cullars/The George-Anne

Sophomore pitcher Brooke Red (15) pushes off the rubber and throws a pitch. Red has an ERA of 2.46, which is second on the team.

Senior infielder Tabby Douberley hit a ball into right field that drove in junior infielder Kourtney Thomas after she doubled earlier. This run was the only one of the game, but was Douberley's 30th RBI of the season.

"You can always do things better, but I think we are doing a nice job. We made a lot of nice defensive plays, and obviously you want to score twenty runs a game, but

you know we can't always do that. So just keep having good at bats and hopefully everything falls the way we want it to," Smith said.

The Eagles will be back on the road to play a weekend series against Western Carolina University on Saturday, April 20 at 1 p.m. and 3 p.m. and on Sunday, April 21 at 1 p.m.

STAT SHEET

2: The number of one-hitters Sarah Purvis has thrown at home in conference play this season (Softball)

5: The number of wins by sophomore pitcher Sam Howard (Baseball)

3700:

The number of fans that attended the Blue-White game

2: The number of times Scott Wolfes has earned player of the week (Golf)

6: The number of conference wins held by the men's tennis team at the end of the regular season

26:

The number of consecutive wins women's tennis has against the WCU Catamounts

6: The number of former GSU baseball players that received minor league assignments

Men's basketball coaching staff announced

Men's Basketball

BY WILL CHENEY

The George-Anne contributor

Georgia Southern University head men's basketball coach Mark Byington has announced his coaching staff for the 2013-2014 season.

The three newly hired assistant coaches under Byington are Randy Peele, Larry Dixon and Andrew Wilson. Jason Slay was hired as director of basketball operations.

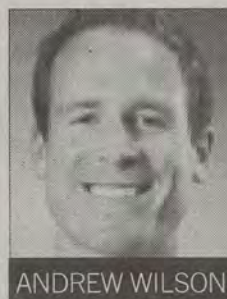
Peele has experience in Division I basketball as a head coach. He previously spent four seasons as head coach for University of North Carolina at Greensboro between 1995-1999, taking UNCG to the NCAA Tournament in his first season. He also spent five seasons at Winthrop University as a



RANDY PEELE



LARRY DIXON



ANDREW WILSON



JASON SLAY

head coach from 2007-2012, while appearing in a pair of NCAA tournaments.

"I am very fortunate to have Randy Peele on my coaching staff. He has had a lot of success throughout his career including three trips to the NCAA Tournament as a head coach. He excels in coaching the fundamentals, recruiting and skill development, so I will lean on his knowledge and experience as we build our program," Byington said in a news

release.

Dixon has 10 years' experience as a collegiate assistant coach. He also served on Peele's staff at Winthrop. He was named Top Assistant Coach in the Big South by Fox Sports. Dixon spent last season as head boy's basketball coach at York Comprehensive High School in York, S.C.

"I have known Larry Dixon for many years and have always had great respect

for his work ethic, his enthusiasm and his determination to help the team succeed. When Larry was at Winthrop, I was involved in a lot of recruiting battles with him and have seen first-hand how good he is at recruiting. He will be great for developing our players and helping them maximize their potential," Byington said in a news release.

Wilson was an assistant at Binghamton University and the College of Charleston. In his six seasons at CofC, he coached with new GSU head coach Byington, and they helped CofC to average 22 wins per season.

Slay joins the Eagles' staff after coaching last season at Hargrave Military Academy in Virginia. Prior to that, he spent the previous four seasons as an assistant at West Virginia State University, winning two West Virginia Intercollegiate Athletic Conference Championships.

Eagles split final matches of regular play

Men's Tennis (10-8)

BY LUCAS BAGGETT

The George-Anne contributor

The Georgia Southern University men's tennis team defeated Samford University 4-3 but fell short to the University of Tennessee Chattanooga 6-1 over the weekend.

The first match of the weekend was against Samford, which ended in a victory for the Eagles.

The doubles portion of the match went down to the play of senior Alex Doherty and sophomore Kyle Hoffman who clinched the point for the Eagles after they defeated their opponents 8-6.

Freshman Rayane Djouad beat his opponent in the No.1 singles spot 6-4, 6-2 to open up singles play.

After a win by junior Marco Osorio, sophomore Albert Codina Sala clinched the match for the Eagles after his exciting 3-6, 7-6 (7-2), 6-3 win at the No. 2 singles spot.

"The point that I learned today was that even though you start a bad match, and you don't play your best you got to be fighting until the end. That's a big lesson personally and for the team," Sala said.

Head coach Nick Zieziula was thrilled with his team's play in both singles and doubles.

"Our doubles were outstanding today, even at two where we lost. We controlled the flow of the play through the first five games. Our singles play was outstanding as well. The dog and determination we showed to not back down and give support to our teammates who were getting clinches was great," Zieziula said.

Next for the Eagles was the University of Tennessee Chattanooga, which was the Eagles' last home match and Senior Day.

The Eagles came up short in doubles after dropping two of three matches. The team of Djouad and Osorio gave GSU its only doubles win of the day.

UTC continued its dominance as it took five of six singles points from the Eagles.

After winning in doubles, Djouad ended his first regular season as an Eagle with a 6-2, 0-6, 6-4 win at the No. 1 singles spot.

Seniors Doherty and Verdam did not play a singles match, but had a good experience in the tennis program.

"My overall experience has been very good. It's incredible what experience you can get from playing a sport and being in college at the same time. I'm really happy to be finishing. I've had a great time," Verdam said.

The Eagles finished its regular season 10-8 and 6-4 in the conference. The SoCon tournament will be April 18-21 in Elon, N.C.



Jessica Stanfield/The George-Anne

Senior Matthijs Verdam returns a forehand across the court against Samford University. The Eagles defeated Samford 4-5.

Men's soccer tops SCAD to end '13 spring season

Men's soccer

BY WILL CHENEY

The George-Anne contributor

The Georgia Southern University men's soccer team's spring season came to an end on Sunday after defeating the Savannah College of Art and Design 1-0.

In a game where goals were at a premium, the first half ended in a scoreless tie. There were multiple missed opportunities by GSU to break the game open, but sophomore defender Trent Doty had a clutch second-half goal to finally break the tie. Doty's goal would be all GSU needed to fend off SCAD.

"This year has just been about continuing to play quicker, particularly in the final third (of the game), but the goals just didn't come," head coach Kevin Kennedy said. "I thought we had a chance to score four or five."

With the spring season coming to an end,

Kennedy still expects his squad to continue to improve with the fall season on the horizon.

"I thought today we got some questions answered. I thought Thomas Valikonis was very, very good for us now that he has come back healthy, and then we had some other players that we moved around that we thought did a great job, and now we can make plans for the fall," Kennedy said.

Looking ahead for the GSU men's soccer program, finding a conference to call home following GSU's move to the Sun Belt Conference in 2014 has been a top priority of the athletic department. The conference search, however, might not send GSU searching too far from home.

Kennedy said, "As of now, we are under the impression that we are going to stay in the Southern Conference. The conference presidents will have to vote on that, but as of now, we are in the Southern Conference for the 2013-2014 season and we believe that is where we will remain."



Christal Riley/The George-Anne
Junior forward Ethan LaPan
(10) maintains possession
against a SCAD defender.
The Eagles won their last
spring season game Sunday

RIFLING, from page 1

rifling team will be a part of is the Air Rifle discipline. The women will be using .177 caliber pellet 10 meters away from 40 targets. The shooter gets one shot per target and will be scored from 1-10, with a perfect score being 600.

The five declared shooters will get a total of one hour and 15 minutes to complete all of their targets. The four best shooters' scores will be counted and totaled for the team's overall score.

Other schools that have women's rifling

as a varsity sport in the Southeast are The Citadel, the University of Alabama at Birmingham and the University of Mississippi. Wofford College, North Carolina State University and the University of Kentucky also have rifling teams, but these teams are coed.

All female students interested in trying out will need to bring a physical signed by a physician within the last six months and proof of medical insurance. Senior Woman Administrator Cathy Beene can be contacted for more information via her GSU email.



Courtesy of www.sxc.hu

The Academy of the Performing Arts Presents: The End of the Beginning!

Come enjoy a night of performances by GSU's student led
Academy of the Performing Arts!

- April 18, 7:30 p.m.
- Performing Arts Center
- Tickets \$5
- Tickets available
at the PAC

Tickets on sale NOW!



Eagles to host mid-week A-Sun opponents

Baseball (21-14)

BY COLIN RITSICK

The George-Anne staff

Georgia Southern University's baseball team will host two mid-week contests starting tonight at 6 against Mercer University and tomorrow at 6 p.m. against Kennesaw State University.

The Eagles (21-14, 10-8 Southern Conference) trumped the Bears (29-10, 10-5 Atlantic Sun Conference) 10-8 in a shootout in Macon in the only other meeting between the two teams. But whereas runs were everywhere against Mercer, the last time GSU squared off against the Owls (19-18, 8-7 A-Sun), the Eagles could not buy a run and were shut out for the first time of the season 5-0.

The Bears have won 15 of their last 21 games since they lost to GSU on March 12, including a 10-1 dismantling of the Georgia Institute of Technology. In that stretch, Mercer has outscored its opponents 162-74. The Bears are hitting a .297 batting average as a team this season, a statistic that would put them in third place in the SoCon in that category. But it is Mercer's ability to produce runs has led the team to its winning ways of



Demario Cullars/The George-Anne

Junior infielder Ben Morgan (18) squares up and bunts the ball in Saturday's game against The Citadel. The Eagles lost this game 0-1.

late. Mercer has batted in 274 runs this year. That is enough to rank them above all of the teams in the SoCon and 91 ahead of GSU. What

was a high-octane affair in March will surely promise another shootout tonight.

KSU on the other hand has been

pretty average since it last played the Eagles. In the 24 games since, the Owls are 12-12 but have lost seven of their last nine.

Common opponents of the Eagles and the Owls include the University of Georgia, Mercer, GT and Jacksonville University. KSU is 3-6 against these common opponents whereas GSU is 6-3. The Owls hold a 3.31 ERA compared the 5.03 ERA of the Eagles. Of course the quality of opponents in the A-Sun versus the SoCon is a mismatch, but GSU still failed to score a single run last time they faced off against the Owls.

These two teams' paths since last playing GSU, reflect different stories than the outcomes against the Eagles. The Bears are hot since losing to GSU with an offensive prowess to take notice of. Meanwhile KSU has been struggling to hold its head above water since shutting out GSU 5-0 last game.

The Eagles have lost three consecutive SoCon series and were swept this past weekend. They have dropped all the way to sixth in the conference and will head out to North Carolina to face Western Carolina University this weekend. If GSU wants to stay in contention in such a competitive SoCon race, the team needs to create some momentum against these two non-conference opponents at home before hitting the short road trip to play the SoCon-leading Catamounts.

GSU baseball swept at home by The Citadel

BY SHAKEEM HOLLOWAY

The George-Anne staff

For the third consecutive weekend the Georgia Southern University baseball team lost a Southern Conference series as The Citadel swept the Eagles, nearly shutting them out in all three games.

The Eagles have dropped seven of their last 10 games with all losses coming from teams with records worse than the Eagles. The Bulldogs managed to hold GSU scoreless for 26 consecutive innings out of a

possible 29. The Eagles did not put a run on the board until the seventh inning of game three.

"They played well all week long," head coach Rodney Hennon said.

The Bulldogs' first basemen Calvin Orth was a problem for the Eagles the entire series beginning in game one.

In the first game of the series GSU fell 11-0, and in that game Orth had two homeruns including an eighth-inning grand slam capping off a five-run fifth inning.

Sophomore pitcher Sam Howard

(5-4) picked up the loss as he went six innings giving up six runs, five earned, on 11 hits while striking out three.

Game two was a pitcher's duel that resulted in a 1-0 GSU loss after 11 innings of play. Senior pitcher Justin Hess pitched for a career-high, nine innings scattering four hits and striking out nine batters.

Senior reliever Kyle Rowe (3-1) recorded the loss, pitching the final two innings, giving up three hits and the only run scored.

Four different Bulldog pitchers

took the mound and gave up three hits combined while recording 12 strikeouts as reliever David Rivera (4-2) picked up the win. Second basemen Mason Davis scored the game-winning run for the Bulldogs in the 11th inning off catcher Joe Jackson's single.

In game three, the Eagles were outpitched and outhit in their 8-2 loss. The Bulldogs recorded nine hits in comparison to five hits for GSU.

Bulldogs' pitcher Austin Mason pitched eight innings, giving up five hits and two runs, both unearned.

GSU was in desperate need of offense in this series, and Hennon wants his team to make adjustments going forward.

"Bottom line is we got a lot of adjustments to make, especially offensively. We're struggling and we got some guys that are just going to have to simply make some adjustments and step up and get it done," Hennon said.

The Eagles will get their chance to answer adversity and adjust against Mercer University today. First pitch is set for 6 p.m.