

Georgia Southern University

Digital Commons@Georgia Southern

The George-Anne

Student Media

2-7-2013

The George-Anne

Georgia Southern University

Follow this and additional works at: <https://digitalcommons.georgiasouthern.edu/george-anne>

Recommended Citation

Georgia Southern University, "The George-Anne" (2013). *The George-Anne*. 2594.
<https://digitalcommons.georgiasouthern.edu/george-anne/2594>

This newspaper is brought to you for free and open access by the Student Media at Digital Commons@Georgia Southern. It has been accepted for inclusion in The George-Anne by an authorized administrator of Digital Commons@Georgia Southern. For more information, please contact digitalcommons@georgiasouthern.edu.

**PACK
THE
HOUSE**
PAGE 18



**FISHING
FOR A
CURE**
PAGE 18

Thursday, Feb. 7, 2013
Georgia Southern University
www.thegeorgeanne.com
Volume 83 • Issue 52

THE GEORGE-ANNE

23 new Eagles sign to soar at GSU



Chase Chalker/ The George-Anne

Head football coach Jeff Monken announced the 2013 signing class yesterday at a press conference. The class is made up of 23 high school seniors and consists of seven running backs, six defensive backs, five defensive linemen, two defensive linemen, one quarterback, one long snapper and one kicker.

BY SHAKEEM HOLLOWAY

The George-Anne staff

Seven running backs, six defensive backs, five defensive linemen, two offensive linemen, one quarterback, one long snapper and one very important kicker have all signed to Georgia Southern University's football team.

Versatility and athleticism seemed to be a constant theme for the Eagles' 2013 recruiting class. Several of the newly committed players play more than one position, and some even play both offense as well as defense.

"It's an athletic group of guys, and hopefully each year we're doing a better job than we did the year before getting guys that are more athletic," head coach Jeff Monken said.

The standout recruit for the Eagles could possibly be Jay Ellison. Ellison started at the varsity level all of his four years in high school and is ranked as the nation's 34th best defensive tackle.

Ellison is among four other committed defensive linemen, which Monken echoed was necessary with the departure of players such as former Eagle defensive tackle Brent Russell.

GSU recruited seven linemen total, two of them coming on the offensive side of the ball.

"Those guys are difficult to find. You've got to be strong upfront on both sides of the ball," Monken said.

This past season, the Eagles ended on a blocked field goal attempt that would have tied the game and possibly sent it to overtime in their playoff loss to North Dakota State University.

Many GSU fans have been clamoring for the Eagles' need for a kicker and their prayers may have been answered. The Eagles got a commitment from kicker YoungHoe Koo from Ridgewood, N.J.

Monken gave Koo high praise saying he had a strong and accurate leg that would be a valuable addition to GSU.

See SIGNING DAY, Page 16



thegeorgeanne.com



Follow us on Twitter
@TheGeorgeAnne



Newsroom 478-5246
Advertising 478-5418
Fax 478-7113

PO Box 8001
Statesboro, GA
30460



Just keep swimming

GSU introduces zebrafish for future human cell research

BY ALANNA NAVIN

The George-Anne staff

Georgia Southern University is introducing a new mode of study in which researchers will study zebrafish in order to learn more about the human body.

The zebrafish are very close to humans genetically and are see-through, which gives researchers the chance to see the results as they happen, Dr. Vinoth Sittaramane, a new biology professor, said.

Sittaramane brought the world of research using zebrafish to GSU.

Researchers will be looking to the zebrafish to teach them about nanotechnology as a means of cancer therapy, the embryonic nervous system and the development of embryonic blood vessels, Sittaramane said.

"We are taking human cancer, and we will put it in the zebrafish," Sittaramane said.

The nanotechnology that will be used will be extremely small rods made essentially out of carbon, Dr. Karin Scarpinato, associate dean of faculty and undergraduate research programs, said.

The rods will be treated with an antibody that is specific to cancer cells. The tube will be inserted into the tumor and will bind specifically to the cancer cell instead of normal cells.

The cell will then be treated with controlled microwaves, which will heat and

kill the cell, Scarpinato said.

"Hopefully the tumor cells will be killed," Scarpinato said.

The major driving force behind the second experiment of observing brain development is to discover some of the reasons as to why autism is a disease in humans, Sittaramane said.

"We are focused on how the nervous system is developed in the embryo," Sittaramane said.

Researchers will also observe how blood vessels are developed in the brain while in the embryonic stage.

The purpose for this experiment is the occurrence of strokes in humans, and observing the growth of blood vessels can show the specifics of the condition, Sittaramane said.

The zebrafish will call a sophisticated tank in the Biology Building "home."

The system used for keeping the fish is called a zebrafish aquatic system. It is a

“ We are taking human cancer, and we will put it in the zebrafish. ”

-Dr. Vinoth Sittaramane,
biology professor

completely new system that has been on campus for only three weeks, Sittaramane said.

"This is very sophisticated because the water circulates automatically," Sittaramane said.

The system uses regular tap water that flows from a pipe to various filtrations systems that sterilizes the water and is treated with certain solutions in order to make the perfect water for housing zebrafish in a controlled environment. All of this is done by the aquatic system automatically.

"We want to do research in the perfect environment," Sittaramane said.

If there is anything off-balance in the system, there are sensors that alert Sittaramane immediately through email and text message.

"It's constantly making sure that the fish are kept in comfortable conditions," Sittaramane said.

Zebrafish are great mediums for research

because they are very close to humans in a genetic perspective, Sittaramane said.

"That is the power of zebrafish; you can do everything in a live fish," Sittaramane said.

Before the advent of research with zebrafish, mice were the preferred mode for information.

"You need a good number of mice, which can be expensive and not very cost-effective, and a number of studies have showed that mice are not the best model to model humans," Scarpinato said.

Zebrafish can also be genetically altered for specific experiments, Sittaramane said.

The projects will not only be done in the department of biology, but the department of chemistry will also be taking part, Scarpinato said.

There will also be monthly meeting with the departments taking part in the research to discuss the findings of the study.

"The fact that everyone is able to collaborate on one project is really cool," Jihan Padgett, senior biology major, said.

Padgett's research focus is on the nanotechnology cell therapy.

"It's good that we have it at GSU now. We can do a lot of collaboration and hopefully get far," Sittaramane said.

Padgett said, "I hope that it does reach a really good endpoint and that everything turns out to be successful."

Police Beat

Sunday, Feb. 3

3:25 a.m.: Officers responded to an injured person at Southern Courtyard. EMS was notified and responded but did not transport the sick person.

4:53 a.m.: Officers responded to a sick person at Subway on Chandler Road. EMS was notified and responded but did not transport the sick person.

11:22 a.m.: An incident report was taken for a theft at the MC Anderson Pavilion basketball courts. This case was turned over to Criminal Investigations.

11:31 a.m.: An incident report was taken for criminal trespass at Southern Pines. This case was turned over to criminal investigations.

12:31 p.m.: An incident report was taken for criminal trespass at Southern Courtyard. This case was turned over to Criminal Investigations.

4:29 p.m.: An incident report was taken for a theft of a bike at Southern Pines. This case was turned

over to Criminal Investigations.

5:49 p.m.: Officers responded to a fire alarm at Kennedy Hall. The fire alarm was activated by smoke from an occupant cooking.

12:40 a.m.: Officers responded to Southern Pines in reference to a drug complaint. Four occupants were judicially referred.

1:02 a.m.: Officers responded to a fire alarm at Centennial Place. The Statesboro Fire Department and maintenance responded. The alarm was activated by smoke from cooking.

Monday, Feb. 4

12:18 p.m.: An incident report was taken for a theft at University Villas. This case was turned over to Criminal Investigations.

1:41 p.m.: Officers responded to Fair Road at Lot 11 to assist a charter bus that was disabled.

2:41 p.m.: Officers made a field contact with a subject at the Russell Union.

3:30 p.m.: Criminal Investigations

arrested Keith Scott Crawford, 19, and charged him with possession of a weapon in a school safety zone.

4:20 p.m.: Criminal Investigations arrested Gary Graham Oetgen, 19, and charged him with criminal trespass.

6:49 p.m.: An incident report was taken for an injured person at Public Safety.

7:40 p.m.: Officers responded to a panic alarm at Kennedy Hall. An occupant accidentally activated the alarm.

10:11 p.m.: An incident report was taken for lost/mislaid property at the Engineering Technology Building.

10:14 p.m.: Officers responded to Southern Pines in reference to a drug complaint. Four occupants were judicially referred.

Tuesday, Feb. 5

9:55 a.m.: Officers responded to Lot 42 in reference to a motor vehicle accident. A motor vehicle accident report was completed.

Statement of Operations

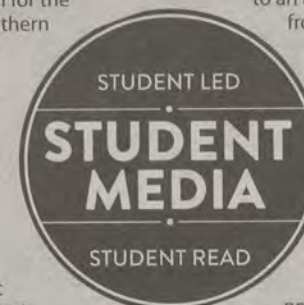
The George-Anne is the official student newspaper of Georgia Southern University, owned and operated by GSU students using facilities provided by the university. The newspaper is the oldest continuously published newspaper in Bulloch County. The newspaper is a designated public forum for the Georgia Southern community. The newspaper is published twice weekly, on Tuesdays and Thursdays, during most of the academic year. Any questions regarding content should be directed to the student editor by phone at 912.478.5246 or at gaeditor@georgiasouthern.edu.

ADVERTISING: The newspaper accepts advertising. Inquiries may be made by calling 912.478.5418 or 912.478-0566. Fax any questions to 912.478.7113 or e-mail ads1@georgiasouthern.edu.

The George-Anne receives additional support, in part, from the Student Activities Budget Committee.

The deadline for reserving space and submitting advertising copy is noon, one week prior to the intended publication date. For more information, rate cards, sample publications, contact

the advertising manager or student media director. The advertiser is responsible for any errors in advertisements and its liability for adjustments is limited to the amount of space the error occupied in the ad. Further, the newspaper is not responsible for any damages caused due to an ad's omission from a particular edition and its responsibility solely is to reschedule the ad in the next regular edition at the regular advertising rates.



STUDENTS BEWARE: The

George-Anne screens all advertisements prior to publication. The newspaper strives to accept ads for legitimate products and services only. Students are urged to exercise caution when replying to ads-particularly those that require personal information. Students are also urged to report to the newspaper any suspicious offers which they might see in an ad.

PUBLICATION INFORMATION: The newspaper is printed by The Brunswick News in Brunswick, Ga.

NOTICE: Unauthorized removal of multiple copies from a distribution site constitutes theft under Georgia law, a misdemeanor offense punishable by a fine and/or jail time.

Senator proposes ballot changes

BY LAUREN GORLA

The George-Anne staff

Student Government Association passed a proposal made by Jacob Jay, SGA College of Science and Mathematics senator, to change the election ballots to no longer include senators' names on the same ticket as the executives.

"With tickets as they are now, for someone who's interested in running as a senator or executive officer, it is nearly impossible to win without being on a strong ticket."

J a y was also concerned t h a t senators would be hesitant to run for an executive position if

they knew they would have to run against a strong ticket.

No one should feel like they must join a ticket to be reelected to the senate seat or executive board, Jay said.



JACOB JAY

"The reason for bringing me back into this issue tonight is to make sure that we are making the right decision for the student body which will affect this and future elections and will ultimately effect the future of student government here at Georgia Southern," Jay said.

Jay said, "Like most everything else, SGA is not perfect. As senators, sometimes we make mistakes and those mistakes must be addressed not for just the sake of every student on campus but also for our own integrity."

Editorial Staff

Editor-in-Chief Arielle Coambes
Managing Editor Jessie Reese
Multimedia Editor Gianna Carme
Opinions Editor Taylor Cooper
News Editor Lindsay Gaskins
News Chief Shelby Farmer
A&E Editor Marissa Martin
A&E Chief Alex LaSalle
Sports Editor Jackie Gutknecht
Sports Chief Trevor McNaboe

Copy Chief Courtney Tielking
Copy Editor James Farmer
Business Manager Chloe Douglas
Sales Manager Phillip Scroggin
Marketing Manager TJ Jackson
Distribution Manager Nick Garcia
Production Manager Kelsey Paone
Photo Editor Tasha Lund
Design Editor Jose Gil
Web Editor Darius Alexander

Corrections

Contact the editor at gaeditor@georgiasouthern.edu for corrections and errors.

Our View

Major combo might hurt students

We reported on Tuesday that the programs for journalism and multimedia communications will merge this fall.

Junior and senior journalism or multimedia students can now choose to major in either area, regardless of whether they took classes previously required by the other major. For instance, a journalism major may now declare a multimedia major without taking the classes required by the former multimedia major, and vice versa.

This places unfair expectations on students who graduate with a journalism or multimedia communications major because future employers will believe that students have been trained in the area their degree says, but that might not be the case.

As was reported in the article, the classes offered on feature writing will include lessons on how to tell the same story in a video. Graduates who are applying for a job in the field of journalism may find that a prospective employer expects them to be able to turn a feature article into a video. A student who took the class before the two majors merged would be unable to do this and may end up not getting the job that the student was otherwise qualified for.

The combination of the two programs will undoubtedly impart to future students a greater base of skills to call upon when applying for a job. Merging the programs is not a bad idea, nor should it be reversed, but any future merges need to be implemented with more thought toward how it will affect all the students, not just those of the future.

The George-Anne welcomes letters to the editor and appropriate guest columns. All copy submitted should be 350 words or fewer, typed, and sent via e-mail in Microsoft Word format to gaeditor@georgiasouthern.edu. All submissions must be signed and include phone number for verification. GSU students should include their academic major, year and hometown. The editors reserve the right to reject any submission and edit submissions for length.

Opinions expressed herein are those of the Board of Opinions or columnists themselves and DO NOT necessarily reflect those of the faculty, staff or administration of GSU, the Student Media Advisory Board, Student Media or the University System of Georgia.

SHENEMAN TRIBUNE MEDIA SERVICES



Imagine it: Monopoly, GSU style

After fans voted in an online contest, Monopoly has a new token: A cat.

To make room for that, the folks at Hasbro have eliminated another classic token by getting rid of the iron. It will be missed by nobody.

With Monopoly in the news, I got to thinking about another board game tradition: Unique editions. There are special editions of Monopoly for everything from Batman to the town of Menomonie, Wis. It's called Menomonopoly.

Well, why can't we have a Georgia Southern Monopoly? I'm sure we could put together a game that truly reflects our school.

First thing to be decided are what we use as tokens for GSU Monopoly. Some of them are obvious. The iconic Scottie dog will be replaced by Gus the Eagle, the race car will be converted into a model of the Blue Goose, and the shoe will be turned into a Sperry. Other tokens would include a can of Natty Light, a football helmet and President Brooks Keel's beard. The final token would be a model of one of GSU's buses, but the token would explode due to a small electrical

ALEX THE PRETTY GOOD



ALEX LASALLE

fire every time you pass "GO."

The top hat token would remain, because top hats are awesome.

For GSU Monopoly, the "Chance" and "Community Chest" cards would have to be replaced. The "Chance" card is now a "GSUProblems" card. You take a chance on a trip to Rudy's, a chance on catching any number of diseases and a chance of getting your picture on GSUProblems.

The "Community Chest" is now the Financial Aid Office. You usually get money from the cards, but you don't actually see any of it until six rounds later.

Of course, the trademark of any special edition of Monopoly is picking the properties.

The cheapest properties, those purple

ones nobody cares about, would be the Newton Building and Forest Drive. On the opposite side of the scale, the notorious Boardwalk and Park Place properties would be changed to Paulson Stadium and the new Biology building, respectively. Simple enough.

Some other changes include turning the railroads into the various dining areas around campus and turning "Free Parking" into "Refund checks." My personal favorite change is turning the "luxury tax" and "income tax" spaces into a "tuition and fees" space. Land on this and you give up all your money and call mom to beg for "book money" before ordering Hungry Howie's.

Finally, that "Go to Jail" square? It's now a "Go to the Plaza" square. Land there and you head across the board to the "Hangover" square. No leaving there unless you roll two sixes or pay up for some coffee.

If Menomonie, Wis. – population: 16,264 – can have its own Monopoly, so can GSU. Let's make this happen!

LaSalle is a senior writing and linguistics major from Cumming.

Newsflash, Axe: Women can be astronauts, too

I was recently sitting in my living room watching the Syfy channel with my roommate when I saw the Axe Apollo commercial. In it

**FROM
THE
MARGINS**



ADRIANA PULLEY

a fireman risks his life in a selfless act of heroism to save a woman. When safe, she swoons over him for a moment, until she spots an astronaut. Forgetting her savior, she runs to embrace the astronaut while the words "Nothing beats an astronaut, ever" and "Axe Apollo Space Academy. Leave a man, come back a hero" flash across the screen.

The point of the commercial is that I, if I happen to be a man, can be an astronaut too, if I win their contest. My eyes bulged as I'm reminded of the movie "Another Planet." They're sending people to space in a contest? Is this real? I hurry to consult Google and yes, it is in fact true.

The Axe website says they are looking for, "a few brave men" to compete for a chance to go to space. However, the main website has since changed to say "a few brave civilians" instead. Yes, despite their testosterone-fueled advertising the contest is open to pretty much any resident of the 50 states and D.C. as long as they are over 18 years old.

Where did the myth that only men can be astronauts come from? There are just over 50 females globally who have either been to space or are scheduled to go. The genderization of space exploration is ridiculous and should really be put to an end. Women find the rest of the universe just as interesting as men do. Hopefully, with the gradual commercialization of space travel tourism aboard ships such as the X-COR Lynx sub-orbital space vehicle will be filled with more female passengers.

Girls should not be fooled into thinking space is just for the boys. So of course you can bet I'll be signing up for the competition, but this is a call to all of our Georgia Southern University males and females to go out on a limb and try something daring. A True Blue sign might be seen amongst the stars someday soon.

Pulley is a junior english major from Florence, S.C.

No common sense in gun debate

The tragedy in Newtown has sparked debate on what our leaders should do concerning gun safety. However, our country can't implement any new laws regarding gun control, like requiring a person to undergo a background check or closing the gun show loophole, because of absolutism displayed by the Republican Party. The 2nd Amendment, furthermore the entire Constitution, was not intended to be interpreted in an absolutist mindset.

Many members of the Republican Party who answer to the NRA refuse to even consider common sense legislation to keep our loved ones and ourselves safe. Those who oppose reform will quickly quote the 2nd Amendment to supplement their argument, but surely the creators of our Constitution did not intend for any citizen to walk the streets with a Bushmaster ACR strapped across his back. To make this a bit simpler, I'd like to administer some common sense into this debate. Assault

**A
LIBERAL
DOSE**



CHRIS WARE

weapons like the ones mentioned before have one primary purpose: to kill as many people as possible in the shortest, most efficient amount of time. Since this is the case, what is the purpose of anyone owning a gun like that if we're not fighting in war? Surely no one would hunt game with weapons like that, and I'm confident in the notion that one can protect themselves from intruders without having to use a weapon designed primarily for combat. Let me be clear, I have no qualms with law-abiding citizens owning handguns or hunting rifles, but it is common sense to say, "weapons that belong in the theater of war have no place in a movie theater,

an elementary school or anywhere else in our American society" (Barack Obama).

We have the right to vote, we can say what we want and do as we please, but even those rights have restrictions. We can vote, but we can't vote ten times in one election cycle. We have the right to free speech, but we can still get sued for libel and slander. We can drive, but we can't go 150 miles per hour on the highway. We have these rights, but parameters still must be set. Simply stated, the right to swing my fist ends where the next man's nose begins.

The Republican members of Congress should look into once again pledging their allegiance to the USA, not the NRA. We don't live in a warzone; we live in a civilized American society and should be governed accordingly.

Ware is a freshman political science major from Griffin.

Letters to the Editor

'Vagina Monologues' demeaning

Eve Ensler's episodic play, "The Vagina Monologues," purports to raise awareness about issues concerning women's sexuality and violence against women, primarily rape. Unfortunately, as the title indicates, the play focuses solely on the sexual aspect of women's lives and in doing so, actually demeans women, and for The George-Anne to act as a vehicle for this debasement, by giving The Vagina Monologues a front page spread, is simply reprehensible.

The title of the article "V is for Voices" gives the impression that the play is meant to give voice to thoughts that women have long held but have been repressed by patriarchy. Yet, is this the advocacy that women even want, or even more importantly, actually need? Are the deepest thoughts and feelings

of women, and their very feminine identity, expressed only in their sexuality? Is the most important part of a woman, indeed the part that effectively sums up everything there is to know about her, her vagina?

The Democratic Party's Presidential campaign focused on birth control and abortion rights, using the slogan "Vote like your lady parts depend on it," essentially saying that women are nothing more than the sum of their "lady parts" and should really only be interested in their ability to have sex without consequences. Such an idea should be at the very least insulting to women voters. Yet, women voters bought into this message and voted for President Obama in overwhelming numbers.

Those who crusade against sexual violence toward women, in embracing these ideas, actually

contribute to the mindset behind such violence. For if the defining component of a woman is her sexuality, it should be no surprise that women are seen only as objects, existing solely for the sexual gratification of men, instead of as people. And from that mindset, it is a very short jump to sexual violence.

A new paradigm is needed: one that sees a woman's sexuality as a component, albeit an important one, of her whole feminine identity. A view that exalts her mind, heart and soul above her vagina, that honors a woman for who she is: the pinnacle of creation, a person who can never be used and never be discarded.

The only acceptable response is true, self-sacrificing love.

Thomas J. McIntyre
Graduate student in history

Binge watching is not so bad for you

As the older generations will not hesitate to tell you, we college students are largely undisciplined. Binge drinking, chain-smoking, over-eating and all-nighters: We are all guilty of one of those. The video-streaming revolution that the Internet has experienced in the last few years has created something else for us students to over-do, which has been given the unofficial name of binge watching.

We have all done it at one time or another, and more will be with the new seasons of the Walking Dead and Breaking Bad on the way. Someone in my family has recently been accusing the rest of us of helping kill what she called "appointment watching."

Of course, you'd never hear someone say you're reading a book too fast, or watching a sequel too soon. Watching a show you love in a short period of time can give you insight that you wouldn't have had if you had watched the episodes weekly. It's the same with a book. If you only read 50 pages a week, you'd have to go back to refresh yourself before continuing. As with books, so too with TV shows.

Netflix seems to have acknowledged this phenomenon because the shows that they have produced have been released in entire seasons. The new season of Arrested

THE COOP SCOOP



TAYLOR COOPER
OPINIONS EDITOR

Development—I can't describe my excitement in words—will be released all at once as well. This is far from the new norm, but it is not going away.

Binge watching isn't just something that we partake in because we can't help ourselves. My family has bonded over marathons of Star Trek, the Twilight Zone and Parks and Recreation. My friends and I have whiled away the hours watching Firefly, and Workaholics serves as great background noise to the time I spend working on homework. I may be late for class every once in a while, but it has yet to show any serious detrimental effects and probably won't until Godzilla movies start popping up.

Cooper is a junior journalism major from Rincon.

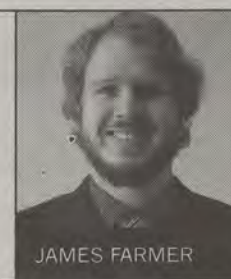
UGC worth second look

There's a good bit of buzz in the air about Greek Life here at Georgia Southern University. The Interfraternity Council and Delta Phi Epsilon of the Panhellenic Association both rushed last week and earlier this semester Omega Psi Phi of the National Panhellenic Council was welcomed back on the yard after being suspended. However, there is one council that seems to be flying under the radar, one of which I am a member: the United Greek Council.

The UGC is the newest of councils at GSU. It's been around slightly more than a year and doesn't consist of your "typical" Greek organizations. The IFC and PHA are traditionally made up of mostly white social organizations, while the NPHC is made up of nine traditionally black social fraternities and sororities. The UGC contains the only Latin-based Greek organizations, music sorority and fraternity, Christian sorority and service fraternities. The diversity within the council is very unique at GSU and is fitting due to the unique nature of many of the organizations within.

The UGC fraternities and sororities are generally smaller than the organizations in other councils for various reasons. The other Greek orgs have traditional appeal to the campus of GSU, which is overwhelmingly either black or white. The chance to be a legacy in the same

THE FARM LIFE



JAMES FARMER

organization as your parents or grandparents is a major draw for many individuals. Also, the UGC isn't included in formalized rush like the PHA and IFC, which for many orgs cuts down on prospective members. The budgets for the individual organizations and the council itself are generally smaller than the other councils; however this does result in generally smaller dues for the members.

As well, many students don't know that the council even exists. It has a small campus presence due to the membership size of most of the organizations and the smaller budget.

Going Greek is a good thing. Look at the graduation rates and the letters to the editors we received about Greek life. However, students should look at UGC fraternities and sororities as well before deciding where and if to pledge.

Farmer is a junior international studies major from Thomasville.

Ronald Reagan's birthday triggers nostalgia

Every generation has a certain person that can really define their time in history, whether it is a movie star, an athlete or even a politician.

Yesterday marked what would have been the 102nd birthday of a man who I feel is one of the most influential and inspirational men in recent history. Ronald Wilson Reagan truly defines the conservatives' viewpoint in almost all aspects. He was a Hollywood actor that was originally very liberal. He "saw the light" and switched parties after seeing the detrimental effects that unions had on our nation through serving as the spokesman for General Electric.

He was a devout Christian who always believed in standing up for what was morally right. As such, he worked to keep God a part of our nation so that we would not

stray from the principles on which our great nation was founded. These are characteristics that the GOP has been lacking in recent years but really needs now more than ever.

Barack Obama is one of the most socialist presidents our nation has seen, even more so than Jimmy Carter. The issues that America faced during the Carter administration are very similar to the ones we face now: high unemployment, an increase in energy costs and stagflation. Reagan was exactly what the country needed at that time, just like another true conservative is exactly what this country needs now.

In 1970s and into the 1980s the world was faced with the threat of communism by the Soviet Union and China, and with the crisis that America was facing and the fear of the Cold War, people were looking to communism for answers. President Reagan

IN MY HUMBLE OPINION



BLAIR MUTIMER

restored faith in the American people about what our nation was really founded on. In one of his most speeches notably called the "Evil Empire," he references a father who famously said, "I love my daughter more than anything in the world, but I would rather see my daughter die tomorrow believing in God than to grow up under communism and die one day no longer

believing in God." I can honestly say that I feel that statement is more relevant today than it was 30 years ago.

If you look at today's global society, you see a lot of the same that was going on 40 years ago. Communist China owns most of our debt, and most of Europe is under socialist rule, which is a close cousin to communism. We cannot afford to lose sight of our roots now; he said it best, saying that this is a time for choosing. We must face these issues head-on and say that we don't want to live under control of people who think that they know what is best for us. We need a leader, a real leader, one like Ronald Reagan who will lead our nation in a direction that will make us respectable again.

Mutimer is a senior construction management major from Augusta.

ResNet explains Wi-Fi expansion

BY LAUREN GORLA

The George-Anne staff

In order for all residential halls to have wireless Internet, multiple steps have to be made, but ResNet cannot expand Wi-Fi alone.

Students may assume that ResNet is in charge of all wired and wireless networks across campus, but the real purpose of ResNet is to troubleshoot common problems students report.

"We are more at position to troubleshoot connectivity issues versus saying when the wired or wireless will be expanded. We basically come in and troubleshoot the wireless network or the wired network," Lakesha Hill, network services specialist, said. "ResNet is only responsible for the wired and wireless network students use in

the residence halls."

A change in residence networks would most likely come from the department of networking and telecommunications, and they would lead the way in the change, Hill said.

Although ResNet cannot make wireless Internet available, a student technology committee made up of six students, appointed by the Student Government Association and five faculty members have already voted to expand the bandwidth of ResNet and to speed up the connection, which will soon be in effect because the state funding was recently approved, SGA College of Science and Mathematics Senator Jacob Jay said.

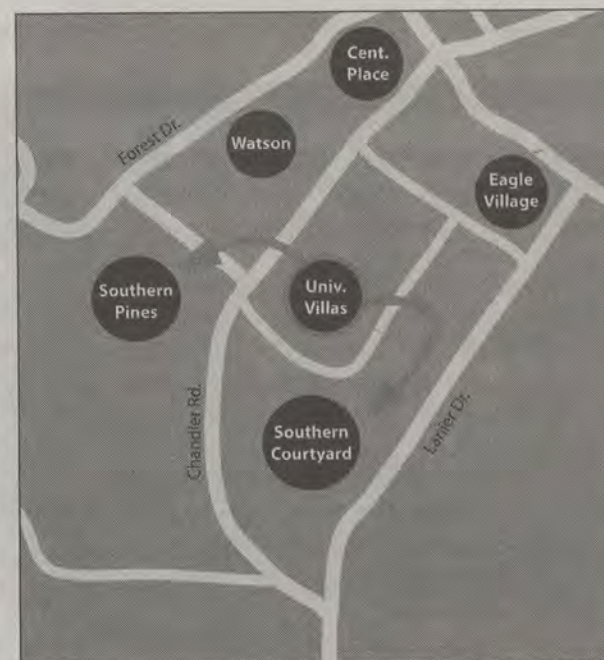
The technology committee reviews proposals that are submitted by the community of GSU.

"Proposals are submitted by anyone in the Georgia Southern community, whatever your proposal may be pertaining to technology," Hill said.

Proposal submission happens between September and October, and in addition to that, there is a forum in September with the student technology committee during which committee members explain the process in detail, Hill said.

"(The proposals) are prioritized by everyone on the committee, and they may take those proposals to the president's cabinet, and they review the recommendations and approve the proposals," Hill said.

Ann Hill, administrative director for networking and telecommunications, could not be reached for comment by press time.



Emily Skolrood/The George-Anne

Plans are in the works to expand ResNet Wi-Fi located in University Villas to both Southern Pines and Southern Courtyard.

STEM to branch out at Engineering Week activities

BY TAYLER CRITCHLOW

The George-Anne staff

Georgia Southern University will be hosting its first Engineers' Week Feb. 17 to 23 to showcase the different components of engineering.

"The idea is to promote diversity and general outreach in (Science, Technology, Engineering, and Mathematics)," JaQuinton Braswell, senior electrical engineer major and president of the National Society of Black Engineers student chapter on campus, said.

"EWeek is a national event celebrated by engineering schools across the nation," Dr. Shonda Bernadin, associate professor in the Department of Electrical Engineers and advisor for NSBE, said.

"It's basically to expose the campus to engineers," Kiara McCrary, sophomore electrical engineer major and program chair of NSBE, said.

Monday will be the kickoff event in the Informational Technology auditorium at 6 p.m.

During the kickoff people will speak on the state of the new college and the dean may speak as well, Bernadin said.

"Diversity in STEM" will be at 6 p.m. on Tuesday in the Russell Union.

Tuesday's event will show the different cultures involved with engineering. Chinelo Ononye, sophomore chemical engineering major and program chair of the NSBE, said.

e-week

Monday-Kickoff - 6 p.m. @ IT auditorium

Tuesday- Diversity in STEM - 6 p.m. @ Russell Union

Wednesday-ThanksGeeking - 3 p.m. @ Rotunda

Thursday- Professionalism in STEM - 6 p.m. @ Russell Union

Friday-Social - 4 p.m. to 6 p.m. @ Williams Center

Friday-Techland - 6 p.m. to 3 a.m. @ IT Building

Saturday- Dreamfair and Introduce a Girl to Engineering -All Day Russell Union

Matt Veal/ The George-Anne

"Diversity in STEM" will be a forum to talk about the minorities who have done things in STEM, McCrary said.

"ThanksGeeking" will be held on Wednesday at the Rotunda at 3 p.m.

During the event, people can write letters to teachers thanking them for what they have done, McCrary said.

Thursday at 6 p.m. in the Russell Union there will be "Professionalism in STEM."

"This is more about engineering and where we need to be with STEM," Ononye said.

Friday there will be a social from 4 to 6 p.m. in the Williams Center, and from 6 p.m. to 3 a.m. there will be Techland in the IT Building.

On Saturday there will be a Dream Fair and "Introduce a Girl to Engineering" day.

The engineering organizations on campus are collaborating with the Girl Scouts to inform students in middle and high school about the importance of women in engineering, Ononye said.

Girl Scouts have been invited from all over the state, though more of the regional troops will

attend, Bernadin said.

"We want to raise awareness about engineering, especially among young people," Braswell said.

Throughout the week there will also be a campus-wide scavenger hunt, Braswell said.

"Other people can gain knowledge about what engineering is about," Ononye said.

If a student is undeclared, then this will give them more insight on what STEM does, who engineers are and what engineers do, McCrary said.

EWeek is sponsored by the National Society of Professional Engineers, which began in 1951.

EWeek is in conjugation with President George Washington's birthday because he is considered to be the nation's first engineer, according to the National Engineers' Week Foundation news release.

"We want to make the entire campus aware that EWeek is happening," Braswell said.

Student chapter groups involved consist of ASCE (American Society of Civil Engineers), IEEE (Institute of Electrical and Electronic Engineers), ASME (American Society of Mechanical Engineers), SWE (Society of Women Engineers) and NSBE.

Bernadin said, "One thing I am most proud of is with the students and officers of the student organizations for wanting to be recognized, and I am proud of them for taking on the challenge and getting people involved."

WEEKLY BUZZ

A weekly calendar listing sponsored by The Division of Student Affairs and Enrollment Management

FEB. 7 - FEB. 13

THURSDAY 2.7.2013

LIFEGUARD CLASS BEGINS

THE RAC

Want to become a lifeguard? Well, now you can! Our Aquatics Program is offering a lifeguard course through the American Red Cross. There is only enough room for 10 participants though, so sign up now at Member Services in the RAC.

5 P.M. SLACKLINE CLINIC

THE RAC

This free climbing program is geared to help prepare you for leading safe, ethical and enjoyable rock climbing trips.

FRIDAY 2.8.2013

5 - 8 P.M. ADULT CPR/AED

Become American Red Cross certified in adult CPR and AED. This training will last three hours, you will become certified after completing and passing the test at the end.

CANOEING TRIP BEGINS

Join us on a relaxing trip to Congaree National Park, South Carolina for a canoeing adventure. We will spend Friday evening at camp, canoe all day Saturday and then go on a short hike Sunday morning. The pre-trip meeting is on February 4 though, so if you want to go on this you have to sign up today.

SATURDAY 2.9.2013 TUESDAY 2.12.2013

9 A.M. - 6 P.M.

WILDERNESS FIRST AID

THE RAC

Learn all about how to handle a potentially scary situation when you or someone else is hurt in the wilderness. Become certified in Wilderness First Aid at this training course. The training will continue on Sunday at 11 a.m. to 7 p.m.

8 A.M.

CLUB SPORTS WRESTLING

THE RAC

Watch some club sports wrestling between 8 a.m. to 5 p.m. on courts 1 and 2 at the RAC. For more about club sports wrestling and scheduled meets, visit the CRI website.

12 P.M.

CLUB SPORTS WOMAN'S SOCCER

THE RAC

Come and watch and support the woman's club sports soccer team in their home games against COC.

SUNDAY 2.10.2013

NO EVENTS SCHEDULED

MONDAY 2.11.2013

8 P.M.

BELAY CLINIC

THE RAC

Upon completion of the course, including passing the top-rope belay test, you may belay as many of your friends that you wish during our open hours of operation! You also get a certification card proving your ability to belay.

REGISTRATION OPENS: SOFTBALL, TENNIS SINGLES

Sign up for intramural softball or tennis singles now! Registration opens at 8 a.m. on this date. Both sports begin playing in March.

5:30 - 7 P.M.

MADNESS IN THE MEADOW BEGINS

THE RAC

To break the monotony of working out with weight machines and free weights, Madness in the Meadow gives participants the opportunity to train with a variety of rudimentary equipment. There is a maximum of 20 participants, so arrive early to sign up. Madness in the Meadow will occur on Tuesdays and Thursdays and 5:30.



7 P.M.

BIKE MAINTENANCE CLINIC

THE RAC

Attend this clinic to learn how to properly clean and repair your bike. Signup at the Southern Adventures Center.

WEDNESDAY 2.13.2013

8 P.M.

INNER TUBE WATER POLO FREE PLAY

THE RAC

Splash around the pool with a friendly game of water polo! Don't worry if you are not a good swimmer because a nifty inner tube will keep you afloat during all the action!

8 P.M.

ADVENTURE MOVIE SERIES

THE RAC

Come to the RAC and watch a movie with the Southern Adventures team! Enjoy free popcorn and other snacks as well.

Student Affairs
Enrollment
Management

Brought to you by Georgia Southern University VALUES. Georgia Southern V.A.L.U.E.S. is the culture shared by our students, faculty, and staff. We endeavor to share our V.A.L.U.E.S. inside and outside of the classroom with faculty, staff, students, alumni and all other community members. In order to produce productive citizens with an informed set of ethics and community standards as well as create an environment of respect and civility, we pledge to live by our V.A.L.U.E.S.



Photo courtesy of The Aquila Theatre Company

"Cyrano de Bergerac" will come to the PAC this Saturday at 7:30 p.m. The first play was performed in France during the year of 1887 at the Theatre de la Porte St. Martin where it gained its reputation as one of the most popular French plays.

Cyrano to wear famous nose at PAC

BY LAURIANNA CULL

The George-Anne staff

Sword fighting, poetry, unrequited love and a very large nose all set the scene for the show "Cyrano de Bergerac," which will come to the Performing Arts Center this weekend.

"Cyrano de Bergerac" is a play that takes place in 17th century France. It tells the story of swordsman and poet Cyrano de Bergerac and will be presented on Saturday at 7:30 p.m.

The show first premiered in 1887 at the Theater de la Porte St. Martin. It has become one of the most well known French plays performed and has maintained its popularity

over many years.

In the show, the character Cyrano has his sights set on the beautiful Roxane but is too nervous to reveal his true feelings because he thinks he is ugly due to his abnormally long nose.

"He's kind, intelligent, brave and an excellent swordsman. He would be the whole package if not for the fact that he is ugly and has a giant nose that gets in his way both literally and metaphorically," Stacie McDaniel, house manager, said.

The New York based theatre troupe, The Aquila Theatre Company, whose goal is to create reinterpretations of classical plays with new styles for contemporary audiences will perform "Cyrano de Bergerac."

For their version of "Cyrano de Bergerac," there is a good deal of action and physical comedy.

"The Aquila Theatre is a movement based theater, so what I'm looking forward to the most is the fight sequences, sword fighting and physical comedy," McDaniel said.

During the course of the show, France goes to war and Cyrano goes to war with it. Also in battle with him is a very handsome, but not intelligent, man named Christian who wishes to steal the heart of Roxane.

In an act of selflessness, Cyrano agrees to write love letters to Roxane and has Christian sign them so that Roxane will fall

in love with the handsome Christian.

"Beautifully funny, poignant and often heart-wrenching, 'Cyrano de Bergerac' is one of the most famous romantic adventures in world literature," Carol Thompson, administrative director, said.

"We read the script for this in my French class in high school. I couldn't believe it when I saw they were performing it here. It's such a classic," Harrison Hogan, freshman chemistry and French double-major, said.

Ticket prices are \$20 for general admission and \$10 for Georgia Southern University students.

The NEST offers free meal for appreciation

BY GRACE HUSETH

The George-Anne staff

Dining plan holders are flocking to The NEST to redeem a bonus meal offered exclusively this week.

Eagle Dining Services has added one additional meal to all students' dining plans during the week of Feb. 4-10 to be used at The NEST, Administrative Coordinator of Eagle Dining Services, Michael Murphy, said.

"We want to do something special for the students with dining plans to show our appreciation," Murphy said.

Meal plan holders are instructed to tell the cashier

that they will be dining with the "Bonus Meal" when their card is swiped, Murphy said.

There are about 700 students with meal plans that dining services wanted to thank for their loyalty, but it postponed the Bonus Meal event until after the first two weeks when many students change their dining plans, Murphy said.

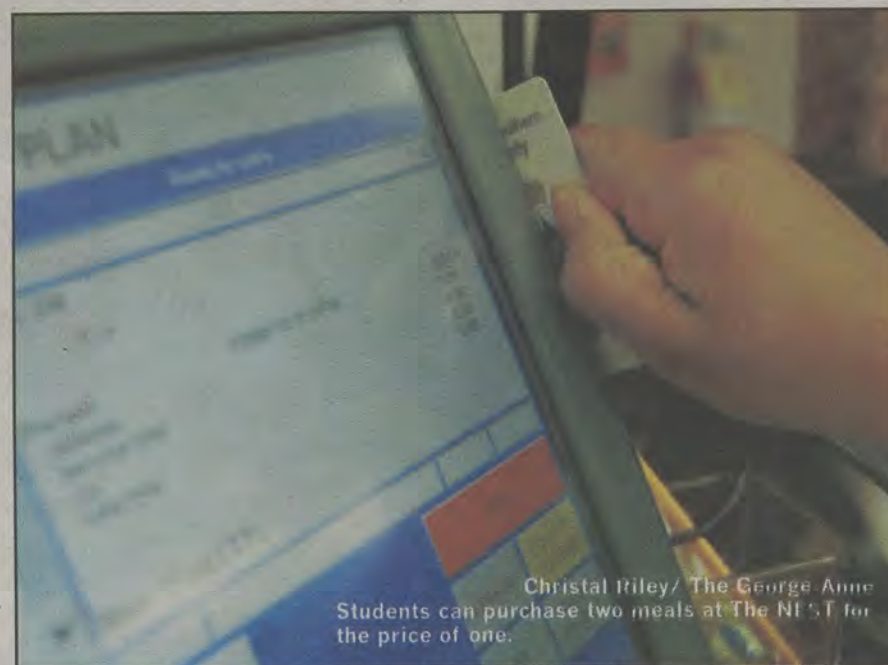
"The bonus meals have brought more students to The NEST, but the dining services team has done a good job managing the flow of traffic," Murphy said.

The traffic increase at The NEST is also due to the arrival of Burritos Amigos, a

new made-to-order burritos and nachos station inside The NEST, Murphy said.

"I don't usually eat at The NEST, but since many people like eating at the cafeteria, it's nice that people can just add on," Carlie Ayn Williams, freshman graphic design and graphic communication management double major, said.

Director of Eagle Dining Jeff Yawn, said, "We appreciate our dining plan holders and others that choose to dine with us. We are excited for the future of Eagle Dining and look forward to the many new ways in which we will serve our customers."



Christal Riley/ The George-Anne
Students can purchase two meals at The NEST for the price of one.

Funk, jazz, new-age jam band to hit GATA's' stage

BY WILL PEEBLES

The George-Anne staff

Tonight at GATA's, the sounds of blues, funk and jazz will all come from the same band as The Orange Constant takes the stage.

The new-age jam group consisting of Andrew Brantley, junior general studies major, Lee Guentert, junior business management major, and Nickalous Benson, senior general studies major, will perform a diverse set of original songs and covers from different genres of music.

The group will sing on GATA's' stage at 10 p.m. tonight.

"There are a lot of different influences. We do a little bit of funk, a little bit of jazz and a little bit of blues. We're not afraid to experiment," Brantley said.

Each member of the band listens to a different type of music, and each of those genres is represented in the group's sound. Performing songs with influences from many different genres has become a known trait of The Orange Constant.

"It started out with Nick and I playing acoustic for a while. We did several shows together, but not under The Orange Constant name. We eventually found Lee, and we all came together in September of last fall and



Photo courtesy of Jessie Adams

The Orange Constant will play various songs ranging from jazz, blues and funky tunes on GATA's main stage at 10 p.m. tonight.

made it all happen," Brantley said.

The group was formed in September of last year when vocalist/guitarist Brantley met

Benson in his music fundamentals class.

"As individuals, we listen to very different things. Lee listens to progressive metal; I listen

to jam bands. It's a collective effort to make music," Brantley said.

Though the band performs a wide array of cover songs, its members do not consider The Orange Constant a cover band. The writing of original music plays an integral part in the chemistry of the group.

"As far as songwriting goes, it'll stem off something one of us writes, then later we bring it in as a band, and we shape it together," Brantley said.

"We strive to change the songwriting process every time to make sure that each song is unique and expresses a different part of the band. It's about the satisfaction of becoming a team with the group of people, then creating something that we're all proud of," Guentert said.

The group has performed at many local bars and regularly plays at house parties throughout the Statesboro community in an effort to contribute to the local music scene. The Orange Constant will also be making an appearance in the upcoming Statesboro Music Festival.

Guentert said, "If you are really involved in music, or if you play an instrument, or if you're part of a band, going to see another band and supporting them eventually forms an informal pact. You have to support the other bands in

Anime Club promotes legal access to subculture

BY PEYTON CALLANAN

The George-Anne staff

The Georgia Southern University Anime Club has created a strong community of students with a love of anime and Japanese culture looking for legal access to this unique subculture in the states.

Club members are asked to pay five dollars in dues each semester, which goes toward the cost for the club's anime library and account on Crunchyroll.com, Cameron Thompson, a senior geology major and club president, said.

Through the meetings, members are given access to anime they might not have been able to find legally otherwise because it does not air on regular television, Dan Lanier, club advisor, said.

"With Japanese anime you get a higher quality storyline, you get a lot more in-depth drawing with more detail," Thompson said.

Anime has not caught on in America quite the same way due to cultural differences and the difficulty of translating the shows accurately, Lanier said.

"We try to discourage pirating. We want to



Photo courtesy of stock.xchng.com

support the industry," Lanier said. "It's still a very small market in the United States and has room to grow."

The club meets twice a week in the Russell Union at 6 p.m. on Wednesday and in the library at 7 p.m. on Thursday. At each meeting the club

watches episodes of different anime shows and discusses them.

"American cartoons only offer slapstick or heroes. There is little to nothing else beyond that point. Japanese anime is a multibillion dollar industry with a large variety to offer viewers," Lanier said.

The anime industry in Japan expanded beyond the standard idea of animated programming when live action filming was not practical or affordable and quickly became part of their culture, Lanier said.

"It can be shocking if someone gets introduced to the wrong type of anime first. It can be very in your face," Lanier said.

The club's meetings are laid back compared to other clubs and social groups around campus because members are free to come and go, Thompson said.

Andre Waters, junior education major said, "Everyone has the same passion for anime, but everyone has different opinions and different things that speak about it. It opens doors and makes things worth while."



**style.
features.
location.**

**now leasing
for 2013-14**

912.681.1300 **Cambridge-Southern.com**

**\$0
DOWN**
no deposit, no fees
LIMITED TIME

Abrasions • Abscesses • Allergic Reactions • Allergies • Asthma • Athlete's Foot •
 Back Pain • Bagel-Slicing Hand Injuries • Bee Stings • Bladder Infections • Blisters •
 Body Odor • Bolls • Bowel Problems • Broken Bones • Bronchitis • Bruises • Burns •
 Canker Sores • Carbuncles • Chemical Exposure • Chicken Pox • Common Cold •
 Cold Sores • Constipation • Conjunctivitis • Contusions • Cramps • Cuts • Cystitis •
 Diarrhea • Congestion • Cough • Dehydration • Dermatitis • Dizziness • Ear
 Infection • Earache • Eye Infection • Face Pain • Fever • Flu Symptoms • Food
 Poisoning • Fractures • Frequent Urination • Fungus • Gashes • Gastrointestinal
 Disorders • Hay Fever • Headaches • Head Lice • Heartburn • Hemorrhoids •
 Infections • Influenza • Injuries • Insect Bites • Intestinal Pain • Itchy Eyes • Itchy
 Nether Regions • Itchy Nose • Itchy Skin • Kidney Problems • Lacerations •
 Migraines • Mononucleosis • Mucus • Muscle Cramps • Muscle Pain • Nausea •
 Neck Pain • Painful Glands • Painful Joints • Painful Urination • Phlegm • Pink Eye •
 PMS • Pneumonia • Post-Nasal Drip • Rashes • Ringworm • Roadrash • Runny Nose •
 Salmonella Poisoning • Scabies • Sinus Congestion • Sinus Infection • Sinus Pain •
 Skin Allergies • Skin Infections • Sore Throat • Sprains • Staph Infection •
 Stomach Ache • Stomach Flu • Stomach Pains • Strains • Strep Throat • Swollen
 Glands • Swollen Joints • Swollen Throat • STDs • Tonsillitis • Urinary Tract
 Infections • Viruses • Vomiting • Warts • Worms • Wounds • Yeast Infection • Etc.

**No matter what's wrong,
let us take good care of you.**



**SOUTH GEORGIA
IMMEDIATE
CARE CENTER**

1096 Bermuda Run Road
(next to Mellow Mushroom)
Statesboro, GA 30468
p: 912-871-5150
get IMMEDIATEcare.com

**NO APPOINTMENT NEEDED. WALK-IN CLINIC.
Caring and Confidential Treatment.**
Monday - Friday 9:00 am - 8:00 pm
Saturday 9:00 am - 5:00 pm
Sunday 12:00 pm - 5:00 pm

Most insurance accepted - bring your insurance card and
Driver's License. Please call with co-pay and insurance questions.
Cash patients also welcome.



LEARN HOW INVISALIGN CAN WORK FOR YOU

INVISALIGN® SPECIAL EVENT

DR JASON MCGIBONY

378 Savannah Ave

Statesboro, GA 30458

912-764-4403

www.drmcgibony.com

Thursday, March 28th 8:00am—5:00pm

Dr Jason McGibony will be providing FREE consultations to answer your questions about Invisalign treatment, the clear way to straighten your teeth. If you have wondered if Invisalign is right for you, make an appointment for this special event. Join us for food, fun, and a chance to win local gift certificates.

- ☒ \$500 off treatment
- ☒ Free Whitening with Invisalign treatment
- ☒ 0% Interest financing options available if you qualify
- ☒ With iTero® Digital Scanning Technology, Dr McGibony will be able to show you a simulation of what your teeth could look like when straightened using Invisalign
- ☒ Space is limited to the first 15 appointments

2012

PREFERRED
P R O V I D E R

'BORO BEAT**HAPPY HOUR****LIVE BAND****SPECIAL EVENT****THURSDAY****Loco's**

\$2 Pint Night

Gnat's Landing

\$10 buckets
 \$3 doubles
 \$3 bombs
 \$3 Newcastle

Applebee's

Live DJ
 \$3 Jose Cuervo shots
 \$3 Appletinis
 \$3 Cosmos

El Sombrero

\$2.50 big draft beers

Retrievers

Beat the Clock:

\$1 mixed drinks 10 to 10:20 p.m.
 \$2 mixed wells 10:20 to 10:40 p.m.
 \$3 mixed wells 10:40 to 11 p.m.

Miss Used

Trea Landon on the patio

Holiday's

2 medium pizzas with 1 topping
 \$10.99
 2 medium pizzas with 2 toppings
 \$12.99
 2 medium pizzas with 3 toppings
 \$14.99
 2 medium pizzas with 4 toppings
 \$16.99

SATURDAY**Loco's**

Absolut Build-Your-Own
 Bloody Mary Bar, 11:00 a.m. to
 3:00 p.m.

Gnat's Landing

Live music
 \$10 buckets

Applebee's

Karaoke
 \$3 Long Islands
 \$3 wells
 \$3 Appletinis

El Sombrero

\$2 margaritas

Retrievers

\$3 bombs 9 p.m. to close
 DJ Animosity

Holiday's

2 medium pizzas with 1 top-
 ping \$10.99
 2 medium pizzas with 2 top-
 pings \$12.99
 2 medium pizzas with 3 top-
 pings \$14.99
 2 medium pizzas with 4 top-
 pings \$16.99

FRIDAY**Loco's**

Live music
 \$4 Crown Royal

Gnat's Landing

Live music
 \$10 buckets

Applebee's

Trivia
 \$3 Long Islands
 \$3 Domestic Brewtus
 \$4 Premium Brewtus

El Sombrero

\$2 Sex on the Beach

Retrievers

Dance night
 \$1 Vodka mixed drinks 9 to 11 p.m.
 DJ Hurricane
 Chuckie P on the patio

Holiday's

2 medium pizzas with 1 topping
 \$10.99
 2 medium pizzas with 2 toppings
 \$12.99
 2 medium pizzas with 3 toppings
 \$14.99
 2 medium pizzas with 4 toppings
 \$16.99

SUNDAY**Loco's**

Absolut Build-Your-Own
 Bloody Mary Bar, 12:30 to 3:00
 p.m.

Gnat's Landing

All day Happy Hour
 Karaoke and Live DJ
 45¢ wings

El Sombrero

\$3 wells mixed drinks

Holiday's

2 medium pizzas with 1 top-
 ping \$10.99
 2 medium pizzas with 2 top-
 pings \$12.99
 2 medium pizzas with 3 top-
 pings \$14.99
 2 medium pizzas with 4 top-
 pings \$16.99

CLASSIFIEDS

This page brought to you by Career Services
Explore • Experience • Excel

14 Thursday, Feb. 7, 2013

The George-Anne

Miscellaneous

Attn: IT/Webpage intern student; I need assistance with a "Wordpress" web-page setup. Time needed: not sure. A professional product is mandatory. Only student with IT/Webpage knowledge and a need for \$\$ need apply. Please send personal info to: gb00812@georgiasouthern.edu
*No resumes, please! Job is just temporary!

Having trouble in your classes? Do you find yourself wasting your time studying on your own and need help studying effectively? Check out McGraw-Hill's Connect and LearnSmart programs. They have guided studying, practice quizzes, flash cards and more. Stop wasting your time and check out <http://connect.customer.mcgraw-hill.com/today!>

Help Wanted

BARTENDERS WANTED!
\$250 a day Potential. No Experience Necessary. Training Provided. Age 18+ OK Call 1-800-965-6520 ext 296.

Housing

Looking for male or female to sublease a room in a 3 BR/3 BT in The Grove! This very clean apartment is fully furnished and includes a walk in closet, pool view, gym, tanning bed and very safe location. Rent is \$445 a month, utilities included! Lease is available May-July 2013. Please email gc00665@georgiasouthern.edu if interested.

Looking for female roommate to sublease at The Exchange for Summer 2013. 3 BR / 3 BT. \$449 / month, all inclusive. For further details, contact Bree at hh01316@georgiasouthern.edu.

Housing

Summer 2013 sublease available for a female in Campus Crossing. Located right across from GSU bus stop. The 3 bedroom apartment is nice and cozy with a nice size bedroom and bath with everything inclusive. The space will practically be empty during the summer so no roommates to worry about. Rent will be around \$395 for June and July but price is negotiable. Contact Alexis Flen at af02017@georgiasouthern.edu.

Male sublease available at The Pointe. 4 BR/4BT. Two rooms available. One at \$369 / month and one at \$385 / month, utilities included. Fully furnished, washer/dryer, great roommates, close to campus. Property includes pool, gym, tanning bed, computer lab, basketball/volleyball court. Contact Brian at 706-399-1860 or bb01693@georgiasouthern.edu.

Housing

Female sublease available for Summer 2013 in Campus Crossings. 3B/3B - one room available. Rent is only \$494/month with utilities, cable included! May's rent already paid! Two great roommates! With a spacious bedroom and closet. Personla bathroom as well. Contact Lindsay Barnette with more info. Call/Text 404-401-3752. Email lb02542@georgiasouthern.edu.

Looking for female roommate to sublease at University Pines. \$429/month all inclusive. I have the largest bedroom and bathroom. For more info email cq00086@georgiasouthern.edu.

1, 2, 3, 4, 5, 6 and 7 bedroom houses for rent. Repairs in 24 hours. Contact 912-682-7468 or 912-764-6076. Available August 1, 2013.

Housing

Current lease available. 4 bed, 2 bath in University Pines. Rent is \$409 a month and January has already been paid for. If someone is interested they can contact me at 404-217-4789 or email me at ac06009@georgiasouthern.edu.

Looking for 6 month lease for the Fall 2013. Will take 2-4 bedroom apartments or house. Looking for a place close to campus. Furnished or unfurnished. Hopefully trying to get some where that is affordable. If you know of a place that fills these demands please email ja03261@georgiasouthern.edu.

Something to sell?

Visit www.thegeorgeanne.com
or email ads1@georgiasouthern.edu.
Its free for students, staff and faculty!

PAID ADVERTISEMENT

Hot Jobs, Cool Internships

Job Title	Company Name	Deadline to Apply
Information Technology Internship	Aflac	Feb. 8, 2013
System Engineer	BlueWave Computing	Feb. 8, 2013
Sales Assistant	WJBF-TV	Feb. 8, 2013
Commercial Real Estate Assistant	Atlanta Alliance Staffing, Inc.	Feb. 10, 2013
WTOC Assignment Editor	WTOC-TV	Feb. 14, 2013
Financial Representative	Western Southern Financial	Feb. 22, 2013
SAP Analyst	Newell Rubbermaid	Feb. 22, 2013
Environmental Journalism and Travel Writer	Ocean's Research Institute	Feb. 23, 2013
Accounting Administrative Assistant	Nolan Transportation Group, Inc.	Feb. 28, 2013
Sales Internship	Hormel Foods Corp	Feb. 28, 2013
Software Developer	Rural Sourcing Inc.	Feb. 28, 2013
Bilingual (in Japanese) Engineer	Teruko Weinberg Inc.	Feb. 28, 2013
Logistics Transportation Specialist	Nolan Transportation Group, Inc	Feb. 28, 2013
Public Relations - Intern	Porter Novelli	March 1, 2013
Sales and Marketing Account Executive	The Campus Special LLC.	March 1, 2013
Student Internship Program	The U.S. Department of State	March 1, 2013
Assistant Supervisor	PVH Corporation	March 29, 2013
Information Technology Intern	Chick Fil A	March 29, 2013
Sales Representative	ADP-Automatic Data Processing	March 29, 2013
Account Manager	Reynolds & Reynolds	March 31, 2013

*Hundreds of jobs, internships and on-campus interviews posted in Eagle Career Net.

*To view the detailed job descriptions and application instructions, log into your Eagle Career Net account at www.georgiasouthern.edu/career.

* Your username is your Eagle ID #; if you don't have your password click the FORGOT MY PASSWORD link enter your info & your password will be emailed to your GSU email account.

TECH
SCIENCE
ENGINEER

STEM CAREER FAIR

11:00 AM - 2:00 PM
NESSMITH-LANE BALLROOM
THURSDAY
FEBRUARY 7TH, 2013

(912)478-5197 | www.GeorgiaSouthern.edu/Career



PUZZLES/COMICS

www.thegeorgeanne.com

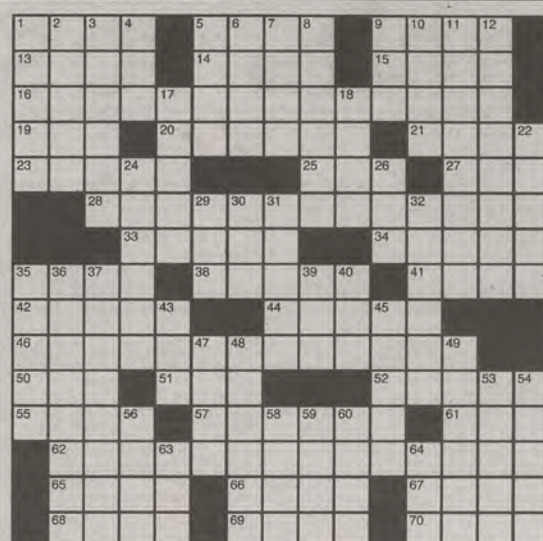
Thursday, Feb. 7, 2013 15

Los Angeles Times Daily Crossword Puzzle

Edited by Rich Norris and Joyce Lewis

ACROSS

- 1 With 70-Across, what you'd likely have if you said this puzzle's four longest answers
- 5 Concerning
- 9 Frequent settler
- 13 Online "Seems to me ..."
- 14 Mother of Judah
- 15 After-school treat
- 16 Weeded carelessly?
- 19 _ glance
- 20 Dote on
- 21 Stop from spreading
- 23 Short
- 25 Arctic diver
- 27 Jurist in '90s news
- 28 Editor's rejection of a tribute?
- 33 Basketball Hall of Famer Robertson
- 34 Like Olympic pools
- 35 Maker of Golf Street shoes
- 38 Instruction on a cap
- 41 Some NFL linemen
- 42 Type of vb.
- 44 1950s war site
- 46 Provoke Olympic winners?
- 50 Channel for a spree
- 51 _ chi
- 52 Ward and others
- 55 Disapproving utterances
- 57 Unpleasant laugh
- 61 "Either you do it, _ will!"
- 62 Purchased, then altered?
- 65 Mystique
- 66 Word with cast and shadow
- 67 Fictional sailor
- 68 MapQuest data: Abbr.
- 69 Sussex stable area
- 70 See 1-Across

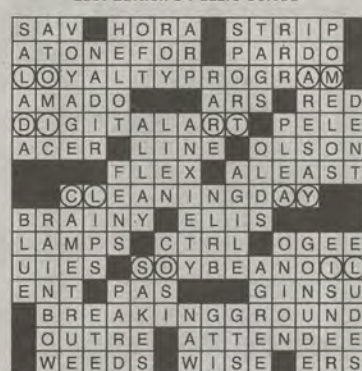


By Norm Guggenbiller

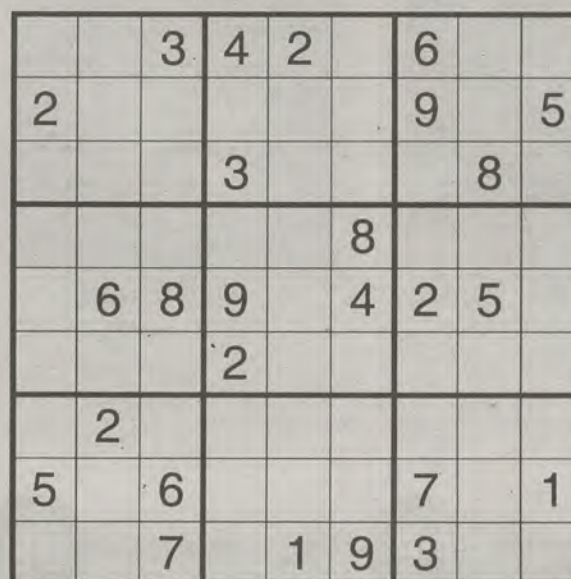
DOWN

- 1 Drummer's pair of cymbals
- 2 Frustrate the director, perhaps
- 3 Informal bridge opening
- 4 Pentagon org.
- 5 Inventing middle name
- 6 Feel
- 7 Rain delay sight
- 8 "We'll just see about that!"
- 9 "I'm such an idiot!"
- 10 "Topaz" novelist
- 11 Conscious
- 12 Simultaneously
- 17 Summer Olympics equipment
- 18 Hard to debate
- 22 They might swing
- 24 Chased away
- 26 _-El: Superman's birth name
- 29 Canadian Thanksgiving mo.
- 30 Raven relative
- 31 Slezak with six Daytime Emmys

Last Edition's Puzzle Solved



- 32 Leave
- 35 Figure on the ice
- 36 Placekicker's target
- 37 Produce prolifically
- 39 Answer to a prob.
- 40 Ad starter?
- 43 Clock-setting std.
- 45 Almost half a glass?
- 47 Per
- 48 Microscopic alga
- 49 ESPN effect
- 53 Staggering
- 54 Went (with)
- 56 "Why not?"
- 58 Give
- 59 Wasn't guessing
- 60 Country runners: Abbr.
- 63 Hot air
- 64 Corner key



Sudoku

Sports Talk

with The George-Anne analysts

Posted Wednesdays at 1 p.m.
on
thegeorgeanne.com

Katie Tolbert



Shakeem Holloway



SIGNING DAY, from page 1

"I feel (Koo) is as good a kicker as we saw all year," Monken said.

Koo went 32-32 in extra-point kicks, made six field goals, recorded 47 touchbacks and was the team MVP in his senior season.

It is well-known that the Eagles are proficient in the running game with their triple-option offense. This recruiting class is heavy with running backs as they added seven.

Most notable out of this stable of backs, might be running back Keshun Hill from Northside Warner Robins Hill from Northside Warner Robins High School. Hill played multiple positions such as wide receiver and kick returner.

Hill averaged 10.7 yards per carry as a running back, caught eight receiving touchdowns and returned four kicks for touchdowns.

According to Monken, having skill guys at the running back position was something that he looked for in order to add to their offense and maybe have them play some receiver.

The Eagles also added one very talented quarterback that fits their offense with Alfred "L.A." Ramsey from Colerain High School in Cincinnati, Ohio.

"In our offense there is a specific type of athlete that we look for at quarterback. I think he's going to be a good player; he's a physical kid," Monken said. "We're hopeful he's gonna be a really good player in our offense."

Ramsey is a dual-threat quarterback that totaled over 3,200 yards, running for 18 touchdowns and throwing for 16.

With the athleticism and depth that the Eagles have added, the 2013 season is looking promising.

"I think the kids that are coming now recognize Georgia Southern as one of the best football programs in the country, and they want to be a part of a winning tradition," Monken said.

Monken said, "At this point we want to be the best FCS team in the country."

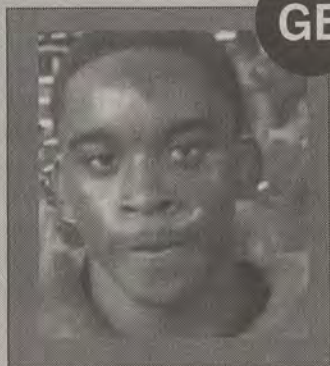
Football restocks roster



Jeff Monken @CoachJeffMonken

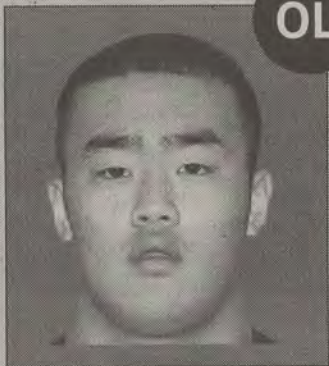
National Signing Day! New Eagles send their National Letters of Intent in today. Standing by the fax machine ready. #HailSouthern

Expand ◀ Reply ↻ Retweet ★ Favorite ... More



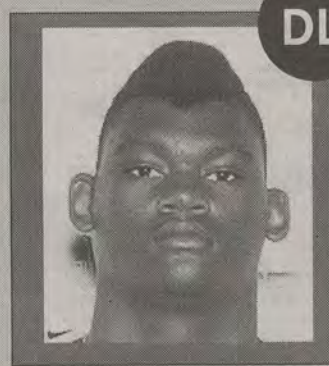
GB

Alfred "L.A." Ramsby
Cincinnati, Ohio
Colerain HS
5'10" 200lbs



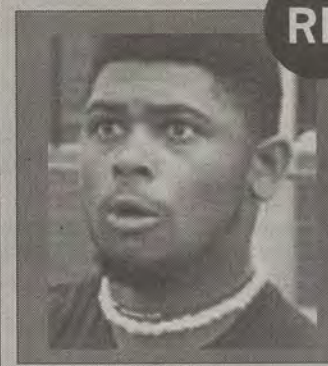
OL

Andy Kwon
Suwanee, Ga.
North Gwinnett HS
6'2" 285 lbs



DL

Bernard Dawson
Thomson, Ga.
Thomson HS
6'2" 225lbs



RB

Cam Lewis
Suwanee, Ga.
North Gwinnett HS
6'1" 234lbs



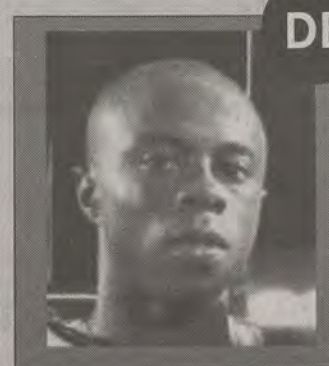
RB

Chaz Thornton
Toccoa, Ga.
Stephens County HS
5'9" 185lbs



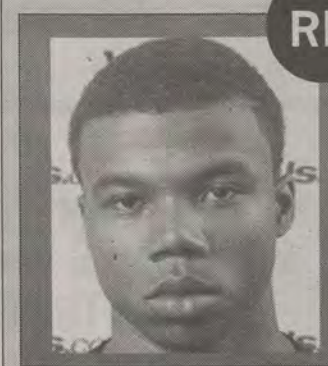
RB

Chris Jordan
Thomson, Ga.
Thomson HS
5'10" 205lbs



DB

Darius Jones
Woodruff, S.C.
Woodruff HS
5'10" 175lbs



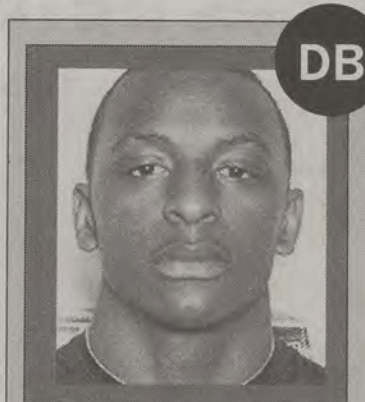
RB

Demarcus Godfrey
Sharpsburg, Ga.
East Coweta HS
5'9" 175lbs



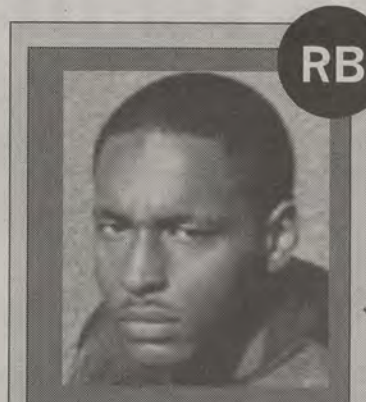
DL

Jay Ellison
Hamilton, Ga.
Harris County HS
6'2" 285lbs



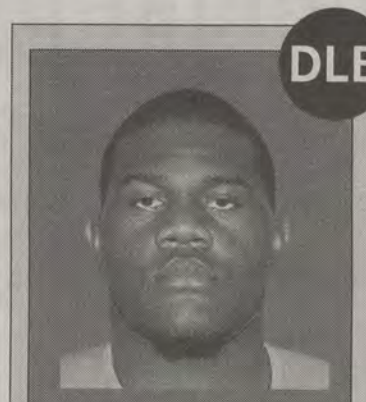
DB

Kel Parham
Powder Springs Ga.
McEachern HS
5'11" 180lbs



RB

Keshun Hill
Warner Robins, Ga.
Northside Warner Robins
5'11" 190lbs



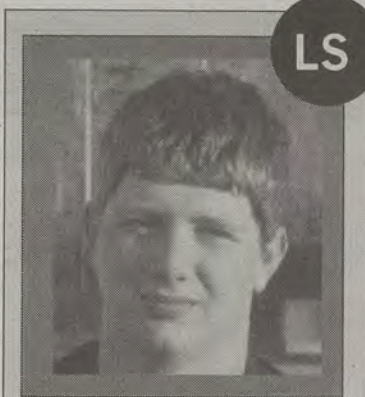
DLB

Larry Mathews
Butler, Ga.
Taylor County HS
6'2.5" 280lbs



RB

Matthew Breida
Brooksville, Fla.
Nature Coast Technical HS
5'10" 175lbs



LS

Nick Sewak
Marietta, Ga.
Lassiter HS
6'2" 215lbs



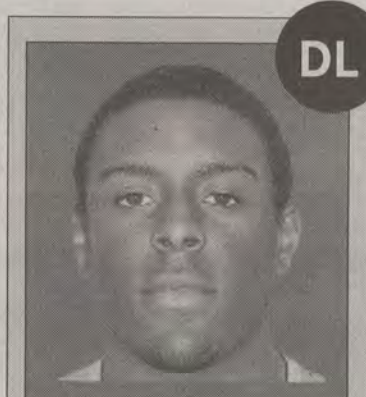
DL

Rafael Hardee
Kingsland, Ga.
Camden County HS
6'1" 240lbs



DB

Robert Brice
Decatur, Ga.
Southwest DeKalb HS
5'11" 185lbs



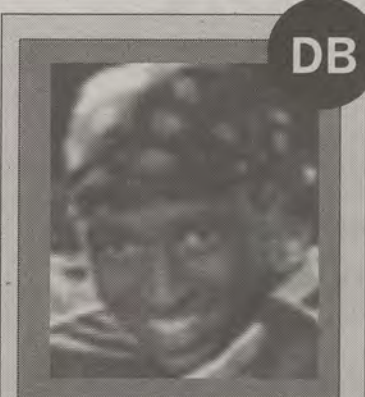
DL

Ryan George
Stone Mountain Ga.
Stephenson HS
6'2" 250lbs



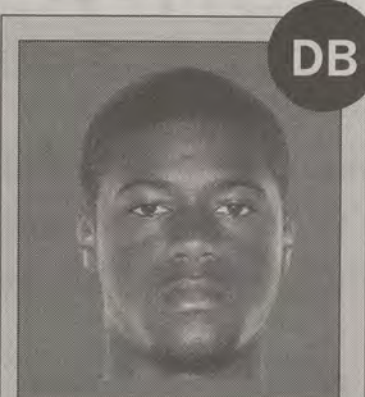
OL

Taylor Lay
Warner Robins, Ga.
Northside Warner Robins HS
6'4" 275lbs



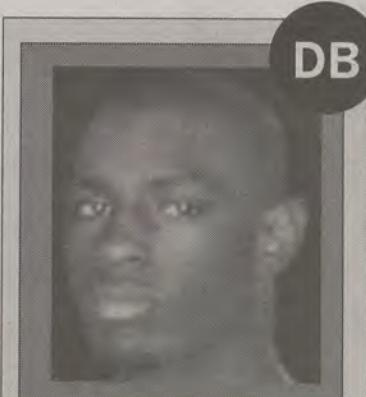
DB

Travosier Mitchell
Dexter, Ga.
West Laurens HS
5'11" 195lbs



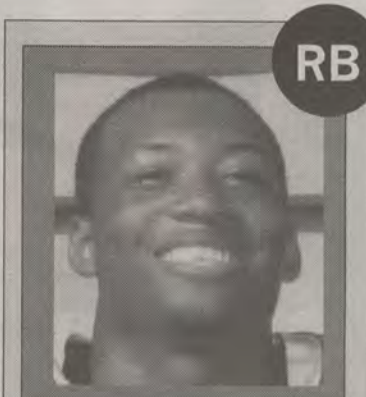
DB

Tyrail Hawkins
Brooksville, Fla.
Hernando HS
5'10" 175lbs



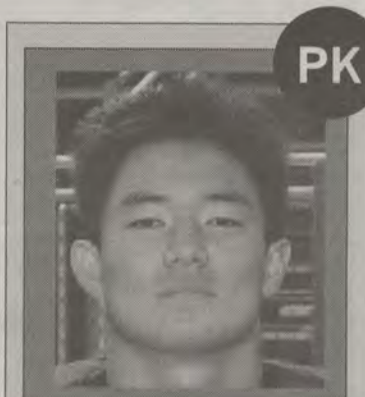
DB

William Bussey
Thomson, Ga.
Thomson HS
6'2 10lbs



RB

Xavier Tobler
Waycross, Ga.
Ware County HS
5'10" 200lbs



PK

YoungHoe Koo
Ridgewood, N.J.
Ridgewood HS
5'9" 170lbs

Students must pick up tickets before game

Baseball

BY COLIN RITSICK

The George-Anne staff

Students wishing to attend any of the Georgia Southern University baseball games on opening weekend against the University of Georgia will not be able to get tickets at the door.

Typically, any Georgia Southern student attending a GSU sporting event simply has to swipe his or her student I.D. at the gate for entry. But due to an expected high demand for tickets, the Georgia Southern Athletic Department has implemented a new ticket policy just for the opening weekend of games, so no tickets will be sold the day of the game, according to a news release.

Students must pick up their tickets to any of the three baseball games at

the Athletic Ticket Office located in the Cowart Building on Lanier Drive.

Tickets are available from Feb. 11 through Feb. 14. Students will receive a ticket for each game in the series.

Opening Day is Feb. 15. The student tickets will remain free of charge, one per student ID. Students will not be able to attend the game if they do not go to the ticket office in advance because no tickets will be processed the day of the game.

This move may come in part as a reaction to last season's huge opening day turnout.

The Friday night contest against then-ranked #10 Georgia Institute of Technology Yellow Jackets hosted a record crowd of 3,258 people, according to the release.

UGA enters this season ranked #29 overall.

The first pitch of GSU's season is set for Feb. 15 at 6 p.m.



Jessica Stanfield/The George-Anne

GSU students must go to the ticket office before the first game of the Eagles' season if they want to attend the game. The first game of the season is Feb. 15.

Valentine's Day

♥ Fresh Roses

(Starting at \$10)

♥ Balloon Bouquets

♥ Huge Cards

♥ Chocolates

♥ Plush

♥ Free Cupcake

with rose order



Great Gifts for Your Best Friend

...and Sweetheart!



(912) 489-9946

801 South Main Street

(Across from CSU Campus
On South Main)

GSU Students bring in this coupon and receive

20% off

Your Valentine Order.

Hey Guys - this includes FRESH ROSES!



COMPASSION
CHRISTIAN CHURCH

Shouldn't going to church change more than your Sunday mornings? Join us and see how Jesus can change everything.

Sundays at 9:15 and 11 a.m.
Mill Creek Elementary School
CompassionChristian.com

GSU looks to win rematch against App. State

Men's Basketball (10-13)

BY SHAKEEM HOLLOWAY

The George-Anne staff

In an overtime thriller, Georgia Southern University men's basketball team lost to rival Appalachian State University 64-62 exactly two weeks ago, but the Eagles will get their chance to right the ship tonight at Hanner Fieldhouse.

A 22-5 run at the end of regulation and a clutch three by senior guard C.J. Reed forced the extra period in the Eagles' previous loss to the Mountaineers. The Eagles struggled shooting throughout much of the game, posting a 36.9 field goal percentage.

"We haven't been shooting the ball very well lately, but I am proud of the fight our team had to fight and scrap to get back in the game," head coach Charlton Young said after last game.

Coming into this game is a different story. The Eagles are shooting a combined 45.8 percent in their last two games. Junior forward Eric Ferguson and Reed are a combined 27-50

from the field in their last two games, totaling 69 points.

Nathan Healy led the Mountaineers in scoring in their last game with 24 points, and he also pulled down eight rebounds. In his first matchup against the Eagles, Healy recorded a double-double with 17 points and 13 rebounds.

GSU has won two of its last three games since the loss against the Mountaineers, whereas the Mountaineers have lost two of their last three games in that time span.

Despite averaging 71.1 points per game as a team, the Mountaineers have only scored over 60 points once in their last three games.

The other two games were losses to Davidson College and the College of Charleston, which hold the number one and number two best records in the South Division of the Southern Conference, respectively. The Eagles have already beaten Davidson and CofC.

The Mountaineers (9-12) are 2-9 away from home, and the Eagles (10-13) are 6-3 at Hanner.

Much like the first game, the rematch will

be the Mountaineers' offense versus the Eagles' defense. The Mountaineers' scoring offense is fourth in the SoCon and the Eagles' scoring defense is third in the SoCon.

The face-off at 7 p.m. tonight in Hanner will be a pivotal matchup for both teams as they make their respective runs for a SoCon Championship.

The eighth annual "Pack The House In Pink" will be happening on Saturday for the basketball doubleheader as the women's team will play CofC at 5 p.m. and the men will face off against Western Carolina University at 7:30 p.m.

There will be activities in order to raise money and awareness for breast cancer.

Eagles to make Cougars see pink

Women's Basketball (4-17)

BY RANDALL HAMPTON

The George-Anne staff

Saturday at 5 p.m. the Georgia Southern University women's basketball team will have the chance to prove to a pink crowd that the College of Charleston's previous two-point win was a fluke.

Two points is all that separated GSU from the sweet taste of victory in the last meeting with CofC, as the Eagles fell 58-56.

"Pack the House in Pink," hosted by Zeta Tau Alpha sorority, will aim to raise awareness about breast cancer and maybe give the Eagles a jolt of energy.

The team has hit a bit of a rough patch losing its last three games, but GSU could

turn things around against CofC.

GSU nearly soared to a victory in the last game against the Cougars behind a furious second half charge that saw the Eagles dig themselves out of a 17-point hole.

Senior guard Meredyth Frye and junior guard Mimi DuBose lifted the team by doing what they do best.

Frye showcased her versatility with 18 points, 11 rebounds and four assists; DuBose hit four three pointers on her way to 27 points in that game.

The Eagles committed 25 turnovers compared to just 15 for the Cougars. The 10 extra turnovers helped CofC attempt 26 more shots than GSU. To put that in perspective, GSU attempted 27 shots total in the second half. GSU basically gave CofC an extra half of possessions when

the teams played in South Carolina.

GSU put the ball in the hoop, but the team could not keep CofC from doing the same. Five players scored at least seven points for CofC, and senior center Latisha Harris spearheaded the Cougar attack with 14 points.

Junior guard Jillian Brown lit the Eagles up with 11 assists in the last meeting, matching her season high.

Brown leads the Southern Conference in assists with 6.6 per game. She has dished out double digit assists in six games this season.

GSU has to lock down the orchestrator of the Cougar offense if the team plans to pull out a win in the packed-pink house.



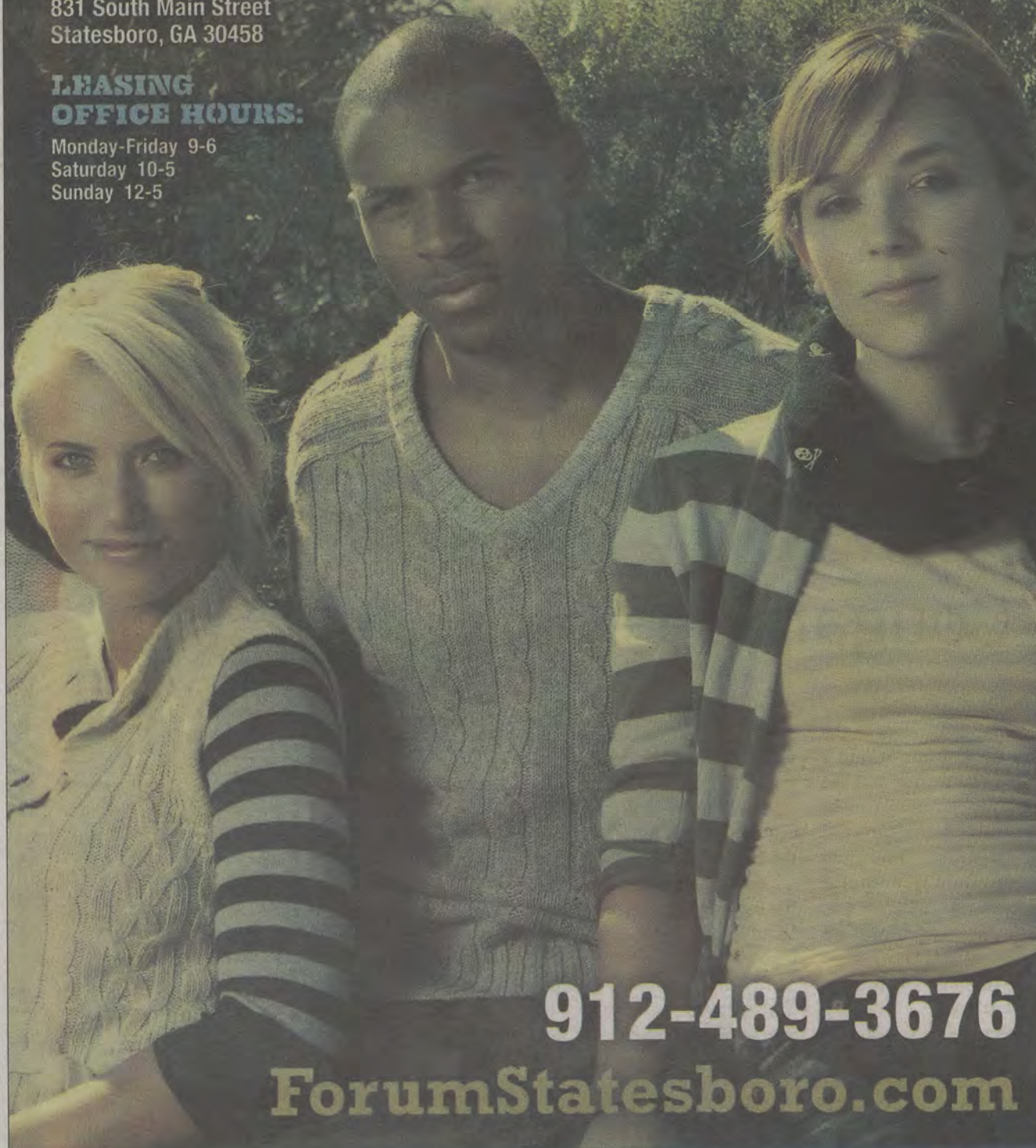
**IT'S YOUR LIFE...
LIVE IT!**
FORUMSTATESBORO.COM

COMING TO:

831 South Main Street
Statesboro, GA 30458

**LEASING
OFFICE HOURS:**

Monday-Friday 9-6
Saturday 10-5
Sunday 12-5



912-489-3676

ForumStatesboro.com

GET A FREE T-SHIRT WITH THIS AD!

FORUM®

AT STATESBORO

A PREMIER STUDENT
HOUSING COMMUNITY

**NOW
LEASING
FOR FALL 2012**

- Tennis Court
- Lap Pool & Spa
- Pet Friendly
- Pet Park
- Two Free Tanning Beds
- Indoor Basketball Court
- Indoor Volleyball Court
- Car Care Center
- Modern Faux-Wood Floors
- Private Bathroom in Bedrooms
- Convenient Individual Leases
- Free High Speed Internet in Bedrooms
- 24 Hour Fitness and Training Center
- Kitchens with Full Size Appliances
- Full Size Washer / Dryer Included
- Wi-Fi Cyber Cafe with Coffee Bar
- Outdoor Sand Volleyball Court
- High Speed Internet Access
- Student Center and Lounge
- Roommate Matching
- Expanded Cable
- Media Room



Forum Statesboro, Georgia, LLC is an Equal Opportunity Housing Provider. No discrimination on the basis of race, sex, or ethnicity.