

Georgia Southern University

Digital Commons@Georgia Southern

The George-Anne

Student Media

1-29-2013

The George-Anne

Georgia Southern University

Follow this and additional works at: <https://digitalcommons.georgiasouthern.edu/george-anne>

Recommended Citation

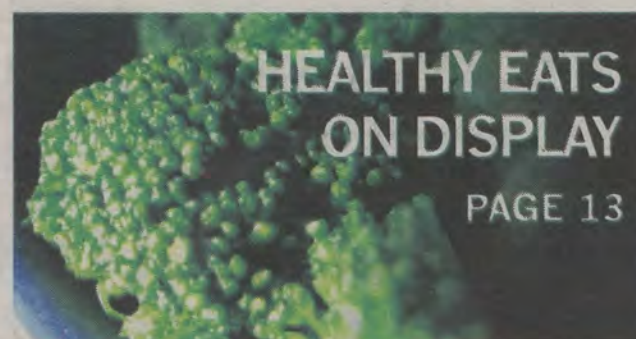
Georgia Southern University, "The George-Anne" (2013). *The George-Anne*. 2597.
<https://digitalcommons.georgiasouthern.edu/george-anne/2597>

This newspaper is brought to you for free and open access by the Student Media at Digital Commons@Georgia Southern. It has been accepted for inclusion in The George-Anne by an authorized administrator of Digital Commons@Georgia Southern. For more information, please contact digitalcommons@georgiasouthern.edu.



BLUE-WHITE GAME TIME SET

PAGE 16



HEALTHY EATS ON DISPLAY

PAGE 13

Tuesday, Jan. 29, 2013
Georgia Southern University
www.thegeorgeanne.com
Volume 83 • Issue 49

THE GEORGE-ANNE

Carter tickets available

BY PHYLICIA GALLMON

The George-Anne staff

Tickets for "An Evening with the Carters," featuring 39th President Jimmy Carter and former First Lady Rosalynn Carter, became available to students yesterday

through the Office of Student Leadership and Civic Engagement.

The former president and first lady will speak on Feb. 12 at Hanner Fieldhouse.

Tickets for "An Evening with the Carters" are currently available for students at the Office of Leadership

and Civic Engagement, but with the anticipation of a packed out Hanner Fieldhouse, students are limited to one ticket per Eagle I.D.

"We are expecting a packed house. I think we can seat about 4,700 people, and that is the plan,"

See **CARTERS**, Page 8



ROSALYNN
& JIMMY
CARTER

GSU baseball prepares with scrimmages

BY COLIN RITSICK AND ROBERT HUITT

The George-Anne staff

With three weeks left until opening day, the Georgia Southern University baseball team had its first scrimmages of the year this past Friday and Sunday at J.I. Clements Stadium.

"It has got to be competitive. We've still got guys competing for starting jobs out here," head coach Rodney Hennon said with regards to the importance of this scrimmage.

The exhibition matches took place in a blue vs. white format with the team splitting up and playing against itself. The scrimmages lasted six innings.

Hitting against live pitching is a completely different task than simply swinging in the batting cage. It forces the players to make on-the-go decisions that are necessary in every game.

"We were a little sloppy out here for the first day, but the more pitches our hitters see, that should get better with each scrimmage," Hennon said.

Even though the games do not count at all, these scrimmages are key in preparing for the start of the season.

"It gets you the feel of a real game. We're playing against each other, but these are still game-like situations so we need to work on things that we're going to see during real games," redshirt junior outfielder Arthur Owens said.

Owens had a great day at the plate with three hits in as many at-bats. However, it is not uncommon

See **BASEBALL**, Page 15

TAKING THE PLUNGE



Lindsay Hartmann/The George-Anne

Georgia Southern University students take the plunge into the RAC's outdoor pool last night. The pool was open for one night for the RAC's annual Polar Bear Plunge event.



thegeorge
anne.com



Follow us on Twitter
@TheGeorgeAnne



Newsroom 478-5246
Advertising 478-5418
Fax 478-7113

PO Box 8001
Statesboro, GA
30460

Hendley to offer housing downtown

BY ISAAC CARRASCO

The George-Anne staff

Next month, Hendley Properties will begin construction for 43 units that will be divided into two new residential complexes located in downtown Statesboro.

"There will be thirty-one bedroom units that will be named Village at Midtown," Bryan Davis, manager at Hendley Properties, said. "We're also renovating a property for twelve bedroom units that will be named Magnolia Village, which will also be in downtown Statesboro."

There will be a total of 51 new bedrooms downtown, Davis said.

"The ultimate goal is to start buying properties downtown and we want to have pocket communities that we can create many villages and have people like students and professors start moving towards the downtown environment," Davis said.

"The key word is low density. A lot of people are getting tired of the big boxed community and they want to live somewhere where they can park outside their front door, walk straight in their apartment, and that's what the village concept will offer you. You'll never have to park like six or seven buildings away," Davis said.

Downtown Statesboro has struggled to get businesses that attract students, and Hendley Properties hopes that by developing residences for students downtown, new businesses will also come, Davis said.

"There will kind of be a mutual benefit for students and for property management. We're hoping just to bring new clientele to downtown that hasn't been there previously," Davis said.

The rent for the apartments is not all-inclusive, and it is left to the resident to connect water and electricity and to pick cable and Internet providers, Davis said.

"But (the residents) are eligible to use any of the four Hendley property

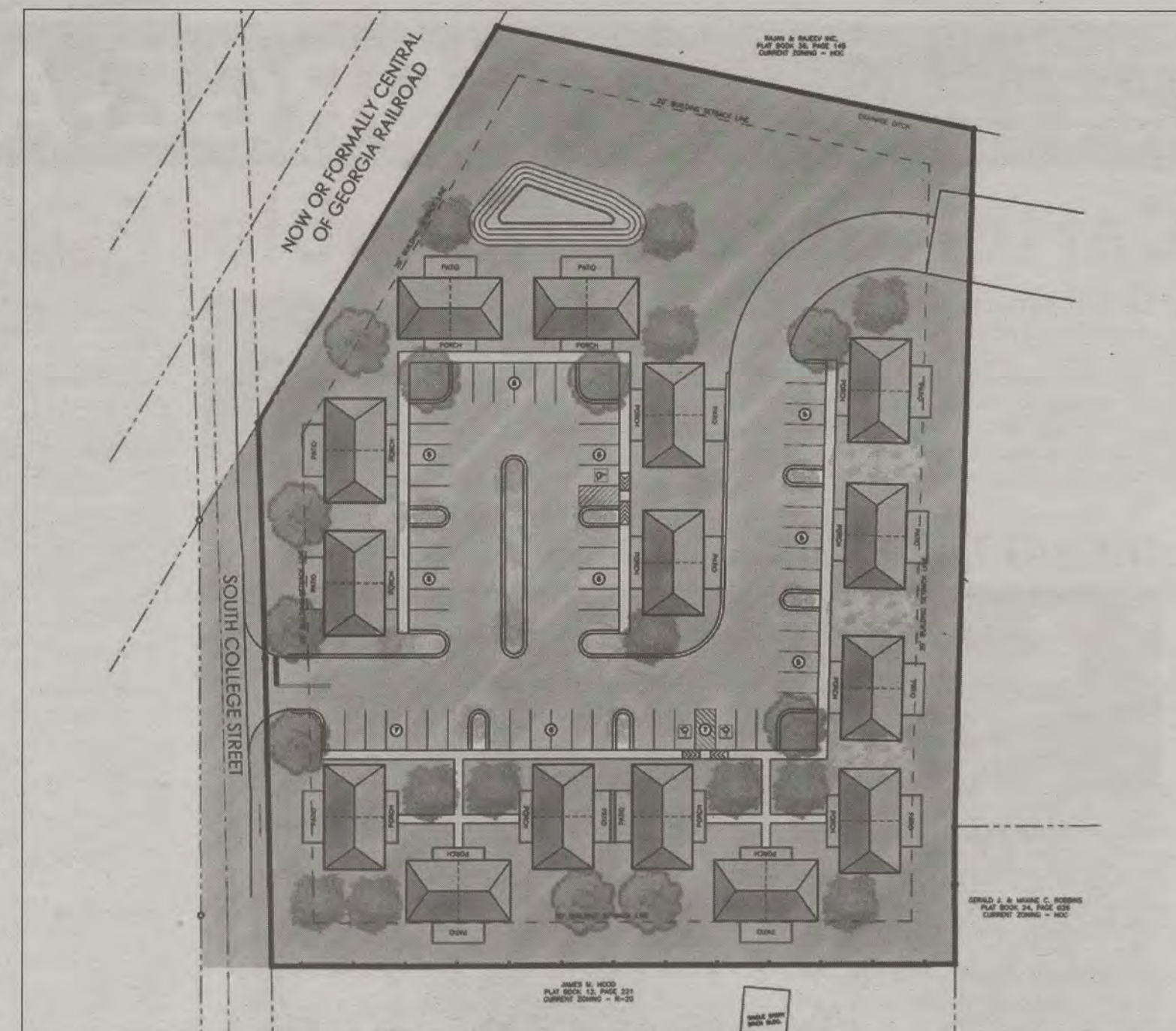


Photo courtesy of Hendley Properties

Hendley Properties will soon be constructing two new complexes in the downtown Statesboro area. These complexes will result in 51 actual bedrooms, called villages.

pools," Davis said.

Hendley Properties has decided to only build one and two bedroom units, but plans on deciding, at a later date, if it can make that number larger as far as unit size, Davis said.

Move-in for Magnolia Village is set

to begin the first of May, and move-in for Village at Midtown will have four dates, the first being in May and the last in August, Davis said.

"Magnolia Village is right next to the walking track in downtown Statesboro so one of the cool things

is that someone might like to exercise like jog or bike. It'll be right outside their back door," Davis said.

The Village at Midtown was made possible by a collaboration of three groups.

Davis said, "It was kind of like

combination effort with the City of Statesboro, the Downtown Development Authority and Hendley Properties, all three working together to bring the Village at Midtown, three groups coming together to make that one project happen."

Police Beat

Wednesday, Jan. 23

11:19 a.m.: Officers investigated a vehicle accident in Parking Lot 21.

1:12 p.m.: Officers responded to a fire alarm at Eagle Village, Building One. Investigation revealed a resident had burnt some toast.

3:43 p.m.: An incident report was taken for a theft at the Russell Union. The incident was referred to the Criminal Investigations Department.

4:44 p.m.: A traffic stop was conducted on Fair Road resulting in the arrest of Shaynen Tory Anderson, 32, who was charged with failure to obey a traffic control device and obstruction of an officer.

5:39 p.m.: Officers assisted another agency with an accident on Lanier Drive.

6:47 p.m.: Officers responded to an alarm at Freedom's Landing that was determined to be a system malfunction.

8:34 p.m.: An incident report was taken from a theft at the RAC. The incident was referred to the Criminal Investigations Department.

11:41 p.m.: An incident report was taken for criminal trespass in the Kennedy parking lot. The incident was referred to the Criminal Investigations Department.

11:59 p.m.: A wallet was found and turned into Public Safety and returned to the owner.

Thursday, Jan. 24

9:00 a.m.: An incident report was taken for found property at the College of Education Building.

10:12 a.m.: An incident report was taken for a suspicious person/incident at Freedom's Landing Building.

2:30 p.m.: Criminal Investigations arrested William Deandre Gardner, 19, for theft by receiving stolen property (misdemeanor).

6:00 p.m.: Officers responded in reference to a Kennedy Hall panic alarm. Officers discovered the room to be unoccupied. Maintenance was contacted and responded to the location to reset the alarm.

7:23 p.m.: An incident was taken for theft by taking from the RAC. Case was turned over to Criminal Investigations.

8:26 p.m.: Officers responded to a suspicious person/incident at C/E/J (Kennedy Overflow) parking lot.

8:48 p.m.: Officers conducted a traffic stop in reference to a vehicle failing to yield to a pedestrian in a crosswalk on Georgia Avenue/Chandler Road intersection. One traffic citation was issued.

Friday, Jan. 25

1:28 a.m.: An officer conducted a traffic stop at University Place. The driver, Christopher Joel Collins, 21, was arrested and charged with headlights required and DUI.

2:12 a.m.: An incident report was taken for criminal trespass at Southern Pines parking lot. This case has been turned over to Criminal Investigations.

12:23 p.m.: An incident report was taken for lost/mislaid property at the Carroll Building.

2:19 p.m.: An incident report was taken for a suspicious incident at Kennedy Hall.

2:36 p.m.: An incident report was taken for financial card theft/financial card fraud. This case was turned over to criminal investigations.

3:40 p.m.: An incident report was taken for a theft that occurred at the RAC. This case was turned over to criminal investigations.

7:17 p.m.: An incident report was taken for a theft that occurred at the RAC.

7:58 p.m.: A motor vehicle accident occurred in C Lot. A motor vehicle accident report was completed.

8:26 p.m.: Officers responded to Freedom's Landing in reference to a drug complaint.

Saturday, Jan. 26

1:05 a.m.: Officers discovered an intoxicated person in C Lot asleep underneath a truck. The intoxicated person, Richard P. Johnson, Jr., 18, was arrested and charged with possession of alcohol under 21 years of age.

1:25 a.m.: Officers responded to a noise complaint at Freedom's Landing.

9:41 a.m.: An incident report was taken for found property at the Nessmith Lane Conference Center.

1:00 p.m.: An incident report was taken for lost/mislaid property at Centennial Place.

1:03 p.m.: Officers responded to fire alarm at Health Services. The Statesboro Fire Department and maintenance responded. The building was checked and no problems were found.

3:42 p.m.: Officers responded to a fight at Kennedy Hall that had occurred 30 minutes earlier. An incident report was completed, and housing judicially referred those involved.

Sunday, Jan. 27

3:47 p.m.: An incident report was taken for lost/mislaid property at The NEST.

Statement of Operations

The George-Anne is the official student newspaper of Georgia Southern University, owned and operated by GSU students using facilities provided by the university. The newspaper is the oldest continuously published newspaper in Bulloch County. The newspaper is a designated public forum for the Georgia Southern community.

The newspaper is published twice weekly, on Tuesdays and Thursdays, during most of the academic year. Any questions regarding content should be directed to the student editor by phone at 912.478.5246 or at gaeditor@georgiasouthern.edu.

ADVERTISING: The newspaper accepts advertising. Inquiries may be made by calling 912.478.5418 or 912.478-0566. Fax any questions to 912.478.7113 or e-mail ads1@georgiasouthern.edu.

The George-Anne receives additional support, in part, from the Student Activities Budget Committee.

The deadline for reserving space and submitting advertising copy is noon, one week prior to the intended publication date. For more information, rate cards, sample publications, contact

the advertising manager or student media director. The advertiser is responsible for any errors in advertisements and its liability for adjustments is limited to the amount of space the error occupied in the ad. Further, the newspaper is not responsible for any damages caused due to an ad's omission

from a particular edition and its responsibility solely is to reschedule the ad in the next regular edition at the regular advertising rates.

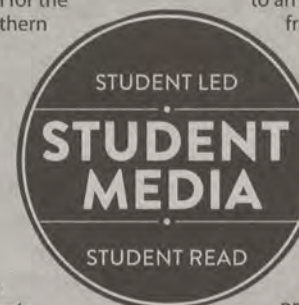
STUDENTS

BEWARE: The

George-Anne screens all advertisements prior to publication. The newspaper strives to accept ads for legitimate products and services only. Students are urged to exercise caution when replying to ads-particularly those that require personal information. Students are also urged to report to the newspaper any suspicious offers which they might see in an ad.

PUBLICATION INFORMATION: The newspaper is printed by The Brunswick News in Brunswick, Ga.

NOTICE: Unauthorized removal of multiple copies from a distribution site constitutes theft under Georgia law, a misdemeanor offense punishable by a fine and/or jail time.



Editorial Staff

Editor-in-Chief Arielle Coambes
Managing Editor Jessie Reese
Multimedia Editor Gianna Carme
Opinions Editor Taylor Cooper
News Editor Lindsay Gaskins
News Chief Shelby Farmer
Arts Editor Marissa Martin
Arts Chief Alex LaSalle
Sports Editor Jackie Gutknecht
Sports Chief Trevor McNaboe

Copy Chief Courtney Tielking
Copy Editor James Farmer
Business Manager Chloe Douglas
Sales Manager Phillip Scroggin
Marketing Manager TJ Jackson
Distribution Manager Nick Garcia
Production Manager Kelsey Paone
Photo Editor Tasha Lund
Design Editor Jose Gil
Web Editor Darius Alexander

Corrections

Contact the editor at gaeditor@georgiasouthern.edu for corrections and errors.

Our View

High-profile guests raise reputation

Soledad O'Brien, anchor for CNN and multicultural activist, will be speaking about issues in social justice at the Hanner Fieldhouse today at 5:30 p.m. She was brought to campus through the efforts of the Multicultural Student Center along with the Vice President for Student Affairs & Enrollment Management.

Georgia Southern University's efforts to bring these speakers to campus should not be taken for granted. O'Brien is one of the most famous news anchors of this generation. She won an Emmy for her coverage of the crisis in Haiti in the category of Outstanding Live Coverage of a Current News Story – Long Form, and has four major news shows under her belt. Her family gives her insight and authority on multicultural issues. Her parents were both immigrants, and she has African, Cuban and European genealogical heritage.

This is on the tail of other speakers of national and international fame that have been brought to GSU, such as Madeleine Albright, first woman to be appointed to Secretary of State, Rudi Giuliani, the former mayor of New York City and Richard Gregory, a civil rights activist and comedian. President Jimmy Carter, the 39th president and the only Georgian president, and former First Lady Rosalynn Carter have also been scheduled to speak on campus.

Students should take advantage of the events that GSU organizes for them. They are not meant to only educate, but also to entertain, and students get in free. The opportunity to learn should never be ignored, and GSU is giving students just that.

The George-Anne welcomes letters to the editor and appropriate guest columns. All copy submitted should be 350 words or fewer, typed, and sent via e-mail in Microsoft Word format to gaeditor@georgiasouthern.edu. All submissions must be signed and include phone number for verification. GSU students should include their academic major, year and hometown. The editors reserve the right to reject any submission and edit submissions for length.

Opinions expressed herein are those of the Board of Opinions or columnists themselves and DO NOT necessarily reflect those of the faculty, staff or administration of GSU, the Student Media Advisory Board, Student Media or the University System of Georgia.

SHENEMAN THORPE MEDIA SERVICES



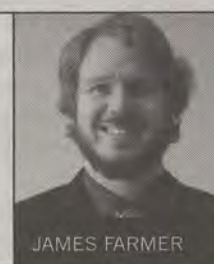
Video games can have politics

Entertainment has long been used to convey politics and political ideas. From Machiavelli's "The Prince" to modern films such as "Zero Dark Thirty," producers of entertainment have long sought to make their audience see their side of an issue. However, a new form of entertainment is starting to make serious strides into the political realm. And it will affect the lives of the majority of college students.

Video games have been around for a long time, but for the most part, have not made serious political statements until recently. This foray into the political scene is not a surprising development, considering the popularity of video games with the coveted 18-24 year old voting bloc. All races, and both sexes – regardless of the male gamer stereotype – play video games.

Also, video games tend to stick with people. Ask a current college student about games he or she grew up with and you are sure to be met with nostalgia and detailed descriptions about games from the 90s. As weird as it may seem, our kids

THE FARM LIFE



JAMES FARMER

might speak of video games in the same breath as books such as "Atlas Shrugged" and "All the King's Men" if we let the video game market progress into the political realm.

Games provide a wide variety of ways to present political themes. "Assassin's Creed III" presents classic liberal themes of freedom and liberty without seeming pushy due to its timeframe in the American Revolution. In contrast, the Bioshock series presents a failed libertarian utopia in the city of rapture, but is very direct with the message from the beginning.

In the long term, the success of politically themed video games lies with the convictions of the game designers

and producers. There is very little risk in creating a game such as "Skyrim" which is a pure adventure game with no political undertones that are apparent. However, making a game with a strong message runs the risk of alienating potential buyers of the game. This is where we as video game consumers can direct the market to our advantage. If we buy games with overwhelming political themes, the video game companies will continue to make them as fast as we'll buy them. We can either accept this bit of video game evolution, or we can make sure it never goes past being a niche.

Just like movies, books, plays and songs of the past, most video games will continue to be for pure enjoyment. However, games will start having more and more political undertones as time progresses. I just hope Michael Moore never gets his hands on producing one.

Farmer is a junior international studies and political science double major from Thomasville

Inequality still growing Feminists too serious

From the beginning of trickle-down economic policy we've seen inequality hit levels not seen since before the New Deal. From 1979 to 2007 the income of the 1 percent has grown nominally by 281 percent, while the bottom fifth has grown only 16 percent, and alongside this statistic is an unprecedented decline of intergenerational mobility. Our generation marks the first ever that has a higher chance to live in conditions worse than our parents, and it is especially true for those from lower income backgrounds.

The Right argues that this inequality is necessary to drive capitalism, often citing Adam Smith, but what gets excluded from this argument is Smith's notion that one's social contribution should determine one's income. In 2006, the top twenty-five hedge fund managers made \$14 billion. That was three times more than the combined income of all 80,000 New York City school teachers. Was their contribution to society really worth 240,000 times more to society than that of a teacher? Likewise, the six Waltons that inherited Wal-Mart have as much



SCOTT MARKLEY

wealth as the combined bottom 30 percent of Americans.

The reality is that much of the 1 percent's income is derived from rent seeking rather than from productivity, and their growing separation from the rest of Americans has created a situation in which a small number of extraordinarily wealthy individuals have rigged the game in their favor. Tycoons like David Koch and Henry Paulson have put down millions towards campaigns, think tanks, PACs and lobbying that have benefitted only the wealthiest Americans at everyone else's expense, simultaneously cutting top-income taxes and social spending.

What has resulted is a society for and by the rich in which hard work does not determine success in America as much as family income. It is statistically more likely for children from the top fifth of incomes to remain there in their adulthood than for someone in the bottom fifth to reach that level, even if those kids from the top perform worse in school. The bottom line is that some income inequality is inherent in capitalism and has a role in American society, but if the American Dream is to remain a possibility, there must be responsible policy in order to give those born at the bottom an opportunity.

Markley is a senior geography major from Marietta.

Reading through "The New York Times," I stumbled across a piece that I found to be absolutely appalling. A mother wrote in complaining that her 4-year-old son was being taught how to be a gentleman because she thought that it was promoting sexism. She feels that it is outrageous that her son is being taught a second set of rules simply because he is a boy. I feel this is just outrageous that a mother would have such opposition to her child being taught basic etiquette.

It seems to me that with more and more stories like this turning up that it is becoming politically incorrect to be what society would call a "man." Etiquette is a staple of society and part of that staple is to treat women with the upmost respect. This woman doesn't understand that as a man, we set ourselves to a standard of respectfulness and courtesy that is not only expected but encouraged. Turning into a society where being a gentleman is frowned upon is not acceptable.



BLAIR MUTIMER

Since the 60s with the civil rights movement, women have strived for equality and in almost all instances they have been given just about every right and civil liberty that they've wanted within the workplace and elsewhere. Chivalry is not anti-feminism, plain and simple. In the past it has always been an unspoken rule that as men we make sure women are held in very high regard. We don't do this as a gesture with the intent that we want them to be subservient to us as men. It is a mutual understanding type of relationship.

Even going as far to look at your stereotypical 50s era family with a working father, a stay at home mother that keeps the home running and her kids are taken care of, this is not a terrible situation. Women have every opportunity that a man has, but if she chooses to take a path that feminists call submissive it certainly is not because a man opens the door for her to get into a car. In my experience women love chivalry, and if feminists feel that they are being oppressed, then they need to take a step back and think about what is really important.

Mutimer is a senior construction management major from Augusta.

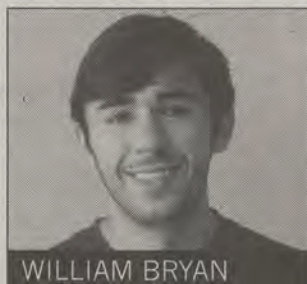
Phil Mickelson has nothing to complain about

In an opinion column last week, Mr. Mortimer wrote about Phil Mickelson's frustration as a California taxpayer. While it is true that Phil will pay a hefty tax bill for his \$61 million in winnings and endorsements, a lot went unmentioned in last week's opinion piece.

Somewhere around 60 percent is Phil's fair share, after federal, state and other local taxes are paid. His federal tax rate, the rate paid on money that he earned after the first \$450,000, went up 4 percent or so to 39.5 percent after the fiscal cliff deal. He is now paying what he paid in the 1990s, which is the lowest that top tax bracket has been since the 1920s. For perspective, it was 94 percent during World

War II, 70 percent during the 1970s and 50 percent after Reagan cut taxes in the 1980s.

In November, California residents voted to raise taxes in order to help solve budget problems that have plagued the state over the past 5 years. This year the state is expecting a budget surplus of almost a billion dollars. Some of that surplus will go towards paying off debt and



WILLIAM BRYAN

the rest will be put towards a "rainy day" fund. California, the world's 9th largest economy, is showing steady and strong recovery from the recession. Job growth is above the national average there, and unemployment is still falling. The governor, in his 2013 budget, plans to focus on education for kids in poor areas, as well as reinstate money that was cut for safety net programs.

But couldn't Phil's money have been better spent if wasn't going to the government? Doesn't he invest a lot and create jobs? No, is the answer to that. Phil was upset because after he had paid all that money in taxes, he was unable to buy part of the Padres baseball team. He's worth about

\$150 million dollars, \$60 million of which went towards a new Gulfstream jet.

Phil, and the rich for that matter, has no room to complain about taxes. The top one percent of earners captured 93 percent of all income growth in 2010, while the average worker hasn't seen a real wage increase in at least a decade. Nothing in our history shows that giving big tax breaks for the rich makes us better off. In fact, it actually shows the opposite. As President Kennedy said, "To those whom much is given, much is expected."

Bryan is a senior economics major from Fayetteville, Ga.

Join together year 'round Eagle Nation

Nation: a community of people who share a common language, culture, ethnicity, descent or history.

Here at Georgia Southern University, we refer to ourselves as the Eagle Nation, a nation that we are extremely proud of and will still support even once we've graduated. We stick together as proud Eagles and stand strong in the face of adversity.

In the past weeks, Eagle Nation has shown its strength when faced with tragedies on campus. I'm sure I speak for all of us when I say that our hearts are aching for the family and friends of Cory Wilson and Matthew Shaw, two GSU students who have recently passed away.

But this great bond that the 20,000 of us share only seems to show itself two times throughout the year: one, during sporting events and two, when a tragedy occurs on campus.

The first one is understandable; we present ourselves as a united front to support our sports teams and motivate them to win. We want other schools to fear our undying loyalty and do so by becoming a giant swell of Eagle Pride.

Now when a tragedy strikes campus, Eagle Nation's bond strengthens and we are at our closest. We host memorial services, start hashtags that trend nationally on Twitter like #PrayforGSU and support the organizations that have lost a member.

It's wonderful to see our students come together as one, but this needs to happen more often throughout the year, whether a tragedy strikes or not.

We hang out with our normal friends, are polite to our classmates we see a couple times a week and awkwardly acknowledge each other in the elevator. But most of the time, we don't go beyond what we feel we have to.

I suggest reaching out to the person who sits alone in class or bringing your friends to a club meeting on campus you wouldn't normally attend. By doing this, we can reach out to our fellow Eagles and come together more often. We can be a true Eagle Nation.

Go beyond your comfort level. Have new experiences. Take chances and work harder to be a more united Eagle Nation.

Gorla is a freshman English major from Warner Robins.

MY VIEW



LAUREN GORLA

The Internet can provide prosperity

The Internet has become a utility, just like any other. Whole companies and industries have been created and destroyed for and by the Internet. The best way to even the playing field between the disparate economic and social classes would be to spread the wealth. It has done wonders for our own society. It can do the same for countries that are still developing as well.

At first, Internet access may seem to be the last thing someone in a third world country needs, considering the chronic malnourishment and everything. However, I would argue that it's exactly what they need.

"We in the West tend to think of innovation as the next, new, shiny, tech, globally accepted thing, but in emerging growth markets, new access to even existing technologies (e.g., higher-speed broadband, mobile phones, smart devices) can lead to fresh and surprising thinking about local and regional problems, and one day these

THE COOP SCOOP



TAYLOR COOPER
OPINIONS EDITOR

over-looked corners of the globe may produce world-class innovations as a result," Christopher Schroeder, internet entrepreneur and angel investor, said in a recent post on his blog.

Consider the effect of telephone and electricity access in rural America. Widespread access helped the rural areas of America develop at a much faster pace than would normally have been the case, though you wouldn't be able to tell in some cases. The government and the service providers worked together to bring these utilities to the countryside of the United States.

Nicholas Negroponte realized the

effect that having access to the data stream that the Internet provides has. He started the One Laptop Per Child initiative, in which a person could give \$200 to give a laptop to a child in a developing country. This was a step in the right direction, but it was started in 2005. In 2013, you can get what was considered top-of-the-line then for \$200.

The Internet is quickly becoming a necessity for advanced societies. Many see the culture that has sprung up around the Internet to be useless and silly. How many hours do we spend a week watching cat videos, playing games or just staring at Facebook? But the Internet has made its mark, and it could easily be used to give a developing nation the prosperity we experience. You're welcome to spend all your time on Pinterest, just don't take it for granted.

Taylor Cooper is a junior journalism major from Rincon.

Rushing through rush week

Do you like wearing nice shirts buttoned all the way up? Sunglasses with big elastic straps on them? Do you sometimes feel the need to wear shirts with big funny-looking letters stitched across the front? If so, then I have great news for you.

That's right, it's time to rush for a fraternity at our wonderful Georgia Southern University!

Rush week is, without a doubt, my third favorite type of rush, right after Canadian rock band Rush and actor Geoffrey Rush.

The thrill of picking out your best match in a fraternity can be quite an experience, but first you have to make the cut during rush week. I'm here to help.

First off, you need to see if you are starting off with any advantages. Was your dad or granddad in the same fraternity you are hoping to join? Then you, my boy, drew the lucky straw. Legacies can get that special consideration, so don't be afraid to ride

ALEX THE PRETTY GOOD



ALEX LASALLE

your genetics into your future.

Second, it's important to make a good first impression. Aside from dressing like you're going to a wedding, you need to actually remember what fraternity you are talking to. As crazy as this sounds, there is a difference between that guy from Psi Pi Kappa-Dappa-Doo and the guy from Alpha Lambda Whamma-Gamma-Bam.

Another important tip: open up your wallet. Fraternity dues are just icing on the cake, when you'll also be paying for pledge activities, parties, etc. Legacies can probably ignore this tip and just call Dad.

While you are preparing to rush,

make sure to reevaluate your reasons for joining a fraternity. Are you looking to party? Then don't restrict yourself to just fraternities. I can party whenever I want without having to pay people dues to tell me why visors are no longer just for women's tennis players.

Others will be joining fraternities to help build references and connections for their future careers. This is called "networking," and is perfectly fine. If being popular has worked for you before, there's no reason to stop making it about who you know instead of what you do.

All jokes aside, I seriously do wish good luck upon those hoping to join a fraternity this semester. It might be good for some people and bad for others - like wearing leggings - but many in GSU's community welcome the opportunities, support and unity provided by our Greek community.

LaSalle is a senior writing and linguistics major from Cumming.

Visa may be possible in new payment process

BY ALANNA NAVIN

The George-Anne staff

Georgia Southern University is working on a new payment process for students to pay for tuition, which will include the option for students to pay with Visa.

As of January 2013, GSU enacted the new Touchnet Bill + Payment system with a more professional look that creates a new home to the option of paying school fees, Cindy Durden, bursar of Georgia Southern University, said.

"Probably our biggest complaint was not taking Visa," Durden said.

"It seems kind of weird that they don't accept one credit card out of all the others out there," Brenda Beckler, sophomore material science engineer major, said.

Before switching to the different online payment options, such as

WebCheck, GSU had to pay the large sum of processing fees by implemented by Visa, which created a budget crisis.

Visa, in the past, has not allowed academic institutions to ignore convenience fees. Currently the only group allowed to ignore Visa's convenience fee is the IRS, Durden said.

The convenience fee was about one million dollars every year, Durden said.

Mastercard and other credit cards allowed institutions to bypass the fee in the past, unlike Visa, Durden said.

"Hopefully, that's going to change," she said.

"Visa has now determined where they'll allow education charges to incur convenience fees," Durden said.

According to Touchnet Information Systems, as of Nov. 6, 2012, Visa will allow percentage-based convenience fees for Higher Education



Jose Gil/The George-Anne

GSU is currently working with Visa in order to include the card in its tuition payment plan for students. The addition would result in an extra surcharge for students.

just as they do for government payments. This means that qualified Visa credit transactions can have an extra fee added based upon the

percentage of the payment amount.

Instead of GSU paying a large sum to use Visa, the option has been offered for students to use Visa, but

they will have to pay a small processing fee, called a surcharge, according to Touchnet Information Systems.

Durden has sent in the application to Visa to start the process of accepting credit cards without the convenience fee.

"It kind of should have been done in the first place. They should have done it from the start," Tyler Covault, sophomore mechanical engineering major, said.

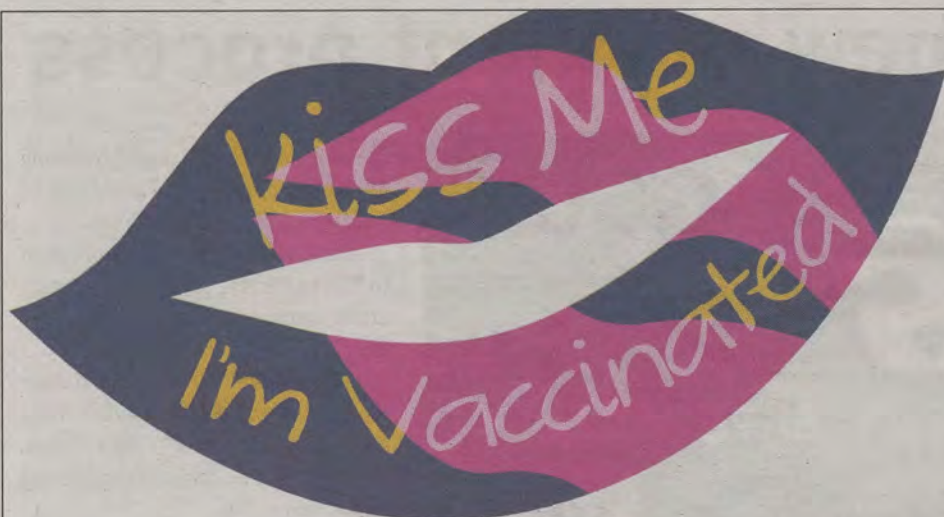
The university moved to Bill + Payment because it is more secure, and it gives students the option to authorize users, which makes it more versatile to students with family members paying, and it is great option for non-traditional students, Durden said.

Durden said, "After people get used to it they will like it a lot because it is more professional. We thought long and hard about it before we did it."

Thank you for reading
The George-Anne
 and keep an eye out
 for Student Media's
SPRING EVENTS

Dress in the Press
 1st Amendment Free Food Festival
 Reflector at the Rotunda
 Miscellany Release Party





Want To Be **Kissable** This Flu Season?

Influenza Vaccination Clinics **EXTENDED**

Wed., Jan. 23 from 2-5 p.m. in the RAC Lobby
Thurs., Jan. 31 from 9-11 a.m. in Russell Union Rm. 2080

\$5 students • \$10 faculty/staff/retirees

Cash, Check, MasterCard/Visa/American Express accepted

Insurance claims will be filed with the following companies:

Aetna, AmeriGroup, BeechStreet, Cigna, Coventry/First Health/CCN Southcare, Health Smart HPO, Humana Choice Care, Tricare, United HealthCare, and WellCare.

** You must have a copy of your insurance card in order for a claim to be filed.**

Please bring your Eagle ID



GEORGIA SOUTHERN
UNIVERSITY

SPONSORED BY GEORGIA SOUTHERN UNIVERSITY HEALTH SERVICES AND THE UNIVERSITY WELLNESS PROGRAM



Courtesy of www.npr.org

“

Not only is he the former president of the United States, but he is from Georgia. So I think it is really special to have the chance to share him with our students and the community.

”

-Jodi Kennedy,

associate director of the Office of Student Leadership and Civic Engagement

CARTERS, from page 1

Jodi Kennedy, associate director of the Office of Student Leadership and Civic Engagement, said.

“Not only is he the former president of the United States, but he is from Georgia. So I think it is really special to have the chance to share him with our students and the community,” Kennedy said.

Tickets for faculty and staff will be available from Jan. 31 to Feb. 6 in the Office of Student Leadership and Civic Engagement, and the Statesboro community tickets will be available Feb. 5 and 6 at the Hanner Fieldhouse box office or at the GSU City Campus.

Inviting President Carter to GSU's campus has been in the works for a couple of years through the collaborative efforts of a group of faculty in a learning community on peace studies, Kennedy said.

“An Evening with The Carters” is a part of the annual leadership lecture series that the OSLCE hosts during a time in both fall and spring semester.

“This is the same series that brought speakers like Condoleezza Rice, Rudy Giuliani and Madeleine Albright to campus,” Kennedy said.

As the Carters exemplify the essence of leadership, students and the community can expect to be motivated and moved by the former president's story to be a leader through any situation in your community and beyond, Kennedy said.

Kennedy said, “They can expect to learn a lot about leadership, learn a lot about what it means to be a responsible part of your community and how they as individuals can give back to causes they are passionate about. I think the Carters are such great examples of how we can dedicate our lives to something bigger than ourselves.”

Consignment fashion struts through 'Boro

BY LINDSEY MCCORMICK

The George-Anne staff

Students plan to show off Madame Couture's Consignment and Fashion Exchange apparel as they walk in the Fashion for Compassion fashion show during February's First Friday event in downtown Statesboro.

The show is free to the public and it will take place at the Averitt Center of the Arts at 5:30 p.m. The Fashion for Compassion fashion show features clothes from both of Madame Couture's stores, which are Madame Couture's Consignment Boutique and Madame Couture's Fashion Exchange.

Although the fashion show features clothing from the consignment boutique, Fashion for Compassion is celebrating the opening of the new store, Madame Couture's Fashion Exchange. This store is a buy, sell and trade boutique similar to Plato's Closet.

The purpose of the fashion show is to present students with the idea that they can wear designer attire for a fraction of the price, Maria Proctor, storeowner, said.

"It is definitely my more trendy, cutting edge, fashion forward store



File Photo

The Averitt Center for the Arts will host the fashion show during First Friday on Feb. 1 at 5:30 p.m.

out of the two. It's mostly for teens, tweens, young adults and men," Proctor said.

Fashion for Compassion is not only introducing the Fashion

Exchange, but it is helping the people of Statesboro. All proceeds of the fashion show will go to the Safe Haven.

"At the fashion show we are

collecting paper goods such as toilet paper, napkins and paper towels for the shelter," Proctor said.

The original store, Madame Couture's Consignment Boutique, has

been open for the past eight months. This store allows students to donate their clothing for consignment. When the item that has been donated sells, students receive half of what was paid for the item.

The Boutique gets clothes from popular brands like Miss Me jeans, True Religion, Lucky Brand and Ralph Lauren, Proctor said.

Students can bring their gently used clothing to the Fashion Exchange to be sold or traded for something similar in price. Students can visit the store to shop around as well, said Proctor.

Students will be walking the runway for the show including girls from various sororities. Alison Gould, senior fashion apparel and design major, has been helping prepare for the event by doing model castings.

"We aren't looking for a specific body type or height or anything. We are looking for someone with really good confidence and someone who will have a good time doing the show, not your typical model," Gould said.

The deadline to register is Jan. 29, and students can contact the store for more information about modeling in the Fashion for Compassion show at themarkettiers@gmail.com.

Nationally acclaimed poet to read at GSU

BY WILLIAM PRICE

The George-Anne staff

The Writing and Linguistics Department at Georgia Southern University will hold a reading with nationally acclaimed poet Paul Hostovsky where he will present poems from his wide collection of award-winning works.

The reading will include poems from all four of Hostovsky's full-length collections of poetry. The event will begin at 7 p.m. on Jan. 31 in the Information Technology Building room 1005. It is free and open to the public.

"Having a poet like Hostovsky is an incredible opportunity for the GSU

community, in that it allows students, faculty and staff the ability to interact with a real living and breathing and working poet," Emma Bolden, professor in the Writing and Linguistics Department at GSU, said.

"In hearing a writer read from his work, the poetry flies from the pages of books and becomes as real and living and breathing and working as the poet him or herself," Bolden said.

This program is put on as a collaborative effort between the Writing and Linguistics Department and the Georgia Poetry Circuit.

"His work is very accessible with a gentle humor and a great sense of compassion for

people," Eric Nelson, professor in the Writing and Linguistics Department and GSU representative for the Georgia Poetry Circuit, said.

The Georgia Poetry Circuit is a collaborative effort of 10 colleges and universities in Georgia that come together every year and vote which poets they want to bring to Georgia and tour the state's participating schools. The program brings three poets a year to GSU: one in the fall and two in the spring.

"This consortium of schools allows us to have a regular series of visiting poets that all have very impressive work," Phyllis Dallas,

chair of Writing and Linguistics at GSU, said.

"The poets that have come over the years have been very aware of their audience, picking poems to read that will appeal to the wide variety of people in the audience," Dallas said.

The final edition of this academic year's Georgia Poetry Circuit will be Jacqueline Osherow on April 10.

Dallas said, "I think it's really valuable to hear these writers speak on the genesis of their work, you know, how long it takes to do something like this, or where they get their ideas come from. From a student's perspective there is a huge amount you can learn."

ELTON JOHN TRIBUTE



Lindsay Hartmann/The George-Anne

Greg Bickley, lead singer from Tokyo Joe, performed on stage at the PAC during "Rocketman: A Tribute to Elton John" on Saturday, Jan. 26. **Left:** Bickley dressed the part as Elton John during the benefit concert by wearing colorful wigs and eclectic outfits. **Middle:** A Donald Duck outfit was worn on stage with striking resemblance to the original look worn by Elton John during a concert in 1975. **Right:** One of Tokyo Joe's band members rocks on the drums during the performance at the PAC.

An Evening with THE CARTERS

A CONVERSATION WITH THE FORMER PRESIDENT AND FIRST LADY

FEBRUARY 12, 2013

7 p.m. - Hanner Fieldhouse

COMPLIMENTARY TICKET DISTRIBUTION

Students: January 28 - February 6, 8 a.m. - 5 p.m.

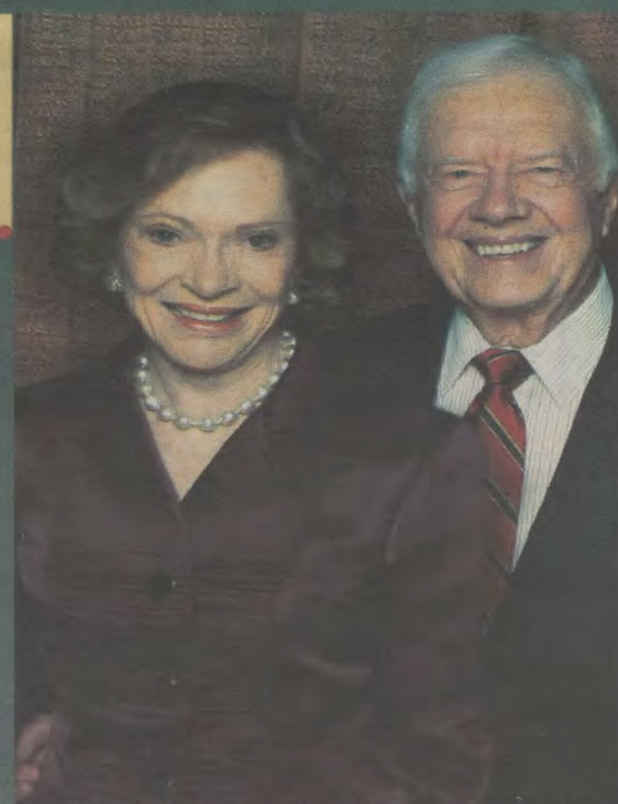
The Office of Student Leadership and Civic Engagement, Russell Union 1056
Must present Eagle ID - Limited to 1 ticket/person

Faculty & Staff: January 31 - February 6, 10 a.m. - 5 p.m.

The Office of Student Leadership and Civic Engagement, Russell Union 1056
Must present Eagle ID - Limited to 2 tickets/person

GeorgiaSouthern.edu/Carters

Your Student Activity Fees At Work!



**GEORGIA
SOUTHERN
UNIVERSITY**

Get a healthy memo from a demo

BY GRACE HUSETH

The George-Anne staff

Students can stop by a cooking demonstration cart to get a sound bite and a real bite to eat after working out at the Recreation Activity Center to learn about healthy cooking from a student majoring in nutrition.

The demos are held at a nutrition cart in the RAC lobby, where senior nutrition and food science major Brianna Dumas introduces new foods and hands out samples to students as they leave the facility.

"As a program assistant, one of my projects was to bring nutrition services back to CRI through cooking demos," said Brianna Dumas, who is also a group fitness instructor at CRI. "We do demos once a month, focusing on foods that are easy and

cheap and that you could probably do in the dorms."

Dumas said the last cooking demo was with Greek yogurt. She handed out samples of three different brands and explained that the yogurt can be eaten alone as a source of protein or as a sour cream substitute.

The cooking demo series has been able to reach out to other food related organizations on campus, including GSU Dining Services, the Wellness Program, Student Dietetic Association and local bakery Sugar Magnolia, Dumas said.

"All of CRI loves Sugar Magnolia. We like that they are local and always have food that we need," Dumas said.

Michelle Martin, University Wellness Program director, said that learning how to shop for food is the first step to a healthy diet, but it is

often overlooked.

"There are so many marketing traps that are confusing. You need to do your research and prepare before you go," Martin said.

When you are shopping, sticking on the outer edges of the grocery store makes you a more health conscious shopper. That's where the fruits, vegetables, and dairy products are, while the processed boxed foods are in the middle aisles, Dumas said.

Taking the time to buy highly nutritious foods and cook healthy meals is an investment, Justine Coleman, Group Fitness director, said.

The cooking demos will partner with GSU Dining Services in February to demonstrate a timely themed demo called "Valentine's Day: The Healthy Date." It's aimed towards guys, to



Back with a Healthy Snack
Valentine's Day : The Healthy Date
Spring Break Mock-Tails
Tea Options & Benefits
Iced Coffee

January 30
February 6
March 6
April 24
May 1

Matt Veal/The George-Anne

teach them how to cook a meal and set a table, Dumas said.

The demo will showcase different locations on campus, like the Pickle Barrel and the Market at Centennial, where the students can use their meal

plans to buy the ingredients needed to create the Valentine's Day dinner, Dumas said.

Coleman said, "If we can invest in things like electronics, surely we can invest in what we put in our bodies."



Willow Bend WillowBendComplex.com
1822 Chandler Road. [912] 681-7110

- * Walking distance to GSU Campus + Paulson Stadium
- * 1, 2, and 4 Bedrooms Available
- * Newly Renovated Units

We have the best rates in town!
Come check out our great move-in specials.

Eagles fly steady, 1-1 last week

Men's Basketball (7-10)

BY SHAKEEM HOLLOWAY

The George-Anne staff

Georgia Southern University men's basketball team went 1-1 this past week in conference play with a gut-wrenching loss to Appalachian State University 64-62 and an effort-fueled win versus Western Carolina University 72-66.

The Eagles came off a double-digit loss to The Citadel in which they were not able to produce much offense, shooting an abysmal 35.7 percent from the field, including 25.9 percent from behind the arc, when they met the Mountaineers on Thursday.

It seemed as if that game carried over into the Eagles' matchup with the rival Mountaineers.

"We haven't been shooting the ball very well lately," head coach Charlton Young said after losing to the Mountaineers.

Young was right as the Eagles shot 36.9 percent from the field and went three of 18 from downtown. GSU also struggled at the charity stripe shooting a 52.4 free-throw percentage.

Despite the team's poor shooting percentage it was still only three points away from a win.

"No doubt about it, we should have won this game, but we left the man on the ball, and he drained the shot," Young said.

After trailing throughout the game, the Eagles went on a 22-5 run in the second half, forcing overtime after a

crowd-silencing three-pointer by senior guard C.J. Reed.

The Eagles led 62-61 in overtime with 28 seconds left to play, and then App. State's Chris Burgess drained a three-pointer with enough time left on the clock for GSU to tie.

GSU wasn't able to convert offensively and the Eagles lost 64-62.

When the Eagles seemed to be reeling, they stopped what would have been a three-game losing streak when they faced the Catamounts by playing with effort and consistency, winning 72-66.

"We challenged the guys to play with effort today and we came out and played very hard," Young said after the win.

The Eagles set the tone in this game. Reed had a career-high with 11 assists, and he also passed the 500 career assists mark. Senior forward Cameron Baskerville posted a career-high in points with 14.

Young switched up the starting lineup in order to get more consistency out of his offense, bringing junior guard Tre Bussey off the bench.

Bussey was effective in his limited role, scoring 11 points in 13 minutes of playing time.

"My MVP of the game was Tre Bussey because he came out and played hard today," Young said.

The Eagles shooting woes ended Saturday as they shot 54.9 percent from the field and 44.4 percent from three.

Defensively, the Eagles were still strong, forcing eight steals and holding the Catamounts to 29.4 percent from downtown.

Next up for GSU is hated rival Furman University on the road Jan. 31 at 7 p.m.



Lindsay Hartmann/The George-Anne

Junior forward Eric Ferguson (3) reaches for the ball against College of Charleston defenders. Ferguson is currently leading the team in points, averaging 14.1 per game.

Eagles sink versus UNF

Swimming & Diving (6-3)

BY JACK MAGRUDER

The George-Anne staff

On Saturday, the Georgia Southern University swimming and diving team fell to the University of North Florida, 142-101 but was able to win five out of the 13 events.

The Eagles are now 6-3 on the season.

"We performed fairly well," head coach Nathan Kellogg said in a news release. "But we were outraced and out touched a few too many times which cost us the win."

The Eagles did not dive into the pool with the intensity that they had hoped for, and their first event win

did not come until the fourth event, the 50-meter freestyle. Elaina Lanson out swam her UNF opponent by almost a second with a time of 24.36. Megan Heller came in at a close third with a time of 25.54. Lanson came out on top again in the 100-meter freestyle, finishing in 53.55.

The Eagles performed well in the 200-meter backstroke, claiming three spots in the top five. Christina Moran led the squad, finishing first in 2:06.61. Sarah Schwartz (2:10.85) and Meg Beasley (2:15.77) finished second and fifth respectively.

Kylee Parsons earned full points for the Eagles in the 500-meter freestyle with a time of 5:06.78, and Amber Juncker came in second in 5:09.86.



Demario Cullars/The George-Anne

The GSU swimming and diving team fell to the UNF less than one month before the CCSA Championships.

Sara Meisenhelder continued to excel in the three-meter dive, earning 270.82 points, the most for her this season.

The Eagles are now less than one month away from the Coastal Collegiate Swimming Association Championships and will return to

action next weekend with back-to-back meets at Gardner Webb University on Saturday and Davidson College on Sunday.



better features.





\$0

DOWN

no deposit, no fees

LIMITED TIME

now leasing for 2013-14

912.681.1300

Cambridge-Southern.com

STUDENT ORGANIZATION FAIR



WEDNESDAY JANUARY 30, 2013 11 A.M. - 2 P.M. RUSSELL UNION COMMONS

YOUR STUDENT ACTIVITY FEES AT WORK!

GSU competes at Jimmy Carnes Invitational

Track and Field

BY ROBERT HUITT

The George-Anne staff

Georgia Southern University's track and field team headed south to compete among 1,500 athletes in the Jimmy Carnes Invitational over the weekend.

The tournament was held at the Stephen C. O'Connell Center in Gainesville, Fla. and the competition was formidable.

The pentathlon was the main event on the first day. Athletes participating in a pentathlon have to compete in five different events. The five events in this pentathlon were the 55-meter hurdles, high jump, shot put, long jump and 800-meter run.

Along with junior Dana Edwards, freshmen Ashleigh Rasheed, Taylor Johnson and Nia Hill accepted the challenge and competed in the pentathlon for the first time this season.

The veteran Edwards had the best finish of the quartet with an overall eighth place finish followed by Rasheed (10th), Hill (12th) and Johnson (15th).

Although Rasheed finished 10th overall, her best result came in the shot put event where she finished first. She whirled around and threw the shot an impressive 10.05m.

Edwards' best finish came in the 800m run where she had a good pace and rhythm that led to a third place finish.

Head coach Marlo Mincey said that despite this being the first pentathlon for the three freshmen, they went into it well prepared, and she is glad the experience is behind them.

On day two, freshman Kelsey Chandler got things started for GSU in the weight throw with a throw of 13.77m, which was good enough for 11th.

Junior Cherrelle King and sophomore Kimberly Thomas both finished in the top 10 of the 400-meter

dash. King dashed through the 400m at a time of 58.55 and came in fourth. Thomas was not far behind at 58.95 in sixth place.

In the 200-meter dash, senior Ebony Carter had her work cut out for her in an extremely deep field of over 40 participants. Carter came in 12th at a time of 25.72.

Mincey has been consistent in saying that her team is still working its way into proper running shape after the long winter break.

"Next week, we plan on doing more specialized work instead of running in as many events," Mincey said.

Next on the schedule for the Eagles is a trip to Winston Salem, N.C. where they will enter the Hilton Garden Invitational. This tournament will start on Friday, Feb. 1 and end on Saturday, Feb. 2.

Winston Salem, N.C. is also the home of the crucial Southern Conference Indoor Championships later in February.



Demario Cullars/The George-Anne

The GSU Track and Field team competed in Florida this past weekend among 1,500 other athletes.



OPEN POSITIONS CALL

VICE PRESIDENT OF FINANCE

WEB DESIGNER

SENATE SEATS

2013

APPLICATIONS AVAILABLE JAN. 22ND-29TH

E-MAIL CHRISTINA BELGE AT CHRISTINA-BELGE@GEORGIA SOUTHERN.EDU FOR ALL SENATE APPLICATIONS.

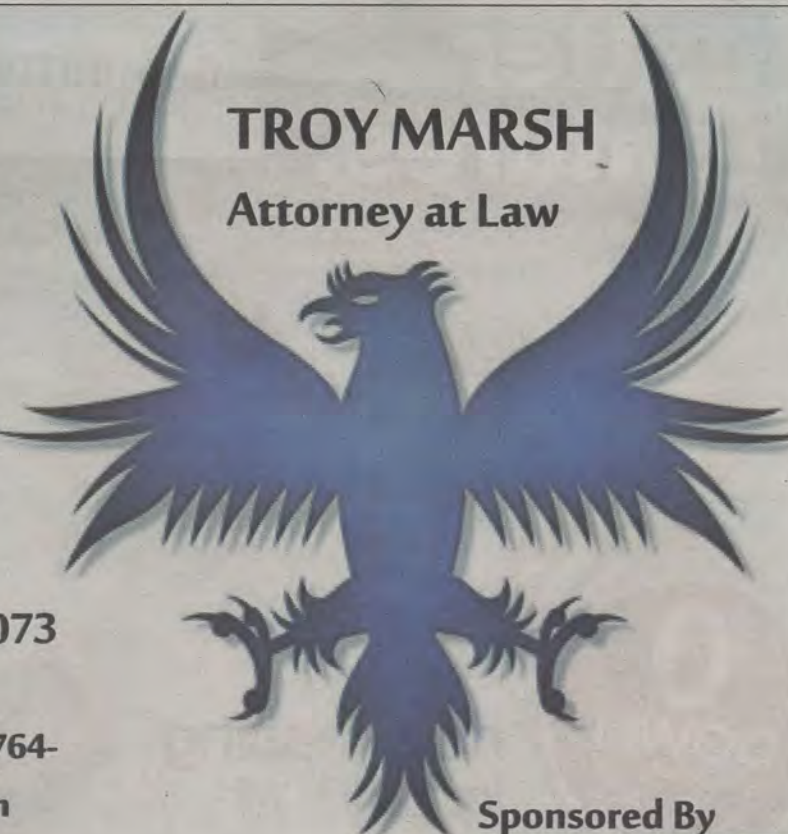
APPLY FOR THESE POSITIONS ON THE STUDENT EMPLOYMENT CENTER WEBSITE

FREE
Legal
Advice

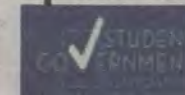
Every
Tuesday
3-5 p.m.
Russell
Union 2073

Call (912)764-
7388 for an
appointment

TROY MARSH
Attorney at Law



Sponsored By



Men's tennis wins season opener 4-3

BY THOMAS O'DONNELL

The George-Anne staff

The Georgia Southern University Eagles traveled to Macon this past weekend, defeating Mercer University 4-3 in their season opener.

Two out of the three doubles teams defeated their Mercer opponents. One match featured redshirted freshman Carson Jones and senior Alex Dohetry.

"They played a phenomenal match and dominated their opponents from start to finish," head coach Nick Zieziula said. "This was the first time we had Carson and Alex competing together; we didn't have them compete at all in the fall. I was very impressed with the way they competed."

In the end it came down to the number one doubles match. Sophomore Andrew Dromsky and junior Oliver Webb won their match with a score of 9-8 thanks to also winning the tiebreaker 7-5.

"We continued to do what we needed to do to get a victory, and when the match was on the line we made shots," Zieziula said. "They weren't the prettiest, but we found a way to put the ball in the court."

The only doubles match to lose was the pair of freshman Rafael Racey and senior Matthijs Verdam. They fought hard against their opponents Arnav Mohanty and Arsav Mohanty, but in the end were defeated by a score of 8-2.

During singles play, the Eagles split the

wins with Mercer 3-3.

Jones won the clinching match for the Eagles, 4-6, 7-6 (7-5), 6-0. He rallied from a 3-0 deficit to defeat Mercer's Austin Emmett and win the final set.

"He lost the first set 6-4 and was trailing 3-0 in the second before he rallied back to win the set, setting himself up to win the tiebreaker 7-5," Zieziula said. "It was a really gutsy performance. It was really special for him to clinch the match for us in the third set, the last match on, in his home town."

Jones is originally from Macon, so he had a home court advantage of sorts.

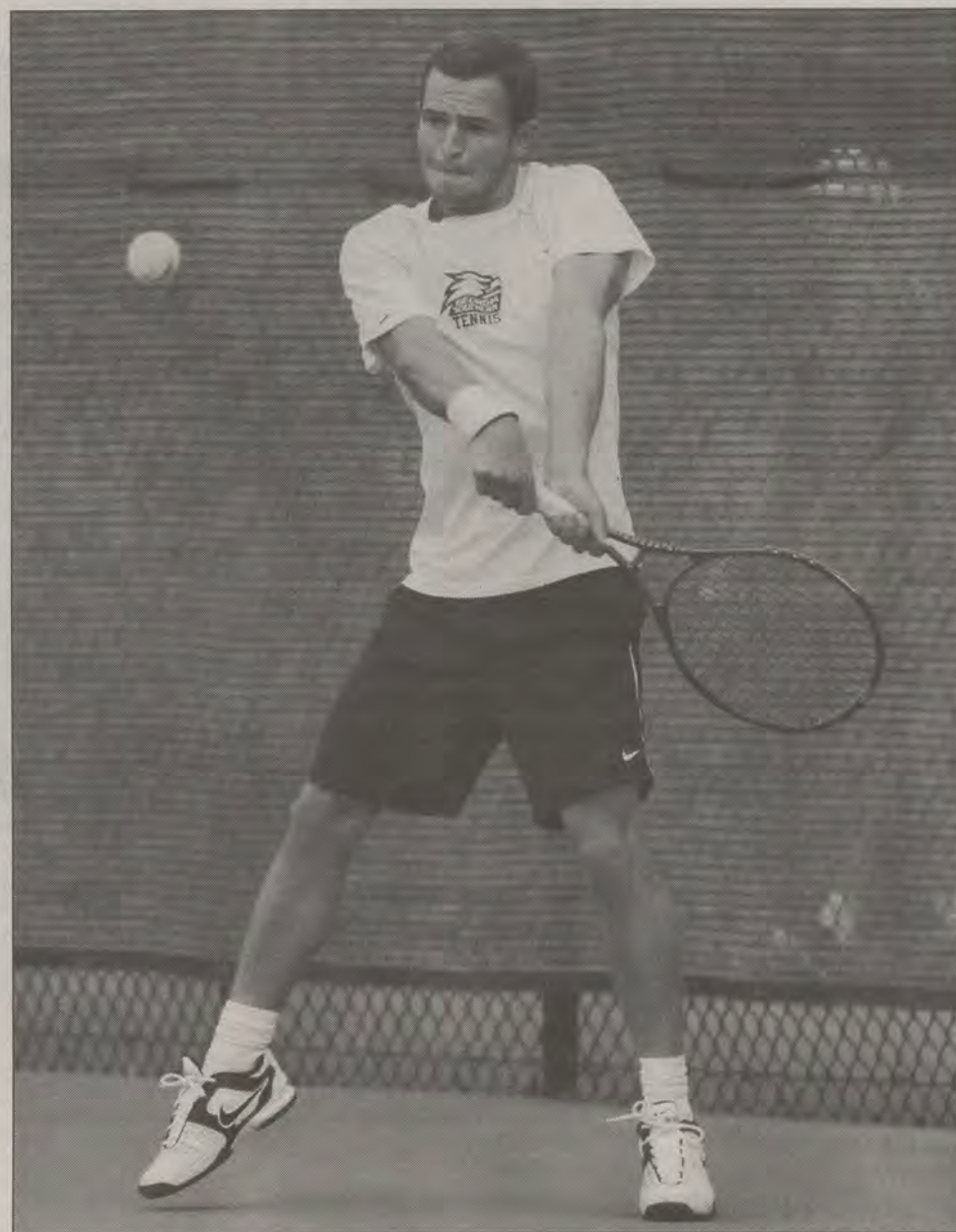
"He had a lot of family and friends out at the match which was really special for him to be able to clinch that match in front of them," Zieziula said.

"His conditioning was a really huge factor in the third set," Zieziula said. "He was still fresh after that third set, and after fifteen to twenty minutes the other kid was just gassed, he was just totally done."

Despite the win, the Eagles are still finding facets of the game to work on.

"We got a lot of areas that we need to improve, and we've got about a week and a half to work on them before we face a national ranked Georgia State team," Zieziula said.

This weekend, the Eagles travel to Georgia State University in Atlanta to face both Georgia State University and Kennesaw State University.



Lindsay Hartmann/The George-Anne

The GSU men's tennis team faced off against Mercer University this past weekend on the road. The Eagles came out victorious for their season opener.

BASEBALL, from page 1

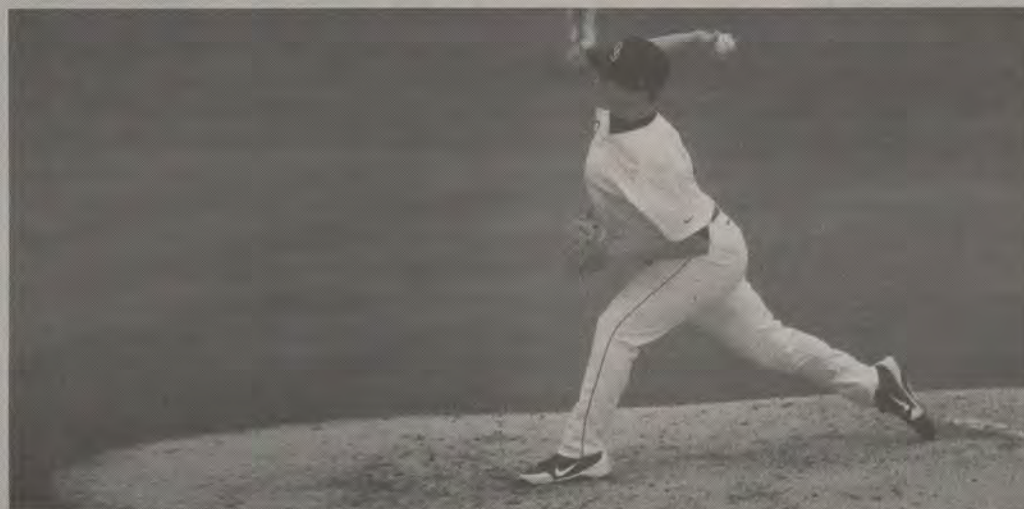
for hitting to be behind pitching early in the season, especially at this point.

"We're just trying to see pitches. That's the thing with hitting, the more pitches you see the better you'll get at it," Owens said.

With the departure of key players and the addition of some fresh faces, this team may have to rely on its pitching in the early going.

"I think the seniors on the pitching staff are going to be a good attribute to our team," senior pitcher Josh Stevenson said.

The Eagles open up the season on Friday, Feb. 15 at home against the University of Georgia. First pitch is set for 6 p.m.



Lindsay Hartmann/The George-Anne

The Georgia Southern University baseball team focused on hitting real pitches in Friday and Sunday's scrimmage games. The scrimmage games were in a blue-white format, with the teams facing off against each other and lasted six innings. The team will start its season on February 15 against the University of Georgia. Scrimmages are key to starting off the season's play and getting used to playing outside of practice.

Blue-White Spring Game scheduled for April



Lindsay Hartmann/The George-Anne

BY JACKIE GUTKNECHT
The George-Anne staff

The Georgia Southern University football team will play its annual Blue-White Spring Game on Saturday April 13.

The spring game is an annual tradition that caps off spring football practice.

There will also be several other activities going on on-campus that day, including men's tennis, baseball and softball games.

On the day of the event there will also be a \$10,000 reverse raffle and auction at 7:00 p.m. hosted by the Eagle Football Alumni Association (EFAA).

The spring game is open to the public for free.

The annual Blue-White Spring Game has been set for April 13. The game caps off spring football practice and is open to the public at no cost.



Sunday, Jan. 20

9:15 and 11 a.m.

Mill Creek Elementary

CompassionIsComing.com

65th Annual
Miss Georgia Southern University
Scholarship Pageant



A NIGHT IN PARIS

SATURDAY, FEBRUARY 2ND, 2013

7 P.M.

RUSSELL UNION BALLROOM

YOUR STUDENT ACTIVITY FEES AT WORK!

CLASSIFIEDS

This page brought to you by Career Services
Explore • Experience • Excel

www.thegeorgeanne.com

Tuesday, Jan. 29, 2013 17

Help Wanted

!BARTENDERS WANTED!
\$250 a day Potential. No Experience Necessary. Training Provided. Age 18+ OK Call 1-800-965-6520 ext 296.

Housing

Looking for a female to sublease a 3 BR / 3.5 BT in Copper Beech! Spacious room, two closets, clean roommates. Rent is \$389 per month. Lease available May-July 2013. May rent is already paid for! If interested call/text at 770-853-4344 or kp01678@georgiasouthern.edu.

Looking for female roommate to sublease at The Exchange for Summer 2013. 3 BR / 3 BT. \$499 / month, all inclusive. For further details, contact Bree at hh01316@georgiasouthern.edu.

Housing

Current lease available. 4 bed, 2 bath in University Pines. Rent is \$409 a month and January has already been paid for. If someone is interested they can contact me at 404-217-4789 or email me at ac06009@georgiasouthern.edu.

Male sublease available at The Pointe. 4 BR/4BT. Two rooms available. One at \$369 / month and one at \$385 / month, utilities included. Fully furnished, washer/dryer, great roommates, close to campus. Property includes pool, gym, tanning bed, computer lab, basketball/volleyball court. Contact Brian at 706-399-1860 or bb01693@georgiasouthern.edu.

Housing

Summer 2013 sublease available for a female in Campus Crossing. Located right across from GSU bus stop. The 3 bedroom apartment is nice and cozy with a nice size bedroom and bath with everything inclusive. The space will practically be empty during the summer so no roommates to worry about. Rent will be around \$395 for June and July but price is negotiable. Contact Alexis Flen at af02017@georgiasouthern.edu.

Housing

Female sublease available for Summer 2013 in Campus Crossings. 3B/3B - one room available. Rent is only \$494/ month with utilities, cable included! May's rent already paid! Two great roommates! With a spacious bedroom and closet. Personla bathroom as well. Contact Lindsay Barnette with more info. Call/Text 404-401-3752. Email lb02542@georgiasouthern.edu.

Housing

1, 2, 3, 4, 5, 6 and 7 bedroom houses for rent. Repairs in 24 hours. Contact 912-682-7468 or 912-764-6076. Available August 1, 2013.

For Sale

Student and Staff parking Chandler Road and Georgia Avenue now leasing parking spaces Spring semester 2013 look for \$100.00 discount in this issue of The George-Anne!

Something to sell?

Visit www.thegeorgeanne.com
or email ads1@georgiasouthern.edu.
Its free for students, staff and faculty!

PAID ADVERTISEMENT

Co-ops and Internships: Knowing the Difference

By: Taylor D. Terrell
Public Relations/Events Intern for Career Services

Most students are familiar with the concept of internships- gaining the necessary experience to increase knowledge of a desired field while utilizing current skills in order to become professionally prepared for future endeavors.

However, the term co-op may seem understated, but essentially co-ops and internships are both valuable to students who thirst for more experience in the various areas.

According to Heather Scarboro, Career Services Coordinator of Career Programs, students should "look for something that is going to give you relevant experience in the field he or she plans to go in."

For students who cannot seem to choose which option is best for them, here are the main differences between co-ops and internships:

Internships:

- ☐ Normally a semester long

- ☐ Can be paid or unpaid
- ☐ Below entry-level position
- ☐ Today's employers may seek more than one internship on résumé

Co-ops:

- ☐ Multiple semesters to years long
- ☐ Primarily paid
- ☐ Typically more common in STEM fields
- ☐ Work toward higher position within company

Ultimately, the biggest difference remains-co-ops are longer than internships giving you more experience within the respective time frame, and a chance for you to rotate positions within the company.

Students should seek internships that give them quality exposure into the field, and multiple opportunities as an intern will allow you to build a diverse portfolio. Scarboro says, "A good internship is going to give you that relevant experience prior to graduation." Following she mentions, "a co-op is going to give you the same thing an internship gives-just more of it."

Spring 2013 On-Campus Interview List

Friday, Feb. 1
WinShape Camps

Friday, Feb. 8
Southern Company
Brasfield & Gorrie
Frito-Lay
First Quality Enterprises, Inc.

Thursday, Feb. 14
Fastenal Company

Tuesday, Feb. 26 (Mock Interview Day)
PLS Logistics
C.H. Robinson
Eagle Health and Rehabilitation
Country Financial Services
Sherwin Williams
Exel
Elliot Davis
State Farm Insurance
GEICO

Philadelphia College of Osteopathic Medicine

Thursday, Feb. 28
Quad/Graphics
IDR, Inc.
Frito-Lay
Target Stores
University Directories
Consolidated Electrical Distributors, Inc.
Hormel Foods Corp.
CGI
Total Quality Logistics

Log onto your Eagle Career Net account to view continual updates on prospective employers, interview dates, and schedule your next interview! Some interviews will be scheduled at career fairs. For more information visit the Office of Career Services located on the first floor of the Williams Center.

PUZZLES/COMICS

18 Tuesday, Jan. 29, 2013

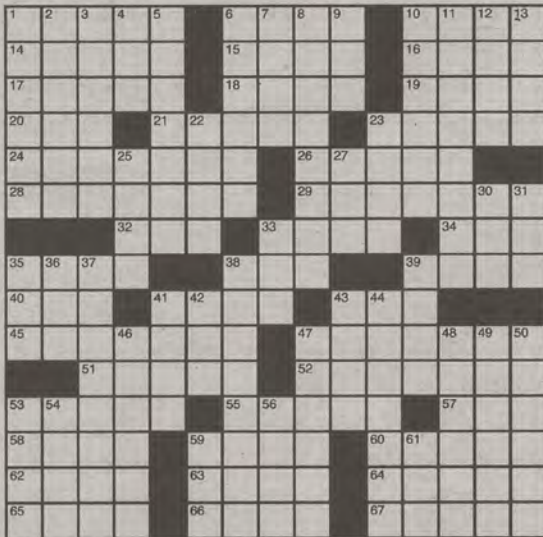
The George-Anne

Los Angeles Times Daily Crossword Puzzle

Edited by Rich Norris and Joyce Lewis

ACROSS

- 1 16-Across, for one
- 6 Friday portrayer
- 10 Flag down ____
- 14 Totally lose it
- 15 Modest reply to a compliment
- 16 Sported
- 17 Zimbalist Jr. of "77 Sunset Strip"
- 18 Playwright Akins and Tony winner Caldwell
- 19 Et ____: and others
- 20 Repeatedly, in poems
- 21 The first Mrs. Trump
- 23 Reaction to a pun, perhaps
- 24 Driver with a permit
- 26 "Monopoly cards
- 28 Snickered at
- 29 Start of a confession to a priest
- 32 Ed.'s workload
- 33 "Warty leaper
- 34 "You've got mail" Internet giant
- 35 Recedes to the sea
- 38 "Oedipus ____"
- 39 Beggar's request
- 40 Spanish aunt
- 41 "Robin's egg color
- 43 Cookie container
- 45 Concur about
- 47 Mary's little follower
- 51 "Scrub
- 52 Latvia neighbor
- 53 Sonic bursts
- 55 Make joyful
- 57 Cold War initials
- 58 Prefix with Chinese
- 59 Silly smile, maybe
- 60 Inline roller
- 62 Sly glance
- 63 ____ platter: Chinese menu
- 64 Tuckers (out)
- 65 Use intense light on
- 66 Laundry challenge
- 67 Begin



By Ed Sessa

DOWN

- 1 From long ago
2 *With 13-Down,
3 roasted aromatic
4 seed
5 Fish-and-chips
6 sauce
7 Reveal, in verse
8 Helps remember
9 *Oz ruler
10 School for
11 English princes
12 Place for
13 pumpernickel
14 Fly-...; air passes
15 Military medals,
16 e.g.
17 Really huge
18 *Carmen"
19 highlight
20 *See 2-Down
21 Victor signs
22 Turned right
23 Canyon
24 perimeters
25 Portuguese "she"
26 *Pop's partner
27 2012 British
28 Open winner
29 Erle
30 Peg on the links
31 35 Terminal
32 expectation; Abbr.
33 *Tom Hanks film
34 37 Lines on labels

Last Edition's Puzzle Solved

M	E	R	C	S		J	A	P	E			S	W	A	T
G	A	I	L	I		E	L	A	L			H	I	L	O
S	U	P	E	R	S	T	O	C	K			E	L	M	O
					U	P	T	O				A	L	L	O
A	T	E	M	P	O			F	O	O	D	F	I	S	H
R	E	T	E	S	T				K	L	M		S	T	Y
S	R	T	A					S	H	A	D	E	D		
	M	A	R	K	E	T	O	P	E	N	I	N	G		
			A	R	M	A	N	I					D	I	E
S	H	E		A	I	L				Z	T	I	L	E	S
H	O	M	E	F	R	E				E	R	N	E	S	T
R	O	O	S	T				L	A	N	E				
O	P	T	S			C	O	M	M	O	N	B	O	N	D
U	L	E	E		A	H	E	M			T	I	R	E	D
D	A	D	S		T	O	R	O			E	G	G	O	

- | | |
|-----------------------------------|------------------------------------|
| 38 Second-place
finisher | 48 Michael who
played Cochie |
| 39 Folk singer
Guthrie | 49 Title associated
with the 11 |
| 41 Swarming
stingers | starred answers |
| 42 Mauna ____ | 50 Most meager |
| 43 Kid around | 53 "Bird's beak |
| 44 Swears to | 54 Fit for military duty |
| 46 "Get Shorty"
author Leonard | 56 Fat removal,
briefly |
| 47 "Piece of packing
material | 59 Navig. aid |
| | 61 Christopher
Carson, famously |



Sudoku

9		8	3	7	2			
	3			9		8		
								2
6			7		4	3		
8								5
		7	5		3			4
3								
		6		3			1	
			8	4	1	7		3

Sports Talk

with The George-Anne analysts

Posted Wednesdays at 1 p.m.
on
thegeorgeanne.com

Katie Tolbert



Shakeem Holloway





 **ASPEN**
• HEIGHTS •

1/28-2/2


TOUR WEEK

1098 BERMUDA RUN (Next to Mellow Mushroom)

COME TAKE A TOUR & GET A GIFT CARD

912-335-3144
MYASPENHEIGHTS.COM

*Valid student ID required **Limit first 100 tours



THE BORO WILL NEVER BE THE SAME

m^{monarch}narch

301
GSU-2013

call us at 912.243.9025
like us on [facebook.com/monarch301](https://www.facebook.com/monarch301)
follow us on twitter: [@monarch301](https://twitter.com/monarch301)
www.monarch301.com