

Georgia Southern University

Digital Commons@Georgia Southern

The George-Anne

Student Media

3-29-1968

The George-Anne

Georgia Southern University

Follow this and additional works at: <https://digitalcommons.georgiasouthern.edu/george-anne>

Recommended Citation

Georgia Southern University, "The George-Anne" (1968). *The George-Anne*. 2560.
<https://digitalcommons.georgiasouthern.edu/george-anne/2560>

This newspaper is brought to you for free and open access by the Student Media at Digital Commons@Georgia Southern. It has been accepted for inclusion in The George-Anne by an authorized administrator of Digital Commons@Georgia Southern. For more information, please contact digitalcommons@georgiasouthern.edu.



THE George-Anne

SEE
WALLACE
INTERVIEW

Published By Students of Georgia Southern College

Volume 47

STATESBORO, GEORGIA 30458, FRIDAY, MARCH 29, 1968

Number 20

'Lettermen' Set For Spring Swing



"THE LETTERMEN"

Set to perform May 13 at beginning of Spring Swing activities.

"The Lettermen" in concert Monday, May 13, begin Spring Swing Week sponsored by the sophomore class. The concert beginning at 8 p.m. in Hanner Gym is free to students with I.D.'s. Tickets will not be sold for the performance, although non-students will be admitted on his or her I.D.

"The Lettermen" trio consists of Tony Butala, Gary Pike, and Jim Pike. Since their beginning

in 1961, they have appeared at more than 1200 colleges throughout the country and are currently on their twentieth cross-country tour.

Their first single recording, for Capitol, "The Way You Look Tonight," sold more than a million copies. Other recordings for which they are famous are "When I Fall in Love," and the medley of "Going Out of

My Head" and "I Can't Take My Eyes Off You."

A talent show will be held Tuesday, May 14, in McCroan Auditorium, sponsored by Wesley Foundation. The proceeds from the show will be donated to the Lamar Harris Scholarship Fund.

The GSC Band will present a concert Wednesday, May 15, in Sweetheart Circle. After the concert a bar-b-que will be held in the circle free to students with meal tickets. Following the bar-b-que a street dance in front of the Administration Building is planned by Student Congress.

A scavenger hunt will begin in Sweetheart Circle Thursday, May 16, at 7 p.m., sponsored by the sophomore class.

Friday, May 17 is track and field events day with the events beginning at 3:30 p.m.

Tentative arrangements include a concert for Friday evening's entertainment, according to Wayne Sanders, president of sophomore class.

A slave auction begins at 11 a.m. in front of the Administration Building Saturday, May 18. Men will be sold into bondage to the highest women bidders.

A tug-of-war between all organizations will be held at the lake Saturday afternoon. A \$5 entry fee is required for this activity.

Tentative plans include a Panhellenic sponsored activity for Saturday evening.

The religious services for Sunday morning will be sponsored by the Religious Activities Committee.

Who's Who Honor Gets Revisions

The requirements for students receiving the honor of being named to Who's Who in American Colleges and Universities at Georgia Southern College have been revised by the Who's Who Committee, under advisement from Student Congress.

A student must meet three minimum requirements before his selection can be approved by the Who's Who Committee. The following requirements were compiled by the committee: (1) a student must meet the academic requirements of 3.0 grade point average with a minimum of 50 activity points; a 2.5 grade point average with a minimum of 70 activity points; or a 3.5 or above grade point average with a minimum of 30 activity points; (2) a student must have obtained the minimum activity points required; (3) a student must be approved by a plurality of the present members on the Who's Who Committee.

The committee is composed of a total of 15 members. Dr. T. S. Pennington, professor of biology, serves as chairman. Other members are: Dr. Ralph K. Tyson, dean of students; Mrs. Virginia H. Boger, dean of women; Harold O. Maquire, dean of men; Shelton Evans, director of student activities; Kent Dykes, president of Student Congress; and one member from each academic division as appointed by the respective division chairman.

A transfer student will be considered on the same basis for his record for three quarters here and his record from the school which he previously attended.

The date for the selection of Who's Who candidates has not been released.

Easter Seal Drive To Get Underway

Donations will be collected and "Miss Easter Seal of GSC" will be named as the Easter Seal Campaign gets underway April 8-11, sponsored by Panhellenic and Interfraternity councils.

This national project, which also operates on state and lo-

cal levels, is a fund raising campaign for the rehabilitation of crippled children and adults.

On Thursday, April 11 the sorority girls will be dressed in bunny suits while collecting donations from local businesses and the fraternities will canvas residential areas. The Bulloch County Bank will remain open that night for deposits of large donations.

Each sorority and fraternity will sponsor a contestant in the "Miss Easter Seal Contest." The winner will be chosen according to the largest amount of money collected. She will be presented a trophy by Vince Doolley, State chairman of the 1968 Easter Seal Campaign, and a free trip to Atlanta where she will have a date with Edgar Chandler, University of Georgia football player.

Mrs. B. W. Knight purchased an eight-foot Easter bunny for the Easter Seal campaign. Tickets will be given away and a drawing for the bunny will be held in the College Gate cafeteria.

The purpose of the Easter Seal campaign is to assist disabled persons and their families in finding and making effective use of resources which will be helpful to them.

Last year Georgians contributed \$314,918.78 to the campaign. With the support of all students and Statesboro residents the campaign will be a great success," stated Pat Canady, President of Panhellenic.

Joyner Reveals Enrollment For Spring Quarter

Total Registration as of March 23, 1968, for Spring quarter '68 has been released by Lloyd Joyner, registrar.

Of this number 1830 are male students and the remaining 2043 are females. Of the 1830 male students and the remaining 2042 are females. Of the 1830 male students 432 are freshmen, 401 sophomores, 506 juniors, and 410 are seniors. The female enrollment of 2042 consists of 632 freshmen, 455 sophomores, 468 juniors, and 336 seniors.

At the beginning of fall quarter 1967, enrollments was 4407 students. It dropped to 4180 students for winter quarter 1968. At the end of winter quarter 108 students failed to meet college academic requirements; 120 students graduated and 80 failed to return because of transfers and other reasons.

INDEX

"Phaedra"	3
Wallace Interview	5
Masquers	6
Classified Ads	7
Old South Ball	8
News Briefs	9
Southern Belle	10
GPA	11
Sports	12-15

Plans Set For Women's Dorm

Plans for a new women's dormitory here are scheduled to be completed April 29, according to Dr. Zach S. Henderson, president. Bids should then be let sometime in May or June.

The three story structure, which should be completed in 1969-70, will be a 400 capacity dormitory.

Cielinski Campaigns For The SUSGA Vice - Chairmanship

Mibe Cielinski, junior political science major from Columbus, is running for vice-chairman of Southern University Student Government Association. He is opposed by the incumbent Charles O. Reynolds, University of Georgia representative.

Cielinski will be accompanied by Dean Boger, Sally Harvard, chairman of Judicial Council; and Joan Jordan, president of WSGA on his trip to the Southeastern division convention in Biloxi, Mississippi, March 28-30.

"I consider it a great honor to be able to represent the student body at the SUSGA convention," commented Cielinski.

If elected, Cielinski will be in charge of all junior colleges, appoint state chairmen, and be next in line to take over the chairmanship of SUSGA. Each member school will cast one vote Saturday, March 30.

"There is some difference in methods between myself and my opponent, although I'm happy with SUSGA as a whole. I have received encouragement from

many areas - no election is an election without opposition," Cielinski stated.



MIKE CIELINSKI

Carroll's Career Reveals Years of Service, Pleasure

By BECKY BOBO
Feature Editor

After having served as academic dean at Georgia Southern College for 20 years (1948-1968), Paul F. Carroll will retire in June 1968. Interested in students and the progress of the college, Dean Carroll has welcomed students into his office through out his career here. Yet, after 20 years, there are quite a number of interesting and amazing facts about GSC's academic dean that students have failed to discover.

EDUCATION
Dean Carroll attended Woford College in Spartanburg, South Carolina. During his college life he not only participated in sports — especially gymnastics—, but he also was a member of Pi Kappa Phi, Phi Delta Kappa and Phi Kappa Phi. Although enthusiastic about English and literature, the versatile college student decided to major in administration and educational programs. Later he attained his M.A. degree from Peabody. Thus he was ready to

begin his active career. As a past president of Norman Junior College and past president of the Rotary, Dean Carroll works not just with administrative duties but also in civics. He always finds time for extra activities as can be seen in the fact that he has served on the educational commission of Georgia Baptist Convention for two terms and was president of the Athletic Association of Georgia Junior Colleges.

LEISURE

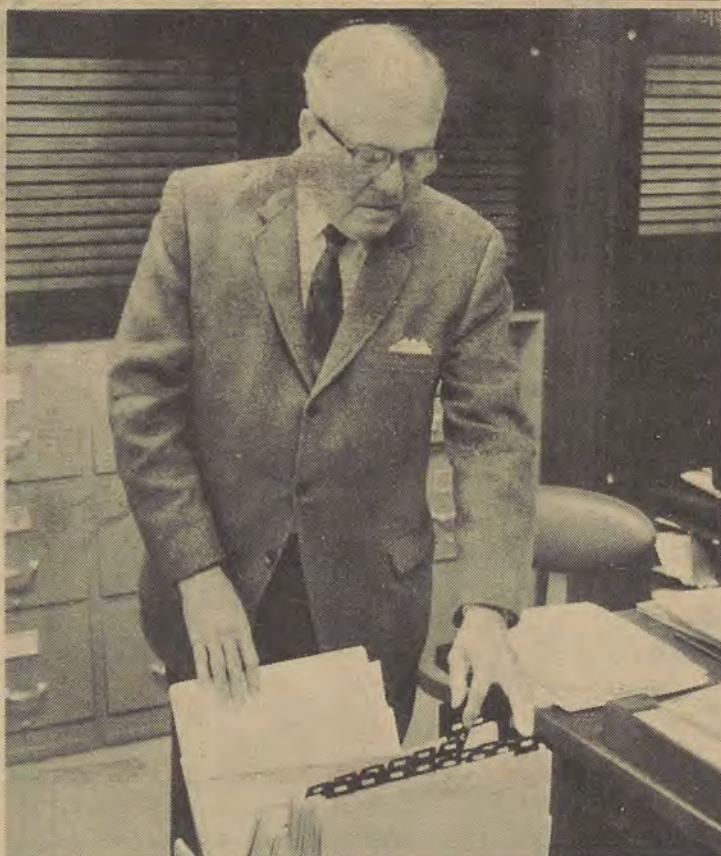
Surprisingly enough, Dean Carroll discovers time to be an avid reader! Originally an English major, he enjoys English and American literature, but lately he has been interested primarily in mysteries as an escape from the rigorous activities of being academic dean.

Dean Carroll relaxed in his office for a few minutes Tuesday. He tilted his head backward and gazed up as if recalling many experiences on campus. "All my years at Georgia Southern have been busy but pleasant," he remarked. "There have been years of continual development and expanding programs in higher education."

EXPANSION

When Dean Carroll first came here, there was only one degree offered — a BS in education. Since then, the college has developed a broad curriculum with a variety of degree programs and even a number of graduate courses and degrees. The dean expressed how "fortunate" he felt to have been academic dean here "at a time when the college was 'ripe' and very ready for the development

The GEORGE-ANNE March 29, 1968 Page 2



Dean Paul F. Carroll organizes files before beginning a busy day of administrative duties.



Dean Carroll confers with Secretary Miss Lizzie Norman.

and progress that has taken place."

Although Dean Carroll will retire in June, he will still maintain an interest in GSC. He stated that the college is "fortunate in the selection of new personnel." And furthermore, GSC will hold a special interest for the Carroll family as his granddaughter will enter as a freshman here in the fall.

FAMILY

Dean Carroll takes great pride in discussing his family. His son Bart is a professional dancer, performing presently in Las Ve-

gas. Bart appeared recently on the Ed Sullivan show. Dean Carroll has one daughter who resides here in Statesboro.

RETIREMENT

Paul F. Carroll has served GSC and remains as a link between the old and new programs on this campus. When he leaves in June, he will only be directing his services in a different channel. He plans to reside in Statesboro, relax, and enjoy having time to do all the things that he seldom found time to do while working behind the dean's desk.

GRAND OPENING

The Statesboro Performing Arts Guild

Knight Village

Statesboro, Ga.

We shall present musical concerts, dances and plays by recording artists and other well known performers. Other facets of our Guild will be classes for the youth in Ballet, Folk and Modern dances. In addition we shall have art and handicraft shows and sales.

For further information call Mrs. H. E. Simmons, President at 764-4480.

GRAND OPENING

Saturday, March 30

8:00-12:00 P.M.

Featuring the Popular Musical Group

"8 Up With Soul"

(Everyone Invited - Admission \$2.00)



Racine's "Phaedra" to be presented April 4 by the American Theatre Productions, Inc.

Jean Racine's 'Phaedra' Is The Spring CLEC Program

"Phaedra" Jean Racine's masterpiece, will be presented in McCroan Auditorium April 4 by the American Theatre Productions, Inc. in the continuing C-LEC program.

"Phaedra" is the tragedy of a passionate woman who falls in love with her step-son. The story has stirred creative talents from ancient Greek times to the present. Racine's "Phaedra" was written in 1677, and is an example of true French classical tragedy.

Robert Lowell's translation will be presented. The produc-

tion will be directed by Joseph Gistarak. Gistarak presents the play in the modern manner of movement and interpretation that creates attention.

"Phaedra" is played by Shirley Cox, a tragedienne of great authority. John MacAllan is an impassioned Hippolytus and Robert Blackburn conveys a volcanic anger as Thesus.

"Phaedra" is lavishly costumed with original creations executed by Jack Edwards.

Tickets will be distributed in the Foy Fine Arts Building upon presentation of IDs.

Nationals To Install KAs March 29-30

The Kappa Alpha Order, national social fraternity, will hold installation ceremonies March 29-30. Kappa Alpha, the first national chapter on campus, will be composed of the brothers of Sigma Epsilon Chi, a local fraternity which was formed in February of 1964 and has been

active on campus since its installation.

The out-of-town guests representing Kappa Alpha include Giles J. Patterson, Jr., and wife, national president, Jacksonville, Florida; Dr. and Mrs. W. McLeod Frampton, former national president and presently national chaplain, Orangeburg, South Carolina; and D. Elliott Dunwoody, Jr., and wife, former national president, Macon, Georgia. These national officers will participate in the installation of the Delta Theta chapter of Kappa Alpha.

The principal speaker for the Friday night banquet will be Dr. W. McLeod Frampton, minister of the First Presbyterian Church of Orangeburg, South Carolina. Dr. Frampton, a native of Charleston, South Carolina, received his B.A. degree from Presbyterian College. He then attended Columbia Theological Seminary where he received his B.D. degree. Presbyterian College, in 1948, conferred upon him the Honorary Doctor of Divinity Degree. After completing his term as national president of Kappa Alpha, he was appointed national chaplain of the order in 1961, and has since written his regular column, "Chaplain's



DR. W. McLEOD
FRAMPTON

Corner," for the KA Journal.

Initiation ceremonies will be performed by the Kappa Alpha brothers of the Universities of Auburn and Georgia. The initiation will take place Saturday, March 30, at the First Methodist Church of Statesboro.

Psychologist To Lecture Apr. 9

William Samuel Verplanck, psychologist, scheduled to speak here April 9 at 10:30 a.m. in McCroan Auditorium as the last in the Marvin S. Pittman Lecture series sponsored by the First Federal Savings and Loan Association.

Verplanck was chosen as the American Psychological Association Visiting Lecturer in the Marvin S. Pittman Lectures. He is the head of the Department of Psychology, the University of Tennessee.

The psychologist is a leading authority on concept formation, behavior theory and human operant conditioning.

Wilkes, Akins Earn Masters

David Wilkes and Billy Akins, graduate assistants, have accepted teaching assistantships at the University of Tennessee to work on their doctorates. They are presently working on their masters degrees in the history department.

**TO ALL NEW AND OLD
GEORGIA SOUTHERN STUDENTS**

A WELCOME

To Try Kentucky Fried Chicken

A 'Finger Lickin' Good

Taste Treat

We Have Just The Right Pack

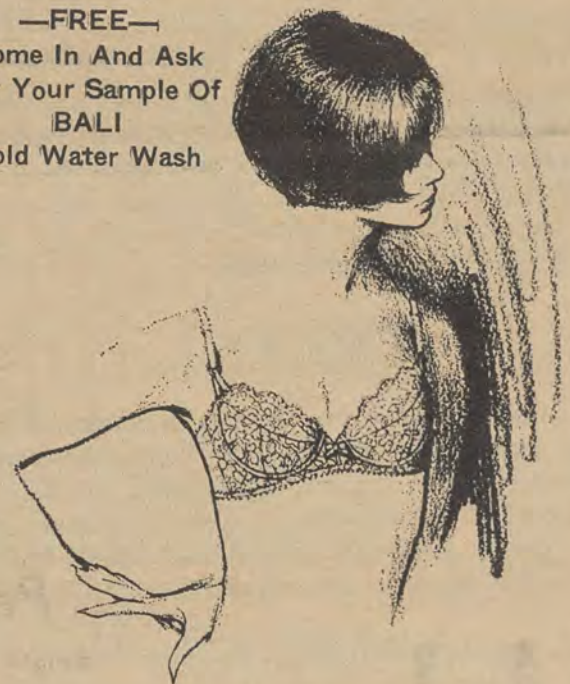
Its Called The Snak Pack

for **79¢**

Your Kentucky Fried Chicken

NEXT DOR TO THE PARAGON

**—FREE—
Come In And Ask
For Your Sample Of
BALI
Cold Water Wash**



Be prettily daring in

Bali-lo More-so

The loveliest decollete bra ever...for the more petite figure. Now, for the first time, all you could ask of nature you get in Bali-Lo More-So. Lighter-than-air push-up pads added to the famous Bali-Lo supplement your curves—naturally, subtly. Nylon lace and spandex. White A and B cups, 32-36. \$7.00.

WILL YOU SPEND FIVE MINUTES IN OUR
FITTING ROOM FOR A BETTER FIGURE FOR LIFE?



Every Bali has a bow

Tilli's

Fiber content—nylon/acetate/polyester/spandex

Editorials

REGISTRATION

Spring quarter's registration was quicker and easier due to changes in the length of time allowed for registration. There was no long line outside the gym which was formerly one of the many pains of registration.

Students received their cards upon entering the gym and merely had to complete the necessary forms. For those students who had to drop-add courses, all the necessary arrangements could be completed inside the gym. The complicated process of standing in line at the registrar's office and obtaining signatures from instructors and division chairmen was eliminated and made convenient and simple by the new method.

The system of paying fees was equally improved. Fees could be paid at one table and the stage was vacant except for special cases.

The only students whose registration was hindered were those who neglected to pay their traffic fines prior to registration. Those students whose records were not in accord with the business office were not allowed to register until they paid their fines and cleared the business office. Even though they paid their fines on the day of registration several hours before they were to register, their course cards were not available until 4:30 p.m.

Traffic fines are important and should be paid, but is it worthwhile to withhold the students course cards when other measures may be more feasible?

Why not withhold the student's grades at the end of the quarter of which the fines are due? This would provide ample time for him to return and pay his fines prior to the assigned hour of registration.

If a student still neglects to pay his fine after his grades are withheld, then the stricter method of withholding course cards could be employed.

Overall, the registration procedure was a definite improvement and those responsible for the changes should be congratulated.

EXODUS

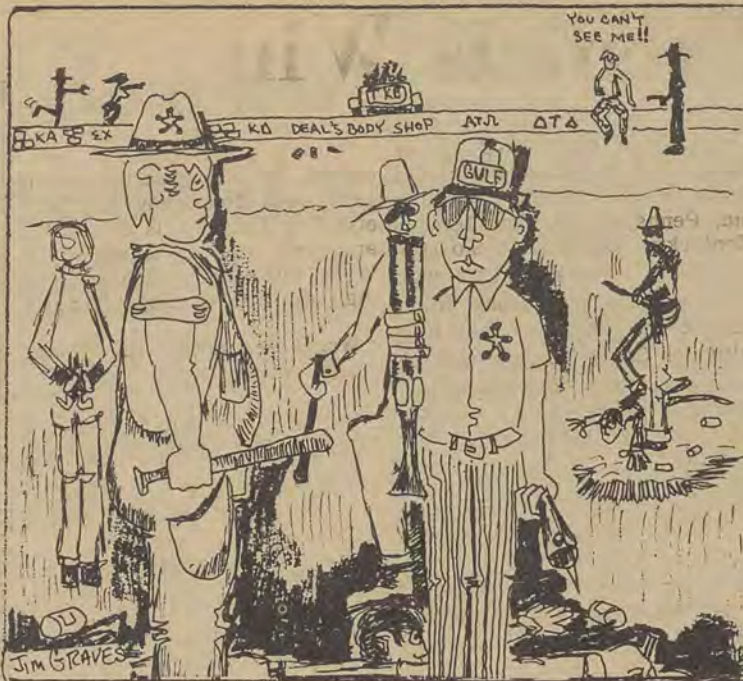
A number of Georgia Southern students managed to confirm a common faculty and administration opinion of the student body during the March 22 weekend. GSC students, frequently accused of general apathy and immaturity, added weight to the charges with Friday's mass migration from the campus.

After spending two days on campus many student felt compelled to return to their respective homes. The tireless campus excuse of "nothin' to do" could not be used. A variety of activities was available to students. A street dance, sponsored by Student Congress, was poorly attended although the weather cleared. The "Exit" provided folk music, dramatic readings and a chance for conversation. "A Happening", held at the College Gate Cafeteria, offered a picnic meal by candlelight and musical entertainment. Georgia Southern's baseball team played three games. There was something to do this past weekend.

Spring quarter offers many campus planned activities to interest students. Quality free movies are shown on Friday night. These films are expensive to order and the cost comes from the student activity fund. The athletic department has planned a full schedule for the baseball team. Student support is missing when only 250-300 fans attend games at a college of four thousand.

Masquers members are rehearsing for a spring presentation. Art exhibitions and musical performances are scheduled.

Students complain of the quality and quantity of college entertainment, yet fail to support activities that are offered to them. When attitudes change at Georgia Southern, situations will also.



WITH THE SPRING OF THE YEAR, CRAZY FORCES OF GBI AGENTS START MAKING APPEARANCES AT LOCAL INSTITUTIONS.

'Spring Swing,' 'Greek Week' — Too Much Of A Good Thing?

By ROBERT SESSIONS
Editor

Spring quarter is upon us. Traditionally, this is a quarter for excursions to the beach, trips to Roy's and an occasional bout with the books. One scheduled event which characterizes spring quarter is "Spring Swing." But now, in addition to "Spring Swing Week" a "Greek Week" is in the planning stages. This week of activities would be sponsored by the Interfraternity Council.

Everyone is familiar with the activities of Spring Swing. It is a week of concerts, dances and other entertainment all geared toward relieving tension on an overworked student body. The proposed "Greek Week" would essentially be the same with one exception, that of choosing an IFC Sweetheart.

It appears that the success of the established tradition of "Spring Swing" would be threatened by the proposed "Greek Week." Two weeks of entertainment, no matter how attractive the idea, is too much of a good thing. College is, contrary to public opinion, first a learning institution which develops one academically and only secondly

an institution for developing one socially.

Also, it is inconceivable that an organization which has in the past had a great deal of trouble in getting organized would undertake such a paramount task. The Interfraternity Council is presently on social probation, a condition which has prevented any detailed planning which such a complicated week of entertainment would require.

Spring Swing Week is one of the few surviving college traditions; one of the few which has kept its head above the flood of student apathy. It is one tradition which should not be destroyed, however the two week amusement park atmosphere which Spring Swing and Greek Week would bring to the campus would challenge the purpose of the college.

One solution to the problem would be a "Greek Weekend" when interference with regular school activity would be minimal. The best solution however would be for the Greeks to wait until fall quarter when hopefully they would be better organized and prepared to coordinate an effective Greek Week.

Emphasis Idea

A Challenge To Student Apathy

By SANDRA DYCHES
Managing Editor

Imagine a stage with Bobby Kennedy, George Wallace and Paul Harvey on the same program. Sound impossible? These speakers are made available to students at the Universities of Alabama, Vanderbilt, and Auburn. This past week the University of Alabama students participated in their annual "Emphasis Week '68" with a notable speaker, Robert F. Kennedy.

The "Emphasis" idea consists of an entire week during one school year devoted to well known contemporary speakers. This program allots time during the day to small group interviews with the speakers. Lectures by different speakers are scheduled each evening of the week. The final night of the week is devoted to a forum composed of several speakers, and a question and answer period for the students.

One might wonder what this has to do with Georgia Southern College, Statesboro, Georgia. GSC Students are accused of apathy and utter lack of intelligence and sophistication each quarter when they fail to attend forums and lectures. Georgia Southern has its share of lectures and programs by quality speakers, but these lecturers are not drawing cards. Experts in a variety of fields have spoken to small, unresponsive audiences. These authorities were excellent but failed to attract students.

The present situation at Georgia Southern provides a forum series sponsored by student Congress in cooperation with the director of student activities; a lecture series assembled by a lecture series committee; and Campus Life Enrichment Series coordinated by the Campus Life Enrichment Committee. The lecture series is a recently organized program planned within a set budget.

In the future the appropriations for the lecture series will come from the student activity fund as the CLES budget does now. Students will be paying for lectures they will not attend. These funds could be used to finance an emphasis week with top name speakers at Georgia Southern.

The individual departments would not be deprived of speakers in their respective fields by an emphasis week if they planned programs similar to the Marvin Pittman Lecture Series of the social science division. The funds for this series is allotted to the division by a local bank. Grants to other divisions would provide appropriations to finance lectures each quarter within different fields. Division chairmen should investigate the possibilities of such grants.

The CLES provides social and cultural entertainment effectively within its present program. The forum series is efficient for local or state lecture presentations. The lecture series committee, composed of faculty and student members, has received little faculty support or student attendance. The funds currently used to finance this series would provide a moderate scale to start an emphasis week. It's time Georgia Southern thought big, and left the ladies league speakers field to the garden clubs.

THE George-Anne

The opinions expressed herein are those of the student writers and not necessarily those of the college administration or faculty. Published weekly during four academic quarters by and for the students of Georgia Southern College. Entered as second class matter at



Georgia Southern College Post Office, Statesboro, Ga., 30458, under act of Congress. Offices located in Room 108, Frank I. Williams Center, Georgia Southern College. Telephone 764-6211, Ex. 246. Printed by Bulloch Herald Publishing Co., Statesboro, Ga.

March 29, 1968 Page 4

EDITORIAL BOARD

ROBERT SESSIONS
Editor

LARRY ENGLAND
Business Manager

SANDRA DYCHES	Managing Editor
SARA FOUNTAIN	News Editor
GREG DURRENCE	Circulation Manager
TIM O'LEARY	Assistant Sports Editor
KEN PURCELL	Assistant Sports Editor
ALAN BOND	Copy Editor
BECKY BOBO	Feature Editor
TERRY OWEN	National Advertising Manager
KENT DYKES	Assistant Business Manager
PAT KENAN	Classified Advertising Manager
BJORN KJERFVE	Photographer

— Yearly Subscription Rate - \$1.00 —

Wallace Predicts Win

The GEORGE-ANNE March 29, 1968 Page 5

By SARA FOUNTAIN
News Editor
And LINDA LANE
Assistant News Editor

Former Alabama Governor George Wallace stopped at the Savannah airport Tuesday for a press conference as part of a tour of several southern states. The Presidential candidate on the Third Party ticket responded to a wide range of questions.

Will Marvin Griffin remain as your permanent running mate?

"Mr. Griffin was kind enough

to stand in on the ballots in states that required a running mate — New Mexico, California, Pennsylvania, New Jersey, Kentucky, Oklahoma, South Carolina, Nebraska . . . I will probably select someone from outside the South for that job, although Griffin has said that he would not mind the position. I am not at liberty to disclose who my actual running mate will be."

Would you consider a woman for a running mate?

"As far as women are concerned, we don't discriminate in our state. You know the Governor of Alabama is a woman, and every woman seeking a post in the last election defeated the man she was running against."

Would you accept the Democratic nomination?

"I am completely divorced from the Democratic party and I expect no support at the convention. I don't have a chance of getting the nomination. I could care less, for if I were nominated I would not run on any platform they would adopt."

Do you feel that Lester Maddox's support or non-support would help or hinder you?

"Well, I would like to have his support, but I don't think it would hurt me if he didn't support me. Even if my wife came out in support for another candidate, I don't think it would hurt."

What do you think about Kennedy's decision to seek the Democratic Presidential nomination?

"It points out the differences of opinions existing in the country and the in-fighting that is going on in the Democratic party. Mr. Kennedy has a right to run for President. Everything we tried in the last ten years, Kennedy has advocated. Mr. Kennedy, along with Mr. Warren, Mr. Javits, and others, have advocated everything that has helped bring about the devaluation of the dollar, breakdown of law and order, and inflation."

As the press conference ended, Wallace inferred the split in the Democratic party would help him "win the Presidency." When asked if he would consider running again for Governor of Alabama, Wallace said "Why should I run for Governor? I'm gonna win the Presidency."



FORMER ALABAMA GOV. WALLACE

Delivers an informal press conference in Savannah, Ga.

Inquiring Reporter

How do you think this quarter's registration compared to last quarter's registration?

Rick McCormack, Augusta, Ga. "It was much easier this quarter for me, because last quarter I had so many traffic tickets that I couldn't even register."

Helen Bauer, St. Marys, Ga. "It was a lot better, especially the drop-add procedure."

Trip Wingfield, Macon, Ga. "I thought it took a lot less time, but paying fees could be simplified."

Elizabeth Bowers, Macon, Ga. "I think it was a lot easier, because they had the cards arranged alphabetically."

Mike Joesbury, Thomson, Ga. "I don't know, since I didn't do it right."

Mike Daniel, LaGrange, Ga. "Last quarter it took me an hour and a half to register and pay my fees and this quarter it took me thirty minutes to pay fees and all - so I feel that registration has improved one

hundred percent."

Jill Grier, Swainsboro, Ga. "I think it was faster and everyone seemed to know what they were doing."

Susan Bush, Dublin, Ga. "I thought it was real efficient and smooth-running and only took a matter of minutes for each detail."

Francis Barclay, Monroe, Ga. "Everything went much smoother on registration day, but drop-add seems a little more difficult and confusing."

Judson Hendry, Savannah, Ga. "Things went overall smoother."

Roger Hux, Warner Robins, Ga. "I think it was better organized. There was less confusion, and the lines were shorter."

Bill Haley, Athens, Ga. "I think it was the best one they have had yet."

Sandra Dunlap, Ashburn, Ga. "I think it was much better, because it was much shorter, and was much smoother."

GARF

Dear Garf,

I hear the Lettermen are coming to Statesboro. Any predictions as to how they will be accepted or how popular they will be at Southern?

Skiparope

Dear Skippie,

If you attended the last concert you were sure to observe the "redneck" qualities of the audience. But if student interest lives up to its reputation, no one will be there anyway!

Garf

Dear Mr. Funkel,

Who are you going to support for the Presidency? What is your outlook on the present situation?

Bobby A Go Go

Dear Bobby,

LBJ is in the saddle where he usually is instead of at the White House. Nixon is so so but not a Go Go and I wouldn't give Wallace a girdle for support. I would support only one

candidate for the presidency - me.

Mr. President

Dear Garf,

Have you eaten in the new dining hall this year? If so, what was your impression?

Curious

Dear Curious,

Outside of a sore hip, a case of severe dizziness resulting from attempting to catch a salad, and the same old food, I'm in great shape. Oh I can't help but compliment the delicious tea that is served - it would be better with sugar I think.

Garfie

Dear Garf,

Where have you been lately? I really missed you.

Single

Dear Sing,

I used to spend my time out near the county line, but now I go to the Metter Courthouse a lot.

Garf



JAMES MOSELEY

Authority on UFO's delivers lecture to students.

J. Moseley, UFO Expert, Believes in Saucer Craze

James W. Moseley, American authority on unidentified flying objects, lectured in McCroan Auditorium March 26. In a brief summary, Moseley stated that there have been unconfirmed reports of UFO's throughout history. The modern flying saucer craze began during World War II, Moseley revealed, when small speeding objects were sighted flying near the wings of airplanes. The objects were believed to be the secret weapon of the opposition by either side until the conclusion of the war. Consultation among countries revealed the objects to be unidentified.

Moseley said the origin of the term flying saucer began in 1947 when businessman Kenneth Arnold was flying his plane near Washington's Mt. Rainier. Arnold sighted large, incredibly fast objects which he reported to be "saucer" shaped. The name became the popular term for UFOs.

Other witnesses have reported cigar or egg shaped objects

moving at tremendous speeds, according to Moseley. The objects occur in frequent waves called flaps. The saucers have been reported to have electromagnetic fields which interfere with power lines and car operations. Saucers are described as being 12 to 15 feet in diameter.

Moseley showed a two minute film of a 1965 United States' sighting. The reel was taken by an amateur photographer when a saucer followed his car.

The speaker discussed the most recent observations of UFOs including the much publicized case of the Michigan Marsh Gases in 1966. Moseley said the U. S. Air Force experts uncovered facts that they were not publishing about this case.

Reports of fantastic flying objects and, in some cases intelligent un-earthly creatures, are constantly being made by witnesses whose training and veracity cannot be questioned Moseley related.

In a question and answer period following the lecture, Moseley stated that he was convinced of the existence of intelligently controlled objects operated by humoid creatures. He said that these creatures could possibly be from unexplored jungles on earth or from nearby Mars. The lecturer laughed at "little green men" theories. The creatures are humoid in appearance, from three to five feet in height and have flesh-toned skin Moseley stated.

Moseley founded the Saucer and Unexplained Celestial Events Research Society (S.A.U.C.E. R. S.) in 1954 to examine the entire flying saucer mystery. The society publishes a magazine, "Saucer News," recognized as the most authoritative source of information about UFOs.

The speaker has appeared on countless radio and television programs. He is a frequent contributor to "Argosy" and "Fate" magazines.

Geology Club To Show Film

The geology club will hold its first meeting for spring quarter April 3, in Herty 105 at 7:30 p.m.

A film entitled "The Eruption of Kilauea" will be shown. Kilauea is an active volcano on the island of Hawaii.

The film contains shots of fountaining lava that reached heights of 2,000 feet, the highest ever recorded, as well as closeup shots of other volcanic phenomena.

The meeting is open to the public.

Undecided Majors To Meet April 1

A meeting of all undecided majors will be held Monday, April 1 at 7:30 p.m. in the A.V. Room of the Rosenwald Library for those who desire assistance in deciding upon their academic goals.

The purpose of the meeting is to assist the student by testing, counseling, or providing information on opportunities available in a particular field.

The meeting will consist of an information giving session, a discussion, a chance for gathering data about oneself, an interpretation of data and a chance for individual counseling.

Anyone wishing assistance, but who cannot attend the meeting should contact Schuyler Reynolds in the Office of Student Personnel.



"GLASS MENAGERIE" CAST

Left to right: Carlton Humphrey, Roslyn Perkins, Alan Milton, Ginger Pyron and Director Hazel Hall.

Hazel Hall Announces Cast For Spring Quarter Production

Masquers spring production, Tennessee Williams' "The Glass Menagerie," is scheduled to play Wednesday - Friday, April 24-26, at 8:15 p.m. in McCroan Auditorium.

In the play featuring the life of a St. Louis family, Ginger Pyron plays the part of a crippled, shy daughter who lives in a world of little glass animals. Roselyn Perkins plays the role of mother, who lives in the past when she was a popular southern belle. Thinking the daughter should be married, mother encourages the son - portrayed by Carlton Humphrey - to invite

a friend to visit. The encounter with the gentleman caller, the part of Alan Milton, results in fiasco.

"The realistic, poetic play staged in 1930's demands special sound and light effects from a willing cast," according to Miss Hazel Hall, director.

Students who wish to work on the spring production in the capacity of set designers, set construction, and costumes should make application to Miss Hall.

GSC Represented At SEIFC Meet in Biloxi, Miss.

Three students and two members of the administration attended the convention of Southeastern IFC February 29-March 2 in Biloxi, Mississippi.

Representing the college were Harold Maguire, Dean of Men; Shelton Evans, Director of Student Activities; Ron Rabin, President of IFC; Hal Roach, IFC representative from Kappa Alpha Fraternity; and Wayne Sanders, President of Alpha Tau Omega Fraternity.

156 Students On Dean's List

156 students were named to the Dean's List Winter quarter, according to the Student Personnel Office.

4.5

Purvis Eric Brannen Jr.

4.3

Michael Jack Bailey, Norris Sutton Basemore Jr., Sidonne Jo Boyd, Phyllis Karen Cannon, Elizabeth Cooper Hull, Robert Lee Johnston, Kristie Marie Lane, Clifford Ray Shoebrooks, Frances Anne Straight, Harry Lamar Taylor, Patricia Elaine Wansley, Ladonna Evelyn Rogers.

4.2

Claudia Ann Croom, Thomas Alexander Kinchen, Jacquelyn Elaine Malcolm.

4.1

Bonnie Ann Adams, Annie Elizabeth Anderson, Margie Elaine Boyles, Miles Leon Brubaker, John Conley Dixon, Jane Elizabeth Dukes, Nancy Beth Flynt, Glenda Gail Fordham, Diana Claire Gulley, Claire Halpern, Emily Ann Harrell, Yet Chow Frederick Hu, Mary Burton Long, Robert Lamar McGregor, James Arthur Mcasters, Sara Ann Mitchell, Peggy Sandra Page, Jay Burton Potter, Larry Olemuel Purcell, Florence Ann Robertson, Carrol Yvonne Smith, Suzanne Thomas, James Ronald Tiller, Hoyt Weaver.

4.0

Thomas Franklin Adams, Dorothy Faye Altman, Lynn Stewart Anderson, James Richard Argroves, Alice Elizabeth Barnes, Frances M. Bates, Rebecca Ann Bobo, Gerald Thomas Bowen, William Jarrel Brumley, Eric Delmas Clark, Vicki Mae Cleveland, Linda Cherly Dixon, Margaret Dose Dunn, Cherry Gibbs Dupree, James Stanley Faircloth, James Elwood Friese, Joan Gay, Julia Ann Golladay, Clyde Leonard Goodrich, Harriet Griffin, Horace William Harrell, Jackie Jet Harville, James Hazel Hatfield, Charles Denton Hill Jr., Celia Anne Huff, Mary Frances Hurst, Roger Kent Hux, Bradford Dwayne James, Charles Danny Johnson, Cardo Rebecca Kennedy, Linda Schene-

beck Kennedy, Sharon Mamie Lasseter, Marilyn Louise Lester, Bonnie Faye Lewis, James Russell Lipford Jr., Harry Franklin Lott, Betty Altschul Matlock, Russell Ward McCollum, David McGahee Milikin, Jerry O'Neal, Cherry Olivia Parker, Billie Jeanne Putnam, James Harold Reddish, Linda Faye Renfro, Julie Ann Rivers, Bobby Gene Sammons, Judith Slater, Kathy Suzanne Smith, Joan Elaine Spain, Minnie Acosta Taylor, Mary Jane Thompson, Willa Gay Thompson, Kay Trowell Tullis, Dennis Murray Waldrop, Harry Glenn Watring, Henry Ashley Woods.

3.9

Nancy Banister, Richard Hassell Cotton, Leigh Essex, Sandra Jane Holcombe, Mary Virginia Holt, Robert Glenn Kight, Eva Marguerite Van Sickler, Dennis Gene Vaughan.

3.8

Janet Adele Ampsoker, Roberta Ann Atkinson, Brenda Jane Boyette, Hilda Jean Braswell, Robert Edward Brown, Thomas Russell Brown Jr., William John Burke, Linda Kay Clifton, Barbara Jean Cornett, Cheryl Culpepper Correll, Hillie Sue Davis, Sue Ann Dixon, Betsy Amelia Farmer, Robert James Fleming, Brenda Joyce Gaston, James Ed. Gay, Robert Hall, Jerry Wayne Harper, John Hughes Hinson, James Wilbur Holland Jr., Linda Dale Howe, Wanda Kay Hutchins, Billy Ned Jones, Gloria Jean Lawson, Gregory James Leonard, Ellen Dianne Lord, Ottis Kermit Lord, Jr., Susan Louise Majors, Robbie Ann Martin, Rebecca Elaine Miller, Kay Smith Morris, Franklin Currie Odom, Pamela Mariana Paxton, Barbara Fay Phillips, Jan Maxine Pyron, Larry Lewis Richardson, Gary Lee Riggin, Edwin Joseph Russell, Jackie Diane Shaw, Khalil Ibrahim Showket, Rick Steven Shuman, Jimmy Lee Simmons, Cheryl Myrl Smith, Jamie Frances Smith, Susanne Smith, Luther James Spaulding Jr., Judy Edna Stevens, Virginia Margaret Sutton, Judy Vickery Turner, Linda Faye White, James Pittman Williams, Johnnie Ruth Williams.



Why A Gant Shirt?

Because a Gant shirt is more than something to hang a tie on. It's a stimulant to make you feel good, look good throughout the day.

Because a Gant shirt—from its softly flared button-down collar to its trim Hugger body—is tailored with singular precision.

Because the fabrics in Gant shirts have élan in a gentlemanly manner; are exclusive and wear superbly.

This is why we carry a complete selection of Gant shirts. It's also why men of impeccable taste come to us for Gant.



DONALDSON-RAMSEY

Store For Men

STATESBORO, GEORGIA

Orders for class rings can be
made in the Lobby of the
Williams Center

Monday, April 8 from 8:00 a.m. until 3:00 p.m.

HERFF JONES COMPANY

Eliot Battle, Representative

Tifton, Georgia

New G-A Board Is Announced

Editorial board members for the spring quarter 1968 "George Anne" has been announced by Robert Sessions, editor.

New editors are Sandra Dyches, managing editor, Sara Fountain, news editor, Alan Bond, Copy Editor, and Becky Bobo, feature editor.

Editorial assistants are Linda Lane, assistant news editor, Bill Blankinship, assistant copy editor, Ken Purcell, and Tim O'Leary, assistant sports editors. Bjorn Kjerfve will serve as photographer.

The Business staff includes Larry England, business manager, Terry Owen, national advertising manager, Kent Dykes, assistant business manager, Pat Kenan, classified advertisements manager, and Greg Durrence, circulation manager.



THE 'GEORGE-ANNE' EDITORIAL BOARD

Left to right: Alan Bond, copy editor; Linda Lane, assistant news editor; Bill Blankinship, assistant copy editor; Becky Bobo, feature editor; Sara Fountain, news editor; Ken Purcell, assistant sports editor; and Robert Sessions, editor.

1968 "Reflector"

To Arrive In May, New Work Begun

The 1968 Reflectors are scheduled to arrive the latter part of May, according to Gordon Turner, editor.

Turner and the new editor for the '69 Reflector will visit Dallas, Texas April 7-9 to tour the Taylor Publishing Company. This will give the new editor an opportunity to study techniques and work on designs for next years Reflector.

Work was finished on this year's annual March 6. This quarter work on next years annual has begun in the way of photographing events.

DIRECTORIES

Phi Mu sorority is still selling student directories. They may be purchased from any sorority sister.

New "Miss GSC" To Be Chosen

The "Miss GSC" pageant, will be held on April 19, 8:00 p. m., in McCroan Auditorium.

David Peak, a Columbus, Ga. Jaycee, will assist Student Congress in organizing and providing judges for the pageant.

Candidates will be sponsored by campus organizations. Further details are pending.

Installment Services Held By Sororities

Alpha Delta Pi and Phi Mu installations last quarter marked the establishment of the second and third chapters of national social fraternities on this campus.

Installation ceremonies for the 39 members of Epsilon Pi chapter of Alpha Delta Pi began March 8 with a skit showing the transition from Gamma Sigma Upsilon to Alpha Delta Pi.

Officers of the Epsilon Pi chapter are: President, Bebe Blount; 1st Vice-President, Ann Cambell; 2nd Vice-President, Pam Carnes; Recording Secretary, Terry Tillman; Corresponding Secretary, Emily Harrell; Treasurer, Florence Ann Robertson; Chaplain, Ann Gregory; Registrar, Olivia Suggs; and

Reporter-Historian, Pam Hastings.

Thirty-eight members of Kappa Mu chapter of Phi Mu began their installation with an inspirational, March 9.

Officers of the Kappa Mu chapter are: President, Beverly Carlson; Vice-President, Dawne Shaw; Secretary, Candy Champion; Treasurer, Carolyn Hillock; Pledge Director, Betty Sutton; Membership Director, Nancy Parrish; Historian, Cookie Cook; and Chaplain, Miles Durante.

A tea held jointly for Alpha Delta Pi and Phi Mu at the Forest Heights Country Club climaxed the weekends' activities, March 10.

Classified Ads Now Available

The George-Anne is offering a program for classified ads, according to Robert Sessions, editor.

Anyone wishing to place an ad pertaining to lost and found, typing done, articles for sale, or miscellaneous should contact Pat Kenan, classified ad manager. Kenan can be reached at the George-Anne office from 11:30 - 1:30 and from 2:30 - 3:20 during the week.



The Handmade Soap & Candle Shop

Daily
9 - 5:30
Sunday
1 - 5:30

Highway 301 South — Statesboro

Bobbie Brooks

Liberated... from all the usual spring and summer looks, our fun-loving, freedom-loving pantdress. Cool striped 100% cotton with deft, dashy tailoring to compliment its sassy personality. Sizes 5-15.

\$10.



Minkovitz

"Co-Ed Corner" — 2nd Floor
Store Hours: Open 9:30 Daily Closed
Wed. Afternoon

Old South Ball Plans Revealed

By SHELLEY DOUGLAS
Staff Writer

With the arrival of spring and warm days, students are looking forward to the activities which have become tradition to the college. One of the most unique and oldest of these is the Old South Ball. Started in 1943 by an Old South history class taught by Dr. Jack Averitt, it was a weekend affair. Costumes were rented from Atlanta and beads were started, as they are today, weeks in advance. Girls looked for antebellum style dresses in attics and forgotten trunks, and accessories such as fans made of feathers, lace shawls, and heirloom jewelry were obtained from grandmothers. A tea was given at an antebellum home in Statesboro, and then the group moved to Birdville Plantation for the gala ball.

On April 20 at 8 p.m., the National Guard will become an antebellum home as Confederate soldiers, bearded Southern gentlemen and beautifully adorned ladies carry on the tradition to its twenty-fifth year. Repla-

cing the string quartet will be a group from Alabama, The Singing Swinging Counts. Student Congress will sponsor the dance free, and a trophy will be presented to the gentleman with the best beard.

Delta Sigma Pi Elects Officers

Delta Sigma Pi has elected new officers for spring and summer quarters. They are as follows: Pres., Robley Rigdon; Sr. V.P., Jerry Whitton; Vice President Carroll Anderson; Secretary John Baxter; Treas. Ron Lundstrom; Chancellor Bob Lovein; Historian Chuck Hopper. Mr. William Bolen is the faculty advisor.

New brothers included Horace Adams, Larry Blocker, Rod Harrell, and Benjie Hodges.

The brothers have a professional trip scheduled for Friday March 29 which will include a tour of Rich's and Carling Brewery of Atlanta.



Students enjoy food and entertainment at the newly opened "Happening" in the College Gate Cafeteria.

New 'Happening' Opens To Students

Psychedelic tablecloths, Joe Lawrence and the Five Steps of Rhythm, a standard meal, and candlelight — that's what's happening at "A Happening" in the back room at the College Gate Cafeteria.

The orderly back room of the cafeteria, with the addition of bright colors, soft lights, and music, became transformed to a psychedelic unusual atmosphere. The newly decorated room was the scene for the initial "happening" Friday, March 22, from 4:30-8:30 p.m. during the regular serving hours for the dinner meal.

Polka dot, daisy, and striped tablecloths decked tables lighted with candles, and waiters

served picnic suppers of fried chicken, sandwiches, potato salad, cake and tea. The band played while students either danced or just sat back and enjoyed the action. Streamers and colored lights added to the psychedelic effects.

"A Happening" will be held at regular intervals, according to Mrs. B. W. Knight who is planning the activity. She stressed that further developments depend on students response to the happenings. Either a band or the newly installed juke box will furnish music for the events. Standard meals will be served for the regular admission price of \$1.25.

Student Teachers Number 203

Two hundred three seniors have student teaching assignments Spring Quarter, according to the education department.

Under the direction of Dr. Don Hawk and their assigned teachers, students are placed in grammar, junior high, and high Schools of eighteen Georgia counties in grades and classes of their chosen teaching fields.

Each student who is planning to obtain a B.S. degree in his major is required to student teach during his senior year.

Russian, Italian To Be Taught

Two new courses will be added in the Division of Languages next fall, according to Fielding D. Russell, Division chairman.

Students pursuing A.B. degrees will have the opportunity to take either of the two new courses, Russian or Italian, in fulfillment of language requirements.

Under the new catalogue students seeking B.S. degrees in biology and majors in voice will also be permitted to take the added language courses.

Dr. Henderson, Dr. Donald Hawk Attend Meeting

Dr. Zach S. Henderson and Dr. Donald Hawk attended a conference on integration in public schools March 20-22 in Charlotte, North Carolina. Dr. Donald Hawk is in charge of practice teaching at the college.

The purpose of the conference was to discuss ways of helping student teachers prepare to go out into schools in underdeveloped areas.

**ITS
A
SIZZLER
TOP CHOICE
SIRLOIN
STEAK
\$1.64
Where?**

At The

Paragon

S. Main St.

Next Door To The

Kentucky Fried Chicken

EAGLE TENPINNERS BOWLING LEAGUE Begins Competition

April 4 (Thursday)

AT 7:00 P.M. AT THE SKATE-R-BOWL

A league for GSC students only, 2 boys and 2 girls constitute a team. This is a handicap league. Therefore, everyone has an opportunity to win even if you have never bowled before.

Trophies will be awarded to team and individual winners plus other interesting awards.

Special Rates — 3 Games \$1.00



BUT SOFT, WHAT LIGHT . . . ?

Numerous attractive lamps have been added to the campus. In many cases, the lights illuminate places which were previously dangerous, such as tricky stairways and sudden drops in sidewalks.

Phi Beta Lambda To Hold Radio Auction On WWNS

A radio auction, sponsored by Phi Beta Lambda business fraternity, will be held April 4 from 8-11 p.m. over station WWNS. Members are contacting local merchants for items to be used in the auction. This project not only provides funds for projects, but gives the college student contacts and experiences he would not otherwise receive. The items purchased will be delivered by members.

The project is part of a program for Future Business Leaders of America Week set by Governor Maddox for March 24-30.

The week started with a joint project of the chapter and the Statesboro High FBLA chapter—the signing of the proclamation by Mayor Bowen. Other plans for the week are posters and displays, coffee for Business Division faculty and a special meeting of the organization.

SEE US

ABOUT THAT

CUT...

Wood's Barber Shop

University Plaza

Blow Yourself Up TO POSTER SIZE

2 ft. x 3 ft.—only \$4⁹⁵ ppd.

Get your own BLO-UP Photo Poster. Send any black and white or color photo from wallet size to 8" x 10" or any negative from 2 1/4" x 2 1/4" to 4" x 5". We will send you a 2 ft. by 3 ft. BLO-UP.

3 ft. x 4 ft.—only \$7⁹⁵ ppd.

Send any black and white or color photo from 4" x 5" to 8" x 10" or any negative from 2 1/4" x 3 1/4" or 4" x 5". We will send you a jumbo 3 ft. x 4 ft. BLO-UP.

Any printed document can similarly be made into giant size posters—diplomas; drawings; programs; pop-art, etc. Original returned undamaged. Poster is shipped rolled in a sturdy self-store tube.

Send check or money order (no C.O.D.) to:

IVY ENTERPRISES, INC.

431-70th Street (Dept. 297), Guttenberg, N.J. 07093

Spring FREE SALE

ONE paperback
BOOK FREE
with PURCHASE
OF FOUR BOOKS

BOOKS
GIFTS

SUPER
FREE DEAL
ONE DOLLAR
IN TRADE
WITH every
10⁰⁰ purchase

FREE BOX SET
STATIONERY
3⁰⁰ purchase of stationery

STATIONERY
GIFTS

HALLMARK 1968 DATE BOOK FREE AS LONG AS 500 LASTS

- Just Arrived: Easter Cards, Peanut and Snoopy Dolls,—
- Banners And Posters and The Beautiful New Spring—
- Line of Eaton and Hallmark Personal Stationery—

Come in and let these friendly folks serve You.



Linda Greenway



Jackie Shaw



Rita Stewart



Ron Mattox

Register for Free Trade Certificates
Shop Kenans First

KENAN'S

Selbald Street STATESBORO Phone 764-2514

GIFTS • BOOKS

Stop in Today while selections are Best





Spring walked in the door of the George-Anne office. A cheerful orange dress; long, light-brown hair; sparkling blueish green eyes, the girl flashed a smile: "I'm Donna Brown. You wanted to take some pictures."

The slender sophomore is still a teenager, but not for long. Wednesday is her 20th birthday.

Donna is majoring in home economics and now has her home in Gainesville, but "I have spent all of my life in Decatur." Another one of those broad smiles. "I love water skiing," she said and continued to praise Southern in the same breath.

Spring quarter has begun. To Donna it means becoming 20, but a lot of other things too . . . sun, hot weather, swimming, a time of happiness, of cheerfulness.

Southern Belle



SPRING '68: VINTAGE STUFF



RANDY STELK JR., recreation major and Kappa Alpha brother, invites friends and fraternity brothers to drop by the Oxford Shop between the hours of 1 and 6 p.m. to show you the new spring line.

Stanley Blocker and Oxford Sport Coats from \$35.00

Stanley Blocker and Oxford Blazers from \$35.00

Corbin and Jefferson Trousers \$12.95 to \$28.00

Cricketeer Suits, from \$59.95



USE YOUR C & S CHARGE

USE OUR LAY-A-WAY PLAN

BIC Medium Point 194

BIC Fine Point 254



Despite fiendish torture dynamic BIC Duo writes first time, every time!

BIC's rugged pair of stick pens wins again in unending war against ball-point skip, clog and smear.

Despite horrible punishment by mad scientists, BIC still writes first time, every time. And no wonder. BIC's "Dynamite" Ball is the hardest metal made, encased in a solid brass nose cone.

Will not skip, clog or smear no matter what devilish abuse is devised for them by sadistic students.

Get the dynamic BIC Duo at your campus store now.

WATERMAN-BIC PEN CORP.
MILFORD, CONN.



Quarterly Average Easy To Determine

"A person's Grade Point Average (GPA) really doesn't tell him what he needs to know about his academic position," according to Jack Lewis of the Registrar's Office.

The GPA merely reveals a student's present academic average; it does not tell him what grades he must make to achieve the 2.0 necessary for graduation. In fact, many students are unaware of the method used to compute their GPA, added Lewis.

The grading system used is based on one (1) hour courses; the value of each grade is A plus 4.5, A 4.0, B plus 3.5, B 3.0, C plus 2.5, C 2.0, D plus 1.5, D 1.0, F, 0. To compute his GPA, a student must multiply the value of the grades earned by the hour values of the course

which he carried, this number should then be divided by all hours attempted and earned. The result is his Grade Point Average. For example: A C plus in a 5 hour course, a B plus in a 3 hour course and a B in a 5 hour course would equal 2.5 times 5, plus 3.5 times 3, plus 3 times 5 or 38.0 divided by 13 hours. the GPA is 2.9.

Students with GPAs of less than 2.0 can use this system to determine what grades must be made to achieve the 2.0 necessary for graduation. A student with a "D" average at the end of his first quarter has a deficit of 15 grade points; to attain a "C" average for his overall work at the end of the next quarter, he must earn 30 grade points. Unless these points are earned within the quarter, additional points must be earned in the following quarters.

A Grade Point deficit is much easier to offset during one's freshman and sophomore years, according to Lewis. Each successive quarter of low grades increases the difficulty of raising the GPA if it is low.



DELTA TAU DELTA SWEETHEART

Susan Majors, a sophomore social science major from Claxton, has been selected Sweetheart of Delta Tau Delta colony. Miss Majors is a member of Delta Zeta sorority.

Free Movie Set For April 5, 8 p.m.

"Goodbye Charlie," starring Debbie Reynolds, Tony Curtis, Pat Boone, and Walter Matthau, is the free movie to be shown Friday, April 5 at 8 p.m. in McCroan Auditorium. It is a sophisticated comedy which presents a different point of view of reincarnation.

Playboy screenwriter Charlie Sorrel, after being shot by a jealous husband, falls to a watery grave and is reincarnated as a beautiful girl (Debbie Reynolds). He appears at his Malibu beach house, much to the surprise of his friend Tony Curtis who is trying to straighten Charlie's debt-ridden estate.

The mental changes Charlie has to make from a carefree bachelor before his death to a beautiful girl in his reincarnation, often makes "Goodbye Charlie" very broad, both in situation and innuendo.

Delta Tau Delta To Hear Speaker

Carl E. Stipe, vice-president of the Southern Division of Delta Tau Delta, national social fraternity, will visit the campus Saturday, March 30.

Stipe will talk to the brothers about the obligations they must meet to obtain chapter status at the college. He also plans to meet with several college officials during his visit.

INTERVIEW

Interviews for possible job placement will be held today by the General Electric Credit Corporation in Room 115 of the Williams Center.

Movie Schedule Is Announced

The free movies for Spring Quarter — Are: "Goodbye Charlie," April 5; "How to Steal a Million," April 12; "Courtship of Eddie's Father," May 3; Free Movie, May 10; "Naked Prey," May 24; and "Patch of Blue," May 31.

The free movies are financed from the student activity fees which students pay each quarter.

Activities Calendar

Saturday, March 30—First District Piano Festival, 9 a.m. - 5 p.m.

Thursday, April 4—Phi Beta Lambda Radio Auction, 8-11 p.m., Station WWNS. "Phedre" CLEC, 10 a.m., 2 p.m., 8:15 p.m., McCroan Auditorium.

Friday, April 5—Free Movie, "Goodbye Charlie."

Saturday, April 6—First District Solo and Ensemble Festival. National Teacher Exam, 8:30 a.m., McCroan Auditorium.



SALE

**STARTS TODAY !
Latest Spring Fashions
in This Sale**



**Entire Stock
of Spring
DRESSES
and
SKIRTS**

• Pamela Martin • Austin Hill
• Country Miss • Juniorite

20% off

SPECIAL REDUCTION ON SWIMWEAR
DURING THIS SALE

All Sport Coats

All Suits

DEANS GATE & HUNTER HAIG

1/3 off

One Group Of
SERO and EAGLE SHIRTMAKERS

DRESS SHIRTS

Short & Long Sleeve

3 for \$14.50 2 for \$9.50 1 for \$5.00



THE
EAGLE Store

ON CHANDLER ROAD adjacent to GSC Campus

Gymnasts Place Seventh in NAIA



1967-68 GYMNASTICS TEAM

Left to right: Trainer Mark Comer, Bill Godwin, Danny Harrison, Gary Barnett, Jimmy Kirkland, Randy Kirkland, Charles

Eunice, Tony Blasko, Denny Davis, Coach Ron Oertley. Kneeling, Assistant Coach Hutch Dvorak.

Jimmy Kirkland Second In Vault

By KEN PURCELL

Jimmy Kirkland placed second in the long horse vaulting competition to lead Georgia Southern's gymnastics team to a seventh place finish in the NAIA National Championship, March 22-23 at Ft. Hayes, Kansas.

Kirkland, a senior, placed second in a field of more than 50 vaulters. Kirkland led the field at the end of preliminary vaults but slipped to second place in the finals.

Tony Blasko, Bill Godwin and Gary Barnett, the remaining three Southern gymnasts to make the trip to Kansas, all reached the finals in at least one event.

Blasko reached the finals in three events. The talented freshman placed tenth in the high bar competition, tenth in vault-in and eleventh in free exercise. Blasko ranked seventh in the all-round competition which includes all events except the trampoline.

Bill Godwin, also a freshman placed sixth in free exercise and Gary Barnett, a sophomore, finished tenth in that event.

The Eagle foursome racked up 21 points in the meet for seventh place honors, four places higher than last season's team that tallied only three points. Northwest Louisiana, sporting a balanced slate of talent, won the national meet this year with 102 points. Northeast Louisiana came in second, paced by a Japanese import who captured an amazing five first places. The outstanding performer placed first ahead of Southern's Jimmy Kirkland in the long horse vault.

The team was accompanied by head gymnastics coach Ron Oertley and assistant coach Hutch Dvorak. Both were pleased with the team's performance. According to Dvorak, "All the boys did a real fine job. I heard many compliments on our team from coaches and judges at the meet."

Oertley and Dvorak recently flew to Chicago for the Illinois state high school gymnastics Championship to recruit for next year's team. Dvorak was optimistic about getting some fine gymnasts from that meet.

With or without a new crop of talented freshmen, it appears that Southern will have another outstanding season in store for next year. Only three seniors were on this year's squad which posted a successful 7-2 record in dual competition.



IRISH

INSIGHTS

By TIM O'LEARY
Assistant Sports Editor

O'LEARY

"C'mon boys, let's get our support up, number 10 is back in the coaches box." Coach Bill Spieth walked confidently and determinedly among his ballplayers as they looked dejectedly at one another. They had just been beaten by Springfield College from the Gateway to the North and by the Wake Forest Demons who threw a little leaguer at them. Times were getting a bit rough for the mediocre Eagles.

"You boys are just a bunch of rinky-dinks. You looked terrible out there." Coach J. I. Clements stood before his players as they gathered sullenly around him. His words hit hard and this was the intention. The opposition had made the Eagles look as though they were only

good enough to play in the pre-lim fostered by Pony Leaguers in a game against the city comedians. In other words, last Saturday, did anyone put a tent on that circus at Eagle Field?

Then things started to happen. The Davidson Red Sox, loaded with their usual amount of talent supported by their equally ambitious coach, rolled in to town in their double decker Trailways. The big bats exploded, Captain Jimmy Dobson continued to be selfish by not giving up a run, again, and after the smoke had cleared, the Davidson Dandies had another loss. Really wonder if they came to play ball or just to take in-field practice!

After another impressive victory over Davidson the following day, there were still a few skeptical fans concerning whether we were able to win against the better teams.

Nationally-ranked Guilford, unbeaten, came to Statesboro Wednesday. They were 9-0 record-wise, impressive but still unbeaten in this area. We hit well and our pitching was clutch, if I do say so myself. The Eagles won 4-1 and we could now prove that we were capable of beating the best, or those that use to be.

Coaches J. I. Clements and Bill Spieth are both responsible for this. They are there to win and to keep the Eagles going. We are going to continue to win from now on because we are tired of looking 'bush.'

Oh, by the way, wonder if it would be possible if we pitchers could take a little bit more batting practice before game-time. And could you please get us some more baseballs, especially before I pitch. Might lose at least one everytime I start a game. Do you believe anyone could really Go-pher that?

Gym Trip Unique

The Southern gymnastics team's recent journey to the NAIA nationals was more than just an ordinary trip—it was a unique experience.

Coach Ron Oertley and Assistant Coach Hutch Dvorak accompanied gymnasts Gary Barnett, Bill Godwin, Tony Blasko and Jimmy Kirkland on the trip that took in both the northern and western parts of the United States. Before going to Ft. Hayes, Kansas, where the national meet was held, the team went to Illinois to work out with the Southern Illinois University gymnastics team.

The GSC team was impressed with the abilities of the SIU gym team. Barnett described them like this: "They are the best in the nation. They even have three men trying out for the Olympic team."

The national meet was something new to Godwin and Blasko, both freshmen, but to Kirkland and Barnett it was not.

Kirkland and Barnett went to the nationals last season. In 1967 Barnett finished ninth in vaulting. This year he was tenth in free exercise. Kirkland moved up from eleventh to second in vaulting.



Jimmy Kirkland demonstrates form in long horse vault. Kirkland placed second in that event at the NAIA Nationals last weekend.

Next Week

BASEBALL

Saturday, March 30—Furman at Greenville, S. C.

Monday, April 1—Erskine at Statesboro.

Tuesday, April 2—Erskine at Statesboro.

Wednesday, April 3—Carson-Newman at Statesboro.

Thursday, April 4—Carson-Newman at Statesboro.

Friday, April 5—Pembroke at Statesboro.

TENNIS

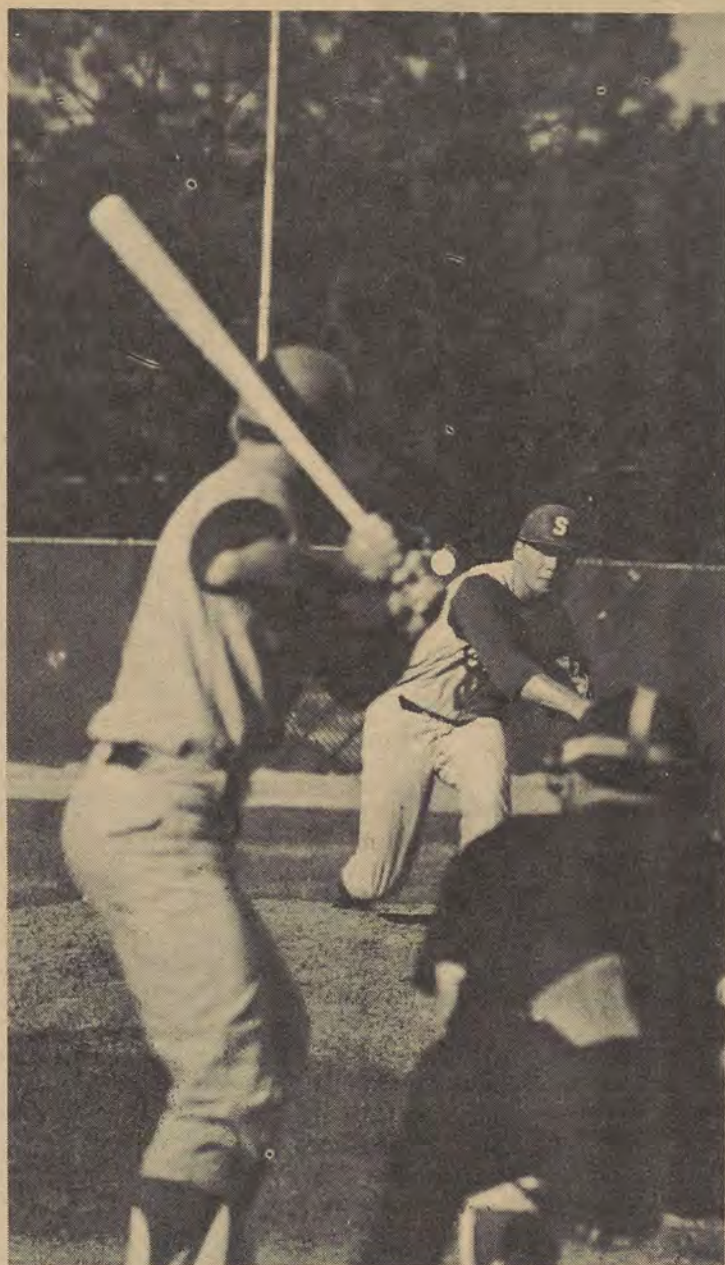
Wednesday, April 3—Armstrong State at Savannah.

Thursday, April 4—Armstrong State at Statesboro.

GOLF

Wednesday - Saturday, March 27-30 — Palmetto Intercollegiate Tournament, Orangeburg, S. C.

J. I. Clements, baseball coach, requests that students return fouled baseballs to the ballboys. Several balls have been lost this season because persons retrieving them did not return them to the ballpark.



Ace hurler Jimmy Dobson fires pitch to Davidson batter en route to his third victory of the season. Dobson pitches a four-hit shutout and struck out 10 as the Eagles won 7-0.

Eagles Dump Guilford 4-1

Set Season Mark at 7-6

By KEN PURCELL

Wednesday's 4-1 Eagle victory over Guilford improved Southern's baseball record to 7-6 marking the first time since the first game of the season that the Eagles had been over .500.

Tim O'Leary scattered 10 hits in posting his second victory without a loss for the Eagles. Guilford's only run came in the seventh inning when the Quakers' catcher smashed a home run. All other Quaker hits were singles.

Jimmy Fields continued to pace the Eagle attack for the season by collecting a triple and a single in four trips to the plate.

EAGLES START RIGHT THEN SLIP

Coach J. I. Clements' diamond men started the season right with an opening game victory over South Carolina, 7-3, but failed to gain another win in their next five starts.

In the second half a doubleheader on March 16 Allan Simmons gave up three earned runs in the first inning and went on to lose a 4-1 decision to East Tennessee.

Simmons settled down after that disastrous initial inning and pitched six scoreless frames before being relieved by Tim O'Leary in the eighth.

On March 18 Jim Goodwin, a transfer from the University of Miami (Florida), had his opening debut on the mound for Southern spoiled by a 3-1 loss to Virginia Tech.

In the second game of the doubleheader on March 18, Tim O'Leary and Herbie Hutson held Kentucky in a 2-2 tie until the game had to be called after 11 innings on account of darkness.

Southern lost a pair of 5-4 encounters on March 19, one to Virginia Tech and one to Kentucky. Richard Billingham was tagged with the first loss. Ronnie McLemore took the blame for the second of the day.

Jimmy Dobson returned to the mound on March 20 to set the eagles straight again by chalking up his and the Eagles' second victory of 1968 with a convincing 12-0 bombardment of Virginia Tech. Dobson gave up only two singles in the seven inning affair, while striking out seven VPI batters.



DOBSON

In the second game of that twin-bill Allen Simmons kept the Eagles rolling with a three hit 5-0 shutout over Kentucky. Since beginning that game Simmons has pitched 16 innings without giving up an earned run.

Clements' charges collected their third straight victory on March 22 with a 9-4 upheaval of Wake Forest. Tim O'Leary took credit for that win, going the distance for Southern.

The following day Wake Forest regained its composure by defeating the Eagles 5-3. Jim Goodwin gave up only one earned run but a mass of miscues gave him his second loss of the year.

A 7-1 beating by Springfield College in the second game March 23 set the Eagle record at 4-6 but a 7-0 win over Davidson on March 25 and an 8-1 victory over the same team on the following day evened Southern's mark at 6-6. Jimmy Dobson made it his third victory

in as many starts in winning the first game with Davidson and Allen Simmons raised his record to 2-1 with a six-hit pitching performance in the second game.

FULL SLATE NEXT WEEK

A full slate of baseball action is planned for the coming week with a game every day except Sunday, April 7.

The Eagles end this week's play by traveling to Greenville, South Carolina, to challenge Furman University on Saturday, then they return to Statesboro for a game with Erskine on Monday. The Eagles again play Erskine on Tuesday followed by games with Carson-Newman on Wednesday and Thursday.

On Friday and Saturday the Southern nine will play single games with Pembroke State plus a second game with Furman on Saturday.

THE
GEORGE-ANNE

SPORTS

March 29, 1968

Page 13

Baseball Roster

PITCHERS				
NAME	CLASS	AGE	LETTERS	HOMETOWN
Richard Billingham	Jr.	21	0	Winter Park, Fla.
Jimmy Dobson	Sr.	21	2	Warner Robins, Ga.
Charles Dozzett	Jr.	22	0	Albany, Ga.
Jim Goodwin	Jr.	20	0	Miami, Fla.
Sam Hendrix	Frosh.	19	0	Savannah, Ga.
Herbie Hutson	Frosh.	18	0	Savannah, Ga.
Ronnie McLemore	Sr.	21	1	Columbus, Ga.
Mike O'Leary	Soph.	19	0	New Bedford, Mass.
Tim O'Leary	Sr.	21	1	New Bedford, Mass.
Frank Pierce	Jr.	23	0	Kingsree, S.C.
Allen Simmons	Sr.	21	3	North Augusta, S.C.
Dick Steel	Soph.	21	0	Toccoa, Ga.
Don Wiggins	Frosh.	19	0	Cuthbert, Ga.
CATCHERS				
Terry Childers	Jr.	20	0	Augusta, Ga.
Bill Krull	Frosh.	18	0	Davton, Ohio
John Lynch	Soph.	20	0	Atlanta, Ga.
John Patrick	Jr.	20	0	Savannah, Ga.
Barry Pevey	Sr.	21	0	Springfield, Ga.
INFIELDERS				
Tom Brown	Jr.	21	0	Jupiter, Fla.
Scotty Carpenter	Jr.	21	0	Savannah, Ga.
Ron Cawthon	Jr.	20	0	Augusta, Ga.
Dannv Gordon	Frosh.	18	0	North East, Md.
Eddie Harden	Frosh.	18	0	Warner Robins, Ga.
Ralph Lynch	Sr.	22	2	Atlanta, Ga.
Jimmie Walters	Sr.	21	0	Sarasota, Fla.
Pete Whitfield	Sr.	22	0	Aiken, S.C.
OUTFIELDERS				
Jimmy Fields	Soph.	20	1	Savannah, Ga.
John Hoyt	Soph.	19	0	Waverly, N.Y.
Robert Jones	Frosh.	18	0	Warner Robins, Ga.
Mike Long	Sr.	21	1	Warner Robins, Ga.
Roddy Michale	Jr.	20	0	Groveland, Fla.
Monte Tillman	Jr.	20	0	Augusta, Ga.
Jim Veryard	Frosh.	18	0	Islip, N.Y.
Terry Webb	Soph.	19	0	Perryville, Ky.
COACHES				
J.I. Clements	Head Coach			
Bill Spieth	Assistant Coach			

Eagle Baseball Action



Eagle Terry Webb is thrown out white attempting to steal second base in game with Davidson. Eagles won 7-0 for their fifth victory of the season.

Netters Down Emory Record Now At 1-2

The Eagle tennis team opened its season with a surprising 6-3 victory over Emory University March 22 but was unable to score against either Virginia Tech on March 23 or Appalachian State on March 25, losing 9-0 on both occasions.

The Eagles netters were in fine form for the Emory match, collecting three points in singles and three in doubles.

Tom King, Sonny Harmon and Ken Purcell all won their singles matches. King, playing in the number three spot for Southern, downed Dave Branyon, 6-2, 2-6, 6-2, for an Eagle victory, while Harmon outlasted Jack Giles, 7-5, 2-6, 6-2, in the number four match. Purcell defeated Chris Rodie, 6-1, 6-2,

while playing number six for Southern.

All three Eagle doubles duos chalked up wins in the Emory match. Björn Kjerfve and Eddie Russell led the way by downing Emory's Tim Askew and Bruce Davis, 4-6, 6-2, 6-0, in the number one match.

King and Jerry Poppell took another three-setter from Giles and John Sheffield, 2-6, 8-6, 6-2, and Harmon and Harm Brandt defeated Branyon and Dave Littlefield, 6-2, 6-3, to complete the Eagles' domination in doubles.

Coach Frank Ramsey's netters were outclassed by both Virginia Tech and Appalachian State. The Eagles failed to win a point in either of the two matches.



Björn Kjerfve gets ready to return shot in match with Appalachian State. Kjerfve was playing doubles with partner Eddie Russell.

Tennis Box Score

Georgia Southern 6
Emory University 3

SINGLES: Tim Askew (E) defeated Eddie Russell (S) 6-3, 6-1. Bruce Davis (E) defeated Björn Kjerfve (S) 3-6, 7-5, 9-7. Tom King (S) defeated Dave Branyon (E) 6-2, 2-6, 6-2. Sonny Harmon (S) defeated Jack Giles (E) 7-5, 2-6, 6-2. John Sheffield (E) defeated Jerry Poppell (S) 6-3, 6-2. Ken Purcell (S) defeated Chris Rodie (E) 6-1, 6-2.

DOUBLES: Russell - Kjerfve (S) defeated Askew-Davis (E) 4-6, 6-2, 6-0. King-Poppell (S) defeated Giles-Sheffield (E) 2-6, 8-6, 6-2. Harmon-Harm Brandt (S) defeated Littlefield-Branyon (E) 6-2, 6-3.

Virginia Tech 9
Georgia Southern 0

SINGLES: Jay Collins (V) defeated Sonny Harmon (S) 6-2, 6-0. Jack Burrows (V) defeated Björn Kjerfve (S) 6-2, 6-3. Prebel Ware (V) defeated Eddie Russell (S) 6-2, 6-2. Bob Burlison (V) defeated Tom King (S) 6-3, 6-3. Kent James (V) defeated Harm Brandt (S) 6-1, 6-3.



Eddie Russell smashes service in doubles match with Appalachian State. The Eagles lost match 9-0.

Chuck Samuels (V) defeated Ken Purcell (S) 4-6, 6-3, 8-6.

DOUBLES: Collins-Burrows (V) defeated Russell-Kjerfve (S) 6-0, 6-1. Ware-Burleson (V) defeated King-Poppell (S) 6-2, 6-2. Samuels-McDonald (V) defeated Harmon-Brandt (S) 6-2, 6-3.

TENNIS ROSTER

NAME	Class	Ht.	Age	Ltrs.	Home
Harm Brandt	Frosh	5-9	19	0	Holland
Sonny Harmon	Jr.	6-2	20	0	Eastman, Ga.
Tom King	Sr.	5-11	21	1	Macon, Ga.
*Björn Kjerfve	Sr.	6-2	23	2	Sweden
Jerry Poppell	Sr.	6-3	21	0	Patterson, Ga.
Ken Purcell	Jr.	6-1	20	0	Crystal River, Fla.
*Eddie Russell	Jr.	5-11	20	2	Statesboro, Ga.
*—Co-captains					
Coach: Dr. Frank Ramsey					

GSC Golfers Enter Tourney

The Southern Golf team travels to Orangeburg, South Carolina this weekend for the Palmetto Intercollegiate Golf Tournament, March 27-30.

This year's squad, coached by Paul Carr, has an abundance of talent, despite the return of only three lettermen. Dennis Raith, Mike Josebury and Eddie Register will combine their experience with a host of freshman and sophomore players in hope of producing a successful season on the course.



Jack Hartness prepares for South Carolina tournament.

THE COLLEGE SHIELD



THE DEFINITION OF A LIFE Insurance Policy

A life insurance policy is just a tinne - yellowed piece of paper, with columns of figures and legal phrases, until it is captized with a window's tears. Then it is a modern miracle, Aladdin's Lamp. It is food, clothing, shelter, education, piece of mind. It is the sincerest love letter ever written.

It quiets the crying of h hungry babyy at night. It eases the heart of a bereaved widow. It is a comforting whisper in the dark silent hours of the night. It is new hope, in the dark silent hours of the night. It is new hope, fresh courage and strength for the widow to pick up the broken threads of life and carry on. It is an education for the sons and daughters. A chance for a career, instead of the need for a job. It is a father's parental blessing to his children on their wedding day.

It is the function of a father's hopes and dreams for his family's future. through life insurance he lives on. There is no death. life insurance exalts life and defeats. It is the premium we pay for the privilege of living after death.

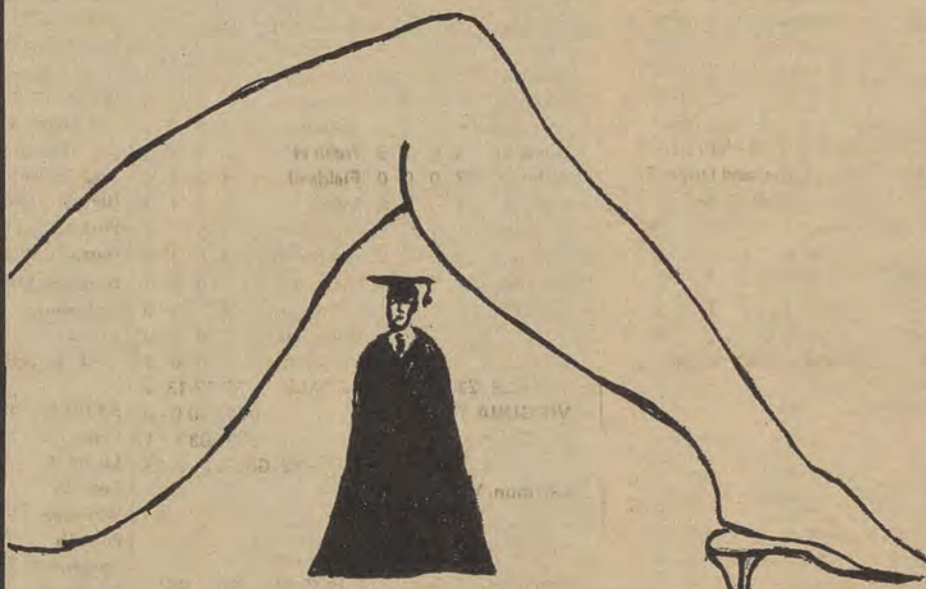
JACK C. POPPELL, General Agent
National Life & Accident Insurance Company
Nashville, Tennessee
College Division
Local Address
Knight Village Shopping Center
Representative
JAMES D. COOPER

JOSEPH E. LEVINE
PRESENTS

THE GRADUATE

STARRING
ANNE BANCROFT AND DUSTIN HOFFMAN
KATHARINE ROSS

Nominated for **7 ACADEMY AWARD**



WEIS STATESBORO

Adm. \$1.50 Each
No Passes Please
Shows Mon-Fri. 5,7,9
Shows Sat-Sun. 1,3,5,7,9

Dodson, O'Leary Still Undefeated

S. C.	ab	r	h	bi	G.S.C.	ab	r	h	bi
Jones 2b	4	1	2	0	Fields cf	4	1	1	0
McCord ss	4	1	2	1	Cawthon 2b	4	1	1	0
Caldwell lf	3	0	1	1	Michele rf	4	0	1	0
Cash 1b	2	0	0	0	Lynch 1b	4	1	1	3
Partyka 3b	4	0	0	0	Brown 3b	3	1	1	0
Eagle rf	4	0	1	0	Long lf	3	1	2	1
Floyd cf	1	0	0	0	Walters ss	3	0	2	1
Fair cf	3	0	0	0	Childers c	2	1	0	0
Mauro c	1	1	1	0	Dobson p	2	1	1	2
Godwin c	1	0	0	0	Webb cf	0	0	0	0
Reitmeier	1	0	0	0					
Land p	0	0	0	0					
Evans p	2	0	0	0					
Medlin p	0	0	0	0					
Stanley ph	1	0	0	0					
Anderson	0	0	0	0					

TOTALS 31 3 7 2 TOTALS 29 7 10 7
SOUTH CAROLINA 000 001 020 - 3
GEORGIA SOUTHERN 000 070 00 - 7

E - Walters, Long. PO-A USC 24-16, GSC 27-13.
DP - Walters, Cawthon, and Lynch, Brown, Cawthon, and Lynch, McCord, Jones and Cash, Godwin and Jones. LOB - USC 6, GSC 1. HR - Dobson, Lynch. S - Childers. SF - Caldwell.

Pitching Summary	IP	H	R	ER	BB	SO
Reitmeier	3	3	0	0	0	3
Land, L (0-1)	1 1/2	4	5	5	1	0
Evans	2 2/3	2	2	1	2	
Medlin	1	0	0	0	0	1
Dobson, W (1-0)	9	7	3	0	4	5

WP - Land. U - Howard and Reams. T - 2: 13.

E. Tenn.	ab	r	h	bi	G.S.C.	ab	r	h	bi
Barr 2b	3	1	1	0	Fields cf	5	0	0	0
Davis rf	5	1	3	0	Cawthon 2b	4	1	1	0
Goodson ss	5	1	2	0	Webb rf	4	0	1	1
Corn c	4	1	2	3	Lynch 1b	3	0	2	0
Ruth'ford	4	0	0	0	Brown 3b	4	0	0	0
Jones lf	4	0	1	0	Long lf	4	0	1	0
Pruett cf	4	0	0	0	Walters ss	3	0	1	0
Pendry 1b	4	0	0	0	Pevey c	4	0	0	0
Overbay p	3	0	1	0	Simmons p	2	0	0	0
Broadway p1	0	0	0	0	Tillman ph	1	0	1	0
Bailey cr	0	0	0	0	O'Leary p	0	0	0	0

TOTALS 37 4 10 3 TOTALS 35 1 7 1
EAST TENNESSEE 300 000 010 - 4
GEORGIA SOUTHERN 001 000 000 - 1

E - Lynch, Brown, Rutherford. PO-A - East Tennessee 27-6, G.S.C. 27 - 10. DP - Brown, Cawthon, and Lynch. LOB - East Tenn. 9, G.S.C. 10. 2B - Corn. 3B - Cawthon. HR - Corn.

Pitching Summary	IP	H	R	ER	BB	SO
Overbay, W (1-0)	7	5	1	1	1	7
Broadway	2	2	0	0	0	0
Simmons, L (0-1)	7	8	3	3	1	6
O'Leary	2	2	1	1	1	0

HPB - By Overbay (Cawthon, Lynch) U - Howard and Reams. T - 2: 30.

V. Tech	ab	r	h	bi	G.S.C.	ab	r	h	bi
Rosson rf	4	0	3	1	Fields cf	2	0	0	0
Wellisch cf	4	0	1	0	Cawthon 2b	2	0	0	0
Oates 2b	4	0	3	1	Michele rf	2	0	0	0
Webb ss	1	0	0	0	Lynch 1b	3	0	0	0
Childress 3b	0	0	0	0	Long lf	3	1	1	0
Doyle 1b	3	1	2	0	Walters ss	3	0	1	0
Rupp lf	4	0	1	0	Carpenter 3b	3	0	1	0
Shorter c	2	1	1	1	Childers c	0	0	0	0
Schockley	3	0	1	0	Tillman ph	1	0	0	0
Settle pr	0	1	0	0	Goodwin p	2	0	0	0

TOTALS 28 3 12 3 TOTALS 22 1 3 0
VIRGINIA TECH 001 011 0 - 3
GEORGIA SOUTHERN 000 000 1 - 1

E - Schockley, R. Webb. PO - A - VPI 21 - 13, G.S.C. 21-16. DP - Webb, Oates, and Doyle 3; Cawthon and Lynch. LOB - VPI 9, G.S.C. 5. 2B - Rosson, Doyle, Walters. S - Childress, Webb.

Pitching Summary	IP	H	R	ER	BB	SO
Schockley, W (1-0)	7	3	1	0	6	2
x Goodwin, L	5	11	3	3	1	2
Hutson	2	1	0	0	1	1

HPB - By Goodwin (Webb, 2). WP - Goodwin, V - Herb and Giles. T - 1: 47

x Faced 3 men in 6th.

KY.	ab	r	h	bi	G.S.C.	ab	r	h	bi
Workman	4	0	0	0	Fields cf	5	0	0	0
Bailey cf	4	1	0	0	Long rf	5	0	0	0
Anderson ss	0	1	0	0	Cawthon 2b	4	0	0	0
Hicks c	4	0	0	0	Webb lf	4	0	0	0
Adams 1b	4	1	1	0	Lynch 1b	3	0	0	0
Cravens lf	2	0	0	0	Walters ss	3	1	1	0
Robida 3b	4	0	1	1	Brown 3b	4	1	0	0
Geary rf	3	0	0	0	Pevey c	3	0	1	0
Sallee lf	1	0	0	0	Childers pr	0	0	0	0

Sheanshang p	0	0	0	O'Leary p	2	0	1	0
Sills p	1	0	0	Tillman pr	0	0	0	0
				Michele ph	1	0	1	2
				Hutson p	1	0	0	0

TOTALS 33 2 3 1 TOTALS 35 2 4 2
KENTUCKY 011 000 000 - 2

GEORGIA SOUTHERN 000 000 200 - 2
E - Geary, Walters. PO - A - Kentucky 30 - 10, G.S.C. 30 - 13. DP - Hutson, Walters, and Lynch. LOB - Kentucky 6, G.S.C. 6. S - Anderson.

Pitching Summary	IP	H	R	ER	BB	SO
Sheanshang	6 2/3	4	2	0	2	6
Sills	3 1/2	0	0	0	1	4
O'Leary	7	3	2	2	3	3

WP - O'Leary. U - Herb and Harvey. T - 2: 20.

V. Tech	ab	r	h	bi	G.S.C.	ab	r	h	bi
Settle 2b	4	0	1	0	Long cf	4	0	1	0
Vinson ss	1	0	0	0	Walters ss	3	1	2	1
Webb ss	1	2	0	0	Michele lf	3	0	0	0
Rupp ph	0	0	0	0	Webb rf	4	1	1	1
Elwell cf	3	1	1	1	Lynch 1b	3	0	0	0
Shroy rf	4	1	1	0	Carpenter 3b	2	0	0	0
Horton lf	4	0	1	1	Cawthon 2b	2	1	2	1
Dean 1b	3	0	1	0	Childers c	2	1	1	0
Foster 3b	0	0	0	0	Billingham p	2	0	0	0
Childress 3b2	1	1	0	0	Fields pr	0	0	0	0

Wilkins c 1 0 0 0
Ellis p 1 0 0 0
Oates p 2 0 1 0
Wellisch pr 0 0 0 0

TOTALS 26 5 7 2 TOTALS 25 4 7 3
VIRGINIA TECH 000 020 3 - 5
GEORGIA SOUTHERN 121 000 0 - 4

E - Foster, Vinson (2), Ellis, Horton, Webb, Childress, Wilkins, PO - A - VPI 21-10, GSC 21-13. BP - Walters, Cawthon, and Lynch, Wilkins and Childress. LOB - VPI 6, GSC 7. 2B - Horton, and Long. S - Carpenter, Childers. SF - Cawthon, Elwell.

Pitching Summary	IP	H	R	ER	BB	SO
Ellis	4	3	4	0	3	1
Oates, W (1-0)	3	4	0	0	1	1
Billingham, L (0-1)	7	7	5	2	5	3

U - Harvey and Herb. PB - Wilkins. T - 2: 17.

KY.	ab	r	h	bi	G.S.C.	ab	r	h	bi
Bailey cf	3	1	1	1	Long cf	3	0	1	0
Robida 3b	4	0	1	0	Walters ss	2	0	1	2
Anderson	2	1	0	0	Michele lf	3	0	3	0
Hicks c	3	0	1	2	Webb rf	3	0	0	0
Adams 1b	4	1	1	0	Lynch 1b	4	0	0	0
Sallee lf	4	1	2	1	Carpenter 3b	4	1	1	0
Cravens rf	3	0	0	0	Cawthon 2b	4	1	0	0
Workman	3	0	1	0	Pevey c	4	1	2	1
Combs p	2	0	0	0	McLemore p	1	0	0	0
Crumbaugh	0	1	0	0	Fields ph	0	1	0	0
Sills p	1	0	0	0	Hutson p	0	0	0	0

TOTALS 29 5 7 4 TOTALS 28 4 8 3
KENTUCKY 012 200 0 - 5
GEORGIA SOUTHERN 000 400 0 - 4

E - Adams, Walters, Pevey, Cravens, Carpenter, Anderson. PO - A - Kentucky 21 - 9, GSC 21 - 6. OF - Combs and Adams; Cravens and Hicks. LOB - Kentucky 7, GSC 10. 2B - Sallee, Hicks, Robida.

Pitching Summary	IP	H	R	ER	BB	SO
xCombs	3	5	4	3	4	3
Sills, W (1-0)	4	3	0	0	1	2
McLemore, L (0-1)	4	5	5	3	2	2
yWiggins	0	0	0	0	2	0
Hutson	3	2	0	0	0	3

x faced 4 men in 4th. y faced 2 men in 5th.

WP - McLemore, Sills. U - Herb and Harvey.

T - 2: 27

V. Tech	ab	r	h	bi	G.S.C.	ab	r	h	bi
Rosson lf	3	0	0	0	Long cp-rf	5	2	1	0
Wellisch cf	2	0	0	0	Michele lf	3	2	1	1
Elwell cf	1	0	0	0	Tillman lf	0	0	0	0
Oates 2b	3	0	1	0	Walters ss	2	2	1	1
Doyle 1b	3	0	1	0	Webb rf	3	1	2	3
Webb ss	3	0	0	0	Fields cf	1	2	1	0
Rupp rf	3	0	0	0	Lynch 1b	4	1	1	1
D. Foster	2	0	0	0	Brown 3b	3	1	1	1
Wilkins c	2	0	0	0	Cawthon 2b	3	0	1	1
J. Foster p	0	0	0	0	Childers c	4	0	3	1
Martin p	1	0	0	0	Wiggins pr	0	1	0	0
					Dobson p	2	0	0	0
					Hutson pr	0	0	0	0

TOTALS 23 0 2 0 TOTALS 30 12 13 9

VIRGINIA TECH 000 000 0 - 0

GEORGIA SOUTHERN 900 003 x - 12

E - None. PO - A - VPI 18 - 12, GSC 21 - 8. 2B - Cawthon. VPI 3, GSC 7.

Pitching Summary	IP	H	R	ER	BB	SO
X J. Foster	0	4	7	7	3	0
Martin	6	9	5	5	4	3
Dobson, W (2-0)	7	2	0	0	1	7

X faced 7 batters in 1st. Martin 2

PB - Wilkins 3, U - Thompson and Herb. T-2: 00.

KY.	ab	r	h	bi	G.S.C.	ab	r	h	bi
Bailey cf	2	0	0	0	Long cf	3	1	1	1
Anderson	1	0	0	0	Michele lf	3	0	0	0
Crumbaugh	0	0	0	0	Tillman lf	1	1	1	0
Robida 3b	3	0	1	0	Walters ss	2	0	0	1
Sallee lf-rf	3	0	0	0	Webb rf	3	0	1	0
Hicks c	2	0	0	0	Fields cf	1	0	1	1
Weston rf	1	0	0	0	Pevey c	4	0	1	0
Adams 1b	3	0	2	0	Lynch 1b	3	2	1	0
Cravens rf	3	0	0	0	Brown 3b	2	1	1	0
Workman	3	0	0	0	Cawthon 2b	3	0	1	1
Starrick ss	1	0	0	0	Simmons p	2	0	1	0
Mitchell p	1	0	0	0					
Feldhaus p	1	0	0	0					
Wright p	0	0	0	0					

TOTALS 24 0 3 0 TOTALS 27 5 9 4

KENTUCKY 000 000 0 - 0

GEORGIA SOUTHERN 010 202 x - 5

E - Sallee, Bailey. PO - A - Kentucky 18 - 6, GSC 21 - 6. LOB Kentucky 4, GSC 9. 2B - Adams.

Cawthon, Long, Tillman. SF - Walters.

Pitching Summary	IP	H	R	ER	BB	SO
x Mitchell	3	4	3	2	3	2
Wright	1	4	2	2	0	0
Feldhaus	2	1	0	0	1	1
Simmons, W (1-1)	7	3	0	0	1	7

x faced 3 men in 4th.

PB - Hicks. U - Herb and Thompson T - 1: 56

W. For.	ab	r	h	bi	G. S. C.	ab	r	h	bi
Myers 2b	5	0	0	0	Field cf	4	2	3	2
Robinson	4	0	1	0	Long rf	5	1	1	0
Berry 1b	4	0	1	0	Michele lf	4	1	0	0
Heitman c	3	0	0	0	Tillman 1b	1	0	1	0
Laughridge	4	1	0	0	Lynch 1b	4	1	1	0
Bergman cf	3	1	1	0	Walters ss	3	1	0	1
Garland lf	4	0	1	0	Brown 3b	4	1	1	1
Bartlett rf	4	1	1	1	Childers c	4	1	1	1
Blanton p	1	1	1	3	Cawthon 2b	4	1	2	0
Branham p	1	0	0	0	O'Leary p	4	0	1	0
Callison ph	1	0	1	0					
TOTALS	37	9	11	9					

BASEBALL CONTEST

Name
 Address or
 Dormitory of Student
 City and State

Pick the Winners
Win \$10.00 Cash!

Circle all the winners and receive \$10.00 cash. If no one gets all the winners the person naming the most winners will receive \$5.00 in cash from The George - Anne. In case contestant tie the prize money is equally divided.

1. In each ad on this page you will find two college teams scheduled to compete this week. Check the teams you think will win.
2. Mail or bring your entry to The George-Anne office located in the Frank I. Williams Center not later than **11:00 a.m. Sat.** Letters must be postmarked before this time.
3. Members of The George-Anne staff are not eligible to win.
4. Members of Faculty, Administration, are Eligible.
5. Only TWO ENTRIES per person.

The Statesboro Telephone Co.

"serving Statesboro and Bulloch County"

9 South Main St. Statesboro

Yankees vs. Tigers (Mon., April 1)



Rockwell Manufacturing Corporation

Giants vs. Indians (Tues., April 2)

Medical Center Pharmacy

OPPOSITE HOSPITAL

Hours: Mon. - Sat., 9 -9—Sun. 2-7

Mets vs. Pirates (Mon., April 1)

The Singer Co.

Your Singer Service Center For:

Typewriters & Musical Entertainment

Indians vs. Angels (Mon., April 1)

Sea Island Bank

and it's

SOUTHSIDE BRANCH

Just Off the GSC Campus

Red Sox vs. Senators (Tues., April 2)

STATESBORO

Buggy & Wagon Co.

"Complete Line of Hardware"

1 Courtland St. 764-3214

White Sox vs. Cardinals (Mon., April 1)

WWNS Radio

Hear College Football

EVERY SATURDAY!

Tigers vs. White Sox (Tues., April 2)

Pyrofax Gas Corp.

Bottle - Bulk

6 E. Vine St. 764-2700

Orioles vs. Yankees (Tues., April 2)

T. J. Morris

WHOLESALE FOOD DISTRIBUTORS

I. G. A.

Franchise for South East Georgia

Athletics vs. Astros (Mon., April 1)

SUPPORT THE

Contest

ADVERTISERS

Bulloch County Bank

"service with a smile"

Orioles vs. Senators (Mon., April 1)

Johnson's Minit Mart

"When You Run Out of Something Run
 Out to the Minit Mart"

"Open 8 Days A Week"—FAIR ROAD

Dodgers vs. Cubs (Mon., April 1)

Music Box

"if it's Musical, WE HAVE IT!"

27 W. Main St.—Statesboro, Ga.

Ph. 764-3613

Phillies vs. Twins (Tues., April 2)

Four Points Service Station

Tires
 Tubes



Wash
 Polish

Road Service Accessories Lubrication

Ph. 4-2153

S. Main St.

Twins vs. Phillies (Mon., April 1)

City Dairy Co.

Grade A Dairy Products

Pasteurized Homogenized Vitamin D Milk

Red Sox vs. Braves (Mon., April 1)