

Georgia Southern University

Digital Commons@Georgia Southern

The George-Anne

Student Media

1-17-1963

The George-Anne

Georgia Southern University

Follow this and additional works at: <https://digitalcommons.georgiasouthern.edu/george-anne>

Recommended Citation

Georgia Southern University, "The George-Anne" (1963). *The George-Anne*. 2502.
<https://digitalcommons.georgiasouthern.edu/george-anne/2502>

This newspaper is brought to you for free and open access by the Student Media at Digital Commons@Georgia Southern. It has been accepted for inclusion in The George-Anne by an authorized administrator of Digital Commons@Georgia Southern. For more information, please contact digitalcommons@georgiasouthern.edu.



THE George-Anne

Published By Students of Georgia Southern College

VOLUME 36

STATESBORO, GEORGIA, THURSDAY, JANUARY 17, 1963

NUMBER 12

Gymnasts Meet
Ga. Tech—
Alumni Building
Tomorrow Night

Two Proposals Drawn By Student Congress

A "Blue Feather Drive" is tentatively planned by the Student Congress for winter quarter, according to Ray Bowden, President. This will be a drive to raise money for several charities at one time in place of small individual drives that have been held in the past, he said.

Co-chairmen of the drive are Charles Warnock and Bob Green.

Several new members to the Congress were introduced at the first meeting of winter quarter last week. They are as follows: Cecil Martin who is replacing Charles Exley as senior class representative; Charles Exley has been named second vice-president to replace Don Nelson, who graduated fall quarter. Other new members of the Congress are Patty Jo Aaron, music division; Tommie Sandefur, business division; Larry Gordon, arts division; and John Brunson, social science division.

The Student Congress proposed two recommendations. They were quoted as follows: "(1) The Frank I. Williams Center provides a most important and necessary service in the lives of GSC students. However, there are two distinct types of activities that probably should be separated. First, the Dining Hall, the Snack Bar, the Book Store, and Post Office are fiscal activities and are properly responsible to the Business Office. Second, student activities seem to be no one's responsibility.

Due to this situation the Georgia Southern Student Congress recommends that a Student Union Board comprised of the four class presidents, six residence hall presidents, two faculty members, selected by the Student Congress, a representative from the office of Student Personnel to be selected by the Dean of Students, the Director of the Frank I. Williams Center, and the Directors of the Snack Bar and Bookstore.

The responsibility of the Board would be to plan a program of student activities for the Williams Center and to appoint appropriate student committees to implement these activities.

(2) The Georgia Southern Student Congress recommends that the Student Congress Committee for naming campus streets meet with Dr. Zach Henderson to discuss this, (ie) (1) which streets are presently unnamed, and (2) appropriate names for these streets.

In connection with Homecoming the Student Congress will sponsor the dances following the Beauty Review and the Homecoming game."

Drew Pearson To Be Here Feb. 5

Drew Pearson, Syndicated newspaper columnist and nationally known radio and television commentator, will speak at GSC's McCroan Auditorium on Tuesday, February 5, at 8:15 p.m.

Tickets will be made available to GSC students upon the presentation of their identification cards to the Dean of Students office on January 22, which is the day for both GSC students and faculty to receive their tickets. The tickets will be made available to the public on January 29.

Pearson has been described as Washington's top reporter by his colleagues, and is known as one who "covers Washington's news and gets stories other reporters are unable to get."

The topic Pearson will speak on is "Behind the Scenes with Kennedy and Khrushchev."

2,030 Students Enrolled At GSC This Quarter

The official enrollment figures of Georgia Southern College, according to Dean Carroll, are as follows.

Freshmen Women, 274; Freshman Men, 217; Total - 491. Sophomore Women 232; Sophomore Men, 245; Total - 477. Junior Women, 218; Junior Men, 269; Total - 487. Senior Women, 258; Senior Men, 251; Total - 459.

There are 48 Women Graduate students, 41 Men Graduate students; making a total of 89 Graduate students. This increases last week's total of Georgia Southern College Students to 2030.

GSC has 136 transfer students this quarter, 16 beginning freshmen, and 2 new graduate students.

WEEKEND EVENTS
Friday Night
— Gymnastic Meet —
GSC vs. Georgia Tech
Alumni Building
— MOVIE —
"Mr. Roberts"
McCroan Auditorium 7:30
Saturday Night
— Freshman Basketball —
GSC vs. South Ga. Technical
School at 6:30
— Varsity Game —
GSC vs. Mercer University
Following Freshman Game

Homecoming Activities Planned; Dances, Parade, Athletics, "Miss GSC" Slated

Eighteen Coeds Named To Vie For 'Miss GSC'

By HALLEY FENNELL

Eighteen contestants will compete for the title of "Miss GSC of 1963" in the annual Alpha Rho Tau Beauty Review, according to Howard Williams, president.

The Review, which will be judged on stage appearance and poise, personality, and general appearance, will be held Friday, January 25, at 8 p.m. in the McCroan Auditorium.

Richard Mandes, Public Relations Director, will be Master of Ceremonies.

Williams announced that tickets for reserved seats will be on sale Monday in the Dean of Students office. The prices for the advanced tickets are 75c for students and \$1.25 for adults. Tickets sold at the door will cost 50c for students and \$1.00 for adults.

The first rehearsal will be tonight at 7:30 in McCroan Auditorium. Williams also stated that rehearsals will be held Monday through Thursday of next week, at 7:30 and at 4:00 o'clock next Monday and Wednesday afternoons. Mrs. Reba Barnes of the Physical Education Department is the director.

On January 25, at 4 o'clock, a tea will be given at Cone Hall for the contestants and judges. The purpose of the tea is for the judges to become acquainted with the contestants.

The contestants will make two stage appearances. During the first appearance they will wear cocktail dresses and on the second they will wear formal gowns. On the second appearance the judges will choose the top ten from which they will choose "Miss GSC" and her four attendants. "Miss GSC of 1963" will be crowned by Marilyn Hickox, "Miss GSC of 1962."

The contestants, their sponsoring clubs, and escorts are: Nancy Johnson, English Club; Mac Clements; Kathy Argust; Kappa Phi Kappa, John Gould; Sandra Shugart, Phi Beta Lambda; Don Stokes; Martha Jane Barton, Student N.E.A.; Charles Exley; and Pam Hill, A.C.E.; John Rutland.

Also: Linda Bell, Young Republicans Club; David Bell, Jr.; Linda Gassaway, Music Educators National Conference; Glenn Hennig; Diane Woods, French Club; Harry Shore; Carson Overstreet, Masquers; Ronald Odum; and Linda Bowen, Alpha Phi Omega, Hugh Lentile.

Also: Lynn Strickland, Gamma Sigma Upsilon, Dennis Meadows; Lisa Thombs, Sigma Alpha Iota; Joe David; Mary Alice Belcher, American Home Economics Association; William Royster; and Lamonta Jean Henson, Student Advisors of Deal Hall, John Brunson.

Also: Carol Taylor, Alpha Gamma Omicron; Al Carter; Jackie Marshall, Archaeology Club; Ray McCrimmon; Patricia Brannen, Phi Mu Alpha; Robert Fullerton; and Nancy Parrish, German Club, Roger Murphey.



Ummm... Das ist Gut!!

Naturally, frosh Tommy Wilder couldn't say this with half a pecan pie in his "oral cavity," but a nickel says he was thinking it. The occasion? Dr. W. W. Powell of the English division bakes pecan pies as a hobby. Following those "gruelling" Saturday classes last week, the doctor invited one of his freshman groups to a homemade "pie party." Dr. Powell says he's been doing this for years. Who will have the longest line at registration next quarter? Any nominees?

Democrat Club Constitution Ratified Mon.

The Georgia Southern Young Democrats Club ratified its constitution so that "everything was in order," at their meeting this week; they also set up several committees.

It was also stated at the meeting that they "hope to have elections on campus on a political basis."

GSC Debaters Meet Harvard Here In April

The Harvard University debating team will debate the GSC team on the Georgia Southern campus early in April according to Clyde J. Faries, faculty advisor of the debating team.

The two teams will debate on the topic "Resolved that there is something rotten in the status of Shakespeare."

The debate will be held in the evening and will be open to the public. It will be semi-serious and is "expected to be somewhat humorous," said Faries. Judges for the debate have not yet been selected.

Faries added however that criticism will be consistent with the style of the debate. There will be a ten minute forum period during which the audience will be given a chance to ask questions.

GSC will take the affirmative side. Frank Chew and Mary Ann Addleman will constitute the GSC team.

The Harvard team will be in the South East for a week in April. They will visit GSC and stay on the campus for a day.

Backstage Play Is A New Twist

By MADELINE MISFELDT

Here's a new twist—a Masquer's play backstage? "That's correct," said Robert Overstreet, director of the Masquers, "Don Juan In Hell" is not the kind of play that is presented to a large audience.

"Don Juan In Hell" involves the evolution toward a better and finer human race," he added.

Appearing in the play are Hayward Ellis, as Don Juan; Wendell Ramage, as the commander; and Wendell Johnston, as the Devil.

"Don Juan In Hell" is not a play in the usual sense; it is more of an interpretation of a reading because there is little motion to the play. It is also different in that it was taken from a play. It is known as the "dream scene" from "Man and Superman." This scene is a conversation at its best among four people who are in hell, added Overstreet.

The lack of motion is an important difference because the actors must convey the characters which they are portraying to the audience by using emotion and expression in their words.

"This is a kind of play that one never gets tired of, for something new develops each time that it is read," said Angela Whittington at a recent interview. She went on to say that the character which she was playing was a proud, but artificial woman of 77 who went to hell leaving behind a husband and twelve children. This character as well as the others are unusual and should certainly keep the audience interested.

According to Overstreet the play will be presented in the classroom backstage, because the Masquers feel that a small audience could derive a better understanding of the play.

He further added that the play would run for five days, January 30, 31, February 1, 2, and 3, in their little improvised theatre. Due to the seating capacity for sixty people each night, the play will be held over if attendance demands it. All tickets are \$1.00 with all seats reserved.

The room will be black as to provide a setting for the darkness and dreariness of Hell. The actors will wear black in order to follow through with the theme color.

According to Overstreet, George Benard Shaw's play

continued on page 5

Campus Gears For Big Event

By MICHAELA DENNIS

Jam sessions, dances, pep parades, pep rallies, ball games, a bon fire, and the crowning of "Miss GSC" — all of these — and more — will be the highlights of GSC's homecoming, which will begin on Friday, January 25, according to Charley Exley, second vice-president of the Student Congress.

Exley announced that homecoming activities will officially begin at 4 p.m. Friday, January 25, with a jam session at the tennis court.

At 8 p.m., Alpha Rho Tau will sponsor a beauty review in McCroan Auditorium. The 18 contestants for "Miss GSC" will be presented, and from these contestants, "Miss Georgia Southern College" will be chosen.

From 10 p.m. until 1 a.m. a dance, sponsored by the Presidents' Organization, will be held in the Alumni Gym. Frances Dell, of the President's Organization, is the chairman of this dance. The band playing for this dance will be the "Top Cats", from Valdosta, Georgia.

Students living in the dormitories will be admitted by their GSC identification cards. Off-campus students must pay 50c, stag or drag. This is because of the contribution each dormitory gave for the band, Exley said.

The Alumni will be given a Coffee Saturday morning from 9:30-11, in Veazy Hall.

Meanwhile, at 10 a.m., students' activities will resume with a pep parade and a pep rally behind the student center, sponsored by the "S" Club and the cheerleaders, with the Phi Mu Alpha Sinfonia Pep Band participating.

The Alumni Board of Directors' luncheon will be held in the Frank I. Williams Center's private dining hall at 12:30.

Activities again turn to the Alumni Gym at 2 p.m. for a gymnastics meet, featuring GSC vs. LSU.

At 4 p.m., Saturday, a General Assembly of Alumni will meet in McCroan auditorium.

Students are urged to attend another jam session at the tennis court, also at 4 p.m., Exley added.

Homecoming activities turn to a Bon fire behind the Hanner Building at 6 p.m., sponsored by the cheerleaders.

At 6:30, a preliminary game between the South Georgia College Tigers and the Columbus Junior College Rebels will be held in the Hanner Building.

Georgia Southern College will play Cumberland on Saturday night, January 26, at 8 o'clock also in the Hanner Building.

A dance will be held in the Alumni Gym from 10:30 - 12:30. The GSC Combo will furnish the music for this dance. Permission will be given for girls to receive late permits for the dances during this weekend.

The different organizations on campus are preparing themselves to decorate the cars and make signs, etc., for the pep parade, which will be held behind the Student Center on Saturday morning at 10 o'clock. These organizations are receiving financial assistance from the administration.

Any organization interested in being represented in this parade is asked to contact Charles Exley before Monday, January 21.

Any changes in these plans will be announced in next week's issue of the GEORGE-ANNE.

RUBINOFF TONIGHT

The famed violinist, Rubinoff, will give a concert of popular and classical music tonight at 8:15 in McCroan Auditorium.

Proceeds from the concert, which is being sponsored by the Statesboro Kiwanis Club, will be used to bolster the GSC scholarship fund. Price of admission will be \$2.00 for adults and \$1.00 for students.

Rubinoff, who has been starred on radio and in the recording industry, will play a Stradivarius violin.



No, he hasn't been shot—Here, gymnast Jon Peacock is caught in the middle of a twisting routine on the mats. He's warming up for tomorrow night's meet with Georgia Tech in the Alumni Gym. For more on this upcoming spectacle, see page 5.



That's right! They're doing one backstage this quarter. Here, some members of the Masquers, GSC dramatics group, get the coming production, "Don Juan In Hell." The play will be presented to small audiences in that room so that the "expressions of the actors may be seen more plainly."

With His Final Column, Herb Griffin Is Answered

SEE PAGE 2

Editorials

A GALA AFFAIR? CROSS FINGERS

Every year at this time the familiar question: parade? displays? or what? regenerates at Georgia Southern.

Since the GSC Homecoming parade was abolished about three years ago, the college has attempted to compensate with a somewhat feeble attempt at decorating Sweetheart Circle.

A few campus organizations proved quite co-operative in that venture. Others worked only half-heartedly. And still others were opposed to it.

This year, an attempt is being made to revive the parade. The administration has agreed to supplement any organizations participating to the tune of \$2.50.

As of Wednesday, 20 organizations signed for the supplement. The parade will be confined to the campus and will principally consist of decorated automobiles and trucks. A "Pep Band" will participate, and Charles Exley, chairman of the Congress Committee on Student Organizations, said that clubs may build floats if willing to do so.

A college Homecoming should be a gala spectacle. It should be festive, colorful, and full of splendor beyond the point of excess. And in any "collegiate" Homecoming celebration, the spark usually

needed to ignite enthusiasm is the parade.

While it may be too late this year to organize the type of spectacle really needed, we'd like to congratulate those who have made a beginning toward that goal.

Now that we have the first stone surmounted, let's use it to the fullest extent. Let's make the most of what time remains before the "Big Weekend" is here.

The best method by which to encourage further development of a bigger and better parade for the future is probably to show that when an opportunity is offered, it will be taken up (to use a modern term) "with great vigor."

The GEORGE-ANNE urges ALL organizations to take part in next Saturday's line-up. We further urge those that can, to build a float, one that will do justice to the occasion. Make the greatest effort possible to show that GSC wants and needs a FESTIVE Homecoming.

It would certainly be much more appropriate indeed, to see "Miss Georgia Southern College" riding in a ribbon-woven, confetti speckled convertible, with the school itself strung out behind her, than to merely see her holding a bouquet of flowers at half-time of the basketball game.

LET'S ALL SEE THE GAMES

The fact that Georgia Southern is crowded is evident when one views almost any aspect of college life here. It is quite apparent by the size of the classrooms, meal lines, and the number of student living in the dormitories.

Now a new problem has arisen; the over-flow of the student population has also been felt by the W. S. Hanner Building during the 1962-'63 basketball season in the fact that students seem to be taking up too much space.

In last week's edition of the GEORGE-ANNE a few simple seating rules and regulations were printed to try to aid students by giving seating locations and restrictions.

Students may sit in the upper and lower section of the East Stands, and in the upper section of the West stands. The lower West stands is designated as the reserved section and reserved tickets must be purchased if one wishes to sit there. Another rule stated that students who leave during the game must pay to come back in.

There are various ways in which the capacity crowds at the gym can be handled which will not be beneficial to the student body. For example, at some colleges where the capacity of the student body has far outgrown the capacity of the school's gymnasium, half of the student body is admitted to

the games on their ID cards on one night and the other half for another game. Then there is the idea of making students pay a special price for basketball games, and they will be admitted on a "first come, first served" basis.

Though a plan similar to these may seem inevitable for basketball games in the not too distant future, the Athletic Department of GSC has urged student co-operation in all forms to help alleviate this problem.

The principle seating problem in existence arises from the fact that students take up too much unnecessary space during basketball games. Some students will sit down, put their coat in the seat next to them, prop their feet on the seat in front, and lean back on the seat behind them, taking up four times as much space as that allotted them.

The best way in which students can help to alleviate this problem is to sit closer together and to take up as little space as possible without being entirely uncomfortable. Students will be a little cramped but it is much better than not being able to see the games.

The George-Anne urges compliance with the seating regulations, which were set up for students' benefit, so that other complications and problems may not arise, and so that more students will be able to enjoy the "Eagle Battles".

LITTLE MAN ON CAMPUS



"I'M AFRAID THE BAND IS IN TROUBLE, DEAN. SEEMS LIKE EACH GENERATION GROWS A LITTLE LARGER."



A new index of the nation's accomplishments in graduate education was released by the Office of Education this month and it said some important things about institutions in the South.

In 1960 Southern universities produced only 15 per cent of the nation's doctorate degrees. Ten years earlier, the South had produced 10 per cent of those degrees.

At the time of the 1960 count, there were 17 Southern institutions granting doctorate degrees which had not offered them 10 years before, including Florida State University, the University of Arkansas, the University of Alabama, Auburn University, Baylor University, Texas Technological Institute, the University of Louisville, North Texas State College, Texas Woman's College, the University of South Carolina, the University of Tulsa, Mississippi State University, St. Mary's Seminary and University, the Medical College of South Carolina, Clemson University, the Medical College of Virginia and North Carolina College at Durham.

Stepped-up Activity
This stepped-up activity at the doctorate level reflects a national concern about graduate education in all academic areas. President Kennedy voiced this concern when he approached the 88th Congress with a package deal for higher education which included stress on support of graduate education in engineering, mathematics and physical sciences.

At the urging of his Science Advisory Committee, the President is looking for public and private funds to provide adequate financial support for all full-time graduate students in engineering, mathematics and physical sciences. He has also asked for funds to cover the full costs of graduate education in those fields, to provide physi-



By HERB GRIFFIN

This column is dedicated to those County Line Lawyers who will never get admitted to the bar.

Actually, it is dedicated to my replacement. This is the last edition of ROOTS AND HERBS. My muse has been Mazonia — carnivorous, "through a glass darkly." Therefore I have chosen to put O. U. and Trixie Pureheart to bed.

This column is all wet. The girls in Squeal Hall read it in the Shower Room.

"But John, that isn't our baby." "Aw, hush. It's a better carriage."

Mother Goosey is closing down her Barnyard Tavern. She lost two of her best customers — a couple of basketball players.

When Mother was in college she majored in Statistics — 38-22-38. What a Mother!

Mother is a lovable cuss. She teaches a Life Adjustment Course — no tuition and place. Of course, she expects professors to contribute a little something, which is about all that most of them can do.

I would like to dedicate something to my editor, young Scribbles. Since he has cut so much material out of this column each week, I am sure he will appreciate this cutting bit of Americana:

"Lizzie Borden took an ax And gave her mother forty whacks. When she saw what she had done, She gave her father fortyone."

Paging Southern

By ROLAND PAGE, Editor

Yell, stomp, holler, blow your lungs out — and a basketball game or other athletic contest is the place at which to do it.

Probably the greatest value of athletics from the spectator's viewpoint is the opportunity one has to break his social shackles, to forget what people will think of him should he just let loose in a wild expression of all the problems and worries locked inside.

A great many GSC students left the Hanner Building last week, disappointed with Oglethorpe's victory over Southern's "Eagles," but relaxed and pacified as a result of the "rip-snort-in" time we had losing.

If Georgia Southern's student body lacks spirit, it was vastly out of character that night. It was magnificent. From pep bands to megaphones, to bells, rebel flags and "just plain ol' voice boxes," everyone seemed to be having a ball.

If you'll notice, sports fans come in all shapes, sizes, and, most important, temperaments. There are those who do just what the first paragraph of this column calls for.

They let themselves go. Some

of them, however, let themselves go both in and out of the gymnasium. There are others who "go along with the crowd," they holler to their feet when "Dixie's" played and "play patty-cake" with their hands when Southern scores.

A third, and most unfortunate type, is the student who goes to a ball game and just freezes! He's afraid to move! If so, he may deviate from the generally accepted pattern which separates the "mature from the child" or so the theory seems to go.

Once in a while, during an extremely exciting phase of the game, his emotions may overwhelm his social tendencies, and he jumps to his feet and screams — then he makes a clumsy retreat to the bleachers condemning himself for being so conspicuously foolish.

We all succumb to social pressures in one way or another. Many of us condemn others for doing such. Perhaps the condemnation sometimes goes too far. The finger pointers often seem to advocate the abolition of all social restrictions.

This, of course, is impossible — both for the "complacent" and the "rebellious." Men must live together, and they must have some sort of mutual code by which they may go on living together, (a brilliant observation).

The regulations within this code, however, change under varying situations and conditions. Many of us seem to look over this point (and, as usual, I'm included).

Our "Number Three Sports Fan," mentioned earlier, is a perfect example of this disorder. He seems to carry his "church behavior" into the Athletic Stadium. And the "Number One Sports Fan" possibly reverses the pattern.

Back to the Gymnasium — as I said before, this is perhaps the site where social restrictions may approach the minimum. It's a place where the rebellious may rebel, and the complacent may enjoy a little "unused liberty" without worrying about infringing upon the rights of others.

Yell, stomp, holler, blow your lungs out — it's more fun. And besides, it may give the ball-players that "extra desire" so often referred to in topics of this nature.

Roots And Herbs

By HERB GRIFFIN

Ogeechee Final
Cousin Sut Luvingsbad telephoned this week. Amos — Sut, "girls who smoke Salem cigarettes will get burned at the stake." (Witch one, Sut?)

Commenting on her boyfriend, Trixie Pureheart states, "right string, but wrong Yo-Yo."

No Trixie. Orientation did not originate in Hong Kong. It just sounds that way.

Sergeant Rex states, "Eagles who get grounded on Sweetheart Circle will have their wings clipped."

Ogeechee's faculty held their annual Prune Juice Festival ((Business was handled quickly because someone might have to run.)) The topic of the day was the "Nature of Fraternities."

Dr. M. Barris of Education said that he was sitting down on the Frat issue because someone told him never to stand up when there was a Greek in the house.

Dr. Brittan of History said that he heard Fraternities served gin. He wanted to know whether it was oxygen or nitrogen.

Dr. Satire of English wanted to know if Fraternity members wrote legibly. Someone assured him that they all had lead in their pencils.

Dr. Cool of Science wanted to know if Fraternities would have training in anatomy. He was told to ask the girls from Squeal Hall.

Dr. Totem Pole suggested that the Fraternity be called, "Sigma Phi County Line."

Dr. Dice of Math said that he

hoped the Frat would book him to discuss the Population Explosion. He wants to sing "Multiplication."

The Dietician said that she could stop this whole thing by using more cheese.

Sergeant Rex of Campus Traffic stated that he hoped the Fraternity didn't have telephone poles. His dog Preston might drown out their conversations.

Sut Luvingsbad thought, "I am a lonely boy. I need a home."

It is time to retire to the coffee shop and do the Perculator Twist. However, before I do, allow me to introduce my roommate who will be writing a new column in this spot — Mr. Patrick Kelley.

Pat is paying his way through school by bootlegging Lydia Pinkham's in Breezy Hall. He is a man of many talents. He solved the Government's potato surplus. He ate them all.

He has contributed much to education. He designed a little Brown Outhouse to match the Little Red School House.

I am grateful to the faculty and students who read this column. It could have been better — another time, another place. Thanks to the GORGIOUS-ANNE and its editor, who made it possible.

Special thanks to the English Division, which taught me "Dixie and Yawp," and to the Education Division, which taught me "empathy."

From Sut Luvingsbad, Trixie Pureheart and OEGEECHEE UNIVERSITY, aufwiederschen, adios adieu, and farewell.

Roots And Herbs Gets Clever Reply

Editor's Note: Public Relations Director Richard Mandes walked into his office last Monday morning and found the following article on his desk. He passed it on to me. We have no idea as to who its author may be, but we are quite certain as to whom its brilliant satire is directed. See if you don't agree.

Perspiring Reporter
(A Continued Column in One Installment)

Once the riots had subsided and the faculty duels had been fought we asked several students and faculty members for their reaction to the sensational column "Sticks and Stones," written by Blurb Buffoon, junior oration major from Kinsville.

Here are our findings. Aeschylus Fahey, senior housekeeping major from Kasplat:

"I think Buffoon is utterly crude and repulsive. Sometimes he mentions men and women in the same column."

Dixie Flirt, sophomore from Wayout:

"Blurb is like nothing. That strict morality bit like it doesn't grab me for less."

Spenser Archbrow, major in kindergarten literature from Avant (garde):

"Buffoon's work shows unresolved structural dichotomies of serious import. Motivational pseudo-Freudian tendencies overlaid by a compulsive alimentary complex."

Mr. Crick Mendacious, public perturbations director:

"Let me say that I have never had to cut out a single line of Blurb's copy — whole columns, yes, but not a single line."

Crass Mildew, graduate student in English grammar:

"Why don't he write in English for us educated students?"

Blossom Early, major in abnormal behavior from Staid:

"Blurb is just so cute, and intelligent, and cerebral, and he's real smart, too. I just really admire people that think. I mean even if it's only once a week."

Resolution drawn up by Professors Britain, Goldbrick, Kildare, Hemingway, Ditch, Gonzales, and Satire:

Inquiring Reporter

By LORI CHAMBLISS

The beginning of this quarter brought out many New Year's Resolutions among the students of GSC. The Inquiring Reporter asked several students what their New Year's resolutions were and if they planned to keep them. These are the replies that were made.

Kathy Parker, Roberta: I resolved to spend more weekends at school this quarter than previously. I do intend to keep it, but I probably won't.

"Freddie" Weaver, Brunswick: I resolved to never make any more New Year's resolutions because I never keep them. I'll probably break this resolution making more resolutions next year.

Bucky Mullis, Baxley: I resolved to stop messing around with inquiring reporters. I intend to keep it!

Henry Bell, Statesboro: On January 2, I discovered that a habit was harder to break than a resolution — the resolution you can figure out for yourself.

Nancy Hinson, Alamo: To make good grades, I'm going to try to.

Eloise Simmons, Statesboro: To do all that I can to be a better Christian and to study hard.

Linda Jenkins, Waynesboro: I want to make one new friend each day of the new year. I am determined to keep it up.

Nancy McLendon, Hawkinsville: I am going to stop playing and start working this quarter. So maybe I can pass and graduate. Yes, I'm certainly going to keep it.

Charlotte Lane, Statesboro: I am going to study hard and make the Dean's List every quarter. I will try my best to keep this resolution.

Lisa Thombs, Pearson: I have decided to not make the Dean's List every quarter until graduation. No, I am not going to keep this resolution.

Mary Bailey, Sylvania: I resolved to study harder this quarter and keep up my grades while at the same time, I want to participate more in activities and, in general, enjoy myself. I'm going to do my best to keep this resolution.

Danny Dunaway, Lumpkin: My resolution is to accomplish all of my goals and if I don't go as I would like — let the rough side drag.

David Dunaway, Lumpkin: To graduate in June and get the heck out of here!

The George - Anne

ROLAND PAGE, Editor

THURMON WILLIAMS
Business Manager

HOYT CANADY
Managing Editor

JOHN TOSHACH
News Editor

The opinions expressed herein are those of the student writers, and not necessarily of the college administration and faculty.

Editorial Board: Roland Page, Hoyt Canady, John Toshach, Thurmon Williams.

Columnists: Herb Griffin, Eunice Neal, Allyn Prichard.

News and Feature staff: Fran Landman, Janice McNorrill, Halley Fennell, Tom Wilkerson, Marcia Townsend, Jo Ann Vaughn, Joy Letchworth, Billy Sheppard, Madeline Misfeldt, Delle Boykin, Michaela Dennis, Jerry Reid, Robert Poole, William Willis, Agnes Farkas Sam Leveto, Lori Chambliss, Pat McMillen.

Society Staff: Eunice Neal, Patty Brannen.

Sports Staff: Allyn Prichard, editor; Lonice Barrett, Jane Rachels, Grant Knox, George Baggs, Patrick Kelley, Dutch Van Houten, Vernon Owmbey.

Business Staff: Thurmon Williams, Joe Buck, Arie Mayo, Bill Denton, Raymond Majors.

Thursday, January 17, 1963

Entered as second class matter at Post Office at Georgia Southern College, Georgia Southern Branch, Statesboro, Georgia, under temporary permit.
Subscription Rate—\$2.00 Per Year.

Sports Forum

By ALLYN PRICHARD, Sports Editor

A Letter To Garland Pinholster

Dear Coach,

Well, I expect you had your fun this time around. Beating Georgia Southern with any degree of regularity (I believe the record still reads 5-4 in our favor) is a feat the Petrels haven't been able to accomplish too well — particularly down here in Statesboro where Oglethorpe was winless until last Thursday night.

Then too, it must be a lot more enjoyable to accept these post-game congratulatory handshakes with a healthy right hand. Thanks for having mercy on our walls, though it did take you a year to find they are pretty sturdy.

You know, all your sports writing buddies (too bad Greg Favre is leaving) up there in Atlanta had led us to believe that Oglethorpe was well-nigh invincible. Certainly losing by five to Murray State in Kentucky is no disgrace, and the statistics-minded NAIA claims you-all are leading the nation in defense and shooting percentage.

So when our freshman team, plus a couple of curious upperclassmen who just wanted to see if the Petrels were as Stormy as their nickname and press clippings claimed, dashed around and pleasantly surprised us by holding you to a 26-26 halftime deadlock, we began to wonder if someone hadn't been trying to wage a little psychological warfare with figures.

Now aren't you just plumb embarrassed? Obviously these poor little freshmen didn't scare easily for they stood up nose-to-nose, shoulder-to-shoulder, and elbow-to-elbow with the mighty Petrels for a half and refused to back up an inch or allow the "wheel" to shift into high gear.

My, what fancy names these metropolitan members of the fourth estate can dream up for the shuffle, which is what Joel Eaves calls this offense at Auburn. And he would know — I hear the Tigers are having a fair-to-middling season themselves this winter.

Anyway, while we're on the subject of the first half, that was a cockeyed 1-3-1 zone our boys were confusing you with. And too, I expect it's time to give credit where credit is due. One of my pet beliefs is that teams using a disciplined, pattern offense have difficulty adjusting to opponents employing screwball defenses. Whether you figured ours out or not, I don't know, but Oglethorpe did put enough points on the board to win, and I guess that's what really counts.

While we're still passing out plaudits, that was a heck of a good matching zone you threw up in the second stanza — with audio effects too, no less. Now, now, seeing your defenses in full color and in three dimensions is enough, without having to listen to them in stereophonic sound as well.

I'll have to admit old Morris Mitchell played pretty well — 23 is a lot any way you look at it, whether it be alumni contributors influenced by the "Stormy Petrel" or points as it was in his case. And I noticed he kept his head (in more ways than one) while playing patty-cake under the backboards with our rowdy, good natured freshmen.

Gee, you'd almost think I'm an Oglethorpe fan, considering all the praise I've been heaping on the Petrels. Tell you what, since the aforementioned Mr. Favre has departed for greener pastures, how about filling me in on the quality of the distaff secretaries Oglethorpe is employing this year. You qualify almost as competently as a cupid as you do as a basketball coach.

But seriously now, don't let all this statistical propaganda the NAIA packs your head with deceive you. True, Oglethorpe plays excellent team defense, but I suspect that in a man-for-man, one-on-one situation all sorts of difficulties might arise. It's a good thing Billy Carter does a fair job of teaching the boys to switch and help each other out, for some individual defensive weaknesses are obvious.

Then too, you'll have to face all your "buddies" such as Jacksonville, Mercer, and Stetson in the NAIA District 25 playoffs when you haven't experienced the honor of playing them during the regular season. The word is out — they're pretty good too, and like it or not, Oglethorpe has to play 'em in order to advance to word is out — they're pretty good too, and like it or not, Oglethorpe has to play 'em in order to advance to word is out — they're pretty good too, and like it or not, Oglethorpe has to play 'em in order to advance to

Mark down February 2 in your scouting file on Southern in red ink. That's the day Jim Seeley, a 6-4, 200 pound transfer from the University of Illinois becomes eligible — and he'd rather beat the Petrels than anybody on our schedule just like everyone else in Statesboro.

Maybe you'd better tell that little band called the "Sinners" (or whatever their name is — it certainly shouldn't have any religious significance) to practice a funeral dirge instead of pep songs for February 21. The Eagles will come a-calling with baskets in their eyes and revenge in their hearts.

Sincerely yours,
ALLYN PRICHARD



Spirit Plus! A rebel flag, megaphones, a pep band, and, of course, Oglethorpe's Petrels made it a rollicking time in the Hanner Building last week. Here, the GSC fans shout to the pre-game thrills of "Dixie." P.S. The fan wielding a hammer in the foreground used said tool on a bell (just for clarification).



Not to be outdone, O.U. brought a conspicuously small but enthusiastic cheering section. All it takes is two points to make a minority forget that they're in the proverbial "Rome." The subject of the whole thing? See the picture below.

School Spirit Soars; But O. U. Shuffles Past Southern

By DUTCH VAN HOUTEN

Oglethorpe University rolled into South Georgia on coach Garland Pinholster's wheel of defense and then rolled over Georgia Southern 60-42.

The Eagles stayed with the Petrels for 33 minutes and 21 seconds, but then the scoreboard was closed to the home team for the remainder of the game. With six minutes 39 seconds remaining Harry Werner hit a long corner shot to bring the score to 46-42, then the Atlanta five collected 14 points while Georgia Southern scored none.

During the first half the score was tied on seven occasions with the lead swapping hands five times. Both teams left the floor at intermission with 26 points.

Georgia Southern used a 1-3-1

defense to confuse the Petrels because of its similarity to a man-to-man. This Eagle defense plus the "J. B. Shuffle" gave a glimmer of hope that the Wheel might go flat, but Coach Pinholster kept his boys rolling despite a scrapping, but under manned Eagle team.

The second half action was started by the Petrels as they quickly found the range and unleashed Morris Mitchell for 21 of his 23 points for the next 20 minutes. The Eagles couldn't work through the Oglethorpe screaming-zone defense which moved as though each man was connected together. John Burton and Don Adler hit for two long shots with the score 46-37 and then narrowed the edge to 46-42. At this point Pinholster called for a time out. The Petrels came back on the floor and held the Eagles scoreless for the final six minutes 39 seconds.

Morris Mitchell had 23 points to lead the Oglethorpe scoring. Bill Johnson was high for the Eagles with 11.

The Petrels had a great showing at the free throw line by hitting 24 of 26 for a 92.3 percentage and 18 of 37 from the floor for 48.6 percent.

The cold shooting Eagles attempted 55 from the floor and connected for 16 for a 29.1 percentage and 10 of 13 for a 76.9 percent from the line.

Box Score

GSC vs. Oglethorpe

	Go. Southern	FG	FT	REB	PF	TP
Von Dielen	3-9	3-5	7	4	9	
Johnson	3-7	5-5	6	3	11	
Meibohm	2-11	2-2	7	1	6	
Burton	5-14	0-0	2	3	10	
Adler	2-12	0-0	0	2	4	
Werner	1-2	0-0	2	3	2	
TOTALS	16-55	10-33	24	16	42	

NEW MOVIE

SCREEN INSTALLED

A new movie screen was installed in McCroan auditorium in December of last year.

This new screen is ten feet by twenty-four feet as opposed to the old screen which was eleven feet by thirty feet. The new screen will allow the movie to be viewed with greater ease as it will produce a more brilliant and clear image than the old one said Ed Abercrombie, director of the film library.

This screen will not interfere with the curtains as the old make-shift screen that was in use previously did.

The prices of the screen and a lens which has been in use for a longer time than the screen together total \$350.

Eagles Defeat Presbyterian, Burton Stars

In what Coach J. B. Searce acclaimed as one of their best efforts of the season, GSC's Eagles rolled over Presbyterian to the tune of 79-60.

All nine Eagles who made the trip played, and hit a sharp 51 per cent from the floor on 29 field goals in 59 attempts.

John Burton led the scoring parade with 25 markers while Glen Von Dielen chipped in 13. Bill Johnson was highly effective as the first cutter in the Eagle shuffle as he rubbed his man off on the pivot block several times for layups.

Southern also shot well from the charity stripe, hitting 18 for 23 free throws. The Eagles, in one of their better defensive efforts, held the Blue Hose to a low 31 per cent shooting total (18-58).

Duplicate Bridge Contest Planned

The Recreation Department will sponsor a Duplicate Bridge Tournament later this quarter if enough students will participate. Two trophies will be given to the team which places first. Students are to enter with their partners. If you are interested, please fill out the blank below and turn it in to the Recreation office by 4:00 p.m. January 22.

We would be interested in entering a Duplicate Bridge Tournament.

Name
College
Address
and
Name
College
Address



Ummph! Grunt, Grumble. Bill Johnson, Eagle forward, struggles for a rebound with two Petrels in a spirited, hard fought battle. The Petrels capitalized on a "final minutes" cold streak on the Eagles part, to win the match 60-42.

Intramural Basketball Teams Are Announced

By JENE RACHELS

Intramural basketball play began Wednesday, January 16 and will continue through Monday, February 11.

Play begins at 6:30 p.m. each night with two games being played at a time. To close the tournament, there will be playoffs between the winners in each league.

The women's teams are divided up into two leagues; the Women's Southern League and the Women's Georgia League. There are five teams in each league. Members of the Women's Southern League are: (1) Anderson Hall Coopers; (2) Lewis Hall Turner; (3) Veazey Hall Bandits; (4) Veazey Hall First Floor; and (5) Iansford X's. Members of the Women's Georgia League are: (1) Anderson Hall Brumbeles; (2) Disciples Student's Fellowship; (3) Lewis Hall Exley's; (4) Deal Hall; (5) Veazey Hall Rebels.

There are twenty-two men's teams and these are divided up into three leagues. The Men's Dormitory National League,

consists of the (1) Gunners; (2) Packers; (3) Tommy Guns; (4) Moxmixers; (5) Untouchables; (6) Zebraz; (7) Hawks. The Dormitory American League is made up of: (1) B'g Boys; (2) Carpenters; (3) Trojans; (4) Cone Dodgers; (5) Honeys; (6) Macs; (7) Dixie Darlings; (8) Blazers. The (1) Billikens; (2) Gunners; (3) Bourbons; (4) Trojans; (5) Flazerites; (6) Rebels; (7) G. Mads; and (8) Warriors make up the Men's Independent League.

These games are open to the student body and the are asked to come and support the team of their choice.

Bears Visit Statesboro For Saturday Clash

By ALLYN PRICHARD

Mercer's Bears climax a busy week of basketball activity when they visit Statesboro for a Saturday night clash with GSC after playing host to LaGrange and Presbyterian on Tuesday and Thursday.

This Bear edition, supposedly the best coach Bobby Wilder has assembled during his stay at the Baptist school, has compiled a 6-5 record, not including this week's action. Mercer absorbed a 73-53 loss at the hands of Chattanooga last Saturday night, but is favored in both midweek clashes to be played in the Porter Gymnasium in Macon.

The Mercer starting lineup has Ray Pearson from Fort Valley and Jim Hearn at forwards, guards are Butch Clifton and Bob Reeves from Albany and Americus respectively, and Don Baxter, 6-6 sophomore pre-ministerial student from Grady (Atlanta) High at center.

Reserves sure to see action are Tommy Wilcox, a Junior College transfer from Abbeville, and Jack Manton, a 5-10 sophomore from Decatur's Druid Hills High.

Coach Wilder subscribes to the "discipline and defense" school of thought, and the Bears have reacted well to his teaching this season. They lack exceptional height and weight, but more than compensate for this with a cautious offense, getting their shots from a variety of screens around the free throw circle, and an aggressive, pressure-type defense.

In the past, Mercer teams have often played poorly against Southern, but the 1963 Bears seem perfectly capable of upsetting the Eagles on any given occasion.

The basketball picture at Mercer looks much brighter for the coming years, as the powers that be at this church supported institution have allowed Wilder more money in the form of athletic grants-in-aid.

Brewton Parker Rally Catches Baby Eagles

By VERNON OWMBEY

The reeling Baby Eagles tried valiantly to end a losing streak in last Thursday's game with the Brewton Parker five. Just as it seemed that victory was their's, the tide turned and Coach Ed Thompson's boys ended up on the short end of a 59-58 score. This marked the Eagles' third consecutive loss against 2 wins.

With slightly more than 20 seconds remaining in the game, the Eagles had a 5 point lead and began resting on their laurels a bit too soon. Then, with only 5 seconds on the clock the lead had dwindled to one point. At this time the Eagles couldn't find anywhere to put the ball and had it stolen on a clever maneuver by Brewton Parker. They layup was made and the game won. A last-second long shot by Jim Bellush was fruitless.

Throughout the hard-fought contest Danny Stephens lead the attack with 13 points and 12 crucial rebounds. Stephens comes to Georgia Southern from Maytown, Kentucky, a father of two, and promises to be valuable asset to the Eagles in the future. George Watson contributed to the Southern cause by pulling down 11 rebounds while dropping in 7 from the field.

The scoring was evenly distributed on both teams with the exception of guard Minton who netted 22 for the Barons. Brewton Parker lead at the half 32-26 but were outscored by the Eagles 32-27 in the second half. The rest of the scoring was G. Johnson with 8, Watson 7, Floyd 4, Harrison 8, Smith 2, Bellush 9, and J. Johnson with 7.

To Your Valentine --

English Leather



... the gift set of ALL-PURPOSE LOTION and DEODORANT STICK \$3.00 plus tax. Individually, ALL-PURPOSE LOTION \$2.00 \$3.50 \$6.50 DEODORANT STICK \$1.00



ONLY THE GIFT THAT YOU CAN GIVE!

CURRIE STUDIOS

34 E. Main

Statesboro

LAUNDERAMA

Next to Johnson's Minit Mart

Statesboro, Georgia

Washing (25 pounds) 25c
Drying (50 pounds) 5c for 5 min.
HAIR DRYERS 30 min. — 25c
10 min. — 10c

Off Campus Bookstore

Save Every Quarter on Textbooks!
Used Books For Every Course

-- Across From Minit Mart --



Coed Corner

By EUNICE NEAL, Society Editor

Powder-Puff football anyone? This could be the reaction of one who has never really seen how an evening is spent in the freshman girl's dorm. Why would anyone ask a group of college girls if they were about to engage in a game of football? When someone is attired in a football jersey, they are planning to play football, aren't they? In the case of freshmen girls, the answer is no.

Football jerseys are the favorite lounging outfits of freshmen girls. There seems to be a huddle down in Room 210. Number 88 is there, so is number 75, 63, and 38. Are the wearers discussing the next play? No—they're discussing their next move on their plans for a Saturday night date. This is not the only huddle. There are others all over the dorm. As you might guess, no plays are being discussed, only gab-sessions, bridge games, and boys.

Football jerseys are not the only lounging outfits girls wear in the dorm, although they are the most popular. One can find other interesting outfits such as gay, flowered muu muus, "Georgia" and "Tech" night shirts, and a variety of other things.

With all the attention being placed on "Who is the best-dressed college coed on campus?", why do these girls dress so sloppily? Dressed in such an outfit as a football jersey, a girl would never be called neat. Neatness is not what the freshman girl is looking for. Why does she wear that old torn jersey? She wears it for the prestige it brings her. She wants everyone to know that she has gone with a football player at some time during her life and that her football player thought enough of her to give her the dear jersey that he worked so very hard for.

Then, football jersey, along with the other lounging apparel are comfortable and they are the fad. If one girl thinks they are the thing to wear, soon another girl will think the same, and then another. Once a fad, as wearing football jerseys, catches on, everyone does it.

My only advice to the boys of the college is: if you have a football jersey that you want to keep, don't let any girl know about it. If you are foolish enough to wear it, you may become very popular until you lose that precious jersey.

'Glamour' Has Prizes For National Finalists

Prizes and surprises are in store for the winners of GLAMOUR's seventh annual "Ten Best Dressed College Girls in America" contest . . . a trip to New York in June; pictures in the August, 1963 College Issue of GLAMOUR, photographs taken in the spring at a yet-to-be-disclosed location.

The contest winners will be flown to New York via American Airlines and will stay at the Biltmore Hotel. During the visit the "Ten Best Dressed" will be introduced to over 1,000 members of the fashion industry at a fashion show previewing GLAMOUR's August Issue. Last year the show was held at famed Carnegie Hall and was followed by a gala night on the town with the girls escorted by the Yale University singing group, The Baker's Dozen.

At least two days of the visit will be spent touring cultural centers in the city—art museums, the United Nations, theatres, concerts, etc. And on it will go for two exciting weeks during which the 1963 winners will be feted and gifted by

GLAMOUR and by friends of the magazine.

The '62 winners had luncheon with Elizabeth Arden at her home, saw Helena Rubenstein's priceless art collection in her Park Avenue penthouse. They met Art Carney after "Take Her She's Mine" (and his co-star, Elizabeth Ashley, another day for lunch at Quo Vadis), Dianah Carroll after a performance of "No String," N.B.C.'s "Monitor" asked them about "ins" and "outs" on campus; Clairco executives entertained them at the Tower Suite, at Germaine Monteil they put on pink smocks to learn about make-up and went away laden with gifts. Also among the gift givers—Abbe Rabiner of Finger and Rabiner (a coat or suit); Alvin Handmacher of Handmacher Vogel (a suit); Arthur Cole of Cole Mort (a dress); Lanvin, Cutex, Charles of the Ritz and many more.

Much of the same will be in store for the 1963 winners with new points of interest to visit, new people to meet, new restaurants to enjoy, new memories to make.



MISS JEANNE BROWN



MISS SANDRA HILTON



MISS JO CAROLE GETTYS



MISS FRANCES DELL



MISS GAIL GLEATON



MISS CAROLYN ASHLEY

"Best Dressed Girl On Campus?" Here Are The Candidates; Cast Ballots Now



MISS CAROL TEMPLE



MISS CHARLENE SMITH

Voting Closes At 6:30 Tomorrow

Ten GSC coeds were nominated this week as candidates for the GEORGE-ANNE'S "Best Dressed Girl On Campus" contest, and students may vote for the candidate of their choice in The GEORGE-ANNE office NOW.

All students who wish to vote for any of the girls pictured on this page may write the candidate's name on the ballot (below), and deposit the ballot in the polls in the Frank I. Williams Center.

The polls will be open until 10 p.m. tonight. They will re-open at 9 a.m. tomorrow morning and remain so until 6:30 tomorrow night.

The candidates were nominated by a committee consisting of two members of the GEORGE-ANNE staff, an officer of the REFLECTOR, an officer of the Home Economics Club, and an officer of Alpha Rho Tau.

They were chosen on the basis of: (1) good figure and posture; (2) Clean, shining, well kept hair; (3) good-grooming—not just neat, but impeccable; (4) a deft hand with make-up (enough to look pretty but not overdone); (5) a clear understanding of one's fashion type; (6) imagination in managing a clothes budget; (7) a workable wardrobe plan; (8) a suitable campus look (in line with local customs); (9) individuality in her use of colors, accessories; (10) appropriate not rah rah look for off campus occasions.

The candidate receiving the most votes will be named "The Best Dressed Girl On The GSC Campus." She will then be photographed in three different types of outfits and entered in GLAMOUR magazine's national contest to find the "Ten Best Dressed Girls In America." (see adjoining story)

The ten candidates for GSC's "Best Dressed" are as follows:

Frances Dell of Waycross, is a junior, majoring in English. She likes English style clothes. She dislikes not having proper clothes prepared to wear. At the time of her picture, Frances was wearing a white sweater and white blouse with a brown Herringbone skirt and brown loafers.

Gail Gleaton of Arlington, is a freshman, majoring in home economics. She likes both tailored and lacy clothes. She dislikes unpressed clothes. At the time of her picture, Gail was wearing a coordinating blue-knit skirt and blazer.

Jo Carol Gettys of Statesboro, is a junior, majoring in art education. She likes feminine styles for dress. For casual wear she prefers woman-tailored clothes. She likes her evening wear to be severely simple.

She dislikes wrinkled clothes and unbrushed sweaters. At the time of her picture, Jo Carol was wearing a red sweater, red and navy Madras shirt, and a navy skirt.

Ann Jenkins of Thomson, is a sophomore, majoring in math. She likes simple evening wear without an excess of jewelry. For school she prefers woman-tailored clothes. At the time of her picture, Ann was wearing Weejuns, green wool skirt, green and white pin-striped shirt, green sweater with suede on elbows and down the front, and a gold pin and bracelet.

Jeanne Brown of Twin City, is a junior, majoring in elementary education. She likes clothes to be neat, appropriate and tailored, but not extreme. She does not like lacy, feminine-looking dresses. At the time of her picture, Jeanne was wearing a red pleated short skirt, red blazer, red pin-striped tailored shirt, and loafers.

Carolyn Ashley of Thomson, is a senior, majoring in early elementary education. She likes her clothes to be neat and conservative with plain lines. She dislikes extremely feminine clothes. At the time of her picture, Carolyn was wearing an olive blazer with a gray A-line skirt, a white Oxford-cloth tailored shirt, and loafers.

Patsy Ginn of Edison, is a senior, majoring in business education. She likes collegiate style clothes that are conservative, tailored and are of dark colors. She dislikes extremely feminine styles in pastel colors. At the time of her picture, Patsy was wearing an olive green wrap-around skirt, pale olive Oxford-cloth shirt, and loafers.

Carol Temple of Hartwell, is a freshman, majoring in elementary education. She likes to be appropriately dressed. She dislikes sloppy clothes. At the time of her picture, Carol was wearing a printed Villager blouse, a short corduroy wrap-around skirt, and a beige leather jacket.

Charlene Smith of Savannah, is a junior, majoring in English. She likes to be neat and wear things that match. She believes in doing the best with what she has. At the time of her picture, Charlene was wearing a Madras wrap-around skirt, a baby-blue Villager blouse, and an olive colored sweater.

Sandra Hilton of Brunswick, is a senior, majoring in Home Economics. She believes in wearing what looks best on her and not just following the crowd. She dislikes clothes that don't fit properly. At the time of her picture, Sandra was wearing a navy-blue sweater, a white blouse and a pleated navy-blue plaid skirt.



MISS PATSY GINN



MISS ANNE JENKINS

DeWolfe Tells Of British Education

By AGNES FARKAS

"In the United States it is believed that everyone should have the opportunity to attend college. In Great Britain only 5% of the high school graduates go on to an university and 'the rest can dig ditches.'"

This is the major difference between education in the United States and Great Britain according to Dr. Gordon DeWolfe, professor of biology, who spoke at the January 10 meeting of Alpha Gamma Omicron. He added that there are more colleges and universities in one state of the U. S. than in both Great Britain and Wales.

Dr. DeWolfe said that another major difference lies in the amount of freedom enjoyed by students. For example in Britain students are allowed to receive mixed company in their dormitory rooms. However Dr. De-

Wolfe added that along with this freedom goes additional responsibility.

Political debates are a major part of student life in England according to Dr. DeWolfe. National political figures often address the debating societies. These debates are reported in the British press.

Dr. DeWolfe stated that the British student's room is his place for study. There is only one student per room. Examinations come at the end of the year in the form of long essays. But the student sees his faculty advisor weekly to discuss his progress.

Tootle, Bryant Neville Added To GSC Faculty

Georgia Southern added three new faculty members to its staff for winter quarter '63.

Two of the new faculty are in the science division and the third is an instructor in the business division. They are as follows:

Dr. Carroll W. Bryant, physics instructor, comes to GSC from the U. S. Air Force where he was an operations analyst. Dr. Bryant had served in the Air Force since 1946. Before his association with the Air Force, he had been the associate professor of math and physics at the University of Tennessee and later he was a professor of physics at the University of Wichita.

Dr. Martha Tootle, instructor of chemistry and a former public school teacher, received her B.S. from GSC, her masters degree from the University of Colorado, and her Ph.D. from the University of Connecticut. Dr. Tootle served as a graduate assistant at the University of Colorado while she was in attendance there.

William Josiah Neville, instructor in the business division, is a part time instructor of law here. Neville received his LL.B. at Mercer University. He was an instructor in the Army and is now practicing law in Statesboro.

Rust Will Speak At Religious Program

The annual Georgia Southern College Religious Emphasis program will be on February 21 with Dr. Eric Charles Rust, London, England, now a resident of Louisville, Kentucky, as the guest speaker.

Linda Bowen, APO Sweetheart

Linda Bowen of Chester was selected Sweetheart of Alpha Phi Omega for 1963 this week. Miss Bowen, a second quarter sophomore, is an English major here at Georgia Southern College.

Miss Bowen was the Salutatorian of senior class, and was chosen "Miss Shangri-la" in high school.

She will represent Alpha Phi Omega in both the GSC Beauty Review and the "Miss Reflector Contest."

Science and Religion is the theme of the Religious Emphasis program. Dr. Rust will pose the question "Does Science Leave Room for God?"

Dr. Rust is well qualified to discuss the subjects of science and religion according to Dr. Samuel T. Habel, chairman of the committee on Religion Emphasis.

Dr. Rust has received degrees in science and theology from the Royal College of Science, London University, Diploma of Imperial College of Science and Technology (DIC), 1932, Regents Park College and St. Catherine's Oxford University.

The Religious Emphasis program will consist of morning and afternoon seminars with a night meeting to be held in McCroan Auditorium which will be open to the public according to Dr. Habel.

Four Initiated At Kappa Phi Kappa Ceremony Mon.

Kappa Phi Kappa, a national education fraternity, held its initiation dinner and ceremony last Monday night in the guest dining room of the Frank I. Williams Center, according to Wayne Ellis, publicity chairman of the organization.

Four new members were initiated into Kappa Phi Kappa; these were Al Turner, Robert Stephens, Wyman Poole, and James Collins.

The chapter also has recently elected new officers stated Ellis. The new officers are Russell Burch, President; Randall Bacon, Vice-President; Mack Sumner, Secretary; and Wayne Ellis, publicity chairman.

The organization also appointed four committees which are the membership committee, program committee, research committee, and a social committee.

Kappa Phi Kappa is a national education fraternity formed to encourage leadership and acceptance of responsibility in the members of the teaching profession.

Membership is limited to men entering the education profession and maintenance of a "B" average is required.

Dr. John Lindsey is the faculty advisor for the organization.



Kappa Phi Kappa's new officers and initiates are shown after their initiation dinner and ceremony last Monday. New members seated left to right are: Al Turner, Robert Stephens, Wyman Poole, and James Collins. Officers of the group standing (l to r) are: Wayne Ellis, Mack Sumner, Russell Burch, Dr. John Lindsey, and Randall Bacon.

BALLOT

'The Best Dressed Girl On Campus'

Voting Time — Thursday: from the appearance of this week's GEORGE-ANNE until 10 p.m.

Friday: from 9 a.m. until 6:30 p.m.

Name or Contestant

(Voter's Choice)

Cut out this ballot and vote.

GSC, Tech Renew Rivalry In Gymnastics Meet Here Tomorrow



Brent Williams, GSC gymnast, displays the form he will use tomorrow night in the Eagles first season home meet with Georgia Tech. In this picture the versatile Eagle demonstrates the "double twist" via trampoline.

By HOYT CANADY Managing Editor

The Arch-rival Georgia Tech Yellow Jackets will invade the GSC Alumni Gym, the new stomping ground of the Eagle gymnastics team, for a meet with coach Pat Yeager's charges scheduled to get under way at 8 p.m. tomorrow night.

In season competition last year, Tech downed the Eagles in Atlanta by a 51½-44½ margin, and Southern evened things up by dropping the Jackets to the tune of 56-40.

This season the much-heralded Engineers will face a rougher, tougher bunch of Eagles than they encountered last year; and the meet tomorrow night should display quite a stimulating performance on the part of both teams.

The GSC gymnasts have two victories under their belt already this season with a win in the Central Florida Gymnastics League Championships and a recent win over David Lipscomb College.

The Jacket powerhouse should not be lacking either. The Techs possess some of the finest performers in the South—seasoned veterans who are tried and true, according to coach Yeager. The GSC mentor also

stated that this was one of "the better Georgia Tech gymnastics teams."

Yeager went on to say, "We respect this team, but we will be out to beat them." The Tech-GSC gym meets have become a most spirited rivalry as the state's two most powerful gymnastics teams collide.

"In this meet against Tech, a one point victory would be a fine achievement for our boys," Yeager pointed out.

The Jackets' big gun this year is a sophomore, Robert Snyder of Decatur. Snyder was one of the big point-makers for Tech last season, and this year he is the Engineers' outstanding side horse contender.

This will be the first in only four home meets for the Eagle gym team. The other three opponents for home matches will be LSU, Florida, and Georgia.

Leading coach Yeager's squad against the lauded Atlantans

will be the faithful foursome of Buddy Harris, Jon Peacock, D. C. Tunison, and Brent Williams.

The unusually potent reserve strength will be headed by side horse expert Charles Exley, and others such as Perry Wright, Raymond Majors, Robert Smith, Jerry Kight, and Bobby Tapley.

Backing up Snyder for coach Lyle Welser's Jackets will be Joe Gatins, William Heierman, and Jim Jakubecy.

Harris, Peacock Lead Gymnasts Over Lipscomb

The GSC Eagles gymnastics team stormed to a 77-51 win over David Lipscomb College of Nashville, Tennessee in the opening meet of the season for both teams.

Led by a 24 point effort of Buddy Harris and a 21 point out-out by Jon Peacock, the classy Eagles took five first places in downing the Bisons of coach Tom Hanvey.

Harris and Peacock comprised 45 of GSC's total points; the young Atlanta native, Harris, took two first places - one in the free calisthenics and the other in the long horse, and captured three second places in the parallel bars, the high bar, and the side horse.

Peacock grabbed first place in the tumbling event, second place in the still rings and trampoline, third place in the free cal, and fourth on the parallel bars and the long horse.

Veteran D. C. Tunison finished with 16 points to his credit and two first places, one in the side horse and the other in the parallel bars. He also took fourth place on the still rings.

Newcomer to the squad, Brent Williams also rounded out the night with 16 points. He captured second place in the long horse and tumbling, third on the trampoline, fourth in the free cal and high bar, and fifth on the still rings.

Coach Yeager's squad defeated the Bisons last year by a 62-49 count in the first home meet. The Eagles' record now stands at two wins and no defeats; the other victory coming from the recent championship in the Central Florida AAU meet.

U.S. Air Force Accepts 7 GSC Men For OTS

Seven Georgia Southern College men have qualified for the Air Force Officer Training School, according to Master Sergeant Charles E. Sandefur of Savannah.

They have passed the administration and technical test and four will now go into the area of tests for flying.

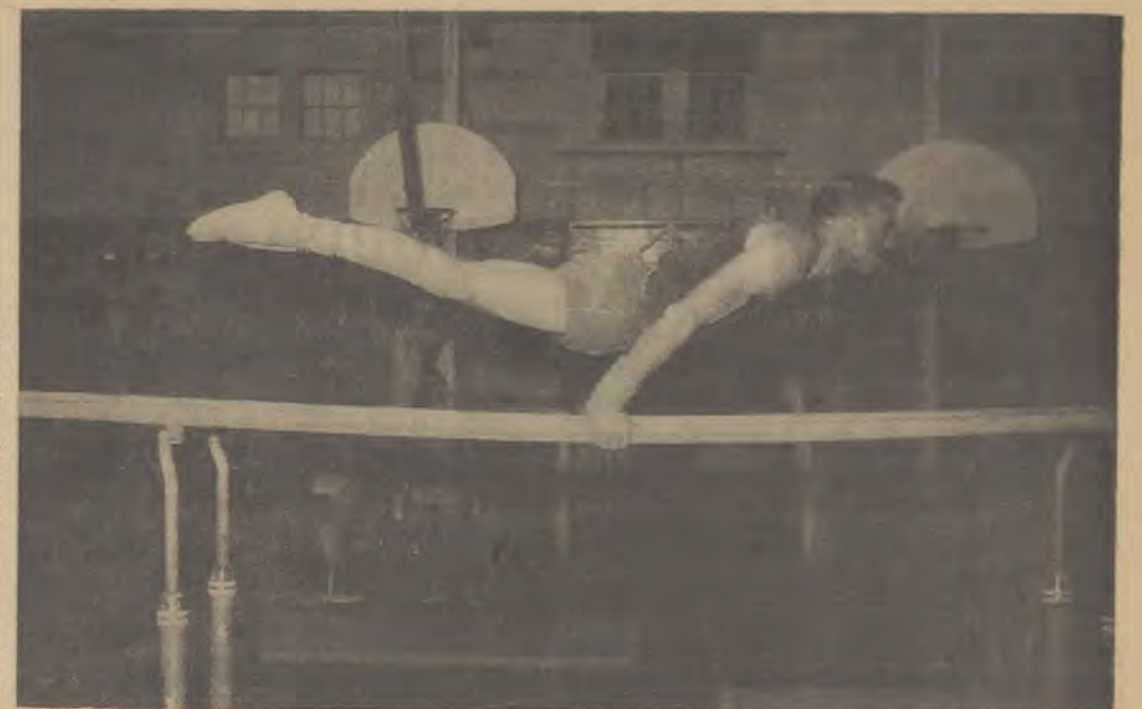
These seven Georgia Southern students are: F. Daniel Reece, Jr., Kenneth M. Waddell, Clifford J. Bobo, Joseph A. Buck, P. Thomas Hill, Jr., Thomas R. Blackburn, Jerry J. Elders. Anyone interested in seeing Sergeant Sandefur may contact the office of Dean of Students, Georgia Southern College. Men and women are invited to these testing sessions.

Gamma Sigma Upsilon hostesses for the week of January 21 through 27 are: Betty Yeomans, 230 Lewis Hall; and Julie Kirbo, 119 Lewis.

JIM'S Hair Stylist

Individual Styling for Lasting Beauty!

114 S. Main—764-2122
Statesboro, Ga.



Georgia Southern's Buddy Harris is shown going through his routine on the parallel bars at a practice session this week. In last week's meet with David Lipscomb, Harris led the Eagles with a total of 24 points for the meet.



Robert Snyder of Georgia Tech demonstrates his versatility which has made him one of the South's top side horse contenders as well as an outstanding gymnast. The Decatur native will be here tomorrow with his Tech teammates for a clash with the Eagles.

Baseball Team Opens Practice

By PATRICK KELLEY

On Monday the GSC Eagles began preparation for defense of their NAIA Championship. Coach J. I. Clements has ten veterans returning to the talented Eagles as well as some outstanding new faces. He also said that "on paper" this could be the best team in GSC's long list of outstanding nine's.

The practice sessions consist of running in order to get the boys in shape. Clements expects to have a strong outfield with such stellar performers as Tommy Jones roaming the field as well as some new transfer students. Clements expressed concern over the infield but with Bill Griffin, All-American shortstop returning; it will be very difficult for opposing teams to reach first.

Pitching will also be a bright spot for the Eagle nine, especially with Pierce Blanchard doing their hurling chores.

"It is too early to tell exactly what we will have, but this will be our roughest schedule ever," said Clements. After a careful glance at the Eagles' schedule, it is seen that GSC

has added Yale, Hampden-Sydney, Kentucky, Parsons, and Jacksonville University to their list of opponents. The competition will indeed be keen, but with such a nucleus of veterans returning, the Eagles will be a strong contender to repeat their national laurel.

COED GYMNASICS

Georgia Southern's women's gymnastics team, composed of Kathy Graham and Janie Dodson, held a clinic last Saturday, Jan. 12 at Furman University.

There are very few women's gymnastics meets and therefore the girls have very little chance for competition. They do, however, get many requests for teaching and instructing, and according to Coach Pat Yeager, the girls are doing a fine job.

TENNIS

All students interested in playing varsity tennis this year are asked to meet in the upstairs classroom of the W. S. Hanner Building Monday, at 7 p.m.



This is baseball practice??? The GSC Eagles opened baseball practice Monday afternoon with a class session indoors as pictured here. The practice session now is mainly concerned with "getting the team in shape" for the season which starts March 18.

GSC Snack Bar SPECIALS!

Corn Dog and Large Coke TAX 24c 1c

25c

All Flavors Milk Shakes TAX 14c 1c

15c

WWNS Radio

Congratulations To

EAGLES

ON FINE PLAY AND SPIRIT!

MAT DANCES EACH WEDNESDAY AT 6:30 AT OLD ALUMNI BUILDING.

HEAR EAGLE BASKETBALL ALL SEASON ON....

WWNS

GSC BASEBALL SCHEDULE - 1963		
March 18	David Lipscomb	Statesboro
19	David Lipscomb	Statesboro
22	Hampden-Sydney	Statesboro
23	Hampden-Sydney	Statesboro
25	Yale	Statesboro
26	Yale	Statesboro
29	South Carolina	Columbia, S. C.
30	South Carolina	Columbia, S. C.
April 1	Davidson	Statesboro
2	Davidson	Statesboro
3	Amherst	Statesboro
4	Amherst	Statesboro
8	Kentucky	Statesboro
11	North Carolina	Statesboro
15	Parsons College	Statesboro
16	Wake Forest	Statesboro
17	Wake Forest	Statesboro
20	Florida State U.	Statesboro
22	Davidson	Davidson, N. C.
23	Davidson	Davidson, N. C.
24	North Carolina	Chapel Hill, N. C.
25	Wake Forest	Winston Salem, N. C.
29	Jacksonville U.	Statesboro
May 2	Mercer	Statesboro
8	Jacksonville U.	Jacksonville, Fla.
9	Mercer	Statesboro
13	Florida State U.	Tallahassee, Fla.
14	Florida State U.	Tallahassee, Fla.

THE GEORGE-ANNE JAN. 17, 1962 PAGE 5

GEORGIA

January 17-18

Escape From East

Berlin

January 19

The Rat Race

Plus

House of Bamboo

January 20-22

The Chapman

Report

January 23

The Sins of

Rachel Cade

DRIVE-IN

January 15-17

Peyton Place

And

The Long Hot Summer

January 18

One, Two, Three

James Cagney

Horst Buchholz

January 19

The Children's Hour

Plus

Mister Rock and Roll

January 20 and 21

No Man Is An Island

January 22-24

Mr. Hobbs Takes A Vacation



Here are the newly-installed officers of the Alpha Phi Omega service fraternity. They are, seated, left to right: Jerry Davis, second vice president; Roland Lance, president; James Haymans, first vice president. Standing, left to right: Hubert Abner, recording secretary; John Evans, corresponding secretary; Danny Bray, sergeant at arms. Missing is Willis Brackett, historian; Billy Felder, treasurer; Hugh Lentile, alumni secretary.

APO Installs Lance President

Roland Lance, Savannah, was installed as President of the Alpha Phi Omega service fraternity for the winter months at this week's meeting of the Alpha Phi Omega. Other officers installed are as follows:

James Haymans, Hinesville, First Vice-President; Jerry Davis, Jesup, Second Vice-President; Hubert Abner, Jesup, Recording Secretary; Billy Felder, Waycross, Treasurer; John Evans, Thomson, Corresponding Secretary; Danny Bray, Statesboro, Sergeant at Arms; Hugh Lentile, Lyons, Alumni Secretary; Willis Brackett, Riverside, Historian.

The terms of these officers will expire in April, 1963.

GSC Grad's Band Performs For Governor

Rod Medders, a 1962 graduate of Georgia Southern, is directing Effingham County High School's Rebel Band, which played a new arrangement of Governor Carl Sanders' favorite song, "Night and Day," in the inaugural parade in Atlanta Tuesday.

Medders, a native of Brunswick, received his B.S. in Education with a major in Music last June. At GSC, he was a member of Phi Mu Alpha Sinfonia fraternity; he also received the Statesboro Music Club Award in the Honors Day program last May.

Assistant director to Medders and also the director of the Effingham County High School band is Wendell Lewis of Sylva, a student at GSC and also a member of Phi Mu Alpha.

Medders is currently replacing Mrs. Fred Grumley, wife of former GSC band director Fred Grumley, who is on a one-year leave of absence.

Many of the band members take private instruction provided by music students at Southern. Medders said that the music program of GSC has contributed much toward the success of the Effingham County band by providing clinics and workshops for the Effingham band members.

club has taken a number of field trips including several to Sweetheart Mound and the Hound Dog Kent Site. He also stated that the appearance of Dr. Ben-Dor on campus is one of the events which the club will sponsor, and that all interested students are invited to come.

Job Opportunities

Job opportunities listed this week by the office of Student Personnel in the Administration Building are as follows:

Campus Counselors
Openings for the positions of camp counselors and other summer work are now available to all interested students. Jobs are available in many different states. This is an opportunity to make money and gain valuable experience.

National American Red Cross
A request has been received from the American National Red Cross to refer qualified young men for the position of Red Cross Trainee. The preferred age for this employee is approximately 25. He will be a young man whom the organization will be considering for managerial positions as he gains

experience with American Red Cross.

He will be in this trainee position for approximately six months before promotion into another field, if his job performance is satisfactory. The applicant should have some work experience and must have completed his military obligation.

Bulletin Board
A bulletin board has been placed just outside the Office of Students' Personnel Service. Information pertinent to job opportunities will be posted there. This is for the convenience and information of the students.

More information on all items appearing in this article can be obtained from the Testing and Guidance Center of the Office of Student Personnel Services.

THE GEORGE-ANNE JAN. 17, 1962 PAGE 6

MEN
get a
**Camel
Blazer**

For getting about
the city, suburb, &
campus at...

Varsity
DONALDSON-RAMSEY
Store For Men
STATESBORO, GEORGIA

Letter To Editor

Dear Editor:

This letter is written to express my appreciation to the following people who helped make the English Club sponsored Dance of Friday, January 11, such a success: Pat Blanchard, who organized a fine group, which provided some very good music; Mrs. Webb who secured and prepared the refreshments; George Thomas who was so helpful in the organization of the dance; Eddie Rogers, who helped during the dance; also, the members of the English Club who helped.

With this cooperation I think the dance was one of the best, if not the best, I have seen at Georgia Southern.

I sincerely hope everyone enjoyed the dance as much as we enjoyed having them.

Sincerely,
Al Turner,
English Club President

LIBRARY NEWS

The GSC Rosenwald Library was open until 7 o'clock during the first two Saturdays of this quarter so as to enable the students to gain some weekend study.

"Due to the fact that the students had classes on the first two Saturdays of this quarter, the library hours were extended to 7 o'clock for these two Saturdays", stated Miss McElveen, librarian at the library.

Professional Typist Available

Quick, Alert Service, for Term Papers, Thesis, or Dissertations. A Thorough Knowledge of Research Techniques.

For Information —

Call 764-5310

**The
Paragon
Restaurant**

... just off the college campus

Specials!

PIZZA

Small Plain 69c
Large Plain 89c

Archaeologist To Speak At GSC

Dr. Immanuel Ben-Dor, nationally famous archaeologist, will speak in the Frank I. Williams Center on Wednesday, January 30, at 8 p.m., according to Ray McCrimmon, President of the Archaeology Club at GSC.

YOUNG REPUBLICANS

The GSC Young Republican Club is having their first open meeting of the quarter tonight.

"All persons interested in the Young Republican Club are invited to attend the meeting," stated J. Campbell Toshach, president of the club. He added that the plans for the quarter will be outlined at this meeting.

The club has been conducting a survey to determine the number of registered voters on campus and the political preference of the students. "We hope that the students of GSC will cooperate with us in determining these facts. Our members are soliciting for these preferences at the present and will continue to do so until we have a complete coverage of the campus," Toshach added.

Second Annual Minstrel Show Slated in Feb.

The second annual "De Land of Cotton" minstrel show will be produced by Phi Mu Alpha Sinfonia in McCroan Auditorium February 20, 21, and 22, according to Tom Fouché, show director.

Phi Mu Alpha, a national music fraternity, produces their minstrel show each year for the purpose of raising funds for the Daniel S. Hooley Music Scholarship, which is given to a deserving music student.

This year's show will be similar to last year's production, including humor, campus satire, quartets, a dixieland band, songs by the Phi Mu Alpha "Cotton Chorus," and a novelty band, Fouché said.

Fouché also stated that rehearsals were started this week for the show which will run for three days.

Phi Mu Alpha is also continuing its weekly radio show "The World of Music" on radio station WWNS. The program is heard each Sunday afternoon at 3 p.m., according to chapter president, Joe David.

GEORGIA SOUTHERN COLLEGE BASKETBALL CONTEST

**Pick The Winners
Win \$10.00 Cash**

**SUPPORT THE SPONSORS OF THIS
CONTEST BY VISITING THEM WHEN
YOU BUY!**

Name _____

Address (Dormitory of Student) _____

City and State _____

Circle all the winners and receive \$10.00 cash. If no one gets all the winners, the person naming the most winners will receive \$5.00 in cash from the George-Anne. In case contestants tie, the prize is equally divided.

1. In each ad on this page you will find two college teams scheduled to compete this week. Check the teams you think will win. Tie games count against you unless indicated.
2. Mail or bring your entry to the George-Anne office located in the Frank I. Williams Center not later than 2 p.m. Friday. Letters must be postmarked before this time
3. Members of the George-Anne staff are not eligible to win.

Skate 'R Bowl

STUDENT RATES

Monday — Saturday

35c Per Game — 3 Games \$1.00

Fla. State — Ga. Tech

BASKETBALL CONTEST WINNER

LARRY CROUCH

Business Administration Major
Augusta, Georgia

Franklin Chevrolet Co.

—Sales and Service—

60 EAST MAIN ST.

U. of Alabama — Auburn

STUDENTS!

FOR THAT QUICK SNACK

Franklin's Restaurant

"Never Closes"

—At Intersection Hwys. 301, 80 & 25—

U. of Akron — Ohio Western

Meet Your Friends At

The College Pharmacy

"Where the Crowds Go"

19 South Main St.

Arizona State — Wyoming

STUDENTS!!!!

Shop the Modern, Convenient Way

BEN FRANKLIN STORE

—Your Most Convenient Store—

E. Main St.

Statesboro, Ga.

U. of Arizona — New Mexico

Bulloch County Bank

"Service With A Smile"

Member

Federal Deposit Insurance Corporation

Brigham Young — Utah



Rockwell Manufacturing Corporation

Drake U. — Wichita

Perfect for a king-size thirst



Bottled under authority of The Coca-Cola Bottling Company
Wagner — Manhattan College

SEA ISLAND BANK

and its

Southside Branch

... just off the GSC campus

Member Federal Deposit Insurance Corporation

Cornell — Princeton

KNOW AND SUPPORT

YOUR GEORGE-ANNE

ADVERTISERS!

Columbia U. — Penn

Franklin Radio & TV Service

—ZENITH—

Complete Selection of Records
TV - Radios - Record Players
48 E. Main St. Statesboro, Ga.

Mississippi State — U. of Mississippi

Merle Norman Cosmetics Studio

To YOU! An invitation for a complimentary demonstration and Free Instructions in Complexion Care, Individual Make-Up and Color Charts.

Studio Hours: 9:00 a.m. — 6:00 p.m.

POLLY ROACH — Owner
450 S. Main St. Phone 764-2509

LaSalle — Seton Hall

Medical Center Pharmacy

(opposite hospital)

Open Daily - Wednesdays & Sundays

"Statesboro's Friendly

Neighborhood Drug Store"

Butler U. — Depaww