

Georgia Southern University

Digital Commons@Georgia Southern

---

The George-Anne

Student Media

---

2-23-1962

## The George-Anne

Georgia Southern University

Follow this and additional works at: <https://digitalcommons.georgiasouthern.edu/george-anne>

---

### Recommended Citation

Georgia Southern University, "The George-Anne" (1962). *The George-Anne*. 2463.  
<https://digitalcommons.georgiasouthern.edu/george-anne/2463>

This newspaper is brought to you for free and open access by the Student Media at Digital Commons@Georgia Southern. It has been accepted for inclusion in The George-Anne by an authorized administrator of Digital Commons@Georgia Southern. For more information, please contact [digitalcommons@georgiasouthern.edu](mailto:digitalcommons@georgiasouthern.edu).





## Eagles Are Top-Rated Team In District Council Calls For Fact Finding Group

By Robbie Powell,  
Staff Reporter

The Eagles of Georgia Southern became the top rated team in NAIA District 25 when they downed Belmont Abbey here Saturday night 69-63. The victory pulled the Eagles one-tenth of a Dunkle point above Oglethorpe in the rating that is used for seeding the teams in the upcoming tournament to be played in Atlanta March 2 and 3.

Throughout most of the season the Eagles have trailed Oglethorpe in the Dick Dunkle ratings, and they were 2.2 points behind Oglethorpe going into the game Saturday night. Oglethorpe faced Stetson Saturday afternoon, and won the game by a two point margin. The small margin of this win dropped the Petrels to 52.6 while the Eagle victory added .5 to their rating and brought it to 52.7.

### Ratings Used

The NAIA uses the ratings listed weekly by Dick Dunkle Inc. for picking the participants in their annual playoffs. The winners in the district tournaments journey to Kansas City, Missouri for the final playoffs.

The Dunkle rating is published weekly by the Dunkle Sports Research Service and has been in continuance since its origination by Dick Dunkle in 1929. A dunkle is a comparative rating based on the season's record to date.

It reflects weighted average scoring margin relative to rating of opposition. Example: a 50.0 team has been 10 scoring points stronger per game than a 40.0 team against opposition of relative equal strength.

Being seeded first in the tournament, the Eagles will face fourth seeded Stetson in the opening game at 7:00 Friday March 2. Oglethorpe will vie with Jacksonville University in the second game.

### SNEA Slate Of Candidates Told

The slate of nominations for the 1962-63 officers of Student National Education Association was announced this week.

Competing for the office of president will be Randall Bacon, Darien, and Donald Westberry, Odum. Others running for officers of the organization will be: first vice president, Sandra Roberson, Odum, and Dahlia Allen, Dexter; second vice president, Katsue Shepherd, Rhine, and Glynn Keebler, Odum.

Also, secretary nominees are Mary Alice Stewart, Lyons, and Madge Surles, Preston; treasurer, John Griffin, Americus, and Sam Jones, Lyons; parliamentarian, Ronny Lasky, Savannah and Russell Burch, Cadwell. The election will be held March 7. The nominees will begin campaigning Monday and short campaign speeches will be made by each candidate at the meeting.

**Champs Picked Saturday**  
Saturday night the winners of the first night's contests will play for the District championship, and the losers will play a consolation game.

Although the Eagles are seeded first in the Tournament, Oglethorpe should be considered a favorite to win on the basis that the games will be played on their home court. Earlier this year the Petrels sneaked by the Eagles in a double overtime contest at Oglethorpe, but were defeated by a slim one point margin here at Statesboro.

Against the other teams in the Tournament the Eagles have two wins and one loss to date. The Eagles lost to Stetson in DeLand, Florida, but stopped the Hatters on the Southern home court. Jacksonville University fell to the Eagles in Statesboro, and the two teams meet in Jacksonville tomorrow night.

### Informal Lecture Series Initiated In Dormitories

A Georgia Southern College Informal Lecture Series has been initiated in the women's residence halls, according to Mrs. Carolyn C. Gettys, dean of women.

This program was developed "in order that women resident students might have a chance to become culturally curious," she stated.

This series is presented by the faculty and staff of Georgia Southern College. Such topics as "The Cultural Aspects of Travel," "Dreams and Hypnosis," and "Fashion Cycles of the World" have been presented to the students.

Some of the purposes of this program are to broaden the students' interest in the world about her; to sharpen her appreciation for the value and beauty of concepts, attitudes, beliefs and causes; and to bring more nearly into balance the cultural opportunities with the physical, academic, social and religious programs now available at Georgia Southern College.

Student attendance is on a voluntary basis. According to Dean Gettys, "the response has been good, with the students seeming to be very interested in this avocational opportunity our faculty and staff are providing."

### Medea Tickets Still Being Sold; Anderson Stars

By MARIE EUBANKS  
Staff Reporter

Tickets for Dame Judith Anderson's "Medea 1962" may be purchased between 9 a.m. and 4:30 p.m. in the backstage office of McCroan Auditorium. The production will be given in the auditorium on March 7 at 8:15 p.m.

Tickets may be purchased in person in the backstage office of McCroan Auditorium or by writing Robert Overstreet, Box 2026, GSC. Prices of tickets are: Orchestra, \$3.00; downstairs middle and side section seats, \$2.50; other downstairs seats and balcony, \$2.00. Checks should be made out to the Masquers Fine Arts Series. The production is open to the general public.

Dame Judith Anderson will appear in her role of "Medea" and her sleepwalking scene of Lady Macbeth.

**Won Two Emmies**  
These roles have brought her two television Emmy Awards as the outstanding actress of the year, and half a dozen other awards for distinguished performance.

Although born in Australia, Judith Anderson came to this country as a young woman, and has often been identified with the American stage. Her first stage success was a part in "Cobra" in 1925. After that she starred in many plays by Eugene O'Neill.

Other roles that have made her famous include starring parts in "Strange Interlude," "Mourning Becomes Electra," "The Old Maid," and the female lead in "John Brown's Body."

**Debut In Rebecca**  
Leaving the New York stage for a time, she made a film debut as the eerie housekeeper in "Rebecca." Some other assignments were the roles of Big Mama in "Cat On A Hot Tin Roof," and the wicked stepmother in Jerry Lewis' "Cinderella."

Performing with her in "Medea" and "Macbeth" will be William Roerick. This professional actor played the southern colonel for several years on the day time program "Clear Horizons."

### Advisory Council Waits For Recommendations

The three recommendations passed by the student council on February 14 were not acted upon by the Student Personnel



PICTURED ABOVE IS the Georgia Southern College Philharmonic Choir as they appeared in their concert Tuesday night. The concert was heavily flavored with religious, classical music. Conducting the group is Robert Gerken, instructor of music at GSC.

### Band Schedules Concert In Aud. For March 5

The GSC Concert Band and the Jazz Ensemble will present a concert of classical, popular, and jazz music in McCroan Auditorium Monday, March 5, according to Fred K. Grumley, conductor.

In addition to the students playing in the band, the concert will feature solos by GSC music instructor Robert Gerken and Ralph Montgomery of the Savannah Symphony.

The band presents a concert once a quarter. A schedule of the numbers to be played at this winter quarter production follows: "El Conquistador" by Tarver, "First Suite in E-Flat for Military Band," by Holst, "Concertino" by Weber (a clarinet solo by Robert Gerken), "Water Music Suite" by Weber, "Czardas" by Monti and Mendez (trumpet solo by Ralph Montgomery).

**ALSO: "Beguine For Band"** by Osser, "Percussion Espangnole" by Prince, and "Symphony No. 1 In G Minor" by Kalinikov.

Following intermission, the Symphonic Jazz Ensemble will take the stage. The band will be assisted by the brass choirs from Statesboro and Effingham County High Schools. There is no admission fee.

### Final Preparations Underway For Grad.

Final arrangements are now being made by members of the senior class in preparation for graduation, according to Jim Pollak, class president.

At a meeting held Monday it was announced that measurements for caps and gowns could be taken at any time. Mrs. Bob Benson, secretary to Robert Pound, director of the Williams Center, will be in charge of measuring and ordering the caps and gowns.

To order a cap and gown no fee is necessary. The \$10 graduation fee must be paid in the business office before seniors can pick up their caps and gowns.

**Receipt To Be Shown**  
The graduation fee also covers diplomas and the receipts must be shown to claim caps and gowns and to receive a diploma.

Orders for invitations and name cards have been taken all this week and can still be placed until 4:15 today in Dr. Jack N. Averitt's office on the second floor of the Administration Building. Orders for these items will not be accepted again until spring quarter.

Committee chairmen for various senior class projects have also been announced. Ernestine Parker is serving as chairman of a committee planning the annual Lantern Walk. Margaret Akridge is chairman of the Banquet committee.

### Lanterns Purchased

Funds donated to the senior class by Alpha Rho Tau have been used to purchase lanterns for the Lantern Walk. Additional lanterns can be obtained on option and will be sold to members of the class. Sally Jane Coleman and Janet Sikes are taking orders in Mamie Veazey Hall. Bill Flournoy is taking orders in Cone Hall. Day students who wish to purchase the lanterns are asked to contact one of the class officers who are Pollak, Miss Coleman and Miss Sikes. Cost of the lanterns is \$1 each.

Funds obtained from the sale of the lanterns will be used to finance the presentation of a gift to the school.

Seniors are also reminded that in order to graduate in June they must apply for graduation in the Registrar's office by the end of this quarter.

The Georgia Southern College student council at a closed session on Tuesday unanimously passed a recommendation calling for the establishment of a fact-finding committee to study the possibilities of sanctioning social fraternities and sororities.

This recommendation of the student council will now go to the Student Personnel Advisory Council for further action. The decision of the student council to make this recommendation was reached after last week's meeting of the student body to air their views on this issue.

Addressed to the Student Personnel Advisory Council, the recommendation is as follows: "The Student Council of Georgia Southern College recommends that a fact-finding committee consisting of one Student Personnel Advisory Council member, one Student Council member, two faculty members, two students at large, and one former fraternity member be appointed to submit a detailed report to the Student Personnel Advisory Council relative to the facts concerning the inauguration of social fraternities and sororities at Georgia Southern College.

The following items should be included in their study: (1) Would social fraternities and sororities elevate moral stand-

ards? (2) Would they increase unity, brotherhood, and school spirit? (3) Would they serve our school scholastically by requiring a minimum scholastic average to maintain membership? (4) How could they alleviate the housing problem? (5) Would they create more student interest in social activities? (6) How can specific sororities and fraternities be organized? and (7) How should charter membership be distributed through all the classes?

Should these facts prove favorable to the Student Personnel Advisory Council, the Student Council will give full support to the organization of social fraternities and sororities."

Diane Brannen, president of the student council stated that: "This recommendation just suggests some of the things we hope will be studied. We also hope that other factors will be included in the study." She added that what the student council wants from the committee most are facts, not opinions.

Meetings of the Student Personnel Advisory Council are held on the third Tuesday of every month. This means that the recommendation cannot be considered until March 19.

### Sweethearts Of BSU Are Named At Wed. Banquet

Rick Osburn, Atlanta, and Mary Kent Gillenwater, Brooklet, were named 1962 "Sweethearts of the Baptist Student Union" at a banquet Wednesday night.

Osburn and Miss Gillenwater were chosen as the boy and girl best representing the ideals of BSU. Those ideals were listed as follows: To link college students with the Baptist Church; To promote spiritual welfare of individual students; To provide Christian entertainment and fellowship; To encourage Bible study and prayer; and To create a wholesome Christian atmosphere on campus.

The council, according to a news release in December, also desires to promote new policies influencing the students' social and cultural life. In this phase the council does not set the policy, but serves in an advisory capacity.

This council and the committees under it are appointed by Dr. Zach S. Henderson, president of the college. The plans made and the policies followed by the council must be approved by President Henderson before being carried out.

Those serving on the council are: Dean Ralph K. Tyson, chairman; Dean W. H. Holcomb, vice-chairman; Dean Carolyn C. Gettys, recording secretary; J. I. Clements; Dr. Lawrence Hitchcock; and Dr. Tully Pennington.



MARY KENT GILLENWATER



RICK OSBURN

The banquet was held at the First Baptist Church Banquet Hall and was entitled "The Roaring Twenties." The program, which consisted of songs popular during the 1920's, was presented by Amelia Robertson, Elaine Walden, Gail Mobley, George Thomas, and Rick Osburn.

Faye Tiner, social chairman, and Florrie Coffey, BSU director, were in charge of the decorations. Others on the decorating committee were: Peggy McLendon, Thomas Brophy, Mary Lee Rogers, John Stetzer, Rick Osburn, and Al Bazemore.

### Cultural Exhibits Planned By Art Class Students

A series of cultural exhibits has been planned and designed by the students of the Georgia Southern Art Course 412, according to Miss Freida Gernant, associate professor of art. The exhibits will be on display from February 19 to March 19.

The display may be seen in the Frank I. Williams Center on the campus of Georgia Southern, at Southern Discount on North Main Street, and at McConnell's in the Simmons Shopping Center.

The schedule is as follows: Frank I. Williams Center, February 19-26, Larry Gordon, Ludwig, African - Modern Sculpture; February 26 - March 5, Fred Ream, Augusta, Julian Wade, Millen, Drawing Techniques; March 5 - March 12, Mary Alice Chaney, Statesboro, Contemporary Design in Everyday Life; March 12 - 19, Billy Fordham, Dublin, Oil Painting Techniques.

Also February 19-26, Eva Lowe, Dublin, Religious Architecture; February 26 - March 5, Martha Morris, Savannah, Children's vs. Professional Paintings; and March 5-12, Elaine Wear, Statesboro, Sculpture - Tools, Technique.

At the Southern Discount Center, February 26 - March 5, Howard Williams, Brooklet, Lovie O'Quinn, Baxley, Art Education; February 26 - March 5, at McConnell's, Mina Herman, Surrency, Puppetry.



GABRIEL MCNAIR

### Art Major Will Give Exhibition In Carruth Soon

An art exhibition by Gabriel McNair, a senior art major from Gwynn, will be presented in the Carruth Arts and Industries Building Feb. 28 through March 7.

The exhibition will cover the fields of arts and crafts, paintings, sculpture, jewelry, and ceramics.

The exhibit represents the results of four years of art study at GSC on McNair's part. The artist, who will graduate this June, plans to teach art after fulfilling his military obligation.

He also plans to do graduate work in art and hopes to teach on the junior college or college level.

A reception will be held for McNair on Thursday, March 1, in the Carruth Building.



SIX GEORGIA SOUTHERN WOMEN were recently initiated into Alpha Gamma Omicron, a freshman honorary sorority. After an initiation service these initiates were honored at a banquet in the guest hall. A B-plus average is required for membership in the organization. Left to right are: Virginia Blackmon, Thomson; Elaine Walden, Lumber City; Judie Lee, Newington; Betty Yeomans, Swainsboro, Agnes Farkas, Statesboro.



# Editorials

## Those Perpetual Holes

This old story comes up time after time. No one likes to hear it. No one likes to write about it. But you can't always do what you like to do. So here it goes one more time.

It's those blasted holes scattered throughout the campus roads. What brings up this question again is something which happened after a recent Saturday night ballgame. The students have learned how to dodge them fairly well. But the poor townspeople who come out to a ballgame don't even know where the holes are located.

Many of them fell into that "crater" in front of the gym after the game. It was really something to watch first the front tire fall in and the car bounce. Then the back tire went in and the car bounced again. It was impossible to avoid the hole be-

cause cars were parked on both sides of the street and a line of traffic was coming from the opposite direction.

Now let's face it. There is no excuse for conditions such as these to exist. Everyone knows it takes money for work like this, but it doesn't take any extra money to throw some dirt in EVERY time what is in the hole washes out.

If we cannot afford to put asphalt or a more permanent filler in the holes, we can afford to throw dirt in constantly to keep the things filled.

Regardless of whether or not the holes get fixed immediately, let's remember in the future that when a hole develops we don't need to wait for money to fix it. All that is necessary is frequent spot checks and a few shovel loads of dirt on a regular basis.

## Student Council Acts Favorably

The student council has acted on the social fraternity and sorority question. As is reported in a page one news story, the council has passed a recommendation favoring the establishment of a FACT-FINDING committee. The recommendation asks that this committee submit a detailed report to the Student Personnel Advisory Council relative to the facts concerning the inauguration of social fraternities and sororities at Georgia Southern.

Points which the student council feels must be included in the report are outlined in the recommendation. Others can and, it is hoped, will be incorporated into the report.

More consideration must be given to this matter.

Now, with this recommendation having been passed, more progress can be seen. Before sanction is given to any social fraternity or sorority, we all deserve to know a little more about what such organizations will mean to the college. By suggesting that a fact finding committee be set-up and a study be undertaken, we can find out what we need to know.

The matter is now out of the hands of the student council.

Their recommendation now goes on to the Student Personnel Advisory Council to be accepted or rejected. It is our hope that the Advisory Council will take positive action on this recommendation. We favor the establishment of this proposed committee and hope to see it exist in the very near future.

The student council has already acted favorably. Now it is up to the Advisory Council to do the same. The GEORGE-ANNE is behind this move all the way.

When the results of the study are complete, everyone will be able to see the findings and should have a chance to agree or disagree by means of a vote.

If such a study will reveal the advantages of fraternities and sororities, and if high standards and requirements are then proposed, we hope to see the beginnings of fraternities and sororities at Georgia Southern. We want this committee to be organized, get to work, and prove that fraternities and sororities can lead the way to even further betterment of Georgia Southern, if they are organized and managed properly. As we have said before, we want them IF we can have the best.

## 'Going To Kansas City'

The Georgia Southern Eagle basketballers have pulled the proverbial rabbit out of the hat.

After plowing through a season of a nearly equal amount of ups and downs, they have shown enough hustle and sparkle to be named the number 1 team in the NAIA district 25.

This means that the Eagles will be the top-seeded team in the district play-offs to be held early in March. Throughout the 1961-62 season, it's been obvious to all that grabbing this position was no easy job. Competition has been keen, and it will continue to be so.

The GEORGE-ANNE feels safe in speaking for the students of GSC when it says "Thanks" to the ballplayers, coaches, managers,

and all those affiliated with the team. Thanks for a job well done.

However, the tale by no means ends here. The Eagles are still hard at work preparing for the all-important tournament coming up. We all know that there is no limit to how far a team can go once it earns a berth in this tournament.

We feel, however, that the most important issue is not whether we win or lose, but the spirit with which we accept the results. Let's get out and support the Eagles with all we've got, as they'll be doing the same for us on the court.

We hope that in a few weeks everyone can be singing, "Going to Kansas City!"

## LITTLE MAN ON CAMPUS



In a formerly bustling industrial site the doors of a single plant close and hundreds of workers are out of jobs.

A one-time agricultural state finds itself dependent upon city industry and city technology for its 20th century livelihood, and as a result thousands of young Southerners seek to work in a strange new environment.

An able high school graduate cannot afford four years of residence at a university away from home, but wants to continue his education.

Each of these situations has one need in common — a need for education or reeducation to help people of the South adjust to new conditions and new circumstances.

They demand education beyond the high school readily available to large segments of the population. They demand post high school education which doesn't necessarily lead to a college degree.

This education could be provided in several ways, but there is one way gaining steady popularity in the South and nation — and that is the two year, non-residential community or junior colleges.

Has Special Responsibilities Special responsibilities of the community college are to provide the first two years of college for students who then transfer to other institutions to work for collegiate or professional degrees; to prepare students to enter employment which requires one or two years of collegiate or technical education; to provide counseling and guidance for students in making decisions about vocational and personal goals; to

provide community educational programs for both youth and adults who want to develop either their vocational competence or their general education.

The Commission on Goals for Higher Education in the South suggested in its report that each state should develop a strong system of two-year community colleges.

The key words in this suggestion are 'strong state system.' The only thing worse than having too few facilities to train Southern talents would be to have a weak, ineffectual school of dubious quality in every town or hamlet. Many people interested in community colleges will have to get over an all-too-frequent idea that these schools do not — and need not — offer education of comparable quality to that found in four-year colleges.

Requires Planning Establishment of successful two-year colleges throughout a state will require long-range planning and careful research before any action gets under way. This planning must take into consideration all educational opportunities of the state and relate the community college to all the rest.

Not any one system of organization will suit all states of the South, for each state will have to satisfy demands of its own people for educational facilities. In Florida, the state is establishing a system of locally controlled community colleges. In this system, each two-year college is considered as a part of the local public school system.

Council Supervises General supervision and cer-

continued on page 3

## Communism And YOU

Prepared by the United States Air Force Chaplain Board at the Air University, Maxwell Air Force Base, Alabama. All articles have been read and approved by Chaplain, Major General, Terrence P. Finnegan, Chief of Chaplains, USAF.

VIII: Joseph Stalin: Dictator The story of Joseph Stalin, Dictator of the USSR from 1924 until his death in 1953, reads like an improbable novel. The ancient proverb, "Truth is stranger than fiction," applies to Communist history during this period as it never applied before or since.

He was born in 1879 with the family name Djughashvili "Stalin" was his later revolutionary activities name). As a boy the Dictator-to-be studied for the Orthodox priesthood. He was expelled from the seminary and found his place as a labor agitator. Before long he came to the attention of Lenin, the Communist leader, and moved in as his aide-de-camp. By 1922 he had become Secretary General of the Communist Party.

Lenin pleaded with the Politburo as he lay dying in 1924 not to allow Stalin to take over as head of the Party. Stalin,

however, had already laid his plans and in spite of opposition from Leon Trotsky, he moved into the party leadership. Only death, on March 5, 1953, ended his days as Dictator.

Stalin's method of removing "deviationists" was through a series of "purges." It is estimated that almost 3,000,000 died violently at his direction up to World War II.

A non-aggression pact with Hitler, completed in August 1939, paved the way for the launching of the war in September of that year. In 1941, Hitler broke the pact, attacked Russia and suddenly the Communists were on the side of the Allies.

Stalin saw Russia rise from a position as one of the most undeveloped nations on earth before World War I to second place among the powers of the world in 1953. The human sorrow that built his historical bridge is not revealed in the cold words that spell its accomplishment. Lenin's prediction concerning the cold ruthlessness of his protégé was carried out to the letter.

Next week: Communism under Khrushchev.

Editor JIM POLLAK

GOES

## behind the headlines big and small

SOMETIMES NOT AT ALL

Delay after delay held up the first manned orbital flight of the United States, but success was finally the order of the day when John Glenn Jr. sped around the earth Tuesday.

It was a historic day for all Americans and all the world. Nothing could have made one feel more thankful that he was an American than to stand or sit before a television screen and watch the events transpire.

Glenn ranks high in the hearts of millions of people and he certainly deserves it. The American people can only thank God that men such as Glenn are working diligently to see that the United States can successfully and freely accomplish triumph after triumph.

Thousands Involved One person watching Tuesday's telecast remarked that: "It is amazing to think about the thousands of men and women who had a hand in the space shot and how all their hopes, dreams, energy, and talent were riding with Glenn."

Mrs. Glenn, the astronaut's mother, commented at a news conference following the space triumph, that "feelings are hard to put into words." That is true, but all America today can rightfully be thankful that the flight

was a success and proud that all men could share in that success. The feelings aroused just watching the event and knowing that millions were doing the same make one feel proud. It is mighty good to know that we can see things such as this as they happen and that all can share in their good fortune.

Americans can truly be thankful and proud, Glenn and all who were connected with the project deserve all the credit they can be given. We can also continue to maintain faith and confidence that a program such as that of this country, being conducted in the light of truth and honesty, will also continue to be heaped with success.

Success seems to have been the pass word this week. The Eagles of Georgia Southern have also realized what it is like. On Monday it was announced that Georgia Southern was the number one team in District 25 of the National Association of Intercollegiate Athletics. The Eagles beat Oglethorpe by one tenth of a point according to the Dunkel ratings. It's on to the District 25 Tournament for the Eagles now and we join in with all the other Eagle fans in wishing them success in that venture.

The Russians are up to their old tricks again. At the same time they were making such a big fuss over the speech of Mrs. Khrushchev they were also

stirring up trouble in Germany. The wife of the Soviet Premier spoke to American women on Radio Moscow Sunday night encouraging them to strive for the day when the United States would take up the "peaceful" ways of the Soviets, "Dump all arms into the ocean," was her call.

Yet, even while she spoke her comrades were trying to claim rights to the air corridors leading into West Berlin. If by chance they try to assert these "rights" which they do not even possess, the allies should resort to only one tactic. Action will be necessary. Direct action, even if it involves firing at the Soviet MIGs buzzing the airliners in the corridors, should be our only alternative.

One news item recently pointed out that refugees from East Berlin, especially the Volpos (secret police), told Western officials that they were instructed to go only as far as the West would allow when constructing the wall dividing Berlin. The West allowed the wall to go all the way and the chances of it coming down now seem slim. This time our best move would be to stop any attempts by the Russians to infringe on Western rights.

As far as listening to anything they say regarding peace, improved relations, or disarmament; we can start believing them when they begin to practice what they preach.

## A Square Deal

By BILLY DEAL

Twenty years from now, when other college students are struggling through the dusty pages of history books, the date of February 20, 1962, will be right up there with July 4 and all the rest.

And Colonel John Glenn will be placed in the same category with other heroes like Abraham Lincoln, George Washington, Dred Scott, and Athlete Foot.

Of course, all Americans realize what a great blow for progress was struck by Col. Glenn's orbital flight. And millions of Americans really got a first hand view — because they watched it on television. And on my TV the broadcast was similar to a sports show. It went like this...

Play-by-Play Good morning, ladies and gentlemen. This is Bill Stern bringing you a play-by-play of Col. Glenn's battle with space. We'll have the kickoff for you in just a moment, but first a word from our sponsor.

Friends, when was the last time you had a really smooth ride in an automobile? Well, if you're still wheeling around a Corvette or Rolls Royce, why don't you trade it in for a 20th century model the Friendship Fireball. As you may have guessed, this model is patterned after Col. Glenn's spaceship, and it is guaranteed to give you the smoothest ride of your life. It is powered by rocket fuel, and we guarantee one half mile per gal-

lon. Remember: what this country needs is a good two-dollar automobile. Now back to Bill.

Thank you, Cheltenham. Now I see Col. Glenn is in the center of the field for the toss of the coin. Well, he must have lost because they are tying him inside the capsule. There goes the gun and the game is on.

He's off... he's gaining speed... look at him go! Well, friends, he is now in orbit and the time is 9:46 a.m. We'll give you a report every three seconds until it is time to bring the good Colonel down. He will make three orbits. But now a quick message for you.

Kiddies! Have you tried brand new Friendship Flakes? They're crisp, full of wheat and oh, so good to eat! And milk doesn't make them mushy. If you want to grow up to be big and strong and fly a spaceship like Col. Glenn, then start eating Friendship Flakes and become muscle-bound.

Thank you, Bartholomew. Col. Glenn is now over Australia. Wait! We're getting his signal. He says something has caught on to his ship. But it's rather small so he isn't worried. Now he says he can pick up somebody down below crying about a boomerang that won't come back.

Aid From Pole Vaulters When Col. Glenn gets over Australia again we're going to have the new pole vault champ, John Uelses, jump up and drop him a load of hamburgers, moon pies and RC's. And now a word from our sponsor.

Friends, do you feel tired, sluggish, mad at the world. If you do, you should try Col.

Glenn's Cosmic Ray Tonic. Yes, folks, the Colonel is nipping at some of this wonderful stuff right now. He feels strong, peppy and happy. Shouldn't you? Absolutely non habit forming, it is made of carrot juice, sea water, and moonshine. You can get it at your favorite distillery. Now back to Bill.

Well, we have 10 minutes till the end of the game, and Col. Glenn is beginning to cruise in. With time running out, the United States is now sending in subs. Col. Glenn is drifting in now, and the fans are giving him a standing ovation.

Game Over Well, fans, Col. Glenn is headed for the showers, and the game is over. We'll have the box score and more comments, but first a word from our sponsor.

Moonlight Blades, Moonlight Blades, shave you twice as fast; Col. Glenn likes them best because they last and last.

Men, use the same blade astronauts use—Moonlight Blades. No more razor scratch, no more burn. Just lather up, then chop them off. And here's the best part: you can use one blade up to 50 times! Of course, it might be a little tough going on the last 47 tries.

And Moonlight Blades are made of top grade meteor particles. Get them today. Now back to Bill.

Well, friends, the United States has done it. We have won. Now this is Bill Stern saying so long. And remember: Win or Lose, Lose or Win; Let's all Cheer for Big John Glenn.

And now a word from our sponsor...

## Inquiring Reporter

By VIRGINIA BLACKMON

Students of Georgia Southern College have been given the opportunity to take advantage of the culture side of life through plays and concerts presented here on the campus. The lack of attendance at these functions has prompted the Inquiring Reporter to ask the following questions: Do you think we have sufficient entertainment? If not, what entertainment should be added? Here are the results:

Ray Beeland, Cordele — "I think we should have something that would appeal to the majority of people instead of the minority. I think we should have some of the popular singers to perform on campus."

Judy Jones, Lakeland — "I think the entertainment is fine at Georgia Southern. I don't think the students appreciate it as they should."

Doy Beck Altimon, Guyton — "I don't believe we need to add anything to our present program of entertainment. The activities which we have are, or could be, valuable experiences for those who attend. Those who do not attend should check their cultural interests."

Ann Laird, Douglas — "I would like a movie during the week. It's not that I don't want to go to the concerts and plays, I just don't have the time."

Norma Gay Moore, Alapaha — "I would like one-act plays. These would be shorter and would give time to study afterwards."

Mary Alice Belcher, Brooklet — "The type of entertainment I would like would be the kind in which individual students could express themselves by using their special talents. In addition to the professional musical

concerts given on campus, I believe that the talents of the students would be enjoyed by a vast majority."

JoAnna Bennett, Blackshear — "If the college is going to sponsor someone, they should get someone who the students would be interested in."

Mary Alice Stewart, Lyons — "I would like to have some of the better known vocal groups on campus."

Gladys Rose Purvis, Baxley — "I am interested in concerts and plays, but it seems that I have a test or a lot of studying on the nights when these events take place."

Eddie Rogers, Glennville — "I think we have enough entertainment now. I think we should get behind what we've already got."

Marsha McClurd, Brunswick

continued on page 4

## The George - Anne

JIM POLLAK, Editor

JOHNNY SCOTT  
Business Manager

MIDGE LASKY  
Managing Editor

ROLAND PAGE  
News Editor

The opinions expressed herein are those of the student writers, and not necessarily those of the college administration and faculty.

Editorial Board: Midge Lasky, Roland Page, Johnny Scott

Columnists: Billy Deal

News and feature staff: Frances Landman, Agnes Farkas, Connie Enzbrenner, Wynette Bags, June Farmer, Phyllis Anderson, Joy Letchworth, Geraldine Durrence, Marie Eubanks, Kay Davis, Delle Boykin, Carol Camp, Anne Barrow, Betty Toney, Pat Crowder, Al Gibson Jr., Patty Ray, Bill Pollak, Virginia Blackburn, Tom Wilkerson, Denny Rushing

Division Correspondents: Judy Chandler, Education; Robert Connor, Arts and Industry; Gail Milton, Home Economics; Ann Crumley, Social Science.

Sports Staff: Robbie Powell, George Baggs, Ann Hedden, Hoyt Cannady, Johnie Kicklighter Jr., Johnny Scott

Friday, February 23, 1962

Entered as second class matter at Post Office at Georgia Southern College, Georgia Southern Branch, Statesboro, Georgia, under temporary permit.

Subscription Rate — \$2.00 Per Year.



# Scoring WITH Scott

by Johnny Scott

Team play was exemplified in the fine manner in which the Eagles defeated the Mercer Bears last Monday night in Macon. The victory was quite an achievement in the fact that the Bears, like almost every other team the Eagles have faced this season, are hard to defeat on their home ground. Most teams are considered ten points better on their home floor than they are on the road, and the Eagles barely eked out a 63-61 decision over Mercer here. After the smoke cleared last Monday, however, the Eagles had defeated the Bears again, this time by a count of 67 to 63.

## EAGLE TEAMWORK CLICKS

The difference was largely due to an all-out display of teamwork on the part of the Eagles. Guards David Patton and John Burton spearheaded a fine defensive effort, and Fran Florian contributed some fine outside shooting in the Eagles' behalf. Numerous steals and timely rebounds in the second half helped the Eagles to ice the contest on one of Florian's dandies in the waning seconds. Mercer's fine playmaker, Butch Clifton, was all that kept the Bears from becoming completely demoralized at one time in the second half, when the Eagles boosted their lead to 10 points.

## EAGLES WELL REPRESENTED

A fine representation of GSC students came to the game in Macon to cheer the Eagles to their victory. In addition to the bus load that came to the game from here, several students made the trip in cars. The body of students from GSC gave the Eagles almost as much support as the Mercer fans did the Bears.

The Eagles make their final appearance of the season in Jacksonville tomorrow night, meeting the team that they defeated soundly here, 93-80. This should be a much closer game this time, and the Dolphins are not to be underrated. They will be one of the four teams, along with the Eagles, who will be playing in the District 25 NAIA Playoffs in Atlanta March 2-3.

## THREE CHEERS FOR THE CHEERLEADERS

I think this is an appropriate time to offer a pat on the back to GSC's fine group of cheerleaders, the "unsung heroines" of the basketball season. Mrs. Iris Young and the girls have done a fine job this year, and have worked hard to generate school spirit at all the games. Some complaints may have been heard, but in my opinion, GSC can stack its fine group of girls against any of our opponents' cheerleaders this year. So, three cheers for GSC's six fine girls. — Paula Pergantis, Marilyn Denmark, Peggy Exley, Ellen Neal, Dodie Roberson, and Marsha Turner.

# Southern Drops Mercer For Win On Road 67-63

Georgia Southern finally snapped its road jinx by earning a 67-63 victory over the Mercer Bears Monday night.

It was the first away-from-home victory for Coach J. B. Searce's Eagles since early in December, giving GSC a 3-10 record in road games this year. A sparkling 11-1 mark on the home court makes the over-all worksheet a respectable 14-11.

Fran Florian and Bill Pickens, as usual, paced the Eagle attack with 22 and 20 points respectively. Ray Hardman, who got most of his in a late Bear rally, led Mercer with 17 markers.

GSC jumped to an early lead, but the hot-shooting Bears came back to tie it at 12-all after six minutes had passed, then broke in front. The Bears raced to a 21-15 margin, their biggest spread of the contest, on torrid shooting from outside. Mercer stayed in front for a 38-34 lead at intermission.

At that point the Bears had found the range on 53 per cent of their field goal attempts to 36 per cent for the Eagles. But the pattern changed quickly in the second half.

GSC got two quick buckets to tie it at 38-all at the start of the second half, then took the lead for the first time of the half at 44-43 on a 25-foot jump shot by Florian with 14 minutes remaining in the game.

Georgia Southern was never headed the rest of the way as Mercer went cold while the Eagles got hot. The Bears did threaten in the waning seconds as Hardman got nine of his points in the last seven minutes.

The closest the losers got was two points back at 64-62, but a steal by David Patton and a field goal by Florian after the steal did it.

The Eagles wound up with a 42 percentage from the floor while Mercer finished with 40 per cent. The Bears now have a 12-11 record.

## Regional Campus

continued from page 2

tification of Texas community colleges are delegated to the Texas Council for Public Junior Colleges, which is under the State Department of Education. Community college districts are arranged as independent districts and as county-wide districts.

Virginia has a system of two-year branch colleges directly under the auspices of the University of Virginia; Virginia Polytechnic Institute; the College of William and Mary; and Virginia State College.

No matter which system is adopted, however, three things are vitally important for successful operation.

First, there must be some over-all state planning to properly relate two-year institutions to the state's total needs for higher education. Second, we must understand that the community college idea can never bear fruit unless we recognize and respect them as a special type of institution —



WATCH OUT FOR E. G. E. G. Meybohm No. 4, took a leap and a grunt and almost added another two points to the Eagles' Saturday night game against Belmont-Abbey. Bill Pickens, No. 50, readies for the rebound while the Belmont-Abbey players look on. The Eagles defeated the North Carolinians by a score of 69-63. This victory put the Eagles in the top spot in District 25 of the NAIA.

# Armstrong Downs Columbus In Triple Over-time Game

In the opening round of play in the annual Georgia Junior College Tournament Armstrong, South Georgia, Gordon, GMC, Middle Georgia, Brewton Parker, and Norman emerged with victories to remain in the running for the Georgia championship. Young Harris Junior College, the top rated team in the nation, drew a bye in the first day's action, but are seeded first in the tournament.

They are neither high schools nor decapitated versions of the four-year college. Finally, and most important, the community college must have the necessary financial and popular support to offer a quality program.

We're fooling ourselves if we promote them primarily because we think they are "cheap."

In the opener of the seven games in the first day, GMC downed Andrew 73-61, and Norman proved too strong for a young Truett McConnell team in the 2nd game 58-43. Gordon breezed by Southern Tech in the third game 71-58, as all three of the early games proved to be mismatches.

It was the fourth game that provided the spectators with all their thrills. Armstrong College, a heavy underdog, in its contest with Columbus College pulled ahead with seconds left in the third overtime to win 96-94.

Ed Clark, the day's top performer, turned in 36 points and scraped the boards for 17 rebounds for the Geechiees of Savannah. He was followed by Jimmy Greenway with 20, Billy Young with 19, and Bill Ball with 11.

The Columbus Rebels were

paced by Roy Awbrey with 26 and James Edmondson with 25. Jackie Mayo bucketed 18 and Bobby Cole, who averaged about 30 points through the season, was held to 15.

The game was an even match from the opening tip, and the lead changed hands 17 times before Armstrong could pull ahead 42-38 at intermission.

Young pushed one in with 30 seconds to go in the game and Cole tied it up for Columbus. In the third overtime, Young stepped to the free throw line with 3 seconds remaining and tossed in the winning points.

The Blue Barons of Brewton Parker quickly undid Augusta College in the next game by a score of 87-46. Rowland was high for Brewton Parker with 22.

In the final game South Georgia, the team that is rated second to Young Harris, routed Georgia Southwestern 83-37.

# Eagles Top Abbey In Close At Home

The Georgia Southern Eagles wound up their home schedule with a hard-fought win over the Crusaders of Belmont Abbey. The Eagles pulled from a 1 point deficit in the closing minutes to post a 69-63 final score for the win.

This victory over the Crusaders avenged an earlier loss to the North Carolina crew in a contest played at Gastonia, North Carolina. The score in this tilt was 64-63.

## Mr. Outside and Mr. Inside

Leading the Southerners in the game were the two men who could well be known as "Mr. Outside and Mr. Inside." Bill Pickens, the 6-9 Eagle center and deadly shooting Fran Florian collected 17 points each.

## McDermont Led Abbey

Showing the way for the visiting team was Bill McDermont, who tossed in 19 points to take high point honors for the game. Trailing him were two players who have caused the Eagles much discomfort in the past. Bill Ficke, who made a last minute free throw to defeat the Eagles earlier this year, had 15, and Jim Lytle with 14 was the player who shot the jump shot in the final second of the last game of the 1960-1961 to edge out the Eagles by the two points.

After the Eagles took the tip off, it looked as though they would take the contest with little effort as the score read GSC 24 Belmont Abbey 5 with 10 minutes gone in the half. The Crusaders seemed to find the key to breaking the zone press of the Eagles and pulled the score to 36-28 at halftime.

## Belmont Leads

As the second half progressed, McDermont began to find range and with two minutes remaining in the tilt, he made a lay-up to put the North Carolina team in the lead by one point.

Pickens quickly made two free throws to regain the lead,

but Pete Tagly shot a jumper to pull Abbey ahead 63-62. With only one second left, John Burton fired up a 15 foot jump shot to give the Eagles the winning points. David Patton added three free throws to ice the game and end the scoring.

In the hotly contested second half fistcuffs broke out two times.

This victory over the Crusaders coupled with a win over Mercer (see story on this page) gives the GSC squad a record of 14 wins to 11 losses.

## End Season At Jax

To close out the regular season for the Eagles, they will travel to Jacksonville tomorrow night to face the Jacksonville Dolphins. Earlier this year the Eagles downed the Jacksonville club here despite a 33 point effort by Roger Strickland the Dolphins leading scorer.

# JIM'S Hair Stylist

Individual

Styling

for

Lasting

Beauty!

114 S. Main - PO 4-2122  
Statesboro, Ga.

## Welcome College Students CONE'S BARBER SHOP

413-B South Main Street  
Phone PO 4-3523 Statesboro, Georgia  
"Just a short Walk off Campus"

## —GUY PHOTOGRAPHERS—

Presents

# Ernestine Parker

As STUDENT OF THE WEEK



Ernestine Parker, a senior biology major from Ludowici is now acting as chairman of the Lantern Walk committee for the senior class. She is also a member of the Science Club, Gamma Sigma Up-

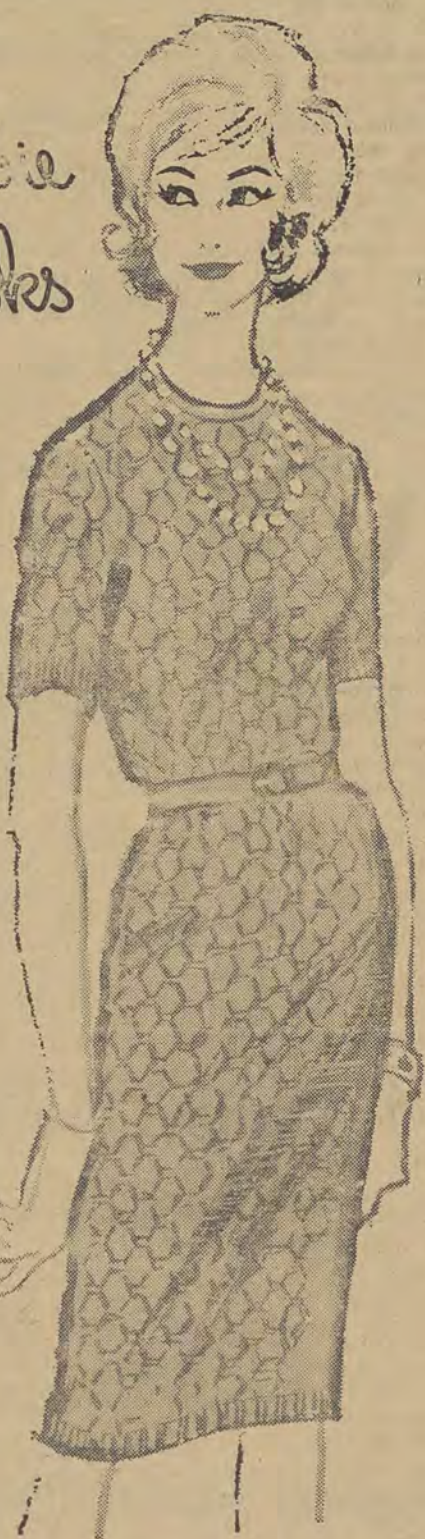
silon, and the German Club. In her sophomore year Ernestine was a member of the Deal Hall House Council.

## CLIFTON PHOTO SERVICE

Under the Management of Mr. and Mrs. R. W. Guy  
E. Main St. Statesboro, Ga.

Bobbie  
Brooks

\$14.99



The long-stem knit dress . . . pick it to wear to one o'clock meetings, eight o'clock movies. Novelty-knit of Orlon® acrylic. New-bloom colors. Sizes 5 to 15.

\*DuPont Trademark



## For The Best

MODEL  
LAUNDRY  
features  
Sanitone  
Cleaning

## Notice

to all students who will practice teach next quarter. If you would like to receive the George-Anne while you are away from campus send your name and the address where you want the paper sent to the

George-Anne  
office.

## The George - Anne — Page 3

Statesboro, Georgia, Friday, February 23, 1962



IT WAS "DAVID PATTON" night last Saturday and the six-foot senior guard is shown receiving a token of appreciation for his four years of spirited play at GSC. Coach J. B. Searce, his "skipper" during those years, is handing Patton a GSC blanket. Patton appeared in his final home game for the Eagles that night.

## Sweetheart Ball

Call 4-5497  
For  
Her Corsage

Statesboro Floral Shop

PEMBROKE HWY.



Hwy 301 South  
Phone 764-9044

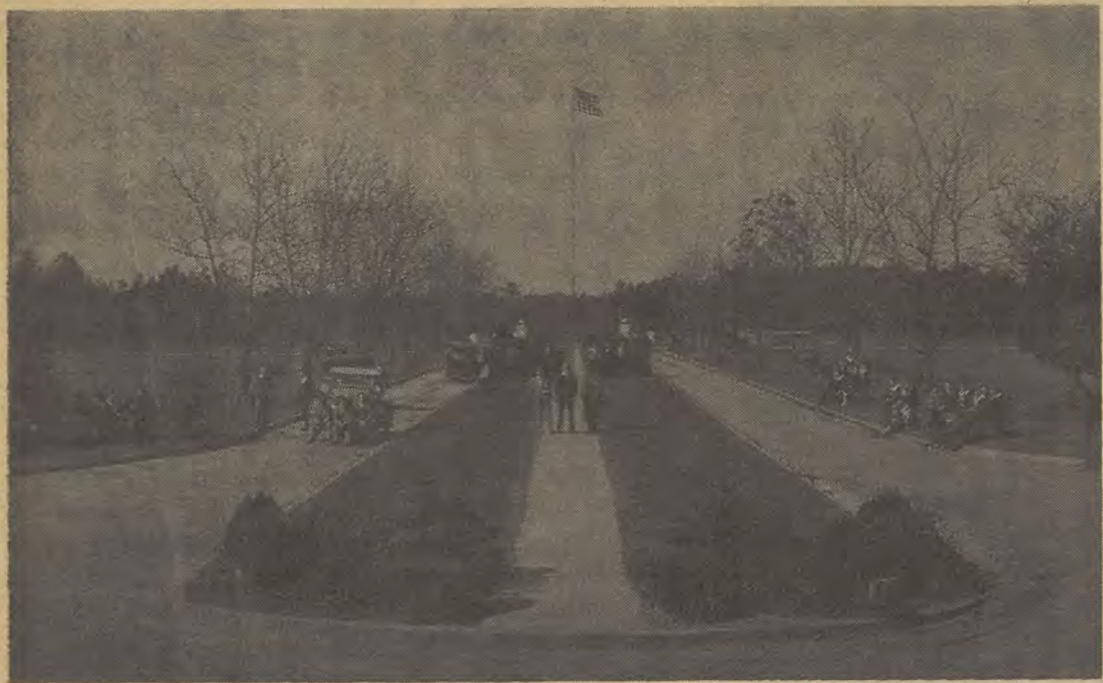


GREAT BETWEEN COURSES!  
Get that refreshing new feeling with Coke!

Bottled under authority of The Coca-Cola Company by Statesboro Coca-Cola Bottling Company



## From The Ancient History Files



THE PICTURE above shows an old view of the front campus looking from the steps of the Administration Building. As can be seen, some changes have been made. The vintage of this photograph is uncertain. Imagine trying to squeeze today's cars onto yesterday's roads. At left, one of GSC's "earlier" life saving classes is shown administering first aid to a victim. Note the wooden fence which surrounded the campus swimming pool in those days. These photographs came from a file discovered in the public relations office and labeled "Ancient History." From time to time, the George-Anne hopes to present additional glimpses of life at GSC during those "Ancient History" years.

## GSC Is Second Fastest Growing College In System

At present, Georgia Southern College is the second fastest growing institution in the university system, according to the winter quarter enrollment report of the university system of Georgia.

The report shows that GSC has a 32.8 per cent increase of 1962 winter quarter enrollment over 1961. Last year's figures show that 1243 students attended Georgia Southern during winter quarter. The 1962 enrollment totals 1651 students.

The fastest growing school in the system is the School of Nursing at the Medical College of Georgia with a 103% gain.

Georgia Southern is also the third largest school in the university system with full-time enrollment. The University of Georgia and Georgia Tech are first and second respectively.

## News Briefs

German courses will be offered in the 1962 summer school schedule, according to Dr. Zoltan Farkas of the foreign language division. Students interested may find more details in the 1962 Summer Bulletin which may be obtained in Dean Paul F. Carroll's office.

## SPECIAL!

PIZZA  
Regular — 75c  
Combination — 85c

## Paragon

Printed in:

BOSTON, LOS ANGELES  
LONDON



Interesting  
Accurate  
Complete

International News Coverage

The Christian Science Monitor  
One Norway St., Boston 15, Mass.

Send your newspaper for the time checked. Enclosed find my check or money order. ☐ 1 year \$22.  
☐ 6 months \$11 ☐ 3 months \$5.50

Name \_\_\_\_\_  
Address \_\_\_\_\_  
City \_\_\_\_\_ Zone \_\_\_\_\_  
State \_\_\_\_\_

PB-16

Get Your  
**FLAT TOP**  
AT  
**B & C**  
BARBER SHOP  
Simmons Shopping  
Center

## The Dixie Pig

Welcomes College Students

Hamburgers ..... 5 for \$1.00  
Hotdogs ..... 15c Each

## Jones the Florist

All Types Of Corsages

Phone 4-2012

## GEORGIA SOUTHERN COLLEGE

# BASKETBALL CONTEST

Pick The Winners  
Win \$10.00 Cash

SUPPORT THE SPONSORS OF THIS  
CONTEST BY VISITING THEM WHEN  
YOU BUY!

Name \_\_\_\_\_

Address (Dormitory of Student) \_\_\_\_\_

City and State \_\_\_\_\_

Circle all the winners and receive \$10.00 cash. If no one gets all the winners, the person naming the most winners will receive \$5.00 in cash from the George-Anne. In case contestants tie, the prize is equally divided.

1. In each ad on this page you will find two college teams scheduled to compete this week. Check the teams you think will win. Tie games count against you unless indicated.
2. Mail or bring your entry to The George-Anne office located in the Frank I. Williams Center not later than 2 p.m. Saturday. Letters must be postmarked before this time.
3. Members of the George-Anne staff are not eligible to win.

## CITY DAIRY CO.

—Grade "A" Dairy Products—

PASTEURIZED—HOMOGENIZED  
VITAMIN D MILK

Phone PO 4-2212 Statesboro, Ga.

Auburn vs. Tenn.

## MRS. BRYANT'S KITCHEN

"Where Eating is a pleasure"

AND  
**BRYANT'S MOTEL**

"For the Best in Rest"  
Located One Block North of Campus

Citadel vs. Davidson

## Franklin Chevrolet Co.

—Sales and Service—

60 EAST MAIN ST.

Fla. St. vs. Miami

## STUDENTS!

For The Best In Foods It's

## Franklin's Restaurant

"Never Closes"

—At Intersection 301 - 80 - 25—

Maryland vs. Clemson

## Franklin Radio & TV Service

—ZENITH—

TV—Radios—Record Players  
Complete Selection of Records

48 E. Main St.

Statesboro, Ga.

Penn vs. Harvard

## SUPPORT YOUR ADVERTISERS

Penn. St. vs. Pitt.

## Bulloch County Bank

"Service With A Smile"

Member

Federal Deposit Insurance Corporation

Yale vs. Cornell



**Rockwell Manufacturing  
Corporation**

Florida vs. Vanderbilt



Navy vs. Army

Patronize Your Friendly

## SEA ISLAND BANK

SAFETY—COURTESY—SERVICE

Member Federal Deposit Insurance Corporation

Louisville vs. Dayton

## The PARAGON

6 a.m. - 12 p.m.

College Students and Families Always Welcome

LUNCHEONS—DINNERS

Complete Food Service—Short Orders  
Sandwiches of All Kinds—Pizza Pies

Ga. Tech vs. Georgia

## BUGGY & WAGON CO.

Welcomes GSC Students  
to Statesboro

Phone PO 4-3214

Statesboro, Ga.

Miss. vs. Tulane

## The College Pharmacy

Invites GSC Students  
to Visit Them

"where the crowds go"

Princeton vs. Dartmouth

## Medical Center Pharmacy

"Statesboro's Friendly  
Neighborhood Drug Store"

OPEN DAILY INCLUDING  
WEDNESDAY & SUNDAY

(Located Opposite Hospital)

Iowa vs. Mich.

## Education Div. Sends Reps. To Rock Eagle Conf.

Dr. Harold Johnson and Dr. Walter B. Mathews of the division of education, Georgia Southern College, attended a sub-committee meeting of the Teacher Education Council of Georgia at Rock Eagle on Monday, February 19, 1962.

The purpose of the meeting was to examine the preparation program for supervising teachers. The supervising teachers are a group of selected public school teachers who cooperate with Georgia Southern College in providing a practical experience for students who are preparing to be teachers.

## Council Waits...

continued from page 1

### Proposals Explained

The program for preregistration would cut down on confusion for students and faculty and allow more organization according to Diane Brannen, president of the student council. She added that Parents Day would allow more of the parents to get acquainted with the school. Student teachers staying in the dormitories during the weekend would not be considered as guests but as students of the college.

Another recommendation recently passed was the exchange of minutes of the student council and the Student Personnel Advisory Council.

Members of the Student Personnel Advisory Council are: Dean Ralph K. Tyson, chairman; Dean W. H. Holcomb, vice-chairman; Dean Carolyn C. Gettys, recording secretary; J. L. Clements, Dr. Lawrence Hitchcock; and Dr. Tully Pennington.

The Council meets on the third Tuesday of every month at 3 p.m. in the Student Council room of the Frank I. Williams Center. The importance of timeliness in a couple of these recommendations suggests that the Student Personnel Advisory committee may need a call meeting, according to Miss Brannen.

## Social Security Administrators Interview Jrs.

J. W. Overstreet and H. M. Boatwright of the social security administration will be on campus Tuesday, March 6, to interview students interested in summer work experience with the administration, according to Dr. Starr Miller, director of placement.

This work experience will be an introduction to possible permanent employment. The representatives will meet in room 106 of the Frank I. Williams Center at 9 a.m. to 1 p.m. and will interview only juniors.

Overstreet, manager of the Savannah office, said that appointments will be given only to those students who have successfully completed the Federal Service Entrance Examination and who have also successfully participated in a panel interview.

The appointments will be limited to about three months. He said that they plan to assign student assistants to smaller class II and larger class III district offices where the employee will have a better opportunity to participate in a wide range of district office responsibilities.

The Savannah office is located at 101 East Liberty Street, Savannah.

### LOST AND FOUND

The Georgia Southern College Lost and Found department is located in the dean of students office in the Administration building.

Students who have lost various articles may claim them here after describing the article lost, according to Jean Coleman, secretary.

Articles now being held in the lost and found dept. include: two leather jackets, one man's raincoat, one man's wristwatch, one pair of prescription glasses, and one pair of prescription sun-glasses.

ALSO: one pair of sunglasses in a case, one case for glasses, one ladies scarf, one compact, one key ring with keys, two pair of gloves and one bracelet.

## The George - Anne — Page 4

Statesboro, Georgia, Friday, February 23, 1962

## GEORGIA

Feb. 25-28  
Sun.-Wed.

## "Bachelor In Paradise"

Bob Hope  
Lana Turner  
Janis Paige  
Jim Hutton  
Paula Prentiss

## DRIVE-IN

Sun.-Tues.  
Feb. 25-27

## "Teenage Millionaire"

Jimmy Clanton  
Rocky Graziano  
Zasu Pitts  
Joan Tabor  
Sid Gould

Feb. 28-March 1  
Wed.-Thurs.

## "The Hustler"

Paul Newman  
Piper Laurie  
Jackie Gleason  
George C. Scott

GO OUT TO A MOVIE