

Georgia Southern University

Digital Commons@Georgia Southern

The George-Anne

Student Media

12-2-1960

The George-Anne

Georgia Southern University

Follow this and additional works at: <https://digitalcommons.georgiasouthern.edu/george-anne>

Recommended Citation

Georgia Southern University, "The George-Anne" (1960). *The George-Anne*. 2417.
<https://digitalcommons.georgiasouthern.edu/george-anne/2417>

This newspaper is brought to you for free and open access by the Student Media at Digital Commons@Georgia Southern. It has been accepted for inclusion in The George-Anne by an authorized administrator of Digital Commons@Georgia Southern. For more information, please contact digitalcommons@georgiasouthern.edu.

GSC Eagles Whip Newberry 95-80

Georgia Southern's gangling Eagles rallied from a 13-point first-half deficit to roll past Newberry College for a 95-80 opening victory before 1,200 fans here Thursday night.

Led by Captain Connie Lewis, their 6-5 forward from Millen, the Eagles came to life after the intermission and shot and ran the visitors into submission.

Georgia Southern trailed, 46-40, at the half. A few minutes earlier, coach J. B. Searce's outfit was on the short end of a 39-26 count.

The Southerners made a clean sweep of the opening-night action as their freshman team smothered Armstrong College, 104-73, in the preliminary.

Lewis led the Eagles' resurgence in the varsity battle and was the night's top scorer with 27 points. Sixteen of them were produced in the final 20 minutes of play.

Southern's guard tandem of J. E. Rowe and David Patton totaled 20 and 14 points, respectively. Tracy Rivers netted 13 and reserve center Tony Thomson tossed in 14 to boost the balanced assault.

Newberry's highly rated forwards, lefty Joel Derketsch and

By NEAL ELLIS

Savannah Morning News
Sports Editor

Carl Short, contributed 22 and 20 points as the Indians suffered their first setback in three games.

Olympic gymnast Doris Fuchs put on a thrilling exhibition at halftime.

Georgia Southern's next test comes against the University of Georgia here Saturday night.

Newberry (30)	GSC (95)
Short (20)	Lewis (27)
Derketsch (22)	Rivers (13)
Bouknight (8)	Long (5)
Scarry (9)	Patton (14)
Musgrave (7)	Rowe (20)

Halftime: Newberry 46, Georgia Southern 40.

Subs: Newberry—Jackson (12), Burton (2), Georgia Southern—Thomson (14), Burton (2).

Campus News Briefs

Georgia Southern College was represented at the Southern Business Education Association in Atlanta during the Thanksgiving holidays by Dr. Lloyd Toumey, Mrs. Virginia Kerr, Mr. Edwin D. Davidson, and Mr. Howard Jackson. The theme for the convention was "Meeting The Challenges in Business Education."

Sixty-nine new microscopes valued at \$15,000 have been recently acquired by GSC and will be used by students in the three laboratories of the Herty Building according to Dr. J. A. Boole of the science department.

Dr. Boole said that the college has received 29 regular lab microscopes valued at \$231 a piece, five oil immersion microscopes costing \$305 each, and 35 dissecting microscopes priced at \$202.

He concluded stating that this addition more than doubles the 40 microscopes owned by the college previously.

The Fall Faculty Social will be held at Robbin's Pond, tonight at 7 p.m. Dress will be informal for the deluxe hamburger dinner.

Miss Martha Holmes of the Business Division attended the eighth annual southern conference on Problems in Collegiate Education for Business at the Biltmore Hotel in Atlanta, November 17, 1960. While in Atlanta, Miss Holmes attended the first session of the Southern Economic Association which was also meeting at the Biltmore.

Mrs. Virginia Kerr of the Business Division was elected Secretary-Treasurer of the First District of the Georgia Business Education Association at the November meeting at the Neptunia Restaurant in Savannah.

Dr. Lloyd Toumey has been appointed editor of the ARM-CHAIR BULLETIN, a state-wide publication in business education published quarterly by the Georgia Business Education Association.

Ga. Southern College Receives \$900,000 For Two Dorms

THE GEORGE-ANNE

PUBLISHED BY STUDENTS OF GEORGIA SOUTHERN COLLEGE

VOLUME 34

STATESBORO, GEORGIA, FRIDAY, DECEMBER 2, 1960

NUMBER 9

The George-Anne Says

'South Pacific' Truly Terrific--Don't Miss It

The GSC music division has done it again. For the second consecutive year, the division has come through with "flying colors" with their performances of "South Pacific" this week.

All of the hard work and numerous hours spent in the planning, rehearsal, and preparation of this production showed in the "finished" performance viewed by the audiences at the first two

performances Tuesday and Wednesday.

It would be very difficult to find another way to spend a more delightful evening than listening to the Rodgers and Hammerstein music as sung by GSC students and played on the piano by Mr. Jack Broucek, associate professor of music, accompanied on the bass fiddle by Mr. Al Alessandri, now working at Rockwell.

Fine Casting

Much credit is due to Dr. Daniel Hooley, professor of music and director, and Joe V. Walters, student director, for the almost perfect "type casting" of the performers.

Bloody Mary or Hilda Blanton, Lakeland, played her role to perfection.

Johnny Hathcock, Atlanta, ably portrayed the scheming, raucous, yet likeable Luther Billis.

Nellie Forbusch, depicted by Peggy Alexander, Nashville, Georgia, shone like a ray of light in darkness. Her vim, vigor, and vitality seemed to radiate throughout the entire cast and audience.

The suave and debonaire Emile de Becque was portrayed by Archie McAfee. His exceptional voice truly highlighted the meaningful words and music of the composers.

Supporting Cast Excellent

The entire supporting cast, including the sailors and waves, seemed to be enthusiastic in their portrayals and enjoying the musical just as much as the audience, which provided a very pleasant atmosphere.

Only two of the three performances have been given and if those students who haven't seen "South Pacific" yet don't go tonight, they will surely be missing a wonderful evening of entertainment.

over the past few years has been nothing short of phenomenal. With the attitude of its leadership, the excellent student body, and the prestige the school enjoys over part of the South, future growth should be unlimited," said Axelsson.

Has Three Children

He is married to the former Rae Smith of Washington, D. C.



JOE AXELSSON

Axelsson Resigns; Becomes Radio Sports Director

Joe Axelsson, public relations director at Georgia Southern College since September, 1957, this week announced his resignation, effective January 1, 1961.

On that date he will become sports director of radio station WPDO in Jacksonville, Florida.

Axelsson was born in Peoria, Illinois, and attended Clinton (Ill.) high school and Northwestern University with a major in journalism.

Serves With Army

He served six years in the U. S. Army, with the rank of captain and was discharged in May, 1954. Two years at Georgia Southern followed with duties as sports publicity director and part-time study.

Prior to returning to GSC as public relations director, he worked one year at Furman University in Greenville, S. C., as sports publicist.

"Georgia Southern's progress



"Get a Load of Honey Bun Tonight"

Student Council Names Activities At Wed. Meeting

The GSC student council at its regular meeting Wednesday heard reports from council members on present business, acted on some of the proposals, and shelved others until winter quarter.

Charles Ragsdale reported that the student council will co-operate with the Statesboro Jaycees in their annual Empty Stocking Fund. Gifts will be collected in all the dormitories and will be presented to the Jaycees on December 12. In conjunction with this, Christmas parties will be held in the dormitories on Sunday, December 11.

Buy A Tree

A proposal that the student council purchases a tree to be planted at some central spot on campus to be used for an annual Christmas tree lighting was brought up and will be acted on by the council.

A date for a contest to rename the "T" Book will be set up sometime during the winter quarter.

Discussion on the high school weekend at which time high school seniors will be invited to the GSC campus, was put off until winter quarter when it may be possible to plan in more detail.

Brass Eagle

Rick Osburn reported that a brass eagle to be located on spirit to the campus.

continued to page 4

Full Weekend Is Planned For GSC

A Student council committee, headed by Jeanne Walsh of Savannah Beach, is carrying out plans for a "Get in the Spirit" weekend, which started Thursday, Dec. 1 with a Christmas Tree Lighting Service.

The service was held in front of the Administration Building preceding the Newberry-GSC ballgame. The program opened with the singing of a carol by the audience, Henri Etta Walea, TyTy, read the scripture, followed by a moment of prayer led by Jimmy Kenney of Montezuma. The Philharmonic choir, directed by Dr. Ronald J. Neil, then presented selections from Handel's "The Messiah" to the accompaniment of Miss Sandra Bacon of Hinesville, Miss Mary Wood, Macon, was the soloist.

Guy Weatherly, student council president, introduced Dr. Henderson, who spoke and officially lit the beautiful tree. The College Choir lead the audience in Christmas carols for the conclusion of the program.

Combo To Perform

Milton Callaway, Sylvester, Embree Anderson, Claxton, and Marcus Thompson of Evans were in charge of the tree and its decorations. Sandra Cox, Lenox, headed the publicity committee. The service was held to bring both school and Christmas spirit to the campus.

continued to page 4

Choir Presents Handel's Messiah on December 6

"The Messiah" by Handel will be presented by the Georgia Southern College music division on Tuesday, December 6, in McCroan Auditorium.

The Philharmonic Choir under the direction of Dr. Ronald J. Neil, chairman of the music division, will present the following selections: "Comfort Ye Valley," "And the glory of the Lord," "But who may abide the day," "O Thou that tellest good tidings," "The people that walked in darkness," "There were shepherds," "Glory to God," and "He shall feed His flock."

Also on the program are "Come unto Him," "Behold the Lamb of God," "Thy rebuke hath broken His heart," "Surely He hath borne our griefs," "The trumpet shall sound," "Since by man came death," and "Hallelujah."

Featured as soloists are the following students: Verne Barfield, Statesboro; Beth Rigdon, Douglas; Mary Wood, Macon; Sandra Strickland, Glennville, and John Barger, Millen.

KPK Elects New Slate Of Officers

A temporary slate of officers was elected Tuesday by the GSC chapter of Kappa Phi Kappa, national honorary educational fraternity, to fill the vacancies created when the officers resigned.

The temporary officers are: Olin Presley, Covington, president; Albert Burke, Wadley, vice president; and Jerry Bennett, Alpharetta, secretary-treasurer. These officers will serve until new ones are elected in January.

ance by Miss Doris Fuchs of the GSC gymnastics team.

After the game, a "Welcome Bulldog Dance," featuring the College Combo, will be held following the game in the Alumni gym. The dance is being sponsored by the A. C. E., under the direction of Dr. Walter B. Matthews.

The decorations committee will be headed by Pat Vicked, Ambrose; the refreshments by Gerry Bailey, Millen; and the clean-up by Linda Loftin of Manchester. Publicity is under the direction of Sandra Bowen, Pinehurst, and Tina Parker of Ludowici.

Housing Capacity Is Increased To 1200 Students

Georgia Southern College was authorized to accept a federal loan amounting to \$900,000 by the Board of Regents recently for the construction of two additional residence halls on campus.

The two new dormitories, one for men and one for women, will each have a capacity for 150 students. Upon their completion, Georgia Southern College will extend its housing facilities to accommodate 1200 students.

"We were extremely happy to receive the approval for these two new buildings because it is helping us toward our goal of a 1900 capacity campus," Dr. Zach S. Henderson, president of Georgia Southern College, stated.

The women's residence hall will be built between the Marvin Pittman School and the new women's dormitory now under construction and the men's hall will be located behind Cone Hall on the hill facing the playing field. Each building will be approximately 300 feet long.

"The architects should be approved in December and the bidding should be completed by mid-summer. It is hoped that these two new campus additions will be completed in time for use in September of 1963," Dr. Henderson added.

New Minor In Psychology Now Offered At GSC

The curriculum committee approved a plan to develop a minor in psychology in the social science division Tuesday, according to Dr. Jack N. Averitt, chairman of the division.

A specialist in psychology will be added to the staff in the development of the program.

"The psychology courses now offered will be used to obtain credit toward the psychology degree in addition to the new courses, which will be offered," Dr. Averitt stated.

The courses offered currently in the social science division are: Social Psychology 304, Group Dynamics 400, Culture and personality 401, Juvenile Delinquency and Deviant Behavior.

The following are proposed as additional courses in the program. Psychology of Adjustment, 403, a course related to personal adjustments, solutions of conflicts, fears, personality difficulties, and development of character; and Psychoneuroses and Psychoses, 404, sensory emotional, memory, abnormalities; their bases; their groupings into the syndromes of the major and minor mental disorders.

Applied Psychology, 405, the applications of the principles of psychology to social, professional, and industrial fields. Differential Psychology, 406, a study of heredity and environment, the distribution of individual differences, and the relationship between behavior and structural characteristics.

Honors Banquet Recognizes 93 Students Thursday Night

Ninety-three students will be honored at an Honors Banquet to be held on Thursday night in the Frank I. Williams Center dining hall.

This banquet, sponsored by the student council, will recognize the newly elected class officers, house council officers, and students elected to Who's Who Among Students in American Universities and Colleges.

The class officers being honored are as follows: Freshman class—Marcus Thompson, Evans; Warren Dawson, Milledgeville; and Joyce Redding, Griffin. Sophomore class—Wayne Bland, Reidsville; Ray Bowden, Jesup, and Nanette Jernigan, Claxton.

Junior Class Officers

Also Junior class Embree Bolton, Albany; Mike Poole, Warner Robins, and Jo Dasher, Glennville. Senior class—Ralph Bowden, Jesup; James Chivers, Atlanta and Gerry Bailey, Milan.

The members of the residence hall house councils being honored are: Anderson Hall - Jackie

Marshall, Augusta; Carole Bowon, Metter; Glenda Ricks, Soperton; Ann Sellers, Brunswick; Lanelle Dean, Ashburn; Beth Mason, Perry; Sandra Stanley, Jesup; June Brantly, Wrightsville; Jerry Reynolds, Valdosta; Gloria Bland, Statesboro; Diane Sammons, Wrightsville and Virginia Chapman, Darian.

Deal Hall honorees are: Nanette Jernigan, Claxton; Gloria Wilkinson; Marianne Sheppard, Donaldsonville; Faye Parker, Sylva; Sandra Bowen, Pinehurst; Lou Ellen Chambers, Waycross; Carolyn McKenzie; Ada Lee Fulford, Swainsboro; Sandra Shugart, Hinesville; Melinda Cowart, Millen; Patsy Ginn, Edison; Linda Allverson, Columbus; Dorothy Shuman, Hoboken, and Ginny Lee, Brooklet.

Lewis Hall

Honored from Lewis Hall are: Sandra Taylor, Arlington; Janet Sikes, Alamo; Jean Holmes, Cartersville; Dianne Brannen, Statesboro; Geraldine Bailey, Milan; Juanda Newbern, Brunswick.

Marshall, Augusta; Carole Bowon, Metter; Glenda Ricks, Soperton; Ann Sellers, Brunswick; Lanelle Dean, Ashburn; Beth Mason, Perry; Sandra Stanley, Jesup; June Brantly, Wrightsville; Jerry Reynolds, Valdosta; Gloria Bland, Statesboro; Diane Sammons, Wrightsville and Virginia Chapman, Darian.

The honored guests from Sanford Hall are: Jerry Hunt, Tifton; Marcus Thompson, Evans; Sterling Jones, Blakely; Robert Gore, Crescent; Stanley McCallar, Richmond Hill; Hubert Abner, Jesup, and Douglas Robertson, Savannah.

Cone Hall

From Cone Hall will be: Jerry Aldridge, Blackshear; Tracy Rivers, Omega; Thad Studstill, Lakeland; Don Blevins, Tifton; Olin Presley, Covington; Bucky Carlton, Moultrie; Jim Curry, Kite; Charles Ragsdale, Hamilton; Jerry Collins, Griffin; Milton Callaway, Sylvester; and Gilbert Millhollin, Douglas.

Student council members to be honored at the banquet are: Guy Weatherly, McRae, president; Dianne Brannen, States-

continued to page 4



BETSY MARTIN, a freshman from Richmond High, was chosen "Miss Starlight Ball" Saturday evening, November 19. The theme of the Starlight Ball was the "Old West." Miss Martin was sponsored by Alpha Phi Omega, service fraternity, and was escorted by Bob Wilson. This is the first time a Miss Starlight Ball has been chosen at GSC.

GSC Music Division Is Swinging Your Way



DR. RONALD J. NEIL, professor and chairman of the music division at GSC, finds one of his many varied jobs as chairman to be leading the Philharmonic Choir. He received his Masters in Music degree at Syracuse University and his Ph. D. at Peabody College. He also did graduate study at Teachers College, New York City. He has had much experience as a division chairman. Before coming to GSC 23 years ago, he was head of the music department at Kidder Junior College, Maryland, and of the Fine Arts Dept. at Culvert-Stockton College, Canton, Missouri. Some of his activities include being elected to "Who's Who in Music." He is a composer of many songs and anthems and is an author of some 30 articles in music magazines.

'Oklahoma' Is Smash Hit Here Last February

"Oklahoma," a smash hit on the Georgia Southern campus, was presented last year by the music division. In a review written by the Georgia Southern student body, the following was stated: "GSC will remember 'Oklahoma'! It was one of the finest productions ever accomplished by the music division."

Over 700 people attended the show and enjoyed the beautiful songs of Rodgers and Hammerstein as sung by the Georgia Southern students.

Pictured are three of the leading players: Jim Brandon, center, played Ali Hakim; Johnny Hathcock, left, portraying Wil Parker; and Jayne Bragan, right, featured as Ado Annie.



Many Activities Keep Music Majors Busy

Approximately ten organizations on the Georgia Southern College campus are musical organizations. All of these do much extracurricular work for the department.

The band and chorus have appeared in performances in many of the cities in Georgia. Also the division provides musical programs for service clubs, such as the Rotary Club, Kiwanis, and state high schools.

The concert and marching band, under the direction of Mr. Fred Grumley, presents concerts on campus, for homecoming and in parades. This group takes an annual tour during winter quarter.

Bands Active

An activity band performs at special events and a dance band plays for large campus dances and accepts off-campus engagements at high schools and other colleges.

The Combo is composed of chosen members from the dance band and plays for smaller campus dances and off-campus engagements.

The Philharmonic Choir is composed of approximately 50 students this quarter. This group of music majors as well as non-music majors presents concerts on and off campus. Also the members of this group present one musical comedy a year.

Oratorios Listed

Some of the oratorios which the Choir has participated in since 1937 include 12 performances of the "Seven Last Words of Christ," three performances of "The Creation," two presentations of "Elijah," seven performances of "The Messiah," two performances of "The Crucifixion," and two performances of "Requiem" by Faure.

The members of the music division have also presented several light operas. These include: "The Red Mill," "Erminie," "The Fortune Teller," "Down in the Valley," "The Telephone," and a very successful run of "Oklahoma" last quarter.

"South Pacific" Given

This year the presentation was Rodgers and Hammerstein's "South Pacific."

The Sinfonians is a small vocal and instrumental group selected from the members of Phi Mu Alpha, a national honorary men's music fraternity.

The Ensembles are various small vocal and instrumental groups which rehearse and perform during the school year.

Musical Fraternities

The two music fraternities on the GSC campus are: the Gamma Theta Chapter of Sigma Alpha Iota, a national honorary music fraternity for women and the Zeta Omicron Chapter of the Music Educators National Conference, which consists of music education majors.

The First District High School Music Festival has been held here every spring for the past 10 years. Approximately 1500 to 2000 high school students always participate.



ANOTHER GREAT SUCCESS for the music division was the presentation of "South Pacific" on Tuesday, Wednesday, and Friday. Peggy Alexander as Nellie Forbush tells the audience that she is "Gonna Wash That Man Right Out of Her Hair." This year the division gave three performances of the show. All of the beautiful music of Rodgers and Hammerstein is presented to the delight of the audience. Musical highlights included a chorus of native girls and a chorus of navy nurses.



THE HOOLEY-BROUCEK CONCERT is an outstanding event of the GSC year. Dr. Daniel Hooley, front, and Mr. Jack Broucek, rear, present a duo-piano concert for the enjoyment of the student body and Bulloch County citizens. Last year's performance was the seventh time in eight years that these two faculty members combined their talents for an evening's entertainment. The program usually consists of a variety of musical arrangements.

Large Increase of Equipment Is Evident Since '37

The equipment in the music department was very meager in 1937 when the department was first organized, according to Dr. Ronald J. Neil, chairman of the music division.

Presently the music equipment includes five grand pianos, a dozen upright pianos, several high-fidelity record players including three stereo machines and two tape recorders.

Also the department has added a number of band instruments, band uniforms and choral robes to their equipment.

The staff of the music division are particularly proud of their record collection. Dr. Neil stated that he believed that it is one of the finest collections of any college he knows of. The approximate value of the record collection is \$5,000.



MISS DOROTHY THOMAS explains to Floyd Williams how the music should be played during a clarinet lesson. Miss Thomas received both her Bachelor of Music and Master of Music degrees at DePauw University in Freeport, Indiana, and has done additional study at the University of Wisconsin in Milwaukee. Her past experience includes: graduate instructor of theory at DePauw University, music teacher in Milwaukee public schools, writing and arranging for radio station WEMP, Milwaukee, and arranging and copying music for the Methodist Film Industry. She is presently a member of the Savannah Symphony Orchestra.



MR. JACK W. BROUCEK, associated professor of music at Georgia Southern since 1944, received his M. Mus. degree from the University of Michigan and is studying for his doctoral degree at Teachers College, Columbia University. Some of his activities include: chairman of district and regional music festivals, member of several Georgia Music Educators Association Committees and author of articles on piano teaching for Georgia Music News. One of the current offices he holds is coordinating secretary for GMEA. One scene, which is certainly not unfamiliar to frequent visitors to the Music Building, is Mr. Broucek at the addressograph machine fulfilling this secretarial position.

B. A. Degree in Music Added To Div. Offerings

A Bachelor of Arts degree with a major in applied music has been added to the music division degrees recently. One major has enrolled in this A. B. degree program this year.

The other degrees available are a Bachelor of Science with a major in music education and the Master of Education degree.

Those students graduating with an A. B. degree are capable of being private teachers, ministers of music in a church, or of having a professional career. A teaching certificate is awarded with a B. S. degree.

Twenty-four undergraduate and seven graduate courses are offered by the music division.

Total enrollment in the music division this quarter for courses is approximately 200 students. This number includes 27 music majors, elementary majors, majors in all fields who are in the Music 100 course and students in band and chorus.



DR. DANIEL H. HOOLEY, professor of music at GSC since 1953, critically studies an issue of the Georgia Music News which he edits. Dr. Hooley received his M. A. and Ed. D. degrees from Columbia University, New York. Past experiences include: supervisor of music for McEwenburg, Pennsylvania, schools and demonstration teacher at Columbia University. Some of his activities include being a professional accompanist in New York City, piano chairman for the Southern Music Educators National Conference, piano adjudicator for Georgia Music Educators Association and for Georgia High School Association, co-author of nine books in an elementary music series and composer of children's songs.

Present Chairman Establishes Music Division 23 Years Ago

Only 23 years ago Dr. Ronald J. Neil came to the Georgia Southern campus to organize the department of music. At that time it was a department in the division of fine and practical

arts. Besides Dr. Neil there was one full-time teacher and a student assistant. Only six music courses were offered.

In 1937 there were only two music majors. Although music was not made a separate division until 1941 five students graduated with music degrees in 1940. Dr. Neil organized the curriculum for majors in music education.

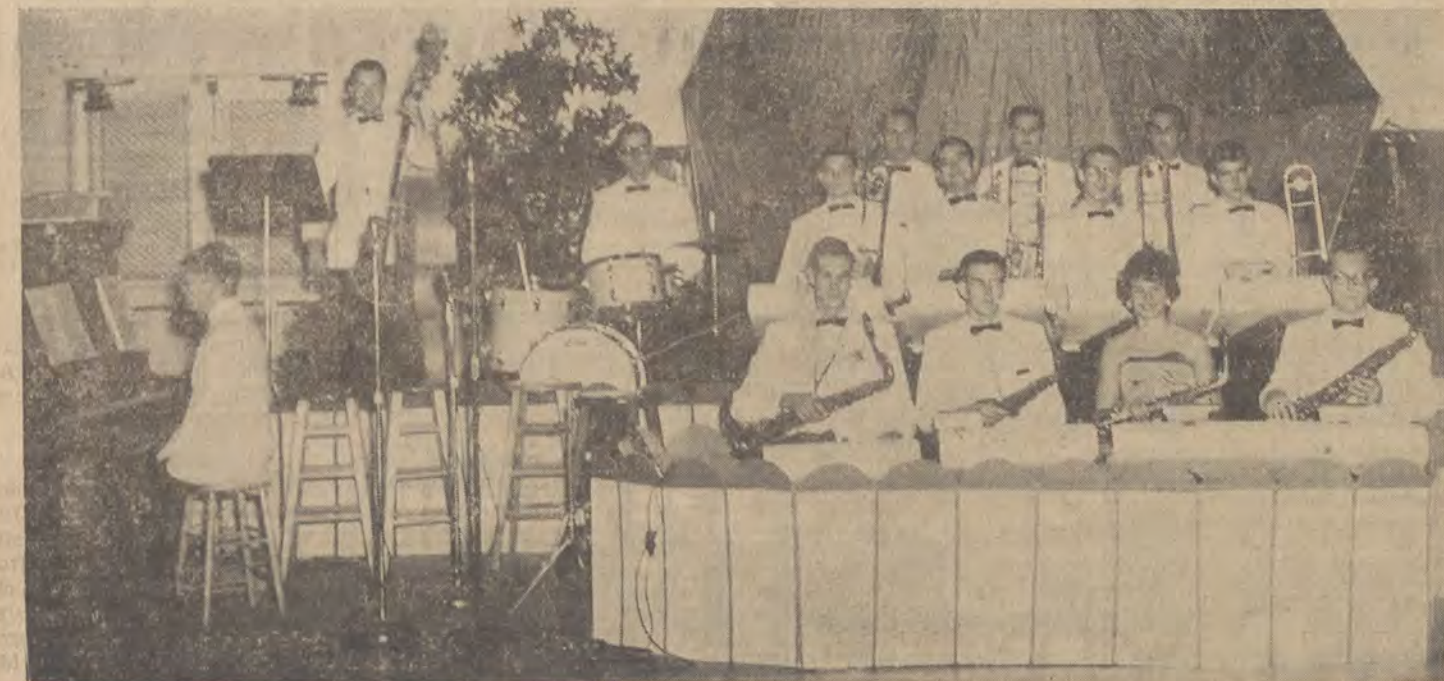
The music classes during those formative years were scattered all over the campus. Some of the places used were: a small room in back of McCroan Auditorium (since remodeled), and the top floor of the old Anderson Hall, now demolished.

After the Marvin Pittman School was built, the music division used two small rooms back of the auditorium at the laboratory school. Dr. Neil remembers teaching music classes in the health cottage "where," he stated, "you couldn't tell the moans from the music." Also classes were once held in the Administration Building basement.

In 1953 the music division moved into its present structure which, up until this year, was shared with the business division. The present Music Building is a two-story structure containing classrooms, music practice rooms, band hall, recital hall, and offices.



MR. FRED G. GRUMLEY, assistant professor of music, directs the bands on campus. He is shown here directing the GSC Concert Band during a recording session rehearsal. Mr. Grumley received his Master in Music Education degree from Florida State University. Previous to 1958, when he joined our staff, he was supervisor of music in the public schools of Anna, Ohio. He is a member of several professional organizations. Mr. Grumley holds the positions of assistant editor of the Georgia Music News, chairman of music clinics and chairman of the First District Festivals.



MEMBER OF THE GSC DANCE BAND at the recent Starlight Ball are: Jerry Bennett, Alpharetta, piano; Johnny Hathcock, Atlanta, string bass; Bob Siefferman, Savannah, drums. First row, left to right, Bob Murff, Moultrie, tenor saxophone; Floyd Williams, Norman Park, alto saxophone; Jackie Comer, Cordele, alto saxophone; Hamp Kiklighter, Hawkinsville, tenor saxophone. Second row, Tommy Blackburn, Sylvania, trombone; John Barger, Millen, trombone; Sammy Prince, Cairo, trombone; Milton Strickland, Adel, trombone; Third row, Tommy Fouché, St. Simons, trumpet; Tommy Rogers, Buena Vista, trumpet; Billy Martin, Valdosta, trumpet. Tommy Fouché is the manager and directs the Dance Band. The band usually plays at the big dances on campus.



AS WE SEE IT

By ROBERT SCHOFIELD and ROBBIE POWELL

Well, the basketball season has started with a bang on the Georgia Southern campus. Now that the freshman and varsity teams have started their seasons with wins we hope that every one will stay on campus this weekend and give the teams his support. Help us DUMP the DOGS!!!

Where was everyone when the freshman game started? The small crowd that was on hand for the first half was a poor excuse for a student body that complains that GSC has no school spirit. The cheerleaders were conspicuous by their absence although their performance during the last half was top-rate! The freshmen will be the varsity stars in the coming years and they deserve our support now. Let's all be on hand for the jump-off Saturday night at 6:15 p.m. when they face the Georgia Freshmen.

The football season is fast fading away and only a few games remain to be played before the season ends. Most of the teams have already ended their seasons and some of the better teams are planning their trips to the bowls.

Minnesota will face Washington in the granddaddy of all the bowls. They have a small edge over the Huskies in the Rose Bowl. At New Orleans in the Sugar Bowl, Mississippi will encounter Rice Institute. Duke University, from North Carolina, will travel to Dallas, Texas, to play Arkansas in the Cotton Bowl. The Midshipmen from Annapolis will vie with the Missouri Tigers for Orange Bowl Honors. In the December bowls: Alabama vs. Texas in the Bluebonnet, Penn. State vs. Oregon in the Liberty Bowl, and Florida vs. Baylor in the Gator Bowl.

Ford Frick continues to keep baseball in the headlines with his comments on the major league expansion. It is almost certain that he will not allow a new American League to move into Los Angeles next year. We feel that this will put a stop to any plans that the American League has for expansion. The owner of the Toronto minor league team has summed up the trouble with the American League's plan by saying, "Sure, I am interested in joining the American League, but not under the plan they now have. They want \$2,100,000 for some ballplayers that my present team could beat."

One last word of congratulations to the ball players.

DUMP THE DOGS!

Eagles Face Powerful Bulldogs Tomorrow; Try For Second Win

The University of Georgia hasn't had a winning basketball team for a decade but this should be the Bulldogs' year to make up some lost ground — they're the most experienced team in the Southeastern Conference.

Nine Players Back

The Bulldogs have their top nine players back from the 1959-60 squad which was the best Coach Red Lawson has had in his 10 years at Georgia. Last season's cagers had only a 5-20, 12-13 record . . . but they won the Gator Bowl Tournament . . . upset S-E-C champion Auburn . . . and beat tough Tennessee.

Georgia posted its best record in nine seasons despite the fact that two top guards—Gordon Darrah and Frank Clark—were both out part of the year with injuries.

Darrah—who led the Bulldogs in scoring as a sophomore and got off to a fast start last year before being hurt—is now a senior and it appears that this 62 sharpshooter is ready for his best season.

And . . . Frank Clark—a 5-10 junior who missed the last two months because of a knee injury—looks like he'll pick up at the fast pace he showed during the first month last season.

Have Good Depth

The Bulldogs are two deep in proven performers at forward and at guard. The only lack of depth may be at center where John Johnson—a 6-7 senior—is the only letterman. But Johnson is expected to get adequate relief from 6-7 sophomore Donn

Linton—imported from the basketball hotbed of Indiana.

For starting forwards—Lawson has his top two scorers of last season back. These are 6-5, 210-pound senior Phil Simpson who averages 14.1 points per game and led the Bulldogs in rebounds and 6-4 senior Don Kaiser who averaged 11.4 points per game.

The guards will be Darrah—who has now scored 648 points in 48 games—and 5-10 junior Allen Johnson who took up the slack last year when Clark was injured. Clark and 6-1 junior Joey Miller add depth at guard . . . and 6-4 Pat Casey and 6-3 Ken Taylor — both seniors, do the same for the forward posts.

New Players Impress

The Eagles showed reserve strength in the Newberry game, and this could pay-off in some unexpected wins later in the season. Freshman John Burton and junior college transfer Tony Thomson looked good in their maiden GSC appearances, and guards J. E. Rowe and David Patton sparked a sticky defense.

Coach Roger Parsons' freshmen, easy 104-73 winners over Armstrong College Thursday, will face Georgia's freshmen in a 6:15 p.m. preliminary game.

The Georgia Southern Eagles will be after their second win of the season Saturday night when the University of Georgia comes to Statesboro.

Fresh from a 95-80 win over Newberry, nevertheless the locals must improve markedly if they are to have a chance with the powerful Bulldogs.



PHIL SIMPSON, 6-5 senior from Dixie. Georgia's captain-elect.

The George-Anne—Page 3

Statesboro, Georgia, Friday, December 2, 1960

Skate-R-Bowl

Bowling: 35c or 3 for Mon.-Sat. 2-12 p.m. Student Rates—2-6 p.m. \$1.00
Skating: Mon.-Sat. 2:30-5 p.m. and 8-11 p.m.
BOOT SKATES: 75c afternoon—\$1.00 night (You can save 25c with your own skates)
SOUTH ON 301 (Just off College Campus)

—CLIFTON PRESENTS— Jeanne Walsh

as

STUDENT OF THE WEEK

Jeanne Walsh, an elementary education major from Savannah Beach, was recently elected to "Who's Who." This active senior is the chairman of the "Get In The Spirit" Weekend for the Student Council. She is a member of Kappa Delta Epsilon, ACE and is participating in the South Pacific performance.

CLIFTON PHOTO SERVICE

E. Main St. Statesboro, Ga.

Running the WHITE WATER Gantlet...

YOU HAVE TO THINK FOR YOURSELF... AND THINK FAST!



DUNKEL COLLEGE BASKETBALL RATINGS
EXPLANATION — A dunkel is a comparative strength rating based on the season's record to date. It reflects weighted average scoring margin relative to rating of opposition. Example: a 50.0 team has been 10 scoring points stronger, per game, than a 40.0 team against opposition of relatively equal rating. The system has been continuous since its origination in 1929 by Dick Dunkel.

SPECIAL!

Bowl of Homemade
Vegetable Soup
Grilled Cheese - Sandwich
55c
Paragon

GEORGIA

Sun thru Tues Dec 4-5-6
"THE TIME MACHINE"
Sun. at 2:15-4:15-8:45
Mon Tues at 3:15, 5:15, 7:15, 9:15

Wed Thurs Dec 7-8
"BELLS ARE RINGING"
at 3:40-6:12-8:45

DRIVE-IN

Thurs Dec 1
"THE MIRACLE"
at 7:00 and 9:00

Fri Sat Dec 2-3
"HARRY BLACK & TIGER"
and
"THE BLACK ORCHID"
at 7:00 and 9:00

Sun Mon Dec 4-5
"ONE FOOT IN HELL"
at 8:30 only (Sun)
at 7:00 and 9:00 Mon

Tues. Wed. Thurs. Dec. 6-7-8
"WILD RIVER"
7:00 and 9:00

Once again this year the George-Anne will be the only college newspaper to feature the Dunkel Basketball Ratings. The Dunkel ratings pick the teams by a power point index rather than actual points. The ratings for this week were based on the teams as they finished last year's season. That is to say that the ratings as they are presented this week cover the team as it finished the season last year.

Friday, Dec. 2

Wake Forest* (25) Florida
Pittsburgh* (2) Purdue
Vanderbilt* (11) Michigan

Saturday, Dec. 3

Citadel (14) Richmond*
Duke* (22) LSU
Ga. Southern* (6) Georgia
Ga. Tech* (12) Furman
Kentucky* (17) Fla. State
Miami* (17) Tampa
Jacksonville* (1) Stetson
Pikeville* (3) Union Ky.

Monday, Dec. 5

N. Carolina* (25) LSU
S. Carolina* (6) Furman
Vanderbilt* (10) Fla. State
Ga. Southern* (4) Oglethorpe*
La. Tech* (13) Texas State

Wednesday, Dec. 7

Ga. Southern* (12) Tampa

Thursday, Dec. 8

Furman* (27) Erskine
S. Carolina (2) Georgia*
Stetson (1) Mid. Tennessee*
* Denotes home games



Elementary...

My dear Watson! From the happy look on your physiognomy, from the cheerful lift you seem to be enjoying, I deduce you are imbibing Coca-Cola. No mystery about why Coke is the world's favorite . . . such taste, such sparkle! Yes, my favorite case is always a case of Coke!



BE REALLY REFRESHED

Bottled under authority of The Coca-Cola Company by

STATSBORO COCA-COLA BOTTLING COMPANY

The George-Anne

MIDGE LASKY, Editor

SUBSCRIPTION RATE: \$1.50 A YEAR

Entered as second class matter at Post Office at Georgia Southern College, Georgia Southern Branch, Statesboro, Georgia, under temporary permit.

Volume 34

Friday, December 2, 1960

Number 9

GEORGIA SOUTHERN COLLEGE FOOTBALL CONTEST

Name

Address (Dormitory of Student)

City and State

Pick The Winners Win \$10.00 Cash

**SUPPORT THE SPONSORS OF THIS
CONTEST BY VISITING THEM WHEN
YOU BUY!**

Circle all the winners and receive \$10.00 cash. If no one gets all the winners, the person naming the most winners will receive \$5.00 in cash from the George-Anne. In case contestants tie, the prize is equally divided.

1. In each ad on this page you will find two college teams scheduled to play football this week. Check the teams you think will win. Tie games count against you unless indicated.
2. Mail or bring your entry to The George-Anne office located in the Frank I. Williams Center not later than 5 p.m., Friday. Letters must be postmarked before this time.
3. Members of the George-Anne staff are not eligible to win.

Franklin Chevrolet Co.

—Sales and Service—

60 E. Main St.

Cleveland — Chicago

STUDENTS!

For The Best In Foods Its

Franklin's Restaurant
"Never Closes"

—At Intersections 301 - 80 - 25—

New York (Giants) — Washington

The College Pharmacy

"Where The Crowds Go"

DRUGS—SODAS—COSMETICS

—Phone PO 4-5421—

Philadelphia — Pittsburgh

BUGGY & WAGON CO.

- ✓ General Line Hardware
- ✓ Gift Items
- ✓ Sporting Goods

Phone PO 4-3214

Statesboro, Ga.

Baltimore — Los Angeles (Rams)

Bulloch County Bank

"Service With A Smile"

Member

Federal Deposit Insurance Corporation

Dallas (Cowboys) — Detroit

Welcome Students and Faculty Favorite Shoe Store, Inc.

"SHOES FOR THE ENTIRE FAMILY"

City Club—Velvet Step—Weatherbird
SHOES

Make It Your Shoe Headquarters

Green Bay — San Francisco

Fraklin Radio & TV Service

—ZENITH—

TV—Radios—Record Players
Complete Selection of Records

48 E. Main St.

Statesboro, Ga.

MRS. BRYANT'S KITCHEN

"Where Eating Is A Pleasure"

AND

BRYANT'S MOTEL

"For the Best In Rest"

Located One Block North of Campus

Buffalo — Houston

Patronize Your Friendly

SEA ISLAND BANK

SAFETY—COURTESY—SERVICE

Member Federal Deposit Insurance Corporation

Oakland — New York (Titans)

Howard Johnson's

AND

Statesboro Motor Lodge

"Landmark for Hungry Americans"

109 N. Main St.

Statesboro, Ga.

Denver — Los Angeles (Chargers)

EVERETT MOTOR CO.

—Sales and Service—

Plymouth—DeSoto—Dodge—Dodge Trucks

45 North Main Street

Medical Center Pharmacy

"Statesboro's Friendly
Neighborhood Drug Store"

**OPEN DAILY INCLUDING
WEDNESDAY & SUNDAY**

(Located Opposite Hospital)

Jake's AMOCO Service

AMOCO Products—FIRESTONE Tires

Washing—Lubrication—Road Service

(Six Blocks North of College Gate)

LUCKY CAR No. 118

Winner Gets FREE LUBRICATION

Robbins

Boston — Dallas (Texans)

Revised 1961 Reflector Club Picture Schedule

MONDAY NIGHT DEC. 5
WILLIAMS CENTER LOUNGE

CLUB	TIME
Alpha Rho Tau	6:30 p.m.
Alpha Psi Omega	6:40 p.m.
Canterbury Club	6:50 p.m.
French Club	7:00 p.m.
German Club	7:10 p.m.
Industrial Arts Club	7:20 p.m.
Kappa Delta Epsilon	7:30 p.m.
Kappa Delta Pi	7:40 p.m.
Kappa Phi Omega	7:50 p.m.
Alpha Gamma Pi	8:00 p.m.
Alpha Gamma Omicron	8:10 p.m.
Phi Mu Alpha	8:20 p.m.
Pi Omega Pi	8:30 p.m.
P. B. Y. F.	8:40 p.m.
Ham Radio Club	8:50 p.m.
Sigma Alpha Iota	9:00 p.m.
Y. W. A.	9:10 p.m.
"V" Club	9:20 p.m.
Westminster Fel.	9:30 p.m.
Cone Hall House Cl.	9:40 p.m.
Anderson Hall H. C.	9:50 p.m.
Sanford Hall H. C.	10:00 p.m.
Deal Hall H. C.	10:10 p.m.
Lewis Hall H. C.	10:20 p.m.
Special Jr. Picture	10:30 p.m.

TUES. AFTERNOON, DEC. 6
WILLIAMS CENTER LOUNGE

Phi Eta Sigma	4:30 p.m.
Newman Club	4:40 p.m.
Student Council	4:50 p.m.
S. C. Social Com.	5:00 p.m.
Student Handbook	5:10 p.m.
Debating Squad	5:20 p.m.
Miscellany Staff	5:30 p.m.
Alpha Psi Omega	5:40 p.m.

TUESDAY NIGHT, DEC. 6
HANNER BUILDING (New Gym)
HANNER BUILDING

A. C. E.	6:30 p.m.
B. S. U.	6:40 p.m.
English Club	6:50 p.m.
Eta Rho Epsilon	7:00 p.m.
Phi Beta Lambda	7:10 p.m.
Gamma Sigma Upl.	7:20 p.m.
Home E. Club	7:30 p.m.
Kappa Phi Kappa	7:40 p.m.
Masquers	7:50 p.m.
Music Educators Club	8:00 p.m.
Science Club	8:10 p.m.
Student NEA	8:20 p.m.
Wesley Foundation	8:30 p.m.
PEM Club	8:40 p.m.
"S" Club	8:50 p.m.
Organ Guild	9:00 p.m.

Pictures of faculty club sponsors will be made at the same time as their respective clubs.

Dump the Dogs!

CONTEST WINNERS

The winners of the George-Anne football contest for the weeks of November 11, and November 18, were released this week.

For the week of November 11, there were forty-six entries and the contest resulted in a five way tie. The winners, Ray Bowden, Jesup; Charlton Bennett, Jesup; John C. Cole, Clyde Miller, and Stanley Etzeberger will receive one dollar each. These students picked thirteen winners while making only four miscues.

Thomas Roush tied with Linda Lang in the contest for the week of November 18 by picking 14 of the 17 games correctly. They will receive \$2.50.

KENNEDY IS PROUD FATHER

President-elect John F. Kennedy is breaking precedents right and left. For the first time in history a president-elect went to see his vice president-elect instead of vice versa. Kennedy will be the first Catholic president as well as the youngest. It's a big jump in one election — from oldest president to youngest. On November 25, the fact of his being the youngest president - elect was brought home in the birth of his first son John F. Kennedy, Jr. The dark-haired child, born three weeks early, weighed 6 pounds 3 ounces.

Honors Banquet

continued from page 1

boro, first vice president; Rick Osburn, Atlanta, second vice president; Patsy Ginn, Edison, secretary; Milton Callaway, Sylvestre, treasurer.

Student council representatives are: freshman class, Sara Adams, Statesboro and Steve Suhomatsky, Watervliet, N. Y.; sophomore class, Judy Aldridge, Blackshear and Karl Peace, Leary; junior class, Sandra Cox, Lenox and Embree Anderson, Claxton, senior class: Betty Jean Bryant, Woodbine, and Charles Ragsdale, Hamilton.

Also Danalyn Lee, Stillson; Glenda Rentz, St. Marys; Mary Rivenbark, Metter; Sandra Taylor, Arlington; Henrietta Walee, TyTy; Jeanne Wilma Walsh, Savannah Beach; and Stacy Wells, Hinesville.

Also present will be the class sponsors, house directors, and the Who's Who faculty committee. Embree Bolton, Albany, will give the Invocation, after which President Henderson will speak. Guy Weatherly, president of the student council, will conclude the banquet with the Benediction.

Members of the committee working on the Honors Banquet are: Wayne Bland, chairman, Reidsville; Gloria Bland, Statesboro; Dorothy Shuman, Hoboken; Marcus Thompson, Evans; and Embree Bolton, Albany.

Econ-O-Wash

(Next to Paragon)

Wash 25c

Dry 10c

If you do not have time, attendant will wash and dry for you.

Axelson Resigns

continued from page 1

They are the parents of David, nine; Mark, four and one-half; and Linda, one and one-half.

"We're losing a very valuable member of the staff. Joe did an excellent job as a staff member. Personally, I wish Joe could stay with us, but I think any administrator feels that it would be wrong to stand in the way of a promotion," stated Dr. Henderson, GSC president, when asked how he felt about the resignation.

Student Council

continued from page 1

campus is still being sought and a suggestion was made that there be a contest conducted to name the Eagle.

The next regular meeting of the student council will be on Wednesday, December 7, at 5 p.m. in the student council room of the Williams Center.

Paragon

**Hamburger and
Hot Dog Special!**
With Drink - each
50c

The George-Anne—Page 4

Statesboro, Georgia, Friday, December 2, 1960



**Do Your
Christmas
Shopping Early**

● USE OUR LAYAWAY PLAN ●

... BURTON'S SHOE STORE Offers You
Brand Name Shoes For Perfect "Giving"



**VITALITY
and
GRACE WALKER
For
LADIES**

IF YOU PREFER USE BURTON'S
CHRISTMAS GIFT CERTIFICATE

● NUNN-BUSH and JOHN C. ROBERTS
for Men and Boys

● SIMPLEX and RED GOOSE for the
Children

● ALL KINDS OF BOOTS for the Entire
Family

● HOUSE SLIPPERS, BAGS and HOSIERY
for Everybody

★ ★ ★
BURTON'S SHOE STORE
10 E. Man St.—Statesboro

SHAKES!

0c to 25c

DRAW FOR A SHAKE

Snack Bar

At

STUDENT CENTER

HELP WANTED!

A Boy to be
Santa Claus
during
Christmas Holidays
Apply to
NORMAN CAMPBELL



JIM'S

Hair Stylist

Member National

Hairdressers' Assn.

409 S. Main - PO 4-2122

Statesboro, Ga.