

Georgia Southern University

Georgia Southern Commons

The George-Anne

8-25-2016

The George-Anne

Georgia Southern University

Follow this and additional works at: <https://digitalcommons.georgiasouthern.edu/george-anne>

Recommended Citation

Georgia Southern University, "The George-Anne" (2016). *The George-Anne*. 2233.
<https://digitalcommons.georgiasouthern.edu/george-anne/2233>

This newspaper is brought to you for free and open access by Georgia Southern Commons. It has been accepted for inclusion in The George-Anne by an authorized administrator of Georgia Southern Commons. For more information, please contact digitalcommons@georgiasouthern.edu.

GA
THE GEORGE-ANNE

Safety on campus

GS police department aims to ease concerns
Page 9

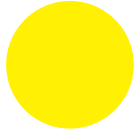
International Students

discuss their journey to GS
Pages 4-5

New coach, Same mission

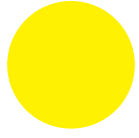
Eagles defense gets in gear for the 2016-2017 season
Pages 6-7

Thursday



High: 93°
Low: 70°

Friday



High: 95°
Low: 70°

Saturday



High: 93°
Low: 72°

Sunday



High: 93°
Low: 72°

Weather Bar

The majority of the weekend should be pleasant, but rain may start rolling in Sunday.

Becoming a Server REFLECTORGSU.COM

Tips on How to Survive the Restaurant Life

BY CHERYL NUZUM
The Reflector staff

If there is one universal truth all college students have come to realize, it is simply this: life ain't cheap. Tuition. Rent. Food. Even those blessed happy hour prices. It all manages to stack up and it can be a bit overwhelming in the pre-real world stage of our lives.

There are some of us who can be grateful to have parents provide for our living. There are others who have taken out enough student loans to turn a blissful blind eye until graduation. There is a third category though and if you're one of the poor unfortunate souls stuck in it (or will be eventually), it's time to start

hunting for one of those minimum wage or \$2.13 + tips part-timers.

If you happen to choose the latter, you'll need a bit of advice:

Buy a pair of non-slip shoes

Not all restaurants have dress codes, some aren't very strict on them, and some have very basic guidelines such as "closed-toed, closed-heeled" and "solid black". If the restaurant you work at cooks anything in grease, spend \$25 at Walmart and buy yourself a pair of non-slip shoes. Otherwise you'll be like me, who once dropped an entire party (6+ people) tray full of



food. Not only did I bruise my ass, I also had to have the food remade, backing the kitchen up, making my table wait longer and resulting in a very poor tip.

Automatic gratuity will become your best friend

You'll learn which customers to use it on and not. Some people consistently tip 10 percent or less. Some consistently tip 20 percent or more. But always check what your tip would be if you did add gratuity though because sometimes a \$25 isn't worth risking. (If a party is 8+ though, I'd strongly recommend it.)

Be nice to the cooks

These are the people that will fix your inevitable screw ups, will accommodate your picky customers and will know when to throw your favorite dessert your way when they happen to make an extra. Plus, just because they don't deal with difficult customers doesn't mean their job isn't just as hard as (or even worse than) yours. Drop the attitude.

Do NOT, under any circumstances, claim 100% of your tips

If you make \$7.25 an hour, at the end of the pay period you get a paycheck with the taxes already taken out. What's left is your paycheck. Servers get paid \$2.13 per hour. They make their entire living off of tips. I've had paychecks that literally say "non-negotiable" which means I didn't make anything. The amount of tips I made that pay period outweighed my hourly pay, so it went entirely to taxes and the restaurant owed me nothing. If that happens enough times, at the end of the year, you'll end up owing taxes back, which you don't want. Report the credit card tips (because you have to) and leave the rest up the imagination. Your paychecks may only go from \$2.78 to \$11.78 but every little bit counts.

The host can either be your best friend or your worst enemy

They can give you good sections or bad sections. Over-seat you or under-seat you. Stick you with nothing but large parties with lots of kids.

Give you the good tippers or bad tippers (cause trust me, we keep track). It's all in their control and you are entirely at their mercy. Just like the cooks, drop the attitude. Better yet, make a friend.

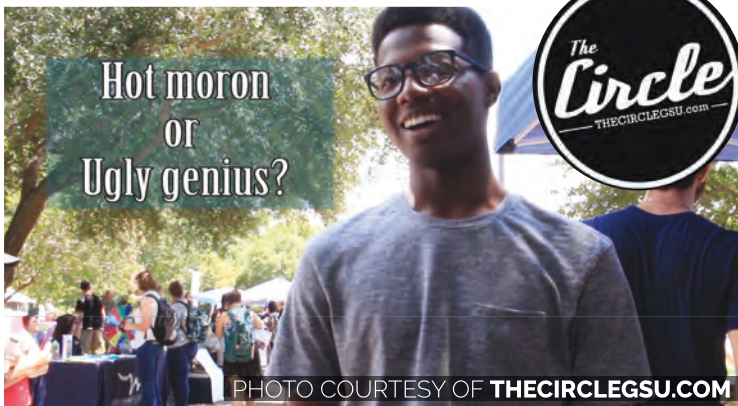
Be honest with yourself

There are times you really can't take another table. If you have three tables that are crazy demanding and soaking up all your time, tell the host or a manager. The same goes if you have a big party or just got double-sat. We all want to do the best we can but that doesn't always mean doing the most we can, especially if we aren't going to do it well. Admit it. It's okay.

Don't let your friends take advantage of you

It's one thing to charge your best friend for a water instead of a Coke, but don't push it and do it for everyone. Free drinks, "accidental" order mess-ups – all that adds up and your manager won't stay dumb forever. Plus, and trust me on this, you don't get much back in return. Your friends may tip you a little extra at first when you throw it in, but eventually they'll start expecting it every time, and eventually those tips go right back to the normal.

True story: I had a hometown friend come in with some of her friends. I pretended it was two of the guys' birthdays so they could get a free birthday shot, and also charged all of their drinks happy hour price. By time they left, they each racked up a bill something close to \$15-20. One of the guys rounded his bill up to the nearest dollar, leaving me a \$0.33 tip. The other simply drew a line and wrote "Next time. Sorry!" Now every time they come in, they still request me and I tell the hostess to pretend my section is full.



The Circle asked some very interesting Would You Rather's to a few Georgia Southern students and they gave us some interesting responses!

COMPUTER REPAIR AND VIRUS REMOVAL

● I come to you! ●

Monthly Special Full Tune Up, **\$75**

Monthly Special Routine Maintenance, **\$50**

912-618-8104

@GSUHealth has been made aware that a person has tested positive for Zika virus in Bulloch County.

Puzzles

8-25-16

3

The George-Anne 8/25/16 Crossword

PuzzleJunction.com

Across

- 1 Leftover
- 6 Tennis's Steffi
- 10 Corker
- 14 Salon activity
- 15 Part of the Corn Belt
- 16 Chop-chop
- 17 True up
- 18 Hockey score
- 19 Banana split topping
- 20 Assembled
- 21 Polish money
- 23 Check information
- 24 Rod attachment
- 25 Shoe part
- 27 Narrow-minded
- 31 Finish second
- 32 Guesses (Abbr.)
- 33 Slough
- 36 Tippy
- 37 British ceremonial lid

1	2	3	4	5		6	7	8	9		10	11	12	13
14						15					16			
17						18					19			
20				21	22						23			
			24					25	26					
	27	28					29	30						
31							32				33	34	35	
36					37	38					39			
40				41					42					
			43					44	45					
46	47	48					49							
50						51	52	53				54	55	56
57						58					59	60		
61						62					63			
64						65					66			

Copyright ©2016 PuzzleJunction.com

- 39 Froth
- 40 Female rabbit
- 41 Donnybrook
- 42 In the sky
- 43 Southpaws
- 46 Collar
- 49 Alcoholic beverage
- 50 In apple-pie order
- 51 Drink
- 54 Patsy
- 57 Present mo.
- 58 "Cheers" regular
- 59 Kind of motel
- 61 Buddy
- 62 Smooth-talking
- 63 Seaweed dish
- 64 Wing-shaped
- 65 Utah lily
- 66 Kind of alcohol
- 10 Hit the dirt?
- 11 Ordinary
- 12 Starbucks order
- 13 Knock over
- 22 Waikiki wear
- 24 Rolling in dough
- 26 "You betcha!"
- 27 Mélange
- 28 Use a beeper
- 29 Poet's "below"
- 30 Query
- 31 High degree
- 33 Rude person
- 34 Bozos
- 35 Clock std.
- 37 Winnowings
- 38 Radioactive
- 39 Dog pest
- 41 ___ gestae
- 42 Hostile
- 43 Athletic award
- 44 With hands on hips
- 45 Apprehend
- 46 True inner self
- 47 Kidney-related
- 48 Haile Selassie disciple
- 52 Spicy Mexican sauce
- 53 Sailing vessel
- 54 Window frame
- 55 In need of a massage
- 56 "Murphy Brown" bar owner
- 60 Loophole

Down

- 1 Study for finals
- 2 Irritate
- 3 Building block
- 4 Chinese food additive (Abbr.)
- 5 Aromatic hydrocarbon
- 6 Libertine
- 7 Dig like a pig
- 8 Out of town
- 9 Artificially high-pitched

		9	2				1	
			8		1		3	
	5	1					2	
		3	1		4			
		2		9		5		
			5			6		
	9					3	7	
	4		3		9			
	7				2	9		

1		5	4			9		7
	8			5				1
		3				2		
								9
2		4		1		6		8
5								
				2			1	
3					7			9
4		6				9	2	3

A TALE OF TWO COUNTRIES

FROM Burkina Faso TO GEORGIA SOUTHERN



© MICK MILLER

Sandra Yankine said that she went on vacation with her family to Italy and Paris during her childhood. Yankine's trip to the United States for college was her first time travelling without her family.

BY JULIA FECHTER

The George-Anne staff

Burkina Faso, a small, landlocked country in West Africa, may seem an unexpected place to recruit students for Georgia Southern University. However, GS is among the top five universities in the United States that enroll Burkinabe students, according to Education USA.

The tale of why these students chose GS, why they stayed and what they have learned from being at GS spans 10 years. The journey begins with a newly hired admissions recruiter.

Setting the foundation

Ron Jones was hired as the international recruiter for the university's Office of Admissions in 2006. He was responsible for increasing the enrollment of international students.

"In 2008, I received a phone call from Savannah Technical College and it was the Director of Career Services. And she said, 'I have this fantastic student here at Savannah Tech. He's completed our associate's program. He needs to move on, but he doesn't really know the process,'" Jones said.

The day after Jones received that phone call, he went to Savannah Tech to meet the student. This student was Ahmed Kabore, a native of Burkina Faso.

The recruiter enrolled Kabore and four other Burkinabe students later in 2008. These five students began communicating with other Burkinabe students and parents, bringing 14 more to GS in 2009.

Kabore graduated in 2011 with a bachelor's degree in health education. That same year, Jones hired him as a graduate assistant, while he was working toward a master's degree in public health.

Two years later, Kabore and Jones travelled to Burkina Faso's capital, Ouagadougou, to recruit more GS students. Kabore returned to Ouagadougou in 2014 and spoke about GS at a local high school.

The journey begins

Sophomore civil engineering and math major Sandra Yankine attended that high school. She and Kabore maintained contact after he visited her high school. Later that year, he influenced her to come to GS.

Originally, though, Georgia Southern University, and even America, was not Yankine's first choice.

"I was trying to go to Canada, and I didn't get the visa, so I just decided to come to the United States," Yankine said.

Yankine first applied to the University of Houston. However, Kabore talked to her and made her change her mind and come to GS instead.

When Yankine arrived at the university, she was accepted into the EIP program and did that for six months before starting classes full time.

Cultural Conundrums

Though there are many nuances between the American and Burkinabe cultures, there are also many similarities.

"It's just like here. We have planes...

fast food...nightclubs. It [a nightclub] is a similar environment, but with different music. For us, it's more like afro-beats," Yankine said.

Burkinabe night clubs play a mix of both American and afro-beats music. Afro-beats music is African music that draws influence from music including jazz, funk, Nigerian and Ivorian (Ivory Coast) music.

Yankine and her Burkinabe friend, Laurence Toe, a junior public health major, have noticed several stereotypes

about American culture while at GS. "When someone asks me where I'm from and I say Africa, I can have a conversation with you when you ask me where in Africa. Then I know that you know that Africa is not a country," Toe said.

Yankine started to interest herself in America and educate herself about its culture, including the stereotypes.

"That's why I don't blame people when they say Africa is just desert and anger and stuff like that. We have also heard stereotypes about America," Yankine added.



Burkina Faso is located south of Mali and north of Ghana. It became an independent country in 1960.



© MICK MILLER

Yankine and Toe said that Burkinabe food can be hard to acquire. Toe added that she has to go to Savannah or Atlanta if she wants African food.

The Next Steps

Ahmed Kabore earned his doctorate degree in public health with a concentration in community health and education in Spring 2016. Afterwards, Kabore returned to Burkina Faso.

"He's the one who really mentored these younger students that were coming behind him. He worked with their families. For the families, he provided this comfort to know that there was a Burkina student here who understood where they were coming from, and he could serve as someone to watch after these other students," Jones said.

"The field I'm working in, public health, is a major you can work everywhere in the world with. My country needs a development of public health more than ever," Toe said.

Yankine chose her major based on Burkina Faso, because the country has more jobs available for civil engineers and construction workers. Whether or not Yankine stays in the United States depends on where she gets more opportunities for work.

According to Jones, it is a misconception that all international students want to come, study and take up permanent residence in the United States,

"What they [international students] want to do is come here, have this experience and then return to their home countries to help them," Jones said.

Georgia Southern University has students from 89 nations including the United States attending the university as of Spring 2016, according to a report from GS' Office of Strategic Research and Analysis.

Jones said, "College is about developing yourself as a person. Part of that is meeting people who are different than yourself whether it's someone from a small town in Georgia, Atlanta, or from Zimbabwe."

BURKINA FASO QUICK FACTS

- **CAPITAL:** OUAGADOUGOU
- **LOCATION:** WESTERN AFRICA
- **GOVERNMENT:** PRESIDENTIAL REPUBLIC
- **ECONOMY:** MARKET ECONOMY
- **POPULATION:** 18, 931, 686

FACTS ACCORDING TO THE CIA'S WORLD FACTBOOK WEBSITE.



Keeping you in the know about Student Affairs and Enrollment Management events, designed with you in mind.

Academic Success Center

MATH 1111 - Review Sessions

Thursday, September 1, 4-5pm, Mr. Jeff Taylor

The hybrid class review is used as the basis for the study sessions. 80% of the students attending a study session pass MATH 1111 with at least a C. To register, please call 912-478-5371 or send an email to asc@georgiasouthern.edu. Seating is limited, register early! All Sessions are in Cone Hall Room 2003. September Sessions:

Event title: NPHC 101

Date: August 25, 2016

Time: 6pm

Location: Performing Arts Center

National Pan-Hellenic Council, a governing council consisting of 9 historically African American Greek lettered organizations, NPHC 101. NPHC 101 guides students through the basics about these international fraternities and sororities including their purposes and ways to pursue membership. For all students interested in pursuing membership into one of the National Pan-Hellenic Council organizations this event is mandatory. Tickets are \$10.00. Ticket sales are from 11-2pm in the Russell Union. Contact information: nphc@georgiasouthern.edu

UPB Outdoor Movie: Now You See Me 2

Friday, August 26th

9:00 pm

Sweetheart Circle

Looking for fun on a Friday night? Join the University Programming Board for our Friday movie series. This event is free and open to the public. Students bring your Eagle IDs. Concessions will not be available for this movie. Be sure to bring snacks, lawn chairs and/or blankets. In the event of inclement weather, this movie will be shown at 7:00pm in the Russell Union Theater. If you need assistance, related to access for this event, please email: upb@georgiasouthern.edu at least 2 weeks prior to the event.

Contact Information: UPB@GeorgiaSouthern.edu

Mind-Reader/Mentalist Chris Carter

Tuesday, August 30th

7:00 - 8:00 pm

Russell Union Ballroom

See amazing mind-reader and mentalist, Christopher Carter! This event is open to GSU students with an Eagle ID only. If you need accommodations related to access to this or any other University Programming Board event, please email: upb@GeorgiaSouthern.edu at least 2 weeks prior to the event. Contact Information: UPB@GeorgiaSouthern.edu

Bouldering Night Out

Thursday, August 25 @ 7PM

Location: Southern Adventures Center - Climbing Wall

Link: <http://cri.gs/1mKL4oo>

Meadow Mash-up BEGINS

Friday, August 26 (Every Monday 6PM, Every Friday 3PM)

Link: <http://cri.gs/MeadowMashup>

Intramural Registration OPEN: Flag Football

Monday, August 29

Registration Link: cri.gs/IM_Register

Intramural Flag Football Officials Training

Monday, August 29 - Wednesday, August 31 @ 9PM

Location: Seminar Room

YOUR STUDENT ACTIVITY FEES AT WORK

The Weekly Buzz is sponsored by the Office of the Vice President for Student Affairs and Enrollment Management.

GEORGIA SOUTHERN

BY ROBERT GEORGE

The George-Anne staff

We're continuing our 2016 football season preview with a breakdown of Georgia Southern's defense. *All stats compiled from ESPN, NCAA and GS Athletics databases.*



Costantini (center) and Summers will look to recreate the success that made UCF a top 25 defense two years ago.

WHAT TYPE OF DEFENSE WILL THE EAGLES RUN?

The Eagles will employ a four-down scheme, which basically means there will be four defensive linemen on most snaps. Behind them will be three linebackers, two cornerbacks and a pair of safeties.

Obviously, the formations and schemes will vary based on the offense their opponent's run. Teams like Georgia State, Troy, South Alabama and Idaho throw the ball a lot, meaning we'll probably see more cornerbacks and safeties and less linebackers and nose tackles. When the Eagles go

against New Mexico State and star running back Larry Rose III, they could stack the box more.

One thing to watch is the reunion of head coach **Tyson Summers** and newly hired defensive coordinator **Lorenzo Costantini**. The two last coached together at the University of Central Florida, where they put together a top 25 defense in 2014.

"I really think that they have an opportunity to be one of the best defenses in the country, and we'll try to put our stamp on it," Summers said.

The defensive line returns pretty much everyone from last season and should form one of the best units in the conference.



DEFENSIVE LINE EXPERIENCE AND TALENT COLLIDE

Outside of running back, this position may boast the most talent on GS's roster. Seniors **Jay Ellison**, **Bernard Dawson** and **Jamal Johnson** will anchor a front line that should create a lot of problems on opposing offenses this season.

Ellison is fantastic at taking on multiple linemen and clogging up gaps at nose tackle. Dawson is probably the best pass

rusher on the team, and will have plenty of opportunities to get to the quarterback in the pass-happy Sun Belt.

Another player to watch is **Jonathan Battle Jr.** The redshirt senior was out all last season with injuries, but started in five games in the 2014 season. He will be ready to get back on the field and a chance to contribute immediately.

Darrius Sapp, Logan

Hunt, and GoDaddy Bowl Defensive MVP **Nardo Govan** will provide depth to form a vicious rotation up front. Being able to go seven or eight players deep will help everyone stay fresh throughout the game.

"We want to set the tone. We want to make the plays first. We want to get the defense going every day," Sapp said. "We're together as a unit."

LINEBACKERS A TWO-HEADED MONSTER



Ironhead Gallon is look to build off his strong junior campaign where he finished second on the team in tackles.

These guys are going to make a lot of plays for the Eagles. With the talented line taking out blockers and blowing up offenses, the linebackers will be the ones making the plays and holding the line.

Senior **Ironhead Gallon** will return after an outstanding 2015 campaign. He finished second on the team with 81 total tackles and also blocked a few punts on special teams. He's the unofficial leader of the team, and certainly one of its most important players. He'll be in-charge of calling the plays and making them, which is what he watched former teammate and current Detroit Lions rookie Antwione Williams do last season.

Ukeme Eligwe will also be making his return to

the gridiron after two long years away from it. The former four-star recruit out of Stone Mountain, Ga. will step into the role that Williams thrived so well in last season. He has a good frame and is explosive and athletic enough to make just about any play on the field. He'll also be an asset in defending against the pass with his speed.

"I'm about to leave all my stress, my anger, my emotions, everything in these last two years," Eligwe said. "I'm back and ready to play the game I love."

Chris DeLaRosa and **William Bussey** will man the other linebacker spot in the 4-3 base defense. Both guys saw a lot of game action last season and should be able to run free all over the field while offenses game plan around Eligwe and Gallon.

Apply Now For
STUDENT SUPPORT SERVICES

Student Support Services (SSS) provides comprehensive services to students who are first-generation college students, income eligible, or students with disabilities. The primary goal of SSS is to help students transition to college, stay in college, and graduate. Through our services we provide opportunities for academic development, assist students with college requirements, and serve to motivate students toward the successful completion of a bachelor degree.

@GASouthernSSS
GeorgiaSouthern.edu/SSS
912-478-2387

TRIO TALKS
"Start strong and FINISH STRONGER!"
New topics every Monday!

Mondays | Russell Union 2084 | 4 p.m. & 5:30 p.m.



2016 DEFENSIVE PREVIEW

© MICK MILLER



Jesse Liptrot is one of the many new faces that will appear in the GS secondary this season. He'll be part of a group with just one returnee with significant game experience.

SECONDARY YOUTH MOVEMENT

This is the team's biggest question mark coming into the season on either side of the ball. While the aggressive front seven should put pressure on opposing QB's, teams will test the young secondary early and often to see if they can land some big plays.

Senior **Darius Jones** is the only returning cornerback who saw major action last season, and he'll be expected to make the transition from nickel to every-down starter. He brings a lot of experience, having played in 35 games during his GS career. He'll be asked to anchor what will be a very young and green secondary.

"I've taken a lot of leadership qualities from the guys that played last year. I feel like we're going to be good," Jones told GS Athletics.

Redshirt freshman **Jesse Liptrot** has been taking a lot of reps with the first unit and is a candidate to be on the field for the first play against SSU.

Freshman **Monquavion**

Brinson was one of the jewels of the top recruiting classes in the Sun Belt and should get some work opposite of Jones.

RJ Murray and Rayquan Sam will also be thrown into the fray in the hope that they will develop into every down players.

Gone are multi-year starters at safety in Matt Dobson and Antonio Glover. And while it's still not set who'll replace them in the first unit, there are plenty of candidates.

Senior **Vegas Harley** certainly has a chance after switching over from quarterback. Summers has praised about his talent and IQ; now it's just about picking up the ins and outs of the position quick enough to hold off some of the younger guys.

Joshua Moon and Robert Brice both played at the position last season and are likely to see time again. **Sean Freeman** was an all-conference safety at Eastern Arizona last season and figures to mix in as well.

SPECIAL TEAMS

WHO REPLACES KEATON?

Summers rose through the coaching ranks as a special teams coordinator, and he takes a lot of pride in it at GS. It's been a major focus in spring practice and fall camp.

"From a special teams standpoint, the way you wind up winning games is being fundamentally sound and not making mistakes and not letting it hurt you," Summers said.

Derek Keaton made a name for himself in the return game last season. Keaton graduated, meaning someone has a chance to step in and fill that production. **Montay Crockett** has returned kicks in the spring and will likely get first crack at it against SSU.

Younghoe Koo will return as the primary place-kicker and kick-off specialist. He nailed 7-9 field goals and put 45 of his 67 kickoffs in the end zone for touchbacks.

It's likely that Koo and **Matt Flynn** will share punting duties until one of them separates themselves as the better option. **Tyler Bass** also has a chance to get on the field after a good offseason.



© MICK MILLER

Summers has placed a lot of emphasis on being fundamentally sound in special teams. It's been a big focal point in practice this offseason.



© MICK MILLER

Koo will probably start as the place kicker and kick off specialist, but Matt Flynn and Tyler Bass will also get a chance to kick in games.



THE
TALON
EXPERIENCE

The Talon Leadership Experience is a comprehensive learning experience for students holding a leadership position in a registered student organization.

This semester's event will focus on building your personal understanding and skills related to interpersonal communication, utilizing the DISC assessment.

Saturday, September 10 from 9:30am-3:30pm
Russell Union Ballroom

Each participant must register individually by
8:00 am on Tuesday, September 6 on MyInvolvement.
Organizations may receive WINGS points for up to three participants!

YOUR STUDENT ACTIVITY FEES AT WORK



Statesboro's doughnut competition heats up

BY TAISHA WHITE
The George-Anne staff

The doughnut community in Statesboro gets another competitor as a new Krispy Kreme is set to open in late October. The store will be located next to Taco Bell on Northside Drive and the new addition now makes three doughnut stores in the area. The new establishment has some people wondering what kind of impact Krispy Kreme will have on both GS students and the Statesboro community.

Daylight Donuts

Best quality: originality

Daylight Donuts has been apart of the Statesboro community since the 1990s, bringing not just a variety of doughnuts (using their daylight donut mix) to the table, but a menu consisting

of sandwiches, sausages rolls, bagels and their own brand of coffee. The local doughnut shop is one of nearly a thousand Daylight Donut shops across 28 states.

Natalie Collins, staff member for Georgia Southern's Campus Ministries believes Daylight Donuts has its own spin on the pastry dish and cannot be compared.

"I don't think you can put Krispy Kreme or Dunkin' in the same category as Daylight and that's because it's a local place and they have their own thing," Collins said, "So I would have to say that Daylight is my favorite."

Dunkin' Donuts

Best quality: location

The Dunkin' Donuts corporation first came on to the scene in the 1950s and then opened its doors in the

Statesboro community in the late 1980s. The chain restaurant provides a fresh batch of doughnuts every four hours as well as a wide variety of fruit smoothies and coffees, which includes ice coffees as well.

For most of the GS community, the placement of Dunkin' Donuts creates a quick and convenient way to satisfy that doughnut craving.

Neel Shroff, general manager of Dunkin' Donuts on Fair Road, credits the location of the doughnut shop as what separates them from the rest of the competition.

"[I'll tell you] we got the best location. It's right across from the college. Fair Road is a big road in Statesboro. You've got Zaxby's, Burger King. A lot of food chains around. So it's easier for college kids to get to," Shroff said.

Krispy Kreme

Best quality: fundraising

The popular franchise first opened its doors back in 1937 in Winston-Salem, North Carolina. Home of the original glazed doughnut, Krispy Kreme has over 50 doughnut flavors, including cinnamon sugar and chocolate iced cake. The chain restaurant has over 1,150 restaurants, including over 500 internationally

The doughnut shop is known for its open window slot where customers are able to witness how each doughnut is created. Krispy Kreme also has a fundraising service, creating opportunities for residents to raise funds in their community. Many GS organizations, like Collegiate 100, take advantage of the service.

Tervarious Carter, Collegiate 100 President, recommends

Krispy Kreme for fundraising because of their willingness to help others.

"They were willing to help us and make sure we have everything we needed. I would definitely recommend it (Krispy Kreme) to other organizations for fundraising purposes," Carter said.

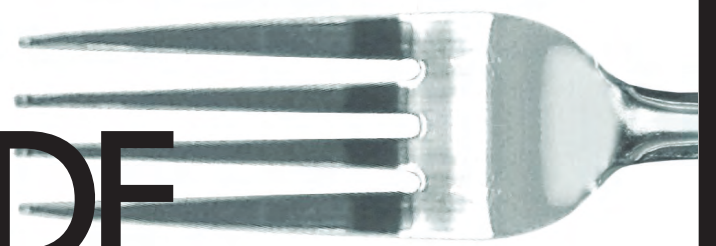
Students at GS are extremely excited for the new Krispy Kreme shop to arrive to the Boro.

Ebony Sullivan, junior biology major, is excited that she finally has a place to go to cure her doughnut sweet tooth.

"I really only eat Krispy Kreme doughnuts," Sullivan said. "So if I have a craving for them, I feel like I have somewhere to go now."

For more updates on the new Krispy Kreme, be sure to follow @BoroKrispyKreme on Twitter.

Full Plate GUIDE



Check out these local restaurant deals!

Statesboro is home to plenty of delicious restaurants that every student should check out at some point! When it comes to finding something to do in town going to a new restaurant is always a great option. Always check the Full Plate Guide to find good restaurants with even better student discounts!



BECAUSE YOU'RE GOING TO MISS MOM'S COOKING.

Southern Classics
Homey Atmosphere
New Menu Daily

Located on Northside Drive just past Lowe's.

EAGLE EXPRESS ACCEPTED.
15% DISCOUNT WITH EAGLE ID.

To advertise in the Full Plate Guide or to have your restaurant listed above, email ads1@georgiasouthern.edu.

GS Police Chief addresses campus safety concerns

BY BAILEY ADCOCK
The George-Anne staff

In the last couple of weeks, Georgia Southern University has experienced numerous on and off campus incidents that have prompted concerns about public safety.

As the University System of Georgia plans to add a total of 51 campus police officers this year, according to myajc.com, some faculty, staff and students might be wondering what GS is doing to address the concerns.

Though it is unknown if any of the 51 police officers will make their way to Georgia Southern University, Laura McCullough, Georgia Southern Police Chief, is dedicated to keeping students and faculty safe on the GS campus.

"We have implemented a new safety feature in the LiveSafe app which is available at no cost to anyone with a smart phone," McCullough said.

The LiveSafe app makes it easier for users to be connected with emergency departments, whether that is the university police department or a 911 dispatcher.

The app also has features such as text messaging, video and picture messaging and voice messaging.

Other than this app, the campus police department has not implemented any new safety procedures for the new school year.

Also, before the semester began, campus police underwent various training scenarios including an active shooter training which shut down the Henderson Library for a few hours.

"I like how the police are on top of their game," Michael Bennett, undeclared freshman, said.

Off-campus incidents have also become strong concerns recently with break-ins and robberies happening at off-campus housing.

These incidents are technically under the jurisdiction of the Statesboro Police Department, but campus police have teamed up with local law enforcement to keep students and residents safe.

"We are working closely with Statesboro PD to assist them with additional patrols around the off-campus

complexes and providing support and cooperation in their investigation," McCullough said.

For anyone with questions related to safety on campus, there are many opportunities for those questions to be answered, such as the FAQ page for the campus police. If you have a more specific question or your question is simply not listed on the FAQ page, students have the opportunity to sign up to have "Coffee with the Chief".

This meeting provides students with a chance to sit down and talk with the Campus Police Chief and have a one-on-one conversation in a comfortable surrounding.

Despite the safety measures that are already in place on and off campus, students are still urged to follow basic safety tips.

McCullough said, "It is important to remember that your safety starts with you. Take time to do the simple things, such as locking your door and not leaving your personal items unattended."

SAFETY TIPS

Report anything suspicious that you hear or see.

Constantly be aware of your surroundings.

Try not to walk alone at night.

Know your emergency contacts.

If you feel uncomfortable when walking alone, hold your keys in your hand with the long end sticking out from between your knuckles.

Keep cash on hand for emergency situations in which you don't have any other form of payment.

Consider taking a self-defense class either online, in a studio in town or take advantage of the Self Defense KINS class and get credit as well.

Know your way around campus and Statesboro.

EMERGENCY CONTACTS

University Police:
(912)-478-5234

Statesboro Police:
(912)-764-9911

Bulloch County Sheriff Office:
(912)-764-8888

If you are in an emergency situation, call 911 directly.

Old health center to be temporary Interior Design Building



PHOTO COURTESY OF ERIN MCGUINNESS

The School of Human Ecology building currently houses the interior design program. It will move to the old health center building later this year.

BY ERIN MCGUINNESS

The George-Anne staff

The interior design program is temporarily moving to the old health center in December while a new building is underway.

According to Amy Boyett-Whiter, associate professor of interior design, the old health center has been gutted and remodeled to fit the needs of the interior design program. The new space will offer the same facilities to students, such as a design/drafting lab, computer space, a studio and 24-hour access.

"It's a great thing, because this means that we are one step closer to

getting a new building," Cara Laine Sims, senior fashion merchandising major, said.

According to Boyett-Whiter, two-thirds of the building will be occupied by the interior design program while one-third is office space for the Counseling Center.

A struggle that Diane Phillips, assistant professor of interior design, foresees for the temporary building is the preconceived idea that it used to be a place where sick people went. She also said the rooms are oddly shaped, but she hopes the remodeling will improve them.

"Everything is a

struggle when you move, but we have needed to downsize, and we need to use the space efficiently, and we don't have room for a lot of extra. Our challenge is to consolidate," Boyett-Whiter said.

She believes the move is positive for interior design students because of options like transportation since there is a bus stop and a parking lot nearby. Many people are excited for the temporary move, not because they are getting a new space, but because the move indicates progress on a new building for the program.

LOOKING TO GET INVOLVED?

We help students make connections to make the most of college. We give students a voice.

Join us. You don't need experience. Now is the time to apply for our fall training programs.

To start your application, go to thegeorgeanne.com and click "Apply to Student Media."

Applications Open August 16th-26th
Interviews 22nd-26th 10AM-3PM
Candidate Classes begin August 30th

For more info, email
SMmarketing@georgiasouthern.edu.



STATEMENT OF OPERATIONS

The George-Anne is the official student newspaper of Georgia Southern University, operated by GSU students using facilities provided by the university. The newspaper is the oldest continuously published newspaper in Bulloch County.

The newspaper is published twice weekly, on Tuesdays and Thursdays, during most of the academic year. Any questions regarding content should be directed to the student editor by phone at 912.478.5246 or at gaeditor@georgiasouthern.edu.

ADVERTISING: The newspaper accepts advertising. Inquiries may be made by calling 912.478.5418 or 912.478.0566. For questions e-mail ads1@georgiasouthern.edu.

The George-Anne receives additional support, in part, from the Student Activities Budget Committee. For more information, rate cards, or sample publications, contact the advertising manager or student media director. The advertiser is responsible for any errors in advertisements and its liability for adjustments is limited to the amount of space the error occupied in the ad. Further, the newspaper is not responsible for any damages caused due to an ad's omission from a particular edition and its responsibility solely is to reschedule the ad in the next regular edition at the regular advertising rates.

STUDENTS BEWARE: The George-Anne screens all advertisements prior to publication. The newspaper strives to accept ads for legitimate products and services only. Students are urged to exercise caution when replying to ads-- particularly those that require personal information. Students are also urged to report to the newspaper any suspicious offers which they might see in an ad.

PUBLICATION INFORMATION: The newspaper is printed by The Brunswick News in Brunswick, Ga.

NOTICE: Unauthorized removal of multiple copies from a distribution site constitutes theft under Georgia law, a misdemeanor offense punishable by a fine and/or jail time.

CORRECTIONS: Contact the editor at gaeditor@georgiasouthern.edu for corrections and errors.

STAFF LIST

Print Editor-in-Chief Ian Leonard
Digital Editor-in-Chief Casey Cargle
Print Managing Editor Jozsef Papp
Digital Managing Editor Meg Elwood
Print News Editor Tandra Smith
Digital News Editor Blakeley Bartee
Features Editor Julia Fechter
Digital Sports Editor Stephanie Matzelle
Opinions Editor Devin Conway

Creative Manager Lauren Grizzell
Photo Editor Kiara Griffin
Design Editor Erin Fortenberry
Features Designer Stevey Mann
News Designer Jasmine Davis
Sports Designer Dionna Williams

Marketing Manager Haley Clark
Business Manager Austin Hinkley

The George-Anne welcomes letters to the editor and appropriate guest columns. All copy submitted should be 350 words or fewer, typed, and sent via email in Microsoft Word (.doc/.docx) format to letters@georgiasouthern.edu. All submissions must be signed and include phone number for verification. GSU students should include their academic major, year and hometown. The editors reserve the right to reject any submission and edit submissions for length. Opinions expressed herein are those of the Board of Opinions, or columnists themselves and DO NOT necessarily reflect those of the faculty, staff, or administration of GSU, the Student Media Advisory, Student Media or the University System of Georgia.

How To Walk On the Pedestrium

A GUIDE

BILLY ZIEGLER

Ziegler is a sophomore economics major from Dalton, Ga. This is a guest column.

For the last few weeks, I've noticed a string of occurrences around campus, mostly located within the pedestrium.

Whether it's during lunch, afternoon busy hours, or after class people somehow forget this simple idea: order.

Two lanes were built as a walking path and that's the

original intention for it.

But of course this was before the huge advent of the mass produced Wal-Mart bicycle, so everyone walked one path, and walked the opposite path the other way and it was nice.

Not to trash my fellow bike riders but y'all threw a wrench in the mix. To add bikes in the mix, have the outer sides a bike lane, or at least bike safer, such as a pullout lane for a highway.

Now the main problem for Southern, as we have our own I-16 right through campus,

is that some people have no idea how a road works.

Honestly, it's the second week or so since y'all moved in, I seriously hope y'all haven't forgotten the rules of the road.

There are two paths to create efficient order, which are: right lanes go past Hendy to the Carroll and continue onward.

In simple English, left lanes go the opposite side, stretching from Newton side toward Lakeside and containing onwards as well.

Sorry for reminding you,

but studies show that y'all obviously forgot which side was which.

Thinking on this, I've decided some healthy tips for young freshmen or rebels who haven't decided how to oil society instead of being a rusty cog in our paths.

With all that being said, I want to thank those that respect the rules of the path that were already naturally set and I want to thank future pedestrians in our path system for being productive and not veering off the sidewalk to catch a Pidgey.

TIPS FOR MANEUVERING ON THE PEDESTRIUM

Bikes (this is currently an idea in development) go on the right side of every path, ergo left lane: right bike path, right lane, right bike path. This will ensure that our high speeders will have the room needed to slide into that bike rack.

Do not stand in the road. Firstly, if a car was heading straight after you, would you move to the side or stand in front of it talking on the phone?

Thinking on this, if this conversation can't wait for class and you also need to use the path, try using the public benches located on the side of the pathway. The university put them there for a reason, please use them.

If you seriously love her so much that you can barely move from the spot you are in, move to the grass. Sure, you can waste her time but that doesn't mean you should waste ours.

Lastly, and this is for you bikers, slow down. You left your apartment 10 minutes ago, but it literally takes two minutes to get all the way through the Pedestrium, please slow down to smell the flowers, trust me you will definitely not be late.

STUDENT GOVERNMENT INCENTIVE PROGRAM



FOUR WAYS TO WIN **\$1500** IN CASH PRIZES!

EARN 2 TICKETS EACH TIME YOU:

- 1 SGA AWARENESS**
ATTEND SGA MEETINGS
- 2 SGA EVENTS**
ATTEND SPECIAL SGA EVENTS
- 3 SGA LEAD SERVE**
VOLUNTEER TO SERVE WITH SGA
- 4 SGA VISION 2020**
ATTEND SGA VISION 2020 EVENTS

COMMUNITY, ENAGEMENT, INVOLVEMENT

#GETINVOLVED

SCAN THE CODE WITH SNAPCHAT
OR
VISIT THE LINK TO REGISTER!



tinyurl.com/sgaincentive

FIRST AMENDMENT FREE FOOD FESTIVAL

SEPTEMBER 13TH
@ THE ROTUNDA
11-2PM



**PARTICIPATING RESTAURANTS INCLUDE:
FORDHAM'S FARMHOUSE RESTAURANT, MCALISTERS, AND SUBWAY**