

Georgia Southern University

Digital Commons@Georgia Southern

The George-Anne

Student Media

9-13-2011

The George-Anne

Georgia Southern University

Follow this and additional works at: <https://digitalcommons.georgiasouthern.edu/george-anne>

Recommended Citation

Georgia Southern University, "The George-Anne" (2011). *The George-Anne*. 2222.
<https://digitalcommons.georgiasouthern.edu/george-anne/2222>

This newspaper is brought to you for free and open access by the Student Media at Digital Commons@Georgia Southern. It has been accepted for inclusion in The George-Anne by an authorized administrator of Digital Commons@Georgia Southern. For more information, please contact digitalcommons@georgiasouthern.edu.



GSU HOSTS CONSTITUTION DAY

PAGE 8



GSU VS. TUSCULUM BLOCK PARTY

PAGE 6

Tuesday, August 30, 2011
Georgia Southern University
www.thegeorgeanne.com
Volume 87 • Issue 20

THE GEORGE-ANNE

Eagles #1 in nation GSU to build archery facility

By JAMES FARMER

George-Anne staff

The Georgia Southern University football team is back atop the Football Championship Subdivision rankings for the first time in nearly a decade.

After South Dakota State upset Eastern Washington University 30-17 last weekend, the Eagles were the favorite to make the leap from No. 2 to No. 1 in both the coaches' poll and the Sports Network/Fathead.com poll.

The last time the Eagles were ranked at the top of the polls was Oct. 27, 2001. They lost to East Tennessee State that weekend, and have not regained the top spot until now.

Since their last No. 1 ranking, the Eagles have had four different head coaches. The spot that they dominated during most of the late '80s and early '90s was taken over by their conference rival, Appalachian State University. The Mountaineers have won three national titles since 2001.

The Eagles topped the University of Northern Iowa for the No. 1 ranking in the coaches' poll, with fellow Southern Conference member App. State rounding out the top three spots. GSU ran away with 23, of a possible 28, first-place votes.

GSU was named the top team in the Sports Network/Fathead.com poll as well, with 102 of 148 first-place votes. In this poll, App. State received 10 first-place votes.

In addition to being ranked number one in the nation, GSU is the leader in the SoCon standings.

The Eagles are the only undefeated team in



Randy Hudgins/STAFF

Students celebrate an Eagle touchdown in Saturday's game against the Tusculum Pioneers.

the SoCon, and already have one conference victory.

Other SoCon teams also fared well in this week's poll. Wofford College moved up to No. 8 in the coaches' poll after a narrow loss to Football Bowl Subdivision school Clemson

University.

The University of Tennessee at Chattanooga advanced to No. 17 in the coaches' poll and No. 14 in the Sports Network/Fathead.com poll after defeating No. 10 Jacksonville State over the weekend.

By AYANA MOORE

George-Anne staff

Georgia Southern University will soon begin construction of a new archery and shooting range facility for student and general public use.

The facility will be funded by a grant of \$3.2 million from the Department of Natural Resources in addition to \$750,000 raised from private funds. It will be constructed adjacent to the GSU campus, facing U.S. Highway 301, and will be built in late spring next year.

"We were approached to do a partnership with the Department of Natural Resources," said Theresa Thompson, vice president of student affairs and enrollment management at GSU. "So with this grant, we get to build an exceptionally good training program for outdoor sports and indoor shooting. The indoor shooting, both for archery and for the shooting range, will be state-of-the-art."

See ARCHERY, page 7



thegeorge
anne.com

Tues.
H 95
L 63

Wednes.
H 94
L 67

Thurs.
H 95
L 66

Fri.
H 93
L 58



Newsroom 478-5246
Advertising 478-5418
Fax 478-7113

PO Box 8001
Statesboro, GA
30460

Plaintiffs: Statesboro City Council held 'secret meetings'

By JENNIFER CURINGTON

George-Anne staff

The Statesboro City Council must pay a \$4,250 fee and hold a repeat of two previous meetings, according to a Georgia Supreme Court ruling made yesterday.

Justice Harold D. Melton ruled in favor of plaintiffs Earl Dabbs, Charles Olliff, Raybon Anderson, Jody P. Stubbs, Ray Hendley and Ellis Wood. The plaintiffs filed suit alleging the council held two secret meetings in April 2011.

Councilman John Riggs said, "We are supposed to repeat two different meetings, April 1 and April 19. They are saying that they were secret meetings, which they were not. In my opinion, I say they weren't. The court says they were, I say they were not. Adamantly, I say they weren't. Anyway, they are telling us that we need to repeat those two meetings. We will abide by that, too."

Riggs said the meetings should not be considered secret because the council followed the regulations for announcing meetings.

"They were not secret meetings, every one of them were posted legally just as

we're supposed to. We're supposed to put a posting on the front door of city hall," Riggs said. "Also, we are supposed to let our legal outlet know about the meeting, which is the Statesboro Herald, which we do and did. Whether they print it or not is up to them. You can tell the newspaper to print whatever you want them to print, but whether they do it or not is up to them."

"These guys didn't think there was any warning about these meetings, which is absolutely just stupid because there were people from the public who were there. Anyway, they were uncomfortable with that, so they decided they would sue us," said Riggs.

The councilman said he also disagrees with the council having to pay for the plaintiffs' court fees.

"They sued us for four different things and we only contested on two of those things. One of them was to pay their legal fees, which the court ruled that we do have to pay their legal fees, which I do not agree with," Riggs said. "The court is wrong on that, but we'll abide by it."

The plaintiffs were represented by Daniel B. Snipes, who was not available for comment.

SGA announces changes

BY SHAUNTEL HALL

George-Anne staff

The Georgia Southern University Student Government Association reassigned Dominique Quarles as vice president of finance and discussed course changes at their recent meeting.

Quarles resigned from this position this summer and reapplied for the fall 2011 semester.

SGA President Alton

Standifer stated his vision for the position this semester.

"Along with all the other different things we talk about in SGA, reconstruction that position is one where we want to put forth a lot of change," said Standifer.

After attending an undergraduate committee meeting, SGA Senator Christina Belge reported to her fellow officers and senators about course changes for the coming

academic year.

In the committee meeting, it was stated that the course BEED 5130, cooperative vocational education, was being removed from the school's curriculum, and a new course, MSSED 6637, would take its place.

International Security Affairs, INTS 3430, and Identity and Nationalism, INTS 3530, were also added to the into the course catalog.

SPECIAL
STUDENT
PRICING!

Hello Frontier Goodbye Ramen

If you want something instant at a great price, try Frontier Fast High-Speed Internet Service with special student pricing.

UNSHARED CONNECTION/GREAT PRICE:

- Get breakthrough speed with a dedicated, unshared connection
- Sign up for flexible, semester-by-semester plans
- Enjoy wireless freedom for all of your devices with our extended-range wireless modem

ONLY
\$34⁹⁹ PER MONTH

Requires a four-month Price Protection Plan and a \$4.50 monthly modem fee.

Don't noodle too long— CALL TODAY!

912.764.3271 • www.Frontier.com

76 East Grady Street | Statesboro, GA 30458

frontier
Welcome to the New Frontier

© 2010 Frontier Communications Corporation. Offer for new residential High-Speed Internet customers only and requires proof of student eligibility. Service subject to availability. Requires a four-month Price Protection Plan. A \$50 early termination fee applies. Installation charge applies. Actual Internet connection speeds may vary and are not guaranteed. Applicable taxes, surcharges and modem charges apply. Other restrictions may apply.

Police Beat

Wednesday Sept. 7

- A cell phone, wallet and keys were taken from the Russell Union.
- A bicycle was taken from the Russell Union.

Thursday Sept. 8

- Officers issued seven traffic citations, three traffic warnings, assisted two motorists, responded to two sick persons and one injured person, responded to one alarm and investigated one accident.
- Taylor Lee McGaha, 18, was charged with underage possession/consumption of alcohol.
- Conor W. White, 18, was charged with DUI and driving too fast for conditions.

Friday Sept. 9

- A case of financial fraud was reported at The Market Place.
- An alcohol violation was reported at Southern Pines.
- A drug complaint was reported at Eagle Village.
- A drug complaint was reported at Southern Pines.

Saturday Sept. 10

- Officers issued three traffic citations, one traffic warning, assisted one motorist, responded to one injured person, responded to three alarms and investigated three accidents.
- A drug complaint was reported at University Villas.
- An iPad was taken from Centennial Place.
- Christopher Caleb Brewer, 21, was charged with public drunk, disorderly conduct and obstruction of an officer.
- Justin Howard Paner, 18, was charged with underage possession of alcohol and furnishing alcohol to an underage person.
- Kaleo Leopn Lyles, 18, was charged with DUI.
- Wesley William Kelly, 18, was charged with underage possession of alcohol and possession of a false I.D.
- Stephen D. Dykes, 22, was charged with disorderly conduct.

Sunday Sept. 11

- Officers issued eight

traffic citations, five traffic warnings, assisted two motorists, responded to one sick person, responded to four alarms and investigated one accident.

- An alcohol violation was reported at Eagle Village.
- A suspicious activity case was reported at Southern Pines.
- Sarah Jordin Miles, 18, was charged with underage possession of alcohol and obstruction of an officer.
- Anthony M. Collazos, 22, was charged with pedestrian under the influence and obstruction of an officer.
- Walther Trexel Bolick, 17, was charged with underage possession of alcohol and criminal trespass.
- Harold Averitt Hinesley Jr., 18, was charged with possession of marijuana.
- Ethan Michael Chamineak, 19, was charged with possession of marijuana.
- Robert Jackson Douglas, 18, was charged with possession of marijuana.

Statement of Operations

The George-Anne is the official student newspaper of Georgia Southern University, owned and operated by GSU students using facilities provided by the university. The newspaper is the oldest continuously published newspaper in Bulloch County. The newspaper is a designated public forum for the Georgia Southern community. The newspaper is published twice weekly, on Tuesdays and Thursdays, during most of the academic year. Any questions regarding content should be directed to the student editor by phone at 912.478.5246 or at gaeditor@georgiasouthern.edu.

ADVERTISING: The newspaper accepts advertising. Inquiries may be made by calling 912.478.5418 or 912.478-0566. Fax any questions to 912.478.7113 or e-mail ads1@georgiasouthern.edu.

The George-Anne receives additional support, in part, from the Student Activities Budget Committee.

The deadline for reserving space and submitting advertising copy is noon, one week prior to the intended publication date. For more information, rate cards, sample publications,

contact the advertising manager or student media director.

The advertiser is responsible for any errors in advertisements and its liability for adjustments is limited to the amount of space the error occupied in the ad. Further, the newspaper is not responsible for any damages caused due to an ad's omission from a particular edition and its responsibility solely is to reschedule the ad in the next regular edition at the regular advertising rates.

STUDENTS BEWARE: The George-Anne screens all advertisements prior to publication. The newspaper strives to accept ads for legitimate products and services only. Students are urged to exercise caution when replying to ads-particularly those that require personal information. Students are also urged to report to the newspaper any suspicious offers which they might see in an ad.

PUBLICATION INFORMATION: The newspaper is printed by Signature Offset in Jacksonville, Fla.

NOTICE: Unauthorized removal of multiple copies from a distribution site constitutes theft under Georgia law, a misdemeanor offense punishable by a fine and/or jail time.

Editorial Staff

Editor-in-Chief	Arielle Coambes
Managing Editor	Mallory McLendon
News Editor	Jennifer Curington
Asst. News Editor	Jessie Reese
Arts Editor	Julia Welch
Asst. Arts Editor	Quanique Epps
Sports Editor	Matthew D'La Rotta
Football Editor	James Farmer
Asst. Sports Editor	Jannah Bolds
Photo Editor	Randy Hudgins
Design Editor	Kelsey Paone

Corrections

Contact the editor at gaeditor@georgiasouthern.edu for corrections and errors.



The Sir Shop
Statesboro Mall
912.764.6924



Our View

Take racism out of the workplace

Tim Wise, an author and advocate against racism in the work place, recently made his third trip to Georgia Southern University to speak to students about his personal experiences with racism.

His perspective in this area is unique, because many speakers on the topic of racism and inequality are minorities themselves. Wise is a middle-class white man who sees the racism in our society. He receives positive evaluations on his lectures from GSU students who attend his lectures.

Wise talks about how people in the past, when interviewed about equal rights in the work place, thought that there was a fair amount of equality for all races. Of course, that's not the general thought now, even though the population as a whole probably thinks that racism isn't as much of an issue, when in fact, it still is in our country, whether we realize it or not.

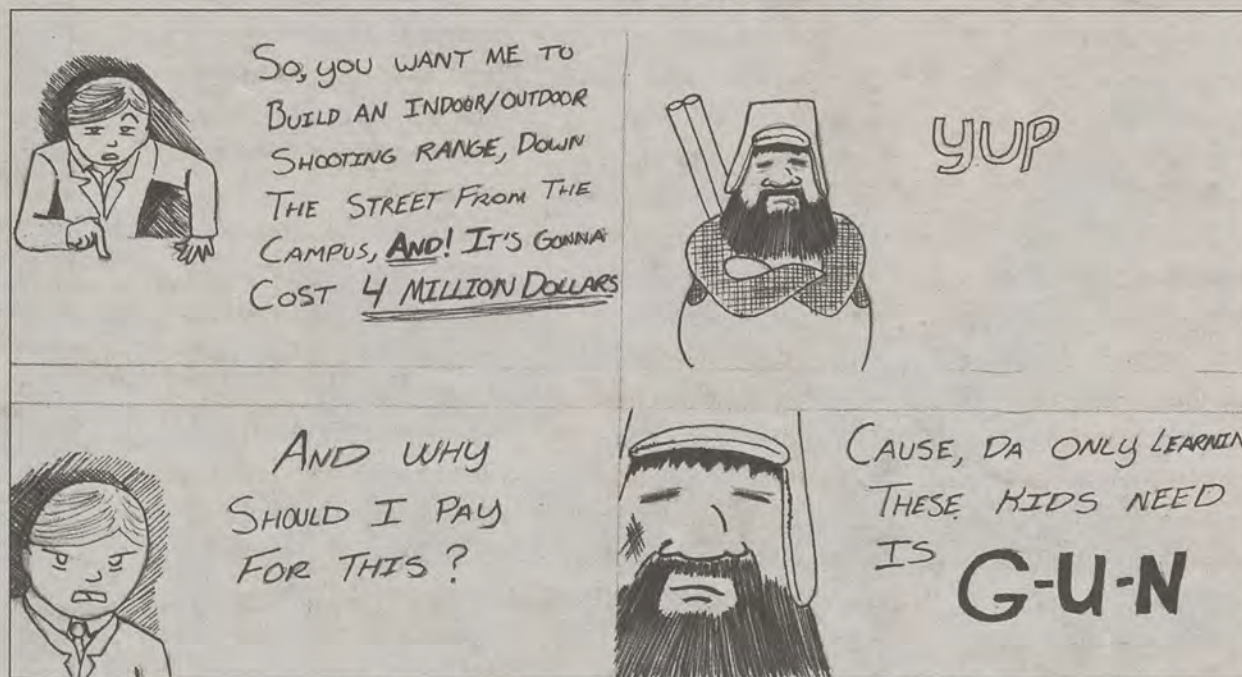
There are examples of this everywhere, from the number of minority CEOs of Fortune 500 companies to the pay difference between caucasians and minorities with similar jobs and degrees.

This is something that needs to be brought to light for everyone. It is everyone's responsibility to fight for those equal rights in the workplace. It's not something that's just given. And it's not a battle that's been won. Equal rights has been fought over for centuries, and you can't stop fighting for it.

If you see racism in your community or your workplace, don't just sit back and let it happen. Put a stop to it or let someone of authority know what's happening.

The George-Anne welcomes letters to the editor and appropriate guest columns. All copy submitted should be 350 words or fewer, typed, and sent via e-mail in Microsoft Word format to gaeditor@georgiasouthern.edu. All submissions must be signed and include phone number for verification. GSU students should include their academic major, year and hometown. The editors reserve the right to reject any submission and edit submissions for length.

Opinions expressed herein are those of the Board of Opinions or columnists themselves and DO NOT necessarily reflect those of the faculty, staff or administration of GSU, the Student Media Advisory Board, Student Media or the University System of Georgia.



Marcus Barkley/STAFF

Letters to the Editor

Abortion is an irresponsible choice

Dear Editor,

We are writing in response to Mr. Roberts' column on pro-choice featured in Tuesday's issue of the George-Anne.

We understand and appreciate the forum the George-Anne creates for students to voice their opinion.

However, Mr. Roberts' column is ignorantly written and full of misinformation.

A simple Google search refutes some of Mr. Roberts' claims. To begin, he states that abortions are only 3% of Planned Parenthood's total services.

This is a misconstrued number because they use the amount of total abortions divided by their total services.

A more accurate statistic would be to find the percentage of Planned Parenthood's total income that is generated by performing

abortions, approximately \$152,283,760 or 40.6% of their income. To continue, according to the National Abortion Federation (NAF), teenagers only account for 19% of the 1.3 million abortions each year.

While college aged women, 20-24, account for 33%. Also, another surprising statistic is that women over the age of 30 account for 25% of abortions.

This clearly shows that "irresponsible teenagers" are not the majority of women getting abortions.

In addition, whether or not a woman and a man can "handle the consequences of their actions" does not take away from the fact that we ARE responsible for our own bodies and our own actions.

Furthermore, why should the government continue to support agencies, such as Planned

Parenthood, which condone these choices?

In his column, Mr. Roberts has a lack of focus in his arguments and has no credible sources supporting his assumptions.

As students at Georgia Southern University, we value the fact that the George-Anne is featuring hot topics during the upcoming election season but we would have expected a more credible viewpoint.

In Eagle Spirit,

Erin Gianella
(770) 402-5408
Logistics & Spanish Major
Marietta, GA

Meghan Tereniak
(770) 364-8891
Marketing Major
Cumming, GA



Jobs Act will help the economy

President Obama presented the American Jobs Act to Congress on Sept. 8 in hopes to put an end to such high levels of unemployment and to stabilize our faltering economy.

Obama is a great speaker and a smart man, and you don't have to like him to agree. He opened up his speech last Thursday saying it was not up to the politicians to end the economic crisis, but up to the businesses.

He rallied troops on both sides for a common cause, but only time will tell whether his plan will pass.

Many Republican leaders have already shot it down and encouraged fellow party members to vote against it. GOP presidential candidate Rep. Michelle Bachmann has spoken out against the plan, despite Speaker John Boehner's promise to consider the proposal.

As I predicted a few weeks ago, the president has implemented programs modeled after the Georgia Works program, which helps the unemployed learn new job skills by working an unpaid, temporary position with a



ROB ROBERTS

participating employer.

This, in conjunction with tax cuts and incentives geared not only toward retaining workers, but also training and hiring workers will make life easier for millions of Americans.

There will also be a large amount of money invested in infrastructure, which may turn out to benefit Georgia more than any other state.

By making quality investments in good infrastructure, Georgia has a good chance at attracting a lot of good high-paying jobs as well as creating a demand for jobs in the interim.

The president also proposed a \$25 billion investment in school infrastructure, which I believe to be one of the best parts about this plan.

We can't expect our future to be

bright when our children can't get a quality education because we're cramming too many children in a run down, under-staffed school.

This money will not only cover repairs, but also make our schools better equipped affording our young minds the technology needed to be intellectually competitive in the world today.

In addition, there is a proposed \$35 billion investment geared toward preventing hundreds of thousands of teacher lay-offs while allowing funding for the hiring of thousands more.

Government spending alone may not be able to get us out of a recession; but responsible government spending that actually helps the people, such as this proposal, will go a long way to restoring the U.S. economy and building a platform for us to build our future on.

Roberts is a senior public relations major from Warner Robins, Ga. He ran against Alton Standifer for SGA's presidency in 2011.

Obama's spending addiction is insane

I know many of us had a lot of things to do on Thursday. Between Velcro Pygmies lighting up the stage at Retrievers and the start of the NFL season, many people probably didn't have time to catch the president's speech on job creation.

Let me fill you in. He wants to pass a more than \$400 billion stimulus package in order to jumpstart the economy - again.

Let's think back to about three years ago when this president passed near-trillion dollar stimulus package in order to jumpstart the economy and get jobs going again.

He passed it with the promise of cutting the deficit by half and not allowing unemployment to get over 6 percent.

As of last month, President Overspend has doubled the deficit, raised the unemployment rate to over 9 percent and did not create a single job in the month of August.

And that's not even the worst part. Not only does he want to spend all this money, which has historically not worked on jumpstarting the economy, he refuses to tell us how he plans on coming up with this money until after the Congress passes this bill.

This is simply unacceptable. You can't keep throwing money at a problem that requires everyone, including the President, to tighten their belts and not spend outside of their means.

This unfortunately means that some programs that mean well and have great social benefits will have to accept some spending cuts. That is exactly how President Clinton got the country to have a budget surplus, a fact many on the left refuse to admit.

The left also won't stop blaming Bush for the economic shortcomings of this president. However Jimmy Carter left the economy in much worse shape back in 1980.

When Reagan took over that year, unemployment was at 11.8% and inflation was at 14%. By then



FRITZ CHAPIN

end of his first term, he brought unemployment down to 5.5% and inflation to just over 2%. He did this by deregulating the private sector and making the United States a haven for big business.

This deregulation is exactly what Republican presidential candidate Mitt Romney has in mind on his way to create jobs.

On Tuesday, before the president's speech, Governor Romney released his 52-point plan to create jobs in the U.S. In his plan, he calls for less regulation on corporations, a cut in capital gains taxes, and the repealing of Obamacare.

The left are outraged, saying this is a way for evil big-business to make more money and screw over the little guy.

This is exactly how President Reagan jumpstarted the economy back in the '80s, which lead to one of the largest economic booms in American history.

Allowing this president to borrow more money to squander away on a plan that's already failed once is outrageous.

He is completely addicted to spending money in order to grow the government and make his influence over the American people all-reaching while the time proven answer for every economic problem that we've faced has been giving the private sector the freedom to grow and take care of itself.

I'm surprised the president is allowed to be in control of a checking account, let alone a national budget.

Chapin is a political science major from Roswell, Ga.



Lindsay Hartmann / STAFF

Jamila Johnson and Makenzie Lewis, freshman nursing and business majors respectively, sign a banner for the football team.

Traditions Council holds Block Party

By RYAN MATHERLY

George-Anne contributor

Eagle nation prepared for the first home football game of the season by throwing a block party last week in front of the University Store.

The Traditions Council hosted the Sept. 9 party instead of the Eagle Rally of previous years.

"Eagle Rallies were only about 30 minutes long, consisted of a speaker such as the head football coach and some players, and the fight song was sung along with the cheers," said Tori Goehrig, public relations coordinator for the Traditions Council. "It was strictly a pep rally."

"We wanted to strengthen the event through more student involvement, and bring the student body together through school spirit," said Goehrig. "The block party is used to get the students excited and is all about community."

According to Goehrig, the event was paid for with funds from the Traditions Council's budget. The council is planning to host similar events before the Eagles' Oct. 15 matchup against Furman, and again before the Nov. 5 homecoming game against the Citadel.

"Incorporating a block party into the homecoming celebration is another big way to get the students involved and excited about Georgia Southern University football all throughout homecoming week. We really want to go out with a bang," said Goehrig.

GSU cheerleaders and the Southern Pride

band were on hand at the event, and the most spirited fans received giveaways from the Traditions Council. While a DJ entertained the crowd, students enjoyed free food and snapped their photos in the True Blue photo booth.

"It's really cool being out here and supporting the Eagles," said Jake Edwards, a senior biology major. "The block party is a really cool idea. You can come and chill and show support for your team, and save your voice for screaming tomorrow."

Goehrig said the event was designed to create unity among students, as well as to foster team spirit.

"Socializing is a big reason Traditions Council put the block party together. We want the campus to unite through support for the Eagles in their first home game and have a great time doing it," said Goehrig.

GSU cheerleader John Rice was also enthusiastic about the event.

"It was really cool seeing all the student gather around and cheer in preparation for the first home game of the season," said Rice, a freshman international studies major. "I love when the students really get in to it, and I think the block party is the perfect venue for that."

"The block party was really cool and a lot of fun," senior mathematics major Leah Justin said. "My boyfriend and I got our picture taken and got some free food, which is always great. Go Eagles!"



Congratulations

Georgia Southern University
Phonathon Team on your record
breaking year!

\$388,138

in support pledged to
Georgia Southern thanks to
your efforts!

2011-2012 Phonathon Team Returners:

Kristen Strater, Cornelius Adu, Delya Williams, Pierre McDonald, Janelle Clarke, Marquis Hoskins, Phylicia Gallmon, Kelli Williamson, Cameron Powell, Lionel Glover, Layne Johnson

'Eagle-It!' allows students to display GSU pride

BY AYANA MOORE

George-Anne staff

Students, faculty and Eagle supporters have a new way to display their True Blue spirit.

"Eagle-It!" was presented by Georgia Southern University President Brooks Keel and head football coach Jeff Monken on Sept. 8 at the Statesboro-Bulloch County Airport.

Coined by GSU's Student Eagle Club, "Eagle-It!" provides GSU fans with the chance to display their school pride, as well as a new marketing tool for the university. The program aims to highlight unused spaces — roadways, buildings, and other suitable objects — with a freshly painted GSU logo.

"We want to paint this anywhere we possibly can," said Keel. "On hay bales, on barn sides, on people's houses, or wherever they want to show their pride for Georgia Southern. This would be a great way to do it."

Christian Flatham, director of marketing and communications at GSU, said alumni, students, faculty and members of the community can recommend a location for the Eagle logo to be painted by visiting the "Eagle-It!" website. The information will be submitted to



Lindsay Hartmann/STAFF

GSU President Brooks Keel and Head Football Coach Jeff Monken announce new "Eagle It!" campaign for

the marketing and communications office for review. Once approved, representatives of the Student Eagle Club, accompanied by professional painters, will mark the spot with the Eagle logo.

"I'm just excited about this project," said Monken. "It's going to let people know that when they cross the state border and they get close to Statesboro and Bulloch

County, that they're in Eagle country and we're excited about Georgia Southern and so proud to be Eagles ourselves. We want to spread the good word about the Eagle Nation."

After the announcement was made, Keel and Monken were each given their own paintbrushes to help color in one of the first logos of the "Eagle-It!" campaign at

the airport, the launch site of the campaign.

"I know that when this catches on, we're going to see these in all the parking lots and businesses in town and on people's homes and on the side of stores and buildings," said Monken. "It's going to bring a great sense of pride to see that."

The idea behind the program is to bring more attention to GSU by

placing its promotion in the hands of those who have the most pride and passion for Eagle Nation.

"I think students are going to react very positively to this and I think that the more students we can get involved in this, the better we can spread this word," said Keel. "Students have a tremendous amount of pride in the university and we sure appreciate that. They're the ones who can hope sell the university better than anybody and we want to take advantage of that however we can."

Though the project is targeting major highways, interstates, and roadways leading into GSU as of now, Keel said the future of "Eagle-It!" is sure to reach beyond just these areas.

"It really was designed to go anywhere and anywhere," said Keel. "I say go beyond the state. We've got students from all 50 states now and from a number of countries. I wouldn't mind flying into Paris and seeing this same sort of thing at the airport there. There's no reason why we can't think of doing that, too."

To suggest a location for an Eagle logo to be painted, to learn more about the "Eagle-It!" process, or for more information about joining the Student Eagle Club, please visit www.georgiasouthern.edu/eagle-it.

ARCHERY, from page 1

The idea for the archery and shooting range stemmed from student requests for an archery club nearly two years ago. In light of their requests, an archery program was created and began to grow exponentially.

Thompson said the DNR was aware of GSU's archery program and that the program was growing.

"So that was one of the reasons that they approached us to build a building and also to help support our recreational facilities with archery and the shooting sites," said Thompson.

GSU students will be able to utilize

the facility. Non-GSU community members can register and schedule a time to use the facilities.

"We do know that we have a lot of young archers out there with not a lot of places to go to when it comes to college," said Thompson. "As time goes on, what we hope this will become is a training center for the Olympic-type students who are interested in really being in that level with archery. So we have a wonderful opportunity for our students to utilize the facility."

The state-of-the-art facility will not only give students an opportunity to further their archery skills, but to earn scholarship money as well.

"We're talking to a couple of

companies where we would like to get them to offer scholarships — especially with archery," said Thompson.

"If students are interested in archery and becoming competitive in that area, what we're trying to do is get some companies to give the scholarship dollars, let the student receive a scholarship in training archery while they may be a math major, a biology major, an English major — it doesn't matter."

As time progresses, there will also be plenty of training programs for students to enroll in and opportunities for competition, said Thompson.

"In addition, in the summer when

things are not quite as busy, we'd like to offer camps and workshops and those types of things for archery and for the shooting site," she said.

Though the new facility may raise concerns regarding campus safety and gun control dangers, precautions have been taken to ensure the community's safety.

"If you think about it, we have a totally open access campus," said Thompson.

"This doesn't change anything that anybody could do if they have an evil intent. For anyone that is not a student, they will have to go through a background check and they will have to go through classes before they're allowed to utilize the shooting

range."

According to Thompson, GSU hopes the archery and shooting range will be a new source of revenue for the university.

"We're hoping that we'll be able to raise scholarship dollars through this process, said Thompson. "Also, as we utilize the shooting ranges for the public, when they have to pay a certain amount, there's an opportunity to raise dollars that way."

"We are excited and we will continue to do our research," said Thompson. "We will also continue to raise private dollars for the process. It's really exciting that we can eventually be some type of Olympic training venue."

GSU celebrates Constitution Day with discussion panel

By JESSIE REESE

George-Anne staff

The fourth annual Constitution Day celebration was held last night in the Williams Center.

The event was slightly different this year, due to the tenth anniversary of the Sept. 11 attacks on the World Trade Center. A panel was on hand to discuss the Patriot Act, as well as the Constitution.

"Constitution day is the celebration of the signing of the Constitution. It is actually Saturday, so federal regulations say we can do the program anytime the week prior, and tonight is our school celebration of Constitution Day," said Kerry Greenstein, assistant dean of students and committee chair for the celebration.

The Patriot Act provided for reduced restrictions on surveillance of citizens, as well as expanded the



Randy Hudgins/STAFF

Constitution Day's celebration consisted of a question and answer session with the above panel. The panel consisted of Darin Van Tassell, Jonathan O'Neil, Richard Pacelle and Scott Phillips. Questions could be submitted previously or asked at the event by the audience.

definition of domestic terrorism.

Serving on the question and answer panel were Darin Van Tassell, associate professor of international studies, Johnathan O'Neill, history department chair, Richard Pacelle, political science professor, and Scott Phillips, of the Department of

Homeland Security.

The questions asked were for clarification of the basics of the Patriot Act, as well as the Constitution.

When asked if Americans were safer due to the Patriot Act, the panelists referenced the different

political climate post-Sept. 11.

Pacelle said, "It is hard to remember the feeling of united-ness we felt after 9/11. We are divided now."

"We need to constantly re-evaluate the law. It's the same with this act," O'Neil said.

"There are two things that our society would like: demands for democracy and demands for national security," Tassell said. "During a crisis, we tend to sway towards the want for national security. During a time without crisis, the pendulum swings back."

Health Education & Promotion
Office of Health Services
Presents....

*Sex
&
Chocolate*
Heterosexual Edition

September 15, 2011
Russell Union Ballroom, 7 PM

Remley becomes forth Legend of the Arts hall of fame

By QUANIQUA EPPS

George-Anne staff

Emma Kelly, Blind Willie McTell, Dr. Michael Braz, and after long awaited public anticipation, the Averitt Center for the Arts in downtown Statesboro has finally revealed to the community, Roxie Remley, who is their 2011 inductee into the Legend of Arts hall of fame.

In more than 60 years of her being a resident of Bulloch County, Roxie Remley has left her mark all throughout the community, especially here at Georgia Southern University where she is known as a key factor in developing the arts program into what it is today.

"Ever since the third grade, I have always had a passion for doing art, and my life has been very pleasant because I have gotten to do what I have always wanted to do, which is be an artist," said Remley.

Originally from Darlington, Indiana Remley left Nashville, Tennessee where she was an art teacher at a junior high school. After sending in applications to GSU and surrounding schools, due to an increase in enrollment at GSU, she became a faculty member here in the fall of 1950.

"I applied after seeing a bulletin board, and I thought that it would be a great thing for me to do. I had an oral interview, and I was hired, and I started as a new faculty member in the art department in the fall of 1950," said Remley.

After nearly 30 years as a faculty member at GSU, Remley retired in 1976, when the school's population was less than half of the 20,000 students that attend today.

"When I retired in '76, we were at 6,000 students, and we thought that was pretty big, the art department has grown tremendously. I'm also



Courtesy of the Betty Foy Sanders Department of Art

Roxie Remley, 60 year Bulloch County resident and former GSU faculty member, has been making art since elementary school.

amazed at the many majors they have in art now, it's really fantastic," said Remley.

Although Remley has made a huge contribution to the community she never would have thought that she would be inducted into the Legend of Arts hall of fame. The news of her induction actually was a complete surprise for her.

"I had absolutely no clue about it at all. I am still stunned, I didn't know that it would be me."

As the fourth inductee into the Legend of Arts hall of fame, although very unexpected, Remley is completely honored.

"To be honored in this way means that I have put in a lot of work in the field of arts at the school. I didn't ever expect such a thing, but I'm

very grateful for the recognition," said Remley.

Remley also has words of encouragement for those student artists who look forward to having longevity in the visual and performing arts.

"To pursue anything in the fine arts, the passion and inspiration has to come from within you," said Remley.

UT&ABOUT

Express Tune & Lube

Tire, Alignment
& Exhaust Center

612 S. Zetterower Avenue

489-4444

www.expresstuneandlube.com

Monday - Friday 7:30am - 6:30pm

Located a half block north of Wendy's.

OIL CHANGE SPECIAL

\$25⁹⁵

Includes up to
5 qts of Castrol
5W20, 5W30, 10W30,
or 20W50

price applies to most vehicles. Expires 9/31/11

www.expresstuneandlube.com

Eliot Chang is set to entertain Georgia Southern

By ALEX LASALLE

George-Anne staff

Comedian Eliot Chang will give Georgia Southern University students a reason to laugh with his a stand-up performance Wednesday night.

Chang delivered his brand of comedy in an episode of "Comedy Central Presents," and the stand-up special was named second place by voters best in the channel's 2011 "Stand-up Showdown." He has also been featured on E!'s "Chelsea Lately" and Showtime's "Minority Report."

Chang's energetic and fast-paced comedy act has been performed at over 400 colleges in the U.S. The act covers a range of topics from sex to race to growing up and living in New York City, where he was born and lived until moving to Los Angeles in 2007.

His style is popular with students across the country due to his use of graphic jokes, and energetic comedy. No subject is off-limits, but Chang often pulls from his own mistakes and experiences for jokes.

He tours the country for eight months every



Courtesy of Eliot Chang

Eliot Chang was awarded second place on Comedy Central's "Stand-up Showdown."

year, and has grown in popularity since his 2005 appearance on Comedy Central's "Premium Blend," a sample showcase of stand-up comics.

The show is being presented by Eagle

Entertainment as part of their new comedy series, which will bring comedians to GSU throughout the year to provide students with comic relief from hectic classes.

Discussing Chang and the other comedians coming to GSU in the future, Eagle Entertainment's Sriravong Sriratanakoul said "He was actually ranked as the top comedian that our members wanted to bring. We're definitely excited about our comedy series as it is a venture in our programming."

The performance, as well as the future comedy shows in the series, will take place in the Williams Center. The facility saw extensive, student activity-focused renovations earlier this year, and re-opened over the summer.

"We're definitely excited about the venue. It has all of the technology you need to produce just about any type of show on campus," said Sriratanakoul. "There is so much we can do in the space in terms of programming and it'll definitely spark some creative ideas for our members in terms of creating new events. So far, it has been great."

This will be Chang's first appearance at GSU. Like other Eagle Entertainment events, the show is free to GSU students.

Doors will open at 7:30 p.m. and the show, which is expected to last 60 to 90 minutes, will begin at 8 p.m.



TROY MARSH
THE MARSH LAW FIRM

WHAT: **FREE** LEGAL HELP

WHERE: ROOM 2001B IN THE RUSSELL UNION

WHEN: EVERY TUESDAY 3:00-5:00 PM

TO SCHEDULE AN APPOINTMENT, CALL (912) 764-7388

SPONSORED BY



STUDENT GOVERNMENT ASSOCIATION
YOUR STUDENT ACTIVITY FEES AT WORK.

miscellany.
magazine of the arts



poetry • sketches • paintings
short stories • photography
free form writing • fashion sketches
prose • cartoons • haikus

submit to: gsumiscellany.submishmash.com

deadline: **September 21**

contact: miscellany@georgiasouthern.edu

Women of every age will bond at Eat-Play-Learn

By SARAH FONSECA

George-Anne contributor

Southern women will gather in Savannah on Wednesday to bond over food and fashion, while learning how to understand each other at every age, through every stage of life.

Georgia Southern University's third annual Eat-Play-Learn series will take place on Sept. 14 at 10:30 a.m. at the Coastal Georgia Center in Savannah. The event is sponsored by WJCL and the Savannah Morning News.

Participants will be provided lunch and the chance to do some boutique shopping on-site. Dr. Rebecca Campen, author of "The Comprehensive Guide to Skin Care: From Acne to Wrinkles," will deliver the "learn" portion of the series with a lecture on skin care basics for women of all ages.

"The past two decades have seen a great rise in the number of successful events exclusively for women by women, as well as a number of critical issues, opportunities and challenges that women must deal with in college, in the workplace, and in their communities, as well as at home."

-Judith Fogarty,
continuing education program specialist

Campen, an assistant clinical professor at Harvard Medical School, practices dermatology in Savannah.

After the lecture, Campen will answer a few questions from the audience, which will give attendees the opportunity to receive answers about their skin conditions and concerns, or other women's health issues.

"She is certain to be a good speaker offering practical information, separating fact from fiction and answering the types

of questions she often hears in her office," said Judith Fogarty, continuing education program division specialist, and creator of the "Eat-Play-Learn" series.

"She has a wonderful rapport with her patients and is a very genuine person," said Fogarty.

According to Fogarty, speakers for the series are chosen based on their appeal to women of all ages. Previous speakers have included New York Times bestselling

author Karen White and historian Marlena Smalls.

"The past two decades have seen a great rise in the number of successful events exclusively for women by women, as well as a number of critical issues, opportunities and challenges that women must deal with in college, in the workplace, and in their communities, as well as at home," said Fogarty.

Fogarty's own family served as

inspiration for her when she was developing the series. It served as a way to bond with her daughter and she encourages other mothers and daughters to do the same.

"As a woman with a daughter in college, I wanted to create a series of events that would bring women of all ages and backgrounds together for enlightenment and information on diverse subjects, while providing entertainment, enjoyment, and fellowship too," she said.

Tickets for this year's "Eat-Play-Learn" series are \$20 in advance and \$25 on the day of the event. GSU students who register on or before Wednesday, Sept. 14, will receive a \$7 discount.

Registration is available through the Continuing Education Center online at <http://ceps.georgiasouthern.edu/conted/eatplaylearnregister.html>, and by telephone at 1-855-479-5551.



Company hours

7:30 A.m. - 6:00 P.m.
Monday - Friday

912-489-2222

102 N Zetterower Ave
Statesboro, GA 30458



Present this Coupon at the time of service to receive a free tire rotation with a full priced oil change.

Super Service at a Super Price
489-2222

Some Restrictions may apply. Call For more details.



Present this coupon at the time of service to receive an oil change for the low price of \$19.95.

Super Service at a Super Price
489-2222

This price is for 5 quart oil changes. It also excludes diesel, synthetic oil changes, and special oil filters. Ask more for details.

CLASSIFIEDS

12 Tuesday, September 13, 2011

This page brought to you by Career Services
Explore • Experience • Excel

The George-Anne

For Sale

Mobile home for sale. 2BR/2BT Fleetwood mobile home. Appliances included! Newly painted and in great condition. Quiet neighborhood. Can be moved or kept at current location.

Email rachelkirkland@georgiasouthern.edu

Size 14 David's Bridal Cocktail Dress. Strapless, hot pink with gold sequins. Worn once, good condition with a few snags. \$60/OBO. Contact Holly at Hh01428@georgiasouthern.edu

Scooter for sale! 2005 Honda Ruckus. Black, 49cc, 85+mpg. Fantastic condition; original (faculty) owner, garage kept and treated like a baby! No special license or insurance required. Great for getting around campus and town. \$1,750 OBO. Call or text: (912) 678-6052

Subleases

Looking for female to sub-lease Spring Semester! 5 BR, \$280 a month. Last month of rent is paid for. Less than a mile from campus. Right off of Gentilly Rd. Amazing roommates! Call/text and/or email Kristina: (678)-770-6251, kf01606@georgiasouthern.edu

Subleasing apartment at Park Place. 2BR/2BT, unfurnished, first floor. Rent is \$425/whole apartment/month through July 2012; I will put \$80/month as an incentive to be paid in one check (\$880/11 month-lease, immediately after your lease is signed). E-mail careyesortiz@georgiasouthern.edu

Jobs

BARTENDERS WANTED! \$250 a day Potential. No Experience Necessary. Training Provided. Age 18+ OK Call 1-800-965-6520 ext 296.

Urgently seeking nanny to take care of my only child, Jessy, three years old. I need someone who is ready to show her great love and care. Nanny could be live-in or not; I will be providing accommodation in the main house. Nanny will work 7 hours every weekday and some additional times based on agreement, and this comes with extra pay. Email zyxwaretech.comanyreps@gmail.com

Something to sell?
Visit Gadaily.com or email
Gaiclass@georgiasouthern.edu
It's free for students, staff and faculty!

HOT JOBS Cool Internships

Job Title: Special Events Intern - Spring 2012 Company: Camp Twin Lakes	Deadline to Apply: Dec 17, 2011
Job Title: Marketing Specialist Company: GradStaff	Deadline to Apply: Nov 30, 2011
Job Title: GBI Internship Company: Georgia Bureau of Investigations (GBI)	Deadline to Apply: Sept 15, 2011
Job Title: Multimedia News Assistant Company: WMAZ 13	Deadline to Apply: Oct 17, 2011
Job Title: Manufacturing Engineering Intern Company: Briggs & Stratton	Deadline to Apply: Dec 31, 2011
Job Title: GIS Technician Intern Company: Pembroke Operations Division	Deadline to Apply: Sept 23, 2011
Job Title: Computer Technician Company: Infinity, Inc.	Deadline to Apply: Sept 21, 2011

To view the detailed job descriptions application instructions or additional postings, log into the Eagle Career Net/NACElink system found at www.georgiasouthern.edu/career.

CAREER KICKOFF

Thursday, September 8, 2011
11 a.m. - 2 p.m. @ the Rotunda

Free Popcorn ♦ Play Games ♦ Win Prizes

Meet/Greet Coach Monken & Team @ 12-1

Questions? Call Career Services at 912.478.5197

Employers Volunteer for Mock Interview Day, Wednesday September 21st

Polish your interviewing skills for the internship or job hunt before it really counts! Practice interviewing with REAL employers during Mock Interview Day which will be held on Wednesday, September 21st in the College of Information Technology Professional Development Center on the third floor. All sophomores through graduate students from all majors are eligible to participate and will get immediate feedback on their interviewing skills. The job search process is never easy and at times full of anxiety, especially interviewing for the first time. Don't miss this great opportunity to receive advice and relieve your interview anxiety.

The Office of Career Services is bringing in over ten recruiting professionals to conduct mock interviews. During the mock interviews, students can expect to have the recruiters ask questions that they would

be asked during a real interview for both full-time and internship positions. Students will also receive advice on how to better answer interview questions, suggestions for improving their resume as well as advice on selling themselves during this process.

Students are able to sign up for a mock interview on the Career Services Eagle Career Net/NACElink system located on the Career Services website at www.georgiasouthern.edu/career. Students must have a current resume uploaded into Eagle Career Net in order to participate in Mock Interview Day. The deadline to sign up and submit a resume for Mock Interview Day is Friday, September 16th by midnight! For additional questions about this event or about Eagle Career Net, students can contact Heather Scarboro, Recruitment Coordinator at hscarboro@georgiasouthern.edu or by calling 478-5197.

ON-CAMPUS INTERVIEWS

Thursday, September 8TH starts the on-campus recruitment season. Career Services anticipates over 40 employers to conduct on-campus interviews for internship, co-op and full-time positions. Check out the Eagle Career Net system to see who is interviewing at www.students.georgiasouthern.edu/career/

PUZZLES/COMICS

www.thegeorgeanne.com

Tuesday, September 13, 2011 13

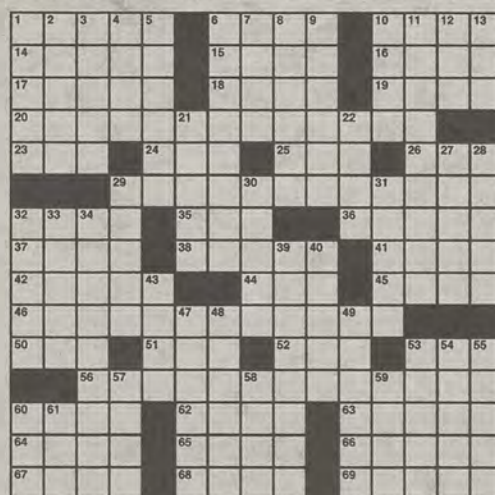
FOR RELEASE SEPTEMBER 13, 2011

Los Angeles Times Daily Crossword Puzzle

Edited by Rich Norris and Joyce Lewis

ACROSS

- 1 Yawn-inspiring
- 6 "Arabian Nights" birds
- 10 Big name in razors
- 14 Alpaca kin
- 15 Pop singer
- 16 Washerful
- 17 Word on a French postcard
- 18 Laura of "Jurassic Park"
- 19 Forever, so to speak
- 20 Shareholder's bonus
- 23 Dir. from Memphis to Nashville
- 24 Something to grind
- 25 Throw easily
- 26 Phone bk. info
- 29 Kitchen island material
- 32 Spinning sound
- 35 "It's a Wonderful Life" studio
- 36 Brief fisticuffs
- 37 It has lots of slots
- 38 Invite to one's penthouse
- 41 Some necklines
- 42 Macaroni shape
- 44 "I could win on my next turn!"
- 45 Bk. before Job
- 46 Wrap for leftovers
- 50 -Tiki
- 51 Wimple wearer
- 52 Window units, briefly
- 53 Mud bath venue
- 56 Laundry convenience
- 60 Empty room sound
- 62 Roll of fabric
- 63 Garlicky sauce
- 64 In ___ of: replacing
- 65 Everyone, to Ernst
- 66 Stops bleeding
- 67 Sail support
- 68 Meg of "Courage Under Fire"



By Gail Grabowski and Bruce Venzke

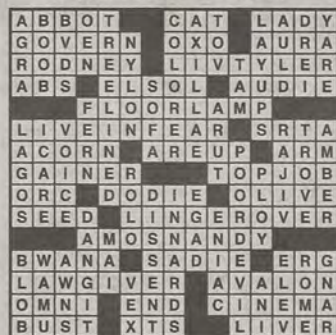
9/13/11

69 Have an inkling

September 8th Puzzle Solved

DOWN

- 1 Little shaver
- 2 Troublemaking chipmunk
- 3 Too trusting
- 4 Madame's "mine"
- 5 Two-seated carriage
- 6 Jeff Foxworthy jokes about them
- 7 Piggied out (on)
- 8 Word with sewing or traffic
- 9 Lisbon mister
- 10 Actor Baldwin
- 11 Created a study aid in class
- 12 Was on the ballot
- 13 Program breaks
- 21 One in a crowd scene
- 22 Goes back to sea?
- 27 Large wedding band
- 28 Smidge
- 29 Witch craft?
- 30 Balderdash
- 31 Flat
- 32 Inflict, as havoc



(c) 2011 Tribune Media Services, Inc.

9/13/11

- 33 Nametag greeting
- 34 How grapes grow
- 39 Remove the chain from, say
- 40 Doggie
- 43 Skid row regular
- 47 Crunchy snack
- 48 Not at all sacred
- 49 "Compromising Positions" author
- 53 Gazpacho eater's need
- 54 Furrier's stock
- 55 Hop out of bed
- 57 Boorish sort
- 58 Jazzy Fitzgerald
- 59 ___ High City: Denver
- 60 Shade source
- 61 "The Bourne Identity" org.

A PIECE OF SPACE DEBRIS JUST CRASHED INTO OUR STATION.



www.gocomics.com/brewsterrockit

CLIFF, I TOLD YOU TO DO SOMETHING ABOUT THE JUNK IN EARTH'S ORBIT!

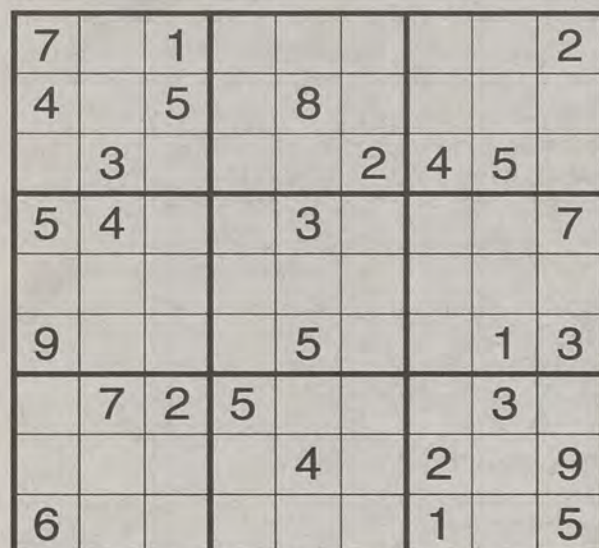


©2011 Tribune Media Services, Inc. All rights reserved. 09/14

A "NO DUMPING" SIGN JUST CRASHED INTO OUR STATION.



Welcome to Falling Rock National Park by Josh Shalek



Sudoku



ALL BOX MEALS

any sandwich, 2 sides & drink

\$7.50

Monday-Friday 4-7pm

we do catering

• free delivery •

607 Brannon Street, Statesboro, GA 30458

(912) 489-4267

Open: Mon-Fri (10am-7pm)

Sat (10am-3pm)

5 BOX LUNCH LIMIT PER PERSON

Eagles win home opener against Tusculum

Football

By JAMES FARMER

George-Anne staff

Georgia Southern University pulled away from a close halftime score to win 62-21 over Division II Tusculum College in front of a crowd of 21,812.

Saturday's crowd was is the second-largest for a home opener in GSU history.

"They give us a lot of momentum, whether they know it or not. Just for those fans to be going crazy and talking to the other team and supporting us like that. I feel like we got to go out and satisfy those guys more than

anything," said senior defensive back Laron Scott.

"There's a presence that's so different than a lot of places that you play at this level," said head coach Jeff Monken. "We have the best fans in America."

GSU dominated all phases of the game, averaging 33 yards per punt return, while the punt return team allowed no return yards. Scott averaged 40.1 yards per return, while the entire Tusculum team averaged 19.4 yards. The Eagles rolled up 530 yards against a suspect Pioneers' defense. Adrian Mora converted his 100th consecutive extra point, and added to the total.

"We did a great job on the

return game, on kickoff return and on punt return," said Monken. "I thought our guys did an outstanding job making blocks and the returners did a great job."

Scott's performance on Saturday earned him the GSU record for kick return yards. He passed the mark with his third return of the night. He has 1,477 return yards for his career.

"It's a great feeling just to be on the wall with the other great players who came through Georgia Southern," Scott said after the game.

Jaybo Shaw set a GSU career high in passing yards with 181 on six completions. J.J. Wilcox and Dominique Swope both scored and

set career highs in rushing yards with 97 and 59, respectively. In total, seven of the 10 GSU players who recorded a carry also scored a touchdown in a balanced attack.

"I think anytime you can get different guys, multiple guys scoring the ball, that's tough on the defense," Shaw said. "Credit goes to the offensive line, the guys opening up those running lanes."

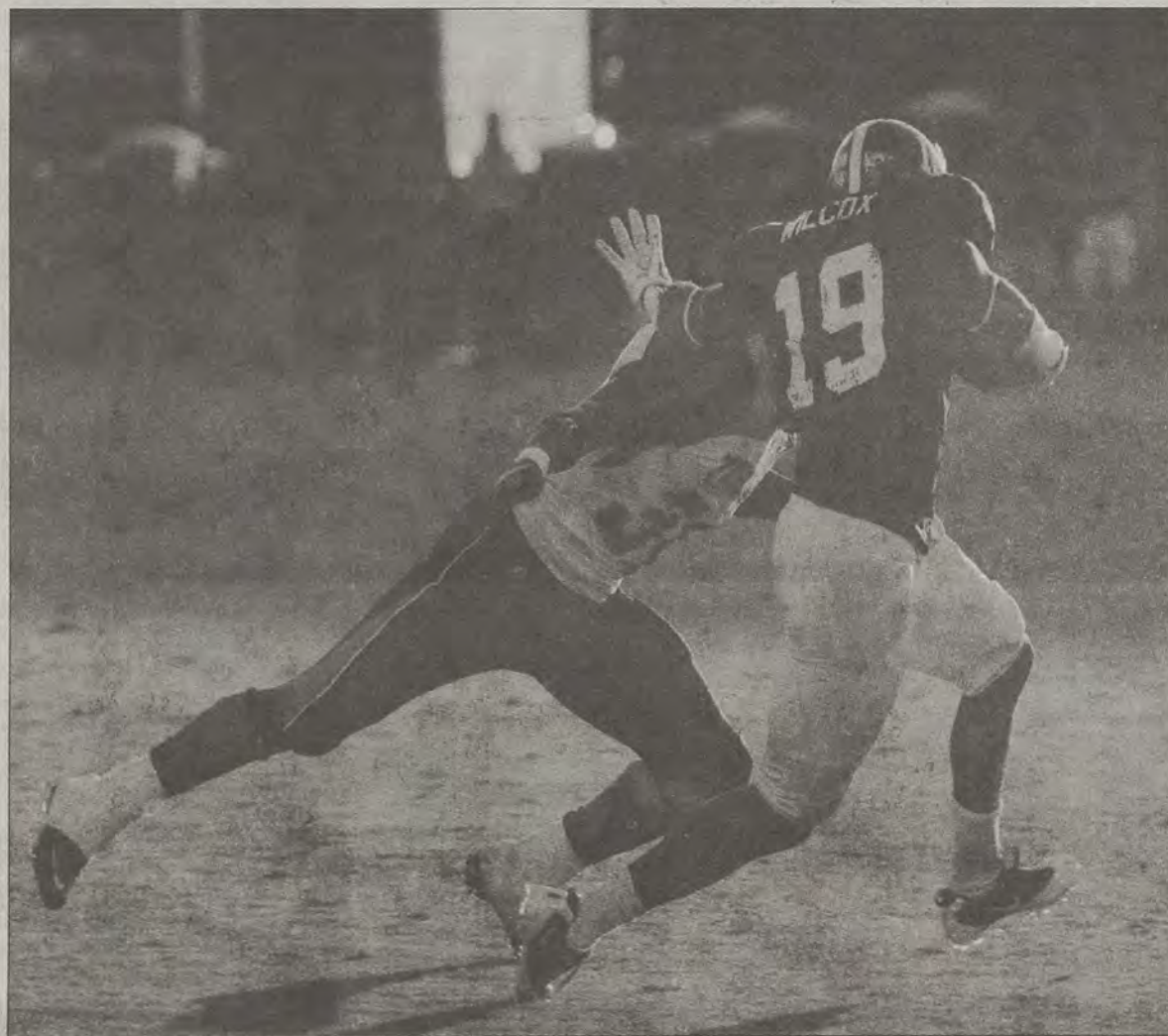
The defense didn't disappoint, either. After allowing 14 points in the first half, the defense didn't allow a touchdown in the second half. Tusculum's Bo Cordell was constantly harassed by the defense, as they forced an interception, broke up four other passes and recorded 6.5 sacks on the night.

"Most of teams in the conference are 'run the ball, run the ball' and it's nice to get on the edge and rush the passer some," said GSU's Josh Gebhardt, who recorded six tackles and a sack during the game.

Tusculum appeared to be set for an upset late in the second quarter. They had rallied to 21-14, with 26 seconds remaining in the half, after facing a 21-0 deficit after the first quarter. However, the Eagles responded by playing like the No. 2 team in the FCS. Scott electrified the crowd when he took the kickoff back across the 50-yard line. Monken proved his game management skills by getting a timeout called with one-tenth of a second left on the clock. The timeout was called after Shaw converted a third-and-10 with a 20-yard strike to Wilcox. Mora used the final play of the half to kick a field goal and extend the GSU lead to 10.

From there, the offense never looked back. The Eagles overwhelmed the Tusculum defense for 302 yards and 38 points in the second half.

GSU is off this week, but will host the Western Carolina University Catamounts on Sept. 24.



Randy Hudgins/STAFF

Junior A-back J.J. Wilcox stiff-arms a Tusculum defender during the Eagles' 62-21 victory on Saturday.

The Press Box

What's going on in GSU sports.

■ **Men's soccer team** swept the Belomnt Invitational last weekend with a pair of wins. The Eagles beat Belmont 1-0 on Friday, and Lipscomb 3-0 on Sunday.

■ **Women's soccer team** suffered a pair of loses on the road last weekend. GSU was bested 1-2 in both of its games against Georgia State on Friday, and then Charleston on Sunday.

■ **Volleyball team** lost all three matches at the Carolina Classic last weekend. GSU lost its match against Arizona on Friday 1-3. The team also lost 0-3 to North Carolina and 1-3 against San Diego on Saturday.

■ **Women's tennis** claimed two titles at UNC Asheville Bulldog Open. Ali Beeler had a three-set win in the singles final over Amryn Soldier of UNC Asheville. Natalie Maffitt and Alexis Prickett the doubles title with an 8-2 victory over UNC Asheville's Emily McNall and Zoe Hame.

■ **Cross Country** took a third place finish at College of Charleston Invite last weekend with three runners finishing in the top 20.

■ **Rebecca Greenwall** ran the second fastest time for the 5k in GSU history, recording a time of 18:45 and finishing fifth overall in the College of Charleston Invite.

Intramural Sports Scores

Dodgeball Final Scores

Co-Rec Playoffs

Semifinals

(1) **Guns and Hoses 3** vs. (5) Were Aiming For The Fat One 0
(2) The Haymakers 1 vs. (3) **Diligaf 3**

Championship Game

(1) Guns and Hoses 0 vs. (3) **Diligaf 3**

Mens Playoffs

Semifinals

(1) **Innocent Until Proven Filthy 3** vs. (5) Game Face Bro!!! 1
(2) **The Great Bambinos 3** vs. (3) The Mendoza Line 0

Championship Game

(1) **Innocent Until Proven Filthy 3** vs. (2) The Great Bambinos 0

Fall Softball Scores

Co-Rec A

Liquor in the Front Poker in the Back 3 vs. **Tough Draw Co-Rec 18**
Slippery When Wet 16 vs. Boro Bombers 7

Co-Rec B-3

True Blue GSU 5 vs. **The Haymakers 10**
RUF 0 vs. **BCM Boys and Girls Club 32**
The Pink Panthers 10 vs. **CCF Boom 14**
The Cunning Koalas 4 vs. **BCM Boys and Girls Club 16**
CCF Boom 11 vs. **RUF 13**
The Haymakers 21 vs. The Pink Panthers 4

Fraternity

Delta Sigma Phi 10 vs. Pi Kappa Alpha 0
Sigma Alpha Epsilon 0 vs. **Alpha Tau Omega 10** 3.00F
Delta Sigma Phi 10 vs. Sigma Alpha Epsilon 0

Mens AB

LHDC 13 vs. DX Factor 3
Da Poopadoos 3 vs. **Southern Adventures 11**
Shake and Bake 1 vs. **The Gentlemens Club 19**
Cougar Bait 12 vs. Not F@#\$%^& Around 3
Eagle Village 2 vs. **El Peligro Banditos 13**

Mens C

Theta Xi 6 vs. CCF Fourth Meal 4 4.00
Team Blunt Force 2 vs. **Flyers 2.0 12**
CCF Fourth Meal 13 vs. Team Blunt Force 7
The Dos Boys 11 vs. Regurgitating Llamas 9
Flyers 2.0 13 vs. **The Dos Boys 3**
Original Stokers 7 vs. The Pink Panthers 0
Beef and Tuna 19 vs. Id Hit That 2
Deadliest Catch 20 vs. Balls Out 5

Co-Rec B-4

Control Your Girl Dawg 5 vs. **Bubbles and Glitter 9**
Title 9 13 vs. CCF Theres Always Money in the Banana Stand 3
Eastbound & Down 15 vs. Carte Blanche 9

Mens C

Theta Xi 6 vs. CCF Fourth Meal 4 4.00
Team Blunt Force 2 vs. **Flyers 2.0 12**
CCF Fourth Meal 13 vs. Team Blunt Force 7
The Dos Boys 11 vs. Regurgitating Llamas 9
Flyers 2.0 13 vs. The Dos Boys 3
Original Stokers 7 vs. The Pink Panthers 0
Beef and Tuna 19 vs. Id Hit That 2
Deadliest Catch 20 vs. Balls Out 5

Co-Rec B-4

Control Your Girl Dawg 5 vs. **Bubbles and Glitter 9**
Title 9 13 vs. CCF Theres Always Money in the Banana Stand 3
Eastbound & Down 15 vs. Carte Blanche 9

Mens C-1

Kewrs 10 vs. Tuta 5

Mens C-4

Purple Headed Yogurt Slingers 4 vs. Double Ds 1
Dudes in Khakis 1 vs. **STACK BCM 21**
Theta Xi 12 vs. Wheres Home? 10

Ultimate Frisbee Scores

Theta Xi 9 vs. The Dos Boys 6

Futs 7 vs. **Regurgitating Llamas 13**

SPOTLIGHT ON CRI



southern
adventures

Open High Challenge Course
Tuesday 4pm
Belay Clinic
Thursday 6pm

fitness

Women & Weights
T & Th 5:30-7pm

intramurals

Registration Closes: Flag Football
Tuesday
Flag Football Champions Mtg:
Wednesday 6, 7, & 8pm

FOLLOW US!



facebook.com/GSUCampusRec
twitter.com/GSUCampusRec

Sign Up For The
LivingGreen Challenge!

WWW.GEORGIASOUTHERN.EDU/CRI



Eagle Motorsports travels to Atlanta for promotions

Eagle Motorsports

By JANNAH BOLDS

George-Anne staff

The Georgia Southern University Eagle Motorsports team traveled to Atlanta to successfully promote its growing organization over the Labor Day weekend.

The team, lead by Formula SAE Captain Chris Willet and Baja SAE Captain Wesley Powell, set up a booth at the Atlanta Motor Speedway in order to spread the word about their growing organization.

"We are desperately trying to raise \$20,000 in like less than 30 days in order to pay for registration and travel expenses," said Powell.

Another purpose was to exploit past sponsors, as well as gain new ones. A list of current sponsors includes The American Society of Mechanical Engineers, Polaris of Statesboro, and The Georgia Southern University Student Government Association.

In the motorsport's last competition, the team was able to finish strong above other competitors.

"We came in top 10 in almost every dynamic event that we competed in," said



Courtesy of Eagle Motorsports

Eagle Motorsports showed off last year's Baja and Formula cars at Atlanta Motor Speedway Labor Day weekend.

Powell. "We were able to place 12th out of 60 overall," he said.

With the Formula Car Competition, GSU finished 19th out of 130 total teams. The team's production also finished well in the dynamic

events and "mid-pack" in the static events. The team races the car at autocross events over the Southeast in places like Savannah, Jacksonville and Macon approximately twice a month.

"We race so much for driver training, reliability, and to make sure it performs to our expectations," said Willet.

The next competition for Formula will be in May and the one for Baja begins in April for the East. Both teams have a list of accomplishments they would like to complete before their competitions.

"Before April, hopefully we will have the entire vehicle built and tested for at least a month," said Powell. "We also want to make sure our design is all put together because that's one thing we fell off of in the past, the actual proof of the design. I really want to hit hard on the presentation material for the design."

Willet also agreed that there were some improvements that needed to be made.

"We are trying to bring the new members up to speed as far as fabrication and design skills are concerned, as well as all other skills needed to be on the team because most of the senior members are leaving," he said.

The next meeting scheduled for the motorsports team will be Monday, Sept. 19 at 5 p.m. in the College of Science and Technology Building. Both captains encourage all majors to attend the meeting.

Georgia Southern special teams are truly special

Opinion

Special teams are an often-overlooked aspect of football. The focus of the fans normally goes to the offense and defense, which are on the field for 60-70 plays during a college game. However, the great equalizer in all levels of football is special teams.

Special teams are what separate good teams from great teams. When Appalachian State University defeated the University of Michigan in 2007, the key play of the game was a blocked field goal that sealed the win.

In last weekend's matchup between the University of Georgia and the University of South Carolina, Gamecock coach



JAMES FARMER/
Football Editor

Steve Spurrier called a fake punt, resulting in a touchdown for a close win.

Even in the NFL, special teams are vitally important. Last season, the San Diego Chargers led the league in offense and defense, yet still missed the postseason action because of terrible play by special

teams. The defining play of Super Bowl XLIV was an onside kick to start the second half by the New Orleans, who went on to win the game. This weekend, Seattle pulled within a touchdown of San Francisco, only to be undone by back-to-back kick and punt returns for touchdowns by Ted Ginn Jr.

Georgia Southern University is blessed with one of the best special teams units in college football. Two of the four specialists for the Eagles hold multiple GSU records.

Laron Scott holds the single-season kick-return yards record, the career kick-return yards record, and is tied with the Eagles' kick-return touchdown record. He is currently averaging over 50 yards a return, which leads the division, and already has a kick

return touchdown on his resume.

Adrian Mora is the most accurate extra-point kicker in school history with 100 percent of his attempted extra points made, as well as the record for field goals made in a season, with 19. He is 5-5 on field goals and 12-12 on extra points this season.

The other specialist, Charlie Edwards, has no records to his name, but led the Southern Conference in punting yards last season, and leads in net punting so far this year.

The fourth specialist is actually two players, Johnathan Bryant and Dominique Swope. They serve as the punt returner for the Eagles. Together they average 21.6 yards per return, good for second in the Southern Conference.

The coverage units for punts and kicks are great as well. The kickoff coverage team allows slightly more than 20 yards per return. The punt coverage team is even tougher to return against, stifling opponents for 3.5 yards per punt return.

Special teams have already had an impact on the GSU season. In the game against Tusculum, tremendous special teams resulted in GSU starting at their own 48 yard line on average. In comparison, Tusculum's average starting field position was on their own 21 yard line.

If the Eagles fulfill expectations of a national championship this year, a big reason for their success will be due to the work of their talented special teams unit.