

Georgia Southern University

Digital Commons@Georgia Southern

The George-Anne

Student Media

3-3-2011

The George-Anne

Georgia Southern University

Follow this and additional works at: <https://digitalcommons.georgiasouthern.edu/george-anne>



Part of the [Higher Education Commons](#)

Recommended Citation

Georgia Southern University, "The George-Anne" (2011). *The George-Anne*. 2209.
<https://digitalcommons.georgiasouthern.edu/george-anne/2209>

This newspaper is brought to you for free and open access by the Student Media at Digital Commons@Georgia Southern. It has been accepted for inclusion in The George-Anne by an authorized administrator of Digital Commons@Georgia Southern. For more information, please contact digitalcommons@georgiasouthern.edu.

BENNETT CHOSEN FOR AMERICORPS

PAGE 6



SOCON TOURNAMENT BEGINS

PAGE 16



Thursday, March 3, 2011
Georgia Southern University
www.thegeorgeanne.com
Volume 86 • Issue 59

THE GEORGE-ANNE

'DOING NOTHING'



Randy Hudgins/STAFF

Students in Nathan Palmer's sociology class do nothing as part of a flash mob experiment at the Russell Union Rotunda Tuesday afternoon. Approximately 250 students participated as onlookers watched in confusion. **For the full story, see page 7.**

Students to see flexibility in meal plans

By COLLEN McNALLY

Assistant news editor

Georgia Southern University students will see more freedom in dining plans beginning this summer.

Changes will include the introduction of roll over meal plans and an increase in the number of meals offered.

Starting May 23, 2011, dining plans will operate on a per week basis, rather than the current day

to day system. Students, faculty and staff will no longer have to use a certain number of meals a day to get the value of their plan.

Instead, summer options will include a 3-Plan, 6-Plan, and 10-Plan that can be used Monday

through Friday and at Landrum Sunday Brunch, with a limit of four meals a day.

For fall and spring semesters, meals will roll over Monday through Sunday, and choices vary between a 3-Plan, 6-Plan, 10-Plan,

15-Plan and 19-Plan.

"We are shifting from a per day basis to a per week basis," said Allison Harper, senior administrative coordinator for Dining Services. "The 14 meal

See DINING, page 7



Finished?
Recycle this
newspaper!

Today	Fri.	Sat.	Sun.	Mon.
H 73	H 71	H 72	H 72	H 67
L 51	L 54	L 58	L 43	L 41

News 3
Views 4
Arts 9

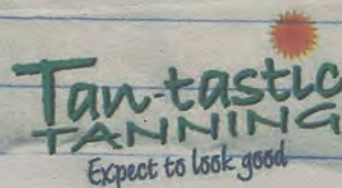
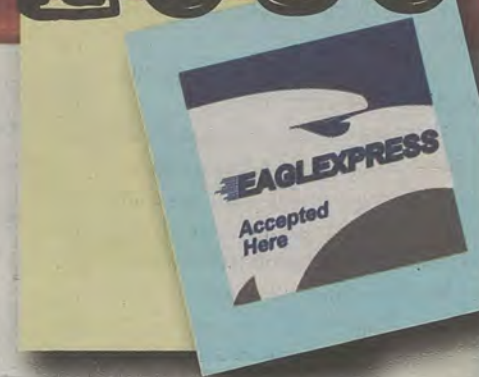
Classifieds 15
Sports 16

Newsroom 478-5246
Advertising 478-5418
Fax 478-7113

www.thegeorgeanne.com
PO Box 8001
Statesboro, GA 30460

LOOK FOR THE EAGLE EXPRESS LOGO

the newest members to eagle express...



BOTH ON...

AND OFF CAMPUS...

AND MANY MORE!



SAGE proposes \$12 green fee

By COLLEEN McNALLY

Assistant news editor

Last night the Student Government Association chose to delay discussion of a proposal for a mandatory green fee for Georgia Southern University students.

Christina Belge, President of Student Alliance for a Green Earth and a College of Liberal Arts and Social Sciences senator for SGA, presented the \$12 proposed student fee for spring and fall semesters.

According to the report, "Last year, President Brooks Keel signed the President's Climate Commitment which is dedicated to reducing the university's environmental impact and educating our students by integrating sustainability into their curriculum.

"In response to the Presidential Climate Commitment as well as the state's commitment to lower energy consumption by 15 percent from 2007 levels by 2020, Dr. Keel formed the Energy Task Force."

Jessica Sparrow, a past SAGE president and SGA senator, conducted the survey and proposed a \$22 fee to SGA in 2009. According to the 1,400 responses, 95.9 percent of students said that it was important or very important to them that GSU switch to "clean, renewable energy" and 56 percent said they would be

willing to pay \$20 and above.

"I think it's a reasonable amount of money. I know [changes to] HOPE happened, and we are taking a lot of [budget] cuts, and fees themselves are going up but you can see the important points here to keep the Center of Sustainability running," said Belge.

Of the total green fees paid, \$6 will go to environmental projects on campus, such as diversifying plant life and making buildings more environmentally friendly and energy efficient. Additionally, \$3 will be spent on environmental education, which includes bringing guests speakers to campus, \$1 is designated for marketing and promotion, and the remaining \$1.50 will be spent on staffing personnel for the Center for Sustainability.

Currently, the center's staff consists of Director Dr. Lissa Legee and one unpaid intern, but according to Belge's report, is responsible for much of the work of Keel's Energy Task Force.

"There is not an actual, physical center, like many other universities, this is really just out a professor's office," said Belge.

Despite size, the center is ranked number 253 in the nation of over 2,000 universities in sustainability.

"That's a huge deal, we are up and coming, growing all over. SAGE

has only been around for 10 years. I just want to stress that this like one trip to Chick-fil-a, this is something a student can easily do, and have lasting effect. Everything we have done for sustainability efforts now, being 253, will be completely lost," said Belge.

The major topic of debate among senators was currency of the data.

Robert Roberts, the executive vice president of SGA, said, "I would prefer to make a decision on this knowing what GSU students today thought, rather than students of 2008."

However, Dean of Students Georj Lewis said, "If you do a survey, don't get bogged down with the numbers. I'm not a statistical genius, but you're probably not going to get 2,000 responses. There are many decisions made on this campus by you and about you with less opinions. Don't let that be your reason."

Anni Rainio, Vice President of SAGE, supported Belge at the meeting.

Rainio said, "I understand money concerns, and wanting another survey, but if we don't start acting now, they are going to be larger fees later. We need 15 percent decrease in our energy consumption in 8 years and that is a whole lot in a little bit of time."

STATEMENT OF OPERATIONS

The George-Anne is the official student newspaper of Georgia Southern University, owned and operated by GSU students using facilities provided by the university. The newspaper is the oldest continuously published newspaper in Bulloch County. The newspaper is a designated public forum for the Georgia Southern community. The newspaper is published twice weekly, on Tuesdays and Thursdays, during most of the academic year. Any questions regarding content should be directed to the student editor by phone at 912.478.5246 or at gaeditor@georgiasouthern.edu.

Mail subscriptions are not available at this time. Readers may access the newspaper and its archives at www.gadaily.com.

ADVERTISING: The newspaper accepts advertising as a community service to help defray publication costs. Inquiries should be directed to ADS or PAGES by calling 912.478.5418 or 912.478-0566. Fax any questions to 912.478.7113 or e-mail ads1@georgiasouthern.edu.

The George-Anne receives additional support, in part, from the Student Activities Budget Committee.

The deadline for reserving space and submitting advertising copy is noon, one week prior to the intended publication date. For more information, rate cards, sample publications, contact the advertising manager or student media director.

The advertiser is responsible for any errors in advertisements and its liability for adjustments is limited to the amount of space the error occupied in the ad. Further, the newspaper is not responsible for

any damages caused due to an ad's omission from a particular edition and its responsibility solely is to reschedule the ad in the next regular edition at the regular advertising rates.

STUDENTS BEWARE: The George-Anne screens all advertisements prior to publication. The newspaper strives to accept ads for legitimate products and services only. Students are urged to exercise caution when replying to ads—particularly those which require a credit card number, other personal information, or money in advance of the delivery of a product or service. Students are also urged to report to the newspaper any suspicious offers which they might see in an ad. Remember, if an offer seems too good to be true, it probably is.

PUBLICATION INFORMATION: The newspaper is printed by Signature Offset in Jacksonville, Fla.

NOTICE: Readers may pick up one free copy, and a second for a roommate or acquaintance, at distribution sites. Additional copies are 50 cents each and are available at the Williams Center. Unauthorized removal of additional copies from a distribution site constitutes theft under Georgia law, a misdemeanor offense punishable by a fine and/or jail time. Editors will seek to have any person(s) who removes more than the authorized number of copies from distribution sites prosecuted to the full extent of the law.

Contact the editor at gaeditor@georgiasouthern.edu for corrections and errors.

For more information about the newspaper, please call the Student Media office at 912.478.7459.

Clarification

An article in the Tuesday, March 1 edition of The George-Anne titled "Campus irrigation updated" stated [Chuck Taylor, Georgia Southern University's campus architect and landscape planner] credited the bioswale project as a "collaboration between the Physical Plant, biology and engineering faculty, students and staff." However, engineering faculty were not involved in the bioswale project. The project involved the Physical Plant, biology and construction management students and staff.



The Sir Shop
Statesboro Mall
912.764.6924



Our View

Possible win-win for students and GSU

Now that some certification testing has become a possibility for students through Georgia Southern University's Information Technology department, the next logical step is for the university to offer exams, such as the popular GRE.

It would prove beneficial to both students and the university. There would be no more waking up before the sun to travel to Savannah, in order to take a test that could determine a graduate's career. It's apparent that the GRE is a necessity for students wanting to enter graduate school.

Therefore, administrators should lobby testing services to allow for a testing site at Georgia Southern. If the GRE were to find its way to GSU there would be many applicants from surrounding counties and other local universities who don't wish to make a day trip to take an already stressful test.

Students who have no means to travel far away for an exam would no longer have to worry about the lack of transportation becoming an obstacle to education. Additionally, GSU would possibly stand to earn money for hosting a test center.

When taking a test like the GRE, many would say to a student, "It's worth your while to take it." In retrospect, it might be more worth it to the university proctoring the tests.

So it's a win-win situation, the students can finally have more options for testing, while the university can continue to improve graduate opportunities for its students.

THE GEORGE-ANNE

Editor-in-Chief Charles Minshew
News Editor Nikki Wiley
Asst. News Colleen McNally
Arts Editor Mallory McLendon
Asst. Arts Aria Gabol
Opinions Editor Quenton Smith
Sports Editor Latrice Williams
Assoc. Sports Natalie Demarko
Photo Editor Andrew Partain
Design Editor Jessica Lester
Copy Editor Arielle Coambes

VIEWS POLICIES

The George-Anne welcomes letters to the editor, story submissions and guest columns. All copy submitted should be 350 words or less, typed, and sent via e-mail in Microsoft Word format to gaeditor@georgiasouthern.edu. All submissions must be signed and include phone number for verification. GSU students should include their academic major, year and hometown. The editors reserve the right to reject any submission and edit submissions for length.

Opinions expressed herein are those of the student writers and editors and DO NOT necessarily reflect those of the faculty, staff or administration of GSU, the Student Media Advisory Board or the University System of Georgia.



Marcus Barkley/STAFF

Accept the problems we've caused

It is a rite of passage for a generation to overcome the condemnation, and follies, of its predecessors. A son is left with the sins of his father so to speak.

However, in order to bear the burden, a generation must mature and come of age. Not in the terms which a father tells his rebellious son, but in the way a man realizes what he has to do in order to succeed on his own, without a safety net.

If our generation is to walk this tight rope, then it has to shed the veil it wears. People today seem to believe they are entitled to something. We have developed a delusion of grandeur, expecting the seas will part one day and we will walk toward the promise land of, whatever the hell it is we set our sights upon.

Unlike the men and women of yesteryear, sweat on our brow and pain in our backs does not seem to make a lot of sense to us. Hard work is what it takes to become great, there are no short cuts.

Though we sat and watched as the steroid era put up unsurpassed numbers in baseball, we cannot expect to live on that same model



BROCK VICKERS

as a people. If we all expect to live under those terms, those false provisions, then we will fail.

By unmasking these disillusion the world becomes a harder place to live in. Now, we all know that the world can be tough, even here in the beautiful south were we take our time a little slower than the rest of the country.

However, the most vital thing that we can do, from the first governor my generation produces to the small business owner I'll buy my coffee from, is take on responsibility and accept the problems we have caused.

Too many times, from the basic level of day to day activity, do we turn our backs on the mini-quandaries we create: a friend not owning up to his or her mistakes towards an amigo or an colleague never admitting they wrong in their

actions or decisions. This cannot be how we handle our day to day problems. Our countries political system is built on the backs of the people who work the grounds the country.

If we as civilians cannot create a day to day existence of responsibility, then how do we ever expect the men and women who work the books to show us the same respect?

People constantly blame republicans for this and democrats for that, and frankly, enough is enough. Accountability, from the lowliest playwright to the top dog lawyer, must filter its way into this generation.

Until we hold ourselves responsible we cannot be surprised to find another corrupt politician, another bad banker, another Wall Street swindle in the works.

This is not a call for everyone to start being nice to each other, this writer certainly won't be starting that any time soon, but it is a plead to come back to reality and realize that the ball is now in our court.

Vickers is a senior theater and journalism major from Alma, Ga.

LETTERS TO THE EDITOR

Double Ignorance

Dear Editor,

Allow me to thank Mr. Randall for his long, last letter to you which vividly, though poignantly, illustrated what Nicholas of Cusa (a great medieval scholar) meant in his discussion of "double ignorance". In letters, he and I are now 2 to 2 and The George-Anne really should not give either of us any more space! Perhaps a "face-a-face" would better serve the purpose. Thanks to The George-Anne for all your excellent reporting.

Peace, George Shriver, Professor Emeritus (41 years of teaching)

HOPE is not a right for students

Dear Editor,

This is in response to complaints of the proposed reforms of the HOPE scholarship. I, as are many other students at GSU, am on the HOPE scholarship and would have been forced to attend a college closer to home without the aid of HOPE. That being said, however, I believe that we as students need to remember how lucky we are to have had access to HOPE to begin with.

The HOPE scholarship is by no means a 'right' given to us because we are citizens of Georgia, but rather a gift that our great state was able to offer us. With our state facing debt as it is, budget cuts have to be made, and as a government program HOPE is subject to those cuts. I hate to see the scholarship cut as much as anyone, but we need to remember that our legislature could just have easily dropped the program all together and used the lottery revenue to fund other areas of government.

I, as I am sure many of us do, think that the cuts could have been handled in different ways and that current students should be grandfathered in, but moreover I am thankful that at least a portion of my tuition will still be covered. Instead of sitting around griping about how we will have to pay a few hundred dollars of tuition per semester, why can we not be thankful that we won't have to pay the full \$2100 (the figure Mr. Peagain used in his article "Students get swindled by HOPE deal" in Tuesday's edition)? I, for one, will applaud our legislature for finding a way to at least keep college affordable and not out of reach all together.

Joshua Rice

Thanks to Graduation Gala

Dear Editor,

I want to thank all of the offices who worked at the Graduation Gala. The Gala was a unique experience that I have not experienced at other schools and I can tell it took a lot of preparation from everyone involved.

I am writing to express my disappointment in seeing no one donating as graduates to the alumni association at the Graduation Gala today.

Considering the fact that I was there for only 30 minutes, it is not fair for me to judge the entire class of 2011 as there could have been a ton of people donating at other times. During the time that I was there I saw one person stop at the alumni table. I had no problem donating the \$20 to join the alumni association. I put some money aside last month specifically for this.

Not everyone can do this I realize, but out of the 25 people I saw passing through I thought someone would have been able to make even a \$5 donation. Funding for higher education is at an all-time low in this country.

The federal government is not providing as much as they used to and the same goes for the state level budgets. If you are graduating and are able to give back I encourage you to do so.

Maybe you can make a donation in the name of a student or faculty/staff member in recognition of their helping you during your time at GSU. If any of you are not able to donate at this time due to your financial situation I understand, but please do not forget the awesome faculty, staff and students who made your experience so positive here.

Maybe at some point you will be able to give back in some way. Remember others gave their time, energy and resources so that you could study here. Other students paid the Recreation Fee so you could have an awesome RAC. Alumni gave to athletics so you could have an athletic program that continues to grow and improve.

Craig Wymer

Not quite as hopeless as before

The recent announcement about HOPE cuts has caused a lot of uproar... but not as much as one might expect.

One reason for this is the bipartisan nature of the cuts - the initial AJC article informed us that the Georgia Democratic leadership showed early support the plan that Republican Governor Deal put forth, which is an indication of how dire the situation could be.

But there's another aspect to the whole story - what effect this is going to have on kids in high schools. Hopefully, the parents of said kids and perhaps the kids themselves will take notice of the changes, and these changes will motivate them to motivate their kids.

A higher bar, like the one set by the new changes, means one of two things, neither of which is mutually exclusive. Either A) fewer kids will go to school in Georgia, or B) more kids will strive to achieve excellence. But for the latter to happen, all aspects of the education system need to get involved. This includes the parents. Since they're the most likely party to have to make up the shortfall set by the new plan, they're the ones who are going to be most economically affected in the short run.

One thing that they can do to help the situation is to take an active interest in their children's education, and motivate them to do their best. It doesn't have to mean hovering over the kid's shoulder while he does his homework; it can be as small as a little extra praise when the kid gets an A, or asking questions about the day's lessons. Those little details often occur when kids are in elementary school, but as time passes they fade, often being replaced with harsher punishments for getting bad grades. But those little boosts of attention can make a world of difference even to high schoolers, and can even be useful study aids if you have to remember what you learned from the day, you're processing it one more time than if you didn't - effectively, it becomes a daily study guide.

It's also possible, if not probable, that some people won't be going to college as the cuts in HOPE progress. But again, that doesn't have to be a bad thing IF we change society's expectations. Once upon a time, one could become a receptionist or secretary straight out of high school. Plenty



JOHN DIPIETRO

of necessary professions, such as mechanics of all stripes, could be taken on by simply taking a short course that focused on that subject, rather than a four year liberal arts degree. Now, many such professions demand higher and higher standards of education, much of which isn't necessary. And it leads those who don't go to college, or even those who don't take "college prep" degrees in high school, to suffer a great stigma for not going on to higher education, even though it may not be necessary for their field.

I'm not saying people who want to better themselves in college shouldn't be able to, but if you don't want to study macroeconomics to become a painter, and if you just want to receive education in the field in which you want to work, why shouldn't you be able to without society making you feel like a lesser person?

It's been working in England for years, even with liberal arts disciplines, to the point where every degree is about a year shorter than it is here in the States. As a society, though, we've decided to constantly raise the stakes for all professions, especially during the Cold War and the Space Race.

If we made our expectations more realistic, though, we could benefit all parties - those who want to focus on one field can do so without needing a bachelor's degree, while those who want the more comprehensive education (or who don't know what they want to go into) can pursue that path. All that it takes is a bit more acceptance of the fact that not everyone needs to know everything.

There's a lot of problems as it stands. But sometimes the solution can be common sense. A shift in a few paradigms may well be necessary; but if we work together, maybe we can bring them to us a bit more quickly.

DiPietro is a senior political science major from John's Creek, Ga.

AmeriCorps selects GSU's Alicia Bennett

By COLLEEN McNALLY

Assistant news editor

Georgia Southern University student Alicia Bennett said she is taking the "True Blue" spirit out west when she serves with the AmeriCorps.

Her service begins in July, and she will be located in San Francisco, California.

Bennett is a senior English major with a minor in health and kinesiology.

"Basically, AmeriCorps is an opportunity for young people to make an impact in the community," said Bennett.

"You can go anywhere in the country that you want and pick any focus, whatever you are interested in. My focus is literacy."

Through AmeriCorps, Bennett said she will be working with the CalSERVES program in six schools in Napa County, and will be helping underprivileged children through ESOL and GED programs, finding mentors, and recruiting more volunteers.

Bennett said that she first became interested in the program when her best friend and former GSU student Jennifer Camacho was chosen to serve in Seattle, Washington.

"We have a lot of the same goals in life," said Bennett.



Special Photo

GSU English major Alicia Bennett will serve with the AmeriCorps in San Francisco, California. Bennett's service will begin in July of this year, and she will be focusing on literacy of underprivileged students.

"I'm speechless. I'm so proud of her. She is so passionate about community service," said Camacho.

Bennett also chose to serve on the west coast since she had never been farther than Kentucky and that she is looking forward to experiencing a new way of life.

"It was about going outside my comfort zone, discovering who I am, outside my family and friends," she said.

"I want to go somewhere where I

can figure out who Alicia is, and still make an impact."

"I know it's going to be so different out there. I want to jump into the culture, the diversity, and different thought processes. We think our own way in the south."

From Lithonia, Georgia, Bennett said that she grew up in a neighborhood where many people don't graduate from high school.

"That is what's pushing me to go, to be able to go back to my home

town," she said.

Her actual position at CalSERVES will be as a team leader, supervising other AmeriCorps volunteers.

She said she earned the role because of the leadership opportunities she experienced at GSU, such as being a Southern's Orientation, Advisement, and Registration, or SOAR, leader in the 2010 program.

Bennett said she was very appreciative of facility mentors she has met during her past four years.

"[They] really encouraged me in being able to find my own way. LaShica Thomas was my boss at the Recreation Activity Center, and I've been working with her since I was a freshman, since I was 18 and now I'm almost 23," she said.

"Alicia is a very remarkable young lady. She has so much passion for life and her smile brightens up the work place. We will truly miss her here at the RAC but we wish her all the luck in the world," said LaShica Thomas, facility coordinator for Staffing and Daily Operations at Campus Recreations and Intramurals.

"She puts her whole self into everything she does, which is very admirable, especially since she is so involved. She is very genuine, and I think she will go out and do great things in the world," said Paige Phillips, coordinator of Orientation

and Parent Programs in the Office of Admissions.

After her 10 months in California, Bennett plans to return to GSU to complete the Higher Education Administration master's program.

"This is where Paige really inspired me. I had a meeting with her every week to talk about grad school," she said.

"Being a SOAR leader made me realize how much I want to help students grow into being leaders," said Bennett.

She said her dream job would be to work in the Office of Student Leadership and Civic Engagement or the Multicultural Student Center.

Heather Jo Harralson, coordinator of civic engagement in the Office of Student Leadership and Civic Engagement, said, "Alicia is a truly dedicated and hard-working individual, who has a heart for serving others."

She continued and said, "I have no doubt that she will go on to make an impact in this world, bettering the lives of less-fortunate individuals, and leaving a legacy for many to follow."

Bennett said that her advice to other students pursuing similar opportunities is not to be afraid.

She said, "Statesboro is a very comfortable place, and it's easy to want to stay in Statesboro."

Students 'cautious' in spring break planning

By JENNIFER CURINGTON

George-Anne contributor

Students are finalizing spring break plans with the week off from class approaching rapidly.

With last year's oil spill off of the Gulf Coast and increased violence in Mexico at the hands of drug cartels, both students and travel agencies are facing challenges when determining spring break destinations.

The oil spill in the Gulf Region occurred when a British Petroleum oil rig exploded on April 20, 2010.

The spill mainly affected the gulf area such as Alabama and Louisiana but has had impacts on the Florida beaches such as Panama City.

According to Tracy Louthain, director of communication at the Walton County Tourist Development Council, the number of visitors to the region was down 20 to 30 percent during June, July, and August.

Patty Burns, owner of the traveling agency Burns World Travel Ltd. in Statesboro said, "The students have been very concerned with the beaches in Florida."

Burns also said that there was noticeable hesitation to book early this year because of the oil spill.

Burns and her employers have gotten reports that, in fact, the beaches are back in pristine condition, and Dr. Henry Eisenhart, a professor of recreation and tourism management at Georgia Southern University said, "My feelings would be that [the oil spill] would not affect spring break students going to Florida."

Akeem Raji, a graduate student, said both of his potential spring break destinations are in Florida.

He is currently trying to decide between Tallahassee and Miami.

He also said that last year's oil spill would not affect his final decision.

"It personally would not deter me, but it would make me more cautious," said Raji.

Kristen Davis, a sophomore studying criminal justice, said, "I'm planning on going to Jacksonville beach," and that she is, "not worried about the oil."

The more recognizably dangerous spring break destination, Mexico, has been host to drug cartel

violence.

In November of 2010, six Americans were killed due to these acts of violence. Two of the victims were students.

Eisenhart said, "The violence in Mexico is a big concern, mostly in border towns."

This has caused travelers to look to other destinations.

A safer alternative, according to Eisenhart, is Cancun. "I would think that [it] is pretty safe," he said.

Raji said, "Most students don't pay attention to the news, they just want to have fun on spring break."

Sociology students break norms, 'do nothing'

By **PATRICK STOKER**

Staff reporter

A sociology class of about 250 students caused confusion when they literally did nothing for 15 minutes Tuesday.

The class participated in a flash mob at the Russell Union Rotunda as part of a class experiment. The students stood motionless and if asked what they were doing, simply responded by saying, "I'm doing nothing."

The reason behind the flash mob was to teach students about norms, which are societal expectations of behavior, and deviance, which is any behavior that violates expected norms, said Nathan Palmer, a

lecturer of sociology and the professor of the class conducting the flash mob.

"As a teacher I like to focus on not just telling people about the ideas, but actually having them experience them and draw on experiences they've had in the past, but with this activity the idea was that they could see it firsthand and so it kind of took the ideas and concepts out of the textbook and put it into their personal lives," said Palmer.

Palmer is also creating a video of the flash mob and reactions of students who participated to be posted to YouTube.

"The video will be to help people all around the world learn about just a little nugget of sociology," he said.

"The hope is that if it gets a large number of views, then it can be a model for social change."

For some students who participated in the flash mob, people's reactions made it difficult to keep their composure.

"I was kind of nervous because I was afraid to laugh and it was really hard not to laugh. I had friends go by and call my name, so it was hard to ignore them and not laugh," said Ray Ashkenazi.

Many of the students were surprised by the reactions of people passing by.

"If I was doing anything like texting on the phone or listening to music people wouldn't pay attention to me, but when you're

doing something that's outside the norm everyone stops," said Lanesha McCann.

"It seemed like we had another group of flash mobbers, but this group was watching us doing nothing," said Dana Wilson. "There was a circle outside of our circle watching us trying to figure out what we were doing."

Some observers seemed to be somewhat outraged by the flash mob because it wasn't normal and they were unaware of what the purpose was, said Palmer.

"We have this very fragile social construction of reality and when someone comes and messes with that we want to know what happened," he said.

"The people who were walking by were feeling this anxiety; they were feeling nervousness about what's going on and so they were desperate to know what it was."

Palmer said he believes his students were made aware that actually participating in an activity is far more effective than being told the outcome.

"When you actually do it, it shows the value of actually doing sociology as opposed to hearing about it and reading about it," said Palmer.

"I really believe that the students came to the outcome that activity is one of the most pervasive social norms and that even when we violate small norms there are consequences."

Dining from page 1

plan will be upped to a 15, and the 5 [meal plan] will become a 6, with more days to choose from and a maximum of 4 per day."

"We have heard from students and seen the need to create more flexibility and dining options for all our dining plan holders," Jeff Yawn, director of Eagle Dining Services, said in a press release.

"The new per week structure and new options will provide our students with more choices than ever before. Even better, they will have more flexibility to choose when they eat, which is perfect for today's busy college student."

Students will spend more money on each meal plan next semester, with a \$32 increase in price for the 3-Plan and a \$275 rise in the 19-Plan.

However, Harper said students are actually getting a better value.

Customers paying with cash or credit card won't receive what Yawn called "additional discounts," a 10 percent discount at the register for those who use meal plans.

Ivey Samples, a sophomore education major, canceled her meal plan earlier this semester.

"I hated it because I was so busy, I didn't have time to go wait in line

somewhere or sit down to eat it, so I had to have something already in dorm. It would come around 9:30 at night, and I'm not hungry, but now I have to go waste two meal plans on something. I didn't have time to go wait in line somewhere or sit down to eat it, so I had to have something already in my dorm."

Despite the changes, Samples said that she probably won't buy a meal plan next semester.

Freshman psychology major Blayne May said, "It seems better to me. I will probably be living off campus next year, and using the [new 6-plan]."

Dining Plans: Current vs. Proposed Plans

SPRING		FALL	
3 Plan	\$320	3 Plan	\$352
5 Plan	\$536	→ 6 Plan	\$704
10 Plan	\$1072	10 Plan	\$1172
14 Plan	\$1370	→ 15 Plan	\$1650
19 Plan	\$1525	19 Plan	\$1800

Males and Females
Meet new friends!

Travel!

Teach your favorite activity

SUMMER IN MAINE

TRIPP LAKE CAMP for Girls:

1-800-997-4347

www.tripplakecamp.com

Tennis

Canoe

Waterski

Gymnastics

Silver Jewelry

English Riding

Copper Enameling

Basketball

Field Hockey

Softball

Newsletter

Lacrosse

Theater Costume

Swim

Sail

Kayak

Archery

Rocks

Ropes

Art

Pottery

Office

Photo

Soccer

Dance

June to August

Residential

Enjoy our website

Apply online

Health insurance coverage to change for students

Students to gain consumer protections and improved health coverage under Affordable Care Act

By **TREVOR MARKS**

George-Anne contributor

Health insurance for college students may change, according to new guidelines proposed under the Obama administration's Affordable Care Act.

The U.S. Department of Health and Human Services proposed rules including improving coverage for students, new consumer protections, and ensuring transparency, which will force insurance companies to tell students already in health plans whether or not their plan meets the new requirements of the Affordable Care Act.

"This rule would ensure that these plans remain a viable, affordable option for students

while guaranteeing that they are regulated consistently and offer transparent benefits," said HHS secretary Kathleen Sebelius.

According to Healthcare.gov, as many as 3 million students are covered through student health plans offered by colleges, universities, or other institutions of higher learning.

Health insurance plans differ. Some plans are comprehensive, but others may offer limited benefits, which can put students and their families at risk for catastrophic medical bills.

"There have been some private plans that, once you read the fine print, you realize there wasn't really any coverage because there were always limitations in defining benefits," said Director of Georgia

“

This rule would ensure that these plans remain a viable, affordable option for students while guaranteeing that they are regulated consistently and offer transparent benefits.

”

-Kathleen Sebelius, U.S. Department of Health and Human Services Secretary

Southern University's Health Services, Paul Ferguson.

The plan states that the proposed rules dictate that insurance providers will not be able to set lifetime dollar limits or benefits.

Students who buy insurance through their college or university

would be given the same rights and protections as other Americans under the Affordable Care Act. Insurers cannot deny or exclude coverage for students under age 19 because of a pre-existing condition.

"These rules have provisions that apply to student insurance plans, but they also apply to college

students themselves . . . [and] any plan that your parents might have," said Ferguson.

To preserve market stability and ensure that student health plans remain affordable until all Americans have new coverage options, student health insurance plans will be allowed to have annual dollar limits no less than \$100,000 for policy years beginning before September 23, 2012.

"The minimum coverage has to be \$100,000, it just has to be because otherwise, for a major medical issue, you don't get anything," said Ferguson.

Under the plan, student health plans with policy years beginning after that date must fully comply with the Affordable Care Act's annual limit restrictions.

Professors' publications help GSU in 'movement upward'

By **COLEEN CUREAU**

George-Anne contributor

Georgia Southern University Jiann-Ping Hsu College of Public Health professors are gaining attention after publishing books intended to aide in the research and development of new pharmaceutical technology and approach.

Professor Karl Peace, Ph.D, and former professor Din Chen,

Ph.D, published "Clinical Trial Methodology" and "Clinical Trial Data Analysis using R," in 2010 as a part of the Chapman Hall Biostatistics Series.

The publication of these companion texts coincided with what Peace describes as, "GSU's strong movement upward toward becoming a research-oriented university," and hopes they will "lend to the greater credibility to the Jiann-Ping Hsu College of

Public Health."

"These books are perfect examples of how Jiann-Ping Hsu College of Public Health faculty members are on the forefront of research that directly impacts the lives of thousands," said Jiann-Ping Hsu College of Public Health Dean Charles Hardy in a press release.

In the texts, there are eight chapters that reflect cases studies led or supported by Peace, who has experience as a leading biostatistics

researcher in the pharmaceutical industry, which led to the establishment of new drugs.

Chen, who is an expert, according to Peace, on using the "R" software, was the lead author on "Clinical Trial Data Analysis using R," which allows researchers to easily develop their own analysis code for performing investigations.

"Clinical Trial Methodology" includes, "all methods that would be used in a clinical trial protocol

as a way of gathering data to demonstrate the effectiveness and safety of a drug, biologic, or medical device," said Peace.

Though other books have been published about this subject, Peace is confident that his and Chen's approach stands out.

He said, "I am more broad... I consider it to be any method that is needed in order for a quality protocol to be designed, conducted, and results reported on."

**Vintage
Connection**
Antiques & Collectibles Mall

Feeling rundown?
Retail Therapist on hand!

(912) 225-6498

21 East Vine Street

Statesboro, GA 30458

www.vintageconnectiononline.com

Drum troupe STOMPs into Statesboro

By SARAH FONSECA

staff reporter

It's been the recipient of both Obie and Academy Award nominations. It's been performed before presidents and world leaders. It's been everywhere from Broadway to Bangladesh and back again; and on Tuesday, March 8, STOMP will be making its first stop in the Statesboro at Georgia Southern University's very own Performing Arts Center.

The drum and dance troupe began performing in 1991 in Brighton, United Kingdom. After rapidly gaining international acclaim, a production company was created in the States. 20 years after that initial inception, the drum and dance troupe continues to fill theaters with the same intensity that it did during its heyday in the 90s.

According to PAC Director Albert Pertalion, STOMP's uniqueness was a driving component in bringing it to GSU.

"The motivating factor of booking STOMP for GSU is its explosive creativity. Somehow, it finds music in the strangest places and engages the audience with those eccentric sounds," he said.

In place of traditional percussion instruments such as drums, cymbals, and xylophones, STOMP cast members utilize a wide variety

of ordinary household objects to make captivating rhythm schemes.

Those in attendance will likely find themselves tapping their feet in time to beats created with many unlikely "instruments," including aluminum trash can lids, brooms, and even strike-anywhere matches.

Pertalion asserts that those unfamiliar with the show will be in for a treat.

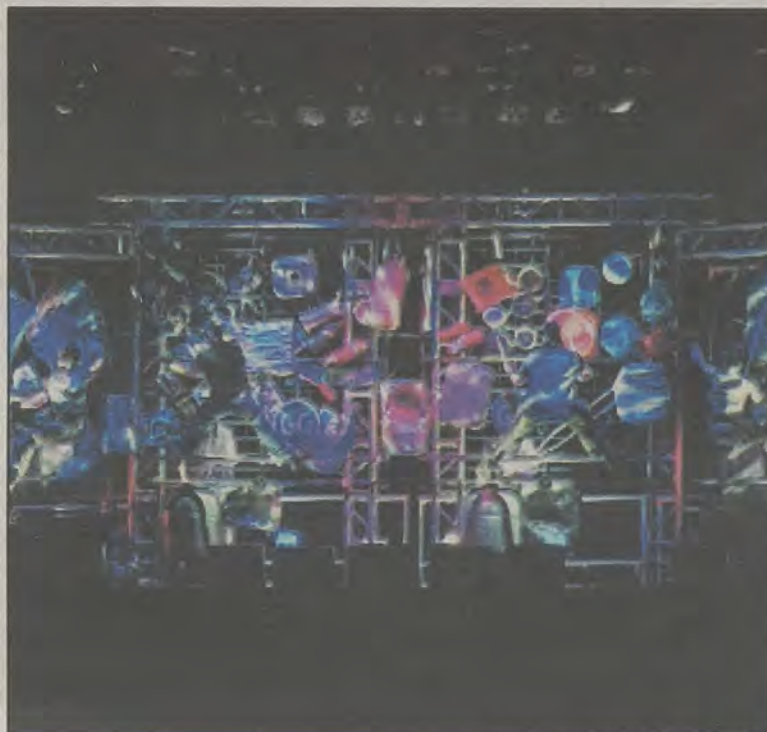
"The show drives like a car chase in an action movie. It has no intermission, and along with percussive music, the performers engage the audience. Students should be extremely receptive of the STOMP style and creativity. It's beautiful. I wanted the students to experience STOMP."

Based out of New York City, the cast is composed of people of varying backgrounds, including a world class tap dancer, a rapper-slash-actor, and a power rock drummer from Alabama.

As evidenced by the cast, the dance troupe has something to offer everyone.

The performance is being held in conjunction with the Performing Arts Center's 2011 performance series and Sea Island Bank, who is generously endorsing the show.

"STOMP has received terrific reviews and we congratulate the Performing Arts Center on securing this quality performance



Special photo from STOMP

The drum and dance troupe from the United Kingdom perform on an assortment of different instruments such as trashcans, brooms, pots, sticks and pipes to make their unique sound.

for our university and our local community," said Wendy Denton, marketing director of Sea Island.

Those hoping to attend the performance but have yet to reserve seating are out of luck. Tickets—which were originally \$10 for students and \$45 for the general public—have quickly sold out.

However, this is not an end to

all things for anyone interested in taking advantage of what GSU has to offer when it comes to the arts.

In addition to STOMP, this semester's Performing Arts Series also includes productions of the critically acclaimed Tango Buenos Aires and A Chorus Line, which will take place on March 24 and April 12, respectively.

The Buzz List

THE CHARLIE SHEEN EDITION

- Charlie Sheen has 1 million Twitter followers in just two days since he created it. Really people, he's losing his kids, living with two girls, suing two multi-million dollar companies... On second thought, I wish I was living the Sheen dream!



Mallory McLendon

- Charlie Sheen, in an interview with 20/20, let off a few of these insane gems that I feel I must share with you:

"I am on a drug. It's called Charlie Sheen. It's not available. If you try it once, you will die. Your face will melt off and your children will weep over your exploded body."

"I'm different. I have a different constitution, I have a different brain, I have a different heart. I got tiger blood, man."

Information compiled by Arts Editor Mallory McLendon from TheHollywoodReporter.com, and Aria Gabol, assistant editor.

OUT & ABOUT
IN THE BORO

Authentic Taste of the Caribbean in the Boro!

Caribbean Feast

MONTHLY SPECIAL
\$5.99

WE ALSO HAVE
JACKSON
BEEF PATTIES
& BREAD

GSU students receive 10% off
www.caribbeanfeast.com
Mon - Thurs 11:00 AM - 7:00 PM
Fri - Sat 11:00 AM - 8:00 PM

407 Felt Rd. Across from
El Comodoro 912-469-0615

Express Tune & Lube

Tire, Alignment
& Exhaust Center

612 S. Zetterower Avenue
489-4444
www.expresstuneandlube.com
Monday - Friday 7:30am - 6:30pm
Located a half block north of Wendy's.

OIL CHANGE SPECIAL

\$25⁹⁹ Includes up to
5 qts of Castrol
5W20, 5W30, 10W30,
or 20W50

price applies to most vehicles. Expires 2/28/11
www.expresstuneandlube.com

DAYLIGHT DONUTS

\$2.99
2 SAUSAGE ROLLS & 1 FOUNTAIN DRINK

764-9536 - contact - 764-4925

Dear Dean, help me!

Who can I talk to about problems on campus?

Dear Dean,

I don't know if you're the right person to talk to or not, but I don't know who else to go to. I want to talk to someone on campus about a few things that are bothering me. How do I go about setting up a meeting with you?

Concerned Student



Dr. Georj Lewis

email at deanofstudents@georgiasouthern.edu or through our "TalkwithTheDean" facebook page.

Finally, I would be remiss if I did not mention your Student Government Association (SGA). The purpose of the SGA is to be the voice for the student population. Your SGA is a great resource for information, and they participate in many of the major decisions that are made on campus concerning students.

You can learn more information about SGA at www.georgiasouthernsa.com or via telephone at (912) 478-0655. I look forward to meeting with you soon.

Dr. Georj Lewis
Dean of Students

any of the Assistant Deans by calling our office at (912) 478-3326. When you talk to the Secretary, it will be helpful if you provide a little more detail as to the purpose of your meeting.

If we know in advance what your specific concerns are, we can better prepare to assist you. You can also share your concerns with us through

If you have a question for Dean Lewis, please submit it to deanofstudents@georgiasouthern.edu.

Gorilla Thrilla steps into GSU

By ARIA GABOL

assistant arts editor

Alpha Phi Alpha Fraternity, Inc. along side the Office of Student Activities is throwing the 20th Annual Gorilla Thrilla Step Show here at Georgia Southern University. In 1991, the Xi Tau Chapter of Alpha Phi Alpha began throwing a small step show in the Russell Union Ballroom and throughout the years both the show and the audience have grown.

Today the show will be performed in Hanner Fieldhouse. Just last year the turn out was up to 2,700 people. In order to reserve the fieldhouse, the students had to collaborate with the Student Organization, PAC, and Traditions Council.

Assistant Director of the Office of Student Activities Carter Walton said, "We work very closely with helping the Alpha Phi Alphas. Whether they need direction throughout planning or promotion, we are always there to assist."

Performers in the show not only include GSU students from the Xi Tau Chapter, but also other fraternity and sorority members from other universities, like Savannah State,

University of Georgia, and even some from out of state. Each performer is fighting for the annual crown and cash prize given to the best.

Senior John Nwosu of Alpha Phi Alpha fraternity said, "The point of the show is to provide the campus with a diverse type of entertainment that many people haven't seen."

The Alpha Phi Alpha brothers throw a cookout before the show for the alumni, and Nwosu said, "The cookout is a nice time for everyone, including the people who came into town for the show, to just hang out and enjoy each others company."

The host of the show is comedian Christopher Pugh, who is also the assistant director of the GSU Multicultural Student Center. Pugh hosted the show in 2005 and couldn't be more excited to host this year.

"My goal is to keep the crowd entertained and to put in a couple of jokes every now and then," said Pugh. The energy from the crowd is the best part for Pugh as a comedian.

Most of the proceeds from the show will go to the March of Dimes Foundation and, since the Alpha Phi Alpha Fraternity provides their own funds, the rest will go to the Xi Tau Chapter Scholarship fund.

Watch students as they compete to make apparel using Student Media newspapers & magazines

DRESS IN THE PRESS

Thursday, March 10, 2011
at the Russell Union Ballroom
7pm- Watch them Create
8pm- Fashion Show
If interested in competing in the event,
please e-mail us at Miscellany@georgiasouthern.edu



George-Anne & Joe

Come and jump start your morning with a cup of Joe and a George-Anne in hand.

Taking place in the Russell Union; starting at 10 for Student Appreciation Day.



Sponsored by:



Student Media
AT GEORGIA SOUTHERN

WEEKEND WRAP

MELLOW MUSHROOM

1098 Bermuda Run
(912) 681-4743

EVERY DAY 11 A.M. - 7 P.M.
\$2.00 SLICE EVERYDAY
DURING WEEK AT LUNCH
TIME

THURSDAY - Large Specialty
\$17, Medium \$13

MONDAY - Free appetizer with
large pizza

TUESDAY - Large Salad \$5

WEDNESDAY - Free chips and
drink with a whole hogie

DOS PRIMOS

200 Lanier Drive
(912) 681-1372

HAPPY HOUR 5-7 P.M.
DIFFERENT \$1 SHOTS
EVERYDAY

THURSDAY - DJ

FRIDAY - DJ

SATURDAY - DJ

MOES

1601 Statesboro Place Circle
(912) 871-6474

Free Chips and Salsa Everyday
Come check out our new menu

**EVERY DAY: HAPPY
HOUR 5-7 P.M.**

Text message coupon service

DON CORLEONES

200 Lanier Drive
(912) 681-1414

EVERY DAY:

1 medium pizza 1 topping cheese
\$11.95

medium pizza up to 6 toppings \$10
large pizza 4 topping \$10

30 wings, 1 large 1 topping, 2L
drink \$25.95

large pizza \$6.99 (until mid)

pickup: medium 1 topping \$5.95

large 1 topping \$7.95

MILLHOUSE

1601 Statesboro Place Circle
(912) 871-6474

HAPPY DAYS: MARGARITAS,
MARTINIS, DRAFT BEERS
AND COCKTAILS \$1.99

THURSDAY - Chris Lee

FRIDAY - Robby Shank

SATURDAY - Doo-good Djs

THURSDAY - 11 oz prime cut
NY strip 10.95

MONDAY - Thai spic tilapia 8.95

TUESDAY - Bistro Burger 5.99

WEDNESDAY - 1/2 lb Alaskan
snow crab legs 14.95

DINGUS MAGEES

3 Georgia Avenue
(912) 681-3207

HAPPY HOUR 5-7 P.M.
2 FOR 1 JAGER BOMBS,
APPETIZERS AND WELLS

THURSDAY - Evan Barber and
the Dead Gamblers

FRIDAY - Incredible Sandwich

SATURDAY - Looters

BUFFALO'S SOUTHWEST CAFE

120 Lanier Drive
(912) 681-9464

HAPPY HOUR 6-8 P.M.

THURSDAY - Davin McCoy

FRIDAY - Nickle Bag of Funk

SATURDAY - Brintley

Half off **EVERYTHING** for happy hour!



(912) 489-8291

IF YOU ARE UNDER THE AGE OF 21 IT IS ILLEGAL, IN THE STATE OF GEORGIA,
TO BUY OR CONSUME ALCOHOLIC BEVERAGES

ALL DAY SPECIALS

.45	cent wings
\$6	64oz pitcher
\$12	well pitchers
\$3	rumple shots
\$2	shots, well
\$4	bombs
\$3	trashcans
\$2	coors & ultra bottles

myth: drinking is central to the
social lives of georgia
southern university
students

fact: in the last 30 days, 1 in 4
students have not had any
alcohol

presented by the division of
student affairs

for more information visit:
<http://thecharmsandgracesofalcohol.com>
data collected from georgia southern university.com
(spring 2010)

INNOVATION
EDUCATION

OPEN AT 8
FREE CHIPS & SALSA
EVERYDAY
EXCLUDING SPECIAL EVENTS

\$1 WELL SHOTS
\$4 PITCHERS

FREE VAN SHUTTLE
CALL 912.512.2815



102 BRANNEN STREET
BEHIND ELSONBERG

FOR ANY QUESTIONS OR SOCIALS
CALL MICHAEL CASH AT (912) 541-2066



\$6 ALL YOU CAN EAT pizza, pasta, salad, and dessert buffet

Includes beverage!

Next to LOWES

All the time!

Anytime!



(912) 764-7499

812 A Highway East,
Statesboro, GA

Special price for GSU students, staff, and faculty with current ID card

Monday: Awareness Table, RU Commons, 10 am - 1 pm
Stop by this table to get helpful information about how to stay safe over spring break. Topics will include safe travel tips, sun safety, and alcohol awareness issues.

Tuesday: Sex on the Beach, HIV/STD Testing, RU Rooms TBA, 10 am - 1 pm
Sex on the Beach will offer free HIV and STD testing to all students. Important information on safe sexual practices will also be passed out.

A Tan to Die for, Skin Cancer Screenings, RU Rooms TBA, 10 am - 1 pm
Clinicians from the Georgia Skin and Cancer Center in Savannah will be giving free skin cancer screenings to students, as well as tips on how to protect yourself while having fun on spring break.

Wednesday: Fight Back on Spring Break, PAC, 7 pm
This program offers proactive safety tips for: party situations, safe sex, binge drinking, predatory drugs, air/car/hotel safety, and ways to avoid crime targeted at tourists. The speaker will also demonstrate her favorite confrontation. Using her signature style of combining humor with straight talk, students will be encouraged to have a blast on spring break...but to make safe choices in the process.

Thursday: Hall Hopping, Residence Halls, 5 pm - 7 pm
Similar to the Hall Crawl of the past, Hall Hopping is an event that involves multiple residence halls across campus. Hop from hall to hall while enjoying mocktails and a fun party at each stop. Each hall will have a different theme related to alcohol safety. Students who participate and go to all stops will be entered in a prize drawing.

February 28 - March 3

SPRING BREAK SAFETY AWARENESS WEEK

WEEKLY BUZZ

A weekly calendar listing sponsored by The Division of Student Affairs and Enrollment Management

march 3 - march 10

THURSDAY 3.3.2011

9:00 AM - 5:00 PM

The Clothesline Project Multicultural Student Center

The Clothesline Project is a mechanism for survivors of violence to express their feelings through decorating a shirt. The shirt is hung on a clothesline as a symbol of the violence and as a representation of the widespread issues represented by the shirts. The shirts are color coded to show the form of abuse and whether the victim survived the abuse they experienced. People can make shirts from 9-5 at the rotunda.

Russell Union Rotunda

11:00 AM

Take Back the Night Multicultural Student Center

Take Back the Night is now an international rally and vigil held in local communities with the purpose of unifying women, men, and children in an awareness of violence against women, children, and families. The march will take place on today and will begin at 7:00 PM in front of Landrum. Immediately following the march (around 8PM), the rally will occur at the Rotunda and last for an hour.

Landrum + Russell Union Rotunda

7:00 PM

Greg Mort: The Art of Stewardship

Greg Mort will speak on "The Art of Stewardship" as a part of the Center for Sustainability's Seminar Series. His appearance at Georgia Southern is in partnership with the Averitt Center for the Arts, where his exhibit, "The Art of Stewardship" will be displayed during March 2011. Greg Mort, internationally acclaimed, self-taught artist hikes the rugged coast of Maine and travels the rural trails of Maryland with his brushes, paints and canvases.

Newspaper Racks All Over Campus

MONDAY 3.7.2011

ONGOING

Early Registration Begins for Fall 2011

Students should view WINGS for individual date, time and Registration Access Numbers.

TUESDAY 3.8.2011

4:00 PM - 5:00 PM

Safe Spring Break Counseling Center

Learn about how to have a safe (and FUN) break! Brought to you by the GSU Counseling Center.

7:30 PM

STOMP! Performing Arts Center

At long last we will have STOMP on our stage! STOMP is one of the most creative shows to ever come to this country from London. Inventive, funny, imaginative, it connects with audiences like no other musical. STOMP redefines percussion; audiences hate to see this show end. It has received standing ovations wherever it has played. Don't miss this one.

PAC

11:00 AM

Georgia Southern University Symphony Concert

Under the direction of Maestro Adrian Gnam, the Symphony will feature the winners of the 2011 Georgia Southern Symphony Concerto Competition: Raymond Nuss performing Mozart's 2nd Horn Concerto; Michael Thomas performing Haydn's Trumpet Concerto; and Kaisaer Ainiwaer performing Chopin's 1st Piano Concerto. The Symphony will also be performing selections of Bach, Grieg, Wagner, and Berlioz. The Georgia Southern Symphony is made up of students from various colleges at the University.

Foy Building



THURSDAY 3.10.2011

ONGOING

Dress in the Press Office of Student Media

Watch as GSU fashion students compete to transform newsprint into stylish fashions, to be exhibited in a runway show immediately afterwards. Event will be held in the Union ballroom and is free to all students.

Reflector Magazine: On Stands Now!

Office of Student Media

The winter edition of the Reflector magazine is on stands now! Pick up a copy anywhere on campus to get a jump on spring break planning, new music and recurring features like 'Overheard on Campus.'

Newspaper Racks All Over Campus

'The Diary of Anne Frank' has been reopened

By QUANIQUA EPPS

George-Anne contributor

On March 4 and 5, history will hit the stage at the Emma Kelly Theater in downtown Statesboro. Local student and adult residents will perform the story of Anne Frank.

"I think it's really cool, it's such a great story and I'm very honored to be apart of it," said sixth grader Baylee Davenport from William James Middle School, who plays Anne Frank's sister Margot.

The Emma Kelly Theater has been a second home to these actors and actresses who have immersed themselves totally into conveying the message behind one of history's worst tragedies.

"The Diary of Anne Frank makes you wonder what you would do if you were in her situation yourself," said former Bryan County High School professor Vicki Dwinelli, who plays the role of Petranella Van Daan. "The Holocaust was

horrifying and the fact that she had to go through this is unthinkable."

Tony Phillips, who serves as the play's producer, wants the show to be an educating experience.

"I want the younger people in the audience to have an opportunity to see this play performed, and I want the older individuals to be reminiscent of that time in history, and be reflective of the chain of events surrounding Anne Frank's story," he said.

Ogeechee Technical College math instructor John Gleissner had a deeper connection with the play and his character Putti Van Daan.

He said, "This is a special play for me because of my friendship with Jerry Cohem, who was a Holocaust survivor and recently died in New York at age 80. Mr. Cohem was a cantor," or a spiritual leader in a synagogue, "in a temple in New York after the war. We became friends because his granddaughter was a student at Georgia Southern, who needed tutoring in math."



Quaniqua Epps/STAFF

Tickets are \$10 and are available Tuesday through Friday from 1-5:30 p.m. in the box office. Tickets are also available for reservation at 912-212-2787.

Director Donna Hooley, a thirty-year employee for the university system, took a message of morality from the show.

"This is the story of hope during adversity. Nothing can destroy the life of the might. It is not love that brings us together; it's suffering.

Empathy saves man," said Hooley.

It was hard for Hooley when choosing the actors for such a big play. "It is not with the depth of talent in our performers we have here at the Averitt center. This venue is so precious, it's like uptown in a small town, and you don't always

find that," Hooley said.

"The history behind the story makes the play very special," said high school senior Claire Bookhoop who plays as Miep.

"The Diary of Anne Frank" will be showing this Friday and Saturday at the Emma Kelly Theater at 7 p.m.

Stryper's music has something for everyone

Review

By MATT LANE

staff reporter



Stryper's new album "The Covering" has made it to the number one spot for best-selling Christian album and has kept this spot for the past six weeks. If you don't know who Stryper is, then you're missing out on something worth listening to.

Stryper is not your typical Christian band. You won't find music here that reminds you of Casting Crowns or Hillsong United. Stryper has always been a heavy metal band, and after 28 years, they are still known as one of the most controversial Christian bands out there.

What makes this band such a controversy: Some of their best songs

"To Hell with the Devil," "Caught in the Middle," and "Rock the Hell Out of You," have been questioned as to whether the band can really be considered Christian music due to the profanity in some of their songs.

Also, their album "Breaking the Law" had nothing to do with Christianity or worshipping God, which worried fans that Stryper had lost its roots.

Despite controversy, Stryper knows how to rock and keep the music wrapped around God without using cliché-ish phrases that you hear in almost every Christian song out there at a Wednesday church night gathering.

And for those who may be wishing for inspirational music to jam out to instead of the soft and tame Chris Tomlin and MercyMe, Stryper is a band you should really invest in.

With this said, "The Covering"

is an amazing album, but there are several different ways you can approach it. Almost the entire album is nothing but covers of famous songs such as Kansas's "Carry on Wayward Son," Iron Maiden's "The Trooper," and Black Sabbath's "Heaven and Hell."

Naturally, I was a bit skeptical hearing this. Covers are almost never as good as the original, and once you hear a great song, you really don't want to be bothered by another version of the same song that you already love.

The funny thing about Stryper is the collection of songs they have chosen to cover and the way they seem to fit into the band's Christian roots. They cover songs from bands such as Sweet and Kiss all the way to Led Zeppelin, but they do an amazing job at playing these songs. It's almost unbelievable.

I'm not going to say that it's

like listening to a different song altogether - we'll never hear a band do a cover that is better than what Led Zeppelin has already given us - but vocalist Michael Sweet has always done a great job with his voice and he gives fans what they have been wanting, which is a grittier, heavier sounding style of metal throughout the entire album.

One other interesting thing about this album is the cover art. The band got its name from the Bible, King James Version Isaiah 53:5. "But he was wounded for our transgressions; he was bruised for our iniquities: the chastisement of our peace was upon him; and with his stripes we are healed."

This will be the second album Stryper has made where the cover art doesn't include that Bible verse. Not that this is a bad or good thing, but it's interesting as to why they wouldn't include it.

If covers aren't your thing, their last song on the album is a track titled "God" that will bring you satisfaction. It may not be as great as some of their previous ballads such as "Honestly," "All of me," or "I Believe in You," but the lyrics are great and original.

However, it is the only song on here that is not a cover, so unless several of you are dying to hear more great Christian music, chances are you might not buy the entire album.

But Stryper is worth looking into. You can still rock out on the road to whatever it is they are playing. Yes, this album may not be as incredible as albums such as "To Hell with the Devil" or "Soldiers Under Command" but as far as Christian music and music in general goes, Stryper does not disappoint.

If you like this, check out Bride and their album, "Snakes in the Playground."

Los Angeles Times Daily Crossword Puzzle

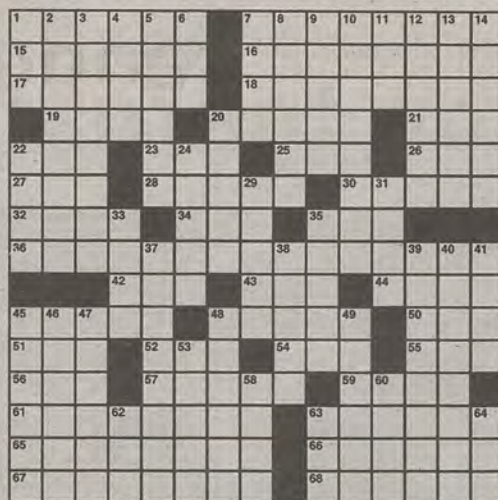
Edited by Rich Norris and Joyce Lewis

ACROSS

- 1 Orates
7 Hourly wage, e.g.
15 Refuses to
16 Astronomy measurements
17 Engrave
18 Sea cows
19 Brief needlework?
20 Megan's "Will & Grace" role
21 Label for some Glenn Frey hits
22 Physicist with a law
23 Acting teacher Hagen
25 "It's far, far better thing...": Dickens
26 Wages
27 Get
28 Noodles, say
30 The Simpsons, e.g.
32 Wedding dance
34 Fabled mattress lump
35 Mal de
36 One of six in this puzzle
42 Some tech sch. grads
43 Top ten item
44 Sign
45 Pricey
48 Pole symbol
50 Wall St. exec's degree
51 Collar
52 "Aladdin" monkey
54 Frat letter
55 Food scrap
56 Geneva-based workers' gp.
57 Babe and Baby
58 Gijon goose egg
61 Orchard grower
63 An iamb's second half gets it
65 Noteworthy
66 Mount McKinley's home
67 Relax
68 Word with health or illness

DOWN

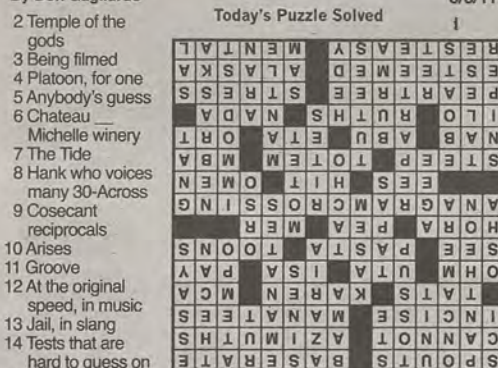
1 _fi



By Don Gagliardo

Today's Puzzle Solved

3/3/11



(c)2011 Tribune Media Services, Inc.

3/2/11

- 2 Temple of the gods
3 Being filmed
4 Platoon, for one
5 Anybody's guess
6 Chateau
7 The Tide
8 Hank who voices many 30-Across
9 Cosecant reciprocals
10 Arises
11 Groove
12 At the original speed, in music
13 Jail, in slang
14 Tests that are hard to guess on
20 DeeJay Casey
22 Dept. of Labor agency
24 Spanish appetizers
29 Speed: Pref.
31 Meeting time qualifier
33 One-time Time critic James
35 Sacred choral piece
37 Comeback
38 Solemn acts
39 Bold
40 Big 12 school soon to be in the Big Ten
41 No-see-um, say
45 Hard-to-see shooter
46 "Thy Neighbor's Wife" author
47 WWII torpedo launchers
48 Some learners
49 It's beneath the crust
53 Siam neighbor
58 Actress Lamarr
60 Sweater style named for Irish islands
62 Like some mil. officers
63 Yosemite
64 ESPN reporter Paolantonio

CLASSIFIEDS

www.thegeorgeanne.com

Thursday, March 3, 2011 15

Student Housing

AVAILABLE AUGUST 1st
3, 4, 5, 6 and 7 BR houses
for lease at entrance to GSU.
24 hr repairs. Call Dr. Hood
at (912) 682-7468.

HOUSE FOR RENT- 3 BR/ 2
Bath house for rent. Walking
distance to campus. Washer/
dryer. Yard. Nice house and
street. \$900/month. Lease
starts 8/1. 706-543-5497 for
details.

Fall 2011 Lease-
The Landings
Large 4 BR/ 4 Bath house
located on 1 1/2 acres w/
private back yard & outside
cooking area. Amenities in-
clude free cable tv w/ HBO,
high-speed internet in each
room & lawn maintenance all
included. Rent is \$350/ BR
& will be available in August.
Call 912-682-9900.

Jobs

BARTENDERS WANTED!
\$250 a day Potential. No Ex-
perience Necessary. Training
Provided. Age 18+ OK Call
1-800-965-6520 ext 296.

First Baptist Missionary
Church is accepting applica-
tions for a church musician.
Any person interested should
call 478-299-5307 for more
information.

**ACCOUNTING REP IS UR-
GENTLY NEEDED TO WORK
FOR AID. REQUIREMENTS:
GOOD TYPING SKILLS,
MUST SPEAK ENGLISH,
FRENCH, OR SPANISH FLU-
ENTLY. ANY JOB EXPERI-
ENCE CAN APPLY. WILL
EARN \$3020 MONTHLY.
Email me at jamesmurray-
holdings@gmail.com for
more info.**

Jobs

**USA Pools: Now Hiring Life-
guards & Managers FT/PT
\$8.00-15.00/hr DOE** Seek-
ing dedicated & enthusiastic
applicants. Get paid to tan!
Apply Now: www.usapools.com
770-248-1872x100

Babysitter needed. I am look-
ing for a babysitter urgently
for my 3 kids. You will be
paid \$600 weekly & a car will
be provided, just take care of
our babies for us. Email
pmmidas4@yahoo.com.

Pets

14 weeks old male & female
English Bulldog puppies are
looking for a good home to
go to. Both AKC and NKC
registered, shots up to date
well vaccinated. If interested
in more information email
djarrett98@yahoo.com.

Subleases

Sublease Available @ Cam-
pus Crossing. Immediate
move in for Spr 2011 se-
mester. 1BR/ 1 Bath open
in a 3 BR/3 Bath apartment.
Call for more info @ 706-
718-2513 or 706-660-6316
or email @ bjsoup1@att.net

Something to sell?
Visit Gadaily.com!
It's free for students,
staff and faculty!

Ever had a question
for the editors at The
George-Anne? Tweet,
Facebook message us or
email us at gaeditor@georgiasouthern.edu and
you'll get an answer on our
new video blog!

Brewster Rockit



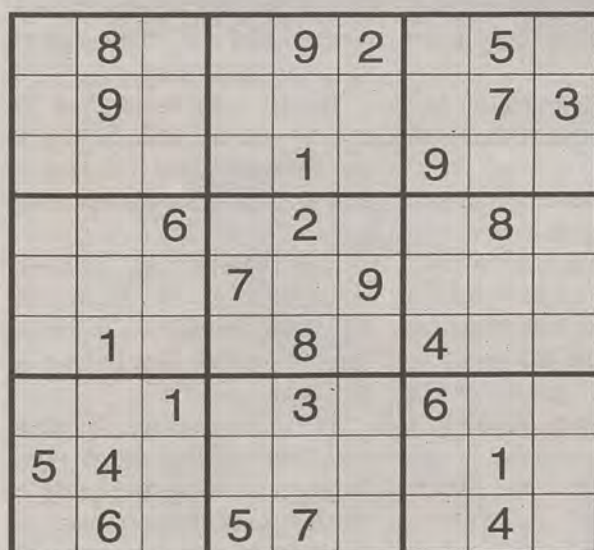
Shrimp



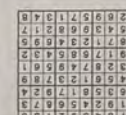
By Garrett Pekar

Would you or your business like to
sponsor our crossword or sudoku?

Contact our Advertising department at (912) 478-5418



Sudoku



Eagles look to stun at SoCon tournament

MEN'S BASKETBALL

By BIONCA BALL

George-Anne contributor

A total of 2,412 true blue fans watched as the men's basketball team played their last regular season game against Elon at Hanner Fieldhouse on Saturday night, ending their season (5-26) overall and (1-17) in the conference.

With the post season only two days away, the Eagles are now in preparation for what could be one of the biggest highlights of the year, a run in the Southern Conference Tournament.

"We've been talking about it all year, especially in the last half of the season," says coach Head Coach Charlton Young (CY).

"The score board does not always show it but we are very close to getting over the hump, playing very well versus a lot of the top teams."

Coach Young expressed his enthusiasm about starting with clean record.

"We are excited about being 0-0 and having a clean slate. Everyone in this tournament is in the same situation we are in," he said.

"If you lose, you go home and that is a good thing for us because we are a bunch of guys who have nothing to lose," said Young.

"When you have nothing to lose you're dangerous so I think some of the other teams in the tournament, they all have a lot more pressure on them than we do, which can makes us a tough out."

Unforced errors have been the key to a lot of previous unsuccessful showmanship from the Eagles and have become the focal point of their improvement areas before the big game.

"I think us turning the ball over-unforced errors, has been costing us ball games. For four or five games before the Greensboro game we were doing a lot better job in



that area. During the Greensboro game we resorted back to some old habits, and then because we never got over the Greensboro loss, I think it popped up in the game versus Elon with 22 turnovers," said Young.

"Elon is a strong team defensively but we should not turn the ball over 22 times unforced. So if there is an error, I think we have to sheer up this week and really viscosly attack in making decisions with the ball and not turning it over."

Some may think the Eagles have little chance to win the tournament due to their statistics; however, the numbers do not always represent

ability.

If the Eagles minimize mistakes and play hard, Coach Young believes they have the possibility to advance.

"Ben Drayton and Rory Spencer are the key to our success in this one because they've been there before. I think they remember that feeling of last year," said Young.

Young explained the team took an unprecedented loss to Chattanooga last year the first round of the tournmanet.

"Rory Spencer is the only senior that we have playing and I think the guys understand that if we don't go out and perform well for Rory, this will be the last time



File Photo

Left: Freshman guard Jelani Hewitt goes in for the layup on Jan. 26 against College of Charleston defensive players.

Above: No. 11, Tre Bussey, who is a freshman guard, shoots a three-pointer against College of Charleston senior Andrew Goudelock.

he ever wears a Georgia Southern uniform. I think the guys are going to play hard because they know that," said Young.

"I think that tournament time is much different than if you watch March Madness every year... you see a tremendous amounts of upsets. I hate to think that if we beat App State, it would be a big upset. I would imagine they're favored in the contest, but we believe that we could win one game at a time."

The last two games of the regular season were played in a 48-hour time frame with a limited roster, which left some players tired and fatigued.

"This week is about getting

ourselves healthy and resting. We took Sunday and Monday off [and] we watched film but did not get on the court," said Young.

Tuesday the team had 20 minute shooting and decided to use Wednesday and Thursday as days to prepare for the upcoming game.

The University of Tennessee at Chattanooga will be hosting the 2011 Southern Conference Men's Basketball Tournament in McKenzie Arena.

The men's game will tip off 30 minutes after the match up between Davidson and the University of North Carolina-Greensboro is complete.

Lady Eagles head to SoCon as 7 seed

WOMEN'S BASKETBALL

By **MESHA RUSSELL**
George-Anne contributor

The Lady Eagles will begin their play in this year's SoCon Tournament today at 1p.m. against the Western Carolina Catamounts (WCU) as the seven seed.

Georgia Southern, in the last six games against their opponent, has been (5-1); our only loss being our most recent contest this past February. This season GSU met up with WCU only twice this year where they split the season series 1-1.

Their first encounter of this year was in January. In the paint, the Lady Eagles did not hit as much as Carolina.

However, they did get higher points off of turnovers to include a nine point lead in the second half, and they came back to win in overtime.

GSU's second encounter was a month later and although the Lady Eagles tied the Catamounts midway through the second half, the game still resulted in a loss.

Their current overall record stands



File photo

Right: Junior guard, Samantha Williams, attempts a 3-pointer while teammates Jamie Navarro, Krista Tate, and Danielle Spencer defend against the Mercer Bears. The Lady Eagles defeated the Bears back in Nov. 71-52.

Left: Freshman MiMi DuBose shoots for a bucket against Mercer University.

at (12-17) and (9-11) against SoCon opponents this season, and in the last ten games the Lady Eagles are (3-7).

Three of Southern's top playmakers, Meredyth Frye, MiMi DuBose, and Jamie Navarro, all average in the double digit figures in scoring during the regular season. In addition, DuBose was just named to

the SoCon All Freshmen Team. Last time the Lady Eagles faced WCU, DuBose tallied double digit scoring.

WCU players to watch for are Kaila'Shea Menendez, Caitlin Hollifield, and Janae' McKinney. Averaging 11.1 points per game, Menendez leads the team in scoring. Being the top rebounder and leading

the team in steals, Hollifield will anchor the defensive. The Lady Eagles will have to stay alert as they face McKinney, who is third in the conference for offensive rebounds.

The winner of Thursday's game at McKenzie Arena in Chattanooga, Tenn. will play Samford, the number two seed, on Friday at 9 a.m.

GSU falls to University of North Florida 11-3

BASEBALL

By **NATALIE DEMARKO**
Assistant sports editor

The University of North Florida

(UNF) defeated the Georgia Southern Baseball team at their first away game last night 11-3.

In the first inning, pitcher Jarret Leverett gave up six hits and four runs, getting the Eagles off to a bad

start. Though the Eagles managed to get eight hits, they were only able to capitalize and turn three of them into runs. Eric Phillips was the hot batter of the night with three hits. Phillips also scored one run for the

Eagles. The team is now 6-3 on the season.

The Eagles are scheduled to play St. John's University in a three-game home series this weekend. The first game is set on Friday at 6 p.m.

The Press Box

What's going on in GSU sports

■ Men's Basketball player, Eric Ferguson was selected to the Southern Conference Coaches All-Freshmen Team. Ferguson now holds the second-highest record in freshmen points scored in GSU history, 368 points.

■ Baseball player Steven Cochrane was named SoCon Player of the Week. During last week's game, Cochrane managed two home runs and 13 RBIs with a batting average of .412.

■ The Softball Team will travel to Knoxville, Tenn, this weekend for the Tennessee Classic. The ladies are matched up to face Louisiana-Monroe, Tennessee, and Dutch National Team.

■ The Men's Golf team will travel to Palmetto Golf Club in Aiken, S. C. to compete in the Cleveland Golf Palmetto Intercollegiate on March 7-8 of next week.



VADEN NISSAN OF STATESBORO
We have over 20 special deals on cars, trucks, and SUVs
ALL FOR UNDER \$8,995

912-681-4700 807 • S. Main St., Statesboro, GA 30458 • www.vadennissanofstatesboro.com

Battle between rival GSUs long awaited

OPINION

By **JAKE WALLACE**
George-Anne contributor

The Georgia Southern University Eagles are one of the most storied programs in FCS and all of college football. Since its revival in 1981, the Eagles have won an unprecedented six FCS National Championships.

Many Eagle fans are now dreaming of the day when Georgia Southern becomes a member of the Football Bowl Subdivision (FBS) and plays annually with the big boys.

Before that happens, the Eagles have one more thing they must do: re-invent the Georgia Southern-Georgia State rivalry.

For those that aren't in the know, Georgia Southern and Georgia State used to be one of the big rivalries in the Trans America

Athletic Conference.

However, the annual series was ended in 1996, before renewing the rivalry on the basketball court last season.

But now there is a new field of competition where the Eagles and Panthers can compete, as Georgia State established its football program in 2010, going 6-5 in their inaugural season.

Many Eagle fans argue that Georgia Southern has nothing to gain by playing Georgia State.

A win is expected against such a young program, so it will do nothing for the team.

However, a loss would be a national embarrassment and could hurt recruitment in Georgia.

The first couple games should be wins for the Eagles, but it will do great things for both programs.

Let me start with Southern. Can you imagine Eagle fans and the caravan of Eagle Nation travelling up I-75 on the first weekend of the

college football season? Can you see twenty thousand screaming true blue Eagle fans in the Georgia Dome screaming Georgia on one side and Southern on the other?

Remember the crowds at the William & Mary and Wofford games and how Southern fans filled the stands?

There are probably many Georgia Southern students, alumni, and fans who would make the drive to Atlanta to see their beloved Eagles play in one of the biggest stadiums in the country.

It would be great for the Eagle program by giving another point for recruitment of athletes in the metro-Atlanta area.

It would be great for the university as a whole by building the Georgia Southern name and brand towards high school students in the Atlanta area.

It is safe to say that Georgia State would love to have close to 30,000 people in the Dome, considering

their average attendance for the first season was 16,750 per game.

There is a great chance that Georgia State fans would make their way down to Statesboro, and provide a great atmosphere at Paulson.

Next, it would help establish the Georgia State program.

Last year, the Panthers played teams such as Lambuth, Shorter, Lamar, North Carolina Central, South Alabama, and Old Dominion.

Imagine what it would do for fan, alumni, and student support if they played an annual rivalry game against a known, traditional power.

Now onto the part of why Southern should help a rival establish themselves. Take a peek 5 years down the road.

Most likely at that point, at the present-day's success level or better, Georgia Southern will be looking seriously at moving to full FBS membership.

Georgia Southern begins looking at conferences to join, with the Sun Belt Conference being the most likely candidate.

The Eagles could offer their program as a package deal with Georgia State.

A conference such as the Sun Belt would jump at the chance to gain a fan base like Eagle Nation one that will have developed at Georgia State, as well as the Atlanta market that State is located in.

Also, the two schools could offer the annual rivalry that takes place as extra benefit to their conference.

Football, and college sports in general, are better with rivalry. The banter between fans is always much better when the teams see each other regularly.

The list of rivalries that includes Florida-Florida State, Georgia-Georgia Tech and South Carolina-Clemson should soon add Georgia Southern-Georgia State to the list of great non-conference battles.

FRANKLIN CHEVROLET - CADILLAC PONTIAC - BUICK - GMC

912.764.6911

Our experienced Body Shop can fix all of the "Dents & Dings" that your vehicle may have!

We service all makes and models and accept all insurance claims, and will give you **FREE ESTIMATE** on your body & paint repair

GSU STUDENTS - Show your ID and receive **10% OFF** any purchase in Parts and Service



Check out our website
www.franklinchevrolet.com

Eagles name Curtis as defensive coordinator

FOOTBALL

By **NATALIE DEMARKO**
Assistant sports editor

The Georgia Southern football program welcomed Jack Curtis to the team as its new defensive coordinator.

Curtis is replacing Brent Pry, who left GSU last month and accepted a position at Vanderbilt.

Curtis is a native of Birmingham, Alabama and began his coaching career as a student coach at Evangel University, his alma mater.

He later coached at Mississippi State University where he helped the Bulldogs achieve a spot in the Liberty Bowl.

Over the next 20 years, Curtis spent time coaching at schools including Central Michigan, Memphis, Northwestern State University, and Arkansas State University.

In his coaching career, not only has Curtis been responsible for coordinating the



Special Photo

defense, but his duties have also included assisting special teams.

While working with Northwestern State University, Curtis immensely improved their pass defense.

Central Missouri was Curtis' most recent home where he also worked closely with the special teams division.

He brings an in-depth knowledge of the 4-3 defensive scheme that is much needed for the Eagle defense to continue to be successful.

"Jack shares the philosophy of what our team does," said Eagles Head Football Coach Jeff Monken in a press release.

"He is an exceptional teacher and our program will benefit from his knowledge and approach," he said.

"We're excited about Jack being here at Georgia Southern."

Intramural Scores

BASKETBALL

Men's

Krispernsnus Nuesperfluesins 53, **SuperBad 60**
Philosoraptors 20, Overweight and Outtashape 0

Flint Tropics 44, **Las Flamas Blancas 51**

The Struggle 49, **Shottas 86**

The Big Richards Academy, **Wetter Than a Swimming Pool 20**

Kappa Sigma 36, Delta Tau Delta 31

Pi Kappa Alpha 20, Sigma Alpha Epsilon 0

Sigma Nu 46, **Alpha Tau Omega 57**

Pi Kappa Phi 54, **Kappa Alpha Psi 69**

Kappa Alpha Order 45, Sigma Phi Epsilon 31

Delta Sigma Phi 22, **Sigma Chi 44**

Hawks 43, **Tappa Keg 47**

T-Shirt Time 23, **Southern Pines HD Ballers 57**

Can I Get a Foul 35, **Pressure D 57**

Elite 61, Pain Train 20

Co- Rec

Alley-Oops 79, **Shooters & Hooters 81**

The Basketball Team 50, Eagle Entertainment 31

Rip Net or Ride Pine 23, **CCF That Wasn't a Tapeworm 53**

SOCCER

Men's

DFW 5, Fiesty Goats 1

Borussia Monchengladbach 0, **Booty Bandits 1**

Aston Manpoolhamingtonlivercity Utd 4, Leones 2

Sport Club Internacional 1, **Didiers 6**

Women's

Zeta Tai Alpha 4, Phi Mu 0

Phi Ulta's 4, The Haymakers 0

Swift Kick in the Grass 4, Alpha Omicron Pi 0

Storm 4, Kappa Kappa Gamma 0

Alpha Delta Pi 7, Upper 90 1

Co-Rec

Look Ma No Hands 4, CCF Fourth Meal 3

CP Referee Beaters 6, Kicks and Giggles 1

Lady Bugs 10, Dongs and Thongs 4

CAMPUS RECREATION & INTRAMURALS

A PAID ADVERTISEMENT SPONSORED BY CRI

Intramural News

Intramural Softball is in full swing and we're about to hit the court with Tennis Singles! Here is the rundown of Intramural events coming up:

- Softball Scrimmages begin today, March 3 and end Monday, March 6.
- Registration for the Intramural Spring Slugfest Tournament begins Monday, March 7 and closes Tuesday, March 29.
- Intramural Softball Season officially begins Monday, March 7
- Registration for Intramural Tennis Singles closes Tuesday, March 8.

CRI Job Fair

The CRI Job Fair ends this Sunday, March 6 on the Student Employment Center Website. This is your last chance to apply for a position at CRI! A resume and cover letter are needed to apply. For more information on what working for CRI is like, visit the CRI Blog at www.gasoutherncri.wordpress.com



SPRINT TRIATHLON

CAMPUS RECREATION AND INTRAMURALS



Sprint Triathlon

A 500 yard indoor pool swim. A 12 mile bike ride. A 3.1 mile run. That's right, the CRI Sprint Triathlon is back! The triathlon race is a great way to show off your athletic endurance while racing through Georgia Southern's scenic campus. This year, the triathlon will be held on Saturday, April 2 at 7 a.m. If you are you up for the challenge, register now! The pre-registration cut off is March 18. Registration is only \$20 for students with a valid student I.D. and \$25 for faculty and community members. Late registration, March 19-25, is \$30. For more information, visit www.georgiasouthern.edu/cri.



NEW!
FOR A LIMITED TIME ONLY!

PAPA'S IN THE HOUSE™ WITH
HEARTY
ITALIAN MEATS **PIZZA**

YOUR CHOICE

\$11
LARGE

OR SPINACH
ALFREDO **PIZZA**

NOBODY DOES WHAT PAPA JOHN'S DOES . . .

Like combining our Better Ingredients to create our NEW Hearty Italian Meats pizza - piled high with Spicy Italian sausage, Italian salami, Italian ham, pepperoni and a delicious four-cheese blend.



Better Ingredients.
Better Pizza.

Order Online @ the NEW papajohns.com

Offer good for a limited time at participating Papa John's restaurants. Additional toppings extra. Not valid with any other coupons or discounts. Limited delivery area. Delivery fee may apply. Customer responsible for all applicable taxes. Prices may vary in Alaska and Hawaii. © 2011 Papa John's International, Inc. All Rights Reserved. 95111 102



**f Find us on
Facebook**

Papa John's Pizza
Savannah, GA

Statesboro
620 Fair Rd.
871-7272

**Go
GSU
Eagles!**

Side & 2 Liter

Add any one side & a 2 Liter

\$7.99

Choose one: Cheesesticks, Breadsticks, Cinnapie, Wings,
Garlic Parmesan Breadsticks, Chickenstrips

EXPIRES 4/28/11. Offer good for a limited time at participating Papa John's restaurants only. Additional toppings extra. Not valid with any other coupons or discounts. Limited delivery area, charges may apply. Customer responsible for all applicable taxes.



Large Pizza & Sticks

Large Three Topping pizza &
an order of Cheesesticks

\$15.99

No double toppings or extra cheese

EXPIRES 4/28/11. Offer good for a limited time at participating Papa John's restaurants only. Additional toppings extra. Not valid with any other coupons or discounts. Limited delivery area, charges may apply. Customer responsible for all applicable taxes.



STUDY BUDDY

Two Medium
Three Topping Pizzas

\$16.00

EXPIRES 4/28/11. Offer good for a limited time at participating Papa John's restaurants only. Additional toppings extra. Not valid with any other coupons or discounts. Limited delivery area, charges may apply. Customer responsible for all applicable taxes.

