

Georgia Southern University

## Digital Commons@Georgia Southern

---

The George-Anne

Student Media

---

10-26-2010

### The George-Anne

Georgia Southern University

Follow this and additional works at: <https://digitalcommons.georgiasouthern.edu/george-anne>

---

#### Recommended Citation

Georgia Southern University, "The George-Anne" (2010). *The George-Anne*. 2158.  
<https://digitalcommons.georgiasouthern.edu/george-anne/2158>

This newspaper is brought to you for free and open access by the Student Media at Digital Commons@Georgia Southern. It has been accepted for inclusion in The George-Anne by an authorized administrator of Digital Commons@Georgia Southern. For more information, please contact [digitalcommons@georgiasouthern.edu](mailto:digitalcommons@georgiasouthern.edu).

Halloween mini golf

Hacker’s will host a Halloween free mini golf and costume contest on Sunday, Oct. 31 for GSU students only.

page 7



‘Cos Fan Tutte’

“All Women Are Like That”: a Mozart play that will be presented to the GSU audience in original Italian.

page 12



www.gadaily.com

Join the conversation about the proposed smoking policy at GADaily’s forum:

thegeorgeanne.proboards.com

Tuesday, October 26, 2010  
Volume 85 • Issue 36  
Serving Georgia Southern  
and Statesboro since 1927

THE GEORGE-ANNE

Brannen Hall to close at semester’s end

Patrick STOKER  
staff writer

The Department of University Housing approved the decision last week to close down one of the oldest residence halls on the Georgia Southern campus at the end of the fall semester.

The university originally planned to close the building following the spring 2011 semester and begin renovations to house another department, but several factors led to the decision to close the residence hall at the conclusion of the current semester.

Brannen Hall, which was built in 1963, is currently only 89 percent occupied. There is a 3 percent vacancy rate among all student housing, meaning there is enough space to incorporate current Brannen residents into other on-campus housing.

“Looking at that coupled with the condition of Brannen and knowing that the Physical Plant needed to go into the building to do renovations for another department, we just put all three together and it made sense to do it now,” said Vickie Hawkins, director of University Housing.

Jon Coleman, assistant housing director, said university housing anticipates some students to not return following the current semester, which was influential in the decision to close Brannen earlier than

See **BRANNEN** Page 3

GSU Equestrians tie with COC for 2nd place



John Jeziorski/STAFF

Taylor Mansell riding Henry in Novice Equitation over Fences. Full story on page 16.

Halloween week kicks off with GSU’s Haunted Forest

Kelleigh CRAM  
guest writer

At Georgia Southern’s haunted forest, students will walk down a trail with spirits lurking around every corner and they better be

prepared for surprises.

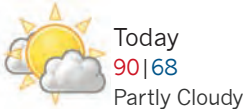
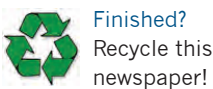
Kevin Lowe, a junior natural and cultural recreation major, said he attended last year’s Haunted Forest.

“It was good anticipation build up while waiting for the Haunted Forest. My favorite

part was watching the reaction of the friends I was with,” he said.

This year’s haunted forest will be bigger than last year’s. It will be held this week, Monday-Saturday on Malecki Drive near the stadium from 8 p.m.-12 a.m.

See **HAUNTED** Page 3



Contents

Police Beat . . . . .	2	Features . . . . .	12
News . . . . .	3	Classifieds . . . . .	14
Opinions . . . . .	4	Sports . . . . .	15

Newsroom	478-5246	www.gadaily.com
Advertising	478-5418	PO Box 8001
Fax	478-7113	Statesboro, GA 30460



## POLICE BEAT

### Tuesday, October 19, 2010

▲ Officers issued two traffic warnings, assisted five motorists, responded to two alarms and investigated one accident.

▲ Some linens and towels were taken from Eagle Village.

▲ A bicycle was taken from Eagle Village.

▲ Someone wrote on a vehicle with some type of marker at Centennial Place.

▲ Someone wrote graffiti on a door at Southern Pines.

▲ Antonio Domingo Bercian, 18, Centennial Place, was charged with obstruction of an officer.

▲ James Hunter Briggs, 19, Southern Courtyard, was charged with obstruction of an officer and possession of a false ID.

### Wednesday, October 20, 2010

▲ Officers issued six traffic citations, four traffic warnings, assisted five motorists, responded to one alarm and investigated two accidents.

▲ Several ceiling tiles were removed from the ceiling at the Mail Center, but nothing appeared to be missing.

▲ A book bag was taken from Sweetheart Circle.

▲ A laptop computer and a cell phone were taken from the Henderson Library.

### Thursday, October 21, 2010

▲ Officers issued two traffic citations, three traffic warnings, assisted six motorists, responded to two alarms and investigated one accident.

▲ A cell phone was taken from the College of Education Building.

▲ A license plate was taken from a vehicle in A-Lot.

▲ A Southern Courtyard resident reported receiving harassing phone calls.

▲ Brian Wade Bowers, 18, Southern Pines, was charged with DUI and reckless driving.

# Bioswale project comes to a close

Nikki WILEY  
assistant news editor

Construction on the bioswale between Watson Hall and Centennial Place came to a close last week ending a project between the Physical Plant, construction management classes and biology classes.

Over the last week, students have worked to complete the project by putting in a walkway and adding additional plants, mulch and other elements to the area.

The bioswale compensates for recent construction in that area of campus by creating an area for the runoff from the dorm buildings and parking lots to travel.

Adding plants to the space creates a way for toxins to filter out before the runoff travels to the river.

Dennis Pope, horticulturist for the Physical Plant, said he has enjoyed working with the students during the project.

“When it sprouts out next spring it’s going to add a good bit of beauty to the area, and it’s going to cut down on maintenance,” he said. “Interacting with some of these kids out here has been funny and hopefully it’s been a learning experience for them as well.”

The project was funded by in-house service learning grants, said Don Slater, construction management professor. The grants fund projects for students that enhance instruction, while providing a service to campus.

Slater said he believes his students have gained a greater understanding of what their field will be like after graduation.

“Some of them, when they graduate and go out on their construction projects, they’re going to either be a landscaping company or, more importantly, they’re going to have a



John Jeziorski/STAFF

The bioswale located between Watson Hall and Centennial Place.

subcontractor,” he said.

“Now they’re going to have an idea of what’s going on. They’ve got some hands on. They can basically say ‘I’ve been out there and I know how that shovel works.’”

Frankie Herring is a senior construction

manager major who worked on the bioswale. He said that not only does the project improve the beauty of the area but it’s also been a good way to learn outside of class.

He said, “It’s just fun being out here as a class and it’s been more of a bonding experience.”





## BRANNEN

from page 1

previously planned.

"Traditionally we have a rather large drop in numbers from fall to spring, so based on being able to anticipate how many we were going to have compared to how many we had in previous years, we had sufficient space that we could still assign everybody and still have Brannen offline," said Coleman.

At the conclusion of the current semester, the Physical Plant will do an analysis on the building and begin minor reservations to prepare it for the occupancy of another department.

Hawkins said that there are currently no plans to construct another residence hall to make up for the lost spaces from the closing of Brannen Hall.

"Every space that we've got throughout our other eight residence halls can absorb all of those students that are living in Brannen to go to other spaces," said Hawkins.

Current residents of Brannen have been notified of the closing and will be given the opportunity to request to stay with their current roommates or be assigned new ones. They will also be able to select the residence hall they wish to be assigned.

Hawkins said that university

housing can't guarantee residents that they will receive the assignments that they request, but they will try to assign them to their desired residency.

Regardless of which residence hall the current Brannen residents are assigned to, they will still only be charged the current Brannen Hall rate.

"We're going to try and work with them as much as possible to get them a space where they would like and no matter where they live, they will only be liable to pay the rate that they would have paid in Brannen Hall," said Hawkins.

While many students have the perception that Brannen is an undesirable residence hall to be housed in due the traditional dormitory style and the absence of cable television, it tends to be one of the strongest communities among all university housing.

"Believe it or not, not having cable TV forces them to go out of their room. They have the lobbies, they go knock on doors. The doors tend to be open a lot more," said Coleman.

"Even our surveys show that Brannen Hall has one of the strongest communities. Again we attribute that to the double-loaded corridors and the community bathrooms that are there," said Hawkins.

Briana Pitts, freshman biology major and current Brannen resident,

said she is upset with the decision to close the residence hall at the conclusion of the semester.

"I think it's wrong. We knew they were going to close it at the end of the school year, but a lot of people actually come to hang out at Brannen. We actually had a girl who was actually living at Centennial and now she's living at Brannen, and we all love it and we all hang out here so we're all just all very sad," Pitts said.

Christian Wilson, also a freshman biology major and Brannen resident, said that he does not support the decision because it is an inconvenience to the residents.

"I feel like it's very inconvenient at the moment. I've gotten settled, I'm very familiar with the people I'm around, and I've gotten accustomed to my setting. While it may be the most efficient way to handle the situation, I still feel like in a way it's going to affect us negatively," Wilson said.

Other students support the decision to shut down the residence hall because of its condition and the fact that it lacks many of the features many of the newer residence halls possess.

Robert Bosshardt, junior biology major said, "It's probably for the best. I've been there a couple times and it looks pretty old and rundown. It was probably about time it needs to be replaced."

### STATEMENT OF OPERATIONS

The George-Anne is the official student newspaper of Georgia Southern University, owned and operated by GSU students using facilities provided by the university. The newspaper is the oldest continuously published newspaper in Bulloch County. The newspaper is a designated public forum for the Georgia Southern community. The newspaper is published twice weekly, on Tuesdays and Thursdays, during most of the academic year. Any questions regarding content should be directed to the student editor by phone at 912.478.5246 or at [gaeditor@georgiasouthern.edu](mailto:gaeditor@georgiasouthern.edu).

Mail subscriptions are not available at this time. Readers may access the newspaper and its archives at [www.gadaily.com](http://www.gadaily.com).

**ADVERTISING:** The newspaper accepts advertising as a community service to help defray publication costs. Inquiries should be directed to ADS or PAGES by calling 912.478.5418 or 912.478-0566. Fax any questions to 912.478.7113 or e-mail [ads1@georgiasouthern.edu](mailto:ads1@georgiasouthern.edu).

The George-Anne receives additional support, in part, from the Student Activities Budget Committee.

The deadline for reserving space and submitting advertising copy is noon, one week prior to the intended publication date. For more information, rate cards, sample publications, contact the advertising manager or student media director.

The advertiser is responsible for any errors in advertisements and its liability for adjustments is limited to the amount of space the error occupied in

the ad. Further, the newspaper is not responsible for any damages caused due to an ad's omission from a particular edition and its responsibility solely is to reschedule the ad in the next regular edition at the regular advertising rates.

**STUDENTS BEWARE:** The George-Anne screens all advertisements prior to publication. The newspaper strives to accept ads for legitimate products and services only. Students are urged to exercise caution when replying to ads-particularly those which require a credit card number, other personal information, or money in advance of the delivery of a product or service. Students are also urged to report to the newspaper any suspicious offers which they might see in an ad. Remember, if an offer seems too good to be true, it probably is.

**PUBLICATION INFORMATION:** The newspaper is printed by Signature Offset in Jacksonville, Fla.

**NOTICE:** Readers may pick up one free copy, and a second for a roommate or acquaintance, at distribution sites. Additional copies are 50 cents each and are available at the Williams Center. Unauthorized removal of additional copies from a distribution site constitutes theft under Georgia law, a misdemeanor offense punishable by a fine and/or jail time. Editors will seek to have any person(s) who removes more than the authorized number of copies from distribution sites prosecuted to the full extent of the law.

For more information about the newspaper, please call the Student Media office at 912.478.7459.

## HAUNTED

from page 1

Freshman pre-nursing major Shanice Hester and freshman pre-med major Danielle Sharp are

planning to go to the forest for the first time together.

They both said they have high expectations for the haunted forest.

"I think it sounds interesting, and anything haunted I'll go," Hester said. "I hope there are lots of scary things

popping out, and I hope it's not childish."

"I've never been to a haunted 'forest, per se," said Sharp. "I've only been to haunted houses, so I'm pretty interested to walk through a haunted forest."

### Correction:

If you spot an error or something that needs clarification, send an e-mail to Kelsey Decker at [gaeditor@georgiasouthern.edu](mailto:gaeditor@georgiasouthern.edu)



The Sir Shop  
Statesboro Mall  
912.764.6924



## SUBMISSION OF LETTERS TO THE EDITOR

The George-Anne welcomes letters to the editor, story submissions and guest columns. All copy submitted should be 350 words or less, typed, and sent via e-mail in Microsoft Word format to [gaeditor@georgiasouthern.edu](mailto:gaeditor@georgiasouthern.edu). All submissions must be signed and include phone number for verification. GSU students should include their academic major, year and hometown. The editors reserve the right to reject any submission and edit submissions for length.

## Our View

## From home to office space

Soon Brannen will be joining the ranks of its fellow fallen residence halls in that it will no longer be a home to incoming students in the coming years. Though the accommodations in Brannen are that of a humble means, it has provided that one essential thing that every freshman needs: a place they can call home.

For several years, the residential hall has withstood the tests of time and the antics of the college students cycling through over the years. And now the very essences of the building is changing. It started as a dorm, and with a change in policy became a residential hall, but the function it once served prevailed. However, our university is now changing it from a home to an office.

So what is the big deal? Think about all the traditions we as Georgia Southern are so proud of, but yet we are willing to allow a building which has served students for nearly 50 years to be forgotten amongst the many different buildings already used for office space. At least Johnson, Winburn and Ollif were given a proper burial, not a makeover.

Though from an economic standpoint, it does make sense to utilize an already existing building instead of building a new one. But isn't there a severe need for housing as it is? Will we be able to house all the freshmen enrolling in the next few years, or will this prove to be a mistake?

Though it might not be as hi-tech as Centennial Place or as spacious as the newer buildings, Brannen has done its job with the utmost loyalty to its residents. To see it go will truly be a day which those who love GSU will remember and will feel the slight twinge of regret.



Marcus Barkley/STAFF

## Restoring sanity through comedy

With the “Rally to Restore Sanity” and the “March to Keep Fear Alive” approaching, it appears as though comedy is the new medium for news.

John Stewart of “The Daily Show” and Stephen Colbert of “The Colbert Report,” Comedy Central’s top news satirists, have ushered in a new era of news. After all, the court jester spoke truth to the king and lived because he made him laugh.

These two men have cornered the market of satirical news reporting and have shown they can stand two to two with the big boys of news. And why not? It appears today that the news itself can often be a joke.

News companies such as FOX parade around with the mottos “Fair and Balanced” even though one will be hard pressed to find a single news-savvy person who did not know that FOX leans — ever so slightly — to the right.

However, despite the charade of news FOX presents to the world, they are the uncontested king of media television. Rupert Murdoch’s media slant has dazzled conservative American audiences with decisive reporting, flashy graphics and a firm



**Brock Vickers** is a senior theatre and journalism major from Alma, Ga.

stance on how people should be thinking.

Luckily, with comedians Stewart and Colbert heading the helm of news spoof of men, and other pranksters such as “The

Yes Men” turning the news on itself with deep well planned hoaxes, people are hopefully becoming more aware that the people who are “presenting” the news often have an agenda as well.

Now that more people turn to television rather than print for their news, we must become more mindful of the topics we are being presented. There was a time in American media history where the infamous news tycoon William Randolph Hurst cornered the market with yellow journalism.

News stories were fabricated, wars created and honest news sources driven into the ground because he figured out a more

entertaining way to present news.

No one can be in both Washington and Statesboro, meaning no one can know every decision the government makes as well as be up to date when the next operation “Rolling Thunder” is coming back through.

People must rely on others to keep them up to date and on target about what is going on in the world. When that bond is broken, that idea of what a person is telling me is true, is severed—by the news—then who is to say that everything we think we know is not just a lie?

We are in an information age the likes has never be seen. The internet connects every facet of day-to-day life instantly and news travels as fast as the latest blog, but there is a reason why hard news sources, such as the New York Times and Washington Post, will always have be a credible “print” source. It is because they are the foundation.

Thank Stewart and Colbert for keeping humor alive, and reminding everyone to not just listen — but challenge what he hears. As the Comedian said from Watchman, “It’s all a [explicative] joke.”

## THE GEORGE-ANNE STAFF

<b>Executive Editor</b>	Victoria Evans	<b>News Editor</b>	Kelsey Sorrell
<b>Editor-in-Chief</b>	Kelsey Decker	<b>Asst. News Editor</b>	Nikki Wiley
<b>Managing Editor</b>	Quenton Smith	<b>Sports Editor</b>	Rick Spurgeon
<b>Features Editor</b>	Mallory McLendon	<b>Asst. Sports Editor</b>	Latrice Williams

**Police Beat**  
Patrick Stoker  
**City Beat**  
Stephen Rhodes  
**SGA Beat**  
Kelley Norman  
**Diversity Beat**  
Colleen McNally  
**Cartoonist**  
Marcus Barkley  
**Feature Reporter**  
Smith Holloway

**Sports Reporters**  
Derrek Asberry, Scott Carpenter,  
Derek Hardge  
**Columnists**  
John DiPietro  
Charles Feagain  
**Photo Editor**  
John Jeziorski  
**Photographers**  
Noele Crooks, Kelysha McCoy-Denis,  
Russell Hamilton, Deborah Inskeep,  
Blair Martin, Andrew Partain, Nick Pavlichek

*Opinions expressed herein are those of the student writers and editors and DO NOT necessarily reflect those of the faculty, staff or administration of GSU, the Student Media Advisory Board or the University System of Georgia.*



# 7 Days, 7 Reasons

Broad choices voters face this election

As Republicans continue to ride a wave of liberal apathy, big donors and Tea Party patriots, here are seven myths the conservative narrative continues to put on repeat.

## 1) President Obama tripled the deficit.

Reality: Bush's last budget had a \$1.416 trillion deficit. Obama's first budget reduced that to \$1.29 trillion.

President Obama essentially inherited an already staggering deficit from former President Bush and increased the deficit by a relatively small margin in order to revive the economy.

Just for laughs, this report comes from the Cato Institute, a traditionally conservative think tank.

## 2) President Obama raised taxes, which hurt the economy.

Reality: Obama cut taxes. Forty percent of the "stimulus" was wasted on tax cuts which only create debt, which is why it was so much less effective than it could have been.

Tax cuts have gone to around 97 percent of Americans outside of those in the top tax bracket.

## 3) President Obama bailed out the banks.

Reality: The bank bailouts were requested by President Bush and his Treasury Secretary, former Goldman Sachs CEO Henry Paulson.

The bailouts passed and began before the 2008 election of President Obama.

## 4) The stimulus didn't work.

Reality: The stimulus worked, but was not enough.

In fact, according to the Congressional Budget Office, the stimulus raised employment by between 1.4 million and 3.3 million jobs.

## 5) Businesses will hire if they get tax cuts.

Reality: Any business hires the amount of employees needed to satisfy a demand. Additional



**Charles Feagain** is a senior sociology major from Detroit, Mich. He is a staff columnist for The George-Anne.

tax cuts may not cause a business to hire more workers.

Increased demand for their product will force any employer to expand and employ more personnel.

## 6) Health care reform costs \$1 trillion.

Reality: The health care reform does cost \$1 trillion, however

with cuts to Medicare and other legislative remedies, the health care reform reduces government deficits by \$138 billion over the next nine years.

## 7) Government spending takes money out of the economy.

Reality: Overwhelmingly the money the federal and state governments spend directly or indirectly benefits taxpayers.

Governments build or repair infrastructure like roads (Interstate 95), bridges like Spaghetti Junction in downtown Atlanta, airports (like Hartsfield-Jackson Atlanta), and ports like the proposed \$350 million dredge project at the Savannah Port.

If anything government spending puts additional money into the economy in a direction that openly benefits us all.

This election will define the next two years of our generation. The next seven days are an opportunity for you to do three things: Read, Think and Vote.

Read as much as you can about candidates on your ballot. Think about what your own views are.

Maybe you are pro-education, anti-abortion, or a green solution junkie.

Whatever your niche is, find it, and then VOTE! If you do not vote, you have no right to complain.

# Failure to calculate

Say what you will about the Drudge Reports politics or policies, you can't deny that the site is effective at getting news out to the people. Its no-frills design, coupled with an auto-refreshing feature, help get all sorts of stories to its readers with minimum effort.

But the real advantage comes from the fact that it doesn't report its own news (usually – once in a while they'll break a story first, and Matt will write up his own "Flash"), but that it links to dozens of other news sites – some of which wouldn't come up to someone who goes only to the "big" sources like national papers or websites. So it manages to capture stories like how Nevada has hit 15-percent unemployment from the Las Vegas Review Journal (which I never heard of before).

The significance of the otherwise local story is emphasized by what it means for the Senate race out there, where Harry Reid, the Senate Majority Leader, is hanging onto his Senate seat by a thread. It also points out a big flaw in Democratic policy these past few years – despite claiming that its policies would create jobs, they can't even make



**John DiPietro** is a senior political science major from John's Creek, Ga. He is a staff columnist for The George-Anne.

them in a Democratic leader's home state. This, of course, raises the question: Where in the world did all the money we spend on bailouts go?

Of course, Democrats will try and say that

two years isn't long enough to get stuff done like reinvigorate the economy. But this comes along with doublespeak from Reid himself, who personally claims that he has saved the world from depression with his actions. And yet, his home state languishes with the worst unemployment in the country.

So, which story is right?

The truth is, if the Democrats hadn't been too busy making promises that they weren't ready or able to keep, I'm not sure we'd be in as deep a mess right now. It's happened to the Republicans, too – both parties promise us the world

and expect us to Lichtenstein. But in the Democrats case, they attempted to follow up their promises by spending and spending and spending, thinking that if you throw enough money at a problem, it will go away. However, just as happens in a campaign, it doesn't matter how much money you have if you don't know how and where to spend it effectively. Donald Trump could run a campaign with his entire fortune and not win because he spent it all on billboards in Wyoming.

The same has held true for the Democrats – they have spent billions of dollars. If even a quarter of what they spent actually had gone to creating minimum wage jobs that were actually sustainable, it could have dramatically cut unemployment. Instead, the money's vanished, but the unemployment numbers haven't. And yet there stands Reid, claiming to have averted a depression around the world, despite the fact that his own state is closer to the Great Depression than should be allowable.

So what do we do? Keep trying the same old same old? Sorry, but I think it's time to try a different path.



# Letter to the editor:

## GSU Tobacco Policy

Dear Editor,

At the meeting of the Faculty Senate on October 19, it was reported that members of the Staff Council had attended a Student Government Association meeting and presented their proposal to make GSU's campus wholly tobacco-free; I do not recall in that report a note that the SGA had signed on to the proposal, but I could be wrong because The George-Anne of October 21 reports that those two organizations are moving this proposal together. Whoever is backing it, I oppose it.

In 1994, I was a member of the Faculty Senate committee that recommended our current policy that bans smoking inside campus buildings. We – smokers and non-smokers alike – based our recommendations on evidence that second-hand smoke in enclosed spaces can have harmful effects on non-smokers. We – though none of us were tobacco chewers – declined to recommend (the suggestion had been made) that we ban such items as chewing tobacco from all buildings because we could not conjure any reasonable circumstances in which such tobacco use constituted a hazard to others.

Three points need to be recognized about what we did: One, we based our recommendations on evidence. Two, we made the recommendations based on principle, not self-interest or personal prejudice. And three, we believed then, as I believe now, that this University should infringe on personal liberties as little as possible, consistent with fulfilling our mission as a University and safeguarding members of the campus community from harm inflicted by others.

The proposal being floated by the Staff Council does not reflect any of these points that guided that 1994 committee. On the issue of evidence, a September 28, 2009, article by Jacob Weisberg in Newsweek notes that “there's no evidence that outdoor secondhand smoke does harm.” But this proposal seeks to infringe on people's rights despite this lack of evidence. Further, the proposal seeks to infantilize the adults who make up the University community: It presumes to impose a set of one group's likes and dislikes on others because it's “for their own good.” The proposed policy would have the University treat the adults of the University community the way elementary schools treat children. This should not be acceptable at any place that pretends to the title of University.

One very disturbing factor here is that it appears the Staff Council, despite the fact that their proposal has not been adopted – that is, not recommended by the Faculty Senate and approved by the President – are moving ahead on their own as though it has become University policy. On Newton Building, signs have been put up that state “This is a tobacco-free and smoke-free facility.” “Tobacco-free” is not part of University policy, which our Human Resources site correctly states in full as “Smoking is prohibited in all campus buildings. In addition, the sale and distribution of tobacco products is not permitted.” In August, I emailed Staff Council member Paul Michaud and asked about this discrepancy. Rather than writing back to me, he phoned and laughed it off; as I recall – I, of course, have no documentation of this because he phoned rather than replying to my email in kind – he joked that they were just getting a head start. The signs stayed up. Just a few minutes ago, as I was writing this, a new one of the signs was being put up. Despite my email to Mr. Michaud, it still makes the same erroneous statement, following the Human Resources signage manual, which says (equally erroneously) “The Georgia Southern University policy is that all Buildings are tobacco free,” and shows a sample sign saying “This is a Tobacco-Free Facility.” I should also note that while the GSU Employee Handbook repeats the real policy, it seems someone didn't think that was good enough and added “it is our policy to discourage tobacco use.” Apparently some people are just making up University policy on their own.

I first became aware of the Staff Council's proposal in 2009, and they became aware that I opposed it. They graciously offered to meet with me to discuss it, and so in January 2010 I met with America Minc, Paul Michaud, and some other Staff Council members (I apologize for not being able to recall their names). In that meeting, there was little if any attempted rebuttal of the fact that there is no evidence that outdoor smoking, or chewing tobacco use anywhere, poses a health threat to non-tobacco users. They did, however, offer some specific, arguably non-paternalistic and non-infantilizing reasons for their proposal, none of which, even on a cursory appraisal, holds water:

1. They charged that some staff members take smoke breaks outside of the breaks that all staff take. They affirmed that breaks and their timing already are a matter of existing policy. I asked, if there is a problem, why are the already-in-place policies not enforced? And if current policies are not being enforced, why would adding even more policies have any effect? They did not answer either question.

2. They charged that some staff members are smoking while operating machinery. This is already prohibited by work-safety policies. Again, if current policies are not being enforced, how

could any reasonable person think that adding even more policies will have any effect? They provided no answer.

3. They claimed that a recent fire in a physical plant building had been caused by a staff member smoking in the building. Smoking in buildings is already prohibited for various safety reasons. So ditto re: my response to the previous two so-called reasons. So ditto their lack of an answer.

4. They expressed concern that clean-up crews have to deal with spit-cups left by tobacco-chewers, which are nasty and (they stated) potentially toxic. Well, there are all sorts of nasty and potentially toxic items that our clean-up crews deal with (for example, in toilets) and they are trained and equipped to do so safely (or should be). They could not, by the way, offer any solid idea of the scale of this supposed problem beyond the observation that it seems fraternities have a lot of tobacco-chewing members. (NOTE: This was the only quasi-arguable reason presented for the inclusion of chewing tobacco in their proposal.) (ANOTHER NOTE: Really, a question: Do GSU employees clean fraternity houses???)

5. They charged that cigarette butts are a major source of litter. I questioned whether the volume of cigarette litter would unfavorably compare with the volume of other sorts of litter, such as food packaging. There was further comment that cigarette filters biodegrade slowly. On slow or non-existent biodegradability, the first things to look into banning should be Styrofoam (which never returns to the elements) or chewing gum: Even recently laid bricks on campus look like they've got the pox, covered as they are by blackened, seemingly permanent concretized gum. But whatever the litter source, I assume we already have policies and/or laws regarding littering. Were these already-existing policies enforced, this point would be even more of a non-issue than it already is.

6. They were concerned that, outside, someone may be downwind of a smoker, and therefore affected. I suggested that people so affected might want to move out of that downwind position, or they might ask the smoker to move, depending on the circumstances. Such interactions should not be too difficult to manage; I believe they're of the sort covered in the curricula of most kindergartens.

You will have noted that a common feature of several of the items discussed in this meeting is the issue of existing policies not being enforced. We never got around to the question of how this proposed policy would be enforced, but on this subject The George-Anne article quotes Ms. Minc: “It will mostly be self-governing. Across the country, numerous institutions have gone tobacco-free and most all have had success with a positive approach of education, awareness and creating a respectful culture on campus. There are some universities who take the punitive approach and give citations, but that is not what we are recommending.” This is much less than clear. What does “mostly self-governing” mean? How, exactly, is it to be enforced?

In this context, what do “education” and “awareness” cover? Are folks on campus supposed to make smokers aware that they're smoking? Are they supposed to somehow confront tobacco-users? Tell them about the ban? Maybe lecture them on the hazards of tobacco use? How will this policy that disrespects individual rights, and perhaps invites people to get in each other's faces, help in “creating a respectful culture on campus”? What I can see happening is a lot of confrontations, and at the least a lot of ill-will being generated – and that's if we're lucky.

The George-Anne reports the reactions of five students. Only one of the five, I assume a non-smoker, is in favor of the proposal. Another, identified as a smoker, is not in favor: “It's ridiculous. I'm not going around blowing smoke in people's faces. I always smoke away from everybody and put my butts in the trash can.” A third is a non-smoker who doesn't have a problem with smokers, but apparently doesn't care if the ban becomes policy or not because he personally won't be affected. (I think he would benefit from a bit of Ms. Minc's proposed education, in his case regarding his “I'm alright, Jack” attitude opening the door to infringements on his rights in areas that do personally affect him.) Two other non-smokers, though, who consider things besides their own immediate self-interests, disagree with the proposed ban, one calling it “wrong to deny [people] the right to smoke on campus.”

If those five are representative, there is little student support for this paternalistic, infantilizing proposal. Perhaps the reason for this lack of support is that outdoor use of tobacco poses no material problem for non-users, certainly none that poses a health threat to non-users. GSU should not adopt policies that unnecessarily infringe on people's rights and treat adults like children. This proposal should be thrown out – in a proper receptacle – with the rest of the trash.

Dr. Marc D. Cyr  
Associate professor



## Eagle Entertainment to host free mini golf, Halloween costume contest at Hacker's

Jessica DENNIS  
guest writer

Eagle Entertainment will provide Georgia Southern students with a free mini golf night and Halloween costume contest at Hacker's Golf Park where the winner will receive a trip to New York.

"The reason we're doing a mini golf night is because we've done it before and students have really enjoyed it," said Sarah Sullivan, the publicity coordinator at Eagle Entertainment.

"It sounds like a fun time. There's probably going to be nothing to do that Sunday night, so it's a nice way to get out and have fun," said Courtney Venegas, a junior education major.

Sullivan said the voting will be done online through Facebook.

In order for a student to enter the contest, not only does he have to show up to free mini golf night at Hacker's, but he must also become a "fan" of Eagle Entertainment on Facebook in order for his votes to count.

This includes those who are in the contest

and those who are just voting.

"It's not just us evaluating how the costumes look," said Sullivan.

The person with the most "likes" on Facebook for his picture will be the winner. Eagle Entertainment will take pictures at the event and upload them to the Eagle Entertainment Facebook page.

In the event of a tie, the organization will ultimately decide based on the creativity and the uniqueness of the costumes.

"We thought it would be a good way to get people out on Halloween. It's free golf, and there's a costume contest where they can win a trip to New York during the holidays," said Sullivan.

Matthew Auge, a junior mathematics major, said, "I'm definitely interested. A free trip to New York would be cool. I mean, all you have to do is dress up and you have a chance to win. It's a win-win situation. Plus you get to play put-put for free."

The Mini-Golf and Costume Party will be on Sunday, Oct. 31, from 7-10 p.m.

## New Mile Markers Club at GSU attempts to 'travel to next level,' expand cultural horizons

Victoria SEWARD  
guest writer

The Mile Markers Club is brand new to Georgia Southern this semester and according to the club motto, is "traveling to the next level" by expanding students' cultural horizons across the U.S.

The club takes one major trip and two smaller trips per semester, which are determined by members. Students can join for a fee of \$20, which includes an MMC T-shirt.

Sara Slaback, the organization's president, and Kristin Ludke, the vice-president, started the group.

"We've just always loved to take random road trips and thought it would be fun to involve more people," said Slaback.

The group's first trip to St. Augustine includes a scavenger hunt and ghost tour; the tour and hotel are free of charge for paying members.

Although they said they are excited about this trip, they eventually want to take students

farther than Florida.

"Our ultimate goal is to have everything free for members," said Ludke.

To do this, MMC will be hosting a benefit concert on Nov. 11 at the RAC Bandshell, which will include T-shirts and food to help raise funds for the club.

Many students said they are excited to have MMC here because they feel it is a great chance to meet new people and see new states.

Senior John deVallette said, "This sounds like a great opportunity for underclassmen that have more time to travel during the school year."

Junior Caroline Parrish said it is a great chance to travel and meet new people.

"California would be great because there is great surf and so many fun things to do," she said.

For students who are interested in joining, the club meets every first and third Tuesday of every month in the Russell Union at 5:30 p.m. MMC members can also be contacted on Facebook or by e-mail.

# Up 'til Dawn®

Unite to Fight Childhood Cancer

## Letter Writing Event

### RAC Pavilion

Free:  
Food | Drinks | Games | Music

## 6 PM - 10 PM



## TROY MARSH, PC

THE MARSH LAW FIRM

**WHAT: FREE LEGAL HELP**

**WHERE: ROOM 2112 CENTENNIAL PLACE**

**WHEN: EVERY TUESDAY 3:00-5:00 PM**

**CALL (912) 764-7388 FOR APPOINTMENT**

**www.MARSHLAW1.com**  
**(877) 627-7452**  
**RATED EXCELLENT**  
**www.avvo.com**



SPONSORED BY STUDENT GOVERNMENT ASSOCIATION  
YOUR STUDENT ACTIVITY FEES AT WORK.





Mark your calendars! On Sunday, November 7 from 6 p.m. -9 p.m., CRI is hosting Sunday Funday. Don't know what Sunday Funday is?

Well, remember sharks and minnows? How about Marco polo? Or racing from one side of the pool to the other? Basically, all those nostalgic games you played as a child in the pool?

Sunday Funday is your chance to relive all those childhood memories! It is a night created especially for your inner child — a night for you to just jump in the pool, act silly, and experience some old fashioned childhood fun.

## GSU women's rugby

Georgia Southern's women's rugby team is at it again, beating the Kennesaw State University women 51-7 on Oct. 7, 2010. This was a friendly match during GSU's social season with some surprising twists.

The GSU ladies took this opportunity to test out different strategies. Non-matrix/social season is a smart time to try out new combinations and put out feelers for ruggers who are capable of playing multiple positions. GSU mixed up their front row three times without using substitutions, swapping around players already on the field. GSU women's rugby did not just win most of the line-outs in this match; they won every single one of them! These ladies definitely earned bragging rights in this match, as this is a remarkable feat for any rugby team.



However, these were not the only astounding occurrences in this particular match. Not only were the line-outs a complete success and the pack got to test their limits, GSU women's rugby team played a traditional 80 minutes match in a rather untraditional manner. Not only did the front row not use any subs, the entire match was played without a single substitution on the part of GSU. An even greater achievement, the GSU gals played 20 minutes of the 80 minute match short a player. Even during this time, where KSU maintained the usual 15 players, Georgia Southern was not scored upon and truthfully, did not miss a step.

Also, the Georgia Southern ladies were honored with the presence of one of their own alumni, Aubrey Janousek. She proved she still has what it takes to be a GSU rugger, scoring the very first try for Georgia Southern within the first few minutes of the match. Coming into a team that has been working and bonding together all season, she fit right in, declaring herself a GSU Women's Rugby alumni through her skill and passion for play.

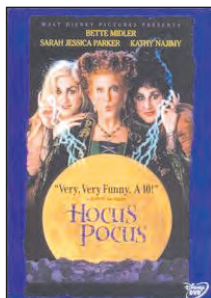
Deciding to join in the fun, Kimberly Knipe, along with her undisputedly undefeated line-outs, scored a try as well, and Lauren Hodges, the rookie that has, within a few weeks, already proven her incredible speed and ball carrying skills, outdid herself in the match against Kennesaw, scoring three tries! Lauren also kicked the conversions in this match, adding to the scoreboard even further. Even with so many individual ruggers on the team that stand out, GSU women's rugby shines it's brightest when working together as a team. Thanks to the combined efforts of these ladies and the supporting field play performed by their teammates, the final score of this match was GSU-51, KSU-7.

There are only two more matches left in these women's social season schedule: Georgia Southern's annual "Prom on the Pitch" against USF on Oct. 23 and an alumni match set for Nov. 5. Both will be played at the RAC fields, and both will present more of the barrier-breaking capabilities of this unstoppable GSU women's rugby team. It is truly the year of the Georgia Southern Women's Rugby team!

### This week at CRI

#### TONIGHT:

- Spin and a Movie. Showing Disney's Hocus Pocus



#### Tomorrow:

- \$10 off massage
- Inner Tube
- Water Polo Free Play from 7:30-10 p.m.

#### Thursday, Oct. 28:

- Bouldering Night Out, 7 p.m.

#### Friday, Oct. 29:

- Iron Eagle Challenge

#### Saturday, October 30:

- Southern Sprint for Wellness,

#### Monday, Nov. 1:

- CRI Job Fair ends
- Intro to Climbing Clinic from 8-10 p.m.

## Bouldering Night Out



What do you get when you mix climbing, costumes, ad candy? Well, this Thursday's bouldering Night, out of course!

This time around Bouldering Night Out will be a Halloween edition complete with a candy collecting competition. Competitors will be awarded candy of varying weight depending on the difficulty of the route they climb. The winner of Bouldering Night Out is the person whose candy bag weighs the most at the end of the night. The competition begins at 7 p.m. Don't forget to wear your best costume!





Southern Sprint for Wellness is THIS SATURDAY, Oct. 30, at 8 a.m. If you have not already signed up, there is still time! Registration is \$20. Student registration is \$10 with an Eagle ID.

Race day registration and packet pickup will be at the RAC at the following times:

- Friday, Oct. 29, 4-8 p.m.
- Saturday, Oct. 30, 6-7:45 a.m.



## Champion Team of the Week

The men's flag football team, Nick's Raiders.

## University Wellness Program's LiveWell Fair



On Wednesday, Oct. 20, the University Wellness Program held its annual LiveWell Fair, which hosted over 30 vendors representing all seven dimensions of wellness (physical, social, spiritual, occupational, intellectual, emotional, and environmental). Those who attended the fair engaged in various activities that represented the dimensions. CRI even set up a green screen in support of social wellness. Visitors were able to choose from backgrounds that included Times Square, Paulson Stadium, the Eiffel Tower, a Haunted House, and the Serengeti. Pictures were then uploaded to the CRI Facebook Page (Search: Campus Recreation and Intramurals).

Photos courtesy of CRI



## Week Nine Intramural Scores

### INDOOR SOCCER

#### Co-Rec

Parabens 0, The Haymakers 4  
Silly Bands! 4, Hermaphrodites 16  
Lady Bugs 6, Ladies and Gentlemen 2  
Team Me 21, Band of Gypsies 1  
Screw U Guys IGH! 12, Grenade Bait 2  
The Grande Johnsons 6, The EV BelIEvers 8  
Dynamo Athletic 0, The Street Pickles 7  
The Rooneys 5, Strawberry Cough 0  
Chameleons 0, Bad News Brews 10  
CP Don't Bring STVC 1, French Toast Mafia 7  
RUFIn It 7, Southern Adventures 10  
Don't Go Jason Waterfalls 3, Bullet Proof Tigers 7  
Our Kicks Don't Lie 7, Sacks and Racks 13

#### Men's

Delta Tau Delta 5, Delta Chi3  
Kappa Alpha Psi 3, Tau Kappa Epsilon 8  
Delta Sigma Phi 9, Sigma Phi Epsilon 3  
Pi Kappa Alpha 5, Sigma Nu 4  
Red Stain Revival 7, FC Honduras 6  
G-Country Squad 4, My Couch POBID 9  
Northern Adventures 4, TREOS 6  
The Foreigners 3, Strikers FC 2  
The Didiers 4, Mike Ann Death Walkers 5  
The Team TIGTBU 5, Would Have DCBSIP 0  
Hasbenz 7, Scrubs 5

### VOLLEYBALL

#### Co-Rec

Puke -N- Rally 0 (9-10), Sloppy Sets 2 (25-25)  
Spartans 0 (22-17), Ninja Turtles 2 (25-25)  
Bump It NDI 2 (25-25), New R. Value 0 (15-13)  
Back TAU 2 (25-25), Spiker Unlimited 0 (22-12)  
Symbiosis 2 (25-25), Over The Net 0 (16-14)  
The Outlaws 2 (25-25), Roll Tide 0

#### Men's

Delta Tau Delta 0 (15-23), Pi Kappa Alpha 2 (25-25)  
Delta Force 2.0 2 (23-25-15), RED 1 (25-21-7)  
Dinking Is For.....2 (25-25), DG4L 0 (14-9)  
The Bearkats 0 (14-19), Dig Us! 2 (25-25)

#### Women's

Brink 0 (0-0), Spike Girls 2(10-10)  
Alpha Delta Pi 2 (25-25), Sets in The City 0 (22-21)  
Zeta Tau Alpha 2 (25-25), The Haymakers 0 (8-13)  
Blaze 2 (25-25), S\*M\*A\*S\*H 0 (19-23)

TD's Galore 13, Centennial Place 18

### FLAG FOOTBALL

#### Co-Rec

We Shine 0, Tuff Draw Co-Rec 40  
West Coast Productions 12, Tomahawks 0  
Ashley Schaeffer BMW 6, One Smoove Squad 35  
Rump Raiders 0, Dolls & Balls 50  
The Sofa Kings 6, TDMP 12  
TD's Galore 13, Centennial Place 18

Your Mother 16, 4 River Phenoms 11  
Couch Potatoes 25, Southern Assassins 0  
Sacks & Racks 21, Balls Deep 6  
Big ROOG 16, Dougy 15  
Eagle Entertainment 13, T and D's 19  
Victorious-Secret CR 25, Wheels of Tranquility 0  
Goin Deep 0, The Haymakers 47

#### Men's

Delta Sigma Phi 19, Tau Kappa Epsilon 0  
Sigma Chi 19, Sigma Nu 0  
Kappa Sigma 0, Alpha Tau Omega 25  
Sigma Phi Epsilon 13, Delta Tau Delta 0  
Pi Kappa Phi 12, Kappa Alpha Order 15  
Pi Kappa Alpha 35, Delta Chi 0  
Showtime 0, Nuff-SAID 20  
Team Jody 27, The Connect 6  
Dem Boyz 13, Hasbenz 7  
Squad Up 15, The Replacements 6

#### Women's

Alpha Omicron Pi 0, Kappa Delta 20  
Zeta Tau Alpha 0, Alpha Delta Pi 8  
Phi Mu 18, Kappa Kappa Gamma 13  
RUF Girls 19, Tight Ends 0  
Da Squad 13, The Hitlist (Ready) 6  
Project Runway 6, Higher Groundz 13  
Fancy Feet 34, Back that Pass Up 0  
O Phi A 25, Bhadd Guriz 32  
BCM Victorious Secret 19, Lipstick Lovers 0  
No Punt Intended 6, Pines HER-ikanes 7



# Job hunting in the holiday season

Courtesy of Monster hotjobs

In just a few short weeks, the holiday season will be in full swing--so now is a great time to pick up seasonal work.

Here are some tips on how to plan effectively and where to look for holiday jobs:

Create a job-hunting plan Heather Huhman, founder and president of Come Recommended, suggests getting your plan of attack ready before you apply for anything. "Get organized for your job hunt," she says.

A first step is making a list of places where you'd like to work, complete with their locations.

Start searching and applying After compiling your list of potential employers, get hunting.

"Set aside a certain time each day for different job-hunting strategies," says Huhman.

Techniques for finding holiday work include "job boards, company websites, networking, and social media sites," she says.

Another great way to find holiday jobs is to hit the malls. "Retail stores usually hire extra holiday help," says Reed Abboud.

Retail not your thing?

"You may be able to find a seasonal type

of role as a gift wrapper, photographer or photographer's assistant, or greeter--or even playing Santa, Mrs. Claus, or an elf," she says.

Ask around and network "Job seekers can use the holidays as a time to offer an extra hand at an organization and make connections," says Huhman.

Use social events like holiday parties to your advantage by networking effectively.

"Make a point to meet new people and get your 'elevator pitch' ready for these opportunities," says Huhman.

No parties or social events in your horizon? "Set up your own mini-business in your neighborhood," suggests Sharon Reed Abboud, the author of "All Moms Work: Short-Term Career Strategies for Long-Range Success."

"Offer services like gift wrapping, holiday decorating, or pet sitting to your neighbors," she says.

Try temping. "Many businesses may need extra help around the holidays since their employees may be taking extra time off," says Reed Abboud.

She suggests that you "contact a few local temp agencies and find out what types of temporary positions are available."

For each opportunity that comes up,



Huhman recommends "creating tailored resumes and cover letters" for employers to better illustrate why you would be the best person for the job.

"The holidays are a great time to pump up your job search," says Huhman. Start your search now to find the best seasonal jobs available in your area.

## Eagle Career Net/NACElink

The #1 Job Resource Site on Campus

- ♦ Find Full-Time, Internship, and Co-Op positions
- ♦ Post your Resume & have it e-mailed to employers
- ♦ Sign-Up for On-Campus Interviews
- ♦ See companies registered for Career Fairs
- ♦ View & RSVP for workshops & information sessions
- ♦ Connect with an Alumni Career Mentor

To access visit the Office of Career Service website at [www.georgiasouthern.edu/career](http://www.georgiasouthern.edu/career). Visit us on campus in the Williams Center to learn how this online portal can help you find your dream career!

Your Student Technology Fees at Work!



Brought to you by the Office of Career Services • Williams Center • 912.478.5197

## HOT JOBS COOL Internships

Job Title: <b>Coach for Kids/Coach Across America Internship</b> Company: Wellness in the Schools	<b>Deadline to apply: Nov 15, 2010</b>
Job Title: <b>City Year Americorps Member</b> Company: City Year Greater Philadelphia	<b>Deadline to apply: Nov 15, 2010</b>
Job Title: <b>Graduate Assistant</b> Company: Office of Career Services	<b>Deadline to apply: Nov 1, 2010</b>
Job Title: <b>Commodity Analyst</b> Company: Allstate Insurance Company	<b>Deadline to apply: Dec 11, 2010</b>
Job Title: <b>Developer/Consultant</b> Company: Meridian Technologies, Inc.	<b>Deadline to apply: Nov 11, 2010</b>
Job Title: <b>MES Automation Consultant (Intern &amp; FT)</b> Company: Responsive Automation	<b>Deadline to apply: Nov 11, 2010</b>

To view the detailed job description above, to sign up for companies interviewing on-campus, or to search and apply for other internships, co-ops or full-time positions please log into the Eagle Career Net/NACElink system found at [www.georgiasouthern.edu/career](http://www.georgiasouthern.edu/career).

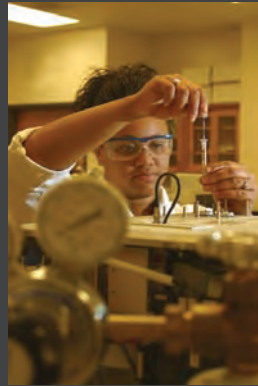
If you have any questions or need assistance with Eagle Career Net/NACElink, please contact Career Services at 912-478-5197.



# CAREER SERVICES

11  
Oct 26  
2010

## Graduate School Fair 2010



**Wednesday, November 10, 2010 | 9:00 AM to 1:00 PM | Russell Union Ballroom**

*To view registered schools log into Eagle Career Net at [www.georgiasouthern.edu/career](http://www.georgiasouthern.edu/career)*

**Brought to you by the Office of Career Services | 1047 Williams Center | 912.478.5197**

## Network on Campus

You need to start now creating the network you will rely on when you begin job searching, if you have not already started.

As the saying goes, "It is all about who you know."

While experience and education are also vitally important, who you know can still be the ticket to the next step in your career. An employer receives multiple resumes, sometimes hundreds. Seeing a familiar name or even better, a familiar face, can make you stand out amongst the crowd.

There are multiple channels that are available for networking and the more the better. First and foremost, the people you know the best are your family. Your family knows your strengths and your weaknesses. Their recommendation to their peers can sometimes be the most powerful.

Get to know professionals that your parents, grandparents, cousins, etc. may have in their own network. They may not be in your field but they can still help you develop relationships with companies and assist you in receiving practice in preparation for interviews, job searching and other professional development.

The next closest network, and sometimes closer if the student is away from home, is your friends or your peers. Join student organizations and participate in them with as much as you can give comfortably. Yet, do not overbear yourself. Be dedicated to one or two

organizations and excel in those to receive leadership opportunities.

Joining professional organizations can help you receive contacts that are already in the professional world and with students who are also interested in a similar career. Get to know the leaders or officers of those organizations. For every one person you add to your network, you also add their network as well.

Professors do not only teach. They are part of a community that is constantly learning and many professors are participating in professional organizations and projects. Faculty may know people in the company or industry that you are seeking employment. Your professor may be the head of a local company or part of a board that could be helpful to you.

There are even more channels to network such as LinkedIn, Facebook and Twitter. Meeting professionals online can get you a job.

If not, it can at least expose you to information on how you can find opportunities in your field. Sites like LinkedIn are simply created just for professionals to „link with people in their network.

Start now. Get involved, get online, and start meeting people. Professionals, families or students, there is no such thing as too many people in your network.

Written by:

Amy Dietrich

PR Intern for Career Services

**Don't be a Waldo.**

Make it **easier** for employers to **find you**.

## Eagle Expo Career Fair

Wednesday, October 27, 2010

10 a.m. to 2 p.m.

@ the RAC



- Find internships, co-ops, and full-time jobs
- Open to ALL majors
- Utilize the GSU transit system
- Business attire is required
- Bring plenty resumes







Photos courtesy of Rebecca Flaherty

## 'Cos Fan Tutte' on GSU stage

Matthew LANE  
guest writer

This weekend, the Georgia Southern Opera will be showing one of Mozart's works for all students to attend, free of charge.

Director Arikka Gregory has composed a quirky opera filled with comedy and presented in original Italian. The title of the play, "Cosi Fan Tutte," is also in Italian and translates to "All women are like that."

The story of "Cosi Fan Tutte" will catch the interest of both guys and girls on and off campus.

It begins with two soldiers talking about their sweethearts. They continue to speak on how loyal their girlfriends are and would never cheat on them with another man.

One of their friends overhears this conversation and makes a bet: that within one day, their sweethearts will fall for another man because like

"all" other women, they are fickle.

And as the play moves on, the audience watches as these two men test their lovers, seeing how loyal they really are when they are tested by temptation.

Graduate assistant of the vocal arts area Rebecca Flaherty plays one of the sisters in the show.

"When I first heard the story, I was upset about it," she said, "but then I realized that Mozart was playing a joke, poking fun at people who take love way too seriously."

However, depending on which day you see the show, you might miss seeing Rebecca as she takes the stage. Arikka Gregory has put together two sets of casts, and depending on which night you see "Cosi Fan Tutte" will decide whether you see the cast with Rebecca playing one of the principal characters, or the one featuring the other equally talented group of actors.

Richard Mercier is conducting the Georgia Southern Symphony with music by Mozart.

"GSU should be proud to have such a wonderful opera program," Flaherty said. "And I love Mozart."

When asked if there is anything else she would like the audience to know she said, "I want people to know this isn't for snobby people. The story written for 'real' people and everyone should give it a try, even [if] you may not be a fan of operas."

Other actors are excited about this show as well. Liz Zettler, who will be playing the character Fiordiligi, said she is amazed how a story written so long ago is still relevant to this point in time.

The premiere showing is this Thursday at 7:30 PM. Tickets cost \$10 for general admission, and \$5 for children, \$7 if you are GSU faculty or staff. You can buy them at the door, online at [www.etix.com](http://www.etix.com) or by calling the PAC Box Office 912-478-7999.

## An uplifting and inspiring keynote by Cleland

Dominic PRICE  
guest writer

An audience of young and old welcomed former Georgia Senator Max Cleland to the 2010 Georgia Literary Festival Saturday.

The former senator lost both legs and an arm from a grenade explosion in the Vietnam War. During the festival, he spoke to the audience about his experience as a writer.

"The first major I declared, they told me I did not have enough math. On the fourth day of orientation, I chose to become an English major, and on the

fifth, they put me remedial English," said Cleland.

He explained his own struggles and used them to encourage perseverance in other authors.

"If you are struggling with writing then think of me," he said while lifting his left arm.

The crowd erupted with applause at the end of his speech, and many collectively complimented and thanked him.

Doris Davenport, writer, poet and associate professor of Albany State University, said, "It was truly inspiring when he discussed learning the five-paragraph essay format. His whole persona is uplifting; it is wonderful to be inspired by someone

you know."

Cleland said he only writes to carve his experiences in life and to make some sense of it all.

"I could really relate when he said, 'I write to find clarity in my life,'" said Nicole Williams, who attended the festival.

Cleland is the author of four books in which he uses his experiences to motivate individuals. Although he does not write to be read, he is more than happy to share his thoughts to those that will listen. Appointed by Barack Obama in 2009, Max Cleland now serves as secretary for the American Battle Monuments Commission.

## The Buzz List

News from outside the Boro

▲ 'Hereafter' gets a pretty sad 51% on [rottentomatoes.com](http://rottentomatoes.com). I was kind of expecting this one to be good because my man Clint Eastwood was directing. What ever happened to good supernatural movies? Oh yeah, they don't exist. Sad.

▲ Kanye West released his 30-minute music video called 'The Runaway,' starring lingerie model Selita Ebanks. I got bored five minutes in. Sorry Kanye, it was unimpressive, but nice grill. Wait. Those are now your legitimate teeth.

▲ PTC is slapping the 'pedophilia' label on 'Glee' after a photo spread printed in a popular adult magazine. In 'Glee's' defence, the actresses aren't under aged. But in PTC's defence, they play high schoolers and are probably sending the wrong message to our youth. Well, I don't know about this one, guys.

▲ Sony is stopping all production of its cassette-based Walkman Friday... Why have they still been making them? Seems like business would be kind of slow.

▲ Comedy Central has picked up the pilot for a new 'Waiting' series based of the 2005 movie starring Ryan Reynolds, Anna Faris and Justin Long. Of course, it will probably lose all of its dry humor and thoughtful message. But, I guess if it's Ryan Reynolds, I'll watch it anyway.

Information compiled from  
[TheHollywoodReporter.com](http://TheHollywoodReporter.com),  
[Variety.com](http://Variety.com) and [Billboard.com](http://Billboard.com)

Commentary provided by Mallory McLendon

# Calendar

## October

**Today 26** ■ **Behind the Image**  
Where: Center for Art & Theatre  
When: All Day

■ **Spin and a Movie**  
Where: RAC  
When: 7-8 p.m.

**Wednesday 27** ■ **SAVE 2nd BASE**  
Where: RU 2041  
When: 7-9 p.m.

■ **Inner Tube Water Polo Free Play**  
Where: RAC  
When: 7:30-10 p.m.

**Thursday 28** ■ **Japanese Story Teller**  
Where: RU Rotunda  
When: 11 a.m.-2 p.m.

■ **Bouldering Night Out**  
Where: RAC  
When: 7-10 p.m.

**Friday 29** ■ **Iron Eagle Challenge**  
Where: RAC  
When: All Day

■ **Cosi Fan Tutte**  
Where: PAC  
When: 7:30 p.m.

■ **Rocky Horror Picture Show**  
Where: RU Ballroom  
When: 10-11:30 p.m.

**Saturday 30** ■ **Southern Sprint for Wellness**  
Where: RAC  
When: 8-10 a.m.

**Sunday 31** ■ **Rhythm & Brews Tickets**  
Where: Botanical Garden  
When: All Day until Nov. 3

## November

**Monday 1** ■ **"Strange Days"**  
Where: RU Theatre  
When: 7:15 p.m.

AVERITT CENTER FOR THE ARTS PRESENTS



# THE ROCKY HORROR PICTURE SHOW LIVE

DIRECTED BY Eddie Key

9PM Thursday, October 28, 2010

Emma Kelly Theater

Doors open at 8pm

Pre-Show Performance by LEER

\$5 PER PERSON BAGS PROVIDED

YOUTH UNDER THE AGE OF 17 MUST BE ACCOMPANIED BY AN ADULT

TICKETS  
OR

912-212-2787

*Emma Kelly* THEATER BOX OFFICE

33 EAST MAIN STREET, DOWNTOWN STATESBORO

VISIT US ONLINE  
FRIEND US ON FACEBOOK

www.AverittCenterForTheArts.org  
facebook.com/averittcenter

**AVERITT CENTER**  
FOR THE ARTS



## Events this Week:

10/26 - Unplugged  
7:00 pm @ RU Starbucks

10/27 - Pumpkin Carving  
6:00 pm @ RU Commons

10/31 - Mini Golf and Costume Contest  
6:00 pm @ Hackers Golf Park

WIN A FREE TRIP TO NYC WITH EE!



www.EagleEntertainment.org

Your Student Activity Fees at Work

## George-Anne & Joe

Come and jump start your morning with a cup of Joe and a George-Anne in hand.

Starting @ 7:30am, every Thursday at the Gazebo between the Union and the Library.



Sponsored by

**Latte Da**  
COFFEE CAFE

721 S. Main Street  
(912) 681-3285





14

Oct. 26,  
2010

Got something to sell?  
Visit Gdaily.com to post a  
classified ad. It's free for  
students and faculty!

## TIMEWASTERS & COMICS

# CLASSIFIEDS

Announcements  
100 - 199

140 Other Announcements

SAVE MONEY: BUY 16 POUNDS OF ICE FOR \$1.50. LAST LONGER THAN ANY OTHER ON THE MARKET. STOP BY AT CLYDES CONVENIENCE STORE, HIGHWAY 67 AT INTERSECTION OF VETRANS PARKWAY AND HWY 67, IN FRONT OF COMFORT INN AND LOCS RESTRANANT AND BAR. CALL 912-660-0501 OR WWWTHEICE-SHACK.BIZ

Employment & Job Services  
300 - 399

!BARTENDERS WANTED! \$250 a day Potential. No Experience Necessary. Training Provided. Age 18+ OK Call 1-800-965-6520 ext 296

Housing & Real Estate  
400 - 499

480 Sub Leases

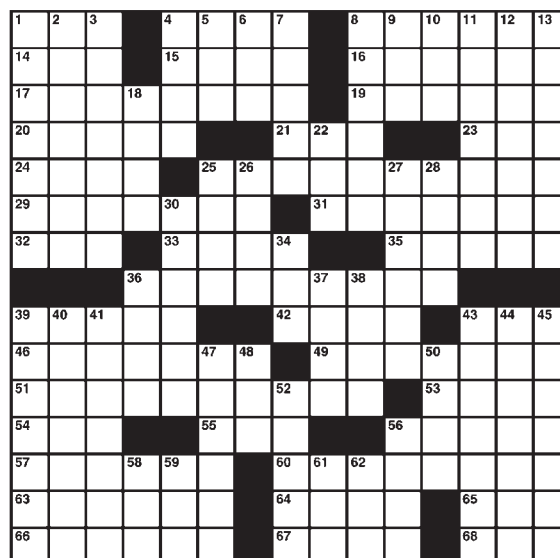
1 bedroom available in a 4 bedroom/2 bathroom house beginning in January. Lease is through July 2011, and rent is \$350 per month. Pet friendly. Contact Kellen for more information (770) 265 6275.

### Los Angeles Times Daily Crossword Puzzle

Edited by Rich Norris and Joyce Lewis

#### ACROSS

- 1 See 4-Across
- 4 With 1-Across, fix à la MacGyver
- 8 "Bovary"
- 14 Suffix with stamp
- 15 "Lonely Boy" singer
- 16 Hypothetical primate
- 17 "Vicious Circle" stand-up guy
- 19 Explosion sound
- 20 Spiral-shelled mollusk
- 21 Uncover, in verse
- 23 River inlet
- 24 Whit or bit
- 25 Stand-up guy who played Tobias Fünke on "Arrested Development"
- 29 Carpenter's fastener
- 31 Regis and Kelly, e.g.
- 32 Big initials in nutritional supplements
- 33 Hot day coolers
- 35 Clear the chalkboard
- 36 Stand-up guy with his own sitcom, 1995-2004
- 39 Horrendous
- 42 NYSE debuts
- 43 Enzyme suffix
- 46 Predicting a market decline
- 49 Husky, e.g.
- 51 Stand-up guy with multiple "SNL" personas
- 53 Start from scratch
- 54 The Trojans of the Pac-10
- 55 Luggage-screening gp.
- 56 Lama
- 57 Platitude
- 60 "Superman" publisher, and this puzzle's title
- 63 Little laugh
- 64 Large-scale work
- 65 Rebellious Turner
- 66 Iraqi neighbor
- 67 Loser to paper and winner over scissors
- 68 USN rank



By Meredith Ito

10/12/10

#### DOWN

- 1 Joe Louis Arena hockey player
- 2 Pocatello resident
- 3 Like some fingerprints
- 4 Tire-changing aid
- 5 Game with Draw Two cards
- 6 "King Kong" studio
- 7 Comedian Smirnoff
- 8 Just about manage
- 9 Therapists' org.
- 10 Society newcomer
- 11 Loving, to Luisa
- 12 "Little Red Book" adherents
- 13 How stadium crowds move
- 18 Mideast carrier
- 22 Photo
- 25 "Bro!"
- 26 From the start
- 27 Word preceding a 22-Down
- 28 Golfer Sabbatini
- 30 Marinara clove
- 34 Lab subj.
- 36 Commercial battery prefix with "cell"

#### Monday's Puzzle Solved



(c)2010 Tribune Media Services, Inc.

10/12/10

- 37 Semicircular recess
- 38 -poly
- 39 Kidnaps
- 40 Potter's friend Ron
- 41 More decorative
- 43 "Sweet" girl in a barbershop song
- 44 Recycled item
- 45 Ones with I-strain?
- 47 Glossy fabric
- 48 Noon and midnight: Abbr.
- 50 Wee weight
- 52 Skywalker's nemesis
- 56 Pier
- 58 Tai
- 59 "Isn't riot?!" "Funny guy!"
- 61 Naval noncom: Abbr.
- 62 Pres. title

# SUDOKU

THE SAMURAI OF PUZZLES By The Mepham Group

			8	9				7
				4	7			
	2	8						
4	3				2			9
		1			3	6		
6			1				7	
						9	3	
			4	5				
5				2	9			1



### WONDERMARK BY DAVID MALKI!

go for it at WONDERMARK.COM



1	8	4	6	2	3	9	7	5
9	2	7	8	5	4	3	1	6
5	3	6	9	1	7	4	8	2
3	7	5	4	8	1	2	6	9
2	4	9	3	7	6	1	5	8
6	1	8	2	9	5	7	3	4
4	6	1	5	3	9	8	2	7
8	5	3	7	4	2	6	9	1
7	9	2	1	6	8	5	4	3



## Quick Hits

▲ Volleyball had two players announced as Players of the Week for the SoCon. Nicole Jeschelnik earned Freshman of the Week and Kate Van Dyke was named the Offensive Player of the Week. They led the Eagles over Appalachian State, Davidson and Western Carolina this past weekend. After three matches on the road, GSU returns home to play host to Furman in its annual Dig Pink match on Thursday, Oct. 28, at 6 p.m.

▲ Football sophomore Brent Russell's play this year as a nose tackle for the Eagles defense has placed him on the Buck Buchanan Award Watch List. The award identifies the Football Championship Subdivision's outstanding defensive player.

▲ Women's soccer dropped a 3-0 decision this past Sunday afternoon to Southern Conference foe Samford at Eagle Soccer Field for the Senior Day game. The Eagles conclude regular season play welcoming Davidson on Thursday, Oct. 28, at 4 p.m.

▲ Women's tennis finished play at the USTA/ITA Southeast Regional Championships this past Friday and Saturday. The tournament was held at the Dan Magill Tennis Complex on the UGA campus. The singles and doubles competitors were forced into the back draw consolation bracket. Georgia Southern closes out fall tournament action at the Kennesaw State Invitational, Oct. 29-31.

▲ Swimming and diving swept the double-dual meet as it played host to Coastal Collegiate Swimming Association for College of Charleston and NAIA member SCAD at the RAC. The Eagles defeated COC 128-99, and SCAD 139-73, to go 4-1 on the season. GSU travels to the Highlander Invitational on Thursday, Nov. 18.

## Equestrians receive silver



John Jeziorski/STAFF

Freshman Sarah Gottschalk riding Castle, in Open Equitation Over Fences.

Kelsey SORRELL  
news editor

The Georgia Southern Equestrian Team hosted its first hunt seat horse show of the season Saturday, tying with College of Charleston for second place behind Savannah College of Art and Design's first-place win.

The team's coach, Eleanor Ellis, said she felt very strong showing at home after GSU tied with COC.

"We have great depth in some divisions and are weaker in numbers in others; not weaker in ability," she said. "Points are accumulated by individual riders and by the chosen point riders for each team. But the other riders from a team not chosen as a point rider act as defensive positions and block others from scoring points on us. That is where we need more numbers."

The point riders who win first through sixth place receive a variation of points that go toward the team's total for that day. The team with the most points wins the competition.

"I am very proud of our WTC [Walk, Trot, Canter] rider Katie Gray. She won her class to give the team seven points. Our walk trot rider, Kayla Metheny, won her first walk trot class to give the team another seven points," Ellis said.

She said that the team had a strong returning team member roster for this show and therefore was only able to show three freshmen due to

seniority.

"[The freshmen] exceeded my expectations and brought home a total of 14 team points," she said.

One freshman rider, Sarah Gottschalk, a biology major, got second place in both the Open Equitation over Fences and the Open Equitation on the Flat classes — the two most advanced classes.

She said she came to GSU for the team because her high school equestrian team — an independent team in Gainesville, Ga. — travelled to GSU for zones last year.

"I heard about the team through zones last year, we had it down here, and I really liked Eleanor," Gottschalk said.

She said she was expecting not to place in the first show Saturday, but did better than she expected.

"I feel good, I feel like I gave my efforts toward the team to help them out," she said. "I was nervous because I was like I don't want to not place and be the point rider when someone else could be here."

Junior nursing major, Emily Cox and president of the team said she has high expectations for the team.

"We want to win, we want to go to Nationals and win at Nationals," she said.

This year, Nationals will be held in Lexington, Ky.

Ellis said, "We have a very strong team this year. Historically we have taken several individuals to Nationals each year. We have started off great this year, with a second place finish. We are going to strive for a top team finish as well."

She said there are some challenges the team members must face this year in order to make it to Nationals.

"We compete in one of the strongest regions in the country. We have several top schools that are tough to beat. We need depth in all of our levels and we need riders to continue to excel," she said.

However, her overall expectations for the team are "to continue to work together and improve in our riding and to make it to post season as a team."

According to the GSUET website, the team competes through the Intercollegiate Horse Show Association in Region Three, Zone Five. The region includes schools such as COC, SCAD, GSU, Mercer University, Wesleyan University, Florida State University, University of Florida, Central Florida Community College, University of Central Florida and University of Miami.

The next horse show GSU will be attending is SCAD's on Halloween. The team will also be competing in a western show at Wesleyan on Nov. 6.





Blair Martin/STAFF

Members of the Bowling Club practice at Statesboro's new bowling alley.

# Bowling Club finally gets home

Natalie DEMARKO  
assignments editor

The opening of the Clubhouse at Hackers means a bit more to the Club Bowling Team than just a good time for a Friday night.

"The new facility is amazing," said Vice President Ryan Conover. He has been waiting three years for the Bowling Club to have something to help it progress; he is more than excited.

"It has been a long time coming and the wait was worth it," he said.

The club was able to communicate extremely well with the Hackers administrators when setting up times for practice. Last Sunday, the team had their first practice at 11 a.m.

"It means everything to the club. In the past few years, we went to college tournaments against the premier teams in the country with no practice and still held our own. Now that we can practice, who knows how good we will be

in coming years," said Conover.

Conover also explained that the GSU Bowling Club is a club for "all experience levels." Within that club, the officers draw out a traveling roster with the elite members to go to tournaments and compete and represent Georgia Southern.

"We are hoping to become a notable team in the country in the next year or two. Right now the talent level is really spread out but as soon as we get top heavy with talent, we should be a

force to reckon with. We try to get to as many tournaments as we can a year with the budget we are allotted," said Conover.

President Josh Ross said he encourages anyone interested to feel free to contact [georgiasouthernbowl@gmail.com](mailto:georgiasouthernbowl@gmail.com) at any time regarding the club or to request information.

"I think the new facilities are state of the art and will undoubtedly help the club to grow and prosper tremendously throughout the upcoming years," said Ross.

# Eagles, led by freshman, blank The Citadel

Latrice WILLIAMS  
staff writer  
from gadaily.com

The Georgia Southern Eagles picked up their second conference victory with a shutout over The Citadel Bulldogs, 20-0. It was an epic game for the Eagles as they broke the school record for fumbles forced in a game and tied the record for fumbles recovered in a game.

Freshman quarterback Jerick McKinnon broke Adrian Peterson's record for the most carries in a game with 35.

The Bulldogs would throw three interceptions and commit six fumbles. With the win, the Eagles now lead the series 16-4.

The Bulldogs started off a little rusty with a fumble on the kickoff return, but would recover. They began their drive from the 15 and took small strides down the field, but they fumbled

on 2nd down and senior outside linebacker EJ Webb recovered it for the Eagles.

Shortly after the Eagle offense took over, quarterback Jaybo Shaw suffered an injury, giving McKinnon an opportunity to lead GSU.

McKinnon felt the pressure from the Bulldog defense, causing the Eagles to settle for a field goal. GSU led 3-0 at the bottom of the first quarter.

The Bulldogs would fumble again on their next drive which was recovered by cornerback Michael Butler.

Fullback Robert Brown got back into the driver's seat with a three-yard touchdown run. Brown sat out for two games after suffering an injury, but the freshman didn't seem to have lost any of his momentum.

On the Eagles next possession, McKinnon picked up a nice gain of 28 yards for the Eagles but failed to make it into the end zone. GSU

would have to settle for another field goal.

Midway through the second quarter, the Bulldogs would fumble yet again, making it their 4th fumble in less than two quarters. Nose tackle Brent Russell recovered the fumble but the Eagle offense couldn't score on The Citadel defense. Adrian Mora's kick was wide right, but the Eagles would maintain a thirteen point lead.

GSU came out of the half with a three and out. The Citadel would fumble again for the fifth time and defensive end Dion Dubose was there with the recovery.

The Eagles would finally find some momentum as McKinnon picked up some big yardage and would eventually score on a three yard touchdown run. Just when it seemed as though the Bulldogs found some rhythm, defensive tackle Roderick Tinsley forced a fumble and Webb recovered it.

Unfortunately, the Eagles would not score. Instead of kicking a field goal, they opted to go for it on fourth down but failed to convert. The Citadel would throw another pick which landed right in the hands of cornerback Laron Scott and GSU was able to let the time expire.

Defense was the name of the game for the Eagles. The GSU defense was stingy and did not let up despite recovering six fumbles and picking off three balls.

On the offensive side, there were some struggles, but McKinnon played well considering the circumstances.

"Offensively, we could have done more but a win is a win. We had some great things to happen on our side of the ball. We did what it took to get the win," said McKinnon.

The Eagles will return to Paulson Stadium to face off against the Samford Bulldogs Saturday at 2 p.m.