

Georgia Southern University

Georgia Southern Commons

The George-Anne

5-27-2010

The George-Anne

Georgia Southern University

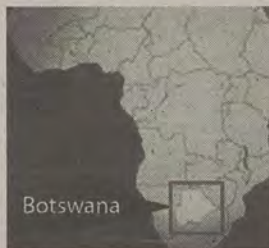
Follow this and additional works at: <https://digitalcommons.georgiasouthern.edu/george-anne>

Recommended Citation

Georgia Southern University, "The George-Anne" (2010). *The George-Anne*. 2177.
<https://digitalcommons.georgiasouthern.edu/george-anne/2177>

This newspaper is brought to you for free and open access by Georgia Southern Commons. It has been accepted for inclusion in The George-Anne by an authorized administrator of Georgia Southern Commons. For more information, please contact digitalcommons@georgiasouthern.edu.

FEATURES



Botswana

First-of-its-kind study abroad trip

Students head to Africa for new, enriching experiences

Page 6

SPORTS



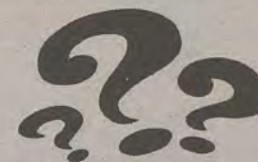
Eagle baseball heads to SoCon

Team finishes regular season with losses to The Citadel; still go to tournament

Page 8

www.gadaily.com

Where else should GSU offer a study abroad program?



Thursday, May 27, 2010
Volume 83 • Issue 8
Serving Georgia Southern
and Statesboro since 1927

THE GEORGE-ANNE

'Click It or Ticket' catches students with seat belts off



Kelsey Decker/STAFF

Sgt. Tracy Atkinson and Officer Tim Colman check a student's car on Plant Drive Tuesday as part of the statewide Click It or Ticket campaign. According to Atkinson, officers will be stationed at random points around campus until June 6 to make sure students are wearing seat belts and complying with other regulations. Tuesday, there were 39 seat belt violations, 10 window tint violations, two stop sign violations and one expired tag violation. Drivers should remember to wear a seat belt when traveling this Memorial Day weekend, as police will be especially watchful.

Student health fee to increase by \$2

Fee increase to support renovations, full-time position

Kelsey SORRELL • news editor

Health Services is raising the student health fee by \$2 for the fall 2010 semester.

Half of the fee will go toward Gary Noble, a staff physician and psychiatrist for the Counseling and Career Development Center, who will, as a result of the fee increase, be available to students full time in the fall.

"He has dealt with naval and marine personnel coming back from Afghanistan and Iraq that come through the Beaufort Naval Hospital, and they have real trauma related problems, so he's used to dealing with young people who have legitimate mental health problems," said Paul Ferguson, the director of health services. "He's a perfect fit for this age group and he's used to working with students of this age."

The second half of the fee will pay for internal renovations on the current health center in order to provide additional waiting areas and exam rooms for patients.

"We hope it will be a short-term renovation," said Ferguson. "The plan is to keep this facility running as long as we can until we build a new facility because we've simply outgrown this

Health fees per semester across the state

Georgia Southern University	\$86
Appalachian State University	\$118
Clemson University	\$131
East Carolina University	\$115
Georgia Tech University	\$148
Medical College of Georgia	\$143
University of South Carolina	\$153
University of Florida	\$157
University of Georgia	\$191

one, which was built for a population of 8,000 students. We'll have over 21,000 this fall."

Ferguson said that the new renovations will need to provide six more exam rooms at a minimum in order to manage the current patient flow of about 150 students per day.

He said that the master plan for the construction of the new health facility does not currently contain a location.

However, the existing health and counseling centers will be torn down and turned into green space after the construction of the new facilities.

See FEE Page 3



Finished? Recycle this newspaper!



Today 90|65 Partly Cloudy



Friday 92|65 Storms

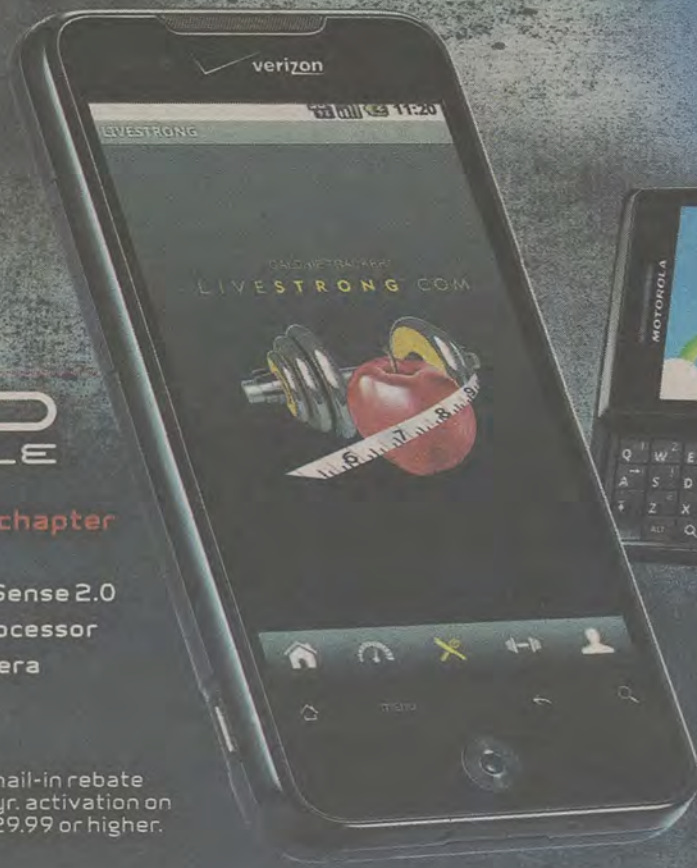
Contents

News	3	Features	6
Opinions	4	Classifieds	7
Police Beat	5	Sports	8

Newsroom 478-5246 www.gadaily.com
Business 478-5418 PO Box 8001
Fax 478-7113 Statesboro, GA 30460

LEAN, MEAN APP MACHINES.

Get an impressive deal on our most powerful,
app-friendly smartphones.



NEW!

DROID INCREDIBLE by HTC

Introducing the next chapter
in the Droid saga

- Android™ 2.1 and HTC Sense 2.0
- 1 GHz Snapdragon™ processor
- Professional 8 MP camera with auto-focus

\$199⁹⁹

\$299.99 2-yr. price - \$100 mail-in rebate debit card. Requires new 2-yr. activation on a voice plan with data pak \$29.99 or higher.



DROID by Motorola

- 16 GB microSD™ card pre-installed
- Brilliant 3.7" touch screen with full slide-out keyboard
- Android™ OS with Google™ Experience

**BUY 1 GET 1
FREE \$199⁹⁹**

\$299.99 2-yr. price - \$100 mail-in rebate debit card. Add'l phone: \$100 2-yr. price - \$100 mail-in rebate debit card. Requires new 2-yr. activation on a voice plan with data pak \$29.99 or higher per phone.

verizon | Google

1.800.2 JOIN IN | www.droiddoes.com/incredible

DROID DOES

Activation fee/line: \$35 (\$25 for secondary Family SharePlan® lines w/ 2-yr. Agmts).

IMPORTANT CONSUMER INFORMATION: Subject to Cust Agmt, Calling Plan, rebate form & credit approval. Up to \$350 early termination fee & other charges. Device capabilities: Add'l charges & conditions apply. Offers & coverage, varying by svc, not available everywhere. Network details & coverage maps at vzw.com. Rebate debit card takes up to 6 wks & expires in 12 months. While supplies last. Shipping charges may apply. All company names, trademarks, logos and copyrights not the property of Verizon Wireless are the property of their respective owners. DROID is a trademark of Lucasfilm Ltd. and its related companies. Used under license. Google and the Google logo are trademarks of Google, Inc. Incredible by HTC is a trademark of HTC Corporation. ©2010 Verizon Wireless. INCR

FRANKLIN

CHEVROLET - CADILLAC

PONTIAC - BUICK - GMC

912.764.6911 Our experienced Body Shop can fix all of the "Dents & Dings" that your vehicle may have!
We service all makes and models and accept all insurance claims, and will give you **FREE ESTIMATE** on your body & paint repair

GSU STUDENTS - Show your ID and receive **10% OFF** any purchase in Parts and Service



Check out our website
www.franklinchevrolet.com

CLEVE WHITE NISSAN

**YOU CAN'T
BEAT CLEVE!**



912.681.4700

SCHEDULE YOUR APPOINTMENTS AT
WWW.CLEVEWHITENISSAN.COM

M-F 8AM-6PM & SAT 9AM-12PM

- WE SERVICE ALL MAKES & MODELS
- COMPETITIVE PRICING
- LOCATED DIRECTLY ACROSS THE STREET FROM CAMPUS
- 10% OFF WITH STUDENT ID
- COMPLIMENTARY PICK-UP & DROP-OFF FROM CAMPUS
- FREE CAR WASH WITH EVERY SERVICE
- FREE CHECK ENGINE DIAGNOSTIC
- FREE ALIGNMENT CHECK
- TUESDAY LADIES DAY, ADDITIONAL 10% OFF

EAGLE OIL
SPECIAL CHANGE
10% OFF

STATEMENT OF OPERATIONS

The George-Anne is the official student newspaper of Georgia Southern University, owned and operated by GSU students using facilities provided by the university. The newspaper is the oldest continuously published newspaper in Bulloch County and Statesboro, Ga. The newspaper is a designated public forum for the Georgia Southern community. Opinions expressed herein are those of the student writers and editors and DO NOT necessarily reflect those of the faculty, staff or administration of GSU, the Student Media Advisory Board or the University System of Georgia. The newspaper is published twice weekly, on Tuesdays and Thursdays, during most of the academic year. Any questions regarding content should be directed to the student editor by phone at 912.478.5246 or at gaeditor@georgiasouthern.edu. Readers may access the newspaper and its archives at www.gadaily.com.

ADVERTISING: The newspaper accepts advertising as a community service to help defray publication costs. Inquiries should be directed to the ADS or PAGES, P.O. Box 8001, Georgia Southern University, or by calling 912.478.5418 or 912.478-0566. You can fax any questions to 912.478.7113 or e-mail ads1@georgiasouthern.edu.

DISTRIBUTION: The newspaper is distributed free to the community of GSU.

COLOPHONE: The newspaper is printed by The Statesboro Herald Publishing Co. in Statesboro, Ga. Body copy in The George-Anne is 10 point Minion Pro on 12 leading. Standard headline size is 40 point News Gothic MT. For more information about the newspaper, please call 912.478.7459, or e-mail the the director of student media at kcallaway@georgiasouthern.edu.

SUPPORT: The George-Anne is funded primarily through revenue from advertisements placed in the paper and receives additional support, in part, from the Student Activities Budget Committee.

STUDENTS BEWARE: The George-Anne screens all advertisements prior to publication. The magazine strives to accept ads for legitimate products and

services only. Students are urged to exercise caution when replying to ads-particularly those which require a credit card number, other personal information, or money in advance of the delivery of a product or service. Students are also urged to report to the newspaper any suspicious offers which they might see in an ad. Remember, if an offer seems too good to be true, it probably is.

DISPLAY AD DEADLINE: The deadline for reserving space and submitting advertising copy is Noon, one week prior to the intended publication date. For more information, rate cards, sample publications, contact the advertising manager or student media director.

PROOFING/ERRORS/OMISSIONS: The newspaper makes every reasonable effort to correct and complete information in advertisements. However the advertiser is responsible for any errors in advertisements and its liability for adjustments is limited to the amount of space the error occupied in the ad. Further, the newspaper is not responsible for any damages caused due to an ad's omission from a particular edition and its responsibility solely is to reschedule the ad in the next regular edition at the regular advertising rates.

CIRCULATION INFORMATION: Mail subscriptions are not available at this time. However, readers may visit our web site for free access to current and past issues. Visit www.gadaily.com to view online issues. The George-Anne is distributed free of charge on the Georgia Southern campus and surrounding areas.

NOTICE: Readers may pick up one free copy, and a second for a roommate or acquaintance, at distribution sites. Additional copies are 50 cents each and are available at the Williams Center. However, unauthorized removal of additional copies from a distribution site constitutes theft under Georgia law, a misdemeanor offense punishable by a fine and/or jail time. Editors will seek to have any person(s) who removes more than the authorized number of copies from distribution sites prosecuted to the full extent of the law.

FEE

from page 1

Ferguson said he strongly believes in students only paying for services from which they will benefit, such as the renovations on the current health center.

Therefore, students will not be charged for construction of the new facility until there is the possibility of them benefiting from it.

"The \$2 increase is an example of where the health fee is going to provide a benefit to all of the students here whether they use those services or not," he said.

Students can also benefit from the fact that Health Services just became a primary care provider in most of the national and regional health insurance plans in partnership with Highland Campus Health Group.

Ferguson said that with Health Services as a primary care provider, students can now receive services such as laboratory tests, X-rays, respiratory therapy, minor surgery and men's and women's health services without receiving additional fees.

"We decided that it was better for us and for the students and the parents if we did it the way we did it — that is, get into the insurance plans since the parents are already paying that premium and become a recognized provider so we can coordinate our care," he said.

GSU is currently the only school in Georgia that has a health program that is a network insurance provider. Therefore, GSU's health fee is comparatively lower than all of the other colleges and universities across the state, and is the only school in Georgia that does not have to charge additional fees per health service or per visit.

Our View

The importance of health

It is a fair assumption that with a growing student body, more health problems will arise.

But if Health Services was to administer a performance survey to the university's students, the results would undeniably be mixed.

One of the comments may be some patients' claims of being incorrectly diagnosed. This could be due to short intervals between patients, limited space or the increased demand for assistance.

Taking those causes under consideration, a valid conclusion is that GSU needs a new health facility. More students means more money, which should result in a newer, better facility and an

increase in available physicians to accommodate the students.

Larger, separate waiting rooms, shorter wait times, additional exam rooms and physicians and better waiting room entertainment are all needed improvements.

Yes, we are tired of watching unclear movies on TBS and archaic children movies. This is college. Let's have televisions reflect that.

The university is planning to build a new facility within five years, but health is never something that should be put on hold. There are budget cuts that need to be taken into consideration, of course, but a good health center should be vital to every university.

If this 'Erks' you, well, GOOD!

It seems the Georgia Southern student body just doesn't have a good grasp as to just what GSU football means. Sure, they are told about it in SOAR and in multiple other attempts that try to indoctrinate them with GSU traditions, but the pool of people who actually bleed blue and white seems to be diminishing.

Bleeding blue and white doesn't just mean you go to a football game, partake in some beverages and then leave at halftime when your team is down — especially at the Homecoming game against Furman this past season. It's not just any game; it's the Homecoming game against our rival. In past years, this would be blasphemy.

I've heard many reasons as to why the fire has died down. "The team hasn't won a National Championship since 2001." "They're not as good as they have been."

These have merit, but isn't a program with six national titles and two runners-up worth supporting? The pool of those who really embrace the history and the glory that comes with it seems to be dwindling. With the drastically increasing incoming classes, it isn't getting much better.

As I said, there are still those

select few people who remember or know what it was like. You can still see many of the Eagle faithful tailgating coveted parking spots at Paulson Stadium on game day.

They understand the importance of Beautiful Eagle Creek and what the water does when it's carried to opponents' stadiums. They recognize the homage given to Erk when the team comes out and touches the forehead on the bust of Coach Russell. They understand a humble program using yellow school buses for transportation.

With the 2010 football season right around the corner, it looks to be a better year for all those involved. The triple option, probably the biggest GSU football tradition, is finally returning to "the prettiest little stadium in America." The head coach bringing it back, Jeff Monken, comes from a pedigree for GSU football. Monken coached



Rick Spurgeon is a double political science and exercise science major. He is the sports editor of The George-Anne.

previously under Paul Johnson, who led GSU to our 2000/2001 repeat National Titles.

The Traditions Council also looks to be doing things to get our history out. And with someone like Dr. Keel, who is all about retaining that which makes our college what it is, there is hope yet.

I advocate bringing "Erk: Football, Fans, & Friends" back from out of print, which is something near and dear to my heart and other supporters of GSU.

This amazing autobiography describes Erk's beginnings in Alabama to his closing quote, "We're Georgia Southern. Our colors are blue and white. They call us the bald eagles and we call our offense the Georgia Power Company. (Our snap count is 'rate hike'.) We practice on the banks of 'Beautiful Eagle Creek' and that's in Statesboro, Georgia, the gnat capitol of America. Our weekends begin on Thursday. The coeds outnumber the men, three-to-two. They're all good-lookin' and they're all rich. Y'all come to see us."

If there isn't a better way to learn about traditions of the football program than from the perspective of the man who created most of them, what is?

THE GEORGE-ANNE

Phone: 912-478-5246

Summer 2010 Editorial Board

VICTORIA EVANS executive editor, student media
executive@georgiasouthern.edu

KELSEY DECKER editor-in-chief
gaeditor@georgiasouthern.edu

QUENTON SMITH managing editor
gamed@georgiasouthern.edu

KELSEY SORRELL news editor
ganews@georgiasouthern.edu

McALISTER'S
DELI

1100 Brampton Ave., Suite A
Statesboro, GA • (912) 681-3354

www.mcalistersdeli.com

WE ACCEPT THE EAGLE EXPRESS CARD

Choose
ANY
TWO!



- Half of ANY Sandwich, Wrap or Panini.
- Cup of ANY Soup or Chili.
- Half of ANY Salad.
- Half of ANY Spud.

\$5.99

POLICE BEAT

Sunday, May 2, 2010

▲ Officers assisted four motorists, responded to one motor vehicle accident and issued six traffic warnings, 11 parking citations and five traffic citations.

▲ A truck was reported damaged at the Landrum Center.

▲ A bicycle was found at Centennial Place and returned to the owner.

▲ A wallet was reported stolen from Centennial Place.

▲ A vehicle was towed from Henderson Library after being improperly parked in the drive for several days.

▲ Terrione Rashad Benefield, 23, Statesboro, was charged with DUI (refusal), open container, driving with a suspended license and excessive volume from radio.

▲ Steven Joseph Ranger, 21, Statesboro, was charged with driving with a suspended license and failure to obey a traffic control device.

Monday, May 3, 2010

▲ Officers issued three traffic citations, issued four traffic warnings and assisted six motorists.

▲ The hubcaps were taken from a vehicle at Eagle Village.

▲ A wallet was taken from a vehicle at Eagle Village.

▲ Jamal Deleon Calloway, 20, The Pointe at Southern, was charged with wanted person.

Tuesday, May 4, 2010

▲ Officers issued one traffic citation, issued two traffic warnings, assisted eight motorists, responded to one alarm and investigated two accidents.

▲ A cell phone was taken from the Recreation Activity Center.

▲ A bicycle was taken from the Forest Drive Building.

Wednesday, May 5, 2010

▲ Officers issued two traffic warnings and five traffic citations, assisted two motorists and one sick person, and responded to one motor vehicle accident and two alarms.

▲ Theft by taking of an ID was reported at the Landrum Center.

▲ A report of entering auto was made at Southern Pines.

▲ Josh William Hamby, 19, Kennedy Hall, was charged with underage possession of alcohol and obstruction of a law enforcement officer.

▲ David Allen Cooper, 23, Hawthorne II #45, was charged with DUI and open container while operating a vehicle.

▲ Jerome Anthony Davis, 21, Wadley, Ga., was charged with possession of a false ID and giving false identity to a law enforcement officer.

Correction: The last two dates of the police beat from Thursday, May 20 should read Friday, April 30, 2010 and Saturday, May 1, 2010.

TEXTBOOK BROKERS

Your Off Campus BookStore
Beats All Local Textbook Pricing



THIS IS WHAT WE DO

We Beat All Local Pricing on Textbooks !

We Will Deliver Your Textbooks To You !
no more waiting in long lines for books

We Have a 48 Hour, Lowest Price Guarantee !
local competitors

We Honor Your Financial Aid and Hope Scholarships !

We Buy Textbooks, Calculators, and Clickers Back All Year Long !

Check us out online or call for any questions. We will never be undersold by our local competitors!

We Deliver
Your TextBooks

We Are TEXTBOOK BROKERS

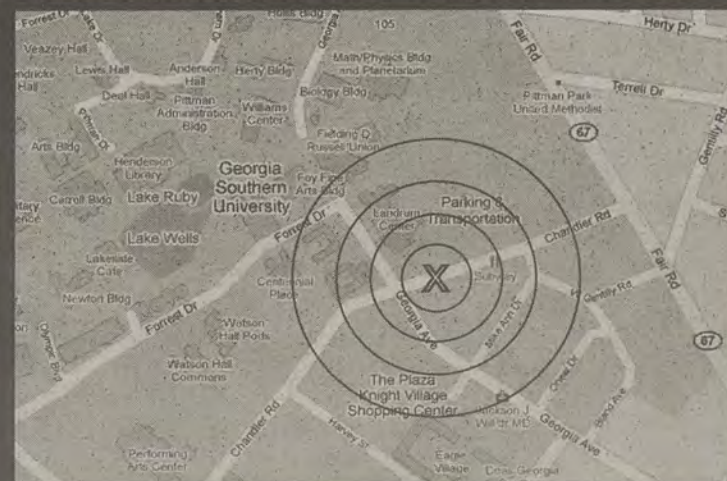
912-225-1400

www.textbookbrokers.com

1598 Chandler RD, Statesboro, GA 30458

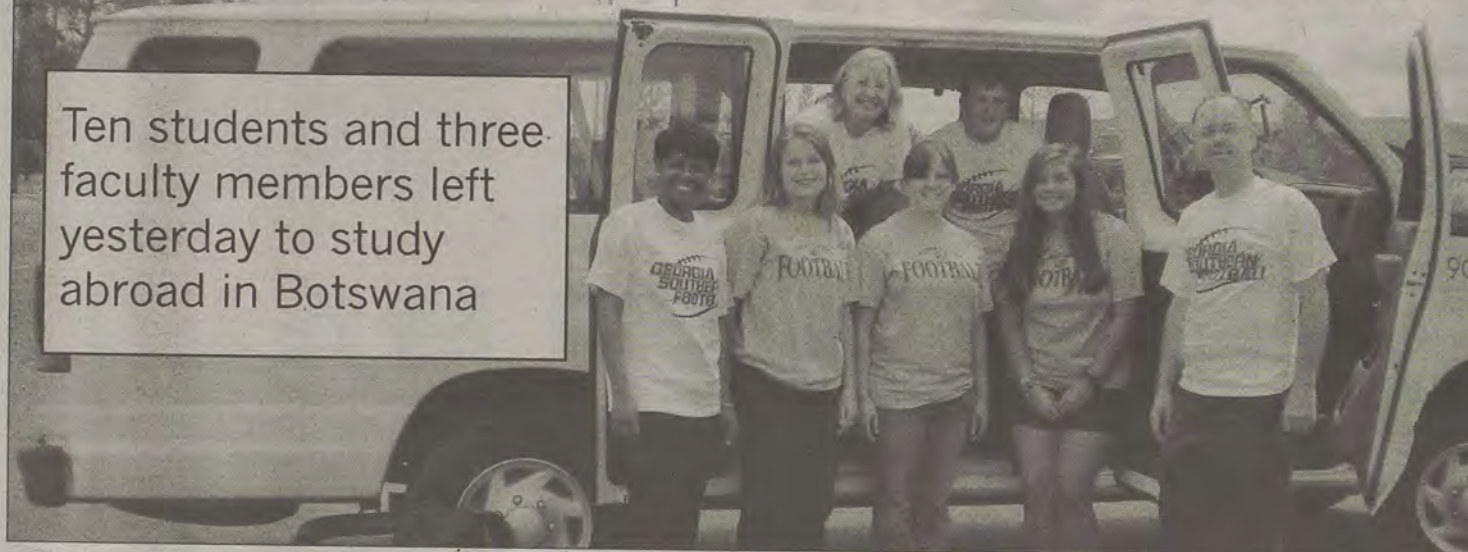
TEXTBOOK BROKERS

This is you standing on the corner
of Chandler & Georgia Ave.
We are just to your left
with the BLUE NEON SIGN!



Group embarks on African adventure

Ten students and three faculty members left yesterday to study abroad in Botswana



Kelsey Decker/STAFF

Submitted to The G-A

Ten students and three faculty members left yesterday for Georgia Southern's first study abroad experience in Botswana.

The students will help address global issues such as poverty and environmental sustainability through courses taught by GSU faculty on the University of Botswana campus and by working with the African non-profit organization Somarelang Tikologo.

"Our students will be learning various aspects of environmental health and economic development as they work alongside a local organization and the communities it serves, to develop or enhance community-based programs for health and sustainable development," said Simone Charles of the Jiann-Ping Hsu College

of Public Health, one of the professors making the trip. "It will enable them to view issues related to these fields of study through a global lens and understand how these issues unfold in a different nation."

The students will also take excursions to learn more about the people, culture and terrain of southern Africa.

The outings will include visits to neighboring communities, a safari at the Buffalo Ridge Safari Lodge in South Africa and a soccer game at the World Cup.

"Study abroad offers students an enriching experience that will stay with them the rest of their lives," said Donna Fisher, a professor in the School of Economic Development in the College of Business Administration. "They come back with an appreciation for the opportunities

available in the U.S., but more importantly they develop more tolerance and understanding of diverse cultures."

Botswana was selected as the site for GSU's first African study abroad program because the country is considered a model of peace and stability.

Once among the poorest nations in the world, Botswana has created one of the most dynamic economies in Africa through more than four decades of uninterrupted civilian leadership, progressive social policies and significant capital investment.

However, the country still faces challenges, such as having one of the world's highest known rates of HIV/AIDS infection.

During the trip, the students will post updates and photos at www.eaglesinafrica.blogspot.com.

The Buzz List

News from outside the Boro

▲ 'American Idol' suffers from lowest ratings since 2004, and now Simon Cowell is leaving at the end of season nine. Let's just hope the show bounces back, or my week is going to be empty and sad.

▲ 'Lost' ends its grand finale with top ratings Sunday night. But I still have absolutely no idea what happened.

▲ A Disney employee was arrested by the FBI for insider trading. So, Disney is made up of more than teenage pop-stars after all.

▲ 'Glee' has been renewed for a third season. No complaints.

▲ Ellen DeGeneres is launching her own record label. Oh, Ellen, I hope you know what you're doing...

Information compiled from TheHollywoodReporter.com, Variety.com and Billboard.com

Sarcasm provided by The George-Anne

PRIDE

Since 1975

35th Anniversary

POOLS • SPAS • HOT TUB RENTALS

Leisure Products, Inc.

www.pridepools.com

BACKYARD • FAMILY • FUN

912-739-2230



CLASSIFIEDS

TIMEWASTERS & COMICS

Got something to sell?
Visit Gdaily.com to post a
classified ad. It's free for
students and faculty!

7
May 27,
2010

Buy or Sell
200 - 299

260 Miscellaneous for Sale

2 Large Bean Bags For Sale! 8 feet in diameter.
Excellent Condition. \$250 each, price negotiable.
Call Shanna @ 404-406-5093

Housing & Real Estate
400 - 499

440 Real Estate for Sale

HOUSE FOR SALE: \$214,900
Available immediately upon closing. 3br/3 bath;
kitchen & breakfast nook; vaulted room, dining rm,
study, utility room, bonus room, two-car garage;
custom curtains and tile, tray ceilings, Corian counters;
2-level deck w/ grapes; beautiful landscaping,
auto. watering; .55 A lot borders on open space/golf
course. Approx. 12 minutes from GSU. 912-839-
4638 or KermitDr1319@yahoo.com.

470 Student Housing

Quiet, affordable 1+2 BR apts, duplexes, houses,
etc. NO PETS. Flexible leases. \$285-\$485/month.
Call Parker Realty at 912-764-5623.

3, 4, 5, 6 and 7 BR Houses Available August 1st.
Guaranteed 24 hr repairs. Call Dr. Hood at (912)
682-7468

Miscellaneous
900 - 999

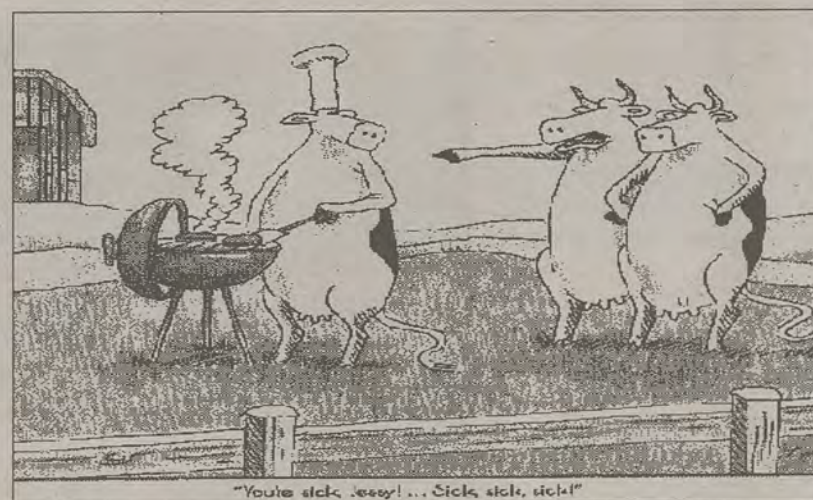
910 Pets & Pet Supplies

Lab Puppies. AKC Registered. 1 Chocolate \$400
and 6 black \$300. Has shots and parents on site.
Please Call Jeanine Carver at (912) 754-3065 or
(912) 663-4225

			2	6				
		7					6	
				3	4			1
							8	5
3	9						1	6
4								7
7			5	6				
	3			7		5		2
			2	8				

Michael Capozzola's CHEAP CITY

While riding the city bus, turn off
the IPOD -and enjoy the free show!



3	7	6	9	8	2	4	5	1
2	9	5	1	4	7	6	3	8
8	4	3	1	6	5	9	2	7
7	3	9	6	1	5	2	8	4
6	3	7	9	5	6	1	8	4
5	8	4	7	2	1	6	3	9
9	5	8	1	3	9	2	4	8
1	2	7	4	3	9	8	6	5
9	6	8	9	3	4	7	2	1
4	9	3	6	8	5	1	4	7

DR. MEL
ATTENDS A
MAD
SCIENTISTS
CONVENTION.

www.gocomics.com/brewsterrockit
©2009 Tribune Media Services, Inc. All rights reserved 03/04



MAD SCIENTISTS WHO ACCIDENTALLY HAD
INSECTS INSIDE THEIR TELEPORTATION PODS.



Richard

EXCLUSIVE CONTENT ON GADAILY.COM

Blogs - Thoughts and opinions on sport related news, games and issues
 Game Tracker - See play by play accounts of games via twitter @gsusports
 Game Story - Breaking interviews with players and coaches after the game

Sports Editor

Rick Spurgeon
(912) GSU-5246

gasports@georgiasouthern.edu

Quick Hits

▲ GSU football is scheduled to return to "The Swamp" for the first time since 1996 to play the University of Florida in November 2013.

▲ GSU baseball lost 4-11 to Western Carolina yesterday in the first round of the SoCon Baseball Tournament.

▲ GSU golf tied with Arizona State for fourth in the NCAA Regional Tournament and is now moving on to the National Championship.

Eagle baseball loses three-game series; looks to capture SoCon title

Eric SMITH
guest writer

The Georgia Southern baseball team was swept by The Citadel in what was both teams' final series of the Southern Conference regular season last weekend.

In last Thursday's series opener, the Bulldogs defeated the Eagles 9-4.

Citadel pitcher Asher Wojciechowski received the victory throwing a complete game and striking out nine Eagle batters.

Michael Burress was the offensive leader for Georgia Southern in game one, going three for four and scoring a run.

The Eagles were held scoreless until the eighth inning when Arthur Owens contributed

a run-scoring single, followed by a Randy Williams base on balls and then a three-run home run by Shawn Payne.

Game two was postponed Friday night because of inclement weather and resumed Saturday. The Citadel won 7-2.

Matt Talley was the winning pitcher for the Bulldogs. He held GSU to five hits through seven innings.

Shawn Payne went two for four, and three other Eagles had one hit a piece.

This victory clinched the regular season SoCon title for The Citadel and eliminated College of Charleston from getting its share.

The Citadel won the series finale 5-2.

Kyle Blackburn hit home runs twice in his last home game as an Eagle. GSU attempted to

mount a comeback with two on base and two outs in the bottom of the ninth.

They fell just short when Blackburn narrowly missed hitting a game-tying three-run home run — what would have been his third home run of the game — by only a matter of feet.

The Eagles finished the regular season with a 34-22 overall record and finished 19-11 in the SoCon.

The Eagles enter the SoCon tournament as a third seed and began tournament play with a game against Western Carolina yesterday.

The Eagles lost 4-11 but will be attempting to capture its second consecutive Southern Conference Baseball Tournament Championship.

Golf heads to national tournament



GSU Athletics

Left: Logan Blondell
 Right: Spence Fulford

Georgia Southern's golf team was able to clinch a top-five spot to travel to the 2010 NCAA Men's Golf Championships located in Chatanooga, Tenn. The championship will take place June 1-6 at The Honors Course. They did this by carding their lowest round of the tournament at a two-over par (282), making a team-total of 23-over par (863) and tied for fourth place with Arizona State in the Southeast Regional.

FRANKLIN

TOYOTA · SCION

10%
OFF
service with your
Student ID

877-464-5284

500 Commerce Drive
beside the new Holiday InnPROTECT
YOUR VEHICLE!

Regular maintenance and upkeep is crucial to your car's optimal performance, best possible gas mileage, and highest resale value.

Our service department offers the best in automotive service for all makes and models.

- > Oil Change
- > Tire Services
- > Tune-Up & Transmission Service
- > A/C & Radiator Service
- > Brake Service
- > Engine Repair
- > Body Shop Services

\$1,000
COLLEGE GRAD REBATE



WHEN YOU BUY OR LEASE A NEW TOYOTA.

SCHEDULE YOUR SERVICE ONLINE! www.FranklinToyota.com