

Georgia Southern University

Digital Commons@Georgia Southern

The George-Anne

Student Media

8-20-2009

The George-Anne

Georgia Southern University

Follow this and additional works at: <https://digitalcommons.georgiasouthern.edu/george-anne>

Recommended Citation

Georgia Southern University, "The George-Anne" (2009). *The George-Anne*. 2108.
<https://digitalcommons.georgiasouthern.edu/george-anne/2108>

This newspaper is brought to you for free and open access by the Student Media at Digital Commons@Georgia Southern. It has been accepted for inclusion in The George-Anne by an authorized administrator of Digital Commons@Georgia Southern. For more information, please contact digitalcommons@georgiasouthern.edu.

THE GEORGE-ANNE

www.GADaily.com

THURSDAY, AUGUST 20, 2009 • VOLUME 82 • ISSUE 20

COVERING THE CAMPUS LIKE A SWARM OF GNATS

Furlough Policy Explained

USG calls furloughs a "temporary" solution to "permanent" budget restrictions

By Chris Buchanan
Staff writer

Georgia Southern may be quieter than usual during part of Thanksgiving holidays thanks to state mandated furloughs that were officially announced early last week.

"What we're trying to do is [find] what has the least impact on the campus, what makes sense and what people want to do," said Vice President of Student Affairs and Enrollment Management Teresa Thompson.

During a three-day period, Georgia Southern employees will be required to take leave without pay. This is required at all universities throughout Georgia, according to a release from the Board of Regents. During furlough days, faculty and staff will not be allowed to work or provide services to the university.

The three days will be the first of six required during the 2010 financial year, which started July 1. Grube announced spring break as being the likely time for the next round of furloughs last week.

A release from the University System of Georgia offices said that this move is a "temporary" solution for "permanent" budget reductions made by the state to stay afloat in the current economy. Alternatives

would include layoffs and pay-cuts.

Grube told students at last week's convocation that the university had already received a 12.5 percent budget cut. This equates to approximately \$12.5 million in budget cuts during the 2008-2009 fiscal year.



Vice President of Student Affairs and Enrollment Management
Teresa Thompson

As of February 2009, Georgia Southern's budget was at \$231.4 million said Assistant Director Betsy Nolen of Marketing and Communications.

The release states that university presidents will ultimately be in charge of any additional furloughs at their universities. This leaves the decision with Grube. Thompson said that any more days would depend on how the economy fairs in the coming months.

"Nobody has a crystal ball I'm sure a lot of things depend upon the economy," said Thompson.

Despite the furlough, Thompson said that the campus will still be open to students.

See **FURLOUGHS** Page 3

The George-Anne's Web site, GADaily.com, is temporarily offline

From Staff Reports

The George-Anne's Web site, GADaily.com, is offline until further notice due to technical difficulties. The staff is currently working to repair the technical issues and plan to have it back in operation as soon as possible.

If you would like to comment on any stories in today's issue, please send comments and concerns to Charles Minshew at gaeditor@georgiasouthern.edu. The George-Anne will still post breaking news stories to our Twitter account at www.twitter.com/TheGeorgeAnne.



GSU welcomes new students during Operation Move-In

Rob Eakins/STAFF

At least 4,000 students moved into residence halls on the GSU this past weekend, with a majority moving in on Friday during Operation Move-In.

Faculty, staff, and students volunteered Friday, assisting students with unpacking and carrying items to their rooms.

Last week, Vickie Hawkins, Director of University Housing, stated that there were over 225 students and 125 faculty and staff volunteers.



NEWS

GSU President Search set to enter a new stage.

Page 3

Three-Day Forecast



Today
Thunderstorms
92/72



Friday
Isolated T-storms
90/72



Saturday
Isolated T-storms
88/72



Follow The George-Anne on Twitter at
www.twitter.com/TheGeorgeAnne!

GSU appoints Michael Russell new University Director of Public Safety

Former Assistant of Public Safety selected after 21 years of service to Georgia Southern

By Shannon Knepp
Managing Editor

Former Assistant Director of Public Safety Michael Russell has been appointed as the new Director of Public Safety and Chief of the Georgia Southern University Police.

According to Russell, his job is to serve the students, faculty, and staff of GSU.

"We provide the only 24 hour agency on campus. If you need us, you can call us, we'll answer the phone and help," Russell said.

Russell said his job includes being over the GSU division of Public Safety, which encompasses the uniformed officers and investigative officers.

According to a recent press release, Russell has been working at GSU since 1988, and started out as the Captain of the Department of Criminal Justice. In 1999, he was promoted to Assistant Director.

Russell graduated from GSU with a degree in criminal justice in 1983.

"I came to Georgia Southern in the fall of

'77, and I've been here ever since," Russell said.

Russell started out his undergraduate as a history major. He said he wanted to teach. However, he changed his major to criminal justice and graduated with a Bachelor of Science.

Russell has also served on the Statesboro Police, and as a Parole Officer with the Georgia State Board of Pardons and Paroles.

Russell said that he wants students to know that the Office of Public Safety is available to students whenever they need it.

Russell said that Public Safety would be willing to escort students if they ever needed it and would sometimes provide rides to students.

Students parked in stadium due to overflow should especially call the Office of Public Safety if they miss the shuttle to get home. According to Russell, the shuttle ends at 3 a.m. every Sunday through Thursday.

Students who are walking home and want an escort should call Public Safety at (912)478-5234.

"We are here to serve the students, so if they need us, call us," Russell said.



SPECIAL PHOTO

Former Assistant Director of Public Safety Michael Russell has been appointed as the new University Director of Public Safety.

"We are here for the faculty, staff, and students. We provide the only 24 hour agency on campus. If you need us, you can call us, we'll answer the the phone and help"

-Michael Russell

Director of Public Safety and Chief of Police

**For University Police
Department assistance call:
(912)478-5234**

**GEORGIA SOUTHERN UNIVERSITY'S OFFICE OF STUDENT LEADERSHIP
& CIVIC ENGAGEMENT AND STUDENT MEDIA PRESENT**

RECRUITED LEADERSHIP BOOT CAMP RAISING THE BAR

The 4th Annual Fall Leadership Conference

September 26th, 2009 • 9:00 am - 4:00 pm

Registration forms available online at

www.georgiasouthern.edu/leadership then choose "Leadership"

on the left tool bar or stop by Russell Union 2024.

Pre-registration is September 18th for \$15

leader@georgiasouthern.edu • 912-478-1435 • Russell Union 2024

GSU President Search is set to enter new stage

First campus visit by candidate is scheduled to happen within two weeks

By Charles Minshew
Editor-in-chief

In less than two weeks, the Georgia Southern community is scheduled to meet the first candidate in the search for Bruce Grube's successor.

The search for GSU's 12th president will soon enter its next major phase when the first candidate makes a visit to campus on Sunday, August 30.

According to Presidential Search and Screen Committee (PSSC) Chairman Trey Denton, applicants for the position include sitting university presidents, provosts, deans, vice presidents, and heads of non-profit organizations.

However, Denton said that the names of the candidates who are chosen to visit campus would not be announced until approximately one to two days before their visit.

Denton said that the search and screening process is still on track as originally stated in the timeline

that is on the committee's website at www.georgia-southern.edu/presidentsearch.

With the first visit beginning on August 30, the first candidate's name should be released on the public around Friday, August 28.

"The Presidential Search and Screen Committee is very, very pleased with the quality and quantity of the applications we've received," Denton said.

At this time, dates for six individual visits have been made public. The visits begin on August 30 and end on September 26. There are slight delays between some of the visits due to Condoleezza Rice's lecture on September 8 and a Day For Southern. All other visits are scheduled back to back.

During their visit, each candidate is scheduled to visit with Grube and each of the vice president's on his cabinet. The candidates will also meet with student leaders, the Deans' Council and the Staff Council.

Students will have a chance to ask questions of each candidate during an open forum which is

scheduled to be held on the second day of each visit.

According to Denton, each open forum is scheduled to take place at 4 p.m. in the Performing Arts Center.

The open forums will last approximately an hour and a half. During this time, any member of the student body, faculty, staff, alumni, or general public will be able to submit questions from the floor.

"We wanted to make sure that each candidate had multiple opportunities to meet with each constituent group," Denton said. "The itinerary reflects that desire."

According to Denton, the campus visit is a chance for the candidates to be evaluated by everyone at Georgia Southern, but that it also provides a chance for the candidate to evaluate the university.

Before candidates are selected to visit campus, they will be interviewed at an off site location. The George-Anne will continue to follow this developing story for the rest of the semester.

Open Forum Dates

Monday, August 31
Thursday, September 3
Thursday, September 10
Thursday, September 17
Monday, September 21
Thursday, September 24

Faculty Q&A Sessions

Tuesday, September 1
Friday, September 4
Friday, September 11
Friday, September 8
Tuesday, September 22
Friday, September 25

All open forums will be at 4 p.m. on the dates listed. These forums will be held in the Performing Arts Center and are subject to change "as deemed necessary by the PSSC."

The Faculty Question and Answer sessions are open to faculty only. All of these events, except the Friday, September 18th event will be held in the Nessmith Lane Auditorium at 8 a.m. The September 18th event will be held at the College of Education Auditorium.

FURLLOUGHS

from page 1

"The residence halls will still be open, but facilities such as the library and those types of things will not be open," she said.

Thompson said that the decision to place the furlough dates during the holiday break was made

with the campus community in mind.

"Any furlough's not good; it's not going to be easy," Thompson said. "But I think what everybody's trying to do is make the best decisions possible to make it as easy for people as possible."

Last week, The George-Anne reported that President Grube stated that the six furlough days would equal three percent of an employee's pay.

Grube did not state this.

Also, The George-Anne reported that a 12.5 percent budget cut equaled \$1 million.

This story reflects the appropriate, approximate figure of \$12.5 million.

We regret any inconvenience caused to readers.

Last week's furlough story written by Shannon Knepp contained information contributed by Charles Minshew.

STATEMENT OF OPERATIONS

The George-Anne is the official student newspaper of Georgia Southern University, owned and operated by GSU students using facilities provided by the university. The newspaper is the oldest continuously published newspaper in Bulloch County and Statesboro, Ga. The newspaper is a designated public forum for the Georgia Southern community. Opinions expressed herein are those of the student writers and editors and DO NOT necessarily reflect those of the faculty, staff or administration of GSU, the Student Media Advisory Board or the University System of Georgia. The newspaper is published twice weekly, on Tuesdays and Thursdays, during most of the academic year. Any questions regarding content should be directed to the student editor by phone at 912.478.5246 or at geordiana@georgiasouthern.edu. Readers may access the newspaper and its archives at www.geodaily.com.

ADVERTISING: The newspaper accepts advertising as a community service to help defray publication costs. Inquiries should be directed to the ADS or PWGES, P.O. Box 80001, Georgia Southern University, or by calling 912.478.5418 or 912.478-0566. You can fax any questions to 912.478.7113 or e-mail ads1@georgiasouthern.edu.

DISTRIBUTION: The newspaper is distributed free to the community of GSU.

COLOPHON: The magazine is printed by The Statesboro Herald Publishing Co. in Statesboro, Ga. Body copy in The George-Anne is 10 point Minion Pro on 12 leading. Standard headline size is 40 point Myriad Pro. For more information about the newspaper, please call 912.478.7459, or e-mail the director of student media at kallaway@georgiasouthern.edu.

SUPPORT: The George-Anne is funded primarily through revenue from advertisements placed in the paper and receives additional support, in part, from the Student Activities Budget Committee.

STUDENTS BEWARE: The George-Anne screens all advertisements prior to publication. The magazine strives to accept ads for legitimate products and services only. Students are urged to exercise caution when replying to ads, particularly those which require a credit card number, other personal information, or money in advance of the delivery of a product or service. Students are also urged to report to the newspaper any suspicious offers which they might see in an ad. Remember, if an offer seems too good to be true, it probably is.

DISPLAY AD DEADLINE: The deadline for reserving space and submitting advertising copy is Noon, one week prior to the intended publication date. For more information, rate cards, sample publications, contact the advertising manager or student media director.

PROOFING/ERRORS/OMISSIONS: The newspaper makes every reasonable effort to correct and complete information in advertisements. However, the advertiser is responsible for any errors in advertisements and its liability for adjustments is limited to the amount of space the error occupied in the ad. Further, the newspaper is not responsible for any damages caused due to an ad's omission from a particular edition and its responsibility solely is to reschedule the ad in the next regular edition at the regular advertising rates.

CIRCULATION INFORMATION: Mail subscriptions are not available at this time. However, readers may visit our web site for free access to current and past issues. Visit www.geodaily.com to view online issues. The George-Anne is distributed free of charge on the Georgia Southern campus and surrounding areas.

NOTICE: Readers may pick up one free copy, and a second for a roommate or acquaintance, at distribution sites. Additional copies are 50 cents each and are available at the Williams Center. However, unauthorized removal of additional copies from a distribution site constitutes theft under Georgia law, a misdemeanor offense punishable by a fine and/or jail time. Editors will seek to have any person(s) who removes more than the authorized number of copies from distribution sites prosecuted to the full extent of the law.

for all mankind



The Sir Shop

TWO LOCATIONS

Statesboro Mall

764-6924

Main Street Village

871-4962



Opinions

Submission of Letters to the Editor

The George-Anne Daily welcomes letters to the editor, story submissions and guest columns. All copy submitted should be 350 words or less, typed, and sent via e-mail in Microsoft Word format to gaeditor@georgiasouthern.edu. All submissions must be signed and include phone number for verification. GSU students should include their academic major, year at Georgia Southern University, and hometown. The editors reserve the right to edit or reject any submission.

4

The George-Anne
Thursday, August 20, 2009

Our View: Plan for the future of GSU sooner rather than later

Last week, it was announced that the projected enrollment for the fall 2009 semester would be one of record proportions: 18,600 students. This number represents an increase of approximately 1,000 students from one year ago.

While this number may change much between now and the actual figure in October, it is clear that GSU is growing much faster than expected. According to the figures from the GSU Fact Book, enrollment in Fall 2005 stood at 16,646.

Between the demolition of Olliff, Johnson, and Winburn Halls, the construction of Eagle Village and Centennial Place, and the purchase of University Villas, the Department of University Housing has seen a net gain of approximately 1,000 beds since 2005.

This year is the first year in recent history that GSU has required its freshmen students to live on campus.

According to the most recent GSU Fact Book, freshman enrollment during fall semesters have been greater than 4,500 for the past five years. With approximately 4,000 beds in University Housing, where does this leave upper class students?

Moreover, where do all of these students

that have to travel from off campus park when thousands of spaces are used for residents?

In an editorial in the Thursday, July 16, 2009 edition of The George-Anne, our staff wrote "in order for the university to meet the needs of the growing campus, a comprehensive plan that coordinates pedestrian, automotive, and bus transportation plans with campus facilities must be formed."

We make an additional plea to the administration of Georgia Southern.

It is time for a transparent plan that addresses enrollment standards and parking limitations that complements a comprehensive transportation plan.

To alleviate the parking issue, construction on an overflow lot across from Kennedy Hall on Knight Drive has already begun. Director of Parking and Transportation Bob Chambers said, in a story printed in today's edition, that the lot should be completed by mid-September.

At this current rate of growth, it is quite possible that we will reach a student population of 20,000 much sooner than anyone expected.

It is time to put more thought into where students are living, where they are parking, and how many of them are enrolled at GSU.

Letters to the Editor

On furloughs...

Dear Editor:

Regarding your recent editorial on furloughs at Georgia Southern, I don't disagree that furloughs are preferable to layoffs, but I think it should be noted that this pay cut is nothing new for those who work in the University system of Georgia. For the past eight years, faculty and staff (though not necessarily administrators) have either received no raise, or raises that don't keep up with the rate of inflation (which are in essence pay cuts). Controlled for inflation, our pay had been cut by more than 12% since 2001 before you even consider the furloughs. So basically,

when times are bad, faculty and staff at Georgia's public universities get a pay cut, and when times are good, they still get a pay cut. In addition to these pay cuts, our share of health care costs has been increased a number of times, and the state's contribution to our retirement program has been cut. So yes, furloughs are preferable to layoffs, but please don't lose sight of the fact that this latest pay cut is one in a long series that have steadily eroded salaries at Georgia Southern under the current state leadership.

Will McIntosh
Professor of Psychology

On Condoleezza Rice...

First, Rice's presentation is being framed as a model of good leadership, and there is to be no free discussion: All questions must be submitted in advance, and none will be taken from the floor. If GSU claims to be a university, a place for the free exchange of ideas, then it should act like one.

Second, how much does her appearance cost?

Rice generally charges up to \$500,000 (yes, a cool half mil) for one of her hour-long appearances, including a speech of just 20 minutes. When faculty and staff are seeing pay cuts (although, oddly, not administrators), how is this at all justified?

Annette Laing

Time to be proud to be a Georgia Southern University Eagle



Robert Greene II is a Graduate Student in history from Augusta, Ga. He is a staff columnist for the George-Anne.

Starting this week, Georgia Southern is embarking on the True Blue program, which is designed to increase school spirit among the student body. Enhancing spirit among students at GSU is a very worthy goal, something that should be, in my opinion, a daily activity.

But while most of that pride derives from the phenomenal success of our football team, there are plenty of other reasons to be proud of

Georgia Southern.

One example is the Model United Nations, which competes in New York City every April against schools from across the United States and the rest of the world.

In the past, the Georgia Southern delegation has been picked to represent nations that were less than popular amongst most Americans, such as Iran during the Iranian Hostage Crisis of 1979 to 1981, and the Soviet Union during the Cold War. Model UN is a testament to the hard work of a few dedicated individuals and professors, who not only work during class time to get ready for the Model UN competition, but also contribute many additional hours outside of class to win prestigious awards in New York.

Georgia Southern's progressive history on

race relations is another reason to be proud of our university.

From the invitation of George Washington Carver to South Georgia Teachers' College in 1933, to the story of Roger Moore, the first African American student-athlete to earn a scholarship in the University System of Georgia playing basketball for Georgia Southern College in 1967, the school's history on race and the South has shown a willingness to blaze ahead of other schools in the nation on the issue.

A history of protest is another reason to be proud to be a Georgia Southern Eagle. Students presented a list of grievances to then-president John Eidson in 1970, and also protested along with students across the nation the role of the United States in the Vietnam War.

Students protested for the re-hiring of school president Marvin Pittman in 1941 after his dismissal by the Board of Regents, then under the thumb of reactionary governor Eugene Talmadge. The editorial pages of the George-Anne, filled with letters from students and faculty concerning the issues of the day, are another testament to the wonderful legacy of inquiry, protest, and plain old-fashioned democracy that symbolize the best of Georgia Southern.

Being an Eagle means being a citizen of the world, synthesizing the best of yourself, the environment of Statesboro, and also the students you meet from around the state, the nation, and the entire world. Embrace the colors blue and white, and remember that it's more than just a slogan. Being an Eagle means a lifestyle of independence.

Lessons learned as a senior at Southern



Ryan Babula
is a senior sociology major from Augusta, Ga. He is features editor for the George-Anne.

A funny thing happened to me a couple of days ago. I woke up in the morning, looked at myself in the mirror, and realized one thing: I'm a senior.

I realized standing there that only 3 years prior, I was moving into Eagle Village with my mother in tow. I realized that in my time

here at Georgia Southern, I've met and corresponded with some of the best and nicest people I've ever had the pleasure of meeting.

I realized that my original decision to shy away from Greek Life was one of ignorance, and that becoming a brother has been one of the most rewarding experiences of my life. I realized, staring at myself that morning, that I only had a year left to enjoy it.

In May, I'll be walking across Paulson Stadium, wearing that big black gown and sweating in the sweltering heat. I'll receive my degree, and then hopefully move on to graduate school. But what

happens after that? Do I follow my original goals? Is there any time left to change my mind?

Thoughts like this have definitely plagued me over the past year. The thought of moving on and moving up is a daunting one, to be sure. But in my time here at GSU, I've come to realize one thing: that life is short, so enjoy every moment you have.

Looking back, I can see where all of my experiences, both bad and good, have lead me to the path I'm on now.

Sure, things have not always been easy. There have been friends that have come and gone, opportunities that have been missed, and decisions that I wish I could take back. In life, many issues and regrets will shape our decisions, but I can tell you now that letting the little stuff wear you down is not the way to live your life.

Many of you freshmen are going to experience these fears and trials, but I can tell you now that if you're a good person, you work hard, and you try to make the right decisions, you'll do fine.

I know that in my final year at GSU, I'm going to live my life to the fullest, and enjoy every moment as much as I can.

WE CAN'T ALLOW OBAMA'S
DEATH PANELS TO DECIDE
THE FATE OF OUR ELDERLY...



I SAY AT LEAST GIVE 'EM
A HEAD START...



Do you love to draw?

WE WANT YOU!

Submit a cartoon to

Gamed@georgiasouthern.edu

Texting in my own time leaves me behind the times



Abbey Lennon
is a senior journalism major from Columbus, Ga. she is a staff writer for the George-Anne.

For the last six years I have been without text messaging. Not a big deal for some, but others can't understand why, and even more radical texters probably are thinking how?

From almost being kicked out of group projects for failing to respond to missing deadlines and completely missing dates,

I have decided to consider "texting." After all of this time of being so called "behind the times," and the relative trouble I've almost been in because I was without texting, I can't help but think, why? What am I missing out on?

Although this is a very small issue for anyone to debate, the lifestyle change would be immense. I enjoy not having text messaging, at times, but other times I wish I had it, but only because everyone else does.

Apart from the little amount of money it

would take to acquire text messaging at merely fifteen to 20 bucks a month for unlimited texts, it is considering

the practicality of texting which takes the top of the list for making up my mind.

Looking back on the past five to ten years with the advent of texting, there is an evident change, and let's face it, we're all guilty of talking text.

The abbreviations and acronyms created by texting has opened up a completely different language. I will never forget hearing "TTYL" coming out of my dear grandmother's mouth.

Conversations in restaurants no longer provide the headache of listening to the person sitting next to you asking someone on the other end, as loudly as possible, if they found their jacket.

On the bus, you happen to land in the seat next

to the most popular person on campus talking to everyone, and sometimes I am embarrassed of the human race when I hear some of the things

"Texting ultimately comes down to convenience until you get into the arguments and full blown conversations people have over text messaging. Friendships, boyfriends, and girlfriends are won and lost through text messaging."

- Abbey Lennon

Staff writer for the George Anne

people talk about. On the one hand, being a journalist, who could ask for more?

People dish their own dirt right there, I don't have to wonder, but on the other hand, I feel, who am I to judge? Texting allows us to miss those

conversations and spend more time thinking about what's going on in our own lives, our own conversations.

Texting ultimately comes down to convenience until you get into the arguments and full blown conversations people have over text messaging. Friendships, boyfriends, and girlfriends are won and lost through text messaging.

While it's the latest update in modern technol-

ogy, is it a need, a coping of society to conform to the ever changing world of technology that impacts everyone daily, or another technological shift to limit face-to-face communication?

My roommate is from Atlanta and driving her cute little P.T. cruiser, at lightning speed, weaving in and out of traffic, while texting, with both hands, and talking to me in the passenger seat simultaneously, is a cause for concern, and another topic for another day.

Most of the time while I'm driving down the street and some irritating driver happens to make dumb decisions because they are texting, I don't want to be that person. Some say texting is an addiction, would I be able to stay away from it? What drama would it bring, or what connections will it create?

People are forced to confront me either face to face, or over the phone, what's so bad about that? Either way, I get to interact with them verbally and they don't have a choice.

Is texting ultimately a necessity or a materialistic want that a majority of us indulge in? Ultimately I hope it remains my choice whether or not I have texting and not solely because I'm "behind the times."

Georgia Southern ushers in new Ph. D. program

By Robert Greene II
Staff writer

The fall of 2010 will see Georgia Southern University offer a new doctoral degree in Logistics and Supply Chain Management.

The degree is the first of its kind offered in the state of Georgia.

"This is a huge feather in our cap," said Dr. Jerry Wilson, chair of the logistics and marketing department. "This will help put the logistics program even more on the map internationally."

The Ph.D. program is, according to Wilson, the first to be offered by a non-research university in the state of Georgia.

"This dovetails nicely with being named a Carnegie Doctoral institute," said Wil-

son.

The closest any other university comes to offering a degree similar to the logistics degree at Georgia Southern is a degree at Georgia Tech, according to Dr. Karl Manrodt, professor in the logistics department.

Other universities that offer a degree similar to the Ph. D. in logistics include the University of Tennessee, Penn State, Ohio State, and Auburn University.

The process to create a doctoral program began in 2006, according to Dr. Wilson. "President Grube felt it was time to offer a doctoral degree from the College of Business Administration," said Wilson.

He said that this degree is part of an effort "to change the image of Georgia Southern." Dr. Wilson also believes that the new doctoral program will raise the stature of Georgia Southern,

in the state and throughout the world.

"In a few years' time, I think the state and the Board of Regents will look at us differently," said Wilson.

The new program will give Georgia Southern more recognition with other schools and with companies seeking to hire new employees, according to Wilson.

He also said that, "Our undergraduate program is known nationally and internationally, and we already have a good reputation for our logistics program."

According to Dr. Manrodt, the program would take a student three years to complete, including summer classes.

He recommends anyone considering enrolling in the program should gain at least two years of working experience, just to see if they are still interested in a career in logistics.

Tickets for Rice Lecture available at Hanner today

By Charles Minshew and Shannon Knepp
Editor-in-chief and Managing editor

Tickets for Condoleezza Rice's lecture as part of the new Speaker Spotlight series will be available at the Hanner Fieldhouse Box Office beginning at 8 a.m. today.

Former Secretary of State Rice will be visiting the Georgia Southern Campus to deliver a lecture entitled "Remarks by Condoleezza Rice" on Tuesday, September 8 at 7 p.m.

According to Todd Deal, Director of Student Leadership, Rice will be discussing leadership and global leadership in her lecture.

The lecture will be free to students. The tickets being distributed today are for students only.

In order to receive a ticket, students must have their Eagle ID. Each student will only be given one ticket.

Hanner will be able to hold approximately 5,000 people for the event. With 18,000 students alone on campus, ideas of ways to compensate for overflow have already begun to be worked out.

"When we start to factor in students, faculty, and the community, that is more than 5,000," said Deal.

Deal said the University is considering places to do a simulcast in order to allow as many people to attend the event as possible.

"[We are] looking for a place that is easily accessible for students, faculty, and members of the community," Deal said.

Rice's lecture will be a one-hour event. She will be discussing leadership for the first 20 minutes, and be doing a question and answer session with students for the last 40 minutes. Questions must be submitted online at www.georgiasouthern.edu/speakerspotlight.

In addition to today, tickets for students will be available on August 21, 24, 25 from 8 a.m. to 5 p.m. as long as tickets last.

New course withdrawal policy instated this semester

Shannon Knepp
Managing editor

Georgia Southern University's new withdrawal policy will begin this week after drop/add ends.

The new policy says that students cannot withdraw from more than five classes during their entire college career.

According to Georgia Southern University Registrar, Michael Deal, students who have withdrawn from class prior to this semester will not have previously withdrawn classes count towards these five. Also, this policy only counts classes that have been withdrawn at GSU.

According to the fact sheet on the university homepage, students who have to withdraw

for medical reasons are exempt from the five withdrawal policy.

Students are also allowed to appeal their withdrawal to their dean if they have over five withdrawals and have extenuating circumstances.

Students who end up withdrawing from more than five classes will receive a WF, which translates into a failing grade on a student's transcript.

One of the goals for the new withdrawal policy is that students will not take a class and drop it automatically because they feel the class is too hard.

"What I hope [the new policy] means is that for those students who struggle early on... instead [of withdrawing] will seek some help

from the Academic Success Center or from their professors," said Todd Deal, Director of Student Leadership.

GSU is hoping that the new withdrawal policy will help students in a number of ways.

According to Michael Deal, GSU is hoping that the new policy will improve course availability because students won't add classes then drop, keeping other students from entering the class.

He also said GSU hopes this will help keep students from having to delay their graduation, and keep them from losing HOPE and other scholarships.

"I think it's a life lesson," said Todd Deal. He said he hopes it will help students learn to "buckle down and get through."

WELCOME BACK GSU STUDENTS!

McALISTER'S
DELI

1100 Brampton Ave., Suite A
Statesboro, GA • (912) 681-3354

www.mcalistersdeli.com
We Accept Eagle Express Cards!

Choose ANY Two!

\$5.99

- Half of ANY Sandwich, Wrap or Panini.
- Half of ANY Salad.
- Cup of Soup or Chili.
- Half of ANY Spud.



New biology building construction scheduled to begin fall 2010

By Ally Rakoczy

Staff writer

Construction on a new biology building could begin as early as fall 2010.

According to Bret Danilowicz, Dean of the College of Science and Technology and biologist, the current biology department is spread out over four buildings and the new building would consolidate all of them into one.

"This will hopefully put them all into one building, depending on the budget of course," said Danilowicz.

The new building will be called the Biological Sciences Building, according to Stephen Vives, Biology Department Chair and professor. The fate of the current biology building has yet to be determined.

The Biological Sciences Building will have

over 120,000 gross square feet, with 80,000 assignable square feet. According to Danilowicz, assignable square feet make up the amount of usable space.

The new building will be located off of Forest Drive, across from the Ceramic Arts Building and the College of Education and will have some special features in addition to labs and classrooms.

"Outside of the traditional labs and teaching rooms, we want to have a different learning environment. It's going to be, at least, LEED silver certified," said Danilowicz.

Danilowicz gave some examples of the environmentally friendly measures they would be taking, including possibly using shredded blue jeans as insulation and having the building collect rainwater for reuse, all enclosed in glass so the students can see how the building is environmentally sustainable.

"We want the building itself to be a learning tool," said Danilowicz.

Getting the University System of Georgia's approval for this building was not done overnight, however.

It involved a long process and series of lists with the Board of Regents. According to Vives, Georgia Southern had to list its top one or two choices and then all other projects had to work their way up the list.

"It's been seriously talked about since 2001," said Vives. However, Vives also said that it's hard to say exactly how long this project has been in the making.

Billy Griffis, Vice President for University Advancement and President of the Georgia Southern Foundation said that the building is currently being funded by State of Georgia Resources.

"There have been no substantial funding

from private donors," said Griffis.

The project received 33 bids by various architecture firms, with the winning bid going to the SLAM Collaborative. According to Vives, the selection process was lengthy.

"They all submitted paper applications and then [we made] a short list. They came to campus and worked at the proposed building site, and then put together a presentation. Both the University System of Georgia and Georgia Southern selected the firm with the best bid."

Preliminary illustrations of the building will not be available until late October, when the SLAM Collaborative draws up three different designs. The new Biological Sciences Building will be the second LEED certified building on Georgia Southern's campus, while the Recreation Activities Center was the first.

Physical Plant was not able to be reached for comments on the project.

Step Into Statesboro helps students get involved in the community

Office of Student Leadership and Civic Engagement is offering volunteer opportunities for students on campus

Robert Greene II

Staff writer

Tomorrow, Georgia Southern students will have the opportunity to volunteer to work at one of Statesboro's numerous service organizations.

Step Into Statesboro, which is an event where students can choose a service organization with which to volunteer, will last from 1 to 4 p.m.

"It is a chance to make new friends for two hours," said Diana Hensley, Coordinator of the Civic Leadership division of the Office of Student Leadership and Civic Engagement. "It's a chance for students to find out how they can

serve."

Step Into Statesboro begins at 1 p.m. at the Russell Union rotunda, where various organization, from Habitat for Humanity to nursing homes will have tables set up for people to sign up at.

From there, students can volunteer two hours of their time, after which a short session is held which allows students to exchange stories from the day's events.

Students will be divided into groups of four to five students, led by students called crew leaders. One of those crew leaders, Alexandria Parker Robinson, has been involved since 2006, and says that she does it because "she likes to give back to the community."

Another student volunteer, Jairo Nunez, became involved the same year, but as a first year student.

"It gives students an opportunity to get involved," said Nunez. "There's a lot of awesome opportunities through Step Into Statesboro."

For Nunez, the program was especially important in helping him become involved on campus, as he had only recently come to Statesboro and looked for a place where he could volunteer.

"At first, it's kind of intimidating," said Nunez, "but Step Into Statesboro helps you get your foot in the door."

For Nunez, Step Into Statesboro is also important because it "helps you bridge the gap

between Georgia Southern and Statesboro."

For Ebony Caper, another crew leader, Step Into Statesboro not only offers a chance to get involved, but also aids her in fulfilling requirements for her major.

Caper, a senior who majors in Community Health, believes that students should come to the event "because they are able to work with other people."

Caper said she loves to volunteer, and has volunteered since sophomore year.

Step Into Statesboro takes place at the beginning of every semester.

For more information, contact Diana Hensley in the Office of Student Leadership and Civic Engagement.

Choices of the Heart
Pregnancy Center

Pregnant?
Free and Confidential Testing and
Counseling. Off Campus Location.
Hot Line: 9AM-9PM 912.764.4303
Appointments Only.

106-B Oak Street, Statesboro, Georgia • www.choicesoftheheart.org • 912.764.4303

POLICE BEAT**Tuesday, August 11**

Officers issued eight traffic warnings, assisted two motorists, responded to an alarm and investigated one accident.

Wednesday, August 12

Officers issued two traffic warnings, assisted one motorist and responded to a residential alarm at University Villas.

Officers responded to a report of a sick person at the Landrum Center.

Thursday, August 13

Officers issued seven traffic warnings, assisted three motorists, assisted another agency with a vehicle fire and responded to two alarms.

Friday, August 14

Officers issued seven traffic citations, issued five traffic warnings, assisted eight motorists, assisted one injured person, responded to one alarm and investigated four accidents.

A bicycle tire was taken from Southern Courtyard.

Saturday, August 15

Officers issued five traffic warnings, assisted seven motorists, assisted one injured person and responded to two alarms.

A vehicle was taken from Southern Courtyard.

A drug complaint was reported at Eagle Village.

A case of harassment was reported at Centennial Place.

Roman Anthony Mangini, 19, Eagle Village, was charged with minor in possession/consumption of alcohol.

John Randall Dunster, 18, Eagle Village, was charged with minor in possession/consumption of alcohol and possession of a false ID.

Sunday, August 16

Officers issued two traffic citations, issued 12 traffic warnings, assisted another agency and responded to one alarm.

A drug complaint was reported at Eagle Village, Southern Pines and University Village.

A case of harassment was reported at Nesmith-Lane.

Monday, August 17

Officers issued four traffic citations, issued seven traffic warnings, assisted four motorists, responded to two alarms and investigated three accidents.

A set of headphones was taken from Kennedy Hall.

An iPod was taken from the Information Technology Building.

A wallet was taken from the Recreation Activity Center.

Matthew Jamar Starks, 18, Kennedy Hall, was charged with minor in possession/consumption of alcohol.

Reginald Dominique Bradford, 20, Harvey Drive, was charged with wanted person.

Tuesday, August 18

Officers issued two traffic warnings, assisted five motorists and investigated three accidents.

An I.D. holder was taken from the Russell Union.

A wallet was taken from the Russell Union.

A bicycle was taken from Eagle Village. Shane David Scott, 34, Pulaski Road, was charged with having a weapon on campus (knife), public intoxication and obstruction of an officer.

Steve Olabise Babajide, 27, Southern Courtyard, was charged with wanted person.

Gabriella Marie Davis, 18, Watson Pods, was charged with minor in possession/consumption of alcohol and disorderly conduct.

"Go Green with the Dean" On Campus

New program emphasizing sustainability on campus to facilitate student enrollment growth and demand

By Ally Rackozy

Staff writer

Wednesday's "Go Green with the Dean" is an initiative Georgia Southern administration is taking to bring environmental awareness to students while opening the line of communication between students and faculty and staff members.

"The purpose of this program is to demonstrate how easy and fun it is to have a positive impact on our environment," said Georj Lewis, Dean of Students at Georgia Southern. "Additionally, it gives my office an opportunity to meet with students and talk about our office services."

Kerry Greenstein, Assistant Dean of Students, said that their office really wanted to do something to benefit the campus community.

"We wanted to contribute to the campus green efforts by letting students know what's recyclable on campus," said Greenstein.

Recycling bins with colored labels that coordinated with the same colors on the campus recycling bins were displayed in the Russell Union Rotunda, accompanied by several staff members from the Dean of Students Office.

"We wanted to show the students that it's not just a student effort, but that it's an administrative effort too," said Kelsey Grubbs, Graduate

Assistant for the Dean of Students Office.

Lewis also added that the "Go Green with the Dean" program this week is directly connected with his "Talk with the Dean" initiative where students have the opportunity to interact with Lewis on Facebook, through focus groups, meeting visits, and several other methods of communication.

Through programs like "Go Green with the Dean" Lewis hopes to further encourage students to communicate, not only with him, but with university faculty and each other.

"The initiatives in our office are very intentional about giving students an opportunity to express themselves."

"In broad terms these programs are in place to facilitate student growth while increasing the engagement with the administration, staff, faculty, and other members of the university community," said Lewis.

According to Lewis, it is his goal to provide an open forum for questions and student concerns that they would like addressed.

"Since many students may have a hard time visiting us our office during business hours, our goal is to provide multiple opportunities for them to interact with office staff."

"Dean Lewis and the administration are dedicated to being student-centered and this program is just a way to prove to the students how high of a priority it is," said Grubbs.

The Dean of Students Office hopes to have more programs like "Go Green with the Dean" in the future.

Frazier's

Flowers & Gifts

Friendly, Caring, and Direct

Cut Out the Middle Man and Order Directly from Us
We Know Flowers

Bring in this Ad and get 10% off your purchase over \$25!
Visit us at the Locally Owned and Operated Flower Shop
Or visit us online at www.fraziersflowers.com

202 S. Zetterower Avenue Statesboro • 912.489.7373 or 1800.205.0612 • www.fraziersflowers.com • Fax: 912.489.8234

T-Shirt Swap Kicks off True Blue Week

Ally Rakoczy
Staff writer

The Spirit and Traditions Council kicked off its first annual True Blue Week on Wednesday. Students have the opportunity to trade in other college and university apparel for a Georgia Southern University True Blue shirt until Friday at 5 pm. The trading will be available all day every day at the Rotunda and the Office of Student Activities. All the shirts swapped will be donated to a charity overseas that is yet to be determined.

"We want to ask the students, 'What does it mean to be true blue?'" said Charlie Hueber, Director of Student Activities.

According to Hueber, the idea began in the athletic sector of Georgia Southern as the "Blue Crew" and now has expanded to include the entire university, which is why it is now called the Spirit and Traditions Council.

Matt Mauney, Spirit Coordinator and writer for the George-Anne, is heading up the committee in charge of the True Blue program.

While the True Blue kick off is just the start of a larger program, Mauney cited the importance of school spirit as one of the major pulls for the

initiative.

"It goes with [athletics] but it's just being proud to be a Georgia Southern Eagle," said Mauney. "[Let's] rid the campus of other schools' apparel."

According to Mauney, the school has always had the problem of students wearing other schools' apparel on campus. He said it's time to put up the shirts of your mom and dad's schools and the shirts of schools you may wish you were at.

"You're here now. Be proud to be at Georgia Southern. Be proud to wear blue and white," said Mauney.

If students miss the swap this week, they will still have an opportunity to purchase a version of the shirt in the University Bookstore. All proceeds of the sales will go towards funding student scholarships here at Georgia Southern.

"We really want to benefit students with this campaign," said Hueber.

"There's no other organization on campus like it. Our events are more traditions and spirit based," said Hueber.

Students who want to get involved with the Spirit and Traditions Council can apply in the Office of Student Activities until August 28. Applications are also available on the Student Activities Web site.



Kelly Vermeil /STAFF

Spirit and Traditions Council members Rachel Baker, left, Matt Mauney and Megan Malone switch out other college gear for GSU Spirit Shirts Friday.

WELCOME BACK GSU STUDENTS!



BURRITOS



CHEESE DIP



SALADS



TACOS



1100 BRAMPTON AVE.
912-871-7655

WAY FRESHER...WAY BETTER!

FREE DRINK
WITH PURCHASE OF
AN ADULT ENTREE

(adult entree includes any
item \$5.79 or higher)



STATEBORO
LOCATION ONLY
EXPIRES 12.7.09

Georgia Southern University Residence Halls see problems with limited parking

By Kathy-Lee Cassie

Guest writer

As students living on campus settle in for their first week of classes, issues with parking have come up. On-campus parking lots are full in a number of the residential facilities on campus.

Overflow parking lots for the newly built Centennial Place, as well as Watson Hall have been made available.

Centennial Place houses 1,000 students, while Watson has approximately 400 students, but there is not enough parking for the two residential halls.

Half of Eagle Village's parking lot off Chandler Road has also been overflowed with parking. Cars have been seen parked on the grass.

According to GSU student Travaris Williams, there is said to be a lot of chaos going on in regards to the parking situation.

"If you come past 7:00, there is nowhere for you to park, but the good thing is that they're building a new parking lot, so I'm happy about that," said Williams.

This parking overflow has also affected Landrum as well as the stadium where students



Deborah Inskeep/STAFF

Students on Georgia Southern's campus are finding it increasingly difficult to find parking in any of the designated lots. As a result, overflow parking lots as well as shuttle services are going to be utilized.

can take the bus to school.

According to Bob Chambers, Director of

Parking and Transportation, a parking lot is being built across the street from Kennedy

and will be used as the overflow parking lot.

"The overflow parking is actually for Centennial Place, Watson, Eagle Village and Kennedy," Chambers said.

This lot is said to be completed hopefully sometime in mid-September.

Due to this shortage of space, students have the option of taking a shuttle from the stadium to their place of residence.

"What we're doing right now is shuttling people from the stadium to the resident halls. And they use the bus system during the day. Then at 9:00 at night until three in the morning, Housing Department is running shuttle vans back and forth from those resident halls and the stadium," said Chambers.

"And if someone needs a ride after that they can call University Police, and they can escort them or give them a ride," he said.

While GSU continues to work on the overflow problem, students on campus will have to use the shuttle system until it is finished.

"It's an unfortunate situation that we don't have that overflow lot, but we've been doing everything we can, and in the midst of bad weather, to get that parking lot done," said Chambers.

Greek Row abuzz during Sorority Rush



Brandilyn Brown/STAFF

Several hundred girls showed up a week early to Georgia Southern University to participate in sorority rush.

Left: Zeta Tau Alpha lets balloons go on their bids, celebrating the arrival of their new littles.

Right: Alpha Omicron Pi wait to greet new recruits at their house on Greek Row on August 14.

SCIENCE
26th EDITION



COOL NEW COVER!

SIX NEW PAGES!

CHOOSE EXPRESS SHIPPING SO YOU GET IT BEFORE THE NEXT EDITION COMES OUT!

5 EASY PAYMENTS
OF YOUR FIRST BORN + TAX

We understand
that Textbooks
are **EXPENSIVE...**

Publishers make
it worse by
issuing "New"
Editions that
cost **MORE!**

**WE WORK HARD TO
SAVE YOU MONEY!**

**USED TEXTBOOK
HEADQUARTERS**



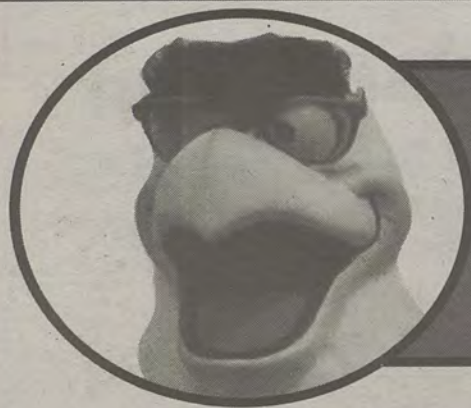
THE UNIVERSITY STORE

91 Georgia Avenue • Statesboro, Georgia

912.478.5181 • 1.800.861.7059

www.gsustore.com

**WE HAVE THE
MOST USED
BOOKS IN
STATESBORO!**



WEEKLY BUZZ

Friday, August 21st

- 1:00 PM - 5:00 PM OSLCE: Step Into Statesboro Russell Union Rotunda
- 5:00 PM - 9:00 PM Block Party Corner of GA Avenue/Forest Drive
- 9:00 PM - 11:00 PM Eagle Cinema Kickoff: Star Trek Russell Union Theater

Saturday, August 22nd

- 8:30 AM - 3:00 PM Multicultural Advisory Council at the RAC
- 10:00 AM - 5:00 PM Road Trip: Tybee Takeover departing from Russell Union Parking lot

Sunday, August 23rd

- 5:00 PM - 10:00 PM IFC Welcome Cook-Out RAC Outdoor Pool

Tuesday, August 25th

- 5:00 PM - 6:00 PM IFC Delegates Meeting
- 5:30 PM - 6:30 PM OSLCE: Leadership 101 Workshop at the Russell Union 2041
- 7:00 PM - 9:30 PM Bollywood at Russell Union Ballroom
- 7:00 PM - 8:30 PM GSU Unplugged at Starbucks

Wednesday, August 26th

- 12:00 AM - 12:00 AM OSLCE: Blood Drive
- 6:00 PM - 8:00 PM NPHC Informational Forum

Thursday, August 27th

- All day OSLCE: Blood Drive
- 10:00 AM - 2:00 PM Boro Browse - Formally known as Eagle Expo Russell Union Rotunda
- 5:00 PM - 6:00 PM Tri-Council Executive Officers Meeting
- 7:00 PM - 9:00 PM Meet the Doctor (HS) Russell Union Ballroom





LOOK FOR THE EAGLE EXPRESS LOGO

On Campus Locations that Accept Eagle Express.



Also: Elements, Lakeside Cafe, Landrum Dining Center, Market at Centennial Place, Market Street Deli, Oasis, Talons Grill, Zach's Brew, The IT Store, Snackers, Eagle Print Shop

Off Campus Locations that Accept Eagle Express.

Remember, Alcohol and Tobacco sales are strictly prohibited.



Also: Coconut Thai, Davis Tire & Automotive, Fast & Easy 2 & 3, Holiday's Greek & Italian, Hot Stop #28, Latte Da Coffee Shop, Lunch Box Deli, Nikko Express, Oriental Express/Wooden Nickel, Corey Hillard's, Buffalo's, Pets & People, ProLube, Save-a-Lot, Seasons of Japan, University Books, Wings Cafe, Zip-N-Food

Southern Pride

preps for 2009-2010 marching season



The Georgia Southern University marching band Southern Pride took to the field and practice room beginning August 4 to prepare for the 2009-2010 marching season. Approximately 200 GSU students attended the organization's annual band camp.

The group will perform songs from Chicago, Boston, Steely Dan, Led Zeppelin throughout the football season.

Pregame Show will include the famous GSU Scramble, the Alma Mater, the Star-Spangled Banner, and the Fight Song. Also, this year there will be a special performance of Jimi Hendrix music.

Dr. Matt Fallin, director of GSU marching band, is very excited to get the football season started and is looking forward to seeing all the fans in the stands.



Photos by Brandilyn Brown,
G-A staff photographer



Top left: Eddie Farr plays tenor saxophone during a rehearsal in the multi-purpose room in the RAC.

Bottom left: Tuba players don togas during their section's spirit day.

Top right: Mellophone players stand at attention enduring the South Georgia heat.

Center right: The Pit shows off their skills while playing a song by Boston.

Bottom right: A quads player practices marching techniques during one of many practices during their one-week camp.

Southern Pride will take the field during the first football game of the season Sept. 5.



"The Caribbean in the 'Boro!"

**GREAT STUDIO, 2 & 3 BR Condos
RUCKER LANE**

**HWY 301 ACROSS FROM GSU
681-SURF**

Oregon State Universities' Second Amendment Week starts with a bang

By Shanna Woodruff
Uwire

Should guns be allowed on campus?

Oregon State's College Republicans group has organized Second Amendment Week to help answer this question from Monday, April 13 to Friday, April 17. The week includes events such as influential speakers, a concealed weapons class, a rally and a raffle to win a rifle.

In addition to teaching students about the history and importance of gun rights, there is an even bigger concern about gun rights on campus that this week will be addressing to some extent.

Oregon state law states only the Legislature has the right to regulate concealed weapons (ORS 166.17).

OSU has banned all possession or use of firearms on campus regardless of if the person has a concealed weapons permit, creating a direct conflict with state law.

"Oregon law is very clear. Universities cannot regulate guns, only the Legislature," said Senator Brian Boquist on the issue. "However, expecting honesty from Oregon University System officials

is like expecting the fox in the hen house to tell you he is guarding the chickens from harm."

The president of the College Republicans, RJ Friedman, plans to present a resolution to the ASOSU Senate Tuesday night to address this issue. At the previous senate meeting it was agreed that OSU should abide by all Oregon state laws.

"I don't think that it's right that the university can circumvent the law," said Friedman, a junior in political science.

If the university is regulating the possession of firearms on campus, then according to Friedman, it is not obeying Oregon state law.

"I just look at it where we have a constitution with a rule of law and we have an institution that changes the rule of law," said Cory Rea, a junior in electrical engineering.

The purpose of the Second Amendment Week is not necessarily to resolve this concern, but to help students understand more about gun rights and how they affect them.

"It will be educational for students in several ways. They will learn about their rights, then they will learn how different levels of government either protect or deny them their rights,"

Boquist said.

Today, Senator Jackie Winters and ORP National Committeeman Solomon Yue will speak in the MU Ballroom at 5 p.m.

Winters will mainly be addressing the Black Student Union and Kappa Alpha Psi about the history of the Republican Party and its role in support and passage of civil rights legislation.

Winters is the only Republican black legislator currently elected and serving in Oregon and has unique experiences in areas of civil rights and responsibilities.

Winters believes that unless we know our history and the principles upon which our country was founded, we will have difficulty understanding the context in which our policies have developed in the 21st century.

On Tuesday, Senator Boquist will be presenting his thoughts on the resolution on gun rights in the ASOSU Senate meeting in MU109 at 7 p.m., and another speaker will be present at a meeting on Wednesday at MU211 at 7 p.m.

Thursday is planned to be the largest event for the week. National talk show host Lars Larson will be broadcasting his show on campus from

12 p.m. to 6 p.m.

"I think the Virginia Tech shooting could have had a lot less damage had people been able to have firearms," Larson said. "The bad guys that do these things know we don't allow guns on campus."


Also on Thursday, a rally will take place from 5 to 6 p.m. with surprise guests of second amendment supporters and state representatives that will express their thoughts about carrying concealed weapons.

Friday is when the drawing will take place for an M16 AR-15 rifle, which was donated by the Philomath Gun Shop, in the MU Quad at 4 p.m. Also, there will be a concealed weapons permit class at Withycombe 109 from 5 to 7:30 p.m.

The class is a prerequisite for anyone wanting a concealed weapons permit and will be free for students as part of the second amendment week.

A booth will be set up in the MU Quad Monday through Friday from 10 a.m. to 4 p.m. to sell raffle tickets and answer any questions.

"What's discussed in the media is when guns are used to kill people," Friedman said. "[They] can be used as self-defense too."




Exclusive back-to-school savings for Georgia Southern University students.

**▶ 10% MONTHLY DISCOUNT
ON QUALIFIED CHARGES.**

> Bring this ad and your student ID
to an AT&T store and mention
FAN #26TEB89 for offer or
visit att.com/wireless/gsu2009att

PANTECH MATRIX™

PANTECH MATRIX PRO™



*AT&T imposes a Regulatory Cost Recovery Charge of up to \$1.25 to help defray costs incurred in complying with obligations and charges imposed by State and Federal telecom regulations; State and Federal Universal Service charges; and surcharges for government assessments on AT&T. These fees are not taxes or government-required charges.

\$36 per line Sponsorship Fee may apply when enrolling your account to take advantage of corporate discounts. IMPORTANT INFORMATION: Limited-time offer. May require a 2-year agreement on a qualified plan. Other conditions & restrictions apply. See contract & rate plan brochure for details. Subscriber must live & have a mailing addr. within AT&T's owned wireless network coverage area. Equipment price & avail may vary by mkt & may not be available from independent retailers. Purchase of additional equipment, services, or features may be required. Not all features available on all devices or in all areas. **Early Termination Fee:** None if cancelled in the first 30 days, but up to \$35 restocking fee may apply to equipment returns; thereafter up to \$175. Some agents impose add'l fees. **Unlimited voice services:** Unltd voice svcs are provided solely for live dialog between two individuals. No additional discounts are available with unlimited plan. **Offnet Usage:** If your voice or messaging service usage (including unltd svcs) during any two consecutive months or data service usage (including unltd svcs) during any month on other carriers' networks ("offnet usage") exceed your offnet usage allowance, AT&T may at its option terminate your svc, deny your contd use of other carriers' coverage, or change your plan to one imposing usage charges for offnet usage. Your offnet usage allowance is equal to the lesser of 750 mins or 40% of the Anytime mins, the lesser of 24 MB or 20% of the MB incl'd with your plan, or the lesser of 3,000 messages or 50% of the messages included with your plan. AT&T will provide notice that it intends to take any of the above actions, and you may terminate the agreement. **Monthly discount:** Available to qualified employees of companies and/or government agencies and qualified students and employees of colleges/universities with a qualified business agreement ("Business Agreement"). Service discount subject to corresponding Business Agreement and may be interrupted and/or discontinued without notice to you. Service discount applies only to the monthly service charge of qualified plans and not to any other charges. A minimum number of employees, minimum monthly service charge for qualified plans, additional AT&T services, or other requirements may apply for discount eligibility. Discounts may not be combined. Offer subject to change. Additional conditions and restrictions apply. If you have a question about available discounts and/or your eligibility, you can contact your company's telecommunications manager. Excludes iPhone™ plans. ©2009 Pantech, Pantech Matrix, and Pantech Matrix Pro are registered trademarks of Pantech Wireless, Inc. All rights reserved. Screen images simulated. Facebook is a trademark of Facebook, Inc. ©2009 AT&T Intellectual Property. Service provided by AT&T Mobility. All rights reserved. AT&T, the AT&T logo, and all other marks contained herein are trademarks of AT&T Intellectual Property and/or AT&T affiliated companies. All other marks contained herein are the property of their respective owners.

The first nationwide carrier to be awarded a Customer Information Code.

OF TOLL-FREE to 800-455-4546

National stimulus funds go towards funding more energy research

By Alexandra Wilcox
Uwire

The Lawrence Berkeley National Laboratory will receive an extra \$40 million in stimulus funds for research in alternative energy and power grids, Secretary of Energy Steven Chu announced Tuesday.

The recent award-part of a national \$371 million in new funds from the administration of President Barack Obama-brings the lab's total stimulus funding up to \$156 million.

The lab received about \$115 million from the Obama Administration in March, most of which is going towards maintaining infrastructure and creating a laser accelerator project and a high-speed computer network.

The additional stimulus money will go toward five projects at the lab, which is funded by the U.S. Department of Energy but managed by the University of California system.

Researchers at the lab said the new money will create jobs and provide for long-term economic recovery and the strengthening of scientific industries.

"These new initiatives will help to create new jobs while allowing the U.S. to maintain its scientific leadership and economic competitiveness," said Chu, who is the former director of the lab, in a statement. "The projects provide vital funding and new tools for research aimed at strengthening America's energy security and tackling some of science's toughest challenges."

About \$11.3 million of the new funds will go the lab's Advanced Light Source, a division that operates a powerful X-ray machine that is used by roughly 1,800 scientists from across the country.

Researchers use the X-ray machine to see things at an atomic and molecular level, including the study of biological proteins that could help researchers develop drugs and learn more about diseases, said Roger Falcone, director of Advanced Light Source and a UC Berkeley physics professor.

The money could create a few dozen jobs and will go towards updating its instruments to current standards, part of its division's strategic plan. The Advanced Light Source and its machine was established about 15 years ago.

"We have been struggling ... together with the Department of Energy to find those funds in an



Special photo

array of very tight budgets for science," he said. "If we hadn't had this, we could improve over a much longer time scale ... we definitely would not have been able to go at a rapid pace as we are now and quite possibly (may) have not at all."

About \$875,000 will also go towards a division called Smart Grid, which aims to improve the efficiency and reliability of the nation's power grid.

"We've been trying to work on this for five years on a sort of shoestring budget," said Juan Meza, senior scientist and department head for High Performance Computing Research, which directs the project.

The rest of the funds will go toward the Joint Genome Institute, the Joint BioEnergy Institute and fusion energy research.

ALWAYS A BRILLIANT IDEA!

SMART CYCLIST WEAR HELMETS!

LivinGreen

CRI CAMPUS CYCLE

For more info visit: www.georgiasouthern.edu/wellness

OUT AND ABOUT IN THE BORO

Express Tune & Lube

Tire, Alignment
& Exhaust Center

612 S. Zetterower Avenue

489-4444

www.expresstuneandlube.com

Monday - Friday 7:30am - 6:30pm

Located a half block north of Wendy's.

OIL CHANGE SPECIAL

\$25⁹⁵

Includes up to
5 qts of Castrol
5W20, 5W30, 10W30,
or 20W50

price applies to most vehicles. Expires 8/31/09

www.expresstuneandlube.com

Shantana's Salon/Tanning

Welcome Back Students!

\$1 Tanning Visit!

\$2 off Haircut!

\$2.00 off your hair cut
when you find your
GSU Student ID card

Call or just walk in!

300 E. Main Street Suite C Across from Wendy's

Eagle Entertainment to host Block Party, 'Star Trek' and Tybee Island trip this weekend

By Ryan Babula

Features editor

This weekend, Eagle Entertainment has numerous events planned for the Georgia Southern student body.

This Friday, starting at 6:00 p.m., Eagle Entertainment is holding its first ever "Block Party" on GSU's campus.

Located on Forest Drive and Georgia Avenue, the event is an attempt to welcome back students, both new and old, and to "promote school spirit within Georgia Southern", says Sriratanakoul, Activities Coordinator at Eagle Entertainment.

At the event, various activities will be taking place, such as inflatables, games, and music. Students are encouraged to bring swimsuits, for many of the inflatables will be water based.

For the event, Eagle Entertainment has coordinated with the Multicultural Student Center, who is providing food for the event.

In securing the area needed for the event, Eagle Entertainment coordinated with Bob Chambers, Director of Parking and Transportation, and Mike Russell, Director of Public Safety and Chief of the GSU Police, or University Police Department (UPD).

Sriratanakoul states that "it wasn't very difficult", that both were "pretty excited" to be involved with helping block off roads. Also, Sriratanakoul says that Russell will be "signing off some of his UPD's for the dunk booth" that will be used at the event.

Sriratanakoul hopes for around 1,500 people to attend the event, "since the residence halls are right there", because participation for all of their events has been "really high this year".

He also hopes that this event can build and grow into something really popular in the future.

To cap off the night, Eagle Entertainment will be showing "Star Trek" in the Russell Union Theater. Based off of the series by Gene Roddenberry, "Star Trek" is an intergalactic adventure that is exciting, and is one of the summer's best films. The film will begin playing at 9 p.m.

As for Saturday, a day trip to Tybee Island has been scheduled for students that would like to get out of Statesboro for the day.

In doing the event, Eagle Entertainment would like to restart their travel program, as the past few trips coordinated through the organization have only been to New York City and for Spring Break.

In not traveling a long distance for the trip, Sriratanakoul states that it is "cost-effective", and they can highlight that GSU is "only so far away from Tybee or Charleston or Jacksonville".

While on the island, students are allowed to roam free and explore the island for "restaurants and to see what activities are going on by the pier". Eagle Entertainment will be providing drinks and sunscreen to those who need it.

So far, numerous people have shown interest in the trip, and 20 applications have been turned in so far. Since Eagle Entertainment is using vans instead of buses for the excursion, 30 can be accommodated on the trip.

Sriratanakoul says for those that would like to attend but cannot find space on the vans, they can carpool behind the vans and into Tybee. Sriratanakoul encourages students to attend because to be a tradition that they build "where on the first weekend of school, Georgia Southern heads down to Tybee and takes it over".

Sriratanakoul hopes that the vans will arrive in Tybee around 11:30 a.m., and they will stay until 5 p.m. to ensure a full day for everybody at the beach.



All Special Photos

International job opportunities immediately available for Post-doctoral, Doctoral and select Masters Candidate's.



Experience and Sub-specialties consistently in highest demand are:

- Engineering: electrical, chemical, nuclear, mechanical and aeronautical.
- Sciences: physics, biology, chemistry, toxicology, virology and veterinary science.
- Computer Science: telecommunications, shipping/logistics and procurement/acquisitions.

Our global partners include: multi-national and public entity firms focused on the most advanced engineering and scientific research projects.

Competitive candidates will have native fluency in a foreign language and a demonstrated ability to live and work overseas.

Please apply by sending resume/CV and cover letter to humanresources@gradjobzone.com or mail to: Gradjobzone.com 1440 Coral Ridge Drive, Suite 338 Coral Springs, FL 33071

STATESBORO FLEA MARKET

20% STUDENT DISCOUNT

Second Saturday of Each Month w/ Student ID

Located at 158
East Parrish, Highway 301
Phone: 912.681.9766

'District 9' is an exciting sci-fi epic that mixes morals with action

By Ryan Babula
Features editor

"District 9" is not only a thrilling science fiction parable, but it's also a smart allegory for apartheid, social stratification, and racism. Now, don't let those things scare you away from seeing the film. It's by no means boring or dull.

It's very intense for most of its runtime, and kept me on the edge of my seat the entire time. It's one of the best science fiction films I've seen in years, not only because of its intense action set pieces or its incredible CG work, but also because of the ideas it presents and fashion in which it does so. I truly, truly loved this film.

Set in Johannesburg, South Africa, the film chronicles the struggles and conflicts between the humans living in the city and the aliens that were marooned there nearly two decades before. The aliens are quarantined in a horrible slum known as District 9, and as the film begins, a squirrely employee named Winkus van de Merwe (Sharlto Copley) is placed in charge of relocating the aliens to a concentration camp many miles outside of the city.

To say much more would ruin the many surprises the film has to offer, but things escalate

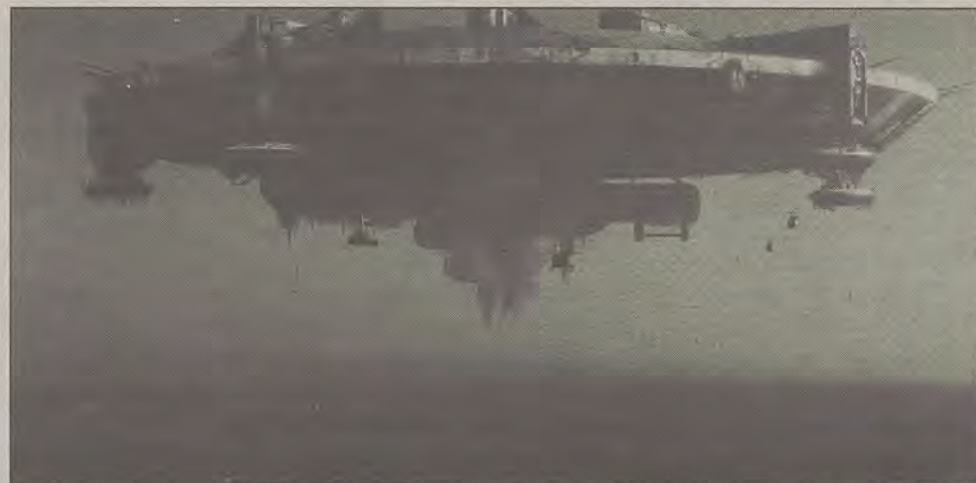
greatly and lead to dangerous consequences for everybody involved.

The immediate thing to notice about "District 9" is the incredible special effects on display. The aliens, known to humans as "prawns", are incredibly lifelike, and are seamlessly integrated into the live-action elements.

The "prawns" stand around seven to eight feet tall, sport antennae and claws, and have tentacles that hang from their heads. Composed by WETA workshop (the effects house that worked on "The Lord of the Rings"), the creatures are disgusting to marvel, but there's still a level of humanity to be found within them. This stands as a testament, not only great effects, but to amazing storytelling.

Another surprising thing about the film is the fact that it was made for only \$30 million dollars (quite the modest budget). To put in perspective, "Transformers: Revenge Of The Fallen" was made for hundreds of millions of dollars. This looks better, and was made for a fraction of that amount.

Sharlto Copley is a completely unknown talent, but after watching his performance here, you'll want to remember him. He paints van de Merwe as a little weasel; a low-level guy who was simply given his position, mainly because of his family



Special Photo

A giant alien mothership hovers over Johannesburg, South Africa in "District 9", a great sci-fi film.

ties to the head of the organization.

When initially clearing out the slums, the level of brutality and hate towards the aliens is horrifying. Some of the decisions he makes in the opening 30 minutes of the film will turn many off, but when he is put in danger, you begin to empathize with him. Copley's performance is absolutely fantastic, and I'm very interested in what the actor will do

in the future.

The conflicts between the humans and aliens give "District 9" a distinct edge over most of the science fiction that has come out as of late. It's not all about explosions and spectacle. It's a smart film that uses all of its action and excitement to service the story. And believe me, there's plenty of action and excitement to go around.

A retrospective look at the famous films of Quentin Tarantino

Quentin Tarantino's new film, "Inglourious Basterds" opens this Friday. In anticipation for the film, here's a look back at Tarantino's films from Features editor Ryan Babula, listing their merits and downfalls.



Reservoir Dogs (1992)

Tarantino's first film is about a group of bank robbers that horribly botch their first job, and their attempts to find out how everything went wrong. It's a very violent crime film that acts as a great set-up for what Tarantino will offer in the future, but its chronological structure ends up hindering the film.



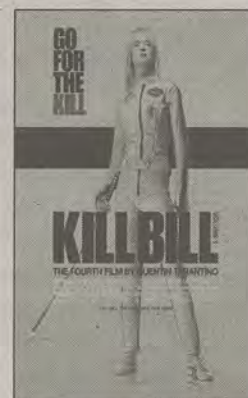
Pulp Fiction (1994)

Premiering at the Cannes Film Festival to awesome reviews and the top prize of the festival, "Pulp Fiction" is Tarantino's true break-out hit. The film is a collection of four interconnected stories, and their outcomes are shocking, violent, and darkly funny. John Travolta and Samuel L. Jackson give the two most memorable performances in the film, and Tarantino's knack for dialogue is wonderfully shown here.



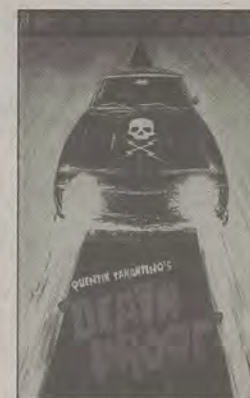
Jackie Brown (1997)

"Jackie Brown" proves that Tarantino is not a one-trick pony. The film is about criminals double-crossing each other, and it is reminiscent of 70's Blacksploitation films, and the dialogue here is once again fantastic. Even though it's rarely seen, "Jackie Brown" is a great Tarantino film.



Kill Bill (2005)

"Kill Bill" is a giant revenge epic that was split into two parts for theaters. As a whole, it's an epic labor of love that is exuberant and violent. It's extremely exciting stuff. "Vol. 1" is a lot of fun, but I'd argue that "Vol. 2" is much better.



Death Proof (2007)

I would consider "Death Proof" Tarantino's one true misstep. The film commits the biggest crime that any film can: it's boring. Tarantino's dialogue comes off as amateur-ish, and it's mostly just characters rambling for two hours. The action scenes are the highlight of the film, but they're few and far between.

All Special Photos

The Green Corner presents: Tips for Living a Green Life

By Philip Clements

Reflector editor-in-chief

The summer is over, and with it goes the leisurely activities we indulge ourselves in. Road trips to the beach, endless pizza boxes and beer cans, and sleeping in all 7 days a week. But now that classes are back in session, it's time to start thinking about our responsibilities again.

With over 18,000 students here at Georgia Southern, we have a great deal of power to push the campus towards a greener future.

If everybody were to band together and put our foot down on unsustainable and wasteful practices, the powers that be would have no choice but to listen to us. But the first step is on the individual level. Each person needs to make an effort to decrease their own impact.

So, whether you're an environmental veteran or a recent recruit, here are a few simple tips to decrease your carbon footprint and live a greener life.

1. Recycle - The golden standard of green living, recycling is one of the most important habits to develop. You can recycle just about anything, including your cereal boxes and Coke cans.

Recycling one aluminum can saves the amount

of energy it takes to run a TV for 3 hours. With a recycling center at Wal-Mart and 16 in Bulloch County, there's really no excuse for not recycling.

For a map of recycling centers in Bulloch county, go to keepbullochbeautiful.org/brochures/RecycleMap.pdf

2. Use compact fluorescent light bulbs - The spiral light bulb has become the icon of the green movement, and not for nothing. On average, they use 50-80 percent less energy than incandescents, which saves you (or your parents) money. They also reduce your carbon emissions by roughly a half-ton over the life of the bulb.

3. Walk, bike, carpool or use the bus - The idea is to use as little gasoline as possible. Walking or biking are the best options, but in the deathly heat of summer in Statesboro, it's not always the most realistic.

However, that doesn't mean you can't still be green. For those that live off-campus with multiple roommates, instead of each person driving to campus separately, carpool instead.

Plus, you'll be saving money because the carpool parking passes are almost half the price of a regular commuter pass (\$85 vs. \$140.) For those on campus, take advantage of the bus system.

4. Use a re-usable water bottle and grocery bag - We all love our bottled water, but they can get expensive and, unless you recycle them, they spend roughly 700 years in the landfill (according to earth911.org).

An easy fix would be to purchase a reusable bottle (Sigg and Nalgene are popular brands) and fill them up at any water fountain or sink you come across. Same goes for grocery bags; just get a canvas bag or even your bookbag.

5. Stay informed - It's hard to be green without knowing the facts or keeping yourself informed on what is going on in the world. There are a million websites out there that offer information and news from the world of environmental activism and scientific discovery.

Some of the better ones include: current.com/green, treehugger.com, ecogeek.org, greenupgrader.com, planetgreen.discovery.com.

6. Get involved - It's one thing to live green, but the threats posed by climate change and fossil fuel dependency are too imminent to stop at replacing one or two lightbulbs. There are hundreds of national environmental groups, such as Greenpeace and Sierra Club.

While those are important and worthy of your time and effort, the easiest way to get involved would be to join a group or club here in Statesboro. The campus environmental group is SAGE (Student Alliance for a Green Earth) can be found on Facebook (Sagacious Sage Members.)

The Statesboro group is Keep Bulloch Beautiful (www.keepbullochbeautiful.org)



'Ossabaw' exhibit brings beauty of Ga. coast to GSU

By Kevin Gordon

Guest writer

Ossabaw Island, a picturesque piece of land located twenty miles from the port of Savannah, can claim many distinctions: thousands of acres of beautiful woods and marshes, and a service committed to preserving the tranquil beauty of the island.

Georgia Southern's Betty Foy Sanders Department of Art has quite the resume as well, being home to a wealth of talented students and dedicated professors.

Put the two together and you have *Ossabaw*, the wonderful new exhibit being displayed by the University Gallery.

The Gallery hosts a wide array of artwork, all produced by GSU students or recent graduates.

One of those artists, graduate student Alla Parsons, an experienced and talented painter who has studied art in Russia, Minnesota and Florida, has an excellent painting in the exhibit entitled "Ossabaw Trees".

Parson had nothing but good things to say about the week-long trip to the island that inspired the artwork in the exhibit.

That trip included fifteen painting and drawing students, both graduate and undergraduate, and was led by Professors Pat Walker and Bruce

Little of the art department.

Walker, who has experience in research projects on the island, petitioned the operators of the island for access, as only approved educational ventures are allowed on the protected island by the Department of Natural Resources.

The students and professors, along with a hired chef, stayed for a week on the island in bunk-style rooms.

These were some of the only buildings on the strictly preserved island, and the students had ample opportunity (when it wasn't raining) to explore the beauty of the Island.

Some of the highlights, according to Parsons, included roaming horses, wild donkeys, tree "bone yards" on the shore, and even a fat, hairy pet pig by the name of Paul Mitchell.

These highlights are portrayed in all of the students art work, from a print of Paul Mitchell included in Sarah Notestine's mixed media project *The Annual Roast*, to a collage of the island's wildlife in Kristina Brennan's oil on canvas entitled *Ossabaw Island*.

Artists Lauren McSwain, Colleen Beyer, Hanadi Istambouli, and Nicole Augustine also contributed excellent pieces of work to the exhibit.

FRANKLIN
CHEVROLET - CADILLAC
PONTIAC - BUICK - GMC
912 - 764 - 6911

GSU Students - Show us your GSU ID and receive 10% off any purchase in Parts or Service Department

We want to be your ONE STOP SHOP
from "Oil Changes & Tires, to major repairs"

WE DO IT ALL!

Our experienced Body Shop can fix all of those "Dents & Dings" that your vehicle might have. We accept all insurance claims, and we will give you a

FREE ESTIMATE

on your body & paint repair.

DID YOU KNOW WE TOW?
24 - 7

Call 912-687-3701 anytime.

Check out our website
www.franklinchevrolet.com



etc.

Free ads for students, faculty & staff (non-commercial). Just go to www.gadaily.com -click on classifieds

You must include your names, phone number and Georgia Southern e-mail address for freebies. No phone calls please, at this price we don't take dictation.

For commercial ads please contact us at gaclash@georgiasouthern.edu or give us a call at 912-478-5418.

CLASSIFIED CATEGORIES

100 Announcements
110 Auditions
120 Freebies
130 Lost & Found
140 Other Announcements
200 Buy or Sell
210 Autos for Sale
220 Auto Parts for Sale
230 Bicycles for Sale
240 Books for Sale
250 Computers & Software
260 Miscellaneous for Sale
270 Motorcycles for Sale
280 Trade & Barter
290 Wanted
300 Employment & Job Services
310 Career & Job Services

320 Child Care Needed
330 Child Care Provider
340 Internships/Volunteer
350 Jobs/Full Time
360 Jobs/Part Time
370 Opportunities/Business
380 University Work
390 Wanted Jobs
400 Housing & Real Estate
410 Apartments
420 Lots & Rooms
430 Mobile Homes
440 Real Estate for Sale
450 Roommates Wanted
460 Storage & Moving Services
470 Student Housing
480 Sub Leases
490 Vacation Rentals
500 Personals
510 Personals

600 Services
610 Education & Tutoring
620 Financial Aid/Loans
630 Legal Services
640 Resumes/Typing/DTP
650 Services/Miscellaneous
700 Travel
710 Spring Break Travel
800 Transportation/Rides
810 Transportation/Rides
900 Miscellaneous
910 Pets & Pet Supplies

Buy or Sell 200 - 299

210 Autos for Sale

Black 1998 Ford Explorer. 95,000 Miles. Leather interior, power locks and windows, multi-disc CD Changer, CD and Cassette Player, New tires. \$3400 OBO. 706-829-2531

1999 Ford Escort SE-Black/grey. 121K miles, AC, Power Windows. Great Condition/very clean. Must sell- \$2800 or best offer. Neel 912-536-3030

260 Miscellaneous for Sale

Costa Del Mar VELA WHITE FRAMES W/GRAY WAVE 400 Polarized WaveCR 39 lenses Frame size small for women. Barely Used. \$75. Call 912-690-7090.

Employment & Job Services 300 - 399

370 Opportunities/Business

BARTENDING \$300/DAY POTENTIAL! No experience necessary. Training provided. Age 18+ OK. 1-800-965-6520 ext 296.

Housing & Real Estate 400 - 499

430 Mobile Homes

2 bedroom/2 bath located in Greenhaven-Great condition-New Carpet-New Paint-Nice Private Deck-Perfect for students or a young couple-Asking \$14,000-CALL 912-687-3767!

450 Roommates

Roommate needed. Private BR/BT for \$325/ mth plus utilities. Brand new duplex, quiet neighborhood off cypress lake road. We smoke, but not inside, no pets, friendly roommates. Move in ASAP. Call 912-531-4805

Roommate needed for 4BR/3BT, 2-story condo. Full second floor is available for \$400. The master suite, and a second BR and BT are included. Call 912-536-8209 for more info.

Need a 3rd housemate for 3 bedroom trailer in Greenhaven trailer park, 200\$/month all inclusive. Call or email for details. 912-682-0150

2 Guys, 1 Girl looking for another roommate in a 4bd/4bt house located in Burkhalter. Rent is 350. Call 7703806239 if interested.

Roommate needed in 2BR/2BT Duplex. Large yard, friendly neighborhood off Cypress Lake Road. 912-531-4805

Male Roommate Wanted at 153 Herchal Drive. Langley Pond 1BR/1BA in new 4BR/4BA home. Rent \$350, plus security deposit. Fishing, swim-

ming pool, volleyball court. Within 1 mile of GSU. Office 912-489-0679, Mobile 912-541-6566 \$150 finder's fee

470 Student Housing

Talon's Lake-4 bed/4 bth, dsl/cable included \$300/room available July 27th to move in. 682-5105

Grove Lakes 105 Cherry St. Cul-de-sac. 2320 sf 3BR/3BT. Lg fam rm w fp. Eat in kitchen. Lg laundry rm. Xtra rm. Strge 11x15; shop 24x36. Screen porch. Covered dock. 8 ac pond. 15 mins to GSU. 912-682-1226

4 BR/4 BT in Burkhalter Plantation. Very nice house with all appliances included. Each room available for \$350 plus utilities/month. Call 912-536-6055. Please leave message.

2 Female roommates needed to share new 3BR/3BA Condo in The Hammocks. \$325/month. Shared utiities. Available immediately. Call 912-541-5093 for more info.

480 Sub Leases

Sublet 1 BR in 3 BR, 2 BT house 8/1/09-12/31/09 w/ 2 male GSU students. Rent is \$350 + utilities, \$350 security deposit. Full kitchen, large backyard, close to GSU campus, quiet neighborhood, no pets. Call 678-797-8151.

Pet-friendly sublease available in Burkhalter Plantation. 4BR/4BT, but the other rooms aren't rented. House/appliances only 1 yr old. \$350/month. (770)364-5088

Sublease 1 BR in unoccupied 4BR/4BT house. Fenced in yard, \$350, plus utilities. Call 770-364-5088

Sublease room at the Avenue. 2 BR, 2 1/2 bath townhouse. Rent is \$445, all inclusive. Free Wi-Fi. Great Roommate. Female Preferred. trobbin2@email.georgiasouthern.edu

Need female subleser for 1BR in 4BR/4BA furnished apt. Rent and utilities paid for Aug-Oct and utilities paid for Nov-Dec. Lease is for 8/11/09-7/31/10, rent \$425/mo, util \$40. 678-494-1993

Need female to sublease 4BR/4BA apt at Campus Crossings for 8/11/09-7/31/10. Lease is \$465/ month including util. Will pay August rent plus \$165 towards remainder of lease. Contact Shelby ASAP at 678-494-1993

Male or Female subleser needed at Campus Crossing. \$460/month. Will pay reservation fee and first month's rent. All inclusive. Contact regina_ruiz@georgiasouthern.edu

Sublease in Copper Beech. 4BR/4.5 Bath. 3 amazing female roommates. Very clean. Rent is \$370. Please contact Katie at 678-447-8888 or by email creightonkatie@yahoo.com.

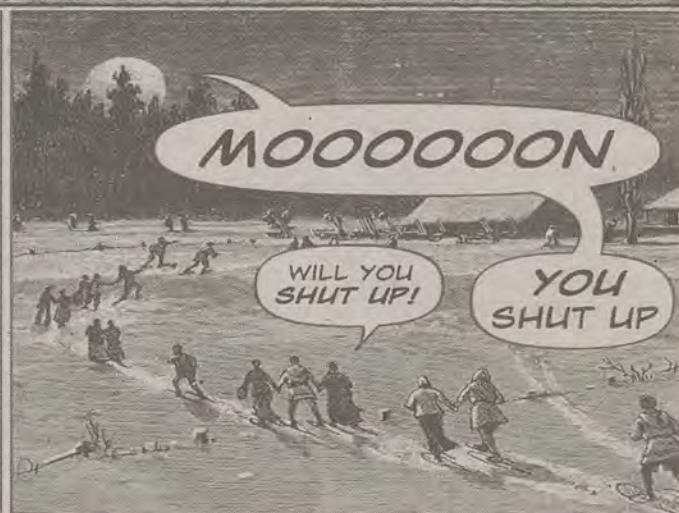
Services 600 - 699

610 Education & Tutoring

FUN & STUFF Visit our Web site for list of things to do that are educational and fun. <http://www.stp.georgiasouthern.edu/funstuff/>

WONDERMARK BY DAVID MALIK!

moon at WONDERMARK.COM



Miscellaneous
900 - 999

910 Pets & Pet Supplies

Obedience Classes and Puppy classes for only \$75! Private lessons also offered prices starting at just \$50! Seminars for \$20 with \$15 to OTC/GSU students, firefighters, police, and military with ID. 912-531-7585.

Doberman Pinscher, Red, Male, 3yrs, fixed, house trained. jgoliwi1@georgiasouthern.edu

Pure-bred lab puppies for sale; 6 weeks old on Aug 15. 2 chocolate males: \$200 each; 2 black males: \$150 each; 1 black female: \$100. Call 912-682-5039

CHECK OUT
GADAILY.COM FOR MORE NEWS,
VIEWS, AND
CLASSIFIEDS



Sudoku

		8	7		9	4
					1	
	2	1		5	8	
4			3		7	
		4		9	3	
1		8			4	
	4	5		6	2	
2						
9	3	2	8			

Level: **1 2 3**

Complete the grid so each row, column and 3-by-3 box (in bold borders) contains every digit 1 to 9. For strategies on how to solve Sudoku, visit www.sudoku.org.uk.

Solution to Saturday's puzzle

5	8	4	3	9	6	7	2	1
3	1	9	7	2	5	8	6	4
2	7	6	8	1	4	5	9	3
8	9	7	1	4	3	6	5	2
6	3	1	2	5	8	9	4	7
4	2	5	6	7	9	1	3	8
7	5	8	9	3	2	4	1	6
9	6	2	4	8	1	3	7	5
1	4	3	5	6	7	2	8	9

© 2009 The Mepharm Group. Distributed by Tribune Media Services. All rights reserved.

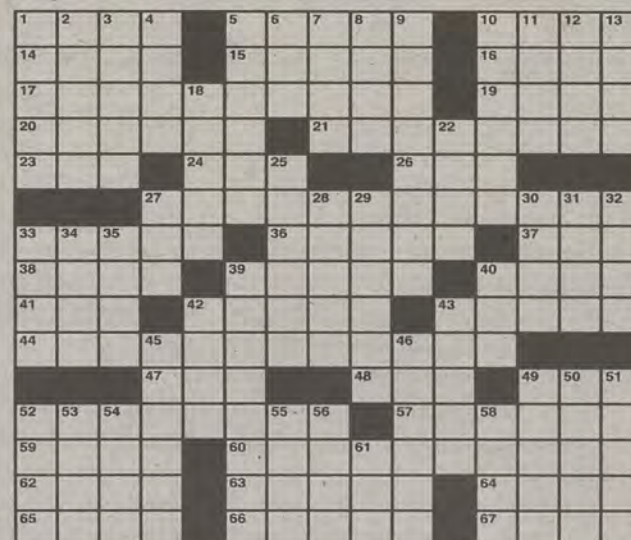
8/31/09

Los Angeles Times Daily Crossword Puzzle

Edited by Rich Norris and Joyce Lewis

ACROSS

- 1 Dogie-catching tool
- 5 Looking like you've seen a ghost
- 10 Poi base
- 14 "Iliad" or "Odyssey"
- 15 Not a soul
- 16 Greek war god
- 17 Scope of a thorough search
- 19 Rod's companion
- 20 Sweater wool
- 21 Mythical city of gold
- 23 Ottoman governor
- 24 Nightmare street of movies
- 26 One having a little lamb
- 27 Scope of a thorough search
- 33 Planetary shadow
- 36 Thinks (over) carefully
- 37 Partner of a tournament "am"
- 38 Chat
- 39 Roman senators' attire
- 40 Immense
- 41 Previously
- 42 Pine product
- 43 Headquartered
- 44 Scope of a thorough search
- 47 Walking on _____ elated
- 48 Doo-wop horn
- 49 Play segment
- 52 Gloria Steinem, notably
- 57 Home beverage counter with a sink
- 59 One with burning pants?
- 60 Scope of a thorough search
- 62 Very dry
- 63 Up in arms
- 64 Bad day for Caesar
- 65 Lottery-like game
- 66 Dressed like a superhero
- 67 Keeps after taxes



By Norfleet Pruden

8/24/09

DOWN

- 1 Post-op treatment
- 2 Offer one's view
- 3 Word with bank or back
- 4 Canyon phenomenon
- 5 Historical records
- 6 Instant lawn
- 7 Digger's creation
- 8 Carbon compound
- 9 Renegotiated contracts
- 10 Paved
- 11 Vicinity
- 12 Physician Walter for whom an Army hospital is named
- 13 Norway's capital
- 18 Venue for games
- 22 Has title to
- 25 Champagne and orange juice cocktail
- 27 Bug
- 28 Made trenches
- 29 Spiral-horned antelopes
- 30 Numbered work
- 31 Encourage
- 32 _____ the line: obeyed

Saturday's Puzzle Solved

T	H	A	T	S	I	T	C	O	B	P	A	R
J	E	B	B	U	S	H	H	O	E	C	A	K
H	A	D	A	C	O	W	O	N	T	O	P	I
O	D	U	K	N	A	C	K	C	L	A	N	K
O	L	L	A	E	R	L	E	H	O	W	T	O
K	I	L	N	S	T	E	D	D	A	N	S	O
E	N	A	C	T	F	U	N					
R	E	H	E	A	R	S	P	A	Y	B	A	C
K	I	M	J	O	N	G	I	L	T	I	T	L
A	D	E	A	L	M	A	I	L	M	O	D	E
R	I	G	I	D	E	L	L	E	N	L	B	J
Z	O	O	M	S	I	N	J	O	E	Y	D	E
A	T	H	E	A	R	T	O	N	W	A	T	E
I	S	M	W	E	S	N	E	T	W	O	R	K

(c) 2009 Tribune Media Services, Inc.

8/24/09

- 33 Brigham City's state
- 34 Wise men
- 35 Stain
- 39 Fabulous
- 40 Solo played by Harrison
- 42 Jockey strap
- 43 Put in cartons
- 45 Arrangement of locks
- 46 Acted sleepy
- 49 Put up with
- 50 West Point undergrad
- 51 Rapunzel feature
- 52 Anti-aircraft fire
- 53 Emerald Isle
- 54 Common street name
- 55 "Nobody doesn't like ___ Lee"
- 56 Mouth, in slang
- 58 Duplicate
- 61 Had lunch

DR. MEL
ATTENDS A
MAD
SCIENTISTS
CONVENTION.

brewrockit@yahoo.com www.gocomics.com/brewsterrockit
©2009 Tribune Media Services, Inc. All rights reserved 03/04

Rickard

THERE'S THE
M.S.W.A.H.I.I.T.T.P.
SUPPORT GROUP.

WHAT'S
THAT?

MAD SCIENTISTS WHO ACCIDENTALLY HAD
INSECTS INSIDE THEIR TELEPORTATION PODS.



Fast food consumers ignore nutrition information

By Shahla Naimi
Uwire

Earlier this month, Yale researchers from the Rudd Center for Food Policy and Obesity released the results of an observational study conducted at several fast food locations, showing that only 6 out of 4,311 — or 0.1 percent — patrons looked at nutritional information before they ordered. The study's authors suggested fast food restaurants display nutritional information more prominently.

"Why not make it easier for people to make a better decision?" Christina Roberto GRD '12, the lead researcher on the study, said. "Customers have a right to know."

Data for the study was collected at four restaurants — McDonald's, Burger King, Starbucks and Au Bon Pain — in both urban and suburban areas in New York City and Connecticut. The researchers counted the number of customers who read on-premises nutritional information available on posters, pamphlets or computer terminals in the restaurants, and compared this to the overall number of customers who purchased food.

"This information is close to useless if no one accesses it," Henry Agnew '09, a psychology major who collected data, said.

Roberto explained that the idea for the study originated in a long-standing dispute about the way menus should be presented. Restaurants, she said, argue that they make nutritional information read-

ily available as pamphlets or posters for customers, making prominent displays unnecessary and costly.

But David Katz, an associate professor in public health practice, said restaurants are not concerned primarily with the health of their customers. He added that it is the responsibility of public health officials to keep restaurants honest.

Katz said he believes government legislation should mandate prominent display signs, whether or not consumers indicate they want the information.

"I don't think it is a matter of whether or not consumers want to know," Katz said. "I think the better question is, should the consumer know? My answer to that is absolutely they should know. Even those people who say they don't want to see how bad it is for them should know."

Debbie Humphries, a clinical instructor in public health, said polls and studies show that the majority of consumers do want to know nutritional information. There needs to be a balance, she said, between displaying the information customers need and the information they want. The Yale study, Humphries added, does not provide information about the extent to which customers want nutritional information.

"It implies that the problem is much simpler than it is," Humphries said of the study.

Katz agreed, explaining customers do not want all the nutritional information about what they eat, but rather a quick overview of its healthiness.

Your Student Activity Fees at Work!

Condoleezza Rice



Remarks by
Condoleezza Rice,
Secretary of State
(2005-2009)

**Tuesday, Sept. 8
7:00 p.m.
Hanner Fieldhouse**

Sponsored by
the Office of the
Vice President for
Student Affairs and
Enrollment Management
and the Office of
Student Leadership
and Civic Engagement

Ticket Distribution

Students - Aug. 20, 21, 24, 25
Faculty/Staff - Aug. 26, 27, 28

Tickets are complimentary and will be
distributed at Hanner Fieldhouse.

For more information please go online to
www.georgiasouthern.edu/speakerspotlight

U. Florida study finds rudeness blocks productivity

By Charlotte Leland
Uwire

A new University of Florida study shows people who witness co-workers being rude to each other experience the same effect as the people toward whom the rude behavior is directed.

Amir Erez, an associate professor of management at UF, and Christine Porath, a professor from the University of Southern California, conducted three experiments that each showed the same result of observers becoming less able to think creatively and solve problems.

In the study, participants observed a fellow student being reprimanded for arriving late to class while participants in the control group only saw a tardy student be dismissed from class.

Those who witnessed the rude behavior toward a student were less able to recall information and found less creative uses for a brick.

They suggested a brick could be used for violent purposes like beating someone up or throwing through a window, according to the study.

"It's an immediate reaction," Erez said. Because

workers have to be more creative and helpful at their jobs, he said, it is important to keep hostile behavior from spreading.

"Managers need to pay attention to that," he said.

The inspiration for the study was similar research indicating that exposure to rude behavior significantly decreased ability to focus, he said.

Because of this, he and Porath wondered how this same behavior affected workers who simply observed the negative behavior.

After about a year and a half of studying and conducting the experiments, Erez and Porath published their findings.

Janitorial supervisor Katrena Johnson said that conflict between two employees usually escalates to involve more.

"That's why they should do it in private," Johnson said.

Michael Lillie, Weimer Hall building supervisor, said the study is representative of his workplace.

"[Rudeness] puts you in a bad mood," he said. "It's not professional."



WITH
SUPPORT
FROM



News From the Nest

Ex-Eagle Donte Gennie signs professional deal with Marso-Vagep NYKK to play overseas



GSU NEWS SERVICE

By GSU News Service

Former GSU basketball player Donte Gennie will play ball overseas.

Former Georgia Southern men's basketball player Donte Gennie has signed a professional contract to play for Marso-Vagep NYKK in Hungary, a team in the first division of the Central European Basketball League (CEBL).

The CEBL consists of various teams from Hungary, the Czech Republic, Austria and Slovakia.

Gennie, a 6-1 guard from Tallahassee, Fla., played last season for Bashkimi Prizren in Kosovo and was selected as an All-Star. He led the league in scoring with a 21.4 points-per-game average and finished the season with 4.5 assists per game.

Gennie posted 25 points and four assists in Bashkimi's first victory over league opponent Prishtina in five years. Last May, he scored 21 points and added seven assists in the first game of the championship series versus Prishtina followed by a game-leading 21 points in the deciding game to lift Bashkimi to the Kosovan Championship.

A 2007 Georgia Southern University graduate with a bachelor's of science in recreation and minor in exercise science, Gennie played professionally with Phoenix Hagen in Germany following his collegiate career (2003-2007).

Gennie earned four letters and led the Eagles in scoring (16.2 ppg), three-point field goals (82), steals (40), three-point field goal (.429) and free throw percentage (69.9) in his senior season.

With 1,288 career points, he is one of 18 Eagle players who have scored more than 1,000 points in the program's Division I history.

He also holds the single-game mark for three-point field goal percentage, hitting six of six attempts versus The Citadel en route to a career-best 30-point total.

For game-by-game updates of Gennie's upcoming season with Marso-Vagep NYKK, visit www.athletemi.com.

GSU Baseball Update

How are Eagles performing in Summer Leagues?

By GSU News Service

Eric Phillips hit .313 with two home runs and 19 RBI in 36 starts. He played for Glen Falls in the New York Collegiate League, which lost in the second round of the NYCBL playoffs.

A.J. Wirnsberger finished second in the Valley League posting a .361 batting average. He drove in 35 runs for the Luray Wranglers (27-20). He scored 29 runs, hit 16 doubles, two triples and three home runs. Wirnsberger also posted a .951 fielding percentage, and in making three relief appearances posted a 5.79 ERA.

Teammates Andy Moyer and Jake Brown also played a big role in the team's winning record. Moyer went 3-3 with a 4.05 ERA making nine starts in 10 appearances. Brown finished 4-0 with a 3.94 ERA in 48 innings. He tied for the team lead in wins and threw a complete game, striking out 31.

Dexter Bobo posted a 2-2 record and 5.87 ERA in 15.1 innings. He made 14 relief appearances, helping the Keene Swamp Bats to a 27-13 record in the New England Collegiate Baseball League.

Kyle Blackburn played for the Staunton Braves and hit .325, second-best average on the team. He scored 21 runs and drove in 18 playing in 37 games. Blackburn recorded eight doubles, one triple and three home runs while playing errorless defense at first base. The Braves finished 27-17 on the year, losing in the first round of the playoffs.

Colin Snow went 3-0 with a 1.77 ERA making one complete game. He started in six of his seven appearances as the Sanford Mariners finished 23-16. Snow struck out 33 in 35.2 innings, walking only eight.

Teammate Matt Murray went 2-1 with a 0.80 ERA in six starts. He held opposing hitters to a .148 batting average in 33.2 innings of work, striking out 27 to nine walks.

Tony Chisman played for a Peninsula Pilots team that finished 35-21. He went 1-0 with a 1.46 ERA and 12 saves (tied for fourth in the league) in 20 relief appearances. Chisman struck out 27 to only eight walks in 24.2 innings.

Former closer Kyle Kamppi signs with Evansville

By GSU News Service

Former Georgia Southern closer Kyle Kamppi signed a professional baseball contract with the Evansville Otters of the Independent League this week.

Kamppi went 3-2 with a 4.54 ERA and eight saves in a team-leading 31 appearances, helping the Eagles to a 2009 Southern Conference Tournament title. He struck out 40 batters in 37.2 innings.

Georgia Southern finished the year 42-17 overall and received its first regular season national ranking since 1996 with Kamppi in the bullpen.

A.J. Battisto was called up to Triple-A New Orleans this week for a brief one game appearance. Battisto allowed two runs on four hits in three innings, striking out three. He owns a 1-0 record and 3.82 ERA in eight games at Double-A Jacksonville.



These **ARE** my church clothes!

9:05 & 11:05 am Sundays
on fair rd. across from campus



Pittman Park | United Methodist Church
growing together

College Football Preview for the 2009-2010 Season



Previewing the SoCon and other major conferences for the upcoming season in college football (Part I)

By Thom Cunningham
Sports editor



SoCon Pick Appalachian State

Player to Watch Armanti Edwards (QB/App. State)

As always, this year should be another great race for the SoCon championship. Will Georgia Southern be apart of that race? Well, they definitely have the potential. The defense seems to be more in-sync and better prepared heading into this season rather than last. Maybe the transition to the 3-3-5 was the struggle for the Eagles' defense, which gave up 30 or more points in a seven game period. Harland Bower is a name to watch on the defensive line this year. Bower had three recorded sacks during the spring game and showed a great burst of energy going across the line. Another impact player to watch out for is defensive back E.J. Webb. Webb has some of the best pure athletic talent on the defensive, along with the perfect attitude defensive coordinators look for on the field.

Lee Chapple will be under center for the Eagle offense and should produce nicely. Chapple's talent, knowledge and overall attitude on the field (in my mind) might be enough for this offense to find success more times than none. Although the receiver position looks to be struggling, GSU now has a two-headed monster in the backfield. Adam Urbano will be one back lining up behind Chapple this year. Urbano's style of game brings a tough and physical rushing attack with deceiving explosion. The second back to look for this year is Darrieon Robinson, who ran a 4.44 40-yard dash entering his freshman year. Robinson's elusiveness and quickness brings a different style of rushing from what Urbano has to offer. Although GSU has some pieces here and there to be a successful team in 2009, I don't see a SoCon title in Statesboro this year.



ACC Pick Georgia Tech over Florida State

Player to Watch Jonathan Dwyer (RB/Georgia Tech)

This should be an interesting year in the ACC, especially in the Coastal division. Virginia Tech was the favorite, until their star tailback Darren Evans was injured during pre-season. Miami (Fl) might be a possible dark horse in the Coastal division. Jacory Harris will be the starter for the Canes this season, who looked impressive in last year's Emerald Bowl. Harris threw for 194 yards and two touchdowns in a loss to California. The Canes did lose starting halfback Greg Cooper to a knee injury, but the team has not announced how serious the injury is. North Carolina is another threat in the Coastal division with quarterback T.J. Yates returning after an injury suffered last season. Out of the Coastal division, I am going with the Georgia Tech Yellow Jackets. No I am not a Tech fan, but they seem to have the best overall team in the Coastal. The offense is too explosive for many ACC teams to contain, which is scary if you know how good an ACC defense usually is. The athletic backfield for the Jackets includes returning QB Josh Nesbitt who had 100 yards rushing and passing in Blacksburg, Virginia last season in a visit to Virginia Tech.

Florida State might take the Atlantic division, even with a pretty tough schedule. They are returning their starting quarterback Christian Ponder, who accumulated over 2,000 yards and 14 touchdowns. Ponder did throw 13 interceptions, but expect a much more composed and intelligent player behind center. Clemson is a dark horse in the Atlantic with the rushing attack of CJ Spiller still in Death Valley. Although I am going with FSU in the Atlantic, don't be surprised if Clemson were to sneak into the ACC Championship game (mainly because they have an easy schedule).



SEC Pick Florida over LSU

Player to Watch Eric Berry (S/Tennessee)

Arguably the toughest conference in college football, the SEC seems to already have a named champion in a majority of the nation's eyes. The Florida Gators are the hands down favorite to not only win the SEC, but the BCS title as well. There is really no one to challenge Florida in the East division. The Gators have the best speed in the nation and leaders like Brandon Spikes and Tim Tebow give Florida the "over-the-top" edge that many talented teams lack. The main question in the SEC is, who will face Florida in the SEC title game?

Ole Miss is the favored squad from the West division. Jevan Snead seems to be the guy who is turning heads and the offensive line is also solid for the most part. The only question I have with Ole Miss is whether or not their team is truly overall better than LSU or Alabama. Julio Jones is returning for the Crimson Tide, which gives them a reliable playmaker throughout the season. The Alabama defense should play well more times than none, but they have a serious question mark at the quarterback position. Will it be filled? Only time will tell, but there is one team that has as much talent (if not more) than both Alabama and Ole Miss. I have also yet to find a missing piece that would prevent the LSU Tigers from competing against Florida in the SEC title game. The LSU defense has little-to-no questions concerning them, but the offense had a few. One of which was at the quarterback position after Ryan Perrilloux was kicked off the team. That question has been filled, however, when Jordan Jefferson threw for 140-plus yards and a touchdown against a very good Georgia Tech defense. When it comes to it in the West, I like the complete team with little questions concerning either side of the football.



Big East Pick South Florida

Player to Watch Marshawn Gilyard (WR/Cincinnati)

It is not that hard to choose from a conference with only 8 teams competing, one of which has a basketball player starting at quarterback. Will the arrival of Greg Paulus be enough to bring Syracuse to the top? No, but that's not taking anything away from how talented Paulus actually is behind center.

Rutgers seems to be the favorite, but why? The defense looks to be fine for the most part, but they lost a lot of weapons on the offensive side. Rutgers is going to be a fine team this year, but their offense can't keep up with some other Big East teams throughout the entire regular season.

West Virginia is a name always on the top of everyone's Big East list. Noel Devine might be the best rusher in the conference, but their quarterback Jarrett Brown will ultimately determine the Mountaineers' success this year. In Tampa Bay, quarterback Matt Grothe and defensive end George Selvie will look to bring South Florida back to the top. USF has some of the best athletes on the field with a coach who knows how to control players for the success of the team. This conference should be a fight between four or five schools before it completely drops off.