

Georgia Southern University

## Georgia Southern Commons

---

The George-Anne

---

2-12-2009

### The George-Anne

Georgia Southern University

Follow this and additional works at: <https://digitalcommons.georgiasouthern.edu/george-anne>

---

#### Recommended Citation

Georgia Southern University, "The George-Anne" (2009). *The George-Anne*. 2043.  
<https://digitalcommons.georgiasouthern.edu/george-anne/2043>

This newspaper is brought to you for free and open access by Georgia Southern Commons. It has been accepted for inclusion in The George-Anne by an authorized administrator of Georgia Southern Commons. For more information, please contact [digitalcommons@georgiasouthern.edu](mailto:digitalcommons@georgiasouthern.edu).

## Ayers weighs in on controversial cancelation

By Sade Oshinubi

Guest writer

Bill Ayers expressed discontentment with the administration of Georgia Southern University after the Monday cancelation of his lecture scheduled for March.

"I find it outrageous on the part of the administration," Ayers said.

An official campus statement of cancelation was issued Monday, and the university said Ayers was notified by phone the same day.

"It seems that they have bowed and caved into the will of a mob," Ayers said. "And if they did that, they should be ashamed."

The University attributes the cancelation to the possibility of nearly \$13,000 in security expenditures—expenses the Vice President of Student Affairs Teresa Thompson said would disrupt university operations.

Some students complained about their student fees going to the event and responded by creating Facebook groups, commenting on GADaily.com, and sending e-mails to the university's administration.

"I don't think an unrepentant domestic terrorist should be allowed to speak on our student fees, especially in this economy," said Junior Luke Parks. "It's not about 'free speech' so much as it's more about 'fee speech.'"

Prior to the cancelation of the event, Multicultural Student Center Director Consuela Ward said \$1,585 of Student Activity Fees was going toward the event.

"I'm not bringing him because he's a Weathermen; I'm bringing him to talk about access to education for students," Ward said.

Dixon Smith, an alumnus from the 1980s said the cancelation was no triumph for free speech.

"That said I am delighted that this angry, violent man is not receiving student funds

and will not spread his version of the truth at my Alma Mater," Smith said. "However, rejoicing in this man's silence reeks of censorship."

Ayers said he was delighted to speak to students at Saint Mary's College on Jan. 28 amid protestors who demonstrated outside the event and interrupted his speech. No violent actions occurred during his visit.

Saint Mary's President Ron Gallagher told the Contra Costa Times that "to live up to our great tradition, we must remain an academic community where the free and open discussion of ideas, even those with which we strongly disagree, is possible."

Because Saint Mary's is a private school, it was not required to disclose the expenses of the Ayers event.

"[Saint Mary's] stood for academic freedom," Ayers said. "Your administration did not show courage. It responded with cowardice."

Senior Lance Sullivan, who joined one of the Facebook groups, said he was happy the event was cancelled.

"Bill Ayers may be a respected professor and author to some people now, but that doesn't excuse the horrible acts he has committed in the past," said Sullivan.

Ayers has spoken at GSU in previous years, mainly in conjunction with GSU's education department.

"As a doctoral student in Curricular Studies, I'm disappointed," said Professor Mark Mohr. "I have talked to him several times, and every time, it has been a joy."

Ayers is on Mohr's doctoral committee and has been on dissertation committees for GSU students pursuing doctoral studies since 2003.

"To silence a noted education scholar from speaking is a real loss for our students and our democratic educational process," said Mohr. "I wish another solution could be

found for the benefit of the university and those who want to learn."

Professor of Curriculum Ming Fang He also worked closely with Ayers and said she was disappointed with the "distortions and insinuations perpetrated against him."

He said the university has not informed faculty members and students across campus about the official cancelation of the Ayers lecture.

"Many of our doctoral students and faculty members are still looking forward to Professor Ayers's lecture on March 2, 2009," said He. "Canceling Professor Ayers' lecture is not merely a loss of an inspiring educational opportunity, nor only a matter of academic freedom, but a violation of human rights."

Bill Schubert, a friend of twenty years and colleague of Ayers at the University of Illinois at Chicago, said "in view of the controversy over Bill Ayers' invitation to speak at GSU [that] it is important that his twenty years of contributions to education -- inspiring educators to do good work -- be known."

Terry Sanders, a GSU alumnus from the 1970s said she is very proud of her school for canceling his visit.

"He is the same person he was 35 years ago and is attempting to legitimize himself and his actions through his position in higher education," said Sanders.

Thompson said the recent increase in local controversy surrounding Ayers also had no bearing on the decision to cancel, but Ayers questioned the reasons why his lecture was canceled.

"The administration is telling you, you have a right. At the same time, they're telling you, you don't, by canceling," Ayers said. "Don't you find that hypocritical?"

The university maintained that the increased cost for security, in conjunction with over \$500,000 in cuts for Student Affairs, made the speaker enviable.



Special Photo

### THRU OUR LENS

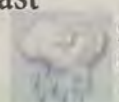
Kappa Delta marks one-year anniversary of sisters' deaths with candlelight vigil. **Page 7**



**Today**  
Sunny  
72/40



**Friday**  
Mostly Cloudy  
67/45



**Saturday**  
Rain  
67/43

### Three-Day Forecast



Check out [www.GADaily.com](http://www.GADaily.com) for breaking news, polls, editors' blogs, and contests.

**NOW LEASING | PET FRIENDLY | DRIVE TO CAMPUS**



**\$200**  
**Limited Time**  
**Signing Bonus!**



**Across The Street From GSU!**

**THE WOODLANDS**  
 OF STATESBORO

**Come By Today**  
**For A Tour!**

All-Inclusive **2 BR** Individual Leases  
**Only \$490/mo** per bedroom

**Included:** (Water/Power/Cable w/HBO/  
 DSL High-Speed Internet/Washer & Dryer)

**NO**  
**MONEY**  
**DOWN**

- Huge Walk-in Closets
- Full Kitchen with bar
- Vaulted Ceilings
- Wifi & Computer Lab
- Fitness Studio
- Resort-Style Pool
- Basketball & Volleyball
- Courtesy Officer
- Pet Friendly
- AND MORE!

**(912) 681-6441** [WoodlandsofStatesboro.com](http://WoodlandsofStatesboro.com)

100 Woodland Drive • Statesboro, GA *Just off highway 301 south on Woodland Drive. Across from GSU entrance!*

Not affiliated with The Woodlands Land Development Company, L.P. in Montgomery and Harris County, Texas.



# Messaging Phone Sale!

Spend less. Message more.



**Samsung Glean™**  
Compact music phone  
Verizon Wireless 3G Exclusive  
**\$19<sup>99</sup>**

\$69.99 2-yr. price – \$50 mail-in rebate debit card.

**LG enV® 2**  
Texting machine  
Verizon Wireless 3G Exclusive  
**OUR LOWEST PRICE!**  
**\$49<sup>99</sup>**

\$99.99 2-yr. price – \$50 mail-in rebate debit card.

**BlackBerry® Pearl™**  
8130 Smartphone  
Pocket powerhouse  
**\$19<sup>99</sup>**

Buy any phone \$19.99 or higher

**GET 3 FREE!**

BlackBerry Pearl 8130: \$119.99 2-yr. price – \$100 mail-in rebate debit card. Each requires a voice plan with email feature, or email plan.

All phones require new 2-yr. activation.

**LG Voyager™**  
Sleek multitasker  
Verizon Wireless 3G Exclusive  
**\$79<sup>99</sup>**

\$129.99 2-yr. price – \$50 mail-in rebate debit card. Requires a Nationwide Plan.

## Get Unlimited Messaging to Anyone on Any Network in America.

On Nationwide Select Plans starting at \$59.99 monthly access. With a new 1- or 2-yr. Agmt. (Activation fees, taxes & other charges apply.) \*Messaging not available everywhere in Nationwide Area.

## Call more people. Use zero minutes.

Alltel is now part of Verizon Wireless, creating America's Largest Mobile to Mobile Calling Family. Over 80 million strong.



**Call 1.888.640.8776**

**Click verizonwireless.com**

**Visit any store**

**VERIZON WIRELESS COMMUNICATIONS STORES** Open 7 days a week. Technicians available at select locations.

**STATESBORO** 609 Brannen St. 912-489-5095



Visit the Verizon Wireless Store inside one of the area's Circuit City locations

**BUSINESS CUSTOMERS**  
**1-800-899-4249**

\*Our Surcharges (incl. Fed. Univ. Svc. of 9.5% of interstate & int'l telecom charges (varies quarterly), 7¢ Regulatory & 85¢ Administrative/line/mo. & others by area) are not taxes (details: 1-888-684-1888); gov't taxes & our surcharges could add 6%–27% to your bill. Activation fee/line: \$35.

**IMPORTANT CONSUMER INFORMATION:** Subject to Customer Agmt, Calling Plan, rebate form & credit approval. Up to \$175 early termination fee/line & other charges. Certain Alltel customers not joining Verizon Wireless. Mobile to Mobile available to Verizon Wireless customers now; most Alltel customers Feb. 17, see alltel.com for updates & eligibility. Offers and coverage, varying by service, not available everywhere. Device capabilities: Add'l charges & conditions apply. Rebate debit card takes up to 6 weeks & expires in 12 months. Voyager is a trademark of Plantronics, Inc. used under license by Verizon Wireless. Limited-time offers. While supplies last. Network details and coverage maps at verizonwireless.com. © 2009 Verizon Wireless.

MPSU

Visit us at the  
**On Campus Housing Fair**

February 12th from 11am-2 pm  
 on the Georgia Southern Campus

*The Exchange*<sup>®</sup>  
 at Statesboro

THE ONLY luxury student apartment homes

[WWW.NOTTHEDORM.COM](http://WWW.NOTTHEDORM.COM)

[leasing@exchangestatesboro-aps.com](mailto:leasing@exchangestatesboro-aps.com)

Join us on **facebook**.  
 Keyword: **Exchange at Statesboro**

- Individual leases
- **FREE** Roommate matching programs
- **FREE** tanning
- **FREE** 24 hour unique athletic club
- Resort style pools



866.482.2089 | 2000 STAMBUK LANE | STATESBORO, GA 30458

FAIRFIELD  
 PROPERTIES LP

\*Some restrictions apply LIVING GREEN

## NATIONAL NEWS

## Senate passes \$838 billion stimulus bill with a 61-37 vote



McClatchy News Service

The Senate, with only scant Republican support, passed an \$838 billion economic-stimulus plan Tuesday that would provide significant tax breaks for new car and home buyers but sharply trim billions in aid that states have been seeking. The vote was 61-37.

The House of Representatives passed similar legislation last month, and a negotiating committee of top congressional tax and budget experts plans to begin reconciling differences immediately.

Their goal is to produce legislation that costs no more than \$838 billion, the House version was \$819 billion, by the end of the week, so that President Barack Obama can sign it Monday, on Presidents Day.

The Senate vote came on a historic day, as the Federal Reserve and Treasury Department unveiled details of their effort to bolster

the banking industry and credit markets and Obama took his stimulus campaign to Fort Myers, Fla., which has been rocked by the mortgage foreclosure crisis.

At the Capitol, the drama now shifts to the negotiators, and the final Senate debate Tuesday illustrated the difficulties that they face.

Part of the problem is political, as the vote reinforced the notion that despite Obama's efforts at bipartisanship, the legislation is very much a Democratic bill.

Democrats hailed the bill as historic and necessary. "Every generation must face up to its own challenge. This economic emergency is ours," said Senate Finance Committee Chairman Max Baucus, D-Mont.

"Let us pass this bill and rise to the economic challenge of our generation."

Most Republicans, however, dismissed the measure as loaded with spending that would do little to stimulate the economy.

## General Motors to slash up to 10,000 salaried jobs due to economic crisis

McClatchy News Service

General Motors Corp, staying afloat with \$13.4 billion in federal rescue loans, announced early Tuesday that it is cutting its worldwide salaried work force by 10,000, or 14 percent, this year and temporarily reducing the pay for a majority of its U.S. white-collar work force.

"These difficult actions are necessitated by a severe drop in vehicle sales worldwide and by the need to restructure GM for long term viability," the company said in a statement.

The Detroit automaker is racing to put together a long-term viability plan to present to the government Feb. 17. It has said it needs to cut its U.S. salaried and hourly work force by as much as

31,500 people through 2012.

"The announcement this week begins implementation of this aspect of the plan," the company said. In the U.S., GM's salaried work force of 29,500 will be cut by about 3,400, or 12 percent, by May 1.

In a statement, GM said the job cuts "will be made using GM separation programs and policies which provide for severance payments, benefit contributions and outplacement assistance."

The company also said executive employees in the U.S. will have their base pay cut by 10 percent and "many other" salaried employees will see reductions ranging from three percent to seven percent. The U.S. pay reductions will also go into effect May 1 and will be in effect through the end

of the year.

One 20-year GM employee said he heard the news on the radio Tuesday morning but had the day off, so he hadn't had time to talk to co-workers yet. Anxiety, he said, was already running high before the announcement.

"Frankly, I am still trying to take it all in," said the employee, who did not want to be identified.

"Everybody is worried and they are concerned," he said. "It's really been a situation where you don't know what's going to happen. And you are kind of waiting for whatever the next shoe is to drop."

The employee, who works at the GM Technical Center in Warren, Mich., said his wife works for an automotive parts supplier and her job is also at risk.

## STATEMENT OF OPERATIONS

The George-Anne is the official student newspaper of Georgia Southern University, owned and operated by GSU students using facilities provided by the university. The newspaper is the oldest continuously published newspaper in Bulloch County and Statesboro, Ga. The newspaper is a designated public forum for the Georgia Southern community. Opinions expressed herein are those of the student writers and editors and DO NOT necessarily reflect those of the faculty, staff or administration of GSU, the Student Media Advisory Board or the University System of Georgia. The newspaper is published twice weekly, on Tuesdays and Thursdays, during most of the academic year. Any questions regarding content should be directed to the student editor by phone at 912.478.5246 or at [gaeditor@georgiasouthern.edu](mailto:gaeditor@georgiasouthern.edu). Readers may access the newspaper and its archives at [www.gadaily.com](http://www.gadaily.com).

**ADVERTISING:** The newspaper accepts advertising as a community service to help defray publication costs. Inquiries should be directed to the ADS or PAGES, P.O. Box 8001, Georgia Southern University, or by calling 912.478.5418 or 912.478-0566. You can fax any questions to 912.478.7113 or e-mail [ads1@georgiasouthern.edu](mailto:ads1@georgiasouthern.edu).

**DISTRIBUTION:** The newspaper is distributed free to the community of GSU.

**COLOPHONE:** The magazine is printed by The Statesboro Herald Publishing Co. in Statesboro, Ga. Body copy in The George-Anne is 10 point Minion Pro on 12 leading. Standard headline size is 40 point Myriad Pro. For more information about the newspaper, please call 912.478.7459, or e-mail the director of student media at [kcallaway@georgiasouthern.edu](mailto:kcallaway@georgiasouthern.edu).

**SUPPORT:** The George-Anne is funded primarily through revenue from advertisements placed in the paper and receives additional support, in part, from the Student Activities Budget Committee.

**STUDENTS BEWARE:** The George-Anne screens all advertisements prior to publication. The magazine strives to accept ads for legitimate products and services only. Students are urged to exercise caution when replying to ads-particularly those which require a credit card number, other personal information, or money in advance of the delivery of a product or service. Students are also urged to report to the newspaper any suspicious offers which they might see in an ad. Remember, if an offer seems too good to be true, it probably is.

**DISPLAY AD DEADLINE:** The deadline for reserving space and submitting advertising copy is Noon, one week prior to the intended publication date. For more information, rate cards, sample publications, contact the advertising manager or student media director.

**PROOFING/ERRORS/OMISSIONS:** The newspaper makes every reasonable effort to correct and complete information in advertisements. However the advertiser is responsible for any errors in advertisements and its liability for adjustments is limited to the amount of space the error occupied in the ad. Further, the newspaper is not responsible for any damages caused due to an ad's omission form a particular edition and its responsibility solely is to reschedule the ad in the next regular edition at the regular advertising rates.

**CIRCULATION INFORMATION:** Mail subscriptions are not available at this time. However, readers may visit our web site for free access to current and past issues. Visit [www.gadaily.com](http://www.gadaily.com) to view online issues. The George-Anne is distributed free of charge on the Georgia Southern campus and surrounding areas.

**NOTICE:** Readers may pick up one free copy, and a second for a roommate or acquaintance, at distribution sites. Additional copies are 50 cents each and are available at the Williams Center. However, unauthorized removal of additional copies from a distribution site constitutes theft under Georgia law, a misdemeanor offense punishable by a fine and/or jail time. Editors will seek to have any person(s) who removes more than the authorized number of copies from distribution sites prosecuted to the full extent of the law.

POLO RALPH LAUREN



The Sir Shop

TWO LOCATIONS

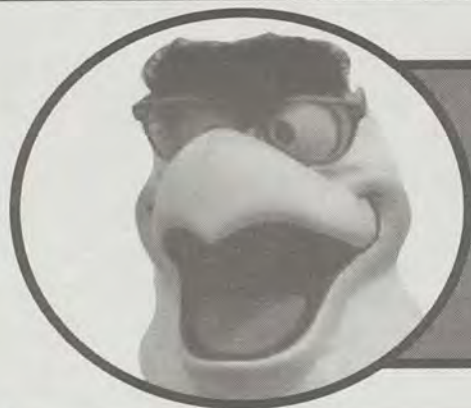
Statesboro Mall

764-6924

Main Street Village

871-4962





# WEEKLY BUZZ

## Today

**Dinner & a Movie (Fireproof)** - 7:00PM @ the Russell union Ballroom Admission: \$10 for students/\$15 for non students

**DIFFERENT FACES OF ISRAEL** - 12-2 pm ~ Russell Union Room 2041 Israel is a country with immigrants from all over the world to include cultures from varying nations, genders, religions, and political ideas. Come learn about multiculturalism within Israel just after their prime minister elections. **PROOF OF ATTENDANCE WILL BE PROVIDED**

**"THE VAGINA MONOLOGUES"** - 7:30 pm ~ Performing Arts Center

The GSU chapter of the National Organization for Women and the Women's and Gender Studies Program are hosting the 5th annual benefit production of Even Ensler's ground-breaking, Obie Award-winning play, "The Vagina Monologues." V-Day is a global movement to stop violence against women and girls. V-Day is a catalyst that promotes creative events to increase awareness, raise money, and revitalize the spirit of existing anti-violence organizations. V-Day generates broader attention for the fight stop worldwide violence against women and girls including rape, battery, incest, female genital mutilation (FGM), and sexual slavery. Through V-Day campaigns, local volunteers and college students produce annual benefit performances of "The Vagina Monologues" to raise awareness and funds for anti-violence groups within their own communities. Student tickets are \$5.00 in advance, \$7.00 at the door. Georgia Southern faculty, staff, and community tickets are \$10.00. Tickets will be on sale at the Rotunda two weeks prior to the performance, or they may be purchased by calling the Performing Arts Center at 912-681-0830. For additional venue information, visit <http://ceps.georgiasouthern.edu/pac/pactickets.html>.



to

## Friday, February 13th

**Dining for Success Registration Deadline (Seniors & Graduate Students)**

## Saturday, February 14th

**The 61st Annual Miss Georgia Southern Scholarship Pageant**

7:00PM @ the Russell Union Ballroom

Admission: \$5.00/\$8.00 (at the Door)

Tickets can be purchased at The Office of Student Activities in room 1056 in the Russell Union

## Wednesday, February 18th

**Cinema: Role Models**

8:00PM @ 8:00PM @ the Russell Union Theater

Admission: \$2.00

**HOOP OF LIFE: A THEATRICAL EVENTING WITH LAKOTA INDIAN: Kevin Locke**

7 pm ~ Performing Arts Center **ADMISSION IS FREE!**

Kevin Locke is known throughout the world as a visionary Hoop Dancer, preeminent player of the indigenous Northern Plains flute, traditional storyteller, cultural ambassador, recording artist and educator. From his early Lakota influences and from his extended "world" family he has learned how we each can draw from our individual heritages to create a vibrant, evolving global

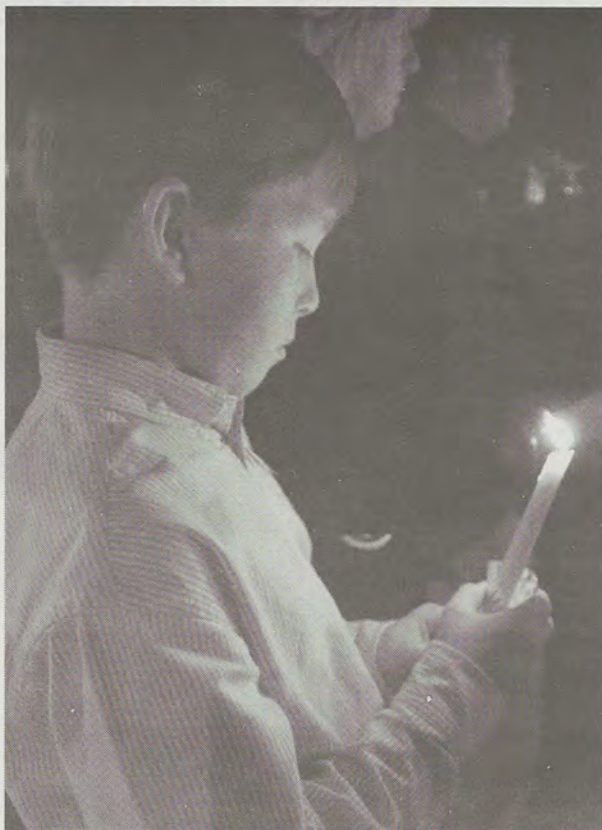
## General Announcements

**DOES YOUR ORGANIZATION NEED TO BE INSPIRED?**

INSPIRE Leadership Consultants

Is your student organization in need of some motivation? Are there issues between members? Is the president of your organization not doing their job? Need to break the ice with new members? Do you want to learn how to run an effective meeting? If you answered yes to any of these questions, then the INSPIRE Leadership Consultants are just the people for you! The INSPIRE Leadership Consultants are trained individuals that specialize in various topics relating to leadership. The INSPIRE team acts as a resource team to further your organization to be the best! To book an INSPIRE member, please contact the Office of Student Leadership & Civic Engagement at (912) 478.1435 or email Ashley Tomlin at [at00046-gw@georgiasouthern.edu](mailto:at00046-gw@georgiasouthern.edu).

For more info, please visit [www.eagleentertainmentonline.com](http://www.eagleentertainmentonline.com)



## Kappa Delta remembers lost sisters

One year after the loss of three sisters, Kappa Delta held a vigil to remember Jessica Fulmer, Melissa Eustice, and Jamie Carter. The vigil was held Monday night in front of the Kappa Delta house on Greek Row.





## Processing of travel reimbursements slowed due to new software University says

*Software errors delay return of on-the-road expenses to students; Accounts Payable works to keep funds moving*

By Anthony Visintainer

Guest Writer

Students may have noticed that the processing of travel reimbursements has slowed noticeably in the past few months.

Students who travel for academic purposes need these funds to pay for expenses, and now it is taking up to 15 days for the funds to come through.

Student government is not majorly concerned about the delay, but will keep tabs on it, says Student Government Association Director of Publicity James Kicklighter.

"In the view of student government this is not a huge issue, though any delay is investigated as it is the SGA's intention to get students their money quickly and efficiently," Kicklighter said.

The problem lies in the software that is used to process the travel reimbursements. It was part of an upgrade issued by the University System, but when the staff at Georgia Southern began using it, they noticed problems.

"Our finance system is not owned by us;

it's owned by the University System," said Kim Brown, from the Office of Control.

"Recently, we upgraded that system. One of the new upgrades available was an online travel reimbursement program; it's rather new, and has some program errors."

The Office of Control decided not to let the program be used extensively until all the kinks are worked out.

If any requests or funds were to be lost because of the errors in the programming, it would be a major inconvenience to both the students and the staff of GSU.

"We at our office are not comfortable with [the software] until the university corrects some of these errors," said Brown.

Until then, the Accounts Payable staff is working to keep the money flowing, if at a slower rate than students at GSU are used to.

Brown said that, in the past, the travel reimbursement process was outstandingly fast here at Georgia Southern.

"In the past years, our Accounts Payable people have done an outstanding job of get-



Special Photo

ting back to people quickly with their travel reimbursements, usually, the [process] only took three days." Brown said.

According to Brown, "The usual time for most businesses is 10 to 15 days. Now that it's

been taking that long, students may feel like it's going slow, but we're really doing well in spite of the problems we're facing."

For more information, visit [www.georgia-southern.edu/sga](http://www.georgia-southern.edu/sga).

### FRANKLIN CHEVROLET - CADILLAC PONTIAC - BUICK - GMC 912 - 764 - 6911

GSU Students - show us your GSU ID and receive **10% off** any purchase in Parts or Service Department.

We want to be your ONE STOP SHOP from "Oil Changes & Tires, to major repairs"

**WE DO IT ALL!**

Our experienced Body Shop can fix all of those "Dents & Dings" that your vehicle might have. We accept all insurance claims, and we will give you a **FREE ESTIMATE** on your body & paint repair.

**DID YOU KNOW WE TOW?**

**24 - 7**

Call 912-687-3701 anytime.

Check out our website  
[www.franklinchevrolet.com](http://www.franklinchevrolet.com)



## Apply for the JOHN F. NOLEN Scholarship

Awards between  
\$1,000 - \$1,500

Only Undergraduate Freshmen, Sophomores, and Juniors will be considered for awardance.

Applicants must be enrolled at Georgia Southern for the entire award year.

Reception of this scholarship is based upon academic performance and current involvement in co-curricular activities at Georgia Southern.

Applications may be downloaded on the SGA website until Feb. 18<sup>th</sup>

# Holocaust survivor to address GSU on Feb. 23 in museum

By Ally Rakoczy  
Guest Writer

Holocaust survivor, Morris Rosen, will be speaking at Georgia Southern in the Russell Union Ballroom on February 23.

Rosen is part of a network of over 60 Holocaust survivors that volunteer with the United States Holocaust Memorial Museum in Washington D.C.

According to Andrew Hollinger, director of Media Relations for the museum, they are able to connect speakers with places and organizations all over the country.

"They can also help organizations find Holocaust survivors who speak locally if they are unable to get a survivor volunteer from the museum," said Hollinger.

Rosen has been a volunteer for over 17 years, in addition to spending almost four years prior to its opening doing research for the museum and translating archives written in Polish and Hebrew.

Rosen, a congenial man with a soft Eastern European accent, immigrated to the United States in 1949, but grew up in Dabrowa Gornicza, in western Poland.

While Rosen says that speaking about the

Holocaust doesn't help heal any of his horrific experiences, it does act as somewhat of a living memorial for his friends that died during the Holocaust.

"It doesn't feel any better, but I have to do this for my friends that didn't make it," said Rosen.

"Most of them didn't make it. I was the lucky one, and I am obligated to remind people that if you forget about it, then it might happen again."

Rosen travels all over the country speaking at various events, high schools, and universities, making many friends along the way, which serves to enrich his speaking experiences.

"I make a lot of friends and meet a lot of people. I get letters from everywhere. It's unbelievable the friends that I make," Rosen said.

In addition to the friends he makes and the thank you letters he receives, Rosen believes it's very important to take his story to young people.

"It shows you how you can teach people, young people especially, to respect all types of religion, because we're all one," Rosen explains.

Indeed, this seems to be one of the main messages of the Multicultural Student Center, which is sponsoring Rosen's speaking engagement.



Special Photo

Auschwitz, one of the most infamous concentration camps, entrance gate has the saying arbeit macht frei, or work means freedom. Rosen believes Holocaust stories and survival tales are very important to relay to children now, to show them the importance of tolerance.

## Library features newer, faster equipment

By Ben Carroll  
Staff Writer

Along with more space and more research materials, the new library also features faster and better equipment, including laptops and laser projectors.

"We have now 18 laptops that must remain inside the library, two projectors that must remain inside of the library, two digital cameras that have 24-hour checkout, and two video cameras that also have 24-hour checkout," said Kendria Lee, the information specialist at the library. "All these checkouts have to be done at the circulation desk in the second floor."

The library has also been equipped with a new Presentation Room located on the first floor and is available as long as the library is open, according to Lee. Any student who wants to reserve the room must log in with their GSU username and Eagle ID.

"Any student or faculty member can reserve the room for a total of two hours and can be made, the earliest, two weeks in advance. It has a first come, first serve policy," said Lee. Students can also come early before the reservation to request a demonstration.

"Before students can go into the room for their reservation, they have to go to the circulation desk to check out the key for the room and the laser pointer and clicker," Lee said. The presentation room is considered a standard smart classroom.

"It is equipped with a projector and workstation. The workstation's hardware has a symposium monitor, which allows the user to write on the screen, an elmo document camera, that allows the user to display a pages of a book and transparencies on the screen, and DVD and VHS combo player, and a laptop hook-up, which allows the user to project someone's laptop screen on the projector screen," Lee said.

"The room is also equipped with everything that the computers on the second floor have," said Lee.

The room also has Notebook suite software, which allows the user to write on the projector screen, screen capture, and audio capture, but the user needs their own microphone to use the audio capture.

"One of the main uses for this room is so students can have a place to rehearse their presentations," said Lee. "We've only had one person sign up for a reservation because the student body doesn't really know that it exists yet."

## CALENDAR

### Thursday, February 12, 2009

Time: 10 - 11 a.m.  
Event: Inspire Meeting  
Location: Russell Union 2001C

Time: 11 a.m. - 1 p.m.  
Event: Condom Day  
Location: Table 5

Time: 6 - 7 p.m.  
Event: Relamping GSU  
Location: Nessmith Lane Assembly Hall

Time: 7 - 10 p.m.  
Event: Dinner and a Movie  
Location: Russell Union Ballroom

Time: 7 - 10 p.m.  
Event: "I Miss You" Conference 2009  
Location: Russell Union Theatre

Time: 7:30 - 9:30 p.m.  
Event: Vagina Monologues  
Location: Performing Arts Center

### Friday, February 13, 2009

Time: 11:15 a.m. - 12:15 p.m.  
Event: Women's Summit Planning Meeting  
Location: Russell Union 2001C

Time: 11:30 a.m. - 1:30 p.m.  
Event: Conversation Hour  
Location: Russell Union Ballroom

Time: 12 - 4:30 p.m.  
Event: ABC Funding Presentation  
Location: Russell Union 2048

Time: 4 - 5 p.m.  
Event: Map Bi-Weekly Meeting  
Location: Russell Union 2042

Time: 6 - 11 p.m.  
Event: Miss GSU  
Location: Russell Union Ballroom

Time: 7:30 - 10 p.m.  
Event: A Heart for Africa  
Location: Williams Center Dining Hall

# OPINIONS



...WHERE WE ARE WISHING YOU A HAPPY VALENTINE'S DAY, OR SINGLES' AWARENESS DAY, WHICHEVER YOU CELEBRATE.

## Submission of Letters to the Editor

The George-Anne Daily welcomes letters to the editor, story submissions and guest columns. All copy submitted should be 350 words or less, typed, and sent via e-mail in Microsoft Word format to [gaeditor@georgiasouthern.edu](mailto:gaeditor@georgiasouthern.edu) or via facebook to Jessica Martin. All submissions must be signed and include phone number for verification. GSU students should include their academic major, year at GSU, and hometown. The editors reserve the right to edit or reject any submission.

## Will freedom of speech stand the test of time?

Freedom of speech is the basis of the first amendment right of all Americans. But to whom does it actually apply?

In times like these, this right is tested to its fullest extent and that question brought to light. Recently, with the controversy surrounding Bill Ayers, numerous accusations have been made by all sides of the argument.

Many have brought up the point that Ayers bombed buildings and founded an organization - the Weather Underground - that destroyed lives.

Others say that his work as a professor speaks louder than past actions and that his unorthodox methods brought attention to hardships of the time.

Ayers' transition from domestic terrorist to renowned educator has left many split on the issue of his right to speak on a college campus or anywhere else.

More importantly it has polarized a community and brought them to ask the same question of their contemporaries who may not agree with them.

It was this idea - prevalent throughout comments on the web and spoken on campus - that

has proven that some people on either side may not be entirely willing to accept the other side's right to speak freely either.

While it isn't always easy to do, sometimes it becomes painfully obvious that we have to accept another's right to disagree.

Whether or the students and the community agree with the words or actions of Ayers is irrelevant. Because few would question his right to speak if they realized that in taking that right from him they would be abolishing their own right to protest.

Evelyn Beatrice Hall is famous for saying, "I disapprove of what you say, but I will defend to the death your right to say it."

For Americans, it should be a phrase to live by because ultimately in a democracy it will be our decisions that decide whether or not that remains a true American value.

As such, it will be our decision as to whom free speech applies.

While it is the right of the public to ostracize the man and it is the right of that same public to damn his ideals, to categorize as unacceptable anyone's free speech is the first step to ending our own.

## DESPERATE TIMES CALL FOR DESPERATE MEASURES...



## Letter to the Editor

Georgia Southern University's decision to cancel William Ayer's campus visit smacks of politics and cowardice, considering he has visited our campus a number of times over the past three years without incident or protest. The inconsistency of GSU and the mock outrage of the anonymous protesters tells more about them than it does about Ayers.

I attended Dr. Ayers' address at the Coastal Georgia Center in Savannah last November. The university represents the free exchange of ideas. Those attending were exposed to the life's blood of a university experience. I argued against a number of Ayers' views. We disagree on several educational issues.

Sometimes we all need reminded of the role of the public university in our society. Do the students from the Multicultural Student Center have the right to invite who they wish to address them?

A number of people protested Ayers' visit based on the hyperbolic rhetoric generated during the Presidential election. If your knowledge of Ayers comes from John McCain and Sarah Palin then you actually know very little indeed. A university is still a university. The trust that it holds is the same as it was in the sixties.

To those who called President Grube and threatened violence or bombs if Ayers came to campus, especially if you are students or work at Georgia Southern, take your fingers out of your ethnocentric noses, wipe away the drool and ask the university for a refund of your tuition money. We clearly did you no service in imparting to you what it means to be a responsible citizen in a democratic society. We failed in opening your world to question and debate and to the exchange of pertinent views that affect all of us. We must have been in business mode the day we talked about the Constitution and discussed the right to free assembly.

GSU conducted a cost-benefit analysis and concluded it would cost too much to protect students' constitutional rights to free speech and peaceful assembly. Everybody gets an F on this one: the University because it lacked the commitment to do the right thing, the protesters influenced by innuendo and hearsay, and the morons who threatened violence in response to being asked to think.

**Professor Michael Moore**  
Literacy Education  
[mmoore@georgiasouthern.edu](mailto:mmoore@georgiasouthern.edu)

## Your comments from [www.GADaily.com](http://www.GADaily.com)

This is yet another example of how the administration at GSU uses and abuses the cost argument to crush anything that the clique who run the place do not wish to support. Please note that this decision will further erode the value of the GSU degree: Today it's Bill Ayers, but tomorrow it will be something else. The lack of freedom of speech on the campus is truly frightening, and the faculty are ruled by fear.

--ANNETTE LAING

This is simple stuff. A person who used violence to affect his stated goal of overthrowing our government has been paid with public funds to visit a university in our backyard. Most clear thinking people know a bad guy when they see one. And most know it isn't a good thing to have terrorists in their backyards. So they voice the displeasure. So what? Call GSU and complain. Join a counter-demonstration on the night of the speech. Withhold your next donation to the campus. Do whatever you need to do to ensure your voices are heard.

--JEFF

It's mighty satisfying to call people names, but insults are not persuasive. In fact, they weaken even the strongest case. The hatemongers that pervade our society may be selling books and dominating our airwaves, but in my opinion they're also poisoning the atmosphere in the U.S. We should all study their techniques, then work on doing the opposite of what they do. When we ignore evidence and facts that contradict our opinions, when we refuse to acknowledge that most issues are much more complex than we might want to think, when we throw around insulting names, when we try to "win" an argument by out-yelling those who disagree, we are not persuading others to reconsider their thinking. We are just appealing to those who already agree with us.

--THERESA WELFORD

# ♥ PINIONS cont ♥ ♥ ♥

## Rekindle your bromances this Valentine's



**James Kicklighter** is a junior public relations major from Claxton, Ga and the Public Relations officer for SGA. He is a guest columnist for the George-Anne.

I'm pretty sure that I'll be single this Valentine's Day.

What is a boy to do all alone, without anyone to take out?

A few months ago, two of my best friends, Ryan and Michael, went out on a date to see *Role Models*.

While I don't know if they held hands or had fun in the theater, they certainly had a good time.

I was thinking about their bonding experience, this column, and my "single" Facebook status, when it dawned on me.

This Valentine's Day, it's time to rekindle your bromances.

What guy *doesn't* want to go out for a steak every so often? When you go out with your girlfriend, she will ruin the mood with a caesar salad. Really, who wants rabbit food?

A proper bromantic evening will give us

guys a time to eat, drink, and be merry without hearing about Dick and Jane's drama. After all, there's only so much blah-blah-blah, drama-drama-drama we can take in a single week, let alone semester.

Let the women have their time of the month; this bromantic weekend will be ours. We'll throw the football, play a few video games, and play some cards without having to worry about that extra baggage women carry around.

It's not a fair world out there. Women can go out together for "ladies night," but Ryan and Michael have to sit a few seats apart in the theater.

Maybe you don't want to have a bromantic evening, when all you know is that every kiss begins with Kay. However, it doesn't mean you have to be alone.

Aristotle once said, "It is those who desire the good of their friends for the friends' sake that are most truly friends, because each loves the other for what he is, and not for any incidental quality."

Perhaps the true meaning of love isn't the incidentals, but the relationships we build; with our lovers or our friends.

## Happy Valentine's Day



## ♥ How-to corner present: Last minute Valentines Day suggestions ♥



**Michelle Vegliante** is a sophomore public relations major from Marietta, Georgia. She is a guest columnist for the George-Anne.

Okay fellas, Valentine's Day is exactly two days away.

Now for those of you who like to procrastinate and still have no clue about what you should do for your loved one, don't panic.

I'm here to help! I have compiled a list of three ways to impress your girl that you can do just in time

for the big day:

**Build-A-Bear.** In my opinion as a woman and girlfriend, this is one of the best routes you can take to score major cuteness points. What could be better than receiving a stuffed animal that was made with love by your loved one? The closest Build-A-Bear is located at Oglethorpe Mall in Savannah so you will have to do a bit of driving.

However, if you do choose to build a lovable stuffed animal for your one and only, there are two ways of going about it. The first way is to make it by yourself. Build-A-Bear offers lots of cute accessories

that are Valentine's Day themed, such as miniature tuxedos, roses, and even a box of chocolates.

You can even add your own voice to the bear that says, "I love you!" when she squeezes it. Another option you have is to take your date to Build-A-Bear on Valentine's Day and let her make her own stuffed animal.

Lots of girls will appreciate this, especially if yours is very hands on and creative. Either way, Build-A-Bear is a cute and thoughtful way to show you care. Now all you have to do is surprise her with your cuddly creation!

If building a stuffed animal is not for you, how about creating a picture collage for your Valentine?

All you have to do is go on Facebook and find a bunch of pictures of you and your girlfriend. If you have some money to spare, take those pictures to either the Walgreens or Wal-Mart photo center and they can put the collage together for you. If you are broke, try using Adobe Photoshop in Henderson Library.

There is also a website called [www.Piknic.com](http://www.Piknic.com) that will allow you to upload pictures and make a collage for free. Don't forget that you can always

do this the old fashion way by cutting and pasting pictures onto construction paper. Making a collage is simple yet it shows that you put real time and thought into picking out the pictures and layout. Any girl would love this!

This last idea is always a classic. Show up at your date's door in a very nice outfit (a suit works best) equipped with flowers and chocolates. After she is over the shock of seeing you all decked out, take her out to a nice dinner.

Make sure you call the restaurant you want to go to in advance to make sure they have a table available. Most restaurants may already be filled by those who did not wait till last minute to make a reservation (tsk, tsk!).

Can't find a nice restaurant or do not have a lot of money? Instead of taking her out to eat, surprise her with a romantic picnic at Sweetheart Circle. She will love the intimacy of a picnic and will not miss a restaurant meal one bit.

Now, no matter which option you procrastinators choose to take, do not forget to tell your Valentine how much she means to you and how pretty she looks that night!

Good luck!

## Can you see the love?

Can you find all of the hearts that are placed on pages 11-12 of today's paper? If so, there is a prize!

Send your guesses to [ganewsed@georgiasouthern.edu](mailto:ganewsed@georgiasouthern.edu) as soon as you find them!

The first person to have the correct number will win student media cups filled with candy! You can claim your prize starting Sunday until Tuesday in the Williams Center room 2023.

# OPINIONS cont...

## What I've learned from February 14



**Shannon Knapp** is a broadcasting student from Albany, GA. She is the news editor for the George-Anne.

This past week as I walked into Wal-Mart, I was immediately bombarded by the upcoming holiday, Valentine's Day. I was hassled, harassed, even offended by the obnoxious number of pink teddy bears and hearts that lined the shelves.

Or maybe not.

In all honesty, my feelings towards this cotton candy holiday have changed drastically throughout the years. I have gone from a deep love, to an absolute hatred, to a distantly friendly feeling. In a word, you could call my relationship with Valentine's Day as bipolar.

Lets face it, Valentine's day as an child is the best. You get your favorite candy from everyone in the class! As well as your "secret messages" to that one boy you feel may have less coodies than the other ones.

I know I always gave the best of my cardboard power rangers cards and the best piece of candy to the boy that I had a crush on.

Then, middle school hits.

Suddenly, that awkward phase of life sets in, and everyone but you has a Valentine.

So while you watch all your classmates get their valentines cards and talk about their plans, you gossip with them and lie about where that red rose came from in your locker with your secret knowledge that it is from you mom and your plans include a babysitter and a movie.

Once I came to college, a came to have a respect for the holiday. I finally realized what I had against it. The meaning to the holiday, once you take Hallmark and Russell Stover out of the equation, is actually a good one. To spread love is a great idea!

My problem with the holiday is, why should this only be one day a year?

Shouldn't it be our responsibility to always make someone feel loved, and not just every February 14 with a heart full of chocolate.

So in conclusion, I must say that I walk through Wal-mart now with a different view.

Upon seeing the pink and red bears holding their "I love you" hearts, I smile and think it is relatively sweet instead of having a slight gag reflex.

After all, it is only once a year, and I guess I can deal with that.

## Regardless of our marital status; We've got it good



**Joey Newton** is a graduate student in Spanish education from Americus, Ga. He is a staff columnist for the George-Anne.

Ahh...it's the most wonderful time of the year.

Well, that is, depending on your relationship status on Facebook...

Today may be your day. You could be receiving lots of flowers, fluffys and fuchsia chocolate hearts.

Or, for others who are going to the Single Sing Along at the local

pub, you might be buying all of your own drinks this weekend. Whatever your situation, don't be downcast. Think about how bad the other guy/gal has it on this "holiday".

Instructions: Cover the section that does NOT pertain to you and never, ever read it.

Single People: Consider yourself lucky. You have no obligations whatsoever.

You are foot free and fancy loose on this pink and purple day. You can go out with friends to take your mind off of your current state of flying solo through your college days!

You do not have to make anyone breakfast in bed...You do not have to waste \$50 on some stupid plants that die in 3 days anyway. You do not have to run to Wal-Mart on Saturday evening because you forgot what the day was and spend

more money than you normally do in a week to make up for your forgetfulness.

(No-of course none of that has ever happened to me). Count your blessings! Next year you may not be quite so lucky!

Taken People: Consider yourself lucky. You have a sugar muffin to call your own.

If you are REALLY lucky, you may have someone who is, what I like to call "low-maintenance". Ladies and gents, please strive to be this person.

This individual enjoys small, sweet gestures that do not have to cost mucho dinero. (example: make a card, take on a picnic, go for a walk, revisit the place of that first date...you get the idea).

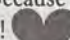
You could make your big boy breakfast in bed... you could splurge on some flowers that fill the room with the natural aroma of love.

Someone loves you, so give them a hug and thank them for seeing past your halitosis, body odor, and that nasty toe nail on your left foot.

Count your blessings! Next year you may not be quite so lucky!

What we all need to remember on this Valentine's Day is that everyone has a different perspective.

You may be sad or smitten, hooking up or just hanging out, but what you need to remember on this glorious day is that we all really do have it good.

So whatever your status, go ahead and count your blessings! Because next year... you may not be quite so lucky! 

## Citizen's can stimulate economy with Valentine's



**Mark Beavers** is a senior journalism student. He is a guest columnist for the George-Anne.

Every Valentine's Day store shelves are stocked with cards containing the same unoriginal messages, special V Day candies are put out on the shelves, and hundreds of manufactured stuffed animals line the shelves in major retail stores.

Florists use the holiday to charge outrageous prices for flowers, a gift that will

die in a few days anyway.

Restaurants are overcrowded and the food is hardly worth the hassle.

These facts make it easy to understand why many have become fed up with this lovers' holiday.

However, if you are dating someone, not celebrating Valentine's Day by spending lots of money on him or her is un-American.

Instead of planning to do unique, inexpensive and romantic Valentine's activities, ultimately boycotting the now over marketed holiday. I believe

every couple should be out in stores buying items of mass produced flattery off the shelves.

While some see investing in Valentine's Day a frivolous waste of money, I implore the haters of corporate Valentine's products to reconsider this year.

I know what I'm saying seems contradictory to how I opened this harangue, but hear me out.

My reasoning is fairly simple. America's economy is already causing heartaches, and since Pres. Obama's stimulus bill is still being bounced around Congress, citizens should take stimulating the economy into their own hands.

Valentine's Day is the perfect opportunity for Americans to spend their hard earned cash on overpriced love items. Retail companies across the nation should benefit from an increase in consumer spending.

Why wait on the government to take action when we have the opportunity to do something now? So go out to your favorite retail store and buy something for that significant other, something that he or she will throw away in a week or two to help make a dent in slumping corporate revenues.



© 2009 Brad J. Guigar

## Baptist Collegiate Ministries offers Singing Valentines for fundraising event

By Tiffany Addison

Guest Writer

In the spirit of Valentine's Day, Baptist Collegiate Ministries is selling Singing Valentines for \$25. Singing Valentines is a group of two or three students from the BCM that delivers balloons, stuffed animals, a bag of candy and a song to a loved one.

The BCM has been holding the Singing Valentine fund raiser for about five years now. The funds are used to support mission trips taken by students during spring break and the summer break. In the past, fund raisers along with this one, such as chicken-ques, and bike rides have funded trips to South Africa, Argentina, Russia, the Grand Canyon, and Europe, just to name a few.

"This year, there will be trips to New Orleans and Greece for spring break," said faculty advisor for the BCM and professor in the office of Student Leadership, Todd Deal.

"This fundraiser is a lot of fun. It's so funny to see the face. Some are excited, embarrassed and even sad," said Jack Caldwell, vice president for outreach for BCM, and has been involved with the fundraiser

since his freshman year in fall of 2005.

"It's a lot of fun and I get really excited. The classroom deliveries where we sing to the professors are the best ones," Caldwell said. He has traveled on mission trips the last three years, visiting New Orleans to help Katrina victims, Key West to do construction and D.C.

Another purpose of this fund raiser, as well as others, is to bridge the gap between the community and the university. A lot of participation from the local community contributes to the success of the fund raiser.

The goal this year is \$13,000 and so far they have raised two-thirds of it from different fundraisers.

Jamie Randolph, vice president of lady's missions, is especially involved and excited about this fund raiser.

"One time we went to an elderly lady's house, and she started crying because she was so shocked and embarrassed at the same time. It's a lot of fun, and it's for a good cause."

The Singing Valentines can be purchased by contacting the Baptist College Ministries at 912-681-2241, by visiting their Web site or consulting any member of the BCM program.



Special Photo

Instead of doing the traditional candy hearts, surprise a loved one with a Singing Valentine.

## Gorilla Thrilla step show to be in Hanner Fieldhouse due to student interest



Special Photo

This year will be Alpha Phi Alpha's 18th year hosting the Gorilla Step Show.

By Cameron Powell

Guest Writer

The Xi Tau chapter of Alpha Phi Alpha fraternity incorporated along with Eagle Entertainment will be hosting its annual Gorilla Thrilla step show on February 28 at Hanner Fieldhouse.

The show has been moved to Hanner Fieldhouse as a result of insufficient holding capacity in the PAC.

"The Student Activity Center wanted more organizations to have a bigger venue like Hanner available for events like this," said Robert Graham, president of the Xi Tau chapter of Alpha Phi Alpha. The Alphas have been hosting Gorilla Thrilla since 1991.

Here at Georgia Southern and have been improving every year in ticket sales.

"The brothers of Alpha Phi Alpha started Gorilla Thrilla to give organizations and step teams an opportunity to showcase their stepping ability and bring a step show to Georgia Southern, something that had been missing from the campus in previous years," Graham said.

Ticket prices for early buyers is \$10 and \$15 at the door the night of the event, so tickets should be bought early, especially because they sold out

last year.

"All proceeds go to our chapter scholarship program which the school awards at its leisure, and to the maintenance of the chapter," said Graham.

This year's Gorilla Thrilla step show will host eight teams competing for a first place prize of \$2,000 and a second place prize of \$1,000.

"Normally, the first place team from the previous year makes a return visit to the stage to defend their crown, but last year's champion is a chapter of Iota Phi Theta that is inactive and therefore can not compete," said Graham.

Although there is no qualification process for entry, competing teams are required to submit a \$100 entry fee, 50 of which they will receive back when they perform.

"The \$100 is a security deposit that we have enforced due to teams dropping out in past shows," Graham said. There will be exhibition acts not included in competition including a high school step team, middle school team, and the Xi Tau chapter of Alpha Phi Alpha.

Alphas started selling tickets at the union Monday, and will continue until the show date or tickets sell out.

Tickets can also be purchased online at [www.gorillathrilla.net](http://www.gorillathrilla.net).

## Actor Ed Begley to speak at the PAC Feb. 16

By Ben Carroll  
Staff Writer

On Monday, February 16, at 7 p.m. at the PAC, Ed Begley, actor and environmental activist, will present his life story about the steps he made to become one of the most famous environmental conservationists.

He has been in many TV shows and movies, such as "Pineapple Express," "King of the Hill," and "Gary Unmarried."

According to [www.edbegley.com](http://www.edbegley.com), Begley has received multiple awards from various organizations, such as the California League of Conservation Voters, the Natural Resources Defense Council, the Coalition for Clean Air, Heal the Bay and the Santa Monica Baykeeper.

He is currently a part of seven different environmental organizations.

"He doesn't just talk about environmental conservation: he lives environmental conservation," said Nigel Davies, the recreation therapist for the CRI Administration.

"He's received six Emmy nominations while riding his bikes to the award show, which definitely shows his true dedication."

His show, "Living with Ed", is a show about Begley, who lives in California, trying to live as sustainable as he can while his wife (Rachelle) has to deal with the changes.

Some of his environmental techniques include using wind and solar power, but he also

powers his own electricity by riding his stationary bike to make two slices of toast.

Ed Begley has two purposes for coming to Georgia Southern.

He is coming to talk to a small group of students, staff, and faculty about the Relamping GSU, where students can volunteer to help change all the bulbs at Georgia Southern into new compact fluorescent bulbs, said Nigel Davies.

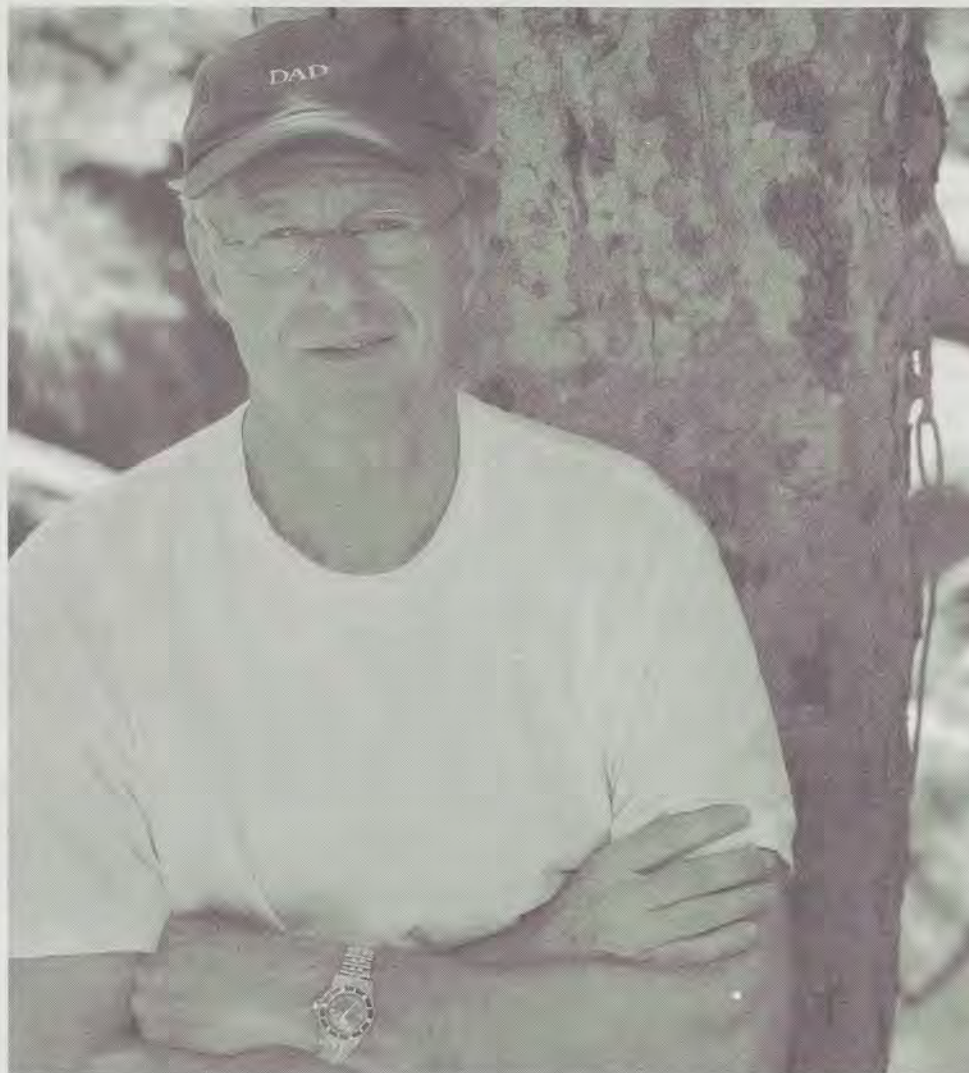
Begley will also have an hour-long presentation about his environmental conservation efforts. This presentation is free to everyone from the school and community. It will include a 30 minute presentation and a 30-minute question and answering section.

"This event is cosponsored by the CRI and the Office of Sustainability in correlation with February being "Livinggreen" month," said Nigel Davies.

One of his major points and famous quotes is "living simply so others can simply live."

"He has his own environmentally safe cleaning products, where all the profits go to environmental charities," said Davies.

"He is a man who does it (environmental conservation) all now, things that we can all do in our lives and they are things we could have been doing a long time ago. Begley is involved with so many things and we are fortunate to be able to schedule him," Davies said.



Special photo

### POLICE BEAT

#### February 9, 2009

Officers issued three traffic citations, issued eight traffic warnings, assisted six motorists, and assisted one sick person.

A case of harassment was reported at the Nessmith-Lane Building.

An in-dash TV, radio and speakers were taken from a vehicle at Southern Pines.

A bicycle was taken from Southern Courtyard.

A CD player was taken from a vehicle at Southern Pines.

Javon Joseph Franklin, 18, Kennedy Hall-possession of marijuana, underage possession consumption of alcohol and obstruction of an officer.

Darren Oneal Jones, 23, Watson Hall for possession of marijuana.

Michael Alexander Turnage, 18, Campus Crossings for underage possession/consumption of alcohol and obstruction of an officer.

#### February 10, 2009

A computer monitor was taken from the Henderson Library.

A case of account fraud was reported at the University Store.

Two chairs were taken from Southern Pines.

Peter J. Reimann, 22, Caribe Ct., was charged with DUI, possession of marijuana and speeding.

## ADA to host Valentine's party to benefit diabetes

By Cameron Powell  
Guest Writer

The American Diabetes Association will host a free Valentine's Day party for all children and teens with diabetes on Sunday, February 15, at the diabetes Wellness Center located in Memorial Hospital from 2 p.m. to 4 p.m.

The list of planned activities for the party includes arts and crafts, team relays, and fun presentations with an emphasis on diabetes self-management.

"This event is a part of the Our Family Resource Network, which allows families dealing with type 1 or type 2 diabetes to come together and network with each other to share their stories, solutions, and how they have been affected by having diabetes as a part of their lives," said Suzanne Willis, ADA associate manager.

According to the ADA website, [diabetes.org](http://diabetes.org), the Family Resource Network consists of parent volunteers that work together to constantly construct events like the Valentine's Day party to

encourage families with diabetes.

"Last year, the ADA hosted an Easter egg hunt, as well as a Halloween, Christmas and summer party which were all a part of the Family Resource Network as well," said Willis.

All throughout the southeastern region of Georgia, the ADA provides information and services including advocacy, education and social events to children and teens living with diabetes that are poster children for survival.

"The Valentines Day party is strictly an opportunity for kids and their families to come together and bond with kids that are just like them," said Maria Center, director of the ADA. "No education or info sessions will be taking place at the party."

While the ADA is dedicated to teaching and making people aware of the severity of both type 1 and type 2 diabetes, school discrimination and an increase in federal funding for diabetes research and medical insurance coverage are battles they continue to fight.

For more information on the organization, visit [www.diabettes.org](http://www.diabettes.org)



**Rates  
Starting  
at \$325!**

# smart living smart price

**Save \$50! Bring in this ad and  
we'll waive your application fee!**

- Private Bedrooms  
and Bathrooms
- 2 Resort Style Pools
- Wireless Internet
- Cable w/HBO
- Pet Friendly

 **BERMUDA  
RUN** 

100 Bermuda Run, Statesboro, GA 30458  
(912) 681-6994







# Get into the Loop!



Choose from our 1, 2, 3, & 4 bedroom condos, townhouses, duplexes, and houses throughout the Statesboro/GSU area. We have properties across from GSU for those who must commute as well as homes throughout town. Even WALK TO CLASS from some locations!

Find Out More Online:  
[www.perimeterproperties.com](http://www.perimeterproperties.com)  
*see floor plans, pictures, and descriptions*

## Duplexes



## Houses



## Condos



Amberwood, Boardwalk, The Village @ Mill Creek, Broad Street Apts, College Vue, Country Club Villas, Eagle's Court, Eagle Estates, Eagle's Crest, Eagle's Heights, Eagle Villa Suites, Eagle Villa Townhouses, Fair Road Apts, Georgia Villas, Hawthorne, Heritage Square, Heritage Woods, Park Place, Sagebrush, Sherwood Forest, Southern Villas, Stadium Walk, Talons Lake, University Place, Yorktown, Valley Road Condos.

# 912.871.4646



224 Lanier Drive  
 Home@perimeterproperties.com  
 Monday - Friday  
 9:00 am - 5:00 pm  
[www.perimeterproperties.com](http://www.perimeterproperties.com)

# FORGET THE REST... PICK THE BEST!!!



THE  
**POINTE**

AT SOUTHERN

1699 STATESBORO PLACE CIRCLE  
STATESBORO, GA 30458 • 912.681.2696



THE  
**AVENUE**

AT SOUTHERN

710 GEORGIA AVENUE  
STATESBORO, GA 30458 • 912.871.6501

[www.myownapartment.com](http://www.myownapartment.com)

# THE CLOSEST CLUB TO CAMPUS

## SAVE \$300 WITH \$35 MOVE-IN

- COMING SOON**
- NEW UPGRADED FURNITURE
  - COMPLETELY RENOVATED CLUBHOUSE
  - NEW POOL FURNITURE
  - UPGRADED COMPUTER LAB
  - UPGRADED FITNESS CENTER & EQUIPMENT
  - NEW VIDEO GAMING AREA
  - UPGRADED SAND VOLLEYBALL COURT
  - UPGRADED BASKETBALL COURT

- ON THE GSU BUS ROUTE
- FREE GOLF CLUB MEMBERSHIP
- RESORT-STYLE POOL
- CLUBHOUSE WITH BIG SCREEN TELEVISION, BILLIARDS & FOOSBALL
- CONFERENCE & STUDY ROOMS
- GREAT LOCATION -- LESS THAN 1 MILE FROM GSU CAMPUS
- ALL UTILITIES INCLUDED WITH CAP
- INTERNET & CABLE WITH HBO INCLUDED
- FULL-SIZE WASHER & DRYER
- FULL-SIZE KITCHEN WITH DISHWASHER
- INDIVIDUAL LEASES



### CAMPUS CLUB

211 LANIER DR  
912.681.2582  
COSTATESBORO.COM

**CHECK US OUT  
AT THE  
HOUSING FAIR**  
REGISTER TO  
WIN AN  
IPOD NANO  
FEB. 12TH  
FROM 11AM-2PM



OWNED AND PROFESSIONALLY MANAGED BY **ACC** AMERICAN CAMPUS COMMUNITIES



UNIVERSITY  
PINES

122 LANIER DR  
912.681.2234  
UNIVPINES.COM

# UPGRADE YOUR COLLEGE LIVING



**SAVE \$300  
WITH \$35 MOVE-IN**

UPGRADED FITNESS CENTER & EQUIPMENT • UPGRADED CLUBHOUSE • NEW POOL FURNITURE  
UPGRADED COMPUTER LAB • NEW VIDEO GAMING AREA • NEW TANNING BED  
WALK TO CLASS • ON THE GSU BUS ROUTE • SAND VOLLEYBALL COURT • FULL SIZE WASHER & DRYER  
HIGH-SPEED INTERNET INCLUDED • INDIVIDUAL LEASES • FULLY FURNISHED UNITS



NEW UPGRADED FURNITURE • WALKING DISTANCE FROM GEORGIA SOUTHERN UNIVERSITY • RESORT-STYLE POOL W/ SUNDECK  
ON THE GSU BUS ROUTE • GAME ROOM WITH BILLIARDS, FOOSBALL & PING PONG • TANNING BED • SAND VOLLEYBALL COURT  
INTERNET & CABLE WITH HBO INCLUDED • ROOMMATE MATCHING AVAILABLE • INDIVIDUAL LEASES • FULLY FURNISHED UNITS

**SAVE \$335  
WITH ZERO  
MOVE-IN**



CAMBRIDGE  
AT SOUTHERN

130 LANIER DR • 912.681.2262 • SOUTHERNSTUDENTHOUSING.COM

OWNED AND PROFESSIONALLY MANAGED BY AMERICAN CAMPUS COMMUNITIES

## STRANGE BUT TRUE

## Leeton High School student-run grocery could save small Missouri town

By Donald Bradley  
McClatchy News Service

Two minutes after the door opened Friday, a retired farmer laid down money for a Hershey bar and two cheese sticks.

And just like that, this little town finally had a grocery store.

Granted, it's not a fancy supermarket. It's no bigger than a two-car garage, it's open only four days a week, and it's in an old bank building - and the bank still uses the vault.

But the 600 or so people in Leeton, about 15 miles south of Warrensburg, are proud of their new store, and indeed they should be. It might be the only one like it in the state and maybe the country.

Leeton High School opened the store, and students will run it. Why? To teach kids practical skills and to save their parents long drives to the market.

In the end, the store just might help save their town.

"I've never heard of any school anywhere doing what we're doing," said agriculture teacher Bonnie Seymour, who is helping the students.



Special Photo

The idea came about last summer when gas prices hit \$4 a gallon and economists warned that small towns in America could soon see an exodus because people could no longer afford the commutes to jobs and shopping.

Leeton is exactly that kind of town. The local school district couldn't do anything to bring jobs closer, but it could provide a grocery store, something the town hadn't had for almost 10 years. Leeton has a Casey's General Store, but folks wanted more of a regular grocery.

For that, residents had to drive to Warrensburg

or about an equal distance to Clinton.

"I think people around here, like my family, are happy that now they won't have to drive so far and use up gas to get some groceries," Taylor Owens, a junior, said Friday.

The new store is what's known as a school-based enterprise. The idea has been around for years, but most SBEs tend to be on school property and sell school supplies to students.

The Leeton store, called the Bulldog Express, is in the mostly abandoned downtown district.

Two classes were told to make it happen: Sey-

mour's ag business class and Marijayne Manley's entrepreneurship class.

The 17 students, including four from Chilhowee High School who take classes at Leeton, will do the ordering, stocking, pricing, counter work and floor sweeping.

Pretty much everything but payroll. Yes, they get paid - minimum wage - for hours they work after 3:15 p.m., when school is out.

The store is open from 1:30 to 6 p.m. Mondays, Tuesdays, Thursdays and Fridays.

There are two students to a shift, always with an adult present.

It all started with remodeling the bank.

Senior Melissa McMullin remembers the first time the students entered the run-down building.

"It was old and dirty and smelled really bad," she said Friday behind the counter.

The school's shop class tore out walls and did much of the heavy work. Students cleaned and painted.

Townpeople joined in, too. John Beck, a member of the school board, drove to Kansas City and brought back shelving from a closed Circuit City.

The Village at  
Mill Creek

NEW!

2 Bedroom/ 2 Bath  
Open Floor Plans  
Patios/Porches  
Fitness Center

Fitness Center  
Pool  
Washers and Dryers  
Walk to Mill Creek Park

Come Check Out The Newest Apartments From:



224 Lanier Drive · Home@perimeterproperties.com · Monday - Friday · 9:00 am - 5:00 pm · www.perimeterproperties.com



# Want an easy way to pay rent?



## Rent from GSU Rental Houses!

Check out [www.gsurentalhouses.com](http://www.gsurentalhouses.com)  
Call Us Today @ 912.531.8369

WITH THIS COUPON YOUR APPLICATION FEE IS WAIVED

GSU Rental Houses, LLC  
*Your Student Rental Housing Headquarters!*



### Statesboro's Most Unique Apartment Community



Rental Rates Starting at \$315!!

### The Garden District

[www.gardendistrictrentals.com](http://www.gardendistrictrentals.com)

- Single-occupancy Studios
- 2 bed/2 bath Apartment Homes
- 3 bed/3 bath Apartment Homes

High-speed Internet, Expanded Cable plus HBO, Your Choice of Furnished or Unfurnished, Your Choice of an optional fixed-rate utility package

912-681-6539  
17931 Hwy 67 STATESBORO  
[www.gardendistrictrentals.com](http://www.gardendistrictrentals.com)  
email us at [gdstatesboro@yahoo.com](mailto:gdstatesboro@yahoo.com)



## The way College Living should be:

secure, comfortable and affordable

# Hendley properties

## Greenbriar

2 Bedroom Townhouse:  
\$700 / month or  
\$350 / person



3 Bedroom Townhouse:  
\$975 / month or  
\$325 / person

3 Bedroom Flat:  
\$975 / month or  
\$325 / person



Amenities:

- Pool
- Volleyball Court

## Hawthorne

2 Bedroom:  
\$700 / month or  
\$350 / person



4 Bedroom:  
\$1100 / month or  
\$275 / person

4 Bedroom Tall Townhouse:  
\$1100 / month or  
\$275 / person



Amenities:

- Pool
- Volleyball Court

## Planters Row

3 Bedroom Cottage:  
\$1095 / month or  
\$365 / person



4 Bedroom Cottage:  
\$1460 / month or  
\$365 / person

Amenities:

- Pond
- Pool
- Volleyball Court
- Fire Pit



[www.hendleyproperties.com](http://www.hendleyproperties.com)

Greenbriar and Hawthorne Office: 912 - 681 - 1166  
Planter's Row Office: 912 - 681 - 1170

Whose House?  
Our House!



# HUGE 3 & 4 BEDROOM APARTMENTS!

1818 Chandler Road • Statesboro, GA 30458

Please call us at 912.681.6765, Email us at [leasing.eagleslanding@gmail.com](mailto:leasing.eagleslanding@gmail.com)

- Walk to Class
- FREE High Speed Internet
- FREE Extended Cable with HBO
- Individual Leases per Bedroom
- Pool Table & Computer Lab
- Community Activities



**WAIVING FEES DURING OPEN HOUSE  
THURSDAYS EVERY WEEK IN FEBRUARY!**

**GREAT LIVING • GREAT LOCATION • GREAT PRICE**

- All-inclusive Utility Package
- Washer & Dryer in every apartment
- Resort Style Pool with WiFi
- Basketball & Sand Volleyball Courts
- 24 Hour Fitness Center
- Pet Friendly



# quick study

*aka Jamie, Verizon Wireless*

At Verizon Wireless, I get to take the skills I already have and build upon them through a variety of training programs that help me grow my career.

[ Already my accomplishments have been rewarded  
- I continue to learn and grow! ]

You're working hard to get that college degree and it's almost time to reap its rewards. Your years of education are the perfect foundation for a high-growth opportunity with Verizon Wireless in our Retail Leadership Development Program (RLDP). If you want to hone and develop your business skills, our dynamic RLDP can launch you from where you are today into a leadership role in record time. Consider your future with a company that values the skills you bring and the work you put in.

If you're ready to take charge of your future, log on to [vzwrlp.com](http://vzwrlp.com) to learn more about our dynamic Retail Leadership Development Program. What are you waiting for? Let Verizon Wireless help you launch the career of your dreams today.

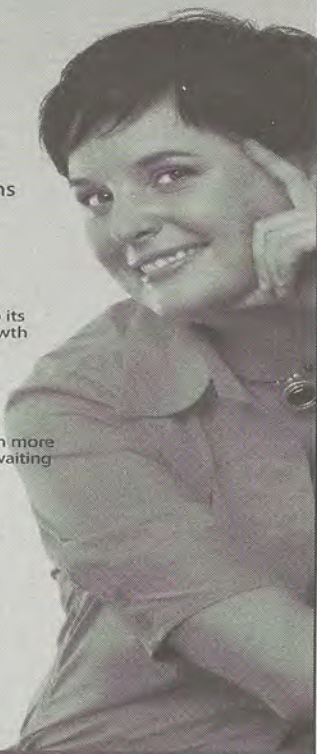
We have opportunities available at several locations for our:

**Retail Leadership Development Program (RLDP)**

We're on facebook!  
Search "Verizon Wireless Careers".  
Become a fan!

Careers For Everything You Are  
[www.vzwrlp.com](http://www.vzwrlp.com)

Verizon Wireless is an equal opportunity employer m/f/d/v.



# OUT & ABOUT IN THE BORO

*Shantoria's Salon Nanning*

**Welcome Back Students!**

**\$1 Tanning Visit!**

**\$2 off Haircut!**

\$2.00 off your haircut when you bring your GSU Student ID, Faculty ID, Staff ID, and Driver's License.

Call or just walk in! 489-5972  
300 E. Main Street Suite C Across from Miller Warehouse

[ConsumerEd.com/geosouthern\\_credit](http://ConsumerEd.com/geosouthern_credit)

You studied  
18 hours for  
a lit exam.  
Maybe your credit  
could use the same  
attention.



Your payment habits can  
come back to haunt you.

Look to Ed for some key advice on  
using credit wisely.

**Consumer Ed**  
ConsumerEd.com

The more you know Ed... **the more you know.**

This message is brought to you by the Governor's Office of Consumer Affairs - State of Georgia.



## Express Tune & Lube

Tire, Alignment  
& Exhaust Center

612 S. Zetterower Avenue  
489-4444

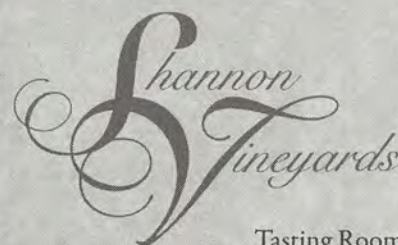
[www.expresstuneandlube.com](http://www.expresstuneandlube.com)  
Monday - Friday 7:30am - 6:30pm

Located a half block north of Wendy's.

**OIL CHANGE SPECIAL**

**\$25<sup>95</sup>** Includes up to  
5 qts of Castrol  
5W20, 5W30, 10W30,  
or 20W50

price applies to most vehicles. Expires 2/28/09



Come Experience  
Georgia's  
Newest Winery  
26 Miles from Statesboro

Tasting Room Now Open

Mon-Sat 11am - 9pm & Sundays from 12:00 - 9pm

912.857.3076 • [www.ShannonVineyards.com](http://www.ShannonVineyards.com)  
4197 Savannah Highway • Sylvania, GA 30467

If you are under the age of 21, it is illegal to purchase alcoholic beverages.



## 'Nightmare Before Christmas' director disappoints fans with boring 'Coraline'

"Coraline" follows the adventures of a bored, unappreciated young girl who finds an alternate world through a passage in her house. While she enjoys the pleasures of this "other-verse," she begins to realize that not everything is what it seems, and she fights to protect the ones she loves from it. The film is directed by Henry Selick ("The Nightmare Before Christmas") from the novel by Neil Gaiman. It features the voice talents of Dakota Fanning and Teri Hatcher.

By Ryan Babula

Staff Writer



While its animation and 3-D effects are stunning achievements in themselves, "Coraline" is an ultimately disappointing film that doesn't carry the spark of energy or enthusiasm of recent animated films. It's not that the initial story isn't interesting, seeing as how it's adapted from a Neil Gaiman novel, but the execution is droll and pretty depressing as well.

Watching the film, I couldn't help but find myself wondering when the story was going to pick up. It was definitely progressing and going somewhere, but it felt like an endless buildup to something bigger that, unfortunately, never fully came.

The momentum that propelled the story was at a minimum, and the true crux of the plot (the encounters and conflict in the "other-verse") seemed glossed over for various character scenes with Coraline's building tenants. I guess it was hard to care about the character of Coraline, as she was a little brat the entire time.

In fact, for all of the tangents the film went on to develop the characters, I really didn't care about a single one.

The only character that I liked was the cat, who, unfortunately, only had a few minutes of screen time.

The film felt like it was all events and no story.

Now, I understand that the film is meant to be dark. Selick said that this is a fairytale for "brave children of all ages." I expected that many of the children in the theater would get scared and start to cry.

Fortunately, that didn't happen, but I can say that this is a genuinely creepy film. Some of the images onscreen unsettled me more than any gore-fest I've seen as of late, and all I could wonder was how this was made for children.

I guess I was the only one affected, though; the child in front of me kept stating that he was bored. I shared his sentiments fully.

After giving the film such a hard time, I should say that where the story fails, the animation takes up the slack ten-fold. This is a beautifully crafted film, and as lacking as the story was, this was the best way to present it. Couple that with the 3-D, and what you get is a fair amount of spectacle on-screen.

It's easy to appreciate the craftsmanship that went into making the film, but I wish that they had taken that enthusiasm and made the story much more compelling. There is a good film to be found in "Coraline," but it's sacrificed for dull storytelling and lifeless plotting. It's a shame that animation this good was wasted on a story this bad.



All Special Photos

By Jonathan Pope

Staff Writer



Henry Selick's ("The Nightmare Before Christmas," "James and the Giant Peach") latest, "Coraline," is a frustrating and somewhat disappointing film. Despite trying fall somewhere between a fantasy adventure for children and a family drama for adults, it may prove too boring and scary for the former and too uninteresting for the later-truly unfortunate considering how good it all looks.

Its animation harkens back to a time when artistry took precedent over technological know-how and it looks stunning. The crew has crafted a film with some immensely imaginative visuals. There is a stark and obvious contrast between the dreary "real" world and the vibrant and, eventually, dark alternate reality that Coraline escapes to. On that note, some of the imagery on display here is truly unsettling, and may prove too frightening for children under 10. Nonetheless, the film is beautiful to behold. Unfortunately, despite the brilliance of its animation, "Coraline" often feels dull and lifeless.

Conceptually, the film is intriguing, much like Selick's most well known film. "The Nightmare

Before Christmas." However, unlike "Nightmare," it's difficult to connect with any of the characters. Despite the honest efforts of the more than capable cast of voice actors, their animated counterparts are just not that interesting. Several are introduced and discussed, yet given little (if any) backstory to help flesh them out.

Even Coraline, who is supposed to be a beacon of life in her drab world, feels hollow and under developed. That is not to say that she and the others are not likable. There is just not enough motivation for the audience to truly lose themselves in the adventure.

Pairing this with the film's minimal and dream-like soundtrack, many people may find themselves lulled into checking their watches every so often, whereas children are likely to fall asleep (if they're not covering their eyes).

"Coraline" is by no means a bad film. The animation is gorgeous and the story is compelling in its potential, but the dull execution and flat characters keep it from ever really taking off. It's just not charming or engaging enough to be a great film.





All Special Photos

## Off-campus housing how to

By Vanessa Terrell  
Staff Writer

The semester's end is nearing and along with it comes some important decisions. Resign or relocate? On-campus or off-campus housing? Before you legally bind yourself to any lease, there are some very important things to consider.

Before ever signing a leasing contract, you should always read it entirely and very carefully. Making sure you agree with everything it entails is exactly why you sign it and is exactly why it's called a leasing agreement.

Understanding its components is very important especially since you are paying for it. Taking your time to carefully investigate all your options is key. If you make the wrong decision, you'll be paying for it for as long as the lease lasts.

Some leases include utilities, and this is usually a good thing. You should first assess whether you and your roommates are responsible enough to keep up with bills. After all, bills are put into your name and affect your credit. If you're forgetful, consider a rent that is all-inclusive.

Make sure that it includes power and water. Some communities offer internet and cable as well. Understand that some of these utilities will have caps on them, which means your rent will only cover up to a certain amount of usage. If you exceed it, you pay for it.

If you choose to live somewhere without all-inclusive rent, make sure you know who provides service for that area and what their costs are. Some communities are serviced by one company, and their costs may not be right for you. For example, a company has a fixed rate for water that would benefit a house of four, but not a house of two.

There are many communities that are pet friendly, and if you have a pet you need to know where you can have it. Some communities approve pets based on type and size. There is usually a non-refundable pet fee attached as well, so make sure

you are willing to pay for that, and any additional damages your pet might cause to your unit, because you will be liable if it says so in the lease.

It's always important to live with people you get along with. If a community offers roommate matching, it is convenient but sometimes just doesn't work out. This is always a possibility so making sure that your lease allows for a sublet is a good precaution.

This is also important if you graduate or leave for a semester for whatever reason, because if someone else doesn't sign a sublease to pay your share of the rent, you most definitely will still be responsible for it.

Joint leases are also risky if you don't know who you're living with. Some communities have joint leases but offer it separately at an extra cost. If you or your roommate may leave for any reason, opt for the separation because one of you could get stuck with the other's rent.

In time, you may find that the best way to find housing is by recommendation through your friends or acquaintances. Hearing first hand experiences is important, because they are far more reliable than an advertisement.

If you've heard a lot of bad things about a community, whether it be about their management or actual units, consider the advice. If you've heard great things about a place, and it fits your needs then it could be right for you. Of course, there are always exceptions and someone may have just had an isolated bad experience, so checking the place out anyway is worth it.

Living off-campus should be a great experience, and if you get stuck with a bad place it may put a damper on your school year. Carefully considering your options is vital, and if you find the right place you may not want to move until you graduate. Just remember not to rush into anything, because no matter how much time you take, there is somewhere for you to live.

## Living on-campus vs. living off-campus

How do you determine which is right for you?

Compiled by Staff

It's the question that every college student must answer: should you live on-campus or off-campus? Both options have their advantages and disadvantages, so it is crucial for you to weigh your choices before you make a final decision. To help you choose between the two, here are some pros and cons of living on-campus and off-campus.



### ON-CAMPUS

#### Pros

**Accessibility to the school.** If you live on-campus, you can easily walk to classes, the library, computer labs, cafeterias, etc. You don't have to waste time and money on driving to school, finding a parking space and so forth.

**Increased social life.** Living on-campus will allow you to meet more people and establish more friendships than if you live off-campus. Living in a dorm means that there will always be someone around to hang out with.

**Simplicity.** If you live on-campus, you don't have to worry about monthly rent payments, utility bills, and grocery shopping.

#### Cons

**Little privacy.** When living in a dorm, it can be very hard to find privacy. You have to share a bedroom and bathroom. The close living quarters mean that you may never have quiet time in your dorm because there will always be something going on.

**Limited space.** You have to limit what you bring to school, or your space will be too crowded.

**Possible low GPA.** Because dorm life is very social, your grades may be affected in a negative way. If you constantly choose hanging out with your dorm buddies over studying at the library, then GPA will suffer.



### OFF-CAMPUS

#### Pros

**Independence.** You will not have to follow as many rules if you live off-campus. Residence halls have several rules that students must abide by when living on-campus. Living off-campus will give you the freedom from those rules and allow you to set your own.

**Privacy.** Living off-campus means that you will more than likely have your own bedroom so you can have a place to sneak off and have time alone away from your roommates. The extra space also means that you can probably find a quiet place to study in the convenience of your own home.

**Sense of responsibility.** Living off-campus will help you be more responsible. If you live off-campus, you will be in charge of paying bills, cleaning the house, grocery shopping and cooking.

#### Cons

**More expensive.** Often times, off-campus housing is more expensive than on-campus housing. Utilities and cable can be an added monthly expense, and you may have to pay for your own Internet access.

**Transportation.** When living off-campus, it may not be convenient for you to walk to campus so you would have to find transportation. Whether you drive your car or use a form of public transportation, it is still going to cost you money. Traffic can also be an issue if you live in a crowded area.

**Isolation.** If you live off-campus, you may not be as involved with campus activities as you would if you lived on-campus.

# Famous TV apartments

By Jeff Martin  
Former Staff Writer

One of the key components of any situational comedy is the set. More often than not, the show takes place in someone's home or apartment. To save on the budget, almost all of the action of the show takes place in the apartment. Here are some of the most memorable TV apartments.

## 1. 'Friends' - Monica and Rachel's apartment

Monica and Rachel's apartment from 'Friends' is probably the most recognized apartment in television history. This extremely extravagant New York apartment can apparently be paid for on a coffee house waitress salary, thanks to a convenient inheritance on Monica's part.



## 2. 'Seinfeld' - Jerry's apartment

Jerry Seinfeld's apartment is the starting point for every episode of the show. Because the show relies almost entirely on the situations discussed in the apartment, it is the most important location of the show.



## 3. 'The Jeffersons' - George and Louise's apartment

George and Louise Jefferson earned their success after years of living next to 'All in the Family' character Archie Bunker. After they moved into their expensive apartment, they dealt with all sorts of issues about race and wealth during a very controversial time.



## 5. 'I Love Lucy' - Lucy and Ricky's apartment

Lucille Ball's classic sitcom was the first show to ever show a single bed in a room shared by a man and a woman. This controversial set piece widened the range of television decency standards and led the way for modern sitcoms.



All Special Photos



Special Photo

# Pet friendly

By Emily Haymans  
Former Staff Writer

None of the things no one mentions when you head off to college is how hard it is to live without a pet. Sure, there are parties and interesting discussions, hangovers and tests. But what about wet noses and soft paws or enthusiastic tail wagging and soft cuddly fur? When you pack up and move out of the old casa, you're not just leaving behind your human family; you're leaving behind your animal friends, too.

Not everyone chooses to be without their furry or scaly comrades, however. I've met college students with snakes, lizards, hermit crabs, cats, dogs, and even a chinchilla. And yet, ever as I ache for a snuggly little puppy to call my own, I know that I am making the right decision for me, which is to not have a pet right now.

One college pet owner, Sarah Mastrario, really wanted a cat to call her own during her collegiate years. She has been taking care of her white and orange cat, Mow, for years in an apartment in Eagle's Landing.

"I like cats, and I wanted one of my own," said Mastrario, who comes from a family of animal lovers.

She makes sure Mow is always comfortable and taken care of, even when she's out of town ensuring that he's fed and played with. Part of the responsibility of having a pet in an apartment is paying a pet deposit, which helps the apartment complex cover the costs of any damage the pet might inflict while living there.

"I [would pay] my \$250 pet deposit, whether it's a cat or a great dane. but even if [Mow]

doesn't do any damage, I don't get it back," added Mastrario.

Sadly, not all pet owners are as responsible as Mastrario. In addition to pet deposits, there's also the obvious costs of having a pet, finding the time to take care of it, feeding it, and um, cleaning up after it. I have noticed evidence of dog owners around sidewalks and anywhere there's grass in my apartment complex. Over winter break, my roommates and I also realized that some of our neighbors might have left their dog alone in her apartment while they were away for the holiday. The stray cats wandering around could also be a testimony to students who realized too late they couldn't handle having a pet.

"There are some people who drop off pets," said assistant property manager for Eagle's Landing, Susan Ahls. "[But] I think here, we encourage people to be responsible for their pets."

Eagle's Landing, like many apartment complexes, has limits on what types of pets residents are allowed to keep: no aggressive breeds of dogs, no pets over 100 pounds, and no snakes. According to Ahls, this is to keep other residents comfortable, since a loose snake or aggressive dog would most likely be unnerving to some people.

The sounds of a lonely dog barking in an abandoned apartment when classes are out, stray cats scavenging for food, and dog poo on our shoes are signs that not everyone is prepared to balance being a student and being a good pet owner.

There are many apartment complexes that are "pet-friendly" in Statesboro for those who decide the benefits of having your animal friend during these stressful years outweigh the costs, but is your lifestyle "pet-friendly?"

# Or you could rent a house

By Elliot Volkman

Former George-Anne Editor

Throughout my experience of searching and living off campus for a majority of my duration at Georgia Southern, I've come to realize that most apartments just are not up to my standard of living.

So as not to bring anymore unwanted attention to myself for the objective articles I've written about the poor living conditions of certain apartment complexes, I will not mention apartment names directly. I would simply say the best way to go is renting a house.

If you can find people reliable and up to your roommate standards, the cheapest and best solution would plainly be renting a house.

Apartments around Statesboro are, for the most part, all inclusive; however, most of them are horribly disorganized and send their residents overages for going over the utility cap.

Renting a home gives you more space, freedom, and, most importantly, a larger sense of responsibility, which, as growing adults, we could all use more of.

The amount of electricity and water usages is between the renter and the utility provider directly, without blindly waiting on an unexpected overage fee on a monthly basis.

The months of research done in order to find a place to live have still resulted in the idea that most, but not all, apartments around here are well out-of-date. Along with the complexes I personally researched, finding substandard living conditions, many readers have told me their horror stories about their places of residence and requesting an investigation. Typically, the older apartments cost far too much for what the residents are getting and they are now becoming more competitive only by ridiculous means.

If an apartment complex is going to offer you \$500 for signing a lease, most likely it is to trap someone without bothering to tell the proprietor the reason for such an offer. A \$500 bonus sounds great in essence, but, if in return, you are getting an apartment filled with poorly patched walls, a disgusting pile of threads they call a carpet and, quite possibly, a balcony that could collapse at any moment, you may want to reconsider signing on the dotted line before falling for the hyped-up apartment model and large bonus.

My ranting and raving toward apartments isn't to say that every apartment in Statesboro is horrible, but rather for readers to see that they must look under the large, fake smiles and sales pitches to see what place will suit your needs.

More importantly, fully read your lease before you sign such an important contract.



File Photo

## Living the dream on Ramble Road

By Will Adams

Former George-Anne Editor

Finding suitable roommates for sophomore year can be hard enough, but finding a reasonably priced place that's still in good condition with a decent commute can be even tougher.

At first sight, it may seem that the only off campus housing options Statesboro has to offer for students are expensive little apartments that have been used and abused only slightly less than some dorms students are moving out of.

Moving in and out of apartments just to find the newest or nicest 'luxury' place in Statesboro isn't very economical or practical, to say the least.

But with a little patience and some know-how, renting a house for three years can be quite rewarding. There's no moving costs or security deposits to pay for, or the hassle of moving.

There are no outrageous costs for utilities or unwanted distractions and noises from other adjacent apartments. And rent can even be cheaper.

I live in Ramblewood, a subdivision at the corner of East Main Street and Lester Road.

My roommates' parents decided a number of years ago to purchase a house so as not to pay rent and utility expenses at a number of different

apartment complexes for him and his two older brothers.

Due to the growth of Georgia Southern in and around the city of Statesboro, their return has been great, considering their four-year investment.

A quiet subdivision with friendly neighbors and close proximity to grocery stores and class, along with numerous restaurants and bars, our house couldn't be in a better location.

Our cabin-style home with a large front porch and front yard have been able to greatly accommodate my roommates' dogs with endless hours of Frisbee catching and playing fetch.

And residing in the only two-story house on the entire street of nearly two dozen houses, our home has proven to be quite welcoming during family affairs, from graduations and family weekends to barbecues and parties with friends.

After living in both the Garden District and Stadium Walk, I couldn't imagine living anywhere else. Sure, it's a drive to campus every morning, but the perks and comfortable setting is incomparable to anywhere else in Statesboro. Living in an apartment is fun, but the freedoms that are associated with living in a house make it all worth with the issues surrounding furnishing the place.



Special Photo

# etc.

Free ads for students, faculty & staff (non-commercial): Just go to [www.gadaily.com](http://www.gadaily.com) -click on classifieds

You must include your names, phone number and Georgia Southern e-mail address for freebies. No phone calls please, at this price we don't take dictation.

For commercial ads please contact us at [gaclass@georgiasouthern.edu](mailto:gaclass@georgiasouthern.edu) or give us a call at 912-478-5418, ask for Reid Pierce.

## CLASSIFIED CATEGORIES

### 100 Announcements

110 Auditions  
120 Freebies  
130 Lost & Found  
140 Other Announcements

### 200 Buy or Sell

210 Autos for Sale  
220 Auto Parts for Sale  
230 Bicycles for Sale  
240 Books for Sale  
250 Computers & Software  
260 Miscellaneous for Sale  
270 Motorcycles for Sale  
280 Trade & Barter  
290 Wanted

300 Employment & Job Services  
310 Career & Job Services

### 320 Child Care Needed

330 Child Care Provider  
340 Internships/Volunteer  
350 Jobs/Full Time  
360 Jobs/Part Time  
370 Opportunities/Business  
380 University Work  
390 Wanted Jobs

### 400 Housing & Real Estate

410 Apartments  
420 Lofts & Rooms  
430 Mobile Homes  
440 Real Estate for Sale  
450 Roommates Wanted  
460 Storage & Moving Services  
470 Student Housing  
480 Sub Leases  
490 Vacation Rentals

### 500 Personals

510 Personals

### 600 Services

610 Education & Tutoring  
620 Financial Aid/Loans  
630 Legal Services  
640 Resumes/Typing/DTP  
650 Services/Miscellaneous

### 700 Travel

710 Spring Break Travel  
800 Transportation/Rides  
810 Transportation/Rides

### 900 Miscellaneous

910 Pets & Pet Supplies

## Announcements 100 - 199

### 140 Other Announcements

Tek-Lan4 When: Fri 13 Feb 09 from 5pm-3am. Where: IT Building 2208 and 2210. What: A free lan party that will host popular FPSs like Nexuiz, Warsaw as well as licensed games like Call of Duty4, Day of Defeat, and others. Email [aitp@georgiasouthern.edu](mailto:aitp@georgiasouthern.edu)

### Buy or Sell 200 - 299

### 230 Bicycles for Sale

Red mtn bike for sell, great shocks, like new \$100 obo

### 260 Miscellaneous for Sale

Brand New, still in box, Red, 2" Turbo CHI, hard to find, top of the line professional grade straightener. Perfect gift. A steal for \$90.

Engagement ring for sale! 18k white ring w/ a .58 round brilliant cut diamond w/diamonds surrounding, t.w. is 1.18 ct! Asking below appraised value. \$3,700 call michelle @ 536-3136.

### 290 Wanted

Dependable car needed for \$600 or less so that I can get to and from work. Please call me at 912-844-0304.

## Employment & Job Services 300 - 399

### 320 Child Care Needed

Need a sitter who is available MWF for occasional babysitting. Child (age 1) attends daycare; need a sitter for when she is sick and parent (faculty at Ga So) is teaching. Home has dogs. Please call or email.

### 350 Jobs/Full Time

Accountant/Bookkeeping Rep needed for Powell Holdings & Co, a technical hardware division company. Interested persons should send a cover letter and resume to [powell.richard24@yahoo.com](mailto:powell.richard24@yahoo.com)

### 370 Opportunities/Business

Bartending \$300/day Potential. No experience necessary. Training provided. 1-800-965-6520 ext 296.

Summer Camp Staff Positions available in Covington, GA for leadership programs and recreation. [www.georgiaffacamp.org](http://www.georgiaffacamp.org)

## Housing & Real Estate 400 - 499

### 440 Real Estate for Sale

WoodBridge Subdivision; 209 Canterbury Place: 3BR/2BT, Approx 1300 Sq.Ft. & .50 acres, & READY TO MOVE IN! Excellent Condition

& decorated to a tee! Call Leann at 912-266-7675 to view this home! Owner is a Licensed agent in Georgia.

### 450 Roommates

4th female roommate needed at Copper Beech for 4BR/4BA starting August 2009-August 2010! \$385 rent plus utilities (about \$50). Call or text 404-771-6723 if interested!!

Fourth roommate needed for 4BR/2BT house located on Robin Hood Trl. Rent \$300/mth plus utilities. Must not mind living with a dog. Looking to sign ASAP. Email [jr00014@georgiasouthern.edu](mailto:jr00014@georgiasouthern.edu)

### 470 Student Housing

Very Nice 4 BR/3 BT House For Rent; Sunroom, Fenced in Pool and Back Deck, 2 Storage Buildings; Date Available is Negotiable; Country Club Area; Call Now For More Info. - Will Go Quickly!

The Landings: House for rent in August. 4BR/4BT, W/D, Cable and internet included. Nice and clean. Call Steve @ (407)637-0514 or email [slstaiman@hotmail.com](mailto:slstaiman@hotmail.com)

For Rent: Multiple Brand New Properties. 3BR/3BT in The Hammocks. 3BR/2BT in Cypress Crossing. Now leasing for fall. Call 912-536-1096 for more info.

Now Leasing for August 1. 3,4,5,6,7 BR Houses at GSU entrance or nearby. References, 24 hr repairs. 912-682-7468 or 912-764-6076.

We have houses for rent for Fall '09. 3/4 BR houses in Sherwood Forest, University Place, and Talon's Lake. Visit [www.wildoak-investments.com](http://www.wildoak-investments.com) for information. Please call 912-484-4763 or 912-682-5315 w/ questions or to set up an appt.

### 480 Sub Leases

\$250 all inclusive 3br/3b apartment at exchange. Feb-July. Great roommates and apt. Text/call 912-667-2998

4 br/4 ba apt in Bermuda Run. Looking to sublease for May - July. Will pay May's rent! Will have own room and bathroom. Rent is \$330 all inclusive. Call 9893305469

Sublease 1BR in a 3BR townhouse in Copper Beech May through July. Spacious room, private BT, fully furnished. Please contact ASAP!

## Services 600 - 699

### 610 Education & Tutoring

Need a writer to help you with those big projects? As the recipient of the Honors Writing Award from Brenau University and 2x Literary Editor, I can help! Call or e-mail for details and questions! 706.833.7191 [nl00322@georgiasouthern.edu](mailto:nl00322@georgiasouthern.edu)

Miscellaneous  
900 - 999

shots/papers. Cage/food included.  
Call 912-541-1895

910 Pets & Pet Supplies

Red Nose Pit Bull puppies \$200  
478-714-3667

Long-Haired Chihuahua. 2 months old, black, and adorable. Has 1st

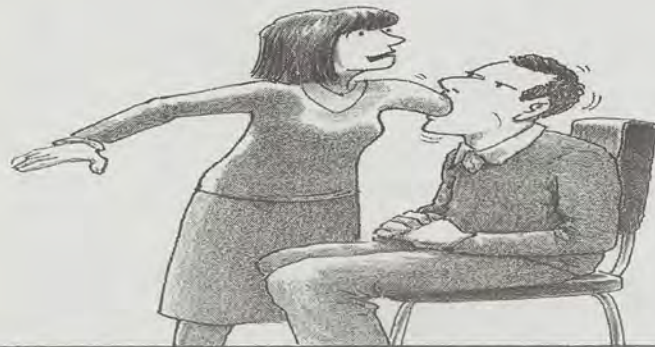


Check out  
**GADaily.com** for  
more news, views,  
and classifieds

©2009 Harry Bliss. Distributed by Tribune Media Services, Inc.

2/14

www.harrybliss.com

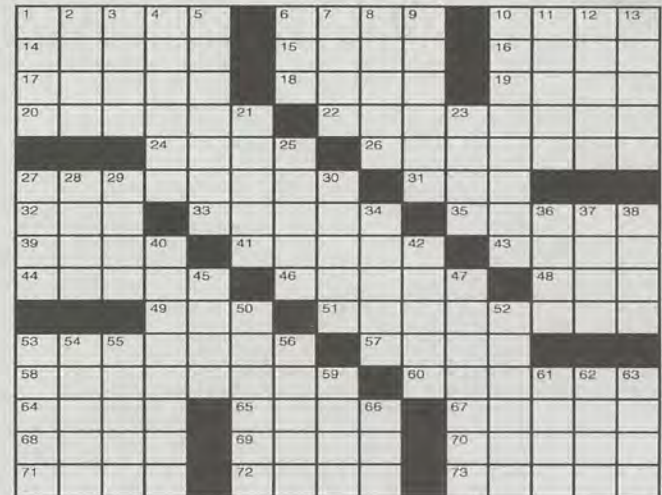


"Gee, sweetie, this certainly is an unorthodox marriage proposal."

## Crossword

- ACROSS
- 1 Chews the fat
  - 6 Art style of the '20s and '30s
  - 10 Small vipers
  - 14 Affix firmly
  - 15 Jewish month
  - 16 Final Four org.
  - 17 Sporting center
  - 18 Actress Sorvino
  - 19 Ripped
  - 20 Tongue-lash
  - 22 Wobbled
  - 24 Five after four
  - 26 Repair-shop vehicles
  - 27 Partial sum
  - 31 Manage
  - 32 Gasteyer of "SNL"
  - 33 Word of defiance
  - 35 Spud
  - 39 Explorer Zebulon
  - 41 Musical show
  - 43 Father
  - 44 Parts of pipes
  - 46 Vends
  - 48 Noisy clamor
  - 49 High times
  - 51 Steer elsewhere
  - 53 Bishop
  - 57 Proofreader's mark
  - 58 Linking up
  - 60 Direct sales
  - 64 Leave out
  - 65 Romanov ruler
  - 67 Brazenness
  - 68 Created
  - 69 Rubik's object
  - 70 Just washed
  - 71 Drove too fast
  - 72 Pianist Myra
  - 73 Serengeti grazer

- DOWN
- 1 Grouchy person
  - 2 Add to staff
  - 3 Declare with certainty
  - 4 Lessee
  - 5 Post
  - 6 Lake maker
  - 7 Amend a draft
  - 8 Yuletide tune
  - 9 Noted speaker



© 2009 Tribune Media Services, Inc.  
All rights reserved.

1/29/09

## Solutions



- 10 Aerials
- 11 Get a goal
- 12 Kitchen implement
- 13 Abrades to smoothness
- 21 Sign on a door
- 23 Like a drumhead
- 25 Roof overhang
- 27 Deprives of vigor
- 28 Army outfit
- 29 Solidify ceramics
- 30 Prying tool
- 34 Adjudicated
- 36 Forceful trend
- 37 Lindros of hockey
- 38 Landlord's due
- 40 Strove to equal
- 42 Church leader
- 45 Petty disagreement
- 47 Failure to speak out
- 50 Sew up

- 52 Pass on a rumor
- 53 Teens' big nights
- 54 Set new boundaries
- 55 Slur over
- 56 Follow
- 59 Jabbers
- 61 Specialty
- 62 Reitman or Pavlov
- 63 Act the pawnbroker
- 66 Notes of scales

MoreOnTV

SCHILLER • CRAVENS

Michael Capozzola's



© 2008 Jay Schiller & Greg Cravens

## CHEAP CITY

Composting your food scraps returns nutrients to the foodchain. AND as a bonus, if left unattended, may produce your own neo-veggie manservant..!



CAPZZOLA



Special Photo

Some of the biology research teams focused on the genetic differentiations of the gopher tortoise, which is indigenous to this region.

## Biology dept. involved in many research projects

By Sarah Goodwin

Staff Writer

The biology department at GSU is currently involved in several research projects during the spring semester of the 2008-2009 school year.

"Our department has a lot of research with undergrad and graduate students, so there are many different projects going on - in just about every one of our 36 faculty member's labs," said Lance McBrayer, a professor in the department of biology.

As with most of the departments at GSU, the biology department is constantly in a stir with different research project, proposals, and presentations. In the month of January alone, at least three presentations were given.

McBrayer's research team gave a presentation on the gopher tortoise which is endemic to this region, and unique in its characteristics. Dr. McBrayer also gave a seminar in January in the department of biology.

John Harrison's research team also gave a presentation in January. This presentation was on the genetic differentiations of gopher tortoises by a graduate student, and Harrison also presented some of his own research.

David Rostal's research team also presented research on snapping turtles and sea turtles,

as well as undergraduate research on gopher tortoises.

"Pretty much everyone from our department travels with students and gives presentations," said McBrayer.

McBrayer is currently working with two undergraduate students to survey the amphibian diversity here on campus.

His lab also has four graduate students working on studies of lizard ecology and tadpole growth and development, and has two undergraduate that are planning to present their poster research in late April, said McBrayer.

"We will [have] about 20 poster presentations of undergraduates research in our department in one major session this April.

Several faculty members will be traveling to (or have traveled to) present research this semester," said McBrayer.

McBrayer also mentioned Lissa Legee who is always doing research on endangered and invasive species, and Lorne Wolfe is always traveling around and giving presentations on his research. Wolfe's research interest area is plant evolutionary ecology.

According to McBrayer, faculty members in the department are always doing some kind of research and preparing for presentations and seminars.

## Different Faces of Israel forum on Feb. 12

*Discussion will allow guests to speak about life in Israel*

By Mark Beavers

Staff Writer

The Multicultural Student Center will be hosting a discussion called "Different Faces of Israel" on Thursday, February 12.

The discussion is based around the changes within the country just after the Prime Minister elections, however, will still encompass overall living conditions and life in Israel as well.

According to Student Affairs Director Consuela Ward, the discussion will involve a panel of guests that have migrated to Israel, and they will talk about the challenges there.

Israel is a country that has immigrants from all over the world, and includes varying cultures, nations, religions, and political ideas.

Ward thinks the discussion will be enlightening.

"Students can find out what it's really like [in Israel]," she said.

Different Faces of Israel will focus on the topic of diversity and multiculturalism within

Israel.

According to Ward, students of all areas of study should attend the talk.

"Students are here to gain a broad education. It's a wonderful opportunity to learn about diversity in a global perspective," she said. "Rarely do we take the time to look at diversity globally."

For students interested in attending, Different Faces of Israel will be from 12 to 2 p.m. in Russell Union room 2041.

Faces of Israel.com, which features information on the youth political group, named Faces of Israel, shares the same mission.

According to the website, the purpose of this project [faces of Israel] is to show what the real life in Israel is, enhancing its multicultural aspect.

For more information on the discussion, visit the Multicultural Student Center located inside the Russell Union. Also, visit [www.facesofisrael.com](http://www.facesofisrael.com) for more information on the organization.



Special Photo

Different Faces of Israel is a discussion that allows panels of guests to discuss life in Israel.

## GSU SOFTBALL PREVIEW

## 2009 is a season of transition and expectations



Jared Siri/STAFF

Sophomore pitcher Brianna Streetmom connects on a swing last season.

By David Lee  
Staff writer

Whether the coaches and players want to accept it or not, the theme for the 2009 Georgia Southern softball team is meeting expectations.

With a new head coach, the most all-conference picks, and upgrades to the field they call home, the Lady Eagles have high hopes as they enter the new season.

The 2008 season was another solid one for the team as they recorded a 37-30 record, including a 13-8 mark in the Southern Conference.

As was the case for the previous two seasons, they reached the conference title game, losing to Chattanooga in two straight games.

Perhaps the highlight of the season was the naming of Robyne Siliga as the SoCon Player of the Year. A .379 batting average, 11 home runs, and 54 RBI made Siliga an easy choice for the award.

The Lady Eagles also had a total of eight named to the all-conference teams. The team set numerous school records and fell one victory short of the school record for wins in a season.

"Georgia Southern had an outstanding season last year," Coach Maggie Johnson stated. "We are fortunate to return so many of our top performers."

The team will return most of the all-conference picks, giving them the honor of having the most preseason SoCon picks for

this season at six.

The Lady Eagles that made first team honors are Siliga, Jenny Side, Nina Iduate, and Amanda Hall.

The two on the second team are Megen Smith and Michelle Beasley.

"[Siliga's] ability is an inspiration to her teammates, and they work harder to perform in support of her outstanding level of play," Johnson said. "The preseason selections give the girls confidence in their ability as we take the field."

"I am very proud of our girls who have made the all-conference teams," Siliga added. "Of course, I feel like there are many more players on our team who have the potential to be a part of a special honor like that, but there's nothing you can do about it."

The offseason saw some important faces leaving the program, as well.

The winningest coach in team history, Natalie Poole, resigned after seven seasons to take the head coaching position at her alma mater, McNeese State.

The Lady Eagles also lost two All-SoCon players to graduation in outfielder Lindsey Hopkins and ace Melissa Laliberte.

Georgia Southern announced the hiring of the new head softball coach in July. Maggie Johnson became the fourth coach in the program's history after five seasons as an assistant at Radford University.

The team has high expectations for the new season.

"I expect us to have a very successful season as far as winning games and owning

up to our team's reputation," Siliga said. "Our team has been practicing very hard since the Fall season."

"We expect to win the conference," Beasley added. "We have worked hard to adjust to a new coaching style and I'm excited to play Friday."

Another exciting addition to the program is the upgrades to Eagle Field. A new building was added that will provide the team with a locker room, a place they can call home.

The wall behind home plate has been made into a brick backstop, improving the appearance of the field. Also improving the appearance is new dirt in the infield and a better drainage system for the field.

The Lady Eagles have a challenging non-conference schedule in 2009. Trips to Georgia State, Georgia Tech, and Georgia headline the non-conference portion.

They will also be hosting a tournament on the second weekend of the season, starting Feb 20, that will feature Charleston Southern and Mercer as well as Coach Johnson's former team, Radford.

The conference portion of the schedule includes trips to Western Carolina, Elon, and defending conference champion Chattanooga.

The team will host Appalachian State, Samford, UNC Greensboro, and a season-ending series against Furman.

The Lady Eagles begin their campaign with a double header at home Friday, February 20 against Troy. Game time is 1 p.m. and 3 p.m.

## Softball Season Schedule

Date	Team	Time
Fri 2/13	Troy	1 & 3 p.m.
Sun 2/15	Mercer	1 & 3 p.m.
Tue 2/17	Florida A&M	4 & 6 p.m.
Fri 2/20	Ch. Southern	1 p.m.
Fri 2/20	Mercer	3 p.m.
Sat 2/21	Belmont	11 a.m.
Sat 2/21	Radford	3 p.m.
Sun 2/22	Oakland	11 a.m.
Wed 2/25	Georgia State	4:30 p.m.
Wed 2/25	Georgia State	6:30 p.m.
Tue 3/03	Jacksonville	4:30 p.m.
Tue 3/03	Jacksonville	6:30 p.m.
Thur 3/05	North Florida	4 & 6 p.m.
Sat 3/07	C of C*	1 & 3 p.m.
Sun 3/08	C of C*	1 p.m.
Sat 3/14	App. State*	1 & 3 p.m.
Sun 3/15	App. State*	1 p.m.
Tue 3/17	Presbyterian	2 & 4 p.m.
Sat 3/21	W. Carolina*	1 & 3 p.m.
Sun 3/22	W. Carolina*	1 p.m.
Tue 3/24	Georgia Tech	3 & 5 p.m.
Sat 4/04	Samford*	1 & 3 p.m.
Sun 4/05	Samford*	12 p.m.
Fri 4/10	Elon*	4 & 6 p.m.
Sat 4/11	Elon*	1 p.m.
Wed 4/15	Ch. Southern	3 & 5 p.m.
Sat 4/18	UNCG*	1 & 3 p.m.
Sun 4/19	UNCG*	1 p.m.
Sat 4/25	Chattanooga*	1 & 3 p.m.
Sun 4/26	Chattanooga*	2 p.m.
Wed 4/29	Georgia	5 p.m.
Sat 5/02	Furman*	1 & 3 p.m.
Sun 5/03	Furman*	1 p.m.
W-Sa 5/06-09	SoCon Tourn.	TBA

Bold denotes home game, \* SoCon opponent



Jared Siri/STAFF

Senior Amanda Hall prepares for a catch in a game last season against Alabama State.

Southern Conference  
Preseason First Team

P - Brooke Loudermilk - Chattanooga  
P - Hannah Angel - UNC Greensboro  
C - Jenny Side - Georgia Southern  
1B - Michelle Fuzzard - Chattanooga  
2B - Nina Iduate - Georgia Southern  
SS - Amanda Hall - Georgia Southern  
3B - Robyne Siliga - Georgia Southern  
OF - Tiffany Harmon - College of Charleston  
OF - Laci Upchurch - Chattanooga  
OF - Jessica Owens - Samford  
DP - Shannon Howard - College of Charleston  
UT - Katie Boyd - Appalachian State

\* The Eagles also had two players on second team  
P - Megen Smith - Georgia Southern  
OF - Michelle Beasley - Georgia Southern

source: SoConSports.com



# SPORTS

## COMPLETE COVERAGE

Check out [GADaily.com](http://GADaily.com) for complete coverage of the weekend's GSU athletics events. Also, check out the weekly swarm podcast and editor blogs.

### QUICK HITS

Stories by GSU News Service

## Swim and Dive named an All-Academic Team

College Swimming Coaches Association of America (CSCAA) announced its Fall Academic All-American Teams today, and Georgia Southern made the list with a 3.38 GPA.

Swimming & Diving's GPA was the 18th highest GPA in Division I.

The Lady Eagles are 6-8 this season after defeating Campbell Jan. 31.

The Swimming & Diving team landed three members on the President's List which features students earning a 4.0 GPA.

Members on the list include Caroline Bevellard, Ali Campbell and Nikki Hutchison.

Georgia Southern also placed six Lady Eagles on the Dean's List which honors those students who earned a 3.5 to 3.9 GPA.

Marshall led all of Division I with a 3.64 GPA.

Swimming & diving returns to the pool in Athens, Ga, Feb. 19 at the CCSA Championships.

## Eagles Men's soccer signs seven for 2009 season

Georgia Southern men's soccer added seven student-athletes for the 2009 season.

"I'm very excited about this class, as I believe we have some outstanding young men joining our team in the fall," said head coach Kevin Kennedy.

The Eagles added four midfielders, a forward, a goalkeeper and a defender. The class includes three players from Georgia, two from Mississippi, one from South Carolina and one from Colorado.

Men's soccer looks to improve on its 8-8-1 record and semifinal appearance in the SoCon tournament when they take the field in 2009.



Brandilyn Brown/STAFF

Newly renovated Eagle Field stands ready for the Lady Eagles' season opener against Troy on Friday at 1 p.m.

## Eagle Field gets needed makeover

By GSU News Service

The ribbon cutting ceremony of the latest additions to the GSU softball field, Eagle Field, will be held Friday at 1 p.m. Following this ceremony, the team will take the field for their season opening game vs. Troy.

The newest additions to the softball complex include locker rooms and bathrooms in a building behind the playing field. The new building will not only allow the players a place to prepare for the game but will also provide the fans a better gameday experience.

A new brick retaining wall was installed around the area behind home plate. Its addition will enhance the overall appearance of the stadium. The infield was laser graded to allow for better drainage.

The bullpen is being reworked using warning track material and is being redesigned so that the pitchers will throw in the same direction as they would on the field.



Brandilyn Brown/STAFF

Workers put finishing touches on the press box that sits looking over Eagle Field.

### Eagles Sports Calendar

#### Men's Basketball

Thur 2/12	@ Furman	7 p.m.
Sat 2/14	@ Wofford	8 p.m.
Thur 2/19	vs. C of C	7:30 p.m.
Sat 2/21	vs. Jacksonville State	TBA
Thur 2/26	@ Elon	7 p.m.

#### Women's Basketball

Sat 2/14	vs. Furman	3 p.m.
Mon 2/16	vs. C of C	7 p.m.
Sat 2/21	vs. Davidson	3 p.m.
Mon 2/24	@ Wofford	4 p.m.
Sat 2/28	@ App. State	1 p.m.

#### Women's Tennis

Fri 2/13	@ Central Florida	2 p.m.
Sat 2/14	@ Wofford	12 p.m.
Sat 2/21	@ Elon	11 a.m.
Sun 2/22	@ UNCG	10 a.m.
Tues 2/24	vs. Jacksonville	2:30 p.m.

#### Men's Tennis

Sat 2/21	@ North Florida	11 a.m.
Sun 2/22	@ Jacksonville	1 p.m.
Sun 3/01	vs. USC Upstate	2 p.m.
Fri 3/06	vs. App. State	2:30 p.m.
Sun 3/15	@ South Alabama	10 a.m.

**"The Caribbean in the 'Boro!"**

**Caribe**  
Condos

**STUDIO  
2 & 3 BR Condos**

**RUCKER LANE  
681-SURF**



**Walk to Campus!  
Free Internet and Cable  
Pets Allowed**



Looking for a  
**NEW LUXURY**  
apartment?

**SIZE MATTERS**  
1, 2, 3 & 4 BEDROOM  
LUXURY TOWNHOMES  
**912.681.8307**  
LOCATED BEHIND SONNY'S BBQ



**DON'T PAY MORE FOR LESS!**

THE AVERAGE 4 BEDROOM APARTMENT IS 1400 SQFT  
COPPER BEECH 4 BR APARTMENT IS 2000 SQFT  
AVERAGE 4 BEDROOM PRICE IS \$445 PER PERSON  
(BASED ON COMPETITORS' RATES WHICH  
INCLUDE UTILITIES)

COPPER BEECH 4 BR PRICE \$385 PER PERSON  
(DOES NOT INCLUDE UTILITIES)

THEIR PRICE \$445 - OUR PRICE \$385 = \$60

DO YOU REALLY SPEND \$60  
(X4 PEOPLE = \$240) EACH MONTH ON  
POWER AND WATER SERVICES?

**Copper Beech**  
TOWNHOMES

## Five schools to be honored at nat'l conference

### Three Georgia schools to be honored during national youth-at-risk conference

By GSU News Service

Five schools nationwide will be honored as "High Flying Schools" next month during the 2009 National Youth-At-Risk Conference sponsored by Georgia Southern University.

Alfred E. Beach High School of Savannah, Ga.; Eagle Rock School and Professional Development Center of Estes Park, Colo.; Elizabeth Vaughan Elementary School of Woodbridge, Va.; Screven County Middle School of Sylvania, Ga.; and C.J. Hicks Elementary School of Conyers, Ga. will be honored during the conference that takes place March 1-4 in Savannah, Ga.

With at least half of their students living at or below the poverty level and with a highly diverse student body, the 2009 High-Flying Schools were chosen for their success in achieving academic success, community collaboration, citizenship development and democratic education.

Each school will be honored during an

awards ceremony at 8:45 a.m. on March 2 at the Hyatt Regency in Savannah, which is the site of the conference.

Following the awards ceremony, each school's success story will be shared in a High-Flying School Showcase beginning at 10:30 a.m.

This year marks the 20th anniversary of the National Youth-At-Risk Conference sponsored by Georgia Southern University's College of Education and Continuing Education Department.

More than 1,200 attendees are expected for what has become the leading conference nationwide for professionals who deal with troubled youngsters and at-risk youth.

The conference draws educators, counselors, social workers, criminal justice professionals and community leaders from around the country.

For more information on registration for the conference, go to [www.nationalyouthatrisk.com](http://www.nationalyouthatrisk.com) or call 912-478-5551.

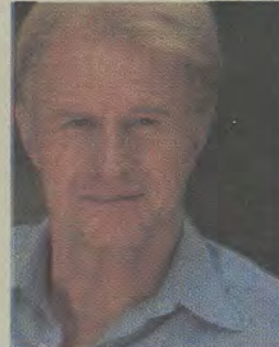


Special Photo

The national youth-at-risk conference will be held in Savannah to honor schools of excellence

LivingGreen & the third speaker in the Sustainability Seminar Series keynote presentation

# ED BEGLEY



Mr. Begley's theme, "Live Simply So That Others Can Simply Live", has been received by standing ovations at over 50 events in just the last year. We are excited to be inspired, empowered and entertained by someone who lives his passion.

## February 16th PAC, 7:00pm

Begley's latest acting endeavor is on the new CBS sitcom Dr. Walter Krandall in "Gary Unmarried" Wednesdays 8:30pm. Begley plays the protagonist's former marriage counselor and fiancée of his ex-wife. His other current hit show "Living With Ed" can be viewed on the new Planet Green channel.

\*\*Co-Sponsored by:  
\* The University Wellness Program  
\* Office of Sustainability in the College of Science & Technology  
\* Campus Recreation & Intramurals

Learn more at [www.livingwithed.net](http://www.livingwithed.net)





**Walk to GSU!**  
**GSU Parking Permit Allowed!**

**Washer & Dryer and Cable TV with HBO in Every Unit**  
**High Speed Internet in apartment.**

12-month Individual Leases

**Two Large Bedrooms, Two Private Bathrooms**  
**Starting at \$335 per Bedroom**  
**Pool, Sand Volleyball Court,**  
**and Fishing Pond**  
**Pet Friendly**

**Telephone**  
**681-2440**

**Fax**  
**681-2447**

**Short term leases available!**

# GREAT PRICES!

## "Valentine's Day Roses!"

Also on Balloons, Baskets, Plushes, Romantic Games and more!



### GSU Students:

receive a 20% discount when you bring in this ad!

**PARTY** ♥ **IMPRESSIONS**  
 "The 'boro's Party Store"

107 West Main Street  
 489 - 9946  
 (across from the Post Office)  
 In-town Delivery Available

## Visit the University Store for your Valentine's day gifts.

We offer a large selection of clothing, noveties, stuffed animals and an extensive selection of greeting cards

**Come in and see us today!**

### Store Hours

M - Th: 7:30 AM - 7 PM  
 Fri: 7:30 AM - 5 PM  
 Sat: 11 AM - 5 PM  
 Sun: Closed



CMX

CMX



## campus crossings STATESBORO

a **campus** apartments community



### Top 5 Reasons for Signing Your Lease today:

- 5 Chill....and relax at our tikki hut/wade in pool.
- 4 The staff is off the chain.
- 3 Location....sleep in, hop the bus, and get to class in 5.
- 2 The hottest new spot in Statesboro.
- 1 **Guaranteed bed to crash in for Fall 2009.**

Take a Tour and Enter to  
Win a Cruise for Two!

133 Lanier Drive, Statesboro, GA 30458  
(888) 675-9310



**campus** apartments®  
smart. living.



[campusapartments.com/statesboro](http://campusapartments.com/statesboro)