

Georgia Southern University

Digital Commons@Georgia Southern

The George-Anne

Student Media

2-10-2009

The George-Anne

Georgia Southern University

Follow this and additional works at: <https://digitalcommons.georgiasouthern.edu/george-anne>

Recommended Citation

Georgia Southern University, "The George-Anne" (2009). *The George-Anne*. 2044.
<https://digitalcommons.georgiasouthern.edu/george-anne/2044>

This newspaper is brought to you for free and open access by the Student Media at Digital Commons@Georgia Southern. It has been accepted for inclusion in The George-Anne by an authorized administrator of Digital Commons@Georgia Southern. For more information, please contact digitalcommons@georgiasouthern.edu.

THE GEORGE-ANNE

www.GADaily.com

TUESDAY, FEBRUARY 10, 2009 • VOLUME 81 • ISSUE 77

COVERING THE CAMPUS LIKE A SWARM OF GNATS

Ayers' visit canceled; university cites financial and security issues

By Chris Buchanan
Editor-in-Chief

A visit by noted professor and controversial activist Bill Ayers that was scheduled for March was canceled yesterday after the possibility of nearly \$13,000 in security expenditures, according to Assistant Director of Communications Betsy Nolen.

"Basically, it was going to be cost prohibitive to have him visit campus because of the expense of security," said Nolen.

Nolen explained that unlike most campus speakers, Ayers could not provide his own security, leaving GSU to foot the bill.

Vice President of Student Affairs Teresa Thompson said that, had Ayers visited the campus, the cost in addition to the need to secure the PAC and the closing of surrounding parking lots would disrupt university operations.

Bomb-sniffing dogs would also have to be brought in to help secure the PAC and neighboring buildings. The event would have required all off-duty campus police officers to come in to help with traffic and general security.

"When the campus police department began taking a look at what they thought would be proper security measures for this particular [event], that's when it became clear that the expenditure was just not going to be reasonable," Nolen said.

According to Thompson, the university hadn't yet made a contract with Ayers. The Multicultural Student Center had, however, requested Ayers as part of their Spring schedule. Thompson also said that the increased cost for security, in conjunction with over \$500,000 in cuts for Student Affairs, made the speaker inviable.

Students, parents, alumni and community members expressed their disapproval

for Ayers' appearance at www.gadaily.com and in multiple Facebook groups.

Thompson said that the recent increase in local controversy surrounding Ayers also had no bearing on the decision to cancel.

The release from the campus echos this sentiment, stating freedom of speech and the free exchange of ideas are both a part of the mission of a university, though the campus does not endorse any speaker that comes to campus.

Before becoming a professor at the University of Illinois at Chicago, Ayers was known for his work with the Weathermen. According to Biography.com, Ayers was instrumental in founding the group, a more militant version of the Students for a Democratic Society which worked in protest of the Vietnam war.

The Weathermen also took responsibility for a number of bombings according to the site including the 1972 bombing of the Pentagon, of which Ayers admitted being a participant in his book, "Fugitive Days."

After charges against Ayers were dismissed following accusations of improper surveillance according to the Chicago Sun-Times, he went back to school for early childhood education. He later earned his doctorate in curriculum and teaching in 1987 and continued to write several books.

This is not the first potential visitor to bring along a need for heavy security according to Thompson, however. Former Vice Presidential Candidate Sarah Palin had initially planned to come to the PAC last fall but also could not provide her own security.

Multicultural Student Center Director Consuela Ward was not available for comment.

Check www.GADaily.com for more updates as they become available.



Special Photo


FEATURES

The hits and misses of Sunday night's grammy awards.

Page 7

Three-Day Forecast

 **Today**
Sunny
76/49

 **Wednesday**
Partly Cloudy
77/52

 **Thursday**
Partly Cloudy
70/40



Check out www.GADaily.com for breaking news, polls, editors' blogs, and contests.

NATIONAL NEWS

Visit the University store for your Valentine's day gifts. We offer a large selection of clothing, novelties, stuffed animals and a extensive selection of greeting cards

Come in and see us today!

Store Hours

M - Th: 7:30 AM - 7 PM

Fri: 7:30 AM - 5 PM

Sat: 11 AM - 5 PM

Sun: Closed



THE UNIVERSITY STORE

WWW.GSUSTORE.COM

TOLL FREE 1-800-861-7059



Special Photo

Peanut region shaken by salmonella scare

McClatchy News Service

More than a half-century ago, residents of rural Early County erected a stone monument topped by an oversized peanut on the courthouse square here as a tribute to the region's signature product.

In this self-proclaimed "Peanut Capital of the World," people credit peanuts with the area's growth and prosperity, and now they fear the fallout from the salmonella outbreak that has sickened more than 500 people and prompted nationwide recalls of more than 1,000 products will have a devastating impact on their livelihood.

"Peanuts have been the cornerstone of our rural community," said Hilary Halford, president of the Blakely-Early County Chamber of Commerce. "We grew up here with the nostalgic smell of peanuts. When they are being harvested, it smells like peanuts everywhere."

"It's a way of life here," she said, "and it would be devastating if there is a long-term impact from this."

Farmers, already hit hard by high fuel costs that affected production, said contracts for next season's crop have been slow coming in from processing companies and manufacturers, leaving them unable to determine how many, if any, peanuts to plant in May.

Most of the approximately 50 employees at

Peanut Corporation of America, which the U.S. Food and Drug Administration has pinpointed as the source of the salmonella outbreak, have been laid off, exacerbating unemployment in an area already hit hard by the recession.

"We're in hot water," Blakely Mayor Ric Hall said of the county, where the median household income is about \$26,000 a year. "We're already struggling with high poverty and a struggling agricultural economy, and this will impact not just our community, but this entire region of the state."

Though Hall said Peanut Corp. was a "small niche" player in the peanut industry, the controversy has cast a shadow over the town that has long taken pride in its peanut production. The shutdown, he said, has come at a time when Georgia-Pacific, the county's largest employer, is laying off at least 100 workers from its paper production plant.

"That's a total of about 150 to 170 people who have lost their jobs," Hall said. "Being the small agricultural community that we are, the prospect of finding new employment is virtually impossible. People here don't have much, and the layoffs make it even more devastating."

As national attention has focused on Blakely, the county seat with about 5,700 people, leaders have tried to paint a positive picture of the region. Three other peanut plants in the county, they point out, have had no problems.

NATIONAL NEWS

Scientists' notes document affects of climate change

McClatchy News Service

It has to do with brown-headed cowbirds and clear-cut forests, lilacs and wildfires, vineyards in the Rhine Valley, marmots, dandelions, tadpoles, cherry trees around the Tidal Basin in Washington and musty old records stuffed in shoe boxes in people's closets and stacked on museum shelves.

As scientists track global warming, they're using sometimes centuries-old data to assess its impact on plants, animals, insects, fish, reptiles and amphibians. Increasingly, they're discovering that it can take only one seemingly insignificant change to disrupt an entire ecosystem.

"People talk about a one or two degree rise in temperature and it's inconsequential to us. Who cares?" said Greg Jones, an environmental studies professor at Southern Oregon University who's been studying wine grapes. "But in an ecosystem it can have dramatic effects."

As the study of phenology, or life cycles, attracts growing attention, researchers are turning more and more to citizen scientists for help.

Since 1954, more than 1,000 people nationwide

have monitored lilacs, recording when they first develop leaves, buds and blossoms in a program that started in Montana and is now part of the National Phenology Network. The data now can be submitted online.

Another 3,500 or so people are monitoring 4,500 different plants as part of Project BudBurst, another online program. Eventually those involved in the project would like to have 40,000 people tracking plants, shrubs and trees from kinnikinnick to chokecherry and wheat to Western columbine.

"The biggest hit has been dandelions," said Jake Weltzin, a scientist with the U.S. Geological Survey who's the executive director of the National Phenology Network. "Everyone cares about dandelions."

Besides scientists and professional land managers, kindergartners, master gardeners, farmers, fishermen and bird, frog and butterfly watchers have participated.

Weltzin said that every time he spoke with a garden club, about one in every five people who attended had detailed records tucked away on their plants, trees and shrubs.



Special Photo

California is now paying the price for over spending

McClatchy News Service

A San Jose Mercury News analysis of California state spending since Republican Gov. Arnold Schwarzenegger took office in late 2003 found that he and the Democratic-controlled Legislature have spent money well beyond the rate of inflation and California's population growth, \$10.2 billion more.

Yet the programs that received most of that money are priorities that Californians broadly support or have demanded at the ballot box: tougher prison sentences for criminals, health care for uninsured children and an aging population, and a cut in the "car tax" that they pay every year to register their vehicles.

The problem, according to a report last week from the state auditor, is that Republican and Democratic politicians in the state capital of Sacramento have shirked their responsibility for the past decade, papering over shortfalls that started after the dot-com bubble popped in 2001.

As the economy worsened and tax receipts plummeted from \$102.5 billion last year to an estimated \$87.5 billion this year the house of cards collapsed.

"We got what we wanted and we've never figured out how to pay for it. And then we had this recession, and that made everything worse," said Stephen Levy, director of the Palo Alto-based Center for the Continuing Study of the California Economy.

"Everybody's got somebody to blame, but in the end these are services people wanted," Levy added. "Look at the screaming when you close a swimming pool, let alone try to cut education."

California's general fund under Schwarzenegger's tenure has grown 34.9 percent from \$76.3 billion in the 2003-04 fiscal year to \$102.9 billion in 2007-08.

If state spending had grown only at that rate, it would have reached \$92.7 billion last year. Instead, Schwarzenegger and the Legislature spent \$10.2 billion more.



Special Photo



The Sir Shop

TWO LOCATIONS

Statesboro Mall
764-6924Main Street Village
871-4962FILSON®
Since 1897

OPINIONS

...WHERE WE'RE JEALOUS OF ALL THE PEOPLE WHO GET TO GO OUTSIDE AND ENJOY THIS WEATHER.

Submission of Letters to the Editor

The George-Anne Daily welcomes letters to the editor, story submissions and guest columns. All copy submitted should be 350 words or less, typed, and sent via e-mail in Microsoft Word format to gaeditor@georgiasouthern.edu or via facebook to Jessica Martin. All submissions must be signed and include phone number for verification. GSU students should include their academic major, year at GSU, and hometown. The editors reserve the right to edit or reject any submission.

You gotta have faith, even in the hard times



Claire Gallam is a senior communications major from Lakewood, Ohio. She is the Managing Editor of news for the GA.

In life, nothing is ever certain. This is ever so clear when tragedy strikes and we are faced with extreme loss and pain when people we love are quickly taken away from us.

In such circumstances, it is so easy to lose faith in a higher being, faith in humanity, and even faith in ourselves. But what is faith, really? Is it something we can really just gain and

lose at our own disposal? Or is it something that is even bigger than us?

Faith is, most objectively, a firm belief in something for which there is no proof and a complete trust in something that is believed especially with strong conviction.

The definition in itself is so vague, that it can be interpreted through different lenses to mean different things.

Faith is also the belief in something you can't see. But isn't that the saying, believing is seeing? With

this definition, faith can mean a belief in a higher, spiritual being, belief in a religion, or even belief in a person or duty. When you believe in something with everything in you, you will be surprised at how many places you see it, both physically and spiritually.

Whatever it is you believe in, it is something that can't be seen, which can make it that much harder to find and keep.

As stated above, when you lose someone you love to a car crash or to cancer, it seems almost impossible to believe that there is a higher being out there to protect us.

However, during times like this, it is more important to keep a belief in something, if not a higher being, in yourself, your loved ones, and humanity. When you lose these, life becomes one giant obstacle, a battle that just can not be won.

As the old adage states, if you don't believe in something, you can fall for anything, and that is more true than most people realize.

So regardless of what is going on, whom you've lost, and the tragedies that face you, keep a belief and a faith in something, what you choose it up to you.



Don't fool us Washington, we know more than you give us credit for

"Fool me once, shame on... shame on you... but if you fool me, you can't get fooled again." So goes one of the famous "Bush-ism" of the former President George W. Everyone

cackles at the supposed "intellectual weakness" of former President Bush.

A few days later, everyone bows down and praises the newest thing in America, President Barack Obama. But have we, as Americans, been praising this "Change," celebrating this "Revolution" to the point that we ignore the patterns that

we see? I think we have.

Are we so blinded by the warmth of President Obama's words, and tone of his speeches that we try to get around the facts? I think we may be doing just that.

Clearly, I am an American, and I will always stand by the Commander in Chief. I may not have voted for him, but that does not mean that I want to move to Europe and denounce my citizenship.

That's ridiculous.

We may not agree on everything, but we are all Americans, and it is our right to form our own opinions and share them.

I love America and what we stand for, and if the majority of Americans put this man in office, then he is MY President too.

That being said, there are some fishy things going on in Washington that I wonder about...

Early January, Timothy Geithner, President Obama's pick for the Secretary of the Treasury, is found to have over \$30,000 in unpaid taxes.

That is equal to many people's salaries for the entire year. That would pay for almost four years of college at GSU.

It is beyond me as to how \$30,000 is "forgotten," and why after being found out, he was continued to be allowed to take charge of the National Treasury. FOOL ME ONCE, SHAME ON YOU...

February 3, 2009. Tom Daschle, President Obama's pick for Health Secretary, was found to have around \$140,000 in unpaid taxes.

That is FOUR TIMES the unpaid taxes that Geithner was discovered to owe less than a month before. He was not removed from the nomination,

however. He stepped down on his own. FOOL ME TWICE... SHAME ON ME.

Of course, once put in the spotlight of hearings and all inclusive media coverage, they paid their debts and then "deeply regretted their mistakes."

I bet they did. Geithner has gone on to be the top man in the Treasury Department, and is now actually overseeing the IRS. Daschle wisely withdrew himself from the nomination.

President Obama took responsibility for the lack of judgment, but why is there a continued lack of it in his cabinet nominations?

If "Change" is what Obama is looking for, then his cabinet members should probably be doing things a little differently, not exactly the same. I think that's the kind of "Change" America wanted in Washington.

I simply hope that others notice these things too. The popular saying has no guideline for "FOOL ME THRICE," but I sure hope we do not need to blaze that trail.

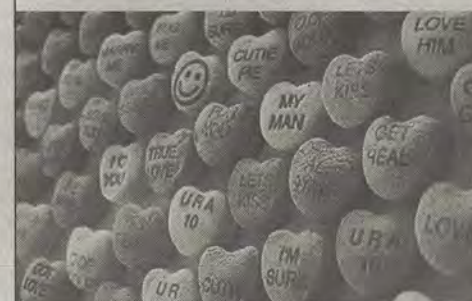
Maybe we should stop being so critical of a former two term president who rose to the highest office in this country and stayed for 8 years, and begin merely questioning some of the decisions of he who took his place.

Do you feel the love?

Head on to www.gadaily.com for the Valentine's Day inspired poll!

How do your past Valentine's stack up?

Send in a letter to the editor (gaeditor@georgiasouthern.edu) about your most bizarre Valentine's day ever, and the strangest story will be the one that is published in our Valentine's Day opinion section on Thursday!





Special Photo

Wellness Wednesday's helps students learn how to maintain a healthy lifestyle, body and mind.

CRI hosts weekly Wellness Wednesdays

By Arianna Jackson

Guest Writer

Since February of 2008 Georgia Southern University has actively promoted healthy living for its students and faculty alike by introducing the program.

University Wellness Program Director Nigel Davies says that wellness consists of multiple facets including "intellectual, emotional, physical, environmental, spiritual; and occupational stimulation and Georgia Southern should be the wellness university," Davies said.

"Wellness Wednesday are designed to encourage the students, faculty and staff at Georgia Southern to become involved in the great programs and activities being offered on campus," Davies said.

Every Wednesday presents students with the opportunity to participate in multiple events around campus that advocate overall wellness.

For example, "Heart Healthy Cooking" in the RAC demonstrates to students how to prepare tasty yet healthy meals.

Life Planning Conferences will aid students with interview skills, resume writing, and financial planning. Free Adventure Movies at the Southern Adventure Center are a great way to be entertained.

An Academic Success Series helps prepare students for exams and take better notes in class.

Also there will be a \$10 discount on scheduled massages and group fitness classes.

The University Wellness Program offers a monthly LivingWell newsletter filled with information and great tips aimed at improving the well-being of the Georgia Southern population.

Keeping in mind the never-ending endeavor to be environmentally friendly this newsletter is only available online in an effort to use the least amount of paper possible.

This year the wellness program hopes to expand with the addition of Wellness Ambassadors. According to Davies, "a Wellness Ambassador is a leader in helping students realize all the wellness opportunities (around campus)."

The search for GSU Wellness Ambassadors is being headed by graduate assistant Katrina Moor who thought this program to be important because "There are many aspects to wellness."

In the near future information sessions will be held for interested students in the Russell Union. Participants of Wellness Wednesdays who are able to assist students and faculty with information on wellness programs will be wearing light purple shirts complete with a wellness logo.

For more information on becoming a Wellness Ambassador or to find out what events are taking place contact Ms. Moor at katrina_r_moor@georgiasouthern.edu or check out the website welcome.georgiasouthern.edu/wellness/Wednesday.

POLICE BEAT

February 4, 2009

Officers assisted nine motorists, assisted one sick person and responded to one alarm.

Dajon D. Gates-Mitchell, 18, Eagle Village, was charged with entering auto.

February 5, 2009

Officers issued 14 traffic citations, one traffic warning, assisted six motorists, assisted two sick persons and investigated six accidents.

Two rugs were taken from the Russell Union.

A purse was taken from the Russell Union.

\$10.00 was taken from the Hanner Fieldhouse.

February 6, 2009

Officers issued three traffic citations, three traffic warnings, assisted six motorists, assisted one sick person, responded to one alarm and investigated one accident.

A cell phone was taken from the Biology Building.

Javon Joseph Franklin, 18, Kennedy Hall, was charged with possession of marijuana, minor in possession/consumption of alcohol and obstruction of an officer.

February 7, 2009

Officers issued five traffic citations, 13 traffic warnings, assisted five motorists, responded to one alarm and investigated one accident.

February 8, 2008

Officers issued 11 traffic citations, 28 traffic warnings and assisted three motorists.

Darren Oneal Jones, 23, Watson Hall, was charged with possession of marijuana.

Michael Alexander Turnage, 18, Campus Crossings, was charged with minor in possession/consumption of alcohol and obstruction of an officer.

STATEMENT OF OPERATIONS

The George-Anne is the official student newspaper of Georgia Southern University, owned and operated by GSU students using facilities provided by the university. The newspaper is the oldest continuously published newspaper in Bulloch County and Statesboro, Ga. The newspaper is a designated public forum for the Georgia Southern community. Opinions expressed herein are those of the student writers and editors and DO NOT necessarily reflect those of the faculty, staff or administration of GSU, the Student Media Advisory Board or the University System of Georgia. The newspaper is published twice weekly, on Tuesdays and Thursdays, during most of the academic year. Any questions regarding content should be directed to the student editor by phone at 912.478.5246 or at gaeditor@georgiasouthern.edu. Readers may access the newspaper and its archives at www.gadaily.com.

ADVERTISING: The newspaper accepts advertising as a community service to help defray publication costs. Inquiries should be directed to the ADS or PAGES, P.O. Box 8001, Georgia Southern University, or by calling 912.478.5418 or 912.478-0566. You can fax any questions to 912.478.7113 or e-mail ads1@georgiasouthern.edu.

DISTRIBUTION: The newspaper is distributed free to the community of GSU.

COLOPHONE: The magazine is printed by The Statesboro Herald Publishing Co. in Statesboro, Ga. Body copy in The George-Anne is 10 point Minion Pro on 12 leading. Standard headline size is 40 point Myriad Pro. For more information about the newspaper, please call 912.478.7459, or e-mail the the director of student media at kcallaway@georgiasouthern.edu.

SUPPORT: The George-Anne is funded primarily through revenue from advertisements placed in the paper and receives additional support, in part, from the Student Activities Budget Committee.

STUDENTS BEWARE: The George-Anne screens all advertisements prior to publication. The magazine strives to accept ads for legitimate products and services only. Students are urged to exercise caution when replying to ads-particularly those which require a credit card number, other personal information, or money in advance of the delivery of a product or service. Students are also urged to report to the newspaper any suspicious offers which they might see in an ad. Remember, if an offer seems too good to be true, it probably is.

DISPLAY AD DEADLINE: The deadline for reserving space and submitting advertising copy is Noon, one week prior to the intended publication date. For more information, rate cards, sample publications, contact the advertising manager or student media director.

PROOFING/ERRORS/OMISSIONS: The newspaper makes every reasonable effort to correct and complete information in advertisements. However the advertiser is responsible for any errors in advertisements and its liability for adjustments is limited to the amount of space the error occupied in the ad. Further, the newspaper is not responsible for any damages caused due to an ad's omission from a particular edition and its responsibility solely is to reschedule the ad in the next regular edition at the regular advertising rates.

CIRCULATION INFORMATION: Mail subscriptions are not available at this time. However, readers may visit our web site for free access to current and past issues. Visit www.gadaily.com to view online issues. The George-Anne is distributed free of charge on the Georgia Southern campus and surrounding areas.

NOTICE: Readers may pick up one free copy, and a second for a roommate or acquaintance, at distribution sites. Additional copies are 50 cents each and are available at the Williams Center. However, unauthorized removal of additional copies from a distribution site constitutes theft under Georgia law, a misdemeanor offense punishable by a fine and/or jail time. Editors will seek to have any person(s) who removes more than the authorized number of copies from distribution sites prosecuted to the full extent of the law.

51st Grammys honor the best of 2008

By Philip Clements
Features Editor

This past Sunday, musicians and industry bigwigs of all sorts made their way down the red carpet to the Staples Center, where the 51st Grammy award ceremony was being held.

It was a night of great music with performances from over 30 artists, including all of the big nominees, took the stage to perform their hits.

Unlike most of the other big award shows, the Grammys have been without a host for the past four years, with the last host being Queen Latifah in 2005. Instead, the classic voice-over guy introduced the presenters, who then either announced the next performance or the nominees and winners.

Among the presenters were stars of all kinds: Samuel L. Jackson, Kate Beckinsale, Gwyneth Paltrow, Will.i.am and Dwayne "The Rock" Johnson.

The biggest winners of the night were Robert Plant and Alison Krauss who picked up five awards, including Album of the Year for "Raising Sand."

Lil Wayne was the most nominated artist of the night with eight and took home four awards, including Best Rap Album for "Tha Carter III."

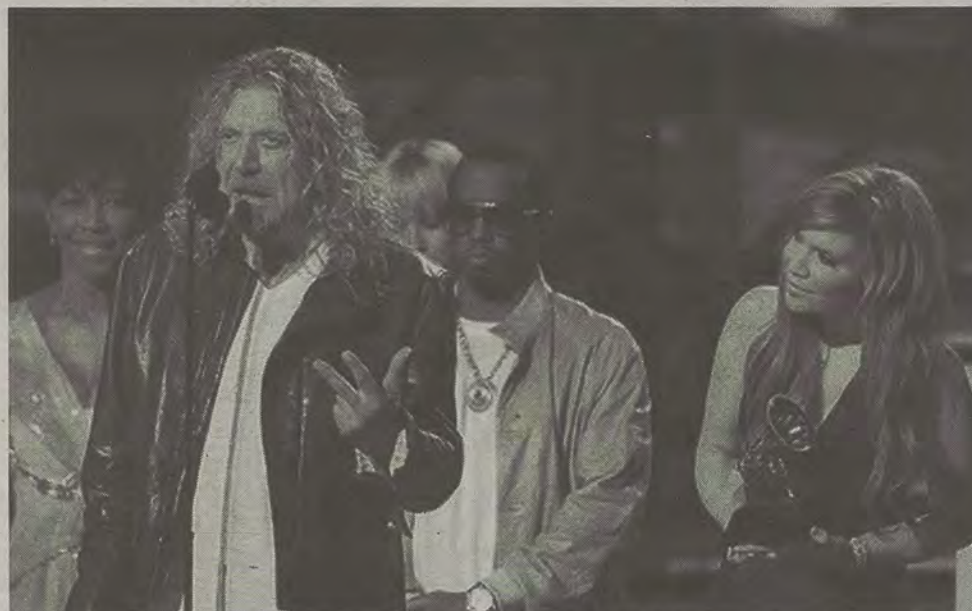
Coldplay won three awards, including Song of the Year and Best Rock Album, beating out Metallica, Kid Rock, Kings of Leon and the Raconteurs.

Adele and Radiohead both won two each. Adele won the coveted "Best New Artist" award, beating out favorites The Jonas Brothers. She later performed her hit "Chasing Pavements" which won the award for Best Female Pop Vocal Performance.

Radiohead beat out Gnarls Barkley, My Morning Jacket, Death Cab for Cutie, and Beck for Best Alternative Album with "In Rainbows," which was also nominated for Album of the Year.

But no award show is complete without at least a little bit of drama. One of the biggest surprises of the night had nothing to do with the awards. Tom Delong, Mark Hoppus and Travis Barker, formerly known as Blink 182, took the stage to present the award for Best Rock Album. Before reading the nominees, they announced that they would be reuniting after breaking up nearly five years ago.

R&B singers Chris Brown and Rihanna were both scheduled to perform but they both cancelled within hours of the event. At the time, it was re-



Robert Plant and Alison Krauss were the biggest winners of the night, picking up five Grammys, including Album of the Year for "Raising Sand." *Special Photo*

ported that Brown had been arrested for criminal threats and the authorities were investigating an alleged domestic violence battery charge.

According to TMZ.com, Robyn Fenty, better known under her performing name Rihanna, has been identified as the alleged victim of the battery charge. The investigation is ongoing.

All in all, the show went off without a hitch. By emphasizing performances by all the top nominees, the Grammys presented the audience with a unique opportunity to not only watch performances by their favorite artists but also see what else is going on in music today. And that opportunity should always be welcomed with open arms.

Apply for the JOHN F. NOLEN Scholarship

Awards between
\$1,000 - \$1,500

Only Undergraduate Freshmen, Sophomores,
and Juniors will be considered for awardance.

Applicants must be enrolled at Georgia Southern
for the entire award year.

Reception of this scholarship is based
upon academic performance and
current involvement in co-curricular
activities at Georgia Southern.

Applications may be downloaded on the SGA website until Feb. 18th

Valentine's Dinner For Two

Two can dine for \$25
Thursday, Friday,
and Saturday

WEEKLY SPECIALS:

Tuesday:

all you can eat boneless wings

Wednesday:

30 cent wings

Saturday:

Karaoke @ 8:00 P.M.

If you are under the age of 21 it is illegal
to purchase alcoholic beverages



And the Grammy goes to...

Compiled By Staff



Album of the Year

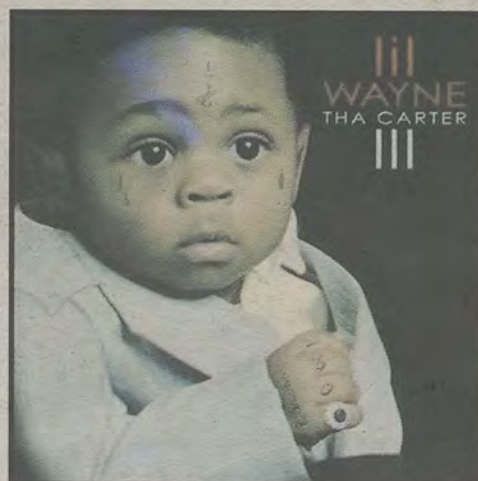
"Raising Sand"

Robert Plant and Alison Krauss

Best Rap Album

"Tha Carter III"

Lil Wayne



Best Rock Album

"Viva La Vida"

Coldplay



Best Alternative Album

"In Rainbows"

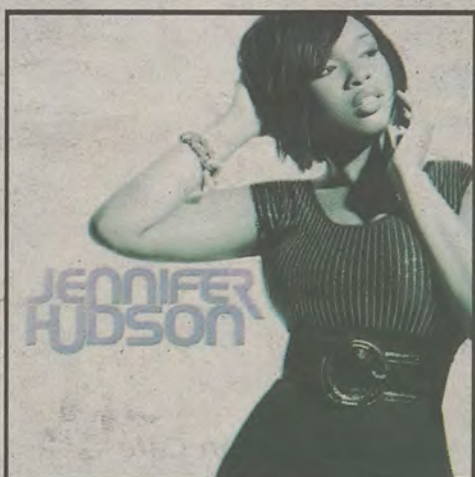
Radiohead



Best R&B Album

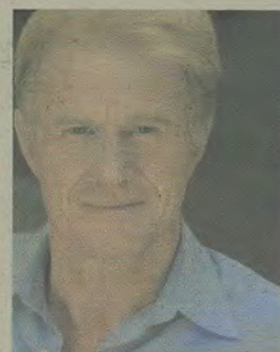
"Jennifer Hudson"

Jennifer Hudson



LivingGreen & the third speaker in the Sustainability Seminar Series keynote presentation.

ED BEGLEY



Mr. Begley's theme, "Live Simply So That Others Can Simply Live", has been received by standing ovations at over 50 events in just the last year. We are excited to be inspired, empowered and entertained by someone who lives his passion.

February 16th
PAC, 7:00pm

Begley's latest acting endeavor is on the new CBS sitcom

Dr. Walter Krandall in "Gary Unmarried" Wednesdays

8:30pm. Begley plays the protagonist's former marriage

counselor and fiancée of his ex-wife. His other current hit

show "Living With Ed" can be viewed on the new Planet

Green channel.

**Co-Sponsored by:

- * The University Wellness Program
- * Office of Sustainability in the College of Science & Technology
- * Campus Recreation & Intramurals

Learn more at www.livingwithed.net



All Special Photos

THE CLOSEST CLUB TO CAMPUS

SAVE \$300
WITH \$35 MOVE-IN

COMING SOON

NEW UPGRADED FURNITURE
COMPLETELY RENOVATED CLUBHOUSE
NEW POOL FURNITURE
UPGRADED COMPUTER LAB
UPGRADED FITNESS CENTER & EQUIPMENT
NEW VIDEO GAMING AREA
UPGRADED SAND VOLLEYBALL COURT
UPGRADED BASKETBALL COURT

ON THE GSU BUS ROUTE
FREE GOLF CLUB MEMBERSHIP
RESORT-STYLE POOL
CLUBHOUSE WITH BIG SCREEN TELEVISION, BILLIARDS & FOOSBALL
CONFERENCE & STUDY ROOMS
GREAT LOCATION - LESS THAN 1 MILE FROM GSU CAMPUS
ALL UTILITIES INCLUDED WITH CAP
INTERNET & CABLE WITH HBO INCLUDED
FULL-SIZE WASHER & DRYER
FULL-SIZE KITCHEN WITH DISHWASHER
INDIVIDUAL LEASES



CAMPUS
CLUB

211 LANIER DR
912.681.2582
CCSTATESBORO.COM

CHECK US OUT
AT THE
HOUSING FAIR
REGISTER TO
WIN AN
IPOD NANO
FEB. 12TH
FROM 11AM-2PM



OWNED AND PROFESSIONALLY MANAGED BY  AMERICAN CAMPUS COMMUNITIES



UNIVERSITY
PINES

122 LANIER DR
912.681.2234
UNIVPINES.COM

UPGRADE YOUR COLLEGE LIVING



**SAVE \$300
WITH \$35 MOVE-IN**

UPGRADED FITNESS CENTER & EQUIPMENT • UPGRADED CLUBHOUSE • NEW POOL FURNITURE
UPGRADED COMPUTER LAB • NEW VIDEO GAMING AREA • NEW TANNING BED
WALK TO CLASS • ON THE GSU BUS ROUTE • SAND VOLLEYBALL COURT • FULL SIZE WASHER & DRYER
HIGH-SPEED INTERNET INCLUDED • INDIVIDUAL LEASES • FULLY FURNISHED UNITS



NEW UPGRADED FURNITURE • WALKING DISTANCE FROM GEORGIA SOUTHERN UNIVERSITY • RESORT-STYLE POOL W/ SUNDECK
ON THE GSU BUS ROUTE • GAME ROOM WITH BILLIARDS, FOOSBALL & PING PONG • TANNING BED • SAND VOLLEYBALL COURT
INTERNET & CABLE WITH HBO INCLUDED • ROOMMATE MATCHING AVAILABLE • INDIVIDUAL LEASES • FULLY FURNISHED UNITS

**SAVE \$335
WITH ZERO
MOVE-IN**



CAMBRIDGE
AT SOUTHERN

130 LANIER DR • 912.681.2262 • SOUTHERNSTUDENTHOUSING.COM

OWNED AND PROFESSIONALLY MANAGED BY  AMERICAN CAMPUS COMMUNITIES 



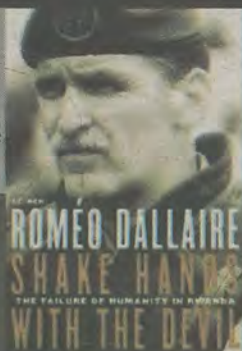
Lt. Gen. Roméo Dallaire

"Dallaire's Story of Courage and Conviction"

Tues., Feb. 17 at 7 pm
Performing Arts Center
Georgia Southern University

Dallaire's actions are credited with directly saving the lives of 20,000 Tutsis and Hutus during the genocide in Rwanda, Africa during the 1990s. His book *'Shake Hands with the Devil: The Failure of Humanity in Rwanda'*, was awarded the Governor General's Literary Award for Non-Fiction in 2004.

Rwanda will never ever leave me. It's in the pores of my body. My soul is in those hills, my spirit is with the spirits of all those people who were slaughtered and killed that I know of, and many that I didn't know...



YOUR STUDENT ACTIVITY FEES AT WORK

Sponsored by the Department of Writing and Linguistics, Office of the Vice-President for Student Affairs and Enrollment Management, Campus Life Enrichment Committee, Office of the Provost and Vice-President for Academic Affairs, Office of the Dean of the CLASS, Department of Geography and Geology, Multicultural Student Center, Center for Africana Studies, Department of History, Department of Sociology and Anthropology, First Year Experience, Center for International Studies, University Honors Program, Department of Political Science, Center for Women's and Gender Studies, STAND, Amnesty International and ROTC.



All Special Photos

Grammys feature top performers and exciting collaborations

By Philip Clements
Features Editor

While we all love seeing our favorite artists and bands win awards, the performances are still what make the Grammys special. Over 30 performers took the stage over the course of the night, including all of the top nominees.

The first performance of the night was U2 with "Get on Your Boots," the single from their upcoming album "No Line on the Horizon." The song revives the riff-heavy electro-rock that brought U2 back to the charts with "Vertigo."

Filling in the slot left empty by Chris Brown's cancellation, Al Green performed his classic hit "Let's Stay Together" with the help of Justin Timberlake, Boys II Men and Keith Urban.

Radiohead induced a standing ovation with their performance of "15 Step" from their album "In Rainbows," which won Best Alternative Album. Radiohead was joined on stage by the drum line and low brass of the University of Southern California Trojan Marching Band, also known as The Spirit of Troy.

There were also several performances that were either collaborations or tributes. After the obituary sequence finished, BB King, Buddy Guy, Keith Urban and John Mayer played a shred-heavy cover of "Bo Diddley" in honor of the late Bo Diddley.

The Jonas Brothers were graced on stage by Stevie Wonder's presence. Wonder has performed at the Grammys more than any other artist. The group played The Jonas Brothers' hit "Burnin' Up"

and then launched into an explosive version of Stevie Wonder's Superstition, which garnered him two Grammys back in 1973.

One of the more highly anticipated collaborations of the night was the "Rap Pack": Jay Z, Lil Wayne, Kanye West, and T.I. These titans traded verses on the Grammy winner for Best Rap Performance by a Duo or Group "Swagga like Us."

Also on stage at the same time was British rapper M.I.A., who did her nominated song "Paper Planes" as well as joined in on "Swagga like Us." M.I.A. was nine-months pregnant at the time of the performance and was said to actually have been due on the same day.

Each of the "Rap Pack" performed a song on their own: Kanye West performed the song "American Boy" with Estelle; Lil Wayne went through "Tie My Hands" with Robin Thicke; T.I. rhymed on "Dead and Gone" with Justin Timberlake; Jay Z took a verse over "Lost" with Chris Martin from Coldplay.

Jennifer Hudson's performance, however, was the highlight of the night. Having gone through a year full of horrible personal tragedies and then winning the award for Best R&B Album, Hudson took the stage and blew everyone away with a heart wrenching performance of "You Puled Me Through." As the song came to a flourishing end, Hudson's lips quivered and her eyes watered up as the crowd broke out into a standing ovation.

Most if not all of the performances should be available on YouTube.

Eight students to compete in 61st annual Miss Georgia Southern Pageant

By Arianna Jackson

Guest Writer

In 1948, as South Georgia Teacher's College, Georgia Southern University became an official local preliminary pageant to the Miss Georgia and Miss America pageants.

As the longest running Miss Georgia preliminary pageant, GSU is proud to celebrate the 61st anniversary of the Miss Georgia Southern University Scholarship Pageant.

In order to compete for Miss GSU interested students, amongst other criteria, must currently be enrolled at Georgia Southern for more than 12 hours, must have completed at least one semester at GSU, and must have a cumulative GPA of 2.0 or better.

Eight contestants will be competing this year for the scholarship opportunity including Alexa Turpin, Kimberly Perez, Brittany Cook, Noelle Singleton, Sarah Farmer, Cassie Brantley, Felicia Jordan, and Britton Black.

In addition to receiving a \$1500 scholarship the winner of the Miss GSU Pageant will also be awarded \$500 to help sponsor travel and other expenses while representing Georgia Southern



Special Photo

in the June 2009 Miss Georgia Pageant.

Five judges will have the privilege of meeting and assessing each contestant's ability to embody all that is Georgia Southern. This year the judges are Robert McGuiar, Marian Arnold, Kerry Har-

old, Branden Lane, and Harriett Anderson.

The Miss Georgia Southern University Scholarship Pageant consists of five different phases: Presentation and Community Achievement in Private Interview (25 percent); Artistic Expres-

sion or Performing Arts (35 percent); Lifestyle and Fitness in Swimsuit (10 percent); Presence, Poise, and Overall Composite in Evening Wear (15 percent); and an On-Stage Question (five percent).

Brittany Cook, who has previously participated in about 30 other pageants, had this to say when asked why she wanted to be a contestant in this year's competition, "I am participating in Miss GSU to support my school and for the opportunity to represent Miss GSU."

She went on to give this word of advice to future Miss GSU Pageant contestants, "I would tell anyone that has the opportunity to participate in Miss GSU to have fun while competing because not many people get the opportunity to have a chance to represent GSU."

This year's Miss GSU Pageant will take place on Saturday, February 14th, 2009 at 7:00 p.m. in the Russell Union Ballroom. Tickets can be purchased in advance for \$5 at the Office of Student Activities or at the door for \$8.

Students will be able to vote for their favorite contestant by donating a dollar per vote.

Proceeds will go towards the winners' scholarship and future pageant expenses.



smart living smart price

Great Leasing Specials!

Short Term Leases Now Available!

Move-in by February 1st and Enter to Win 6 Months Free! Plus \$0 Down and January Free!

Join us for an Open House, January 31st 2pm-5pm

Private Bathrooms
Walk-In Closets in each Bedroom
Clubhouse w/ Video Gaming Stations

BERMUDA RUN

100 Bermuda Run, Statesboro, GA 30458
(912) 681-6994

located off Fair Road beside the hospital
(East Georgia Medical Center)

etc.

Free ads for students, faculty & staff (non-commercial): Just go to
www.gadaily.com -click on classifieds

You must include your names, phone number and Georgia Southern e-mail address for
 freebies. No phone calls please, at this price we don't take dictation.

For commercial ads please contact us at gaclass@georgiasouthern.edu or
 give us a call at 912-478-5418, ask for Reid Pierce.

CLASSIFIED CATEGORIES

100 Announcements
 110 Auditions
 120 Freebies
 130 Lost & Found
 140 Other Announcements
 200 Buy or Sell
 210 Autos for Sale
 220 Auto Parts for Sale
 230 Bicycles for Sale
 240 Books for Sale
 250 Computers & Software
 260 Miscellaneous for Sale
 270 Motorcycles for Sale
 280 Trade & Barter
 290 Wanted
 300 Employment & Job Services
 310 Career & Job Services

320 Child Care Needed
 330 Child Care Provider
 340 Internships/Volunteer
 350 Jobs/Full Time
 360 Jobs/Part Time
 370 Opportunities/Business
 380 University Work
 390 Wanted Jobs
 400 Housing & Real Estate
 410 Apartments
 420 Lofts & Rooms
 430 Mobile Homes
 440 Real Estate for Sale
 450 Roommates Wanted
 460 Storage & Moving Services
 470 Student Housing
 480 Sub Leases
 490 Vacation Rentals
 500 Personals
 510 Personals

600 Services
 610 Education & Tutoring
 620 Financial Aid/Loans
 630 Legal Services
 640 Resumes/Typing/DTP
 650 Services/Miscellaneous
 700 Travel
 710 Spring Break Travel
 800 Transportation/Rides
 800 Transportation/Rides
 900 Miscellaneous
 910 Pets & Pet Supplies

Announcements 100 - 199

140 Other Announcements

Airsoft Team meeting Tues 2/10, open to anyone interested. No experience necessary. Meet in Union Room 2042 @ 7pm For more into contact us: BlackTalonAirsoft@gmail.com FaceBook Group: Black Talon Airsoft Team

Buy or Sell 200 - 299

230 Bicycles for Sale

Red mtn bike for sale, great shocks, like new \$100 obo

260 Miscellaneous for Sale

7' "The Lola" Pool Table \$400.00... Thick Slate top. No warps. One small scratch in felt. Comes with two sets of pool balls and some accessories. Will deliver for a small charge. Call Jonathan 770-856-5848

Brand New, still in box, Red, 2" Turbo CHI, hard to find, top of the line professional grade straightener. Perfect gift. A steal for \$90.

Engagement ring for sale! 18k white ring w/ a .58 round brilliant cut diamond w/diamonds surrounding, t.w. is 1.18 ct! Asking below appraised value. \$3,700 call michelle @ 536-3136.

290 Wanted

Dependable car needed for \$600 or less so that I can get to and from work. Please call me at 912-844-0304.

Employment & Job Services 300 - 399

320 Child Care Needed

Need a sitter who is available MWF for occasional babysitting. Child (age 1) attends daycare; need a sitter for when she is sick and parent (GSU faculty) is teaching. Home has dogs. Please call or email. 478-5704 or tyancey@georgiasouthern.edu

350 Jobs/Full Time

Accountant/Bookkeeping Rep needed for Powell Holdings & Co, a technical hardware division company. Interested persons should send a cover letter and resume to powell.richard24@yahoo.com

370 Opportunities/Business

Bartending \$300/day Poetential. No experience necessary. Training provided. 1-800-965-6520 ext 296.

Housing & Real Estate 400 - 499

440 Real Estate for Sale

WoodBridge Subdivision; 209 Canterbury Place: 3BR/2BT, Approx

1300 Sq.Ft. & .50 acres, & READY TO MOVE IN! Excellent Condition & decorated to a tee! Call Leann at 912-266-7675 to view this home! Owner is a Licensed agent in Georgia.

450 Roommates

Fourth roommate needed for 4BR/2BT house located on Robin Hood Trl. Rent \$300/mth plus utilities. We have a dog. Looking to sign ASAP. Email jr00014@georgia-southern.edu

470 Student Housing

Very Nice 4 BR/3 BT House For Rent; Sunroom, Fenced in Pool and Back Deck, 2 Storage Buildings; Date Available is Negotiable; Country Club Area; Call

The Landings: House for rent in August. 4BR/4BT, W/D, Cable and internet included. Nice and clean. Call Steve @ (407)637-0514 or email slstaiman@hotmail.com

GSU Rental Houses Now Leasing for Fall 2009 in Burkhalter Plantation. 4BR/4BT w/ garages. Call Bob Lienhard @ 912-531-8369 for first pick of houses. Visit us online at gsurentalhous.com

For Rent: Multiple Brand New Properties. 3BR/3BT in The Hammocks. 3BR/2BT in Cypress Crossing. Now leasing for fall. Call 912-536-1096 for more info.

Now Leasing for August 1. 3,4,5,6,7 BR Houses at GSU entrance or

nearby. References, 24 hr repairs. 912-682-7468 or 912-764-6076.

We have houses for rent for Fall '09. 3/4 BR houses in Sherwood Forest, University Place, and Talon's Lake. Visit www.wildoak-investments.com for information. Please call 912-484-4763 or 912-682-5315 w/ questions or to set up an appt.

480 Sub Leases

\$250 all inclusive 3br/3b apartment at exchange. Feb-July. Great roommates and apt. Text/call 912-667-2998

4 br/4 ba apt in Bermuda Run. Looking to sublease for May - July. Will pay May's rent! Will have own room and bathroom. Rent is \$330 all inclusive. Call 9893305469

Sublease 1BR in a 3BR townhouse in Copper Beech May through July. Spacious room, private BT, fully furnished. Please contact ASAP!

Miscellaneous 900 - 999

910 Pets & Pet Supplies

Red Nose Pit Bull puppies \$200 478-714-3667



Michael Capozzola's
CHEAP CITY

YouR big event will get more press with a Community-minded angle...

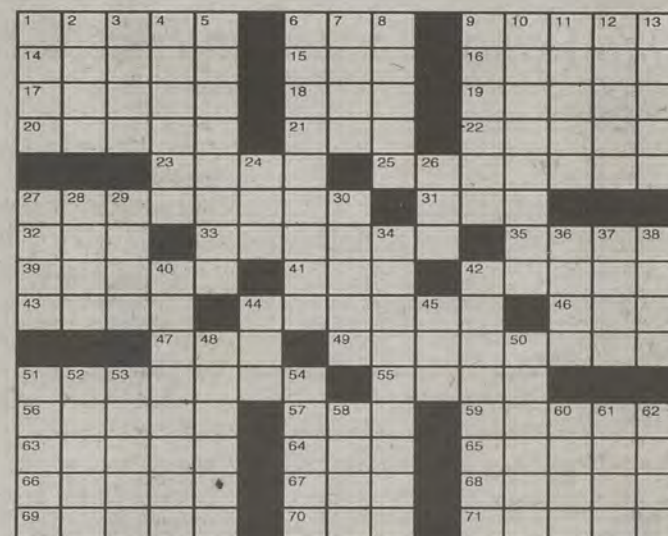
WELL, JOHN-- TECHNICALLY IT'S NOT A RAVE. IT'S A 96-HOUR DANCE MARATHON TO RAISE PUBLIC AWARENESS OF CRYSTAL METH...

Check out **GAD-**
aily.com for more
 news, views, and
 classifieds

Crossword

- ACROSS
- 1 Church table
 - 6 Derek and Jackson
 - 9 Actor's platform
 - 14 Drench
 - 15 Pacer maker, briefly
 - 16 Large villages
 - 17 Uneasy feeling
 - 18 Australian joey
 - 19 Opera songs
 - 20 Penny pincher
 - 21 Pull behind
 - 22 Present, e.g.
 - 23 Daytona 500 or Indy, e.g.
 - 25 Sleds
 - 27 Subway stops
 - 31 Motel
 - 32 Old card game
 - 33 Absolutely not!
 - 35 Roosevelt follower
 - 39 Bancroft and Baxter
 - 41 New Haven student
 - 42 WWII riveter
 - 43 Young adult
 - 44 Former Spanish dictator
 - 46 Printer's spaces
 - 47 TV guide abbr.
 - 49 Belgrade populace
 - 51 "Waltzing"
 - 55 Earth orbiter
 - 56 Privileged few
 - 57 Youth grp.
 - 59 Gas containers
 - 63 Log structure
 - 64 Mare's morsel
 - 65 Shiraz resident
 - 66 Wept
 - 67 Cycle starter?
 - 68 More adorable
 - 69 Stock up on
 - 70 Shamus
 - 71 Tucks away

- DOWN
- 1 Sandler of "Little Nicky"
 - 2 Anderson of "WKRP..."
 - 3 Harbor vessels
 - 4 Declare to be true
 - 5 Gets back into shape
 - 6 Mixologist
 - 7 Herman Melville novel
 - 8 Flat boats
 - 9 Island, NY
 - 10 Ripped open
 - 11 Inspiring reverence
 - 12 Grind together
 - 13 Slalom curves
 - 24 Pigeon call
 - 26 Prevarication
 - 27 Blind strip
 - 28 Verbal subtlety
 - 29 Top-drawer
 - 30 Manner of fiction
 - 34 Of films
 - 36 Going by yacht
 - 37 Mark Twain's Huckleberry
 - 38 1979 Polanski film
 - 40 Beings
 - 42 Branch of automation



© 2009 Tribune Media Services, Inc.
 All rights reserved.

1/28/09

Solutions



- 44 Passing fascination
 45 -Magnon
 48 Combines
 50 Doing the same old same old
 51 Islamic holy city
 52 Red light
 53 Shinbone
 54 Circa
 58 Rational
 60 Allied org.
 61 Recognized
 62 Knights

WONDERMARK BY DAVID MALKI!

get in the spirit at WONDERMARK.COM

YES. I THINK I HAVE IDENTIFIED THE PROBLEM.

IT SEEMS THAT YOU ARE AWFUL.

MAN, I HATE THESE UNREAL EXPECTATIONS IN MUSIC! EVERYONE'S ALWAYS HARPING ON YOU TO HIT EVERY SINGLE NOTE. NOBODY'S PERFECT, YO!

BATTING .400 IN BASEBALL GETS YOU INTO THE HALL OF FAME. BUT FOR SOME REASON I JUST GET YELLED AT!

A FACILE COMPARISON! BASEBALL IS A COMPETITION, AND WE EXPECT THE PITCHER TO ALSO BE PARTIALLY SUCCESSFUL.

YOU HAVE NO SUCH EXCUSE. YOUR HORN IS A THING OF BRASS. IT IS NOT FIGHTING YOU.

DESPITE WHAT YOU INSIST, IT IS NOT SOME ANIMATE DEMON SPIRIT HELL-BENT ON SABOTAGING YOUR EVERY EFFORT.

DUDE YOU GOTTA START BACKING ME UP HERE

RODNEY MY TIME HAS NOT YET COME

Behind the Swoosh event to be held on Friday in the Russell Union

Jim Keady's documentary depicts truth of living conditions in an Indonesian Nike Sweat shop

By Sarah Goodwin

Staff Writer

The Multicultural Center at GSU is sponsoring the "Behind the Swoosh" event on February 10, 2009 in the Russell Union.

"Behind the Swoosh: Sweatshops and Social Justice" is a documentary about a man named Jim Keady who spent a month in an Indonesian sweatshop in 2000 making \$1.25 a day.

Jim Keady and Leslie Kretzu will be showing the documentary about their experiences and they will also have a question and answer session after the film.

Keady is an educator in the area of social justice, and speaks internationally about his growing concern with sweatshop workers in the Nike factories of Indonesia.

In 1997, Keady was fired from his job at St. John's University as the coach of the NCAA Division I Champions, the Red Storm.

"I was given an ultimatum, wear Nike and drop this issue, or resign," said Keady in the press release for the documentary.

Since this time, Keady has been working for justice for the Indonesian workers and made it his life work.

During his time as a factory worker, Keady struggled to survive off a meager 23 cents an hour, the average wage of these factory workers.

"I lived in a 9x9 box, sleeping on a reed mat on a cement floor for 30 days. I lost 25 lbs. trying to live like a Nike factory worker," Keady said.

Since his first visit in 2000, Keady has returned to Indonesia several times, the most recent being May and June of 2008.

Also, he has recently founded the TEAM SWEAT organization.

This is a coalition of people, including investors, consumers, and workers, who are fighting for justice in these Nike factories.

Keady has also met with Nike executives, all the way up to the founder, Phil Knight, to discuss this pressing issue.

"This [presentation] offers another perspective, and that's the whole idea of a higher education," said Consuela Ward, director of Student Affairs for the Multicultural Center.



Special Photo


Life Planning Conference

Wednesday, February 11
3:30pm & 7:00pm
Russell Union Ballroom

**Keynote
Speaker**

Donald Asher

Life After College: Depends on You!



Internationally acclaimed speaker delivers an interactive presentation on the successful job search including:

- Cracking the Hidden Job Market
- Networking for Success
- How to Get a Job with Any Major
- Life Goals
- How to make sure you don't have to go home broke to live in the basement
- How to beat 1000 to 1 odds to land the job or internship of your dreams, especially in a challenging economy!

Sponsored by the
Campus Life
Enrichment Committee
(CLEC) & Career
Services

If you have any questions, please call 912-478-5197 for more information.

CALENDAR

Tuesday, February 10, 2009

Time: 5:30 - 6:30 p.m.

Event: Leadership Workshop Series

Location: Russell Union 2041

Time: 6 - 7 p.m.

Event: Spirit & Traditions & Cinemas

Location: Russell Union 2052

Time: 6 - 8 p.m.

Event: Circle K Meeting

Location: Russell Union 2054

Time: 7:30 - 9:30 p.m.

Event: Gay-Straight Alliance Meetings

Location: Russell Union 2084

Time: 8 - 9 p.m.

Event: Romeo Dallaire Dinner

Location: Nessmith Lane Southern Ballroom

Time: 9 - 11 p.m.

Event: Swingscats Society Meetings

Location: College Plaza Building

Wednesday, February 11, 2009

Time: 10 a.m. - 6 p.m.

Event: Red Cross Blood Drive

Location: Williams Center Dining Hall

Time: 2 - 3:30 p.m.

Event: Lead Team Meeting

Location: Russell Union 2001B

Time: 5 - 6:30 p.m.

Event: SAGE Meeting

Location: Russell Union 2044

Time: 6:30 - 8:30 p.m.

Event: SGA Meeting

Location: Russell Union 2047

Time: 7 - 10 p.m.

Event: "Stand Up, Stand Out"

Location: Russell Union Ballroom

Time: 8 - 10 p.m.

Event: Movie TBD

Location: Russell Union Theatre

NOW LEASING | PET FRIENDLY | DRIVE TO CAMPUS

\$200
Limited Time
Signing Bonus!



Across The Street From GSU!

THE WOODLANDS
OF STATESBORO

Come By Today
For A Tour!

All-Inclusive **2 BR** Individual Leases
Only \$490/mo per bedroom

Included: (Water/Power/Cable w/HBO/
DSL High-Speed Internet/Washer & Dryer)

**NO
MONEY
DOWN**

- Huge Walk-in Closets
- Full Kitchen with bar
- Vaulted Ceilings
- Wifi & Computer Lab
- Fitness Studio
- Resort-Style Pool
- Basketball & Volleyball
- Courtesy Officer
- Pet Friendly
- AND MORE!

(912) 681-6441 WoodlandsofStatesboro.com

100 Woodland Drive • Statesboro, GA Just off highway 301 south on Woodland Drive. Across from GSU entrance!

Not affiliated with The Woodlands Land Development Company, L.P. in Montgomery and Harris County, Texas.

SPORTS

COMPLETE COVERAGE

Check out GADaily.com for complete coverage of the GSU Lady Eagles basketball game against the Samford Bulldogs last night in Birmingham, AL. Also catch up online on the weekend action in Eagle sports.

SHOW ME THE MAUNEY

Size and hands highlight Eagles recruiting class

By Matt Mauney

Editor-in-chief, GADaily.com

After missing the playoffs for the second straight season in as many years with the Eagles, Georgia Southern head football coach Chris Hatcher had more time to focus on recruiting and building next year's squad.

His work paid off.

The Eagles received 30 commitments from student-athletes in last Wednesday's National Signing Day, but looking at some of the credentials and measurements of the majority of the signees, you might think that there were over 50 commitments.

Hatcher went into this off-season with one main purpose in mind, add size to both the offensive and defensive lines. After looking at a signing class that recruited eleven total linemen whose average weight comes to a hefty 276 pounds, I think it is safe to say mission accomplished.

Other than the hog-mollies up front, this year's signing class brought a lot of prospective talent at the skill positions. The most prominent improvement was the receiving core, which saw seven additions to a team that lost their leading receiver in all major categories last season, Raja Andrews.

Patrick Barker, the number one wide receiver

prospect out of the state of Florida, not only highlights the receiver recruits, but highlights the entire recruiting class. Barker played for legendary coach Danny Cowgill at the storied Nease High School program in Ponte Verde, FL, where he made 81 catches for 1,301 yards and 14 touchdowns last year. At 6'2" 185, Barker is not only one of the best signs in Hatcher's tenure as coach, but might be one of the best additions in program history, as Barker turned down offers from Texas Tech and Oregon State in order to join the Eagles, according to Scout.com.

Hatcher stayed true to his tendency of recruiting within his "own backyard" by signing 19 players from Georgia (with the other 11 coming from Florida, Alabama, and South Carolina). Two players literally came from just across town at Statesboro High, that saw place kicker Graden Bozeman (6'1", 165 lbs.) and defensive end Willie Burden (6'1", 230 lbs.) join the other team in town that dons plain blue and white uniforms.

The 30 signees will add to the depth of the Eagles, who are coming off a disappointing 6-5 campaign. The 2009 season looks very promising however, with the Eagles returning 17 starters from last year's team who saw over 30 true-freshman, redshirt-freshman or sophomores make at least one start in 2008.

'SHOW ME THE MAUNEY' REPORT CARD

NAME: 2009 GSU Signing Class

February 4, 2009

POSITION	GRADE
OFFENSE	
Quarterbacks: C+ Running Backs: C+ Wide Receivers: A+ Offensive Line: A+ Tight Ends and ATH: B	Notes: With what lacked in recruitment of backfield skill positions, was made up for by the amount of beef added to the O-line and the quality of some talented wide-out prospects.
DEFENSE	
Defensive Line: A Linebackers: B- Defensive Backs: B	Notes: The added size to the D-line will help with the pass rush and improve defensive production when the Eagles run the 3-4 formation.
SPECIAL TEAMS	
Kickers: B- Punters: B Returners: A-	Notes: The Eagles are still looking for production and consistency from its special teams unit. With the additions of a kicker, punter and a couple return men from this year's class, the Eagles look to improve on one of the most important parts of a football team.

PARENTAL SIGNATURE:

Matt Mauney

(Failure to get parental signature will result in detention)

New faces, old foes fill the Eagles football 2009 season

2009 GSU Football Season Schedule

Sept. 5	Albany (N.Y.)	Statesboro, GA	TBA
Sept. 12	South Dakota State	Brookings, SD	7 p.m.
Sept. 19	Western Carolina*	Statesboro, GA	TBA
Sept. 26	Elon*	Elon, NC	TBA
Oct. 3	Wofford*	Spartanburg, SC	TBA
Oct. 10	North Carolina	Chapel Hill, NC	TBA
Oct. 17	Chattanooga*	Statesboro, GA	TBA
Oct. 24	Appalachian State*	Boone, NC	TBA
Nov. 7	Samford*	Birmingham, AL	TBA
Nov. 14	Furman* (H)	Statesboro, GA	TBA
Nov. 21	The Citadel	Statesboro, GA	TBA

Bold denotes home game. * Southern Conference

By GSU News Service

A season-opening game at Paulson Stadium and the program's first-ever game against Atlantic Coast Conference member University of North Carolina highlights Georgia Southern University's 2009 Football schedule. Director of Athletics Sam Baker announced the schedule Friday (Feb. 6).

The Eagles open the season at Paulson Stadium on September 5th against Albany (N.Y.), undefeated champion of the Northeast Conference.

Georgia Southern renews its series with South Dakota State, traveling to Brookings, South Dakota on Sept. 12. The two teams will meet for the fourth time in six years, the last a Georgia Southern 41-38 win thanks to a 54-yard field

goal as time expired in 2007. The Jackrabbits are coming off a 7-5 campaign.

On Oct. 10 the Eagles travel to Chapel Hill to face the Tar Heels, who finished 8-5 last year and played in the Meineke Car Care Bowl (31-30 loss to West Virginia). This is their first ever game against an ACC opponent.

"Our non-conference schedule will be a challenge. We are excited about the opportunity to play a BCS member for the second year in a row. North Carolina turned things around last year, qualifying for a bowl game. I think we play in the toughest conference in the country. It doesn't matter who you play in the Southern Conference, week in and week out you have to bring your A-game if you want to have a chance at winning," said head coach Chris Hatcher.