

Georgia Southern University

Digital Commons@Georgia Southern

The George-Anne

Student Media

10-29-2008

The George-Anne

Georgia Southern University

Follow this and additional works at: <https://digitalcommons.georgiasouthern.edu/george-anne>

Recommended Citation

Georgia Southern University, "The George-Anne" (2008). *The George-Anne*. 2057.
<https://digitalcommons.georgiasouthern.edu/george-anne/2057>

This newspaper is brought to you for free and open access by the Student Media at Digital Commons@Georgia Southern. It has been accepted for inclusion in The George-Anne by an authorized administrator of Digital Commons@Georgia Southern. For more information, please contact digitalcommons@georgiasouthern.edu.

THE GEORGE-ANNE DAILY

WEDNESDAY, OCTOBER 29, 2008 • VOLUME 81 • ISSUE 60

COVERING THE CAMPUS LIKE A SWARM OF GNATS



SPORTS

MEN'S BASKETBALL PREVIEW

The Eagles have six newcomers this season and look to be a lot more physical on the court than last year.

Page 7

NEWS

ALCOHOL CONTROL BOARD

With the recent disbandment of the Alcohol Control Board, Statesboro could be affected by economic change.

Page 5

OPINIONS

GSU'S SAFETY PLAN

Keith Warburg weighs in on GSU's safety plan after the recent shooting at the University of Central Arkansas.

Page 4



Special photo by Bryan Anselm/WKU

IN OTHER NEWS

ALIEN SOLAR SYSTEM POSSIBLY FOUND

Astronomers say they have uncovered evidence supporting the claim that they found an alien solar system.

Page 2

BANKS WORRY ABOUT CREDIT CARDS

With the collapse of mortgage companies and loan agencies, banks are now beginning to worry about credit card defaults.

Page 3



Lauren Roesse/STAFF

College Republicans and Young Democrats hold debate

By Denver Pittman
Staff Writer

On November 4, our nation will embark upon one of the most important elections in history.

Beyond party lines, the United States will be forever changed. Studies show all ages will be affected; yet, it may be the y-generation politicians who fuel the outcome.

Georgia Southern University responded to student awareness with an election forum, Monday.

The mission of the debate was to educate young minds on the issues of each current political candidate.

"We were pretty satisfied with the turnout," College Republican member Greg Johnson said.

"We know the students aren't near as involved as they should be and we are trying to do everything

we can to get them involved."

The forum was held in the university theatre in the Russell Union. The auditorium seats were filled with a demographic student body. Supporters from both political parties reacted strongly upon the discussion on social policies.

"The forum was important because it addressed issues that we, as college students, are forced to face," College Republican member Elise DiPalma said.

In conclusion to the forum, the floor was opened to audience participation.

Each panel of three to four students had one minute to provide their candidate's response.

The current budget crisis, economic reform, education, and oil were all prominent discussions.

The importance of the youth vote has proven itself throughout

recent elections.

According to a research conducted collaboratively by MTV, CBS, and NYT in 2007, nearly eight in ten young adults believe that their generation will decide who our next president will be.

"The problems we're beginning to see today will be apparent for us. If we get involved now, we may be able to directly influence our own future," Young Democrat member Emily Roche said.

The university will hold several events much like the *Red vs. Blue Debate*.

These promotional events are important for students whose schedules may not permit their ability to keep updated on the current political issues.

"I think a lot of people walked away with a better understanding," Johnson said.

CLASS offers student research assistance

By Charles Minshew
Features editor

The College of Liberal Arts and Social Sciences (CLASS) will soon be offering assistance to students who wish to conduct undergraduate research through the formation of a new research office.

Ellen Hendrix, Assistant Professor in the Department of Writing and Linguistics, believes that the formation of this new research office will benefit students, faculty, and the university as a whole.

"Undergraduate research experiences are becoming, more often than not, the ticket into the higher-level jobs and the ticket to grad school," Hendrix said.

Although the office does not yet have a physical space, a research symposium has already been planned for 7 p.m. on November 6 in the galleries of the Center for Art and Theatre.

According to Hendrix, there will be two separate presentation rooms. One will be for traditional research while the other room will be open for performance pieces.

Hendrix said that CLASS Dean Sue Moore, Associate Dean Olivia Carr Edenfield and CLASS Advisory Board President Ryan Pickrell have also been instrumental in the creation of the research office.

According to Hendrix, the office will keep a record of students' research activities, provide information about presentation opportunities throughout the nation, and could one day be a source of funding for research.

see CLASS PAGE 2

Three-Day Forecast



Today
Clear
61 / 34



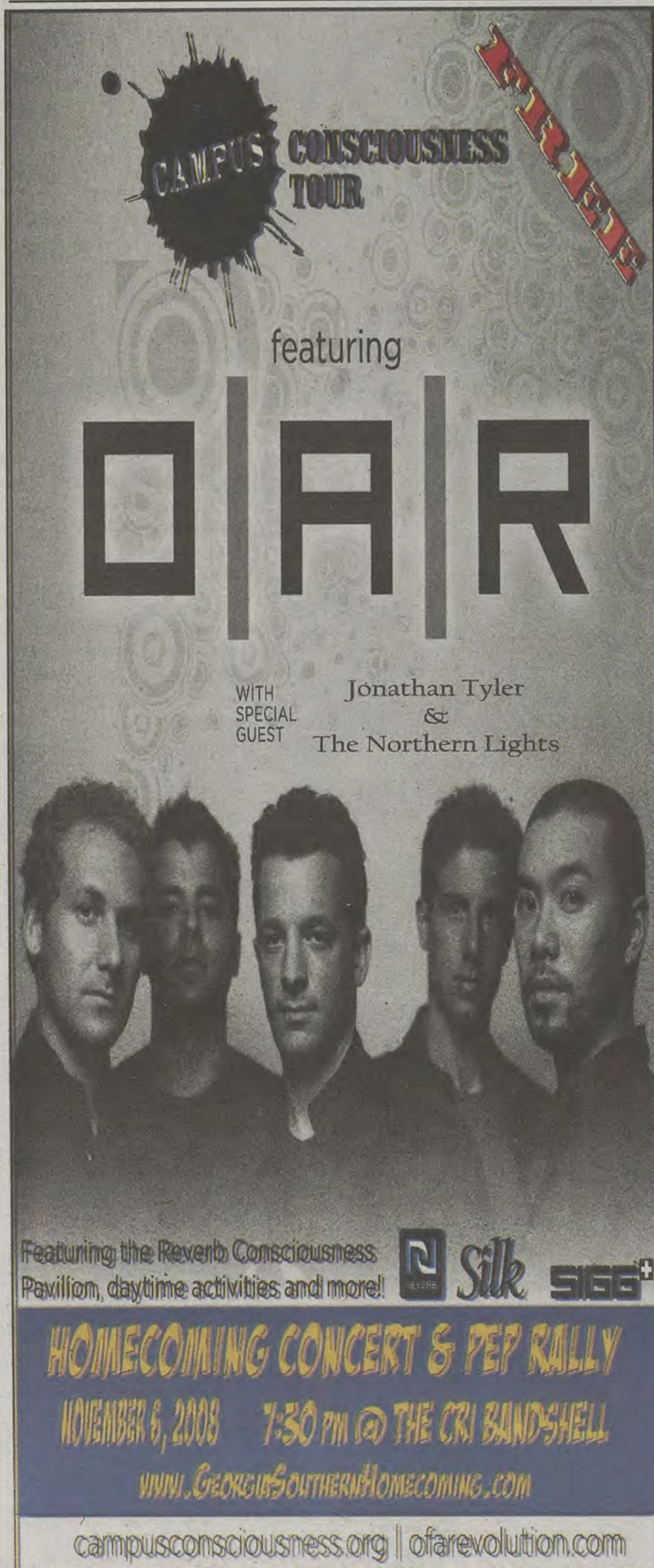
Thursday
Clear
67 / 38



Friday
Clear
70 / 43



GADaily.com Poll:
Are you going to be dressing up for this Halloween?



CAMPUS CONSCIOUSNESS TOUR

featuring

O | A | R

WITH SPECIAL GUEST Jonathan Tyler & The Northern Lights

Featuring the Reverb Consciousness Pavilion, daytime activities and more!

HOME COMING CONCERT & PEP RALLY
NOVEMBER 6, 2008 7:30 PM @ THE CRI BANDSHELL
www.GeorgiaSouthernHomecoming.com
campusconsciousness.org || ofarevolution.com

CLASS

From page 1

"The CLASS office puts everything in one center, where you can then come to us and compare your research interest with faculty members," Hendrix said.

According to Edenfield, plans for this research office began earlier this year, and it has grown into an office that will provide students with the opportunity to present their research on campus.

Edenfield said that all disciplines in CLASS would be represented at the symposium on November 6, with at least 35 students scheduled to participate.

"I think there's a lack of awareness of the research we do in liberal arts and social sciences and in the creative arts," said Edenfield.

"When we think of research we often times think about laboratories. We have undergraduate students who have been engaged in extremely important, unique

research activities in the creative arts and visual arts."

Edenfield said that the addition of this new office is important since Phi Kappa Phi and the University Honors Program are the only other venues that provide opportunities for students to present their research on campus.

With the addition of this new office, research assistance will be available to all students in CLASS.

Edenfield said that the office would be part of the Dean's Suite in the Foy Building when it opens in January.

"Our undergraduates are contributing new ways of understanding to their disciplines," said Edenfield.

"The charge of the center is to help them get their ideas out there and to get them the recognition they deserve."

For more information about the new CLASS Research office or the upcoming symposium, contact Ellen Hendrix at ehendrix@georgiasouthern.edu or Olivia Edenfield at carr@georgiasouthern.edu

NATIONAL NEWS

Scientists find new nearby solar system

McClatchy News Service

For the first time, astronomers think that they've found evidence of an alien solar system around a star close enough to Earth to be visible to the naked eye.

They say that at least one and probably three or more planets are orbiting the star Epsilon Eridani, 10.5 light-years, about 63 trillion miles, from Earth. Only eight stars are closer.

The host star, slightly smaller and cooler than our sun, is in the constellation Eridanus, the name of a mythological river, near Orion in the northern sky.

Epsilon Eridani is much younger than the sun, about 850 million years old compared with 4.5 billion years for our system.

"This really is a system like our solar system was when it was five times younger than it is now," said one of the discoverers, Massimo Marengo, an astronomer at the Harvard-Smithsonian Center for Astrophysics in Cambridge, Mass.

"It's like a time machine for our solar system."

"This system probably looks a lot like ours did when life first took root on Earth," said Dana Backman, of the SETI

Institute in Mountain View, Calif., the lead author of a report to be published Jan. 10 in The Astrophysical Journal.

SETI chose Epsilon Eridani as one of the first targets in its long, but so far vain, search for signs of extraterrestrial intelligence in 1960.

The suspected planets are too far away to be detected directly, so their presence has to be inferred by indirect measurements.

Their star is so near, however, that some astronomers think that they may be able to see its planets with better telescopes within the next decade.

One of the planets, a gas giant 100 times heavier than Jupiter, was discovered in 2000 by Barbara McArthur, an astronomer at the University of Texas in Austin. She measured the slight wobble in the star's position as the planet swung around it.

Further observations by the Hubble Space Telescope in 2006 confirmed its existence, McArthur said at the time.

Now Backman's team has deduced the presence of at least two more planets, after space- and ground-based telescopes separately revealed two belts of rocky asteroids and an outer icy ring circling Epsilon Eridani.

NATIONAL NEWS

Credit cards may be next to collapse

McClatchy News Service

U.S. banks charged off 5.47 percent of all credit card loans in the second quarter, according to the Federal Reserve, representing some \$50 billion that they'll likely never collect.

First came trouble with mortgages, then home equity loans and commercial real estate. Now, banks are starting to worry about credit cards.

As the economy slows and unemployment rises, consumers are defaulting on credit card payments more often. And though that trend is unlikely to create a crisis in line with the mortgage fallout, it's still a headache for banks that are already hurting.

That's up from 3.85 percent the year before, and that is a movement that's on the radar of Ken Lewis, chief executive of Bank of America Corp.

Asked in a recent TV interview if credit card debt would be "the next shoe to drop" for the banking industry, Lewis replied:

"It, in some ways, already is," adding that such losses have risen "pretty substantially."

Laura Nishikawa, an analyst at the Innovest ratings agency, predicts that banks such as Bank of America and Citigroup Inc. could be hit especially hard by credit card defaults.

That's because those banks, which offer both consumer and investment services, have been depending more heavily on money made on consumer services such as credit cards as the returns in investment banking grow increasingly unpredictable.

The main problem, Nishikawa said, is that "everyone is so weak after what happened with mortgages that another blow to a consumer product would be hard to handle."

Innovest estimates that about 30 percent of Bank of America's credit card loans are to subprime borrowers, second only to the failed Washington Mutual Inc., which had almost half of its credit card loans held by subprime borrowers.

Innovest also estimates that more than half of Bank of America's credit cards are high-limit cards, second only to American Express Co. (Innovest classifies high-limit cards as those with lines of more than \$10,000.)

Nishikawa says that combination could prove toxic for Bank of America, which may have "lent more than (borrowers) can be expected to pay back."

Bank of America's charge-offs, or loans it doesn't expect to collect on, increased to 6.14 percent of all credit card loans, or \$1.24 billion, in the third-quarter. That's up from 4.61 percent the year before.

Survivors of sunken fishing boat recount struggle

McClatchy News Service

The captain of a commercial fishing boat that sank last week in remote Aleutian waters says he and other crewmen spent a terrifying night trying to cling to a wave-pummeled life raft.

The 11-man crew was forced to abandon the 93-foot vessel Katmai after it lost steering, flooded and rolled over in rough seas west of Adak early last Wednesday, said Henry Blake, who lives in Massachusetts.

Blake said he and six others made it into a life raft, which itself was filled with water as waves pounded against it and the men tried to secure a sheltering canopy in the wind gusts.

"And then a big one came," he said, a monster wave that overturned the raft and dumped the men, all wearing survival suits, into the frigid water.

When they regrouped, three of the men had disappeared. "Josh was gone, Cedric was gone," said Blake, pausing at that point as emotion gripped his throat.

In the ensuing hours, before a U.S. Coast Guard rescue helicopter found them the next day and hoisted them to safety, waves flipped

the raft over and over again, 20, 30, maybe even 50 times, Blake said.

A rookie crewman, 23-year-old Adam Foster of Shoreline, Wash., testified Monday that after one wipeout he found himself about 40 yards away from the raft.

"Countless times," he said, waves flipped the raft and he had to swim hard to get back to it.

"When we saw that helicopter just come out of the sky out of nowhere, that was the best feeling I've ever felt in my life," he said.

The rescue came more than 15 hours after serious trouble developed on the fishing boat, which was running east through heavy weather to Dutch Harbor to deliver its catch of Pacific cod.

The crewmen as well as an owner of the boat testified Monday the boat was fully loaded with some 120,000 pounds of cod worth about \$200,000.

Three Coast Guard officers, along with two investigators from the National Transportation Safety Board, are expected to take more testimony today.

Their goal is to find out what went wrong on the Katmai, whether any laws were broken, and how to prevent future tragedies.



Special photo

STATEMENT OF OPERATIONS

The George-Anne Daily is the official student newspaper of Georgia Southern University, owned and operated by GSU students and utilizing the facilities provided by GSU. The newspaper is the oldest, continuously published newspaper in Bulloch County and Statesboro, Ga. The newspaper is a designated public forum for the Georgia Southern Community. The ideas expressed herein are those of the editor or the individual authors and do not necessarily represent the views of the Student Media Advisory Board, the administration, the faculty and staff of Georgia Southern University, or the University System of Georgia. The George-Anne is published four times weekly (Monday-Tuesday-Wednesday-Thursday) during most of the academic year and six times during the summers. Any questions regarding content should be directed to the editor by phone at 912-478-5246 or fax at 912-478-7113. Readers may access the newspaper and its archives staff by visiting our Web site at <http://www.gadaily.com>.

SUPPORT

The G-A is funded primarily through revenue from advertisements placed in the paper and receives additional support, in part, from the Student Activities Budget Committee.

STUDENTS BEWARE

The G-A screens all advertisements prior to publication. The newspaper strives to accept ads for legitimate products and services only. Students are urged to exercise caution when replying to ads-particularly those which require a credit card number, other personal information, or money in advance of the delivery of a product or service. Students are also urged to report to the newspaper any suspicious offers which they might see in an ad. Remember, if an offer seems too good to be true, it probably is.

FREEBIE INFO

ALL FREE student and faculty ads to be run in the G-A must have a NAME, P.O. BOX and PHONE NUMBER. Ads will be rejected if they do not have this information. NO EXCEPTIONS.

OFFICES, MAIL, PHONES

Room 2023, F.I. Williams Center. The George-Anne, P.O. Box 8001, Georgia Southern University, Statesboro, Ga. 30460. 912-478-5246 (News) or 912-478-5418 (Advertising) or 912-478-0069 (Advisor).

EMAIL DIRECTORY

Executive Editor gaeditor@georgiasouthern.edu
Managing Editor gamed@georgiasouthern.edu
News Editor ganews@georgiasouthern.edu
Advertising ads@georgiasouthern.edu or ads1@georgiasouthern.edu

ADVERTISING

The G-A reserves the right to refuse any advertisement.

DISPLAY AD DEADLINE: The deadline for reserving space and submitting advertising copy is Noon, one week prior to the intended publication date. For more information, rate cards, sample publications, contact the advertising manager or student media advisor.

PROOFING/ERRORS/OMISSIONS: The newspaper makes every reasonable effort to correct and complete information in advertisements. However, the advertiser is responsible for any errors in advertisements and its liability for adjustments is limited to the amount of space the error occupied in the ad. Further, the newspaper is not responsible for any damages caused due to an ad's omission from a particular edition and its responsibility solely is to reschedule the ad in the next regular edition at the regular advertising rates.

CLASSIFIED ADS: Free classified ads from students, faculty and staff must be non-commercial in nature and submitted in writing with the name of the sender, local address and phone number. No free ads taken via telephone - at this price we don't take dictation. One free ad per person per week. Commercial classified are available only from our online site at www.gsuads.com. The price of commercial ads is \$7 for 200 characters for line ads. Ads must be paid for using a major credit card. For classified display ads, contact gaclass@georgiasouthern.edu.

CIRCULATION INFORMATION: Mail subscriptions are not available at this time. However, readers may visit our Web site for free access to current and past issues. Visit www.gadaily.com to view online issues. The G-A is distributed free of charge on the Georgia Southern campus through delivery sites located in campus buildings, at off-campus sites, and in residence halls.

NOTICE

Readers may pick up one free copy, and a second for a roommate or acquaintance, at distribution sites. Additional copies are 50 cents each and are available at the Williams Center. However, unauthorized removal of additional copies from a distribution site constitutes theft under Georgia law, a misdemeanor offense punishable by a fine and/or jail time. Editors will seek to have any person(s) who removes more than the authorized number of copies from distribution sites prosecuted to the full extent of the law.

NOTE

We gratefully acknowledge the theft of one of our slogans: "Liked by Many, Cussed by Some, Read by them All" - from Robert Williams of the Blackshear Times. Credit for the other slogan - "Covering Campus like a Swarm of Gnats" - goes to G-A alum Mike Mills.

OPINIONS

...WHERE WE ARE TAKING KANSAS
CITY BY SWARM, GSU STYLE!

COLUMN

Central Arkansas shooting reminds us of GSU's plan.

On April 16, 2007, a gunman killed 32 students and faculty in two separate attacks at Virginia Tech. This event was the worst single-gunman shooting in United States history, on or off a college campus.



Keith Warburg is a junior graphic communications major from Moultrie, Ga. He is the Executive Editor of the George-Anne Daily.

After similar tragedies at Northern Illinois University and Sunday night's shooting at the University of Central Arkansas, which left two students dead, campuses across the country are tightening security and trying to increase the speed of emergency communication.

What plan does Georgia Southern have in place to handle a shooting situation?

The Office of Public Safety has a full handbook detailing situation plans for individual circumstances.

The handbook can be found online at welcome.georgiasouthern.edu/publicsafety, and handles everything from airplane crashes to gas leaks.

The Office of Marketing and Communications also established an 'Eagle Alert' system just weeks after the Virginia Tech shootings, which, though receiving flack earlier this semester is a comparatively effective system.

Eagle Alert sends emails, text messages and phone calls to every student enrolled in the system, which is a mandatory enrollment. In cases of bad weather, campus emergency or other advisory situations, students are notified in an average period of ten to fifty minutes.

Virginia Tech has increased the response time of its similar alert system by installing LED message boards across campus. These boards, similar to the marquee at the Rus-

sell union bus stop, are posted in academic buildings, dining establishments, residence halls and on walkways throughout campus, and serve to inform the campus community instantly of any emergency.

Georgia Southern could benefit from this system in multiple ways.

It provides instant visual information to the entire community, not only those who happen to be enrolled in the program. It runs over the campus' existing Ethernet network, eliminating most installation costs and providing instant delivery, independent of wireless relay.

The system also informs students without phones or ready access to email immediately, so that they may too seek shelter.

This system worked well in the Washington, D.C. subways after 9/11, leading thousands of citizens to safety in the mass confusion underground.

Campus security organizations across the country are tightening up and taking every possible threat seriously. The suspicious note incident last month at the College of IT is a prime example of the readiness to act from our own campus safety officials.

Last week at Western Kentucky University, students reported gunfire (which turned out to be an exaggeration) following a large fight on the south campus. Campus police locked down all buildings, blocked traffic onto campus and apprehended the suspects with full force. To see photos and reports on the incident, visit www.wkuherald.com.

Our campus seems prepared, but there is always room for improvement. We at the George-Anne have a plan for a campus emergency, which, God willing, will never be used.

Talk to your roommates, building directors and professors and figure out your own plan for what to do in case of emergency, whether it is something as devastating as a campus attack, or bad weather. Be ready.

Submission of Letters to the Editor

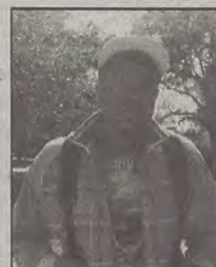
The George-Anne Daily welcomes letters to the editor, story submissions and guest columns. All copy submitted should be 350 words or less, typed, and sent via e-mail in Microsoft Word format to gaeditor@georgiasouthern.edu or via facebook to Jessica Martin. All submissions must be signed and include phone number for verification. GSU students should include their academic major, year at GSU, and hometown. The editors reserve the right to edit or reject any submission.



Jamal Dupree/STAFF

The Campus Question What do YOU think?

Are you participating in the
Homecoming activities?



Terry Gordon
Senior
recreation

"I'm pretty sure I will.
I'll go to the game,
parties, anything."



Angeline Budgett
Junior
child & family develop-
ment

"No. I really don't have
time with kids, hus-
band, all that."



Kyle Wilson
Freshman
undeclared

"No, probably won't
have time to."



Earle Turner
Senior
political
science

"Yes, but not actively. I am
going to the game but not
part of an organization."

FROM GADAILY.COM

Bishop Center Begins Construction

Thank Goodness! Finally, after so many years, we're getting a Family Welcome and Alumni Center! And Math/Physics and Biology Buildings are rundown and grossly underfunded....Awesome! Keep up the good work!

- Aaron

Disbandment of Alcohol Control Board may bring changes to Statesboro

Mark Beavers
Staff Writer

The Statesboro City Council abolished the Alcohol Control Board, a group of citizens responsible for reviewing and approving or denying applications for licenses for the sale of liquor, wine, and malt beverages, in a meeting on October 7 and put into place new consumption rules that will distinguish establishments as being either restaurants, bars or taverns.

The new rules require restaurants to keep a 50 percent alcohol to 50 percent food ratio, taverns to have a 65 to 35 percent alcohol to food ratio, and bars will have no required ratio.

Only people 21 and older will be allowed into bars under the new rules, and people of all ages can go into taverns before 10 p.m. but after that time, only those who are 18 or older will be allowed in.

The disbandment of the Alcohol Control Board and the new consumption rules has spawned mixed reactions.

"We didn't see a need for [the Alcohol Control Board] to be dissolved," Vice President of

Student Affairs and Enrollment Management Teresa Thompson said.

Thompson believes the board was one more set of citizens that could take a look into the process of alcohol regulation.

"The board has worked hard to make decisions in the best interest of students and citizens. I hope this will continue," Thompson said.

Thompson said the Alcohol Control Board made rules to keep students under 21 from drinking. She also noted that GSU has been working hard over the last few years to help students understand the problems with obsessive alcohol consumption.

"I can see a decline in [alcohol consumption] over the last couple of years. There has been an increase in the number of alternative opportunities on campus...like first run movies, laser tag, and programs at the RAC," said Thompson. However, Thompson said that she realizes with an increased student population, there are going to be students that drink.

SGA Publicity Coordinator James Kicklighter thinks that the disbandment of the Alcohol Control Board will have a positive effect on Statesboro.



Special Photo

"I think, with the new alcohol ordinances, we are going to have an expansion of businesses. The laws cater more to business models," Kicklighter said.

Kicklighter believes that the new rules will bring in new restaurants and businesses that previously would not have come to Statesboro.

"I think you're going to find Statesboro becoming more like Athens, which is something

the students might not necessarily like, but it will be more helpful to law enforcement," said Kicklighter, referring to Athens' strict age rules for bars.

Kicklighter does think that the Alcohol Control Board was good in that it gave citizens oversight.

"People aren't going to have a say about what establishments are brought into their community," Kicklighter said.

CLINICAL EXCELLENCE THROUGH GRADUATE EDUCATION

YOUR CHOICE FOR PHYSICAL AND OCCUPATIONAL THERAPY EDUCATION

Doctor of Physical Therapy (DPT)

Master of Occupational Therapy (MOT)

Dual Degree Option:
Doctor of Physical Therapy
Master of Occupational Therapy (DPT and MOT)
Earn both degrees

Online and weekend flexible Doctor of Physical Therapy (DPT)

The University of St. Augustine for Health Sciences offers entry-level and transitional degrees in both occupational and physical therapy, as well as continuing professional education courses for practicing OTs and PTs. The University's focus is on providing exceptional graduate-level education.

MAKE PLANS NOW TO ATTEND OUR NEXT INFORMATION SESSION!

Saturday, November 8, 2008
10:00 am - Noon
Embassy Suites Atlanta Perimeter Center
1030 Crown Pointe Parkway
Atlanta, GA 30338

RSVP would be appreciated by completing the information session response form on our website www.usa.edu or by calling Krista toll-free at 800-241-1027, ext. 233.

Mention this ad to receive an application fee waiver.

The Physical Therapy Program is accredited by the Commission on Accreditation in Physical Therapy Education (CAPTE). The Occupational Therapy Program is accredited by the Accreditation Council for Occupational Therapy Education (ACOTE).



UNIVERSITY OF ST. AUGUSTINE
FOR HEALTH SCIENCES

Campus locations:
St. Augustine, FL • Boca Raton, FL • San Diego, CA

MAKING A DIFFERENCE ONE STUDENT AT A TIME.

ADV Women's Self-Defense Course



Admission: Free to GSU Women

Date: November 10, 11, 12

Time: 6:00-10:00pm

Limit: 14 Students

Contact: Cpt. Laura McCullough

912-478-3018



Sponsored by Georgia Southern University Public Safety and Sexual Assault Response Team

Your Student Activity Fees at Work

etc.

Now you can place your classified ads online... For Commercial Ads, Visit...

<http://www.gsuads.com>

...and create, place, proof and pay for your ad online. Just \$7 for 200 characters. In partnership with Universal Advertising.

Free ads for students, faculty & staff (non-commercial): Send an email message to...

www.gadaily.com -click on classifieds

You must include your names, address and phone number for freebies. No phone calls please, at this price we don't take dictation.

CLASSIFIED CATEGORIES

100 Announcements
110 Auditions
120 Freebies
130 Lost & Found
140 Other Announcements

200 Buy or Sell
210 Autos for Sale
220 Auto Parts for Sale
230 Bicycles for Sale
240 Books for Sale
250 Computers & Software
260 Miscellaneous for Sale
270 Motorcycles for Sale
280 Trade & Barter
290 Wanted

300 Employment & Job Services
310 Career & Job Services
320 Child Care Needed
330 Child Care Provider
340 Internships/Volunteer
350 Jobs/Full Time
360 Jobs/Part Time
370 Opportunities/Business
380 University Work
390 Wanted Jobs

400 Housing & Real Estate
410 Apartments
420 Lofts & Rooms
430 Mobile Homes
440 Real Estate for Sale
450 Roommates Wanted
460 Storage & Moving Services
470 Student Housing

480 Sub Leases
490 Vacation Rentals
500 Personals
500 Personals
600 Services
610 Education & Tutoring
620 Financial Aid/Loans
630 Legal Services
640 Resumes/Typing/DTP
650 Services/Miscellaneous

700 Travel
710 Spring Break Travel
800 Transportation/Rides
800 Transportation/Rides
900 Miscellaneous
910 Pets & Pet Supplies

Announcements 100 - 199

110 Auditions

We are looking for a drummer and a female vocalist to join our band. You must be willing to play Christian Genre, comprised mostly of Contemporary Christian and Christian Rock. Keyboarding abilities a plus!

Lead guitarist looking to start up a band. Formerly had a 311 cover band, looking for somewhat of the same genre. Think Guns n Roses, Sublime, Zeppelin, always looking to play new stuff as well. Looking for trial jam sessions now, already have local paying gigs lined up if things work out. Think you fit the bill? Contact Weston at (678) 643-2331. Serious inquiries only please

120 Freebies

if anyone has old PC joysticks that they no longer want, I would appreciate donations for my EET senior design project. We will be using the buttons and scroll wheels off of the joystick. Thanks 706-836-1429

140 Other Announcements

Student Alliance For A Green Earth meets every Wednesday at 5pm in the Russell Union room 2048.

Buy or Sell 200 - 299

210 Autos for Sale

I am selling my 1989 Chevy Corsica. Only 48,000 miles. Needs new O2 sensor and a frion charge. Just had the oil changed heater works. Automatic. Selling for 1000\$. OBO. Call Tiffany at 912-531-7585 if interested. Serious inquiries only! Makes an amazing first time car or delivery car.

260 Miscellaneous for Sale

Want to host the hottest parties with the coldest shots?

Jagermeister Tap Machine (*NEW* JEM Model) for rent! For more info. contact (770)330-6878.

I have a matching pull out couch and loveseat that I'm selling for \$250. Both are in REALLY good condition. no stains or smells. Are used. Can bring to you for a small fee. Call 912-531-7585 and ask for Tiffany. Serious Inquires only.

270 Motorcycles for Sale

HONDA SHADOW 2000 VT1100C. 21,000 miles New tires, windshield, LOUD Cobra pipes stage II jet kit, Mustang seat, leather bags, light bar, ETC. this is a Super NICE BIKE! \$4300.00 firm. I may consider partial trade for smaller bike and CASH Call 912-478-1384 or 852-5540 after 4:30. I drive this Bike most days to Physical Plant and park beside the Entrance to Southern Pines.

Employment & Job Services 300 - 399

350 Jobs/Full Time

BARTENDING \$300/Day Potential. No Experience Necessary. Training Provided. 1-800-965-6520 X296.

360 Jobs/Part Time

Part-time painter needed. Exp. not required. Must have own transportation. Pay based on exp. Contact Brian @ (912)531-0962

Wanna get your security deposit back? We can make sure your bath and kitchen are clean as a whistle. Call Jennie @ 687-3896 or Marie @ 687-3781 for details.

Housing & Real Estate 400 - 499

410 Apartments

1BR/1BA available in 2BR/2BA apt @ the Woodlands \$480/month all inclusive. Lease for Spring (Jan-Jul 2009). Roommate matching service used or bring your

own. Offers high speed internet & wireless, washer/dryer, walk in closet, dishwasher, patio, Brinks alarm, pool, volleyball court, b-ball court, foosball, 24-hour club house w/ pool table, fitness/weight room, & computer lab. Also pet-friendly & close to campus. Willing to pay half of 1st mth rent. Call 912-670-4156 if interested.

Furnished room for rent in spacious private home within walking distance of GSU campus. Rental price includes private bedroom, kitchen privileges, utilities, wireless internet access, unlimited long distance, laundry. Quiet neighborhood, large screened porch perfect for relaxing and studying, large fenced yard. Have 2 dogs/2 cats-would consider renter with pet upon approval (additional fee required) Owner is female 58 year old doctoral student looking for quiet, respectful female renter. \$450/month + security deposit-will rent month by month 603-852-2005

440 Real Estate for Sale

3 BR/2BA house for sale on almost full acre lot, located in cul-de-sac of a quiet neighborhood. In ground sprinkler and sod in front yard, vaulted ceilings in LR, small deck in back and porch in front. \$120,000. Call 912-690-4986.

Very nicely renovated condo in stadium walk with new carpet and wood floors for sale or spring semester lease. Very nice place at a truly great deal. Call brad for more info at 912-617-7905.

450 Roommates

Looking for female roommate to rent 1st floor of 4 bedroom 3 bathroom townhouse! You will pay only \$325 a month plus utilities a month. Call (708)-769-8637 for more information.

Need a place to stay ASAP?? 2 bedroom/1 bath, \$200 rent and half utilities, and 10 minutes walking distance to classes(not campus!!) Want more info? Call Laney @ 912-224-3426

Female roommate needed to share a 4BR/4BA house in Camelot subdivision beginning in January. \$425 per month, all inclusive. Close to campus. Contact Ralph or Rhonda gornto at 912-265-8794 or 912-223-

5751 or 912-222-5979. Will be glad to show the house when requested.

480 Sub Leases

1BR/1BA available in 3BR/3BA at the Exchange \$469/month or negotiable. All inclusive rent, fully furnished, top floor balcony. Amenities include 2 large pools, game room, tanning bed, volleyball, fitness center, basketball courts, computer lab and study rooms, gated community, and more. Apartment is available immediately or beginning Spring Semester '09. If interested call (703) 282-8430

2BR/2BA available in a 4BR/4BA in the Exchange. Starting January - July. \$440/month all inclusive. Would have 2 girl roommates. Great for two people looking for a place to live Spring semester. Girls preferred. Right next to Clubhouse, pool, and gym. Large living area with open kitchen and balcony. Spacious bathrooms with lots of storage. HBO movie channels. We are the First occupants of the apartment, so it is still very new and nice. Call Jesse at 770-883-7521 if interested.

Services 600 - 699

610 Education & Tutoring

FUN & STUFF Visit our Web site for list of things to do that are educational and fun. <http://www.stp.georgiasouthern.edu/funstuff/>

Miscellaneous 900 - 999

910 Pets & Pet Supplies

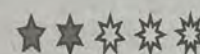
free black lab-mix puppies to a good home, 9 weeks old, ready to go. puppies are in Augusta, but can be brought down. for info call 706-836-1429.

8 week old Dachshund... She is energetic, fun and has a bold personality. She is almost crate trained already. Smart and extremely friendly. She loves kids and other dogs also. We have only had her

for two weeks but we cannot keep her because our apt complex will not allow it. We are hoping to sell her to a loving home. If anyone is interested please contact us asap.

P.s- she has already had all of her shots to date and we have food, toys and a crate for her. (912)667-2572

Sudoku



		7	5			9		
		1	8		3	2		
					9	5		
4	2			3				
8	1		9		4		5	7
				1			2	4
		2	1					
		3	4		2	6		
	5				7	4		

brainfreezepuzzles.com

Rules: Fill in the grid so that each row, column, and 3x3 block contains 1-9 exactly once.

brainfreezepuzzles.com

2	1	4	7	6	3	8	5	9
6	8	9	2	5	4	3	7	1
5	3	7	9	8	1	2	4	6
4	2	6	8	1	9	5	3	7
7	5	3	4	2	6	9	1	8
8	9	1	5	3	7	6	2	4
1	7	5	6	9	2	4	8	3
9	4	2	3	7	8	1	6	5
3	6	8	1	4	5	7	9	2

SPORTS

Be sure to grab next week's Southern Reflector for a season outlook on this year's men and women's basketball teams.



Jared Siri/STAFF

Men's basketball preseason report

"Either our guys will understand how they need to be more physical or we'll find ways to play to disguise it."

GSU news service

As they enter the second full week of practice, the Georgia Southern men's basketball team is still playing "getting to know you" according to head coach Jeff Price.

The Eagles return nine letterwinners from last year's 20-12 team but have six newcomers, including three JuCo transfers, many of whom will be asked to contribute immediately.

"We are obviously still early in the season and in the feeling-out process because we have so many new players," said Price. "Our guys are working pretty hard, we just have to be more familiar with each other and that takes time."

Georgia Southern held their first scrimmage of the preseason on Sunday against Coastal Carolina.

"I saw both good and bad," said Price. "We're very athletic and we can get up and down the floor pretty well. I have some concerns about our physical abilities on the frontline and hopefully we'll have an answer for that. Either our guys will understand how they need to be more physical or we'll find ways to play

to disguise it."

Much like the point guard position, the No. 2 guard will be manned by several different players, notably sophomore Willie Powers. Along with Powers, juniors Antoine Johnson and Antonio Hanson can effectively produce at both the point and shooting guard positions.

"We just have so many guys that can play that combo position," said Price. "Willie, A.J. and Antonio are all very capable of playing that spot. All of those guys are going to have to play and all of them are going to have to contribute."

Powers is the team's lone returning All-SoCon honoree, having earned All-Freshman team status last year after averaging 11.5 points and 2.6 assists per outing.

"Willie is the steady person on our team," said Price. "We know what we have and what we're getting. He's been here a year and a half and is an experienced player in our program as opposed to our new guys."

The new season begins Nov. 10 against Houston in Durham, N.C. For ticket information call 800-GSU-WINS.



BETHANY THOMAS
for Homecoming
Queen 2008



KAPPA KAPPA GAMMA



Pi Kappa Alpha proudly supports
Matt Paige
for
2008 Homecoming King!

2008 Homecoming Kings Candidates

Clay Turner
Marketing, Senior
Southern Ambassadors



Ian Brown
Logistics and International Transp., Senior
Georgia Southern Logistics Assn.



Domayen "D.Lowe" Lowe
Marketing, Senior
Residence Hall Association



Josh Carnon
Marketing, Senior
Gamma Phi Epsilon



Matt Mauney
Journalism, Senior
Student Media



Paul Tenzel
Chemistry/Pre-Med, Junior
Delta Tau Delta



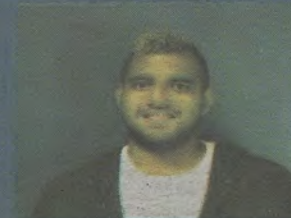
Matt Paige
Finance, Senior
Phi Kappa Alpha Fraternity



Rahman Anjorin
Exercise Science, Senior
Student Government Association



Reuben Hayslett
Writing and Linguistics, Junior
Casual Writing Club



2008 Homecoming Queen Candidates

Cameron Davis
Sport Management, Senior
Sports Management Majors Club



Bethany Thomas
Psychology, Senior
Kappa Kappa Gamma



Amy Lynn Morrish
Biology/Pre-Med, Senior
Golden Key Honor Society



Sasha Anne Martin
Business Management, Senior
SCAR



Samantha Young
History, Junior
Student Government Association



Jessica Vanner
Business Administration, Senior
Zeta Tau Alpha



Briana Collins
Writing and Linguistics, Senior
Southern Ambassadors



Kelsey Grubbs
Public Relations, Senior
Alpha Delta Pi



Fallon Bird
Public Relations, Sophomore
Phi Mu



Kathleen "Kat" Reeves
Public Relations, Junior
Black Student Alliance



Ditoria Gaddis
Journalism, Senior
GSC Women's Rugby



Ashley Nelson
Psychology, Senior
Student Athletic Advisory Board



Jessica Simpson
Marketing, Senior
Delta Sigma Pi



Deborah Swafford
Philosophy, Senior
Residence Hall Association



Jessica Lewallen
Middle Grades Education, Senior
Alpha Omicron Pi



Lindsey Wood
Fashion Merchandising, Senior
Kappa Delta



Vote on WINGS 11-3 through 11-5!!
For more information, visit:
www.georgiasouthernhomecoming.com