

Georgia Southern University

Digital Commons@Georgia Southern

---

The George-Anne

Student Media

---

10-23-2007

## The George-Anne

Georgia Southern University

Follow this and additional works at: <https://digitalcommons.georgiasouthern.edu/george-anne>

---

### Recommended Citation

Georgia Southern University, "The George-Anne" (2007). *The George-Anne*. 2091.  
<https://digitalcommons.georgiasouthern.edu/george-anne/2091>

This newspaper is brought to you for free and open access by the Student Media at Digital Commons@Georgia Southern. It has been accepted for inclusion in The George-Anne by an authorized administrator of Digital Commons@Georgia Southern. For more information, please contact [digitalcommons@georgiasouthern.edu](mailto:digitalcommons@georgiasouthern.edu).





# THE GEORGE-ANNE DAILY

TODAY



High: 88 | Low: 69  
Thunderstorms

Get the lowdown on the Eagles newest QB

QB Billy Lowe was an integral part of GSU's win over the Appalachian State Mountaineers

see **SPORTS**, page 12

TUESDAY, OCTOBER 23, 2007 • GADAILY.COM

COVERING THE CAMPUS LIKE A SWARM OF GNATS



Will Adams/STAFF

## Victoria Redel reads collection of poetry

Elliot S. Volkman  
News editor

Yesterday, Victoria Redel read from her award winning work, "Lover Boy." Redel intrigued the audience (who filled the lecture hall in the education building) by giving the students a taste of modern poetry.

Associate professor of writing and linguistics, Peter Christopher, presented the poetry reading along with sponsoring the event.

Christopher opened with one of his favorite poems of Redel and explained how she had once been a student of his.

The first work Redel spoke about was called "The Credit." It relates to the modern retail store and their unreasonable credit-ing policies.

The mother of two also read poems about her sons. "My sons have mixed feelings on [the poems]," said Redel.

She explained how her youngest son enjoyed them, but her oldest didn't.

Redel's work entitled "First Kissing," narrates how the average middle-aged person doesn't always have to act in the way that the fashion society labels them.

"[Creating a poem] never starts with an idea or topic," Redel said. "There is an image that comes to me, and I look for an entry point, which is usually the first sentence."

## The long road home



Special Photo

Two GSU students started 'Southern Destinations' as an alternative transportation service for other GSU students living in and around the metro Atlanta area.

*New 'Southern Destinations' bus service, created by GSU students, allow for transportation to and from the Atlanta metro area*

By Lyndell Nelson / Staff writer

Do you ever find yourself dreading that long drive home to Atlanta? Wouldn't it be nice if there was a service that provided rides for students back to their hometowns? Sophomore information systems major Alex Pachon, along with his friend junior industrial management major Mike Bobbey, has created a business that does just that.

Pachon first came up with the idea to create a transportation system for students while traveling to and from Georgia Southern last year. The students' business, Southern Destinations, will provide reliable, professional transportation to Atlanta from the GSU campus. The two shared their idea with professors in the business department and got feedback before launching the company.

The entrepreneurs, who are both from the Atlanta area, have contracted with an out of town bus service to provide the transportation. Each bus has 55 seats,

and each seat must be filled for each trip. There are two destinations for each trip, one at the North end and one at the South end of Atlanta. As the business gets more recognition and customers, Pachon and Bobbey plan to offer more destinations.

According to the guys, there are several benefits in taking a bus on a long trip.

"You can save miles on your car, save money on gas, and not worry about speeding tickets," Bobbey said.

Also, Pachon suggests doing any schoolwork on the bus, leaving you more time with friends and family once you get home.

Southern Destinations plans to make its first trip for Thanksgiving break. Students can sign up for tickets via the Southern Destinations website. Unless the bus is at maximum capacity (55 students), the trip can not be made. Pachon hopes the business will be

see **SOUTHERN**, page 8

## NEWS

### GSU Wildlife Center celebrates 10th year

Anniversary celebration for the GSU Wildlife Center will be on Saturday Oct. 27 from 3-11 p.m. Free food, music, shows and music will all be available free to the public.

see **NEWS**, page 8

## FEATURES



Jared Siri/STAFF

### GSU Theater presents 'The Women'

The play, directed by James Harbour is a comedy focusing on high society women in New York, running until October 27.

see **FEATURES**, page 3

## OTHER TOP STORIES

### 'Blessed Assurance' opens at Averitt Center

Set against the tumultuous 1960's rural south, 'Assurance' centers around the struggle to vote with different races.

see **NEWS**, page 10

### Wildfires force evacuations in California

### Mother charged in baby's death

see **NEWS**, page 5



## "The Women" delivers laughs

Set in New York City in the 1930's, "The Women" is about love, loss and laughs as a sweet socialite discovers her husband is unfaithful and her friends are disloyal. It is the final play for GSU's Communication Arts' Black Box Theater. Next year, the new Black Box Theatre behind the old Communication Arts building will be open, with *King Lear* as the grand-opening show.

All photos by Jared Siri

To the Left: Meagan Van Buren, as Mary, comforts her daughter, Little Mary, played by Bailey Jacobs.

Right: Megan Lyles, as Jane, recaps the sordid tale to another maid.

Bottom: Van Buren, Rachael Rabinovitz as Sylvia, Taryn Davis as Miriam, and Jennifer Pollock as The Countess work out their differences in the century-old tradition of a catfight.







Jared Siri/STAFF

High society women and the gossip surrounding them are the focus of the play "The Women."

## GSU Theater presents 'The Women'

By Ashley Dunn

Guest writer

Students and visitors waited in their seats on Friday inside the Black Box Theater of the Communication Arts building for the curtains to go up. Opening night of "The Women" was their reasoning.

"The Women", written by Clare Booth Luce, is a witty comedy about a group of high society women in New York and the gossip that affects their everyday lives. This performance held true to its comedic premise with audience members giggling ten minutes into the first act.

"The director and actors understand the play and know the funny parts, but it's so much better when you're back stage and hear the audience laugh," said Anna Giles, a student actress in the play.

"The Women", directed by James Harbour, a Georgia Southern professor in the Communication Arts Department, offered more than comic relief.

"What immediately sets the play apart from others is that the cast is comprised of 30 female roles and no male roles," said Meagan Van Buren one of the lead actresses. Even though there are no male actors in the play, men are definitely discussed and have a vital role.

"The play not only takes you on a journey through the female point of view, but allows you to see each character transform in a significantly different way," said Van Buren.

There are several aspects to theater. "The Women" is no exception. Cast, scenery, and sound all help the audience gain the complete theater experience.

"Preparation for this play took about two months," said stage manager, Khadeeja Walker. "Stage management worked on the performance every day."

The audience's continuous applause at the end of the opening night's performance signaled that all the work and practiced paid off.

"The Women", aside from its all female cast and humorous plots, is special in other ways.

"It is also the last play that will be done in the old Black Box Theatre," said Walker.

Currently construction is under way for the Center for Art and Theatre which will hold the new Black Box Theatre.

There is still time to see "The Women." The show will run in the Black Box Theatre at 7:30 p.m., October 19-27, in the Communication Arts Building. To make reservations call 912-681-5379.

## Looking for experience? We have it.

**And you can, too!** The George-Anne is looking for talented writers who want to work on features, sports, and news stories for the upcoming year. If you are interested, contact us at 912-681-5246 or by e-mail at [ganewsed@georgiasouthern.edu](mailto:ganewsed@georgiasouthern.edu).

### STATEMENT OF OPERATIONS

The George-Anne Daily is the official student newspaper of Georgia Southern University, owned and operated by GSU students and utilizing the facilities provided by GSU. The newspaper is the oldest, continuously published newspaper in Bulloch County and Statesboro, Ga. The newspaper is a designated public forum for the Georgia Southern Community. The ideas expressed herein are those of the editor or the individual authors and do not necessarily represent the views of the Student Media Advisory Board, the administration, the faculty and staff of Georgia Southern University, or the University System of Georgia. The George-Anne is published four times weekly (Monday-Tuesday-Wednesday-Thursday) during most of the academic year and six times during the summers. Any questions regarding content should be directed to the editor by phone at 912-681-5246 or fax at 912-486-7113. Readers may access the newspaper and its archives staff by visiting our Web site at <http://www.gadaily.com>.

### SUPPORT

The G-A is funded primarily through revenue from advertisements placed in the paper and receives additional support, in part, from the Student Activities Budget Committee.

### STUDENTS BEWARE

The G-A screens all advertisements prior to publication. The newspaper strives to accept ads for legitimate products and services only. Students are urged to exercise caution when replying to ads-particularly those which require a credit card number, other personal information, or money in advance of the delivery of a product or service. Students are also urged to report to the newspaper any suspicious offers which they might see in an ad. Remember, if an offer seems too good to be true, it probably is.

### FREEBIE INFO

ALL FREE student and faculty ads to be run in the G-A must have a NAME, P.O. BOX and PHONE NUMBER. Ads will be rejected if they do not have this information. NO EXCEPTIONS.

### OFFICES, MAIL, PHONES

Room 2023, F.I. Williams Center. The George-Anne, P.O. Box 8001, Georgia Southern University, Statesboro, Ga. 30460. 912-681-5246 (News) or 912-681-5418 (Advertising) or 912-681-0069 (Advisor)

### EMAIL DIRECTORY

Executive Editor [gaeditor@georgiasouthern.edu](mailto:gaeditor@georgiasouthern.edu)  
Managing Editor [gamed@georgiasouthern.edu](mailto:gamed@georgiasouthern.edu)  
News Editor [ganewsed@georgiasouthern.edu](mailto:ganewsed@georgiasouthern.edu)  
Advertising [ads@georgiasouthern.edu](mailto:ads@georgiasouthern.edu) or [ads1@georgiasouthern.edu](mailto:ads1@georgiasouthern.edu)

### ADVERTISING

The G-A reserves the right to refuse any advertisement.

**DISPLAY AD DEADLINE:** The deadline for reserving space and submitting advertising copy is Noon, one week prior to the intended publication date. For more information, rate cards, sample publications, contact the advertising manager or student media advisor.

**PROOFING/ERRORS/OMISSIONS:** The newspaper makes every reasonable effort to correct and complete information in advertisements. However the advertiser is responsible for any errors in advertisements and its liability for adjustments is limited to the amount of space the error occupied in the ad. Further, the newspaper is not responsible for any damages caused due to an ad's omission from a particular edition and its responsibility solely is to reschedule the ad in the next regular edition at the regular advertising rates.

**CLASSIFIED ADS:** Free classified ads from students, faculty and staff must be non-commercial in nature and submitted in writing with the name of the sender, local address and phone number. No free ads taken via telephone - at this price we don't take dictation. One free ad per person per week. Commercial classified are available only from our online site at [www.gsuads.com](http://www.gsuads.com). The price of commercial ads is \$7 for 200 characters for line ads. Ads must be paid for using a major credit card. For classified display ads, contact [gaclass@georgiasouthern.edu](mailto:gaclass@georgiasouthern.edu).

**CIRCULATION INFORMATION:** Mail subscriptions are not available at this time. However, readers may visit our Web site for free access to current and past issues. Visit [www.gadaily.com](http://www.gadaily.com) to view online issues. The G-A is distributed free of charge on the Georgia Southern campus through delivery sites located in campus buildings, at off-campus sites, and in residence halls.

### NOTICE

Readers may pick up one free copy, and a second for a roommate or acquaintance, at distribution sites. Additional copies are 50 cents each and are available at the Williams Center. However, unauthorized removal of additional copies from a distribution site constitutes theft under Georgia law, a misdemeanor offense punishable by a fine and/or jail time. Editors will seek to have any person(s) who removes more than the authorized number of copies from distribution sites prosecuted to the full extent of the law.

### NOTE

We gratefully acknowledge the theft of one of our slogans- "Liked by Many, Cussed by Some, Read by them All" - from Robert Williams of the Blackshear Times. Credit for the other slogan- "Covering Campus like a Swarm of Gnats" - goes to G-A alum Mike Mills.



## The Sir Shop

TWO LOCATIONS

Statesboro Mall  
764-6924

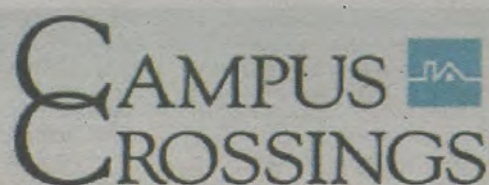
Main Street Village  
871-4962



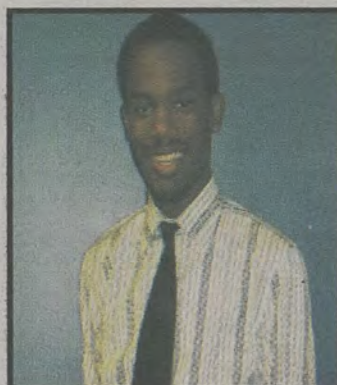




Alpha Omicron Pi supports  
**Elena Bencini**  
for Homecoming Queen 2007



ERIKA BANDY FOR  
HOMECOMING  
QUEEN 2007



Student Government Association Supports

**Tedrick "Tetris" Kelly**  
for Homecoming King 2007



Interfraternity Council  
**Beau Turpin**  
for Homecoming King 2007



**TALON CLUB**

**MORGAN  
HAMMONDS**  
FOR HOMECOMING  
QUEEN 2007



## NATIONAL NEWS

## Wildfires force evacuations in Southern California



Los Angeles County firefighters monitor a wildfire threatening homes in Hasley Canyon.

By Barbara Kollmeyer and Russ Britt  
McClatchy Newspapers

One person was killed and tens of thousands of Southern California residents were being evacuated from their homes Monday, as wildfires burned out of control across seven counties, stretching from the Mexican border north to Santa Barbara County.

Gov. Arnold Schwarzenegger declared a state of emergency for the counties of Los Angeles, Orange, Riverside, San Bernardino, San Diego, Santa Barbara and Ventura in the wake of more than 11 major blazes. Firefighters were being hampered by "red-flag" conditions of high winds and low humidity, with more of the same expected for at least the next two days.

Resources also are stretched thin because so many fires were burning at once across the region. The total area burned, stretching from Santa Barbara to San Diego, is estimated to be in the tens of thousands of acres.

"We've been talking about the drought and the

Santa Ana (winds), and with very low humidity it is a design for disaster," Los Angeles County Fire Chief P. Michael Freeman said.

In San Diego County, more than 18,000 acres of land are burning in the area of the Witch Creek Fire, with 62 square miles destroyed and fires as yet uncontained, according to an online report from the San Diego Union-Tribune. Officials said one person had died and 17 others were injured in San Diego County.

The Associated Press reported that as many as 250,000 people were being evacuated in San Diego County, including hundreds being moved by school bus and ambulance from a hospital and nursing homes. Northeast of San Diego, the community of Ramona, with a population of 36,000, was ordered to completely evacuate.

The raging fires across Southern California are being fueled by dry brush created from a record drought this year.

Some of the worst fire damage has taken place in the coastal Malibu area of Los Angeles County, where more than 2,200 acres have burned.

## NATIONAL NEWS

## Mother charged in baby's death

By Jessica Rocha and Peggy Lim  
McClatchy Newspapers

When investigators found the remains of Harmony Jade Creech's baby body this weekend, she was inside a diaper box in the family's attic, said Harnett County Sheriff Larry Rollins.

The statewide Amber Alert for the 11-month-old is now canceled and Harmony's mother, Johni Michelle Heuser, 25, is being held without bail in the Harnett County jail on a charge of first-degree murder.

The baby's father, Ronald Earl Creech II, just returned from a 15-month deployment in Iraq. Now, he must bury his first daughter, whom he had seen just once during a leave shortly after her birth in January.

Investigators believe Harmony had been dead for three or four weeks, Rollins said.

Heuser's mother, Brenda Irizarry, picked Creech up at Pope Air Force Base on Friday and drove him to the Spring Lake home he shared with Heuser, Harmony and Heuser's three children from a previous marriage.

But Harmony was gone, the window near her crib open, clothes and blankets missing as well. Irizarry called 911 to report her missing granddaughter around 11 a.m., Rollins said.

The Spring Lake home that should have been a place of homecoming celebration for the soldier

has turned into a crime scene.

When Harnett County deputies showed up to investigate the missing child report, the situation looked staged from the outset, the sheriff said Sunday. An investigator searched the house, including its attic, but they didn't find the baby girl that was missing. Instead, deputies issued a statewide Amber Alert. They searched the house again a couple hours later, said Maj. Gary McNeill.

"At that time, we were thinking we were maybe looking for a child that was alive hopefully," said Rollins, the sheriff. "And if not, we were looking for a child weighing 15 or 16 pounds."

Investigators tried one more time Saturday afternoon. Stuffed in a back corner, reachable only with a golf club from an old set stored up in the attic, investigators were able to grab a Pampers diaper box so light it could have been empty, Rollins said.

In there they found little Harmony Creech's decomposing baby body wrapped in a plastic bag, he said. Investigators are waiting for a medical examiner's report to provide a better time and cause of death.

Confronted with the discovery of the body, Heuser told investigators she found the baby dead in the crib several weeks back, but didn't notify authorities out of fear.

i.d. Bare Minerals

hairstudio 101

Now selling

BARE ESSENTUALS  
makeup so pure you can sleep in it

a new lesson in beauty

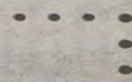
Bring this in for a free make over

912-764-6442  
13 South Main St. Statesboro, Ga 30458



## Eagle Expo & Education Career Fair

Wednesday, October 24, 2007  
9:00 AM-2:00 PM  
Recreation Activity Center



Over 100 companies will be recruiting students for full-time, internship, and co-op positions!

Open to ALL majors!

The Eagle Expo & Education Career Fair is a GREAT opportunity to network with industry leaders that may hold the key to your future!

To view a complete list of companies visit:

<http://students.georgiasouthern.edu/careers>

& select 'Eagle Expo & Education Career Fair link'



### Questions? Contact

Career Services

Phone: 912-681-5197

Careersv@georgiasouthern.edu

**Parking is limited!!!**  
Please utilize Georgia Southern University's  
Transit System to eliminate parking issues!

(Additional parking is available at the RAC Pavilion  
on Old Register Road)

# Georgia Southern University Mystery of the Century Homecoming Week 2007



Slots for Sleuths  
Tuesday, October 23<sup>rd</sup>  
Russell Union Ballroom  
6:00 p.m. - 10:00 p.m.




[www. GeorgiaSouthernHomecoming.com](http://www.GeorgiaSouthernHomecoming.com)



Eagle Entertainment  
[www.georgiasouthern.edu/homecoming](http://www.georgiasouthern.edu/homecoming)





Featuring  guster

and special guest 

*Brett DeWen*

**Thursday, October 25th**  
**RAC Bandshell**

**Georgia Southern University**

**Pep Rally/Royalty Court Announcement - 7:30pm**

**Crocs Next Step Campus Tour - 8:30pm**

**FREE for Georgia Southern community!**

**Bring a blanket or folding chair - lawn seating only**

For more information visit: [www.georgiasouthernhomecoming.com](http://www.georgiasouthernhomecoming.com) or  
<http://www.nextstepcampustour.com>



**crocs**

**SPIN**

**Reverb**

PRODUCED BY 360 PRODUCTIONS

 [NEXTSTEPKAMPUSTOUR.COM](http://NEXTSTEPKAMPUSTOUR.COM)



## Wildlife center celebrates 10th anniversary

By Lauren Childs

Staff writer

This Saturday, Oct. 27, will mark the Center for Wildlife Education and the Lamar Q. Ball Jr. Raptor Center's tenth anniversary. To celebrate, the Center will host numerous events for the whole family. There will be free food and beverages and many activities.

Founded in October 1997, the Wildlife Center occupies five beautiful acres in the heart of the Georgia Southern campus.

"The center has grown considerable and on many fronts in the past years," said Steve Hein, director of the Wildlife Center. "In 1997, the center largely served the surrounding counties and today children from school systems around the state make the annual trek to Statesboro to visit the Wildlife Center."

"In our first few years of operation our off-sites were few and mostly close to home," said Hein. "Today the center conducts around 150 off-site programs annually taking us from New York to Texas. We have been contracted to deliver programs for the NBA Atlanta Hawks and ESPN Bassmasters."

Over the last ten years there have been many improvements to the Center.

"We have added two mammal displays which house a skunk and an opossum," said Wildlife Curator Steve Courdin. "We also have doubled the bird housing space which

has allowed us to increase the number of educational birds for programs."

The Center is also currently nearing completion of a 12-acre expansion. "The new area will include three water features that will showcase wading birds, including herons and egrets, as well as waterfowl," said Hein.

On Saturday, Naturalist Steve Scruggs will present a wildlife conservation program that will run from 3 p.m. until 3:45 p.m. Okefenokee Joe, a world-renowned expert in field herpetology, will host "Earth Day Every Day" from 5:15 p.m. until 6 p.m. and magician Magic Marc will perform from 8 p.m. until 8:45 p.m. Falcon Fireworks of Rincon, Ga. will conduct a fireworks exhibition from 8:45 p.m. until 9 p.m. and a social that features refreshments and music by Ryan Kelly will run from 9 p.m. until 11 p.m.

"We are bringing in outside organizations that will bring animals not found at the Wildlife Center," said Courdin.

All events are free and open to the public. "We anticipate a very large crowd and would be delighted to top the estimated crowd of 2,000 that attended the opening," said Hein. "While the event is family-oriented, I believe that Georgia Southern students would enjoy the guest speakers and the opportunity to learn about our native wildlife as well as the many exotic animals that will be present during the event."

## Southern

from page 1

fully operational by next semester.

"We're not making a profit just yet," Pachon said. "We're really just doing this [starting the business] with the benefit of students and the community in mind."

Pachon and Bobbey plan to advertise by posting flyers, passing out business cards, and creating a facebook group.

The duo entrepreneurs also intends on presenting information about their business through the Office of Admissions and future

SOAR sessions to inform parents as well as students.

"We believe this service will make Georgia Southern unique," Bobbey said. "It will be beneficial to many students. Overall, it will advance the university and be an advantage that other campuses don't have."

Pachon and Bobbey plan to go into business together after graduation.

For more information, visit [www.southerndestinations.com](http://www.southerndestinations.com)

### POLICE BEAT

10-20-2007

• Chase Bradford Phillips, 22, of Cotton Field Drive, Kennesaw, Ga., was charged with public intoxication and criminal trespass.

• Ferris Kyle Ward, 21, of Campus Courtyard Apartments, Statesboro, was charged with DUI.

10-21-2007

• Aaron Patrick Farrelly, 22, of College Walk Apartments, Statesboro, was charged with public intoxication.

### CALENDAR

9 a.m. - 5 p.m.

From Protest to Peace  
Museum Front Gallery

9 a.m. - 5 p.m.

Mad Scientist Laboratory  
Museum Rear Gallery

5:30 p.m. - 8:30 p.m.

Dining for Success  
Nessmith Lane Southern Ballroom

7p.m. - 9p.m.

Global Crossing Film Series  
Russell Union Theatre

**Greek Street**

**Trick or Treat**

**OLYMPIC BLVD  
STATESBORO**

**OCTOBER 30  
6 - 8 PM**

**TWO CONVENIENT LOCATIONS**

Southside      Downtown

100 Brampton Ave.      43 N. Main Street

ATM • Close to Campus      ATM • Drive-thru • Sat. Baking

**Core CREDIT UNION**

**BULLOCH COUNTY RESIDENTS & GSU / OTC STUDENTS ELIGIBLE**

**Your savings will blossom with FREE Checking!**

• FREE online Account Access

• FREE Billpay

• Free Photo ID Checkcard

• UNLIMITED checkwriting

• Drive up and Saturday Hours

• No Monthly Fee

[www.corecu.org](http://www.corecu.org) 912.764.3846 877.267.2673

NCUA



# etc.

Now you can place your classified ads online... For Commercial Ads, Visit...

<http://www.gsuaads.com>

...and create, place, proof and pay for your ad online. Just \$7 for 200 characters. In partnership with Universal Advertising.

Free ads for students, faculty & staff (non-commercial): Send an email message to...

[www.gadaily.com](http://www.gadaily.com)

You must include your names, address and phone number for freebies. No phone calls please, at this price we don't take dictation.

## CLASSIFIED CATEGORIES

**100 Announcements**  
110 Auditions  
120 Freebies  
130 Lost & Found  
140 Other Announcements

**200 Buy or Sell**  
210 Autos for Sale  
220 Auto Parts for Sale  
230 Bicycles for Sale  
240 Books for Sale  
250 Computers & Software  
260 Miscellaneous for Sale  
270 Motorcycles for Sale  
280 Trade & Barter  
290 Wanted

## 300 Employment & Job Services

310 Career & Job Services  
320 Child Care Needed  
330 Child Care Provider  
340 Internships/Volunteer  
350 Jobs/Full Time  
360 Jobs/Part Time  
370 Opportunities/Business  
380 University Work  
390 Wanted Jobs

## 400 Housing & Real Estate

410 Apartments  
420 Lofts & Rooms  
430 Mobile Homes  
440 Real Estate for Sale  
450 Roommates Wanted  
460 Storage & Moving Services  
470 Student Housing

## 480 Sub Leases

490 Vacation Rentals

## 500 Personals

500 Personals

## 600 Services

610 Education & Tutoring  
620 Financial Aid/Loans  
630 Legal Services  
640 Resumes/Typing/DTP  
650 Services/Miscellaneous

## 700 Travel

710 Spring Break Travel

## 800 Transportation/Rides

800 Transportation/Rides

## 900 Miscellaneous

910 Pets & Pet Supplies

## Announcements 100 - 199

### 140 Other Announcements

Alternative Winter Break Challenge Enterprises of North Florida 12/9-12/13 \$50-Lodging, meals, and travel Sign Up In Union 2022 Space is Limited

Destination: Challenge Enterprises in Green Cove Springs, FL Cost: \$50 Sign Up and Pay in Student Leadership & Civic Engagement RU 2022

LOST--TOYOTA KEY--\$20 REWARD CALL 912 857-3441

Alternative Spring Break Freeport, Bahamas March 15-22, 2008 Cost: \$775 Applications due 11/9/2007 Visit Russell Union 2022 for more information

### Buy or Sell 200 - 299

### 210 Autos for Sale

02 VW Jetta 1.8t, Dark blue, 5sp w/ short shifter, LOADED, 1thr,snrf, 100kmiles, \$8500 obo 678 3130220

Ford Focus ZX5 '02, fun & practical, 5 spd manual trans, power windows, locks & moonroof. 72k mi., very good cond., \$4,900. Jim 225-0672, (912)617-3443

1997 Saturn CS2 for sale. White. Fair Condition. Asking \$2000 but will take best offer. If interested please call or text Kristine at 706-325-6648

FORD EXPLORER '03 XLT 4x4. 70k 2 DVDs, TV/MP3/DIVX/USB/SD/MMC, 20", HIDs. \$13,000 with all, \$12,000 no options. EXCELLENT RIDE. (912) 839-5408

### 230 Bicycles for Sale

New Weslo Pursuit 6.0 DX recumbent bike; adjustable/ quiet/low impact/ Grip Pulse Sensors. \$140. Call Jane at 687-2558

### 260 Miscellaneous for Sale

61" Mitsubishi Projection TV \$350 obo 678 313-0220

### 270 Motorcycles for Sale

2004 Suzuki GS500F with 9000 miles. Good condition, call to come and see for yourself. Asking 3250 obo

### Employment & Job Services 300 - 399

### 380 University Work

The GSU Men's Basketball team is seeking an Asst. Student Manager to help with practice and administrative duties. Call Coach Myrick at 912-681-5328

SOAR Leader Applications are available at <http://admissions.georgiasouthern.edu/orientation/leader> Applications are due Monday, November 5th at 5:00 pm

### Housing & Real Estate 400 - 499

#### 410 Apartments

Sublease available for 1 female in beautiful furnished 3 bedroom/3 bath at Campus Club apartments. Student seeks to transfer for 2nd semester. Private bath for each bedroom, large closets, screened porch with closet, well equipped kitchen, laundry room with washer/dryer in apartment, large kitchen and living room with TV. Wireless internet. Easy access to Campus bus service. Please call Rachel at (404) 247-6035 for more information.

2 Bed/1 Bath AVAILABLE FOR RENT IN SHERWOOD across from the STADIUM! Great for FOOTBALL GAMES the BUS STOP & more! LOW RENT, Available NOW! 6789360250

QUIET, REASONABLY PRICED (\$285-\$450 per month) One & Two bedroom Apts., Duplexes, Houses. NO PETS. Deposit, Application required. Flexible leases. PARKER REALTY (764-5623)

#### 440 Real Estate for Sale

Two bedroom, Two Bath unit at 14 Sagebrush for sale. Comes with kitchen appliances and fenced in backyard. \$78,500. Please call Trent at 678-884-81871

#### 450 Roommates

Female roommate needed ASAP! 2 bed/2 bath, extra large washer and dryer. \$250/month plus half utilities. For more info, call Venus: (912)536-5586.

Need a third person to live with us! Master bedroom is open and you would have your own bathroom. Dogs allowed. Rent is \$300 all inclusive. 9126903214

#### 470 Student Housing

House For RENT! Available now! Corner Fair Rd & Catherine Ave. 4 bed 2.5 bath. For more information call 912-764-6076 or 912-682-7468

#### 480 Sub Leases

1 room of a 2 bed/2 bath apt. in Hawthorne II available for spring/summer '08. \$325/month, not including utilities, unfurnished, call david@4045182089

Apartment for RENT! First month for FREE and \$379/mth. Utilities included, covered parking available. 5 minutes from campus. Call Tyler 404-668-6873

Female Sublease needed for SPRING 2008. One bed/bath in 2 bed townhouse in Players Club. Available mid December. Call 770-378-3409 if interested.

Sublease available for 1 furnished 3 bedroom/3 bath @ Campus Club apts. Laundry room with washer&dryer/ Wireless internet. Please call Rachel @ (404) 247-6035 for more info.

Sublease available for Spring 08. One bed/bath with washer & dryer in Eagle Creek Town Houses. \$405 including Cable w/HBO. Very quiet & nice neighbor. Close to bus stop at stadium. Queen-size bed & two couches are also included. Available end Dec. please contact to Masa 912-541-3630/noriboy@hotmail.com for more info.

Subleasing apt. for Spring 08. \$450/no pet; \$465 w/ pet. Pet deposit already paid. All inclusive. Move in mid-December. 904-838-6689

### Services 600 - 699

#### 610 Education & Tutoring

FUN & STUFF Visit our Web site for list of things to do that are educational and fun. <http://www.stp.georgiasouthern.edu/funstuff/>

America Reads tutors earn \$7.50-9.50/hr. Need 2.5+ GPA, work-study eligibility, transportation. Contact Astrick8-gw@georgiasouthern.edu

### 650 Services/ Miscellaneous

Horse Pasture Board with shelter 15 minutes from GSU Endless dirt roads to ride Round Pen Locked tack rooms \$250 includes feed 823-2150

### Travel 700 - 799

#### 710 Spring Break Travel

Spring Break 2008. Sell Trips, Earn Cash and Go Free. Call for Group Discounts. Best Prices Guaranteed! Jamaica, Cancun, Acapulco, Bahamas, S. Padre, Florida. 800-648-4849 or [www.ststravel.com](http://www.ststravel.com).

## Crossword

### ACROSS

- 1 Zodiac sign
- 6 Infrequent
- 10 Audible exhalation
- 14 Kind of lily
- 15 Daredevil Knave
- 16 China setting
- 17 Mooring basin
- 18 Medusa
- 20 Scientific breakthrough
- 22 Tobacco ovens
- 23 Comic-strip Dick
- 24 In place of
- 25 Designate
- 28 Conveyance
- 32 Rise on hind legs
- 33 Sot
- 34 Lady lobster
- 35 Anthropology focus
- 36 Cyclonic wind
- 39 Annex
- 40 Antiquated
- 41 Winter blanket
- 42 "Picnic" playwright
- 43 Arrived at
- 45 Inhabited by ghosts
- 48 Word on a towel
- 49 Tithe amount
- 50 Artist's model
- 53 Chewed the fat
- 57 Hors d'oeuvre
- 59 Wear away
- 60 Garden vegetables
- 61 Crow's-nest support
- 62 Goes up
- 63 Frank or Rice
- 64 Hunter's quarry
- 65 Reeked

### DOWN

- 1 Etcher's fluid
- 2 Hindu queen
- 3 Afflictions
- 4 Qualified voter
- 5 Zen enlightenment
- 6 Decide against
- 7 Cartoonist Tex
- 8 Lean (on)
- 9 Pipe bend
- 10 African trek
- 11 Sister/wife of Osiris
- 12 Heart of the matter
- 13 Cries of triumph
- 19 Hey there!
- 21 Delivery vehicle
- 24 Ward (off)
- 25 Knight's outfit
- 26 U.S. family of artists
- 27 Bamboo lover
- 28 By way of
- 29 Plainsong
- 30 Rocky projection
- 31 Terminated
- 33 Opposite of ESE
- 36 Casual top
- 37 Singles
- 38 Gangster's gat
- 42 Receive by bequest
- 44 Monterey Jack, for one
- 45 Robust
- 46 Aesop's industrious insect
- 47 Says
- 49 This and this
- 50 Bear dad
- 51 Uncork
- 52 Cross over
- 53 Winter Palace resident
- 54 Diva Ponselle
- 55 First family garden?
- 56 Office station
- 58 Little devil

© 2007 Tribune Media Services, Inc.  
All rights reserved.

9/21/07

## Solutions

K	N	V	I	S	A	E	R	E	N	N	V
S	E	S	I	H	I	S	W	S	V	E	P
E	D	O	R	E	H	E	Z	I	L	E	P
E	D	H	E	L	L	V	H	O	S	O	P
					H	I	N	E	L	S	I
E	E	I	N	V	A	H		E	H	O	V
E	G	N	I				M	O	N	S	
D	D	V		O	D	V	N	H	O	L	N
N	E	H		O	N	I	M		H	V	E
E	T	O	I	H	E	A		I	N	I	O
S	I	S	V	O		A	H	E	A	O	S
H	S	I	E	A	T	T	E	P			
V	I	S	V								
H	G	I	S								



# "Blessed Assurance" opened over the weekend at the Averitt Arts Center



Ashley King/STAFF

The cast members of "Blessed Assurance" are, from left to right, Art Steel, Kristyl Tift, Jeff Kozee, Julie Kozee and Alan Tyson.

By Ashley King

Staff writer

Over the weekend, The Averitt Center for the Arts was the scene of the opening of the play, "Blessed Assurance." Patrons were piling in to see the performance written by Laddy Sartin and directed by Mical Whitaker.

"Assurance" is set against the tumultuous 1960s in the rural south. The play centers around the struggle to vote with different races.

Olivia, an elderly black woman, played by Kristyl Tift, goes to the county courthouse and demands to register to vote. Olivia is employed in a local café by a white man named Mr. Harlan, played by Alan Tyson.

Mr. Harlan is inadvertently blamed for Olivia's boldness in voicing her rights. Because of the threat of such boldness among the local populace, Olivia's black friend Lewis (Art Steel), another white citizen Slick (Jeff Kozee) and Harlan, all attempt to talk Olivia down from registering. Olivia remains fixed.

"I'm gonna put on my church hat and gloves, and I'm marching back up them steps again today.

When they least expect it."

Lewis begins to agree with Olivia and stands up with her. The towns' people, including Slick, make serious threats on Lewis's and Olivia's life. Harlan attempts to sneak them out of town but not before Olivia decides to conduct a sit-in in the very café that she works.

Harlan's daughter Sally serves Olivia as Slick enters the café. He attempts to throw water on Olivia for eating at the "white only" counter. Harlan scuffles with Slick where Harlan is hit with a gun.

Olivia runs Slick off with the gun. After Harlan is assisted by Sally, he goes to the counter and, in an emotional poignant scene, hands Olivia a glass of water. The play closes as Olivia explains she will once again head off to the court house to continue fighting for her rights.

The cast was an extremely talented ensemble who each gave very powerful performances. The production was lucky enough to have the playwright, Laddy Sartin, see it Saturday night. Sartin said he has seen his play many times, but this performance was exactly what he was looking for.

## Earn work experience at CRI

By MJ Trahan

Staff writer

Georgia Southern has many opportunities for student employment. However, one of the most unique working experiences can be found within Campus Recreation & Intramurals (CRI). CRI currently employs between 250-300 students in the areas of Facility Management, Intramurals, Aquatics, Club Sports, Fitness, and Southern Adventures. There's literally an area for everyone's interests.

Campus Recreation & Intramurals will be accepting applications October 29 - November 1 for the CRI Job Fair, aimed towards fresh, eager students looking for employment. Applications will be available at the Recreation Activity Center (RAC) and the Student Employment Center in the Rosenwald Building.

CRI employees can gain valuable work experience and become better prepared for the often dreaded "real world" after graduation. When dealing with a recreational setting, it's guaranteed to be fun. However, one may not realize the skills they can obtain at the same time.

"Our employees have developed excellent communication skills, which is essential when you're working together with peers in a building of this size," said Associate Director Matt Horst. "Employees learn how to interact with

groups of participants, as well as each other, to accomplish daily objectives." Responsibility, time management, and leadership skills also play a key roll in CRI jobs, and will be vital for future employment.

What's more important is CRI takes care of their kids. The professional staff recognizes the importance of each individual worker. If it was not for the student staff, it would certainly be difficult to keep the RAC up and running.

"This facility is devoted to the students. We find that students respond well to other students, so it creates a comfortable environment," said Carter Walton, facilities coordinator. "A lot of times, we also find that the students are our main sources of information to help the RAC stay 'in the know' about current events."

Who can work at the RAC? You don't have to be a health nut. Whether you're into sports or not, the RAC provides an outstanding work environment and gives each individual employee skills that will last a lifetime. A variety of students, with numerous different degrees, help create a well-rounded atmosphere.

"CRI does not strictly hire Exercise Science or Nutrition majors," said Tracy Adams, a senior photography major. "When I come in to the building to work, I'm surrounded by a very diverse group of great friends!" More information about CRI is available at <http://services.georgiasouthern.edu/cri/index>.



## UPCOMING EVENTS

**TODAY:**  
OCT. 23

**"LIVE IT, LOVE IT, LOSE IT"**  
5:30 TO 7 P.M.

- FLAG FOOTBALL PLAYOFFS BEGIN
- INTRO TO CLIMBING CLINIC

**THURSDAY**  
OCT. 25

- WOMEN & WEIGHTS 5:30 P.M. TO 7 P.M.
- PEP RALLY AT BAND SHELL
- GUSTER IN CONCERT

**SATURDAY**  
OCT. 27

- HOMECOMING GSU FOOTBALL VS. THE CITADEL

**MONDAY:**  
OCT. 29

- CRI JOB FAIR BEGINS (MON-THURS. 4 P.M. TO 8 P.M.)
- WELLNESS WEEK BEGINS
- BLOOD DRIVE 12-6 P.M.
- ADULT CPR 6 - 9 P.M.





Special Photos

# Key tips to help you live green every day

By Philip Clements

Staff writer

The environment is all around us. Giant Oak trees that shade a family as they enjoy a picnic on a sunny summer day. The white clouds that paint the blue sky behind the birds that sweep and swoop with the breeze. The plentiful amber waves of grains that feed and support millions of people. The grass under the feet of the star quarterback as he makes his way across the goal line. The Earth is, without a doubt, the most important asset to human life. However, it is also the asset that is often taken for granted.

Global warming, air and water pollution, oil shortage and deforestation are just a few of the many different threats to our environment. While there is no need for pointing fingers and laying blame, there is definitely a need for us humans to make a change. It is obvious that we are all engaged in many unsustainable practices

in transportation, waste management, energy production and consumption that will eventually lead to more problems.

So, what can you do to help our good friend Earth? It doesn't take an act of biblical proportions to reduce your personal impact on the environment. In fact, it's quite easy. Here are some tips on how you can make some small changes and live a greener life:

- Turn off the lights when you leave the room.
- Don't leave the water running when you aren't using it.
- Recycle, recycle, and then recycle some more. There are recycling centers all over Statesboro (even one at Wal-Mart.) Trey Gunning from SAGE (Student Alliance for a Green Earth) said that "recycling one aluminum can saves the same amount of energy that it takes to run a TV for three hours."
- Use nature's thermostat (i.e. the outside temperature) instead of relying heavily on

your air conditioning.

- Unplug phone chargers (and other electronic devices) when not in use. When plugged in, most electronic devices still use electricity and energy, even if they are not on or in use.
- Instead of paper or plastic at the grocery store, use a reusable cloth bag. Also apply the reusable product principle to things like water bottles (Nalgene vs. a new Dasani bottle every day). Matt Parker of Southern Adventures and the LivinGreen Challenge said that "more resources are used to make a water bottle than are saved when that bottle is recycled."
- Use public transportation, carpool, or even travel by foot or bike.
- Combine all your small errands and trips into one bigger trip. This reduces the time spent you spend in the car in the long run and thus reduces oil/gas consumption as well as pollution.

- Minimize waste. This means not only throwing away less, but also being more a more selective consumer. "If I'm at a store looking at two virtually equal products and one has less packaging than the other, then I'm buying that one," said Dustin Sanderson, also of Southern Adventures, about unnecessary waste.

- Don't litter. In fact, it is even a good idea to pick up trash that's on the ground, even if it's not yours. Simply cleaning up some of the trash that you see on the ground outside of your door or on your way from class to class is a great way to not only help the environment but also to simply make your surroundings look nicer.

Of course, these are just some of the things you can do. To find out more, go to a SAGE meeting every Wednesday at 5 p.m. in Russell Union Room 2048 or visit the CRI 'LivinGreen' website at <http://welcome.georgiasouthern.edu/wellness/LivinGreen/>.

## FOR ALL YOUR COMPUTER HARDWARE AND SOFTWARE SOLUTIONS

# THE PC SHOP

58C E. Main Sr. • Downtown 912.489.6961 • [pcshop07@gmail.com](mailto:pcshop07@gmail.com)



Gifts for Special Occasions  
Fashionable Clothes & Accessories

10% off for GSU Students, Faculty, and Staff



Hours: Tuesday - Friday 10:30 a.m. - 5:30 p.m. Saturday 10:30 a.m. - 4:00 p.m.

413 South Main St. Statesboro 912-764-6558

website: <http://geocities.com/thewildpetunia>



## SPORTS

Who's  
**HOT**

**NFL:** Rob Bironas. The former Georgia Southern kicker set an NFL record, knocking through eight field goals in the Tennessee Titans 38-36 win over the Houston Texans on Sunday. Bironas played for the Eagles for one year in GSU's 2000 National Championship campaign.

Who's  
**NOT**

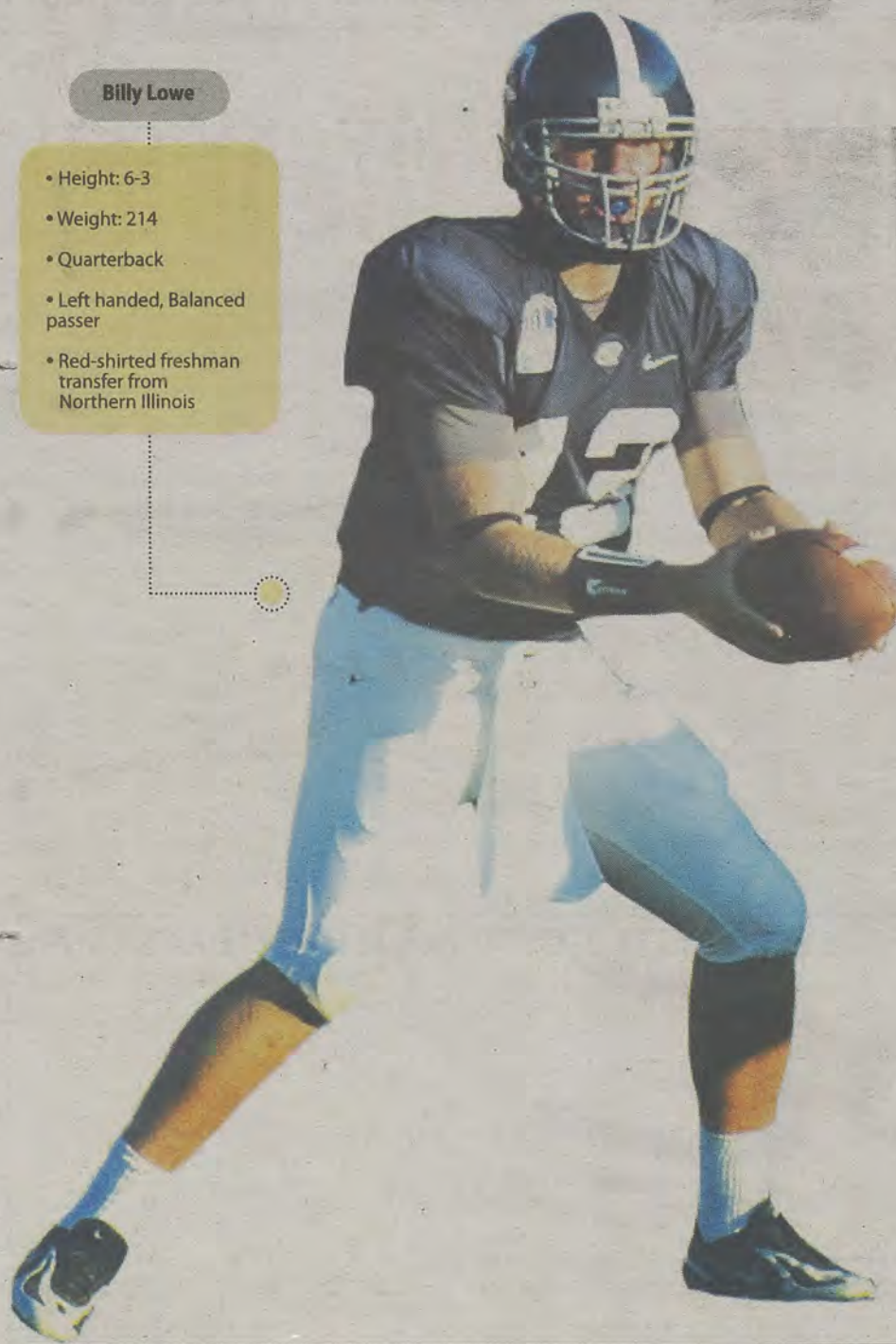
**MLB:** Cleveland Indians. The Indians blew a 3-1 series lead to the Boston Red Sox losing game seven Sunday night 11-2 in Fenway. Boston will meet the Colorado Rockies in the World Series. The Rockies have won 21 of their last 22 games.

## The 'Lowe' down

*With Lowe's addition to the offense, the Eagles now have a "two headed monster" scenario for opposing teams to prepare for.*

Billy Lowe

- Height: 6-3
- Weight: 214
- Quarterback
- Left handed, Balanced passer
- Red-shirted freshman transfer from Northern Illinois



By Matt Mauney | Assistant sports editor

Eagle Nation now has another name to chant when the Georgia Southern quarterback runs onto the field.

Now don't get me wrong, there will be plenty of fans at Paulson Stadium on Homecoming Saturday chanting, "Jayson...Jayson!" but for this week and the remainder of the Eagles 2007 campaign, you might hear a group of students cheering, "Billy...Billy!"

Who is this Billy fellow that I'm speaking of, you ask? It is none other than red-shirt freshman Billy Lowe, the new passing threat of GSU football. Lowe made a huge impact in the Eagles 38-35 upset of the Appalachian State Mountaineers last Saturday when he teamed up with first string quarterback Jayson Foster.

"He [Lowe] played well and had great composer," said Head Coach Chris Hatcher. "He's been working toward that opportunity all season long and we just felt like he was finally ready to come out there and play and I think he performed well."

Lowe, being more of a "pass first" minded QB, gave Jayson the opportunity to get a taste of the "sampler platter" of football skill positions. Foster lined up at running back, wide receiver, and quarterback in the Eagles win over the Mountaineers.

"You have to be aware of [Lowe] back there at quarterback," Foster said. "He has a good arm so that allows him to get me and Raja [Andrews] the ball out in space. Throwing screens he's going to be able to get the ball out there to you and

it's your job to make a play for him. Putting me out there draws a little bit of attention so you just have to let Billy do his job and deliver the passes," he said.

Lowe was 8-11 for 145 yards and one touchdown. Foster finished with 175 yards on the ground for one touchdown and had 41 yards receiving on that night.

Teams scout Foster to run and Lowe to pass, but both play callers have versatile playing styles.

"Jayson runs the ball well and throws the ball well," Lowe said. "He's a great player. I feel that

I don't necessarily bring anything different playing wise that he doesn't but maybe I bring just a different personality. We're two different people and two different personalities. He gets a lot of respect from the players. We probably both bring about the same stuff to the table."

Lowe was named the Southern Conference 'Player of the Week' Monday after his impressive

showing in Boone, N.C. He said that he was glad to be given the opportunity to show what he can do.

"I was really happy and just really appreciative to be given that opportunity," Lowe said. "The way I look at it is that I've had eight weeks to prepare and I just did what I was taught to do."

Lowe is a transfer from Northern Iowa, where he was red-shirted for his first year. Coach Hatcher was a big reason for his decision to transfer.

"Coach Hatcher recruited me out of Valdosta State and I just always remembered in the back of my head that he recruited me. When I decided to transfer and I heard that he made the move to Georgia Southern, it's just a great opportunity to come in and play," Lowe said.

**"Billy's a good player. He brings a new dimension to our game and it allows us to get the ball to Jayson more in space. It's a two headed monster there and we will try to use it to benefit us the best we can."**

Chris Hatcher  
Head Coach

## GSU SPORTS CALENDAR \* box denotes home game or match

## Men's Soccer

10/26	UNC Greens.	8 p.m.
10/30	Charleston	5 p.m.
11/6	Stetson	7 p.m.

## Women's Soccer

10/25	Wofford	4 p.m.
11/1	Davidson	7 p.m.
11/4	SoCon Tourny	TBA

## Men's Tennis

10/26	Alabama Invite	TBA
1/20	Florida A&M	TBA
1/27	North Florida	1 p.m.

## Swim and Dive

10/26	Davidson	6 p.m.
10/27	Campbell/Howard	2 p.m.
11/16	Davidson Invite	TBA

## Volleyball

10/27	Chattanooga	2 p.m.
10/28	W. Carolina	2 p.m.
11/2	Charleston	7 p.m.