

Georgia Southern University

Digital Commons@Georgia Southern

---

The George-Anne

Student Media

---

2-15-2007

## The George-Anne

Georgia Southern University

Follow this and additional works at: <https://digitalcommons.georgiasouthern.edu/george-anne>

---

### Recommended Citation

Georgia Southern University, "The George-Anne" (2007). *The George-Anne*. 2011.  
<https://digitalcommons.georgiasouthern.edu/george-anne/2011>

This newspaper is brought to you for free and open access by the Student Media at Digital Commons@Georgia Southern. It has been accepted for inclusion in The George-Anne by an authorized administrator of Digital Commons@Georgia Southern. For more information, please contact [digitalcommons@georgiasouthern.edu](mailto:digitalcommons@georgiasouthern.edu).



Volume 79  
Number 76

## A world of fun

Get out of the 'Boro with  
Study Abroad | HIATUS, p. 8Our Hiatus editors  
babble about 'Babel'

| HIATUS, p. 9

## THE GEORGE-ANNE DAILY

THURSDAY, FEBRUARY 15, 2007

## Plant a tree, save the world



Plant, or hug, a tree on Arbor Day this year.

By Ashe Johnson

Staff writer

Take the time to hug a tree this weekend. No really, do it! Georgia's official Arbor Day is this Friday, Feb. 16.

To celebrate, Georgia Southern Botanical Garden, Keep Bulloch Beautiful and the Bulloch Council of Garden Clubs have come together to sponsor the third annual Arbor Day Celebration.

The festival takes place in downtown Statesboro on Saturday, Feb. 17 from 10 a.m. until 1 p.m.

The purpose of Arbor Day is to encourage the planting and cultivation of trees. Arbor Day began in 1872 as an effort to promote settle-

Campus environmental group SAGE to volunteer during Arbor Day events  
See more on page 4.

ment in the tree-barren state of Nebraska.

By 1894, the holiday was being celebrated nation-wide. In order to ensure premium conditions for tree-planting, each state has a different date for Arbor Day that best suits its climate.

Join fellow Statesboro residents this Saturday in learning about the benefits of trees, as well as how to properly care for them.

"They're an essential part of our ecosystem," says Abby Johnson, a freshman at Georgia

Southern University. Her view is that trees contribute to a clean environment and also points out that "a lot of everyday items come from trees."

"We should learn how to take care of them," said Abby.

Free tree saplings will be given out at the festival along with free food and arboreal advice. There will be guided walks on a nature trail, presentations by professionals from Future Trees about how to properly plant a tree, and how to prune a tree, information booths, and nature crafts.

"It's an opportunity for the community to celebrate the trees within the community

see ARBOR, page 4

CENTENNIAL  
1906-2006

File Photo

Roger Moore soars above the competition as the first black athlete at GSU.

## Athletes through history

Editor's note: Georgia Southern celebrated its 100th anniversary in December. Each Thursday The George-Anne Daily will highlight something from our past.

By Rachel McDaniel

Executive editor

Georgia Southern has a rich tradition of outstanding athletes and teams, contributed largely by African American players throughout the years.

GSU was the first school in the University System of Georgia to financially support black athletes, with the first scholarship going to basketball player Roger Moore.

Moore was a letterman in his first year in 1967, and set several GSU records, including scoring 1,200 career points from 1967 to 1969, and grabbing more than 1,000 career rebounds.

Moore was one of only seven black students attending at the time. Catherine Davis became the first black student to receive her bachelor's degree, and she spent time with Moore and other students.

"Our favorite meeting spot was in an alcove near the entrance to the gym," said Davis. "We would meet there and talk about everything, including the new basketball players, Roger Moore from Savannah's Beach High School and that cute guy, Gene Brown."

Through the years, several other athletes from GSU have made headlines and history after graduating, including football players Fred Stokes and Earthwind Moreland, who were the only athletes from GSU to take home Super bowl rings. This year, GSU alum Adrian Peterson played in the Super bowl with the Bears.

Tracy Ham is one of the best football players to graduate from

see ATHLETE, page 4

## Centennial celebration underway

By Samantha Graves

Staff writer

Throughout the decades, Georgia Southern has served as an institution and home for many people within and beyond the community.

Now, both students and faculty have the chance to pay tribute to this great school by participating in the Georgia Southern Centennial Celebration.

The Centennial Celebration is scheduled to take place on March 30 at Sweetheart Circle, surrounding the very foundations of this school.

It is expected to be a commemoration that will feature games, live music, fireworks, and festivities honoring Georgia Southern's past, present, and near future.

"It is more of a campus community centennial celebration and what we are doing is food, fireworks, games for the kids provided by the RAC, and shows from different departments," said Melanie Mosley, an assistant in the University Advancement Department.

Behind this celebration is University Advancement, but many other departments such as the RAC, Nursing Department and the school Museum are lending their expertise to the process.

Last week on Feb. 7, there was a meeting for all those who wanted to help in the centennial preparation and activities. Those who didn't make the meeting are still encouraged to get involved.

Anyone who wants to be informed about preparations can speak with members of University Advancement.

Different associations, like the Nursing Center or the RAC, are still looking for students and staff members to volunteer for their cause.

Dean George Lewis was able to offer a few words about the school's centennial and what further celebrations he hopes to see.

"The main purpose is for students to have fun and to combine fun and education. This [centennial] will help people view the history of Georgia Southern and the world," said Lewis.

see CELEBRATE, page 4



Erica Johnson, a theater major and music minor, plays the piano in Hendrix Hall Wednesday.

## The music must go on



Tao Ventre/STAFF

Broadcast major Ross Wetherald plays the euphonium in Hendrix Hall Wednesday.

By Avina Darmadjaja

Assistant news editor

Georgia Southern invested roughly \$8 million to renovate the Foy Fine Arts Building, permanent house of the music department.

"The centerpiece of our project is the recital hall," said Allen Henderson, Chair of the department of music. "We will also add a lobby on to the side of the building near the Russell Union, provide adequate studio space for faculties to teach in, add more practice rooms and improve rehearsal facilities for band, choir, wind ensemble and opera."

In the past, the third and fourth floor of Foy was used for painting studios. Once the renovation is completed, the whole building will be a much-improved facility designed especially for the music department.

Although the end result is undeniably positive, music students along with their professors are not looking forward to spend the next eighteen months in an

abandoned dorm, Hendricks Hall.

"There are some interesting odors wafting throughout the dorm rooms and hallways," said Adam Con, Chair of music education.

Con also said that there is plenty of construction noise on the side of the dorm because of Veazy Hall and in the front with the construction of the new black box theatre. Construction noise and music is never a good mix.

"Waiting for that perfect breath of silence to either start music or to let music exhale just isn't possible," said Con.

There is another important issue: faculty and students are scattered all over campus. According to Con, the music program is unique because faculty and students work very closely.

This requires adequate space to organize and create musical sounds. The construction obviously benefits future students, but existing students also deserve the same nurturing environment.

see MUSIC, page 4

TODAY

 High: 52 | Low: 34  
Partly cloudy

FRIDAY

 High: 46 | Low: 28  
Sunny

SATURDAY

 High: 56 | Low: 26  
Partly sunny

SUNDAY

 High: 50 | Low: 34  
Partly sunny

Campus ..... 2  
Campus ..... 3  
Briefs ..... 4  
News ..... 5

Classifieds ..... 6  
Sports ..... 7  
Hiatus ..... 8  
Hiatus ..... 9, 10

ROCKIN' THE BORO

Check out The Hiatus calendar for local shows and events going on throughout the week. See the side bar for a list of events on page 10.



## CALENDAR

Thursday, February 15

9 a.m. - 5 p.m.  
100 Years at GSU  
Museum

12 p.m.  
Welfare in America  
Russell Union 2071

12:30 p.m. - 1:30 p.m.  
Beginner's sign language  
Russell Union 2042

2 p.m. - 3 p.m.  
Coretta Pittman presentation  
IT 3204

4 p.m. - 6 p.m.  
Faculty senate  
Russell Union Ballroom

5 p.m. - 6:30 p.m.  
Make-a-wish  
Russell Union 2043

6 p.m.  
Minorities in Medicine  
IT auditorium

6 p.m. - 9 p.m.  
Street law program  
Russell Union 2047

7 p.m.  
Minorities in Law and Politics  
Education auditorium

7 p.m. - 10 p.m.  
The Jokers model elimination  
Russell Union 2080

7 p.m. - 10 p.m.  
Top model elimination  
Russell Union 2080

7:30 p.m. - 11 p.m.  
Lannie Jo Scott award banquet  
Nessmith Lane Ballroom

8 p.m. - 10 p.m.  
Dimes model practice  
Russell Union 2048

8 p.m. - 10 p.m.  
Movie: Borat  
Russell Union Theater

# Dining etiquette brightens career prospects

By Elliot S. Volkman  
Staff writer

First impressions are long lasting.

As college students getting ready to graduate, dining etiquette is one way to leave a positive first impression that will hopefully impress their future employer.

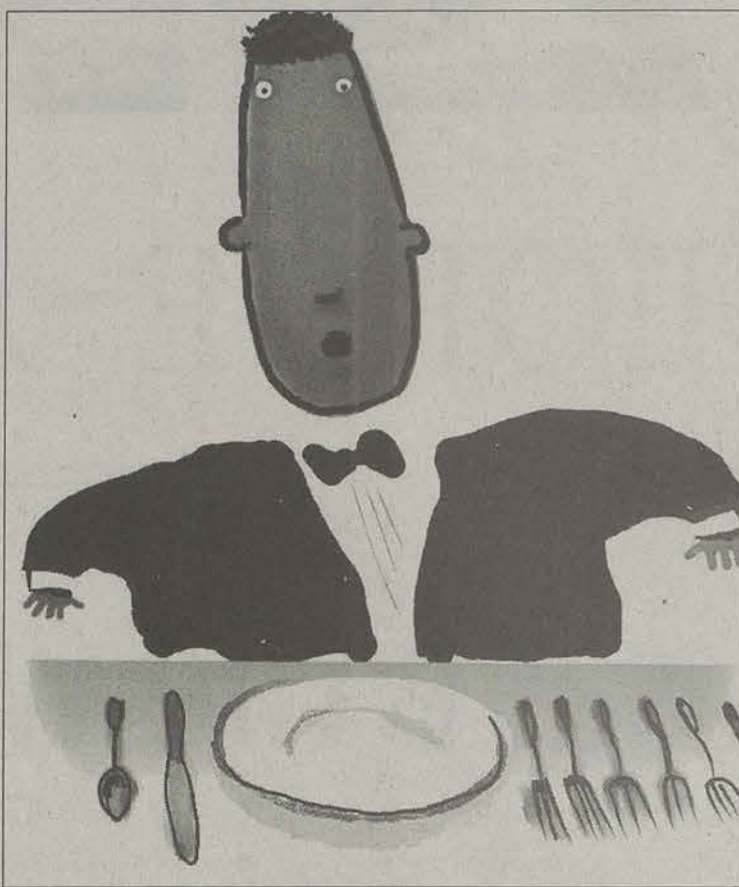
Appearance and skills of a prospective employee may be important; however, keeping that steak sauce off of your well-ironed shirt may save you from embarrassment.

With the knowledge of proper dining etiquette you can get that extra professional touch.

Amy Rowell, assistant director of student affairs, will be organizing the bi-annual event of eight years, Dining for Success.

According to Rowell, employers often invite prospective employee for a dinner interview.

Employers purposely set up the interview over a meal to see how you conduct yourself in a more



Special photo

social situation.

Therefore, dining etiquette can be critical to career and job search success because you do not want your future employer to see you as messy and improper.

"When you have a meal with an employer, you definitely want to know proper dining etiquette," said Rowell. "Entertaining a new client also requires proper dining etiquette."

Some dining etiquette tips include: table manners, which utensil is for what, and last but not least, how to use a napkin.

Seniors now have a chance to brush up on these dining skills before the Eagle Expo by attending the Dining for Success program on Tuesday, Feb. 27 from 5:30 p.m. - 8:30 p.m. in the Union Ballroom.

Students should also dress appropriately in business attire. They will be able to network with well-known companies such as Target, Liberty Mutual and a handful of others before the event begins.

"It provided me with great

networking skills with students and employees in my major," said Alicia Holmes, recent attendee of the Dining for Success program.

The deadline to reserve a seat is Feb. 16 and the cost is \$20; however, when you arrive at the event your check will be returned. So, in essence, you not only receive free dining etiquette tips but also a free meal!

There are several seats available and you do not need to be a senior to attend.

You may download the registration form from the career services website at <http://students.georgia-southern.edu/career/> and submit it to room 1047 of the Williams Center.

"You need to know how to eat right to impress the employer, they don't know who you are so it gives them an impression," said Crystal Greene, another recent attendee.

This is an evening that will not only allow you to eat something tastier than week old bologna, but will also benefit your future.

## SIFE uses grant to educate women

### GSU News Service

Students In Free Enterprise (SIFE) team has been awarded a \$1,000 grant from HSBC Global Education Trust.

The grant will fund a project to educate women who have experienced domestic violence about the benefit of saving early for retirement.

"Student members of the SIFE team will be working with representatives from BB&T in Statesboro to educate a group from Safe Haven, a shelter for battered women, about the benefits of saving early for retirement," said assistant professor John King.

King and assistant professor Amanda King, are faculty members in the School of Economic Develop-

ment at Georgia Southern and serve as faculty advisors to SIFE.

"As part of the project, SIFE will match each woman's monthly contributions (up to \$25 per month) to a systematic saver CD at BB&T for one year," said John King.

"At the end of the year, the money in the CD will be used to open an individual retirement account for each participant," he said.

While the SIFE chapter has funds to initiate this project, it welcomes support from individuals or corporations to help carry out this effort.

If you would like to help with the SIFE project, contact John King at [jking@georgiasouthern.edu](mailto:jking@georgiasouthern.edu) or at 681-0388 or Amanda King at [aking@georgiasouthern.edu](mailto:aking@georgiasouthern.edu) or at 681-0535.

## GSU professor helps set global nursing standard

### GSU News Service

Jean Bartels, Georgia Southern professor and chair of the school of nursing, was one of thirty international leaders in nursing who met recently in Bangkok, Thailand.

The purpose of the meeting is to begin developing global standards for basic nursing and midwifery education.

The meeting was called by the World Health Organization (WHO) and Bartels attended as a representative of the American Association of Colleges of Nursing.

"The goal of this meeting was to define minimum education standards for an estimated 11 million

nurses and midwives around the globe," said Bartels.

"If we reach a consensus on minimum requirements for nursing education, the result will be a better educated health care work force," she said. "Ultimately, all nations will hopefully have better patient outcomes."

According to a report from Sigma Theta Tau International, the honor society of nursing, the lack of global education standards creates issues for quality care, the immigrating nurse, the potential employing agency and the recipient country.

While many nations have developed standards for nursing practice and education, the standards usually apply only to one region or

country.

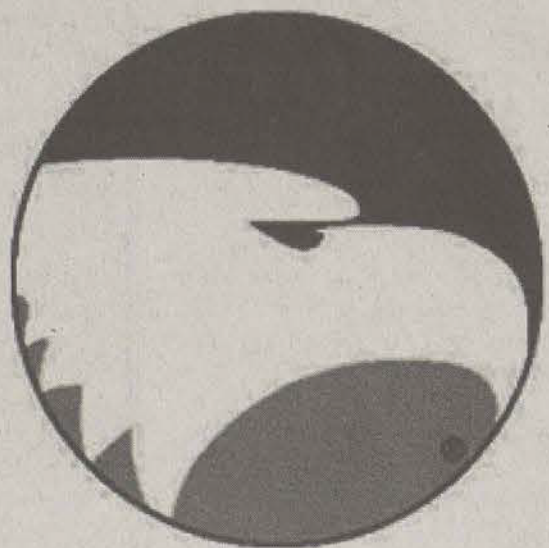
During the three-day meeting, participants developed key elements for proposed standards in five areas: educational program admission criteria; educational program development requirements; educational program content components; nursing and midwifery faculty qualifications; and nursing and midwifery program graduate qualifications.

The next steps in developing standards include a comprehensive review of the standards that exist, development of proposed global standards and broad circulation and review of the proposed standards.

The target date for completion of the WHO and Sigma Theta Tau report is January 2008.

Contract Issues?  
Lease Questions?  
Been Arrested?

Call today for **FREE**  
Legal Services!



Call 486-7731

to schedule an appointment with

**Attorney Troy Marsh!**

or make an appointment in the Dean of Students  
office in the Russell Union room 2017

Brought to you by

**STUDENT GOVERNMENT ASSOCIATION**

Call  
The Georgia  
Tobacco  
Quit Line

**1-877-270-STOP**

TTY 1-877-777-6534 for the hearing impaired



**Live  
healthy  
Georgia**



GEORGIA  
CANCER  
COALITION

[www.livehealthygeorgia.org](http://www.livehealthygeorgia.org)

This ad is a public service for the Georgia Cancer Coalition and  
the Georgia Department of Human Resources.



# Students hop over to Big Frog Wilderness

By MJ Trahan  
Staff writer

Join Southern Adventures (SA) next weekend for backpacking in the Cherokee National Forest of the Appalachian Mountains.

Challenge yourself to the rugged, but breathtaking trails of the Big Frog Wilderness next Friday, Feb. 23 through Sunday, Feb. 25.

Big Frog Wilderness is located on the north Georgia border, stretching into the southeastern mountainous area of Tennessee.

Some of the views from mountain trails are said to be among the best in the country.

One of those is Big Frog Mountain, reaching an elevation of 4,224 feet. The mountain is said to look like a frog when viewed in profile. There is also a large network of trails that the hiker can explore.

Although not a high mountain, Big Frog seems to dominate its surroundings because it stands completely alone.

What's so great about Big Frog? "The Big Frog Wilderness, to-

gether with the Cohutta Wilderness, forms the largest continuous wilderness area east of the Mississippi River," said Matt Parker, graduate assistant and trip leader.

"Big Frog itself covers 8,082 acres. A lot of the views we'll see from the mountain are from some of the highest points in the region, as well."

All Southern Adventures trips seek to provide a unique wilderness experience for all participants.

The hikers will travel in small groups, stay in tents, carry all our own gear and rely on no one but themselves.

On a Southern Adventures trip, you can expect to push your personal limits, learn new skills, gain life lessons and build new relationships.

"One of the greatest things about our trips is that people don't need any prior experience to participate. Beginners, as well as experienced adventurers, will benefit from the time spent outdoors," said Matt McBride, graduate assistant.

The trip holds enough space for eight backpackers and two trip lead-

ers from Southern Adventures.

Cost is \$30 for the whole weekend. The registration deadline will be Friday, Feb. 16, and a pre-trip meeting will begin the following Monday, Feb. 19 at 8:00 p.m. in the Southern Adventures Center.

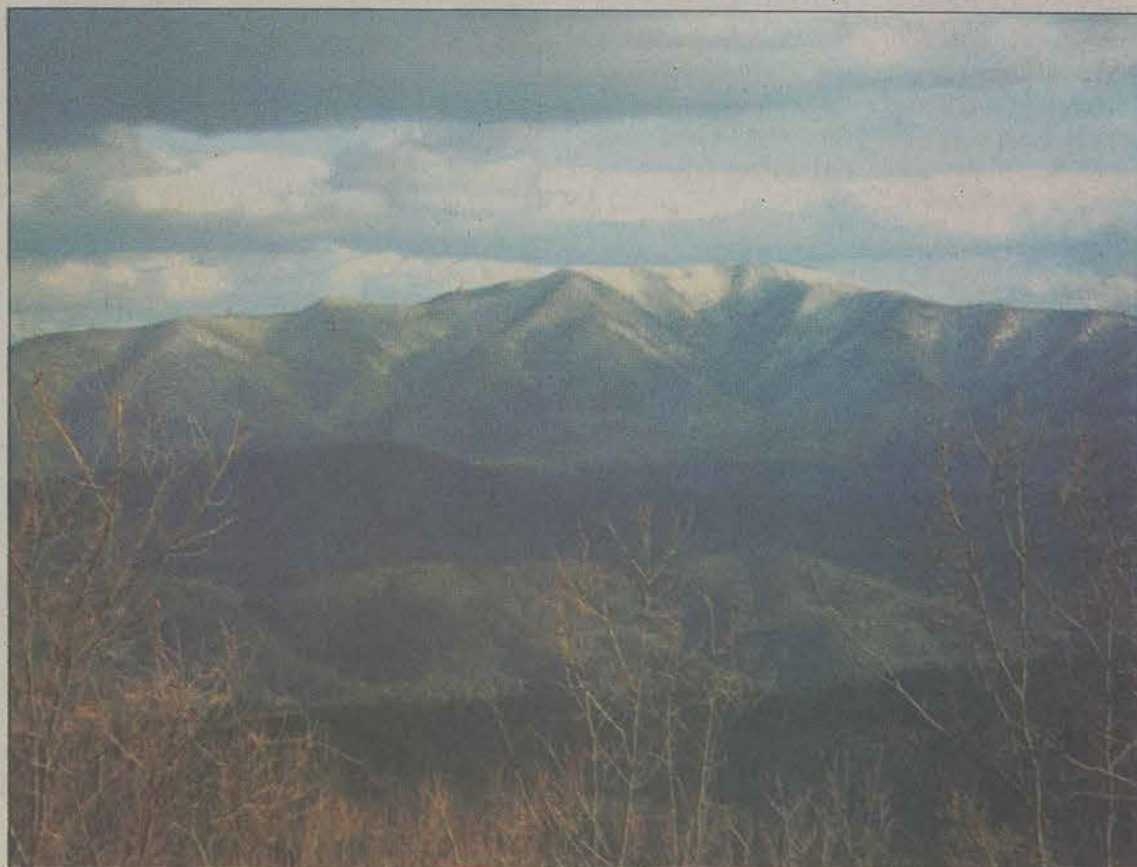
"Our pre-trip meetings are really important because we go over the need-to-know information," said graduate assistant, Daniel Flanders.

"We discuss topics such as safety on the trail, the itinerary, how to use equipment, the menu plan, and answering any questions. And we have free pizza, why not eat dinner while you're at it?"

Whether you're an experienced backpacker, or just looking to try something different for a weekend, Southern Adventures would love to take you along.

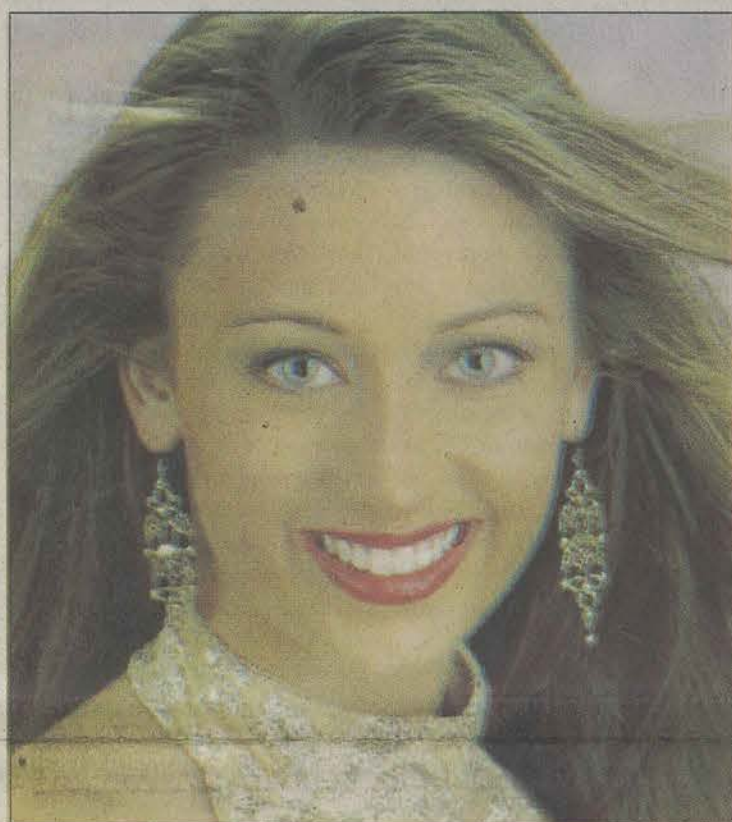
You might discover you really enjoy the outdoors. Maybe it would just be nice to get some fresh air.

For further information, contact Matt Parker at 912-681-5436 or visit the CRI website at <http://services.georgiasouthern.edu/cri/>.



Special Photo

Big Frog Mountain is located in southeastern Tennessee in the Big Frog Wilderness. The mountain has an elevation of 4,224 feet.



Special Photo

Toni Lynn Gordon was recently crowned Miss GSU 2007.

## Five questions with Miss GSU

**1Q: How long have you been doing pageants?**

**A:** I began competing in the Teen Miss division when I was a junior in high school. I won the title of Teen Miss Wayne County, which qualified me to compete at the Teen Miss Georgia Pageant. I serve as a preliminary titleholder for Miss Elliottia 2005 and Miss Wayne County 2006. I also competed in the Miss Georgia Scholarship Pageant.

**2Q: What motivated you to participate in pageants?**

**A:** I have been dancing and twirling since age three, and I love to perform. When I was younger, I mainly entered pageants so that I could perform my talent on stage. I wanted to use the Miss America Organization as a way to promote my platform, Extracurricular Activities Paving the Road to Success. Preliminary pageants also provide scholarship aid, and as a college student, I always need a little extra spending money.

**3Q: What is your platform all about?**

**A:** I wanted to choose a platform that was close to my heart. Through my own experience and involvement, I know participation in extracurricular activities helps to equip those involved with the tools, drive and experiences necessary to obtain success. I have seen a direct correlation between participation and obtaining the necessary skills to better myself as an individual and to help further my goals. I hope to provide an example for others to follow as I encourage them to participate in extracurricular activities.

**4Q: How did you feel after you won?**

**A:** I am very shocked and excited! I am looking forward to giving back to a university who has given so much to me the past three years. I cannot wait to represent such a prestigious university at the Miss Georgia Scholarship

**5Q: What are some common misconceptions about pageant participants?**

**A:** Many people assume that pageant girls are vicious behind the curtain, but that is not the case. All of the contestants in Miss GSU were very sweet, honest and helpful.

## The George-Anne Daily needs writers!

We are looking for hardworking, motivated, creative students who are interested in covering campus, local and community events.

If you are interested, contact us at [ganewsed@georgiasouthern.edu](mailto:ganewsed@georgiasouthern.edu), call us at 912-681-5246 or stop by the newsroom in the Williams Center, room 2023.



**The Sir Shop**

TWO LOCATIONS

Statesboro Mall  
764-6924

Main Street Village  
871-4962



**COSTA DEL MAR**



**Almost SOLD OUT!**

**Act Fast: They're Almost Gone!**

**Copper Beech**  
TOWNHOMES

### Amenities

- Private bath
- Extra guest bath
- Walk-in closet
- Washer/Dryer
- Free Extended Cable
- Clubhouse
- Pool
- High Speed Internet
- Game Room
- 24-hour Fitness Center
- Optional Furniture Package

(912) 681-8307 FAX: (912) 871-3721

Located behind Sonny's on the Hwy. 67 By-pass

Offices Hours - 9am-6pm, Monday - Friday & 12pm-5pm, Saturday

[www.CopperBeechTownhomes.com](http://www.CopperBeechTownhomes.com)

### STATEMENT OF OPERATIONS

The George-Anne Daily is the official student newspaper of Georgia Southern University,

owned and operated by GSU students and utilizing the facilities provided by GSU. The newspaper is the oldest continuously published newspaper in Bulloch County and Statesboro, Ga. The newspaper is a designated public forum for the Georgia Southern University community. The ideas expressed herein are those of the editor or the individual authors and do not necessarily represent the views of the Student Media Advisory Board, the administration, the faculty and staff of Georgia Southern University, or the University System of Georgia. The George-Anne is published four times weekly (Monday-Tuesday-Wednesday-Thursday) during most of the academic year and six times during summers. Any questions regarding content should be directed to the editor at by phone at 912/681-5246 or fax at 912/486-7113.

Readers may access the newspaper and its archives staff by visiting our web site at <http://www.godaily.com>.

### SUPPORT

The G-A is funded primarily

through revenue from advertisements placed in the paper and receives additional support, in part, from the Student Activities Budget Committee.

### STUDENTS BEWARE

The G-A screens all advertisements prior to publication. The newspaper strives to accept ads for legitimate products and services only. Students are urged to exercise caution when replying to ads — particularly those which require a credit card number, other personal information, or money in advance of the delivery of a product or service. Students are also urged to report to the newspaper any suspicious offers which they might see in an ad. Remember, if an offer seems too good to be true, it probably is.

### FREEBIE INFO

ALL FREE student and faculty ads to be run in the G-A must have a NAME, P.O. BOX and PHONE NUMBER. Ads will be rejected if they do not have this information. NO EXCEPTIONS.

### OFFICES, MAIL, PHONES

Room 2023, F.I. Williams Center. The George-Anne, P.O. Box 8001, Georgia Southern University, Statesboro, Ga. 30460. 912/681-5246 (News) or 912/681-5418 (Advertising) or 912/486-7113 (Fax); 912/681-0069 (adviser).

### EMAIL DIRECTORY

Executive Editor  
[gaeditor@georgiasouthern.edu](mailto:gaeditor@georgiasouthern.edu)  
Managing Editor  
[gaedit@georgiasouthern.edu](mailto:gaedit@georgiasouthern.edu)  
News Editor  
[ganewsed@georgiasouthern.edu](mailto:ganewsed@georgiasouthern.edu)  
Advertising  
[ads@georgiasouthern.edu](mailto:ads@georgiasouthern.edu) or [ads1@georgiasouthern.edu](mailto:ads1@georgiasouthern.edu)

### ADVERTISING

The George-Anne reserves the right to refuse any advertisement.

**DISPLAY AD DEADLINE:** The deadline for reserving space and submitting advertising copy is Noon, one week prior to the intended publication date.

**FOR MORE INFO,** rate cards, sample publications, contact: Lindsey Anthony, Marketing Director, ADS, (912) 681-5418, [ads@georgiasouthern.edu](mailto:ads@georgiasouthern.edu); or Bill Neville, Student Media Coordinator, (912) 681-0069, [bneville@georgiasouthern.edu](mailto:bneville@georgiasouthern.edu)

### PROOFING/ERRORS/OMISSIONS:

The newspaper makes every reasonable effort to present correct and complete information in advertisements. However, the advertiser is responsible for proofing the ad upon publication and should notify the newspaper immediately in the event of an error. The newspaper is not responsible

for any errors in advertisements and its liability for adjustments is limited to the amount of space the error occupied in the ad. Further, the newspaper is not responsible for any damages caused due to an ad's omission from a particular edition and its responsibility solely is to reschedule the ad in the next regular edition at the regular advertising rates.

**CLASSIFIED ADS:** Free classified ads from students, faculty and staff must be non-commercial in nature and submitted in writing, with the name of the sender, local address, and phone number. No free ads taken via telephone — at this price we don't take dictation. One free ad per person per week. Commercial classified are available only from our online site at [www.gsads.com](http://www.gsads.com). The price of commercial ads is \$7 for 200 characters for line ads. Ads must be paid for using a major credit card. For classified display ads, contact [gaaclass@georgiasouthern.edu](mailto:gaaclass@georgiasouthern.edu)

**CIRCULATION INFORMATION:** Mail subscriptions are not available at this time. However, readers may visit our web site for free access to current and past issues. Visit [www.stp.georgiasouthern.edu](http://www.stp.georgiasouthern.edu). It is the goal of the newspaper to have its edition placed on-line within 24 hours of

publication. Breaking news will be placed on-line as warranted. The G-A is distributed free of charge on the Georgia Southern University campus through delivery sites located in campus buildings, at off-campus sites, and in residence halls.

### NOTICE

Readers may pick up one free copy, and a second for a roommate or acquaintance, at distribution sites. Additional copies are 50 cents each and are available at the Williams Center. However, unauthorized removal of additional copies from a distribution site constitutes theft under Georgia law, a misdemeanor offense punishable by a fine and/or jail time. Editors will seek to have any person(s) who removes more than the authorized number of copies from distribution sites prosecuted to the full extent of the law.

### NOTE

We gratefully acknowledge the theft of one of our slogans — "Liked by Many, Cussed by Some, Read by them All" — from Robert Williams of the Blackshear Times. Call Bob and he can tell you who he stole it from originally. Credit for the other — "Covering Campus like A Swarm of Gnats" — goes to G-A alum Mike Mills.



## Arbor

from page 1

and learn about them," said Stephanie Tames, spokesperson for the Georgia Southern Botanical Garden.

Tames said that the festival is a great way for homeowners to learn how to provide better care for

their trees as well as an opportunity for GSU students to become involved in environmental awareness.

As more and more of Georgia's forests become cleared and industrialized, it is extremely important for people to remember the environment and do their part to keep it clean and healthy.

## Music

from page 1

"There was very little done inside the Hendricks Hall to make it work for a music program," said Con.

One thing Hendricks Hall needs desperately is sound isolation. "Sound-proofing would help because it is unbelievably loud," said Schmid, professor and jazz director.

"Some of us even have to come up with our own money and put up some acoustic panels and rugs to try to absorb the sound."

The department is aware of these conditions, but unfortunately they have

no funds left to make the temporary home more comfortable.

"We realize that we don't have the ideal teaching situation for a period of time," said Henderson.

"But just as other departments have experienced in the past, the best way to deal with the situation is to remain patient until the new and improved Foy is finished."

But how does this situation affect the learning process and performance?

"There's nothing like the sound of beginning and accomplished students. Just walk around Hendricks Hall; you'll hear every spectrum of musical style, performance practice, skill and teaching practice," said Con.



Tao Ventre/STAFF

Students get up close and personal with nature. From left to right, Sage treasurer Ohki Komoto, Sage president William Russell, recent graduate Michael Griffin, Sage member Esther Kim and tree enthusiast Eric Dolive.

## SAGE joins the community in efforts for a greener tomorrow

Campus environmental group SAGE (Students for a Green Earth) is taking steps toward a greener world this weekend.

The group will be volunteering alongside Keep Bulloch Beautiful at the third annual Arbor Day Celebration.

"It's a really good educational tool to get people involved, especially around the community," said SAGE president William Russell.

SAGE is very active in the community, with their major yearly events being The Great American Cleanup, with Keep

Bulloch Beautiful, and Earth Day. Russell says events like these help the community by "getting people to think greener at a younger age."

"We're trying to start them off on the right foot," said Russell.

Join SAGE and the community on Saturday, Feb. 17 from 10 a.m. to 1 p.m. to celebrate Arbor Day.

To get involved with SAGE, stop in for one of their meetings, held every Wednesday in the Math and physics building in room 2041 at 5 p.m.

## Athlete

from page 1

GSU. He led the team to back-to-back national championships with Erk Russell in 1985 and 1986.

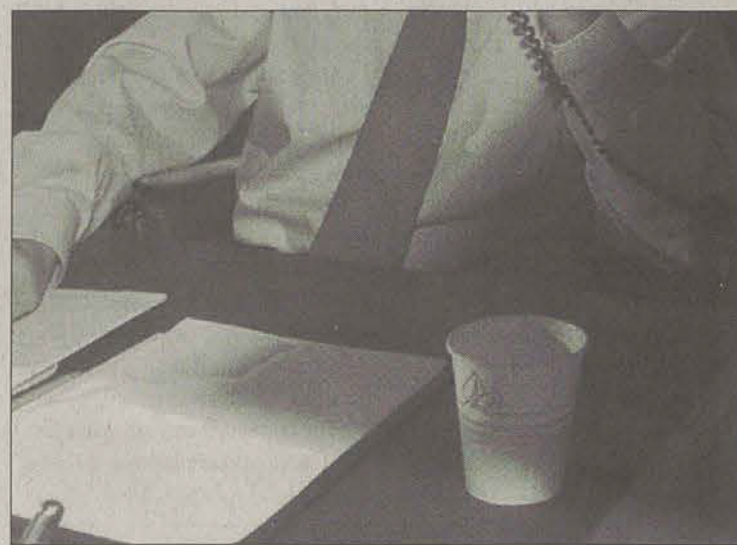
Tracy Ham and Peterson are the only GSU players to have retired football jerseys at GSU.

Ham became a letterman for the

four years that he played at GSU. He passed for more than 1,400 yards three years in a row, from 1984 to 1986, and rushed for more than 1,000 yards in 86.

Ham holds several GSU records, including the longest pass at 79 yards in 1986, most passes completed at 40 in 85, most passing yards for a single game at 419 in 1985 against Furman and most total offensive plays in the same game.

## Study shares danger of office space items



Special Photo

Office bacteria can have an affect on your health.

McClatchy Newspapers

Your office desk harbors far more bacteria than your workplace restroom, and if you're a woman, chances are your workspace has more germs than your male co-workers, a new research report shows.

Women have three to four times the number of bacteria in, on and around their desks, phones, computers, keyboards, drawers and personal items as men do, according to a recent study by University of Arizona Professor Charles Gerba showed.

Gerba, a professor of soil, water and environmental sciences, tested more than 100 offices on the UA campus and in New York, Los Angeles, San Francisco, Oregon and Washington, D.C. The \$40,000 study was commissioned by the Clorox Co.

"I thought for sure men would be germier," Gerba said. "But women have more interactions with small children and keep food in their desks. The other problem is makeup."

Women's desks typically looked cleaner. But the knickknacks are more abundant, and cosmetics and hand lotions make prime germ-transfer agents, Gerba said. Makeup cases also

make for fine germ homes, along with phones, purses and desk drawers.

Food in desk drawers also harbors lots of microorganisms, and it is more abundant among female office workers. Gerba found 75 percent of women had munchies in their desks.

"I was really surprised how much food there was in a woman's desk," he said. "If there's ever a famine, that's the first place I'll look for food." The news isn't all negative for the fairer sex. Gerba found the worst overall office germ offender is men's wallets.

"It's in your back pocket where it's nice and warm, it's a great incubator for bacteria," Gerba said. Another hot spot for bacteria in men's offices, the personal digital assistant. "Men tend to play with their Palm Pilots more," Gerba said. The average office desktop has 400 times more bacteria than the average office toilet seat, Gerba said.

Gerba said using a hand sanitizer and using a disinfectant on office surfaces helps, with 25 percent fewer bacteria found on surfaces that were regularly disinfected. "You don't have to go crazy with it, but with the key areas, desktops, phones and keyboards probably need to be disinfected every once in a while," he said.

## Celebrate

from page 1

He and his staff are creating the time capsule for GSU, and other activities for the residence halls.

"It's going to be a residence centennial hall competition. They will be representing different decades

and decorating their hall to suite their decade."

Students will be advised on more events coming up in later in the year. Students or staff with question can contact University Advancement, or SGA.

The Centennial Celebration is scheduled for March 30 at Sweetheart Circle.

# "THE CARIBBEAN IN THE 'BORO!!"

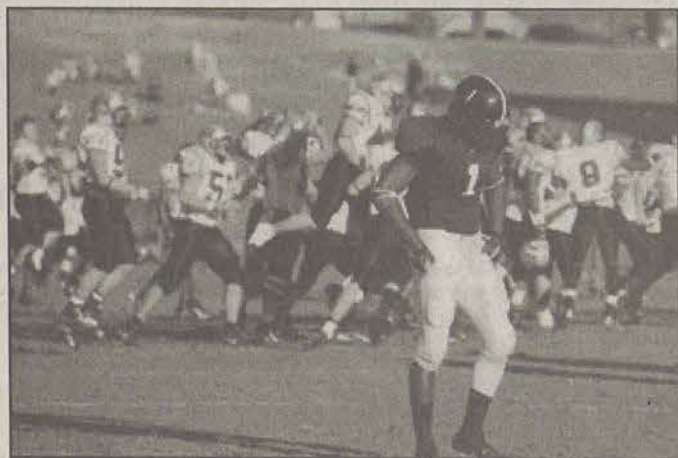
NEW STUDIO, 2 & 3 BR CONDOS

RESERVE ONE NOW!

# Caribe

RUCKER LANE • HWY 301 ACROSS FROM GSU • 681-SURF

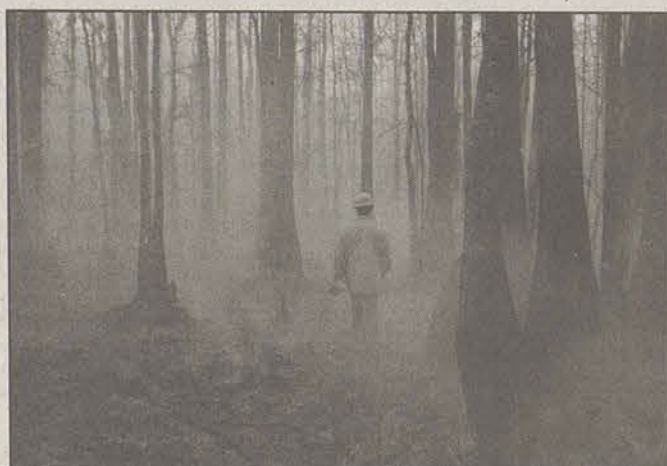
## Congratulations to Us! The G-A's Award Winning Photos!



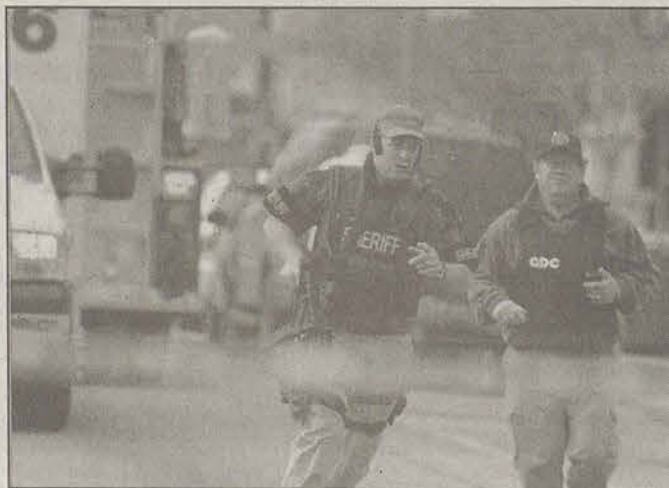
Tao Ventre, First, Best Sports Photography



Grayson Hoffman, First, Best Editorial or Feature Photograph



Grayson Hoffman, First, Best News Photography



Chase Lanier, Second, Best News Photography

## The George-Anne Daily

The Number 1 newspaper serving the Number 1 readers in Georgia



**CLINICAL TRIALS**  
AT THE  
MEDICAL COLLEGE OF GEORGIA

## Women Helping Women

### The Herpevac Trial for Women: A Herpes Vaccine Study

For women age 18-30 without oral or genital herpes

This study of an experimental vaccine might protect women against herpes.

Participants receive:

- Free screening for herpes
- An investigational vaccine against herpes or hepatitis A
- Financial compensation for time and travel

For more information, contact:

Medical College of Georgia  
706-721-2535  
877-643-1414 (toll-free)  
womens\_health@mcg.edu  
www.herpevaccine.nih.gov

GSU study participants  
will be seen at the GSU  
Health Center

This vaccine CANNOT give you herpes.



NATIONAL NEWS

# Skip the textbook, play the video game

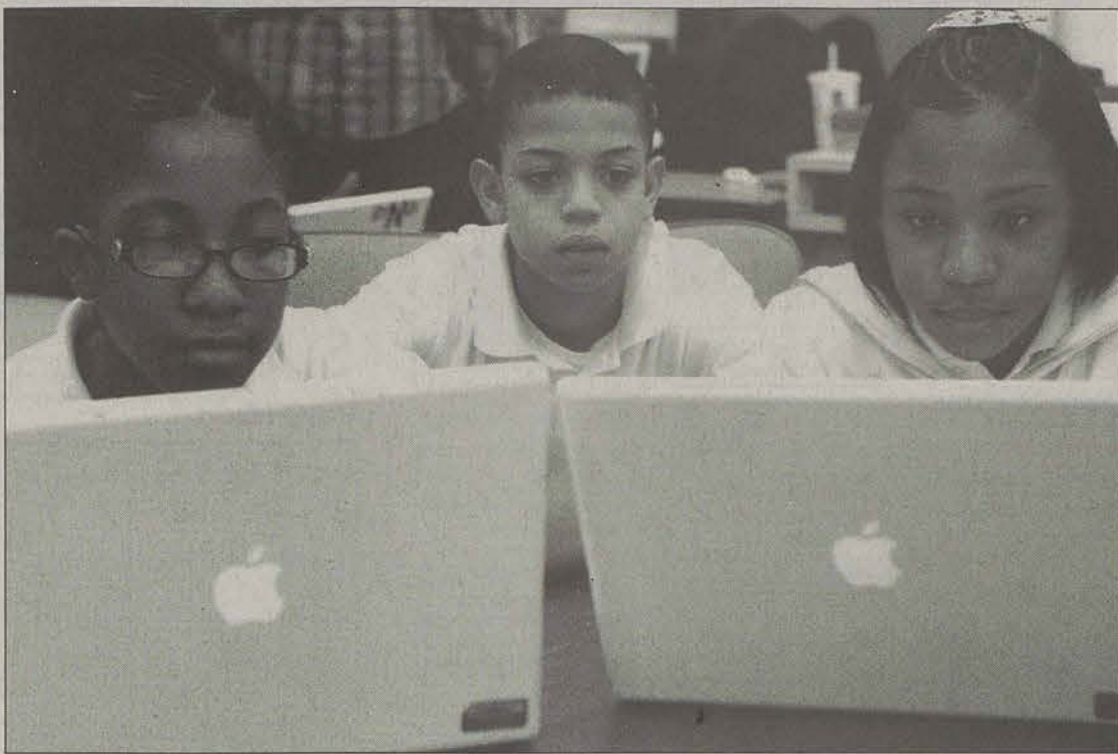
McClatchy Newspapers

In a series of research projects as likely to thrill young people as they are to horrify their parents and teachers, academic experts across the country are unearthing educational benefits in the digital games that surveys show are now played by more than 80 percent of American young people aged 8-18.

At the top of the experts' lists are simulation and role-playing games, often played on the Internet alongside thousands of other participants, because of the vocabulary, reasoning and social skills they can boost. But even some of the most violent games, such as the notorious Grand Theft Auto, have some valuable lessons to teach in the right circumstances, researchers are finding.

Some researchers even suggest supplanting much of the traditional back-to-basics K-12 curriculum with a new generation of game-based materials to capture the increasingly short attention spans of today's youth.

"Right now in American schools we spend most of the first six or seven years of math education teaching kids to do what a 99-cent calculator does,"



Scott Strazzante/MCT

North Kenwood/Oakland Middle School students Robbie Hawkins (from left), Diamon McKelvin and R'Mani Haulcy work on video games at an after school class in Chicago, Illinois, February 7, 2007.

said David Williamson Shaffer, an education professor at the University of Wisconsin-Madison and author of a recent book, "How Computer Games Help Children Learn."

"We have this view that schooling

is the natural and inevitable way to get kids ready for life in the world," said Shaffer, a leader in the field of digital learning.

"But it shouldn't come as a surprise that when our economy has changed,

when innovation and creativity are much more important than rote memorization, that the system needs some real updating to train kids how to use computer games to solve problems in the real world."

NATIONAL NEWS

# New policy may speed deportations

McClatchy Newspapers

Herman Martinez fled when right-wing death squads targeted him and many other leftists in El Salvador.

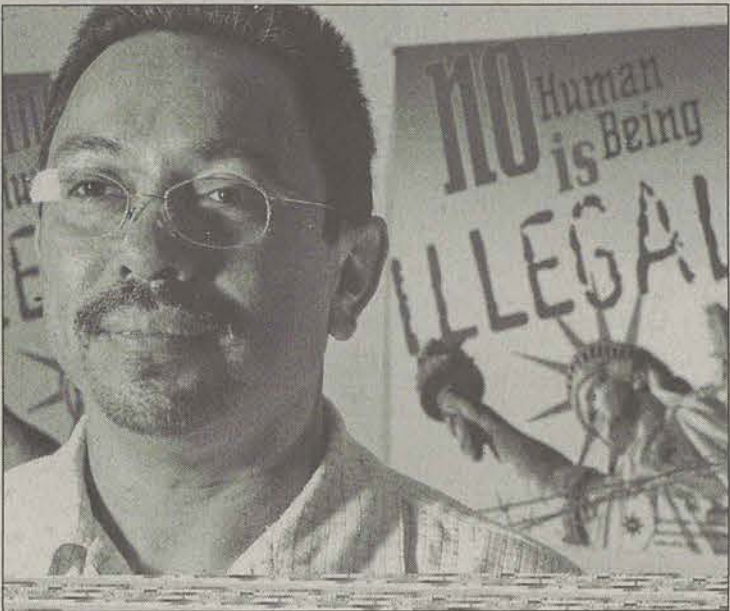
He sneaked into the United States in August 1980, and remained undetected until immigration agents detained him in May 1985 and placed him in deportation proceedings.

Now an immigrant rights activist, Martinez was among tens of thousands of Salvadorans who in the 1980s were discouraged from seeking asylum. That practice ended in 1988 when a Los

Angeles federal judge issued an injunction ordering immigration authorities to advise Salvadoran immigrants about their right to seek asylum.

The Orantes Injunction is now under official attack. The Department of Homeland Security is pressing a federal court in Los Angeles to lift it, and for Congress to prohibit similar future injunctions.

The fight is among new strategic moves by Homeland Security to quicken the deportation of undocumented Central American immigrants and gain control of a porous border.



AI Diaz/MCT

Herman Martinez is a community social advocate for American Friends Service Committee in Miami, Florida.

NEWS OF THE WEIRD

From Universal Press Syndicate

## Lead story

• Alternative-world online games like Second Life allow players to create identities and personalities, to communicate, and to interact commercially in a self-contained universe. Players buy, sell, invest and generate wealth using a virtual monetary system. Currently, Second Life players bump up against real-world taxes only if they earn real-world money from cashing out in-game wealth, but a congressional economist told Reuters in October that the House and Senate would soon be considering whether also to levy taxes on property and currency left inside the system ("virtual capital gains"). (Second Life's in-game economy is so robust that it is growing at many times the rate of the U.S. economy.)

## New frontiers in science

• In October, The Washington Post reported the growing movement among psychiatrists to call compulsive buying a separate, identifiable disorder and recounted this 62-year-old "shopaholic's" therapeutic conversation with herself: "I would say (to the jewelry she felt compelled to buy), 'You are so beautiful, I can't live without you, I love the way you sparkle.' The jewelry would say back, 'You need me. You look pretty when you wear me.' I would say, 'I do need you. I can't possibly think of being without you. But something has to change. I need to stop this. I can't afford a penny more.'" The patient said she eventually came to believe that her compulsion stemmed from her relationship with her mother.

## Thinning the herd

• The latest pedestrian-train collisions: An 18-year-old man in Kenosha, Wis., in September, who, probably inebriated, first left the tracks well in front of the train but then returned, stood on the tracks, and made a finger gesture at the conductor.

## Least competent people

• In October, when Turkey's prime minister Tayyip Erdogan fainted from low blood sugar, his security team rushed him to a hospital but mistakenly locked him and the keys inside his fortified car; after they pounded on it for a while, a nearby construction worker with a sledgehammer saved the day.

QUICK, WHAT'S NEW

McClatchy Newspapers

# DaimlerChrysler plans job cuts, plant closure

DaimlerChrysler AG announced plans early Wednesday morning to cut 13,000 jobs from 2007 to 2009 as part of a three-year restructuring plan at the Chrysler Group.

As expected, the plan calls for idling

the Newark, Del., plant that makes the Dodge Durango and Chrysler Aspen SUVs. The plan also calls for eliminating shifts at the Warren truck assembly plant and a minivan plant in St. Louis.

# Bush convinced Iran's giving weapons to fighters in Iraq

President Bush said yesterday that he is convinced Iran is supplying deadly weapons used by fighters

in Iraq against U.S. troops, even if he can't prove that the orders came from top Iranian leaders.

# Big beers pack a big punch

They'll knock you on your fanny if you're not careful.

Extreme and big beers, those with high alcohol content and colossal flavor, are all the rage among craft brewers and many beer drinkers nowadays. Triple India pale ales. Imperial stouts.

Belgian-style ales. And even, gasp, imperial pilsners.

Craft brewers are pushing the limits when it comes to alcohol content and flavor profiles.

Sometimes quite literally, considering state liquor laws.

# New dollar coin set for its debut

New presidential dollar coin will be released tomorrow.

The curator of the American Numismatic Association's museum will discuss the coin's effect on the

U.S. economy, how it could save the government millions because it lasts longer than dollar bills, and whether Americans will warm to the new coin.

# Franken says he'll run for Senate

Comedian, author and liberal talk-show host Al Franken declared his candidacy Wednesday for the Minnesota U.S. Senate seat held by Republican Norm Coleman, ensuring that the 2008 race will be more entertaining than

usual and more closely followed by the national media.

Franken at the opening of his statement confronted the central question he will face in the early going, whether a life-long comic should be taken seriously.

# Mexican drug turf war advances

From the shopping malls and the fashionable clothes of its residents, this could be any affluent U.S. suburb. Residents pride themselves on their prosperity.

But in recent weeks, drug-related violence has shattered the tranquility.

Law enforcement officials on both sides of the border says that the killings represent an attempt on part of a drug cartel, in this case, the Gulf cartel and its enforcement arm, the Zetas, to gain control of police through intimidation and corruption.

GETS THE ADRENALINE GOING.  
YOURS AND WHOEVER READS ABOUT  
IT ON YOUR RESUME.

The Army ROTC Leader's Training Course is a paid 4-week summer experience that marks the beginning of your career as an Officer, a leader of the U.S. Army.

**ENROLL IN ARMY ROTC**  
BECOME AN ARMY OFFICER

Add Some Excitement & Leadership To Your Life Today! For more information, contact MAJ Ammons, Georgia Southern University Army ROTC, 912-681-0040 or visit <http://cost.georgiasouthern.edu/rotc>



# THE GEORGE-ANNE CLASSIFIEDS, ETC.

Now you can place your classified ads online... For Commercial Ads, Visit...

<http://www.gsuads.com>

...and create, place, proof and pay for your ad online. Just \$7 for 200 characters. In partnership with Universal Advertising.

Free ads for students, faculty & staff (non-commercial); visit us online at...

[www.gadaily.com/class\\_ad\\_sub.php](http://www.gadaily.com/class_ad_sub.php)

You must include your names, address and phone number for freebies. No phone calls please, at this price we don't take dictation.

## CLASSIFIED CATEGORIES

**100 Announcements**  
110 Auditions  
120 Freebies  
130 Lost & Found  
140 Other Announcements

**200 Buy or Sell**  
210 Autos for Sale  
220 Auto Parts for Sale  
230 Bicycles for Sale  
240 Books for Sale  
250 Computers & Software  
260 Miscellaneous for Sale  
270 Motorcycles for Sale  
280 Trade & Barter  
290 Wanted

**300 Employment & Job Services**  
310 Career & Job Services  
320 Child Care Needed  
330 Child Care Provider  
340 Internships/Volunteer  
350 Jobs/Full Time  
360 Jobs/Part Time  
370 Opportunities/Business  
380 University Work  
390 Wanted Jobs

**400 Housing & Real Estate**  
410 Apartments  
420 Lofts & Rooms  
430 Mobile Homes  
440 Real Estate for Sale  
450 Roommates Wanted  
460 Storage & Moving Services  
470 Student Housing

480 Sub Leases  
490 Vacation Rentals

**500 Personals**  
500 Personals

**600 Services**  
610 Education & Tutoring  
620 Financial Aid/Loans  
630 Legal Services  
640 Resumes/Typing/DTP  
650 Services/Miscellaneous

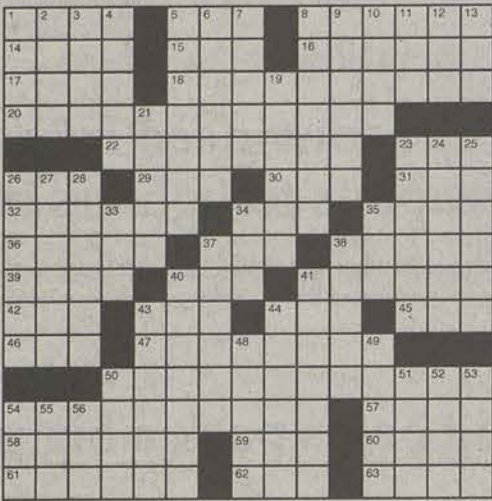
**700 Travel**  
710 Spring Break Travel

**800 Transportation/Rides**  
800 Transportation/Rides

**900 Miscellaneous**  
910 Pets & Pet Supplies

## Crossword

ACROSS  
1 In vogue  
5 Old USSR  
space station  
8 Llama relative  
14 Word of honor  
15 Top pilot  
16 Ebert's partner  
17 Bart's sister  
18 TV station  
20 "Who's the Boss?" co-star  
22 The self-centered 1970s  
23 Macho jet  
28 Ms. Gardner  
29 Put on  
30 End of cash?  
31 Cohort of Fidel  
32 Travel aimlessly  
34 Ques. response  
35 Chicken house  
36 Communion table  
37 Pub serving  
38 Hazy purple  
39 Aliments  
40 Inarticulate sounds  
41 Park bench  
42 Gaffer's gadget  
43 EMT specialty  
44 Letters on Cardinal caps  
45 Former draft org.  
46 Middle Eastern nat.  
47 "On the Waterfront" co-star  
50 Courses with optional anchovies  
54 Disasters  
57 Operatic song  
58 Tries to look good  
59 David Roth  
60 Soft-toy stuff  
61 Substantiate  
62 NBC weekend show  
63 Soap unit



© 2007 Tribune Media Services, Inc. All rights reserved.

2/15/07

**New Voices.  
New Services,  
New Attitude.**

[www.gadaily.com](http://www.gadaily.com)

**There is No Option!**

5 Toreador  
6 Hired killers  
7 Bit of antiquity  
8 Video-game parlors  
9 Repair-shop car  
10 Guadalajara money  
11 Want ad rental  
12 So-so grade  
13 JFK notice  
19 Jerry's pal  
21 Passover meal  
23 Pathfinders  
24 Pushes  
25 Conical shelters  
26 Looks forward to  
27 Hills separator  
28 Half a buck's rack  
33 German article  
34 Capone and Pacino  
35 Hip dude  
37 Take into custody  
38 toast  
40 Certain fencer

41 John of "20/20"  
43 Braiding devices  
44 Basketball formation  
48 Holding cells  
49 Mel of cartoon voices  
50 Attended  
51 Vicinity  
52 Actor Bogarde  
53 Vault  
54 IRS employee  
55 Knack  
56 Ignited

## Color Coordinated Movies

©2006 PuzzleJunction.com

Each movie title below contains a color. Do you know what's missing? Good luck!

- The \_\_\_\_\_ Pirate (Burt Lancaster)
- The \_\_\_\_\_ Dahlia (Alan Ladd)
- \_\_\_\_\_ Dolphin Street (Lana Turner)
- The \_\_\_\_\_ Danube (Walter Pidgeon)
- The \_\_\_\_\_ Buffalo (Charles Bronson)
- The \_\_\_\_\_ Rolls-Royce (Rex Harrison)
- The \_\_\_\_\_ Jungle (James Garner)
- The \_\_\_\_\_ Child (Eddie Murphy)
- The \_\_\_\_\_ Orchid (Sophia Loren)
- \_\_\_\_\_ Lady Down (Charlton Heston)

## Eagle Print Shop

Headquarters For All Your  
Printing, Binding, & Copying Needs!

Hours Monday - Friday 8:00 a.m. - 5:00 p.m.

For a Song

L A T C A R O L T E N O Z N A C R  
A N G K L K F E G R I D I L T D O  
G I X T C O N M Q Z E A L N E D U  
I T W B L H O A T M R P B T D X N  
R A N O L T A S E F E G O N A N D  
D V S N E U U N E A C I K D N T E  
A A K T R R E R T K P K U R E G L  
M C M K O K X S C I R Y L Q R P A  
M G C H L C Y B A L L U L B E K Y  
R B C O N T C Z B T T T V T S R M  
H J F N Q D O A A T H A O K R E Y  
A N T H E M U H L K Y I C R L V K  
R M T L J B N M L R L R N O C L L  
U N B V A L T P A Q R A D G B H W  
N Z M D L M R D D V G Y B M R P C  
E T E Y Z M Y R O R A T O R I O X  
C N N L H P K S O U L F J R M H V

©2006 PuzzleJunction.com

ANTHEM	COUNTRY	ORATORIO
ARIA	DIRGE	PAEAN
AUBADE	EPODE	REFRAIN
BALLAD	FOLK	REQUIEM
BLUES	HYMN	ROUNDELAY
CANZONET	LULLABY	RUNE
CAROL	LYRICS	SERENADE
CAVATINA	MADRIGAL	SOLO
CHANT	MELODY	SOUL
CHORUS	MOTET	TORCH

## Announcements 100 - 199

### 130 Lost & Found

FOUND: one key on keyring in Hendricks Hall parking lot. Call Janette at 681-5076

### 140 Other Announcements

Reach Georgia Southern students with a publication they really read... Over 100,000 copies of the G-A Daily circulate each month. For more info: [ads@georgiasouthern.edu](mailto:ads@georgiasouthern.edu)

### Buy or Sell 200 - 299

### 210 Autos for Sale

2003 2 door Honda Accord. Sapphire blue on black leather. The car has a V6 with 57,xxx miles. Every option including 6 disc changer, sun roof, power seats, dual climate control etc. Asking 15,000 obo. call Matt @ (404) 849-3092.

89 Cadillac Sedan DeVille, only 93K miles!! Great gas mileage. Black with cloth top and tan leather interior, power locks and windows, electric seating controls, digital information system, climate control, cruise control. Call Nicole at 912-282-9364 for more information. Make sure to leave a message! :-)

### 260 Miscellaneous for Sale

Full size refrigerator with built in kegerator and a workin freezer \$300 obo. Contact Carl at 404-247-0856

Very nice full size foosball table. Just needs legs. Priced for quick sell. \$30.

Sportcraft foosball Table for sale! Glow-in-the-Dark table! Only missing 1 guy. Still in good condition. 770-605-9162 if interested.

Sportcraft Foosball Table for sale! Glow-in-the-Dark table! Only missing 1 guy. Still in good condition. Email to come check it out!

Whirlpool Washer & Dryer. Perfect condition, purchased new in 2003. \$400

Don't throw away that junk... turn your trash into cash. Trying selling it online and in print with a G-A Daily action classified ad. It's free for students. Visit [www.gadaily.com](http://www.gadaily.com) to find out more!

Image 15.5S treadmill for sale. Rarely used, 4 months old. Great condition. Paid near \$500, asking \$350 which includes treadmill and mat. You move it. [arainareaves@yahoo.com](mailto:arainareaves@yahoo.com)

XBOX 360 New, only played few times, selling because don't have time to play. This is the premium system with one wireless controller, also comes with Call of Duty 3 game. \$300 firm 478-952-2029

Bedroom Furniture for sale! All white from Ikea. Great shape. Less than 2 yrs old. Willing to compromise on price. Includes: corner desk, armoire, and 3 drawer dresser. Available in May! Call Katy if interested @ 770-317-4093

### 270 Motorcycles for Sale

Pampered Chef Kitchen Tools, Kitchen Shows, Bridal Showers Registry, free, half-price and discounts. Call 681-7453 after 5:30 p.m.

MOTORCYCLE! 2003 HONDA CBR600RR. Red and black. Excellent condition. 9100 miles, lots of aftermarket parts and accessories. <http://loligagger.com>

dotphoto.com \$7000 obo 912-678-9729

## Employment & Job Services 300 - 399

### 340 Internships/Volunteer

Volunteer at Camp Wannalot, July 21-27, 2007 and help kids with bleeding disorders have fun at camp. Must be 18 or older. Contact Kim at 770-518-8272, [kawilson@hog.org](mailto:kawilson@hog.org), or visit [www.hog.org](http://www.hog.org)

### 350 Jobs/Full Time

SUMMER CAMP Traditional, nature-based day camp in Roswell, GA. seeks energetic, dedicated counselors and specialists May 29-July 28. Contact [camp@highmeadows.org](mailto:camp@highmeadows.org) or 770-993-7975

Need extra money? Tell us what hours you can work, we'll see if we have a schedule to fit it. \$7-\$9/hr. No Qualifications e. o. e. call 912-739-3181 ask for Nestor.

CONSTRUCTION TESTING TECHNICIANS Construction or engineering background helpful with a vehicle to haul equipment preferred. We train you to inspect and test soil, concrete, steel, masonry, etc. Fax resumes to ECS Southeast 912-966-9931 or fax resume to 912-966-9931.

BARTENDING! Up to \$250 a Day. No Experience Necessary. Training Available. Age 18+ OK 1-800-965-6520 XT 296

### 360 Jobs/Part Time

LIFEGUARDS: Hiring f/t lifeguards/pool managers. Cobb, Dekalb, Kennesaw, Woodstock. LGT and CPR classes available. Contact: Allison 770-485-3672, [allison@nautixpools.com](mailto:allison@nautixpools.com), or online at [WWW.NAUTIXPOOLS.COM](http://WWW.NAUTIXPOOLS.COM)

### 370 Opportunities/Business

Earn Full-time money working Part-time. Scentsational New Business. Make \$\$\$\$. Call Stacy 1-888-694-2165 Ext 102

### 390 Wanted Jobs

Webdesigner/webmaster! Do you have a web presence? Get an awesome, inexpensive web presence without the need to spend countless hours creating it. I am an information technology student currently attending Georgia Southern University and have experience in webdesign, including being the webmaster of 919thebuzz.com! Interested? Call Andrew at 404-201-2551 or by email at [ahodges8@georgiasouthern.edu](mailto:ahodges8@georgiasouthern.edu)

## Housing & Real Estate 400 - 499

### 410 Apartments

If you need an apartment, or if someone you know needs one, OR if someone you know knows someone that needs one then let me know ASAP! I am going to Spain next semester and need someone to sublease. \$250 a month rent, big room, own bathroom. Will have a female roommate. Call for more info. 478.390.7365

Looking for roommate to live in a furnished luxury apartment. Conveniently located less than one mile from GSU campus. 912-681-2582

NOW Leasing!! Newly renovated units in Stadium Walk. Great Deals! call Brad at 912-617-7905

### 420 Lofts & Rooms

## Find a New Friend Roxanne



Roxanne is about 10 months old and is a very good girl! She is already housetrained and loves people. Please call or email for more information.

Join us for our 7th Annual Pet Fun Day Saturday, Oct. 28 - 10 a.m. - 3 p.m. Please bring your pets (on a leash) and exotic pets are welcome

Humane Society of Statesboro & Bulloch Co. Animal Rescue Division Statesboro, GA • 912-681-9393 [bullochanimalrescue@yahoo.com](mailto:bullochanimalrescue@yahoo.com)

Master Bedroom for Rent! Huge walk in closet, own bath and shower, washer dryer. Located in countryside, off of cypress lake rd. New unit, very nice and clean. available now! call Rob (843)568-4118

### 430 Mobile Homes

14x76, 3 BR/2BA mobile home for sale in nice park near GSU. Included: couches, washer & dryer, entertainment system. \$12,500. Call 912-844-0188.

### 440 Real Estate for Sale

Brand New Single Family Home for Rent. 3bd/2b/2gar. Home is located in a very nice subdivision. Rent starting as low as \$700.00 a month. Section 8 or Grapha assistance accepted. Please contact The Invest Trust Company, (321) 506-4693 or (321) 724-9331

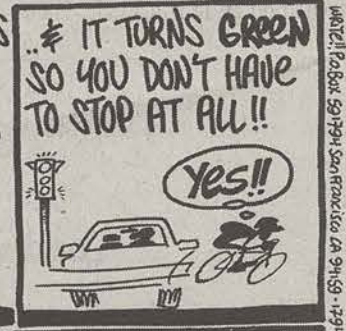
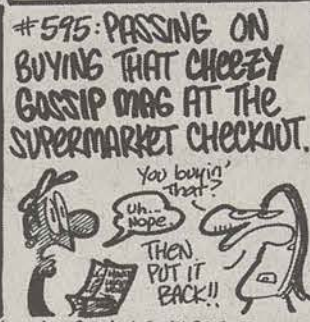
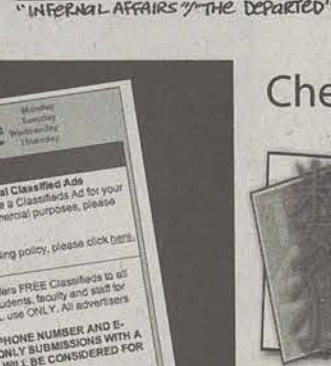
### 450 Roommates

Looking for a roommate? Trying to sublease your place? Put the G-A Daily to work for you. Free classified for students in print and online. Visit [www.gadaily.com](http://www.gadaily.com) for information

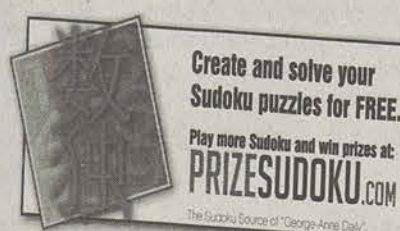
### 470 Student Housing

3 Bedroom / 2 Bath Brick home / carport All tile/hardwood flooring W/D and D/W included Spacious back yard Rent only \$850/month Call Elise: 706-627-1594

NEW 4 BEDROOM, 4 BATH



## Cheats Corner



Create and solve your  
Sudoku puzzles for FREE.

Play more Sudoku and win prizes at  
[PRIZESUDOKU.COM](http://PRIZESUDOKU.COM)

The Sudoku Source of "The George-Anne Daily"



## Solutions



1. Crimson  
2. Blue  
3. Green  
4. Red  
5. White  
6. Yellow  
7. Pink  
8. Golden  
9. Black  
10. Gray

Solution Trivia Puzzle 59



## SPORTS

Who's  
HOT

**NBA:** Dallas Mavericks and Miami Heat. Both teams are on big winning streaks going into the All-Star break. The Mavs have won eight straight, while the Heat have won seven of their last eight. Pat Riley will be returning as head coach of the Heat after recovering from knee surgery.

Who's  
NOT

**GSU Tennis:** Both men and women's tennis teams are struggling having won only a total of three matches combined this season. Neither team has won a road match. The men are 1-4 going into weekend play against South Carolina State, while the women are 2-3 going into a match against in-state rival Georgia.

GEORGIA SOUTHERN 13, NORTH FLORIDA 9

# Eagles defeat North Florida

## Pierce, Beckham spark scoring frenzy in ninth inning

## GSU News Service

After a win over Jacksonville, 10-6, on Tuesday night, Georgia Southern erupted for six runs in the top of the ninth inning, rallying for a 13-9 win at North Florida Wednesday.

The Eagles (5-2 overall) won their fourth straight since returning from their season opening trip to Hawaii.

Down 9-7, Brian Pierce started the ninth with a single through the right side. He took second base on a wild pitch from Antonio Franzese. Two batters later, Jeremy Beckham hit a grounder up the middle that shortstop Mycal Jones could not field which allowed Pierce to score.

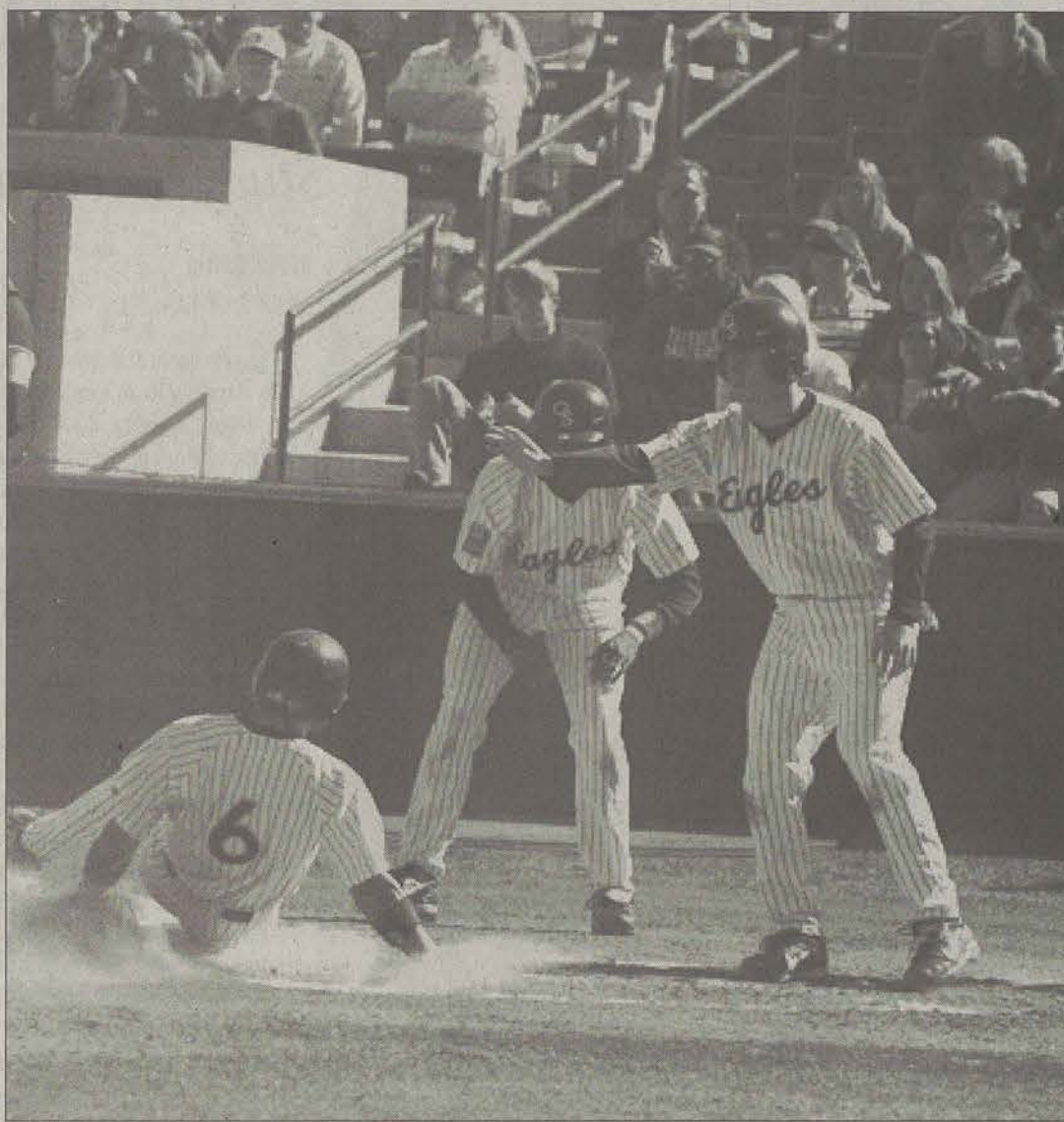
Matt Miller followed with a game-tying RBI double. Mike Economos reached on an infield error then A.J. Wirnsberger was hit by a pitch to load the bases.

Griffin Benedict drew a walk to bring home the go-ahead run. A RBI groundout from Chris Shehan then a 2-run double from Phillip Porter capped the rally.

GSU took advantage of a walk and hit batter to start the second inning. Economos drew a leadoff walk then Wirnsberger was hit by a pitch from freshman Gordon Lott. Benedict dropped down a sacrifice bunt to advance the runners. Shehan brought home a run off a groundout. Porter ripped a two-out single to right center, spotting the Eagles to a 2-0 lead.

Key hits with two outs spurred a four-run fifth inning for the Eagles. Shehan singled to start then Porter reached on an infield single. Pierce laid down his team-leading fourth sacrifice bunt to advance both runners. On a 3-2 count with two outs, Beckham ripped a 2-run double in front of Dandridge in right field. That chased starter Lott.

Relief pitcher Ranzo Sheppard walked Miller. Economos drilled a 2-run double into the left field gap,



Tao Ventre/STAFF

The Georgia Southern baseball team will go up against New Jersey Tech in a home series beginning Friday.

extending the lead to 6-2.

Damon Olinto hit a two-out solo homer in the fifth, cutting the Eagles' lead to 6-3. A hustle play by Shehan scored another two-out run for Georgia Southern.

Pierce dropped a single down the right field line, and with Shehan running from first base all the way was able to score on the play.

The Ospreys scored two runs in the sixth off relief pitcher David Cogswell. A two-out wild pitch and

RBI single from Jones made it a 7-5 game. A.J. Battisto (Pottstown, PA/Pottsgrove) walked the first batter he faced to load the bases, but the senior got a ground ball force out to end the UNF scoring threat.

UNF took a 9-7 lead in the eighth when Belyea hammered a 2-run shot with two down off Strohecker (3-0). The freshman right-hander gave up the two runs on one hit in 1.2 innings but earned the win. Kyle Kamppi struck out two to close out

the game.

Lairsey pitched five innings, allowing three runs on five hits. The senior left-hander struck out three and did not walk a batter.

Porter finished 3-for-5 with three RBI. Shehan and Pierce had two hits apiece. Beckham tallied three RBI and scored two runs.

The Eagles return home for a three-game series against New Jersey Tech. Friday night's (Feb. 17) first pitch is scheduled for 7 p.m.

GSU LADY EAGLES 68, ASU 61

# Lady Eagles get road win at App. St.

## GSU News Service

Tiffany Brown and Ashley Melson combined for 38 points as the Lady Eagles concluded a three-game road trip with a 68-61 win over Appalachian State, Wednesday night at Boone's Holmes Center.

Georgia Southern (11-16, 6-10) wins its second consecutive game on the road, playing its third road game in five days.

The Lady Eagles were paced by junior guard Tiffany Brown who scored 20 points, her second consecutive 20-point performance, making 7-of-11 attempts from the field, and going 5-of-6 from the free-throw line. Sophomore Ashley Melson followed with a career-high 18 points on 6-of-14 shooting, including a trio of three-pointers and a perfect 3-of-3 from the free throw line.

"The guards are stepping up," said 11th-year head coach Rusty Cram. "I'm as proud of Melson as I could be. And I'd hate to play without her tonight because she was a big, big lift in the first half and got us back in the ball game."

Melson's nine points in the first half paced the GSU squad.

ASU went on to build up a nine-point, 14-5 lead with 13:29 remaining in the first half, thanks to Tossie's jumper, just two of five of her first-half points.

The Mountaineers led at the half, 33-31 with GSU's bench outscoring ASU 17-2 in first-half action.

But the Lady Eagles made some adjustments that opened up some more scoring opportunities.

"In the first half we were very lethargic, and we had nobody scoring," added Cram. "So what we tried to do is to create a few plays for Tiffany (Brown) to get her isolated to go one-on-one, and fortunately it worked."

Brown's jumper with 11:55 on the clock gave the Lady Eagles their first lead since early in the first half. It was

just two of Brown's 14 second-half points, and GSU owned a 44-43 lead that it would never relinquish.

The Lady Eagles were able to build up its largest lead thanks to a Tiffany Brown layup with 9:44 remaining. And though Whitney Kentner's jumper, with 5:20 remaining, closed the margin to just two points, Georgia Southern was able to maintain the lead.

Georgia Southern's defense forced 21 turnovers which were converted into 20 points, while ASU took advantage of GSU's 25 errors, scoring 18 points.

"Chequilla Jessie, Christa Waterman and Jessica Geiger did an excellent job inside today rotating through," said Cram. "Geiger did a great job on Jaime Bennett who is a key player for them. She just defended her really well the times we needed her to."

"We got to the line tonight, and that's what we had to do," added Cram. "We just started isolating, going back to Tiffany Brown and Ashley Melson and Shawnda Atwood and started spreading the floor, and letting them create some one-on-one situations and getting them to the line."

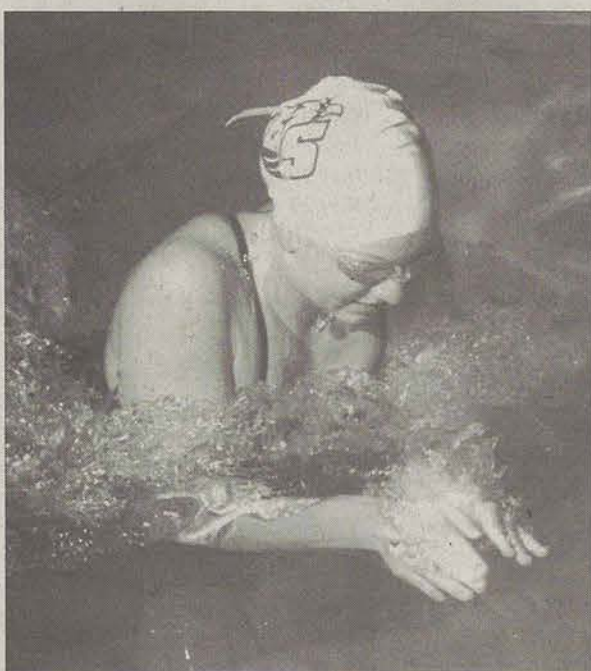
GSU's bench outscored the Mountaineers 29-8.

The Lady Eagles return home to Hanner Fieldhouse to play Chattanooga on Monday at 5 pm.

**GEORGIA SOUTHERN (11-16, 6-10)**  
 Jessie 3-4 3-7 9; Atwood 1-6 2-4 4; Melson 6-14 3-18;  
 Brown 7-11 5-6 20; C. Whitney 1-8 4-4 6; Rivers 0-3 0-0 0;  
 Waterman 2-2 2-3 6; Geiger 2-5 0-0 4; Ogburn 0-1 1-2 1. Totals 22-54 20-29 68.  
**APPALACHIAN STATE (11-16, 5-11)**  
 Williams 2-4 0-2 4; Thomas 5-17 3-14; Costner 1-1 0-0 2;  
 Grimes 3-10 0-2 9; Bennett 0-6 7-10 7; Ketter 3-4 0-1 6;  
 Cunningham 0-0 0-0 0; Tossie 8-17 3-6 19; Mixon 0-2 0-0 0; Smith 0-1 0-0 0. Totals 22-62 13-28 61.

**Halftime: Appalachian State 33-31.**  
**3-point goals:** GSU 4-15 (C. Whitney 0-1; Brown 1-3; Rivers 0-2; Melson 3-7; Atwood 0-2); ASU 4-16 (Thomas 1-4; Grimes 3-8; Bennett 0-1; Tossie 0-3).  
**Fouled out:** GSU None, ASU none. **Rebounds:** GSU 35 (Jessie 7), ASU 36 (Bennett 8). **Assists:** GSU 15 (C. Whitney 5), ASU 11 (Bennett 4). **Total fouls:** GSU 15, ASU 23.  
**Attendance:** 512.

# Swimming prepares for NEC finals



Special Photo

GSU Swimmer Katie McCarthy helped the Eagles finish fourth in the NEC championships last season.

## GSU News Service

Georgia Southern's swimming and diving team will travel to Landover, Md. to compete in the eighth annual Northeast Conference Championships Feb. 15-17.

Since joining the NEC in 2003, GSU has consistently finished in the top five with their best finish coming in 2004 when they tied Central Connecticut State for third. Since then, the Eagles took fifth in 2005 then improved to fourth last season.

So far this season GSU has faced four NEC opponents, with three of the meetings resulting in wins. Their first conference defeat came in October when they demolished Howard 157-66.

In November, GSU out-swam Campbell 114-89 and in their first meet of the new-year they beat Radford 136-81. Between those three meets, Georgia Southern averaged a 57-point winning margin.

Three-time defending NEC champions

Gardner-Webb was the Eagles only conference loss this season. On Jan. 27 GSU was defeated by the bulldogs 186-155.

Going into the conference meet, the Eagles stack up extremely well against the conference. Out of 20 conference events, GSU has a total of 18 competitors and one relay team owning top-five marks in 13 events. Freshman Mackenzie Garrot (Fayetteville, Ga./Starr's Mill) has the top time in both the 100y (1:07.23) and 200y Breast (2:22.87). Hutchison is the number one seed in the 3-meter Dive (205.19 points) and ranks second in the 1-meter Dive (222 points).

"The girls are looking very solid. They are energetic, excited, and having fun during workouts - usually a great sign," said Head Coach Nate Kellogg.

"We have been working towards the conference championship meet all year and they understand what they need to do as a team: give 100 percent effort, support each other, and most of all enjoy themselves."

## This week in SPORTS

Friday, Feb. 16

**Swimming and Diving** at NEC Championships, 12 p.m.

**Softball** vs. Samford, 10:30 am

**Softball** vs. Bethune-Cookman, 1 pm.

**Men's Tennis** vs. South Carolina State, 2 pm.

**Baseball** vs. New Jersey Tech, 7 p.m.

Saturday, Feb. 17

**Women's tennis** vs. Bethune-Cookman, 11 a.m.

**Baseball** vs. New Jersey Tech, 1:30 p.m.

**Track and Field** at Southern Conference, 7 p.m.

## UPCOMING EVENTS

Compiled by staff

GSU golf team heads to the Rio Pinar Invitational in Orlando, Florida on Feb. 19-20. The tournament will be held at the Rio Pinar Country Club and starts at 8 a.m.

Lead by senior Bryan Jones, the Eagles will try to improve on a fifth place performance at the Gator Invitational on Feb 10-11. Jones placed second individually, shooting 71-68-70-210 and finishing even.

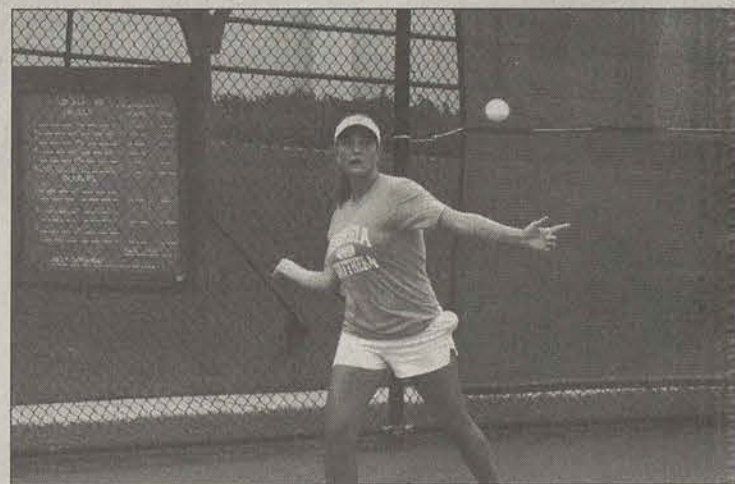
Sophomore Jordan Johnstun also performed well for the Eagles, shooting 71-71-73-215 and finished five over par and tied for 15th place.

The tournament is hosted by the University of Memphis and South Alabama. Other teams that will be competing with the Eagles are the Southern Mississippi, Mississippi State, and the University of Tulsa.



Special Photo

Brian Jones leads the Eagles in scoring.



Special Photo

Women's tennis is 3-2 on the season and begin SoCon play next week.

# Lady Eagles travel to Athens to take on Lady Bulldogs

## GSU News Service

The Eagles will travel to Athens today to take on the Georgia Bulldogs. Match time is set for 2:30 p.m.

The Lady Eagles are currently 2-3, with wins against North Florida, Florida A&M and Mercer.

Despite finishing off a four week homestand, the Lady Eagles have lost two of three, including non conference home losses to Jacksonville and Georgia State last weekend.

"[That] was a heartbreaker of a loss for our team," said head coach Amy Bartlett-Bonner.

"We'll have to learn from the mistakes that we made and use the rest of this week to prepare for our trip to Athens," she said.

The Georgia Southern women's tennis team fell 4-3 to Georgia State last Saturday afternoon at the Hanner Fieldhouse Courts.

The Eagles dropped the doubles point, winning only one of the three

matches. Shea Huxtable/Jessica Matlosz captured an 8-6 win in the No. 3 slot.

At No. 1 doubles, Heather Reynolds/Molly Maddox fell 8-5 and Christine Caforio/Kristi Kegerreis dropped their No. 2 match 8-5.

In singles action, Georgia Southern picked up three wins.

Kegerreis picked up a win at No. 2, 6-2, 6-1 over Malina.

Reynolds defeated Stahl-Johanson 6-3, 6-0 at No. 3 and Emma Knight won 6-1, 6-1 over Smith at No. 6.

At No. 1, Maddox fell 6-4, 6-1 to Nitkova. Lauren Wolken dropped her No. 4 match 6-1, 6-2 and Caforio fell 7-6 (6), 6-4.

Georgia holds a 15-1 all-time series advantage over Georgia Southern.

The last meeting was in 2006, resulting in a 7-0 Georgia victory.

The Bulldogs have won the past 15 since dropping the first meeting in 1974, the last time the Eagles took a win in the series.



## OUR PICK

### Savannah Irish Festival

The festival will be Feb. 17 and 18 at the Savannah Civic Center. There will be entertainment including Harry O'Donoghue. Admission is free with your student ID.



# Where in the world are our students?

*Study abroad takes you places*

By Jeff Martin  
Features editor

Don't stay in Statesboro to take classes this summer, instead look into traveling to an exotic locale with Study Abroad.

If you want to study abroad with the 257 Georgia Southern students who are already going to be traveling to places like India, Spain, and Costa Rica this summer your deadline is March 1.

#### Info meeting

For study in Britain  
Tuesday, Feb. 27  
6 p.m. Russell Union  
Room 2084

Some locations like Italy are already full, but plenty of other locations are still taking applications. For the most part you only need to be a student in good academic standing to apply.

With so many options to choose from Jeff Palis, administrative coordinator in the Center for International Studies, advises students to talk to what he calls "study abroad alumni" or students who have returned from their study abroad programs.

Another good place to find information would be to check out travel books and other materials which can be found in the Study Abroad Resource Room located in room 1316 in the Forest Drive Building. If you still can't decide, there's a study abroad fair that is held every fall and a large number of information meetings, like the one happening on Feb. 27 about studying in Britain.

For the most part you can take your core classes, however, there are major specific programs; for example there's a program for Health and Human Services.

Palis recommends that students meet with him or student advisor Matt Walker. He also said the best time to go is often the summer after your freshman year.

Money is a major factor in many students' decision about the Study Abroad Program, and it is an important one with programs like the one to Costa Rica costing \$4000 or India costing \$3,800.

However, with proper planning and some creativity sufficient funds can be raised. It's too late to apply for most scholarships for the summer, however HOPE does pay for the cost of tuition.

"I made a deal with my parents when I went. This trip was my birthday and Christmas present for five years," said Matt Walker. Walker also said that his second trip to Mexico, this time he stayed for a semester and went to school just like a regular Mexican student, actually cost him less than to stay at GSU.

If you want to study abroad you need to act fast because: "It's crazy around here," said Palis. Some programs like Costa Rica, India and Vietnam won't be around forever because they have been arranged through interested professors. However, efforts are being made to add new programs every year. For example, next year the study abroad program will be adding Krakow, Poland.

So, get ready to break out of Statesboro and go to the Study Abroad office to see the world.

## Where to go, places and prices



#### India

May 8 - June 2  
\$2950 + tuition

#### England

June 18 - July 19  
June 22 - July 27  
\$3,298 - \$4,849  
+ tuition

#### France

June 28 - Aug. 3  
\$4,425 + tuition

#### Costa Rica

Summer Session 2  
Summer Term A  
\$2,378 - \$4,000  
+ tuition

#### Germany

June 20 - July 24  
\$4,400 + tuition

#### China

July 5 - July 31  
May 8 - June 5  
May 29 - July 6  
\$2,950 - \$3,595  
+ tuition



*Oh, the places you'll go, and oh, the things you'll see*



Photo Illustration / Casey Altman





Jeff Martin  
Features Editor

# Martin & Burris

Babel (R)



Justin Burris  
Assistant  
Hiatus Editor

## ACTING

Brad Pitt cries in this movie. I'll restate that for emphasis: Brad Pitt star of *Fight Club*, *Troy*, and *Snatch* cries in this movie. Someone is fishing for an Oscar and I won't say who.

## CINEMATOGRAPHY

There was a lot of frantic camera work and some interesting angles, but for the most part this movie is not really about stunning visuals. The feel of the film really comes through with the simplistic style.

## PLOT

The plot of this movie is broken up into interconnected episodes that are about failures to communicate. It is really confusing because the director chose to shuffle the time line of the film like in *Pulp Fiction*.

## FINAL VERDICT

I won't lie I didn't understand this movie completely, but I think that's kind of the point. This film was about people who don't understand each other. There were some interesting topics, but the movie takes way too long to show us that even people who speak the same language don't understand each other.



Special Photo

## PLOT SUMMARY

Referring back to the Tower of Babel from the bible, this film tells the stories of three groups of people who have trouble communicating due to language barriers, miscommunication and inability to relay messages. In addition to those troubles, it tells of how everyone is connected, whether they know it or not.

## ACTING

As is to expect from most of the actors in this film, the acting was very well done. With such a cast, I could have asked no less. In addition to the big names, many of the other lesser known actors did a great job.

## CINEMATOGRAPHY

The camera work helped in often telling the story as much as the actors did. It felt as many of the shots were very deliberate in how far they went, which in a film that has content like this, is needed.

## PLOT

The plot was pretty straight forward, strange time-lines aside. People from around the globe have communication breakdowns and in the end they are all connected. I was hoping for more to be honest.

## FINAL VERDICT

Babel took two hours and thirty minutes to tell a story that really could have been summed up in about an hour. The connections between some of these characters felt like the writer sat down for five minutes and took the first plot connection that came to mind. The movie was well done, but too long.

## Look snazzy this spring

A wonderful thing about this spring is that you won't be spending a whole lot of money on a wardrobe that is strikingly different from last season's.

Eye-popping proportions are still making headway, and so are the bubble dresses. But beware because the last thing you want is to look like you have been on a couch potato diet.

When out on the town, wear this style of dress with heels and a cinched waist. Also, make sure that the hemline of the dress hits slightly above the knee; anything shorter than that and people will think you need to be up in the gym working on your fitness.

Back in the world of things that are puffy: sleeves. Now I know that Gwen Stefani's video, "Wind It Up", was homage to the Sound of Music, but that doesn't mean that we're going to go mad with a puffy-sleeved shirt and ruffles. The trick is keeping it simple so avoid prints, which can make it too girly.

Skinny pants are staying for spring, but you'll find more tapered capri pants in stores. Aim for dark colors since cluttered patterns can give the illusion of extra weight. And if you want the look of longer legs, wear with funky wedges.

And while we are on the funky side of things, headbands are continuing the '80s influence. Make sure to avoid looking plain and childish and have your hair in a ponytail when wearing headbands.

Edginess is the look to go for; but don't try going too edgy by adding on massive amounts of jewelry because it will look messy.

Enjoy not having to gut out the closets this season. It makes life a lot easier to keep what is already there, especially since it accompanies so many body types.

## Fallout Boy's new album bombs

By Edgar Fernandez  
Staff Writer

With "Infinity On High," Fallout Boy's latest album, the band is trying to not only add new elements to their songs, but also to apparently catch the listener off their guard.

Unlike, FOB's familiar sound, which laid somewhere between emo and pop-punk, "Infinity On High" includes R&B elements, something that was to be expected by having Jay-Z as a producer and contributor. Other odd contributions included Babyface and Butch Walker.

The first single of the album "This Ain't a Scene, It's an Arms Race" has proven to be quite popular, even if it does criticize the same "emo scene" that is probably buying the CDs. The song follows the pattern

of R&B-influenced, slow verse followed by a heavier, faster chorus, which might not be the norm for the band, but it nevertheless works. "Thanks for the Mmrs" is the first song in the album to dwell into the more familiar ground of the band, but it is not until "The Carpal Tunnel of Love" that the album regresses back to their earlier work. The other noteworthy song is Golden, which is actually a short, slow ballad-type, but it is the delivery of singer Patrick's vocal that make the song a memorable one.

It seems that most of the songs in the album follow the same pattern set by "This Ain't a Scene..." starting slow and waiting until the chorus to pick things up. This would not be a big concern if it wasn't for the fact that most of the lead-in is too boring. Songs like "Thriller," which are

the most hip-hop-heavy make you wonder if FOB is trying to shock their fans or just plain ostracize them.

The band decided to take a chance and do something different, which has to be admired in a music scene where most bands do what has proven to work. Overall, "Infinity On High" can be an attempt to blend two music scenes that wouldn't usually share the same place, but it fails.

**'Infinity On High'**  
**Fall Out Boy**  
Label: Island Records  
Released: Feb. 6, 2007  
Prices:  
samgoody.com - 16.99  
bestbuy.com - 9.99  
amazon.com - 9.99  
Grade - 3 of 5 ★★★★★



Special Photo

## WarioWare strikes again

By Matthew Gibson  
Staff writer

"WarioWare" games are always crazy, but Smooth Moves takes it to a whole new level.

The graphics are all over the place, some look like graphics from older systems, others look like someone simply took a picture a five year old scribbled with a crayon. Obviously, it

adds to the humor of the game.

The controls take only one or two tries to get the hang of. The main problem players will have to face is not worrying about how ridiculous they look in front of friends when they use control "Forms" like "The Elephant" and "The Big Cheese."

Of the Wii games released so far, this one is in the top five. For full review visit [gadaily.com](http://gadaily.com)

## Sales Representatives Needed!

**The George-Anne Daily** is now accepting resumés for sales representatives in the advertising department. We are looking for outgoing, highly motivated people. No experience is required.

### Job Requirements include:

(but are not limited to)

- Daily office hours
- Monthly meeting attendance
- Email and phone correspondence
- Knowledge of local area businesses
- Means of transportation

Questions? Call 912-681-5418.

Please email resumé with references to Ads Manager at [ads1@georgiasouthern.edu](mailto:ads1@georgiasouthern.edu)

## MISCELLANY

GSU Arts and Literary Magazine is **now** accepting submissions for the **ALL NEW SPRING ISSUE!**

For a 2007 submission packet go to:  
<http://www.stp.georgiasouthern.edu/miscellany>

Or you can visit the **Miscellany Office, Williams Center, Rm 2015** to personally pick up your submission packet.

Photography, Poetry, Illustrations, Short-Stories, Graffiti, Musical Compositions, Original Monologues, Graphic Arts, Haiku, Paintings, Mixed-Media Art...

**ALL ENTRIES MUST BE RECEIVED BY MARCH 9TH, 2007.**



## RANDOM QUOTES

"I have unofficially declared Valentine's Day as Friend's Day. So, happy Friend's Day."

"Last night was incredible :)"

Quotes taken from Facebook

## SWEET & SOUR

**Sweet:** Valentine's Day was yesterday.

**Sour:** Valentine's Day was yesterday.

Submit your Sweet&Sour to hiatus@georgiasouthern.edu

## THIS WEEK IN HISTORY



File Photo

This sign warns students studying in the library to keep an eye on their belongings after a series of purse thefts. Nearly seven purses went missing in three months. Campus police launched an investigation to find the purse snatcher, but he was never apprehended. The story was reported on Feb. 18, 1982.

## ROCKIN' THE BORO

Thurs., Feb. 15  
Bryan Clark  
Gnats Landing

Fri., Feb. 16  
Escape Vehicle  
Dingus Magee's

Latte Da  
Chris Lee

Sat., Feb. 17  
Escape Vehicle  
French Quarter Cafe

Listen 2 Three  
Turtles

Latte Da  
Brad "Big Show"

Playing a gig we don't know about? Update our calendar at [www.gadaily.com](http://www.gadaily.com)!

# What happens in Panama City...

Jacquelyn Beckman  
Staff Writer

Ever wonder where your student fees go? Well, lots of places, but one of them is to the office of student activities.

With the money they receive from tuition, they have the ability to help fund trips such as the upcoming spring break trip.

The trip, sponsored by Eagle Entertainment, is headed to Panama City Beach.

The trip cost \$300 and covers transportation on a chartered bus along with your hotel room for five days and four nights. The ride is around six hours, but worth the wait.

The hotel, similar to a condo, has a kitchenette and balcony in every room. By the Sea Resorts where students will stay has an ocean front view and is located on the strip.

The trip will leave on Saturday March, 10 and arrive back in Statesboro on Wednesday, March 14.

This trip is a great way to meet new

people. Full of diversity, the groups are always a pleasant mix.

To each his own is truly the model of this trip.

Jackie Rieger, who coordinated the trip, said she deliberately plans the excursions with no structure because everyone has different interest and this set up allows for students to do what they find entertaining on the trip.

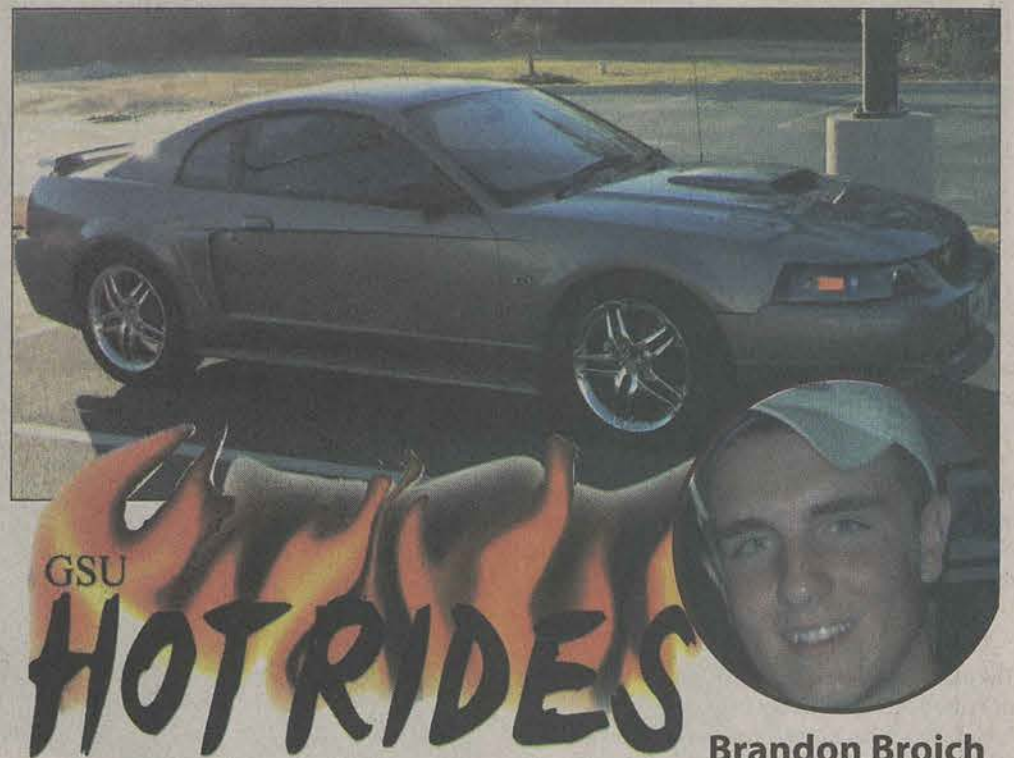
The first nonrefundable deposit is due tomorrow the 16th for a payment of \$100, and allows your spot to be saved.

The final payment of \$200 will be due Friday, March 2. Bill Pickett, the director at the office of student activities said, "the trip is very affordable and we hope students will take advantage of this opportunity."

The bus holds fifty five people, and several have already signed up.

To receive further information or sign up, you can visit the Eagle Entertainment Office in the Russell Union room 1058 or call 486-7270.

And remember, what happens in Panama City stays in Panama City.



Brandon Broich  
'01 Ford Mustang

Age: 20  
Year: Sophomore  
Major: Construction Management  
Hometown: Loganville, Ga

**Why you bought the car?**  
I bought the car because I have always loved cars especially Mustangs, ever since I was little.

**What is cool about your car?**  
My car has approximately 362 h/p and 373 ft/lbs of torque

**What is the most expensive feature on it?**  
I have added a JLT Performance cold air

intake, Bassani SS Cat-back Exhaust, DiabloSport Predator Tuner, Mach1 Grill delet, Mach1 Chin Spoiler, 25% Window Tint, 18inch ICW Racing Wheels, and Projector Headlights.  
**What is one thing you would like to do to your vehicle that you haven't yet done?**  
Maybe one day down the road after all my loans are paid off a new set of heads and a super charger.  
**What do you like most?**  
What I like most about my car is when I punch it and the exhaust is just screaming.

Tell us about your car. E-mail us at [hiatus@georgiasouthern.edu](mailto:hiatus@georgiasouthern.edu)

## Five bands play Apex Saturday

Compiled by staff

### City Sleeps

The band started in 2004 and are from Atlanta, GA. They are signed to Trustkill Records and have been on many national tours playing along side Goldfinger, Saliva and 3 Doors Down.

### The Silent Escape

The band started in 2005 and are from Atlanta, GA. They are a 5-piece band and have recorded with Lee March (Fight Paris and Far-less.) They are signed to Tried By Fire Records. The band has played with Anberlin, Hopesfall, Underoath, and Maylene & The Sons of Disaster.

### A Girl A Gun A Ghost

From Savannah, GA this 5-piece band recorded an EP under Hotfoot Records and has a full-length CD coming out this summer. They are signed with Hotfoot Records.

### Dora Maar

This 5-piece band from Brunswick, GA recorded with Lee March (Fight Paris and Far-less) and are signed to Still Movement Records. They played with Chasing Victory, Mayday Parade, and Secret Lives of the Freemasons.

### 1994

This still unsigned 5-piece band from Marietta, GA is negotiating with labels.

## Premier Management Group

### Presents...



### Brand New 4 Bedroom 4.5 Bath Townhomes

1976 Square Feet  
Hardwood floors, Tile kitchen/bath  
Stainless steel appliances w/ washer and dryer  
Individual leases

Media center with 42" plasma tv  
Rent includes water, deluxe cable,  
Wireless internet, trash pickup, etc.  
Rents starting at \$425 per bedroom

### Space is limited!!!!

### Other Properties Available In:

Brad Lane Duplexes  
Boardwalk

Talon's Lake  
Pamela Way Duplexes

Homes throughout Statesboro

### Premier Management Group

1221 Merchants Way, Suite 202  
(Turn onto Merchants Way right across from McAllister's Deli)  
Statesboro, Georgia 30458  
(912) 489-4432

Specializing in individual houses, townhomes, duplexes, and commercial leases.

Let us find your next "home away from home"!

# Out & About in The 'Boro

## THE GEORGE-ANNE DAILY

Take a BITE Out of the 'Boro!

681-5418

fax: 486-7113

ADS@GEORGIASOUTHERN.EDU • WWW.GADAILY.COM



## Southern Palace

The Best Chinese Cuisine in Statesboro

[www.southernpalace.com](http://www.southernpalace.com)

Fresh, Healthy, and Tasty Special Student Carry out Menu

100% Vegetable oil, No M.S.G. (912) 489-8813

Dine-in, Carry out, Catering, Group party (912) 764-5536

602 Brannen Street, Suite 9, Statesboro, GA 30458. (Next to Dollar General, behind Jiffy Lube)

## Express Tune & Lube

Tire, Alignment & Exhaust Center

612 S. Zetterower Avenue  
489-4444

[www.expresstuneandlube.com](http://www.expresstuneandlube.com)  
Monday - Friday 7:30am - 6:30pm

Located a half block north of Wendy's.

### Oil Change Special

Includes up to 5 qts. of Castrol 5W20, 5W30, 10W30, or 20W50

**\$19.95**

Price applies to most vehicles. Expires 2/28/07