

Georgia Southern University

Digital Commons@Georgia Southern

---

The George-Anne

Student Media

---

11-16-2006

## The George-Anne

Georgia Southern University

Follow this and additional works at: <https://digitalcommons.georgiasouthern.edu/george-anne>

---

### Recommended Citation

Georgia Southern University, "The George-Anne" (2006). *The George-Anne*. 2024.  
<https://digitalcommons.georgiasouthern.edu/george-anne/2024>

This newspaper is brought to you for free and open access by the Student Media at Digital Commons@Georgia Southern. It has been accepted for inclusion in The George-Anne by an authorized administrator of Digital Commons@Georgia Southern. For more information, please contact [digitalcommons@georgiasouthern.edu](mailto:digitalcommons@georgiasouthern.edu).





Volume 79  
Number 60

## Bright lights, big city

Eagle Entertainment sponsors trip to New York City over winter break | HIATUS, p.7



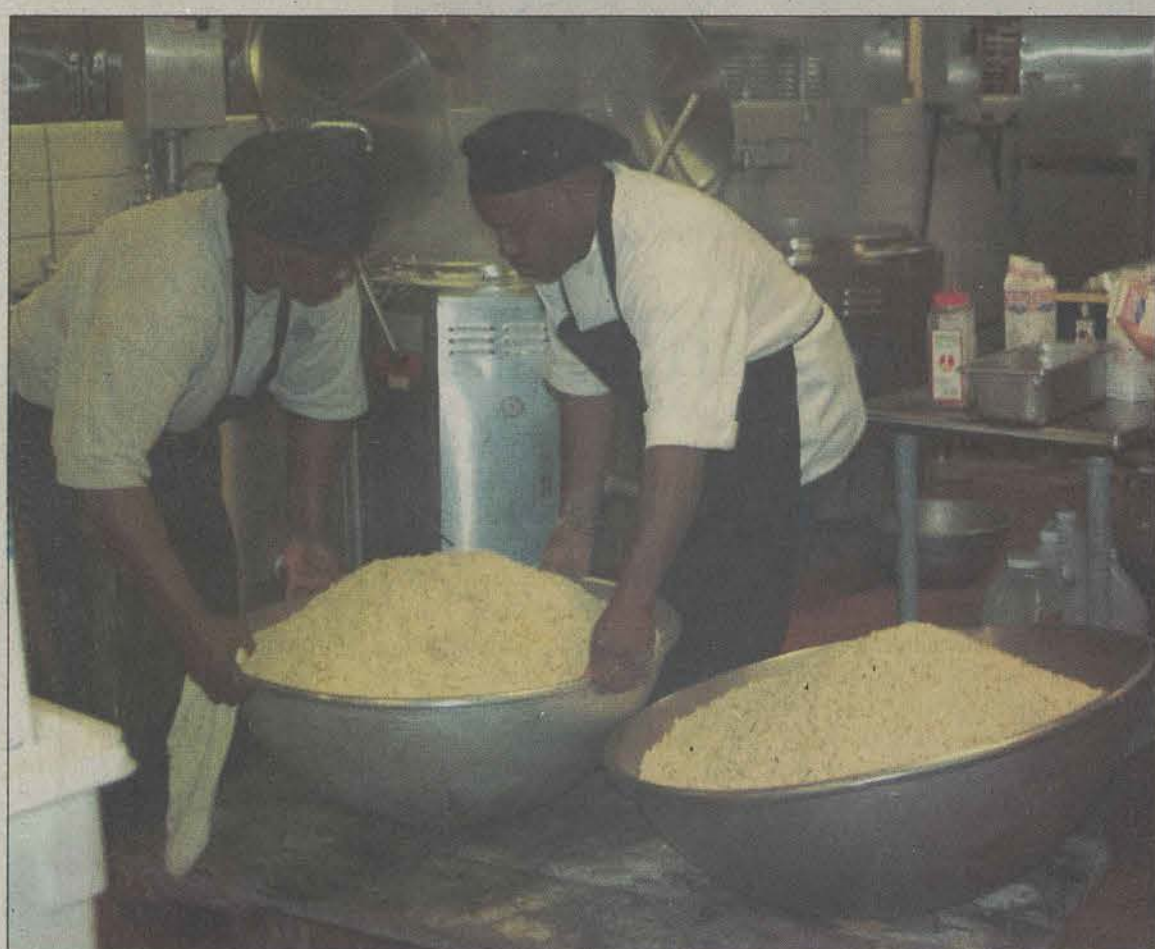
## Bounce out to the basketball tourney at the RAC Friday

NEWS, p. 4

# THE GEORGE-ANNE

DAILY

THURSDAY, NOVEMBER 16, 2006



Rachel McDaniel/STAFF

Annette Perkins and Charles Baker prepare dressing for hundreds of Georgia Southern students and faculty members at Landrum Court yesterday for the annual Holiday Feast.

## A holiday feast

### Thanksgiving by the pounds

By Jenny Miller  
News editor

The holiday festivities started early when over 500 students came to the Holiday Evening Meal at Landrum Court last night.

The elaborate menu featured eggplant soup, arugula salads, smoked seafood, turkey carving stations, traditional dressing and even a chocolate fountain.

The Thanksgiving feast is not just another night at Landrum, taking days to prepare for and a staff of more than 40 people to make it possible.

"It's definitely been busier, but it's been good," said chef Jason Pickford, who helped to cook most of the meal.

The holiday meal has become an annual tradition for some and has been served for more than 20 years. The feast was not offered for a few years in the 1990s, but was resurrected and has grown every year since then.

The Landrum dining hall was transformed for the evening, with holiday decorations, white cloths on the tables and music professor Michael Braz playing piano. The Landrum Court feeds around 3,000 students every day.

#### What goes into a Landrum Holiday Meal?

- 200 pounds of potatoes
- 200 pounds of ham
- 6 full turkeys
- 18 turkey breasts
- 20 pans of dressing
- 50 pounds of cantaloupe
- 32 pounds of strawberries

• A staff of 40 to cook and prepare for four to five days before the feast.



## Director 'echoes' dad's life

By Justin Burris  
Staff writer

A film director shares his father's journey to Vietnam as a medical doctor and spoke about the movie to honor him. The house was packed Tuesday evening at the Russell Union Theater for the screening of "As the Call, So the Echo."

The documentary is set in rural Vietnam and tells the story of Alex Moreano, a doctor from America, who donated equipment to a local hospital. The film doesn't simply dwell on the poor state of the area, or the lack of equipment the doctors have, but focuses more on the personal stories of the doctor and the people he encounters there. Moreano describes his experiences as being emotionally challenging, but he feels as if he had gained much from his trip.

The film was shot and directed by Keir Moreano, Alex Moreano's son, who described the experience as more than just an opportunity to film, but also a great experience in seeing just what his father does in the medical field.

After the presentation of the film, both Moreanos stayed for a question and answer session in which students asked them questions about the film and their experiences in Vietnam. Both of them said that they felt the people of the country had been very inviting and their experiences with the people were exceptional.

Keir Moreano also screened another movie that he filmed in Ethiopia, "A Child's Reach." Keir said that he enjoys doing documentaries. "Often, real life is more interesting and telling than fictional movies," he said.

The film serves as more than a way to tell the experiences of the American doctor, it helps students to understand see DIRECTOR, page 3



Brian Prusa/STAFF

Construction began in 2005, and steel structures are now going up.

#### Expansion facts:

Completion date:  
June 2007

Amount of space:  
29,850 square feet

#### Building will contain:

- Three art galleries for students and professional artists' displays
- An experimental (Black Box) theater for student instruction and theatre productions
- Administrative offices
- Georgia Artists Collection

## Out of the Black Box

### Expansion to open in fall of '07

By Lyndell Nelson  
Staff writer

The Black Box theater is an intimate setting for student performances in the communication arts trailer. The venue has seen over 10 years worth of student acts, and was once a classroom. The construction of the new building located behind Hendricks Hall will soon house a new Black Box theater as well as more studio space for art students.

"The Black Box theater we have been using is a converted classroom," said Rebecca Kennerly, assistant professor in the communication arts department. "It has served us well, but, it is in a trailer."

According to Director of Theater Jim Harbour, the new theater will have many new features. "President Grube has really spearheaded the construction," Harbour said. "The new theater is designed to be flexible in terms of audience configuration.

We will be able to move the seats, so it will be easy to change the setting. It will be able to accommodate between 150 and 180 seats versus 89 in the current theater. There will be theater lights 30 feet above the floor as opposed to seven feet in the existing theater. It will also include a catwalk to do camera work without requiring a ladder."

The theater will offer more than versatile seating arrangements. Also included will be dressing rooms, a green room that will double as a rehearsal hall and a two-story lobby outside the entrance of the theater to display works created by fine arts students.

Kennerly feels that a new student-operated theater is necessary since the department is growing.

"Our student involvement in the theater and performance area is thriving and we really need a more professional venue for training actors and training theater technicians,

as well as for the audience who attends our performances," she said.

Once the renovation of Veasy Hall is complete, the current communication arts trailer will be removed. The entire department will be relocated to the refurbished building.

"Veasy will offer computer labs, faculty offices and nine classrooms," Harbour said. There will also be a small practice theater in the former residence hall.

All of the changes occurring within the communication arts department are possible through revenue granted and approved by the Board of Regents. A minor capital project is defined as any development that will cost \$5 million or less to complete.

Although a name has not yet been decided for the new building, Harbour believes that it will be ready in time for the first production of the fall 2007 semester.

C E N T E N N I A L  
1 9 0 6 - 2 0 0 6

## Teachers to Eagles

*Editor's note: Georgia Southern will begin its official centennial celebration in December. This story is part of a weekly feature on the university's history.*

By Rachel McDaniel  
Executive editor

Georgia Southern basketball has a long-standing tradition of winning. Before the surge of six football national titles and the emergence of current icons like Paul Johnson and Erk Russell, basketball was the only sport to watch. Basketball took center stage while the GSU football program was on hold during the depression. Homecoming celebrations during this time took place during the basketball season.

The Teachers, as they were called, became conference champions for the first time in 1931 under the leadership of Coach Byron Lambert "Crook" Smith. Smith also coached several championship teams in football, basketball, baseball and track from 1929 to 1941.

"There are many things in life more important as character builders, that makes for better preparation

in life's battles, than victory. Victory is always sweet, but victory without sportsmanship, loyalty and courage is not worthwhile," said Smith in a 1932 George-Anne article.

The 1950s was a decade of domination for GSU basketball, with the small-town team beating bigger schools like the University of Georgia, Georgia Tech, Florida and Florida State.

James Boyd Searce, called the 'littlest prof' by the Atlanta Constitution in 1955, led the team to the 1957 Gator Bowl, beating the Bulldogs 85-57. A teacher and a coach, Searce was thought by many to be one of the best instructors on campus. After the huge win for the Eagles, local boosters worked together to get a gymnasium that could hold more than 2,000 fans. In 1955, the team moved into the brand new Hanner Gym.

In 1960, a competition was held to determine a team mascot, and in an edition of the George-Anne that year, "Eagles" was agreed upon as the name to appear on the basketball team's jerseys.

"The GSU Eagles was suggested see EAGLES, page 3



File Photo

Roger Moore, the first black athlete to receive a University System of Georgia scholarship, sinks a shot in a 1968 game.

#### TODAY

High: 64 | Low: 43  
Chance of rain

#### FRIDAY

High: 65 | Low: 45  
Partly cloudy

#### SATURDAY

High: 68 | Low: 48  
Mostly sunny

#### SUNDAY

High: 67 | Low: 49  
Mostly sunny

Campus ..... 2  
Briefs ..... 3  
News ..... 4

Classifieds ..... 5  
Sports ..... 6  
Hiatus ..... 7, 8

#### HEADER GOES HERE

The Hiatusals on page 9.



# Feast and fun with royal court Friday

By Frenchi Jones  
Staff writer

Devour upon the elaborate sights and sounds of opera while consuming the foods and drinks of a Madrigal Feast.

The Georgia Southern Opera will present "Amahl and the Night Visitors" at 6:30 p.m. on Friday and Saturday in the atrium of the IT Building.

Spectators will feast upon Cornish game hen, roasted pork and roasted vegetables while being serenaded by voices of GSU music students.

Sara Hancock, director of the opera and GSU music instructor, said this year's dinner-feature is expected to delight everyone in attendance.

"It is absolutely beautiful. This year we have established a royal court," Hancock said.

"We have Lord Edward Rutherford, who will be played by psychology

Director John Murray."

The one-act opera will feature the story of a young, crippled boy and his poor mother. The pair receives a special gift after being visited by the three wise men traveling to see baby Jesus.

"It is such a precious story," she said.

For the past six weeks the opera's cast has been rehearsing their roles.

"This is the second year we have done this," Hancock said. "It takes a great deal of planning. We have had to displace all the students in the IT building, four students had to learn the dance and we had to find two boys from the community through the Statesboro Youth Chorale."

Laura Carroll is one of 20 vocal performance students who will sing in the production.

Carroll plays the role of Amahl's mother, a character she described as

exasperated by her disabled son.

"Playing the role of the mother was not as easy as I thought it would be," she said. "I have never played a maternal character before, but once we learned the words and the music it was easier to get into it."

Twelve-year-old Cal Bookhoop and 14-year-old Clay Oldham play Amahl.

In an unfortunate twist of fate, Oldham really got into character. While playing Frisbee in the front yard of his house, he broke two of his toes.

"I love it. It is my first opera and I have always loved singing and acting," he said.

Carroll shares in his excitement. "I don't think that by the end of the night there will be a dry eye in the house," she said.

Tickets for the show are \$35 for adults and \$27 for students. For tickets call 912-486-7999.



Actors rehearse for the Madrigal Feast, which will take place Friday and Saturday.

## CALENDAR

### Thursday, November 16

8 a.m. - 5 p.m.  
Student life workshop  
Nessmith Lane 2908

5 p.m. - 6 p.m.  
International club meeting  
Russell Union 2084

5 p.m. - 7 p.m.  
New Slavery in a Global Economy  
Nessmith Lane Banquet room

6 p.m. - 7 p.m.  
Traditions and Spirit  
Russell Union 2052

6 p.m. - 8 p.m.  
MAP Thanksgiving banquet  
Russell Union Ballroom

7 p.m. - 8 p.m.  
NYC information meeting  
Russell Union 2042

8 p.m. - 10 p.m.  
Movie: Superman Returns  
Russell Union Theater

### Friday, November 17

11:30 a.m. - 1:30 p.m.  
Conversation hour  
Russell Union Ballroom

2 p.m. - 3:30 p.m.  
Irish studies sessions  
IT classroom 2202

### Saturday, November 18

8 a.m. - 12 p.m.  
Open house  
Russell Union

1 p.m. - 4 p.m.  
Football: Central Arkansas  
Paulson Stadium

## Artists shows 'emotion' at downtown exhibition



Special photo

Jennifer Garrett's artwork will be on display in the third floor of the Averitt Center for the Arts in downtown Statesboro from Nov. 20 through Nov. 26.

### Special to the G-A

Jennifer Wedincamp Garrett, bachelor of fine arts candidate at Georgia Southern University, will open her senior painting exhibition, Emotion At An Echo, on Nov. 20, in the third floor gallery of the Averitt Center for the Arts. The Betty Foy Sanders Department of Art sponsors the exhibition, which will close with a reception on Sunday, Nov. 26, from 5 p.m. - 8 p.m.

Jennifer Garrett is a native of Emanuel County and grew up in Canoochee. Her interest in art began at an early age, and Garrett believes she inherited a "creativity gene" from her parents. Influenced by her

father who worked with wood and her mother with sewing, she also watched her grandfather's ingenuity in his taxidermy shop as he would "create" odd animals complete with chicken feet, boar's heads and other parts from various animals.

Garrett has encouraged creativity in her twin daughters. "There are always art supplies on the counters and our paintings line the hallway. I believe creating art brings out positive energy."

About her artwork, Garrett writes: "Art has a spiritual value. Its strength lies in its ability to serve as a point of connection between an individual and something larger than oneself. Color is used in my images

as a means of expressing light, as well as emotion. Texture is as important as my color choices. I have been influenced by the energy and motion of the works of abstract expressionists including Arshile Gorky, Mark Rothko, William de Kooning and, especially, Jackson Pollock."

She will also be exhibiting her work at "Monkey Love Dessert Bar and Gallery" in Pooler and "CPR Fitness" in Swainsboro following her senior exhibition.

The exhibition and reception are free and open to the public. The Averitt Center for the Arts is open Monday through Friday from 10 a.m. to 7 p.m. and Saturday from 10 a.m. to 4 p.m.



Special photo

The New Sigmund Romberg Orchestra performs Nov. 25 at 7:30 p.m. in the Performing Arts Center.

## Orchestra kicks off holiday season

### GSU News Service

The Performing Arts Center (PAC) at Georgia Southern is hosting a joyous celebration of the holiday season. The New Sigmund Romberg Orchestra and Soloists will present "A Viennese Christmas" at the PAC on Nov. 25 at 7:30 p.m.

The show will feature a mixture of traditional Christmas songs and classic Viennese tunes. Tickets are \$30 plus tax per person for the general public. GSU faculty, staff and students will receive a 10 percent discount. Groups of 15 or more from outside the university community are also eligible for a 10 percent discount.

The New Sigmund Romberg

Orchestra and Soloists continue the tradition of their namesake, who lived from 1887 until 1951. A native of Hungary, Romberg moved to the U.S., where he became a well-known and popular composer of operettas. More than a half-dozen of his works became motion pictures, most notably the original "Viennese Nights."

Romberg collaborated with Al Jolson, Oscar Hammerstein II, Cole Porter, George Gershwin and Gus Kahn.

In 1940, Romberg put together

the first concert tour by the orchestra which bears his name.

More than six decades later, the New Sigmund Romberg Orchestra and Soloists is billed as "America's first touring pops orchestra" and remains a popular attraction throughout the country.

The box office is open every Tuesday through Friday from 10 a.m. until 5 p.m. and one hour before he show. To purchase tickets call toll-free 866 PAC-ARTS, or visit <http://ceps.georgiasouthern.edu/pac>.

### The New Sigmund Romberg Orchestra

• Presenting "A Viennese Christmas" at the PAC Nov. 25 at 7:30 p.m.

• Tickets are \$30 plus tax, 10% off for students, faculty and staff

**OUR NURSES DO MORE THAN GIVE SHOTS THEY CALL THEM**

**YO SOY EL ARMY**

Become a leader by combining your nursing education with Army ROTC, and graduate with the skills of a nurse and the respect of an Army Officer. For details about Army Nurse Scholarships and career opportunities, contact your local Army ROTC office.

**ENROLL IN ARMY ROTC BECOME AN ARMY OFFICER**

For more information, call 912-681-5320 or 1-800-334-ROTC or visit our website at <http://cost.georgiasouthern.edu/rotc>.

## May Move-ins Available!

Why Go To The Beach, When The Beech Can Come To You?



**3 levels • 2,000 sq. ft. • 4 Bedroom • 4 1/2 Bathrooms**  
**Walk-in Closets • Ashley and Bassett Furniture**

(912) 681-8307 FAX: (912) 871-3721

Located behind Sonny's on the Hwy. 67 By-pass

Offices Hours - Monday - Friday 9am-6pm, Saturday 12pm-5pm

[www.CopperBeechTownhomes.com](http://www.CopperBeechTownhomes.com)



## SCIENCE

## If temperatures continue to rise ...

A report by a British economist suggests that the world's economy could shrink if steps are not taken to curb greenhouse gas emissions.

## Emissions report

Highest greenhouse gas emissions, in millions of tons of carbon dioxide equivalent, 2004 (percent change since 1990):

United States	7,068 (+15.8%)
European Union	4,228 (-0.6%)
Russia	2,024 (-32.0%)
Japan	1,355 (+6.5%)
Canada	758 (+26.6%)

■ Under the 1997 Kyoto accord, 35 nations agreed to cut emissions by an average 5 percent below 1990 levels by 2012; the United States did not sign the accord.

## Dire predictions

Projected effects if global temperatures rise by these amounts within the next 50 years

	1.8°F (1°C)	3.6°F (2°C)	5.4°F (3°C)	7.2°F (4°C)	9°F (5°C)
Food	Crop losses, especially in developing countries				
Weather	Rising intensity of storms, forest fires, droughts, floods and heat waves				
Health	Higher death tolls from malnutrition, heat stress, malaria, dengue fever				
Ecosystems	Damage to coral reefs Up to 40 percent of species could face extinction				
Water	Small glaciers disappear, causing water shortages	Significant water shortages	Flooding from rising sea levels; drought and flood could displace 200 million		
Economy	Global GDP cut by 3 percent		Cut by 10 percent	Worst case: 20 percent cut (on a scale of world wars, Great Depression)	

■ Acting now to cut emissions would cost about 1 percent of global GDP each year

Source: U.N. Framework Convention on Climate Change, Stern Review on the Economics of Climate Change Graphic: Pat Carr, Melina Yingling

© 2006 MCT

## Scientists, public disagree on warming

McClatchy Newspapers

When it comes to global warming, scientists and the American public aren't talking on the same wavelength.

Most scientists believe that humans and their machines are mainly responsible for the 1.4 degree Fahrenheit rise in the world's average temperature in the last 100 years. Most Americans think otherwise.

Last month, a group of 18 climate scientists, including two Nobel Prize winners, submitted an affidavit to the Supreme Court declaring that they're 99 percent certain that "greenhouse gas emissions from human activities

cause global climate change, endangering human health and welfare."

Only 41 percent of those polled last summer by the Washington-based Pew Research Center, however, accepted the argument that climate change is due primarily to human activities, such as burning fossil fuels in cars, trucks and factories.

The rest of the 1,501 adults in the survey either said there's no solid evidence that the Earth is warming, or that if there is, the extra heat is the result of natural climate patterns, such as fluctuations in the sun's radiation.

This public skepticism flies in the face of the most widely accepted scientific assessment of the cause of global warming, which lays the blame primarily on "greenhouse gases" generated by humans.

The leading greenhouse gas is carbon dioxide (CO<sub>2</sub>), which is emitted by cars, trucks and factories and traps the sun's heat in the atmosphere.

The official scientific consensus is contained in a massive report issued in 2001 by the Intergovernmental Panel on Climate Change (IPCC), an organization that the United Nations created to collect and assess the work of climate scientists.

The IPCC report concluded that "most of the observed warming over the last 50 years is likely to have been due to the increase in greenhouse gas concentrations." The authors defined "most" to mean more than half and "likely" to mean that they're 66 percent to 90 percent sure that their statement is true.

Hundreds of scientists from around the globe are now working on an updated IPCC report to be completed next year.

The report will reflect the results of the last five years of research and more accurately define the human and natural roles in global warming.

## NATIONAL NEWS

## Doctors short on flu shots

The Atlanta Journal-Constitution

Doctors in Atlanta and around the country are frustrated at continued delays in the distribution of flu vaccines that have left some physicians' offices short of shots a little more than a week before families gather for Thanksgiving.

Dr. Sandra Fryhofer, an Atlanta internist and past president of the 120,000-member American College of Physicians, called the vaccine distribution system "haphazard."

Fryhofer, who said she doesn't have all the vaccine she needs for patients, said many doctors are angry that the nation still has a problem distributing vaccine, even as manufacturers churn out a record amount.

"I'm at the American Medical Association meeting in Nevada," she said by telephone. "A doctor just said he didn't have all his vaccine yet. We're wondering, when are we going to get it right? There's plenty around, everybody says, but a lot of doctors don't have it, or don't have enough."

For now, officials are advising Georgians to call their local health department or physician to find out where flu vaccines are available. Some retailers that offer shots, such as Kroger and Publix stores, have them available now. Shots generally cost about \$25.

Dr. Julie Gerberding, director of

the U.S. Centers for Disease Control and Prevention in Atlanta, said Monday that 77 million flu doses had been distributed of the 110 million to 115 million promised by manufacturers. Officials said the rest of the vaccine is in the pipeline but can't say when it will arrive.

Many doctors worry that grocery and drugstore retailers, who buy the largest quantities of vaccine, get preferential treatment.

Sneezy? Achy? Feverish? Do everyone a favor: Don't leave the house

# DON'T MAKE ME SICK

**COLD VS. FLU**

The difference between a cold and the flu

The cold and the flu are respiratory illnesses caused by viruses. Colds, generally milder, if you feel sneezy but not as if you want to die. The typical symptoms of a cold is a runny nose. The flu will have you burning with fever, aching all over, extremely tired and coughing intensely. The flu can lead to serious complications, such as pneumonia. Sometimes, it's hard to tell a cold from a flu based on symptoms alone. A doctor can test to see whether you have the flu in the first few days of the illness.

How do you treat cold and flu? The cold is pretty much the same. Drink plenty of fluids, get lots of rest, avoid using alcohol or tobacco, and treat the symptoms. Antibiotics won't cure the flu, but some over-the-counter medications may help with the symptoms, including acetaminophen for children and acetaminophen or aspirin for adults, decongestants and cough suppressants. A humidifier may also help.

— Dr. Mary Mather, Editorial Health Goals and MCT

**WHAT IS AVIAN INFLUENZA (BIRD FLU)?**

Avian influenza is a highly contagious viral infection that affects birds. It is caused by a virus that is found in the droppings, secretions, and tissues of infected birds. Humans can become infected by eating undercooked poultry or by direct contact with infected birds. Symptoms include fever, cough, sore throat, and difficulty breathing. In severe cases, it can be fatal.

**PREVENTING THE FLU**

Get vaccinated. The flu vaccine is the best way to prevent the flu. It is made from inactivated flu viruses and is safe for everyone over the age of 6 months. People who should get vaccinated include: people who live in long-term care facilities, people who work in health care, people who have close contact with someone who has the flu, and people who have a chronic medical condition.

**STAY HOME**

If you are sick, stay home. This helps prevent the spread of the virus. Avoid close contact with others, and cover your mouth and nose when you cough or sneeze. Wash your hands frequently with soap and water.

**PANDEMIC**

A pandemic is a worldwide outbreak of a disease. It is caused by a new virus that spreads easily from person to person. The 1918 influenza pandemic is one of the most deadly in history, killing an estimated 20 million people. Scientists are currently monitoring for signs of a new pandemic virus.

**SICK**

McClatchy-Tribune

## GEORGIA NEWS

## New aquarium leader

The Atlanta Journal-Constitution

Benefactor Bernie Marcus is turning over the operations of the hugely successful Georgia Aquarium to an appointed board of directors to assure that it's not a one-man show — even though he was elected chairman of the board.

Marcus, who personally contributed \$250 million toward the \$300 million aquarium, said Tues-

day he wants the year-old tourist destination to outlive him.

The group of business and community leaders, which also includes Marcus' wife, Billi, will take full control on Dec. 1.

"I'm still chairman, but all the decision-making will be done by the board," said Marcus. "I am passing it to them debt-free and with a wealth of development and expansion plans," he said.

## Eagles

from page 1

by Ralph Swords, the nickname was adopted by a special committee last week from among 104 entries of students and faculty. Swords will receive \$10 for his winning entry," said the article.

The 1960s would usher in an interesting era for GSU basketball. In a 1964 match-up against Jacksonville University, Fran Florian scored 60 points and set a GSU record.

1965 was the first year of integration at Georgia Southern. Searce,

then a legend on campus, requested permission from the athletic committee to recruit two or more black players. In 1966, Chancellor George Simpson allegedly thought it not a good idea to integrate the team, and Searce decided his recruiting. When the players Searce hoped to recruit began playing well at other schools, he got the go-ahead to integrate from school administration.

One year later, Roger Moore became the first black athlete to receive a scholarship in the University System. He led the Eagles to become a Division I competitor in 1988 and dissolved the color barrier at GSU.

## Director

from page 1

what nations, outside of our own looklike. Presented in this year's international film festival, the movie was part of a major art project on Asia, according to Megan Jacobs,

who is working with colleague Jeff Beekman to plan a trip to Vietnam in 2007.

Students are encouraged to sign up for the trip, which is part of the study abroad program. If interested, call study abroad office at 912-871-1747. More information on "As the Call, so the echo" can be found at [asthecall.com](http://asthecall.com).

**The Sir Shop**  
TWO LOCATIONS

Statesboro Mall 764-6924 Main Street Village 871-4962

**PENGUIN by Munsingwear**

**Welcome to New York**

Got Plans For Winter Break? Well, now you do! Visit New York with Eagle Entertainment!

**Who: Open to all GSU Students**  
**When: Sat, Dec 9 - Fri, Dec 15**  
**Price: \$100 deposit (due 11/21) + \$150 (due 12/1)**

**\*Info Meeting will be held on Nov 17 at 7PM in Russell Union Rm. 2042**

Visit the Office of Student Activities for more details or to make a deposit for the trip.

Visit our website: [www.eagleentertainmentonline.com](http://www.eagleentertainmentonline.com)

## Sales Representatives Needed!

**The George-Anne Daily** is now accepting resumés for sales representatives in the advertising department. We are looking for outgoing, highly motivated people. No experience is required.

## Job Requirements include:

(but are not limited to)

- Daily office hours
- Monthly meeting attendance
- Email and phone correspondence
- Knowledge of local area businesses
- Means of transportation

Questions? Call 912-681-5418.

Please email resumé with references to Ads Manager at [ads1@georgiasouthern.edu](mailto:ads1@georgiasouthern.edu)

## STATEMENT OF OPERATIONS

The George-Anne Daily is the official student newspaper of Georgia Southern University, owned and operated by GSU students and utilizing the facilities provided by GSU. The newspaper is the oldest continuously published newspaper in Bulloch County and Statesboro, Ga. The newspaper is a designated public forum for the Georgia Southern University community. The ideas expressed herein are those of the editor or the individual authors and do not necessarily represent the views of the Student Media Advisory Board, the administration, the faculty and staff of Georgia Southern University, or the University System of Georgia. The George-Anne is published four times weekly (Monday-Tuesday-Wednesday-Thursday) during most of the academic year and six times during summers. Any questions regarding content should be directed to the editor at by phone at 912/681-5246 or fax at 912/486-7113.

Readers may access the newspaper and its archives staff by visiting our web site at <http://www.gadaily.com>.

## SUPPORT

The G-A is funded primarily

through revenue from advertisements placed in the paper and receives additional support, in part, from the Student Activities Budget Committee.

## STUDENTS BEWARE

The G-A screens all advertisements prior to publication. The newspaper strives to accept ads for legitimate products and services only. Students are urged to exercise caution when replying to ads — particularly those which require a credit card number, other personal information, or money in advance of the delivery of a product or service. Students are also urged to report to the newspaper any suspicious offers which they might see in an ad. Remember, if an offer seems too good to be true, it probably is.

## FREEBIE INFO

ALL FREE student and faculty ads to be run in the G-A must have a NAME, P.O. BOX and PHONE NUMBER. Ads will be rejected if they do not have this information. NO EXCEPTIONS.

## OFFICES, MAIL, PHONES

Room 2023, F.I. Williams Center. The George-Anne, P.O. Box 8001, Georgia Southern University, Statesboro, Ga. 30460. 912/681-5246 (News) or 912/681-5418 (Advertising) or 912/486-7113 (Fax); 912/681-0069 (adviser).

## EMAIL DIRECTORY

Executive Editor  
[gaeditor@georgiasouthern.edu](mailto:gaeditor@georgiasouthern.edu)  
Managing Editor  
[gamedit@georgiasouthern.edu](mailto:gamedit@georgiasouthern.edu)  
News Editor  
[ganews@georgiasouthern.edu](mailto:ganews@georgiasouthern.edu)  
Advertising  
[ads@georgiasouthern.edu](mailto:ads@georgiasouthern.edu) or [ads1@georgiasouthern.edu](mailto:ads1@georgiasouthern.edu)

## ADVERTISING

The George-Anne reserves the right to refuse any advertisement.

**DISPLAY AD DEADLINE:** The deadline for reserving space and submitting advertising copy is Noon, one week prior to the intended publication date.

**FOR MORE INFO,** rate cards, sample publications, contact: Lindsey Anthony, Marketing Director, ADS, (912) 681-5418. [ads@georgiasouthern.edu](mailto:ads@georgiasouthern.edu) or [ads1@georgiasouthern.edu](mailto:ads1@georgiasouthern.edu) or Bill Neville, Student Media Coordinator, (912) 681-0069, [bneville@georgiasouthern.edu](mailto:bneville@georgiasouthern.edu)

**PROOFING/ERRORS/OMISSIONS:** The newspaper makes every reasonable effort to present correct and complete information in advertisements. However, the advertiser is responsible for proofing the ad upon publication and should notify the newspaper immediately in the event of an error. The newspaper is not responsible

for any errors in advertisements and its liability for adjustments is limited to the amount of space the error occupied in the ad. Further, the newspaper is not responsible for any damages caused due to an ad's omission from a particular edition and its responsibility solely is to reschedule the ad in the next regular edition at the regular advertising rates.

**CLASSIFIED ADS:** Free classified ads from students, faculty and staff must be non-commercial in nature and submitted in writing, with the name of the sender, local address, and phone number. No free ads taken via telephone — at this price we don't take dictation. One free ad per person per week. Commercial classifieds are available only from our online site at [www.gsuaads.com](http://www.gsuaads.com). The price of commercial ads is \$7 for 200 characters for line ads. Ads must be paid for using a major credit card. For classified display ads, contact [gaclass@georgiasouthern.edu](mailto:gaclass@georgiasouthern.edu)

**CIRCULATION INFORMATION:** Mail subscriptions are not available at this time. However, readers may visit our web site for free access to current and past issues. Visit [www.stp.georgiasouthern.edu](http://www.stp.georgiasouthern.edu). It is the goal of the newspaper to have its edition placed on-line within 24 hours of

publication. Breaking news will be placed on-line as warranted. The G-A is distributed free of charge on the Georgia Southern University campus through delivery sites located in campus buildings, at off-campus sites, and in residence halls.

## NOTICE

Readers may pick up one free copy, and a second for a roommate or acquaintance, at distribution sites. Additional copies are 50 cents each and are available at the Williams Center. However, unauthorized removal of additional copies from a distribution site constitutes theft under Georgia law, a misdemeanor offense punishable by a fine and/or jail time. Editors will seek to have any person(s) who removes more than the authorized number of copies from distribution sites prosecuted to the full extent of the law.

## NOTE

We gratefully acknowledge the theft of one of our slogans — "Liked by Many, Cussed by Some, Read by them All" — from Robert Williams of the Blackshear Times. Call Bob and he can tell you who he stole it from originally. Credit for the other — "Covering Campus like A Swarm of Gnats" — goes to G-A alum Mike Mills.



# Students square off on the court



The Holiday Basketball Tournament takes place this weekend at the RAC. *Special photo*

By MJ Trahan  
Staff writer

If you are looking for something fun to watch this weekend, then head to the RAC and watch teams compete in the Holiday Basketball Tournament, Friday Nov. 17- Sunday, Nov. 19 at the RAC.

Twenty-one teams in an all men's division have entered to play in the tournament. Team entry forms were turned in last Monday, and according to the intramurals staff at CRI, this weekend is going to be a tremendous turn-out.

"We're glad that so many teams have shown an interest in the tournament and want to get some playing time in before the regular season starts. It's a great way for teams to

practice and scout out their competition for the year," said Matt Rice, intramurals graduate assistant.

With the opening of the expansion and an increase in playable court space, the team entries for the tournament nearly doubled from last year's tournament.

The double-elimination tournament will begin Friday night. Games will be played through Sunday evening, with the presentation of awards following the championship game.

"With twenty-one teams playing this weekend, that guarantees around forty-eight games of good, competitive basketball. It's going to be a lot of fun to watch, and I'm glad I could be a part of organizing it," said Tommy Segi, intramurals graduate assistant.



*Special photo*

In this photo, author Kevin Bales is shown, at left, speaking at a conference.

## Slavery expert lectures today

By Avina Darmadjaja  
Staff writer

Slavery seems to be a topic from the past. In truth, it is estimated that 27 million people are held in some form of slavery today. This number is more than at any time in history. The modern-day slavery is occurring all around us and is becoming a global issue.

As part of International Week and the Zia Hashmi Lecture Series, the center for international studies coordinates a lecture titled "New Slavery in the Global Economy."

Kevin Bales will deliver the lecture today in the Nessmith-Lane building. There is going to be a reception at 6 p.m. in the Southern Ballroom prior to the lecture, which starts at 7 p.m. in the assembly hall.

Our purpose is to raise awareness about modern day slavery and human trafficking," said Angie Threatte, coordinator of special event and planning in the center for international studies.

Bales is the world's leading expert on modern slavery and president of

Free the Slaves, a non-profit organization dedicated to abolish slavery around the world.

He received his Ph.D. at the London School of Economics and is currently a professor of sociology at Roehampton University in London.

His award-winning book, "Disposable People: New Slavery in the Global Economy," was nominated for the Pulitzer Prize and has been published in ten other languages. Most people's image of slavery is one of ships and plantations.

But today's slavery exists in a form that transcends all types of labor. They are merely disposable tools that are used to increase profits.

Most slaves are forced to work in agriculture, mining and prostitution. Most slaves are paid nothing

at all and the physical and psychological violence used against them is so harsh that they cannot escape their condition as a slave.

Although it exists in almost every country, slavery is illegal. It is universally seen as a violation to basic human rights.

## Former Black Panther speaks at GSU

By Magaela Luke  
Staff writer

Georgia Southern students had the opportunity to witness a dialogue of Shujaa Graham, an ex-Black Panther Party member, freed prisoner and amnesty advocate, as he relayed his experience of being wrongly assigned to death row.

In his discussion, he gave an account of his prison experience, how he was framed in a prison guard murder case and the process which exonerated him only days before his scheduled execution.

"This discussion is interesting in that it includes topics relating not only to criminal justice and amnesty movements, but also broader areas like race, ethics and politics," said Leah Daigle, a criminal justice professor.

"The program sheds light onto an era in which we students were not able to live and a subject that some students may not feel comfortable addressing,"

said Sean Bethune, a senior political science education major.

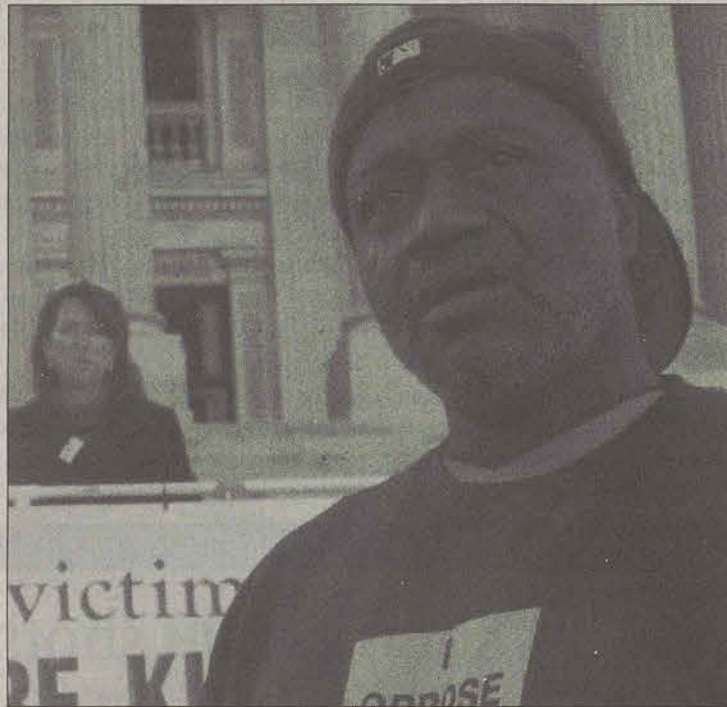
Graham, who was imprisoned in 1969 on a robbery charge, became involved with the Black Prison Movement of the Black Panther Party in the 1970s.

"The Black Panther Party was a radical Black Nationalist group that stood for armed resistance against the oppression of African Americans. Some people have misunderstood this group," said Erik Brooks, a professor of political science.

Graham was vocal about sub-standard prison conditions and other political issues during that time.

He was accused and convicted in the killing of a prison guard in Soledad Prison in November 1973.

In 1981, after two more trials, Graham was found innocent by a jury and exonerated and freed from death row. Ever since then, Graham has fought to abolish the death penalty.



*Special photo*

Shujaa Graham has been an outspoken advocate to abolish the death penalty after being falsely accused and sent to death row.

# KEGS TO GO AT BI-LO

## Lowest Prices in Town!



Natural Light - \$55.79

Pabst Blue Ribbon - \$50.49

Killian's Red - \$81.99

Budweiser- \$70.59

Bud Light- \$70.59

Michelob- \$70.59

Miller Light - \$78.99

**Plus Deposit!**

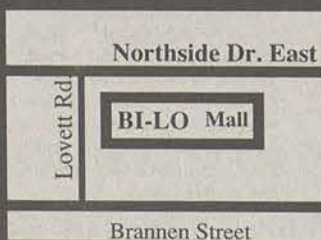
KEG DEPOSIT - \$30.00

TAP DEPOSIT - \$40.00

BARREL - \$12.00

**\$82.00**

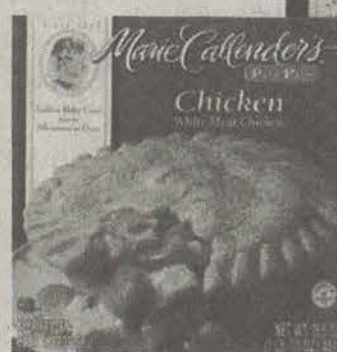
DEPOSIT IS REFUNDABLE WHEN RETURNED



**Birds Eye Vegetables**

12 oz. Steamfresh,  
22-32 oz. Polybag or  
12 Count Corn on Cob

**BUY ONE  
GET ONE  
FREE**  
WITH YOUR CARD



**Marie Callender's Dinners,  
Entrées or Pot Pies**

12-21 oz. Assorted Varieties

**2 for \$5**

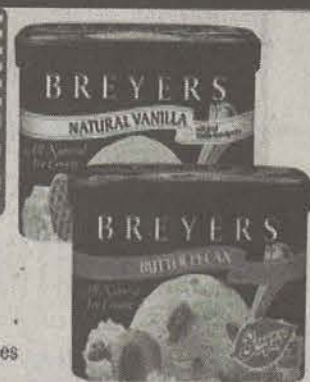
Save up to 4.18 on 2  
WITH YOUR CARD

**BUY ONE  
GET ONE  
FREE**  
WITH YOUR CARD

**Plumrose  
Premium  
Sliced Bacon**  
16 oz.



**BUY ONE  
GET ONE  
FREE**  
WITH YOUR CARD



**BUY ONE  
GET ONE  
FREE**  
WITH YOUR CARD

**Carolina Pride  
Cocktail  
Smokies**  
14-16 oz.  
Regular or Beef



The Following are Accepted at BI-LO



**34 Statesboro Mall  
Northside Dr. East  
Statesboro, GA  
489-1465**



# THE GEORGE-ANNE CLASSIFIEDS, ETC.

Now you can place your classified ads online... For Commercial Ads, Visit...

<http://www.gsuads.com>

...and create, place, proof and pay for your ad online. Just \$7 for 200 characters. In partnership with Universal Advertising.

Free ads for students, faculty & staff (non-commercial): visit us online at...

[www.gadaily.com/class\\_ad\\_sub.php](http://www.gadaily.com/class_ad_sub.php)

You must include your names, address and phone number for freebies. No phone calls please, at this price we don't take dictation.

## CLASSIFIED CATEGORIES

**100 Announcements**  
110 Auditions  
120 Freebies  
130 Lost & Found  
140 Other Announcements

**200 Buy or Sell**  
210 Autos for Sale  
220 Auto Parts for Sale  
230 Bicycles for Sale  
240 Books for Sale  
250 Computers & Software  
260 Miscellaneous for Sale  
270 Motorcycles for Sale  
280 Trade & Barter  
290 Wanted

## 300 Employment & Job Services

310 Career & Job Services  
320 Child Care Needed  
330 Child Care Provider  
340 Internships/Volunteer  
350 Jobs/Full Time  
360 Jobs/Part Time  
370 Opportunities/Business  
380 University Work  
390 Wanted Jobs

**400 Housing & Real Estate**  
410 Apartments  
420 Lots & Rooms  
430 Mobile Homes  
440 Real Estate for Sale  
450 Roommates Wanted  
460 Storage & Moving Services  
470 Student Housing

## 480 Sub Leases

490 Vacation Rentals

**500 Personals**  
500 Personals

**600 Services**  
610 Education & Tutoring  
620 Financial Aid/Loans  
630 Legal Services  
640 Resumes/Typing/DTP  
650 Services/Miscellaneous

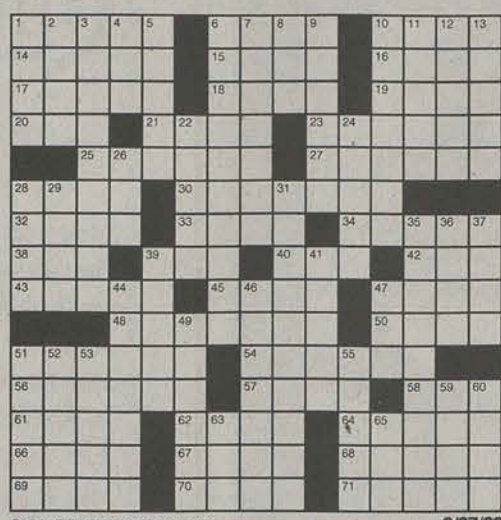
**700 Travel**  
710 Spring Break Travel

**800 Transportation/Rides**  
800 Transportation/Rides

**900 Miscellaneous**  
910 Pets & Pet Supplies

## Crossword

**ACROSS**  
1 Destined  
6 Cincinnati nine  
10 Pub projectile  
14 "Aldo" or "Carmen"  
15 Organic compound  
16 Needle case  
17 Kind of numeral  
18 Conception  
19 Conduit  
20 6th sense  
21 Ballerina's skirt  
23 Harder to swallow?  
25 First match  
27 Hams it up  
28 Stable dweller  
30 Chest of drawers  
32 Quickly!  
33 Alleviate  
34 More modern  
35 Expose publicly  
39 Museum purchases  
40 Regular or high-test  
42 "Roses" red...  
43 Town leader  
45 Corn units  
47 Handhold  
48 Centers  
50 Nabisco cookie  
51 Counsel  
54 Meeting outline  
56 Cargo cases  
57 Moderate  
58 Shaq's playground  
61 Feather fall  
62 QED part  
64 Temple table  
66 Cosmo rival  
67 Frozen fog  
68 Actress  
69 Lost tradition  
70 Natterjack  
71 Parties in a conflict



© 2006 Tribune Media Services, Inc. All rights reserved.

9/27/06

**DOWN**  
1 Fairway alert  
2 PFC's addresses  
3 For a limited time  
4 Paleozoic, e.g.  
5 "Divine Comedy" poet  
6 Said again  
7 Tolerates  
8 Female deer  
9 Lists of candidates  
10 Regret deeply  
11 Like Pisa's tower  
12 New Delhi currency  
13 Stadium levels  
22 Reporting to  
24 Prayer enders  
26 Type of talk  
28 Lady's address  
29 Katmandu's place  
31 Set apart  
33 Deserved  
36 Niagara's source  
37 Emilio Estevez film, "Man"  
39 Get up  
41 Balance sheet item  
44 Left off the list  
46 Mobile home?

6 Said again  
7 Tolerates  
8 Female deer  
9 Lists of candidates  
10 Regret deeply  
11 Like Pisa's tower  
12 New Delhi currency  
13 Stadium levels  
22 Reporting to  
24 Prayer enders  
26 Type of talk  
28 Lady's address  
29 Katmandu's place  
31 Set apart  
33 Deserved  
36 Niagara's source  
37 Emilio Estevez film, "Man"  
39 Get up  
41 Balance sheet item  
44 Left off the list  
46 Mobile home?

**New Voices.  
New Services.  
New Attitude.**

[www.gadaily.com](http://www.gadaily.com)

**There is No Option!**

## Classic Beginnings

©2006 PuzzleJunction.com

Below are 10 classic movie titles. Each movie starred someone famous. However, some of the actors and actresses in these movies were just getting started (some in bit parts), and they would become well-known in later years. Can you choose the lesser-known future stars who played in these flicks? Good luck!

- Annie Hall (1977) starring Woody Allen  
(a) Jeff Goldblum (b) Sigourney Weaver (c) Both of them
- Hawaii (1966) starring Julie Andrews  
(a) Mary Tyler Moore (b) Bette Midler (c) Neither of them
- Love Story (1970) starring Ali MacGraw & Ryan O'Neal  
(a) Tommy Lee Jones (b) Anjelica Houston (c) Robin Williams
- Don't Bother to Knock (1952) starring Marilyn Monroe  
(a) Brigitte Bardot (b) Anne Bancroft (c) Jack Lemmon
- Dr. Strangelove (1964) starring Peter Sellers  
(a) James Woods (b) Timothy Dalton (c) James Earl Jones
- A Star is Born (1937) starring Fredric March & Janet Gaynor  
(a) Lana Turner (b) Joan Crawford (c) Both of them
- The First Deadly Sin (1980) starring Frank Sinatra  
(a) Sarah Jessica Parker (b) Bruce Willis (c) Neither of them
- Irma la Douce (1963) starring Shirley MacLaine  
(a) James Caan (b) Joe Pesci (c) Dudley Moore
- Bonnie and Clyde (1967) starring Warren Beatty & Faye Dunaway  
(a) Jon Voight (b) Richard Gere (c) Gene Wilder
- Ben-Hur (1926) starring Francis X. Bushman & Ramon Novarro  
(a) Loretta Young (b) Myrna Loy (c) Norma Shearer

## LAKE-SIDE CAFE

Lunch and Dinner with a View

Stone Willy's Pizza • Freshen's • Wrapsody Grill  
Cuisine • Field of Greens • Summit Subs • Smoothie Co.

Mon.-Thurs. 7:30 a.m. to 8:30 p.m. • Fri. 7:30 a.m. to 7 p.m.

In the Spice Rack

R T H X L N O M A D R A C S Z N X  
E C I P S L L A E Y A W A R A C L  
K P B N Y K V C X N J F J T O K R  
M M A B C K A M L L F V T A N Q J  
E K W R P M A J L R P A P R I K A  
M Y Y N S I L O L J H H R O X N  
Y A J R S L N N M L T F H A N D V  
H Z N S R A E A R I J S A G E W C  
T Y A I G U R Y N D G Y X O Q L N  
R C J E S J C O B M B I M N O X G  
O K R N O E M S A K E T N V C F A  
W O T R C A A H S N M N E G K V R  
G K A N N V B T I U Q S N R E X L  
I M N N O J K K L T L T B E K R I  
F J I R L F M G M M B C N P Y H C  
L C Y T C Y R A M E S O R I N A R  
F E N N E L R K K G Q G N I M U C

©2006 PuzzleJunction.com

ALLSPICE	CURRY	ONION
ANISE	DILL	OREGANO
BASIL	FENNEL	PAPRIKA
CARAWAY	FIGWORT	PARSLEY
CARDAMON	GARLIC	ROSEMARY
CASSIA	GINGER	SAFFRON
CAYENNE	MACE	SAGE
CINNAMON	MARJORAM	SAVORY
CLOVES	MINT	TARRAGON
CUMIN	NUTMEG	THYME

## Announcements 100 - 199

### 140 Other Announcements

Someone needed to sublease my apartment ASAP! 4bed/2b in Eagles Landing. Great room-mates!! Please call Anna 478-494-8269. We will work out a good deal!!

**NOTICE** -- While the newspaper makes every effort to screen bogus offers and ads, please remember if an offer seems to be too good to be true, it probably is.

Reach Georgia Southern students with a publication they really read... Over 100,000 copies of the G-A Daily circulate each month. For more info: [ads@georgiasouthern.edu](mailto:ads@georgiasouthern.edu)

### Buy or Sell 200 - 299

#### 210 Autos for Sale

1990 Nissan 240SX for sale. Black. has CD player and 4 Polk speakers. sounds like it has problems with the starter, doesn't crank up. Car ran a month ago. \$500 or best offer!

Call 706-575-0264 and come take a look.

1999 FORD TAURUS FOR SALE

IN GOOD CONDITION

\$3,000 ONO

CONTACT MEGAN SANDS @ 954-540 3096

For Sale:

1989 Oldsmobile Delta 88. Minor body damage, needs work. \$1500. (678)386-6623.

1992 Ford Explorer \$500

NEEDS transmission replaced or rebuilt. 4Dr. Good condition.

Call Chris at 404-944-8905.

### 250 Computers & Software

Laptop for Sale \$600 or OBO. go to <http://atlanta.craigslist.org/sys/231330305.html> for full description

Complete Computer System \$250, includes Windows XP, Office XP/Word, Excel, Powerpoint and Norton Antivirus. Great for school and internet. Call Chris at 404-944-8905.

Dell Laptop with 13" LCD Screen, DVD, High Speed Internet, 20 GB HD, Office XP. Very slim and Lightweight. Like New! \$275 (912)-424-9750

### 260 Miscellaneous for Sale

Epson Stylus C42UX for sale with full ink cartridges and all parts. Call Wes 770 639 2367

Want to build a bed frame, loft or other furniture? Spare

wood for cheap. Call Wes 770 639 2367

Two 12inch Audiobahn 1400 watt speakers, 1 Crunch 1,000 watt amp and one large sealed speaker box. \$500 or best offer. Call (229)221-1723

For Sale Crossbow Home Gym. Great shape. barely used. \$450. email [s\\_t\\_long@hotmail.com](mailto:s_t_long@hotmail.com) for pics or more information.

Two 30 watt sony speakers for sale. Great sound quality! Any reasonable offer is good. Call Wes 770 639 2367

Like new one hose hookah for sale. All accessories included plus an extra hose. \$75 obo.

Boxflex Style Adjustable Dumbbells. Also including bench! Get buff fast at home! Like New! \$200 (912)-424-9750

2 1200 watt sony explodes in chambered box. 1200 watt 4-channel amp. plus wiring. \$400 call Adam at (478)256-5951

Don't throw away that junk... turn your trash into cash. Trying selling it online and in print with a G-A Daily action classified ad. It's free for students. Visit [www.gadaily.com](http://www.gadaily.com) to find out more!

Desk/Chair for sale Excellent condition. 1 Desk, four chairs for sale. Ideal for studying or can be used for a dining set. Call Carlene at 803-290-6179

15 inch Memphis Audio subwoofer, 300 watt amp, and box. Like New, amp still in box. Also have all the cables and noise reducers nessecary. Paid 700 asking 300 or best offer!

15 inch Memphis Audio subwoofer, 300 watt amp, and box. Like New, amp still in box. Also have all the cables and noise reducers nessecary. Paid 700 asking 300 or best offer! call 912.481.4232

270 Motorcycles for Sale

Pampered Chef Kitchen Tools, Kitchen Shows, Bridal Showers Registry, free, half-price and discounts. Call 681-7453 after 5:30 p.m.

MOTORCYCLE! 2003 HONDA CBR600RR. Red and black. Excellent condition. 9100 miles, lots of aftermarket parts and accessories. <http://loligagger.dothphoto.com> \$7000 obo 912-678-9729

2002 Honda CBR600F4i, Silver Metallic, 5000 miles, Yoshimura exhaust, Runs, Rides and Looks NICE! Your way to Avoid the campus traffic!

\$5700 404-276-2568

Employment & Job Services 300 - 399

350 Jobs/Full Time

BARTENDING! Up to \$250 a Day. No Experience Necessary. Training Available. Age 18+ OK 1-800-965-6520 XT 296

### 380 University Work

Sales Representatives Needed!

The George-Anne Daily is now accepting resumes for sales representatives in the advertising department. We are looking for outgoing, highly motivated people.

No experience is required.

Job Requirements include:(but are not limited to)

- Daily office hours

- Monthly meeting attendance

- Email and phone correspondence

- Knowledge of local area businesses

- Means of transportation

Please email resume with references to Ads Manager at [ads1@georgiasouthern.edu](mailto:ads1@georgiasouthern.edu)

Questions? Call 912-681-5418.

### Housing & Real Estate 400 - 499

#### 410 Apartments

Unit for Rent at Statesboro Place!

Female roommate needed ASAP!! Fully furnished, \$365 all inclusive rent, and all appliances included!!

Contact Sheridan at 229 942 7016 or sbushy13@yahoo.com

DUPLEX 2 br 1 ba walk/bike to campus near bus stop available spring sem pets considered. 764-3697

Stadium Walk Apt for rent. Nice Unit. Wood floor and fresh paint. Sorry no Pets. Call Brad 912-617-7905.

FOR RENT NEW 1650 SF DUPLEX, 3 BR, 2 BATH, COUNTRY SIDE S/D, \$850 PER MO, NO PETS NO SMOKING, GARELA102302

QUIET, REASONABLY PRICED ( \$285-\$450) one & two bedroom apartments. NO PETS. Deposit, application required. Flexible leases. Parker Realty (764-5623)

470 Student Housing

FOR RENT BY OWNER. STADIUM WALK APARTMENT. TWO BEDROOMS, WASHER, DRYER. \$425.00 per month. Some pets allowed. Lease required. Call 912 541 4885.

3BR, 2BA Brick Home for Rent

With carport, W/D, DW, spacious backyard, no pets, ex. cond., \$850/mo, no deposit w/ qualification, available for immediate move in. Please contact 912-653-2825 alt. 912-604-1453

FOR RENT Gentilly x N. Edgewood 1800 sq ft 3 bd/2 ba den living dining kitchen washer/dryer 124 Holly Dr \$1200 681-3163

480 Sub Leases

Statesboro Place - 4br/4ba; fully furnished; all utilities included; \$375/mo; next to pool/clubhouse; start in January. Call (770)329-1389

Sublease available in December. 4br/2ba house across from hospital. \$325/mo. Call Scot @ (770)364-1968.

1bed/1bath spacious mother-in-law house. Located in a quiet neighborhood behind Statesboro High. Washer/dryer included. \$400/month...sublease until July. Can move in ASAP. Call Bess at 229-848-1001.

For rent

Sublease available now 4br/4ba at Campus Club \$419/month Call 478-290-1088.

sub-lease available! Garden District. 2Br/2 bathroom. 490/month. furnished/utilities! you get master bedroom. First month rent free! call J @ 616-813-8424

Services 600 - 699

610 Education & Tutoring

I will tutor you in spanish! Only \$10/hour

FUN & STUFF Visit our Web site for list of things to do that are educational and fun. <http://www.stp.georgiasouthern.edu/fun-stuff/>

Calculus tutor wanted immediately! Willing to pay up to \$10/hour! Will need to meet approx. 2/week. Please contact me

Solutions

6-a, 7-b, 8-a, 9-c, 10-b

1-c, 2-b, 3-a, 4-b, 5-c

Solution Trivia Puzzle 41

Cheats Corner

Create and solve your Sudoku puzzles for FREE.

Play more Sudokus and win prizes at: [PRIZESUDOKU.COM](http://PRIZESUDOKU.COM)

The Sudoku Source of Georgia Anne Daily

380 University Work

Sales Representatives Needed!

The George-Anne Daily is now accepting resumes for sales representatives in the advertising department. We are looking for outgoing, highly motivated people.

No experience is required.

Job Requirements include:(but are not limited to)

- Daily office hours

- Monthly meeting attendance

- Email and phone correspondence

- Knowledge of local area businesses

- Means of transportation

Please email resume with references to Ads Manager at [ads1@georgiasouthern.edu](mailto:ads1@georgiasouthern.edu)

Questions? Call 912-681-5418.

Housing & Real Estate 400 - 499

Unit for Rent at Statesboro Place!

Female roommate needed ASAP!! Fully furnished, \$365 all inclusive rent, and all appliances included!!

Contact Sheridan at 229 942 7016 or sbushy13@yahoo.com

DUPLEX 2 br 1 ba walk/bike to campus near bus stop available spring sem pets considered. 764-3697

Stadium Walk Apt for rent. Nice Unit. Wood floor and fresh paint. Sorry no Pets. Call Brad 912-617-7905.

FOR RENT NEW 1650 SF DUPLEX, 3 BR, 2 BATH, COUNTRY SIDE S/D, \$850 PER MO, NO PETS NO SMOKING, GARELA102302

QUIET, REASONABLY PRICED ( \$285-\$450) one & two bedroom apartments. NO PETS. Deposit, application required. Flexible leases. Parker Realty (764-5623)

470 Student Housing

FOR RENT BY OWNER. STADIUM WALK APARTMENT. TWO BEDROOMS, WASHER, DRYER. \$425.00 per month. Some pets allowed. Lease required. Call 912 541 4885.

3BR, 2BA Brick Home for Rent

With carport, W/D, DW, spacious backyard, no pets, ex. cond., \$850/mo, no deposit w/ qualification, available for immediate move in. Please contact 912-653-2825 alt. 912-604-1453

FOR RENT Gentilly x N. Edgewood 1800 sq ft 3 bd/2 ba den living dining kitchen washer/dryer 124 Holly Dr \$1200 681-3163

480 Sub Leases

Statesboro Place - 4br/4ba; fully furnished; all utilities included; \$375/mo; next to pool/clubhouse; start in January. Call (770)329-1389

Sublease available in December. 4br/2ba house across from hospital. \$325/mo. Call Scot @ (770)364-1968.

1bed/1bath spacious mother-in-law house. Located in a quiet neighborhood behind Statesboro High. Washer/dryer included. \$400/month...sublease until July. Can move in ASAP. Call Bess at 229-848-1001.

For rent

Sublease available now 4br/4ba at Campus Club \$419/month Call 478-290-1088.

sub-lease available! Garden District. 2Br/2 bathroom. 490/month. furnished/utilities! you get master bedroom. First month rent free! call J @ 616-813-8424

Services 600 - 699

610 Education & Tutoring

I will tutor you in spanish! Only \$10/hour

FUN & STUFF Visit our Web site for list of things to do that are educational and fun. <http://www.stp.georgiasouthern.edu/fun-stuff/>

Calculus tutor wanted immediately! Willing to pay up to \$10/hour! Will need to meet approx. 2/week. Please contact me

Solutions

6-a, 7-b, 8-a, 9-c, 10-b

1-c, 2-b, 3-a, 4-b, 5-c

Solution Trivia Puzzle 41

Cheats Corner

Create and solve your Sudoku puzzles for FREE.

Play more Sudokus and win prizes at: [PRIZESUDOKU.COM](http://PRIZESUDOKU.COM)

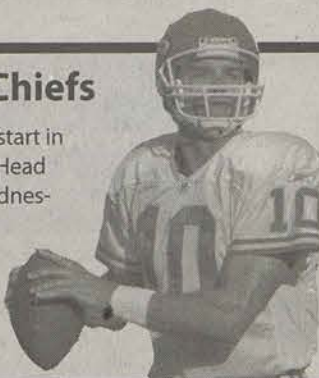
The Sudoku Source of Georgia Anne Daily



# SPORTS

## QB Trent Green to start for Chiefs

Kansas City Chiefs quarterback Trent Green will start in Sunday's match-up against the Oakland Raiders. Head Coach Herm Edwards announced the decision Wednesday after updating the injury report by saying that Green had fully recovered from the concussion he suffered in the first game of the season against the Cincinnati Bengals. Doctors have given Green full medical clearance to play.



## Girardi, Leyland named MLB Managers of the Year

Six weeks after getting fired from the Florida Marlins, Joe Girardi has been named the National League Manager of the Year for keeping a team full of rookies and only \$16 million in payroll in contention until the final weeks of the season. Beating out New York Mets Manager Willie Randolph, Girardi became the first manager to win the award despite having a losing season. After leading the Tigers to a World Series appearance, Detroit's Jim Leyland won his third Manager of the Year award, first with the American League. Hired just last season, Leyland helped lead the Tigers to their first World Series appearance since 1984.

## SOCON PREVIEW

**WCU** at **Florida**  
0-7, 2-8 7-1, 9-1

**What:** The Catamounts travel to Gainesville to take on Chris Leak and the nationally ranked Florida Gators.  
**Where:** Ben-Hill Griffin Stadium Gainesville, FL  
**When:** Saturday 1 p.m.

**Citadel** at **Elon**  
3-3, 4-6 2-4, 5-5

**What:** The Citadel looks to improve their conference record when they take on the Elon Phoenix on the road in Elon, North Carolina.  
**Where:** Rhodes Stadium Elon, NC  
**When:** Saturday 2 p.m.

**Wofford** at **GWU**  
5-2, 6-4 2-2, 6-4

**What:** The Runin' Bulldogs of Gardner-Webb look to improve their record and make a run at the I-AA playoffs in a matchup against Wofford.  
**Where:** Spangler Stadium Boiling Springs, NC  
**When:** Saturday 3:30 p.m.

## DIVISION I-AA PREVIEW

**#20 Maryland** at **#21 B.C.**  
5-1, 8-2 4-2, 8-2

**What:** Boston College may be ranked higher than Maryland in the Top 25, but it's the Terrapins who hold the crucial edge in the ACC Atlantic Division.  
**Where:** Alumni Stadium Chestnut Hill, MA  
**When:** Saturday 12 p.m. ESPN

**#2 Michigan** at **#1 Ohio St.**  
7-0, 11-0 7-0, 11-0

**What:** With a berth in the BCS title game at stake, Saturday's contest at Ohio Stadium between No. 1 Ohio State and No. 2 Michigan might just be the biggest in the history of a rivalry that rates among the most heated in the nation.  
**Where:** Ohio Stadium Columbus, OH  
**When:** Thursday 3:30 p.m. ABC

**#14 Auburn** at **Alabama**  
5-2, 9-2 2-5, 6-5

**What:** The No. 15 Tigers try to bounce back from a home loss to Georgia when they travel to Alabama looking to continue their recent domination of one of college football's most storied rivalries.  
**Where:** Bryant-Denny Stadium Tuscaloosa, AL  
**When:** Saturday 3:30 p.m. CBS

**#21 Virginia Tech** at **#16 Wake Forest**  
4-2, 8-2 5-1, 9-1

**What:** The 21st-ranked Hokies are looking to defeat a tough Demon Deacons team in a battle of two potent ACC teams.  
**Where:** Groves Stadium in Winston-Salem, N.C.  
**When:** Saturday 7 p.m. ESPN2

**#15 California** at **#3 USC**  
6-1, 8-2 6-1, 8-1

**What:** After the fourth-ranked Trojans unexpectedly climbed back into the national championship race, they face the No. 17 Golden Bears in a matchup that will decide the Pac-10's BCS bid.  
**Where:** Memorial Stadium L.A., CA  
**When:** Saturday 8 p.m. ABC

## EDITOR'S VIEWPOINT



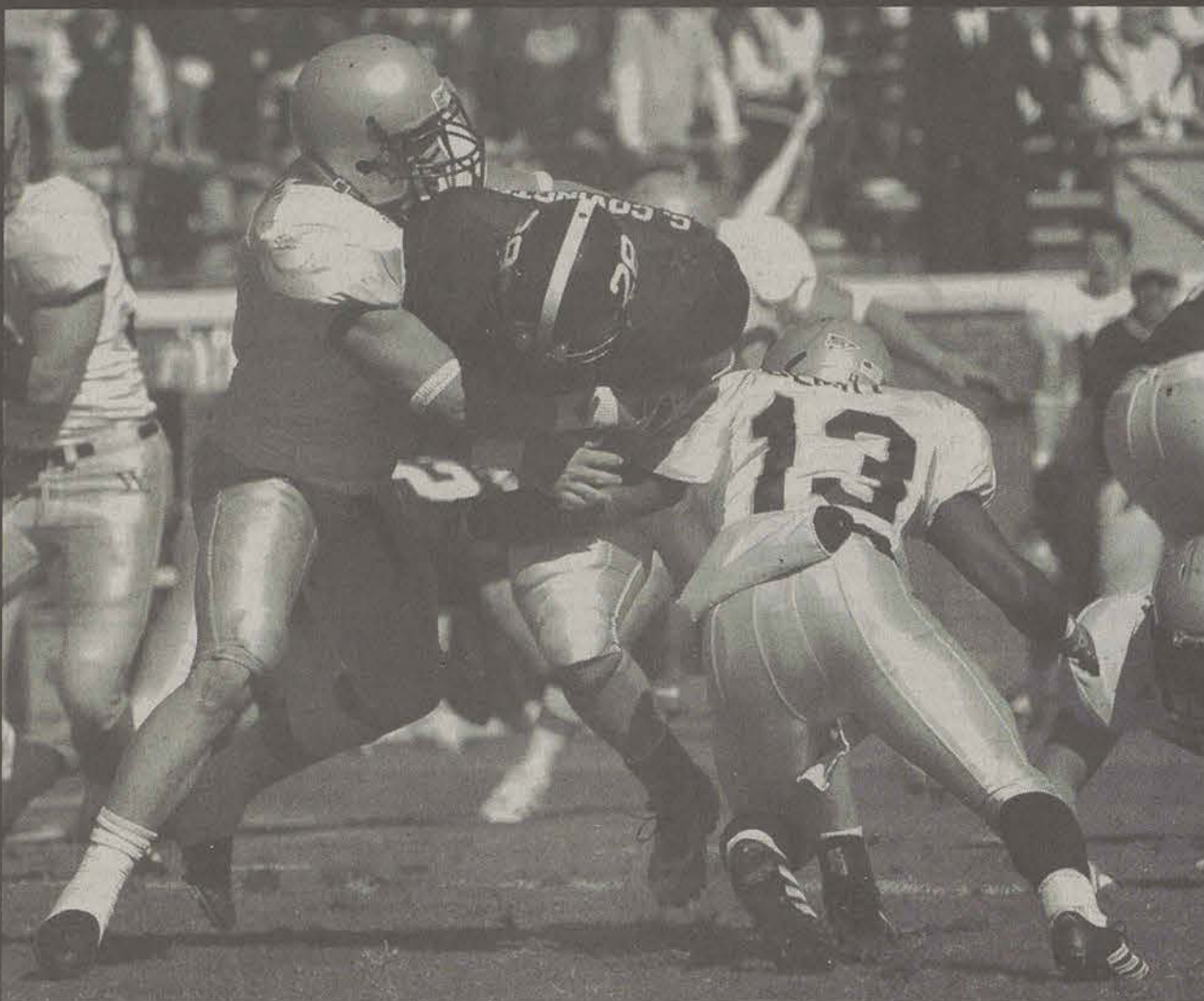
**Eric Robinson**  
Record: 22-10

Maryland over B.C., 23-20  
Ohio St. over Michigan, 34-31  
Wake Forest over V.T., 24-16  
USC over Cal, 45-37



**Will Adams**  
Record: 24-9

B.C. over Maryland 24-21  
Ohio St. over Michigan, 28-26  
Wake Forest over V.T., 36-28  
USC over Cal, 38-24



Jared Siri/STAFF

Eagle running back Chris Covington lunges forward for extra yards in GSU's loss to Wofford. The 3-7 Eagles will face Central Arkansas Saturday.

# Last-ditch effort

Eagles look for a bright spot going into Saturday's final game

**By Eric Robinson**  
Managing editor of operations

Following a disappointing 13-10 loss to rival Furman last Saturday, the Georgia Southern Eagles return to Paulson Stadium with the hopes of ending their 3-7 season on a positive note. As with every game the Eagles have played this year, this one shouldn't be a cakewalk.

The Eagles will conclude their season against the 7-3 Central Arkansas Bears, who are led offensively by running back Ross Brown and wide receiver Aaron Fairouz.

Brown has rushed for 838 yards on 148 carries and eight touchdowns. Fairouz has 54 catches for 731 yards, six receiving touchdowns and one punt return touchdown. Defensive end Jacob Ford has six sacks and 15.5 tackles for a loss on the year.

"They're a transition team from division II in I-AA. Like a lot of those situations, they've taken a lot of junior college transfers. They're a very talented team," said Head Coach Brian VanGorder.

The Eagles will have to cage the Bears

early. UCA has totaled 96 points in the first quarter, while giving up only 18. The first half has been no problem for the Eagles this year, as they have out-scored their opponents 128-97. The second half has been a different story. The Eagles have scored only 77 points while giving up 119.

The GSU defense held strong Saturday, holding the Paladins to just 13 points and giving up only 296 yards of total offense. Running back Cedrick Gipson was held to 78 yards, and quarterback Renaldo Gray threw for 125 before being injured in the fourth quarter.

The Paladins dominated the clock, however, possessing the ball nearly 10 minutes longer than the Eagles. With speedy Jayson Foster under center most of the game, GSU netted 221 yards on the ground but only 57 through the air.

"Taking [the ball] out of shotgun

was a little bit different. But as the game progressed, I got a little comfortable back there," said Foster.



**Central Arkansas Bears**  
Record: 7-3

### 2006 Results

8/31	Henderson St.	W, 39-6
9/9	Illinois St.	L, 18-3
9/16	Missouri St.	W, 16-14
9/23	at Stephen F. Austin	W, 37-35
9/30	South Dakota	W, 24-0
10/7	South Dakota St.	L, 20-7
10/14	UC-Davis	L, 13-3
10/19	at Sam Houston St.	W, 38-30
11/4	Southern Arkansas	W, 55-21
11/17	Augustana	W, 37-13

Though quarterback Travis Clark was banged up last week, VanGorder said he should be ready for the Bears.

"He's healthy. He feels better this week than he has the last couple of weeks," said VanGorder.

VanGorder said that the GSU defense has made effective strides in getting better over the last few weeks.

"Last week we played a strong game with well-prepared defense," he said. "They gave up a couple of explosive plays though. I thought it was their best effort. I think they have a good, confident attitude about them right now."

Kickoff is scheduled for 1 p.m. at Paulson Stadium.

## Quote of the week

"They really execute well and their kids are unselfish and they have good ball handlers. It's tough to pressure them. I don't think we had as much energy as we had [Sunday], but I think a lot of that had to do with the way Georgia Southern played. They take the energy out of you."



Special Photo

Esteemed head coach of the Duke Blue Devils, Mike Krzyzewski, on the Eagles' performance Monday night.

## This week in SPORTS

### AT GSU

#### Today

**Volleyball** vs. Western Carolina, SoCon tournament in Boone, N.C., 10 a.m.

#### Friday

**Men's Basketball** at Illinois, 8 p.m.

**Swimming & Diving** at Highlander Thanksgiving International, times TBA

#### Saturday

**Football** vs. Central Arkansas, 1 p.m.

**Women's Basketball** at Troy, 12 p.m.

**Swimming & Diving** at Highlander Thanksgiving International, times TBA

#### Sunday

**Women's Basketball** at South Florida, 2 p.m.

**Swimming & Diving** at Highlander Thanksgiving International, times TBA

## NFL PREVIEW

**Atlanta Falcons (5-4)** at **Baltimore Ravens (7-2)** 1 p.m., FOX

**Washington Redskins (3-6)** at **Tampa Bay Buccaneers (2-7)** 1 p.m.

**St. Louis Rams (4-5)** at **Carolina Panthers (5-4)** 1 p.m.

**Cincinnati Bengals (4-5)** at **New Orleans Saints (5-4)** 1 p.m. CBS

**G-A GAME OF THE WEEK**  
**San Diego Chargers (7-2)** at **Denver Broncos (7-2)** 8:15 p.m. NBC

**MONDAY NIGHT FOOTBALL**  
**New York Giants (6-3)** at **Jacksonville Jaguars (5-4)** 8:30 p.m. ESPN

# Basketball prepares for Illini



Jared Siri/STAFF

GSU takes on UNC-Greensboro in this file photo.

**By Will Adams**  
Sports editor

The Georgia Southern men's basketball team hits the road again this week when they travel to Champaign on Friday to take on Illinois at 8 p.m.

Heading into Friday night's match up, the Illini hold the nation's longest non-conference win streak and have the best home court win percentage with a record of 57-2.

Despite losing to the No. 11 Duke Blue Devils in the semifinal regional of the CBE Classic, the Eagles (1-1) look to become the first non-conference team in nearly four seasons to defeat the Fighting Illini (2-0) in their house at Assembly Hall.

After graduating the Southern Conference Player of the Year in guard Elton Nesbitt, the Eagles hope to rely on more team efforts if they want to

be able to compete with the likes of perennial powerhouses like Duke and Illinois.

"Obviously 21 points per game and the player of the year is going to be hard to replace," said Head Coach Jeff Price. "But I don't think you do it with individuals, you do it by committee, and we have a good group of guards back that can step up and it will be interesting to see who does. From a point production standpoint, I don't think there's any question that our guards will be able to do it. We will miss Elton and that go-to kind of guy, but I think we'll find a new one."

Senior Donte Gennie totaled a career-high 26 points, while junior Louis Graham blocked five shots and added 20 points and 11 rebounds to help lift the Eagles to their highest point total under Price in a win over UC-Davis last Sunday.

"Donte has been our glue—I thought he was the glue for our team last year. We expect him to have a great season and he can play the 'one' or the 'two' and be a combo-type guard. With Dwayne at the point we'll probably move Donte over to the 'two' a little bit. He's a solid overall player and an all-conference caliber player," said Price.

"I'm thrilled with our effort. I thought we played extremely hard. In your first game you just never know what your team is going to look like, so I was pretty pleasantly surprised. We shot the ball well early in the game and I thought that broke their spirit a little bit."

In GSU's last meeting with the Illini, the Eagles were defeated 83-52 in Nov. 1997.

GSU News Service contributed to this story.





## CONCERT CALENDAR

### In the 'Boro

French Quarter Cafe

Miles Ahead  
Fri., Nov. 17

Tishamingo  
Sat., Nov. 18

Dingus Magees

Brian Kleese  
Thur., Nov. 16

Black Eyed Katie  
Fri., Nov. 17

Miles Ahead  
Sat., Nov. 18

Dos Primos

Bob and Friends  
Sat., Nov. 18

Retrievers

Sister Hazel  
Thur., Nov. 16

Eric Lee Beddingfield  
and County Line  
Fri., Nov. 17

Kermit and Bob  
Sat., Nov. 18

Gnat's Landing

Outrider  
Fri., Nov. 18

Silver Creek Saloon

Johnny Little and South  
Paw  
Fri., Nov. 17  
Sat., Nov. 18

Rude Rudy's

PGroove  
Thur., Nov. 16

Deep Step  
Fri., Nov. 18

Locos

Trey Cowart  
Fri., Nov. 18

Turtles

Outrider Band  
Sat., Nov. 19

## WHAT IS NOW PLAYING

Carmike Cinema 12  
(912) 489-4492

The Return  
(5:30), 7:40, 9:55  
A Good Year  
(4:00), 7:00, 9:40  
Stranger than Fiction  
(4:20), 7:05, 9:35  
Borat  
(5:20), 7:30, 9:45  
Flushed Away  
(3:10), 7:15, 9:20  
The Santa Claus 3  
(5:00), 7:45, 10:00  
Saw 3  
(4:15), 7:00, 9:30  
Flicka  
4:15, 7:00, 9:30  
Flags of Our Fathers  
(4:10), 9:55  
The Prestige  
(4:20), 7:10, 10:00  
Texas Chainsaw Mas-  
sacre: The Beginning  
5:25, 7:30, 9:35  
Facing the Giants  
(4:20), 7:15, 9:35

Parenthesis denotes matinee

# Take a bite out of the 'Big Apple'

## Students can travel to New York

By Katherine Dyches  
Staff writer

Bright lights in the big city can really lighten up your winter break this year. Eagle Entertainment is sponsoring an affordable trip to New York City right after finals, from Saturday, Dec. 9 through Friday, Dec. 15 for Georgia Southern students who are ready for a big change.

"New York during the holidays is really beautiful, especially with Rockefeller Center all dressed up," said Bill Pickett, director of the office of student activities. He said the trip only cost \$250 per person, including transportation by charter bus to New York and lodging at The Hampton Inn at the Meadowslands in New Jersey which is just across the Hudson River from Manhattan.

"Last year's winter break trip was skiing in Colorado, and it was a little pricier, so this year we wanted to make the trip more affordable," said Pickett. "It will be a long trip, but we'll be taking a charter bus with movies and restrooms, so it won't be too bad."

Pickett said he hopes GSU students will see some sights and attend shows by being in the audience of the Today show, or visiting other free shows like The Late Show with David Letterman or The Daily Show with John Stewart.

For trips into the city, the hotel offers a complimentary shuttle within a five-mile radius, and a free

shuttle to a train station that travels to Penn Station in central Manhattan. Pickett said the hotel is within walking distance of several restaurants, and right near the Lincoln Tunnel.

GSU's charter bus will also offer daily rides into the city to cut down on the cost of transportation around the city for students.

Once in New York, students are free to plan their own itineraries. The city offers an endless array of activities to satisfy anyone's taste. For the sight-seer, there are world-famous landmarks to visit such as The Statue of Liberty, Ellis Island, the Empire State Building, Central Park and Ground Zero.

A trip down Fifth Avenue could satisfy any shop-a-holic's dreams. Or for the theatre-lover, catch a show on Broadway. Ice skating in Rockefeller Center could put anyone in the holiday spirit, or stop by for the taping of The Today Show and maybe get your five seconds of fame.

One thing is for sure, there is no shortage of ways to stay busy in The Big Apple. Don't forget, New York City is often called "The Greatest City in the World."

For students interested in attending, a non-refundable deposit of \$100 is due before Wednesday, Nov. 22. The remaining balance of \$150 will be due on December 1. Payment can be made by check, Visa or MasterCard.

For more information, or to sign up, contact the office of student activities at 912-486-7270.

## Shopping Ideas:

The Warner Bros.  
Store  
E 57th St. and 5th  
Ave.



FAO Schwartz  
767 5th Ave and  
58th Street

The Disney  
Store  
210 W. 42nd St  
and 7th Ave.

Macys  
Herald Square  
Broadway and 34th  
Street

## Places to eat:

Tom's Restaurant  
Cost: Cheap  
Location: 2880 Broadway @  
112th  
Home of the "Seinfeld" Restau-  
rant

Hard Rock Café  
Cost: \$20 or less  
Location: 221 W. 57th Street  
Serves American food with  
various items from rock music  
history.

Russian Tea Room  
Cost: \$25  
Location: 150 W. 57th Street  
Considered to be a must see,  
though reviews are mixed



Hot Dog Stand  
Cost: Cheap  
Location: Many street corners  
around the city.  
Eating a New York City hotdog  
is a right of passage.

## Places you have to see:



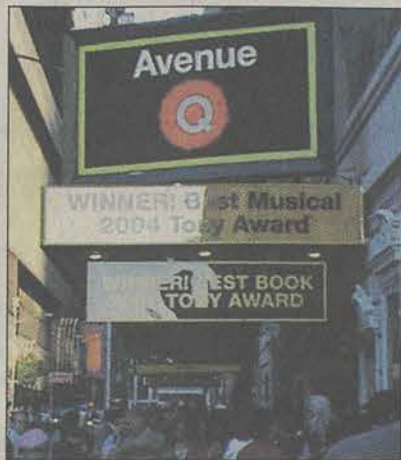
Rockefeller Center  
Location: 47th - 51st street  
To Do: Shopping, Skating, Top  
of the Rock  
For more information call (212)  
632-3975

Grand Central Terminal  
Location: E. 42nd Street  
To Do: Guided and walking  
tours, places to eat available  
For reservation on guided tours  
call (212) 340-2345

Empire State Building  
Cost: \$18  
Location: 350 5th Ave.  
Go to esbnyc.com for ticket  
information



## 'They say the neon lights are bright on Broadway'



Special photos



Grayson Hoffman/Photo Illustration

Broadway musicals are a must see attraction in New York. We suggest you see Avenue Q, Spamalot or Rent.

### ON THE STREET

## What would you do if you went to New York?



I would  
visit the  
Museum  
of Natural  
History.

Scott Blair,  
Junior



I'd go  
shopping  
and tour  
the city.

Sharonna Brown,  
Freshman



Broadway,  
I love the  
shows.

Patrick Wall,  
Senior

### New York Minutes

The "New York Post" estab-  
lished in 1803 by Alexander  
Hamilton is the oldest run-  
ning newspaper in the United  
States.

The first capital of the United  
States was New York City. In  
1789 George Washington took  
his oath as president on the  
balcony at Federal Hall.

European settlers who brought  
seeds to New York introduced  
apples in the 1600's.

New York City has 722 miles of  
subway track

The first presentation of 3D  
films before a paying audience  
took place at Manhattan's As-  
tor Theater on June 10, 1915.





# Sister Hazel to perform tonight at Retrievers

By Cindy Ann Kilgo  
Staff writer

Blues-rock band Sister Hazel, made famous by their 90's hit "All For You," will be performing Thursday night at Retriever's at 10 p.m.

Sister Hazel is a southern-rooted band originally from Gainesville, Florida.

The band is composed of five talented members: Drew, Ken, Ryan, Jett and Mark. They are otherwise known as the "Hazelnuts," and have been composing and performing music together for more than a decade.

Their music attracts all ages. It is even known to "gap" the generations. The band's website notes their music as, "comfortable and friendly, like old friends."

The band released their latest album, "Absolutely" in October. Within the first week, the album reached 86 on the Billboard Top 200. The band is mostly known for its heavy touring nature. Touring in the south is almost a trademark for this band.

They have hit schools such as the University of Mississippi, Auburn and the University of Alabama.

The south isn't the only place Sister Hazel has performed, however. They have toured all over the United States, and as a result have a wide fan base that stretches to all corners of the country.

They are also scheduled to perform in Lynyrd Skynyrd's "Gimme Three Days" cruise in the Bahamas during early January.

There is still time to get in and

hear some of this roots rock music.

Retriever's employee Nathan Queen said, "Tickets will only be sold in advance. They can be bought up until tomorrow mid-afternoon."

"We are expecting a sold out crowd, and you can't pay at the door," he said.

The fact that it may be a sold-out venue doesn't scare some people from trying to get in on the action.

Freshman Calie Elam said, "Sister Hazel is one of my favorite bands. I wouldn't mind standing in line for an hour to purchase a ticket to see them play."

Band member Drew Copeland is opening.

Tickets are \$10. For tickets or more information, contact Retriever's Sports Bar and Grill, at 912-681-2444.



Rock band Sister Hazel will perform tonight at Retrievers. They are on tour to promote their new album.

Special Photo

## CLUB FOCUS The Plug

By Avina Darmadjaja  
Staff writer

If you ever walk by the IT auditorium on a Tuesday night at exactly 8 p.m., you have probably seen a big banner outside of the door with Chi Alpha written all over it, and maybe you have even heard a band playing inside.

You might think that a sorority or fraternity gathering is going on inside, but what is really going on is "The Plug."

The Plug is a weekly service sponsored by Chi Alpha, the youngest yet fastest growing Christian ministry on campus.

The name Chi Alpha comes from the Greek christou apostoloi meaning "Christ's sent ones" or "Christ's Ambassadors".

"Our mission is to connect students to God and to each other," said Brad Lacy, campus minister and director of Chi Alpha.

Three and a half years ago, Brad and his wife Stacy came to Statesboro to start Chi Alpha because God puts the burning passion in their hearts to minister to college students.

"I join Chi Alpha not because it is better or worse than other Christian ministries but because I really like Brad's vision for on-campus ministry," said Brett Werkheiser, student and Chi Alpha's worship leader. "And of course because doors are open for me to worship."



Daniel Flanders/STAFF

Save it for Sunrise performed along with three other bands to an energetic crowd at Apex Saturday night.

## Bands rock-out the 'Boro

By Jessica Emery  
Staff writer

Last Saturday night Apex was full of enthusiastic students waiting to rock out with four distinct performances: Achilles' Downfall, Save it for Sunrise, Dora Maar and The Silent Escape.

"Rockin the 'Boro" was sponsored by Apex and organized Matt Vigliotti and his team of promoters. Vigliotti is a Georgia Southern student and the founder of Eccentric Energy Entertainment.

Local progressive rock band Achilles' Downfall set the bar high by starting off the show with natural stage presence and clear vocals by Drew Smith. The band members appeared low key despite their high energy performance and occasional screams.

Chaos arrived when Save it for Sunrise took the stage. The band from Bainbridge, Georgia, had the crowd on their feet, giving plenty of positive

feedback. With seven band members, screaming, and a keyboard, this band gave a powerful, energetic metal performance that transcended their emo appeal to the crowd's screaming approval.

Dora Maar, a five member rock band from Brunswick, Georgia was third in line for the stage. Self-described as a "Rock and Screamo" band, Dora Maar was the only band to have a mosh-pit.

Brandon Suggs, vocalist, said they are influenced by the bands Emery as well as Chiodos, although they try to stray away from sounding like other bands. "Since being signed with Still Movement records the band has more help," said Suggs. "It's like a family."

Their performance Saturday was similar to the sound of The Used. Georgia Southern student Nicole Irish, originally from Bainbridge, said, "I went to high school with these guys, and was listening to their CD on the way here." But Irish wasn't the only Bainbridge local, many friends

and fans drove to the 'Boro to show support.

Last but not least was a rock band from Atlanta, The Silent Escape. Comprised of five members, they closed the show with the crowd screaming, "One more song!" to which the band obliged. On stage, The Silent Escape was energetic, with their newest member, vocalist Brandon Cawood swinging his microphone, splashing the crowd with water and even jumping up onto a side stage.

The show was an overall success. Apex owner, Roman, said, "I've been trying to bring back the live music scene to Statesboro for years. It is the biggest turnout for Rock here in a long time."

He also mentioned how he remembered years ago when it was all live rock bands there.

Energy Entertainment advertising representative Jessica Richard said she hopes for more rock concerts like this to occur and she was impressed with the turnout.

## Student playwrights look for local actors

By Kevin Bell  
Staff writer

Georgia Southern's student playwrights are seeking talented students to volunteer for their quick but fun 10 minute plays. The second annual production will be held Nov. 19 & 20. The 10-minute plays

**When:**  
Nov. 19, 20

**Where:**  
Communication  
Arts Building  
Room 1006

are written, directed and performed by students here at GSU. Students who are interested in acting, public speaking or writing will find this a perfect opportunity to perform in front of an audience.

Volunteers need not have previous acting experience as the plays focus solely on the voice and communicating the action through dialogue.

Students will meet with the playwright and rehearse for a short time before performing for the public two hours later.

In addition to attending the performance, the audience will be able to respond to the playwrights and to give the students feedback on their plays.

This input is applied to the plays so the following night the audience can see how the students respond and change their material, ensuring that each night is different.

"We had several people in the audience who came back every night to see how the plays had changed, especially since their comments contributed to the revisions," said professor Stephanie Routman when discussing the first annual 10-minute play.

"As a playwright myself, it is

always thrilling to hear your words performed out loud and to hear the audience respond," she said.

The 10-minute play was originally the creation of Jon Jory at the Actor's Theater of Louisville's Humana Festival in 1977.

These plays have spread in popularity all over the country because they are relatively inexpensive to produce.

It challenges writers and actors to develop characters and stories in a set amount of time.

GSU students also submit their plays to a regional festival where eight students in the region are selected.

A student whose play is selected will have their trip to the festival paid for. Their play will be performed.

The top playwright selected will have an entire week paid trip to the nationals in Washington, DC at the Kennedy Center.

"The regional and national opportunities are why I encourage the students in playwriting to work on 10-minute plays and why we produce an annual 10-minute play festival," said Routman.

All volunteers who are interested in performing for the student's plays should arrive at the Black Box Theatre in the communication arts building on Sunday, Nov. 19 at noon and in the communication arts room 1006 on Monday, Nov. 20 at 5 p.m.

The readings will be open to the public at 2 p.m. on the Nov. 19 and 5 p.m. on Nov. 20.

Students who are interested in writing their own plays for next spring's 10-minute play should contact Stephanie Routman, who is located at the communication arts building.

## Out & About in The 'Boro



### Southern Palace

The Best Chinese Cuisine in Statesboro

www.southernpalace.com

Fresh, Healthy, and Tasty Special Student Carry out Menu

100% Vegetable oil, No M.S.G.

(912) 489-8813

Dine-in, Carry out, Catering, Group party

(912) 764-5536

602 Brannen Street, Suite 9, Statesboro, GA 30458. (Next to Dollar General, behind Jiffy Lube)

## NEW! VIKKO EXPRESS

Open All Day Everyday 11 a.m. - 9 p.m.  
Dine In, Take Out or DRIVE-THRU!

### Express Bowl

- Chicken Bowl Jr. \$2.99 \$4.50

- Shrimp Bowl Jr. \$3.95 \$5.50

- Steak Bowl Jr. \$4.95 \$6.95

### All New

- Nikko Bento \$5.95

- Super Health Combo I \$4.50

- Super Health Combo II \$4.50

### Maki SUSHI Combo

12 pieces

- Vegetable Combo \$3.50

- California Combo \$4.95

- GSU Combo \$4.95

### Express Bowl Combo

- Chicken Bowl Combo Jr. \$4.50 \$5.95

- Shrimp Bowl Combo Jr. \$5.50 \$6.95

- Steak Bowl Combo Jr. \$5.95 \$7.95

(All combos served with drink, rice, choice of salad, vegetable or extra rice)

### 2 Locations

Nikko Steakhouse

609 Brannen Street

489-4007

Nikko Express

701 Piedmont Loop

(Buckhead Plaza) 489-4003

We accept Eagle Express!

Best in Boro 5 years & Best Sushi 11th Hours Readers Choice

## Express Tune & Lube

Tire, Alignment  
& Exhaust Center

612 S. Zetterower Avenue

489-4444

www.expresstuneandlube.com

Monday - Friday 7:30am - 6:30pm

Located a half block north of Wendy's.

### Oil Change Special

Includes up to  
5 qts. of Castrol  
5W20, 5W30,  
10W30, or 20W50

**\$19.95**

Price applies to most vehicles. Expires 12/31/06