

Georgia Southern University

## Digital Commons@Georgia Southern

---

The George-Anne

Student Media

---

11-7-2006

### The George-Anne

Georgia Southern University

Follow this and additional works at: <https://digitalcommons.georgiasouthern.edu/george-anne>

---

#### Recommended Citation

Georgia Southern University, "The George-Anne" (2006). *The George-Anne*. 2029.  
<https://digitalcommons.georgiasouthern.edu/george-anne/2029>

This newspaper is brought to you for free and open access by the Student Media at Digital Commons@Georgia Southern. It has been accepted for inclusion in The George-Anne by an authorized administrator of Digital Commons@Georgia Southern. For more information, please contact [digitalcommons@georgiasouthern.edu](mailto:digitalcommons@georgiasouthern.edu).





High: 75 | Low: 52  
Mostly cloudy  
Volume 79  
Number 55

## For love of the game

Despite a busy schedule, Mark Bialkoski makes time for basketball | **PHOTO, p. 2**



Editor says players aren't the ones to blame for sore season | **SPORTS, p. 7**

# THE GEORGE-ANNE DAILY

TUESDAY, NOVEMBER 7, 2006

## RAC opens new doors

By M.J. Trahan  
Staff writer

After months of anticipation, Campus Recreation & Intramurals unveiled the newest addition to the Recreational Activities Center this Monday.

The 220,000 square foot expansion project began in the summer of 2005. After a long year of construction and inspections, the CRI staff finally got to reveal what the Georgia Southern community has been waiting for.

"We have been working really hard to reach a point where we could allow the students to utilize this amazing facility," said Facilities Coordinator Carter Walton. "We are so proud of the new building and we want everyone to come in, check it out, and hopefully love it as much as we do."

So what does the expansion include? The new addition consists of two new basketball courts, two multi-activity courts, the new Southern Adventures office, a completely new weight room with new equipment and an aquatics area.

Also, renovations to the pre-existing building will continue to be made. The former entrance will become the new climbing and bouldering wall, and the weight room is divided into three new rooms for athletic training and the others for spinning and mind/body.

Upon entering the new building, immediately to your right is the communications center and main offices for CRI. A smoothie and snack bar is also located in this area. You can sit in the lobby on the new couches and enjoy a smoothie with a friend, or add some protein to a smoothie after you work out.

One of the most popular areas of the former facility is the weight room and cardio fitness machines. Now there's no need to worry about a lack of space or machines.

The new weight room has been split into three areas. On the first level of the building, machine weights and free weights are arranged in an open-air environment with tons of new equipment.



Top: RAC employee Jennifer Stevens swipes student Payvand Khosravi's card at the new entrance to the RAC. Bottom right: Students Anthony Rogers and Drew Anderson get their cards swiped at the new RAC entrance before entering the newly constructed area of the RAC.

According to Angie Frederick, associate director of facilities and fitness, all of the cardio machines, such as ellipticals and treadmills, have been moved to the second floor with connections to the indoor track.

More than 70 pieces of new equipment occupy this area and the majority of the machines have TV screens with basic cable. There are eight plasma, flat screen televisions available to watch as well.

Southern Adventures also has a wing of the building all to themselves, which they couldn't be happier about.

"This space allows us to store all of our equipment and boats, distribute rental items, perform bike repairs and provide a resource center for all those who are interested," said Southern Adventures graduate assistant Matt Parker.

A back parking lot has been added to the Southern Adventures area so patrons can pull directly up to the

see **RAC**, page 4.

### New features at the RAC:

- Larger weight room split into three sections, plus more machines
- New group classrooms for athletic training, spinning and mind/body
- Smoothie and snack bar
- Two new basketball courts and two new multi-activity courts
- More than 70 pieces of new equipment with TV screens and basic cable
- New Southern Adventures office
- A back parking lot for loading/unloading equipment



Photos by Jamie Tuten/STAFF

## New GPA policy is put into action

By Ditoria Geddis  
Staff writer

The Georgia Southern Academic Standards Committee is changing the current policy on grade point averages. This change will eliminate the adjusted GPA and affect all undergraduate students starting next fall. Students that enrolled before fall 2007 will retain their adjusted grade point, but all grades earned then and afterwards will be computed in their GPA, according to the Registrars office.

In the fall, all grades earned will be included in the calculation of your grade point average. This means that even if you take a course, fail it, then repeat it, both of the grades will be computed into the GPA. Students who want to repeat courses to improve their grade point average should do so before this summer.

The policy change is unique to GSU and does not apply to other schools in the area. Many other schools already calculate cumulative GPAs. According to Registrar Mike Deal, GSU is in the minority when it comes to using the adjusted GPA. Changing to cumulative GPA will bring us to the same level as other institutions.

"Sometimes students have problems adjusting their GPA over to another institution because of differences and may think that their GPA is higher than it is," said Deal.

Many degree programs require a certain cumulative GPA and students may have concerns with this because their adjusted GPA is high enough but their cumulative GPA is not. Adjusted GPAs are what students' academic standing is based on.

"I feel that students aren't being given enough time to adjust to the GPA policy change. We need a grace period. The time given is not long enough to recuperate from the last grade," said geology major Matthew Webb. "The class I need to retake is only offered every two years. I'm not sure that they took that into consideration."

"If the student is in a situation where it's going to affect their academic standing, then that would be a matter that the GPA standard committee would have to review and would take

see **GPA**, page 4

## Saddam sentenced to hang, appeals murder charges

### Saddam appeal starts amid deep Iraq divisions

BAGHDAD — Judges put Saddam Hussein's appeal process into motion as Baghdad lifted a round-the-clock curfew imposed to prevent attacks in the aftermath of the ousted president's death sentence.

Prime Minister Nuri al-Maliki, meanwhile, called upon the security forces to strictly implement anti-terror law to prevent sectarian and insurgent violence, his office said.

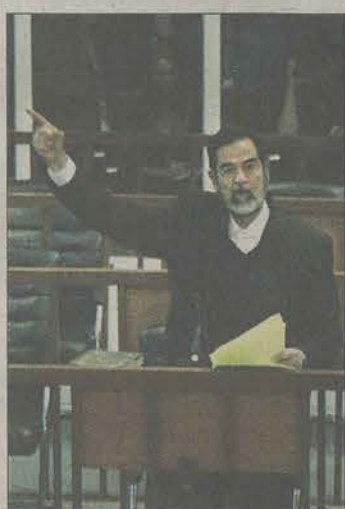
He also warned against media statements that create troubles and

division among the Iraqi people," it added in a statement.

Saddam was sentenced to hang by the Iraqi High Tribunal, which found him guilty on Sunday of crimes against humanity in the case of 148 Shiite civilians killed in revenge for an 1982 attempt on the then Iraqi leader's life.

The verdict served only to deepen Iraq's bitter religious divide, with Shiites celebrating it as a vic-

see **SADDAM**, page 8



Jacob Silberberg/MCT

Saddam Hussein argues with Chief Judge Raouf Rashid Abdel-Rahman, not pictured, in Baghdad, Iraq, March 2006.

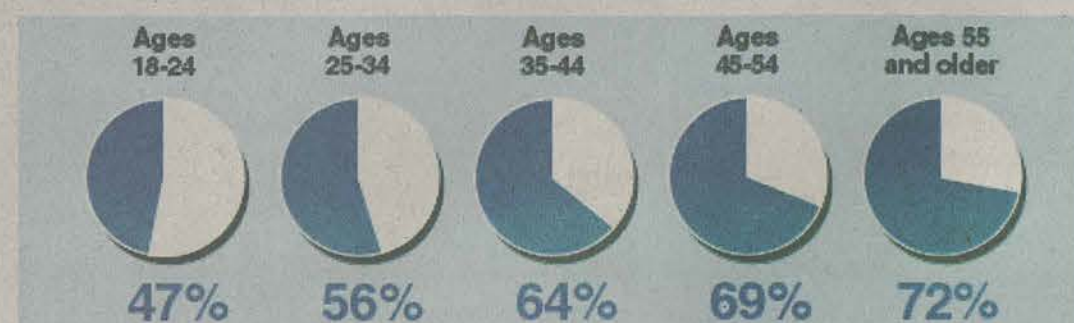
## Young adults still minority at polls

By Morgan Marsh  
Managing editor for news

### SOME MAJOR VOTING EVENTS IN HISTORY

Candidates will try just about anything to win your vote these days, from bashing their competitor's character on television to making fake phone calls from their competitor's political party. Yet despite all this effort, adults between 18 and 24 — your average college student's age range — hold the lowest percentage of those voting on election day. Citizens have been fighting for hundreds of years to gain the right to vote. Take advantage of your right to do so today at the polls.

- 1870:** The 15th Amendment was added to the Constitution, prohibiting any state from refusing voting rights to any man, regardless of race, color or previous condition of servitude.
- 1920:** The 19th Amendment, women's right to vote, was ratified.
- 1964:** The 24th Amendment is ratified, disallowing the use of poll taxes. Poll taxes were used as a ploy to ensure that the poor black population could not vote even though they had been enfranchised almost 100 years earlier.
- 1971:** The 26th Amendment lowered the voting age from 21 to 18.





# FOR LOVE OF THE GAME



Mark answers questions during a camp last summer.



More than a coach, the kids view Mark as a mentor and friend.



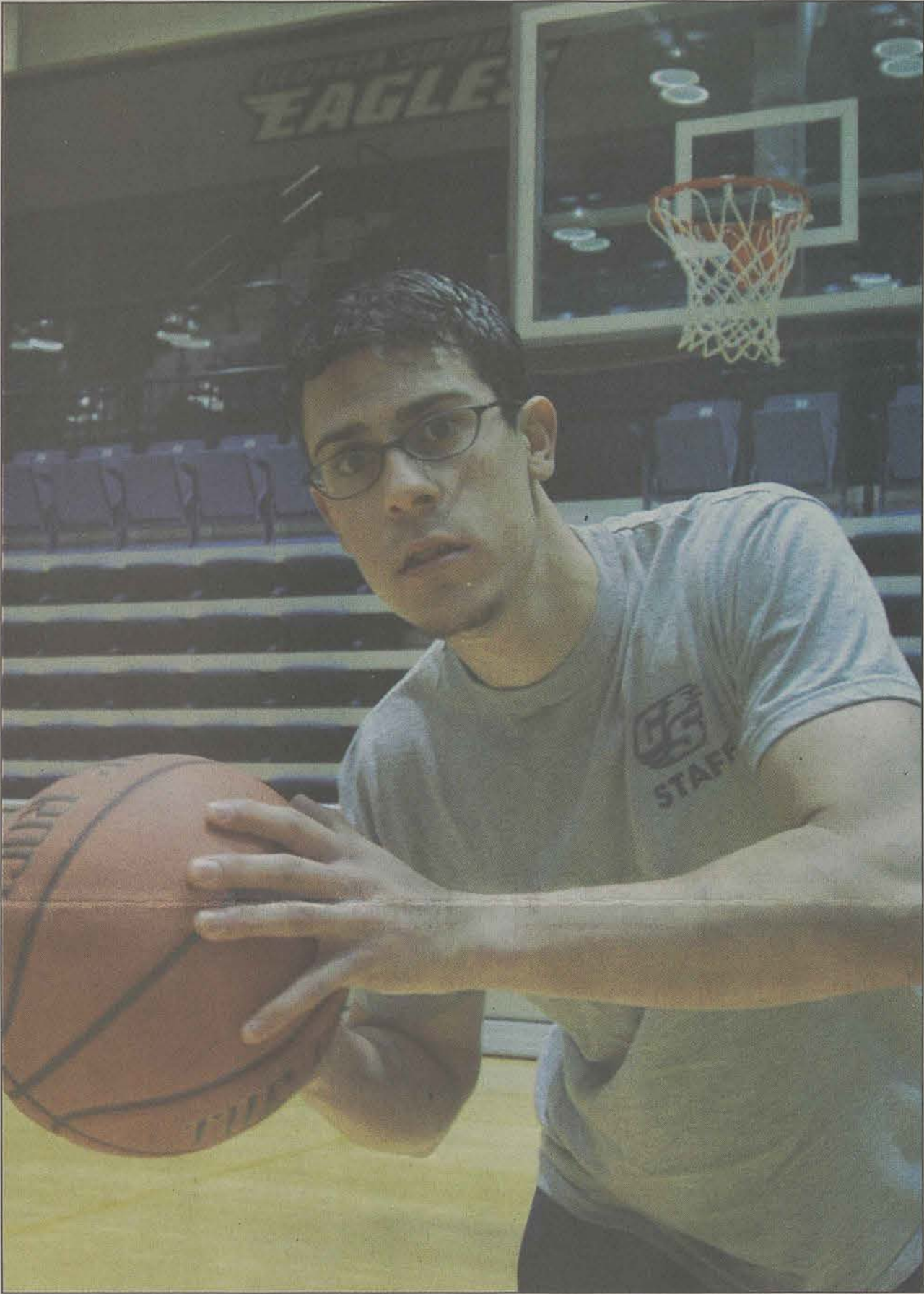
Mark listens to stories of basketball games from earlier that day.



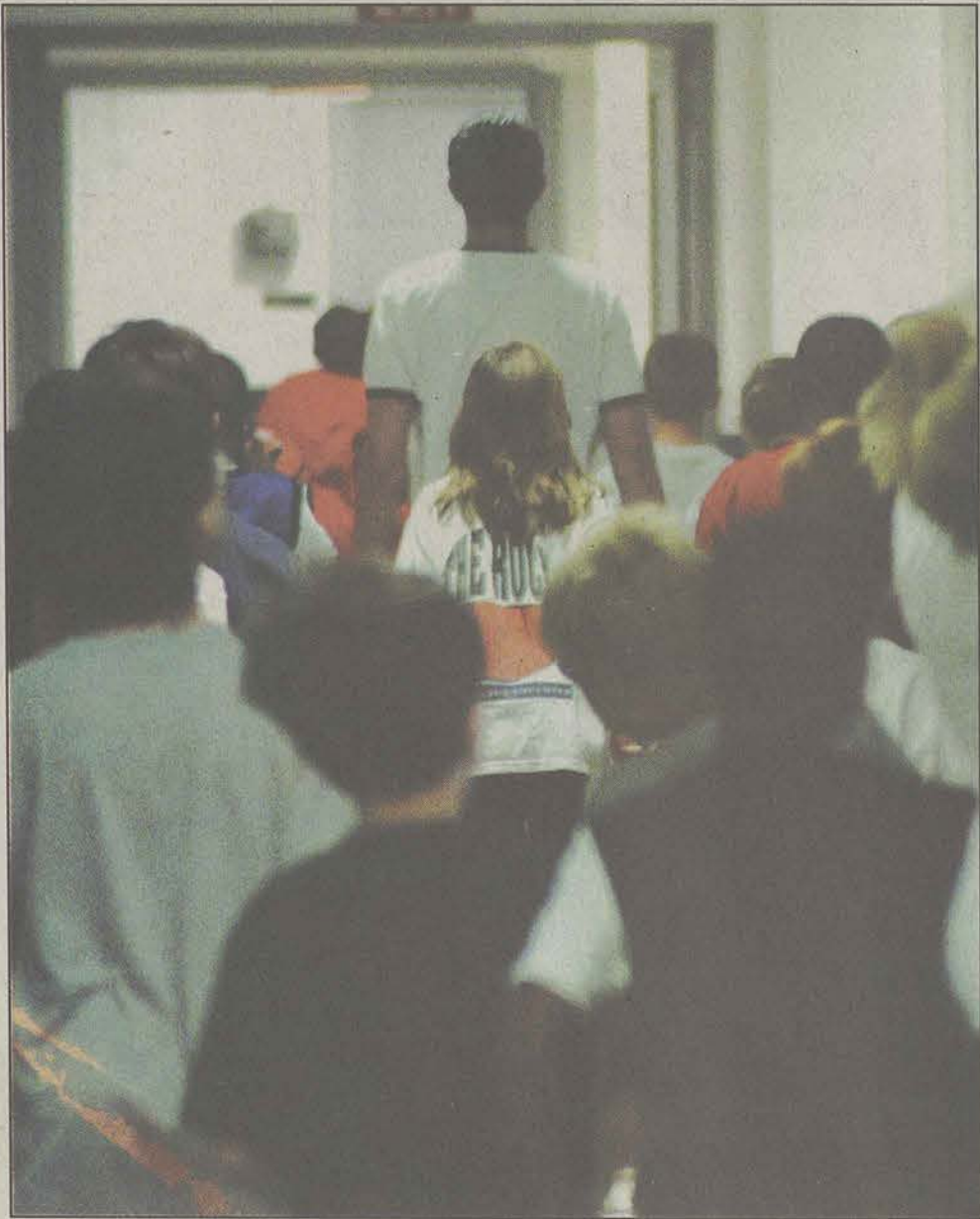
Basketball is more than a game. It's a life long passion.



Mark watches in support as the kids participate in a drill.



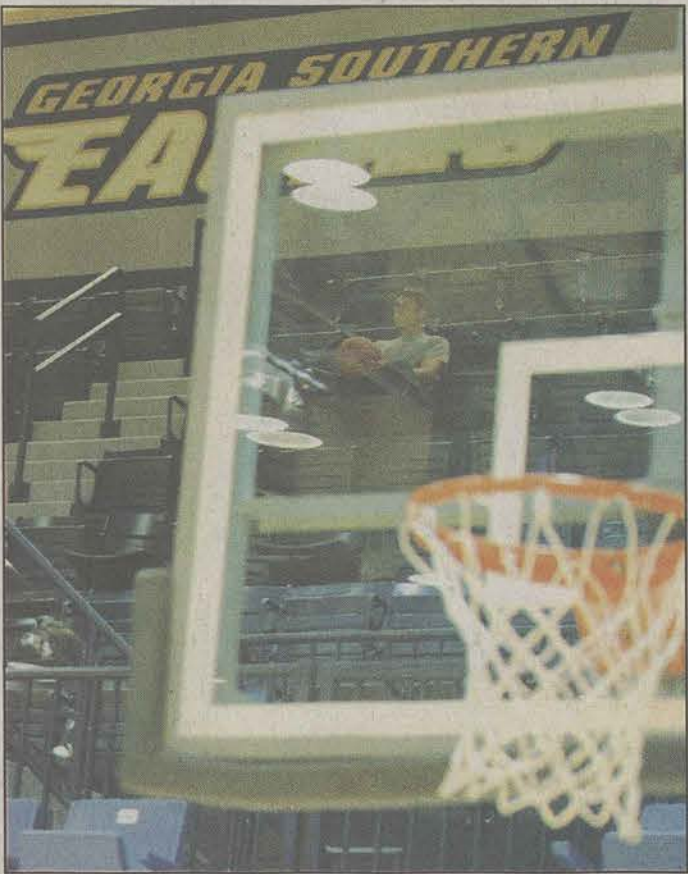
For Mark, life is a game but basketball is serious.



Mark leads the kids back onto the court after a water break.

ALL PHOTOS BY: GRAYSON HOFFMAN

Hidden beneath the books, classes and numerous jobs around town, Mark Bialkoski still finds time to shine a beam of support on others. For nothing more than the love of the game, Mark travels with the Georgia Southern Basketball team to away games and attends all of their practices. For the past two years, Mark has enjoyed being the head student assistant for the GSU basketball team and volunteers his summers for the kids at summer basketball camps. Mark says of his volunteer work, "It's a great experience to interact with local kids and teach them the fundamentals of the game."



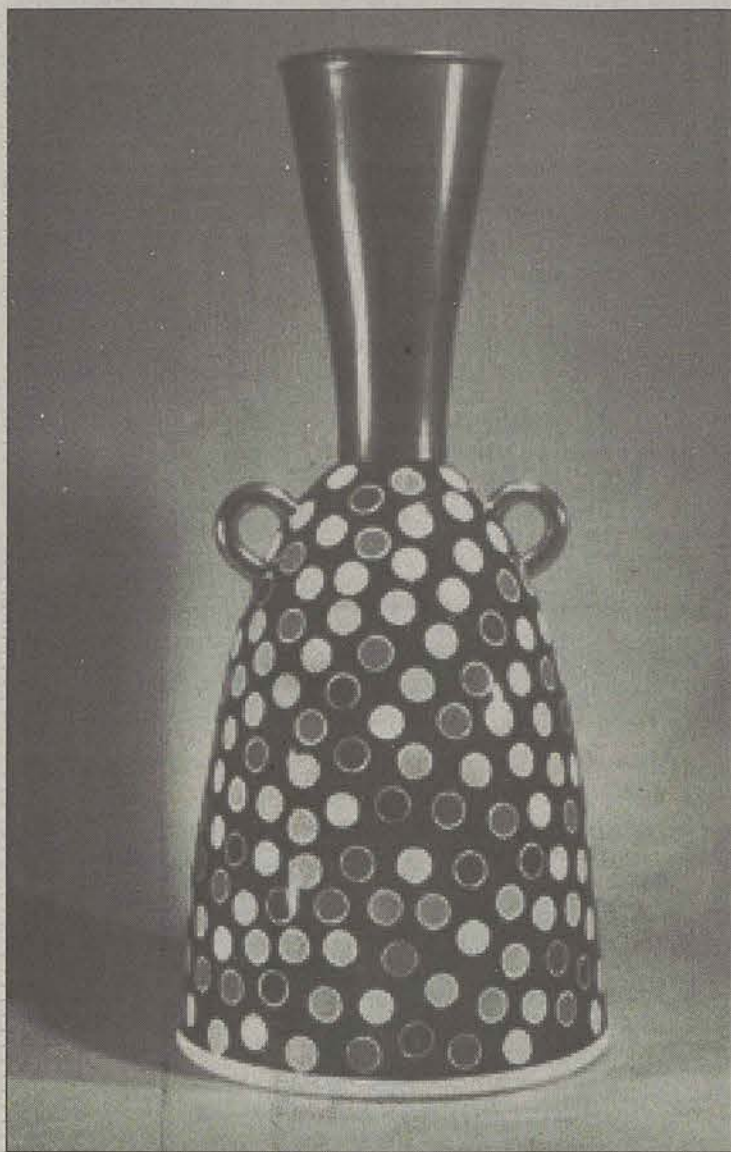
At the end of the day Mark over looks the hard work achieved at the Hanner basketball courts.



Mark speaks to kids at one of the four basketball camps GSU offers during the summer. Mark helps coach during all four of the summer camps.



# Hay presents low-fire ceramics



Special photo

Ceramic artist Dick Hay will be sharing artwork like this piece above when he speaks today at 12:30 p.m. in the Ceramics and Sculpture building.

## GSU News Service

Ceramic artist Dick Hay, Professor of Art and head of the ceramics program at Indiana State University, will visit the Department of Art at Georgia Southern Nov. 6 and 7.

Hay will share his expertise in low fire ceramics and kiln building with ceramic students and interested community members.

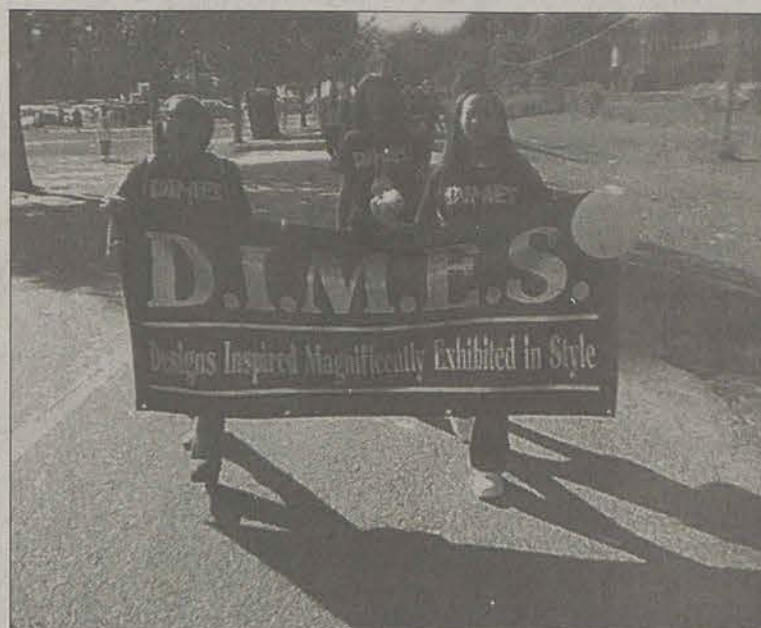
On Tuesday, he will lecture at 12:30 p.m. about his extensive creative career and his skill in kiln building. It will take place in the Ceramics and Sculpture Building on the GSU campus.

As an artist, Hay has shown his work in over two hundred exhibitions in the U.S., Japan, Canada, Russia, Latvia and Korea. His work is in major collections throughout the world including the Pushkin Museum in Russia.

Hay is a much sought after lecturer and has been invited to lecture about his work in over ninety universities in the U.S. and other countries.

He was awarded the "NCECA Excellence in Teaching Award" from the National Council on Education for the Ceramic Arts.

The free event is sponsored by the Club Mud organization, led by ceramics professor Jane Pleak and by the art department. For more information call 912-681-5358.



Special photo

D.I.M.E.S. members participate in GSU's Homecoming Parade. They will host a fashion show Nov. 8 at 7 p.m. at the Averitt Center downtown.

## Designs of a decade

### Special to the G-A

D.I.M.E.S., a fashion and design organization on campus, will present their annual fall fashion show Nov. 8. The show, "Designs of a Decade," will capture fashion trends from the '50's to the '90's. Styles will mimic that of the movies "Grease," "Superfly" and more.

"This is my third year with D.I.M.E.S. and I really believe that this will be one of the best shows we have ever produced," said Gabby Smith, a model for

D.I.M.E.S. "The organization is better, the entertainment is better; it will be well worth your time and money."

The show will be held at the Averitt Center in historic downtown Statesboro. Admission will be \$5 in advance and \$7 at the door. The show includes performances from groups and organizations at GSU as well as other universities. There will also be poetry readings from the Neo Centric Poetry Troupe. Host Danielle Spann will lead the evening's festivities starting at 7 p.m.

## CALENDAR

### Tuesday, November 7

4 p.m. - 5 p.m.  
Poetry workshop  
Newton building 2209

4 p.m. - 6 p.m.  
Irish Studies lecture  
IT Auditorium 1004

5 p.m. - 10 p.m.  
Leadership week activity  
Russell Union Theatre

5:30 p.m. - 7 p.m.  
ShuttleGus meeting  
Russell Union 2001C

7 p.m. - 8 p.m.  
Poetry reading  
Business Administration 1124

7 p.m. - 9 p.m.  
Abstinence Q & A  
Russell Union 2048

### Wednesday, November 8

9 a.m. - 1 p.m.  
Graduate school fair  
Russell Union Ballroom

10 p.m. - 6 p.m.  
Red Cross blood drive  
Williams Center Dining Hall

4 p.m. - 5:30 p.m.  
National French Week  
Nessmith Lane 2911

7 p.m. - 9 p.m.  
"Everybody's doing it, right?"  
IT Auditorium 1004



## The Sir Shop

TWO LOCATIONS

Statesboro Mall 764-6924  
Main Street Village 871-4962



# Wendy's

## 99¢ Crispy Chicken Sandwich

### ★NOW HIRING★

## SPRING 2007 RA POSITIONS

**RAs:** Energetic, enthusiastic students needed to be Resident Advisors for Spring 2007. Resident Advisors (RAs) are vital members of the Georgia Southern Department of Housing staff. The RA is a live-in member of the Department of Housing staff and works with the residence halls or complexes on campus involved in creating environment. To accomplish this, the RA is expected to play a variety of constantly changing roles. The RA must be flexible and creative in meeting residents' needs by serving as a counselor, advisor, activity programmer, educator and friend. The position requires serious time commitment and willingness to be available and accessible to other students.

**RAs  
Wanted**

member of the University Housing groups of students in apartment. The RA is primarily a positive community

**Benefits:** Each RA receives a stipend each semester. The Spring 2007 stipends is \$1875.00. RAs are guaranteed on-campus housing at a discounted rate (See rates in the RA application for specific buildings). Position starts January 2, 2007.

**Non-tangible Benefits:** the opportunity to interact with a variety of people and the chance to develop employer desired skills such as leadership, verbal and written communication, organization, time management, confrontation and decision-making skills.

**RA Attributes:** RAs should possess many of the following attributes to be successful in the RA position: Reliable, Flexible, Motivated, Creative, Enthusiastic, Friendly, Confident, Mature, Team player, Open to new ideas, Positive work ethic, and Solid academic standing.

Applications due November 21, 2006 for Spring 2007 openings

Applications for Fall 2007 openings are due on February 1, 2007

For more information, application, and reference forms visit the

University Housing web-site at:

[www.gsuhousing.com](http://www.gsuhousing.com)



## International Week - November 11-17 "Connecting Cultures - Uniting People"

### Saturday

10:00-4:00 p.m.,

**International Festival** at Mill Creek Park. Opening Remarks by Mayor Pro-tem Joe Brannen at noon

### Sunday

3:00 p.m., **The Legends of West Africa**

Matinee Performance at PAC, Cost: \$5/children (12 & under), \$7/adults, \$5/GSU I.D.

### Monday

11:00-2:00 p.m., **"A Diner's World Tour"** at Seasons, Landrum Cafeteria. Cost: Eagle

Express \$6/plus tax  
Cash \$7/plus tax

### 7:00 p.m.

**Lost Boys of Sudan** return to tell their story as two of the "Lost Boys of Sudan." Join them as they share their stories. Russell Union Ballroom. Sponsored by the Multicultural Student Center

### Tuesday

Noon, **International Luncheon**. Williams Center Dining Hall. \$5 per plate to sample international foods. Advanced tickets may be purchased by calling Angie @ 681-0332 5:30-7:30 p.m.

**"Taste the World"** All University Residence Halls. Travel from hall to hall to learn about other people and sample their foods. Get your "passport" in any hall and return your completed passport at your last stop. Contact: Hamal Strayhorn at 688-8000

7:00 p.m., **"As the Call, So the Echo"** Union Theater. Filmmaker Keir Moreano will discuss his moving film about Vietnam after the showing. Sponsored by the Art Department

### Wednesday

Noon, **"The Kite Runner"**

facilitated by Dr. Joseph Barjis. Cultural Book Club Discussion. Russell Union Rm. 2044 Sponsored by the Multicultural Student Center

### 7:00-9:00 p.m.

**International Talent Show**. Union Ballroom. Presented by PRestige

### Thursday

6:00 p.m. Reception in Southern Ballroom  
7:00 p.m. Lecture in Assembly Hall. Co-sponsored by Campus Life Enrichment Committee

**"New Slavery in the Global Economy"** presented by Dr. Kevin Bales. Zia Hashmi Lecture Series. Nessmit Lane Bldg.

6:00 p.m. Reception in Southern Ballroom

7:00 p.m. Lecture in Assembly Hall. Co-sponsored by Campus Life Enrichment Committee

### Friday

11:30-1:00 p.m., **International Conversation Hour** Union Ballroom Proclamation by the Mayor at noon. Media will be present.

For more information, contact the Center for International Studies at 681-0332.

## Copper Beech TOWNHOMES

# Space to Breathe!

## 3 levels 2,000 sq. ft.



### Amenities

- Private bath
- Extra guest bath
- Walk-in closet
- Washer/Dryer
- Free Internet
- Free Cable
- Clubhouse
- Pool
- Fitness Room
- Game Room
- Units available furnished with Ashley and Basset furniture

(912) 681-8307 FAX: (912) 871-3721  
Located behind Sonny's on the Hwy. 67 By-pass

Offices Hours - 9am-6pm, Monday - Friday  
[www.CopperBeechTownhomes.com](http://www.CopperBeechTownhomes.com)



# Weekly Eagle Buzz



## Today

6:30pm – 7:30pm – Union 2084 – Eagle Entertainment Sound and Stage & PR/Promotions committee meeting.

Office of Registrar reminds students that Advisement and Registration for Spring 2007 is taking place now! 24/7 via WINGS. Undergraduate students – Contact your advisor to be advised and receive your RAN for next semester. Transients and Post-Baccs- Your Spring 2007 RAN is available in your mygeorgiasouthern account. Contact Wayne Smith for any questions at 871-1680.



## Wednesday, November 8th

11am – 4:30pm – Williams Center Dining Hall – Red Cross Blood Drive

Career Services will sponsor a graduate school fair from 9am-1pm in the Russell Union ballroom. Students have the opportunity to visit with Georgia Southern faculty and representatives from other universities to learn more about Graduate School options. Contact Amy Rowell at 681-5197 with any questions.

7pm – Educational Auditorium – Speaker Bobby Gonzalez – Come and listen as the untold story of Americans is shared by the Native American speaker.

## Thursday, November 9th

**SIGN UP FOR THE WEEKEND TRIP!!! TRIP TO MACON!** – Departure time from the Union is 8am. Trip cost is \$15 and includes transportation, Admission to the Sports Hall of Fame and Admission to the Georgia Music Hall of Fame. Estimated time of Arrival back in Statesboro is 7:30pm. Stop by the Office of Student Activities, Russell Union 1056 or call 486-7270.

## Saturday, November 11th

**TRIP TO MACON!** – Departure time from the Union is 8am. Trip cost is \$15 and includes transportation, Admission to the Sports Hall of Fame and Admission to the Georgia Music Hall of Fame. Estimated time of Arrival back in Statesboro is 7:30pm.

10am – 4pm – Mill Creek Regional Park – International Festival – This festival is designed to increase and promote cross-cultural awareness and understanding through educational, cultural and international sports activities and games, while promoting unity within our communities.

## Sunday, November 12th

Theater and Performing Arts Club and Multicultural Student Center will provide tryouts for Colored Girls Who Have Considered Suicide When the Rainbow is Empty from 1pm-5pm in the Russell Union room 2052. Contact Amy with any questions at 681-5409. Will we be auditioning both men and women for roles in this dynamic choreopoem written by Ntzoze Shange.

## Monday, November 13th

7pm – Union Ballroom – Lost Boys of Sudan – Jacob Magot and Nathaniel Nyok return to tell their story on the "Lost Boys." They were orphaned refugees forced from their villages as children. In 2001, 3,500 Lost Boys came to the United States seeking freedom, peace and education. Join them as they share their story.

## Ongoing/Upcoming Opportunities:

Volunteers are wanted to help serve and clean up at the International Conversation Hours put on by International Programs. Volunteers can meet at the Office of Volunteer Services, RU2022 at 11:15 on any Friday.

Now Hiring for Spring 2007 RA positions. RAs: Energetic, enthusiastic students needed to be Resident Advisors for Spring 2007. Resident Advisors (RAs) are vital members of the Georgia Southern Department of Housing staff. The RA is a live-in member of the Department of University Housing Staff and works with a groups of students in the residence halls or apartment complexes on campus. The RA is primarily involved in creating a positive community environment. To accomplish this, the RA is expected to play a variety of constantly changing roles. The RA must be flexible and creative in meeting residents' needs by serving as a counselor, advisor, activity programmer, educator and friend. The position requires serious time commitment and willingness to be available and accessible to other students. Benefits: Each RA receives a stipend each semester. The Spring 2007 stipends is \$1875.00. RAs are guaranteed on-campus housing at a discounted rate (See rates in the RA application for specific buildings). Position starts January 2, 2007. Non-tangible Benefits: the opportunity to interact with a variety of people and the chance to develop employer desired skills such as leadership, verbal and written communication, organization, time management, confrontation and decision-making skills. RA Attributes: RAs should possess many of the following attributes to be successful in the RA position: Reliable, Flexible, Motivated, Creative, Enthusiastic, Friendly, Confident, Mature, Team player, Open to new ideas, Positive work ethic, and Solid academic standing. Applications due November 21, 2006 for Spring 2007 openings. Applications for Fall 2007 openings are due on February 1, 2007. For more information, application, and reference forms visit the University Housing web-site at: [www.gsuhousing.com](http://www.gsuhousing.com)

### Homecoming 2006 Winners:

(view all winners at – [www.georgiasouthernhomecoming.com](http://www.georgiasouthernhomecoming.com))

Most Spirited Fraternity:  
Tau Kappa Epsilon

Most Spirited Sorority:  
Phi Mu

Most Spirited Residence Hall:  
WO Hall (Winburn and Olliff)

Most Spirited Student Organization:  
Baptist Collegiate Ministries

Most Spirited Off-Campus Apartment:  
Players Club

Overall Spirit Winner:  
Theatre and Performance

Parade Float:

1st place: Kappa Sigma/Kappa Delta  
2nd place: Southern Creative Anachronist  
3rd place: SAGE

Parade Crazy Car:

1st place: Wesley Foundation  
2nd place: Admissions/Southern Ambassadors  
3rd place: College of Ed Alumni

Walking Banners:

1st place: Theatre and Performance  
2nd place: Winburn/Olliff Halls  
3rd place: Residence Hall Association

**Brought To The Eagle Nation Each Week By The Division  
of Student Affairs and Enrollment Management**

# Program combines mind, body

GSU News Service

Athletic success is built on speed, strength, and skill, but preparing for sport in today's world involves one more part of the puzzle: the mental aspect of athletic success.

"There are two approaches to viewing sport psychology," said Daniel R. Czech, associate professor at Georgia Southern University.

"Our students not only examine the mental aspects of optimally consistent sport and exercise performances, but also look at how sport and exercise performances can affect mental well-being."

Czech, who is certified by the Association for Applied Sport Psychology, directs GSU's graduate program in sport psychology, a part of the Health and Kinesiology department in the College of Health and Human Sciences.

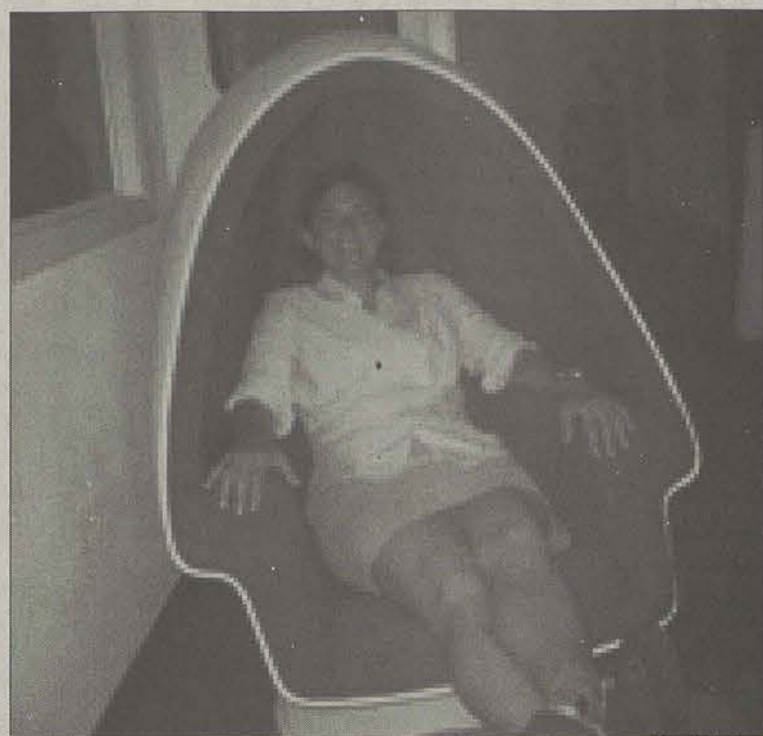
When you step into the sport psychology laboratory at Georgia Southern, it feels like a large comfortable living room, until you see the scientific equipment: a stabilometer, anticipation timer, dexterity stars, reaction timer, and accompanying computer systems.

One adjacent room has a "relaxation egg" – a comfortable egg-shaped cocoon with a sound system that offers quiet relaxation. A second adjacent room is equipped with video capability and a 42-inch plasma screen for one-on-one performance enhancement counseling.

"We use a variety of psychological techniques for both team education and one-on-one consultations," said Czech. "For teams, we offer workshops and interventions that build team chemistry and increase psychological skills to improve consistency. For individuals, we teach exercises that improve mental well being, and we use one-on-one counseling to help with performance issues. Learning these psychological skills can make a tremendous difference for student athletes not only on the field, but in their lives."

The program is a two-year immersion in the field and requires each student to work with one of GSU's athletic teams on psychological skill development or with any team member one-on-one.

First-year students shadow the more experienced second-year stu-



Special photo

A student relaxes in the "relaxation egg," complete with a sound system for relaxation and comfort.



Special photo

Students enrolled in the sport psychology program learn counseling skills and teach exercises to help.

dents, and in the second year, students are assigned responsibilities for their own team.

"To get applied experience at the NCAA Division I level as a master's degree student makes this program a very unique and highly desirable graduate environment," said Sam Whalen, who is currently a graduate student associate director of the sport psychology lab.

The graduate program in sport psychology includes three important professional opportunities: a trip to New York City to train athletes for the NFL Combine, a summer course in Key West, Fla. that teaches health behavior change to incorporate a healthy lifestyle into everyday activities and an international trip.

"The experience of New York City,

Key West, and GSU women's soccer was amazing and very helpful in my development as a sport psychology consultant," said graduate student Lacey Sorenson.

Career opportunities in sport psychology can be found locally in community sports and youth groups such as the YMCA, CHAMPS LifeSkill Program, The First Tee Golf Program for Youth and the Boys and Girls Clubs of America.

"We are finding that life skills such as communication, time management, study skills, and conflict resolution skills are often neglected in the athletic university setting," said Czech.

For more information about the graduate study sport psychology program and what it has to offer call Czech at 912-681-5267.

## RAC

from page 1

office and load equipment onto or into their cars.

Given minor preparations that still need to be made, the aquatics area and the multi-activity courts did not open with the rest of the building.

These areas, along with renovations being made to the pre-existing side, will take a little longer to prepare. However, the staff is positive that it will not be long before these areas will be accessible and members can fully enjoy the new RAC.

"I think the students will be very excited about the new addition to the building. We've really gone above and

beyond to meet the students' needs for more space, more machines, and an overall better facility," said graduate assistant Amy Marquez.

Want to get involved? There's no better time than now! CRI is encouraging everyone to visit the new expansion and try out their new equipment. For more information call the RAC at 681-5436.

## GPA

from page 1

into consideration," said Deal.

Transfer students and freshmen are just like everybody else. Their GPA is going to be based on all the courses that they took here at GSU.

"We only use the GPA of the transfer

student for admissions, the grades they make here is what counts in this policy," said Deal. "For admission to other programs like graduate school, they look at the student's transfer GPA."

GSU wants to report statistics as much like other schools as possible. Using the cumulative GPA should help with that. Athletic eligibility and graduation rates would be similar to

other schools. And don't worry about "keeping the hope alive." The Hope Scholarship currently uses the cumulative GPA, so it does not affect grade standings.

"The change in GPA policy, I believe, has a very minimal effect on the graduation rates. I believe that when you raise the bar, most students raise to those expectations," said Deal.

**Wendy's** **99¢**  
**Crispy Chicken Sandwich**

**The George-Anne Daily**  
**Writers wanted!**

Are you a good writer? We need you on our staff. Call us at (912) 681-5246 or visit The George-Anne office in the Williams Center

**www.gadaily.com**  
**Come Post on Our Wall!**  
**Join Our Facebook Group - gadaily.com!**



## NATIONAL POLITICS

## Candidates make last-minute appeals

McClatchy Newspapers

The Republican party's six-year hold on the reins of government in Washington could be in jeopardy in Tuesday's midterm election, as both sides' campaigns shifted to elaborate get-out-the-vote efforts.

At least two late national polls showed renewed enthusiasm among GOP voters — but Democrats still leading in many key races across the country.

The election will prove whether the historic "six-year itch" holds true: In the past 60 years, the party out of power has gained an average of 31 House seats and six Senate seats midway through the second term of a president.

Campaigning in Florida on Monday, President Bush took aim at the pollsters and pundits who have predicted Democrats will win control of the House Tuesday and might capture the Senate, too.

"Some of the folks in Washington already think they figured out the results. That's what happened in 2004. ... The same thing is going to happen tomorrow. Republicans are going to turn out," Bush said in Pensacola near the end of a ten-state swing on behalf



Jenni Girtman/MCT

Georgia incumbent Republican Gov. Sonny Perdue, (left) and his Democrat challenger, Georgia Lt. Gov. Mark Taylor attend their final debate at Georgia Public Broadcasting on the "Meet the Press" broadcast Sunday.

of embattled GOP candidates.

Republicans are counting on superior voter turnout methods to prevail in close races.

But Rep. Rahm Emanuel, D-Ill., who heads the Democratic Congressional Campaign Committee, trumpeted his party's "custom-made"

turnout plans in 50 congressional districts around the country.

The nation's eyes will be focused on a relatively small number of contests — among them Missouri's Senate race — that will decide control of Congress. Democrats would need to gain 15 House seats to gain a majority

there and six Senate seats to win that chamber.

Most of the key races Tuesday feature an identical scenario: Republican incumbents trying to withstand Democratic challengers riding a wave of discontent centered on the Iraq war.

## NATIONAL POLITICS

## As 2006 campaign slows, 2008 contest gears up

McClatchy Newspapers

For millions of Americans, the political season ends Tuesday with the elections for Congress.

But for one very small, very elite and supremely confident group, the last several months were just a warm-up. For 20 plus potential candidates for president in 2008, the presidential campaign starts in earnest Wednesday.

They include more than a dozen white men from the Senate, the birthplace of presidential ambition but often the burial ground of actual campaigns.

They include others with different backgrounds — including at least one woman, one Mormon and both a past and the present mayor of New York City.

They also include people who supported the Iraq war, some who opposed it, and all who think they can lead their party and their country into the post-George Bush era.

President Bush is barred by the 22nd Amendment from seeking another term.

Vice President Dick Cheney, who has faced problems, has ruled out running.

That makes 2008 arguably the most

wide-open campaign since 1920 — the last time there was no overwhelming favorite in either major party and both the sitting president and vice president were either unable or uninterested in running.

Republicans face the rare challenge of running with and against Bush, all

against the backdrop of an Iraq war that could still be under way.

Running with him courts the conservative base that still likes Bush — and dominates Republican primaries. Running against him courts the independents and moderates who'll decide the general election.

It's not easy to do. Ask Al Gore, who had to run with and against Bill Clinton in 2000.

Democrats don't have quite that challenge, but they do have to navigate the war issue, as well as decide where they stand on whatever agenda congressional Democrats put forward.

## GEORGIA NEWS

## Vote even if you work

The Atlanta Journal-Constitution

If you're planning to vote in today's election but working a shift that doesn't allow you to get to the polls, don't worry. You can still vote. Just let your boss know ahead of time you're taking time off.

By law, you get up to two hours of time off to vote — unless you have two hours of free time before or after work. With the polls open from 7 a.m. to 7 p.m., those who work 9-to-5 should have enough time to vote.

But even 9-to-5ers in metro

Atlanta may face time constraints getting to and from the polls. And some polling places experience bottlenecks early in the morning or shortly before the polls close.

While there are no penalties for companies that crack down on workers who exceed the two-hour provision, election officials urge companies to be flexible.

Workers who feel their right to vote is violated can file a grievance with their company's personnel office, said Ashley Holt, a representative of the secretary of state's office.

## NATIONAL NEWS

## Abortion records leaked

McClatchy Newspapers

Attorneys for abortion clinics targeted by Kansas Attorney General Phill Kline have asked the state Supreme Court to investigate the leak of private medical information to television personality Bill O'Reilly. The attorneys are asking the

court to appoint a special prosecutor to take possession of private medical records now under review by Kline's office. The special prosecutor would also be charged with investigating O'Reilly's comments that he had a source leaking him information from abortion files.

## NEWS OF THE WEIRD

From Universal Press Syndicate

## Addictions and compulsions

• In a September raid, sheriff's deputies in Vista, Calif., seized jars of urine from the home of a suspected methamphetamine user. Deputies said the user appeared to be saving his own urine in order to extract, and reuse, the meth he had already used. A Drug Enforcement Administration agent said he was unsure whether the practice was widespread.

## CAN YOU BE EDUCATED &amp; NOT KNOW THE BIBLE?

Rich Lowry of National Press says NO. "America is a Bible-soaked nation". You must know the Bible to be successful. Your ED is not complete without the Bible.

Invite 4 friends to your room 2 hrs, one evening per week & TRAVEL THRU THE BIBLE WITH JESUS. Program is new, different, self-teaching, non-denominational, challenging, inspiring, fun and educational; designed by retired educator.

Email your name and address to mikie2@iggylinks.zzn.com. Use subject 'Education', or write Bible Study Fellowship, Box 3177, Pembroke, NC 28372.

## Abstinence is the Key

Abstinence Week at Georgia Southern University  
November 6 – 9, 2006

If You Only Knew...  
Monday, Nov. 6, 10 am – 1 pm  
Russell Union Commons

Stop by the table and learn about the events that are planned for the week. The Health Education Peer Educators will also be there to promote the benefits of abstinence.

Safe Sex vs. Abstinence  
Tuesday, Nov. 7, 7 pm  
Russell Union 2048

The issues of "safe sex" versus abstinence will be candidly discussed. Kenya Beard, a GSU graduate and abstinence educator from the Medical College of Georgia will be here to answer questions and clear up myths.

Everybody's Doing it Right?  
Wednesday, Nov. 8, 7 pm  
IT Auditorium 1004

Is it possible to look hot, be fly and still have your V-Card? Jason and Joshua Rogers are D.L.V.F.U. "Don't Let the Virgin Fool You." Jason and Josh will use their talent of speaking and rapping to promote the message of abstinence.

"40 Days and 40 Nights"  
Thursday, Nov. 9, 7 pm  
Russell Union Room TBA

Join us for this comedy that chronicles a young man that decides to observe Lent by abstaining from sexual activity. In the mean while, his ex is wants him back and he meets the girl of his dreams.

Sponsored by the  
Office of Health Education and Promotion

**Wendy's**

**99¢ Crispy Chicken Sandwich**

# THE GEORGE-ANNE DAILY

## Is Hiring For...

**Managing Editor of Operations.** The George-Anne needs a managing editor of operations for the spring. Knowledge and experience in journalism is highly recommended. Duties include assisting with page layout, writing articles and overseeing newspaper operations.

**Assistant News Editor.** The George-Anne needs an assistant news editor for the spring. Applicants should be reliable, looking for journalistic experience with layout, editing and news reporting. Applicant should also be available for daily office hours and nightly layouts.

**Assistant Sports Editor.** The George-Anne Sports Department needs an assistant sports editor for the spring. Applicants should be interested in sports and have a good, solid knowledge of sports reporting and writing. We are also looking for writers interested in covering sports beginning in the spring. For more information, e-mail gasports@georgiasouthern.edu.

**Assistant Features Editor.** The George-Anne Features Department needs an assistant editor for the spring. Applicants should be outgoing, enthusiastic about entertainment, hardworking, capable of thinking up off the wall ideas, and have solid writing skills. Applicant should be able available for daily office hours and at least one night a week for layouts. Duties include writing articles, assisting with assigning stories, and assisting with layout. Layout experience is a plus.

**Staff Writers.** The George-Anne needs staff writers. Applicants should be interested in writing about campus and community events. For more information, e-mail ganews@georgiasouthern.edu.

**Advertising Sales Representatives.** The George-Anne needs sales representatives. The job is commission-based and requires daily office hours, e-mail and phone correspondence, knowledge of local area businesses, and means of transportation. For more information, e-mail ads1@georgiasouthern.edu.

Resumes need to be turned into room 2023 in the Williams Center. Deadline for application is Friday, November 10, 2006.

## STATEMENT OF OPERATIONS

The George-Anne Daily is the official student newspaper of Georgia Southern University.

owned and operated by GSU students and utilizing the facilities provided by GSU. The newspaper is the oldest continuously published newspaper in Bulloch County and Statesboro, Ga. The newspaper is a designated public forum for the Georgia Southern University community. The ideas expressed herein are those of the editor or the individual authors and do not necessarily represent the views of the Student Media Advisory Board, the administration, the faculty and staff of Georgia Southern University, or the University System of Georgia. The George-Anne is published four times weekly (Monday-Tuesday-Wednesday-Thursday) during most of the academic year and six times during summers. Any questions regarding content should be directed to the editor at by phone at 912/681-5246 or fax at 912/486-7113.

Readers may access the newspaper and its archives staff by visiting our web site at <http://www.gadaily.com>.

**SUPPORT**

The G-A is funded primarily

through revenue from advertisements placed in the paper and receives additional support, in part, from the Student Activities Budget Committee.

## STUDENTS BEWARE

The G-A screens all advertisements prior to publication. The newspaper strives to accept ads for legitimate products and services only. Students are urged to exercise caution when replying to ads — particularly those which require a credit card number, other personal information, or money in advance of the delivery of a product or service. Students are also urged to report to the newspaper any suspicious offers which they might see in an ad. Remember, if an offer seems too good to be true, it probably is.

## FREEBIE INFO

ALL FREE student and faculty ads to be run in the G-A must have a NAME, P.O. BOX and PHONE NUMBER. Ads will be rejected if they do not have this information. NO EXCEPTIONS.

## OFFICES, MAIL, PHONES

Room 2023, F.I. Williams Center. The George-Anne, P.O. Box 8001, Georgia Southern University, Statesboro, Ga. 30460. 912/681-5246 (News) or 912/681-5418 (Advertising) or 912/486-7113 (Fax); 912/681-0069 (adviser).

## EMAIL DIRECTORY

Executive Editor

[gaeditor@georgiasouthern.edu](mailto:gaeditor@georgiasouthern.edu)

Managing Editor

[gamed@georgiasouthern.edu](mailto:gamed@georgiasouthern.edu)

News Editor

[ganews@georgiasouthern.edu](mailto:ganews@georgiasouthern.edu)

Advertising

[ads@georgiasouthern.edu](mailto:ads@georgiasouthern.edu) or [ads1@georgiasouthern.edu](mailto:ads1@georgiasouthern.edu)

[ads1@georgiasouthern.edu](mailto:ads1@georgiasouthern.edu)

[ads1@georgiasouthern.edu](mailto:ads1@georgiasouthern.edu)

[ads1@georgiasouthern.edu](mailto:ads1@georgiasouthern.edu)

[ads1@georgiasouthern.edu](mailto:ads1@georgiasouthern.edu)

[ads1@georgiasouthern.edu](mailto:ads1@georgiasouthern.edu)

[ads1@georgiasouthern.edu](mailto:ads1@georgiasouthern.edu)

[ads1@georgiasouthern.edu](mailto:ads1@georgiasouthern.edu)

[ads1@georgiasouthern.edu](mailto:ads1@georgiasouthern.edu)

[ads1@georgiasouthern.edu](mailto:ads1@georgiasouthern.edu)

[ads1@georgiasouthern.edu](mailto:ads1@georgiasouthern.edu)

[ads1@georgiasouthern.edu](mailto:ads1@georgiasouthern.edu)

[ads1@georgiasouthern.edu](mailto:ads1@georgiasouthern.edu)

[ads1@georgiasouthern.edu](mailto:ads1@georgiasouthern.edu)

[ads1@georgiasouthern.edu](mailto:ads1@georgiasouthern.edu)

[ads1@georgiasouthern.edu](mailto:ads1@georgiasouthern.edu)

[ads1@georgiasouthern.edu](mailto:ads1@georgiasouthern.edu)

[ads1@georgiasouthern.edu](mailto:ads1@georgiasouthern.edu)

[ads1@georgiasouthern.edu](mailto:ads1@georgiasouthern.edu)

[ads1@georgiasouthern.edu](mailto:ads1@georgiasouthern.edu)

[ads1@georgiasouthern.edu](mailto:ads1@georgiasouthern.edu)

[ads1@georgiasouthern.edu](mailto:ads1@georgiasouthern.edu)

[ads1@georgiasouthern.edu](mailto:ads1@georgiasouthern.edu)

[ads1@georgiasouthern.edu](mailto:ads1@georgiasouthern.edu)

[ads1@georgiasouthern.edu](mailto:ads1@georgiasouthern.edu)

[ads1@georgiasouthern.edu](mailto:ads1@georgiasouthern.edu)

[ads1@georgiasouthern.edu](mailto:ads1@georgiasouthern.edu)

[ads1@georgiasouthern.edu](mailto:ads1@georgiasouthern.edu)

[ads1@georgiasouthern.edu](mailto:ads1@georgiasouthern.edu)

[ads1@georgiasouthern.edu](mailto:ads1@georgiasouthern.edu)

[ads1@georgiasouthern.edu](mailto:ads1@georgiasouthern.edu)

[ads1@georgiasouthern.edu](mailto:ads1@georgiasouthern.edu)

[ads1@georgiasouthern.edu](mailto:ads1@georgiasouthern.edu)

for any errors in advertisements and its liability for adjustments is limited to the amount of space the error occupied in the ad. Further, the newspaper is not responsible for any damages caused due to an ad's omission from a particular edition and its responsibility solely is to reschedule the ad in the next regular edition at the regular advertising rates.

**CLASSIFIED ADS:** Free classified ads from students, faculty and staff must be non-commercial in nature and submitted in writing, with the name of the sender, local address, and phone number. No free ads taken via telephone — at this price we don't take dictation. One free ad per person per week. Commercial classified are available only from our online site at [www.gsuaads.com](http://www.gsuaads.com). The price of commercial ads is \$7 for 200 characters for line ads. Ads must be paid for using a major credit card. For classified display ads, contact [gaclass@georgiasouthern.edu](mailto:gaclass@georgiasouthern.edu)

**CIRCULATION INFORMATION:** Mail subscriptions are not available at this time. However, readers may visit our web site for free access to current and past issues. Visit [www.stp.georgia-southern.edu](http://www.stp.georgia-southern.edu). It is the goal of the newspaper to have its edition placed on-line within 24 hours of

publication. Breaking news will be placed on-line as warranted. The G-A is distributed free of charge on the Georgia Southern University campus through delivery sites located in campus buildings, at off-campus sites, and in residence halls.

## NOTICE

Readers may pick up one free copy, and a second for a roommate or acquaintance, at distribution sites. Additional copies are 50 cents each and are available at the Williams Center. However, unauthorized removal of additional copies from a distribution site constitutes theft under Georgia law, a misdemeanor offense punishable by a fine and/or jail time. Editors will seek to have any person(s) who removes more than the authorized number of copies from distribution sites prosecuted to the full extent of the law.

## NOTE

We gratefully acknowledge the theft of one of our slogans — "Liked by Many, Cussed by Some, Read by them All" — from Robert Williams of the Blackshear Times. Call Bob and he can tell you who he stole it from originally. Credit for the other — "Covering Campus Like A Swarm of Gnats" — goes to G-A alum Mike Mills.



# THE GEORGE-ANNE CLASSIFIEDS, ETC.

Now you can place your classified ads online... For Commercial Ads, Visit...

<http://www.gsuads.com>

...and create, place, proof and pay for your ad online. Just \$7 for 200 characters. In partnership with Universal Advertising.

Free ads for students, faculty & staff (non-commercial): visit us online at...

[www.gadaily.com/class\\_ad\\_sub.php](http://www.gadaily.com/class_ad_sub.php)

You must include your names, address and phone number for freebies. No phone calls please, at this price we don't take dictation.

## CLASSIFIED CATEGORIES

**100 Announcements**  
110 Auditions  
120 Freebies  
130 Lost & Found  
140 Other Announcements

**200 Buy or Sell**  
210 Autos for Sale  
220 Auto Parts for Sale  
230 Bicycles for Sale  
240 Books for Sale  
250 Computers & Software  
260 Miscellaneous for Sale  
270 Motorcycles for Sale  
280 Trade & Barter  
290 Wanted

## 300 Employment & Job Services

310 Career & Job Services  
320 Child Care Needed  
330 Child Care Provider  
340 Internships/Volunteer  
350 Jobs/Full Time  
360 Jobs/Part Time  
370 Opportunities/Business  
380 University Work  
390 Wanted Jobs

**400 Housing & Real Estate**  
410 Apartments  
420 Lots & Rooms  
430 Mobile Homes  
440 Real Estate for Sale  
450 Roommates Wanted  
460 Storage & Moving Services  
470 Student Housing

**480 Sub Leases**  
490 Vacation Rentals

**500 Personals**  
510 Personals

**600 Services**  
610 Education & Tutoring  
620 Financial Aid/Loans  
630 Legal Services  
640 Resumes/Typing/DTP  
650 Services/Miscellaneous

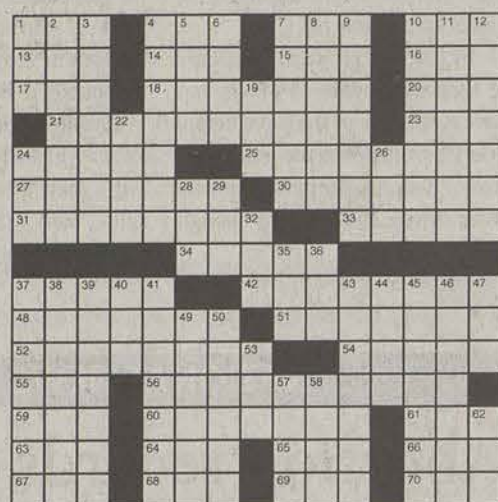
**700 Travel**  
710 Spring Break Travel

**800 Transportation/Rides**  
810 Transportation/Rides

**900 Miscellaneous**  
910 Pets & Pet Supplies

## Crossword

ACROSS  
1 Glutton  
4 Retirement grp.  
7 Nincompoop  
10 Mil. training ctr.  
13 Fr. woman's title  
14 Links standard  
15 E-mail period  
16 Half a dance?  
17 Knight's title  
18 Dancer Duncan  
20 Daggett or Curry  
21 Zygomatic structures  
23 Small snake  
24 Follow  
25 Throw into disorder  
27 Parts of eyes  
30 Unfruitful  
31 Beaver's waterproofing  
33 Metal scum  
34 Life of a region  
37 Razor sharpener  
42 Gossip press  
48 Way of doing things  
51 Music master  
52 Having a sheen  
54 Derived from oils  
55 Citrus drink  
56 Gourmet  
59 Roll-call vote  
60 Honshu Island city  
61 O.T. book  
63 Break bread  
64 Sportscaster  
65 Negative link  
66 "alors!"  
67 Expected  
68 Junk mail, mostly  
69 Deity  
70 Ecological watchdog grp.



© 2006 Tribune Media Services, Inc.  
All rights reserved.

9/21/06

8 Most painful  
9 Hidden away  
10 Mexican poet  
11 Sculptor's equipment  
12 Specimens  
19 Pentagon grp.  
22 "kleine Nachtmusik"  
24 Sch. in Fort Worth  
26 Make a boo-boo  
28 Eglin or Lackland, e.g.  
29 "generis"  
32 Decay  
35 "o-shanter"  
36 Lawyers' grp.  
37 Turned outward  
38 Former Canadian P.M.  
39 Optimistic  
40 10th month  
41 Trelliswork passageway  
43 Bornstein or Nimoy

**New Voices.  
New Services,  
New Attitude.**

[www.gadaily.com](http://www.gadaily.com)

**There is No Option!**

## Missing Titles

©2006 PuzzleJunction.com

Listed below are a dozen movie titles, each with one word missing. We've given you the year of release and the star's name. Can you fill in the blanks? Good luck.

- "A Dream of \_\_\_\_\_" Anthony Quinn, 1969
- "The \_\_\_\_\_ Takes a Wife" Betty Grable, 1953
- "The \_\_\_\_\_ Brute" Victor McLaglen, 1936
- "A Fine \_\_\_\_\_" Sean Connery, 1966
- "Rachel and the \_\_\_\_\_" Loretta Young, 1948
- "Take a Letter, \_\_\_\_\_" Rosalind Russell, 1942
- "\_\_\_\_\_ Jack Flash" Whoopi Goldberg, 1986
- "Each \_\_\_\_\_ I Die" James Cagney, 1939
- "Cain and \_\_\_\_\_" Clark Gable, 1936
- "\_\_\_\_\_ In My Pocket" Andy Griffith, 1969
- "\_\_\_\_\_ Misbehaves" Greer Garson, 1948
- "\_\_\_\_\_ Of the Islands" Betty Grable, 1942

## Announcements 100 - 199

### 110 Auditions

Now auditioning singers for 311 cover band. Contact Weston at (678)643-2331.

Now auditioning singers for 311 cover band. Contact Weston at (678)643-2331.

### 140 Other Announcements

NOTICE -- While the newspaper makes every effort to screen bogus offers and ads, please remember if an offer seems to be too good to be true, it probably is.

Reach Georgia Southern students with a publication they really read... Over 100,000 copies of the G-A Daily circulate each month. For more info: [ads@georgiasouthern.edu](mailto:ads@georgiasouthern.edu)

### Buy or Sell 200 - 299

### 210 Autos for Sale

2002 Honda CBR600F4i, Viper Bright Silver. 5200 miles, Yoshimura exhaust, Nice Motorcycle. Must sell. It's yours today for \$5500 404-276-2568

1989 Cadillac DeVille; 91,000 miles, Black, leather interior, power locks/windows/seating controls. Smooth ride, great condition. Contact Nicole at 912-282-9364.

### 250 Computers & Software

Laptop for sale! Windows XP OS, Adobe, PhotoShop, Microsoft Office plus more! Need to sale!! \$600! Call 912-327-0014

### 260 Miscellaneous for Sale

For Sale Crossbow Home Gym. Great shape, barely used. \$450. email [s\\_t\\_long@hotmail.com](mailto:s_t_long@hotmail.com) for pics or more information.

KEGERATOR FOR SALE. MADE FROM FULL-SIZE REFRIGERATOR. CO2 TANK, TUBES, VALVES AND TAP INCLUDED. GOOD CONDITION. CALL NICK @ (404) 808-6440. \$350/OBO.

Couch and loveseat for sale. Beige and comfortable. \$50 for couch. \$25 for loveseat, OBO. Call 912-327-0014

7' Lighted Air Hockey Table. In great condition and awesome to play! \$375 obo. Call Dan @ 912-282-0642

FOR SALE: PlayStation 2 plus internet adaptor, 2 dual shock controllers, 8MB memory card, 1 game. Good Condition. \$79.00 Call Chad: 912-713-7631

Don't throw away that junk... turn your trash into cash. Try selling it online and in print with the G-A Daily action classified ad. It's free for students. Visit [www.gadaily.com](http://www.gadaily.com) to find out more!

### 270 Motorcycles for Sale

Pampered Chef Kitchen Tools, Kitchen Shows, Bridal Showers Registry, free, half-price and discounts. Call 681-7453 after 5:30 p.m.

## Employment & Job Services 300 - 399

### 350 Jobs/Full Time

BARTENDING! Up to \$250 a Day. No Experience Necessary. Training Available. Age 18+ OK 1-800-965-6520 XT 296

### 360 Jobs/Part Time

EARN MONEY FOR CHRISTMAS... ONLY A FEW WEEKS LEFT... ALL SHIFTS AVAILABLE... This pay-for-performance program lets you earn more money by paying you for your good work ethics. You could average \$10-\$13/hr. The more you do, the more you get paid! Must be able to lift 50-80 lbs. frequently, pass a mandatory drug screen and criminal-history. Paid weekly. Apply in person Tue. or Thurs. 1:30-3 pm or call 764-8800. SNELLING, 410 S. Zetterower Ave., Statesboro, GA

### 380 University Work

Sales Representatives Needed! The George-Anne Daily is now accepting resumes for sales representatives in the advertising department. We are looking for outgoing, highly motivated people.

No experience is required.

Job Requirements include:(but are not limited to)

- Daily office hours
- Monthly meeting attendance
- Email and phone correspondence
- Knowledge of local area businesses
- Means of transportation

Please email resume with references to Ads Manager at [ads1@georgiasouthern.edu](mailto:ads1@georgiasouthern.edu)

### 410 Apartments

QUIET, REASONABLY PRICED (\$285-\$450) one & two bedroom apartments. NO PETS. Deposit, application required. Flexible leases. Parker Realty (764-5623)

### 450 Roommates

Looking for a roommate? Trying to sublease your place? Put the G-A Daily to work for you. Free classified for students in print and online. Visit [www.gadaily.com](http://www.gadaily.com) for information

### 480 Sub Leases

1bed./1bath spacious mother-in-law house. Located in a quiet neighborhood behind Statesboro High. Washer/dryer included. \$400/month...sublease until July. Can move in ASAP. Call Bess at 229-848-1001.

Statesboro Place - 4br/4ba; fully furnished; all utilities included; \$375/mo; next to pool/clubhouse; start in January. Call (770)329-1389

Need female sublesser for 3 bedroom, 3-bath apartment in University Pines!!!! Rent=\$425 utilities included. Fully furnished & all inclusive with pool, hot tub, tanning bed,work-out

room and computer lab. Will pay application fee at sublease signing! Contact Brittany @ 478-461-5326.

Roommate need to sublease spacious bedroom, private bath, 2 Wonderful Roommates, huge living area/kitchen, lots of space... 225/mth w/o util. Great price!!! call whitney @ 912-536-4125

PLANTER'S ROW sublease available asap!!! \$325/mo. Contact Michelle Long at 770.630.0934 for further information!

sublease CAMBRIDGE single sublease or whole apt. available two bath two bed w/brand new utilities included, balcony, gym, pool, storage \$509

scot 757-277-1565

Apartment for Sub-Lease!

Stadium Walk Apts

\$425 a month, Free Security Deposit. Must past credit check. Lease from now to august.

Please contact Meri at (478) 951-4633.

SPRING 07 SUBLEASE! Private bed and bath in Campus Club. \$419/month ALL INCLUSIVE, FULLY FURNISHED, RIGHT BY BUS STOP! Interested? Call (770) 757-3567

Male/Female roommate needed to take over sublease for 3bd/2bth townhouse at Park Place. Rent is 225/mth w/o util. available 12/16/06. Great for Spring Semester...

Eagle's Landing Sublease. \$320/mo. All inclusive, fully furnished except for bedroom. Walking distance to GSU. Can move in December. Contact Walter or Christina @ 229-424-3967

Looking for someone to take over lease! Campus Club, 4 bedroom apt, two male roommates, \$419 a month! Can move in whenever you want to! GREAT PLACE TO LIVE!!!

Need Sublease for Spring 2007 semester. Brand new townhome apartment. Private bedroom and bath with three great roommates! Please call Kristine at 706-325-6648

### SUBLEASE

Transfer student looking for sublesser...MALE SUBLEASE CAMPUS CLUB, SPRING 07 (free december rent) \$389 all inclusive and close to bus stop CALL:706-830-6450

### Services 600 - 699

610 Education & Tutoring

I will tutor you in spanish! Only \$10/hour

FUN & STUFF Visit our Web site for list of things to do that are educational and fun. <http://www.stp.georgiasouthern.edu/funstuff/>

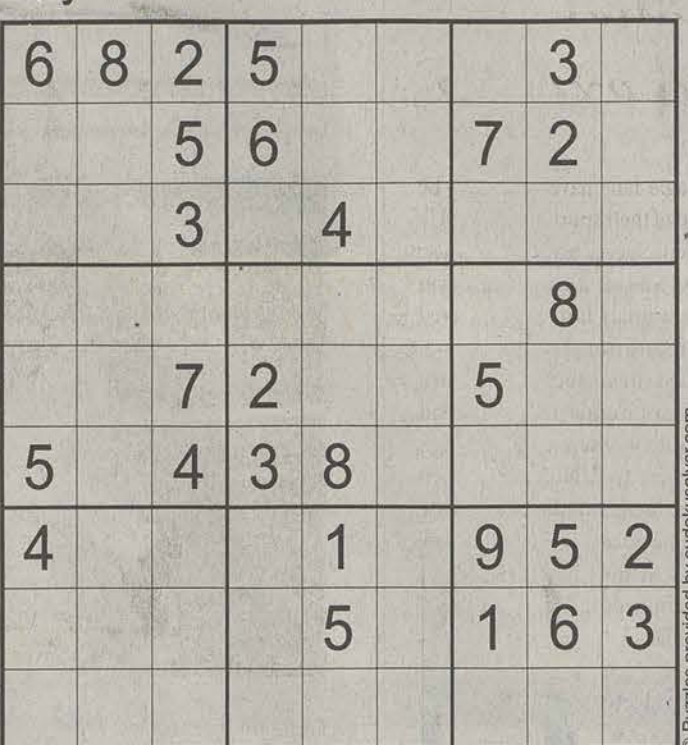
### ALTERATIONS

Quality Alteration Shop  
Quick Turn Around  
Ann Hill, Seamstress  
7 South Main St. • Downtown  
M-F 9-6 • Over Cobbler's Bench • 489-1825

Covering the Web Like a Swarm of Electrons...  
**www.gadaily.com**  
New Voices. New Services. New Attitude

## Sudoku Easy

To play: Complete the grid so that every row, column and every 3x3 box contains the digits 1 to 9. There is no guessing or math involved, just use logic to solve!



Puzzles provided by sudokusolver.com

### 650 Services/Miscellaneous

ShuttleGus is a nonjudgmental service that provides free rides home from bars and parties. Don't Drink then Drive, call ShuttleGus at 912-681-3709!

Beginner guitar lessons at \$10 an hour. Must have own instrument. Can teach anyone. Call Jonathan (912)245-0802

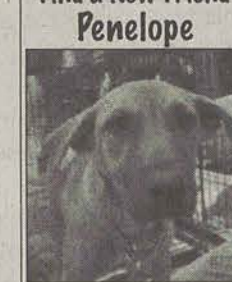
Want a house, fence or outdoor furniture painted or pressure washed? Call 912-258-0562 or 912-223-5212. Ask for Alston or Robbie.

### Travel 700 - 799

### 710 Spring Break Travel

Spring Break Bahamas 5 Days/4 Nights from \$199

### Find a New Friend Penelope



This beautiful young shepherd mix little girl is looking for someone to love! She is very smart and loves to play! She is up to date with shots and has been altered.

Humane Society of Statesboro & Bulloch Co. Animal Rescue Division  
Statesboro, GA • 912-681-9393  
[bullochanimalrescue@yahoo.com](mailto:bullochanimalrescue@yahoo.com)

### Miscellaneous 900 - 999

### 910 Pets & Pet Supplies

Tortoise-shell kitten with purple collar found in the College of Education building. Very friendly and playful. Call 681-0672 or 682-8205 to claim.

Female Guinea Pig, 8 weeks old. ADORABLE. 25 dollars. Call (912)688-7334!



"I need my greens," Willie Nelson said, as police arrested him today for a van full of spinach."

Welcome to Falling Rock National Park. by Josh Shalek



Dear Current Resident, You May Be Our Next Million-Dollar Winner: [www.joshshalek.com](http://www.joshshalek.com) kid\_shay@joshshalek.com

**GA George-ANNE DAILY Classified Advertising**

Business & Commercial Classified Ads

Name: \_\_\_\_\_

P.O. Box: \_\_\_\_\_

Phone: \_\_\_\_\_

Email: \_\_\_\_\_

Please list in section: ☐ BUSINESS & COMMERCIAL ☐ PERSONALS

Classified Ad: \_\_\_\_\_

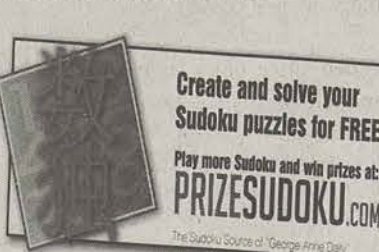
Submit

Free classified ads for students, faculty & staff (non-commercial Only): visit us online at...

[www.gadaily.com/class\\_ad\\_sub.php](http://www.gadaily.com/class_ad_sub.php)

You must include your name, address and phone number and "dot.edu" address for freebies. Go online and prepare your non-commercial message. No phone calls please, at this price we don't take dictation.

## Cheats Corner



7	8	9	2	6	1	5	3
3	9	1	8	5	4	6	7
2	5	6	3	1	7	8	9
9	7	2	6	8	3	4	1
6	1	5	4	9	7	2	8
4	8	3	5	7	1	9	6
5	6	9	7	4	8	3	1
8	2	1	7	3	9	5	6
1	3	4	7	6	9	2	8

Easy

## Solutions

A	V	E	L	E	S	O	U	E
A	V	E	L	E	S	O	U	E
A	V	E	L	E	S	O	U	E
A	V	E	L	E	S	O	U	E
A	V	E	L	E	S	O	U	E
A	V	E	L	E	S	O	U	E
A	V	E	L	E	S	O	U	E
A	V	E	L	E	S	O	U	E
A	V	E	L	E	S	O	U	E

37

6. Darling  
5. Stranger  
4. Madness  
3. Magnificent  
2. Farmer  
1. Kings

Solution Thivia Puzzle 36

**talons grille**

**All-You-Can-Eat Breakfast**  
Mon.-Fri. 7:30 a.m. to 10:30 a.m.

**Lunch - Mon.-Fri. 11 a.m. to 4:30 p.m.**

**Dinner - Mon.-Fri. 5 p.m. to 9 p.m.**

On the Bridge

F F K W M B R A I S E B K Q N Y M  
S Y S T E M L E B W C H O T B T T  
E V V D N R E B B U R O P F I K Y  
L Z K L S L A N G I S N P G D N W  
G N E Q L W R M K F D O O K D C J  
W R R E R A L C E D C R N L I R M  
T L A H U L C K K O K S E V N Y A  
P A J N R Q S R U P T A N T G M L  
R G K D D T S N E I D J T M S M S  
E W V E N S T H U V R T S D R U L  
N X E I O I L S Q E O N R N D D L  
T G O C N U R A K H L A T R R T A  
R P E G A L T R M L C B R L R R M  
A H M N G N I N E P O U U U C I S  
P Q T M E V E Z M Y F W M O L C F  
Y Z W T Y R K T R F H P V R D K R  
F I N E S S E K T C E R O C S S Q

©2006 PuzzleJunction.com

BIDDING	OPENING	SCORE
CARDS	OPPONENTS	SIGNALS
COUNTING	OVERCALL	SMALL SLAM
DECLARER	PARTNER	SQUEEZE
DOUBLE	POINTS	SUITS
DUMMY	RAISE	SYSTEM
FINESSE	REBID	TAKEOUT
GRAND SLAM	RENEG	TENACE
HONORS	RUBBER	TRICKS
LEAD	RUFF	TRUMP



## SPORTS



Who's  
**HOT**

**In the NHL:** the Atlanta Thrashers. The Thrashers have the second-best record in the Eastern Conference and lead the division. They are also second in the conference in goals scored.

**In the NFL:** Peyton Manning. Surprise, surprise. Indy's hero did it again Sunday night with a 27-20 victory over the Patriots in Foxboro. Manning threw for 326 yards and two touchdowns. He leads the league in passer rating and has only thrown three picks all year.

Who's  
**NOT**

**In the NFL:** the Atlanta Falcon's defense. Though Michael Vick was hot last week, the defense still allowed 27 points against Cincinnati. The defense struggled again Sunday, allowing 30 points in a loss to the Lions. The Falcons have given up 95 points in their last three games.

Eric Robinson  
OUT OF OPTIONS

## 'First year coach' is no excuse

Eagle fans have reason to be proud of their sports teams. GSU's women's soccer team ended their season with a 2-0 loss to Furman in the semifinals, but they improved their record from 3-15-1 to 8-11-1. The GSU men's soccer team had a great season under first-year Head Coach Kevin Kennedy. Although they lost to UNC-Greensboro in the finals Sunday, it was the first time since 1996 that the program made it that far.

Which brings me to Saturday's pathetic display by GSU's other notable first-year coach. For any who missed it, I will summarize the worst game I've seen

at Paulson Stadium. The highlights: zero points in the second half, two Paulson records—by Wofford—and a first-and-goal on the 10 after a turnover on downs in which the Eagles got no points.

When we look back on this season—our only losing one since 1996, and we had an interim head coach that year—many will blame poor kicking, defense, offensive execution, etc. These are all reasons Head Coach Brian VanGorder has used for the team's lackluster performance.

The problem has not completely been in the players. The guys show up to play every game. Travis Clark has shown improvement and the running game has done fairly well all season. The defense has had some struggles, but the secondary is young and the veteran players have done well.

What's obvious is the difference in the halves. The best teams don't always jump out to 30-point leads, but they make the right halftime adjustments to get the victory. Teams are figuring us out at the half and exploiting our weaknesses. And if you look at our "progression" this season, it seems as though we're getting worse every game.

What VanGorder has failed to do is point the finger at himself and his staff. Though I don't profess to be a football guru, I know bad play calling when I see it often. Continuously throwing screen passes or dump-offs on third-and-20 is ridiculous. With the speedy receivers we have—Reggie McCutchen and Jayson Foster for example—not running the occasional deep pass is inexcusable.

With VanGorder's credentials, and given past history of our football program, it shouldn't have to take an entire "rebuilding" season. Erk Russell took a team of undersized guys to a 6-5 season and a national title in three years. Some would rightly say the SoCon is much tougher than the schedule Russell played. However, our current GSU staff is more athletic than Russell's first team, and should be able to keep up. They did under Sewak (whom, I've been told, is looking for a head coaching job).

So are we impatient for expecting immediate results? I think not. Our tuition goes into this campus, and our reputation as well. The team that used to be feared is now laughed at. Behold: The new era of mediocre Eagle football.

Don't worry sports fans, basketball season starts this weekend.



Eric Robinson is the managing editor of operations for the George-Anne. He is a journalism major from Albany, Ga.



Eagle midfielder Liesl Jenkins tries to steal from a Davidson player in this file photo. The Eagles lost to Furman 2-0 in the SoCon semifinals Friday.

## Georgia Southern Lady Eagles

Record: 8-11-1 overall  
5-5 SoCon

### 2006 results

8/25	at Mercer	W 2-1 (OT)
8/27	at North Florida	L 2-1
9/1	at Oral Roberts	T 0-0
9/3	at Tulsa	L 5-0
9/8	at Jacksonville	L 1-0
9/10	South Carolina St.	W 4-0
9/15	Georgia St.	L 1-0
9/17	Winthrop	L 1-0
9/24	Davidson	L 3-1
9/29	at The Citadel	W 4-1
10/1	at Chattanooga	W 1-0
10/5	Coll. of Charleston	W 2-1 (2OT)
10/8	UNC-Greensboro	L 1-0
10/12	at Furman	L 3-0
10/15	Elon	W 1-0
10/20	Western Carolina	W 3-2 (2OT)
10/22	Appalachian St.	L 1-0
10/27	at Wofford	L 2-1
10/31	at Davidson (first round)	W 1-0
11/3	vs. Furman (semifinals)	L 2-0

### Notables

-Record improves from 3-15-1 in 2005 to 8-11-1  
-GSU was third in SoCon in saves

-Ashley Toussaint finished fourth overall in points (18), second in points per game (1.29) and goals (8) and third in game-winning goals (3)

# GSU falls in SoCon tourney

Lady Eagles fall to Furman 2-0 in semifinals to finish conference 5-5

### GSU News Service

Two late second-half goals lifted third-seeded Furman past No. 7 seed Georgia Southern 2-0 at Western Carolina University's campus in Cullowhee, N.C. on Friday. The game was the first semifinal match of the 2006 Southern Conference Women's Soccer Tournament.

Junior Emily Krankowski put the Lady Paladins on top 1-0 at the 72:53 mark. She netted her third goal of the season after she out ran the GSU defense and pushed the ball past the goalkeeper.

Furman sealed the win at the 85:28 mark when all-conference first-team member Anna Betton accepted a cross from freshman Margaret Antonik and found the back of the net to put Furman up 2-0. The goal was Betton's 13th on the season.

"We played well in the first half and created lots of opportunities," said GSU head coach Ashley Hart. "Our kids played well and I'm proud of how they represented the University. Things just didn't bounce our way tonight."

GSU managed just six shots and one on goal. First Team All-Conference sophomore Ashley

Toussaint led the effort with two shots. Freshman Lauren Santos made four saves and allowed both goals.

"Furman took advantage of our mistakes," Hart added. "You have to limit your mistakes when you're playing a team like that."

GSU ends its season with a 5-5 conference record and an overall record of 8-11-1. The team will return all 11 starters next season.

"I'm proud of our season and we don't lose anybody, so this is something we can build on," said Hart.

## Volleyball splits weekend

### GSU News Service

The Georgia Southern volleyball team could not gather the offense needed to move past UNC Greensboro Saturday night, falling 3-0 (30-27, 30-26, 30-22).

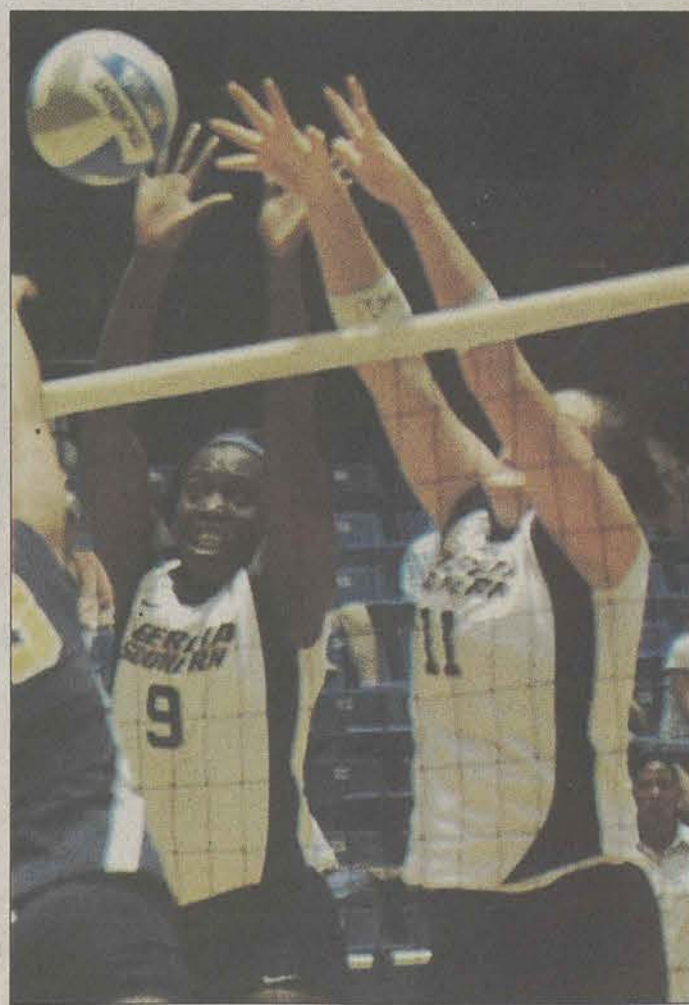
GSU posted 44 kills in the three game set, 14 of which came from Gorana Basic. Basic managed a .481 hitting percentage, recording only one error in 27 attempts. Jennifer Charles had 12 kills, and hit .455 with two errors in 22 total attacks. The Spartans held GSU leading hitter Christy Dowd to just five kills and a .074 percentage.

Staci Anderson posted 15 digs, and Mae Chabra added 11 for the Eagle defense. Basic notched four block assists on the night, while Charles had three. Jennifer Schenk added three block assists and a solo block. The Spartans recorded 67 kills, hitting .350 on the night. Kaitlyn Nortz and Lauren Keiser had 16 kills each.

Dowd recorded 24 kills and Basic added a season-high 19 as the Eagles defeated Elon 3-1 (30-28, 34-32, 24-30, 30-27) in the final road match of the regular season.

"Elon came out and served us very well and for us to pull this win out is huge for our team," said Head Coach Nicole McCray. "It shows that we are really learning to play well in difficult situations."

The Eagles posted a season-high 71 kills in the four-game match and hit .217 as a team. Dowd's 24 kills are her second-highest tally of the season. She posted 28 kills in the Eagle's match versus Charleston Southern on Aug. 26. Basic had 19 kills, four more than her previous



Eagles Jennifer Charles and Bailey Coleman attempt to block a shot from a UTC player in this file photo. The Eagles lost to UNC-Greensboro Saturday but defeated Elon Sunday.

season high of 15. Charles provided 12 kills for the Eagle offense and notched five block assists and a solo block on defense. Schenk added two solo blocks and a block assist as the Eagles downed the Phoenix.

GSU improved to 12-12 (6-10) on the season, while Elon falls to 11-16 (8-8).

"This was a tough weekend,"

added McCray, "and to come out one-and-one is a huge accomplishment for us and hopefully we can carry that through to Appalachian State next weekend."

The Eagles will finish out the regular season at home next weekend as they play host to Appalachian State on Saturday and Davidson Sunday.

## NATIONAL BRIEFS

Compiled by staff



## 'Joe Pa' surgery successful

Long-time Penn State Head Coach Joe Paterno underwent successful surgery Sunday to help repair two torn ligaments and a broken tibia, according to the Associated Press.

The 79-year-old coach suffered the injury in Penn State's 13-3 loss to Wisconsin Saturday when two players collided with him on the sideline.

Paterno plans to coach in Saturday's game against Temple.

## Rangers hire Washington

The Texas Rangers announced Monday that Ron Washington, former assistant coach for the Oakland Athletics, would take over the reins as manager.

The Rangers released Buck Showalter following an 80-82 season and only one winning season since 1999.

ESPN.com reports that Washington, who was a leading candidate to replace Ken Macha, beat out four candidates for the Texas job.



1. Ohio State	10-0
2. Michigan	10-0
3. Louisville	8-0
4. Florida	8-1
5. Texas	9-1
6. Auburn	9-1
7. USC	7-1
8. California	8-1
9. Notre Dame	8-1
10. West Virginia	7-1
11. Arkansas	8-1
12. LSU	7-2
13. Rutgers	8-0
14. Boise State	9-0
15. Wisconsin	9-1
16. Tennessee	7-2
17. Oklahoma	7-2
18. Georgia Tech	7-2
19. Wake Forest	8-1
20. Oregon	7-2
21. Virginia Tech	7-2
22. Boston College	7-2
23. Maryland	7-2
24. Oregon State	6-3
25. Texas A & M	8-2



GA Sports predicts the top five fantasy players of the weekend.

### RB L. Tomlinson, Chargers

Last week:  
Vs. Cleveland, W, 32-25  
172 yards, three touchdowns

This week:  
at Cincinnati (4-4)  
Predicted stats:  
145 rushing yards, 35 receiving yards, two touchdowns

### RB Tatum Bell, Broncos

Last week:  
at Pittsburgh, W, 31-20  
DNP (Toe injury)

This week:  
at Oakland (2-5)  
Predicted stats:  
115 rushing yards, 20 receiving yards, one touchdown

### QB Peyton Manning, Colts

Last week:  
at New England, W 27-20  
326 yards, two touchdowns

This week:  
vs. Buffalo (3-5)  
Predicted stats:  
325 yards, three touchdowns

### QB Drew Brees, Saints

Last week:  
at Tampa Bay, W 31-14  
314 yards, three touchdowns

This week:  
at Pittsburgh (2-6)  
Predicted stats:  
288 yards, two touchdowns

### RB Larry Johnson, Chiefs

Last week:  
at St. Louis, W 31-17  
172 yards, one touchdown

This week:  
at Miami (2-6)  
Predicted stats:  
150 yards, two touchdowns



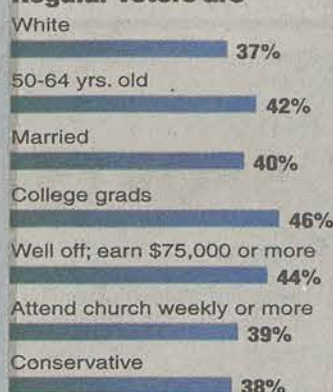
## Who votes, who doesn't

About one-third of U.S. adults say they vote regularly; how they compare to those who aren't registered:

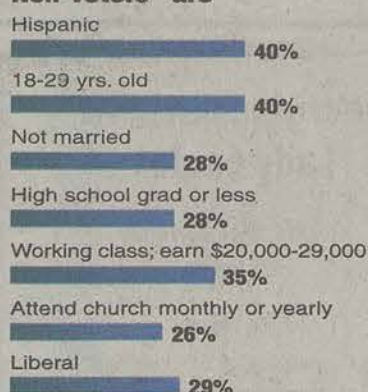
### How often people vote



### Regular voters are



### Non-voters\* are



### Attitudes

Percent who agree with the statement	Regular voter	Non-voter*
Duty as citizen to always vote	88%	39%
Voting doesn't change things	13%	33%
Issues in Washington don't affect me	15%	27%
Difficult getting to polls	9%	30%

\*Not registered  
Graphic: Angela Smith, Judy Treble

### Why non-voters don't register

Reason	Percentage
No time; just haven't done it	19%
Recently moved	17%
Don't care about politics	14%

Source: Pew Research Center poll of 1,804 adults, Sept. 21-Oct. 4, 2006; margin of error: +/- 3 percentage points

© 2006 MCT

## Saddam

from page 1

tory against their former oppressor and some Sunni Arabs protesting at this latest humiliation of the ousted regime.

Tribunal spokesman Raed Juhi said the court has 10 days, starting Monday, within which it must submit its ruling justifying Saddam's execution to an appeals committee. This panel will then invite input from the prosecution.

Defense lawyers also said they will submit their arguments.

"My experience with this court shows that there is no benefit to gain from appealing because this court is political; nevertheless, we will appeal," lead defense lawyer Khalil al-Dulaimi said.

Twenty days after the 10-day filing deadline, the case will be sealed and the panel will retire to consider its verdict.

No date has been set for their final judgement, which is binding, said Juhi, the court's investigative

## Guilty as charged

Former Iraqi dictator Saddam Hussein (right) and two co-defendants have been sentenced to death by hanging by the Iraqi Special Tribunal for their roles in the execution of 148 people after a botched 1982 assassination attempt.



### Sentencing highlights

**Saddam sentence:**  
•Death for murder  
•10 years for forcible deportation  
•10 years for torture  
Distinction made between high-ranking officials who ordered attacks and lower-level officials who carried them out

### Co-defendants



Source: McClatchy Washington Bureau

© 2006 MCT

judge.

If the final verdict confirms Saddam's guilt, he will be executed within 30 days, and some powerful Iraqi voices are calling for the judges not to dawdle.

"We strongly feel that every day he lives is not good for the Iraqi

people. We need to put an end to him, to this dictator," Bassam Ridha, a senior aide to the prime minister, told AFP.

"I hope this issue comes to an end quickly. Hopefully, in the next few months — before next summer — he will be dead," he said, adding it was his personal view and he was not seeking to influence the final verdict.

The satisfaction of Maliki's Shiite-led government at the death sentence was mirrored in the joyful street rallies held to celebrate in Shiite and Kurdish areas across Iraq.

"This just sentence on Saddam has comforted me greatly," said Fatima Mohammed a teacher in her fifties living in the mainly Shiite city of Kut, who lost six brothers to Saddam's security forces in a 1982 purge against Maliki's then banned Dawa party.

"It's a great day. We do not know how we can express our feelings on such a great day," Wahid Dairam, a 45-year-old writer living in the Shiite holy city of Najaf, told AFP.

"The blood of our brothers and fathers in the mass graves was not spilled in vain," said Dairam.

"Today, their killer is facing a just fate."

But among Saddam's supporters in Iraq's Sunni Arab minority, there was anger at a ruling many argued had been forced on Iraq by foreign powers, in particular the United States.

In Hawijah, a Sunni town in northern Iraq, hundreds of school-children and women gathered and

linked their arms bearing portraits of Saddam and placards demanding their former leader's release.

Here — as elsewhere in Sunni regions of Iraq — the threat of violence was not far from the surface.

"The Americans and the Iraqis who are with them will see black days ahead of them in Iraq," warned Abdullah Zamar Hassan, a 49-year-old shopkeeper.

Meanwhile, the Iraqi authorities lifted the round-the-clock curfew that was imposed in Baghdad, Diyala and Salaheddin provinces since Sunday 6 a.m.

An interior ministry official said the ban on pedestrian movement was lifted from 4 p.m. Monday, while the vehicle ban would be lifted from 6 a.m. Tuesday.

A security official said that the Baghdad curfew had been successful, with almost no violent incidents reported overnight in a city which has for months been at the centre of a bloody sectarian turf war.

Elsewhere, sporadic violence continued.

In Iskandariyah, south of Baghdad, a bomb exploded on a bus and wounded 10 passengers, two of them seriously, police said.

US headquarters on Monday announced that five more of its soldiers had been killed, including two when a helicopter crashed on Monday in the north of the country.

The latest deaths brought the US military's death toll in Iraq since the March 2003 invasion to 2,832 according to an AFP count based on Pentagon figures.

November 8, 2006

9 AM to 1 PM

# Graduate School Fair

The Office of Career Services and the Jack N. Averitt College of Graduate Studies invite you to participate in the Annual Graduate School Fair at Georgia Southern University.

All students are encouraged to visit with Graduate School representatives who will be present to share information about their programs and the benefits of attending Graduate School.

## Russell Union Ballroom

To view an up-to-date listing of schools attending, go to:

<http://students.georgiasouthern.edu/career/>

For more information contact:  
Amy Rowell, Assistant Director  
at 681-5197 or  
[awilliams@georgiasouthern.edu](mailto:awilliams@georgiasouthern.edu)

**Wendy's 99¢**  
**Crispy Chicken Sandwich**

# Out & About in The 'Boro

Savannah's #1 Japanese Restaurant  
Now in Statesboro!!!



715 Northside Drive East in Southern Square Center • Next to K-Mart

Jr. Chicken Bowl \$3.15  
Jr. Shrimp Bowl \$3.95  
Chicken Bowl \$4.50  
Shrimp Bowl \$5.50  
Shrimp/Chicken \$5.75

Over 20 franchises in the area

We Can Quickly Make Your Favorite Dish.  
So You Get In and Out in a Hurry!  
Ikebuchi Steak • Shrimp Tempura  
Teriyaki Chicken & Shrimp  
Sushi • Salads • Appetizers and Much More...

Dine In or Carry Out 912-764-5150  
Hours: 11 AM - 9 PM 7 Days A Week [www.capitaljapan.com](http://www.capitaljapan.com)

K-Mart  
Now in Statesboro at Southern Square Shopping Center  
Hwy 80  
Long Lines

## THE GEORGE-ANNE

Take a BITE Out of the 'Boro!

681-5418

ADS@GEORGIA SOUTHERN.EDU  
WWW.STP.GEORGIA SOUTHERN.EDU

fax: 486-7113

**\$109 CONTACT LENS PACKAGE**

Offer includes complete eye exam and contact lens fitting. This offer includes a complete eye exam and contact lens fitting plus a three-month supply of clear, two-week disposable contact lenses. Colored, Toric and Bifocal contacts are available for an additional cost. Some restrictions may apply. Appointments recommended.

Offer expires November 30, 2006. Coupon required.

**\$100 OFF**

\$100 off second pair. Buy a complete pair of glasses (frames and lenses) and receive \$100 off a second pair. Sale cannot be shared. Some restrictions apply.

Offer expires November 30, 2006. Coupon required.

**Boomers Vision Center**  
Statesboro  
(912) 489-6655

820 Hwy. 80 East • Statesboro (in front of Lowe's)  
**SATURDAY AND EVENING APPOINTMENTS AVAILABLE**

**Nikko EXPRESS**  
"Two Convenient Locations, Same Great Japanese Food!"  
Voted "Best of The Boro" Five Years in a Row!

Visit Our Upscale Dine In Area!  
Open All Day Everyday 11 a.m. - 9 p.m.  
Dine In, Take Out or DRIVE-THRU!

Two Locations

Nikko Steakhouse  
609 Brannen Street  
489-4007

Nikko Express  
701 Piedmont Loop (Buckhead Plaza)  
489-4003

We accept Eagle Express!

Chicken Bowl \$2.99  
Shrimp Bowl \$3.99

\*\*Now Hiring Daytime Cook\*\*