

Georgia Southern University

Digital Commons@Georgia Southern

The George-Anne

Student Media

10-24-2006

The George-Anne

Georgia Southern University

Follow this and additional works at: <https://digitalcommons.georgiasouthern.edu/george-anne>

Recommended Citation

Georgia Southern University, "The George-Anne" (2006). *The George-Anne*. 2031.
<https://digitalcommons.georgiasouthern.edu/george-anne/2031>

This newspaper is brought to you for free and open access by the Student Media at Digital Commons@Georgia Southern. It has been accepted for inclusion in The George-Anne by an authorized administrator of Digital Commons@Georgia Southern. For more information, please contact digitalcommons@georgiasouthern.edu.



High: 64 | Low: 38
Sunny
Volume 79
Number 51

'Jesus Christ Superstar' comes to campus on Halloween

| NEWS, p. 3

Sparkling memories

Our photographers take a moment to reflect on the Homecoming magic

| PHOTO ESSAY, p. 2

THE GEORGE-ANNE DAILY

TUESDAY, OCTOBER 24, 2006



Special Photo

An illustration of how G-Proteins work, which is one of the main focuses of Claiborne's research.

Professor gets \$650,000 science grant

James Claiborne receives a grant from the National Science Foundation

GSU News Service

By studying a certain type of fish protein, a professor in the Department of Biology at Georgia Southern University is hoping to gain a better understanding of what causes a variety of significant health problems in human beings.

James B. Claiborne has been awarded a grant worth \$652,391 from the National Science Foundation (NSF) to conduct the project, which includes research at a marine laboratory in Maine and collaboration with scientists at Johns Hopkins University.

The grant represents a new high for basic research funding by the NSF to a Georgia Southern research team. The University's biology department has received \$1.5 million in NSF funding over the last five years.

"In this project, we are using molecular biology and comparative approaches to solve physiological problems," Claiborne said. "Our specific interest concerns the function of a family of cell proteins that are called sodium-hydrogen exchangers, or NHE. They are responsible for the regulation of acid and salt levels in our kidneys, intestines and other essential organs."

According to the biologist, defects in the regulation or expression of these proteins can lead to problems in the cardiovascular, renal and digestive systems. In addition, alterations of the proteins have been implicated in some deadly types of brain tumors.

"We are examining the similarities and differences in the function of NHE proteins between fishes and mammals to understand how they have been modified through evolutionary time," Claiborne said. "As fish are our early vertebrate ancestors, the sequence and function of these molecules in fish can reveal much about the same homologous proteins found in all of us."

Funded by the NSF Division of Integrative Organismal Biology, the four-year project is officially entitled "Functional characterization of Na⁺/H⁺ exchangers in marine and freshwater fishes."

The grant will continue support of see **GRANT**, page 5

Bush to visit 'Boro Monday

President set to campaign for former Georgia Southern professor Max Burns

By Adam Crisp
Staff writer

President George Bush will visit Statesboro Monday where he will campaign for former Congressman Max Burns, a former Georgia Southern professor, who is hoping to win back the seat he lost to Rep. John Barrow in 2004.

The White House has refused to say exactly when and where Bush will speak in Statesboro, but since this is the first time a sitting president has ever visited the 'Boro, speculation has been furious.

U.S. Rep. Jack Kingston, who is the Republican's fourth-highest-ranking house member, confirmed

the visit late last week. Rob Asbell, Kingston's communication director, said the president will be in Statesboro from mid-morning to lunch, but there has been no official confirmation.

This trip, Bush's second to south Georgia within two months, is meant to get out the vote for Burns. A day after his visit to Statesboro, Bush will stump for Mac Collins, another former congressman who is hoping to unseat Democratic Rep. Jim Marshall.

Don Layfield, Republican Party chairman for the 8th District where Collins is running, told the Associated Press Bush is slated to appear at an afternoon rally at the Georgia

National Fairgrounds and Agricenter outside Perry.

A Bush visit to Pooler in September was closed to the public. There's no indication if Monday's visit to Statesboro will be open.

"I think it's good for the entire school," said Eric Cumbee, GSU's College Republicans information technology director. "This is a big deal not just to the College Republicans, but also to the whole college community. This is a once-in-a-lifetime opportunity."

In addition to being good for his public relations, political watchers say these two Congressional races are the Republican's best chances of defeating a sitting Democrat Nov.

7. Marshall has served two terms in Congress, while Barrow has served just one.

Democrats need to gain 15 seats to have a majority in the house.

"Georgia's the only state in the nation where there are two congressional seats where Democrats are really engaging in difficult campaigns," said Emory University political scientist Merle Black, who specializes in Southern politics in published reports. "The president's time is one of the most valuable assets in a campaign ... They think the president's presence down here could really help."

Not all Republicans have been so quick to roll out the welcome mat for

Bush. Some have seen Bush, with a 37 percent approval rating, as a liability. But in Georgia—which went solidly for Bush in the last election—most say his tailcoats are still good.

In middle Georgia's 8th District where Marshall faces Collins, Bush won 61 percent of the vote. In the eastern 12th District, where Barrow and Burns are facing off, Bush took 50 percent of the vote in 2004. The 12th has since been redrawn to be slightly more conservative.

"We're trying to get all of our members lined up and ready to attend it and we're expecting a good turnout," Cumbee said. "From my understanding it will mainly be see **BUSH**, page 5

A football movie...

By Rachel McDaniel
Executive editor

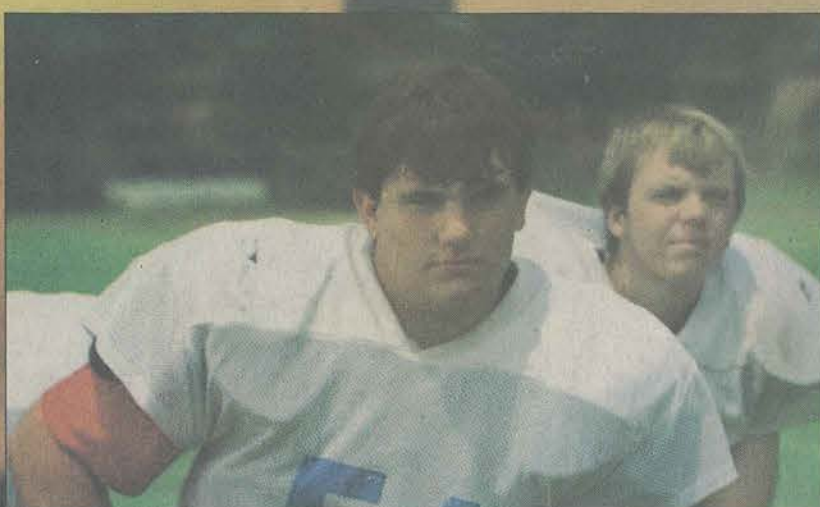
Georgia Southern junior Jason McLeod and over 500 volunteers faced the daunting task of filming a feature-length movie in only six weeks in 2004. The film, "Facing the Giants," is the faith-based project of Sherwood Baptist Church in Albany. The film opened at 441 theaters across the country on the first Friday in October and became the weekend's twelfth highest grossing film. The movie is opening at 58 new screens this Friday, including the Carmike Cinemas in Statesboro and theatres in Brunswick, Griffin and St. Mary's Island.

McLeod landed one of eight leading roles in the film. He plays Brock Kelley, the team captain of the Eagles, Shiloh Baptist's losing football team. McLeod was a red-shirted center in 2004 for the GSU Eagles. McLeod had to tell Coach Van Gorder that he wouldn't be able to play for the school in order to follow his faith and take part in the film about another Eagles football team.

McLeod said the movie was filmed in the church he attended growing up in Albany. He currently works with the GSU football chaplaincy program.

The director was Alex Kendrick, who also see **MISSION**, page 5

'Facing the Giants' opens in Statesboro this Friday at the Carmike Cinemas.



Special Photo

...with a mission

Lecture series: 'Home and the World'

Averitt Lecture Series features internationally acclaimed economic historian

By Avena Darmadjaja
Staff writer

Internationally acclaimed historian Peter A. Coclanis will present the 2006 Jack N. and Addie D. Averitt Lecture Series at Georgia Southern University on Monday

and Tuesday, Oct. 23 and 24.

A faculty member at the University of North Carolina-Chapel Hill, Coclanis studies, writes and teaches in the fields of American, international and Southeast Asian economic history.

His theme for the three lectures of the Averitt Series is "Home and the World: Perspectives on the Economic History of the American South."

The first, titled "People and Places," took place Monday; the second, titled "Products," will take place today, Oct. 24, at 9:30 a.m.; and the third, titled "Processes," will also take place today, Oct. 24, at 2 p.m. All three lectures will be held in the ballroom of the Russell Student Union, and they are free and open to the public.

Coclanis is the author of "The Shadow of a Dream: Economic Life and Death in the South Carolina Low Country, 1670-1920," which won the Allan Nevins Prize from the Society of

see **LECTURE**, page 4

INSIDE

Drunken man picks a fight with a gas pump

With a BAC of over .4, a man answers cops' questions with numbers after fighting a gas pump. | **WEIRD NEWS**, p. 4

Photo essay .. 2 Classifieds 6
Campus 3 Sports 7
National 4 Campus 8

Homecoming week

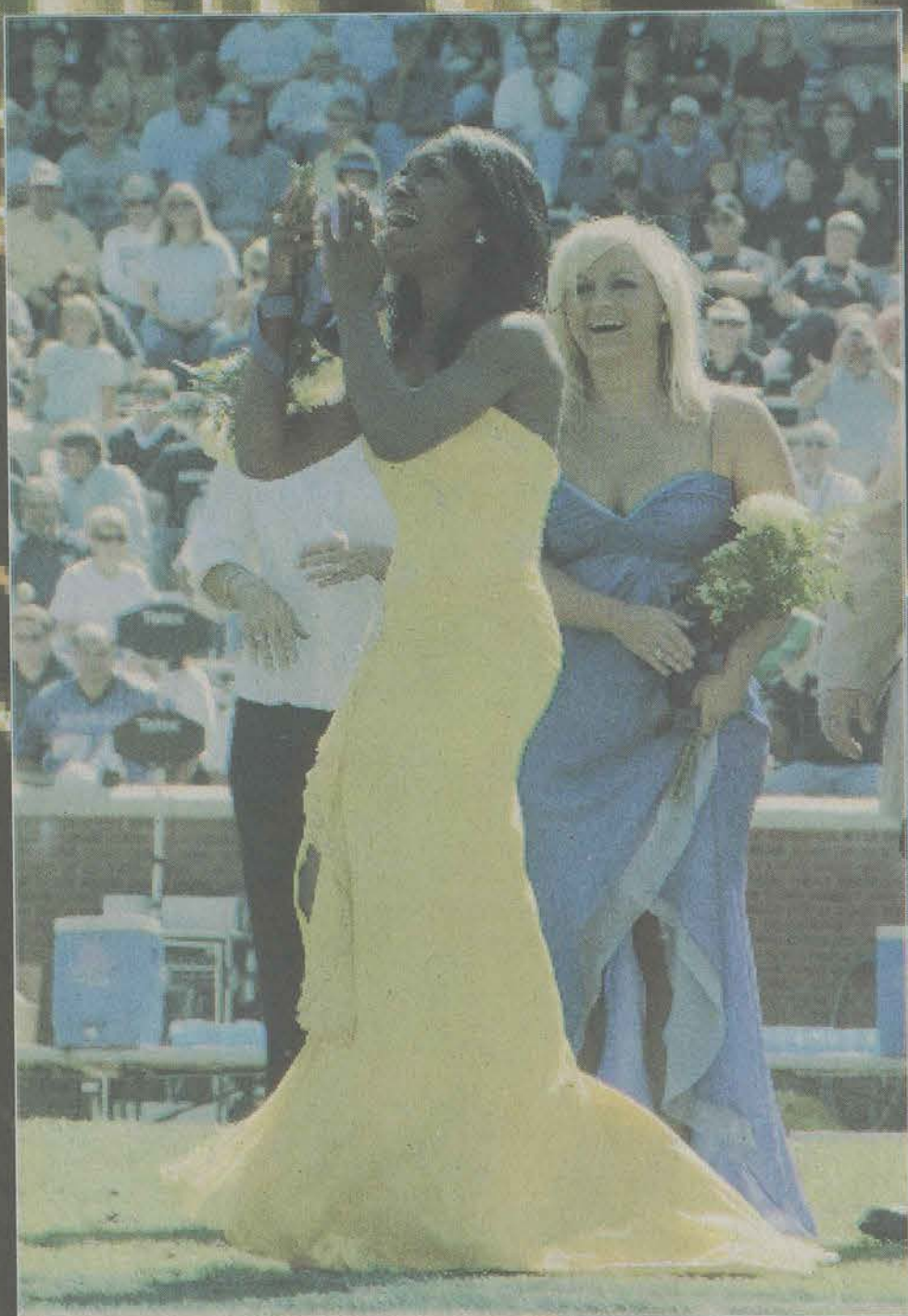
Georgia Southern students were captured by the pirate Homecoming theme this year. Events and programs were sponsored by Eagle Entertainment and took place during the week all over campus.

Throughout the week GSU friends were reunited to celebrate Southern's Homecoming. From the heated competition of the Homecoming football game to the laid back Lazy Lagoon events at the Russell Union Rotunda, there were events for every students to get involved in the spirited celebration.

Below: Students participate in the Blue Out of Paulson Stadium during Saturday's game against App. State.
Right: The football team rides on a Statesboro fire truck during the Homecoming parade.
Middle: Members of the Homecoming Court.



Left: Tara Jones makes virgin daiquiris at the Lazy Lagoon event under the Russell Union Rotunda on Thursday.



Top: Members of the Homecoming Court ride in a convertible during Friday's Homecoming Parade.

Bottom: Cherrelle Holland and Crystal Stevenson take part in a Lazy Lagoon game under the Russell Union Rotunda.

Right: Homecoming Queen Angela Byrd is excited and surprised as she is announced Homecoming Queen.

Photos by Brian Prusa/STAFF

CALENDAR

Tuesday, October 24

9:30 a.m. - 11:30 a.m.
Averitt Lecture
Russell Union Ballroom

12 p.m. - 1 p.m.
Multicultural book club
"Brotherhood"
Russell Union 2044

2 p.m. - 4 p.m.
Averitt Lecture
Russell Union Ballroom

5 p.m. - 6 p.m.
Greek Life info session
Russell Union 2014C

5:30 p.m. - 7 p.m.
ShuttleGus meeting
Russell Union 2001C

6 p.m. - 8:30 p.m.
Dining for Success
Williams Center Dining Hall

7 p.m. - 10 p.m.
"Greek and Out"
Russell Union Theatre

7:30 p.m. - 8:30 p.m.
Phi Mu Alpha concert
Carter Recital Hall

7:30 p.m. - 9:30 p.m.
Hurdy Gurdy concert
Performing Arts Center

POLICE BEAT

10-21-2006

• Nicole Katherine Dingels, 19, of Lanier Drive, Statesboro, was charged with minor in possession/consumption of alcohol.

• Seth Reeves Elliott, 22, of Boone, N.C., was charged with public intoxication and criminal trespass.

• Patrick Brent Tipton, 26, of Chandler Road, Statesboro, was charged with public intoxication, disorderly conduct and obstruction of an officer.

10-22-2006

• Samuel J. Joseph, 19, of Watson Hall, was charged with criminal trespass.

• Frias Lopez Modesto, 22, of Cindy Lane, Statesboro, was charged with DUI and failure to maintain lane.

'Jesus Christ Superstar' coming to Southern



By Darren Jones
Staff writer

"Jesus Christ Superstar" will be coming to the Performing Arts Center (PAC) on Tuesday, Oct. 31, at 7:30 p.m.

The theatrical piece is set in two acts, telling the story of Jesus' final seven days. The musical, considered a rock opera, features the turmoil caused by his preaching, the betrayal by Judas, Jesus' trial and his crucifixion.

The play will star Ted Neeley as Jesus. He received Golden Globe nominations for Best Actor and Best Newcomer for his portrayal of Jesus in the Norman Jewison film "Jesus Christ Superstar."

This will be his final tour reprising his role as Jesus. Dallett Norris will be the director.

"Jesus Christ Superstar" opened on Broadway in October of 1971. The first tour began in June of 1972 with Neeley in the title role.

He also starred in the motion picture version, which was shot on location in Israel in 1973.

NY Times theatre reviewer Ben Brantley commented on the overall contemporary feel of the production when it was performed in 2000, filled

with "images that most adolescents are familiar with from MTV," said Brantley of the main idea.

"Jesus as a celebrity icon, who wore his fame ambivalently, was inspired and prescient. So was making Judas, the opera's narrator, a figure forced to play a fatal role he didn't really want to take on."

This play was selected by representatives of Georgia Southern at a regional conference where booths show off live acts of productions.

On the basis of its price range, locations it will run, technical feasibility and whether the community will enjoy it, a production is selected.

Carol Thompson, assistant director at the PAC, who is involved in the process of choosing this and other plays, feels that "Jesus Christ Superstar" would be a fine choice, since it has both beautiful music and a timeless story.

Tickets are \$45 plus tax per person for the general public. Georgia Southern faculty, staff and students receive a 10 percent discount.

To purchase tickets or obtain additional information, call 912-486-7999 or visit the PAC website at <http://ceps.georgiasouthern.edu/pac>.

"Jesus Christ Superstar" will be performed Tuesday, Oct. 31 at 7:30 p.m. in the Performing Arts Center. Tickets are \$45 plus tax for the general public. Georgia Southern faculty, staff and students receive a 10 percent discount.

Special photo

Planetarium sponsors free fall events

GSU News Service

This Friday the Georgia Southern Planetarium will have a star showing of the night sky, with telescopic viewing following presentations by professors.

"We have another wonderful public event next week at the planetarium," said Becky Lowder, assistant director of the GSU Planetarium. "Find out the latest breaking news in astronomy, space science and more."

The GSU Planetarium is located in the Math/Physics building across Herty Drive from Hanner Fieldhouse. For more information, call the Physics Department at 912-681-5292 or visit <http://cost.georgiasouthern.edu/planetarium>.

Friday, October 27
7 p.m. and 8 p.m.
Free Planetarium Fall
Public Evening

The George-Anne Daily
needs an assistant news editor. Bring your resume to the Williams Center, room 2023, or email it to ganewsed@georgia-southern.edu

FACING THE GIANTS!



Opening Friday, October 27
at Carmike Cinemas 12 in Statesboro
General Admission: \$7.50 • Matinee: \$5.25

Wendy's

99¢ Crispy Chicken Sandwich



The Sir Shop

TWO LOCATIONS

Statesboro Mall 764-6924 Main Street Village 871-4962

patagonia



CLINICAL TRIALS

AT THE
MEDICAL COLLEGE OF GEORGIA

Women Helping Women

The Herpevac Trial for Women: A Herpes Vaccine Study

For women age 18-30 without oral or genital herpes

This study of an experimental vaccine might protect women against herpes.

Participants receive:

- Free screening for herpes
- An investigational vaccine against herpes or hepatitis A
- Financial compensation for time and travel

For more information, contact:

Medical College of Georgia
706-721-2535
877-643-1414 (toll-free)
womens_health@mcg.edu
www.herpevaccine.nih.gov

GSU study participants
will be seen at the GSU
Health Center

This vaccine CANNOT give you herpes.

Call to
Schedule Your
Viewing Today!

SIZE MATTERS

Copper Beech

TOWNHOMES



3 levels • 2,000 sq. ft.

(912) 681-8307 FAX: (912) 871-3721
Located behind Sonny's on the Hwy. 67 By-pass

Offices Hours - 9am-6pm, Monday - Friday
www.CopperBeechTownhomes.com

NEWS OF THE WEIRD

From Universal Press Syndicate

Awesome!

• Police in Madison, Wis., said Milo Chamberlain's blood-alcohol content was .425, which experts said normally is attainable only by those either dead or in a coma, but he was picked up, quite conscious, allegedly causing a disturbance at a gas station, where he reportedly got into a fight with a gas pump before being restrained by passersby. Police said Chamberlain responded to each of their questions only by rattling off strings of numbers of no particular pattern.

REGIONAL POLITICS
Immigration surge is spawning a backlash

McClatchy Newspapers

With anti-immigration feelings running high and elections just three weeks away, North Carolina has become a key actor in the national debate over how to absorb — or expel

— illegal migrants. North Carolina has had a greater increase in foreign-born population over the last 15 years than any state in the nation: a 412 percent increase, almost five times the national average.

"This is the hottest issue I've ever seen," said Mecklenburg County Sheriff Jim Pendergraph, a Democrat who is running for reelection. "And it's going to be the hottest issue, maybe next to Iraq, in the presidential election in two years."

The sheriff is lobbying for a federal immigration court and detention center in Charlotte to handle more cases. Others there, however, argue that immigrants are made scapegoats by a community — and a country — that wants their labor but not their presence.



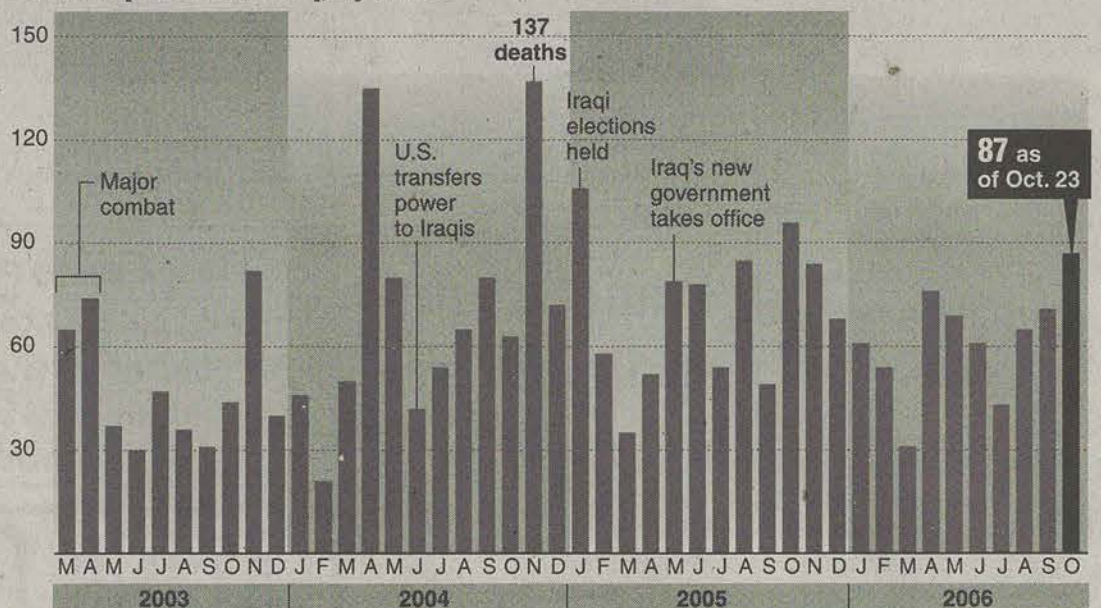
Michael Wirtz/MCT
Fourth grade immigrants Lila Zunun (left) and Makayla Timmons-Eley read their books, "I'm New Here."

NATIONAL POLITICS

Increase in U.S. troop deaths

With at least 87 troops killed so far, October is shaping up to be one of the deadliest months for U.S. troops in Iraq in more than a year.

U.S. troop deaths in Iraq, by month



Source: U.S. Department of Defense, AP, McClatchy Washington Bureau

Graphic: Chicago Tribune

© 2006 MCT

STATEMENT OF OPERATIONS

The George-Anne Daily is the official student newspaper of Georgia Southern University, owned and operated by GSU students and utilizing the facilities provided by GSU. The newspaper is the oldest continuously published newspaper in Bulloch County and Statesboro, Ga. The newspaper is a designated public forum for the Georgia Southern University community. The ideas expressed herein are those of the editor or the individual authors and do not necessarily represent the views of the Student Media Advisory Board, the administration, the faculty and staff of Georgia Southern University, or the University System of Georgia. The George-Anne is published four times weekly (Monday-Tuesday-Wednesday-Thursday) during most of the academic year and six times during summers. Any questions regarding content should be directed to the editor at by phone at 912/681-5246 or fax at 912/486-7113.

Readers may access the newspaper and its archives staff by visiting our web site at <http://www.gadaily.com>.

SUPPORT

The G-A is funded primarily

through revenue from advertisements placed in the paper and receives additional support, in part, from the Student Activities Budget Committee.

STUDENTS BEWARE

The G-A screens all advertisements prior to publication. The newspaper strives to accept ads for legitimate products and services only. Students are urged to exercise caution when replying to ads — particularly those which require a credit card number, other personal information, or money in advance of the delivery of a product or service. Students are also urged to report to the newspaper any suspicious offers which they might see in an ad. Remember, if an offer seems too good to be true, it probably is.

FREEBIE INFO

ALL FREE student and faculty ads to be run in the G-A must have a NAME, P.O. BOX and PHONE NUMBER. Ads will be rejected if they do not have this information. NO EXCEPTIONS.

OFFICES, MAIL, PHONES

Room 2023, F.I. Williams Center. The George-Anne, P.O. Box 8001, Georgia Southern University, Statesboro, Ga. 30460. 912/681-5246 (News) or 912/681-5418 (Advertising) or 912/486-7113 (Fax); 912/681-0069 (adviser).

EMAIL DIRECTORY

Executive Editor
gaeditor@georgiasouthern.edu
Managing Editor
gamed@georgiasouthern.edu
News Editor
ganews@georgiasouthern.edu
Advertising
ads@georgiasouthern.edu or ads1@georgiasouthern.edu

ADVERTISING

The George-Anne reserves the right to refuse any advertisement.

DISPLAY AD DEADLINE: The deadline for reserving space and submitting advertising copy is Noon, one week prior to the intended publication date.

FOR MORE INFO, rate cards, sample publications, contact: Lindsey Anthony, Marketing Director, ADS, (912) 681-5418, ads@georgiasouthern.edu or ads1@georgiasouthern.edu; or Bill Neville, Student Media Coordinator, (912) 681-0069, bneville@georgiasouthern.edu

PROOFING/ERRORS/OMISSIONS:

The newspaper makes every reasonable effort to present correct and complete information in advertisements. However, the advertiser is responsible for proofing the ad upon publication and should notify the newspaper immediately in the event of an error. The newspaper is not responsible

for any errors in advertisements and its liability for adjustments is limited to the amount of space the error occupied in the ad. Further, the newspaper is not responsible for any damages caused due to an ad's omission from a particular edition and its responsibility solely is to reschedule the ad in the next regular edition at the regular advertising rates.

CLASSIFIED ADS: Free classified ads from students, faculty and staff must be non-commercial in nature and submitted in writing, with the name of the sender, local address, and phone number. No free ads taken via telephone — at this price we don't take dictation. One free ad per person per week. Commercial classified are available only from our online site at www.gsads.com. The price of commercial ads is \$7 for 200 characters for line ads. Ads must be paid for using a major credit card. For classified display ads, contact gaclass@georgiasouthern.edu

CIRCULATION INFORMATION:

Mail subscriptions are not available at this time. However, readers may visit our web site for free access to current and past issues. Visit www.stp.georgiasouthern.edu. It is the goal of the newspaper to have its edition placed on-line within 24 hours of

publication. Breaking news will be placed on-line as warranted. The G-A is distributed free of charge on the Georgia Southern University campus through delivery sites located in campus buildings, at off-campus sites, and in residence halls.

NOTICE

Readers may pick up one free copy, and a second for a roommate or acquaintance, at distribution sites. Additional copies are 50 cents each and are available at the Williams Center. However, unauthorized removal of additional copies from a distribution site constitutes theft under Georgia law, a misdemeanor offense punishable by a fine and/or jail time. Editors will seek to have any person(s) who removes more than the authorized number of copies from distribution sites prosecuted to the full extent of the law.

NOTE

We gratefully acknowledge the theft of one of our slogans — "Liked by Many, Cussed by Some, Read by them All" — from Robert Williams of the Blackshear Times. Call Bob and he can tell you who he stole it from originally. Credit for the other — "Covering Campus like A Swarm of Gnats" — goes to G-A alum Mike Mills.

Bush

from page 1

people from across the 12th district and students."

Democrats publicly welcome Bush to the area, but add it won't do much to help the Republicans on election day.

"With so many candidates distancing themselves from Bush, I'm surprised (Max Burns) would even want him down here," said Riley Wells, president of GSU's Young Democrats. "Even in south Georgia, because of the way he's conducted the war, conservatives aren't backing him quite as strongly as before."

That aside, any visit by the president, whether it's private or open to the public, is seen positively.

"I would love to meet the guy. I've seen him speak in Washington, DC before," Wells said. "I would even love to get my picture taken with him. Maybe I'll get the opportunity to ask him why he fumbled the war in Iraq so many times."

Lecture

from page 1

American Historians.

His book charts the economic and social rise and fall of a small, but intriguing part of the American South: Charleston and the surrounding South Carolina low country.

Spanning 250 years, Coclanis's study analyzes the interaction of both external and internal forces on the city and countryside, examining the effects of various factors—the environment, the market, economic and political ideology, and social institutions—on the region's economy from its colonial beginnings to its collapse in the 19th and early 20th centuries.

"This book is the compelling story of the tragic rise and fall of the rice economy in the South Carolina Low Country," wrote reviewers in the American Historical Review. "Coclanis has mastered an impressive array of primary and secondary sources...He presents his findings in clear, graceful prose."

Coclanis became the Albert R. Newsome Professor and Associate Provost for International Affairs at UNC-Chapel Hill after serving as associate dean for general education and heading the history department there for ten years.

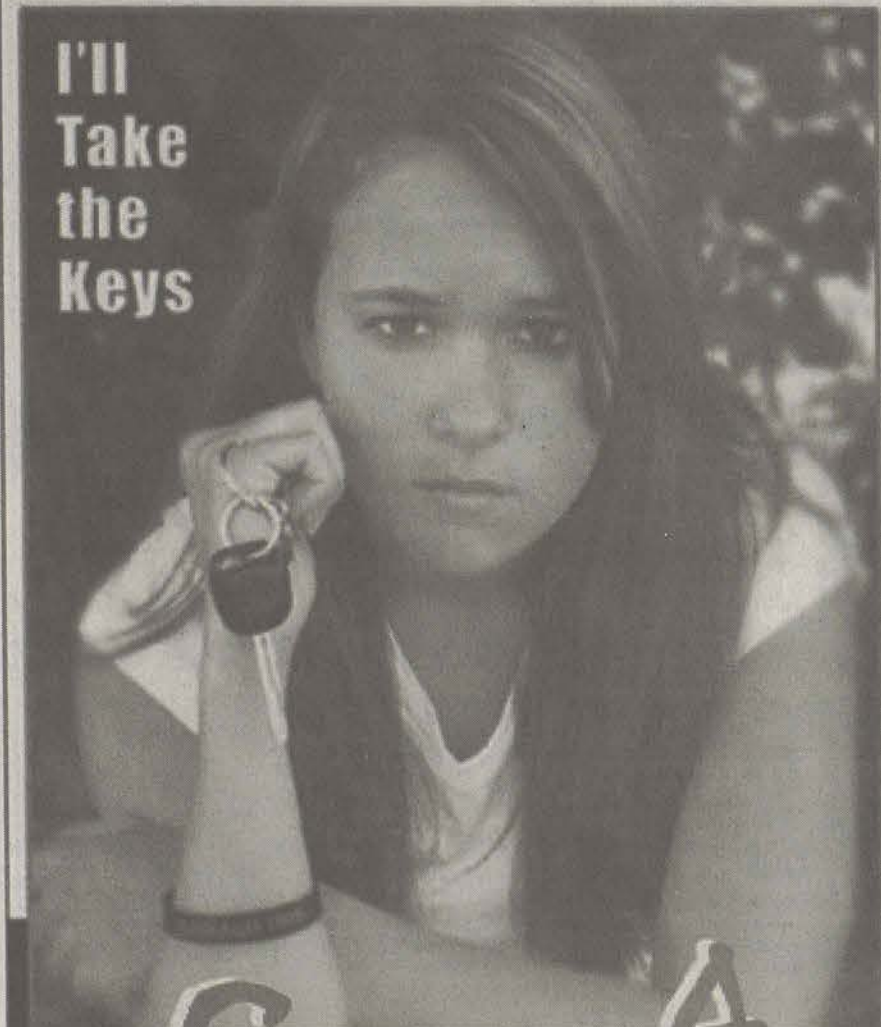
Coclanis is the author or co-author of more than 100 scholarly articles and several books, and he has written 70 book reviews. He is currently completing a book titled "Distant Thunder: The Creation of a World Market in Rice and the Transformations it Wrought."

Jack Averitt and his wife Addie established the Averitt Lecture Series in 1990 as a gift to Georgia Southern's Department of History, Department of Literature and Philosophy, and Department of Writing and Linguistics. Jack Averitt was the first dean of Georgia Southern's graduate school, which now bears his name. He funded the biennial Averitt Distinguished Service Award and now serves as dean emeritus.

The Averitt Lecture Series seeks to enhance on-campus academic and cultural life for students, faculty and community by bringing world-class scholars to the University to the University to speak on historical and literary subjects.

The lectures are subsequently published by the University of Georgia Press.

For more information on the Averitt Lecture Series, contact Georgia Southern's History Department at 912-681-5586 or send an e-mail to asims@georgiasouthern.edu.



Experience the Drama

Wednesday, October 25th
Russell Union Ballroom 10 a.m. - 6 p.m.

www.savealifetour.com

Featuring the most realistic, sophisticated drunk driving simulator in the country!

Save A Life Tour!

High-impact Alcohol Awareness Presented By Georgia Southern's Health Services and the Georgia Office of Highway Safety

Mission

from page 1

edited the film, scripted the film and acted as the head coach," said McLeod. "We were on the set for a total of six weeks. On average, shooting lasted about 15 to 16 hours a day, and it was not unusual to stay up until 3 or 4 a.m. shooting scenes."

The movie has been a hit with many football fans and people of faith across the country.

"Facing the Giants" is a great movie about how God can change lives on and off of the football field. Every family in America should see it," said Dan Reeves, former NFL head coach.

"The No. 12 ranking shows that there's a lot of support for this kind of movie," said Sherwood Senior Pastor Michael Catt. "In theaters it's getting standing ovations. This is one of those kinds of movies that's going to have a big impact on people's lives."

McLeod learned many lessons during the six weeks of intensive filming for the movie.

"God is bigger than Hollywood



Special Photo

A scene from 'Facing the Giants' where actor McLeod carries one of his teammates on his back during what's called the 'death-crawl.'

and our church faced our own 'giant' in making this film. First of all, churches don't make movies and if they did, they are probably not very good, but we have overcome every obstacle in the process of it showing nation-wide starting out on 441 screens from Tampa, FL to Anchorage, Alaska."

McLeod's character Brock Kelley faced some physical challenges in the film.

"The most difficult part of the film would without a doubt be the death-crawl scene. In the scene I carry another player on my back and it's the

big turning point of the movie," said McLeod. "It was very emotional and physical, not to mention it took two days to shoot and it was 98 degrees in the middle of the summer."

Written and produced by pastors at Albany's Sherwood Baptist Church, "Facing the Giants" grossed \$1.3 million, according to Exhibitor Relations Co., which tracks weekend box office results.

For a preview of the film, check out www.facingthegiants.com. The site includes information about the film, the making of it and also how it's been doing since the premiere.

Grant

from page 1

the Claiborne lab team's research during the academic year at Georgia Southern. It will also fund the team's summer research at the Mount Desert Island Biological Laboratory in Salisbury Cove, Maine.

In addition, the grant will support master's degree and undergraduate students in the biology department at Georgia Southern who train under the mentorship of Claiborne and research associate Andrew Diamanduros.

Finally, the grant will fund a new collaboration with scientists at the Johns Hopkins University School of Medicine in Baltimore, Md.

According to Claiborne, the NSF Integrative Organismal Biology program agrees to fund less than 10 percent of the proposals submitted each year by colleges and universities from across the nation.

"This puts us in good company," he said. "While serving on NSF review panels in Washington, D.C., I've

learned just how tight the budgets have become. Because of science-funding cutbacks, there are many excellent and important research projects that still do not receive support."

With over 80 peer-reviewed publications, Claiborne is an internationally known authority on fish physiology and NHE proteins.

During his 24-year career at Georgia Southern, Claiborne has garnered \$3 million in funding from the NSF to support research and student training at the University and at Mount Desert Island. Seventeen students, ranging

from high school to the post-doctoral level, were supported by NSF funds to train in his laboratory between 2001 and 2005.

In 2003, Claiborne became the most recent recipient of Georgia Southern's John Olin Eidson Presidential Award. The \$5,000 prize recognizes general excellence over a sustained career of teaching, scholarship and service at the University.

For more information on Claiborne and his research, visit <http://www.bio.georgiasouthern.edu/clai-borne>.

Wendy's **99¢**
Crispy Chicken Sandwich

Sales Representatives Needed!

The George-Anne Daily
is now accepting resumé
for sales representatives
in the advertising department.
We are looking for outgoing,
highly motivated people.
No experience is required.

Job Requirements include:

(but are not limited to)

- Daily office hours
- Monthly meeting attendance
- Email and phone correspondence
- Knowledge of local area businesses
- Means of transportation

Questions? Call 912-681-5418.

Please email resumé with references
to Ads Manager
at ads1@georgiasouthern.edu

Weekly Eagle Buzz



Today

SIGN UP TODAY FOR the Eagle Entertainment weekend trip!!! Southern Travel's Weekend Getaway to Charleston, SC. Students can attend the GSU vs. The Citadel game, go visit Fort Sumter, or go see NEVERMORE at the Dock Street Theatre. \$75 per student for the whole trip! Call 486-7270 for more details. (THIS WEEKEND)

Wednesday, October 24th

12pm-1pm- Union Room 2048- Book club- Author Shane L. Windmeyer takes a provocative look at the concepts of brotherhood, masculinity, and sexuality in college fraternities. He questions the strength of the bonds of brotherhood in overcoming homophobia within a college fraternity. Books can be purchased in the Multicultural Student Center.

6:30pm-7:30pm- Union 2084- Sound & Stage and Promotions Committee Meeting

Shane Windmeyer - Out & Greek presentation at 7pm in the Russell Union Theatre. Shane L. Windmeyer is one of the foremost educators on sexual preferences.

Wednesday, October 25th

Career Services will sponsor the Eagle Expo Career Fair from 9am-2pm at the RAC. Visit with over 140 company reps to learn about careers and locate internships and full time jobs. FREE for students. Contact 681-5197 for any questions.

Come and enjoy an intense adventure movie with FREE food. Southern Adventures will sponsor, "Instinct" at 9pm in the RAC. Pizza will be served at 8:30pm. For more information, call the main office at 681-5436.

Thursday, October 26th

Enjoy a Drag Show at 7pm in the Russell Union Ballroom. Be entertained by elaborate performances of song monologues and dance while gaining more insight into the GLBT lifestyle. Contact the Multicultural Student Center for more information at 681-5409.

Friday, October 27th

Southern Travel's Weekend Getaway to Charleston, SC. Students can attend the GSU vs. The Citadel game, go visit Fort Sumter, or go see NEVERMORE at the Dock Street Theatre. \$75 per student for the whole trip! Call 486-7270 for more details.

Saturday, October 28th

Southern Travel's Weekend Getaway to Charleston, SC. Students can attend the GSU vs. The Citadel game, go visit Fort Sumter, or go see NEVERMORE at the Dock Street Theatre. \$75 per student for the whole trip! Call 486-7270 for more details.

Monday, October 30th

Southern Adventures presents, "Terror in the Trees" at 5pm. Participate in an outdoor challenge course the night before Halloween. It's guaranteed to be a thrill. FREE event.

Ongoing/Upcoming Opportunities:

Volunteers are wanted to help serve and clean up at the International Conversation Hours put on by International Programs. Volunteers can meet at the Office of Volunteer Services, RU2022 at 11:15 on any Friday.

University Wellness Council will sponsor a Live Well Fair on November 1st from 8:30am-2pm in the Russell Union Ballroom. This health fair will have over 20 different organizations spreading the wellness word. Fitness assessments, flu shots, cholesterol screenings, and much more.

Important Dates and Deadlines

October 26	Academic Standards Committee meeting, 2:00 p.m.	February 21	individual date and time.)
November 2	Final date to hold terminal or comprehensive examination, theses and dissertation defenses	February 23	Deadline for M.Ed. students to register to take the comprehensive exams during Spring Semester 2007
November 15	Final deadline for domestic graduate students to apply for Spring 2007 admission	March 1	Mid-term grades for Freshmen due
November 15	Deadline to submit electronic theses and dissertations to College of Graduate Studies for final format review	March 1	Priority deadline for international graduate students to apply for Fall 2007 admission
November 22-24	Thanksgiving holidays for students - Administrative offices closed November 23-24 - Residence halls open	March 1	Priority deadline for domestic graduate students to apply for Fall 2007 admission
November 30	Last day of classes	March 1	Deadline for receipt of Graduate Assistantship Applications to have priority consideration for Fall Semester 2007
December 1	Deadline for Spring Semester 2007 Undergraduate Admission Application	March 5	Last day to withdraw without academic penalty
December 1	Reading Day	March 12-16	Spring break for students - Administrative offices open - Residence halls open
December 4-7	Final exams	March 15	Priority deadline for domestic graduate students to apply for Summer 2007 admission
December 7	Deadline to submit final verified (approved) electronic theses or dissertation to College of Graduate Studies	March 24	Annual Alumni Awards Dinner
December 7	Final date for graduate and undergraduate students to apply for Spring 2007 graduation	March 29	Academic Standards Committee meeting, 2:00 p.m.
December 8	Residence halls close at 12:00 noon	April 1	Final deadline for domestic graduate students to apply for Summer 2007 admission
December 8	Commencement	April 4	Final date to hold terminal or comprehensive examination, theses or dissertation defenses
December 9	Residence halls close at 12:00 noon for students participating in commencement activities (permission required)	April 4	Honors Day, 8:30 a.m.
December 9	Christmas break for students begins	April 11	Deadline to submit electronic theses and dissertations to College of Graduate Studies for final format review
December 12	Employee Tuition Assistance Program registration for Spring 2007, via the web beginning at 3:30 p.m.	April 30	Last day of classes
December 25-29	Christmas Holidays - Administrative offices closed-No classes	May 1-4	Final exams
January 1	New Year's Day Holiday-Administrative offices closed-No classes	May 4	Deadline to submit final verified (approved) electronic theses or dissertations to College of Graduate Studies
January 3	Academic Standards Committee meeting, 2:00 p.m.	May 4	Final date for graduate and undergraduate students to apply for Summer 2007 graduation
January 4	Residence hall check-in, 1:00 p.m. at the Residence Halls	May 5	Residence halls close, 12:00 noon
January 5	Academic Standards Committee meeting, 10:00 a.m.	May 5	Commencement
January 5	New Student Orientation and Registration, Russell Union, 8:00 a.m. NOTE: Enrolled and former students should refer to WINGS (http://students.georgiasouthern.edu/registrar) for specific registration times.	May 6	Residence Halls close at 12:00 noon for students participating in Commencement activities (permission required)
January 8	Fee payment deadline for Spring Semester 2007 (First Day of University Classes)	May 10	Employee Tuition Assistance Program Registration for Summer 2007, via the web beginning at 3:30 p.m.
January 8	Classes begin	May 4	Final date for graduate and undergraduate students to apply for Summer 2007 graduation
January 8-11	Drop/Add	May 10	Employee Tuition Assistance Program Registration for Summer 2007, via the web beginning at 3:30 p.m.
January 12	\$100 Late Registration Fee begins	May 10	Academic Standards Committee meeting, 10:00 a.m.
January 15	Martin Luther King Holiday - Administrative offices closed - No classes	May 13	Residence hall check-in, 1:00 p.m. in the Residence Halls
January 16	Attendance Verification Deadline for classes starting January 8-12	May 14	Academic Standards Committee meeting, 10:00 a.m.
January 22	Fee payment deadline for registration or changing registration during Drop/Add period	May 14	New Student Orientation and Registration, Russell Union, 8:00 a.m. NOTE: Enrolled and former students should refer to WINGS (http://students.georgiasouthern.edu/registrar) for specific registration times.
February 1	Final deadline for international graduate students to apply for Summer 2007 admission	May 15	Fee payment deadline for Summer Semester 2007 (First Day of University Classes)
February 19	Early Registration for Summer Semester 2007 and Fall Semester 2007 begins (Students should view WINGS for		

**Brought To The Eagle Nation Each Week By The Division
of Student Affairs and Enrollment Management**

THE GEORGE-ANNE CLASSIFIEDS, ETC.

Now you can place your classified ads online... For Commercial Ads, Visit...

<http://www.gsuaads.com>

...and create, place, proof and pay for your ad online. Just \$7 for 200 characters. In partnership with Universal Advertising.

Free ads for students, faculty & staff (non-commercial); visit us online at...

www.gadaily.com/class_ad_sub.php

You must include your names, address and phone number for freebies. No phone calls please, at this price we don't take dictation.

CLASSIFIED CATEGORIES

100 Announcements
110 Auditions
120 Freebies
130 Lost & Found
140 Other Announcements

200 Buy or Sell
210 Autos for Sale
220 Auto Parts for Sale
230 Bicycles for Sale
240 Books for Sale
250 Computers & Software
260 Miscellaneous for Sale
270 Motorcycles for Sale
280 Trade & Barter
290 Wanted

300 Employment & Job Services
310 Career & Job Services
320 Child Care Needed
330 Child Care Provider
340 Internships/Volunteer
350 Jobs/Full Time
360 Jobs/Part Time
370 Opportunities/Business
380 University Work
390 Wanted Jobs

400 Housing & Real Estate
410 Apartments
420 Lofts & Rooms
430 Mobile Homes
440 Real Estate for Sale
450 Roommates Wanted
460 Storage & Moving Services
470 Student Housing

480 Sub Leases
490 Vacation Rentals

500 Personals
500 Personals

600 Services
610 Education & Tutoring
620 Financial Aid/Loans
630 Legal Services
640 Resumes/Typing/DTP
650 Services/Miscellaneous

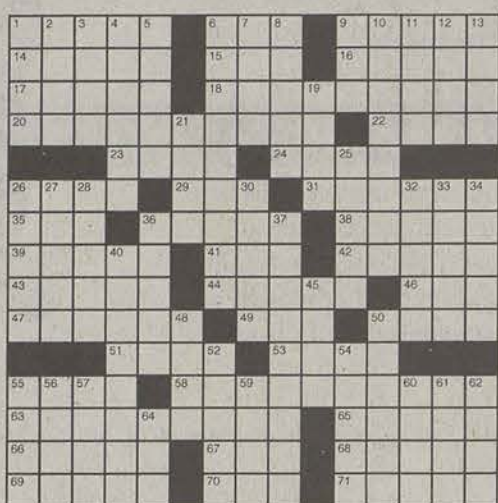
700 Travel
710 Spring Break Travel

800 Transportation/Rides
800 Transportation/Rides

900 Miscellaneous
910 Pets & Pet Supplies

Crossword

ACROSS
1 Lean-to
6 Corrida cheer
9 Man from Manilla or Manchuria
14 Chocolate tree
15 Go a few rounds
16 Deep ravine
17 Scene of action
18 Maid of Orleans
20 Ability to recover quickly
22 Deck timber
23 Drugbust
24 "brillig"
26 Carrying a grudge
29 in the cards
31 Nation on the Baltic Sea
35 Status
36 By means of
38 Dress cut
39 About-face
41 Actor Kilmer
42 Great Lake
43 Notions
44 Conductor
45 Leinsdorf
46 Silent yes
47 Put on
49 Baton Rouge
50 Reddish-brown
51 Whip handle
53 Thicket unit
55 Verve
58 Annual
63 Special case
65 Scatter
66 Proclaim loudly
67 Compass dir.
68 Midwest hub
69 Quartet member
70 Tycoon Turner
71 Landed estate



© 2006 Tribune Media Services, Inc.
All rights reserved.

9/15/06

**New Voices.
New Services,
New Attitude.**

www.gadaily.com

There is No Option!

6 Target
7 Crazy bird?
8 Precise
9 In the past
10 Subtle
11 "Dies"
12 Taj Mahal site
13 Guitar part
19 Current reports
21 Spring bloom
25 Swapped
26 Calamari
27 Surpass
28 Seine port
30 Gridlock
32 Ross or Rigg
33 Diplomatic agent
34 Requisites
36 Al or Bobby of auto racing
37 Sparkled
40 Southwestern cattleman
45 Ringlet
46 "Fence Me In"
50 Big (large cannon)
52 Indicate soundlessly
54 English Derby town
55 Financial hole
56 Wheel shaft
57 Thumb through
59 Treat for Rover
60 Teheran land
61 Round number?
62 Water pitcher
64 According to

Where in the World 2

©2006 PuzzleJunction.com

Can you match up the names in the first column with their countries in the second column?

- | | | |
|---------------------------|-------|-----------------|
| 1. Los Banos Hot Springs | _____ | (a) New Zealand |
| 2. Thaya River | _____ | (b) Jordan |
| 3. Ragang Volcano | _____ | (c) Australia |
| 4. Grand Canal | _____ | (d) Philippines |
| 5. El Lisan Peninsula | _____ | (e) Austria |
| 6. Iguazu Waterfall | _____ | (f) Zambia |
| 7. Morro Castle | _____ | (g) Mindanao |
| 8. Kafue National Park | _____ | (h) Ireland |
| 9. Manukau Harbor | _____ | (i) Cuba |
| 10. Joseph Bonaparte Gulf | _____ | (j) Brazil |

Announcements 100 - 199

140 Other Announcements

The Herpes Trial for Women: A Herpes Vaccine Study For women age 18-30 without oral or genital herpes This study of an experimental vaccine might protect women against herpes. Participants receive: Free screening for herpes An investigational vaccine against herpes or hepatitis A Financial compensation for time and travel For more information, contact: Medical College of Georgia 706-721-2535 877-643-1414 (toll-free) womens_health@mcg.edu www.herpesvaccine.nih.gov This vaccine CANNOT give you herpes.

NOTICE -- While the newspaper makes every effort to screen bogus offers and ads, please remember if an offer seems to be too good to be true, it probably is.

Reach Georgia Southern students with a publication they really read... Over 100,000 copies of the G-A Daily circulate each month. For more info: ads@georgiasouthern.edu

Buy or Sell 200 - 299

210 Autos for Sale

1999 Ford Taurus For Sale
In Good Condition
\$3,500.00
Contact Megan @ 954 540 3096 if interested

1998 ISUZU RODEO, BLACK, TINTED WINDOWS, V6, PWR LOCKS & WINDOWS, GREAT CONDITION, \$3,500.00. CALL STEVE 770-315-6044

'05 Black Nissan Frontier Nismo ex. cab. Loaded, one owner, very nice, 31,000 miles, asking \$18,500. Call Travis (912)656-6503.

250 Computers & Software

NEW SEALED Microsoft Windows XP Professional SP2! Certificate Of Authenticity. Only \$135!! Save Hundreds of dollars! Limited supply! Please email me nazimall@gmail.com or call 770 718 7902.

will BUY WORKING computers and misc comp accessories. will pay CASH. Contact Reggie 954-591-6989 or reginald_dsmith@georgiasouthern.edu

NEW SEALED Windows XP Professional SP2 COA!!!!

Has COA and its still sealed, never opened!!!

Only \$125!!!!

Epson Stylus C42UX color inkjet printer with all parts and Epson chip resetter for refilling print cartridges. Call Wes 770 639 2367

260 Miscellaneous for Sale

For Sale: 2004 Polaris Predator 500CC (Dale Earnhardt Jr. Edition) In good condition. Low hours. Never raced. Very fast. Has a K&N air filter, after market brush-guard, & Fox Racing Shocks. \$3000 or best offer. Contact 478-808-7645.

Need a Halloween Costume? Medusa deluxe costume for sale. Never worn. Dress has sexy shoulder drapes. Snake Headpiece and Armband included. Only \$45. Call Krysta @ (912)871-6205.

For Sale a black soft violin case in great condition. Please call 912-541-3026 if interested.

New Weight Bench 45lb Steel Bar, 300lbs Total Including Steel Plates, Barely Used Awesome Condition. Great for a serious weight lifter. \$200 OBO. Kenon, 5012471519

Kegerator for sale. Full size refrigerator with freezer on top outfitted for a full size keg. In great shape. Tubes, tap, hoses and CO2 tank included. \$350 OBO.

Don't throw away that junk... turn your trash into cash. Trying selling it online and in print with a G-A Daily action classified ad. It's free for students. Visit www.gadaily.com to find out more!

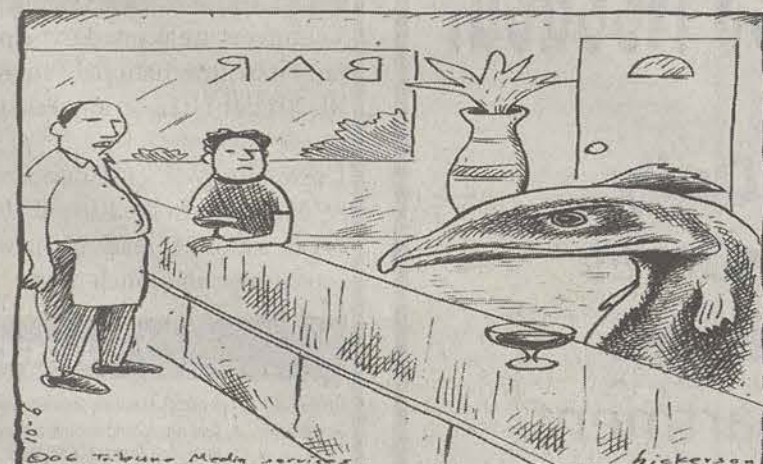
FOR SALE sofa & loveseat: navy, wine and green floral & paisley print good condition \$200 681-4936

"PET BLINKERS" Safety for your Pet. Can be seen 1/2 mile at night. Available at McCook's Pharmacy. Hwy 80 East in Statesboro.

Want to make a loft or other furniture? Spare wood for sale at a ridiculously cheap price. Call Wes 770 639 2367

270 Motorcycles for Sale

Pampered Chef Kitchen Tools, Kitchen Shows, Bridal Showers Registry, free, half-price and discounts. Call 681-7453 after 5:30 p.m.



Two Dudes



by Aaron Warner

GA George-Anne DAILY

CLASSIFIED ADVERTISING

Name: _____

P.O. Box: _____

Phone: _____

Email: (Must be Georgia Southern email. All others will be rejected.) _____

Please fill in section: ☐ Classified Ad ☐ Business & Commercial Classified Ad

To review our advertising policy, please click HERE: www.gadaily.com/class_ad_sub.php

The George-Anne offers FREE Classifieds to all Georgia Southern students, faculty and staff for business or other commercial purposes, please click HERE: www.gadaily.com/class_ad_sub.php

All free ads must be 25 words or less. If you type more than 25 words, your ad may be rejected or edited.

The George-Anne reserves the right to refuse any classified ad.

Free classified ads for students, faculty & staff (non-commercial Only): visit us online at...

www.gadaily.com/class_ad_sub.php

You must include your name, address and phone number and "dot.edu" address for freebies. Go online and prepare your non-commercial message. No phone calls please, at this price we don't take dictation.

290 Wanted

Wanted: treadmill, good condition. \$250 or less. Preferably fold-up kind, but not required. Please e-mail rainaraines@yahoo.com

Wanted to buy - Kegerator. Must be in good condition. Please call 404-409-9901 or email mwideman@email.georgiasouthern.edu if interested.

Employment & Job Services 300 - 399

350 Jobs/Full Time
BARTENDING! Up to \$250 a Day. No Experience Necessary. Training Available. Age 18+ OK 1-800-965-6520 XT 296

Housing & Real Estate 400 - 499

410 Apartments
EAGLECREEK TOWNHOUSES. Moving out Dec. 10, 2 bedrooms, 2.5 baths, two floors, 1150sqft, \$500/month. Call me at 478-320-3611

FOR RENT NEW 1650 SF DUPLEX, 3 BR, 2 BATH, COUNTRY SIDE S/D, \$850 PER MO, NO PETS NO SMOKING, 912-687-3496, 912-489-8480, GAREL A102302

430 Mobile Homes

14x76, 3 BR/2BA mobile home for sale in nice park near GSU. Included: couches, washer & dryer, entertainment system. \$12,500. Call 912-844-0188.

450 Roommates

Needed: 1 female roommate (students only). 2bdrm/2bath duplex past fairgrounds. All inclusive rent \$460/mo. Great new place. No pets. Available immediately. Call Maggie (706) 570-0361

Looking for a roommate? Trying to sublease your place? Put the G-A Daily to work for you. Free classified for students in print and online. Visit www.gadaily.com for information

Roommate needed (female preferred) for 3BR/2BA house. 5 min. from campus. Washer, dryer, kitchen appliances. Quiet, safe neighborhood. Rent \$260 plus 1/3 utilities. Danielle (478) 390-4355

Roommate needed ASAP in two bedroom duplex in Hawthorne II. Rent \$325 + utilities. Two months rent free. Contact Ash-808-7645.

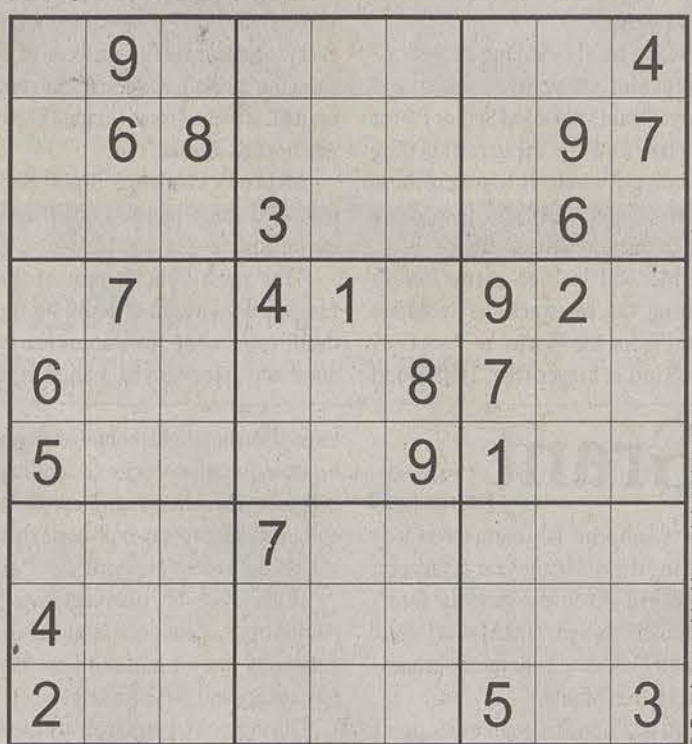


www.gadaily.com
New Voices. New Services. New Attitude

Sudoku

Easy

To play: Complete the grid so that every row, column and every 3x3 box contains the digits 1 to 9. There is no guessing or math involved, just use logic to solve!



32

Puzzles provided by sudokusolver.com

ley (478) 284-1196

FEMALE ROOMMATE NEEDED!!!

for Spring and Summer 2007. Player's Club Apartments. 2 b/r, 2 bath. W/D & dishwasher. Only \$385/month, utilities included. Within walking distance of campus & University Plaza. Call Ashlee 770-547-6682

470 Student Housing

FOR RENT BY OWNER. STADIUM WALK APARTMENT. TWO BEDROOMS, WASHER, DRYER. \$425.00 per month. Some pets allowed. Lease required. Call 912 541 4885.

480 Sub Leases

We need two people to sublease our duplex in Hawthorne!!! 2 bedroom, 2 bath very clean w/ large living room, fresh paint, and right next to pool! Rent \$325 + utilities. Please contact 478-808-7645.

SPRING 07 SUBLEASE! 2BD/1BTH in University Place. \$275 per room. Will rent individual rooms. Free cable/HBO. Washer/Dryer. Walk to campus. First month rent FREE! Call 912-515-4108. Leave message.

First Month's Rent FREE!! Female sub-lease needed ASAP for Statesboro Place! \$365/mo, All Inclusive, and fully furnished! Contact Sheridan at 2299427016 or shesuey13@yahoo.com

Someone needed to take over lease, one bedroom in a 4 bedroom in Hawthorne2, partially furnished apt, unfurnished room. want

to move during christmas break! call jessica 404-401-3897

Girl Sublease needed IMMEDIATELY for beautiful apartment. Private Bd/Ba, All-INCLUSIVE, Cable, Internet and Furnished, \$345/month (Originally \$385) close to campus. 3 great roommates. Call Denise 757-897-1667

Sublease!!! Starting Spring 2007. Statesboro Place. Guy needed, great roommates, great location, \$365 fully furnished, personal room with own bathroom, washer/dryer. CALL 770-289-7578 NOW!!!

Sublease needed starting January 1st. Stadium Walk Apartments 158, 2 BR, 1 BA, 450 a month, pets allowed. Call Brent at 912-655-6239.

Sublease for Spring Term. Master w/ private bath available in 4 bdrm house. Quiet and clean. Right across from hospital. Call Nick @ (404) 808-6440 for information.

Services 600 - 699

610 Education & Tutoring

FUN & STUFF Visit our Web site for list of things to do that are educational and fun. <http://www.stp.georgiasouthern.edu/fun-stuff/>

Travel 700 - 799

710 Spring Break Travel

Spring Break Bahamas 5 Days/4 Nights from \$199 per person Includes Cruise Transport & Resort in The Bahamas - Other Packages also Available Book Early for FREE VIP Party Package! Toll-Free 1-888-85-BEACH (1-888-852-3224) www.GoBahama.com

BAHAMAS SPRING BREAK CELEBRITY CRUISE from \$339! Includes Meals, Taxes, Exclusive Parties w/ MTV Celebrities.

Find a New Friend Lacy



This beautiful 6 month old female is looking for someone to play with! She is a wonderful companion and will make someone very happy! She is up to date with shots and has been altered.

Join us for our 7th Annual Pet Fun Day Saturday, Oct. 28 - 10 a.m. - 3 p.m. Please bring your pets (on a leash) and exotic pets are welcome

Humane Society of Statesboro & Bulloch Co. Animal Rescue Division. Statesboro, GA. 912-681-9933 bullochanimalrescue@yahoo.com

Cancun, Acapulco, Nassau, Jamaica From \$599! Panama City & Daytona from \$169! Organize a group and travel FREE! Call StudentCity.com/SpringBreakTravel.com at 1.888.SPRINGBREAK or visit www.StudentCity.com

Travel with STS to this years top 10 Spring Break destinations! Best deals guaranteed! Highest rep commissions. Visit www.ststravel.com or call 1-800-648-4849. Great group discounts.

Miscellaneous 900 - 999

Pit Bull Puppy for sale. Female 5 month old, Razor Edge bloodline. Call for more information. 687-3004

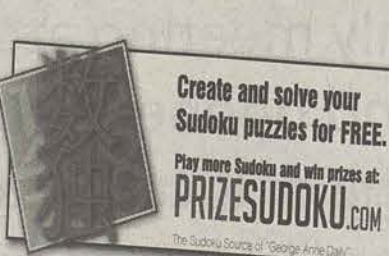
Free kittens! Very playful and loving. All are gray and white. Please call 404-518-5954

FREE CUTE kittens looking for a good home. Call Kati at 912-269-0803.

ALTERATIONS Quality Alteration Shop

Quick Turn Around
Ann Hill, Seamstress
7 South Main St. • Downtown
M-F 9-6 • Over Cobblers Bench • 489-1825

Cheats Corner



8	7	9	9	4	6	1	8	7
6	8	9	1	2	5	7	3	4
2	1	4	3	8	7	9	5	6
8	3	1	6	7	9	4	2	5
9	7	4	8	3	2	6	1	9
9	2	6	5	1	4	7	8	3
1	9	8	2	6	3	5	4	7
7	6	2	4	5	1	8	9	3
4	5	3	7	9	8	2	6	1

Solutions

H	O	N	V	M	D	E	L	H	O	N	E	L
I	d	a	g	r	H	V	T	E	R			
M	E	R	I	S		N	O	I	T	E	P	E
E	Z	I	R	E	T	E	R	O	N	H	S	V
C	E	E	R									
S	A	V	E		U	S	T					
D	O	N	H	O	I	R	E	S	V	E		
E	A	V	I	S		T	A	V				
E	N	I	T									
N	E	D	E	M	S		S	L	I			
S	A	M	I									
X	A	V	E									
O	R	A	V									
E	B	H	O									
N	A	I	S	V								

1. (d) Philippines
2. (e) Austria
3. (g) Mindanao
4. (h) Ireland
5. (j) Jordan
6. (f) Zambia
7. (i) Cuba
8. (a) Australia
9. (b) New Zealand
10. (c) Australia

Solution Trivia Puzzle 31

© 2006 PuzzleJunction.com

BASALT	GRANITE	PSEPHITE
BOULDER	GRAVEL	QUARTZ
DETRITUS	GRAYWACKE	SAND
DOLOMITE	LAPILLUS	SAPROLITE
ELUVIA	LAVA	SHALE
FELDSPAR	MAGMA	SINTER
GANISTER	MONODOCK	SLATE
GNEISS	MUDSTONE	XENOLITE

SPORTS

Who's
HOTWho's
NOT

In the NCAA- The Clemson Tigers. The 7-1 Tigers are rolling after walloping Georgia Tech 31-7 Sunday. The victory, along with the Tigers' earlier defeat of Florida State, puts them in the driver's seat in the ACC.

In the World Series- Kenny Rogers. What's fact: Rogers has pitched 23 straight scoreless innings. What's questionable: did he cheat?

In the NFL- The Arizona Cardinals. The Cards might have invested well in their future with Matt Leinart, but Head Coach Dennis Green is on the hot seat after Sunday's loss against the hapless Raiders.

In the NCAA- The Georgia Bulldogs. Following a disappointing loss against Vanderbilt, the 'Dawgs turned the ball over five times in a narrow victory over Mississippi State.

Will Adams

WHAT'S TALL?

Some folks
real, some
folks jive

Chargers linebacker Shawne Merriman, 2005's Defensive Rookie of the Year, is quite possibly the most notable player that has tested positive for steroids in the NFL, proving that Major League Baseball's problem has now permeated into the ranks of America's most popular sport.



Will Adams is the sports editor of the George-Anne. He is a journalism major from Dunwoody, Ga.

The NFL is at the height of its popularity, and as far as most sports fans were concerned until these scandals, its integrity too. The controversy surrounding the players suspended in the NFL for violating the league's steroids and substance abuse policy is exactly what the NFL doesn't need. For some, the NFL was and possibly still is the only safe bet for real athletes playing real sports with real muscles.

But now after the suspension of Merriman, along with two others, one wonders if the few that have tested positive for performance enhancers are just the tip of the iceberg. As more and more athletes continue to use steroids and other drugs to enhance their performance, professional sports will descend into an age of illusion where the casual sports fans can't tell who's real and who's not.

Testing positive for steroids or performance enhancers in sports today comes as much as a surprise as a cake at a five-year-old's birthday party.

But at the same time, the truth hurts and that unfortunate truth is what takes away from the game and the way it's supposed to be played.

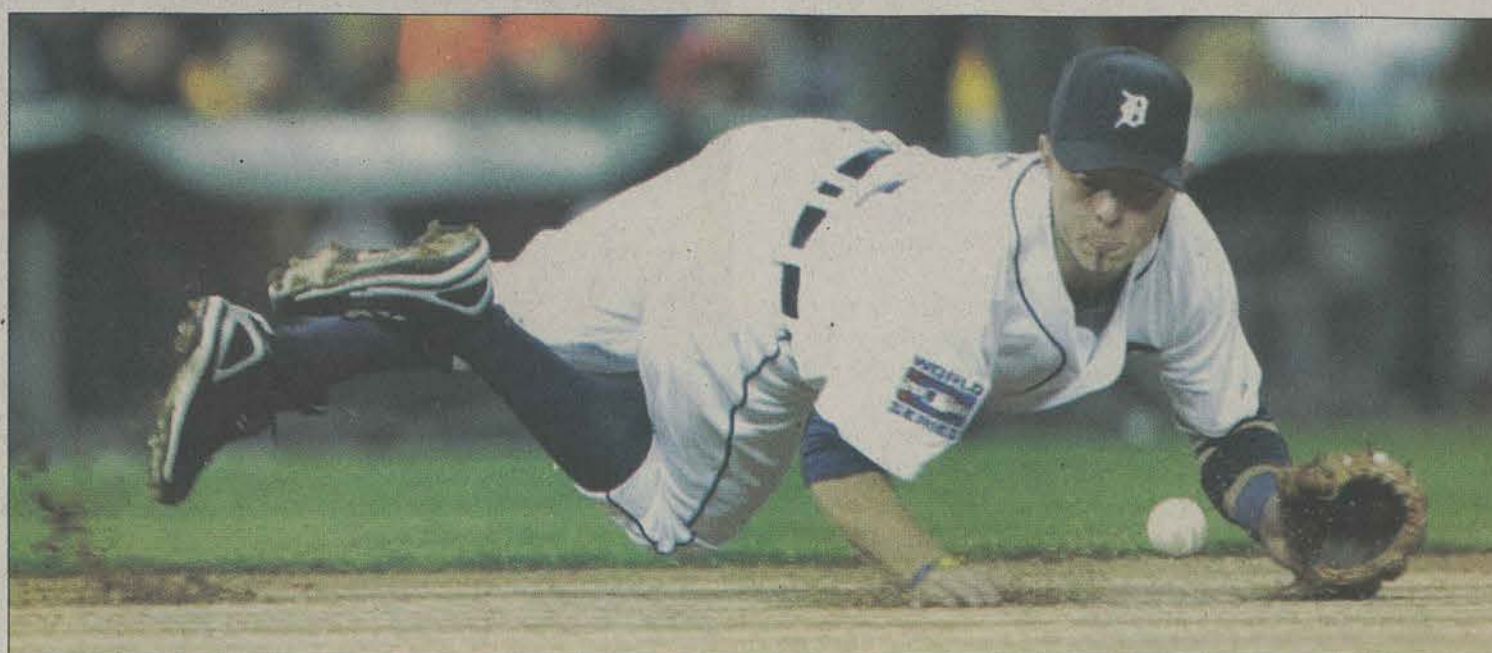
The difference between the players who have tested positive in the MLB and those in the NFL is incredulity. While baseball's steroid scandal has been uncovered in the past few years, the NFL has grown by leaps and bounds. Teams are gaining popularity and selling out stadiums, leaving media pundits, analysts, former players and owners in awe of the possibilities of something like this happening in the NFL.

Personally, I'm shocked and surprised by the number of athletes that have tested positive just in the past week in the NFL, but it's obvious that steroids exist in every sport.

It's definitely a problem, a health concern and a question of honesty and values of those athletes that we cheer on every season. I'm confident in the testing policies of MLB and the NFL. I think they're working and hopefully diminishing the want or need to use steroids to enhance performance on the field.

As sports fans, we cannot ignore the significance and impact of steroids on the integrity of the NFL. Let's hope that Shawne Merriman is not the tip of the iceberg, because if so, there are thousands of high school athletes and college-level guys that will get the wrong idea about using steroids and performance enhancing drugs.

So when you sit back Sunday afternoon cheering on your fantasy team, remember that some folks are real, some just jive.



Kirthmon F. Dozier/MCT

Detroit Tigers third baseman Brandon Inge dives but cannot handle a ball hit by the St. Louis Cardinals Scott Rolen in the first inning of Game 2 of the World Series.

Series travels to St. Louis

Robertson and Carpenter will duel in game three with the series tied 1-1

By Eric Robinson

Managing editor of operations

Following a dominating—and controversial—performance by Kenny Rogers on Sunday, the Detroit Tigers evened up the 2006 World Series at one game apiece.

The Tigers are hoping the controversy surrounding the "dirt" on Rogers' hand will blow over as the series travels to St. Louis.

The offensive performance the Cardinals displayed in game one

was stymied by Rogers. Scott Rolen had two of the Cardinals' four hits on the evening, while Albert Pujols went 0-for-3.

The Tigers offense wasn't overpowering, but timely and opportunistic. Craig Monroe set the tone in the first inning, blasting a home run into left field off of Jeff Weaver. Carlos Guillen was 3-for-3 with a walk and an RBI. The first baseman is batting .432 in the

postseason.

Detroit will send Nate Robertson to the mound Tuesday night to face off against 2005 Cy Young-winner Chris Carpenter. Robertson's first postseason effort was an 8-4 loss to the Yankees in the first game of the ALDS.

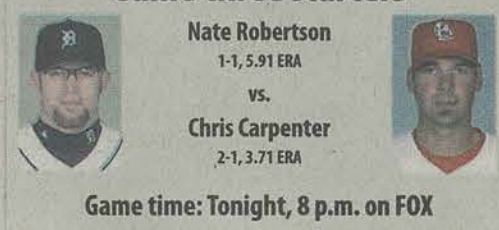
Robertson's second start was a five-inning, scoreless performance against Oakland in the ALCS.

Carpenter pitched beautifully in his first two starts in the playoffs. He struck out seven in his first appearance against San Diego and five in his second.

His first appearance in the NLCS was a rocky one. Carpenter gave up five runs in five innings in game two, but the Cardinals would get the victory, 9-6.

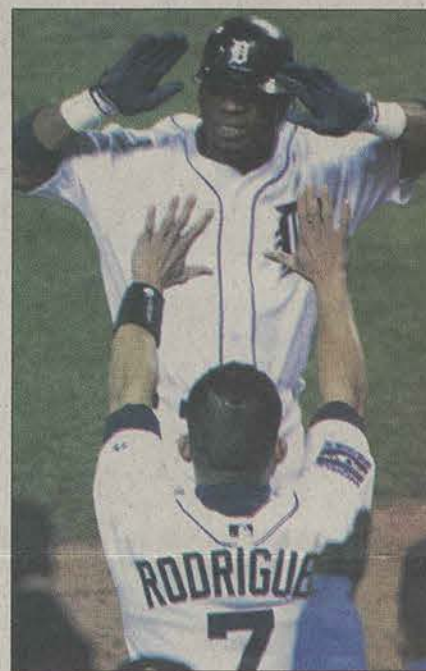
In game six against the Mets, Carpenter gave up two earned runs in six innings in a losing effort. His performance was overshadowed by New York pitcher John Maine, who threw five scoreless innings in the win.

Game three starters



Nate Robertson
1-1, 5.91 ERA
vs.
Chris Carpenter
2-1, 3.71 ERA

Game time: Tonight, 8 p.m. on FOX



Amy Leang/MCT

Craig Monroe is greeted by Ivan Rodriguez, after hitting a home run in Game two on Sunday.



Jared Siri/STAFF

Senior forward Calvin Simon has possession of the ball during a matchup with Winthrop earlier in the season. The Eagles are 8-4-3 on the year.

Men's soccer to play final
regular-season match

GSU News Service

Before focusing on hosting a first-round match in the Southern Conference tournament Saturday, the Georgia Southern men's soccer team will conclude its regular season Tuesday, taking on non-conference opponent Jacksonville at 7 p.m.

The Eagles (8-4-3) will enter tomorrow's game with a recent win at SoCon foe Davidson, having recently blanked the Wildcats, 1-0 on Oct. 21.

Thanks to a commanding defense and a precise, game-winning header off of Kellen Stanley, the Eagles earned their seventh shutout of the campaign, and claimed a No. 2 seed in the SoCon tournament.

Jacksonville (5-10-1) will also close its own regular season with Tuesday's match, both teams preparing for post-season play.

"We're looking at it as a final game to prepare for the conference tournament," said GSU's first year Head Coach Kevin Kennedy, who has seen his team turn around from a 7-10-1 finish in 2005, to a competitive 8-4-3 track record, second in the Southern Conference standings.

The Dolphins and Eagles have clashed a total 14 times, with Jacksonville hoping to improve its 6-5-3 all-time series lead against Georgia Southern. The last time the two teams met was back in 2003, when the match ended in a 2-2 stalemate.

Eagles look forward
to Citadel matchup

By Eric Robinson

Managing editor of operations

The Georgia Southern Eagles will be looking to rebound after a tough double overtime loss against Appalachian State when they travel to Charleston to compete against the Citadel Saturday.

The Bulldogs are coming off a big win against the Western Carolina Catamounts. The Citadel was down 17-7 at halftime, but two touchdowns in the fourth quarter would knot the score at 24 and send the game into overtime.

The Catamounts scored a field goal on the first possession in overtime to go up 27-24. The Bulldogs responded with an eight-yard game-winning touchdown run by running back Tory Cooper. Cooper was phenomenal in the game, rushing for 200 yards on 36 carries for two touchdowns.

The Citadel only has two wins on the season, but has competed well against the teams they

have faced. In their losses against Charleston Southern, Wofford and Furman, the Bulldogs were out-scored by only 17 points.

Against Furman, the Bulldogs fell behind 23-0 at halftime. The defense stepped up in the second half, however, keeping the Paladins scoreless. But the offense could only rally 17 points, and the Citadel lost 23-17.

The Bulldogs are led at quarterback by junior Duran Lawson. Cooper, the team's first-string running back, also leads the team in receptions with 29. The Citadel has struggled defensively this season, giving up 31.9 points per game.

Historically, GSU has done well against the Citadel, leading the series 12-3. The Eagles are 4-2 when the game has been played in Charleston. The last time the Eagles lost to the Bulldogs was in 2003, when The Citadel defeated GSU at home, 28-24.

Kickoff is scheduled for 2 p.m.

Players to watch



QB Duran Lawson, Jr.
141 for 224, 1377 yards, seven touchdowns.



RB Tory Cooper, So.
85 carries for 396 yards, four touchdowns. 4.7 average yards per carry.

2006 Results
Record: 2-5

at Texas A&M	L, 35-3
C. Southern	L, 38-35
at Pittsburgh	L, 51-6
Chattanooga	W, 24-21
at Wofford	L, 28-20
at Furman	L, 23-17
W. Carolina	W, 30-27

Quote
of the week

"It was a big clump of dirt. I didn't know it was there. They told me about it, but it was not a big deal."

Kenny Rogers
P, Detroit Tigers



Special Photo

Rogers' response to allegations of a foreign substance on his hand in game two of the World Series Sunday night.

This week in
SPORTS

Today

Men's soccer at Jacksonville, 7 p.m.

Friday

Women's tennis at South Carolina Invitational, 12 p.m.
Men's tennis at Central Florida Invitational, 12 a.m.
Women's soccer at Wofford, 6 p.m.

Saturday

Volleyball at Chattanooga, 12 p.m.
Football at the Citadel, 2 p.m.
Men's soccer vs. Davidson, 3 p.m.



1. Ohio St.	8-0
2. Michigan	8-0
3. USC	6-0
4. West Virginia	7-0
5. Auburn	7-1
6. Florida	7-1
7. Texas	7-1
8. Louisville	7-0
9. Notre Dame	6-1
10. California	7-1
11. Tennessee	6-1
12. Clemson	7-1
13. Arkansas	6-1
14. Rutgers	7-0
15. Boise St.	8-0
16. LSU	6-2
17. Boston College	6-1
18. Wisconsin	7-1
19. Oklahoma	5-2
20. Missouri	7-1
21. Texas A&M	7-1
22. Nebraska	6-2
23. Oregon	5-2
24. Georgia Tech	5-2
25. Washington St.	5-3

The George-Anne needs
an assistant sports editor!

We need applicants who are interested in sports and have a good, solid knowledge of sports reporting and writing.

We are also looking for writers interested in covering sports beginning in the spring.

Applications can be filled out in room 2023 in the Williams Center. For more information, contact gasports@georgiasouthern.edu.

Refer a friend and win

By Ditoria Geddis
Staff writer

Want to win an iTunes gift card? The Admissions Office is giving you that chance.

Amy Smith, special project assistant with the Admissions Office is the creator of Refer-a-Friend. The purpose of the program is to involve current GSU students in the recruitment process.

"We feel who knows student life best, and who can give us the best recommendations, than a students who are already here enjoying their time," said Smith.

Current students can fill out a card or web form with the information about prospective students. Admissions asks the student questions to make sure they want to know more about GSU. If they are not already receiving information then they are put on the mailing list.

All students who refer verified prospects during the month of October will be entered into a drawing

for \$25 iTunes gift card. Students can also win the gift card by going to the website and filling out a form.

According to Smith, during the month of September the office received a total of 173 referrals from students and alumni. Alumni can also refer students, and to date have 49 alumni referrals.

"The Office of Admissions asked us, as Southern Ambassadors, to be a part of this program," said Jennifer Odom.

"Our task was to set up a table in the Russell Union and get students in there to sign up anyone they knew who might be interested in attending Georgia Southern."

The program could help lots of lost and confused minds in the search for their new college home.

"This may not only raise interest in Georgia Southern, it may increase campus visits and enrollment," said Odom.

Starting Oct. 23, the Office of Admissions will have a table inside the Union from 10 a.m. to 2 p.m.

Visit the Garden for hands-on fall festival

By Jenny Miller
News editor

With Halloween right around the corner, fall festival season is upon us. The Georgia Southern Botanical Garden will be joining in when they host their annual Farm & Forest Festival and Plant Sale, Saturday, Oct. 28 from 10 a.m. to 2 p.m. Admission is free.

According to Stephanie Tames, public relations coordinator at the Botanical Garden, the festival will be expanded this year to appeal to a larger audience.

"The festival is open for kids of all ages," she said. "We are increasing in size slowly to see what people in the community enjoy."

This year, the theme is "Made in the Garden," and everyone can experience garden creations as they paint pumpkins, make straw dolls and soap and learn to use a Dutch oven. Along with the festival there will be a plant sale that will focus on native plants.

Carolyn Altman, education coordinator of the Botanical Gardens, said that students enjoy coming to the plant sale to find unusual plants they



Grayson Hoffman/STAFF

GSU's Botanical Garden will be the site for a fall celebration this Saturday, with a barn open for history viewing.

may not find anywhere else. She also said that the Farm & Forest Festival is not just for kids. "You can learn how to make hemp bracelets and flower prints, which make good gifts for people on a budget," Altman said.

One of the two barns on the property will be open the day of the festivities for viewing as well. It will have a new display of the history and encourages interaction.

The festival will also feature clog-

gers, food, music and even a donkey or two. Organic Farms of Guyton, Ga. will be selling products as will local bakery Sugar Magnolia. For more information, contact the Garden at 912-871-1149.

Wendy's **99¢**
Crispy Chicken Sandwich

R.J. Pope

TRADITIONAL MENSWEAR AND LADIES APPAREL

THREE LOCATIONS

New Location
Buckhead Plaza
912-764-6973

Downtown
912-764-4306

Designer Jeans

Now in Stock

For Ladies & Men - James, AG,
City of Angels, Silver, Paige
For Men - Seven

Cobblers Bench

Ladies' Clothing

Shoes & Accessories

Downtown • 764-9489



Special photo

The Save a Life Tour will be visiting GSU Wednesday from 10 a.m. to 6 p.m.

Save a Life Tour stops at GSU

GSU News Service

The First Year Experience Success Series and Health Services are sponsoring the Save a Life Tour and a return visit from Chris Sandy.

On Wednesday, Oct. 25, from 10 a.m. to 6 p.m. the national Save a Life Tour will make a stop in the Russell Union Ballroom.

The tour includes simulators that give the participant the feeling of impaired driving with the simulated effects of alcohol gradually increasing.

Two additional large screen displays reveal what each driver sees, the face of the driver, a helicopter view of the driver's vehicle in traffic and an indicator level of the driver's impairment as it gradually worsens. True to real life, the drive usually ends in a serious accident.

Every driver will be served with a simulated citation as a powerful reminder of his or her driving under the influence.

At 7 p.m. in the Russell Union Theatre, Chris Sandy will speak on

"From College Bar Life to Life Behind Bars."

Sandy is serving a mandatory 13-year sentence in a Georgia maximum security correctional institution for vehicular homicide involving the death of two people. He will speak about how your actions can impact the lives of others.

"We had a very impressive turnout when Chris Sandy spoke in the spring," said Paul Ferguson, director of Health Services. "Chris talks about his experiences and makes no excuses, which is good for the students to hear. He definitely gets the student's attention."

All presentations are free and orientation classes are strongly encouraged to attend.

For more information on the Save a Life Tour visit <http://www.savealifetour.net/index.html>.

For more information on each of these events, visit the First Year Experience Web site at <http://academics/georgiasouthern.edu/fye/success.htm>.

Fulbright Scholar visits

GSU News Service

Georgia Southern's ties to China were strengthened this year when Meng Deng, professor and associate dean of the College of Education at Central China Normal University, received a Fulbright grant to study and research at GSU.

Deng, along with his wife and son, will spend a year in Statesboro working with faculty in the College of Education and lecturing at universities throughout the U.S.

"The focus of my research is inclusive special education," said Deng. "The momentum for inclusive special education is strongest right now in the United States, so this is a great opportunity for me to learn."

For his Fulbright year, Deng holds an appointment as an adjunct professor in the Department of Teaching and Learning in the College of Education.

This is Deng's third visit to the U.S., and he is comfortable in the culture and environment. He brought his wife and seven-year-old son along this time because he wanted them to have the experience of living outside of China.

"China is more open now, and many Chinese go for two-week tours to Europe and the U.S.," he said. "I have the privilege of traveling, and I enjoy each new place."

Deng pointed out that education in China has been strongly influenced by the United States and his visit resulted in a continuing

influence of his ideas on modern Chinese education.

Prior to this Fulbright year, Deng's research focused on the adaptations necessary to bring special education into the regular classroom.

For his Fulbright research project, "Meeting Special Education Needs in Mainstream Classrooms in the United States and China: A Cross-Cultural Study on Instructional Adaptations," he will visit a variety of Georgia classrooms to observe inclusive teaching practices, gathering classroom data to be compared with teaching techniques used in China. Working with him on the project is Kimberly Harris, assistant professor at GSU.

As part of his Fulbright responsibilities, Deng will travel to other colleges and universities in the U.S. to share insights on his research and on life in China.

"When I talk with Americans I can see they are keen to know about China," said Deng. "They don't know much about China's social and political system. In China it is the opposite. Chinese people know American culture and geography, and English is taught from grade three onward. Our cultures are combining fast."

One of Deng's goals is to develop strong ties between Central China Normal University and GSU, and he plans to host a visit by a group of GSU faculty once he returns to China.

Out & About in The 'Boro

\$109 CONTACT LENS PACKAGE

Offer includes complete eye exam and contact lens fitting.

This offer includes a complete eye exam and contact lens fitting plus a three-month supply of clear, 2-week disposable contact lenses. Colored, Toric and Bifocal contacts are available for an additional cost. Some restrictions may apply. Appointments recommended.



Offer expires October 28, 2006. Coupon required.

\$100 OFF

\$100 off second pair.

Buy a complete pair of glasses (frames and lenses) and receive \$100 off a second pair. Sale cannot be shared. Some restrictions apply.



Offer expires October 28, 2006. Coupon required.



(912) 489-6655

820 Hwy. 80 East • Statesboro (in front of Lowe's)

SATURDAY AND EVENING APPOINTMENTS AVAILABLE

Express Tune & Lube

Tire, Alignment & Exhaust Center

612 S. Zetterower Avenue
489-4444

www.expresstuneandlube.com
Monday - Friday 7:30am - 6:30pm

Located a half block north of Wendy's.

Oil Change Special

Includes up to
5 qts. of Castrol
5W20, 5W30,
10W30, or 20W50

\$19.95

Price applies to most vehicles. Expires 12/31/06

Savannah's #1 Japanese Restaurant
Now in Statesboro!!!



715 Northside Drive East in Southern Square Center • Next to K-Mart

Jr. Chicken Bowl \$3.15
Jr. Shrimp Bowl \$3.95
Chicken Bowl \$4.50
Shrimp Bowl \$5.50
Shrimp/Chicken \$5.75

Over 20 Franchised Restaurants in the Area

We Can Quickly Make Your Favorite Dish.
So You Get In and Out in a Hurry!
Hibachi Steak • Shrimp Tempura
Teriyaki Chicken & Shrimp
Sushi • Salads • Appetizers and Much More...

Dine In or Carry Out
912-764-5150
Hours: 11 AM - 9 PM 7 Days A Week
www.capitaljapan.com

THE GEORGE-ANNE



Take a BITE Out of the 'Boro!
ADS@GEORGIASOUTHERN.EDU
WWW.STP.GEORGIASOUTHERN.EDU

681-5418

fax: 486-7113