

Georgia Southern University

Digital Commons@Georgia Southern

The George-Anne

Student Media

10-19-2006

The George-Anne

Georgia Southern University

Follow this and additional works at: <https://digitalcommons.georgiasouthern.edu/george-anne>

Recommended Citation

Georgia Southern University, "The George-Anne" (2006). *The George-Anne*. 2033.
<https://digitalcommons.georgiasouthern.edu/george-anne/2033>

This newspaper is brought to you for free and open access by the Student Media at Digital Commons@Georgia Southern. It has been accepted for inclusion in The George-Anne by an authorized administrator of Digital Commons@Georgia Southern. For more information, please contact digitalcommons@georgiasouthern.edu.



ROID REALITY

College steroid use exists despite bans

SPORTS, 2B

Homecoming brings Eagles big challenge against App. State

SPORTS, 1B



THE GEORGE-ANNE

DAILY

THURSDAY, OCTOBER 19, 2006

Sit-in to protest military commissions

Members of local Amnesty International to stage protest today at union

By Jenny Miller
News editor

Several students from the Georgia Southern chapter of Amnesty International handed out information and had a petition available for interested students Tuesday. Their cause was pertaining to the new Military Commissions Act that was signed into law by President Bush Tuesday morning.

Jamie Steele, secretary of the organization, explained what it was. "Amnesty International is an organization that is not affiliated with politics or religion. Our sole purpose is to defend and maintain human rights around the globe," she said.

The Military Commissions Act is a bill that will not grant detainees legal counsel. Specifically, it blocks detainees from filing habeas corpus

petitions that would challenge their detention in a federal court.

"Our main concern is that this bill was covered up by the government and it is important for people, all Americans, to know about it. It is un-American to torture people and revoke rights," said Kristen Hillis, president of GSU's Amnesty International.

'Habeas corpus' are laws that protect people from unlawful deten-

tion or from poor conditions during detention.

When signing the act Tuesday President Bush said, "It is a rare occasion when a President can sign a bill he knows will save American lives... The Military Commissions Act of 2006 is one of the most important pieces of legislation in the War on Terror."

In order for the act to work, a three officer military panel will be able to

determine the status of a detainee. If the person is believed to be "enemy combatant," the detainee can be held indefinitely.

Amnesty International is also upset because it also permits non-citizen civilians to be tried by military commissions, including permanent residents whose children are citizens.

see SIT-IN, page 6A

Group wants stadium all blue

Students want fans to wear GSU blue on Saturday

By Adam Crisp
Staff writer

Georgia Southern's colors are blue and white with gold as an accent.

Despite that, Brad Foley, a junior, doesn't see many students wearing the school colors on game day.

Along with the help of a few friends and the on-line social network, Facebook, Foley hopes to "blue-out" Paulson Stadium for this Saturday's homecoming game against Appalachian State University.

"I created the group Blue Out Paulson on Facebook about a month ago," Foley said. "I figured this would be the best way to get the word out, and it has gone past my expectations with over 1,400 members."

Foley wants GSU fans to exhibit the sort of school pride seen at the University of Georgia, where fans' shirts form a sea of red.

Whether it's because they lack school



Adam Crisp/STAFF
Jessica Jones searches through blue shirts in the University Store Wednesday. Students hope more students will wear blue garb to Saturday's homecoming game against Appalachian State, but a bookstore manager said Wednesday sales were about normal.

spirit or that white and grey shirts are cooler during the first few games of the season, Foley said showing school pride starts with the shirts, but doesn't have to extend much further.

"Not all articles of clothing have to be

blue. It would be nice if they were, but a blue shirt or dress would be just fine," Foley said. "I think if everyone in the stadium were wearing blue it would give the players a sense of unity and pump them up that much more in preparation for their biggest

game this year."

Foley admits his idea isn't unique. The event was tried before, but sophomore Jeff Haas thinks this year's effort will be more

see BLUE-OUT, page 6A

Taylor on campus Saturday

Candidate attending homecoming game

By Matthew Mannila
Staff writer

The 2006 Georgia Gubernatorial Elections are only two weeks away and it looks like the race has come down to Democratic Lt. Governor Mark Taylor versus Republican Governor Sonny Perdue. Expect to see Mark Taylor at Paulson Stadium this Saturday between 11 a.m. and noon.

He is supposed to visit the Savannah State homecoming parade at 9 a.m., followed by Georgia Southern vs. Appalachian State before kickoff and then move the campaign north to Valdosta.



Lt. Gov.
Mark Taylor

Originally, there was a fish fry planned, but on Monday a Kiwanis Fairgrounds representative said there was no way for a spot to be cleaned by this Saturday. So, resilient campaign members have secured a spot at the tailgate and there will be other food and refreshments available.

Mark Taylor is coming to talk to the people about his platform rooted in improvement of public safety, education, healthcare and the economy like he did at GSU's first home game this year.

"It's time for the little guy to get some respect," said a campaign

see TAYLOR, page 6A

Homecoming ushered in festivities, party atmosphere

By Rachel McDaniel
Executive editor

CENTENNIAL
1906-2006

The history of homecoming at Georgia Southern is as colorful and exciting as the yearly parades. Since the very first homecoming celebration, there have been different ways of celebrating the annual spirited event. During WWII, GSU football was postponed until Erk Russell restarted the football program in 1981. From 1942 until 1982, homecoming was celebrated during basketball season.

Kirbylene Stephens graduated in 1955 and worked as secretary to the GSU president for 32 years after that.

Through the years, she was involved in many homecoming events.

"We only had 600 students when I was in school, so it was smaller, but we had a parade downtown back in those days," she said. "Since we did not have football, we had homecoming during basketball season, which was the winter quarter. Students had displays in front of various dorms with competitions as to which display best carried out theme of homecoming for that year."

Until 1979, the homecoming court consisted of only females. Patrick Fetter was the first male to run for and be crowned Homecoming Queen. When asked by The George-Anne what he would wear if he won, Fetter replied, "I do look rather stunning in a gold rayon jumpsuit. But I'll probably just stick to the basics, new levis and white shirt with a vest."

During 1982's first football home-



Southern Reflector Yearbook file photo

see PARTY, page 6A

GSU band plays the fight song during a homecoming parade.

INSIDE

Sapelo Island Fest.

Group offers weekend trip to see rare Gullah-Geechee culture along the Georgia coast.

| Hiatus 6B

Campus	2	Classifieds	6
National	3	Sports	7
Opinion	4	State	8
News	5		



Volume 79
Number 49

TODAY

High: 92 | Low: 72
Partly cloudy

FRIDAY

High: 88 | Low: 53
AM Showers

SATURDAY

High: 82 | Low: 55
Mostly sunny

SUNDAY

High: 82 | Low: 55
Mostly sunny

33 days until the Thanksgiving break begins (Nov. 22-24)

44 days until the last day of class (Dec. 3). Finals start Dec. 4.

49 days until fall graduation (Dec. 8)

Wildlife Center gets creepy 'after dark'

By Jenny Miller
News editor

Scary snakes, eerie barns and frightful owls...oh my!

The Wildlife Center at Georgia Southern is hosting the sixth annual Center after Dark festival this Saturday, Oct. 21 from 6:30 p.m. until 9 p.m.

Although the evening is aimed mostly towards families and children, all are welcome to attend.

According to the Education Program Director at the center, Krista Weatherford, organizing the event takes time on the part of all staff members.

"We started planning for the evening back in August, but all the staff has found it to be a lot of fun," she said.

Each year, the theme of the program is different, but every year it also has similarities.

This year, the theme of the evening is "Creepy Crawly," and has many activities throughout the night to emphasize this.

There will be flight shows, a creepy barn, a fear factor program, animals that people can interact with and creepy crawly animals like snakes and lizards. There will also be arts and crafts and nocturnal animals for people to enjoy.

At 7 p.m., Wildlife Center Director Steve Hein will present a flight show with some of the birds at the center.

The night will also offer camping for those who are interested. People can set up in tents in the area of the center where the picnic tables are located.

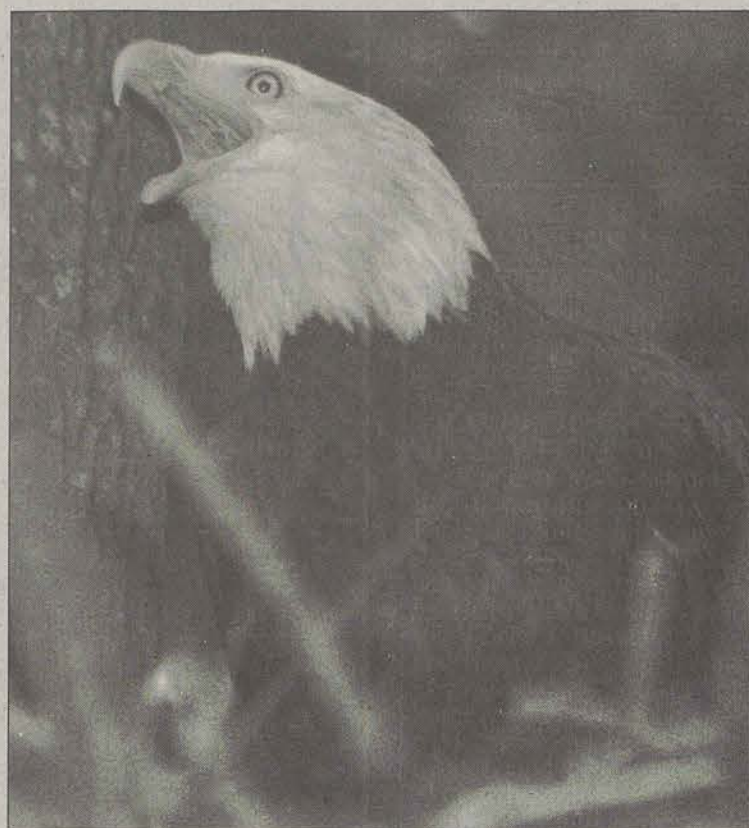
There will be a campfire and snacks, but participants will need to bring their own dinner if they plan on eating there.

"We are catering more to school aged kids. The event was organized with families in mind," said Pam Harley, business manager for the center.

Admission to the event will be \$6 per person or \$12 per family. Camping fees are an additional \$20 per family. You can pay in advance or at the door.

The Wildlife Center is open Monday through Friday from 9 a.m. to 5 p.m. and Saturday from 1 p.m. to 5 p.m.

For more information about the Center after Dark event, contact the Wildlife Center at (912) 681-0831.



Tao Ventre/STAFF

The eagle at GSU's Wildlife Center will be sitting high at Saturday's event. The center will host its annual Center after Dark program this weekend, with creepy crawly activities and games geared toward the whole family.

Wendy's

99¢ Crispy Chicken Sandwich

TURTLES

The place to come out of your shell

Mondays: live music

Tuesday: Insomniac Trivia

Wednesday: \$5.00 AYCE wings and \$2.50 pitchers

Thursday: Karaoke

Friday: Uncle Dank

Saturday: Bravis and Travis from Gunshy

Happy Hour 5-7: \$2.00 Beer, Wells and Pitchers & Keystone

The George-Anne Daily

needs an asst.
news editor

Any major can apply. Must be hardworking, organized and have some writing experience. Need to be able to work evenings and an hour each day.

If you are interested, please stop by the Williams Center, upstairs room 2023, with a resume, or email your resume to ganews@georgiasouthern.edu.

PARTTIME BUSINESS FOR STUDENTS!

Help parents make up no Bible Ed in school. Take kids into your home church fellowship hall 7-9 PM Wed. **TRAVEL THRU THE BIBLE WITH JESUS.** •Program is self-teaching, non-denominational. No Bible or ministerial training needed. No preaching. If you can read, you can lead kids. You learn Bible as kids learn. •Parents pay 100 kids grosses you \$2495 per month @ around 73% profit. Not home Wed evening? Let sub work. Earn and pay off ED loans, be independent. For more information, email your name and address to mikie2@iggylinks.zzn.com, or write WFCPress, Box 3187, Pembroke, NC 28372.

CALENDAR

Thursday, October 19

10 a.m. - 1 p.m.
Mocktails
Russell Union Rotunda

10 a.m. - 3 p.m.
NOLS bus
Russell Union

11 a.m. - 1 p.m.
Lazy Lagoon
Russell Union Rotunda

11 a.m. - 1:30 p.m.
Simulated DUI
Russell Union

5 p.m. - 6 p.m.
Indian Origin and Heritage
Russell Union 2044

5:30 p.m. - 6:30 p.m.
Panel discussion
Russell Union 2075

6 p.m. - 7 p.m.
Traditions and Spirit
Russell Union 2052

7 p.m. - 9 p.m.
Gamma Beta Phi
Russell Union 2084

7 p.m. - 9 p.m.
Capture the Royal Court
Russell Union Ballroom

7:30 p.m.
Performance of 'King Stag'
PAC

Friday, October 20

5 a.m. - 7 a.m.
Coastal Sunrise broadcast
Paulson Stadium

11:30 a.m. - 1:30 p.m.
Conversation hour
Russell Union Ballroom

4 p.m. - 5 p.m.
Homecoming Parade

5:30 p.m. - 8:30 p.m.
Captain's Cookout
Sweetheart Circle

7:30 p.m.
Performance of 'King Stag'
PAC

9 p.m.
Shipwrecked fireworks
J.I. Clements Stadium

9:15 p.m.
Movie: Pirates of the Caribbean
J.I. Clements Stadium

Saturday, October 21

10 a.m. - 12 p.m.
Plant keying workshop
Botanical Garden

12 p.m.
Football: App. State
Paulson Stadium

9 p.m. - 1 a.m.
BAGS reunion dance
Russell Union Ballroom

Sunday, October 22

1 p.m. - 6 p.m.
Meet and Greet
Russell Union 2047

3 p.m. - 5 p.m.
Graduation recital
Carter Recital Hall

6 p.m. - 10 p.m.
Drag show practice
Russell Union Theatre

7 p.m. - 9 p.m.
Forte Step Team practice
Williams Center Dining Hall

7 p.m. - 10 p.m.
Fraternity business meeting
Russell Union 2073

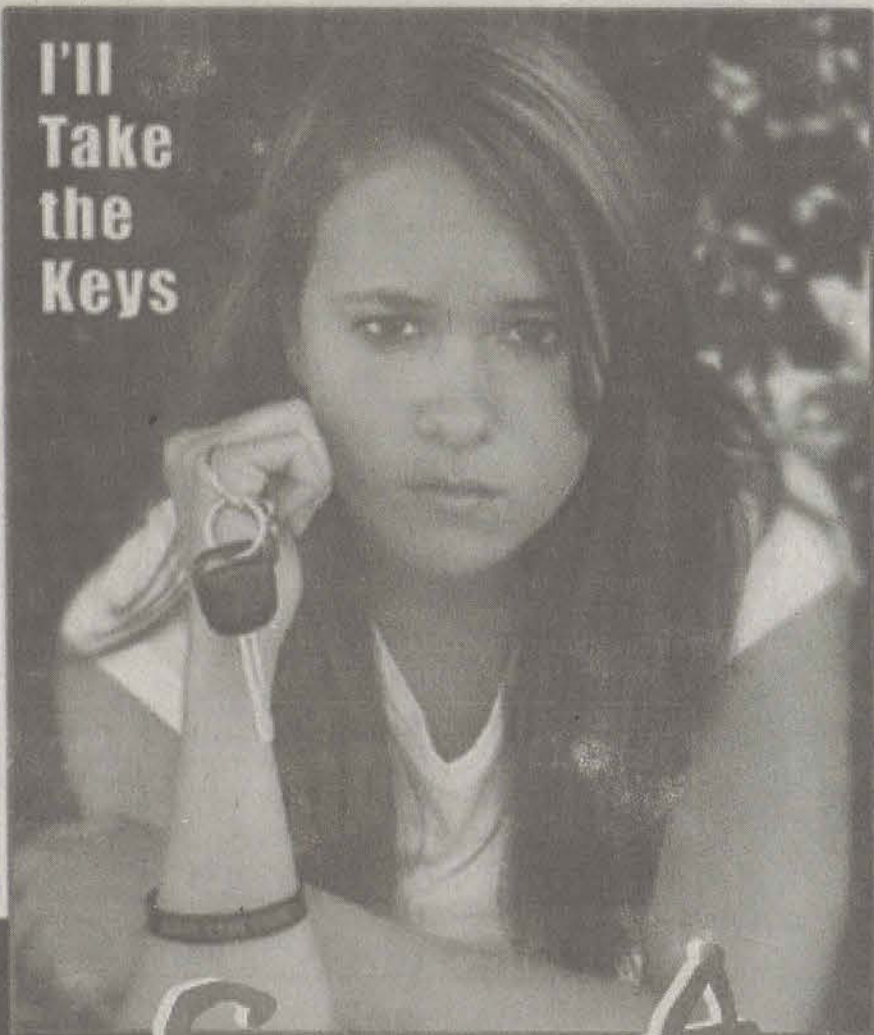
POLICE BEAT

10-16-2006

• A window was broken on a vehicle in the Eagle Village parking lot.

• An Eagle Village resident reported receiving harassing phone calls.

I'll
Take
the
Keys



Experience the Drama

Wednesday, October 25th

Russell Union Ballroom 10 a.m. - 6 p.m.

www.savealifetour.com

Featuring the most realistic, sophisticated
drunk driving simulator in the country!

Save A Life Tour!

High-impact Alcohol Awareness Presented By Georgia Southern's Health Services and the Georgia Office of Highway Safety

Webster swears in cadets, speaks with students



Amy McIntyre/STAFF

GSU Cadets William Webster, Richard Zettler and Jerome Hunt wait to be sworn in by General Webster yesterday outside of the ROTC building.

By Amy McIntyre
Staff writer

Major General William Webster visited the Georgia Southern campus to swear in cadets and to speak about expectations of them as commissioned officers, leadership and the war in Iraq.

Webster has served in the army for 32 years. He is currently the Director of Operations for U.S. Northern Command, but lately held the position Commanding General, 3rd Infantry Division, Operation Iraqi Freedom.

Webster swore in three cadets on Wednesday: Jerome Hunt, Richard Zettler, and his own son, junior William Webster, outside the ROTC building, where fellow Eagle Battalion cadets gathered to watch the event.

The general took the opportunity to remind those present about the importance of taking the oath of service. "The oath we take in the United States," said General Webster, "is different from any other kind taken elsewhere in the world."

"We promise to protect and defend the Constitution and the people of this country. Our oath is about obeying and defending with

no regard to who the president might be or what political party he might represent."

Jerome Hunt, a senior, was excited about being contracted. "I am prior service and as an enlisted soldier, I realized how important it was for me to some day lead others," said Hunt. "I think that I will be a good officer because I can balance giving orders with the experience I have had in taking them."

ROTC graduates are commissioned as second lieutenants following completion of their degree. Webster delineated the most important components of leadership for cadets, emphasizing the expectations of them as officers.

"First of all, officers are held at a higher standard than other Americans," said Webster. "Because of this, officers are not expected to compromise themselves morally, ethically or legally."

Physical fitness, a full commitment to every mission, caring for your soldiers and being a team player were all aspects of leadership the general addressed as key components for successful service in the United States Armed Forces.

Webster discussed the importance of lieutenants at the tactical level, because they represent the first line of leadership above the non-commissioned officers (NCO) in the army.

They are the ones that interact with enlisted personnel the most, and therefore, they must represent the level to which their soldiers to need uphold themselves.

The general addressed the changing face of war as it is in Iraq in response to a question about U.S. strategy there. The general emphasized that strategy is what takes place between nations, but the tactical level was where 'the rubber met the road', where troops are face-to-face with the enemy.

Because of the changes in warfare in Iraq, it is the leaders at the squad level, NCOs and lieutenants, who are fighting a new kind of warfare where the enemy isn't clearly identifiable.

Webster said, "Today it is through lieutenants and NCOs building relationships with local tribal leaders in Iraq."

"Gathering information on how to best build trust in the Iraqi government and breaking down the influences of tribal leaders who kill and



Amy McIntyre/STAFF

Major General William Webster visits GSU to commission cadets, including his son.

terrorize in their quest for power and control, that those in intelligence can make decisions leading to progress in the country."

For more information about GSU's ROTC Military Science department, call 912-681-532. You can also check out their web site at <http://cost.georgiasouthern.edu/rotc/>.

Crisis advocates needed

By Abbey Lennon
Staff writer

The Bulloch County Sexual Assault Task Force (BCSATF) is looking for volunteers to participate in Crisis Advocate Training.

The program is a non-profit organization designed to help anyone who has been victims of any Sexual Crime physical, mental, or emotional.

The program, headed by current President and chair committee member Linda Paige, is run by volunteers. Paige has been with the program since its beginning.

Crisis Advocates are volunteers who serve a rape crisis hotline that is available 24/7.

Crisis advocates go through a three day training session at the East Georgia Regional Hospital about how to take phone calls and how to listen to people who are victims of sexual crime.

Some crisis advocates go to hospitals to be with patients recovering from these crimes. Advocates give information to these victims of who they can call to get help.

Linda Paige said that victims call from all over including "people from Atlanta all the way to Valdosta."

In order to be a crisis advocate volunteer you must be 18 years old and attend three days of training, which will be held Oct. 20, 28 and 29 from 5:30-9:30. Volunteers will be trained on how to be influential crisis advocates.

The program seeks people who are

responsible and trustworthy. There are five phones that are checked out. Volunteers work whenever it is most convenient and whatever fits into their schedule.

Vicki O'Brien is in charge of the phones and trading them out to people. O'Brien has the main phone and can transfer calls to any of the five phones at any time.

"This program benefits everyone in the community," said Paige.

If someone does not feel like they could respond effectively over a phone to a victim, other ways of volunteering for the program are available and "there is something for everyone," Paige said.

The hotline is a way for victims to get help because sometimes "some people won't go to a family member but would go to a stranger," said Paige.

Being able to help people is one of the ways she enjoys working with the program. There is so much information that people don't know said Paige.

She gave the example of victim's assistance, which is designed to help victims pay for counseling and other things that have to do with the healing process. Many people are unaware that this program even exists. According to Paige this does benefit the whole community, not just Georgia Southern students.

If you would like to get involved and help make a difference with the BCSATF, you can contact Paige at 681-0232.

Annual Chic-N-Que Friday

By Ellen Eklund
Staff writer

Don't be surprised if you wake up Friday morning craving barbecue chicken. Simply follow the aroma of fresh, marinated chicken to the front lawn of the Baptist Collegiate Ministry, where student volunteers will begin cooking chickens around 3 a.m. Friday morning.

The Chic-N-Que is this Friday, Sept. 20 from 11 a.m. to 6 p.m. The BCM will be selling barbecue chicken plates for only \$6, which includes a half piece of barbecue chicken, beans, slaw, bread, dessert and tea.

All proceeds of the Chic-N-Que go toward sending BCM students to serve in domestic and international missions during spring break and summer 2007.

"The Georgia Southern BCM has sent students to places as close to Baxley, Ga. to as far away as the Himalayas," said Dr. Jerry Johnson, Senior Campus Minister for the BCM. "We work with other BCMs across the state to send more than 200 students each summer."

According to Johnson, the BCM helps sponsor GSU students to work at various locations every spring break. Last year, the BCM took nearly

200 students to New Orleans to help with disaster relief.

This year, the BCM makes plans to send students to Honduras, Key West and Las Vegas for spring break missions.

During the mission trips, students plan and organize lessons and activities for youth groups, serve community organizations, build churches and work on other construction projects, develop and implement children's programs, teach English, sing and play instruments and conduct other acts of service that communicate God's love.

Last summer, students from the BCM served in Georgia, California, North Carolina, Colorado, Nevada, Moldova, India, Spain and Germany.

"The important thing about this Chic-N-Que is the mission. Students are using their breaks from school to go and change lives. Supporting this Chic-N-Que helps students to be able to go and to serve," said Johnson.

The BCM center is located on the corner of Chandler Rd. and Harvey Dr. across from Johnson Hall.

For more information about the Baptist Collegiate Ministry or to place an order for Chic-N-Que, please call 912-681-2241.

Wendy's **99¢**
Crispy Chicken Sandwich



The Sir Shop
TWO LOCATIONS

Statesboro Mall 764-6924 Main Street Village 871-4962

ORVIS
SPORTING TRADITIONS
Since 1856

YOUR HOMECOMING HEADQUARTERS

GNAT'S LAND
BRA & GIRLL
470 South Main Street, Statesboro
(912) 489-8291

STATEMENT OF OPERATIONS

The George-Anne Daily is the official student newspaper of Georgia Southern University, owned and operated by GSU students and utilizing the facilities provided by GSU. The newspaper is the oldest continuously published newspaper in Bulloch County and Statesboro, Ga. The newspaper is a designated public forum for the Georgia Southern University community. The ideas expressed herein are those of the editor or the individual authors and do not necessarily represent the views of the Student Media Advisory Board, the administration, the faculty and staff of Georgia Southern University, or the University System of Georgia. The George-Anne is published four times weekly (Monday-Tuesday-Wednesday-Thursday) during most of the academic year and six times during summers. Any questions regarding content should be directed to the editor at by phone at 912/681-5246 or fax at 912/486-7113.

Readers may access the newspaper and its archives staff by visiting our web site at <http://www.gadaily.com>.

SUPPORT

The G-A is funded primarily

through revenue from advertisements placed in the paper and receives additional support, in part, from the Student Activities Budget Committee.

STUDENTS ARE

The G-A is an all-advertisement publication. The newspaper strives to accept advertisements for products and services only. Students are urged to exercise caution when replying to ads — particularly those which require a credit card number, other personal information, or money in advance of the delivery of a product or service. Students are also urged to report to the newspaper any suspicious offers which they might see in an ad. Remember, if an offer seems too good to be true, it probably is.

FREEBIE INFO

ALL FREE student and faculty ads to be run in the G-A must have a NAME, P.O. BOX and PHONE NUMBER. Ads will be rejected if they do not have this information. NO EXCEPTIONS.

OFFICES, MAIL, PHONES

Room 2023, F.L. Williams Center. The George-Anne, P.O. Box 8001, Georgia Southern University, Statesboro, Ga. 30460. 912/681-5246 (News) or 912/681-5418 (Advertising) or 912/486-7113 (Fax); 912/681-0069 (adviser).

EMAIL DIRECTORY

Executive Editor
gaeditor@georgiasouthern.edu
Managing Editor
gamed@georgiasouthern.edu
News Editor
ganews@georgiasouthern.edu
Advertising
ads@georgiasouthern.edu or ads1@georgiasouthern.edu

ADVERTISING

The George-Anne reserves the right to refuse any advertisement.

DISPLAY AD DEADLINE: The deadline for reserving space and submitting advertising copy is Noon, one week prior to the intended publication date.

FOR MORE INFO, rate cards, sample publications, contact: Lindsey Anthony, Marketing Director, ADS, (912) 681-5418, ads@georgiasouthern.edu or Bill Neville, Student Media Coordinator, (912) 681-0069, bneville@georgiasouthern.edu

PROOFING/ERRORS/OMISSIONS:

The newspaper makes every reasonable effort to present correct and complete information in advertisements. However, the advertiser is responsible for proofing the ad upon publication and should notify the newspaper immediately in the event of an error. The newspaper is not responsible

for any errors in advertisements and its liability for adjustments is limited to the amount of space the error occupied in the ad. Further, the newspaper is not responsible for any damages caused due to an ad's omission from a particular edition and its responsibility solely is to reschedule the ad in the next regular edition at the regular advertising rates.

CLASSIFIED ADS: Free classified ads from students, faculty and staff must be non-commercial in nature and submitted in writing, with the name of the sender, local address, and phone number. No free ads taken via telephone — at this price we don't take dictation. One free ad per person per week. Commercial classifieds are available only from our online site at www.gsads.com. The price of commercial ads is \$7 for 200 characters for line ads. Ads must be paid for using a major credit card. For classified display ads, contact gaclass@georgiasouthern.edu

CIRCULATION INFORMATION: Mail subscriptions are not available at this time. However, readers may visit our web site for free access to current and past issues. Visit www.stp.georgiasouthern.edu. It is the goal of the newspaper to have its edition placed on-line within 24 hours of

publication. Breaking news will be placed on-line as warranted. The G-A is distributed free of charge on the Georgia Southern University campus through delivery sites located in campus buildings, at off-campus sites, and in residence halls.

NOTICE

Readers may pick up one free copy, and a second for a roommate or acquaintance, at distribution sites. Additional copies are 50 cents each and are available at the Williams Center. However, unauthorized removal of additional copies from a distribution site constitutes theft under Georgia law, a misdemeanor offense punishable by a fine and/or jail time. Editors will seek to have any person(s) who removes more than the authorized number of copies from distribution sites prosecuted to the full extent of the law.

NOTE

We gratefully acknowledge the theft of one of our slogans — "Liked by Many, Cussed by Some, Read by them All" — from Robert Williams of the Blackshear Times. Call Bob and he can tell you who he stole it from originally. Credit for the other — "Covering Campus like A Swarm of Gnats" — goes to G-A alum Mike Mills.

Sales Representatives Needed!

The George-Anne Daily is now accepting resumés for sales representatives in the advertising department. We are looking for outgoing, highly motivated people. No experience is required.

Job Requirements include:

(but are not limited to)

- Daily office hours
- Monthly meeting attendance
- Email and phone correspondence
- Knowledge of local area businesses
- Means of transportation

Questions? Call 912-681-5418.

Please email resumé with references to Ads Manager at ads1@georgiasouthern.edu

GSU Gamedays

Happy Hour Daily (4-7)

Free Oysters

2 for 1 Liquor and Draft Beer

& 1/2 Off Appetizers

Boiled Peanuts

All Day

\$3 Two-Hander PBR

\$8000 Margaritas

\$3 (24oz.) Coors & Miller Lt. Cans

\$5 Lunch Specials

(Monday-Friday 11 a.m. - 2 p.m.)

Many Items to Choose From

LOCAL POLITICS

Perdue, Taylor talk to superintendents

The Macon Telegraph

With just three weeks to go before they face voters, both Gov. Sonny Perdue and Lt. Gov. Mark Taylor came to Macon on Tuesday to state their cases to Georgia school superintendents.

Educators' dissatisfaction with former Gov. Roy Barnes' schoolhouse policies played a key role in his defeat four years ago. Taylor, the Democrat, and Perdue, the incumbent Republi-

can, have each made education the centerpiece of their campaigns for the governor's office.

The two candidates stuck to issues they have stressed repeatedly on the campaign trail: Taylor assailed education cuts under Perdue's watch, while the governor defended his spending decisions and mandate that school systems spend at least 65 percent of their budgets on classroom expenses.

INTERNATIONAL POLITICS

Japan said it has no plans for nukes

McClatchy Newspapers

Japan told visiting U.S. Secretary of State Condoleezza Rice on Wednesday that it has no plans to develop its own nuclear weapons, as Asian countries watched North Korea for signs that it's considering further nuclear tests.

Rice arrived in Tokyo, the first stop of a four-nation tour, to reaffirm in person the United States' long-standing commitment to Japan's defense and snuff out any trend toward a regional arms race.

Since North Korea's Oct. 9 nuclear

test, some Japanese politicians have asked openly whether the country should take another look at its own prohibition against nuclear weapons.

But Foreign Minister Taro Aso said after talks with Rice: "As far as Japan is concerned, we, the government of Japan, have no position at all to consider going nuclear."

Rice, at a brief news conference with Aso, warned North Korea that the United States will come to Japan's defense if necessary.

"The United States has the will and capability to meet the full range, and I underscore, full range, of its deterrent and security commitments to Japan," Rice said.

She was to meet Thursday with new Prime Minister Shinzo Abe for talks that include how to enforce U.N. sanctions that call for inspecting North Korean cargo.

Japan sees itself as a potential North Korean target and has announced its own unilateral sanctions, including a ban on ship visits and trade imports.

Still, Aso emphasized diplomacy, and saying, "We intend to keep the door open to dialogue at all times."

Rice agreed, saying the United States didn't want to escalate the crisis.



Yomiuri Shimbun/MCT

Prime Minister Shinzo Abe speaks at a House of Councillors Budget Committee session in the Diet on Wednesday, Oct. 11, 2006. Japan intends to impose additional sanctions against North Korea even if Pyongyang's nuclear test turned out to be a failure.

GEORGIA NEWS

Illegal landfill catches fire

Athens Banner-Herald

More than a day of drenching rain has helped to extinguish a smoldering Barrow County fire that drew attention to a huge illegal dump ground, according to local and state officials.

The fire burned off of Finch Road, near Georgia Highway 211, from Thursday afternoon until Friday afternoon, when heavy equipment arrived to smother the burning waste, said a state environmental emergency responder. Bulldozers worked another day to put out the flames, and rain that started Monday quenched the last hot spots.

Rangers with the Georgia Forestry Commission discovered the fire Thursday afternoon and called an emergency responder with the state Environmental Protection Division.

A permit to burn yard waste led rangers to a two-acre fire burning illegally dumped construction waste, mostly leftover materials from construction sites, according to the EPD.

"It was such an intense fire that water wouldn't put it out," said Environmental Emergency Specialist Kenneth Perry.

A 19-year veteran of EPD, Perry said he hasn't seen an unpermitted construction and demolition landfill

as large as this one in years.

"The piles included shingles and Sheetrock (drywall) with a hot inner core that water wouldn't put out," he said.

Local residents didn't know about the landfill, according to officials and Johnny Orr, who manages a licensed inert landfill and transfer station not far away.

"It was right under our noses and we didn't even know it," Orr said.

A local man, Tim Segars, said he'd operated the landfill for two years, Perry said.

"So, he's been illegally dumping, and now illegally burning."

NATIONAL NEWS

Suit to stop Arizona's wire transfer seizures

McClatchy Newspapers

A class-action suit was filed Wednesday against an unusual enforcement plan by Arizona authorities looking to curb the smuggling of illegal immigrants.

The Arizona attorney general

had been seizing hundreds of wire transfers to Mexico and Arizona from about 26 states, hoping to intercept payments to "coyotes" who smuggle people in.

But the plaintiffs said the money has been seized unfairly.

INTERNATIONAL NEWS

10 more troops killed

McClatchy Newspapers

Ten American troops were killed in Iraq Tuesday, raising the death toll so far this month to 69 and putting October on track to be the deadliest month for coalition forces since January 2005, the U.S. military reported

Wednesday.

The sharp rise in deaths comes as the U.S. has increased the number of troops in the Baghdad area to try to stop the spiraling sectarian and insurgent violence engulfing the city of some six million people.

NATIONAL NEWS

Population: 300,000,000

Minneapolis StarTribune

At 6:46 a.m. Tuesday, there were precisely 300 million Americans, according to the Census Bureau's calculations. And 11 seconds later, the population reached 300,000,001, climbing by one more American with every 11 seconds that pass.

It's something of an illusory mile-

stone because census officials point out it's simply impossible to count everyone at any given moment.

That said, the agency developed an algorithm that calculates a baby is born every seven seconds, someone dies every 13 seconds and a person immigrates every 31 seconds. It doesn't appear to measure emigration.

NEWS OF THE WEIRD

From Universal Press Syndicate

Fetishes on parade

• Alfred Thomas Steven, 69, was arrested in the La Purisma Mission park in Lompoc, Calif., in September, and cited for trespassing and animal cruelty for attempting to satisfy himself sexually with a horse. According to police, Steven apparently had anointed himself with olive oil and coated his nude body in feed grain or oats, and then lay down so that the horse would nibble and lick him. Deputies said he told them that it was a longtime fantasy.

NATIONAL COLLEGIATE ALCOHOL AWARENESS WEEK

OCT. 16-19, 2006

Jail n' Bail

Monday, Oct. 16, 10 am - 2 pm
Rotunda

Come be apart of the action as a GSU police officer arrests volunteer faculty, staff and students for a mock DUI. Volunteers will be read their rights, given sobriety tests and "booked" for the DUI charges. They will be jailed at the Rotunda. Help the "prisoners" raise money for bail to gain their freedom while contributing to the Health Education Foundation.

Simulated DUI

Wednesday, Oct. 18, 11 am - 1:30 pm
Russell Union Visitors Parking Lot

Captain Lee Harris from the Bulloch County Sheriff's Department will be here to assist students with a drunk/impaired driving simulation. Students will be able to participate in various activities and obstacle courses while wearing Blood Alcohol Content (BAC) goggles. Free beer (root beer of course) will be provided along with food donated from local restaurants. Shuttle GUS volunteers will be there to answer any questions and give information about Georgia Southern's highly successful safe ride program.

Mocktails

Wednesday, Oct. 18, 7 pm
Russell Union Ballroom

It is possible to enjoy great drinks without the effects of alcohol. Join the Health Education Peer Educators and the Homecoming Steering Committee as they serve up tasty, non-alcoholic beverages for "Plunderin' for Pirates' Booty."

Mocktails

Thursday, Oct. 19, 10 am - 1 pm
Rotunda

Join us again for different recipes if you enjoy the mocktails Wednesday night. The Health Education Peer Educators will serve up "Calhoun Typhoons" and "Pink Champagne." The drinks will have you saying "who needs alcohol?"



Sponsored by the
Office of Health Education and Promotion
Governor's Office of Highway Safety

THE GEORGE-ANNE CLASSIFIEDS, ETC.

Now you can place your classified ads online... For Commercial Ads, Visit...
http://www.gsuads.com
...and create, place, proof and pay for your ad online. Just \$7 for 200 characters. In partnership with Universal Advertising.
Free ads for students, faculty & staff (non-commercial): visit us online at...
www.gadaily.com/class_ad_sub.php
You must include your names, address and phone number for freebies. No phone calls please, at this price we don't take dictation.

CLASSIFIED CATEGORIES

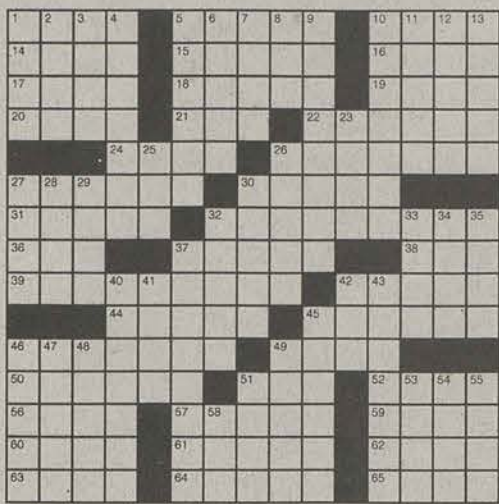
100 Announcements
110 Auditions
120 Freebies
130 Lost & Found
140 Other Announcements
200 Buy or Sell
210 Autos for Sale
220 Auto Parts for Sale
230 Bicycles for Sale
240 Books for Sale
250 Computers & Software
260 Miscellaneous for Sale
270 Motorcycles for Sale
280 Trade & Barter
290 Wanted

300 Employment & Job Services
310 Career & Job Services
320 Child Care Needed
330 Child Care Provider
340 Internships/Volunteer
350 Jobs/Full Time
360 Jobs/Part Time
370 Opportunities/Business
380 University Work
390 Wanted Jobs
400 Housing & Real Estate
410 Apartments
420 Lofts & Rooms
430 Mobile Homes
440 Real Estate for Sale
450 Roommates Wanted
460 Storage & Moving Services
470 Student Housing

480 Sub Leases
490 Vacation Rentals
500 Personals
510 Personals
600 Services
610 Education & Tutoring
620 Financial Aid/Loans
630 Legal Services
640 Resumes/Typing/DTP
650 Services/Miscellaneous
700 Travel
710 Spring Break Travel
800 Transportation/Rides
810 Transportation/Rides
900 Miscellaneous
910 Pets & Pet Supplies

Crossword

ACROSS
1 Fashionable
5 Pooped
10 Jot
14 Old Capri cash
15 Identical
16 Enveloping glow
17 Related
18 Baseball teams
19 Mosque prayer leader
20 Arizona city
21 Gallivant
22 Will contents
24 Auctioneer's closer
26 Haggled the mirror
27 "The Thinker" or "David"
30 Father of an aristo
31 Ger. submarine
32 Stroking tenderly
36 Golfer
37 Woosnam
38 Destined
39 Fish eggs
42 Valued highly
44 James Dean film
45 Played over
46 Removes suds
48 Omen
49 Maximum
50 New York lake
51 Employment position
52 Mild expletive
56 Makes a lap
57 Roughly finished
59 PBS series
60 Classify
61 Downy duck
62 ...in-the-wool
63 Adam's grandson
64 Silvery fish
65 Pouchlike structures



© 2006 Tribune Media Services, Inc. All rights reserved. 9/13/06

DOWN
1 Chowder chunk
2 Cross-country walk
3 Eye part
4 Game with four jokers
5 Knot
6 Homeric epic
7 Cheese covering
8 Barely manage
9 Left alone
10 Certain servers
11 Person
12 Fuming
13 Brought to heel
23 Comprehends
25 Not at home
26 Peeled
27 Tuxedo, e.g.
28 Ski lift
29 Top-notch
30 Eucharist plate
32 Jeweler's measure
33 Gershwin and Levin
34 Zilch
35 Obtains
37 Heat sources
40 Monet and
41 Germ
42 PX patrons
43 Means
45 Penn Warren or Redford
46 Sheriff's search party
47 Bulbous vegetable
48 Kind of rocket
49 Prototype
51 Actor Law
53 Spanish painter
54 With, in Avignon
55 June
56 celebritants
58 Periphery

**New Voices.
New Services,
New Attitude.**

www.gadaily.com

There is No Option!

Announcements 100 - 199

140 Other Announcements

Colleges Against Cancer
Next Meeting October 23, 2006
7:00 p.m. Russell Union 2075

Please come prepared with your t-shirt money! Lets get as many people there as possible to make an even bigger difference! Hope to see you there!

The Herpevac Trial for Women: A Herpes Vaccine Study For women age 18-30 without oral or genital herpes This study of an experimental vaccine might protect women against herpes. Participants receive: Free screening for herpes An investigational vaccine against herpes or hepatitis A Financial compensation for time and travel For more information, contact: Medical College of Georgia 706-721-2535 877-643-1414 (toll-free) womens_health@mcg.edu www.herpevacine.nih.gov This vaccine CANNOT give you herpes.

NOTICE - While the newspaper makes every effort to screen bogus offers and ads, please remember if an offer seems to be too good to be true, it probably is.

Reach Georgia Southern students with a publication they really read... Over 100,000 copies of the G-A Daily circulate each month. For more info: ads@georgiasouthern.edu

Buy or Sell 200 - 299

210 Autos for Sale

1999 Ford Taurus For Sale
In Good Condition
\$3,500 ONO
Contact Megan @ 954 540 3096 if interested

'05 Black Nissan Frontier Nismo ex. cab. Loaded, one owner, very nice, 31,000 miles, asking \$18,500. Call Travis (912)656-6503.

1999 Ford Taurus For Sale
In Good Condition
\$3,500 ONO

250 Computers & Software

NEW SEALED Windows XP

Professional SP2 COA!!!!
Has COA and its still sealed, never opened!!!!
Only \$125!!!!

Epson Stylus C42UX color inkjet printer with all parts and Epson chip resetter for refilling print cartridges. Call Wes 770 639 2367

260 Miscellaneous for Sale

For Sale: 2004 Polaris Predator 500CC (Dale Earnhardt Jr. Edition) In good condition. Low hours. Never raced. Very fast. Has a K&N air filter, after market brush-guard, & Fox Racing Shocks. \$3000 or best offer. Contact 478-808-7645.

Need a Halloween Costume? Medusa deluxe costume for sale. Never worn. Dress has sexy shoulder drapes. Snake Headpiece and Armband included. Only \$45. Call Krysta @ (912)871-6205.

Kegerator for sale. Full size refrigerator with freezer on top outfitted for a full size keg. In great shape. Tubes, tap, hoses and CO2 tank included. \$350 OBO.

Don't throw away that junk... turn your trash into cash. Try selling it online and in print with a G-A Daily action classified ad. It's free for students. Visit www.gadaily.com to find out more!

"PET BLINKERS" Safety for your Pet. Can be seen 1/2 mile at night. Available at McCook's Pharmacy. Hwy 80 East in Statesboro.

Want to make a loft or other furniture? Spare wood for sale at a ridiculously cheap price. Call Wes 770 639 2367

270 Motorcycles for Sale

Pampered Chef Kitchen Tools, Kitchen Shows, Bridal Showers Registry, free, half-price and discounts. Call 681-7453 after 5:30 p.m.

290 Wanted

Wanted: treadmill, good condition. \$250 or less. Preferably fold-up-kind, but not required. Please e-mail rainareaves@yahoo.com

Employment & Job Services 300 - 399

350 Jobs/Full Time

BARTENDING! Up to \$250 a Day. No Experience Necessary. Training Available. Age 18+ OK 1-800-965-6520 XT 296

360 Jobs/Part Time

COOK & ASST COOK at Japanese Rst. : No Experience Required; Easy Job & Compatible Hours; Training Avail. 912.681.3881 for questions
Immediate openings for LPNs: Accord Services, a private duty home care staffing company working with quad/catastrophic clients only has opened an office in Savannah, FT and PT positions available for Licensed Practical Nurses in Chatham and Bryan County. Please contact Thomas Guidry Mon-Fri 9 a-5 p toll free at 1-877-858-1795 for more information.

Housing & Real Estate 400 - 499

410 Apartments

QUIET, REASONABLY PRICED (\$285-\$450) one and two bedroom apartments. NO PETS. Deposit, Application required. Flexible leases. Parker Realty (764-5623)

EAGLECREAK TOWNHOUSES. Moving out Dec. 10, 2 bedrooms, 2.5 baths, two floors, 1150sqft. \$500/month. Call me at 478-320-3611

450 Roommates

Needed: 1 female roommate (students only). 2bdrm/2bath duplex past fairgrounds. All inclusive rent \$460/mo. Great new place. No pets. Available immediately. Call Maggie (706) 570-0301

Looking for a roommate? Trying to sublease your place? Put the G-A Daily to work for you. Free classified for students in print and online. Visit www.gadaily.com for information

Roommate needed ASAP in two bedroom duplex in Hawthorne II. Rent \$325 + utilities. Two months rent free. Contact Ashley (478) 284-1196

FEMALE ROOMMATE NEEDED!!!

for Spring and Summer 2007. Player's Club Apartments. 2 b/r, 2 bath. W/D & dishwasher. Only \$385/month, utilities included. Within walking distance of campus & University Plaza. Call Ashlee 770-547-6682

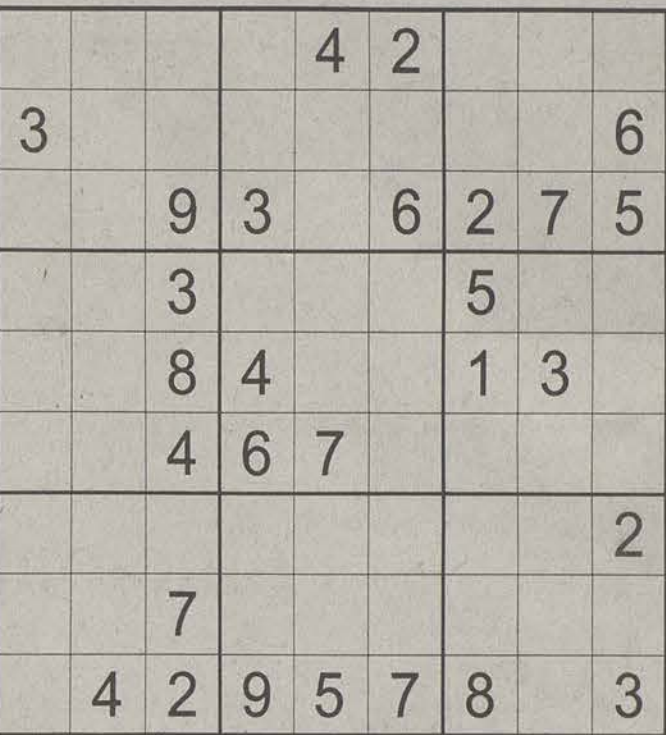


Covering the Web Like a Swarm of Electrons...
www.gadaily.com
New Voices. New Services. New Attitude

Sudoku

Very Hard

To play: Complete the grid so that every row, column and every 3x3 box contains the digits 1 to 9. There is no guessing or math involved, just use logic to solve!



© Puzzles provided by sudokusolver.com

480 Sub Leases

We need two people to sublease our duplex in Hawthorne!!! 2 bedroom, 2 bath very clean w/ large living room, fresh paint, and right next to pool! Rent \$325 + utilities. Please contact 478-808-7645.

SPRING 07 SUBLEASE! 2BD/1BTH in University Place. \$275 per room. Will rent individual rooms. Free cable/HBO. Washer/Dryer. Walk to campus. First month rent FREE! Call 912-515-4108. Leave message.

NEEDED SUBLEASE FOR SPRING 2007! STADIUM PLACE! QUIET COMPLEX & CLOSE TO CAMPUS! JANUARY RENT AND WATER FREE! CONTACT ASAP gradybab84@yahoo.com

First Month's Rent

FREE!!! Female sub-lease needed ASAP for Statesboro Place! \$365/mo. All inclusive, and fully furnished! Contact Sheridan at 2299427016 or sbushley13@yahoo.com

Sublease for Spring Term. Master w/ private bath available in 4 bdrm house. Quiet and clean. Right across from hospital. Call Nick @ (404) 808-6440 for information.

Services 600 - 699

610 Education & Tutoring

FUN & STUFF Visit our Web site for list of things to do that are educational and fun. <http://www.stp.georgiasouthern.edu/fun-stuff/>

Find a New Friend AJ



AJ's mom is an AKC registered English Bulldog and dad was a Jack Russell/Pomeranian mix. He is the cutest little guy. He is 8 weeks old. He is also up to date with shots, de-wormed and have been altered. Join us for our 7th Annual Pet Fun Day Saturday, Oct. 28 - 10 a.m. - 3 p.m. Please bring your pets (on a leash) and exotic pets are welcome.

Humane Society of Statesboro & Bulloch Co. Animal Rescue Division Statesboro, GA - 912-681-9393 bullochanimalrescue@yahoo.com

Travel 700 - 799

710 Spring Break Travel

Spring Break Bahamas 5 Days/4 Nights from \$199 per person Includes Cruise Transport & Resort in The Bahamas - Other Packages also Available Book Early for FREE VIP Party Package! Toll-Free 1-888-85-BEACH (1-888-852-3224) www.GoBahama.com

Travel with STS to this years top 10 Spring Break destinations! Best deals guaranteed! Highest rep commissions. Visit www.ststravel.com or call 1-800-648-4849. Great group discounts.

Miscellaneous 900 - 999

910 Pets & Pet Supplies

Pit Bull Puppy for sale. Female 5 month old. Razor Edge bloodline. Call for more information. 687-3004

Lost Pet. Deformed claws. Siamese Mix. One white paw. Gray and white stripes. 2 yrs old. Missing since Friday. 404-668-1600 grey-naulit@yahoo.com

U, too

©2006 PuzzleJunction.com

The words in column one have a couple of things in common: They all have only 4 letters and they all end with the letter "u." Can U match them up with their meanings in column two? Good luck!

- | | | |
|----------|-------|-----------------------------|
| 1. Prau | _____ | (A) Fish |
| 2. Atiu | _____ | (B) Sun god |
| 3. Lulu | _____ | (C) Afghan pony |
| 4. Pudu | _____ | (D) Korean apricot |
| 5. Maru | _____ | (E) Hardwood tree |
| 6. Ansu | _____ | (F) One of the Cook Islands |
| 7. Yabu | _____ | (G) Ship name (Japanese) |
| 8. Pelu | _____ | (H) Swift canoe |
| 9. Kiku | _____ | (I) Balsam |
| 10. Haku | _____ | (J) Barn owl |
| 11. Atmu | _____ | (K) Chilean deer |
| 12. Tolu | _____ | (L) Chrysanthemum |

THE UNIVERSITY STORE

Everything GSU under one Roof!

1-800-861-7059

www.gsustore.com

Football Fever

E L B M U F S F Z G W B P X D J T
Y K Y F L A G E V F N F A V O E H
K G X R C N Z R G Y N Y S L W L T
Q W H K V X Z J T A T C S Y N D N
F Q L B L R Y C N L M K R W S D O
K C A B R E T R A U Q M O R Y U R
Q F L W W Q V N J H P D I V N H I
V Q O A P T E B K V H I R R K L D
L R R U O P A R L C G C G R C L I
W O E B L G R C U D O K Y S I S R
O S T R L Z D O K A R T R N K R G
B E N T B T T L C L E A E J H I M
R B E P U N T H E F E M U P E N N
E O C G T R X Z A I A X V G L D T
P W C M N K T S X N F T N Z M F K
U L K S C O R E R E C E I V E R T
S C E E R E F E R N M L Y Q T D L

©2006 PuzzleJunction.com

- | | | |
|------------|-------------|------------|
| CENTER | HELMET | REFEREE |
| COACH | HUDDLE | ROSE BOWL |
| DOWNS | LINEMAN | SACK |
| FIELD GOAL | PASS | SAFETY |
| FLAG | PENALTY | SCORE |
| FOUL | PIGSKIN | SCRIMMAGE |
| FUMBLE | PUNT | SUPER BOWL |
| GRIDIRON | QUARTERBACK | TACKLE |
| GUARD | RECEIVER | TOUCHDOWN |

THE K CHRONICLES

"TAKE A PICTURE, IT'LL LAST LONGER"

ONE OF THE COOL THINGS ABOUT BEING A SLOB IS CLEANING UP & COMING ACROSS AN OLD-FASHIONED DISPOSABLE CAMERA WITH UNDEVELOPED FILM IN IT...

THE LATEST ONE THAT I GOT DEVELOPED WAS FROM THE MID-NINETIES...

NOW, I CAN'T RECALL THE NAME OF THE DJ, BUT I DO RECALL THAT WE DISCOVERED HE WAS AN ALCOHOLIC IN THE MIDDLE OF THE TOUR...

IT CONSISTED MOSTLY OF PICS FROM A VERY EARLY TOUR OF THE MARGINAL PROPHETS, MY HIP-HOP GROUP.

THE FIRST THING HE DID WHEN HE AWOKED WAS SUCK DOWN THE WARM BACK-WASH LEFT IN THE 40 OUNCES HE KNOCKED OFF TO PUT HIMSELF TO SLEEP.

THIS WAS WAAAY BACK IN THE DAY, BEFORE WE HAD A FULL BAND...

WAS JUST ME, THE NOBLE DEFG & A D.J...

OUR PROFESSIONAL RELATIONSHIP ENDED AFTER A SHOW IN EUGENE, OREGON.

Keep @ kchronicles.com New 2007 calendar now available @ www.kchronicles.com!!

GA George-Anne Classified Advertising

Name: _____

P.O. Box: _____

Phone: _____

Email: (Must be George-Anne email. All others will be rejected.) _____

Please list in section: _____

PLEASE MAKE SELECTION: _____

Classified Ad: _____

Business & Commercial Classified Ads

If you would like to place a Classified Ad for your business or other commercial purposes, please click here:

The George-Anne offers FREE Classifieds to all Georgia Southern students, faculty and staff for NON-COMMERCIAL use ONLY. All advertisers must include:

NAME, P.O. BOX, PHONE NUMBER AND E-MAIL ADDRESS. ONLY SUBMISSIONS WITH A MAIL ADDRESS WILL BE CONSIDERED FOR FREE ADS.

All free ads must be 20 words or less. If you type more than 20 words, your ad may be rejected or edited.

The George-Anne reserves the right to refuse any classified ad.

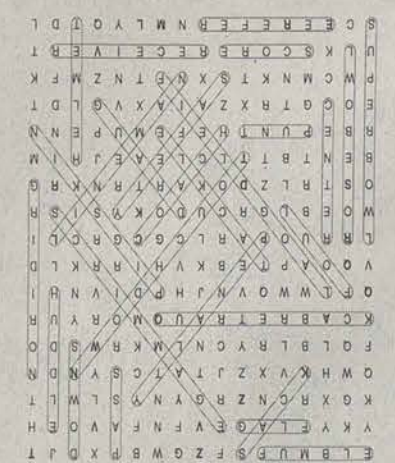
Free classified ads for students, faculty & staff (non-commercial Only): visit us online at...

www.gadaily.com/class_ad_sub.php

You must include your name, address and phone number and ".dot.edu" address for freebies. Go online and prepare your non-commercial message. No phone calls please, at this price we don't take dictation.

Cheats Corner

Create and solve your Sudoku puzzles for FREE.
Play more Sudoku and win prizes at: PRIZESUDOKU.COM
The Sudoku Source of Georgia State



Solutions



9 (L) 10. (A) 11. (B) 12. (I)
5 (G) 6. (D) 7. (C) 8. (E)
1. (H) 2. (F) 3. (J) 4. (K)

Solution Trivia Puzzle 29

THURSDAY, OCTOBER 19, 2006

Ready for redemption

Georgia Southern
EaglesDivision I-AA
Ranking: NR

Record: 3-3

2006 Results

at Central Conn. St.	L, 17-13
Coastal Carolina	W, 38-21
Chattanooga	L, 27-26
at West. Carolina	W, 24-14
North Dakota St.	L, 34-14
Elon	W, 28-21

Last week's
statistical leaders

Travis Clark, QB

27 of 39 for 375 yards, one TD, one INT. Broke Tracy Ham's record for most completions in a game.

Reggie McCutchen, WR

Seven receptions, 191 yards. Broke school record for most receiving yards in a game.

Jayson Foster, WR

Nine receptions, 84 yards, one TD. Tied school record for most receptions in a game.

SoCon Standings

	W	L	PCT
Appalachian St. (6-1)	3	0	1.000
Furman (5-2)	3	0	1.000
Georgia Southern (3-3)	2	1	.667
Chattanooga (3-4)	2	2	.500
Elon (3-3)	1	2	.333
Wofford (2-4)	1	2	.333
The Citadel (1-5)	1	2	.333
Western Carolina (2-4)	0	4	.000



Wide receiver Reggie McCutchen and free safety Rico Zackery enter Paulson Stadium on Eagle Walk. The Eagles will play No. 1 Appalachian State in their homecoming game Saturday.

Eagles look to avenge
last year's road lossBy Eric Robinson
Managing editor of operations

It was a game most of the current Eagles roster wants to forget. It was a 24-7 loss in Boone last year to the eventual national champs in which Georgia Southern had 276 yards of total offense and gave up 457. Mountaineer running back Kevin Richardson totaled 208 yards on 22 carries.

"We were playing well last year, rolling through the season and we came into that game and they it handed to us. It was a bad loss for us," said senior center Lance Wayne.

The Eagles have waited a year for their rematch.

Though GSU is the statistical underdog against the number-one ranked Mountaineers, they are coming off a hard-fought victory over a much-improved Elon team. Two offensive records were broken and one was tied in the 28-21 victory.

"I thought it was outstanding for our offense to play against a defense that was totally dedicated towards stopping our run, and then to be able to go to the passing game and produce big plays in that area," said Head Coach Brian VanGorder. "I've said that I want a balanced offense that could equally hurt you in the run game and in the passing game. We're moving closer to that."

But Appalachian is not Elon. In fact, Appalachian walloped the Phoenix in week five, 45-21.

The rivalry between the Eagles and the Mountaineers dates back to 1932. The series is even with ten wins per team. In that time, GSU has a record of 7-2 when playing ASU at home. The last time the Mountaineers defeated the Eagles in Paulson Stadium was in 1996.

"I think it's a great rivalry because both programs traditionally have been winners. Any time you have two good ball clubs that are competing for all those things, it makes for a great rivalry," said VanGorder.

GSU is hoping the same thing will happen as the last time they played a number one team—last year's 27-24 upset of Furman—a game many name as the greatest ever played in Paulson Stadium.

"The only thing that really sets it apart is that they're number one coming into our place," said senior linebacker Jason Earwood. "We're just going to line it up, kick it off and play as hard as we can."

Series Record: 10-10-1

Nov. 25, 1932	App St.	0
	GSU	33
Oct. 25, 1934	GSU	22
	App St.	13
Nov. 15, 1934	App St.	7
	GSU	6
Nov. 9, 1935	GSU	0
	App St.	0
Oct. 24, 1936	GSU	0
	App St.	27
Nov. 17, 1939	GSU	0
	App St.	59
Dec. 5, 1987	GSU	0
	App St.	19
Oct. 16, 1993	GSU	34
	App St.	28
Oct. 15, 1994	App St.	31
	GSU	34
Oct. 14, 1995	GSU	17
	App St.	27
Oct. 10, 1996	App St.	35
	GSU	28
Oct. 18, 1997	GSU	12
	App St.	24
Oct. 17, 1998	App St.	24
	GSU	37
Oct. 16, 1999	GSU	16
	App St.	17
Oct. 14, 2000	App St.	28
	GSU	34
Oct. 13, 2001	GSU	27
	App St.	18
Dec. 8, 2001	App St.	24
	GSU	38
Oct. 19, 2002	App St.	20
	GSU	36
Oct. 18, 2003	GSU	21
	App St.	28
Oct. 16, 2004	App St.	7
	GSU	54
Oct. 15, 2005	GSU	7
	App St.	24

Top-ranked Mountaineers hope to avoid upset

By Will Adams
Sports editor

The Mountaineers hope history doesn't repeat itself as they head into Saturday's game as the top ranked team in Division I-AA, something Furman did last season and came away as the loser.

Last season's 27-24 victory over the Paladins proves that on any given Saturday, the Southern Conference is one of the toughest in I-AA.

"In the Southern Conference, it's pretty easy to lump [Appalachian State], Georgia Southern and Furman together out of habit," said Mountaineers Head Coach Jerry Moore. "But you better be ready to go at them one Saturday at a time or somebody will slip up."

The Mountaineers offensive success is attributed to the play of running back Kevin Richardson and quarterback Trey Elder. "We've got good football players up front and in order to be successful, you have to have some flexibility," Moore said.

"You have to be able to run and throw the ball with authority," Moore said. "From day one, Kevin has had a very good work ethic and Trey has played in probably the two biggest games in school history and played well," Moore said.

Eagles Head Coach Brian VanGorder believes Saturday afternoon's contest against the Mountaineers will be the Eagles toughest test yet.

"They're a pretty similar team [to last year's]," VanGorder said. "They have a quarterback that's very similar to the quarterback they had last year. They've got a lot of guys returning from a year ago. They're just a solid, athletic and good football team."

"I think the number of athletes on both side of the ball [is impressive]. Their offense—it's hard to really try to single them and take one thing away," VanGorder said.

"They've got outstanding receivers, an outstanding running back and outstanding quarterback. They're solid on the offensive line. You've got to defend a lot of things," he said.

The Mountaineers look to improve upon their unblemished Southern Conference record on Saturday.

Appalachian State
MountaineersDivision I-AA
Ranking: 1

Record: 6-1

2006 Results

at NC State	L, 23-10
JMU	W, 21-10
Mars Hill	W, 41-0
at Gardner-Webb	W, 41-6
Elon	W, 45-21
at Chattanooga	W, 56-21
Wofford	W, 14-7

Statistical leaders

Passing

Armanti Edwards, Fr.

72 of 112 for 1038 yards and eight touchdowns.



Rushing

Kevin Richardson, Jr.

116 carries, 583 yards (5.0 avg.) and 10 touchdowns.



Defensive

Jeremy Wiggins, Jr.

Already has five interceptions on the season.

I-AA
PREVIEW

What to watch for:

Can Furman remain undefeated in the SoCon after hosting Chattanooga this weekend? Can Elon recover from a tough loss at GSU last week?

#5 at #17
Chattanooga 3-4, 2-2 Furman 5-2, 3-0

What: Jerome Felton and the Paladins host SoCon rival Chattanooga as the Paladins look to stay unbeaten in the Southern Conference.
Where: Paladin Stadium Greenville, SC
When: Saturday 2 p.m. CSS

at #17
Wofford 2-4, 1-2 Elon 3-3, 1-2

What: The Terriers travel to Elon to take on a Phoenix team that lost a tough road game against GSU last weekend.
Where: Rhodes Stadium Elon, NC
When: Saturday 2 p.m.

at #14
WCU 2-4, 0-4 Citadel 1-5, 1-2

What: The Catamounts travel to Charleston to take on the hapless Citadel Bulldogs. Western Carolina is looking for its first conference win.
Where: Johnson Hagood Stadium Charleston, SC
When: Saturday 2 p.m.

#14 at #5
N. Iowa 4-2, 2-0 YSU 6-1, 3-0

What: Northern Iowa travels to Youngstown State in a battle of nationally-ranked Gateway Conference rivals.
Where: Stambaugh Stadium, Youngstown OH
When: Saturday 4 p.m.

EDITOR'S
VIEWPOINTEric Robinson
Record: 17-7
PicksWill Adams
Record: 19-5
Picks

Ga. Tech over Clemson, 27-24
Texas over Nebraska, 32-23
Tenn. over Bama, 38-23
ND over UCLA, 28-17

Ga. Tech over Clemson, 35-21
Texas over Nebraska, 24-17
Tenn. over Bama, 28-17
ND over UCLA, 21-14

I-A
PREVIEW

What to watch for:

Who will retain momentum in the ACC between its two top competitors—Georgia Tech and Clemson?

#13 at #12
Ga. Tech 5-1, 3-0 Clemson 6-1, 3-1

What: The Georgia Tech Yellow Jackets are fresh off a bye week and are looking to take advantage of Clemson in an ACC showdown.
Where: Memorial Stadium Greenville, SC
When: Saturday 7:45 p.m. ESPN

#5 at #17
Texas 6-1, 3-0 Nebraska 6-1, 3-0

What: The Texas Longhorns travel to Lincoln to take on the Bill Callahan's Cornhuskers in a Big 10 showdown.
Where: Memorial Stadium Lincoln, NE
When: Saturday 12 p.m. ABC

at #7
Alabama 5-2, 2-2 Tennessee 5-1, 1-1

What: A battle of SEC powerhouses resumes a bitter old rivalry Saturday when the Volunteers host the Alabama Crimson Tide.
Where: Neyland Stadium Knoxville, TN
When: Saturday 3:30 p.m. CBS

at #10
UCLA 4-2, 2-2 Notre Dame 5-1, 3-1

What: UCLA hopes to improve their record against Brady Quinn and the No. 10 Fighting Irish of Notre Dame.

The needle and the damage done

An inside look at the use of steroids and performance enhancing drugs in college athletics

By Will Adams
Sports editor

As Major League Baseball and other professional sports leagues have come under increasing media scrutiny for their testing policies of steroids and other performance enhancing drugs, the NCAA has stayed mostly quiet, until now.

This past summer, the NCAA revamped their drug-testing program and added new rules and regulations that rivals the changes made in the testing policies of most professional sports organizations.

Student athletes, especially those participating in baseball and football, will face much tougher testing, making it virtually impossible to hide or cover up efforts of juicing or using any other banned drug or substance.

"I think like 10-15 percent [of the guys I played against were on steroids or used performance enhancers] because it's so hard to beat the tests, it's just not worth it."

Furman Football Player

Competition has significantly improved every season with players are constantly looking for an edge. For some, that means using steroids and other performance enhancing drugs to win at any cost. With infinite monetary incentives like scholarships, the chance at going pro or even personal satisfaction, student athletes will sometimes do whatever it takes to be the best, putting themselves, the team and their school in jeopardy.

According to the Director of NCAA Compliance and Student Athletic Services Keith Roughton, every football team in Division I is tested at least once during the regular season and then once in the first few rounds of the playoffs and bowl games.

"That testing is designed to look for steroids, performance enhancers [and] anything that is on the banned substance list that the NCAA puts out," said Roughton. Even Georgia Southern has their own drug testing program.

"We've had a drug testing policy since 1986 or 1987 and we've tweaked it over the years," said Roughton. "We do a 10 percent random sample of our athletic population

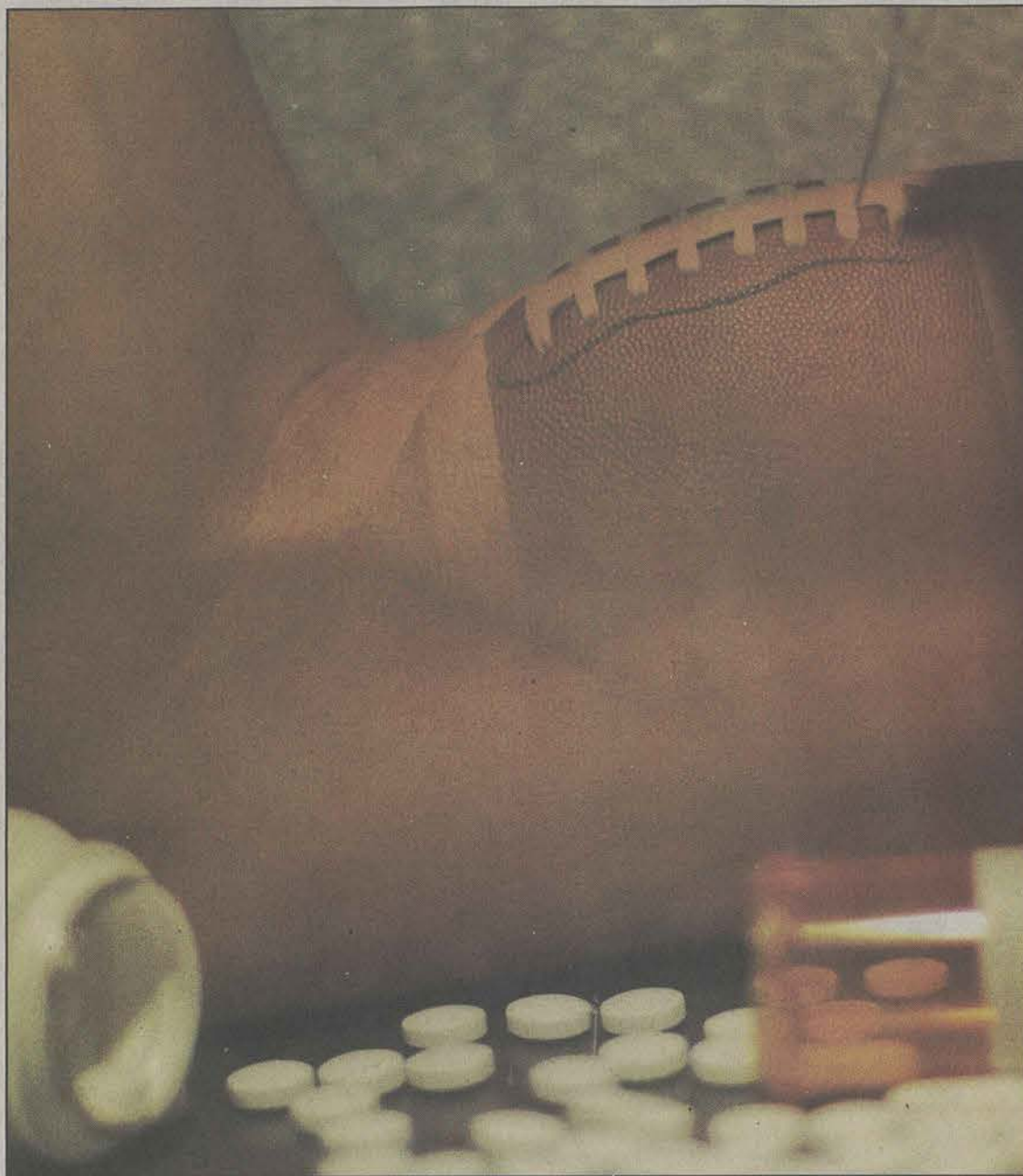


Photo Illustration by Jamie Tuten and Grayson Hoffman

three times a semester."

The results from a five-year testing report released by the NCAA this past July revealed that the number of students that tested positive was only 49 during the 2004-2005 academic year, compared to 90 during the 1999-2000 season.

Despite the decrease in positive tests of late, one former GSU football player who was tested before believes that "steroids are an issue" and thinks that "athletes will

use them."

"I was tested like three or four times," said a Furman football player who requested to remain anonymous. "I think like 10-15 percent [of the guys I played against were on steroids or used performance enhancers] because it's so hard to beat the tests, it's just not worth it," he said.

"[It's] pretty hard because you don't find out when you're getting tested until the day before," said an Appalachian State football player who also wished to remain

anonymous. "I've heard of guys that took some type of performance enhancers or steroids and now they're no longer playing," he said. "There is no point of taking enhancers because it just puts you and the team at risk," he said.

Georgia Southern Athletics Director Sam Baker believes that the new testing policy is working and has helped control the number of college athletes who test positive. "I think that the drug testing that college athletics does and the NCAA program [works]. I don't think steroids are as big of a factor as they are in professional sports because there's a greater degree of control of what's going on," Baker said.

"Performance enhancing drugs do not have a place in college athletics."

Dr. Bruce Grube
GSU president

"The penalty, if you test positive, you are suspended for one year, 365 days from the test date," said Roughton of the consequences of getting caught using a drug on the banned substance list.

With the new regulations enacted this season, any student athlete who tests positive a second time will lose their regular-season and postseason eligibility in all sports.

Despite all of the controversy, steroids and performance enhancers are only a few of the nearly one hundred classified drugs that are found on the banned substance list. Some administrators and student athletes believe that street drugs and over-the-counter energy supplements that are frequently used by student athletes and college kids when cramming for exams, can cause a positive test result.

"The biggest problem facing all college athletics isn't necessarily steroid use or growth enhancing supplements, but I think it's the energy pills, caffeine pills and those types of things that you can buy over the counter and there's very little information about it," Roughton said. "That's become a big concern with the NCAA and even Red Bull is a banned substance," he said. "It's really the caffeine level they're looking at, with the energy drinks and that's something they're doing more education on."

"They should get there through hard work, learning techniques, strength-training and good diet. Performance enhancing drugs do not have a place in college athletics," said Grube.

Steroid effects

The banned steroid nandrolone, a synthetic male sex hormone, can boost performance but can have serious side effects

HOW STEROIDS WORK:

Steroids like nandrolone boost bulk, muscle growth and physical strength

- 1 Blood carries steroid to muscle
- 2 Steroid attaches to muscle cell's wall, is drawn in by receptor
- 3 Steroid enters cell nucleus, interacts with chromosomes
- 4 Nucleus sends out information to increase protein production, which strengthens muscle

SIDE EFFECTS:


- Aggressiveness
- Hair loss
- Acne
- Voice change
- Jaundice
- Liver toxicity
- Impotence in men
- Weight gain
- High blood pressure, increased cholesterol level in blood
- Blood clots

The body itself produces only a limited amount of nandrolone

SOURCES: Bantam Medical Dictionary, KRT archive, news reports Research/JUTTA SCHEIBE, Graphic/MORTEN LYHNE © 2000 KRT

How sports control drug use

U.S. professional leagues' rules range from the NFL's stringent controls to the limited testing of NHL players; amateur sports follow the tighter international rules.

	Professional sports		Amateur sports				
	 National Football League	 National Basketball Association	 Pro boxing (Nevada rules shows; most states do not test)	 Major League Baseball (rules start in 2006)	 National Hockey League	 Olympic sports	 College sports
Testing for	Steroids, illicit drugs, ephedra, other substances	Steroids, amphetamines, cocaine, marijuana, LSD, opiates	Steroids, diuretics, illicit drugs	About 24 steroids and related substances, amphetamines	Unspecified "performance-enhancing" drugs; list of drugs to be agreed on by * NHL and players' union	Hundreds of steroids, stimulants, growth hormones, blood-doping drugs, chemicals that mask signs of drugs	Stimulants, steroids, diuretics, illicit drugs, growth hormones, chemicals that mask signs of drugs
How done	Year-round, random tests each week	First-year players can be tested four times a season, veterans once during training camp; testing at any time for "reasonable cause"	Random tests in non-title fights; before and after title fights	Random tests by independent organization during off-season, spring training and regular season; if test is positive, second test five to seven days later	No more than two tests a year; no minimum number; tests given only during training camp and regular season	Athletes tested randomly at events and between competitions	Year-round, random tests for all sports; each school tested at least once a year
Penalties	Four-game suspension for first positive test; one-year suspension after three positive tests	10-game suspension on first positive test; 25 games for second; one year for third; lifetime ban for fourth	Commission decides on each case; may issue warning, impose fine or suspension	Steroids: 50-game suspension on first positive test; 100 games on second; lifetime ban on third* Amphetamines: 25-game suspension on second positive test; 60 days on third**	20-game suspension on first positive test; 60 games for second; lifetime ban for third*	Minimum two-year ban for steroid violation; lifelong ban in extreme case	Athletes who test positive lose a year of eligibility

*Player can appeal for reinstatement two years after being banned
**Commissioner can impose lifetime ban after fourth positive test; arbitrator can review that ban
Source: National Collegiate Athletic Association, NFL, NFL-A, Major League Baseball, Nevada State Athletic Commission, AP
Graphic: Helen Lee McCombs, Tim Goheen

*Player can apply for reinstatement two years after being banned. **Commissioner can impose lifetime ban after fourth positive test; arbitrator can review that ban. Source: National Collegiate Athletic Association, U.S. Anti-Doping Agency, NFL, NHL, NBA, Major League Baseball, Nevada State Athletic Commission, AP. Graphic: Helen Lee McComas, Tim Gohsen © 2005 KRT



All You Can Eat - \$4.99

We Now Deliver!!

• Come check out our Daily Lunch Specials •

912-764-7499 • 812 Hwy 80 East (Next to Lowes) • Mon-Sat 11:00am-10pm • Sun 11:00-9pm

All Day!

Mon - 35¢ Wings
Tues - 10% off
w/ Eagle ID
Wed - Large 1 Topping
\$6.00
Thurs - 2 Medium
1 Topping \$10.00

american music series

singer/songwriter



tony
arata



chris mitchell



gerald
smith



jill & justin samples



mary hannah riggins

artists:
tony arata • gerald smith • chris mitchell • jellyroll
johnson • mary hannah riggins • jill & justin samples

saturday, oct. 21st
@ 7 pm

\$15 general admission
(GSU students \$10 with ID card)

emma kelly theater

tickets on sale downtown now
at pladd dot music • averitt center box office
call 912.764.3230

Sponsors: Lovett Bennett, Jr. Attorney at Law • Braswell Foods • French Quarter
Cafe • Midtown Coffeehouse • Student Media @ GSU. Produced by Pladd Dot Music

Alonso near triumph

In the last race of his career, the Brazilian Grand Prix in Interlagos, Sao Paulo, Michael Schumacher has little chance of regaining the World Championship. The race will be held Oct. 22.

Fernando Alonso
(Spain)
Renault, ruling world champion



126 pts.

Current driver score

116 pts.



Michael Schumacher
(Germany)
Ferrari, former world champion

Renault R26

Length: 15.75 ft. (4.8 m)

Width: 5.91 ft. (1.8 m)

Height: 3.12 ft. (0.95 m)

Total weight: 1,331 lbs. (605 kg)

Engine: 90°, V8

Displacement: 2,400 cc

Weight: 209 lbs. (95 kg)



Ferrari 248 F1

Length: 14.76 ft. (4.5 m)

Width: 5.87 ft. (1.79 m)

Height: 3.15 ft. (0.96 m)

Total weight: 1,320 lbs. (600 kg)

Engine: 90°, V8

Displacement: 2,398 cc

Weight: 209 lbs. (95 kg)



Season's GP results

	Bahrain	Malaysia*	Europe	Spain	Canada	U.S.	Hungary*	Turkey	Italy*	Suzuka*
1st										
2nd										
3rd										
4th										
5th										
6th										
7th										
8th										

*One of the two drivers dropped out
Source: FIA, Ferrari, Renault, MCT Photo Service Graphic: Jutta Scheibe, Morten Lyhne

© 2006 MCT

There's more to the Schumacher story

McClatchy Newspapers

A retired Formula One racer who has adopted Wisconsin as his home, David Hobbs takes an interest in the different way two storied sports franchises have handled their aging superstars.

The Green Bay Packers awaited Brett Favre's decision on retirement last off-season patiently, almost apologetically. Now Ferrari apparently has given Michael Schumacher a push.

"But I don't think he's gone off quite like Brett has yet," Hobbs said.

Schumacher announced after winning the Italian Grand Prix on Sunday that he would retire from driving at the end of this season. The 37-year-old German holds all premier international series' important records, including 90 victories and seven titles, and is in a position to extend them.

Officially, Schumacher's decision came when it did so that he could help the team prepare for next year.

By retiring, he will not stand in the way of Felipe Massa's development by forcing Massa back into a test role in support of Schumacher and expected newcomer Kimi Raikkonen.

"I just somehow doubt that Schumacher has got the milk of

human kindness running through his veins to that extent where he's that concerned about Felipe Massa's career," said Hobbs, analyst for Speed Channel F1 telecasts and a Milwaukee-area car dealer.

"I suspect there's been a lot of back-door politicking and machinations that have not particularly gone the way Michael Schumacher wanted them.

"The slant I put on it: Do you want a 25-year-old driver who's going to be 25 seconds at the end behind the leaders or do you want a 37-year-old driver who is the leader? I just think that they'll miss Michael when he goes."

Schumacher, who helped resurrect a struggling Ferrari when he joined the team in 1996, is a strong motivator as well as the most gifted and technically skilled driver on the circuit.

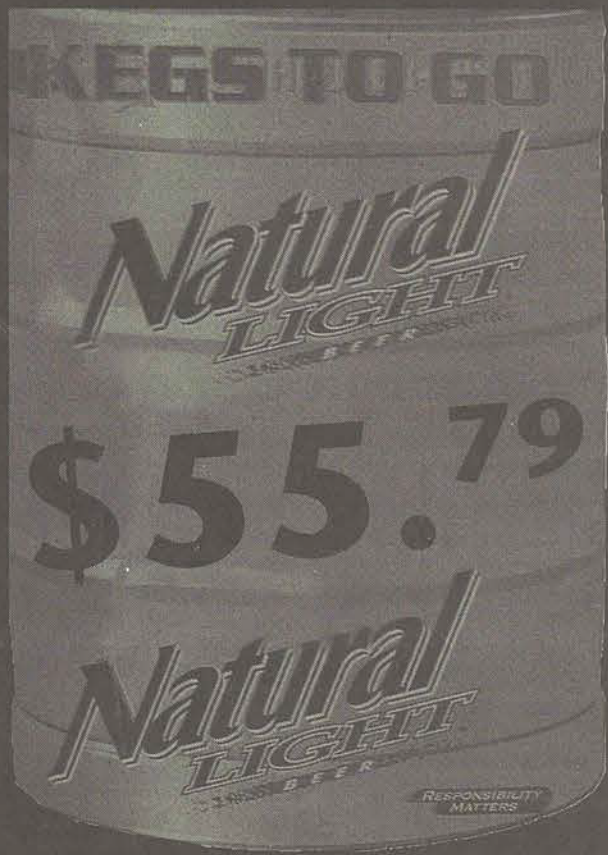
An argument can be made that Schumacher's greatness does not compare with that of Juan Manuel Fangio or Jim Clark or Ayrton Senna — who compiled more impressive per-start statistics in shorter careers — but his totals aren't likely ever to be matched.

Schumacher also has been a compelling personality, and his absence in Formula One will be noticed. But at least he will go out at or near his peak, a luxury not every top athlete enjoys.

Wendy's

99¢ Crispy Chicken Sandwich

KEGS TO GO AT BI-LO



Lowest Prices in Town!

DEPOSIT INCLUDES

KEG DEPOSIT - \$30.00

TAP DEPOSIT - \$40.00

BARREL - \$12.00

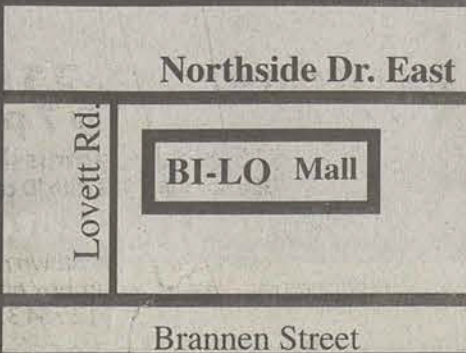
\$82.00

DEPOSIT IS REFUNDABLE
WHEN RETURNED

GO EAGLES!!!

Natural Light - \$55.79
Pabst Blue Ribbon - \$50.49
Killian's Red - \$81.99
Budweiser - \$70.59
Bud Light - \$70.59
Michelob - \$70.59
Miller Light - \$78.99

Plus Deposit!



Your EAGLEXPRESS Card And the Following Accepted at BI-LO



34 Statesboro Mall
Northside Dr. East
Statesboro, GA
489-1465

VIDEO GAME REVIEW

Valkyrie Profile 2 true to the original

By Drew Sturdivant
Staff writer

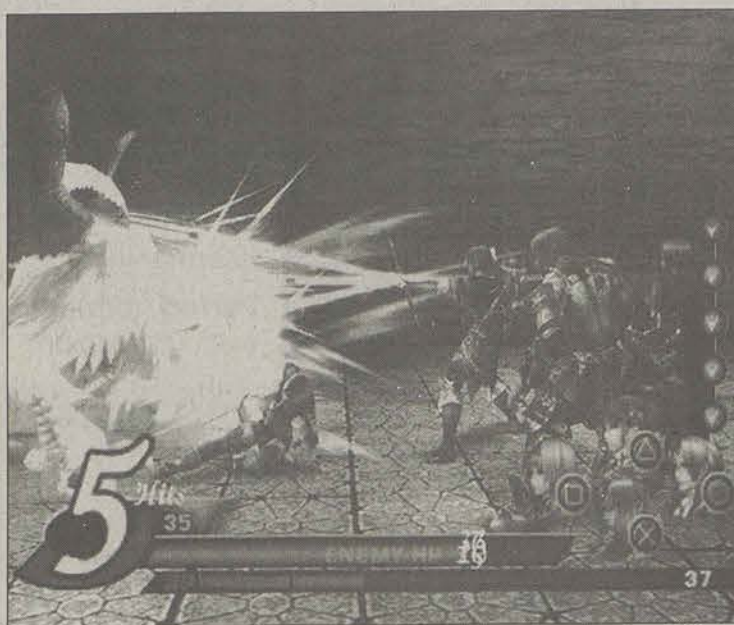
In fairness, exacting revenge on a god seems like it ought to be pretty difficult. Valkyrie Profile 2 is the story of Silmeria, a valkyrie's soul trapped in the body of the princess of Dipan, Alicia. To onlookers, it appears as if Alicia has a split personality, or in other words, is crazy. So, without a friend in the world, Alicia sets off to aid Silmeria in her quest to get back at Odin, the lord of the gods, for exiling her.

Square-Enix left nothing behind in the graphics department, as the in-game graphics rival the beauty of the cut-scenes. The only downside that some players may encounter is the game's trueness to the original in that it is a side-scrolling RPG. In towns and dungeons, Alicia follows a set horizontal path rather than a free-roaming

environment. But do not despair. The backgrounds are completely 3D and are very intricate.

Valkyrie Profile 2 utilizes a new and exciting combat engine known as the Advanced Technical Combination Battle System, or ATC for short. This unique system allows four characters to attack simultaneously using the PlayStation 2 controller's four primary buttons. It results in massive combination strikes.

Timing is critical as one character might launch an enemy into the air while another attacks with a ground sweeping move, missing its target. Ultimately, combos lead to building your special attack meter to 100. This triggers a special attack (based on what weapon you are currently equipped with, you may or may not receive a special move) hitting your opponent with huge damage. Touching an enemy takes you to a 3D, free-range battlefield



Special Photo

Beautiful graphics and a great plot make Valkyrie Profile 2 a worthy game.

with enemies scattered about. While there might be four monsters in one battle, one of them will always be declared the leader. Defeating this enemy is the key to winning the fight. Many tactical features have been introduced to the battleground allowing you "divide and conquer" by separating your party into two teams to "pincer strike" your opponent. Another cool attribute is the dashing ability. Using AP (Attack Points) you can "dash" across the field before the enemy has a chance to strike. Learning these techniques is crucial to surviving encounters.

Outside of battle, Alicia can shoot bolts of holy power known as photons. These photons are essential to solving puzzles and avoiding enemies, as shooting one at a foe will temporarily encase it in a chunk of translucent crystal. Firing a photon at an enemy

that is already stunned allows Alicia to do a teleportation move to reach places impossible with only a jump.

Valkyrie Profile 2 is different from the original, so those who loved the first game may have mixed feelings about this sequel. At the same time, even hardcore fans of similar RPG's, for whom this game seems intended, will likely find some aspects of the experience to be a bit too much. But the journey is still a rewarding one overall, requiring a fair amount of patience but delivering plenty of instant gratification along the way, thanks to a great combat system and action-packed dungeon levels. If you're looking for more from your next RPG than just another save-the-world storyline and really want to sink your teeth into some complex game-play, this one's for you.

MUSIC REVIEW

The Decemberists hit the big leagues

By Edgar Fernandez
Staff writer

"The Crane Wife" is The Decemberists' newest album under their new label.

The album is slightly different from The Decemberists' previous material. Unlike "Picaresque," "The Crane Wife" does not have as many whimsical, melodious and funny beats, instead maintaining a rather mellow, calm and unusual sound throughout most of the album. The entire album works as a story inspired by Japanese folklore. As such, it is not odd to find hints of Japanese influence hidden beneath the deep layers of the music.

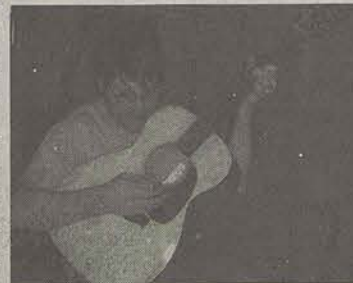
The album starts with "The Crane Wife 3," which sets a pretty high standard for the rest of the songs to meet. Gladly most of them do. Another great song is "Yankee Bayonet (I Will Be Home Then)," which is my favorite, mainly because

of the powerful voices of both singers. Sadly there are not many duets in the album. "O Valencia" and "Summersong" are executed marvelously. I only wished "O Valencia" had more variety.

Last but not most certainly not least, "The Island" is a masterpiece by itself. Some of the songs were not on par with the rest of the album. "The

Perfect Crime 2" and "When The War Came" were a bit too repetitive. Also, I just could not enjoy the sound in "Shankill Butchers."

Is interesting to see how this band has managed to create such a wonderful experience from the simplicity in the album, by which I mean the lack of elaborate sounds and technicalities. They are just people that make it obvious they are playing from the heart. In the end, an album this well recorded is a rare occurrence, one that nobody should miss.



Special Photo

Colin Meloy maintains his mellow sound in the new album.

'The Crane Wife'
The Decemberists
Label: Capitol

samgoody.com - \$18.98
barnesandnoble.com - \$13.28

Grade: 5 of 5 ★★★★★

Wendy's **99¢**
Crispy Chicken Sandwich

There is an Option!

One Bedroom Townhomes (650 sq. ft.)



One Level Unit

Two Bedroom Townhomes (1300 sq. ft.)



First

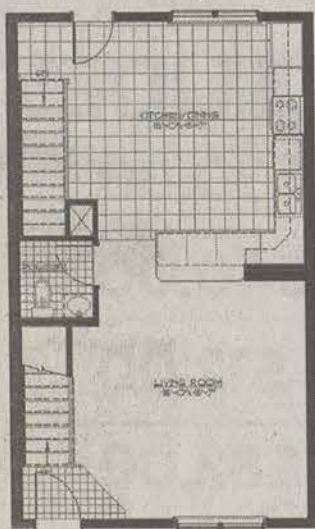


Second

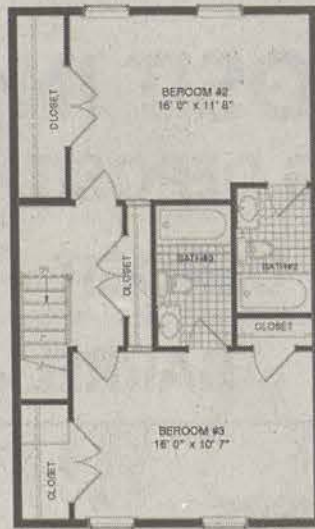
Three Bedroom Townhomes (2,000 sq. ft.)



Lower

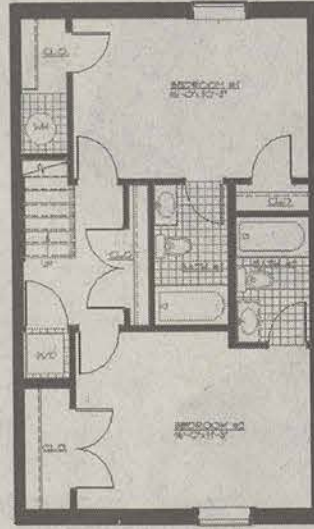


Entry

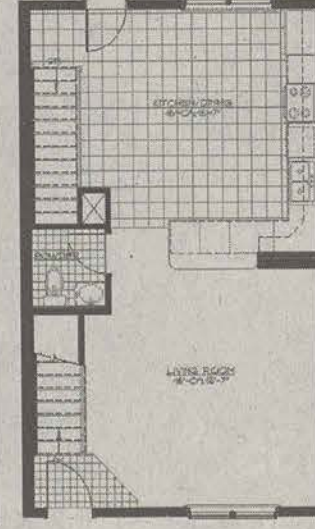


Third

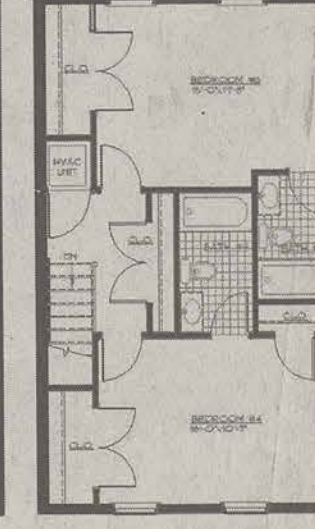
Four Bedroom Townhomes (2,000 sq. ft.)



Lower



Entry



Third

Amenities

- Private bath
- Extra guest bath
- Walk-in closet
- Washer/Dryer

- Free Internet
- Free Cable
- Clubhouse

- Pool
- Fitness Room
- Game Room

- Units available furnished with Ashley and Basset furniture

Copper Beech

TOWNHOMES



(912) 681-8307 FAX: (912) 871-3721

Located behind Sonny's on the Hwy. 67 By-pass

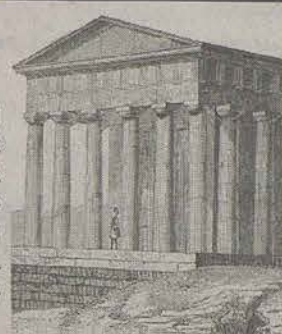
Offices Hours - 9am-6pm, Monday - Friday

www.CopperBeechTownhomes.com

OUR PICK

Greek Festival

Starting today, Savannah will be hosting its annual Greek Festival, featuring Greek dancers, food and music. The event lasts until Saturday and lasts from 11 a.m. until 9 p.m. each day and is located at 14 W. Anderson St.



CONCERT CALENDAR

In the 'Boro

French Quarter Cafe

The Sophisticates
Thur., Oct. 19

Dead Confederate
Fri., Oct. 20

Last Waltz Ensemble
Sat., Oct. 21

Dingus Magees

Escape Vehicle
Thur., Oct. 19

Brian Clese
Fri., Oct. 20

Dos Primos

Elosha
Fri., Oct. 20

Zach Deputy
Sat., Oct. 14

Rum Runners

Heath Deloach
Thur., Oct. 19

Scott Little
Fri., Oct. 20

Hazard County
Sat., Oct. 21

Retrievers

Velcro Pygmies
Thur., Oct. 19

Brian Clark
Fri., Oct. 20

Kermit and Bob
Sat., Oct. 21

Gnat's Landing

Down Right Brothers
Fri., Oct. 20

Silver Creek Saloon

Johnny Little
Fri., Oct. 20
Sat., Oct. 21

Atlanta

The Tabernacle

Nick Lachey
Fri., Oct. 20

Paul Stanley
Sat., Oct. 21

WHAT IS NOW PLAYING

Carmike Cinema 12
(912) 489-4492

The Marine

(5:30), 7:45, 10:00

The Grudge 2

(4:15), 7:10, 9:40

Man of the Year

(4:30), 7:10, 9:45

The Departed

(4:00), 7:00, 10:05

Employee of the Month

(4:15), 7:00, 9:30

Texas Chainsaw Massacre: The Beginning

(5:25), (5:50), 7:30, 7:55,

9:35, 10:00

The Guardian

(4:00), 7:00, 10:00

Open Season

(5:10), 7:20, 9:25

Jackass: Number Two

(5:25), 7:30, 9:35

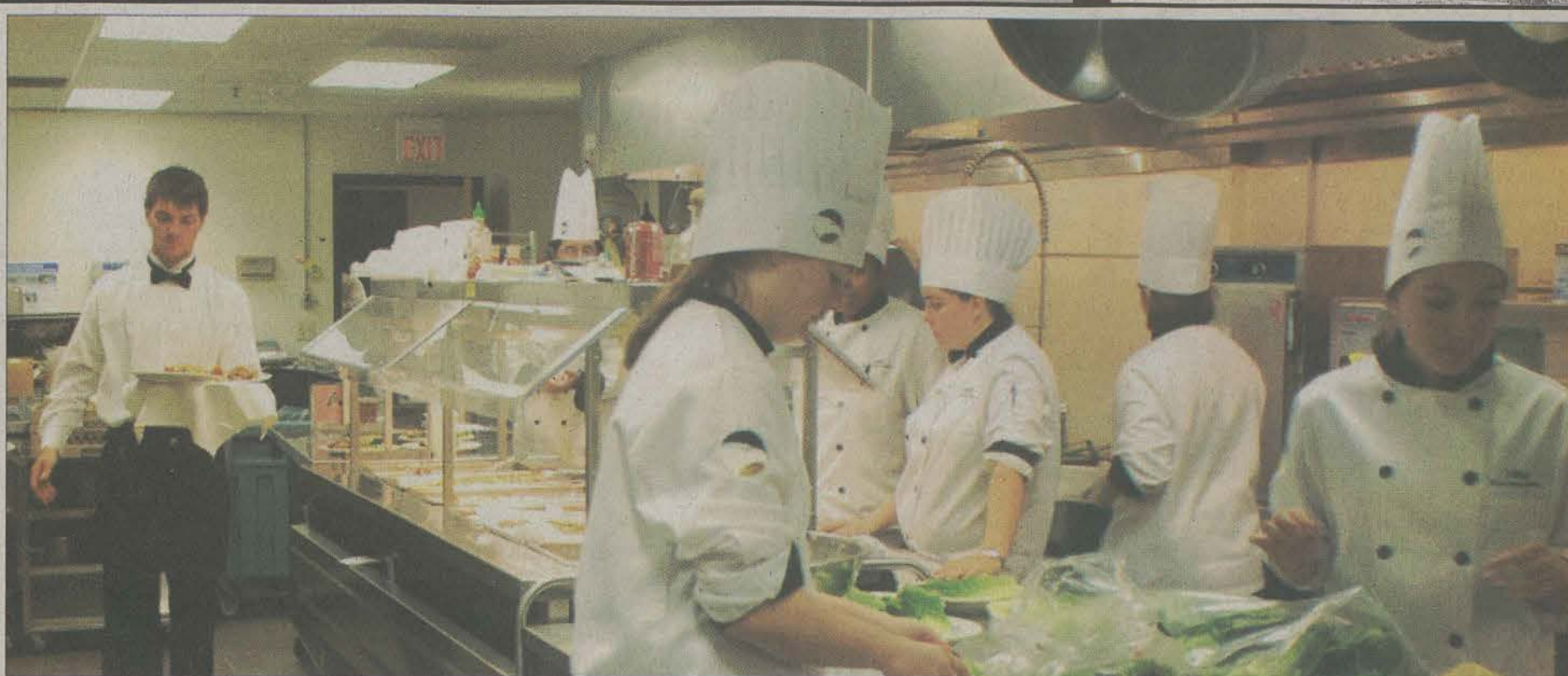
Love's Abiding Joy

(5:20), 7:30, 9:40

The Illusionist

(4:20), 7:15, 9:45

Parenthesis denotes matinee



Students from Hotel and Restaurant Management classes prepare food for other students to serve during last week's Friday Lunch Series.

Photos by Jared Siri/STAFF

Students test culinary skills

Friday lunch series gives students experience serving and cooking high class luncheons

By Alena Parker

Staff writer

Hotel and Restaurant Management students prepare restaurant-style food with a continental theme each Friday as part of the Friday Lunch Series.

Lunches cost \$9 and usually draw about 30-80 people, including the public and GSU Faculty and Staff. Orders must be in by Monday of the week of the lunch so enough food is prepared without wasting, which means the crews can not take walk-in orders. However, take-out is available.

The HRM students preparing the meal work from 7 a.m. to 2 p.m. Seating for patrons start at 11:30 and the lunch is usually over around 1 p.m.

Those attending can expect to be served by professionally dressed students. A soup or salad is served for the first course. The second course includes an entrée, a starch and vegetables. The third course is a dessert. Meals are complete with a beverage and bread. All the food is made from scratch with fresh ingredients.

Chef Stephen Minton instructs the required course for HRM majors and leads the students in the preparation. At the beginning of the semester, he prepares the first three Friday lunches

and the student "chefs-in-training" take over from there.

"Students research a cuisine and develop a menu," he said.

The native recipes require a lot of research from the students and Chef Minton has a library of 400 cookbooks that students can thumb through. Only tried and true recipes are prepared for the luncheon.

"It's good food," said Minton. "Students do a good job with it."

Lisa Smith, a librarian at the Henderson Library, has enjoyed going to lunches. She especially liked the food the HRM students recently made for the grand opening of the library's new addition.

"I loved it," she said. "It was very good food that was well presented and served."

Chef Minton explained that the money made from the lunches goes into buying the food for the next lunch. "We actually run a business," he said.

Chef Minton is a certified chef

with 30 years experience, including 11 years of running a restaurant in North Carolina. His specialties

include German, French, Southern and some Caribbean cuisine.

College students on a tight, or nonexistent, budget usually do not have access to the food that the department will be serving at the lunch series. Some students may not have ever tasted some of the entrees or vegetables, like lamb, duck, asparagus or brussels sprouts.

Minton explained that students may be apprehensive about trying the new foods. He calls it "childhood prejudices." But only by trying new food will students know if they like

it or not.

"Approach the food with an open mind," he said.

Last lunch had a southwestern theme, serving lemon chicken, barbecued spareribs, sweet-and-sour squash, cowboy soda biscuits and more.

There will not be a Friday lunch next week, as part of the department will be attending a conference. Orders can be taken for the following Friday's lunch.

Chef Minton said the sit down lunch will be a learning experience for students who may find themselves on lunch or dinner interviews with a prospective employer.

"You don't want to embarrass yourself by not knowing the food or what to eat," he said.

Next semester the aspiring chefs of HRM will put on a Thursday night dinner series, in addition to Friday lunches. The dinners will be "a la carte," meaning 4 courses.

In addition to catering for the library, the Hotel and Restaurant

Management students help other departments and organizations on campus. They recently put on the dessert buffet for approximately 850 people for Family Weekend last Friday.

Chef Minton said that the Friday Lunch Series is a worthwhile investment. Students will get quality, upscale food for nearly half the price normal restaurants would charge.

"They will walk out full," said Minton.

It is too late to reserve tomorrow's African cuisine, but the next lunch will be November 3, with a French theme to coincide with GSU French Week.

The meal is \$9 and reservations can be made by contacting Dr. Larry Stalcup at 912-681-5975. Menus for upcoming lunches can be obtained from Dr. Stalcup by emailing him at stalcup1@georgiasouthern.edu.

Friday Lunch Series

Friday, Oct. 20 at noon
African cuisine

Friday, Nov. 3 at noon
French cuisine

Friday, Nov. 10 at noon
TBA

Price: \$9
Register one week in advance
Take-out service available

Local talent returns to Statesboro

By Anthony Fierstos

Copy editor

The best of the best of local musicians are performing this Saturday, Oct. 21 at the Emma Kelly Theatre in downtown Statesboro. The American Music Series, featuring Tony Arata, Gerald Smith, Chris Mitchell and others, is an opportunity to view some of the most popular and well-known homegrown musical talents.

Chris Mitchell, who has played the southeast circuit for years, thought up and planned the event after attending a similar locals show in Nashville. If it could work there, he thought, why not here in Statesboro?

"There are a lot of great musicians in this area. It's nice to be able to celebrate that talent all on one stage in the same night," Mitchell said. "Statesboro has the talent, history, and now the resources to hold an event like this. Why spend big bucks on concert tickets for an out of town show when Statesboro has equal talent in its own backyard?"

Tony Arata, who studied at Georgia

Southern and is from Savannah, is an incredible songwriter with soulful guitarabilities. He has penned number one hits for Garth Brooks, Patty Loveless and Clay Walker. Other national stars who have recorded his tunes include Reba McEntire, Emmylou Harris, Bonnie Raitt and Trisha Yearwood.

Before becoming an internationally known singer-songwriter, Arata played here on the GSC campus. "I try to be humorous. I've written very few tearjerkers. My tunes are very cut-and-dry with no imagery," he said in an interview printed in the George-Anne in 1979.

Garth Brooks has recorded seven Arata songs, including "The Dance," which won song of the year at The Academy of Country Music and received both

a Country Music Association and Grammy nomination.

"One of my favorite songwriters has to be Tony Arata. He's a cat who doesn't care about appearance. He doesn't care about money. He cares about his children, his wife, and his music. That's neat," said Brooks.

Other local guests will also be performing. Gerald Smith, from here in Statesboro, graduated from GSU and has performed with Waylon Jennings and Roy Clark. Mary Hannah Riggins is also from South Georgia. She is currently studying music at LaGrange College and working on her first CD with Mitchell acting as producer. Justin

and Jill Samples, both of whom studied at GSU, are working in the studio with plans for an album in the future.

For years, Statesboro has lacked a proper venue for such a performance. Luckily, The Averitt Center for the Arts fits the bill perfectly.

"The Averitt Center for the Arts is pleased and honored to be the venue for the American Music Series," said Tim Chapman, executive director of the venue.

The American Music Series "Singer Songwriter" will take place this Saturday, Oct. 21 at 7 p.m. Tickets are \$15 and are on sale at Pladd Dot Music and the Averitt Center Box Office. For more information, contact Pladd Dot Music at 912-764-3230.



Special photo

Singer/songwriter to the stars Tony Arata comes to Statesboro.



Special photo

THE BOTTOM LINE

By NICK ABNEY

Seafood and more

The Great Ogeechee Seafood Festival will be held Fri., Oct. 20 until Sun., Oct. 22. The event will be located at the J.F. Gregory Park. The park is located on Highway 144 in Richmond Hill, Ga. This year, they

expect over 35,000 people to attend.

Seafood is not the only thing that will be featured at the event. There will also be an open vehicle car show. Trophies for the event will include the top 50 cars, the longest drive and hard luck story. The car

show will be held on Sat., Oct. 21.

But that's not all. There will also be arts and crafts, a carnival, live music acts and food vendors. All this comes together to make for a great weekend of activities for anybody looking for a good time.

Good food, nice cars and even a carnival mark the Ogeechee Seafood Festival starting this Friday.



Sapelo brings West African culture to Georgia



Special Photo

Singers perform during the Sapelo island cultural day, held each October. The festival celebrates songs, stories, dances and food of the culture.

By Jerriod Grizzle
Staff writer

Want a change for the weekend? How about experiencing a culture other than your own? Listen and experience the culture and language of a Creole mix of English and West African with the kick-off of Sapelo Island's twelfth annual Cultural Day Festival, Saturday Oct. 21, 2006.

Cultural Day is an annual festival celebrating the Gullah/Geechee heritage of the island.

Events at the festival include old-fashioned gospel music, storytelling, African dance, cultural demonstrations, food, arts and crafts and more which developed on the Sea Islands among slaves from West Africa between 1750 through 1865.

"For black folk, a trip to Sapelo is like going home, because it's the closest connection we have," said Michele Nicole Johnson, program

officer for the Sapelo Island Cultural and Revitalization Society (SICARS) as quoted in an article in Creative Loafing.

Austin Cowert, a junior at Georgia Tech said that his experience at the festival was unlike anything else.

"It was a great time, the laughing the singing. It was like going back in time. I honestly feel that it is an important tradition to keep up, to know your heritage, I mean, that's all you got."

Sapelo Island is the fourth largest Georgia barrier island and is 16,000 acres. It has an unspoiled wealth of natural history in its marshes, maritime forests, beaches and dune areas.

The Gullah culture started on Sapelo Island with the arrival of African slaves.

Different regions, languages and culture from all around Africa were

formed into one culture. Gullah traditions include such things as basket weaving, net making and religion.

The island was settled by Gule Indians around 2000 BC and occupied by the British in 1757. It was finally bought by Thomas Spaulding, who saw the island's potential and introduced sugar cane, rice, cotton and a revival of tabby architecture, which he used to build his house.

It was finally bought by R.J. Reynolds, who owned the island until his death in 1964.

The island currently houses four main components: the University of Georgia's Marine Institute, the Sapelo Island National Estuarine Research Reserve, the R.J. Reynolds Wildlife Refuge and the Hog Hammock community.

Sapelo Island is located eight miles northeast of Darien, Ga. off of Hwy. 99.

When:
Oct. 21, 2006

Where:
Sapelo Island Georgia

Cost:
\$20 per person, a tour of the island can be taken for \$10 more. The cost includes transportation by ferry to and from the island. The ferry departs from Meridian, Ga. Once there, guests will be taken by bus to the festival site in the Historic Hog Hammock Community.

How to buy tickets:
To order tickets call Sapelo Island at 912-485-2197. Tickets must be purchased in advance. No tickets will be sold after 5 p.m. on Oct. 20.

Other Information:
www.sapeloislandga.org/culturaldayfaq.html

OPENING FILMS

Flags of Our Fathers Rated R

"Flags of Our Fathers" is set during the battle of Iwo Jima, and is a drama of all sorts. It deals with friendship and love, sacrifice and manipulation. Starring Clint Eastwood, the film focuses equally on the war and what was happening back home in the US.

Flicka Rated PG

"Flicka" is a movie that is based upon a novel by Mary O'Hara, titled "My Friend Flicka." In the tale, Katy McLaughlin is a willful 16-year-old girl who finds a wild mustang, who has more in common with her than she thought.

Marie Antoinette Rated PG-13

"Marie Antoinette" is an interesting interpretation of Marie Antoinette, France's teenage queen. The movie tells of her unguided entrance to the French court life.

The Prestige Rated PG-13

"The Prestige" is the story of two magicians who compete from their first meeting. However, their rivalry begins to endanger the lives of the people who surround them. A suspense thriller filled with twists and turns.

LOCAL BUSINESS

Pladd Dot Music offers more than just tunes

By Justin Burris
Staff writer

Have some free time on your hands and looking to fill it with something a little creative? With a new store opened off of Main Street, Pladd Dot Music may have the solution you're looking for.

According to Justin Samples, a guitar instructor at Pladd, they offer all sorts of lessons on instruments ranging from electric and bass guitars to violin and piano. In addition to musical instrument lessons, they also offer vocal coaching.

Each lesson lasts 30 minutes and they are held once a week at the store. Payments are made monthly, each month costing 80 dollars, bringing the cost of each lesson down to about \$20 every half hour.

Currently there is a waiting list to receive lessons, however according to Samples, "The list moves extremely fast." They currently teach over 150 students each week, but each lesson is still a one-on-one session with your instructor.

Samples also said that they accept all levels of players, from beginner to advanced. With the les-

sons they provide the instructions, but not the instruments. They do, however, sell many instruments and all of the accessories that are needed to go with them.

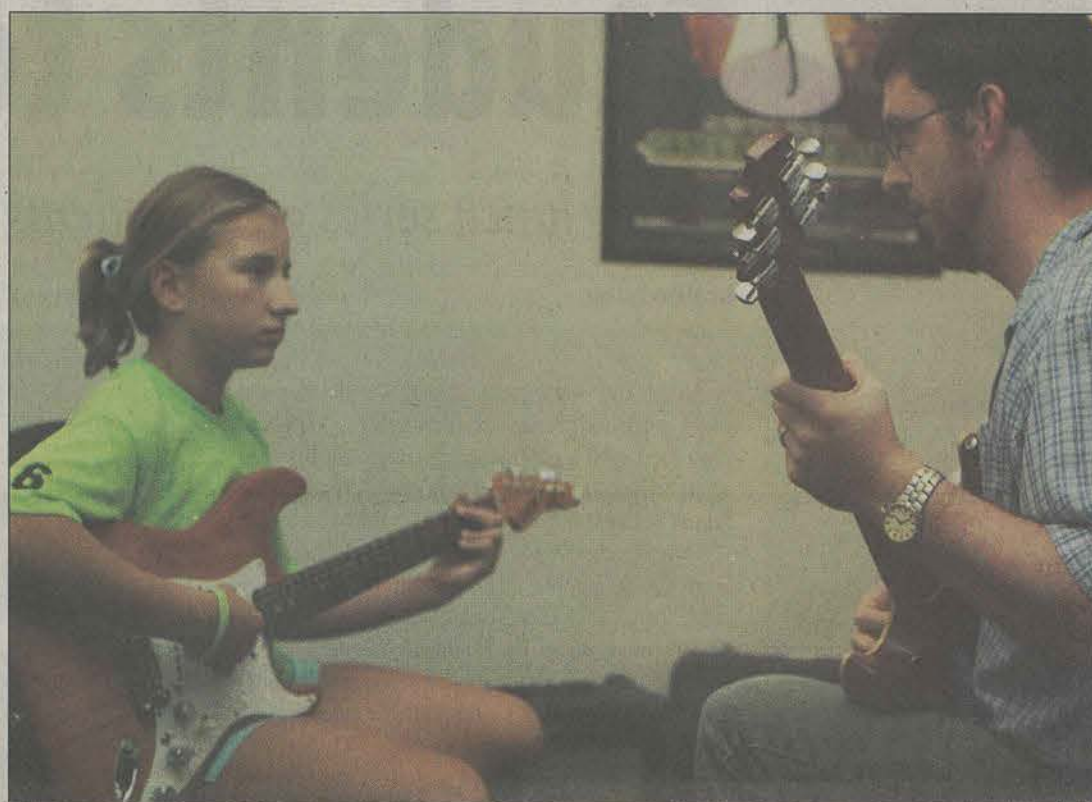
Offering more than just musical lessons, Samples said that they also repair most instruments, with the costs just being labor and parts.

In addition to dealing with instruments, the music store also participate around town in various music festivities. Not just the staff either, the students also participate in the events.

On Oct. 21 at 7 p.m., at the Emma Kelly Theater, they are holding their second installment of a singer and songwriter performance. The tickets are \$15 each.

Pladd Dot is currently owned and operated by Chris Mitchell, who is a GSU graduate. Pladd's website said that he not only teaches people to play, but he also records his own music. He currently has two albums released and is working on a third.

Mitchell states that "music performance and education go hand in hand." In addition to recording music, Mitchell also has a book in



Tao Ventre/STAFF

Kayce Lanier receives guitar lessons from Instructor Justin Samples, at Pladd Dot Music.

the works.

Titled "Lessons for Life," it's aimed towards being an instructional book for guitar players. Included on their webpage is an

abridged version that is available for free, allowing a sneak peak before the book hits the shelves.

The store is located at 20 South Main Street, which is located on the

right side of the road, if you're traveling from GSU. For more detailed information, they can be reached at 912-764-3230, or from their website at pladdmusic.com.

Out & About in The 'Boro

PETS & PEOPLE



Puppy Center

Now Open

609 Brannen Street
(next to Verizon)
Statesboro, GA



Grooming Special
Appointment or Walk-ins

Tues.-Sat.: Come see Elizabeth
Sun.-Mon.:

Under 25 lbs. - \$5

Over 25 lbs. - \$10

Prices include: bath, brush out, fragrance, nails trimmed and ears cleaned

Mon.-Sat. 8-7 p.m.

Sun. 1-5 p.m.

489-7388

Coming soon:
www.boropets.com

NEW! VIKKO EXPRESS

Open All Day Everyday 11 a.m. - 9 p.m.
Dine In, Take Out or DRIVE-THRU!

Express Bowl

- Chicken Bowl Jr. \$2.99 \$4.50
- Shrimp Bowl Jr. \$3.95 \$5.50
- Steak Bowl Jr. \$4.95 \$6.95

All New

- Nikko Bento \$5.95
- Super Health Combo I \$4.50
- Super Health Combo II \$4.50

Express Bowl Combo

- Chicken Bowl Combo Jr. \$4.50 \$5.95
- Shrimp Bowl Combo Jr. \$5.50 \$6.95
- Steak Bowl Combo Jr. \$5.95 \$7.95

(All combos served with drink, rice, choice of salad, vegetable or extra rice)

Maki SUSHI Combo

12 pieces
- Vegetable Combo \$3.50
- California Comob \$4.95
- GSU Combo \$4.95

2 Locations

Nikko Steakhouse
609 Brannen Street
489-4007

Nikko Express
701 Piedmont Loop
(Buckhead Plaza)
489-4003

We accept Eagle Express!

Best in Boro 4 years & Best Sushi 11th Hours Readers Choice



Meinhardt Vineyards

It's time to celebrate the change of seasons. Fall is the perfect time to gather with friends and enjoy the outdoors, and there's no better setting than our courtyard. Come spend a day or just a couple of hours relaxing under the pergola or a lazy swing listening to great live music and enjoying great food and all in the company of wonderful people. You can't find a better place to get away and loose yourself.

www.meinhardtvineyards.com

Participating Retailers:
•Fast & Easy (on campus)
•H's
•The Store @ Atkins Pond Rd.
•French Quarter Cafe
•The Country Store
•Midtown Wine Cellar

Hrs: Wed-Thur 11am-7pm
Fri-Sat 11am-10pm

Meinhardt Vineyards

Call for more info
912.839.2458



Southern Palace

The Best Chinese Cuisine in Statesboro

www.southernpalace.com

Fresh, Healthy, and Tasty

Special Student Carry out Menu

100% Vegetable oil, No M.S.G.

(912) 489-8813

Dine-in, Carry out, Catering, Group party

(912) 764-5536

602 Brannen Street, Suite 9, Statesboro, GA 30458. (Next to Dollar General, behind Jiffy Lube)

Express Tune & Lube

Tire, Alignment & Exhaust Center

612 S. Zetterower Avenue
489-4444

www.expresstuneandlube.com
Monday - Friday 7:30am - 6:30pm

Located a half block north of Wendy's.

Oil Change Special

Includes up to
5 qts. of Castrol
5W20, 5W30,
10W30, or 20W50

\$19.95

Price applies to most vehicles. Expires 12/31/06