

Georgia Southern University

Digital Commons@Georgia Southern

The George-Anne

Student Media

10-17-2006

The George-Anne

Georgia Southern University

Follow this and additional works at: <https://digitalcommons.georgiasouthern.edu/george-anne>

Recommended Citation

Georgia Southern University, "The George-Anne" (2006). *The George-Anne*. 2035.
<https://digitalcommons.georgiasouthern.edu/george-anne/2035>

This newspaper is brought to you for free and open access by the Student Media at Digital Commons@Georgia Southern. It has been accepted for inclusion in The George-Anne by an authorized administrator of Digital Commons@Georgia Southern. For more information, please contact digitalcommons@georgiasouthern.edu.



High: 77 | Low: 62
Chance of showers
Volume 79
Number 47

Raising the roof

Our photographer catches Garden District residents in full swing | PHOTO ESSAY, p. 2



ASCE to participate in bridge design competition

| NEWS, p. 3

THE GEORGE-ANNE DAILY

TUESDAY, OCTOBER 17, 2006

Coffee takes a culinary twist

Midtown Coffeehouse opens downtown

By Wesley Huffmaster
Staff writer

After much anticipation, Midtown Coffeehouse has opened its doors to the latte-craving public.

Although it opened rather discreetly, the café/coffee shop has already enjoyed an enthusiastic and diverse customer base. So what does Midtown have to offer?

When customers walk in, they are immediately struck by the amazing interior design, the work of Jerry Sapp. There is a free-flowing and homey feel, from the curves tracing the counters to the jazzy blue lights accenting the earth-toned space.

Perhaps accounting for the broad spectrum of patrons, the area is filled with various nooks that accommodate any mood or personality. One might enjoy a salad on the outdoor patio, a warm cup of coffee on the couches near the fire, or perhaps a lively conversation beneath the fiber-optic studded ceiling in the upstairs room.

"I really love the way the Midtown Coffeehouse looks," said International Studies major Jessie Emery. "The two floors give the building depth. It has a character that is unique and trendy without being cliché."

Midtown celebrates the local flavor of art, as can be seen by the paintings displayed upstairs, and heard by the music flowing through the speakers. All of the art and music is original; uniqueness and originality seems to be an unspoken creed for Midtown.

This was part of manager Scott Bryant's "bigger personal vision." A former Savannah resident who believes that "music feeds the soul," Bryant hopes that the area will become a venue for local artists to vent their creativity.

Just beneath the stairs, an acoustic guitar and a shiny black piano beckon the hands of any musician. The stage area, which is really an extended floor space, is perfect for Bryant's vision.

"The space doesn't lend itself to large crowds," said Bryant.

"It's large enough for comfort, yet small enough to provide for

see COFFEE, page 4

INSIDE

Least competent criminals

Man tries a quick getaway in his van — with his name written on the side. | BRIEFS, p. 5

Photo essay .. 2 National 5
Campus 3 Classifieds 6
News 4 Sports 7, 8



Tao Ventre/STAFF

Magic at the PAC

'King Stag' to be performed on campus

By Stephanie Routman
Staff writer

This week, the Performing Arts Center at Georgia Southern will be transformed into a magical arena of comedy, clowning, music and fun when Georgia Southern Theatre and Performance presents King Stag.

The play will be held nightly at 7:30 from Oct. 18 to Oct. 21.

Written in 1762 by Carlo Gozzi, King Stag was translated into English during the early 1900s by Carl Wildman.

The GSU production puts a comedic

clowning spin on the timeless fairy tale, promising something for spectators of all ages.

Designed as a vaudeville-type show, it will include puppetry, special effects, music, clowns, heroes and villains.

"This play is a fairy tale about love and revenge and people should come see it because it's an easy date," said Sean White, who plays Tartaglia in the play.

Mandy Sponable is the assistant stage director, and along with stage director Brittany Collins, she makes sure the props and actors are in the right places at the right

times.

"I'm in charge of all the props and backstage, making sure each scene has the props that they need," Sponable said. "The actors are a lot of fun, and working with them definitely makes this job worthwhile."

The costumes are bright and colorful, as are the actors in the play.

see KING, page 4

Oct. 18 - 21
7:30 p.m.

Students with ID: \$4

Faculty, staff & seniors: \$8

General admission: \$12

Campus stars compete for Idol title



Brian Prusa/STAFF

GSU Idol's 2004 winner performs in this year's Idol competition.

By Brittany Hall
Assistant news editor

Eleven contestants rocked the Russell Union Theater at the fifth annual GSU Idol competition last night. Justin Johnson stood out amongst the rest, however, as he took the heart and applause of the audience and was announced as the 2006-2007 GSU Idol.

GSU Idol was hosted by Student Government Association as a fundraiser for the United Way Campaign. Over 400 tickets were sold to students, parents and faculty at \$3 for pre-sold tickets and \$5 for tickets sold at the door. The money will be distributed among organizations such as the American Red Cross, The Boys and Girls Club and 4-H, to name a few.

"GSU Idol is a fabulous event and I have been lucky enough to attend for the third year," said Executive Director of United Way,

Southeast Georgia, Bob Oliff, who was in attendance at last night's performance. "The talent every year is amazing and United Way is so fortunate to have SGA choose us as a beneficiary."

The night was hosted by Eagle Entertainment leader Angela Byrd and SGA Publicity Coordinator Jered Martinez. They kept the night light and entertaining. GSU Idol

see IDOL, page 4

- 1 Justin Johnson
- 2 Quinette Everson
- 3 Kati Newman



Brian Prusa/STAFF

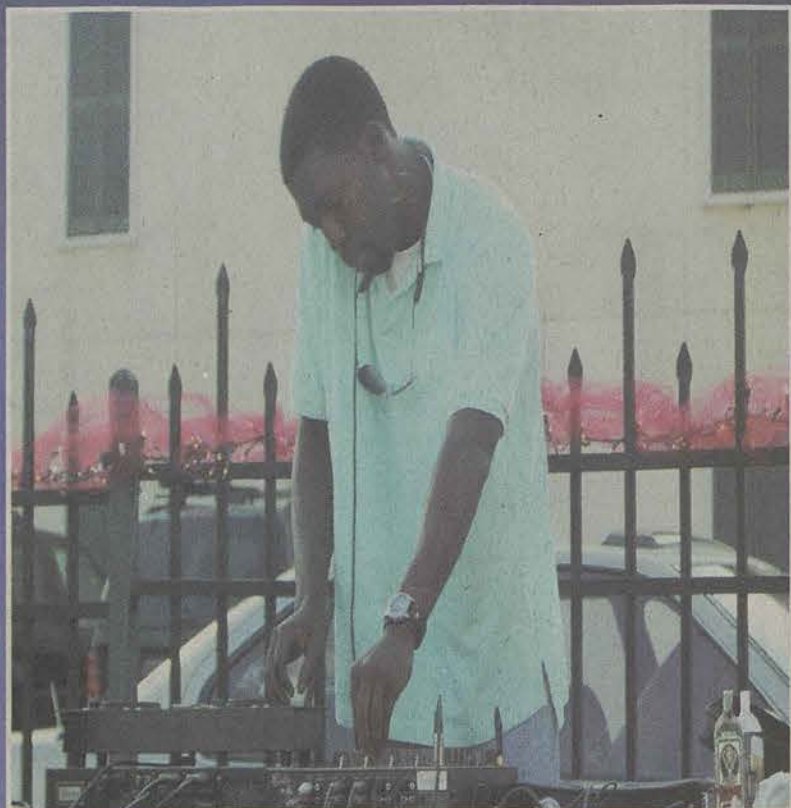
Justin Johnson is presented with his first place trophy.

ALL PHOTOS: JAMIE TUTEN

The Garden District heated things up last Wednesday with their annual Fall Party. Hosted By Community Advisor Jennifer Cook and MC Cam, the event raised over \$200 for a local charity. With food sponsored by Retrievers, plus plenty of prizes, these residents were in for a good time.



Community Advisor Jennifer Cook and MC Cam take time out to pose for a picture.



DJ Jared mixes up the beat to get this party started right.

DISTRICT SHIN-DIG



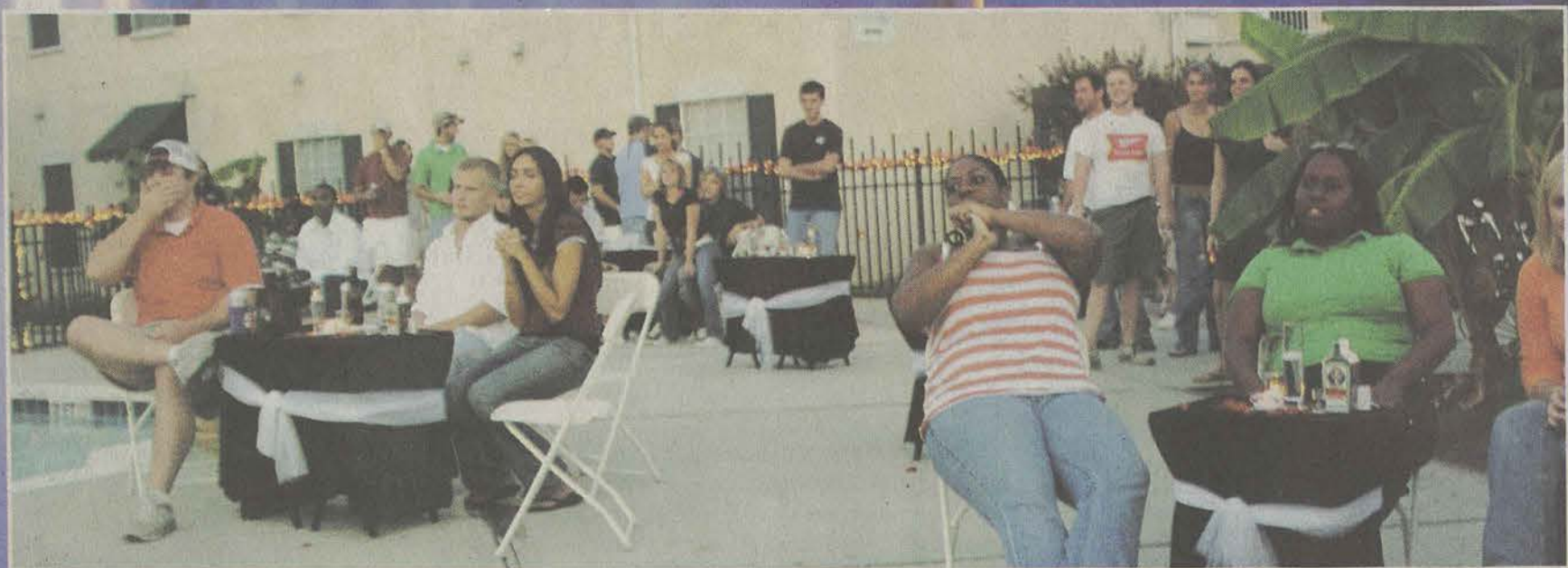
Students buy raffle Tickets for a chance to win free rent.



Residents Lean in just before they announce the winner of musical chairs.



MC cam gets the crowd involved to help chose the winner of the dance off.



Residents lean back, relax and enjoy a cold beverage while watching the pool side competitions.

CALENDAR

Tuesday, October 17

12:30 p.m. - 2 p.m.
Student focus group
Russell Union 2052

3:30 p.m. - 5:30 p.m.
Edge Leadership Class
Russell Union 2075

5:30 p.m. - 6:30 p.m.
Leadership workshop
Russell Union 2044

5:30 p.m. - 7 p.m.
ShuttleGus meeting
Russell Union 2001C

6 p.m. - 10 p.m.
The Plug - Chi Alpha
IT Auditorium

6:30 p.m. - 7:30 p.m.
Young Democrats
Russell Union 2044

6:30 p.m. - 8 p.m.
Habitat for Humanity
Russell Union 2041

7 p.m. - 9 p.m.
Irish Studies Lecture
IT Auditorium

7 p.m. - 10 p.m.
Doo Dah step show
Hanner Fieldhouse

7:30 p.m. - 10 p.m.
Society of Women Engineers
Russell Union 2084

8 p.m.
Southern Georgia Symphony
Lucas Theatre, Savannah

9 p.m. - 11 p.m.
Swing Cats meeting
Williams Center Dining Hall

Wednesday, October 18

9 a.m. - 3 p.m.
Sculpt It For the Hungry
Russell Union Rotunda

9:30 a.m. - 2 p.m.
Simulated drive
Russell Union

3:30 p.m. - 5 p.m.
Faculty Forum
Newton 2203

4 p.m. - 5 p.m.
Children's Vegetable Garden
Botanical Garden

4 p.m. - 5 p.m.
Peer financial aid counseling
Russell Union 2052

4 p.m. - 5 p.m.
Kellman workshop
Newton 1110

5 p.m. - 7 p.m.
Art dept. lectures
Arts Building Auditorium

6 p.m. - 8 p.m.
SGA meeting
Russell Union 2047

6:30 p.m. - 9:30 p.m.
Woman to Woman
Russell Union 2080

7 p.m. - 9 p.m.
Poet Anthony Kellman
IT Auditorium

7 p.m. - 10 p.m.
Plunderin' for Pirates Booty
Russell Union Ballroom

7:30 p.m.
Performance of 'King Stag'
PAC

POLICE BEAT

10-14-2006

• Melissa Lynn Garrett, 24, of University Place Apartments, Statesboro, was charged with public intoxication and disorderly conduct

10-15-2006

• Charles Jonathan Hodges, 19, of Grays Creek Drive, Savannah, was charged with minor in possession/consumption of alcohol and public intoxication

10-12-2006

• A cell phone was taken at the RAC

ASCE aims to build bridges in Tennessee

By Jenny Miller
News editor

For the fifth year in a row, Georgia Southern University students with the civil engineering technology program will travel to the American Society of Civil Engineers' Regional Steel Bridge Design Competition, Mar. 29-31, 2007.

Although the competition is five months away, the ASCE is working hard to prepare for this year's event.

Last year the team of civil engineering technology students won sixth place in competition.

They competed against schools like Auburn, University of Alabama, Vanderbilt and the University of Tennessee.

The competition requires teams to design and build a steel bridge that can hold up to 2,000 pounds of weight. The event is timed and the lighter the bridge is, the better.

Faculty advisor Dr. Nirmal Das

said that conference has grown.

"It is an annual conference in the southeast region and each year there are more and more events," said Das.

There are about 120 civil engineering majors and around 15 students who will go to the competition in March.

According to Marc Snyder, president of the ASCE student chapter at GSU, the chapter needs help to be the best they can be.

"Our funding last year for the conference was about \$2,000, but other schools had over \$20,000. It takes money to construct the best bridge," said Snyder.

The competition gives the students real world experience in the field of engineering.

To assist GSU's student chapter of the American Society of Civil Engineers by supporting the 2007 Steel Bridge Design Competition, contact Marc Snyder at 912-682-5957.



Members of last year's American Society of Civil Engineers pose at the Regional Steel Bridge Design Competition. This year's team will compete at the southeastern conference at the University of Tennessee Knoxville, Mar. 29-31.

LET US INTRODUCE...

Kathleen Comerford, professor, history department

Name: Kathleen Comerford
Department: History
Hometown: Forest Hills, NY
Education: BA & MA at Fordham, PhD at University of Wisconsin

How did you find GSU?
"There was a job advertised in my field."

How long have you been here?
"Since 1999"

What's your largest class?
"I once had a class of 175, but usually it's 80."

What class do you enjoy teaching the most?
"I like them all for different reasons."



Professor Kathleen Comerford

When you aren't teaching, what occupies your time?

"Research, writing, the Statesboro-Georgia Southern Community Chorus, hobbies, and of course my family."

Besides studying and attending lectures, what should students do to pass your class?

"I always advise people to follow instructions and to think."

If you could teach anywhere where would you teach and why?
"I came here from a teaching position I hated and I've never looked back."

What's the best part of your job?
"The balance between teaching and learning."

After school fun

By Ellen Eklund
Staff writer

The Boys & Girls Clubs of Bulloch County invite Georgia Southern University students to participate in their art, music, academic and sports programs during after-school hours.

Directors of the Clubs are looking for volunteers who will take a serious interest in helping younger students learn and set a positive example.

"It's a worthwhile cause and a good way to build relationships within the community," said Kellie Allen, marketing director for the BGC.

The volunteer application process begins with completing an application either online or in person.

Once the application is complete, applicants must bring their drivers licenses and social security cards so that the BGC can keep a copy of each.

Volunteer checks are conducted on a weekly basis. Volunteer applicants will be notified when the results have returned, and then they will receive their placement.

The Boys & Girls Club of Bulloch County opened on Aug. 18, 2001. The Club tended to 235 children each day, though there were over 500 students on the waiting list.

The BGC began with only one unit, known as the Denmark Unit, named after the Club's location on Denmark St.

The Club has had two expansions since 2001, the Portal Unit, which is located at Portal Elementary School, and the Elvera Mays Teen Center which was added behind the Denmark Unit.

The Boys & Girls Clubs of Bulloch County now serve over 700 students every weekday.

The Clubs have programs in the areas of character and leadership, education and career, health and life skills, the arts, and sports fitness and recreation.

For more information about getting involved with the Boys & Girls Clubs, please call 912-764-9696 or download a volunteer application from www.bgcbulloch.org.

NATIONAL COLLEGIATE ALCOHOL AWARENESS WEEK

OCT. 16-19, 2006

Jail n' Bail

Monday, Oct. 16, 10 am - 2 pm
Rotunda

Come be apart of the action as a GSU police officer arrests volunteer faculty, staff and students for a mock DUI. Volunteers will be read their rights, given sobriety tests and "booked" for the DUI charges. They will be jailed at the Rotunda. Help the "prisoners" raise money for bail to gain their freedom while contributing to the Health Education Foundation.

Simulated DUI

Wednesday, Oct. 18, 11 am - 1:30 pm
Russell Union Visitors Parking Lot

Captain Lee Harris from the Bulloch County Sheriff's Department will be here to assist students with a drunk/impaired driving simulation. Students will be able to participate in various activities and obstacle courses while wearing Blood Alcohol Content (BAC) goggles. Free beer (root beer of course) will be provided along with food donated from local restaurants. ShuttleGUS volunteers will be there to answer any questions and give information about Georgia Southern's highly successful safe ride program.

Mocktails

Wednesday, Oct. 18, 7 pm
Russell Union Ballroom

It is possible to enjoy great drinks without the effects of alcohol. Join the Health Education Peer Educators and the Homecoming Steering Committee as they serve up tasty, non-alcoholic beverages for "Plunderin' for Pirates' Booty."

Mocktails

Thursday, Oct. 19, 10 am - 1 pm
Rotunda

Join us again for different recipes if you enjoy the mocktails Wednesday night. The Health Education Peer Educators will serve up "Calhoun Typhoons" and "Pink Champagne." The drinks will have you saying "who needs alcohol?"



Sponsored by the
Office of Health Education and Promotion
Governor's Office of Highway Safety

Weekly Eagle Buzz



Today:

VOTE ON WINGS FOR HOMECOMING KING & QUEEN!

Island Fantasy will take place at the Russell Union Rotunda from 11am-1pm. Stop by and enjoy our Caribbean atmosphere and food of the islands! Think you've got a bottomless pit for a stomach? Come out to our Hawaiian pizza-eating contest to prove you can clean out the galley (utensil attachments provided for all hooks). Enter the "Pirate" raffle, spin the Captain's Wheel for giveaways, and much more.

Georgia Southern's traditional Doo-Dah/Step Show will take place in Hanner Fieldhouse at 7pm. Doors open at 6:30pm. Come check out the hottest step and dance moves from fellow GSU students and watch them shake it from the bow to the stern! Advanced wooden nickel (ticket) sales will start on Wednesday, October 11th in the Office of Student Activities. Advanced tickets will be \$3.00 or \$5.00 at the door.



Wednesday, October 18th:

VOTE ON WINGS FOR HOMECOMING KING & QUEEN!

Sculpt It for the Hungry will take place at the Russell Union Rotunda from 9am-3pm. Think you're seeing a mirage? Nope, there are big ones, small ones, some as big as your head! Come watch participants build themed-inspired and spirited sculptures out of canned goods and non-perishable items. (Sponsored by Volunteer Services)

Plunderin' for Pirates' Booty will take place in the Russell Union Ballroom from 7pm-10pm. Come play like a pirate (no pillaging allowed); admission is FREE! Play casino games or the slot machines, spin the Captain's Wheel, win prizes, be entertained by the comedy troupe, Improv Asylum (<http://www.improv asylum.com>), and much more.

King Stag by Carlo Gozzi will be performed by GSU Theatre and Performing Arts students in the Performing Arts Center at 7:30pm on Wednesday, Oct 18 through Saturday, Oct 21. Tickets can be purchased by calling the PAC box office (M-F, 10:00 - 5:00) at 912-486-7999. Tickets may also be purchased at the door. Ticket prices are \$12 for the general public, \$8 for seniors, local students, and GSU faculty/staff, and \$4 for GSU students with ID.

Thursday, October 19th:

Lazy Lagoon will take place at the Russell Union Rotunda from 11am-1pm. Unscrew your peg leg, take off your boots, and hang up your sword for a few hours; all hands will be on deck at our oasis at the Rotunda. You can get a massage, enjoy tropical fruits, and take a break between classes. Enter the "Pirate" raffle, spin the Captain's Wheel for giveaways, and much more.

Powered by recycled vegetable oil (RVO), solar power, and the world's leading organic yogurt manufacturer, Stonyfield Farm, The NOLS Bus will be at the Russell Union from 10am-3pm. We encourage students to come out and learn about alternative energy, climb the wall on the bus, watch outdoor skill demonstrations, apply for a NOLS scholarship, and get some free stuff from the National Outdoor Leadership School, the leader in Wilderness Education.

Capturing the Royal Court- Homecoming Social will take place in the Russell Union Ballroom at 7pm. No one will walk the plank tonight, but we have ensnared the Homecoming candidates to present them with their royal honors. Come celebrate the week with desserts, music, and entertainment by illusionist Jason Bishop (<http://www.thejasonbishopshow.com>). The Homecoming 2006 royalty court will be announced and various awards will be given out for Homecoming participation. Limited seating is available. Semi-formal attire is recommended, so polish your boots and lace up your corsets!

Friday, October 20th:

The Homecoming Parade will start near Paulson Stadium at 4pm and end on Sweetheart Circle. Calling all landlubbers! Grab a seat near our "ocean on land" - the parade route - to catch a glimpse of ships, pirates, islands, and other Caribbean creations fashioned by various organizations in the spirit of Homecoming. For a complete map of the route, view the Homecoming website at www.georgiasouthernhomecoming.com

The Captain's Cookout and GSU Homecoming Party will start immediately after the parade at approximately 5:30pm. Yo ho, yo ho, a pirate's life for me! After watching the Homecoming Pirates' Parade, sail over to Sweetheart Circle and the pedestrian near Brannen and Sanford halls to enjoy inflatables, novelty games, prizes, food, music, and so much more. This event is FREE!

Shipwrecked Fireworks Display will flare in the J.I. Clements Baseball Stadium at 9pm. Anchor your pirate ship and watch one of the most spectacular shows under the seal Entry to this event is FREE!

Shiver me timbers! Pirates of the Caribbean 2 is playing as an outdoor movie on the big screen. Drop anchor at the J.I. Clements Baseball Stadium at 9:15 pm to enjoy the FREE movie.

Saturday, October 21st:

The Georgia Southern Homecoming football game starts at 12pm vs. Appalachian State. Come out to watch the Eagles make the Mountaineers walk the plank! The game will be televised on Turner South. The crowning of the King & Queen will take place during halftime.

SUPPORT THE "BLUE OUT" & wear any GSU BLUE clothing for the football game! Go Eagles.

The American Music Series "Singer Songwriter" takes place in the Emma Kelly Theater downtown Statesboro at 7pm. General admission is \$15.00 and tickets can be purchased at Pladd Dot Music and the Averitt Center Box Office. Contact Pladd Dot Music with any questions at 764-3230.

Register today for the Southern Spirit for Wellness, befitting the University Wellness Council. The University Wellness Council is sponsoring the Southern Spirit for Wellness 5K/Kiddie Run at 8:30am for the Kiddie Run and 9am for 5K race. Call Julie for more info at 681-5436. Students cost \$10.00 and general registration is \$20.00. (www.georgiasouthern.edu/services/cr)

Sunday-Tuesday, October 22nd - 24th:

2007 SOAR Leader Information Nights I the Lewis Hall Presentation Room. Learn what it takes to be a SOAR Leader! Hear from former leaders and pick up an application. Call 681-0860 for more information.

Ongoing/Upcoming Opportunities:

Volunteers are wanted to help serve and clean up at the International Conversation Hours put on by International Programs. Volunteers can meet at the Office of Volunteer Services, RU 2022 at 11:15 on any Friday.

The Student Disability Resource Center will be sponsoring early registration from October 16th - October 20th from 8am-5pm in 805 Forest Drive Building. Contact their office at 871-1566 with any questions. Emails are scheduled to go out to SDRC students four weeks in advance as a reminder for the upcoming event. Attached to the email students will find a proof of advisement form that will be required to have with them the day they are scheduled to come in and do early registration. Those SDRC students that do not receive a notice prior to early registration please contact our office at 912-871-1566.

Health Services and the Office of Health Education and Promotion will sponsor the National Collegiate Alcohol Awareness Week October 16-19, 2006

Simulated DUI - Wednesday, Oct. 18, 11 am - 1:30 pm - Russell Union Visitors Parking Lot. Captain Lee Harris from the Bulloch County Sheriff's Department will be here to assist students with a drunk/impaired driving simulation. Students will be able to participate in various activities and obstacle courses while wearing Blood Alcohol Content (BAC) goggles. Free beer (root beer of course) will be provided along with food donated from local restaurants. Shuttle GUS volunteers will be there to answer any questions and give information about Georgia Southern's highly successful safe ride program.

Mocktails - Wednesday, Oct. 18, 7 pm - Russell Union Ballroom. It is possible to enjoy great drinks without the effects of alcohol. Join the Health Education Peer Educators and the Homecoming Steering Committee as they serve up tasty, non-alcoholic beverages for "Plunderin' for Pirates' Booty."

Mocktails - Thursday, Oct. 19, 10 am - 1 pm - Russell Union Rotunda. Join us again for different recipes if you enjoy the mocktails Wednesday night. The Health Education Peer Educators will serve up "Calhoun Typhoons" and "Pink Champagne." The drinks will have you saying "who needs alcohol?"

Win a FREE Cruise! When you attend a Homecoming 2006 event, fill out a ticket for a chance to hit it big! Yes, one lucky Georgia Southern student will win a free Caribbean Cruise (\$500.00 package). The more events you attend, the better your chances will be of sailin' the seas on a FREE cruise!!

For complete Homecoming 2006 details, changes, and additions you can view the official website at www.georgiasouthernhomecoming.com

Brought To The Eagle Nation Each Week By The Division of Student Affairs and Enrollment Management

Coffee

from page 1

musical intimacy."

Bryant is sponsoring an open mike night on Friday, Nov. 3 at 7:30 p.m.

Another great aspect of Midtown is its delicious breakfast and lunch menu, a product of Chef Stephen Campbell, a GSU alumni and graduate of the Culinary Institute of America in New York.

At first glance, the salads and sandwiches appear to be standard deli fare, but after a taste, customers will be sure to appreciate the culinary craftsmanship.

"We have a very eclectic menu that shoots for everyone," said Campbell. "But even the old favorites are done with a culinary twist."

Because Midtown is not a franchise, the establishment retains the freedom to follow the ebb and flow of the community's taste, and make the according innovations when new

ideas arise. The staff all take turns blending flavors and creating new coffee drinks.

Midtown Coffeehouse, much like the dishes they serve, is the result of a perfect blend of elements with close attention to details.

Midtown Coffeehouse located on Main Street in the Midtown complex, just down the road from Daylight Doughnuts. It's open until 10 p.m. on weekdays and 11 p.m. on weekends. Most menu items are priced around \$5.

King

from page 1

Jessica Bradshaw, who plays Cigo-lotti in the play, said she's excited about the play opening on Wednesday.

"I start the story off. I'm the magician's servant and I help nar-

rate the beginning of the play," said Bradshaw.

King Stag will be the fourth play directed by Stephanie Routman, and her debut in the Performing Arts Center. The play will contain puppets by Gary Dartt, costumes by Brenda Dartt, and original live music by GSU student Dean Patterson and his band.

Performances will be held every night from Oct. 18 to 21 at 7:30 p.m.

Tickets are \$4 for GSU Students with ID, \$8 for GSU faculty, staff, and seniors and \$12 general admission.

For more information, or to reserve tickets, please contact the Performing Arts Center box office at 912-681-5821.

Idol

from page 1

worked the same as 'American Idol.'

There were three judges who gave feedback about each contestant's performance, but ultimately the audience decided.

Their cheers and applause were measured by a decimal meter which ultimately decided the winner.

After two grueling rounds of elimination and criticism, there were four contestants left in the

top three due to a tie.

Kati Newman, Justin Johnson, Quinette Everson and Tedrick 'Tetris' Kelly each sang their rendition of 'Over the Rainbow' to determine the top three.

Kati Newman was the second runner-up, Quinette Everson was the first runner-up and Justin Johnson took the title as the new GSU Idol.

"I am so excited and happy to be the new GSU Idol," Johnson said through an immense crowd of supporters around him.

"This was so much fun and everyone did such a great job."

Vote

from page 1

Jones of the registrar's office.

Political Science professor and chair, Richard Pacelle said, "a chain is only as strong as its weakest link, and as long as we are using the punch cards, voter's security is challenged, along with the allegations of voter fraud."

"After the Sept. 11 attacks, the Florida re-count and the problem of illegal immigration, it has been proposed that Voter IDs could help limit one vote to each citizen, and secure voting rights to those citizens."

Although voters aren't required to have a photo ID for the elections this November, a clear decision on whether photo IDs should be required in the future has not been decided yet.

For information about acceptable means of identification, visit the Web site http://www.sos.state.ga.us/elections/ga_photo_id.htm. Voter IDs may be obtained at your local County Voter Registrar's Office.

Wendy's 99¢
Crispy Chicken Sandwich

SOAR 2007

SOARing Through the Centennial: Leading the Future



SOAR Information Nights October 22nd, 23rd, & 24th at 7p.m. Lewis Hall on Sweetheart Circle

Applications available at Lewis Hall
For more information contact the
Office of Orientation at
orientation@georgiasouthern.edu

INTERNATIONAL NEWS



"I don't worry about being close to the border," said Jung Dong Hyun, a seventh-grader who thinks nothing of walking to school beside the coastal boundary. A chain-link fence topped with coils of barbed wire runs along the beach.

Rodney Turner/MCT

China erects border fences

McClatchy Newspapers

Ahead of the adoption of a U.N. Security Council resolution against Pyongyang, China increased security along its border with North Korea by building fences in and near Dandong, its largest city on the border.

Residents on both sides of the border seemed unable to quell anxiety about the situation, and some North Korean merchants began stockpiling goods.

Even after Pyongyang's announcement that it conducted a nuclear test, areas along the border appeared calm. But closer to the border, on a drive about 20 kilometers (12 miles) north of central Dandong, was brand new barbed wire fences. Near the fences,

the width of Yalu River, which forms the border between China and North Korea, is less than 10 meters (33 feet), which means crossing the river is relatively easy.

A nearby resident said, "The fences were built a week or so ago, though we don't know why."

Locals said the fences seem to be to prevent North Koreans from illegally crossing the border into China.

Beyond the river, North Korean farmers working with tractors in fields could be seen. Before, houses lined the North Korean side of the river.

A Chinese source in Dandong said, "About 150 households were forcibly moved from the border area to a remote location."

ENVIRONMENT

EPA relaxing rules for ethanol plants

Chicago Tribune

As President Bush promotes ethanol as a green alternative to gasoline, his administration is quietly relaxing environmental rules for dozens of new corn-to-fuel refineries sprouting up across the nation.

The U.S. Environmental Protection Agency is planning to change the way ethanol plants are treated under the Clean Air Act, a move critics said could make it easier for the burgeoning industry to evade controls that dramatically reduce toxic air pollution.

The shift in policy would give a break to agricultural conglomerates and newcomers seeking to cash in quickly on the nation's growing thirst for renewable fuel. More than 40 new ethanol plants are expected to be built

during the next year, boosting U.S. production by 30 percent.

Industry supporters said the new rule is crucial to sustain the ethanol boom, which they contend will reduce the nation's dependence on imported oil and cut greenhouse gas emissions from fossil fuels.

"Ethanol is good for the environment," Bush said during an April speech that touted the fuel additive as a key part of America's energy strategy.

The proposed rule, which needs only a notice in the Federal Register to take effect, comes less than four years after the Bush administration brokered a series of legal agreements that promised deep cuts in air pollution from leading players in the industry.

REGIONAL NEWS

Bus race kills sheriff

The Orlando Sentinel

Lake County Florida Sheriff Chris Daniels Sr. was killed Saturday night at New Smyrna Speedway while taking part in a school-bus race to raise money for charity.

Daniels was celebrating his 47th birthday by competing with other area sheriffs in the fifth annual Battle of the Badges, a fundraiser for the Florida Sheriffs Youth Ranches hosted by Volusia County Sheriff Ben Johnson.

Daniels is thought to have died when his bus spun out of control during the 15-lap bus race.

Lake County Jail Operations Chief Gary Borders was in the stands when Daniels was thrown from the bus. He

would not discuss the details of the accident but said that "a lot" of Sheriff's Office employees were watching.

"It's devastating and unbelievable," Borders said.

The death stunned Lake County, where Daniels had a reputation for being an innovative and compassionate sheriff. Chaplains and Sheriff's Office employees were trying to contact all 700 members of the department late Saturday night to inform them of Daniels' death.

"We're going to come together as a Sheriff's Office and a family," Borders said. "We want our employees to learn about it from us."

He said the immediate priority was to take care of Daniels' family, to make sure they had been notified.

NEWS OF THE WEIRD

From Universal Press Syndicate

Least competent criminals

• Bryan Sanderson was arrested minutes after allegedly committing his second bank robbery of the day in York County, Va., in September. Sanderson's main misjudgment, according to police, was making his getaway both times in his company home-inspection van with "Sanderson Services" on the side.

PARTTIME BUSINESS FOR STUDENTS!

Help parents make up no Bible Ed in school. Take kids into your home church fellowship hall 7-9 PM Wed. TRAVEL THRU THE BIBLE WITH JESUS.

•Program is self-teaching, non-denominational. No Bible or ministerial training needed. No preaching. If you can read, you can lead kids. You learn Bible as kids learn.

•Parents pay 100 kids grosses you \$2495 per month @ around 73% profit. Not home Wed evening? Let sub work. Earn and pay off ED loans, be independent.

For more information, email your name and address to mikie2 @iggylinks.zzn.com, or write WFCPress, Box 3187, Pembroke, NC 28372.

Wendy's

99¢ Crispy Chicken Sandwich

Call to
Schedule Your
Viewing Today!

SIZE MATTERS

Copper Beech

TOWNHOMES



3 levels • 2,000 sq. ft.

(912) 681-8307 FAX: (912) 871-3721

Located behind Sonny's on the Hwy. 67 By-pass

Offices Hours - 9am-6pm, Monday - Friday

www.CopperBeechTownhomes.com

STATEMENT OF OPERATIONS

The George-Anne Daily is the official student newspaper of Georgia Southern University, owned and operated by GSU students and utilizing the facilities provided by GSU. The newspaper is a designated public forum for the Georgia Southern University community. The ideas expressed herein are those of the editor or the individual authors and do not necessarily represent the views of the Student Media Advisory Board, the administration, the faculty and staff of Georgia Southern University, or the University System of Georgia. The George-Anne is published four times weekly (Monday-Tuesday-Wednesday-Thursday) during most of the academic year and six times during summers. Any questions regarding content should be directed to the editor at by phone at 912/681-5246 or fax at 912/486-7113.

Readers may access the newspaper and its archives staff by visiting our web site at <http://www.gadaily.com>.

SUPPORT

The G-A is funded primarily

through revenue from advertisements placed in the paper and receives additional support, in part, from the Student Activities Budget Committee.

STUDENTS BEWARE

The G-A screens all advertisements prior to publication. The newspaper strives to accept ads for legitimate products and services only. Students are urged to exercise caution when replying to ads — particularly those which require a credit card number, other personal information, or money in advance of the delivery of a product or service. Students are also urged to report to the newspaper any suspicious offers which they might see in an ad. Remember, if an offer seems too good to be true, it probably is.

FREEBIE INFO

ALL FREE student and faculty ads to be run in the G-A must have a NAME, P.O. BOX and PHONE NUMBER. Ads will be rejected if they do not have this information. NO EXCEPTIONS.

OFFICES, MAIL, PHONES

Room 2023, F.I. Williams Center. The George-Anne, P.O. Box 8001, Georgia Southern University, Statesboro, Ga. 30460. 912/681-5246 (News) or 912/681-5418 (Advertising) or 912/486-7113 (Fax); 912/681-0069 (adviser).

EMAIL DIRECTORY

Executive Editor
gaeditor@georgiasouthern.edu
Managing Editor
gamed@georgiasouthern.edu
News Editor
ganews@georgiasouthern.edu
Advertising
ads@georgiasouthern.edu or ads1@georgiasouthern.edu

ADVERTISING

The George-Anne reserves the right to refuse any advertisement.

DISPLAY AD DEADLINE: The deadline for reserving space and submitting advertising copy is Noon, one week prior to the intended publication date.

FOR MORE INFO, rate cards, sample publications, contact: Lindsey Anthony, Marketing Director, ADS, (912) 681-5418, ads@georgiasouthern.edu; or Bill Neville, Student Media Coordinator, (912) 681-0069, bneville@georgiasouthern.edu

PROOFING/ERRORS/OMISSIONS:

The newspaper makes every reasonable effort to present correct and complete information in advertisements. However, the advertiser is responsible for proofing the ad upon publication and should notify the newspaper immediately in the event of an error. The newspaper is not responsible

for any errors in advertisements and its liability for adjustments is limited to the amount of space the error occupied in the ad. Further, the newspaper is not responsible for any damages caused due to an ad's omission from a particular edition and its responsibility solely is to reschedule the ad in the next regular edition at the regular advertising rates.

CLASSIFIED ADS: Free classified ads from students, faculty and staff must be non-commercial in nature and submitted in writing, with the name of the sender, local address, and phone number. No free ads taken via telephone — at this price we don't take dictation. One free ad per person per week. Commercial classified are available only from our online site at www.gsuads.com. The price of commercial ads is \$7 for 200 characters for line ads. Ads must be paid for using a major credit card. For classified display ads, contact glass@georgiasouthern.edu

CIRCULATION INFORMATION: Mail subscriptions are not available at this time. However, readers may visit our web site for free access to current and past issues. Visit www.stp.georgiasouthern.edu. It is the goal of the newspaper to have its edition placed on-line within 24 hours of

publication. Breaking news will be placed on-line as warranted. The G-A is distributed free of charge on the Georgia Southern University campus through delivery sites located in campus buildings, at off-campus sites, and in residence halls.

NOTICE

Readers may pick up one free copy, and a second for a roommate or acquaintance, at distribution sites. Additional copies are 50 cents each and are available at the Williams Center. However, unauthorized removal of additional copies from a distribution site constitutes theft under Georgia law, a misdemeanor offense punishable by a fine and/or jail time. Editors will seek to have any person(s) who removes more than the authorized number of copies from distribution sites prosecuted to the full extent of the law.

NOTE

We gratefully acknowledge the theft of one of our slogans — "Liked by Many, Cussed by Some, Read by them All" — from Robert Williams of the Blackshear Times. Call Bob and he can tell you who he stole it from originally. Credit for the other — "Covering Campus like A Swarm of Gnats" — goes to G-A alum Mike Mills.

THE GEORGE-ANNE CLASSIFIEDS, ETC.

Now you can place your classified ads online... For Commercial Ads, Visit...

<http://www.gsuaads.com>

...and create, place, proof and pay for your ad online. Just \$7 for 200 characters. In partnership with Universal Advertising.

Free ads for students, faculty & staff (non-commercial); visit us online at...

www.gadaily.com/class_ad_sub.php

You must include your names, address and phone number for freebies. No phone calls please, at this price we don't take dictation.

CLASSIFIED CATEGORIES

100 Announcements
110 Auditions
120 Freebies
130 Lost & Found
140 Other Announcements

200 Buy or Sell
210 Autos for Sale
220 Auto Parts for Sale
230 Bicycles for Sale
240 Books for Sale
250 Computers & Software
260 Miscellaneous for Sale
270 Motorcycles for Sale
280 Trade & Barter
290 Wanted

300 Employment & Job Services
310 Career & Job Services
320 Child Care Needed
330 Child Care Provider
340 Internships/Volunteer
350 Jobs/Full Time
360 Jobs/Part Time
370 Opportunities/Business
380 University Work
390 Wanted Jobs

400 Housing & Real Estate
410 Apartments
420 Lots & Rooms
430 Mobile Homes
440 Real Estate for Sale
450 Roommates Wanted
460 Storage & Moving Services
470 Student Housing

480 Sub Leases
490 Vacation Rentals

500 Personals
510 Personals

600 Services
610 Education & Tutoring
620 Financial Aid/Loans
630 Legal Services
640 Resumes/Typing/DTF
650 Services/Miscellaneous

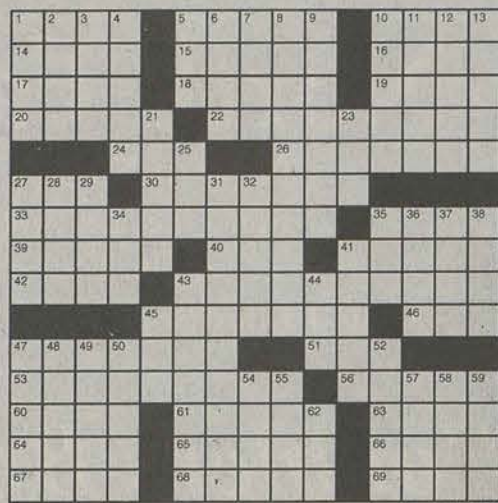
700 Travel
710 Spring Break/Travel

800 Transportation/Rides
810 Transportation/Rides

900 Miscellaneous
910 Pets & Pet Supplies

Crossword

ACROSS
1 On a cruise
5 Idiots
10 Center leisurely
14 Religious custom
15 Soap brand
16 Poet Pound
17 Stop up
18 Heathen
19 Raised platform
20 Type of boom
22 "Cabin in the Sky" star
24 Crafty
26 Administered corporal punishment
27 Peculiar
30 Superlatively spooky
33 Lasting quality
35 Stratford's river
39 Danger drill
40 Winged mammal
41 Cutting edge
42 Eye shades?
43 Makassar Strait outlet
45 Plucky fellow
46 Psycho's gift
47 Put in a predicament
51 Soup veggie
52 Stately Polish dance
56 Hebrew letter
60 Person with a handle?
61 Seaside
63 Mournful cry
64 Cheers for toreadors
65 Magnani and Moffo
66 Asian sea
67 Small boy
68 Davis of "Do the Right Thing"
69 Photog's strips



© 2006 Tribune Media Services, Inc.
All rights reserved.

9/11/06

**New Voices.
New Services,
New Attitude.**

www.gadaily.com

There is No Option!

DOWN
1 Circle parts
2 Farm tower
3 Orwell's alma mater
4 Patronage
5 Short swim
6 Ellipsoid

7 Theater box
8 Cut crosswise
9 Nerve junction
10 Enticed
11 Missouri plateau
12 Dylanesque singer John
13 Alleviated
21 Shoe grip
23 Beanie or bowler
25 Strong desire
27 Australian gemstone
28 Sub shop
29 Scott in a high court case
31 Uprisings
32 Total
34 "Dalloway"
35 Gore and Capp
36 Flower holder
37 Poetic tributes
38 Quarter-moon tide
41 Generate offspring
43 Orange liqueur
44 Jazz style

45 Interdiction
47 Disney World attraction
48 In a worthy way
49 Glossy
50 Scandinavian
52 Egyptian dam
54 souci (carefree)
55 Actor Morales
57 Rhine tributary
58 Oblique: abbr.
59 Woes
62 Half a fly?

George-Anne Daily Trivia Puzzle 27

PuzzleJunction

Where in the World...?

©2006 PuzzleJunction.com

Do you know where in the world the following islands are located?
Good luck!

- | | | |
|---------------|-------|---------------------------|
| 1. Cebu | _____ | (A) Bering (Russia) |
| 2. Amrum | _____ | (B) Indian Ocean |
| 3. Trall | _____ | (C) Indonesia |
| 4. Diomed | _____ | (D) Arctic (Canada) |
| 5. Roosevelt | _____ | (E) Philippines |
| 6. Celebes | _____ | (F) Mediterranean (Spain) |
| 7. Zea | _____ | (G) Caribbean |
| 8. Java | _____ | (H) Arctic (Greenland) |
| 9. Tortue | _____ | (I) Atlantic |
| 10. Bathurst | _____ | (J) North Sea |
| 11. Tenerife | _____ | (K) Greece |
| 12. Balearics | _____ | (L) Ant-Arctica |

THE UNIVERSITY STORE

Everything GSU under one Roof!

1-800-861-7059

www.gsustore.com

North to Alaska

R D M L L A H N E D N E M D N R M
Y K I A M T A K N G H W J F N C P
R E L A Y U K O N S Q M Y A K X T
M N K K C B M I L W I A L I P G L
N A Z R B E R X T Z W T N R V A M
A I C A F E N Y V G Y L K B Q L K
K H K P B L K D A L E A K A N C Z
I F L T F B K V Y K L X N Y A K
H J O W R L S R Q P V E V K G N P
C D W L K Y I Y O C M U K S K T R
T T R R I A M N L O Y T T X A E R
E M M K D B I R G Z K S G R I U E
K X M N R E I D J I Z S M T Y A I
S E W A R D L R O V T I N K L E C
T Z Y V G R L S P K G O R K L N A
S E O H S W O N S A R H L G C U L
K A D A K N H R N F K H W T H J G

©2006 PuzzleJunction.com

ADAK	JUNEAU	PRIBILOF
ALCAN	KATMAI	PTARMIGAN
ALEUTS	KENAI	SEWARD
BERING	KETCHIKAN	SITKA
BROOKS	KODIAK	SKAGWAY
FAIRBANKS	MCKINLEY	SLED
FRONTIER	MENDENHALL	SNOW SHOES
GLACIER	NOME	TLINGIT
GRIZZLY	PARKA	YUKON

Announcements

100 - 199

140 Other Announcements

Colleges Against Cancer

Next Meeting October 23, 2006
7:00 p.m. Russell Union 2075

Please come prepared with your t-shirt money! Lets get as many people there as possible to make an even bigger difference! Hope to see you there!

The Herpevac Trial for Women:
A Herpes Vaccine Study For women age 18-30 without oral or genital herpes This study of an experimental vaccine might protect women against herpes. Participants receive: Free screening for herpes An investigational vaccine against herpes or hepatitis A Financial compensation for time and travel For more information, contact: Medical College of Georgia 706-721-2535 877-643-1414 (toll-free) womens_health@mcg.edu www.herpevac.mcg.edu This vaccine CANNOT give you herpes.

NOTICE -- While the newspaper makes every effort to screen bogus offers and ads, please remember if an offer seems to be too good to be true, it probably is.

Reach Georgia Southern students with a publication they really read... Over 100,000 copies of the G-A Daily circulate each month. For more info: ads@gedgiasouthern.edu

Buy or Sell

200 - 299

210 Autos for Sale

1999 Ford Taurus For Sale

In Good Condition

\$3,500 ONO

1996 Nissan Maxima. Looks and runs GREAT! 167,000 miles. Asking \$3900.

678-687-5088

230 Bicycles for Sale

Gary Fisher Wahoo Mountain Bike- Shimano-V Brakes and Shifters, Bell comfort seat, aluminum frame. Originally bought for three hundred dollars, will sell for \$125.00! Call Jeff 912-690-4999.

Diamondback Topanga Mountain Bike- Shimano-V Brakes and Shifters, Rock Shox Jet Shockers, Lemond custom seat, aluminum frame. Originally bought for four hundred dollars, will sell for \$150.00! Call Jeff 912-690-4999.

250 Computers & Software

SELLING A NEW Linksys Wireless Router. 4 ports, includes copy of Norton Internet Securities

Retail Price: \$70

Contact Reggie theonlybuster@gmail.com

954-591-6989

Epson Stylus C42UX color inkjet printer with all parts and Epson chip resetter for refilling print cartridges. Call Wes 770 639 2367

260 Miscellaneous for Sale

Drumset for sale. 5-piece Tama Swingstar set with Tama double bass pedal. Includes 21inch ride and 14inch high-hat zildian cymbals. asking \$550 or best offer

(229)221-1723

TREADMILL-Folding Weslo Cadence DS11 treadmill. Electronic Time, Distance, Calories & Fat Burned, Speed Control and comfort drink holder \$150.00 Call Jeff 912-690-4999

2 12inch audiobahn 1,400watt speakers. Crunch 1,000watt amplifier and a large sealed speaker box. In great condition. \$550 or best offer

(229)221-1723

LOW COUNTRY BOILTICKETS \$10.00 for October 19 event at Delta Sigma Phi house For Sale at Rotunda from 9am-3pm Oct 9-12 or call 404-840-2380

solid dark wood stain desk & end-table set in good cond. Desk w/ detachable hutch(40x12x44). End-table can double for file storage (26x18x30). \$90 Call (501)472-0956.

Don't throw away that junk... turn your trash into cash. Trying selling it online and in print with a G-A Daily action classified ad. It's free for students. Visit www.gadaily.com to find out more!

"PET BLINKERS" Safety for your Pet. Can be seen 1/2 mile at night. Available at McCook's Pharmacy. Hwy 80 East in Statesboro.

Want to make a loft or other furniture? Spare wood for sale at a ridiculously cheap price. Call Wes 770 639 2367

270 Motorcycles for Sale

MOTORCYCLE! 2003 HONDA CBR600RR. Red and black. Excellent condition. 9100 miles, lots of aftermarket parts and accessories. http://hollagager.dothphoto.com \$7000 obo 912-678-9729

Employment & Job Services

300 - 399

BARTENDING! Up to \$250 a Day. No Experience Necessary. Training Available. Age 18+ OK

Call 912 541 4885.

480 Sub Leases

We need two people to sublease our duplex in Hawthorne!!! 2 bedroom, 2 bath very clean w/ large living room, fresh paint, and right next to pool! Rent \$325 + utilities. Please contact 478-808-7645.

1-800-965-6520 XT 296

360 Jobs/Part Time

COOK & ASST COOK at Japanese Rst. ; No Experience Required; Easy Job & Compatible Hours; Training Avail. 912.681.3881 for questions

Immediate openings for LPNs: Accord Services, a private duty home care staffing company working with quad/catastrophic clients only has opened an office in Savannah, FT and PT positions available for Licensed Practical Nurses in Chatham and Bryan County. Please contact Thomas Gurley Mon-Fri 9 a-5 p toll free at 1-877-858-1795 for more information.

Housing & Real Estate

400 - 499

EAGLECREEK TOWNHOUSE. Moving out Dec. 10. 2 bedrooms, 2.5 baths, two floors, 1150sqft, \$500/month. Call me at 478-320-3611

410 Apartments

Needed: 1 female roommate (students only). 2bdrm/2bath duplex past fairgrounds. All inclusive rent \$460/mo. Great new place. No pets. Available immediately. Call Maggie (706) 570-0301

Looking for a roommate? Trying to sublease your place? Put the G-A Daily to work for you. Free classified for students in print and online. Visit www.gadaily.com for information

Roommate needed ASAP in two bedroom duplex in Hawthorne II. Rent \$325 + utilities. Two months rent free. Contact Ashley (478) 284-1196

FEMALE ROOMMATE NEEDED!!!

for Spring and Summer 2007. Player's Club Apartments. 2 b/r, 2 bath, W/D & dishwasher. Only \$385/month, utilities included. Within walking distance of campus & University Plaza. Call Ashley 770-547-6682

Female roommate needed for immediate move in! 3 bedroom 2 1/2 bath townhouse located less than a mile from campus. Bedroom partly furnished. Rent \$400 w/everything included. Call Molly (419) 351-3900

470 Student Housing

FOR RENT BY OWNER: STADIUM WALK APARTMENT. TWO BEDROOMS, WASH, DRYER. \$425.00 per month. Some pets allowed. Lease required. Call 912 541 4885.

480 Sub Leases

Sublease College Walk 1 and/or 2 BD/1 BA. \$200/\$400 Utilities included. Pets ok. Has 2 great roommates. 404-668-1600

Room for rent in Planter's Row. Female roommate needed for immediate sublease. Huge bedroom, walk-in closets, full kitchen. For more info call Mallory at 706-825-5441

First month free rent! Sublease this apartment before it's too late. Bedroom with private bathroom in a gated community. New apartment. Low utilities, pet friendly. Great female roommate.

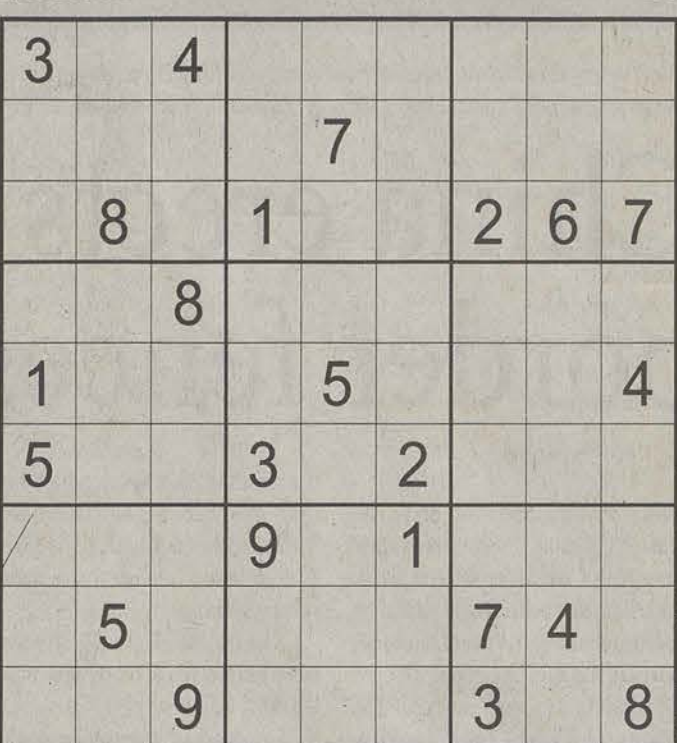


www.gadaily.com
New Voices. New Services. New Attitude

Sudoku

Medium

To play: Complete the grid so that every row, column and every 3x3 box contains the digits 1 to 9. There is no guessing or math involved, just use logic to solve



SUBLEASE!!! Need someone to take over lease for brand new duplexes pass the fairgrounds with two GREAT roommates!! \$385 ALL inclusive, which includes 5 HBO's and high speed internet. Please contact 912-429-3244!

SPRING 07 SUBLEASE! 2BD/1BTH in University Place. \$275 per room. Will rent individual rooms. Free cable/HBO. Washer/Dryer. Walk to campus. First month rent FREE! Call 912-515-4108. Leave message.

NEEDED SUBLEASE FOR SPRING 2007! STADIUM PLACE! QUIET COMPLEX & CLOSE TO CAMPUS! JANUARY RENT AND WATER FREE! CONTACT ASAP gradybabib84@yahoo.com

First Month's Rent FREE!!! Female sub-lease needed ASAP for Statesboro Place! \$365/mo, All Inclusive, and fully furnished! Contact Sheridan at 2299427016 or sbushy13@yahoo.com

Sublease College Walk 1 and/or 2 BD/1 BA. \$200/\$400 Utilities included. Pets ok. Has 2 great roommates. 404-668-1600

Room for rent in Planter's Row. Female roommate needed for immediate sublease. Huge bedroom, walk-in closets, full kitchen. For more info call Mallory at 706-825-5441

First month free rent! Sublease this apartment before it's too late. Bedroom with private bathroom in a gated community. New apartment. Low utilities, pet friendly. Great female roommate.

Services

600 - 699

610 Education & Tutoring

FUN & STUFF Visit our Web site for list of things to do that are educational and fun. <http://www.stp.georgiasouthern.edu/fun-stuff/>

Travel

700 - 799

710 Spring Break Travel

Spring Break Bahamas 5 Days/4 Nights from \$199 per person Includes Cruise Transport & Resort in The Bahamas - Other Packages also Available Book Early for FREE VIP Party Package! Toll-Free 1-888-85-BEACH (1-888-852-3224) www.GoBahama.com

Travel with STS to this years top 10 Spring Break destinations! Best deals guaranteed! Highest rep commissions. Visit www.ststravel.com or call 1-800-648-4849. Great group discounts.

Miscellaneous

900 - 999

Find a New Friend

AJ



AJ's mom is an AKC registered English Bulldog and dad was a Jack Russell/Pomeranian mix. He is the cutest little guy! He is 8 weeks old. He is also up to date with shots, de-wormed and have been altered. Join us for our 7th Annual Pet Fun Day Saturday Oct. 28 - 10 a.m. - 3 p.m. Please bring your pets (on a leash) and exotic pets are welcome.

Humane Society of Statesboro & Bulloch Co. Animal Rescue Division Statesboro, GA • 912-681-9393 bullochanimalrescue@yahoo.com

910 Pets & Pet Supplies

Pit Bull Puppy for sale. Female 5 month old. Razor O'Edge bloodline. Call for more information. 687-3004

Lost Pet. Deformed claws. Siamese Mix. One white paw. Gray and white stripes. 2 yrs old. Missing since Friday, 4-4-06 1600 grey-naul@yahoo.com

ALTERATIONS

Quality Alteration Shop

Quick Turn Around

Ann Hill, Seamstress

7 South Main St. • Downtown

M-F 9-6 • Over Cobbler's Bench • 489-1825

Wendy's 99¢

Crispy Chicken Sandwich

Cheats Corner

Create and solve your Sudoku puzzles for FREE.
Play more Sudoku and win prizes at PRIZESUDOKU.COM
The Sudoku Source of George-Anne Daily



Solutions



Solution Trivia Puzzle 27

SPORTS

Who's
HOT

At GSU- Football's record-breaking offensive performance against Elon. Travis Clark threw a record 27 completions for 375 yards. Jayson Foster tied the record for most receptions in a game (9), and Reggie McCutchen broke a record with 191 receiving yards.

In the NCAA- The Arkansas Razorbacks. After upsetting Auburn two weeks ago, the Pigs rolled over Southeast Missouri State and are in control of the SEC West. Suuuueeeey!

Who's
NOT

HOT: Darren McFadden and the Arkansas Razorbacks.

In the NCAA- Florida International and the University of Miami. Thirty-one players have been suspended so far for the brawl in the third quarter of Saturday's game.

In the NFL- The Oakland Raiders. Expect to hear more complaining from Randy Moss. With their fifth loss Sunday against the Broncos, the Raiders solidified their spot as the worst team in the NFL.

Volleyball falls to App St., Davidson

GSU News Service

Despite rebounding from a first-game loss to win game two, the Eagles fell to Appalachian State 3-1 (30-24, 24-30, 31-29, 30-14). The Mountaineers improve to 9-1 in the SoCon and 16-7 overall, having won 10 of their last 11 matches. The Eagles drop to 2-6 in league play and 8-8 on the season.

Appalachian tied its tenth-best mark in school history with 26 block assists, as the team compiled 18 total blocks. Lewis was responsible for 10 of those blocks. She also set a career-high with nine block assists. Sophomore Carla Durham added six total blocks and junior Dianna Thomas blocked five attacks.

The Mountaineers recorded its most kills in a game in the match in the opening set with 19. ASU held GSU to just a .138 hitting percentage to take the game, 30-24. In the second game, Georgia Southern held Appalachian to just a .135 hitting clip as the visitors tied the match at 1-1 with a 30-24 victory.

With the home team up 29-25, the visitors used a 4-0 run to tie the third game at 29. The Mountaineers took advantage of two-straight Eagle errors for a 31-29 win and 2-1 match lead. ASU rolled in game four, holding GSU to a .061 hitting percentage for a 30-14 win and 3-1 match-victory.

Lewis added 11 kills and a .381 hitting clip and Thomas led the way with 17 kills and a .586 hitting percentage. Durham chipped in 14 kills. Junior Brittany Zahn added 11. Junior setter Lorelle Rau dished out 53 assists in the win, and freshman Cassie Engelgau and senior Rachel Gates anchored the defense with 15 and 12 digs, respectively.

Sophomore Christy Dowd put up a double-double for Georgia Southern with 17 kills and 16 digs, both team highs. Senior Jennifer Charles added 11 kills and sophomore Mae Chabra dished out 39 assists. Senior Libero Staci Anderson recorded 12 digs and freshman Natalie Rodriguez added 10.

The Eagles lost again to Davidson Sunday afternoon, falling 3-1 (32-30, 16-30, 30-24, 30-28) at Davidson. The loss was the sixth-straight for GSU.

"We knew coming into this weekend that these were two really tough teams," said Head Coach Nicole McCray. "We came in and played really hard and, unfortunately,



Jared Siri/STAFF

Junior outside hitter Gorana Bacic attempts a kill against a Chattanooga player in this file photo. The Eagles lost their fifth and sixth-straight match this weekend against Appalachian State and Davidson.

came up short."

Katie Pierucci's 31 kills were just two shy of her career-high 33, posted on Oct. 3, 2004 at Chattanooga. With the win, the Wildcats improve to 13-11 overall and 5-4 in SoCon play, while Chattanooga evens to 8-8 overall and just 2-6 in the conference.

Senior outside hitter Liz Williamson joined Pierucci in double-digits with 18 kills to go along with 11 digs on the defensive end. Senior setter Jenna Dykstra totaled a

match-high 55 assists.

For the Eagles, Christy Dowd led the GSU's attack with 10 kills, but she hit just .025 in the match.

Davidson held a 6-2 advantage in game one, but the Eagles got things knotted at 11-11, and then again at 13-13. GSU went ahead 17-14, but junior Lindsey Woeste served four straight points to put the Wildcats back on top 20-17. With the Cats unable to build on the lead, the score was tied five times, and as late as 30-30, in the extra action,

Saturday results

Game	1	2	3	4
Georgia Southern	24	30	29	13
Appalachian St.	30	24	31	30

Sunday results

Game	1	2	3	4
Georgia Southern	30	30	24	18
Davidson	32	16	30	30

sophomore outside hitter Megan Parks and Neale posted back-to-back kills to lift Davidson to a 32-30 victory.

Game two was tight at the beginning, but the Eagles put together a couple big runs, including a eight-point serve by Natalie Rodriguez, to take a 19-9 lead that the Cats could never overcome. Williamson answered with four straight points to pull the Cats within seven at 20-13, but GSU went on to a fairly easy 30-16 win to even the match at one game apiece.

In the third game, Davidson jumped out to the a large 10-3 lead before the Eagles went on a 4-0 run to close the gap to 10-8. And though the Eagles would battle and stay close during game three, a kill from Woeste eventually put them away for a 30-24 victory to take a 2-1 lead in the match.

GSU took a 5-1 lead in game four, but the Cats refused to quit, getting things knotted at six and then trading points until the Eagles finally took a 9-8 edge. GSU maintained the lead, holding a 13-11 advantage when Williamson served for five straight points to put the Cats on top for good. Davidson took a 16-14 lead and built on it for the remainder of the game. Williamson's 18th kill of the match lifted the Cats to a 30-18 victory for the match.

The Eagles return to action Friday night as they take on Furman.

Match-time is set for 7 p.m.

Clark named SoCon Player of the Week

GSU News Service

Georgia Southern quarterback Travis Clark's record-setting performance against Elon earned him the Southern Conference Offensive Player of the Week award. He joins running back Chris Covington as Eagles to win the weekly league award.

With the recent SoCon Offensive accolade, Georgia Southern extended its streak of quarterbacks winning the award. Clark's award makes it the 12 straight year. Thirteen of the 14 seasons as a SoCon member, an Eagle QB received the honor. The sophomore signal caller joins: Jayson Foster (2005), Chaz Williams (2004, 2002), Trey Hunter (2003), J.R. Revere (2000-01), Greg Hill (1997-99), Kenny Robinson (1996) and Charles Bostick (1993, 1995).

Clark completed 27 passes, a single-game record, for 375 yards and a touchdown as the Eagles



Clark

defeated Elon 28-21. He broke All-America Tracy Ham's record of 26 completions against East Carolina in 1984. Clark's 375 yards are the most since Ham threw for a record 419 yards against Furman in the 1985 National Championship game.

Two of GSU's receivers also had a record setting performance from the game. Reggie McCutchen hauled in 191 of Clark's yardage on seven receptions. The senior wide receiver broke Deryl Belser's record of 170 yards against James Madison 15 years ago. Foster's nine receptions (84 yards) tied Robert Baker's record set against ECU in 1984.

After Elon tied the game with just over two minutes left, Clark directed the Eagles' game-winning touchdown drive, covering 53 yards on four plays in 78 seconds.

The Eagles (3-3 overall, 2-1 SoCon) host top-ranked Appalachian State (6-1, 3-0) this Saturday as part of Homecoming festivities. The game will be televised live on SportSouth (former Turner South) with kickoff scheduled for noon at Paulson Stadium.

Late goal vaults Eagles over App St.

GSU News Service

Sophomore Ashley Toussaint's goal with 20 minutes left in the contest was the only goal for Georgia Southern who prevailed 1-0 over Elon Sunday in Southern Conference women's soccer action from Eagle Field.

The win moves the Eagles to 6-8-1 overall and 4-3 in the SoCon, while the Phoenix fall to 5-8-1 and 2-3-1.

GSU's four league wins are the most by the program since going 7-2-1 in 2002.

"I'm proud of our team," said GSU Head Coach Ashley Hart. "We came out and fought hard. Elon was well organized. I thought it was a good battle between two good teams. We did a good job of taking advantage of our opportunities and we played smart as a team."

The two teams had just nine shots combined in the first half and only put three of those on net.

The second half saw more shots and more scoring opportunities. Elon had 13 shots in the final period compared to seven for GSU.

"We went through the motions in the first half. We said 'If you want to

win this game, you're going to have to step up and prove you're the better team.' We raised our level to where we needed to be to win this game."

Toussaint single-handedly put the Eagles on top at the 70-minute mark. She took a pass midway between the center circle and the top of the 18-yard box in the middle of the field, dribbled through the Elon defense and lifted a shot at the top-left corner of the box over the Phoenix keeper.

Her tally is the fifth of the season, which leads the team and sets a new personal best.

Elon's best chance to tie came with just under five minutes remaining. Georgia Southern keeper Laura-Ashley Harris was ruled to have handled the ball outside the box, giving the Phoenix a free kick from 18 yards away. But Katie Persichini's attempt went over the crossbar.

Harris made her first start of the season and had seven saves for her fourth career clean sheet. Lizz Johnson made five saves in net for Elon.

GSU goes on the road for its next match, traveling to Western Carolina Friday. Elon hosts Appalachian State Thursday afternoon.

What's next for the Eagles: at Western Carolina, Friday, 12 p.m.

Sophomore midfielder Kate Boardman (right) battles for possession with a UNC-Greensboro player in this file photo. Sophomore Ashley Toussaint (below) scored the only goal in the Eagles' 1-0 defeat of Elon.



Grayson Hoffman/STAFF

Goals by period	1	2	Total	W	L	T	PCT
Elon	0	0	0	6	0	1	.929
Georgia Southern	0	1	1	5	1	1	.786
				5	1	1	.786
				4	2	0	.571
				4	3	0	.571
				3	3	0	.500
				3	4	0	.429
				2	3	1	.417
				2	4	0	.333
				0	6	0	.000
				0	7	0	.000

UNC Greensboro (7-7-2) 6 0 1 .929
Western Carolina (9-5-2) 5 1 1 .786
Furman (7-7-1) 5 1 1 .786
Coll. of Charleston (6-6-2) 4 2 0 .571
Georgia Southern (6-8-1) 4 3 0 .571
Davidson (7-6-2) 3 3 0 .500
App. State (7-8-0) 3 4 0 .429
Elon (5-8-1) 2 3 1 .417
Wofford (5-6-2) 2 4 0 .333
Chattanooga (3-9-1) 0 6 0 .000
The Citadel (1-15-1) 0 7 0 .000

Shots by period 1 2 Total
Elon 5 13 18
Georgia Southern 4 7 11

artists:
tony arata • gerald smith • chris mitchell • jellyroll johnson • mary hannah riggins • jill & justin samples

saturday, oct. 21st @ 7 pm

\$15 general admission (GSU students \$10 with ID card)

emma kelly theater

tickets on sale downtown now at pladd dot music • averitt center box office call 912.764.3230

Sponsors: Lovett Bennett, Jr. Attorney at Law • Braswell Foods • French Quarter Cafe • Midtown Coffeehouse • Student Media @ GSU. Produced by Pladd Dot Music.

american
music
series
singer/songwriter



tony arata



gerald smith



chris mitchell



mary hannah riggins

jill & justin samples

NATIONAL SPORTS BRIEFS

Compiled by staff

UGA running back out for season

Georgia Bulldog running back Thomas Brown will be out for the season with a torn ACL, according to the Associated Press.

Brown was the team's leading rusher and a potent kick returner. The junior suffered the injury in Saturday's loss to Vanderbilt. It was the second loss for the Bulldogs in as many weeks.

The Bulldogs are deep at the running back position, as Brown will be replaced by either Kregg Lumpkin or Danny Ware—both of whom are capable and experienced running backs. The trio combined for 853 yards and seven touchdowns on the season.

The 5-2 Bulldogs play Mississippi State between the hedges next week, and play rival Florida the following week in Jacksonville.

Cubs hire Lou Piniella as manager



The Chicago Cubs are hoping Lou Piniella will break their near-century old curse.

After being five outs from a World Series in 2003, and failing following the infamous "Bartman incident," former manager Dusty Baker had three sub-par seasons with the Cubs. Chicago has not won a World Series since 1908.

The Cubs were 66-96 last season and have reached the postseason only twice in the past 17 years.

The Cubs signed Lou Piniella for around \$3 million, according to the Associated Press.

The 67-year old Piniella managed the Tampa Bay Devil Rays until 2005. He has also managed the New York Yankees, the Cincinnati Reds and the Seattle Mariners. Piniella won a World Series with the Reds in 1990.

Oakland fires manager Ken Macha

Ken Macha was fired by the Oakland Athletics on Monday, following a disappointing performance by the team in the ALCS against the Detroit Tigers.

Despite finishing 93-69 on the season and sweeping the Minnesota Twins in the ALDS, Oakland fans have been frustrated by the A's inability to make a World Series performance under Macha.

Macha had two years and nearly \$2 million dollars left on his contract.



Special Photo

Out & About in The 'Boro

\$109 CONTACT LENS PACKAGE

Offer includes complete eye exam and contact lens fitting. This offer includes a complete eye exam and contact lens fitting plus a three-month supply of clear, 2-week disposable contact lenses. Colored, Toric and Bifocal contacts are available for an additional cost. Some restrictions may apply. Appointments recommended.

Offer expires October 28, 2006. Coupon required.

\$100 OFF

\$100 off second pair. Buy a complete pair of glasses (frames and lenses) and receive \$100 off a second pair. Sale cannot be shared. Some restrictions apply.

Offer expires October 28, 2006. Coupon required.

Boomers Vision Center
Statesboro
(912) 489-6655

620 Hwy. 80 East • Statesboro (in front of Lowe's)

SATURDAY AND EVENING APPOINTMENTS AVAILABLE

american music series
singer/songwriter

artists:
tony arata • gerald smith • chris mitchell • jellyroll johnson • mary hannah riggins • jill & justin samples
saturday, oct. 21st @ 7 pm
\$15 general admission (GSU students \$10 with ID card)
emma kelly theater
tickets on sale downtown now
at pladd dot music • averitt center box office
call 912.764.3230

Sponsors: Lovett Bennett, Jr. Attorney at Law • Braswell Foods • French Quarter Cafe • Midtown Coffeehouse • Student Media @ GSU
Produced by Pladd Dot Music

Savannah's #1 Japanese Restaurant
Now in Statesboro!!!



715 Northside Drive East in Southern Square Center • Next to K-Mart

Jr. Chicken Bowl \$3.15
Jr. Shrimp Bowl \$3.95
Chicken Bowl \$4.50
Shrimp Bowl \$5.50
Shrimp/Chicken \$5.75

Over 20 franchises
restaurants in the area
Dine in or Carry Out

We Can Quickly Make Your Favorite Dish.
So You Get In and Out in a Hurry
Hibachi Steak • Shrimp Tempura
Teriyaki Chicken & Shrimp
Sushi • Salads • Appetizers and Much More...
912-764-5150
Hours: 11 AM - 9 PM 7 Days A Week
www.capitaljapan.com

K-Mart
Now in Statesboro at Southern Square Shopping Center
May 2016

VIDEO WAREHOUSE

RENTING MOVIES JUST GOT EASIER!

New Releases for 10/17/2006

Monster House
An American Haunting

Nacho Libre
Slither

1200B BRAMPTON AVE
871-7012

199 NORTHSIDE DRIVE
489-4279

Blue Out Paulson!

Show Your Eagle Spirit for Homecoming!



GSU Eagles vs. Appalachian State
Oct. 21st at 12 p.m.

Pick-up your Blue Today at:

THE UNIVERSITY STORE

Hours: Mon.-Thurs. 7:30 a.m.-9 p.m.
Fri 7:30 a.m.-5 p.m. • Sat. 11 a.m.-5 p.m.

1-800-861-7059

I.T. STORE

Hours: Mon.-Thurs. 7:45 a.m.-5 p.m.
Fri 7:45 a.m.-2 p.m.

www.gsustore.com

