

Georgia Southern University

Digital Commons@Georgia Southern

The George-Anne

Student Media

4-20-2006

The George-Anne

Georgia Southern University

Follow this and additional works at: <https://digitalcommons.georgiasouthern.edu/george-anne>

Recommended Citation

Georgia Southern University, "The George-Anne" (2006). *The George-Anne*. 1948.
<https://digitalcommons.georgiasouthern.edu/george-anne/1948>

This newspaper is brought to you for free and open access by the Student Media at Digital Commons@Georgia Southern. It has been accepted for inclusion in The George-Anne by an authorized administrator of Digital Commons@Georgia Southern. For more information, please contact digitalcommons@georgiasouthern.edu.



Reflector's Review

Don't forget to pick up the Reflector's last edition of the semester Monday



Baseball to play UNC-G at home this weekend

SPORTS, p.7

THE GEORGE-ANNE DAILY

THURSDAY, APRIL 20, 2006

Chic-Fil-A takes top collegiate sales in the nation

GSU's Chic-Fil-A topped 161 other Chic-Fil-As on college campuses, bringing in over 1.4 million



Rachel McDaniel/STAFF

Students wait in Chic-Fil-A's line Wednesday afternoon in the Russell Union. Georgia Southern's Chic-Fil-A restaurant earned the top collegiate sales for 2005.

By Rachel McDaniel
News editor

Georgia Southern students bought over 1.4 million dollars worth of food from the Chic-Fil-A in Russell Union last year, giving the store the top collegiate sales for 2005. The restaurant is one of 162 Chic-Fil-As on college campuses in the nation, said Manager Judy Connelly.

The store employs around 30 students who work to keep campus fed. "They work as team members," said Connelly, who has worked on GSU's campus for 20 years. "We have a lot of student employees, but a lot of them only work three to four hours a day."

To thank student customers, Connelly said they will give out coupons for free food.

"We want to show the students that we appreciate their business," she said. "We'll have a banner

thanking them and we'll be passing out chicken sandwich coupons to students who come in the Union."

Tom Palfy, director of food services, thinks the restaurant has done a good job of feeding GSU students.

"That is an extremely difficult operation to keep employees motivated. Most of them are students and their number one priorities are school and class work," said Palfy. "I think their performance has been very good for the amount of volume in the store."

Palfy said the store has taken top collegiate sales in the nation two years, once in 2003 and now for the 2005 year. He said the restaurant is second in the total number of food sales on campus behind Landrum. Lakeside is third in sales.

Jason Montgomery has worked at the Russell Union Chic-Fil-A for almost seven months. "I love

see **CHIC**, page 5



Special Photo

A scientist uses molecular biology to study aquaculture.

GSU takes a look at molecular biology for Research Week

GSU News Service

The popular "CSI" television shows have provided the general public with a very basic understanding of molecular biology.

Thanks to the creation of a state-of-the-art teaching facility in the Department of Biology, students and faculty at Georgia Southern University have all the tools they need to conduct their own in-depth investigations of the molecules that are central to all biological life.

Located on the second floor of the Herty Building, the molecular biology teaching facility offers access to cutting edge equipment and techniques that are essential to the study of molecules such as DNA, RNA and proteins.

"This type of extensive, hands-on exposure to molecular biology is critical to students who are interested in securing jobs in the biotechnology industry, or going on to graduate or professional schools," said Laura Regassa, a professor in the biology department.

As the University celebrates its first Research Week, it is important to note that the molecular biology teaching facility also plays a crucial role in numerous faculty and student research projects.

"All faculty members within the Department of Biology maintain active research programs, and many of them rely on molecular biology techniques," Regassa said. "In addition, all of the undergraduates in our department are encouraged to gain research experience with a faculty member."

"Students with an interest in molecular biology are better equipped to work in a research laboratory if they have already taken a class in the molecular biology teaching facility. These students often present their research findings at scientific meetings or publish their results in scientific journals."

The molecular biology teaching facility, which can accommodate as many as 18 students at any one time, opened in Fall 2005. The University System of Georgia's Major Renovation and Repair Fund paid for the renovation of the space the facility occupies in the Herty Building.

Meanwhile, funds for the facility's equipment were provided by the Office of the Provost at Georgia Southern, the Allen E. Paulson College of Science and Technology and the Department of Biology. A grant for \$114,803 from the National Science Foundation (NSF) also helped fund the equipment.

see **LAB**, page 3

Music department gets new digital keyboards

Student technology fees pay for nearly \$70,000 of new musical equipment

By Tyler Griffin
Staff writer

Our student technology fees are being put to good use at the music department this spring.

Seventeen new digital keyboards were bought for the music department and their piano students on Feb. 3.

"The total cost for the purchase, including accessories like headsets, floppy drives and a teacher control system was around \$70,000," said associate professor Tom Pearsall. "The lab itself includes 16 student keyboards plus another one for the teacher."

Music major Matthew Price said, "It's a full size keyboard with semi-weighted keys, which feels pretty good for a keyboard."

Pearsall said that the field of music

is becoming increasingly technological. With today's technology, many different instruments' sounds can be duplicated with a few pushes of button.

The sounds emitted are so realistic, Pearsall said, that it's difficult to distinguish the sound of a traditional piano, organ, or numerous other instruments from the ones produced on the digital keyboards.

Students and teachers can use headsets or the external speakers that the pianos came with. The instruments are becoming increasingly popular because of their technological features.

The pianos also can connect together so that students in their lab sessions can accompany each other in ensembles that the teacher can monitor, and even participate in.

Another unique feature the keyboards have is the ability to connect to the Yamaha website on the Internet and download additional music.

Pearsall said that, with the students, the most popular keyboards "include the recording capabilities, diverse selection of sounds and numerous accompaniment and rhythm patterns in a variety of popular styles that may be added to the music."

"With these new instruments, we are able to integrate lots of creative activities into the classes," said Pearsall.

The sounds can be customized and saved or recorded onto today's flash drives, midi disks and smart media cards.

Price said he thinks it's very easy to use the equipment. "Matter of fact, see **MUSIC**, page 5



Daniel Flanders/STAFF

The music department recently bought 17 new keyboards, among other musical equipment.

Math plus lecture equals April 22

GSU News Service

The Department of Mathematical Sciences will sponsor a public lecture on Saturday, April 22.

Florida State professor De Witt Summers and GSU assistant professor Frederic Mynard will be the featured speakers at the lecture, which will be held from 10 a.m. until noon in room 1005 of the College of Information Technology Building. Summers' lecture is titled "Calculating the Secrets of Life: Mathematics in Biology and Medicine."

Mynard's lecture is titled "Everything You Wanted to Know about Topology but Were Afraid to Ask."

Prior to the lecture, a reception will be held outside of room 1005 at 9:30 a.m. For more information, visit <http://cost.georgiasouthern.edu/math/seminar/pls.php>.

Creative Writing Club hosts poetry reading at RAC Saturday

By Brittany Hall
Staff writer

The Creative Writing Club is hosting a poetry-reading and open-mic bonfire at the RAC Fire Ring Saturday, April 22 at 7 p.m.

The open-mic night is an opportunity for anyone to come and share their short stories, poems or acoustic music with people who have like interests.

Every semester the Creative Writing Club organizes a venue for writers, artists and performers to share their work with their peers. These events normally draw anywhere from 10-40 people, said the Creative Writing Club advisor, Professor Peter Christopher.

This is the club's first event at the RAC Fire Ring, but they have also held open-mic events at the Wildlife Center, The Daily Grind and the Russell Union.

Professor Christopher has high hopes for the bonfire and hopes that

the students reading, as well as the audience members, will get something back from the experience.

"While some students are nervous about reading their writing, they are given feedback about their pieces previous to the event so they can be confident in speaking from their heart," said Professor Christopher. "The students later say it's an enriching opportunity to read aloud in front of their peers of like heart and mind."

With the high audience capacity expected to attend the Saturday night festivities, the event has attracted more than just artists. The GSU Miscellany is supporting the Creative Writing Club with their bonfire.

"The Miscellany joined a little late in supporting the bonfire," said Stevens. "The Miscellany normally has an evening of the arts, but we found out about the Creative Writing Club's bonfire and decided to support them

see **POET**, page 5



Special Photo

Students will be able to sit around a bonfire and listen to or share poetry while listening to acoustic guitar.

TODAY

High: 83 | Low: 59
Mostly sunny

FRIDAY

High: 82 | Low: 58
Mixed skies

SATURDAY

High: 84 | Low: 62
Mostly sunny

SUNDAY

High: 80 | Low: 62
Mostly sunny

Campus 2, 3
Features 4
Briefs 5

Classifieds 6
Sports 7
Hiatus 8, 9, 10

Get a glimpse of Savannah's gardens

Savannah's Garden Club offers annual tours to allow visitors to see historic gardens usually closed off to the public. | **BOTTOM LINE**, p. 8

Campus ministry to benefit Maasai people

By Rebekah Wilson
Staff writer

The students of Georgia Southern Christian Campus Fellowship (CCF) are raising funds for the Maasai people of southern Kenya and Tanzania.

The Maasai people are in the middle of the worst drought in over 50 years. The CCF are raising money to help through a fundraiser called Mission Maasai.

CCF, a non-denominational ministry, is sponsoring several weekly events

at their campus house to raise money for Mission Maasai.

There will be a weekly open mic night on Mondays at the campus house on Fair Road, with coffee served for donations. Coffee will be offered around the clock at the campus house with all the donations going towards the fundraiser. Every Wednesday at 3:30 p.m. the ministry sponsors a weekly HORSE basketball tournament at the campus house with a \$1 entry fee that will be donated to Mission Maasai.

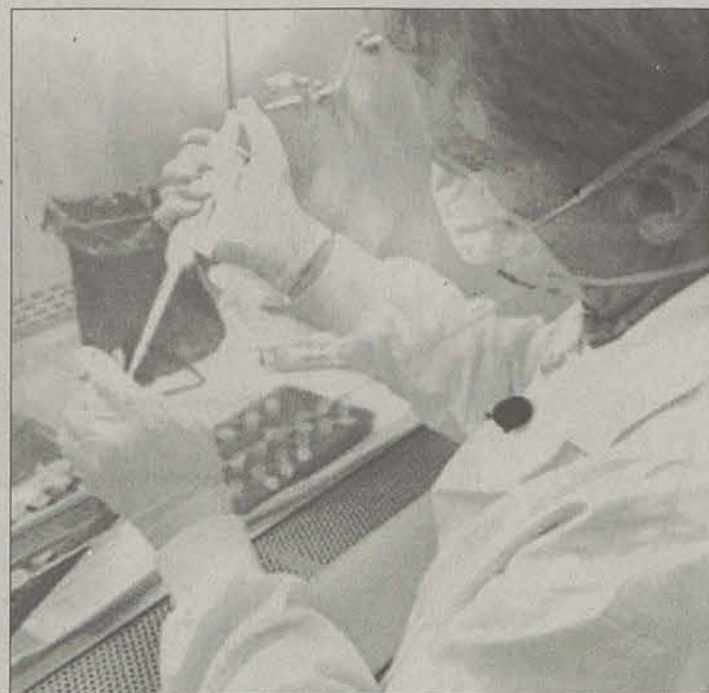
Mission Maasai is not about spend-

ing less, but about spending differently, said Josh Holt, CCF's intern. He suggests not spending \$3.50 on a cup of coffee at a coffee shop, but instead coming to the campus house and spending the money on coffee which will benefit the Maasai people.

This mission is not just a goal at GSU's CCF. The Georgia Tech CCF is also raising funds. Assistant campus minister at Tech, Robert Braden, said the fundraiser is a way to do without so others will have the necessities of food and water.

"Mission Maasai encourages you not to change your lifestyle, but to go through the day conscious of what you spend your money on, and saving money on things you can do without," said Braden.

All are welcome to attend the weekly events at the CCF campus house, located at 1206 Fair Road in Statesboro, near the intersection of Fair Road and Gentry. For more information concerning Mission Maasai contact CCF at 912-681-8634 or at www.gscf.org.



AP photo

Molecular scientist Ken Sojony looks for the presence of viral RNA in swabs from fowl in a research lab.

Race For A Cure raises hundreds of dollars

By Amanda Fischer
Staff writer

The Georgia Southern Association of Pre-Health Professionals hosted a 5K Race For A Cure at Mill Creek Regional Park. The event was organized to promote wellness within the community and to raise money for the American Cancer Society's national fundraising event, the Relay for Life. Over \$550 will be contributed to the American Cancer Society from the proceeds of the event.

The overall winner of the race was Michael McClure, a junior at Georgia Southern. The second place finisher in the men's division was Pat O'Brien



Special Photo

Sean Payne, Michael McClure and Shelly Lovell ran the Race for a Cure.

and the third place finisher was Sean Payne. In the Women's division, Tammy O'Neil finished first, Mary Jarrous finished second and Shelly Lovell finished third.

Christina Jarrous served as the head of the planning committee. "I

cannot describe how thrilled I was to see the support from both our organization and from the community," she said. "Everybody had such great attitudes, considering the horrible weather. We had a lot of fun and the success of this first race is a precedent for an annual event in the years to come."

Tabatha Lee, the association's secretary, also planned the race. "As a new organization, it is exciting to see what we have accomplished this year," she said. "We raised a good amount of money for a very worthy cause and had fun doing it. I am looking forward to having the 5K again next year."

The advisor for the Association of

Pre-Health Professionals is Dr. Todd Deal. He has helped the new student organization tremendously in getting started this year. "The Race For A Cure and the proceeds raised are indisputable evidence for how students can make a difference," he said. "What a tremendous accomplishment for a group of students, all of whom carry a heavy academic load."

Sponsors for this event include Coca-Cola, Statesboro-Bulloch County Parks and Recreation, Dr. Rani Reddy at Candler Internal Medicine, Jack Strickland Rehabilitation Center in Claxton, Southside Service Center, B&J Awards and WOW Apparel & Promotions.

LAB

from page 1

Speaking of equipment, the molecular biology teaching facility features an impressive array of high-tech instruments, including DNA electrophoresis setups, microcentrifuges, micropipettors, PCR thermocyclers, high-speed centrifuges, heat blocks, ultra-cold freezers, gel documentation systems, and incubators.

"Each student has their own workstation equipped with all the items that are necessary to conduct inde-

pendent experimental work," Regassa said. "Larger pieces of equipment are located throughout the teaching labor in adjacent equipment rooms."

Thus far, the facility has been used by students in three advanced biology classes: Comparative Animal Physiology, Molecular Biology Techniques and Plant Diversity.

"The facility is equipped to handle any advanced biology class that uses molecular biology techniques," Regassa said. "I expect the number of classes that use it to double in the next two or three years."

The NSF grant that helped fund the facility was awarded to Regassa, who is conducting a study of her own, titled "Undergraduate Molecular Biology Literacy: From Knowledge to Application with Project-Based Learning."

As part of the project, Regassa designed the Molecular Biology Techniques course. "The goal of the grant is to provide undergraduate students with relevant, effective molecular biology training," she said.

According to preliminary results compiled by an outside assessor from the University of Central Florida, the course has been a success.

"The data clearly show that significant learning is occurring," Regassa said. "Students increased their understanding of molecular biology."

"THE CARIBBEAN IN THE 'BORO!!"

NEW STUDIO, 2 & 3 BR CONDOS

Caribe

RUCKER LANE • HWY 301 ACROSS FROM GSU • 681-SURF

RESERVE ONE NOW!

LEARN ONLINE THIS SUMMER

- Traveling abroad?
- Working on an internship?
- Going home for the summer?

Work toward your degree requirements at your own pace. Take online courses taught by University System of Georgia faculty along for the summer.

**University System of Georgia
Independent and Distance Learning**

See your academic advisor about applying specific
IDL courses to your program of study.

FOR MORE INFORMATION OR TO REGISTER

www.georgiacenter.uga.edu/idl/summer2006
(706) 542-3243

Ride for a Cause

support the

**GEORGIA
POWER**
A SOUTHERN COMPANY

MS 150

SAVANNAH CHALLENGE

Georgia's Two-day Cycling Tradition

Cycle for a cause and enjoy the lush scenery of Georgia's low country during the first Georgia Power MS150 Savannah Challenge on May 6-7, 2006. The two-day fully supported ride benefits the National Multiple Sclerosis Society, Georgia Chapter. Riders will enjoy discounted hotel rates, well-stocked break points, mechanical support before, during and after the ride, and entertainment at the Saturday overnight village. Help us end the devastating effects of multiple sclerosis.

For more information and to register online, go to www.nationalmssociety.org/gaa or call 1-800-344-4867 or 404-256-9700



CALENDAR

Thursday, April 20

12:30 p.m.

Brown-bag forum to discuss Foundations of Excellence surveys and future
Russell Union Room 2075

6 p.m.

African Student Association Meeting
Russell Union Room 2047

8 p.m.

Theatre & Performance presents "She Stoops to Conquer." For reservations and ticket information call 681-5379
PAC

8 p.m.

Brass Chamber Recital
Carol A. Carter Recital Hall

Friday, April 21

6 p.m.

Jazz Band & Concert Band
Russell Union Ballroom

8 p.m.

Theatre & Performance presents "She Stoops to Conquer." For reservations and ticket information call 681-5379
PAC

8 p.m.

Senior Recital
Carol A. Carter Recital Hall

POLICE BEAT

04-17-2006

- Kerensa Joyce Byers, 37, of Eagle Inn, Statesboro, was charged with DUI and failure to stop at a stop sign.
- A Carroll Building employee reported a case of harassment.
- A Winburn Hall resident reported a pair of boots missing from her room.

04-18-2006

- A bookbag was reported missing from the Henderson Library.
- A text book was reported missing from the Henderson Library.

Often overlooked objects get a 'Fine Focus'



Special Photo
A photo from Silvia Arifin's exhibition gets an up close and personal look at the roots of a plant.

By Juliet Macdonald
Staff writer

Silvia Arifin believes in taking a close look at things. Her senior exhibition "Fine Focus" will be held next week, April 24 to 28, in Gallery 303 on the third floor of the Foy Fine Arts Building.

A reception will take place Friday April 28th at 6 p.m. to 8 p.m. The reception is a senior graphic design portfolio reveal.

The photography exhibition artist Silvia Arifin is a graphic design student

at Georgia Southern. The theme of her work is "Fine Focus" and the title explains its attention to detail.

"It's about nature, its micro nature, things that are really small that are found in nature," said Arifin.

"The photos will be printed on silk and that they have a real three dimensional feel because of it," said Megan Jacobs, assistant professor of digital photography.

Arifin explained that she tried to capture natural objects that are not always looked at. "Certain things are going on in nature, but we don't no-

tice because it's so small," said Arifin. She said she is trying to show people the beauty of things that are going on almost everywhere in nature but are so small we don't often stop to notice them.

Arifin said her art started with her love of nature. "I like taking pictures of nature and when I started this project, I wasn't thinking of taking micro pictures of nature." She said as she spent more time in the woods, she started noticing all the beautiful small details that people normally miss.

Jacobs said Arifin's works repre-

sent more than just nature. "In many ways it's about looking really close at nature, but I think in some ways it goes beyond nature," she said.

Jacobs said the art gives size to small objects. "In life it was really small and in print it has become really big," she said. "They're very beautiful too, especially on the silk." Jacobs encourages anyone and everyone to come see the exhibition "It's going to be a wonderful show," she said.

The exhibit is open in Gallery 303 from 9 a.m. to 5 p.m. Monday through Friday.

Museum sponsors trip to Congaree National Park and Riverbanks Zoo



Special Photo
Students can see sights like this on a museum sponsored trip to Congaree National Park and Riverbanks Zoo.

By Lindsey Asche
Staff writer

The Georgia Southern Museum is sponsoring a Coastal Plains Adventure trip to Congaree National Park and the Riverbanks Zoo in South Carolina on Saturday, April 22.

Congaree is a 22,000-acre park that features a boardwalk for visitors to explore the largest tract of old-growth bottomland forest in the U.S. The park is known for its giant hardwoods, towering pines and some of the highest canopies in the world.

GSU professor Fred Rich, who is a geologist and wetland ecologist, will guide the museum group through the park.

The trip will also visit the River-

banks Zoo, which contains 350 species from around the world. The zoo features 170 acres of natural habitat exhibits including an award-winning aquarium, a two-acre reproduction of an African savannah and three geographically-themed bird habitats. Rich will be able to provide the group with interesting information about plant-life.

Susan Shryock, an administrative secretary at the museum, said, "The trip will offer adults an experience to learn about the surrounding coastal area." She said some of the previous trips that the museum has offered are to Cumberland Island, the Okefenokee Swamp and the Aquarium in Atlanta. Shryock explained that the

museum staff is hoping to give college students and adults an opportunity to "learn about the fascinating things we have here in coastal Georgia."

The group will leave from Statesboro on a chartered bus on the morning of April 22 at 8 a.m. and return at 8 p.m. The trip is open to people 18 and older. The cost is \$50 per person for members.

To sign up for the trip to Congaree National Park and the Riverbanks Zoo, call the Museum at 681-5444.

CLASSES IN KEY WEST

A course experience that
you will never forget!!

July 1-15

Earn your Health & Physical Activity Core Credit
Hope Scholarship may be applied for tuition
Deadline: June 15th!

For more information and application,
call 681-5267 or lbryant@georgiasouthern.edu
Check out the Grand Key Resort: www.grandkeyresort.com



The Sir Shop

TWO LOCATIONS

Statesboro Mall
764-6924

Main Street Village
871-4962



Established 1974 San Clemente, California

Do you want to be a George-Anne Daily Editor?

The George-Anne Daily is looking to fill five positions for the 2006-2007 academic school year, including Deputy Managing Editor, Sports Editor, Assistant News Editor, A&E Assistant Editor and Assistant Photography Editor.

- Students should be available for training this summer.
- Students must be in good standing with the university and have a GPA of at least 2.0.
- Previous writing and/or publication experience is a plus.
- A resume, cover letter and writing samples should be submitted by 5 p.m. Thursday, April 27 in room 2023 of the Williams Center. Interviews will be arranged. The search will remain open until all positions are filled.

Deputy Managing Editor –

The Deputy Managing Editor is responsible for day-to-day operations and office management, and organizing and editing wire and syndicated stories for the paper. The editor should also have good writing skills and will cover breaking news and features when called upon.

Sports Editor –

The Sports Editor is responsible for covering all GSU sporting events. The editor is responsible for directing sports coverage, recruiting writers, assigning sports stories and working with sports writers. Some layout and design is required.

Assistant News Editor –

The News Editor's assistant should be able to write two or more news stories per week, help come up with news story ideas and assign them to writers. The editor should assist in designing pages and working with writers.

A&E Assistant Editor –

The Arts and Entertainment Editor's assistant is responsible for helping create story ideas and recruiting writers to cover the stories for the weekly Entertainment edition of Thursday's paper. The editor is also responsible for helping with design and organization of the Entertainment and Features section.

Assistant Photography Editor –

The Photography Editor's assistant is responsible for coordinating photography assignments, asking in recruiting photographers, preparing multi-media presentations, and covering 2-3 photo assignments per week.

Each position requires working at least three nights a week for layout and serving office hours during the day. Bring a resume, cover letter and writing and photography samples to the George-Anne Daily, room 2023 of the Williams Center, by April 27, 2006.

DAILY
THE GEORGE-ANNE
"Covering the campus like a swarm of gnats."

Bedrooms
from
\$260

**EAGLE'S
LANDING**
Apartment Homes

**HUGE 2, 3 & 4 BEDROOM
APARTMENTS!**

1818 Chandler Road, Statesboro, GA 30458
912.681.6765 tel • www.eagleslandingapts.net

**2nd SEMESTER & FALL '06
LEASES AVAILABLE NOW!**

**WHOSE
HOUSE?
OUR
HOUSE!**

- Walk to Class!
- FREE High Speed Internet
- FREE Extended Cable with HBO
- Individual Leases per Bedroom
- All-Inclusive Utility Packages
- Pet Friendly
- Washer & Dryer in Every Apartment
- Resort Style Pool, Basketball & Sand Volleyball Courts

Stretching your gas dollars

This summer is set to be a record-breaker for travel. But as gas prices continue to rise, car trips can be a pricey choice for consumers. Car care, proper pumping, travel planning and sensible driving are the keys to fuel efficiency.

Here are some tips to help you make the most of your gas money.

CRUCK MYERS
Knight Ridder/Tribune

VACATION TIPS

The days of long, leisurely driving vacations may be a thing of the past.

With the price of gasoline at or near record highs, families planning a one- or two-week vacation by car must take a more creative and economical approach to the trip — especially when it comes to gas expenses.

Here are a few words of advice from AAA on planning a driving vacation.

■ **Consider the vacation destination.** The farther you travel, the more gas you'll need. Also think about a vacation spot that requires minimal driving.

■ **Plan ahead.** Select routes that allow driving at constant speeds and bypass congested areas. When possible, avoid two-lane roads, which are typically dotted with stop signs and traffic signals.

■ **Explore the rental option.** Renting a fuel-smart car might provide greater bang for the gas-dollar buck per mile.

■ **Get an early morning start,** when traffic is at its lightest.

■ **Cut down on luggage weight** and pack everything inside the vehicle. A car piled with luggage on the roof creates wind resistance and reduces fuel efficiency.

■ **Before hitting the road,** you might take a spin on the information highway to gauge gasoline prices along your route and at the final destination.

Here are a few Web sites that provide gasoline prices nationwide:
AAA Daily Fuel Gauge Report (www.fuelgauge.com): Offers an average of national and state-by-state gasoline prices.

GasPriceWatch.com (www.gaspricewatch.com): Allows users to search gas prices in a specific area.
U.S. Department of Energy (www.fuel-economy.gov/feg/gasprices/states/index.shtml): Provides a gateway to local gas prices with an interactive U.S. map.

■ **Split up your modes of transportation.** Drive part of the distance, then take a flight or train for the final leg. You may find that you can actually save money by taking an alternative form of travel.

CALCULATE FUEL ECONOMY

How to determine your car's fuel consumption:



1 Go to a gas station with pumps that turn off automatically.

Set trip odometer to zero*

Fill tank; don't add fuel after pump turns itself off

2 Drive car until tank is low, return to same pump, refill tank and write down amount of fuel pumped. Cars get better fuel economy on open highway than in stop-and-go city driving, so do both kinds of driving as you usually do.

3 Divide reading on trip odometer by amount of fuel pumped the second time. The result is your car's fuel consumption.

For more accuracy, do the calculation for several tanks of gas, then average the results.

*If car has no trip odometer, write down odometer reading in Step 1; when you refill tank, subtract that number from current odometer reading and divide by amount of fuel pumped.

Source: American Automobile Association. Graphic: Helen Lee McCormac, Mark Matsum

CAR CARE

Regular maintenance on your car can help you save money on gas. Here are a few easy ways to improve your car's performance.

AIR CONDITIONER: Running an automobile's air conditioner causes the engine to use more gas. Roll down the windows or flip on the "recirculation" feature when possible to improve fuel performance.

AIR FILTER: Replacing a clogged air filter can improve gas mileage and protect the engine.

BRAKES: A stuck brake caliper creates drag, forcing an engine to work harder.

MOTOR OIL: Using the manufacturer's recommended grade

of motor oil can improve your car's gas mileage by 1 percent to 2 percent.

RADIATOR THERMOSTAT: A bad radiator thermostat increases an engine's warm-up time and wastes gas.

SPARK PLUGS AND ENGINE TUNEUP: Change spark plugs and set up a regular engine tune-up schedule.

TIRE INFLATION: Keep tires inflated to owner's manual recommendation or as listed on the driver's door pillar label. Fuel economy drops by about 1 percent for every three pounds below recommended pressure.

TRANSMISSION: A car that runs on an automatic transmission system generally uses more

gasoline than a vehicle equipped with a manual transmission.

ALSO CONSIDER COLOR AND SIZE:

A car with a light exterior color reflects heat from the sun, which helps keep the interior cooler and can reduce the need for the air conditioner. Plus, windshield shades can cut down on heat buildup in the summer and help keep frost off in the winter.

It's no secret that the size of your car has an impact on how many times you visit the pump. A smaller engine usually means better gas mileage. Many vehicles that use four-wheel drive also gulp down gas. Trucks and SUVs with a shorter bed or smaller cab generally consume less gas than the larger vehicles.

RULES FOR THE ROAD

Frustrated by bumper-to-bumper traffic and road construction? Taking an aggressive approach to driving is not the answer. Not only is it dangerous, it can hit you hard in the wallet. Aggressive driving — which includes speeding, accelerating quickly and braking suddenly — wastes gas, leading to as much as a 33 percent decline in a car's fuel efficiency. That translates to a loss of somewhere between 11 cents and 73 cents per gallon.

But that's not the only area that can end up costing a driver precious gas money.

FOLLOW THE SPEED LIMIT

The faster you go behind the wheel, the quicker your gas tank empties. So stick to posted speed limits

as much as possible. The estimated savings at the pump could run from 15 cents to more than 50 cents per gallon. And keep constant accelerations to a minimum. Higher speeds produce wind resistance and make a car work harder. Driving at a steady speed provides the best fuel economy, and using cruise control can help, particularly when you're out on the open highway. Using a car's overdrive gears also can save gas and reduce engine stress.

SET A DRIVING PLAN

Consolidate driving trips and errands as much as possible. When you're out and about, keep an eye out for red lights and slowdowns, which can cause more fuel use. Avoid unnecessary braking when anticipating traffic conditions — quick starts and sudden stops waste fuel.

SHOPPING FOR A CAR?

Before you buy, take a look at this list of the best and worst cars for fuel efficiency for 2005*.

■ **Most efficient vehicle overall:** Honda Insight, 61 miles per gallon city, 66 highway
Annual fuel cost: \$515*

■ Sub compact car

BEST: Volkswagen New Beetle Diesel (manual), 38 mpg city, 46 highway
Annual fuel cost: \$802 (diesel)
WORST: Maserati Coupe & Transport (manual), 12 mpg city, 17 highway
Annual fuel cost: \$2,722**

■ Compact car

BEST: Honda Civic (hybrid, automatic), 48 mpg city, 47 highway
Annual fuel cost: \$674*
WORST: Bentley Continental GT (automatic), 11 mpg city, 18 highway
Annual fuel cost: \$2,722**

■ Midsize car

BEST: Toyota Prius (hybrid, automatic), 60 mpg city, 51 highway
Annual fuel cost: \$590*
WORST: Bentley Arnage (automatic), 10 mpg city, 14 highway
Annual fuel cost: \$2,949**

*Based on 15,000 annual miles and a fuel price of \$2.16 per gallon regular gasoline.

**Based on 15,000 annual miles and a fuel price of \$2.36 per gallon premium gasoline for cars where premium is recommended.

■ Large car

BEST: Toyota Avalon (automatic), 22 mpg city, 31 highway
Annual fuel cost: \$1,296*
WORST: Bentley Arnage LWB (automatic), 10 mpg city, 14 highway
Annual fuel cost: \$2,949**

■ Sport utility vehicle

BEST: Ford Escape 2WD (automatic), 36 mpg city, 31 highway
Annual fuel cost: \$982*
WORST: Mercedes-Benz G55 AMG (automatic), 12 mpg city, 14 highway
Annual fuel cost: \$2,722**

■ Pickup truck

BEST: Ford Ranger Pickup 2WD (manual), 24 mpg city, 29 highway
Annual fuel cost: \$1,247*
WORST: Dodge Ram 1500 Pickup, (automatic), 9 mpg city, 12 highway
Annual fuel cost: \$3,540**

■ Minivan

BEST: Honda Odyssey 2WD (automatic), 20 mpg city, 28 highway
Annual fuel cost: \$1,409*
WORST: Kia Sedona (automatic), 16 mpg city, 22 highway
Annual fuel cost: \$1,801*

ELIMINATE EXTRA WEIGHT

Limit using your car to haul heavy loads, even if they fit nicely in the trunk or the back of a flatbed truck. Extra weight adds greater stress on an engine, forcing it to burn more gas.

AVOID EXCESSIVE IDLING

Sitting in an idling car gets you nowhere and wastes gas. And racing a cold engine can worsen a gas-efficiency problem. When you start an engine, put the car into drive but don't accelerate quickly.

OTHER OPTIONS

Look into car pools, van pools and public transportation to help ease the pressure on your monthly gas bill.

PUMPING UP

Putting gas in a car involves more care and thought than most people may realize.

To get the maximum value from every drop when refueling, the AAA suggests these tips.

■ **Don't attempt to top off a gas tank.**

Trying to fill the tank too much leads to spilling, which is like throwing away cash. Also, warm weather causes fuel to expand, which can result in an overflow.

■ **If your car is designed to use less expensive regular unleaded-grade gas,** then stick with it. Filling up with more expensive midgrade or premium gas will not necessarily improve your vehicle's performance.

■ **Shop around for a good gas price.** But don't put more effort than necessary into the search. Driving from station to station wastes gas.

■ **Make sure your gas cap fits securely —** a poorly fitting cap can cause engine problems.

■ **Reset the car's trip meter** at each fill-up so you can monitor your gas mileage and determine whether your car is operating at peak performance level. In addition, keep track of gas mileage on a monthly basis rather than a weekly basis. Driving patterns can change from week to week, so a monthly average may provide a better indication of gas mileage performance.

SOURCES: AAA, U.S. DEPARTMENT OF ENERGY, AMERICAN COUNCIL FOR AN ENERGY-EFFICIENT ECONOMY, WWW.FUELECONOMY.GOV

Removal of anti-abortion display spurs debate

By Brett Barrouquere
Associated Press

HIGHLAND, Ky. — When a Northern Kentucky University professor led graduate students out into the quad to pull up 400 white crosses erected by an anti-abortion group, she said it was in the name of free speech.

But to student Katie Walker, the dismantling of the display was about stifling free speech, not exercising it.

"When you tear down a display, that's very counterproductive," said Walker, president of Northern Right to Life, the anti-abortion group that put up the crosses.

The incident has resulted in a criminal investigation and suspension of professor Sally Jacobsen until she retires next month, and has fueled a debate about abortion and about what is appropriate in the name of free speech on campus.

"The freedom of speech doesn't give you the right to do whatever you want," Walker said. "It doesn't give you the freedom to commit a crime."

The events that led to Jacobsen's suspension started with a group of pro-choice faculty members having lunch on the campus in a politically conservative region.

The group, Educators for Reproductive Freedom, brought in a speaker from the American Civil Liberties Union of Kentucky at a brown bag lunch in February to talk about issues related to abortion law, particularly the future of Roe v. Wade, the U.S. Supreme Court decision that legalized abortion.

"We feel there's been an attack on reproductive rights," said Fran Zaniello, an instructor in composition and rhetoric.



Special Photo

Anti-abortion groups often plant hundreds to thousands of white crosses similar to the ones shown above as a means of protest.

Outside the faculty group's meeting, students protested, carrying signs with slogans such as "Former fetus against abortion." Erin Parker, 21, of Alexandria, Ky., called the protest a "respectful disagreement" with the faculty members.

"We don't expect everyone to agree with us," Parker said.

The student protesters formed Northern Right to Life and chose rows of white crosses set up as a mock graveyard called "The Cemetery of the Innocent" to mark its arrival on campus.

The idea wasn't original. Similar displays have been put up at schools around the country, including Duke University in Durham, N.C., Loyola University in New Orleans and the

University of Maryland, but without the uproar that happened at Northern Kentucky University, a school of about 15,000 students across the Ohio River from Cincinnati.

Jacobsen, a professor of literature and longtime advocate of women's rights, led the charge in calling for a dismantling of the display a few days after it went up.

"I did, outside of class during the break, invite students to express their freedom of speech rights to destroy the display if they wished to," Jacobsen previously told The Kentucky Enquirer before she was put on leave.

University President James Votruba and others praised Jacobsen's 27-year career at the school as distinguished. Votruba said Jacobsen will retire in

May, at the end of the semester.

The cross display was in an area of campus known as the "grassy knoll," which has been used for previous displays or protests. Under university policy, school officials must give approval for campus displays.

Recent events have left students and faculty wondering what will be allowed.

"It's not clear who is and who isn't allowed to put up certain things on campus," said Hancock, a philosophy professor.

Votruba said competing ideas should be exchanged on campus, through debate and displays if necessary. He said the university will approve as many displays as are deemed appropriate.

Quick, what's new

THE STATE

Tech student accused of planning terrorism

ATLANTA — The FBI is holding a Georgia Tech student accused of planning terrorist activity, but the student's family says he is innocent of wrongdoing. The family of Syed Ahmed, 21, said that he was arrested a few weeks ago, but details of the case have not been made public. The federal government has sealed all information about Ahmed's arrest.

THE REGION

Alabama makes peach official fruit

CLANTON, Ala. — Alabama Gov. Bob Riley traveled to a peach orchard Tuesday to sign into law a bill making the peach Alabama's "official tree fruit." The bill passed the Legislature Monday night, in the final hours of the 2006 session. Earlier Tuesday, Riley said he wasn't worried about comments that have been made by some officials in Georgia, known as "the peach state," claiming that Alabama's peaches are the best. "We don't want to have an argument. We just think our peaches taste better," Riley said.

THE NATION

White House staff shake-up continues

WASHINGTON — White House Deputy Chief of Staff Karl Rove gave up some of his responsibilities and White House press secretary Scott McClellan announced his resignation Wednesday, continuing a shake-up in President Bush's administration that has already yielded a new chief of staff. Rove is giving up oversight of policy development to focus more on politics with the approach of the fall midterm elections.

CHIC

from page 1

the physical work, but it's always so crowded," he said. "It definitely gets busy, sometimes we'll get 30 or more people coming in at one time."

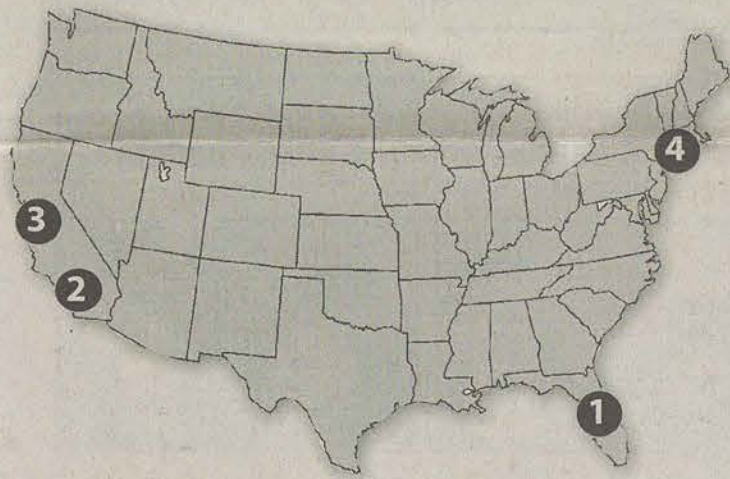
"They are doing a great job, aware of

trying to keep the customer serviced," said Palfy. "They are very upbeat and aware of their roles and goals, to serve the customers in a friendly, polite manner and in a clean atmosphere. That's the Chic-Fil-A way."

"We want to say thank-you to GSU for making us number one, and these coupons are good at any Chic-Fil-A across the country."

ONLY IN AMERICA

stories by The Associated Press



Child's checkers game comes with nude picture

1 VOLUSIA, FL — A Florida grandfather got more than his money's worth when he bought a checkers game for his grandchild.

The box said that the game was meant for children six and up, but when he opened it, inside he found a picture of a naked woman with sexually-suggestive text.

"We went over to the shelving where we bought this item, and opened up several more packages and found more of the same," said John Finn.

The store manager immediately pulled all of the games from the shelf.

The Finns have filed a complaint with the game's manufacturer.

School makes kids use buckets for toilets

2 INGLEWOOD, Calif. — A principal trying to prevent walkouts during immigration rallies inadvertently introduced a lockdown so strict that children weren't allowed to go to the bathroom, and instead had to use buckets.

Worthington Elementary School Principal Angie Marquez imposed the lockdown March 27 as nearly 40,000 students across Southern California left classes that morning to attend immigrants' rights demonstrations. The lockdown continued into the following morning.

Marquez apparently misread the handbook and ordered a lockdown designed for nuclear attacks.

Tim Brown, the district's director of operations, confirmed some students used buckets but said the principal's order to impose the most severe type of lockdown was an "honest mistake."

Woman run over by own vehicle

3 SAN JOSE, Calif. — A San Jose woman has died after apparently being run over by her own van.

Police say 48-year-Camie Hong Duong died yesterday afternoon after she parked her vehicle at her home in the Berryessa Hills area of San Jose.

Investigators are still trying to determine what happened, but it appears the mini-van was not engaged in park.

Police said after Duong got out of the car, she was apparently trapped under it as it rolled backward.

A police spokesman says drug or alcohol do not appear to be factors in the incident.

Clinical web sites may be targets of porn seekers

4 NEW YORK — It seems that online dermatological images, intended as a references for doctors, are sometimes being used pruriently.

The idea that a searchable archive of clinical photographs was being misused first occurred to site curators when they noticed a marked jump in queries for images of genital areas.

Researchers assessed request patterns received by the site over a 6-month period, in terms of diagnosis, age group and anatomic site.

Of the more than 7800 dermatological images available on the site, 5.5 percent involve genital regions. However, 12 percent of queries for a specific diagnosis involved a genital area. Also, 37 percent of the requests for an anatomic site involved a genital region, and 12 percent of the 10,000 free text queries were for images of genitalia.

POET

from page 1

instead of having a separate event. With all of the publicity and flyers circulating, I think students are really going to get a cultural experience and will also have the opportunity to listen to what their fellow students have written."

The RAC Fire Ring is located behind the RAC towards the outdoor course on the right side of the RAC towards Akins Boulevard.

For further information contact Peter Christopher at (912) 681-5889 or pchrstphr@georgiasouthern.edu.

MUSIC

from page 1

I just got done writing and recording a brand new song," he said. "It's very simple to use as I went from recording the piano part, adding a strings part, and finally a drum part, to transferring to my laptop, to burning it onto a CD within an hour and a half."

On the downside, only students enrolled in the classes can use these new expensive toys. Even though the digital piano labs were designed for music students, any student in the university can enroll into the class.

STATEMENT OF OPERATIONS

The George-Anne is the official student newspaper of Georgia Southern University, owned and operated by GSU students and utilizing the facilities provided by GSU. The newspaper is the oldest continuously published newspaper in Bulloch County and Statesboro, Ga. The newspaper is a designated public forum for the Georgia Southern University community. The ideas expressed herein are those of the editor or the individual authors and do not necessarily represent the views of the Student Media Advisory Board, the administration, the faculty and staff of Georgia Southern University, or the University System of Georgia. The George-Anne is published four times weekly (Monday-Tuesday-Wednesday-Thursday) during most of the academic year and six times during summers. Any questions regarding content should be directed to the editor at by phone at 912/681-5246 or fax at 912/486-7113.

Readers may access the newspaper and its archives staff by visiting our web site at <http://www.stp.georgiasouthern.edu>.

SUPPORT

The G-A is funded primarily through revenue from advertisements placed in the paper and receives additional support, in part, from the Student Activities Budget Committee.

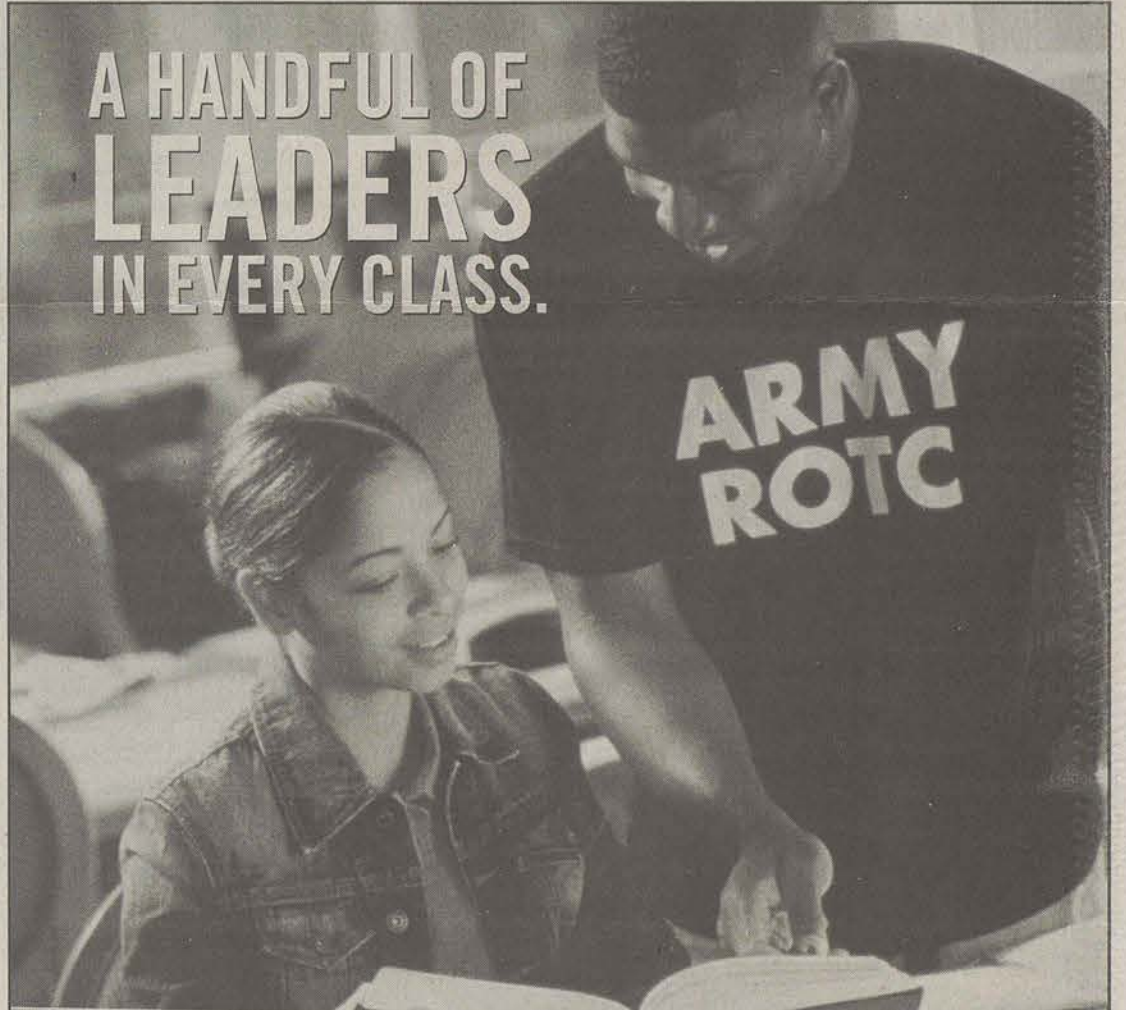
STUDENTS BEWARE

The G-A screens all advertisements prior to publication. The newspaper strives to accept ads for legitimate products and services only. Students are urged to exercise caution when replying to ads — particularly those which require a credit card number, other personal information, or money in advance of the delivery of a product or service. Students are also urged to report to the newspaper any suspicious offers which they might see in an ad. Remember, if an offer seems too good to be true, it probably is.

FREEBIE INFO

ALL FREE student and faculty

A HANDFUL OF LEADERS IN EVERY CLASS.



AN ARMY OF ONE

Add Army ROTC to your curriculum and you'll graduate as an Army Officer with leadership skills that will change your life.

ENROLL IN ARMY ROTC
BECOME AN ARMY OFFICER



Contact Captain Ron Cohen at 912-681-0040/5320
or roncohen@georgiasouthern.edu

ty ads to be run in the G-A must have a NAME, P.O. BOX and PHONE NUMBER. Ads will be rejected if they do not have this information. NO EXCEPTIONS.

OFFICES, MAIL, PHONES

Room 2023, F.I. Williams Center. The George-Anne, P.O. Box 8001, Georgia Southern University, Statesboro, Ga. 30460, 912/681-5246 (News) or 912/681-5418 (Advertising) or 912/486-7113 (Fax); 912/681-0069 (adviser).

EMAIL DIRECTORY

Editor in Chief gaeditor@georgiasouthern.edu
Managing Editor gamed@georgiasouthern.edu
News Editor ganews@georgiasouthern.edu
Advertising ads@georgiasouthern.edu

ADVERTISING

The George-Anne reserves the right to refuse any advertisement.

DISPLAY AD DEADLINE: The deadline for reserving space and submitting advertising copy is Noon, one week prior to the intended publication date.

FOR MORE INFO, rate cards, sample publications,

contact: Lindsey Treadwell, Marketing Director, ADS, (912) 681-5418, ads@georgiasouthern.edu; or Bill Neville, Student Media Coordinator, (912) 681-0069, bneville@georgiasouthern.edu

PROOFING/ERRORS/OMIS-

SIONS: The newspaper makes every reasonable effort to present correct and complete information in advertisements. However, the advertiser is responsible for proofing the ad upon publication and should notify the newspaper immediately in the event of an error. The newspaper is not responsible for any errors in advertisements and its liability for adjustments is limited to the amount of space the error occupied in the ad. Further, the newspaper is not responsible for any damages caused due to an ad's omission from a particular edition and its responsibility solely is to reschedule the ad in the next regular edition at the regular advertising rates.

CLASSIFIED ADS: Free classified ads from students, faculty and staff must be non-commercial in nature

and submitted in writing, with the name of the sender, local address, and phone number. No free ads taken via telephone — at this price we don't take dictation. One free ad per person per week. Commercial classified are available only from our online site at www.gsuads.com. The price of commercial ads is \$7 for 200 characters for line ads. Ads must be paid for using a major credit card. For classified display ads, contact ads@georgiasouthern.edu

CIRCULATION INFORMATION:

Mail subscriptions are not available at this time. However, readers may visit our web site for free access to current and past issues. Visit www.stp.georgiasouthern.edu. It is the goal of the newspaper to have its edition placed on-line within 24 hours of publication. Breaking news will be placed on-line as warranted. The G-A is distributed free of charge on the Georgia Southern University campus through delivery sites located in campus buildings, at off-campus sites, and in residence halls.

NOTICE

Readers may pick up one free copy, and a second for a roommate or acquaintance, at distribution sites. Additional copies are 50 cents each and are available at the Williams Center. However, unauthorized removal of additional copies from a distribution site constitutes theft under Georgia law, a misdemeanor offense punishable by a fine and/or jail time. Editors will seek to have any person(s) who removes more than the authorized number of copies from distribution sites prosecuted to the full extent of the law.

NOTE

We gratefully acknowledge the theft of one of our slogans — "Liked by Many, Cussed by Some, Read by them All" — from Robert Williams of the Blackshear Times. Call Bob and he can tell you who he stole it from originally. Credit for the other — "Covering Campus like A Swarm of Gnats" — goes to G-A alum Mike Mills.

THE GEORGE-ANNE CLASSIFIEDS, ETC.

Covering the Campus Like a Swarm of Gnats
The George-Anne Daily
Monday • Tuesday • Wednesday • Thursday

THE PennyPress CROSSWORD PUZZLE

ACROSS

1. Weeps audibly
5. Horse's relative
8. Crucifix
12. Gator's cousin
13. Inlet
14. Overwrought
15. Axillary
16. Call out
17. Ceramic unit
18. Worth
20. Spread out
22. Washer setting
25. French manor
28. Baste again
32. "Town"
33. Arouses
35. Hawaiian wood
36. Church sanctuaries
38. Bowling game
40. Harass

DOWN

1. Fraudulent scheme
2. Shield border
3. Male pig
4. Text of a play
5. Curve
6. British title
7. Oral permission
8. Snap once more
9. Lyrical
10. Flirty look
11. Colorized
19. Some locks
21. Root vegetable
23. Break bread
24. Posh accommodation
25. Corn unit
26. Tinge
27. Sleeve occupant
29. Emulate
30. Tomba
31. Many millennia
34. Race in neutral
37. Take in
39. Blood part
41. Check
42. Small rugs
43. Medley
44. Customer
46. Put
47. Narration
48. Abilities
51. Yes vote
52. Marry

Yesterday's Solution

1. 2. 3. 4. 5. 6. 7. 8. 9. 10. 11. 12. 13. 14. 15. 16. 17. 18. 19. 20. 21. 22. 23. 24. 25. 26. 27. 28. 29. 30. 31. 32. 33. 34. 35. 36. 37. 38. 39. 40. 41. 42. 43. 44. 45. 46. 47. 48. 49. 50. 51. 52. 53. 54. 55. 56. 57. 58. 59. 60. 61. 62. 63. 64. 65. 66. 67. 68. 69. 70. 71. 72. 73. 74. 75. 76. 77. 78. 79. 80. 81. 82. 83. 84. 85. 86. 87. 88. 89. 90. 91. 92. 93. 94. 95. 96. 97. 98. 99. 100. 101. 102. 103. 104. 105. 106. 107. 108. 109. 110. 111. 112. 113. 114. 115. 116. 117. 118. 119. 120. 121. 122. 123. 124. 125. 126. 127. 128. 129. 130. 131. 132. 133. 134. 135. 136. 137. 138. 139. 140. 141. 142. 143. 144. 145. 146. 147. 148. 149. 150. 151. 152. 153. 154. 155. 156. 157. 158. 159. 160. 161. 162. 163. 164. 165. 166. 167. 168. 169. 170. 171. 172. 173. 174. 175. 176. 177. 178. 179. 180. 181. 182. 183. 184. 185. 186. 187. 188. 189. 190. 191. 192. 193. 194. 195. 196. 197. 198. 199. 200. 201. 202. 203. 204. 205. 206. 207. 208. 209. 210. 211. 212. 213. 214. 215. 216. 217. 218. 219. 220. 221. 222. 223. 224. 225. 226. 227. 228. 229. 230. 231. 232. 233. 234. 235. 236. 237. 238. 239. 240. 241. 242. 243. 244. 245. 246. 247. 248. 249. 250. 251. 252. 253. 254. 255. 256. 257. 258. 259. 260. 261. 262. 263. 264. 265. 266. 267. 268. 269. 270. 271. 272. 273. 274. 275. 276. 277. 278. 279. 280. 281. 282. 283. 284. 285. 286. 287. 288. 289. 290. 291. 292. 293. 294. 295. 296. 297. 298. 299. 300. 301. 302. 303. 304. 305. 306. 307. 308. 309. 310. 311. 312. 313. 314. 315. 316. 317. 318. 319. 320. 321. 322. 323. 324. 325. 326. 327. 328. 329. 330. 331. 332. 333. 334. 335. 336. 337. 338. 339. 340. 341. 342. 343. 344. 345. 346. 347. 348. 349. 350. 351. 352. 353. 354. 355. 356. 357. 358. 359. 360. 361. 362. 363. 364. 365. 366. 367. 368. 369. 370. 371. 372. 373. 374. 375. 376. 377. 378. 379. 380. 381. 382. 383. 384. 385. 386. 387. 388. 389. 390. 391. 392. 393. 394. 395. 396. 397. 398. 399. 400. 401. 402. 403. 404. 405. 406. 407. 408. 409. 410. 411. 412. 413. 414. 415. 416. 417. 418. 419. 420. 421. 422. 423. 424. 425. 426. 427. 428. 429. 430. 431. 432. 433. 434. 435. 436. 437. 438. 439. 440. 441. 442. 443. 444. 445. 446. 447. 448. 449. 450. 451. 452. 453. 454. 455. 456. 457. 458. 459. 460. 461. 462. 463. 464. 465. 466. 467. 468. 469. 470. 471. 472. 473. 474. 475. 476. 477. 478. 479. 480. 481. 482. 483. 484. 485. 486. 487. 488. 489. 490. 491. 492. 493. 494. 495. 496. 497. 498. 499. 500. 501. 502. 503. 504. 505. 506. 507. 508. 509. 510. 511. 512. 513. 514. 515. 516. 517. 518. 519. 520. 521. 522. 523. 524. 525. 526. 527. 528. 529. 530. 531. 532. 533. 534. 535. 536. 537. 538. 539. 540. 541. 542. 543. 544. 545. 546. 547. 548. 549. 550. 551. 552. 553. 554. 555. 556. 557. 558. 559. 560. 561. 562. 563. 564. 565. 566. 567. 568. 569. 570. 571. 572. 573. 574. 575. 576. 577. 578. 579. 580. 581. 582. 583. 584. 585. 586. 587. 588. 589. 590. 591. 592. 593. 594. 595. 596. 597. 598. 599. 600. 601. 602. 603. 604. 605. 606. 607. 608. 609. 610. 611. 612. 613. 614. 615. 616. 617. 618. 619. 620. 621. 622. 623. 624. 625. 626. 627. 628. 629. 630. 631. 632. 633. 634. 635. 636. 637. 638. 639. 640. 641. 642. 643. 644. 645. 646. 647. 648. 649. 650. 651. 652. 653. 654. 655. 656. 657. 658. 659. 660. 661. 662. 663. 664. 665. 666. 667. 668. 669. 670. 671. 672. 673. 674. 675. 676. 677. 678. 679. 680. 681. 682. 683. 684. 685. 686. 687. 688. 689. 690. 691. 692. 693. 694. 695. 696. 697. 698. 699. 700. 701. 702. 703. 704. 705. 706. 707. 708. 709. 710. 711. 712. 713. 714. 715. 716. 717. 718. 719. 720. 721. 722. 723. 724. 725. 726. 727. 728. 729. 730. 731. 732. 733. 734. 735. 736. 737. 738. 739. 740. 741. 742. 743. 744. 745. 746. 747. 748. 749. 750. 751. 752. 753. 754. 755. 756. 757. 758. 759. 760. 761. 762. 763. 764. 765. 766. 767. 768. 769. 770. 771. 772. 773. 774. 775. 776. 777. 778. 779. 780. 781. 782. 783. 784. 785. 786. 787. 788. 789. 790. 791. 792. 793. 794. 795. 796. 797. 798. 799. 800. 801. 802. 803. 804. 805. 806. 807. 808. 809. 810. 811. 812. 813. 814. 815. 816. 817. 818. 819. 820. 821. 822. 823. 824. 825. 826. 827. 828. 829. 830. 831. 832. 833. 834. 835. 836. 837. 838. 839. 840. 841. 842. 843. 844. 845. 846. 847. 848. 849. 850. 851. 852. 853. 854. 855. 856. 857. 858. 859. 860. 861. 862. 863. 864. 865. 866. 867. 868. 869. 870. 871. 872. 873. 874. 875. 876. 877. 878. 879. 880. 881. 882. 883. 884. 885. 886. 887. 888. 889. 890. 891. 892. 893. 894. 895. 896. 897. 898. 899. 900. 901. 902. 903. 904. 905. 906. 907. 908. 909. 910. 911. 912. 913. 914. 915. 916. 917. 918. 919. 920. 921. 922. 923. 924. 925. 926. 927. 928. 929. 930. 931. 932. 933. 934. 935. 936. 937. 938. 939. 940. 941. 942. 943. 944. 945. 946. 947. 948. 949. 950. 951. 952. 953. 954. 955. 956. 957. 958. 959. 960. 961. 962. 963. 964. 965. 966. 967. 968. 969. 970. 971. 972. 973. 974. 975. 976. 977. 978. 979. 980. 981. 982. 983. 984. 985. 986. 987. 988. 989. 990. 991. 992. 993. 994. 995. 996. 997. 998. 999. 1000. 1001. 1002. 1003. 1004. 1005. 1006. 1007. 1008. 1009. 1010. 1011. 1012. 1013. 1014. 1015. 1016. 1017. 1018. 1019. 1020. 1021. 1022. 1023. 1024. 1025. 1026. 1027. 1028. 1029. 1030. 1031. 1032. 1033. 1034. 1035. 1036. 1037. 1038. 1039. 1040. 1041. 1042. 1043. 1044. 1045. 1046. 1047. 1048. 1049. 1050. 1051. 1052. 1053. 1054. 1055. 1056. 1057. 1058. 1059. 1060. 1061. 1062. 1063. 1064. 1065. 1066. 1067. 1068. 1069. 1070. 1071. 1072. 1073. 1074. 1075. 1076. 1077. 1078. 1079. 1080. 1081. 1082. 1083. 1084. 1085. 1086. 1087. 1088. 1089. 1090. 1091. 1092. 1093. 1094. 1095. 1096. 1097. 1098. 1099. 1100. 1101. 1102. 1103. 1104. 1105. 1106. 1107. 1108. 1109. 1110. 1111. 1112. 1113. 1114. 1115. 1116. 1117. 1118. 1119. 1120. 1121. 1122. 1123. 1124. 1125. 1126. 1127. 1128. 1129. 1130. 1131. 1132. 1133. 1134. 1135. 1136. 1137. 1138. 1139. 1140. 1141. 1142. 1143. 1144. 1145. 1146. 1147. 1148. 1149. 1150. 1151. 1152. 1153. 1154. 1155. 1156. 1157. 1158. 1159. 1160. 1161. 1162. 1163. 1164. 1165. 1166. 1167. 1168. 1169. 1170. 1171. 1172. 1173. 1174. 1175. 1176. 1177. 1178. 1179. 1180. 1181. 1182. 1183. 1184. 1185. 1186. 1187. 1188. 1189. 1190. 1191. 1192. 1193. 1194. 1195. 1196. 1197. 1198. 1199. 1200. 1201. 1202. 1203. 1204. 1205. 1206. 1207. 1208. 1209. 1210. 1211. 1212. 1213. 1214. 1215. 1216. 1217. 1218. 1219. 1220. 1221. 1222. 1223. 1224. 1225. 1226. 1227. 1228. 1229. 1230. 1231. 1232. 1233. 1234. 1235. 1236. 1237. 1238. 1239. 1240. 1241. 1242. 1243. 1244. 1245. 1246. 1247. 1248. 1249. 1250. 1251. 1252. 1253. 1254. 1255. 1256. 1257. 1258. 1259. 1260. 1261. 1262. 1263. 1264. 1265. 1266. 1267. 1268. 1269. 1270. 1271. 1272. 1273. 1274. 1275. 1276. 1277. 1278. 1279. 1280. 1281. 1282. 1283. 1284. 1285. 1286. 1287. 1288. 1289. 1290. 1291. 1292. 1293. 1294. 1295. 1296. 1297. 1298. 1299. 1300. 1301. 1302. 1303. 1304. 1305. 1306. 1307. 1308. 1309. 1310. 1311. 1312. 1313. 1314. 1315. 1316. 1317. 1318. 1319. 1320. 1321. 1322. 1323. 1324. 1325. 1326. 1327. 1328. 1329. 1330. 1331. 1332. 1333. 1334. 1335. 1336. 1337. 1338. 1339. 1340. 1341. 1342. 1343. 1344. 1345. 1346. 1347. 1348. 1349. 1350. 1351. 1352. 1353. 1354. 1355. 1356. 1357. 1358. 1359. 1360. 1361. 1362. 1363. 1364. 1365. 1366. 1367. 1368. 1369. 1370. 1371. 1372. 1373. 1374. 1375. 1376. 1377. 1378. 1379. 1380. 1381. 1382. 1383. 1384. 1385. 1386. 1387. 1388. 1389. 1390. 1391. 1392. 1393. 1394. 1395. 1396. 1397. 1398. 1399. 1400. 1401. 1402. 1403. 1404. 1405. 1406. 1407. 1408. 1409. 1410. 1411. 1412. 1413. 1414. 1415. 1416. 1417. 1418. 1419. 1420. 1421. 1422. 1423. 1424. 1425. 1426. 1427. 1428. 1429. 1430. 1431. 1432. 1433. 1434. 1435. 1436. 1437. 1438. 1439. 1440. 1441. 1442. 1443. 1444. 1445. 1446. 1447. 1448. 1449. 1450. 1451. 1452. 1453. 1454. 1455. 1456. 1457. 1458. 1459. 1460. 1461. 1462. 1463. 1464. 1465. 1466. 1467. 1468. 1469. 1470. 1471. 1472. 1473. 1474. 1475. 1476. 1477. 1478. 1479. 1480. 1481. 1482. 1483. 1484. 1485. 1486. 1487. 1488. 1489. 1490. 1491. 1492. 1493. 1494. 1495. 1496. 1497. 1498. 1499. 1500. 1501. 1502. 1503. 1504. 1505. 1506. 1507. 1508. 1509. 1510. 1511. 1512. 1513. 1514. 1515. 1516. 1517. 1518. 1519. 1520. 1521. 1522. 1523. 1524. 1525. 1526. 1527. 1528. 1529. 1530. 1531. 1532. 1533. 1534. 1535. 1536. 1537. 1538. 1539. 1540. 1541. 1542. 1543. 1544. 1545. 1546. 1547. 1548. 1549. 1550. 1551. 1552. 1553. 1554. 1555. 1556. 1557. 1558. 1559. 1560. 1561. 1562. 1563. 1564. 1565. 1566. 1567. 1568. 1569. 1570. 1571. 1572. 1573. 1574. 1575. 1576. 1577. 1578. 1579. 1580. 1581. 1582. 1583. 1584. 1585. 1586. 1587. 1588. 1589. 1590. 1591. 1592. 1593. 1594. 1595. 1596. 1597. 1598. 1599. 1600. 1601. 1602. 1603. 1604. 1605. 1606. 1607. 1608. 1609. 1610. 1611. 1612. 1613. 1614. 1615. 1616. 1617. 1618. 1619. 1620. 1621. 1622. 1623. 1624. 1625. 1626. 1627. 1628. 1629. 1630. 1631. 1632. 1633. 1634. 1635. 1636. 1637. 1638. 1639. 1640. 1641. 1642. 1643. 1644. 1645. 1646. 1647. 1648. 1649. 1650. 1651. 1652. 1653. 1654. 1655. 1656. 1657. 1658. 1659. 1660. 1661. 1662. 1663. 1664. 1665. 1666. 1667. 1668. 1669. 1670. 1671. 1672. 1673. 1674. 1675. 1676. 1677. 1678. 1679. 1680. 1681. 1682. 1683. 1684. 1685. 1686. 1687. 1688. 1689. 1690. 1691. 1692. 1693. 1694. 1695. 1696. 1697. 1698. 1699. 1700. 1701. 1702. 1703. 1704. 1705. 1706. 1707. 1708. 1709. 1710. 1711. 1712. 1713. 1714. 1715. 1716. 1717. 1718. 1719. 1720. 1721. 1722. 1723. 1724. 1725. 1726. 1727. 1728. 1729. 1730. 1731. 1732. 1733. 1734. 1735. 1736. 1737. 1738. 1739. 1740. 1741. 1742. 1743. 1744. 1745. 1746. 1747. 1748. 1749. 1750. 1751. 1752. 1753. 1754. 1755. 1756. 1757. 1758. 1759. 1760. 1761. 1762. 1763. 1764. 1765. 1766. 1767. 1768. 1769. 1770. 1771. 1772. 1773. 1774. 1775. 1776. 1777. 1778. 1779. 1780. 1781. 1782. 1783. 1784. 1785. 1786. 1787. 1788. 1789. 1790. 1791. 1792. 1793. 1794. 1795. 1796. 1797. 1798. 1799. 1800. 1801. 1802. 1803. 1804. 1805. 1806. 1807. 1808. 1809. 1810. 1811. 1812. 1813. 1814. 1815. 1816. 1817. 1818. 1819. 1820. 1821. 1822. 1823. 1824. 1825. 1826. 1827. 1828. 1829. 1830. 1831. 1832. 1833. 1834. 1835. 1836. 1837. 1838. 1839. 1840. 1841. 1842. 1843. 1844. 1845. 1846. 1847. 1848. 1849. 1850. 1851. 1852. 1853. 1854. 1855. 1856. 1857. 1858. 1859. 1860. 1861. 1862. 1863. 1864. 1865. 1866. 1867. 1868. 1869. 1870. 1871. 1872. 1873. 1874. 1875. 1876. 1877. 1878. 1879. 1880. 1881. 1882. 1883. 1884. 1885. 1886. 1887. 1888. 1889. 1890. 1891. 1892. 1893. 1894. 1895. 1896. 1897. 1898. 1899. 1900. 1901. 1902. 1903. 1904. 1905. 1906. 1907. 1908. 1909. 1910. 1911. 1912. 1913. 1914. 1915. 1916. 1917. 1918. 1919. 1920. 1921. 1922. 1923. 1924. 1925. 1926. 1927. 1928. 1929. 1930. 1931. 1932. 1933. 1934. 1935. 1936. 1937. 1938. 1939. 1940. 1941. 1942. 1943. 1944. 1945. 1946. 1947. 1948. 1949. 1950. 1951. 1952. 1953. 1954. 1955. 1956. 1957. 1958. 1959. 1960. 1961. 1962. 1963. 1964. 1965. 1966. 1967. 1968. 1969. 1970. 1971. 1972. 1973. 1974. 1975. 1976. 1977. 1978. 1979. 1980. 1981. 1982. 1983. 1984. 1985. 1986. 1987. 1988. 1989. 1990. 1991. 1992. 1993. 1994. 1995. 1996. 1997. 1998. 1999. 2000. 2001. 2002. 2003. 2004. 2005. 2006. 2007. 2008. 2009. 2010. 2011. 2012. 2013. 2014. 2015. 2016. 2017. 2018. 2019. 2020. 2021. 2022. 2023. 2024. 2025. 2026. 2027. 2028. 2029. 2030. 2031. 2032. 2033. 2034. 2035. 2036. 2037. 2038. 2039. 2040. 2041. 2042. 2043. 2044. 2045. 2046. 2047. 2048. 2049. 2050. 2051. 2052. 2053. 2054. 2055. 2056. 2057. 2058. 2059. 2060. 2061. 2062. 2063. 2064. 2065. 2066. 2067. 2068. 2069. 2070. 2071. 2072. 2073. 2074. 2075. 2076. 2077. 2078. 2079. 2080. 2081. 2082. 2083. 2084. 2085. 2086. 2087. 2088. 2089. 2090. 2091. 2092. 2093. 2094. 2095.

SPORTS

What's coming up this weekend in GSU athletics

Thursday, April 20

Women's Tennis at SoCon Tournament, Charleston, S.C.
Men's Tennis at SoCon Tournament, Charleston, S.C.

Friday, April 21

Women's Tennis at SoCon Tournament, Charleston, S.C.
Men's Tennis at SoCon Tournament, Charleston, S.C.
Baseball vs UNC-G, 7 p.m.

Saturday, April 22

Women's Tennis at SoCon Tournament, Charleston, S.C.
Men's Tennis at SoCon Tournament, Charleston, S.C.
Baseball vs UNC-G, 3 p.m.
Football vs Blue-White Game, 1 p.m.

Sunday, April 23

Women's Tennis at SoCon Tournament, Charleston, S.C.
Baseball vs UNC-G, 1:30 p.m.

Softball drops two to University of Georgia

The No. 8 Georgia softball team scored a run in the bottom of the seventh inning to win game one 4-3, and received a shutout from Katie Griffith in game two to sweep Georgia Southern Wednesday evening at the UGA Softball Complex.

The Bulldogs won by the scores of 4-3 and 3-0 to improve to 45-9. The Eagles fall to 22-27.

GSU senior Shanita Black (Fayetteville, N.C.) went 0-for-4 in game one, ending her hitting streak at 30 games.

Football to play spring game

The annual Blue-White game takes place Saturday at Paulsen Stadium

By Mike Anthony
Staff writer

The Georgia Southern football team held its last full pads practice of the spring on Wednesday night. Only a Friday walk through session remains for the team before they gear up for the Blue-White game, which is scheduled for 1 p.m. this Saturday at Paulsen Stadium.

The annual scrimmage serves as the last official team practice of the spring, and is a great chance for all Eagle fans to come out and see the team in its first simulated game-action of the season.

During the game, the team will be divided by their current positions on the depth chart. Those who are considered to be starters at this point will make up one team, while all current backups will compile the other side.

The team has participated in 11 on 11 drills all through the spring, and has twice held scrimmages that focused on game situations, but Saturday will be the first time everything will come together and resemble the type of play that will be seen come September.

Although the final setup of the game has yet to be determined, the coaching staff said that there would be a running clock for at least one half of the scrimmage.

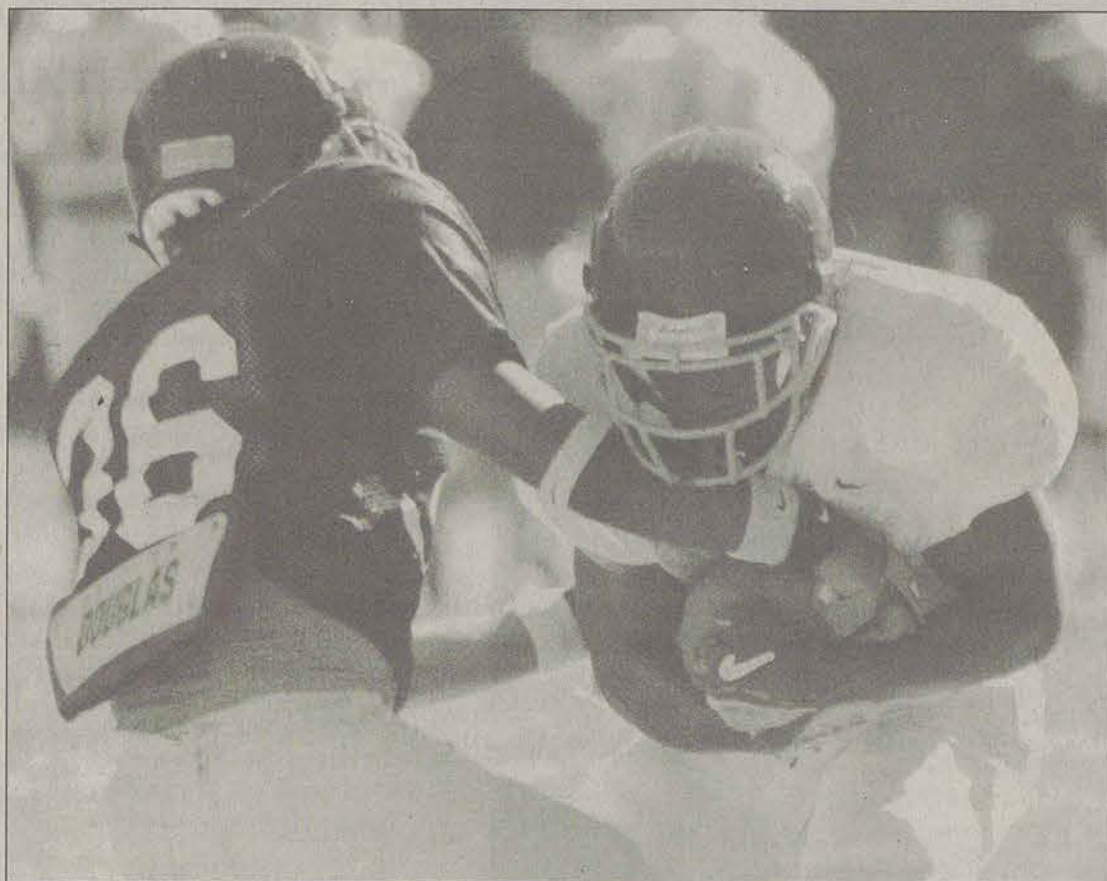
Offensive coordinator Darrin Hinshaw stressed that the offenses will be testing every aspect of their new attack during the game.

"We're going to show multiple looks, multiple formations, and we've got a bunch of different packages that we want to throw in there," he said. "The main thing that I want to see is the offense functioning as a team. We've got some great athletes and some guys that can make big plays, but I want us to all be on the same page."

Defensive coordinator Deion Melvin was also eager to see how his troops will perform in the game setting.

He was also clear that the defense's tendency to give up the big play, which drew some criticism from head coach Brian VanGorder earlier in the spring, was being worked on throughout practice and will be a focal point of their performance on Saturday.

"We're still concentrating on learning the entire system, but I'm looking to see improvement from the defense every day," VanGorder said.



Grayson Hoffman/STAFF

GSU cornerback Joe Turner tries to strip the ball from wideout Jayson Foster during practice Wednesday. Spring Practice concludes Saturday with the Blue-White game at 1 p.m. at Paulsen Stadium.

"We're going to be subbing a lot and we're really pushing a faster tempo on defense. We've got a lot of talent out there. We just need to be in the right spot to use it."

VanGorder is anxious to see how things will shape up this weekend.

"This is what we've been working hard for the last few weeks. The guys have put forth a lot of effort and have learned a lot, and this is just another chance to see where we're at so far."

He stressed that even though this is the Blue-White game and all situations will be played out as they will during the regular season, this is still an evaluation period and a chance for the players to learn and for the coaches to teach.

However, as much as he emphasizes the learning and progression that he is looking for during the spring, he can't help but show some of the fire that the spring game is sure to bring out in him.

"What we see out there on Saturday, we'll use to further evaluate. We're going to give everyone a fair shake, and we're going to try a little bit of everything, but this is still a game situation, and if it's worth playing, it's worth winning."

Who to watch for....



#14 Chris Griffin, QB

Redshirted last season, Griffin came into spring practice on the second string. For the last two weeks he has taken

the majority of his snaps in practice with the first team. Possessing good field vision and great speed, he offers a quick escape from any collapsing pockets.



#91 Charrod Taylor, DT

A seasoned veteran and heart of the defensive line, the senior defensive tackle will be called upon to pressure

quarterbacks and plug holes at the line. With fellow defensive lineman Shaheen Solomon still recovering from a leg injury suffered last season, his play will be essential until the D-line can get back to full strength.



#4 Jayson Foster, WR

Last year's starting quarterback is no longer behind center; he will be reprising his role from his SoCon

freshman of the year performance in 2004. A slot receiver and listed as the primary return man for kickoff and punt returns, his speed and lightning quick moves are sure to cause nightmares for opponents.



#1 Rico Zachery, DB

As the only returning starter from last year's defensive backfield, the senior safety will be relied upon to give a great performance on the field and give direction

and advice to his new teammates off the field. He has shown his versatility, defending the pass, as well as stepping up and causing pressure with his blitzes and run stopping ability.

Baseball to give away prizes at homestand vs UNC-G

By Todd Steinmetz
Staff writer

The hot-hitting Georgia Southern baseball team hosts UNC Greensboro for a three game series Friday through Sunday at J.I. Clements Stadium.

The Eagles (20-19, 7-5 SoCon) have won six of their last 10 games and the offense has posted a total 79 runs during that span. Senior first baseman Greg Dowling has continued his success this year batting .423 while clubbing nine home runs with a slugging percentage above .600. Chris Shehan has also kept his swing, hitting .381, and freshman catcher Griffin Benedict is batting .333 with three home runs and 6 doubles.

Brett Pelfrey is batting .273 and is tied for the team lead in doubles (9) and has hit five homeruns. In limited action, Matt Miller (.385) is tied with Pelfrey for the team lead in doubles. Jeremy Beckham (.385) and Jeremiah Klinger (.313) have contributed as well.

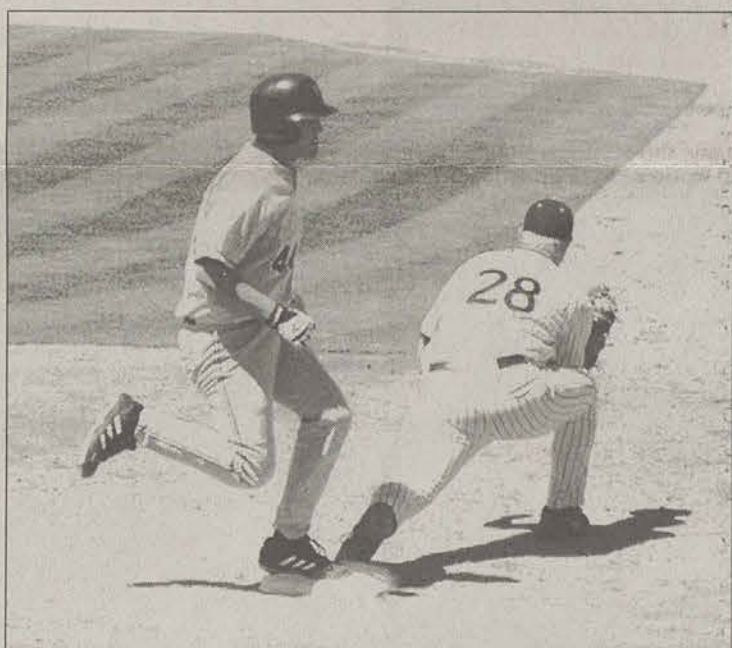
The Eagles pitching staff has struggled at times this year. David Cogswell (3.60) has the best ERA and six of the team's seven total saves. Everett Teaford has a 5-3 overall and has an ERA of 4.99. Helping out of the bullpen, Mike Chiciak (4.88) has struck out 36 batters through 31 innings. A.J. Batisto (5.52) has struck out 24 batters through 29 innings, earning him a record of 3-0 with a

save. Overall, the pitching staff has posted a team ERA of 5.68.

UNC Greensboro (17-22, 6-6 SO-CON) has struggled some offensively this season. The team is batting .275 and has only produced 186 runs, 105 fewer runs than the Eagles through the same number of games. Jermaine Mitchell leads the team in batting average (.358), slugging percentage (.509), on-base percentage (.455), triples (5) and homeruns (3). Guy Welsh (.329) has hit eight doubles and leads the team in RBI. Greg Feltes (.314) has also contributed with eight doubles and two homeruns.

The Spartans pitching staff has an overall ERA of 5.55. Patrick Curran (5-2) is the team's top pitching performer with an ERA of 2.72 and seven saves. However, Nick Stearnes (4-1) is the team's top starting pitcher and has struck out 51 batters in as many innings. Ryan Falcon (2-1) has an ERA of 4.55 and has started the most games, but has only pitched 27 innings. As the numbers show the Spartans rely on solid defense and pitching to overcome the lack of offensive production.

After a season long promotion, Grand Slam Marketing will be giving away their prizes that have been open for registration all year. Prizes include a dinner at the Chart House in Savannah, a \$1,000 savings bond, a Ping Golf Bag, and free tuition in the fall.



Jared Siri/STAFF

Eagle first baseman Greg Dowling stretches to get an out during the Eagles game against Western Carolina April 9. GSU takes on UNC-Greensboro this weekend in a three game series.

Braves beat Mets 2-1; gain a game in standings

By Mike Fitzpatrick
Associated Press

NEW YORK — The big question in the NL East early this season is whether Atlanta still has enough pitching to hold off the New York Mets.

Winners of 14 straight division titles, the Braves delivered an emphatic answer this week.

Tim Hudson took a one-hit shutout into the ninth inning before finishing with a three-hit gem, and Atlanta got another big homer from Andruw Jones in a 2-1 victory Wednesday over the Mets.

"You don't look at the lineups and decide who wins the game," Hudson said.

Hudson outpitched Tom Glavine in a matchup of All-Stars in peak form. The right-hander retired his first 15 batters before Ramon Castro's leadoff single in the sixth and held on with some help from his defense.

It was the second stellar outing in a row for the Braves, who also got a three-hitter from 22-year-old Kyle Davies in a 7-1 win Tuesday night.

"It's good to see our starting pitchers go out and perform the way they did the past two days," Jones said.

Mets third baseman David Wright made three errors and hit a game-ending groundout with a runner on after Chris Woodward's RBI single.

Jones hit his fifth homer in four games for the Braves, who took two of three in the first series this season

between the NL East rivals. The Mets fell to 10-4 — they won their opening four series for the first time in franchise history.

"We'll probably be going back and forth all season with these guys," New York manager Willie Randolph said.

Hudson (1-1) struck out six and walked one, throwing 65 of 97 pitches for strikes in his 19th career complete game. All three wins by Braves starters this season have been complete games in a five-day span.

Glavine (2-1) was nearly as good against his former team, allowing two runs — one earned — and four hits in eight innings. He struck out five and walked none.

With both aces dominating depleted lineups, the game took only 1 hour, 59 minutes.

Jones connected with two outs in the seventh, and Atlanta added an important run in the eighth thanks to a pair of miscues by Wright, who began the day with zero errors.

Hudson, who struggled through his first three starts and came in with an uncharacteristic 9.20 ERA, entered the ninth inning seeking his ninth career shutout and first since August 2004 with Oakland.

Jose Reyes doubled with one out and scored on Woodward's single, but Hudson retired Carlos Delgado on a fly to left and got Wright on a grounder to shortstop.

Hudson improved to 4-0 with a 1.70 ERA in five starts against the Mets.

After Castro's single, a throwing error by Brian Jordan, making his second career start at first base, helped the Mets mount a threat. But left fielder Matt Diaz caught Reyes' routine fly and threw a strike to the plate to cut down Castro for an inning-ending double play.

"When I let it go I had a good feeling," Diaz said. "Seven total hits. Defense is going to win that game."

Hudson yelled and pumped his first, high-fived catcher Todd Pratt and pointed to Diaz in appreciation.

He also got defensive help from shortstop Tony Pena, making his first major league start. The son of former big league catcher and Kansas City manager Tony Pena made a pair of outstanding plays.

Jones, who hit a pair of two-run shots Tuesday night, drove a 2-0 pitch over the right-center fence for his eighth homer of the season. He began the day leading the majors with 22 RBIs.

"He's been able to turn it up a few notches and pick up on his shoulders,"

Hudson said.

Hudson put two runners on in the seventh, then got Xavier Nady to ground into an inning-ending double play.

Atlanta was missing 75 percent of its regular infield and its top three hitters because of injuries to second baseman Marcus Giles, shortstop Edgar Renteria and third baseman Chipper Jones.

The Mets played without ailing center fielder Carlos Beltran, left fielder Cliff Floyd and rookie second baseman Anderson Hernandez.



AP Photo/Ed Betz

New York Mets' Ramon Castro, right, is tagged out home plate by Atlanta Braves catcher Todd Pratt during the sixth inning of their game Wednesday at Shea Stadium. The Braves defeated the Mets 2-1.

Runner wins Athlete of the Week award

GSU News Service

Spartanburg, S.C. — The Southern Conference announced Georgia Southern junior Nicole Brown as its female Outdoor Track & Field Athlete of the Week Wednesday afternoon.

The Lawrenceville, Ga. native won the 100 meters and the triple jump at the Bagwell-Settle Invitational held at Charleston Southern over the weekend. She won the 100 meters in a school record and regional qualifying time of 11.74. She also won the triple jump in a regional qualifying distance of 41'7". She currently holds both the indoor and outdoor school records in the event.

Brown also finished third in the long jump with a leap of 18'3" and anchored the second place 4x100 relay team in a time of 46.75 seconds.

"Nicole has been performing at a consistently high level all season," said head coach Shaun Meinecke. "She is a gifted athlete and I expect to see many more performances of this caliber from her and her teammates."

This is the second Outdoor Athlete of the Week honor for Brown, as she was also named in 2004 for the week of April 6-11.

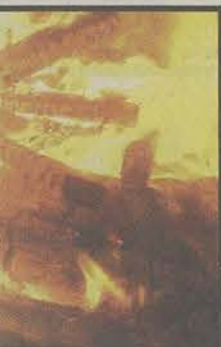


Nicole Brown

OUR PICK

Not your mother's bonfire

The Creative Writing Club is spicing up their usual end of the year open-mic poetry and short story reading by hosting a bonfire Friday night at 7 p.m. at the RAC Fire Ring. Everyone is welcome to bring their own words and share in an evening of music, food and free speech.



ALL AROUND TOP TEN

SONGS, MOVIES, DVDS

DVD RENTALS

- King Kong**
Naomi Watts
- Memoirs of a Geisha**
Ziyi Zhang
- Chicken Little**
Zach Braff
- Get Rich or Die Tryin'**
50 Cent
- Harry Potter and the Goblet of Fire**
Daniel Radcliffe
- Walk the Line**
Joaquin Phoenix
- Dreamer**
Kurt Russell
- A History of Violence**
Viggo Mortenson
- Capote**
Phillip Seymour Hoffman
- Derailed**
Jennifer Aniston

MOVIES

- Scary Movie 4
- Ice Age: The Meltdown
- The Benchwarmers
- The Wild
- Take the Lead
- Inside Man
- Lucky Number Slevin
- Thank You for Smoking
- Failure to Launch
- V for Vendetta

ALBUMS

- Rascal Flatts, Me and My Gang
- Various Artists, NOW That's What I Call Music! 21
- T.I., King
- Various Artists, High School Musical soundtrack
- Tim McGraw, Greatest Hits Vol. 2
- Pink, I'm Not Dead
- James Blunt, Back to Bedlam
- Shakira, Oral Fixation Vol. 2
- Bubba Sparxxx, The Charm
- Alan Jackson, Precious Memories

Source: Entertainment Weekly

WHAT IS NOW PLAYING

Carmike Cinema 12
(912) 489-4492

Aquamarine

(1:45, 4:15)

Eight Below

(1:30, 4:15), 7:00, 9:40

Failure to Launch

(1:30, 4:15), 7:10, 9:40

Final Destination 3

7:30, 9:50

The Hills Have Eyes

(1:45, 4:20), 7:00, 9:30

The Inside Man

(1:00, 4:00), 7:00, 9:55

Larry the Cable Guy: Health Inspector

(1:20, 3:30), 5:40, 7:45, 9:50

Madagascar Family Reunion

(1:30, 4:15), 7:00, 9:45

The Shaggy Dog

(12:45, 3:00, 5:15), 7:30, 9:45

She's the Man

(1:45, 4:30), 7:00, 9:30

Stay Alive

(1:10, 3:15, 5:20), 7:25, 9:30

V for Vendetta

(1:20, 1:50, 4:15, 4:55), 7:10, 8:00, 10:00

Parenthesis denotes matinee

GSU Celebrates Earth Day



A view of the planet Earth from space. Earth Day is both a celebration of how amazing life is on Earth, and an assertion of communal responsibility in taking care of it.

This year's celebration to continue 36-year-old international tradition

By Marcy E. Thornton
Hiatus editor

Today marks the 36th annual International Earth Day. Georgia Southern will be celebrating this holiday dedicated to protecting and honoring our planet today at the Russell Union Rotunda.

The first Earth Day was held on March 21, 1970. John McConnell, the holiday's creator, said that the date and place of the first celebration were especially significant.

"The first Proclamation of Earth Day was by San Francisco, the City of Saint Francis, patron saint of ecology," McConnell said, "[and] what could be more appropriate than the first moment of spring, when day and night are equal around the world and hearts and minds can join together with thoughts of harmony and Earth's rejuvenation."

Today, Earth Day is celebrated internationally, with the ringing of the United Nations Peace Bell "at the moment spring begins and hearts and minds join all over the world," McConnell said.

Earth Day at GSU is coordinated by the Student Alliance for a Green Earth, which is hosting this year's Earth Day celebration at the Russell Union Rotunda from 10 a.m. to 2 p.m. The official kickoff will occur with a message from University President Bruce Grube at 12 noon.

"We will have a faculty dunking booth, free food and drinks, live band, booths with local businesses that support environmental causes and raffle tickets. Prizes include gift certificates from local businesses and the grand prize a mountain bike (winners will be announced at 2 p.m.)," said SAGE President Sherri Cannon.

The entire GSU community is invited to celebrate Earth Day today, as well as to remember the importance of taking care of our environment.

"Earth Day is to remind each person of his right, and the equal right of every other person, to the use of this global home," McConnell said, "And at the same time [it is] the equal responsibility of each person to preserve and improve the Earth and the quality of life thereon."

Disaster is the draw for Discovery Channel

By Robert Trussell
Knight Ridder Newspapers

For most of my life I never really thought about what happens to a human foot when tissue starts freezing.

Now I know, because the Discovery Channel showed me. Thanks to computer-generated imagery, I watched a camera lens burrow into a woman's foot, gliding past bone and tissue to show me the blood vessels turning into black ice as a dispassionate announcer's voice explained the process in detail.

Likewise, it never occurred to me that a tornado so vast that it could wipe out most of downtown Dallas was even possible.

Now I know, thanks to Discovery, that if the necessary weather conditions align, hail could fall in daylight and fish could rain from the sky.

We have entered a brave new age of television, my friends. The line between "educational" and "sensational" blurs more with each passing TV season. And cable television has surpassed all expectations in bringing human suffering into our dens and

living rooms.

And, yes, it can teach us things we didn't know. But it also satisfies a hunger that used to drive people to disaster films or sword-and-sandal movies. The Germans call it *schadenfreude*, the enjoyment of the misfortunes of others.

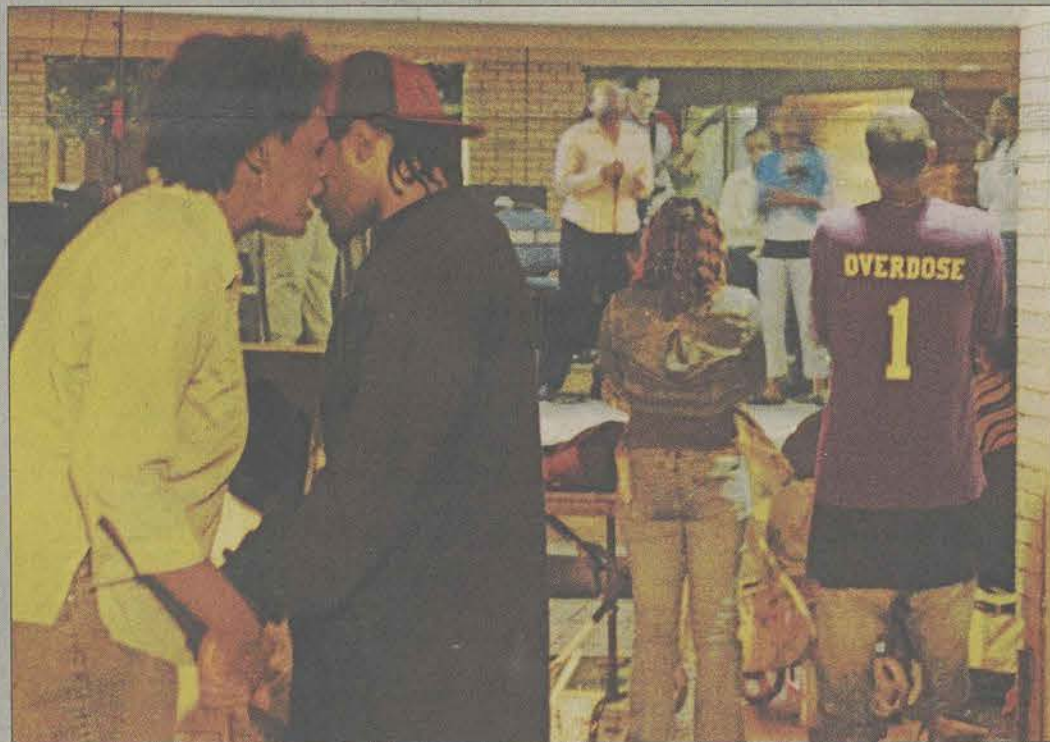
Why all this televised mayhem? Why now?

Some viewers undoubtedly tune in out of morbid curiosity, said pop-culture expert Elizabeth Bird, chair of the anthropology department at the University of South Florida. They just like to watch buildings collapse and hikers being eaten alive by insects.

She suggested that others may find a level of comfort from vivid depictions of catastrophes and survivors who beat the odds.

"These sorts of things probably give people some sense of control because if they have some tools in advance, then maybe that can deal with it," Bird said. "People always have this unquenchable optimism that they'll be the ones who survive. I do think people believe the world is a very frightening place."

Inspiration rings through campus



Grayson Hoffman/STAFF

Participants gather to pray and sing under the Russell Union Rotunda during Inspiration 2006, a celebration of faith. It is hosted by Revival Fire Campus Ministry. This is the first event of several that will continue throughout the rest of the week and into the weekend. To wrap up the week, there will be a concert on Saturday, April 22, at 6 p.m. in the Union Ballroom and a presentation of a play entitled "Church Folk" on Sunday, April 23, at 6 p.m. in the Union Ballroom.

'Wheel of Fortune' game show to hold auditions in Savannah



Special photo

The Wheel of Fortune production crew sets up the famous game board, which has 52 screens, each standing for a puzzle letter. As contestants name letters to solve the puzzle, the screens are lit, revealing parts of the phrases.

By Carl W. Bonebright
Staff writer

The Wheelmobile, "Wheel of Fortune"'s method of contestant searching, is coming to the Savannah area this weekend.

"The Wheelmobile tour gives us the opportunity to present local viewers with a unique and personal experience with the show," said Executive Producer Harry Friedman.

How does one actually make it on "Wheel of Fortune?" Simply shine above the rest at the Wheelmobile event this weekend.

"We're just looking for people with good stage presence, loud and clear voices. Basically, we're looking for good contestants," and you don't have to win to be chosen, said David Strathearn, a "Wheel of Fortune" representative.

There will be three game times each day, each of which will have several contestants. Applications will be handed out at 1 p.m. both days, but expect large crowds both days and arrive early. Each applicant will be given a different color-coded application, dictating at which show time they will participate.

At show time, the applications will be drawn at random by the host, and five players will move up on stage where they are given a quick interview before they get the chance to play a version of the "Speed Round" of "Wheel of Fortune." Every contestant will receive a prize, be it a "Wheel of Fortune" t-shirt or coffee mug.

Those chosen as possible contestants on the show will be notified by mail about a month or so from now

with a date for the finals round. Even some of those who didn't make it on stage during the two-day event may receive an invitation to the finals. The finals round is a tougher round where the contestants are further tested on their ability to perform well on the show.

"It's a two-step process. The Wheelmobile, the finals round, and then you're on the show!" said Strathearn.

While travel to L.A. for the show's taping is not provided, a \$1,000 minimum prize for participating in the show should cover all expenses.

The Wheelmobile will be at the National Guard Armory (1248 Eisenhower Drive) on Saturday and Sunday, April 22nd and 23rd from 2 p.m. to 6 p.m. For more information, go to www.wsav.com.

THE BOTTOM LINE

by ADAM CRISP

See the secret side of Savannah

Savannah's Garden club is offering a rare chance to go behind the walled yards of many historic homes this Friday and Saturday. The annual tour allows visitors

to see historic gardens usually closed off to the public.

This walking tour includes eight walled gardens plus the award-winning Massie School Garden, one of the Garden Club's community projects. Different private gardens are selected each year for their excel-

lence of design, historical interest and beauty. Ticket holders are also invited to enjoy a southern tea in special gardens.

Tickets are \$30 and are available on-line at www.gcosavannahnogstour.org.

BOTTOM LINE
Get a glimpse of high society gardenery. The cost is \$30.



ALBUM REVIEW

Ashes of 'The Unicorns' yield 'Islands'

By Edgar Fernandez
Staff writer

If there is something I remember from Biology, it is that matter does not disappear, it just changes its structure and moves in a cycle.

The same can be said of bands. When one breaks up, its members always try forming a new one. Of course, not all new bands can live up to their former ones, but for the many "Zwan" there is at least one "Mars Volta."

Fortunately this is the case with "Islands," a group formed by Nick Diamond, former lead singer of "The Unicorns," after the band broke up.

The Unicorns were a great underrated band, one that brought humor and absurdist imagery to indie-pop.

With "Islands," Diamond is trying

'Return to the Sea'

Artist: Islands
Label: Equator
Released: 2006

Prices:
barnesandnoble.com - \$12.98
bestbuy.com - \$12.99
amazon.com - \$10.96

Grade - 4 of 5 ★★★★★

a different technique for the same formula, with quite successful results. Their debut album "Return to the Sea" is simply brilliant.

Each of the 11 songs is overflowing with different elements, instruments and influences. The band makes the album a powerful experience.

The band draws from everything including pop, classical, southwest-

ern funk. They also use an array of instruments besides the obligatory guitars and drums, like trumpets, piano and other percussion instruments.

All of the songs are unique, but the best one is definitely "Rough Gem," which, unlike its name, shines brightly with its different, fun sounds that keep changing.

Some songs, like "Volcanoes" and "Don't Call me Whitney, Bobby," bring a whimsical humor with their amusing sounds and lyrics, the former is about the end of the world, while the latter being a candid criticism.

"Jogging Gorgeous Summer" has a remarkable use of wind instruments and drums.

The first song "Swans (Life after Birth)" is fine, and the only problem is

that it last more than 9 minutes.

I'm sure this might not be a problem for some people but I lose attention fast.

I was not crazy about either "Ones" or "If." The sound and lyrics were nothing spectacular. Also "When There is a will There is a Whalebone" is interesting, mainly because there is a rap interlude.

I really enjoyed the album. It is probably one of the best to be released in this year so far.

Although Islands is not as humorous as The Unicorns were, there are other ways in which they are The Unicorns' equal, if not better. Hopefully, this time Islands will not go as unnoticed as the Unicorns were.

It would be a shame for people to miss such great music a second time in a row.

VIDEO GAME REVIEW

'Marvel Nemesis' is imperfect at best, awful at worst

By Carl W. Bonebright
Staff writer

Marvel Nemesis: Rise of the Imperfects was released in late Fall 2005 to the PS2, PSP, Xbox, Gamecube and GameBoy Advance systems.

The game promised much as a Marvel fighting game with brand new never-before-seen characters available. What was delivered was a confusing story mode and a moderately entertaining versus mode.

The basic story is that the Marvel Universe is under attack by unknown aliens who somehow manage to make Captain America, the Punisher and Hulk all disappear in the first cut scene, never to be seen or heard from again. Players then take control of a hodge-podge of heroes from the major headliners of the Marvel Universe: the Fantastic Four, X-Men, Spider-Man, Daredevil and Avengers comics.

Oddly enough, there are no complete teams in the playable characters, either in story or in versus, and no excuses are made for their absence. Also, in playing through the story mode, the story will jump from character to character without much more continuity than "Oh, hi Spider-Man. Yeah, I just saw Storm over at the power plant and I'm on my way to Grand Central Station to check on another disturbance. Have fun fighting a mind-controlled Venom!" Then Iron Man flies off.

One gets the feeling that even though EA brought in several big-name Marvel writers for this game, the story is just an excuse for unlocking characters and arenas to use in versus mode.

One major deviance from almost every other super-hero and/or fighting game is a complete lack of super

'Marvel Nemesis: Rise of the Imperfects'

Produced by: EA Games
Released: 2005
Rated: T for Teen

Prices: (based on system)
barnesandnoble.com - \$17.99-29.99
bestbuy.com - \$19.99-29.99
amazon.com - \$19.95-29.95

Grade - 1.5 of 5 ★★★★★

moves. While the hero's power is accessible, there are no screen-blinding, mind-blowing, nuke-your-opponent moves, which will certainly disappoint many players.

Nemesis is not without its good points, an amazingly accessible environment being one of them. If you're the Thing and you want to pick up that car and throw it at your opponent, go right ahead. Also, the strength of

most characters is proportional, i.e. if you're Daredevil and try the same previously mentioned car, you're just going to look silly.

Players also get to fight at Marvel New York mainstays, namely the roof of the Daily Bugle and the Avengers Mansion.

The new, never-before-seen characters are certainly all they claim to be. All are completely original to the game, although their powers may be similar to some seen in the Marvel Universe before.

A lackluster story mode and a complete absence of super moves leaves this game with much to be desired.

"Marvel Nemesis" is like a bad weekend matinee villain: his bad puns and "clever" witticisms may hurt, but it's something to pass the time until something better comes along.

YOUR SOCIAL CALENDER

Live music on the way

By Patrick Sauters
Staff writer

The weekend is finally upon us. After a grueling week of classes, homework and tests, the urge to run wild through the streets of Statesboro is overwhelming.

With so many attractions around town, one might get lost in the search for the most appealing nightlife hot spot. This weekend showcases a huge variety of bands that will satisfy any student's late night desire.

Thursday, Black-eyed Katy will be at Dingus Magee's. This band throws out covers from the Grateful Dead and Pearl Jam, along with many of their own songs.

At Rude Rudy's, Rehab will be performing. A regular to the Statesboro area, Rehab always brings an intense show to a packed house.

At Retriever's, The 17th Floor will be playing some of today's most popular hip-hop songs, along with some old school favorites.

Rum Runners will be celebrating the CD release party of local favorites Grayson Hill. This should guarantee a dynamite atmosphere.

Friday night keeps the heat going with Jack's Wild at Dingus. They always put out high energy shows that really please the crowd.

The Brantley Gilbert Band will be holding down the stage at Retriever's. The tag on this band is

country rock. They are well worth checking out if this is your kind of music.

Rum Runner's will have a local legend, the Cole Swindell Band, singing country favorites to the party animals who always pack this bar.

At the French Quarter, Memory Lane will be making their debut in Statesboro.

Owner Brent Husley said, "It is our first time having them, but they are a 3-piece, older pop band playing songs from the 60s and 70s." With French Quarter's laid-back atmosphere it should be a good time.

Saturday night, Lonesome Whistle will be taking the place of Memory Lane.

Husley said, "We've had them several times and they are an excellent bluegrass band." So if bluegrass is your thing, head on down French Quarter for some great music.

Once again, Retriever's will be providing an extraordinary cover band. Pink Floydian Slip covers, to perfection, songs from the legendary British rock group.

"This is the only band worth paying more than a five dollar cover charge to go see," said Stephen Bruce, a senior finance major.

"The band puts on an incredible show," Catherine Willoughby, a senior nursing student, said "I am not even that big a fan, but it was unbelievable." Plan this show to cap off your weekend.

Top 10 words you will NOT find in the dictionary

1. ginormous- really, really big
2. confuzzled- puzzled and confused
3. woot- nerdy exclamation of joy
4. chillax- chill and relax
5. cognitive displaysia- when you know that you are forgetting something
6. gription- power to create friction
7. phonecrastinate- not answering the phone out of laziness
8. slickery- wet and/or icy
9. snirt- dirty snow; do not eat.
10. lingweenie- a non-neologist

Source: www.merriam-webster.com

BI-LO

NOW HIRING

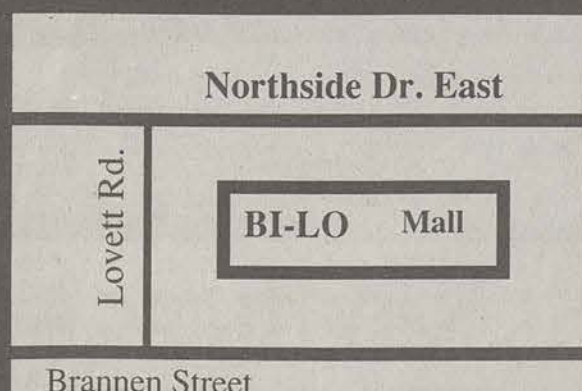
Statesboro BI-LO Store

We're Growing

All Positions, All Departments, All Shifts:

Management Opportunities, Great Careers in Sales, Marketing, Business Management, Human Resources, and more...

Deli-Bakery, Stock Clerks, Cashiers, Baggers, Meat Cutters, Cake Decorators, Frozen Food, Produce and more.
Experience preferred. Career advancement.



34 Statesboro Mall
Northside Dr. East
Statesboro, GA
489-1465

Great Benefits:
Profit Sharing
401(k), Major Medical
STD/LTD, Life, Dental
Part-time Medical
& Much MORE

Join a WINNING TEAM
EOE

Apply in Person at the local BI-LO store

REMEMBER:
Your EAGLEXPRESS Card
And the Following
Accepted at BI-LO



Take on the summer heat with cute tank tops

By Ashley Ferguson
Staff writer

The sweet, humid Georgia heat is among us once again. That means it is time to invest in tank tops, which are an essential college item, up there on the list with flip-flops and lightweight sweatpants.

These days there are more to tank tops than just functionality. Style and graphics are being applied to this simple garment, which gives more funk and attitude when paired

with jeans.

Black tank tops are nice and always come in handy, but add a phrase like "karmically delicious" and it is ten times better. Witty phrases like these are hilarious and bring a unique casualness to the outfit. Leave the cute looks for the tunics and halter-tops and let the tank tops do all the talking.

Now, if sexy tank tops are on your wish list, then those are even easier. Prints are good for the summer,

and so are beaded tops, since they add nice drops of color to the look. Crochet, lace and eyelet tanks are also popular.

Even though tank tops are so easy to deal with, the easiest types are the bra tops. They are spaghetti strap tanks with built-in bras. If a tank top is cut low in the back, there is no need to worry about going braless because there is already one sewn into the top. I think more halter-tops need built-in bras, but I will save that for

another week.

Of course, because there is a big elastic band going around your chest and back, expect a line imprint and some minor discomfort. However, I really do not think it is that big of a deal.

Go ahead and take your old, plain white, yellow and any other color tank tops and replace them with attitude-filled tanks. All you need is some closet and drawer space for these fabulous essentials.



Special photo

Tattoo tank from Victoria's Secret, \$48

Jack Black talks politics

By Daniel Fienberg
Knight Ridder Newspapers

As long as he makes movies about giant monkeys or larger-than-life Mexican wrestlers, Jack Black knows that he can find ways to make people see them. Things have been more complicated for "60 Spins Around the Sun," a documentary Black produced more than five years ago.

"The market is a little flooded now," Black said. "There are so many great documentaries out there and with reality TV taking off so strong, it's kind of doubled that phenomenon of the documentary fever. But if it's something you believe in, you just keep on plugging away and looking for different ways to show your work."

In this particular case, salvation for the film has come from Netflix, which began distributing "60 Spins" exclusively on Tuesday. Directed by Black's former girlfriend Laura Kightlinger, the doc focuses on Randy Credico, a once-promising stand-up comic whose confrontational political jokes led him away from a career in entertainment and into work as an organizer for a variety of causes.

"I just find him inspirational in that he's a guy who wants to make a change and it just shows how anybody can get involved and make a difference politically, even if you're not politician, if you're just a regular citizen who sees injustice," Black said.

The hour-long film was funded through what the "King Kong" star calls the "Jack Black Fund," though he doesn't appear on camera (several other familiar comics, including Larry David, make appearances). Turned on the Credico's message, Black admits that he's not a "super-political" guy.

"When a filmmaker has something to say about politics and what they should or shouldn't do, there's a huge outrage. It's like, 'Oh, shut up. You don't know anything about politics.' Well, you don't stay out of entertainment. If you don't stay out of entertainment, why do I have to stay out of politics?"

At least Black has a simple answer for why he's waiting to get more involved.

"I wish I was smarter, so that I could pose a better argument, but I feel in my gut when I sense injustice or something that I feel is wrong politically. I think I know in my heart what's right and wrong, but if you're not armed with the political vocabulary, then it's kind of just a feeling you have."

'Found Art' workshop makes art from recyclables

By Jessica Newsome
Staff writer

Recycling took the form of art at Georgia Southern yesterday. The seventh annual "Art From Objects" workshop is a great way to put recycling and community clean ups to work.

The featured artist, Tom Amettis,

displayed the series one of his "The Dashboard Collection: Between The Rubber and The Road." Each masterful piece is from an object Amettis has found and collected.

"The act of picking up is art in its self. One might even say, performance art," said Amettis.

Amettis attributes his inspiration

to collect and create as something he has always been drawn to, even as a child. He also remembers being inspired by a former college professor of his at the University of Central Arkansas.

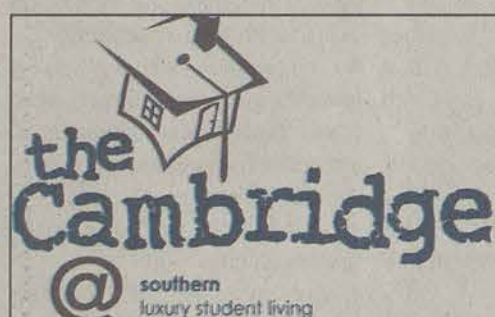
Amettis remembers loving the professor's home of collages. Amettis's art has also been displayed at the DK

Arts in downtown Statesboro.

Students and the preschool children from the Family Center on campus were given the opportunity to express themselves through art. The preschoolers were encouraged to create masterpieces using many different objects, such as egg cartons and shredding of paper.

"Making forms of art out of anything," said Junior Graphic Design major, Michael Green, when asked what he liked about the workshop.

The workshop was held in the Henderson Library from 10 a.m. to 2:00 p.m. More pieces by Tom Amettis can be seen at the SAGE Earth Day event today at Russell Union.



Cambridge @ Southern Opening August 2006

Club House and Model Now Open For Tours!

1, 2, & 3 bedroom units still available!

- Walking Distance from Georgia Southern University
- One, two, three, four bedroom, and 2 story town house floor plans
- Private baths*
- Fully-furnished
- All Black Kitchen Appliances
- Full size washer and dryer in every unit
- Big screen TV's in select units
- Tanning Beds
- Computer Lab/Business Center
- Private Study Rooms
- State of the art fitness center

- Game Room w/ Billiards, Foosball, Ping Pong, and Cable TV
- Sand Volleyball
- Resort Style Pool w/ Outdoor Kitchen and Stainless Steel Grill
- High speed Ethernet
- Extended basic cable with HBO
- Resident Life Program
- Individual Leases
- Roommate Matching

*4 bedroom 2 Bath floor plans will have shared baths



130 Lanier Drive
Statesboro, GA 30458

www.cambridgeatsouthern.com

Phone: 912-681-2262
Fax: 912-681-2265

Out & About in The 'Boro

Express Tune & Lube

Tire, Alignment
& Exhaust Center

612 S. Zetterower Avenue
489-4444

www.expresstuneandlube.com
Monday - Friday 7:30am - 6:30pm

Located a half block north of Wendy's.

Oil Change Special

Includes up to
5 qts. of Castrol
5W20, 5W30,
10W30, or 20W50

\$17.95

Price applies to most vehicles. Expires 4/30/06

RENTING MOVIES JUST GOT EASIER!

VIDEO WAREHOUSE

HAS A NEW LOCATION
AT
1200B BRAMPTON AVE
871-7012

New Customers can get a FREE Membership
and
Our Current Valued Customers can use their
EXISTING MEMBERSHIP!



Savannah's #1 Japanese Restaurant Now in Statesboro!!!



715 Northside Drive East in Southern Square Center • Next to K-Mart

Jr. Chicken Bowl \$3.15
Jr. Shrimp Bowl \$3.95
Chicken Bowl \$4.50
Shrimp Bowl \$5.50
Shrimp/Chicken \$5.75

Over 20
franchised
restaurants
in the area

We Can Quickly Make Your Favorite Dish.
So You Get In and Out in a Hurry!
Hibachi Steak • Shrimp Tempura
Teriyaki Chicken & Shrimp
Sushi • Salads • Appetizers and Much More...
Dine In or Carry Out
912-764-5150
fax 912-764-5655
Hours: 11 AM - 9 PM 7 Days A Week www.capitaljapan.com

K-Mart
Now in
Statesboro at
Southern Square
Shopping Center
May 20
Long Run

GET OUT OF DEBT

Applications now available online
www.cccsavannah.org

FREE
Home Buying
Counseling
Available

CONSUMER CREDIT COUNSELING

A Non-Profit Service

STATESBORO
912-489-2227

515 Denmark Street

*Approved to issue certificates in compliance with the Bankruptcy Code. Approval does not endorse or assure the quality of an Agency's service.

Your Only Local Agency Since 1965

1-800-821-4040

Confidential Counseling

SAVANNAH
912-691-2227

7505 Waters Ave., Suite C-11



MAUI SMOOTHIES & COFFEE HOUSE

Get your juices flowing

620 fair road, #2

statesboro, ga 30458

(912) 681-7979 or fax (912) 681-7982

Don't accept
imitations