

Georgia Southern University

Digital Commons@Georgia Southern

The George-Anne

Student Media

9-8-2005

The George-Anne

Georgia Southern University

Follow this and additional works at: <https://digitalcommons.georgiasouthern.edu/george-anne>

Recommended Citation

Georgia Southern University, "The George-Anne" (2005). *The George-Anne*. 1886.
<https://digitalcommons.georgiasouthern.edu/george-anne/1886>

This newspaper is brought to you for free and open access by the Student Media at Digital Commons@Georgia Southern. It has been accepted for inclusion in The George-Anne by an authorized administrator of Digital Commons@Georgia Southern. For more information, please contact digitalcommons@georgiasouthern.edu.



High: 91 | Low: 75
Sunny
Volume 78
Number 23

Tailgate elsewhere

GSU limits where students can tailgate, offers transit for game day | **SPORTS, p. 6**



Everything you need to know about GSU football | **VARIETY, p. 12**

THE GEORGE-ANNE

THURSDAY, SEPTEMBER 8, 2005

HURRICANE KATRINA

Students offer help for victims

By Casey Altman
Assistant news editor

Katrina devastated the gulf coast Sept. 29, leaving thousands of people homeless. Families are living in shelters across the South from Houston to Atlanta. In the wake of this disaster, many people have volunteered their time and money to help, including Georgia Southern and Statesboro residents, offering dozens of ways to help relief efforts.

Eric Powell, graduate assistant at the Greek Life Center, said sororities and fraternities had received a big response.

"They have come in throwing around different ideas," said Powell. "It's really awesome that they are so willing to help."

Yesterday, "Bus Stop Heroes," volunteers from Phi Mu, Zeta Tau Alpha and Pi Kappa Phi worked tables at the Russell Union and the Education Building stops, taking over \$900 in donations to be given to the American Red Cross.

The Office of Student Activities and Volunteer Services has organized "The One Million Challenge." Bill Pickett, the director of student activities, said the goal of the challenge is to raise one million items.

"We want groups to be creative with how they raise the items," Pickett said. "Some groups are paying 10 canned goods as dues."

Groups will collect canned goods, water, baby items, toiletries and non-perishables.

The SAC will assist by acting as a hub for communication and will arrange a pick-up service allowing groups to schedule a time where volunteers collect the boxed goods.

see **HELP**, page 9

Students find refuge at GSU

Free tuition offered to at least 11 students displaced by hurricane

By Adam Crisp
Managing editor

Rachel Kohn knows she's one of the lucky survivors of Hurricane Katrina.

The Tulane University sophomore is among 11 students from the Gulf coast attending classes at Georgia Southern in the wake of last week's torrential storms. University officials expect as many as eight other students to attend classes here at least temporarily.

The students who are taking classes here this semester hail from Tulane, Xavier and Loyola universities. The school is granting the students free tuition for the rest of this semester.

Kohn, who is a Statesboro native, says being away from friends and leaving behind New Orleans — her adopted home — is a painful experience.

"It's really heartbreaking," said Kohn from her parents' rural Bulloch County home. "It was a good thing I was with boys during the first part of the hurricane break because I didn't cry — I didn't know how they would handle it. And then I went to Dallas to a girlfriend's house and all we did was sit and look at the TV and cry."

Kohn arrived in Statesboro Saturday. Since then the Bulloch Academy grad has been glued to the TV, plying for details. So far, all the news has indicated that Tulane was spared from much of Katrina's wrath.

"Right now, the plan is for us to open back up in January," she said. "The city of New Orleans is pretty much in despair. The infrastructure



Adam Crisp/STAFF

Rachel Kohn stands in her parents' Statesboro yard. The Tulane sophomore is among at least 11 students who are attending classes at GSU after being displaced due to Hurricane Katrina.

isn't there. Everything is flooded and there is only one way back into the city...there isn't any water or electricity. But as soon as the city is ready, we are ready."

Kohn evacuated Louisiana shortly after going back to the campus for a week-long orientation. She and a large group of incoming freshman she was helping to move were urged to leave their belongings in their dorm rooms and head out.

"I had a few friends who were going to San Antonio and they offered me a spot in the car," she said. "So I packed my suitcase and got my laptop

and went."

No one expected a hurricane to actually hit.

"Every year we get evacuated and we just go and we have a hurricane party," said Kohn. "We call it a 'hurrication.' We figured we'd be back in like a week, because that's what always happens."

Though Kohn said the evacuation has been an inconvenience, she admits the experience pales in comparison to torment depicted in TV news accounts.

"I don't have my clothes and I'm

see **STUDENTS**, page 5

Tropical storm Ophelia worries Florida coast

By Ron Word
Associated Press

JACKSONVILLE - Brisk wind and forceful rain from Tropical Storm Ophelia moved through this beachside community Wednesday, sending tourists scurrying inland and driving surfers out of the churning Atlantic.

The tropical depression off the coast strengthened into a tropical storm early Wednesday and could bring strong winds and heavy rain to central and northern Florida over the next few days.

The Jacksonville area is one of the few spots spared any serious damage from the six hurricanes that have hit the state in the last 13 months.

"We have to wait and see what (Ophelia) is going to do. The possibilities are endless," said Steve Letro, a meteorologist with the National Weather Service in Jacksonville.

Without strong steering currents, it was impossible to say what path Ophelia would take or whether it would reach hurricane strength, Letro said. Some computer models had the storm moving farther east and away from the coast, others had it going west, closer to shore, and some showed it heading east and then looping back toward the state.

At 11 p.m. EDT, Ophelia, the

Ophelia near two 2004 hurricanes



15th named storm of the season, was centered 85 miles east-northeast of Cape Canaveral. It had top sustained winds near 50 mph, up from 40 mph earlier in the day, and was nearly stationary.

A tropical storm warning, meaning winds exceeding 39 mph are possible within 24 hours, was canceled for areas south of Cocoa Beach but remained in effect north to Flagler Beach.

A tropical storm watch, meaning those conditions are possible within 36 hours, was in effect from Flagler Beach to Fernandina Beach.

Schools aims for more protections after spring breaches

By Darren Jones
Staff writer

On April 23, a security breach allowed a hacker access to the University Store server.

This happened primarily because of a weak user password that gave the hacker the ability to use the bookstore server as a relay point for an IRC chat session. As a result, sensitive data stored on that server, such as credit card information, was possibly compromised.

Since then, many measures have been taken to both to reinforce security guidelines already in place and implement new ones that will ensure above all the students' confidence.

One such measure in place is the initiation of a credit card auditing program, headed by Scott Pearce of Internal Audit. The program confers with every organization on campus that deals with credit card information such as the bookstore, Food Services, and the Wildlife Center, to make sure they are as secure as possible.

Internal Audit is just one of the many examples of the efforts made



Special photo

by the university to increase security efficiency and awareness.

TouchNet, the handler of credit card information for WINGS, has been in close partnership with GSU because they're not only certified but they have policies we know and trust.

At least four more teams will be formed to address issues such as passwords, services, firewalls and workstations. In addition, unnecessary data has been removed and the remains encrypted. This

see **CREDIT**, page 5

Football returns to Paulson this Saturday

By Chad Bishop
Sports editor

It's been nine long months since the Eagles last played a game in Paulson Stadium. The students, the players, the coaches, and the fans are ready. Big crowds are expected for this Saturday's home opener, as Georgia Southern plays host to fellow I-AA powerhouse McNeese State.

The Eagles are coming off a thrilling overtime victory over Northeastern in Boston, and will try to continue their winning ways against the Cajun Cowboys of McNeese. The game marks the season opener for MSU, whose first game against Southern University was cancelled last week in the aftermath of Hurricane Katrina.

McNeese State (0-0), out of Lake Charles, La., has a football tradition comparable to that of GSU, winning 6 Southland Conference Championships since 1991, and playing for a national title in 1997 and 2002. The Eagles and Cowboys last met in 2003 in Lake Charles, with McNeese com-

ing out on top 34-15.

"They're a perennial power," said GSU head coach Mike Sewak. "They've won a ton of Southland Conference championships, they've been to the national championship, and they're on the verge of having another great year."

Despite the Eagles (1-0, 0-0) already having a win and a game under their belt, Sewak isn't giving an advantage to either team.

"It'll be a push. They're going to make some mistakes they don't expect to make, but they've also seen our game films and will be better able to prepare for what we're bringing to the table."

But with a game under their belt, the Eagles do have a slight edge in fixing some weaknesses exposed last week in Boston. GSU's defense allowed 38 points in the win, and Northeastern scored on its first four offensive possessions.

That defense will have to control Senior quarterback Chris Jones, who

see **FOOTBALL**, page 5



Grayson Hoffman/STAFF

Players are anticipating a return to the gridiron this Saturday. Practice was intense Wednesday as the Eagle prepare for kick-off.

Parking services finds a space behind Landrum

By Jennifer Maddox
Staff Writer

Parking and Transportation Services will soon have a new home behind the Landrum Center.

About two years ago, the parking office was located near Sweetheart Circle. Unfortunately, that building was vacated because of a mold problem. This is what placed them in their current location.

As of now the office is temporarily located on Forest Drive next to the ROTC building.

Relocating got them away from the mold problem, but it was not a permanent solution. Instead, the plan was to house them there until a better, more permanent location could be provided. Thus, the motivation for this project was sparked.

Construction on the new parking office began in May and is scheduled to be complete in November. It will serve as the new home for Transportation Services starting next semester. According to Myron Powell of the Physical Plant, the building itself is approximately 3,500 square feet and will house about six to eight offices. They also anticipate having a lobby area with 10 stations set up to help

students. The total budget for this project is around \$500,000.

Powell said three sites were considered for this project, one of which included their current location on Forest Drive. He said relocating behind Landrum provides convenience for students on campus and gives employees a place to park.

The project is scheduled for completion in November, but there have been several construction challenges.

Contractors say the weather has not always been perfect and given the location they are working in, traffic from Chandler conflict with efforts to bring in equipment and supplies.

"Construction is difficult and hard to keep up with when delays happen, but it should be worth it in the end," said Powell.

Director of Parking and Transportation Bob Chambers said there is an uncertainty over starting something new by moving to a different location, but the department is in need of a better location, and employees will have a better environment to work in.

Chambers said transportation services is excited about the online



Jared Siri/STAFF

Construction continues on the Parking and Transportation building, despite setbacks due to weather and traffic, the project is expected to be completed by November this year.

service that they started this year, allowing students to pay parking tickets and buy permits from the comfort of

their own home. He said it is anticipated that this will lighten traffic at the office as well.

"We are hoping to do as much business as possible on the web, but we will still be here," said Chambers.

Raptor Center to expand 12 acres next year

By Britt Davis
Staff Writer

The Center for Wildlife Education and the Lamar Q. Ball Jr. Raptor Center are home to many different species of wild animals, including snakes, turtles, insects and different birds of prey like eagles and falcons. At the center, students can learn about the different animals that are located here in Georgia.

Plans for expanding the center are already underway. Phase II, which will begin construction next year,

will be a twelve-acre addition to the center. Among these additions will be an aviary full of native songbirds and other species.

Another addition will be an aquatic ecology station, holding a series of different educational exhibits dealing with ponds and rivers. One exhibit will be the wetland area, which will demonstrate the importance of the filtering effects of our state's wetlands.

Inside the center, visitors can experience the "Down to Earth" encounter, housing reptiles such as turtles, count-

less snakes (including three species of rattlesnakes), fish, insects and even a small alligator. There is also a large room, which hosts many educational programs for K-12 students from around the area.

"We have 10-20,000 kids a year come to the Raptor Center," said Tim Brewton, educational program coordinator for the Center. Brewton said they visit many schools around the state, taking different snakes and birds with them. One of these snakes is an eleven-foot Albino Burmese

Python. The purpose of these trips is to educate students about the wildlife in Georgia and to teach the importance of wildlife education.

Outside the center, a boardwalk pathway leads through the woods to six different habitats located in Georgia. Some examples of these habitats are hills and mountains, wetlands and even a replica of an old tobacco barn, which houses two barn owls. Along this pathway is home to the center's birds of prey.

The center is home to about 28

different birds of prey. Some of these include hawks, owls, vultures, and a bald eagle. It is also home to Clyde, the mascot for the Atlanta Hawks. Clyde, whose alias is Spirit, is flown at every home game in Atlanta. Daily flight shows are also held at the outdoor amphitheater where the birds of prey fly over visitors and the staff gives general information on each bird, describing the bird's habitat and how they hunt.

The center opened in 1997. The idea originated with interests to get an eagle back in 1991. Steve Hein, the center's director, was contacted to see if Georgia Southern could get an eagle. Hein, who is a licensed falconer, started designing the center with help from Jim Fowler, host of the wildlife show Wild Kingdom and personal friend. Construction started in 1992 and the rest is history.

The Center for Wildlife Education and the Lamar Q. Ball, Jr. Raptor Center

- Located on Forest Drive, across from the Public Safety Building

- The center is open Monday-Friday from 9:00-5:00 and on Saturdays from 1:00-5:00

- General admission is free

CALENDAR

Thursday, September 8

5 p.m.
March on Hurricane Katrina
Russell Union
Students can pledge money to marchers or give canned goods and join the march from Russell Union to the RAC.

Saturday, September 10

10 a.m. - 6 p.m.
Help from Harvey's
Harvey's
Greek members will be in front of the Grocery store collecting funds for victims.

2 p.m. - 6 p.m.
GSU Tailgating
Russell Union and University Store
The SGA is raising money with a dunking booth and tailgating session. Students can bring non-perishable items to dunk campus leaders and ride the bus to the game.

6 p.m.
Football Game Donations
Paulson Stadium
University Housing will be taking donations during the game.

POLICE BEAT

08-31-2005

- Fariba Aadelvand, 18, of Johnson Hall, was charged with DUI.
- Willis Addison Jr., 30, of Enterprise Road, Hinesville, Ga., was charged with driving with a suspended license and obstruction of an officer.
- William C. Inabinet III, 23, of Robin Hood Trail, Statesboro, was charged with obstruction of an officer.
- Nishant Mahashkumar Randerwala, 21, of Chandler Road, Statesboro, was charged with possession of marijuana and headlights requirements.
- Hunter Meade White, 18, of Eagle Village, was charged with minor in possession of alcohol and obstruction of an officer.
- A student reported that a child was at the Russell Union without her parent.
- A student reported that she was the victim of simple battery in Kennedy Hall when someone she knew threw clothes in her face and grabbed her by the arm and neck.

09-01-2005

- Brandon Tyler Broich, 18, of Eagle's Landing Apartments, Statesboro, was charged with minor in possession of alcohol and public intoxication.
- Clay Sanderford Howell, 20, of Campus Club Apartments, Statesboro, was charged with minor in possession of alcohol.
- A Kennedy Hall resident reported his laptop computer was missing.
- A student reported her purse was missing from the Russell Union.
- A student reported someone used her personal information to open a cable-provider account in Columbus, Ga.

09-02-2005

- A computer monitor and some computer cords were taken from the Southern Courtyard computer lab.

09-03-2005

- Michael Brian Melancon, 18, of Brannen Bridge Road, Sylvania, Ga., was charged with underage drinking.
- Leonardo Gabriel Santaiti, 18, of South Main Street, Statesboro, was charged with public indecency, underage drinking and possession of a false ID.
- David Alexander Tootle, 18, of Metts Road, Statesboro, was charged with underage drinking.

09-05-2005

- Tyrus Lashaun Hamilton, 19, of Woodbine, Ga., was charged with failure to comply with a traffic control device and giving false information to an officer.
- Alexander John Wheaton, 19, of Brannen Hall, was charged with underage drinking.
- A suspicious person was reported at Watson Hall.
- Two cell phones were taken from Eagle Village.

09-06-2005

- Michael Solomon Matthias, 21, of Derry Down Way, Decatur, Ga., was charged with peeping tom.



inkjet & toner

Next to Big Lots in Statesboro Square
503 Northside Dr. E.
489-1320
Mon-Fri • 9am-6pm
Sat • 10am-2pm

Come to Statesboro's ONLY
discount inkjet and toner supplier

NEVER PAY FULL PRICE FOR PRINTER INK AGAIN

HP, Lexmark, Brother,
Epson, Canon, Xerox,
Dell & Sharp Cartridges

Prices Lower
than anyone in town
GUARANTEED!

Get your ink cartridges
REFILLED
And Save Up To 50%!
I Buy Empties!

10% off
with a school i.d.

free phone

ON SELECT MODELS



MOTOROLA V330

MSRP \$199.99
Mail In Rebate \$50.00
\$149.99



NOKIA 6010

MSRP \$119.99
Instant Rebate \$20.00
Annual Service Agreement Required, Taxes Excluded.
\$99.99



SAMSUNG X475

MSRP \$99.99
Instant Rebate \$100.00
Annual Service Agreement Required, Taxes Excluded.
FREE

600 WHENEVER, WHEREVER MINUTES*

\$39.99 Only
A Month
600 Whenever, Wherever Minutes Plus... Unlimited Night & Weekend Minutes
Limited Time Offer.

1000 WHENEVER, WHEREVER MINUTES*

\$39.99 Only
A Month
1000 Whenever, Wherever Minutes No Long Distance or Roaming Charges Includes National Long Distance Roaming Charges.
Limited Time Offer.

3000 Neighborhood Whenever Minutes*

\$49.99 Only
A Month
Any Day, All Day!
Limited Time Offer.



ALLTECH - Main Street Village (Next to Hospital) **871-7522**
ASAP - 406 S. Main St. Statesboro **764-2337**
ALLTECH - 1596 Chandler Rd. Statesboro **871-5555**
ALLTECH - 5966 Ogeechee Rd. Savannah **961-7881**



T-Mobile
authorized dealer

Additional Regulatory Programs Fee of 96c per line/mo. applies. This is not a tax or government-mandated charge. Taxes and other charges (including Universal Service charges) additional. If you are not satisfied with our service, you may cancel within 14 days of activation (longer in certain states, e.g. 30 days in CA), with no early cancellation fee. Both this offer before activation, and this plan after activation, may be modified and/or discontinued by T-Mobile, with or without notice and with respect to all T-Mobile customers. 30c-45c per additional minute (or fraction thereof), depending on plan. 5c per additional text message. Rates are for calls originating and terminating in the U.S. Coverage allowances lost. Partial minutes used are rounded up and charged at the full-minute rate; calls are measured from when the network begins to process the call (i.e., before the phone rings or the call is answered) through the network's termination of the call. Billing of roaming charges and minutes of use or services may be delayed to a subsequent billing cycle. Call duration and/or your continued eligibility for this plan may be limited or terminated in T-Mobile's sole discretion, especially if monitoring of your usage discloses abusive conduct or abnormal call patterns(s). Devices sold for use on our GSM/GPRS system may not be supportable on or compatible with other wireless systems. Weekends are midnight Fri. to 11:59 p.m. Sun., based on commencement time of call. Nights are 9:00 p.m. to 6:59 a.m., based on commencement time of call. Mobile-to-mobile means a directly dialed call between T-Mobile subscribers while on our U.S. network. Call minutes currently rate in the following order (as available): weekend/night, mobile-to-mobile, WHENEVER, Phone/Rebate: At participating locations; while supplies last; phone or accessories may be substituted for items of equal or greater value; additional taxes and shipping charges may apply. Rebate offer requires purchase of the phone listed and new activation on a qualifying rate plan. You must be on a qualifying rate plan when rebate is received.

ONLY IN AMERICA

Stories by The Associated Press

School offers mule training

1 LOS ANGELES — Sugar the mule was anything but sweet. She bit her owner, kicked him and dragged him around his corral.

This summer, Will Green, a 43-year-old warehouseman hauled the cranky creature to what is believed to be the nation's only mule school at Pierce College in Woodland Hills, a Los Angeles suburb.

Within a few hours, mule charmer Steve Edwards had Sugar behaving like a lamb, obediently waltzing around a dusty corral on a length of rope.

The Arizona-based Edwards is the point man for the mule training program that Pierce College launched in 2002 to promote its sagging equestrian program.

The class quickly became popular with baby boomers and active retirees enamored with the Old West and eager to explore rugged back country. More than 100 people from all over the country have taken the \$42 weeklong classes at the school's Equestrian Education Center.

Starting Tuesday, Pierce will offer a semester-long course in mule riding.

Edwards teaches basic mule packing, treatment of injuries and disease and how to communicate as one with the long-eared equines whose hard work is chronicled in the Bible and in history books.

Lake goes down the drain again

2 WILDWOOD, Mo. — Did someone pull the plug again? Little more than a year after it practically disappeared overnight, Lake Cheslerfield is dwindling again.

"Deja vu, all over again," said Bruce Colella, chair of the homeowners' association board of trustees.



The 23-acre artificial lake in this affluent St. Louis suburb drained last year like a bathtub after the plug was pulled. A geologist determined that water had eroded layers of limestone, creating gaps in the bedrock.

Residents of the subdivision voted to contribute about \$1,000 per home for repairs, spending a total of about \$650,000.

By last month, the lake was almost back to its normal level and it had been restocked with thousands of fish.

Last week, however, residents noticed that the water was dropping again, by at least a foot a day, Colella said.

The lake must drain completely before a geologist can determine exactly what the problem is, he said.

Man drives horse to work, saves money

3 MINOT, N.D. — Jim Jundt was so determined to rein in his spending on gasoline that he got out of bed early and rode his 14-year-old quarterhorse mare to work.

Jundt lives 15 miles south of Minot and works as a mechanic at Goodyear Tire & Auto Service in the city.

He said he and his co-workers had been talking about rising fuel prices, and he joked that he would ride his horse to work if gasoline ever hit \$3 a gallon.

His co-workers laughed, but when the price at the pump soared to \$3.20 last week, Jundt headed for the barn.

He said he was only five minutes late riding his mare, Patty, to work.

While he worked, Patty waited patiently, eating hay out of the back of a truck.

THE BIG STORY

Bob Denver, TV's Gilligan, dies at age 70

It was supposed to be just a three-hour tour and, if the critics had their way, "Gilligan's Island" would have been forgotten after its three short seasons on television. But somewhere along the line in rerun eternity, television audiences fell in love with the goofy character of Gilligan played by Bob Denver, who died Friday at age 70.

It became a love affair that endured throughout the life of Denver, who died of complications related to cancer treatment at Wake Forest University Baptist Hospital in North Carolina. He had lived in recent years in Princeton, N.J.

"One thing I can say about Bob and the show is he entertained generations, and everybody approached us and him in particular with love and a smile," said Russell Johnson, who played the

egg-headed professor on "Gilligan's Island." "That's a tremendous legacy for someone from Hollywood to leave."

Gilligan may have been his signature role, but when he took the part in 1964 Denver was already widely known to TV audiences for another iconic character, Maynard G. Krebs, the bearded beatnik friend of Dwayne Hickman's Dobie Gillis, which aired on CBS from 1959 to 1963.

Maynard G. Krebs' only desire was to play the bongos and hang out at coffee houses, and he would shriek with terror every time the word "work" was mentioned.

Gilligan on the other hand was industrious but inept. His bungling stranded his tour boat's skipper and their five passengers on an uncharted

desert island for all of TV eternity and, when the seven castaways actually got off the island in a film sequel, they wound up back there when Gilligan bungled the reunion cruise a year later.

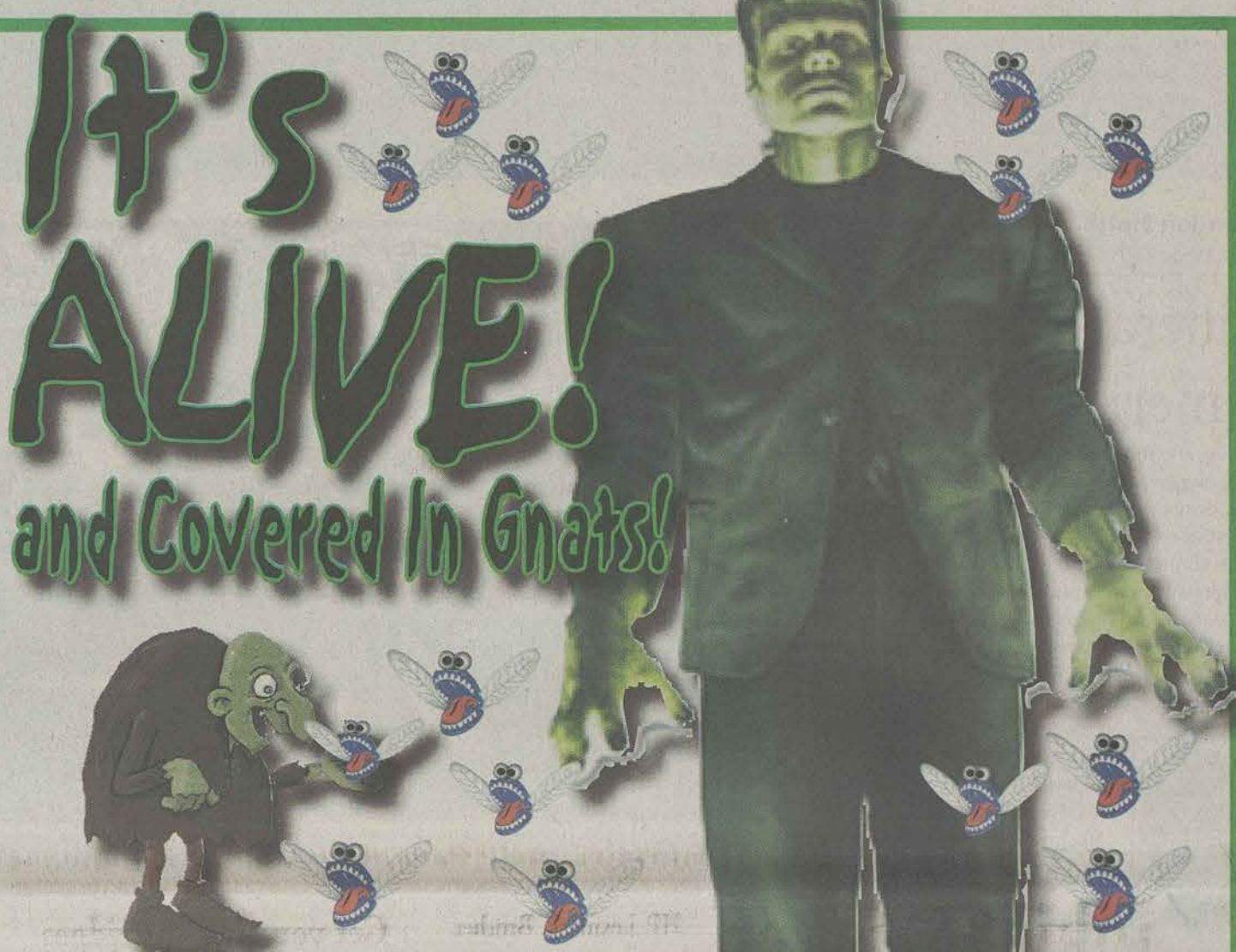
His character was as lovable as he was incompetent, and viewers embraced the skinny goofball kid with the white sailor hat. So did the Minnow's skipper, Jonas Grumby, played by Alan Hale Jr., and who always referred to Gilligan affectionately as "little buddy."

"As silly as it seems to all of us, it has made a difference in a lot of children's lives," Dawn Wells, who played farm girl Mary Ann Summers, once said. "Gilligan is a buffoon that makes mistakes and I cannot tell you how many kids come up and say, 'But you loved him anyway.'"



Associated Press

In this photo released in 1963 by CBS, Bob Denver is seen on the set of "Gilligan's Island"; he died of complications from treatment he was receiving for cancer, his agent said.



George-Anne Daily Celebration

Monday, Sept. 12 • 11:30 a.m. - 1 p.m.
Food • Fun • Prizes • Russell Union Rotunda

- Register to win an iPod Shuffle or G-A T-Shirts
- Smack an Editor in the Face with a Pie
- Music Performance by Curtis Smith
- Dancing Exhibitions
- Free Publications
- Popcorn and Cokes
- 1,000 Ice Cream Sandwiches from Bi-Lo
- Surprises... and, of course, Gnats

Proceeds from the Smack an Editor in the Face Event will benefit the J. Wright bench fund which will be located by the Education Building. J. Wright was a former News Editor for the George-Anne who died unexpectedly this summer.



Brought to You by Student Media at Georgia Southern,
The George-Anne Daily, Bi-Lo, Frito-Lay, Inc.,
Coca-Cola Bottling Company, and Papa John's Pizza



Covering the Campus like a swarm of gnats!



The Sir Shop

TWO LOCATIONS

Statesboro Mall Main Street Village
764-6924 871-4962



POLO
RALPH LAUREN

Earn up to \$72,000
while you finish your Health
Administration Degree

Looking for a financial boost to complete your Master's Degree in Health Care Administration. Let the Health Services Collegiate Program help lead the way!

Eligibility Requirements

- US citizenship
- 18 to 40 years of age
- Cumulative GPA of 3.0 or higher on a 4.0 scale
- Physically fit with NO major medical problems and be able to swim
- NO felony convictions
- NO pending civil actions or bad debt
- NO history or illicit drug use
- Enrolled in or accepted to CAHME accredited graduate program.

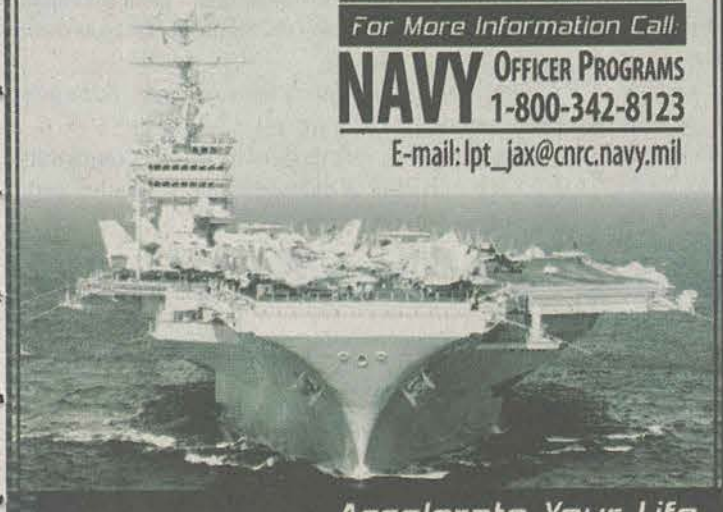
When Selected

- Receive about \$3000 a month during graduate school
- Full Navy Benefits as a student to include:
 - Full medical/dental coverage
 - 30 days paid vacation each year
 - Many other benefits
- Naval Officer commission upon graduation

For More Information Call:

NAVY OFFICER PROGRAMS
1-800-342-8123

E-mail: lpt_jax@cnrc.navy.mil



OPINION



THE GEORGE-ANNE DAILY EDITORIAL BOARD

LUKE HEARN, EXECUTIVE EDITOR
ADAM CRISP, MANAGING EDITOR FOR NEWS
MORGAN MARSH, MANAGING EDITOR FOR OPERATIONS
RACHEL WEEKS, NEWS EDITOR

LaVene Bell-Koepeke, Photo manager
Grayson Hoffman, Asst. photo manager
Miguel Fuller, Variety editor
Bert Noble, Deputy managing editor

Chad Bishop, Sports editor
Relaldo Stover, Sports editor
Casey Altman, Assistant news editor
Anne McGuire, Copy editor

"Both parties deprecated war; but one of them would make war rather than let the nation survive; and the other would accept war rather than let it perish. And the war came."

—Abraham Lincoln
Second Inaugural Address, March 4, 1865

OUR VIEW

Hurricane donation centers should be clearly marked

AT ISSUE: Students should be aware of where they can donate to disaster relief

There are many ways to give food and monetary donations to people living through the devastation of Hurricane Katrina. Students are providing others with a way to help out too.

On-campus organizations have many volunteers collecting canned goods, non-perishable goods and money donations.

In the Statesboro community, businesses are also collecting cans and money to help, including local bars, the American Red Cross and Eagle Diner.

There are plenty of ways to provide support for those in need, and it's good to take up donations

for the cause, but people need to feel confident that the money they are giving will be spent helping people left homeless and without food.

Some campus organizations have set up tables at bus stops to take up donations, but many students walked right past them because they couldn't tell what the table was there for.

There were no signs saying "leave donations here" and no way to tell which organization the money would go toward. For all most students knew, the people at the table were selling donuts or taking nominations for Homecoming Queen.

At each station where donations can be dropped off, there should be colorful signs and banners encouraging everyone on campus to contribute valuable goods to the devastation in the Gulf Coast area.

Most students walk right by tables because they think students are trying to sell them things. When people come to campus to pass out Bible literature, some students walk out of their way to not have to encounter the evangelists.

The same thing happens when groups try and collect money for their particular fundraiser. Not all students care to take the time and see

what all the booths on campus are about because there are so many.

However, if students know that a booth has been set up for hurricane relief efforts, their attitude may change. They may pause to read the banners and consider helping out the homeless and hungry.

They may see what goods are being taken up and bring canned goods the next time they pass the table. They may even take out a checkbook and make a much-needed donation to the American Red Cross or other disaster relief organizations.

Brandon Smith
Guest Columnist

Liberals are "un-American"

"Liberals should be very afraid...we [Conservatives] are much more prepared than our America-hating, relativistic counterparts to wage battle for the hearts and minds of America's youth."

This quote from the article "Democrats Should Be Very Afraid," written by Britton Alexander in the August issue of *The Conservative Statesman*, made me stop and think about the issues liberals fight for every day.

This isn't the first time I've heard a conservative call all liberals "America-hating." The term "un-American" is also often used.



Brandon Smith is a junior accounting major from Atlanta. He is a guest columnist for *The George-Anne*.

Now I don't consider myself a radical liberal by any means; however, I take great offense to quotes like this one. Calling people who have left-wing views un-American is a blow to the country as a whole.

Although conservatives tend to be super patriotic and God-fearing, they don't often take time to think about the minorities, such as the conservative saying, "we believe in equal rights, equal justice and equal opportunity for all, regardless of race, creed, sex, age or disability." Sure, equal rights for all... except homosexuals.

Liberals give great balance in our country, seeking true equality for all, including homosexuals. Liberals fight for a cleaner environment, stricter pollution laws, increased animal rights and lessened deforestation. These are some strong left-winged views. Liberals also vote for stricter gun control.

As the Second Amendments right to bear arms is just fine, this amendment should be translated to current day, limiting how many and what types of fire arms a citizen may obtain.

Liberals are often against war as well. They tend to understand different cultures and ways of life better than conservatives. While Americans may enjoy democracy and their capitalistic society, there is no justification for pushing this one way of life into other countries.

If it's easy for you to understand reasons why you dislike other countries and other governments, perhaps you can take a minute to understand why they may dislike the government and way of life of the United States. Not everybody wants to live like an American. Conservatives don't seem to understand this.

So if accepting other peoples way of life, including foreigners and homosexuals is un-American; if fighting for a cleaner environment and more respect for living beings is un-American; if attempting to listen to the minorities and make life a little less hectic for everyone is un-American, is it so hard to see why many other countries frown upon the USA?

If these things are truly un-American, is it hard to see why many Americans are sometimes too embarrassed to be patriotic? Instead of labeling liberals as "un-American," maybe it's time for some conservatives to sit down and understand what liberals are fighting for.

If you believe the Ten Commandments are indeed the highest law, that's fine. But there's no room for a law saying "Thou shall not lie."

If you are disgusted by the thought of homosexuality, it's time to understand laws should not be based around personal opinions.

Disagreeing with the left-wing on specific issues is by all means just fine, however labeling the entire side as "un-American" or "America-hating" is a disgrace to our country as a whole.

Write Brandon at bsmith75@georgiasouthern.edu.



IF OUR CONSTITUTION'S AUTHORS WORKED UNDER THE CONDITIONS OF IRAQ'S CONSTITUTION AUTHORS

Adam Bazemore: YOUR TURN

Lincoln not the great man he's cracked up to be

Luke Hearn is correct to say that politicians in Washington are very corrupt and driven by the almighty dollar ("Washington, D.C.: not the place I remember," Aug. 30). There was one thing that really disturbed me in Hearn's column, and that was the elevation of Abraham Lincoln to an uncorrupted plane.

In many respects, Lincoln began much of the corruption present in American government that we see today.

Adam Bazemore is a freshman from Sylvania majoring in History Education. He is a member of the Ogeechee Rifles camp and the Sons of Confederate Veterans.

First of all, Lincoln imposed the most devastating war in U.S. history on the South by invading our homeland.

He began the War of Northern Aggression for two simple reasons: to return the tariff-paying South to the Union in order to benefit the northern merchants and the federal government's coffers, and by being a wartime president he had much better chances of being re-elected.

With that said and done, Lincoln also suspended the Writ of Habeas Corpus (unconstitutional) so that he could arrest Southern-sympathizing lawmakers in Maryland.

"Honest" Abe also ordered the mass-executions of hundreds of American Indians.

Concerning the freeing of the slaves, Lincoln did not free a single slave. Read the Emancipation Proclamation for yourself and you will find that it was a war measure that freed the slaves in areas not under Union control.

When blacks fled to the North, Lincoln drafted them into his army to fight his bloody war.

Lincoln will never be an icon of American democracy, but one that represents how our country went from a constitutional-republic with true federalism to one with an all-powerful socialist central government that controls every aspect of our lives.

Write Adam at adam_d_bazemore@GeorgiaSouthern.edu.

Bret O'Connor: YOUR TURN

The Sierra Club is a resource, not an enemy

The Sierra Club knows that humanity needs surrounding healthy ecosystems and that society can be better managed to perform this function.

A good example of this would be in Louisiana where the now slowly disappearing marshes and buffers would have lessened Katrina's devastating effects. Many people think that environmentalists put the needs of nature over that of humanity; this is not true.

For example, there is a horrible disaster happening called mountain top removal. Looking for coal is easier if you blow the top off a mountain, but the local people suffer. Asthma and death are the result. These coal companies call them "Acts of God" in the courts and get away with it. This is when environmentalists who believe in alternative forms of energy step in and try to create public awareness that it's both hurting locals and polluting our water.

I admit the Sierra Club has changed from its ways of its original founder, John Muir, who worked to create national parks.

Since then they have stepped it up a notch because

they see that environmental problems have become more apparent and that people care to prevent disaster for both humanity and nature.

Environmental values are for all people and most all religions. Unfortunately most people aren't good stewards of the earth like Genesis says to be. There are many Republicans in this community that care for the environment and some take part in Sierra Club actions.

I can't believe a person would call their fellow Republicans ignorant because they disagree with how Bush is handling the issue of the environment ("The Sierra Club is not your friend," Aug. 25). It is silly to think that caring about the environment is un-American.

We have the technology to burn cleaner coal and to provide ethanol which is both cleaner and cheaper than regular gas. Having a healthy, lush environment is good for humanity. Using our inventive minds we can work together to benefit humanity and the natural ecosystem's diversity. The Sierra Club here at GSU is a resource for people who want to explore nature and/or protect the United States of America.

bret_1_oconnor@GeorgiaSouthern.edu

Adam Fogle
THE NEW VALHALLA

Southern hospitality will triumph

Hours of The Weather Channel, CNN and FoxNews coverage poured through my television this past week. Night and day I have remained fixated on the fate of the Gulf Coast as Hurricane Katrina set her eyes upon near-total annihilation.

As of Tuesday, 80 percent of New Orleans was buried under 20 feet of water and the floods continued to rise rapidly.

At least 80 people had been confirmed dead in Mississippi alone; a number likely to increase.

Millions are homeless. Millions are without power. Residents are forced to swim through more than \$25 billion of damage to try to find necessities for survival.

Words like "staggering, devastating and overwhelming" are all too common – yet an adequate description eludes words.

"The dimensions are unfathomable," said Louisiana Governor Kathleen Blanco. "But slowly, gradually we will recover. We will survive. We will rebuild. It will take some time. This will not happen overnight."

And the stories are heartbreaking. A man with his young son at his side searching desperately for his wife after losing what very little his family owned.

A young woman searching through rubble for a photo album; all that remains of the mother she lost to a drunk driver a few years ago.

A couple who gave up everything to open up a bed and breakfast, only to watch – while clinging to a tree for over three hours – as their dream was destroyed.

As I watched these accounts, I was filled with concern, with sorrow and with grief.

This time it hit close to home; too close to home. You see, soon after I enrolled at Georgia Southern University, my family moved to Alexandria, La.

Although Alexandria received only mild damage, I was forced to sit by and watch as my new home state was shattered by a monster, category four hurricane.

Even before Katrina made landfall, it was expected that this storm was different; this would be catastrophic. And it was.

Nature can impose disaster. Nature can rain down terror. But nature can also provide phenomenal paradox.

And with this disaster, nature's great irony is the southern spirit; amazingly obstinate in its benevolence, graciousness and perseverance.

I can recall the hospitality that I had encountered upon first arriving in Georgia less than a year ago. I was taken in and welcomed. A friendly hand was extended to me by many people; something that, to them, seemed as natural as a southern summer's mid-afternoon rain shower.

And it is the southern spirit, which I have so magnificently witnessed, that will inevitably comfort injured souls, save lives and triumph over nature.

Our neighbors face a bleak future and must attempt to rebuild their lives from scratch. We must extend to them more than our sympathy.

Our brothers and sisters need our help; financially and physically.

I encourage everyone to offer whatever they can by calling 1-800-HELP-NOW or going online to www.redcross.org or www.fema.gov.

Write Adam at amfogle@yahoo.com.

Staff Writers

Chad Bishop, Angela Byrd, Britt Davis, Cheryl Frost, Robert Greene, Emily Haymans, Alicia Howe, Darren Jones, Heidi King, Kessler Lawrence, Jennifer Maddox, Bryan Metcalf, Jenny Miller, Kristin Miller, Danielle Powell, Mary Kate Roan, Renaldo Stover, Brandee Thomas, Marcy Thornton.

Affiliated Publications

Reflector editor: Katie Glorieux, Miscellany editor: Ashley Stevens

Advertising & Distribution Services (ADS)

Marketing Director: Lindsey Treadwell
Ad Reps: Drew Anthony, Caitlin Carter, Angela Parker

Photography, Art, Graphics, Electronic Systems (PAGES)

Production Manager: Sarah Banks
Photographers: Katie Anderson, Grayson Hoffman, Hillary Jones, Ryan Moore, Brian O'Connor, Sarah Parillo, Terrence Williams

Letters Policy

The George-Anne welcomes letters to the editor, story submissions and guest columns from people both inside and outside the GSU community. All copy submitted should be 250 words or less, typed, and preferably sent via email in Microsoft Word format to gaeditor@georgiasouthern.edu. All submissions must be signed and include a mailing address and phone number for verification. The editors reserve the right to reject any submission.

How to Contact Us:

Letters to the Editor: gaeditor@georgiasouthern.edu
News: ganews@georgiasouthern.edu
Sports: gasports@georgiasouthern.edu
Features: gahiatu@yahoo.com
Advertising: ads@georgiasouthern.edu
Newsroom: 912-681-5246
Fax: 912-486-7113

Soap star Mark Collier on campus Friday

By Miguel Fuller
Variety Editor

How far can you get with an accounting degree from Georgia Southern? For some it may be a nice cushy job with a sweet car, for others it may be a lifetime of dealing with numbers. And for some a degree in accounting leads to a career in daytime television.

Take Mark C. Collier, a GSU alum, who is known by many fans as Mike Kasnoff, ex-race car driver, on the CBS soap "As the World Turns." Collier will return to GSU tomorrow, Friday, Sept. 9 to the PAC to discuss the business of acting. A question and answer session, with an autograph signing to follow.

Recently Collier spoke by telephone about his

Mark Collier, GSU grad and soap star will speak Friday at the PAC.

humble beginnings, the future of his career and where he spends his free time.

Not only has Collier appeared in several national commercials, he also had a brief stint on "Beverly Hills 90210," and a recurring role on the short-lived soap, "Sunset Beach." Since 2002, he has showcased his acting chops on "As the World Turns."

Collier admitted that he didn't have the best GPA his freshman year at GSU. Coming from a small town in Florida, Collier said he immersed himself in the night life of Statesboro his first term. Collier actually changed his major three times before settling with accounting. He had plans to go work for his father's accounting firm.

Acting didn't cross his radar while in college even though he performed in some theatrical productions while in grade school.

After graduating in 1993, Collier made his way back to his home state, Florida. While in Miami, he landed several theatre gigs and some national

commercials. He moved to L.A. in hopes of gaining more exposure and learning more about the craft of acting.

In 1999, "Sunset Beach," the now dead NBC soap, came calling. He worked a few times a month as David the bartender — dispensing advice to the dysfunctional characters of "Sunset Beach."

Teen angst made the call in 2000 when Collier was cast in "Beverly Hills 90210" as Mitch Field. Like "Sunset Beach," "90210" was canceled after Mark started. After a couple of years of odd jobs, Collier got the part he had been dreaming of.

"As the World Turns" gave the gift that keeps on giving by offering Mark a job on the long running soap. Now Mark says he has the financial freedom to eat where he wants and travel during the weekends. I asked him how he thought fame changed his life—he laughed about not having to eat peanut butter and jelly sandwiches anymore. When Collier accepted the job with "As the World Turns" he was given five days to

pack his stuff and catch a plane to New York, and that he did.

He spends his free time traveling to New Jersey visiting friends and trying to stay on top of the 30 pages or more of dialogue he has to memorize for each week for "As the World Turns."

When asked about his future, Collier excitedly talked about his hopes of moving into prime time television.

"I would like to end up working in films. To be able to work two or three films a year, plus the traveling would be nice," he said. He talked candidly about how hard it can be to work on a soap for a long period of time while playing the same character. The actor does not get much opportunity to try something new.

Mark wanted to come back to GSU and help aspiring actors.

"I wish someone would have come and told me about the reality of the business," he mentioned. Next Friday Mark will return to his alma mater and give aspiring actors his take on the business of acting.

Students

from page 1

just like 'whatever,' said Kohn. "Everyone else lost so much. They had their lives ruined. We're just lucky to be alive and that we got out."

Kohn, an anthropology major, is taking nine hours at GSU this semester. Her classes are isolated to Tuesday and Thursday. She scaled back her classes because GSU had already begun the semester three weeks earlier.

"I didn't think I could catch up on three weeks of reading," she said. "My dad also teaches at Georgia Southern so it's the most convenient option right now."

After enrolling at GSU, Columbia University and the University of Colorado Boulder also invited all the displaced students to the schools.

Kohn, whose father, John, teaches marketing and management classes here, was joint enrolled at GSU during her senior year of high school.

"We thought maybe we'd be gone a couple months and that we'd have an abbreviated semester," she said. "Then we saw how bad it got on the news, it seemed inevitable that we would not have a fall semester."

She has hope that New Orleans — the city she's grown to love — will return to its former grandeur.

"It's going to be fine. It will be different, but that's not saying that in ten years it won't be the city it always was or even better," she said.

"We thought maybe we'd be gone a couple months and that we'd have an abbreviated semester..."

Rachel Kohn
Tulane student

"It's not the end of the world for my friends and me. We are so lucky in comparison to other people."

Kohn said talks of a reunion party are already floating.

"It's going to be awesome (to get to see all my friends again). And I'm really ready to see them. I'm only taking classes on Tuesday and Thursday so hopefully I will get to take the weekends to go see everyone."

Credit

from page 1

event did not, however, shock the university into action, as many of these efforts were in place before this unfortunate occurrence. The shift from using social security numbers to Eagle Express was taking place before the fact.

IT Director and Chief Information Officer Lisa Spence confirms, "We've already had good policies, now we just need to make sure we follow them fully."

This event also signals a change in student responsibilities as well. Over the next few months, we can expect a movement in stressing the importance of increasing their password

complexity. Hacker software and programs easily run through a list of words and phrases commonly used with a dictionary-like database.

Even the common methods of increasing complexity are quickly becoming passé. A good password now in a good length (at least 6 characters) and uses a combination of capital letters, symbols and numbers.

Changes to the system itself will be made regarding passwords, like a lock-out systems that only gives the user so many tries before it tells them to call a number to reset it, and, most innovatively, a portal program that will give a student one login for nearly all their different needs (WINGS, WebCT, campus e-mail, etc.).

"It's [the students'] data," says Spence. "They need to do everything they can to make sure it's secure."

GETTING INVOLVED...

Do you have a news or feature-related story idea? E-mail our news editor at ganewsed@georgiasouthern.edu.

Are you interested in writing for any section? Call the newsroom at (912) 681-5246.

OUR NEWS STAFF

Luke Hearn.....Exec. Editor
Adam CrispME News
Morgan Marsh...ME Operations
Rachel Weeks.....News Editor
Casey Altman...Assistant Editor
Miguel Fuller.....A&E Editor

Dorm Economics 101.

frontier®
HIGH-SPEED
INTERNET ONLY

Call 681-3634 today.
76 E. Grady Street.

\$59⁹⁵
PER MONTH

Perfect for apartments, dorm rooms, students and faculty.

It's the same great high-speed Internet service that we offer with our packages, but without the dial tone. It comes right through your existing phone jack so there are no holes to drill and no cables to run—and no slow-poke cable guy to cramp your busy schedule.

Here's what you'll get:

- Fast and easy installation.
- Download speeds up to 3 Mbps.
- An always-on connection—no waiting to dial up or log on.
- Instant access to WebCT, GoSOLAR, research sites, music, videos, e-mail and instant messaging.
- The **best value in raw high-speed Internet** access—without any extra services you don't yet need.

SPORTS



This weekend's
SoCon game
schedule

Saturday, Sept. 10:

•6:00 p.m.



@



@



@



Outmount Sports

•6:45 p.m.



@



•7:00 p.m.



@



@



GETTING
INVOLVED...



Are you interested in writing for The George-Anne sports section? If so, e-mail us at gasports@georgiasouthern.edu

OUR STAFF

Chad Bishop Editor
Renaldo Stover Editor

Lady Eagles sweep Grambling State

Auburn, Ala.—The Georgia Southern volleyball team defeated the Grambling State Tigers three games to none Saturday afternoon in Auburn, Ala.

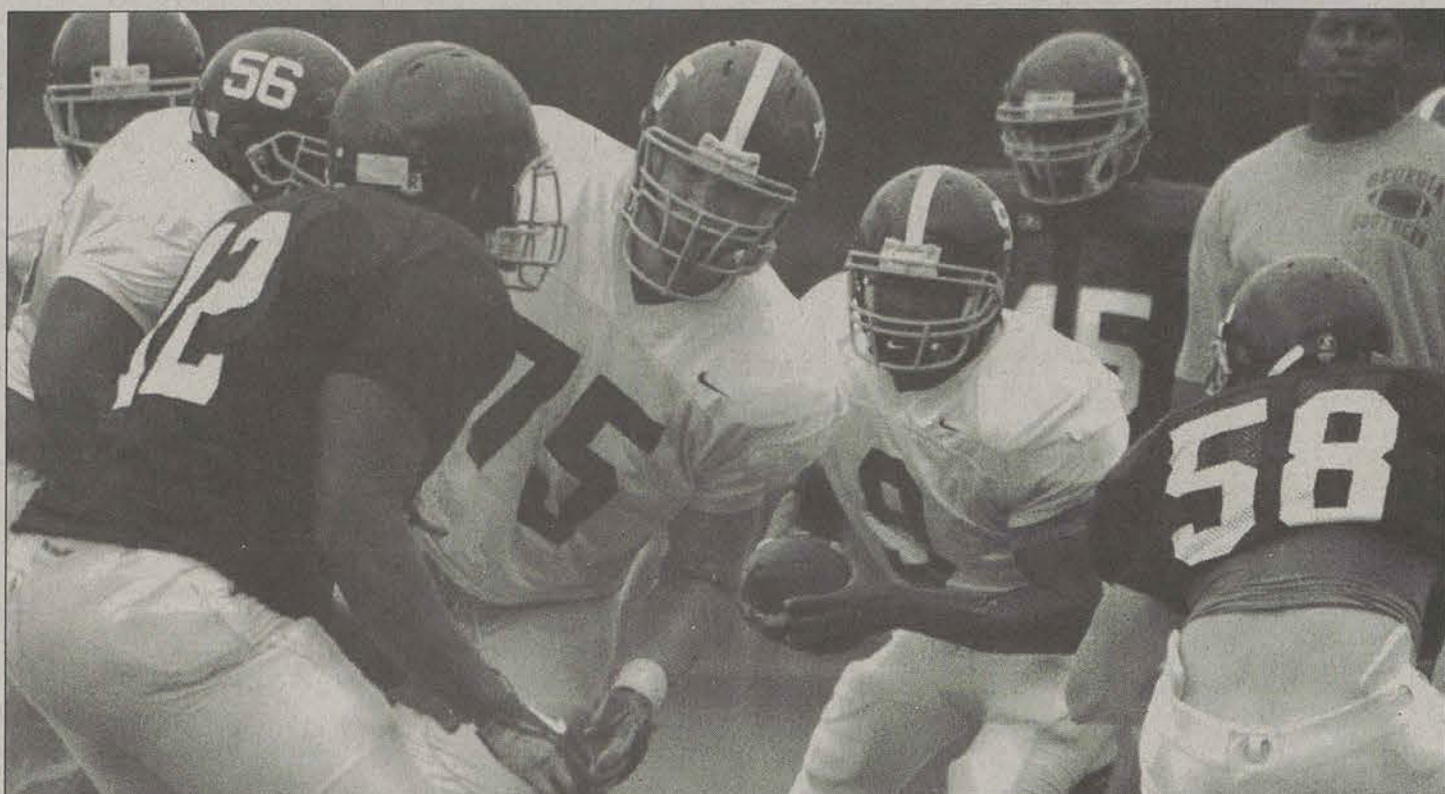
GSU (4-2) won the first game in a close 30-24 before wrapping up the match winning games two and three, 30-19 and 30-14 respectively. The Eagles finished the road trip to Athens, and Auburn winning two matches and losing one.

The Eagles showed a balanced offensive attack in the win, led by sophomore Bailey Coleman, 11 kills, junior Jennifer Charles and sophomore Gorana Bacic, both with nine kills, and senior Julia Porumbescu, who finished the match with eight kills.

"I was excited to see how balanced we were out there this afternoon," head coach Kerry Messersmith said. "We

started off again a little slow but picked up momentum and didn't look back."

GSU will next travel to Birmingham, Ala. to compete in the UAB Tournament against the University of Alabama-Birmingham, Louisiana-Monroe, and Southeast Louisiana. The Eagles will play Louisiana-Monroe Friday, Sept. 9 at 11 a.m.



Grayson Hoffman/STAFF

Georgia Southern's Darius Smiley (9) looks for an opening Wednesday at practice.

Eagle are home sweet home Football

started three of MSU's last four games in 2004, and is a threat with both his arm, and his legs.

Southern will continue to use a two quarterback system, with both Jayson Foster and Darius Smiley seeing playing time. Jermaine Austin will also look to have another stellar performance at fullback. The Senior from Darien was named this week's Southern Conference Player of the Week.

Katrina Relief at the game

Those wishing to make contributions to the relief efforts for Hurricane Katrina, they'll be plenty of opportunities for fans. Student Government will be sponsoring a dunk take, giving fans the opportunity to dunk some of their favorite student leaders. Members of University Housing will be taking donations during the game.

McDonald's of Statesboro and Slyvania have joined efforts with the Savannah co-op to donate \$10 for every point scored in Saturday's game.

Other Goings On

—At Saturday night's game, look for the Wal-Mart Kicking Tee Kid of the Game, a youngster who will rush the field to retrieve the tee after the kickoff.

—Verizon Wireless will sponsor a Student Tailgate at the Russell Union from 2:00-6:00 with all sorts of free food and activities.

Parking near Paulson limited for students

By Adam Crisp

Managing editor

If students are planning to tailgate at this Saturday's game, don't expect to set up your grill behind Paulson Stadium — those spaces are being saved for member's of the Georgia Southern athletic booster's club.

School officials are restricting parking at the stadium since the construction of a soccer/track and field complex absorbed a large chunk of the grass parking lot.

Parking for students and other non-boosters is available at several lots around campus. The transit system will run before and after the game. School officials say grilling and drinking will be allowed in all the designated parking areas — as long as the partying ends when the teams kick off.

"Most of the parking spaces behind Paulson Stadium are being saved for boosters. There won't be any more \$10 parking," said Patrick Osterman, the football team's spokesman. "There are going to be several different pick-up points

around campus — located near each one of the parking lots."

Ken Brown, GSU's police chief, says his officers will patrol all the lots for under-aged drinking. As in years past, kegs are off limits, and when the game starts, students should head to the stadium.

"We want to encourage people to be responsible," said Brown. "Don't turn tailgating into a block party. We want everyone to have a good time before the ballgame... but when the game starts, go to the game. Do not sit around and get plastered."

The parking lots

The buses will begin running two and a half hours prior to kickoff for each home game. The buses will run a continuous route beginning at Paulson Stadium and stopping at the following locations in order:

- The University Store and Union.
- The Performing Arts Center
- The Ceramics Studio
- The RAC Parking Lot.

Eagles survive battle in Boston

By Matt Rapp

Staff Writer

Boston, Mass -The Georgia Southern Eagles managed to win their season opener 41-38 in comeback fashion this past Saturday in Boston against the Northeastern Huskies thanks to a last minute game tying touchdown.

Things were looking very bad as the Eagles found themselves in a fourth and long situation. Coach Mike Sewak hadn't seen Foster complete a pass all day, but with a gutsy call Eagle fans saw the chains move after a 27-yard pass from Foster.

As time was running out, coach Sewak seemed calm and collective on the sideline, not calling a time out.

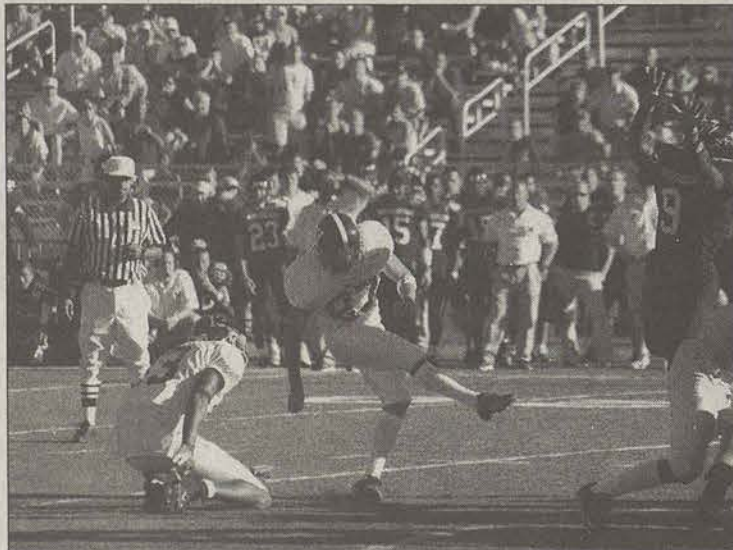
Then came the huge tying touchdown from quarterback Darius Smiley to wide receiver Reggie McCutchen tying the game at 38.

NU had no chance to convert any more points, making Sewak's decision not to call any timeouts crucial.

In overtime the Eagles had the field presence that Southern fans are used to here at GSU, something that had been missing for most of the game.

Holding the Huskies to a quick fourth down, the normally reliable senior kicker Miro Kesic topped his 39-yard field goal attempt, giving GSU the chance to bring home a victory after trailing a pesky Northeastern squad all day.

Playing their usual game, the Eagles kept the ball on the ground, grinding their way into comfortable field goal range.



Matt Rapp/STAFF

The Northeastern bench watches from the sidelines as GSU kicker Jonathan Dudley puts the game-winner through the uprights.

From 24 yards out, junior Jonathan Dudley made his field goal attempt, giving the win the an Eagle squad that never gave up all day long.

It was red shirt freshman Anthony Orio, a heavily recruited quarterback from New Jersey that shocked the Eagles in the first half passing for 137 yards and 2 touchdowns.

Within minutes of the first quarter on the Huskies first drive, Orio threw a 46-yard touchdown pass to a wide-open Pat Graham to take an early 7-0 lead.

"I'm not sure but I think it was a busted coverage," Said A.J. Bryant after the game on Saturday.

On their opening drive, the Eagles worked their way to midfield, led by sophomore quarterback Jayson Foster.

With Jermaine Austin in the

backfield, the All-American broke a 40-yard run that ended at the Huskies 4 yard line.

On the goal line, the Eagles slammed fullback Brandon Andrews into the end zone.

Anthony Orio came up big again on the Huskies second drive. NU reached the 45 off a 27 yard pass from Orio putting the momentum right back in their hands.

The Huskies got tricky on their next play as they confused GSU fans and players alike when flags were thrown without any whistles, leaving another wide-open 42 yard pass for a touchdown.

GSU answered with a promising drive but only came up with a field goal ending the first quarter.

The Eagles defense continued to struggle in the second quarter as NU successfully had back-to-back first

downs, bringing them into the red zone. Pulling themselves together, the Eagle D held NU for a field goal making it a 17-10 game.

Jermaine Austin came up big again with a 47-yard carry to put the Eagles right where they wanted to be. On third and one, Foster followed Austin on a sweep crossing the goal line to tie the game at 17.

Orio's dominant field presence continued at the end of the half as he led the Huskies on a 71-yard drive resulting with an Orio TD run.

The Eagles looked like a new team coming out strong in the second half. In their first drive, Austin scored on a phenomenal 60-yard run, nearly matching his career long.

"I knew what I had to do to help the team out. I did my part. We were all disciplined at the end, but I just wish we had been disciplined from the beginning," said Austin about his performance in the game.

The Eagles brought in Smiley in the fourth quarter. For the first passing completion of the day and the season, Smiley dumped a three-yard pass to Austin to pick up 4 yards.

The Eagles had a very sloppy passing game on Saturday to say the least.

In the following drive for the Eagles, Foster bounced his way in the end zone for a 35-yard touchdown run. Foster ran for a career high in rushing yards and touchdowns.

Unfortunately for the Eagles, the momentum would once again swing back to the Huskies on a 94-yard kickoff return by Husky return man Alex Broomfield's, even after his left shoe came off at his own 40.

THE FINE PRINT

Georgia Southern Athletics
Friday
Men's Soccer hosts North Florida
Volleyball vs. Louisiana-Monroe (Birmingham, AL), 11 a.m.
Volleyball at Alabama-Birmingham, 1:30 p.m.
Women's Soccer vs. Morehead State (Green and White Invitational)
Saturday
Volleyball vs. Southeast Louisiana (Birmingham, AL), 11 a.m.
Football hosts McNeese State, 6 p.m.
Sunday
Women's Soccer at Marshall (Green and White Invitational)
Men's Soccer at East Carolina

Georgia High School Football Scores

(AP) - Avondale 20, Druids Hill 6
Camden County 73, Savannah 0
Glynn Academy 53, Jenkins 16
M.L. King 23, Cedartown 0
Mays 42, North Atlanta 21
Monroe 33, Mitchell-Baker 20
Mt. Zion-Jonesboro 37, Forest Park 7
Savannah Christian 19, Bleckley County 16
Southwest DeKalb 21, Redan 19
Warner Robins 70, Stockbridge 7
Friday
Americus-Sumter 36, Southwest 6
Aquinas 35, Augusta Christian 0
Bacon County 22, Emanuel County Institute 12
Bainbridge 19, Cairo 6
Berrien 20, Atkinson County 15
Bowdon 28, Alpharetta 18
Bremen 41, Whitefield Academy 0
Briarwood 7, Thomas Jefferson 0
Brookwood 44, East Coweta 23
Brunswick 30, Windsor Forest 0
Buford 41, Union City 7
Bulloch Academy 14, Robert Toombs 14
Burke County 21, Cross Creek 7
Butler 23, Jockey 21
Calhoun 50, Pepperell 28
Calvary Day 35, Pierce County 8
Carrollton 23, Oconee County 3
Carver, Ala., 19, Peach County 12
Cedar Shoals 12, Salem 7
Central 28, Henry County 0
Chapel Hill 28, Villa Rica 13
Charlton County 25, Clinch County 13
Chattooga 25, Model 21
Columbia 21, Towers 0
Cook 34, Pelham 8
Coosa 28, Lafayette 26
Darlington 41, Dade County 7
Deerfield-Windsor 34, Stratford 19
Dodge County 28, Clayton 0
Dougherty 14, Thomasville 0
Dublin 63, Metter 0
Dutchtown 21, North Oconee 6
Eagles Landing 29, Carver-Columbus 8
Early County 47, Miller County 6
East Hall 35, Rabun County 20
East Paulding 10, Ridgeand 6
Fitzgerald 21, Perry 3
Flint River 41, Fullington 6
Flowers Branch 21, White County 0
Franklin County 34, Mill Creek 29
Gainesville 31, Johnson-Gainesville 12
George Walton 28, Spalding 14
Gordon Central 27, Dalton 24, 2OT
Grady 3, Blessed Trinity 0
Greater Atlanta Christian 27, Dawson County 14
Greene County 48, Hancock Central 7
Habersham Central 3, Heritage 0
Hart County 34, Alexander 0
Harrison 47, Campbell 6
Hart County 27, Washington-Wilkes 0
Hawkinsville 6, Treuten 0
Hiram 21, Ringgold 7
Houston County 28, Crisp County 7
Jackson 20, Macon County 12
Jefferson County 41, Harlem 12
KMH 44, Sprayberry 14
Landmark Christian 40, Social Circle 21
Laney 14, Evans 0
Lanier County 45, Tri-County 0
Lee County 37, Turner County 32
Logansville 16, Eastside 3
Lowndes 52, Kendrick 0
Madison County 29, Jackson County 0
Madison County, Fla., 29, Valdosta 28
Manchester 42, Crawford County 7
Marietta 13, McEachern 7
Marist 35, Etowah 7
McIntosh County Academy 28, Appling County 28
Milton 24, Cherokee 17
Monroe 33, Mitchell-Baker 20
Monticello 28, Calloway 21
Morgan County 31, Commerce 3
Murray's Mill 26, Morrow 7
Murray County 35, Tifton 19
Nathaniel Greene 38, Curtis Baptist 6
Norcross 21, Centennial 10
North Forsyth 22, St. Pius 19
Northside-Warner Robins 14, Griffin 7
Northview 20, Duluth 14
Oglethorpe County 49, Our Lady of Mercy 7
Pacelli Catholic 24, Calhoun County 0
Parkview 35, Colquitt County 14
Paulding County 23, Lakeview-Ft. Oglethorpe 14
Pebblebrook 15, North Cobb 14
Pike County 49, Lamar County 35
Portal 38, Tatnall County 21
Prince Avenue 29, Southside Christian 20
Randolph Southern 35, Westminster Christian 6
Randolph-Clay 42, Schley County 6
Riverdale 37, Lovejoy 34
Riverside 50, Central Fellowship Christian 0
Rockmart 48, Armuchee 6
Roswell 31, Pope 14
Sandy Creek 20, Northgate 0
Seminole County 47, Albany 0
Sequoyah 24, Wheeler 0
Shaw 52, Spencer 0
South Cobb 7, Shiloh 0
South Gwinnett 14, Fayette County 7
Southeast Whitfield 24, Gordon Lee 6
Southwest Georgia 23, Terrell Academy 14
Star's Mill 30, Spalding 17
Statesboro 35, Swainsboro 0
Tatnall Square 27, Edmund Burke 0
Temple 14, Mt. Zion-Carroll 6
Terrell County 36, Taylor County 0
Thomson 3, Liberty County 0
Tift County 33, Irwin County 0
Toombs County 34, East Laurens 7
Troup 42, Columbus 27
Tucker 37, Lakeside-DeKalb 6
Union Grove 41, Newton 15
Upon Lee 42, Hardaway 28
Vidalia 30, Screven County 7
Walker 21, Cross Keys 14, OT
Walton 31, Lassiter 24
Ware County 31, Wayne County 0
Washington 45, South Atlanta 0
Washington County 34, Putnam County 13
Wesleyan 41, Banks County 0
Westside-Augusta 35, Greenbrier 23
Wilkinson County 48, Montgomery County 0
Woodstock 13, Kell 6
Woodward Academy 6, Lithia Springs 6
Thursday
LaGrange 41, Jordan 0
NFL Schedule
Thursday
Oakland at New England, 9 p.m.
Sunday
Denver at Miami, 1 p.m.
Chicago at Washington, 1 p.m.
Houston at Buffalo, 1 p.m.
Tennessee at Pittsburgh, 1 p.m.
N.Y. Jets at Kansas City, 1 p.m.
Seattle at Jacksonville, 1 p.m.
New Orleans at Carolina, 1 p.m.
Cincinnati at Cleveland, 1 p.m.
Tampa Bay at Minnesota, 1 p.m.
Green Bay at Detroit, 4:15 p.m.
Dallas at San Diego, 4:15 p.m.
Arizona at N.Y. Giants, 4:15 p.m.
St. Louis at San Francisco, 4:15 p.m.
Indianapolis at Baltimore, 8:30 p.m.
Monday
Philadelphia at Atlanta, 9 p.m.
Sunday, Sept. 18
Detroit at Chicago, 1 p.m.
Baltimore at Tennessee, 1 p.m.
Pittsburgh at Houston, 1 p.m.
Buffalo at Tampa Bay, 1 p.m.
Jacksonville at Indianapolis, 1 p.m.
Minnesota at Cincinnati, 1 p.m.
New England at Carolina, 1 p.m.
San Francisco at Philadelphia, 1 p.m.
Atlanta at Seattle, 4:05 p.m.
St. Louis at Arizona, 4:05 p.m.
Miami at N.Y. Jets, 4:15 p.m.
Cleveland at Green Bay, 4:15 p.m.
San Diego at Denver, 4:15 p.m.
Kansas City at Oakland, 8:30 p.m.
Monday, Sept. 19
N.Y. Giants vs. New Orleans at East Rutherford, N.J., 7:30 p.m.
Washington at Dallas, 9 p.m.

Women's Soccer drops 3-1 decision to Winthrop

GSU News Service

ROCK HILL, S.C. — Winthrop's Chelsea White scored a goal and added an assist to lead the Lady Eagles to a 3-1 victory over Georgia Southern in women's soccer action Saturday afternoon in Rock Hill, S.C.

GSU was forced to use three goalkeepers due to injuries to starter Laura-Ashley Harris (Jonesboro, Ga.) and Katie Petroski (Dallas, Ga.). Sophomore Megan Macdonald (Lilburn, Ga.), a midfielder that backed up Harris last season, went the final 68 minutes.

White put the Lady Eagles on top at the 17-minute mark of the half just after Macdonald had entered the game at keeper. The freshman took a cross from Erin Foote and drove the ball past a diving Macdonald for the score. White was involved in the second goal when she delivered a perfect pass to Ashley Aboud who scored from 10 yards out.

Winthrop put the game away at the 68-minute mark when freshman Kristen Lee scored her first collegiate goal with a shot from about 12 yards out to the left side of the goal after making a nice individual move to elude her defender.

GSU avoided a shutout when Audrey Brown (Fort Worth, Texas) took a rebound from her own shot off Winthrop freshman goalkeeper Dimitra Poulos and scored an uncontested goal with 13 minutes left to play.

The Lady Eagles outshot GSU 14-5 as Lee led the way for Winthrop with four shots. Poulos was credited with just one save as the Winthrop defense limited Georgia Southern to only two shots on goal. The keeper trio for GSU had a combined three saves.

GSU is idle until Friday, Sept. 9, when it meets Morehead State in Huntington, W.Va., at the Marshall Green and White Invitational.

Jermaine Austin earns SoCon Player of the Week

GSU News Service

Senior Jermaine Austin was named "Offensive Player of the Week" by the Southern Conference office on Monday. He helped Georgia Southern rally for a 41-38 overtime win at Northeastern to start the 2005 campaign. That marks the fourth time

in his career he received the SoCon's weekly offensive award.

Austin gained 199 yards on 20 carries, his second-highest single game total and most by an Eagle in a season-opener. The senior fullback missed on his personal best by eight yards (207 against Florida International in

2003) but did break Adrian Peterson's previous season-opening best of 192 yards in 2001 versus Savannah State. GSU gained 474 yards on the ground and 520 in total offense.

He surpassed 4,000 career rushing yards (4,064) and overtook second place among the GSU rushing lead-

ers, behind only Peterson now. Austin broke through on a 60-yard TD run and registered two other runs of 40-plus yards.

The Eagles (1-0 overall) open their home schedule on Saturday (Sept. 10) against McNeese State, kickoff scheduled for 6 p.m. This will be McNeese

Cross Country team places fourth at Gamecock Invitational

GSU News Service

Columbia, S.C. - In their first meet of the 2005 season, the Georgia Southern Cross Country team earned an overall fourth place finish at the Gamecock Invitational, Friday evening (Sept. 2) in Columbia, South Carolina.

The separation between the third through sixth place teams was extremely close.

The Eagles tallied a total score of 115 and placed just behind Southern Conference opponent Western Carolina (third overall), which scored

110, and just ahead of SoCon rivals College of Charleston and the Citadel, which finished with 116 and 117, respectively.

Clemson University and host school South Carolina took the top two spots in the Invitational with scores of 45 and 47, respectively.

For the second consecutive year, senior Brittany Jett finished fifth out of all runners at the event, clocking a time of 19:11 in the 5K race.

Freshman Danielle Shaurette followed Jett's performance with a

finishing time of 19:57 for 19th overall. Rounding out the top three Eagle finishes was sophomore Abby Bloom, who ran in 20:04 and placed 23rd.

The GSU field was completed by juniors Jessica Kerzie (20:21) and Katie Wilson (22:03) and by freshman Molly Trendell (23:43) and sophomore Megan Bien (27:54).

"This was a fun competition and we definitely learned some beneficial things," said Head Coach Shaun Meinecke.

"It turned out to be an extremely

tight pack and I think we went out a little hard at the start of the race and the heat may have been a factor, but we'll take that experience with us and come back after Labor Day to prepare for the next event."

In all, 14 schools participated in the event, with nine Division I Women's teams competing against one another.

GSU's next test will come Saturday, September 10th when the team travels to Macon to compete at Mercer University in the Mercer Atlanta XC.

Men's soccer falls to Navy

Team to face North Florida today at 5 p.m. at Eagle Field

GSU News Service

The Georgia Southern men's soccer team fell 4-0 Sunday afternoon at Navy in the final game of the Naval Academy Invitational.

The Eagles are now 1-1 on the year, while Navy improves to 2-0.

After a scoreless first half, Navy opened the second period with its first goal of the game as Addy Stradas recorded his first goal of the year.


At the 58:39 mark, J.P. Murphy tallied the second goal for the Midshipmen, while Carter Stapleton

scored Navy's third goal only two and a half minutes later.

Travis King gave the Midshipmen their fourth and final goal of the afternoon at the 80:40 mark.

Adam Webb recorded two saves while William Alexander made his first appearance as an Eagle, tallying one save in seven minutes of action.

The Eagles will open the home portion of their schedule Friday evening as they host the North Florida Ospreys at 5:00 p.m. in the team's inaugural game at the new Eagle Field.



Open 24/7
230 EAST MAIN ST.

Delivery 24/7
(912)-764-9343

THIS SATURDAY AND SUNDAY

HALF OF OUR TOTAL SALES WILL BE DONATED TO THE RED CROSS

TO HELP THOSE AFFECTED BY HURRICANE KATRINA

Please join us between 6 a.m. and 10 p.m. on either day to dine in.

In their time of need, help us make a difference for those who need it most.

BI-LO STORE COUPON

FREE KRAFT® Macaroni & Cheese Dinner Combinations 7.25 oz.

When You BUY 2 POST® PEBBLES® Cereal Fruity or Cocoa, 13 oz.

THE FLINTSTONES and all related characters and elements are trademarks of and © Hanna-Barbera. WB SHIELD-TM & © Warner Bros. Valid 9/7/05 thru 9/13/05 at any BI-LO store. Limit one per customer. Coupon good only for the product indicated. Coupon may not be duplicated or photocopied. Any other use constitutes coupon fraud.

BI-LO STORE COUPON

FREE KOOL-AID BURSTS® Soft Drink 6 ct.

When You BUY any NABISCO® Tray Pack 12 ct.

Valid 9/7/05 thru 9/13/05 at any BI-LO store. Limit one per customer. Coupon good only for the product indicated. Coupon may not be duplicated or photocopied. Any other use constitutes coupon fraud.

BI-LO STORE COUPON

Get one FREE Loaf of New Sara Lee® Soft & Smooth® Bread when you BUY any 3 participating KRAFT®/NABISCO® Brands

06772

Maximum Value \$1.99. Participating products include any Kraft® Soft & Smooth® bread (any size or shape), Kraft® Pull-Out® and Kraft® Ring-Loaf®. 2% Milk. Strong-taste® and Hand-Cut®. SARA LEE® and SOFT AND SMOOTH® are trademarks of Sara Lee Corporation. BI-LO and KRAFT® are trademarks of BI-LO. Coupon will reimburse the retail price of the participating item. Coupon must be presented at the time of purchase. Coupon is good only for the product indicated. Coupon may not be duplicated or photocopied. Any other use constitutes coupon fraud. Coupon good only for the product indicated. Coupon may not be duplicated or photocopied. Any other use constitutes coupon fraud.

BI-LO STORE COUPON

FREE TACO BELL® HOME ORIGINALS® Dinner Kits 10.25-18 oz.

When You BUY TACO BELL® HOME ORIGINALS® Salsa 16 oz.

TACO BELL Logo and HOME ORIGINALS are trademarks owned and licensed by Taco Bell Corp. Valid 9/7/05 thru 9/13/05 at any BI-LO store. Limit one per customer. Coupon good only for the product indicated. Coupon may not be duplicated or photocopied. Any other use constitutes coupon fraud.

BI-LO STORE COUPON

FREE HANDI-SNACKS® Pudding or KOOL-AID® Gels 14 oz.

When You BUY 1 TOMBSTONE® Pizza 17.7-31.5 oz.

Valid 9/7/05 thru 9/13/05 at any BI-LO store. Limit one per customer. Coupon good only for the product indicated. Coupon may not be duplicated or photocopied. Any other use constitutes coupon fraud.

BI-LO STORE COUPON

FREE KRAFT® Mayo or MIRACLE WHIP® Dressing Squeeze bottle, 10 oz.

When You BUY OSCAR MAYER® Smoked Ham 12 oz.

Valid 9/7/05 thru 9/13/05 at any BI-LO store. Limit one per customer. Coupon good only for the product indicated. Coupon may not be duplicated or photocopied. Any other use constitutes coupon fraud.

BI-LO STORE COUPON

FREE 12 Count Large White EGGS

When You BUY OSCAR MAYER® Regular 16 oz. or Center Cut Bacon 12 oz.

Valid 9/7/05 thru 9/13/05 at any BI-LO store. Limit one per customer. Coupon good only for the product indicated. Coupon may not be duplicated or photocopied. Any other use constitutes coupon fraud.

BI-LO Now Sells KEGS!

\$68.00

Budweiser
Bud Light
Coor's Light
Michelob Light
Miller Light



Natural Light - \$53.00
Pabst Blue Ribbon - \$65.00
Killian's Red - \$77.00

Plus Deposit!
Your EAGLEXPRESS Card Accepted at



BUY ONE GET ONE FREE WITH YOUR CARD

Quaker Instant Oatmeal or Grits 10.9-16.2 oz. Assorted Varieties

BUY ONE GET ONE FREE WITH YOUR CARD

Carolina Pride Smoked Sausage 14-16 oz. Assorted Varieties

BUY ONE GET ONE FREE WITH YOUR CARD

Ball Park Meat or Beef Franks 16 oz. Regular or Bun Size

BUY ONE GET ONE FREE WITH YOUR CARD

Coke 12 Pack 12 oz. Cans Assorted Varieties

BUY ONE GET ONE FREE WITH YOUR CARD

Kellogg's Cereals 15 oz. Froot Loops, 20 oz. Frosted Flakes, 12.6 oz. Marshmallow Blasted Froot Loops or 13.5 oz. Rice Krispies

BUY ONE GET ONE FREE WITH YOUR CARD

Freezer Queen Frozen Meal 6-10 oz. Assorted Varieties

BUY ONE GET ONE FREE WITH YOUR CARD

Coke 2 Liter Assorted Varieties **99¢** WITH YOUR BONUSCARD®



LaVene Bell-Koepe/Staff

Seven hundred seventy-six freshmen moved into Eagle Village this semester. The residence hall has come a long way since its inception, but some construction continues.

New dorm not yet a 'village'

Although 776 students reside at Eagle Village, the clubhouse and residential parking lot are still under construction.

By Jessica Martin
Staff Writer

Students swarm in and out of Eagle Village barely a year after construction was completed. The new residence hall opened its doors to 776 incoming freshmen.

Eagle Village was a massive construction project, costing \$24 million plus \$1.4 million for furniture in the rooms.

Located off Georgia Ave., Eagle Village houses First Year Interest Groups (FIGs) and Success in U (SIU) programs for freshmen on campus.

Like everything new, it has its problems. Students moved into rooms without working air conditioning units and rooms with broken locks. Some students did not have hot water for about two weeks.

These are normal problems in a new building, according to Ms. Vickie Hawkins, Director of University Housing, who said that the issues have definitely subsided in the last week. If students still have a problem, she

encourages them to go online and fill out a work order.

The biggest problem for many residents is the parking situation. Eagle Village has two parking lots: one on Georgia Avenue, which holds 200 cars and one on Chandler and Harvey Roads, which holds 300 cars.

The larger of the two parking lots is not complete and many of the 776 residents are forced to park their vehicles elsewhere.

To accommodate residents, housing started a shuttle service running from Paulson to Eagle Village.

But the first home game day, Saturday, all of the cars in the Paulson lot must be moved by 7 a.m. If they are not moved, they will be towed.

The Housing Department has expended an extra 40,000 dollars to get the incomplete parking lot finished quicker, opting to put down a different type of concrete and asphalt.

The main problem is the weather. The unusually wet summer forced the construction delay. With more storms

already brewing off the coast, it is hard to predict an opening date for the lot. "We can't give an exact date because of the weather, but we are working very, very hard to get this going," said Hawkins.

The clubhouse, which sits between the two residential buildings, has not been yet opened for student use. The clubhouse will hold the Eagle Village computer lab, an X-Box theater, a pool table and two classrooms.

The grand opening is set for Friday, and next week, the classrooms are expected to open for use even though the clubhouse is still not totally complete.

There is still some painting to do and some work, like installing cabinets, tables and sinks, will not be finished until the end of the month.

Though some students may be disgruntled, many are happy with Eagle Village.

"I wish kids would appreciate it more," said resident Adrian Kinsey. "It is one of the best places around [here] to live."

Come check out our NEW STORE!

We carry skateboards... ...and lots of bicycles!

TREK



cannondale
HANDMADE IN USA

the bike shop

We are now
located on
Hwy. 67 South,
just past the
Fairgrounds

871-6493

Weekly Eagle Buzz



Today

7pm-10pm at the RAC – Unity Fest (free food, inflatables, informational tables, and more). *Co-sponsored with the Multicultural Student Center - MAXIMUM EXPOSURE

8pm in the Russell Union Theatre – Monster-In-Law movie (\$2.00 entry fee) – REEL CINEMA

Saturday, September 10th

2pm-6pm between the Russell Union and University Bookstore – Tailgating at the Union – TRADITIONS AND SPIRITS (PLEASE BRING A canned good or non-perishable item)

Monday, September 12th

7pm in Russell Union 2075 - Southern Travel Committee Meeting

Tuesday, September 13th

6pm in Russell Union 2052 - Traditions and Spirit Committee Meeting

7pm in Russell Union 2080 - Soundstage Committee Meeting

Wednesday, September 14th

7pm-9pm in Russell Union 2084 - First Wednesdays Student Auditions – SOUNDSTAGE

8pm in Russell Union 2052 – Reel Cinema Committee Meeting

Friday, September 16th

10am-2pm in Anderson Hall – The Financial Aid Department will celebrate "Constitution Day" by showing the movie "National Treasure" in the lobby of Anderson Hall. This is a free program!

General:



Counseling and Career Development Center. Some of our Fall groups and workshops include:

- Serenity Now!
- The Drop-In Stress Management Group
- Gay, Lesbian, Bi-Sexual, Transgendered (GLBT) Group
- Self-Enhancement Workshop
- Women's Empowerment Group

Contact the Counseling and Career Development Center for more information at: <http://students.georgiasouthern.edu/counseling/>

Important Dates and Deadlines

September 19	Deadline for M.Ed. students to register to take the Comprehensive Exams during Fall Semester 2005	January 7	Residence hall check in, 9:00 a.m.-5:00 p.m.
September 30	Mid-term grades for Freshmen due	January 7	New Student Orientation and Registration, Russell Union, 8:00 a.m. NOTE: Enrolled and former students should refer to WINGS (http://students.georgiasouthern.edu/registrar) for specific registration times.
October 1	Final deadline for international graduate students to apply for Spring 2006 admission		
October 1	Priority deadline for domestic graduate students to apply for Spring 2006 admission	January 9	Fee payment deadline for Spring Semester 2006
October 7-9	Family Weekend	January 9	Classes begin (First Day of University Classes)
October 10	Last day to withdraw without academic penalty	January 9-12	Drop/Add
October 21-22	Homecoming Classes canceled beginning at 2:00 p.m. on Friday, October 21	January 13	\$50 Late Registration Fee begins
October 24	Registration for Spring 2006 begins (Students should view WINGS for individual date and time)	January 16	Martin Luther King Holiday - Administrative offices closed - No classes
October 27	Academic Standards Committee meeting, 2:00 p.m.	January 17	Attendance Verification Deadline for classes starting January 9-13
October 29	Comprehensive Exams for M.Ed. Students	January 23	Fee payment deadline for registration or changing registration during Drop/Add period
November 9	Final date to hold terminal or comprehensive examination, thesis and dissertation defenses	February 1	Final deadline for international graduate students to apply for Summer 2006 admission
November 15	Final deadline for domestic graduate students to apply for Spring 2006 admission	February 20	Deadline for M.Ed. Students to register to take the comprehensive exams during Spring Semester 2006
November 16	Deadline to submit electronic theses and dissertations to College of Graduate Studies for final format review	February 20	Early Registration for Summer Semester 2006 and Fall Semester 2006 begins (Students should view WINGS for individual date and time.)
November 23-25	Thanksgiving holidays for students - Administrative offices closed November 24-25 - Residence halls open	February 24	Mid-term grades for Freshmen due
December 1	Deadline for Spring Semester 2006 Undergraduate Admission Application	March 1	Priority deadline for international graduate students to apply for Fall 2006 admission
December 1	Last day of classes	March 1	Priority deadline for domestic graduate students to apply for Fall 2006 admission
December 2	Reading Day	March 1	Deadline for receipt of Graduate Assistantship Applications to have priority consideration for Fall Semester 2006
December 5-8	Final exams	March 6	Last day to withdraw without academic penalty
December 8	Deadline to submit final verified (approved) electronic thesis or dissertation to College of Graduate Studies	March 13-17	Spring break for students - Administrative offices open - Residence halls open
December 8	Final date for graduate and undergraduate students to apply for Spring 2006 graduation	March 15	Priority deadline for domestic graduate students to apply for Summer 2006 admission
December 9	Residence halls close at 12:00 p.m.	March 25	Comprehensive Exams for M.Ed. students
December 9	Commencement	March 30	Academic Standards Committee Meeting, 2:00 p.m.
December 10	Christmas break for students begins	April 1	Final deadline for domestic graduate students to apply for Summer 2006 admission
December 15	Employee Tuition Assistance Program registration for Spring 2006, 3:30-4:30 p.m., Rosenwald Building, second floor, or by web beginning at 3:30 p.m.	April 1	Final date to hold terminal or comprehensive examination, thesis or dissertation defense
Dec. 26-30	Christmas Holidays - Administrative offices closed	April 5	Honors Day, 8:30 a.m.
SPRING 2006		April 5	Annual Alumni Awards Dinner
Dec. 8, 2005	Final date for graduate and undergraduate students to apply for Spring 2006 graduation	April 8	Deadline to submit electronic theses and dissertations to College of Graduate Studies for final format review
January 2	New Years Day observed	April 12	Last day of classes
January 4	Academic Standards Committee Meeting, 2:00 p.m.		
January 6	Academic Standards Committee Meeting, 9:00 a.m.	May 1	

Brought To The Eagle Nation Each Week By The Division
of Student Affairs and Enrollment Management

Edward Falco comes to GSU to read newest publications

GSU News Services

Acclaimed writer Edward Falco will be reading from his newest publications, the novel *Wolf Point* and the collection *Sabbath Night in the Church of the Piranha: New and Selected Stories* tonight at 7:00 in the IT building, room 1005.

A link to his publisher: www.unbridledbooks.com/forthcoming/falcowp.php.

An excellent description of Falco's work from Kirkus Review: "tense, gritty fiction that portrays ordinary people caught between the claims of normal life and the lure of the forbidden and untasted."

And from The New York Times: "There is in Mr. Falco's fiction a little of Raymond Carver's sensitivity to the menace of the everyday, and a lot of Andre Dubus's sturdy empathy with his characters' failings and regrets."

All faculty, staff, students, and other visitors are welcome. The event



Special Photo

Edward Falco is an award-winning writer and poet, and Associate Professor of English at Virginia Polytechnic and State University.

is free. Copies of both books will be available for purchase. Call the department of writing and linguistics at 681-0739 for more information.

Faculty Exhibition to hold opening reception Friday

GSU News Services

The Faculty Exhibition of the Betty Foy Sanders Department of Art will stage an opening reception Friday evening from 6 to 8 p.m.

The reception will be held in Gallery 303, located on the third floor of the Foy Fine Arts Building.

Faculty members of the depart-

ment, including faculty emeriti and new faculty, will be present.

The exhibition will hang through Oct. 7. Gallery 303 is open Monday through Friday from 9 to 5 p.m.

Please join us as we celebrate the recent artistic endeavors of the excellent faculty of the Betty Foy Sanders Department of Art.

The event is open to Georgia Southern faculty, staff, and students, and to the public.

In addition, on the same evening from 8 to 10 p.m., the Faculty Fundraiser Exhibition will close with a gala reception at Gallery 33 W, 33 W. Main St.

Faculty members of the Betty

Foy Sanders Department of Art have donated work to be sold for the Student Art Fund.

The Student Art Fund supports the purchase of student artwork, which is exhibited campus wide.

Join us and purchase artwork to "take off the walls or floor or pedestal."

Help

from page 1

The challenge will continue until September 30.

The Black Student Alliance's "March on Hurricane Katrina" is open to anyone interested. Registration will begin today at 5 p.m. and the march will begin at 6 p.m. Individuals can pledge \$1 or give two canned goods. Organizations need to pledge \$50 or give 50 canned goods. The march will step off from the Russell Union and will end at the RAC. All proceeds will be donated to the American Red Cross.

Area businesses are also helping raise money for the relief efforts. Eagle Diner will donate 50 percent of its proceeds for Saturday and Sunday from 6 a.m. until 10 p.m. to the American Red Cross.

Assistant Manager Adam Brady said the diner will also be accepting

cash and canned food donations, as well as facilitating a sign-up for people willing to give blood at East Georgia Regional Medical Center.

"We've all been paying attention to the news these past few days, and decided to do something to help," said Brady. "If we made \$1,000 then \$500 would go to the Red Cross, so drop by and help out."

Executive Director of Habitat for Humanity of Bulloch County Vicki Davis said the group has announced a rebuild plan. She said the local Habitat for humanity may be getting a group together, but it is still too early to know any details. They will need people experienced in carpentry to volunteer.

"If people really want to help, right now money is the key thing," Davis said. "Every donation helps."

For more information about getting involved in the relief efforts contact the Office of Volunteer Services at 871-1435 or visit theonemillionchallenge.com.

Tailgating Southern Style

on Saturday, Sept. 10 from 2 p.m.-6 p.m.

Fun inflatable games, Funny Photos, free food, music, giveaways, prizes, and much more!! Tailgate the best way... at the Russell Union!!!

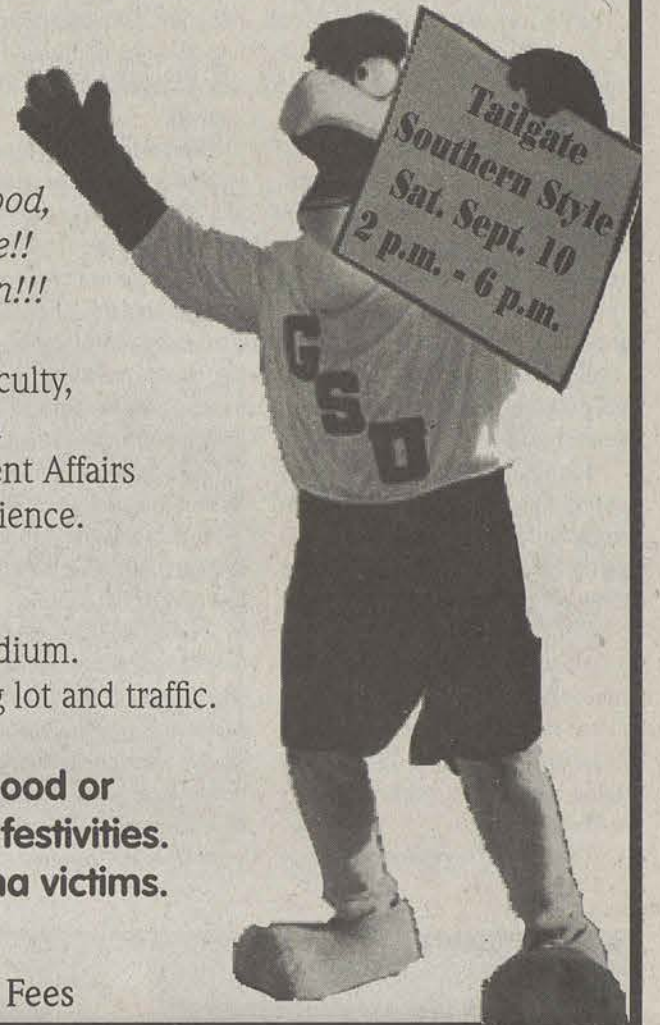
Join Georgia Southern University students, faculty, and staff for some tailgating fun between the Russell Union and the bookstore for the Student Affairs and Enrollment Management Tailgating Experience.

You can walk over or drive!

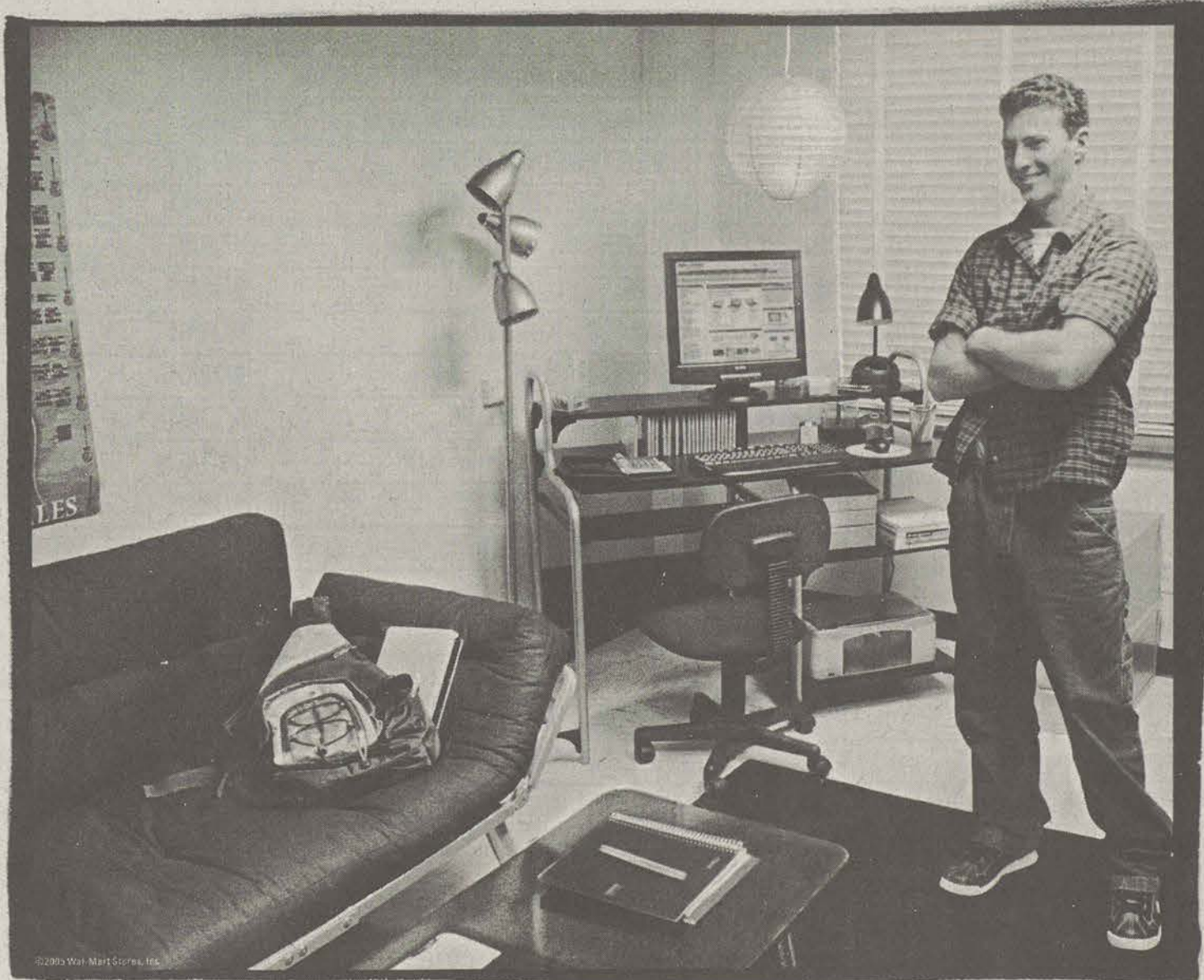
Then, hop on the bus for a free ride to the stadium. After the game, ride the bus back and avoid the parking lot and traffic.

We ask all participants to bring a canned good or non-perishable for entry into the tailgating festivities. All items will be utilized by Hurricane Katrina victims.

Sponsored by: Eagle Entertainment and funding provided by Student Activity Fees



Share your space, but live on your own.



All furnishings pictured are from Wal-Mart.



HP Laptop



Bedding



Storage

Get everything for your dorm room at Walmart.com and still afford tuition.

WAL★MART
ALWAYS LOW PRICES.

Always

Walmart.com

ON THE STREET

What have you done differently since gas prices rose?

I'm going to drive less, and stay on the road as little as possible.



T.J. Waters, Freshman

I haven't done anything differently but ride my bike on campus.



Kevin Spruill, Freshman

I car-pooled home this weekend, but I walk most of the time anyway.



Elizabeth DeZouche, Senior

My friends and I try to carpool when going to some events to save gas.



Danielle Powell, Senior

I haven't driven my car at all. My family picked me up for the weekend.



Marlee Kincaid, Sophomore

'The Exorcism of Emily Rose' scares its way into theaters

By Christy Lemire
Associated Press

It may aspire to be a highbrow horror movie, but deep down, "The Exorcism of Emily Rose" is more like a two-hour, sweeps-period "Law & Order" episode, complete with special guest stars and a shocking story that's been ripped from the headlines.

Director Scott Derrickson, who co-wrote the script with Paul Harris Boardman (which was inspired by true events), is all business in telling the story of a Catholic priest on trial for negligent homicide following the death of a satanically possessed 19-year-old on whom he'd performed an exorcism.

Sounds juicy, gory, potentially cheesy, right? It even could have been ironic and knowing, considering the plethora of previous films about demonic forces.

You'll find no references to regurgitated pea soup or Linda Blair here, though. Just a cavalcade of Oscar nominees (Tom Wilkinson, Laura Linney, Shohreh Aghdashloo) going about their work very, very seriously.

That's not to say there aren't a few

solid scares. Told in flashback, the possession and exorcism of Emily Rose (Jennifer Carpenter) can be, at times, truly startling. The college freshman experiences disturbing paranoid hallucinations, contorts her body in impossible ways and screeches and snarls in subtitled Aramaic.

The role calls on Carpenter to do all this but little else; her character is a vessel, a pawn, a symbol, but never a fully developed person for us to root for or care about. Emily's mother explains that, "Before she went away to university, my Emily, she was so very happy." We'll just have to take her word for it.

But presumably the film is called "The Exorcism of Emily Rose" because that sounds more exciting than "The Trial of Father Moore," though that's actually what it is: a workmanlike courtroom drama.

Derrickson and Boardman get the characters' back stories out of the way in speedy fashion with prepackaged expository dialogue. "This case sounds like a quagmire," says Linney as rising-star defense attorney Erin Bruner. "If I'm smart, I'll stay away from it." (Similarly, after she's

changed her mind and taken the case, she explains her reasoning by telling Wilkinson's Father Richard Moore in his jail cell, "I'm here to make senior partner at my firm.")

Father Moore truly believes he was doing the right thing in trying to expel the demons from Emily's body though doctors diagnosed her condition as some sort of epileptic-psychotic hybrid and insists on taking the witness stand to enlighten the world with the young woman's story. He also tries to warn Erin, an agnostic who naturally will have a change of heart about the nature of faith, that she is in danger, as well.

"There are forces surrounding this trial dark, powerful forces," Wilkinson manages to say with a straight face.

And sure enough, Erin is awakened each day at 3 a.m. (the demonic witching hour) to the same kind of rushing winds and slamming doors that Emily heard in her dorm room before her possession. (It is sort of refreshing, though, that all the frights come courtesy of good old-fashioned filmmaking lighting and sound effects and camera angles with no fake-looking computer-generated

beasties zooming about.)

As uptight, self-righteous prosecutor Ethan Thomas specially selected by the district attorney because he's a churchgoer Campbell Scott offers up the requisite medical experts to refute the demonic-possession defense. He objects to the testimony from Aghdashloo's character, an expert on spiritual forces, on the grounds of "silliness."

And he's got a point. Whether you walk out of "Emily Rose" feeling truly creeped out will depend on how you felt about the possibility of satanic possession walking into it that is, whether the devil makes you do it.

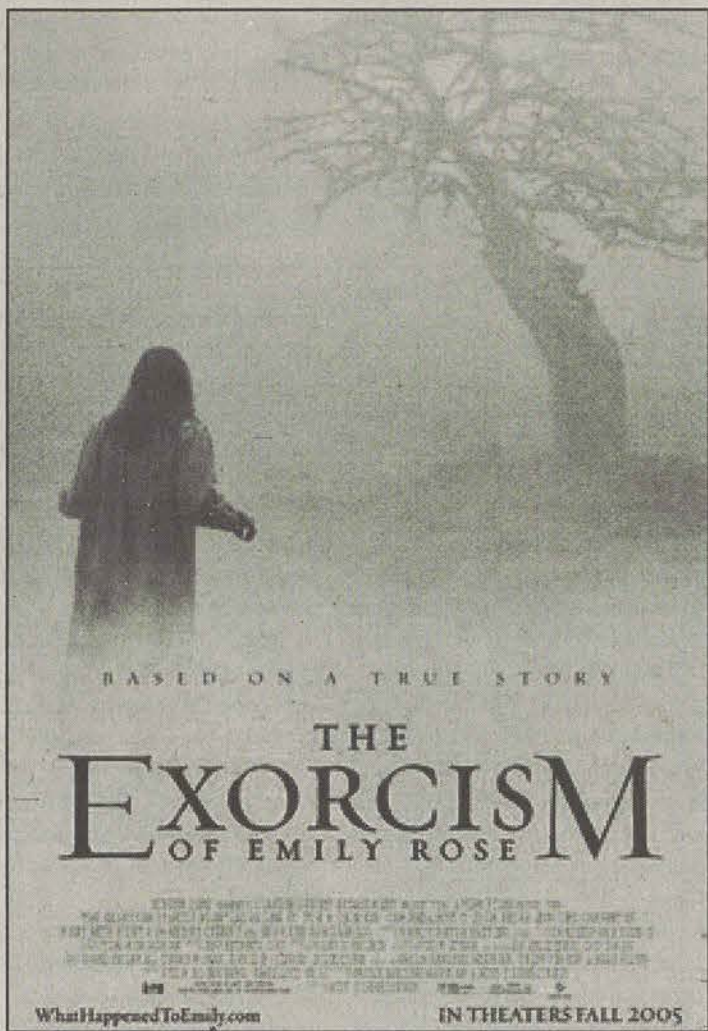
'The Exorcism of Emily Rose'

Cast: Laura Linney, Tom Wilkinson, Campbell Scott, Colm Feore, Jennifer Carpenter

Running time: Two hours

Showtimes: 4:25p.m., 7:00p.m., 9:40p.m.

Grade - 2 of 5 ★★★★★



Eventually
you will run
out of books
to sell back.

Georgia Southern Career Services'
Fall Recruitment Calendar
Employers Attending as of 9/07 2005

DATE	COMPANY	INTERVIEW TYPE	JOB TITLE	RESUME DEADLINE	LOCATION
9/9/05	TURNER CONSTRUCTION	Open	Field Engineer	9/7/05	Camuth
9/9/05	BRASFIELD & GORRIE LLC	Open	Intern	9/7/05	Williams Center
9/20/05	GIFFORD, HILLEGASS & INGWERSEN	Preselect	AUDIT INTERN, BUSINESS ADVISORY STAFF, TAX INTERN	9/6/05	COBA
9/20/05	NICHOLS, CAULEY, AND ASSOCIATES, LLC	Preselect	ACCOUNTANT/AUDITOR, ACCOUNTING INTERN	9/6/05	COBA
9/29/05	HANCOCK, ASKEW, & CO., LLP	Preselect	STAFF ACCOUNTANT, INTERN	9/21/05	COBA
9/30/05	HABIB, AROGETI AND WYNNE	Preselect	STAFF ACCOUNTANT, INTERN	9/16/05	COBA
10/4/05	GA DEPARTMENT OF AUDITS	Preselect	STAFF AUDITOR	9/20/05	COBA
10/4/05	MAULDIN & JENKINS, LLC	Preselect	STAFF ACCOUNTANT	9/20/05	COBA
10/5/05	ABF FREIGHT SYSTEM, INC.	Preselect	MANAGEMENT TRAINEE	9/21/05	Williams Center
10/6/05	DRAFFIN & TUCKER, LLP	Preselect	STAFF ACCOUNTANT	9/22/05	COBA
10/6/05	PORTER, KEADLE AND MOORE	Preselect	TAX/AUDIT STAFF, INTERN	9/22/05	COBA
10/7/05	TIC, THE INDUSTRIAL COMPANY	Open	FIELD ENGINEER INTERN/CO-OP	10/5/05	Williams Center
10/12/05	MOORE COLSON	Preselect	ASSOCIATE - INTERN	9/28/05	COBA
10/14/05	BB&T	Preselect	MANAGEMENT ASSOCIATE	9/30/05	COBA
10/27/05	PROGRESSIVE INSURANCE	Preselect	CLAIM REP TRAINEE	10/13/05	Union
10/27/05	SHERWIN-WILLIAMS	Open	MANAGEMENT TRAINEE	10/25/05	Williams Center
11/1/05	ABERCROMBIE & FITCH	Preselect	MANAGER IN TRAINING	10/18/05	Williams Center
11/3/05	TARGET STORES	Preselect	EXECUTIVE TEAM LEADER, Intern	10/20/05	Williams Center
11/9/05	Walgreens	Open	RETAIL MANAGEMENT TRAINEE/INTERN	11/7/05	Williams Center
11/14/05	CSX CORPORATION	Preselect	OPERATIONS MANAGEMENT TRAINEE	10/31/05	Williams Center

This is just a partial list.
For an up-to-date listing of who is interviewing on campus,
be sure to check EagleTRAK by visiting this link:
<http://students.georgiasouthern.edu/career/eagletrak/>
Questions?? Comments??
Feel free to contact Dorsey K. Baldwin or Wallace Brown
by phone at 681-5197
or by E-mail at careersv@georgiasouthern.edu

THE GEORGE-ANNE CLASSIFIEDS, ETC.

Now you can place your classified ads online... For Commercial Ads, Visit...

<http://www.gsuads.com>

...and create, place, proof and pay for your ad online. Just \$7 for 200 characters. In partnership with Universal Advertising.

Free ads for students, faculty & staff (non-commercial); Send an email message to...

gaclass@georgiasouthern.edu

You must include your names, address and phone number for freebies. No phone calls please, at this price we don't take dictation.

CLASSIFIED CATEGORIES

100 Announcements
110 Auditions
120 Freebies
130 Lost & Found
140 Other Announcements

200 Buy or Sell
210 Autos for Sale
220 Auto Parts for Sale
230 Bicycles for Sale
240 Books for Sale
250 Computers & Software
260 Miscellaneous for Sale
270 Motorcycles for Sale
280 Trade & Barter
290 Wanted

300 Employment & Job Services

310 Career & Job Services
320 Child Care Needed
330 Child Care Provider
340 Internships/Volunteer
350 Jobs/Full Time
360 Jobs/Part Time
370 Opportunities/Business
380 University Work
390 Wanted Jobs

400 Housing & Real Estate
410 Apartments
420 Lofts & Rooms
430 Mobile Homes
440 Real Estate for Sale
450 Roommates Wanted
460 Storage & Moving Services
470 Student Housing

480 Sub Leases

490 Vacation Rentals

500 Personals
500 Personals

600 Services
610 Education & Tutoring
620 Financial Aid/Loans
630 Legal Services
640 Resumes/Typing/DTP
650 Services/Miscellaneous

700 Travel
710 Spring Break Travel

800 Transportation/Rides
800 Transportation/Rides

900 Miscellaneous
910 Pets & Pet Supplies

THE PennyPress® CROSSWORD PUZZLE

- ACROSS**
1. Some road turns
 6. Navigational hazard
 11. Shining
 13. Paltry
 14. Tropical lizard
 15. Big cheese
 16. Type this for a Web search
 18. Be in the red
 21. Stock unit
 22. Cistern
 25. Schmooze
 27. Went like the dickens
 28. Lome's land
 29. In-between
 31. Sharp as a tack
 32. Compatriot

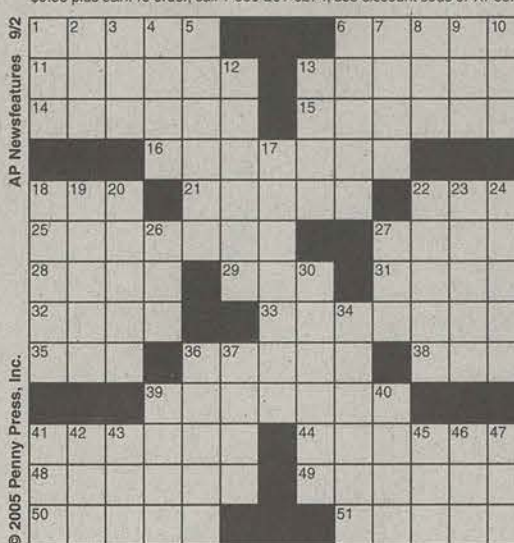
DOWN

33. Apparition
35. It makes rain drain
36. Lower in manner
38. Type spaces
39. Pig
41. Strand
44. Captivate
48. Acquaint
49. Strip
50. Result of not shaving
51. Knights' mates

YESTERDAY'S SOLUTION

6. Fern seed
7. Helper
8. Grampus
9. Pulverized lava
10. Lion's sign
12. Confusion
13. Restaurant
17. Most cautious
18. Group of eight
19. Undiminished
20. Golfing coup
22. Silk fabric
23. Flaming felony
24. Mail denizens
26. Trifle
27. Even-number factor
30. Cut the calories
34. Buzzed
36. Light-colored
37. Parent's sibling
39. Active one
40. Darling dog
41. Unruly bunch
42. "Blessed... the meek..."
43. Estuary
45. Late bloomer?
46. Pindaric
47. Thing, in law

SAVE OVER 70%! Enjoy 16 Penny Press crossword magazines, for just \$9.95 plus s&h. To order, call 1-800-261-6274; use discount code JXPX85.



Announcements 100 - 199

120 Freebies

FREE FEMALE KITTENS WANTED! If you have or know anyone with free kittens I am in search of a sweet little companion. If you have any information please call 912-681-6287 and leave a message.

140 Other Announcements

UU Campus Fellowship Fall Kickoff/Pizza Party. Tuesday 9/6 at 7:00, Room 2042 Russell Union. New members welcome!

NOTICE - While the newspaper makes every effort to screen bogus offers and ads, please remember if an offer seems to be too good to be true, it probably is.

Do you want to bring students to your church activities? Place an ad in the G-A!

Having a meeting next week? Place an ad in The George-Anne to boost your attendance

Buy or Sell 200 - 299

210 Autos for Sale

Oldsmobile Achieva 1998. A/C, Power Steering, PW/PL, CD Player, Automatic with 107,000 miles. Good condition. Asking \$2200. Call 912-489-1839.

1987 TOYOTA CAMRY good gas mileage automatic silver 220K miles - recent tune-up all power options, sunroof, no A/C, \$1250 OBO Call 871-6574. Please leave message

1992 Ford Explorer EXT - leather, CD, AC, Brush Guard, Moonroof. Fair condition 200K mi \$2,200 OBO. Call Zac 770-855-2514

Acura Integra 91. CD player, power steering, \$2500. 3 Speed with 150000 miles. Loads of market parts. Perfect condition. Call 912-541-0399

2001 Toyota RAV4. Sporty but thrifty SUV. 31,800 miles. 3mpg. Fully equipped and alarmed, new tires and battery. \$14,500. Call 912-489-9843 for more info.

If you are in the market for a new car, place an ad in the G-A to sell your old car fast.

240 Books for Sale

Biology-w/CD-Campbell-6th edition for sale.

Almost new. Includes study guide. \$55.00 firm. Call 912-294-5838.

250 Computers & Software

Canon Word Processor, with instruction guide. Runs on 4 D batteries (not included) or just plug in. Very good condition with only one owner. \$75. Call 912-681-6645 or email estrang1@georgiasouthern.edu.

Dell Latitude CPI Notebook 200 MHz, 13 GB, 125 MB, DVD/CD Rom and Floppy drive 13" tft screen. Call 912-541-0019.

Texas Instruments TI 83 plus graphing calculator-excellent condition, suitable for all math courses. Will sell for \$100. Texas Instrument TI-81 Calculator, excellent condition, \$75. Will sell both together for \$150. Call 912-681-6645 or email estrang1@georgiasouthern.edu.

260 Miscellaneous for Sale

10+ Long sleeve Polo Shirts 3XL (\$8). Shorts and Pants 46X30 (\$5). Blue Sport Coats (\$40) Good Condition Make offer on entire lot! Call 912-681-5033.

Twin Mattress with pillow top. One year old \$175. Call Beth 912-486-0025

For Sale: USED 4-cycle GE Electric Dryer. \$ 75. Call 404-408-7245.

Sony Digital Camera. Mavica FD-75, 10X With 2 new Hi Cap Batteries and carrying case. Uses 3 1/2 inch disk. Outstanding condition. \$125 Call 912-681-5828 or email wem@georgiasouthern.edu.

Used Pioneer 12-Disk Car CD changer. Very good condition! Everything needed for easy installation. Remote control included. \$200 Call 912-681-2837. No answer, leave message!

Metal framed futon for sale! Sealy mattress. Excellent condition. Call 912-481-1464 for more details.

Very cool Loft bed: New, never used, from IKEA. Made for double bed. Metal. Looks great. \$200. Call 912-489-0550.

Dryer in good condition. Will sale for \$90. Call 912-681-7453.

Used GE 4-cycle dryer for sale. Washer available as well. Call Stephanie@ 678-687-3705.

270 Motorcycles for Sale

Honda VFR 800 motorcycle for sale. Very clean,

Mystic Arts Horoscope

Today's Birthday (09-08-05). The more you study, the more you'll realize there is to know. Don't be discouraged; get involved in a fascinating quest.

To get the advantage, check the day's rating: 10 is the easiest day, 0 the most challenging.

Aries (March 21-April 19) Today is a 5 Should you spend or should you save? It's always a dilemma. Save by spending wisely - that's the trick.

Taurus (April 20-May 20) Today is an 8 - If there's anything you've been dreading, it's likely to surface now. This is good, because it's easier to face fears when you know what they are.

Gemini (May 21-June 21) Today is a 6 By now, you may have convinced yourself the job will be too hard. Don't be afraid; just make a list of the obstacles to overcome.

Cancer (June 22-July 22) Today is a 9 Turn down an invitation you don't really want to accept. The person is going to do what she wants anyway; might as well save your breath.



Leo (July 23-Aug. 22) Today is a 5 Spend carefully, and thoughtfully, on items for your family. With help from an older person, you'll do well.

Virgo (Aug. 23-Sept. 22) Today is an 8 There's a controversy arising, as to whether to stay or go. Before you travel far, you'd better simplify your plan.

Libra (Sept. 23-Oct. 22) Today is a 6 If you buy things on sale with credit cards, you end up spending more than if you paid regular price with cash. Think about it.

Scorpio (Oct. 23-Nov. 21) Today is an 8 The competition is fierce, but this will only make you more determined to succeed. Proceed with caution.

Sagittarius (Nov. 22-Dec. 21) Today is a 5 Don't rush into anything. Don't make any agreements to take on new assignments. Check carefully for hidden agendas.

Capricorn (Dec. 22-Jan. 19) Today is a 9 Social activities are important, but don't always take top billing. This time, a loved one's request for your time is an awful lot more important.

Aquarius (Jan. 20-Feb. 18) Today is a 5 You'll think of every little thing that possibly could go wrong. Make a list; this attitude can be an enormous help.

Pisces (Feb. 19-March 20) Today is an 8 A frustration may be born of nervousness. You have trouble advancing to the next level because you're not sure you can take that next leap of faith.



chrome wheels and exhaust, has spinners on wheels. Must see! \$6,200 OBO 912-541-6111.

Pampered Chef Kitchen Tools, Kitchen Shows, Bridal Showers Registry, free, half-price and discounts. Call 681-7453 after 530 p.m.

MOTORCYCLE! 2003 HONDA CBR600RR. Red and black. Excellent condition. 9100 miles, lots of aftermarket parts and accessories. http://lolligagger.dotphoto.com \$7000 obo 912-678-9729

Employment & Job Services 300 - 399

350 Jobs/Full Time

DISTRIBUTORS NEEDED!!! To sell hot new PARTY product. Visit www.x3now.com for info or call 800-936-0963

BARTENDERS WANTED! \$250 a Day Potential. No Experience Necessary. Training Provided. Age 18+ OK Call 1-800-965-6520 ext 296

360 Jobs/Part Time

Wanted: Computer Support worker, 19 hrs/wk, Windows 2000/XP, MS Office TCP/IP, Web Page Design, Ghost. Email campus_tech@yahoo.com for more information.

INTERNET WORK! \$8.75-\$38.50/Hr! FT/PT/Summer. Flexible hours. Use any computer. \$25 Bonus! Studentsurveysite.com/Ganne

380 University Work

Need work-study job? Got a car? We need you! Call 912-681-5458 or stop by Williams Center Room 1026 for application for America Reads.

Housing & Real Estate 400 - 499

410 Apartments

Three Bedroom two bath apt for rent Park Place Apt walking distance to GSU. Available July 1st. Call 682-4103 or Coastal Investments 1-866-845-5633.

contact: Lindsey Treadwell, Marketing Director, ADS, (912) 681-5418, ads@georgiasouthern.edu; or Bill Neville, Student Media Coordinator, (912) 681-0069, bneville@georgiasouthern.edu

PROOFING/ERRORS/OMISSIONS: The newspaper makes every reasonable effort to present correct and complete information in advertisements. However, the advertiser is responsible for proofing the ad upon publication and should notify the newspaper immediately in the event of an error. The newspaper is not responsible for any errors in advertisements and its liability for adjustments is limited to the amount of space the error occupied in the ad. Further, the newspaper is not responsible for any damages caused due to an ad's omission from a particular edition and its responsibility solely is to reschedule the ad in the next regular edition at the regular advertising rates.

CLASSIFIED ADS: Free classified ads from students, faculty and staff must be non-commercial in nature

and submitted in writing, with the name of the sender, local address, and phone number. No free ads taken via telephone - at this price we don't take dictation. One free ad per person per week. Commercial classified are available only from our online site at www.gsuads.com. The price of commercial ads is \$7 for 200 characters for line ads. Ads must be paid for using a major credit card. For classified display ads, contact ads@georgiasouthern.edu

CIRCULATION INFORMATION: Mail subscriptions are not available at this time. However, readers may visit our web site for free access to current and past issues. Visit www.stp.georgiasouthern.edu. It is the goal of the newspaper to have its edition placed on-line within 24 hours of publication. Breaking news will be placed on-line as warranted. The G-A is distributed free of charge on the Georgia Southern University campus through delivery sites located in campus buildings, at off-campus sites, and in residence halls.

420 Lofts & Rooms

2 Rooms available in Statesboro Place Apt for 2005-6. All inclusive. Completely furnished. Available ASAP! Preferably females. Call 770-853-2938 or 678-596-1890

Room Available in 2 bedroom, 1 bath house. Fully furnished, quiet in town neighborhood. Call 770-328-5154.

Room available in duplex. Private room and bath. Affordable and quiet. Just minutes from campus. Call 912-481-1081 for more information.

430 Mobile Homes

For Rent extra nice double wide! Lovely setting on my farm. 3 bedroom, 2 full baths. 3 mi from I-16, 1 mi from Hwy 67. 839-9040. Agent Owner.

450 Roommates

3bd,2bth HOUSE FOR RENT 912-687-1034

Roommate Needed: male or female. 3BD/2BA, garage, sunroom, fireplace, BelAir Estates. \$300/mo. Call Dan

Roommate Wanted for fall: Male or female, 4BR/3BA apartment is close to campus. Rent is \$275+all utilities. Please call Reid at 912-481-0952

Roommate needed: Male or female 3BD/2BA garage, sunroom, fireplace, BelAir Estates. \$300/month. Call Dan 678-571-9758 or Susan 678-644-7928

1 roommate needed to share 4 br/4 ba house on Rebekah Rd. \$275 mo/ plus 1/4 utilities. Call 912-507-6994.

2 GSU Roommates needed for house in Gentryville-Area neighborhood. 350/mo includes utilities. Nice house large backyard quiet neighborhood. Call 912-695-3252.

Word Puzzle

S E L E E G E S E R V E L I T
M L R U B N D R E S S I N G Z
P D E S N M A C A R O N I O N
S E P E T P O O S E V I L O P
E V P P E N Y I V A Y H U A N
C H E R A T E I H Y A C U L M
O A P G N T L I L O C C O R B
S R E I E O S A D I A U O H B
H R D M T T R A S E R Z L H D
O V A A C P A S P O R W I C D
T T M G H I P B T E O G H T L
H O U B E C L I L B T I N D I
T M S O E N N R A E L P M I S

V I L F V U O R Y I L Y Z
D V L L Z A E B R A L O P
O A X N T H E B X N R O D I
E M I P H S P I D E B I T
C A M A S C A R A C I L X
L N D R O N H O L U P U R Y O
I W N S H P O N T S R S Y E R
C H A R C O A L A U P W Y G
O M P W T W O D G O S M E R
R I E X D Z O F L L N P N N
I L H C U T I M D Z E S A A U
C P A M G G I G E W W A W K
E U I B M O T I V D N R O W S
C R A E D F Y O E H O R L U G
F N H Z T A R B P C M I F Z

Answer to the Previous Puzzle

Looking for a place to stay? Two females needed for Southern Courtyard. Call Keivia at 404-729-6565 or Shani at 678-372-2416. Move in incentive available.

Roommate needed for 3 br/2 ba Hawthorne duplex. Rent is \$262/mo. Utilities not included. Fully furnished except bedroom being leased. Three girls looking for another female or male until July '06. Please call Bird at 770-403-7077 or Rachel at 706-840-4569.

2 bed/2 ba unit in Eagles Court. \$450 per month. Contact Rachel 912-681-9473.

ROOMMATE NEEDED: 3BR/2BA duplex. \$390/month all inclusive (includes cable, internet, electricity, water, etc). This is a newly constructed duplex. Everything is furnished except the bedroom up for rent. 2 females already live there and are looking for another female or a male roommate. Please contact Breanna at 912-663-6645 or 912-826-4592.

470 Student Housing

House for rent, immediately. Westover Subdivision, great for GSU faculty/Staff or Mature College Student. 15 minutes from GSU-very quiet area, 3 BR, 2 Bath/split floorplan/Formal DR/ Washer&Dryer included/Central Air/ Pet friendly/Large yard. For more details call 912-681-5623-Day or 912-489-0715-After 6 PM.

Newly renovated 5 bed 2.25 bath-large house for rent over 2,300 sq. ft. \$250 per person. Call 912-489-8935 or 912-678-1017

HOUSE FOR RENT 3BR/2BA House, pet friendly, fenced in back yard. Available Aug 1, Washer/ Dryer Refrigerator Microwave, new carpet in bedrooms and new flooring in living room, \$900 a month. Please call Cliff at 912-541-4216.

480 Sub Leases

Sublease for Spring Semester 2006. In a 3 bed/2 BA house located in Countryside. \$260/ mo and bills are anywhere from \$70-90/mo. Everything furnished except the 1 bedroom. 2 females already live her. Can move in Dec 1. Call 229-224-1314 or email at kimberlym_17@yahoo.com

Sublease Now!!! Player's Club Townhouse. 2br/2 1/2 ba if interested please contact La'Keia

Rip us off

That's right, classified ads are free for students, faculty and staff. Here's the deal: 20 words or less, submitted with this handy form or via email to gaclass@georgiasouthern.edu. You can also place ads in person at the G-A office, Room 2022, Williams Center. One ad per person per issue. Non-commercial use only.

Name: _____
Telephone: _____
Address: _____

Name, address and telephone number is required for ALL free ads.

Send your classified ad to:

The George-Anne
P.O. Box 8001
Statesboro, GA 30460

Sorry, no free ads accepted by telephone. At these prices we don't take dictation

STATEMENT

OF OPERATIONS

The George-Anne is the official student newspaper of Georgia Southern University, owned and operated by GSU students and utilizing the facilities provided by GSU. The newspaper is the oldest continuously published newspaper in Bulloch County and Statesboro, Ga. The newspaper is a designated public forum for the Georgia Southern University community. The ideas expressed herein are those of the editor or the individual authors and do not necessarily represent the views of the Student Media Advisory Board, the administration, the faculty and staff of Georgia Southern University, or the University System of Georgia. The George-Anne is published four times weekly (Monday-Tuesday-Wednesday-Thursday) during most of the academic year and six times during summers. Any questions regarding content should be directed to the editor at by phone at 912/681-5246 or fax at 912/486-7113.

Readers may access the newspaper and its archives staff by visiting our web site at <http://www.stp.georgiasouthern.edu>.

SUPPORT

The G-A is funded primarily through revenue from advertisements placed in the paper and receives additional support, in part, from the Student Activities Budget Committee.

STUDENTS BEWARE

The G-A screens all advertisements prior to publication. The newspaper strives to accept ads for legitimate products and services only. Students are urged to exercise caution when replying to ads - particularly those which require a credit card number, other personal information, or money in advance of the delivery of a product or service. Students are also urged to report to the newspaper any suspicious offers which they might see in an ad. Remember, if an offer seems too good to be true, it probably is.

FREEBIE INFO

ALL FREE student and facul-

ty ads to be run in the G-A must have a NAME, P.O. BOX and PHONE NUMBER. Ads will be rejected if they do not have this information. NO EXCEPTIONS.

OFFICES, MAIL, PHONES

Room 2023, F.I. Williams Center. The George-Anne, P.O. Box 8001, Georgia Southern University, Statesboro, Ga. 30460. 912/681-5246 (News) or 912/618-5418 (Advertising) or 912/486-7113 (Fax); 912/681-0069 (adviser).

EMAIL DIRECTORY

Editor in Chief gaeditor@georgiasouthern.edu
Managing Editor gamed@georgiasouthern.edu
News Editor ganews@georgiasouthern.edu
Advertising ads@georgiasouthern.edu

ADVERTISING

The George-Anne reserves the right to refuse any advertisement.

DISPLAY AD DEADLINE: The deadline for reserving space and submitting advertising copy is Noon, one week prior to the intended publication date.

FOR MORE INFO, rate cards, sample publications,

THE 20 THINGS YOU SHOULD KNOW ABOUT GSU FOOTBALL

Allen Paulson

1 Paulson, the founder of Gulfstream Aerospace, the world's largest privately owned aircraft manufacturing company, donated \$1 million dollars toward the construction of the Georgia Southern football stadium. He later gave an additional \$350,000 to complete the project. Paulson died in 2000 and left an additional \$5 million to the school's foundation.



Paulson

About the stadium

2 Allen E. Paulson Stadium was opened Sept. 29, 1984. The stadium can seat 18,000. There are 26 private booster boxes, and a 50-seat press area. The stadium cost \$4.7 million in its original construction. Lighting was added in 1994.

The Georgia Southern Vultures?

3 When a raptor flew over the stadium during the university's 1992 championship football game, a television announcer incorrectly identified it as the school mascot, the bald eagle.

"It was not. It was a vulture," GSU wildlife center director Steve Hein recounted in a recent Savannah Morning News article.

Incensed alumnus Harry Mathews asked Hein, a GSU alumnus, expert falconer and wildlife artist, for help.

Five years and \$2.5 million later, the wildlife center opened. Today it houses not only bald eagles but also owls, hawks, vultures, other birds of prey, snakes, turtles, amphibians, some insects and interactive displays for children and adults. And it offers educational programs for groups of all ages.

The Eagle

4 The eagle is the third nickname used by the university and has been the official mascot since 1959. The nickname from 1924 to 1941 was the Blue Tide, the origin of which is unknown. After World War II, when all sports except football were revived, the nickname was changed to Professors. The students were asked to select a new name in '59. Eagles narrowly beat out the Colonels as the new mascot.



Honking horns

5 Just because you can't park behind Paulson Stadium, doesn't mean you shouldn't hang out there. About an hour before the game, the team arrives to the stadium on yellow school buses. At this time, all the horns in the parking lot start beeping to welcome the Eagles.



Tailgating

7 It wouldn't be a complete football game unless half the attendees were full of beer and an assortment of grillable meat products. This year though, students will no longer be allowed to tailgate just off the football field — all the parking lots around Paulson Stadium are reserved for alumni and special guests. Students who wish to get their fill of beer and hot dogs will be asked to tailgate in one of a handful of campus lots and take the shuttle into the stadium.

Our house

8 Ah, Paulson Stadium. Everyone's home away from home on Saturday. Above the alumni side of the stadium hangs the words, "Our House." But why is the prettiest little stadium in America called "Our House?" The moniker was developed as a rallying cry by fans during the 1989 season.

The Eagles have lost a mere 16 times since the opening of Paulson. Between 1985 and 1990, the Eagles won 38 consecutive games to set a NCAA I-AA record. The Eagles bested their own record when they won 39 consecutive games from 1997 to 2001. More importantly, they have lost only three times at home in the playoffs and have also captured two national titles at home in 1989 and 1990.

This fall, you will hear one side of the stadium scream, "Whose house?" Now you know the answer.

Mike Sewak

9 Attend a GSU game and you'll see Mike Sewak on the sidelines. The 2004 Southern Conference "Coach of the Year" has been a familiar face at Georgia Southern for 10 seasons and has been a part of nine playoff appearances. This season will be his fourth at the helm of Eagle football. Sewak expects his players as well as himself to succeed on and off the field. The coach has started such programs as Eagle-for-a-day, Ladies Locker Room and Eagle Football Alumni Letterman's Group.



Sewak

Who is Erk Russell

10 Erk Russell: Mention GSU football to anyone and it won't be long before this man's name comes up. To put it simply, Erskine Russell is the father of Eagle football. Russell came to GSU in 1981 with the goal of restarting a football program that had been dormant for 40 years. In 1985 and 1986, the Eagles posted back-to-back national championships with 13-2 seasons and GSU football was already a powerhouse in I-AA football. This was particularly true in 1986 when the Eagles averaged 50.7 points a game. Russell retired from coaching in 1989.



Games are free, but bring your ID

11 Students are allowed entry to non-playoff football games for free. This year, IDs are required and the cards must be swiped as students enter. Swiping will eliminate students being able to enter and then hand their ID to another student.



Players to watch

13 Fullback Jermaine Austin is always a threat for opponents. Hailing from Darien, Austin needs 1,000 yards to claim the second place spot on GSU's all-time rushing list. Austin has already garnered the honor as SoCon's Player of the Week, a title he has received four times in his career, in the opening contest against Northeastern. Another Eagle to watch would be sophomore Jayson Foster who has assumed the role as starting quarterback after Chaz Williams graduated last season. On the defensive side of the ball, keep an eye on senior nose tackle Shannon Williams and senior strong safety Tariq Muhammad.

GEORGIA-SOUTHERN

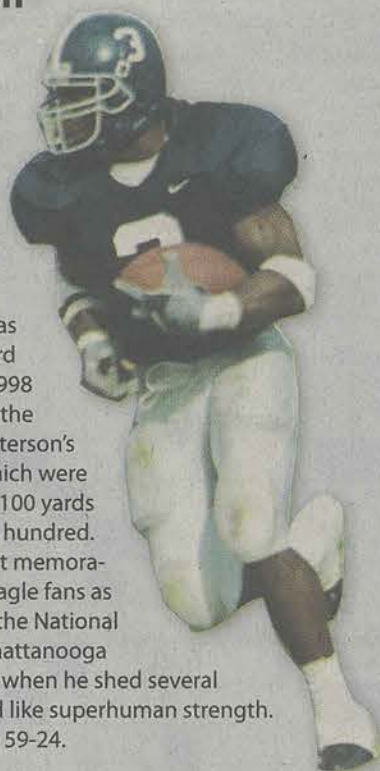
12 When going to a game this fall, you will undoubtedly hear the chant of GEORGIA followed by SOUTHERN. The rules are very simple if you care to join in (and you should). If the side of the stadium across from where you are yells, "Georgia," you must respond by yelling, "Southern." If you don't, you will be carried out by several large men, dragged behind a pickup truck and fed to the eagles at the Raptor Center. If you don't believe this, give it a try.

Record attendance

14 Biggest crowd at a game—25,725 vs. Stephen F. Austin, Dec. 16, 1989.

Adrian Peterson

15 A large blue jersey with the number three hangs in Paulson Stadium, recognizing the greatest fullback in history to play for GSU. Adrian Peterson, currently playing for the Chicago Bears, shattered defenses as well as every rushing record in the NCAA book. From 1998 to 2002, fans from around the country tuned in to see Peterson's astronomical numbers, which were usually at least more than 100 yards and regularly two or three hundred. Probably his best and most memorable run, remembered by Eagle fans as simply "The Run," came in the National Championship game in Chattanooga against Youngstown State when he shed several tacklers with what seemed like superhuman strength. The Eagles went on to win 59-24.



Tracy Ham

16 Eagle fans will never see a player wear the number eight and that's because of this man. Ham, who also holds a spot in the GSU Athletic Hall of Fame, ushered GSU into the national spotlight by leading the Eagles to their first two I-AA championships. He is the only player in college history to rush for 3,000 yards and pass for 5,000. Ham is best known for his performance in the 1985 national championship game against Furman University when he rallied the Eagles from a 22-point deficit in the third quarter to win 44-42.

Jingling Keys

17 With any luck, you will hear the melodious sounds of thousands of sets of keys jingling in the stands this Saturday. This is the crowd's way of telling the opposing team that they might as well give up; they can't beat the Eagles. Intended as a signal for the opposing bus driver to start the bus, the jingle can only be used when the Eagles are dominating and the other team has been overwhelmed. The sound is most satisfying when the other team hails from Wofford, App. State or Furman.



The GSU Fight Song

18 Wave the blue, wave the white, Hold the banner high, The Eagles are on the wing.

Sound a cry to the sky
As we look for glory,
Victory now we sing.
Hail the blue, hail the white,
Hail the team that's soaring
Upward to bring us fame.

Georgia Southern Eagles,
Fight on to victory and
Win this game!

Blue and White Fight Fight!
Blue and White Fight Fight!
Georgia Southern, Eagles!
Fight! Fight! Fight!

Who is Gus?

20 He might have nearly 2,000 friends on his facebook.com profile, but don't expect this guy to ever be a real friend. Gus' true identity is a closely guarded secret. Portraying the cuddly raptor falls in the hands of the GSU cheerleaders. This year, three students will take on the job. They were recently selected through a tryout process. Gus was named by the students in 1997 through a contest. The name was officially bestowed at homecoming.



6 Paulson Stadium can hold 18,000 when filled to capacity but more can be accommodated when the endzones are filled.

ALLEN E. PAULSON STADIUM

OUR HOUSE

COUNTDOWN
to KICK-OFF
The GSU Eagles kick
off against McNeese
State this Saturday.

Punk band Pennywise breaks ground with album 'The Fuse'

By Edgar Fernandez
Staff Writer

If you are not familiar with this band, let me give you a brief introduction.

Pennywise has been a quintessential punk band since the early 90s, though it has never achieved as much popularity as other bands like Bad Religion or NOFX. Even so, that has not stopped the band from making good records, as with their latest one, "The Fuse."

"The Fuse" is filled with the same old Pennywise sound: fast riffs, guitar solos, angry lyrics and choruses that feel more like street anthems than sing-alongs.

The fifteen songs in this album have all the same energy and tone; of course some pull it off better than others, making the ones that can not sound repetitious.

Another notable thing is that Pennywise has not changed their attitude (much) either. While other punk bands complain about politics and the current president, Pennywise lyrics have always picked at society in general.

Of course three or four songs do deal with politics, but they make a good point. Songs like "Fox TV" attacked the network's "fair and balanced" views, while "18 Soldiers" raises the issue of the situation soldiers in Iraq are going through

and "Premeditated Murder" is a somewhat obvious attack to the current president. Other songs deal with more general subjects, mainly about the problems with society, from racism to apathy, from our children to technology.

Overall, this was a really good CD. I have heard better, but I have also heard worse. I enjoyed all of the songs in the album except for four, and four out of fifteen is not bad.

Of course there are the songs that I really enjoyed; my favorite songs in the album were "Yell Out," "Knocked down" and "Fox TV."

I found all the aspects of these songs great, from the lyrics and chorus to the sound.

This might not be the band's best CD ever, but they have gotten better at it. Hopefully they will keep up making great music and, with the help of other bands like them, keep punk alive.

'The Fuse' Pennywise

Record Label: Epitaph
Release Date: August 09, 2005

Prices:

amazon.com - \$13.98
barnesandnoble.com - \$12.58
walmart.com - \$11.98

Grade - 3.5 of 5 ★★★★★

Nitty Gritty Dirt Band comes to the PAC

By Marcy Thornton
Staff Writer

The legendary Nitty Gritty Dirt Band will be performing at the Georgia Southern Performing Arts Center on Thursday, Sept 15, at 8 p.m.

This Grammy-award-winning group is the first performance of the PAC's new season.

The Nitty Gritty Dirt Band first achieved fame in 1970 with their top 10 hit, "Mr. Bojangles."

Listed as the influence for countless modern performers (such as The Eagles and Alabama), the band has collaborated with Earl Scruggs, Emmylou Harris, Alison Kraus, Willie Nelson, the late Johnny Cash and many others.

The band has released over 30 albums, three of which have earned a Grammy, including the prestigious Grammy Hall of Fame Award.

The Nitty Gritty Dirt Band's distinctive and eclectic mix of folk, bluegrass, country and rock has been long hailed as having played a significant role in the evolution of folk rock.

Former band member John McEuen described the sound in glowing terms, saying, "You feel like it's made by people and you feel closer to the music. You know, it's not overworked, synthesizer-laden, electronic vocal tuning it's

more real."

Fans of good old-fashioned southern melodies should contact the PAC at 912-486-7999 or toll free at 866-PAC-ARTS to obtain further information or buy tickets, which are

being sold for just \$32 plus tax.

One can also purchase tickets online at <http://ceps.georgiasouthern.edu>, or at the PAC ticket office, which is open from Monday through Friday from 10 a.m. to 5 p.m.

Students who wish to enjoy the performance may show their student ID and purchase any remaining tickets ten minutes before the start of the performance for \$10 dollars plus tax.



The eclectic Nitty Gritty Dirt Band comes to the PAC September 15.

Special Photo

Out & About in The 'Boro

HAIR FREE! CARE FREE!



You Need A PERMANENT SOLUTION!

Complete Confidentiality • Sterile
Disposable Probes • Gift Certificates Available

FREE CONSULTATION



Electrolysis By Edwina Morris, CPE

For More Information Call:
(912) 489-0921

- 2003-Present, Private Practice in Statesboro
- 1992-2003, Private Practice in Manhattan, NY
- 1990-1996, Assistant Director/Teacher New York Institute of Electrolysis, Inc.
- 1983-1990, Owner/Operator, Allana of New York in Jacksonville, FL



MAUI SMOOTHIES & COFFEE HOUSE

Get your juices flowing

620 fair road, #2

statesboro, ga 30458

(912) 681-7979 or fax (912) 681-7982

Don't accept
imitations



871-7433

FREE OIL

BETWEEN OIL CHANGES OIL CHANGES TWO MONTHS
WATER SERVICE

\$16.99

AND

10% OFF

SAVING \$10.00 AND MORE FILTER
OIL CHANGES INCLUDES



Randy, Robert, Tracy
811 South Main Street
681-1975

Hours: Mon.-Sat. 8 a.m. - 6 p.m. Head Lamp Restoration Available!

Weekly Specials Available!
Stop by for details!

**Ask How to
Earn a Free
Car Wash!**

As Seen In
Leading National
Magazines & On The
Today Show

DARE TO BE BARE...
With Permanent Hair Removal!

Alice J. Paul
Electrolysis

"Permanent Results With Comfortable Treatments"

FREE CONSULTATION

(912) 489-8006

"25 Years Experience"



**Savannah's #1 Japanese Restaurant
Now in Statesboro!!!**



715 Northside Drive East in Southern Square Center • Next to K-Mart

Jr. Chicken Bowl \$2.95	<p>We Can Quickly Make Your Favorite Dish. So You Get In and Out in a Hurry!</p> <p>Hibachi Steak • Shrimp Tempura Teriyaki Chicken & Shrimp Sushi • Salads • Appetizers and Much More...</p> <p>Dine In or Carry Out</p> <p>912-764-5150 fax 912-764-5655 www.capitaljapan.com</p> <p>Hours: 11 AM - 9 PM 7 Days A Week</p>	K-Mart
Jr. Shrimp Bowl \$3.65		<p>Now in Statesboro at Southern Square Shopping Center</p> <p>Read More Long Story</p>
Chicken Bowl \$4.25		
Shrimp Bowl \$5.25		
Shrimp/Chicken \$5.50		



Great Chicken
Mild or Spicy
Strips-Sides
Shrimp-Biscuits
CAJUN STYLE

WE CATER!
681-1078

526 Fair Road • Statesboro

BREAST DINNER
W/ REGULAR SIDE & BISCUIT
\$2.99

Expires 9/30/05
Limit two per coupon



**FREE
BISCUIT**
WITH ANY PURCHASE

Not valid with any other offer
Expires 9/30/05
Limit one per coupon



'The Transporter 2' drives local audiences away from theaters

By Heidi King
Staff Writer

"Unbelievable!" "Whatever," shouted the crowd between waves of laughter. Wait—I thought "The Transporter 2" was an action movie, not a comedy.

Unmistakably like the first, "The Transporter 2" delivers high-octane explosions and tight-laced fighting sequences that unbelievably mimics the prequel.

Jason Statham returns as Frank—the structured transporter who is as firm and starched as his black tuxedo.

Frank's doctrine is simple: no names, no questions, no looking; all making Frank a valuable commodity in this rough profession. Now living in Florida, there is a new twist for the sequel—instead of quiet and square packages, the new job is the delivery of a drug administrator's son to and from school. Creating trust in both the son and the mother, Frank was content to stay with this all too easy job.

As the Columbian drug cartel gained influence in Florida, the Drug Administration's leader became too easy of a target. Paying a rough crime lord named Gianni, the Columbian drug cartel sought to devastate the administration with a deadly virus that traveled through air and killed within hours. Unbeknownst to Frank, the

boy he was delivering was to become the virus' deadly host.

This movie, with all its unbelievable stunts and tricks, should be kept in the non-new release section of a video store. It should have skipped the theater and released straight onto DVD. Why did Jason Statham agree to the sequel when the first bombed so badly? Someone should have told him to stick to "Snatch" and "Lock, Stock!"

With so many eye-rolling scenes, the producers must have made this movie unbelievable; it was as if lunacy was their goal. All the weapons fired without reloading ammo, one-second cut scenes that repeated, cars were never damaged—magically summing up everything that has ever happened wrong in a movie and calling it "The Transporter 2."

If you're still interested in seeing some aspect of this movie, maybe you should rent The Transporter for half the price of a theater ticket.

'The Transporter 2'

Cast: Jason Statham, Alessandro Gassman, Amber Valletta, Kate Nauta.
Running time: 88 minutes.
Showtimes: 4:00p.m., 7:10p.m., 9:30p.m.

Grade - 1 of 5 ★★★★★

On the shelves this week: DVD/Video Releases

Associated Press

Returning for a fourth season of adventures in "Smallville," the young Clark Kent (Tom Welling) once again attempts to balance his high school life with the superpowers he was equipped with at birth.

The season begins with Lois Lane (Erica Durance) turning up in Smallville to investigate the death of her cousin. In a neat touch, Margot Kidder, who plays Lois in the Christopher Reeve-era "Superman"

movies, makes an appearance in the first episode. Meanwhile, Lana (Kristin Kreuk) has picked up a new boyfriend in Paris; Lex (Michael Rosenbaum) has got his hands on a kryptonian crystal in Egypt; and Lionel (John Glover) sets a mutant on the trail of Chloe (Allison Mack) to determine whether she is dead or not. A wonderful counterpart to the adult adventures of Superman, Smallville continues to go from strength to strength.

'Smallville Season 4'

Cast: Tom Welling, Erica Durance, Kristin Kreuk, Michael Rosenbaum, John Glover, Allison Mack
twenty-five minutes.

Prices:

amazon.com - \$41.99
barnesandnoble.com - \$41.98
walmart.com - \$37.88

Country cookin' served at Fordham's Farmhouse

By Andres Garcia
Staff Writer

"So, what's for dinner?" A common question that sends most Georgia Southern University students reaching for a package of ramen or racing out the door to redeem their daily meal plans.

However, greasy pizza and soggy noodles sometimes just aren't enough. That chicken sandwich somehow fails to compare to Dad's fried chicken, but how do you get that same quality meal without breaking the bank? Well folks, I have a solution for you that will satisfy your hunger, as well as your wallet.

Fordham's Farmhouse, just past Lowe's, is a great little spot to get your home-cooked fix. Boasting favorites such as fried chicken, mashed pota-

toes, macaroni and cheese and green bean casserole, this restaurant is a must for those days when a burger and fries isn't going to cut it. So, how much are we talking here? For \$6.52 you can get a meat, two sides, bread and a drink.

That's just a little over a meal plan and they accept Eagle Express! On my first visit, a friend and I stood in line next to a little girl with her dad, excitedly awaiting her mac and cheese, as well as an elderly couple picking out their veggies, just to give you an idea of the kind of family place we're talking about. From the home-made (that's right, kids) country cookin' to the warm smiles of the staff, the place just seemed to radiate with a friendly, family atmosphere.

My friend and I sat down in a booth and dug into our heaping

plates with a feeling that can only be described as "sheer bliss." You tend to forget how great fried chicken is compared to that bowl of cereal you ate for dinner last night. And for those of you with a sweet tooth, don't forget about dessert!

The desserts, as well as the menu change from day to day, but you can be sure that some of your favorites are going to show up on the list. Pies and cakes are sliced up and at your fingertips. From the traditional sweet potato and pumpkin to the coconut cream and chocolate, it's a dessert lover's dream.

Leaving ultimately stuffed and satisfied, I would rank Fordham's as a great place to go when you feel the need for some genuine sticking-to-the-ribs home cooking.

The restaurant was clean, the staff

was friendly, the food was, a much needed escape from the normal college diet and it was all under 10 bucks! I advise all who make Fordham's their next dinner solution to come in with an empty stomach; you'll leave full with a few bucks in

Fordham's Farmhouse

Located at 23657 Highway 80 East, past Lowe's and a church on the right side in a shopping center.

Call (912) 489-3307

Full bar	No
Live entertainment	No
Credit cards	Yes
Handicap accessible	Yes
Dinner for one	\$6-\$7

Overall Grade - 3 of 4 ★★

Out & About in The 'Boro

BREAKFAST
SERVED ALL DAY



TOASTER® SANDWICHES

On Thick Fresh Texas Toast

Sausage, Egg & Cheese 2 19

Bacon, Egg & Cheese 2 19

Ham, Egg & Cheese 2 19

Breakfast Burrito 1 89

Sausage, Egg & Cheese

SuperSONIC™ Breakfast Burrito 2 49

Loaded with Sausage, Egg, Cheese, Tater Tots, Tomatoes, Diced Onions & Jalapeños

French Toast Sticks (4) 1 69

Four Thick Golden French Toast Sticks

Happy Hour
2 p.m. - 5 p.m.
every day
1/2 priced drinks
and slushes

Two Locations
322 S. Main St.
880 Buckhead
(Hwy 80 @ Bypass)



September Value
offers expires 10/15/05
Please present coupon.

Route 44 Drink for 99¢

Express Tune & Lube

Tire, Alignment & Exhaust Center

612 S. Zetterower Avenue

489-4444

www.expresslubeandlube.com

Monday - Friday 7:30am - 6:30pm

Located a half block north of Wendy's.

Oil Change Special

Includes up to
5 qts. of Castrol
5W20, 5W30,
10W30, or 20W50

\$17.95

Price applies to most vehicles. Expires 9/30/05

Lovett Bennett, Jr Attorney at Law, P.C.

Over 22 years of local experience helping GSU students

- DUI/DWI Defense
- Minor in Possession of Alcohol
- Open Container Charges

- Driver's License Issues
- Expungements
- Criminal Defense

21 Courtland Street
Statesboro, GA 30459

764-3122

bennettlawfirm2000@yahoo.com

811 S. Main St.
Statesboro, GA
(Hwy 301)
871-6659



151 Northside Dr. E
Statesboro, GA
(Hwy 80)

764-6659



& SERVICE CENTER
Open Mon-Fri 7:30am - 6pm • Sat 7:30am - 4pm



Student Discount
with I.D. on Tires & Service
10%
Offer expires 9/30/2005. No other discounts apply.



We Perform All These Automotive Services

OIL, LUBE & FILTER
Includes: Lube (where applicable), new filter and up to 5 quarts of major brand oil. Environmental disposal fee may apply in some areas. Free 12-point safety inspection included.

\$17.95
Most cars and light trucks. Vehicles requiring synthetic or diesel oil & filter may be extra. No other discounts apply. Additional charge for shop supplies may be added. Offer expires 9/30/2005. Most present coupons to get this price. Call for appointment.

• Tires • Alignment • Brakes • Air Conditioning • Tune Up • Cooling System • Belts • Hoses • Shocks/Struts • Exhaust

AJ's Coffee Cafe

Offering Statesboro the finest coffees, teas & frozen drinks

We also carry a wide selection of bottled waters & pastries



871-JAVA
Located across from the Fair Grounds on Highway 67

Holiday's Greek & Italian Restaurant

764-7669

Two 12" Pizzas • Special

1 topping - \$7.99 • 2 topping - \$9.99

3 topping - \$11.99

New additions to menu! Expanded dining room!
We accept Visa, MasterCard & EAGLEXPRESS™

405 Fair Road • Next to Rec. Dept. • Free Delivery!
Open Daily from 11am - 11:30pm

LASAGNA • SPAGHETTI • STEAK GRINDERS • GREEK SALAD • BAKED ZITI



PIZZA • CALZONES

SLADS • BAKED ZITI



Scents and
Gifts over
Georgia



Licensed Grateful Dead Dealers

Oils/Incense
Candles
Italian Charms
SS Jewelry

418 S. Main Street
Statesboro
912-764-6606
912-489-0783

Clothing
Dancing Bears
Glass Pipes
Hemp/Glass Beads