

Georgia Southern University

Digital Commons@Georgia Southern

---

The George-Anne

Student Media

---

8-31-2005

## The George-Anne

Georgia Southern University

Follow this and additional works at: <https://digitalcommons.georgiasouthern.edu/george-anne>

---

### Recommended Citation

Georgia Southern University, "The George-Anne" (2005). *The George-Anne*. 1888.  
<https://digitalcommons.georgiasouthern.edu/george-anne/1888>

This newspaper is brought to you for free and open access by the Student Media at Digital Commons@Georgia Southern. It has been accepted for inclusion in The George-Anne by an authorized administrator of Digital Commons@Georgia Southern. For more information, please contact [digitalcommons@georgiasouthern.edu](mailto:digitalcommons@georgiasouthern.edu).





High: 91 | Low: 73  
Partly cloudy  
Volume 78  
Number 21

## Welcome, world

Locals welcome international students into home | **CAMPUS, p. 2**



## Women's soccer looks to match with Mercer

| **SPORTS, p. 6**

# THE GEORGE-ANNE

DAILY

THURSDAY, AUGUST 31, 2005

## Herty Building gutted to make way for renovations

### Second phase of renovations well underway

By Emily Smith • Staff writer

**G**utted halls, exposed rafters and demolished bathrooms are dampening the ambience of the Herty Building, while students and administrators say the building's renovations may be unpleasant, it will be a welcomed reward.

"It's been a headache, but it will be worth it in the end," said geology major Craig Blumenfeld. "I'm confident it will look pretty good in the end, judging by the other buildings (the school has renovated) on campus. I expect the same thing here."

Many of Herty's classes have been relocated to other buildings due to the construction.

The courses are spread among seven other buildings around campus. The only classes that are currently being taught in the building are a few upper level biology classes and the introduction to geology classes.

The facility is currently in phase II of a construction project that will eventually lead to the renovation and creation of many labs, classrooms and offices.

The school is planning three separate phases of construction for Herty, the first of which has already been completed. The second phase, which is currently taking place, will include the renovation of the geology and geography department. This current phase is scheduled to be complete in March 2006.

Haroun Homayun is the project's manager. The architect is Richard Hinman. Studio Three, a construction company based in Augusta, has been contracted to carry out the work.

When phase II is complete, Herty will house a geochemistry lab, qualitative methods lab, planetary geology/remote sensing lab, geomorphology/structural geology lab and teaching lab.

There will also be eight new offices for staff members who currently have offices in other buildings.

"For the first time ever, we will have all of our faculty in the same building," said Dallas Rhodes, a professor of geology.

The renovations will also result in upgrades to fire alarms, improvements to the

see **HERTY**, page 3

## Search for VP opens

*Committee aiming for permanent fill for job currently held by Teresa Thompson*

By Luke Hearn  
Executive Editor

On Monday, Georgia Southern President Bruce Grube charged a search committee to start their work in filling the position of vice president of student affairs and enrollment management.

Dean of the College of Graduate Studies Charles Hardy, who chairs the committee, said he and the nine others serving with him will work hard to fill the position, currently held by Teresa Thompson.

"This is an important search, and all members of the committee realize its importance," Hardy said.

The search committee is charged by the president to serve as the work group for evaluating all applications for the position, which, according to Hardy, begins on Sept. 30.

"At some point in the search, the committee will move from a pool of qualified applicants to a pool of finalists," Hardy said. "We will then present an unranked list of the finalists to the president, and then have each candidate come to cam-

see **SEARCH**, page 3

## Big Easy residents recover

By Brett Martel  
Associated Press

Rescuers along the hurricane-ravaged Gulf Coast pushed aside the dead to reach the living Tuesday in a race against time and rising waters, while New Orleans sank deeper into crisis and Louisiana's governor ordered storm refugees out of this drowning city.

Two levees broke and sent water coursing into the streets of the Big Easy a full day after New Orleans appeared to have escaped widespread destruction from Hurricane Katrina. An estimated 80 percent of the below-sea-level city was under water, up to 20

### New Orleans' levees

Official confirmed two major breaks in the levees that are supposed to protect New Orleans from flooding.



SOURCE: U.S. Army Corps of Engineers

feet deep in places, with miles and miles of homes swamped.

"The situation is untenable," Gov. Kathleen Blanco said. "It's just heartbreaking."

One Mississippi county alone said its death toll was at least 100, and officials are "very, very worried that this is going to go a lot higher," said Joe Spraggins, civil defense director for Harrison County, home to Biloxi and Gulfport.

see **RECOVER**, page 3

## What has everyone feeling sick?

### Nurse: Allergies flare up during season change

By Emily Haymans  
Staff Writer

Seasonal allergies aren't just a problem during the spring and summer months. August is an especially trying time of year, as it marks the transition from summer to fall, when allergens from both seasons, especially grass pollen and ragweed pollen, are very prevalent in Statesboro.

The Health Center has seen more patients so far this year than they did in August 2004, according to head nurse Carol Turknett. She says the increase could be due to several factors, including seasonal allergies and lowered immunity.

"Seasonal allergies cannot be prevented, only controlled," said Turknett. The Health Center offers a variety of prescription drugs to treat allergies, and there is even an allergy injection office next door.

Turknett said one of the best ways to avoid getting sick is to make healthy decisions, adding that lack of sleep, too little fluids and lots of stress can contribute to lowered immunity. If you are an allergy sufferer, Turknett says to stay indoors as much as possible. The first few months of school are difficult,

### Fall brings allergy troubles

Hay fever, or allergic rhinitis, is on the increase; due to climate changes, the pollen season is longer, starting far ahead of springtime.

#### Pollen

■ Male reproductive part of plants — from grasses, trees, weeds

■ One tree can produce millions of pollen spores that act as allergens

#### Symptoms

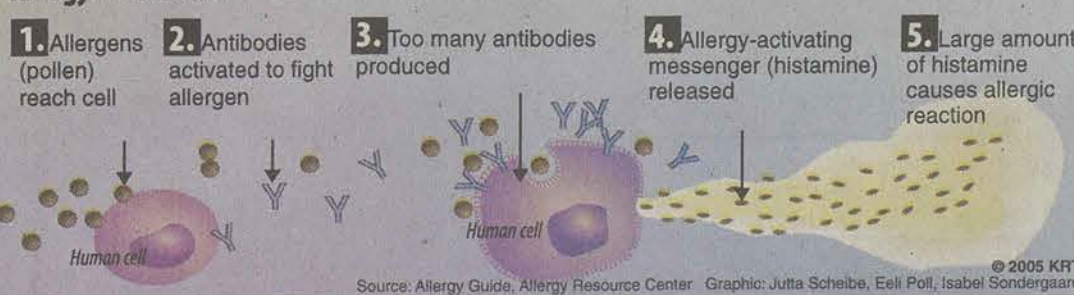
**Eyes:** Watery, redness, itching, swelling

**Nose:** Sneezing, runny and/or blocked nose, itching, sinus pressure

#### Nasal mucosa

■ Tissue inflamed  
■ Blood vessels widen  
■ Mucus production increases  
■ Swelling

#### Allergy mechanism



Source: Allergy Guide, Allergy Resource Center Graphic: Jutta Scheibe, Eeli Poll, Isabel Sondergaard © 2005 KRT

## Blood drive on campus today

The American Red Cross will be on campus for a blood drive today, from noon to 6 p.m. in the Russell Union, rooms 2041 and 2047.

The drive is sponsored by Alpha Delta Pi and the Interfraternity Council. The goal is 100 units.

As an incentive, the Red Cross is offering the chance to win two round-trip tickets on Delta Airlines

to any Delta destination world-wide. All donors have to do is give blood or platelets to be entered to win.

In addition, each participant receives a scratch-off card with a chance to win prizes like music download redemption codes, music download cards or iPods and get a free T-shirt. The Red Cross advises that a picture ID is required.

both physically and mentally, but taking precautionary measures can help prevent illness, she said.

"You're going to have to walk on campus and be exposed to the elements, so at least try to wash your hair before bed," said Turknett. Washing

hair before bed removes germs, pollen and other irritants that can be inhaled during sleep.

Turknett explains ways to treat seasonal illnesses. "Just treat the symptoms with over-the-counter medicines," she said. "It takes about

three days for a sickness to develop, three days of actual sickness and three days to recover."

If symptoms get worse or you start running a fever, it could be a sign of infection. Seek medical treatment as soon as possible.



# International students find homes with local families

By Lindsay McConnell  
Staff Writer

Students who travel from their home countries to attend Georgia Southern will be getting a true taste of the South as they live with local Statesboro families.

The International Extended Families program matches incoming students from around the world with local volunteer Statesboro families to give them insight into American culture and provide a home away from home.

The extended families program started as a way for students coming to a new country and school to make friends, improve their English language skills and explore American culture firsthand. Students and families are mostly matched at random, although some things such as gender and language preference are taken into consideration.

According to Joan Stalcup, coordinator of international programs, there are nearly 200 international students at GSU this year. She says the program gives local families a chance to become learn new customs and gives students a deeper look into community life and local customs.

"The program is mutually beneficial to both the student and the family. It is especially great for families that do not get to travel," said Stalcup.

Families who host international students are expected to meet at least once a month to spend time watching movies, cooking cultural foods or taking trips to places such as Savannah and local islands to share Georgia history.

"By offering this program we are really trying to provide friendship and



Left to right: international student Erika Heredia from Ecuador, Takae Furukawa of Japan, Mrs. Altmiller, Mr. Altmiller, and Seung Hyun Lee of South Korea spent Thanksgiving holiday in the local home of the Altmillers and helped prepare some traditional Southern foods.

bridge a cultural gap. We want students and families to take advantage of this opportunity," said Stalcup.

Another program offered to help international students adjust is the Cross-cultural Friendships program, which is designed to create lifelong

friendships between GSU students and exchange students. This program gives both students a chance to learn things from each other and share memories. Afra Modh, a senior international student says the program was a big help.

"When me and my sister first came to America from Jordan, the friendships program was how we met people and made friends," said Mohd.

For information on the Extended Families Program, contact Stalcup at jstalcup@georgiasouthern.edu.

LET US INTRODUCE...

## James Mohr starting anew, planning for the long-haul

**Name:** James Mohr, 48, Assistant professor, Communication Arts Department

**Where do you see yourself in five years?** I see myself still teaching here at GSU.

**Hometown:** Clinton, Arkansas

**Democrat or Republican?** Democrat

**Education:** A B.S. in Radio/TV Broadcasting and a master's degree in Mass Communication, both from Arkansas State.

**What's the best cheap thrill in the area?** Watching all the crazies at Wal-Mart!

**Why did you choose GSU?** I was looking for a new start, and the school was looking for professors for its Broadcasting program.

**What's the best meal in Statesboro?** Holiday's, particularly the salads.



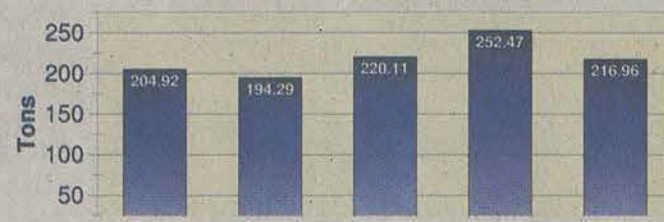
James Mohr

**When you aren't in classes, how do you pass the time?** I spend time with my wife LaDawn and our three cats.

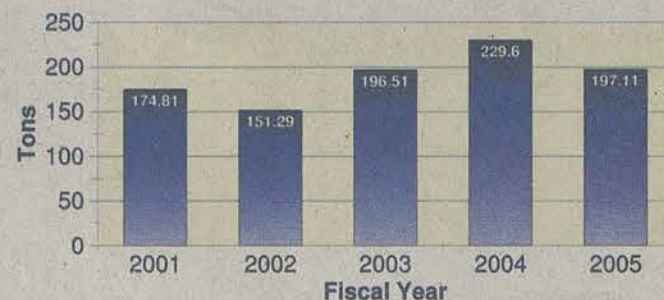
**What's the one thing every student needs to know about GSU or college?** This is the place where you are preparing to transition into the real world. Savor each day.

## Recycling pays off

### Georgia Southern University Total Recycling Recovery



### Georgia Southern University Paper Recycling



#### G-A News Service

With over 16,000 students and hundreds of employees, Georgia Southern generates a lot of trash, but much of it is recycled.

In the past eleven years, GSU has been able to divert 2,041 tons of material from landfills to recycling centers and eventually into usable items. Local businesses have supported the campus community, saving \$60,902.40 in waste disposal fees.

Currently, plastic is donated to the Bulloch County recycling program. Recycled materials of metal are taken to a local business, Stubbs Metal and Wrecking Yard. All of GSU's recycled paper products are recycled by Georgia Pacific in Rincon.

When the recycling program began in 1993, only office paper, cardboard, steel and aluminum cans were accepted. But over the years, the program has expanded to include newspapers and magazines. Such news grade papers accounted for approximately 46.2% (942.4 tons) of the materials recovered in 10 years.

As fewer vending machines dispensed aluminum cans and more plastic bottles were used, containers to collect clear plastic bottles were added to the recycling program.

Recycling containers are color-coded to help keep different types of recyclable items separate. Blue containers are for office papers, envelopes, printer paper, letterhead, self-adhesive notes, notebook paper and other types of uncolored paper.

Yellow containers are for unbleachable papers like construction paper, glossy paper, manuals, newspapers, posters, paper bags and phone books. GSU reached a peak in recycling in the 2004 fiscal year, recycling 229.6 tons of paper.

Light grey containers are for aluminum cans and dark grey containers are for plastic bottles.

Since the tonnage for metal recyclables primarily consists of scrap metal and furniture, the amount recovered is basically limited by what is generated through support facilities.

Employees are provided with the means to recycle larger items such as cardboard boxes and office items with convenient recycling containers.

An 'Eagle' box is supplied by physical plant without charge and used by GSU employees to collect papers at their desk. Employees can share in campus recycling efforts by emptying their 'Eagle' box in larger hallway containers.

Support facilities generating larger amounts of corrugation have special outdoor containers. Physical plant empties such bins by taking the content either to a local recycling center or to the auxiliary warehouse for temporary storage.

Used printer toner cartridges should not be placed in recycling bins but stored in each department, then contact Central Receiving at 681-0043 to request pick up so that they can be palletized before they are shipped for recycling.

## GSU student named Top Soldier of 48th Brigade

#### Special to the G-A

Two soldiers of the 48th Brigade Combat Team have been selected as Top Soldier and Noncommissioned Officer of the Quarter. Spc. Nicholas Ives, a Georgia Southern student, was named Top Soldier.

Spc. Nicholas Ives of the 648th Engineer Battalion and Sgt. Eric Lynn of the 248th Military Intelligence Company were named the best of the best in the 48th BCT. The selection process allowed each of the battalions and separate units within the brigade to send their top troops to address a board of seniors in order to vie for the honor of being named Top Soldier and Noncommissioned Officer of

the Quarter.

"The awards process gives the soldiers a break from the rigors of deployment. It strengthens their bonds through friendly competition," said 48th BCT Command Sgt. Maj. James Nelson Jr.

Six candidates for Soldier of the Quarter were brought individually before the board of sergeants major and first sergeants who represented major battalions and separate companies assigned to the 48th BCT. The candidates were questioned on topics that ranged from military customs and courtesies; awards and decorations; brigade history; Army programs; the Army chain of command; and the

Enlisted Promotion System.

After doing a series of facing movements, each candidate sat in front of the board, which watched their every move and listened to every response.

"It feels good to have your skills tested. It is an honor to be selected," said Ives, who was able to successfully answer the majority of the questions fired at him. "I studied mostly at night and between missions, he added.

Ives, a finance major at GSU, plans for a career in real estate as well as a long career in the National Guard.

The noncommissioned officer of the quarter, Sgt. Eric Lynn, is an active-duty soldier augmenting the

248th Military Intelligence Company as an analyst, studied for the award competition.

"I've been studying for a month preparing for the active duty E-6 promotion board. This was a good rehearsal for that board," Lynn said.

Lynn responded to each question with a quick, clear-cut answer as if he were reading an Army fieldguide.

"The purpose of these boards is to allow soldiers to keep up their general knowledge while participating in friendly competition," said Nelson. "The brigade commander and I want to continue to foster friendly competition between the units. This is a good way to do that."



Gus Says:

## Name the New Transit System and Win Big!

- All Terrain Bike Valued at \$200
- All entries eligible for drawing for \$100 on Eaglexpress

**Deadline for Entries: Friday, September 2**

### NAME THE TRANSIT SYSTEM CONTEST

The winning entry will win an all-terrain bike valued at \$200!

I think Georgia Southern's new transit system should be called:

Name

Phone

Enter as many suggestions as you like. One suggestion per entry. Drop your entry off at The University Store (Customer Service), Transportation Services (Bldg 805), or on any bus. Deadline for entries is Friday, September 2.

Even if your entry is not chosen, you will be entered to win \$100 on EAGLEXPRESS.

\*A drawing will be held to determine the winner if more than one person submits the winning entry.



### NAME THE TRANSIT SYSTEM CONTEST

The winning entry will win an all-terrain bike valued at \$200!

I think Georgia Southern's new transit system should be called:

Name

Phone

Enter as many suggestions as you like. One suggestion per entry. Drop your entry off at The University Store (Customer Service), Transportation Services (Bldg 805), or on any bus. Deadline for entries is Friday, September 2.

Even if your entry is not chosen, you will be entered to win \$100 on EAGLEXPRESS.

\*A drawing will be held to determine the winner if more than one person submits the winning entry.



## Obedience School

#### G-A News Service

College students probably don't have a lot of time to train their dog, so classes are offered on campus to keep them under control. Beginning dog obedience training is being offered by the Center for Continuing Education. The training course uses positive reinforcement techniques to teach various commands, such as house training and feeding. The course covers numerous other dog topics and is enjoyable for both handlers and the dogs.

There are five main requirements for admittance to class. Dogs must be 12 weeks old or older. Dogs need a web leash and a collar with a buckle.

All dogs must be fully vaccinated and owners need to have vaccination records available.

Owners need to arrive at 6 p.m. on the first night of class for check-in and all participants must fill out liability waivers.

Instructor Leslie Sprando offers the one-hour training course every Tuesday from Sept. 13 through Oct. 18 at 6:30 p.m. The course costs \$60 and takes place in the grassy area near the ball fields at the RAC.

To register your dog, call 681-5551 or drop by the Nessmith-Lane Continuing Education Building on the corner of Chandler Road.



## THE BIG STORY

# Teen sentenced to consecutive life sentences in school shootings

Associated Press

ST. CLOUD, Minn. — A 17-year-old who gunned down two classmates at school was sentenced Tuesday to life in prison, with no possibility for parole until he's well over 50.

"You devastated two families, you damaged a community's sense of safety and you destroyed your own and your parents' hope for the future," the judge told Jason McLaughlin at his sentencing.

McLaughlin was convicted of first-degree murder in the September 2003 shooting death of 14-year-old Seth Bartell, and second-degree murder for killing Aaron Rollins, 17.

Witnesses at his trial described how McLaughlin brought his father's pistol to Rocori High School in Cold Spring and shot Bartell, causing a minor wound.

A second shot accidentally killed Rollins.

McLaughlin then chased Bartell up a flight of stairs and fired a fatal shot into his forehead, witnesses said.

McLaughlin's mother argued that a life sentence would deny her son

treatment for mental illness.

But relatives of the slain students said he deserved the longest sentence possible.

"Our family is no longer complete," said Aaron's mother, Sherry Rollins. "Jason handed us a life sentence without parole and he should get the same."

Tom Rollins said he hadn't heard Aaron's twin brother, Adam, say his name since he was killed.

McLaughlin stared down as they talked about how he had destroyed their lives. He declined to speak during the hearing.

His attorneys said McLaughlin felt persecuted by Bartell, and that he and other students called McLaughlin "pizza face" because of his acne.

During the sentencing hearing, they called one witness, special education professor John Harvey Hooper of St. Cloud State University, who testified that McLaughlin suffered permanent psychological harm as a result of the bullying.

McLaughlin's mother, Mary McLaughlin, said her son had para-



Family of Seth Bartell and Aaron Rollins talk with reporters in St. Cloud, Minn., Tuesday. Convicted school shooter John McLaughlin, 17, was sentenced to life in prison Tuesday for the September 2003 killing of classmate Seth Bartell, 14, Aaron Rollins, 17, another student at Rocori High School.

The Associated Press

noid schizophrenia.

"Jason, I can't imagine the pure hell you were going through in school," she said. "We love you very much and we always will."

McLaughlin was sentenced to life with the possibility of parole after 30

years for the first-degree conviction, and 12 years with the possibility of parole after eight for the second-degree conviction.

The sentences will be served consecutively. McLaughlin gets two years credit for time served.

## Oldest person in world dies at age 115

Associated Press

AMSTERDAM, Netherlands — A woman listed as the world's oldest person died Tuesday at age 115, according to the director of the home for the elderly where she lived.

Hendrikje van Andel-Schipper died peacefully in her sleep, according to the home's director, Johan Beijering.

"She was very clear mentally right

up to the end, but the physical ailments were increasing," Beijering said. "She said 'It's been nice, but the man upstairs says it's time to go.'"

Known as "Henny," she lived in Hoogeveen since World War II, moving to the Westerkim elderly home when she was 106.

A fan of the soccer club Ajax, she was born in 1890 and celebrated her 115th birthday on June 29.

Her status as "oldest person" was

recognized by Guinness Book of World Records last year.

She advised others who wanted a long life to "keep breathing" and eat pickled herring, a favorite Dutch snack.

She had no children or immediate family and her husband, Dick van Andel, died of cancer in 1959. Beijering said her closest living relative was a nephew who lives in Spain.

"She wanted me to tell everybody

that she enjoyed the attention, the friends, and the good care she had," Beijering said.

"She felt that being the oldest person in the world for more than a year was long enough."

Guinness spokesman Sam Knights said the oldest authenticated person now is Elizabeth Bolden, 115, of Memphis, Tenn., born Aug. 15, 1890.

The oldest man is Emiliano Mercado del Toro, 114, of Puerto Rico.

## Recover

from page 1

Thirty of the victims in the county were from a beachfront apartment building that collapsed under a 25-foot wall of water as Katrina slammed the Gulf Coast with 145-mph winds. And Louisiana officials said many were feared dead there, too, making Katrina one of the most punishing storms to hit the United States in decades.

After touring the destruction by

air, Mississippi Gov. Haley Barbour said it looked like Hiroshima after the atomic bomb was dropped.

The flooding in New Orleans grew worse by the minute, prompting the evacuation of hotels and hospitals and an audacious plan to drop huge sandbags from helicopters to close up one of the breached levees. At the same time, looting broke out in some neighborhoods, the sweltering city of 480,000 had no drinkable water, and the electricity could be out for

weeks.

With water rising perilously inside the Superdome, Blanco said the tens of thousands of refugees now huddled there and other shelters in New Orleans would have to be evacuated.

She asked residents to spend Wednesday in prayer.

"That would be the best thing to calm our spirits and thank our Lord that we are survivors," she said. "Slowly, gradually, we will recover; we will survive; we will rebuild."

## Herty

from page 1

duct work and asbestos tiles will be removed.

In addition, new lines are being added for more computers throughout the building. An emergency generator is also being added as a backup source of power for the entire building.

"When the building is complete, it will really be designed to function as a 21st century lab building," Homayun said. Recently, the design for the third phase of the construction has begun.

Scheduled to begin in the summer of 2006, the construction will be complete in the spring of 2007.

## Search

from page 1

pus to be interviewed by the campus community."

Hardy said the interviews that each candidate will go through on campus will include people the candidates would work with if hired.

"Because of the importance of the job of the vice president for student affairs and enrollment management, each candidate will also meet with people from academic affairs and students," Hardy said.

He also said there will be an open forum for others on campus to be able to meet with each candidate.

"This person's going to get a work-out when he or she gets to campus."

**Earn up to \$34,000**  
while you finish your Nursing Degree

Looking for a financial boost to complete your Bachelor's Degree in Nursing. Let the Navy Nurse Candidate Program help lead the way!



### Eligibility Requirements

- US citizenship
- 18 to 40 years of age
- Cumulative GPA of 3.0 or higher on a 4.0 scale
- Physically fit with NO major medical problems and be able to swim
- NO felony convictions
- NO pending civil actions or bad debt
- NO history or illicit drug use

### When Selected

- Receive about \$1000 a month for up to 24 months during last two years of BSN program
- Receive a \$10,000 sign-on bonus paid in 2 installments
- Naval Officer commission upon graduation
- Full Navy Benefits as Navy Nurse include:
  - Full medical/dental coverage
  - 30 days paid vacation each year
  - Many other benefits
  - Safe nurse/Patient ratios

For More Information Call:

**NAVY OFFICER PROGRAMS**  
1-800-342-8123

E-mail: [lpt\\_jax@nrc.navy.mil](mailto:lpt_jax@nrc.navy.mil)

**Accelerate Your Life**

## GSU Student Media Website

[www.stp.georgiasouthern.edu](http://www.stp.georgiasouthern.edu)

http://www.stp.georgiasouthern.edu/

Updated Continuously

AP Top News at 11:57 a.m. EDT

**Aruba arrests 3 in missing student case**

ORANJESTAD, Aruba (AP) - Aruban police arrested three men Thursday who admitted giving a ride to an Alabama teenager the night she disappeared more than a week ago, the attorney general said. The three men were previously questioned in the disappearance of Natalie Holloway, 18, and described as "persons of interest." They told police they dropped off Holloway, of Mountain Brook, Ala., at her hotel early May 30, but Holiday Inn employees say security cameras did not record her return.

**Military investigates U.S. guards in Iraq**

BAGHDAD, Iraq (AP) - The U.S. military is investigating 16 private American security guards for shooting at U.S. Marines and Iraqi civilians during a three-hour spree last month west of Baghdad, officials said Thursday. Meanwhile, President Jalal Talabani said up to 25 Sunni Muslim Arabs will be appointed to join elected lawmakers in drafting Iraq's new constitution, averting a threatened Sunni boycott of the process if they did not receive greater representation.

**Tropical Storm Arlene forms in Caribbean**

MIAMI (AP) - Tropical Storm Arlene developed Thursday in the northwest Caribbean Sea, edging closer to western Cuba as the Atlantic hurricane season's first named storm. Gulf Coast residents, including those in storm-battered Florida, were warned to beware. Arlene had maximum sustained winds of 40 mph after strengthening from a tropical depression that formed Wednesday, the National Hurricane Center in Miami said. Tropical storms have not sustained winds of 39 mph to 74 mph.

**Greenspan: economy on fairly firm ground**

WASHINGTON (AP) - Federal Reserve Chairman Alan Greenspan said Thursday that the economy seems to be on a "reasonably firm footing," with inflation under control. In his most extensive remarks on the state of the economy since February, Greenspan said that a recent uptick in economic indicators showed the soft readings of the early spring were not signaling a more serious slowdown in the pace of activity.

**Hispanics are fastest-growing minority**

WASHINGTON (AP) - Hispanics accounted for half the 2.9

Go to: <http://www.stp.georgiasouthern.edu/reflectarchive/index.html>

**Student Media**

George-Anne  
Miscellany  
Reflector  
Other Information  
Student Media Alumni  
Fun Stuff  
Documents  
Student Media Handbook  
Extra Services  
TV LISTINGS  
MOVIE LISTINGS  
University Radio  
WGS 91.3 FM  
On-line learning  
Photoshop Level 1  
Photojournalism Ethics  
Documents  
Student Media Handbook  
Hall of Fame Musical Letter to the Editor  
Graphic: Sheet Music, JPS format (11/24)  
Sound Clip: WAV format (1/7/04)  
Galleries  
Photo Gallery: Homecoming 2003

**Covering Campus like a Swam of Gnats**

**In the House**

**The G-A Today**

NEWS: For the latest campus news, click here.

ARCHIVE PROJECT:

- Take a look at The G-A's earliest editions... 1927 to 1958 and growing!
- Check out early issues of The Reflector yearbook!

AD INFORMATION: Rate Card, Schedule and G-A Print Info (download PDF)

powered by Google

The George-Anne  
Coming Fall 2005

**GAD**

George-Anne Daily • Four Days a Week to Serve You Better

**MONDAY  
TUESDAY  
WEDNESDAY  
THURSDAY**

Live  
News Feeds

See the Latest  
G-A Issue  
Online!

Links to  
The Reflector  
& Miscellany

Want to place a display ad or classified?

Email the Ads Manager at  
[ads@georgiasouthern.edu](mailto:ads@georgiasouthern.edu)

Advertising rates are also available online!





# OPINION



## THE GEORGE-ANNE DAILY EDITORIAL BOARD

LUKE HEARN, EXECUTIVE EDITOR  
ADAM CRISP, MANAGING EDITOR FOR NEWS  
MORGAN MARSH, MANAGING EDITOR FOR OPERATIONS  
RACHEL WEEKS, NEWS EDITOR

LaVene Bell-Koepke, Photo manager  
Miguel Fuller, Variety editor  
Bert Noble, Deputy managing editor

Trevor Long, Sports editor  
Casey Altman, Assistant news editor  
Anne McGuire, Copy editor

## OUR VIEW

# No 'voodoo medicine' being practiced in the 'Boro

AT ISSUE: Stereotypes and rumors give a bad name to good care

Students may complain about long waits at the 'voodoo hut,' but when you look at the number of nurses and doctors at the Health Center compared to the number of students enrolled, it's no wonder that it takes a while to get treated.

If students make appointments in advance or visit the center in the morning before the rush, the wait time is dramatically less.

Students should keep in mind that the Health Center is a free service and

consider the price they would pay to visit a local doctor. The wait is well worth the difference in cost.

It's amazing that Health Center workers can keep a happy and helpful attitude with students when they are constantly overworked and understaffed.

Every day they work with potentially contagious students and still maintain a friendly demeanor. Doctors are thorough and really listen to patients' symptoms, sometimes testing

blood for illnesses that can be easily overlooked.

Some students complain that the Health Center does not help them, but come on, they are not going to prescribe Vicodin for a headache, nor will they give Oxycontin for a sore foot.

If students need such strong painkillers, they should probably be at a hospital.

It's important to remember that the Health Center exists for the benefit of

the students on our campus.

The employees there are dedicated individuals who have devoted their lives to the health and wellness of Georgia Southern students.

The next time you're feeling ill or need a check-up, go on over to the Health Center.

Don't be afraid they'll put a hex on you or treat you with some form of witchcraft.

We promise they'll provide you with the best medical care available.

## Morgan Marsh TAKING IT ALL IN

# Driving drunk is not worth the risk

There is a disturbing trend among college students that desperately needs to be addressed.

The fact that college students tend to drink quite a bit is of no surprise to anyone, I'm sure. But over my last three years as a student, I've noticed that driving drunk is perfectly acceptable to most students.

Many students believe driving home from the bars after "a few drinks" is no big deal. It's hard to turn down a ride from a friend who swears he's fine to drive, especially when your alternative is a long walk alone.

But driving home drunk is never a smart decision, no matter if "home" is 30 feet or 30 miles away.

Besides the fact that you are putting yourself and your friends in danger (I don't care how great of a driver you think you are drunk, you're not), there are other people out there on the road with you.

Families live here as well. They shouldn't have to worry about whether they should leave their house on a Friday night, or let their children go out on the weekends because there are college kids all over the roads who don't know when they've had too much to drive.

This isn't an attack on college students. I'm a student who's done my fair share of stupid things. But at some point we all need to realize that the actions we take affect many more people than just ourselves. Driving the two miles home from a bar after having just a few drinks could leave you with heavy fines, jail time, injuries or the guilt of an innocent driver or passenger's death on your conscience. It's not worth it.

There are several alternatives to driving home after drinking at a bar or party.

There's nothing wrong with walking home. We're all used to walking around campus every day. Almost all of Georgia Southern's dorms, as well as a large number of apartment complexes in Statesboro, are well within walking distance of Statesboro's main bars. Of course if you're alone, or not within walking distance of your home, walking isn't the best option.

The most obvious solution is to have a sober driver. Most likely everyone has at least one friend who doesn't drink, or at least who doesn't feel the need to drink every night of the week.

Ask a friend to pick you up from the bars every now and then. A good friend would rather be called out of bed to drive you home from the bar than be called to drive you home from the police station.

The best solution in my opinion is to call a cab. Why more students don't call for a taxi at the end of the night, I don't understand. I can't imagine a better alternative to driving home drunk.

It doesn't cost much, especially when compared to the amount of money students dig up to afford cover charges and expensive drinks at the bars.

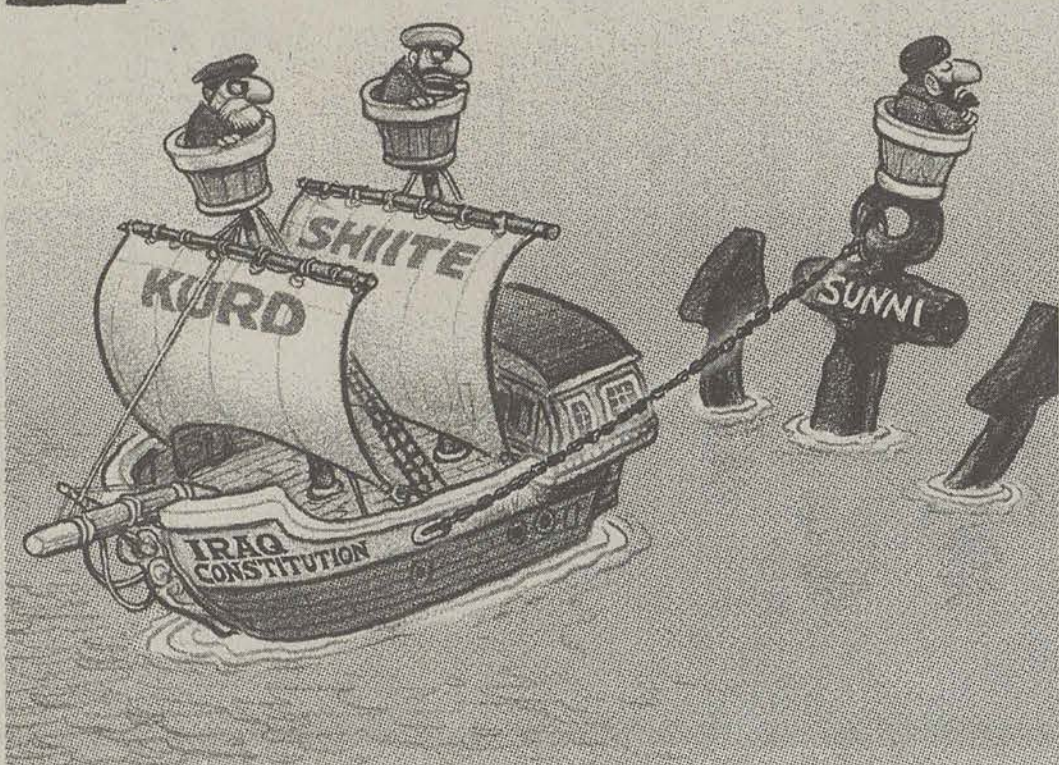
While it may seem like a waste of money to catch a cab for a two-minute drive, the price of getting a DUI doesn't even compare. It's the easiest, safest and smartest options.

Statesboro has two taxi services listed in the phone book. Eagle Taxi (912-681-3333) is advertised in some bars and fliers, including Retrievers. Flash Jones Taxi Cab Co. (912-764-3333) is also available in Statesboro.

College isn't just about getting a good education or going out to the bars. Students should be learning how to live on their own and take care of themselves. With that comes responsibility. Please be responsible when it comes to drinking.

Write Morgan at [mmarsh1@georgiasouthern.edu](mailto:mmarsh1@georgiasouthern.edu)

STAR TRIBUNE  
S&K



## Chris Lane: YOUR TURN

# Liberals should look at themselves to place blame

I would like to thank the countless liberals who routinely voice their opinions on the opinions page.

Their angry tone, vulgar suggestions and lack of supporting arguments do not advance their cause in the least. Instead, their actions and overall attitude have served to advance the interests of the right wing for the past several years.

The American people have demonstrated that they will not stand with those who express their political opinions with anger and vulgarity.

One needs only to refer to the backlash against Whoopi Goldberg and Chevy Chase after they dropped the "f-bomb" on the president several times at a Democratic fundraiser. Furthermore, John Kerry paid a price for calling those two the "heart and soul of America" after their tirades.

Americans resented the fact that he associated that hate speech with their "hearts and souls."

Why all of a sudden do Democrats feel the need to resort to such antics? Perhaps it is because they are

having trouble articulating their political positions as the party out of power.

In any event, there is a marked lack of "meat" in their arguments, and most Americans cannot tell you what positions John Kerry and his cohorts took on important political questions during the last election. The phrase, "I have a plan for that," became a snickering point for many during the presidential debates.

Political power was not shifted because of ignorant smear campaigns.

We have heard the same angry rants from liberals for years, and for years Republicans have swept elections. Is this a coincidence? Possibly, but just to be safe, I would ask that Luke Hearn continue to run the picture of himself making his inappropriate gestures towards the White House.

The far left has done an outstanding job of hijacking the Democratic Party and driving moderates to the right wing.

History will record the turn-of-the-century answer to the popular 1992 election theme: It's the Dean effect, stupid.

Write Chris at [Chrisbc01@aol.com](mailto:Chrisbc01@aol.com).

## Adam Johnson: YOUR TURN

# Don't complain about gas if you drive a gas hog

A lot of the media's attention of late has been spent on the rise of gas prices, and the discussion has turned to the enlarged chunk of budgets now allotted for gas.

A number of examples, however, have shown people who have little right to complain about the price of gas.

Last week on CNN's Headline News a reporter told the story of a woman who has stopped buying some of the items she used to buy for her children.

The woman stated she can no longer stand to take her six-year-old twins shopping with her because they continue to ask for things that she can no longer afford to buy. Video was shown of her pitifully pushing a cart around the Dollar Tree in her town and then at the end of the piece driving home in her 2005 GMC Yukon, a vehicle the EPA estimates gets 16 miles to the gallon.

A similar story was written for this paper. Under the headline "Rising gas prices put a pinch on students," Kori Williams, a person I neither know nor imagine will ever meet, was shown pumping gas into her vehicle. Granted, the image of her vehicle is not a clear one, but Ms. Williams drives what appears to be a fairly new sport utility vehicle.

We live in an era where gas prices are on the rise, and relief is not in the near future's forecast.

We as a nation need to realize that we lose the right to complain about the price of gasoline as soon as we purchase a vehicle that is terrible in the gas mileage department.

Do I think gas prices are too high? I most certainly do. But I keep my mouth shut, because I drive a ten-year-old pick-up with 12 MPG on a good day, a vehicle that gives me just as little right to complain as the Yukon driver on Headline News.

Write Adam at [ajohns77@georgiasouthern.edu](mailto:ajohns77@georgiasouthern.edu).

## Brandon Smith GUEST COLUMNIST

# Rising gas prices can be a good thing

Questions concerning the expensive gas prices have made their way into daily conversation.

Not a day goes by in which I don't hear both students and faculty around campus complaining about the sudden surge in gas prices.

Even stars like actor/comedian Chris Rock have made numerous public appearances to discuss the problem at hand.

However, while the majority of the population is trying to solve this "problem," I can't help but see many positive effects of the high prices.

Already, mass transit systems have received boosts in usage.

USA Today reported that transit systems, such as the Los Angeles Metropolitan Transportation Authority (MTA), have received large increases in the average weekly bus and metro railway boardings.

The average number of boarding passengers has increased by 100,000 for MTA alone.

With people driving less and carpooling more, air pollution output will decrease dramatically.

Vehicles emit many harmful pollutants into the environment, including Carbon Monoxide (CO), Nitrogen Oxide (NO<sub>x</sub>), Ozone (O<sub>3</sub>) and Chlorofluorocarbons (CFCs), just to name a few.

The higher gas prices are also causing people to think twice before purchasing large and inefficient vehicles. The current situation is causing hybrid vehicles, with mileage around 50 miles per gallon, to become more and more appealing.

Because of this change in opinion, car manufacturers like Toyota are looking into ways to "soup up" some of

# Even stars like actor/comedian Chris Rock have made numerous public appearances to discuss the problem-at-hand.

their current hybrid models.

For the students like me who can't yet afford a brand new hybrid vehicle, here are a few tips for getting the most out of your full tank: avoid high speeds, drive smoothly, avoid lengthy idling and stay away from traffic.

These few changes in daily driving can also help reduce air pollution.

Aside from the fact that higher gas prices can drastically improve the quality of our environment, people need to understand that, compared to a lot of the things people consume, gas is not all that expensive.

Even at the national average of \$2.61 per gallon of gas, you're probably spending more on bottled water or soda (over \$5.00 per gallon), or shampoo (over \$20.00 per gallon), among many other things.

I sometimes feel people have the false impression crude oil comes in infinite supply. If high gas prices are negatively affecting you right now, imagine how things will be when we run out completely.

Maybe now everybody can help do their part in conserving the remainder of the Earth's petroleum.

It's time to stop complaining about "high" gas prices and time to start thinking about the real problems at hand.

Write Brandon at [bsmith75@georgiasouthern.edu](mailto:bsmith75@georgiasouthern.edu).

## Staff Writers

Chad Bishop, Angela Byrd, Britt Davis, Cheryl Frost, Robert Greene, Emily Haymans, Alicia Howe, Darren Jones, Heidi King, Kessler Lawrence, Jennifer Maddox, Bryan Metcalf, Jenny Miller, Kristin Miller, Danielle Powell, Mary Kate Roan, Renaldo Stover, Brandee Thomas, Marcy Thornton.

## Affiliated Publications

Reflector editor: Katie Glorieux, Miscellany editor: Ashley Stevens

## Advertising & Distribution Services (ADS)

Marketing Director: Lindsey Treadwell  
Ad Reps: Drew Anthony, Caitlin Carter, Angela Parker

## Photography, Art, Graphics, Electronic Systems (PAGES)

Production Manager: Sarah Banks  
Photographers: Katie Anderson, Grayson Hoffman, Hillary Jones, Ryan Moore, Brian O'Conner, Sarah Parillo, Terrence Williams

## Letters Policy

The George-Anne welcomes letters to the editor, story submissions and guest columns from people both inside and outside the GSU community. All copy submitted should be 250 words or less, typed, and preferably sent via email in Microsoft Word format to [gaeditor@georgiasouthern.edu](mailto:gaeditor@georgiasouthern.edu). All submissions must be signed and include a mailing address and phone number for verification. The editors reserve the right to reject any submission.

## How to Contact Us:

Letters to the Editor: [gaeditor@georgiasouthern.edu](mailto:gaeditor@georgiasouthern.edu)  
News: [ganews@georgiasouthern.edu](mailto:ganews@georgiasouthern.edu)  
Sports: [gasports@georgiasouthern.edu](mailto:gasports@georgiasouthern.edu)  
Features: [gahiat@georgiasouthern.edu](mailto:gahiat@georgiasouthern.edu)  
Advertising: [ads@georgiasouthern.edu](mailto:ads@georgiasouthern.edu)  
Newsroom: 912-681-5246  
Fax: 912-486-7113







SPORTS



Mike Sewak television and radio shows begin this weekend

Georgia Southern football fans can catch head coach Mike Sewak on television and on the radio again throughout the 2005 season.

Starting this Sunday night (Sept. 4) and every Sunday during the season, Georgia Southern Football 2005 with host Brady Pocsik and Coach Sewak will air at 10 p.m. on WTGS-TV (Channel 28/Fox Savannah).

The show will broadcast highlights from the previous game and commentary from Coach Sewak.

GSU Football 2005 can also be seen Friday afternoons at 1:30 p.m. on both Fox Sports Net South and Fox College Sports Atlantic. In addition, the show is also available on WPHJ-TV Channel 46 in Vidalia, Northland Cable Channel 97 and via the internet at

www.georgiasoutherneagles.com.

Every Monday at 7 p.m. throughout the season, starting on Sept. 5th, The Coca-Cola Mike Sewak Show will be held at RJ's Restaurant in Statesboro.

The call-in show, with play-by-play voice Nate Hirsch, features player and coach interviews in addition to a question and answer segment for fans.

Women's soccer prepares for Mercer

Eagles look to win 10th straight vs. Mercer University Bears

G-A News Service

Georgia Southern women's soccer aims for their second win of the season, welcoming Mercer to new Eagle Field today for a 4 p.m. match.

Both teams enter today's match with a 1-1 record, losing their respective openers to Southeastern Conference schools before bouncing back with wins on Sunday. GSU traveled to Georgia on Friday and came back with a 6-0 defeat, but rebounded with a shutout victory over North Florida, relying on freshman Ashley Toussaint's goal in the 48th minute in the 1-0 win.

Laura-Ashley Harris made seven stops versus the Ospreys in picking up her third career shutout. Harris faced 15 shots on the afternoon, none scarier than the shot off the crossbar in the 58th minute.

Toussaint becomes the first GSU freshman to record a match-winning goal this early in the season since Katy Znosko in 2001.

GSU leads the all-time series with Mercer 9-1 and has won the last nine meetings. The Bears posted a 4-0 win in Macon back in 1994 but since then GSU has outscored Mercer 30-6 with four shutouts. Only once in that time has MU scored more than one goal.

Mercer lost 7-0 to South Carolina Friday but evened its mark with a 2-1 win at UNC Charlotte.

GSU hits the road for four straight away contests beginning Saturday at Winthrop. The Eagles will then return home Tuesday, Sept. 20, hosting Jacksonville at 4 p.m.



GSU freshman midfielder Kate Boardman moves the ball downfield during Sunday's game vs. UNF.

LaVene Bell-Koepeke/STAFF

Georgia Southern Eagles

Record 1-1

Players to Watch

- #1 Laura Ashley Harris
  - her 97 saves last season as goalkeeper is second most in GSU history
- #24 Ashley Toussaint
  - her goal in Sunday's game was game-winner
- #10 Jenni Boykin
  - Second in team scoring in 2004 season



Mercer Bears

Record 1-1

Players to Watch

- #15 Megan Castaldo
  - game winning goal against UNC-Charlotte last week
- #11 Catie Marshalek
  - 2004 All-Freshman team
- #00 Lauren Burch
  - 98 saves in '03 season
  - Ranked 5th in all-time saves with 202
  - Ranked 3rd in career shut-outs with 10



MEN'S BASKETBALL

Eagles release 2005-06 schedule

G-A News Service

Stops in 10 states, including a trip to Lubbock, Texas for the Coaches versus Cancer Classic highlight the 2005-06 Georgia Southern basketball schedule according to an announcement made by head coach Jeff Price on Sunday.

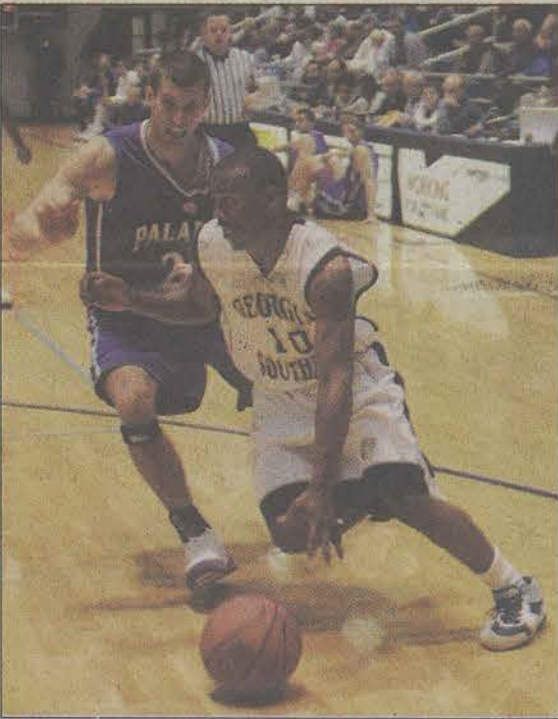
"I am very pleased with the schedule we have put together this season," said Price. "I feel like it will certainly prepare us for another tough year in the Southern Conference. The road trips early in the season will be a great experience for our players."

GSU opens the 2005-06 season Thursday, Nov. 10 as it plays Portland in the first round of the Coaches versus Cancer Classic. The Eagles will play either host school Texas Tech, who advanced to the Sweet 16 of the 2005 NCAA Tournament, or San Jose State in the second round of the tournament.

The Eagles visit Kansas State on Nov. 18 before returning to Hanner Fieldhouse for a three game home stand, including their home opener against Mercer on Nov. 22. The Eagles welcome Augusta State on Nov. 26, while Illinois-Chicago makes its return trip from last years ESPN Bracket Buster game on Nov. 28. GSU travels to Springfield, Mo. for the Missouri State Tournament Dec. 2, where it faces host Missouri State in the opening round. The Eagles face off against either South Florida or Texas A&M Corpus Christi on Dec. 3.

Price and the Eagles will travel to Illinois State on Dec. 10, before returning to host Jacksonville on Dec. 14. The Eagles' final game before the Christmas holiday will be a trip to Arkansas State. Rounding out the non-conference portion of the schedule is a trip to Jacksonville for the second meeting of the season with the Dolphins and a contest with Webber International at Hanner Fieldhouse on Jan. 3.

GSU opens the 2005-06 Southern Conference season



File photo

Elton Nesbitt drives the lane against Furman on Feb. 5. The Eagles beat the Paladins 81-63 at Hanner fieldhouse.

on Jan. 7 when it travels to Charleston, S.C. to face The Citadel. The Eagles welcome the College of Charleston to Hanner Fieldhouse for the SoCon home opener on Jan. 9 at 7:30 p.m. SoCon foes Wofford, Furman, UNC Greensboro, Elon, Western Carolina, The Citadel and Davidson also visit Statesboro during the season while the Eagles will face Davidson, App. State, Chattanooga, C of C, Wofford and Furman on the road.

The 2005-06 SoCon Tournament will be held March 1-4 in Charleston, S.C.

GSU returns eight letter-winners and three starters, having won the South Division regular season title two of the last four years. The Eagles, who finished sixth in the nation in scoring last season, will begin the 2005-06 season with an 11-game home court winning streak, the 12th longest in the nation.

GOLF

GSU Golf announces 2005-06 schedule

G-A news Service

The Georgia Southern golf team will compete in 13 tournaments over the course of fall 2005 and spring 2006, according to an announcement made by head coach Larry Mays yesterday.

GSU opens the season at the Holston Hills Country Club in Knoxville, Tenn. for the Coca-Cola Tennessee Tournament of Champions on Sept. 12-13. The following week, the Eagles will travel to Wayzata, Minn. for the Minnesota Collegiate Invitational held Sept. 17-18.

After a week off, GSU will make its first of two trips to California to compete in the Clubglove Intercollegiate Oct. 3-4 in Malibu, Calif. The remainder of the fall will see a trip to Rocky Face, Ga. for the Carpet Capital Collegiate Classic and Howey-in-the-Hills, Fla. to compete in the Hooters Collegiate Match Play. The match play is held each fall as an invitation only to the previous top 16 teams in the NCAA.

The spring portion of the schedule is kicked off once again with the Gator Invitational Feb. 18-19 in Gainesville, Fla. The Eagles head west for the Ashworth Intercollegiate Feb. 27-28 before traveling to Dorado, Puerto Rico for the Hyatt Plantation Club Intercollegiate March 5-7.

The Eagles return home for the Schenkel E-Z-GO Invitational March 18-19. The 2006 event, which annually draws the top teams in the country, features six teams that advanced to the 2005 NCAA Championships.

The Eagles will round out the spring playing in the Augusta State Invitational April 1-2 and the Intercollegiate in Cary, N.C. April 7-8.

The Southern Conference Championship, where the Eagles finished second in 2005, will be held April 16-19. The Eagles will conclude their regular season play May 14-15 at the Linger Longer Invitational in Greensboro, Ga.

"We have scheduled very strong tournaments over the past few years and this season will be no exception," said Mays. "We are excited to add Minnesota and Pepperdine to our schedule as both fields are strong every year. We will compete against many of the nation's top teams this fall and



File photo

Former GSU standout Aron Price makes his put during a tournament last season

we will get to see where we stack up very early.

"It will be nice to play at The Farm in Dalton," he continued, "as well as being invited to play in the Hooters match play. These tournaments should prepare us for the spring as well as another run at the NCAA Championship."

GSU returns seven letter-winners that helped guide the Eagles to a 13th place finish at the 2005 NCAA Championship

BASEBALL

Double-A team hunkers down with big league Braves

By Charles Odum  
Associated Press

ATLANTA - After making a harrowing escape from Montgomery, Ala., and Hurricane Katrina Monday, the Class AA Mississippi Braves hunkered down at a hotel near the Atlanta Braves' Turner Field Tuesday, unsure if their season was over.

The team bused to Atlanta from Montgomery after Monday's game was canceled - "None too soon for me," said Mississippi manager Brian Snitker. "The wind and the rain were unbelievable. The bus was rocking in the wind."

Snitker said due mainly to reports of widespread power outages in the Jackson, Miss., area, the team's games Tuesday, Wednesday and Thursday were canceled. Tentative plans are to return Thursday for a Friday game, but Snitker was skeptical.

Mississippi Braves Stadium is in Pearl, Miss., a suburb of Jackson.

Snitker said the hitters' background in centerfield has been damaged at the Pearl park, but otherwise he thinks the field would be playable.

"I don't know if there would be any place for the other team to stay," he said. "We're all going to go back to powerless homes."

Added Snitker: "We'll go back Thursday and we'll probably regroup and make some plans."

Because he and his players all rent apartments or homes, Snitker emphasized he was more concerned about residents in the Pearl and Jackson area.

Snitker said the Mississippi team has remaining road series scheduled at Carolina and Raleigh but said "I don't think we would travel that far if we can't play in our stadium."

Added Snitker: "It wouldn't be a monumental thing if we didn't play any more this year."

At 28-34, Mississippi has been eliminated from playoff contention in the second half of the Southern League season. Mississippi was second in the South Division in the first half of the season.

Because rain forced the Atlanta Braves' game to be postponed Monday, a doubleheader is set for Wednesday.

That's good news for the Mississippi Braves, who need the diversion and have been provided tickets.

"It gives them something to do, and I don't think they make enough money to go out and eat or do much," Snitker said.

The Mississippi players also planned to attend Tuesday night's game, according to Snitker.

EVERYTHING ELSE

Georgia high school football polls

Associated Press

Class AAAAA	1. Lowndes (20) 200
2. Camden County 179	3. Valdosta 154
4. Brookwood 127	5. Harrison 117
6. Parkview 81	7. Sequoyah 61
8. McEachern 49	9. Norcross 42
10. Houston County 27	Class AAAA
1. Warner Robins (19) 199	2. Statesboro (1) 179
3. Tucker 144	4. Rome 143
5. Ware County 115	6. Griffin 91
7. Northside-Warner Robins 80	8. Marietta 61
9. Salem 39	10. Lee County 22
Class AAA	1. Washington County (16) 196
2. Cartersville 162	3. LaGrange (3) 156
4. Carrollton (1) 151	5. M.L. King 101
6. Cairo 85	7. Peach County 85
8. North Hall 54	9. Shaw 50
10. Troup 26	Class AA
1. Charlton County (15) 195	2. Buford (3) 174
3. Dublin (2) 159	4. Laney 134
5. Calhoun 118	6. Vidalia 102

NFC

East	W	L	T	Pct	PF	PA
Dallas	2	1	0	.667	50	32
N.Y. Giants	2	1	0	.667	56	52
Philadelphia	2	1	0	.667	78	69
Washington	1	2	0	.333	44	62

AFC

East	W	L	T	Pct	PF	PA
Buffalo	2	1	0	.667	56	57
New England	2	1	0	.667	77	53
N.Y. Jets	2	1	0	.667	52	39
Miami	1	3	0	.250	61	85

South

Jacksonville	2	1	0	.667	54	57
Houston	1	2	0	.333	42	58
Tennessee	1	2	0	.333	54	57
Indianapolis	0	4	0	.000	72	105

North

Cleveland	2	1	0	.667	58	50
Pittsburgh	2	1	0	.667	65	51
Baltimore	1	2	0	.333	38	42
Cincinnati	1	2	0	.333	54	67

West

Denver	3	0	0	1.000	83	59
San Diego	1	2	0	.333	59	50
Kansas City	0	3	0	.000	50	74
Oakland	0	3	0	.000	46	57

Transactions

American League

BOSTON RED SOX - Recalled RHP Manny Delcarmen from Pawtucket of the IL. Optioned LHP Abe Alvarez to Pawtucket. CHICAGO WHITE SOX - Placed 3B Joe Crede on the 15-day DL, retroactive to Aug. 28. Recalled INF Willie Harris from Charlotte of the IL. Called up RHP Brendon McCarthy from Charlotte. Optioned RHP Jeff Bajenaru to Charlotte. NEW YORK YANKEES - Signed INF Mark Bellhorn. Transferred RHP Carl Pavano from the 15- to the 60-day DL. SEATTLE MARINERS - Placed INF Willie Bloomquist on the 15-day DL. Recalled INF Jose Lopez from Tacoma of the PCL. TEXAS RANGERS - Purchased the contract of RHP Edison Volquez from Frisco of the Texas League. Optioned LHP C.J. Wilson to Frisco.

National League

ATLANTA BRAVES - Optioned RHP Joey Devine to Richmond of the IL. Transferred C Edie Perez from the 15- to the 60-day DL. Named Dayton Moore assistant general manager. CHICAGO CUBS - Placed RHP Kerry Wood on the 15-day DL. Purchased the contract of RHP Jermaine Van Buren from Iowa of the PCL. Recalled OF Matt Murton from Iowa. SAN DIEGO PADRES - Activated SS Khalil Greene from the 15-day DL. Designated SS Wilson Valdez for assignment. SAN FRANCISCO GIANTS - Traded LHP Jason Christiansen to the Los Angeles Angels for LHP Dusty Bergman and RHP Ronnie Ray. WASHINGTON NATIONALS - Traded RHP Ben Cox to the San Francisco Giants for INF Delvin Cruz. Sent RHP Danny Ruckel outright to Harrisburg of the Eastern League.

NFL Thursday's Games

Atlanta at Miami, 7:30 p.m.  
Houston at Tampa Bay, 7:30 p.m.  
New York Jets at Philadelphia, 7:30 p.m.  
Cleveland at Chicago, 8 p.m.  
Green Bay at Tennessee, 8 p.m.  
Jacksonville at Dallas, 8 p.m.  
New York Giants at New England, 8 p.m.  
Pittsburgh at Carolina, 8 p.m.  
Washington at Baltimore, 8 p.m.  
New Orleans at Oakland, 9 p.m.  
San Francisco at San Diego, 10 p.m.  
NFL Friday's Games  
Detroit at Buffalo, 7 p.m.  
Indianapolis at Cincinnati, 7:30 p.m.  
Kansas City at St. Louis, 8 p.m.  
Minnesota at Seattle, 9 p.m.  
Denver at Arizona, 10 p.m.