

Georgia Southern University

Digital Commons@Georgia Southern

The George-Anne

Student Media

1-28-2004

The George-Anne

Georgia Southern University

Follow this and additional works at: <https://digitalcommons.georgiasouthern.edu/george-anne>

Recommended Citation

Georgia Southern University, "The George-Anne" (2004). *The George-Anne*. 1840.
<https://digitalcommons.georgiasouthern.edu/george-anne/1840>

This newspaper is brought to you for free and open access by the Student Media at Digital Commons@Georgia Southern. It has been accepted for inclusion in The George-Anne by an authorized administrator of Digital Commons@Georgia Southern. For more information, please contact digitalcommons@georgiasouthern.edu.

SPORTS

Hoop Troop plays with no regard to their own safety

Page 6

NEWS

UN considers helping to turn Iraq over to its citizens

Page 8



The GEORGE-ANNE

www.stp.georgiasouthern.edu

January 28, 2004

Wednesday

Volume 76, Number 56

WHERE YOUR BUCK STOPS



TECHNOLOGY

25 percent
\$150 (currently \$76)
97.4 percent increase

ATHLETICS

28 percent
\$166 (currently \$161)
4 percent increase

STUDENT ACTIVITIES

20 percent
\$122 (currently \$106)
15 percent increase

HEALTH SERVICES

19 percent
\$115 (currently \$114)
1.3 percent increase

CRI FACILITIES

8 percent
\$50 (currently \$50)
0 percent increase

Proposed fee increases to be submitted to Board of Regents

By Luke M. Hearn
lheard@georgiasouthern.edu

Activity, health services, athletic, technology, housing, and food services fees may be rising next year after Georgia Southern submitted to the Board of Regents the proposed fee increases to take affect next semester in the fiscal year of 2005.

Many of the increases are quite small and are a result of inflation, such as the \$3.00 increase in the health services fee, and \$8.00 increase in the athletic fee. The student activity fee is also being proposed to increase.

Student housing fees are also proposed to increase, partly because of inflation, but also because each room will be equipt with a micro fridge, and have access to free laundry. But as Director of Auxiliary Services Joe Franklin, said,

"students will still have to pay for their detergent."

Although Southern Courtyard Apartments already has access to free laundry since there are washers and dryers in the apartments, Franklin said that the demand to live there has increased. All of the increases aren't the same for each student living complex, but vary from three, to nearly ten percent. Both the addition of the micro fridges to each room and the access to free laundry come from suggestions by the Residence Hall Presidents Council. The residence hall activity will remain at \$18.00.

Food Services also has some proposed increases. Each meal plan is set to increase about six percent, due to the meal plan roll-over. Up until last semester, meals on a meal plan were spread out over the week with a certain amount of meals to be eaten each day. If the meals weren't eaten, they were lost. Now,

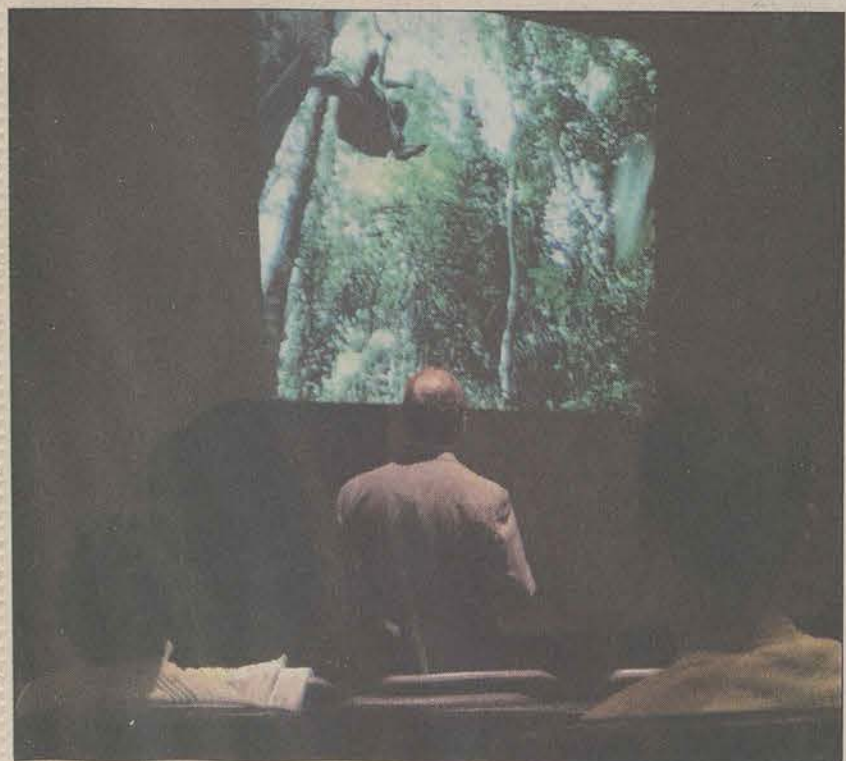
meals are grouped by week and if not used over the course of that week, they are void. Franklin said that many students are now using the remainder of their meals at the end of the week at the Pickle Barrel. Before, daily leftover meals could be spent there, but many more are being used there now that leftover weekly meals can be used.

Franklin said that without the rollover, the plans would only increase about two percent, but that since students have pushed for so long for the roll-over plans, it would be best to keep them that way.

Although there is no proposed CRI Facilities fee increade that will be taking affect this semester, there is one being proposed for fiscal year 2006 that would

See Fees, Page 5

Project JASON Brings Rainforests of Panama to GSU



David Caselli/STAFF

Elementary and middle school students participated in a live uplink with Project JASON scientists in Panama.

By Scott Corwin
sdcorwin2@hotmail.com

Georgia Southern is joining universities across the nation by providing elementary and middle school students with an interactive education opportunity known as Project JASON.

Founded by Dr. Robert Ballard, who also discovered the Titanic's wreckage, Project JASON puts students in contact, both via satellite and in person, with renowned scientists across the globe to expose them to real field situations.

"We want students to see that not all scientists are dressed in white," said Jean Smith, Institutional Support Specialist at the Regional Education Service Agency.

This year's activities take place in the rainforests of Panama where kids will learn about a plethora of domestic species from the forest floor to the tree-lined canopies.

During the first live uplink, locally hosted in the Nes-smith-Lane Continuing Education Building, the on-site scientists and their Argonauts - students who earn a spot on the expedition, greeted the audience.

Over the course of an hour, the presentation challenged participants to answer questions based upon material learned in their classrooms. Answers were voted upon by the class, and they checked to see how

See JASON, Page 5

New residence hall to open Fall 2005

By Sarah Frey
sfrey11@yahoo.com

Freshman who have had to endure the cramped spaces, community bathrooms, and overall lack of privacy in traditional first-year residence halls such as Johnson and Winburn are bound to be jealous of freshman living on campus the fall of 2005.

Eagle Village, the new freshman building opening that semester, is a far cry from current freshman housing. Forget going insane from listening to your roommate's music or wishing that they would just go to bed and turn off the light.

Students living in Eagle Village will have their own bedroom, sharing a suite with three other students. Unlike the most recent additions to campus housing, Southern Pines and Southern Courtyard, however, students will not have a choice between a two-bedroom suite or a four-bedroom apartment. All the suites are four-bedroom.

Also, instead of having the apartment entrances on an outdoor walkway, they will be on an indoor hall in the interest of giving the freshmen a sense of community during their first year of college. The residence hall will be four stories tall, and house roughly 800 students.

See Village, Page 5

EAGLE VILLAGE

- Four-bedroom suites
- Two buildings, L-shaped and four stories tall
- Total population of 800 students
- Clubhouse including two classrooms, computer lab, ping-pong table, pool table, and X-Box
- Police substation included in building

Weekday Weather

Wednesday



Sunny

HIGH

53°

LOW

28°

Thursday



Partly Cloudy

HIGH

57°

LOW

38°

Only in America

- Poultry pursuer becomes a celebrity in Key West
- New York girl finds a burglar in her closet
- Kansas man leaves one judge buzzing in court



Page 3

Opinions

- Adam Brady presents the 'Bradiet'
- Grace-Marie Turner highlights the ideas included in the Atkins diet



Page 4

Sports

- Men's basketball game postponed due to weather
- Lady Eagles use rebounds to top College of Charleston
- Women's tennis edged by Stetson in Florida road trip



Pages 6

Inside

Police Beat	2
Classifieds	7
Crossword	7
Comics	7
Sports	6
Opinions	4
Calendar	2
OIA	3
News Briefs	2

Police Beat

01-23-2004

- A cell phone was taken from the Russell Student Union.
- Four quarts of oil were taken from a vehicle in the Kennedy Hall parking lot.
- Officers issued one traffic citation and two traffic warnings, investigated one traffic accident, assisted six motorists and one sick person, and responded to one fire alarm.

01-24-2004

- Logan Perry Phillips, 21, of Georgia Avenue, Statesboro, was charged with public drunkenness.

- A bicycle was taken from Southern Courtyard.
- Officers issued five traffic warnings and assisted five motorists.

01-25-2004

- John Michael Malone, 21, of 3531 Donegal Way, Snellville, Ga., was charged with public drunkenness and transmitting a false public alarm.
- George Erikson Tramel, 20, of 9034 Doublehead Gap Road, Blue Ridge, Ga., was charged with minor in possession/consumption of alcohol.
- Officers issued four traffic warnings, investigated one traffic

accident, assisted one motorist and responded to three fire alarms.

01-26-2004

- Officers issued one traffic warning, investigated two traffic accidents, assisted seven motorists and responded to four fire alarms.

- All Police Beat information compiled by Luke Hearn, News Editor

Campus News

Exchange Club, Eagle Basketball fight child abuse

Special to the G-A

Once again, the Exchange Club Family Skills Center joins forces with the Georgia Southern Eagle Men's Basketball team in order to advocate the prevention of child abuse that has stricken so many families in today's society. Efforts on behalf of local businesses are also being taken to prevent child abuse locally.

On Saturday, February 4, Georgia Southern University Men's Basketball team will take on its long-time conference rival, Furman, at 7:30 p.m. in Hanner Field House. The Exchange Club Family Skills Center will host Child Abuse Prevention & Awareness Night during the game in order to raise

money to help the fight against child abuse. Donations are being requested and all contributions will go directly to child abuse programs throughout Bulloch County.

These donations will directly correlate with the amount of points GSU scores against Furman as all the businesses will already have specified a certain dollar amount given for each point made. Door prizes will also be given out during the game.

As of 2003, statistics have shown that 507 cases of child abuse were reported in Bulloch County, thus providing ample evidence that there is some cause for concern on child abuse locally.

The Exchange Club Family Skills

Center is a non-profit organization whose main goal is to provide education and support services to families in Bulloch County in order to strengthen the parenting and life skills of the parents and prevent child abuse and neglect within these families.

Their program, Parent Aide, provides practical skills needed for parents to raise their children in non-abusive ways. Other programs provided by the Center include Alternative to Physical Punishment and Seminar for Divorcing Families.

For more information, contact Marta Harris at 842-9893, or visit their Web site at www2.enia.net/users/familyskillscenter/.

News Briefs

Iraqis helping Americans may be a death wish

BAGHDAD - A week ago Sunday, on a quiet morning shrouded in fog, a white Toyota pickup packed with half a ton of explosives pulled up at the main gate of the U.S. occupation headquarters in Baghdad.

It was 8 a.m. when hundreds of Iraqi workers who have jobs with the occupation authority were lining up for security checks. The blast was felt before it was seen or heard. In an instant, 25 Iraqis were dead; scores were maimed.

The bomber's message was clear: Don't work with the Americans.

But a week later, the workers were back.

"We have no choice," Daoud Khalaf, 40, said Sunday. "I have four kids. What else can I do?"

The attackers go after anyone believed to be aiding Americans. Iraqi police are high on their list.

Despite the intimidation, the occupation authority has no trouble filling jobs.

"Sure, it's a danger. To be seen working for the Americans is not a good idea, but we have to pray that God will take care of us because there are no other jobs," said Ali Fajir Ali, 53, a former teacher who works as a cleaner.

Another man complained that he was risking his life for a wage that was hardly enough to live on.

"They pay us 5,000 dinars (\$3.62) a day. A kilo of tomatoes costs 750 dinars," said Sa'ad Waheed.

Another showed where tiny shards of flying glass from the blast had sliced through his sweat pants.

For these men, Sunday was the first day back to work since the explosion.

"It's not safe and we are afraid even when we are inside working," said Said Aziz, 28, from Nasiriyah, about 180 miles south of Baghdad.

"We are just surviving," Aziz said.

Juvenile convictions may come to an end

WASHINGTON - The Supreme Court said Monday it will consider whether executing young killers violates constitutional protections against cruel and unusual punishment.

The high court already has

eliminated executions of the mentally retarded, insisted that juries, not judges, impose death sentences.

Now the justices will take up the case of Missouri death row inmate Christopher Simmons, who was convicted and sentenced to death in 1994. Simmons was 17 years old when he tossed Shirley Crook off a railroad trestle into a river after a botched robbery a year earlier.

The Missouri Supreme Court overturned Simmons' sentence, relying heavily on the high court's 2002 ruling in *Atkins v. Virginia*, which outlawed executions of the mentally retarded. The "evolving standards of decency" the high court justices cited in that case should be extended to make executing young killers unconstitutional, the Missouri court wrote.

The Missouri decision was unusual in its attempt to apply a high court ruling to an area of law it didn't address at all. Angry dissents on the Missouri bench said that only the U.S. Supreme Court was qualified to make that kind of leap.

Still, some experts say the Missouri decision was a reasonable follow-up to the court's decision on executions of the mentally retarded.

"I think it's very difficult to square the *Atkins* decision with the idea that it's OK to execute juveniles," said Stephen Bright, director of the Southern Center for Human Rights and a lecturer at Yale Law School.

Many states have eliminated juvenile executions, and the pace of juvenile capital convictions and executions in all death penalty cases has slowed appreciably.

Patriot Act may be ruled unconstitutional

LOS ANGELES - A federal judge has ruled that a portion of the U.S. Patriot Act which bars giving expert advice or assistance to groups designated as foreign terrorist organizations is unconstitutional and the government may not enforce it.

David Cole, an attorney and Georgetown University law professor who argued the case on behalf of the Humanitarian Law Project, said the ruling marks the first court decision to declare a part of the Patriot Act unconstitutional.

The U.S. Justice Department was reviewing the judge's ruling, spokesman Mark Corallo said in a statement from Washington, D.C.

Corallo called the Patriot Act "an essential tool in the war on terror" and asserted that the portion at issue in the

ruling was only a modest amendment to a pre-existing anti-terrorism law.

"By targeting those who provide material support by providing expert advice or assistance," the law made clear that Americans are threatened as much by the person who teaches a terrorist to build a bomb as by the one who pushes the button," he said.

A civil rights attorney applauded the decision.

"We're thrilled that the first judge to look at the free-speech implications of the Patriot Act has ruled properly," said ACLU attorney Ann Beeson. "She recognized that the Patriot Act was written so vaguely that it is suppressing legitimate political speech."

Federal deficit to reach record high

WASHINGTON - The federal deficit will hit a record \$477 billion this year and get worse if lawmakers cut taxes or increase spending.

The Congressional Budget Office projected this Monday in a report sure to become ammunition in the election-year fight over red ink.

In its annual wintertime economic outlook, lawmakers' nonpartisan fiscal analyst also estimated that the deficit would ease to \$362 billion in 2005, according to numbers obtained by The Associated Press.

The budget office also estimated that deficits for the decade ending in 2013 would total nearly \$2.4 trillion. The August report foresaw deficits totaling \$1.4 trillion over 10 years.

The added red ink was due in part new costs such as the prescription drug benefit created last year.

President Bush plans to send Congress a \$2.3 trillion budget for that year next Monday in the face of growing criticism by Democrats and conservatives over increased spending and surging federal shortfalls.

Bush has so far revealed no details of how he would achieve that. Democrats say his goal would be a minimal accomplishment because deficits are so high to start with.

- All News Briefs compiled from wire reports by Luke Hearn and Teresa Southern, News Editors.

HAPPY NEW YEAR! Celebrate! 2004

Start 2004 by Saving More!

NOKIA 3595
SRP \$49.99
Mail In Rebate \$50.00
FREE
Annual Service Agreement Required

600 WHENEVER, WHEREVER MINUTES
Only \$39.99 A Month
Plus... 1 Free Phone
Must Present Coupon At Time Of Purchase. Limited Time Offer.

UNLIMITED WEEKEND MINUTES
Only \$29.99 A Month
Plus... 1 Free Phone
Must Present Coupon At Time Of Purchase. Limited Time Offer.

3000 Neighborhood Whenever Minutes
Only \$49.99 A Month
ANY DAY, ALL DAY!
Limited Time Offer.

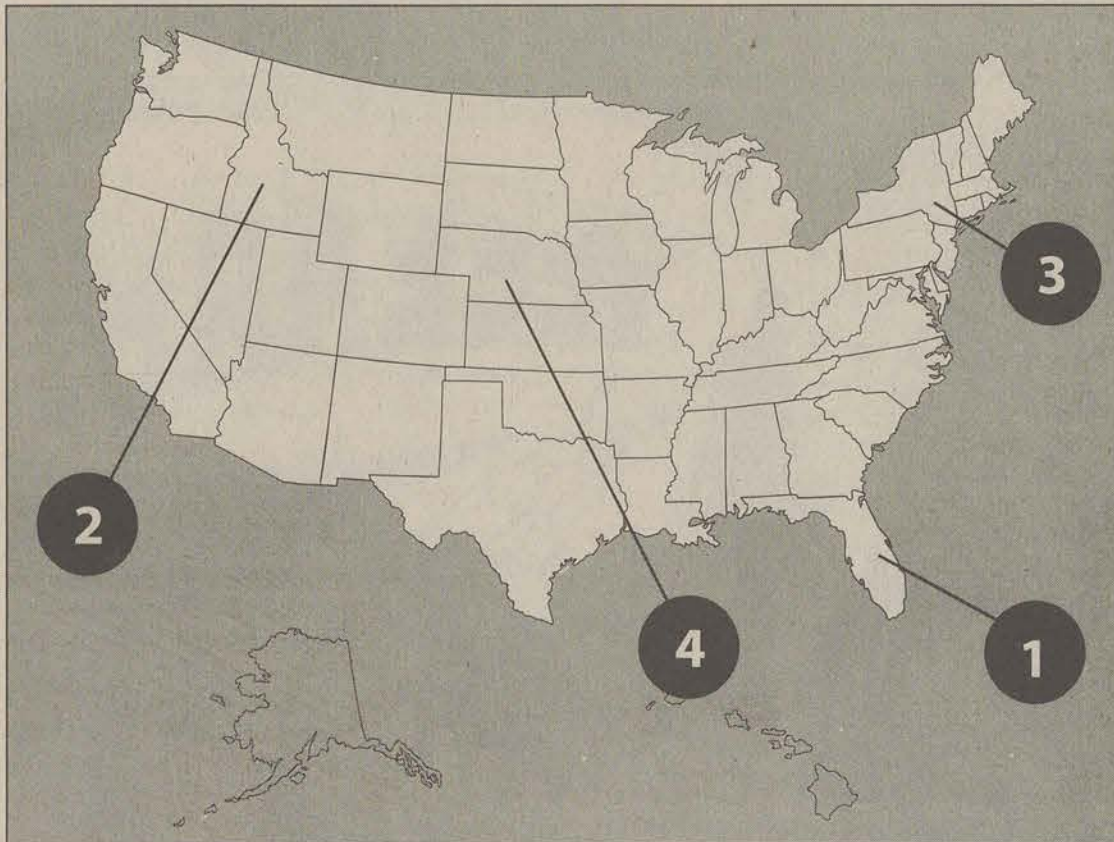
It Doesn't Cost Much to Stay in Touch...
Take a look at these fantastic offers

SAMSUNG
SRP \$149.99
Mail In Rebate \$50.00
FREE
Annual Service Agreement Required

NOKIA 3390
SRP \$49.99
FREE
Annual Service Agreement Required

ALLTECH
- Main Street Village (next to hospital) • Statesboro **871-7522**
- 406 S. Main St. • Statesboro **764-2337**
- 1596 Chandler Rd. • Statesboro **871-5555**
- 5966 Ogeechee Rd. • Savannah **961-7881**

©2003 CANCELLATION: If you are not satisfied with our service, you may cancel within 14 days of activation with no penalty cancellation fee. CONSUMER INFORMATION: Limited time offer, subject to change. Coverage only available on our domestic GSM/GPRS network and that of our roaming partners ("Go More network"). Credit approval, 335 activation fee and 1-year agreement required with \$200 early cancellation fee per line use. Use of our service constitutes acceptance of our Terms and Conditions including mandatory arbitration. Time, USF and other charges additional. Unpaid alternatives fee. Partial minutes used or rounded up to the full minute rate calls measured from when the network begins to process the call (before the phone rings or the call is answered) through the termination of the call. Taxes are for domestic calls. Billing of roaming charges and minutes of use or services may be delayed. Devices sold for use on our GSM/GPRS network and may not be compatible with other wireless systems. Additional restrictions apply; see brochure and Terms and Conditions for details. NATIONAL PLANS: Domestic long distance (not for credit card, calling card or operator-assisted calls) and roaming are on the Go More network. REGIONAL PLANS: Domestic long distance (not for credit card, calling card or operator-assisted calls) and roaming are provided in your region. A calling area. Calls from outside your region are \$0.09 per min. CALL RATING: Weekends are midnight Fri. to midnight Sat. Long weekends begin midnight Thu. Nights are 9 pm to 6:59 am. Mobile to mobile minutes means a directly dialed call to or from a T-Mobile subscriber at calling area. Calls from outside your region are \$0.09 per min. CALL RATING: Weekends are midnight Fri. to midnight Sat. Long weekends begin midnight Thu. Nights are 9 pm to 6:59 am. Mobile to mobile minutes means a directly dialed call to or from a T-Mobile subscriber at calling area. Calls from outside your region are \$0.09 per min. CALL RATING: Weekends are midnight Fri. to midnight Sat. Long weekends begin midnight Thu. Nights are 9 pm to 6:59 am. Mobile to mobile minutes means a directly dialed call to or from a T-Mobile subscriber at calling area. Calls from outside your region are \$0.09 per min. CALL RATING: Weekends are midnight Fri. to midnight Sat. Long weekends begin midnight Thu. Nights are 9 pm to 6:59 am. Mobile to mobile minutes means a directly dialed call to or from a T-Mobile subscriber at calling area. Calls from outside your region are \$0.09 per min. CALL RATING: Weekends are midnight Fri. to midnight Sat. Long weekends begin midnight Thu. Nights are 9 pm to 6:59 am. Mobile to mobile minutes means a directly dialed call to or from a T-Mobile subscriber at calling area. Calls from outside your region are \$0.09 per min. CALL RATING: Weekends are midnight Fri. to midnight Sat. Long weekends begin midnight Thu. Nights are 9 pm to 6:59 am. Mobile to mobile minutes means a directly dialed call to or from a T-Mobile subscriber at calling area. Calls from outside your region are \$0.09 per min. CALL RATING: Weekends are midnight Fri. to midnight Sat. Long weekends begin midnight Thu. Nights are 9 pm to 6:59 am. Mobile to mobile minutes means a directly dialed call to or from a T-Mobile subscriber at calling area. Calls from outside your region are \$0.09 per min. CALL RATING: Weekends are midnight Fri. to midnight Sat. Long weekends begin midnight Thu. Nights are 9 pm to 6:59 am. Mobile to mobile minutes means a directly dialed call to or from a T-Mobile subscriber at calling area. Calls from outside your region are \$0.09 per min. CALL RATING: Weekends are midnight Fri. to midnight Sat. Long weekends begin midnight Thu. Nights are 9 pm to 6:59 am. Mobile to mobile minutes means a directly dialed call to or from a T-Mobile subscriber at calling area. Calls from outside your region are \$0.09 per min. CALL RATING: Weekends are midnight Fri. to midnight Sat. Long weekends begin midnight Thu. Nights are 9 pm to 6:59 am. Mobile to mobile minutes means a directly dialed call to or from a T-Mobile subscriber at calling area. Calls from outside your region are \$0.09 per min. CALL RATING: Weekends are midnight Fri. to midnight Sat. Long weekends begin midnight Thu. Nights are 9 pm to 6:59 am. Mobile to mobile minutes means a directly dialed call to or from a T-Mobile subscriber at calling area. Calls from outside your region are \$0.09 per min. CALL RATING: Weekends are midnight Fri. to midnight Sat. Long weekends begin midnight Thu. Nights are 9 pm to 6:59 am. Mobile to mobile minutes means a directly dialed call to or from a T-Mobile subscriber at calling area. Calls from outside your region are \$0.09 per min. CALL RATING: Weekends are midnight Fri. to midnight Sat. Long weekends begin midnight Thu. Nights are 9 pm to 6:59 am. Mobile to mobile minutes means a directly dialed call to or from a T-Mobile subscriber at calling area. Calls from outside your region are \$0.09 per min. CALL RATING: Weekends are midnight Fri. to midnight Sat. Long weekends begin midnight Thu. Nights are 9 pm to 6:59 am. Mobile to mobile minutes means a directly dialed call to or from a T-Mobile subscriber at calling area. Calls from outside your region are \$0.09 per min. CALL RATING: Weekends are midnight Fri. to midnight Sat. Long weekends begin midnight Thu. Nights are 9 pm to 6:59 am. Mobile to mobile minutes means a directly dialed call to or from a T-Mobile subscriber at calling area. Calls from outside your region are \$0.09 per min. CALL RATING: Weekends are midnight Fri. to midnight Sat. Long weekends begin midnight Thu. Nights are 9 pm to 6:59 am. Mobile to mobile minutes means a directly dialed call to or from a T-Mobile subscriber at calling area. Calls from outside your region are \$0.09 per min. CALL RATING: Weekends are midnight Fri. to midnight Sat. Long weekends begin midnight Thu. Nights are 9 pm to 6:59 am. Mobile to mobile minutes means a directly dialed call to or from a T-Mobile subscriber at calling area. Calls from outside your region are \$0.09 per min. CALL RATING: Weekends are midnight Fri. to midnight Sat. Long weekends begin midnight Thu. Nights are 9 pm to 6:59 am. Mobile to mobile minutes means a directly dialed call to or from a T-Mobile subscriber at calling area. Calls from outside your region are \$0.09 per min. CALL RATING: Weekends are midnight Fri. to midnight Sat. Long weekends begin midnight Thu. Nights are 9 pm to 6:59 am. Mobile to mobile minutes means a directly dialed call to or from a T-Mobile subscriber at calling area. Calls from outside your region are \$0.09 per min. CALL RATING: Weekends are midnight Fri. to midnight Sat. Long weekends begin midnight Thu. Nights are 9 pm to 6:59 am. Mobile to mobile minutes means a directly dialed call to or from a T-Mobile subscriber at calling area. Calls from outside your region are \$0.09 per min. CALL RATING: Weekends are midnight Fri. to midnight Sat. Long weekends begin midnight Thu. Nights are 9 pm to 6:59 am. Mobile to mobile minutes means a directly dialed call to or from a T-Mobile subscriber at calling area. Calls from outside your region are \$0.09 per min. CALL RATING: Weekends are midnight Fri. to midnight Sat. Long weekends begin midnight Thu. Nights are 9 pm to 6:59 am. Mobile to mobile minutes means a directly dialed call to or from a T-Mobile subscriber at calling area. Calls from outside your region are \$0.09 per min. CALL RATING: Weekends are midnight Fri. to midnight Sat. Long weekends begin midnight Thu. Nights are 9 pm to 6:59 am. Mobile to mobile minutes means a directly dialed call to or from a T-Mobile subscriber at calling area. Calls from outside your region are \$0.09 per min. CALL RATING: Weekends are midnight Fri. to midnight Sat. Long weekends begin midnight Thu. Nights are 9 pm to 6:59 am. Mobile to mobile minutes means a directly dialed call to or from a T-Mobile subscriber at calling area. Calls from outside your region are \$0.09 per min. CALL RATING: Weekends are midnight Fri. to midnight Sat. Long weekends begin midnight Thu. Nights are 9 pm to 6:59 am. Mobile to mobile minutes means a directly dialed call to or from a T-Mobile subscriber at calling area. Calls from outside your region are \$0.09 per min. CALL RATING: Weekends are midnight Fri. to midnight Sat. Long weekends begin midnight Thu. Nights are 9 pm to 6:59 am. Mobile to mobile minutes means a directly dialed call to or from a T-Mobile subscriber at calling area. Calls from outside your region are \$0.09 per min. CALL RATING: Weekends are midnight Fri. to midnight Sat. Long weekends begin midnight Thu. Nights are 9 pm to 6:59 am. Mobile to mobile minutes means a directly dialed call to or from a T-Mobile subscriber at calling area. Calls from outside your region are \$0.09 per min. CALL RATING: Weekends are midnight Fri. to midnight Sat. Long weekends begin midnight Thu. Nights are 9 pm to 6:59 am. Mobile to mobile minutes means a directly dialed call to or from a T-Mobile subscriber at calling area. Calls from outside your region are \$0.09 per min. CALL RATING: Weekends are midnight Fri. to midnight Sat. Long weekends begin midnight Thu. Nights are 9 pm to 6:59 am. Mobile to mobile minutes means a directly dialed call to or from a T-Mobile subscriber at calling area. Calls from outside your region are \$0.09 per min. CALL RATING: Weekends are midnight Fri. to midnight Sat. Long weekends begin midnight Thu. Nights are 9 pm to 6:59 am. Mobile to mobile minutes means a directly dialed call to or from a T-Mobile subscriber at calling area. Calls from outside your region are \$0.09 per min. CALL RATING: Weekends are midnight Fri. to midnight Sat. Long weekends begin midnight Thu. Nights are 9 pm to 6:59 am. Mobile to mobile minutes means a directly dialed call to or from a T-Mobile subscriber at calling area. Calls from outside your region are \$0.09 per min. CALL RATING: Weekends are midnight Fri. to midnight Sat. Long weekends begin midnight Thu. Nights are 9 pm to 6:59 am. Mobile to mobile minutes means a directly dialed call to or from a T-Mobile subscriber at calling area. Calls from outside your region are \$0.09 per min. CALL RATING: Weekends are midnight Fri. to midnight Sat. Long weekends begin midnight Thu. Nights are 9 pm to 6:59 am. Mobile to mobile minutes means a directly dialed call to or from a T-Mobile subscriber at calling area. Calls from outside your region are \$0.09 per min. CALL RATING: Weekends are midnight Fri. to midnight Sat. Long weekends begin midnight Thu. Nights are 9 pm to 6:59 am. Mobile to mobile minutes means a directly dialed call to or from a T-Mobile subscriber at calling area. Calls from outside your region are \$0.09 per min. CALL RATING: Weekends are midnight Fri. to midnight Sat. Long weekends begin midnight Thu. Nights are 9 pm to 6:59 am. Mobile to mobile minutes means a directly dialed call to or from a T-Mobile subscriber at calling area. Calls from outside your region are \$0.09 per min. CALL RATING: Weekends are midnight Fri. to midnight Sat. Long weekends begin midnight Thu. Nights are 9 pm to 6:59 am. Mobile to mobile minutes means a directly dialed call to or from a T-Mobile subscriber at calling area. Calls from outside your region are \$0.09 per min. CALL RATING: Weekends are midnight Fri. to midnight Sat. Long weekends begin midnight Thu. Nights are 9 pm to 6:59 am. Mobile to mobile minutes means a directly dialed call to or from a T-Mobile subscriber at calling area. Calls from outside your region are \$0.09 per min. CALL RATING: Weekends are midnight Fri. to midnight Sat. Long weekends begin midnight Thu. Nights are 9 pm to 6:59 am. Mobile to mobile minutes means a directly dialed call to or from a T-Mobile subscriber at calling area. Calls from outside your region are \$0.09 per min. CALL RATING: Weekends are midnight Fri. to midnight Sat. Long weekends begin midnight Thu. Nights are 9 pm to 6:59 am. Mobile to mobile minutes means a directly dialed call to or from a T-Mobile subscriber at calling area. Calls from outside your region are \$0.09 per min. CALL RATING: Weekends are midnight Fri. to midnight Sat. Long weekends begin midnight Thu. Nights are 9 pm to 6:59 am. Mobile to mobile minutes means a directly dialed call to or from a T-Mobile subscriber at calling area. Calls from outside your region are \$0.09 per min. CALL RATING: Weekends are midnight Fri. to midnight Sat. Long weekends begin midnight Thu. Nights are 9 pm to 6:59 am. Mobile to mobile minutes means a directly dialed call to or from a T-Mobile subscriber at calling area. Calls from outside your region are \$0.09 per min. CALL RATING: Weekends are midnight Fri. to midnight Sat. Long weekends begin midnight Thu. Nights are 9 pm to 6:59 am. Mobile to mobile minutes means a directly dialed call to or from a T-Mobile subscriber at calling area. Calls from outside your region are \$0.09 per min. CALL RATING: Weekends are midnight Fri. to midnight Sat. Long weekends begin midnight Thu. Nights are 9 pm to 6:59 am. Mobile to mobile minutes means a directly dialed call to or from a T-Mobile subscriber at calling area. Calls from outside your region are \$0.09 per min. CALL RATING: Weekends are midnight Fri. to midnight Sat. Long weekends begin midnight Thu. Nights are 9 pm to 6:59 am. Mobile to mobile minutes means a directly dialed call to or from a T-Mobile subscriber at calling area. Calls from outside your region are \$0.09 per min. CALL RATING: Weekends are midnight Fri. to midnight Sat. Long weekends begin midnight Thu. Nights are 9 pm to 6:59 am. Mobile to mobile minutes means a directly dialed call to or from a T-Mobile subscriber at calling area. Calls from outside your region are \$0.09 per min. CALL RATING: Weekends are midnight Fri. to midnight Sat. Long weekends begin midnight Thu. Nights are 9 pm to 6:59 am. Mobile to mobile minutes means a directly dialed call to or from a T-Mobile subscriber at calling area. Calls from outside your region are \$0.09 per min. CALL RATING: Weekends are midnight Fri. to midnight Sat. Long weekends begin midnight Thu. Nights are 9 pm to 6:59 am. Mobile to mobile minutes means a directly dialed call to or from a T-Mobile subscriber at calling area. Calls from outside your region are \$0.09 per min. CALL RATING: Weekends are midnight Fri. to midnight Sat. Long weekends begin midnight Thu. Nights are 9 pm to 6:59 am. Mobile to mobile minutes means a directly dialed call to or from a T-Mobile subscriber at calling area. Calls from outside your region are \$0.09 per min. CALL RATING: Weekends are midnight Fri. to midnight Sat. Long weekends begin midnight Thu. Nights are 9 pm to 6:59 am. Mobile to mobile minutes means a directly dialed call to or from a T-Mobile subscriber at calling area. Calls from outside your region are \$0.09 per min. CALL RATING: Weekends are midnight Fri. to midnight Sat. Long weekends begin midnight Thu. Nights are 9 pm to 6:59 am. Mobile to mobile minutes means a directly dialed call to or from a T-Mobile subscriber at calling area. Calls from outside your region are \$0.09 per min. CALL RATING: Weekends are midnight Fri. to midnight Sat. Long weekends begin midnight Thu. Nights are 9 pm to 6:59 am. Mobile to mobile minutes means a directly dialed call to or from a T-Mobile subscriber at calling area. Calls from outside your region are \$0.09 per min. CALL RATING: Weekends are midnight Fri. to midnight Sat. Long weekends begin midnight Thu. Nights are 9 pm to 6:59 am. Mobile to mobile minutes means a directly dialed call to or from a T-Mobile subscriber at calling area. Calls from outside your region are \$0.09 per min. CALL RATING: Weekends are midnight Fri. to midnight Sat. Long weekends begin midnight Thu. Nights are 9 pm to 6:59 am. Mobile to mobile minutes means a directly dialed call to or from a T-Mobile subscriber at calling area. Calls from outside your region are \$0.09 per min. CALL RATING: Weekends are midnight Fri. to midnight Sat. Long weekends begin midnight Thu. Nights are 9 pm to 6:59 am. Mobile to mobile minutes means a directly dialed call to or from a T-Mobile subscriber at calling area. Calls from outside your region are \$0.09 per min. CALL RATING: Weekends are midnight Fri. to midnight Sat. Long weekends begin midnight Thu. Nights are 9 pm to 6:59 am. Mobile to mobile minutes means a directly dialed call to or from a T-Mobile subscriber at calling area. Calls from outside your region are \$0.09 per min. CALL RATING: Weekends are midnight Fri. to midnight Sat. Long weekends begin midnight Thu. Nights are 9 pm to 6:59 am. Mobile to mobile minutes means a directly dialed call to or from a T-Mobile subscriber at calling area. Calls from outside your region are \$0.09 per min. CALL RATING: Weekends are midnight Fri. to midnight Sat. Long weekends begin midnight Thu. Nights are 9 pm to 6:59 am. Mobile to mobile minutes means a directly dialed call to or from a T-Mobile subscriber at calling area. Calls from outside your region are \$0.09 per min. CALL RATING: Weekends are midnight Fri. to midnight Sat. Long weekends begin midnight Thu. Nights are 9 pm to 6:59 am. Mobile to mobile minutes means a directly dialed call to or from a T-Mobile subscriber at calling area. Calls from outside your region are \$0.09 per min. CALL RATING: Weekends are midnight Fri. to midnight Sat. Long weekends begin midnight Thu. Nights are 9 pm to 6:59 am. Mobile to mobile minutes means a directly dialed call to or from a T-Mobile subscriber at calling area. Calls from outside your region are \$0.09 per min. CALL RATING: Weekends are midnight Fri. to midnight Sat. Long weekends begin midnight Thu. Nights are 9 pm to 6:59 am. Mobile to mobile minutes means a directly dialed call to or from a T-Mobile subscriber at calling area. Calls from outside your region are \$0.09 per min. CALL RATING: Weekends are midnight Fri. to midnight Sat. Long weekends begin midnight Thu. Nights are 9 pm to 6:59 am. Mobile to mobile minutes means a directly dialed call to or from a T-Mobile subscriber at calling area. Calls from outside your region are \$0.09 per min. CALL RATING: Weekends are midnight Fri. to midnight Sat. Long weekends begin midnight Thu. Nights are 9 pm to 6:59 am. Mobile to mobile minutes means a directly dialed call to or from a T-Mobile subscriber at calling area. Calls from outside your region are \$0.09 per min. CALL RATING: Weekends are midnight Fri. to midnight Sat. Long weekends begin midnight Thu. Nights are 9 pm to 6:59 am. Mobile to mobile minutes means a directly dialed call to or from a T-Mobile subscriber at calling area. Calls from outside your region are \$0.09 per min. CALL RATING: Weekends are midnight Fri. to midnight Sat. Long weekends begin midnight Thu. Nights are 9 pm to 6:59 am. Mobile to mobile minutes means a directly dialed call to or from a T-Mobile subscriber at calling area. Calls from outside your region are \$0.09 per min. CALL RATING: Weekends are midnight Fri. to midnight Sat. Long weekends begin midnight Thu. Nights are 9 pm to 6:59 am. Mobile to mobile minutes means a directly dialed call to or from a T-Mobile subscriber at calling area. Calls from outside your region are \$0.09 per min. CALL RATING: Weekends are midnight Fri. to midnight Sat. Long weekends begin midnight Thu. Nights are 9 pm to 6:59 am. Mobile to mobile minutes means a directly dialed call to or from a T-Mobile subscriber at calling area. Calls from outside your region are \$0.09 per min. CALL RATING: Weekends are midnight Fri. to midnight Sat. Long weekends begin midnight Thu. Nights are 9 pm to 6:59 am. Mobile to mobile minutes means a directly dialed call to or from a T-Mobile subscriber at calling area. Calls from outside your region are \$0.09 per min. CALL RATING: Weekends are midnight Fri. to midnight Sat. Long weekends begin midnight Thu. Nights are 9 pm to 6:59 am. Mobile to mobile minutes means a directly dialed call to or from a T-Mobile subscriber at calling area. Calls from outside your region are \$0.09 per min. CALL RATING: Weekends are midnight Fri. to midnight Sat. Long weekends begin midnight Thu. Nights are 9 pm to 6:59 am. Mobile to mobile minutes means a directly dialed call to or from a T-Mobile subscriber at calling area. Calls from outside your region are \$0.09 per min. CALL RATING: Weekends are midnight Fri. to midnight Sat. Long weekends begin midnight Thu. Nights are 9 pm to 6:59 am. Mobile to mobile minutes means a directly dialed call to or from a T-Mobile subscriber at calling area. Calls from outside your region are \$0.09 per min. CALL RATING: Weekends are midnight Fri. to midnight Sat. Long weekends begin midnight Thu. Nights are 9 pm to 6:59 am. Mobile to mobile minutes means a directly dialed call to or from a T-Mobile subscriber at calling area. Calls from outside your region are \$0.09 per min. CALL RATING: Weekends are midnight Fri. to midnight Sat. Long weekends begin midnight Thu. Nights are 9 pm to 6:59 am. Mobile to mobile minutes means a directly dialed call to or from a T-Mobile subscriber at calling area. Calls from outside your region are \$0.09 per min. CALL RATING: Weekends are midnight Fri. to midnight Sat. Long weekends begin midnight Thu. Nights are 9 pm to 6:59 am. Mobile to mobile minutes means a directly dialed call to or from a T-Mobile subscriber at calling area. Calls from outside your region are \$0.09 per min. CALL RATING: Weekends are midnight Fri. to midnight Sat. Long weekends begin midnight Thu. Nights are 9 pm to 6:59 am. Mobile to mobile minutes means a directly dialed call to or from a T-Mobile subscriber at calling area. Calls from outside your region are \$0.09 per min. CALL RATING: Weekends are midnight Fri. to midnight Sat. Long weekends begin midnight Thu. Nights are 9 pm to 6:59 am. Mobile to mobile minutes means a directly dialed call to or from a T-Mobile subscriber at calling area. Calls from outside your region are \$0.09 per min. CALL RATING: Weekends are midnight Fri. to midnight Sat. Long weekends begin midnight Thu. Nights are 9 pm to 6:59 am. Mobile to mobile minutes means a directly dialed call to or from a T-Mobile subscriber at calling area. Calls from outside your region are \$0.09 per min. CALL RATING: Weekends are midnight Fri. to midnight Sat. Long weekends begin midnight Thu. Nights are 9 pm to 6:59 am. Mobile to mobile minutes means a directly dialed call to or from a T-Mobile subscriber at calling area. Calls from outside your region are \$0.09 per min. CALL RATING: Weekends are midnight Fri. to midnight Sat. Long weekends begin midnight Thu. Nights are 9 pm to 6:59 am. Mobile to mobile minutes means a directly dialed call to or from a T-Mobile subscriber at calling area. Calls from outside your region are \$0.09 per min. CALL RATING: Weekends are midnight Fri. to midnight Sat. Long weekends begin midnight Thu. Nights are 9 pm to 6:59 am. Mobile to mobile minutes means a directly dialed call to or from a T-Mobile subscriber at calling area. Calls from outside your region are \$0.09 per min. CALL RATING: Weekends are midnight Fri. to midnight Sat. Long weekends begin midnight Thu. Nights are 9 pm to 6:59 am. Mobile to mobile minutes means a directly dialed call to or from a T-Mobile subscriber at calling area. Calls from outside your region are \$0.09 per min. CALL RATING: Weekends are midnight Fri. to midnight Sat. Long weekends begin midnight Thu. Nights are 9 pm to 6:59 am. Mobile to mobile minutes means a directly dialed call to or from a T-Mobile subscriber at calling area. Calls from outside your region are \$0.09 per min. CALL RATING: Weekends are midnight Fri. to midnight Sat. Long weekends begin midnight Thu. Nights are 9 pm to 6:59 am. Mobile to mobile minutes means a directly dialed call to or from a T-Mobile subscriber at calling area. Calls from outside your region are \$0.09 per min. CALL RATING: Weekends are midnight Fri. to midnight Sat. Long weekends begin midnight Thu. Nights are 9 pm to 6:59 am. Mobile to mobile minutes means a directly dialed call to or from a T-Mobile subscriber at calling area. Calls from outside your region are \$0.09 per min. CALL RATING: Weekends are midnight Fri. to midnight Sat. Long weekends begin midnight Thu. Nights are 9 pm to 6:59 am. Mobile to mobile minutes means a directly dialed call to or from a T-Mobile subscriber at calling area. Calls from outside your region are \$0.09 per min. CALL RATING: Weekends are midnight Fri. to midnight Sat. Long weekends begin midnight Thu. Nights are 9 pm to 6:59 am. Mobile to mobile minutes means a directly dialed call to or from a T-Mobile subscriber at calling area. Calls from outside your region are \$0.09 per min. CALL RATING: Weekends are midnight Fri. to midnight Sat. Long weekends begin midnight Thu. Nights are 9 pm to 6:59 am. Mobile to mobile minutes means a directly dialed call to or from a T-Mobile subscriber at calling area. Calls from outside your region are \$0.09 per min. CALL RATING: Weekends are midnight Fri. to midnight Sat. Long weekends begin midnight Thu. Nights are 9 pm to 6:59 am. Mobile to mobile minutes means a directly dialed call to or from a T-Mobile subscriber at calling area. Calls from outside your region are \$0.09 per min. CALL RATING: Weekends are midnight Fri. to midnight Sat. Long weekends begin midnight Thu. Nights are 9 pm to 6:59 am. Mobile to mobile minutes means a directly dialed call to or from a T-Mobile subscriber at calling area. Calls from outside your region are \$0.09 per min. CALL RATING: Weekends are midnight Fri. to midnight Sat. Long weekends begin midnight Thu. Nights are 9 pm to 6:59 am. Mobile to mobile minutes means a directly dialed call to or from a T-Mobile subscriber at calling area. Calls from outside your region are \$0.09 per min. CALL RATING: Weekends are midnight Fri. to midnight Sat. Long weekends begin midnight Thu. Nights are 9 pm to 6:59 am. Mobile to mobile minutes means a directly dialed call to or from a T-Mobile subscriber at calling area. Calls from outside your region are \$0.09 per min. CALL RATING: Weekends are midnight Fri. to midnight Sat. Long weekends begin midnight Thu. Nights are 9 pm to 6:59 am. Mobile to mobile minutes means a directly dialed call to or from a T-Mobile subscriber at calling area. Calls from outside your region are \$0.09 per min. CALL RATING: Weekends are midnight Fri. to midnight Sat. Long weekends begin midnight Thu. Nights are 9 pm to 6:59 am. Mobile to mobile minutes means a directly dialed call to or from a T-Mobile subscriber at calling area. Calls from outside your region are \$0.09 per min. CALL RATING: Weekends are midnight Fri. to midnight Sat. Long weekends begin midnight Thu. Nights are 9 pm to 6:59 am. Mobile to mobile minutes means a directly dialed call to or from a T-Mobile subscriber at calling area. Calls from outside your region are \$0.09 per min. CALL RATING: Weekends are midnight Fri. to midnight Sat. Long weekends begin midnight Thu. Nights are 9 pm to 6:59 am. Mobile to mobile minutes means a directly dialed call to or from a T-Mobile subscriber at calling area. Calls from outside your region are \$0.09 per min. CALL RATING: Weekends are midnight Fri. to midnight Sat. Long weekends begin midnight Thu. Nights are 9 pm to 6:59 am. Mobile to mobile minutes means a directly dialed call to or from a T-Mobile subscriber at calling area. Calls from outside your region are \$0.09 per min. CALL RATING: Weekends are midnight Fri. to midnight Sat. Long weekends begin midnight Thu. Nights are 9 pm to 6:59 am. Mobile to mobile minutes means a directly dialed call to or from a T-Mobile subscriber at calling area. Calls from outside your region are \$0.09 per min. CALL RATING: Weekends are midnight Fri. to midnight Sat. Long weekends begin midnight Thu. Nights are 9 pm to 6:59 am. Mobile to mobile minutes means a directly dialed call to or from a T-Mobile subscriber at calling area. Calls from outside your region are \$0.09 per min. CALL RATING: Weekends are



1 Florida

Chicken catcher becomes Key West's newest celebrity

KEY WEST – Armando Parra has been plucked from obscurity to become Key West's official chicken catcher.

The city commission voted Wednesday to hire the barber to trap wild chickens for \$20 apiece and rid the resort community of a major nuisance.

Since then, Parra has been sought by talk show hosts, newspapers and TV stations, all asking what it takes to catch a chicken.

"I've stopped answering the phone. I've got to make a living here," a flustered Parra said Thursday as a roomful of customers awaited haircuts at the Conch Town Barber Shop, where he has worked for 27 years.

About 2,000 wild chickens wander the streets of Key West. City officials want to reduce the chicken population by half because of complaints the birds make noise at daybreak and uproot flower beds.

Parra's contract allows him to bag up to 900 birds, earning \$18,000. The captured chickens will be taken to a farm.

2 Idaho

Horse gets permanent black eyeliner tattoo

TWIN FALLS – Cosmetic tattoo artist Teri Reid does not usually have to put her customers under general anesthesia when she is applying permanent eyeliner, eyebrows or lipstick.

Then again, her customers generally do not bite, kick or weigh 1,000 pounds.

Reid, a registered nurse who specializes in so-called permanent cosmetics, has expanded her clientele to include horses.

The tattoos she puts on American paint horses are not for cosmetic reasons, however. Unlike horses with dark coats, the dappled dark and light coloring of paint horses can leave little natural pigmentation around the eyes.

When the horse is exposed to sunlight, the resulting glare can lead to squinting, sunburns, cataracts and cancer, said Holly Akagi, Reid's assistant.

Akagi came to Reid in August with a request: Would Reid apply a permanent black eyeliner to her horse's eyes?

"My horse had a terrible time being out in the sun," Akagi said. "She'd squint all the time, and her eyes would drip."

The process of adding pigment to horses' eye areas began in the 1980s, Reid said. The American Paint Horse Association approves of the procedure, and Akagi said the permanent eyeliner can actually increase a horse's value.

Reid agreed to do the job, and the results were successful, Akagi said.

"It really makes the horse more comfortable," she said. "I liken it to sunglasses for her, or when football players put black under their eyes to deflect the glare."

3 New York

This burglar was no monster in the closet

WHITEPLAINS – It was a victory for sleepless kids everywhere.

When a 10-year-old girl woke up at 2 a.m. to the frightening sight of a strange man and two strange dogs in her bedroom, she quickly ran to tell her sleeping parents.

They told her to go back to bed. "The parents evidently thought she was having a dream or a nightmare," said A. Gerald Schramek, chief criminal investigator for the Putnam County Sheriff's Office.

Half an hour later that same morning, Dec. 8, the girl woke her mother and father again, saying she'd seen the man and his cocker spaniels leave their house in Phillipstown, on the Westchester-Putnam border.

"Again, they thought she was dreaming," Schramek said.

So it wasn't until 11:30 a.m. – when Mom and Dad got up to find muddy dog tracks throughout the house and discovered that cash, keys and a cell phone were missing from a pocketbook – that the young girl was vindicated and the sheriff's office was called. The victim's names have not been made public.

Now the crime has been solved, authorities say, and the suspect arrested after fleeing to Florida. But it could have been wrapped up more quickly if the parents had believed what their daughter was saying.

Based on the girl's description of the man and his dogs, investigators quickly suspected Craig Finnegan, 38, a homeless man who had lived in the nearby woods for three years and was seen with two dogs the evening before the burglary, Schramek said.

The next day, just after a toll col-

lector saw a man and two dogs walk across the Bear Mountain Bridge, a truck was stolen near the western end of the span. On Dec. 15, Finnegan was arrested in Fort Myers, Fla., for allegedly stealing a compact disc and a siphon pump, total value \$16.85, from a Wal-Mart, the Lee County sheriff's office said.

On Jan. 10, Finnegan was extradited to Orange County on a truck-stealing charge. And on Jan. 14, he was brought back to Putnam to face prosecution for burglary, allegedly having been caught in the act by a 10-year-old girl who knew she wasn't dreaming.

4 Kansas

Bumblebee clad man leaves courtroom buzzing

OLATHE – A man who came to a court hearing wearing a bumblebee costume – to protest what he called a "sting" operation by prosecutors – left a judge buzzing.

Conrad J. Braun, 54, was in Johnson County District Court on Friday to hear a judge rule whether a blackmail case filed against him last summer should go to trial.

District Judge John Anderson III was not amused by Braun's getup, which included yellow stripes, cloth wings and a foot-long stinger.

Anderson told Braun that although there is no rule prohibiting the wearing of such a suit in court, the judge has a duty to uphold court decorum.

Braun assured the judge that he meant no contempt to the court and promised he would not do it again.

The blackmail charge alleges that Braun made a threat against his former wife's husband.

January is: National Cervical Cancer Awareness Month

CERVICAL CANCER IS PREVENTABLE AND
CURABLE IF DETECTED EARLY!!!

If you are sexually active or 18 years old or older
have an annual pap test

Questions? Call Health Services 681-5641
Quality *Caring* Convenient

2nd Annual Spring Leadership Conference

• • • • • Only \$20 for GSU Students • • • • •

S.T.E.P.S.



Students
Together,
Engaged, and
Preparing for
Success

Saturday, February 21st, 2004
Nessmith-Lane Continuing Education Building
presented by:

INSPIRE
GEORGIA SOUTHERN UNIVERSITY'S
STUDENT LEADERSHIP CONSULTANTS

For information on how you can reserve a space at this year's S.T.E.P.S. Conference, contact the Center for Student Leadership Development at (912) 871-1435, stop by Russell Union Suite 2022, or visit us on the web at, <http://students.georgiasouthern.edu/leadership>

HEALTH SERVICES

Quality • Caring • Convenient

www.gasou.edu/health

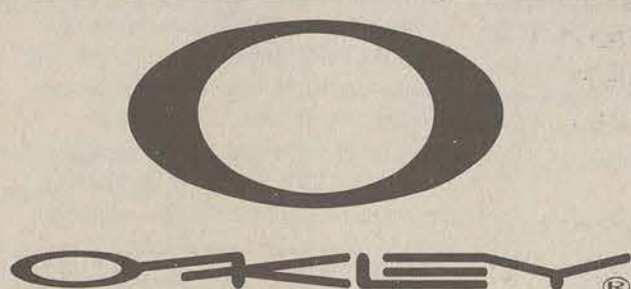


The Sir Shop

TWO LOCATIONS

Statesboro Mall
764-6924

Main Street Village
871-4962



4A

The
GEORGE-ANNE

Thursday, January 29, 2004

OPINIONS

Fixing the USA
Patriot Act

The following editorial appeared in the Milwaukee Journal Sentinel on Monday, Jan. 26:

It is ironic that the USA Patriot Act, enacted just six weeks after the terrorist attacks of Sept. 11, 2001, contains some provisions that seem to abridge certain constitutional rights. These flaws either were ignored or trivialized when the measure was enacted, and the need to correct them remains a matter of great importance. Instead, as he said in his State of the Union address, President Bush wants Congress to renew the act as is rather than permit several of its provisions to "sunset" at the end of next year.

There's no good reason to make a decision on sunsets quite yet; Congress would do better to reassess the act in an open debate sometime in early 2005. Meantime, several of the flaws contained in the original measure do deserve the prompt attention of Congress, beginning with the House Judiciary Committee and its chairman, Rep. F. James Sensenbrenner Jr., R-Wis.

A worthy reform bill called the Security and Freedom Ensured Act would rein in the federal government's immense power under the Patriot Act but wouldn't undermine the effectiveness of law enforcement. The SAFE bill has united activists on the political left and right: Senators such as Russ Feingold, D-Wis., Edward Kennedy, D-Mass., John Sununu, R-N.H., and Larry Craig, R-Idaho, and organizations such as the American Conservative Union and the American Civil Liberties Union.

Perhaps the most odious feature of the USA Patriot Act is Section 215. It allows the FBI to order any person or organization to surrender "any tangible thing" - including library, medical and financial records - so long as the agency certifies that the order was part of an investigation against terrorism or secret intelligence activities. The FBI is not required to supply any reason for believing that the target of the investigation is a criminal.

The SAFE bill would not repeal Section 215, but it would require the government to show "specific and articulable facts giving reason to believe" that the target of the search is a suspected terrorist or a spy. The change would not cripple the fight against terrorism; instead, it would require the FBI to focus its attention on criminal suspects, not law-abiding citizens.

SAFE also addresses "sneak and peek" searches authorized by Section 213 of the law. This section authorizes government agents to sneak into a person's home when the occupant is away, conduct a search and remove evidence, yet not have to inform the occupant until much later. The reform bill would not ban such searches, but it would require a showing that such stealth is required to satisfy common-sense goals - to preserve evidence, for instance, or to prevent the escape of a criminal suspect. In essence, the reform would reinstate provisions that existed before the Patriot Act was enacted.

The USA Patriot Act codified a number of long-overdue changes in law enforcement, one of which saved the life of an elderly Walworth County woman whose kidnapper was traced to cell phone records, reports U.S. Attorney Steven Biskupic. Another feature of the law knocks down walls that prevented government agencies from sharing essential information.

The SAFE bill does not challenge these changes. Rather, it addresses blatant flaws that resulted from the hasty drafting of the Patriot Act and that probably would have been deleted had the measure been fully scrutinized by Congress. Now, more than two years later, it's long past time to repair this law.

LETTER AND SUBMISSION POLICY

The George-Anne welcomes letters to the editor, story submissions and guest columns from people both inside and outside the GSU community. All copy submitted should be typed, preferably via email or on Macintosh disk in Microsoft Word format. All submissions must be signed and include a mailing address and phone number for verification. The editors reserve the right to reject any submission. There is no word limit on submissions. A writer may request to remain anonymous. However, it will be the editor's decision whether or not to print the name. Submissions are run on a space-available basis.

THE GEORGE-ANNE STAFF

For 76 years, Georgia Southern's Official Student Newspaper

THE 2002-03 EDITORIAL BOARD

Amanda Permenter, Editor-in-Chief; Adam Brady, Managing Editor; J. Wright, News Editor

THE 2002-03 EDITORIAL STAFF

Brandon Sparks, Assistant News Editor; Katie Glorieux, Deputy Managing Editor; LaVene Bell, Photo Editor; Dallas Oliver, Assistant Photo Editor; Jewel Denson, Copy Editor; Erin Nease and V.A. Patrick Slade A&E Editors; Eli Boorstein, Sports Editor

STAFF WRITERS

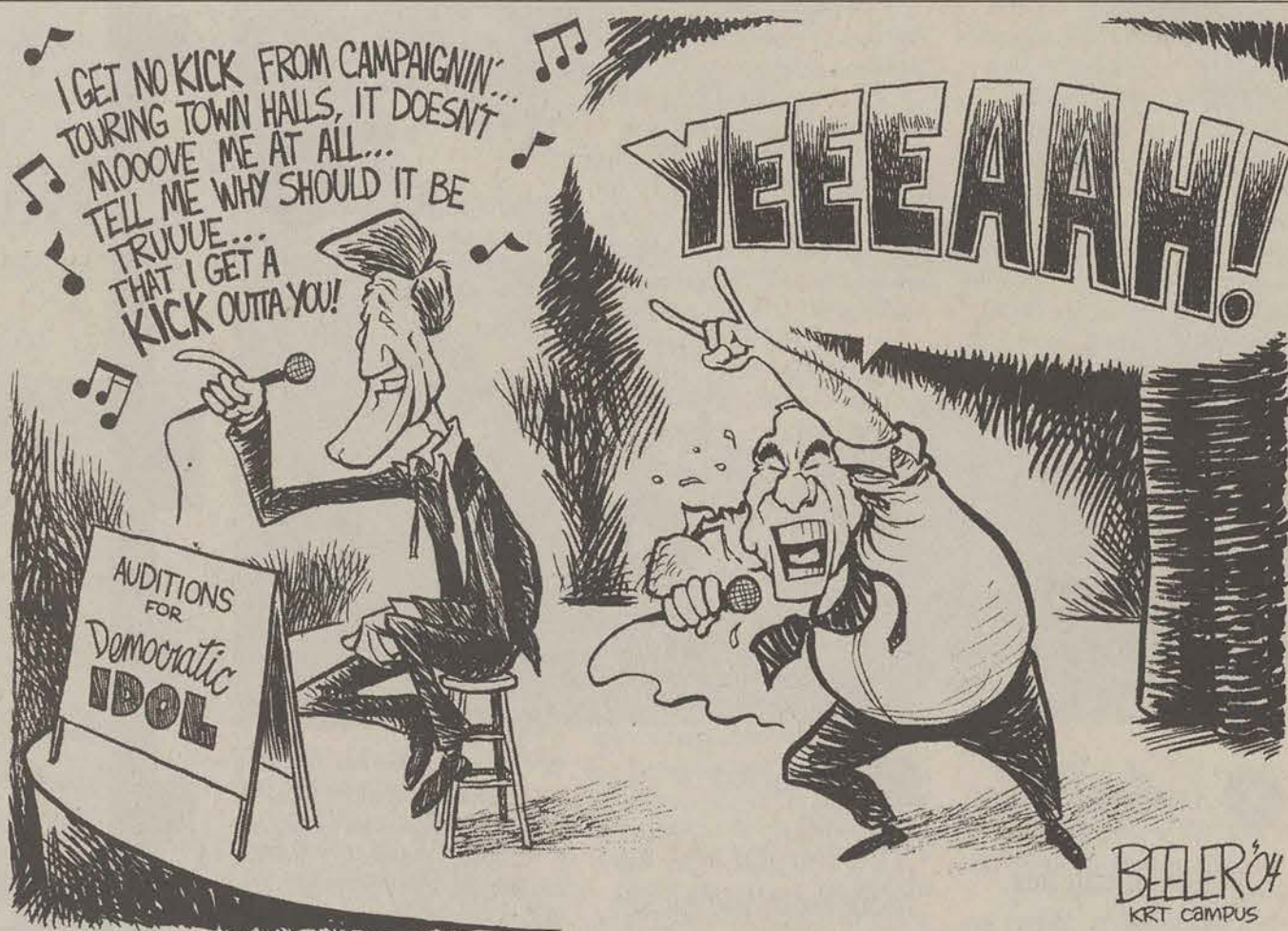
Rhonda McLeod, Teresa Southern, Eli Boorstein, B.J. Corbitt, Dennis Hightower, John Harris, Gabrielle Oddman, Erik Howard, Judson Arnold, Jessica Lubert, Eric Haugh, Luke Hearn, Cory Cunningham, Jenny Miller, Natasha Harty, Brittany Gates, Christina Calloway, Brian Lug, Juliet Walls, Jennifer Taylor, Sarah Frey, Maria Folsom, Christopher Fair, Shelly Clayton, Scott Corwin, Adam Crisp

PHOTOGRAPHY

Katie Anderson, Ryan Moore, David Caselli, Felicia Emanuel,

ADVERTISING & DISTRIBUTION SERVICES (ADS)

Marketing Director: David Brenna-man
Ad Reps: Rachael Patch, Shea Roundtree, Angela Parker, Lindsey Tredwell

PRODUCTION & GRAPHICS
SERVICES (PAGES)

Bradiet: The hottest new weightloss fad

The diet fads of today are missing one very important thing: Definite results.

Sure, the recent fad in the Atkins diet might prove mildly proficient in some instances, but as part of a population where one in four citizens are obese, something far more effective is necessary. Even exercise in combination with Atkins' master plan can only produce a nominal outcome.

Other modern tools of weight loss, fitness and health such as Tae-Bo, The Nordic Track, The Bowflex, and even the belt that straps around your lower abdomen and is meant to shock your fat ass into shape prove effective only to the muscle-laden "after" window meatheads on nighttime infomercials.

What America needs is a diet plan and an exercise routine that every stout man, large woman, and plump child can embrace: The Brady Diet.

First things first. Disregard all prior knowledge you may have on the subjects of nutrition and calisthenics. Proper proportions of necessary vitamins, minerals, fats, proteins, and most importantly, carbohydrates, have no place in the Brady Diet, or "Bradiet."

First and foremost, reduce all solid foods in your diet until your body is conditioned to eat a regular amount of starlight mints, Orbit gum, grass (for roughage) and chocolate Riesen. Water is strictly prohibited while on the Bradiet, and only beverages with 26 grams of sugars or higher - preferably carbonated - are allowed. Any product name food or beverage with the words "diet," "lite," or "I can't believe" in their titles must be avoided at all costs. Fruits and vegetables are allowed only once daily in small portions, and must be eaten with a healthy amount of ranch dressing, honey mustard, or chocolate syrup.

Alcohol consumption is encouraged as long as dieters drink only cheap beers costing less than or equal to \$5 a dozen. Only poorly made liquors with no name recognition in popular advertising are allowed.

While on the Bradiet, it is essential that you begin smoking. Brand and type are of no consequence: the

usage of tobacco will curb your appetite and allow you to stay on the path to a lighter you! Coughing up blood in the morning will help you to shed those excess ounces, and if you're not coughing hard enough, you're not smoking enough.

Cardio workouts matched with toning or bulking up of the muscles are purely incidental while performing "Bradisthenics." Don't expect to work a specific set of muscles or gain a stronger heart rate individually. Bradisthenics evenly improves physical performance and build all the while giving you the opportunity to enjoy yourself in the great indoors.

It has been proven by several unaccredited studies that finger motion needed to properly use a television remote control can greatly reduce the amount of fat stored in your lower body. Try a different channel every 30 minutes or so. More advanced dieters may want to try channel surfing or switching between a television program and the special features disc of "The Lord of the Rings: Two Towers" in their DVD players. According to the same studies mentioned above, added motion doubles your energy usage and triples your weight loss opportunity.

Try sitting out on your porch with your inexpensive beer or liquor while smoking your hunger-reducing cigarettes as a change of pace. Announce to those who walk by what you think of their un-Bradiet lifestyle, and what a morbidly obese look they have about themselves. In many cases, those passing by may become jealous and ask if you have some kind of problem. You can and should show that neighborly thing or two about fitness and dieting with all of the lean muscle mass you've developed while on the Bradiet.

You too can lose weight and stuff! Get on the Bradiet today!

Adam Brady is an award-winning columnist and the Managing Editor of The George-Anne. He has, in no capacity, studied nutrition, exercise, or anything about the human body to put him in a position to be an expert in the field. But he's published - and that's what makes him right.



Adam Brady
managing editor

Atkins' success suggests high-carb diets responsible for obesity problem

By Grace-Marie Turner
KRT Campus

ALEXANDRIA, Va. - Renowned chef Julia Childs once said she would rather have one spoonful of a dish made with real cream, cheese and butter than a whole plateful of a concoction made with skim milk, low-fat cheese and margarine.

Her statement also captures the theory behind the famous Atkins Diet, freeing dieters to enjoy foods that contain fats as long as they are high in protein and low in carbohydrates. That means dieters can enjoy steak or lamb chops, but they must avoid bread, muffins, potatoes and sugary desserts if they want to lose weight.

Julia captured the key principle of the diet, recognizing that when people are satiated, they eat less. A slice of a rib roast, served with a side of cauliflower in a cheddar sauce, makes a delicious meal that's also less likely to send you back to the refrigerator.

But instead of giving ourselves permission to eat Julia's meal, we dive into a gargantuan plate of pasta, thinking that we're eating right because it's low in fat. There must be some reason that our nation, which is obsessed with low-fat foods, is getting fatter and fatter, with one in five obese. Are we being fed low-fat lies?

Atkins argued that pasta and other carbohydrates set off a chain reaction of cravings that result in excess calorie consumption.

Here's why: Carbohydrates contain sugars

in various forms. Sugar is digested into glucose to turn the food into fuel, which is quickly released into the bloodstream to be either burned or stored. Glucose in the bloodstream triggers the production of insulin, whose basic job is to store fat.

A high-carbohydrate, high-sugar meal triggers a rush of insulin, but once the glucose is burned or stored, the blood-sugar level plummets, and we're suddenly hungry again - for more carbohydrates. We over-eat because our blood sugar is jumping up and down. Today, the average American gets one-third of his calories from sugar and even more from other carbohydrates.

Protein and fat don't trigger the insulin rush. The cravings are dissipated, and we don't need to eat as much.

Part of the problem with our obese society is that we're too rushed to cook. Grabbing a bucket of fried chicken with rolls and mashed potatoes on the way home from work or ordering a pizza surely helps a busy working mom feed her family.

But most fast foods like these also are high-carb food. Carbohydrates are popular with food manufacturers and with consumers because there are more calories for the dollar.

A cup of pasta and a small steak both contain about 200 calories. But the pasta may cost less than a quarter at the store, while even a small steak can cost several dollars.

Many nutritionists are aggressively critical of the Atkins diet. For starters, it violates the

U.S. government's Food Pyramid, which says people should eat 6 to 11 servings of carbohydrates a day and keep fat consumption to a minimum.

Critics say that all people eat on the Atkins diet is artery-clogging meat, butter and cheese. They ignore that the diet also includes a long list of healthy vegetables like asparagus, beets, collard greens, green beans and zucchini.

Dr. Atkins' Diet Revolution has sold more than 10 million copies, so clearly it is touching a nerve. Several recent studies also have shown that test subjects on the diet lost 13 pounds compared to 4 pounds for those on a low-fat diet.

The satiation factor is key. Listen to Julia: Eating a little of something rich and delicious that doesn't trigger excessive insulin production has given millions of people a tool to slim down.

The data on the Atkins diet also suggest that, contrary to expectations, subjects actually find their cholesterol stays level or even drops after they go on the diet.

It's crucial that we find the key to slowing the epidemic of obesity, which leads to diabetes, musculo-skeletal problems and to the biggest killer - heart disease.

Dr. Atkins died last year in a fatal fall on the ice outside his office. But after decades of battles, his diet is gaining new respect and could help to slim our nation's waistline and reduce the serious threat of obesity-induced illnesses.

Eighteen sentenced in protests over Fort Benning school

Associated Press

COLUMBUS, Ga. — Eighteen people who participated in a November protest demanding the closing of a Fort Benning school for foreign soldiers were sentenced Monday to up to six months in federal prison for trespassing on the Army post.

Five defendants pleaded guilty and 12 pleaded innocent but stipulated to the facts presented by the prosecution.

The eighteenth demonstrator whose case was heard, Father Ben Jimenez, a Jesuit priest from Cleveland who has been jailed since the Nov. 23 protest, was sentenced to time served and released.

Nine others faced trials on Tuesday.

The sentences of those convicted ranged from 12 months probation to six months in prison, with fines ranging from \$500 to \$1,500.

Almost 170 people have been sentenced for trespassing on Fort Benning property during the 14 years that protesters have targeted the military school they say has trained foreign soldiers who went on to commit rape, murder and other crimes in Latin America.

The school, formerly known as the Army's School of the Americas, moved to Fort Benning from Panama in 1984. Now it is under the jurisdiction of the Defense Department with a new name, the Western Hemisphere Institute for Security Cooperation.

FEES, FROM PAGE 1

would make that fee \$110.00, a \$90.00 increase from what it is now. This proposed increase is due to the expansion of the RAC that is to take place.

The proposed fee to increase the most is the student technology fee, which is currently \$38.00. If approved, the fee would jump to \$75.00. The reasons behind this increase and what the extra money will go towards is currently unknown.

Franklin said that there is no past record to look to when predicting whether or not the changes for next year will be approved or not. "We never know," he said. "It really depends on the political nature of the government; sometimes they say no, and sometimes it sails right through."

Franklin also said that this year's decisions will rest heavily on what the Legislature decides to do with the HOPE scholarship. Some are suggesting that HOPE not cover student fees, while others have different opinions, such as tying the scholarship to SAT scores.

If it is decided to keep the fees covered under HOPE, Franklin says that the proposed increases have little chance of being approved. If the fees are not covered by HOPE, however, he says that they will have a much easier chance of passing.

VILLAGE, FROM PAGE 1

The building will consist of two L-shaped structures that form a rectangle. In the center will be a grassy area, as well as a clubhouse. The clubhouse will have two classrooms, a computer lab, and activity room with a pingpong table, a pool table, and an X-Box gaming system. There will also be a police substation.

Eagle Village will be located where Stratford, Southern Splash, a small shop-

ping center, and Knight Drive currently are. Harvey Drive will be extended all the way to Lanier Drive. Stratford and the other buildings will be taken down in February.

The department of university housing has been meeting with architects, and expects to select a construction manager soon. Construction itself will begin in May or June.

The Miscellany needs your submissions!

The Miscellany is Georgia Southern's magazine of the arts and literature. We are looking for submissions in fiction, creative non-fiction, and creative essay, up to 1500 words, in poetry or prose-poetry of any length, and in the visual arts of any medium, such as drawing, painting, photography, graphic design, sculpture, etc. Submissions must be received in electronic form, along with a printed copy. Submission packets, which include a cover sheet and submission guidelines, can be picked up at the Miscellany office, Williams Center 2009. Submissions can be sent to Jerome Powell, P.O. Box 8001, or emailed to miscmag@gasou.edu.

JASON, FROM PAGE 1

matched up nationwide by showing the results on a remote website.

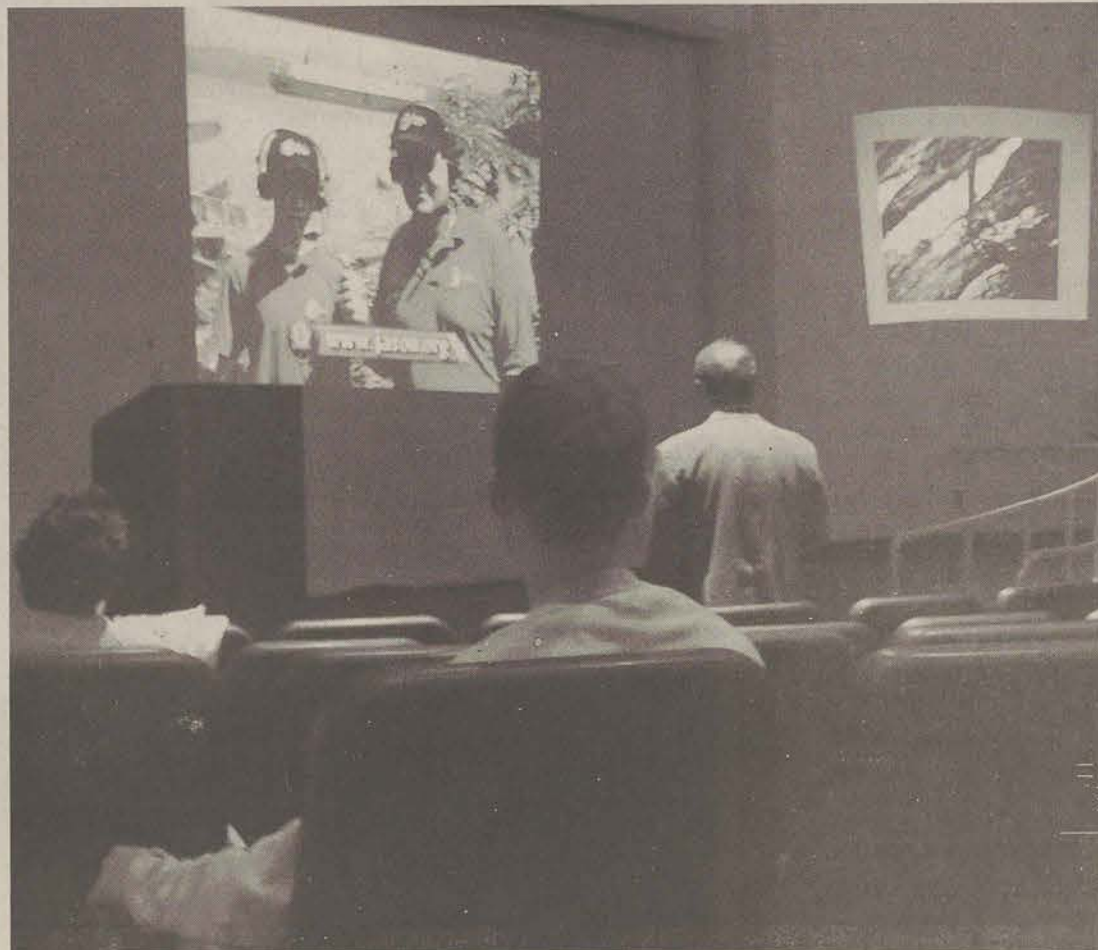
Without breaking a sweat, the local auditorium locked in a correct answer every time.

There were several chances for students to ask their questions during the program which were responded to by the scientists.

Afterwards, teachers and students alike said they enjoyed taking part in the project. "We had a chance to see and hear about what we had been reading," said Debbie Kennedy, a Brunswick teacher.

For over twelve years Project JASON has journeyed to the outskirts of Alaska, Galapagos Islands, and the Florida Keys among other places. Next year it will continue the expedition in Louisiana's Mississippi Delta.

Further information on Project JASON and how to support it can be found at www.jason.org.



ALLTECH TANNING & BOUTIQUE

• UPSTAIRS NEXT TO QUIZNO'S

"HOME OF THE BIG SHOE CHAIR"

- GREEK GIFTS
- SUNGLASSES
- SWIMSUITS
- VALENTINE BASKETS

912-871-2TAN

** MENTION THIS AD FOR 10% OFF **

BLACK AWARENESS MONTH STUDENT SHOWCASE

First Annual • First Annual • First Annual • First Annual
February 2, 2004 • 8:00pm • Russell Union Ballroom

FREE TICKETS AVAILABLE!

January 27-29
Russell Union Commons
10:00 am until 2:00pm

January 27-February 2nd
Multicultural Student Center

Sponsored by
NAACP and the
Multicultural Student Center

For more information, contact
the Multicultural Student Center
at 681-5409

Your student activity fees at work!

Tickets required at the door!

"Experience the Culture!"

The Most Dangerous Band in the 'Boro

Hoop Troop adds their music, fanaticism as they play the Eagles on to victory

By Eli Boorstein
Nietsroob17@hotmail.com

Unlike the Eagle basketball teams, their playbooks don't include the X's and O's of how to break down defenses.

Their playbooks include songs like Paul Simon's "You Can Call Me Al" and AC/DC's "Back in Black."

Hoop Troop, comprised of 30 musically-inclined students, fills up the stands above the Hanner Fieldhouse baseline at each of the men's and women's basketball games. Their quest, from tip-off to the final buzzer, is to entertain the crowd, cheer on the teams and rattle on the opponents.

Led by Dr. Mathew Fallin, associate director of bands, Hoop Troop in its present form has been a part of Eagle ball games for over a decade, but there has been a pep band at basketball games since Fallin was an student at Georgia Southern in the early 1980s.

It wasn't until Fallin returned to the university as a professor that the pep band got a name and image.

"It needed an identity when I came," said Fallin, himself a percussionist and a member of the original Southern Pride in 1982.

Since then, it's been rare not to hear songs echoing through the steel rafters of the Hanner Fieldhouse ceiling. However, there was one season when Hoop Troop did not play, leaving Hanner eerily quiet.

The victim of budget cuts within the athletics department, the group was disbanded for the 1999-2000 basketball season.

"The year the band disbanded, both coaches were disappointed the band was not around," Fallin remarked about the void left without the natural music. "They said, 'What would it take to get you back?'"

With the continued support, Hoop Troop has been going strong

since their brief hiatus.

Just like marching bands during football season, basketball games just don't seem the same without pep bands whipping the crowd into a frenzy.

When they aren't performing in the stands, it's commonplace to see the group's members making their voices hoarse in their support for the players – and their dismay for the opponents and officials – in between their rallying songs.

As Fallin remarked, the ambience of a live ensemble brings a lot more enthusiasm to the crowd than listening to a CD being played over the arena's speakers.

While Hoop Troop performances can get wild and spirited, they remain like any other musical ensemble, with try-outs and practices involved.

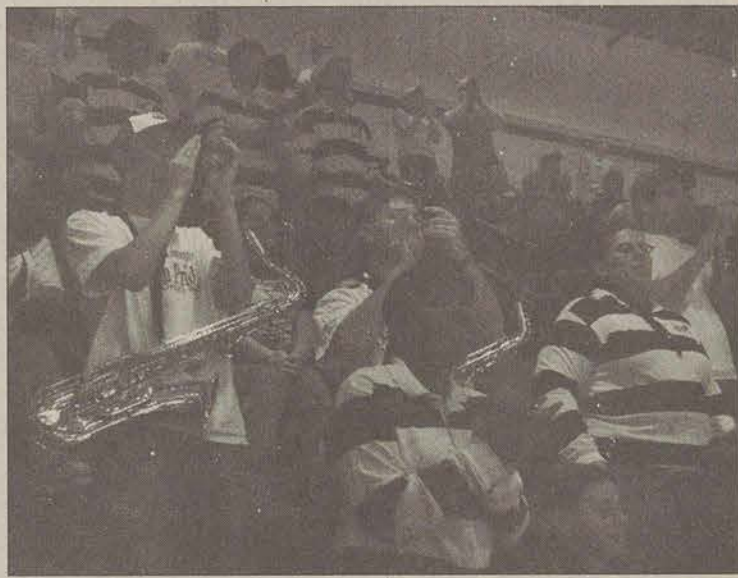
During the fall, notices are posted in the halls of the Foy Fine Arts Building calling for applicants. Those interested apply by sections and are given a selection of songs to practice. The members who pass the auditions and are welcomed into Hoop Troop are given a \$100 stipend for the season and the ever-visible blue-and-white rugby shirts.

However, there is also practice involved, as the band used the two days before the beginning of spring semester to fine tune their skills before the season enters its stretch run.

The song selection in each musician's playbook is culled from the Southern Pride repertoire, among other sources.

"I'll listen to promotional CDs and figure if I want to order the songs," Fallin explained. "I try to program a variety of rock and funk and even country and novelty songs."

In a single game day, a fan can hear Hoop Troop play a selection of songs ranging from Black Sabbath's "Iron Man" to the theme from "Rawhide."



Whether they are applauding the latest achievements of the men's and women's basketball teams or trying to rattle the opponents as they get set for a key free throw, Hoop Troop can always be seen lending their support through their instruments and through their voices.

Photos by LaVene Bell/STAFF

"They're our sixth man. They bring the crowd alive. We couldn't do it without them."

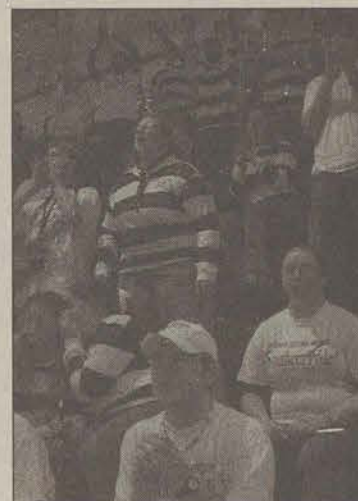
— Women's basketball head coach Rusty Cram

Though the men's and women's basketball programs at Georgia Southern are currently heading in opposite directions – the men thriving and the women suffering through some lean times – Hoop Troop can always be counted on to lend their support, both musically and vocally.

And you can tell that the teams definitely appreciate the support and enthusiasm.

"Every now and then, you can see the players bobbin' around [to the music]," Fallin mentioned.

Rusty Cram, head coach of the women's basketball team, can attest



to the effect of Hoop Troop, as he is currently in his fourteenth season at Georgia Southern as either an assistant or head coach.

"They're our sixth man," said Cram, who often provides pizza and drinks for Hoop Troop during the middle of lengthy doubleheaders.

Even in the tough times that are currently victimizing his team, the veteran coach never short-changes the effect that the band has at basketball games, through the good and the bad.

"They bring the crowd alive. We couldn't do it without them."

Women's tennis edged by Stetson in Florida road trip

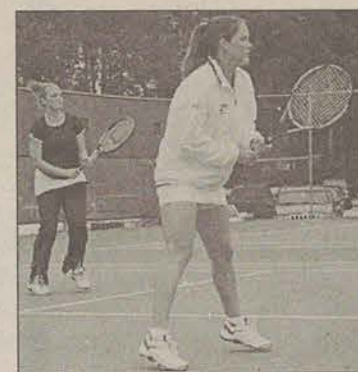
By Tom McClellan
GSU Athletic Media Relations

DeLAND, Fla. – Stetson captured four of six singles matchups, including two in three-set fashion, to earn its first victory of the season by edging Georgia Southern 4-3 at the Mandy Stoll Tennis Center Sunday afternoon.

The Eagles (0-2) used wins by tandems Amy Pazahanick/Ciara Finucane (9-7) and Kim Wollett/Szylvia Zsakay (8-3) to earn the doubles point before the Hatters (1-1) posted wins in the No. 1, No. 2, No. 3 and No. 4 singles competition. In the top two slots, Mili Milovanovic fought past Charlotte Bruneteaux 4-6, 6-1, 6-1, while Jackie Bohannon squeaked out an exciting 7-6 (5), 4-6, 7-6 (5) victory over Finucane.

Earning singles' wins were Pazahanick, who routed Jen Wisnoski 6-0, 6-0 in the No. 5 match, and Heather Reynolds, who topped Danielle Mollman 6-0, 7-5 at the No. 6 position.

The Eagles will return to action Friday, Feb. 6, when they host Gardner-Webb at Hanner Courts. Match time is set for 2:30 p.m.



File Photo

INDIVIDUAL RESULTS

Singles
No. 1 – Mili Milovanovic (SU) def. Charlotte Bruneteaux (GSU), 4-6, 6-1, 6-1
No. 2 – Jackie Bohannon (SU) def. Ciara Finucane (GSU), 7-6 (5), 4-6, 7-6 (5)
No. 3 – Beth Hayden (SU) def. Krystal Sauvageau (GSU), 6-2, 6-4
No. 4 – Marina Levin (SU) def. Szylvia Zsakay (GSU), 4-6, 7-5, 6-4
No. 5 – Amy Pazahanick (GSU) def. Jen Wisnoski (SU), 6-0, 6-0
No. 6 – Heather Reynolds (GSU) def. Danielle Mollman (SU), 6-0, 7-5

Doubles
No. 1 – Pazahanick/Finucane (GSU) def. Milovanovic/Levin (SU), 9-7
No. 2 – Bohannon/Hayden (SU) def. Bruneteaux/Sauvageau (GSU), 8-5
No. 3 – Kim Wollett/Zsakay (GSU) def. Eville/Wisnoski (SU), 8-3

Chattanooga to keep I-AA title game

Associated Press

CHATTANOOGA, Tenn. – Chattanooga will remain host of the I-AA national football championship game for the next two years.

The city beat out bids from Cedar Falls, Iowa, and San Antonio, Dennis Pope, the NCAA's managing director for football, said Monday.

The NCAA I-AA Football Committee, which chose the site, was impressed with the city's support of the 2003 championship game, Pope said. Chattanooga first hosted the game in 1997.

"The community acted positively," he said. "The committee believes it has a first-rate facility."

The game is played at Carter-Finley Stadium, which is home to the University of Tennessee at Chattanooga.

Delaware beat Colgate 40-0 in the 2003 title game.

NCAA proposal to tie scholarship totals to academic performance

KRT Campus

MILWAUKEE – More than 2,000 athletic teams in Division I potentially fall short of the NCAA's proposed guidelines on academic performance, an NCAA official said Wednesday.

The new proposals, expected to be given final approval in the spring after a two-year effort, are part of a larger academic reform program for NCAA member schools in Division I.

For months, NCAA officials have promoted the reforms as a way of prodding colleges and universities to improve student academic performance.

On Wednesday, Todd Petr, the NCAA's managing director of research, said a pilot study of the new measures indicated that, of the 6,138 sports teams in the NCAA, more than 2,000 would fall short of the new academic guidelines.

But Todd Turner, the former athletic director at Vanderbilt University who chaired a key committee that put together the new rules, said the number was an estimate based on available statistics and didn't necessarily mean all of the teams would be subject to penalty.

The new system essentially ties a team's academic record to its ability to award scholarships and recruit and, perhaps, exclude the team from participating in post-season NCAA championships.

Specifically, the NCAA is setting up two different ways to measure academic progress. One is called the Graduation Success Rate, which for the first time would include student transfers. It would replace the old graduation rate, which many coaches felt provided an inaccurate picture of graduation rates because it did not include student transfers.

The second measure will be called the Academic Progress Rate or APR. Beginning with this academic year, schools will be required to compile, term-by-term, its athletic eligibility and retention rates for each of its teams.

After each year, the information is

collected, sports teams at each school will be notified of its APR. After two years of gathering the information, the NCAA will set specific standards that sports teams must meet.

It is contemplated that, beginning in the fall of 2007, warning or probationary letters will be sent to teams. If teams still do not comply, penalties will be imposed incrementally, beginning with scholarships being lost and recruiting opportunities being cut back.

According to Petr and other NCAA officials, because it will take several years to set up the program, the NCAA intends to set up a system of what it calls contemporaneous penalties.

"That will provide for more immediate accountability to change the academic culture right away," according to Turner.

Turner said the penalty being contemplated in the short term would forbid a school from re-awarding a scholarship to replace an athlete who fails to meet eligibility requirements and leaves the school. That penalty would begin in 2005.

"The hope is that some things will change and that some schools will respond to this," Petr said.

On two other fronts, the academic reform effort is already in place for freshman athletes. Last fall, athletes headed to college had to meet stronger eligibility requirements by maintaining at least 12 credits per semester.

Incoming athletes also had to have completed 14 core courses in high school, an increase of one course from the year before. By 2008, high school athletes must take 16 core courses to be eligible for college athletic competition.

Kevin Lennon, NCAA vice president for membership services, said the changes for incoming athletes were consistent with the new demands being made of all high-school students.

"They are expecting their students to challenge themselves to take academic courses," Lennon said of high-school counselors and administrators.

Basketball game postponed due to wintry weather in Carolinas

Chad Fleming and the rest of the Eagles will have to wait an additional day to continue the quest for their eleventh consecutive victory.

LaVene Bell/STAFF

By Eli Boorstein
Nietsroob17@hotmail.com

With ice and snow covering much of North and South Carolina, the men's basketball game between Davidson and Georgia Southern was postponed from Tuesday to tonight.

The game will still be played at Hanner Fieldhouse at 7:30 p.m.

The Wildcats did not want to drive the treacherous highways and the two clubs mutually agreed to delay the game.

In total, five Southern Conference games originally set for Monday and Tuesday were postponed due to the inclement weather.

In addition to the Georgia Southern-Davidson game, three of those games were rescheduled for tonight.



GOING FOR ELEVEN...



Davidson Wildcats at Georgia Southern Eagles

Tonight, 7:30 p.m.
Hanner Fieldhouse

Davidson (8-10, 3-4 SoCon)
Ga. Southern (14-3, 5-1 SoCon)

LEADING SCORERS

DAV: Brendan Winters, 16.8 ppg
GSU: Elton Nesbitt, 16.6 ppg

Lady Eagles dominate the boards as they top Cougars

Shooting woes continue to trouble team in win

By Amy Howard
GSU Athletic Media Relations

CHARLESTON, S.C. – The Georgia Southern Lady Eagles grabbed a season-high 61 rebounds as they downed College of Charleston 61-56 in Charleston Monday night.

The Cougars (5-13, 3-9 SoCon) jumped out to an early 11-4 lead at the 13:34 mark, on a Marketta Talley jumper. The Eagles (10-8, 6-6 SoCon) kept the score close, responding with four straight Shawnica Hill points, with 9:43 remaining in the opening stanza. Lee DuBose connected on two shots from behind the three-point arc, making the score at 24 all going into the break. DuBose led the Eagles with six points at the half, while Jennifer Manard led all scorers with eight. Both teams struggled from the field, combining for 18-71 shots in the half.

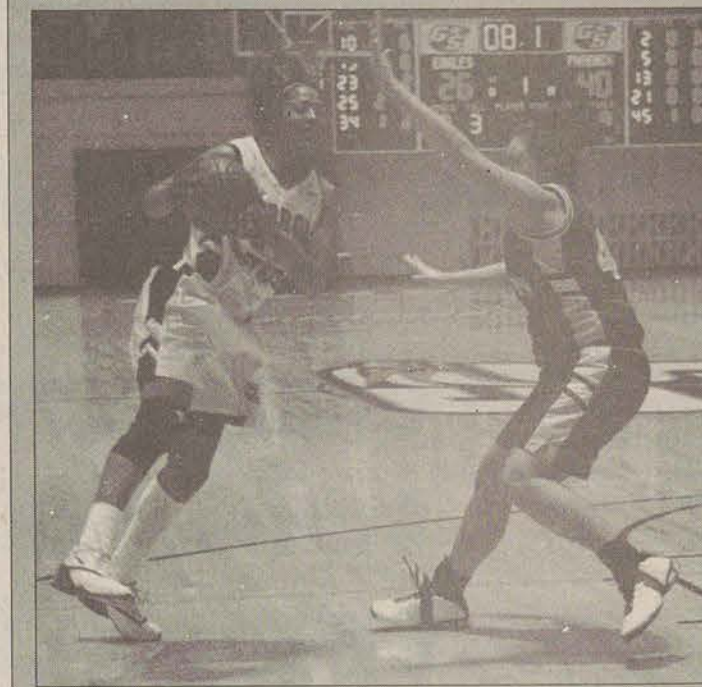
The Cougars came out of the gates quickly in the second half, leading by as many as seven at the 15:00 mark, 37-30. The Eagles bounced back with a 12-0 run, giving them the 42-37 advantage

with 11:55 remaining. CofC would cut the Eagle lead to one with 4:28 left, but could not regain the lead, sending GSU to the charity stripe ten times in the final five minutes. The Eagles connected on 7-of-10 from the stripe, giving them the 61-56 victory.

Georgia Southern's 61 rebounds ties the school record for the fourth most rebounds in a game. Jessica Everett's 13 rebounds ties her career-best and pushed her past the 500-career rebounding mark, with 505 all-time. She also grabbed her third double-double of the year with 12 points. Shawnica Hill and Kellie Tiller also scored in double digits, with Hill adding 11 points and Tiller 10.

Leading all scorers was Marketta Talley, who had 14, on 6-of-10 from the field, and 2-of-5 from three-point range. The Cougars also had two other players in double-figures, with Patrice Bryant putting up 12 and Rachel King adding 11.

The Eagles return to Hanner Fieldhouse on Saturday, as they host to Davidson at 3 p.m.



LaVene Bell/STAFF

Senior Jessica Everett led the Lady Eagles' rebounding parade with 13, tying her career-high. With her performance, Everett topped 500 rebounds for her career. She will help guide Georgia Southern over Davidson when Georgia Southern returns to action Saturday at 3 p.m.

WHAT DID THEY SAY?

Sports quotes you wouldn't use to inspire your team

"He's about the size of a lot of guys that size." – Offensive coordinator Gary Crowton on quarterback Cade McNown

"Like they say, it ain't over till the fat guy swings." – Phillies catcher Darren Daulton on teammate John Kruk

"Baseball is about 90 percent mental – the other half is physical." – Baseball legend Yogi Berra

"Any time Detroit scores more than 100 points and holds the other team below 100 points, they almost always win." – NBA player, coach and commentator Doug Collins

Annan: U.N. will study Iraq elections

By Tom Lasseter and Hannah Allam
KRT Campus

BAGHDAD, Iraq – U.N. Secretary-General Kofi Annan said Tuesday that he would send a delegation to study elections in Iraq if the U.S.-led coalition could guarantee its safety.

But underscoring the difficulty of providing a safety guarantee – for the mission or for eventual elections – six American soldiers were killed in bomb blasts in Khaldiya, about 50 miles west of Baghdad, and in Iskandariyah, south of the capital, on Tuesday.

The U.N. team would assess whether open elections are possible this spring. Many Iraqis have threatened to revolt unless elections are held for a transitional government that's scheduled to take power June 30. American officials in Iraq say the lack of a census, election laws and security would make it impossible to have safe and open elections.

"I have concluded that the United Nations can play a constructive role in helping to break the current impasse," Annan said in Paris. "Therefore, once I am satisfied that the (American-led coalition) will provide adequate security arrangements, I will send a mission to Iraq in response to the requests that I received."

"We have the responsibility to provide for a safe, secure Iraq," said coalition spokesman Dan Senor. "That's not to say it's complete security at all times, 24 hours a day, seven days a week."

Annan's announcement signaled a possible U.N. return to Iraq after a three-month absence.

The United Nations pulled its foreign staff out of Iraq after attacks on aid workers, including an August bombing that killed the top U.N. envoy, Sergio Vieira de Mello, and 21 other people.

The United States initially didn't



Iraqi men walk past the destroyed U.N. headquarters building in Baghdad, Iraq, Tuesday, January 27. The U.N. has announced plans to send a team back to Iraq to determine whether elections should be held before the mid-year hand over of power in June.

involve the United Nations in planning for Iraq's transition to self-rule. But after weeks of widespread unrest over the election issue, the Bush administration and members of the interim Iraqi Governing Council requested last week that the United Nations send a team to study whether elections could be held.

The United States announced a plan in November that would hand over power to an interim national assembly chosen by a system of national caucuses, rather than direct elections.

That plan didn't sit well with many Iraqis, most notably Grand Ayatollah Ali al-Hussein al-Sistani, the nation's top Shiite Muslim cleric, whose word is considered law by millions in the country.

Sistani has continued to insist on

elections. But a spokesman for him said Tuesday that the cleric was taking a wait-and-see attitude about the U.N. mission and had asked those around him to keep quiet until he was ready to make a statement. Last week tens of thousands of Shiites marched through Baghdad, promising widespread revolt if their leader's demands weren't met.

Jassim Mahdi, a street vendor outside Sistani's Baghdad office, said Tuesday that the situation could get beyond Sistani's control if there were no elections. "We should revolt," he said. "We will start the fight with or without him."

Other Shiites said the future rested in Sistani's hands.

"I hope he will not call for jihad, but if he does, we have no choice – we must obey," said Sadiq Ali, a

guard for the Iraqi Facility Protection Services.

The town of Khaldiya, where three American soldiers were killed Tuesday, is in a large region of Iraq known as the Sunni Triangle for its majority population of Sunni Muslims, including many loyal to Saddam Hussein. In recent weeks U.S. military commanders have said they're also seeing more influence from radical Islamic fighters, including some from Osama bin Laden's al-Qaida terrorist network.

Three Iraqi policemen were killed and one was wounded Tuesday near Ramadi, a town just west of Khaldiya. South of the Iraqi capital, two CNN employees, both Iraqis, were shot to death. A third employee of the news channel was injured in the attack.



Special Photo

Players Club residents panicked Tuesday when an electrical fire threatened to spread across one section of the complex of two-story townhouses.

Electrical fire results in no injuries, minor damage

Smoldering insulation ignited bathroom

By Scott Corwin
sdcorwin2@hotmail.com

No injuries were reported after an electrical fire broke out at an apartment in Players Club on Tuesday.

The fire, which caused relatively little damage, was believed to have been caused when two power meter wires crossed, causing a short-circuit, and igniting the insulation.

"I looked everywhere, but couldn't find a fire," said Jocelyn Napier, a co-leaser of the apartment.

She called the fire department at 3:15 p.m. when she noticed a massive plume of smoke coming from her two-story townhouse.

After being alerted to the blaze, Georgia Power notified the other tenant, Laura Bennett, who was on her way home from the RAC. "I was afraid when they told me what was happening. I'm glad I didn't lose anything," she said.

The emergency crew wasted no time getting to work on the source of the blinding smoke that had enveloped the townhouse. Their suspicions were confirmed after they chopped into the downstairs bathroom wall and found the smoldering insulation.

Captain Derrel Melton was among several other firefighters who arrived at the scene. "Fortunately, the fire was discovered early on before it had the potential to really cause some damage," he said.

Nearby residents began to gather around the scene to determine how safe they were.

"At first I was afraid that it was going to spread to our place," said Clay Elrod who lives nearby, "once we realized it was contained, I just grabbed a beer and watched."

All victims of the fire have been given lodging at the local Hampton Inn until the smoke clears and power is fully restored.

'I was afraid when they told me what was happening. I'm glad I didn't lose anything.'

– Laura Bennett, GSU student

Black Awareness Month Table Contest

Would you like to celebrate Black Heritage?

The Black Awareness Month table contest allows student organizations and campus offices to create a table display that focuses on Black Heritage.

The winning table will win a Pizza party for the group's next meeting (up to \$75).

WHEN
February 17th
11am – 1pm

WHERE
Russell Union Commons

WHY
To celebrate Black Heritage

For more information and contest rules, please visit The Multicultural Student Center or call 681-5409.

**Martin Luther King, Jr. • Harlem Renaissance
Underground Railroad • Hip Hop
Tuskegee Airmen • HBCU's • Traffic Light
Black Panther Party • Mae Jemison
Malcolm X • Gospel Music • NAACP
"Lift Every Voice & Sing"**

Off-Campus Housing
COMMUNITY ADVISOR PROGRAM

Residing OFF-CAMPUS next year?

Consider being a

Community Advisor (CA)

Receive a concession off your rent.

Visit the Off-Campus Housing Office in Russell Union 2022 or students.georgiasouthern.edu/offcampus for more details and AN APPLICATION

Application Deadline January 30, 2004