

Georgia Southern University

Digital Commons@Georgia Southern

The George-Anne

Student Media

8-30-2000

The George-Anne

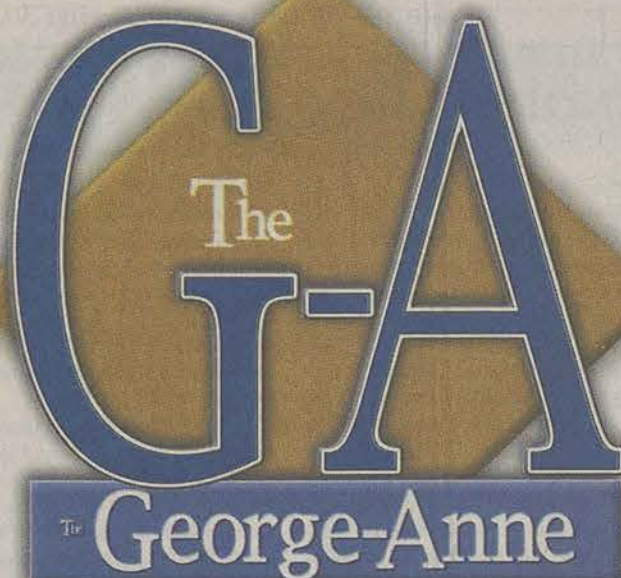
Georgia Southern University

Follow this and additional works at: <https://digitalcommons.georgiasouthern.edu/george-anne>

Recommended Citation

Georgia Southern University, "The George-Anne" (2000). *The George-Anne*. 1665.
<https://digitalcommons.georgiasouthern.edu/george-anne/1665>

This newspaper is brought to you for free and open access by the Student Media at Digital Commons@Georgia Southern. It has been accepted for inclusion in The George-Anne by an authorized administrator of Digital Commons@Georgia Southern. For more information, please contact digitalcommons@georgiasouthern.edu.



RECEIVED

AUG 30 2000

HENDERSON LIBRARY
GEORGIA SOUTHERN
UNIVERSITYSPECIAL FOOTBALL
EDITIONLook for a special
insert inside!

Vol. 73 No. 19

Wednesday, August 30, 2000

THE GOOD, THE BAD, AND THE UGLY

Georgia

GSU

JOSH
KATZOWITZ

Shh! Listen closely, Georgia Southern fans, and you might be able to hear sports commentator Al Michaels call the final seconds of last year's Division I-AA national championship game, featuring your beloved Eagles and Youngstown State.

"I can't believe this is happening!" the emotional Michaels said, similar to his famous play-by-play from the 1980 U.S.A.-Russia Olympic hockey battle. "Do

you believe in miracles? YES! Georgia Southern is officially national champions with a gutsy 59-24 victory over ... ahem ... uh ... I have it here somewhere ... Oh yes, Youngstown State?!? What was the point of this game again? Oh, that's right. The 1-AA championship. Hmm."

"Hell, let's get out of here and do something else. Anything else."

Kind of brings a tear to your collective Eagle eye, doesn't it? No doubt.

GSU is a great football program and always seems to be in the race for a national championship.

One problem, though? Nobody cares - at least in Division I-A (where any respectable football program finds itself, even Georgia Tech) - who is tops in the nether regions of NCAA football.

Quick, take a poll of any football fan outside of beautiful Statesboro and the surrounding metropolis. Who won the Division I-A football championship last year? Eighty-seven percent of fans say Florida State. Good. Okay, now who won the Division I-AA title last year? Ninety-nine percent of fans scratch their heads, furrow their brows, bite their nails, shrug and say "You know what? Who cares?"

Who cares, indeed.

Georgia Northeastern (AKA the Bulldogs) certainly won't when the Eagles climb into their mud-drenched pickup trucks (don't forget the Copenhagen and Old Milwaukee) and travel to Athens for Saturday's game.

The only concern the Bulldogs have is figuring out a way to stop running

back Adrian Peterson, a great runner in his own right. But you know what a one-trick pony in a cheap-trick circus will get you? A 63-10 thumping in front of 86,000 fans.

Embarrassing for GSU? Probably. But you want to hear someone who will be even more embarrassed than the Eagles football team, GSU students and Statesboro citizens once the game is history?

Eagles quarterback J.R. Revere. This joker, who by the way has never started a game for GSU, was quoted as saying:

"Those Southern Conference games are going to be harder than the Georgia game."

Hold on a sec, big man. Muuhahahahahahah.

Is this guy serious? Can anybody even name three other Southern Conference schools? I couldn't. I had to look it up in GSU's media guide.

Here are some of the Eagles' competition that are oh-so-much tougher than the 10th-ranked school in the nation (Get ready to begin quaking with fear).

Virginia Military Institute (last year's record: 1-10), Western Carolina (last year's record: 3-8), The Citadel (last year's record: 2-9).

So what wacky J.R. basically implies is that VMI quarterback Joey Gibson is going to cause more problems in GSU's secondary than Quincy Carter. That Western Carolina's receiving corps of Fred Boateng, Lamont Seward and Chris Lane is more dangerous than Terrence Edwards, Reggie Brown and Durrell Robinson. That The Citadel's defensive line will disrupt the Eagles' offensive line more often than the Bulldogs'.

How ridiculous.

J.R. is seemingly just like the rest of GSU's student body: he's got thoughts of grandeur (an example: Southern fans seriously think their team can hang with Georgia), but in reality, nobody outside of Statesboro believes it. And nobody cares.

Josh Katzowitz is sports editor of The Red & Black and can be reached at sports@RandB.com.



Vs.



Here it is. The moment we've all been waiting for. The Georgia game.

For all the hype that has surrounded this game, I for one am ready to see the two teams put all that aside and just play. I hope this game, this battle of what some consider to be the two best football teams in the state (yes, even with Georgia Tech) will live up to some of those expectations and provide us with yet another shining chapter in the history that is Georgia Southern Football.

Some people are dumbing down the expectations for this weekend's contest, and that's not right. Just because it's the University of Georgia doesn't make them invincible. I've seen them get beaten before (on several occasions by some teams from Knoxville and Gainesville) and it can and will happen again.

Can't you just envision the field this Saturday? Sanford Stadium, home to Goliath (and a goliath place in its own right), basking in the sunshine of a hot Saturday in September as it waits to inaugurate the opening of college football here in the Deep South. Two teams eager to prove they have what it takes to repeat in their respective divisions and compete for a national championship wait to take the field.

The stadium will be packed, electricity will hang in the air as the teams take to the field. What will it be? The first of many wins for UGA enroute to an Orange Bowl appearance or an early end to their dreams as GSU pulls the stunning upset on the way to their own undefeated national championship.

No one knows, and that's the beauty of it.

Talk is cheap. Results matter.

People are ready to see what the coaches have done and see some 'live ammo' action. They want to know if the hype is just that: hype.

I, for one, believe that we are gonna give them a helluva run for the entire game. We aren't quitters, we're national champions.

UGA fans can say they're gonna blow us out because they're I-A. But I don't buy it (see Appalachian State vs. Wake Forest and App. State vs. Auburn in recent years). Two close games, one victory for App. State.

Heck, even GSU led national powerhouse Florida State in the 4th quarter of a game held back in the late 80's. Seeing as how FSU hasn't been out of the top 4 in 14 years, that's pretty impressive.

The I-A argument doesn't hold water.

Then they say they'll beat us because they've got Jasper Sinks and Quincy Carter. Well, I'll match up Sinks' or Carter's stats with Adrian Peterson's any day of the week.

Besides, I just flat out think Quincy Carter is a loser.

Even if they beat us, he won't deliver the big game against Tennessee or Florida and everyone in Athens knows it.

Plus, we have better fans. As far as goal post destruction is concerned, anyway.

We've got premium experience at championship celebrations and field storming. They haven't done it at UGA in longer than I can remember and are sure to be rusty. So, as you can see, our fans will be far more rabid (you heard about that whole NCAA violation thing, right Vince Dooley?) and will more than compensate for the pitiful show the UGA fans will put on.

So, with that said, let the games begin. I'll be there, cheering for the Blue and Gold, cheering for national champions. 76,000 other people will be cheering for what is sure to be an also-ran in the I-A title picture come November. What will GSU be doing then?

We'll be challenging the likes of Massachusetts and Appalachian State for a national championship game berth.

It sure is great to be an Eagle. I just don't know about being a Bulldog. Too much talk, not enough action. Besides, I never liked UGA anyway. Never will.

Let's get it on. John Bryson is the News Editor of the George-Anne and can be reached at ganews@gsou.edu.

JOHN
BRYSON

Don't Get Pierced Anywhere Until You Come & See Us

CLOUD 9

5 Years Piercing Experience! New Needle Every Time!

Over 8000 Piercings on File

EyeBrows & Noses Always \$25.00 With Hoop

Naval Piercings Always \$30.00

We don't run specials or put our piercings on sale. For the best quality work by the most experience piercer in Statesboro, come to Cloud 9.

Novelties, Gifts & Body Piercing by Rick

- Adult Novelties
- Sterling Silver Jewelry
- Smoking Accessories
- Lava Lamps
- Leather and Vinyl Lingerie
- Beaded Curtains
- Candles & Incense
- Black Lights
- Zippo Lighters
- Fish Nets

#3 University Plaza

871-4054

test **PURE**

CHILLS

ANNOUNCEMENTS

Things To Do at GSU Ongoing

• **Free Tutoring** in several subjects: English, history, sociology and psychology, all maths, chemistry, biology, and college reading/study skills. Each subject has different hours of operation. Call 681-0321 for more information.

• **The Christian Faculty/Staff** meets every Monday at noon in the Russell Union Room 2044.

• **The NAACP** meets every Monday at 6 p.m. in the Russell Union Room 2048.

• **BSU** meets every Tuesday at 8 p.m. at 401 Chandler Rd. across from Johnson Hall. BSU also has lunch every Wednesday from 12 to 1 p.m.

• **GSU Chapter of Habitat for Humanity** meets every Tuesday at 5:30 p.m. in the Russell Union Room 2044.

• **The American Society of Mechanical Engineers (ASME)** meets the first and third

Wednesday of every month at 2 p.m. in the Technology Building Room 2116.

• **The Institute of Electrical and Electronic Engineers** meets the first and third Tuesday of every month at 5 p.m. in the Technology Building Room 2117.

August 29

• **The Black Student Alliance** will meet at 7 p.m. in room 2047 of the Russell Union.

• **Phi Kappa Phi** will hold a meeting at 4:15 p.m. in room 2042 of the Russell Union.

September 6

• **Gamma Beta Phi** will hold its first meeting in Russell Union room 2048 at 7 p.m.

• **The GSU Minority Advancement Program** will hold its 11th annual ice cream social at 5 p.m. in the Russell Union Ballroom.

• **The Best Buddies Program** will hold its organizational meeting in room 2052 of the Russell Union. No time given.

September 9

• **The Association of Georgia Southern**

Women will hold its annual membership coffee on Saturday, Sept. 9, 2000 at 10 a.m. at the Lamar Q. Ball, Jr. Raptor Center. Refreshments will be served until noon. Membership is open to all wives of, or women who are, active or retired faculty members, administrators and staff of GSU. Call Linda Rhodes at 681-5373 for more information.

September 10

• **GSU Educational Talent Search Parent Club** will hold a Gospel Jubilee at 5 p.m. at the Old William James Educational Complex located at 150 Williams Road. Proceeds from the event will help to fund scholarships for high school students in Bulloch, Burke, Emanuel, Jenkins and Screven counties. Tickets are \$3.00. For more info, call 681-5458.

September 19

• **Focus on Excellence** lecture given by Dr. David Stone will be held at 4 p.m. in the GSU museum lecture hall.

This Week's Weather



Today
Partly cloudy with a high of 86 and a low of 68.



Thursday
Thunderstorms with a high of 90 and a low of 71.



Friday
Scattered T-Storms with a high of 89 and a low of 71.

Colleges, youth groups fight voter apathy

The Associated Press

DEFIANCE, OH - Voter apathy isn't allowed at Defiance College, which for the first time required incoming freshmen to register to vote and encouraged them to knock on doors in the community Monday to sign up others.

The college's community service day before classes start Tuesday reflects a nationwide push to get more young people interested in politics.

"This is a grand experiment we have going on here. It will be interesting to see if this will work," said James Harris, president of the private school of about 1,000 students. "But most colleges aren't even trying."

There are, however, at least a dozen organizations trying to excite young people about voting. Their goal is to force candidates to talk about issues that appeal to younger voters, said John Dervin, a spokesman for Youth Vote 2000.

"You turn on politics and you don't see yourself, and you don't see your issues," Dervin said. "It's a very alienating process."

In the last presidential election, just three in 10 people ages 18-24 voted. Among 18- and 19-year-olds, it was only one of 10.

Youth Vote 2000 is a coalition of organizations working to change those numbers. It's hiring people in 20 big cities to organize door-to-door registration campaigns.

Projects such as Rock the Vote have enlisted MTV and the World Wrestling Federation to register 72,000 young people this summer.

The United States Student Association this year is sending information on the presidential candidates to more than 400 colleges nationwide.

"The candidates themselves are not reaching out to young people," said Ali Fischer, president of the association.

Despite the perceived waning interest in politics, it's not as though young people aren't concerned about their communities. Studies have shown that today's younger generation volunteers at higher rates than any other group.

"They're not slackers," said Jehmu Greene, a spokeswoman for Rock the Vote. "But they're not connecting that volunteer work to voting."

That's why Harris decided this year to include the voter registration drive among the community service projects at Defiance College.

"Maybe they'll finally make the

connection between service and politics," he said. "We're taking baby steps."

Mark Minglin, the college's director of service learning, said it seems students "get more out of painting houses and tutoring."

"We want them to get to a point of activism," he said.

The students on Monday knocked on dozens of doors, asking people if they wanted to register to vote. Few were home, so they left plastic grocery bags filled with voter registration cards tied to door handles.

Many of those they did talk with said they were already registered or not interested.

"They probably just wanted to get some sleep," said Peter Morales, a freshman from Miami. "I think we woke them up."

The goal is to hit 2,000 houses in the city of 20,000 people about 50 miles south of Toledo. Students will follow up in the coming weeks to make sure everyone knows about the elections.

"If they see us out there, they'll know it's important to vote," said Mariah O'Shea, a junior from Copenish, Mich.

Still, some students said they don't have time to keep up with the issues on the national and local levels. There are classes, sports, homework, new friends and adjusting to life on their own.

"College kids are too busy," said Beth Brigeman, a freshman from Norton. "There's no point in me voting when I don't know the issues."

VoiceStream to acquire Powertel

The Associated Press

WEST POINT, Ga. - VoiceStream Wireless Corp., the nation's eighth largest mobile telephone carrier, has agreed to buy cell phone company Powertel Inc. for roughly \$5.8 billion.

The deal announced Sunday is subject to the completion of the previously announced \$46 billion merger between VoiceStream and Germany's Deutsche Telekom AG, the largest telecommunications company in Europe.

VoiceStream, based in Bellevue, Wash., has been seeking to expand its base of U.S. wireless customers.

West Point-based Powertel said it has about 727,000 subscribers as well as licenses in 12 states covering 25 million potential subscribers. Powertel's customer base is in the southeastern United States, where VoiceStream is currently weak.

Based on Friday's closing price on the Nasdaq Stock Market, Powertel has a market value of about \$2.7 billion, less than half of what VoiceStream is offering to pay.

Bonn-based Deutsche Telekom agreed to buy VoiceStream to gain an international reach to 375 million customers and a foothold with one of the few

U.S. telecom companies using the GSM standard, the most popular digital cellular standard in the world.

VoiceStream has the broadest reach of any GSM company in the United States, reaching 2.3 million customers throughout the nation.

Like VoiceStream, Powertel also uses the GSM standard.

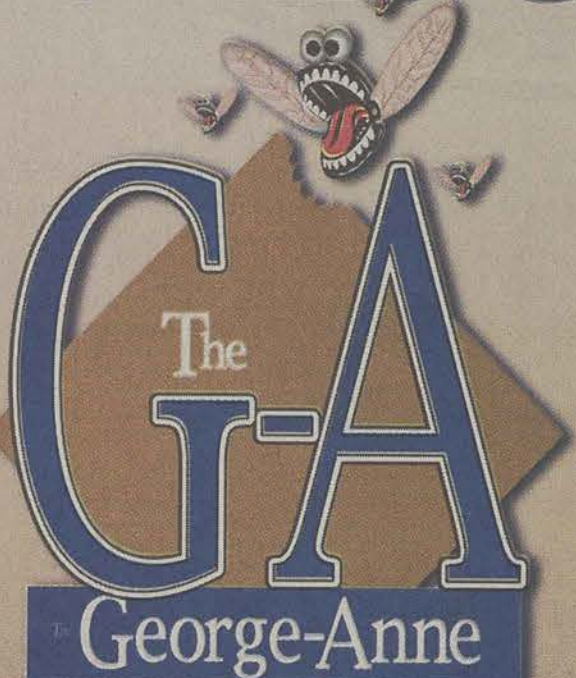
Terms of the agreement call for Powertel shareholders to receive VoiceStream common shares at a predetermined conversion ratio. If VoiceStream's shares close at \$130.77 or above, Powertel shareholders will receive .65 VoiceStream shares, but if VoiceStream shares close at \$113.33 or below, they will receive .75 shares.

If Deutsche Telekom's merger with VoiceStream falls through, Powertel shareholders would receive 0.7 share of VoiceStream stock for each of their Powertel shares.

In a separate agreement, Deutsche Telekom agreed to swap 2.6353 shares of its stock for each Powertel share.

VoiceStream and Deutsche Telekom also will assume \$1.2 billion in Powertel debt.

Nobody Bites into campus news Like The G-A



**Covering the campus
like a swarm of gnats**
GEORGIA SOUTHERN UNIVERSITY

Nobody works harder at giving you the big picture of what's buzzing on the Georgia Southern campus, gnats and all, than *The George-Anne*, GSU's student-managed newspaper. Named an All American newspaper by the Associated Collegiate Press and the top collegiate newspaper in the state by the Georgia College Press Association, *The G-A* covers the beat and the offbeat three times a week. Look for it Mondays, Wednesdays and Fridays. It's been covering the campus like a swarm of gnats for almost 74 years.

Visit our web site: www.gasou.stp.edu

SPECIAL SUBSCRIPTION OFFER

Yes, I just can't get enough of the G-A. Sign me up for all the exciting action. You can keep the gnats.

Name: _____
Address: _____
City: _____ State: _____ Zip: _____
email: _____ Phone: _____

☐ One semester (\$35)

☐ Two semesters (\$60)

A week's worth of *G-A* newspapers will be sent in a plain brown wrapper once per week via First Class Mail so your neighbors will never suspect your true reading habits. The cost is \$35 per semester or \$60 for the entire year. Please include check or money order made payable to *The George-Anne*. Provide complete subscription information above and mail to:

The G-A, P.O. Box 8001, GSU, Statesboro, GA 30460. Telephone: 912.681.5246 Fax: 912.486.7113

**99¢
Whopper®**



Open 'til 1AM
Thursday-Friday-Saturday

Statesboro Only • Limit Two per Coupon
Expires 12/15/00

Learning Support Department to be discontinued

By Shawntineal Hughes
Senior Staff Writer

In keeping with the University's strategic plan to eliminate enrollment of learning support students, President Grube has ordered the discontinuation of the Learning Support Department and the formation of a new learning resource center to address students' academic needs, according to Carole Browne, director of the academic resource center.

The Learning Support Department will be dissolved on June 1, 2001 according to the Plan for the Elimination of Credit-Bearing Remedial Programs. GSU is doing away with the Learning Support Department to reflect the renewed commitment to Academic Distinction that stands at the center of its Year 2000 Strategic Plan. This is being done in an attempt to raise standards and place GSU in the top tier of universities in the country.

Students already admitted to GSU who have not exited learning support as of June 1, 2001 will have a final opportunity to complete their learning support requirements during the 2001-2002 academic year. After June 1, 2001 the courses GSU 1120: Methods of Learning; RGTR 0198: Regent's Review - Reading; and RGTE 0199: Regent's Review - Essay will only be offered on an "as needed" basis.

Even though the Learning Support Department is being discontinued, students who still require academic assistance will have their needs addressed by tutorial and resource services. These services include the University's current Academic Resource Center (formerly known as the Tutorial Center), a new Learning



Aisha Fulton

CHANGES ARE ON THE WAY: Students who still require academic assistance will now have their needs handled by a new Learning Resource Center.

Resource Center, which is scheduled to begin operation on July 1, 2001, and the University Writing Center.

"Students can still expect to get help like they always have at the Academic Resource Center," Carole Brown, academic resource center director, said. There may be a possibility that the Academic Resource Center will be a part of the new learning center, but no decision has been made yet.

"Just because the Learning Support Department is going away doesn't mean that the Academic Resource Center is changing at all," Janet O'Brien, interim department chair of learning support, said. "There has been no indication whether or not the ARC [Academic Resource Center] will be a part of the new

learning center, but it will definitely be available for students."

There have been many questions concerning the dissolving of the Learning Support Department. One of these questions deal with the termination of jobs. There is a possibility that around 50 employees will lose their jobs due to the elimination of this department, according to Brown. The new Learning Resource Center will have some positions available for former learning support faculty, but it doesn't seem to have enough space for all.

The development of this new Learning Resource Center is in the making. Additional information concerning the center will be released at a later date.

**Thank you for reading
the George-Anne.**

**FRONTIER
CHOICESSM**

\$14.95^{*}
As Low As per month

**UNLIMITED
INTERNET
ACCESS**

\$12.95^{*}
As Low As per month

**Frontier
Rewards... You!**

**FRONTIER
LONG
DISTANCE^{**}**
As Low As **5¢^{*}** per minute

**THE MORE YOU USE,
THE MORE YOU SAVE!**

Frontier Rewards is our way of saying "THANKS" to our loyal customers. The more Frontier products you use, the more monthly credits you will receive on your telephone bill! So select the products that fit your lifestyle and start reaping your Frontier Rewards today.

• **FRONTIERNET** - unlimited Internet access for one low monthly price starting at \$12.95*.

• **FRONTIER LONG DISTANCE** - Low \$1.99 monthly charge gives you daily long distance for 9¢ per minute and only 5¢ per minute on Sundays and holidays with our **Hometown SaverSM** Plan!

• **FRONTIER CHOICES** - all your area phone features for one low monthly price, starting at \$14.95*.

©2000 Global Crossing North America, Inc. Frontier and Frontier Communications are service marks of Global Crossing North America, Inc. *Does not include tax. Prices mentioned are good only for customers that subscribe to multiple Frontier products as mentioned. Maximum savings for residential customers is \$10 per month. Savings applied against total cost of services on your bill and represented in the form of a credit at the bottom of your invoice. **Long Distance service provided by Global Crossing Telecommunications, Inc. Frontier is not responsible for any toll charges incurred when connecting to the Internet. Services are subject to availability in certain areas. Some restrictions may apply.

1-877-728-3587

SAVE OVER

\$100 A YEAR

**ON LONG DISTANCE,
INTERNET AND
PHONE FEATURES**

**frontier
COMMUNICATIONS[™]**
A Global Crossing Company

www.frontiernet.net

Archibald's
Restaurant & Tavern
407 S Main St 764-6597

Monday Night Football

\$.25 wings
\$4 pitchers (Eul & Bud Light)

Tuesday Night

Burger and Beer \$5.00

Wednesday Night

Fiesta Noche
Mexican Dishes
Jimmy Buffet's Margaritaville Specials

Live Entertainment Thursday and Saturday Nights
5th Quarter after GSU Games!

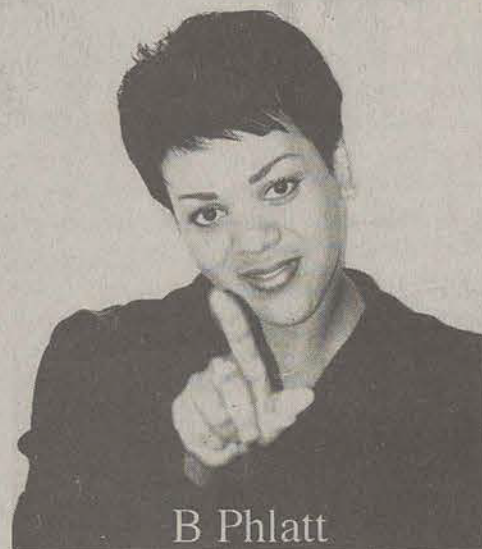
We Now Accept Eagle Express!!!

Eagle Entertainment Event Hotline - 681-5442 • Eagle Entertainment Event Hotline - 681-5442

**Eagle
Entertainment**
"Your Student Entertainment Connection"



Shawn C



B Phlatt

Thursday,
September 7
7:00 pm
Russell Union
Ballroom

**Eagle Entailment will
see you at the Student
Organization Fair**

Thursday, August 31
10 am - 3 pm
Russell Union Rotunda

Get Involved!

For more information call: 486-7270
Event Hotline 681-5442

Eagle Entertainment Event Hotline - 681-5442 • Eagle Entertainment Event Hotline - 681-5442

LOVE IT OR LEAVE IT. OUR SCHOOL DESERVES MORE FROM ITS STUDENTS

Why do people wear UGA paraphernalia at Georgia Southern University? What the heck are you people thinking? If you want to go to UGA, then go. We don't want you people here anyway. If you flunked out or dropped out then why do

Our Opinion

you want to cling on to that? Can't you get over it? Do you have no shame? You do not go to Georgia, you attend Georgia Southern. Are you not happy that you are here? Why attend Southern if you don't want to be here? There are myriads of other schools out there. Sure, Southern may be smaller, not have all the classes that you want, and may be

out in the middle of B.F.E., but who the heck cares. This is the perfect place to go to school. Southern has less distractions from school work, closer relationships with your professors, and best of all is centrally located darn near to the center of Georgia. On Saturday we play a team that is larger, more experienced, and arguably a better team (although, not in our opinion). The players could use some support. Not even considering that, what do you think UGA fans are going to think when Southern students show up in Athens and don't even support their own school? They will think: Who the heck wants to go to a school where the students wouldn't think twice about crapping on it. This is your future alma mater, you should treat it as such.

Make your voice heard or get out!

My last school year here at GSU has finally arrived.

When I began writing for the George Anne my purpose was to inform and enlighten. This year I plan to add a new component to my purpose

—"Change Your Life Editorials". Of course I realize that very few world wars will be

stopped by reading my column, however, I do hope that some interested reader might do more than just go "hmm".

College students are sup-

posedly the trend setters, world changers, and big thinkers. If asked about what we do not like about society or the wide range of problems in government, we can give you a lengthy, detailed list of grievances.

Ask us about the last time we voted and chances are many of us will not have very much to say.

During a casual conversation with several of my highly intelligent, outspoken peers I was surprised to find out that many of them do not vote, have not voted, and have no plans of doing so in the future.

Their reasons for not voting included it doesn't matter, it takes too long, and my

very personal favorite, "I forgot". How can you complain about how our democracy does not work if you do not take part in the democratic process?

Tosay not matter is to undermine the very foundation that America was founded on. The whole premise is "for the people, by the people".

Without the people, it just doesn't work. Sure the vast majority of politicians are liars, thieves, and cheaters but there are a few decent candidates who would do the job correctly.

Someone has to vote for decency—if not you then who? It takes too long has to

be the most ridiculous excuse thus far. The entire process requires less than twelve minutes of your time.

Those individuals who "forgot" might want to go that spring does week with Elian Gonzalez and his family. The everyday pleasures that our government offers us are only a dream to those in Cuba and places like it.

Ultimately, life is, of course, what we make of it. Thankfully God has dropped us on this part of the planet for a reason. Our challenge is to try to make the world a little bit better because we were in it. Voting is only one small, yet important part of accepting this challenge,—the rest is up to us.

Where is my school spirit? Sit down...

This weekend, like I need to remind you, we send our football team to face down the "evil" forces of UGA. We've been prepping ourselves for months for this one, and two factions have arisen. On

one side we've got a bunch of fanatical kids who swear up and down that GSU is going to heartily beat down their enemies, and then we have the gang who is all gung-ho about UGA killing us.

Now, the kids who are yay-GSU are telling the go-UGA crowd that they are lacking in school spirit, that they have no pride in their school. Well, yes, this is true. These individuals are pretty much a void of no spirit. They're mainly the people who tried but failed to get into Georgia, but that's a different story.

See, I'm one of the ones who is lacking in school spirit. But at the same time I hate Georgia.

Why? Easy, GSU itself drained it from me.

My school spirit is in the same place as the new Comm Arts building. I am in one of the largest majors on campus, but they relegate me to a trailer. A trailer that is leaking, that is falling a part, that smells when it rains, that is really embarrassing to be in when you look across the way at the brand new Education Building or should I say palace. We don't get anything. Thanks for showing support to my major.

My school spirit ran dry after having to deal with the clerks in the front of the financial aid office. My advisor, the processors, and everyone besides the clerks are all beautiful people as far as I'm concerned. They've helped me out of some real binds. However,

The 2000 Editorial Staff

Kevin Caskey

Sports Editor

Hannah Helton

Assistant Sports Editor

Lindsay Wise

Photo Editor

Dana Mackay

Assistant Lifestyles Editor

Britney Shiver

Assistant News Editor

Tim Prizer

Lifestyles Editor

Nick Crouch

Deputy Managing Editor

For 73 years, Georgia Southern's Official Student Newspaper

The 2000 Editorial Board

David Koepke

Editor in Chief

Justin Johnson

Managing Editor

John Bryson

News Editor



MARNITE ZACHERY

Open letter to students and faculty of GSU

The year 2000 will mark the end of the Barbara W. Bitter Scholarship for Students Under Learning Support Requirements. The scholarships was founded in 1992 to honor Barbara W.

courses that students are enrolled in during the fall semester of their freshman year plus an interview with the finalists. The recipients receive a nonrenewable, \$900.00 stipend disbursed in

earned the undying gratitude of thousands of young people and their parents, and they deserve far more recognition than the dedication of this scholarship can bring. But we will have to leave that pleasurable task of recognition and praise to the administration of this great university that Learning support students and teachers have played such a vital role in building.

For the past eight years, the founders have funded one scholarship a year with the second one being funded through your generous donations. For the year 2000, the scholarship fund has, in hand or pledged, \$2,100. This is three hundred dollars in excess of the amount needed for two stipends and only six hundred short of a third scholarship. On February 1, 2001, any excess money in the fund and the remainder of long term pledges will be rolled into another scholarship fund. Or—if donors are willing, we can support three scholars this, our last, year. I'll leave that up to you. Please be

aware that any Day For Southern pledges will need to be paid in full by the third of January, 2001, in time for the spring semester disbursement.

Before closing, I want to thank all of you not only for your monetary support, but also for the hundreds of evaluation forms that faculty across campus have filled out for applicants. Without these forms the committees would have had no way of determining which applicants were academically strong, self-disciplined, motivated, and deserving of all the help we could give them. I look forward to introducing our final set of recipients in January.

Sincerely,

Verdery B. Kennedy

Retired Asst. Professor of Learning Support Scholarship Selection Committee Chair

Mrs. Kennedy can be reached by email at vkennedy@gsvms2.cc.gasou.edu

LETTER TO THE EDITOR:

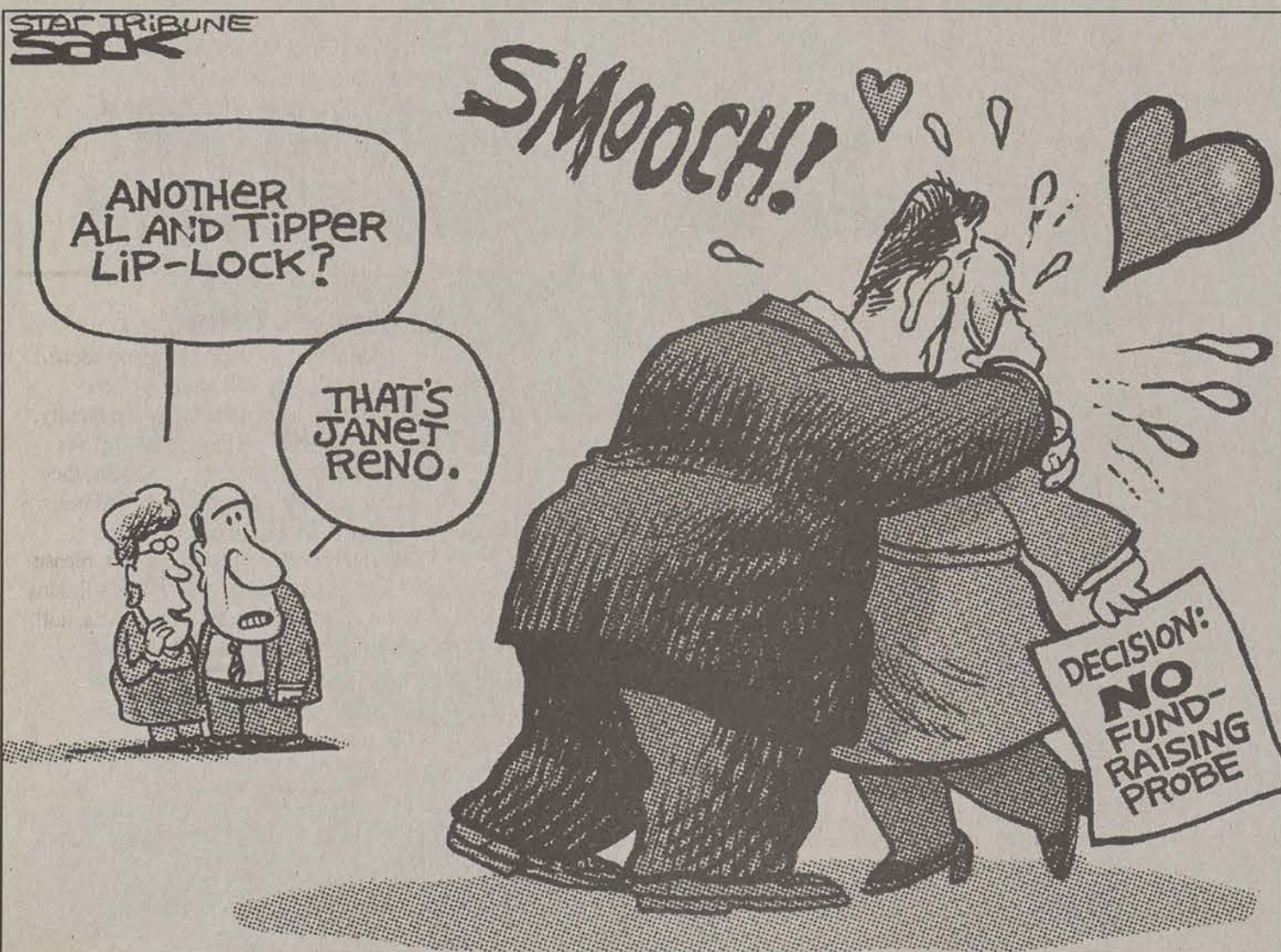
VERDERY KENNEDY

Bitter who built Georgia Southern's Special Studies—i.e. Developmental Studies i.e. Learning Support—Department into what was, at the time of her retirement, considered to be the best in the state. It is intended to benefit students in financial need who demonstrate strong character and academic potential, along with high motivation to achieve a college degree.

Recipients are selected by a committee of four persons representing the three academic areas of Learning Support. The selection is based on written, teacher evaluations from all academic

two payments (fall and spring semesters) and deposited in the students' accounts.

Due to the dissolution of the Department of Learning Support as of June 1, 2001, this year will be the last that Barbara Bitter Scholarship will be offered, terminating it one year short of our ten year commitment. Barbara and I would like to dedicate this final year to the Learning Support faculty who have so faithfully devoted their careers to the thousands of students who, without this program, would not have had the opportunity to attain a college degree. These teachers have, through the years,



LETTER AND SUBMISSION POLICY

The George Anne welcomes letters to the editor, story submissions and guest columns from people both inside and outside the GSU community. All copy submitted should be typed (double-spaced, please), preferably on Macintosh disk in Microsoft Word or Microsoft Works format. All submissions must be signed and include a mailing address and phone number for verification. The editors reserve the right to reject any submission. There is no word limit on submissions. A writer may request to remain anonymous. However, it will be the editor's decision whether or not to print the name. Submissions are run on a space-available basis.

THE GEORGE-ANNE STAFF

NEWS

Leigh-Ann Burgess, Jake Hallman, Shawntineal Hughes, Jason Kemp, Neusomba Long, Teresa Southern, Malcolm Travers

LIFESTYLES

Kathy Bourassa, Chris Brenneman, Melissa Denby, Mark Metter, Jeremy Nix, Tim Prizer, Mary Render, Michael Russo, Zane Thomas

SPORTS

Edmund Coley, Bilal Malik, Jennifer Martin, Taryn Price

PHOTOGRAPHY

Cory Brooks, Hans Knoepfel, LaVene Bell, Mellonee Gibson

STUDENT PUBLICATIONS

News, Editorial Advisor

General Manager
Bill Neville

CIRCULATION

Supervisors

ADVERTISING/DISTRIBUTION SERVICES (ADS)

Advertising Manager
Vic Cuvo
Business Manager
Brooks Clements
Ad Reps
Jonathan Brooks, Tiffany Domingas, Pamilla Smith

PRODUCTION AND GRAPHICS EDITORIAL SERVICES (PAGES)

General Manager
Jonathan Brooks
Production Managers
Will Thigpen
WebMasters
Sugio Waldring

Arkansas shooting leaves university in state of shock



TMS Campus

APPARENT MURDER-SUICIDE: Investigators remove the body of one of the victims of an apparent murder-suicide from Kimple Hall on the campus of the University of Arkansas on Monday, August 28.

TMS Campus

It may only be two days old, but this school year has already been a long one for students and faculty at the University of Arkansas.

A confrontation on Monday between a graduate student and his former professor resulted in the deaths of both men. It was the first day of the fall semester. Tuesday's all-university forum, held on campus between 12:30 and 2 p.m., gave the students and staffers a chance to share their thoughts, bond together and, hopefully, bounce back.

In his address to attendees, Chancellor John A. White said that while Monday's shooting was a blow to the entire university, the community has everything to gain by working together and being strong.

"Yesterday's tragic event has shocked and saddened the entire university community," said White. "It is one of those very unfortunate and difficult times that tests our individual resolve and community spirit."

White also reiterated comments by President B. Alan Sugg, who remarked Monday night how "proud" he was of "the sensitivity and the civility that have been displayed in the midst of one of its saddest moments."

Over the course of three press conferences Monday afternoon and evening, White and local authorities identified the shooting victims as English professor John R. Locke and graduate student James Easton Kelly.

Both bodies were found in Locke's office around 12:30 p.m. after an anonymous 911 caller alerted authorities. Police have linked a .38 caliber handgun found at the scene to Kelly but could not confirm who shot whom.

Locke, 67, had served more than 30 years at the university as a professor of English and comparative literature. White said that he had planned to

retire at the end of this academic year.

Kelly, 36, who had been enrolled on and off for 10 years in the English and comparative literature Ph.D. programs at Arkansas, was dismissed from the program on Aug. 21, said White. While White was Kelly's faculty adviser, it was not immediately clear what role the professor had in his student's dismissal.

"By the late 1990s, Mr. Kelly had enrolled for several consecutive semesters, and in each case he subsequently withdrew," said White. "Based on his record, he was ultimately dismissed, but was allowed to continue taking courses as a non-degree student."

The state medical examiner's office in Little Rock will perform autopsies on the bodies in hopes of establishing a clearer scenario.

Arkansas Police Chief Larry Slamons was on hand to discuss issues of campus safety and violence, as well as clear up any confusion on the details as they stood so far. But it was the topic of recovery that stole the proceedings.

White reminded the crowd that Monday's shooting was an isolated incident, the first of its kind in almost 20 years.

"While [the shooting] is extremely tragic, it must be viewed in perspective," he said. "This is not a violent or unsafe campus. To the contrary, it is a campus of safety, security, respect and civility. That is why this event is so incredibly shocking to all of us."

Since the shooting, the university has urged students to get in touch with loved ones immediately, and encouraged both students and parents to call a special hotline established in the wake of the tragedy. The number is (501) 575-2277. Counselors will also be on hand on the first floor of Brough Commons to talk to students and parents.

The George-Anne wishes the Eagle football team good luck in Athens this weekend and encourages all GSU fans to keep it safe as they drive to and from the game!! Remember, don't drink and drive.

Career Services Events

Opening the Door to Your Future

Fall Semester 2000, Hours: Monday-Friday, 8:00am-5:00pm

912-681-5197, 1047/1058 Williams Center

<http://www2.gasou.edu/sta/career>

CRC Walk-in Assistance: 9:00am-12:00pm & 1:00pm-4:00pm Monday-Friday



Students, Alumni, & Faculty

Looking for information on careers, jobs, and internships?

"Prepare to be a Hero in your Career" by Joining us for

Eagle Expo

Thursday, October 12, 2000

RAC, 9:00am-1:00pm

(Part of Homecoming Events)

(A shuttle will run every 20 min. from near the Rotunda area of the Russell Union to the RAC beginning at 9:00am)

As a Special Bonus...We are now including a **Majors Fair Addition!**

- ♦ Would you like help in choosing a major?
- ♦ Are you unsure of your career goals?
- ♦ Do you have questions about what career opportunities are available in different majors?
- ♦ Then visit the academic information tables to learn more about how majors relate to careers!
- ♦ Representatives will be available from different academic departments to answer your questions.



Before Attending the Career Fair, Don't Forget to Attend:

Making the Most of Eagle Expo

Monday, October 9, 4:00pm

Russell Union, Rm. 2044



Halloween Open House

Tue., Oct. 31, 2:00-4:00,

Career Resource Center,

1047/1058 Williams Center

Students and faculty are invited to attend an Open House at Career Services. Receive a tour of the Career Resource Center, learn more about the services we offer, and meet the Career Services Staff! Refreshments will be served...Come for a hauntingly good time!



Cooperative Education



With more than a million college graduates entering the workforce each year, it is likely that many graduates will have some difficulty finding a career position in their field of study, usually because of lack of practical work experience. GSU's CO-OP program can give you practical experience and the competitive edge it takes to find a job when you graduate.

Meet with Warren Riles, Experiential Education Coordinator, to learn more about the CO-OP program.

Walk-in Hours:

Every Monday & Wednesday 9am-1pm

CO-OP Seminars for Fall 2000

Tuesday, Sept. 5, 11:30-1:00, Union Room 2044
 Wednesday, Sept. 6, 9:00-10:30, Union Room 2042
 Thursday, Sept. 7, 1:00-2:30, Union Room 2042
 Friday, Sept. 8, 2:00-3:30, Union Room 2042
 Monday, Sept. 11, 8:00-9:30, Union Room 2070
 Tuesday, Sept. 12, 9:00-10:30, Union Room 2042
 Wednesday, Sept. 13, 10:00-11:30am, Union Room 2044
 Thursday, Sept. 14, 11:00am-12:30pm, Union Room 2044
 Friday, Sept. 15, 12:00pm-1:30pm, Union Room 2042
 Monday, Sept. 18, 1:00pm-2:30pm, Union Room 2042
 Tuesday, Sept. 19, 10:00am-11:30am, Union Room 2044
 Wednesday, Sept. 20, 11:00am-12:30pm, Union Rm. 2044
 Thursday, Sept. 21, 3:00pm-4:30pm, Union Room 2042
 Friday, Sept. 22, 8:30am-10:00am, Union Room 2042
 Monday, Sept. 25, 2:30pm-4:00pm, Union Room 2042
 Tuesday, Sept. 26, 8:00am-9:30am, Union Room 2084
 Wednesday, Sept. 27, 12:00pm-1:30pm, Union Room 2042
 Thursday, Sept. 28, 9:00am-10:30am, Union Room 2042
 Friday, Sept. 29, 10:30am-12:00pm, Union Room 2044

Career Connections

This easy on-line program allows you to:

- ♦ Complete your résumé and forward it online to Career Services
- ♦ Sign up for on-campus interviews
- ♦ Place your résumé in our Web Résumé Book
- ♦ Provide employers access to view your résumé
- ♦ Allow Career Services to refer your résumé to potential employers
- ♦ Access Career Connections at:

<http://www.sta.gasou.edu/0290/student>

To gain access to Career Connections, you must first obtain an ID and PIN number through Career Services. Please come by the office located in 1047/1058 Williams Center or to the COBA Satellite Office to complete the application.



WALT DISNEY PRESENTS....

The Value of an Internship

Presented Gregory Taylor, Walt Disney World Representative

Monday, Nov. 6, 2:00-3:00, Russell Union 2047

Learn from the experts how to obtain the most from your internship experience. Also a GREAT networking opportunity!

Special Workshops

Business Etiquette Practices in the Real World
 Wed., September 27, 2:00-4:00 CRC

Careers for Liberal Arts Students
 Mon., Oct. 16, 2:00-4:00, CRC

Life After College
 Mon., Dec. 4, 2:00-4:00, CRC



SENIORS AND GRADUATE STUDENTS!

JOIN US FOR A

SPECIAL INTERACTIVE DINING ETIQUETTE EXPERIENCE

Provided especially for you through corporate sponsorship!

Wed., Oct. 11, 6:00-8:00pm, Russell Union Rooms 2070 & 2080. Learn appropriate dining etiquette by gaining practical experience at a five course meal. **Limited Spaces....First Come, First Served.** RSVP to Connie Franklin (681-5197) or Theresa Beebe (681-0516). \$15 refundable deposit due by Wed., Oct. 4, 2000.



Web Job Listing

Are you looking for part-time jobs on campus? Off campus? For full-time employment after graduation? Leadership opportunities? Internship opportunities? Check out Career Services' Web Job Listing!

To obtain information:

Access the Internet

Go to <http://wjl.resumeexpert.com/0290>

Click on Student

Password: gsualumni (one word)

Questions:

Part-Time, Diane Wynn Financial Aid, 681-5413

Full-Time Employment: Career Services, 681-5197

Leadership, Sheri West: Russell Union, 681-0399

Volunteer, Victoria Futch: Volunteer Services, 871-1435

Career Services Satellite

The Career Services Satellite Office for the College of Business Administration allows Career Services to expand its services to business students, faculty, & alumni. This office provides one stop shopping for COBA students.

For more information about the office or to make an appointment, please contact:

Theresa Beebe, Career Service Specialist

1101B COBA Student Service Center

Phone: 912-681-0516

Fax: 912-486-7208

Email: tbeebe@gsvms2.cc.GaSoU.edu

Eagle Suit Drive!

Do you have a professional employment interview soon? Have you thought about what you will wear? Career Services has collected several suits donated by the faculty, staff, and community and would like to get you "fit" for your interview! Suits are free to students. However, they are limited and available on a first come first served basis. In addition, you will need to incur the cost of any alterations. If you are interested in obtaining a suit, please come by the Career Services Office at 1047/1058 Williams Center and ask the front desk about getting "fit" for a suit! Please call 912-681-5197 if you have any questions!



Let us help you succeed in your career!



Eagles in Athens

By Doug Kidd
Senior Sports Writer



J.R. Revere

When GSU takes the field Saturday there will be 76,000 screaming fans wearing red that won't care about the Eagle's five national titles, their innovative spread option offense that has broken several national records, or a running back that's on pace to shatter the NCAA record for career rushing yards and consecutive 100-yard rushing games. Almost no one, including many Eagle fans, expect GSU to keep it close, much less pull off the victory.

And everyone in the GSU football program knows it and likes it better this way. They would rather sneak up on people.

"We're going to go out there and try to play the best we can," said GSU offensive coordinator Mike Sewak. "We'll see how our guys react underneath that pressure. I think we have enough veteran guys that have played. I really like what we've got in our skill position players. They will not panic."

The skill position players Sewak alluded to are talented and experienced. And it all starts with fullback Adrian Peterson. The junior has rushed for 5,310 yards and 74 touchdowns in his 30 career games at GSU and is I-AA's best chance at winning the Heisman since Steve McNair in 1994.

But the record on the line Saturday for Peterson is the most storied to date: two-time Heisman winner Archie Griffin's NCAA

record for most consecutive 100-yard games. With Peterson gunning for the record, he knows he's a marked man. "I don't mind. It comes with the territory. I'm sure [the Bulldog defense] would come out and hit me the same if I wasn't known. It's a great challenge for the team. I'm going to go at it at one-hundred percent and see what happens from there. But I'm going to treat it

SEC schedule. "We're not going to overlook Georgia Southern but our main focus is getting ready for Florida and Tennessee and the rest of the SEC," said UGA defensive tackle Marcus Stroud.

Georgia enters the game with its highest expectations in years. With SEC East foes Florida and Tennessee facing uncertainty with their go-to-guys, the Bulldogs are the

season. Another reason for excitement in Athens is a strong receiving corps led by wide receiver Terrence Edwards (53 rec. 772 yards) and tight ends Randy McMichael and Javaris Johnson. Heralded newcomers Reggie Brown and Durrell Robinson are expected to be Carter's deep threats.

On the defensive side of the ball, UGA returns all but one of their starters from last season. In most cases this would be great except that the Bulldogs finished dead last in the SEC in defense a year ago. So the Bulldogs brought in former

Oklahoma coach Gary Gibbs to direct the defense in hopes of slowing opponents down this season. Defensively, UGA is led by their two interior linemen in Richard Seymour and Marcus Stroud.

Linebackers Boss Bailey (66 tckls) and Kendrell Bell (61 tckls) return as well.

Entering the season against a nationally-ranked I-A opponent in front of 85,000 is an imposing challenge. GSU quarterback J.R. Revere knows his first starting assignment will be a tough one for him and his teammates because of the crowd. "I'm going to treat it like coming out [in Paulson Stadium]. I know it's not the exact same, but that's how I'm going to treat it. We have a team to beat. I can't fight the crowd and play against them."



Quincy Carter



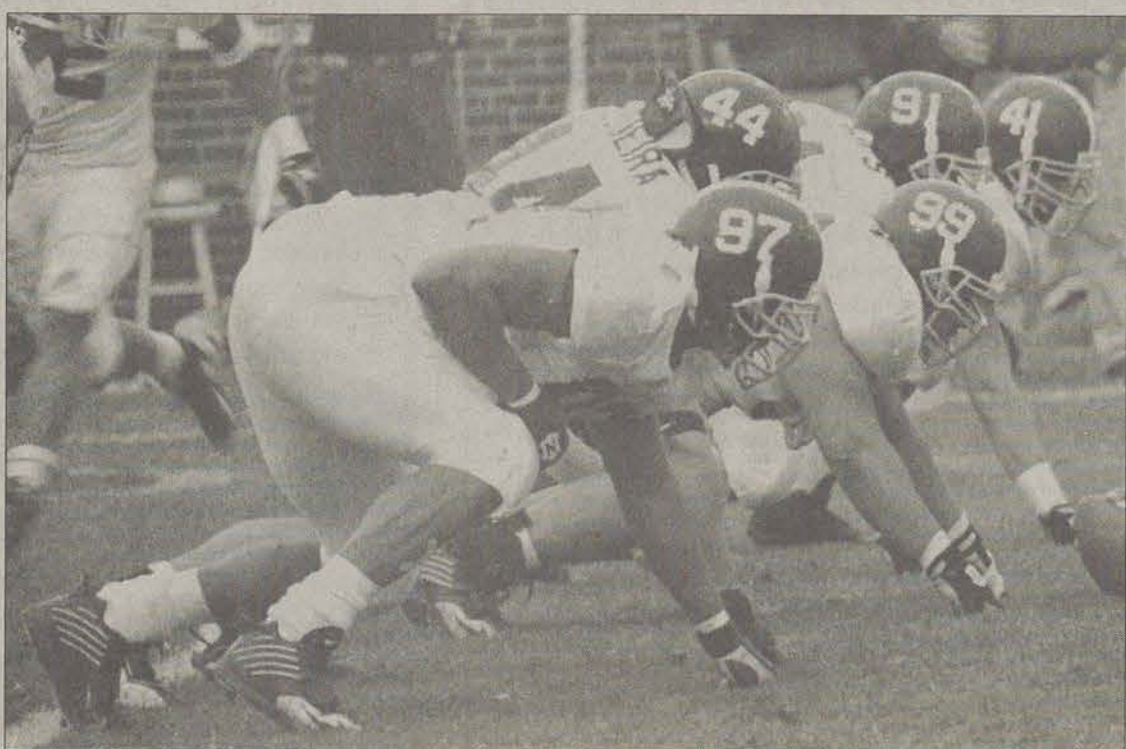
Adrian Peterson

as just another game. If I do well, then I do well. If not, I'll take that also."

Peterson's attitude towards the game mirrors that of his head coach Paul Johnson, who seems more concerned that UGA's check passes through than with the media hype for the game. UGA also appears as uninterested in the excitement as they see the contest as just a warm-up for the

popular pick to make their first appearance in the SEC Championship Game.

The biggest reason is the return of eight starters on offense, including two-year starting quarterback Quincy Carter. The junior improved dramatically in '99, passing for 2,713 yards and 17 touchdowns with just six interceptions. Also returning is running back Jasper Sanks, who rushed for nearly 900 yards despite being out of shape nearly all



↑
L
O
S
E
R

Burkett feels GSU ready to take on UGA



File Photo

By Hannah Helton
Sports Editor

Recently, Travis Burkett, a senior offensive lineman for the GSU football team sat down for an interview with the George-Anne. The following is the transcript from that interview.

Who has influenced your career the most?

"My mom has probably influenced my football career the most. She always encouraged me to play and to do my best. My coaches along the way have also influenced me. Most of them have been like fathers to me, especially Coach Sewak [Offensive Coordinator/Offensive Line]. He knows a lot and I have learned a lot from him."

How do you think playing a I-AA school will affect the future of GSU football?

"I think that playing a I-AA school now will definitely improve the future of GSU football. Look at us now. We are definitely becoming more well known. I think that we will get better recruits and gain more respect in the I-AA division."

Will playing UGA for the season opener have a positive or negative effect on the team?

"Definitely positive. We get to go out and show everybody what we have got. We're [the team] really excited to play UGA. We want to give everybody a good show. It has given us a boost of energy."

How do you handle the stress that comes along with school and

Travis Burkett

Offensive Tackle

Senior, Sports Management

6-1, 269 lbs.

2 yr. letterman

Aiken, SC (South Aiken HS)

football?

"It is definitely tough. I am pretty much on the go nonstop. I barely even get time to eat. I go to class, grab some lunch and then head to practice. After practice, I eat dinner and study until midnight almost every night. You know how professors tell you to study 2 hours for every hour in class? I am lucky to get 10 minutes. I just try to take it in stride and manage my time."

Do you feel that you are in a more prominent leadership role now that you are a senior?

"I do feel that I am in more of a leadership position this year. I think that all of the seniors do. It is our team to take care of, not as dictators, but as father figures to the younger guys. It is our responsibility to help the younger guys make the right decisions and the right choices."

Who is your biggest inspiration on the team?

"Dietrich Everett. He is a team leader. You can always go to him with problems and questions. He really wants to see the younger guys grow up right."

What are your plans after graduation?

"I am not sure just yet. Hopefully, I will be able to coach on the college level. My major is Sports Management and one day I would like to work in some type of sports organization."

Editor's note: Profiles of the senior football players will run throughout football season.

NEW DIGITAL PHOTOCOPIERS SEPTEMBER 1

at
Henderson Library!

- New copiers will use Eagle Express cards. Dispenser for adding value and purchasing Eagle Express and Eagle Express Vind cards available at the Library.
- 10 cents per page, microfilm and microfiche copies will be free!
- Auxiliary Services will transfer the value from existing copy card to Eagle Express cards.
- Beginning Friday, September 1, patrons may take their old copy cards to the ID Center in the Russell Union and have the value on them added to their Eagle Express Cards. The ID Center is open 8 am to 5 pm Monday through Friday.

The Library offers a Variety of Workshops

For a current list, go to <http://www2.gasou.edu/library/workshops.html> or come by any service desk for assistance.

Whether you are new or returning,
remember we are here to help

Magic the Gathering

Warhammer

In-Store Gaming

GALLOP'S COMIC AND GAMES

17066 Hwy. 67 South (Fair Rd.)

Statesboro, GA 30458

(912) 681-2592

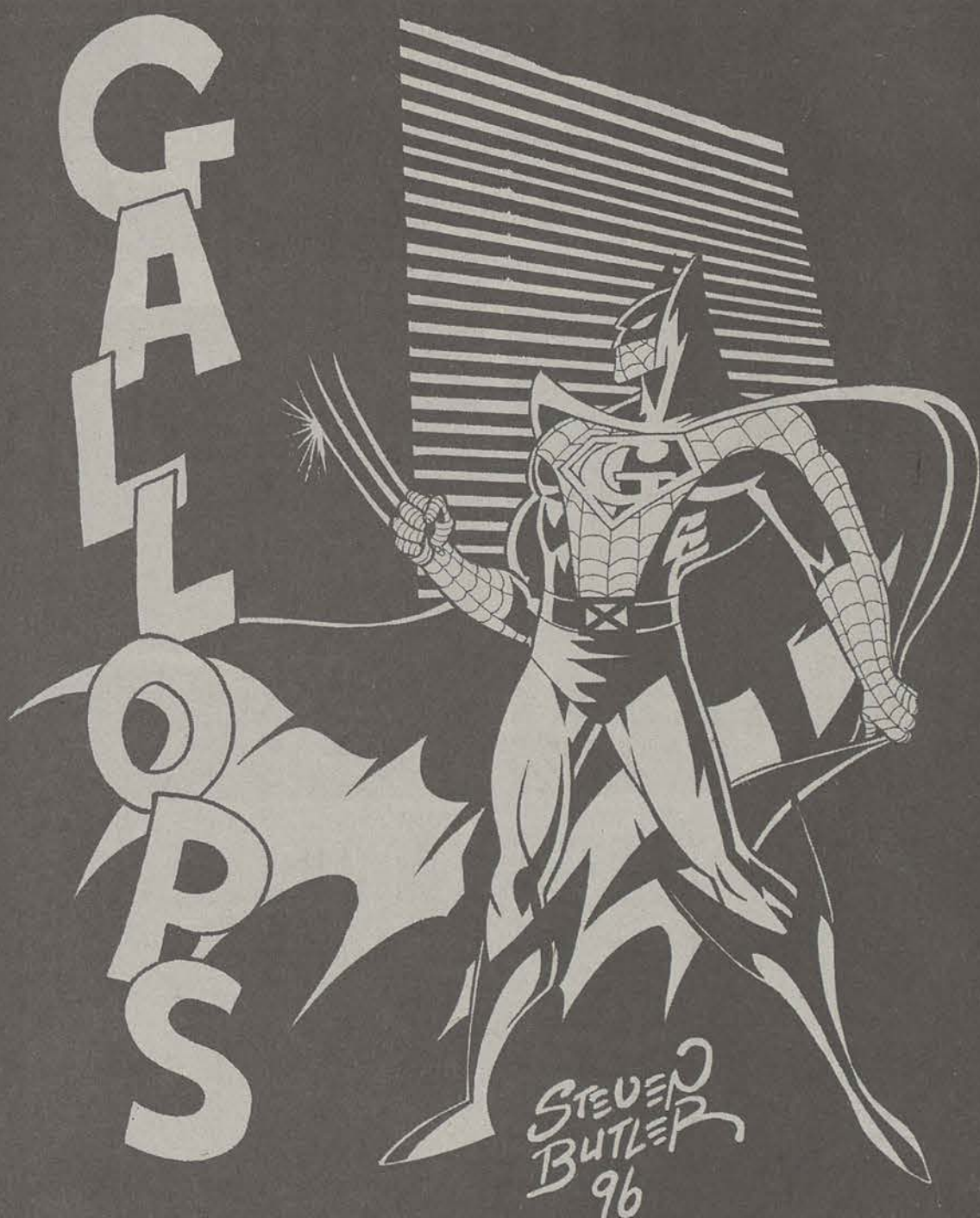
Near Fairgrounds

Hours 9:00 a.m. - 6:00 p.m. Mon., Tues., Fri., Sat.
Open Late Wed., Thurs., 'til 10:00 p.m.

And Much More!!!

Comics New and Old

Anime Video Rentals



THE CAVALIER

(Formerly Krikkets)

Come out and have great seafood and feast on oysters at the raw bar, while enjoying outrageous drink specials and live entertainment!

**TUESDAY
LADIES NIGHT
\$2 WELLS - LADIES FREE**

**Wednesday
Live Bands & Free Drink
Free Draft & Wells from 8-10
Ladies Free!**

**Thursday
Dance Party with DJ Tony
75 ¢ Pitchers • \$2 Wells
\$300 Wet T-Shirt Contest**

**Friday & Saturday
Live Bands
& Good Fun**

GA

Page 8 — Wednesday, August 30, 2000

Football for Dummies

By Becky Crowder
Staff Writer

Don't know the difference between the cornerback and the quarterback? Ever wonder what a nose guard does? This short, informative guide has simple explanations about the playing field, player's positions, and how the game actually works so that, while reading this won't make you a football expert, you'll at least have a basic understanding of "America's Game".

The first step in knowing about football is to understand how the playing field is marked. The field is 120 yards long with goal posts on each end. The end zone is the 10-yard area from the goal line to the endline. The goal line is located at the zero yard line and the endline is where the goal posts are. The 50-yard line separates the field into halves. Each half is marked off with yard lines every five yards. During play, the line where the front row of players from each team are lined up is the scrimmage line. All the players not on the scrimmage line are considered to be backfield.

The next step is to know what each player on the field is doing during the game. On either side of the scrimmage line lies the offense and defense. The offense's goal is to get the ball into their opponent's end zone. The defense strives to keep the opponent's ball out of their end zone. Each player has a specific job to perform on the field. Here's a breakdown of each position.

The Offensive Players:

-Center: The center has two jobs. The first is to snap (or pass-off) the ball to the quarterback. The second is to block an assigned defensive player. The quarterback counts to let the center know when to snap, so the center must remember the snap number to prevent a penalty. The center is lined up (surprise!) in the center of the lineup on the scrimmage line.

-Quarterback: The quarterback is the leader of the offense. He calls the plays in the huddle before each down. The quarterback either hands the ball off to another player, passes

it, or runs with it himself. He lines up directly behind the center.

-Running Backs: The job of the running back is to catch passes, carry the ball, or block the defense. Halfbacks and tailbacks usually run more often than block, and a fullback usually blocks more often than he runs. The running backs will be set up in the backfield, usually behind and to one side of the quarterback.

-Ends: There are two types of ends: split ends and tight ends. Tight ends act as blockers for running plays and sometimes must catch passes. Speed is very important for split ends because they may be used for big yardage gains. Split ends are also sometimes known as wide receivers. Ends set up at the ends of the scrimmage line and in the backfield wide to the left or right of the quarterback.

-Linemen: There are also two types of offensive linemen: guards and tackles. Guards and tackles are mostly used for blocking. They don't run the ball or catch it. They will be set up on either side of the center on the scrimmage line.

The Defensive Players:

-Linemen: The linemen are the first line of defense against the offensive onslaught. They include the ends, nose guards, and tackles. The ends fight off blockers, sometimes charge the quarterback, or guard their position against a run. They set up at the ends of the scrimmage line. The nose guard and two defensive tackles are the defense's "inside" linemen. The nose guard sets up opposite the center and attempts to push past the center and tackle or hurry the quarterback. The tackles set up on either side of the guard and go after whoever has the ball.

-Linebackers: The linebackers are the second line of defense against the offensive unit. The linebacker's job is to meet and tackle the ball carrier if he breaks through the linemen. He must also be alert for passes. They set up backfield to the outside and behind the linemen.

-Defensive Backs: The defensive backs are the last line of defense.

They try to prevent the offense from completing passes (long throws). They catch or knock down passes thrown by the other team. There are two types of backs: cornerbacks and safeties. The cornerback is set up in the backfield, usually wider and deeper than the other backfield players are, but not as deep as the safety. The safety is the deepest player on the defense.

Now that you know the difference between all the players on the field, it's time to talk about putting the ball into play.

To start the game, the team captains meet the referee at the 50-yard line. The referee tosses a coin, and the winner has first choice to make or receive the kickoff, or he may choose the goal his team will defend. The loser has first choice at the beginning of the second half.

After the kickoff, the teams line up opposite each other at the scrimmage line. The center on the receiving, or offensive team, will snap the ball to the quarterback. The quarterback will either pass the ball, run with it, or hand it off to another player on the backfield.

The offense has four downs, or tries, to gain 10 yards. If they gain 10 or more yards before they use all four downs, they get a first down and four more chances to gain another 10 yards. This goes on until they fail to gain 10 yards in four downs, score, or lose the ball.

Usually if a team hasn't gained 10 yards after the third down, they will punt the ball to the other team on the fourth down. For a punt, the kicker drops the ball and kicks it before it can hit the ground. After a field goal, or after a touchdown and extra point attempt, the team that scored puts the ball back into play with a kickoff.

Now that you have a basic understanding of the game of football, put your knowledge to work. Even if you can't make it to Athens this weekend, at least you'll be able to talk about the game back here in the 'Boro.

EAGLE CINEMA

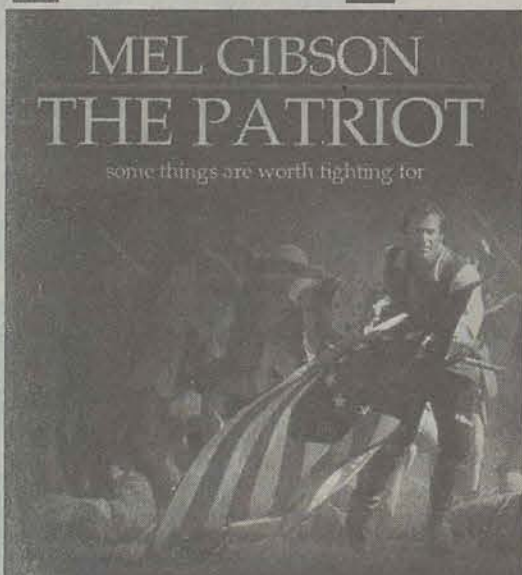
Fall 2000 Schedule

All Movies are \$1.00 and are show in the Russell Union Theater unless otherwise noted.

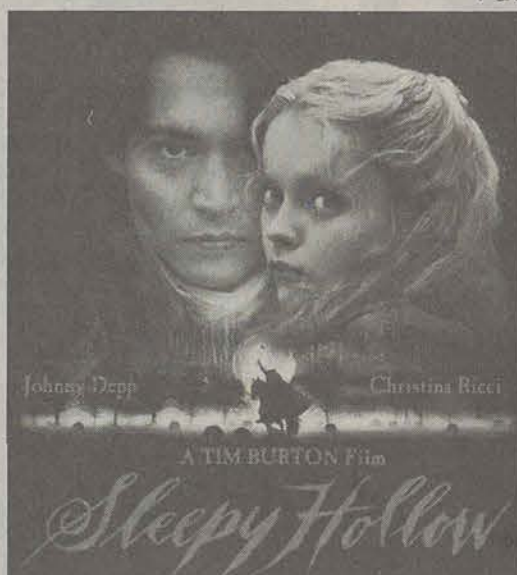
Eagle Entertainment
"Your Student Entertainment Connection"
Hotline: 681-5442



Friday, Oct. 27
Drive In Movie
Paulson Stadium (FREE)



Thurs., Nov. 2 - Sat., Nov. 4



Thurs., Sept. 21 - Sat., Sept. 23



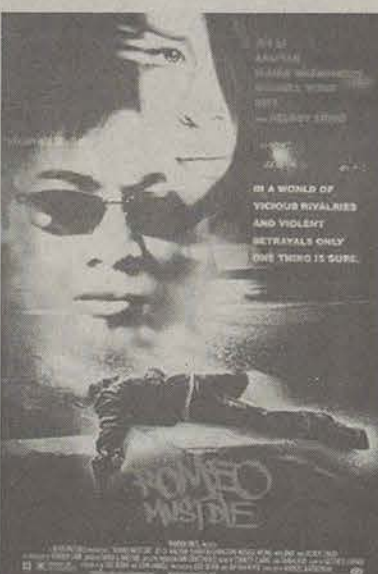
Thurs., Nov. 16 - Sat., Nov. 18



Thurs., Nov. 2 - Sat., Nov. 4



Thurs., Oct. 26 - Sat., Oct. 28



Thurs., Nov. 9 - Sat., Nov. 11

Erin Brockovich

Thursday, 9/7 7 pm
Friday, 9/8 7 & 9:30 pm
Saturday, 9/9 7 & 9:30 pm

Return to Me

Thursday, 9/14 7 pm
Friday, 9/15 7 & 9:30 pm
Saturday, 9/16 7 & 9:30 pm

Sleepy Hollow

Thursday, 9/21 7 pm
Friday, 9/22 7 & 9:30 pm
Saturday, 9/23 7 & 9:30 pm

80's Film Festival

Thursday, 9/28 7 pm
Friday, 9/29 9:30 pm

The Breakfast Club

Friday, 9/29 7 pm
Saturday, 10/6 9:30 pm

The Patriot

Thursday, 10/19 7 pm
Friday, 10/20 5:30 & 9:30 pm
Saturday, 10/22 5:30 & 9:30 pm

Me, Myself, & Irene

Thursday, 10/26 7 pm
Friday, 10/27 7 & 9:30 pm
Saturday, 10/28 7 & 9:30 pm

Mission Impossible 2

Friday, 10/27 9:30 pm
Drive-In Movie
Paulson Stadium (FREE)

Big Momma's House

Thursday, 11/2 7 pm
Friday, 11/3 7 & 9:30 pm
Saturday, 11/4 7 & 9:30 pm

Romeo Must Die

Thursday, 11/9 7 pm
Friday, 11/10 7 & 9:30 pm
Saturday, 11/11 7 & 9:30 pm

Shaft

Thursday, 11/16 7 pm
Friday, 11/17 7 & 9:30 pm
Saturday, 11/18 7 & 9:30 pm



Thurs., Sept. 7 - Sat., Sept. 9

GO

Blue!!!

<http://www.stp.gasou.edu>

Gasles!!

<http://www.stp.gasou.edu>

Yoga begins at the RAC *Raves continue to cause problems*

By Jessica Garcia
Staff Writer

Beginning last Spring, a new addition to GSU's CRI program was born and continues to help students of all realms reach into their bodies and just plain relax. If you haven't guessed yet, the new addition is yoga. Balancing the body and mind, hatha yoga combines poses, or "asana," with breathing techniques called pranayama. This five thousand-year-old practice originated in India and has now become a popular pastime associated with Hollywood symbols such as Madonna, Michelle Pfeiffer, and singer Sting.

So far, Mia Blackwell is teaching CRI's newborn recreation. A native of Canada, Mia has been practicing yoga since she was sixteen years old, and has been teaching it for seven years. In England, Mia trained as a dancer and was active in theater. During her spare time, however, she found her love for

yoga. Mia enjoys yoga, simply put, because it "feels so good." She adds that, due to today's fast-paced society, "we ignore our bodies and eventually pay for it when our bodies scream out 'Stop! What are you doing to me?'"

While some are intimidated by the misconception that yoga may conflict with one's religion, it is important to understand that while yoga is spiritual, you make it what you want it to be. It is your own spiritual practice - whether you are Christian, Non-Christian, or of no religious affiliation at all. Yoga is all

about you; you "look into your body" and "listen to what it has to tell you," as Mia instructs her students. It is "all about where you are at that moment, not what you did yesterday, or what your plans are that night, but where you are at that moment right then," she said.

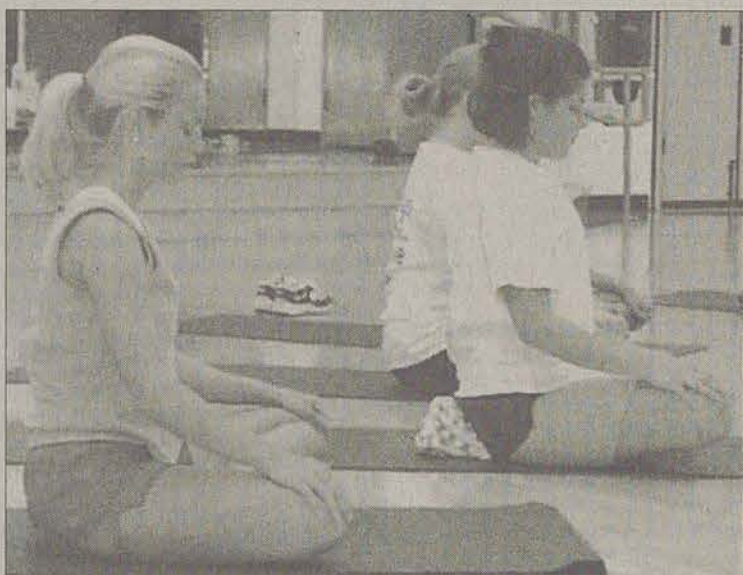
Another common misconception is that you must be as flexible as Gumby and exceptionally strong to participate. While yoga is progressive and is offered on three levels, level one is for anyone, even if you have never tried yoga before. Acquiring

beneficial aspects to our minds and bodies is how one breathes. Today, for example, most people, women in particular, breathe from their chest rather than their stomach. This is because most women are expected to maintain a flat belly and therefore, hold their stomachs in when they inhale. This is not allowed in yoga class. Mia has her students focus mainly on exhaling completely, so that they feel as though they are "squishing all the air completely out." This causes the student to then inhale more thoroughly and properly from the lower abdomen.

Breathing correctly not only prevents hyperventilation, but also prevents emotional distress and increases the oxygen levels in the blood. As a result, cells heal properly and the immune system is boosted. Yoga is also useful in healing other ailments such as headaches, back-

aches, arthritis, and depression.

Things to remember before you try a yoga class are to never go on a full stomach. Also, you should wear comfortable, loose clothing with no jewelry or watches. If you are cold natured, a sweater is recommended for the cool-down period. Due to the hands-on nature of the instructor in correcting poses of the student, a limited space is available to the first fifteen persons who arrive. In addition to a towel, students are finally advised to bring with them an open mind to "learn something new about their bodies." To receive a schedule of yoga classes offered at the Fitness Extension and the RAC, call 681-5436.



Lindsay Wise

poses will eventually be achieved when your body is ready, but it is not of any concern in a first level class.

Upon a first visit with Mia, you may expect to close your eyes and practice holding poses while concentrating on breathing. During poses, Mia often instructs students to hold the pose until they reach a point of "pleasurable discomfort, but never pain." After holding several poses, students are asked to feel their bodies absorbing the work and to feel what their bodies are telling them.

Perhaps one of the most relaxing and

Associated Press

NEW ORLEANS — A weekend "rave" party on the edge of the French Quarter started late because of a raid by federal agents, but after the all-night event five people went to a hospital to be treated for drug overdoses. One remained hospitalized and in guarded condition Monday.

Raves are all-night dance parties to throbbing, hyper-repetitive music that runs anywhere from 120 to 180 beats a minute. One piece can run anywhere from half an hour to an hour and a half. The music originated in this country, but the parties started in England around 1988, and arrived a few years later on the East and West coasts.

Drugs popular at raves have been a problem in some Southern states for years, and are becoming an increasing problem

in others.

A girl from Alabama died in 1998 from a drug overdose during another rave at New Orleans' State Palace Theatre, scene of the rave party this past weekend. A Kentucky man died in June from a drug he may have unwittingly consumed at a Louisville rave. Last October in Florida, statewide raids at 57 raves netted 1,219 arrests and nearly \$9.4 million in drugs, weapons, vehicles and cash.

The man being treated at Charity on Monday was unconscious and had seizures, kidney failure, and a temperature of 106 degrees when he and the others arrived at 5 a.m. Sunday. On Monday, he was alert and responsive, though still in the intensive care unit.

Aside from abusing drugs, people dancing at raves often push themselves so hard that the body runs out of quickly

available energy, and starts using muscle tissue.

"It can be reversed, but it can leave its imprint, just as drugs leave their imprint on other systems," Van Meter said.

Urine tests on the five who went to Charity early Sunday indicated that they had used some sort of stimulant such as LSD, Ecstasy, another amphetamine, or some combination of those drugs.

Some said they had spent the night at the rave party at the State Palace. Brian Dehart, an emergency room doctor at Charity, told The Times-Picayune.

About a half dozen people wind up at the Charity ER every time there is a rave, even though the theater's owner hires a crew of paramedics, Van Meter said Monday. "We've probably had as many as 20 on some large ones."

HOT OFF THE PRESS!

THANK YOU FOR READING THE GEORGE-ANNE

Dining & Entertainment

Appearing Exclusively in the George-Anne

Wednesday
Beer Bingo
\$5.95 Fajitas
\$3 Pitchers

Thursday
All You Can Eat Wings \$7.95
\$1 Margaritas

Friday
Call for Daily Specials
681-3030

Saturday
Georgia Southern vs. UGA
Live on the Big Screen TV

Sunday
Kids Eat Free!

Monday
Kids Eat Free!

Tuesday
Trivia
Come Check Out Statesboro Best
Tuesday Entertainment

Monday
Ladies' Night
No Cover Ladies!
\$1.00 Vodka
Free Pool 8-11PM

Tuesday
Dime Draft Night

Wednesday
Call for Private Bookings

Alaskan Snow Crab Legs
The Boro's Best Wings
Supreme Nachos
Homemade Chili

HORIZONS BAR & GRILL

Open Daily 11:30am - 1am
681-3533
All-New Menu!

Raw Bar - Oysters Raw & Steamed
Burgers - "Any Way You Like 'Em"
Chicken Sandwiches - Fried or Grilled
Buffalo Chicken Sandwiches
Gourmet Hot Dogs
Fresh Salads

Thursday
Dolewite - n- Scooby
Hip-Hop Party

Friday
& Saturday
\$1 Vodka
\$1 Bourbons
\$1 Gins
\$1 Tequilas

Philly Steak and Cheese
Cheese Stix
Blooming Onion
Jalapeno Peppers

PIZZA • CALZONES • LASAGNA • SPAGHETTI • STEAK GRINDERS • MEAT & CHEESE RAVIOLI • STROMBOLI

2 Medium 1-Topping
Pizzas for only
\$7.99
Lunch Buffet
11 am to 2 pm
only 3.99
Dinner Buffet 4.99
(weekdays only 6-8)



**HOLIDAY
PIZZA**
405 Fair Rd.
Next to Recreation Dept.
Open Daily 11am-11:30pm
FREE DELIVERY
764-7669

CHICKEN FINGERS • GREEK SALADS • CHICKEN PARMESAN • BAKED ZITI

G-A CLASSIFIEDS

What a Deal!!

Classifieds are FREE to Students and Faculty!
(20 Words or Less, Noncommercial)

EAGLE CINEMA

At the Russell Union

A Division of Student Affairs
All Movies Show in
Russell Union
Theater

Julia
Roberts
is
Erin
Brockovich

Thurs., Sept. 7 7 pm
Frid., Sept. 8 7 & 9:30 pm
Sat. Sept. 9 7 & 9:30 pm

For more info., call 486-7270

Coming Soon

Thurs., Sept. 14
Fri., Sept. 15
Sat., Sept. 16



'The Cell' gets mixed reviews *GSU Theater to present 'Tartuffe'*

By Julie Allen
Staff Writer

Critics around the country have given it ratings ranging from "best movie of our young decade," to "it was the worst \$6.50 I ever spent." "The Cell" defiantly has had that "love it or hate it" effect on the public. A lot of the opinions derive from plot vs. special effect scenes.

The story line is relatively simple to figure out. Director, Tim Singh, and writer, Mark Protosevich, did not take much time going into great detail with even the main characters. In fact most of the movie was undeveloped leaving lots of room to concentrate on the visual content. It is these frightening images and great visual effects that give this movie such high ratings.

Catharine Deane (Jennifer Lopez) is a child psychologist who works for a company that has created the latest technology in mental therapy. They have invented a way for someone to go into the mind of someone else to discover reasons for their mental breakdowns. The one patient she's been testing is in a coma and she is slowly trying to bring him out of it.

While Deane is busy concentrating on the new age world of therapy, Carl Stargher (Vincent D'Onofrio) is busy living in his sick, demented world of being a serial killer. Stargher brings a new meaning to the definition of torture. This torture is similar to the one found in the older smash hit, "Silence of the Lambs."

Closely on his trail, FBI agent Peter Novak (Vince Vaughn) finally to track the psycho killer down in his own home. Unfortunately for Novak, Stargher, a violent schizo-



Internet Photo

phrenic, has lapsed into a coma and is unable to reveal the whereabouts of his recent victim who awaits death in the cell.

In an effort to discover where the hidden cell is, they decide to use the new technology of mind traveling to ask Stargher where the cell is before it is too late. When Deane gives the approval for this project she has no idea what threatening images she must encounter.

Deane is transformed into a sci-fi fantasy world where Stargher is the king over a dark, freaky kingdom that consists of all of his vic-

tims. Along with all the madness in his head there is a scared little boy running around dodging memories of an abusive father.

Deane is suddenly wrapped up into a world where she is unable to distinguish reality from the sickness of Stargher's mind. To bring her out of this state Novak has to go into Stargher's mind also.

Since Novak has been studying the habits of Stargher for so long he is able to use plain detective work once inside Stargher's head to find out where the cell is located.

Novak brings himself and Deane out of Stargher's mind so he can begin the quick search for Stargher's victim.

If the visual effects in "The Matrix" amazed you, then the scenes in this movie will blow your mind. Singh uses the work that we are used to seeing in his music videos ("Losing My Religion" by R.E.M.) and brings it to the big screen.

Approximately two thirds of the movie takes place in the mind of the killer which combine the computer generated scenes that could be seen in "The Matrix" with the freakiness in the idea behind "Silence of the Lambs."

Though the movie is packed full of never seen visual effects, it does, however, fall short in plot. The story is undeveloped and leaves out a lot of elements needed for a horror story. A scary movie such as "Ernest Scared Stupid," had more plot development than "The Cell." If you looking for a good movie at the theaters, don't spend your money on this so-called box office hit.

By Amanda Davis
Staff Writer

The GSU Theater and Performance Department has started up another fun-filled season with the August 23rd auditions for the adaptation of the famous Moliere play "Tartuffe." The play, called "Tartuffe: Born Again" is directed by James Harbour. The auditions were last Wednesday and Thursday nights with a callback scheduled for August 25.

The play was originally written 400 years ago, but this version is set in a 1980 Tele-

evangelist studio.

The main character, Tartuffe, is believed by Orgon to be a most holy man, when in reality Tartuffe is a hypocrite, trying to steal Orgon's wife.

Orgon is oblivious to the fact that Tartuffe is trying to wreck his marriage, and arranges a marriage between Tartuffe and his own daughter, Marianne. Though Orgon has already promised his daughter to a man named Valere, Orgon feels that Tartuffe deserves her more.

It seems, as the play continues, that everyone but Orgon sees Tartuffe for what he really is, and not the good religious man he pretends to be.

Will Orgon realize who Tartuffe really is? Will Marianne get to marry the person who truly loves her? Will Tartuffe pay for the strife he has placed upon others? Come see for yourself on October 11-14, 2000 at the Black Box theater in the Communication Arts building. You may be in for a humorous surprise!

Filling a prescription should be painless

Friendly smiles and fast service is our prescription for good business at Georgia Southern's College Pharmacy. It doesn't matter if your prescription is from your hometown doctor or one of the doctors here in Statesboro, you will always receive your student rate (which is always BELOW marketplace pricing) on all of your pharmaceuticals.

COLLEGE PHARMACY
GEORGIA SOUTHERN UNIVERSITY

Located inside Health Services • 681-0807 • www.cornerdrugstore.com

Cinema Arts opens for Fall

By Tim Prizer
Lifestyles Editor

Attempting to block out the mediocre, greedy Hollywood films with which they share the Russell Union theater, the Cinema Arts program at GSU has created an impressive new schedule of films for this semester. Featuring seven intelligent pictures, GSU's Cinema Arts have carefully selected shows that will educate, enlighten, and entertain.

In an age where the films that the mass media feed us feature the exact same popular icons that we saw in the last ten movies we've seen, it is difficult to believe that there are people who still consider cinema a form of art. In a time where we fork over close to seven bucks to go see an unoriginal film about a bus that is about to explode, or some guy in a goofy costume that gets off on murdering high school "kids" in their late twenties, it is hard to step back to realize that there are writers and actors out there who work privately and on a limited budget, creating some of the most intelligent and inventive films in the world.

Though at times Hollywood does turn out some quality movies like "The Straight Story," "Cider House Rules," or "American Beauty," most of the time the million-dollar motion pictures deal with the supernatural, or a squeaky-voiced teen with his "boyhood" in an apple pie.

Fortunately, there are those that go out of their way to find low-budget films that receive little public exposure. Kicking off this past Monday night, the Cinema Arts program at GSU began featuring independent, cultural films that deal with real-life issues, rather than the mess that Hollywood has adopted to deteriorate theater and numb the minds of the masses. Running the Cinema Arts program at GSU, directors John Humma, Tomasz Warchol, and Nancy Dessommes

made a wise decision when opting to delve into the cinema of other countries and other cultures. Four of the seven films scheduled for this Fall are in a European language with English subtitles, with another in Vietnamese.

Monday night, the Cuban picture "Who the Hell is Juliette?" was featured in the theater. "Who the Hell is Juliette?" tells the story of Juliette Ortega, an attractive 16-year old Cuban girl who does whatever it takes to endure life in

Havana, including prostitution. Juliette meets Fabiola, a famous Mexican

model, and is featured in a music video with her. With a similar childhood, Juliette and Fabiola connect, and director Carlos Marcovich successfully stresses the coincidences and parallels in their lives. With rave reviews, "Who the Hell is Juliette" is an eye-opening film, and a marvelous choice to open up another season of Cinema Arts.

Upcoming films include "Run Lola Run," "Beaumarchais," "Three Seasons," "Now, Voyager," "Cafe Au Lait," and "Hold Me Thrill Me Kiss Me." All of these movies are educational in a sense of a mixture of true art and entertainment, not educational in the boring sense of a slide show in an upper-level biology class.

While it isn't fair that most of you haven't heard of independent films like "The Spitfire Grill," "The Adventures of Sebastian Cole," or "Boys Don't Cry," it is also not your fault. Hollywood has become a monopoly, and most of the public is kept blind to the fact that anything else even exists, operating on an underground scene. But at least now you have the chance. For an admission price of only \$2, GSU's Cinema Arts program is offering you the opportunity to escape the pointless massive explosions, the tears at the end of the cheesy chick-flicks, the immature fart jokes, and most of all, an industry whose product is aimed at the easily amused.

THE BATTLE BETWEEN THE HEDGES

SEPTEMBER 2, 2000



SANFORD STADIUM • ATHENS, GEORGIA

Get Your Game Day T-Shirt

\$13.99

Hurry—Quantities Limited!



Triple H is pro wrestling's most versatile contender

By Michael Russo
Staff Writer

There are few guys in the Sports Entertainment business that can equal the talent of Triple H. Not only is "The Game" an outstanding performer in the ring, but he's also extremely talented and versatile when it comes to playing whatever character the WWF requires him to play.

Going back five years, Jean-Paul was expected to play the part of a Greenwich snob known as Hunter Hurst Helmsley. Though the gimmick was poor, I don't think many can deny the fact that Jean-Paul played his stuck-up persona well.

After two years of being caught in gimmick hell, Jean-Paul was finally granted the opportunity to advance. With Shawn Michaels and Chyna by his side, D-Generation X was formed. These three individuals would later change the face of Sports Entertainment as we knew it, and would become the most popular faction in WWF history. Unfortunately, the

success of D-Generation X would reach its peak without the founder Shawn Michaels, due to a career shortening injury he would sustain at WrestleMania. Rather, Triple H would take control allowing "The Game" to elevate to the next level.

With Triple H as the new leader of the most controversial faction in wrestling history, he would not only fool us all with pranks, but he would make us laugh. Little did we realize that during the summer of 1999, he would all make us hate him more than we had ever hated anyone before.

The night after Summer Slam '99 marks Triple H's reign over the WWF as the WWF Champion. From that point on, we all yelled and booed "The Game" every opportunity we had. We hated his new attitude, we hated his defiant behavior, and we hated the fact that he always won.

However, now things are changing. We feel somewhat sorry for Triple H. He's doing everything he can to keep his

marriage alive, but because of Kurt Angle, seems to be failing miserably. This "softer" side of Triple H is what makes him a fan favorite. My focus however is not on the current storyline involving Stephanie, Angle, and Triple H, but rather Triple H's versatility as a performer. Triple H has already proven to the world that he's able to switch from being the most hated man in Sports Entertainment, to one of the most popular, in seemingly no time at all, whenever needed. Not everyone can do that. Look at Chris Jericho for example. Jericho couldn't turn from a face to a heel no matter what the creative team dreamed up for him to do.

The bottom line is that Triple H's talent needs to be admired and respected. Even though his young performer has undoubtedly gone through his fair share of poor gimmicks and front office politics, he's never given up. He's a consummate performer and the best at what he does. Triple H is indeed, "That damn good."

DOG DAYS

Tonight! \$3 Pitchers All Day Every Day



\$2 Coronas • \$2 Cuervo Gold

Suit Up For The Party!
WITH DJ SLKT

Win Tickets to
the Game!
Friday Night at
the Doghouse



**DICK'S
DOGHOUSE**

Thursday

Dog Days

\$5

All you can eat
Hot Dogs 5-9pm

Thursday Night
The Pondering

\$1 Vodkas • \$1 Bourbons

It's a

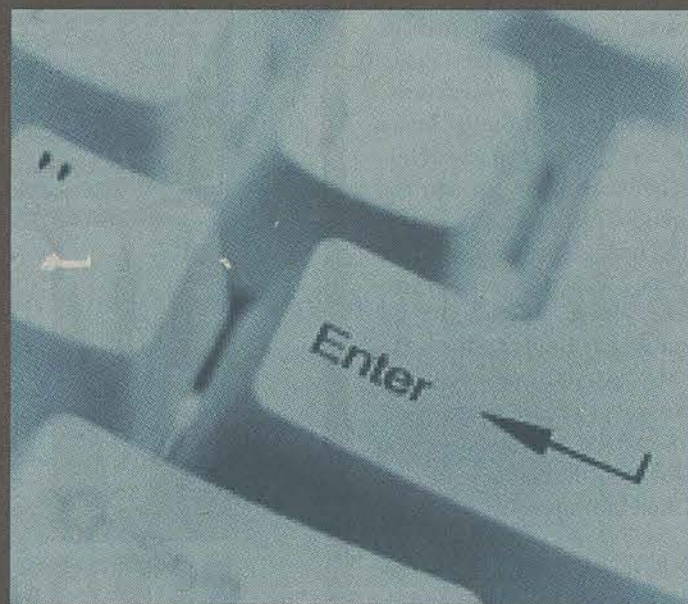
win, win,
win, win,
win
situation.



AT&T Take the Money and Rock Sweepstakes*

You could win one of 500 cool prizes—including the grand prize of **\$10,000 cash** and a **trip** for you and three friends to the **Hard Rock Hotel** in Orlando, FL. Enter today at att.com/college.

It's soooooo easy to increase your odds. If you live off campus, you can get **10 extra chances to win**. Just register for the sweepstakes at the site, and sign up for long distance with the AT&T One Rate® Off-Peak II Plan. You can sign up right then and there, online. Or call 1 877 COLLEGE. Either way, you'll get up to **100 free minutes*** of talk time. Sounds good, huh?



att.com/college

*TO PLAY GAME: Take your AT&T Instant Win Game Decoder Card, and go to att.com/college/takethemoney. Follow the directions by inputting the Entry Code that appears on your Decoder Card to see if it reveals an instant-winner message. To play without a Decoder Card, visit att.com/college/takethemoney and follow instructions on how to receive an Entry Code for a chance to win instantly. Game ends 10/31/00. HOW TO CLAIM: If your Decoder Card or Entry Code reveals a prize message, mail your original Decoder Card, along with a 3" x 5" card with your name, address, phone number and Entry Code (if you don't have a Decoder Card) to "Take the Money and Rock" Prize Winner, c/o National Judging Institute, Inc., 100 Marcus Dr., Melville, NY 11747-4229 by 11/30/00. FOUR WAYS TO ENTER SWEEPSTAKES: 1) To enter online, visit att.com/college/takethemoney. Complete the registration form by filling in your complete name, address, phone number, area code and e-mail address to be entered into the Sweepstakes. Or if you have an Entry Code that does not reveal an instant-winner prize message, you will be automatically entered. 2) To enter by providing referrals, complete online registration and include each e-mail address you want to refer. Each legitimate referred e-mail address provided will earn you an entry into the Sweepstakes. 3) To enter via sign-up, complete online registration and sign up for the AT&T One Rate® Off-Peak II Plan to receive 10 entries. 4) To enter by mail, on plain 3" x 5" paper, hand print your name, address, phone number, area code and e-mail address (if any) and mail in a separate stamped envelope, to AT&T "Take the Money and Rock" Sweepstakes, PO Box 7781, Melville, NY 11775-7781. (Your first mailed entry is worth 10 entries. Each additional mailed entry is worth one entry.) Sweepstakes ends 10/31/00. SWEEPSTAKES DRAWING: The Sweepstakes Grand Prize winner will be selected in a random drawing about 11/13/00 from among all eligible entries received. Odds of winning Sweepstakes Grand Prize depend on total number of eligible entries received. PRIZES: INSTANT WIN PRIZES AND APPROXIMATE ODDS OF WINNING: (100) Prizes of a \$15 Gift Certificate from CDNOW.com (ERV: \$15/ea.); odds of winning Gift Certificate are 1 in 8,500; (400) Prizes of a T-shirt (ERV: \$10/ea.); odds of winning a T-shirt are 1 in 2,125. Unclaimed prizes will not be awarded. SWEEPSTAKES PRIZE: GRAND PRIZE (1): \$10,000 and a 7-day/6-night trip for 4 to Orlando, FL, including roundtrip coach air transportation, deluxe hotel accommodations at The Hard Rock Hotel (2 rooms, double occupancy), ground transportation to and from the hotel/airport in FL (ERV: \$142.15). GENERAL CONDITIONS: Trip must be taken between 3/1/01 and 8/31/01. Sweepstakes Grand Prize winner will be required to execute and return an affidavit of eligibility and liability/publicity release within 14 days of notification attempt or the prize may be forfeited and an alternate winner selected. Acceptance of prize constitutes permission to use winners' names and likenesses for promotional purposes (including posting name on website), without further compensation except where prohibited by law. By entering this promotion, you agree to be bound by the Official Rules. ELIGIBILITY: Open to residents of the U.S., 18 years of age or older as of 7/19/00, except employees and their families of AT&T, its affiliates, subsidiaries, contractors, advertising agencies, and Don Jagoda Associates, Inc. Void where prohibited or restricted by law. Subject to all federal, state, local laws and regulations and to the Official Rules available at att.com/college/takethemoney. Sponsor: AT&T Corp., Basking Ridge, NJ 07920. Instant Win Game and Sweepstakes subject to Official Rules; for Official Rules visit att.com/college/takethemoney. NO PURCHASE NECESSARY. Instant Win Game and Sweepstakes ends 10/31/00. Void where prohibited.

*100 free minutes offer based on becoming a new AT&T Residential Long Distance customer and selecting the AT&T One Rate Off-Peak II Plan. 100 free minutes of AT&T domestic, direct-dialed long distance and local toll calls will be credited against qualifying usage on your first full monthly bill after all discounts and credits are applied. Unused minutes cannot be carried over. Qualifying calls do not include conference calls, AT&T Calling Card, Directory Assistance, Operator-Handled calls, 700 or 900 number services, or mobile, marine or cellular services. In addition, monthly recurring charges, non-recurring charges and taxes are also excluded. Offer expires 12/31/00.

'Blood Simple' rereleased

By Zane Thomas
Staff Writer

When most movies are released with the subtitle "Director's Cut," they are usually not as good as the original cut. But this is not always the case. Fifteen years after it was released, "Blood Simple," made by the famous Coen brothers, who would go on to make classics like "Raising Arizona" and "Fargo," is back in theaters as a "Director's Cut" edition. But don't cringe. The running time is the same as the original. The Coens just snipped some seconds here and added some there. The change is not even noticeable.

"Blood Simple" was the Coens first film, and it has been hailed as their best, next to "Fargo." The set-up is like this: Frances McDormand plays Abby, the unhappily married wife of Marty (Dan Hadeya). Marty owns a seedy saloon in Austin, Texas. Abby is having an affair with Ray (John Getz), one of the bartenders at Marty's bar. Marty has hired a sleazy private investigator named Loren Vissor (M. Emmett Walsh) to track them.

Eventually, Abby leaves Marty, taking a .38 caliber pistol and three bullets with her. Ray quits his job in lieu of getting fired. But that isn't enough to satisfy Marty. He wants them dead, so he hires Vissor to kill them. But Vissor has different plans.

"Blood Simple" is one of the most enjoyable thrillers of all time. The wrong person is killed, people are double-crossed, and confusions set in as to who is alive and who is dead, and of course, who is responsible for the deaths.

"Blood Simple" relies a lot on dramatic irony. Every character in this movie knows something that the other doesn't. However, the audience knows everything and the whole joy of the movie is watching the characters make sense of what is really going on. This is the type of movie that strings the audience along with the story. There is no scene in the film that is extraneous, and every scene sets up the next one and every death is essential to the outcome.

Hadeya and Walsh play two of the sleaziest characters ever put on screen. When they're together in the same scene, they seem to be trying to top one another. And in the end, they both get what they deserve and the audience can rest assure that it was justifiable.

"Blood Simple" is one of the greatest films to come from the 80's. It blended off-beat humor and drama together before the style became chic in the 90's. And all the Coen brothers' trademarks are present, including a scene on a deserted road at night that is similar to a scene in "Fargo" that true Coen brothers fans will like. Like wine, "Blood Simple" only gets better with age.