

Georgia Southern University

## Digital Commons@Georgia Southern

---

The George-Anne

Student Media

---

3-6-2000

### The George-Anne

Georgia Southern University

Follow this and additional works at: <https://digitalcommons.georgiasouthern.edu/george-anne>

---

#### Recommended Citation

Georgia Southern University, "The George-Anne" (2000). *The George-Anne*. 1643.  
<https://digitalcommons.georgiasouthern.edu/george-anne/1643>

This newspaper is brought to you for free and open access by the Student Media at Digital Commons@Georgia Southern. It has been accepted for inclusion in The George-Anne by an authorized administrator of Digital Commons@Georgia Southern. For more information, please contact [digitalcommons@georgiasouthern.edu](mailto:digitalcommons@georgiasouthern.edu).

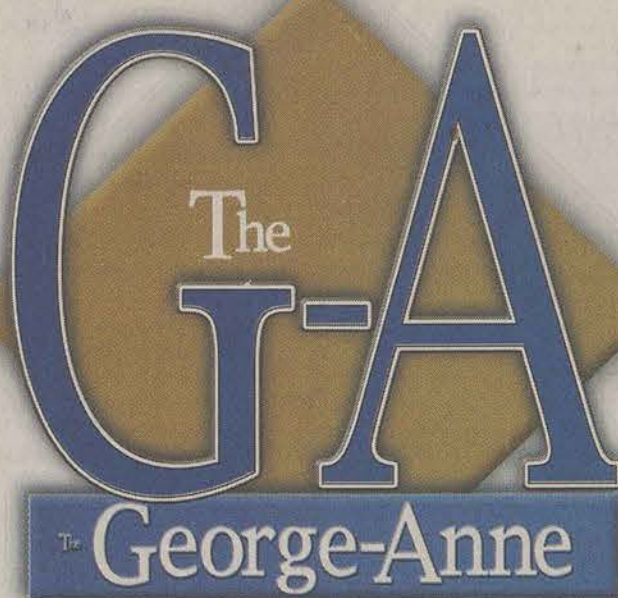




## SPORTS

### Don't forget about Gus!

Today is the last day to place your votes for Gus in ESPN's Battle of the Mascots. To support Gus, go to [promotions.go.com/espn/mascots.challenge.html](http://promotions.go.com/espn/mascots.challenge.html)



## LIFE

### Need something to do over Spring Break?

Georgia State Parks offer a wide variety of attractions. Consider spending your break outside with nature.

Page 8



Vol. 72 No. 65

Monday, March 6, 2000

## Two arrested for selling alcohol to minor

By Shawntineal Hughes  
Assistant News Editor

The Statesboro Police Department conducted an undercover investigation at Legends in February which led to the arrest of two Legend employees, according to a police incident report.

At 10 p.m. the Statesboro Police Department sent an underaged person, whose name is unknown, into Legends to see if he could purchase an alcoholic beverage. Two employees allegedly sold the underaged person alcohol without asking for proper identification. The suspects, Anna Addison, 19, of 112 Hidden Lakes Dr., Albany, Ga., and Claire Fitzgerald, 22, of #26 Fox Creek Rd, North Augusta, S.C., were arrested and charged with sales of alcohol to an underaged person and failure to check identification.

"According to the City of Statesboro Alcoholic Beverage Ordinance, people who work in establishments are required to ask for identification to verify that the customer is of legal age to purchase the alcohol and these two women violated this ordinance," Richard Malone, Chief of Statesboro Police, said. "The person who violates this ordinance can face a fine and/or incarceration and possibility of losing their job."

Selling alcohol to an underaged person and failure to check identification both carry \$610 fines.

According to Addison, she was not fired. "My boss was very understanding," she said. "I do not remember selling alcohol to the underaged person. I do not even remember seeing his face, but I was very busy because the club was very crowded that night."

According to Malone, the sales of alcohol to an underaged person could cause a civil liability toward the establishment and the individual.

"It is the establishments' responsibility to make sure that their employees know the guidelines and the penalties for selling alcohol," Malone said.

The Statesboro Police Department offers a Responsible Beverage Service Program that teaches different establishments about the law when serving alcoholic beverages.

"This program is offered at least twice a year and it offers establishments the opportunity to be educated about the ordinance law," Malone said.

This is a volunteer program and each establishment can send as many employees as they wish.

It is not known at the moment if any administrative actions have been taken toward Legends. This information will not be known until a later date, Malone said.

Claire Fitzgerald was unable to be reached for her comments, but Addison advises everyone to be careful and check identification regardless of the situation.

"It's easy to lose everything for a minor mistake and it's not worth it," she said.



## Georgia gears up for Super Tuesday

By John Bryson  
News Editor

All of the countless hours of campaigning and phone calls in the state of Georgia will come to end as Super Tuesday will determine which candidate will win their respective party's state delegates in preparation for the national convention.

At stake are 54 GOP and 92 Democratic delegates for the presidential contenders. The primary is winner-take-all, meaning the victor will not split any of the delegates with another candidate. A Republican candidate needs 1,034 delegates to win his party's nod, while the Democratic nominee will have to garner 2,170 delegates.

While Georgia's delegate count is larger than that of most states, the fact that California, New York and Ohio, among others, are voting on the same day has led to Georgia receiving less attention than most other states.

Georgia Republican Party Chairman Chuck Clay was quoted by Fox News as saying Georgia has been somewhat snubbed by GOP candidates. "I think Georgia and a number of other states are receiving less attention than we'd like to see," said Clay.

It's even more noticeable on the Democratic side, where the race has

for so long been lopsided in favor of Al Gore winning that neither he nor Bill Bradley have done much in Georgia.

"The media has recently portrayed Al Gore as having pulled out in front of Bradley across the board," said Barry Balleck, a professor of political science here at GSU. "Al Gore pretty much has it locked up here in Georgia and Bradley's campaign doesn't have the momentum it had even a month ago."

The numbers clearly back up that assertion. According to a recent Georgia Democratic Party survey, Al Gore leads Bill Bradley 58 percent to 13 percent. In addition, Governor Roy Barnes and Atlanta mayor Bill Campbell are pushing for a heavy pro-Gore turnout.

This could help John McCain, since Georgia is an open primary state. The McCain campaign is hoping that this one-sided race will tempt independents and Democrats to vote for him in the GOP contest instead, giving him a boost against George Bush, who strongly leads McCain among GOP voters.

However, the numbers don't look promising for his insurgent campaign. An ARG poll released Wednesday showed that Bush leads McCain 62 percent to 23 percent in the state. Alan Keyes garnered 6

percent of likely GOP voters.

"I would definitely say that it appears Bush will win the GOP primary in Georgia," Balleck said. "His issues of tax relief and traditional values generally play well in the South."

Bush's campaign is highly visible in Georgia, as it boasts a presence in all 159 counties. The campaign is reportedly making calls in at least 40 counties and has handed out thousands of flyers across the state in the last week.

Spence Pryor, executive director of Bush's Georgia campaign, was

quoted by Fox News as saying Georgia is an important swing state for the general election.

"Georgia is an important swing state in the general election, and if we can send a strong message with a resounding victory, it will let the Gore people know they're dealing with a very strong candidate that's gonna be in good shape against them in the general election," Pryor said.

Georgia is more likely to receive plenty of attention come the fall campaign, since it has been won by both Democrats and Republicans in the 1990s.

## Apathy may keep student voters away

By John Bryson  
News Editor

GSU students are more likely not to vote in Georgia's "Super Tuesday" primary election. Students will be able to decide whether they will vote on the Republican or Democratic candidates, as Georgia has an open primary.

General apathy in the 18-24 age group, it appears, may deflate student turnout on Tuesday. "People in that age group tend to participate if there is a candidate or issue that captures their attention," Barry Balleck, GSU political science professor, said. "There doesn't appear to be any one candidate or issue that has been able to successfully motivate [18-24 year olds]."

Yet, there are some in the age group who do tend to participate. "Politically active students or those who this is their first election usually have high turnout numbers," Balleck said. "Yet, [18-24 year olds] are still the lowest participating age group."

Please see APATHY, page 3

## GSU attempts to reinstate African-American fraternities suspended for hazing

By Tamara Mckenzie  
Staff Writer

After three of four African-American fraternities on campus were suspended, GSU is now taking steps to intercede to their national chapters to have these fraternities reinstated.

Omega Psi Phi, Kappa Alpha Psi, and Alpha Phi Alpha were all suspended by the university judicial system on charges of physical abuse, otherwise known as hazing.

Kappa Alpha Psi was suspended for five years by its national chapter, while Omega Psi Phi and Alpha Phi Alpha were suspended by both their national chapter, as well as the university. Omega Psi Phi was suspended in for four years, while Alpha Phi Alpha was suspended for five.

The fraternities were not suspended at the same time.

Acting Vice President for Student Affairs Melanie McClellan said that it was not until a third African-American fraternity was suspended last Spring, that she really got concerned.

"I was concerned because three of only four African-American fraternities were gone from campus," McClellan said. "I had students that came to me that were concerned about the whole situation."

In trying to tackle these concerns, McClellan said that she appointed a black Greek task force of faculty, staff and students. She said that she asked the task force to study the present situation going on with the African American fraternities that were suspended.

"Essentially I asked them for recommendations under which GSU would have them return to campus," she said.

### ACTIVITIES CONSIDERED TO BE HAZING:

- Calisthenics, such as sit-ups and push ups.
- Total nudity at any time
- Paddle swats, even when traded with activities
- Associates or pledges awakened time and again during the night
- Forcing alcoholic beverages on a member who does not wish to drink or drink that much
- Wearing apparel which is conspicuous and not normally in good taste
- Personal errand runs or chauffeuring by associate members or pledges for the active members (servitude)
- Putting associates or pledges in a room which is uncomfortable
- Less than six continuous hours of sleep for associates or pledges each night during pre-initiation or initiation periods.
- Pushing, shoving, or tackling associates.

Information provided by the office of Greek life at GSU

"Recommendations that would create a positive environment for African American fraternities at GSU."

At the end of fall semester, McClellan said that she received a book of recommendations and findings from the task force, and is presently in the process of sending these recommendations in the form of letters to the national representatives of the suspended fraternities.

"If the national representatives would commit to these recommendations by April 1, 2000, then GSU will allow the return of these fraternities to campus," McClellan said.

According to McClellan, if these fraternities return to campus with permission from their national chapters, they would be placed on probation for one year.

Mid year of this probationary period, she would have to meet with officers of the fraternity to make a progress report.

At end of that calendar year, the

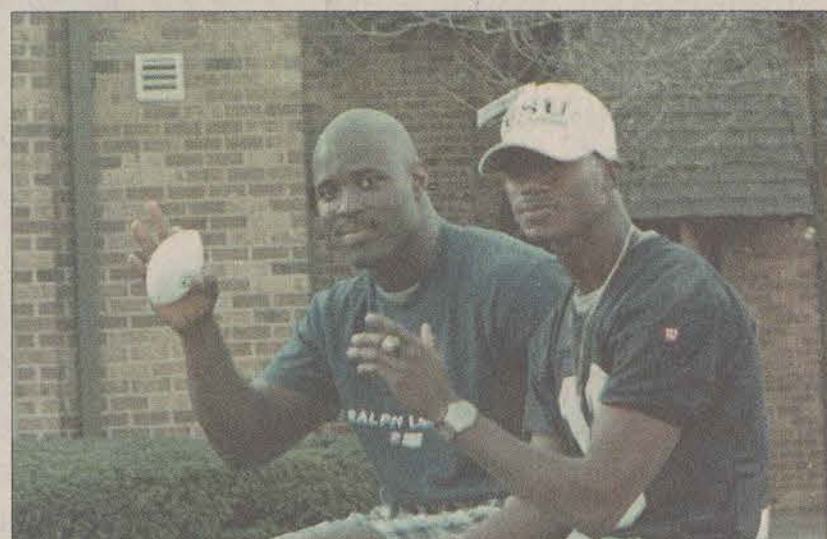
fraternity may petition for full reinstatement. This petition, according to McClellan, should include written statements from any members who were members at the time of the suspension, which should describe what they have learned from the experience.

McClellan, with the assistance of a committee, would then make the decision as to whether these fraternities will be re-established on campus as full operating regular fraternities, continue its probationary period, or remain suspended as before.

"The university cannot make decisions to reinstate these fraternities unless the national chapter endorses it," McClellan said. "This has to be a national organization decision. What we are essentially saying to the national chapters, is that if they are willing to give these fraternities another try, then we ourselves at GSU are willing to try again."

Please see HAZING, page 3

## Champions take to the streets



Seth Schilke



Hans Knoepfel

**KEEPING IT REAL:** GSU's 1999 National Championship football team took to the streets last Thursday to let the GSU/Statesboro community help celebrate their title. Eugene Phillips and Greg Hill waved to fans (top). Cheerleaders were on-hand, along with Gus, to keep the crowd lively (middle). After the parade, Head Coach Paul Johnson, spoke in front of City Hall (bottom).



Hans Knoepfel







## Eagle in Training



Cory Brooks

**LEARNING FROM THE PROS:** The GSU softball team gets a little extra help in the dugout from bat girl (1/2) Kasey Pate. In turn, they have taught her about the wonders of sunflower seeds. The six-year-old is the daughter of defensive line football coach John Pate and his wife, Tammie. She has two older siblings, her sister Kathleen and brother Thor.

## HAZING

From page 1

As to how these and other fraternities are brought on hazing charges, McClellan said that it's hard to keep matters like hazing a secret on campus.

"Often times pledges themselves come forward, and in some cases, faculty and staff observe changes in behavior among pledges in class, which leads them to believe that something is not right with the student."

If a Greek organization is found hazing, McClellan said that the campus chapter president of that fraternity will be notified and he/she would have the opportunity to investigate the matter and make recommenda-

tions. According to McClellan, judicial charges will also surface, and the organization will go before the judicial system.

"This means they can either admit that the hazing incident happened and accept the sanctions of the judicial officer, admit that it happened and ask for a hearing, or say it did not happen and ask for a hearing."

At present, Phi Beta Sigma is the only active African-American fraternity on campus.

"If those other groups want to come back on campus, it is our goal to work with them to have them back," McClellan said.

## APATHY

From page 1

This can be partly blamed on the lack of issues that affect students, Balleck said. "When students get older, they will have to deal with issues ranging from taxes, social security and education that will make them more active in the political process," Balleck said. "Most students

just don't perceive those things as affecting them, when in reality they do."

Those who are registered to vote in Statesboro can do so at the Grady Street Gym by the Statesboro police station on Tuesday from 7 a.m. to 7 p.m.

Thank you for reading the  
*George-Anne*

Here's your chance to  
make a difference on campus . . .  
and in your life.



is looking for a few good men and women

Information Session  
Wednesday, March 8, 2000, 7 p.m.  
Russell Union Room 2044  
Business Casual Attire

By joining this elite group, you'll have a chance to . . .

- develop your leadership and social skills at University-sponsored events
- meet interesting alumni
- gather firsthand information on a variety of career fields
- provide input for the future of Georgia Southern

You may be a good candidate if . . .

- you are enrolled at Georgia Southern and in good academic standing
- you can commit to attending regular SAC meetings
- you can commit to serving at approximately two on-and-off-campus alumni events each semester

SAC will not discriminate on the basis of race, creed, ethnic origin, sex, age, political persuasion, sexual preference, physical handicaps or marital status.

For more info . . .

Contact Wendell Tompkins at 681-5691 or via e-mail at wtompkins@gasu.edu, or pick up an application form in the John O. Eidsen Alumni House across from Hanner.

Application Deadline — March 31, 2000

## Women's contributions highlight activities this week

By Bryant Smalley  
Special Assignments Editor

The month of March is nationally recognized as Women's History Month. To mark the occasion, the multicultural and international student center is sponsoring Women's Awareness Week 2000 that will run today through Thursday, March 9.

"Women's Awareness Week is an opportunity to educate the campus community of the contributions that women have made and continue to make to society," Art King, director of the multicultural and international student center, said.

Many events are scheduled to take place during the week including "Breaking Out of the Cage of Race: A White Woman in the 1960s Freedom Movement." This event is scheduled for today at 7:30 p.m. in Russell Union 2048.

Joan Browning, a former Student Nonviolent Coordinating Committee (SNCC) member and civil rights activist, will tell of her role as a Freedom Rider.

Women's Awareness Week will also bring a program entitled "Are Christianity and Feminism Compatible?" The program will be held in the Russell Union Theater on Thursday, March 9 at 7 p.m.

Margaret Keyes, co-director of the Southborough Massachusetts branch of L'Abri Fellowship, will speak on feminist issues and will use this forum to raise bigger world view questions to encourage critical thinking.

Many other events are also planned and they are listed in the schedule for Women's Awareness Week. All students, faculty and staff are welcome to attend any of the events. For additional information about Women's Awareness Week, contact the multicultural and international student center at 681-5409.

## Women's Awareness Week 2000

### Today

- Re-orienting Feminism: Looking into the Rising Sun" 5 p.m. — Russell Union 2070

- Breaking Out of the Cage of Race: A White Woman in the 1960s Freedom Movement" 7:30 p.m. — Russell Union 2048

- "Women's History Quiz Bowl" 8 p.m. — Russell Union 2080

### Tuesday, March 7

- Rewriting Ophelia: Young Women in Contemporary Fiction" 1 p.m. — Russell Union 2070

### Wednesday, March 8

- Women's Status in History: Female Images in Children's Rhymes" 5 p.m. — Russell Union 2042

### Meeting in Circle: Women as Leaders"

- 1 p.m. — Russell Union 2042
- ReVISION's "The Yellow Wallpaper" Monologues" 7 p.m. — Russell Union 2084

### Thursday, March 9

- Women's Health Fair 10 a.m. to 2 p.m. — Russell Union Rotunda
- "Are Christianity and Feminism Compatible?" 7 p.m. — Russell Union Theater

## SPRING BREAK COUNTDOWN

# DRAFT DROP

Drafts  
50¢  
Today!

Everyday Draft Prices  
Drop 10¢

# BIG MONEY MONDAY!

Win Cash for Spring Break  
Plus take your shot at Winning \$10,000

# Mardi Gras

\$1.50 Hurricanes • \$4 Shooter Pitchers  
\$3 Draft Pitchers • \$2 Tooters  
\$1 Jello Shots

1 University Plaza • 681-WING Dine In • Take Out • Delivery

## Student Media Positions Open for 2000-2001

# The George-Anne

Editor in Chief (\$1,600 per full semester)  
Managing Editor (\$1,500 per full semester)  
News Editor (\$1,400 per full semester)

# Miscellany

Georgia Southern's Magazine of the Arts

Editor (\$600 per full semester)

# Reflector

Georgia Southern University Student Magazine Spring 1999

Editor (\$1,000 per full semester)  
Art Director (\$900 per full semester)  
Managing Editor (\$900 per full semester)

# WVGS 91.9

řāCīōĀčīvē

Station Manager (\$1,200 per full semester)  
Program Director (\$1,000 per full semester)  
Operations Manager (\$1,000 per full semester)

The Student Media Advisory Board of Georgia Southern University announces its selection process to choose student editors and managers of the 2000-2001 broadcast and editorial boards of the university's official student media (The George-Anne, Miscellany Magazine, Southern Reflector Magazine, and WVGS/FM).

Students interested in applying for an elected position will be expected to present (1) a **resumé**; (2) a **letter of application** explaining the candidate's qualifications and their plans or objectives for the media position sought; and (3) a **signed waiver** (included with this advertisement) which gives permission to the chairperson of the Student Media Advisory Board to validate the candidate's academic standing. Students may indicate the position(s) sought either in their letters of application or on the waiver form. However, a separate application packet (a **resumé**, a **letter of application** and a **signed waiver**) should be submitted for each medium, if a student wishes to apply for more than one medium.

**SELECTION AND TERM:** The editorial and broadcast boards will be selected by members of the committee based on a majority of those voting, according to committee by-laws. The term of office for the editorial and broadcast boards shall extend through the end of the next spring semester.

**QUALIFICATIONS:** Specific qualifications for persons holding board positions are listed below. Prior experience may be considered in lieu of stated qualifications. The media are listed in alphabetical order but the board positions within each medium are listed in ranking order.

**DEADLINE:** The deadline for the receipt of all applications for any of these positions is **Friday, March 31, at 5 p.m.** Applications should be sent to Bill Neville, chairperson, Media Committee, in care of Box 8067, or delivered in person to Room 2022, Williams Center.

**INTERVIEW DATE:** The Committee has established two interview sessions for candidates. All candidates for board positions on **The George-Anne** and **Reflector Magazine** **MUST APPEAR PERSONALLY** for an interview with the committee on **Thursday, April 13, and for Miscellany and WVGS/FM on Thursday, April 24.** Each interview session will begin at 3 p.m. in Room 2009 of EL Williams Center (Upper Floor).

## APPLICATION FORM AND WAIVER

**INFORMATION:** Questions regarding these positions should be directed to the advisors of the media: Robert Bohler (The GEORGE-ANNE) at 681-5933 or Box 8091; Mike Mills (MISCELLANY) at 681-0228 or Box 8048; Dianne Lamb (REFLECTOR MAGAZINE) at 681-0534 or Box 8091; or Bill Neville (WVGS/FM) at 681-0069 or Box 8067. Additional information and interpretation of the qualifications may be obtained from the chairperson, Bill Neville (681-0069 or Box 8067).

Position(s) applied for (Please check ALL that are applicable):

GEORGE-ANNE	MISCELLANY	REFLECTOR	WVGS/FM
<input type="checkbox"/> Editor in Chief	<input type="checkbox"/> Editor	<input type="checkbox"/> Editor	<input type="checkbox"/> Station Manager
<input type="checkbox"/> Managing Editor	<input type="checkbox"/> Managing Editor	<input type="checkbox"/> Art Director	<input type="checkbox"/> Program Director
<input type="checkbox"/> News Editor	<input type="checkbox"/> News Editor	<input type="checkbox"/> Managing Editor	<input type="checkbox"/> Operations Manager

- A student interested in applying for an elected position is required to present (1) a **resumé**; (2) a **letter of application** explaining the candidate's qualifications and their plans or objectives for the media position sought; and (3) a **signed waiver** (included below) which gives permission to the chairperson of the Media Committee to validate the candidate's academic standing.
- A student seeking a position on an editorial or broadcast board must have a **CUMULATIVE GRADE POINT AVERAGE of at least 2.0 and must not be on scholastic or disciplinary probation**. If at any time a board member drops below these standards, that member must relinquish the position.

I, \_\_\_\_\_ do hereby authorize the Media Committee, in relation to the above criteria for board positions, to contact the GSU student records representatives to validate my academic standing for compliance. This validation may be at a time of application and at any time during the period I would hold a board position.

Signed \_\_\_\_\_ Box No. \_\_\_\_\_

Social Security No. \_\_\_\_\_ Date \_\_\_\_\_

E-Mail address \_\_\_\_\_

This (1) application/waiver form (or a facsimile), together with a (2) **resumé** and a (3) **letter of application** for each medium in which a position(s) is sought, should be received by Friday, March 31, 1999, by 5 p.m. to: Student Media Advisory Board, Bill Neville, chair, Room 2022 Williams Center, Box 8067, GSU, Statesboro, GA 30460. Candidates for George-Anne and Reflector must be available on Thursday, April 13, and for Miscellany and WVGS/FM on Thursday, April 20. All interviews are scheduled at 3 p.m., Room 2009, Williams Center (Upper Floor).



## GSU's double standard in regards to hazing

Talk about a double standard. There is a rule that says student-athletes should not be treated any differently than student non-athletes.

But when it came to the baseball hazing scandal, the players were given preferential treatment. An agreement was made with student affairs to allow the matter to be dealt with internally. This means that the baseball coaches and athletic administration decided who was responsible and what the punishment should be.

### Our Opinion

But on the front page of today's paper, Acting Vice President of Student Affairs Melanie McClellan outlined the proper procedures for dealing with hazing in fraternities and sororities.

She said that if a Greek organization is suspected of hazing the chapter president will be notified and given the opportunity to investigate the matter. She said that judicial charges will also surface and the organization will go before the judicial system.

She said, "This means they can either admit that the hazing incident happened and accept the sanctions of the judicial officer, admit that it happened and ask for a hearing, or say it did not happen and ask for a hearing."

So, if a Greek organization is suspected of hazing, they face judicial

charges.

But the baseball team did not, and that is special treatment. Student money goes to the athletic department to cover equipment, scholarships and facilities for Eagle athletics. They receive money for what they do and are expected to represent GSU well on and off the field.

Fraternities and sororities do not receive GSU money (at least not substantial money), and they are held to a higher standard.

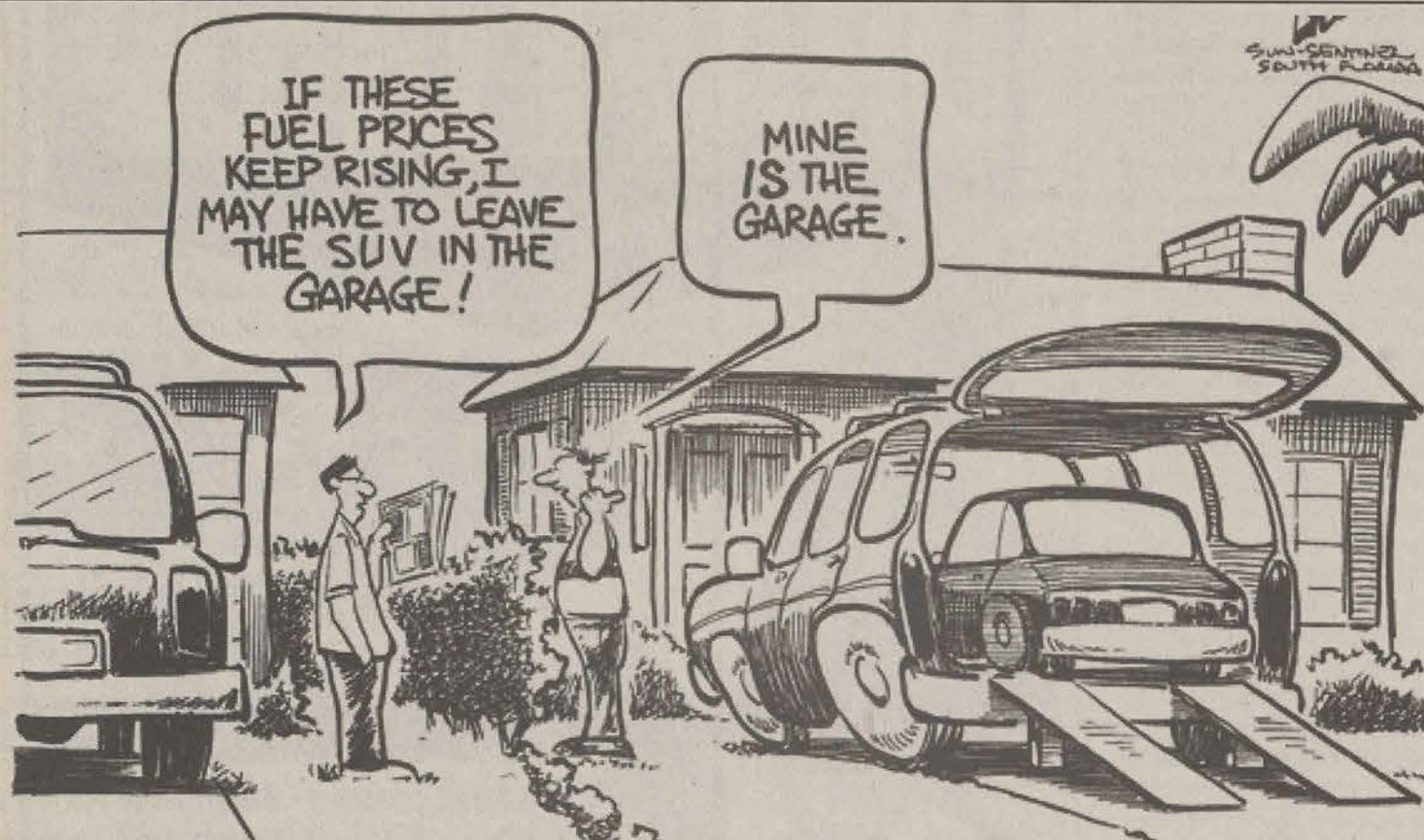
It is unfair to allow the baseball team off so lightly, when Greek organizations may be kicked off campus for the same thing.

Greek organizations are given a hearing, unless they admit to hazing and accept the punishment. The baseball team should have been given this opportunity.

If they had faced an actual hearing, then maybe things would not seem so shady. The four players who have been kicked off maybe would have been able to face their accusers and could have told their side of the story. The 12 suspended players could have possibly taken more responsibility for their roles in the incident.

Maybe it would have resulted in no baseball this spring. Maybe that would have hit the athletic department where it hurts the most.

In the bank.



## Statesboro minus GSU equals not much

Can you picture Statesboro without GSU? Do you think that you would even be able to pinpoint Statesboro on the map if this university didn't exist? How big do you think Statesboro would really be?

Would you think that Statesboro would have the variety of fast food restaurants, grocery stores, apartment complexes, or a Cinema 9 theater? Do you think that Wal-Mart would be open 24/7 or even be a Super Wal-Mart? Probably not. Would there be a bike shop, Bath and Body Works, or as many hotels? No way.

What about Applebee's, Longhorn, and Ruby Tuesday? Would those type of restaurants typically be found in a town the size of Statesboro? Not a chance.

Have you ever noticed how so many businesses in town have the words eagle, university, or southern in their company name?

Did you ever think how many people profit off of the students that go to school here? A whole lot.

Have you come to ask yourself how Statesboro is out in the middle of nowhere, yet has as much as it does? When I say as much as it does, I'm comparing it to towns like Brooklet, Claxton, Metter, or Portal. Why is Statesboro so much more economically advanced? Primarily, it's GSU.

Do you think it's ironic that there's a benefit called "A Day for Southern" once a year, and we seem to

contribute to Statesboro about 365 days in the year. I do. Maybe GSU should recognize this as "A Year for Statesboro," and have a big party to celebrate.

So, if GSU has done so much good and greatness for the town of Statesboro, then did you ever wonder why a majority of the citizens of Statesboro view GSU students only as sex-crazed, reckless driving druggies? I do.

It amazes me how people can ridicule and stereotype the very people who keep their businesses open and profitable.

In almost all my classes, this issue has come up. Ninety-nine percent of students here feel that they are discriminated against in some way in the town of Statesboro, whether it is by simply being ignored in the stores that they enter, looked upon only as college students and not really as people, or stereotyped.

How much more should GSU do to be in the good graces of the town of Statesboro? Sure, there are some of us who are bad, the world is not perfect. We are, in fact, one community.

So, why nine-times-out-of-10 it's Statesboro as well as the GSU community and not the Statesboro and GSU community? In fact the only real times when we truly come together are football games. Yea, sometimes we get together to do good things like Habitat for Humanity, March of Dimes, or Relay for Life,

yet we hardly interact with one another.

Why can't we be perceived as equals and not "those kids who are ruining our town"? We are people too, and we just want some respect and maybe even a little appreciation.

Students don't evict families out of their houses because they have too many people living in them, but if GSU students have more than 3 unrelated people in a rental house in a certain zone, they are subject to eviction. That's crazy. If it's a 4 bedroom house, you should have the right to have 4 people living there.

It's a shame that some citizens have these views towards students, or that students should feel like they are looked down upon in such a negative way. We're not trying to take over the city, or rip apart subdivisions for the expansion of our campus. We're just here trying to get an education for the most part. Sure, we party, and we go out dancing, and we hang out. That's to be expected, we're at the stage in our lives that most people our age do those things.

We shouldn't have to deal with being pulled over by the police for "looking suspicious," being charged higher rates, or ignored. We should be considered a part of the community and embraced for it, and not merely accepted because we aren't going anywhere.

Yes, I know that we crowd the roads, make lines at restaurants twice as long, and perhaps we moved in next to you and each of us have a car, somehow managing to piss you off

because we have ruined the splendor and beauty of your neighborhood. We apologize, but we can't help it.

At the same time, though, we profit your businesses, bring in various forms of diversity and culture, and populate your city. We put you on the map.

There are exceptions to every rule. I know that there are tons of good people in Statesboro that embrace the GSU community. I am not than narrow minded. I also know that there are students at GSU who are less than ideal to deal with in certain instances.

To the students of GSU, maybe you should be a little more vocal about the things that affect you. For the most part, we really only just bitch about what has happened to us, and don't act upon it. That, perhaps is our downfall. How many of us did anything other than complain when the city raised the age to run for city council to 25? Not many. Get involved, and voice your opinion. If something affects you directly you better do something about it if you want to change it. Don't you feel that you are part of this community and should be treated like it? Well, do something about it. However, also recognize respect when you receive it, and realize it when you are being disrespected. Bitching only gets you so far. Actions speak louder than words ever will.

*-Justin Johnson is the features editor at The George-Anne. He is a sophomore majoring in marketing. He can be reached at jacksonswims@goplay.com*

### The 2000 Editorial Staff

**Doug Kidd**

Co-Sports Editor

**Kevin Caskey**

Co-Sports Editor

**Luke Renfroe**

Photo Editor

**Sam Siegel**

Arts and Entertainment Editor

**Justin Johnson**

Features Editor

**Bryant Smalley**

Special Assignment Editor

**Shawntineal Hughes**

Assistant News Editor

**Nick Crouch**

Asst. Deputy Managing Editor

**Brooks Clements**

Cartoon Editor

For 72 years, Georgia Southern's Official Student Newspaper

### The 2000 Editorial Board

**Kelley McGonnell**

Editor in Chief

**Stacey Wysong**

Managing Editor

**John Bryson**

News Editor

**David Koepke**

Deputy Managing Editor

**Tricia Hall**

Lifestyles Editor

## The mad Hungarian fastball made my cup runneth over

DAVE BARRY

When I was a boy, playing Little League baseball, I dreamed — as most boys did back then — of someday getting a call from the Major Leagues.

"Son," I dreamed the Major Leagues would tell me, "you stink. We're kicking you out of Little League."

I would have been grateful. I was a terrible player. I was afraid of the ball and fell down a lot, sometimes during the "National Anthem." So in 1960, I hung up my Little League uniform for good (it immediately fell down), and I had no contact with organized baseball for the next 40 years.

Then, recently, I was asked to participate in the Joe DiMaggio Legends Game, which raises money for the Joe DiMaggio Children's Hospital in Hollywood, Fla. I said yes, because (a) it's a good cause, and (b) since they were asking ME to play, I figured it would be a relaxed, low-key event, like those company-picnic softball games where beer is available in the outfield and as many as six people play shortstop simultaneously.

Imagine my horror when I found myself at a real stadium, with thousands of spectators in the grandstands. Imagine my further horror when I found myself in a locker room containing several dozen former major league baseball players. Some were older guys, such as Minnie Minoso of the White Sox, who I believe once caught a fly ball hit by Magellan. But there were also some guys who had played big-league ball recently and still looked capable of hitting a baseball all the way through a human body.

I expressed concern about this to one of my teammates, the great Orioles third baseman Brooks Robinson, who gave me some reassuring advice.

"Don't play in the infield," he said. "You'll get killed."

I was on the American League team, managed by former Yankee John Blanchard. He gave me a nice little pregame pep talk, which I will reproduce here verbatim:

BLANCHARD: You should see how these guys hit the ball.

ME: Hard?

BLANCHARD: Oh Lord God. Are you wearing a cup?

ME: I don't OWN a cup.

BLANCHARD: Oh Lord God.

I did pretty well for the first few innings. This is because I was not in the

game. Then Blanchard sent me out to left field to replace Mickey Rivers, which is like replacing Dom Perignon with weasel spit.

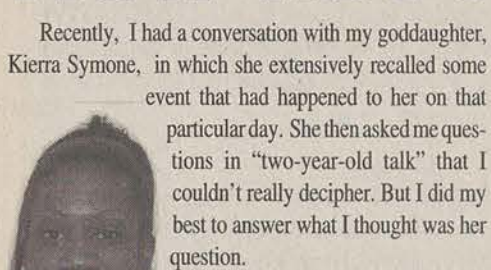
I trotted out of the dugout wearing the stiff new glove I'd bought that afternoon. When I brought it home, I removed the price tag and spent a few minutes fielding grounders thrown to me by my wife, who was nine months pregnant and thus could not put a ton of mustard on the ball, which dribbled my way at the velocity of luggage on an airport conveyor belt. That was my preparation for this moment, for standing alone in deep left field, with vivid Little League memories swarming in my brain — memories of praying for the ball not to come to me, and memories of falling down when it did.

So I'm standing out there, and for almost two innings, nothing comes my way. Then it happens: George Foster, five-time All-Star slugger for the Cincinnati Reds, rips a ground ball between second and short. I get a good break on the ball, going to my left, running hard. Foster is rounding first, trying for a double, and the crowd is roaring, and suddenly I realize, with a sense of elation, that I'M ACTUALLY GOING TO GET TO THE BALL. Yes! I can see it clearly, and I have the angle, and I'm closing fast, and I'm going to make it! I'm almost there! And now I'm there! And now OH NO IRANPASTTHEBALL. THE BALL IS BACK OVER THERE. OH NOOOOOOOO....

And of course I fall down. I've seen a video replay; I look like a man whose lower and upper body halves are being operated by two unrelated nervous systems. I make a pathetic, longing gesture toward the ball as it zips past to the outfield wall, where centerfielder Dave Henderson retrieves it. After he throws it in, he puts his arm on my shoulders and says, "You're supposed to catch the ball in your glove."

I also got to display my batting prowess. The pitcher I faced was Al "The Mad Hungarian" Hrabosky, who still looks as though he has just been kicked out of the Institute for the Criminally Insane for being a little TOO insane, and who can still throw pretty hard (by which I mean "faster than light"). He struck me out on three pitches. I was still swinging at the last one when Hrabosky was in the show-ers.

So it was a pretty humiliating experience. But mark my words: I'll be back next year, and that's going to be a different story. Because next time, I'll be ready to "play with the big boys." That's right: I'm going to be wearing a cup. TWO cups, in fact, because I'm assuming you need one for each knee.



MARNITE ZACHERY

Recently, I had a conversation with my goddaughter, Kierra Symone, in which she extensively recalled some event that had happened to her on that particular day. She then asked me questions in "two-year-old talk" that I couldn't really decipher. But I did my best to answer what I thought was her question.

As a godmother, my responsibilities include making sure she has a spiritual foundation, listening to her problems and even making sure she knows what the purpose of the potty really is.

Later, as I flipped through "How To Marry A Millionaire", "Who Wants To Be A Millionaire", and "Greed" I thought about what it might be like to grow up during this millennium. What kinds of questions will she ask me about Mr. Right, money, and sex? What will I tell her?

Many of us here at GSU were "80s kids". Our parents worried about the negative influence that Bart Simpson might be on us. We grew up watching "The Cosby Show", "Roseanne", and "Knight Rider". We wanted to fall in love and get married like the Huxtables, go to a college that would both challenge and prepare us for tomorrow, and drive an expensive, black sports car like "Kit". Now we can just skip the preliminaries and marry a millionaire. If we're not yet ready to settle down, but still want the automobiles and fringe benefits — we can just call up Regis or Chuck and collect the money.

I can just see myself explaining the two choices to Kierra: Well, on this hand you have me with credit card bills, 20,000 dollars plus owed to Uncle Sam for my education, my job as an elementary school teacher where if I'm lucky, I'll get a 2% raise every two years or so. On the other hand you have Darva Conger, married, rich, and debt-free in 120 minutes.

As for love I will tell her that (1) You can't hurry love (2) Money cannot buy love and (3) Do not go searching for the right man — the right man will come to you. Rick did it

why can't she?

This brings us to a totally different conversation — how the playing field just is not leveled for men and women. Take Rick and Darva for example. As soon as this marriage started to disintegrate Darva Conger was immediately labeled a greedy, absentminded slut. Rick, on the other hand, was billed as the poor little rich guy who just wanted a Cinderella princess to place on her throne in his gigantic house in the hills. Did anyone ever ask why this intelligent, athletic, seemingly healthy guy couldn't get a date on his own? What can a woman do on a television screen in two hours that would make a man want to spend the rest of his life with her?

The lesson learned here is obviously that the Cinderella story is perhaps best left to the story books. Television, in this millennium acts as both a help and a hindrance. The good news is that we are the ones who have the power to make it so. Our other option is simply to turn it off. Hopefully, through our question and answer sessions I can teach Kierra to learn from my example and my mistakes.

## THE GEORGE-ANNE STAFF

### NEWS

Kashauna Clark, Tamara McKenzie, Jeremy Nix, Danielle Offing, Jonathan Peacock

### LIFESTYLES

Kathy Bourassa, Chris Brennaman, Joe Ben Deal, Melissa Denby, Donny Dye, Dana MacKay, Mark Metter, Jeremy Nix, Tim Prizer, Mary Render, Michael Russo, Lindsay Wise, Laura WigginsZane Thomas,

### SPORTS

Edmund Coley, Ryan Hemenway, Bilal Malik, Jennifer Martin, Luke Martin, Taryn Price

### PHOTOGRAPHY

Cory Brooks, Hans Knoepfel, Chris Kohlhagen, David Whiddon

### STUDENT PUBLICATIONS

News, Editorial Advisor Robert Bohler  
General Manager Bill Neville

### CIRCULATION

Supervisors

Aaron Bradford and Jim McNally

### ADVERTISING/DISTRIBUTION SERVICES (ADS)

Advertising Manager

Vic Cuvo

Business Manager

Brooks Clements

Ad Reps

Jonathan Brooks, Tiffany Domingas, Pamella Smith, Melissa Waldrop, Courtney Williams

### PRODUCTION AND GRAPHICS EDITORIAL SERVICES (PAGES)

General Manager

Jonathan Brooks

Production Managers

Courtney Williams, Will Thigpen

WebMasters

Segio Waldring



## Best-selling author Harold Kushner speaks at GSU tomorrow

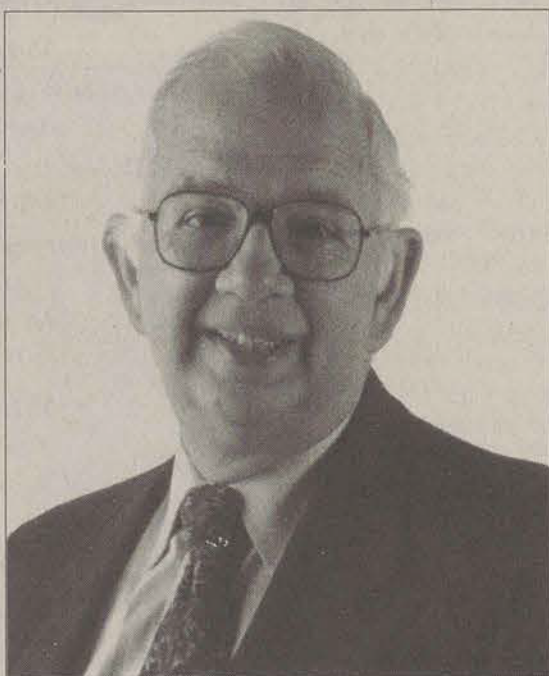
G-A News Service

Author of the best-seller, "When Bad Things Happen to Good People," Harold Kushner will be speaking at GSU tomorrow at 7 p.m. He brings with him an understanding of human spirit to audiences of all denominations. Kushner's compassionate guidance helps people learn to cope with an unfair world, find new meaning in their lives and nourish their souls.

His latest best-seller, "How Good Do We Have To Be?," teaches how to accept human imperfections and let go of unrealistic expectations. Like his writing, his public speaking draws on modern literature, psychology, theology and more than three decades of experience as a spiritual leader.

Rabbi Kushner won the Christopher Medal for "When All You've Ever Wanted Isn't Enough," and was recently honored as one of fifty people who have made the world a better place in the last fifty years.

GSU students may pick up free tickets at the Union Information Desk. Faculty and staff tickets are available at the Hanner Ticket Office for \$5, all other tickets are \$10.



Special Photo

## Last Minute Change of Heart

By Kathy Bourassa  
Staff Writer

"You never listen to me!"  
"How come I never meet anyone nice?"

If these refrains sound all too familiar, take heart.

Stop shouting at the proverbial wall. No need to keep banging your head against it, either. Instead of wondering whether you should just call it quits with your partner or debating whether you really need to make an appointment with a plastic surgeon, consider opting for a new approach to such debilitating questions.

Eagle Entertainment is sponsoring a "Change of Heart" game show at GSU. Based on the popular television program, two couples will be selected to date single contestants. After the date,

participants will publicly describe their dates.

The couples will decide whether to stick with their struggling relationships or venture forth to explore new possibilities.

The network program is known for generating laughs, surprises,

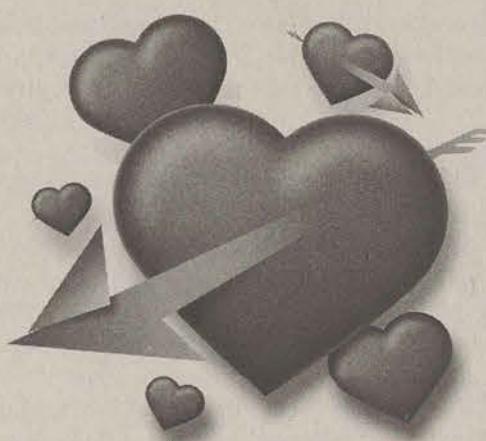
angry outbursts or fond memories. What will the outcome be at GSU? That remains to be seen.

Event coordinator Ericka Jones says that would-be contestants (couples or singles) must complete a short application and turn it in to Russell Union Room 2022 by Mar. 10. The application does not ask for details about the applicants' circumstances with their partners (or lack thereof).

The show will be held in the Union Commons near the end of March.

Stayed tuned for more information right after this break from our sponsor. Spring break, that is.

An information session will be held on Tuesday at 7 p.m. in the Union. For more information, contact Jones at 486-7270.



## Pi Sigma Epsilon presents first annual auction

By Shawntineal Hughes  
Assistant News Editor

Pi Sigma Epsilon presented its "First Annual Benefits Auction" last Wednesday in the Williams Center.

The purpose of this auction was to refamiliarize the fraternity to the GSU campus and to raise money for its sales and marketing convention, according to Monee Cottman, vice president of the fraternity.

Pi Sigma Epsilon played music throughout the auction to entertain its guests.

"We wanted our guests to feel comfortable and not just enter a room that was quiet and full of silent people," Cottman said.

Facing the audience was a crosswalk where 10 prizes wrapped in decorated baskets sat waiting to be auctioned.

The prizes were all auctioned beginning at \$20 and ending at \$70.

The most amusing part of the auction, which many of the women showed enthusiasm for by screaming and shouting, was the male models who strolled the crosswalk and delivered the prize to the winner.

Each model carried a rose and would pose for the audience until the bid was over. "Looking at

the males was the best part of the show," Latisha Capers, GSU junior, said. "I really enjoyed the entire auction and I would not mind doing it again next year."

According to Cottman, Pi Sigma Epsilon received a huge response from the people who came. "We plan to make this an annual event," Cottman said.

**Thank you for reading The George-Anne.**

Could you use an extra \$100?



Southern Reflector is sponsoring an essay contest in which you could win \$100 for first place! Second and third place winners will receive \$50 and \$25.

**Topic:** We live in a society that is focused on beauty and glamour. Is a person's personality and inner self enough to be accepted in today's society? Does society contradict itself when it says that beauty comes from within? Or is image really everything?

**Length:** 6-10 pages, typed, double spaced

**Deadline:** March 28, by 5:00 pm

Essays can be turned in to the Southern Reflector office, room 2015 in the Williams Center, or mailed to ATTN: Reflector Essay Contest, PO Box 8001, GSU, Statesboro, GA 30460. Please include your name, address, Landrum box number, and phone number at the top left of your essay. All essays submitted become the property of the Southern Reflector. Essays will be judged by the Southern Reflector staff on an anonymous basis. Employees of Southern Reflector are not eligible.

**Good Call.**  
Save up to 84% on calls from home or the road.

<b>6.9¢</b> PERSONAL 800 FT. CALLS All calls to and from your home phone are free. No long distance charges. No international charges. No payphone charges. No pay-per-minute charges. No pay-per-second charges. No pay-per-minute charges. No pay-per-second charges. No pay-per-minute charges. No pay-per-second charges.	<b>13.9¢</b> CALLING CARD All your Calling Card calls from the Road are free. No long distance charges. No international charges. No payphone charges. No pay-per-minute charges. No pay-per-second charges. No pay-per-minute charges. No pay-per-second charges.
---	--

CALL 24 HOURS FOR INFORMATION  
**an 1-888-ITS-GREAT**

## Graduation Gala:

In Honor of our Millennium Graduates



Date: Tuesday, March 7, 2000

Time: 1:00 PM - 7:00 PM

Date: Wednesday, March 8, 2000

Time: 10:00 AM - 4:00 PM

Location: Williams Center Dining Hall

- Check on Graduation Plans and Learn Details About the Commencement Ceremony
- Order Your Cap and Gown, Announcements, or a Class Ring
- Discuss Career Opportunities with Enterprise - Remember to Bring Your Resume!!!
- Pay Your Graduation Fee
- Have Your Picture Taken In Cap and Gown (Pre-Pay Packages Available)
- Check Out How You Can Stay Involved as an Alumnus or Alumna
- Meet With a Career Service Representative to Learn About Job Opportunities
- Clear Your Account of Parking Fines, Library Fees, etc.
- Leave a Forwarding Address with Postal Services
- Gather Information About Graduate Programs
- But Most Of All, Come to Celebrate and Have FUN!!!!

WILDLIFE EDUCATION AND LAMAR Q. BALL RAPTOR CENTER

Tuesday, March 7 at 3:00 pm and Wednesday, March 8 at 2:00 pm

Event Co-Sponsored By Enterprise

For comments or questions please call Career Services @ 681-5697

RETIREMENT INSURANCE MUTUAL FUNDS TRUST SERVICES TUITION FINANCING

## Why is TIAA-CREF the #1 choice nationwide?\*

### The TIAA-CREF Advantage.

Call us for a free information package

Year in and year out, employees at education and research institutions have turned to TIAA-CREF. And for good reasons:

- Easy diversification among a range of expertly managed funds
- Solid performance and exceptional personal service
- Strong commitment to low expenses
- Plus, a full range of flexible retirement income options

With an excellent record of accomplishment for more than 80 years, TIAA-CREF has helped professors and staff at over 9,000 campuses across the country invest for—and enjoy—successful retirements.

Choosing your retirement plan provider is simple. Go with the leader: TIAA-CREF.

### THE TIAA-CREF ADVANTAGE

Proven Performance

Low Expenses

Highly Rated

Quality Service

Trusted Name



Ensuring the future for those who shape it.

1 800 842-2776

www.tiaa-cref.org

\*According to DALBAR, Inc., a financial services research firm. In its most recent study, 1997 Defined Contribution Excellence Ratings, TIAA-CREF was voted number one in participant satisfaction. TIAA-CREF Individual and Institutional Services, Inc. distributes CREF certificates and interests in the TIAA Real Estate Account, Teachers Personal Investors Services, Inc. distributes the variable component of the personal annuities, mutual funds and tuition savings agreements. TIAA and TIAA-CREF Life Insurance Co. issue insurance and annuities. TIAA-CREF Trust Company, FSB provides trust services. Investment products are not FDIC insured, may lose value and are not bank guaranteed. For more complete information on our securities products, including charges and expenses, call 1 800 842-2776, ext. 5509, for the prospectuses. Read them carefully before you invest or send money. © 2000 TIAA-CREF 1/00.



## Eagles dominate first ever Eagle Classic

By Ryan Hemenway  
Sports Writer

After last weekend's runner up finish in the GSU/Reebok Invitational, the Eagles were sure of one thing, they wanted the trophy in inaugural Eagle Classic. GSU's hopes came true as the Eagles swept the trophies at the awards ceremony. Senior center fielder Jaclyn Kaylor brought home the tournament's most valuable player award, junior pitcher Lacey Kammerer took the most valuable pitcher award, and most importantly the team took home the Eagle Classic championship trophy.

The Eagles entered the weekend under .500 at 7-10, but walked away a game up, 12-11 as they picked up five wins against one loss.

"Everyone played well, all weekend was a great team effort, pitching was great, we hit the ball, defensively we are playing well" head coach Kelley Kirkland said. "I'm really happy where we are right now."

Senior Jaclyn Kaylor nearly stole the show as she dominated the weekend at the plate for the Eagles. The senior picked up the MVP trophy after batting .412 for the tournament, doubling the number of RBIs of the next closer batter (10), and hitting for the cycle over the weekend with a double, triple, and a

home run. She also tied with the lead for stolen bases with three fellow teammates, as Shannan Hoobin, Jennifer Harris, and Kelly Blazi all also stole three bases apiece.

Kaylor entered the tournament batting .275, and raised her team leading average to .309 after the weekend.

"I've been struggling a little bit earlier in the season," Kaylor said. "I decided it was time to relax and play some ball and not really worry about what was happening around me."

Kirkland knew Kaylor was getting close to a break out game and was just waiting for it to happen.

"She had a great tournament, tons of RBI in the clutch," Kirkland said. "Two outs bases loaded, she was there for us every time."

In Sunday's championship game, junior pitcher Lacey Kammerer dominated Tennessee Tech from the mound. The junior pitcher had a no hitter going through 5 1/3 innings before a slow roller trickled through the infield to break up the no-no. Kammerer settled for her first career complete game one hitter to garner the most valuable pitcher award.

"I'm excited for her, she has been pitching well, you could tell how excited she was when she finished the game," Kirkland said. "It is good for her and it's also great for the team."

For the weekend, Kammerer was 1-0, with a save, and was the only pitcher not to give up an earned run in the tournament. The junior pitched 13 innings, giving up 4 hits, 0 earned runs, and struck out eight.

"I'm really glad all the hard work from the fall and the spring is paying off," Kammerer said. "This is a great honor for me to win."

The junior was hoping for her first career no hitter at GSU, but was happy to take home the championship trophy instead.

"I might could have gotten

the ball up the middle," Kammerer said.

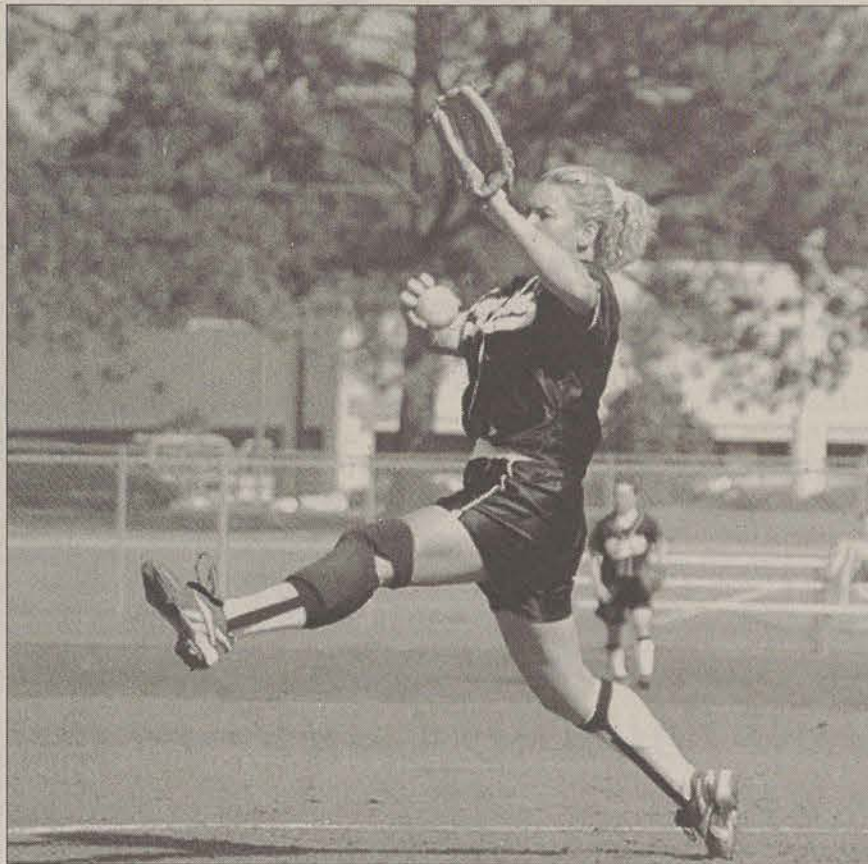
"I could have gone a little farther maybe, but people are going to get hits, it all evens out in the end, but a win is a win and we have the trophy."

The Eagles also placed two sophomores on the all tournament team, second baseman Stacie Cooper and pitcher Aimee Littlejohn.

In Sunday's semifinal and final, Cooper went three for eight with a RBI and made several spectacular defensive plays. Littlejohn for the weekend was 3-0 on the mound with a 0.33 earned run average as she gave up only one earned run in 21 innings of work including 17 strikeouts.

The Eagles' advanced to Sunday's action as the number one seed in the single elimination play after completing pool play with a 3-1 record. The Eagles lone loss of pool play was to Drake, who GSU would face in the semifinals looking for revenge.

GSU would find that revenge with a 6-0 pounding to send Drake home. The Eagles took a 1-0 lead in the bottom of the fifth before rallying for 5 runs behind Jaclyn Kaylor's base loaded double sent home three runs to put the game away and secure the win for Aimee



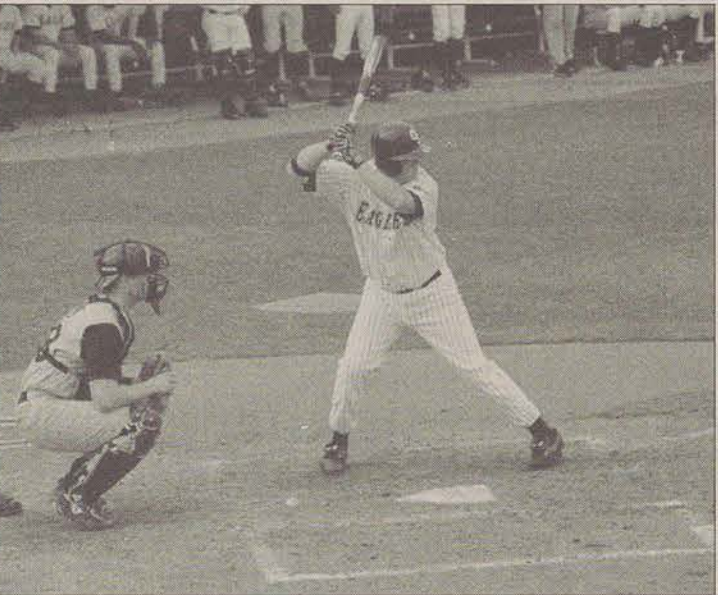
Cory Brooks

**WINDING UP:** Lady Eagle pitcher, Jen Miller, improved to 3-3 behind a six-hit outing in five innings against Mercer.



Cory Brooks

**SOLID CONTACT:** Lady Eagles surpassed the .500 mark at the inaugural Eagle Classic to improve their record to 12-11.



Luke Renfro

**KEEP YOUR EYE ON THE BALL:** The Eagles improved their record to 5-6 and 2-1 in SoCon play.

## GSU baseball wins two out of three against VMI

•Eagles fall to VMI 7-5 Sunday afternoon

By Edmund Coley  
Sports Writer

The Eagles were not able to pull off the weekend sweep as they fell short to Virginia Military Institute 7-5 yesterday afternoon.

Matt Easterday's solo homerun in the bottom of the 7th brought the Eagles to within one run but still would have been enough to stay undefeated in the conference.

"It's disappointing we didn't finish them (VMI) off and get the sweep," said head coach Rodney Hennon. "VMI played hard and you've got to give them credit."

The Keydets (6-7, 3-6 SoCon) posted a four to nothing lead after the third inning before Dustin Langley hit a three-run homer to get the Eagles back in the game.

VMI immediately answered scoring two more runs the very next inning off a Michael Goldman single.

The game was 6-4 going into the seventh inning when sophomore Chris Walker stretched a liner to leftfield into double. The

effort would be in vain as Walker would be caught attempting to steal third base. J.R. Revere would also get thrown out in the inning trying to steal second just before Easterday's team-leading fifth homerun.

"We've got to continue to be aggressive," Hennon said. "We've just got to have a better understanding on when to be aggressive and when not to."



VMI's David Sharp pitched two and a third innings to record his first save of the season.

GSU's Bill Stewart receives his first decision of 2000 picking up the loss, while the Keydets' Matt Poulos gets the win.

With the two homeruns, the Eagles recorded seven for the series and 11 for the season.

The Eagle bullpen continues to improve giving up only one earned run in five and a third innings.

## GSU basketball falls in the SoCon Tournament

• Men drop 68-54 to Furman, women lose to ETSU, 82-73

By Doug Kidd  
Senior Sports Writer

As promising as the beginning of the Southern Conference tournament started out, both GSU basketball teams came away empty after their opening games Friday in Greenville, with the men losing to Furman 68-54 and the women dropping a 82-73 decision to East Tennessee State.

In the men's action, GSU was held to their lowest point production of the season on 35 percent shooting, including an dismal 4-20 from the arc.

"We struggled in the half court," said GSU head coach Jeff Price. "We're a team that when we are shooting the ball well, things are going good. When we're not shooting well and making baskets, it doesn't allow us to get into our press and do different things and play our style of basketball."

It's the second straight game Furman has taken us out of what we are trying to do," continued Jeff Price, referring to the Paladins 80-73 victory on February 18. "We haven't had many problems scoring this year, but against them, a couple of times, we have."

Hamp Jones was the only Eagle player in double figures, scoring 10. Julius Jenkins and Donta Humphries added nine each as GSU struggled, particularly in the second half, to get the ball inside to forwards Jones and Kashien Latham.

"We did a good job of keeping them off the boards and out of the post, especially in the second half. That was the key to our win," Furman head coach Larry Davis said. "Furman defenders harassed Jones and Latham into combining for 7-19 shooting while Jenkins struggled from the perimeter going 1-5 from behind the arc, 4-11 overall. Todd Shipley and Demarlo Slocum combined to convert only three in their ten attempts between them."

The tempo throughout the game was slow, but in the early going, it

seemed to favor GSU. "Early on we were defending well in the half-court when it was 22-16," Price said of his team's defense in the game's opening fifteen minutes. "We were defending well."

GSU shut every Paladin player down in the first half but one, freshman Karim Souchu. "I thought we survived the first half," Furman's head coach said. "We didn't shoot the ball worth a 'nickel' for about 10 to 15 minutes but [Souchu] got himself going and helped us survive the first half." The conference's sixth leading scorer coming into the tournament at 16 points per game nearly equaled that in the first half, scoring 14 of Furman's 31 points.

The turning point of Friday's contest came with 1:17 remaining in the first half when Latham picked up a technical foul after slamming the ball down in disgust after missing an easy shot inside then getting called for a foul going after his miss. "Kashien's technical foul was obviously the biggest play of the game," Price said. "It turned the entire game around."

"After [Latham's technical foul], I don't think we really got over it," said senior guard Quentin Martin who finished with a career-high ten boards in the defeat. "We kept it in the back of our heads and it ended up hurting us in the long run."

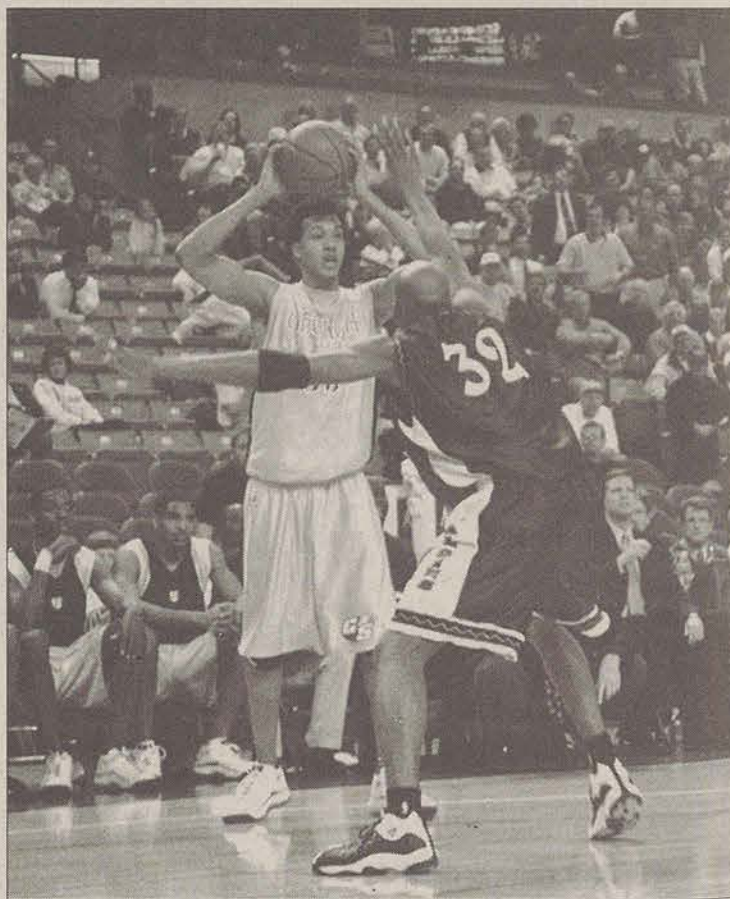
**"AFTER (LATHAM'S TECHNICAL FOUL), I DON'T THINK WE REALLY GOT OVER IT. WE KEPT IT IN THE BACK OF OUR HEADS AND IT ENDED UP HURTING US IN THE LONG RUN."**

**-- QUENTIN MARTIN, SENIOR GUARD**

"I'm not going to fault Kashien too much because I've been trying to get Kashien to show emotion all year," Price said. "He finally showed emotion but at the wrong time. Kashien was not upset with the referee's, he was upset with himself because he missed an easy shot. There's no question it was the big turning point of the game."

In the second half it was more of the same for GSU, as they shot 33 percent in the second half while Furman went 11-for-20 from the floor on their way to the easy 68-54 victory.

Price's first season in Statesboro



Luke Renfro

**LOOKING TO PASS:** Jones tries to pass to a teammate.

was a success as he guided the Eagle program to its first winning season in six seasons with the team's 16-12 overall record. "I think our guys did a great job this year," Price said. "Our three seniors have been outstanding. We've done a lot of things this program has not done the last eight years. I'm very proud of that. But I also told them that we're not where I want to be yet. In the future, when we got to this tournament, I want to find a way to win it."

**Lady Eagles vs. ETSU**

In the women's action Friday night at Timmons Arena, the Lady Eagle basketball squad didn't have much more luck getting outscored 44-31 in the first half on their way to an 82-73 defeat.

GSU was on the verge of getting blown out early, falling behind 27-12 after the game's first ten minutes but rallied to eventually take a 42-38 lead into halftime. Sarah McCary and Danna Simpson led the first-half comeback scoring nine points a piece while

Tiffany Lanier added six.

But the Lady Eagles could not sustain the momentum in the second half as the experience of East Tennessee State took over. "Experienced players have to carry this time of the year and when we have two sophomores and a freshman leading you in scoring, that's not a good sign," GSU head coach Rusty Cram said. "That's what I think is the answer to what happened. We don't have enough experience players at this stage of the game. Your experience has to come through this time of the year."

For GSU, McCary finished with 15 points and a career-high 12 boards while Simpson, playing in foul trouble for most of the second half, finished with 12 points and four assists.

"We didn't execute, but East Tennessee State did a good job of putting pressure on us."

"It's hard to end [the season] on a game like this because we know we didn't play like we should have," Simpson said. "If we had come out and played composed and hard, we



Today's Quote  
"Vote for me. I deserve it... I've been a very good bird. The URL is <http://promotions.go.com/esp/mascots/challenge.html>"

--Gus the GSU Eagle

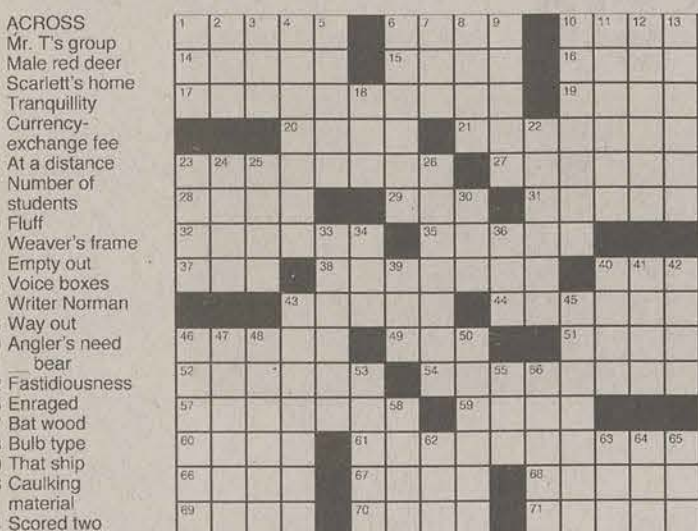


# Classifieds, etc.

Monday, March 6, 2000

Page 7

## Crossword



© 2000 Tribune Media Services, Inc. All rights reserved.

3/1/00

### Solutions

ACROSS  
1 Mr. T's group  
6 Male red deer  
10 Scarlett's home  
14 Tranquility  
15 Currency-exchange fee  
16 At a distance  
17 Number of students  
19 Fluff  
20 Weaver's frame  
21 Empty out  
23 Voice boxes  
27 Writer Norman  
28 Way out  
29 Angler's need  
31 bear  
32 Fastidiousness  
35 Enraged  
37 Bat wood  
38 Bulb type  
40 That ship  
43 Caulking material  
44 Scored two under par  
46 Violinist Isaac  
49 Delity  
51 Anderson of "WKRP in Cincinnati"  
52 Sore  
54 Most impoverished  
57 Craftsman  
59 In-office time  
60 Sparse  
61 Set durations  
66 East of the Urals  
67 Adam's grandson  
68 Strange  
69 Effrontery  
70 Chimney deposit  
71 Hang in loose folds  
DOWN  
1 Gibbon, e.g.  
2 X  
3 Corn unit  
4 Altar boy  
5 Cantaloupe, e.g.  
6 Spillane's Mike  
7 Span of time  
8 Tough outer  
9 Clan emblem  
10 Reckoned  
11 Away from home  
12 Spoke wildly  
13 Blood vessel  
18 Smoked salmon  
22 Copper crust  
23 Home of song  
24 Allies' WWII opponent  
25 Far from broke  
26 Wise man of the Bible  
30 Archaeological site  
33 Scottish chieftains  
34 Flap gums  
36 Victory sign  
37 Ear-like projection  
40 Blackthorn  
41 Biddies  
42 Revise for print  
43 Sequential  
45 Flicker of light  
46 German POW camp  
47 Singer Brewer  
48 Call for  
50 Abhor  
53 Evaluates  
55 Wiggly catch  
56 Removed moisture  
58 Boxer Benvenuti  
62 Bovine comment  
63 Pension \$  
64 Cause to topple  
65 Get it?

2000 COMMUNICATIONS Arts Department Workshop Statesboro, Ga. Feb 21st, 2000. The Communications Arts Department Presents its annual workshop, Spring Forward Into Your Career on March 3rd, 2000. The workshop will be held in the Russell Union in Rms 2048 and 2041 from 1pm to 4pm.

TUTORING AVAIL wide variety of subjects \$7 /hr minimum. Call Kathryn at 587-9518

PI KAPPA PHI is hosting a raffle for a 17ft aluminum boat. Tickets are two dollars each. For details call Bo at 541-0056

### 40 Autos for Sale

MITSUBISHI ECLIPSE GST Like New! Black, fully loaded, turbo, low mileage. \$18,000 obo call Erin at 352-2481.

MUST SELL 1992 Toyota Tercel White exterior, dark interior, two door, clutch, great condition. \$500 + take over payments or \$5,000. Cost is negotiable. Call 764-2628

CUTLASS CALAIS, 2 door, auto trans, runs good, looks good, \$1000. Call Carey at 871-1954 daytime and 871-6843 after 6pm.

FORD ASPIRE 1996, Emeralds green, 2 door, 5 speed, excellent condition. 89,000 miles. \$3,900 O.B.O. Call 912 852-5162. Ask for Wendy or Elizabeth.

1987 Pontiac Fiero- New black paint job! New computer chip. Runs well. No problems. \$1,500 or best offer. Call Dan at 912 871-4810

HONDA ACCORD '84 Hatchback runs well needs body work. \$400 obo call Mike at 681-4877.

### 52 Bicycles

SCHWINN S-20 full suspension for sale. Brand new rode twice \$800 obo. Call 871-5893 ask for Jerry or leave a message.

### 70 Child Care

NEEDED FEMALE student to assist working couple with childcare Monday-Thursdays 4-9. Please call 764-5426 if interested.

### 80 Computers & Software

FOR SALE like new Packard Bell Computer everything except printer and scanner. \$1500 OBO if no answer leave message.

PENTIUM 125 Processor with monitor, keyboard, mouse, and speakers. 72 RAM, 10GB harddrive 33.6 modem. Need to sell. \$400. Guy at 912 681-3807.

### 90 Education

FUN & STUFF Visit our Web site for list of things to do that are educational and fun. On-line at <http://www.stp.gasou.edu/funstuff/>

### 120 Furniture & Appliances

LAZY BOY Recliner x2 rust red color perfect color condition 4 yrs. old. It's a steal! \$200 set. Call 764-9190

VCR, TELEPHONE, (Cordless) entertainment center, and other items for sale! If you are moving into an apartment call us. 871-7948 ask for Jameka

### 140 Help Wanted

RESIDENT MANAGER GSU Upward Bound seeks Resident Manager for summer. Experience, Bachelors. \$2000. Apply: Williams Center 1026 or 681-5458 by March 30th.

THE STATESBORO- Bulloch County Parks and Recreation Department is now taking applications for a part-time Concessions Manager. This position calls for a minimum of 25 hours per week, and up to 40 hours per week during peak times. This applicant should be mature and highly motivated. Duties include inventory control, ordering concessions items, hiring staff, overseeing a staff of approximately 25 people, being in charge of all daily money operations, being able to cook short orders, keep all concession areas very clean, and assigning staff hours to work. Interested persons should apply in person at the Honey Bowen Building on Fair Road. Salary: \$6.00- \$7.50 per hour. Deadline: Open until position is filled.

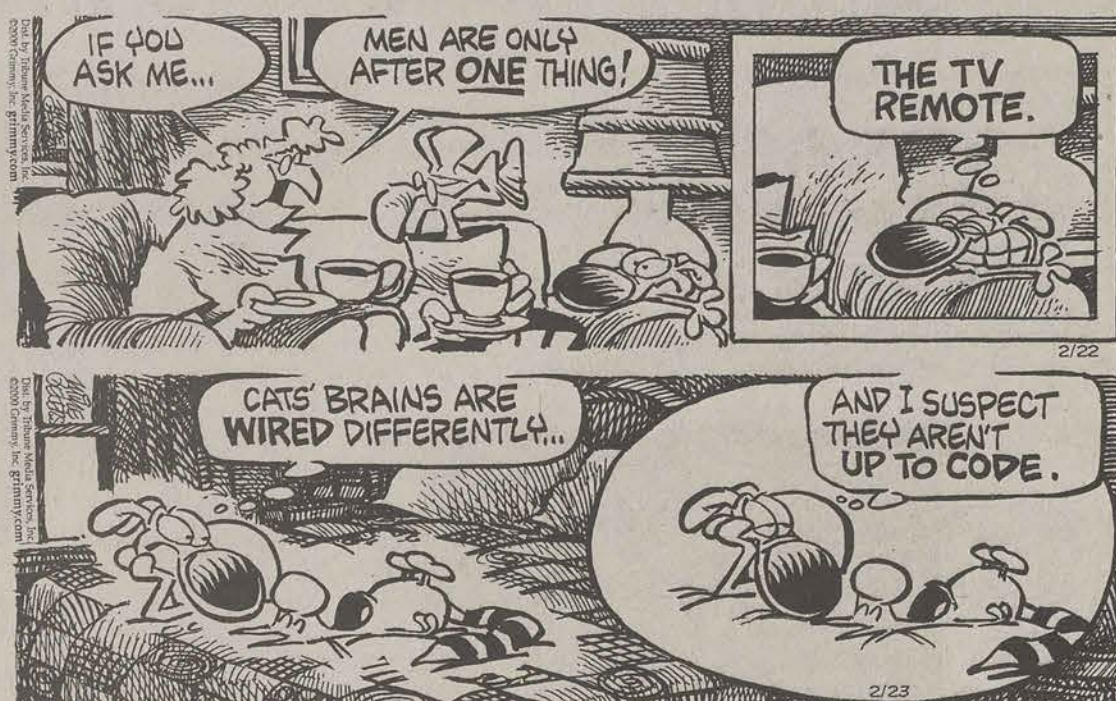
### 165 Mobile Homes

HOME FOR SALE. 2000 Fleetwood, 3 BR, 2 BA, 16 X 80. Completely set up Cypress Lake MHC. Practically new. \$28,000 OBO. For info call 912 852-9851.

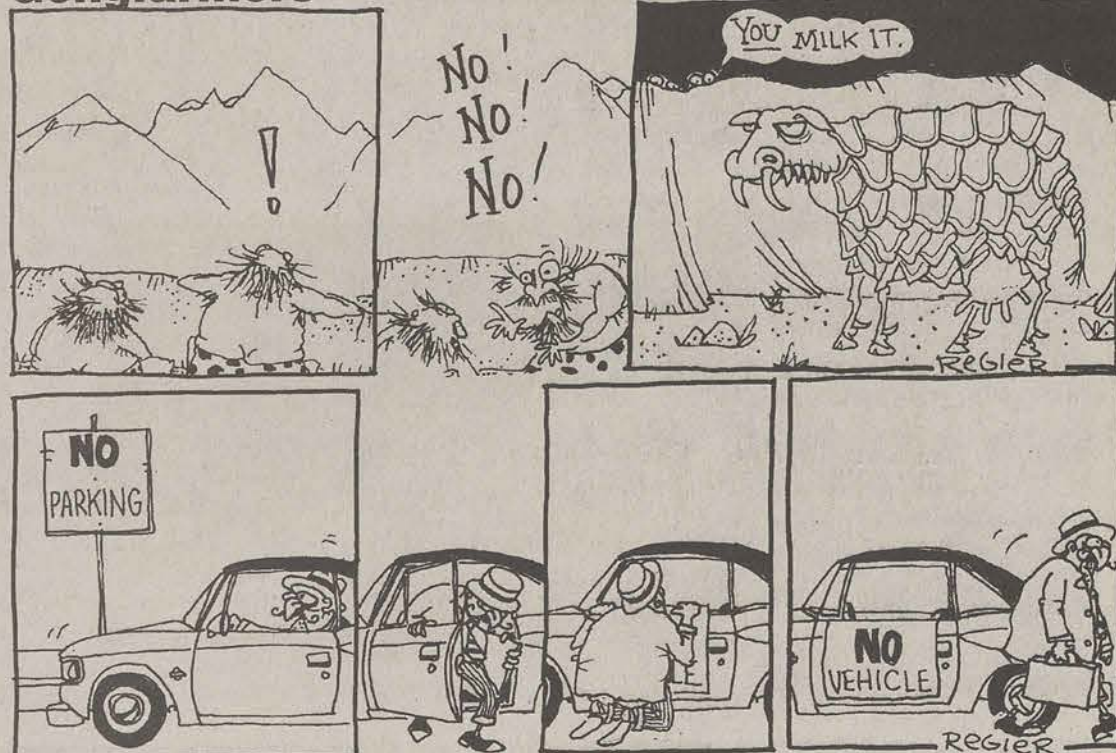
### 20 Announcements

ATTENTION SENIORS Remember to take your cap and gown pictures. For more information call 871-6735.

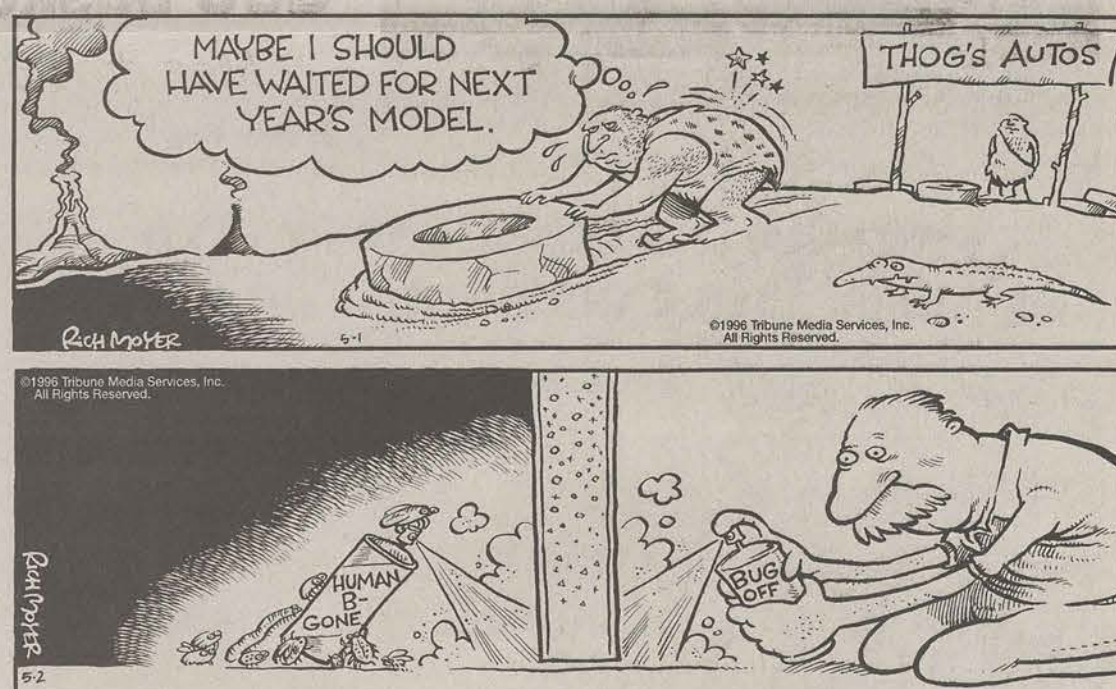
## Mother Goose & Grimm



## Gongfarmers



## Ick



1998 MOBILE Home. Available in May. Next to GSU stadium. Fully furnished w/ washer/dryer. Great Location. Spacious Master Bedroom/ bath. Includes Deck. Call 871-5001

### 170 Motorcycles

FOR SALE 1999 Honda XR 400 motorcyle. \$4100. Call 871-7375

### 180 Musical

PUNK KID seeking other Punk Kids to form a Punk Band. I play bass. Call 489-2324 and ask for Mike. Save the whales.

### 190 Personal

HAPPY BIRTHDAY Toshia and Adelaide. "Carpe Diem" Your bud Mamite

### 200 Pets & Supplies

BABY COCKATIELS for sale. Pearl and gray variations. Birds already hand trained. Asking \$50 per bird. Call 842-2504. If there is no answer leave a message.

ANIMAL LOVERS Burmese Python and Savannah Monitor with cage for sale. If interested call Eric at 871-5303

### 210 Photography

LOOKING FOR models for photography portfolio. Girls and guys for exchange of photos. Think you look good enough why not try? Call now 688-3049.

### 220 Rentals & Real Estate

SUBLEASE APARTMENT Immediately. Fully furnished, spacious kitchen with new dishwasher. Great price. Must sublease now! Call 912 681-9986

SUMMER SUBLEASE with optional take over of house. One furnished room in house less than 300 yards from campus. \$215.00 and 1/4 utilities. Ryan 871-4853.

EAGLE HEIGHTS under new management. Spacious 4BR, 2 bath apts. 3BR, 1 Bath houses. W&D. Close to campus. 116 Lanier Drive. Call 912 764-9181

SUBLEASE FOR summer Towne Club pri-

vate room/bath \$250 1/4 utl. avail mid May 681-3155 females please.

NEED SOMEONE to sublease large, furnished one bedroom apartment in Varsity Lodge. \$360 per month. Avail mid May. For details call 871-3778. Dont wanna miss out.

RENT FROM Owner- Stadium Walk or Park Place, August for 1 year. Includes washer and dryer. Call 912 764-7528.

APARTMENTS and houses for rent.

Available in August. No pets. James Hood, 764-6076. Visit Website <http://www2.gasou.edu/facstaff/jhood/> for information on housing ordinance.

ROOMMATE NEEDED to share two bedroom apartment in Players Club. Must be responsible and non smoking contact Cristin 681-9954

WANTED ROOMMATE for 2 bed, 1 bath apt. in Eagle's Nest \$225/mo + 1/2 utl. sublease. 681-6633

SUBLEASE PRIVATE bedroom, private bathroom, private phone, for summer in Statesboro Place. Fully furnished \$285 + 1/4 utl. Free May rent! Please call: 486-3355

DO YOU need an apartment for the summer? Bedroom in 2 bed fully furnished apt. \$257.50/mo + 1/2 utl. For more information 871-7501 male or female & Rent is neg. Seasons Apart.

### 230 Roommates

QUIET, RESPONSIBLE Roommate needed for fall 2000. \$175 plus electric. Water included. Private bedroom and bath. Please call Allison at 541-0886 leave message.

ROOMMATE NEEDED for Nice two bed, two bath, mobile home. Satellite and internet access. \$150 a month plus utilities. Excellent opportunity for serious student to find a good place to stay at a very reasonable price. Call 842-5030

WANTED A Female to share a 4 bedroom townhouse in Campus Courtyard. \$250 per month + 1/4 utilities. If interested please call 681-7002.

ROOMMATE NEEDED for nice mobile home. \$150 a month plus one half utilities. Must be a serious student. 842-5030

### 260 Stereo & Sounds

FIBERGLASS SPEAKERBOX for custom fit in 93+ Camaro. Fits 15' sub \$75 call 764-9190

JL AUDIO subwoofer with speaker box \$80 call 764-9190

PIONEER 15INCH subwoofer \$85 call 764-9190

### 280 Television & Radio

PHILCO 13 inch color TV. On Screen Language Option. Remote control. \$89.00 Call 764-3645 mornings or evenings.

### 290 Travel

SPRING BREAK 2000 Panama City Beach, Daytona Beach FL. Oceanfront hotels and condos. Hottest pool parties, lowest prices! 800-575-2026.

### FUN & STUFF

Visit our Web site for list of places to visit and things to do that are both educational and fun. On-line at <http://www.stp.gasou.edu/funstuff/>

### 300 Vans & Trucks

FOR SALE Bed cover for 1997-1999 Ford F-150 Snap-down black \$150 OBO call Ryan 531-1922.

Ford F150 XLT '96, 2 wd, 6cylinder, 5 speed pwr W/L, cruise, tilt, cd, 15X10 tires and rims, bedrails, bedliner, tint, exc. shape must see. \$12,800 obo. 681-7224

4X4 1999 Dodge W100, 318, 4 speed, transfer case, fiberglass top, short box, reese hitch, 110,000 miles, Hinesville \$2000 912-877-2993

### 310 Wanted

TUTOR-COUNSELORS (4) GSU Upward Bound seeks Counselors for summer. Experience. 2-3 GPA. Sophomore. \$1600+. No Summer School. Williams Center 1026 or 681-5458 by March 30th.

RISE NEEDED to Miami, Fort Laud., West Palm on March 10th. Will pay for all. Gas! Please call me at 681-1015

VOICE TEACHER needed for two teenage girls (Soprano and Alto). Fees/times are negotiable. Please call 587-2919 and leave a message.

WIDESPREAD PANIC I am looking for live shows on tape or cd. 871-9990.

## The 2000 SUMMER SEMESTER FINANCIAL AID RENEWAL APPLICATION DEADLINE IS MARCH 15, 2000!

Pick up an application at the Financial Aid reception desk in Anderson Hall or from your Academic Advisement Center

### IMPORTANT FACTS ABOUT SUMMER FINANCIAL AID

- Applications will not be processed for students who have not pre-registered for at least half-time enrollment (six credit hours for undergraduates and three hours for graduates). Exceptions: The State HOPE Scholarship Programs.
- Students who fail to pre-register for the required number of hours may not be eligible for certain types of financial aid.
- The amount of aid that you receive will be based on your remaining eligibility, financial need, and the number of hours and the terms for which you enroll.
- There will be no adjustments made to your original summer award once it has been made.
- Payment of any financial aid awarded to you is contingent upon your remaining Satisfactory Academic Progress (SAP). Your SAP status will be checked at the end of the Spring 2000 semester.
- The summer application is a renewal form. You must have a 1999-2000 Student Aid Report on file with our office.
- Financial Aid for Transient Study has additional requirements. Contact your Financial Aid Counselor at (912) 681-5413.
- NO Federal Direct Stafford or Parent PLUS Loans will be processed after July 15, 2000.
- Undergraduate students enrolled less than half-time during Long Term and/or Short Term I prior to beginning Short Term II will not receive funding (except for the state HOPE Scholarship Programs) until the beginning of Short Term II. Graduate students enrolled in three hours or more in any term will receive their aid at the beginning of Long Term I. This includes students enrolled during the COBA Short Term.
- Eligible HOPE students enrolled less than 6 hours will receive \$75.00 in book allowance.



# Need a break? Spring into action!

Georgia State Parks and local towns offer fun, inexpensive things to

By Kathy Bourassa  
Staff Writer

If life's a beach, then spring break doesn't have to be. Those people who have to work next week or who have a negative cash flow that prevents them from heading to the trendy sites still have options to make the most of the school vacation time.

Just a few ideas for alternative getaways that are easy on the pocketbook and tires:

**Magnolia Springs State Park** — A historical Confederate POW camp known for its clear freshwater springs, the park located on Hwy. 25 just north of Millen attracts ample wildlife including deer, egrets, and alligators. Wooded swamp provides a lush background for two nature trails. Canoeing, fishing, equipment rental, and a swimming pool are available. While there, visitors can visit the Bo Ginn National Fish Hatchery and Aquarium on the park grounds. Call (800) 864-PARK for reservations or info.



Magnolia Springs State Park

**Dublin** — Museums are of nominal interest during St. Patrick's day events. Founded by Irish settlers, Dublin boasts two weeks of festivities to celebrate its Irish heritage. Drive west on I-16 to exit 14, then four miles north to the heart of the town.

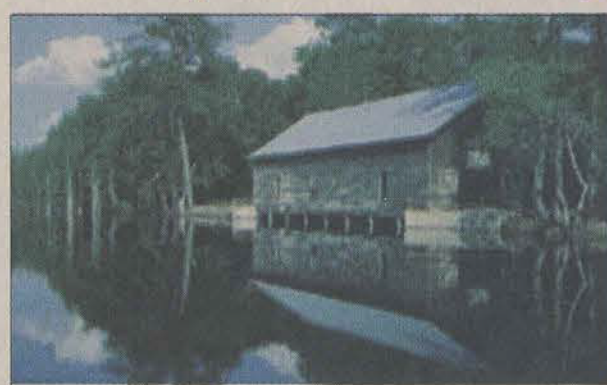
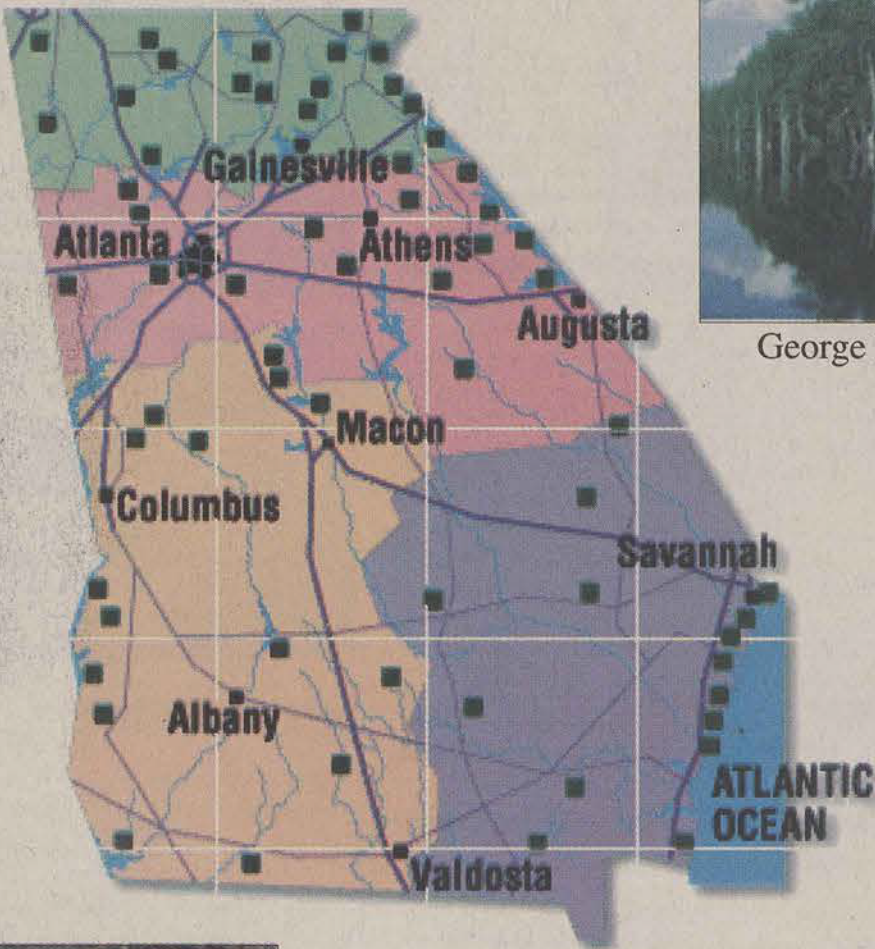
**High Falls State Park** — Just east of I-75 exit 65, on the Towaliga River banks, lie the ruins of a once prosperous town and a 100-foot waterfall. Both are within the campground's boundaries and can be visited by journeying along the half-mile Historic Ruins Trail at the park. A nature trail and non-game trail are available also. A lake, swimming pool, and miniature golf are among the attractions found by campers at the 142 campground site. Canoe trips may be available. Call (912) 994-5080 for information and reservations.



High Falls State Park

**Milledgeville** — History buffs will enjoy a visit to the former state capitol. Two historic homes serve as bed and breakfasts ideal for a romantic or quiet getaway and

trolley tours or self-guided tours take visitors to the former state capital and Governor's Mansion. For information about tours contact the tourist office at (912) 452-4687. Accommodations may be made at either the 1890 Hinton House (912) 453-3993 or Mara's Tara, an 1825 mansion (912) 452-4687. The Brick, on Hancock St., offers "environmentally correct" pizzas after a long day of sightseeing. Cowboy Bill's completes the day with foot-stomping fun.



George L. Smith State Park

**Claxton** — March 11-12 are this year's dates for the town's annual rattlesnake roundup. Guests sample rattlesnake cooking, observe snake judging (longest, fattest, and so on) and milking, and see parades. If that's not enough to whet the appetite for novelty, visitors can drive 15 miles south to Armstrong and visit the world's largest cricket farm.

**Macon** — With too many attractions to note, Macon is a fine place for examining many historical and cultural events. The annual Cherry Blossom Festival takes place in March, so it might be hard to find last minute accommodations. The festival "brings 10 days of activities that range from refined to wacky. A major Southern-style block party that fills downtown" is the description listed in the Georgia Handbook by Kap Stann. Those who can land a room can skip the festival and still enjoy country music, pipe organ music, and opera in historic settings, or opt for jazz and R&B or eclectic tunes in present day establishments. The Tubman



**George L. Smith State Park** — Boating, fishing, canoeing, nature trails, and camping are offered at the quiet park. Although it's close to Statesboro, it may be difficult to make reservations. With more acreage than other state parks in the area, including a 412-acre lake, there are only 21 campsites available. An 1880's covered bridge provides a picturesque backdrop for picnickers. Ten miles north of I-16, take exit 23 to get there. Call (800) 864-PARK for information and reservations.

African-American museum, the Pleasant Hill Historic District and the Otis Redding Memorial Library are notable historic sites. So are the Indian Mounds at Ocmulgee National Monument. Several other museums are devoted to Civil War memorabilia. To learn about tours contact the Macon-Bibb County Convention and Visitors Bureau at (912) 743-3401. For hotel reservations, contact the Courtyard by Marriott (800) 321-2211 or Best Western (800) 446-6835. For camping information call (912) 474-8770. (Lake Tobesofkee does not allow its 120 campsites to be reserved.)

These ideas are based upon entries in the Georgia Handbook by Kap Stann.

## Indian Mounds at Ocmulgee National Monument



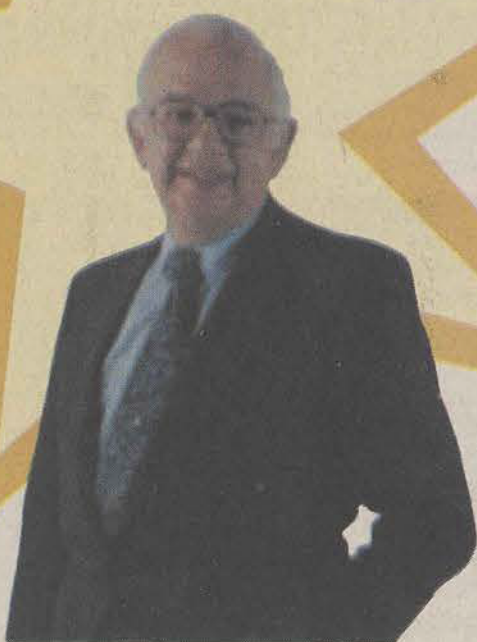
## GEORGIA SOUTHERN UNIVERSITY'S CAMPUS LIFE ENRICHMENT COMMITTEE

Presents its

### Campus Lecture Series

Featuring

Best-Selling Author Harold Kushner



## How Good Do We Have to Be?

March 7, 2000 at 7:00 p.m.

Russell Union Ballroom

The lecture will be followed by a book signing.

Tickets are free to GSU students and are available at the Union Information Desk and the Hanner Ticket Office.

Tickets for faculty/staff are \$5.00 and \$10.00 for the public. They may be purchased at the Hanner Ticket Office or by calling 681-0123.

Tickets will also be available at the door if the event is not sold out. Doors will open at 6:30 p.m. and seating is open.

5 Years Piercing Experience! New Needle Every Time!

**Don't Get Pierced Anywhere Until You Come & See Us**

Over 200 Piercing on File

**CLOUD 9**

Eyebrows & Noes Always \$25.00 With Hoop

Naval Piercings Always \$30.00

We don't run specials or put our piercings on sale. For the best quality work by the most experience piercer in Statesboro, come to Cloud 9.

**Novelties, Gifts & Body Piercing by Rick**

- Adult Novelties
- Sterling Silver Jewelry
- Smoking Accessories
- Lava Lamps
- Leather and Vinyl Lingerie
- Beaded Curtains
- Candles & Incense
- Black Lights
- Zippo Lighters
- Fish Nets

#3 University Plaza  
**871-4054**

CHILLS

test **PURE**