

Georgia Southern University

Digital Commons@Georgia Southern

The George-Anne

Student Media

8-18-1999

The George-Anne

Georgia Southern University

Follow this and additional works at: <https://digitalcommons.georgiasouthern.edu/george-anne>

Recommended Citation

Georgia Southern University, "The George-Anne" (1999). *The George-Anne*. 1601.
<https://digitalcommons.georgiasouthern.edu/george-anne/1601>

This newspaper is brought to you for free and open access by the Student Media at Digital Commons@Georgia Southern. It has been accepted for inclusion in The George-Anne by an authorized administrator of Digital Commons@Georgia Southern. For more information, please contact digitalcommons@georgiasouthern.edu.



The George-Anne

RECEIVED

AUG 18 1999

This Week's Weather



Today
Partly cloudy with a high of 92 and a low of 75.



Thursday
Scattered t-storms with a high of 92 and a low of 75.



Friday
Scattered t-storms with a high of 88 and a low of 75.



Saturday
Isolated t-storms with a high of 92 and a low of 74.

Wednesday
August 18, 1999
Vol. 72, No. 13

The oldest continuously published newspaper in Bulloch County

Sports



New logos, same great teams

The GSU athletics department unveiled new logos at Media Day last week.

Please see story, 1B

Lifestyles



New students SOAR this summer

This summer's SOAR sessions were full of activities for new students and transfers. Get a glimpse at the bigger picture behind SOAR.

Please see story, 7B

WAL-MART SUPERCENTER

Where do most GSU students turn for back to school supplies?

Wal-Mart Supercenter has been preparing for the start of classes for months now. Get an inside look.

Please see story, 1B

Today's Word

Oofle n. The attempt to find out the name of a person whose name you should know but cannot remember.

Source: Weird Words

Index

Calendar/Police	2A
Classifieds	9B
Comics/Crossword	9B
Lifestyles	B section
Only in America	3A
Opinions	4A
Sports	6A, 8A, 10-11A

It is a desire of The George-Anne to print the news of Georgia Southern University as accurately as possible. If you believe that something covered is in error, contact the editor at 681-5246 as soon as possible. Thank you.



ADVERTISING: 681-5418
STORY OR PHOTOS: 681-5246
FAX NUMBER: 486-7113
P.O. Box 8001
Statesboro, GA 30460
E-MAIL TO:
stud_pub@gsaix2.cc.gasou.edu
Check out our
On-Line Newspaper at
http://www.stp.gasou.edu

George-Anne

Liked By Many,
Cussed By Some ...
Read By Them All

Grube motivates GSU to strive for higher ranks

By Vanessa Keber
News Editor



Special Photo

HIGH ASPIRATIONS: President Grube gave his first state of the university address Monday where he focussed on fundamentals needed to improve GSU's standing as one of Georgia's major colleges.

The quest for discovery and change is the spiritual and intellectual equivalent of a journey for educators, according to GSU president Bruce Grube at the State of the University Address.

The address was Grube's first since being selected for the position of president, and focused on the fundamentals needed to improve GSU's standing as one of the major colleges in the state, including academic distinction, technology, transcultural opportunities, public and private partnerships and the physical environment of the campus.

"All journeys are difficult, but the journeys we remember are the journeys that are important—especially in the university among the faculty, staff and students," Grube said. "The journey depends on discovery and change in all directions, yet universities are the most constrictive institutions in the country."

Grube said he feels that it is necessary to eliminate as many university-placed obstacles as possible by refusing to protect the mediocrity that makes GSU resistant to change.

In order to do this, it is necessary for the university to be responsive and flexible, and try to support itself, he said. Economically, Grube believes that GSU must be a partner in the regional and economic productivity of the state.

He said GSU can be ranked among the top institutions in the country in ten years, but in order to do this, faculty, staff and students must have a vision and desire to make it a reality.

"GSU is a much better place than we think it is. Its accreditation is outstanding, but we must continue to seek to improve progress," Grube said.

He said he intends to do this by increasing the support and development of well-selected graduate

Please see GRUBE, page 5A

Education department makes requirement changes

By Carrie Crabb
Student Writer

The new education department requirements have not affected the number of students entering the educational program, Betty-Ware Wray, GSU coordinator of advisement and certification, said.

An entry test called the Praxis I Exam has been added to the agenda of requirements for all students in the education department.

Wray said she cannot see any noticeable change in the amount of students entering into the department.

"At the end of the spring semester, 48 percent of the people that applied for entry into the department were accepted," Wray said. "That is about the usual amount of people that we always have, but it is still too early to tell the full effects of the test."

Students taking the Praxis I Exam, an academic skill test in reading, mathematics and writing, must score above a 176 on reading, 173 on mathematics and

172 on the writing content sections of the test to be eligible to enter the educational program.

"This test will assure us and the public that the people in the education department can meet the requirements to become an effective teacher," Wray said.

"REQUIRING STUDENTS TO DRIVE ONLY 50 MILES WILL ALLOW FOR MORE CLASSROOM TIME AND LESS TIME DRIVING,"

—BETTY WARE-WRAY

COORDINATOR OF ADVISEMENT & CERTIFICATION

Elizabeth Poole, a GSU student majoring in health and physical education, has taken the Praxis I Exam three times and failed.

"I can't seem to pass it," Poole said. "It has really set me back with classes because I will have to take alternative classes until I can pass the exam. Graduation is looking farther away each day."

Students will also be required

to pass the Praxis II Exam, a second test, before graduating.

"This exam detects the student's knowledge of the content of what is taught to them in the program," Wray said.

The education department has also lessened the distance its students may travel for their student teaching, according to Wray. Wray said that beginning Spring of 2000, students will be required to student teach at schools within a 50-mile radius from campus with a few exceptions for schools in Metro Atlanta.

Before, students were able to teach at schools ranging from Brunswick to Columbus.

"Requiring students to drive only 50 miles will allow for more classroom time and less time driving," Wray said. "Also, it will provide us better supervision over the students. Before university supervisors were having to travel long distances to talk with teachers and students."



David Koepke

BLACK BAGGIN' IT: If you need help, don't bother going to the emergency call boxes around campus.

Call box repair further delayed

By Vanessa Keber
News Editor

Emergency call boxes, which were placed on campus last year, are still inoperative due to a host of delays brought about by the manufacturers of the call boxes and the company contracted to install them.

The call boxes have two major problems which have prevented operation. The communication system, which is highly sophisticated, allows the user to press the button, which immediately dials public safety; it crashed itself before installation began, according to Ken Brown, GSU police chief. In addition, the software that was presented at the time of the bid by Code Blue, the manufacturer of the call boxes themselves, had several software glitches and was taken off the market and replaced with a temporary program while the university was accepting a bid from Mosler, another security company, to install the system, he said.

"The school bent over backwards to aid in fixing the problems, but neither our personnel or Mosler

could get the system to work," Brown said.

The accounts with both companies are currently set up as purchase orders, so the funding for the call boxes remains in the school's possession, he said.

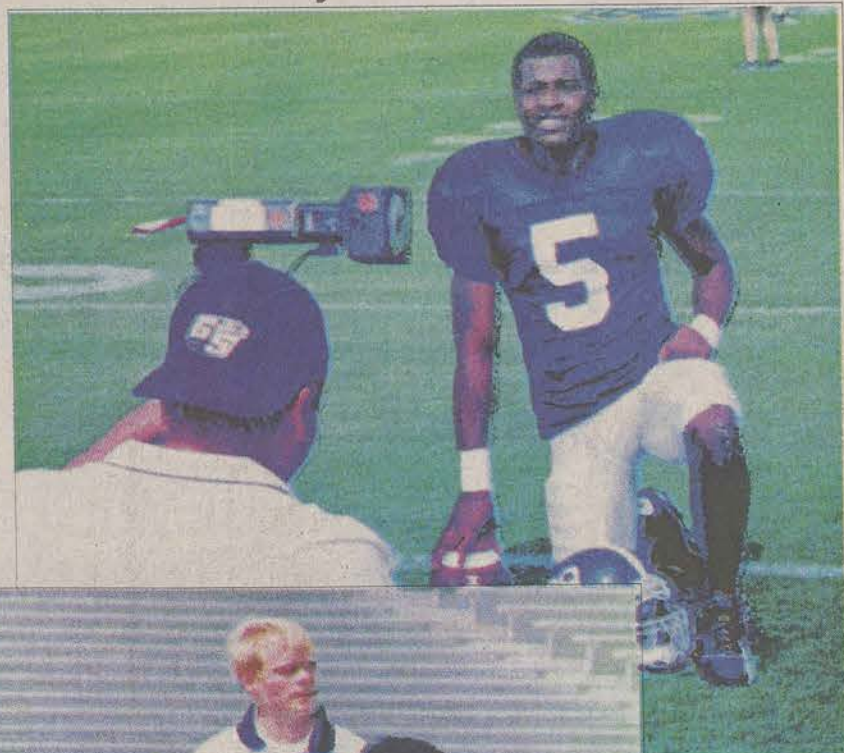
"It is important that the students realize we have not spent one dime of [their] money—it's still in the bank," Brown said. "Students put up the money and we want to make sure the students get what was promised to them before a check is cut [to Mosler or Code Blue]."

If the call boxes cannot be made to function, the school will develop a bid for another kind of equipment, and the current equipment will be removed from the campus by its manufacturer, Brown said.

The new bid will be placed on the Internet through the State of Georgia Purchasing Department web site so that bids for the project will be received from companies around the world, he said. It will remain on the Internet for two to

Please see boxes, page 5A

Football is just around the corner



Sarah Trucksis

GEARING UP FOR THE GAME: Arkee Thompson (top) poses for his annual football shot. Chaplain Moody (left) talks to the team before practice on Media Day.

Abby Franzo

POLICE BEAT

Statesboro Police Department

August 15

•Melanie Satterwhite, 17, of 156 Myrick Rd., Claxton, Ga., was charged with underage possession of alcohol and giving false information.

•Sean Prouty, of Evans, Ga., reported damage to property.

August 14

•Bobby Googe, 23, of Route 3, Claxton, Ga., was charged with no insurance and following too closely.

•Donald Morris, 23, of 1468 South Fork Rd., Sylvania, Ga., was charged with DUI and driving on the wrong side of the road.

•Cal Deloach, 24, of Route 3, Claxton, Ga., was charged with weaving, DUI, no proof of insurance, and expired tag.

•A resident of University Place reported burglary.

•Brandon Hayes, of Old Middleton Rd., reported damage to property and someone entered his auto.

August 13

•Adam Borchik, 20, of 31 Pebble Beach Dr., was charged with DUI and traffic light violation.

•Eddie Werts, 22, of 508 East 7th St., Alma, Ga., was charged with driving on a suspended license.

•Russell Lemons, 20, of 1977 North-erly Way, was charged with driving on suspended license.

•Stephanie Andel, of Springdale Rd., reported lost or stolen license plate.

August 12

•Mathew Rushing, 22, of 369 Franklin Rd., was charged with DUI.

August 11

•Nikiti Smokes, 21, of Little Lots, was charged with shoplifting.

•Tiffany Baldwin, 20, of 213 South Walnut St., was charged with disorderly conduct.

•Shawn Williams, 21, of 118A West Jones Ave., was charged with disorderly conduct.

•Sherrod Williams, 20, of 118A West Jones Ave., was charged with disorderly conduct.

•Shadonna Williams, 19, of 1500 Friendship Rd., Sylvania, Ga., was charged with shoplifting.

•Eddie Little III, 19, of 918 Miller St., was charged with obstruction to officer and battery.

•Keyanna Tanksley, 17, of 1500 Friend-ship Rd., Sylvania, Ga., was charged with shoplifting.

August 10

•Christopher Mikell, 24, of 209 West Jones Ave., was charged with littering and obstruction to officer.

GSU Department of Public Safety

August 14

•Joseph Williams reported a refrigera-tor missing from his room in Dorman Hall.

August 13

•Michael Parrish, 24, of Richmond Hill, was charged with DUI and having an ex-pired tag.

August 12

•Brady Rigdon, 19, of 8A University Plaza, was charged with minor in pos-session of alcohol, public indecency, and giv-ing false information to an officer.

August 3

•Charles Champ reported a lap top com-puter and a calculator was missing from the M.P.P. building.

•A Residence Life employee reported someone had gone through personal items in his room at Sanford Hall.

August 2

•A Residence Life employee reported a VCR and a stereo missing from Dorman Hall.

—Editor's Note: Police Beat appears in every issue of The George-Anne in an effort to inform the GSU community of the amount, nature and location of crime. All reports are public information and can be obtained from the GSU Division of Public Safety or at the Statesboro Police Department.

Check us
out next
Wednesday

ANNOUNCEMENTS

Things To Do at GSU

Ongoing

•Open E-mail accounts Monday - Fri-day from 9 a.m. - 4 p.m. at the Computer Services Help Desk in the Marvin Pittman Administration Building.

Today

Wednesday, August 18

•GSU 1210 First Class Meeting from 9 - 10:15 a.m.

•ROTC Rope Rappelling Demon-strations will be held on the Henderson Library from 10 a.m. to noon.

•Step into Statesboro. Come to the Russell Union Rotunda at 10:30 a.m. and volunteer in the community for a half-day with several projects taking place around Statesboro Community. To sign up and ensure a place, please call the volunteer services office at 681-5409.

•Lunch with GSU President Grube at the Landrum Dining Center from 11:30 a.m. to 1:30 p.m.

•Canoe on the Lake from noon to 3 p.m. in front of the library.

Thursday, August 19

•Customized Tours of Campus starting at 1:30 p.m. at the Landrum Dining Center.

•Preparing for the Workforce 2003 starts at 4 p.m. until 5 p.m. Separate

sections will be held for nursing, busi-ness, engineering, medical field, teach-ing, computers, and undeclared majors. Check the poster at the Russell Union for more information.

•DJ Meeting for WVGS 91.9 FM at 6 p.m. in the Russell Union Theater. All interested students should attend.

•Georgia Southern Botanical Garden is pleased to present **Plants for Play** from 6 - 7:30 p.m. in the Bland Cottage at the Garden, 1505 Bland Avenue

•Computer Training will be held in the Henderson Library (1st floor). At 2 p.m. they will have training for E-mail Basics in Pine. At 3 p.m. they will have training for Surfing the Net.

•Free admission to see "The Waterboy" at 8 p.m. in the Russell Union Theatre.

Thursday, August 19

•GSU 1210 Class Meeting starts at 9 a.m., 11 a.m., 1 p.m., and 3 p.m. Check the schedule you received on Wednes-day for the time and location of your class.

•Resident Hall Mandatory Meet-ing will be held in all resident halls at 6 p.m.

•5th Annual: Creative Dating will be held in the Russell Union Ballroom at 8 p.m.

Friday, August 20

•All Classes Begin!!

•Business Expo will be held in the Russell Union Rotunda from 10 a.m. - 3 p.m. Come meet the merchants of Statesboro. See what Statesboro has to offer to the students. There will be free popcorn and soda.

•Mentalist: Craig Karges will be at the Russell Union at 7 p.m. to present a fantastic display of illusions, the paranormal, and extraordinary phe-nomena using total audience partici-pation.

Saturday, August 21

•Free admission to see "Rush Hour" at 8 p.m. in the Russell Union Theatre.

•Attention students from junior high through college in Savannah, Statesboro and surrounding counties: Get ready for "GODSUNZ," one of Atlanta's hottest new hip-hop gospel groups. Also featuring the **step team** not of this world, K.O.G. Show starts at 6 p.m. in the Russell Union. Admis-sion is only \$3 at the door, but space is limited. For more information, call Vi-sion Ministries at (912) 654-4150.

Thursday, August 26

•Student Organizational Fair will be held in the Russell Union Rotunda at 10 a.m. - 3 p.m.

GRE no longer available at GSU

By Chrissy Mathe
Student Writer

Students will only be able to take the Graduate Record Examination in the computer-based format, not the paper-based format beginning this fall due to techno-logical advances in testing, and the test will no longer be offered at GSU, George Lynch, director of the testing office, said.

For students who are computer oriented, the computer-based format of the GRE is a great idea, but may not be for others, Lynch said. "The older, non-traditional students who are not so computer minded may be at a slight disad-vantage," Lynch said.

The GRE is a multi-aptitude test needed for admissions into gradu-ate programs, containing a verbal, analytical and quantitative section, he said.

To help become familiar with the test format and the computers,

there is a tutorial session before the actual test begins, Lynch said.

Yet the biggest disadvantage to the computer-based format of the GRE is that the Educational Testing Service controls the test, he said.

"The details of the computer-based test are still sketchy because the university does not deal di-rectly with the test," Lynch said.

GSU students and faculty have a good relationship with each other and GSU would do as well as the Sylvan testing centers in adminis-tering the test, Lynch said. The closest test site is in Savannah.

"In the past the biggest luxury for students was to register and take the test here at GSU," Lynch said. "It was one-stop shopping for stu-dents."

There are some distinct advan-tages to the computer-based for of the GRE, he said.

The computer-based GRE is

offered more often, allowing a student to take the exam once a month if necessary and an unoffi-cial score report is given at the end of the test since the test is continually graded as questions are answered, which is quite an advantage, Lynch said.

The strategies students use on the GRE have changed some due to the technology, he said.

Students do not like the fact that questions cannot be skipped and then returned to later using computer-based testing, Lynch said, and there is no opportunity to write directly in the book.

Kevin Collins, an GSU under-graduate student, said that the switch over to only the computer-based format is not a good idea.

"I was always told to do the questions you know first and then go back to the others," Collins said. "With the computer-based format, I would not be able to do that."

Life Takes Guts

...become an organ and tissue donor.

GEORGIA SOUTHERN
ORGAN & TISSUE
DONOR DRIVE

Friday, August 20, 1999
Russell Union Rotunda
10 a.m. - 2 p.m.

Come show that you can
stick to your Commitment
at the

Velcro Wall Challenge

Giveaways:
Stadium Cups, Koozies, Popcorn,
Bumper Stickers, Pens, Pencils,
LifeSavers® and Frisbees

Sponsored by:
The Georgia Coalition on Donation

CONTACT LENS EXAMS \$50

EYEGGLASS EXAMS \$35

GSU SPECIALS

We Match or Beat Local Contact Lens Prices

PETER LANGENFELD, OD

Doctor of Optometry

Adjacent Southern Eyecare →

Across from the Mall, Statesboro

(912) 764-7777

GSU Blue Cross accepted. Prescriptions given out.
Valid Rx required to purchase contacts or eyeglasses.

Free Rx Sunglasses or 20% OFF

Buy 1 pair sunglasses at normal low price &
receive a free pair Rx Sunglasses or 20% OFF*

FRAMES START AT \$50

*Offer expires October 31, 1999. Some restrictions apply.

SOUTHERN EYECARE

625 Brannen Street, Suite 7, Statesboro

(912) 764-2020

OPEN SATURDAYS & WEEKDAYS

1-2 HOURS most glasses & bifocals. Custom orders 1-2 days

Walmart Mall LA Waters
So. Eyecare & Dr. Hardees
→ Highway 80



HILLEL

ALL JEWISH STUDENTS
PLANNING MEETING
WED., AUGUST 25, 7:00 pm
UNION 2052
hillel@gsaix2.cc.gasou.edu
688-2418

ONLY IN AMERICA...

1 New York
Bank revokes 3-year-old's credit card

Associated Press

ROCHESTER— The bank is revoking Alessandra Scalise's credit card. After all, she's only 3 years old.

Her mother, Antonia, applied for the platinum card with a \$5,000 line of credit when Alessandra was sent a pre-approved credit card application last month. "It was just a big joke," she said Wednesday.

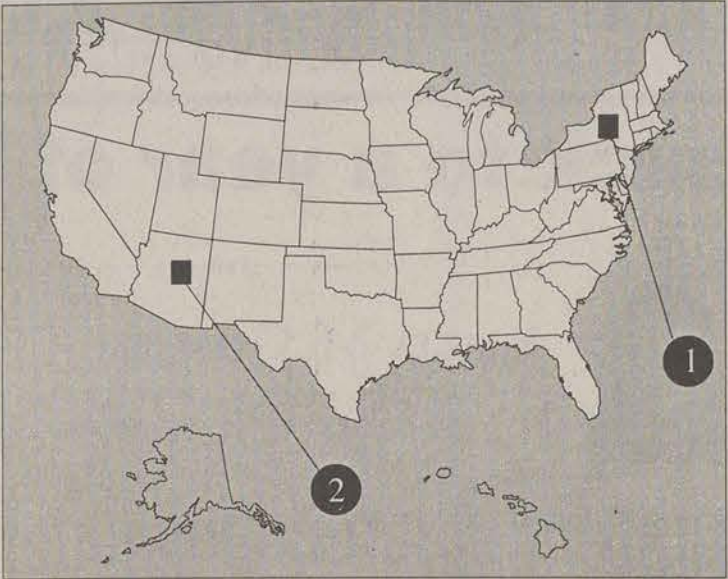
For occupation, she listed "preschooler." Under income and social security number, she wrote nothing. And she included a plea from her daughter: "I'd like to have a credit card to buy some toys, but I'm only 3, and my mommy says no."

The card arrived in the mail last week, startling Mrs. Scalise and her husband, Joseph, who said he used it to buy \$13.82 worth of groceries "just to make sure it was real."

The family's amazement made for an interesting headline in the hometown newspaper: "Bank gives tot \$5,000 credit limit." Next came a torrent of calls from the media, including the David Letterman show.

First USA Bank in Wilmington, Del., which issued the card after getting a solicitation list from Charter One Bank, blamed the blunder on "a human error in the process which has been fixed" and canceled the card.

One little bonus: The card application came with a promise of a \$50 savings bond, and the bank is honoring its offer. "I had totally forgotten about that," Mrs. Scalise said.



2 Arizona
Attack of the mating peacocks!

Associated Press

GLENDALE — Mating-minded peacocks mistaking reflections of themselves for the real thing attacked parked cars outside a library, to the costly consternation of auto owners.

A shiny black sedan owned by Anne Caltabiano, public service manager of the main municipal library in this western Phoenix suburb, was the object of one peacock's territorial attack.

"He scratched up the hood, he scratched up the trunk," she said of the June assault. "Then he went over to my door and he pecked great big circles and took it down to the metal."

By the time he was done, the \$27,000 vehicle's paint job was history. Glendale picked up the tab, including a rental while Caltabiano's car was in the shop.

Neighboring Sahuaro Ranch Park is home to about 40 peafowl. From March through July, the peacocks have their eyes on peahens for prospective mates. During that time, they attack each other to establish territory and dominance.

But it seems they can't tell the

difference a bird foe and a faux bird when they wander into the library parking lot.

As a result, some car owners have new paint jobs, thanks to the birds' sharp talons and beaks, and Glendale has had a few bills of its own.

The birds themselves wind up bloodied but unbowed.

Jerry McCoy, a city spokesman, said this week that the peacock caused about \$3,000 damage to four cars.

At that point, the peacocks were banished to the care of a bird breeder in Queen Creek, on the far eastern side of metro Phoenix.

Well and good for now, but next year more males may go a-roaming, looking for love in all the wrong places.

That's why next year Glendale intends to collect all the peahens and get them to an aviary, yet to be built in a fenced portion of the park. They figure the males then will be hanging out rather than bashing about.

Meanwhile, to be on the safe side, Caltabiano has been driving her 17-year-old son's less-than shiny station wagon while he gets her beautiful black Accura.

"What's wrong with this picture," she said with chagrin.

Couple ties the knot as companies pick up tab

Associated Press

GLENSIDE, Pa.— A couple who wanted a wedding they couldn't afford tried something unusual for a private event, getting companies to sponsor the ceremony.

Renting a castle called Grey Towers at Beaver College in Glenside, long white limousines, gourmet food, gifts for the bridesmaids and groomsmen, makeovers for the women and all the other expenses would have cost tens of thousands of dollars. And that wasn't realistic for Tom Anderson, a 24-year-old bartender, and Sabrina Root, a 33-year-old hair stylist.

So Anderson talked 24 local businesses into donating goods or services in exchange for advertising at the wedding.

"She's not wearing a sign on her back," Janet Anderson, the mother of the groom, said. She, along with the bride's mother, Liz Wolf, supported the sponsorship idea.

Root drew the line at allowing a banner to be

draped across the aisle during the ceremony. But Anderson promised the sponsors that they would be acknowledged six times. They appeared as an insert to the invitation, on cards at the buffet, on scrolls at the dinner tables, in an advertisement in a local alternative newsweekly, in a spoken thank-you after the first toast, and in the thank-you cards.

The National Enquirer also donated a limousine with a "just married" sign on the bumper. In exchange, the supermarket tabloid got to see the bridesmaids' hairstyling session.

Anderson said the idea sprang from a business practice he used when he was a partner in a small animation studio. He said the company was struggling, so the partners often bartered to get what they needed.

Anderson estimated that he and Ms. Root spent about \$4,000 on their own, compared to \$30,000 worth of donations. Anderson paid \$1,400 for the diamond engagement ring; Ms. Root spent \$1,600 on her dress.



EagleNet
Internet Services

STATESBORO'S INDEPENDENT INTERNET SERVICE PROVIDER

- Lower Rates - Unlimited access for \$17.50 Per Month
- No Activation Fee
- 3 E-Mail Accounts Included
- Discounts for Prepayment
- V.90 56K Modems for Fast Connection Speeds
- On- Line Activation - 24 hours a day, 7 days a week
- Tech Support - 24 hours a days, 7 days a week
- Web Page Hosting

Sign Up Now!
Soar to www.CyberEagle.net
or Call 764-7335

Attention All
GSU Students, Faculty, and Staff!!
Meet Statesboro's Business Community

ANNOUNCING
THE SEVENTH ANNUAL
BUSINESS INFORMATION EXPO

When: Friday, August 20
10:00 a.m. - 2:00 p.m.

Where: Russell Union Rotunda & Pedestrium

Come Out and Meet
Statesboro's Business Community!

Free Soft Drinks, Popcorn, Samples, and Coupons

PowerTel's
50-State
Rates

free roaming and
free long distance
from coast to coast

New, Nationwide calling plans that include *free long distance* to ANYWHERE in the 50 states anytime and *no roaming charges* in over 3,400 cities across the United States. Plus, there's *no long-term* contract required.

Ask how to
get a free
digital
phone!



Monthly fee	# of Anytime Minutes
\$30	120 minutes
\$60	600 minutes
\$80	800 minutes
\$120	1200 minutes



PCS WIRELESS SERVICES

Included with a plans:
Voice Mail, Caller ID, Numeric Paging,
Call Waiting and 1st Incoming minute Free!

Authorize Agent: Tiger USA 912-871-7522
604 Fair Road, Statesboro, Across from GSU Sports Center

50 State Rates apply to all calls made with PowerTel phone on PowerTel's digital GSM network or any other GSM network in the United States. Does not apply to analog calls. Does not apply to Pre-Paid plans. Subject to PowerTel Terms and Conditions of Service. Credit Approval and Activation Fee Required. Additional per minute charges apply to airtime above monthly rate plan minutes. ©1999 PowerTel Inc.

Our Opinion

Blind Willie's: you will be missed

It's a shame that one of Statesboro's best clubs has closed its doors for good. Blind Willie's was a place where anyone could go to play pool, hang with friends, hear a band and grab a beer all in one foul swoop. Now the doors are shut and the auction has already been scheduled.

What was Greg Bacon thinking? Can someone "forget" to pay over \$113,000 in taxes? Or was he just not paying because he didn't want to? Whatever the reason, GSU students will be missing out in the years to come.

We can only hope that someone will purchase this GSU landmark and bring back what will be missed otherwise.

Security guards would be cheaper than call boxes

Emergency call boxes can be found just about everywhere around campus, but that's no reason for GSU students to feel any safer. Each call box wears a black plastic bag declaring the machine out of order.

For nearly a year now these warning systems have graced our campus, but no one has had the chance to use them. They have never worked. Ever. For some reason one company installed the boxes and another company was hired to set them up. Not a great idea in the first place.

Now an alternative must be found to either fix the boxes or have them removed and replaced with new ones from another company. That involves another bid process and even more time.

Fortunately neither company has been paid for the installation or the work to set them up. So student money has yet to exchange hands. But that also means that the money is just sitting in an account somewhere doing absolutely nothing. Kind of a bummer.

With all the money that will eventually be spent on finding a new company who can install the emergency call boxes properly, GSU could have been protecting its students with security guards all the while. We could have just hire cops to stand all around campus. It would have been more productive than waiting for the boxes to work.

The university seems to have high hopes for a system that has proven time and time again to be a complete flop. Let's just hope they get it right the next time around.

It's Your Turn

We have expressed our opinions, now it is time for you to express yours. Be it long or short, send it our way. Complain about parking, classes, food services or complain about *The George-Anne* if that is what suits your fancy. You can even praise something if you feel the urge. Just fill this form and attach it to your opinion.

Name: _____ L.B.: _____ Phone: _____

Subject of your complaining or praising: _____

Send to:
P.O. Box 8001
or drop off in:
Williams Center room 2023

THE GEORGE-ANNE STAFF

NEWS

Assistant News Editor
Shawntine Hughes
Staff
Amanda Brunger, Tiffany Fell,
Kevin Head, Ellen Rogers

LIFESTYLES

Lifestyles Editor
Tricia Hall
A&E Editor
Sam Siegel
Features Editor
Bryant Smalley
Staff
Denikia Bellamy, Nicole Claroni,
Kevin Coheleach, Tamaya Huff,
Yolanda Gunn, Ellen Rogers, Zane
Thomas

SPORTS

Sports Editor
John Bryson
Staff
Edmund Coley, Andrew
Franklin, Florian Scheidat,

PHOTOGRAPHY

Photo Editor
Sarah Trucksis
Staff
Erik Anderson, Tim Aron, Cory
Brooks, Robert Bruce, Hans
Knoepfel, Chris Kohlhaugen, Molly
Morrison, Susan Smith, David
Whiddon

LAYOUT DESK

Managing Editor
Stacey Wysong
Deputy Managing Editor
David Koepke
Assistant Managing Editor
Nick Crouch

CIRCULATION

Supervisors
Aaron Bradford and Jim McNally

ADVERTISING/
DISTRIBUTION
SERVICES (ADS)

Advertising Manager
Jonathan Brooks
Business Manager
Courtney Williams
Classified Manager
Melissa Waldrop
Ad Reps
Jonathan Brooks, Rhonda Burkes,
Staci Ceams, Vic Cuvo, Jason
Lumpkin, Tim Kievit, Amber Ran-
som, Pamilla Smith, Melissa
Waldrop, Jaime White, Courtney
Williams

PRODUCTION AND
GRAPHICS EDITORIAL
SERVICES (PAGES)

General Manager
Jonathan Brooks
Production Manager
Kathy Jacobus
Production Assistants
Joseph Mahaney, Courtney Wil-
liams
WebMaster
Lee Phillips
Asst. WebMaster
Doug Bargerion

STUDENT PUBLICATIONS

News, Editorial Advisor
Robert Bohler
General Manager
Bill Neville

Welcome back to a year of changes

Hey, welcome to the *George-Anne*. In case you do not already know, this is the official student newspaper of Georgia Southern University. Others may claim to be the "voice" of GSU, but they are not. Do not be fooled.

Anyway. We have a huge year ahead of us. There are so many things to look forward to that it is hard to list them all. But rest assured, the *George-Anne* will cover each and every one of them.

First: We have a new president. Dr. Bruce F. Grube took office July 1.

In case you are wondering, he is the tall guy in the suit swatting away the gnats. Grube is most recently from St. Cloud Minnesota, but don't let that Yankee-ness fool you. He has already been heard to say that he wants the Eagles to beat the Bulldogs in 2000. I like him already.

Unfortunately GSU will also be looking for a new vice president of academic affairs and a vice president of student affairs. This will most likely mean a ton of forums for the candidates to address the community. To be perfectly honest, Linda Bleicken is doing a fine job as interim vice prez. of academic affairs.



KELLEY MCGONNELL

EDITOR IN CHIEF

Not only does the president's office look different this year, but the athletic department has changed its look. On August 10, they unveiled the new athletic marks for GSU.

They are certainly different

Just give her the job.

In case you didn't know the GSU football team is currently ranked #1. True, this doesn't really mean anything until the season starts, but if last year is any indication of what we can expect

I JUST ASK THAT YOU PARTICIPATE IN LIFE AT GSU. IF NOT, YOU HAVE WASTED YOUR TUITION MONEY.

and will take some time to get used to, but the freshmen won't even notice. Quite frankly, it doesn't matter what the mark is as long as the winning tradition doesn't change.

Speaking of athletics GSU has four new head coaches. Our men's basketball team, baseball team, women's swimming and men's tennis all have new leaders. It should be an exciting building year for GSU sports in general.

from the Eagles, then it is all good. The deadly duo of Peterson and Hill is back and ready to play. And word has it that our defense has improved from last year. We may not win it all, but it is sure to be an eventful year.

In case you haven't heard, the GSU softball team won the Southern Conference Tournament for the first time ever last May. They beat the UTC Lady Mocs and victory was certainly sweet for

the ladies. Keep an eye out for them this spring.

As far as the *George-Anne* goes, we have a ton of surprises for you this year. Not only will you see us more often, but we will look better than ever. Look for big changes September 13.

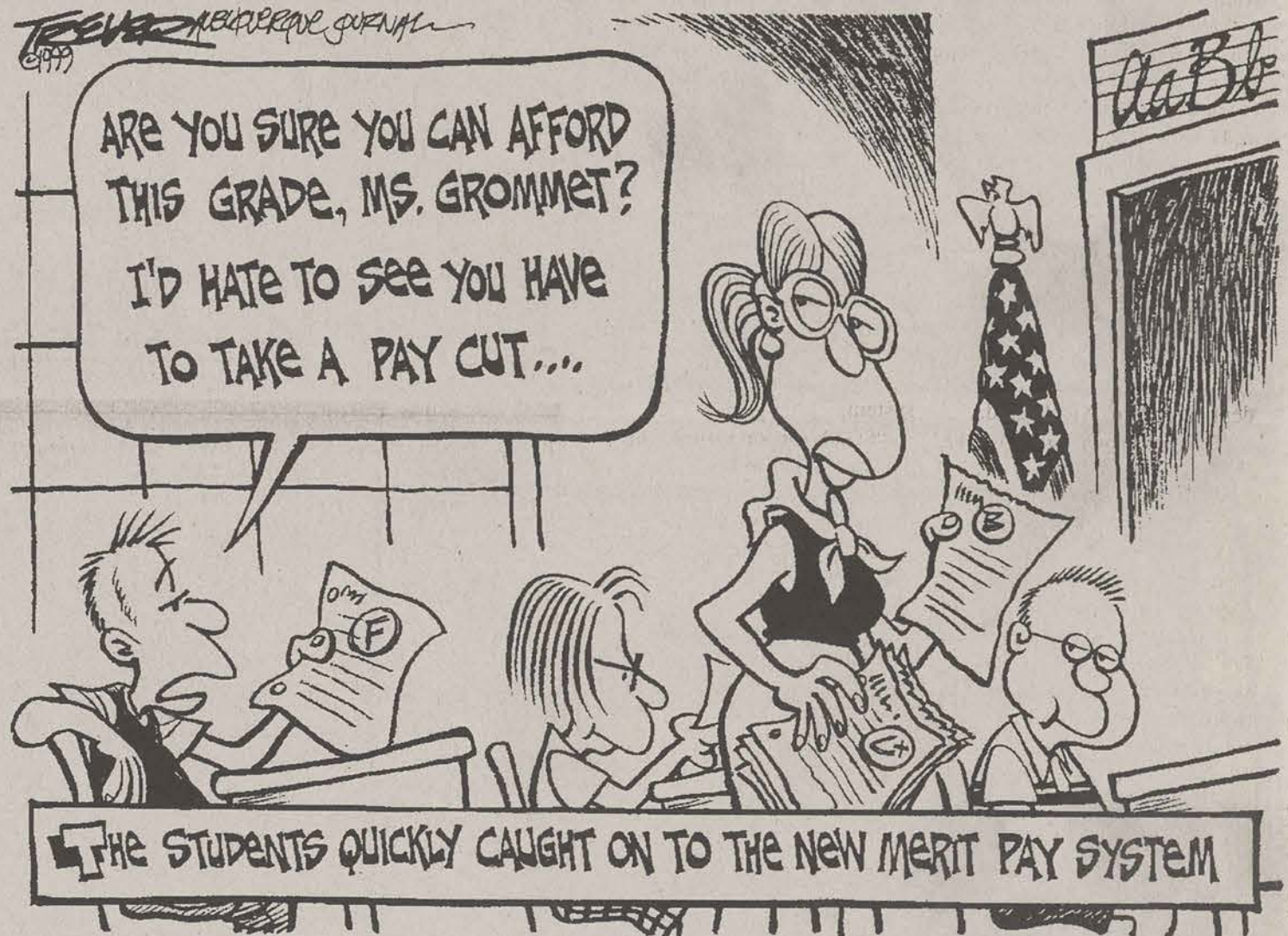
We have also added a few contests and polls into our schedule for the year. Keep an eye out to win prizes and participate in student surveys in the coming months.

More importantly we are striving to bring you even better coverage of the events and issues that affect your lives. Let us know if we have missed something important.

Heck, if you want you can even work here. Do not hesitate to write letters to the editor or to submit stories or story ideas. This is a student newspaper. It is by students and for students. Please let us know how we can serve you.

Take advantage of our free classifieds, enjoy the Only in America section and read about your friends in the Police Beat.

I just ask that you participate in life at GSU. If not, you have wasted your tuition money.

A word from your
SGA president...

Welcome to Georgia Southern University.

I'm excited about this new class of freshman. I spent a lot of time with them during their orientations and I can say that they are super-energetic and they are very involved. They should be a great asset to the already outstanding students at GSU.

I chose to run for SGA president because, like any other student leader on campus, I simply wanted to leave GSU a better place for the students than when I got here.

I hope that I do just that and that all of you do that, too.

I would hope that all the students would get involved with some facet of university life. Not only will you help the university community as a whole, but hopefully you will get something out of it yourself.

This university has a ton of things to offer to the students if the students are willing to be active participants in their education. Outside of this being a very student centered university, I love our football team. I wish them luck and I encourage all GSU students to attend all the home games and any away games they can.

Good luck to everyone in the new academic year.

Aaron Nicely
1999-2000 SGA President

Your Opinion
Organ donors needed

Editor:

The numbers are disturbing. MORE than 13 people will die needlessly today because a life-saving organ is not available. Tragically, nearly 5,000 deaths annually are attributed to end-stage organ disease.

According to the United Network for Organ Sharing (UNOS) more than 69,000 people—including more than 800 Georgians alone—are on the waiting list for organs in the United States.

Unfortunately, the need for organs and tissue far outweighs the current supply. Although most Americans support organ donation, only a small percentage actually sign donor cards and share their decisions with family members, the second crucial step to ensuring that wishes are followed.

Many barriers to donation remain including race and religious issues, as well as a host of general misconceptions. If we are to succeed in eliminating these barriers, we need to ensure that Georgians understand the need for or-

gan and tissue donors and accept this concept as a personal responsibility.

For the fourth year, the Coalition has launched a statewide educational campaign targeting colleges and universities around the state.

Because the college years typically represent the time when people make life-long value decisions, The Georgia Coalition on Donation's goal is to help instill the concept that hte organ donor commitment is a fundamental personal responsibility.

Georgia Southern University is among the schools participating in the statewide campaign. The Coalition will be on campus for an organ donor drive during the Business Expo on Friday, August 20, from 10 a.m. to 2 p.m. at the Russell Union Rotunda to help educate students about the need for organ and tissue donors.

Sincerely,

Alexandra Trask
The Georgia Coalition on Donation

Send your letters to the editor to P.O. Box 8001. Include your name and phone number.

Blind Willie's permanently closed for unpaid taxes

By Vanessa Keber
News Editor

Blind Willie's closed its doors permanently after neglecting to pay back taxes totaling to \$113,593, according to the Georgia Department of Revenue's records.

The unremitted sales taxes date back to the 1993 business year according to the records.

Greg Bacon, the owner of the establishment, could not be reached for comment.

In an effort to recoup the tax liability, the Department of Revenue will be auctioning Blind Willie's and the contents thereof on the second Saturday in Sep-

tember.

Blind Willie's was closed by the Georgia Department of Revenue earlier in the year, but was allowed to reopen under the premise that sales taxes would be remitted to the state.

When this did not occur, the Georgia Department of Revenue closed the establishment.

Blind Willie's, a landmark establishment for students, is located within walking distance from GSU.

The club was the site for many local band performances, along with the annual WVGS Battle of the Bands.

SGA initiates changes for upcoming year

By Vanessa Keber
News Editor

SGA president Aaron Nicely and his staff have begun the 1999-2000 school year with the initiation of several projects designed to get students involved on campus, namely a House of Representatives and a Legal Advisory Committee, according to Nicely.

Most recently developed was a House of Representatives that includes an SGA-elected speaker of the house and executive vice president to discuss both individual and organization concerns and ideas in an open forum.

The House was developed in an effort to get students more involved in activities, issues and concerns centered on campus by providing a facet of student government focused on making students involved, Nicely said.

The house will convene the first Tuesday of each month in the Russell Union, room 2080 or 2041, Nicely said.

"It's another attempt to get students involved with where their student activity fees go, and also to bring their issues to the table," Nicely said. "It gives students an organization that's more accessible, allowing them a larger and better voice in the SGA."

In addition, SGA is finalizing plans for a legal advisory

service that will provide students with free legal advice. The program will enable students to present an attorney with legal questions or problems and receive advice from the said professional free of charge.

The program is planned to start on a volunteer basis, and depending on its success will be given the opportunity to expand by issuing a referendum to fund the program through student fees.

"Hopefully this program will enable students to get legal advice, helping them to realize their rights," Nicely said.

The SGA is also intent on enabling students to accomplish more on the internet, including on-line class registration.

According to Nicely, SGA is only as strong as its support system.

"SGA's support system is the 15,000 students at GSU. I want to do all I can do to see them get involved," Nicely said.

The first SGA meeting of this school year will be at 6 p.m. in room 2080 of the Russell Union.

The SGA board includes executive vice president Joyce Estrada, vice president of academic affairs Casey Jackson, vice president of finance Francesca Evans and vice president of auxiliary affairs Matt Monahan.

GRUBE

From page 1

assistant programs. In addition, better evaluation and teaching skills should be developed, along with a center for excellence in teaching and other programs should be developed, he said.

Grube said that educators should engage students in hands-on learning experiences to foster interest in academic development, above all in general education programs.

"General education must be constructed so that it's the outstanding feature in our undergraduate program," Grube said. "Academic integrity should be explained in discussions and enforced in the classroom, and participatory government should be taught to the students as well."

Grube said that students should graduate thinking that they should impact the community around them.

"Above all, we should do the

best we can in whatever we do," Grube said. "GSU is a very fine university that is poised to go up to the next level. The University of Georgia is not the only university in the state."

Embracing and respecting cultural differences is an important trait to be modeled by both faculty and administration as well, according to Grube.

In order to create a better GSU, Grube said that everyone in the university community should engage in discussions about the future of the university, and then act on our expectations.

"The vision that we have for GSU is a compelling picture. It reaches out and captures the imagination, but isn't a depiction of what the university is; but instead what it should become," Grube said. "A university is like a nest on the ground—it's there for picking up."

BOXES

From page 1

three weeks, whereupon the bid will be awarded to the lowest respective bidder who can provide proper documentation and past work history, he said, but it will take approximately two months to contract another vendor.

"Until the call boxes are a 100 percent turn key operational system

the companies will not get one cent of the students' money," Gail Girardeau, buyer for the GSU materials management department, said. "Ken Brown and his staff have been very dedicated with the program in seeing that we reach a good solution to this problem."



HEALTH SERVICES

A Department of Auxiliary Services and Student Affairs
Member of the American College Health Association

SERVICES

FREE HIV TESTING

FREE ATHLETIC
TRAINING

FREE ALLERGY
INJECTIONS

FAMILY PLANNING

WOMEN'S HEALTH

MEN'S HEALTH

X-RAYS

PHARMACY

LABORATORY

HEALTH EDUCATION
Office

Georgia Southern University Health Services is available to students for consultation, examination, diagnosis, and treatment to illnesses and injuries.

Location: The Health Center is located on Forest Drive across from Watson Hall and near the Lakeside Cafe.

Operating Hours: 8:00 a.m. to 5:00 p.m., Monday - Friday during the semester with limited services and hours during semester breaks.

Eligibility & Costs: All GSU students are eligible to use the Health Center. Students enrolled in four or more semester hours prepay the health fee (currently \$66.00 for fall & spring and \$30.00 for summer) at the beginning of each semester while students taking less than 4 semester hours may choose to prepay the health fee. Although the health fee allows students unlimited visits throughout the semester, there are usually additional costs incurred each visit for prescriptions, x-rays, lab tests, and immunizations. Payment for these services is due at the time of the visit.

A valid Georgia Southern University identification card is required to access services at the Health Center

Staff: The highly-qualified staff of Health Services include a physician, nurse practitioners, nurses, clerical staff, a radiologic technologist, a laboratory technologist, and a health educator. The relationship between patients and our staff is strictly confidential. Please contact us any time for more information.

General Office: 912-681-5641

Appointments: 912-681-5484

Fax: 912-681-0792

E-Mail: HEALTH@GaSoU.edu

Web Page: <http://www2.gasou.edu/sta/health/>

Put the money
you save on this account
into CDs.

WACHOVIA

Let's get started™

1 800 WACHOVIA
WWW.WACHOVIA.COM

THE WACHOVIA COLLEGE ACCOUNT

NO MINIMUM BALANCE CHECKING • CONVENIENT WACHOVIA ATM LOCATIONS • FREE WACHOVIA ATM USE
FREE WACHOVIA CHECK CARD • PC ACCESS • 24-HOUR PHONE ACCESS

Wachovia Bank, N.A. is a member FDIC. Accounts subject to approval. Wachovia Bank, N.A. imposes a fee for the use of non-Wachovia ATMs.

Interested in writing for The George-Anne?
Stop by our office in Room 2023 of the
Williams Center to pick up an application.



A VIEW FROM THE CHEAP SEATS

JOHN BRYSON

My picks for this football season

Oh yeah. I can feel it in the air. The hot summer days here in Statesboro will soon give way to the fall and another season of Georgia Southern football.

It's time to crank up the old grill and start tailgating behind Paulson Stadium as we gather to watch GSU maul another opponent. Since this is my first column of the year, I thought it best to parlay my wisdom upon you fine people and give you MY picks for the upcoming football season.

As you might expect, I fully believe that GSU will bring home the bacon for us in I-AA football. Adrian Peterson and Greg Hill are, in my opinion, the two best players in I-AA football.

Their finely tuned scoring machine will have Southern Pride playing the fight song so much it may become nauseating. So what? The more touchdowns the better. I like seeing scores of 56-13 and 63-7. Georgia Southern... Eagles... Fight, Fight, Fight!!!!!!

My pick in I-A is the obvious one for those that know me. The obvious choice is Florida State. They return the most awesome playmaker in the country in wide receiver Peter Warrick, not to mention the fact that seven starters return to a defense that was tops in I-A football last year. I look forward to many touchdowns between Warrick and Chris Weinke.

FSU will march through the ACC schedule as usual, then they will travel over to Gainesville and rout the pathetic Gators to round out the year.

I foresee a title rematch with those lucky fellas from Knoxville in the Sugar Bowl. This time, their luck will have run out. Bobby Bowden and company will return to Tallahassee with the hardware that belonged to them the year before, the Sears National Championship Trophy.

As for the NFL, I'm a little bit nervous about this pick. One could say that I'm more than nervous, but I'm gonna take the Atlanta Falcons, albeit cautiously. I like the fact that Jamal Anderson finally signed a contract extension (even though I think he should have been in training camp anyway) and can get back to business.

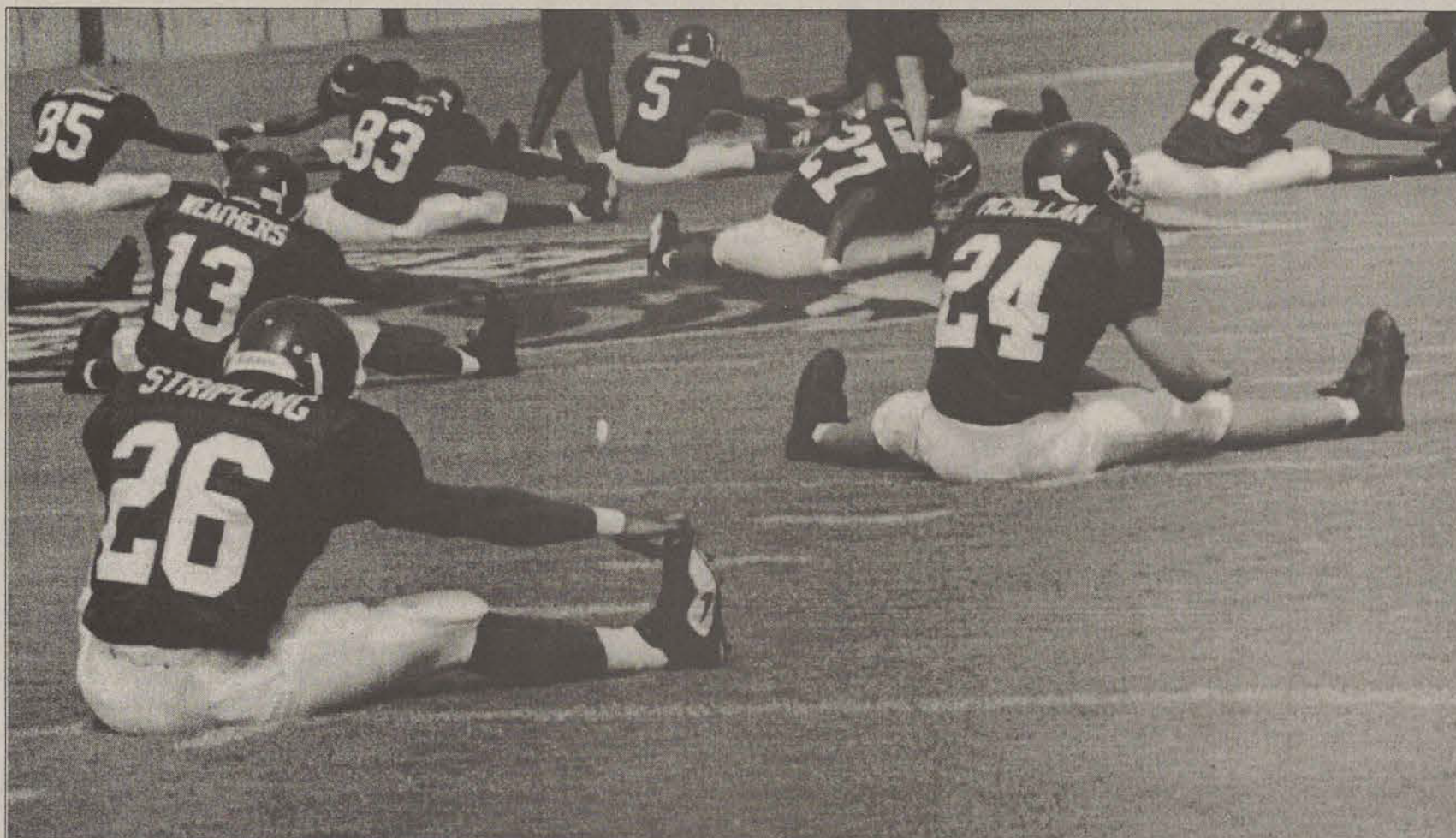
He is sure to run over opposing defenses in devastating fashion. If the Falcons keep Chris Chandler, aka Crystal Chandelier, healthy, he could keep the passing game wide open to stumble defensive coordinators around the league.

One must also mention the awesome play of Ray Buchanan, the heir apparent to Deion Sanders as the best cornerback in the league. His defensive spark led the Falcons to a couple of key victories last year and this year is sure to be much the same.

But, my favorite Falcon is Tim Dwight. He is totally gung ho every time he touches the ball, and takes off like a lightning flash. What a nightmare for the opposition, a crazy white boy from Iowa that's quick, strong, and fearless.

I'm sure there are those out there who disagree with my picks, and that's fine. The fine art of picking winners at the beginning of a season is far from exact. Yet, I like the chances of those I've picked. GSU, FSU and Atlanta. Where did these guys finish up last year?

In second place...each one of them. They were my picks last year, so you can't say I did that bad, although I was 0 for 3. If I can go just 1 for 3 this year, I'll be a happy camper. The one I want the most rests solely on the shoulders of those who play at Paulson. My Georgia Southern Eagles.



Sarah Trucksis

EAGLES PREPARE TO STRETCH THE LIMITS: The GSU football team looks to the new year with a Number 1 ranking and obstacles to overcome. With a majority of last year's starters returning to the field, the

team hopes to dominate the Southern Conference for the third year in a row and to make its way back to the playoffs. GSU finished last season 14-1 with a perfect regular season record.

GSU prepares to dominate I-AA

•Eagle offense hopes to score big with additions to line

By John Bryson
Sports Editor

The 1999-2000 edition of the Georgia Southern Football Team will feature an offense that returns seven starters, including top rushers Greg Hill and Adrian Peterson.

Hill, who rushed for 1,061 yards in eleven games, and Peterson who rushed for 1,932 yards in eleven games, will anchor an offense that is expected to blow games wide open with a spread option set.

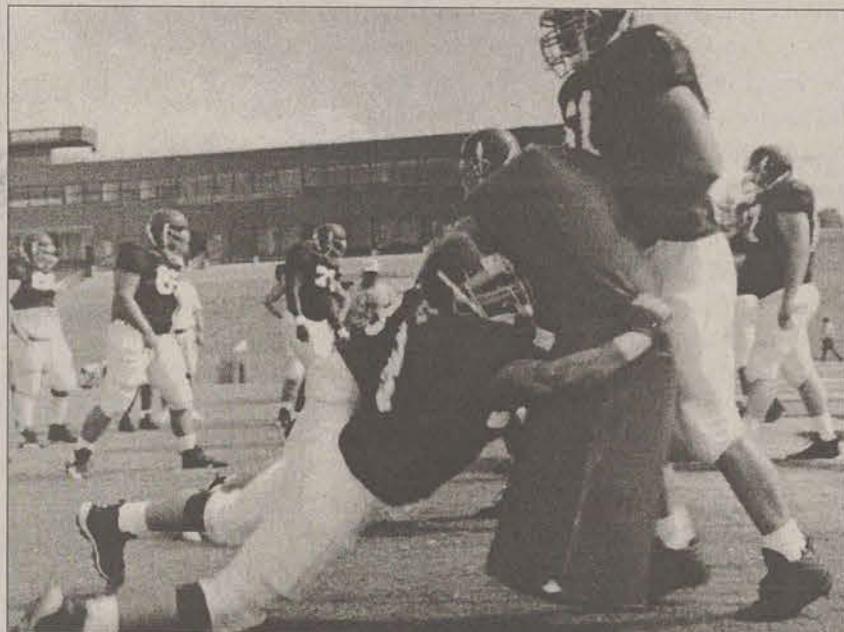
At slotback, the Eagles appear ready to step up with returning starters Bennie Cunningham and Cherard Freeman, who had 30 carries for 300 yards and 24 carries for 200 yards, respectively.

Even with all the optimism surrounding this edition of the Eagles, questions have surfaced about the offensive line. Depleted by the graduations of offensive guard

Steve Dill, offensive tackle Grant Chestnut, and center Matt Winslette, Coach Johnson will be looking to junior Michael Anderson, junior Dietrich Everett, senior Tom Jiles, sophomore Bob Bellinrath and freshman James McCoy as possible starting candidates.

Senior quarterback Greg Hill doesn't think it will be a problem. "These guys have been in the trenches before, even if they weren't starters, so they should be able to step in and contribute," Hill said.

GSU returns all but one of its starting receivers, including junior Chris Johnson and senior Dedric Parham, who caught 14 receptions for 202 yards and 10 receptions for 170 yards, respectively. They look to contribute to the offense in multiple ways, by blocking and catching opposing defenses off guard.



Sarah Trucksis

SOME OUTLINE HERE: And then we need some kind of caption here so that the whole thing gives the way I want it to. Can I get in trouble if I kill someone? I am the editor in chief.

"We feel like we have a lot of bodies there who can really help us out," says coach Johnson.

Any way you cut it, the Eagle

offense looks to steamroll over the opposition in much the same way our 1998 team did. Perhaps this time, fifteen teams won't be able to keep pace.

•New multiple 50 scheme prepares to shut down opposition



By Sarah Trucksis

BACK TO THE GRID IRON: The 1999 Eagle defensive line is preparing for a season of domination.

By John Bryson
Sports Editor

Georgia Southern fans can expect to see a different Eagle defense than the one from 1998. Coach Johnson, GSU head football coach, and Rusty Russell, GSU defensive coordinator, have decided to switch from a 4-3 defense to a multiple 50.

"We changed to get to our strengths...primarily our linebackers...we can do more with this type of defense," Eagle cornerback Earthwind Moreland said.

The GSU defense has six returning starters, including All-American nose tackle Voncellies Allen and Southern Conference honoree free safety Arkee Thompson.

The defensive line, anchored by Allen, does have some potential, but coaches are guarded about its progress.

"We don't have as much depth as I would like, but I don't think you ever do," Coach Paul Johnson said.

In the linebacking corps, there is tremendous potential and high expectations. The Eagles hope to take advantage

of their speed and depth at the position.

"Our talent at the linebacker position was one of the main reasons we decided to change up the scheme (from a 4-3 defense)," Johnson said.

The defensive secondary is touted by the Eagles coaching staff as one of the most talented on the team. Anchored by Arkee Thompson, Earthwind Moreland and Kiwaukee Thomas, the Eagle secondary hopes to improve on last year's performance. Thompson led the Eagles in tackles last season, racking up 152 and setting a school record for interceptions with 6. Earthwind Moreland also netted 51 stops during last season.

All in all, the coaches are hoping that the changes that were made will lead to a better defense that can keep Georgia Southern in the game when and if the offense is stifled. "Our defense had a good spring and they are gaining confidence," Johnson said "My expectations for them are higher than for the offense, to be honest."

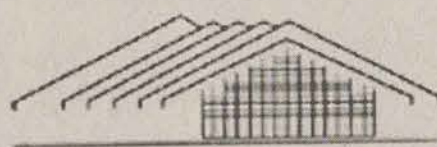
Georgia Southern 1999 Football Schedule

Sept. 4 FAYETTEVILLE STATE 7pm	Oct. 16 @ App. State* 1pm
Sept. 11 @ Wofford* 7pm	Oct. 23 THE CITADEL* (HC) 1pm
Sept. 18 @ Oregon State 4pm	Oct. 30 @ E. Tenn. St.* 2pm
Sept. 25 CHATTANOOGA* 1pm	Nov. 6 FURMAN* 1PM
Oct. 2 @ VMI* 1pm	Nov. 13 @ Jax State 2pm
Oct. 9 W. CAROLINA* (FW) 1pm	

* denotes southern conference game

The University Store

Prepare Yourself for the "Southern" Experience



(912) 681-5181 • fax (912) 681-0383

Visit us on the web... <http://www.aux.gasou.edu/ustore>

Welcome Back

New And Returning Students!

The University Store has everything for
your back to school needs.

Lady Eagles are Tourney champs



All photos by Kelley McGonnell

FIRST TIME CHAMPIONS: The Lady Eagle softball team won their first ever Southern Conference Tournament over the UTC Lady Mocs in May.

By Jana Aiken
Softball Article

The Georgia Southern Lady Eagles softball team went home for the summer break after completing the best season in the history of GSU softball.

The Lady Eagles boasted an overall winning record with 38 victories and 27 losses topped by their first ever Southern Conference Tournament championship.

In 1996 the Lady Eagles won the season championship but did not clinch the win at the Southern Conference Tournament. This year, the Lady Eagles brought home the Conference Championship with a 7-5 win over the No. 1 seed Chattanooga.

The Lady Eagles also carried out the longest winning streak in team history with 11 straight victories.

Pitchers Jennifer Miller and Aimee Littlejohn, as well as sec-

ond baseman Ashley Flemming, were named to the All Tournament Team for their outstanding performances.

Freshman pitcher Aimee Littlejohn gave up only eight hits and one earned run in the victory over Chattanooga.

Other honors for the GSU team were awarded for regular season performances. Jennifer Miller, Ashley Flemming and Jaclyn Kaylor were named to the All Conference Team for their accomplishments throughout the winning season.

Pitcher Jennifer Miller was injured her sophomore year and spent much of the following summer rehabilitating. She came back strong and had an outstanding junior year with a 17-9 winning record accompanied by a 1.21 ERA. Miller was also strong offensively with a batting average of .238 with 6 home runs.

Head Coach Kelley Kirkland is enthusiastic about the tremendous accomplishments made by her Lady Eagles.

"This team showed a lot of work ethic and discipline," said Kirkland. "They respected one another's abilities and really came together as a team. They played with one goal in mind and it played off. It has been a blessing to be a part of this team and a real joy to coach this team."

The Lady Eagles are anticipating the season to come with hopes of accomplishing even more. The team lost three graduating seniors but will gain five true freshman and one junior college transfer.

The Lady Eagles will begin workouts in August and will play one "non-traditional" set of games in the fall before kicking off the regular season in February.

Ljone named head women's swimming coach

G-A News Services

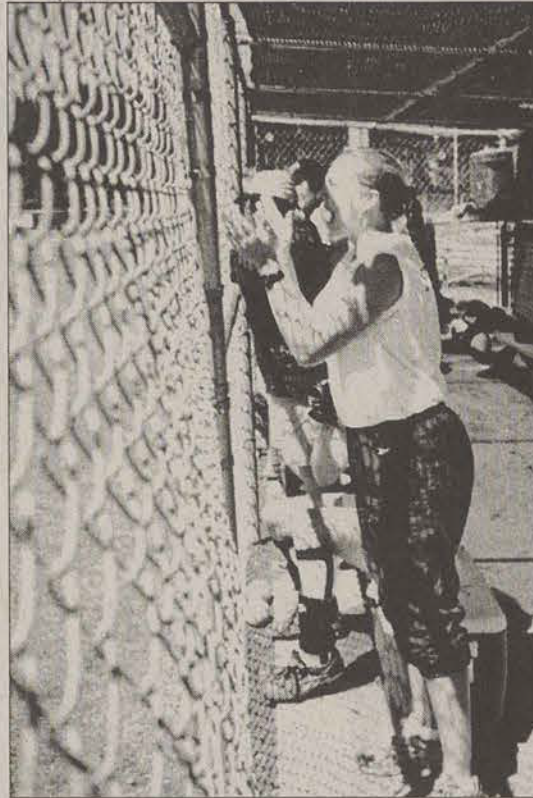
Tracy Ljone has been named Georgia Southern's eighth head swimming coach, GSU athletics director Sam Baker announced last week. Ljone replaces Anne Marie Wozniak, who resigned her position after three years to take over the Northern Illinois swimming and diving program.

"Tracy will be a strong addition to our athletic coaching staff," Baker said. "Her familiarity with the program and the student athletes will certainly benefit the team during this time of transition. We are excited to have her on as head swimming coach and are looking forward to the great things to come with Georgia Southern swimming and diving."

Ljone is no stranger among the GSU athletic ranks after serving last season as a graduate assistant coach for the strength and conditioning program. During that time, she also handled duties in Georgia Southern's health and kinesiology department as a graduate assistant physical activity instructor.

From 1995-96, Ljone served as head coach for the Greenbriar Swim Club in Chantilly, Va., where she directed a team of 120 athletes. From 1992-97, she served as an assistant swim coach for the Carl Burke Swim Club in Burke, Va.

A four-year letterwinner at the University of South Carolina, Ljone was a finalist at the Southeastern Conference Championships in the 100 Butterfly event in 1994 and 95. She was also part of the USC team that captured Team Academic All-America honors from 1993-95. Individually, she was a named an SEC Scholar Athlete after graduating with a 3.8 GPA.



CHEERS HELP: Senior McCaine Lowder encouraged the team from the dugout due to an early season injury.



CELEBRATE GOOD TIMES: The Lady Eagles rush the mound to congratulate tournament MVP Aimee Littlejohn.

UNIVERSITY BOOKS
OF STATESBORO

Attention GSU Students Welcome Back!

"We Specialize In Used Textbooks"

School Supplies • Book Bags • Scantrons
Gift Items • Class Rings • Eagle Pendants
Trade Books • Graduation Invitations



1598 Chandler Road
Next to Dingus MaGee's
Statesboro

681-6295

Starting Monday, September 13, 1999

We're Doing it Three Times a Week!

(...and boy are we tired)



Monday • Wednesday • Friday

<http://www.stp.gasou.edu>

GSU names Hennon to succeed Stallings

Special to the G-A

Rodney Hennon has been appointed head baseball coach at GSU, director of athletics Sam Baker announced last Tuesday at an 11 a.m. press conference at the Russell Union Building.

Hennon, a native of Dalton, Ga., will end a two-year stay as head baseball coach at Western Carolina University after leading the Catamounts to an overall 81-38-1 (.679) record and a Southern Conference mark of 38-16 (.704).

He succeeds former head coach Jack Stallings, who announced his retirement May 24 after 29 overall seasons as a collegiate head coach and 24 seasons heading the Eagle program. Hennon will be GSU's eighth head baseball coach since the start of the program in 1933 and first since 1976.

"We are certainly delighted to have an energetic individual of high character who already possesses a successful head coaching background such as Rodney Hennon to guide our baseball program into a new era," Baker said. "His return to the state of Georgia, knowledge of the Southern Conference and enthusiasm are clearly attractive qualities which should translate into success for Georgia Southern and excitement for all constituencies."

After accepting an offer to guide the Western Carolina program in July 1997, Hennon quickly added his own distinctive chapters to one of the most winning programs in the Southern Conference which has



Rodney Hennon

captured eight league tournament titles and made nine NCAA Regional appearances since 1985. Most recently, the Catamounts have advanced to national post-season play in 1992, 1993, 1994 and 1997.

During his inaugural campaign

claimed both the Southern Conference's pitcher and player of-the-year award while seven signed professional contracts at the conclusion of the season.

In addition, the 1998 WCU squad led the nation in stolen bases with 153, which shattered a 33 year-old school record and a 16 year-old conference mark. He directed a pitching staff which also enjoyed an outstanding season, turning in a 4.01 earned run average to rank 11th nationally, while finishing ninth among all Division I institutions with 499 strike-outs.

Hennon followed up his record-setting initial season with a 36-23-1 mark last spring, which included a third-place league standing at 18-10.

The Catamounts easily distinguished themselves as the SoCon's top offensive squad with conference bests in average (.328), on-base percentage (.423), slugging percentage (.523), runs (502), hits (684), home runs (82) and runs batted in (445) while finishing second in triples (20) and third in stolen bases (123). Hennon guided one of the league's youngest pitching staffs to a 5.70 earned run average rating third among all conference teams.

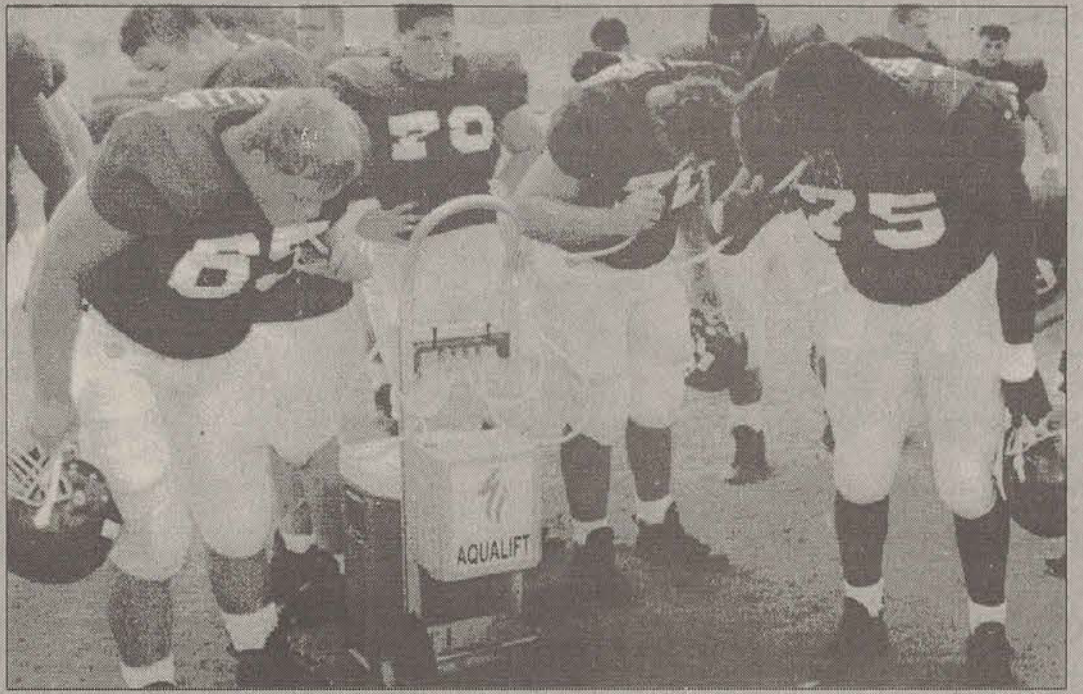
Prior to taking over the WCU head coaching duties, Hennon served as a full-time assistant coach for his alma mater for three seasons and was a two-time all-conference second baseman for the Catamounts in the early 1990s.

"WE ARE CERTAINLY DELIGHTED TO HAVE AN ENERGETIC INDIVIDUAL OF HIGH CHARACTER ... TO GUIDE OUR BASEBALL PROGRAM INTO A NEW ERA."

--SAM BAKER, GSU ATHLETIC DIRECTOR

as head coach, Hennon led the Catamounts to a 45-15 overall record and a 20-6 SoCon mark, tying the school mark for most victories in a single year and ranking sixth among all NCAA Division I members in winning percentage. His player

Quenching the thirst for victory



Sarah Trucksis

COOLING DOWN: The Eagle football team has been practicing for the past few weeks in preparation for the 1999-2000 season where they will defend their Southern Conference title. The first home game is September 4 at 7 p.m. in Paulson Stadium.

Unfinished business on the agenda for Eagle football

By John Bryson
Sports Editor

This year's edition of the GSU football team is expected to do something last year's did not: bring home a national championship. After last year's exciting, but in the end, disappointing season many look to this season as a chance for GSU to redeem itself.

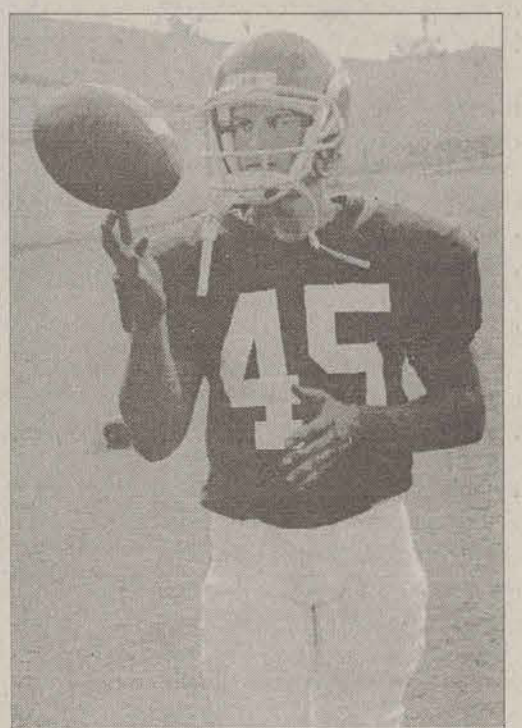
This lofty expectation has garnered quite a bit of comment from the players and coaches, many of which took quite different views on how to climb the mountain to the title game and win it.

"We do have a lot to do, expectations to live up to. Last year left a bitter taste in our mouths. Hopefully the new guys will help

us and we can bring it home," Eagle cornerback Earthwind Moreland said. "Our first game is the first test, we have to take it one game at a time."

However, it is clear that the leader of this team expects nothing else. Quarterback Greg Hill said, "We did everything last year except bring it home. There's just one thing left for us and me... a national championship."

Coach Johnson dismisses the thought that last year will automatically translate into success this year. "1998 is over. The 1999 Eagles have good players, but they haven't proven anything," Johnson said. "We will have to see if these guys have what it takes."



Sarah Trucksis

LIFE'S A BALL: Placekicker/punter Chris Chambers appeared relaxed at Media Day last week. The Eagles plan to build on last year's record-breaking season.

While the Eagles players and coaching staff may have their own opinions on this year's football season, it is clear to see that expectations are lofty and the pressure will be there to perform.

CAREER SERVICES EVENTS

Fall Semester 1999 Open Monday-Friday, 8:00am-5:00pm
912-681-5197, 1047/1058 Williams Center, <http://www2.gasou.edu/sta/career>
CRC Walk-in Assistance: 9:00-12:00 & 1:00-4:00 Monday-Friday

Coffee Shop Hours

Come join the Career Services Staff for refreshments and a chance to ask questions about choosing a major, your job search strategy, planning graduate school, and much, much, more!

Topics, Dates, and Times
Time: 3:00pm-5:00pm

Location: Career Services, CRC
1047/1058 Williams Center

Job Search Strategies (including salary ne & relocation/cost of living)

Sept. 7 Oct. 27
Sept. 24 Nov. 19

Deciding a major and/or career path or finding out what you can do with your major

Sept. 10 Oct. 26
Sept. 21 Nov. 18

Résumés and Cover Letters

Sept. 8 Oct. 29
Sept. 23 Nov. 15

Interview Skills (including Dining & Business Etiquette)

Sept. 9 Oct. 25
Sept. 22 Nov. 16

Graduate School Planning (including applying to Law, Med, Dental, & Vet Schools)

Sept. 20 Nov. 17 Oct. 28

SPECIAL WORKSHOPS

Finding an Internship or Co-op Assignment:

Nov. 10, 4-5pm at Career Services, 1047/1058 Williams Center

Career Opportunities in General Studies:

Oct. 11, 4-5pm at Career Services, 1047/1058 Williams Center

Career Opportunities in International Studies:

Nov. 4, 3:30-4:30pm at Career Services, 1047/1058 Williams Center

RE-WEB! New Name, New Place!

Now get the same great RE-WEB Résumé service at a new Web Address! Career Connections (aka REWEB) can now be accessed at: <http://cc.resumeexpert.com/0290/student>, or <http://www.sta.gasou.edu/0290/student>. You must first obtain an ID and pin number through Career Services to access Career Connections

Students, Alumni, & Faculty

Looking for Information on Careers, Jobs, and Internships???

Soar into the Next Millennium! and

Join Us For
Eagle Expo 99!
October 7, 1999

Russell Union Ballroom
9:00am-1:00pm

Before Attending the Career Day, Don't Forget To Attend:
Making the Most of Eagle Expo!

Monday, Oct. 4, 4:00pm
Russell Union, Rm. 2044

Seniors and Graduate Students!

Join Us For A
Special Interactive Dining Etiquette Experience

Provided especially for you through corporate sponsorship!
Oct. 6, 6:00-8:00pm, Russell Union Rooms 2048, 2070, & 2080
Learn appropriate dining etiquette by gaining practical experience at a five course meal. **Limited Spaces...First come, First Serve. RSVP to Connie Alston (681-5197) or Angela Clark (681-0516) by Sept. 29. \$15 refundable deposit also due by Sept. 29, 1999.**

Eagle Suit Drive!

Do you have a professional employment interview soon? Have you thought about what you will wear? Career Services has collected several suits donated by the faculty, staff, and community and would like to get you "fit" for your interview! Suits are limited and available on a first come first served basis. In addition, you will need to incur the cost of any alterations. If you are interested in obtaining a suit, please come by the Career Services Office at 1047/1058 Williams Center and ask the front desk about getting "fit" for a suit! Please call 912-681-5197 if you have any questions.

Career Services Satellite

The Career Services Satellite Office for the College of Business Administration allows Career Services to expand its services to



business students, faculty, & alumni. This office provides one stop shopping for COBA students.

R.J. Pope Traditional Menswear

5 S. Main Street, Statesboro • (912) 764-4306
Downtown



Timberland

Columbia



RALPH LAUREN

TOMMY

HILFINGER

nautica

TIGER USA



Rates As
\$6.95
Low As

Features Available:

- 800 #'s
- No Credit Check
- Voice Mail
- No Contracts
- New Digital Pagers
- Same Day Activation
- Prepay Services

CALL (912) 871-7522 TIGER USA (inside Powertel)
ASK ABOUT OUR BACK TO SCHOOL SPECIAL!

Sam Baker looks to new year with excitement

By Kelley McGonnell
Editor in Chief

The 1999-2000 year in sports promises to be exciting but hopefully not as exciting as the one past. In the past year, the athletic department has seen the departure of some prominent coaches and the elimination of some men's programs. But it has also seen the triumphs of teams, like the success of the football team and the championship won by the Lady Eagle softball players.

With all of this behind him, athletic director Sam

was no student representation during the initial discussions. Students from SGA were included on subsequent discussions and a panel of experts met with SGA and faculty senate members to discuss the issue.

Former president Harry Carter made the decision final in a May 14 memo to the faculty senate, according to Baker.

"Dr. Carter reiterated that after the review and all considerations, he recon-

firmed his earlier decision to discontinue the programs," Baker said.

Baker said that the controversy and faculty senate desire to review the decision did not have a negative impact on the department.

"If a subject is thought out the proper way, you can stand the scrutiny of review," he said. "I think it was reviewed and was reconfirmed so I don't think it damaged the program or hurt anything in particular."

Women's Outdoor Track and Field

Baker is looking forward to the first competition of the women's track team.

"I'm anxious to see how our women's track team develops over the next year or several years," Baker said. "I think, after talking to Coach Lane, that we have the capabilities to attract some really good female track athletes so we can become a really competitive team in the Southern Conference."

He said that the addition of track will help GSU get closer to meeting Title IX female participation requirements and that the first team will lay the ground work for the future runners.

"I just hope that we go out there and we are competitive and the young ladies who come here start a foundation, like the ladies who started the first soccer team."

The team will compete and practice at the track at Statesboro High which was just repaved and resurfaced thanks to the efforts of GSU, the Statesboro-Bulloch County Recreation Department and the Bulloch County Board of Education.

There are no immediate plans to build a track on campus, but Baker said that if a track is ever built that it will benefit more than just the team. He said



"I WANT EVERYTIME OUR TEAMS GO OUT ONTO THE FIELDS AND THE COURTS OF COMPETITION TO FEEL THAT WE HAVE GIVEN IT EVERYTHING WE HAVE."

—SAM BAKER, GSU ATHLETICS DIRECTOR

vice president of business and finance; Mike Long, alumnus and former player; Richard Rogers, the faculty athletics representative to the NCAA and Sam Baker just recently hired Rodney Hennon to guide the Eagles.

"If we [did] our job as

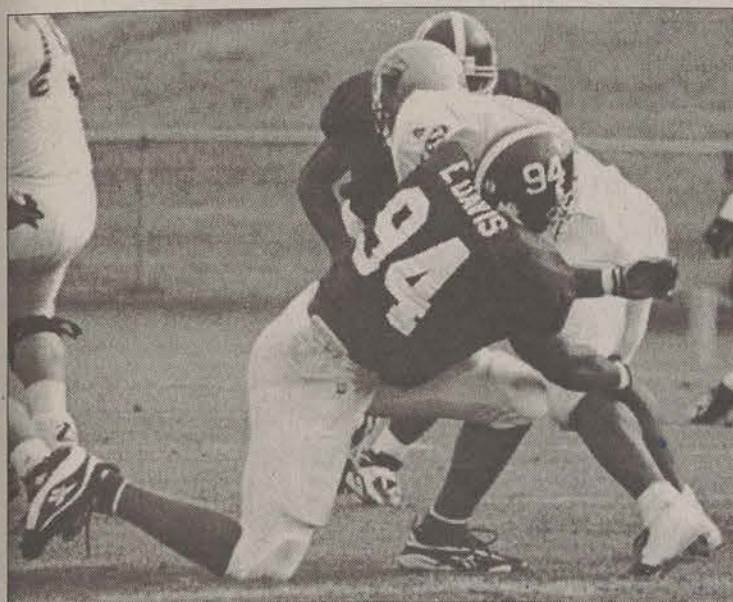
well as the people who hired Coach Stallings, who was here for 24 years, we [are] successful," he said.

He said that he looks forward to the competition next year and thinks that Eagle athletics are headed in the right direction.

"I think each of our sports has turned some corners," Baker said. "I think our golf teams getting stronger because of the Schenkel E-Z Go returning. Football is always the cornerstone of the program. We're hoping we can continue to be successful there. I think our basketball programs are on the right path. I'm excited about all of it as far as competition."

Still Baker has big hopes for the coming year of competition.

"I want every time our teams go out onto the fields and the courts and competition to feel that we have given it everything we have," he said. "And beyond the fields of competition, I want our students to continue to be focused on the academic side and getting their degrees. I take great pride in watching our athletes walk across that stage and get their diplomas."



Cory Brooks

TAKING CONTROL: Former GSU Eagle Eric Davis takes down an opponent in 1998. Athletic director Sam Baker hopes to build on the foundation Davis and the past team started.

Baker is looking forward to the new year, but is expecting the same amount of challenges.

"I certainly hope that everything is smooth," Baker said. "When you're athletic director, disaster is only one phone call away sometimes. I hope that some of the tougher decisions that were on the horizon were faced [last] year and we can have a smooth year."

Some of those tough decisions included how to comply with Title IX gender equity regulations. GSU has upheld an earlier decision that discontinued men's swimming and diving and cross country. In order to comply with regulations, the university needed to add a new women's sport and chose to start a track and field team in the fall. There was not enough money in the budget to fund the new programs without dropping other programs.

Many students, athletes and parents protested the decision, including SGA. The faculty senate voted to have the decision revisited, because there

that intramurals and classes will also find the track to be a benefit.

"It would take a major funding to put in a competitive track," Baker said.

Men's Basketball

Another big decision made last year was the hiring of new men's basketball coach Jeff Price. Price is from Lynn University in Florida where he started the program from scratch and led it to six national post season berths.

"I go a lot on...gut instinct when you met somebody and whether or not there's a mesh of personalities," Baker said. "I just really liked Jeff as a person."

Baker said he thinks Price will encourage a different style of play of his team and that it will be noticeable to the crowd.

"His style is a little more aggressive," he said. "[It will be] offensive-oriented but also offense created by good defensive pressure. I think that is one of the key things you'll see right off."

Baker said that Price was praised by many of the coaches and others that had worked with Price's teams at Lynn University and that many of them said that his teams were very aggressive offensively and defensively.

Baseball

An unexpected disaster that was just one phone call away was the resignation of longtime baseball coach Jack Stallings. He retired right after the Eagles completed play in the Southern Conference Tournament. Stallings, at the time, was the winningest active coach in NCAA Division I baseball with 1,258 wins.

A search committee consisting of Ron Core,



Sarah Trucksis

RUNNING THE BASES: Shortstop Dustin Langley had a great season last year but the Diamond Eagles hope to improve this year under a new head coach.

WILD WEDNESDAY

MEDIUM 1 TOPPING HAND TOSSED
CARRYOUT ONLY

\$2.99

MEGA DEAL

ANY PIZZA ANY TOPPINGS

\$8.99

DEEPDISH & DOUBLE PORTIONS \$1.00 EXTRA

FREE DELIVERY
OPEN FOR LUNCH



CARRY OUT
2 LARGE 2
TOPPING
\$12.00

Georgia Southern University

1999 Welcome Week

EAGLE PRIDE: Welcome to GSU



Wednesday, August 18

Returning Student Registration (11:00 pm - 6:00 pm)

Russell Union open 8:00 am - 11:00 pm; Russell Union Gameroom open 9:00 am - 10:30 pm

RAC open 5:00 pm - 11:00 pm; Climbing Wall at the RAC open 5:00 pm - 8:00 pm



9:00 am - 10:15 am GSU 1210 First Class Meeting . Check your schedule for room #

Meet your professor for your 1st class of the year. Receive your information for the Class meetings on Thursday.

10:00 am - Noon ROTC Rope Rapelling Demonstrations ... On Henderson Library

10:30 am Step Into Statesboro Russell Union Rotunda

Volunteer in the community for a half-day with several projects taking place around the Statesboro Community. To sign up to ensure a place, please call the Volunteer Services Office at 912-681-5409.

11:30 am - 1:30 pm Lunch with GSU President Grube Landrum Dining Center

Have lunch and meet Georgia Southern's new President. Enjoy relaxing conversations over brick-oven pizza, subs, Asian Creations, and Southern Traditions. Use your meal plan, Eagle Express, or cash. Sponsored by SOAR



Noon - 3:00 pm Canoe on the Lake Lake Wells

1:30 pm Customized Tours of Campus Landrum Dining Center

Bring your schedule to *Lunch with the President* and afterwards get a personalized tour of campus highlighting your classroom locations by SOAR Leaders.

4:00 pm - 5:00 pm Preparing for the Workforce 2003 Check Poster at Russell Union

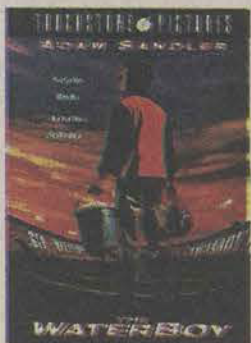
Separate Sections will be held for Nursing, Business, Engineering, Medical Field, Teaching, Computer, & Undeclared Majors. All new and returning students welcome! *Sponsored by the Minority Advisement Program*



Computer Training - Henderson Library 1st floor

2:00 pm E-mail Basics in Pine 3:00 pm Surfing the Net

8:00 pm Eagle Cinema: The Waterboy (free) Russell Union Theatre



Thursday, August 19

Drop/Add Williams Center (8:00 am - 4:30 pm)

Russell Union open 8:00 am - 11:00 pm; Russell Union Gameroom open 9:00 am - 10:30 pm

RAC open 5:00 pm - 11:00 pm; Climbing Wall at the RAC open 5:00 pm - 8:00 pm

GSU 1210 Class Meeting: 9:00 am; 11:00 am; 1:00 pm, 3:00 pm

Each GSU 1210 class will attend two sessions: Academic Survival & Computing at GSU. Check the schedule you received on Wednesday for the time and location of your class. You will attend two of the times listed above.

8:00 pm 5th Annual: Creative Dating Russell Union Ballroom

(Interactive Presentation)

Creative Dating is a high-energy, audience participation workshop where you'll discover over 250 new ideas for dates that are fun, inexpensive, and safe. You will also gain a new feeling of confidence in relationships!

Sponsored by Eagle Entertainment FREE



Friday, August 20

All Facilities Open Normal Hours

Classes Begin!!

10:00 am - 3:00 pm Business Expo Russell Union Rotunda

Meet the merchants of Statesboro. Gather information from local banks, food retailers, clothing stores, and much more. See what Statesboro has to offer to students!! Free popcorn & soda.

7:00 pm Mentalist: Craig Karges Russell Union Ballroom

Extraordinist Craig Karges presents a fantastic display of illusion, the paranormal, and extraordinary phenomena using total audience participation! It's like *The Twilight Zone*, live on stage. Karges has been on The Tonight Show with Jay Leno, Larry King Live, E! Entertainment Television, and has won numerous awards for his show. Don't miss a once in a life time opportunity live. Sponsored by Eagle Entertainment. **FREE**



Saturday, August 21

8:00 pm Eagle Cinema Movie: Rush Hour (free) ... Russell Union Theatre

Thursday, August 26

10:00 am - 3:00 pm Student Organizational Fair Russell Union Rotunda

Find out how to get involved in one of the 150 student organizations GSU has to offer all students. Meet members of the organization and find out how you can get involved with the groups that are of interest.

All events are free, unless noted.

This week is supported by your Student Activity Fee. Schedule subject to change.

For more information, please call 912-486-7270.

Get Involved Today!!

All Students are Welcome To Attend All Events!!



**First Eagle Entertainment Meeting
is Tuesday, August 31st at 7 p.m.
in the Russell Union Room 2084**

THE EAGLE HAS LANDED



Looking ahead towards the new millennium, the Eagles have a new attitude.

By John Bryson
Sports Editor

The GSU Eagles will enter the new millenium with a new look and a new attitude. Sam Baker, GSU athletic director, and Connie Palffy, GSU director of licensing, unveiled the new athletic logos for Georgia Southern University at a press conference last Tuesday.

The old logo, the circular eagle emblem, was created in the 1980s and the university thought it appropriate to come up with a more exciting, aggressive logo, according to Palffy.

Beginning in March, the university authorized a community-wide committee comprised of local alumni, faculty, students and student athletes, Palffy said. The firm, SME advertising, located in New York City, was chosen to assist the school in its search for a new logo, she said. The committee met with the SME representatives over a period of four months to receive feedback and make revisions in order to ensure a logo that the university would be happy with.

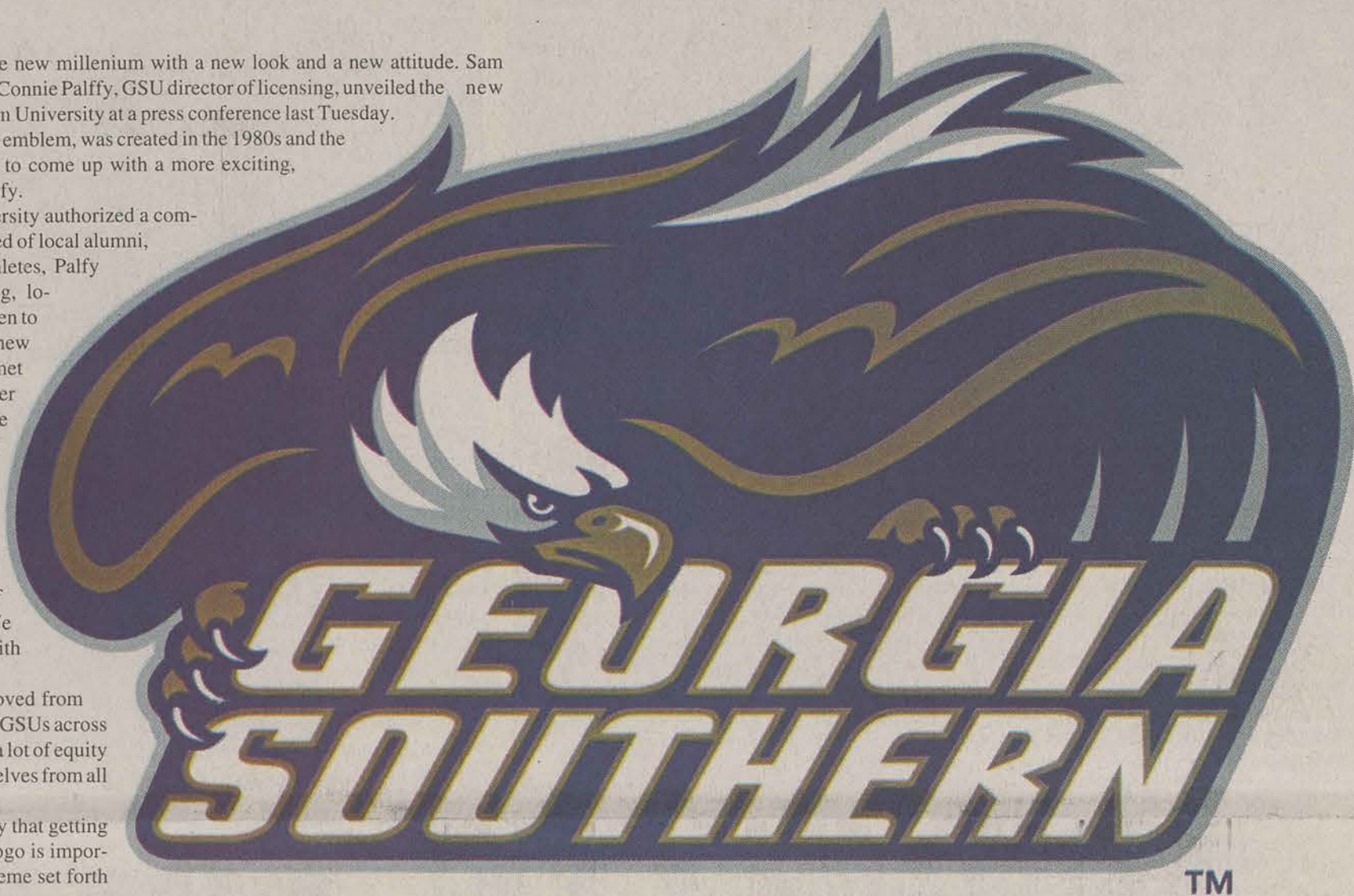
"We wanted something exciting, invigorating that would energize the community and campus and provide a new level of excitement to GSU athletics. We feel we have accomplished that with this logo," Palffy said.

On the logos, the U was removed from GSU. Noting that there are many GSUs across the country, Palffy said, "We saw a lot of equity and the ability to distinguish ourselves from all the other GSU's nationwide."

Baker and Palffy went on to say that getting students excited about the new logo is important to the overall marketing scheme set forth by the university.

"Students were on this committee and we wanted to get something students would like, something action-oriented. The new apparel was made available today (last Tuesday) at several retailers around town....not to mention the fact that students will have the opportunity to pick up some paraphernalia at a table during the business expo," Palffy said.

GSU plans to give away approximately 6,000 keychains and 10,000 schedule cards and posters at the business expo held on Friday at the Russell Union Rotunda.



TM

A FRESH NEW LOOK: GSU's athletics program will be sporting new logos beginning this football season. Pictured above is the primary mark depicting the Eagle as a majestic, yet powerful and aggressive bird of prey. The new logos will be represented on GSU game uniforms, facility decorations, athletic department stationery, correspondence materials, publications and officially licensed merchandise.



Wal-Mart gears up for back to school rush

You've been in town for less than a week, but chances are you know where Wal-Mart is and how to find just about anything you need there. The lines are long, the shelves are becoming bare, but this store has been preparing for back to school for months. The Wal-Mart phenomenon is in full effect.

By Tricia Hall
Lifestyles Editor

It's back to school time! This exciting time of the year means one thing: it is time for the annual trip to Wal-Mart to stock up on school, dorm and apartment supplies. This week is one of the busiest times of the year for Wal-Mart as students flood Statesboro and move into apartments and dorms.

To prepare for this rush, Wal-Mart stocks up on what they predict students will need.

"I do research and ask students what they need this year," Troy McAlpine, assistant store manager said. "I try to capitalize on things that I ran out of last year."

McAlpine said that he makes sure that plenty of notebook paper, one inch binders, pillows and mattress covers are ordered and kept in stock for students since those are some of the most popular items.

To ensure that the store is well stocked, delivery trucks come everyday from 4 p.m. to 1 a.m. Trailers are brought in and kept behind Wal-Mart to



IF YOU'RE LOOKING FOR IT... Wal-Mart will probably have it. Statesboro's Super Center experiences a high volume of customers around this time of year due to the large influx of GSU students shopping for dorm, apartment and school necessities.



HE'S THE MAN WITH A PLAN: Troy McAlpine, assistant store manager, (right) said he watches buying trends from past years and tries to capitalize on those items he didn't have enough of previously.



Photos by Sarah Trucksis

help store all the extra merchandise.

Wal-Mart does not hire many additional employees to help handle the back to school season, but there will be extra associates on hand to assist students. "We pull people from other, less busy areas such as home and garden to work the busier

parts of the store," McAlpine said.

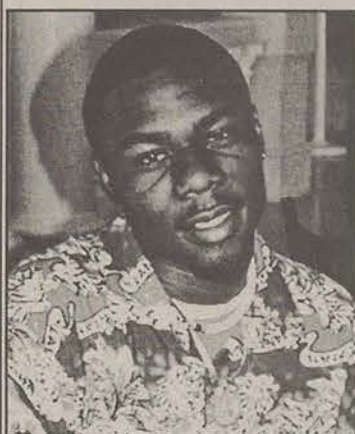
Stuart Baxley, a GSU student, has worked at Wal-Mart for over a year and said that he will be working overtime for the next couple of weeks to help handle the rush.

"Last year, we had nearly every register open

everyday," Baxley said. "People come in to buy school supplies, furniture, desks and odds and ends for their apartments."

In mid-September, however, the store begins to slow down. By then, everyone has pretty much settled in, McAlpine said.

GSU freshmen are asked: Do you have any concerns about GSU? What are you nervous about?



"I'm nervous about just making it here and keeping my scholarship."
--Antwan Andrews



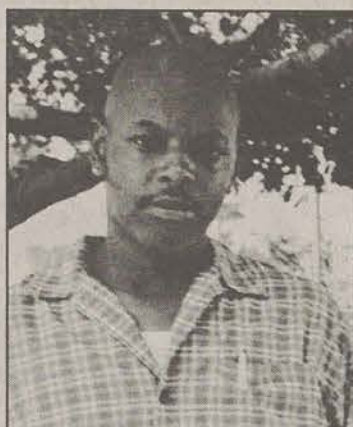
"I'm nervous about classes—getting adjusted to the teachers. It will be a whole lot different than high school."
--Shainna Charlton



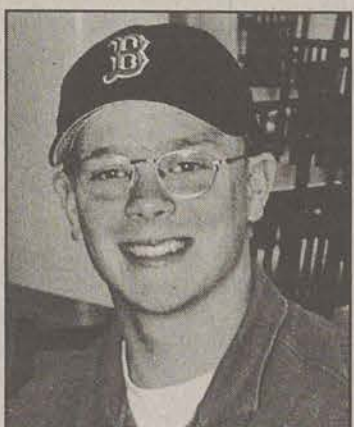
"Starting classes and how different college is from high school."
--Katie Logan



"I really want to get involved. I'm excited about meeting new people."
--Beth Wolf



"I'm nervous about getting a job on campus and paying my apartment rent."
--Rickey Sanders



"I'm nervous about classes starting. I don't want to flunk out."
--Justin Evans

All photos by Tricia Hall

1999 SOAR leaders offer advice to freshmen and transfer students

"Don't be afraid to broaden your horizons. Venture out, get involved, and don't be afraid to meet new people."

Ty Duffy, sophomore

"College is what you make it, so get involved, make new friends, broaden your horizons. Make it an experience you'll never forget."

Francesca Evans, junior

"Take this opportunity that you have chosen to expand your mind. Challenge yourself. Question everything. Experience every moment as if it were your last. Be happy."

Kacey Ingram, senior

"Above all things, respect yourself. If you respect yourself first, then others will respect you also."

Darek Stoddard, junior

"Be yourself. If you come to college and act in a way that does not reflect your morals, values, and how you really feel on the inside, then you will lose who you are and really struggle."

Jennifer Dörner, junior

"Get involved in organizations. They tend to help you with social skills and may even improve your grades."

Tobias Mathis, sophomore

"It's okay to be homesick. It passes and if you stick it out here, you will be immensely proud of yourself."

Natalie Kleparek, junior

"Realize that you are an individual and do things according to your plans and nobody else's. You have to live with the decisions that you make so don't fall into something because everyone else is doing it. Live in a manner that is going to make you feel the most at ease."

Antowaun Lightsey, sophomore

"Make sure you prioritize your school work over your social life and study hard and party smart."

Krista Magalhaes, junior

Southern Café changes names again

By Sam Siegel
A&E Editor

What used to be Southern Arcade and then Southern Café is now a club called Horizons. The new setup features a sizable new dance floor and a stage for live bands.

The changes are interesting: the walls are now painted a dark color (it is hard to say what color because it was so dimly lit), and

there are couches lining the outside of the dance floor.

It is a great venue for bands now with the additions, and will make a good place to mix with friends. There is a new deck to sit on if you don't want to dance, and the arcade side is the same as it was. There are still pool tables and the arcade games. You can even go play a game of pinball.

The music is sometimes a little

erratic; on Friday night, the DJ played a combination of disco, country and 80s rock. To make it worse, there weren't sections of each type of music. They would play one country song, then a disco song, then a glam-rock song and then another country song.

All in all, it is a good place to have a drink and play a game of pool. They have a swing night on Mondays and teen night on Sundays.

SOUTHERN CAFÉ has a new name, Horizons. The club now offers a great dance floor and live music. A new deck was also built to sit on to have a drink with your friends.



Abby Franzo

WELCOME BACK

GEORGIA SOUTHERN

Students and Faculty



OIL, LUBE, FILTER

\$13.95

FREE Preventive Maintenance Check (on request)

Lube (where applicable), new filter & up to 5 quarts major brand oil (brands vary). Most cars. Special diesel oil & filter extra. Environmental oil disposal fee may apply in some areas. Call for appt.

Offer ends 8/31/99. No other discounts apply. Redeem at participating Goodyear retailer. Additional charge for shop supplies, up to \$4.00, may be added.

STATESBORO'S ONLY FULL SERVICE AUTO CENTER

LOCALLY OWNED AND OPERATED
BY JEFF RAINES, GSU ALUMNI

UNIVERSITY TIRE AND SERVICE

— 2 CONVENIENT LOCATIONS —

HWY 301 SOUTH • STATESBORO
871-6659

HWY 80 EAST • STATESBORO
764-6659

Where you buy your books can make or break your bank

The Class	The Book	GSU Bookstore Price	Varsitybooks.com Price	Amazon.com Price
General Biology	<i>Biology: Concepts and Applications</i>	new: \$84.35 used: \$63.25	\$72.21	not available
College Algebra	<i>Graphic Approach to College Algebra</i>	new: \$79.00 used: \$59.25	\$71.31	not available
Pols 1101	<i>Introduction to American Government</i>	new: \$57.35 used: \$43.00	\$55.01	\$61.10
Hist 2110	<i>America: Past and Present</i>	new: \$47.00 used: \$35.25	\$39.86	\$46.90
Engl 1001	<i>Steps to Writing Well</i>	new: \$40.65 used: \$30.50	\$38.25	\$45.00
Anth 1002	<i>Anthropology</i>	new: \$68.65 used: 51.50	\$64.60	not available

When comparing prices of new books, where you shop can make a great deal of difference in how much you pay. The used book prices at the the GSU Book Store are less than any of the new prices, and you also have to keep the shipping and handling fees in mind when ordering online.

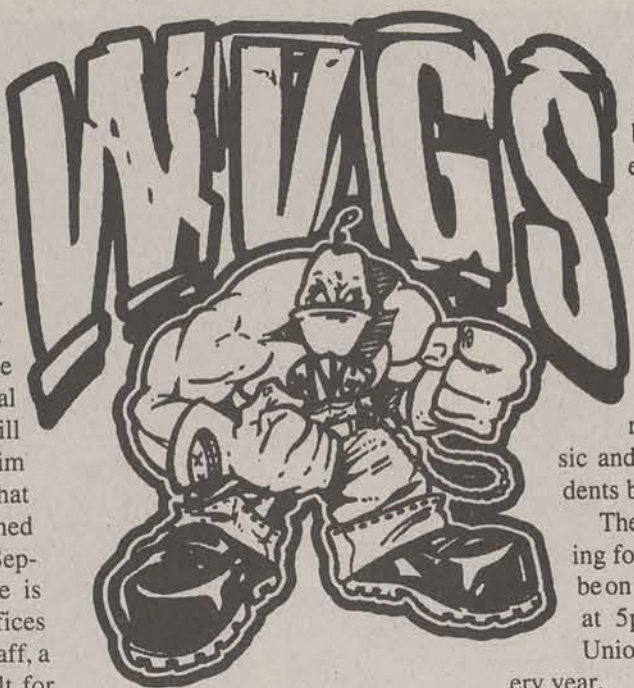
The Delayed WVGS

By Sam Siegel
A&E Editor

Students usually expect WVGS 91.9 to begin filling Statesboro with music when classes start, but they should not this year. The station is temporarily closed so that improvements can be made.

"We're in the middle of reworking the physical facility of the station," Bill Neville, the WVGS interim advisor, said. He said that the station will be opened "as early as possible" in September. A new console is being installed, new offices are being built for the staff, a new room is being built for the transmitter and the entire facility is being painted.

Engineers in the station putting together the console, the



tion is finished on the facility, the employees still have to be trained on the new equipment.

"This is the price of progress" Neville said. All of this is being done to provide a better radio station for the college, he said.

The radio station runs a variety of music and talk shows for students by students.

The organizational meeting for the station will still be on the first day of classes at 5 p.m. in the Russell Union Theater, as it is every year.

Anyone interested in being a DJ or participating in the workings of the station should attend this meeting.

cd players and the rest of the equipment necessary for broadcasting. Even once the construc-

Roommate relationships

Moving into a dorm is both exciting and scary. One problem that many students living in residence halls face is getting along with your roommate. There are several ways to make living with a roommate easier.

1. Decide when and how long members of the opposite sex can visit.
2. Decide who will buy items that are shared such as paper products, cleaning supplies and some food items.
3. Discuss study styles. Can you study with the radio on or does it need to be turned off?
4. Discuss who cleans the room and how often it needs to be cleaned.
5. Respect each other and your belongings. Everyone has a right to privacy.
6. Respect the quiet hours assigned to your residence hall. These hours are designated to help provide a good study environment.
7. When problems arise it is best to talk to the person you are having a problem with before getting others involved.
8. Remember: your resident advisor is always there to help. Talk to your R.A. if you cannot resolve the problem.
9. Remember that compromise is essential when living with others.

The Department of Housing contributed to this article



Statesboro Mall Location
Valid 8/18/99 - 8/24/99

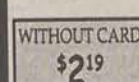


LIMIT 4. ADDITIONAL PURCHASES AT REGULAR RETAIL.



BUY ONE, GET ONE
FREE!

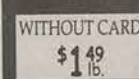
8 oz. • Assorted Varieties



Doritos
Tortilla Chips



Sweet, Juicy
Sun Ripened
Peaches

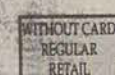


69¢
lb.



12 oz. Cans
Diet Coke, Sprite or
Coca-Cola
12 Pack

\$1.69



WITH YOUR
BONUSCARD
SAVE



BUY ONE, GET ONE
FREE!

20 oz. • Assorted Varieties



Nabisco Oreo
Cookies



18 oz. Corn Flakes, 11 oz. Froot Loops Or
Applejacks, 10 oz. Rice Krispies or 15 oz.

Kellogg's
Frosted Flakes

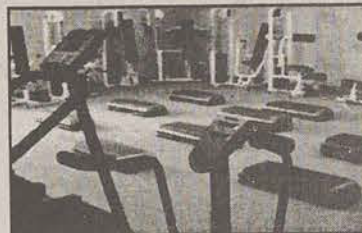


2
FOR **\$3**

Healthy Hair & Scalp • Waxing & Facials
Specializing in All Type of Hair
Pleasant Environment • Walk Ins are Welcome
Entire Family is Welcome



RENAISSANCE
BEAUTY & BODY WORKS



GSU DAYS
10 % Discount with
GSU ID on
Mondays, Tuesday,
and Wednesday



Visit us on the web
www.rbbw.com

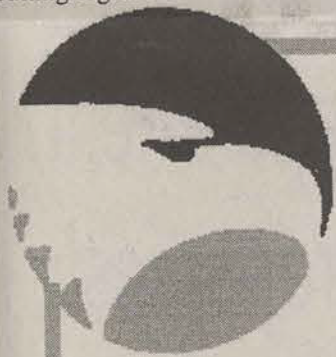
Beauty Salon • Barber Shop • Nail Salon
Computer Styling • Fitness • Massage

(912) 764-8434

8 Proctor Street, Statesboro, GA 30458

Also Accept Diner's Club,
Cash, or Checks

Email: rbbw@frontiernet.net • Fax (912) 764-8245 • Internet: www.rbbw.com



GSU
students

Reading the Savannah Morning News
can answer your questions!

Whether you need national news, area
entertainment information, a break on
your groceries, ideas for where to live,
today's weather, who's doing what in
sports, or need to find a job.

Read the Savannah Morning News
daily and get all the answers.

(Mail Back)

Special GSU Discount
"1/2-Off" Rate

- ☐ ONLY \$24.00 for One Semester
☐ ONLY \$40.00 for Two Semesters

Savannah Morning News.
www.savannahnow.com

NAME _____ PHONE _____

ADDRESS _____ APT. _____

CITY/STATE/ZIP _____

☐ Check Enclosed



Credit Card# _____

Signature _____ Exp. Date _____

☐ Please Bill Me

or Call 236-0271, 1-800-533-1150 (GA), To Sign Up Now!

Please use an envelope if paying by check or credit card.

Mail to:
Savannah Morning News
P.O. Box 1088
Savannah, GA 31402

I understand that delivery and billing will continue at the regular rate beyond the initial order period unless I notify the Morning News office by calling 236-0271. This offer is limited to households that have not subscribed in the past 30 days. Source: GSUPaper



DATE RAPE: SOAR leaders Carrie Leinhard and Ty Duffy portrayed the classic date rape situation. A sweet and innocent guy, Duffy's main goal was to get a little action from Leinhard.

Sarah Trucksis

SOAR leaders prepare freshmen for their first year experience

By Bryant Smalley
Features Editor

Students attending college for the first time usually have questions and concerns about college life.

It is the responsibility of the office of new student and parent programs and the SOAR team to address these issues during SOAR (Southern's Orientation, Advisement, and Registration).

SOAR is a summer program that gives both freshmen and transfer students an opportunity to become acquainted with GSU, to be advised and registered and to have any questions answered.

The first session for new students began June 8 and 11 additional sessions have followed. A team of 22 students led by Susan Braxton, director of new student and parent programs, accepted the task of orienting a combined total of over 3000 freshmen and transfer students to GSU.

Through small group meet-



Cory Brooks

A GAME OF VOLLEYBALL: Incoming freshmen got to know each other by playing games at the RAC. SOAR leaders emphasized the importance of meeting new people during orientation to the incoming freshmen so that they would recognize a few faces the first week of school.

ings, faculty and student panels and breakout sessions, the 1999 SOAR team prepare new students for their first year at Southern.

The SOAR leaders targeted tough issues of alcohol and drugs, diversity, eating disor-

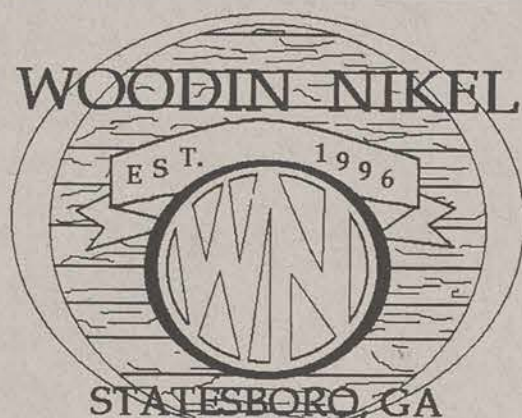
ders, and roommate conflicts through a campus issues skit. While at SOAR, freshmen also had the opportunity to experience on-campus housing by staying over night at Johnson Hall, and they were able to meet other incoming students at an

social held at the RAC by the SOAR team.

Hopefully successful in their efforts to provide new students with an informative and exciting first time experience at GSU, the SOAR team has received rave reviews from faculty and staff.

"I don't know of a more concentrated contribution by students to the operation of the University," Fred Richter, director of first year experience, said. "SOAR is a most impressive display of commitment to GSU, and it has inspired me to model the GSU 1210 Peer Leader program after the SOAR team as much as possible. The SOAR team is one of the most mature, dynamic, and likable groups of people I have ever met."

If you are interested in becoming a part of the SOAR 2000 experience, contact the office of new student and parent programs at 871-1987 for information. (Bryant Smalley was a 1999 SOAR leader.)



THIS WEEK AT THE WOODIN NIKEL

WEDNESDAY (8/18): THE ULTIMATE LADIES NIGHT
LADIES LOCK-IN RETURNS!

\$5.00 ALL-U-CAN DRINK & EAT

6-9PM

SORRY FELLAS, LADIES ONLY TIL 9 PM!!

THEN PARTY

W/ DJ ROCKY

\$1.00 VODKA DRINKS

\$1.00 DRAFT

THIS YEAR THE PARTY JUST GOT BETTER!

THURSDAY (8/19): DRINK, EAT & DROWN

DRINK ALL YOU WANT,

EAT ALL YOU WANT

\$10.00

6-9PM

WINGS, CHEESE STICKS, & LOTS OF STUFF TO GO WELL WITH BEER!

FRIDAY (8/20): KARAOKE NIGHT RETURNS!

W/ ED !

START EARLY WITH THE RETURN OF HAPPY TIME!

ALL-U-CAN EAT & DRINK 6-9PM

\$10.00

THEN TRY OUT YOUR SINGING SKILLS WITH THE BEST KARAOKE IN THE SOUTHEAST!

SATURDAY (8/21): THE REAL DANCE PARTY

RETURNS!

W/ DJ SCOOBIE

\$2.00 WELL DRINKS

\$1.00 16 OZ. DRAFT!

\$1.00 SHOTS!

MONDAY (8/23): MEXICAN MELEE NIGHT!

ALL-U-CAN EAT & DRINK TACO & BEER BAR 6-9PM

\$10.00

PLUS

\$2.00 CUERVO SHOTS

\$1.00 16OZ. DRAFT

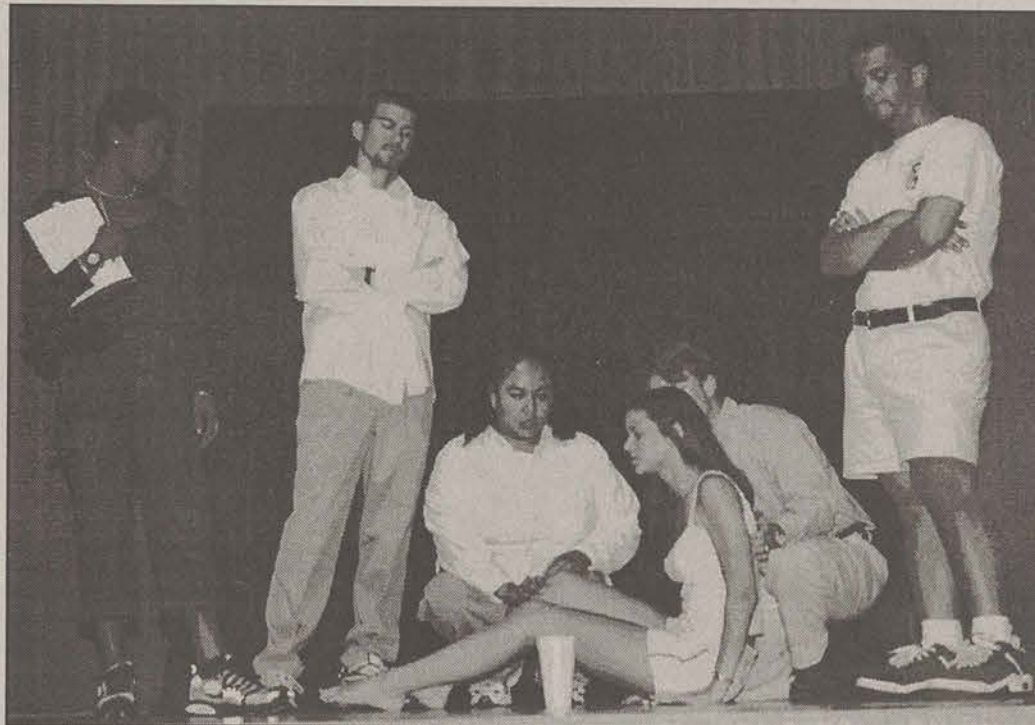
THEN PARTY AND SING ALONG

TUESDAY (8/24): BIG TIME BURGER NIGHT

ALL-U-CAN EAT BURGER & BEER BAR 6-9PM

\$10.00

ALSO ENJOY OTHER GOODIES TO GO ALONG WITH YOUR ICE COLD BEER!



Sarah Trucksis

PERSONAL ISSUES: SOAR leaders targeted the tough issue of eating disorders based on the television sitcom "Saved by the Bell."

Haven't found the right apartment? Check out Perimeter Properties!

We've got everything from affordable two bedrooms to spacious 4 bedrooms. With 7 complexes to choose from and a wide range of amenities and prices, we're sure we can find the apartment that meets your needs. Stop by our office and find your new home today!

Amenities Available:

- Washer/Dryers
- Dishwashers
- Central Heating & Air
- Ceiling Fans
- Garbage Disposals
- Vaulted Ceilings
- Patios
- Energy Efficient Construction
- Swimming Pools
- Basketball Courts
- Full time maintenance staff & 24 hour emergency call

PERIMETER PROPERTIES

224 Lanier Drive
Statesboro, GA 30458
(912) 871-4646



GSU marching band gears up for football season

By Jeremy Nix
Staff Writer

While many students are spending their last days of summer sleeping late in the comfort of air-conditioned homes, Southern Pride Marching Band has been working hard in the grueling heat. During band camp, the members of Southern Pride may practice anywhere from 9 to 15 hours a day both indoors and outdoors—even if there is a heat wave.

In early August, the band's section leaders participated in a retreat to prepare for the upcoming marching season. The major-ettes, flag corps and percussion lines began preparations on August 9.

Despite the heat, hard work and extensive hours, the attitude among the auxiliaries is one of

enthusiasm. Amy Huntley, a third year member of the flag corp, does not mind the strenuous day-long rehearsals.

"The hard work pays off in the end," Huntley said.

Some of the rehearsals are held in the RAC, but there are many hours of rehearsing outside in the heat.

Elizabeth Hunt, who has been participating in the summer rehearsals for three years, enjoys the time she spends rehearsing.

"It is hot, but I love it," Hunt said.

Matthew Fallin, director of the Southern Pride, is excited about the upcoming marching season.

"There are new faces and outstanding attitudes," Fallin said.

The 180 member band is working on two shows for this

year's football games.

One show has a movie theme that features songs from "Gone with the Wind," "Star Wars," "Glory" and "Robin Hood."

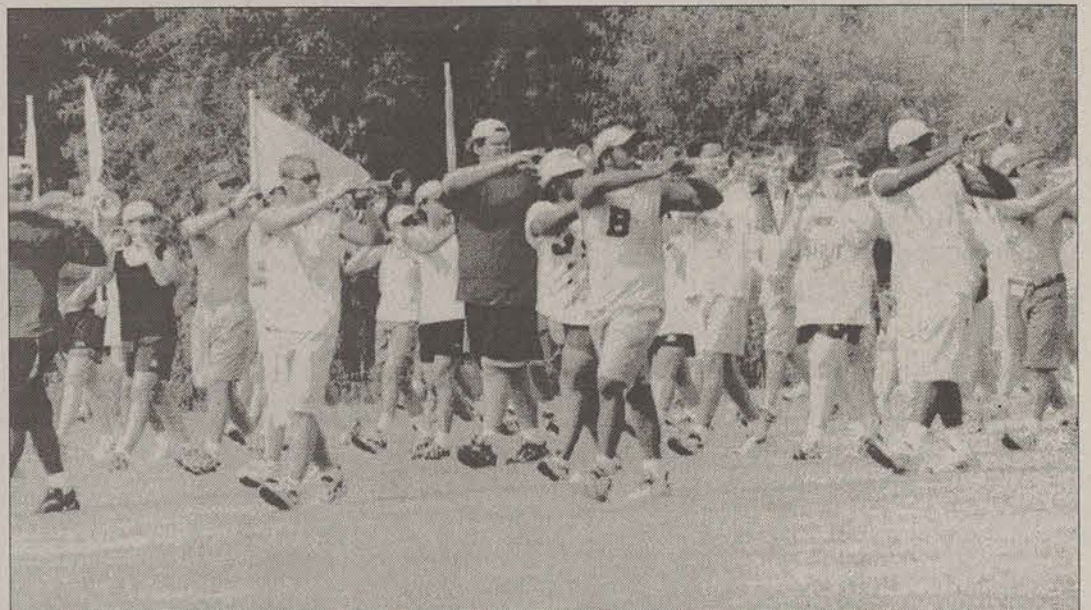
The second show, a swing show, includes songs such as "Sing, Sing, Sing," "It Don't Mean a Thing If It Ain't Got That Swing" and "Pachuco."

The band will play all home games and will travel with the Eagles to East Tennessee State University later in the season.

Fallin is very confident in this year's band.

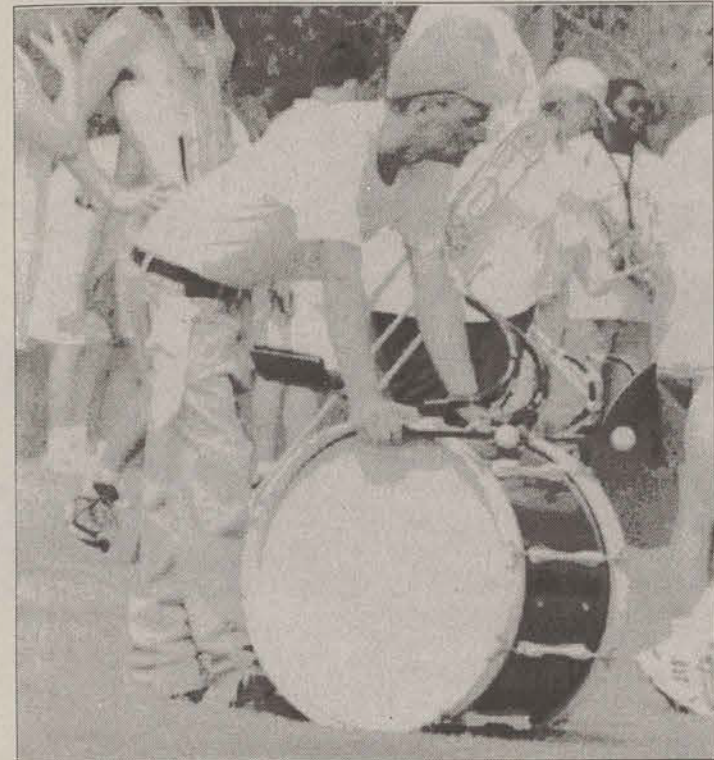
"The students are doing really well," he said. "This should be a good year."

Southern Pride will make their 1999 debut on September 4 when GSU takes on Fayetteville State in Paulson Stadium.



Sarah Trucksis

LEFT, RIGHT, LEFT: The musicians of the GSU marching band have a good time practicing their shows despite the August heat.



Sarah Trucksis

TAKING A PAUSE WITHOUT SKIPPING A BEAT: The marching band indulges in a rare moment of quiet and rest out on the field.

'Sixth Sense' scares up second week at top of box office

Associated Press

LOS ANGELES—Disney had a premonition "The Sixth Sense" would do well at the box office. The studio was right: The Bruce Willis thriller returned to haunt theaters as the No. 1 film for the second straight weekend.

"Sixth Sense," about a psychologist treating a boy who communicates with the dead, took in \$26.1 million, a scant 2 percent drop from the gross in its opening weekend, according to estimates Sunday. The movie has taken in \$70 million in its first 10 days.

"Bowfinger," the Steve Martin-Eddie Murphy comedy about a shy producer trying to make it in Hollywood, bowed in at No. 2 with \$18.2 million in its first weekend.

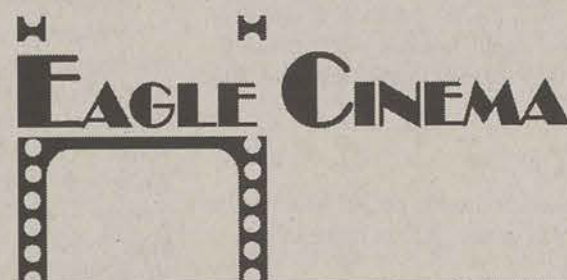
Two other movies had disappointing debuts. "Brokedown Palace," starring Claire Danes and Kate Beckinsale as Americans jailed for drug smuggling in Thailand, came

in ninth with \$4 million. "Detroit Rock City," a comedy about teens trying to score KISS concert tickets, opened with \$2 million for a likely 13th-place premiere.

"The Blair Witch Project" slipped from second to third place with \$15.3 million, according to Exhibitor Relations Co. Inc. The horror film shot on a tiny budget has grossed \$108 million, most of that since it went into wide release three weeks ago.

broadriver.com 793-6242
Broad River Outpost
near Athens
Open Daily
Canoe & Kayak
Rental • Sales • Instruction
\$15 person Wkend \$10 Wkday

Georgia Southern University



\$1.00 for GSU Students, Faculty, Staff or Guests.
All movies are shown at the Russell Union Theatre.
Films subject to change, depending upon availability.
For more information, call 486-7270
or the hotline at 681-5442.

1999 Fall Semester Movie Schedule

MUMMY
Thur., Aug. 26
5:30 pm & 8:00 pm
Fri., Aug. 27
7:00 pm & 9:30 pm

Wild, Wild West
Thur., Nov. 18
5:30 pm & 8:00 pm
Fri., Nov. 19
7:00 pm & 9:30 pm

Notting Hill
Fri., Sept. 18
5:00 pm, 7:30 pm,
& 10:00 pm
Sat., Sept. 19
4:30 pm & 7:30 pm

Entrapment
Thur., Sept. 9
5:30 pm & 8:00 pm
Fri., Sept. 10
7:00 pm & 9:30 pm

BIG DADDY
Once you adopt a kid
you've got to keep him
Thur., Nov. 4
5:30 pm & 8:00 pm
Fri., Nov. 5
7:00 pm & 9:30 pm

NEVER BEEN KISSED
Fri., Sept. 2
5:30 pm, 8:00 pm
Sat., Sept. 19
7:00 pm & 9:30 pm



Fri., Oct. 1
7:00 pm, 9:30 pm, & 11:30 pm
Sat., Oct. 2
8:00 pm

ATTENTION Skateboarders Roller Bladers

A company is exploring the possibility of centrally locating an indoor skate park facility in the Toombs, Montgomery, Candler, Evans, Emanuel, Appling, Jeff Davis, Laurens, Tattnall, Telfair and Bulloch Counties area. If you are interested in using such a facility, please answer the following short survey and send it or fax it to the address below.

My age is: _____ I live in: _____ (town)

I am a: ☐ Skateboarder ☐ Roller Blader ☐ Both

Would you be willing to travel 30 miles to use an indoor skate park facility? ☐ Yes ☐ No

If you are not old enough to drive, would your parents be willing to travel 30 miles to a skate park facility? ☐ Yes ☐ No

Fax to: 912-537-4899 or mail to:
Skate, P.O. Box 669, Vidalia, GA 30475

GSU

AUGUST		
Sat., Aug. 14	There's Something About Mary	9:00 pm (Free)
Wed., Aug. 18	The Waterboy	8:00 pm (Free)
Sat., Aug. 21	Rush Hour	8:00 pm (Free)
Thur., Aug. 26	The Mummy	5:30 pm & 8:00 pm
Fri., Aug. 27	The Mummy	7:00 pm & 9:30 pm
SEPTEMBER		
Thur., Sept. 2	Never Been Kissed	5:30 pm & 8:00 pm
Fri., Sept. 3	Never Been Kissed	7:00 pm & 9:30 pm
Thur., Sept. 9	Entrapment	5:30 pm & 8:00 pm
Fri., Sept. 10	Entrapment	7:00 pm & 9:30 pm
Fri., Sept. 18	Notting Hill	5:00 pm, 7:30 pm & 10:00 pm
Sat., Sept. 19	Notting Hill	4:30 pm & 7:30 pm
Fri., Sept. 24	Shakespeare In Love	7:00 pm & 9:30 pm
Sat., Sept. 25	Shakespeare In Love	7:00 pm & 9:30 pm
OCTOBER		
Fri., Oct. 1	Austin Powers:	
Sat., Oct. 2	The Spy Who Shagged Me	7:00 pm, 9:30 pm & 11:30 pm
Thur., Oct. 7	Austin Powers:	
Fri., Oct. 8	The Spy Who Shagged Me	8:00 pm
Fri., Oct. 8	The General's Daughter	5:30 pm & 8:00 pm
Fri., Oct. 8	The General's Daughter	7:00 pm & 9:30 pm
Thur., Oct. 28	Drive-In: You've Got Mail **	9:30 pm (Free)
Fri., Oct. 29	The Blair Witch Project	5:30 pm & 8:00 pm
Sat., Oct. 30	The Blair Witch Project	7:00 pm, 9:30 pm & 11:30 pm
Sat., Oct. 30	The Blair Witch Project	11:30 pm
	Rocky Horror Picture Show ***	9:00 pm (Free)
No movies are being shown from October 14 - 23 because of Fall Break & Homecoming		
NOVEMBER		
Thur., Nov. 4	The Haunting	5:30 pm & 8:00 pm
Fri., Nov. 5	The Haunting	7:00 pm & 9:30 pm
Fri., Nov. 12	Big Daddy	7:00 pm & 9:30 pm
Sat., Nov. 13	Big Daddy	5:30 pm & 8:00 pm
Thur., Nov. 18	Wild, Wild West	5:30 pm & 8:00 pm
Fri., Nov. 19	Wild, Wild West	7:00 pm & 9:30 pm
DECEMBER		
Thur., Dec. 2	Runaway Bride	5:30 pm & 8:00 pm
Fri., Dec. 3	Runaway Bride	7:00 pm & 9:30 pm

Eagle Cinema supported by the Student Activity Fee and Student Affairs
To be placed on the Eagle Cinema mailing list, call 486-7270.

* Family Weekend Drive-In Movie at Paulson Stadium, bring your blankets and food
** Rocky Horror will take place outside by the Russell Union Rotunda, No Ticket

Eagle Cinema supported by the Student Activity Fee and Student Affairs
To be placed on the Eagle Cinema mailing list, call 486-7270.

** Family Weekend Drive-In Movie at Paulson Stadium, bring your blankets and food
*** Rocky Horror will take place outside by the Russell Union Rotunda. No KISS!



Blair Witch Project
Thur., Oct. 28
5:30 pm & 8:00 pm
Fri., Oct. 29
7:00 pm & 9:30 pm
& 11:30 pm
Sat., Oct. 30
11:30 pm

The General's Daughter
Thur., Oct. 7
5:30 pm & 8:00 pm
Fri., Oct. 8
7:00 pm & 9:30 pm

Statesboro has food, snacks and fun for all ages

By Tricia Hall and Sam Siegel
Lifestyles and A&E Editors

Statesboro is not a big city, but it has enough restaurants to be. One can live here for years without acquainting one's self with all of them. For those of you who are new to the area, or if you just haven't gotten around much, here is a list of restaurants, bars and snack places that will quench your thirst, fill your stomach, or give you a cool treat, so enjoy!

Restaurants

•Zaxby's

Amazing chicken-fingers, sandwiches, salads and chicken wings. There are two locations; one is on Fair Road near Wendy's and the other is on Georgia Avenue in the same shopping center as Wild Wing and Mellow Mushroom. Prices range from \$4 to \$6.

•The Beaver House

Good southern food served family style. They provide tasty food in great quantity. They are located on Main Street across the street from the Statesboro Library. A meal will cost between \$8 and \$12 before drinks.

•Franklin's

Southern food. Known for good fried chicken and apple pie. On the corner of Main Street and Northside Drive. Prices range from \$6 to \$11.



•Vandy's

Some of the best BBQ anywhere. They serve good southern food including fried chicken and Brunswick stew. There are two locations; one in the Statesboro Mall and the other in downtown behind RJ Pope and Hair Studio 101. Their prices range from \$4 to \$6.

•Snooky's

Sandwiches, steaks and chicken fingers. On Zetterower across the street from the practice football fields. Most entrees are between \$4 and \$5.

•Holiday Pizza

Great Greek food and pizza. Fun and friendly service. They are located on Fair Road in the same shopping center as El Sombrero. Entrees range from \$6 and up.

•Western Sizzlin

Steak and buffet bar. Located on South Main near RJ's. Price of a meal is about \$6 to \$8.

•Pizza Inn

Better for quantity than quality, they serve a good variety of pizza at low prices. Located on South Main (301) across the street from GSU.

•Nikko Japanese Steak and Seafood House

A Japanese restaurant known for its elegant atmosphere and good quality. Located on Brannen St. across from Winn Dixie. Entrees range from \$6 to \$10.

•Hachi

Another good Japanese restaurant. The dining room is not quite as nice as Nikko, but they serve sushi, which Nikko does not. The quality of food is about the same. The average meal costs about \$6.



•Health Attack

Great place for a healthy lunch or a smoothie. Good vegetarian menu. Located on Brannen St. near Nikko, across the street from Winn Dixie. Full lunch for under \$5.

•Captain Joe's

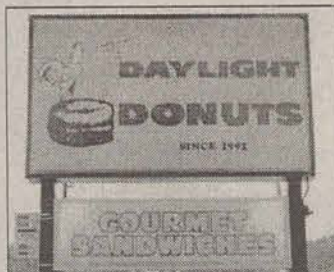
Seafood restaurant located on 301 south of the Bypass. A meal is usually \$10 or more.

•RJ's Seafood and Steak

The title says it all. They serve seafood, steak, salad and so on. Located on South Main Street. Average price of a meal is \$8.

•Daylight Donuts

They serve breakfast biscuits, sandwiches and coffee. Good for breakfast or lunch. Located on South Main Street. Average meal is about \$5.



•Peking Chinese Restaurant

Chinese food. Meal for \$6 and up. Located at the intersection of Fair Rd, South Main St. and Brannen St.

•Craig's Deli

"Deli" explains it. Full lunch for under \$5. On East Main St. near Statesboro City Hall.

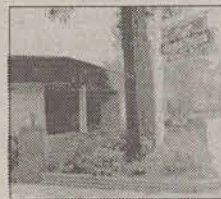
•Southern Palace

Good Chinese food. Meal for \$6 and up. Located in the same shopping center with the Winn Dixie on Brannen St.

Bar/Restaurants

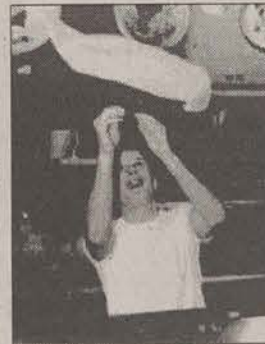
•Dingus McGee's

Good hamburgers, steaks and salads—basic American cuisine. Located on the corner of Georgia Avenue and Chandler Road. Average meal ranges from \$5 to \$6. Good for listening to music and hanging out.



•Mellow Mushroom

Good pizza, calzones, grinders and salads. Located on Georgia Avenue in the same shopping center as Wild Wings and Zaxby's. Prices range from \$4 to \$6. Good place to play pool or sit on the deck with friends.



•Wild Wing Café

Good chicken wings, hamburgers and a variety of other choices. Good place to hear live music and have fun. Located on Georgia Avenue in the shopping center with Mellow Mushroom. Meals range from \$5 to \$7.

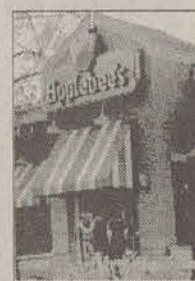
•El Sombrero

Really good Mexican food in a fun atmosphere. Two locations. One on Fair Road in the same shopping center with and Holiday Pizza. Prices range from \$4 to \$7.



•Applebee's

Good variety of hamburgers, pasta salads and other things. It is located in front of Lowes on Northside Dr. Prices start at \$6.



•Buffalo's Café

Good for steak, hamburger, chicken wings and various other selections. Great place to mix with friends and listen to music. Prices are \$5.00 and up.

•Longhorn Steak House

"Steak House" says it all. Located across Northside Dr. from Walmart and Ruby Tuesdays. Prices start at \$7 and go up.

•Ruby Tuesday's

Good for salad, pasta, hamburgers and other selections. To enter, drive into the Walmart parking lot and then into the restaurant lot. Prices start at \$6.

Bars and Clubs

•Krickets

Good country and rock hangout. Tuesday night is Swing Night. Located on 310 several miles south of the Bypass.

•The Woodin Nikel

Good place for listening to rock and sitting with friends. Located next to the Fast and East in the same shopping center with Zaxbys, Mellow Mushroom and the Wild Wing Café.



•Horizons

Good place to go play pool or listen to a variety of music. Pool and arcade games provided. Monday night is Swing Night and Sunday night is Teen Night (people 12 to 17 only). Located on Lanier Rd. across from Paulson Stadium.

Please see RESTAURANTS, page 7B

SNACKERS

BOOKS PLUS

ONE LOCATION

RUSSELL UNION
681-0450

REGISTER TO WIN GIANT NESTLE CRUNCH

Heroin Addict Purse Snatcher Vandal Car Jacker

...all kicked out
with the help
of kids like me.
—Billy, age 15

Everybody loves to trash teenagers, right? Maybe they don't realize that we do care. That we can make a difference. Get involved in Crime Prevention. Clean up parks. Teach younger kids. Start a school or neighborhood watch. And help make your community safer and better for everyone. Together, we can prove them wrong by doing something right.

Call Toll Free
1-800-722-TEENS
www.weprevent.org

Continued from page 6B

On-Campus Restaurants

•The Educated Palate

This is a good Italian eatery. Located in the Russell Union. Prices start at meal plan and go up.



•Lakeside Café

Good pizza, hoagies, mexican food and frozen yogurt. Located across the pedestrian from the Carol Bldg and the Henderson Library. Prices start at meal plan and go up.

•Landrum

A variety of choices--everything from pizza to Chinese food to American cuisine. Located in the building with the GSU Post Office. Prices start at meal plan and go up.



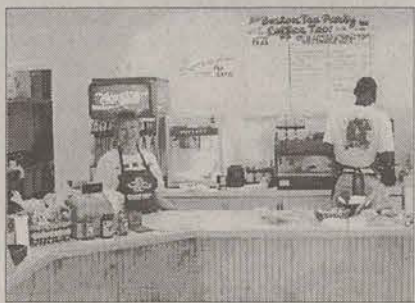
•Union Station/ Chick-fil-a

Good place to go get a chicken sandwich or a hamburger if you are on campus. Located in the Russell Union. Prices range from the meal plan price to \$6.00.

Snacks

•Emack and Bolio's

Good place for coffee and desert. They have especially good ice cream. Also a great place to sit and chat with friends. Located in the shopping center with El Sombrero.



•Dunkin Donuts/ Baskin Robins

Good place for a sweet treat or a good breakfast. Located on Fair Road across the street from the GSU practice fields.

•Sno-Biz

Snow cones for a hot summer day. Located behind Western Sizzlin' and across Fair road from El Sombrero.

All photos by Sarah Trucks

If you would like to write for the Lifestyles section of The George-Anne, contact Tricia Hall at 681-5246 or stop by our office in Room 2023 of the Williams Center.



Abby Franco

MOVING IN: On Saturday and Sunday, students flooded the campus to move into residence halls. Resident advisors were on hand to assist students moving in. Activities such as cook-outs and ice-cream socials were also offered to welcome back students.

Decatur musician killed in car wreck

BLANDFORD, Mass. (AP)—A Georgia musician was killed and three band members injured when their van went off a rainy mountain road in the Berkshires and hit a utility pole, police said.

Louis Lawrence, 29, of Decatur, Ga., a member of A Day By the River band, was pronounced dead at the scene of the

Sunday accident, according to State Police Sgt. Kevin Hanna.

The three injured band members, Jason Rabineau, 25; Edward Lahey, 25, and Andrew Abramson, 28, all of Athens, Ga., were released after treatment at Noble Hospital in Westfield. Three others, including driver, David Brockway, 26, of Athens,

Ga., escaped without injuries.

The band had been on its way to perform at a music festival at a ski area in Great Barrington when it went off the road shortly after noon.

Investigators are still trying to determine the cause of the crash, but it was raining and the road was wet, Hanna said.

Same-sex marriage on hold for university ruling

Associated Press

WINSTON-SALEM — Wake Forest University is discussing a policy on same-sex marriages in one of its chapels, an issue that has delayed a ceremony two women have been trying to get for nearly two years.

Susan Parker and Wendy Scott asked the congregation of Wait Chapel, one of two on the university campus, for permission to have a covenant ceremony in November 1997.

Parker and Scott say they're not just trying to make a point. It's crucial that their ceremony take place in their own church, they say. They haven't considered holding it anywhere else.

"This is about spiritual relationships: to each other, to our families and to God. We trust the university will do the right thing," Parker said.

A congregation vote approving same-sex ceremo-

nies hasn't settled the issue. The women, who had planned an Aug. 20 ceremony, have been put on hold while the university Board debates the issue.

The congregation, Wake Forest Baptist Church, meets in Wait Chapel, which is owned by the university. University chaplain Ed Christman said he won't schedule the ceremony for Parker and Scott until the university sets a policy on the issue.

"If I had thought of this more in terms of the church, and of one pair of persons, then certainly it's conceivable I would have simply scheduled it and that would have been that," Christman said.

Christman is a member of the church but said he was acting as a university employee in seeking guidance from the Wake Forest board. When the request was made, Christman asked university president Thomas K. Hearn Jr. to have the school explore the issue.

'Angel' co-stars answer questions

Associated Press

David Boreanaz and Charisma Carpenter, the stars of "Angel," the WB network's new "Buffy the Vampire" spinoff, talk about first loves, getting grounded and fetishes in the September issue of *Seventeen* magazine.

In an article by Eliza Bergman Krause, Boreanaz, 28, and Carpenter, 29, talk about their characters. Boreanaz plays Angel, a moody vampire, and Carpenter plays Cordelia, an aspiring actress. Angel runs into Cordelia in Los Angeles, where he moves after breaking it off with Buffy (Sarah Michelle Gellar). Cordelia becomes Angel's "girl Friday" while she waits to get her big break in acting.

Boreanaz and Carpenter answered several questions posed by *Seventeen* about their lives and their new series.

Question: Is this the end of the great Buffy and Angel romance?

Boreanaz: "I don't think you've heard the last of Buffy and Angel. There's another story to be told concerning the two of them."

Question: Is Charisma as mischievous as Cordelia?

Carpenter: "I was grounded every weekend... but it wasn't my fault!"

Question: Do you have any advice for teens going back to school?

Carpenter: "High school is like boot camp... So you need to hone those survival skills now."

broadriver.com 795-3242
Broad River Outpost
near Athens
Open Daily
Canoe & Kayak
Rental • Sales • Instruction
\$15 person Wknd \$10 Wkday

CRESCENT MOON TALENT

THE SOUTHEAST'S SOURCE FOR COLLEGE ENTERTAINMENT

Country/Southern Rock

Comedians & Hypnotists

Formal Bands

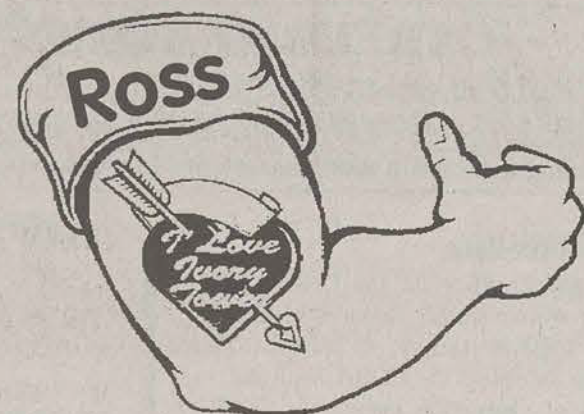
Party Rock

80's Bands

Acoustic Solos/Duos

Funk/Motown/Soul

contact: Chip Staley 1-800-666-0098



Ivory Tower
welcomes
you to Statesboro.

Mondays
Names or
Fraternity/ Sorority Letters
\$25⁰⁰

10%-25%
Student Discount
(According to purchase)

Wednesdays
\$30⁰⁰
Navel Piercing

For any questions or advice concerning, or if you are interested in getting a tattoo or body piercing please call or come by and see us at

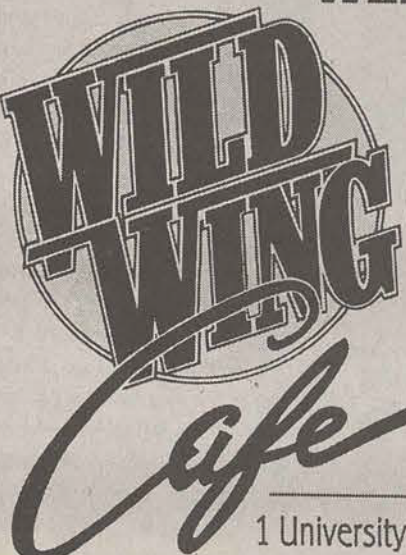
Ivory Tower
Tattoos/Piercing

764-5048 • 406 Fair Rd. #9

Welcome Back!

All You Can Eat
Tonight! 6-9pm
\$10 Wing Ding

• Wings & Food Bar • Draft Beer
• Margarita Pitchers



Thirsty
Thursday
\$1 Vodkas
\$1.25 Icehouse
Skwzbxx

Friday Night
Disco Party
PARTY WITH
Stayin' Alive
Prizes for costumes
& dancers

1 University Plaza • 681-WING Dine In • Take Out • Delivery

Entertainment and fun all around town

By Sam Siegel
A&E Editor

Welcome back, GSU students! If you're aching for something fun to do before school starts up for the year, fear not. There's plenty to do if you have a little bit of cash and a whole lot of ambition.

Thursday

The Wild Wing Café will be hosting the **Ben Swift Band**.

If you want to get wild, Legends is having their annual **Welcome Back Party**.

The Woodin Nickel is hav-

ing a theme night, **Drink, Eat and Drown**. It explains itself.

Horizons, the establishment formerly known as Southern Cafe, is having **Dance Night**.

Sing your heart out with your friends at Buffalo's **karaoke night**, or head over to Krickets for **Ladies' Night**.

Dingus McGee's will have **Jamie Woods** playing.

Friday

The Wild Wing Café will be having the legendary **DJ Rob Meadows**--dance your

heart out.

Buffalo's is getting into the whole pro-wrestling trend with **Wrestling Night**. Catch the **Jason Harkom Band** afterwards.

Members Only will have their gig at Legends.

Catch the best **karaoke night** in town at Woodin Nickel.

Horizons is holding a **Welcome Back Fall Bash** with four DJs.

Krickets will be hosting the **Outriders Band**, and Dingus McGee's will feature the music of **Jamie Woods**.

Saturday

Woodin Nickel will have their infamous **Dance Party**.

If you're more in the mood to kick back and listen to the bands play, check out the **Captain Crajos Band** at Horizons, or this year's Battle of the Bands competitor **Rye House** at Buffalo's Cafe.

Regardless of what you decide to do, you're sure to remain entertained throughout the week. With a little bit of planning you could probably see all there is to see just in these next three days. And hey, you might even pull in a few new friends.



Stacey Wysong, Managing Editor

Top 5 Albums I Couldn't Live Without:

1. Mental Jewelry -- LIVE

LIVE is my all-time favorite band and, of all their albums, Mental Jewelry best reflects who they are to me. Everything from vocals to lyrics to music is five star on this album.

2. Automatic for the People -- R.E.M.

If you're from Georgia and haven't fallen in love with R.E.M. yet, shame on you! These guys are simply the best in alternative rock, and I'm sure they'll be around for a long time to come.

3. Shades -- Nina Storey

This girl can sing. Whether you're looking for funk, blues, rock, or soul, Nina Storey has it covered. She's been known to stop by Statesboro now and then, so keep looking!

4. Galore -- The Cure

All their hits, all on one CD. What more could you ask for?

5. Fumbling Towards Ecstasy -- Sarah McLachlan

She's so amazing. All of her albums are full of life and grace, but I think "Fumbling Towards Ecstasy" is her best yet.

Woodstock celebrates 30th anniversary in N.Y.

Associated Press

BETHEL, N.Y. — Performers sported gray hair this time and revelers brought strollers and cell phones to a reunion concert marking Woodstock's 30th anniversary.

The "Day in the Garden" concert Sunday lacked the youthful mayhem of the famous three-day 1969 show here at Max Yasgur's old farm. This one-day show was more geared toward 1960s stalwarts and their families who wanted to hear original Woodstock

artists likes Arlo Guthrie and Richie Havens.

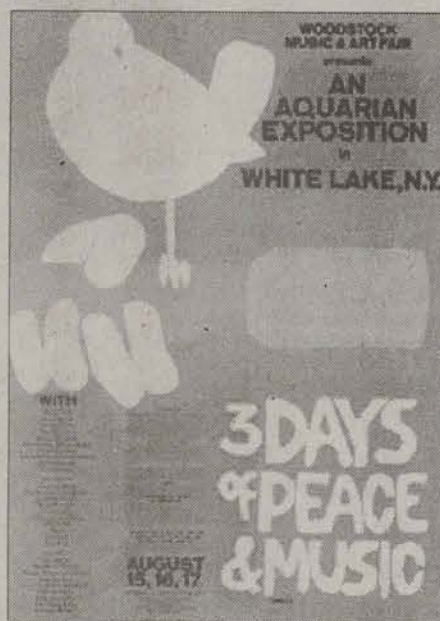
And it was a chance to rekindle a bit of Aquarian spirit many believe was sullied by rioting crowds at the far larger official Woodstock '99 concert in Rome, N.Y. last month.

"This is what it's all about, not like that synthetic, false Woodstock," said 49-year-old Charles Castrovinci of Westchester County.

Castrovinci was one of the many original concert-goers to return to the grassy hill located 80 miles north of New York City. Some, like 53-year-old Lee Augustine of Wawarsing, came back with their children.

"I wanted my kids to experience some of the music and camaraderie," he said as his three young children gobbled curly fries at his wife's lap. "You can repeat some of it. You can bring back the music."

And the performers did. Havens roused the crowd with



his old Woodstock chestnut "Freedom" and Melanie performed Jimi Hendrix's "Purple Haze." Country Joe McDonald performed his signature anti-Vietnam War "Fish Cheer," once again exhorting the crowd to spell the obscene word that starts the song.

"It was three days of peace and music," Melanie told the crowd, adding that the show on stage looked like "old timers' day."

That sentiment was echoed by 20-year-old Joey Ruchtie, who assessed the concert like this: "The music is kind of outdated. The atmosphere is good."

As expected, the show drew far less than the roughly 400,000 people who showed up 30 years ago. Promoters who have been fixing up the long-neglected site for over a year said more than 12,000 people had bought tickets for the show, which lasted well past midnight. Only a few hundred people stayed to the very end.

Roseanne in the center of bruising battle over her show

Associated Press

NEW YORK — If Roseanne becomes the new queen of late-night television this fall, it won't be by choice. Not by a long shot.

Her struggling daytime talk show has been assigned by several TV stations to start when most of the intended audience is asleep: 1 a.m. in Phoenix, midnight in Denver, 1:05 a.m. in Minneapolis, after an informal.

Other stations have dumped Roseanne completely.

Entering its second year, "The Roseanne Show" is not quite dead, but not really alive, either. Its star, the former blue-collar heroine of situation comedy, is enmeshed in a nasty corporate battle.

She's not talking, but her executive producer, Jeff Wald, is tossing

a few grenades. He said the show's recent cancellation by 11 NBC-owned stations was an attempt to strong-arm Roseanne into quitting.

"I don't like bullies," Wald said, "and I think they're trying to bully her."

It wasn't supposed to be this way, of course. It never is. There was such enthusiasm when Roseanne agreed to a talk show that stations representing 86 percent of the country signed up, even though the syndicator, King World, required two-year contracts at stiff prices.

Critics immediately noticed the show's schizophrenic nature. Some days Roseanne wanted to entertain you, other days enlighten you. Some days she wanted to make you mad, other days she did so unintentionally. It was never clear what "The Roseanne Show" was really all about.



Internet photo

Hungry Howie's Pizza

HOWIE COMBO

1 Large 1 Topping Pizza*
1 Howie Breadsticks plus Sauce*
Plus Free 2-liter Coke ©

\$9.98

Plus Tax Exp. 7/1/00 Delivered or Pickup

GSU CAMPUS VALUE MEAL

1) 12" Sub w/ Coke
2) Med. 1 Topping w/ Coke
3) Large 1 Topping
4) 10 Wings w/ Bread & Coke

\$4.99

Plus Tax Exp. 7/1/00 Delivered or Pickup

WINGS SPECIAL

ADD 10 TO ANY ORDER
WINGS ONLY **\$3.99**

Plus Tax Exp. 7/1/00 Delivered or Pickup

LARGE SPECIAL

Large 1 Topping Pizza Special **\$4.99**

Pickup Only Plus Tax Exp. 7/1/00

Call or Drop by

764-6565 • 607 Brannen St. • Across From Winn-Dixie

CAREER SERVICES EVENTS

Fall Semester 1999 Open Monday-Friday, 8:00am-5:00pm

912-681-5197, 1047/1058 Williams Center, <http://www2.gasou.edu/sta/career>

CRC Walk-in Assistance: 9:00-12:00 & 1:00-4:00 Monday-Friday

Career Services Satellite

The Career Services Satellite Office for the College of Business Administration allows Career Services to expand its services to business students, faculty, & alumni. This office provides one stop shopping for COBA students.

Hours of Operation are:

Monday: Walk-ins 9am-Noon, 1-4pm

Tuesday: Appointments

Wednesday: Appointments

Thursday: Walk-ins 9am-Noon & at Career Services CRC from 1-5pm

Friday: Walk-ins 9am-Noon, 1pm-4pm

For more information about the office or to make an appointment, please contact:

Angela Clark, Career Service Specialist

1100 COBA

Phone: 912-681-0516

Fax: 912-681-0648

email: angelac@gsvms2.cc.gasou.edu

Cooperative Education

With more than a million college graduates entering the workforce each year, it is likely that many graduates will have some difficulty finding a career position in their field of study, usually because of lack of practical work experience. GSU's Co-op program can give you practical experience and the competitive edge it takes to find a job when you graduate.

Meet with Warren Riles, Co-op Coordinator to learn more about the Co-op program.

Walk-in Hours:

Every Monday & Wednesday 9am-1pm

Co-op Seminars for Fall 1999

Monday, Sept. 13, 11:30am-1:00pm: Union Room 2048

Tuesday, Sept. 21, 4:00pm-5:30pm: Union Room 2042

Wednesday, Sept. 29, 7:00am-8:30am: Career Services

Friday, Oct. 8, 11:00am-12:30pm: Union Room 2044

Thursday, Oct. 21, 2:30pm-4:00pm: Union 2084

Sunday, Oct. 24, 6:00pm-7:30pm: Union 2042

Saturday, Oct. 30, 10:30am-12:00pm: Union 2042

Monday, Nov. 1, 11:30am-1:00pm: Union Room 2044

Tuesday, Nov. 9, 4:00pm-5:30pm: Union Room 2044

Wednesday, Nov. 17, 7:00am-8:30am: Career Services

Sunday, Nov. 21, 6:00pm-7:30pm: Union Room 2042

Thursday, Dec. 2, 2:30pm-4:00pm: Union Room 2044

CO-OP Listserv Up-Dates

Do you want an up-date of the open CO-OP positions, new CO-OP employers and Cooperative Education information? If so, then join our listserv list, **COOPMAIL!!!**

Send an e-mail message to:

listproc@gsaix2.cc.gasou.edu

Subject: (Don't put anything)

Subscribe **COOPMAIL**, your first name your last name
Example: Subscribe **COOPMAIL** Warren Riles
(Shut off signature)

Then Send

Send a message through **COOPMAIL** to:

COOPMAIL@gsaix2.cc.gasou.edu

Employment Listserv Up-Dates

Seniors & Alumni, are you interested in any Career Services Recruitment Activities (in other words, what companies are willing to come to campus to interview)? If so, then join our listserv, **EMPLOYU!!!** Send an email message to:

listproc@gsaix2.cc.gasou.edu

Subject: (Don't put anything)

Message: Subscribe **EMPLOYU** your first name your last name

Example: Subscribe **EMPLOYU** Connie Franklin
(Shut off signature)

Web Job Listing

Are you looking for part-time jobs on campus? Off campus? For full-time employment after graduation? Leadership opportunities? Internship opportunities? Check out Career Services' Web Job Listing!

To obtain information:

Access the Internet

Go to <http://wjl.resumeexpert.com/0290>

Click on Student

Password: **gsualumni** (one word)

Questions:

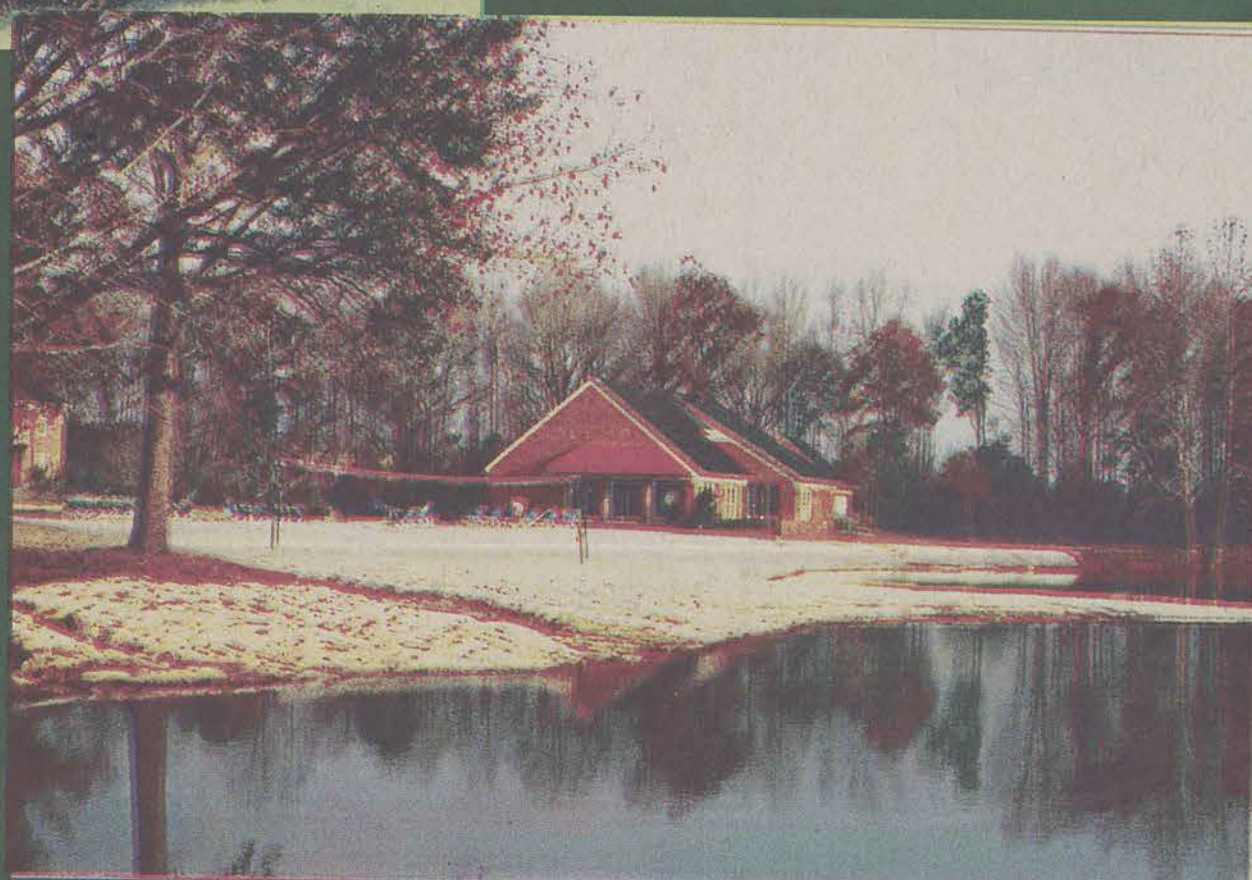
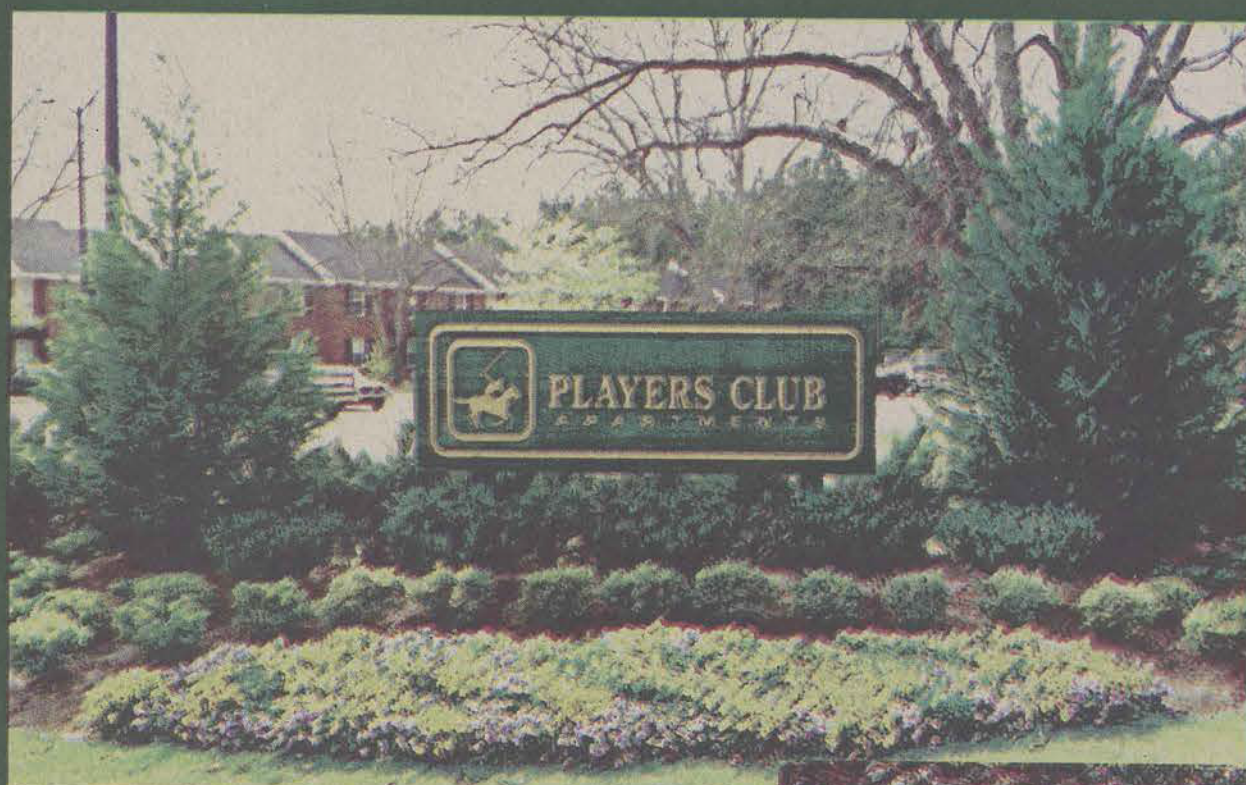
Part-Time, Teresa Burdette: Financial Aid, 681-5413

Full-Time Employment: Career Services, 681-5197

Leadership, Sherri West: Russell Union, 681-0399



PLAYERS CLUB APARTMENTS



NOW LEASING FOR FALL '99

- Fully Equipped Fitness Center
- Clubhouse w/ Large Screen TV
- Swimming Pool
- Planned Social Activities
- 2, 3 & 4 Bedroom Apartments
- Tennis & Basketball Courts
- Washers & Dryers
- Sand Volleyball
- Private Decks & Patios
- Roommate Matching Service

The Place for you at GSU!

710 Georgia Avenue
Statesboro, GA 30458
(912) 871-6501

