

Georgia Southern University

Digital Commons@Georgia Southern

The George-Anne

Student Media

2-24-1998

The George-Anne

Georgia Southern University

Follow this and additional works at: <https://digitalcommons.georgiasouthern.edu/george-anne>

Recommended Citation

Georgia Southern University, "The George-Anne" (1998). *The George-Anne*. 1517.
<https://digitalcommons.georgiasouthern.edu/george-anne/1517>

This newspaper is brought to you for free and open access by the Student Media at Digital Commons@Georgia Southern. It has been accepted for inclusion in The George-Anne by an authorized administrator of Digital Commons@Georgia Southern. For more information, please contact digitalcommons@georgiasouthern.edu.



The George-Anne

Georgia Southern University's Official Student Newspaper

Statesboro, Georgia 30460

Founded 1927

BLUE EDITION
Tuesday
February 24, 1998
Vol. 70, No. 51

The oldest continuously
published newspaper in
Bulloch County

Sports



SoCon Champs!

The nets came down Saturday night as GSU's Lady Eagles clinched the SoCon regular season title with a 78-74 win over the Western Carolina Catamounts.

Please see story,
page 6

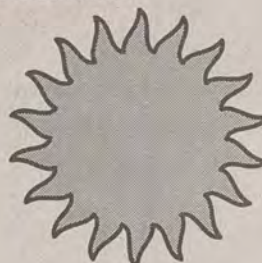
Features

BMOC

Clint Bridges won the 12th Annual Big Man on Campus last Wednesday. The event was sponsored by Zeta Tau Alpha and the proceeds went to fight breast cancer.

Please see story,
page 10

Weather



Today: Sunny with a high in the lower 70s and a low in the mid-30s.

Wednesday: Sunny with a high in the mid-70s and a low in the mid-40s.

Today's Word

risibility (rizuBILute)
n. the inclination to laugh.

Source: Weird Words

Index

Announcements	2
Classifieds	9
Crossword	9
Features	8
Only in America	3
Opinions	4
Police Beat	2
Sports	6

It is a desire of The George-Anne to print the news of Georgia Southern University as accurately as possible. If you believe that something covered is in error, contact the editor at 681-5246 as soon as possible. Thank you.



FOR ADVERTISING INFO: 681-5418
STORY OR PHOTO IDEA: 681-5246
FAX NUMBERS: 871-1357, 681-0863
LANDRUM BOX: 8001
E-MAIL TO:
stud_pub@gsu.edu
Check out our On-Line Newspaper at
http://www.stp.gsu.edu

The George-Anne

Liked By Many, Cussed
By Some ...
Read By Them All

Future of parking discussed at town hall meeting

By Rhett Erb
Guest Writer

The closing of the dirt lot and future plans for parking were among the topics of discussion addressed at the first town meeting sponsored by GSU's Student Government Association last Wednesday.

According to Phil Hodges, director of facilities planning, the dirt lot is expected to be closed by March 18. He said the expansion of the Southern Center for Continuing Education will result in the loss of 500 occupied spaces. Students will be forced to park in the west commuter lot, the new performance annex or in the spaces near the Marvin Pittman School.

In addition to these spaces, new spaces will be added to the Humanities parking lot. There will be a total of 600 spaces created to replace the 500 being lost, Hodges said.

Students will find that there will be enough parking, but they may find it inconvenient, said Bob Chambers, director of parking and transportation.

He said that by the fall of 1998, a new lot will have been constructed for students near the ROTC rappelling tower. This new lot will provide an additional 306 spaces.

Chambers said that he is also looking into having spaces reserved near the Southern Center, once the expansion is completed and open to students at certain hours of the day.

Hodges said that GSU is working on having the future parking lots based on



Cory Brooks

By March 18, this dirt lot will be closed and 500 commuter parking spaces will be lost to make way for the expansion of the Southern Center for Continuing Education.

three aspects.

"Adequate number of spaces, proximity and free flow of traffic [are what we are striving for]," Hodges said.

Future plans for parking, focusing on these aspects include a plan for an additional 1,737 spaces, to be available in the next 18 months, he said.

These plans include 178 spaces that

will be added to the west commuter parking lot, the moving of the physical plant to provide 100 spaces for students and an additional 100 spaces to be constructed near Dorman Hall.

The additional spaces, that will be provided near Dorman Hall, will only be a net gain of 38 spaces. It will be built in anticipation of an extension to the Physics Build-

Birds die en masse at Williams Center

By Kelley McGonnell
News Editor

Last Thursday, a crowd formed outside the Williams Center. They weren't enjoying the nice weather. They were watching as birds careened to the ground dead.

The crowd formed as rumors of birds committing suicide circled around the offices in the Williams Center.

The birds, cedar waxwings, were not killing themselves. They were attempting to go through the windows of student publication coordinator, Bill Neville's, office.

"I heard wham-wham-wham," Neville said. "At first, I thought it was disgruntled readers throwing something at the window, only to find out it was birds committing harey-carey."

The birds were gathered in a holly tree outside The George-Anne offices and they could see the reflection of the tree in the windows, according to Raymond Chandler, assistant professor of biology.

"The reflection looked like an opening that they thought they could fly through," Chandler said.

The birds hit the windows going relatively fast and consequently, they died from trauma to the head, either fractured skulls or broken necks, Chandler said.

Chandler and a colleague went to the Williams Center after rumor of the birds reached the biology department. They counted at least 11 birds which died by flying into the windows.

According to Chandler, the birds are migratory who live in the northern half of the country and Canada when the weather is warmer.

"They build into very big flocks when they start to migrate north," he said. "That's why there were so many there."

The cedar waxwings were gathered in the holly tree because they eat the berries to fatten up before their flight north, Chandler said.

The birds will now be used as study specimens for the biology department and will be on permanent display, Chandler said. They will be laid on their backs and stuffed with cotton so students can study the waxwings plumage and coloring, he said.

According to Chandler, mistaking reflections is a very common problem among many kinds of birds. To avoid future deaths, Chandler said people can pull down their shades to make windows less reflective. People can also place stickers on the windows or something in front of the windows to break up the reflections.

**"AT FIRST, I THOUGHT IT WAS
DISGRUNTLED READERS THROWING
SOMETHING AT THE WINDOW,
ONLY TO FIND OUT IT WAS BIRDS
COMMITTING HAREY-CAREY."**

**--BILL NEVILLE, COORDINATOR OF
STUDENT PUBLICATIONS**

GSU groundbreaking



Rebecca Smith

GSU officials broke ground last Wednesday on the Southern Center for Continuing Education expansion project.

Miss African-American



Anne Stanley

Jamico Primrose was crowned Saturday night at the 9th Annual Miss African-American Pageant.

Please see story, page 10

Editor's Note ...

Clarification of the series of articles about race relations

By Stacy Clemons
Editor

How the survey was done:

In last week's editions of *The George-Anne*, the series of race relation stories which were based on surveys and interviews, were conducted fall quarter 1997 by four student journalists in Robert Bohler's advanced reporting course.

The convenience sample survey was conducted in November to determine the racial attitudes of students at GSU. The survey was conducted by student journalists Amy Branch, Stacy Clemons, Josh Nunez and David Lacher.

The survey was distributed randomly to every fourth student at four high traffic areas on campus, Lakeside Café, Landrum Center, Fielding D. Russell Union and on the pedestrian in front of the Zach S. Henderson Library over a four day period.

Of the 361 students surveyed, 48 percent were white and 43 percent were black. The responses of the other nine percent of students represented other ethnic groups.

In the coming weeks, *The George-Anne* will present a series of stories based on surveys and interviews on the topic of binge drinking on the GSU campus.

POLICE BEAT

GSU Division of Public Safety

February 19, 1998

• A Brannen Hall resident reported receiving harassing phone calls.

February 18, 1998

• Kimberly D. Hill, 18, Stadium Walk, was charged with leaving the scene of an accident.

• Michael Kane reported someone entered his vehicle in the Winburn Hall parking lot and took a CD player and radar detector.

• Sandy Beasley reported someone entered her vehicle in the Landrum parking lot and took her bookbag.

• Kelly Helms reported someone entered her vehicle in the Plant East parking lot and took a CD player and radar detector.

• Stacy Peters reported someone pried out the lock on her vehicle door in the Johnson Hall parking lot.

February 17, 1998

• Charles Rosenberger reported his Wachovia ATM card was missing from the Russell Union Building.

February 16, 1998

• Darin Van Tassell reported \$80 and two checks were miss-

ing from the Baseball Complex.

• Shirley Hughes reported a computer and monitor were missing from Room 1121 in the Biology Building.

• David Walker reported a set of keys was missing from his room in Dorman Hall.

Statesboro Police Department

February 22, 1998

• Travis Blocker, 19, Roswell, was charged with underage possession of alcohol.

• Emily Hardee, Snellville, reported that her vehicle was damaged at Woodin Nikel.

• Jill Rodgers, Players Club, reported that several males kicked in her apartment door.

• Wendy Stickland, Grady Johnson Road, reported that someone broke the sideview mirror on her vehicle.

February 20, 1998

• James Cox Jr., 19, Waycross, was charged with underage possession of alcohol.

• Joseph Pritchard, 19, Waycross, was charged with underage possession of alcohol, DUI and littering.

• John Gordon, 18, Reynolds, was charged with traffic light violation, driving too fast for conditions and DUI.

• Stephanie Anderson, 19, Harlem, was charged with leaving the scene of an accident,

DUI and underage possession of alcohol.

• Torrye Davis, Seasons Apartments, reported that a gold bracelet, tennis bracelet and gold watch were missing from her apartment.

• A resident of North College Street reported a case of harassment.

February 19, 1998

• Robert W. Jones Jr., 25, Savannah, was charged with misdemeanor possession of marijuana.

February 18, 1998

• Harry Baldwin, 19, Maple Street, was charged with loitering.

February 17, 1998

• Virgil Yancey, 21, Eagles Nest, was charged with possession of marijuana with intent to distribute and misdemeanor obstruction of an officer.

• Derrick Riggs, 21, Sylvania, was charged with driving on a suspended license.

Editor's Note: Police Beat appears in every issue of The George-Anne in an effort to inform the GSU community of the amount, nature and location of crimes. All reports are public record and as such are obtained from the Statesboro Police Department and the GSU Division of Public Safety.

ANNOUNCEMENTS

Things to Do at GSU

Ongoing

• The 2nd Annual GSU Mr. and Ms. Fitness Contest on March 3 at 7 p.m. in the Union Ballroom. For contestant information, call 681-5922.

• "Free Eating Disorder Screenings" will be held from 8 a.m. to 5 p.m. in the Counseling and Career Development Center Feb. 23 to Feb. 27.

• The winter production of "Measure for Measure" will be showing March 4-7 at 8 p.m. in McCroan Auditorium. Tickets are \$6 for adults, \$4 for faculty/staff, seniors, children, and area high school students with ID. Tickets are \$2 for GSU students with ID.

Today

• A Night for Southern's STARS, organized by the Public Relations Event Management class, will hold talent au-

ditions on Feb. 24, from 6-8 p.m. at the Russell Union, rm. 2075. Students with any particular talent for music, comedy, dance or acting are encouraged to try out. Prizes will be given when the event is held on March 11 from 7 to 10 p.m. For more information, call Tom Wilson at 489-5661.

• The First Presbyterian Church on Fair Road will host a Pancake Supper at 6 p.m. Tickets will cost \$4 per person and the event is hosted by the Presbyterian Student Fellowship.

• Alpha Phi Omega, a national coed fraternity, is holding winter rush, at 8 p.m. in Russell Union room 2052. For more information, call Erica at 489-3967.

• There will be "A Tribute to African-American Musicians" presented by UMOJA at 7 p.m. in the Russell Union Ballroom.

• An English Movie "Old Lady Who Walked into the Sea" at 7:30 p.m. in the Russell Union Ballroom.

Thursday, February 26

• The Black Student Alliance invites you to an Evening of Enchanted Poetry for the Soul at 7 p.m. in the Williams Center dining hall.

• Eagle Cinemas will present "The Devil's Advocate" starring Al Pacino and Keanu Reeves at 7 p.m. in the Russell Union Theater.

Friday, February 27

• The Counseling and Career Development Center, CRI and the Health Education Office are sponsoring "No Diet Day," including a discussion "Media and Its Impact on Body Image." The events are meant to teach participants about body image, body acceptance and eating disorders.

Thanks for reading *The George-Anne*.

Send your organization's announcements to Kelley McGonnell in Williams Center room 2023.

Come See Mrs. Grace
Psychic readings by Mrs. Grace
And find out what's in store for you in 1998

Psychic Reading \$10.00 Special
Psychic, Palm, and Card Reading Advice on All Problems of Life

(912) 871-4487
1113 Highway 301 South, Statesboro, GA
across from Ogeechee Tech

HEALTH SERVICES

A Department of Auxiliary Services and Student Affairs
Open 8:00am-5:00pm Monday-Friday
Located on Forest Drive across from Watson Hall
near Lakeside Cafe

Students taking 6 or more hours are eligible for unlimited visits during the quarter to see a physician, nurse practitioner, or nurse. Nominal charges for such items as lab work, x-rays, and prescriptions may be incurred so students are urged to bring cash, check, VISA, or Mastercard on each visit to the Health Center. Students taking less than 6 hours may pay the quarterly health fee to be eligible for services offered.

FREE Allergy Injections
Asthma Patients Welcome
Men's Health Services
Women's Health Services
FREE HIV Testing
Health Education Programs

Our nurses have a combined
190 YEARS of experience.

Our PHYSICIAN and 4 Nurse
PRACTITIONERS have a combined
93 YEARS of experience.

Highly satisfactory survey ratings for CONFIDENTIALITY,
QUALITY of CARE, and COST EFFECTIVENESS

UP Union Productions
GEORGIA SOUTHERN UNIVERSITY

The Joke Zone

Thursday, March 5

Games People Play
Presents...

Are You Ready?

Because It's

PARTY TIME

Music Video Bingo

PRIZES: t-shirts and CDs of your favorite Artist!

\$1 Per Bingo Card • FREE POPCORN
6 - 8 pm • Union Commons

JOIN TODAY

We're looking for fun and energetic college students who want to help bring the best of entertainment to Georgia Southern!

Union Productions Team Interest Form
Yes! I want to be involved in UP. Here is the Team that I am interested in!!

☐ The Joke Zone ☐ Contemporary Issues
☐ Sound Waves ☐ Games People Play
☐ SPLASH ☐ Public Relations

Name _____

LB _____

Local Phone _____

For info call 681-0655

or mail interest form to:

GSU P.O. Box 8066

SPLASH

Coming Soon:
More Sizzling, HOT UP Events!

Union Productions
681-0655
Office Hours 9 - 4
P.O. Box 8066 GSU
Statesboro, Ga 30460

ONLY IN AMERICA...

1 Georgia
Produce manager finds heart-shaped potato

The Associated Press

FRANKLIN — Ann Cotton found a rare and timely treat on her job as produce manager at a local supermarket — a potato shaped like a heart.

"It would've surprised me any other time, but right here before Valentine's Day, I thought it was kind of neat," Cotton said.

Cotton, 31, said this find was the first time she has ever run across a vegetable with such an unusual shape during her year on the job at the Piggly Wiggly store.

"I had considered baking it for Valentine's Day," she said. "I thought it would be kind of neat to bake it and eat it with my husband. But I don't know what I'll do with it yet. If I can figure out a way to preserve it, I might keep it."

2 Florida
Woman could be jailed over overdue book

The Associated Press

CLEARWATER — When they say book return at the Clearwater library, they really mean it.

Jennie Basile could go to jail over it.

The working mom borrowed "The Notebook" and it's a year overdue.

When police stopped her car last Friday for no lights, her name came up in the computer. There was a warrant for failure to appear in court. It was over the library book.

She apparently had gotten some late notices, but moved from her old address and said she didn't get a summons to show up in court.

Officials say she can return the book or pay for it and avoid

legal troubles.

In 1995, librarians said 178,000 materials checked out were never returned and the funds were going toward replacement books instead of new books.

Now, with the get-tough stance, losses have been cut in half.

While Basile said the book wasn't very good, she won't say yet what she plans to do.

At the library, patron Mary Hilton called the situation ridiculous.

How much will it cost the city in legal fees vs. an overdue library book, she asked.

3 New York
Police: Suspect snoozed after breaking-and-munching

The Associated Press

ELMONT — A snack and a snooze were the undoing of a burglary suspect, who was still asleep under the cash register at a bakery when police arrived to arrest him.

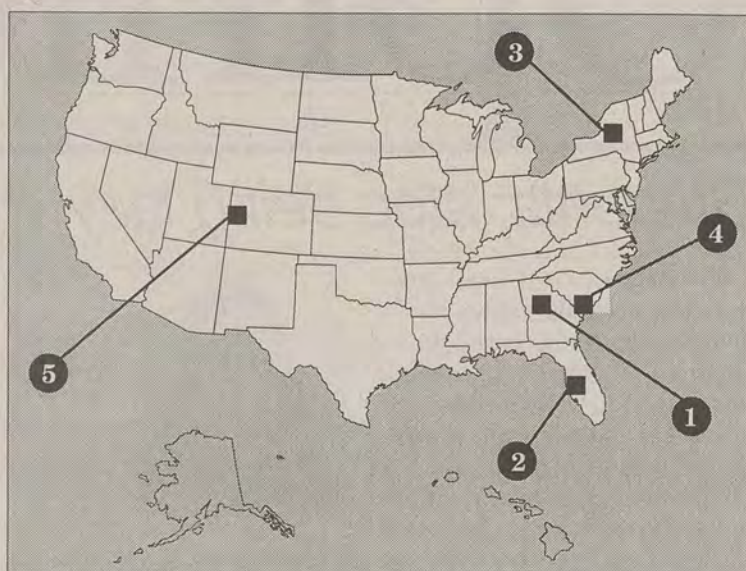
Tommy Jacobs, 33, of Elmont pleaded innocent to a burglary charge last Wednesday and was held in lieu of \$1,000 bail, Nassau County police said.

He was accused of breaking in through the front window of Ragusa's Bakery last Tuesday night and removing a little dough — coins from a drawer beneath the cash register — before pausing for shut-eye.

A baker arriving for work at 11:30 p.m. spotted Jacobs under the counter, a half-eaten box of fancy chocolates beside him. The baker tiptoed out and called police.

"They found him sleeping on the floor," said Detective Sgt. Lucy Guido. "He didn't give any struggle at all. He didn't resist."

The suspect, an unemployed father of two, was on probation for a drunken driving offense, Guido said.



4 South Carolina
Plantation owner offers Yankees a reprieve

The Associated Press

HARDEEVILLE — Less than a month after barring "Yankees" from ever taking back his plantation, Henry Ingram is offering a reprieve — as long as they pledge their allegiance to the South.

Ingram recently was back at the county courthouse, filing a follow-up document to the deed restrictions that prohibit the sale of Delta Plantation, which was occupied by Gen. William T. Sherman's Union troops, to anyone from north of the Mason-Dixon Line or anyone named Sherman.

Northerners who find the 1,688 acres too irresistible to pass up now can make an offer, once they have signed Ingram's "Southern Oath" that begins, "Of my own free will and choice, I do hereby in the presence of these witnesses swear to be loyal to the South."

Oath-takers also must affirm that "when speaking of Yankees, I will refer to them as scalawags or carpetbaggers."

And they must promise to "whistle or hum Dixie as a sign of my loyalty and as a token of my new outlook on life."

5 Colorado
Driver hits bicyclist, gives rider \$20

The Associated Press

FRUITA — Relatives of Rocky Swartwood are looking for a good Samaritan, and the Colorado State Patrol is looking for the driver whose car hit Swartwood, then gave him \$20 and drove away.

Swartwood, 57, who is developmentally disabled, was riding his bike home last Tuesday when a car apparently ran a stop sign and struck him.

The driver then got out, told Swartwood he would be all right, tossed a \$20 bill at the man and drove away.

A man in a pickup truck then stopped, helped the blood-covered Swartwood into his truck, loaded the wrecked bicycle in the truck bed and drove Swartwood home.

Swartwood's sister, Jerry Rose, and his niece, Jackie Bowlin, said all they learned from the good Samaritan was he was from Delta and might be a reserve deputy before he drove away.

They would like to find him and thank him.

The state patrol would like to find the driver of the red car that hit Swartwood.

OFFBEAT

Intruder hit with can of stew

The Associated Press

OKLAHOMA CITY — An intruder who kicked in a family's back door remains in critical condition after he was struck in the head with a can of stew heaved by the homeowner.

Police found the man with a bloodied head on a nearby sidewalk while answering a call last Tuesday about what they thought was a domestic disturbance, Capt. Charles Allen said.

The beheading ended a bizarre series of events that began with the man yelling at a meter reader trying to check a meter in his backyard.

The man, whose name was not immediately released, was in critical condition after emergency surgery for his head wound, Allen said.

Allen said the chain of events began when the utility meter reader was looking over a backyard fence to read a meter and encountered the man dressed only in a towel.

The man was angry with the meter reader, telling him to get

out of the man's yard, Allen said. The meter reader told him he wasn't in the man's yard and the man threatened to come over the fence after him.

Allen said that as the man ran toward the fence naked, the meter reader ran a half-block away and asked a homeowner to call police.

The man went back into his home and put on clothes, climbed over the fence and went in search of the meter reader, Allen said.

Allen said the man apparently thought the meter reader had gone into a home and kicked in the back door.

Allen said the man was threatening to the residents and made a motion behind his back as though he had a weapon.

That's when the big can of Dinty Moore stew went sailing across the room and hit the intruder. Allen said that individuals are allowed under the state's "Make My Day" law to use any force necessary to protect themselves if they believe someone intends to harm them.

Man's ear bitten off after shooting

The Associated Press

TAMPA, Fla. — A man who shot a homeless woman in the head found himself in a struggle with another man who came to her defense and lost an ear in the fight, police said.

As Christa Eland, 38, lay bleeding on the sidewalk outside a homeless shelter, the men rolled around in a struggle over the revolver, witnesses said.

Mandel Croxton, the rescuer, emerged from the tangle holding the gun and clenching the ear of Larry Harley in his teeth.

Eland, 38, was in critical condition at Tampa General Hospital after the Valentine's Day fracas. The man accused of shooting her, Harley, 36, also went to the hospital, then to the county jail, minus an ear.

The Tampa Tribune reported

doctors were not able to reattach the severed ear.

Harley is charged with attempted murder, aggravated battery, aggravated assault, resisting arrest and four counts of aggravated assault on a law enforcement officer.

The dispute began about 10 a.m., witnesses said. Harley came looking for Eland, who had been staying at the shelter. Eland is Harley's former girlfriend.

"He came over here looking for her last night saying, 'Tell her I love her, and I want her back,'" a homeless man said.

When he found her last Saturday morning, Harley punched her until she fell unconscious, then kicked her in the head, according to a witness. Croxton, who described himself as a close friend of Eland's, stepped in.

The Academic Corner

SEMESTER CONVERSION

How will I complete my degree requirements under the Semester System?

QUARTER SYSTEM TO SEMESTER SYSTEM COURSE EQUIVALENCY CHART

Core Curriculum Courses • Listed by Quarter System Areas • (Semester Course Hours in Parentheses)

AREA I

Quarter

ENG 151	English Composition I
ENG 152	English Composition II
ENG 251, 252, or 253	The Human Image in Literature of the Western World I, II, III
ART 160	Art in Life
MUS 152	Introduction to Music
PHI 150	Survey of Philosophy
CAT 257	Introduction to Theatre
CAS 251	Funds. of Public Speaking
CA 252	Intro. to Human Communication

Semester

ENGL 1101	Composition I (3)
ENGL 1102	Composition II (3)
ENGL 2111, ENGL 2212	World Literature I (3), World Literature II (3)
ART 1130	Art in Life (3)
MUSC 1101	Introduction to Music (3)
PHIL 2130	Living Issues in Philosophy (3)
THEA 2331	Introduction to Theatre (3)
SPCM 2331	Prins. of Public Speaking (3)

AREA II

Quarter

MAT 150	Intro. to Mathematical Modeling
MAT 151	College Algebra
MAT 152	Trigonometry
MAT 165	Pre-Calculus
MAT 155	Business Calculus
MAT 166, 167, 264, or 265	Calculus I, II, III, or IV

Ten Hour Sequence From:

BIO 151 & 152	Prins. of Biology I & Prins. of Biology II
BIO 161 & 162	General Biology I & General Biology II

CHE 171	Intro. to General Chemistry
CHE 172	Intro. to Organic Chemistry
CHE 181/182	Chem. Str. & Props., Chemical Reactivity
CHE 182/183	Chemical Reactivity, Appl. of Str. & Reactivity
GLY 151	Gen. Phys. Geology
GLY 152	Gen. Historical Geology
PHS 161	Planetary Astronomy
PHS 162	Stellar & Gal. Astronomy
PHY 251 & 252 or 253	General College Physics I & II/III
PHY 261 & 262 or 263	General College Physics for Sci., Eng., & Math Stud. I & II/III

Five Quarter Hours From Above or From:

BIO 165	People & the Environment
CHE 165	Chemistry and Your World
GGY 150	Physical Geography
GLY 165	Prins. of Environmental Geology
GT 165	Sci., Tech., & the Environment
PHS 151	Prins. of the Physical Universe
PHS 152	General Astronomy
STA 255	Stats. Using the Computer I

AREA III

Quarter

HIS 152 or 153	Develop. of Civ. To 1650, Develop. of Civ. Since 1650
HIS 252 or 253	The U.S. To 1877, The U.S. Since 1877
PSC 250	American Government
ANT 150	Introduction to Anthropology
GGY 250	World Regional Geography
PSY 150	Introduction to Psychology
SOC 150	Introduction to Sociology
ECO 250 or ECO 260	Prins. of Economics I, Basic Economics
ECO 251	Prins. of Economics II

ADDITIONAL COURSEWORK OUTSIDE THE CORE CURRICULUM

Quarter

HTH 131	Personal Health Promotion
	Physical Activity (4 activities)*

Semester

MATH 1111	Area A Mathematics Credit (FE)
MATH 1113	College Algebra (3)
MATH 1113	Pre-Calculus (3) (FE)
MATH 1232	Pre-Calculus (3)
MATH 1441, MATH 2242, MATH 2243	Survey of Calculus (3)
BIOL 1130/BIOL 1110	Calculus I, II, or III (4 each)
BIOL 1230/BIOL 1210	General Biology/General Biology Lab (3/1) (FE)
BIOL 1130/BIOL 1110	Environmental Biology/Envir. Biology Lab (3/1) (FE)
BIOL 1230/BIOL 1210	General Biology/General Biology Lab (3/1) (FE)
	Environmental Biology/Envir. Biology Lab (3/1) (FE)
CHEM 1140	Area DI Credit (FE)
CHEM 1145	General and Organic Chem. (4) (FE)
CHEM 1146	General Chemistry I (4)
GEOL 1121/GEOL 1120	General Chemistry II (4)
GEOL 1121/GEOL 1123	General Physical Geology/General Physical Geology Lab (3/1)
PHYS 1631, PHYS 1211	Gen. Historical Geology/Gen. Historical Geology Lab (3/1)
PHYS 1632, PHYS 1211	Planetary Astronomy (3), Astronomy Lab (1)
PHYS 1111, PHYS 1112	Stellar Astronomy (3), Astronomy Lab (1)
PHYS 2211, PHYS 2212	General Physics I (4), General Physics II (4)
	Cal-based Physics I (4), Cal-based Physics II (4)
BIOL 1331, BIOL 1333, BIOL 1335	Insects and People (3) (FE), From Neuron to Brain (3) (FE), Plants and Civilization (3) (FE)
CHEM 1030	Chemistry and Your World (3) (FE)
GEOL 1111	Physical Geography (3)
GEOL 1330	Environmental Geology (3)
TCGT 1530	Sci., Tech., & the Environment (3)
PHYS 1135	Physics: How Things Work (3)
PHYS 1531	General Astronomy (3)
STAT 2231	Intro. Stats. I (3)

Semester

HIST 1111, HIST 1112	World History I (3) (FE) or World History II (3) (FE)
HIST 2110	The United States: A Comprehensive Survey (3) (FE)
POLS 1101	American Government (3)
ANTH 1102	Introduction to Anthropology (3)
GEOL 1130	World Regional Geography (3)
PSYC 1101	Introduction to Psychology (3)
SOCI 1101	Introduction to Sociology (3)
ECON 2105	Economics in a Global Society (3)
ECON 2106	Business Economics (3)

Semester

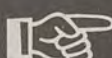
HLTH 1520	Healthful Living
	Physical Activity (3 activities)*

* Four quarter activities are equivalent to three semester activity courses. See the "Completing the Physical Activity Requirement" charts to determine how a student completes the requirement if fewer than four activity courses are completed under the quarter system.

Academic Affairs
Vice President's Office
Post Office Box 8022
Georgia Southern University
Statesboro, GA 30460



912/681-5258



Fax: 912/681-5279

E-mail:

hscarter@GaSoU.edu

cblack@GaSoU.edu

lvantassell@GaSoU.edu



The George-Anne

For 70 years, Georgia Southern's Official Student Newspaper

Stacy Clemons
Editor

Amanda Crews
Managing Editor

Kelley McGonnell
News Editor

Opinions

The oldest continuously published newspaper in Bulloch County

Tuesday, February 24, 1998

Liked By Many,
Cussed By Some...
Read By Them All

Our Opinion

Students, university officials discuss campus parking problem at SGA inaugural town hall meeting

Parking at GSU seems to be a big problem and with the closing of the dirt lot near the Southern Center, it seems it could only get worse. But what students should know is that there is, and will be, adequate parking for students.

Last Wednesday, SGA hosted a town hall meeting with Phil Hodges, director of facilities planning and Bob Chambers, director of parking and transportation. Hodges and Chambers answered student questions about parking. Not only were they willing to allow students to confront them on issues, they were prepared with very good answers.

Yes, the dirt lot near the Southern Center will close and 500 spaces will be lost. But 600 new spaces will be open to students and more are on the way. Students can park in one of three different places on campus.

By fall of 1998, 306 new spaces will be provided near the rappelling tower. Over the next 18 months, 1,737 spaces will be made available by many improvements that both Chambers and Hodges are working on.

The meeting also discussed the possibility, or rather impossibility, of a parking garage. Contrary to popular belief, a parking garage is too expensive for the GSU budget right now. Also, a shuttle bus system has been looked into but will not be considered further until the campus can no longer provide adequate parking for students.

There is and will be parking on campus for students, but as Chambers said, students may find it inconvenient compared to current parking. But walking to class from a lot on campus is better than walking from apartments.

News Flash: Last week, some students actually broke out of their apathy and showed up for an event at which attendance was not required for a class. And this event did not even include alcohol or music!

They had an ax to grind. They wanted their voices to be heard. So, they showed up at the first of SGA's town hall meetings. The topic? The age-old gripe of students: parking.

Granted, with the closing of the dirt parking lot by the Southern Center for Continuing Education, students, for once, may actually have a valid complaint. Without these spaces, finding a parking spot might become a little more challenging.

The problem is that many students have been complaining about parking *forever*. Even with the dirt parking lot open, these students swear that they can never find a parking spot.

Honestly, I just don't understand, and I'm beginning to wonder if I attend the same school as these folks do. I drive to campus every morning, and I find a parking space every morning. Imagine that! I don't leave my house 30 minutes before my class begins so that I can wait for a parking spot. Frankly, I'm just not that patient, and I'd rather sleep during that extra 30 minutes.

Because sleep ranks higher



AMANDA CREWS
MANAGING EDITOR/COLUMNIST

than finding a parking spot in my list of priorities, I usually must park in the "boondocks." Most days I park in the lot across

stretches to prepare to walk one morning when a girl who is in the class came running up to the teacher. She said, "I'm going to

...MOST COMMUTING STUDENTS WANT A PARKING SPOT WITHIN THE FIRST FEW ROWS OF ANY GIVEN PARKING LOT. LET'S DO THE MATH, FOLKS. THAT IS LOGISTICALLY IMPOSSIBLE.

from Arby's and Food Lion. Then, I walk to my class. It's really no big deal. By the time I park and walk, the vultures I passed on the way in are still waiting for a spot.

So, I'm beginning to see that when these students say there are no parking spaces, they actually mean there are no parking spaces within spitting distance of their classes. There is a subtle, yet distinct, difference between these two statements.

Here's a true story to illustrate my point. A certain Fitness Walking class meets on the grass by the tennis courts at Hanner. Well, the students in this class were doing their

be late because I can't find a parking space." Then, she hopped back into the car which she had left running and circled around the three rows in the flanner parking lot several times. When someone finally pulled out of a spot, she grabbed it and ran to class. She arrived 15 minutes late.

Now, am I the only one baffled by this story?

A) All the other students in the class seemed to have found parking spaces. I'm sure they found parking spaces because they did not limit themselves to the three rows closest to their class.

B) She could have used all the

time and energy she spent running back and forth to her teacher and waiting for a spot to simply park a little farther away from her class and walk.

C) The greatest irony of all is that she did not want to walk to her Fitness Walking class!

But we can't heap all the blame on the students who diligently and patiently wait for a prime parking spot. I've actually been told that many of the parking hassles could be eliminated if the students who are walking to their cars could kindly point these vultures in the right direction. Well, I must not be a very Good Samaritan because I have no plans to encourage their laziness.

First of all, they would probably turn their noses up at my parking spot across from Arby's, and secondly, if my two legs can carry me from my car to my class, then theirs can too.

The problem, then, as I see it, is not that there are not enough parking spaces but that most commuting students want a parking spot within the first few rows of any given parking lot. Let's do the math, folks. That is logistically impossible.

Now, once the dirt parking lot closes, my whole stance on this issue may change, but even then, I'm sure the actual problem will not be as bad as we like to make it out to be.



Backtalk

Now you have a chance to "talk back" to *The George-Anne* about whatever floats your boat. It's a quick, easy way to write a mini-letter to the editor. Fill out this form and send it to P.O. Box 8001, or drop it by *The George-Anne* office at Williams Center room 223.

Name: _____ L.B.: _____ Phone: _____

Your words of wisdom: _____

LETTER AND SUBMISSION POLICY

The George-Anne welcomes letters to the editor, story submissions and guest columns from people both inside and outside the Georgia Southern University Community. All copy submitted should be typed (double-spaced, please), preferably on Macintosh disk in Microsoft Word or Microsoft Works format. All submissions must be signed and include a mailing address and phone number for verification. The editors reserve the right to reject any submission. There is no word limit on submissions. A writer may request to remain anonymous. However, it will be the editor's decision whether or not to print the name. Submissions are run on a space-available basis.

STAFF

NEWS

Assistant News Editor: Amy Branch; Layout Editor: Aletha Snowberger; Staff: Michael Bowdoin, Amanda Brunger, Kevin Larson, Laura Owens, Jennifer Stone, Terra Traylor, Amanda Weed

FEATURES

Features Editor/Arts & Entertainment Editor: Karen Abbott; A&E Staff: Eric Bray, Robbie Bruce, Brett Heilbron, Brad O'Neill, Amanda Payne, Jennifer Stokes; Features Staff: LaTonya Askew, Jennifer M. Dornier, Kaytee McGonnell, Chris Mayer, Ni' Cole Patterson, Rodney Reid

SPORTS

Sports Editor: Lee Guarnella; Assistant Sports Editor: Jamie Hodges; Staff: Edmund Coley, Reginald Farrell, Mike Gibbs

OPINIONS

Staff: Stacy Clemons, Amanda Crews, Aletha Snowberger, Marnite Zachery

PHOTOGRAPHY

Chief Photographer: Cory Brooks; Staff: David Mathews, Amy Hazen, Hans Knoepfel, Amanda Scott, Rebecca Smith, Anne Stanley, Dan Torok, Sarah Trucksis

CIRCULATION

Supervisor: Steve Taliaferro

ADVERTISING/DISTRIBUTION SERVICES (ADS)

Advertising Manager: Shawn Sunderland; Business Manager: Zeina Rahme; Marketing Coordinators: Julie Thompson; Classified Ad Manager: Ron Lair; Sales Representatives: Tom Harrington, Anda Johns, Ron Lair, Julie Thompson

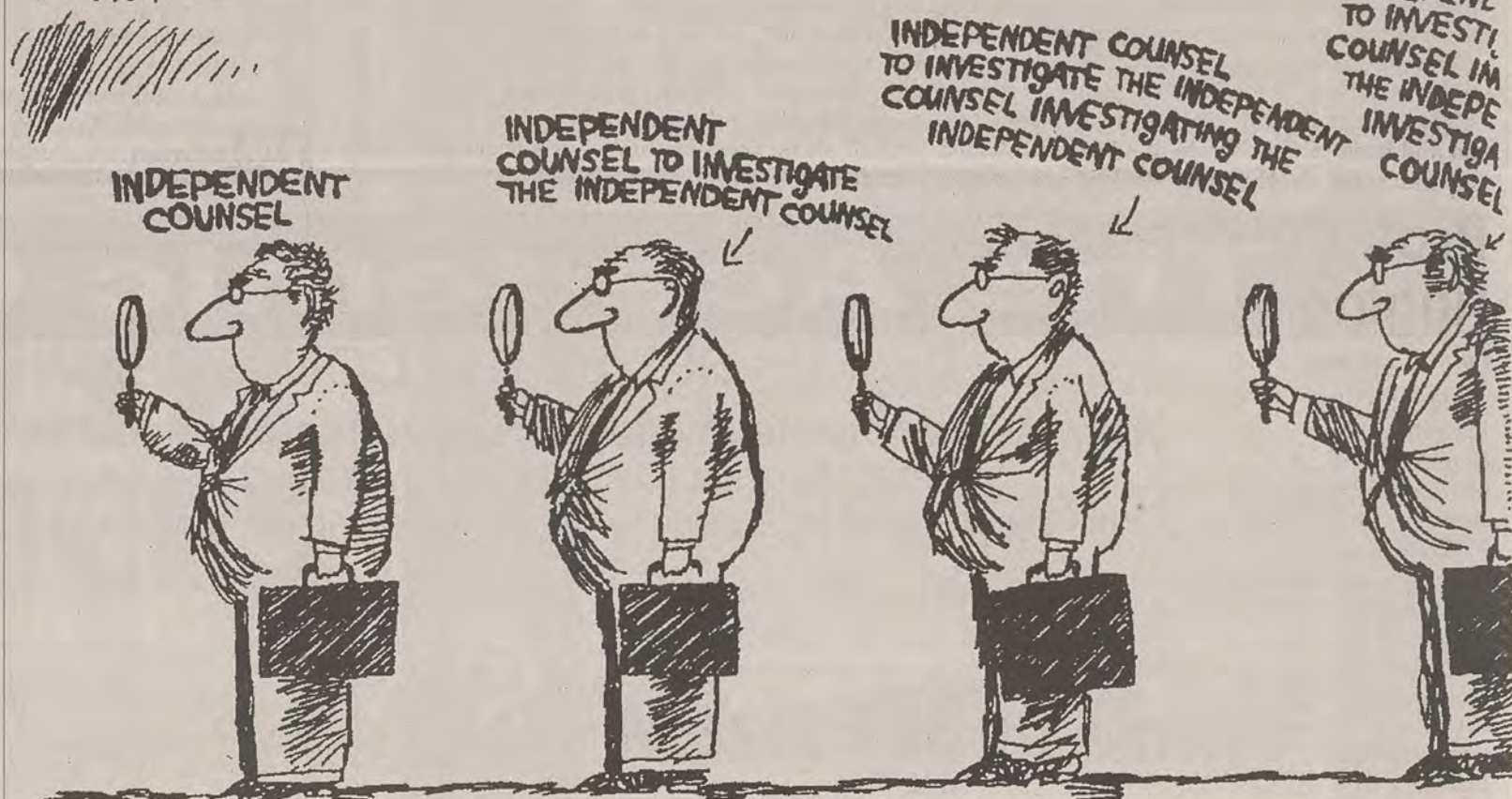
PRODUCTION AND GRAPHICS EDITORIAL SERVICES (PAGES)

General Manager and STP Web Master: Scott Mulkey; Production Manager: Kathy Jacobus; Assistant Production Manager: Shawn Sunderland; Staff: Johnathon Brooks, Amy Hazen, Angela Hodges, Ron Lair

STUDENT PUBLICATIONS COORDINATOR

Robert Bohler: News, Editorial Advisor; Bill Neville: General Manager

J. DROVE 1991
SACRAMENTO BEE



Finally looks as if Saddam Hussein is wising up

United Nation Secretary-General Kofi Annan negotiated a written agreement with Iraq Sunday, Feb. 22 to provide full access for U.N. weapons inspectors to suspected Iraqi weapon sites.

If it meets U.S. approval, the deal would head off threatened U.S.-led military strikes.

This is not quite like the other columns I have written about the crisis in Iraq. I want to focus on some of the similarities and differences between the Gulf War of 1991 and possible warfare in 1998.

U.N. spokesman Fred Eckhard said the agreement respects the U.N. resolutions over Iraq's weapons of mass destruction and preserves the integrity of the U.N. weapons inspection program.

Why did it take Iraq this long to comply to the U.N. inspection team's demands? Or is that it. Did Iraq and Saddam Hussein look at the demands as just that: DEMANDS?

However, you must remember that any deal must be endorsed by Washington, which has said it would refuse an agreement that it believes would undermine the inspector's authority.

So, what exactly remains on the line from the U.S. perspective? You must remember the



STACY CLEMONS
EDITOR

U.S. has sent a large military force to the Persian Gulf region to lead air strikes. And early last week, the first of 3,000 soldiers of the 3rd Infantry Division

than the 9 percent delivered in the Gulf War.

Why? The main reason is because Iraq's military is much weaker than it was in mid-Janu-

WHY DID IT TAKE IRAQ THIS LONG TO COMPLY TO THE U.N. INSPECTION TEAM'S DEMANDS? OR IS THAT IT. DID IRAQ AND SADDAM HUSSEIN LOOK AT THE DEMANDS AS JUST THAT: DEMANDS?

boarded planes headed for the Middle East from Fort Stewart, Ga.

It's true that these soldiers are prepared to do what needs to be done, but now that Hussein has come to terms with the U.N. inspectors, maybe warfare can be avoided.

The 1991 war lasted 42 days, with an air campaign of 38 days, and was followed by an air and ground campaign of over 100 hours. However, the 1998 war (if Hussein breaks the agreement) will be much shorter and more effective. More than 80 percent of precision-guided air attacks will take place this time rather

ary of 1991 when the Gulf War kicked off because Iraqi fighters were shot down, destroyed on the ground or evacuated to Iran.

So, what does all of this have to do with Statesboro? Well, I know there are a few students here whose parents or some of their close friends have been placed on standby for deployment to the Middle East or to various training sites here in the U.S.

I talked to one young lady last Friday and she was concerned because this is the second time members of her family have been placed on standby due to problems caused by Hussein.



I have been on standby for the past week and a half. I had to consult the Bible on questions I had about the task set before me. After realizing my fate, I discussed this matter further with my family and they have accepted the fact that I might have to take part in training exercises in Texas or California. I have also discussed this matter with my fellow staff members at *The George-Anne* and I would like to thank them all for their support and concern.

No matter what my fate might be within all of this madness, I want everyone here at GSU, within the Statesboro community and the U.S. that if war comes, your tax dollars will not go to waste.

Protesters send White House a message: 'No more war'

By Glen Johnson
The Associated Press

WASHINGTON — Last week, the secretary of state, the defense secretary and the U.S. ambassador to the United Nations heard from antiwar protesters.

Then it was President Bill Clinton's turn.

An estimated 3,000 people marched about a mile (kilometer) through the streets to the front gate of the White House last Saturday, protesting a possible attack on Iraq.

The peaceful protesters were vocal: "Do not bomb Iraq" said

the banner leading them. "No more war" was their chant.

people for demonstrating without a permit, but said the crowd

"CLEARLY, WHENEVER THERE IS MILITARY ACTION, IT PROVOKES, EVOKES STRONG FEELINGS ON THE PART OF MANY PEOPLE."

— SANDY BERGER,
NATIONAL SECURITY ADVISER

The president, who was inside meeting with members of his national security team, did not acknowledge the crowd.

U.S. Park Police arrested six

was otherwise orderly.

It was the first time that the anti-war protest has been taken to the White House gates. National Security Adviser Sandy

Berger, Secretary of State Madeleine Albright, Defense Secretary William Cohen and U.N. Ambassador Bill Richardson heard from protesters last week as they fanned out across the country to ready the public for the possibility of war.

Berger told reporters while the protest carried on outside that he still believed that a majority of U.S. citizens support the administration's policy.

He recalled a similar dynamic before the country rallied around President George Bush when the Gulf War started in January 1991.

"Clearly, whenever there is military action, it provokes, evokes strong feelings on the part of many people," Berger said.

One of the marchers, actor Kyle Secor, star of the NBC series "Homicide," said he could no longer remain silent.

"I watched all this play out on the TV for a few weeks, but now I think we have to take action if we're going to stop the killing of a lot of innocent people," Secor said.

"I hate Saddam Hussein, but I'm flabbergasted that the administration has decided they're going to try to contain him with limited bombing," said another marcher, Baghdad native Haider Thamer, who brought his family to the protest.

"They say they don't have any complaint with the Iraqi people, but they're going to kill some of them and not target him," added Thamer, 37, a U.S. citizen living in Baltimore, Maryland.

Thanks for reading The George-Anne.

Officials at Dartmouth investigating apparent anti-Semitic incident

The Associated Press

HANOVER, N.H. — Police were investigating an apparent anti-Semitic incident at Dartmouth College at an apartment occupied

A Star of David and the words "Death to You" were written on the door casing of the campus apartment, according to Dean of the College M. Lee Pelton.

The Star, a symbol of Judaism, and the words were small and written with what might have been a felt-tip marker, according to Hanover police Capt. Christopher O'Connor. He said police have no leads.

Dartmouth's Jewish student union has labeled the act "anti-Semitic vandalism," and Pelton has written a letter to the community stating the institution's censure of the act.

The writing was discovered by one of the women last Tuesday evening. The next morning, a custodian noticed another Star of David, but no words, on the door casing of another room in the same dormitory occupied by four men who are not Jewish, according to Pelton.

The college declined to release the names of the students.

"Dartmouth College deplores these acts of racism and hate," Pelton wrote in a letter published last Thursday in the daily student newspaper,

The Dartmouth.

"To the extent we wish to be a true community, when anyone among us employs the vocabulary of racism, hate and bigotry the rest of us have an obligation to say a resounding 'No! We will not accept it and will not let it pass without challenge.' This community is not fully for any of us unless it is a com-

"THIS COMMUNITY IS NOT FULLY FOR ANY OF US UNLESS IT IS A COMMUNITY FOR ALL OF US."

— DEAN M. LEE PELTON

munity for all of us."

Pelton wrote that Rabbi Philip Posner, who serves Dartmouth Jews and the Upper Valley Jewish Community, has convened a meeting of Hillel student leaders and the leadership of the Upper Valley Jewish Community. Posner could not be reached for comment.

Dartmouth has some 450 Jewish students. In November, the Roth Center for Jewish Life opened, and last week roughly 100 Jewish students from universities throughout the Northeast joined the Dartmouth Jewish students in a special Sabbath celebration.

Two years ago, more than 200 Dartmouth students joined in a campus rally to express their outrage at a string of incidents targeting Asian, homosexual and female students. The immediate catalysts for the rally were two incidents in which racial slurs were written on the doors of Asian students.

Prof: College students ringing up credit card debt

The Associated Press

DES MOINES, Iowa — An Iowa State University professor said college students are burdening themselves with extra credit.

While amassing thousands of dollars in student loans, they are also running up credit-card bills.

Tahira Hira, a professor of human development and family studies, randomly surveyed 665 ISU students last spring. She found that the average student had three credit cards and a debt on those cards of \$1,027.

The charges were not usually for textbooks and school supplies, she said.

"A lot of the credit-card debt is not necessarily related to education expenses," Hira said. "They're for clothes. They're for living a life that access to credit cards allows us to have."

Hira said there should be cause for concern that the habit of shopping on credit is surfacing so soon. College students are bombarded by credit-card companies even before they step on campus.

Students need to learn about

A survey at Iowa State University found that the average student had three credit cards and a debt of \$1,027 on those cards.

credit dangers the way they are taught math or other academic subjects, she said.

"On average, kids come to campus and they have access to credit cards, but they don't have the knowledge of how to handle them," she said.

About 80 percent of those who responded to Hira's survey said they carried credit cards. About 9 percent said they had more than five cards.

More than half reported buying things they didn't need; 44 percent shopped to celebrate; and 27 percent could not resist sales.

"My debt is coming from shopping and not because I have to pay for my own education," one respondent said. "Therefore, my theory is I will be able to pay it all off after graduation."

Products & Services

...It's Like Putting
Your Business Card
In The Hands of
Thousands.
At One Time!!

LASER ENCOUNTER

Family Entertainment Center
Come Play the Game

Lazer Tag
764-4665

120 Northside Drive East • Statesboro
(Next to Save-a-Lot in the old Video Warehouse)

Tropical Tan & Total Image

STATE OF THE ART
TANNING BEDS

•AIR CONDITIONING
•30 BULBS PER BED
•BUILT IN AM/FM
STEREO

FULL SERVICE
SALON

•MAKEOVERS •HAIRCUTS
•NAILS •COLORING
•FACIALS •WAXING
•SKIN CARE •PERMS

\$5 OFF 10
TANNING
SESSIONS

404
SOUTH
ZEITZEROWER
AVE.
489-2TAN

\$5 OFF
ANY
HAIRCUT

Southern Reflector
492756
49275633
711
366
327572

Your Social Security Number . . .
what happens if it falls into the wrong hands?

Pick up your
FREE
copy of the
Southern Reflector
TODAY

PLACE YOUR P&S
AD TODAY!
CALL OUR ADS
DEPARTMENT AT:
681-5418

Eye surgery with care
Julie Claveria, M.D.
764-6017
Aesthetic & Lasar Surgery of the Eye-Lids & Face
420 C Gentilly Place,
Statesboro, GA 30458

Angies Book & Balloon
Gifts and Balloons
Used Books • Regular & Costume Delivery
Bring in Coupon and
Recieve 10% Off
Balloon Bouquet
550 S. Zetterower
Statesboro, GA
489-3161
Free Delivery In Town

MORE THAN JUST BLUE PRINTS!
THE COPY CENTER
15 COLLEGE PLAZA
STATESBORO, GEORGIA 30458
912-871-4726
FAX: 912-681-1910
GOOD FOR 69¢ COLOR COPIES
8 1/2 x 11 - ONE SIDED

CLASSIC CLEANERS
We've been helping
Bulloch County look
good for years.
Drive-Thru Service
One Day Service Available
510 Northside Dr. East • Statesboro, GA
(912) 489-8950

SPORTS

PHILOSOPHY

LEE GUARNELLA



My first lacrosse practice of the year

Well, my lacrosse friends have been bugging me to come to practice for about five months now and last Thursday night, I finally gave into the pressure.

I play defense on the lacrosse team. Last year, I played left and right wing but Thursday night, I played crease which is directly in front of the goal. Anyway, it was an interesting practice because not only was my first practice a rough one, but it was all video taped on my friend's brand new camera. Needless to say, we watched the tape for hours of enjoyment.

So, here I am on the field dressed in lacrosse equipment for the first time since last spring, wondering if I can remember all of my shifts and poke-check rules. They came back to me eventually, but at some of my teammates expense.

My buddy Mike F. takes the ball toward the goal and I'm stuck defending against him. Well, I decide that if I can't get him to drop the ball the legal way, I'll just frustrate him a little with some quick poke-checks to the body. I missed big time. I nailed poor Mike right in his unprotected groin and he hit the ground. I felt sorry for him but I couldn't help but laugh a little.

He went down with a loud, "OOHHHHOOHHOOHHOOH." Everyone saw it and started cracking up. My friend Shawn, who was tapping the practice, yells out "Got that on tape!" Mike would be OK, he only sustained minor damage. My pain inducing practice was far from over however.

My buddy Mike V. got the ball and started heading for the crease. Now Mike V. has been doing the lacrosse thing for a long time now and knows how to swiftly slide by a would-be defender. Not this one. Not legally anyway.

He slides by me and I nail the top of his foot, sending him hurdling toward the earth. This also resulted in mass laughter. Mike wasn't angry though. He knows that I'm a bit rusty on defense still and bares with all my mistakes. He better learn to live with it, because my mistakes ain't going anywhere for a while.

I'm not exactly in the best of shape either. I wish I had the time to work out and run more, but this column and the entire sports page along with school sometimes keep me bound to only them. It started raining and a few minutes later, we left the field. Thus ended my first practice.

Our team is young and looks to have some good prospects for the season. We have a couple of new faces on the team but they seem eager to learn and have developed stick skill fairly quickly. We should have a decent season this year. We have the talent and the discipline, we just have to mix up the two ingredients.

So, my first practice of the year went well for me, but not so well for the guys I was defending against. I know I will work out all of the kinks, these sort of things just take time. Rome wasn't built in a day. Although, with the start of the season only weeks away, I don't exactly have a couple hundred years to revitalize my stick skills.

Southern Conference Champions!

• Lady Eagles head to SoCon tournament as number one seed



Amanda Scott

The nets came down last Saturday night as the Lady Eagles clinched the SoCon title and a no. 1 seed

By Jamie Hodges
Assistant Sports Editor

And the nets came down! The GSU women's basketball team clinched the Southern Conference regular season title Saturday night, holding off a determined Western Carolina Lady Catamount club, 78-74.

With the win, the Lady Eagles acquire the top seed heading into the Southern Conference Tournament.

"It's hard to believe that it's here (the regular season title)," Coach Rusty Cram said after the game. "The last two weeks, we've been saying what would

happen if we lost or won a game. But now we got it and it's over. It feels wonderful."

GSU raced out to a 13-2 lead in the opening minutes of the first half, and appeared ready to completely dominate the Lady Catamounts.

But Western Carolina responded with a 13-2 run of their own to knot the game at 15-15 with 13 minutes to go in the first half.

The Lady Catamounts took a 23-22 lead on a LaSha Jackson layup. But the lead would continue to change hands for most of the rest of the half.

Western Carolina held a slight 42-40 halftime lead over the Lady Eagles.

Cram decided to turn the heat up on defense in the second half. He had his Lady Eagles double team the ball, and placed guards Tori Durrett and Nikita Whatley at the point of attack.

The trapping defense threw the Lady Catamounts off their offensive rhythm.

"We surprised them with the run and jump defense," Whatley said. "They (Western Carolina) didn't know how to handle it."

Whatley, a sophomore who was rarely used last year, came off the bench in the second half and sunk two crucial jumpers to keep the Lady Eagles' slim lead over the Catamounts.

"My confidence is certainly up since last year," Whatley said. "I knew I had the ability to play. I just needed some experience to get some more skills."

Western Carolina would hang around throughout the whole second half. Rosie Arnold's three pointer with six minutes left

provided GSU with their biggest lead of the half, 67-61.

But the Lady Catamounts trimmed GSU's lead back down to two on another Jackson shot

GSU	78
WCU	74

inside the paint, giving the Lady Eagles a slight 74-72 advantage with 1:24 to go in the game.

Arnold was then fouled, and with 26.8 seconds left nailed two free throws to give GSU a four point lead, seemingly putting the game away.

But then Eagle guard Svetlana Trjeskal fouled Tamara McMahan with 19.3 seconds left. McMahan hit both her foul shots, shortening GSU's lead to 76-74.

With 7.8 seconds left, Arnold caught the Western Carolina defense napping and spotted a wide open Mary Perry underneath the basket.

Arnold fired a bullet across the length of the court that found Perry for the winning layup.

"It feels real great," said Durrett, during the celebration after the game. "This gives us the chance to play a lower seeded team. We have a better opportunity to make it to the championship."

The Southern Conference Tournament will be held in Greensboro, N.C.

The Lady Eagles' first game is scheduled for Friday afternoon at 1:30. GSU will play the winner of Thursday night's matchup between 8th seeded Chattanooga and 9th seeded Wofford.

Lady Eagle Mary Perry helps defeat WCU

By Reginald M. Farrell
Staff Writer

The Lady Eagles had their fans, players, and coach on the edge of their seats during an intense battle against the scrappy Lady Catamounts of Western Carolina University.

However, GSU came out on top and claimed the Southern Conference regular season title 78-74 Saturday night at Hanner Fieldhouse off of a key lay-up by Lady Eagle forward Mary Perry. "It feels good," said Perry. "I was glad I didn't miss it."

In Saturday night's win, GSU junior forward Mary Perry put in seven points off of a three-for-eight shooting performance, including the basket that would nail down the Conference title down for the Lady Eagles. She also added four assists and one rebound for the night.

"This is probably one of the best teams I've ever played on," Perry said. "We had our rough times, but we came together. We had one goal and we just worked every day to get there."

During her time as a Lady Eagle, Perry has had career best in the following areas: 16 points vs. UTC on February 7, eight rebounds and six assists against Davidson on December 30, and three steals against Alabama St. Nov. 29, 1996.

**"WE HAD OUR
ROUGH TIMES, BUT WE
CAME TOGETHER. WE
HAD ONE GOAL AND
WE JUST WORKED
EVERY DAY TO GET
THERE."**

--MARY PERRY

When Perry isn't helping the lady basketball team win titles, the versatile athlete is the starting goalkeeper for the women's soccer team.



Cory Brooks

Mary Perry, number 24, looks to get the ball from teammate Rosie Arnold in GSU's close win over WCU last Saturday night at Hanner Fieldhouse. Perry's layup clinched the championship for GSU.

News & Notes

• The Lady Eagles will be going for their third SoCon tournament title; their two previous championships came during the 1992-93 and 1993-94 seasons.

• GSU shot 9/16 from the free-throw line against Western Carolina Saturday night.

• Saturday night's victory puts the Lady Eagles at 16-10 overall, 13-3 in conference play on the year.

• Senior forward Telly Hall became the 13th Lady Eagle to reach 1,000 when she scored 16 points vs. UGA on Nov. 16. Her career total stands at 1,349 which places her at seventh place.

• The Lady Eagle program is 383-264 in 25 years of existence.

• Sophomore forward Sharon Mitchell has the best shooting percentage from the field (65.6%) which ranks her first in the league and third nationally.

—compiled by
Reginald M. Farrell

GSU softball takes 1 out of 2 from Mercer, go 3-9 for the year



Cory Brooks

GSU split a double header with Mercer on Thursday, 3-2 and 1-3.

GSU News Services

The GSU softball team split two games last Thursday afternoon with Mercer, winning the first game 3-2 and dropping the

GSU	3
Mercer	2

second 3-1 at Lady Eagle Field.

Sophomore hurler Jennifer Miller (2-4) pitched her way to her second win from the mound in game one, allowing just two runs on five hits and striking out two.

In the second game, both teams plated one run in the fifth

inning, but the visiting Bears added two more in the sixth to cap the win.

Freshman Lacey Kammerer (1-2) took the loss on the mound despite allowing only five hits and striking out one.

The Eagles (3-9) plated a run in each of their first two innings in Thursday's opener.

Mandi Dunn touched the plate in the first after a Bear throwing error, and Beth Dance scored from third base in the second inning on a wild pitch.

Mercer (7-7) would tie the game in its half of the fourth inning, all starting from a solo home run. A GSU error would

add another run for Mercer.

But the Lady Eagles put the game-winning run on the board in the sixth when Jaclyn Kaylor came up with a clutch triple to center field, scoring Miller.

Mercer	3
GSU	1

The Eagles were led by McCaine Lowder's 2-for-3 hitting performance and Amy Griffith hit 2-for-3 with a RBI in the second game to guide the Bears offensively.

GSU had five players who all finished with one hit each.

GSU NEWS

GSU men's and women's tennis teams defeat Mercer, both teams improve to 2-2

GSU News Services

The GSU men's and women's tennis teams defeated Mercer last Tuesday, 6-1 and 8-1, respectfully. Both GSU teams improve to 2-2 on the season.

On the men's side, they won all but the No.5 singles spot. Florian Scheidat defeated Rafael Coute 6-0, 7-5, at No.1. At No. 2, Christian Singer defeated Diego Brunicardi 6-3, 6-1.

Kendall Swartz swept past Brent Molyneux 6-1, 6-2, at the No.3 position while Ryan O'Keefe downed Tom Kaplan 6-1, 6-1, at No.4.

Mercer's Eric Pettersson was the lone winner for the Bears defeating Cecilio Gibbs 6-4, 6-2 at No.5. In the final singles spot, Alex Franqui got by Kevin Palmer 6-1, 6-4.

In men's doubles, Scheidat/Singer defeated Couto/Kaplan 8-6 at the No. 1 spot. In the

second position, O'Keefe/Franqui beat Brunicardi/Palmer 8-4 while Swartz/Gibbs upset Molyneux/Pettersson 9-7 at the No.3 slot.

For the Lady Eagles, Britta Wilms defeated Lisa English 6-0, 6-4, at the No. 1 slot. Isabella Kling swept past Annica Tevell 6-1, 6-1 at the No.2 position.

At the No.3 spot, Aude Boule defeated Linde Suttle 6-2, 6-2. Melissa Brown downed Joanna Day 6-2, 6-0 at No.4 while Leigh Biggers beat Amy Smith 6-0, 6-0 at No.5.

The lone Lady Bear winner was Melissa Pusey who defeated Brandy Petty 6-2, 6-2, at the No.6 position.

In doubles, the Lady Eagles swept MU. Boule/Biggers downed English/Tevell 8-6 at No.1. Wilms/Biggers defeated Suttle/Day 8-2 at the No.2 spot while Brown/Petty beat Pusey/Elizabeth Keller.

GSU vs. MERCER Feb. 17

Men's Tennis Singles

No. 1 - Florian Scheidat, GSU, def. Rafael Coute, MU, 6-0, 7-5

No. 2 - Christian Singer, GSU, def. Diego Brunicardi, MU, 6-3, 6-1

No. 3 - Kendall Swartz, GSU, def. Brent Molyneux, MU, 6-1, 6-2

No. 4 - Ryan O'Keefe, GSU, def. Tom Kaplan, MU, 6-1, 6-1

No. 5 - Erik Pettersson, MU, def. Cecilio Gibbs, GSU, 6-4, 6-2

No. 6 - Alex Franqui, GSU, def. Kevin Palmer, MU, 6-1, 6-4

Men's Tennis Doubles

No. 1 - Scheidat/Singer, GSU, def. Couto/Kaplan, MU 8-6

No. 2 - O'Keefe/Franqui, GSU, def. Brunicardi/Palmer, MU 8-4

No. 3 - Swartz/Gibbs, GSU, def. Molyneux/Pettersson, MU 9-7

Women's Tennis Singles

No. 1 - Britta Wilms, GSU, def. Lisa English, MU 6-0, 6-4

No. 2 - Isabella Kling, GSU, def. Annica Tevell, MU 6-1, 6-1

No. 3 - Aude Boule, GSU, def. Lindi Suttle, MU 6-2, 6-2

No. 4 - Melissa Brown, GSU, def. Joanna Day, MU 6-2, 6-0

No. 5 - Leigh Biggers, GSU, def. Amy Smith, MU 6-0, 6-0

No. 6 - Melissa Pusey, MU, def. Brandy Petty, GSU 6-2, 6-2

Women's Tennis Doubles

No. 1 - Boule/Kling, GSU, def. English/Tevell, MU 8-6

No. 2 - Wilms/Biggers, GSU, def. Day/Pusey, MU 8-2

No. 3 - Brown/Petty, GSU, def. Pusey/Elizabeth Keller, MU 8-6

MLB NEWS

Marquis Grissom is happy with his new team, ready for start of season

The Associated Press

PHOENIX, Ariz. — Marquis Grissom emerged from the first full-squad workout of the Milwaukee Brewers training camp saying he's eager to start the season with his new team.

"I'm anxious to get started," the 31-year-old centerfielder said after he and 50 other players completed a Thursday workout at Maryvale Baseball Park.

"I'm happy to be here. I'm happy about a whole lot of things. I'm happy to be on this team. I'm happy to be back in the National League."

"This reminds me of when I was in Montreal (1989-94)," he added Grissom, who was obtained by the Brewers in a December trade with Cleveland.

"It's just like that. We've got a good little team and we're going to surprise some people. We've got a good lineup."

Grissom, acquired along with right-hander Jeff Juden in exchange for pitchers Ben McDonald, Mike Fetters and Ron Villone is expected to add much-needed veteran leadership.

"When you've got a guy with his experience, you can't help but have it rub off on the other guys," Brewers general manager Sal Bando said.

Grissom hit .262 with 12 homers and 66 RBI during an up-and-down season for the Indians in 1997.

He picked up his production in the playoffs and is hoping that a return to the NL, where he spent his first eight seasons with the Expos and Atlanta Braves, will help him get back in the groove.

"This is as good as I've felt in a long time," he said. "I'm ready to go."

NBA NEWS

NBA referee pleads guilty to charges of false, fraudulent income-tax return

By Kevin O'Hanlon

The Associated Press

CINCINNATI, Ohio—An Ohio man who twice officiated at NBA All-Star games has resigned from the league after pleading guilty in federal court to a charge of filing a false and fraudulent income-tax return.

Prosecutors said Michael Mathis illegally cashed in first-class tickets provided by the league, bought cheaper seats in coach and pocketed the difference without reporting it as income.

That resulted in \$69,000 in unreported income between 1989 and 1992, prosecutors said.

Following his guilty plea, the league issued a two-sentence statement acknowledging Mathis' resignation.

"I thoroughly enjoyed my nearly 22 years of employment

as a referee with the NBA," Mathis said in a statement released by his lawyer, Terrence Grady. "And while I understand the difficult position the NBA is facing in this matter, it is my hope to resume my career with them at some point."

U.S. District Judge Sandra Beckwith said she will wait for a presentencing report before sentencing Mathis, who faces up to five years in prison and a \$250,000 fine.

Under the referee's collective-bargaining agreement with the NBA, the league was required to buy them tickets to travel first-class on plane trips longer than two hours.

Referees were allowed to downgrade the tickets and keep the difference, but they were required to report it as income and pay income tax on it.

MLB BASEBALL

Atlanta Braves give Double A pitcher a chance in the 'big leagues'

By Tom Saladino

The Associated Press

KISSIMMEE, Fla. — Right-hander Kevin Millwood had a plan last season: Be impressive in the minors at Double A and maybe, just maybe, get a chance to stick with the Atlanta Braves this spring.

A funny thing happened along the way: Millwood made it to the Braves last July.

"My goals were just to pitch well at Greenville and maybe get called up to Richmond (Triple A) and get a shot this year at making the club," Millwood said last week.

"I got the call a lot earlier than I expected," he said.

Millwood was 5-3 with a 4.03

ERA in 12 games with the Braves, eight of them starts. He was 7-0 in nine starts with Richmond with a 1.93 ERA, but wasn't that effective at Greenville (Double A) where he was 3-5 with a 4.11 ERA in 11 starts.

"At the beginning of the year I struggled a bit. I really wasn't going after hitters the way I should have, but about a month into the season I started pitching better," Millwood said.

He then hurt his shoulder, was sidelined for two weeks, made a successful start and was promoted to Richmond.

How 'Bout That?

A Native American sport originally, lacrosse has grown in popularity over the years. Do you know what NCAA team has won the most lacrosse championships?

Johns Hopkins has won seven lacrosse titles in 1974, 1978-80, 1984-85 and 1987



Source: Guinness Book of Sports Records

NIGHT

Utilize those forgotten playground skills under the stars and get a free T-shirt!

Intramural Night Kickball Tournament Thursday, March 5, 1998

Starts at 8 PM and we play till the cows come home.
Teams can be co-ed or single sex, with a max of 12, min of 8.
Register at the CRI Office, deadline is March 3rd.

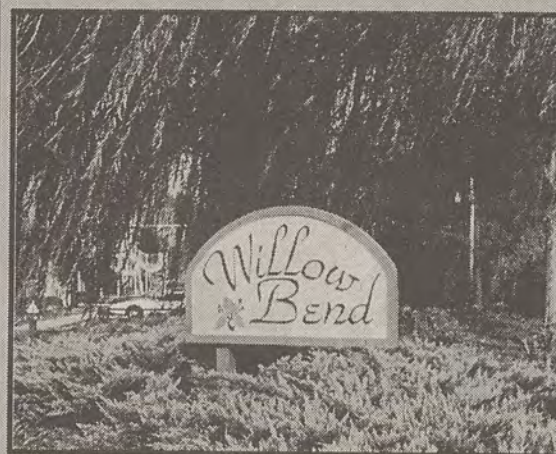
Call CRI for more information
681-5436.

KICKBALL

Sponsored by CRI, Real Choices and the Health Education Office, a department of GSU Health Services.

Thinking of a Change? So Did We!

See What's New At-



Willow Bend

4 Bedroom 3 Bath Townhouses

4 Bedroom 2 Bath Flats

Individual Leases

Private balconies/Patios
Washer & Dryer in Unit
All Electric Kitchen

Conveniently Located—
Walking distance to
GSU- & Paulson Stadium

•Golds Membership Included

•On Site Management

•On Site Security

•Olympic Size Swimming Pool

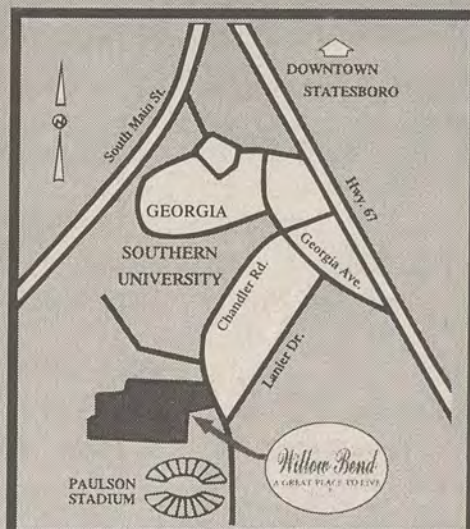
•Sand Volleyball Court

•Tennis Court

•Basketball Court

•Outdoor Barbeque & Party Area

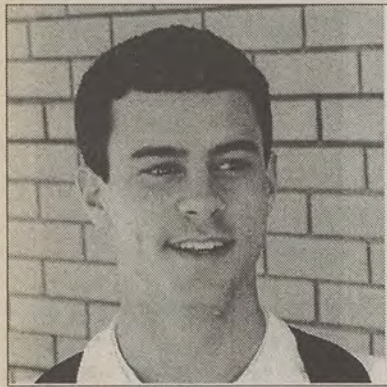
Community Advisor Activities
Sponsored by Management.



1822 Chandler Road Statesboro, Georgia

(912)681-6763

From Puffy to Garth, see how your favorites ranked



Jimmy Aycock: The Charlie Daniels Band



Ayo Fashola: God's Property from Kirk Franklin's Nu Nation



Johnathan Hardwick: Harry Connick, Jr.



Tracy Jacob: Maxwell

By **Rodney Reid**
Staff Writer

Riding down the street, with the head bobbing sounds of the Notorious B.I.G.'s "One More Chance" remix, thundering from my speakers, the idea came to me to find out what music artist or group GSU students favor the most.

Whether getting ready to tear the club up or settling down to do some much needed studying, we always seem to have a couple of CDs ready to place us in the mood.

Search through any student's stash of music and you are sure to find at least one CD for romance, partying, chillin', and many others to fit a variety of different occasions.

There is country, R&B, alternative, disco, techno, rap, hard and soft rock, heavy metal, and the list goes on of all the different genres available.

Inside each genre, there is still a seeming infinite number of artist to choose from.

I started my search to find out GSU students most popular artists, with confidence that I would be able to form a close approximation of GSU's taste; however very quickly in my survey, I realized that I had taken on a practically impossible feat.

Narrowing down the vast number of music artist and groups, ranging from Laciara Cook's favorite Louie Armstrong to Tommy Pearson's favorite Maxwell, is like trying to catalogue all the stars in the night

sky.

Ditching the idea to form a list of the most popular artist, I decided to just question students and see what I came up with.

I started off by asking the question, "who is your favorite music artist or group?" As simple and straightforward as this question seems on the surface, it had students scratching their heads and rubbing their chins, as if I had asked them to explain Einstein's Theory of Relativity.

HAVING A MULTI-PLATINUM ALBUM DOES NOT GUARANTEE AN ARTIST A SHOT AT BEING ONE OF GSU STUDENT'S FAVORITE ARTIST.

Trying to make the question a little easier, I added "if you could only have one CD for the rest of your life, which one would you choose, to which Adam Davis said, "I don't know," but I sure would have a lot of cassettes."

Slain rap artist Tupac Shakur was given by the most students, who listed him 6 out of 65 times. With the continuing publicity of their deaths as well the heat between east and west coast rap artist, I fully expected Tupac and the Notorious B.I.G. to be listed more often. The Artist formally known as Prince was given by 4 students, strangely enough all of which were females. "I really like Prince, his music is different, and he sounds so erotic," said GSU student Mandy Gaddy. I guess their is truly a limit to the appeal of rising rap artist Mas-

ter P, as he was only listed by 3 students. Country superstar singer Garth Brooks, as well as several other artist, only received 2 votes, although some 3 million people have already rushed out to buy his new CD "Seven." While the majority of the names given, could easily be identified after watching a couple of hours of MTV or BET, some such as Beethoven, Creedence Clearwater Revival, and Michael Learns to Rock have never been

heard of by the majority of GSU students.

Having a multi-platinum album does not guarantee an artist a shot at being one of GSU student's favorite artist, as multi-platinum artist such as Celine Dion, Alanis Morissette, Puff Daddy, Michael and Janet Jackson, Pearl Jam, Hootie and the Blowfish, Jewel, and No Doubt received little or no support from the GSU students surveyed.

Surprising Garth Brooks is the only artist who received multiple votes from white students, as each one surveyed seemed to have different opinions of who they think is the best music artist.

"I believe the white student's diversity in music really reflects the diversity of the students on campus, as well as there being a

Greek Update

Phi Mu

Phi Mu is kicking off their annual ROCK-A-THON in hopes to raise money for the Children's Miracle Network. Every year, Phi Mu sisters participate in this event. Phi Mu's get individual sponsors to donate money, and then take turns rocking in chairs throughout the course of the day. This year, Phi Mu's ROCK-A-THON will be held at Wal-Mart on Feb. 28, from 8 a.m. until late afternoon.

The members of Phi Mu ask that everyone come out to support their philanthropy. If you cannot attend on Saturday, be sure to stop by Lakeside Café or Russell Union the week of the event and purchase a CMN balloon for \$1. All the proceeds will be given to the Children's Miracle Network. Last year, the Phi Mu chapter at GSU won first place at the national convention for raising the most money.

Alpha Phi Omega

Alpha Phi Omega is a national co-ed service fraternity associated heavily with the Boy Scouts of America. With over 600 chapters nationwide, the GSU chapter is looking for new members to join their family.

They are dedicated to service the community and the GSU campus.

They are involved in such activities as Learning for Life, Camp Blue Herron, Habitat for Humanity, The March of Dimes Walk-a-Thon and Best Buddies, which is a program that matches up handicap children with a partner, and they spend a few times a month with them doing different activities.

COLLEGE PHARMACY

GEORGIA SOUTHERN

We can fill prescriptions from any doctor.

We have over-the-counter medications too!

Open to G.S.U. Students ONLY!!



25%-60% below Statesboro Prescription Prices!

681-0807

Located inside the Health Services Building
8:30 am - 5:30 pm (M-F)

No "body" is perfect!

Free yourself from food
Fri, Feb 27 is a No Diet Day.

Attend one of these events to learn more about body image, body acceptance & eating disorders.

Mon, Feb 23 - Fri, Feb 27	8 AM - 5 PM	Free Eating Disorder Screening Counseling & Career Dev. Center
Mon, Feb 23 - Wed, Feb 25	4:30 - 6:30 PM	Info Table Fitness Extension
Tues, Feb 24 - Thurs, Feb 2	11 AM - 1 PM	Info Table Russell Union Commons
Fri, Feb 27	NO DIET DAY! 12 noon	Media & Its Impact on Body Image Russell Union 2052

Sponsored by Counseling & Career Development Center, Campus Recreation & Intramurals and the Health Education Office, a department of GSU Health Services.

Occupational or Physical Therapy - Your Career Choice

Information Reception in Savannah!

Saturday, February 28th, 5:15 PM - 6:30 PM

The University of St. Augustine for Health Sciences is hosting an Information Reception on February 28th in Savannah. Join us to learn more about our first professional Occupational and Physical Therapy Master's Degree programs. All interested parties are welcome to attend.

RSVP with Susan Marsolais at 1-800-241-1027!

Reception Site: Savannah DeSoto Hilton
15 Liberty Street • Savannah, GA • (912) 232-9000

UNIVERSITY OF ST. AUGUSTINE
FOR HEALTH SCIENCES

The University is located on Florida's northeast coast and the intracoastal waterway in historic St. Augustine, Florida.

WEB SITE: www.usa.edu

E-MAIL: info@usa.edu

Even
EZ-er
than
1040EZ.

Golden Key

Induction Ceremony

Tues, Feb. 24 1998

7:30 in the

Southern Center!

All members &
Inductees are invited.



Introducing TeleFile from the IRS. If you are single and filed Form 1040EZ last year, you can file your tax return in ten minutes by phone. Anytime. Check your tax booklet for information.

TeleFile
It's free. It's fast. It works.

Department of the Treasury
Internal Revenue Service
Changing for good.

Today's Quote

"We defend and we build a way of life, not for America alone, but for all mankind."

-- Franklin Delano Roosevelt

CLASSIFIEDS, etc.

Crossword

ACROSS
1 Extinct bird
4 Beast
8 Confront boldly
14 Crescent shape
15 Birdhouse
16 Actor Nielsen
17 Muscle spasm
18 Paint a picture
19 Strike caller
20 Dickens
21 Character
22 Quiescence
23 Neighbor of
24 China
25 Venomous
26 Materials for
27 girders
28 Starting over
29 Student's
30 performance
31 "Pretty Woman"
32 co-star
33 Snacked
34 Cooperate
35 secretly
36 Roulette bet
37 Fuji flow
38 Ravens
39 One reindeer
40 Fastened
41 loosely
42 Cher's ex
43 Urbane
44 Scaredy-cat
45 Scotch shot
46 Huns' leader
47 Domestic worker
48 Fuss
49 Less accurate
50 Peak in Sicily
51 X
52 Facing
53 See fit
54 Wynn and
55 McMahon

DOWN
1 Crooner Johnny
2 East
3 Give one's
4 consent
5 Nocturnal bird
6 Wide smile
7 Make new
8 charts

7 Boredom
8 Bobby Vinton hit
9 Tarry
10 Psychic's gift
11 Thieves' leader
12 Respectful
13 Driving area
14 Bridge support
15 Nautical
16 passage
17 Actor Guinness
18 Tent stake
19 Water pitcher
20 Seldom seen
21 Kane's
22 Rosebud, e.g.
23 Ballpark display
24 Lined up
25 Cable station
26 East
27 Yodeler's stage
28 Poi base
29 Writer Hunter
30 Time stretches
31 East Coast cape
32 Desert Storm
33 missile

49 Bicyclist
51 Japanese self-
defense
52 Got around
53 Evil spirits
55 Dubbed
56 Speak

59 bombastically
61 Appropriate
62 In addition
63 Pull behind
64 Pension acct.
66 Beaver project

2/26/98

© 1998 Tribune Media Services, Inc.
All rights reserved.

EARN \$750-\$1500/WEEK
Raise all the money your student group needs by sponsoring a VISA fundraiser on your campus. No investment & very little time needed. There's no obligation, so why not call for information today.
1-800-323-8454 x 95

HELP WANTED: Tutor Counselors needed for the Upward Bound Summer Program. (June 14-July 25). Compensation: \$1,300 plus room and board for six weeks. Applicants may apply at The Educational Opportunities Office, Williams Center Room 1026. Call 681-5428 for more details.

HELP WANTED: A knowledgeable student who can care for three saltwater aquariums. Two 120 gal and 1 20 gal. Experience is a must. Part-time employment with flexible hours. Call GSU Museum at 681-5444.

ALASKA SUMMER EMPLOYMENT: Fishing industry. Excellent student earnings & benefits potential (up to \$2,850/mo. + Room/Board). All major employers. For employment information: 517-324-3117 ext. A53941

JOURNALISM MAJORS:
The Southern Reflector is now hiring for fall. Gain experience and build your portfolio. Call 681-5305 for more information.

NATIONAL PARK Employment: Parks, Forests, Wildlife Preserves. Ask us how! 517-324-3109 Ext. N53941

CRUISE SHIP & LAND TOUR JOBS:
Workers earn up to \$2,000/month (w/tips & benefits) in seasonal/year-round positions. World Travel (Hawaii, Alaska, Mexico, Caribbean, etc.) Ask us how! 517-324-3093 Ext. C53942

150 Lost & Found
FOUND: HANDSOME YELLOW/tan male dog, young, medium size, orange collar. Seems to think he lives in Players Club. Call 681-0871.

MENS CLASS ring found in Herty Building. Call to identify. Call Doug at 489-6517

FOUND: SMALL cat near Highway 24 and 301 bypass around Sandy Hill Apartments. Please call 587-2698 to identify.

160 Miscellaneous for Sale
AVON BEAUTY products and cosmetics. To try the ANEW line call 764-2350.

NEON BEER signs for sale. Mostly brand new some used. Call for more info! Chris at 871-5113

GAME GEAR for sale. Includes car adapter; with 2 games. Streets of Rage 2 and Joe Montana's football; good condition. \$100. Call 681-5217.

COMPUTER-WP 5.0 w/ keyboard and mouse. Great condition \$75. Ironing board \$5. Call or leave a message for erica at 681-3127.

CHROME! 15" rims and tires \$700 OBO. Call 871-6730

MOBILE HOME for sale: 14x76 Horton/Summit. 3BR/2BA. Shingled roof, masonite siding. CH&A. Located next to GSU football field. \$12,900 or 681-8314.

170 Motorcycles
1991 ZX67 Ninja Black. Polished Rims. Full Muzzy system. Alarm. Matching helmets, garage kept, + many extras. 15k/miles \$4.5k obo. 681-8914.

180 Musical
BRAND NEW ACOUSTIC guitar for sale. Includes case, strap, and pick. \$180. Contact Kim at 871-5621.

200 Pets & Supplies
ROTWEILER PUPPY w/ papers. Full blooded, 13 weeks old. Contact Monty at 681-6414. \$200 OBO.

FOR SALE: COLOMBIAN Red Tailed BOA about three years old and three feet long. Excellent condition, good eater. Call 681-5494 or 489-5674.

REEF READY, 1220 gal fish tank by Allglass, 6 months old, double 48" light strips, wood stand, plumbing, glass tops. Paid \$785 only \$400. Call Andy 764-3553.

FREE PUPPY Black Lab Female Mix. Looks just like a lab. Call Shelley at 681-1774.

220 Rentals & Real Estate
APARTMENT for rent Spring Quarter. Hard wood floors, vaulted wood ceilings. All utilities included in rent except phone. Ideal for 1 person or couple. \$400 mth. Call Mike @ 489-5004, or at work 681-5436.

ONE BEDROOM apartment for sub lease at Eagle Villa Suites. Call (912) 624-2763 after 6pm weekdays.

FEMALE NEEDED to take over my sublease at Hawthorne ASAP. For Spring and Summer Quarters. Private BR & BA. \$287.50 a mth. Please call 871-5619.

2 BEDROOM, 2 bath apartments available. Will consider short term lease through June or August. Will also write leases for upcoming 1998-1999 school year. \$500/mth and a \$500 deposit required. Call 681-0894. Evenings call 871-6663.

SUBLEASE A room at Eagle's Nest Apartments for Spring and/or Summer. Its located across from campus. The rent is \$212.50 or negotiable. Call 681-9726.

ONE BEDROOM apartment, clean, close to campus \$315/mo + utilities. Available February at Stadium Place Call 912-871-4646.

HOME For Rent- Huntington Subdivision 3BR, 2b, 2 Car garage. Lake view, lots of storage, flexible terms. 912-587-9898.

Beautiful 4BR/3BA Townhomes or 4BR/2BA Flats. All amenities. Available immediately for Fall. \$850/mth call 681-6763.

SUBLEASE SAGEBRUSH Apartment through 1998. Available immediately for more information call 681-6704 and ask for Kim.

REASONABLE RENTALS
764-5003

3 BR/2BA condo available starting Spring Quarter. Mail area 681-5577.

230 Roommates

NEED SOMEONE to take over 1 BR apartment for Spring and Summer Quarters. Nice one bedroom apartment in Pine Haven Apts. \$275/mo + utilities. Call 68417974, leave a message or ask for Stephanie.

I WANT you to take over my lease for Spring and Summer quarters. Very nice 4 bedroom flat in Campus Courtyard. Three very nice female roommates. Only \$230 + 1/4 utilities per month. Call 681-3545.

SUBLEASE ASAP one bedroom in Hawthorne Ct. Female preferred. Reasonable rates. Available spring and summer quarters. This offer will go fast. Call Stephanie at 871-7950.

NEEDED MALE or female roommate for 1 BR/1BA fully furnished living room, kitchen, W/D at Greenbriar. This is a 2BR/2BA townhouse. Junior/Senior or Grad student. Contact Gordon at 681-7182, \$287/mth + 1/2 utilities

NEEDED! FEMALE to sublease f/summer quarter. Park Place. Private BD & BR, W/D, DW. Low rent!! 1/2 utilities. Call 871-7908, ask f/leigh.

ROOM for sublease. Eagle Crest apartments. Two bedrooms one bath. \$200 rent and \$100 deposit. 489-1507 (African American Male).

SUBLEASE FOR Summer! 4 bedroom townhouse at Campus Courtyard. Nice big bedrooms, Washer and Dryer. Close to campus. \$240/mth per person or negotiable. Call 871-4349.

SUBLEASE ASAP. Park Place, 2 BR/2BA \$350/mth (if you live alone). \$500 (2 persons living together). Very quiet and near campus. Call 871-5315.

Needed female roommate, Park Place, own bedroom and bathroom. \$250/mth and 1/2 utilities. Very quiet and near campus. Call 871-5315.

Roommate needed ASAP to share large 2BR/1BA apartment, totally furnished. Fireplace, W/D and microwave. Must be a clean person. Good location. \$200 a mth, \$75 deposit and 1/2 utilities. Lease optional Call Melanie @ 681-7672 after 5 or leave a message.

NEED FEMALE roommate to share 2 BR/2BA trailer 2 miles from campus. Nonsmoker preferred. \$200/mth includes all utilities must like cats. For more info call Rebecca Dixon at 681-1448 and leave a message.

FEMALE NEEDED ASAP to sublease Spring and Summer. Nice Park Place apartment rent is \$233/mth. Nice, Clean roommates. For more information call Shadale @ 681-9684.

NEEDED! FEMALE to sublease Spring and Summer quarters. Own bedroom and bathroom. Fully furnished living room. W/D and dishwasher. Great roommate! For more info call 871-7585.

ROOMMATE NEEDED: ASAP for 2 BR/2BA Trailer. \$180/mth plus 1/2 utilities. 10 minutes from campus. For more info call 488-2434 and ask for Jamie.

ROOMMATE NEEDED to sublease Spring and Summer quarters in Bermuda Run. \$260/mth. Female or Male. More info call 871-4445.

MATURE ROOMMATE wanted! Great house, quiet neighborhood. W/D, dishwasher, WM or WF undergrad or graduate student. Call 489-4063 and leave a message.

FEMALE NEEDED to sublease apartment in Hawthorne Ct. ASAP! for Winter and Spring Quarters. Private BR, and bathroom in 2 BR apartment. \$287.50 + utilities. Call 871-5619.

NEED SOMEONE to sublease! Spring and Summer 1998. Bermuda Run, own bedroom and bath. \$235/mth. Call Rachel at 871-5394 ASAP.

BEDROOM AVAILABLE in Bermuda Run Spring Quarter. Great Roommates-\$235/bedroom to tanning beds, pool, basketball courts, etc.. Male/female please call Leah/Wikki at 871-4038.

FEMALE to share 2 BR apartment. Pet lover, non-smoker, large bedroom, private bathroom. \$262.50 per month plus utilities. W/D. Call 681-2090.

EAGLE VILLA Suites. \$340 a month + utilities. Please contact LaShanda at 681-8389.

ROOMMATE NEEDED! Spring and Summer quarters 1998. Close to campus. \$230/mth. If interested please call Keena at 681-1860.

WF OR WM needed to share 3BR/2BA house w/ fenced in backyard. Have one dog. Smokers are welcome! \$217 a month + 1/3 utilities. Call 489-2618. Ask for Tiffany or Will, or leave a message.

240 Services

WEB PAGES simple. Web-site to multi hompages, designs for companies, GSU departments or students. You must provide internet space. Call 688-2510 or email gsit13981.

I WILL quickly do your federal and state income tax returns for \$10. Call Debbie at 764-4001, so I can tell you what to bring.

PERSONALIZED CARDS for all occasions, letterhead, labels, calendars, title pages, etc. Created on colored Desk Jet Printer. Call Renee at 871-3918 for information and prices.

If you need something typed and spell checked on the computer call or leave a message for Renee at 871-3918. \$1.00 per double-spaced page.

ALTERATIONS. Expert Alterations, prompt service, very reasonable prices. Call Dee Washington at 912-764-7200.

250 Sports & Stuff

GOLF CLUBS: Golden Ram CuLaser x2: Beryllium Head. Newly gripped. \$150 OBO. Call 688-2751 and ask for Matt.

BASEBALL CARDS for sale -- Kirby Puckett, Dwight Gooden, Darryl Strawberry, Felix Jones, Andy Benes, Ken Hill, Jimmy Key, Alan Trammell, Eric Davis. Call Renee 871-3918.

260 Stereo & Sounds

10" KICKER Speakers with 2050 Alphasonik Amplifier in box for \$300 OBO. Call Erin at 681-9776 any time. Leave a message if not home.

2 X 10" JBL Brand New in Plexiglass box. Only \$200 must sell. Clarion passive EQ only \$50. Alpine detachable face tape deck \$150. Call Andy 764-3553.

290 Travel

#1 SPRING BREAKDON'T GET BURNED**** SunSplash Tours! THE RELIABLE SPRING BREAK CO. 12 YRS. EXP. Hot destinations! LOW PRICES! FREE trips, parties-drinks!!!! SunSplash 1800-426-7710 www.sunsplashtours.com

✓ FUN & STUFF

Visit our Web site for list of places to visit and things to do that are both educational and fun. On-line at
<http://www.stp.gasou.edu/funstuff/>

310 Wanted

SUPER SOAKER players wanted! Want to form multiple teams in the area. Call Paul or Shane at 871-4972 for more information.

BASIC TUTOR wanted: Would like a tutor for 1-3 hours per week. will pay \$10/hr. Phone 623-3302.

10 G-A Action Ads

☆ FREEBIE INFO

ALL FREE student and faculty ads to be run in the George-Anne must have a **NAME, P.O. BOX and PHONE NUMBER**. Ads will be rejected if they do not have this information. **NO EXCEPTIONS.**

STUDENTS BEWARE

ATTENTION -- The George-Anne screens all advertisements prior to publication. The newspaper strives to accept ads for legitimate products and services only. Students are urged to exercise caution when replying to ads -- particularly those which require a credit card number, other personal information, or money in advance of the delivery of a product or service. Students are also urged to report to the newspaper any suspicious offers which they might see in an ad. Remember, if an offer seems too good to be true, it probably is.

STATEMENT OF OPERATIONS: The George-Anne is the official student newspaper of Georgia Southern University, owned and operated by GSU students and utilizing the facilities provided by GSU. The newspaper is the oldest continuously published weekly newspaper in Bulloch County and Statesboro, Ga. The ideas expressed herein are those of the editor or the individual authors and do not necessarily represent the views of the Student Media Committee, the administration, the faculty and staff of Georgia Southern University, or the University System of Georgia. The George-Anne is published twice weekly during the academic year and three times during summers. Any questions regarding content should be directed to the editor at by phone at 912/681-5246 or fax at 912/871-1357. Readers may also send electronic messages to the newspaper staff by visiting our web site at <http://www.stp.gasou.edu>.

OFFICES, MAIL, PHONES: Room 2023, F. I. Williams Center. The George-Anne, P.O. Box 8001, Georgia Southern University, Statesboro, Ga. 30460. 912/681-5246 (News) or 912/618-5418 (Advertising)

ADVERTISING INFORMATION

The George-Anne reserves the right to refuse any advertisement.
DISPLAY AD DEADLINE: The deadline for reserving space and submitting advertising copy is Noon, one week prior to the intended publication date.
For more information, rate cards, sample publications, contact: Shawn Sunderland, Advertising Manager, ADS, (912) 681-5418; or Bill Neville, Student Media Coordinator, (912) 681-0069.

PROOFING/ERRORS/OMISSIONS: The newspaper makes every reasonable effort to present a complete information in advertisements. However, the advertiser is responsible for proofing the ad upon publication and should notify the newspaper immediately in the event of an error. The newspaper is not responsible for any errors in advertisements and its liability for adjustments is limited to the amount of space the error occupied in the ad. Further, the newspaper is not responsible for any damages caused due to an ad's omission from a particular edition and its responsibility solely is to reschedule the ad in the next regular edition at the regular advertising rates.

CLASSIFIED ADS: Free classified ads from students, faculty and staff must be non-commercial in nature and submitted in writing, with the name of the sender, local address, and phone number. No free ads taken via telephone -- at this price we don't take dictation. One free ad per person per week. Commercial classified are 20 cents per word with a \$4 minimum per insertion. Tearsheets are \$2 extra per insertion.

CIRCULATION INFORMATION: Subscription rates for home delivery of The George-Anne are eight dollars per quarter, or \$24 per year, delivered by third class mail. Please address all inquiries to Zeina Rahme, Business Manager. The George-Anne is distributed free of charge on the Georgia Southern University campus through delivery sites located in campus buildings, at off-campus sites, and in residence halls.

NOTICE: Readers may pick up one free copy, and a second for a roommate or acquaintance, at distribution sites. Additional copies are 35 cents each and are available at the Williams Center. However, unauthorized removal of additional copies from a distribution site constitutes theft under Georgia law, a misdemeanor offense punishable by a fine and/or jail time. Editors will seek to have any person(s) who removes more than the authorized number of copies from a distribution site prosecuted to the full extent of the law.

NOTE: We gratefully acknowledge the theft of our slogan -- "Liked by Many, Cussed by Some, Read by them All" -- from Robert Williams of the Blackshear Times. Call Bob and he can tell you who stole it from originally.

20 Announcements

PANCAKE SUPPER First Presbyterian Church- 1215 Fair Rd-681-2053. Tuesday February 24, 1998 at 6:00pm. \$4/person sponsored by: Presbyterian Student Fellowship. Let us cook for you on the 24th.

Classifieds

That's right!! Students, Faculty, & Staff may receive free George-Anne Classifieds. Ads may be sent via campus mail to: G-A Classifieds, GSU P.O. Box 8001, or sent via email to stud_pub@gsa12.cc.gasou.edu. No classifieds will be taken over the phone.



MOTHER GOOSE & GRIMM by Mike Peters



Miss African-American pays tribute to mothers



By Anne Stanley

Miss African-American 1998 Jamico Primrose poses with her family.

By NiCole Patterson
Staff Writer

Random House Webster's Dictionary defines mother as a female who bears or rears offspring; a woman in authority; something that gives rise to something else; a source.

But does a mother's definition stop there? No, it doesn't. A mother is also a teacher, best friend, confidante, provider and in many cases the backbone of the family.

On Feb. 21, eight women gave tribute to their mothers at the 9th Annual Miss African-American Pageant, respectively themed "A Tribute To Our Mothers," where Jamico Edrica Primrose was crowned Miss African-American 1998.

Primrose is a senior business management major from Decatur, Ga. Her platform for the pageant was *Women: Taking care of the inside, as well as the outside.*

"The outside is what people see first. The way you project yourself and your appearance needs to be appropriate," Primrose said. "You want people to also get to know the inside of you."

Primrose said that it feels good to be crowned Miss African-American.

"This is an experience I will treasure for a lifetime," she said. "It was interesting meeting the other contestants."

When asked how her mother influences her, she said, "She's

been with me through everything. When I do not know what to do, she always says pray and read your Bible."

She also said that with her title, she can be a role model to young kids and in everyday life. She also encourages people who want to participate in pageants like these to keep their head up and always put God first.

The judging for the pageant was on technique, overall impression, and poise in four sections of the competition (on-stage interviews, talent, evening wear, and the final walk); however, the contestants were prepared because preparation for the pageant was unique.

In this pageant the contestants actually helped each other out and they walked away with the essence of sisterhood.

"You have the typical Nubian Queen and Miss Nubian Queen," Erica Gordon, pageant coordinator, said. "Even though our mothers are 200-300 miles away, they are always there for us. It was this kind of spirit inside both of us that knowing we wanted to thank someone who help us get to the point where we are now."

Gordon said, "The girls were really nervous about the on-stage interviews and their talent, but I stressed to them that nothing else mattered if they felt a since of sisterhood. They told me they did feel the bond and it really showed tonight."

The participants practiced in

depth for three to four days. A week before and the initial practice was a sleep over.

This gave the contestants a chance to bond and play games with each other.

"Each day we practiced on each section of the pageant," Gordon said. "The dress rehearsal was the only time they practiced on stage."

The entertainment for Saturday's event included the hip-hop dance group D.I.V.E.R.S.I.O.N., who jammed to "Dangerous" by Busta Rhymes.

A young gentleman named Derrick Bailey, read a spiritually moving poem about the uniqueness of black women.

There was also a group called True Gentleman, who sang a smooth melody entitled "I Gotta be the One You Love."

Finally, two young ladies from Statesboro High School performed a lyrical dance to Whitney Houston's, "You are Loved."

Overall, the pageant was a success, however, Shenica Bridges, another one of the pageant's coordinators, said there were some technical difficulties.

"We did have some difficulties, but I'm happy about the attendance. I would give the pageant an A," Bridges said. "This was my last pageant and I am going to miss this school very much."

Gordon said this is her last pageant as well at GSU.

"I want every young lady and gentleman to know that these kinds of pageants are here not only to award winners, but to award those who in mind, body, and spirit want to compete," Gordon said.

"It's basically an element of us as African-Americans getting together to celebrate the successes of life and celebrate who we are and what we represent, and to also show the world, especially the GSU community, that all of our black females are not stereotypical females," Gordon said. "We are intelligent, beautiful black women who are trying to do something."

brought by Stephen Kessler of Kirkwood was unreasonable, if not frivolous.

In his lawsuit, Kessler accused Crichton and Spielberg of stealing his screenplay, "Catch the Wind," to make "Twister."

Both stories are about storm chasers.

On Jan. 28, a jury rejected Kessler's claim. He is seeking a new trial.

Richard J. Claveria, M.D., Inc.
ORTHOPAEDIC SURGERY

Sports Medicine

412 Northside Drive E.
Suite 500
Statesboro, GA 30458
(912) 489-7746



Big Man on Campus 1998: Clint Bridges

By Erika Smith
Staff Writer

On Feb. 18, Zeta Tau Alpha presented the 12th Annual Big Man on Campus Contest.

The theme of the event was "Super Heroes Fighting Breast Cancer," to benefit the Susan G. Komen Breast Cancer Foundation.

"Unfortunately, too many women are affected by this life-threatening disease," Allison Nunnally, Zeta Tau Alpha president, said. "Surprisingly, over one thousand men are also affected."

Numerous sororities and fraternities were present to cheer on their nominees. Some organizations represented were Alpha Omicron Pi, Sigma Nu, Kappa Delta, Kappa Sigma and many more.

The event was made possible by Allison Oasis. She said although it took months of planning, she was very happy that it was a big hit and everyone had fun.

The entertainment for the evening was provided by Mix 97.3's Danger Boy and the Mas-

ter of Ceremonies, Bowen Beall, with his roaring guitar.

respectively.

As the evening went on, the contestants were put through a stage of Super Hero Attire, in which they gave the audience a thrill with tight pants and dangerous weapons.

The biggest reception came from Clint Bridges' performance to Ginuwine's "Pony." He and other contestants had many people wanting more. They were definitely given what they wanted after the Top 5 finalists were announced which included Nathan Lyell, Clint Bridges, Mark Williams, Brian Cooper and Chad Raith.

The last stage was the introduction of the new Big Man on Campus 1998, and the winner was Clint Bridges.

Bridges is a 21 year old business management major from Sylvester, Ga., with hopes of living in Atlanta after graduation. He plans to get his master's degree at Georgia State University.

"I appreciate all the support from the Kappa Deltas, and I enjoyed getting to know the other contestants," Bridges said.

"I APPRECIATE ALL
THE SUPPORT FROM
THE KAPPA DELTAS,
AND I ENJOYED
GETTING TO KNOW
THE OTHER
CONTESTANTS."
-- CLINT BRIDGES

The contestants were introduced. They then stated the name of the organization that sponsored them. Jennifer Personette and her big sister, Jenny Mingay (both Zeta Tau Alpha sister's), were very happy to be there cheering for Brian Cooper, representing Kappa Sigma, one of the top 5 finalists for the contest. Chris Ritch and Shawn Snow said they were very happy to be representing their fraternities of Sigma Nu and Delta Tau Delta,

CAMPUS NEWS

ASME to join Mini-Baja competition in 1999



The 1987 Mini-Baja model

In celebration of National Engineering Week, the ASME has announced they will join the Mini-Baja competition in May of

1999 in Tennessee.

The competition includes building a car that will be put through speed and power contests, a tractor pull and an amphibious competition (the car must be able to float).

The team will be competing against schools throughout the nation.

Each school has a budget of \$2,500 which will be used for supplies and the construction of the car.

The money can be donated by

sponsors and alumnus, or like GSU's team, through fund raising.

They are selling paper weights to raise the money needed for the competition.

ASME is trying to bring engineering pride to GSU. The Mini-Baja competition is open for all interested students.

For more information call 871-3887.

If you wish to help support ASME, the paper weights are on sale in the bookstore.

ASE, ICAR Certified • Towing • Import Specialist

SOUTH 301
Auto Body Collision Center

We sell and install autoglass & body parts

• Free Estimates

• Student Discounts

No job is too BIG or SMALL for us.

42 years of experience, come see
Mike Jett or Bill O'neal.

(912) 871-5181

1305 Hwy 301 South • Statesboro, GA 30458

Hockey star's wife wants more money for child support

The Associated Press

NEW YORK — The mother of Mark Messier's 10-year-old son wants a judge to boost the hockey star's child support payments from \$1,500 to \$10,000 a month, the *Daily News* reported.

Former model Leslie Young, who successfully sued Messier for paternity in 1988, said she's entitled to more money, in part because the boy has minor learning difficulties and attends a private school.

The two were in Family Court and negotiations were continu-

ing.

"This is a private matter," Messier's attorney Phillip Hoffman said. "It has not been resolved."

Messier is in the first year of a three-year, \$20 million contract with the Vancouver Canucks. Young, who lives with her son in Fairfax, Va., supports herself as an X-ray technician.

ST. LOUIS — A filmmaker who unsuccessfully sued the makers of "Twister" for copyright infringement received a bill for about \$1.2 million from their lawyers.

Lawyers for Michael Crichton, Steven Spielberg and other Hollywood heavyweights filed the bill in U.S. District Court in St. Louis.

They argued that the lawsuit

NOW OPEN

CLOUD 9

**Novelties, Gifts
& Body Piercing
by Rick**

- Adult Novelties
- Sterling Silver Jewelry
- Smoking Accessories
- Lava Lamps
- Beaded Curtains
- Candles & Incense
- Black Lights
- Zippo Lighters

#3 University Plaza
871-4054

test **PURE**

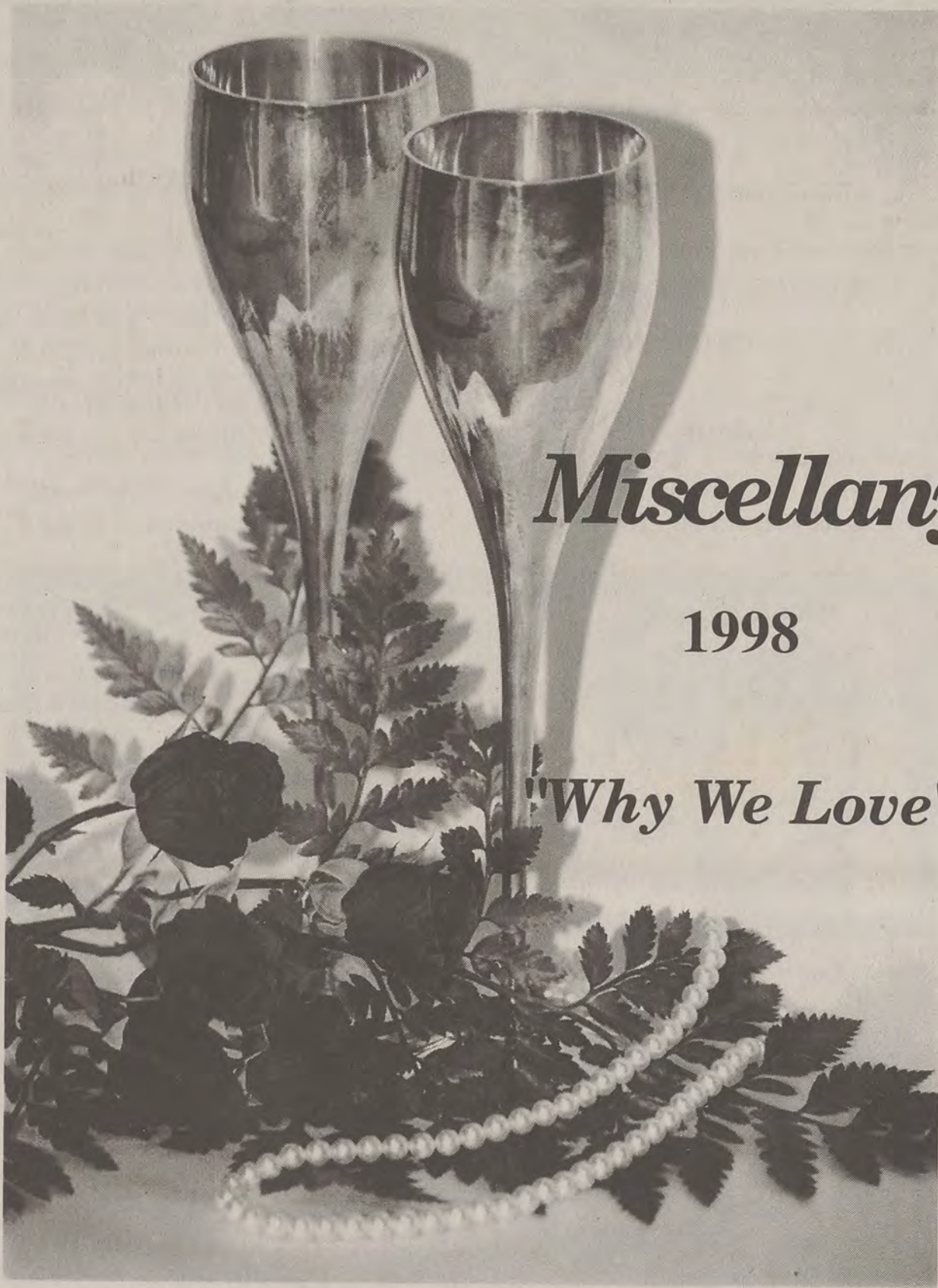
CHILLS

PLAYERS CLUB APARTMENTS

WHERE WEEKENDS LAST ALL WEEK LONG!

PLAYERS CLUB APARTMENTS

710 Georgia Avenue • Statesboro, GA 30458
(912) 871-6501



Miscellany

1998

"Why We Love"

Why We Love

- "The little straw hat he promised to wear"
Childhood Peggy Jones pg 4
- "your little legs still unsteady"
Adrift Anita Gail Poole pg 5
- "rhythm of your heart"
I will miss you Howard Anna Maria Goodson pg 6
- "a sight of true beauty"
Masterpiece Bennie Florence Jr. pg 7
- "This thing that causes wars"
Concinnity Kier DeSean Chapple pgs 8 & 9
- "while you sit back and smile"
My Heart Frank Jackson pg 10
- "Excuses, excuses, excuses"
What seems to be the problem Frank Jackson pg11
- "Promise of fidelity when he's ready to be mine."
Love is Kameelah Martin pgs 12 & 13
- "its future . . . our future"
Lanelle Keir DeSean Chapple pg 14
- "No sounds but spray and salt."
Waves Chuck Butler pg 15
- "Doing it for my own good"
Why We Love Linda Rhode Doremus pg 16

Editor's Note

Is it because of the way he calls your name,
or is it because she stares at the sky when she thinks she is alone?

Is it because you like the taste of tears,
or is it because the moon and the lake seem to dance when it's really dark?

Is it families,
funerals, fashion shows, or fools?

We at the Miscellany were interested in "Why We Love?" We thank you for
your answer.



Editor: Tracie Poole

Assistant Editors: LaDonna Goldwire
Sarah Trucksis

Media Consultant: Bill Nevile

Advisor: Mike Mills

Cover: Picture taken by Cory Brooks, created by Sarah Trucksis

Thanks to The Hope Chest's Flowers & Gifts for providing the flowers
and special thanks to The Bridal Creations for their cooperation and,
the use of their store and accessories.



Childhood

Peggy Jones

A Boy

He sits on the grass,
Legs sprawled, toes stirring the water.
The little straw hat he promised to wear
Is a nest for worms.
His freckled nose bakes in the sun;
His eyes are fixed on the tiny red cork-
Waiting and wishing.

A Girl

She teeters in her mother's high heels.
So busy "playing like."
She bends over the cradle,
Kisses and covers the doll.
Her baby sleeps: she sits down to tea.
So busy "playing like."

Hello, little boy-child
 with your laughing black eyes and blacker hair,
 smiling up at me—
 my child would have looked a lot like you.
 Little boy-child
 wondering at the world, going, looking under things
 your little legs still unsteady
 you are so young and helpless
 your tongue trips over half-formed words
 making the words come out wrong
 but they are right because you are still a baby.
 My child would have acted a lot like you.
 Little boy-child,
 your bursts of energy are short—
 you slow down and yawn and fret and
 climb clumsily onto your mother's lap
 and you put your tiny arms around her waist
 as far as they will reach
 and you snuggle into the softness of her;
 your cheek against her breast, you drift into sleep,
 your breath soft against her like kisses of angels—
 My child would have been a lot like you.

I will miss you Howard

Anna Maria Goodson



your words have
branded my heart
late at night when
everything is still
and i have held you
so close to me
if only with my eyes

our backs do not
have to touch for me
to feel the troubled
rhythm of your heart

even when we are
separated, my fingers
are entwined in yours~
we hear each other's
cries

even when i am
far away, i feel you
by my side, Howard~
step for step your
shadow falls beside mine

when i lie in bed
with all of the lights out
and afraid, i feel
your words and am calmed

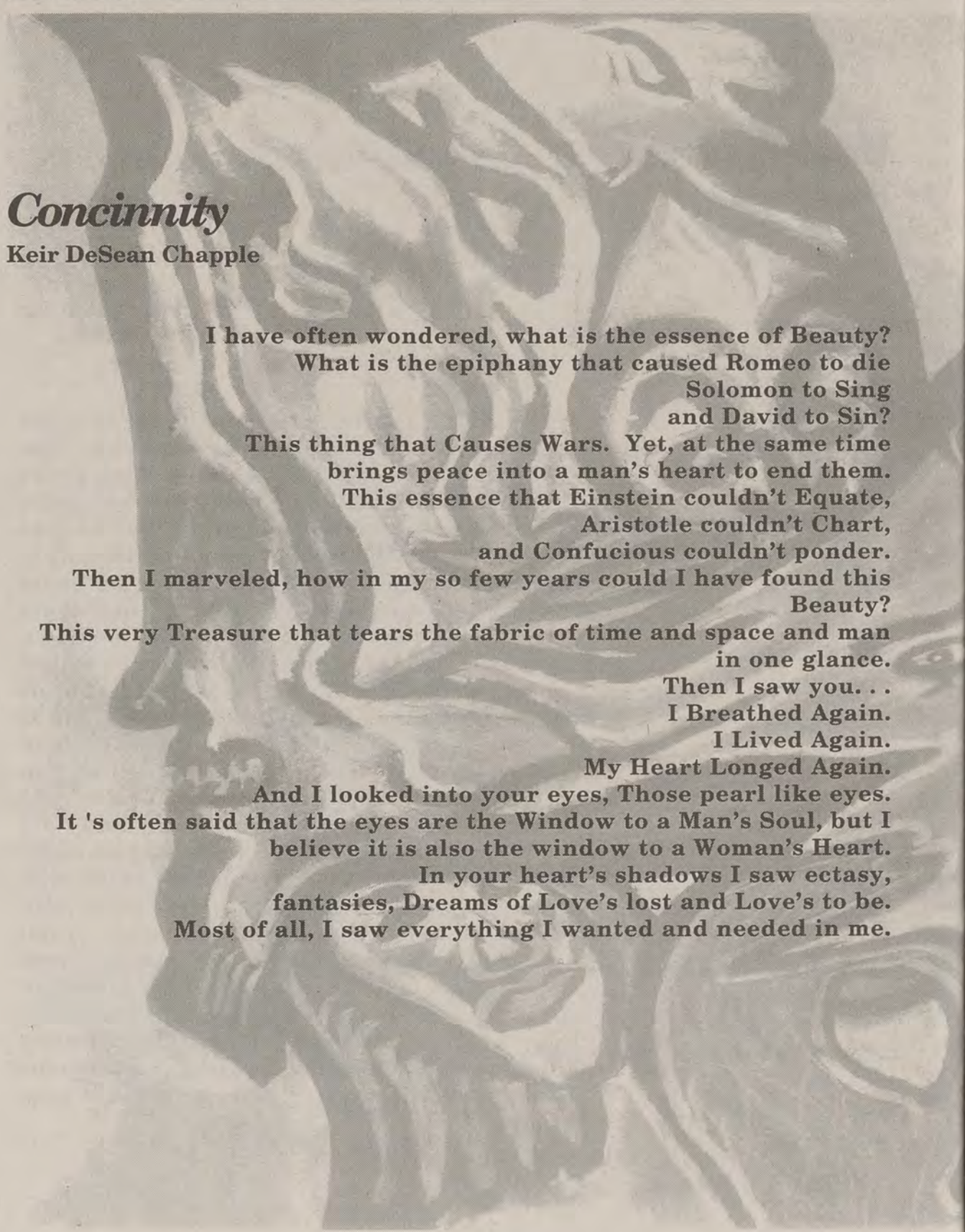
Masterpiece

Bennie Florence

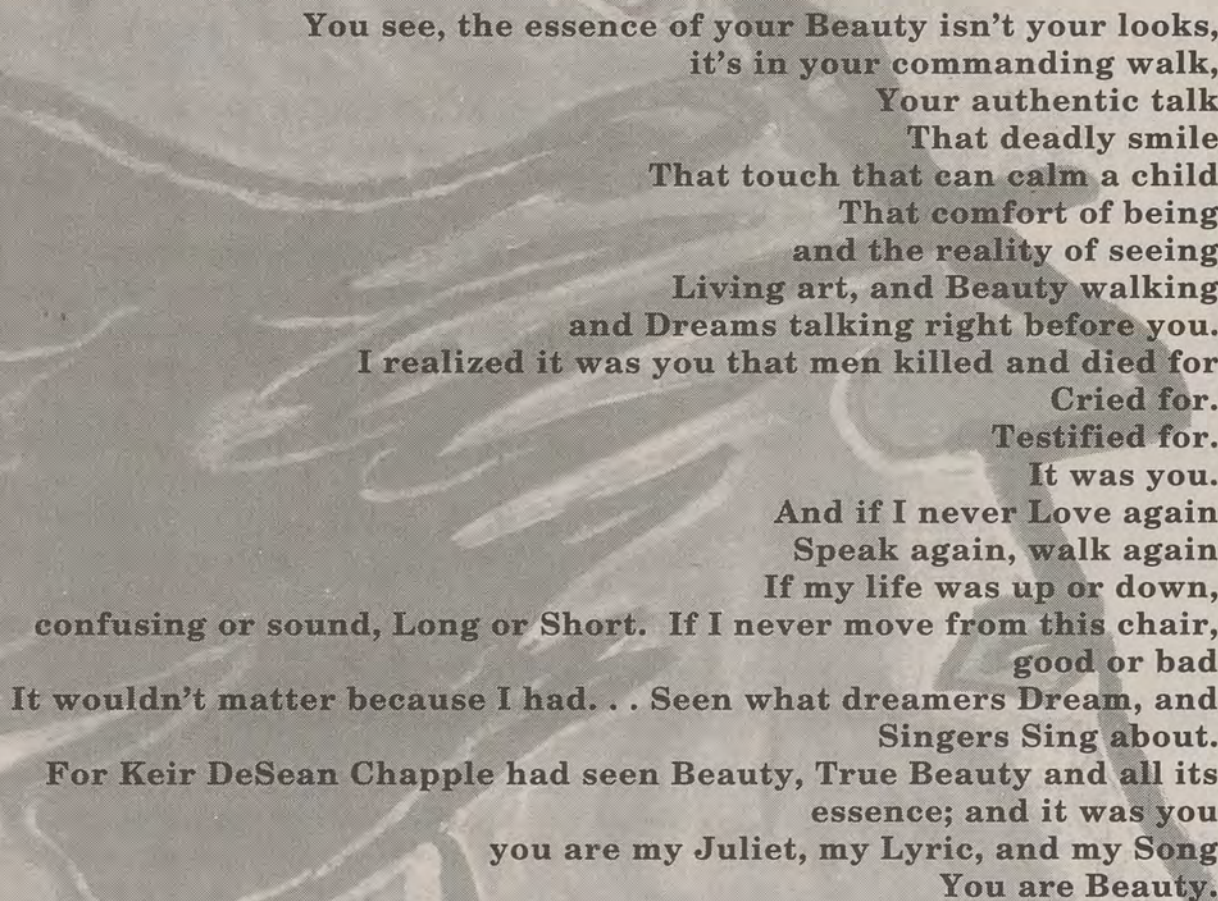
I sit at night with your image in mind
trying to grab the reality of there being a creature so fine
Where have you been hiding all my years
where were you when my heart shed tears
I cried for a sight of true beauty
I guess God gave you that duty
You have all the admiration of my heart
mending my faith in women that had been torn apart
Past experiences in life had me down
and then there was hope when you came around
Your body seems to be cherished by Donatello's hands
your skin matches that of golden beach sands
Your smile is as bright as the rising sun
you raise my heartbeat like a marathon run
Your legs and thighs are like limbs of pure gold
making your walk sexy and bold
Can I be the one to make you smile
can I be the one to take you that extra mile
I want to be able to hold you when you need to be held
and I will be all ears when you have a story to tell
Can I be the one you receive comfort from
let me be the one you call for affection
Your eyes could make a blind man see
healing him with your loving intensity
I describe you as the world's greatest masterpiece
because your presence rests my soul at ease

Concinnity

Keir DeSean Chapple



I have often wondered, what is the essence of Beauty?
What is the epiphany that caused Romeo to die
Solomon to Sing
and David to Sin?
This thing that Causes Wars. Yet, at the same time
brings peace into a man's heart to end them.
This essence that Einstein couldn't Equate,
Aristotle couldn't Chart,
and Confucious couldn't ponder.
Then I marveled, how in my so few years could I have found this
Beauty?
This very Treasure that tears the fabric of time and space and man
in one glance.
Then I saw you. . .
I Breathed Again.
I Lived Again.
My Heart Longed Again.
And I looked into your eyes, Those pearl like eyes.
It 's often said that the eyes are the Window to a Man's Soul, but I
believe it is also the window to a Woman's Heart.
In your heart's shadows I saw ectasy,
fantasies, Dreams of Love's lost and Love's to be.
Most of all, I saw everything I wanted and needed in me.



You see, the essence of your Beauty isn't your looks,
it's in your commanding walk,
Your authentic talk
That deadly smile
That touch that can calm a child
That comfort of being
and the reality of seeing
Living art, and Beauty walking
and Dreams talking right before you.
I realized it was you that men killed and died for
Cried for.
Testified for.
It was you.
And if I never Love again
Speak again, walk again
If my life was up or down,
confusing or sound, Long or Short. If I never move from this chair,
good or bad
It wouldn't matter because I had. . . Seen what dreamers Dream, and
Singers Sing about.
For Keir DeSean Chapple had seen Beauty, True Beauty and all its
essence; and it was you
you are my Juliet, my Lyric, and my Song
You are Beauty.

My Heart

Frank Jackson

It is somewhat ironic that my heart, once torn and crushed,
Has been filled with modesty, courage, generosity, and trust.
Despite the rumors of war that plague the atmosphere around me,
I find it deep within myself to display maturity in times of envy.
The pain that is caused by others can't even be described.
Though I might not show my emotional prowess, the love in my heart
makes it subside.

My heart reaches out to you, let it restore your piece of mind.
A love that is eternal begs for the chance to show you a sign.
I have seized the opportunity, it's frustrating at times, but that's just
life.

My heart compels me to spread the love that cuts deep like a knife.
What if my heart didn't have the warmth you desired to have?
I wouldn't be mad, instead I would remind myself not to worry and
just laugh.

It takes an awful lot to bring out a frown on my face.
While you sit back and smile, I smile too; wishing that you could take
my place.

Many people feel down and out when they are in bad situations,
But I look at it as a chance to focus my heart on a positive inspira-
tion.

That is how I grow, that is why I do the things that I do.
People don't seem to understand that my heart will always stay true.

True to the image I portray and true to myself.
If you could see the love in my heart, there would be a whole lot left.
So I'm begging you, don't be quick to judge the heart of this man,
Because I can reveal an entourage of love in camouflage that you
can't understand.

Surely my heart pumps blood, just as I continue to spread love.
But I can't live on memories alone, so the future is what I'm thinking
of.

We are all given the chance of a lifetime, so put your name on the
dotted line.

Don't rip love apart, make an effort from the start; it's there, seek,
search, and find.

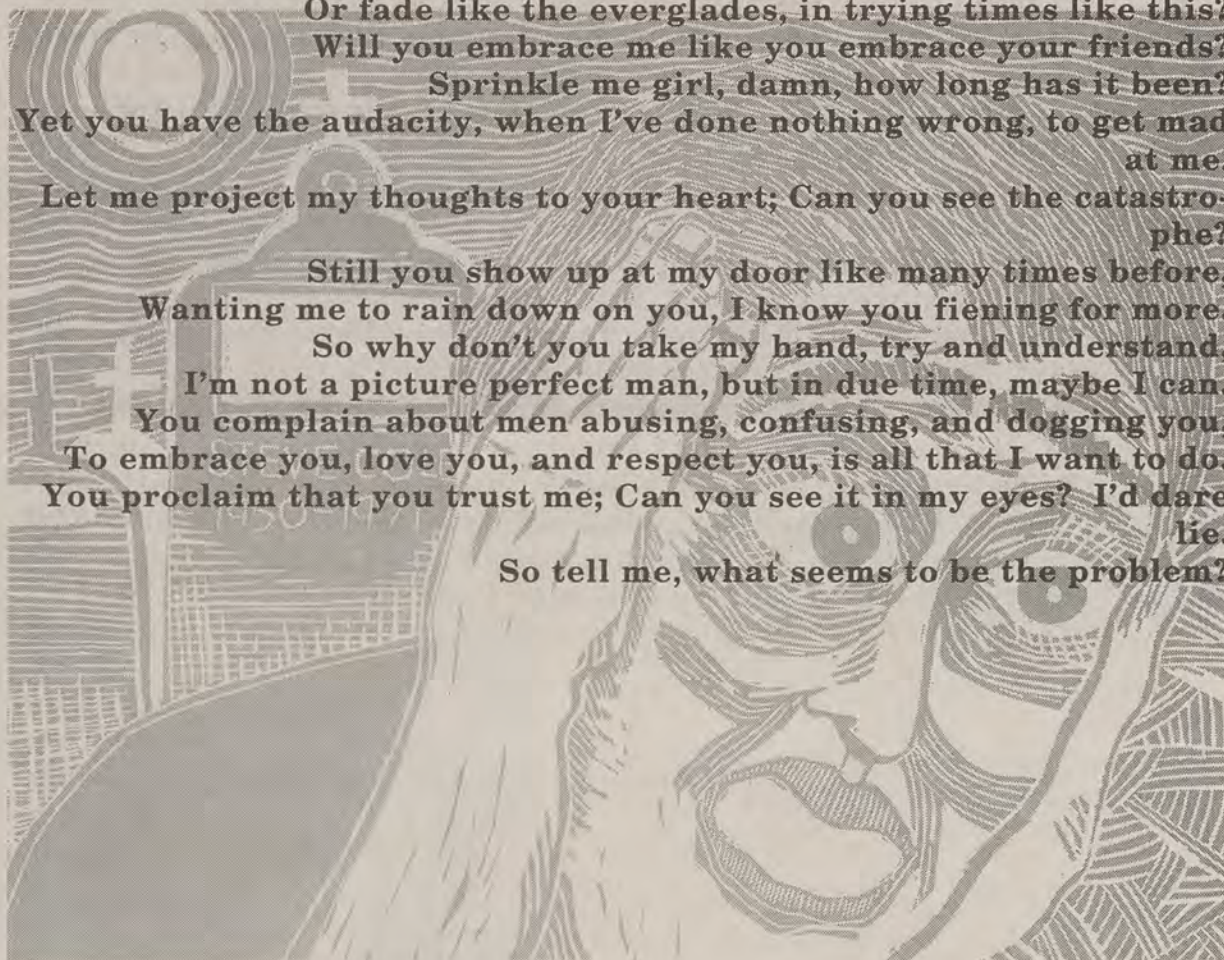
I found it! And it's right in my HEART.

Dedicated to Kristile, because you are my heart.

What seems to be the problem?

Frank Jackson

What seems to be the problem?
Mind telling me, maybe I can solve them.
Excuses, excuses, excuses,
You know sometimes I think that it is useless.
I talk to you, but you don't talk back.
You leave me dazed and confused, now why would you act like that?
You say that you love me, but I find it hard to believe.
My heart is longing for your affection, and it makes it hard for me to
breathe.
Do you care about me, like I care about you?
What else can I say, tell me, what can I do?
You are so close, yet your love so far away.
It's like my past is in the present, and my future is yesterday.
Can we sit and reminisce, and bring back love with a French kiss,
Or fade like the everglades, in trying times like this?
Will you embrace me like you embrace your friends?
Sprinkle me girl, damn, how long has it been?
Yet you have the audacity, when I've done nothing wrong, to get mad
at me.
Let me project my thoughts to your heart; Can you see the catastro-
phe?
Still you show up at my door like many times before,
Wanting me to rain down on you, I know you fiening for more.
So why don't you take my hand, try and understand,
I'm not a picture perfect man, but in due time, maybe I can.
You complain about men abusing, confusing, and dogging you,
To embrace you, love you, and respect you, is all that I want to do.
You proclaim that you trust me; Can you see it in my eyes? I'd dare
lie.
So tell me, what seems to be the problem?



Love is...

Kameelah Martin

Love is so complex, some see it only as sex. Could it only mean that much when you can get that by the bunch? Love to me is when your feelings are free. You don't have fear to show them, and you don't have a reason to loathe them. An excuse it should not be, with that I must agree. Love is an emotion that I don't give out for free.

Love can work in crazy ways. It can make you smile or cry for days. The good comes with the bad, the happy with the sad. It's not something that happens over night, or something that should end because of one fight. It's not an easy concept to grasp. Having faith in its power can whip your ass! But, if it is love that you truly seek, don't get caught slippin' with that booty freak! Love is patient, love is kind, it can sneak up on you and catch you from behind. It could be there the whole time and some never know because they were blind. You can't act on love if you don't know it's there, while your lover-to-be is already wishing their heart you would spare. Do you try to make it right, should you even dare? After the pain you have caused, it wouldn't be fair. But, should one be punished for not knowing that love was there?

On the other hand, should you just give up because you haven't had the best of luck? Cheating and beating I do not condone, I don't want a dog or any broken bones! But, what if love's problems are much smaller than that? He wants to go in bare-back and I want him to use a hat. What if he's not ready and he wants a little time? A promise of fidelity when he's ready to be mine. Do I just turn my back and walk away, hoping that I find love again someday? Do I keep the faith or betray my love when I know that he is all that I'm thinking of? He has caused me pain and many tears, but he has also chased away many tears. He has done some good and also bad, but he has given me the best feeling I've ever had. I'm convinced that it's not just a fad.

Love endures, that I truly believe. Moms loved Pops, but when he struck, she had to leave. They still love each other, of that type of love can you conceive? Time and distance is between them, but love still remains. If it weren't for that love I wouldn't have a name. People are the ones that change, love stays the same. You can give it new form, fashion, or name, but the concept of love will always be maintained.

I'll Give To You

Alfred Schneebeli



I'll give to you my body
Which is only what you see
And is that one aspect
That is all there is to me.

And I'll give to you my mind
Plus the colours in each cell
To invoke in you what it did in me
The warmth and wisdom of the ways

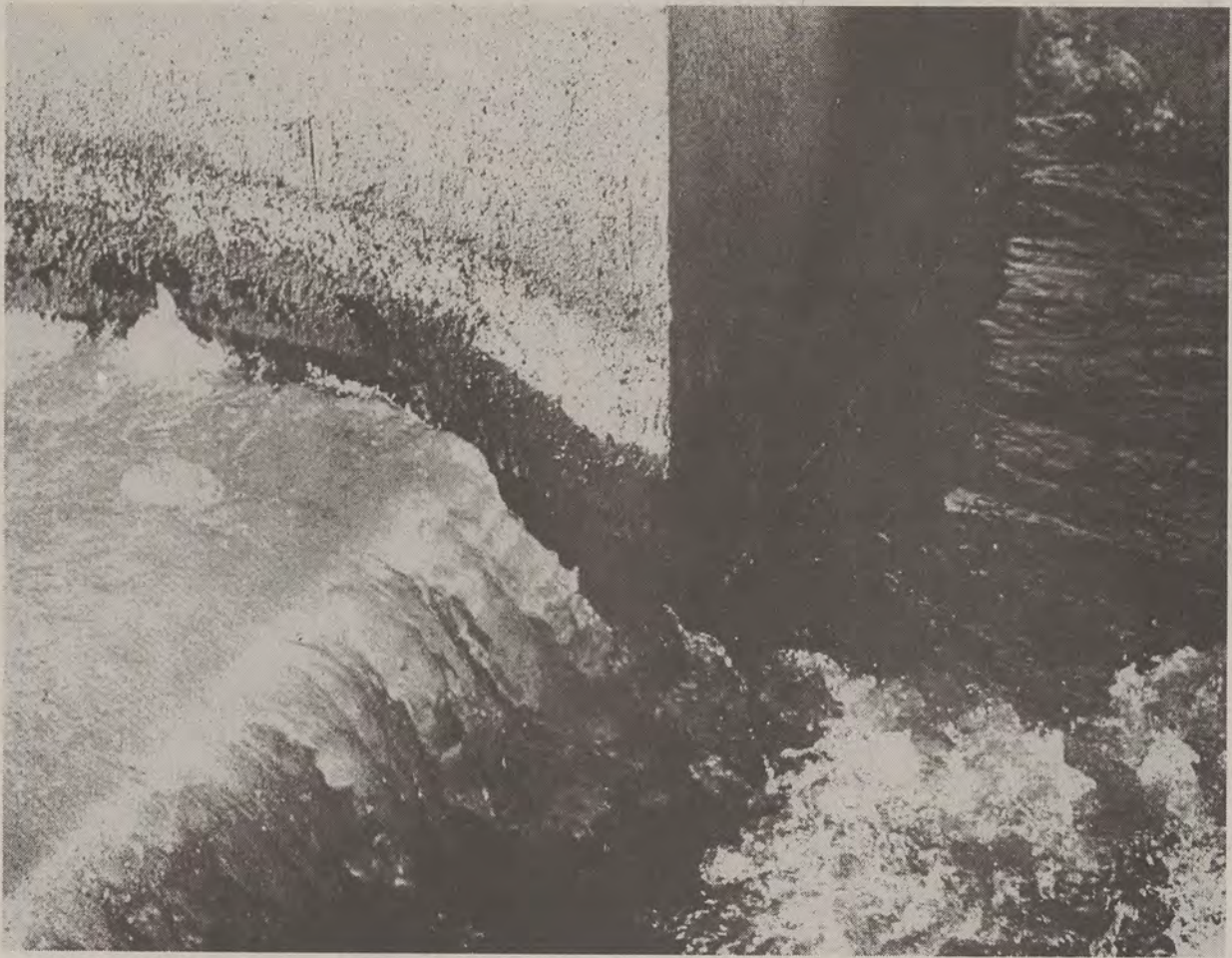
I'll give to you my soul-
God's inner light which burns in me
Can make each lonely day
Into beloved eternity

I'll give to you my all
The total of my love
To mount you up and take you high
On wings of an everlasting dove.

Lanelle

Keir DeSean Chapple

I never quite understood it.
It walked in my life seven years ago.
In its eye (I think they were eyes)
I saw a dream, then a purpose, then my longing.
I wanted it.
It never had been wanted.
I scared it.
No!
Our future scared it.
It saw it, I saw it
I told it, it refused it.
It kept running.
Can't always run,
it tried.
So it only dreamed of running.
Recently its voice called out to me
I was absorbed in its complexity, and
baffled by its boldness. It grew,
or had it always been this big. (Ha)
I never understood it.
I just loved it. Settled for its friendship
It didn't want my friendship, or so it said.
Then I told it neither did I.
I said, "Don't use your voice to call me. I can't hear it. I'm deaf,"
it broke down and told me it always wanted me, and loved me, but
feared me,
well in my future,
its future
our future
It tried to run,
can't run from purpose
from the future
just to it.
So it decided
to come to me
to its future
to its purpose.
I've loved it ever since
I still don't understand it.



Waves

Chuck Butler

Crashing throughout the day and night,
no sounds but spray and salt.
Never thought power could make a sound.
Breach through the crisp, clean air,
dolphins dance and play like no tomorrow.
Freshness fills the body,
no ill feelings today.
Peace and tranquility.
Hard to believe that such a beautiful thing
can create death.
Do not fear the waves,
for they are just like you and me
LIFE.

Why We Love

Linda Rhode Doremus

We love to survive. We may love food, friends, cars, dogs, family, and one person more than another person. We may hate to love or love to hate. Some love clouds and the burning hues of autumn. Some love cool winter whiteness or warm summer breezes. It doesn't always matter what or who we love, but we must love to stay alive.

If we refuse to love anything, then we have signed our own death warrant for soon we will cease to exist. Our brains will have no reason to think and our hearts will have no reason to beat. Haven't you ever heard of someone grieving to death because a loved one had died? That person had stopped loving. They had terminated any desire to eat, sleep, and exercise mind and body. They didn't stop loving the person they lost, but they lost the will to live.

A person can love someone. Some love God or a god or no god. Parents love their children. Sisters love brothers or love to hate brothers. Brothers love to aggravate sisters and little brothers. Grandparents love to spoil their grandchildren. Men love women. Teenagers love sports, cars, clothes, and the opposite sex.

Clint Black sings that love is "something that we do." It's not something that we fall into or something that we're in. It's what we do for others because we love them. It is this doing for others that keeps us alive. Someone once told me that I was selfish when I performed a random act of kindness. He said that I benefited more from doing the deed. He accused me of doing it for my own good. His words angered me, but now I understand. He was right.

Why we love is so broad a subject as the ocean is deep and the sky is wide. Why do you love? Do you love to live or live to love? I love to survive.