

Georgia Southern University

Digital Commons@Georgia Southern

The George-Anne

Student Media

4-15-1997

The George-Anne

Georgia Southern University

Follow this and additional works at: <https://digitalcommons.georgiasouthern.edu/george-anne>

Recommended Citation

Georgia Southern University, "The George-Anne" (1997). *The George-Anne*. 1469.
<https://digitalcommons.georgiasouthern.edu/george-anne/1469>

This newspaper is brought to you for free and open access by the Student Media at Digital Commons@Georgia Southern. It has been accepted for inclusion in The George-Anne by an authorized administrator of Digital Commons@Georgia Southern. For more information, please contact digitalcommons@georgiasouthern.edu.



The George-Anne

Georgia Southern University's Official Student Newspaper

Statesboro, Georgia 30460

Founded 1927

BLUE EDITION

Tuesday
April 15, 1997
Vol. 70, No. 03

The oldest continuously
published newspaper in
Bulloch County

Sports



GSU Baseball

Eagle baseball team added two more wins to their record by beating Bethune-Cookman this weekend.

Please see story,
page 6

Features



Rodeo comes to the 'Boro

Bull rides, calf roping and barrel racing were several attractions this past weekend at the International Pro Rodeo held at the Bulloch County Horseman's Association.

Please see story,
page 12

Weather



Today: Partly cloudy with a high in the mid-60s.

Wednesday: Mostly sunny with a high in the low 70s.

Today's Word

mycterism
(MIKteriz'm) n. derision or sarcasm that is somewhat veiled.

Source: Weird Words

Index

Announcements	2
Classifieds	13
Crossword	13
Features	10
G-A Spotlight	3
Only in America	3
Opinions	4
Police Beat	2
Sports	6

It is a desire of The George-Anne to print the news of Georgia Southern University as accurately as possible. If you believe that something covered is in error, contact the editor at 681-5246 as soon as possible. Thank you.



FOR ADVERTISING INFO: 681-5418
STORY OR PHOTO IDEA: 681-5246
FAX NUMBERS: 871-1357, 681-0863
LANDRUM BOX: 8001
E-MAIL TO:
stud_pub@gsu2cc.GaSoU.EDU
Check out our On-Line Newspaper at
http://www.stp.gasu.edu

The George-Anne

Liked By Many, Cussed
By Some ...
Read By Them All

Police find no connection among recent rapes

By Stephanie Strobel
and Farrah Senn

Police say there is no connection between the Thursday night rape of a Players Club resident and other recently reported rapes. Police have also dispelled the notion of a serial rapist in Statesboro.

Rumors of a series of connected rapes in the GSU community which began to escalate at the end of winter quarter have been confirmed to be just rumors by the Statesboro Police Department.

In the past two months, three incidents of rape and one incident of sexual assault, including the one at Players Club, have been reported to the Statesboro Police.

According to SPD, evidence in these cases doesn't lead them to suspect a serial rapist. In no case did the assailant fit the description of the rumored serial rapist, who is described as hairless.

On Feb. 8, a resident of Willow Bend reported being raped. The assailant was a black male who the victim knew.

On Feb. 21, a resident of Greenbriar reported a case of sexual assault. The

reported being raped by an unknown white male, of medium build with dark hair, which doesn't fit the description of the so-called hairless man that has been rumored to be raping women in the area.

RUMORS OF A SERIES OF CONNECTED RAPES IN THE GSU COMMUNITY WHICH BEGAN TO ESCALATE AT THE END OF WINTER QUARTER HAVE BEEN CONFIRMED TO BE JUST RUMORS BY THE STATESBORO POLICE DEPARTMENT.

victim did not know the assailant.

On March 8, a resident of Foxridge Apartments reported being raped by someone she knew.

Police arrested Anthony Lamar Perkins on March 18 in connection with the Foxridge rape.

Last week, a Players Club resident

"There is no indication that there is a serial rapist," a SPD spokesperson said.

The rumors that were stirring at the end of last quarter were set off by a newsletter distributed by Bermuda Run apartments.

"We felt that our residents should be aware of what is going on and remind

them to be cautious of their surroundings," one Bermuda Run employee said.

Linda Smallwood, a volunteer counselor for the local rape crisis center, said that the rumors can have both a positive and negative impact on the students.

"Rumors like this make students more aware of the safety of their surroundings, whether it is in their apartments or around campus," Smallwood said. "However rumors that start a panic cause an innocent person to get hurt."

University Police advise students to exercise caution by making their surroundings more secure against attack and by learning how to defend themselves.

This year GSU's department of physical education has added a self-defense course to the curriculum.

"The classes are very popular and fill up quickly," Laura Gibson, student secretary at the activities program, said.

Board of Regents approves a state-wide six percent tuition hike

By Kevin Bonsor
News Editor

GSU students can expect to shell out a few more dollars for tuition when next fall rolls around because of the Board of Regents' decision to raise tuition across the state.

The Board of Regents approved a 6 percent general tuition increase that is scheduled to go into effect on July 1, 1997.

Tuition for undergraduates at GSU, as well as Georgia's other regional, state and four-year colleges will increase from \$528 to \$560 per quarter for in-state students.

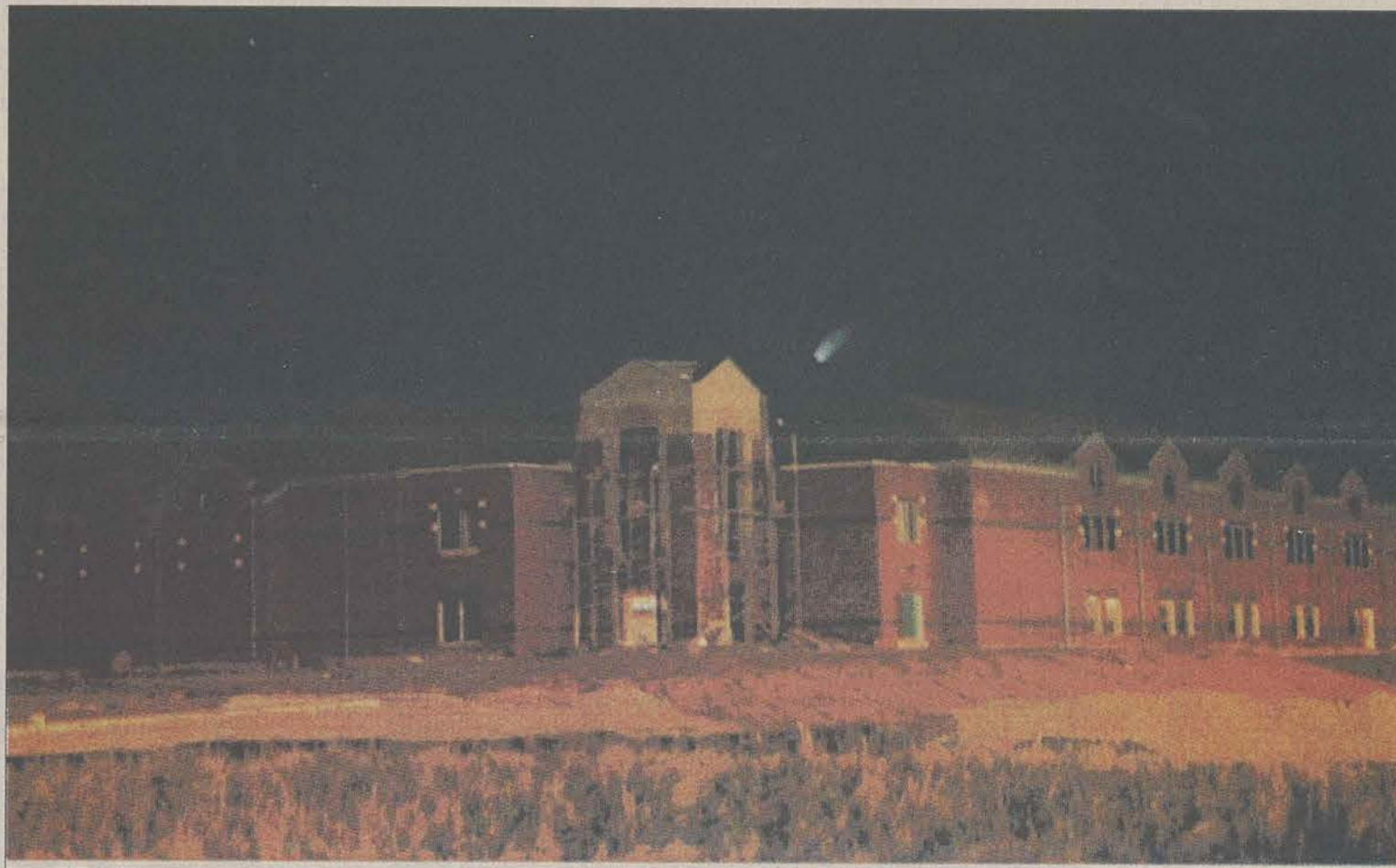
Out-of-state students will be required to pay 7 to 12 percent more than last year.

Tuition at the University System of Georgia's two-year schools will increase by \$22 per quarter. At the System's research institutions, resident undergraduate tuition will increase from \$705 to \$747 per quarter.

Arlethia Perry-Johnson, assistant vice chancellor for media and publications, said that the increase in tuition can be linked to several reasons.

Please see TUITION, page 14

Look, it's Hale-Bopp



Mike Spilker

By now, almost everyone has caught at least a slight glimpse of the Hale-Bopp comet which has been putting on a spectacular light display since mid-March. Discovered in July 1995 by amateur astronomers Alan Hale of Cloudcroft, N.M. and Thomas Bopp of Stanfield, Ariz., the streaking ball of ice and dust made

its nearest pass of the Earth on April 1. According to astronomers who have been monitoring Hale-Bopp, the comet has now moved behind the sun and will not be visible again until August. When it returns to view, however, it will be more than 200 million miles from Earth and much fainter.

GSU's latest commuter parking lot now under construction

The lot will be convenient for students with classes in the College of Business Administration and Engineering Technology buildings

By Laura Owens
Staff writer

The construction of a new commuter parking lot on the corner Akins Boulevard and Forest Drive is now under way to combat the need for commuter parking as the GSU campus continues to grow.

Construction was scheduled to begin earlier this year but was delayed due to the removal of waste in the area.

The lot will be adjacent to the ROTC training area and will be convenient for students who have classes in the College of Business Administration and Engineering Technology buildings as well as the future College of Education buildings.

The new lot will provide approximately 300 commuter spaces, including a few spaces for faculty.

Officials hope the additional spaces will help to alleviate the current parking problems.

Bob Chambers, director of Parking and Transportation, said the process of cleaning the waste is complete and construction is now underway on the new lot.

Chambers said that the univer-



David Mathews

The new parking lot, which will be located near the ROTC training area will provide approximately 300 commuter parking spaces to the GSU campus. Officials say the parking lot was part of the original plan by the university and they hope the additional parking lot will help reduce some of the current parking problems.

sity had planned to build a lot in that location

"It was part of the master plan of the university to have a parking lot there," Chambers said.

Chambers also said a temporary walk-way will be built to connect the lot to the current pedestrian and walkways.

The site was chosen because of its accessibility to the College of Education building, which is to be built near the lot.

Additionally, the site for the lot is one of the few dry locations in the area, considering that most of the land near the new lot is wetlands.

Phil Hodge, director of Facilities Planning, said plans are under way to open up another new commuter lot next to Marvin Pittman School playground. It should contain 100 spaces.

After Marvin Pittman closes in the summer of 1998, the lot will have a total of 450 spaces.

Erika Skaug also contributed to this report.

POLICE BEAT

GSU Division of Public Safety

April 8, 1997

•Charmell Funnys reported her purse was taken from her vehicle in the Landrum parking lot.

•Maurice McNeal reported someone took his driver's license, GSU identification card and three textbooks from the Hanner Gym.

April 7, 1997

•Curtis Murrell Jr., 18, of Lithonia, was charged with obstruction of an officer.

•Johnmark Ceaborn Thomas, 18, of Vidalia, was charged with obstruction of an officer.

April 4, 1997

•Clark McPherson Jr., of Statesboro, was charged with driving with a suspended license.

Statesboro Police Department

April 10, 1997

•Lakisha Alford, of Park

Place, reported that a passenger in another vehicle threw something at her vehicle while driving down Chandler Road.

April 9, 1997

•Roydeco Rich, 21, of Institute Street, was charged with disorderly conduct.

•Angela Guarnieri, of Players Club, reported that the passenger side window of her vehicle was broken while in Buffalo's parking lot.

•Lakiesha Howard, of Park Place, reported that someone damaged her vehicle.

April 7, 1997

•Maurice Henderson, 19, was charged with shoplifting.

•A resident of Campus Court-yard reported harassing phone calls.

April 6, 1997

•Lumumba Hawkins, 20, was charged with possession of mari-

juana.

•Chris Sklar, of University Place, reported that someone took a mobile phone and radar detector from his vehicle.

April 5, 1997

•Gary Cooper, 19, of Olliff Hill Road, was charged with possession of cocaine, marijuana and driving without a license on his person.

•Pascal Wilkerson, 18, of Hill Street, was charged with possession of marijuana and possession of cocaine.

•Eliezer Alver, 19, was charged with possession of marijuana and possession of alcoholic beverage by an underage person.

•Robert Brandes III, 19, was charged with possession of alcoholic beverage by an underage person.

•Timothy Odonnell, 19, was charged with underage posses-

sion and dispensing alcohol.

•Taj Travis, 19, of Southern Villa, was charged with possession of alcohol by an underage person.

•Leary Martin, of Park Place, reported that a black male gave a counterfeit \$20 bill at Enzone.

•David Andretti reported that a black female tried to pass a counterfeit \$20 bill at BruHaHa.

April 4, 1997

•Amina Harvey, of Robinhood Apartments, reported that someone put rubbing alcohol in her water bottle and some unknown substance in her fruit punch.

Editor's Note: Police Beat appears in every issue of The George Anne in an effort to inform the GSU community of the amount, nature and location of crimes. All reports are public record and as such are obtained from the Statesboro Police Department and the GSU Division of Public Safety.

ANNOUNCEMENTS

Things To Do At GSU

On Going

•The Center for International Studies will select the student delegation for the **1998 National Model United Nations**. Contact the Center for International Studies in room 1119 of the Forest Drive Building or call 681-0332. The deadline for applications is April 28, 1997.

Today

•A lecture on Living with the **Family Leave Act** will be given at noon in room 2048 of the Russell Union. Speakers will discuss the economic and professional impacts of leave policies.

•Dan Rea and Barbara Rudolph will present a lecture entitled **"The Equality of Women and Men from a Spiritual Perspective."** The lecture will begin at 2 p.m. in room 2048 in the Russell Union.

•**Women in Business**, a program to highlight successful business women in the Statesboro area, will begin at 4 p.m. in room 2048 of the Russell Union.

•The **African Student Association** will be meeting at 6 p.m. in the Russell Union. For more information, contact Zackery Matovu at 681-1469.

•Zisca Burton and Sheri Drivers will present a lecture entitled **"The Return of Star Wars: The**

Trilogy Reconsidered" at 7 p.m. in room 2048 of the Russell Union.

•The Department of English and Philosophy, as part of its Cinema Arts program, will present the movie **"Raining Stones"** at 7 p.m. in the Russell Union Theater. Admission is \$2.

Wednesday, April 16, 1997

•A lecture entitled **"How to Achieve Happiness and Health"** will be given at noon in room 2048 of the Russell Union. Kim Spangler will discuss what makes people happy.

•Annette Laing will present a lecture entitled **"The Spiritual Journey of Elizabeth Ashbridge"** at 2 p.m. in room 2048 in the Russell Union. This lecture will focus on the spirituality of Ashbridge's life.

•A lecture entitled **"Radiant Life: Meditations and Visions of Hildegard of Bingen"** will be given at 4 p.m. in room 2048 of the Russell Union. The lecture will discuss Hildegard, a Benedictine nun who challenged popes and rulers of her time.

•**"Whatever Happened to Dinner and a Movie?: Dating Rules of the '90s,"** a panel discussion involving GSU students talking candidly about *The Rules* and dating in the 90s, will begin at 7 p.m. in room 2048 of the Russell Union.

Thursday, April 17, 1997

•**"I'm Not Perfect But... Parts of Me Are Excellent!"** is the title of a workshop focusing on strategies to aid women in enhancing their self-esteem. The workshop will begin at noon in room 2048 of the Russell Union.

Get the Message Get ALLPAGE

3 State Coverage As Low As \$5.95 per month

GSU Student Special!

\$4.95* **1c***

WE SERVICE WHAT WE SELL!

232-8222 **354-4722** **489-1155** **368-6550**

Corner of Bull & Victory **Chatham Plaza Across from the Mall** **Statesboro Hwy 67, Across from Hanner Field House** **Hinesville Liberty Square**

Walker Pharmacy

202 Northside Drive West
1 Block West of Dairy Queen
764-6175

Statesboro's ONLY Savannah Civic Center ticket outlet

We offer a variety of gift items

- silver jewelry
- Crabtree & Evelyn bath products

We specialize in Greek merchandise

- paddle supplies
- new scrapbook supplies

For a limited time only

25% off any Greek item in the store

expires May 5, 1997

CONGRATULATIONS ON A JOB WELL DONE!!! SOAR TEAM 1997

Jennifer Allen
Lawrence Anochie
Amanda Bailey
Summer Baynham
Shemeicka Bean
Annisia Bledsoe
Turkessa Burton
Mark Cheatham
Nicole Claroni
Sly Colquitt
Lori Ann Grizzle
Christina Jenkins
Jazz Johnson
Melissa Lien
Janelle Lunsford
Veronica McGhee
Bryan Moss
Pete Randall
Beth Rudd
Terae Smith
Rebecca Taylor
Tarka Turner
David Van Tassell
Lynne Walker

The
George-Anne

STATEMENT OF OPERATIONS

The George-Anne is the official student newspaper of Georgia Southern University, owned and operated by GSU students and utilizing the facilities provided by GSU. The newspaper is the oldest continuously published weekly newspaper in Bulloch County and Statesboro, Ga. The ideas expressed herein are those of the editor or the individual authors and do not necessarily represent the views of the Student Media Committee, the administration, the faculty and staff of Georgia Southern University, or the University System of Georgia. The George-Anne is published twice weekly during the academic year and three times during summers. Any questions regarding content should be directed to the editor (681-5246).

OFFICES, MAIL, PHONES

Room 223, F. I. Williams Center. The George-Anne, P.O. Box 8001, Georgia Southern University, Statesboro, Ga. 30460. 912/681-5246 (News) or 912/681-5418 (Advertising)

ADVERTISING INFORMATION

The George-Anne reserves the right to refuse any advertisement. The George-Anne's advertising rates are as follows:

•Students and student groups:	\$2.75 per column inch
•GSU faculty, departments or affiliates:	\$3.25 per column inch
•Statesboro area businesses & groups:	\$4.80 per column inch*
•National rate:	\$8.50 per column inch

*Five inch minimum ad size, otherwise classified display rates (\$6.50 per column inch) apply.

DEADLINE: The deadline for reserving space and submitting advertising copy is **Noon, one-week prior to the intended publication date**. For more information, rate cards, sample publications, contact: Shawn Sunderland, Advertising Manager, ADS, (912) 681-5418; or Bill Neville, Student Publications Coordinator, (912) 681-0069.

CLASSIFIED ADVERTISING INFORMATION

The George-Anne reserves the right to refuse any advertisement. DEADLINE: The deadline for reserving space and submitting classified advertising copy is **Noon, one-week prior to the intended publication date**. Free classified ads from students, faculty and staff must be submitted in writing, with the name of the sender and local address. **No free ads taken via telephone.** One free ad per person per week.

CIRCULATION INFORMATION

Subscription rates for home delivery of The George-Anne are seven dollars per quarter, or \$21 per year, delivered bulk mail. Please address all inquiries to Stephanie Wylie, Business Manager. The George-Anne is distributed free of charge on the Georgia Southern University campus through delivery sites located in campus buildings and residence halls. "We gratefully acknowledge the theft of our slogan - "Liked by Many, Cussed by Some, Read by them All" - from Robert Williams of the *Blackshear Times*. Call Bob and he can tell you who he stole it from originally.

SOUTHERN AMBASSADORS
WANT YOU !

If you are serious about getting involved in school, we have an excellent opportunity for you. The Office of Admissions is looking for energetic, enthusiastic, outgoing people who have a 2.3 or better and LOVE GSU!

SOUTHERN AMBASSADORS volunteer time and effort by way of campus tours for special groups, high school fairs, GSU recruitment receptions, hosting Open House, and much more.

If this organization sounds exciting, pick up your application at the Admissions Office in Rosenwald immediately. Application deadline is Friday, April 18. Please call Leigh Ames at 681-5532 if you have any questions.

Let Domino's Be Part of Your Study Plans!



Serving Georgia Southern University

681-4326



NOW HIRING!

Call or stop by for more information!

<p>\$4.99 plus tax</p> <p>SMALL</p> <p>1 TOPPING PIZZA</p>	<p>\$5.99 plus tax</p> <p>MEDIUM</p> <p>1 TOPPING PIZZA</p>	<p>\$7.99 plus tax</p> <p>LARGE</p> <p>1 TOPPING PIZZA</p>
---	--	---

Valid at participating locations. Not valid with any other offer. Customer pays sales tax where applicable. Our drivers carry less than \$20. Delivery areas limited to ensure safe driving. *1997 Domino's Pizza, Inc. CALL NOW OFFER ENDS 5/19/97.

ONLY IN AMERICA...

1 California
Stranger returns
money to woman

The Associated Press

NAPA — Jennifer Ibanez panicked when she stood in the checkout line at the local Kmart and realized the \$470 in cash she had been carrying was gone.

"It was like a punch in the stomach," Ibanez said. "I must have dumped my purse out 20 times. I turned gray. I was ashen. I could hear my blood going through my body, my heart pounding."

She frantically searched the store, with no luck, finally giving up and leaving her name and number with store managers, just in case.

"Four hundred and seventy dollars to me is probably like several thousand to anybody else," said Ibanez, a single mother who recently moved to Napa with her two children. "I was up all night long, adding, subtracting, dividing, deciding what we could do."

But the next day, Ibanez got a call from Pack Warfield, who explained that he was shopping

at the Kmart with his family. Outside the store, his 4-year-old daughter picked up a wad of paper that looked like play money.

Upon closer inspection, Warfield realized his daughter's discovery was real money.

He asked the store managers if they knew anything about it and they led him to Ibanez.

When the two families met to return the money, Ibanez agonized about a reward. She wanted to thank her new friends, but she needed every penny. So she gave the family a lithograph, book and video based on Dickens' "David Copperfield."

Pack and his wife, Susan, hope the experience will teach their 4-year-old daughter, Naomi, a lesson in honesty.

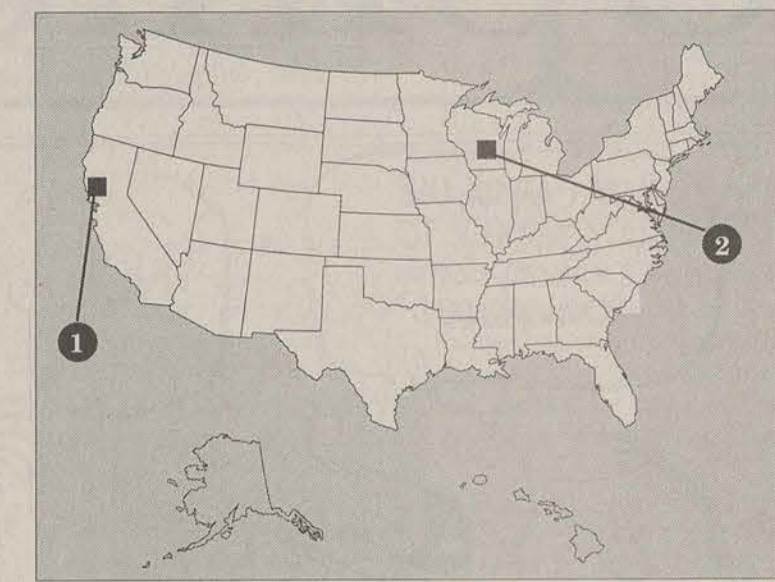
"We're both educators," said Warfield, a school principal. "It's what we call a teachable moment."

2 Wisconsin

Plumber's snake
grabs 10-year-old girl

The Associated Press

HARTLAND— An errant plumber's snake took a wrong turn in a pipe, slithered over a



rooftop and wrapped itself around a 10-year-old girl playing in her back yard.

Shannon Musli was lifted off the ground as a service technician pulled the power snake back into an apartment, Police Chief Morton Hetznecker said.

"The snake became ensnared in her jacket and as it continued to twist, it snared her hat, head and hair," Hetznecker said.

When it grabbed Shannon, the serviceman running the power snake thought he had found the pipe's blocked area and started pulling back.

The girl's brother ran to alert

the technician.

"This is definitely a weird situation. We're grateful it wasn't more serious," Huth said.

Firefighters used bolt cutters to free Shannon from the snake's grip, then used razor knives to cut away the girl's clothing and free her hair.

She was treated for minor injuries at an Oconomowoc hospital.

Shannon's mother, Kari Kleuskins, declined to discuss the incident until after she meets with her attorney later on this week.

OFFBEAT

Judge makes decision on difference
between male/female breasts

By Larry Neumeister
The Associated Press

NEW YORK — A judge has ruled that a man's breasts just don't have the same sex appeal as a woman's.

The decision by federal Judge John S. Martin's upheld a 1995 city law banning female topless

dancing in residential areas.

Martin said advertisements for a troupe of male strippers don't emphasize the "extraordinary dimensions of the breasts of their male dancers."

The decision will go into effect May 1. Residents of the area say they will protest the decision.

Stadium Club Apartments
SUMMER SPECIAL

\$125⁰⁰

month per person

June through August 20th 1997
No long term lease

Fully Furnished, Water, and Garbage
Included
4 Bedroom—2 Bath

OFFBEAT

Salsa to become state sauce of Texas

By Sarah Hornaday
The Associated Press

AUSTIN — Barbecue sauce never stood a chance.

The House State, Federal and International Relations Committee approved resolutions that would make picante sauce the official state sauce, the Texas Sweet Onion the state vegetable and the buckminsterfullerene or "buckyball" the official state molecule.

The measures will next be voted on by the full House.

"This is a very serious day," said Rep. Ruth Jones McClendon, D-San Antonio. Ms. McClendon authored the picante sauce resolution.

"What we're doing is, if it passes, we're going to have picante sauce on the same level as the bluebonnet, as chili as the state dish, as the pecan tree as the state tree. So this is very significant in the state."

The items passed through the committee unopposed.

But Ms. McClendon said a fellow lawmaker had urged her to make barbecue sauce the official state sauce, even sending her a jar of the tangy stuff made by a constituent.

Ms. McClendon said the decision was easy. She said barbecue sauce didn't originate in Texas, like picante sauce.

"It's amazing. We have a natural resource that is born, manufactured here in the state of Texas that we have not previously recognized," Ms. McClendon said. "I think with this, it says that we have a valuable resource here in Texas that we value and we have a great deal of pride in, and no it's not

New York City, it's Texas."

The choice of molecule had been the subject of debate because several were discovered or created by state scientists. But Rep. Scott Hochberg, D-Houston, said only one was recognized for a Nobel Prize.

Hochberg, D-Houston, moved one step closer to recognizing Rice University's Nobel Prize-winning "buckyball" the whim-

sically nicknamed new form of carbon discovered by Rice chemists Rick Smalley and Robert Curl.

"The whole purpose of having a state symbol is to be proud of our state and to have fun," said Rep. Mike Wise, D-Weslaco.

Wise authored a resolution recognizing the Texas Sweet Onion, a hybrid created in Texas.

R. J. Pope

TRADITIONAL MENSWEAR

DOWNTOWN
NEW SPRING ARRIVALS DAILY



Timberland

TOMMY

POLO RALPH LAUREN

nautica

HILFINGER

COLE HAAN

764-4306

MON - SAT 9:00 - 6:00

up Union
Productions
GEORGIA SOUTHERN UNIVERSITY

The Joke Zone

Splash

Do you like to play?
Do you like to laugh?
Then you are the perfect person to join
U.P. Splash!

Splash provides students with a variety of programs during the summer quarter... from dances to ice cream floats!

If you are interested in joining, contact the UP office and ask for Wregina.

Saturday, April 26

PR

Public
Relations

LIVE
FUNKY
MUSIC!!



The Floyds

with: The Flying Toasters!!

Bungee Run! • Bouncee Boxing!
Climbing Wall! • Organization Booths!

Oxford Field • Noon - 6:00 pm

Union Productions Team Interest Form
Yes! I want to be involved in UP. Here is the Team that I am interested in!!

<input type="checkbox"/> The Joke Zone	<input type="checkbox"/> Contemporary Issues
<input type="checkbox"/> Sound Waves	<input type="checkbox"/> Games People Play
<input type="checkbox"/> SPLASH	<input type="checkbox"/> Public Relations

Name _____
LB _____
Local Phone _____
For info call 681-0655
or mail interest form to:
GSU P.O. Box 8066

Coming
Soon:
Black
Comedy '97

Union Productions
681-0655
Office Hours 9 - 4
P.O. Box 8066 GSU
Statesboro, Ga 30460

WOULD YOU LIKE TO BECOME A MAP SPONSOR?

THE MINORITY ADVISEMENT PROGRAM

IS NOW TAKING APPLICATIONS FOR THE 97-98 ACADEMIC YEAR
Minimum Requirements:

• 2.40 Grade Point Average

• Not Enrolled in Learning Support Classes

• A Genuine Willingness to Assist Minority Freshmen

Interested persons are encouraged to attend one of the following information sessions:

Monday, April 14 Union Room 2044 at 4:00 p.m.

Tuesday, April 15 Union Room 2044 at 5:00 p.m.

Monday, April 21 Union Room 2044 at 6:00 p.m.

Application packets and more information are available from the Office of Multicultural Programs, Rosenwald 2034 or call Art King @681-5409.
Completed applications are due April 30. Interviews will begin May 6.

BECOME A PEER COUNSELOR AND MAKE A
DIFFERENCE IN A FRESHMAN'S LIFE!

Contemporary
Issues



SPLASH



The George-Anne

For 70 years, Georgia Southern's Official Student Newspaper

Amanda Crews
Editor

Stacy Clemons
Managing Editor

Kevin Bonsor
News Editor

Opinions

The oldest continuously published newspaper in Bulloch County

Liked By Many,
Cussed By Some...
Read By Them All

Tuesday, April 15, 1997

Our Opinion

Georgia tuition still a bargain

Many students may not be happy about the recent decision by the Board of Regents to raise tuition at Georgia's 34 public colleges, but the cost of going to college in Georgia is still a bargain compared to the cost of tuition in other states.

GSU's in-state students will be asked to pay \$560 per quarter in tuition next school year, \$32 more than they currently pay. Out-of-state students at the regional and state universities and the four-year colleges, including GSU, will have to pay 12.4 percent more.

Before we, as students, start complaining about how expensive school is becoming, let's look at the numbers. The nationwide average for undergraduate tuition at a college or university comparable to GSU is \$2,695 compared to just \$1,932 in Georgia.

Yes, it is still expensive, but it is much cheaper to attend college in Georgia than in most other states. By going to a state university or four-year college in Georgia, Georgia residents are saving about \$760 in tuition. Think about it like that and it doesn't seem as bad. Basically, Georgia is putting \$760 in your pocket if you attend school in Georgia.

We are going to complain anytime we have to pay more money. When tuition increases become an annual event, it becomes burdensome in planning on how we are going to pay for school the following year.

But consider that thanks to the HOPE scholarship, students in Georgia today have access to more financial aid than ever before.

We must also realize the value of a college degree. A college education is an investment that reaps great profits. With all the things we spend money on, nothing is more important than the money we invest in our future.



Backtalk

Now you have a chance to "talk back" to *The George-Anne* about whatever floats your boat. It's a quick, easy way to write a mini-letter to the editor. Fill out this form and send it to P.O. Box 8001, or drop it by *The George-Anne* office at Williams Center room 223.

Name: L.B.: Phone:

Your words of wisdom:

LETTER AND SUBMISSION POLICY

The George-Anne welcomes letters to the editor, story submissions and guest columns from people both inside and outside the Georgia Southern University Community. All copy submitted should be typed (double-spaced, please), preferably on Macintosh disk in Microsoft Word or Microsoft Works format. All submissions must be signed and include a mailing address and phone number for verification. The editors reserve the right to reject any submission. There is no word limit on submissions. A writer may request to remain anonymous. However, it will be the editor's decision whether or not to print the name. Submissions are run on a space-available basis.

STAFF

NEWS

Assistant News Editor: Farrah Senn; Staff: Amy Branch, Salua Brannen, Joshua Edmonson, Aaron Flood, January Holmes, Kevin Larson, Laura Owens

FEATURES

Features Editor: Kelley McGonnell; Arts & Entertainment Editor: Melanie Weinberg; Staff: Eric Bray, Robbie Bruce, Stephen Clark, Jennifer DeBary, Jake Hallman, Shana Johnson, Tia Martin, Jessica Morton, Ni' Cole Patterson, Rodney Reid, Jennifer Stokes

SPORTS

Sports Editor: Mike Davis; Staff: Mike Gibbs, Robbie Monk, Dennis Stovall, Carolyn Wynn

OPINIONS

Staff: Stacy Clemons, Amanda Crews, Chance Fulk, Rusty McGuire, Justin Miller, Trina Springs, Tracey Varnell, Aletha Yoho

PHOTOGRAPHY

Chief Photographer: David Mathews; Staff: Michael Hamburger, Heather Hoffman, Hans Knoepfel, Amanda Scott, Jacob Uchitel

CIRCULATION

Supervisor: Steve Taliaferro

ADVERTISING/DISTRIBUTION SERVICES (ADS)

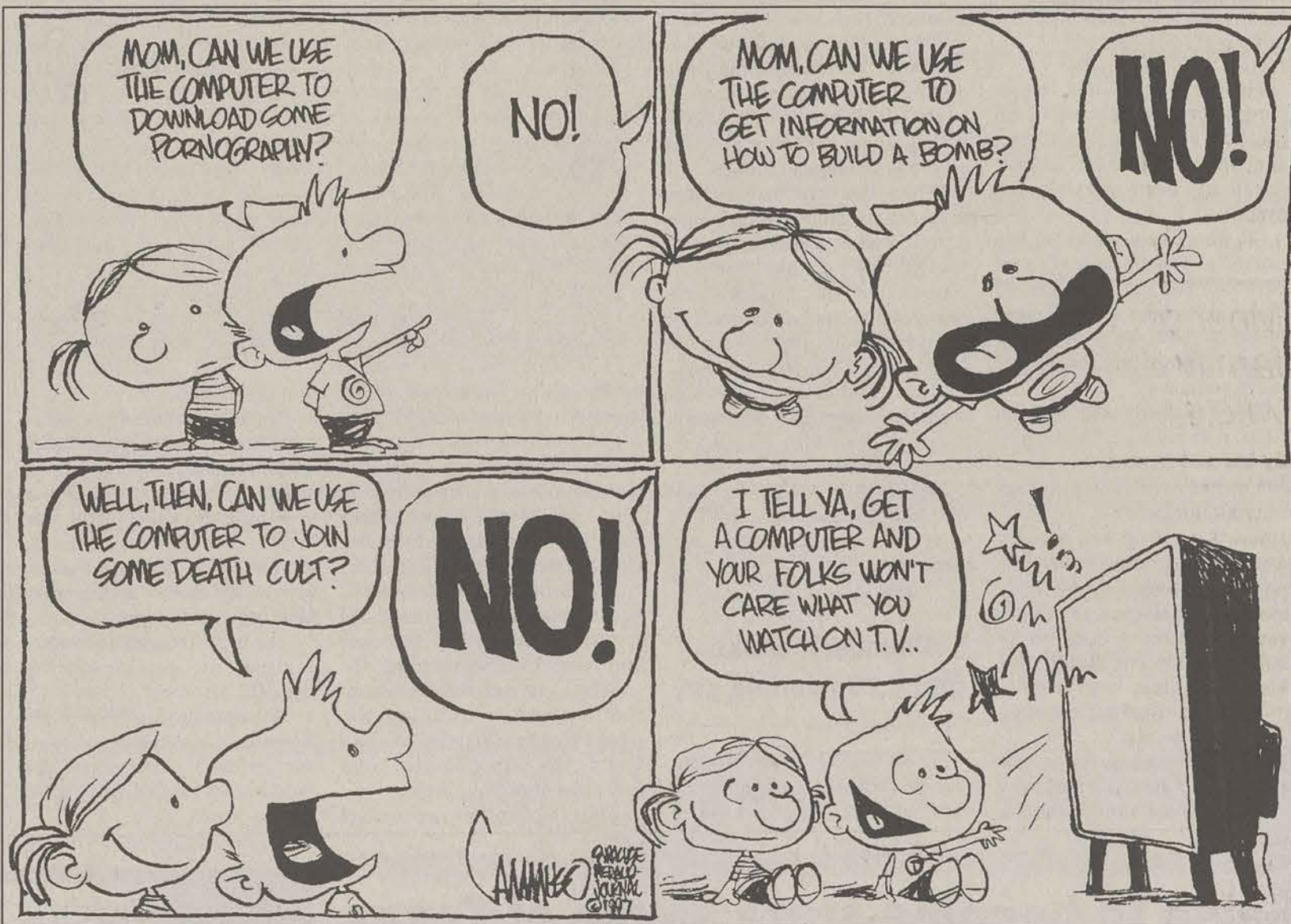
Advertising Manager: Shawn Sunderland; Business Manager: Zeina Rahme; Marketing Coordinators: Julie Thompson; Classified Ad Manager: Meredith Keefe; Sales Representatives: Tom Harrington, Anda Johns, Ron Lair, Julie Thompson, Carolyn Wynn

PRODUCTION AND GRAPHICS EDITORIAL SERVICES (PAGES)

General Manager and STP Web Master: Scott Mulkey; Production Manager: Kathy Jacobus, Ron Lair, Scandia McCray; Assistant Production Managers: Shawn Sunderland; Staff: Johnathon Brooks, Robert Castaneda, Erica Harris, Amy Hazen, Angela Hodges, Kathy Jacobus, Ron Lair, LaTrevia Todman

STUDENT PUBLICATIONS COORDINATOR

Robert Bohler: News, Editorial Advisor; Bill Neville: General Manager



'Coming out episode' of Ellen: mountain or molehill?

America loves to make mountains out of molehills.

Case in point: the hoopla surrounding Ellen Degeneres' "Coming out episode" to be aired April 30.

This one episode of this one television sitcom has become fodder for television talk shows and debates, magazine articles and news stories.

As if that weren't enough, Rev. Jerry Falwell, the former head of the Moral Majority, has denounced the show and has urged sponsors to yank their advertising dollars.

So far, Chrysler has been the only sponsor to follow Falwell's suggestion to bail on the episode. Ironically, though, all the hoopla that has surrounded this episode has almost guaranteed, if for no other reason than simple curiosity, a large viewing audience, which happens to be heaven on earth for advertisers.

Of course, GLAAD, the Gay & Lesbian Alliance Against Defamation, fully supports the episode and maintains that the time for a gay lead character on primetime television has been long overdue.

And so there we have it. The lines have been drawn.

Falwell has referred to



AMANDA CREWS

EDITOR

Degeneres as "Ellen Degenerate." (I was unaware that name-calling was the mark of a true Christian.)

Meanwhile, GLAAD has been

be left up to individual families?

Apparently, Kevin Snow, the chairman of the entertainment committee for Birmingham Pride Alabama, believed the answer to

FINALLY, THEY ARE EVEN FREE TO USE THEIR REMOTE CONTROLS ON APRIL 30 ... IT'S AS SIMPLE AS THAT.

taking requests for "Coming Out With Ellen" house party kits on their web site.

And the battle continues with the latest skirmish taking place in Alabama. Apparently, ABC 33/40, the ABC affiliate in Birmingham, has refused to air the episode because they felt the show was not suitable for family viewing.

Even though this television station is perfectly within its rights to pull the show, my question is why is the station dictating what is suitable for family viewing? Shouldn't that decision

that question is yes. So, he and GLAAD set about arranging a free airing of the show via satellite at the Alabama Theatre.

But a theater spokesman said Friday that they would not air the show because "this thing is way too controversial for the Alabama Theatre."

Again, the Alabama Theatre has the right to decide what to show and what not to show, but it's a shame that the people of Birmingham won't get the opportunity to decide for themselves whether or not they wish to see the episode. After all, the

chance to decide for ourselves about every issue is what living in a free country is all about.

ABC and Ellen Degeneres have the freedom to air an episode which addresses an issue they believe needs addressing. All of the viewers, excluding those who live in Birmingham, have the freedom to watch it or not to watch it as they see fit. See, it's really a beautiful system when we all play our parts.

Perhaps I'm looking at this issue through simplistic eyes, but I know of a solution.

I understand that there are people, like Rev. Jerry Falwell for example, who believe that homosexuality is a sin. They are free to believe what they choose because of that beautiful system mentioned earlier. They are also free to decide that watching an openly gay character on television is not something they want their families to do.

Finally, they are even free to use their remote controls on April 30. They can turn the channel or they can turn the television off. It's as simple as that.

Now, wasn't that silly? When we look at this issue within the framework of freedom and plain common sense, it really is a molehill after all.

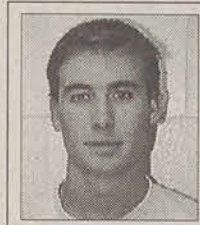
Fanatics shouldn't force their views down their children's throats

Many of you may have seen groups of fanatics preaching to the student body in an attempt to sway our opinions on the liquor referendum a few weeks ago. At first glance, I, like many of you, figured that, though I didn't agree with them, I still supported their right to free speech. While I still support that idea, I was most disturbed when I saw elementary school-children belting out the gospel at the tops of their lungs in a very belligerent manner.

These kids were taught by their parents how to effectively hurl these sacred words as weapons in their self-conceived morality battle. What gets me is that these kids, even the ones not screaming as loud as they could, probably didn't choose of their own free will to take part in this display.

Those of you who are new to GSU's campus probably never saw how a guy named Brother Jim employed similar tactics to advance his own cause. He's basically just a self-righteous clown who uses children to try to strike a chord deep in our souls while pointing fingers and preaching hellfire and damnation.

What people like this have in common is a blatant disregard for any personal decision these children might have about their



RUSTY MCGUIRE

COLUMNIST

own lives. Sure, I disagree with their methods for getting their point across, but what really upsets me is the lifestyle they force on their children.

When I say "force," that is exactly what I mean. The fact that these children are on campus in the middle of the day tells me that they are probably home schooled. While home schooling probably is a good idea for some children, I'll just bet that the reason these people use it is that they don't want their kids to be corrupted by the views of the majority of society. I do admire people who take time out of their own schedules to try to help their sons and daughters. However, the downside is that the practice deprives the kids of the socialization that public schools provide. This is done on purpose because they don't want their kids to be exposed to any outside ideas which they might think about.

Instead, they want their children to continue looking up to Mommy and Daddy. This nar-

rows their minds. The worst part is that, by the time these children come into contact with mainstream society, they're almost grown, and then they see the world through the same self-righteous glasses as their parents. A couple of years later, they have children, and the cycle will likely start all over again.

In fact, during the week preceding the liquor referendum vote, a girl who looked to be about twelve years old tried to hand me a little flyer. After I passed on by, I thought that I should have asked her a few questions to pacify my own mind. I would mainly have liked to hear how she would respond had I asked her why she was out there. Would she have said that she felt compelled to reach the masses to inform them about the virtues of her family's viewpoint? I don't think so. I think she would either have responded, "I don't know," or "because my daddy brought me here."

Please don't think that I am underestimating the ability of a

child to understand theological concepts. I'm not. I am just saying that it is unfair to start a child off in a hole by conditioning them into a personality which will almost certainly be ostracized by his peers. Most kids whose parents are considered normal have enough trouble trying to fit in.

A lot of people would respond that people have a right to live their lives and teach their children however they want. They would argue that just because some ideologies are more acceptable than others doesn't make them any more right. That is true. On the other hand, I would argue that the need to have friends and fit in is equally important.

So, how should fanatics raise their children? It doesn't really seem like such a difficult question. They should take their kids to church if they want. They can even home school them if they want. They should just know where to draw the line of forcing extreme views down their kids' throats. They know what things are going to be considered most abrasive by society. If the kids choose to holler the scriptures at large groups of people, then let them. Personally, I think they would probably rather play kickball or house.

STATE NEWS

HOPE scholarships help black college enrollment soar 100 percent since 1986

The Associated Press

ATLANTA—HOPE scholarships may not be the only reason for the soaring black enrollment at Georgia colleges, but they are certainly a significant one, educators say.

"One of the things we cannot overlook in Georgia is HOPE," said Joseph Silver, a vice chancellor of the University System of Georgia. "It's really opened up doors for students who formerly

couldn't afford to go to school."

Twice as many blacks are enrolled in Georgia's public colleges today as 10 years ago, a growth rate that far exceeds national numbers for both blacks and whites. And the growth shows no sign of slowing.

Black enrollment grew from 21,824 students in 1986 to 43,609 in 1996, a 99.8 percent increase. During the same period, white enrollment in state schools grew

22 percent, from 120,264 to 146,607 students.

About 20 percent of Georgia's black college students receive the state's lottery-funded HOPE scholarship.

Educators say there are other reasons for the increase in black enrollment, including the availability of more financial aid in general and special efforts to expose black children to college earlier.

Still, at some schools the jump in enrollment seemed to mirror the start of the HOPE program in 1993. Blacks made up 16.5 percent of students at Georgia State University in 1986 and 18.5 percent in 1992, but the figure rose to 23.6 percent in 1996.

Black enrollment in Georgia is increasing more than twice as fast as it is throughout the country. Recent figures released by the New York-based College

Fund/UNCF showed that black enrollment at U.S. colleges and universities grew by about 40 percent from 1 million students in 1976 to more than 1.4 million in 1994, the latest year for which all figures were available.

National enrollment among whites during the same period rose about 15 percent to 10.4 million.

DeKalb College has seen the largest gain in black students in

Georgia, soaring from 1,522 in 1986 to 4,345 in 1996, a 185 percent increase. Georgia State University and Georgia Southern University are close behind.

"Once you get a certain number of (black) students and get beyond the critical mass, they feel comfortable on campus and feel they're a part of what's going on," said Jim Scott, Georgia State's vice president of student life and enrollment.

Most of Gingrich family assets in wife's name

By Larry Margasak
The Associated Press

WASHINGTON—Even if House Speaker Newt Gingrich wanted to use his own money to pay a \$300,000 penalty for ethics violations, the state of his current assets would make it difficult. Most of the holdings are in his wife's name.

And that could be a problem, since Marianne Gingrich is known to be cool to payment from the family's personal funds.

Many of the couple's assets, including a new home in Cobb County, Ga., were transferred to Mrs. Gingrich or placed in her name.

Those decisions were made long before the House ethics committee came up with the penalty idea last year.

Since such a penalty had never been imposed before, there was no way the speaker could have anticipated the sanction and maneuvered to shield his money.

"These financial decisions were made in the early '90s and reflect a family man trying to look out for the future and well-being of his wife and kids," Gingrich spokeswoman Christina Martin said.

Gingrich and a small group of advisers have been discussing several options for paying the penalty, including: personal funds, using his campaign account, asking House Republicans to chip in from their campaign accounts, using a legal defense fund, or a combination of these.

The speaker has been warned by House colleagues and his closest political associates that he will create a new political firestorm and perhaps threaten his hold on the speakership, if he does not use personal funds to pay the penalty.

One way Gingrich could pay from his own money would be to borrow some or all of the amount owed or to work out an installment plan with the ethics committee.

Gingrich earns \$171,500 as speaker.

The couple's major, non-retirement joint bank account was valued at \$100,001 to \$250,000 on Gingrich's most recent financial disclosure form, filed last May.

The speaker also has two accounts at Congress' credit union, neither worth more than \$15,000.

The largest account in Mrs. Gingrich's name is a municipal money market fund valued between \$100,001 and \$250,000. She also has a checking account worth between \$50,001 and \$100,000 and three investments worth up to \$15,000. That is in addition to the couple's home.

Ms. Martin said \$471,348 in net book royalty income earned by Gingrich was principally deposited in the joint account and the largest account under Mrs. Gingrich's name.

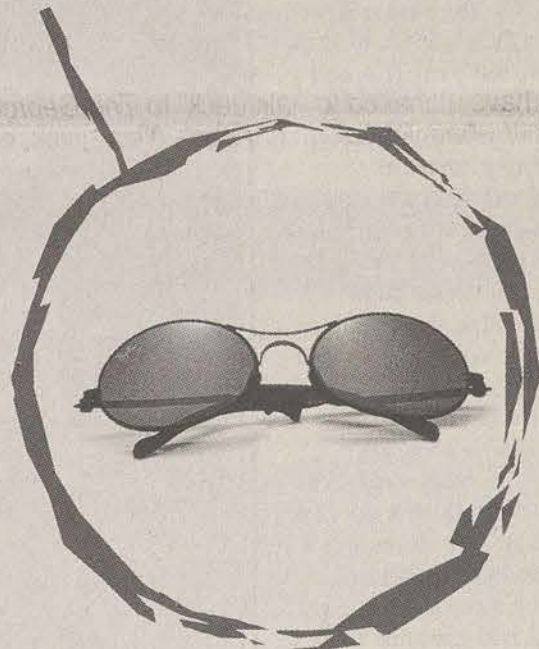
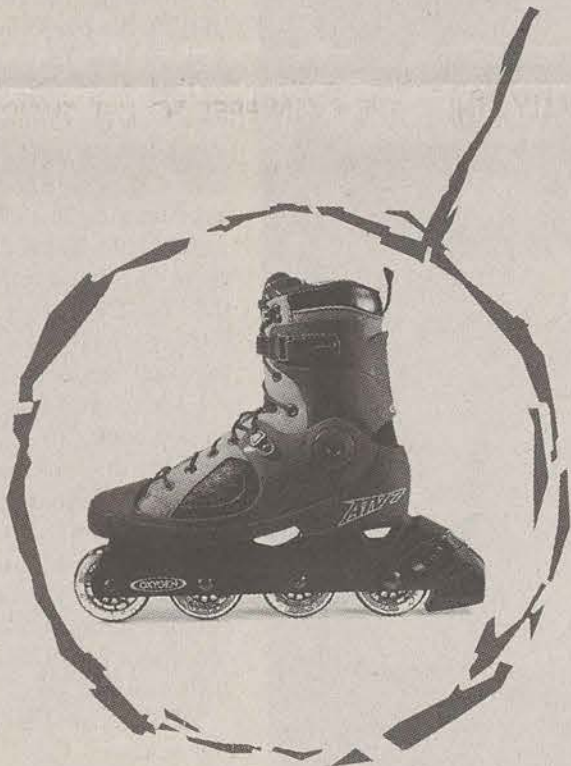
When asked last Wednesday how he would pay the penalty, Gingrich said: "The reimbursement will be paid in full, and the taxpayers will be totally protected."

Appearing on CNN's "Larry King Live," Gingrich said Friday night that he and his wife had not decided yet precisely just how he would pay the penalty.

"The fact is Marianne and I will spend time talking about it (and) we will make a joint decision," Gingrich said. "We'll talk it out."

Final Exam Question The Collect Call

What's the only number to use for all your collect calls that could instantly win you cool stuff (like classy Ray-Ban® sunglasses and Oxygen® in-line skates) every hour, every day?



- a) nope
- b) nope
- c) nope
- d) 1 800 CALL ATT
- e) go back one

1-800
call **ATT**
..... For All Calls



The one number to know
for all your collect calls.

No purchase necessary. Must be a legal US resident age 13 or older. Calls will be accepted and 336 winners will be selected randomly between 4/14/97 (noon EST) and 4/28/97 (noon EST). Only completed domestic calls are eligible. Prize values: Skates \$199/Sunglasses \$169. Odds of winning depend on number of entries. For official rules and free entry instructions, call 1 800 787-5193. Void where prohibited. Ray-Ban is a registered trademark of Bausch & Lomb Inc.

**BEYOND
THE ARC**
MIKE DAVIS



Now and then, Tiger Woods stole the show

As I sat and watched Tiger Woods' heart-stirring performance at The Masters Sunday afternoon, I could only think of that cool Saturday morning four years ago.

It was Tiger, then a young and ripe 17 years of age, playing his second U.S. Amateurs in Chattanooga, Tn.

What a player he was then, and it's scary to think of what he has evolved into in such a short time.

Quite an audience watched Tiger on that day at a place they call The Honors Course, by far the most well groomed and most demanding course in Chattanooga. And quite an audience that watched the young phenom Sunday at Augusta National, where young Woods broke nine Masters records, including the youngest to ever win the prestigious tournament.

Though it's hard to compare a day at the U.S. Amateurs to a day at The Masters, there was one distinct thing in common.

Tiger stole the show. Even though he didn't win the U.S. Amateurs that year (he won the next three), he was the main attraction. Just like he was Sunday afternoon.

And what amazes me as well as the rest of the millions of golf fans across the country, young Woods seems to hit pressure harder than he does those little round Titleist golf balls.

What did young Woods do by winning The Masters?

For one, he continued to do what he's done for the sport of golf ever since he announced the start of his professional career ... he's resurrecting golf from its burial grounds back to where it used to be, back when much talk was about another young pro named Jack Nicholas some 36 years ago.

It seems fitting that one of young Woods' records was the 32-year old course record of 271 set by Nicholas. It also seems fitting that Nicholas was there teeing it up in the final round this year, quite an accomplishment at the age of 58.

Trash Nike. Trash his attitude. Trash his sometimes youthful composure on the course. But face it, you even found yourself watching him. Maybe just for one hole. Maybe just on ESPN.

But you watched him, and that's my point. Golf has become more than just that ol' Sunday afternoon television bore that you watched only because the Bulls/Lakers game had not come on yet.

And what he has done for African-Americans and Asian-Americans in the sport of golf is nothing less than heroic. In a sport that is predominantly played, owned and orchestrated by whites, Woods has broken the barrier. That is an enormous feat itself.

Although I can't remember the quote exactly, I can still hear the words of one of the TV commentators during the final moments of the 1997 Masters. "If anyone is to break Tiger Woods' Masters record of 18-under 270, it will be Tiger Woods."

In my humble opinion, I have to agree.

Sunday fun day for GSU, B-C falls again

By Mike Gibbs
Staff Writer

The last game of a two-game series resulted in another Eagle win over Bethune-Cookman on Sunday at J.I. Clements Stadium, as the Eagles took the sweep in the two-game series by claiming a 4-1 win over the Wildcats.

GSU's Ryan Cummings (6-6) made his 14th start and pitched an outstanding game, only allowing one run off three hits in eight innings pitched.

The defense of the Eagles (25-20/15-6) would click once again against a totally different Bethune-Cookman (17-25-1) team seen from a year ago, when the Wildcats tangled with the Eagles for

a chance to play in the NCAA regionals. "We manufactured some runs, and we pitched well today," GSU coach Jack Stallings said.

GSU's bullpen has remained to be flawless this season, going 18-0 when leading after the seventh inning and 16-0 when leading after the eighth inning.

"Pitching can be such a dominating figure in the ball game," said Stallings.

The Eagles would be the first to strike in the second inning off a single by Jody Pollock, followed by a sacrifice fly by Tyson Whitley, driving in Jamie Olvey and giving GSU a 2-0 lead.

The Wildcats scored their only run in the third inning off a sacrifice fly to left.

The Eagles scored two more in the eighth inning to secure things. After

designated hitter Steve Watson pounded out a double to lead off the inning, Jamie Olvey doubled him home to collect the RBI. Olvey would score off a sacrifice fly from Pollock.

Two-time all-American closer Tod Lee came on in the ninth to wrap things up, giving him his seventh save of the season.

Lee surpassed The Citadel's Hank Kraft as the leading record holder in career saves with 30.

"I just threw my fast ball, curve ball and slider," said Lee.

GSU's designated-hitter Steve Watson would go 1-for-4 in the game. Most importantly, he would push his hitting streak to 14 games.

"Watson is swinging at strikes, now.

At the beginning of the season he was swinging at balls that were not strikes," said Stallings. "He is more selective and he is more patient."

Remaining GSU baseball schedule

April		
15	GEORGIA STATE	7 p.m.
16	GEORGIA STATE	4 p.m.
19	MARSHALL (DH)	4 p.m.
20	MARSHALL	1:30 p.m.
24-27	SoCon tourney	TBA
29	at Mercer	7 p.m.
30	at Jacksonville	6 p.m.
May		
6	at Ga. Tech	7 p.m.
7	at Ga. Tech	5 p.m.
9	CHARLESTON SO.	7 p.m.
10	CHARLESTON SO.	1:30 p.m.



Mike Spilker

A WARM WELCOME BACK: GSU catcher Michael Holder is greeted in the dugout by his teammates after smashing a three-run homer against Bethune-Cookman on Saturday at J.I. Clements Stadium.

Three-run shot by Holder boosts GSU to 17-run win

By Mike Gibbs
Staff Writer

On what turned out to be a beautiful evening that was threatened by rain all day, the

GSU base-
ball team
out-hit and
outmatched the Bethune-Cookman Wildcats, a team the Eagles beat to advance to last year's NCAA regional, in the first game of a two-game series with a final score of 19-2, at J.I. Clements Stadium.

Right-hander Clint Sauls was the winning pitcher.

Sauls continued his hot streak by making his 11th start and upping his personal record to 6-1 since Feb. 19.

But the Wildcats (17-24) would strike first off Sauls with a single by Virgil Watson, driving in Wayne Slater, the Wildcats' leading base stealer.

GSU (24-20/15-6) would then score four runs in the bottom of the first. Eagles catcher Michael Holder hit a three-run blast over the right-center wall to give GSU a 4-1 lead, and there they never looked back.

"I hit the ball pretty good tonight," said Holder. "I got some great pitches."

Holder would finish the game by going 2-for-3, two home-runs and five RBIs. His second home-run was a 2-run shot in the seventh inning.

"Michael has had an outstanding season," GSU coach Jack Stallings said. "He was struggling a little bit early in the season. He is really giving us a big lift as a catcher and as a hitter."

GSU is steadily reaching that high level of play that gave them a 29th pre-season ranking in the NCAA polls.

"The thing that was gratifying to me is that we kept our focus throughout the ball game," Stallings said in reference to his team posting 19 runs on the board. "We wanted to keep our concentration at every at-bat."

The 17-point margin of vic-

**"WE HAD GOOD
FOCUS AND GOOD
CONCENTRATION
THE WHOLE BALL
GAME, AND THAT'S
GRATIFYING
BECAUSE WE REALLY
NEEDED THAT."**

**--- JACK STALLINGS
HEAD COACH**

tory was the largest this season by the Eagles.

Finishing things off, short-stop Jody Pollock made a diving catch to rob Wildcats Rory Beauford, getting the Eagles out of another inning.

"We had good focus and good concentration the whole ball game on offense and defense and that's gratifying because we need that," Stallings said.

Tod Lee came in to close for the Eagles, placing him as the all-time Southern Conference leader in pitching appearances.

LADY EAGLE TENNIS

Troy no match for Lady Eagles

By Robby Monk
Staff Writer

With the conference tournament right around the corner, the Lady Eagles tennis team was looking for a strong finish to carry them into the post season.

They got one, as the Trojans of Troy State were in town Sunday afternoon to face the Lady Eagles, who came away with a win in a 6-1 spanking.

"The women are doing really well," said GSU first-year coach Cathy Beene. "We're 3-3 in the conference and the three losses were really close."

This was the women's last match of the season, but they head to Furman next week for the conference tournament.

In the number-one slot, Anita Buggins handily won her match 6-0, 6-2. Britta Wilms had a rocky first set, yet squeaked out a win with a 6-4, 6-2 score.

Melissa Brown put the hurt on the Trojan's number-four seed with a 6-0, 6-0 shut-out win.

In the fifth and six seeds, Vivian Scarbrough and Jill

Walker walked over their opponents. Scarbrough won 6-2, 6-3, and 6-1, 6-0 was Walker's score.

The only loss for the Eagles in singles was a tight match between Aude Brown and Trojan Ginette Parker.

Parker won the match by a 6-2, 7-5 mark.

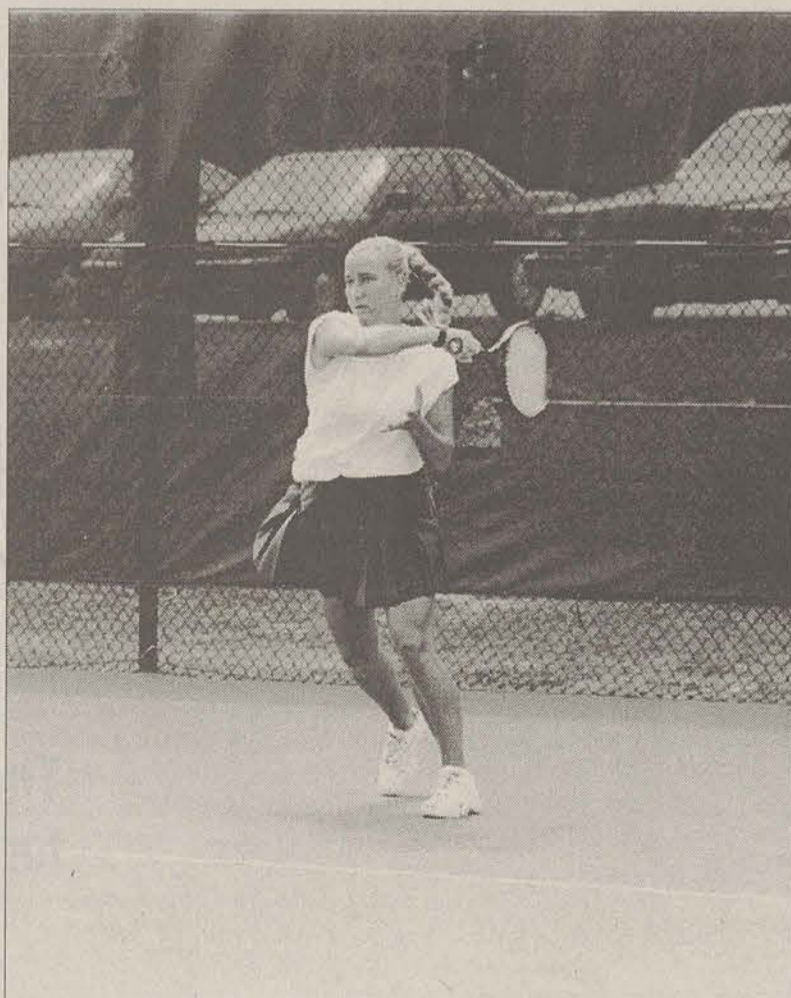
In doubles action, the Eagles took two of three with the loss at the number-two spot.

Buggins and Wilms continued their success and managed an 8-5 win, Brown and Scarbrough fell 8-4, and Walker and Boule toppled their opponents, 8-3.

"We have a good chance to win the conference this season," Beene said.

With the Southern Conference Tournament next week, the Lady Eagles will get that opportunity to knock off conference favorite, Marshall.

The Eagles ended their regular season on a good note at 6-7. They take their hopes of a conference title to Furman next week for the conference tournament.



Amanda Scott

WILMS MASTERFUL: GSU's number-two seed Britta Wilms plays against Troy State Sunday at the Hanner courts.

GSU SOFTBALL

GSU eliminated from SoCon title

GSU News Service

UT-Chattanooga swept a Southern Conference double-header from GSU Sunday afternoon at Warner Field, eliminating GSU from Southern Conference title contention.

In the first game, the Lady Mocs jumped out to a 4-0 lead on three hits in the first inning en route to a 5-2 victory.

GSU's Ashley Flemming led off the fourth inning with a double to right centerfield and Danelle Toole followed with an RBI single to cut the deficit to 4-1, but UTC answered with a run of its own in the fifth to maintain a four-run lead.

Toole led off the sixth inning with a double and McCaine Lowder knocked her in with an RBI single for the Lady Eagles' final run.

Amy Robertson held GSU to just two hits in five innings of work as UTC won the nightcap, 6-1. Jennifer Miller hit a bomb to left centerfield for her second home run of the year for GSU's only run of the game.

EAGLE TENNIS

GSU drops 13th, loses to Troy

By Robby Monk
Staff Writer

With a 1-13 overall mark, the bleeding continued for the men's tennis team in a loss to Troy State, 6-1, at Hanner Courts Sunday afternoon.

"We've had some disciplinary problems in the past, but the four guys we have now are playing well," GSU head coach Cathy Beene said.

The lone win for the Eagles Sunday came at the number-one slot, where Christian Singer fought back to take a 3-6, 6-4, 7-5 win over Shannon Nettle.

But the Trojans dominated the Eagles and won handily at every position, taking five of six singles matches.

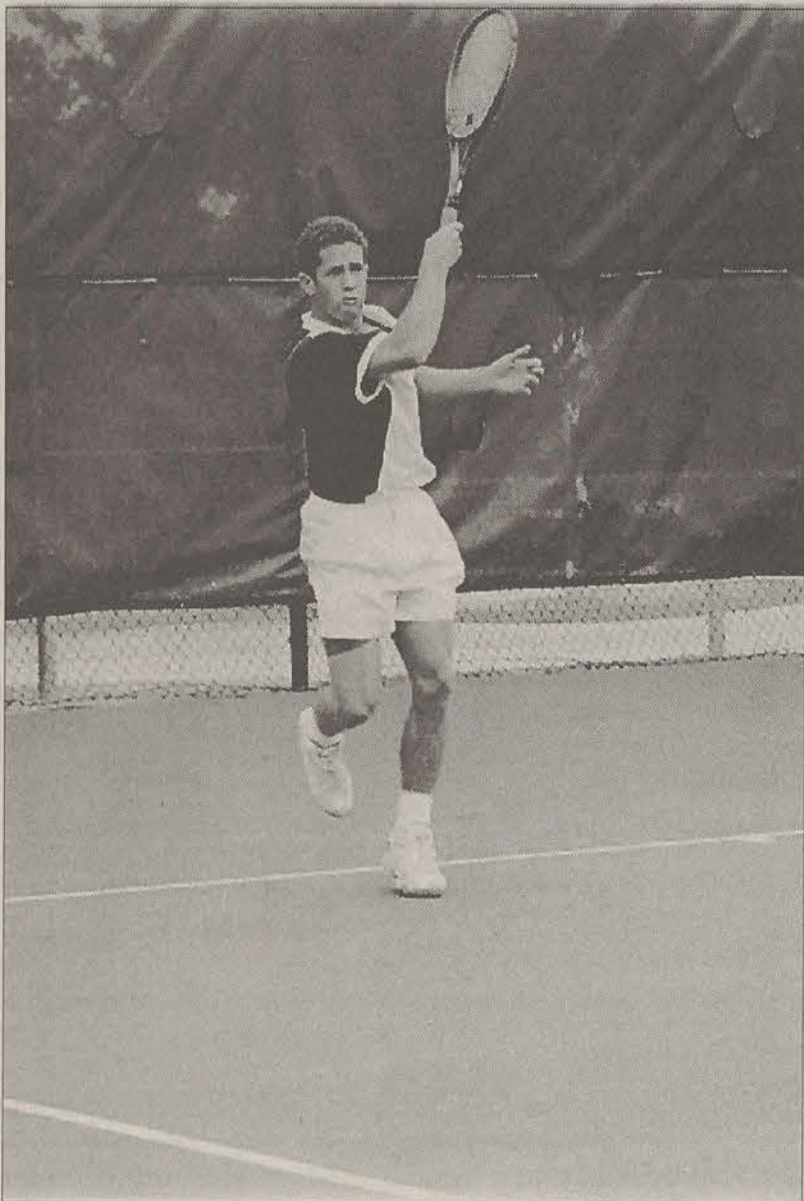
In doubles play, Troy State won at the one seed, 9-8, over Singer and Brett Holiff. Settle and Anshooman Aga took the win for Troy State.

Jesse Combs and Michael Crowder lost at the number-two doubles as well, in an 8-1 pounding at the hands of Pelle Henning and Marcel Lima.

With the singles matches, Holiff lost quickly, 6-1, 6-0 to Aga and Combs lost with the same mark, one and zero.

Crowder's match wasn't much better as he fell 6-0, 6-2 to Steve Bragg.

Troy State claimed wins in the five and six spots due to forfeits by GSU.



SMASH MOUTH TENNIS: Michael Crowder battles against Troy State during their match Sunday at the Hanner tennis courts.

Blue/White Spring Sports Festival approaches, scheduled to be bigger and better than ever

By Mike Davis
Sports Editor

The sixth annual Blue/White Spring Sports Festival is scheduled to get under way April 23 and will last for four days, finishing with the Blue/White football game on Saturday, April 26.

Started and orchestrated by Linda Blankenbaker, the sports festival was designed to bring former GSU students together for a weekend, as well as keep present students in town one weekend.

"That was the initial idea," said Joe Blankenbaker. "This is kind of a homecoming in the spring. The whole idea is to get everybody here for a weekend."

This year's events include a spectacular line-up, including a golf tournament that features a Buick as a prize for a hole-in-one.

Also slated is an aerobic marathon as well as beach volleyball, a home run derby, a softball tournament, a 5K road race, a tennis tournament, a softball tournament, a three-on-three basketball tournament, a tail-gate party at Paulson Stadium followed by the Blue/White football game on Saturday.

Utilized by the program development class as well as physical education majors, the festival will provide free t-shirts for all participants.

Also, certain events will include free pizza and fruits.

To participate, entry forms can

be picked at the Campus Recreation and Intramural (CRI) offices, the Department of Recreation and Leisure and the Department of Health and Kinesiology.

There will also be separate divisions in most events.

"We are having division play

to open this up for more people," Joe Blankenbaker said. "We are stressing participation."

It is highly recommended that entry forms be picked up and turned in prior to the festival so proper brackets can be filled out.

There will be a minimal fee in each event.

Spring Sports Festival line-up of events

- April 23
 - Kickoff
- April 24
 - Aerobic marathon
 - Beach volleyball (4)
- April 25
 - Golf tournament
- April 26
 - Home run derby
 - 5K Road race
 - Tennis tournament
 - Softball tournament
 - 3-on-3 basketball
 - Tailgate party
 - Blue/White football

Broad River Outpost
Canoe & Kayak Rental
near Athens

Wkend \$15 Wkday \$10
Info/Res (706) 795-3242

EAGLE ATHLETICS

TUESDAY, APRIL 15

Eagle Baseball

vs.

Georgia State

7:00 pm

WEDNESDAY, APRIL 16

Eagle Baseball

vs.

Georgia State

4:00 pm

All games played at J.I. Clements Stadium

Strategic Planning Council Feedback Forum

You have the opportunity to participate in the strategic planning process of the University!

Topics Will Include:

- *The Current State of Student Life at GSU.*
- *Strategic Ways to Improve the Overall Quality of the Student Experience at GSU.*

Feedback from the forum will be incorporated into a Strategic Planning Council report forwarded to the President.

2:00 - 5:00 pm Wednesday, April 16
Room 2070 in Russell Union

Student Media Positions 1997-1998

The George-Anne

Miscellany

Georgia Southern's Magazine of the Arts

Southern Reflector

QUARTERLY MAGAZINE

WVGS

The Media Committee of Georgia Southern University announces its selection process to choose student members of the 1997-98 broadcast and editorial boards of the university's official student media (The GEORGE-ANNE, MISCELLANY, SOUTHERN REFLECTOR, and WVGS/FM).

Students interested in applying for an elected position will be expected: (1) to present a **letter of application and/or resumé** to the chairperson of the Media Committee; and (2) to **sign a waiver** (included with this advertisement) which gives permission to the chairperson of the Media Committee to validate the candidate's academic standing. Students may indicate the position(s) sought either in their letter of application or on the waiver form. However, a separate letter should be submitted for each medium, if a student wishes to apply for more than one medium.

QUALIFICATIONS: Specific qualifications for persons holding board positions are listed below. Prior experience may be considered in lieu of stated qualifications. The media are listed in alphabetical order but the board positions within each medium are listed in ranking order.

DEADLINE: The deadline for all applications for any of these positions is **Friday, April 25, at 5 p.m.** Applications should be sent to Bill Neville, chairperson, Media Committee, in care of Box 8067, or delivered in person to Room 2022, Williams Center.

INTERVIEW DATE: The Committee has established two interview sessions for candidates. All candidates for board positions on **George-Anne** and **Reflector Magazine** MUST APPEAR personally for an interview with the committee on **Thursday, May 8, and for Miscellany and WVGS/FM on Thursday, May 15.** Each interview session will begin at 3 p.m. in Room 2006 of F.I. Williams Center (Upper Floor).

Editor (\$850 per quarter)
Managing Editor (\$800 per quarter)
News Editor (\$750 per quarter)

Editor (\$375 per quarter)

Editor (\$675 per quarter)
Art Director (\$625 per quarter)
Managing Editor (\$575 per quarter)

Station Manager (\$600 per quarter)
Music Director (\$600 per quarter)
Operations Manager (\$600 per quarter)

APPLICATION FORM AND WAIVER

INFORMATION: Questions regarding these positions should be directed to the advisors of the media: Robert Bohler (The GEORGE-ANNE) at 681-5933 or Box 8091; Mike Mills (MISCELLANY) at 681-0228 or Box 8048; Laura Milner (REFLECTOR MAGAZINE) at 871-1399 or Box 8048; or Russ Dewey (WVGS/FM) at 681-5446 or Box 8041. Additional information and interpretation of the qualifications may be obtained from the chairperson, Bill Neville (681-0069 or Box 8067).

Position(s) applied for (Please check ALL that are applicable):

GEORGE-ANNE	MISCELLANY	REFLECTOR	WVGS/FM
() Editor	() Editor	() Editor	() Station Manager
() Managing Editor	() Art Director	() Music Director	() Music Director
() News Editor	() Managing Editor	() Operations Manager	() Operations Manager

1. A student interested in applying for an elected position is required to present a **LETTER OF APPLICATION explaining his or her qualifications (and/or resumé)** to the chairperson of the Media Committee.
2. A student seeking a position on an editorial or broadcast board must have a **CUMULATIVE GRADE POINT AVERAGE of at least 2.0 and must not be on scholastic or disciplinary probation.** If at any time a board member drops below these standards, that member must relinquish the position.

I, _____ do hereby authorize the Media Committee, in relation to the above criteria for board positions, to contact the GSU student records representatives to validate my academic standing for compliance. This validation may be at a time of application and at any time during the period I would hold a board position.

Signed _____ Box No. _____

Social Security No. _____ Date _____

This application/waiver form (or a facsimile), together with a letter of application for each medium in which a position(s) is sought, should be submitted by Friday, April 25 by 5 p.m. to: Media Committee, Bill Neville, chair, Room 2022 Williams Center, Box 8067, GSU, Statesboro, GA 30460. Candidates for George-Anne and Reflector must be available on Thursday, May 8, and for Miscellany and WVGS/FM on Thursday, May 15. All interviews are scheduled at 3 p.m., Room 2006, Williams Center (Upper Floor).

CAMPUS SPOTLIGHT

Women's basketball inks two recruits

GSU News Service

Heather Thomas and Amy Krach have signed national letter-of-intent to play women's basketball for GSU, head coach Rusty Cram announced Friday.

Thomas, a six-foot-five post player from Elberton, Ga., plays her high school ball at Elbert County High School. She earned second-team all-Northeast Georgia and third-team all-area honors for posting 10 points and grabbing 6.2 rebounds a game for the Blue Devils. Thomas blocked 1.6 shots per contest and shot 48 percent from the field.

"Heather is a definite five player," Cram said. "She will be a big asset to our inside game."

A native of Sharpsburg, Ga., Krach plays her high school ball at East Coweta High School where she averaged 16 points (1,313) and seven rebounds a game. The six-foot-one three-guard dished out two assists per contest and averaged 2.0 steals for the Indians. Krach shot 50 percent from the field and 60 percent from the charity stripe.

"Amy is probably the tallest guard we've had since I've been here," said Cram. "She's a good three-point shooter and will help with our matchups against taller teams."

"We're trying to add height to our lineup and we're certainly excited about having Heather and Amy join us."

Matthews calls for open walk-on tryout in two weeks

By Mike Davis
Sports Editor

GSU volleyball coach Eddie Matthews has announced that there will be a walk-on tryout April 21-25 open for anyone interested in playing for the GSU volleyball team.

The four-day tryout will determine if a player will be invited for a second tryout in the fall.

"If we see a player or players that we want to invite back, then we'll keep them for a second tryout," Matthews said. "But just because they

make it this first tryout doesn't mean they're on the team. This is just to determine who we'll invite for our tryout in the fall."

Anyone interested must notify Matthews in the volleyball office before the tryouts begin in order to complete the proper paperwork.

Anyone who does not notify the volleyball office prior to the tryout will not be allowed to participate.

Those interested can contact Matthews in the volleyball office at 871-1502.

Check-out The George-Anne on-line
http: // www.stp.gasou.edu

The George-Anne is looking for a few good writers. If interested, come by room 2023 of the Williams Center and fill out an application today.

*There Are As Many Dimensions To The Word
As There Are People.*

No One Knows That Better Than Budget.

At Budget, we didn't become the third largest car and truck rental service in the world by limiting options. Instead, we took every opportunity available to maximize the talents of all our employees in all of our 3200 locations. It's a tremendous commitment to our success, as well as yours.

CUSTOMER SERVICE REPS
Full-and Part-Time Positions Available

You will greet and assist customers with renting and returning vehicles, providing them with product information and protection packages/services options. Top performance qualifies you for cash incentives

SERVICE AGENTS
Full-and Part-Time Positions Available

You will ensure that our vehicles live up to the highest standards of customer expectation. In addition to cleaning and refueling, you will check for vehicle damage, and review vehicle accessories and general performance to ensure a safe, comfortable rental. A valid driver's license and acceptable driving record are required. Must be able to work evenings and weekends.

We offer competitive wages, an excellent benefits package, flexible hours and a fun, fast-paced environment! For immediate consideration, please apply in person at 47 Ida J. Gadsden Drive, Savannah or call 1-888-894-JOBS, 24 hours a day, 7 days a week to apply by phone. An equal Opportunity Employer.

Budget.
Car and Truck Rental

Products & Services

...It's Like Putting Your
Business Card In The
Hands of Thousands,
At One Time!!

Your one stop Beauty Shop.....



- ✓ Waxing
- ✓ Tanning
- ✓ Perming
- ✓ Color
- ✓ Style
- ✓ French Manicures
- ✓ Manicures
- ✓ Acrylic
- ✓ Facial Beds

**SUPERIOR
TANNING**

Located next to Weight Extension
• 871-6653 •



Wood's Barber Shop & Copy Center

Next to Mellow Mushroom

681-HAIR



- NEXXUS
- REDKEN
- BIOLAGE
- NIOXION
- TRI

*Reduced Retail Prices on all
Professional Products

"Men's Grooming Headquarters"

Klipette Nose
Hair Clippers
\$10

Quick copy convenience for residents around University Plaza

**10 Free
Copies**
with purchase of
Haircut or Products
Wood's Barber Shop
681-HAIR



Brand New Wolf Tanning Beds!
24XL Bulbs

(January thru February)

Winter Tanning Special:

15 Visits for \$25

or

1 Visit for \$3

\$2.00 OFF
Acrylic Nails

(with Coupon) The Ritz Hair Salon



Hair Stylist

Heather Aldrich
Dale Butler
Sheila Weaver
Carol Kaczmarick
4 other Stylists
Available

681-2017

Located Next to
Mellow Mushroom

Athletic Footwear 40% to 60% off
Includes men's, women's, and children's shoes
Nike, Reebok, Fila, Adidas

Large selection of clearance caps 40% to 75% off

Apparel Rack 50% off and up

Sports Emporium

"Statesboro's Largest Selection of Athletic Footwear"

Located inside Statesboro Mall (912) 764-6869
Store hours: Mon-Sat: 10am-9pm Sun: 1pm-6pm

UNIVERSITY TIRE

Complete Auto Service

**OIL
LUBE
SHOCKS
TUNE UPS
BRAKE SERVICE
AIR CONDITIONING**

HWY 80 EAST 764-6659

Oil Filter, Chassis Lube, \$15.95
Includes up to 5 qts of oil
Special diesel oil and filter type may result in extra charges

Free 8-Point Preventive Check

- Tire Pressure
- Filters
- Transmission
- All Fluid Levels
- Lights
- All Fluid Levels
- Lights
- All Belts & Hoses
- Wiper Blades
- Cooling System

CRAIG'S COLLISION CENTER

"Over 23 Years Experience"

Complete Body Work & Painting
Insurance Claims Welcomed
Certified by PPG
Towing Available

10% Discount to GSU Students and Faculty (with valid Id)

Free Estimates

6 W Parish Statesboro **764-7770** Craig Rigdon Owner-Operator

The Fastest Cash On Campus.

Visit our newest ATM location inside The Enzone located on Lanier Drive, right across from Paulson Stadium. Open a checking account with Farmers & Merchants Bank today. It's all you need for the fastest cash on campus.

To open your account, drop by any location:
221 North Main, College Plaza or Brooklet. Or call 489-2600 for the location nearest you.

F&MB
FARMERS & MERCHANTS BANK

Place Your P&S Ad Today!

CALL Our Ads Department at:
681-5418

LADY EAGLE TENNIS

Buggins making mark as GSU's top player

By Dennis Stovall
Staff Writer

Sunday's 6-0, 6-2 win over Troy State's number-one seed over Claire Mowling of Troy State was just another win to continue the spectacular season for GSU tennis star, Anita Buggins.

Buggins, who stepped into the number-one spot when teammate Britta Wilms went down with an injury, has filled the position quite nicely, and she has a conference record of 6-0 to prove it.

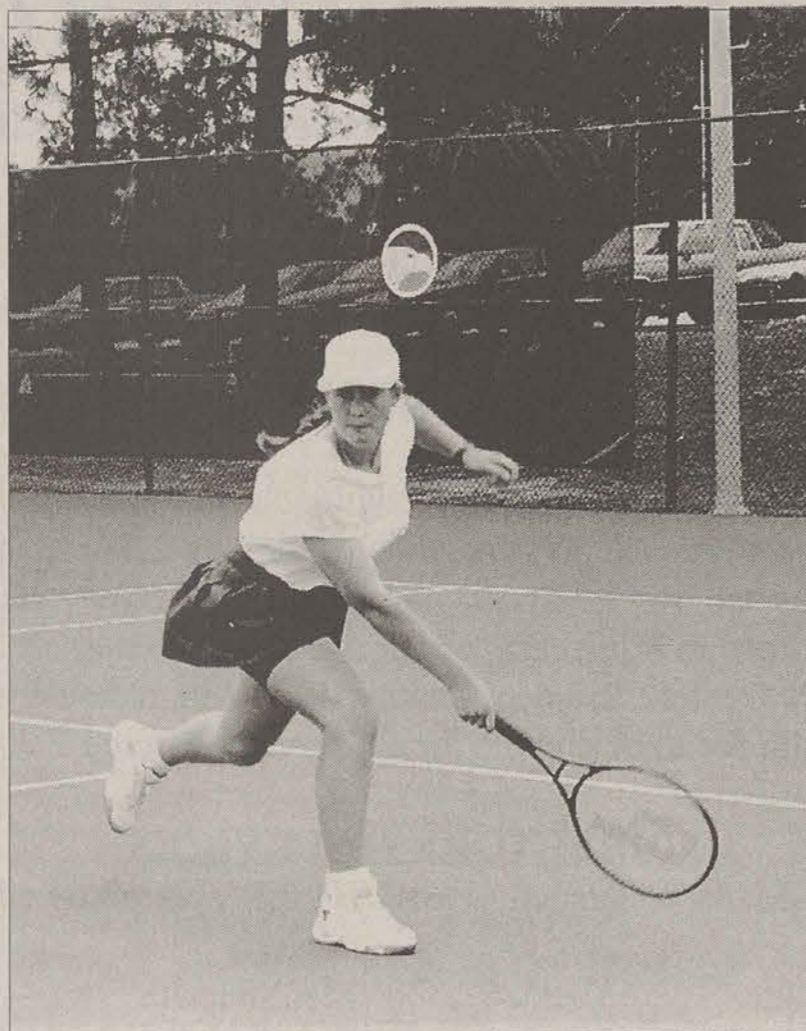
"She earned the team's number one seed when the former team number-one, Britta Wilms, fractured her wrist over the Christmas holidays," first-year GSU coach Cathy Beene said.

Buggins, a junior geology major, is from Swindon, England. Buggins has been playing tennis since the age of eight.

"My father used to be a teacher back in England and a colleague of his used to teach a tennis class," Buggins said. "My father put my sister and I in his class. Then my father put me in a tournament and I won and I have played ever since," Buggins said.

"I heard about GSU through a sports agency I joined. The agency contacted former coach Joe Blankenbaker, and he contacted me. I was recruited by Kentucky and all the midwestern states, but the reason I choose GSU is because of the weather. It is usually warm year round."

Rolux Collegiate Tennis Rankings ranks Buggins 89th in the nation in singles. She has won 11 matches with only two losses, but the two came against



Amanda Scott

REACHING FOR THE BEST: Anita Buggins plays big for Lady Eagles

people from Georgia and Clemson.

Buggins teams up with Wilms in doubles and together they are ranked 47th in the nation.

The two have been ranked as high as 27th.

"Putting a lot of extra time with the guys and members of the team," said Buggins in crediting her success. "I had a lot of injuries and I have managed to

stay fit this year. This has been my best season since I've been here, and I have enjoyed playing doubles with Britta."

"Anita's biggest asset is her ability to stay focused in her matches," Beene said.

"She works very hard and has a slight chance of making nationals. She definitely has a chance of making nationals next year."

EAGLE FOOTBALL

Attitude still getting better for GSU football team

By Carolyn Wynn
Senior Staff Writer

Spring football may be one of the first signs of spring, but the intensity seen in Saturday's second weekend scrimmage may be one the first signs of an excitement-filled season.

The scrimmage itself demonstrated continued aggressive strides by the defensive squad.

However, the offensive squad would turn it up a notch to overpower the defense during the second half of the scrimmage.

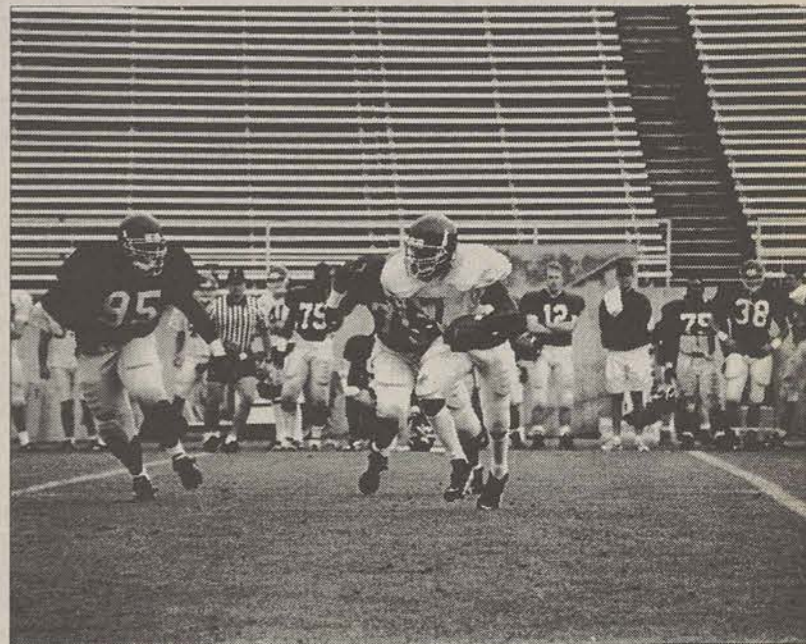
As the weeks of practice go by the renewed spirit and enthusiasm of the players become more evident not only by their words but in their on-field effort.

"We are looking forward to next year. If practice so far is any indication of next year then I would have to say that Georgia Southern should be looking pretty good next year," fullback Roderick Russell said with a smile.

"Not only are the younger guys stepping up, but some of the older guys are stepping up too. We are all learning everything over again. Everyone wants to contribute, and everyone wants to work hard."

The excitement isn't limited to the offensive side. Linebacker D.T. Tanner agreed with Russell, adding the importance of senior leadership.

"I feel great looking towards next season," Tanner said. "I think we have a lot of senior leadership along with a lot of our starters returning. We have a whole new coaching staff that is dedicated to seeing us execute every play, and securing the win."



Michael Hamburger

IN PREPARATION: GSU prepares for a new season with new personnel. The Eagles will continue practice for two more weeks.

"You can't help but to be excited from day one of spring practice till now there has been constant improvement."

A commitment to improvement of play execution and team togetherness seem to be the catalyst for building the team's new found confidence.

"I think we have become stronger technically and with executing the fundamentals," linebacker Cloise Williams said.

"We are gradually improving each day."

"It is kind of exciting to walk back on the field after a disappointing season being able to see the changes happen before your eyes."

— News and notes

• Josh Smithers, freshman outside linebacker, had his knee examined and has had limited

action in practice.

• Defensive end Kinte Morgan has suffered a knee injury during the previous week's practice and was out during this weekend's scrimmage.

• Brian Lovett also continues to be out while recovering from surgery.

• Additional moves continue to re-shape the Eagles roster. The latest position change centered around Cordell Benton, Earthwind Moreland and Marvin James.

Benton was moved from slotback to defensive back.

Moreland made the change from wide receiver to defensive back in efforts to provide more speed in the secondary.

James has moved back to offensive line after previously being moved to defensive line.

Now Leasing For Fall '97 Stadium Club

APARTMENTS

- Individual Thermostats in Bedroom
- Single Story Design
- Energy Efficient
- On Site Laundry
- On Site Management
- Built in Security
- Fully Equipped Kitchens
- Roommate location assistance

Stadium Club Apartments are located in a convenient, yet private location, less than one mile from the GSU campus area. These 4 bedroom 2 bath apartments offer a spacious living room for entertaining. We offer individual and flexible leases. Stop by Stadium Club and see why we are the apartment community that gives you the best of the collegiate atmosphere.

210 Lanier Drive
Statesboro, Georgia
(912) 681-2437

Network Event Theater



Student Video Clips Wanted

Exciting prizes for funniest clips

Share your funniest moments:

- * Spring Break
- * Life on Campus
- * Eating
- * Sports
- * Roommates
- * Study Habits

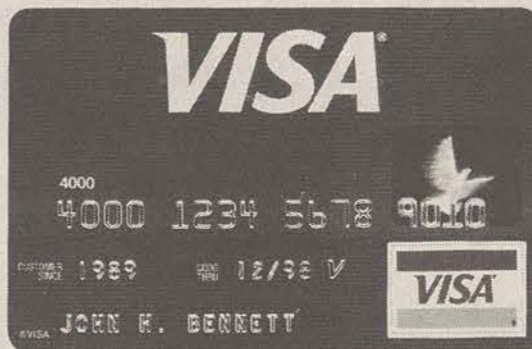


Send three minute, VHS clips to: Campus Video Contest, Network Event Theater*
149 5th Ave, 11th Floor, New York, New York 10010
Videos will not be returned and will become property of NET*.
For contest rules or more information please call 681-0399. Void where prohibited.

Send us your videos!

© Visa U.S.A. Inc. 1997

Because today is mystery meat day.



It's everywhere
you want to be.

CLUB SPOTLIGHT

New club aims to destroy the stereotypes of African culture

By Kevin Bonsor
News Editor

Most people who grew up in the United States may have very distinct images come to mind when someone mentions Africa.

Lions running through open prairies, tribesmen in the jungles or the historical political problems of South Africa all may be something Americans think of when they think of Africa.

However, a new student organization, the African Student Association, has set out to educate the students of GSU about what Africa really is.

They want students to know Africa is more than just what they have learned about from their televisions.

"The media never shows the development or technology of Africa," Zolega Frankfort, ASA's public relations director, said.

ASA members say they want to give the GSU community an understanding of Africa and raise awareness about the diversity of the large continent.

They don't deny that there are some of those stereotypical images that still exist in Africa, but they say that Africa is so large one region or country can't represent the entire continent.

"We want to make them aware Africa is more diverse than what they see on National Geographic," Vivian Wonzon said.

ASA was officially recognized by the university last quarter after two years of work by members to achieve that recognition.

The organization has approximately 30 members now.

The members do not come from just one area. They come from all over Africa, and that is why they

want to educate the GSU community on the different cultures of Africa.

"Africa is so big and so diverse you can't just say 'in Africa,'" Frankfort said.

Manfred Makor, acting president of ASA, said that most American students lack a good understanding of Africa and that ASA is a way to educate students.

**"WE WANT TO MAKE
THEM AWARE AFRICA**

IS MORE DIVERSE THAN

WHAT THEY SEE ON

NATIONAL

GEOGRAPHIC."

**-- VIVIAN WONZON,
MEMBER OF ASA**

"Our purpose, basically, is to give American students and Americans more information and more insight about Africa and how it is," Makor said.

He said that Americans really only know Africa from what they have seen on television. He said what is seldom seen is the metropolitan areas of Africa.

Another purpose of the organization is to make other students from Africa aware that there are other students like themselves on campus.

"We want to make it known there are Africans around here and make students more welcome," Frankfort said.

For more information on the ASA, contact Zackery Matoya at 681-1469.

HEALTH SERVICES

A Department of Auxiliary Services and Student Affairs

Open 8:00 am - 5:00 pm Monday - Friday

**Located on Forest Drive across from
Watson Hall and near Lakeside Cafe**

Students taking 6 or more hours are eligible for unlimited visits during the quarter to see a physician, nurse practitioner, or nurse. Nominal charges for such items as lab work, x-rays, and prescriptions may be incurred so students are urged to bring cash, check, VISA, or Mastercard on each visit to the Health Center. Students taking less than 6 hours may pay the quarterly health fee to be eligible for all services offered.

DIRECTORY of SERVICES

E-Mails Welcomed: HEALTHSERV@GaSoU.edu

Women's Health	681-0526	Men's Health	681-0526
Free HIV Testing	681-0012	Free Injection Service	681-5484
Radiology	681-5804	Laboratory	681-5937
Pharmacy	681-5780	Immunization Office	681-0743
Main Office	681-5641	Health Education	871-1732

Our NURSES have a combined 184 YEARS of experience

**Our PHYSICIAN and 4 NURSE PRACTITIONERS
have a combined 78 YEARS of experience**

**Highly satisfactory survey ratings for CONFIDENTIALITY,
QUALITY of CARE, and COST EFFECTIVENESS**

The Academic Corner

Do We Have Your Current Address?

In order for you to receive information from us concerning your registration, fees, financial aid, grades, etc. we must have your current address on file. If your address has changed in the past months, please provide us with that information using the form below.

Take a moment to fill out this form and send it to the Registrar's Office via intracampus mail at P. O. Box 8092.

Thank You!

Official Change of Address Request

Please Print

Social Security Number: _____ Name: _____

Local Street Address: _____

City: _____ State: _____ Zip Code: _____

Phone: (_____) _____ - _____

Permanent Home Address (Cannot be a Campus Mail Box):

City: _____ State: _____ Zip Code: _____

Phone: (_____) _____ - _____

Name of Emergency Contact: _____ Relationship: _____

Street Address: _____

City: _____ State: _____ Zip Code: _____

Phone: (_____) _____ - _____

Academic Affairs
Vice President's Office
Landrum Center Box 8022
Georgia Southern University
Statesboro, GA 30460



912/681-5258



Fax: 912/681-5279

E-mail:

hscarter@GaSoU.edu

cbblack@GaSoU.edu

lvantassell@GaSoU.edu

STUDENT VIEWPOINT

Parents just don't understand — or do they?

By Shana Johnson
Staff writer

Some of us can't live with them—some of us can't live without them.

They're our parents. As a child, they're our heroes and role models.

As a teen, they are irrational and over-protective beings, but what place do parents have in their children's lives once they cross over into adulthood?

For many of GSU's student body, age, maturity and independence have brought about a welcome change in how they view their parents.

Junior Tomeka Simmons says that her relationship with her parents has strengthened since she's been in college.

"My mother and I are a lot closer," she said. "I can tell her stuff now that I wouldn't have in high school. We have more of a 'sister' relationship than a 'mother/daughter' one. There's a lot more trust."

Shatanya Anthony, a freshman, agrees that her relationship with her parents has gotten "better and stronger" since she has been in college.

"We've always had an open relationship, but now it's more

"NOW THAT I'M IN SCHOOL, THEY LOOK AT ME MORE AS AN ADULT SO WE GET ALONG BETTER,"

-- JAMES RAYMOND, GSU STUDENT

open and there's more freedom," Anthony said.

Senior James Lunsford has a similar reaction.

"We've gotten closer because now I can relate to them more and see all of the immature things

that I was doing," Lunsford said.

Many students believe that being away from each other has enabled them to "bridge the gap."

"Now that I'm in school, they look at me more as an adult so we get along better," James Raymond, a freshman, said.

The same holds true for freshman Demetrius Swindle. "We're closer because we're not there to get on each other's nerves," he said. "Now we have to keep in touch and talk."

Unfortunately, absence does not always make the heart grow fonder.

"We're even more distant," Marcus Rivera, a freshman, said. "I talk to them even less."

"They're tired of me calling for money," Malcolm Lee said. "We don't talk as much. It's definitely gotten weaker."

For some students, college has forced them to mature and they found out their parents were right all along. For others, parents are still a burden to bear.

CAMPUS NEWS

Stop and smell the roses at the Spring Festival

By Jennifer DeBary
Staff Writer

The pollen is in the air, the students are tanning and the sun is shining bright.

Spring is here, and to celebrate, the GSU Botanical Garden is holding its sixth annual Spring Festival on Saturday April 19.

The festival will include the yearly plant sale.

With plants of all sizes and varieties, this is a great way to spruce up a house, apartment or a residence hall.

Performing arts will be available for all ages, with performances by the GSU Jazz Band, the Statesboro High Jazz Band and individual classical musicians.

For children, as well as adults, there will be a storyteller. June-Marie will tell tales which promise to captivate her audience.

There will also be a Maypole dance, guided tours, refreshments and an expanded gift shop. The Garden will feature new

and improved trails meandering through woodlands and gardens.

The final event of the day will be the Dancer's Workshop's recital of "Isabelle's Dream" from 3:00 until 4:00.

Admission is free, but parking will be tight. Grab a friend and walk, bike or rollerblade to the Bland Avenue entrance. Off-site parking is available at College Cinemas if necessary.

Dee Hope, of the Botanical Garden, urges students to attend.

"This is a part of the university that they can enjoy," he said. "The garden is for students as well as the Statesboro community."

So put on some shorts, get a



Special Photo

A Maypole is just one of the many attractions this year's Spring Festival has to offer.

friend and kick off spring with the beautiful Botanical Gardens at the festival.

It promises to be six hours of fun and great scenery. Take advantage of the beauty Statesboro has to offer.

CAMPUS NEWS

KIDS Place: the coolest place to learn on campus

By Nicole Patterson
Staff Writer

Usually when you think of the word museum, you tend to associate it with enclosed exhibits that can only be seen with the eye.

But at the GSU Museum, kids get hands-on experience with the exhibits.

Scheduled groups from different Bulloch County schools, including the Marvin Pittman School and Glenville Christian Academy, have a chance to endure a motley kind of museum, simply called KIDS Place.

KIDS Place is a traveling display of exhibits sponsored by the Discovery Place in Charlotte, NC.

"This is a popular exhibit that allows kids hands-on interaction with different exhibits," William Stern, undergraduate museum employee, said.

"The Museum Exhibit Committee elect on where the exhibits will travel," Cybil Humphrey, museum educator, said. "The GSU museum only has these exhibits for a certain time frame, then the exhibits are shipped to a different venue. But the young kids seem to enjoy the exhibits. They have lots of fun because it is interesting and there is a lot of scientific exploration."

Upon entering the museum, the children are greeted and then

taken to the Hall of Natural Exhibits. They are told the rules and broken up into groups of three.

If they have money they are allowed to go into the museum gift shop to purchase books, post-



Amanda Scott
Local school children learn while playing at KIDS Place in the GSU museum.

The Hall of Natural Exhibits is the best because you learn about the past."

Some of the other appealing exhibits include the building, sound, puppet, dinosaur, nature, life science, physical activity and sand centers.

The most popular exhibit seems to be the bubble center.

"This place is cool, especially the bubbles because you can make a lot of them," said cousins Evan and Matthew Durrancy.

"The bubbles are fun," said fourth grader Mark Hallenbough.

Overall, KIDS Place is a hit with the children, parents and teachers.

Although the museum exhibit is designed for the kids to have fun, it is also a chance for them to learn.

"You do a lot of stuff, but learn with having fun," said fourth grader Tabitha Brannen.

KIDS Place does not discriminate.

Faculty, staff and students are welcome to learn and explore, also. It offers entertainment and education for kids of all ages.

You can visit KIDS Place Monday through Friday from 9 to 5 p.m. through the end of May.

CAMPUS INTEREST

Recycling will work if everyone pitches in

By Rodney Reid
Staff Writer

What do you plan to do with this newspaper after you are done reading it? Toss it in the trash? Well, not if Suzanne Venerable, GSU's recycling coordinator, has anything to say about it. Venerable has overseen the recycling program since December 1995. Venerable came to GSU after earning a degree in engineering.

The recycling program goals are "to increase the participation of students and faculty and to reduce the amount of waste that is land filled, and to comply with Georgia's Comprehensive Solid Waste Management Act of 1990," Venerable said.

Currently the act calls for a reduction of 25 percent of solid waste. GSU is not at the state's recommended level yet, but the school has seen an increase of nearly double the production over the last year. To help in the effort, the school has placed numerous recycling bins around

campus.

"It is very important that you place the right materials in the correct bins," Venerable said.

To make it a little easier on everyone, the bins are color coordinated. Clear plastic bottles should be placed in the gray recycling bins.

Unbleachable paper such as books, construction paper, copy paper wrappers and magazines should be placed in the yellow containers. Office papers belong in the blue containers.

The bins are collected by the Physical Plant grounds crew division. Paper is picked up by Fort Howard Paper Company. Metals are taken to Stubbs Metal and Wrecking Yard. Plastics go to the Local Statesboro-Bulloch County Drop-Off Center.

The funds received for recycling go to maintaining the program. Venerable encourages everyone to take an active part in recycling.

"We all live on this earth," she

said. "So we all need to take care of it."

She offers these tips to help reduce waste: Reuse file folders, convert two pages to one by using front and back and use e-mail whenever possible to send memos.

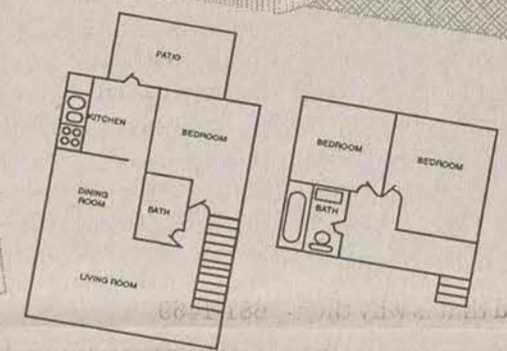
"Remember it's everyone job to recycle and save the environment."

Southern Realty Has Plans For You!!!

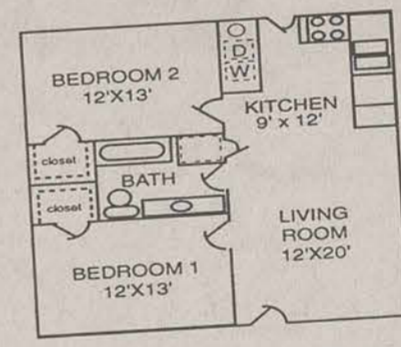
1, 2, & 3
BEDROOM APARTMENTS



2 Bedroom Flat



3 Bedroom Townhouse



2 Bedroom Flat

LEASE NOW FOR BEST SELECTION!!!

Southern Realty
Associates, Inc.

1800 CHANDLER ROAD
STATESBORO, GA 30458
(912) 681-3000

WVGS SCHEDULE FOR SPRING 1997

91.9 FM 681-5525

SUPPORT GSU'S STUDENT RADIO STATION

Time	Monday	Tuesday	Wednesday	Thursday	Friday	Saturday	Sunday	Time
3-7 a.m.	Brad Punk/SKA	Jonathan Variety	Jill R. New Box	Randy Classics	Tush Metal/Hard	Karamel Rap/R&B	Dolawhite Hip-Hop/R&B	3-7 a.m.
7-9 a.m.	Mathew Variety	Ashley Angle Altern/Variety	David Progressive	Doug Alt/SKA	Crazy Lee Progressive	Demetrius R&B	Tonia Gospel	7-9 a.m.
9-11 a.m.	Melinda Techno	Shana & Hilary Various	G-Spot Variety	Bob Celtic/New	Jeff Accoustic	Brian Jazz/Blues	Tonia Gospel	9-11 a.m.
11 a.m.-1 p.m.	Adam Variety	Circe Etc.	Isaac Progressive	Piper from hell Celtic/New	Joey Variety	Nancy&Carey Variety	Rev. Joker Jazz/Variety	11 a.-1 p.m.
1-3 p.m.	Austin 'Tex' Variety	Space Cadet Assorted Goodies	Pure Leather Luscious Music	Scott Strange Underground	Lisa Pick a groove	Thom Hadeshangover	Mercedes Techno/Pro	1-3 p.m.
3-5 p.m.	Mark British	Ben M. Progressive	Rudy's Revenge Punk/Ska	Brian & Jason Hard Stuff	Grover&Gator SKA & Alt	Peter New Box	Keta & Mike Hip-Hop	3-5 p.m.
5-7 p.m.	Cpt. Groovy Old Wave	Ben A. Variety	SGA 5-5:45, CRI 5:45-6:15, Sports 6:15-7	Tim European	Robert Blues/Jazz	Annie Stole Progressive	Nocturnal Kollage Hip-Hop/Jazz	5-7 p.m.
7-9 p.m.	Bo Regressive Cntry.	Gabe Kill the Dead	Spaz GA Music/New	Jody Blues	Joseph Funk	Bobby Specialist	Bobby Specialist Reggae/Dance	7-9 p.m.
9-11 p.m.	Spider Hip-Hop	Tomato Girl Variety	Scott Jazz/Blues	Ryno New Box	Strawberry Girl Progressive	Exodus House/Dance	Kalimba Old School	9-11 p.m.
11 p.m.-1 a.m.	Phantom Hip-Hop	Gina Goth-n-Roll	Notorious Cliff East Coast	Ed Jazz/Classical	Jake Remixes	Shad Roc Hip-Hop	Ken Urban Contem	11 p.-1 a.m.
1-3 a.m.	Nolege Hip-Hop	MaryBeth&Meredith Variety	Madison&Nick Industrial	Cole Variety	Katie New Box	Brian B-Side Hip-Hop	Amy Progressive	1-3 a.m.

EAGLE CINEMA
At the RUSSELL UNION

The Attack Begins:
Wednesday, April 16 &
Thursday, April 17
Shows Start at: 7 PM
\$1.00 Admission



For more info call 681-0399

Box 8016, Statesboro, GA 30460-Web Site: <http://www.cs.gasou.edu/wvgs>
Office telephone #: 681-0877 - Fax: 871-1357

HAPPY TAILS

KELLEY MCGONNELL

I should have been a cowboy

I guess if you are reading this, you've noticed that there was a rodeo in Statesboro. I went, and I think I'm hooked. Now I don't intend to become a bull rider or a barrel racer, but I love the rodeo.

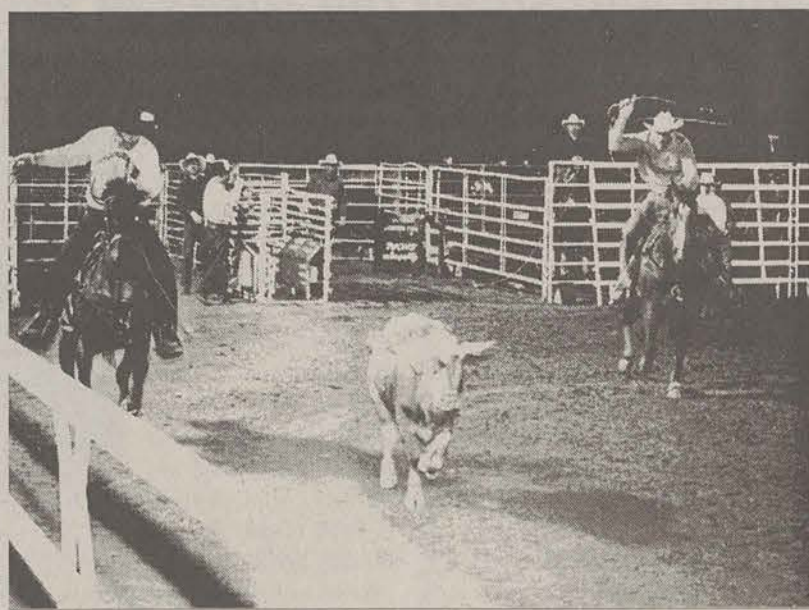
I have loved country music for years. My favorite song is "Amarillo by Morning" by the King of country, George Strait. I love Garth, Randy and Alabama. But I learned there is much more to country than boot scootin'.

The cowboys I met work at home all week to make their entry fees, then travel all weekend and hope they can make their money back. I had always known this (I have seen "Pure Country" and "8 Seconds") but it wasn't until this weekend that I really understood what they do. This is a dangerous lifestyle, but these people love it.

My weekend taught me a lot. I learned that money ain't everything. If it was, you wouldn't put yourself through hell for it when you know you may not even earn any.

As a journalism/English major, I will never be rich. I could go to law school but I would be miserable. The cowboys showed me that I am doing the right thing. I'm doing something I love even if I never break even. I hope that all the doctors, lawyers and politicians can say that. I hope they are all doing something they would do even if they didn't get paid. If not, I pity them.

So even if you hate country music and you don't even know what a steer is, you can still learn from the rodeo riders. Do what you love and nothing else matters.

'It's the bulls and blood, it's the dust and mud'

Michael Hamburger



Michael Hamburger



Michael Hamburger

Team Calf Roping involves the header and the healer in a battle against the calf and the clock. This is the only event cowboys may enter twice.

By Kelley McGonnell
Features Editor

The International Pro Rodeo moseyed into Statesboro April 11 and 12. The event was presented by the Bulloch Co. Horseman's Association and took place at the Association's Arena.

The weekend's events included the Miss and Li'l Miss Bulloch Co. Pro Rodeo, steer wrestling, calf roping, bronc riding and, of course, bull riding.

There are many myths surrounding the rodeo and many of them proved to be untrue. The horses and bulls are not tortured into performing. A cotton or nylon rope is tied around their flanks and this is what causes them to buck. After the eight-second buzzer, the pick-up men quickly remove the rope and the animal is fine.

The pick-up men are also responsible for the cowboys safety in other ways. If he gets thrown, the pick-up men chase the bronc or bull to release the rope and calm the animal. The legendary rodeo clown keeps the animal away from the cowboy until he is safely on his feet and over the fence.

This weekend's bull fighter/rodeo clown was Tommy Monts. He is a 21-year-old ex-bull rider. He gave up riding for safety.

"This is safer than going to the bars every weekend," he said. "What would you rather me do? Put myself in danger here, or put you and me in danger when

I go out to the bars?"

Injuries are what caused Randy Minnick to turn to funny man acts. In 1984, Minnick received a horn in the back while working as a bull fighter. He was in the hospital for 14 months and changed his job when he got out.

"I wouldn't have been able to give the cowboys the full protection they need," he said. "So I became a funny man."

It seems to have paid off because Minnick is the number-three funny man in the world and the only rookie to have ever gone to the competition and won it.

Contrary to popular myths, Minnick is happily married and has a son who comes along when he can.

"My wife knows this is what I want to do," he said. "You have to have someone who understands that."

Bull rider Ty Cobb also knows how hard the rodeo life can be. He is a college student who also happens to be the number two bull rider in the world. He has been riding bulls for about eight years now.

"I always wanted to be a cowboy," he said. "I got on the bulls on a dare. It's not so much for the adrenaline rush. I just love doing it."

He goes to a community college in his hometown so he knows many of his professors. They work with him so he can attend rodeos every weekend and in the summer Cobb focuses all his attention on

the rodeo. Like many college kids, his four-year degree will take him about five and a half years to earn.

All of the riders pay an entrance fee for each event they enter. The money is compiled together for prize money. For each dollar in prize money a cowboy/cowgirl wins, he/she receives a point. Whoever earns the most points in each event wins.

But earning points is not as easy as it sounds. If a cowboy does not reach the eight-second buzzer, he gets no score. If a cowgirl knocks over a barrel in the barrel racing, she also has no score.

Rodeo crowds are a mixed breed. Everyone from cowboys to business men were there this weekend. Children in hats and boots spent the evening climbing the fences to get a better view of the cowboys and the animals.

"He enjoys the ponies, the bulls and the ponies," Sharon Kingrey said of her young son, Scotty.

After the calf roping, the children in the audience were allowed into the arena to participate in the Kids Calf Scramble. A calf with a ribbon attached to his tail was let loose and the children chased him to grab that ribbon.

For the older crowd, there was Money the Hard Way. A \$100 bill was placed on a bulls horn and about 50 crowd members chased him for it.

"I did it just for fun," GSU student



Michael Hamburger

Angelique McKillip (right) was named Miss Bulloch County Pro Rodeo and Brandy Morris was named First Alternate.

Chance Fulk said, "It's about the closest I ever got to \$100."

All and all, it was a weekend of horses, bulls, calves and fun. It was something a little different but straight out of a country song.

INFRATERNITY COUNCIL
PRESENTS...

FRATERNITY RUSH

SIGN UPS BEGIN:
MONDAY, APRIL 14
THRU
WEDNESDAY, APRIL 16
10:00-2:00 AT THE GREEK LIFE
OFFICE (UNION), LAKESIDE
CAFE, AND IN FRONT OF THE
UNIVERSITY STORE.

ANY QUESTIONS?
PLEASE CALL

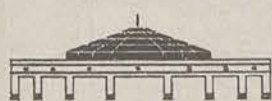
681-5185



TODD MCFARLANE'S
Spider-Man

And a special presentation of
HBO2's new music show

Reverend
featuring **Wilco**



Two World Premieres
See them on your campus first
FREE Admission Exciting Giveaways!
April 23 8:00 pm @ Russell Union Theater
Presented via satellite by **Network Event Theater®**
in association with Russell Union

Seating is limited and not guaranteed. Please arrive early to ensure a seat.

HBO

NET
NETWORK
EVENT
THEATER®

Today's Quote

"Perhaps the reward of the spirit who tries is not the goal but the exercise."

-- E.V. Cooke

01•Announcements

AD PLACEMENT (For Commercial Enterprises) -- Classified ads in the George-Anne cost 20¢ per word with a \$4 minimum per insertion. Please add \$1 per ad for mailing and handling for tearsheet service. The customer is responsible for proofing the ad immediately upon publication. Prepayment with your ad is appreciated. Call 681-5418 for more information. The George-Anne reserves the right to refuse any advertisement.

AD PLACEMENT (For Students, Faculty & Staff) -- The George-Anne publishes ads for students, faculty and staff which are non-commercial in nature. Submit your ads, 25 words or less, either in person at Room 223 Williams Center during normal business hours (9am to 4pm), or via mail at Landrum Box 8001. Please do not attempt to place free ads via telephone -- at these prices we don't take dictation.

All free student and faculty ads to be run in the George-Anne must have a Name and Landrum Box number. If it does not have both, it will not be printed.

ATTENTION ALL STUDENTS !!! GRANTS, SCHOLARSHIPS, AID AVAILABLE FROM SPONSORS !!! NO REPAYMENTS, EVER !!! \$\$\$CASH FOR COLLEGE \$\$\$ FOR INFO: 1-800-400-0209.

ATTENTION: The George-Anne screens all classified ads prior to publication. The newspaper strives to accept ads for legitimate products & services only. Students are urged to exercise caution when replying to ads, particularly those which ask for money or a credit card number in advance of delivery of products or services. Students are also urged to report to the newspaper (at 681-5418) any suspicious offers they might see in the classifieds. Remember, if an offer seems too good to be true, it probably is.

Attn Dancers! Southern Dance Company will be holding auditions April 8-10 and 15-17 from 4-6 pm at the College Plaza Dance annex behind Wendy's for more information contact Aletha Yoho at 871-7555.

Attn: Freshmen and Sophomores. The GSU football team is in need of equipment managers. Some scholarship opportunities available. For info: contact Greg Colson at 681-5970.

Check out the Fifth Dimension on 91.9 WVGS FM for your groovin' tunes Thursday 9-11 pm.

If you wish to purchase pictures that have been published in the George-Anne, please contact Mike Spilker, chief photographer at 681-5246 or stop by the George Anne office in room 223 of the Williams Center.

Scuba club: first meeting will be April 9 at 7 pm in the union room 2072. Everyone welcome, call Christine at 764-3038.

03•Autos for Sale

1985 Toyota Camry. Slate blue, good traveling condition. Reasonable offers. Contact Leslye at 681-9745 and leave a message.

1987 Pontiac 6000 4 dr, auto with air, pwr brakes, steering windows, and locks. \$900 call Andy at 852-9438 (lm).

1988 Honda Accord Coupe. Runs great, have all service records, 108,000 miles. Must sell. \$4500 OBO. Call Chris at 871-6772.

1989 Jeep Cherokee Laredo 4x4, 100k miles. Fully loaded, PW, PL, auto locks, runs great. Perfect condition. First \$7500 takes it. Call Rodney at 681-1316.

87 Toyota Celica, blue, runs good. \$2200. Call 489-2630.

93 Dodge Shadow ES, V-6, White, Runs perfectly but lots of miles. \$4325. Please call 912-369-5337.

For sale, 1982 Toyota Corolla. Auto, AM/FM radio, great condition. Must sell in next week. Call Derek and offer a price. 681-1394.

SEIZED CARS from \$175. Porsches, Cadillacs, Chevys, BMWs, Corvettes. Also Jeeps, 4WD's. Your area. Toll free 1-800-218-9000 ext A-7828 for current listings.

SEIZED CARS from \$175. Porsches, Cadillacs, Chevys, BMWs, Corvettes. Also Jeeps, 4WD's. Your area. Toll free 1-800-218-9000 ext A-7828 for current listings.

04•Auto Parts, Repair

Repair not replace. Get your cracked car windshield fixed. Many types can be repaired starting at only \$20. Call Brad at 489-1425 leave message.

05•Business Opportunities

\$1000's POSSIBLE READING BOOKS. Part Time. At Home. Toll free 1-800-218-9000 ext R-7828 for current listings.

\$1000's POSSIBLE TYPING. Part Time. At Home. Toll free 1-800-218-9000 ext T-7828 for current listings.

Earn \$ while in college. College students, if you want to make lots of \$ legally and with little or no work then this is the program for you while you in school. For Free details send SASE to S. Elrod, 228 Holcombs Pond Ct., Alpharetta, GA 30202

09•Furniture & Appliances

3 19" color TVs, not cable ready, \$50/each OBO. Unused Craftsman toolbox with 150 sockets, \$300 OBO. Call 681-0555, leave message.

Black vinyl sofa and loveseat, dresser and night tables. Call Lynn 764-4515.

Bunk beds w/ mattresses for sale. Cherry oak wood, great condition. Will also sell beds separate. Call Trish at 681-6185.

Like new -- royal blue traditional style sofa and chair. 852-5278.

Twin bed for sale. \$50, call 681-9778 and ask for Jan.

Washer and/or dryer for sale. \$325 OBO. Both are in very good condition. Call 681-3110.

11•Help Wanted

\$1000's POSSIBLE READING BOOKS. Part Time. At Home. Toll free (1800)-218-9000 ext R-7828 for listings.

\$1000's POSSIBLE TYPING. Part Time. At Home. Toll free (1800)-218-9000 ext T-7828 for listings.

\$1500 weekly potential mailing our circulars. No experience required. Begin now. For info call 301-429-1326.

ALASKA SUMMER EMPLOYMENT: Fishing Industry. Details on how to find a high-paying job with excellent benefits (transportation + room & board). For more information: 1-800-276-0654 Ext. A53917 (We are a research & publishing company).

CRUISE AND LAND TOUR EMPLOYMENT - industry offers travel (Hawaii, Mexico, Caribbean), incomparable benefits, & good pay. Find out how to start the application process now! Cruise Employment Services provides the answers. Call 800-276-4948 Ext. C53947 (We are a research and publishing company).

INTERNATIONAL EMPLOYMENT-Teach basic conversational English abroad! Get the inside edge for finding work in Japan, Taiwan, and S.Korea. For more information: (206) 971-3570 ext. N53946 (We are a research and publishing company).

Need some quick easy money to get through the quarter? Set your own hours and have unlimited earnings. Join Avon. Call Melissa Disney at 587-2042.

12•Lost & Found

Keys lost in George-Anne office on Wed. April 2 around 3 pm. Reward if found, very important. Call 681-7122 anytime or leave a message.

Lost: calico kitten near stadium walk area before spring break. Missed greatly. Please call Kim at 871-7471.

Statesboro High School class ring near the Carroll Building. Please call to identify 681-5648.

13•Miscellaneous for Sale

14 inch VGA monitor for sale \$75 OBO. Also system 286 selling for spare parts, can be upgraded to a 486 with a new motherboard, \$20, keyboard included. Call 688-2768 ask for Don

3 formal dresses. Two size 9/10, one size 11/12. Call for more info at 489-4209 or to come try on. Only \$30/each.

Beer Meister with keg. Keeps keg cold with tap coming out the top. Keeps keg from ever getting flat. Excellent for parties. Call Bryan 489-6185.

Biology 152 lab goggles for eyeglass wearers for sale. Used once, don't pay \$11 at the university store, I'll sell them for \$5. Call Renee at 871-3918

Brand new carpet for sale 91/2x61/2. Very nice color, only \$35 call 688-2189 will deliver.

Cards for sale: cheap! Call 681-9778 ask for Jan.

For sale BA-35 business calculator only used one quarter. \$30. 871-7397 after 2 pm ask for Jason.

For sale: Baseball cards - Kirby Puckett, Dwight Gooden, Darryl Strawberry, Felix Jose, Andy Benes, Ken Hill, Jimmy Key, Alan Trammell, Eric Davis. Call Renee at 871-3918.

For sale: Decision Science Book - \$45. Call Jody at 842-5180.

For sale: ladies round solitaire stargite diamond ring. .77 carat, diamond certificate included. Mint condition. Paid \$2300, asking \$1500 OBO. Call 681-0555, leave message.

For sale: NFS 151 Intro to Food sciences lab book. Only \$5 must have for the class - call 489-4209.

For sale: \$100 roundtrip bus ticket to New York city. Also goes to Montreal. Please call 681-3110 for more info.

MBQJART 6 1/2" 2-ways. Sounds great. Asking \$50/OBO - call Wesley at 871-4275.

Playstation games for sale. Road Rash and Ridge Racer, \$15 each or \$25 for both. Call Scott Rogers at 688-3631.

Three lawn, pool, or beach chairs, hourglass, three positions. \$30.00 each, 3 for \$75.00. Office chair, arms, swiveled, 4 wheels \$50.00. Ladies dresses sizes 14-16. Call 681-1803.

Need someone to sublease at Campus Courtyard for Summer Qtr. Sublease before April 1 and receiver June free! Call 681-4611 for more info.

Need someone to take over lease at Season's Apts. 2 bedroom, 2 bath big size washer/dryer. Big kitchen. Rent is \$257.50. Please call Felicia at 871-6124.

Need to sublease my apt now. Great location, low utilities, doesn't smell funny. Call Jake at 681-9829.

One bedroom apt available immediately. \$250/month keep \$275 deposit. Pets welcome, quiet neighborhood. Call Alonzo or Tameka at 871-6257.

Rent now! \$200/month. Park Place Apts. Own room and bath, W/D. Available Spring and Summer. Call Angela at 871-6379.

Room for rent. Fully furnished 2 story house in a quiet neighborhood. \$220/month plus utilities. Call Brandon Hodges at 489-5983.

Sublease 2 br apt. Air conditioned, 5 minutes from campus. June 1st - \$162.50, no roommate. Have option to lease for longer. Call 489-4209 (lm).

Sublease beginning May. 2 br/2bath mobile home. W/D included. Front/back porches, close to campus. \$400, call 681-3853 or leave a message.

Sublease for summer at Campus Courtyard. Female nonsmoker. Call 681-1407. Price negotiable.

Sublease for summer! Bermuda Run, \$185/month. Own room and bath. Great deal, call Angela at 681-7218 ASAP.

Sublease for summer. \$225/month for July and Aug. June is paid for. Private br. Campus Courtyard. Call Mark at 871-5868.

Sublease needed for summer qtr. Nice house, private room. Walking distance from campus. \$200/month. Call Jason at 681-7008.

Sublease two bedroom one bath apt \$425/month plus deposit (refundable). Partially furnished, very clean, close to campus. Call Latoya at 681-7738.

Sublease: 1BDR, 1BATH apt. Free cable & HBO. Close to campus. \$270/mth plus \$100 deposit. Great deal! Call 871-6527. Serious inquiries only.

Summer qtr rental: one br/one bath in 3 bedroom 2 bath house. \$250/month for one \$325/month for two. Includes water and electricity. Call 842-5180.

Townhouse sublease now -- own bedroom and bath -- spacious living room, dining room, kitchen and patio, next to pool. Quiet. \$288/mo, 1/2 utilities. Call and leave message 681-3218.

Townhouse sublease now. Own br and bath. Spacious living room, dining room, kitchen and patio next to pool. Quiet. \$288/month plus 1/2 of utilities. Call and leave a message. 681-3218.

20•Roommates

2 females needed for roommate, 4 bdr/bath. Free water, deposit, Gold's gym membership. 681-7128.

Available immediately 3 bdr/2bath directly across from Hanner. This is a must see. \$240/month plus 1/3 of utilities. Call Ryan or Joey at 681-4612.

Available spring and summer: need roommate only \$150 per month + 1/2 utilities. If interested call Ken at 764-8719.

Female nonsmoker ASAP to live in four bedroom house next year. Call Kelly or Tara at 688-2158.

M/F roommate needed for 2 1/2 year old mobile home. Own bed and bath plus a spare room. Free water. \$212.50/month plus 1/2 of utilities. Great deal - 681-7122.

M/F roommate needed starting Fall Qtr 97. Rent \$170 plus 1/5 utilities. Will have own room, share bath. Call anytime 681-6747 ask for Jill or Melanie.

Male needed immediately. College View apts. Fully furnished. 2 br. \$225/month plus 1/2 of utilities. Call David at 871-5706.

Male or female to co-sign lease for 97-98 lease year. 2 bdr/1 bath at Stadium Walk. \$230/month plus half of utilities. For more details call Ashley at 681-2361 (lm).

One female roommate needed for 97-98 school year. Park Place, 2 bedroom, 2 full baths, \$250/month plus 1/2 utilities. Nonsmoker, quiet, tidy but not a neat freak! Call 681-2461.

Roommate needed for a large 3 br apt for Spring and Summer. Rent neg. For info call Nate or Cayce at 681-7272 ASAP.

Roommate needed for Eagle Court. 2b furnished washer and dryer. \$250/month. Rent deposit neg. Need to rent now! Call 681-2272.

Roommate needed for summer. \$200/month at the Pond House. Call Blane a 681-6301.

Roommate needed to take over lease for Spring and Summer. 3 bdr townhouse, own room, share bath. April rent fee. Call 871-5874.

Roommate needed. Sagebrush duplex. br/2 bath. Rent is \$250/month. Deposit is \$250, no pets. For more info call Jennife at 871-7399.

Roommate summer quarter, 1/4 utilities spacious own bedroom, w/d, pool, townhouse in Hawthorne. Rent negotiable. Females need apply, call 871-4116 leave message.

Roommates needed for summer in Campus Courtyard. Own room, close to pool. Rent is neg. Call 681-1277.

Wanna sell your books? Need communication theory, health, principles of advertising, documentary film. Call Beverly 489-8522.

14•Motorcycles

1982 Honda CB650. New 4 to 1 exhaust. Needs tune up, \$650 - neg. Call Bob at 489-6338.

1986 Motorcycle Yamaha FZ 600. New paint job, runs and sounds great. Must see - will sell for \$1000, call Rodney at 681-1316

Motorcycle helmet for sale. Almost new, original price \$140, will sell for \$60. Call 688-2189.

15•Musical

Alto saxophone for sale. Excellent condition. Like new. Call 489-8766.

17•Pets & Supplies

For sale: six foot columbian redtail. \$200 OBO. Call Derek at 871-4347.

Free 6 1/2 month old charpe' puppy. Female, has had 2nd set of shots. Flea dipped, not spayed. Call 681-8880.

Free puppies to good home. Half lab and half hound. Call 764-6161 or 489-1934 (lm). Serious inquiries only.

M's Pet Center is going out of business. 25-50% sale starts now. Located in Winn Dixie Shopping Center. Everything must go.

PUPPY NEEDS HOME

5 month old golden retriever/yellow lab, well trained, has all necessary shots, friendly animal, needs good home. Free with good home. Call Sonny at 681-8237.

19•Rentals & Real Estate

2br/2bath apt available Summer Qtr. W/D included, close to campus. For more info call 871-6658/681-3120 (lm).

3bedroom house with one room available. \$175/month plus 1/3 of utilities. W/D, call Aaron or Justin at 764-9458 for details. Located on N. College St.

Apartment available for sublease immediately. 1 bedroom, 1 bath, free cable and HBO. Close to campus. \$270/mo, deposit is negotiable. Call 489-5459 or 489-4852.

Apartment available now and Sept. Utilities furnished. 764-6076.

Available now! Spring & Summer Qtr. Furnished 1 bedroom apt in Eagle Villa Suites. Rent \$265 spring qtr. Deposit \$150. Call 681-9940.

Bermuda Run apt. Sublease a great apt for summer. \$235/month including Gold's membership. Price neg. Call Sonny at 681-8237.

Desperately need someone to sublease for summer quarter in Park Place. 2 bedroom, 2 bathroom, washer/dryer. No deposit required. Call Elizabeth at 681-2875

2br/2bath, w/d hook up available. Summer or fall, year lease. Call 681-1252.

Duplex 3 bdr/3 bath, w/d included. Available immediately. 681-1252.

Duplex available for sublease June through Aug. 2 br/1bath. Close to campus. \$400/month. Call Valerie at 489-3641 or 489-6044. No deposit required.

Eagles Ct apts. One br/bath available ASAP in a 2 br/bath. Reduced rent for Spring and summer. Call 681-7375.

Female needed to sublease 2 bedroom apt. Rent is \$200, own room, share 1/2 of utilities and share 1/2 bath. April rent free. Call 764-7542 or 706-283-7227.

Female needed to sublease ASAP at Campus Courtyard. Call Shannon at 681-7873.

GOVT FORECLOSED homes from pennies on \$1. Delinquent tax, repo's, REO's. Your area. Toll free 1-800-218-9000 ext H-7828 for current listings.

HOUSE FOR RENT

-Available Sept. 1, 1997
-3 bedrooms
-Only 1/4 mile from campus
-Washer/Dryer
CALL 912-234-6227

House for rent starting June. Rent is \$225 deposit \$225. Contact Diana at 489-6442 or 871-6204. Need reply ASAP.

Houses available Sept. 1st. Apartment: available now and Sept. 764-6076.

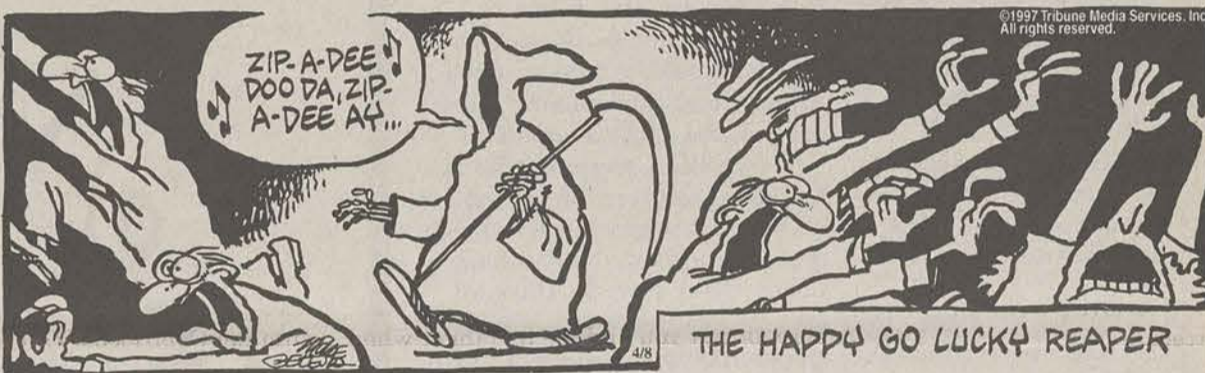
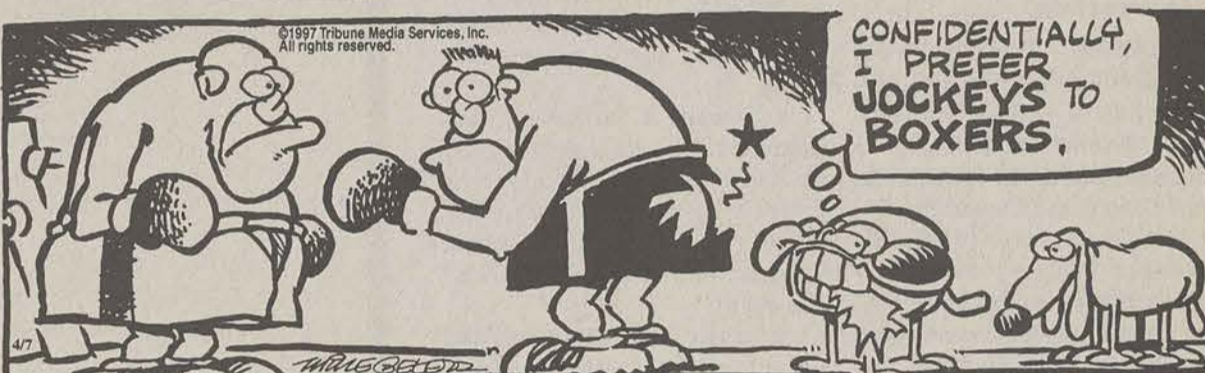
Large 2 bdr apt available ASAP for \$450. month. Close to campus, call 489-6033 or 489-6198 for more info.

Lease now for fall. Nice 1,2,3 br apts. Quiet location, walking distance from campus Call 489-3286.

Looking for a 2-3 bedroom house on or near campus starting June or July through 97-9 school year. Call Allison at 764-4738 an leave a message. Must allow pets!

Looking for someone to take over my lease and/or for summer at Willow Bend. N roommate problems, two other people in 4 bedroom. Ask for Peter at 681-7486.

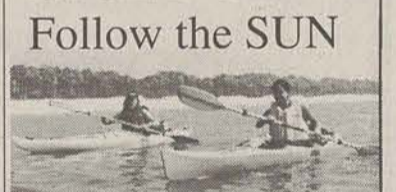
Need male or female to take over lease. Seasons Apt. ASAP. 2 baths, 2 BR, b kitchen and big size washer and dryer Please call Felicia 871-6124.



Geinnell County Government is Now Accepting Applications to Fill Several Positions in Various Summer Programs. Call 1-800-218-9000 for more information.

LIFEGUARDS
Life guard pay \$3.50 per hour. Paid A/C/E training provided. Salary from \$3.50 to \$5.00. Free uniforms. American Red Cross Lifeguard Training Classes to be taught at Mountain Park Field. (Check for upcoming dates) Training Program Supervisor - Counselor II - Counselor I. Previous with special skills in Art, & Crafts, Music, Theater, Culinary, Activities and Athletics are encouraged to apply. Some jobs will work with at-risk, handicapped, physical & emotional disabilities. For these positions, training pay in working in a therapeutic environment preferred. From \$3.50 to \$5.00. Apply to Geinnell County Human Resources, 75 Langley Dr., Lawrenceville, GA or call for application (770) 822-7915. E.E.

Beards Bluff / Altamaha R near Glennville US 25 South



Info/Res 912 654 3632
Canoe & Kayak \$15 person
Historic Cabins \$ 20 / 5 Camping

FREE

Classified Ads
25 words or less
Students & Faculty

21•Services

Car wash - get a professional car detail for a great low price. For more info call 681-4451.

COLLEGE FINANCIAL AID- Student Financial Services profiles over 200,000+ individual scholarships, grants, loans, and fellowships-from private and government funding sources. A MUST FOR ANYONE SEEKING FREE MONEY FOR COLLEGE! 1-800-263-6495 Ext.F53947 (We are a research and publishing company).

Need something typed and spell checked on the computer? Must be legible and in order. \$1.00/per double spaced page. Call or leave message, Renee 871-3918.

Personalized cards, signs, banners, and letterhead made on Print Shop. Cards/Signs, \$0.50/per page. Banners/Letterhead, \$0.25/per page. Call or leave message - Renee 871-3918.

Typing, Lesson plans, units, term papers, resume, etc. GSU secretary. Overnight guaranteed. Call Brenda at 489-3364.

22•Sports & Stuff

95 Trek 800 sport like new. \$175 call 681-2395 and leave message.

Bike graduation sale. 3 months old, ladies style, clean, colorful and pretty. Must sell for best offer. Call 681-3265.

For sale: 2 Eclipse: Ravine 200 Mountain Bikes. One black chrome and one blue tornado. 21 speed shimano - A10 RapidFire Shifters. Both like new, \$300 each, 489-8227.

Nordic Trak Walkfit for sale. \$300 OBO For info call 764-7668 and ask for Roxie.

Racing bike for sale. \$150. Original French Peugeot, all new parts...688-2189.

23•Stereo & Sound

8 inch woofers Bostwick, pair, neve installed, still in boxes, bought January Sell for \$120 OBO. 871-7361. Ask for Jami or leave message.

Speaker box for 2 ten inch speakers. Band pass box, thick wood and thick plexiglass. Never been used. Call 489-5983. \$50

27•Wanted

Looking for rare cd. "Follow for Now". Check your collection, will pay \$20 for a good copy. Call Wil at 739-8996 (lm).

Need to sell your books? I want to buy Business Policy book and Intermodal Seminar books.

TUITION

Continued from page 1

"The primary component of our budget are salaries and medical benefits associated with employing human resources," Perry-Johnson said.

She said that the 6 percent annual increase in salaries plays a part in a need for generating new revenue.

Tuition, along with allocations from the Georgia State Assembly, are the two primary revenue bases for the university system.

System officials defend the increase by saying the cost of tuition is still low in comparison to national and regional averages.

"We are moving forward in implementing the board's ambitious plan for enhanced academic quality, yet Georgia is still a low-tuition state," Chancellor

Stephen R. Porch said. "Both among our peers in the South-

**"THE PRIMARY
COMPONENT OF OUR
BUDGET ARE SALARIES
AND MEDICAL BENEFITS
ASSOCIATED WITH
EMPLOYING HUMAN
RESOURCES."**

**--ARLETHIA PERRY-
JOHNSON,
ASSISTANT VICE
CHANCELLOR FOR MEDIA/
PUBLICATIONS**

ern region and nationally, we are exceptionally competitive in keeping our costs low and qual-

ity high."

According to a study by the Washington University System, the 1996-97 national cost for undergraduates at a research university, which would include institutions comparable to UGA and Georgia Tech, is \$3,358 compared to \$2,694 in Georgia.

At the college and state level, which includes institutions like GSU, the national average cost is \$2,645 compared to \$1,932 in Georgia.

Within the 15 states served by the Southern Regional Education Board (SREB), Georgia ranks sixth for cost of tuition at a research university.

Among SREB colleges and state universities, Georgia ranks seventh out of 15.

"The fact is that we are still very low," Perry-Johnson said.

GEORGIA NEWS

Freaknik '97: Street party or controlled fun?

By Chelsea J. Carter
The Associated Press

ATLANTA—Traffic comes to a standstill as stereotypes boom to the sounds of rap artists. Students abandon their cars to mingle and dance in the streets. Drinks are passed around.

That's the scene city officials and police want to prevent during this year's Freaknik celebration, an annual street party of at least 100,000 mostly black college students.

It's a scene that has irritated politicians and police, and has forced residents indoors, away from the lewdness and looting of the past few Freakniks.

This year, organizers and city officials plan to promote concerts and dances in an effort to change Freaknik's rowdy image.

But for most students, the three-day street party, April 18-20 is meant to be a roving exhibition for frisky young adults.

"The whole essence of Freaknik is not organized. It's about hanging on the street and having a good time," said Lidia Lanns, 20, a junior at Alabama State University in Montgomery.

The event took form in 1982, when students at Spelman and Morris Brown colleges hosted a picnic for about 65 students during spring break.

The group dubbed the picnic "Freaknik," after a popular dance in the 1970s known as the "freak."

Freaknik gained national fame in the late 1980s when it

was mentioned on "A Different World," a television comedy show about black college students.

"It's really a marketing phenomenon. It's completely spread by word of mouth. Students come from California, New York, from all over the place," said Sharon Toomer, one of the founders of the event.

In recent years, the event has been marred by looting and lewd behavior. Last year, a student from Ohio was shot to death.

Outrage from business owners and residents in downtown Atlanta and surrounding suburbs caused political upheaval.

Mayor Bill Campbell, who is black, was called an "Uncle Tom" several years ago when he advocated a crackdown on Freaknik. Police Chief Beverly Harvard, who also is black, sent notices to traditionally black colleges warning against everything from open containers to dropped trousers.

The commission has approved two street festivals, a dance competition, an interactive sports show and a concert. For \$35, students can get into every event.

PSYCHIC READINGS
by
Mrs. Grace
Psychic Palm
and Card Reader
Solves All Problems
Of Life
Reveals Past • Explains Present • Foretells Future
SPECIAL \$10.00 READING
★ 912-871-4487 ★
1113 Hwy. 301 S., Statesboro, GA
★ (across from Ogeechee Tech) ★

NOW OPEN

CLOUD 9

**NOVELTIES, GIFTS
& BODY PIERCING
BY RICK**

- Adult Novelties
- Sterling Silver Jewelry
- Smoking Accessories
- Lava Lamps
- Beaded Curtains
- Candles & Incense
- Black Lights
- Zippo Lighters

871-4054
#1 University Plaza

Spring into Spring With Our Revised Menu

The Educated Palate

**New
Menu Items**

Calzone and Stuffed Pizza

Lower Pizza Prices

Great Values

for Contract Meal Deals

Pasta Creation with Choice of Beverage and Breadsticks

OR

7-inch one-topping individual Pizza with choice of Beverage

'Italian Cuisine at reasonable prices'

**Hours – Monday through Friday
11 AM - 2:30 PM & 5 PM - 8 PM**

*Russell Union
Georgia Southern University*

Convenient Payment by Cash, MC/VISA, Check, Eagle Express & Contract

MONDAYS ONLY	TUESDAYS ONLY	WED. & THUR. ONLY	FRIDAYS ONLY
<p><i>The Educated Palate</i></p> <p>Buy one entree at full price – get a second entree of equal or lesser value for half price.</p> <p>Not valid with contract purchases. Dine-In Only. Expires 6/15/97. One coupon per customer per day.</p>	<p><i>The Educated Palate</i></p> <p>Carry-Out Special. One Large (14-inch), One Topping Pizza \$5.75 Please call ahead 681-5303 5 PM - 7:30 PM ONLY. Expires 6/15/97. One coupon per customer per day.</p>	<p><i>The Educated Palate</i></p> <p>FREE Slice of Apple Pie with the Purchase of Any Entree Dine-In Only Expires 6/15/97. One coupon per customer per day.</p>	<p><i>The Educated Palate</i></p> <p>All You Can Eat Pizza Buffet \$3.75 5 PM - 7:30 PM Dine-In Only Expires 6/15/97. One coupon per customer per day.</p>

**The Taxman Cometh Today –
But, Under the Green Roof it's...**

TAX FREE

TUESDAY

6% OFF

Any Purchase


GEORGIA SOUTHERN UNIVERSITY STORE
A Division of Auxiliary Services

681-5181

Mon-Thurs 7:45 AM - 6 PM
Fri 7:45 AM - 5 PM
Sat 10 AM - 5 PM