

Georgia Southern University

Digital Commons@Georgia Southern

---

The George-Anne

Student Media

---

2-6-1997

## The George-Anne

Georgia Southern University

Follow this and additional works at: <https://digitalcommons.georgiasouthern.edu/george-anne>

---

### Recommended Citation

Georgia Southern University, "The George-Anne" (1997). *The George-Anne*. 1458.  
<https://digitalcommons.georgiasouthern.edu/george-anne/1458>

This newspaper is brought to you for free and open access by the Student Media at Digital Commons@Georgia Southern. It has been accepted for inclusion in The George-Anne by an authorized administrator of Digital Commons@Georgia Southern. For more information, please contact [digitalcommons@georgiasouthern.edu](mailto:digitalcommons@georgiasouthern.edu).





# The George-Anne

Georgia Southern University's Official Student Newspaper

Statesboro, Georgia 30460

Founded 1927

**GOLD EDITION**  
Thursday  
February 6, 1997  
Vol. 69, No. 46

The oldest continuously  
published newspaper in  
Bulloch County

## Sports



### Eagle Baseball

The GSU Eagle Baseball team will begin the '97 season Saturday as they host the Georgia Tech Yellow Jackets at J.I. Clements Stadium.

Please see story,  
page 6

## Entertainment



### Backdoors at Legends

The band which is inspired by the Jim Morrison group, the Doors, brought its talent to Legends last Friday night.

Please see story,  
page 8

## Weather



**Today:** Mostly sunny with a high in the mid-60s.

**Friday:** Increasing clouds with a high in the low 60s.

## Today's Word

**bever** (BEver) n. a between-meal snack.

Source: Weird Words

## Index

Announcements	2
A&E	8
Classifieds	9.
Crossword	9
G-A Spotlight	3
Opinions	4
Police Beat	2
Sports	6

It is a desire of The George-Anne to print the news of Georgia Southern University as accurately as possible. If you believe that something covered is in error, contact the editor at 681-5246 as soon as possible. Thank you.



FOR ADVERTISING INFO.: 681-5418  
STORY OR PHOTO IDEA: 681-5246  
FAX NUMBERS: 871-1357, 681-0863  
LANDRUM BOX: 8001  
E-MAIL TO:  
stud\_pub@gsa2.cc.GaSoU.EDU  
Check out our On-Line Newspaper at  
http://www.stp.gasou.edu

**The George-Anne**

Liked By Many, Cussed  
By Some ...  
Read By Them All

## Public Safety Committee combines ordinances

By Wendi Williams  
Staff Writer

The Public Safety Committee held a working session Tuesday to discuss changes to the liquor by the drink ordinance.

The issues discussed were whether the already existing beer and wine ordinance should be combined with the new proposed liquor ordinance, brown bagging, and times at which liquor sales will be cut off.

The committee voted to combine both the beer and wine and the liquor ordinances to cut down on the clerical work two separate ordinances would cause and to minimize confusion of the law.

City Councilman Cory Andrews proposed the prohibition "brown bagging," the practice of bringing liquor into an establishment to drink, which is now left to the discretion of the business owners.

"My concern is for the protection of business owners," Andrews said.

City Attorney Sam Brannen said that the state law already prohibits brown bagging liquor into an establishment that sells liquor by the drink.

"If liquor by the drink is



David Mathews

City Councilman Cory Andrews (center) and the Public Safety Committee discussed the combining of the beer and wine ordinance with the newly proposed liquor ordinance at the Tuesday night meeting.

passed, then brown bagging will be illegal," Brannen said.

The committee also discussed the procedures involved in obtaining a liquor license.

An applicant must clear a background check from the Georgia Bureau of Investigations and the FBI.

"The fingerprint background check can take as long as 12 weeks," Richard Malone, chief of the Statesboro Police Department, said.

The committee decided on a 10-year provision for applicants with felony charges, and a 5-year provision for those with

misdemeanor charges.

"A background check must be done every year for a license holder to renew his license," Gordon Lowe, Statesboro Police Department lieutenant, said.

The issue of how long a restaurant will be open and able to serve alcohol was also addressed

in the meeting.

"It is up to the discretion of a restaurant as to how long they stay open," Andrews said.

Malone proposed the restaurants should stop selling at midnight.

"For enforcement purposes, because we've had problems from bars here complying, I suggest setting a definite hour to stop serving, dispensing and consuming alcohol," Malone said. "I recommend no sales on Sunday and to keep the 12 midnight hour."

The committee voted, 5-3, to add to the ordinance, that a restaurant can sell alcohol until 1 a.m., as long as the kitchen is open until the establishment closes.

Malone, Lowe and Councilman David Shumake opposed the 1 a.m. cut-off time.

"Extending the time one hour longer gives them one more hour of getting intoxicated and getting in their cars and driving home," Shumake said.

Councilman Wendell Hagins made the point clear that this was a working session.

"Nothing is set in stone," Hagins said. "We can change this."

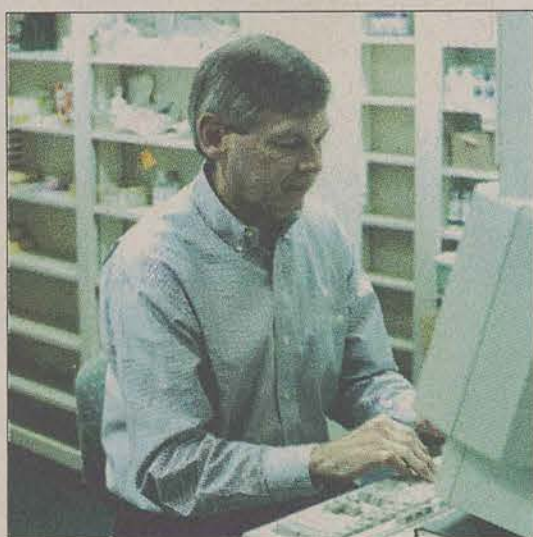
## No need to be sick



The College Pharmacy is located conveniently near the front lobby of Health Services which is located on Forest Drive.



Virginia Brasfield examines blood types in the laboratory.



Tommy Wilbanks, a pharmacist, fills prescriptions for GSU students.



Members of the Health Service clerical staff take a few minutes out of their busy schedules to pose for a photograph.

Health Service workers take great pride in their work. They offer their services not only during the quarter, but also between quarters. Health Services averages about 160 patients a day, and 24,000 per year. Health Services has a staff consisting of one doctor and four nurse practitioners to provide

complete exams. Their staff also includes an on-hand x-ray technician, a head nurse and 11 licensed practical nurses. Health Services also offers free AIDS testing, free allergy shots, and family planning counselors. And Health Services has something that not all colleges offer. Health Services has a branch of the College

Pharmacy located inside to provide students with the medicine they need at a price they can afford. The pharmacy is open from 8 a.m. to 5 p.m. Monday through Friday. Health Services has recently improved the lobby by installing new carpet and a TV to make the wait a little more pleasant.

Photos by David Mathews

## Builders of the University Wall fountain vandalized

By Kevin Bonsor  
Assistant News Editor

A fiberglass fountain that is part of the commemorative Builders of the University Wall was damaged sometime between Saturday and Monday morning.

Damage to the fountain is estimated at \$1000 Larry Davidson the job superintendent of the construction project, said.

Builders of the University Wall honors faculty who have worked at the university for at least 10 years. The wall is being constructed between Anderson

Hall and the Administrative Building.

Davidson said that the top cover to the third tier of the

it.

"It appears they used it for a frisbee and threw it against the wall," Davidson said.

**"IT APPEARS THEY USED IT FOR A FRISBEE AND THREW IT AGAINST THE WALL."**

**--LARRY DAVIDSON,  
JOB SUPERINTENDENT**

fountain was damaged, according to statements he made to the University Police.

The top cover is a round plate with light fixtures attached to

He said that the top of the fountain that shoots water out was broken off.

The fountain was shipped to GSU from a company in Ne-

vada. Sales representatives of the company will be coming to the university to assess if the fountain can be repaired on site, Davidson said.

He said he didn't think the damage would delay the completion date of the project.

A plan table at the site was also damaged, but Davidson said he wasn't worried about the damage.

A spokesperson for University Police said there are no suspects in the case, as of Wednesday morning.

## GSU holds disability forum

By Salua Brannen  
Staff Writer

Forums were conducted Monday and Tuesday pertaining to GSU's disabled students and students exhibiting learning disorders.

"The essential purpose of these forums was to share information with the faculty," Harry Carter, vice president of academic affairs, said.

The forums also discussed the procedures disabled students must go through to be diagnosed and to be accepted into GSU's program.

Carter said that it isn't a goal of the forums to make separate curriculum for disabled students but to make necessary accommodations that will allow them to function within the standard GSU curriculum.

There are currently four panel members, two who serve to diagnose students with learning disabilities/disorders and who provide services and two members who are affirmative action officers.

The affirmative action officers are involved in making sure the university complies with all the laws and regulations relative to learning disabilities.

At GSU, there are students with physical as well learning disabilities.

Among the physically handicapped student body are individuals both confined and not confined to wheelchairs, visually and hearing impaired students.

The current case load of disabled students on GSU's campus is around 230 to 250 active cases.

"Academic Affairs provides services to whatever disability presents itself in terms of the disabled student, and to our best ability, we figure a way to provide the special accommodations for these students," Carter said.

Academic Affairs also provides whatever tool necessary to enforce equal opportunity education to physically disabled students including "books on tape" for the visually impaired and notetakers for the hearing impaired.

"It's a combined effort with GSU as well as other agencies out there that deal with rehabilitating services," Carter said.



## POLICE BEAT

### GSU Division of Public Safety

February 2, 1997

•Kerri Ann Mosley, 20, of Stadium Walk, was charged with driving with a suspended license.

February 1, 1997

•Jason Kona reported that someone entered his vehicle in the Dorman Hall parking lot and took his CD player and radar detector.

•A resident of Sanford Hall reported a broken window in his room.

January 31, 1997

•Derrick Corey Gray, 25, of Pamela Way, was charged with DUI(.125), weaving and no proof of insurance.

•A resident of In-The-Pines Apartments reported receiving harassing phone calls.

•Kyron Conner reported a check was missing from his room.

### Statesboro Police Department

February 3, 1997

•John Samuel Beck Jr., 23, of Clayton, was charged with an open container violation, defective equipment and DUI.

•Windy Hodges, of Ridgewood Drive, reported burglary.

•A resident of Campus Court-yard Apartments reported receiving harassing phone calls.

February 2, 1996

•Susan Hooks, of Players Club, reported that someone entered her auto and took a Kenwood CD changer and 36 CDs.

•John Mitchell, of University Pointe Apartments, reported lost

or stolen property.

•Amanda Dillard, of Hawthorne Road, reported a suspicious person.

•Amy Calloway, of Towne Club Apartments, reported that someone had entered her auto and took a pair of sunglasses and a crystal ball necklace.

February 1, 1997

•Chris Pearson, of Towne Club Apartments, reported that someone entered his auto and took a Kenwood CD player.

•Michael Ross, of Towne Club Apartments, reported criminal trespass.

January 31, 1997

•Jill Senkbeid, of Towne Club Apartments, reported criminal trespass.

## ANNOUNCEMENTS

### Things To Do At GSU

#### Today

•Applications are now being accepted for the **1997 Homecoming Chair**. All full time GSU students with a GPA of 2.5 or better are eligible to apply. Applications may be picked up in room 2024 of the Russell Union. Applications are due no later than Friday, Feb. 14 by 5 p.m. and interviews will take place from Feb. 17 to Feb. 20. For more information, contact the Russell Union at 681-0399.

•The Henderson Library will be offering **tutorial sessions** in writing, reading skills, study skills, and math throughout the quarter. Sessions will be held Monday through Friday at various times during the day. For more information and times of the sessions, call 681-0321.

•**"A Photographic Tribute to the People of Mexico"** will be shown in the GSU Museum until Feb. 23.

•**The Reading/Taping Program** needs **volunteer readers** to record textbooks for students who are visually impaired, blind, dyslexic and students who have physical and learning disabilities. If you are interested in volunteering to read, please call the Student Disability Resource Center at 681-5259 or 871-1566.

•There will be a tutorial session on **"Writing the Regent's Essay"** at 4 p.m. in room 114 of the Henderson Library. For more information, call 681-0321.

•**The College Republicans** will be having a general meeting at 6:30 p.m. in room 2042 of the Russell Union. The meeting is open to members and anyone who would like to be involved.

•Virginia Beth Shields will show **"Red Dreams"** in Gallery 303 through Feb. 28. Gallery 303 is located on the third floor of the Foy Fine Arts Building.

•The Music Department Recital Series will present a **symphonic wind ensemble**. The performance will begin at 8 p.m. in the Foy Recital Hall.

•There will be a tutorial session on the **"Regent's Reading Exam"** at 5 p.m. in room 114 of the Henderson Library. For more information, call 681-0321.

•James D. Anderson will present a lecture on **"The Education of Blacks in the South, 1865-1935."** The lecture will begin at 7:30 p.m. in the Southern Center Auditorium. For more information, call 681-0332.

Friday, February 7, 1996

•**Bible study for males** will be held in room 2084 fo the Russell Union from 6 p.m. to 7:15 p.m. Everyone is invited to attend.

Saturday, February 8, 1997

•There will be a **basket making workshop** from 10 a.m. to 1 p.m. in the Botanical Gardens. For more information, call 871-1913.

•**The Unitarian Universalist Church services** will be held at 10:45 a.m. in room 126 of the GSU Nursing Building. Everyone is invited to attend.

Monday, February 10, 1996

•There will be a **general student recital** at 1 p.m. in the Foy Recital Hall.

•Amy Anderson will present a lecture on **"Globe: A Junior Achievement International**

**Program"** at 6 p.m. in the Southern Center Auditorium. For more information, call 681-5526.

•A tutorial session on **"Using the Internet for Research"** will be held at 3 p.m. in the microcomputer lab in the Henderson Library. For more information, call 681-0321.

•The African American Gospel Choir will have **choir rehearsal** from 6 p.m. to 8 p.m. in room 1223 of the Williams Center.

Tuesday, February 11, 1997

•The Faculty Recital Series will feature **Sandra McClain as a soprano and Michael Braz on piano** at 8 p.m. in the Foy Recital Hall.

•The African American Gospel Choir will have **choir rehearsal** from 7 p.m. to 9 p.m. in room 1223 of the Williams Center.

Wednesday, February 12, 1996

•Marie Leticee will present a lecture on **"Negritude and Women Writers of the Caribbean"** at 8 p.m. in the Foy Recital Hall. For more information, call 681-5695.

Thursday, February 13, 1996

•**The High School Model United Nations** will be held in the Russell Union through Feb. 15. For more information, call 681-0332.

Friday, February 14, 1996

•**The 2nd Annual Masquerade Ball** in conjunction with Black Awareness Month will begin at 8 p.m. Tickets will be \$6 for singles and \$10 for couples in advance. Prices will be \$8 and \$12 at the door. Tickets may be purchased from the GSU Ticket Office or call 871-1723.

## GEORGIA NEWS

# Albany renames Martin Luther King Drive for Thomas Jefferson

The Associated Press

ALBANY, Ga. —A still-divided Albany City Commission has restored the name Jefferson Street to a thoroughfare that had been renamed last year for the Rev. Martin Luther King Jr.

With two new commissioners, the panel voted 4-3 Tuesday night to reverse last year's 4-3 decision to change the name of the street that had been named for Thomas Jefferson.

## GEORGIA NEWS

# Can the HOPE scholarship work for America?

The Associated Press

ATLANTA—Georgia's lottery-funded HOPE scholarship fund is giving high school students with good grades a free ride through college.

The program, created in 1993, has provided more than \$330 million to 239,000 students who became eligible by having a B average in high school and maintaining it in college.

It's a plan that has caught the eye of President Clinton.

"He and I had talked for years about this program and he was always fascinated with it," Gov. Zell Miller said. "When he came up with his HOPE idea, I was very pleased that he was trying to fill the need nationally that I filled in Georgia."

The president's plan for the nation is loosely modeled after the one Miller pushed through the state Legislature. Rather than using lottery-funded scholarships, Clinton's would use tax credits. It also would require a B average.

Georgia's HOPE scholarship program, Helping Outstanding Pupils Educationally, gives high school graduates with a B average free tuition plus \$100 for books at any of the state's public colleges and universities. Students get the same deal at technical schools, no matter what their high school grades.

Those attending private schools can get at least \$3,000 a year.

The impact at two of the state's largest universities has been impressive. At the University of Georgia, 90 percent of the roughly 2,800 Georgia residents in the freshmen class aren't paying a dime for college. The same is true for 96 percent at Georgia Tech, which has a total enrollment of about 13,000 students.

Once they are in, they have to keep a B average or lose the money.

"This is an incentive for them to work," the governor said.

This year, \$159 million was allocated to the program and the governor hopes to spend \$167 million in 1998.

The president's plan, while tied to grades, is less ambitious. Instead of a four-year ride, Clinton's program would offer a \$1,500 tax credit to students who keep a B average plus a \$10,000 tax deduction for the first two years. Families who make more than \$100,000 wouldn't be eligible; Georgia's program has no salary cap.

Ana Alviz, married and the mother of a 9-month-old daughter, had mostly A's in high school

The commission also voted to change Liberty Expressway to Dr. Martin Luther King Jr. Expressway and to seek approval from the Georgia Department of Transportation for that change.

The Rev. Lorenzo Heard, chairman of Restoration 2000, which was behind the initial move to rename Jefferson Street, told the commission Tuesday night that its Liberty Expressway alternative was an insult.

He said King was a figure outside the city of Albany fighting for justice within it, and naming the arterial route of Liberty Expressway after him "keeps him outside the city."

William Wright, president of the local chapter of the National Association for the Advancement of Colored People, said the name changes were diametrically opposed and "a slap in the face" to the legacy of King.

but no money for college.

"I couldn't believe I could go for free when they told me," said Alviz, a freshman studying criminal justice at Georgia State University in Atlanta. "There's no

they earn at least a B average the first year.

Miller won the governor's office in 1990 with a campaign based on using lottery proceeds for education.

The program got off to a rocky start when parents complained that the rules were confusing and unfair, and that a B from one high school would have been a C elsewhere. That was solved by a statewide grading standard.

The scholarship program has boosted college enrollment in Georgia by 3.4 percent since 1993. And technical school enrollment is up 24 percent.

"That's impressive because there has been a decline in higher education enrollment over the past three years," said David Merkwitz, spokesman for the American Council on Education.

**"THIS IS AN INCENTIVE FOR THEM TO WORK."**

**--ZELL MILLER, GEORGIA GOVERNOR**

way I can lose this."

Students who lose their B average lose their money, but can get it back after a year if they bring their grades up. And students who enter college with high school grades below a B average can get a HOPE scholarship if

## The George-Anne

### STATEMENT OF OPERATIONS

The George-Anne is the official student newspaper of Georgia Southern University, owned and operated by GSU students and utilizing the facilities provided by GSU. The newspaper is the oldest continuously published weekly newspaper in Bulloch County and Statesboro, Ga. The ideas expressed herein are those of the editor or the individual authors and do not necessarily represent the views of the Student Media Committee, the administration, the faculty and staff of Georgia Southern University, or the University System of Georgia. The George-Anne is published twice weekly during the academic year and three times during summers. Any questions regarding content should be directed to the editor (681-5246).

### OFFICES, MAIL, PHONES

Room 223, F. I. Williams Center. The George-Anne, P.O. Box 8001, Georgia Southern University, Statesboro, Ga. 30460. 912/681-5246 (News) or 912/618-5418 (Advertising)

### ADVERTISING INFORMATION

The George-Anne reserves the right to refuse any advertisement. DEADLINE: The deadline for reserving space and submitting advertising copy is **Noon, one-week prior to the intended publication date**. Free classified ads from students, faculty and staff must be submitted in writing, with the name of the sender and local address. **No free ads taken via telephone**. One free ad per person per week. For more information, rate cards, sample publications, contact: Brooks Clements, Advertising Manager, ADS, (912) 681-5418; or Bill Neville, Student Publications Coordinator, (912) 681-0069.

### CIRCULATION INFORMATION

Subscription rates for home delivery of The George-Anne are seven dollars per quarter, or \$21 per year, delivered bulk mail. Please address all inquiries to Stephanie Wylie, Business Manager. The George-Anne is distributed free of charge on the Georgia Southern University campus through delivery sites located in campus buildings and residence halls. "We gratefully acknowledge the theft of our slogan - 'Liked by Many, Cussed by Some, Read by them All' - from Robert Williams of the Blackshear Times. Call Bob and he can tell you who he stole it from originally."

Thanks for reading The George-Anne.

**PSYCHIC READINGS** by Mrs. Grace Psychic Palm and Card Reader Solves All Problems Of Life Revolve Past • Feelings Present • Foresee Future **SPECIAL \$10.00 READING** 1113 Hwy. 301 S., Statesboro, Ga. (across from Ogeechee Tech) 912-871-4487

**Singing Valentines**

Send your Valentine a stuffed animal, candy, and three songs of Love, all for just \$15 - \$10 with Student ID (and at the same time support to GSU Baptist Student Union Missions Program!)

We will be delivering these Singing Valentines Feb. 12, 13, & 14 To Order, call: 681-2241

## GEORGIA NEWS

# GPTV executive accused of stealing contributions

The Associated Press

ATLANTA—State officials have accused the suspended head of finances for the state commission that operates Georgia Public Television of stealing almost \$70,000 in public contributions to GPTV.

Fulton County Magistrate Antone Allison issued a warrant Wednesday for theft by taking "in excess of \$67,000" against Richard E. Cramer, 42, of Lawrenceville.

The charge was filed at the request of the attorney general's office, Georgia Bureau of Investigation spokesman John Bankhead said.

Cramer has been the target of a GBI investigation since October and already faces charges that he double-billed at least \$3,500 worth of airline tickets and travel expenses.

He is free on \$13,000 bond

and faces grand jury action on the charges lodged Dec. 30.

Cramer was originally put on administrative leave with pay, but his \$70,000 salary was suspended after he was bound over to the grand jury last week, said Telecommunications Commission chief Werner Rogers.

Assistant Attorney General David Laughlin said a probe by the state audit department in mid-January found that Cramer opened an account in 1985 through which he allegedly deposited donations from GPTV contributors, and in turn wrote more than \$40,000 in personal checks and paid \$14,000 charged to his American Express card.

Cramer's lawyer, Robert Rubin, said he did not know enough about the basis for the new charge.

Rubin did comment that his client is innocent of any inten-

tional wrongdoing on the earlier charges.

Get the Message Get **ALLPAGE**

3 State Coverage As Low As \$5.95 per month

**GIZMO** **NOKIA BAG PHONE**

**WE SERVICE WHAT WE SELL!**

**\$4.95\*** **1¢\***

- Digital Readout
- 8 Page Memory
- Tone or Vibration
- Clock/Alarm
- 3 Watts Power
- Speed Dial
- Memory Dial

\*Activation & Monthly Service Required While Supplies Last

232-8222 Corner of Bull & Victory 354-4722 Chatham Plaza- Across from the Mall 489-1155 Statesboro Hwy 67, Across from Hanner Field House 368-6550 Hinesville Liberty Square

**Southern Exposure Altamaha River**

Canoe & Kayak rental \$15 per person  
Historic Cabins \$20 Camping \$5  
Beards Bluff Fishcamp (912) 654-3632  
30 min. South on US 25 near Glennville



## G-A SPOTLIGHT

### Schnieder speaks at insurance meeting

•Lorilee Schnieder, assistant professor of economics, presented a paper, "The Impact of State Mandated Maximum Disability Benefit Levels on the Frequency of Occupational Injuries," at the 1996 Southern Risk and Insurance meeting in Hilton Head, S.C. Schnieder also helped to organize the meeting.

### Hashmi receives grant from Americas Council

•Shafik H. Hashmi, professor of political science, has received a \$2,500 grant from the Americas Council of the University System of Georgia. He will research "Democratization in Muslim and Catholic Societies." Hashmi has published an article, in collaboration with Garth N. Jones, entitled "Pakistan: Personnel Administration in an Obsolescing Imperial Tradition" in the Journal of Asiatic Society. He organized, chaired, and participated in a round table discussion on "the State and Ethnic Conflicts in the Third World" at the Association of Third World Studies conference held recently at Troy State University in Montgomery, Ala.

### Rodell chairs panel at Third World Studies meeting

•Paul A. Rodell, assistant professor of history,

organized and chaired the panel "Contemporary Issues in Southeast Asia" for the 14th annual meeting of the Association of Third World Studies in Montgomery, Ala. last fall. He also presented a paper, "The Dynamics of ASEAN-PRC Relations." He served as chair and discussant for the panel "Cultural Adaptation: Asians and Americans in Foreign Lands" at the Southeast Conference, Association for Asian Studies in Savannah, Jan. 17-19.

### Vives named associate editor of ichthyology for science journal

•Stephen Vives, associate professor of biology, has recently been named the associate editor of ichthyology for the scientific journal, *The American Midland Naturalist*.

### Galleore participates in NAPEHE conference

•Sandy Galleore, professor of health and kinesiology, recently participated in the annual conference of the National Association for Physical Education in Higher Education, which had as its theme "Organizing to Serve Society's Needs." Galleore presented a paper, "Physical Education for Healthy Senior Adults: An Opportunity or a Lost Cause?" As immediate past president she also participated in meetings of the Board of Directors held at the conference.

The George-Anne would like your help in order to recognize special people, organizations and activities on campus.

Anyone who would like to make suggestions for our G-A Spotlight feature may call Joshua Edmonson, news editor, at 681-5246. Letters may also be sent to The George-Anne at Post Office Box 8001.

## GEORGIA NEWS

# The future of Georgia youth programs in jeopardy due to financial constraints

The Associated Press

FORT STEWART, Ga.—The future of a youth program that has helped high school dropouts earn equivalency diplomas and learn life skills needed to move on to college or a career is in jeopardy because of proposed funding cuts.

Youth Challenge is a National Guard-sponsored, military-style program designed to discipline, train and educate 16- to 18-year-old dropouts.

The dropouts come into the program from all over Georgia.

Charita Faulkner, who was among 170 students of the 22-week course slated to graduate Saturday night, said the program altered her entire outlook on life.

"It helped me a whole lot," said Ms. Faulkner, who plans to join the Army after graduation. "When I got here, I had a real bad attitude."

The program, based at Fort Stewart near Savannah and funded by the Department of Defense, has taken cuts in the

past two years.

But unless supplemental funds come through, the program will have to cut its staff and the number of students, said Maj. Mark London, a commandant

**"HE WENT DOWN THERE AND GOT WAY MORE THAN AN EDUCATION. HE GREW INTO A ... MAN OVERNIGHT."**

**—GAIL DUPREE, MOTHER OF YOUTH CHALLENGE GRADUATE**

with the program.

Students used to earn \$100 per week, which was given to them when they graduated. But those stipends have been reduced

from \$2,200 to \$250.

Saturday's graduation marked the seventh class to complete the program since it began in 1993 when Georgia became one of 10 states chosen for the National Guard's pilot programs. Now 15 states participate.

For the current class, 350 students applied for 180 positions.

Gail Dupree said the program has made a real responsible person out of her son, Chris.

Chris Dupree was to graduate Saturday at the Macon City Auditorium.

"This has been the best thing that has happened to my son," Ms. Dupree said.

"He went down there and got way more than an education. He grew into a ... man overnight."

Chris Dupree and some of his classmates have so far collected about 3,000 signatures on a petition seeking additional federal funding for the program.

"It was a lot of hard work, but it really pays off in the end," Chris Dupree said.

## GEORGIA NEWS

# Senate measure would bar tax delinquents from holding office

By Russ Bynum  
The Associated Press

ATLANTA —Public officials with long overdue taxes would get the boot under a constitutional amendment that has cleared the Georgia Senate.

The proposal, approved 51-2 on Friday, gives office holders a year to pay all overdue taxes once they have exhausted their court appeals.

After that, they're history. Still, a lawmaker who voted against the amendment said voters would most likely weed out tax deadbeats at the ballot box.

"If they know someone is a delinquent and vote for them, they're crazy," said Sen. Mike Egan, R-Atlanta.

"But they ought to have the right to be crazy if they want to be."

The amendment now goes to

the House. Constitutional amendments require a two-thirds vote by both chambers of the Legislature and approval by voters.

"I personally do not feel any-

**"IF THEY KNOW**

**SOMEONE IS A**

**DELINQUENT AND VOTE**

**FOR THEM, THEY'RE**

**CRAZY."**

**—MIKE EGAN, SENATOR**

one should be able to vote on how to spend taxes and how to regulate and collect taxes when they don't pay their own taxes," said Sen. Don Cheeks, the measure's

sponsor.

Cheeks, D-Augusta, insisted he is not sniping at any particular office holders with his amendment.

But there has been an uproar over local and county officials owing back taxes in Cheeks' district.

The Augusta Chronicle reported in October 1995 that nine sitting city and county officials had paid taxes late over the previous five years.

Four candidates qualified for county elections that year still owing taxes.

Similar problems have been reported elsewhere in Georgia.

The Savannah Morning News reported in March that the chairman of Chatham County's Board of Assessors and his wife, a city official, owed more than \$28,000 in property taxes.

## GEORGIA NEWS

# Georgia bill would repeal legalization of marijuana

The Associated Press

ATLANTA—A bill to repeal Georgia's 17-year-old law legalizing marijuana for medical purposes was introduced in the House Friday.

The bill by Rep. Earl O'Neal, D-Conyers, comes three weeks after Secretary of State Lewis Massey called for the Legislature to get rid of the law.

Massey said the program that allowed patients to smoke pot legally for glaucoma and cancer-related nausea proved unworkable as originally designed.

The program attracted only lukewarm interest among patients and doctors.

It took a blow in 1991 when the federal government decided to eliminate the free marijuana cigarettes it was supplying the state.

Voters in California and Arizona voted in November to legal-

ize pot for medical use in their states.

Neck

Underarm

Back

Arm

Hands

Leg

Feet

Hair Line

Eyebrows

Facial

Breast

Abdomen

Bikini Line

Thigh

Remove Unwanted Hair  
Painlessly & Permanently

**Southern Belles**

7 East Kennedy St. • Statesboro, GA • (912) 489-1144  
(Behind Snooky's Restaurant)

Bring this ad for  
50% off  
first treatment!

MasterCard VISA

**BeautiControl Cosmetics**

THE WORLD'S PREMIER SKIN CARE & IMAGE COMPANY

•SKINCARE•COSMETICS  
•SKIN CONDITION ANALYSIS • COLOR

**Southern Belles**

7 East Kennedy St. • Statesboro, GA • (912) 489-1144  
(Behind Snooky's Restaurant)

MasterCard VISA

## BRIEFLY

### Galore Metzger, retired Emory professor, dies

The Associated Press

ATLANTA—Lore Metzger, the first female full professor at Emory College, has died of breast cancer.

She was 71.

Ms. Metzger died Friday at her Decatur home.

A native of Frankfort, Germany, Ms. Metzger began teaching English and comparative literature at Emory College, Emory University's division of arts and sciences, in 1968.

In 1984, she founded the Emory University Women's Caucus.

"She was really a pioneer at Emory," said Martine Brownley, who served as chair of Emory's women's studies program until 1996.

Ms. Metzger retired from Emory in 1992.

She has published "One Foot in Eden," a book on pastoral Romantic poetry.

Ms. Metzger received her doctorate in English from Columbia University, where she taught before joining Emory.

She also taught at Mount Holyoke College, the University of Washington, the University of Iowa and Michigan State University.

**POLO RALPH LAUREN**

POLO BY RALPH LAUREN

A STYLE UNTO ITSELF,

COMBINING FUNCTIONAL

GOOD LOOKS WITH

CASUAL COMFORT

IN THE UNMISTAKEABLE

POLO TRADITION.

**R.J. Pope**

TRADITIONAL MENSWEAR

5 SOUTH MAIN  
STATESBORO  
(912) 764-4306

**Tommy Hilfiger  
Ralph Lauren Polo  
Nautica  
Columbia  
WoolRich**

**\$39.90**  
(Specified Groups)

**After Inventory  
Clearance Sale!**

**1/2 Price**

• Jackets & Sweaters

**R.J. Pope**

Downtown Statesboro

**IF OUR EARLY MORNING DONUTS WERE HARD TO GET UP FOR...**

**THEN YOU WILL BE GLAD TO KNOW THAT OUR FRESH DONUTS ARE BEING MADE IN THE LATE AFTERNOON, ALONG WITH OUR NEW SANDWICHES SO TRY DAYLIGHT GOURMET SANDWICHES & DONUTS**

Give The Definition Of "LAGNIAPPE" to Your Cashier And Receive A Free 12oz Fountain Drink With Your Sandwich Order.

CLUBS AND ORGANIZATIONS, RESERVE OUR MEETING ROOM FOR GROUPS UP TO 15.

**THIS PROMOTION ENDS 3-17-97**

**GOURMET SANDWICHES AND DONUTS**

455 S MAIN  
OPEN UNTIL 9:00 PM



## Our Opinion

### Park at your own risk, university officials warn

This weekend the GSU baseball team will kick off the season at J.I. Clements Stadium.

Many people have been waiting on this moment since last year, but for residents of Sanford, Brannen and Cone halls this part of the year may bring some inconveniences.

The GSU Athletic Department has informed faculty, staff and students that due to the State of Georgia Self-Insurance Policy, the university cannot reimburse them should they incur personal vehicle damage as a result of foul ball while parked on university property.

Therefore, they have proposed that residents who have A-lot parking permits should relocate their vehicles to the Lower Hanner/Nursing Commuter Lots or to the 30-minute zone in front of Sanford Hall during home games.

Thankfully, the university is showing some concern for the students in informing them of this change prior to any problems.

Apparently, this measure has come about because of complaints by residents of these dorms that arose during last year's baseball season.

Many students complained that their vehicles were being damaged by foul balls and that the university acted slowly in finding a solution.

Well, now a solution has been developed and it will save both the university and the students a lot of money and hassle in the long run.

Although this may pose some inconvenience to the students, they should thank the university for acting on their complaint before the start of the season.

Students should follow these measures to eliminate the chance of costly damages.

Perhaps university officials could look into a permanent and long-range solution to the problem by putting up a higher fence behind home plate that would help reduce the problem of foul balls damaging vehicles parked in the A parking lot. Though the higher fence would not eliminate all foul balls, it might reduce the number significantly.

University officials have seemingly come up with a plan they think will benefit everyone, but now the students must back their decision and cooperate with it to the fullest.



## Backtalk

Now you have a chance to "talk back" to *The George-Anne* about whatever floats your boat. It's a quick, easy way to write a mini-letter to the editor. Fill out this form and send it to P.O. Box 8001, or drop it by *The George-Anne* office at Williams Center room 223.

Name: \_\_\_\_\_ P.O. Box: \_\_\_\_\_

## STAFF

### NEWS

Assistant News Editor: Kevin Bonsor; Staff: Rosemary Burn, Rusty McGuire, Laura Owens, Justin Miller, Farrah Senn, Gin Starling

### FEATURES

Features Editor: Kelley McGonnell; Arts & Entertainment Editor: Melanie Weinberg; Staff: Kelly Blake, Eric Bray, Ebony Brown, Robbie Bruce, Jason Eastman, Beecher Gatewood, Jake Hallman, Shana Johnson, Tia Martin, Jason Miller, Jessica Morton, Jennifer Stokes

### SPORTS

Sports Editor: Mike Davis; Staff: Scott Bates, Mike Gibbs, Jennifer Holloway, Dennis Stovall, Carolyn Wynn

### OPINIONS

Staff: Stacy Clemons, Amanda Crews, Chance Fulk, Rusty McGuire, Justin Miller, Trina Springs, Tracey Varnell, Aletha Yoho

### PHOTOGRAPHY

Chief Photographer: Mike Spilker; Staff: Mike Hill, Hans Knoepfel, David Mathews

### ARTWORK

Scott Morris

### CIRCULATION

Supervisor: Steve Taliaferro

### ADVERTISING/DISTRIBUTION SERVICES (ADS)

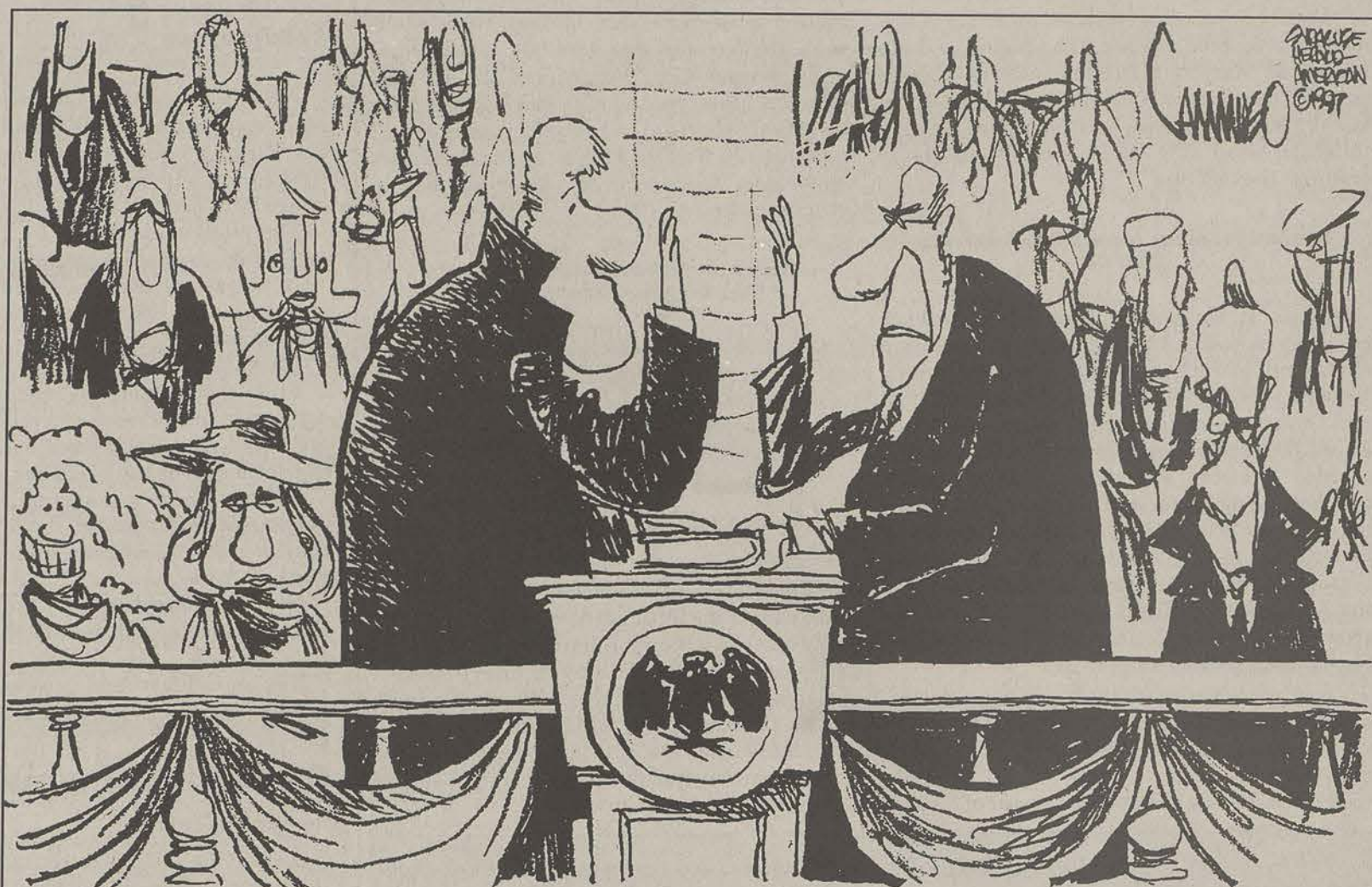
Advertising Manager: Brooks Clements; Business Manager: Stephanie Wylie; Marketing Coordinators: Heather Turner; Classified Ad Manager: Meredith Keefe; Sales Representatives: Ron Lair, Michael Hamburger, Heather Turner, Carolyn Wynn

### PRODUCTION AND GRAPHICS EDITORIAL SERVICES (PAGES)

General Manager and STP Web Master: Scott Mulkey; Production Manager: Ron Lair, Scandia McCray; Assistant Production Managers: Shawn Sunderland; Staff: Robert Castaneda, Jennifer Craft, Lindsay Hunter, Kathy Jacobus

### STUDENT PUBLICATIONS COORDINATOR

Robert Bohler: News, Editorial Advisor; Bill Neville: General Manager



## Why are we ignoring the burnings of black churches?

The recent wave of black church burnings in the South has received a great deal of news coverage and has called attention to the possibility of organized hate against African Americans.

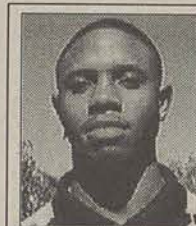
Yet what has not been reported is the widespread silence among local, state and federal officials over the cause of the burnings, the tensions between members of black parishes and investigators of the fires, and the possible role that specific hate groups may have played in causing the fires.

According to the Center for Democratic Renewal, an organization that monitors the activities of the Ku Klux Klan and other white supremacist groups, the silence over the possible cause of the fires has been alarming.

Not only have fire officials been eager to dismiss many of the church burnings as "accidents," but they have also harassed church members unnecessarily, placing the blame for most of the fires on churchgoers rather than on outside groups.

For example, on April 7, 1996, the St. Paul's Primitive Baptist Church in Lauderdale, Miss. burned to the ground. After discovering that the deacon of the church smoked, officials determined that the fire was started by one of his cigarette butts.

The deacon later said he could not have started the fire because



### STACY CLEMONS

MANAGING EDITOR

he smoked in the church parking lot. The NAACP has challenged the findings of the investigation.

Since the early 1990s, black churches in the South have been subjected to several attacks.

More than 80 mostly rural, historically black churches have been firebombed, burned or vandalized since 1990 and the pace

will aid somewhat in finding the perpetrators.

According to reports, these attacks have occurred at night, between midnight and 7 a.m. and most of the people arrested have been white males between the ages of 14 and 45.

Many of these people, who usually come from middle class

fact, some of the fires were preceded by attempts to either buy or swap land with the churches.

This fact alone gives credence to the belief held by many African Americans that these attacks against black churches are acts of terrorism and hate crimes.

The fires have revived memories of the Ku Klux Klan firebombings of black churches in the 1960s and have stirred up a debate of whether the flames are the deliberate work of racist groups or of copycat arsonists.

The number of hate groups in the South are prolific.

The Ku Klux Klan, National Association for the Advancement of White People, Aryan Nations and Aryan Sisters League are some of the many white supremacist groups with chapters in the South which have had members of their groups arrested in connection to the church burnings.

Whether you are black or white, everyone has to admit that the burning of black churches is totally unacceptable. But for those churchgoers and members of Southern black churches, remember that although the intimidation may remain an integral part of your community long after the church has burned, the strength and determination of you and your fellow church members will help protect the sanctity of the black church as the center of spiritual growth in the African American community.

### YET WHAT HAS NOT BEEN REPORTED IS THE WIDESPREAD SILENCE AMONG LOCAL, STATE AND FEDERAL OFFICIALS OVER THE CAUSE OF THE BURNINGS ...

has steadily picked up since January of this year.

It does not surprise me that the law enforcement officials have been slow to respond to the problem since in the past, it has been noticed that they do arrive rather late to some crime scenes and sometimes do not take precautions in collecting evidence during their investigations.

Due to concerns raised by the National Council of Churches, law enforcement officials have recently increased the pace of the investigations. Hopefully this

suburban families, use accelerants (a substance, such as a petroleum distillate, which is usually used as a catalyst) and firebombs to start the fires.

Such harassment and "bothering" in the investigations of the church burnings has caused the CDR to question whether the local fire departments have obstructed the federal investigations of many of the church fires.

Some churchgoers suspect that some of the fires were set to force black churches to give up ownership of valuable land. In

## Long ago, in a politically correct galaxy far, far away ...

When I first heard "Star Wars" was going to be re-released I had my doubts on how it would be received—I didn't know if today's younger generation would accept it, but to be honest, I didn't really care.

"Star Wars" rocks for a lot of reasons, but I had a nightmare the night after I watched it. I realized that in our overly-sensitive, "I feel your pain" politically correct society, "Star Wars" comes from the old school "eat, drink, and be merry" time, way back when "The Artist Formerly Known as Prince" was simply known as Prince. The only thing we have close to that today is a frenzied anti-government, pro-alien paranoia that has everyone partying like it's 1999 (even though we slipped into the "next millennium" in November of 1996).

In my dream I was watching a never-ending parade of "Star Wars" protests on CNN's Headline News. All I could do was grit my teeth and watch. It was so bad I couldn't even find the cool side of my pillow.

People for the Ethical Treatment of Animals led the charge.



### JUSTIN MILLER

COLUMNIST

It seems Chewbacca was portrayed as violent toward droids, and evidently, at least according to PETA, Wookies are fun-loving creatures who come from the family *genus ewokus*—and we all know how cute Ewoks are.

Next was the Christian Coalition. First there was the issue of family. The whole thing about Annakin Skywalker being unaware of his twin offspring, who were separated at birth, was too dysfunctional for them.

The Christian Coalition was also upset because of the idea of "the force." It was too much like a veiled form of a hybrid transcendental-pantheism for them. The signs they carried in their nationwide theater protests said things like, "You'll need more than 'The Force' on Judgment Day!" and "Jesus wasn't a Jedi Knight!"

CNN's legal segment, hosted

by Johnny Cochran, analyzed the fight scene between Obie One and Darth Vader. Evidently Vader was framed, because in the close-up shot where you see only a boot stomping on the cloak after Old Ben Kenobi disappears, the boot is a Bruno Magli "galaxy boot." If you look at Darth Vader he is, throughout the whole movie, clearly wearing L.L. Bean "Planetary Exploration Boots," commonly referred to as "rebel stompers." So, whoever stomped on Ben's crumpled-up cloak—i.e. the real killer—was not Darth Vader.

The National Organization for Women sponsored a benefit concert with headliners The Indigo Girls and Alanis Morissette to raise money for "The Fight Against Princess Leia-like Portrayals of Women in Film." They even managed to raise enough money to lobby Congress, and

get a Senate hearing overseen by, you guessed it, the Senate's own Jabba the Hut, Ted Kennedy—isn't it ironic?

At this point Local Edition cut in with a blurb on a riot that broke out on GSU's campus between Star Trek fans and "Star Wars" fans. It all stemmed from a column written in *The George-Anne*. The writer, a "trekkie," described "Star Wars" fans as being "those people who are unable to stretch their ring finger apart from their middle finger."

The "Star Wars" fans could make fists though, because according to the Local Edition reporter, the "Star Wars" fans "beat the living snot" out of the "Star Trek" fans.

On that note I shook myself awake. I got up, stumbled to my feet, and walked across the room. As I rubbed the last remnants of sleep from my eyes I reached to the very back of my closet. With a smile I dragged my toy chest out to my living room, opened it up, and played with my action figures for five hours. All was well in the galaxy, and I felt like a kid again.

May the force be with you.



# DINING & ENTERTAINMENT GUIDE

Appearing Exclusively in The George-Anne



**MUGS & MOVIES**  
STATESBORO MALL



Playing Jan. 31-Feb. 8  
**"In Love and War"**

All Show times 7:00pm & 10:00pm

Do You Know Those Unpronounceable Dishes? Neither Do We.

Nothing Fancy. Just Good Food.

The world's best wings, rotisserie chicken, soup, salads, sandwiches & burgers

120 Lanier Drive, Statesboro, GA

(1/4 mi from GSU's Paulson Stadium) 681-3030

Mon-Sat 11:30am-12am • Sun. 11:30am-10pm



Nightly Entertainment

Thur: Fran Vidal Band  
Fri: Brian Webb  
Sat: The Drunks  
Sun: \$.25 Wings until 5pm

Mon: 12 oz Ribeye with 3 sides only \$8.95  
Big Mug Refill \$1.50  
Tues: Bash Night: All You Can Eat Wings  
6-10 p.m. \$7.95 & \$1 Longnecks 10p.m. - Close  
Wed: Karaoke & \$1 Longnecks 8-10p.m.

Monday - Friday \$3.50 pitchers and .25 wings from 3p.m. - 5p.m.

Free Membership!

**KELLY'S VIDEOS**

Monday - Thursday  
10:00am to 11:00pm

Friday - Saturday  
10:00am to 12:00pm

Sunday  
12:00am to 10:00pm

2 College Plaza  
Next To Good Will

Rent 1 movie  
Get one  
**FREE**

UP TO A \$1.50 VALUE

New Arrivals \$2.50/Day

General Titles \$1.50/2 Days

(912)681-1942

**Southern Sports Bar & Grill**

21 Pool Tables  
\$.50 per Game  
DJ 6 Nights

BREAKFAST 6-10AM

MONDAY - SAT.

DAILY LUNCH SPECIALS 11-2:30PM

HOME COOKED LUNCH SPECIALS 1 MEAT,  
2 VEGGIES & BISCUIT  
\$4.75

681-1439

60" Big Screen TV  
To Watch Your Favorite Teams  
Call About  
Nightly Specials

**VANDY'S  
BAR-B-Q**



**10%  
Discount  
for Students  
w/ Valid ID**

Named by the Atlanta Constitution as

**THE BEST BARBECUE IN GEORGIA**

**Vandy's Barbecue**

Downtown  
22 West Vine St  
Specializing in  
Barbecue  
764-2444

2 Locations to Serve you:

**HOME  
COOKING**

Statesboro Mall  
Breakfast, Lunch  
& Dinner  
Featuring a full menu  
764-3033

**Franklin's  
restaurant**

221 N. Main • Statesboro, GA  
764-2316

**\$2.99** Mon - Hamburger  
Combo w/ choice of  
potato

**\$4.99** Tues - Chicken Fingers  
with potato  
& salad bar

ALL MONTH LONG!  
8 oz Ribeye with  
Baked Potato and Salad Bar  
Only \$7.99

**\$4.99** Wed - 1/2 pound ground  
sirloin w/ potato & salad bar

**\$4.99** Thurs - Fried fillet of sea trout  
w/ potato & salad bar

**\$8.99** Fri & Sat - Shrimp Scampi  
Chicken Fetticini Alfredo  
w/ a choice of potato, salad,  
and dinner bread.

CURE THE HUNGRIES IN FEBRUARY WITH SONIC!  
BIG COMBOS AND LOW PRICES

**SONIC**

"Everything you're hungry for"

Offers Not Good With Any Other Coupons or Offers

(A) • Deluxe Sonic Burger  
• Large French Fries  
• Large 32 oz. Soft Drink

**\$2.69**  
PLUS TAX

(B) • Ex-Long Chili Cheese Cone  
• Large French Fries  
• Large 32 oz. Soft Drink

**\$2.89**  
PLUS TAX

(C) • Country Fried Steak Sandwich  
• Large French Fries  
• Large 32 oz. Soft Drink

**\$3.19**  
PLUS TAX

**\$3.99**  
PLUS TAX

Brown Bag Combo

2 - Deluxe Sonic Burgers

2 - Small French Fries

2 - 14 oz. Soft Drinks

After 5 p.m. "Dinner Deals"

One Order per Coupon (Offer ends 2/28/97)

Just cut this out and bring in when you dine at Sonic

SONIC

DRIVE-IN 322 South Main DRIVE-THRU

After 5 p.m. "Dinner Deals"

One Order per Coupon (Offer ends 2/28/97)

Just cut this out and bring in when you dine at Sonic

SONIC

DRIVE-IN 322 South Main DRIVE-THRU

After 5 p.m. "Dinner Deals"

One Order per Coupon (Offer ends 2/28/97)

Just cut this out and bring in when you dine at Sonic

SONIC

DRIVE-IN 322 South Main DRIVE-THRU

After 5 p.m. "Dinner Deals"

One Order per Coupon (Offer ends 2/28/97)

Just cut this out and bring in when you dine at Sonic

SONIC

DRIVE-IN 322 South Main DRIVE-THRU

After 5 p.m. "Dinner Deals"

One Order per Coupon (Offer ends 2/28/97)

Just cut this out and bring in when you dine at Sonic

SONIC

DRIVE-IN 322 South Main DRIVE-THRU

After 5 p.m. "Dinner Deals"

One Order per Coupon (Offer ends 2/28/97)

Just cut this out and bring in when you dine at Sonic

SONIC

DRIVE-IN 322 South Main DRIVE-THRU

After 5 p.m. "Dinner Deals"

One Order per Coupon (Offer ends 2/28/97)

Just cut this out and bring in when you dine at Sonic

SONIC

DRIVE-IN 322 South Main DRIVE-THRU

After 5 p.m. "Dinner Deals"

One Order per Coupon (Offer ends 2/28/97)

Just cut this out and bring in when you dine at Sonic

SONIC

DRIVE-IN 322 South Main DRIVE-THRU

After 5 p.m. "Dinner Deals"

One Order per Coupon (Offer ends 2/28/97)

Just cut this out and bring in when you dine at Sonic

SONIC

DRIVE-IN 322 South Main DRIVE-THRU

After 5 p.m. "Dinner Deals"

One Order per Coupon (Offer ends 2/28/97)

Just cut this out and bring in when you dine at Sonic

SONIC

DRIVE-IN 322 South Main DRIVE-THRU

After 5 p.m. "Dinner Deals"

One Order per Coupon (Offer ends 2/28/97)

Just cut this out and bring in when you dine at Sonic

SONIC

DRIVE-IN 322 South Main DRIVE-THRU

After 5 p.m. "Dinner Deals"

One Order per Coupon (Offer ends 2/28/97)

Just cut this out and bring in when you dine at Sonic

SONIC

DRIVE-IN 322 South Main DRIVE-THRU

After 5 p.m. "Dinner Deals"

One Order per Coupon (Offer ends 2/28/97)

Just cut this out and bring in when you dine at Sonic

SONIC

DRIVE-IN 322 South Main DRIVE-THRU

After 5 p.m. "Dinner Deals"

One Order per Coupon (Offer ends 2/28/97)

Just cut this out and bring in when you dine at Sonic

SONIC

DRIVE-IN 322 South Main DRIVE-THRU

After 5 p.m. "Dinner Deals"

One Order per Coupon (Offer ends 2/28/97)

Just cut this out and bring in when you dine at Sonic

SONIC

DRIVE-IN 322 South Main DRIVE-THRU

After 5 p.m. "Dinner Deals"

One Order per Coupon (Offer ends 2/28/97)

Just cut this out and bring in when you dine at Sonic

SONIC

DRIVE-IN 322 South Main DRIVE-THRU

After 5 p.m. "Dinner Deals"

One Order per Coupon (Offer ends 2/28/97)

Just cut this out and bring in when you dine at Sonic

SONIC

DRIVE-IN 322 South Main DRIVE-THRU

After 5 p.m. "Dinner Deals"

One Order per Coupon (Offer ends 2/28/97)

Just cut this out and bring in when you dine at Sonic

SONIC

DRIVE-IN 322 South Main DRIVE-THRU

After 5 p.m. "Dinner Deals"

One Order per Coupon (Offer ends 2/28/97)

Just cut this out and bring in when you dine at Sonic

SONIC

DRIVE-IN 322 South Main DRIVE-THRU

After 5 p.m. "Dinner Deals"

One Order per Coupon (Offer ends 2/28/97)

Just cut this out and bring in when you dine at Sonic

SONIC

DRIVE-IN 322 South Main DRIVE-THRU

After 5 p.m. "Dinner Deals"

One Order per Coupon (Offer ends 2/28/97)

Just cut this out and bring in when you dine at Sonic

SONIC

DRIVE-IN 322 South Main DRIVE-THRU

After 5 p.m. "Dinner Deals"

One Order per Coupon (Offer ends 2/28/97)

Just cut this out and bring in when you dine at Sonic

SONIC

DRIVE-IN 322 South Main DRIVE-THRU

After 5 p.m. "Dinner Deals"

One Order per Coupon (Offer ends 2/28/97)

Just cut this out and bring in when you dine at Sonic

SONIC

DRIVE-IN 322 South Main DRIVE-THRU

After 5 p.m. "Dinner Deals"

One Order per Coupon (Offer ends 2/28/97)

Just cut this out and bring in when you dine at Sonic

SONIC

DRIVE-IN 322 South Main DRIVE-THRU

After 5 p.m. "Dinner Deals"

One Order per Coupon (Offer ends 2/28/97)

Just cut this out and bring in when you dine at Sonic

SONIC

DRIVE-IN 322 South Main DRIVE-THRU

After 5 p.m. "Dinner Deals"

One Order per Coupon (Offer ends 2/28/97)

Just cut this out and bring in when you dine at Sonic

SONIC

DRIVE-IN 322 South Main DRIVE-THRU

After 5 p.m. "Dinner Deals"

One Order per Coupon (Offer ends 2/28/97)

Just cut this out and bring in when you dine at Sonic

SONIC

DRIVE-IN 322 South Main DRIVE-THRU

After 5 p.m. "Dinner Deals"

One Order per Coupon (Offer ends 2/28/97)

Just cut this out and bring in when you dine at Sonic

SONIC

DRIVE-IN 322 South Main DRIVE-THRU

After 5 p.m. "Dinner Deals"

One Order per Coupon (Offer ends 2/28/97)

Just cut this out and bring in when you dine at Sonic

SONIC

DRIVE-IN 322 South Main DRIVE-THRU

After 5 p.m. "Dinner Deals"

One Order per Coupon (Offer ends 2/28/97)

Just cut this out and bring in when you dine at Sonic

SONIC

DRIVE-IN 322 South Main DRIVE-THRU

After 5 p.m. "Dinner Deals"

One Order per Coupon (Offer ends 2/28/97)

Just cut this out and bring in when you dine at Sonic

SONIC

DRIVE-IN 322 South Main DRIVE-THRU

After 5 p.m. "Dinner Deals"

One Order per Coupon (Offer ends 2/28/97)

Just cut this out and bring in when you dine at Sonic

SONIC

DRIVE-IN 322 South Main DRIVE-THRU

After 5 p.m. "Dinner Deals"

One Order per Coupon (Offer ends 2/28/97)

Just cut this out and bring in when you dine at Sonic

SONIC

DRIVE-IN 322 South Main DRIVE-THRU

After 5 p.m. "Dinner Deals"

One Order per Coupon (Offer ends 2/28/97)

Just cut this out and bring in when you dine at Sonic

SONIC

DRIVE-IN 322 South Main DRIVE-THRU

After 5 p.m. "Dinner Deals"

One Order per Coupon (Offer ends 2/28/97)

Just cut this out and bring in when you dine at Sonic

SONIC

DRIVE-IN 322 South Main DRIVE-THRU



CAMPUS SPOTLIGHT

## New parking rules at the old ballpark

GSU News Service

The GSU Athletic Department, in conjunction with the Department of Parking and Transportation, would like to inform the residents with A-Lot parking permits the possible resources available to them during the baseball season.

Due to the State of Georgia Self-Insurance Policy, the University cannot reimburse faculty, staff or students if their personal vehicles are damaged as a result of a foul ball when parked on university property. With this in mind, the Parking and Transportation Department has devised some options to prevent such damages.

Residents who have A-Lot parking permits have the opportunity to relocate their vehicles to the Lower Hanner/Nursing Commuter Lots or to the 30-minute zone in front of Sanford Hall during home baseball games.

Students who have questions regarding this can contact the Parking and Transportation office at 681-0702.

## Chaisson honored

GSU soccer striker Tara Chaisson has been named to the All-Freshman Southeast Team by *Soccer Buzz*, the collegiate soccer magazine of the World Wide Web.

Chaisson, a native of Kitchener, Ontario, has already been named Southern Conference Freshman-of-the-Year after leading the conference in points (37), goals (14), and point average (1.76). She also was third with nine assists.

Her tremendous season also placed her in the GSU record books. She tied Debbie Hensley's season record of 37 points and was just one goal away from Hensley's record of 15 goals in a season.

GSU also was listed fourth in the Southeast's Most Outstanding Soccer Publications category.

The *Soccer Buzz*, located at [www.triad-com.com/soccerbuzz](http://www.triad-com.com/soccerbuzz), is in its first year of publication on the web.

## Black Rose rugby

The GSU rugby team, in cooperation with Campus Recreation and Intramurals, is very pleased to present the eighth annual Black Rose rugby Tournament, featuring GSU ruggers as well as rugby teams from across the country, beginning Feb. 14-16 at the M.C. Anderson Fields (located on Old Register Road).

There will be a Friday night, Feb. 14, captain's meeting and then a Saturday night social with free cover for ruggers.

If you have any questions, please feel free to contact Mark Hendrickson or Steve Sanders at (912) 681-5436.

Look into next week's G-A sports pages for more information on the tournament.

## Tournament tickets

Student tickets for the 1997 Southern Conference Basketball Tournament will be available to all Southern Conference students for \$30. Tickets may be purchased through the Box office at each Southern Conference school. Students must show student I.D. at the time of purchase.

The ticket book is good for all men's basketball sessions, the women's semi-finals, the wrestling tournament and admission to Sidecourt, which will feature a food court, a Walk-of-Fame and University Day celebration.

# Diamond teams to begin this weekend

## Stallings and Eagle baseball looking for repeat appearance at NCAAs

By Paul Ashmore  
Staff Writer

This weekend the GSU baseball team will open the season at home against the Georgia Tech Yellow Jackets. Tech is currently ranked sixth in the *USA Today* and tenth in *Baseball Weekly*.

This season, GSU will be without the players from last season who produced 68 percent of its homeruns, 61 percent of its RBIs and hit for a combined .333 batting average. Not to mention, they also lost their number-one ace, All-American Julio Ayala.

With the losses, the Eagles will take a different approach against their opponents. They will look to their solidified pitching staff.

"Although we lost Julio, our pitching staff should be strong," GSU baseball coach Jack Stallings said. "In fact, I think this year's staff is as strong and deep as we've had in years. We have several pitchers who are capable of having big years."

Stallings, who is entering his 22nd year as skipper of the Eagles, is looking for junior Ryan Cummings as one of those who could have a great year. Last season, Cummings produced an 8-2 record to go along with a 5.38 ERA.

"We lost our number-one in Julio, but we've got four quality starters, great relief pitchers and of course, we've got Todd Lee coming out in the ninth,"

Cummings said.

Lee, a two-time All-American, will anchor the bullpen yet again. Lee has saved 11 games in each of his last two seasons, becoming GSU's career saves leader. He has already been dubbed the premier closer in college baseball by *Collegiate Baseball*.

Along with Cummings and Lee will be a lot of supporting players in between. Clint Sauls, this year's probable number-two starter, went 7-2 last season with a 4.80 ERA.

After strong fall performances, Stallings expects sophomore Danny Washburn and lefthander Brian Hall to contend for the other two spots in the four-man rotation. Look for freshman Keith Morris and Aaron Parker to be major contributors this season as well.

Offensively, the Eagles will counter the power they lost with speed.

"Last year we did have a lot of power. This year we might not have as much power but we'll have a little more speed and we'll adjust our offensive strategy to meet that," Stallings said.

Antoine Moran, who shattered the GSU single-season stolen base record last year with 50, will police centerfield again this season.

"My job is to get on base," said Moran, who is only eight stolen bases away from breaking the school stolen base record of 82. "Last year when I got on base,



Mike Spilker

**EAGLE BASEBALL GEARING UP:** Georgia Tech will be the first opponent of the season for the GSU Eagles when the Jackets come rolling into town this Saturday at 1:30 p.m. at J.I. Clements Stadium.

Tommy knocked me in. This year I'm going to run more, a lot more than I did last year.

Donnie Coe is another who will look to balance the Eagle offensive attack with his consistent hitting. Coe hit .329 last year and drove in 40 runs.

"My role is to play defense up the middle and get on base," said Coe who started 56 games

last season.

The power of the Eagles will look to come from outfielder Steve Walson and third baseman Tyson Whitley.

"Steve can put some juice into the ball," Stallings said. "He'll be more experienced, more comfortable and have more confidence this spring. He'll be a tough out."

Last year, Whitley hit 12 homeruns, trailing the team-lead to only Peterman, and was named a *Collegiate Baseball* Freshman all-American last season. Whitley will look to continue to swing the bat well as he did toward the end of last season.

"Hopefully I can put the ball  
Please see **EAGLES**, page 7

## LADY EAGLE SOFTBALL

# Unfinished business for GSU softball, Lady Eagles begin run Sunday



Mike Spilker

**PLAY AT THE PLATE:** Lady Eagle catcher McCaine Lowder waits for Kristen Steigenhofer at the plate during a Monday afternoon practice.

By Mike Davis  
Sports Editor

It's not exactly what GSU softball coach Kelley Kirkland had hoped to see at this time of year.

Now just days before they throw the first pitch to crank up yet another season, one player is already watching practice on crutches and another is hobbling off the field with an ice-pack draped around her ankle.

But through all the pre-season bumps and bruises, Kirkland still has reason to be excited.

For one, she lives for softball. Like a duck in water or a bird in air, this is her time of year. This is where she is supposed to be — on a diamond, hitting ground balls and showing players the correct way to execute the hit and run.

Two, she has talent in her line-up, highlighted by senior Tonya Whitted in left-field, junior Sheri Russo at first, sophomore Ashley Flemming at second and freshman McCaine Lowder behind the plate, who is coming off a Southern Conference Freshman-of-the-Year honor.

Though not an overly powerful line-up, this one can score runs efficiently.

"We have the potential to be strong," Kirkland said Monday afternoon following another in-

tense practice. "A lot will depend on how we open up. I think if we play Florida State well this Sunday, then that will be a sign that we're good. There is no reason whatsoever that we can't play with them. We are going to come in with the intentions to win this game."

Florida State, a nationally-ranked opponent, will be the first opposition the Lady Eagles will see this season. Game time is set for 1 p.m. Sunday afternoon at the GSU softball complex. On Monday, Florida A&M rolls into town for a 4 p.m. start.

"I will know how ready we are by the end of the week, but it really depends on the rest of the week in practices," Kirkland said. "Today (Monday), we had a good, intense practice. If we can have the rest of them like this one, we should be in good shape."

Kirkland possessed only two pitchers last season and lost one, her ace, to graduation, meaning she has reason to be concerned.

Mandi Dunn, by far the most experienced, will start Sunday's matchup. As far as relief innings go, freshman Jennifer Miller will be called upon for clean-up duties.

But while there are question marks, there are also positive aspects which opposing teams

cannot ignore.

Russo, who carried the best batting average (.346) on a team that went 31-23 last season, is back for her third go-round. Two other players, Whitted and Lowder, also hit above .300 on the year.

As a team last season, the Lady Eagles pounded out 56 more hits and scored 95 more runs than their opponents en route to their Southern Conference regular season title.

But after the resounding regular season, the Lady Eagles fell short to UT-Chattanooga in the conference tournament finals, and that's where this season's story begins.

"Basically, our goal this year is to go all the way," said Whitted, who sported a .336 batting aver-

age as a junior as well as posting a team-leading 18 stolen bases.

"After we lost the tournament last year, we just said to ourselves that it's ours next year. We want to take the Southern Conference regular season again, and hopefully take the tournament this time. We have a lot of talent on this team. It's there, we just have to go and get it."

Back at third base will be junior Amy Cook, with Danelle Toole, who is currently running the hardwood for the GSU women's basketball team, beside her at shortstop. Sophomore Beth Dance, who could be playing shortstop this season to fill holes, could also be placed in the outfield.

Whitted will be patrolling

things in left field, while freshman Kristen Steigenhofer will secure center and freshman Jennifer Harris right field.

Freshman utility player Jessica Brott, outfielder Linda Diaz and infielder Jacklyn Kaylor, who is suffering a knee injury, round out the GSU roster.

"We've got more experience at some positions than others," Kirkland said. "Overall, I think we are pretty solid at the infield positions as well as the outfield position. We should be fine. We have the potential to be really strong defensively."

"We have to work as a team," Whitted said. "And at the same time keep our defense up and our bats going. That kind of hurt us last year."

Please see **SOFTBALL**, page 7

## Baseball and softball rosters

### Softball Outfielders

- 2 Beth Dance, So.
- 5 Tonya Whitted, Sr.
- 6 Linda Diaz, Fr.
- 7 Kristen Steigenhofer, Fr.
- 8 Jennifer Harris, Fr.

### Baseball Outfielders

- 2 Matt Meadows, Fr.
- 4 Kevin Killimett, Jr.
- 5 Antoine Moran, Sr.
- 12 Shane Marquis, So.
- 13 Charlie Bridges, Fr.
- 23 Brian Chester, Fr.
- 25 Brandon Williams, So.
- 28 Steve Walson, So.

### Softball Infielders

- 3 Jessica Brott, Fr.
- 9 Amy Cook, Jr.
- 10 Mandi Dunn, Jr.
- 13 Jacklyn Kaylor, Fr.
- 14 Danelle Toole, Jr.
- 16 Sheri Russo, Jr.
- 18 Ashley Flemming, So.
- 20 McCaine Lowder, So.

### Softball Pitchers

- 10 Mandi Dunn
- 11 Jennifer Miller

### Baseball Pitchers

- 10 Brian Hall, LHP, Jr.
- 16 Grady Blanchard, RHP, So.
- 18 Keith Morris, RHP, Fr.
- 20 Danny Washburn, RHP, So.
- 22 Kelvin Davis, LHP, Sr.
- 26 Dennis Moore, RHP, Fr.
- 27 Ryan Cummings, RHP, Jr.
- 29 Aaron Parker, RHP, Jr.
- 32 Clint Sauls, RHP, Jr.
- 35 Tod Lee, RHP, Jr.

### Baseball Infielders

- 6 Kyle Aldridge, So.
- 9 Michael Holder, Jr.
- 11 Donnie Coe, Sr.
- 14 Jamie Olvey, Sr.
- 15 Ryan Petersen, Fr.
- 17 Jimmy Brown, Fr.
- 19 Tyson Whitley, Sr.
- 21 Jody Pollock, Fr.
- 28 Steve Walson, So.
- 30 Jimmy Alexander, Fr.

### Softball Coaches

Head Coach - Kelley Kirkland  
Assistant - Dana Fulmer

### Baseball Coaches

Head Coach - Jack Stallings  
Associate - Scott Baker  
Pitching - Darin Van Tassell  
Assistant - Garth Spendiff



LADY EAGLE SOFTBALL

## Russo brings experience and a heavy bat for GSU softball team

By Dennis Stovall  
Staff Writer

Junior Sheri Russo, the starting first basemen for the GSU softball team, could be referred to as the unsung hero for the Lady Eagles.

In 1996, Russo batted .346, which led the team, and was sixth in the Southern Conference in batting average.

She also hit 18 doubles, which was second in the conference, a GSU single-season record and also put her second on the all-time GSU record with 29 behind the current all-time leader Heather Olejcek.

Russo's .426 on-base percentage and her .484 slugging percentage also led the team. And while playing injury-free, Russo was able to start all 54 of GSU's games, leading to her selection to her second All-Southern Conference Team and her second All-Tournament Team.

"Sheri is a good leader, a quality ball player and is definitely one of our keys to success," said softball coach Kelley Kirkland.

Russo will enter as one of the on-the-field team leaders.

"It's nice to get individual awards and it's great to be recognized, but if I can drive in one more or move one more person over to score, that is one more opportunity we have to score and to win the game, she said."

Russo says the key to getting back to the success the team had last year, which included a Southern Conference regular season title and a second-place finish in the conference tournament, is



Mike Spilker

**LADY EAGLES AT WORK:** Amy Cook catches Tonya Whitted in a run-down during a Monday afternoon softball practice.

sticking together.

"We have to play as a unit, play as a team and our defense has to stay tough because that is our strongest aspect of our game."

Russo also emphasizes that defense wins ball games.

"If our defense falls apart it is over," Russo said.

While Russo continues to be a team leader, her personal goals also act as motivation.

"I would like to make the Southern Conference team again," Russo said. "I would just like to stay the way I am offensively. Defensively, I would just like to get better. And as an upper classman, to be more of a leader on the field, and to get another ring."



Mike Spilker

**PREPARATION:** Coach Kelley Kirkland studies the practices.

EAGLE BASEBALL

## Lee bringing heat for Eagles this year

By Jennifer Holloway  
Staff Writer

The 1997 Eagle baseball team will start their season with an All-American in their bullpen in 6-foot, 235-pound junior Tod Lee, known to his teammates as "Snacks."

This season marks the third consecutive season that Lee has been awarded All-American honors.

"It's a great honor," Lee said. "I work hard and always hope good things come out of it."

As a freshman in 1994, Lee finished with a record of 5-4 and a 1.82 ERA.

He struck out 61 batters while walking only 12 in 39 2/3 innings and recorded 11 saves and was ranked second nationally among first-year pitchers and was named the Southern Conference Freshman-of-the-Year.

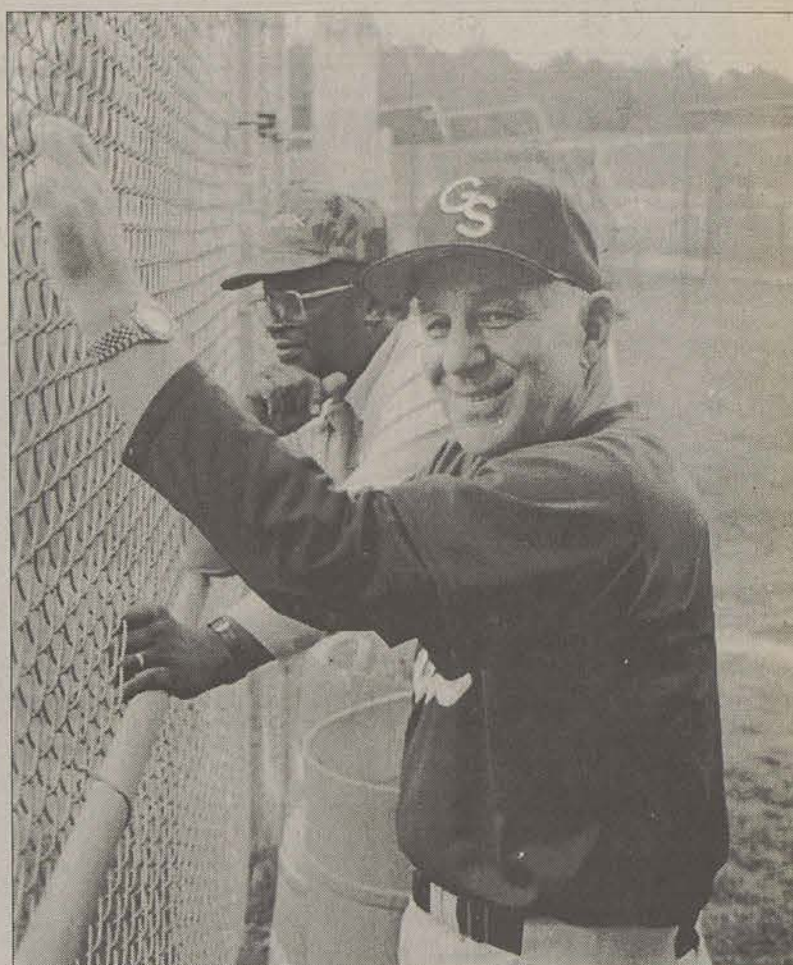
Last season as a sophomore, he finished with a 7-4 record and improved his ERA to 1.18. He struck out 88 batters, walking 21 in 53.1 innings. He was ranked nationally with 11 saves and was voted All-Southern Conference and named to the All-Atlantic Regional Team.

This past summer, Lee was invited to pitch in the Cape Cod League for the Yarmouth-Dennis Red Sox.

During his stay there, he appeared out of the bullpen in 10 games, working 9.2 innings. He recorded 15 strikeouts and walked seven, ending with a 5.59 ERA.

With all these accomplishments behind him and more to come, Lee remains level-headed, thinking only of the team.

"When I come into a season, the first thing is the team," Lee said. "All those extra things are looked at, but I don't ever say that I want to have an ERA of less than one or I want to strike out one hundred people. I just let



Mike Spilker

**'SKIP' BACK FOR MORE:** Jack Stallings, starting his 22nd season at GSU, is depending on closer Tod Lee to secure wins for the Eagles.

those things come as they do. My goals are the same as everyone on this team, and that's to go to Omaha and bring home a National Championship."

GSU became Lee's choice mainly because of Jack Stallings.

"He's a really good teacher of the game and he has had a lot of success in the past," Lee said. "He has taught me a lot about how to play, approach and prepare for the game."

Stallings has the same feelings and respect for Lee.

"When the game hangs in the balance in the eighth or ninth inning and you have the chance to win or the chance to lose, you want to have your best pitcher out there on the mound, and we

certainly feel that with Tod Lee," Stallings said. "We have as much of a chance to win as anyone in the country. He's extremely talented and a hard-working pitcher and does a great job as our closer. He's a major boost to our ballclub."

Next Saturday and Sunday, in their fifth and sixth games of the season, the Eagles will face Georgia.

Lee has developed a personal rival against the Bulldogs and is looking for a win.

"Georgia has managed to beat us six out of the eight times that we've played them since I've been here," Lee said.

"Hopefully next weekend, we can win."

BASEBALL NOTEBOOK

## 'Ballpark Bound' new addition for GSU baseball

GSU News Service

In addition to our normal season ticket prices, there is also an additional program that GSU baseball has adopted for the 1997 season.

"Ballpark Bound" gives a chance for Eagle baseball fans the opportunity this year to not only buy their own season tickets, but to purchase an additional season ticket to be given to a child in Bulloch County who might not have the opportunity, income, or necessary guidance to grow up in this area and take advantage of college athletics.

Hopefully, this program will give youngsters such a chance to find a healthy alternative to after-school activities and discover the excitement that

comes with athletics and positive role-models.

For only \$15, you can help do this small gesture. When you mail in your order from, just note on it that you want your youth tickets to go to the "Ballpark Bound" program.

### Wiggins complex now open

The Michael J. Wiggins baseball complex is just one of the many new and improved things that baseball fans will see this year at GSU baseball games.

Along with the new complex, which houses lockerrooms and the baseball offices, J.I. Clements will also have a new concession stands for the fans.

## EAGLES

Continued from page 6

in play and produce some runs," Whitley said.

If you think the Eagles are intimidated because they're losing the season against Georgia Tech, you're sadly mistaken.

## SOFTBALL

Continued from page 6

The Lady Eagles will begin conference play on March 8 when Furman comes to GSU for a two-game series.

After Monday's contest with Florida A&M, the Lady Eagles will travel to Alabama to play

The Eagles were 3-1 against the Yellow Jackets last season and swept them at J.I. Clements field in front of over 1000 faithful.

"As long as our pitching does good, we play good defense, hit

the ball well and execute as a team, we can hang with any team," Whitley said.

The game against Georgia Tech is scheduled for a 1:30 p.m. start at J.I. Clements.

Samford on the 15th and Jacksonville State on the 16th before returning for a date with Charleston Southern on the 19th and College of Charleston on the 20th.

"I think we are moving to the

point where we expect to win," Kirkland said. "It is becoming a lot more fun this year. I enjoy working with these athletes. We have a good nucleus on this team and that makes it much more enjoyable."

## EAGLE ATHLETICS THIS WEEKEND

SATURDAY, FEBRUARY 8

EAGLE BASEBALL

VS.

GEORGIA TECH

J.I. CLEMENTS STADIUM

1:30 PM

SUNDAY, FEBRUARY 9

LADY EAGLE SOFTBALL

VS.

FLORIDA STATE

GSU SPORTS COMPLEX ON FAIR RD.

1:00 PM



SUNDAY, FEBRUARY 9

EAGLE BASEBALL

VS.

GEORGIA TECH

1:30 PM



STUDENTS GET IN FREE WITH VALIDATED I.D.

Look no further than these sports pages for the latest on Eagle athletics and up-to-date news around campus

**MATTRESS SALE**

NO ONE SELLS NAME BRANDS FOR LESS!

**MATTRESS DEPOT**

IMMEDIATE DELIVERY

HWY 80 E. Statesboro (Next to Lowe's) • (912) 489-3555

**Mr. Cash Pawn & Jewelry**

GSU STUDENTS

Bring in this ad for:

- half price pawns-
- up to 50% off all items-
- in the store

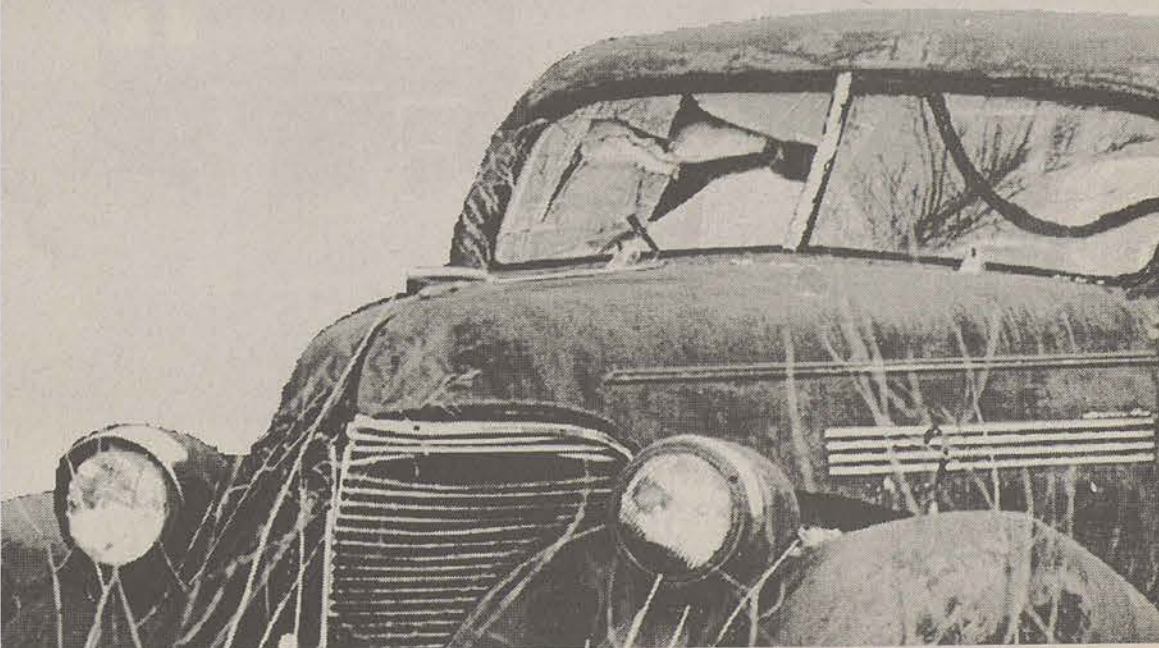
TVs, VCRs, Stereos, Microwaves, Refrigerators, Jewelry, and much more

406 Gair Road

(912)764-9388

Statesboro Junction-Next to Holiday Pizza

Thanks A Heap For Reading  
*The George-Anne*





Taking  
Care of  
Business

By  
Melanie Weinberg

Surprise, Surprise... Spider Monkey is playing Blind Willie's tonight. If you've never experienced a Spider Monkey show - check it out. It's a wild, sweaty, elbow-to-elbow, jump-up-and-down fiasco.

People Who Must, a band based in Augusta, will be appearing at the Woodin Nickel tonight as well. Often compared to the Gin Blossoms, Drivin' N Cryin and Better Than Ezra, People Who Must play an array of heavy guitar pop tunes.

Next week at Blind Willie's, the following bands will hit the stage: The Floyds will play on the 12th, Wallace Green will play on the 14th and a group called Stonegroove will play on the 15th.

So anyway, over the weekend I had some things stolen from me. Among the important items taken, my CD player and my wallet, some of my favorite CDs that I keep in my car were abducted as well.

First of all, let me clearly state that stealing is wrong.

Second of all, let me state even louder that messing with someone's music collection is even worse.

Lastly, let me state that whomever the culprit was that took my music could've gone to Timbuktu with the rest of my stuff because it's replaceable, but stealing my CDs was absolutely heartless.

Even though they are replaceable as well, it takes so long to create a music collection. When someone takes a part of what you have, it's like taking a part of your collected memory.

Musical opinions are a very personal aspect. Why we buy certain music and why a particular song appeals to us is all harbored in a feeling, an emotion, if you will.

Well, part of that emotion, that feeling you get when you hear good music was taken from me as well because I can't hear it when I want to now.

Although the crime committed against me wasn't a felony, a part of me was taken and I don't have the money to compensate for it.

The moral of the story is to watch out for your music. There are selfish thieves among us who would just love to see your name in the Police Beat.

Long live music

#### LIVE MUSIC REVIEW

### Was that Jim Morrison? The Backdoors gave tribute to the original Doors

By Adam Clark  
Staff Writer

was the original Morrison.

How would I describe the Backdoors' concert at Legends Friday night?

Awesome?...yeah.

All that?...pretty much. Kicked butt all over?...You betcha!

Last Friday night the Backdoors, a tribute band inspired by the Jim Morrison fronted Doors, showed up at Statesboro's very own Legends.

The band played to an overflowing crowd who wanted nothing but the best, and they got just that.

The band showed up a little late, about 11:30, but that didn't matter. Jim Hakim, the band's lead singer, and Morrison impostor spent some time walking through the crowd figuring out just what kind of group he was going to play for.

When he finally came on stage I actually thought for a moment that he was the real Jim Morrison.

Hakim was dressed like him and he walked around as if he



Mike Spilker

Jim Hakim, of The Backdoors, entertains the crowd as he and his band members reproduce the music of Jim Morrison and the Doors.

It wouldn't surprise me if Hakim thought he was Morrison in a previous life.

Hakim kept the crowd going

until about 1:30 a.m., all the while acting, singing and dancing around the stage just like Morrison did 25 years ago.

Throughout the concert, Hakim shocked the audience with old Morrison statements such as, "We're all killing time until time kills us" and "Live every minute like it was your last."

The rest of Hakim's band wasn't bad either. The guitarist, drummer and keyboardist all put forth their talent to imitate the Doors' music creating one of the best concerts I have ever seen down here in the 'Boro.

The Backdoors definitely do justice to a band and a man who changed the way we, as an entire generation, listen to music.

It doesn't matter if you are a Doors fan or not, the next time you get the chance to hear the Backdoors perform, watch them. You won't be disappointed.

#### MOVIE REVIEW

### Lack of hype doesn't help 'Gridlock'd' win over the audience

By Eric Bray  
Staff Writer

Is it just me, or was there an unusually minuscule amount of hype around the new movie "Gridlock'd"?

It didn't just drop out of the sky and plenty of people were eager to see it, but you would think the last film starring Tupac Shakur would be played up a little bit more than it was.

After all, his posthumous album "The Don Killuminati" was preceded by more fanfare than the average presidential election. And wasn't the death of Brandon Lee used as a selling point for "The Crow"?

Okay, so Tupac wasn't actually killed in the filming of "Gridlock'd," but he was also a lot more famous than Lee. So why the lack of hype?

Well, if you went to see the movie, your first clue would have been the number of viewers walking out grumbling comments like, "If Tupac hadn't died, his career would have anyway." Your second clue would have surfaced immediately after the opening credits when costar Thandie Newton's character overdoses on heroin and is rushed to the hospital.

Subsequently Shakur and other costar Tim Roth ("Pulp Fic-

tion," "Reservoir Dogs") make a New Year's resolution to swear off drugs and go through rehab. You can practically sense the entire audience roll its eyes and groan the second the phrase "I'm kickin'" escapes Shakur's mouth.

"Gridlock'd" will suffer the same disappointment "Dead Presidents" did because people will go in expecting a gangster flick but will watch a drama. "Gridlock'd" has a potentially sluggish plot because it is a film about two guys who try to overcome drug addiction and its consequences rather than an action flick about undercover cops.

However, like "Dead Presidents," what it lacks in action it makes up for in substance. There is a strong sense of character development and effective pacing and use of timing.

Furthermore, it is surprisingly upbeat. Focusing on the frustration over inadequacies in government servitude rather than addiction itself, "Gridlock'd" seldom gets bogged down in the gravity of the plot (which is not entirely commendable).

The character depth may be credited in part to the performances of both Shakur and Roth. While Tupac was no novice to the acting field ("Poetic Justice," "Juice"), it is surprising to see how far he has come.

On the other hand, Roth's attempt to emulate the "coolness" of the black lifestyle (which

doesn't exactly mesh with his British voice) is annoying and highly unnatural. This is mostly the fault of the screen writing, but after a while, Roth overcomes the friction allowing his part to blend with and accent the rest of the film.

Appearances are made by Elizabeth Pena ("Jacob's Ladder"), Howard Hessman ("Clue"), Bokeem Woodbine ("Jason's Lyric," "Dead Presidents"), and Vondie Curtis Hall ("Heaven's Prisoners"), who also directed the film.

The film's main flaw is its aimlessness. Amidst intrusive flashbacks and shared memories about the early years of shooting smack are a series of adventures which mostly serve to entertain until the film reaches its ultimate conclusion.

These antics merely mask a poignant theme underneath the surface. Just what it's poignant about I'm not quite sure.

The moral of this film is about as behooving as the beatnik music the band within the film (comprised of Shakur, Roth, and Newton) delivers. Essentially, it boils down to the old complaint that the system doesn't work.

We may not be certain who exactly the film is attacking, but the message is delivered well. "Gridlock'd" may not become a popular movie in the eyes of its viewers, but it aspires to be greater than their expectations.

## RED HOUSE



Hans Knoepfel

The local blues band Red House will share their soulful music with us this Saturday night at Blind Willie's.

#### ON CAMPUS BRIEFS

### GSU's Art Department unveils new photography exhibit today in Gallery 303

G-A Staff Reports

Today at noon in Gallery 303 of the Foy Fine Arts Building, GSU's Art Department will open up the exhibit of Virginia Beth Shields to the public.

The show will feature a cross media display of black and white photography and 3-D materials.

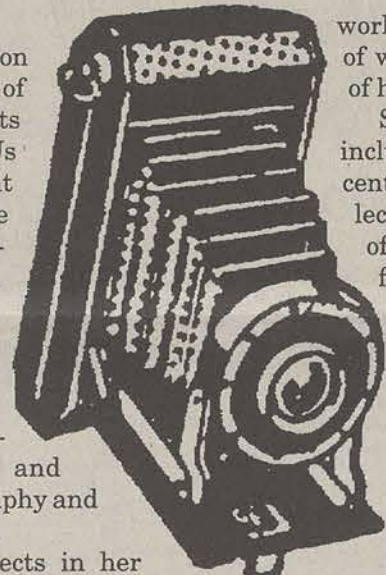
Shields' objects in her

work are women, most of whom are members of her own family.

Shields will also be including her most recent piece of work, a collection of the histories of five sharecropper families.

The exhibit will be open from 8 a.m. to 5 p.m. Monday through Friday and will continue until Feb. 28.

For more information, please call 681-5358.



For a CD review of the soundtrack to Shakespeare's "Romeo and Juliet" the movie, plus more A&E news briefs, turn to page 10.

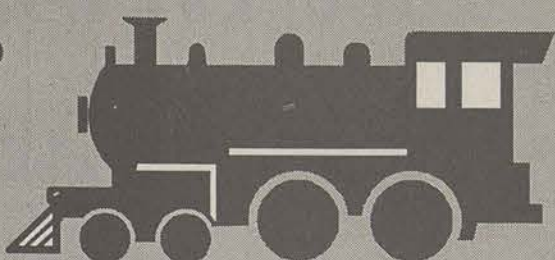


1996 Miss Georgia Southern University  
Jana Thompson  
Invites You to Climb...

Saturday, February 8  
7:00 PM

Russell Union Ballroom

"ALL  
ABOARD"



Mistress Of Ceremony  
Kara Martin Shelar

Tickets:  
GSU Students \$3.00  
General Public \$5.00  
Tickets Available at  
The GSU Ticket Office  
or at the door

49th Annual  
Miss Georgia Southern University  
Scholarship Pageant

COME TO WALKER PHARMACY  
YOUR ONE STOP  
VALENTINE SHOP!!



CHOOSE FROM A VARIETY OF  
VALENTINE GIFTS:

• CHOCOLATE BODY PAINT • LOVE CUFFS  
RUSSELL STOVER CHOCOLATES • SILVER JEWELRY  
• CRABTREE & EVELYN LUXURY BATH BASKETS

GREEK GIFTS ARE ALSO AVAILABLE

202 Northside Dr W.  
1 Block West of Dairy Queen  
(912) 764-6175



# Today's Quote

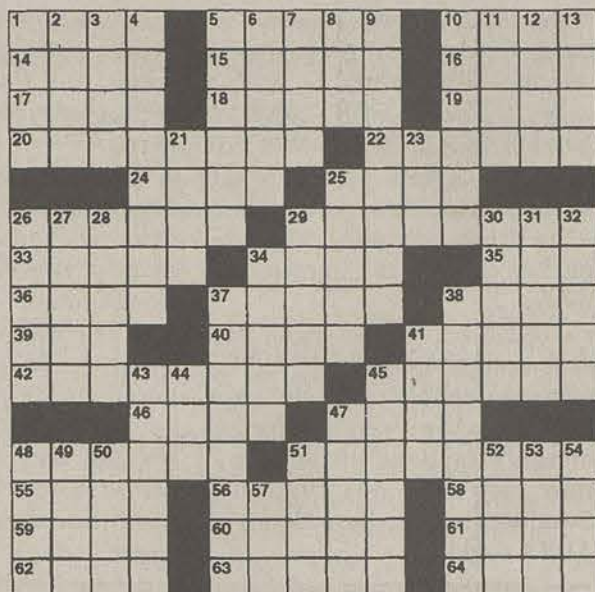
"We inherit nothing truly, but what our actions make us worthy of."

-- George Chapman

# CLASSIFIEDS, etc.

## Crossword

ACROSS  
1 Marsh bird  
5 Seraglio  
10 Resounded  
14 Baxter or Bancroft  
15 In flames  
16 Mr. Kazan  
17 Isinglass  
18 Cover girl  
19 Irritate  
20 Australian animal  
22 Expresses a belief  
24 Shoe part  
25 A cheese  
26 Seem  
29 Outward sign  
33 Dens  
34 Shoe or family end  
35 Coffee-filled vessel  
36 Friendly nation  
37 Drizzles  
38 Unruly child  
39 — Aviv  
40 Singer Ed  
41 Squander  
42 Perfumes  
45 Life work  
46 Orchestra instrument  
47 Concern  
48 Next day, poetically  
51 Act of alighting  
55 Field  
56 Decorate  
58 Polpourri  
59 A state: abbr.  
60 Common contraction  
61 Sharif  
62 Narrow opening  
63 Passover meal  
64 Biblical weed



© 1997 Tribune Media Services, Inc.  
All rights reserved.

DOWN  
1 Inclined way  
2 Indigo  
3 Indian of Peru  
4 Tough, as the skin  
5 Impede  
6 Run — of the law  
7 Clears  
8 Poet's "before"  
9 Tunes  
10 System of government  
11 Chester — Arthur  
12 Long river  
13 Liquid measures: abbr.  
21 Affirmative votes  
23 Cushion  
25 Makes more regular  
26 Equipped with wings  
27 Blancher  
28 Tablets  
29 Western Indians  
30 Hospital worker  
31 Item for packing  
32 Enroll  
34 Domesticated  
37 Where trotters trot  
38 Shoeless  
41 Hospital area

30 Wandering  
44 Recent pref.  
45 Food factory worker  
47 Slice  
48 Gym pads  
49 City on the Oka  
50 Nevada city  
51 Earsplitting  
52 — mater  
53 Ananias  
54 Traditional knowledge  
57 Deer

Sony CD player, 20 Wx 4, \$150, Fultron Amp 55 wx4, \$150. Call Vic at 681-4463. Also, Bauer roller blades, top of the line, size 10, only worn 3 times, \$150.

## 15•Musical

Pearl drum set, 5pc, red w/ Zildjian hit-hat, 16" Sabian crash and 20" Zildjian ride cymbals. Great cond. \$625 OBO. Call Ashby 681-2361.

## 17•Pets & Supplies

Full blooded Dalmations for sale! Ready in three weeks. \$150 OBO. For more info call Michelle at 871-7314.

PUPPIES for VALENTINE'S DAY! Beautiful AKC labradors. Excellent conformation and pedigree. Black males \$300, 489-8315.

## 19•Rentals & Real Estate

Roommate needed immediately to share 2 BR, 2 Ba mobile home \$200/mo plus 1/2 utilities (free water). 681-4060.

2 bedroom apt for sublease Spring and Summer Qtr. Hawthorne Ct. Call 871-4877 and ask for Brandy or Kellie.

3 br/2 bath, central h&r, appliances, w/d connections. Call after 6 p.m. 863-7509.

4 br/2 bath, H&A, w/d connections, new carpet. New refrig and range. Call 863-7509 after 6 p.m.

Apartment for rent. Georgia Ave. 1 bath, washer/dryer, dish washer, 2 bedroom. Need someone to take over lease ASAP!! Please call Lisa or Jim at 681-1065.

Available for rent beginning spring quarter: 2bdr/2bath in Park Place Villas. Extra clean, non smokers. \$500/month. Call 871-5237.

Available now!! 3 bedroom mobile home close to campus. Free water, available for one or two people. Call Chris for appointment, 871-3054 or 764-5621.

Available now: 1994 3 bedroom/2 bath mobile home in great condition. \$500/month including water, located close to GSU and Ogeechee Tech. Only serious inquiries, call or leave a message with Marcia or Liz. 871-3911 or 681-6432.

Desperate! \$200/month OBO. Big house near campus. Female willing to negotiate! If interested call 681-3909 and leave a message.

Female needed to sublease 2 bdr/2 bath at Eagles Court Condos. Spring and Summer Quarter remain on lease. Washer/Dryer included, reasonable rent for great apartment and roomie! Call Ami at 681-7375.

Houses and Apartments available in September. No pets, 24 hour repairs, rental rate same for four years. Call 764-6076.

I need someone to sublease a room in Bermuda Run for spring and summer quarter. Own bedroom and bath, free membership to Gold's Gym. Rent is \$235/month. Call Trevor at 871-6441.

M or F desperately needed to sub lease in Park Place. Own room and bath. W/D, keep your deposit!! Please call 681-8117.

Need female to sublease Spring and Summer Quarter. Park Place, own bedroom and bath, trash pick-up, washer and dryer. Call 871-7658, rent is \$262.50.

Need someone to sublease a beautiful one bedroom upstairs apartment in St. James Place spring and summer quarter. \$350/month with water. Call Holly at 871-4474 and leave a message.

One or two roommates needed ASAP at Campus Courtyard. \$225/month plus 1/4 of utilities. Call 681-2583 for more info.

Sublease needed of a two bedroom apartment close to campus. First month, \$300, the rest until August \$340. Call Kelly or Yenny at 489-8299.

SWF needed to sublease beginning April 1 at Bermuda Run. Own room, bath. \$285/1/2 of utilities. Call Stacey at 681-8401.

Terrific Summer Opportunity!! Four responsible non-smokers needed to sub lease 4bdr/2bath fully furnished apartment Summer Quarter at Campus Courtyard. Call Amy or Beth at 681-4634.

Vacant apartment, 3 bedroom/2bath townhouse in Park Place. Available Spring and Summer. Rent is \$233.33/person/OBO. Call Jenny or Susan at 871-3177.

Wanted: professor or graduate student to rent 2 bedrooms of a 3 bedroom pond house on a private lake. 5 miles north of town, appliances furnished, some furniture. \$350/plus utilities. References and deposit required. Call 764-9780.

## 20•Roommates

Desperately seeking one or two WF roommates in a new 3 bedroom mobile home. \$200/month plus a share of the utilities. Cable and phone in your room. Call Christy at 681-8887 ASAP!!

Duplex apartment for rent. Close to Statesboro High School. 2 br/1 1/2 bath, outside storage, no pets. \$450/month. Call 489-1066.

Female roommate needed ASAP in Plantation Villas. Own bedroom. W/D, new carpet, half furnished. \$225/month plus 1/2 of utilities. Call 871-5156 or 681-4204.

Female roommate needed immediately to take over lease. Campus Courtyard, non-smoker, own bedroom/bath. Furnished, \$300/month plus 1/2 of utilities. \$300 deposit required. Call Erica at 681-3127.

Female roommate needed in Campus Courtyard to take over lease. Non-smoker, own room, bath furnished. \$300/month plus 1/2 of utilities. \$300 deposit by March 1997. Call Erica at 681-3127.

Female roommate needed to take over lease in Towne Club. Own bedroom, \$230/month plus 1/4 of utilities. Free membership to South Georgia Fitness. Call Amy at 681-8605.

Female roommate needed. \$225/month plus 1/2 of utilities. Call 681-3820 for more info.

Male roommate needed immediately. Eagle Creek. Own bedroom and bath, furnished living room. \$250/month plus 1/4 of utilities. Spring and Summer Quarter. Call Kim or Brian at 681-4257.

Roommate needed ASAP to share 2 bdr/1bath house. \$200/month plus 1/3 of utilities. Call 871-3199 or 489-5018.

Roommate needed ASAP. \$200/month plus 1/2 of utilities. Free water, washer/dryer equipped. Will have own room and bath. Nice trailer located near campus. Please call Bethany at 681-1583.

Roommate needed to sublease for spring and summer quarter. Upstairs bedroom in four bedroom townhouse in Campus Courtyard. Please call Leah at 871-7203.

Roommate needed. Private bedroom/bathroom, spacious living area, duplex apartment. Need a female to take over lease ASAP or by Spring Quarter. Call Dena at 764-7490.

Someone needed to move in at Willow Bend ASAP. Great roommates, call Peter at 681-7486, I can help pay for rent.

Sublease for spring quarter. One bedroom, \$375/month. Electricity, water included. Right across from GSU. Very nice neighborhood. Call 489-5759.

SWF roommate needed ASAP to share brand new 2 br mobile home. Private bath. Only five miles from campus. Please call Melissa at 852-5033 after 5:30 pm.

Two females need a roommate! 3 bedroom townhouse, private bed and bath. Free deposit, water, Gold's Gym membership. Cheap, 2 minutes from campus. Spring and Summer Qtr. Lease. 681-7128.

## 21•Services

For a free skin consultation or to try samples of the new skin care line from Avon or to receive a catalog call Melissa Disney at 587-2042.

Have your wedding dress custom made by DEE-ZIGNS. Also Bride's Maids, Prom, Pageant, Evening Wear and Alterations. Call Dee Washington at (912) 764-7200.

I sell Mary Kay! If you need a facial, makeup tricks or need a new style, call April at 489-6517 for your makeup.

Long distance rates!! 11.9 cents per minute. 24 hours a day on or off campus. E mail your name and phone number to gsi 01145.

Need something typed and spell checked on the computer? Must be legible and in order. \$1.00/per double spaced page. Call or leave message, Renee 871-3918.

Personalized cards, signs, banners, and letterhead made on Print Shop. Cards/Signs, \$0.50/per page. Banners/Letterhead, \$0.25/per page. Call or leave message - Renee 871-3918.

Typing...Lesson plans, units, term papers, resume, etc. GSU secretary. Overnight guaranteed. Call Brenda at 489-3364.

## 22•Sports & Stuff

Hunting Bow for sale. Highcountry \$150 plus all of my accessories. Call Seth and leave a message. 871-7454.

Schwinn High plains mountain bike for sale. Great components, good condition. Only \$175, call 681-4102.

Trek 800 for sale. Two months old, great condition. \$200. Call 688-2940.

Two pairs of football shoes. Brand new, leather, size 12. \$18/each or \$30 for both. Call 871-7293 in the evenings.

## 27•Wanted

ATHLETES Cash in! Sports collector pays up to \$450 for used H.S. Varsity team letter jackets, 1990 or newer. Any school, any condition. 770-517-8406 or tom.n@mci2000.com

## 28•Weekends & Travel

\$29 SPRING BREAK PACKAGE Boardwalk Beach Resort - Panama City's Spring Break Headquarters, Only \$29 Per Person! Restrictions Apply. 1-800-224-4853.

Panama City, FL!! Best hotels and condos. From \$139. MTV! Campus connections. 1-888-750-45UN.

Sun & Ski Travel & Tours -- Cancun - Jamaica - Bahamas, \$299; Colorado Ski Trip, \$599; Cruises from \$330. Call 1-888-SUN-N-SKI

**The George Anne Needs You!**

To be a Writer or Photographer

If interested, stop by RM 223 in the Williams Center to pick up application

## 01•Announcements

AD PLACEMENT (For Commercial Enterprises) -- Classified ads in the George-Anne cost 20¢ per word with a \$4 minimum per insertion. Please add \$1 per ad for mailing and handling for tear-sheet service. The customer is responsible for proofing the ad immediately upon publication. Pre-payment with your ad is appreciated. Call 681-5418 for more information. The George-Anne reserves the right to refuse any advertisement.

AD PLACEMENT (For Students, Faculty & Staff) -- The George-Anne publishes ads for students, faculty and staff which are non-commercial in nature. Submit your ads, 25 words or less, either in person at Room 223 Williams Center during normal business hours (9am to 4pm), or via mail at Landrum Box 8001. Please do not attempt to place free ads via telephone -- at these prices we don't take dictation.

All free student and faculty ads to be run in the George-Anne must have a Name and Landrum Box number. If it does not have both, it will not be printed.

All gentlemen interested in forming a NEW GREEK SOCIAL FRATERNITY should call 871-5868. We are looking for OUTGOING, CONFIDENT men of INTEGRITY. Ask for Mark.

ATTENTION: The George-Anne screens all classified ads prior to publication. The newspaper strives to accept ads for legitimate products & services only. Students are urged to exercise caution when replying to ads, particularly those which ask for money or a credit card number in advance of delivery of products or services. Students are also urged to report to the newspaper (at 681-5418) any suspicious offers they might see in the classifieds. Remember, if an offer seems too good to be true, it probably is.

Biology and chemistry tutor: Scott Beck. 871-7591.

If you wish to purchase pictures that have been published in the George-Anne, please contact Mike Spilker, chief photographer at 681-5246 or stop by the George Anne office in room 223 of the Williams Center.

Psychology Coalition will meet alternate Thursdays beginning Feb. 30th at 5:15 pm in the Conference Room, MPP 2041. Anyone interested in psychology is welcome.

Second Annual Black and White Masquerade Ball. Triangle Club in conjunction with Black Awareness Month. Friday, Feb. 14th, 8 p.m. In the Williams Center Ballroom. Call 489-2638 or 871-1723.

The College Republicans will be having a general meeting on Thursday, Feb. 6 at 6:30 pm in Union room 2042.

## 03•Autos for Sale

1981 Ford F150 pickup for sale. 115,000 miles, in good working condition. White, long bed, 300 6-cylinder, 3 speed. \$1350/OBO, for more info call Daniel at 489-6338.

91 Mustang LX, extra clean, reliable, auto transmission, AC, cruise, PWand PL. AM/FM cassette and more! Looks new, graduating, going overseas..must sell! \$4600/OBO. Call 681-6064. SALE SALE!

Volkswagen Scirocco, 1986. Only 53,000 miles. Black, 5 speed, AC, sun roof. One owner-garage kept, beautiful condition. \$4700. 1-770-924-9069.

## 04•Auto Parts, Repair

24kt gold knock-offs for a set of wire "roadster" rims. Brand new, universal six lug. A must have for anyone with roadster wire rims. \$200 for the set, 489-5983 ask for Brandon.

## 05•Business Opportunities

FREE T-SHIRT + \$1000. Credit card fundraisers for fraternities, sororities, & groups. Any campus organization can raise up to \$1000 by earning a whopping \$5.00/ VISA application. Call 1-800-932-0528 ext 65. Qualified callers receive FREE T-SHIRT.

## 07•Education

It's no longer necessary to borrow money for college. We can help you obtain funding. Thousands of awards available to all students. Immediate qualification. 1 800-651-3393

## 09•Furniture & Appliances

Bunk-beds w/mattresses. Solid wood, great condition. \$275/OBO. Call Trish at 681-6185 or 871-4680.

Emmerson 4 head VCR with remote, \$80. Call 871-5237.

For sale: two happening vintage 70's chairs. Purple upholstery with beige corduroy cushions. Excellent condition, \$40/each. Call Mike at 681-9778.

Small futon for sale. Great for dorm room or apartment. \$50. Call Seth and leave a message. 871-5454.

Washer and Dryer for sale. Practically new, asking \$225. Please call 871-3199, for more info.

## 11•Help Wanted

Earn money quickly for VALENTINE'S DAY. Join Avon and give your special someone something special. Call Melissa Disney at 587-2042 or leave a message.

Earn quick Valentine's Day cash. Join Avon and give your special someone something special. Call Melissa Disney at 587-2042 for information, leave a message.

Earn thousands stuffing envelopes. Rush \$1 and a SASE to PO Box 19045 Statesboro, GA 30460.

Part time office assistant needed for local construction company. EOE an drug-free workplace. General office knowledge and professional attitude required. Please call 489-8948.

The George-Anne is accepting applications from experienced photographers until 6:00 p.m. On Thursday, Feb. 6. Apply at the Chief Photographers Desk in room 223 of the Williams Center.

## 12•Lost & Found

Reward offered for the return of a Guess watch lost between Russell Union and Cone Hall. If found, please contact Cherell at 688-3324.

## 13•Miscellaneous for Sale

486sx, 25 MHZ computer for sale. SVGA screen, CD-ROM, 14.4 modem, sound card, printer, and games. \$450 OBO. Call Ron at 688-2089.

Computer for sale. 486 8 mag, WIN 95 software, \$800 or best offer. Good for doing papers and projects. Call Seth at 871-7454, leave a message.

For sale: Baseball cards - Kirby Puckett, Dwight Gooden, Darryl Strawberry, Felix Jose, Andy Benes, Ken Hill, Jimmy Key, Alan Trammell, Eric Davis. Call Renee at 871-3918.

Isobaric Box, brand new, fits two ten inch speakers. Great box, perfect for deep, strong bass. \$150/OBO. Call Brandon at 489-5983.

## ATTENTION LIFEGUARDS!

### BE A USA GUARD!

USA Pools is looking for highly motivated persons to be lifeguards! Certification is available. Atlanta's hottest pool management company, excellent pay, exciting awards programs. If you like to work outdoors, call USA Pools at (770) 248-1USA.

## SPRING BREAK - PANAMA CITY BEACH, FLORIDA

1200 FEET OF PARTY BEACH!

TWO HOTELS & A BEACHFRONT NIGHTCLUB ON ONE AWESOME BEACH!

BOOK DIRECT & SAVE!

STAY HERE AND PARTY HERE. TWO HOTELS WITH A PARTY NIGHTCLUB. RIGHT IN THE MIDDLE! FREE KEG PARTY ON ARRIVAL. BEER PARTIES NIGHTLY. LIVE BANDS DAY & NIGHT. HOT ROCK & ROLL AND REGGAE. SEX ON THE BEACH & BIKINI CONTESTS. TWO HOT DANCEROOMS!! KILLER DJS. HOME OF THE WORLD FAMOUS BEACH BASH.

1-800-874-7101

## SEASONS APARTMENTS

A great place to live year round

NEW APARTMENTS AVAILABLE NOW!



2 Bed / 2 Bath  
Washer/Dryer  
Ceiling Fans  
Fully Equipped Kitchen  
Lake With Beach  
Clubhouse  
Picnic & Grill Area  
Swimming Pool  
Volleyball Court / Basketball Court

Come check out the newest apartment community in town!

For More Information Call:

Wise Choice Realty

Norma Woods 681-2440 or 681-WISE

Turn on Robin Hood Trail across from

Paulson Stadium and follow the signs

to our new on-site rental office



CD REVIEW

# The soundtrack to 'Romeo and Juliet' proves to be just as spellbinding as the movie

By Mark Runyon  
Staff Writer

From the ravishing Claire Danes perched atop a balcony purring a sweet "Goodnight, goodnight" to the brutal beating Leonardo DiCaprio takes at the hands of his unknowing brother-in-law Tybalt (played by a striking John Leguizamo), the latest film adaptation of "Romeo and Juliet" defines a classic tale, while at the same time is touched with a taste of modern-day savvy.

It stands out among last year's lack-luster film delivery as a virtual must-see that tip-toes the borderline between mainstream and obscurity with relative objective ease.

The movie's soundtrack follows in the steps of those same intentions. It is easily the most impressive compilation of bands since the eclectic British display in the movie "Trainspotting," which was released earlier this year.

This album features the hottest new alternative acts like the Cardigans, Garbage, Everclear and Gavin Friday.

As the movie used several unique takes on visual abstraction and allusion, this soundtrack taps a similar vein. From the dark and beautiful to the addicting pop and rip rockin' music, this album has got it all.

We open up the disc to the dark rhythmic dance beat of Garbage's "#1 Crush." The piece, an outtake from the original recording session from their self-titled release, is one of haunting complexity.

Shirley Manson's fluctuating voice just seduces the hell out of you. By the song's end, the obsessor becomes the one being obsessed.

On a similar dark tone, midway through the album we run across Radiohead's "Talk Show Host." A B-side drawn from the import version of "My Iron Lung" CD5, this piece has a lazy hesitance in its tempo that is quite

lifting. It is strong tracks like these that show us how many more dimensions this band has

Hearts Run Free," are a bit strange in their approach and seem out of place, yet still work.

While others like the piece "Whatever (I Had a Dream)" from the pathetic ensemble, the Butthole Surfers, should really be avoided at all costs.

Two numbers here relentlessly rock the cashbah. One Inch Punch's "Pretty Piece of Flesh" tends to make you recall an image of 311 with a wrench of intensity instead of reggae.

Techno-esque elements laced within these heavy thumping beats make you wonder where these guys have been hiding to avoid being devoured by the capitalist, mainstream beast.

Everclear takes off the kid gloves to kick their music into the next gear with "Local God." Careening guitars superimposed in fluttering drum beats accentuate this piece and add depth to

a group that, up to this point, has preferred the shallow end of the pool.

The album's quieter moments, though, are what really stand out here. Des'ree "Kissing You (Love Theme From Romeo and Juliet)" is a masterfully poignant and beautiful song.

In "Little Star," Stina Nordenstam drifts in on her understated vocals over a softly strumming acoustic guitar. Then a breathtaking wave of saxophones come in to complete the piece.

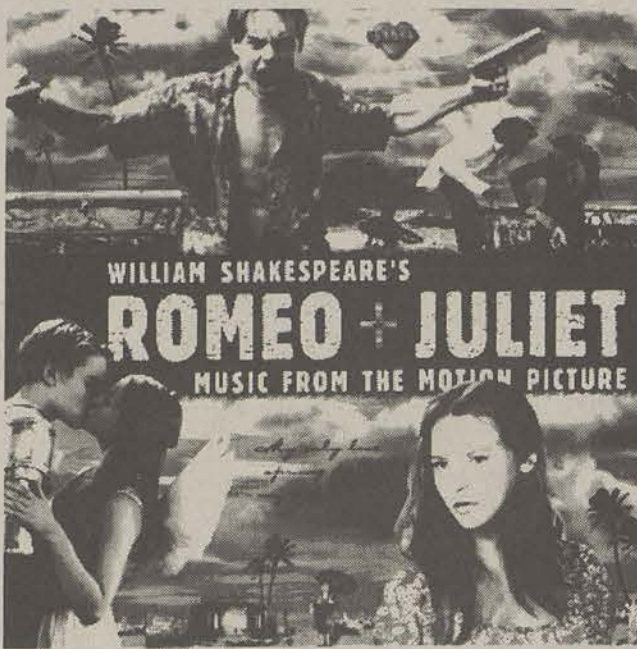
Only the Cardigans could top such exquisite elegance. Contributing the stellar first single "Love Fool" from the recently released album "First Band on the Moon," they rock in a way that only Swedes raised on the anthems of ABBA could.

As the woman who doesn't know when to leave behind a bad relationship, Nina Persson's girlish vocals plead with quiet urgency: "Love me love me\ say that you love me\ leave me leave me\ just say that you need me." Persson is simply too lovely for words, and this track is too addicting to let go with only a single listen.

Overall, this is a fabulous soundtrack that accentuates the film well, while it is also able to stand on its own as a great collection of songs.

If you haven't seen the movie, count the days in manic anticipation for its video release.

If you haven't heard the music, get thee to your nearest record store and pick up the hottest little commodity since Cliff's Notes.



captured since its pre-madonna "Creep" days.

The rock pieces included here are jarring rivets that seemingly come out of nowhere to punch holes in this tranquil set.

Some, like the disco extravaganza of Kim Mazelle's "Young

ENTERTAINMENT BRIEFS

## Boy George beaten up by bouncers at the club where he works as a disc jockey

The Associated Press

LONDON — Boy George said Sunday he was beaten up by bouncers at the night club where he works as a disc jockey.

The former Culture Club pop star told the British news agency Press Association he will never again work for the Ministry of Sound, one of London's leading dance venues.

Scotland Yard said it was investigating a reported assault at the club.

"The victim suffered minor injuries and didn't need hospital treatment," said a Scotland Yard spokesman, speaking anonymously.

Boy George said he tried to use his VIP guest pass to enter the Ministry of Sound with a friend, but two doorman refused to allow his friend inside and a fight ensued.

"They grabbed me by the throat and dragged me out into the street," he told Press Association.

"They kicked me and punched me and broke my fingernails.

They actually beat me up under the poster advertising an album I have done for them."

"As far as we're concerned, a group of people arrived at the club last night and refused to go through the normal entry procedure for which the Ministry of

to go through the normal entry procedure.

"A scuffle ensued after which the party left the club," he said in a statement.

"We have never had an incident of this sort in the 5 1/2 years we have been trading."

Pete Tong.

The album, Annual 2, sold over 450,000 copies.

Rodol said he would not comment on Boy George's statement that he will never again work for the Ministry of Sound until he speaks to the disc jockey.

"THEY KICKED ME AND PUNCHED ME AND BROKE MY FINGERNAILS. THEY ACTUALLY BEAT ME UP UNDER THE POSTER ADVERTISING AN ALBUM I HAVE DONE FOR THEM."

-- BOY GEORGE,  
MUSICIAN

Sound has become legendary.

Mark Rodol, the club's managing director, said Boy George was apparently in a party that arrived at the club and refused

Boy George, whose real name is George O'Dowd, recently produced one of the biggest selling dance albums for the Ministry of Sound with BBC radio disc jockey

EAGLE CINEMA  
AT THE RUSSELL UNION

\$1.00  
Admission  
Free  
Giveaways!!

For mor info  
call 681-0399

Thursday, Feb. 6  
Shows Start at 7 P.M.



Check-out the George-Anne

On-line @

<http://www.stp.gasou.edu>

THE WOODIN NIKEL

Thursday, Feb 6

Band: People Who Must

\$1 Draft / \$3 Pitcher

All You Can Eat Wings

\$5<sup>99</sup>

Friday, Feb 7

Band: The Drunks

\$1 Draft / \$1 Pizza Slice

25¢ Wings

Saturday, Feb 8

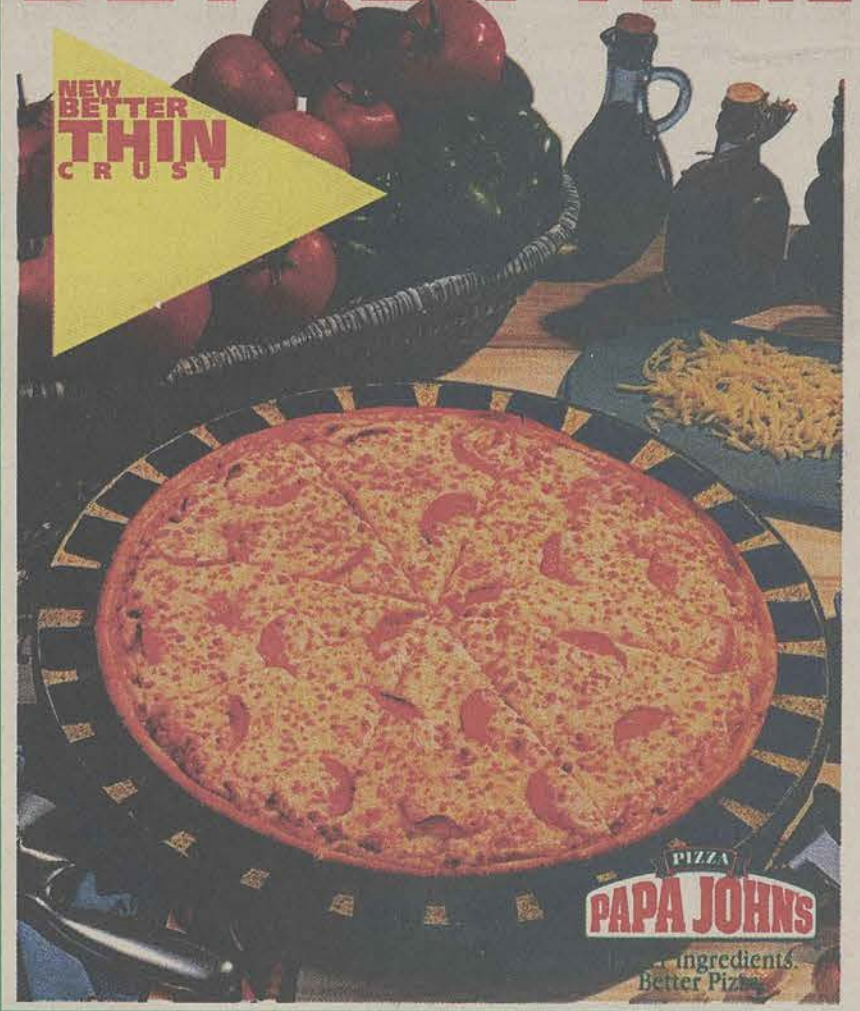
Band: Jude

\$1 Draft / \$1 Pizza Slice

25¢ Wings

For More Info Call: 871- 3900

INTRODUCING PAPA JOHN'S  
**BETTER THIN**



FREE DELIVERY

Fast • Hot • Perfect

Pizza

FREE DELIVERY & CARRY OUT  
620 FAIR ROAD

871-PAPA  
(7 2 7 2)

FREE DELIVERY  
One Large  
One Topping  
**\$7<sup>99</sup>**  
+ Tax  
Additional Toppings extra.  
Not valid with any other coupon.  
Valid only at participating stores.  
Offer expires in 30 days

FREE DELIVERY  
Two Large  
One Topping  
**\$12<sup>99</sup>**  
+ Tax  
Additional Toppings extra.  
Not valid with any other coupon.  
Valid only at participating stores.  
Offer expires in 30 days

FREE DELIVERY  
One Small; Two Toppings  
And Two Cans of  
Coca Cola® Classic  
**\$7<sup>50</sup>**  
+ Tax  
Additional Toppings extra.  
Not valid with any other coupon.  
Valid only at participating stores.  
Offer expires in 30 days

Comments  
or  
suggestions?  
E-Mail us  
at

[stud\\_pub@gsaix2.cc.gasou.edu](mailto:stud_pub@gsaix2.cc.gasou.edu)