

Georgia Southern University

Digital Commons@Georgia Southern

---

The George-Anne

Student Media

---

10-31-1996

## The George-Anne

Georgia Southern University

Follow this and additional works at: <https://digitalcommons.georgiasouthern.edu/george-anne>

---

### Recommended Citation

Georgia Southern University, "The George-Anne" (1996). *The George-Anne*. 1444.  
<https://digitalcommons.georgiasouthern.edu/george-anne/1444>

This newspaper is brought to you for free and open access by the Student Media at Digital Commons@Georgia Southern. It has been accepted for inclusion in The George-Anne by an authorized administrator of Digital Commons@Georgia Southern. For more information, please contact [digitalcommons@georgiasouthern.edu](mailto:digitalcommons@georgiasouthern.edu).



## SPOOK EDITION

Thursday, October 31, 1996  
Vol. 69, No. 32

What's going on in Statesboro?



Turn to the A&E section, pages 10 and 12 to find out what's going on in the 'Boro.

## BRIEFLY...

### UGA will preserve old dorms as historical sites

The Associated Press

ATHENS, Ga.— Old dorms at the University of Georgia used to be just that old.

Now, they are considered treasures and campus planners are trying to preserve them to hold onto the school's historical roots.

Buildings that sit on the North Campus like the Lustrat House and the Bishop House, which once housed faculty, are being treated like museum pieces, said David Lunde, director of campus planning at the university.

"We do have a very serious ethic to maintain historic buildings," Lunde said, sitting in a building that dates back to 1821.

Evidence of that is a broad historic preservation policy that university officials passed last year, stating that "universities have a responsibility to preserve their heritage for posterity."

The school once considered tearing down Denmark Hall and authorized the razing of old faculty houses on the North Campus quadrangle, all in the name of progress.

And at one time, putting a parking garage where the historic Jackson Street cemetery sits was considered.

The committee formed more than a decade ago out of worry that the new law school addition would block the view to Brooks Hall.

The group won a compromise in the battle that shifted the building's position.

Now, they're working on an overall historic preservation plan for the campus, "instead of having a fight here, a fight there and a fight everywhere," said Mark Reinberger, an environmental design professor and preservation committee member.

## WORD OF THE DAY

sophophobia (sofoFObeu) n. fear or dislike of learning.

Source: 'Weird Words

## 'BORO WEATHER

### Today

Mostly cloudy with a chance of thunderstorms with a high the low 80s.

### Friday

Mostly cloudy with a chance of thunderstorms with a high in the low 80s.



## INDEX

Announcements	2
Classifieds	13
Crossword	13
A&E	10
Opinions	4
Police Beat	2
Sports	6

It is a desire of The George-Anne to print the news of Georgia Southern University as accurately as possible. If you feel that something covered is in error, contact a member of the editorial staff at 681-5246 as soon as possible. Thank you.

FOR ADVERTISING INFO.: 681-5418  
STORY OR PHOTO IDEA: 681-5246

FAX NUMBERS: 871-1357 and 681-0863

LANDRUM BOX: 8001

E-MAIL TO: stud\_pub@gsa2.cc.GaSoU.EDU

The George-Anne

Liked By Many, Cussed By Some ...

Read By Them All



# The George-Anne

Georgia Southern University's Official Student Newspaper

Statesboro, Georgia 30460

Founded 1927

## GSU suspends 18 players for curfew violations

By Mike Davis  
Sports Editor

Eighteen GSU football players have been suspended for at least this weekend's homecoming game against East Tennessee State because the players failed to meet their 10:30 p.m. curfew last Friday before the Saturday game against The Citadel.

Four of the players were suspended indefinitely, including Cossie Harvey, junior cornerback, Brian Lovett, freshman snapper, Kinte Morgan, freshman tackle, and Jevon Sullivan, sophomore slotback.

The other 14 players were suspended for the homecoming game.

"We regret situations like this, but they require extreme action," Ellwood said.

"Obviously, for the benefit and future goals of the team and program, this was necessary to deal with."

Allegations have arisen claiming that the players missed their curfew because they were being entertained by a stripper.

However, Ellwood maintained that the players were suspended because they violated their curfew.

"I had to make a decision and it

didn't take me that long when I found out the facts," he said. "The action I took was necessary because this is a team. If I would have known this before the game last weekend against The Citadel, then it would have been done before the game started. But I didn't find out and get a hint until Saturday night after the game."

Ellwood said that the players are only asked to be in their rooms 11 nights out of the year.

"That's not too much to ask," he said.

Ellwood's decision to suspend the 18 players was a decision supported by both the athletic department and the whole GSU coaching staff.

Sam Baker, director of athletics, said that he supports Ellwood's decision.

"It's certainly disappointing, but no player is ever larger than the program," Baker said. "We owe that to our fans, our alumni and the rest of the football program."

Ellwood said the decision was made by the entire staff.

"I let all the coaches get their two-cents-worth in before making the final call," he said.

Ellwood said that they still have



Mike Spilker

Due to the recent violations, the GSU football team will be without key players for the next game.

great football players out there.

"This is just something that happened and I had to take care of that," Ellwood said.

"Now obviously, somebody is going to have to step up and make the play. That's all there is to it."



### Suspended players

#### Starters:

defensive back Cossie Harvey  
slotback Corey Joyner  
center Robert Moore  
defensive end Derrick Reeves  
linebacker Edward Thomas  
offensive guard Mark Williams

#### Special teams starters:

punter Kenny Worob  
placekicker Ronnie Stalmaker

#### Reserves:

center Brian Lovett  
defensive tackle Kinte Morgan  
slotback Jevon Sullivan  
slotback James Banks  
slotback Willie Ellington  
linebacker Basall Mack  
strong safety Christopher Malone  
fullback Carl Small  
punter Brandon Smith  
linebacker Chad Nighbert

## Homecoming parade will close several roads around campus

By Gin Starling  
Staff Writer

The Homecoming Parade, one of the highlights of this year's Homecoming festivities, will close several roads around campus Friday.

The parade will begin at Paulson Stadium at 3 p.m. and travel down Chandler Road. At the end of Chandler Road, the caravan will make a left onto Fair Road and then proceed to turn onto Herty Drive. The parade will then end at Sweetheart Circle around 3:45.

All of Chandler Road will be closed from 2 p.m. to 5 p.m. on Friday.

Students who live in apartments on Chandler Road will not be allowed to access this road for any reason.

Greek Row will also be closed to traffic.

Herty Drive will not be open for use from 2:30 p.m. until the end of the parade.

Faculty who park in the lot that exits through Herty Drive will not be able to leave until the parade is concluded.

Students who have parked in the lots near the Forest Drive Building will be able to leave campus through Akins Boulevard.

The parade has around 80 entries this year including the Georgia Southern Marching Band and bands from Fort Gordon and Fort Stewart.

"I hope students will come out and support the parade," Theresa Beebe, activities coordinator, said.

## Students Spicin' it up at Southern

By Emily Rollison  
Staff Writer

Monday began the week-long "Spicin' it up at Southern" Homecoming celebration, which will include activities

such as Blue and Gold Spirit Day, a pep rally and a banner contest to lead up to Saturday's football game against East Tennessee State University.

This weekend's festivities start on Friday with Blue and Gold Spirit Day. Students are encouraged to show their school spirit by wearing the school's colors.

Classes end at noon so ev-

eryone can participate in the Homecoming Parade at 3 p.m. This year's parade starts at Paulson Stadium and ends at Sweetheart Circle.

The parade, led by Grand

**"THERE HAS BEEN A TREMENDOUS TURN OUT THIS YEAR BY THE STUDENT GROUPS."**

**—THERESA BEEBE, ACTIVITIES COORDINATOR**

Marshall Jon Godbee, will feature crazy cars, banner contests, clowns and floats.

The pep rally and awards presentation begins at 7 p.m. at Paulson Stadium and will be followed by the bonfire. There have been more than 40 groups competing this year for

awards in five separate categories: student organization (non-Greek), sorority, fraternity, residence hall, and complex.

"There has been a tremendous turnout this year by the student groups," said Theresa Beebe, activities coordinator.

Students receive points based on participation and placing in the various event categories such as the banner contest, spirit games and the yelling contest.

As a long standing GSU tradition, the yelling contest involves student groups competing to see who can cheer the loudest to show their spirit.

Then, the elusive All Spirit Trophy is awarded to the one group with the largest number of points from all the Homecoming events.

"Any student group can par-

Please see ACTIVITIES, page 14

## Political science department hosts forum for local candidates

By Kevin Bonsor  
Assistant News Editor

Candidates running for local offices convened at Statesboro City Hall Tuesday night in a political forum organized by the GSU political science department.

The purpose of the forum was to allow the candidates a chance to debate issues one last time before the upcoming election on Nov. 5.

Two candidates, who are running unopposed, began the forum.

Gary Michael is running unopposed in the race for solicitor for Bulloch County. The county solicitor is the prosecutor of misdemeanor and traffic offenses in the State Court in Bulloch County.

"This is one of the fastest growing areas of our justice system and I'm looking forward to the challenge," Michael said.

William Woodrum, who is presently one of three Superior Court judges covering Bulloch, Jenkins, Effingham and Screven counties, is running for re-election unopposed.

Woodrum has served as a Superior Court judge since December of last year and said he looks forward to serving for the next four years.

There are five contested races including House Assembly District 145, Bulloch County Sheriff, County Chairperson and County Commissioner seats 2-A and 2-C.

Running for the House seat is Republican Jim Martin and



Hans Knoepfel

Local candidates chatted following the forum Tuesday night at Statesboro City Hall.

his opponent, Democrat Pete Mills. Among other topics discussed by the candidates were term limits and school vouchers.

When asked how he would vote on the school vouchers issue Martin, who advocates education reform, said that he should experiment with school vouchers.

"I'm not sure that vouchers is the answer to our problems," Martin said but added he would vote for them on an experimental basis.

Mills said he also would support experimental use of vouchers, but he doubts it would work in Georgia.

"I think it would hurt pri-

vate and public education," Mills said.

The candidates also addressed the topic of term limits.

Mills said he believed term limits take care of themselves and failed to directly say if he supported or opposed term limits.

"If the people of this district support term limits, I would support it," Mills said.

Martin said that he would like to see the two-year terms changed to four-year terms and the terms limited to three or four.

"I would be supportive of that and cast my vote in that direction," Martin said.

Arnold Ray Akins (R) and Larry Brown (D) Bulloch County Sheriff.

Both men agreed that Bulloch County's two biggest problems were juvenile crime and drugs but differed in their solutions.

"The problem we've got with juveniles is that parents have to learn that they have a responsibility," Akins said.

Brown also said parents were important to solving the juvenile problem, but community leaders should also help.

Akins said that he favored having drug treatment programs, which are not currently available through the state.

When asked if there should

be a full-time drug investigator at the department, Akins said there are three agents assigned to the drug task force and that the funds for a full-time investigator aren't available.

"You've got to do what you can do with what you've got," Akins said.

Brown said he would like to start an investigative drug unit within the department to work along with the drug task force. Brown also favors the purchase of a dog.

"Without a dog, it is hard to find the drugs," Brown said.

Running for County Commission chair are Louis Woodrum (R) and Jimmy Hayes (D). After the forum the two discussed their positions on a referendum for liquor by the drink.

"A lot of background work has to be done to get a sensible vote," Woodrum said. "This is a problem that will have to be dealt with."

Hayes believes that the referendum should be voted on because many of the people he has talked to wanted to vote regardless whether they would vote in favor of it or not.

"For that reason, I think that it should be put to a vote," Hayes said.

In the County Commission District 2-A race, the candidates are Wayne Groover (D) and Holmes Ramsey (R). They also discussed the issue of the liquor referendum.

Please see FORUM, page 14



## POLICE BEAT

## GSU Division of Public Safety

October 28, 1996

•Anthony Lamont Austin, 21, of Stadium Walk, was charged with simple battery.

•Gail Stills reported the rear window of GSU vehicle #436 was broken into the Lakeside Café parking lot.

•Deborah Deal reported the rear window of GSU vehicle #376 was broke into in the Southern Center parking lot.

•David Shields reported a Panasonic VCR was missing from Hanner Fieldhouse.

•Shannon Bailey reported her wallet was taken from her book bag at the library.

•Officer Jason Long found three vehicles broken into in the Oxford Hall parking lot. The owners of the vehicles reported stereo equipment, book bags and a leather jacket missing.

Statesboro Police Department

October 28, 1996

•Beth Dawkins, of Johnson's Trailer Park, reported criminal trespass.

October 27, 1996

•Jennifer Shoemaker, of Pine Haven Apartments, reported battery.

October 25, 1996

•Antonio Sellers, of Players Club, reported criminal trespass.

## ANNOUNCEMENTS

## Things to do at GSU

## Today

•Doug Boughton will present a lecture on "Visual Arts in Education" at 10 a.m. in room 280 of the Russell Union. For more information, call 681-5078.

•"Aboriginal Art of Australia" will be presented by Doug Boughton in the Foy Fine Arts Recital Hall at 7 p.m.

Friday, November 1, 1996

•A reception for GSC graduates from 1950 to 1960 begins at 1:30 p.m. in room 247 of the Russell Union. Campus tours will be given after the reception.

•The 1996 Homecoming Parade begins at 3 p.m. at Paulson Stadium and ends at Sweetheart Circle.

•The classes of 1932 to 1949 reunion will be held at the Forest Heights Country Club at 6 p.m.

•A welcome reception for the classes of 1950 to 1960 begins at 6 p.m. at the Trellis Garden Inn.

•Friday Lunches will be served in the FCS Food Service Restaurant in the Family and Consumer Sciences Building at noon. The menu will include santiago grilled delight, tortilla chips and salsa, and blueberry crisps.

•The class of 1950 to 1960 reunion will have a golf outing at the Southern Links Golf Club at 1 p.m.

Saturday, November 2, 1996

•GSU celebrates Homecoming. This year's theme is "Spicin' it up at Southern."

•The Alumni Association Board of Directors meeting begins at 9 a.m. in the Southern Center for Continuing Educa-

tion.

•CRI hosts the 1st annual Homecoming 5K Run/Walk. Beginning at Paulson Stadium parking lot, the walk will encompass old and new areas of GSU's campus. The entry fee is \$5. For more information, call the CRI office at 681-5436.

•A cookout for black alumni begins at 11:30 a.m. and will be held in the Paulson Stadium parking lot.

•The 1950 to 1960 reunion cookout begins at 11:30 a.m. at the John O. Eidson Alumni House.

•The College of Education alumni cookout begins at noon on the pedestrian in front of the Carroll Building.

•A cookout for the College of Business Administrators alumni begins at noon at the Coca Cola Plaza at the College of Business Administration Building.

•The Best Tailgate Party Contest begins at 2 p.m. in the Paulson Stadium parking lot.

•The Lady Eagle volleyball team goes up against UT-Chatanooga in Hanner Fieldhouse. The Southern Conference match begins at noon.

•The GSU Eagle football team meets East Tennessee on the gridiron for a Southern Conference game at 3:30 p.m. in Paulson Stadium. The 1996 Homecoming queen and king will be crowned at halftime.

•The GSU women's soccer team faces Appalachian State in a Southern Conference game at 1 p.m. The men's soccer team will match up against Alabama A&M at 3:30 p.m. Both games will be played on the Eagle soccer fields on Fair Road.

•The GSU men's and women's swim teams will hold the annual Blue/White exhibition swim meet at 10 a.m. in Hanner Fieldhouse.

•The classes of 1950 to 1960 will hold a reunion dance in the Russell Union Ballroom at 8 p.m. The \$25 cost per person includes the Friday reception.



Four Seasons Florist

373 Savannah Avenue  
Statesboro, Ga. 30458

•Roses  
•Fresh Arrangements  
•GSU Homecoming  
Corsages  
Go Eagles!

912-764-9839

## Landrum Center post office closes doors early for safety reasons

By Farrah Senn  
Staff Writer

An answer has been given as to why the Landrum Center post office closes its door at 9 p.m. Officials say that it is for safety reasons.

"Safety is the main reason," said Ron Lee, postal supervisor. "There are a lot of cubbyholes and indentions where people could hide."

Another reason is that students coming in and out at night would interfere with the janitorial crew that cleans at night.

"If we did extend the hours they would have to be irregular because the custodial service strips and waxes the floor regularly," Lee said.

"They would not be able to do that with students walking around in the building."

Lee also said that extending the hours would probably be expensive because they would need to add lights, cameras, or a security guard.

Federal policy mandates that post office doors remain open 24 hours a day so that post office boxes will be accessible for users at all times of the day and night.

"The United States postal system does do that," said Chris Mitrison of the Statesboro post office.

"It is a service we personally provide to the customers," he said.

The Statesboro post office, which does leave its doors open 24 hours, has never had any problems with safety at night.

"In high crime areas, post offices may close their doors early for fear of vagrants or homeless people occupying the lobbies, but we don't have that problem here," said Billy Morrison, postmaster of the Statesboro post office.

"We've never had anybody mugged or bothered when they come to get their mail at night."

Morrison also estimated that 99 percent of U.S. post offices leave their doors open and have not had any trouble with night security.

The Landrum Center post office does not have to follow federal policy because the contract center, the front desk of the post office, is the only part under federal regulation.

The part of the building where students' boxes are located is considered part of GSU and is not obligated to follow federal guidelines.

"They're providing a service to the college student... and since it's contract service they can do it however they'd like to do it," Mitrison said.

## AUCTION

Thursday, November 16th, 11a.m.

ATTENTION STUDENTS! NO MORE RENT!!  
4 BEDROOM - 2 BATH POOL SIDE CONDO - #10 WILLOW BEND,  
1822 CHANDLER ROAD, LOCATED BETWEEN CAMPUS & STADIUM. INTERIM SELLER FINANCING.  
TELL YOUR PARENTS THIS SELLER IS EXTREMELY MOTIVATED  
FOR BROCHURE & INFO, CALL: INTERSTATE AUCTION COMPANY  
1-800-732-3325

Robin Blake, Carol Lee, The Joke Zone, Dating, Expo, Deal Reel, Battle, at the Bands, Star Wars, Film Festival, Games People Play, Spring Fling, US College, Comedy, Competition, Fashion Show, Rugged Post, Whole World, Improve, Sound Waves, Tom DeLaney, Hypnotist, The Pastors, Festival, Brothers

Up Productions  
Do you want to share your favorite clean, non-offensive joke in The Joke Zone. Mail it to:  
The Joke Zone GSU P.O. 8066

**MURDER MYSTERY**

Why ?  
Where ?  
Who Done It ?  
When ?  
How ?

Big Time Entertainment

Union Ballroom • 7 pm

Watch for the U.P.  
Promo Video  
Coming Soon  
to a Campus Near You!

AhU.P. !

Union Productions Team Interest Form  
Yes! I want to be involved in UP. Here is the Team that I am interested in!!

☐ The Joke Zone ☐ Big Time Entertainment  
☐ Sound Waves ☐ Contemporary Issues  
☐ SPLASH ☐ Games People Play

Name \_\_\_\_\_  
LB \_\_\_\_\_  
Local Phone \_\_\_\_\_  
For info call 681-0655  
or mail interest form to LB 8066

Coming Soon!  
Phil the Prettigoood

Union Productions  
**681-0655**  
Office Hours 9 - 4  
LB 8066 GSU  
Statesboro, Ga 30460

TRICK OR TREAT

20% OFF ALL ITEMS  
EXCEPT TEXTBOOKS

AT OUR ANNUAL  
HALLOWEEN BASH

DRESS UP AS YOUR FAVORITE  
CHARACTER TO WIN GREAT PRIZES

EVENTS BEGIN AT 5:00 PM

UNIVERSITY STORE  
10/31/96  
12:00 - 7:00 PM



## G-A SPOTLIGHT

### GSU professors give presentation in Toronto

Janice H. Kennedy, professor of psychology, made a presentation entitled, "Romantic Attachments and Attributional Style, Identity, and Family of Origin" at the annual meeting of the American Psychological Association in Toronto in August. At the same conference, Kennedy, Courtney D. Malowney, a GSU graduate student, and William D. McIntosh made a presentation entitled, "Relationships Among Attachment Style, Rumination, Self-Esteem, and Depressive Affect."

### Professor named as director

Margaret A. Lloyd, professor of psychology, has been appointed executive director of the Office of Teaching Resources in Psychology for Division 2 (Society for the Teaching of Psychology) of the American Psychological Association.

### Psychology professor publishes articles

John D. Murray, assistant professor of psychology, had two articles accepted for publication. The first, entitled "Connectives and Narrative Texts: The role of Continuity," will be published in *Memory and Cognition*. The second, co-authored with Chadd McGlone, is entitled "Topic Overviews and the Processing of Topic Structure" and will be published in the *Journal of Educational Psychology*.

### Grants received for computer lab

John D. Murray, Richard L. Rogers, and Janice N. Steirn, professors of psychology, received a grant from the National Science Foundation which, combined with matching funds, brought in a total of \$36,000 to fund equipment purchases to update the present computer lab in the department of psychology.

### Professor leads a ten-day training seminar

Edward W. L. Smith, professor of psychology, led a ten-day training program on Gestalt therapy in July at the Ohio State University continuing education center, sponsored by the Gestalt Institute of Central Ohio. In September, he taught a four-day seminar based on his book, "Sexual

Aliveness: A Reichian Gestalt Perceptive" in Kleinich, Germany. The seminar was attended by psychotherapists from Germany and Holland. Recently, Smith published "Notes on the Existential Psychotherapist as a Host in Couples Therapy" in the edited volume *Couples: Building Bridges*. He also published an article in *Voices* with Paul Foster. The title is "The American Academy of Psychotherapists Research Committee Survey of Members." Smith has recently published an article entitled "The Embodied Couple: Posture Change as an Assessment Tool" in the *Journal of Couples Therapy*.

### Professor publishes article

Michael Nielson, assistant professor of psychology, published an article, "H-Comp: A Program to Calculate Information Complexity," in *Behavior Research Methods, Instruments, & Computers*. The article describes a computer program that calculates information in a set of binary data. This summer he also presented a paper entitled "Thinking about Religion: Some Psychological Perspectives," at the annual Sunstone Symposium in Salt Lake City. The paper describes similarities and differences between culture and in current psychological research.

### Head Injury Awareness Day sponsored

Lisa Sherwin, assistant professor of psychology, and the Psychology Coalition sponsored the first annual Head Injury Awareness-Blue Jeans Day on Wednesday, October 23. Two days prior to that, education points were established and information concerning the prevalence of head injury and its complications were disseminated. Individuals who have experienced a head injury were encouraged to sign-up so that a clearer picture of prevalence of head injury can be established. On Wednesday, a panel discussion with a survivor of head injury and Wayne Akins from the Center for Students with Disabilities was held. More than 20 people attended. The Psychology Coalition also raised over \$100 for its project, The Clubhouse, a unique program for individuals with a head injuries.

The George-Anne would like your help in order to recognize special people, organizations and activities on campus.

Anyone who would like to make suggestions for our G-A Spotlight feature may call Joshua Edmonson, news editor, at 681-5246. Letters may also be sent to The George-Anne at Landrum Box 8001.

## GEORGIA NEWS

# Jewell hopes to restore his reputation

BY Russ Bynum  
Associated Press

ATLANTA—Richard Jewell was supposed to be a hero, not a hermit.

His job as an Olympics security guard was supposed to launch a career in law enforcement, not end it.

Now cleared as the FBI's chief suspect in the Olympic park bombing, Jewell said he wants to try again. He said he plans to stay in Atlanta and look for another job in the field he loves.

"I don't look at law enforcement as a job," Jewell said. "I love helping people. That's what I have always done and that's what I hope to continue to do."

For 88 days, Jewell professed his innocence while he was branded the FBI's chief suspect in the Olympic park pipe bombing. He calmly told the world again: "I am innocent man."

His attorneys said he has a few offers for security work at a local radio station and a small supermarket chain, but nothing concrete.

"His first desire would be to return to law enforcement," said attorney Lin Wood. "He's got to find out if that's feasible. If it is, good. If it's not, then he has got to face that."

The July 27 bomb blast at the park, the central gathering place at Atlanta's Olympics, killed one woman outright, was blamed for a cameraman's death and injured more than 100. Jewell initially was hailed as a hero for alerting authorities to a suspicious knapsack and helping to evacuate the area.

He gave numerous media interviews about the big moment. Then, three days after the bombing, *The Atlanta Journal-Constitution* reported that Jewell was a suspect.

Reporters who just a day earlier portrayed him as a hero staked out his apartment complex for days and followed his

every move. Jewell took refuge in the apartment he shared with his mother.

"I felt like a hunted animal, followed constantly, waiting to be killed," Jewell said. "The media said I fit the profile of a lone bomber. That was a lie. The me-

**"I FELT LIKE A HUNTED ANIMAL, FOLLOWED CONSTANTLY, WAITING TO BE KILLED."**

— RICHARD JEWELL

dia said I was a frustrated police wanna-be. That was a lie. I was, then and now, a law enforcement officer."

*The Journal-Constitution* released a statement, defending stories about Jewell as "accurate and appropriate."

"The public had, and has, a strong interest in the progress of the bombing investigation. They had a right to know when authorities' doubts about such a prominent figure in the bombing story led them to suspect him."

On Saturday, federal prosecutors gave Jewell's attorneys a letter clearing him as a suspect. To Jewell's attorneys, the letter is nothing but a weak effort at an apology.

"While the government can tell you that I am an innocent man, the government's letter cannot give me back my good name or my reputation," Jewell said.

His lawyers have said they plan to sue the *Journal-Constitution* and to sue NBC for comments Tom Brokaw made in early news reports about the bombing. A lawsuit against the FBI is being considered.

G. Watson Bryant Jr., Jewell's first attorney who quickly became a close friend, lambasted the FBI.

"I don't have enough words, I can't cuss enough, to describe the way they have treated this man," Bryant shouted at the news conference.

He also lashed out at the FBI over affidavits released that were used to gain warrants for searches of Jewell's home and other property in the days after the bombing, saying the papers are "full of half-truths."

**Speak your mind.  
Feel good about it!**

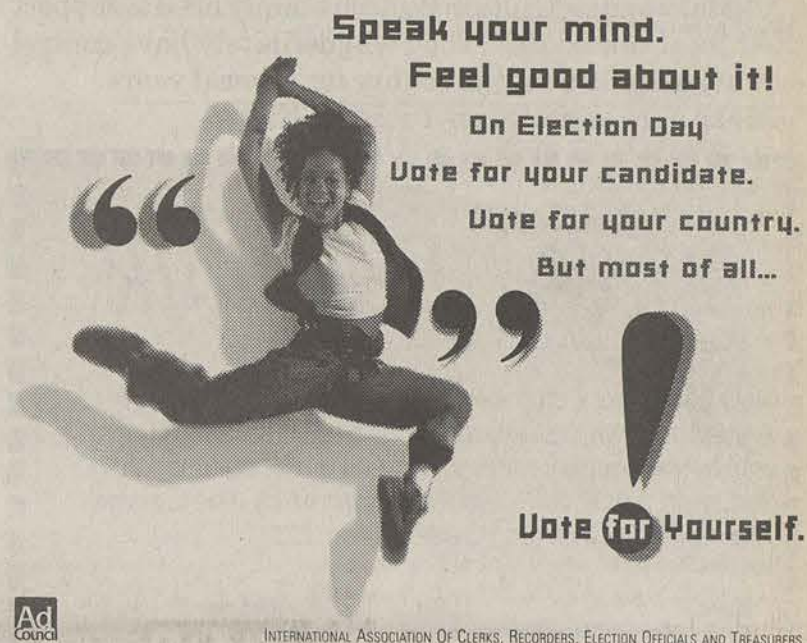
**On Election Day**

**Vote for your candidate.**

**Vote for your country.**

**But most of all...**

**Vote for Yourself.**



Ad Council

INTERNATIONAL ASSOCIATION OF CLERKS, RECORDERS, ELECTION OFFICIALS AND TREASURERS

# Spicing it Up at Southern

## Celebrate Homecoming '96

- Hats
- Shirts
- Novelties
- Sweatshirts
- Greek Wear
- Glasses and more...

# Go Eagles!



**Monday - Friday  
7:45a.m. - 6p.m.  
Saturday 10a.m. - 5p.m.**



## Our Opinion

### Vote on Super Tuesday

The national elections are coming up on Tuesday, Nov. 5, and all of America is invited to the party.

Once again, the candidates will finish a year-long battle over control of the White House. Your vote will determine the victor. This all begins when you step into the voting booth and cast your ballot.

If we fail to inform our representatives of our approval or disapproval by the means of our vote, those representatives will proceed with their own agendas and fail to represent our interests.

Our government was set up so that we would have representatives controlled by the constituents. If the people fail to inform their representatives of what they want done in politics, the people have failed to fulfill their commitment to this nation.

Super Tuesday is one of the long-standing traditions of our great country. Unfortunately, not many Americans are willing to participate.

The future of our nation may just take a radical turn as a result of this election.

But you shouldn't just vote to throw your hat in on the presidential elections. State and local elections will also be held on Tuesday. These elections will affect you in even more ways than the national elections will.

Citizens and students in Bulloch County need to support their local candidates. They will definitely have control over what occurs in this county for several years.

Make sure you vote on Tuesday, Nov. 5.



## Backtalk

Now you have a chance to "talk back" to *The George-Anne* about whatever floats your boat. It's a quick, easy way to write a mini-letter to the editor. Fill out this form and send it to P.O. Box 8001, or drop it by *The George-Anne* office at Williams Center room 223.

Name: \_\_\_\_\_ L.B.: \_\_\_\_\_ Phone: \_\_\_\_\_

Your words of wisdom:

#### LETTER AND SUBMISSION POLICY

*The George-Anne* welcomes letters to the editor, story submissions and guest columns from people both inside and outside the Georgia Southern University Community. All copy submitted should be typed (double-spaced, please), preferably on Macintosh disk in Microsoft Word or Microsoft Works format. All submissions must be signed and include a mailing address and phone number for verification. The editors reserve the right to reject any submission. There is no word limit on submissions. A writer may request to remain anonymous. However, it will be the editor's decision whether or not to print the name. Submissions are run on a space-available basis.

## STAFF

#### NEWS

Assistant News Editor: Kevin Bonsor; Staff: Rosemary Burn, Rusty McGuire, Laura Owens, Justin Miller, Emily Rollison, Farrah Senn, Gin Starling

#### FEATURES

Features Editor: Erika Anderson; Arts & Entertainment Editor: Melanie Weinberg; Staff: Eric Bray, Robbie Bruce, Jake Hallman, Jennifer Stokes, Beecher Gatewood, Shanika Glynn, Tia Martin, Kelley McGonnell, Jason Miller

#### SPORTS

Sports Editor: Mike Davis; Staff: Scott Bates, Yolanda Gunn, Jennifer Holloway, Carolyn Wynn

#### OPINIONS

Staff: Stacy Clemons, Amanda Crews, Chance Fulk, Rusty McGuire, Justin Miller, Tracey Varnell, Aletha Yoho, Marnite Zachery

#### PHOTOGRAPHY

Chief Photographer: Mike Spilker; Staff: Mike Hill, Hans Knoepfel, David Mathews, Kristy Rickards

#### ARTWORK

Scott Morris

#### CIRCULATION

Supervisor: Steve Taliaferro

#### ADVERTISING/DISTRIBUTION SERVICES (ADS)

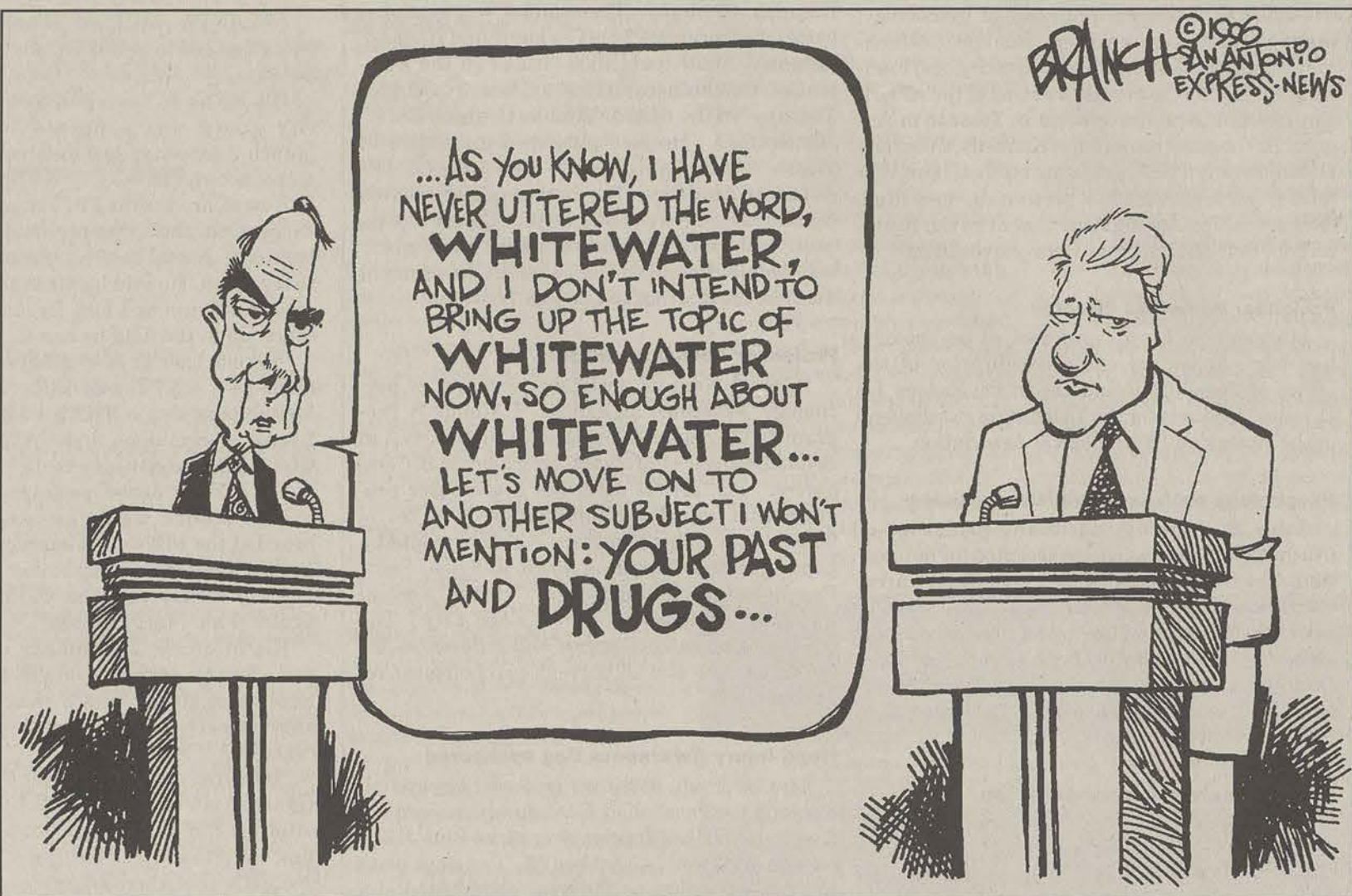
Advertising Manager: Brooks Clements; Business Manager: Stephanie Wylie; Marketing Coordinators: Heather Turner, Jennifer Ricketson; Sales Representatives: Ron Lair, Jennifer Ricketson, Heather Turner, Carolyn Wynn

#### PRODUCTION AND GRAPHICS EDITORIAL SERVICES (PAGES)

General Manager and STP Web Master: Scott Mulkey; Production Manager: Ron Lair; Assistant Production Managers: Shawn Sunderland; Staff: Robert Castaneda, Jennifer Craft, Lindsay Hunter, Kathy Jacobus, Scandia McCray

#### STUDENT PUBLICATIONS COORDINATOR

Robert Bohler: News, Editorial Advisor; Bill Neville: General Manager



## State of political system is frightening

BOO! Since it's Halloween, I thought I'd try to scare you. But the only scary thing I can think of is that we're supposed to vote next Tuesday.

Since no one votes anymore, Super Tuesday, as it is affectionately called, has become just one more Tuesday in the year, no different than any other.

How do we change that? Maybe we should have our election day named after some cheesy who-gives-a-darn cause and give people the day off, like National UFO Abductee Awareness Day. Maybe then we'd get people out to vote.

Unfortunately, our election day is one of those cheesy who-gives-a-darn causes. It's sort of funny, actually, when you think about it. Early projections show that only about 37 percent of eligible voters will make it to the polls. What this means is that even if one candidate gets a simple majority (50 percent plus one) in the election, it would still be less than 20 percent of the actual electorate. Maybe those "political points" that Clinton leads by are really the *actual number of people* voting for him.

The big question is, "why?" Do we have bad choices, no choices, or are we a lethargic pile of mush as some believe?

We can't count on parties to give us choices. There are no parties anymore. You're either a conservative-liberal or a liberal-conservative. The terms Republican and Democrat denote so-



### JUSTIN MILLER

COLUMNIST

cial differences these days, not political ones. You can pick your party simply by deciding which animal you want on your shirts, buttons and bumper stickers. For the memory-challenged, there's

**YOU CAN PICK YOUR PARTY SIMPLY BY DECIDING WHICH ANIMAL YOU WANT ON YOUR SHIRTS ... FOR THE MEMORY-CHALLENGED, THERE'S ELEPHANTS, FOR THE OTHER JACK-ASSES, THERE'S, WELL, A JACK-ASS.**

elephants, for the other jack-asses, there's, well, a jack-ass. Need I say more?

Now I don't want to sound cynical, so let me interject this thought: we are only hopeless, and therefore prone to cynicism, if there are no solutions out there. But there is hope, and there are some solutions.

One glimmer of hope is the 104th Congress. It was by far one of the hardest-working of this century. Granted, they should all spend some time hanging by their thumbnails for playing Russian roulette with our lives when they shut the government down, but in the long run, they got the job done.

Another bright spot in Con-

gress is the plethora of young, ambitious leaders springing up. Take this year's Congressional rookie-of-the-year Bob Barr. He fought a tight race up in the 7th district of Georgia in 1994. He

ran on a pretty intricate platform. Then he fought tooth and nail for it, and the people who voted for him, in his first term in Washington.

He's a little too far to the right for me, but I'm not in his district, and the people there love him. He's a perfect model for the ideal legislative leader: put your finger on the pulse of your constituents, come up with some innovative ideas on how to better their lives, and go fight with the big boys for them. A Christian will get elected prime minister of Israel before this guy will get voted out of office.

Barr isn't alone, however. There's a gaggle of genuine leaders up on the Hill. Hopefully,

this season will see their numbers increase.

In our executive branch we've got some problems, though. The old-school motto was GOTV (get out the vote), but now it has become WYGMAY? (will you give me a vote?). Instead of kissing babies, they're kissing up to voters. They need shovels to disburse the bull they're slinging. No one seems to have any vision or goals in this branch of government. We need some of that legislative leadership to ooze into the White House, but until we get a decent candidate it ain't gonna happen, so I came up with a solution.

We should enact a new law. If at least three-fifths of the electorate does not cast a ballot, the election should be considered null and void. It's the way all decent organizations run voting situations, and it should be applied to the would-be leader of the free world.

Now I know many say this is a bad idea because people don't vote because they don't care. They don't vote, folks, 'cause they are fed up with the current state of politics. You aren't giving up your voice by not voting. You're saying that all the candidates suck and aren't worthy of working for you.

I admit I'm a bit nervous about the future of America. I do have hope (and maybe a solution?), but there are no certainties anymore, and that's what really scares me.

## 'To err is human,' to assume is just plain wrong

Assumptions can be right, wrong, stereotypical and sometimes even deadly. Some people incorrectly assumed that the Braves would win the World Series.

Others assume that Southern people all like to eat fried chicken and biscuits with jelly, and those persons who continue to assume that drinking does not inhibit one's driving ability may now be thinking twice, if at all. Why do we make so many assumptions?

A large portion of students are afraid of the unknown. Fear usually causes us to act or not act, without thinking. This is the reason that a number of my male classmates say that they do not speak to certain "types" of women because they assume that these women are conceited, pushy, or hard to talk to. These included women from the Southeast, women who are educated, women who speak their minds, and even women who wear ankle bracelets.

On the surface, it appears that these men are shallow, scared and only looking at minor things that really do not matter. The way that a person will react to



### MARNITE ZACHERY

COLUMNIST

you does not solely depend on the person's origins, intelligence and most certainly not jewelry. The underlying factor is that the

when you assume, you leave room for an even greater margin of error. They make judgments without knowing the entire story.

**IF THIS WERE TRUE COULD I USE THE HUMAN NATURE DEFENSE ANY TIME I FORGOT MY HOMEWORK, SPED ON THE HIGHWAY, OR FORGOT A LOVED ONE'S BIRTHDAY? THE ANSWER IS NO.**

majority of them are trying to protect their "fragile" egos and are dwelling on past negative experiences with women (i.e. rejection).

Many of my female classmates held similar animosity and recalled various examples of how men can sometimes be rude and unapproachable.

The most popular reason was lack of knowledge. Yes, in our society, unfortunately, a great many people are ignorant. These people simply do not know that

They can often be found on all our early morning talk shows, late night radio programs, or even walking down the street next to us.

There is no hope for too many of them, but there may be hope for you.

Human nature is another reason that people make assumptions. Several people who cited this as their reason did so with enthusiasm, finesse, and great confidence. They firmly believed that assuming is as natural as

spring water, alpine trees, and pumpkin pie.

If this were true could I use the human nature defense any time I forgot my homework, sped on the highway, or forgot a loved one's birthday? The answer is no.

Being human should not be an excuse for assuming, but an even more important reason not to. Of course none of us are perfect. We assume things about someone and then they assume things about someone else. Soon it becomes a cycle, but where does it end?

We all make assumptions. Whether we do it because we are scared of being hurt, just plain ignorant or because we're human beings, the fundamental thing to realize is that "to err is human," to assume is wrong. We cannot predict another person's actions but if we do not know, then why not ask? Even if we are wrong at least we will have tried to do the right thing and who can fault a person for that?

I have met many good friends that I would not have made had I assumed and been close-minded.



# Your Opinion

## 'We blacks are definitely not asking for anything ...'

Editor,  
I'm sure that most readers remember the infamous Christopher Cole who wrote his opinion about Black Awareness Month last school year. After reading Lance Deen's letter in the Oct. 24 *George-Anne*, I began to wonder if these two students know one another. It hasn't even been a full year since Cole's column and now we have Lance Deen to pick up, in a sense, where Christopher Cole left off. I never imagined that the same ignorance would be displayed so soon. The word "ignorance" was not meant to be taken as an insult, but I think it is exactly what needs to be said. Besides, there were a number of insults in Deen's letter, but I will refrain, unlike Deen, from making such aggravating comments about things, or should I say people, he knows nothing about.

I don't believe that when Stacy Clemons wrote his column ("Boro needs more options for black students," Oct. 15), he was exclusively comparing the Greek Row parties with Playerz Ball. I think that Stacy was referring to the situation of blacks and our parties in general.

Now, I will admit that there have been some instances of violence at the parties, but the fact is that at any party, there is going to be some kind of "beef," or tension, that either rises or settles. Sure, the incident with the football player was not a desirable one, and I honestly can't answer why things go to such an extreme, but a person can't simply generalize all blacks and say that something "harmful erupts" every time we get together.

It is obvious, to me at least, that the real "bottom line" is

that there are two different viewpoints involved. Deen's viewpoint is blind to a reality that doesn't exist in his world and probably never will. Our viewpoint is one that sees two realities and is concerned with why they are not the same. It is a reality that many people, I'm sure, could not possibly understand.

Let's take, for instance, the problems that blacks have with police in Statesboro. No matter how many times we try having the quietest of block parties or whatnot, you had better believe that the whole Statesboro police force and the University Police are around the corner waiting to break them up. Now this usually goes on every weekend we try having fun around this dead town (my opinion). And it doesn't stop there because I remember during my freshman year, riding along Chandler Road with three other friends of mine and getting stopped by a policeman. He asked the driver a few stupid questions about the car and ended up looking like a fool because he was stopping us for nothing. That happened in 1993, and if I'm not mistaken, still goes on all the time around Statesboro, especially to black men, but that's another essay in itself. Hell, I could write a book on that. Now that doesn't mean that the cops are not just as rude to other students, but it just seems like we always get the bad end of the deal.

The last of what I have to say is that we blacks are definitely not asking for anything. I'm sorry, we are asking that those cops stop bothering us, but that's all. I found that after reading Deen's letter, the problem for him was understanding things because every word written somehow reaffirmed the fact that he was just as clueless as Christopher Cole was.

Derrick Figures  
GSU student

## Improvements needed at Oxford

Editor,  
As a freshman, I live in the Oxford Residence Hall. I have a few complaints about Oxford.

First, there are not enough microwaves at Oxford. There is only one microwave and about 300 rooms in one building. I remember a time when there were about 10 people ahead of me waiting to heat up food.

It was about a week ago, and I was looking to heat up something quickly, so I could go back to my room and study. I had to wait half an hour to heat up something that generally only takes about a minute.

Surely, I'm not the only person who has faced this problem before.

My next complaint is the lack of safety during a fire drill. I remember when we had a fire drill at Oxford. I

believe it was during the first full week of school. Somebody set someone else's door on fire. The fire alarm went off. My roommate and I were sleeping at the time, and we did not hear the fire alarm. We could have died if the fire had not been resolved quickly enough.

Oxford Hall is not a terrible place to live, but a few changes are needed. My solution to the microwave problem is to simply install more microwaves. Also, installing a small conventional oven wouldn't hurt either. I believe if the school would increase the loudness of the fire alarm, then everyone would be able to hear it.

If these solutions were implemented, then Oxford would be a wonderful place to live and hopefully, there would never be another letter condemning Oxford or any other dormitory.

Gilbert Walker  
GSU student

## Advice for dealing with 'Boro's realtors

Editor,  
I, too, have lived in many apartments. It seems that when the apartment management or real estate agent, who is most likely getting six to 10 percent of your rent as a "management fee," has your money, that's all they want, and you'll get nothing of what you want.

I have passed the "big 5-0" in age, and I have tried just about everything. The only tactic that has ever worked is this one: withhold your rent!

Do not send it to your real estate agent or apartment manager. Instead, send a letter to them telling them that you will not pay the rent until all your complaints have been resolved to your satisfaction.

Now, most importantly, don't spend the money you are withholding. Tell them in the letter that you are holding the entire rent in an escrow account to pay them just as soon as they fix your problems. Tell them which bank this money is in and give them the account number.

They can't touch your money and you are legally holding their money. Don't let them intimidate you. You can use either a savings or a checking account.

The only thing that gets their attention is not getting their money.

Good luck.

Sonny Quinn  
Graduate student

## Deen letter 'typical'

Editor,  
We have one word to sum up Lance Deen's Oct. 24 letter "Blacks should stop blaming others," typical. First of all, how do you, Lance, know that Stacy Clemons' column was full of misrepresentations? You provided no specific data to back up your beliefs. And how do you know the views of blacks on this campus? Are you black? No!

Lance, blacks do not always blame others for their problems. We, as young black females, feel that you are a problem, not only to the black population but also to yourself.

As far as blacks getting a house on Greek Row, the bottom line is that black fraternities and sororities do not have the same membership numbers as white fraternities and sororities. Therefore, money becomes an inhibitive factor in building a house on Greek Row.

On the subject of the Playerz Ball, you are way off, Lance. If there was any disrespect toward anyone, then it was toward blacks. Police officers placed paddy wagons in the middle of the road in front of Level One and told students walking in a crowd of five or

more to disperse, lest they incite a riot. And as you approached Greek Row, you saw no paddy wagon in the middle of the road for white students. But you did see a large number of white students in groups of five or more drinking and partying just as the black students were up the street.

And short-lived gatherings are not always characteristic of a large number of blacks being together. There are many examples of blacks coming together and having peaceful outcomes. For instance, the Million Man March and the march held on campus just last year prove that blacks do not always end gatherings in violence.

Finally, Lance, you feel blacks should ascertain something for themselves instead of waiting around for handouts. Both of us are obtaining bachelor's degrees in criminal justice, which we will receive this spring. So you see Lance, it would be nice if you would ascertain some knowledge on the subject of black students at GSU before you decide to write a letter to the newspaper degrading blacks as a whole.

Donita Morris  
Lakiesha Fair  
GSU students

## Jewish Awareness Week Activities

MONDAY, NOVEMBER 4 "Rabin Remembered" an account of the life and accomplishment of the late Prime Minister of Israel. Lecture presented by the Honorable Zvi Vapni from the Israeli Consul in the Georgia Southern University Museum. At 6:00 p.m.

Tuesday, November 5 Jewish Mysticism with Bill Miesel in the University Union room 280. At 7:00 p.m.

Wednesday, November 6 International Judaism Featuring Rabbi Wilcoff and Rabbi Belzer. Topic: Jewish life in Asia and Sweden. In the University Union room 241. At 3:30 p.m.

Thursday, November 7 Abe's Story discussed by author Joey Korn. A book describing his father's Holocaust memoirs. In the University Union Theater. Co-sponsored by the Office of Multicultural Programs. At 7:00 p.m.

Friday, November 8 Sabbath Services in the University Union room 280. At 7:30 p.m.

Saturday, November 9 Havdalah (ending Sabbath) at Sweetheart Circle followed by Community Social in the Williams Center Cafeteria. At 6:00 p.m.

## PRINCIPLES of SOUND RETIREMENT INVESTING



## EVERYONE WILL GIVE YOU THEIR TWO CENTS WORTH, BUT WILL THAT BE ENOUGH TO RETIRE ON?

Today there seems to be an investment expert or financial advisor almost everywhere you turn. But just how qualified are all these experts?

Peace of mind about your future comes from solid planning. From investments and services designed and managed with your needs and retirement security specifically in mind. The kind of investments and services TIAA-CREF has been providing for more than 75 years.

### WE'LL HELP YOU BUILD A REWARDING RETIREMENT.

Our counselors are trained retirement professionals who have only you and your future in mind. So you're treated as the unique person you are, with special needs and concerns about retirement. And that makes for an understanding, comfortable relationship.

With TIAA-CREF, you have plenty of choice and flexibility in building your retirement nest egg—from TIAA's guaranteed traditional annuity to the investment opportunities of CREF's seven

variable annuity accounts. And we're nonprofit, so our expense charges are among the lowest in the insurance and mutual fund industries.\* That means more of your money is where it should be—working for you.

TIAA-CREF is now the largest private pension system in the world, based on assets under management—managing more than \$150 billion in assets for more than one and a half million people throughout the nation.

### TIAA-CREF: THE CHOICE THAT MAKES SENSE.

It's tough to wade through all the "advice" to find a reliable pension plan provider. But as a member of the education and research community, your best choice is simple: TIAA-CREF. Because when it comes to helping you prepare for retirement, our annuities will add up to more than spare change.

For more information about how TIAA-CREF can help you prepare for the future, call our Enrollment Hotline at 1 800 842-2888.



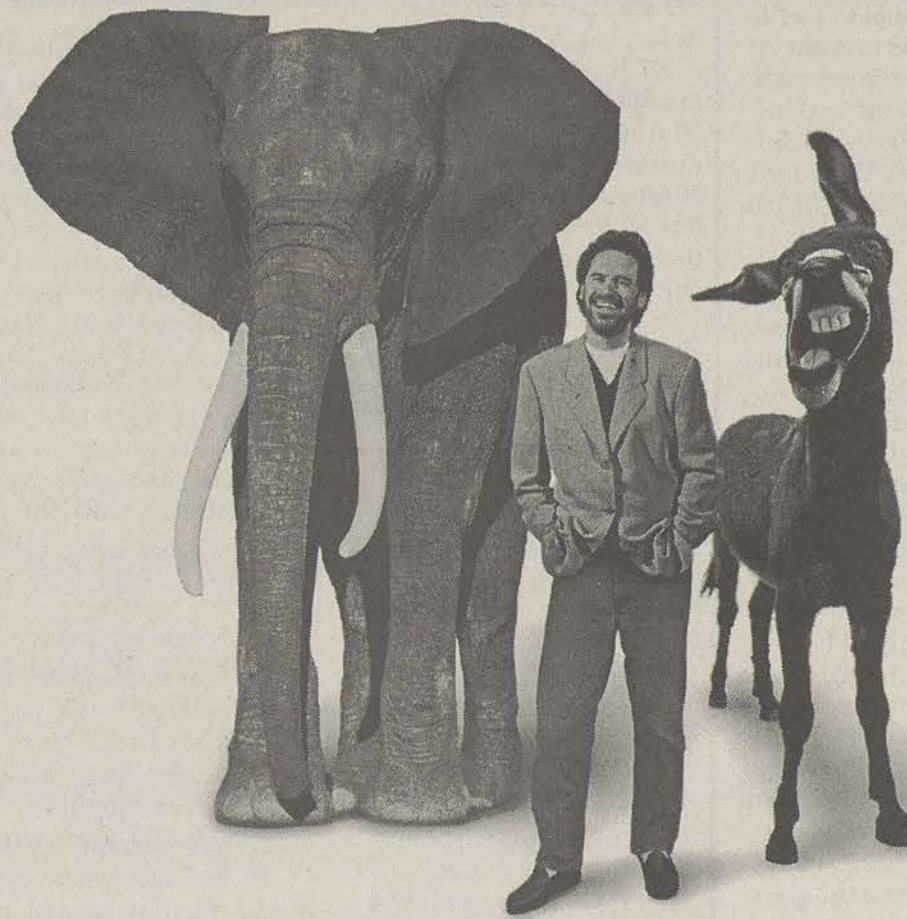
Ensuring the future for those who shape it.™

\*Standard & Poor's Insurance Rating Analysis, 1995; Lipper Analytical Services, Inc.; Lipper-Directors' Analytical Data, 1995 (Quarterly). CREF certificates are distributed by TIAA-CREF Individual and Institutional Services.

FROM THE PRODUCERS OF NOT NECESSARILY THE NEWS

## NECESSARILY NOT THE ELECTIONS

HOSTED BY DENNIS MILLER



In this fall's fight between the Elephant and the Donkey, DENNIS MILLER would like to point out the bull.

HBO  
IT'S NOT TV. IT'S HBO.

FREE Admission—seating is limited so arrive early!

Russell Union Theater

Monday, November 4th @ 9:00 p.m.

Presented by Russell Union





THE  
SPORTS  
CORNER

DENNIS STOVALL



## Generations seem to view sports differently

The first football game I ever watched featured the Chicago Bears. I was mesmerized by how big, strong and fast these people were. My favorite athlete on the team was the "Sweetness," Walter Payton. He is considered by many to be the best running back ever. I idolized him. I wanted to be just like him. He was my first role model.

Today, I still love the Chicago Bears and I still love "Sweetness," but I really don't have any role models anymore. Maybe I think I'm too old to have a role model. And even though my favorite athlete is now Deion Sanders, I don't consider him my role model, but I do look up to him.

Some adults who look at my favorite athlete often question my values. But what is wrong with my choice?

Nothing, it just deals with something I call generation outlook. Generation outlook means the perspective of those from generations past.

What generations from the past see in Sanders is something they didn't see in their time.

In the past, there was nobody who was as flamboyant as he is. And there was nobody as self-confident as he is. Although you could make a case for Joe Namath, he really didn't take it to the extent that Sanders has taken it.

Past generations try to see the negative instead of the positive. Everybody makes mistakes, but when Sanders got in an altercation with a cop, people condemned him for it without knowing all the information. Everybody deserves a second chance. And Sanders was found not guilty.

Off the field, problems with athletes are looked into too deeply. Like the incident with Michael Irvin. I'm not making excuses for what Irvin did, but if I'm not mistaken, there have been comparable disappointments from athletes of the past.

Babe Ruth was everyone's hero. He was an orphan who was great with the kids. Ruth was also a womanizer and an alcoholic who would show up at the games drunk and get into fights with the umpires. This is evidence that nobody is perfect, and the past generation didn't condemn him.

Charles Barkley said he didn't ask to be anybody's role model. And true enough he didn't nor did anybody else ask to be a role model.

Although I do believe when you step in the limelight, there are certain ways you have to behave. And you have to know that the kids are watching what you do.

It doesn't matter who you look up to or who is your role model. Everybody has different likes and dislikes. If you look at some of the choices this generation has made and compare them to the choices made by other generations, then you could see a lot of similarities. So, don't be quick to judge somebody about something wrong they have done, because you don't know what led to that circumstance. And athletes should remember that people are watching and that they should behave in a manner that is becoming to them.

# Mixed reactions of suspensions from GSU players

By Carolyn Wynn  
Staff Writer

There is a cloud hanging over Homecoming for both players and fans. After this weekend's suspension of 18 Eagle football players, Saturday's match-up may prove to be more of an uphill battle than expected.

Because of the vacancies left by the suspensions, Saturday's game will feature many less experienced Eagles as well as many Eagles playing out of their normal positions.

And while the coaches might feel their decision was right, the players have mixed feelings about the punishment.

"Personally, I felt the punishment may have been a little extreme," junior quarterback Kenny Robinson said. "But we don't have any control over that decision. The decision was made by the head coach and the athletic director."

As expected, the suspensions are weighing heavily on the minds of the remaining Eagle athletes who realize the absence of many key starters will factor into the success or failure of the 3-5 team, who badly needs a win this weekend.

"This week we are going to have to come in and pick up the slack," Robinson said. "The suspension of 18 of my teammates will be something that we will have to compensate for. The new guys are going to have to come in and learn positions that they have not played before."

Roderick Russell, a junior fullback, also expressed his feelings about this week's game.

"We are going to have to come together as a group," he said. "We are missing a lot of players,

namely a lot of starters. However, we have been practicing hard trying to follow a new game plan for Saturday."

Despite the absence of offensive starters such as junior Corey Joyner and senior Robert Moore, Russell affirms his confidence in the Eagle offense.

"We are doing pretty good right now offensively," he said. "We have one of the best offenses in the country."

This week's game will be the first for many of the Eagles, which will bring many answers concerning the ability of the younger players to step up.

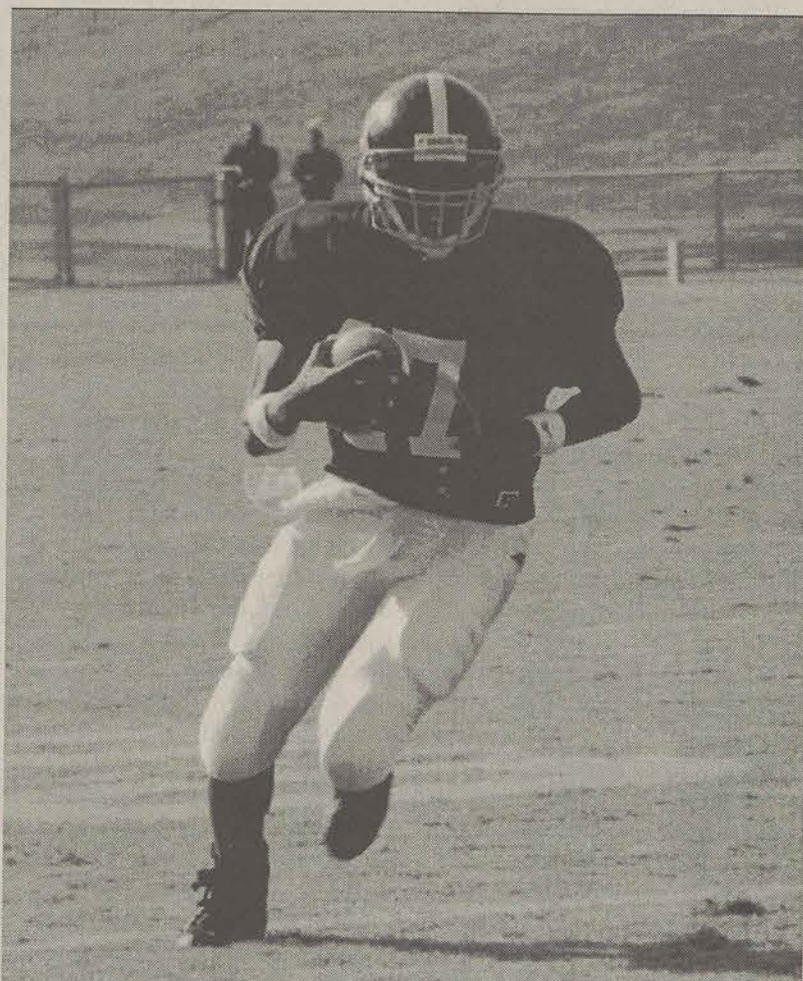
"There are a lot of young players out here that are always very enthusiastic and always ready to play," Russell said. "Even with the suspensions, this week is Homecoming for us. This is giving them another big reason to be pumped up for this game."

One of these Eagles set to see action in this week's match-up will be John Peacock, a junior outside linebacker transfer from East Carolina.

"It's kind of exciting," Peacock said. "We are the underdogs going into this game now. We have nothing to lose, but everything to gain."

"We are definitely at a disadvantage, but if everyone steps up and plays their heart out, then we will have a good shot. Personally, this is the most excited I have been all season."

Also, Saturday will mark the first game for freshman kicker Chris Chambers, who will assume the puntin, place-kicking, and field goal duties. Chambers was a standout in highschool but has yet to kick for GSU outside of practice.



LEADING THE CHARGE: Quarterback Kenny Robinson will lead an Eagle team that is suffering from injuries and suspensions.

## FOOTBALL PREVIEW

# East Tennessee looking for second consecutive win

By Mike Davis  
Sports Editor

Talk about awkward situations.

East Tennessee State University head coach Mike Cavan hopes to be the one selected to fill the vacant GSU head coaching spot next month.

But come this Saturday, the Eagles will be on his number-one hit list, as he brings his ninth ranked ETSU team into a very important Southern Conference game with the Eagles.

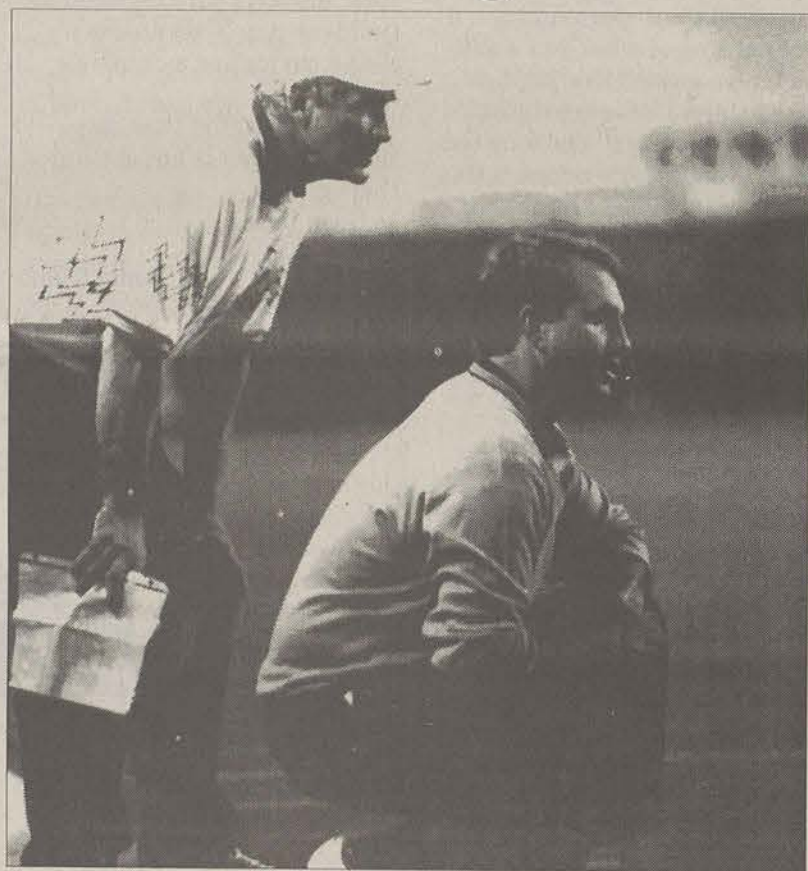
But for Cavan and the Buccaneers, a Paulson Stadium visit is easier said than done as Homecoming at GSU will only mean more Eagle fans in attendance.

GSU will also be looking to avenge the upset loss to ETSU last year, which didn't help the situation for the now-fired Tim Stowers.

But though Stowers is gone, many Eagle players still remember the 21-16 defeat to Cavan's Bucs.

ETSU, in the midst of a remarkable season, is riding high off a win over then-undefeated Furman, as they keep their hopes of conquering a Southern Conference crown and continuing their season into the I-AA tournament alive.

"I tell you what. You can't argue with East Tennessee's record," GSU coach Frank Ellwood said Tuesday. "They beat Furman at home last week in a tough ballgame. Both of those teams were undefeated at that



HEAD BUC: Head Coach Mike Cavan will lead ETSU this Saturday.

point and time."

Part of the Bucs' success is credited to quarterback Greg Ryan, whose performance this season with the Bucs has been nothing less than spectacular.

"Cavan's players know the system," Ellwood said. "They have a great quarterback and some great returning players, who for three years got beat up pretty good, so they're ready to win."

On the Eagles' sideline stands a frustrated GSU team, which

now out of the playoff hunt, is trying to find the motivational factor to carry them throughout the remainder of the season.

And now, the suspension of 18 players, four for an indefinite period of time, is not going to help either.

But in all reality, the Eagles might not have to look too far for that extra boost. The fact looms that GSU has to win the remainder of their games to call this a winning season. And around

Statesboro, Ga., that's important.

Also, if this senior class doesn't want to be remembered as the GSU team that entered double-digits in the loss column, they will do anything in their effort to avoid a loss in either of the final two games.

"Knowing the tradition of this series, I don't think ETSU will come in here overconfident, even with its ranking and our suspensions," Ellwood said. "They haven't won the conference in so many years, so they are riding high. If I know Coach Cavan, he'll have his group ready."

"They still have to play the game Saturday and they have to come to Paulson Stadium, by golly, and there is still 60 minutes of football to be played on that field. We won't back down from anybody. Our kids will go after it."

**LAST MEETING:** East Tennessee State quarterback Greg Ryan passed for 202 yards and two first-half touchdowns to lead the Bucs to a win over GSU. The Eagles totaled 313 yards in offense, including 144 through the air, but fell victim to three turnovers and a season-high eight penalties.

**SERIES TIED:** The GSU/East Tennessee State series record is knotted at 3-3. The Eagles have won three of the last four after the Buccaneers opened the series by winning the first two meetings. In fact, ETSU's win last October was its first victory over GSU since 1984.

**CONFERENCE OPPONENTS:** GSU has recorded a 12-3 (.800) record when playing Southern Conference opponents at Paulson Stadium since becoming a member. Despite dropping a 35-28 decision to Appalachian State two weeks ago, the Eagles have still been victorious in eight of the last 10 league home games.

**LOOKING BACK:** Mike Cavan has recorded a 1-4 lifetime record against GSU (1-2 at ETSU, 0-2 at Valdosta State). Frank Ellwood did not face the Bucs while guiding the Marshall program from 1975 to 1978.

## East Tennessee State preview

<b>Location</b> - Johnson City, Tn.	<b>Record</b> -57-46-2 (10 yrs.)
<b>Enrollment</b> - 11,715	<b>Rec. at ETSU</b> -20-24-0 (4 yrs.)
<b>Nickname</b> - Buccaneers	<b>1995 Record</b> - 4-7
<b>Colors</b> - Navy blue and gold	<b>Basic Offense</b> - Multiple I
<b>Stadium</b> - Memorial Center	<b>Basic Defense</b> - 4-3
<b>Surface</b> - Astro Turf	<b>Lettermen returning</b> - 30
<b>Conference</b> - Southern	<b>Lettermen lost</b> - 9
<b>Athletic Dir.</b> - H. Keener Fry	<b>Starters Returning</b> - 15
<b>Head Coach</b> - Mike Cavan	<b>Starters Lost</b> - 7

## Associated Press I-AA Top 25

- |                             |                            |
|-----------------------------|----------------------------|
| 1. Marshall (8-0)           | 14. Furman (6-2)           |
| 2. Montana (7-0)            | 15. William & Mary (6-2)   |
| 3. Northern Iowa (7-1)      | 16. Villanova (6-2)        |
| 4. Troy St. (7-1)           | 17. Eastern Illinois (5-2) |
| 5. Murray St. (6-1)         | 18. James Madison (6-2)    |
| 6. Delaware (7-1)           | 19. E. Washington (6-2)    |
| 7. SW Missouri St. (6-2)    | 20. New Hampshire (5-2)    |
| 8. N. Arizona (7-2)         | 21. Youngstown St. (6-2)   |
| 9. East. Tenn. St. (7-1)    | 22. Northwestern St. (4-3) |
| 10. Jackson St. (6-1)       | 23. Indiana St. (6-3)      |
| 11. Stephen F. Austin (5-2) | 24. Columbia (6-0)         |
| 12. Florida A&M (6-1)       | 25. Southern (5-2)         |
| 13. Western Illinois (7-1)  |                            |

## Southern Conference

- |                                 |                                 |
|---------------------------------|---------------------------------|
| 1. Marshall (5-0/8-0)           | App St. at UT-Chatt., 3:30 p.m. |
| 2. East Tennessee St. (5-0/7-1) | Citadel at Marshall, 1 p.m.     |
| 3. Furman (4-1/6-2)             | ETSU at GSU, 3:30 p.m.          |
| 4. Tenn-Chattanooga (2-2/3-4)   | Western Carolina at VMI, 1 p.m. |
| 5. Appalachian St. (2-3/4-4)    |                                 |
| 6. The Citadel (2-3/3-4)        |                                 |
| 7. Georgia Southern (2-4/3-5)   |                                 |
| 8. Virginia Military (1-4/1-6)  |                                 |
| 9. Western Carolina (0-6/2-6)   |                                 |

## CAMPUS SPOTLIGHT

### GSU's Chaisson honored again

GSU News Service

Freshman striker Tara Chaisson of GSU was named Southern Conference/Reebok Women's Soccer Player-of-the-Week.

Chaisson recorded two goals and an assist as the Lady Eagles went 1-1 on the week.

Chaisson netted a goal and added an assist in the 3-2 overtime win versus Georgia State.

She also scored the lone GSU goal in the 3-1 loss to Davidson.

Chaisson continues to lead the conference in scoring with 33 points on 13 goals and seven assists.

"Tara's play continues to improve as the season goes on," head coach Tom Norton said. "She gives us the scoring boost we need up front."

Seniors Rachel Tolliver and Ailyson Hood accepted the award

earlier in the year.

### Rugby team wins

It was an aggressive scene this weekend as the GSU rugby team played the University of South Carolina in Columbia, S.C., and the Eagles won 15-7 despite more than the usual number of fisticuffs.

Scoring opened up about 15 minutes into the game, when Rick Stevens scored with his fifth scoring try of the season.

Antonio Rodrigues scored his first career try this weekend about 10 minutes after Steven's try.

Travis Schmit also got in on the action as he closed the half with his fourth try of the season. All the scoring took place in the first half.

The second half looked more like a brawl than a rugby game. There were some close, debatable calls made by the referee. It is believed that this is what

caused arguments between opposing players which led to more physical contact than usually seen in the rough sport.

"I am really pleased with the newer players," Godwin said. "They are helping to keep our team strong. New players that stood out were Rodrigues, Jamey Stiltz, Dan Eastland and Ryan Bonacci."

The Eagles were scheduled to play Clemson this weekend, but due to field complications and a fund-raiser by the Clemson team, the game has been rescheduled.

GSU will play Clemson in the first round of the Black Rose Tournament.

The Eagles will face the University of Alabama, a team they defeated last year.

"This weekend will show what we are really made of," Pruitt said.

The game will take place at the club sports fields located across from Legends. Kickoff is scheduled for noon.



# Cram to lead the Lady Eagles

By Jennifer Holloway  
Staff Writer

It's the new-look Lady Eagle basketball team, and despite the major coaching changes that have taken place within the last year, this G S U team is looking to improve from last year's 16-14 record.

After the resignation of long-time coach Drema Greer, six-year assistant Rusty Cram accepted the lead role, while former volleyball coach Dee Nichols assumed the vacant assistant coach position, making this her first basketball coaching job.

The Lady Eagles have adjusted well to the new faces and are fired up for the start of the season which begins with a home exhibition game this Sunday at Hanner Fieldhouse against the Sports Reach Crusaders at 4 p.m. There, the test will begin for the two new coaches.

"Anytime there is a change, it affects a team," head coach Rusty Cram said. "I've been here for six years, but now I'm in a new role, and I think the team has handled the transition very well and will have a great year. As soon as a routine and habits are formed, everyone will be a lot more comfortable."

Nichols also said, "The team is really fired up so far and they relate to Coach Cram very well."

Expected to lead the Lady Eagle team once again this year is senior guard, Danelle Toole, who Cram says is "a real 100 percent blue-collar worker."

"We were disappointed with the way our season ended last year," Toole said. "We've now got our heads ready and our intensity is set to win because of the optimistic influences that our

new coaches have set."

Toole, along with teammate, Mary Perry, a sophomore forward, is enrolled on the roster of two GSU athletic teams.

Toole will occupy the short-stop position for the softball team come spring time, while Perry is currently a goal keeper on the soccer team.

In the past, playing two sports was not even an option, but Cram is satisfied with their performance and ability to keep up so far and approves of the double duty.

"These kids only get to go through college once," Cram said. "If they can go play dual sports at a high level and still show that they can hold up their academics, then I don't have a problem

with that at all."

Ather player expected to be seen on the highlight reel this year is senior guard Tarsha Askew.

Cram said Askew can "lift up the whole ballclub."

Also, junior forward Telly Hall will set the tone for others on the floor as well as the continuing improvement of sophomore point guard Rosie Arnold and freshman Sharon Mitchell.

Cram believes that his team looks as good as expected at this point and should match up well in Southern Conference play this season.

"We'll be a very competitive ball team," Cram said. "I'll be surprised if we don't finish in the top four in the conference."

## CRI REPORT

### CRI's flag football in full swing as tight races add to excitement

By Yolanda Gunn  
Staff Writer

It was rally-time Sunday night for some flag football participants, as the Sports Multi-Complex was lit up with lights and excitement.

While Men's A, B, and C leagues battled to keep their winning record, fraternities roared chants to keep the crowds hype.

So far, ATO is leading the fraternity league with a record of 4-1.

In the Men's-A league, the "Neals" are at the top of the ladder with a 4-1 record. Large and In Charge, in Men's-B, is tied with Photo Heads and D.U.B. And the "Ballers" in Men's-C tied with Prime Time Players International.

In addition, guiding the Men's Residence Hall league is "The Enigmatic Stigmas" with a perfect 3 - 0 record.

If perhaps, you play on one of the co-recreational teams, the "Hodawgs-Fast & Easy," you'll

quickly find out, is the dominating pack.

Nevertheless, each team participating in CRI flag football wants to take home the winning title.

However, they must realize that the game is strictly for fun. Also, keep in mind that although actual contact is not being made, there is still room for possible injuries.

On Oct. 27, there were a number of incidents throughout the night. But, one major injury that stood out happened to Kenneth Burston of Madison, Ga.

"While in motion for the play, Kenny dove for the flag strip of an opponent. Afterwards, we notice he was down on the ground," said one of Burston's teammates.

CRI officials came to the rescue immediately. Friends were also there to aid Burston in any way possible. Soon the paramedics arrived.

Burston was diagnosed with a dislocated shoulder.

Elect

# PETE MILLS

State Representative District 145

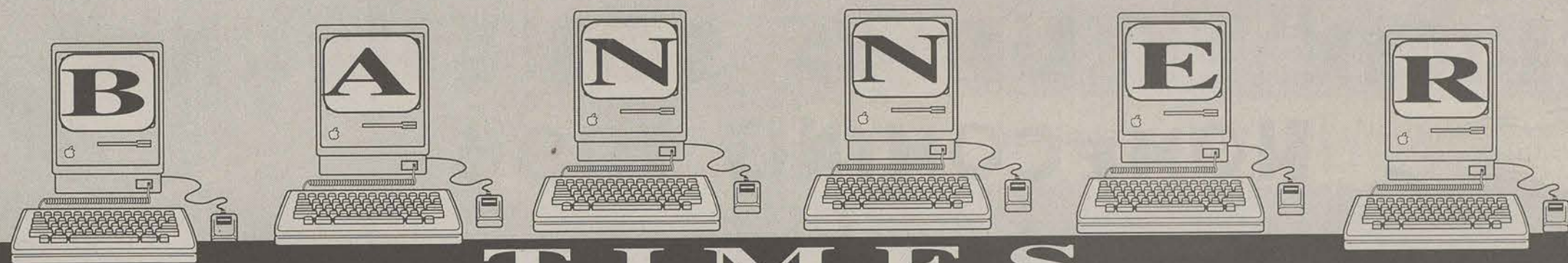
Pete Mills has 25 years of experience working with legislators and strong support from the current leadership of the House of Representatives.

Pete Mills Believes in Family, Community and a Brighter Future for all Georgians.



Pete will work for all the citizens of District 145  
**Your Voice • Your Vote • Make It Count**

Paid for by the committee to elect Pete Mills - Ernest Thorne, Harvey Street, Millen-Chairman  
Virginia McBride, Winthrop Ave., Millen-Tres. • Mary Bland, College St., Metter Co-Chairman



Edition I

Georgia Southern University's Information Source for Banner®

Number 6

## ADVISEMENT AND REGISTRATION IS UNDERWAY

Advisement for Winter Quarter 1997 has already begun in some departments and advisement centers. **REGISTRATION** for winter began on Monday, October 28.

As indicated below, some changes are being made in order to create a much better advisement/registration experience for students. Where possible, registration and advisement are being put together in the same physical location so that students will not need to go back and forth from advisement to registration.

**IN THE COLLEGE OF BUSINESS:** pre-business students will be advised in their advisement center located in the College of Business Administration Building and registered in their academic department. B.B.A. Students will be advised and registered within their academic department.

**IN THE COLLEGE OF EDUCATION:** advisement and registration for all education majors will take place in the College of Education Advisement Center located in the Carroll Building.

**IN THE COLLEGE OF HEALTH AND PROFESSIONAL STUDIES:** students with 0-45 hours will be advised and registered in the Student Services Center; students who have earned more than 45 hours will be advised by a faculty advisor within their department and registered in the Student Services Center.

**IN THE COLLEGE OF LIBERAL ARTS AND SOCIAL SCIENCES:** freshman who entered Fall 1996 will be advised and registered in the Academic Advisement Center located in the Williams Building. The remaining students will be advised by advisors in their Academic Department and registered in the Williams Center Registration Area.

**IN THE COLLEGE OF SCIENCE AND TECHNOLOGY:** students will be advised by advisors in their Academic Department and registered in the Williams Center Registration Area.

**FRESHMAN BIOLOGY MAJORS** who entered Fall Quarter 1996 will be advised and registered in the Academic Advisement Center located in the Williams Center.

**UNDECLARED MAJORS:** will be advised and registered in the Academic Advisement Center located in the Williams Center.

Please call the Office of the Registrar at 681-5323 if you have questions about registration and/or advisement.



WOMEN'S BASKETBALL

## Women's basketball league hopes to gain same exposure as the National Basketball Association

The Associated Press

SEATTLE — Look out, sports fans a new level of professional sports is just around the corner.

Aiming to catch the wave of excitement for women's basketball generated by the Summer Olympics, the new American Basketball League starts play in October.

The Northwest entry, the Seattle Reign, has even more going for it than the Games.

This city has been primed for women's ball by the popular University of Washington's women Huskies team, which has won 70 percent of its games in 21 seasons while the men racked up a 53 percent record.

"How often do you have the opportunity to live your dream?" Reign coach Jacquie Hullah said when she opted to join the Seattle team last spring.

"We're unique. There's no other professional women's leagues. Period. Little girls need to see women as athletes and little boys need to see them in leadership positions," she said.

Seattle is one of four Western Conference teams, joining Denver, Portland, Ore., and San Jose, Calif. The Eastern Conference

teams are Atlanta, Columbus, Hartford/Springfield and Richmond. The clubs play 40 games this season: 20 at home and 20 on the road.

The Reign starts regular-season play Oct. 27 at home against Portland.

The season runs into February, followed by playoffs.

National Basketball Associa-

**"LITTLE GIRLS NEED TO SEE WOMEN AS ATHLETES AND LITTLE BOYS NEED TO SEE THEM IN LEADERSHIP POSITIONS."**

—JACQUIE HULLAH, SEATTLE REIGN COACH

tion fans will find a different style of play than they're used to. The women's game is played below the rim and is team-oriented with heavy doses of passing, screening and cutting.

The rules are different.

There are no restrictions on defense, there's a 25-second shot clock instead of a 30-second one, and the ball is thrown in from

where it goes out of bounds, not from half court.

And the money is very different. The league's 80 players are paid an average \$70,000, with salaries ranging from \$40,000 to \$125,000 a year.

The Reign has a good balance of size and quickness, and is working to develop team chemistry, Hullah says.

Olympic gold medalist Venus Lacy, a 6-foot-4 center from Louisiana Tech, joins Olympic teammate Cindy Brown of Long Beach State and former Huskies Rhonda Smith and Tara Davis to form a solid core of players.

"Venus has set the tone right away, that we're a team and success will come when we recognize that," Hullah said. "If mistakes are made the team works together to find a solution."

It's the fourth full-scale attempt.

The Women's Professional Basketball League, formed in 1976, lasted for three seasons. Hullah, a 1978 graduate of Cal State University at Fullerton, played there as a guard and was offered a contract by the league's St. Louis Streak.

She passed to pursue her master's in physical education at Penn State.

PROFESSIONAL FOOTBALL

## San Francisco 49ers fullback charged with DUI

The Associated Press

SAN JOSE, Calif. — San Francisco 49ers fullback William Floyd faces a drunken driving charge after being arrested in San Jose late last week.

Floyd, former Florida State Seminole, spent a few hours in Santa Clara County's jail and was released at 8 a.m., just in time to board the 49ers' charter flight to Houston.

Team president Carmen Policy and coach George Seifert were unavailable for comment. Floyd directed all questions to the team's public relations department.

"We don't have an official team comment at this point," 49ers spokesman Rodney Knox said.

"Everyone is waiting on the details."

Floyd was tabbed as the

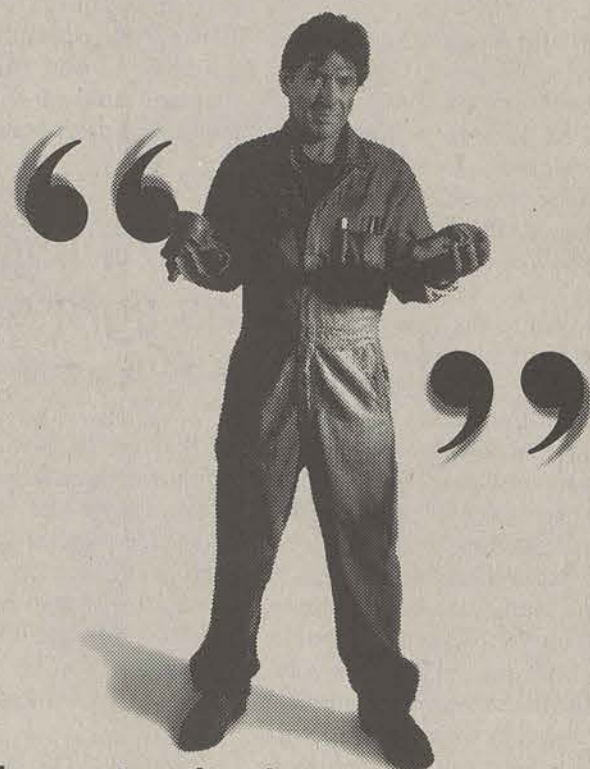
49ers' starting fullback Sunday against the Oilers, and the arrest was not expected to affect his status for the game.



-The Largest Beer Selection in Town!  
-Lowest Tobacco Product Prices in town

Premium Cigarettes  
\$13.39 Carton  
Marlboro Salem Newport Camel  
Generic Cigarettes  
\$10.89 Carton  
Basic GBC's Doral Monarch  
Dips \$2.17

118 Lanier Drive Statesboro  
871-6709



Don't sit on the sidelines.  
Say your piece!  
On Election Day  
Vote for your candidate.  
Vote for your country.  
But most of all...

Vote for Yourself.

INTERNATIONAL ASSOCIATION OF CLERKS, RECORDERS, ELECTION OFFICIALS AND TREASURERS

**Now Open**  
**SOUTHERN**  
**GOLD & SILVER**

\*10K & 14K \*Sterling Silver  
\*Diamonds, Rubies, Emeralds \*Jewelry Repair  
\*We buy Unwanted or Damaged Jewelry

(912)764-4311 Statesboro Junction

**Rick's Exotic Body Piercing**  
**We Make House Calls**

A moment of pain for a lifetime of pleasure  
Piercing Accessories and Assorted Jewelry Available  
in Surgical Steel, Niobium, 14K Yellow and White Gold  
Safe and Clean with a New Needle Every time

Rick Seckinger  
Cellular# 682-8271  
Leave Message  
(912) 857-3744

New Location  
681-2972

# SPICIN' IT UP AT SOUTHERN HOMECOMING 1996 ACTIVITIES

## Spirit Games

Team Events

Sweetheart Circle • 4:30 pm



Russell Union Rotunda • 9 pm

Friday, Nov. 1

## Homecoming Parade

Grand Marshal:

Honorable Representative John Goodbee

Starts at Paulson • Ends at Sweetheart Circle  
3:00 pm

• Chandler Road will be closed from 2 - 5

## Bon Fire Pep Rally

- Yelling Contest
- Awards

Paulson Stadium • 7 pm

Co-sponsored By:  
Athletic Department • Delta Tau Delta

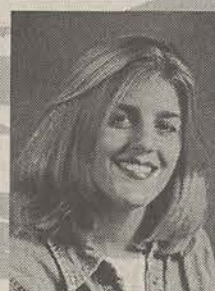
## The 1996 Homecoming Court



Janet Ayers  
Kappa Delta



Angeliq Cobb  
Alpha Kappa Alpha



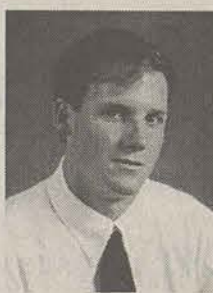
Melanie Cobb  
Alpha Delta Pi



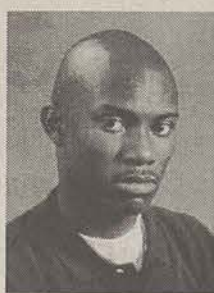
Tawanna Collins  
NAACP



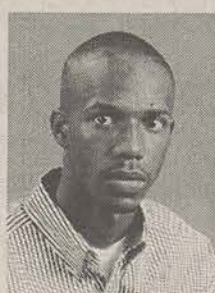
Elizabeth Godbee  
Pi Sigma Epsilon



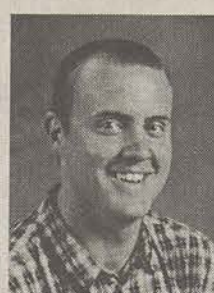
Dow Drury  
Alpha Delta Pi



Zan McBride  
Alpha Phi Alpha



Chard Reese  
NAACP



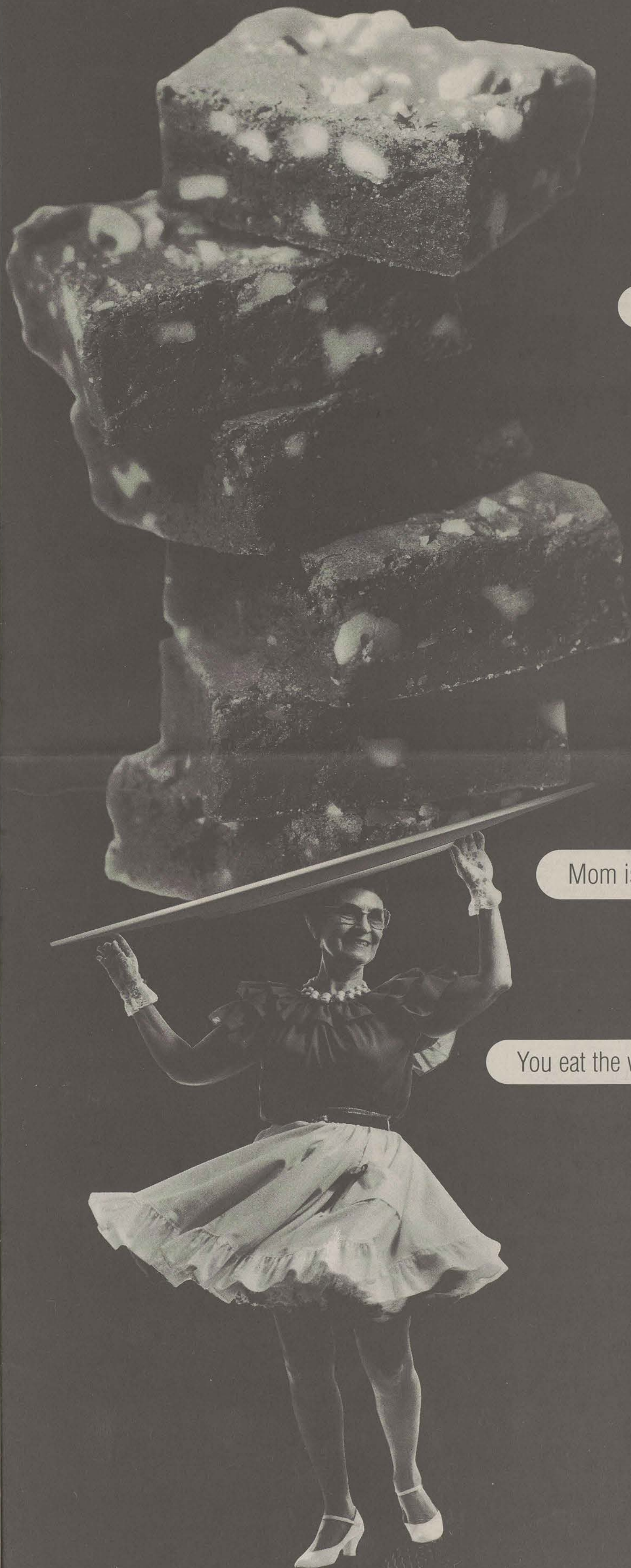
Barney Sutley  
Alpha Omicron Pi

Not Pictured

Malcolm Lee  
Gamma Beta Phi

The Homecoming Queen & King will be crowned  
at the Homecoming Game Halftime on Saturday  
Paulson Stadium • 3:30 pm





You get sick

You call Mom for sympathy

You dial 1-800-COLLECT

Mom saves a ton of money

Mom is so pleased she sends you brownies

You eat the whole box of brownies

You get sick

**1-800-COLLECT®**

**SAVE THE PEOPLE YOU CALL UP TO 44%**

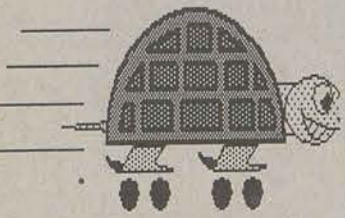


# The George-Anne Entertainment

Thursday, October 31, 1996

The oldest continuously published newspaper in Bulloch County

Page 10



## Taking Care of Business

By  
Melanie J. Weinberg

## What's going on this week

### On Campus Tonight

• Departmental Programs will present "Aboriginal Art of Australia" at 7 p.m. in the Foy Recital Hall. For more information, call 681-5078.

### Tuesday, Nov. 5

• The Center for Irish Studies will present a poetry reading by Irish poet Richard Murphy in the Southern Center Auditorium at 7:30 p.m.

• Cinema Arts will present "Jamon Jamon" at 5:15 p.m. and 7:00 p.m. in the Union Theater.

### Off Campus Tonight

• **Blind Willie's:** S.M.O. with ATMA, \$2 pitchers.

• **Legends:** Halloween Masquerade Ball with Trip West from Z-102, \$25 drafts and cash prize for the best costume.

• **Bru-HaHa:** penny drafts.  
• **Woodin Nikel:** \$2 pitchers.

### Friday, Nov. 1

• **Blind Willie's:** Private party.

• **Woodin Nikel:** \$2 pitchers, live band.

• **Bru-HaHa:** Bladder Bust with Ry-no and James.

### Saturday, Nov. 2

• **Blind Willie's:** Private party.

• **Bru-HaHa:** Live music from Emenon, \$2 pitchers.

### Monday, Nov. 4

• **Blind Willie's:** Free pool, \$1 cover, \$1 long necks.

• **Bru-HaHa:** Bring your own container and have it filled for \$1.

### Tuesday, Nov. 5

• **Blind Willie's:** Dime time, \$10 drafts.

• **Bru-HaHa:** Dance night, \$1 cover, \$1 long necks.

• **Legends:** Disco Hell, live music from Disco Inferno.

### Wednesday, Nov. 6

• **Blind Willie's:** Donkey, \$2 pitchers.

• **Bru-HaHa:** Ladies' night, \$1 cover for the ladies.

## LOCAL BAND REVIEW

# Fathead and the Polyphonics bring true live jazz to the 'Boro

By Patrick Doyle  
Staff Writer

The local jazz trio, Fathead and the Polyphonics, escaped the confines of Statesboro this past Friday night when they played Huey's restaurant on River Street in Savannah.

The trio, which consists of Chuck Hutcheson, a senior music performance major, on trumpet and flugelhorn, Billy Hoffman, a junior music performance major, on percussion and Jake Hallman, junior music composition major on keyboard, is a local favorite in the 'Boro, having frequented both Café Insomnia and Boomers.

The performance on River Street was a step in the right direction for Fathead and the Polyphonics as it widened the spectrum of its audience.

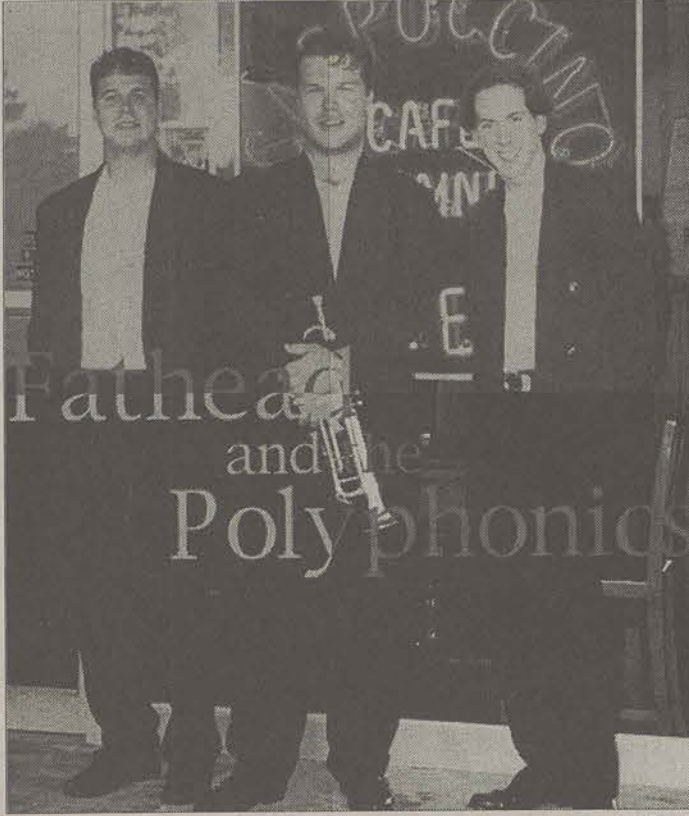
People ranging from high school teenagers to foreign tour-

ists to elderly couples all stepped into the restaurant to take in some of the area's best jazz.

Another plus for Fathead and the Polyphonics was that the audience actually appreciated what they heard.

Fathead's gig featured many jazz standards ranging in styles from funk to big band.

All selections were played well, but especially impressive was the group's multi-tonal centered interpretation of the jazz favorite "Watermelon Man."



Special Photo

The River Street endeavor wasn't totally flawless though as the group was without Hallman, who was absent due to previous obligations.

Sitting in on keyboard was James Geiger, a sophomore music composition and performance major.

At times there were communication problems between players leading to shaky starts and tempo fluctuations, but overall, the night went off without a hitch.

Geiger's individual performance was exceptional

considering this was only the second time he had read through Fathead's selections.

Fathead and the Polyphonics music serves as a nice reminder to all who are sick of the endless line of mediocre rock bands the drift into the 'Boro.

There are other types of music being played in this region, and Fathead and the Polyphonics are an example of a group that plays extremely well.

Check them out this Saturday at Huey's on River Street and at Boomers when there is live jazz.

**For more A&E coverage, turn to page 12.**

## LIVE MUSIC REVIEW

# The Grapes: 'A poor man's Phish'

By Jake Hallman  
Staff Writer

The Grapes, a five-piece band out of Atlanta, brought their jam-based rock show to a packed house at Blind Willie's last Wednesday night.

They are not a group of Dead-inspired amateurs, and they are definitely not The California Raisins.

The Grapes have been together for years and have performed well over 2,000 shows in front of literally millions under their collective belts.

A heavy psychedelic influence and a shot of Southern Rock fuels The Grapes' stage engine.

The varied influences of the members shine through in their eclectic mix of personal styles.

Chicago native and bassist Charlie Lonsdorf fronts the group.

He shares animated vocal duties with keyboard player Steven Fink, whose frenetic key-pounding adds a unique depth to The Grapes' sound.

Drummer Rick Welch keeps steady time for the group, and the "new Grape on the block," Brooks Smith, is a versatile rhythm guitarist.

Lead guitarist Ted Norton provides soaring lines above the instrumental din, and occasion-

ally chips in with tenor vocals.

If his constant happy head-waving is any indication, he also has the most well-toned neck muscles in show business.

The Grapes certainly know their audience, and play to it.

A poor man's Phish, they seek to entertain the upper-middle class, new-wave-college, quasi-hippies, and they do their job well.

At the Blind Willie's show, the tied-dyed and hemp-necklaced masses danced the night away, screaming their approval.

If there's one com-

plaint that can be voiced about The Grapes, it's that they sometimes lapse into a sort of "jam monotony."

Their playlist needs more tempo variety because self-indulgent excursions can tire the listener.

These guys are such good musicians that they can't wait to show what they can do; unfortunately, they sometimes don't know when to quit.

All told, though, The Grapes aren't bad. The mix through Blind Willie's sound system was excellent, and there were no obvious musical mishaps.

They are not yet a big-time group, but one day they might share a place with Widespread Panic and The Meters.



## ON CAMPUS THEATER PREVIEW



Special Photo

**Moulineaux, played by Robert Meguiar, woos Madame D'Artagnan, played by Kelli Howard, in the production of Georges Feydeau's french farce, "A Fitting Confusion."**

**POPEYES**  
CHICKEN & BISCUITS CO.  
Delivers  
681-1234  
4:00 pm-9:00 pm

Show your Georgia Southern Pride and buy the Limited Edition Eagle Wall Clock made by Southern Consolidated Industries, a company owned and operated by Georgia Southern Students

- Pendulum w/Chime: \$55.00
- Pendulum w/o Chime: \$49.00
- Face Clock: \$30.00



A small deposit is required at time of order  
Please Call 871-3266 for more info.

The play is being presented by Theatre and Performance through Nov. 2 at 8 p.m. in the McCroan Auditorium. For ticket information, call 681-0532.

# EAGLE FOOTBALL

## PEP RALLY / BONFIRE

PAULSON STADIUM  
PARKING LOT

FRIDAY, NOVEMBER 1  
7:00 P.M.

COME TAILGATE WITH US!  
NO GLASS PLEASE

## HOMECOMING!

GEORGIA SOUTHERN  
VS.  
EAST TENNESSEE ST.  
SATURDAY, NOVEMBER 2

3:30 P.M.



## Landrum Dining Hall

### Pizza Supper

- Bobbin for Apples
- Dinner for 2 certificates
- Hidden Prizes

Thursday, October 31st 3:45p.m.- 7p.m.



7a.m.-7p.m.  
Monday-Friday  
Closed  
Saturday & Sunday  
Full Service, All You-Can-Eat  
681-0044

## Pickle Barrel

### All Day Halloween Fun

- Door Prizes
- Gift Give-a-Ways



8a.m.-10p.m.  
Monday - Friday  
2p.m. - 10p.m.  
Saturday & Sunday  
681-0424





# DINING & ENTERTAINMENT GUIDE

Appearing Exclusively in The George-Anne

## Southern Sports Bar & Grill

*21 Pool Tables  
\$1.50 per Game*  
*60" Big Screen TV  
To Watch Your Favorite Teams*  
*DJ 6 Nights*  
*Call About  
Nightly Specials*

**BREAKFAST 6-10AM**  
**MONDAY - SAT.**  
**DAILY LUNCH SPECIALS 11-2:30PM**  
**HOME COOKED LUNCH SPECIALS 1 MEAT,  
2 VEGGIES & BISCUIT**  
**\$4.75**  
**681-1439**

## Do You Know Those Unpronounceable Dishes? Neither Do We.



Nothing Fancy. Just Good Food.  
The world's best wings, rotisserie chicken, soup,  
salads, sandwiches & burgers  
120 Lanier Drive, Statesboro, GA  
(1/4 mi from GSU's Paulson Stadium) 681-3030  
Mon-Sat 11:30am-12am • Sun. 11:30am-10pm

**Nightly Entertainment**  
Thurs: The Drunks KISS Tribute Night  
Best Halloween Costume Contest  
2 tickets to NAPA 500 Drawing  
Fri: Kermit and Honest Bob  
Sat: Down Right Brothers  
Sun: \$2.25 wings Kids Eat Free  
Monday - Friday \$3.50 pitchers and .25 wings from 3-5

Mon: 12 oz Ribeye with 3 sides only \$8.95  
\$1.50 Big Mug refills  
Tues: 12 oz Ribeye with 3 sides only \$8.95  
\$1.50 Big Mug refills  
Wed: 12 oz Ribeye with 3 sides only \$8.95  
\$1.50 Big Mug refills

**Buy One  
Lunch Entree  
Get One FREE**  
Of Equal Or Lesser Value

Coupon valid at this store only.  
Does not include tax or gratuity.  
Not valid with any other offer.  
Expires in 30 days

## The Rockin' Horse

**Tuesday: Pool Tournament**  
**Wednesday: No Cover/ \$1.00 Long Necks**  
**Thursday: Ladies Night/ \$.75 Pitchers til 10pm**  
**Fri & Sat: No Cover and \$.75 pitchers til 10pm**

For Details Call 681-9000

## Franklin's restaurant

221 N. Main • Statesboro, GA  
764-2316

**\$2.99** Mon - Hamburger  
Combo w/ choice of  
potato

**\$4.99** Tues - Chicken  
Fingers with potato  
& salad bar

**ALL MONTH LONG!**  
1/2 lb. fried or grilled shrimp  
w/ baked potato &  
salad bar  
**Only \$8.95**

**\$4.99** Wed - 1/2 pound  
ground sirloin w/  
potato & salad bar

**\$4.99** Thurs - Fried fillet of  
sea trout w/ potato &  
salad bar

SONIC SATISFIES YOUR TASTE  
& POCKET WITH BIGGER  
COMBOS AND LOWER PRICES  
THIS NOVEMBER

**SONIC**

"Everything you're hungry for"

**DRIVE-IN  
322 South Main  
DRIVE-THRU**

Offers Not Good With Any Other Coupons or Offers

(A) • Deluxe Sonic Burger  
• Regular French Fries  
• Regular Soft Drink

**\$2.69**  
PLUS TAX

• Jr. DBL Meat-  
DBL Cheeseburger  
• Regular French Fries  
• Regular Soft Drink  
(5 p.m. to Closing)  
**\$2.79**  
PLUS TAX

One Order per Coupon (Offer ends 11/30/96)  
Just cut this out and hop on down to Sonic

• Grilled Chicken  
Breast Sandwich  
• Regular French Fries  
• Regular Soft Drink  
(5 p.m. to Closing)  
**\$3.69**  
PLUS TAX

One Order per Coupon (Offer ends 11/30/96)  
Just cut this out and hop on down to Sonic

DRIVE-IN • 322 South Main • DRIVE-THRU

**VANDY'S  
BAR-B-Q**



Named by the Atlanta Constitution as  
**THE BEST BARBECUE IN GEORGIA**

**Vandy's Barbecue**

Downtown  
22 West Vine St  
Specializing in  
Barbecue  
764-2444

2 Locations to Serve you:

**HOME  
COOKING**

Statesboro Mall  
Breakfast, Lunch  
& Dinner  
Featuring a full menu  
764-3033

**10%  
Discount  
for Students  
w/ Valid ID**

## JUMPIN' JACK'S® GIANT SUBS

Burgers • Subs • Chicken & More  
764-SUBS • 459 S. Main (One Block from GSU)

**Try Our:  
6 Inch Ham & Cheese Sub**

**FOR ONLY:  
\$.99**

Daily Buffet • All Day • \$3.99

*Have a Happy and Safe Homecoming.*

From the George-Anne Staff

**GO EAGLES!**

**Daylight**  
DONUTS

**764-9536**

455 S. Main, Hwy. 301 S.  
1 Block from GSU

Donuts and Baked Goods  
Made Fresh Everyday!

Eat-in, Carry-out  
or Drive-Thru

**Hours**

M-F 5am-6pm  
Sat. 5am-1pm  
Sun 7am-12pm

Phone Orders Welcome

## KELLY'S VIDEOS

Monday - Thursday  
10:00am to 11:00pm

Friday - Saturday  
10:00am to 12:00pm

Sunday  
12:00am to 10:00pm

2 College Plaza  
Next To Good Will

Rent 1 movie  
Get one  
**FREE**

UP TO A \$1.50 VALUE

New Arrivals \$2.50/Day

General Titles \$1.50/2 Days

(912)681-1942

Free  
Membership!

## Your New Spot for Food & Fun

• Chicken  
• Steaks  
• Seafood  
• Pasta  
• Burgers  
• Sandwiches

**BOOMERS**

**Varsity Grill**

Open 11am-Midnight  
7 Days a week

**871-7700**

\$1.75 Drafts All Day  
Everyday

Please Call for Take Out

Wednesday  
The Flamingo Kid  
Thursday  
Halloween Costume Party  
Drink Specials  
Plenty of Prizes  
Friday  
The Drunks  
Saturday  
Karaoke with Dancin' Dave  
Monday  
Monday Night Football  
w/QBI



MOVIE REVIEW

'Basquiat' delivers accurate portrayal of artist in an 'artsy and expressive' way



By Eric Bray  
Staff Writer

Like a lot of underground films lately, "Basquiat" has received a good deal of critically acclaimed notoriety. As for myself, I enjoyed the movie, and I think it's a well-made film. But I wouldn't recommend it to very many people.

First of all, if you don't care too much about art or artists, then this isn't the movie for you. The film chronicles the success of Jean Michel Basquiat, a painter using the name "Samo" in the late 70s, early 80s, who was a colleague and friend of Andy Warhol.

The film's style is about as artsy and expressive as Basquiat's work itself. Functionalistic symbolism riddles the entire piece with the unnerving surrealism of dreamy hallucinations.

While this certainly might not help the film's popularity, it does offset the seemingly pointlessness of many movies based on actual events (especially biographies).

Society has been spoiled by fiction to the point that the plausibility of a true story seems boring and purposeless (not that the violence and sensationalism of most commercial films these days serves a significant function anyway).

"Basquiat," on the other hand, creatively conveys a message through the account of the artist's life. It shows his frustration in dealing with success in a world of avant garde elitism separate from the urban culture of poverty that embodies his artwork.

Furthermore, the film is produced, written, and directed by Julian Schnabel, a painter who was familiar with Basquiat himself. For this reason, we can assume the depiction is somewhat accurately portrayed, eliminating the doubts of authenticity and poetic license which plague the audience through most films

based on true stories.

"Basquiat" also features a stellar cast. Big-name actors certainly aren't reluctant these days to sign their names to indie films, as if to maintain an image of integrity through promoting an aspiring low-budget project with their names (like some charity

acting field with films such as "Labyrinth" and "The Linguini Incident" under his belt.

Michael Wincott ("The Crow," "Strange Days") plays an artjournalist who promotes Basquiat's work at first and is later snubbed by him. The hilarious Benicio del Toro ("The Usual Suspects,"

had met Warhol in his lifetime, casting names such as Willem Dafoe, Christopher Walken, Parker Posey, Tatum O'Neal and Courtney Love in various cameo appearances, which though intriguing, seems a bit pointless.

The film actually has little involvement with Andy Warhol and his attack on the notion of Basquiat as "his protégé." It does, however, confront the rumor that Warhol used Basquiat for his own promotion, though I don't get the impression that Schnabel believes this was so.

I have to admit that I grew very weary of the lifestyles surrounding the artists within the film and their sleepy mannerisms.

But through the muck of artsy posturings and symbolism, a true message can be found.

"Basquiat" pays homage to a misunderstood artist who served as a champion to aspiring black artists of his time.

This film tells the story behind his rise to fame and its repercussions in the art world for years after.

It shows his (BASQUIAT'S) FRUSTRATION IN DEALING WITH SUCCESS IN A WORLD OF AVANT GARDE ELITISM SEPARATE FROM THE URBAN CULTURE OF POVERTY THAT EMBODIES HIS ARTWORK.

gig).

The cast is made up of some major celebrities but features a relative unknown. Jeffrey Wright delivers an excellent performance of the artist himself.

David Bowie plays Andy Warhol with off-beat hilarity, but the character comes off more as a sissy than chic. You may recall that Bowie is no amateur to the

"Swimming With Sharks") is typically humorous yet repugnant as a friend of Basquiat.

Also starring is Dennis Hopper as an agent and Gary Oldman ("Dracula," "The Professional") as a Schnabel-like artist (which is important to know or else his function in the film seems hazy). Along with these two, Schnabel sought to include celebrities who



Have a safe and happy Halloween!

Halloween Madness Clearance Sale on House Plants

GSU BIOLOGY BUILDING GREENHOUSE

Thursday, Oct. 31  
9:00 am - 5:00 pm

Proceeds go to the GSU Biology Dept.

CD REVIEW

Phish's new CD 'Billy Breathes' proves worthy of bumper sticker fame

Phish  
"Billy Breathes"  
Elektra Records

By Robbie Bruce  
Staff Writer

It has always been a highlight for me to be on a road, highway, etc., and see a big, smoky Volkswagen van.

For the last few years, observation has led me to conclude that a new "hippie" vehicle exists. It comes complete with band stickers, too, and not just the Grateful Dead or Bob Marley. Phish is the new sticker on the commune block.

Consequently, only the sticker was what I knew of Phish before listening to the album "Billy Breathes." I had heard the song "Down With Disease" and thoroughly enjoyed it, but could recognize nothing else of theirs.

I had also heard they are a pretty good "jam" band.

"Billy Breathes" begins with "Free," the heaviest-rocking song on the album. Highlights include an over-

dubbing where guitarist Trey Anastasio's guitar line is recorded backwards, and bassist Mike Gordon uses a flange effect to heighten an already cool and funky bass line.

A soulful organ whines over a bass line that deceptively maintains the groove.

Also, drummer John Fishman rarely smacks his snare, instead opting for the deep, subtle

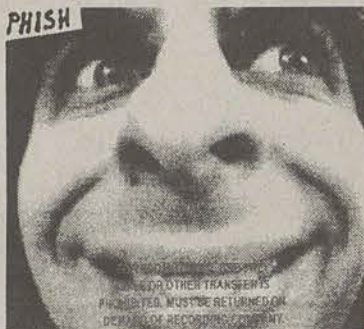
sounds of his toms and bass drum.

I could have sworn Pink Floyd was playing something from the "Dark Side of the Moon" when I first listened to "Theme From the Bottom."

The Floyd feel is intensified, though, by the low, whispery vocals in the verses and the loud, resolute vocal harmonies in the chorus.

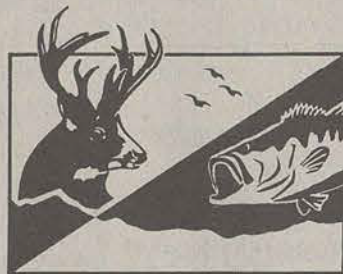
The mellow numbers far exceed the rockers, and a little effort on the part of the listener is required in order to get maximum pleasure from Phish.

That is, unless you just want to be a hippie and whirl to whatever Phish plays.



Billy Breathes

We're Your Hunting Equipment Headquarters



Outdoor Sportsman  
STATESBORO, GA

Statesboro's One Stop Shop For Hunting & Fishing Equipment!

154 Northside Drive E  
764-8855

Be a Lifesaver

Become an Organ & Tissue Donor

Wednesday, Nov. 6  
Russell Union  
11:00 - 1:00 p.m.

Featuring:

Athletic Director, Sam Baker  
Coach Rusty Cram  
Coach Gregg Polinski  
Coach Kevin Chambers  
Coach Tom Norton  
Miss GSU, Jana Thompson  
SGA President, Derick Burns  
The Georgia Southern Eagle

GIVEAWAYS!!!

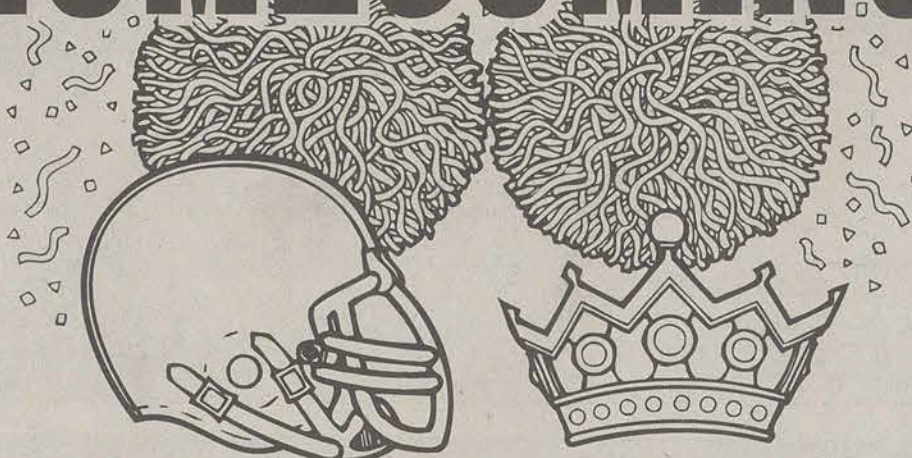
Frisbees  
Stadium Cups  
Michael Jordan Posters  
Michael Jordan Donor Cards  
LifeSavers™

Sponsored by:  
Georgia Southern University  
Health Services

Organ & Tissue  
DONATION  
Share your life. Share your decision.

THE GEORGIA COALITION ON DONATION

HOME COMING!



Georgia Southern University

NOW HIRING!  
Call or Stop By For More Information.

681-4326

College Plaza

For hot and wow call Domino's Pizza Now!



"GSU SPECIAL"

\$4.99

Small 1-Topping Pizza

\$5.99

Medium 1-Topping Pizza

\$7.99

Large 1-Topping Pizza

Students Must Present Valid Student ID Cards  
Offer Expires Nov. 11, 1996

One coupon per pizza. Valid at participating stores only. Not valid with any other offer. Prices may vary. Customer pays sales tax where applicable. Delivery areas limited to ensure safe driving. Our drives carry less than \$20.00.



FREE PIZZA!

Buy Any Large Pizza at Regular Menu Price, Get a Medium 1-Topping Pizza FREE!

Offer Expires Nov. 11, 1996

One coupon per pizza. Valid at participating stores only. Not valid with any other offer. Prices may vary. Customer pays sales tax where applicable. Delivery areas limited to ensure safe driving. Our drives carry less than \$20.00.



# Today's Quote

"A lie would have no sense unless the truth were felt as dangerous."

-- Alfred Alder

# CLASSIFIEDS, etc.

## 01-Announcements

**AD PLACEMENT** (For Commercial Enterprises) -- Classified ads in the George-Anne cost 20¢ per word with a \$4 minimum per insertion. Please add \$1 per ad for mailing and handling for tearsheet service. The customer is responsible for proofing the ad immediately upon publication. Pre-payment with your ad is appreciated. Call 681-5418 for more information. The George-Anne reserves the right to refuse any advertisement.

**AD PLACEMENT** (For Students, Faculty & Staff) -- The George-Anne publishes ads for students, faculty and staff which are non-commercial in nature. Submit your ads, 25 words or less, either in person at Room 223 Williams Center during normal business hours (9am to 4pm), or via mail at Landrum Box 8001. Please do not attempt to place free ads via telephone -- at these prices we don't take dictation.

All free student and faculty ads to be run in the George-Anne must have a Name and Landrum Box number. If it does not have both, it will not be printed.

**ATTENTION:** The George-Anne screens all classified ads prior to publication. The newspaper strives to accept ads for legitimate products & services only. Students are urged to exercise caution when replying to ads, particularly those which ask for money or a credit card number in advance of delivery of products or services. Students are also urged to report to the newspaper (at 681-5418) any suspicious offers they might see in the classifieds. Remember, if an offer seems too good to be true, it probably is.

Carlos!  
Hey there lil brother! I just wanted to welcome you back and say I love ya!  
CG

Come get your Dole/Kemp bumper stickers and signs at the Bulloch Co. Republican Headquarters on Main St and sign up to volunteer!

Divers wanted! Next scuba meeting will be held Wed, Oct. 23 at 7 pm in the Union room 254. For more info, call Christine at 871-4989.

Looking for Super 8 movie camera and projector, any leads? Please call 489-8522.

The College Republicans will meet at the Archibald's Annex on Thurs, Oct. 24 at 6:00pm. Anyone interested in participating in the coming year is encouraged to attend.

To: Marsha Harty  
Good luck with Homecoming!  
WE LOVE YOU!  
Christy, Amy, Melanie, and Katie

TRIANGLE: GSU's gay/lesbian/bisexual organization will be holding its first meeting Sept. 26 at 6 pm. Subsequent meetings will be held the first Thursday of each month.

## 03-Autos for Sale

1989 Taurus, runs good. \$3000. Call 865-5991 and leave a message.

1990 Honda Accord LX, 97K, 4 door, AT, AC, all power, one owner, non-smoker, cell phone. \$6900, call 764-6472.

For sale: 1985 Chevy Spectrum 5 speed. New tires, runs good, air conditioning. \$1500, call 764-6934 after 6 pm.

For sale: Restored 1969 F-100 truck; trophy winner, 460, automatic. Needs valve job and two front tires. \$4000.00. Call 842-9122 evenings.

Mustang LX 91. A well maintained, extra clean car with automatic transmission, power windows, locks, cruise, A/C and more. Looks new. Must sell. \$5395/OBO. Call 681-6064.

**SIEZED CARS FROM \$175.** Porsches, Cadillacs, Chevys, BMW's, Corvettes. Also Jeeps, 4WD's. Your Area. Toll Free 1-800-218-9000 Ext. A-7828 for current listings.

Subaru GL 1984. A nice, reliable, clean car. A/C, AM/FM radio, cruise, and more! \$1250, please call 681-6064.

Toyota MR2, 1986. AC, Red, Kenwood CD player. \$3000 OBO. Call 871-2661.

## 05-Business Opportunities

**FREE T-SHIRT + \$100** -- Credit card fundraisers for fraternities, sororities & groups. Any campus organization can raise up to \$1000 by earning a whopping \$5/VISA application. Call 1-800-932-0528, ext. 65. Qualified callers receive a free t-shirt.

Want to start your own business? Call 1-800-371-3849 and leave a message and I'll get back to you.

## 06-Child Care

I am looking for a patient, reliable and dependable person to baby-sit my son in the evenings. If interested, call 681-4439 and ask for Michelle.

## 07-Education

**FREE FINANCIAL AID!** Over \$6 billion in public and private sector grants & scholarships is now available. All students are eligible regardless of grades, income, or parent's income. Let us help. Call Student Financial Services: 1-800-263-6495 ext. F53945.

## 09-Furniture & Appliances

Brown sofa bed. Good condition, must sell. \$50, call 871-5188 after 5 pm.

Couch for sale! Full size, neutral tones, NO rips, wood trimming. \$50 or best offer. Call Kristin at 489-4794.

FOR SALE: Couch with hide-a-bed. Makes a full size bed. \$100. Call 764-8785.

For sale: mattress and box spring for a double bed. Good condition. Please call 681-8861.

Great big, beautiful waterbed now available! Moving - must sell, \$50. Call 489-8522.

Small desk for sale. Has four drawers with brass handles. 4 years old, \$80. Call 871-1381 between 9-5 pm Monday-Friday.

Still for sale!  
Camel colored sectional sofa with full sized pull-out bed. Asking \$100. Call

## 11-Help Wanted

**\$1000'S POSSIBLE TYPING.** Part Time. At Home. Toll Free 1-800-218-9000 Ext. T-7828 for listings.

**ALASKA EMPLOYMENT** -- Students needed! Fishing industry. Earn up to \$300-\$6000+ per month. Room and board. Transportation! Male or female. No experience necessary. Call 206-971-3510 ext A53946.

**ATTENTION EVERYONE!** Earn \$500 to \$1500 weekly working from home/dorm! No experience necessary! Set your own hours! Serious individuals call TOLL FREE 1-800-370-6218.

**CRUISE SHIPS NOW HIRING** -- Earn up to \$2000+/month working on cruise ships or land-tour companies. World travel. Seasonal & full-time employment available. No experience necessary. For more information call 1-206-971-3550

**NATIONAL PARKS HIRING** -- Positions are now available at National Parks, Forests & Wildlife Preserves. Excellent benefits + bonuses. Call 1-206-971-3620 ext. N53944

Need extra money for Christmas or next quarter? Try selling AVON. Earn up to 50% easily. Call Melissa Disney at 587-5450 for more information.

**NOW HIRING!** Alaska Crab & Fish Industry. Earn \$3,000-\$6,000/Mo. Free room and board. Transportation. No experience. Toll free 1-888-393-1433 Ext. A-1001.

## 12-Lost & Found

Lost cat: Adult male, one year old. Yellow-brown with brown collar. Reward offered. Call 871-5726.

## 13-Miscellaneous for Sale

35mm Vivitar camera, never used, \$15. Dartboard, new, in box, \$15. Rap albums (Kurtis Blow, Run DMC, etc.), \$1.00 each or \$20 for all. Call 587-2994.

Cobra 25 LTD Classic CB with K40 antenna, built in high output amp, one of the best around. Fun, better than a radar detector! \$125. Call Vic at 681-4463.

Computer for sale with printer. \$200, call JC at 681-3633.

Computer for sale. \$300, includes monitor, 2-drive CPU, printer, and keyboard. Perfect for word processing, is upgraded. Must Sell! Call Kristin at 489-4794.

For sale: COMBINATION CARBON MONOXIDE & COMBUSTIBLE GAS DETECTORS. Saves lives, single unit, detects both gases, new, un-used. Plugs into electrical outlet (no wires/batteries needed). Compact size, ONLY \$30, much less than half of the retail price. Call 688-2513.

For sale: Super Nintendo, \$50; SNES Doom, \$15; SNES DK country, \$15. Call 688-3660 ask for Orris.

For sale: Treck 830. Two months old, great condition. \$300. Call 688-2940.

Internal faxmodems with software/manuals: 14.4K, \$45; USRobotics WinModem, 28.8/33.6K, almost new, \$95. OBO. Call 681-0891 or

**NEW COMPUTER SOFTWARE FOR SALE!!!** Don't miss out on the

## 14-Motorcycles

1994 Suzuki GSX-F600 red street bike. 7500 miles, excellent shape. Call 681-6505.

For sale: 1993 Honda CB 750 Nighthawk. Black and chrome, mint condition with many extras included. Call Michael at 681-2155 for an appointment.

## 15-Musical

Excellent condition alto saxophone. Lots of extras. Call 489-8766.

## 17-Pets & Supplies

Male ferret, coco colored, 10 months old. Has had all shots, \$75. Call 871-5188 after 5 pm.

One adult male leopard gecko. 20L, crickets, heat rock, heat lamp, thermometer, turf, all \$80. Call anytime, leave a message. 681-8635.

**SMELLY CAT...** had smelly kittens (It's not their fault)! White/tabby females. Call 842-9422 after 5 p.m.

## 19-Rentals & Real Estate

Apartment for lease winter qtr. 2 bdr/2ba, Park Place. \$235/mo, call Jeremy or Garrett at 681-3969 and leave a message.

Apartment for lease! One bedroom in quiet neighborhood! Call 489-6438 and leave a message.

Apartment for sublease! One bedroom in quiet neighborhood! Call 489-6438 and leave a message.

Available: 2 Bdr/2 1/2 bath townhouse at Player's Club. Available December thru Spring Qtr. Call Krista or Steph at 681-6071 or Lynn, property manager, at 871-6501.

For sublease immediately: one bedroom apartment in Pinehaven Apts. Very nice apartment and the bills are cheap! Won't last very long, so call 871-6619.

Need someone to sublease apartment starting Jan. 1st thru Aug. Rent is \$275/month. Call 764-5070 if interested.

One bedroom apartment available for sublease Winter Qtr. Clean, new carpet, cheap bills. Rent is \$285/month. Call for more info. 871-4862.

Reasonable Rental: 764-5003.

## 20-Roommates

**DESPERATE!!** WF roommate needed to sublease 2bdr/1bath apartment in University Place. \$220/month plus 1/2 of utilities. Beginning winter quarter. Call 681-8505 and leave a message.

Female needed! Sublease apartment Winter Quarter only with option to resume for rest of the year. \$219/month, water included. Close to campus. Call Kendra at 681-3655 and leave a message.

Female roommate needed to take over lease beginning Winter Quarter. Bermuda Run, own room, own bathroom, own phone, HBO, across from pool. Three great roommates. \$235/month (negotiable). Please call April at 681-7402 and leave a message.

**I'M DESPERATE!!** Roommate needed after fall qtr. Large 2 bed/bath, washer/dryer in Campus Courtyard. New furniture. \$300/month plus 1/2 of utilities. Please call Jenny at 681-2564. Nice roommate, nice apartment!

I'm looking to take over someone else's sub-lease. I'm a white female smoker. Please call 681-3415.

Male roommate needed! Roommate needed to take over lease. Two bedroom townhome within walking distance from campus. \$250/month plus 1/2 of utilities. First month's rent FREE! Call 369-2156 (Todd) or 871-5706 (David).

Roommate needed after fall quarter. Large 2br/2bth, furnished, w/d. Will pay 1/2 of December rent. \$300/month plus 1/2 utilities. Call Jenny at 681-2564.

Roommate needed ASAP! Own bedroom, close to campus, bars, stores, and stadium. \$190/month and 1/2 of utilities. No deposit required. Please call 681-3415.

Roommate to share house in quiet neighborhood, \$210/month plus 1/2 of utilities. Call 489-1098 and leave a message.

WF roommate needed ASAP! \$250/month plus 1/2 utilities. Washer/Dryer included. Private bedroom and bath. Call 681-3629.

WF roommate wanted ASAP. \$200/month plus 1/2 of utilities. Free water, w/d equipped, near campus. Private bedroom and bath. Must furnish your own room. Call Bethany at 681-1538.

## 21-Services

11.9 cents a minute/ 24 hrs a day. On or off campus phones. Email your name and phone number to gso1145. No monthly fee.

## Crossword

**ACROSS**  
1 Guinness or Baldwin  
5 Biblical verb  
10 Fountain order  
14 Glib talk  
15 Lowest point  
16 Stuff  
17 Prayer ending  
18 Without help  
19 Demolish  
20 Make like new  
22 Hot Mexican food  
24 Lamb's mom  
25 Faucet  
26 Stock holders, e.g.  
30 Rues  
34 Young fellows  
35 Rescued  
37 Achy  
38 "— Maria"  
39 Relay race unit  
40 1004  
41 Skin  
43 Librarian's tool  
45 Wee one  
46 — at (pooh-poohed)  
48 Student  
50 Negative  
51 Cravat  
52 Curiosity seeker of myth  
56 Guides  
60 Busy as —  
61 Shady nook  
63 Risk  
64 Fibber  
65 Double  
66 At any time  
67 Dog and cat  
68 Trifled  
69 Ridge of rocks

**DOWN**  
1 Partly open  
2 — ricky  
3 Holiday times  
4 Middles  
5 Trappers  
6 Hearty  
7 Stir  
8 Fuzz  
9 Paid the dinner tab

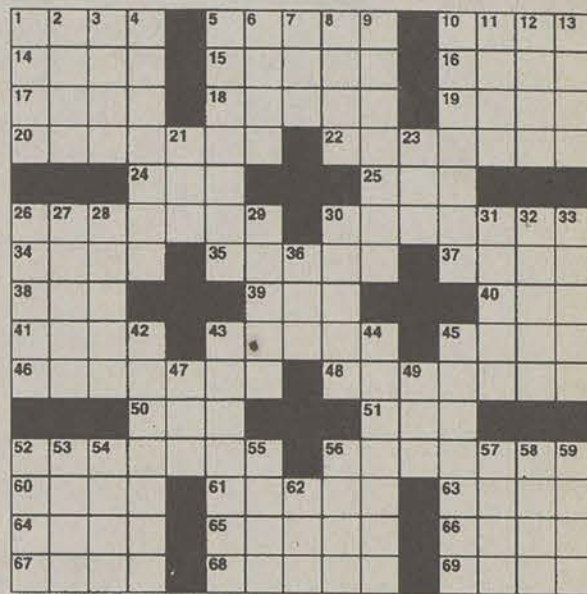
Biology tutor: Will tutor Bio 151/152 161/162, Che 371 181/182. \$10/hr. For more information call Scott Beck at 871-7591.

LAD Typing services offers computerized typing of letters, resumes, and term papers with competitive rates and quality service. Call 764-4693 and leave a message.

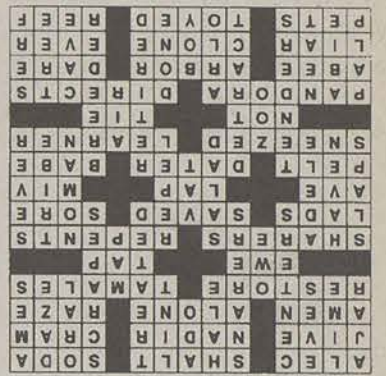
## 22-Sports & Stuff

Bauer 2000 competition roller blades aluminum chassis, foam forming ankles for maximum comfort. Bauer's second best skate! Worn only three times, new - \$300, a steal at only \$180! Call Vic at 681-4463.

Hockey equipment; cooper gloves, \$15, knee and shin pads, \$5, helmet with cage, \$10 (without cage, \$5). Call Vic at 681-4463.



© 1996 Tribune Media Services, Inc. All rights reserved.



54 Trim  
55 A Guthrie  
56 Completed  
57 Grotto  
58 Elm or oak  
59 Feudal class member  
62 Lad

## 27-Wanted

VCR's Wanted. We buy used VCR's working or not. If interested, call 681-4451.

## 28-Weekends & Travel

Bahamas cruise. 3 days/2 nights for 2. Must sell!! Call 839-2413.

**FREE TRIPS AND CASH** -- Find out how hundreds of students representatives are already earning FREE TRIPS and LOTS OF CASH with America's #1 Spring Break company! Sell only 15 trips and travel free! Cancun, Bahamas, Mazatlan, Jamaica, or Florida. **CAMPUS MANAGER POSITIONS ALSO AVAILABLE.** Call now! TAKE A BREAK STUDENT TRAVEL (800) 95-BREAK.

JAMAICA SPRING BREAK \$483 wk Atlanta Reggae/JAM 24hr info. (800) "U'REGGAE" http://reggae-jam.com/springbreak/ email jammon@gte.net

**Christian Musician Wanted:**  
Drummer, Guitarist, Keyboard, etc. to play on the Wesley Foundation Praise Band.  
Can Don at 681-3136 or Mike Hill at 681-9080

**Speak your mind.**  
**Feel good about it!**  
On Election Day  
Vote for your candidate.  
Vote for your country.  
But most of all...  
Vote for Yourself.



## MOTHER GOOSE & GRIMM

by Mike Peters



you are invited to the best

**HALLOWEEN PARTY ON CAMPUS**

WHEN: 10/31/96  
TIME: 12:00-7:00PM  
WHERE: UNIVERSITY STORE

EVENTS INCLUDE AN EATING CONTEST AT 5:00 PM AND A BEST COSTUME CONTEST AT 6:30 PM



## GEORGIA NEWS

## Georgia Democrat Max Cleland wants Guy Millner to quit the name calling

The Associated Press

ATLANTA—In what already has become the third costliest U.S. Senate race in the nation's history, the attack ads are hard to miss.

For weeks, Republican Guy Millner has been using an intense TV campaign to portray Democrat Max Cleland as a corrupt, criminal-coddling bureaucrat.

Cleland has fired back with ads depicting the millionaire Atlanta executive as a greedy businessman who would rob Medicare.

But in sheer ad volume alone, Cleland doesn't seem to be keeping up.

Cleland has passed over opportunities to attack. A week ago in the first of a planned series of three debates, a smiling Cleland absorbed repeated blows from Millner, returning fire only sporadically.

## FORUM

continued from page 1

"As a progressive county and as a city convention hub, I believe that Bulloch County will have to address that issue and that the best way to address this issue is to put it on the ballot and let the people decide," Ramsey said.

Ramsey said a passage of the referendum would create jobs, but he did not condone opening up a place to serve only liquor.

Groover said that he is not opposed to liquor by the drink in restaurants.

"I'm not convinced that it is an issue with enough people to warrant me advocating a referendum," Groover said. "I would support a referendum if there is a petition."

Ramsey has recently switched parties from Democrat to Republican.

## ACTIVITIES

continued from page 1

ticipate for the All Spirit Trophy," Beebe said. "It's a big honor to win. Many groups go all out for it. If they win then they can say for rest of the year that they are the most spirited."

The CRI Fun Walk/Run begins Saturday's festivities.

The 5K walk starts at the new sports complex on Old Register Road at 9 a.m. The first 100 students will receive free T-shirts.

radically.

In this crucial battle to succeed Democrat Sam Nunn, some Democratic leaders think Cleland's apparent strategy is the right choice, roll with the punches, stay above the fray as much as possible.

But some experts say he may be following the same course for disaster that incumbent Democrat Wyche Fowler took in 1992, when he lost to Republican Paul Coverdell.

"I think what Max is trying to do is focus on issues," said Sonny Perdue, Democratic leader of the state Senate. "I think Millner runs the risk of being like the little boy in school who just calls people nasty names all the time."

Steve Anthony, executive director of the state Democratic party, agreed. "Sometimes, the worst thing you can do is overreact."

lican.

Gracie Hill (D) was the only candidate to appear for the race for the County Commission District 2-C seat.

Hill said she personally doesn't believe in liquor, but if they wanted to have a referendum she would not to oppose it.

In response to her opponent Bobby Deal (R) not being present at the forum, Hill said she didn't remember seeing him at any forum or debate.

"He must think he's got it made and he doesn't have to get out and come to these forums and beat the bushes like I'm doing," Hill said. All the candidates present advocated the need for Bulloch County residents to get out and vote in the upcoming election.

The week's excitement will culminate in Saturday's football game and the crowning of Homecoming king and queen during halftime.

Member of the 1996 Homecoming Court are Janet Ayers, Angelique Cobb, Melanie Cobb, Tawanna Collins, Elizabeth Godbee, Dow Drury, Zan McBride, Chard Reese and Barney Sutley.

The game begins at 3:30 p.m.

## COLLEGE NEWS

## Several Columbia University students receive offensive e-mail messages

By Kim Van Duzer  
The Daily Spectator

NEW YORK—Several first-year Columbia University students and one staff member received an e-mail message containing racial slurs and expletives, composed anonymously after a student failed to log out after using her e-mail account.

By not logging out, the student enabled another person to send the message under her name.

The author of the e-mail began the message by stating "This place is meant for WHITE people."

The message proceeded to attack African American students for attending Columbia and included slurs aimed at Jews, Hispanics, homosexuals, and African Americans. The author signed the message with the name of the student on whose account the message was composed. Under the account holder's name, the message author appended the title "White

Supremacist."

Of the 11 people who received the message, 10 are first-year students. The other recipient is a staff member at the C.V. Starr East Asian Library. All of the students are either residents of

was also surprised at how openly the apparent author signed her name to the message.

"Usually, when someone says stuff like that they don't admit to it so blatantly," he said.

Oishi printed out the mes-

shocked everyone was, I realized that this kind of opinion is in the minority," Halpert said. "I was happy with the way people dealt with it."

Both Oishi and Halpert said they had no idea why they were chosen to receive the message. Balmer said the deans are investigating the incident, which she called "a very serious offense."

"This kind of action is simply not tolerated at Columbia University, and the person who did it needs to know we're not looking the other way," she said.

Disciplinary measures are handled on a case-by-case basis, Balmer said, stressing that the incident would not be considered merely a prank.

"Every member of the community is to be respected, and any violation of that is dealt with very seriously. This is something we teach students from

Orientation on," Balmer said. "It's part of one's education at Columbia and training to be a responsible adult."

"USUALLY, WHEN SOMEONE SAYS STUFF LIKE THAT THEY DON'T ADMIT TO IT SO BLATANTLY."

—JEFFREY OISHI,  
COLUMBIA UNIVERSITY STUDENT

Carman or Schapiro Halls, and nine are students in the School of Engineering and Applied Sciences (SEAS).

Jeffrey Oishi, SEAS '00 and a recipient of the message, said he was using his account when the message arrived at around 9 p.m. Sept. 5.

"When I first read it, I was surprised," Oishi said. "I wouldn't have thought that would have happened anywhere, especially here." Oishi said he

sage and showed it to his RA, who brought the matter to the attention of First Year Program Deans Kathryn Balmer and Richard Slusarczyk.

Another recipient of the message, Andrew Halpert, SEAS '00, said the incident was disturbing but did not necessarily reflect the prevailing opinion on campus.

"For a minute it was kind of scary, but when I talked to people about it and saw how

## Good Times! Great Pizza!

ALL THROUGH THE WEEK

For Pizza Out - It's Pizza Inn!

FREE  
COKE2-Liter Coke With  
Any Large PizzaDelivery or Take Out  
Only

Full Menu

Take Out

or FREE Delivery



MONDAY

Monday Night Football Specials  
12 Wings for \$3.99 • Drink Specials

TUESDAY

Tuesday Night Buffet \$4.99  
5 p.m. - 9 p.m.

WEDNESDAY

TV Night "90210/Party of Five"  
Chicken Fajitas Only \$5.00 • Drink Specials

THURSDAY

Thursday Night Buffet \$4.99  
5 p.m. - 9 p.m.

FRIDAY

Nightly Appetizer  
Specials

SATURDAY

Nightly Appetizer  
Specials

SUNDAY

Sunday Night Chicken Fingers  
Basket Only \$3.99

Any 2 Medium Pizzas for \$12.99 (Take Out Only)



(912) 681-9066

301 South (Across From Georgia Southern)  
Sunday - Thursday: 11:00 a.m. - 12:00 a.m.  
Friday - Saturday: 11:00 a.m. - 1:00 a.m.  
\*Grill closes one hour before restaurant closing.



Remember your Big and Lil  
with a gift from  
**Walker Pharmacy**

- \*Unique Sorority & Fraternity Gifts
- \*Wooden Letters & Paddle Supplies
- \*Silver Jewelry & Accessories

202 Northside Dr. W 1 Block West of Dairy Queen  
764-6175

**Western  
Auto**

**Halloween Savings**

**10% Off**

All Students, Faculty, & Staff

on October 31, 1996