

Georgia Southern University

Digital Commons@Georgia Southern

The George-Anne

Student Media

11-16-1995

The George-Anne

Georgia Southern University

Follow this and additional works at: <https://digitalcommons.georgiasouthern.edu/george-anne>

Recommended Citation

Georgia Southern University, "The George-Anne" (1995). *The George-Anne*. 1393.
<https://digitalcommons.georgiasouthern.edu/george-anne/1393>

This newspaper is brought to you for free and open access by the Student Media at Digital Commons@Georgia Southern. It has been accepted for inclusion in The George-Anne by an authorized administrator of Digital Commons@Georgia Southern. For more information, please contact digitalcommons@georgiasouthern.edu.

► Four in a row

Atlanta Braves' pitcher Greg Maddux wins his fourth consecutive Cy Young Award.

Please see story, page 6



BRIEFLY...

HOPE decreases two-year colleges' enrollment

By Joan Kirchner
The Associated Press

ATLANTA — Enrollment at Georgia's public colleges increased 1.1 percent this fall even though the popular HOPE scholarship program is drawing students away from two-year schools, the University System chancellor said.

Enrollment at two-year schools dropped an average of 1.6 percent. Macon College suffered the biggest drop statewide: 14.7 percent.

Bainbridge College, a two-year school in southwest Georgia, saw the biggest increase statewide: 7.1 percent.

Chancellor Stephen Portch predicted this fall's 1.1 percent increase overall will compare favorably nationally because enrollment across the country is expected to be down. National figures have yet to be released.

"We do believe that's probably bucking the national trend," he said.

In fall 1994, Georgia posted a 0.4 percent increase in enrollment.

Portch attributed Macon College's sharp drop partly to the city's good economy, which may be drawing more residents to jobs than to college.

"Two-year (college) enrollment is much more reactionary to the economy. When the economy is good, enrollment in two-year colleges goes down," he said.

Eight of the state's 15 two-year schools saw enrollment drop this fall despite a 5 percent tuition decrease at those schools that was designed to boost enrollment.

"We'd have seen more of a drop had we not done that," Portch said.

Portch has directed the presidents of the two-year schools to find ways to reverse the enrollment trend.

Portch said the HOPE scholarship program, which pays for college tuition and books for students who maintain a B average, is siphoning students from two-year schools because they can now afford to go away to school.

WORD OF THE DAY

eyeservice *n.* work done only when the boss is looking

Source: Weird Words

'BORO WEATHER

Today
Sunny and cool with highs in the upper 50s.

Friday
Fair skies with highs in the 50s to lower 60s.



INDEX

Announcements	2
Classifieds	7
Comics	7
Crossword	7
Opinions	4
Police Beat	2
Sports	6

It is a desire of The George-Anne to print the news of Georgia Southern University as accurately as possible. If you feel that something covered is in error, contact a member of the editorial staff at 681-5246 as soon as possible. Thank you.

FOR ADVERTISING INFO.: 681-5418

STORY OR PHOTO IDEA: 681-5246

FAX NUMBERS: 871-1357 and 681-0863

LANDRUM BOX: 8001

E-MAIL TO: stud_pub@gsa12.cc.GaSoU.EDU

The George-Anne

Liked By Many, Cussed By Some ...

Read By Them All



The George-Anne

Georgia Southern University's Official Student Newspaper

Statesboro, Georgia 30460

Founded 1927

Board votes to move Marvin Pittman

7-1 vote makes Langston Chapel Road the new site

By Erika Anderson
Staff Writer

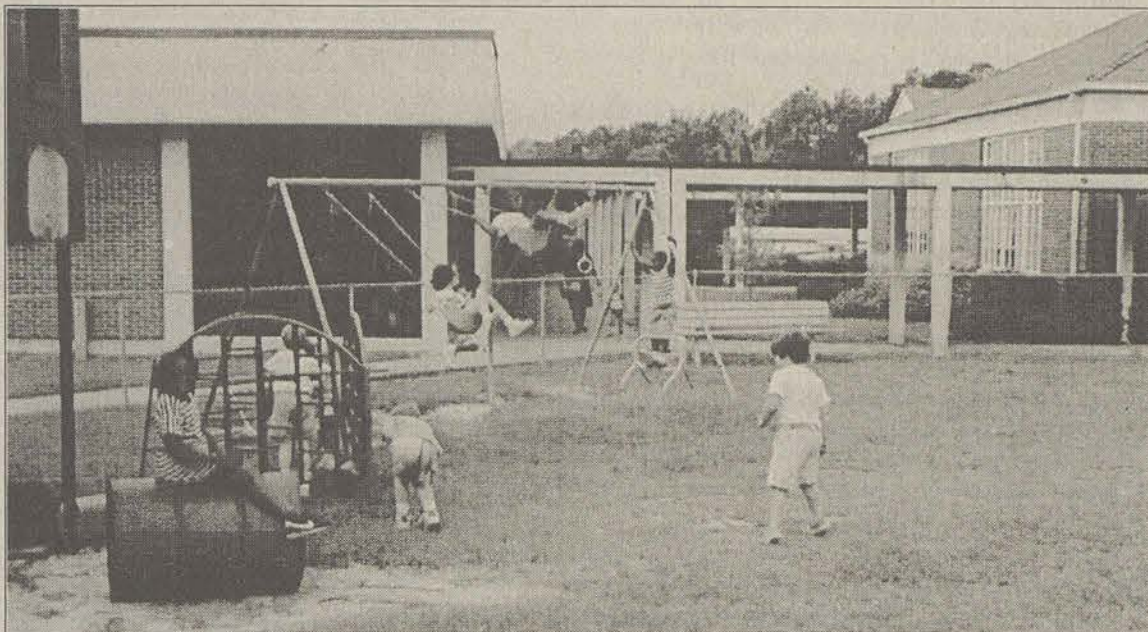
Despite apparent regrets by Bulloch County School Superintendent Billy Bice and GSU president Nicholas Henry, the laboratory school relationship between Marvin Pittman School and the university likely ended last week with the school board's decision to move the school off-campus to Langston Chapel Road.

The 7-1 vote came last Thursday after several months of debate between GSU, the school board and parents of Marvin Pittman students.

Originally, Marvin Pittman was to be adjoined to the forthcoming College of Education, but there simply was not enough room for expansion, Bice said.

"Georgia Southern did all they could to provide an adequate site for the school, but there was a need for an acceptable site to build a 600-student school," Bice said.

According to Bice, the first site that GSU proposed was an



File photo

Children attending Marvin Pittman will likely be playing at the Langston Chapel Road school by January of 1998. Superintendent Billy Bice and the school board hope to maintain ties with GSU.

oddly-shaped 10-acre site that would not allow enough room for expansion as needed.

The second site was a 12-acre site with four and a half acres of wetlands that would

require a high cost of development.

Bice also said that he and the board are committed to a long and healthy relationship with GSU throughout all of

the schools in Bulloch County.

"A strong relationship between GSU and the Bulloch County school system is a tremendously valuable asset to everyone," Bice said. "I do re-

gret that we will no longer have a lab school."

GSU President Nicholas Henry also expressed "disappointment" at the loss of Marvin Pittman.

"It will not help Georgia Southern's education program," Henry said. "We will lose a real educational advantage that we will have to compensate over time. The lab school was a great asset and we regret losing it."

GSU will continue to work with the schools throughout Bulloch County in the training of its teachers.

Construction for the new elementary school on Langston Chapel Road is slated to begin this spring or summer. The school was originally scheduled to open in August of 1997, but due to the delays, it will most likely open January 1998, Bice said.

The land that is currently occupied by Marvin Pittman will be developed in accordance with the University Master Plan, Henry said.

Campus phone problems persist

By Meredith Whitt
Staff Writer

Just when students on campus have gotten accustomed to the Sprint Collegiate phone system, another problem has arisen — poor or no service.

In early November, James Rust, a senior Sanford Hall resident, was without service for eight days.

When he asked Assistant Housing Director Greg Schlierf when his phone would be operational, he was told Christmas.

Upon leaving Schlierf's office, Rust and his roommates spotted a Frontier Communications truck on campus and chased it down. The problem was identified and fixed the next day.

That night, the phone was dead again.

Rust called Frontier and was told that there was nothing they could do for him.

And being Saturday, there was nothing Rust could do until Monday when he could file yet another complaint to Housing.

The problem was fixed for a

second time that following Tuesday.

Rust's phone has been operational ever since.

The brunt of the problems with the on-campus phone lines stems from getting the phones fixed, international calling, and overload on the system, Schlierf said.

These problems have been occurring on and off since the beginning of the quarter and the nature of the problems were addressed in the Nov. 5 "Twirl," he said.

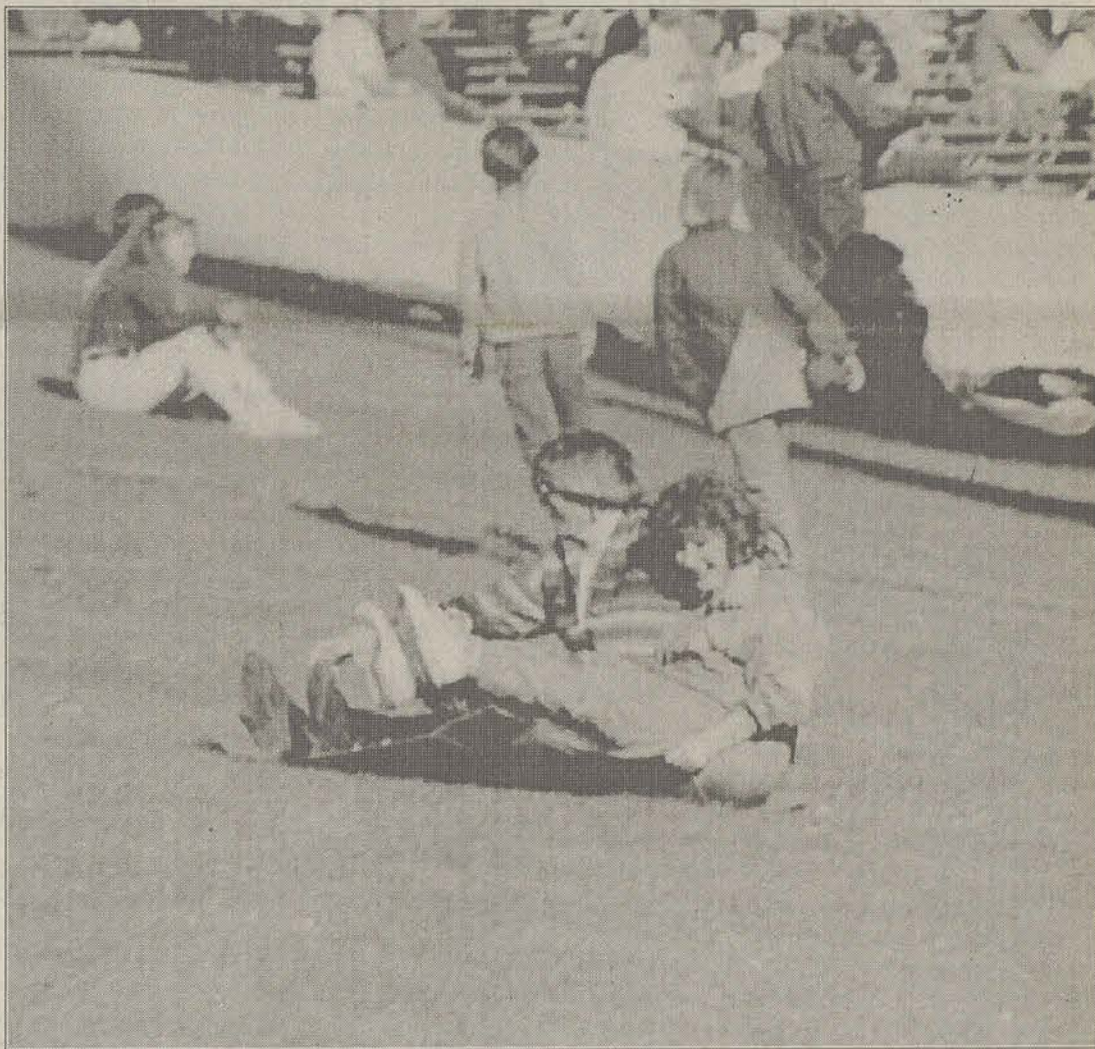
"All of the problems have been either fixed, are in the process of being fixed, or the problem has been identified," Schlierf said.

Another contributing factor to the phone problems has been Frontier's overdue expansion of their lines that was planned to be complete this summer, said Steve Brett of Frontier Communications.

Frontier supplied the phone lines through the state of Georgia, who in turn allowed them to supply GSU's dial tone.

Frontier also maintains the phone lines.

Eagles on a roll



File photo

During home football games, many Eagle fans enjoy sliding or rolling down the grass seating at Paulson Stadium. And with the football team on the road to a possible playoff berth, the true Eagle fan's excitement and support hasn't fallen off.

State earmarks \$400,000 in funds for art programs

By Kim Wagner
Staff Writer

For the third year GSU will be a Grassroots Agency responsible for providing the seven-county area with arts programming from a \$400,000 fund established by the state legislature.

"Basically the Georgia Council for the arts divides the state of Georgia into different units and then Georgia Southern volunteered to administer this program," said Maria Cahill, administrator of Grassroots Art project for the seven-county region.

Bulloch, Candler, Effingham, Emanuel, Evans, Jenkins and Screven counties received approximately \$12,000 this year.

"This is state money that is used to help promote arts at the regional and local levels, and basically take arts into rural communities," Cahill said. "It's wonderful; last year we served 4,000 people with this program. It (the program) involves everything from a black arts

festival, storytellers, theatre workshops, professional artists working with schools or the community or anything with artistic merit."

Anyone is welcome to apply for a grant as long as it abides by the guidelines provided by the council, she said.

"THIS IS STATE MONEY THAT IS USED TO HELP PROMOTE ARTS AT THE REGIONAL AND LOCAL LEVELS, AND BASICALLY TAKE ARTS INTO RURAL COMMUNITIES."

— MARIA CAHILL
GRASSROOTS ART ADMINISTRATOR

Cahill said. "So even though it may be geared toward a particular audience, we want everyone in the community to know about it."

Other guidelines include the submission of plans which publicize the event in their county. The applicant must also plan to match the state grant with 50 cents to every dollar and have a reasonable plan to achieve this, she said.

"Most of our applicants received money last year," Cahill said. "We had about 17 applicants and 13 were funded."

Charity drive ends tomorrow

By Jeni Smith
Staff Writer

Tomorrow is the last day of GSU's charitable contributions drive that gives faculty, staff and students an opportunity to help local programs by giving through the United Way.

This is a statewide program that was created by the 1982 Georgia General Assembly to help provide a yearly, statewide opportunity for employees to make financial contributions to help others. It also makes possible the use of payroll deductions to eligible charities.

Some local programs included in this year's drive are Blitch Street New Beginnings, Boy Scouts, Bulloch County Red Cross, Council for Exceptional Children, FoodBank, Girl Scouts, Citizens Against Violence, Reading is Fundamental and Statesboro/Bulloch Parks and Recreation.

The program was kicked off last week with a luncheon attended by about 75 people.

The program is chaired by President Nicholas Henry and co-chaired by Fred Whitt, Dean of Health and Professional Studies, and Tony Phillips of Human Resources.

United Way sponsors these programs with all types of businesses and organizations. Whitt said it is important for GSU to be active in Bulloch County because the university is the largest employer in the county.

"Last year we surpassed our goal for the first time in six years. So we've got our work cut out for us to do it again this year," Whitt said.

He said the amount of money raised is important because it would be good for the university to pay back the community to show its appreciation for the money they raised on "A Day For Southern" that exceeded \$650,000.

More important than the amount of money raised is the actual percentage of faculty members who actually contribute, he said.

POLICE BEAT

GSU Division of Public Safety

November 10, 1995

- Brian Christopher Starks, 21, of Roswell, was charged with driving with a suspended license.
- Scott Wesley Robertson, 18, of Olliff Hall, was charged with minor in possession/consumption of alcohol.
- A Westwood Drive resident reported his 1994 Jeep had been broken into and a CD player was taken in the Russell Union parking lot.
- A Campus Courtyard resident reported his book bag was taken from the University Store.
- A Winburn Hall resident reported some keys missing from Winburn Hall.

Statesboro Police Department

November 14, 1995

- Carolyn Anne Beresh, of Statesboro, reported a forgery.
- Chris Ashton Sturgess, 18, of Savannah, was charged with possession of marijuana.
- Jason Matthew Weber, 19, of Lithonia, was charged with failure to yield and DUI (.096).
- Brent Shryock, of Willow Bend, reported a theft by taking.

November 13, 1995

- Withrow Edra, of In the Pines, reported someone entered his auto.

November 12, 1995

- Anika Logan, of Eagles Court, reported someone entered her auto.
- Corey Prophet, of Plantation Villas, reported a burglary.
- Paul Kirday, of Bermuda Run, reported damage to property.
- David Relez, 19, of Statesboro, was charged with weaving, no insurance, and DUI (.099).

November 11, 1995

- Thearon Taylor, of Plantation Villas, reported a burglary.
- Jeremy McFarland Shankel, 18, of Dunwoody, was charged with unlawful use of license, weaving, no proof of insurance, and DUI.

ANNOUNCEMENTS

November 16

- A study abroad fair will be held from 10 a.m. - 3 p.m. in the Russell Union. For more information, call 681-0332.
- The Jazz Ensemble will perform at 8 p.m. in the Russell Union Ballroom. Admission is free. For more information, call 681-5396.

November 17

- Camellia Johnson will hold a master class at 3 p.m. in the Foy Recital Hall. For more information, call 681-5396.

IN GEORGIA

Activists don't want Olympic flame in Cobb

By Marc Rice
The Associated Press

ATLANTA — The gay rights activists who pressured Atlanta Olympic organizers to move volleyball competition out of Cobb County are stirring again.

The activists believe the Olympic flame will be carried through Cobb, which has an anti-gay resolution on the books, on the final leg of the 15,000-mile torch relay next summer. Atlanta organizers say they haven't finalized the route yet.

"That's the most important symbol of the Olympics," said Jon Ivan-Weaver, co-chairman of Olympics Out of Cobb.

"It does not belong in Cobb County."

Opponents of Cobb County's "traditional values" resolution, passed in 1993, consider it a hate document that is at odds with the Olympic spirit of brotherhood.

The Atlanta Committee for the Olympic Games last year moved the preliminaries of volleyball from Cobb, an Atlanta suburb, to Athens, about 65 miles away, after months of discord and publicity over the resolution.

But, Weaver says: "They lied to us — they're back in Cobb."

Weaver said two sources inside ACOG told him that Cobb is definitely on the torch route. Based on that information, Weaver's group is talking with activists from across the country about disrupting the torch relay at various points along the route.

mation, call 681-5734.

• Dr. Alva Hughes will present "Memory Trek — what people remember about Startrek" at 3:15 p.m. in room 201 of the Math/Physics/Psychology Building. For more information, call the department of psychology at 681-5749.

November 18

• There will be a Black Tie Gala at 8 p.m. in the Union Theater sponsored by Southern Arts featuring Camellia Johnson. For

more information, call 871-1451.

November 28

• Cinema Arts presents "The Go-Between" at 7 p.m. in the Union Theater. For more information, call 681-5471.

December 1

• Theatre and Performance will present "A Christmas Carol" at 8 p.m. in the McCroan Auditorium.

For more information, call 681-0123 (runs through Dec. 3).

Also, several gays are applying to be torch carriers. If accepted, some will use their time with the torch to make a statement about Cobb and the Games, Weaver said.

Laurie Olsen, a spokeswoman at ACOG, said the activists are getting riled up over mere speculation. She said the final route leading to Atlanta won't be set

**"THAT'S THE MOST
IMPORTANT SYMBOL
OF THE OLYMPICS. IT
DOES NOT BELONG IN
COBB COUNTY."**

— IVAN WEAVER
CO-CHAIRMAN OF
OLYMPICS OUT
OF COBB

until next year.

Regarding Weaver's sources at ACOG, Ms. Olsen said, "I know who those people are. They are reading a lot into anything that has been said at this point."

Tickets to the opening and closing ceremonies of the 1996 Olympics and other prime events are still available if you've got a lot of money to spend.

Atlanta organizers are running ads in business-oriented publications to revive interest in the Olympic Games Patron Packages, which cost a cool \$50,000 a pop and include pairs of tickets to 32 premium events.

"Although tickets to these most sought-after sessions are no longer available on an individual basis, a limited number of seats are still reserved for holders of an Olympic Games Patron Package," the ads say.

ACOG pitched these deals to executives earlier in the year, but have not yet sold them all. Scott Anderson, ACOG's ticket chief, won't disclose how many have been sold, though he said it's somewhere between 340 and 1,000. Los Angeles sold 340 of a similar package for the 1984 Games, an amount Atlanta has already exceeded, Anderson said. ACOG's budget writers projected sales of 1,000 for 1996, a goal that has not been reached.

As an incentive to get the money to pry open their wallets now, Anderson cautioned the price may go up after the first of the year.

Only 10 percent of Olympic ticket buyers from outside Georgia have put in requests for housing with the official lodging agency of the Games. That was enough, however, to snap up the few remaining hotel rooms within a 1 to 1 1/2-hour drive of Atlanta. WorldTravel Partners says, however, it still has plenty of private homes and apartments to rent to Olympic visitors.

"People really need to look seriously at private accommodations as one of their options," said Jerilyn Jones, vice president for marketing at WorldTravel.

IN THE USA

King's church to become a museum

By Elliott Minor
The Associated Press

ALBANY, Ga. — The pigeons are being evicted from the crumbling brick church where freedom songs were born and the Rev. Martin Luther King Jr. inspired weary protesters.

The old Mt. Zion Baptist Church, which has been standing empty for 23 years, was added to the National Register of Historic Places in August and will become a civil rights museum.

Its artifacts, including the key to a jail cell where King was confined, will honor members of the "Albany movement," who risked arrest and beatings in 1961 and 1962 to end segregation in Georgia's fifth largest city.

"That was our meeting place," said McCree Harris. "I was a school teacher. I had to be careful, but I attended every meeting, even though I had some fear. I had some retaliation from my bosses."

The first meeting was on Nov. 25, 1961, three days after five black students were arrested for standing in a white ticket line at the bus station.

Within a few days, more than 700 of Albany's black residents had been arrested, marking the first mass arrests of the civil rights movement.

Albany is considered significant in the struggle because it was where King refined his tactics of non-violence before moving on to Birmingham and Montgomery, Ala., said Lee Formwalt, a history professor at Albany State College.

It was also in Albany that some of the movement's songs were born, such as "I Woke Up This Morning With My Mind Stayed on Freedom" and "Ain't Gonna Let Nobody Turn Me 'Round."

IN GEORGIA

President of UGA says student quality increased

The Associated Press

ATHENS, Ga. — Nearly every indicator shows student quality at the University of Georgia is rising this year, the school's president said Thursday.

"We have some of the best students in the country," President Charles B. Knapp said in remarks prepared for his 1995 State of the University address.

The average freshman SAT score this fall was 1,108, about 200 points above the national average and 260 points above the state average, he said.

Construction continues at a rapid pace, he said, with more than \$200 million worth in progress or planned.

"We will need to continue building at this pace of approximately one major new building

"Every time I hear something about the movement, I hear some of the songs that were revitalized" in Albany, said Mrs. Harris, secretary of a non-profit corporation that is rebuilding the church.

"Most of them were old spirituals. We used them... with sometimes a change in words. The tune was more or less the same."

King visited Mt. Zion in December 1961 to energize civil rights protesters.

He delivered four sermons in one night— two at Mt. Zion and

**"EVERY TIME I HEAR
SOMETHING ABOUT THE
MOVEMENT, I HEAR
SOME OF THE SONGS
THAT WERE
REVITALIZED."**

— MCCREE
HARRIS

two across the street at Shiloh Missionary Baptist Church.

"There had been mass meetings, mass marches and hundreds were in jail," said Formwalt. "The movement was at a point where they needed a shot in the arm."

He was arrested the next morning during a march. But rather than pay a fine of \$178, he chose to serve a jail sentence to demonstrate the evils of segregation, Formwalt said.

City officials, anxious to get out of the national spotlight, wanted King to leave, and a mystery man eventually paid his fine.

King has described Albany as his greatest failure. Lorie

Pritchett, Albany's police chief, had studied King's tactics using non-violent civil disobedience to provoke a violent white response and was prepared.

He had ordered his officers to use restraint in public and had made arrangements to jail protesters in surrounding counties.

"That frustrated the heck out of King," said Formwalt. "He expected a violent reaction."

A rapport developed between King and the chief, and King even postponed a march so that Pritchett could celebrate his wedding anniversary, Formwalt said.

Besides its role in the civil rights movement, Mt. Zion was a meeting place for Albany's oldest black Baptist congregation.

The Gothic-style church was built in 1906 and used until 1972, when the congregation moved to a new building about three miles away.

Workers began a massive restoration project last month. One of the first tasks was to remove about 3 1/2 tons of pigeon droppings from one of the bell towers.

The roof leaks, the brick walls are cracked and some of its wooden beams are rotted. Arched windows that once held stained glass are covered with plywood. The organ and pulpit are gone, but the dusty brown pews remain intact.

The \$753,000 project, funded largely through a special sales tax, should be completed late in 1996. It is the first step in creating a black historic district.

A few years after the Albany movement, the city repealed segregation laws and integrated the schools. And black residents gained some political clout.

"It changed our direction," Mrs. Harris said. "No longer did we want to go in the back."

per year for the foreseeable future," Knapp said.
He said less than half the construction costs this fiscal year have come directly from state appropriations, and externally sponsored grants for research have grown 22 percent.

The
Miscellany
Magazine of the Arts

Budding Poet ?
Enter your poems in The Miscellany's
Fall Poetry Contest. Up to \$75 in prizes! All poems
received will be considered for publication in the
Miscellany Magazine of the Arts.
Deadline : Nov. 20, 1995
For more information call 681 - 0565, send entries to:
Miscellany L.B. 8001

Freshman Faces

Now available
inside the
Student
Government
office

Upstairs in the
Russell Union
from 9:30 am
- 3:00 pm

for pre - orders only

Sing at
SOUTHERN

*Choral Opportunities
Winter Quarter*

SOUTHERN CHORALE

(M,T,W,Th-12-12:50) • MUE 320 C & MUE 820 C

UNIVERSITY SINGERS

(M,T,W,Th-2-2:50) • MUE 320 RC & MUE 820 RC

Participation in Choral Ensembles is open
to students of all academic majors.

For more information contact:

Dr. Rodney Caldwell
Director of Choral Activities
681-0616

Deep Thoughts

To me, clowns aren't funny. In fact, they're kinda scary. I've wondered where this started, and I think it goes back to the time I went to the circus and a clown killed my dad.

Source: Deep Thoughts by Jack Handey

What's Happenin' BY TRACEY VARNELL



• Thursday, Nov. 16: Bullhead Clap returns to Blind Willie's. Bubba's hosts its Lady's Lock-up Champagne Jam from 8 until 9. Men can get in before 8, but no other men are allowed in until after 9. So be one of those lucky fellows to get trapped in Bubba's with a crowd of women that are raving to get oblivious.

• Friday, Nov. 17: The infamous Swinging Medallions will return to Blind Willie's to shake things up a bit. They're definitely swingers and they have quite a reputation for hosting a huge get-drunk and shake your butt party. Also, Purple School Bus will be at Blind Willie's.

• Saturday, Nov. 18: Blind Willie's will be lucky enough to have Col. Bruce Hampton and the Fiji Mariners once more. This band is worthy of your time, especially if you like the whole Grateful Dead, Phish, Zappa thang. Col. Bruce Hampton is a virtual legend (No, not just in the 'Boro).

• Monday, Nov. 20: Legend's is throwing a Thanksgiving Party complete with your favorite dance, disco, and 80s tunes. Free pool at Blind Willie's (need I say more?).

• Tuesday, Nov. 21: The Athens-based band The Shadowcast will be at Blind Willie's. They're a pop band with a southern feel. Legend's will stick to the weekly tradition of Disco/80s night.

• Wednesday, Nov. 22: Jupiter Coyote will return to Legend's.

By the way, if you assumed that I've given up my tradition of slamming — **YOU'RE DEAD WRONG!** I've just decided to give all of those who can't seem to deal with the truth in my columns a taste of what they are obviously looking for. For those of you out there who have complained about those who've complained, rock on ... I'll return promptly.

'Copy Cat' is far from an original

By Eric Bray
Staff Writer

The title of "Copy Cat" is appropriate since the movie rehashes the old serial killer plot preceded by much more noteworthy films such as "Silence of the Lambs" and "Seven."

Apparently the creators of "Copy Cat" thought the element of a serial killer who mimics the works of other serial killers was enough of an innovative slant to distinguish it from the entourage of other, similar films.

The truth is that the audience's attention usually falters after gathering all this information from the title and turns to the story line to pique their interest.

So another ploy is used. The movie attempts to incorporate the use of female leads. What it does, though, is take something that should have been an asset and turns it into a gimmick.

If "Boys on the Side" was about asserting female strength, then "Copy Cat" should have been titled "Boys Nowhere."

There is no strong and/or substantial male characterization throughout the movie. In addition, what few male characters exist are killed or written out of the picture halfway through.

Sigourney Weaver ("Aliens," "Ghostbusters") stars as the serial killer expert, which almost doesn't count as a female lead considering she looks more like a man than most of the Glorious Ladies of Wrestling.

For all her butch toughness, though, it is the petite Holly Hunter ("The Piano," "Home for the Holidays") who exhibits the heroine qualities as a homicide investigator.

The strength of Weaver's character is somewhat amputated in that she portrays an agoraphobic case who hasn't left her apartment in 13 months.

Her fear of open spaces is conveyed well thanks to good direction of photography.

Also, Weaver is almost a foot taller than Hunter. To assert Hunter's strength, director Jon Amiel ("Sommersby") tried to shoot most scenes with Hunter standing and Weaver sitting, which is appropriate for someone who's agoraphobic.

Weaver herself gives an effective performance as someone who has been suffering from a nervous breakdown. She looks so bleary-eyed and haggard you'd believe she was still an emotional wreck from having to shave her head for "Alien 3."

Holly Hunter, on the other hand, seems detached from her role.

She did quite a bit of research by participating in actual police crime scenes, but it doesn't help her meld into the role.

This may be the fault of poor direction by Amiel, but Hunter seems to be sleepwalking through the part, never getting a true feel for it.

Dermot Mulroney ("The Last Outlaw," "Young Guns") plays Hunter's partner. He gives a stellar performance considering he has to act infatuated with Weaver.

The role of Harry Connick Jr. ("Memphis Belle") has been hyped.

He is not the villain, nor does he appear in more than three segments.

I don't know who decided to cast him, but he is completely unrecognizable in the part.

His smooth, silky lounge-singer voice is disguised by one more fitting to some hick gas attendant.

With misshapen teeth, pimples, and red hair he looks more like a deranged Opie Taylor than his usual suave self.

He's one of the few interesting aspects of the film, which is completely predictable and tiresome.



Tricky
Maxinquaye
Island Records
By Paul Ferlita
Staff Writer

Tricky first found his niche in the music community by working with the Wild Bunch, a group of DJs and MCs who were responsible for creating England's hottest underground parties.

Tricky left the Bunch when they became the dance act Massive Attack; however, he continued to write lyrics and music for Massive Attack's two albums. He quit after an argument and began to pursue a solo career with the help of a beautifully-voiced woman named Martina.

Tricky's work on his debut album Maxinquaye is not far different from his days with Massive Attack. The first song on this album, "Overcome," is an alternate of "Karmacoma," a song written by Tricky for Massive Attack.

The songs on Maxinquaye are all different. This album spans everything from the psychosexual dependent themes of

"Overcome" to the slow-jam paranoia of "Ponderosa." The album also has a chilling transformed version of Public Enemy's "Black Steel In The Hour Of Chaos."

Musically, this album is unparalleled. The beats are all fresh, mixing hip-hop, ambient, soul, R&B, and crunching guitar.

All these styles blend to form a thick wall of sensual as well as danceable beats. With the dueling voices of Tricky and Martina, this album speaks from both sides of the fence.

All in all, this is great album by a great artist. You definitely want this one if you are into Portishead, Massive Attack, Garbage, or The KLF.

Robin Blake
Carrot Top
Fun
The Joke Zone
Earth Tones
Crunette
and
Mabey
Big Time Entertainment
Sneak Previews
Wallers
Forrest Gump
Harlem
Globetrotters
Contemporary Issues
Virtual Reality
Berilee Berry
Rocky Horror
Picture Show
Tailgate Party
Wingfield
SPLASH

Blackbus
Creative
Dating
The Joke Zone
BLIZZARD OF BUCKS
CRAZY GAME SHOW
Friday,
November 17
Union Commons
1 pm
Thursday, November 30
TABOO
Resident Hall Tournament
The Game of Unspeakable Fun
So you think you and your friend or roommate have this special mental connection Hu, or are you just good at the game!?! Well talk with your Resident Assistant about getting a team together. Only the first ten teams to respond can enter the tournament. Each hall can have more than one team. Call UP at 681-0655 to reserve your team for the tournament.
Special Prizes for the Winning Hall
Union Ballroom 7:30 pm

Multicultural
Expo
Don Reed
Battle of the Bands
Star Wars
Film Festival
Games People Play
Spring Fling
US College Comedy Competition
Fashion Show
Reggae Fest
Whole World Improv
Sound Waves
Tom DeLuca
Hypnotist
The Positions
Fettucini Brothers

CLASSICS IN REVIEW

BBC's answer to historical trauma

By Scott Morris
Staff Writer

Tearing off the front line of the British comedy invasion is The Black Adder. It was a series on BBC for awhile in the 80s and is now available on film. Each of these videos has three episodes to test your wit and wisdom. In this series, Black Adder (Rowan Atkinson, also from HBO's Mr. Bean a.k.a. the voice of Zazu in The Lion King) is a character who shows up here and there throughout history.

He was there when the King separated the church in England. He was there during Victoria's reign. This time, in the first volume, he is on the Western Front 1917, commanding a group of bumbling idiots.

General Haig orders Capt. Black Adder to move his liquor cabinet six inches closer to Berlin. To avoid participating in this

action that may well cost him his life, Black Adder volunteers to be the official war artist. He ends up painting battle scenes with a realistic flair (or if you didn't catch on, he ends up sitting in a battlefield while bullets whiz over his head as he paints).

In episode two, Corporal Punishment, Capt. Black Adder avoids the battlefield again by shooting the carrier pigeon that contained the orders from General Melchett (Stephen Fry) to move the front forward. The pigeon he shot happens to have been a boyhood friend of the general, and carrier pigeon shooting is an offense punishable by death due to loss of other means of communication. Black Adder is saved by Lt. Barleigh's (Hugh Laurie's) uncle. Barleigh's uncle is in charge of the lives of the all the soldiers in the Queen's Armed Forces. Our hero survives al-

though the lieutenant gets so drunk he forgets to mail the letter requesting that Black Adder's life be spared.

In episode three, Major Star, the Russian Revolution causes all the Germans who were fighting Russia to come over and fight the British. The general decides it would be a good idea to have a talent show of sorts. The show, produced by Captain Black Adder, has Lt. Barleigh doing a drag show. The general appears not to have caught on to the fact that this was indeed a drag show. Lt. Barleigh is forced to go on a date with the general and they end up getting engaged by the end of the evening.

I highly recommend renting any of the Black Adder episodes you can find. They have the intelligent charm that most British comedy emits along with some humorous historical hijinks.

Thanksgiving

Union Productions
681-0655
Office Hours 9 - 4
LB 8066 GSU
Statesboro, Ga 30460



Our Opinion

Failure to compromise has cost GSU enormously

Once again, the student body should castigate the Bulloch County Board of Education and the GSU administration for failing to find a compromise on a plan to keep Marvin Pittman School on campus.

The final decision last week to move the laboratory school to a new site on Langston Chapel Road will do grave harm to our College of Education and the teachers-in-training who attend GSU.

To understand the serious implications of this decision, one must only recall that GSU has prided itself over the years as being one of the biggest and best places in Georgia to study the field of education. One of the major factors contributing to the revered status of our education college is that a lab school is located adjacent to the building.

Moving the school off campus, which essentially severs our close relationship with area schools, is tantamount to telling future teachers that on-site training is the least important aspect of their college careers.

If anyone needs hands-on experience with their profession while still in college, it is teachers.

We realize the shutdown of an on-campus Marvin Pittman does not signal the end of student-teaching in the classrooms of Bulloch County, but it does mean that a delicate relationship established over a number of years has been destroyed.

It is not merely an issue of whether education students will be inconvenienced because they have to drive to their respective teaching locations. Having a lab school adjacent to the college developed a trust and a kinship between GSU and the school which is now virtually impossible.

We believe the end of these ties will make our education students less prepared for and less experienced with their profession in years to come.

Next time an issue of the GSU-Bulloch County relationship arises, we hope our leaders will find room for compromise so that all parties can benefit.

Change phone system next year

The new on-campus phone system provided by the Sprint Collegiate plan has proven in a number of cases to be inefficient, inconvenient, and sometimes, completely worthless.

The housing department should seriously consider looking into a new telephone system for next year and all subsequent years.

The poor service provided by Sprint has limited the options of on-campus students regarding what calls can be dialed out of their rooms and how numbers must be dialed. Their own telephone numbers are not even available in Frontier Communications' database of information. That makes dorm phones extremely inconvenient.

On-campus students can't even dial a regular 411 call from their rooms, and that makes dorm phones extremely inefficient.

In at least one case of which we have been made aware, phones have become inoperational and service for them has been delayed. That makes dorm phones, occasionally, completely worthless.

GSU changed its phone system in the wrong direction. The next change should be yet another new system.

I walked briskly to class, clutching my coat to my chest against the first biting wind of fall. I tend to be observant, so my attention was immediately drawn to countless white strips of cloth tied to trees along the sidewalk. They seemed to stretch through the branches as a white parade, waving as flags. I wondered what they represented, as I shoved my icy hands into my pockets. Later, I learned that each white strip represented female students here who were victims of rape. I was appalled and amazed. How could I have failed to see such a massive problem?

Rape, domestic violence, child abuse ... I guess we all tend to sugar-coat these social "taboos." It's time to address the problem. Education about this widespread issue is essential. I don't think that people realize what a large problem these issues are. Victims often think they are alone, in the minority. The truth, however, paints a different picture.

I don't believe that I truly understood the ugliness of abuse until I witnessed a sight that horrified me. As I was browsing through a store one day, I felt a something brush against my leg. I glanced down and saw a small blonde head. There was a child playing beneath my feet. Smiling, I bent down to say, "Hello." The little blonde angel pushed away, backing herself as close to the shelf behind her as possible. I was bewildered until I saw her face. She must have seen the smile on my face fade into sheer disbelief. Her face was no longer shielded by her platinum hair. She stared at me with two blackened eyes, bruised cheeks, and swollen lips lined with dried blood. I spoke to her softly, tell-

ing her that I wouldn't hurt her, wondering how many times she'd heard that phrase before. Tears pooled in my eyes as I looked at the brown eyes staring out of a blue and purple face. How could anyone inflict such pain on a beautiful and helpless child? Abuse was in human form before me. I wanted to take her home with me. I wanted to do something — anything. Her mother was suddenly towering over me. I could imagine the terror this child felt as her mother's shadow loomed over her time and time again. Suddenly, I could see her in a dark room hovering in a corner whimpering, fearing the steps in the hall were coming closer to her room. I stood as the mother grabbed the limp arm of her child. She was the epitome of evil, tearing apart the life of a child ... killing innocence. I opened my mouth to speak, but no sound came. Whisking away the child, the mother hurriedly proceeded down the aisle. Turning, she gave me a glance of bitterness. That event forever haunts my memory.

What are we to do for the bruised angels, for the innocent victims of rape? Well, first of all, we cannot ignore the bruises. So often, we ignore problems because we don't want to get to "wrapped up in the problem." Truly, we are part of the problem if we fail to be part of the solution.

If we don't nurse the bruises, who will?

If you know someone who is a victim of abuse, help them get help. If we don't break the silence and become brave enough to speak out, victims of abuse are crying in vain. It is not just someone else's problem anymore. The repercussions of

What are we to do for the bruised angels, for the innocent victims of rape? Well, first of all, we cannot ignore the bruises. So often, we ignore problems because we don't want to get to "wrapped up in the problem." Truly, we are part of the problem if we fail to be part of the solution.

If we don't nurse the bruises, who will?

If you know someone who is a victim of abuse, help them get help. If we don't break the silence and become brave enough to speak out, victims of abuse are crying in vain. It is not just someone else's problem anymore. The repercussions of



WHY THE GSU SEXUAL ASSAULT SURVEY WASN'T A QUESTION-AND-ANSWER SESSION ...

abuse are beginning to be felt throughout society.

If we can save one girl from sobbing in a dorm shower, scrubbing away a layer of pain caused by rape, then we have accomplished something. If one less child has to cover bruises at recess, then one less wound is opened.

Counseling services on cam-

pus should be used. If you or someone you know is a victim of abuse, please, don't live in silence. Go to a local church, a counselor, or a trustworthy adult, and don't let someone steal your voice. In fact, your brave words might just save someone else from having to cover bruises and nurse emotional scars. Enough is enough.

Your Opinion

GSU offers coupons for missed meals at Union Station

Editor,
I had the pleasure to meet with the student government officers and senate this past Wednesday evening for a question-and-answer session on Georgia Southern food services.

I was very impressed with the interest and concern that was shown by the student body representatives. There were many good questions about how food services operates and why certain policies are in place.

One question was brought up that I wanted to share with other students via your media pertaining to a recent incident that occurred in Union Station.

On Nov. 5, at approximately 3 p.m., Union Station's fire extinguishing system activated over the charbroiler and fryer stations, even though there was no danger of fire. Not only did this scare customers and employees alike, but when this happens the gas supply to the building is automatically turned off to prevent any catastrophic situations.

The gas supply cannot be turned back on until the fire extinguishing system is reset. The company that resets the system is in Savannah and could not be reached until Monday morning.

Consequently, Union Station could not serve any charbroiled or fried menu items for the remainder of the day, only salads and deli sandwiches.

Although the Educated Palate and the Pickle Barrel were open for those who were not satisfied with salads or deli

sandwiches, the question brought up at the student government meeting asked about food services' willingness to make amends to meal plan customers who may have lost their meals due to this situation.

The answer is yes. For those students who felt their meal options were limited and ultimately dissatisfied, I am offering coupons valued at \$3.60 to be used at their convenience at Union Station.

All a student need do is go by Union Station and provide the management with his or her name, ID number and Landrum box. If the student was eligible for a weekend meal, the \$3.60 coupon will be mailed to the student's Landrum box.

Fortunately, this is the first time that something like this has happened at Union Station.

However, in the event this should happen again, Union Station will scan student IDs for the meal and provide students coupons for use anytime at their convenience.

I want your readers to know that food services values our students as customers and will do everything within reason and our ability to satisfy their needs. I regret any inconvenience experienced by this incident.

We are researching the cause of this situation in hopes that it will not happen again.

Tom Palfy
Director of food services

Leave blacks alone on the African issue

Editor,
My kettle is whistling loud and uncontrollably.

I've been at GSU now for three years, and all I see when I open the papers is, blacks need to do this, blacks don't need to do that, blacks, blacks, blacks.

Well, first let me applaud *The George-Anne* for allowing students to voice their opinions on hot issues and without "biting their tongues" too hard. However, I don't appreciate the fact that someone always has something negative to say about African-American students.

I was so appalled at the article in the Tuesday, Nov. 14 edition entitled, "Blacks, just be Americans" (Brad Daniell). To be an African-American means to be of African descent and (sometimes unfortunately), be an American citizen.

You may not be proud of your Scottish heritage, but I'm elated to be the son of African kings and queens. Leave us alone!

"It's a black thing, you wouldn't understand," so stop trying. It saddens me to see such hatred in the hearts of those who I have to sit next to in class on a daily basis. But it's a different story in class. You smile in my face, and then

whisper when I walk by and talk behind my back.

Be a man! You must use your courage before it wanes, and apparently it already has.

Sadly, these conditions aren't limited to the campus of Georgia Southern University. For instance, the three-strikes law, which is some prejudiced, unjust BS. I feel that it is aimed solely at African-Americans because we get locked down the majority of the time. What you're really telling us is, there is no such thing as paying off your debt to society, because if we get in trouble again, you are going to make us pay for that mistake, plus the mistake(s) we made in the past.

Is it really about correction, or is it really about torture? Is it really about rehabilitation, or is it about keeping us away from your daughters and out of your front offices?

Leave us alone! You let the child molesters out in three years, but give a mandatory eight to 10 years for those caught with a reasonable amount of cocaine.

I hope you feel me, and if you don't after this you can kill me. No love.

Demetrius Freeman
Junior

STAFF

NEWS

Assistant News Editor: Melanie Weinberg; Staff: Erika Anderson, Stephen Kirven, Derek Lewis, Kim Wagner, Meredith Whitt

FEATURES

Features Editor: Stacy Clemons; Arts & Entertainment Editor: Tracey Varnell; Staff: Jill Buckthal, Shantell Elliott, Dana Gunter, Lynn Thielman

SPORTS

Sports Editor: Ronnie Swinford; Staff: Mike Davis, Hughie Hunt, Reginald Gibson, Carolyn Wynn

OPINIONS

Staff: Christopher Cole, Amanda Crews, Chance Faulk, Justin Miller, Jana Newsome, Melanie Weinberg

PHOTOGRAPHY

Chief Photographer: James Hill; Staff: Sarah Brinkley, Darryl Jones, Michele Hess, Jerome New

ARTWORK

Shawn Chavis, Scott Morris

CIRCULATION

Supervisor: Steve Taliaferro

ADVERTISING/DISTRIBUTION SERVICES (ADS)

Advertising Manager: Brooks Clements; Business Manager: Stephanie Wylie; Marketing Coordinator: Heather Turner; Sales Representatives: Ron Lair, Jennifer Ricketson, Julie Thompson, Heather Turner, Carolyn Wynn

PRODUCTION AND GRAPHICS EDITORIAL SERVICES (PAGES)

Production Managers: Ron Lair, Scott Mulkey; Layout Editor: Andrea D'Astoli; Staff: Jennifer Craft, Tamara Gilbert, Shawn Sunderland, Tonya Thompson; Darkroom Manager: James Hill

STUDENT PUBLICATIONS COORDINATOR

Robert Bohler: News, Editorial Advisor; Bill Neville: General Manager

Your Opinion

GSU professors respond to G-A cover story, editorial on Cohen

'Disturbed' by coverage

Editor,
I was disturbed by both your cover story and your editorial regarding Jeff Cohen, who was sponsored by CLEC as part of the fall lecture series. Not only do both pieces reflect poor journalistic practice, they contain many errors and quote only those who seem to want to make a name for themselves and reap political hay as a result.

Mr. Cohen's talk was primarily concerned with the increasing trend in the media toward massive conglomeration. Anyone truly interested in a fair and accurate press and a diversity of media options has to be concerned about the increasing concentration of all media in the hands of a few corporations and individuals. He also spoke about being critical consumers of all media, paying special attention to the corporations that sponsor the media, particularly the news. However, the content of Mr. Cohen's talk did not seem too important in either piece you printed in *The George-Anne*. Instead you quote Lee Hyer and Cory Andrews without questioning their intentions or the veracity of their statements. Further, you valorize what they said by phrases such as "Hyer said" or "Andrews wrote," while later in the piece you indirectly quote what Jeff Cohen said and use words like "alleged." Clearly, such characterizations are meant to disparage Cohen's remarks as inaccurate and elevate Hyer's and Andrews' quotes to the level of unassailable truth.

Your editorial suggests that Mr. Cohen's lecture and discussion had "the sole purpose of debunking conservatives in the media." That is false. I outlined the major points of Mr. Cohen's remarks above. It was almost

as an aside that he mentioned Rush Limbaugh. Mr. Cohen did speak to Mr. Limbaugh's frequent exaggeration and distortion. I doubt any serious critic of the media will claim that everything Rush Limbaugh says is accurate and true. After all, we need to remember that Mr. Limbaugh's primary role is as entertainer. However, Mr. Cohen also characterized Mr. Limbaugh as middle-of-the-road compared to the likes of racist Bob Grant. As students of journalism, I would hope that the staff of *The George-Anne* knows the difference between journalism and entertainment. Granted, thanks to the likes of Rupert Murdoch, the distinction is becoming more difficult to make, which, again, was the major point of Mr. Cohen's talk. Mr. Cohen has documented Rush Limbaugh's claims in a book which can be judged on its merit or lack thereof.

To your credit, you do highlight Mr. Hyer's political agenda in your editorial. However, the suggestion that CLEC should not sponsor "biased" speakers is ludicrous. As if anyone or any position could be free of bias. Again, the very point of Mr. Cohen's lecture was to be critical of the media so as to detect bias. Also, Mr. Cohen was clear about his biases: the right to a free press in a democratic society, the promotion of a broader variety of media options including public access, and the reinstitutionalization of the fairness doctrine. I fail to see what is so radical about these positions. I applaud CLEC's excellent choice in bringing such a distinguished scholar as Jeff Cohen to GSU.

Michael J. Ludwig
Professor of health science

Fails to see how the lecture was inappropriate

Editor,
I am writing in response to the recent article and editorial criticizing CLEC for sponsoring Jeff Cohen. I attended Mr. Cohen's lecture and fail to see how this presentation, or any presentation that offers the university community a well-informed point of view, is inappropriate. To demand that the CLEC balance every speaker with a second that presents an opposing view is impractical if not impossible. Moreover, to do so is unnecessary. Mr. Cohen spoke of the myth of objective reporting and supported his

perspective with data — data available for any member of the university community to review and interpret. Presentations like this have the potential to stimulate critical thinking and intellectual discourse. I regret that the intellectually stimulating message in Mr. Cohen's lecture is being obscured by debates about what information can be offered on campus instead of debates about the ideas raised in the presentation itself.

Rebecca Terry
Professor of psychology

Criticism 'narrow-minded'

Editor,
I was present at Jeff Cohen's talk on fairness and accuracy in the media, and I think that the criticism leveled at CLEC by your paper, Cory Andrews, and Lee Hyer is misguided and narrow-minded.

Your editorial begins by suggesting that "One of the great challenges of a public university is to bring a wide variety of opinions and insights into contemporary issues to the student body." Exactly! To suggest that CLEC should only fund nonpolitical speakers is a direct contradiction of this statement. Mr. Cohen was a dynamic, insightful, intellectually stimulating speaker, exactly the type of speaker that CLEC should be funding.

For people who feel that students are not being provided with an "alternative point of view," I would like to point out that (a) at graduation last year the keynote speaker was the vice-president of Coca-Cola, clearly a conservative speaker,

and there were no complaints of bias and one-sidedness, and (b) if you feel that CLEC should fund a conservative speaker, then submit a proposal to CLEC, rather than complaining about speakers because others took the initiative to write a proposal.

For those who did not attend Mr. Cohen's talk, I would like to point out that he did not criticize conservative political views. He criticized Rush Limbaugh not for his views, but for consistently stating facts that are inaccurate. The majority of his talk, however, involved presenting evidence that conservative interests in corporate America are silencing opposing voices, and that no opinions, whether conservative or liberal, should be censored. I find it ironic that so many here at GSU wanted to stop CLEC from sponsoring a speaker bearing that message.

Bill McIntosh
Professor of psychology

Lecture was 'rewarding'

Editor,
Last Monday's CLEC-sponsored lecture by Jeff Cohen of FAIR was an eminently rewarding experience for the viewing audience, evidenced by the very enthusiastic follow-up discussion. The critique of mass media oligarchy was cogently advanced and well-docu-

mented. It is permitted, in a democratic society, by the way, to view the Rush man as something less than the *fin de siècle*'s answer to Edward R. Murrow (or even to Walter Winchell, for some of us with less edified standards).

Bob Dick
Professor of political science

CLEC member responds

Editor,
I am deeply troubled by the front page and editorial in your paper (Nov. 9) regarding the CLEC sponsorship of the Jeff Cohen lecture.

In the first place, the students who wrote these articles and/or were quoted in it do not (or, more depressing to a political science professor, *cannot*) distinguish between informed intellectual opinion and ideologically-motivated speech. Since they see no difference, they begin labelling Mr. Cohen a "left-wing" "radical" and then use the label to ignore the content of the lecture, and now apparently even deny him the right to speak! This is unacceptable for the same reason that it would be unacceptable to dismiss Mr. Rush Limbaugh's words merely because he is labelled a "conservative" or "right-wing." The label is irrelevant. What is important is the content.

Mr. Cohen's talk (as those who did attend will testify) was based on systematic research using content-analysis techniques to identify the problems posed by corporate ownership of the media, sources quoted/cited by the media and the ability of the media to provide unbiased news stories. His talk was aimed at cautioning all American consumers of the media (regardless of ideological persuasion) that there is a

need to diversify our sources of information in order to get a better understanding of the broad spectrum of public opinion that is out there in American politics. This is not by any stretch of the imagination the words of an ideologue.

The fact that *The George-Anne*, in conjunction with Mr. Hyer, is now seeking to "politicize" the Cohen lecture is in truth evidence of the very phenomena that Mr. Cohen pointed to — the groups that dominate the public debate frequently portray themselves as the "victims" in order to narrow and mainstream their own agenda.

Secondly, I am also concerned by the charges leveled against CLEC. The Campus Life Enrichment Committee is here precisely to "enrich" student life by exposing them to a variety of opinions, which is what the Cohen lecture was all about. CLEC publicly asks for proposals and students are welcome to put forward suggestions and proposals. It is unfortunate that the same students who complain about not having their viewpoints represented have not bothered to use the democratic process that is available and at their disposal to bring in speakers/programs.

Sudha Ratan
Professor of political science
Member of CLEC

AIM HIGH

Your Future Is Waiting

A high school diploma and the desire to learn are all you need. You'll receive:

- High-tech training
- Hands-on experience
- Tuition assistance for college
- Medical and dental care
- Excellent salary

For more information call 1-800-423-USA or contact your local Air Force recruiter.



Rent A Refrigerator From SGA

\$30/Year With A \$20 Refundable

OR

Buy One For Only \$40

SGA Will Deliver To You

For More Information, Call 681-0655 or come by Russell Union Room 207



For a
Limited
Time!

Any Pizza,
Any Size,
Any Toppings!

for ONLY \$7.99

No Double Portions, Please

Gotta
Be
Domino's

Order as often as you'd like!
No coupon necessary!

Serving Statesboro/GSU

681-4326

Valid at Statesboro location only. Not valid with any other offer. Customer pays sales tax where applicable. Our driver's carry less than \$20. Delivery areas limited to ensure safe driving. © 1995 Domino's Pizza, Inc.

Q: Which school does GSU hold its single game rushing mark against?

A: Glenville State, 665, accomplished in 1994 season.

BEHIND THE ARC

MIKE DAVIS

The Iron Bowl, an SEC tradition

SEC football is like none other, mainly due to the rivalries that the conference holds. But through the years, some things never ceased to amaze me.

Most of the time, it had something to do with Auburn, a team that embarrassed itself but never knew it.

It's just a shame. Frankly, I don't see how Auburn fans can show their faces.

The Georgia Bulldogs were crucified by Florida 52-17, after being shut-out by Bama 31-0. Yes, the Crimson Tide, whom everybody has condemned this year due to the lack of offensive production, blanked the severely injured Dawgs.

Auburn's Terry Bowden once again lucked out with a win and was proud of it.

Um, Terry. For the sake of the SEC, please keep your mouth shut. The team you beat by six points started a quarterback who had a broken wrist, yet still drove all over your defense. Are you proud of that?

This is the beginning of the end for the Tigers.

You so-called Auburn fans were so pumped up when Bowden began his coaching career in the pastures of Auburn (let's not even consider his job at Samford a coaching experience).

And now, after being beaten by LSU, squeaking by Georgia, and about to surrender a defeat to the Tide, we are beginning to hear the winning that Auburn fans have been so good at in the past.

Yes, the Crimson Tide, despite its sluggish offense, will go to the plains and pull out a victory over Bowden and his cats.

This is their SEC championship game. They have nothing to lose.

Face it Auburn fans (if there are any true ones out there), when you were not allowed to play a post-season game you manage to win all but one of your games (hmmm, to whom would be that loss?).

Now that you're eligible, you're fighting for any bowl that will take you.

I'll tell you the only post-season play Auburn will be in. Have you ever heard of the Blue-Gray game?

Instead of counting your bowl bids this year, how about concentrating on the number of chins Bowden has?

That could be rather difficult.

The Iron Bowl, in which Bama holds a commanding lead, will be played Saturday at Jordan-Hare Stadium, home of the biggest dairy-farming convention in the country, at 5:30 p.m.

Even though I do think the game will be close, the Tide will prevail and claim the "state" championship, something that Auburn has gotten quite used to.

Let me offer one final thought to Auburn. Instead of getting yourself hyped up before the game this weekend and then getting humiliated on national television, go ahead with Saturday's alternate plans and attend the annual cow auction down the street at Toomer's Corner.

You'll have better luck there!

The George-Anne Sports

Sports Schedules

- SoCon Volleyball tournament at Davidson, N.C. this weekend
- GSU at VMI in football at Norfolk, Va. in the Oyster Bowl

Three Eagles make surprise contributions

By Carolyn Wynn
Staff Writer

Three bright young players Andra Rogers, Maurice Bing, and Jevon Sullivan are giving a glimpse of the future to Eagle football.

Andra Rogers is a sophomore 5'9 175 pound free-safety from Duluth, Georgia where he attended Duluth High School.

Last season Rogers played as a true freshman going on to play in all 11 games as a special teams member. He also made 4 appearances at free safety during the Miami, Tennessee-Chattanooga, VMI, Glenville State games.

During the 1994 season Rogers was credited with three tackles, and 5 assisted tackles.

While in high school Rogers made 48 tackles, caused four fumbles, intercepted 4 passes, made 8 touchdowns on 110 rushing attempts, gaining 840 yards, and grabbed 30 passes for 340 yards with two touchdowns.

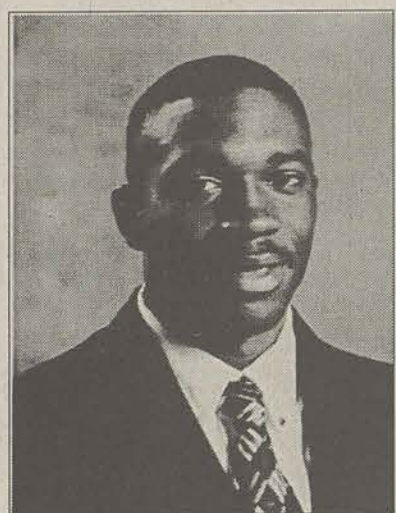
This year Rogers made his first collegiate touchdown against Middle Tennessee State in the Georgia Dome. Then he later went on to another touchdown during the homecoming game against Furman.

"I consider myself lucky to have the opportunity to play collegiate football. Hopefully I can help the team reach their goals," Rogers said.

Rodgers says one of his great-

est influences is his family. His parents have only missed one game so far this season, and have proven to be true Eagle supporters.

Rogers, has been described by other teammates as a hard working, talented athlete that is very



Maurice Bing #84

modest about his talents, but is willing to give you is all.

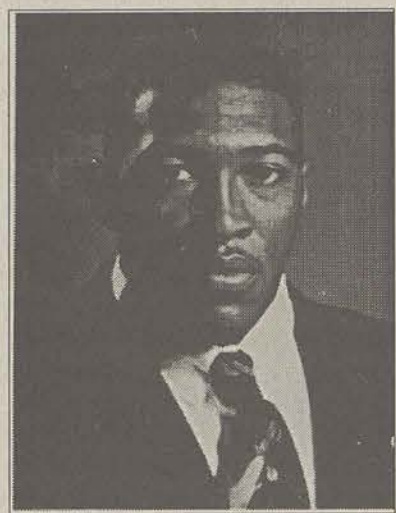
Another young Eagle is Maurice Bing, a junior 5'9 165 pound split end from Savannah, Georgia where he attended Groves high school.

Bing was originally a walk on. During the 1994 season Bing played in 6 varsity games and 1 junior varsity game as a member of the special teams.

He is credited with a 40 time

of 4.6 and has a 32 inch vertical leap.

"I choose GSU not only because it was close to home, but because of the reputation of the school. I decided to try to play football, even though I knew it would be difficult. I had faith



Andra Rogers #22

that I could be successful," Bing said.

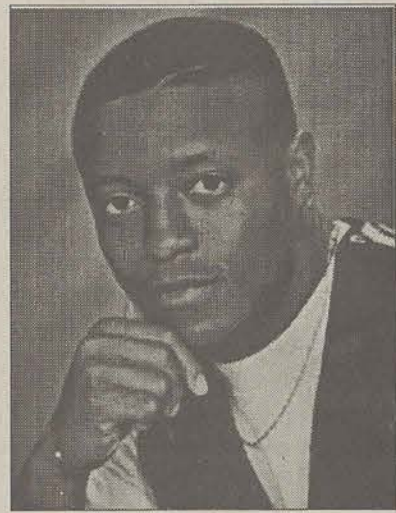
So far this year Bing has gained a starting position at splitend and has proven himself on the field. However Bing's popularity on the field has not changed him off the field he is an outgoing friendly person that enjoys hanging out with his friends.

While in high school he was a four sport athlete playing foot-

ball, basketball, baseball, and he also ran track.

He was an all-state selection on the gridiron, and an all-city in basketball.

The youngest of the three is Jevon Sullivan a 6'0 180 pound freshman from Conyers, Geor-



Jevon Sullivan #35

gia.

He attended Heritage High and led his team with 935 yards rushing and 14 touchdowns. He also was the 100 and 200 meter dash champion posting a time of 10.6, and 21.8.

After senior fullback Chad Holmes shoulder injury, Sullivan's red-shirt was taken away and he played in the homecoming game against Furman University.

Sullivan, the oldest of two boys, has not decided on a major yet, but says that he is leaning toward pre-physical therapy.

"Being a student and an athlete is hard. Our schedule is hectic between practice, classes, and study hall," Sullivan said.

"But I am learning how to manage my time. As far as football I do not feel any pressure in football because playing with other college level is a challenge for me."

He is very positive about his performance so far this season. "I have no regrets about losing my redshirt I really wanted a chance to play, and to contribute to the team's efforts and if my role is helping back up Roderick (Russell) or playing behind Chad (Holmes) I hope that I can to my part," Sullivan said.

Sullivan says that his father is the main influence in his life.

"I admire his will, determination, and his hard work," Sullivan said.

Sullivan will be traveling this weekend to Norfolk, Virginia and seems positive.

"Last week's victory over Liberty was great. I think that it is what the team needed-coming together," he said. "Hopefully we can continue."

The Eagles will once again leave Thursday afternoon after practice for the Saturday 1:30 pm match-up.

WOMEN'S BASKETBALL

Lady Eagles attempt to replace five lost starters and still contend

By Ronnie Swinford
Sports Editor

"We have a young team this year, with a lot of talent," head coach Drema Greer said. That statement previews the season for the Lady Eagles.

This is who the Lady Eagles lost.

Andrea Autrey, at forward led the team in scoring with 20.2 points and rebounding with 9.3 per game.

Janice Johnson was second in scoring with 15.1 points per game.

Tara Anderson was third in scoring on the team averaging 14.1 per game, and 96 assists.

Also the Lady Eagles lost both senior point guards, in Denise Primeaux and Stacy Childers. Childers was lost early in last season with a knee injury. Primeaux started the entire season, missing only one game.

That was an accomplishment for last years team, they had 10 major injuries, and six deaths in families.

Both Childers and Johnson were lost due to career ending knee injuries.

But the Lady Eagles still have

five players returning from last year. Marysue James returns at center, as does Tarsha Askew but this year she is at forward. They were both starters last year and will return 18 points and 8.6 rebounds per game between

"TOURNAMENTS HELP THE KIDS GET THEIR FEET WET BEFORE THE CONFERENCE SEASON STARTS."

— DREMA GREER
HEAD COACH

them.

Other returning players are Danelle Toole (5.3 points per game) Telly Hall (6.4 points, and 5.1 rebounds per game) and Lacresa Mitchell.

They all were roll players last year, but they are expected to play more this year.

"We are looking to Marysue and Danelle to be our leaders this year," Greer said. "And Telly

Hall is running the floor like Andrea did."

The Lady Eagles are also depending on some young talent. Especially at the point guard position where they recruited Rosie Arnold, a true freshman, to be the starting point guard.

"We recruited her to play point guard," Greer said. "She will run the show for us this year."

Greer also has some other freshman who will play. Svetlana Trjeskal from St. Petersburg Russia, by way of Charleston SC., is a slick passing guard. And Angelica Rivers is the next coming of Janice Johnson as a starting guard on the team.

The Lady Eagles are playing three tournaments this year. They will also play against some big time competition when they travel to Athens to play pre-season number one Georgia later this month.

"Tournaments help the kids get their feet wet before the conference season starts," Greer said.

"We played a tough schedule when Andrea and J.J. were freshmen, we need to get them ready to play anyone."

GSU looks to march past the Keydets

By Carolyn Wynn
Staff Writer

This week the Eagles leave for Norfolk, Virginia to play the Keydets of Virginia Military Institute in the astro turf covered Oyster Bowl.

VMI is a member of the Southern Conference and the Keydets are currently 4-6 overall and 3-4 in the Southern Conference.

The Keydets are lead by second year head coach Bill Stewart. Last year VMI had 1-10 season and suffered a crushing defeat against GSU in a 49-0 loss.

Last week the Eagles did not have a single passing yard, but were able to pull out a 7-6 victory against Liberty.

The Eagles moved up to a 17th ranking in the national polls.

One spot out of the playoff contention.

Within the Southern Conference GSU is third behind Appalachian State, and Marshall.

"VMI has a really sound team. We'll have a tough test on

both sides of the ball. We just have to find a way to play four quarters of mistake-free football" senior slotback Marlow Warthen said.

This is the third time the Eagles have played VMI with GSU leading the series 2-0.

Last year's GSU victory was lead under the then freshman Kenny Robinson who rushed for a career high 74 yards and two touchdowns.

This year Robinson will not make the trip because of leg injury.

Besides Robinson other Eagle injuries include Senior Fullback Chad Holmes, while offensive lineman Jamie Glover is questionable.

Defensively, GSU are still dealing with the unfortunate absence of sophomore transfer linebacker Chris Smith.

In Robinson absence the Eagles offensive attack will be lead by senior quarterback Charles Bostick.

"Charles is like the father of the team. He didn't have to come back, but he did," Marlow Warthen said.

BASEBALL

Greg Maddux, four Cy Youngs in a row, what next?

By Ronald Blum
The Associated Press

NEW YORK—For Greg Maddux, winning the Cy Young Award— even unanimously—is just another part of his routine.

"We might have a little party tomorrow night or something," he said Monday after capturing his fourth consecutive NL Cy Young, his second straight by a shutout vote. "After winning the World Series, we're pretty much partied out."

Maddux, at 29 perhaps not even halfway through his career, continued to put up numbers that can be compared only with baseball's greats.

Steve Carlton is the only other pitcher to win four Cy Youngs. He did it for Philadelphia in 1972, 1977, 1980 and 1982.

Sandy Koufax is the only other pitcher to win the award unanimously in consecutive years—in

1965-66 for the Dodgers.

"It's really hard for me to talk about the history of the game because my history goes back 10 years," Maddux said during a telephone news conference from

Maddux, who led the Atlanta Braves to their first World Series title, received 140 points in balloting announced by the Baseball Writers Association of America.

"BACK THEN, I WAS PRETTY MUCH BRAIN DEAD HEAVEN. NOW I'D LIKE TO THINK I KNOW A LITTLE SOMETHING ABOUT PITCHING THAT I CAN APPLY ON THE FIELD."

— CY YOUNG WINNER GREG MADDUX

his home in Las Vegas.

"When I heard comparisons about people who pitched in the '50s or '60s or '70s, I can't really relate to it. I didn't really watch baseball a whole lot back then. I really wasn't the fan then I am now. I just take it as a nice compliment on move on."

Maddux led the NL in wins with a 19-2 record, and was tops in the league in ERA (1.63) and complete games (10). He became the first major leaguer since Walter Johnson in 1918-19 to have an ERA under 1.80 in consecutive seasons.

Cincinnati's Pete Schourek

was second in the voting with 55 points, followed by Braves teammate Tom Glavine with 30. Los Angeles rookie Hideo Nomo was fourth with 19 and Dodgers pitcher Ramon Martinez had

out there and makes as many good pitches as I can. That's good enough for me. Whether I'm 20-0 or 0-20, it doesn't much matter."

Maddux has won the Cy Young in each of his three seasons with the Braves. He says he's a much better pitcher than when he started with the Chicago Cubs.

"Back then, I was pretty much brain dead heaven," he said. "Now I'd like to think I know a little something about pitching that I can apply on the field."

Last year, Maddux became the first player to win any of baseball's major awards three straight times. He's also a strong contender in this year's NL MVP race.

By winning the award, Maddux gained a \$750,000 bonus added to his \$5 million salary.

Today's Quote

"When ideas fail, words come in very handy."

-- Goethe

01-Announcements

A black tie Gala, featuring soprano Camellia Johnson, will be held Nov. 18. Reservation deadline Nov. 4. Call Southern Arts at 681-0830 for more information.

AD PLACEMENT (For Commercial Enterprises) -- Classified ads in the George-Anne cost 15¢ per word with a \$3 minimum per insertion. Please add \$1 per ad for mailing and handling for tearsheet service. The customer is responsible for proofing the ad immediately upon publication. Pre-payment with your ad is appreciated. Call 681-5418 for more information. The George-Anne reserves the right to refuse any advertisement.

AD PLACEMENT (For Students, Faculty & Staff) -- The George-Anne publishes ads for students, faculty and staff which are non-commercial in nature. Submit your ads, 25 words or less, either in person at Room 223 Williams Center during normal business hours (9am to 4pm), or via mail at Landrum Box 8001. Please do not attempt to place free ads via telephone -- at these prices we don't take dictation.

Attention Jewish Students Hillel Georgia Southern Jewish Organization has weekly meetings Tuesday at 7:30pm in Russell Union Rm. 252. For more information, call 871-1723.

ATTENTION: The George-Anne screens all classified ads prior to publication. The newspaper strives to accept ads for legitimate products & services only. Students are urged to exercise caution when replying to ads, particularly those which ask for money or a credit card number in advance of delivery of products or services. Students are also urged to report to the newspaper (at 681-5418) any suspicious offers they might see in the classifieds. Remember, if an offer seems too good to be true, it probably is.

DNA meeting, Tues., Nov. 7 at 6:30 room 1116. Business building. All LIT majors and anyone who wants to know more about LIT welcomed.

Gamma Beta Phi general meeting Nov. 15 on Wednesday at 7pm in the Union Theater. All members please attend.

OUTDOOR ADVENTURES CLUB meeting Monday, November 20 at 7:00pm in Union rm 244.

PLAY LACROSSE. Call Bill 871-2929.

Pest...want to have a blast and win valuable Prizes? Join us at Casino Night, November 28 in the Williams Center. Residence Hall Students Only.

SCUBA CLUB MEETING Wednesday, November 8, 7pm. Room 254 in the Student Union.

Send demo. Tapes to Lisa LB 10217. I'm looking for new hot bands to play on my time slot @ WVGS, Saturdays, 9-11pm!

The African-American Gospel Choir will hold a fall quarter concert Friday, November 17 at 6pm in the Union Ballroom. Admission is FREE! Come and enjoy!

The GSU Fencing Club meets at the College Plaza Center on Mondays and Wednesdays for 5 to 6:30pm + on Fridays form 4 to 6:30pm. If you have any questions, please call John Mason at 871-5910 or by email gsm00849.

03-Autos for Sale

'70 Buick Electra 225. Great car, runs smooth. Two door, new tires, 455 engine. \$1,500. Real genuine "hoopy". Call 871-6554

1980 Black 280ZX perfect condition. 5 spd and all powers. \$3,000 value stereo system and many expensive accessories. \$3,100. Call 871-3408.

1991 White Honda CRX, low miles, new tires, muffler. Runs great, 50 miles per gallon. Very clean 489-5533 leave message, call 12-8pm. VERY SMOOTH.

1994 Green Geo Tracker with rims and music. Great gas mileage. Well kept. Asking \$2,500 plus take over rest of the payments. Call Shawn at 871-7098 or 681-7754.

FOR SALE DARK BLUE 1990 FORD FESTIVA professionally tinted windows, great gas mileage. Asking \$2,400 OBO. Call Chris anytime at 871-6238 or leave a message.

For sale: 1988 VW Golf GL 4-door gold. Low mileage, runs good, drives great. \$3000. Call David 871-6785.

For sale: 1990 Ford Festiva. Excellent running condition, AC, perfect interior. Asking \$2,600 OBO. For more information, contact Chris at 871-6238 or leave message.

For sale: 1995 Nissan 240SX, blue emerald. Excellent condition, fully loaded plus CD player. \$16,995. Call 489-4416.

Mazda MX6 1988, good looking car, great condition, runs great. \$2,500. Call now at 871-4483.

MAZDA MX6 1988. Great condition, good looking car. Runs great. Stereo. \$3500 negotiable. Call now at 871-4483.

05-Business Opportunities

Homeworkers needed, choose from a variety of work and make up to \$1000 per week. For free info send SASE to HM Inc., 2104 Bryan Ct., Statesboro, GA 30458.

WANT TO MAKE SOME EXTRA MONEY? Call 871-5184 on M,W,F 3-5 pm.

07-Education

GRANTS AND SCHOLARSHIPS ARE AVAILABLE. BILLIONS OF DOLLARS IN GRANTS. QUALIFY IMMEDIATELY. 1-800-243-2435 (1-800-AID-2-HELP).

08-Freebies

Free to good home. One year old cat neutered and declawed. Must get rid of. All shots and misc. Included. Call 681-9267.

09-Furniture & Appliances

13" TV Color (negotiable). White Daybed w/comforter, sheets, and skirt. \$100. 871-3687.

4-drawer desk \$50. Papa son chair \$50. Water bed \$50. Loveseat and couch \$100 together. Call Dana at 681-5390 (day) and 842-9169 after 6pm.

Dining room table and chairs. \$150 OBO. Call after 6pm 489-6736

For sale Queen size Futon bed. \$150. Color TV \$100. Call Chris at 871-3961.

For sale! Two Black and White Swivel Keg rocking chairs! Good condition! Perfect for relaxation! Call 871-7964 after 5pm. Negotiable!

For sale: 4 piece living room set. \$100 or best offer. Call anytime and leave a message. Must sell! 871-7048.

For sale: Dirt Devil stick vac. Plus. Like new, with extra vacuum bags. \$25. Call Anna at 681-7587.

For sale: Dorm size refrigerator. Like new \$40. 681-8507.

Large waterbed frame for sale. Good condition only \$35. Call Tella at

Queen size waterbed for sale. Includes Oak sidings with headboard and heater. \$225. Call 871-5578 for more information.

Water bed for sale!!! MUST SELL ONLY \$100!! Includes heater, sheets, and it is motionless bed with fibers. Call 871-6367.

11-Help Wanted

Wanted!!!! Individuals, Student Organizations and Small Groups to Promote SPRING BREAK '96. Earn MONEY and FREE TRIPS. CALL THE NATION'S LEADER, INTER-CAMPUS PROGRAMS; http://www.icpt.com or 1-800-327-6013.

ALASKA EMPLOYMENT - Students Needed! Fishing Industry. Earn up to \$3,000-\$6,000+ per month. Room and board! Transportation! Male or Female. No experience necessary. Call (206)545-4155 ext A53942

Georgia Certified EMT's needed. Flexible schedules and \$\$\$ Call Richmond EMS at 489-8500.

NATIONAL PARKS HIRING - Positions are now available at National Parks, Forests and Wildlife Preserves. Excellent benefits and bonuses! Call 1-206-545-4804 ext. N53941

Need responsible nanny to keep newborn in my home. Ref's required. Over age 19 only. Call Alix 681-9267 serious inquiries only.

Sunny and warm in Orlando Fla!!! Spend Christmas Break at some of Orlando's finest resort hotels as a pool and activity director. National Recreation Co. Has immediate openings for part and full time positions. Call 1-800-864-8762 for more information and application.

12-Lost & Found

LOST MY KEYS: BLACK PLASTIC CORD WITH CORONA ATTACHMENT. 871-7695.

Lost Passport in Library Sunday 10/29. It is green. USA. Please call Steve Strozio at 842-2223 if you find it. Thank you very much.

13-Miscellaneous for Sale

1/2 price sale!! Books, Posters, and more... Georgia Southern Museum. Great gifts for teachers and students. Come see what we have today!!

Air conditioner window unit for sale, excellent condition! \$150 or best offer. Call Kim at 489-2021 after 5pm or leave a message.

Computer for sale: Hewlett-Packard computer with word processor. Printer included. Must sell! For more info, call Jennifer at 871-6195.

For sale: Meade Model 4450: 4.5" Equatorial Reflecting Telescope with 3x Barlow lens and three eyepieces: H4mm (225x), H12.5 (72x), and H25mm (36x). Also 5X24 mm viewfinder. \$225. Call 681-7763.

For sale: Schwinn Sidewinder. Like new only 3 months old with u-lock and toe clips. \$250, call 688-2883. Ask for Ty or leave a message.

FOR SALE: Stamina 5000 50-in-1 band resistant home gym. Barely used. \$150. Call Cheryl at 681-5761 or 865-5558.

Green and tan envelope style Dooney and Bourke pocketbook with shoulder strap. Practically brand new, paid \$180, asking \$90. Call 489-4084. Ask for Laura.

IBM compatible 386SX 4meg RAM, 3 1/2 disk drive, VGA monitor, modem, mouse, keyboard. \$500. Call Anna at 681-7587.

IBM compatible 386SX 4meg RAM, two hard drives, 16-bit sound, speakers, modem, fax, Windows, W-Perfect. Desk-Top publisher, Print Shop, Quicken, Games, \$800 OBO. 764-6799.

IBM PS2 Model 30 286 desktop computer. VGA color monitor, extended keyboard, internal send/receive fax modem. Okidata Microlin 321 printer. Access the internet from your home! Have your own e-mail account! \$525 please call 489-3191 for more information.

Laptop PC- Packard Bell Diplomat 386 Enhanced, 4 megs RAM, 170 hard drive. Lots of extras. \$1,125. Please call 489-3191 for more information.

Laser Printer-Epson Laser 1100. Please call 489-3191 for more information.

Need something typed or spellchecked? Must be legible and in order. \$1.00 per page. Other pages negotiable. Call or leave message. Renee 688-2660.

REDUCED Prices on Mary Kay products! If you are interested in saving a few dollars, call Leslye at 681-9745. Leave a message if necessary.

SCUBA GEAR FOR SALE: Womens Sea Elite wetsuit (M), Sea Elite Booties (8) and IST gear bag. All only used once. Paid \$250, asking \$150. Call Julie at 764-8201 leave message.

14-Motorcycles

1989 Yamaha Route 66 5800 original miles, showroom condition, black. Lots of chrome 250 CC. \$1900. Day 764-5017, night 587-5721.

16-Personal

Ben-you make me so unbelievably happy and you mean the world to me. I love you with all my heart, Benny-the-Pooh -Amy.

Graduating Marge? Well it's better late than never. Congratulations! Now what is Ali going to do?

Happy belated 22nd birthday Kelli. I promise we will do something for your birthday. We love you lots. The gang (Deb, Lacy, and Melba).

Happy Birthday Leigh Anne Walters. I hope your birthday is fantastic. You and Kristi can party some for me this week. JAM

Maggie, Ray still cares for you. Call him, because the sky is blue forever. Ask him to do something with you.

Mary, have a great 21st birthday! I had a great time at your b-day party. Tell your mom and dad thanks! Love ya, JP

Nessa, the countdown is on to Dec. 10, 3pm. We are ready. We know where you are too. It's time to ride out! Your girls.

Steve, Just wanted to say hello and enjoyed lunch. How does it feel to be a brother? Congratulations!!!! Your time and hard work paid off. Love ya, Melissa

Zinger, can you believe it's five months already? It has been fun!! I'll miss you next quarter! Love, Kitty

17-Pets & Supplies

AKC Rottweiler puppy, champion bloodlines, sire and dam on premises, \$250. Call 842-5199 after 4pm.

FISH TANKS: 29 gal filter, stand, etc. \$125. 18 gal filter, stand, etc. \$75. Prices firm. 681-9295. Leave message.

For sale: baby ball Python with heat rock, twenty gallon long critter cage and etc. Call 871-3765 to make an offer.

Pointer, 11 months old, white with liver spots, very energetic, \$125. Call 842-5199.

19-Rentals & Real Estate

1 bedroom apartment. Take over lease. Available Dec. 11. Call 489-6139 for more information.

Accepting leases for now + Winter quarter. 4BR units + roommate spaces. Water free - 681-6763.

Anybody need a place for summer at Willow Bend? 871-3368.

Apartment for rent: 2 bedroom, no deposit, first months rent free, Park Place Apartments, \$237.50 per person, available December 1st. Call Elizabeth 871-5497.

Apt. To sublease. 2 bedroom, 1 bath, \$200 per person. Colony apts. Clean with great neighbors. Located near college cinemas. 681-4195.

Bonnie Glen Apartments available now- 2BR-\$400. Quiet setting. Walk to class. Call 681-6763.

Female roommate needed beginning Winter Qtr. Large bedroom, huge living area. Share bath. No deposit. \$212.50/mon + 1/2 utilities. Call Kellie 764-8664. Rent seriously negotiable!

For rent: 3 bedroom, 2 bath trailer close to campus. Living room/kitchen furnished. Sublease Dec.1. For more information, call 871-7220 or 871-7711 ASAP.

Male or female needed to take over lease in Stadium Walk. \$212.50/mon plus bills. W/D. Dishwasher mostly furnished. 681-9050.

Need immediately, will pay first months rent + \$100 cash to male to take over lease in Player's Club apartments at end of quarter. 4 bedroom flat, queen size bed, W/D, cable, AC, \$230/mon. + 1/4 utilities. Call 871-6651.

Crossword 101

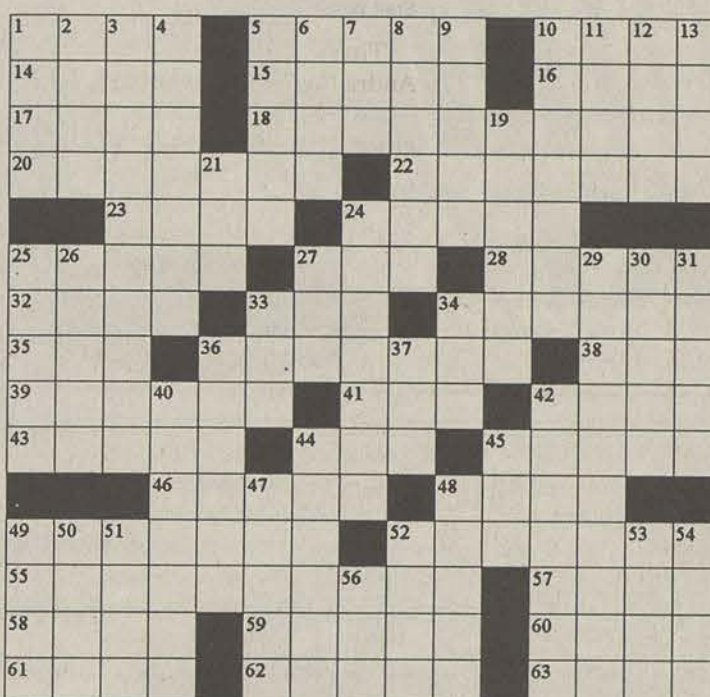
"The Big Apple"

By Gerry Frey

ACROSS
1 *Shea bag*
5 *Opera at the Met*
10 *Treaty org.*
14 *Singer Paul*
15 *Perfect*
16 *Baseball's Hersher*
17 *Orbison and Rogers*
18 *Big Apple neighbor*
20 *Person in the know*
22 *Signs up*
23 *Corp. execs.*
24 *Reverie*
25 *Oath*
27 *Vis-a-*
28 *Dance style*
32 *Med. school subject*
33 *Fire:Slang*
34 *Follows English or Irish*
35 *Int'l driving permit*
36 *Big Apple neighbor*
38 *Shoe insert*
39 *Repaired the oboe ?*
41 *Simpson's Judge*
42 *Space org.*
43 *Senator Hatch*
44 *Collection of materials*
45 *Maravich and Rose*
46 *Fragrant floral oils:Var.*
48 *Scorch*
49 *Commonplace*
52 *"One Day _____"*
55 *Big Apple ad address*
57 *Forest Hills server ?*
58 *Serf*
59 *Gillette speciality*
60 *Duck shooting boat*
61 *Oceans*
62 *"... as cheaply _____"*
63 *Regarding:2 wds*

DOWN
1 *Italian city*
2 *Soon*
3 *Big Apple sight*
4 *Simplest*
5 *Floor coverings*
6 *Smell*

© 1995 All rights reserved GFR Associates
P.O. Box 461, Schenectady, NY 12301



7 *DC VIP*
8 *Knick players*
9 *Skirt type*
10 *Any size bet:2 wds*
11 *Mr. Parseghian & others*
12 *Big top*
13 *GM car*
19 *Tobacco brothers*
21 *Buck's mate*
24 *Big Apples ex mayor*
25 *Capital of Egypt*
26 *Beneath*
27 *Moving truck*
29 *Big Apple sight*
30 *Stop*
31 *Killer whales*
33 *North Atlantic fish*
34 *Broadway sign*
36 *Gossipy women:Yiddish*
37 *Timetable abbr.*
40 *Personal journals*
42 *"_____ pin"*

44 *M.S.G. & Yankee Stadium*
45 *Legume*
47 *Greek marketplace*
48 *One cubic meter*
49 *Iowa city*
50 *Urn*
51 *Ms. Ferber*
52 *Shakespeare's river*
53 *Bratwurst, e.g.*
54 *Therefore*
56 *Containing nitrogen:prefix*

Quotable Quote

"One belongs to New York instantly. One belongs to it as much in five minutes as in five years."

Thomas Wolfe (1900-1938)
American author

Reasonable rentals, houses, apts, m/homes, and offices. 764-5003.

Sublease, take over lease Summer Quarter in Park Place 40. Call Trina at 871-4943. Fully furnished \$250/mon. Rent + 1/2 utilities.

SWM seeks SWM/F to share 3 bedroom, 2 bath trailer close to campus for winter quarter. Own bedroom and bathroom, partially furnished, cable. No smokers, no pets. \$185/mon. Adam 871-3701.

Tired of roommates and dorm? Take over a lease in Pine Haven apt. At the end of quarter. Excellent for individuals. It comes with free VCR and others. Call 871-3408.

University Pointe Apartment for rent. \$270/mon. Only a \$100 deposit. Starts in December. Please call Dominique at 871-6367 for more information. Apt. #27.

WM to sublease house across from Hanner. W/D, \$198/mon. Call 871-4144.

20-Roommates

FEMALE ROOMMATE NEEDED IMMEDIATELY! To take over lease in Bermuda Run at end of quarter. Private bedroom and bath. Call Amy at 871-6797.

Female roommate needed summer quarter. \$250/mon + 1/2 utilities, W/D, fully furnished, own bedroom, and bathroom. Call Trina at 871-4943. Parkplace #40.

Female roommate needed Winter Quarter W/D, own room, new apt. Close to Campus, furnished. Rent negotiable, call Lark 681-8591.

Female roommate needed Winter, Spring. Partially furnished, W/D included, walking distance from school, own room. Call Dana 871-7446.

Female roommate needed, winter quarter. Own bedroom, bath. Overlooks pool and lake in Player's Club. Only \$230/mon. Call 871-3801.

Female roommates wanted to share partially furnished townhouse unit walking distance of campus. Water and washer/dryer furnished. Prefer graduate or upper class or faculty member. 681-6763 Ref# BR89-28.

Female to take over 1/2 of lease. GA Villas #21 beginning December. 2 bedroom, shared bathroom. \$210/mon + 1/2 utilities. Call 871-2667 or leave message.

Help! Female roommate needed! Winter Quarter. First month FREE! Rent negotiable! W/D, with or without furniture. Great roommates own room! Call today! Amy 871-3456.

HELP! Female roommate needed in Players Club Apartments at end of the quarter. First month FREE! 4 bedroom flat. W/D, cable, AC, \$230/mon. Call Rachel 871-5661.

Male or Female roommate needed to share 3 bedroom/2 bath house in Sherwood Forest. Fully furnished \$250 + 1/3 utilities. Call Patrick or Burke 871-6877

Roommate needed immediately to share four bedroom apartment in Player's Club. Ask for Chris. Call 871-3291. Available Dec. 20, 1995.

Roommate needed Player's Club townhouse. One room good for two. Each room w/bathroom. \$325/mon., W/D included. Call 681-6542.

Roommate wanted to share two bedroom, two bath mobile home. \$175/mon includes utilities. Call 488-2549 for more information.

SBF roommate needed in Townclub. Own master bedroom and bathroom. \$220/mon + 1/4 utilities. Please call ASAP. Call Tasha at 871-5343.

Single black female needed to take over lease at Stadium View apt. #30. ASAP. Private room, furnished, and shared bathroom. Call 871-7466 or main office.

SWF seeks SWM/F to share 2BR apt. Rent \$225 + 1/2 utilities. Partially furnished. I am a smoker and cat owner. Serious inquiries call 871-6013.

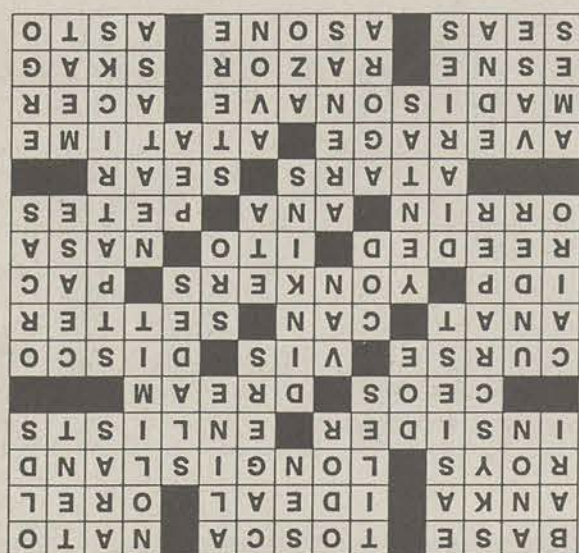
Wanted immediately! Female roommate for winter quarter. Partially furnished, W/D, private bedroom! \$200/mon + 1/2 utilities. Close to campus! Great roommate! Call 871-5346.

21-Services

BRAIDS IF YOU WOULD LIKE TO HAVE BRAIDS CALL CHASTIDY AT 681-9264. CALL TODAY FOR MY SPECIAL HOLIDAY DISCOUNT PRICES!!!

Come become a part of one of the fastest growing sports; Horseback riding. Beginners through Advanced. Huntseat and Western Pleasure. 764-2021 leave message.

Foreign students-visitors DV-1 Green Card Program available. Tel: 1-800-660-7167 & (818)772-7168. #20231 Stagg St. Canoga Park, CA 91306.



THE BIG APPLE



Do you need to find a new roommate? You can find that perfect roommate in the George-Anne

George-Anne's Classified Ads are FREE for GSU students! to place your Ad come by room 223 of the Williams Center.

Dining & Entertainment Guide

Appearing Exclusively in The George-Anne

All-U-Can Eat Buffet



Buy one at regular price and get another at 1/2 price.
Offer expires 12-31-95

202 North Main St.
Statesboro, Ga
764-6197

Must Show Student I.D.

KELLY'S VIDEOS

Free Membership!

Monday - Thursday
10:00am to 11:00pm

Friday - Saturday
10:00am to 12:00pm

Sunday
12:00am to 10:00pm

Rent 1 movie
and get 1 free!

Excluding
New Arrivals

New Arrivals

- Bad Boys
- Mad Love
- Malicious
- Gordy

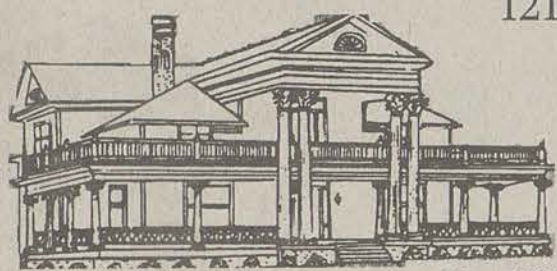
New Arrivals \$2.50/Day
General Titles \$1.50/2 Days

(912)681-1942

2 College Plaza
Next To Good Will

The Beaver House Restaurant

121 South Main Street



Circa 1911

Serving the Highest
Quality Southern
Cuisine in a casual
atmosphere.

Lunch 11:00am-2:30pm Mon-Sun
Dinner 5:30pm-9:00pm Mon-Fri

Lunch and Dinner.
764-2821

We Have A New Menu...

Check It Out!!!

Some New Items Are...

- Jalapeño Poppers
- Mexican Cheese Steak Sandwich
- 14 oz Grilled Prime Rib

New Drink Prices.....Check It Out!

Live Entertainment

• Call For Dates and Times •

Georgia Avenue

681-3207

Lunch Served

Mon. - Fri. 11am - 3pm

*All Menu Items Are Available for Take-Out



The Rockin' Horse

Tuesday: Pool Tournament/ \$100 1st place

Wednesday: Jug Night / \$1 Cover

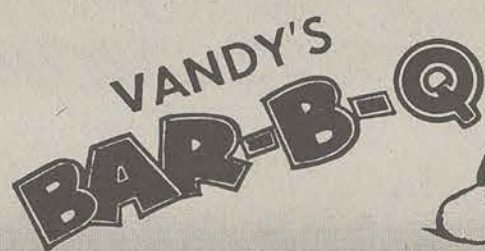
Formerly

The Country Club

Thursday: *Ladie's Night*

Fri & Sat: No Cover Until 10 / Specials All Night Long

For Details Call 681-9000



10%
Discount
for Students
w/ Valid ID

Vandy's On Main

63 East Main Street • Open 7am-3pm • 764-7710

HOME COOKING

Serving Breakfast & Lunch

Meats & Vegetables (3 meats / 5 vegetables)

Drive-In for a Change And See Why SONIC NOVEMBER
Combos Beat The Competition By A "S" Mile!!

SONIC
"Everything you're hungry for"
DRIVE-IN • 322 South Main • DRIVE-THRU

Offers Not Good With Any
Other Coupons or Offers

(A) • Deluxe Sonic Burger
• Regular French Fries
• Regular Soft Drink

\$1.99

PLUS TAX

(B) • Ex-Long Chili Cheese Coney
• Regular French Fries
• Regular Soft Drink

\$2.19

PLUS TAX

(C) • Country Fried Steak Sandwich

- Large French Fries
- Large Soft Drink

\$2.59

PLUS TAX

(D) • Breaded Chick-Fillet Sandwich

- Large French Fries
- Large Soft Drink

\$3.19

PLUS TAX

(E) • Double Meat, Double Cheeseburger

- Large French Fries
- Large Soft Drink

\$3.39

PLUS TAX

Do You Know Those Unpronounceable Dishes? Neither Do We.

• Bash Night: \$6.95
Tues. 6-10:30pm
All-U-Can-Eat Wings

• Nightly Entertainment:
Wed.-Sat. with NTN and
QB-One Trivia Every Day

• All-U-Can-Eat Buffalo
Wing Eating Contest,
Dec. 4, 8:30-9:30 -- \$12
Limited Entry w/
free t-shirt & prizes.



Nothing Fancy. Just Good Food.

The world's best wings, rotisserie chicken, soup,

salads, sandwiches & burgers

120 Lanier Drive, Statesboro, GA

(1/4 mi from GSU's Paulson Stadium) 681-3030

Mon-Sat 11:30am-12am • Sun. 11:30am-10pm

Buy One
Lunch Entree
Get One FREE

Of Equal Or Lesser Value

Coupon valid at this store only.

Does not include tax or gratuity.

Not valid with any other offer.

DINE-IN ONLY

Exp 12/15/95

Franklin's restaurant

221 N. Main • Statesboro, GA
764-2316

\$2.99 Mon - Hamburger
Combo w/ choice of
potato

\$4.99 Tues - Chicken
Fingers with potato
& salad bar

ALL MONTH LONG!
8 oz. ribeye steak/choice
of potato & salad bar
Only \$7.99

\$4.99 Wed - 1/2 pound
ground sirloin w/
potato & salad bar

\$4.99 Thurs - Fried fillet of
sea trout w/ potato &
salad bar

Boyd's Pit Barbecue & Steakhouse

Featuring Statesboro's Only Barbecue Breakfast

Specializing in

- Bar-B-Q Pork
- Smoked Chicken
- Smoked Ribs
- Char-Grilled Steaks
- Buffet

764-9995

Highway 80 West

M-F 5am - 9pm
T & Sat 5am - 10pm
Sun 7am - 3pm

Catering Available
No Party Too Large or Small

Pizza Inn.

Statesboro
Highway
301 South
681-9066

•Salad •Pizza •All-U-Can-Eat •Pasta •Desserts
•Breadsticks

Mon.- Fri.
LUNCH
\$3.99

Tues. & Thurs.
DINNER
\$4.99

Sat. & Sun.
LUNCH
\$4.99

If you drink, don't drive
If you drive, don't drink

Because we need you to read
The George-Anne