

Georgia Southern University

Digital Commons@Georgia Southern

The George-Anne

Student Media

7-6-1995

The George-Anne

Georgia Southern University

Follow this and additional works at: <https://digitalcommons.georgiasouthern.edu/george-anne>

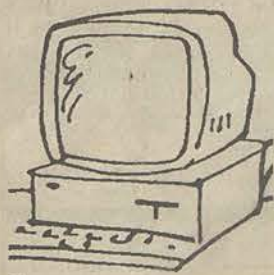
Recommended Citation

Georgia Southern University, "The George-Anne" (1995). *The George-Anne*. 1375.
<https://digitalcommons.georgiasouthern.edu/george-anne/1375>

This newspaper is brought to you for free and open access by the Student Media at Digital Commons@Georgia Southern. It has been accepted for inclusion in The George-Anne by an authorized administrator of Digital Commons@Georgia Southern. For more information, please contact digitalcommons@georgiasouthern.edu.

What do you think?

You may now contact the news office of *The George-Anne* at our new e-mail address. To send us your comments, simply type "pine" at the dollar prompt and mail to: stud_pub@gsaix2.cc.GaSoU.EDU. If possible, please include your name and phone number or e-mail address.



BRIEFLY...

GSU employee loses sexual harassment case

G-A Staff Reports

After a week-long civil case against the Board of Regents of the University of Georgia, a jury denied GSU physical plant electrician her charge of sexual harassment June 12.

Valarie F. Dukes filed her complaint Nov. 24, 1993 in Fulton County Superior Court, claiming that the Board of Regents violated the Civil Right Act of 1964.

Jury selection for the case began May 30. Judge Isaac Jenrette presided over the case.

In Dukes' document, she alleged she was harassed by GSU employees with "foul and abusive language, offensive touching of her private areas, pornography directed at her, and one employee constantly harassing her by asking for sex."

Dukes also charged she was further retaliated against after she brought forth claims of the alleged harassment in September 1989. The complaint states her job assignments had been altered, that she has been denied promotions, advanced training, and benefits, or attempts have been made to deny her benefits of employment.

The document also charged the Board of Regents condoned the alleged harassment by not properly investigating or acting to prevent it.

The Board of Regents filed an answer and defense to the charges in Fulton County Superior Court on Jan. 19, 1994, stating a denial of all charges and requesting that Dukes' complaint be dismissed.

Neither Stephen B. Taylor, attorney for Dukes, nor the attorneys for the Board of Regents could not be reached at press time.

WORD OF THE DAY

cainotophobia (kay-no-teh-fo-be-a)
n. An abnormal fear of newness.

Source: The American Heritage College Dictionary

'BORO WEATHER

TODAY

Isolated thunderstorms, with a high in the mid-90s and a low in the mid-70s.

FRIDAY

More isolated thunderstorms, with a high in the mid-90s and a low in the mid-70s.



INDEX

| | |
|---------------|---|
| Announcements | 2 |
| Classifieds | 4 |
| Opinions | 3 |
| Police Beat | 2 |

It is a desire of *The George-Anne* to print the news of Georgia Southern University as accurately as possible. If you feel that something covered is in error, contact a member of the editorial staff at 681-5246 as soon as possible. Thank you.

FOR ADVERTISING INFO: 681-5418

STORY OR PHOTO IDEA: 681-5246

FAX NUMBERS: 871-1357 and 681-0863

LANDRUM BOX: 8001

E-MAIL TO: stud_pub@gsaix2.cc.GaSoU.EDU

The George-Anne

Liked By Many, Cussed By Some ...
Read By Them All



The George-Anne

Georgia Southern University's Official Student Newspaper

Statesboro, Georgia 30460

Founded 1927

GSU loses lab school

G-A Staff Reports

GSU's laboratory school will close, possibly by next year, officials announced June 28.

Marvin Pittman School, the only laboratory school in Georgia, won't be rebuilt on campus as planned by the GSU administration. Citing GSU's inability to comply with requests from the Bulloch County Board of Education, which runs the school, board members voted not to construct a new building on campus.

The Board voted instead to build a new elementary school two miles from the planned site.

Marvin Pittman has been used since its creation as a way for education majors to practice their discipline in the classroom setting. More than half the teachers in Bulloch County graduated from GSU.

GSU officials have expressed a necessity for the lab school to remain adjacent to the education building, to allow a free flow of pupils, students and professors between the buildings. The loss of Marvin Pittman presents a difficulty for the department.

"An off-campus school would require frequent busing of elementary students to campus and driving back and forth by our students and professors," said College of Education Dean Ann

Converse Shelly. "The logistical problems defeat the benefit of the daily give-and-take between the school and the college."

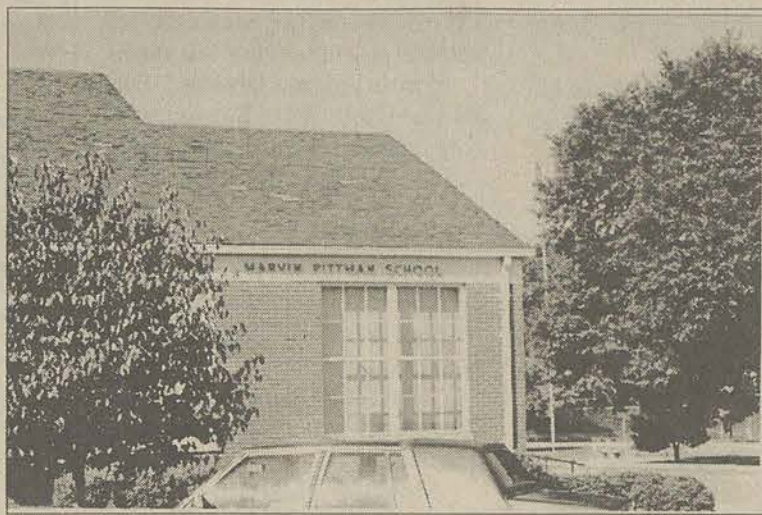
Due to the inadequacy of the current Marvin Pittman facility, GSU set aside 10 acres in its master plan to lease at \$1 a year to the Board for construction of a new school. GSU officials also planned to build a new College of Education Building adjacent to the new school.

GSU President Nicholas Henry said GSU agreed in March to give up two more acres to expand the school to 600 students. Two more acres were also provided as buffer property. In addition, GSU agreed to allow students to attend by geographic zone instead of by lottery drawing, the current system.

However, GSU could not afford the \$1 million required to relocate a food storage facility away from the site. Board members said the warehouse would detract from the new school's aesthetic value and limit its size.

"This was the one new issue that we just could not accommodate," said GSU President Nicholas Henry in a released statement. "The cost was too high."

Please see SCHOOL, page 4



File Photo Marvin Pittman, the state's only laboratory school, will close.

Football player expelled

By Ronnie Swinford
Sports Editor

Thomas Plant, a GSU football player, was arrested for allegedly entering an auto and possession of a weapon on school grounds.

The incident happened May 29 when officers noticed that the rear driver's side window of a Honda in Dorman parking lot had been broken. The officers stopped their patrol to investigate the broken window. As they approached the car, Plant exited the car. He was perspiring as if he had been in the car for a while.

The officers then questioned if it was Plant's car, and if it was, why he had not filed a report on having his window broken. Plant stated that the car was his and that he broke into it.

Plant then started to walk away from the officers. When the officers called him back, Plant then ran around Dorman Hall. He slipped on Chandler Road, but then continued into a wooded area along Gentilly Road. Both officers continued pursuit. After hiding, Plant then ran back out of the woods and was cut off and arrested by

another officer.

"When investigators went to follow up the incident the next day, Plant admitted that he had done what he was charged with," said GSU Police Chief Ken Brown.

Also found on Plant was a screwdriver that was hidden in his sock. This was considered a weapon and taken as evidence.

"Mr. Plant was expelled from school," said Edward Bayens, GSU Judicial Officer. "The case was handled administratively by the Judicial Programs office."

Judge allows suit against father, fraternity in Fair case

By Enoch W. Autry
Special Assignment Reporter

Bulloch County Superior Court Judge William Neville ruled out of court June 19 that the Tootle family will be allowed to sue a campus fraternity and the father of former GSU baseball pitcher Clinton Fair for allowing the student to drive while intoxicated and subsequently kill another motorist.

The ruling was not released through court records until June 26.

Fair was arrested following an automobile wreck at about 6 p.m. May 21, 1994, and charged with driving under the influence, reckless driving, driving on the wrong side of the roadway and vehicular homicide. His blood alcohol content registered .17, which is .09 above the legal limit.

When Fair's 1994 Chevrolet truck struck Ernest Edwin Tootle's 1987 Ford Ranger truck on Highway 67, Tootle, 45, was killed on impact.

The suit filed July 14, 1994, by Sonya Tootle, wife of Ernest Tootle, asked for \$6,294 in order to take care of medical and burial expenses.

She also asked that "she [be] entitled to recover an amount determined by the enlightened conscious of the jury for the economic value of her husband's life and for the in-

tangible loss resulting from his death."

According to the suit, as owner of the Chevrolet his son was driving, Dennis Fair is liable for the negligent acts of Clint as related to the operation of the vehicle under the Family Purpose Doctrine.

The local GSU Kappa Zeta

The suit alleges Fair attended the Kappa Sigma "Luau Party" the day his Chevrolet collided with Tootle's Ford. Tootle died in the wreck.

chapter of Kappa Sigma International Fraternity is named in the suit for several reasons.

The suit alleges, among other things, Fair attended the Kappa Sigma "Luau Party" the day of the accident at which time he "became highly intoxicated" and Kappa Sigma "failed to exercise reasonable care in knowing or having reason to know that Fair departed the social gathering in a state of inebriation so as to pose a danger to others with Kappa Sigma failing to take any action to

abate that danger."

Tootle also alleges that "as a direct and proximate result of the negligence and carelessness of the defendants Clint Fair, Dennis Fair and Kappa Sigma International Fraternity, all of whom are jointly and severally liable, Mr. Tootle suffered multiple trauma which caused pain and suffering and resulted in his subsequent death on May 21 (1994)."

The Statesboro law firm representing Mrs. Tootle is Brown and Livingston.

On Sept. 20, 1994, GSU Assistant Dean of Student James Orr was served a subpoena to appear before the law firm of Brown and Livingston in Statesboro, pursuant to Section 30 of the Georgia Civil Practice Act (Section 9-11-30) for a deposition to be taken for the purpose of cross examination, discovery and all other purposes.

Orr is the administrator in charge of Greek affairs.

Orr was instructed to bring a copy of the charter for the Kappa Zeta Chapter of the Kappa Sigma International Fraternity, a copy of any and all documentary evidence of any and all disciplinary sanctions taken against Kappa Sigma in the last 15 years and a copy of all documents submitted by Kappa Sigma in re-

Please see FAIR, page 4

Miss GSU fares well in Georgia pageant

By Enoch W. Autry
Special Assignment Reporter

Even though a University of Georgia student captured the title of Miss Georgia May 24 in Columbus, GSU was well-represented as three from the Statesboro institution placed in the top five.

Rachel English, Miss UGA, will serve as this year's reigning Miss Georgia. English will represent the state at the Miss America Pageant Sept. 16 in Atlantic City, N.J. But beyond English, the next three runners-up all have affiliation with GSU.

First runner-up was 21-year-old Cyndi DeLoach, Miss GSU 1995, who will graduate within three quarters with a degree in international business.

Second runner-up was 21-year-old Osjha Anderson, Miss Atlanta. Anderson, who is enrolled at Agnes Scott College, has taken courses at GSU from time to time. The double major in business economics and theater was awarded a \$2,200 scholarship for a successful showing.

Third runner-up Seleta Hayes, 23, the current Miss Southeast Georgia, was a 1994 GSU graduate with a degree in broadcast journalism. Hayes received a \$1,600 scholarship. She was also the 1993 Miss GSU.

Six more contestants also called GSU their college.

Amy Armstrong, Miss Coastal Georgia; Angela Canady, Miss Northeast Georgia; Kristy Oldham, Miss Thomasville; Jana Thompson, Miss Bulloch County; and Kelli Wiggins, Miss Altamaha, are currently enrolled at GSU. Leigh Ann Lamar, Miss Savannah, is a graduate.

DeLoach, from Glennville, used her talent in Polynesian dance along with her platform of "Building Bridges for Bilingual Communications" to win \$4,400 for placing first runner-up. She collected an additional



Cyndi DeLoach

\$250 for winning the swimsuit competition.

Now DeLoach will look to the future, since being runner-up means she will take over the crown only if English is unable to fulfill her duties.

"There is a pageant, the Sweetheart Pageant, for all the first runners-up (throughout the country)," DeLoach said. "It's not televised because they don't want to take anything away from the Miss America Pageant, but there is scholarship money available."

But DeLoach said if English were to win Miss America, then the GSU student would take over as Miss Georgia. This move would allow English to focus more on the nation as a whole.

DeLoach, who is "taking a full load" of classes during the summer, said she was "happy" with her performance.

Glennville has more to be happy about than just the success of DeLoach, as the town of only 3,800 had five females competing in the pageant.

Joining DeLoach from Glennville were Anderson, Thompson, Wiggins and Miss Tatnall County Jennifer Blocker.

"We have gotten so much publicity. It has been great," DeLoach said. "The town has done fundraisers for us and they even had a going away reception."

Lost and found



Special Photo

Lewis Stewart, accounting professor and head of the business school alumni association, shows Gale McLeroy, a 21-year-old GSU senior, the spot he unearthed her father's high school class ring that had been missing for over 33 years. Phillip McLeroy lost the ring in 1962 as a senior at Georgia Southern College. While taking a shortcut from his office to his car, Stewart found the Crawford County High School ring June 8 after days of heavy rains brought it to the surface.

POLICE BEAT

GSU Division of Public Safety

June 20, 1995

•A resident of the G-56 Dorm reported a broken window in room 116.

•A Springfield resident reported someone had taken her license plate from her 1985 Toyota in the Sanford Hall parking lot.

•A resident of Allenwood Drive reported someone had put a deep scratch on the left rear of her 1993 Chevrolet in the Hollis parking lot.

June 8, 1995

•Robert Lee Smith III, 18, of Lithonia, was charged with theft by receiving stolen property.

•A resident of Sanford Hall reported a CD player, several compact discs and an answering machine was missing from his room.

•A resident of In The Pines reported a Huffy bicycle missing from In The Pines.

•A resident of In The Pines reported his wallet and keys were missing from the Newton Building.

•A resident of Sanford Hall reported someone had damaged the door to room 311.

June 7, 1995

•A Marsham Drive resident reported his 1986 GMC was taken from the Physical Plant parking lot. It was later discovered on Harville Road where it had been burned.

June 6, 1995

•A resident of Oxford Hall reported someone entered his Nissan Maxima in the Oxford Hall parking lot and took a set of speakers.

•A resident of Oxford Hall reported someone entered his 1986 Toyota in the Oxford Hall parking lot and took his CD player.

•A resident of Oxford Hall reported his Murray bicycle missing from Oxford Hall.

June 5, 1995

•An employee of the Russell Union Building reported a microphone system and a CD player was missing from the Union.

•A resident of Oxford Hall reported someone broke into his 1992 Chevrolet in the Oxford Hall parking lot and took his AM/FM radio.

•An EastView Apartment resident reported her purse was missing from the library.

•A resident of Brannen Hall reported approximately fifty compact discs were missing from his room.

•A resident of Johnson Hall reported a calculator was missing from her room.

June 2, 1995

•A resident of Johnson Hall reported someone broke into her 1995 Mustang and took \$740.00.

•A resident of Hendricks Hall reported her book bag was missing from BooksPlus.

May 30, 1995

•A resident of Oxford Hall reported someone broke into his 1987 Nissan Pathfinder in the Oxford Hall parking lot and took

his stereo equipment.

•A resident of Olliff Hall reported a set of keys were missing from the Landrum Center.

•An employee of the Biology Department reported several tools were missing from the Biology Building.

•An employee of Sea Island Bank reported that one of the ATM machines in the Russell Union had been tampered with.

May 29, 1995

•Thomas Plant, 22, of Dorman Hall, was charged with entering an auto, obstructing an officer and carrying a concealed weapon.

Statesboro Police Department

July 3, 1995

•Jason Gardiner, of Greenbriar Apartments, reported criminal trespass.

July 2, 1995

•Christopher Michael Malone, 19, of Jacksonville, was charged with speeding, no proof of insurance, and DUI first offense.

June 29, 1995

•Leslie Norman, of Georgia Avenue, reported damage to her car by towing from Southside Service Center.

•Robert Edwin Evans, of In the Pines, reported criminal attempt of theft by taking of a motor vehicle in the Legends parking lot by two unknown white males.

June 27, 1995

•Stephanie Beckem, of Campus Courtyard, reported a criminal trespass.

June 26, 1995

•Ashley Brian Simons, of Ellabell, Ga., reported someone shattered the rear window of his pickup on Mulberry Street.

•Henry Ross, 25, of Gordon Street, was charged with entering auto, possession of marijuana and theft by taking a bicycle.

•Roy Godbee Jr. reported a black male wearing a dark shirt and hat was seen entering an auto on North Main Street.

June 25, 1995

•Ben Provence, of Rucker Lane, reported someone entering an auto on Mulberry Street.

•Jonathan Zipp, of Hawthorne Court, reported criminal trespass without force in which his bathroom was damaged.

•John Breier, of University Place, reported theft by taking auto.

June 24, 1995

•Eric Ziglin, 19, of Stadium Walk, reported a civil dispute at University Point.

•Carol Burgess, of Players Club, reported criminal trespass by two unknown white males who allegedly threw a beer bottle through her window.

•Robert James Quinn IV, 23, of Park Place, was charged with speeding and DUI first offense.

June 23, 1995

•A female resident, of Georgia Avenue, reported simple battery by her ex-boyfriend in Winn

Dixie.

June 21, 1995

•Sterling Ryan G. Smith, 19, of South Edgewood, was charged with minor in possession.

•Newton William Chism III, 20, of Stadium Walk, was charged with disorderly conduct and minor in possession.

•Sarah Bridges, of Eagles Court, reported theft by taking of a television by an unknown person.

•A female resident, of Church Street, reported a domestic dispute.

June 20, 1995

•Brent Day, of Eagles Court, reported battery at his apartment.

•Sandra Mercer, of Pine Haven Apartments, reported a domestic dispute.

June 19, 1995

•A female resident, of Campus Courtyard, reported harassment by her ex-boyfriend.

June 18, 1995

•Thomas Monroe Lee Jr., 24, of Eagle Villas, was charged with DUI second offense and open container.

•Jason Andrew Camp, of Bermuda Run, reported a lost or stolen tag.

•Liuh Leong, of Miller Street, reported theft of a bicycle.

•A female resident, of Robinhood Trail, reported harassment.

•Chris Calhoun, of Broad Street, reported burglary of his roommate's television.

•Ronda Benson, of Stadium Walk, reported criminal trespass in which someone allegedly broke in and used the dishwasher.

June 16, 1995

•Alexander Walker, of Park Place, reported burglary of several valuables.

•A female resident, of Park Place, reported harassment.

•Cindy Rodday, of Campus Courtyard, reported criminal trespass.

June 14, 1995

•A female resident, of Park Place, reported harassment.

•Cindy Rodday, of Campus Courtyard, reported criminal trespass.

June 13, 1995

•Mariana Depetrise, of Sussex Commons, reported a rock was thrown at her on Chandler Road by three unknown black males.

•A female resident, of Towne Club, reported taking too many anti-depressant pills.

June 12, 1995

•Eric Bailey, of Chandler Road, reported criminal trespass of his vehicle at Winn Dixie.

June 10, 1995

•Michael Bowen, of Robinhood Trail, reported a burglary of his residence.

•A female resident, of Eagle Creek, reported obscene phone calls.

June 9, 1995

•Robert Iuan Rodriguez, 19, of Parkwood Avenue, was charged with duty upon striking fixture, improper lane change, and minor in possession/consumption.

•Nancy Ann Morrow, of Cam-

pus Courtyard, reported burglary of a vacuum cleaner and answering machine.

•John Kea, of East Grady Street, reported a theft by taking.

•Debbie Durand, of Georgia Avenue, reported an injury at the Flying Eagle.

June 8, 1995

•Jason Sabatino, of Players Club, reported a theft by taking.

•Chris Stumpf, of Campus Courtyard, reported burglary of several valuables from his apartment.

June 7, 1995

•Dennis Chadwick Johnson, 19, of Greenbriar, was charged with DUI and leaving the scene.

•Paula Andrea Brewer, 18, of Towne Club, was charged with stop sign violation, open container, and DUI first offense.

June 6, 1995

•Jeremy Aaron Berson, 20, of Southern Villas, was charged with possession of cocaine and marijuana.

•Jermaine Swift, of Sussex Commons, reported a criminal trespass.

•Matthew Harris, of Eagles Nest, reported criminal trespass when the rear window of his truck was shattered.

•Jennifer Burkhart, of East Main Street, reported theft by taking at Vandy's.

•Krista Smith, of Savannah Avenue, reported a burglary at her residence.

•Matthew Kightkep, of Pine Haven Apartments, reported his wallet lost or stolen.

•Jason Dodson, of Towne Club, reported a criminal trespass.

•Keya Imani, 19, of Southern Villas, was charged with sale of LSD, marijuana and counterfeit substances.

June 5, 1995

•Joseph Simpson, of Park Place, reported a criminal trespass.

•A female resident, of Olympic Boulevard, reported simple assault by her ex-boyfriend on Broad Street.

June 4, 1995

•Stephanie Cullen, of Players Club, reported criminal trespass of a vehicle.

•Robin Roth, of Stadium Walk, reported battery in Players Club.

June 3, 1995

•Glenn Nicoletti reported theft of a bicycle.

June 2, 1995

•Marcel Griffin, of Park Place, reported aggravated assault with a beer bottle by a known person in Sussex Commons.

•Timothy Galvin, 20, of Players Club, was charged with reckless driving.

June 1, 1995

•Danny Cressy, of Dry Branch Village, reported aggravated assault with a beer bottle by an unknown person at Legends.

•Jenny Cargill, of Lanier Drive, reported damage to her vehicle.

ANNOUNCEMENTS

Ongoing

•Faculty, staff and students are invited to the annual watermelon cuttings every Tuesday and Thursday at 10 a.m. beside the lake by the fountain, now

through early August.

President Nicholas Henry will cut the first melon, continuing a tradition begun 47 years ago at GSU by the late President Zach Henderson.

THE GEORGE-ANNE

STATEMENT OF OPERATIONS

The George-Anne is the official student newspaper of Georgia Southern University, owned and operated by GSU students and utilizing the facilities provided by GSU. The newspaper is the oldest continuously published weekly newspaper in Bulloch County and Statesboro, Ga. The ideas expressed herein are those of the editor or the individual authors and do not necessarily represent the views of the Student Media Committee, the administration, the faculty and staff of Georgia Southern University, or the University System of Georgia. The George-Anne is published twice weekly during the academic year and three times during summers. Any questions regarding content should be directed to the editor (681-5246).

OFFICES, MAIL, PHONES

Room 223, F. I. Williams Center. The George-Anne, Landrum Center Box 8001, Georgia Southern University, Statesboro, Ga. 30460. 912/681-5246 (News) or 912/618-5418 (Advertising)

ADVERTISING INFORMATION

The George-Anne reserves the right to refuse any advertisement. The George-Anne's advertising rates are as follows:

| | |
|------------------------------------------|-------------------------|
| •Students and student groups: | \$2.50 per column inch |
| •GSU faculty, departments or affiliates: | \$3.00 per column inch |
| •Statesboro area businesses & groups: | \$4.50 per column inch* |
| •National rate: | \$7.00 per column inch |

*Five inch minimum ad size, otherwise classified display rates (\$5.00 per column inch) apply.

DEADLINE: The deadline for reserving space and submitting advertising copy is Noon, one-week prior to the intended publication date. For more information, rate cards, sample publications, contact: Brooks Clements, Advertising Manager, ADS, (912) 681-5418; or Bill Neville, Student Publications Coordinator, (912) 681-0069.

CLASSIFIED ADVERTISING INFORMATION

The George-Anne reserves the right to refuse any advertisement. The George-Anne's classified advertising rates are as follows:

| | |
|-----------------------------------------------------|-------------------------------------------|
| •Students, student groups, faculty and departments: | Free (25 words or less) |
| •Others groups or businesses: | 10¢ per word per edition (\$5.00 minimum) |
| •Retail classified display: | \$5.00 per column inch |

DEADLINE: The deadline for reserving space and submitting classified advertising copy is Noon, one-week prior to the intended publication date. Free classified ads from students, faculty and staff must be submitted in writing, with the name of the sender and local address. No free ads taken via telephone. One free ad per person per week.

CIRCULATION INFORMATION

Subscription rates for home delivery of The George-Anne are six dollars per quarter, or \$18 per year, delivered bulk mail. Please address all inquiries to Stephanie Wylie, Business Manager. The George-Anne is distributed free of charge on the Georgia Southern University campus through delivery sites located in campus buildings and residence halls.

*We gratefully acknowledge the theft of our slogan from Robert Williams of the Blackshear Times. Call Bob and he can tell you who he stole it from originally.

Spectacular Summer Savings



Welcome to
Summer Quarter
at GSU!
During the
month of July,
the temperatures
may be soaring
but our
prices are not.



"Under The Green Roof"
681-5181

Mon. - Fri. 7:45 a.m. - 5:00 p.m.



871-PAPA
(7 2 7 2)

Fast • Hot • Perfect

Pizza

FREE DELIVERY • CARRY OUT
620 FAIR ROAD

1 Large Two
Topping Pizza

\$8 ⁶⁸/_{Plus Tax}

Additional Toppings 95¢
each Not valid with any
other coupon Valid only at
participating stores
Offer expires 7/19/95

PAPA's Special
1 Large Pizza Up
to Five Toppings

\$9 ⁹⁶/_{Plus Tax}

Additional Toppings 95¢
each Not valid with any
other coupon Valid only at
participating stores
Offer expires 7/19/95

Manager's Special
1 Large One
Topping Plus
Cheese Sticks OR
Bread Sticks

\$10 ⁹⁵/_{Plus Tax}

Additional Toppings 95¢
each Not valid with any
other coupon Valid only at
participating stores
Offer expires 7/19/95

Jury grants no award in pilot lawsuit

By Enoch W. Autry
Special Assignment Reporter

Less than an hour after attorneys' closing statements were made Friday, a verdict of no award was returned by the jury in the civil trial involving a 1993 airplane crash that left a GSU student and an Arkansas banker dead.

Alan and Kathryn Newman, parents of Henry S. Newman, the 20-year-old student pilot killed in the crash, claimed 53-year-old Arkansas pilot John H. "Tommy" Thompson was responsible for their son's death.

On April 27, 1993, at Statesboro Municipal Airport, a commercial Cessna plane piloted by Thompson collided with Newman's trainer Grumman plane.

Newman, from Loganville, was the only occupant of the single-engine trainer.

That 1993 evening, the commercial plane flew in to land on the east-west runway while the trainer plane was taking off on another runway. The two met in a collision at the intersection that caused Newman's plane to burst into flames.

The body of Nelson Henry, 50-year-old resident of Jonesboro, Ark., and passenger of Thompson, was removed from the remains of the Cessna. Henry was president of Leachville Bank in Leachville, Ark. Thompson, of Jonesboro, Ark., was treated at Bulloch Memorial Hospital for head and face injuries.

Nancy Wagner, an associate professor in the business admin-

istration accounting department, was a passenger aboard Thompson's aircraft. Wagner was treated and released from Bulloch Memorial Hospital.

Donald Anderson, an attorney for the Newmans, suggested Thompson was tuned in to the wrong radio frequency and unable to communicate with other pilots at the time of the crash, published reports read.

Published reports also state defense attorney Charles Ratz claimed Newman's lights were not on at the time of the crash. Ratz also said Newman had quit his job at Bulloch Memorial Hospital and planned to leave GSU.

Ratz said a friend of Newman's said the student was going flying that evening "to get things off his mind," according to reports.

The Newmans sought \$6.2 million in damages from Thompson in the case. Included in the suit was \$1.9 million for the economic value of their son's life, \$3.8 million for the non-economic value, \$500,000 for the fright and shock and roughly \$8,000 for medical and funeral services.

The Newman suit was filed less than three months after the collision. Nearly a year later, they also filed suits against Arkansas Aircraft, Thompson's employer.

Thompson had filed a countersuit, claiming Newman was responsible for the crash.

After hearing a week of testimony, the jury did not award any money to either side.

Arkansas Aircraft also filed a counterclaim against the Newmans that is still pending.

Our Opinion

Loss of lab school a tragedy for GSU program

The failure of Bulloch County education officials to compromise with GSU on details regarding a new Marvin Pittman Laboratory School will cost our university immensely in the long run.

Our oldest pride, the College of Education, will suffer from the loss of a nearby lab school where GSU students can learn first-hand about the experience of teaching children. It is a unfortunate day for education majors and a startling reminder of the problems of progress.

It is not our intention to begin a blame game, but it is obvious that those most at fault sit on the Bulloch County Board of Education. After a period of compromise between GSU and the Board, which included increases in land set aside for the new school, these officials made yet another request: that we relocate a food storage facility at an estimated cost of \$1 million. The expense was too high for GSU to accept.

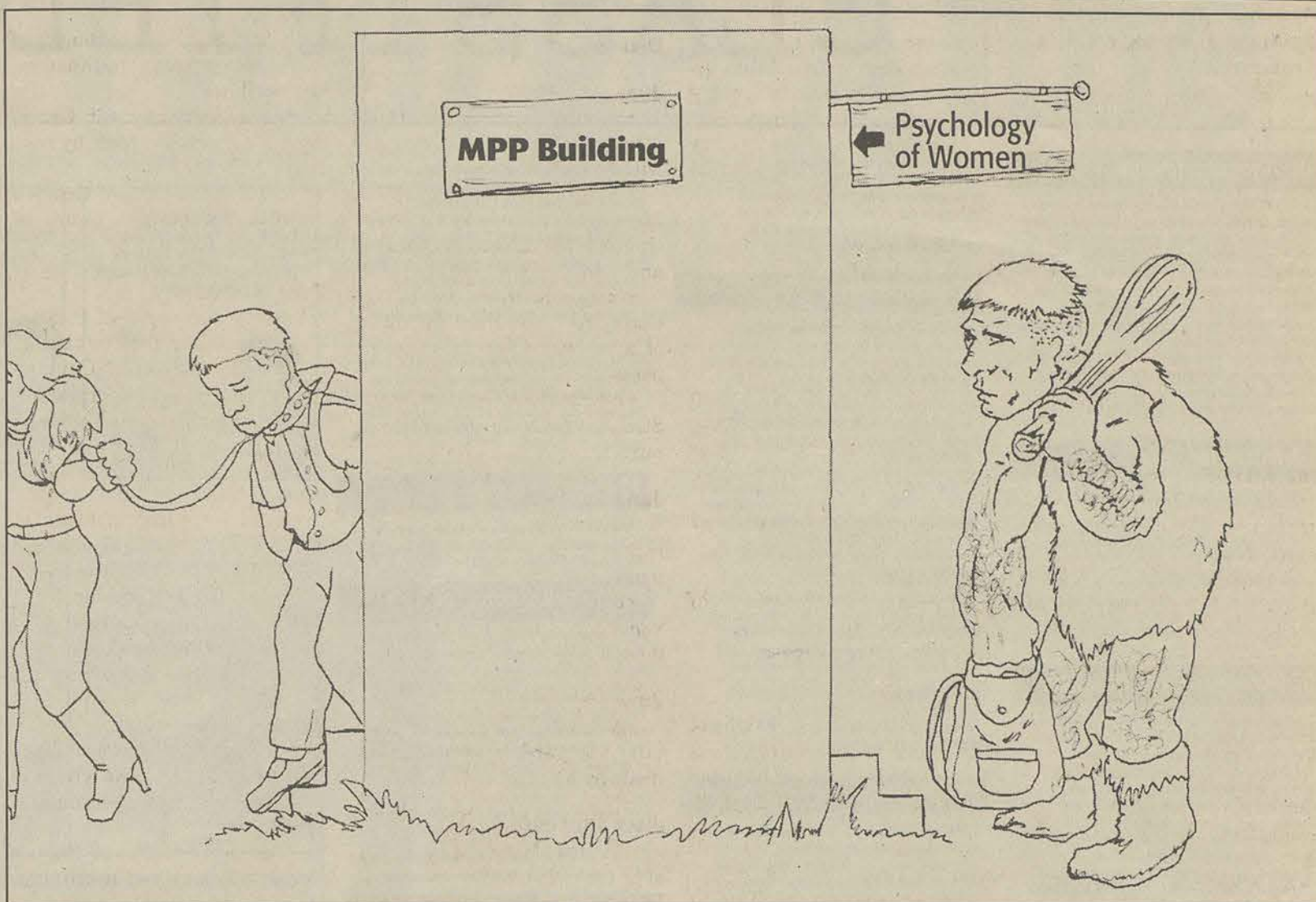
Unfortunately, this final straw, which ruined any hopes for a lab school on campus, was based on a relatively minor problem. School board officials felt the warehouse would be an eyesore located next to the new school. What a shame for such a small detail to dash our collective hopes to build a new Marvin Pittman.

GSU had even integrated into its master plan the construction of a new education building adjacent to the new lab school. We were prepared to make costly sacrifices while school board officials split hairs over aesthetic beauty.

The warehouse apparently also restricted the size of the Marvin Pittman school, but GSU had already made land concessions in an effort to compromise. The acreage we set aside more than covered the demand for space.

This disappointment leads us to regret the retirement of GSU official Harrison Carter from the school board, where he was a longtime leader. Perhaps his influence there might have changed the course of events.

Instead, we have tried, and failed, to form a compromise agreeable to Bulloch County school officials. The result is a stunning loss for us all.



Psych of women: lessons in feminist thought

THE EDITOR SPEAKS

CHRISTOPHER COLE

One wise observer recently pointed out that the liberals of the 1960s college classroom have moved up in the world and now have tenure.

How apt a statement, even here in southern Georgia.

I was recently treated to a taste of this unsettling development after enrolling in a seemingly harmless psychology class devoted to the study of women. It quickly became clear the course was not forthright in its study of the female gender, but instead slanted toward the study of feminism, which is *not* synonymous with women.

Perhaps I'm getting to be an old-timer at GSU, and my applicable course catalog even now is being relegated to the dark ages, but no one mentioned until I entered the class that the course doubled as a women and gender studies (WGS) course. Everyone knows the WGS major was created as part of the modern movement to satisfy every group in society that allegedly is being ignored, so the ensuing course content failed to surprise me.

The grumbling can be heard already: any man who enrolls in Psychology of Women is merely intent on getting into the minds

of women for the purpose of seduction. For some, this may be true; to pigeonhole all men in this category would reek of the same male-bashing evident in the course. I had various reasons for taking the class; none included the desire to learn how evil my gender was, and how evil it continues to be.

For 12 weeks, we were spoonfed Gloria Steinem nonsense ranging from the illegality of sexist advertising to the lack of differences between men and women. Some of the material contained rudimentary logic, such as the sexual double standards which are still prevalent in society, but in general the facts were skewed and the content was grossly biased.

Our professor, herself an informed researcher and competent teacher, was clearly slanted toward a political agenda and allowed that bias to shine through in every lecture I witnessed. Having stated from the

outset that she taught her course from "a feminist perspective," it was clear there would be little room for dissent in the classroom. She didn't say the feminist perspective would be covered in the material; the course was literally devoted to feminism.

It isn't exactly a fair and objective approach to take one side of a political debate and wield professorial muscle to stifle disagreement. But such is the way of campuses in the 1990s.

To be sure, she did allow students to offer dissenting opinions, but they were quickly smothered by feminist research warmed over as "facts" to be foisted down our throats.

Which leads me to another point: while most of the material was documented in studies conducted at universities across the nation, many of the researchers were feminists with a clear agenda in mind. It tended to demean her own admonitions that research conducted by male

scholars had the potential to be colored by gender bias.

While I felt the course emphasized the WGS side more than actual psychology, I was willing to listen. Some of the content was fair and accurate; much of it generalized male thinking and made men out as The Enemy.

At one point, we studied a case in which supposedly sexist advertising was ruled illegal under the Civil Rights Act — an infringement on free speech, but that side of the argument was purposely neglected.

And throughout the course, a constant theme was that differences between men and women were exaggerated. In this area, common sense nullifies all the feminist research in the world.

I could write an entire book about my response to the content of this politically correct course. I wouldn't think it necessary, however, since the professor acknowledged the majority of *women* don't even consider themselves "feminists" as defined in today's terms.

The movement has noble intentions and is a respectable cause, but is dominated by radicals who make it self-defeating. Such is the case here.



Backtalk

Now you have a chance to "talk back" to *The George-Anne* on any topic of interest, from pedestrian traffic congestion to cafeteria food. Simply fill out this form and send it to Landrum Box 8001, or drop it by *The George-Anne* office at Williams Center room 223.

Name: _____

Telephone: _____ Landrum Box: _____

Your 'words of wisdom' ...

Your Opinion

Admissions proposal bad

Dear Editor,
In your May 18 editorial, you endorsed the proposal that Chancellor Portch recently made regarding changes in statewide admissions policy as being beneficial to the state. I wish to challenge your opinion. The full implementation of this plan will be very counter-productive, particularly for residents of southern Georgia.

Georgia's "first tier" universities (Georgia State, UGA and Georgia Tech) will not experience much impact upon their enrollment and this move will enhance their claim on state resources for academic programs.

The local import of this plan would be that roughly half of this year's GSU freshmen would not have been admissible to GSU and would have been expected to spend their first two years at two-year schools such as the Ogeechee Technical Institute (OTI).

Obviously, lots of these students would rather go to GSU or they wouldn't be here.

OTI and similar schools do, and should, have a basic mission, a vocational/technical mission, which is other than serving as a prep school for a liberal arts education from GSU.

I doubt if two-year transfers will be as well-prepared to

compete with other GSU students as those who have the opportunity to learn how to compete as freshmen and sophomores.

GSU is better-equipped to offer learning support to the wide range and number of students needing that support than are the two-year schools.

What is needed to improve learning support programs, in Georgia and throughout the nation, is a much tighter articulation between support coursework and the basic liberal arts requirements.

Do we not all start with the assumption that it will take much time and effort to bring many of Georgia's high schools to the point that they can prepare their students for a rigorous academic program? In the meantime, we must have viable means of better helping our students make it in a world requiring greater sophistication and skill.

GSU's learning support students belong right where they are at GSU. Georgia Southern University, in turn, should be given the resources to do the (admittedly more expensive) job of offering that support.

Jacques H. Robinson
Assistant Professor
Student Development Programs

Stop printing list of worst faculty/staff offenders

To the Editor:
The George-Anne has yet again listed the "top offenders" against the parking regulations of Georgia Southern. Enough is enough. I am sick and tired of this nonsense, and I strongly suspect most or all of the others on the list are as well.

The fines administered by Parking and Transportation *must* be paid at the beginning of each year in order to receive a new tag. The suggestion, made by being listed on the front page of the paper, that those who have not yet gotten around to paying those fines are criminals or deadbeats is offensive. Please do not do this again.

Faculty are given one tag for both cars at the beginning of the year. If, for example, a faculty member and his or her spouse switch cars one day and forget to move the tag, is that faculty member supposed to walk five miles to work that day? Indeed, since Parking and Transportation knows instantly through hand-held computers that the faculty member has paid for the right to park on campus, why is he or she fined at all, except as a way to bilk more money out of

us? The University paid a very large sum of money for the hand-held computers used by the parking police. What are they for, if not to determine whether or not we have paid for the right to park?

Frankly, the entire parking system is ludicrous and offensive, at least when it comes to employees of the university. That faculty and other employees of GSU should have to pay for the privilege of parking at their place of work *at all* is absurd. Salaries at GSU are notoriously low; this additional deduction from the paycheck is hardly the way to improve the morale that the administration claims to be so concerned about.

There is a simple way to deal with this problem. Parking and Transportation could simply mail, free of charge, a permanent sticker to all faculty and employees at the beginning of each year. Those who need the tags to open gates could just be given one. However, since this is the logical, fair and faculty-friendly way to handle the situation, I have every confidence it will not be done.

Timothy Teeter
Assistant professor of history

STAFF

NEWS

Copy Editor: Anna Murdock; Assistant News Editor: Melanie Weinberg; Special Assignment Reporter: Enoch W. Autry; Senior Staff Writer: Kim Wagner; Staff: Jan Boulware, Stacy Jordan, Stephen Kirven, Jana Mobley, Meredith Whitt

FEATURES

Features Editor: John Munford; Arts & Entertainment Editor: Tracey Varnell; Senior Staff Writer: Derek Lewis; Staff: Erika Anderson, Stacy Clemmons, Kwaseera Dixie, Tijuana Thomas

SPORTS

Sports Editor: Ronnie Swinford; Staff: Scott Cullen, Mark Harrington, Tonya Hilton, Josh Nunez, Aaron Solomon, Carolyn Wynn

OPINIONS

Staff: Christopher Cole, Amanda Crews, Justin Miller, Melanie Weinberg

PHOTOGRAPHY

Chief Photographer: James Hill; Staff: Sarah Brinkley, Darryl Jones, Michele Hess, Jerome New; Contributing Photographer: Randy Trujillo

ARTWORK

Leigh Braddy, Shawn Chavis, Adam Nelson, Anna Murdock

CIRCULATION

Supervisor: Steve Taliaferro; Staff: David Hillis, Bruce Karr, Scott Newton

ADVERTISING/DISTRIBUTION SERVICES (ADS)

Advertising Manager: Brooks Clements; Business Manager: Stephanie Wylie; Marketing Coordinators: Rob Gayle, Jana Mobley; Sales Representatives: Tonia Anderson, Leigh Braddy, Melissa Goodman, Steve Keller, James Salter, Heather Turner, Stacy Wood, Carolyn Wynn

PRODUCTION AND GRAPHICS EDITORIAL SERVICES (PAGES)

Production Managers: Ron Lair, Scott Mulkey; Staff: David Beck, Aquila Bookhart, Tamara Gilbert, Mitch Staffell, Blair Schuit, Shawn Sunderland, Monica White; Classified Ads Manager: Melissa Goodman; Darkroom Manager: Randy Trujillo

STUDENT PUBLICATIONS COORDINATOR

Robert Bohler: News, Editorial Adviser; Bill Neville: General Manager

Today's Quote

"If you steal from one author, it's plagiarism. If you steal from two, it's research."

-- Wilson Mizner

01-Announcements

ATTENTION: The George-Anne screens all classified ads prior to publication. The newspaper strives to accept ads for legitimate products & services only. Students are urged to exercise caution when replying to ads, particularly those which ask for money or a credit card number in advance of delivery of products or services. Students are also urged to report to the newspaper (at 681-5418) any suspicious offers they might see in the classifieds. Remember, if an offer seems too good to be true, it probably is.

03-Autos for Sale

1993 Ford Explorer "LTD". Beige. 852-5278

For Sale-1984 Volvo, 240 DL. Asking \$2,000. 489-5353

PONTIAC FIERO '84, AT, white, full power, exc body, interior, engine replaced by previous owner. \$1200 or OBO. 871-4573.

05-Business Opportunities

Position available-Weekly newspaper how accepting applications for News Editor. Duties include covering hard news, writing features, photography, opinion pieces, and coordinating special sections. Ideal candidate should have 1-2 years background in news reporting/writing, computer skills, and layout experience. Journalism degree helpful but not required. This position offers opportunity for rapid advancement and above-average income. Mail or fax resume and at least three clips to: The Claxton Enterprise, P.O. Box 218, Claxton, GA. 30417, FAX: (912) 739-2140.

09-Furniture & Appliances

Sofa and chair. Country style. Royal blue. 852-5278

Table w/ 4 chairs. 852-5278.

11-Help Wanted

ALASKA SUMMER EMPLOYMENT-Students Needed! Fishing Industry. Earn up to \$3,000-\$6,000+ per month. Room and Board! Transportation! Male or Female. No experience necessary. Call (206)645-4155 ext. A53945.

SCHOOL

Continued from page 1

Henry said GSU thought the site would satisfy concerned parties.

"It exceeded the state's acreage standards. It was virtually free. It maintained the laboratory school and a cooperative relationship which benefited the school children and the county taxpayers," he said.

Henry said the lab school could not be continued as a result of the vote.

"It's the end of an era. We have sadly concluded that the laboratory school cannot function effectively off campus, away from our students and faculty," he said. "Therefore, Marvin Pittman will end nearly seven decades of service when its stu-

FAIR

Continued from page 1

lation to the "Luau Party."

In an article published in *The George-Anne* May 26 edition concerning the possible involvement of the fraternity, Orr said he had been informed that Fair was present at a "Luau Party" sponsored by Kappa Sigma.

Orr, at that time, said Fair was not on the guest list that was submitted by the fraternity to his office.

At official Greek functions where alcohol is present, the organization is required to submit paperwork detailing guests and security measures to Orr's office.

Orr said that if liability or a violation of rules was discovered, Kappa Sigma would face "appropriate actions being taken."

Wanted Immediately! Persons to take over lease of GA Villas, Apt. #21! Lease is from this summer to June '96. 2 spacious bdrms/bath. Very quiet apartment complex. Rent \$420 a month. Call 871-2667 or leave message.

20-Roommates

HELP! 2 Female Roommates for Fall, Winter, Spring or Summer! Nice place, low rent and only 1 mile from campus. W/D, own room. Renee-871-7955.

Male roommate needed Fall '95. Hathorne II, fully furnished, washer/dryer, 2BR, 2 bath. Please call 681-3270 for more information.

ROOMMATE NEEDED -- Starting Sept. 1, 3BR, 2 1/2BA house across from Hanner. Nice quiet neighborhood w/ large backyard. Only \$212 a month. Responsible, clean roommates only. Call 871-7201.

Roommates needed can move in ASAP! Private room furnished or unfurnished in a house with W/D and cable. Walking distance from campus. \$180/mo. Call 871-4099. Leave name and number.

SUMMER ROOMMATE NEEDED AT SUSSEX #67. WATER BED IS INCLUDED. STORAGE ROOM. CALL PETER AT 871-3368.

21-Services

FREE FINANCIAL AID! Over \$6 Billion in private sector grants & scholarships is now available. All students are eligible regardless of grades, income, or parent's income. Let us help. Call Student Financial Services: 1-800-263-6495 ext. F53945.

GUARANTEED savings on your phone bill. Save big on long distance, 800 #'s, calling cards and International. ALL plans beaten. No fees. 800-731-3488.

25-Television & Radio

Satellite system w/ decoder. 852-5278.

28-Weekends & Travel

Vacation! Vacation! Vacation! Want to spend 8 days/7 nights in Florida and Bahamas? VERY CHEAP! Call 871-2828.

CRUISE SHIPS HIRING - Travel the world while earning an excellent income in the Cruise Ship & Land-Tour Industry. Seasonal & full-time employment available. No exp necessary. For info call 1-206-634-0468 ext. C53947.

Great opportunity for students. Unlimited income. For information send a long, self-addressed stamped envelope to: Universal, P.O. Box 440611, Kennesaw, GA 30144

RESORT JOBS-Work at one of the many Resorts in the United States. Locations include Hawaii, Florida, Rockies, New England, etc. Earn to \$12/hr. + tips. For more information, call (206) 632-0150 ext. R53942.

12-Lost & Found

Diamond and Sapphire bangle bracelet. Lost sometime Fall quarter. If found please call Michele at 681-6657.

13-Miscellaneous for Sale

1991 Austin 386 SX-20, 85 mb hard disk, dual floppies, 14" color monitor, 8 mb RAM, Microsoft mouse, Windows 3.1, DOS 6.0. \$750 or best offer. Call 489-2554.

For sale-Slightly used TI-82 graphics calculator with owner manual. Complete with Trig programs for Mat 152. Cost: \$75. If interested call 863-7374 (Sylvania) or 564-2747 (Sylvania).

For sale: Weider Weight Machine. New asking \$100. Call Susan 865-5625.

TI-81 calculator used, new batteries. \$50. Call Aaron at 764-9458, leave message.

17-Pets & Supplies

ADORABLE KITTENS FOR FREE -- That's right, look in a dictionary under "adorable" and you'll see their pictures. Call 764-4673 for your feline today!

19-Rentals & Real Estate

ATTENTION: Open for Fall. Extremely large house for rent. 5 bedrooms, hardwood floors, W/D. \$175 month. Large private bedrooms. One minute from campus. Grab it before its gone! Call 489-8464 or 489-4022.

HOUSES & APTS AVAILABLE SEPT. 1. No pets. All utilities furnished at 602 S. College Apts. Need related students for 4 BR Houses. James M. Hood, 764-6076.

Reasonable rentals- Houses, apartments, mobile homes. 764-5003.

and work with mentors to develop innovative programs.

Vice President of Academic Affairs Harrison Carter said these programs "will be lost, and that loss will be felt statewide, most strongly here."

One of these programs, Carter said, is "Success in Reading."

Carter said GSU would continue working with Bulloch County to allow education majors to work in classrooms across the system, and said that some Marvin Pittman funding would be used for that purpose.

The current Marvin Pittman School, located behind the Carroll Building, will be renovated and used for GSU's art and communication arts departments.

A DUI charge and a second vehicular homicide charge were dropped.

Neville said Fair was ordered to pay a supervisory fee of \$20 and a \$5,000 fine, to avoid alcohol, to stay away from alcohol activity, and to adhere to 500 hours of community service under the supervision of the probation department to speak on the "awareness of drunk driving and reckless abuse of public authority."

At This Price, Our Wings Will Fly.



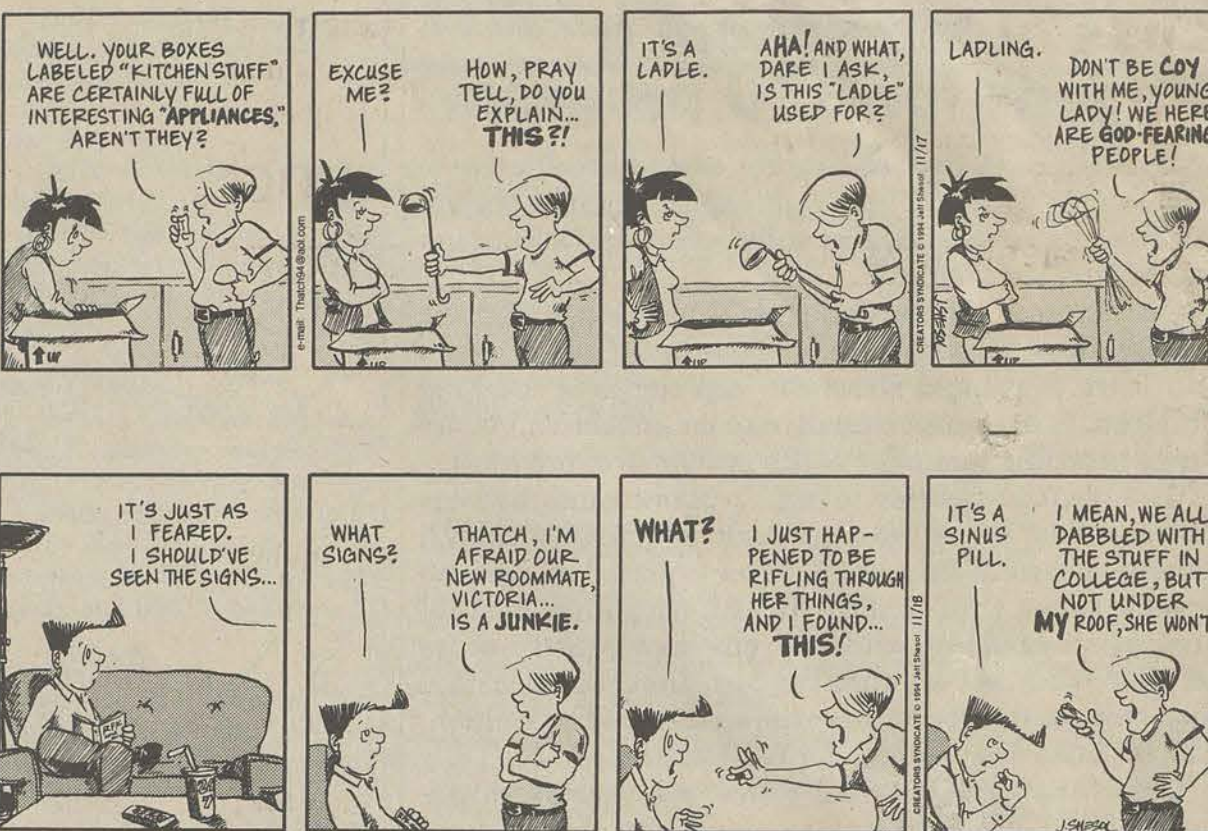
Nothing Fancy. Just Good Food

120 Lanier Dr. Statesboro, GA (Across from GSU's Paulson Stadium) 681-3030 • Mon.-Sat. 11:30am-12am • Sun. 11:30am-10pm

Bash Night: Tues. 6-10:30 pm All-U-CAN EAT Wings • Large patio • Take-out or Dine-in • Monthly wing-eating contests \$6.95

Buy One Lunch Entree Get One Free Of Equal Or Lesser Value Coupon valid at this store only. Does not include tax or gratuity. Not valid with any other offer. Exp. 08-31-95.

THATCH by Jeff Shesol



Tues. Disco Night
Thurs. Summer Party 8 - 10

Bands:
Tues. - Georgia Satellites
only \$5.00

July 14 - Swingin' Medallions

Upcomming Bands:
July 19 - Wonder Lust
July 21 - Memory Dean
July 28 - Kinchefoonee Cowboys

Legends Bar &
Grill
871-5349

up Union
Productions
GEORGIA SOUTHERN UNIVERSITY

Looney Tuesdays

A SERIES OF LOONEY ENTERTAINMENT

Tuesday, July 11
Wild Wild West!

Come get your free picture
taken in western attire!
11am - 1:30pm Union Rotunda

Thursday, July 13
Water War Day

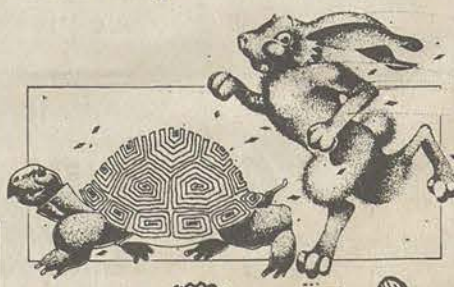
Squirt Guns, Water Balloons, and your imagination
PINES Pool Time TBA

JAWS

Movie Starts at Dusk
All At the PINES Pool

Tuesday, July 18
Looney Sports

Crab Soccer, Twister,
Putt Putt and much More!
11am - 1:30pm Union Rotunda



SPLASH

Union Productions Team

Interest Form

Yes! I want to be involved in UP.
Here is the Team that I am
interested in!!

The Joke Zone
Big Time Entertainment
Sound Waves
Games People Play
Contemporary Issues

SPLASH

Name

LB

Local Phone

For more info on Union
Productions call 681-5442
or mail interest
form to LB 8066

Easter 1987, Age 5



Easter 1988, Age 6



Easter 1989, Age 7



Lorien Lea Denham.

Killed by a drunk driver on Good Friday, March 29, 1991, at College Park Drive and Hwy. 19 North in Meridian, Miss.

If you don't stop your friend from driving drunk, who will? Do whatever it takes.

FRIENDS DON'T LET FRIENDS DRIVE DRUNK.