

Georgia Southern University

Digital Commons@Georgia Southern

The George-Anne

Student Media

4-13-1995

The George-Anne

Georgia Southern University

Follow this and additional works at: <https://digitalcommons.georgiasouthern.edu/george-anne>

Recommended Citation

Georgia Southern University, "The George-Anne" (1995). *The George-Anne*. 1361.
<https://digitalcommons.georgiasouthern.edu/george-anne/1361>

This newspaper is brought to you for free and open access by the Student Media at Digital Commons@Georgia Southern. It has been accepted for inclusion in The George-Anne by an authorized administrator of Digital Commons@Georgia Southern. For more information, please contact digitalcommons@georgiasouthern.edu.

➔ **Golfers lose in sudden death**
GSU lost the Southern Conference Championship Tournament in a sudden death playoff to ETSU Tuesday afternoon ...
Please see story, page 6

➤ **Country in the 'boro**
Country music sensation Aaron Tippin will play in Paulson Stadium during Musicfest 95, featuring the Kinchafoonee Cowboys as the opening act ...
Please see story, page 9



BRIEFLY...

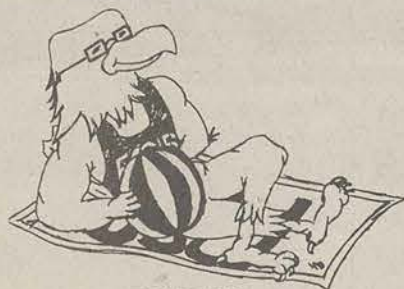
Chevy Chase gets probation, fine, and alcohol rehab following arrest for DUI

The Associated Press
BEVERLY HILLS, Calif. — Actor Chevy Chase was placed on probation, fined and ordered to 90 days alcohol rehabilitation after pleading guilty to drunken driving. Chase, 51, was arrested after police spotted him driving erratically on Jan. 26. He was ordered to appear for arraignment Thursday, but he showed up in court March 31 and pleaded guilty.
Los Angeles County Deputy District Attorney Lisa Hart said Thursday that Chase was placed on three years' probation, fined \$966, ordered to three months of alcohol rehabilitation and his drivers license was temporarily suspended.
Chase is a former "Saturday Night Live" cast member and star of such films as the recently released "Man of the House."

WORD OF THE DAY

defenestration (de-fen-i-stra'shen)
n. An act of throwing someone or something out of a window. [Lat. fenestra, window]

'BORO WEATHER



TODAY

Partly cloudy, with a high in the mid-70s and a low in the upper 50s.

FRIDAY

Sunny, with a high in the upper 70s and a low in the mid-40s.

INDEX

Announcements	2
Arts & Entertainment	10
Classifieds	11
G-A Mailbag	2
G-A Spotlight	3
Opinions	4
Police Beat	2
Q and A	3
Sports	6

It is a desire of The George-Anne to print the news of Georgia Southern University as accurately as possible. If you feel that something covered is in error, contact a member of the editorial staff at 681-5246 as soon as possible. Thank you.

FOR ADVERTISING INFO.: 681-5418
STORY OR PHOTO IDEA: 681-5246
FAX NUMBERS: 871-1357 and 681-0863

The George-Anne

*Liked By Many, Cussed By Some ...
Read By Them All*



Georgia Southern University's Official Student Newspaper

Statesboro, Georgia 30460

Founded 1927

SGA elections to be held next week

By Stephen Kirven
Staff Writer

The Student Government Association will hold its Elections at three different locations for the 95-96 Academic year on Tuesday, Wednesday and Thursday from 9 a.m. to 3 p.m.

On Tuesday, elections will be held in the Union Commons, Wednesday at Lakeside Cafe' and Thursday outside the Hanner Fieldhouse from 9 a.m. to 3 p.m. every day. Running for president are Mario Hairston and Lee Hyer.

On the Hairston ticket, John Walraven is running for vice-president of finance and Dee Dee Williams is running for vice-president of auxiliary affairs.

Hairston, freshman Pre-Med major is running for the office of president. The major issues he will address are the fee increases and "to incorporate informative sessions as to new policies and procedures to get student input."

"Although I may not be able to solve every problem, I promise to uphold the office and be a dedicated voice for GSU," Hairston said.

Walraven, a junior finance major, is running on the Hairston ticket for vice-president of finance. If elected, he will help influence the SGA senate to take a fiscally responsible look when dispersing funds.

"I will make them think conservatively in making careful, itemized decisions so we won't be spending money carelessly," Walraven said. "I look forward to serving on the Activity Budget Committee."

Williams, a freshman pre-med major, is running for vice-president of auxiliary affairs. She hopes to serve as a mediator and buffer for parking,

housing and food services.

"Parking and transportation will not budge about parking tickets. I will try and work with them and the students to resolve any misconceptions the students may have," Williams said.

Hyer, a junior political science major, is running for the office of President of SGA. If elected, he plans to work on establishing an on-line registration system, work with parking and transportation to make more available parking spaces, and start a "Day of Grace" where students are allowed one unpaid parking ticket. He also plans to promote intra-university relations by working with the students and administration.

"Students need to spend less time in administrative offices and more time in the classroom," Hyer said.

On the Hyer ticket, Heather Karlson is running for vice-president of auxiliary affairs, Gavin Shook for vice-president of academic affairs and Carlton "Slick" Dickerson for executive vice-president.

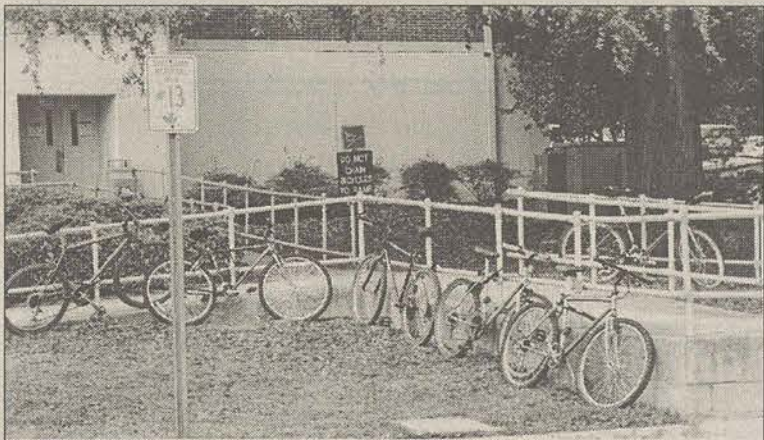
Karlson, a freshman justice studies major, is running for vice-president of auxiliary services. If elected, she will work to change the parking on campus by opening more spaces for commuter parking, work on extending the pedestrian program, and go out to the student body at least every other week to get their input.

"I am planning to change SGA and take a more active role and not allow the administration to walk all over the students," Karlson said.

Also on the Hyer ticket, Dickerson, a senior double majoring in public relations and broadcasting, is running

Please see SGA, page 12

Cops say, use bike racks



James Hill

Bikes locked onto handicapped rails can be confiscated by police.

By Chris Sherwood
News Editor

Day after day, many students at GSU lock their bikes to the handicapped railings around campus. Not thinking twice about the consequences of their actions, these students make it hard, if not impossible, for handicapped students to access these buildings.

Although there is no specific policy against students locking their bikes to these railings, GSU public safety officials will break the locks of any bike they find locked to a railing.

"We probably cut several bikes a quarter," said GSU Public Safety Captain Michael Russell. "We look for the bikes and we receive complaints about them."

After removing the bikes, students must go to the Public Safety Department to retrieve their bikes.

"We cut them loose," Russell said. "We will hold the bikes for one year, and if they aren't picked up, we turn them over to student affairs. We remind the students that it isn't safe

to lock their bikes to the railings."

Many students do not realize there are over 300 students on campus who fit the physically disabled category, and who might need to use the railings adjacent to these buildings.

Sue Williams, the Americans with Disabilities Act official on campus, said although she has not received too many complaints, there is a problem.

"I've had two complaints, but two is too many," Williams said. "I wish people would read the signs and obey them. Public Safety does (breaks the locks off of bikes) as often as they can."

Bike Rack Availability

Bob Chambers, head of parking and transportation at GSU, said the problem arises because there aren't enough bike racks on campus. Parking and Transportation is not responsible for removing the bikes that are locked to the railings.

"It's a slow process (obtaining enough racks)," Chambers

Please see BIKES, page 12

Out-of state tuition fees increased by 15 percent

5 percent tuition increase approved for all students at four-year colleges

By John Munford
Assistant News Editor

The Georgia University System Board of Regents approved a tuition increase Wednesday for the 1996 fiscal year of 15 percent of the gap between the amount out-of-state students pay for their actual educational costs. Out-of-state students will also pay the Regents' approved 5 percent tuition increase for students at Georgia's four-year universities, which was approved unanimously.

The \$363.71 out-of-state increase will be the smallest of planned out-of-state tuition increases to be phased in over the next three years.

The out-of-state tuition increase is part of the Board's plan to up the amount out-of-state students pay of the actual cost of their education

(\$9,699) to 100 percent from the current 75 percent. In-state students pay about 25 percent of the current actual cost, which at a Georgia four-year institution is currently \$9,699.

After the decision, Stephen Portch, the chancellor of Georgia's Board of Regents said this first increase will be the smallest "so students will be able to plan their finances."

"AS IT RELATES TO OUT-OF-STATE STUDENTS, WE WANT TO BE A BARGAIN, NOT A STEAL."

**— STEPHEN PORTCH
CHANCELLOR**

"We'll still be one of the best bargains in the nation for out-of-state students," Portch said. "We'll still be very low in the nation with the [low] price of our out-of-state tuitions."

Portch said the Board did

discuss the possibility that the price increases would hurt out-of-state enrollments.

"I don't believe it will affect our enrollment figures," Portch said. "In other states, when they've increased the cost of state tuition, their applications have increased."

The increases will take effect July 1, 1995, the first day of the new fiscal year.

The 15 percent increase for out-of-state students would bring in approximately \$4 million, which offsets the \$4 million of losses the state will incur with the approved 5 percent reduction in tuition for students at Georgia's two-year colleges.

The increase will affect GSU's 1,982 out-of state students, who now pay \$1,504 per quarter for tuition and related athletic and activity fees. In-state students currently pay \$626 per quarter for tuition and related fees.

"As it relates to out-of-state students, we want to be a bargain, not a steal," Portch said.

Unexplained fires break out

By John Munford
Assistant News Editor

A specific cause has not been determined for either of two fires that occurred on campus Sunday night.

A car fire was reported through Central 911 at 8:20 p.m. GSU Safety Inspector Michelle Goff said that both GSU officers and the Statesboro Fire Department arrived at the Olliff Hall parking lot and put out the fire, but the fire department's incident report determined the cause listed as something "under the hood."

Another fire occurred at approximately 8:41 p.m. at a trash can on the pedestrian near the Williams Center. A GSU service officer arrived on scene first and put out the fire with an extinguisher from the Foy building, but the can was totally burned.

Since the objects in the can were burned, fire inspectors could not determine what started it.

"There was such damage to the can itself, they couldn't tell," Goff said. "We have no reason to believe there was



John Munford

This trash can was removed after incurring fire damage.

foul play. There were no accelerants, other than the ordinary contents of a trash can.

"Somebody could have thrown a smoldering match or

cigarette in there and that could have been there a while before the fire actually ignited. there are just so many possibilities."

Former slotback signed by CFL

By Aaron Solomon
Staff Writer

Former GSU slotback Chris Wright was signed by the Canadian Football League's Baltimore franchise. Wright will be joining a notable group of former GSU standouts now playing in the CFL. Legendary Eagles' quarterback Tracy Ham led Baltimore to the Grey Cup title game in 1994. Baltimore lost to the British Columbia Lions, 26-23.

All Southern Conference defensive end Alex Mash, the 1993 runner up for SoCon Defensive Player-of-the-Year honors, plays for Shreveport. Defensive back Keith Whitley plays for the Toronto Argonauts.

"It seems so fast," said Wright about his latest career move, "I'm looking forward to new experiences."

Wright has had an outstanding career at GSU. He lettered all four years and is the Eagles' all-time kick-return leader, with 1,569 yards on 73 returns. His 94 yard touchdown return against

Furman in 1992 helped lead GSU to a 21-0 win.

Wright's longest run from scrimmage came against Western Carolina in 1994. The 85-yard touchdown run is the longest rushing touchdown in GSU history.

Signing with Baltimore



Chris Wright

gives Wright an opportunity to play with Tracy Ham.

"I can't wait to get a chance to talk with Tracy," Wright said, "He helped to build this program, along with Coach

Russell."

Wright and Ham are from two different eras in GSU's football history, and never played on the same team.

The CFL is known for its fast offensive game. Teams only have three downs to make a first down, and the field is 110 yards long, with larger end zones than its American counterpart.

Wright said he has no objection to playing a fast game.

"They are going to have me in a slot position as a motion man," he said. "I'm a big play player, and I think that style of offense suits me."

Over the past few years the CFL has expanded to include teams in the U.S. The league now has franchises in Memphis, Sacramento, Baltimore, and Shreveport.

Wright said he is pleased to sign with a team in the states and is looking forward to a professional career.

Before coming to Statesboro, Wright played for the Georgia high school powerhouse Valdosta Wildcats.

ON CAMPUS

Residence halls to be renovated

By John Munford
Assistant News Editor

Two of GSU's residence halls will face renovations in excess of \$675,000 over summer break, while other minor renovations and projects are planned for other housing facilities on campus.

The two halls, Olliff and Winburn, will have each of their air conditioning chiller system replaced.

According to GSU Housing Director Pat Burkett, contractors will connect the adjacent buildings to one chiller unit, for approximately \$350,000.

The Housing Department will also spend about \$175,000 to get both residence halls up to current building codes.

"Summer's a very busy time with us since the buildings are closed. It's an opportunity for us to get in and do some things," Burkett said. "While these buildings are closed for the summer, we'll put smoke detectors in the rooms just like we did to Johnson

Hall last summer. The buildings are safe, it's just that we need to be getting them into compliance with the newest codes."

Olliff Hall's roof will also be completely replaced at a cost of approximately \$100,000.

"They're not what we call 'visible improvements,'" Burkett said. "When students come into the buildings, they're not going to see that the chillers have been replaced. They'll probably notice the detectors in their rooms, but they certainly won't notice their roof. We have to keep our buildings in good condition both mechanically as well as appearance-wise."

Other residence halls are slated for improvements.

Cone Hall will get new beds and mattresses this summer, and Johnson Hall will receive new lobby furniture.

The In The Pines apartment complex will have fire hydrants added near the rear buildings.

POLICE BEAT

GSU Division of Public Safety

April 10, 1995

• A student reported unknown person(s) removed his bike from the Russell Union bike rack. The bike was unlocked.

• A student injured her knee during tennis class at Hanner tennis courts. She was transported by private vehicle to Bulloch Memorial Hospital.

• A student reported her vehicle was damaged while parked in B lot.

• Myra Valentine reported a damaged window at Auxillary Services.

• GSU officers and Statesboro Fire Department responded to a vehicle fire in the Olliff Hall lot.

April 8, 1995

• Adam Michael Barrett, 19, of Central, S.C., was charged with minor in possession and consumption of alcohol.

• Chad Fielding Sasser, 20, of North Augusta, S.C., was charged with minor in possession and consumption of alcohol.

• Peter Lindley Murray, 18, of Greenville, S.C., was charged

with minor in possession and consumption of alcohol.

• Karen Lamb reported her wallet missing from the Carroll Building.

• Dana Hammouri reported a bike missing from Sanford Hall.

Statesboro Police Department

April 11, 1995

• Regina M. Campbell, 18, of Campus Courtyard Apartments, reported a CD player stolen from her car.

April 10, 1995

• Claire Harrison, 21, of Hawthorne II Apartments, reported her license plate stolen.

April 9, 1995

• Jeff Meguire, 19, of Eagle's Court Apartments, reported his amplifier was stolen from his car.

• A resident of Sussex Commons Apartments reported a case of simple battery.

April 7, 1995

• Mary Alice Watson, 38, of Millen, was charged with financial transaction card fraud.

ANNOUNCEMENTS

Things to do at GSU

April

Ongoing

• The Ogeechee Poetry Journal will be accepting submissions at Landrum Box 8023 through May 15.

Today

Thursday, April 13

• The CLEC Departmental Program will present E.P. Morgan, "Third World Government," at 11 a.m. in the Russell Union room 241 and M.C. Morgan, "Industrial Policy in China," at 6 p.m. in the Biology Lecture Hall.

Women's Awareness Week

• At Noon in the Russell Union room 280: The Stress Mess: Strategies for Gliding into the 21st Century - will be conducted by Jan Jensen, health educator - Women face many sources of stress in the 90s with little hope for significant change in the stress factor for the future. Women are pulled from every direction by our families, our friends and society in general. Today, more than ever before, women must learn to manage the stressors they face. The key is learning to recognize and cope

with stress and ultimately become happier, healthier individuals.

• At 2 p.m. in the Russell Union room 280: "Ecofeminism: Women and the Environment - What's the Connection?" - Steve Weiss, Assistant Professor, Department of English and Philosophy. Questions will be answered concerning the relationship between the domination of women and the domination of nature. Touching on feminist and ethical theories, the program will also explore the cultural and historical justifications for patriarchy.

• At 4 p.m. in the Russell Union room 280: W. I. N. (Women Investing Now) - will be discussed by Margaret Prosser, Retired Educator and co-founder of W.I.N. She will discuss why women need to take control of their financial future. She will also discuss proven, successful investment strategies/alternatives. Prosser will also suggest how one may start a financial investment group of his/her own.

• At 7 p.m. in the Southern Center for Continuing Education Auditorium: "Womentalkin': A Readers' Theater Performance of Teacher's Stories" will be conducted by Petra Munro (LSU), Mary-Ellen Jacobs (LSU), Natalie Adams (GSU), Ann

Trousdale (LSU) and Tammie Causey (Teach for America, La.)

- The personal narratives of four women teachers form the basis of this readers' theater presentation. The four women whose voices are included represent diverse races, geographical areas, generational perspectives and disciplines.

Friday, April 14

• At Noon in the Russell Union room 280: "Re-Engineering the Twenty-First Century: A Role for Women in Tomorrow's World" will be discussed by Carolyn Thorsen, director of K-12 programs center for education integrating Science, Mathematics and Computing, Georgia Tech. In spite of the opportunities that have opened up to women in the past 20 years, especially in fields of science and technology, few women have entered these fields and even fewer have risen to positions of leadership. What roles will women choose and what contributions will they make to the fast changing world in which they live? Sponsored by Georgia Initiative in Mathematics and Science.

Women's Awareness Week Concludes

Tuesday, April 18

• The film "Blue" will be shown

in the Russell Union Theater at 7 p.m. It is in French with English subtitles. For ticket prices or other information, contact the English department at 681-5471.

Wednesday, April 19

• Today and every Wednesday the GSU Planetarium Public Show will be held at 11 p.m. Doors close at 11:10 p.m.. The shows will be 30 minutes and all are welcome at no charge. This will be held in the Math/Physics/Psychology Building on the first floor.

• The Opera Theater will present "Captain Lovelock" at 8 p.m. in the Foy Recital Hall. It is free for GSU students. For more information on symphony ticket prices and to confirm listings, contact the GSU music department at 681-5396.

Thursday, April 20

• A lecture entitled "Nice Girls Don't Sweat" will be presented by Jane Curry at 7 p.m. in the Southern Center for Continuing Education Auditorium. Contact Lynn Wolfe at 681-5322 for more information.

The G-A Mailbag

More news from our semi-dysfunctional branch office in Rome, Wisconsin.

• Campaign to encourage organ donation

Earlier this year, a group of Georgia organ and tissue procurement organizations and transplant centers joined forces to form the Georgia Coalition on Donation. The coalition was formed to implement a comprehensive statewide public education campaign urging individuals to sign organ and tissue donor cards and to share their decisions with family members. The coalition has announced plans to launch a statewide communications effort to coincide with National Organ and Tissue Donor Awareness Week (NOTDAW) scheduled for April 16-20.

• Criminals may start paying their victims back in cash

Senator Jack Hill is working for passage of legislation that would expand victims' assistance programs and make criminals foot the bill.

The proposed legislation would add a 5 percent surcharge to fines handed down in criminal cases. The proceeds would be used to fund victims' assistance programs in the counties in which they are collected. Hill said the legislation stems from efforts begun in Effingham County.

• Savannah Activities Guide, Twice as Important

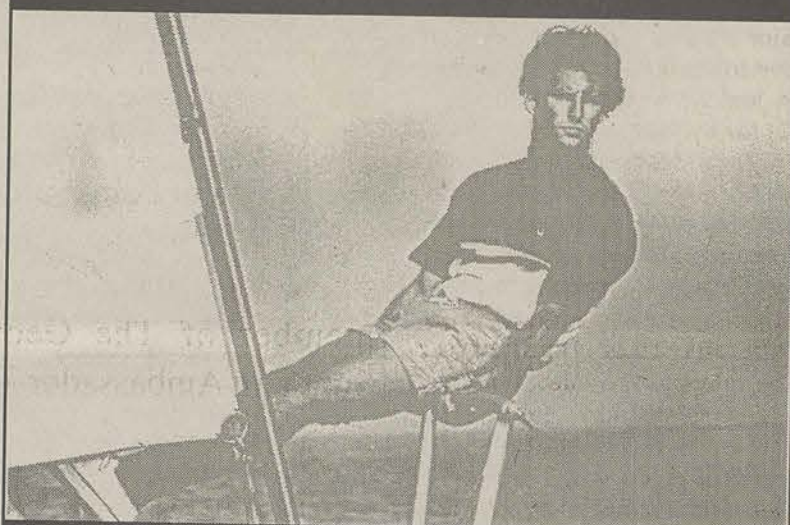
(Editor's Note: We received this twice, therefore it must be twice as important as the above information).

The Savannah Area Convention & Visitors Bureau is pleased to announce the 1995 Spring/Summer Activities Guide is available and FREE for the asking. The guide provides a listing of fun and festive events taking place March through August 1995. For additional information, a FREE copy of the VISITORS GUIDE and the ACTIVITIES GUIDE or room reservation please contact: Savannah Area Convention & Visitors Bureau, P.O. Box 1628 Savannah, GA 31401-1628 or call 1-800-444-2427 or (912) 944-0456.

• Landowners Quail and Wildlife Mangement Field Day

On Saturday, April 22, the Georgia Department of Natural Resources, Wildlife Resources Division, along with Quail Unlimited, will host a field day for landowners, land managers, and hunting clubs interested in learning more about bobwhite quail and wildlife management techniques on private lands.

Pre-Easter Sale



Selected Merchandise 25% Off

Ralph Lauren
on Sale

nautica



The Sir Shop

Many people think

O.J.'s A DEGENERATE

YOUR VOTE COUNTS

Did O.J. Simpson commit the bloody double murder in a jealous and violent rage, OR do you think he is a victim of a plot to frame an innocent man?

YOUR OPINION will be included in the results of the poll and forwarded to O.J. Simpson & the LA District Attorney's office weekly throughout the trial. Registering votes 24 hours daily. New poll begins every Monday.

Officially register your vote:
Call **THE VERDICT LINE**

1-900-263-4145

(\$1.99/min. • avg. length 1 min. • avg. cost \$1.99)
Must be 18 • Touch Tone Phone Required

The TDM Group, San Mateo, CA
(415) 568-7899

DON'T LET THE FRESHMAN 15
BECOME THE FRESHMAN 25
BY JOINING

TOTAL
BODY
ENHANCEMENT

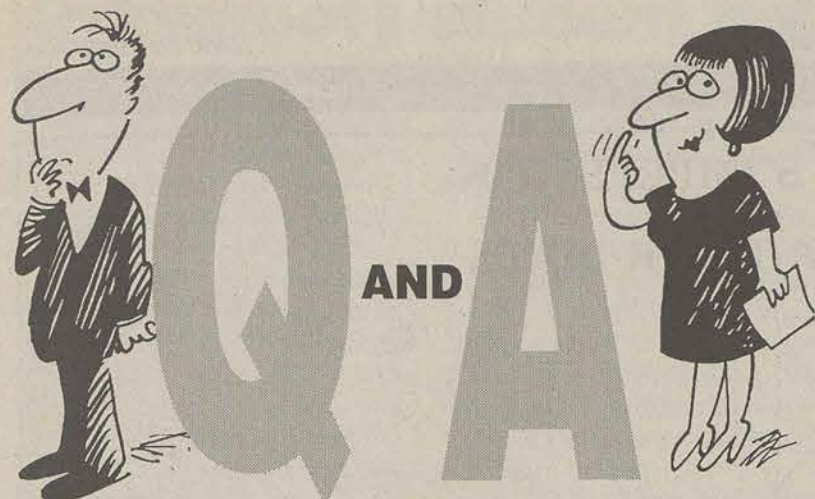
Beginning April 19
5-7 p.m. • The Union
This 8-Week Class will be held in room 284.

- Learn How To Improve Your Body Image & Self Esteem By Setting Positive Goals That Are Lasting
- End Your Battle With The Scale And Yo-Yo Weight Loss-Weight Gain
- Develop A Whole New Relationship With Food

Sponsored by the
GSU Health Center

For more information
please call 871-1732





All You Need to Know about GSU

Q: How long have the lakes in front of the library been around, and who are they named for?

A: Since 1926. The small lake, Lake Wells, is named for former Georgia Teachers College President Guy H. Wells. The larger pond was named Lake Ruby in honor of Mrs. Ruby Wells.

Well, here's your big chance. Ask us what you want to know, and we'll do our journalistic best to dig up some answers. Send your questions to "Q&A" at L.B. 8001, or come by Williams Center room 223. You could even FAX it to us at 871-1357. After all, the only stupid question is the one that wasn't asked.

ON CAMPUS

Union will no longer show major movies

By Jana Mobley
Staff Writer

A drop in attendance and revenue has caused the Russell Union to stop showing blockbuster movies this quarter.

"I think that the reason that most people don't go to the Union movies is because of the location and lack of advertisement," said Dennis Mesaros, a GSU freshman with an undeclared major. "I don't like to have to drive to campus at night when I can just go to the College Cinema for the same price."

Fall quarter the Union showed blockbuster sellers like *Candyman* and *City slickers II* to try and boost attendance winter quarter. Winter quarter they showed *Speed* and *Forest Gump* which ranked highly and had yet to be released on video, but the attendance was still low.

"We showed the movie *Speed* four times and had an average of 47 people show up and we showed *True Lies* eight times and had an average of 29 people to show for each movie," said Jody Heimerl, activities coordinator for Union Productions.

For the rest of the year the union will show movies only for special events. The sneak preview for the movie *Friday* will be showing April 19 and for Parent's Weekend April 28-29, *The Pagemaster* will be showing.

"We've spent a lot of money on getting movies in here and we've done all we can to get the students to attend, now we're just trying to restructure to change whatever is wrong," Heimerl said.

The Union is now thinking about changing from blockbuster movies to alternative movies.

This wide variety of movies will include some that will feature music from popular groups.

G-A SPOTLIGHT

GSU student joins Board of Directors

•Brandi Stone, sophomore Spanish education major, has joined the Board of Directors for the Bulloch County Food Bank. Stone, the youngest board member, is responsible for organizing canned good drives for the agency. Stone's other activities include the SOAR (Southern Orientation, Advisement and Registration) team, Top Step and participation in Red Cross Blood Drives.

Biology student participates in program

•Layron Long, a senior biology (pre-med) major, participated in a four-day program called the Introduction to Biomedical Research Program. It was held at the National Institutes of Health and sponsored by the National Institute of Allergy and Infectious Diseases. The program is designed to encourage minority undergraduate and medical students to compete and pursue careers in biomedical research at NIAID/NIH. Many program participants are offered summer employment in NIAID laboratories located in Bethesda and Rockville Md., and Hamilton, Montana. Long was among 60 students selected for the program.

Professor wins museum award

•James Bigley, assistant professor of recreation and leisure services won a state museum association award. Bigley created an exhibit about Southeast Georgia's contribution to World War II. The Georgia Association of Museums and Galleries recently presented Bigley an award for the year's most significant special project in state museums.

The George-Anne would like your help in order to recognize special people, organizations and activities on campus.

Anyone who would like to make suggestions for our G-A Spotlight feature may call Chris Sherwood, news editor, at 681-5246. Letters may also be sent to The George-Anne at Landrum Box 8001.

THE GEORGE-ANNE

STATEMENT OF OPERATIONS

The George-Anne is the official student newspaper of Georgia Southern University, owned and operated by GSU students and utilizing the facilities provided by GSU. The newspaper is the oldest continuously published weekly newspaper in Bulloch County and Statesboro, Ga. The ideas expressed herein are those of the editor or the individual authors and do not necessarily represent the views of the Student Media Committee, the administration, the faculty and staff of Georgia Southern University, or the University System of Georgia. The George-Anne is published twice weekly during the academic year and three times during summers. Any questions regarding content should be directed to the editor (681-5246).

OFFICES, MAIL, PHONES

Room 111, F. I. Williams Center. The George-Anne, Landrum Center Box 8001, Georgia Southern University, Statesboro, Ga. 30460. 912/681-5246 (News) or 912/681-5418 (Advertising)

ADVERTISING INFORMATION

The George-Anne reserves the right to refuse any advertisement. The George-Anne's advertising rates are as follows:

•Students and student groups:	\$2.50 per column inch
•GSU faculty, departments or affiliates:	\$3.00 per column inch
•Statesboro area businesses & groups:	\$4.50 per column inch*
•National rate:	\$7.00 per column inch

*Five inch minimum ad size, otherwise classified display rates (\$5.00 per column inch) apply.

DEADLINE: The deadline for reserving space and submitting advertising copy is Noon, one-week prior to the intended publication date. For more information, rate cards, sample publications, contact: Stacy Graham, Advertising Manager, ADS, (912) 681-5418; or Bill Neville, Student Publications Coordinator, (912) 681-0069.

CLASSIFIED ADVERTISING INFORMATION

The George-Anne reserves the right to refuse any advertisement. The George-Anne's classified advertising rates are as follows:

•Students, student groups, faculty and departments:	Free (25 words or less)
•Others groups or businesses:	10¢ per word per edition (\$5.00 minimum)
•Retail classified display:	\$5.00 per column inch

DEADLINE: The deadline for reserving space and submitting classified advertising copy is Noon, one-week prior to the intended publication date. Free classified ads from students, faculty and staff must be submitted in writing, with the name of the sender and local address. No free ads taken via telephone. One free ad per person per week.

CIRCULATION INFORMATION

Subscription rates for home delivery of The George-Anne are six dollars per quarter, or \$18 per year, delivered bulk mail. Please address all inquiries to Jeff White, Business Manager. The George-Anne is distributed free of charge on the Georgia Southern University campus through delivery sites located in campus buildings and residence halls.

*We gratefully acknowledge the theft of our slogan from Robert Williams of the Blackshear Times. Call Bob and he can tell you who he stole it from originally.

The George-Anne. It's not just for breakfast anymore.

BE AN OFFICIAL HOST OR HOSTESS OF GSU!

Its never too early to get involved!

Southern Ambassadors!!!!

The office of admissions is looking for energetic, enthusiastic, outgoing people who have a 2.0 or better and love Georgia Southern. If you meet these requirements, you could be a member of The Georgia Southern 1995-96 Southern Ambassador Team.

Southern Ambassadors volunteer time and effort to help GSU recruit students by the way of campus tours, high school fairs, GSU receptions and much, much more



If this organization sounds inviting, applications will be available on April 3 in the Rosenwald Building (Admissions Office). The deadline is April 14.

For more information call Keith Jordan or Becky Avant • 681-5532

UNION PRODUCTIONS
GEORGIA SOUTHERN UNIVERSITY

UNDER CONSTRUCTION

Thursday April 13
Vicky Pratt Keating
Acoustic Guitarist
Lakeside Café 11am - 1pm

Monday April 17
Pool Shark Jack White
Union Commons
11:30am

Wednesday April 19
Men's 8 Ball
Prizes Prizes Prizes Prizes Prizes
6pm Union Gameroom

Wednesday April 19
"FRIDAYS"
Sneak Preview Movie
7:00 & 9:30pm
FREE
Union Theatre

Saturday 22
Featuring
Aaron Tippin
and
Kinchafonee Cowboys
Paulson Stadium
\$8.50 Grass seats w/ GSU Student ID
Gates open at 3pm
Tickets on sale at
GSU Ticket office or
1-800-GSU-WINS ex. 0123

Union Productions Committee Interest Form
Yes! I want to be involved in these committees!!

The Joke Zone _____ Big Time Entertainment _____

Sound Waves _____ Games People Play _____

Contemporary Issues _____ SPLASH _____

Name _____

LB _____

Local Phone _____

For more info on Union Productions call 681-5442 or mail interest form to LB 8006

BUILDING YOUR GUIDE TO ENTERTAINMENT

Union Productions
681-0461
Office 681-5442
LB 8066 GSU
Statesboro, Ga 30460

Copenhagen/
Skool
\$2.09

Michael's
COFFEE & TOBACCO

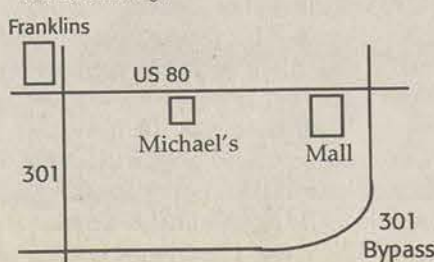
Golden Blend
\$1.05 Pk.
Levi Garret

Now Open Check Us Out!

- Cigarettes
- Gourmet Coffee
- Imported & Domestic Cigars
- Chewing Tobacco
- Pipes & Pipe Tobacco and ...

Marlboro ... \$12.69 Ct + Tax or ... \$1.35 Pk + Tax	Camel/ Winston, Salem ... \$10.69 Ct + Tax or ... \$1.15 Pk + Tax	Misty or Montclair ... \$7.99 Ct + Tax or89¢ Pk + Tax
Pyramid ... \$6.99 Ct + Tax	Doral or GPC ... \$7.99 Ct + Tax or89¢ Pk + Tax	Harley/Style ... \$7.69 Ct + Tax or85¢ Pk + Tax

SURGEON GENERAL'S WARNING
Smoking By Pregnant Women May
Result in Fetal Injury, Premature Birth,
And Low Birth Weight



We Carry Clove Cigarettes

**We carry selections of
Your Favorite Beverages!**
241 Northside Dr. (U.S. 80)
Mon - Sat 7 a.m. - 7 p.m.
764-8982

Our Opinion

Elections lack real issues

How stupid do they think we are?

One of ticket in the upcoming SGA elections has sunk to new political campaign lows by soliciting votes based on an intent to work with GSU parking and transportation on allowing students one "grace" parking ticket which will have no fine.

Do they really think we are that shallow, or do they not realize the GSU budget needs to be heavily scrutinized? The real issues should include:



- A closer look at the percentage of temporary instructors on campus. Certain departments on campus will be able to attract better faculty by offering tenure-track positions.

- A closer look at on-campus security, particularly in the ever-expanding art of graffiti. What is public safety doing about the problem? Why haven't video cameras been installed to improve GSU's chances of catching the hooligans?

- A closer look at off-campus security, especially at particular apartment complexes that lie in proximity to campus.

- Getting more students out to support university-sponsored events including, but not limited to, athletic events and Union Productions events.

The candidates will have a debate on Monday at, well, the current SGA hasn't announced the time yet. But keep your eyes peeled. We won't be able to tell you about it because we won't come out with another issue until Tuesday, the day AFTER the debate.

Be there. It's up to you to make sure your voice is heard.

GSU bicyclists must be more courteous parking their bikes

Courtesy. It's a kindness every student should take care to extend to his/her fellow students.

Some students, however, don't seem to see it that way. Some bikers have chained their bikes to disabled entrance ramps adjacent to GSU buildings. While GSU has no official policy forbidding these occurrences, bikers have returned to the scene of their "crime" to find that public safety officials have popped their bike loose, confiscating it.

The fact is, when you lock your bike up to one of these ramps, you could very well be blocking the only way out of a building for one or more of GSU's 300-plus disabled students.

GSU Public Safety Captain Mike Russell said every time he's popped a bike loose, there has usually been an open spot on a nearby bike rack.

There is no shortage of bike racks on this campus. The problem lies with those who don't realize the problems they are causing for others. It is time for every biker on campus to wake up and realize they go to school with other people too. And some of them are handicapped.

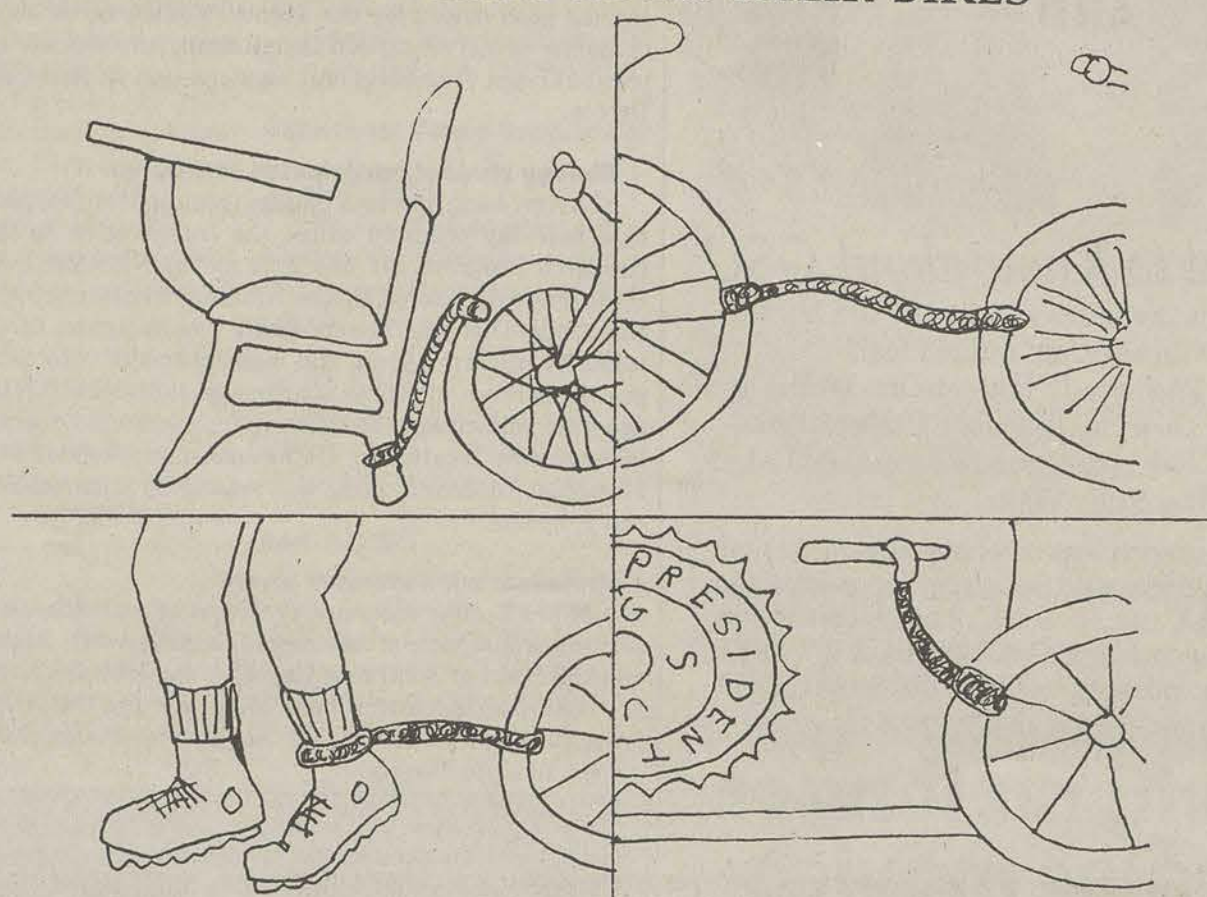
Please be considerate of them and don't park your bike on a ramp. Use the bike racks.

OPINIONS

Liked By Many,
Cussed By Some...
Read By Them All

Thursday, April 13, 1995

A GSU ART MAJOR'S IMPRESSION HOW STUDENTS LOCK THEIR BIKES



Please note: a desk, other bikes, classmates and President Henry's car are acceptable.

That early morning TV stuff just kills me

REFLECTIONS FROM THE EDGE

JOSH BASS



I've discovered, by default actually, that there is a period of decrepitude on cable television in the late-night/early-morning. The programming presented during this time on a nightly basis is the most basal, idiotic, manipulative, exploitative and basically stupid choice of broadcast material ever conceived.

All of television is fertilized by the blanket of crud that begins to amount after 2 a.m. There are bad B-grade movies on USA, TBS and other stations. Maybe the big networks step out of the picture so-to-speak and the local stations let their interns have their way with the automation equipment.

It may be that the management only gives the late-niters access to the crap collection so that they can't screw up anything important; kind of like how your parents never let you use anything they own deemed as "good" for fear of destruction.

Shows and movies about oil drilling or the life of an intellectual drunk, made in the late seventies, usually starring some middle-aged man with black hair, a younger guy with blond hair, and a thirty-something red head wearing a Wonder Bra are probably the most appropriate choice at this time.

Though hard to believe how a

statement like this can be made in good conscience, it will be justified following examination of the other choices.

The most sickening programs on during the dead hours are the info-commercials. These "shows" are actually advertisements paid for by the respective firm, person or company hawking their wares.

Everything about these carnivals is disgusting. The people in the "audience" are not really an audience. They're not there because they love the "show," not like the freaks on the "Price Is Right."

They're paid to be there!

These poor schmucks get a couple of hundred bucks to sit in fold-up chairs, smile all the time, nod and clap on command, and go "Ooohhh. Aaahhh. Yes! It's amazing. I wouldn't believe it if I hadn't seen it." These people must be the same type who sing the "COPS" theme song while dusting off their collection of Elvis memorabilia and make Strawberry Jell-O molds with

shredded carrots in them.

What really makes my stomach crowd my colon is how so often the shows' participants are some guy with a bad English or Australian accent and a host named Steve, Bob or Jim.

The hawk jumps around sucking up nails and marbles with the world's most powerful vacuum, or makes a car that's been in a junkyard for eight years look brand new with the latest miracle polish.

There are some that are simply funny. Today and forever in time, there will always be a kitchen product that is multi-purpose. "It slices. It dices. It shreds, cubes, chunks, digs, cores, peels, sections and makes great French-fries," will never die.

Why couldn't we be satisfied with good old Ginsu?

I've even seen full-length programs that simulate MTV for the sake of a single music album. They are usually dance music collections. For half an hour out-

takes from each song's video are flashed across the screen so we can see how "slammin'" the tracks are while the toll free order number floats from one corner of the screen to the other.

I wonder if "Call right now!" should be adopted as the official slogan of the United States of America. Just replace "In God we trust."

I think that someone should undertake the production of the ultimate reaction to the marketing industry. Get a loan from the Money Store at 26 percent interest under the name of Tony Little. Buy every damned \$29.95 product seen advertised on the tube, including the Thigh Master and Helicopter Lure.

Throw the entire mess in a Ryder, haul it to LA and dump it on Dionne Warwick's door-step. Send the bill to the QVC president and claim to be his and Sally Struthers' love-child. Anonymously tip-off Geraldo of Ted Turner's apparent off-handed practical joke and inform "A Current Affair" that Ger is about to bust the whole thing wide open.

Make a video about the ordeal, market it in between reruns of "Starsky and Hutch," and sell the thing for \$19.95 plus \$4.50 shipping & handling.

That oughta fix 'em.

It may be time to step on someone's toes

I am taking my second English this quarter and last week we were discussing a short story we had read. The short story was about racism, among other things. Everything was going well. But when the professor asked a question, everyone grew very silent as if they were afraid to speak. A tension seemed to rise out of the floor, a kind of tension where each student (black or white) kept their mouth closed. I am not sure if everyone was shy or if we were all worried about being politically incorrect if we spoke up.

These days everyone is seemingly tiptoeing around and watching what they say so they don't offend anyone. And it seems every little thing has become an issue. You have to watch how you say things ... especially in politics. For instance, in his campaign three years ago (failed though it was), Ross Perot was addressing the NAACP. One of the answers he gave started out with "you people". Mr. Perot may not have realized it then but he was insulting the members of the NAACP and the press tore him apart because of his mistake. No one really knows why he started like that, except for the obvious, that he is a racist. But I personally, don't think he

THE HIGH NOTE AMY STAATS



meant it like that.

As far as my English class goes, each of us wouldn't answer the teacher's questions because they were about a touchy subject. None of us wanted to be seen as racists, myself included. And now that I look back on it, that fear shouldn't have existed. We should have been free to discuss the story without worrying about whether or not we were being politically correct. The way the class handled the questions was to answer as broadly as possible and hope that the professor would understand. For instance, if she had asked us 'what colors are in a rainbow' we would have answered 'all of them'. But since that wouldn't be the answer she wanted, she would keep pushing us until we said "Red, orange, yellow, green, blue, indigo, and violet." This was the way she was with all the questions she asked. And I really felt the tension ... I really don't understand why, but I did. Seemingly, some

questions were only for the black students to answer because if I, a white female, would have answered it would have been inappropriate. For example, the questions concerning the whereabouts of the main character were avoided by the white students because the character was in a place called 'Niggertown', a demeaning term. For so long, we have been trying to get around racism and prejudice. Now we only have to say something that is politically incorrect and be yelled at.

For instance, fall 1994 saw a controversy on whether the on-campus housing were to be called "dorms" or "residence halls." The RA's and RD's would say that there is a difference, but is there really? Is it a place to live ... really, so why make such a fuss? People are going to call it a dorm even if you send out flyers everywhere and there is nothing anyone can do about it!

This walking on eggshells is

getting pretty irritating because in this country we are supposed to have freedom of speech ... etc. But yet, we always have to worry about being politically correct. For instance, on financial aid forms I am not "White" ... I am "Caucasian." It's like they don't want to offend any white person so they write "Caucasian" instead of "White." I don't really care about being called "white" because I have nothing to hide! It is a technicality that is stupid! Why don't we just go ahead and be really ridiculous and have categories of how white you are? Such as: "Ghost-Like," "Never-Goes-Outside," and "Never-Seen-The-Light-Of-Day." Then for the not-so-white persons there would be: "Fake-Baked," "Spends-Too-Much-Time-Outside" and "Radiation-Overload." Then they have that category ... "Other." "Other" what?? What other colors can you be? "Purple-With-Pink-Polka-Dots??"

It is just upsetting to see how we have to tiptoe around what we really want to say because racism is still an issue. In all seriousness, though, it is sad that one classroom full of students couldn't talk about racism openly because they were scared that they might step on someone's toes in the process.

STAFF

NEWS

Copy Editors: John Kluttz; Anna Murdock; Layout Editor: Mandy Crews; Assistant News Editor: John Munford; Senior Staff Writer: Kim Wagner; Staff: Jan Boulware, Sharon Grier, Stacy Jordan, Stephen Kirven, Jana Mobley, Ayana Thomas, Melanie Weinberg, Meredith Whitt

FEATURES

Features Editor: Ashley Hunt; Arts & Entertainment Editor: Josh Bass; Senior Staff Writer: Derek Lewis; Staff: Erika Anderson, Eric Bray, Stacy Clemons, Judith Cunningham, Kwaseera Dixie, Suneae Euell, Chris Hall, James Salter, Tijuana Thomas

SPORTS

Sports Editor: Jeff Whitten; Senior Staff Writers: Scott Garner, Ronnie Swinford; Staff: Scott Cullen, Tonya Hilton, Aaron Solomon, Carolyn Wynn

OPINIONS

Staff: Josh Bass, Christopher Cole, Julie Collins, Ashley Hunt, Derek Lewis, John Munford, Jana Newsome, Amy Staats

PHOTOGRAPHY

Chief Photographer: James Hill; Staff: Elizabeth Hayes, Jerome New, Brandee Nickodem; Contributing Photographers: Mardee Coyle, Michele Hess, Randy Trujillo

ARTWORK

Leigh Braddy, Shawn Chavis, Adam Nelson, Anna Murdock, Michelle Underwood

CIRCULATION

Supervisor: Steve Taliaferro; Staff: David Hillis, Bruce Karr, Scott Newton

ADVERTISING/DISTRIBUTION SERVICES (ADS)

Advertising Manager: Brooks Clements; Business Manager: Stephanie Wylie; Marketing Coordinators: Leigh Braddy, Jana Mobley; Sales Representatives: Melissa Goodman, Steve Keller, James Salter, Heather Turner, Michelle Underwood, Carolyn Wynn

PRODUCTION AND GRAPHICS EDITORIAL SERVICES (PAGES)

Production Managers: Ron Lair, Scott Mulkey; Staff: David Beck, Aquila Bookhart, Tamara Gilbert, Mitch Mitchell, Shawn Sunderland; Classified Ads Manager: Melissa Goodman; Darkroom Manager: Randy Trujillo

STUDENT PUBLICATIONS COORDINATOR

Robert Bohler: News, Editorial Advisor; Bill Neville: General Manager

Grassroots student coordinator thanks for park assistance

Dear Editor,
On March 11, 1995, citizens from around the state of Georgia came together and worked to improve Georgia State Parks for the 1996 Summer Olympics.

Thirty individuals from Georgia Southern University came out to George L. Smith State Park to help clean up the park for an Olympic Force Group effort called Grassroots. These students worked together in a day-long project to help beautify the park and also to introduce students to the nearby state park in Twin City.

Two fraternities participated in this event and I would like to personally thank them. Sigma Pi and Kappa Alpha Order worked all day digging fence post

holes and helping to build a weather pit for the park. They were a great contribution to this project.

Another campus organization, Community Improvement Club for Students, participated and helped to make this volunteer Olympic event at the park successful. They worked to help clean the picnic area and helped to make the park a more attractive place to visit.

At lunch, Steve Hein from Georgia Southern's Raptor Center came and gave us a demonstration.

Mr. Hein and his assistant enlightened the students with their knowledge. He made the day's activities complete and everyone enjoyed his presentation.

Once again I would like to thank all the groups and individuals that helped with this

project.

Thank you for your time and effort. Your support was greatly

appreciated.

Brandi L. Stone

Grassroots Student Coordinator

Your Opinion

Facing an Alcohol or Drug Offense?

We can help.

Call today for an appointment.

■ Confidential Alcohol/Drug Assessments

■ Alcohol/Drug Education

■ Outpatient Counseling

■ Flexible Counseling Hours for Students



**Willingway
Outpatient**

311 Jones Mill Road • Statesboro, GA 30458

764-6236

Stadium Club

**Now Leasing
For Fall '95**

** Lowest Rates on Campus*

** Flexible Leasing*

** Fully Furnished Apartment*

(912) 681-2437



**INSIGNIA
MANAGEMENT GROUP**



Dining & Entertainment Guide

Found Exclusively in The George-Anne's Gold Edition • Thursday, April 13, 1995

Legends Bar & Grill

Old Register Road
871-5349

**Thur - GSU Nite
with Tripp**

Pizza Inn

711 S. Main
681-9066

**Nightly Grill Specials
Call For Details**

Movie Night

"The Shawshank Redemption"

25¢ Wings

Buffalo's Cafe

Lanier Drive
681-3030

**Thurs - Angie Aparo
Ladies Night 25¢ Wings "Bring Your Change"**
Fri - Kermit & Bob at 5pm and The Drunks
Sat - 25¢ Wings "Bring Your Change" and "NTN"
Sun - 25¢ Wings All Day • Kids Eat FREE
Mon - Kids Eat Free - "NTN"
Tues - Bash Night All You Can Eat Wings "NTN"
Wed - House of Dreams

Y-Drive

871-5693

**Y-DRIVE
SHUTTLE SERVICES**



**Get on
All Night
for the**

BAR-HOP - \$3

The Country Club

Hwy 301 S.
681-9000

Battle Of The Bands April 19th
Final Competition April 21st
Tues - Pool Tournament
Wed - No cover and More!
Thurs - Ladies Night & Mechanical Bull
Fri & Sat - Heartland Express

Vandy's

Statesboro Mall
764-3033

Pit Cooked BBQ Since 1929

Best Chicken Fingers in Town

Daily Specials

Ribs on Tuesdays

Catering Service Available

**22 W. Vine St.
764-2444**

&

**Statesboro Mall
764-3033**

Cinema 9 Mugs & Movies

Statesboro Mall
489-4492

Tuesday

**Ladies Night
1/2 Price**

Thursday

**Wing It!
25¢ Buffalo Wings**

Video Warehouse

120 Northside Dr. E
489-4279

FREE Membership

Sun. - Thurs. 8:30 - 11 pm • Fri. & Sat. 8:30 - Midnight

NOW SHOWING:

The Shawshank Redemption

Previously Viewed

Movies and used

Video Games for Sale

COMING NEXT WEEK

Ed Wood

Franklin's

Hwy 301 N.
764-2316

**8 oz. choice ribeye with choice of
potato or vegetable and garlic bread
and all you can eat salad bar.**

\$7⁹⁵

If You Are Going to Drink Don't Drive

AND

If You Are Going to Drive Don't Drink

Women's Softball Scores 4/11/95

Ga Tech 5, GSU 1
Ga Tech 5, GSU 3

(Senior outfielder Debbie Hensley played in her final home games against the Yellow Jackets. In her last at bat, Hensley got on base and scored.)

THE SPECTATOR

JEFF WHITTEN

Quirks of a few characters I have known

1. B. Simpson: third grader, Columbia S.C.: Simpson could play dodgeball better than anyone at Horrel Hill Elementary School. Bobby also had a habit of picking both nostrils at the same time with his thumb and index finger, then wiping whatever came out on his shirt, under his armpit. When he did this at lunch people like me would laugh and spit milk on our plates. But even as a third-grader, I wondered what Simpson's mother thought when she did his laundry.

2. B. Goforth: third grader, Columbia S.C.: another member of the Simpson-Whitten gang, Goforth was black and could run and dance at the same time and so was something of a hero to me. This was because I hated running, and couldn't dance.

I still hate running, and still can't dance.

But never mind that. We used to play a game which in those politically incorrect times was called smear the queer (I wonder what they call it now): in essence the game involved giving one guy a football — he was the queer — and trying to maim him while he tried to avoid being maimed by running like hell.

Smart people would usually just throw the ball up in the air and fall down — and roll up in the fetal position — once they realized that if they didn't a pack of bloodthirsty elementary schoolers was about to stomp them silly, and all for a stupid leather ball.

Smart people sometimes think too much, I've heard ... but in smear the queer the more you think, and the faster, the better.

Sometimes the entire third grade class would be out on the playground, trying to kill whoever was stupid enough to keep the ball.

But Goforth wasn't stupid, yet he always kept the ball, and was never caught, not once. Even fourth and fifth graders couldn't catch Goforth, who was tricky and fast as lightning, and like I said, could dance and run at the same time.

There are times I wonder what happened to Goforth, who had great natural talent and much courage.

3. Sondra, first grader, Pendleton, S.C.: Sondra was large and pink and mean and might've been an albino. She was also the monkey bars king — no one dared to call her anything but king — of Pendleton Elementary School, way back whenever.

Sondra would knock milk cartons out of your hand when no one was looking and stomp them into the concrete unless you gave her money not to.

If you didn't have a nickel, Sondra would drag you to the monkey bars — she was already six-feet-tall in those days — and make you get on them so she could knock you off. If you didn't get on, she would punch you until you did.

If you told your parents, Sondra would drag them to the monkey bars and make them get on them so she could knock them off.

Or punch them until they did.

George-Anne Sports

GSU opens series with win

By Ronnie Swinford
Senior Staff Writer

The Eagles were led to a 5-3 win over Tennessee Tech by freshman pitcher Ryan Cummings, who recorded a career high nine strikeouts in seven and a third innings.

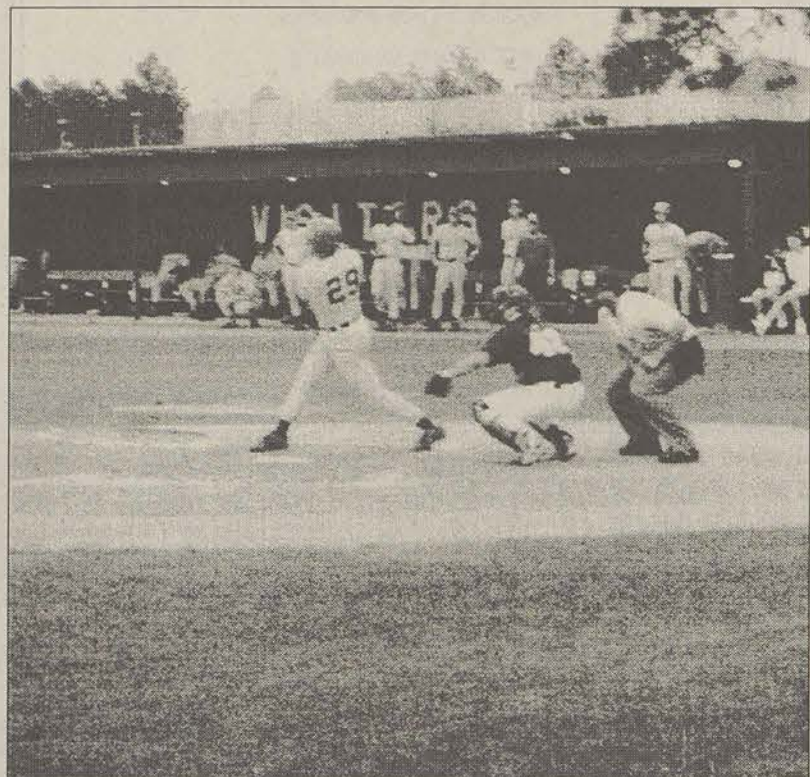
GSU grabbed an early 2-0 lead when shortstop Tyson Whitley walked. Whitley stole second, then first baseman Tommy Peterman drove him in with a ground rule double to centerfield. A single by catcher Steve Wilson moved Peterman to third and leftfielder Shane Marquis' sacrifice fly drove in Peterman.

The Eagles added two more in the bottom of the sixth, when third baseman Garth Spendiff struck out, but reached on a wild pitch. Three successive singles — by centerfielder Kevin Killimett, designated hitter Donnie Coe, and second baseman Chad Fussell — drove in Spendiff and Killimett. Coe and Fussell had the RBI's for the Eagles.

Tennessee Tech got on the board in the seventh inning. Catcher Shane Smith was hit by a pitch to start the inning. Leftfielder Mark Maberry then stepped up and launched a homerun to dead centerfield and narrowing the score to 4-2.

The Golden Eagles scored again in the eighth inning. The run came on an error, a fielder's choice, a single and a passed ball.

GSU countered with a run in the eighth as well. Killimett doubled to lead off the inning. He was erased on a fielder's choice at third that allowed Coe to reach



Sarah Brinkley

A Tennessee Tech batter takes a cut during Monday night's game.

first. Antoine Moran came in to pinch run for Coe and stole second and third. A walk to Fussell gave GSU runners at the corners and only one out. Fussell was then picked off, but stayed in the run-down long enough to allow Moran to score from third.

Tod Lee came in for the save in the ninth and shut the door for his sixth save of the year.

Standouts for the Eagles included Killimett, who went 3-4 with a stolen base and a run scored, and Cummings, who earned his fourth win of the year with his seven and a third inning performance.

Cummings struck out nine and walked one and hit three batters. He only gave up six hits and three runs, two of which were earned.

"I just felt that if I got a chance to play that I could contribute to the team," Killimett said.

Schedule Notes:

April 15, 16: ETSU, home.
April 18: South Carolina, home.
April 19: South Carolina, away.
April 22, 23: Furman, away.
April 27-30: SoCon Tournament. Charleston, S.C.

Final Standings of SoCon Golf Tournament

ETSU*	889	The Citadel	933
GSU	889	ASU	935
Marshall	905	WCU	939
Furman	907	Davidson	946
UTC	911	VMI	1018

*Won play-off.

Golfers finish second

By Jeff Whitten
Sports Editor

There is good news and bad news.

The bad news is that after two days, 54 holes, a second day filled with wind and collegiate golf's version of a sudden death playoff, the Eagles came up one stroke short in their bid to win the Southern Conference team championship.

The good news is that GSU team member Neal Gibson won the conference's individual title with a one-over-par 217, and he and teammate Greg Green were named first team All-Southern Conference.

"Gibson was our number four player, and has played good and bad this year, but when he's playing good he is as good as anyone else," said GSU head coach Drew Pittman, who was named Southern Conference Coach of the Year.

East Tennessee State University overcame an 18 stroke deficit in the third and final round of the tournament, held at Forest Heights Country Club in Statesboro, to tie the Eagles, who had gone into the round with a twelve stroke lead over Marshall.

ETSU won the two-team playoff with four par scores, while GSU players recorded three pars and a bogey.

The Thundering Herd finished third in the tournament, 16 strokes behind GSU.

Pittman said the Eagles were "probably" expected to finish second to ETSU.

"They've beaten us the last three times we've played them, before the conference tournament," Pittman said.

Both the first and second rounds of the tournament were played Monday.

The Buccaneers led at the end of the first round, while GSU was third, eight strokes behind ETSU. The Eagles caught fire in the second round, however, and took the lead with a 284.

"The second round was our best of the year," Pittman said. GSU finished the round at four under (Forest Heights is a par 72 course).

On Tuesday the combination of gusting wind and a bad start over the front nine hurt GSU.

"The conditions were windy, and we got off to bad start, had a few bad holes," Pittman said. "We played better on the back nine, but ETSU played well."

The Eagles posted a team score of 307 for the final round. ETSU shot a 292.

"We were in a position to win. It was very exciting," Pittman said. "We had good fan support."

Pittman also praised the course.

"It was in great shape. Everyone enjoyed playing on it," he said.

Eagles Jaimie McGuire, Henric Warholm and Sean Hodge also competed. McGuire shot a 224, good enough for ninth, Warholm finished 19th with a 232, and Hodge 26th with a 233.

Dr. Wagner on office space, gender equity and locker rooms

Editor's note: in the first part of this interview, published Tuesday, Dr. Wagner talked at some length about the restructuring of NCAA Division I-A, and where GSU might fit in once the smoke has cleared. Today we present more from Dr. Wagner on the restructuring of the NCAA. He also comments on renovations of GSU athletic facilities and gender equity.

By Jeff Whitten
Sports Editor

BW: (on the proposed restructuring of NCAA Division I-A) What we would have (takes a legal pad out and begins writing as he talks) is eight conferences. You got the Big East, the Big Ten, the Big Twelve, which used to be the Big Eight, the SEC, the ACC, the PAC 10, the WAC and the new conference. They would make up I-A. What they want to be able to do is vote together. They already got all the money for the bowl games, they already got the national championship game. Let's put Notre Dame in there too.

Now, who does that leave out? That leaves out the Mid-American, that leaves out the Big West, that's about 12 teams over the country in there. You still have some Virginia Techs, or some East Carolinas sitting out there with no place to go ... some other teams like that. These teams really go from I-A to I-AA.

You have in the I-AA the Southern Conference, the SWAC, the MEAC and part of the Yankee, that would tie up with these people. So here's I-A. You also have another group of people ... the Ohio Valley Conference, the Gateway, the Southland, part of the Southland might come this way, the Ivy League, the Patriot and some others that will probably go to a need based program.

So what we've been dealing with right here is a shift of the top I-A teams to the bottom of the I-AA teams, now what's that going to be called? Now, if in fact that becomes I-AA, then we're right where we are, we got better teams in I-AA and that group doesn't have enough people to play so they are gonna play us. That gives us access to them without us having to move to I-A and getting into one of those conferences, which we couldn't do. Or, we become a I-A associate, which says we're I-A and these people (the I-A teams) will play us, but we don't get to vote. Which doesn't make any difference anyway. All we want is the association so that Georgia, Tech, Florida State...these people will play us.

Now, the Southern Conference might

expand to pick up some OVC schools, or Youngstown State, to where the Southern Conference has 12 schools and we can go six and six, north and south, and we can play a Southern Conference championship, which will be a good game. Then the Southern Conference champion can go against the Mid American champion, two days before the Citrus Bowl in Orlando.

So we would have our own bowl game. And that's what the Southern Conference used to do. I coached in the Mid American Conference and we played against the Southern Conference in what was the Tangerine bowl before they had the Citrus Bowl.

Now what that would permit us to do, is ... right now, when we schedule, we can't...we'd like to schedule at least one I-A team, but if don't have to win eight games to get in the playoffs, see when you schedule a Miami, now you can only lose two (laughs) the rest of the season, but now it's possible we can play three.

G-A: Three big teams?

BW: Yeah. And playing in the Southern Conference, all we have to do is win it to get to the championship game, win the championship game and go to the bowl. There aren't any polls, we win it outright on the field. So we can play a tougher schedule, it's a little better challenge and one of the things that will do is really help us financially.

It will help us with the guarantees and will also help the image of the institution. That we have the classification, we have identity with Georgia and with Tech and with Florida State and we're playing and people will know about us.

That's what I've been waiting for since 1991 and we've kind of had to sit. And I don't think...we didn't get any better and I think we've slipped. Obviously we slipped in relation to Marshall and Youngstown, who we taught how to host the games (I-AA championships), and then they went out with a bigger city and bought 'em away from us.

G-A: Sir, you said something I'd like to get back to, to get some clarification on. You said 'we're going to get better (in football) or some changes are going to be made. We can't have another 6-5 season'.

BW: Right.

G-A: You know what the implication is ... what that implies?

BW: I don't think you have to be an Einstein to figure that out.

G-A: (laughs) It's just that it's the first time I've heard anybody say that ... any-

body from the administration.

BW: We're not very happy with not being the best. And sometimes you have to pick your moments. And we had to wait and see what was going to happen around us. You'd like to be at the top all the time, but sometimes things happen that you're not there, and then you got to get another plan. How're you going to get there? Sometimes it's hard to turn things around but we're not that far away.

We make a field goal against The Citadel, we're probably in the playoffs because we're second in the conference. We have to go before Appalachian State. So, we got good people, we got good players, we've just got to play good.

G-A: As far as the restructuring of the NCAA goes, and the possibility of GSU becoming a I-A associate, do you have a timetable for when this might happen?

BW: Yeah, here's the timetable. January 1996 we will vote on restructuring of the NCAA. Now that gets into governmental things and how the NCAA bureaucracy is set up. And we'll have Division III, Division II and Division I and I-AA...and there are 1,000 schools voting and it's pretty unwieldy, and so presidents, because of some of the I-A problems the presidents said we got to get control of athletics, and so they came in and developed the presidents' council. Well, the presidents' council is strong, and they with legislation it passes.

What a lot of people are concerned with is that we're not getting the proper input into those committees and they're listening to NCAA staff people rather than listening to people in the trenches, the people who are actually doing it.

So the governmental structure will permit a flow of information from the coaches through the ADs up through a management council to the presidents' council so when they're ready to make a decision they've got input from everybody.

That is being restructured and the power or strength of the NCAA will be put into those eight conferences that make all the money (laughs).

Now that'll happen in 1996, and that's Division I, II and III. Right now Division III doesn't want to do it, and if they don't do it Division I may walk. Let's just leave the NCAA. Leave that new \$40 million building ... there's some serious stuff going on right now.

January 1997 we'll probably see a vote on membership. Right now you have 107 Division I-A schools, here (points to list of the major conferences). They have about 72 or so in that group so they have their majority. So that group can vote ... whatever they want to do... they can kick these people (the minor conferences and independents) out. What they're saying is Division I-A, you're going to have 30,000 seats or average 30,000 in attendance or be in a conference that averages 30,000 in attendance.

What we're saying in here (I-A associate group) is you have to average 12,000 in attendance or be in a conference that averages 12,000 in attendance to be in this group. And can only give 70 percent of the grants-in-aid and so forth. So we'll try to get the lines drawn there, which will take these people out (smaller I-AA schools) so we can have association with the I-A group.

G-A: So we should know something on this by ...?

BW: January 1996 on the restructuring, January 1997 on the membership. We'll be able to start to see it starting to form, although it changes and hasn't moved as fast as we thought it was going to, but we feel like we could take our program — during this time of turmoil in the structure of the NCAA — and move it. We felt like it was time for a little introspection. Gotta look at ourselves, gotta see what we need so we're ready to make a move when the time comes.

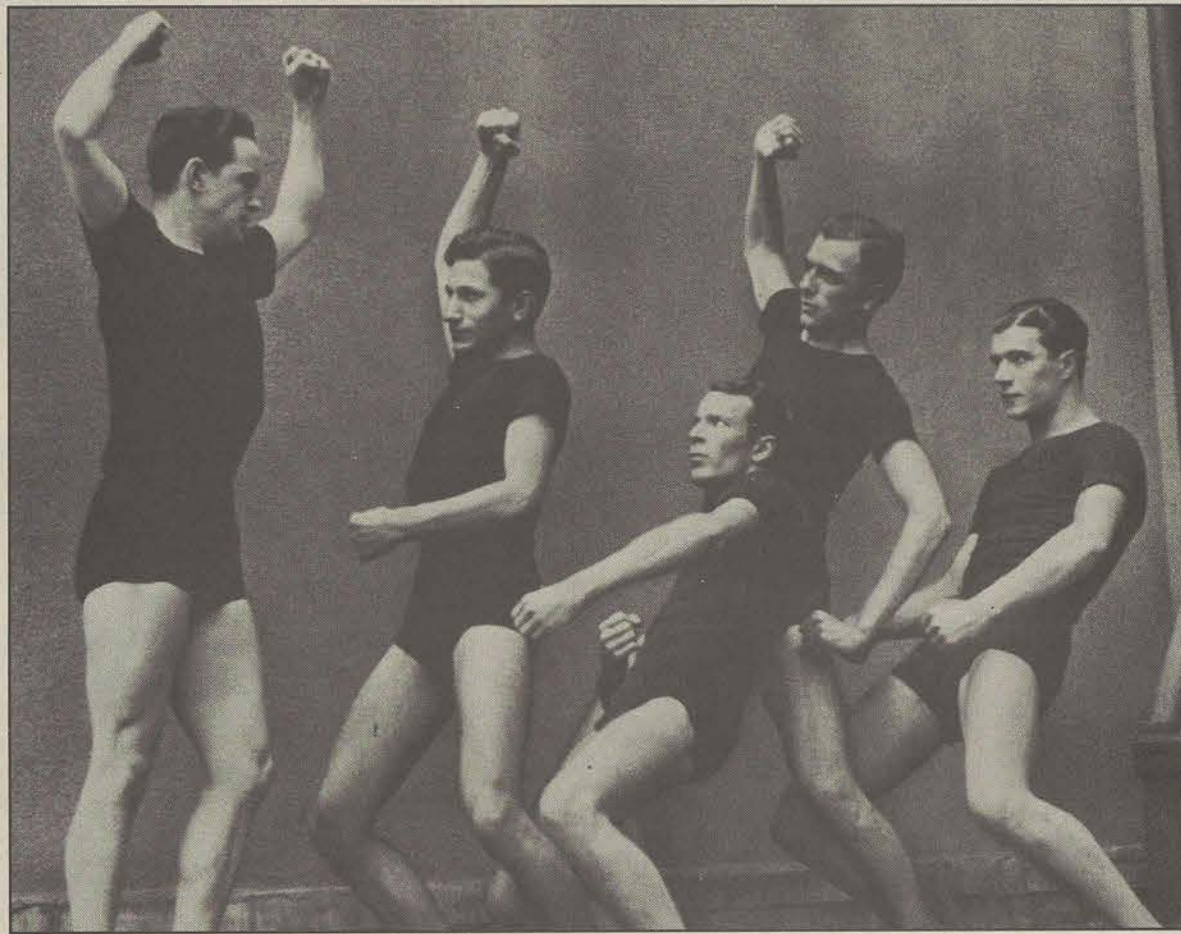
G-A: Okay sir. Different question. What's going on with renovations of GSU athletic facilities ... what's in the works right now?

BW: Right now we have our facilities planning division for athletics, and we have things that we're looking at ... several sports don't have locker rooms. Both soccer don't have locker rooms, volleyball doesn't have a locker room, cross country doesn't have a locker room and we need more space. Football has been located in Hanner, we're looking at moving football to the stadium, expanding the Lupton Building into a football facility so that everything that football uses in the Hanner Building can be turned over to the other sports.

We may move women's softball down to the building at the sports complex and it's possible we could put locker rooms in an area there for the soccer and softball down

Please see WAGNER, page 8

For long-distance calls. Savings based on a 3 min. AT&T operator-dialed interstate call.



**GILBERT NEVER TOLD THE GUYS HE DIALED HIS GIRL 1-800-COLLECT
FOR FEAR THEY'D ACCUSE HIM OF BEING THE SENSITIVE TYPE.**

1-800-COLLECT®

Save The People You Call Up To 44%.

SPORTS OPINION

BETWEEN
THE
LINES

JOHN MUNFORD



Cheap seats are best

Baseball is a game that die-hards like myself find difficult to detach themselves from.

Once you've become a fan of the game, it's really hard to get it out of your blood, even if the major-league ballplayers are whining, moaning and groaning over salary caps and collective bargaining agreements.

But collective bargaining agreements and salary caps are not actually part of baseball. They are a part of the money-grubbing machine that we know as *major-league* baseball, but don't confuse it with *real* baseball.

Real baseball involves the aroma of hot dogs and popcorn wafting its way through a ballpark one hour before game time as the fans start to trickle in. *Real* baseball is about getting to the park five hours before workouts just to hang out. *Real* baseball is more concerned with bat spin races and dirtiest-car-in-the-parking lot contests than charging \$20 for an autograph and \$4 for a brewski.

Real baseball implies that the players work as hard as they can to the best of their abilities. *Real* baseball is as simple as the game of pitch and catch — anyone can throw a baseball.

Real baseball is a shared game, and those who cherish *real* baseball share a certain camaraderie. You'll find yourself, like I did, talking to the guy (or gal) next to you, because you're really not strangers: you've got something in common: a love for the sport.

I've found a nearby place where you can find *real* baseball — Savannah's historic Grayson Stadium, home of the Savannah Cardinals, a single-A baseball farm team for the St. Louis Cardinals.

And it's *real* baseball at real prices. It costs \$3.75 for general admission (that's less than the price of a movie) and if you get there early enough, you can sit in the blue bleachers behind home plate. Wonderful seats, absolutely wonderful.

You also find players who take their game very seriously. They're playing for peanuts (about \$1,500 a month). And if they don't show enough improvement during the course of the season, they'll be ushered out of baseball for good.

The fire is there, you can see it in their eyes, that desire to win. They're always busting their butt, whether it's legging out a routine ground ball or running into the wall in des-



John Munford

SavCards outfielder Curtis Williams is in his third year in the St. Louis Cardinal organization. He batted .190 last year in Johnson City.

perate reach of a long fly, they're always hoofing it.

And I can appreciate that. Amidst all the hustle, there was a lot of drama in Saturday night's game as 18-year-old Corey Avard made his professional pitching debut. Damn, talk about pressure. Talk about having a case of the nerves.

He fared well. Heck, he pitched like a seasoned pro. He got in a jam in the second with men on second and third with one out. He took it easy, forced himself to relax, and then struck out the next two batters to get out of the inning, sending himself en route to a nine strikeout no-decision. Four innings of shutout ball your first time out ain't bad at all.

His teammates fell behind 1-0 later in the game and before I knew it, the ninth inning rolled around. My friend Will and I tried the "Shark" rally cap. One out. We tried the "Max Patkin" rally cap. Two outs.

In a last-ditch effort, with Savannah seeming to be on the ropes of another loss and a three-game losing streak, we put our caps over our hearts as if we were respecting a fallen comrade.

Then, to our surprise, Savannah got a runner on with a flare to left field. He advanced to second on a wild pitch while Savannah sent a pinch hitter to the plate, who fell to a 1-2 count early.

But the hitter wouldn't give up. He fouled off offering after offering. No one was moving from their seats, regardless of how bad they had to use the bathroom. Everyone, including

the little babies, kept their eyes glued on what would be the final confrontation of the game.

The pinch hitter, I don't even remember his name, finally ended the stalemate by sending a waist-high fastball over the bleachers in left field for the 2-1 win. The game was Savannah's first win of the season on their first home run of the year.

I couldn't have asked for a better finish. I got just what I wanted — I was able to relax and enjoy the atmosphere without spending a fortune. *Real* baseball isn't about money.

Real baseball is about fun.

WAGNER

Continued from page 6

there. We have to handle those.

We need to go into Hanner Arena ... that needs to be dressed up. It's not a bad arena, but its been sitting the same way for 20 something years. We need some new seats and some paint and some carpet down there.

We haven't had coaches offices ... football coaches are still working out of the concession stands. We got four coaches in the concession stand along with the popcorn and mice and the roaches. Been there for 14 years. See we've grown, the athletic department had 17 people to 77 people since I've been here. We just haven't had office space. This is the first time I've had an office and I've had this about two years. I was over in one of those little trailers...

G-A: Where the boosters are now ...?

BW: Yeah, had a squirrel living in my wall and a possum lived in my air conditioning and (laughs) fleas in the carpet and we won four national championships.

G-A: Maybe you should go back over there.

BW: (laughs) That's right. But with the new school of business building being built and the school of business package from Hollis moving over there and the recreation faculty and some of the nursing faculty moving over there will give us some coaches offices over here. So our coaches will get to have some offices. We'll look at relocating football so our other sports can have locker rooms, we'll redo the arena, we have a dormitory coming on line that will have an academic enhancement center... tutoring programs and computer labs and so forth.

So that is supposed to be done this spring. We will have it analyzed for compliance with gender equity to make sure locker rooms for men and women are substantially equal and then we'll get moving on it.

G-A: So the plan will be done this spring?

BW: The plan will be done this spring. And we hope to get some of the parts of it done, depending on how the budget works out and how much money we can raise.

G-A: Gender equity, sir. I was told that now the number of women student-athletes has to be proportional to the number of women on campus ...?

BW: There are three tests to gender equity. The first test is proportionality (here Dr. Wagner starts writing on his legal pad again). And right now we have about 45-55 percent women. We have 70 percent men and 30 percent women participating in athletics. So we're certainly not equal, we do not meet the test of proportionality, so we go to test two. And that is, do you have a history of program development for women. And we can say yes. We have built four women's

sports in the last 10 years. So that's a yes. Then we go to the next one. Have you accommodated the interest of women on campus. Now, that's women in inter-collegiate athletics. In other words, are there women on this campus who want to play inter-collegiate athletics who we haven't provided an opportunity for. So, how do you find that out? We look at club sports. We may probably in the next two years do some type of survey. But as long as we're out of proportionality we have to meet the other two tests, so if there's a group of women on campus who want to start a team, we'd be hard pressed not to start a team.

G-A: If you had a group of women who wanted to run track, for example ...?

BW: If women wanted to run track we'd be hard pressed not to start a track team.

IF YOU WANT TO MAKE IT
IN THE REAL WORLD,
SPEND A SEMESTER
IN OURS.

Walt Disney World Co. representatives will be on campus to present an information session for Undergraduate Students on the WALT DISNEY WORLD Summer/Fall '95 College Program.

WHEN: THURSDAY, APRIL 20 AT 6:00PM
WHERE: ROOM 280 UNIVERSITY UNION

Attendance at this presentation is required to interview for the Summer/Fall '95 College Program.

Interviews will be held Friday, April 21. The following majors are encouraged to attend: Business, Communication, Recreation/Leisure Studies, Hospitality/Restaurant Management, Travel & Tourism and Theatre/Drama.

Lifeguards are needed to work at our many Water Parks and Resorts. Students with ANY major are eligible to apply. You need to hold lifeguard certification OR be a strong swimmer and we'll provide the training needed for an exciting experience this summer or fall!

For more information contact:
Recreation & Leisure Services
Phone: 681-5462



Walt Disney World Co.
Where students spend a semester getting ready for the rest of their lives.

© The Walt Disney Co. An equal opportunity employer

Student Media Positions 1995-1996

The
George-Anne
Savannah, Georgia 31406

Miscellany

Georgia Southern's Magazine of the Arts

Southern Reflector
QUARTERLY MAGAZINE

WVGS/FM
94.9 - WVGS-FM
RADIOACTIVE

Editor (\$750 per quarter)
Managing Editor (\$725 per quarter)
News Editor (\$700 per quarter)

Editor (\$375 per quarter)

Editor (\$650 per quarter)
Managing Editor (\$575 per quarter)
News Editor (\$525 per quarter)

Station Manager (\$500 per quarter)
Music Director (\$400 per quarter)
Music Archive Manager (\$400 per quarter)
Operations Manager (\$400 per quarter)

APPLICATION FORM AND WAIVER

INFORMATION: Questions regarding these positions should be directed to the advisors of the media: Robert Bohler (The GEORGE-ANNE) at 681-5933 or LB 8091; Kathy Albertson (MISCELLANY) at 681-0230 or LB 8023; Laura Milner (REFLECTOR MAGAZINE) at 871-1399 or LB 8048; or Russ Dewey (WVGS/FM) at 681-5446 or LB 8041. Additional information and interpretation of the qualifications may be obtained from the chairperson, Bill Neville (681-0069 or LB 8068).

Position(s) applied for (Please check ALL that are applicable):

GEORGE-ANNE	MISCELLANY	REFLECTOR	WVGS/FM
<input type="checkbox"/> Editor	<input type="checkbox"/> Editor	<input type="checkbox"/> Editor	<input type="checkbox"/> Station Manager
<input type="checkbox"/> Managing Editor		<input type="checkbox"/> Art Director	<input type="checkbox"/> Music Director
<input type="checkbox"/> News Editor		<input type="checkbox"/> Managing Editor	<input type="checkbox"/> Music Archive Mgr.
			<input type="checkbox"/> Operations Manager

Any student seeking a position on an editorial or broadcast board must have a cumulative grade point average of at least 2.0 and must not be on scholastic or disciplinary probation. If at any time a board member drops below these standards, that member must relinquish the position.

I, _____ do hereby authorize the Media Committee, in relation to the above criteria for board positions, to contact the GSU student records representatives to validate my academic standing for compliance. This validation may be at a time of application and at any time during the period I would hold a board position.

Signed _____ LB No. _____

Social Security No. _____ Date _____

This application/waiver form (or a facsimile), together with a letter of application for each medium in which a position(s) is sought, should be submitted by Friday, April 21 by 5 p.m. to: Media Committee, Bill Neville, chair, L.B. 8068, GSU, Statesboro, GA 30460.

Candidates for George-Anne and Reflector must be available on Thursday, May 4, and for Miscellany and WVGS/FM on Thursday, May 11. All interviews are scheduled at 3 p.m., Room 101, Williams Center.



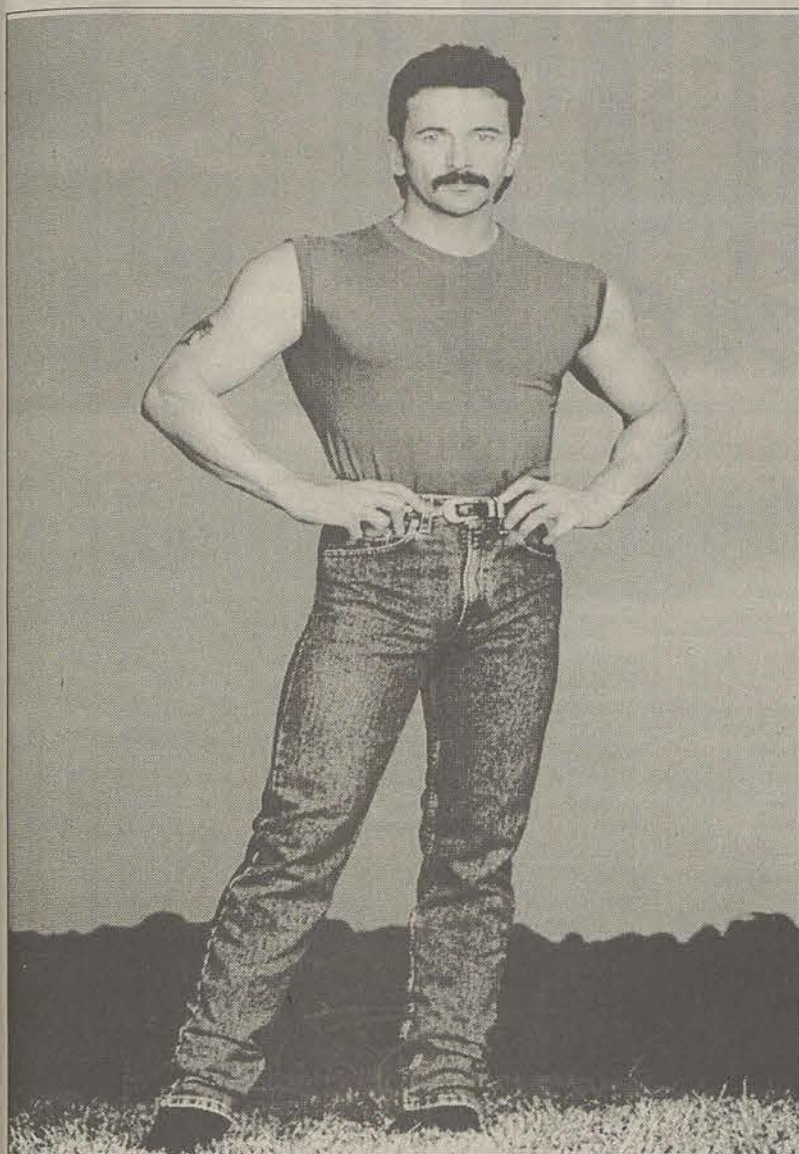
Belk
All For You!
Statesboro Mall

Your
Source
For
Levi's
550
and
560
Jeans

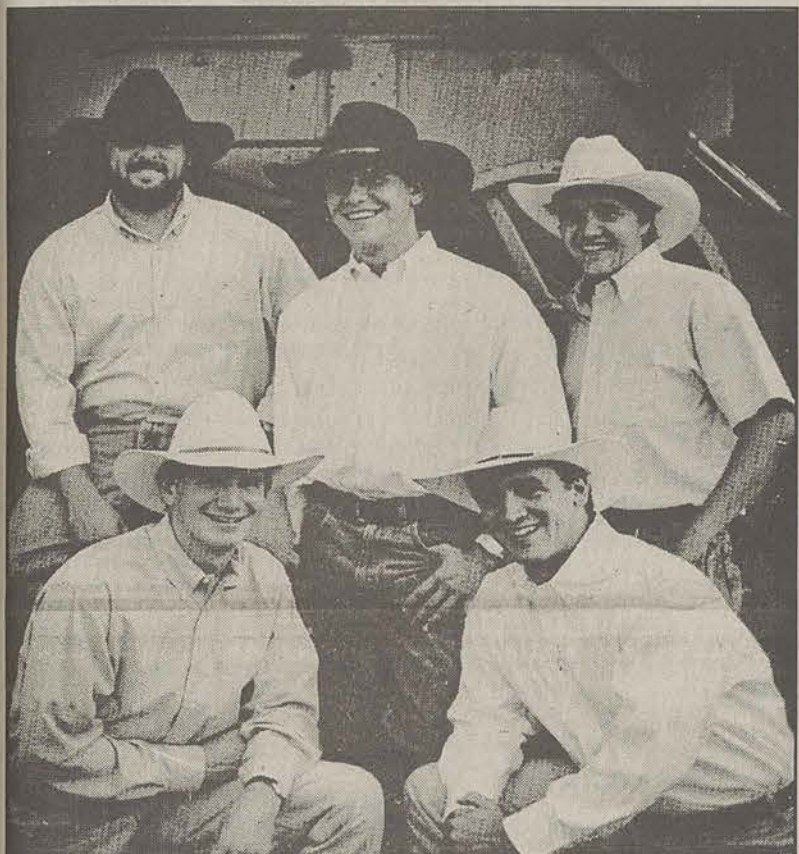
Belk 10% off **Levi's**
Entire Stock
Levi Jeans For Men
Valid Through April 30, 1995 • Statesboro Mall Store Only.

IN MUSIC

Musicfest '95 brings country sensation Aaron Tippin to the 'Boro



Working man Aaron Tippin is the star of Musicfest '95.



The Kinchafoonee Cowboys will be the opening act.

Special to the George-Anne

The biggest event to hit the music scene of Statesboro happens April 22. Musicfest '95 will bring such acts as the Kinchafoonee Cowboys and country music sensation Aaron Tippin.

The festival will be held at Paulson Stadium on the GSU campus, and is sponsored by the Statesboro-Bulloch Chamber of Commerce and Union Productions in conjunction with R&B Productions of Nashville.

The winner of a local "Battle of the Bands" competition will be spotlighted before The Kinchafoonee Cowboys take the stage as Tippin's opening act.

The highlight of Musicfest '95 is "working man" and bodybuilder Aaron Tippin.

Tippin was raised in South Carolina and attributes his success to traditional values and a work ethic he learned from his parents.

Tippin has been a hit on the country charts with four albums, including his latest *Lookin' Back At Myself*, which features such hits as *Working Man's Ph.D.*

He has opened for country legends Reba McEntire, Hank Williams, Jr. and Brooks and Dunn.

He hit the Nashville music scene in 1990, and with his mix of honky-tonk licks, sentimental ballads and high-energy performance style quickly brought him recognition and lots of fans.

Tippin is also a competitive bodybuilder.

"I've learned through bodybuilding, there's virtually nothing I can't do if I put my mind to it," he said.

"Bodybuilding gives me psychological relief and being an athlete helps me put on a better show. I found out from bodybuilding that things happen when you stick with them," Tippin said.

Despite his success, Tippin still has a down-to-earth attitude who remembers his roots. He runs his own tractor on his 350-acre farm outside of Nashville.

He said farming has helped him develop his sound.

"I had to learn how to sing

over the hum of the tractor," Tippin said.

He is also a licensed pilot. "At the farm I have a place for a runway," Tippin said. "I've bought a crawler and a dump

log home," he said.

The Kinchafoonee Cowboys hail from Albany, Ga., and got their name from a creek where the members used to hang out. "We've all spent a lot of time

stayed with us."

The group got their start playing in small bars and finally to the Georgia Theater in Athens. During other previous performances in Statesboro, the Cowboys have packed local clubs. When the group plays at Musicfest '95, they will go directly from their performance to Atlanta where they are scheduled to perform as the opening act for country singer John Berry.

"Statesboro fans have always been supportive," Hallford said, "and we're excited about being a part of Musicfest '95."

"We'll be on a tight schedule April 22 to make both shows, but we wouldn't miss the chance to play in Paulson Stadium for people who've been behind our music from the start. We're looking forward to a great show!"

Tickets for Musicfest '95 can be ordered by phone at 1-800-351-7469 or 681-0123.

A service charge will be added to all tickets purchased by phone.

Reserved seats are \$12 and general admission is \$10.

GSU student tickets are available for \$8.50 with a student I.D.

"STATESBORO FANS HAVE ALWAYS BEEN SUPPORTIVE, AND WE'RE EXCITED ABOUT BEING A PART OF MUSICFEST '95. WE'LL BE ON A TIGHT SCHEDULE APRIL 22 TO MAKE BOTH SHOWS, BUT WE WOULDN'T MISS THE CHANCE TO PLAY IN PAULSON STADIUM FOR PEOPLE WHO'VE BEEN BEHIND OUR MUSIC FROM THE START. WE'RE LOOKING FORWARD TO A GREAT SHOW!"

— BRAD HALLFORD
OF THE KINCHAFOONEE COWBOYS

truck and I'm going to work on leveling it out and getting the runway ready to go.

"Even though I've finally gotten to the point where I could afford a nice house in a ritzy suburb, I'm out here building a

hunting, fishing and singing songs in the area of Kinchafoonee Creek near Albany," said lead guitarist Brad Hallford. "For a lack of a better name when we started the band, we chose the Kinchafoonee Cowboys and it

ATTENTION STUDENTS

Women's Family Planning and Gynecological Exams are Now Scheduled at the Health Center by Appointment Only

For an Appointment or for More Information Call:

**Patricia McBride
681-5641**



The George-Anne is looking for the ten most beautiful women and ten most beautiful men on campus. If you know anybody who qualifies, drop by the Williams Center Room 223 with a picture, the candidate's name and phone number or just mail it to Landrum Box 8001.

Turkey's Auto Sales U-Haul

We rent Trucks & Trailers
We sell U-Haul boxes!
Across Town or Across Country
Reserve Now for summer vacation
Lowest Prices In Town

Call 489-2808
Across from Wal-Mart

The Minority Advisement Program

Is Now Taking Applications for Map Sponsors for 95-96

Minimum Requirements:

- 2.5 Adjusted GPA
- Not Enrolled in Learning Support Classes
- A Genuine Willingness to Assist Minority Freshmen

All applicants are encouraged to attend an information session:

Tuesday, April 25 Union Room 273 7 p.m.
Wednesday, April 26 Union Room 271 5 p.m.
Thursday, April 27 Union Room 275 6 p.m.

Application Packets and more information are available at the Office of Multicultural Programs, Rosenwald 289 or call 681-5409. All materials will be due May 5. Interviews will begin May 11

MAKE A DIFFERENCE IN A FRESHMAN'S LIFE

Convert Your Car Into A Concert Hall Without Spending A Fortune!

JVC® 12-DISC CD CHANGER



- 12-Disc changer
- 1-bit DA converter
- 8fs digital filter
- High-precision 3-beam laser pickup
- Track-error recovery system
- 2-Way installation (horizontal or vertical)
- Hung mounting cable
- Extra XC-M120 magazines optionally available (for 5 CDs)

\$44900 Installed

JVC® HIGHPOWER DETACHABLE FACE CASSETTE DECK



- TUNER** • PLL synthesizer tuner with 20 station (15 FM + 5 AM) • Prescan • seek up/down • AFNS • Stereo/Mono button • European tuning switchable
- TAPE** • U-turn auto reverse • Smart mechanism
- AMPLIFIER** • EHP head
- GENERAL** • Active Hyper-Bass • Bass/treble controls

\$23900 Installed

JVC® IN-DASH CD PLAYER



- CD-PLAYER** • Direct disc loading • 1-bit DA converter • High-precision 3-beam laser pickup • Track-error recovery system
- Anti-shock/vibration mechanism
- Track direct access (1-6) • Random, Skip, Search, Repeat, Endless play, Intro scan
- Last-position memory

TUNER • ES tuner with 24 station presets (18 FM + 6 AM) • Preset scan, Seek up/down • AFNS • Stereo/Mono button

• European tuning switchable

AMPLIFIER • 4-Channel amplifier • electronic control • 4-channel power fader • Hyper-Loudness

GENERAL • Digital clock • Power antenna lead

• Front or rear mountable design • Detachable trim plate

\$29900 Installed

JVC® THREE-WAY SPEAKERS



- 120 watt max. music power
- Hyper Neo Olefin cone woofer
- Strontium magnet • Dual-equalized woofer
- Angled-mounting PEI cone midrange units
- Rolled butyl rubber edge
- Heat-resistant voice coil

\$11900

ADVANTAGE CABLE SYSTEMS



1College Plaza

681-6899



Statesboro

*Normal Installation Does Not Include Any Necessary Kits

Top 10 uses for an old shoe

10. Dog's chew toy
9. Ferret play house
8. Throw at noisy neighbors
7. Spare slipper
6. Voodoo charm
5. Flower pot
4. Bug trap
3. Change holder
2. Furniture leg bracing
1. Clutter



Arts & Entertainment

Page 10 — Thursday, April 13, 1995



JOSH BASS



Last week's best offering, Dayroom at Blind Willie's went as expected. A small group showed up to hear the band, but the response was good. They did play very well.

Local Goth-Pop band, Pulse, has released a seven-inch single, Isis. Recorded at Beaten Path in Augusta with the B-side taking form at Standard Records in Savannah, the release follows months of rehearsing, gigging and saving.

Statesboro's only record label, Exquisite Feline is the releasing agent. The art-work racing the covers was produced by Erin Garrett and is the most intrinsically artistic of any I've seen on a record in a while.

The sound on the single is great, but doesn't come close to the live experience. The band plays Augusta and Columbia, S.C., this weekend and travels to Greensboro, S.C., and Athens in coming weeks with future Florida dates planned.

The week's offerings are not that great.

Legends now has "Seinfeld" night on Thursdays. The tubes will be tuned in to NBC and the specials will be as zany as the show. The Drunks play the cafe tonight.

Blind Willie's has Floyd's Funk Revival tonight, big party band. There will be a considerable crowd there mainly for the band.

At press time, no bands are booked for either club Friday and Saturday night.

Wednesday has Purple School Bus at Blind Willie's and Memory Dean at Legends.

Purple School Bus get their name from their touring vehicle, a 1978 International school bus. Imagine a cross between Skynyrd and Wide-spread.

Statesboro has a new restaurant

By Brian Myler
Staff Writer

Welcome back to the first spring revue of Statesboro's area eateries.

This week we are going to take a look at the Hibachi Grill. It is located at 724 Northside Drive East in front of Wal-Mart, where Gabby's was once located.

The Hibachi grill is a Japanese restaurant that serves somewhat of a limited menu, but the reasonable prices more than make up for this shortcoming.

Appetizers range in price from a chicken wing for 65 cents, to yakimiku for \$1.95. Entrees at the Hibachi range from deluxe vegetables (\$1.95) to teriyaki chicken and grilled seafood for \$4.25, with these two being the highest priced entrees on the menu.

The Grill has tried to achieve a Japanese motif in the restaurant but you can't escape the sensation of eating Japanese in a diner.

On this day, I had a late lunch around 3 p.m. It was very quiet so service was quick.

I started out with the seafood soup as an appetizer (95 cents). The soup was served very hot and contained crab, baby shrimp, mushrooms and scallions, with the usual water based broth. It was pretty tasty after a little

pepper was added to spice it up a touch.

Midway through the soup, the server brought out the meal. I had ordered the teriyaki shrimp (\$3.95).

All entrees were served with vegetable and fried rice.

When she brought it out, I noticed immediately the healthy portion they had served. My shrimp contained cabbage, celery, broccoli and zucchini.

The fried rice was served in an equally healthy portion as well.

Unfortunately, this is about all I can say about the Hibachi Grill. The food was alright, but nothing that would make you sit down and write a surprise letter to your parents. But, it is worth going out and giving it a try, maybe on your way to Wal-Mart one day.

For those of you who are environmentally conscious, the Hibachi Grill may not be for you, because everything they served was in or on a Styrofoam container. If you can get past that drawback, the Grill is the perfect place to take a date for an inexpensive meal and get full before a heavy night of beer swilling.

But if you're looking for some exotic Japanese cuisine, then you better head on down to Savannah because it won't be found at the Hibachi Grill.

WVGS Spring Quarter Schedule

TIME	MONDAY	TUESDAY	WEDNESDAY	THURSDAY	FRIDAY	SATURDAY	SUNDAY
7-9	Tracy Smith Trick 1	Tracy Smith Goods	Tracy Smith (8'44')	Tracy Smith ENOUGH	Tracy Smith Hangover	Off Air	Off Air
9-11	Gil Gordon FUNK	Daniel Snow Variety	Tracy Varnell Trick 2	Daniel Snow Variety	T.B.A. Progressive	Off Air	Off Air
11-1	Melinda Burnett Variety	Bo Baker Variety	Melinda Burnett Variety	James McNally Variety	Marianne Fortino Latin/Tempered Metal Chick	Douglas Reagan Celtic/Fish	Tonia D Owens Gospel
1-3	Carolyn Duttweiler New Stuff	Ben Davis Progressive	Carlton Dickerson SLICK	Cara Hunt Progressive	Neal Stanton Industrial	Mike Rock Variety	Marcel Rivers Latin
3-5	Stephanie Santos Stuf Rock	Mary Ann Hagan Hard Stuff	Rita Sallee Bitchmagnet	Aaron Klein Sub-Pop-Rocks	Kevin Skene Buzztrip	Michael Fitzpatrick Variety	DJ Gemini Hip-Hop
5-7	Megyn Taback Progressive	Craig Hamechek Progressive	Tracy LaBarbera Chick Music	P.J. Ferita Bubblegum Pop Favorites	Josh Bass Good Stuff	Robert Meecham Hard Stuff	Lester Best Hip-Hop
7-9	Jazz/Jew	Matt Ellis Hardcore/Ska	Tripp West Import Dance	James Salter Gothic/Eurodenial	Brian Estes Progressive	Kevin Holiday Hollywood	Jennifer Futch Hip-Hop
9-11	Jazz/Jew	Wade Page Hardcore/Ska	Stephen Davis Electro	All Streetman Gothic/Eurodenial	Joe & Doug Jazz/Polka/Blues	Jim Porter Progressive	NATIVE (9-12) Hip-Hop
11-1	Alison Rudnick Progressive	Carmen Rivers Hardcore/Ska	Ryan King Electro	Stephanie Terry The Four Hour Gothic/Industrial	Jody O'Donnell Variety	Chris Garchew Industrial	Ben Esque (12-2) Hip-Hop
1-3	Chris Sikes Progressive	Craig Meers Hardcore/Ska	Laura Miller Industrial	If you need to be depressed Show! This is a happy one!!! Stephanie Terry	John Davidson Rock	T.B.A. Progressive Music Trust me it's on the air!	Off Air
3-7	off air	off Air	Off Air	Off Air	Off Air	Off Air	Off Air

Did you know that there is an official campus radio station? Known by many affectionate euphemisms; The progressive/alternative, The voice of Georgia Southern, The Veeg, VGS, Toxic Radio and We Very Good Station, WVGS 91.9 FM strives to bring music largely ignored, but equally fine to GSU. The programming this quarter has been formatted to offer specialty nights. From 5 p.m. until 1 a.m. the shows have been grouped to provide similar styles

of music. Interviews with bands playing local venues are frequently offered as well as information on where bands are playing and other area events. For information on happenings, requests and other chit-chat, 681-5525 is the number in the control room. DJs will fill most requests for non-mainstream songs. Use the above schedule to keep track of air and format times. Tune in for an alternative edge in radio.

APRIL 17

PUBLIC DEBATE FOR THE CANDIDATES OF THE SPRING ELECTIONS.

A TIME FOR STUDENTS TO HEAR WHAT THE CANDIDATES HAVE TO SAY.

LOCATION : UNION ROTUNDA
TIME : TO BE ANNOUNCED

APRIL 18

VOTE '95

SGA SPRING ELECTIONS

LOCATION : THE UNION COMMONS

TIME : 9 - 3

ELECTIONS FOR : PRESIDENT
EXECUTIVE - VICE - PRESIDENT
V.P. OF FINANCE

V.P. OF ACADEMIC AFFAIRS
V.P. OF AUXILLIARY AFFAIRS

APRIL 20

VOTE '95

SGA SPRING ELECTIONS

LOCATION : HANNER FIELDHOUSE, OUTSIDE ON HERTY DRIVE

TIME : 9 - 3

**Celebrate the New Year
in our Towne!**

TC

Towne Club

Fall '95

Towne Club Apartments
1818 Chandler Road
681-6765

Dates Guys & Gals Dates

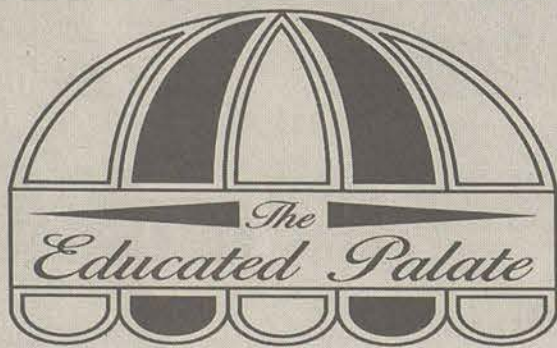
1-900-776-6600

Ext. 5470

\$2.99 per min.

Must be 18 yrs.

Procall Co. (602) 954-7420



Special This Week
Grilled Chicken Ceasar Salad
\$4.75

Check for our weekly Specials.
Now selling pizza by the slice, carry out only:

cheese \$1.33 • pepperoni \$1.55

Lunch 11-2:30 Dinner 5-8:00

Call 681-5303

Today's Quote

"Most college campuses are getting to be so crowded that if a student wants to be alone, he has to go to class." —Anon.

01-Announcements

Any Junior Political Science major interested in attending Impact Energy at Lake Lanier Islands contact Connie at 871-7117 by April 10.

Attention Pet Owners! Do you have an exotic pet? If so, then we would like to know and write about it. Call Julie at the Reflector at 681-5305.

ATTENTION: The George-Anne screens all classified ads prior to publication. The newspaper strives to accept ads for legitimate products & services only. Students are urged to exercise caution when replying to ads, particularly those which ask for money or a credit card number in advance of delivery of products or services. Students are also urged to report to the newspaper (at 681-5418) any suspicious offers they might see in the classifieds. Remember, if it often seems too good to be true, it probably is.

Delta Sigma Pi is having its spring quarter smokers on April 12th and April 13th at 8:30pm in the Russell Union. Casual dress. All interested business majors and faculty members are invited to

Free Planetarium shows every Wednesday at 11am. Doors close at 11:10am. All students, staff, and faculty are invited to attend. Come gaze at the stars while the sun is still high!

LONG DISTANCE DISCOUNTS!!! Save 50% or more call anywhere in U.S. At \$.14 1/2 per minute or less. No surcharge calling cards, 800 numbers 681-2399. Agent.

The GSU Chapter of Habitat for Humanity International will meet on Tues., Apr. 11 at 6pm in Union rm. 270. Call Ben 764-7636 for more info.

Top quality GRE study books will be sold in the Rotunda on Wed. April 12 from 11am to 1pm. Come check them out!

03-Autos for Sale

1984 Jeep CJ-7, 6 cyl w/ 4 sp, hard and bikini tops, looks & runs good, \$5000. Call Jason at 823-3663 after 7pm

1987 Ford ESCORT GT. 5 speed, stereo, good user car. \$1800. Please call 681-4040.

1991 Pontiac Sunbird LE CONVERTIBLE. Loaded, 55k miles, red w/white top, call 852-9022 evenings.

1993 Ford Explorer 55k miles. Beige. Call 852-5278-after 6pm or leave message.

1993 Ford Ranger XLT Extra Cab, V6, Cruise, excellent cond. Call 764-5292.

82 Honda Accord Hatchback Auto, 90 K miles only. Very good condition. \$1200. 871-7293 evenings.

86 Chevy Cavalier, 4 door, auto, radio, new battery, good tires, clean inside, runs good. \$700 681-5536 (day), 681-6341.

FOR SALE: 1989 Honda Civic LX 89,000 miles. Good condition, \$5400. Day phone (912) 526-1235, night phone (912) 537-1306.

For sale: 83 Ford LTD. 3.8 lt engine, A/C, cruise control, power steering, new transmission, new starter, very clean. Asking \$1500. Call 871-4986.

04-Auto Parts, Repair

For sale - 4 265-75-16" tires for 25 each. 871-5033.

For sale: 4 "195-75-14" tires. Good condition \$25 set. 764-5314.

For Sale: Four Ultra Type 25 directional wheels with 265/50/15 BFG T/A Radials mounted and balanced asking \$250 OBO. Call Aaron at 681-4402.

05-Business Opportunities

ALASKA SUMMER EMPLOYMENT -- Students Needed! Fishing industry. Earn up to \$3,000-6,000+ per month. Room and Board! Transportation! Male or Female. No experience necessary. Call (206) 545-4155 ext A53943.

07-Education

FREE FINANCIAL AID! Over \$6 billion in private sector grants and scholarships is now available. All students are eligible regardless of grades, income or parent's income. Call Financial Services 1-800-263-6495 ext F53943.

08-Freebies

FREE to a good home: baby hamsters. 871-6939.

09-Furniture & Appliances

Almost new 2-recliner sofa; new \$600; sell for \$225. Call Doug 587-5052.

BEDROOM SET, queen Sealy posturpedic firm mattress and boxspring, matching oak headboard, nightstand and dresser, very attractive contemporary style, like new, \$550, 871-7224.

Bedroom set, like new, queen bed, matching oak headboard, dresser, night stand, \$550. Small dining table with 2 chairs \$100. 871-7224.

DINING/KITCHEN TABLE, 3'x3' square butcher block with 2 light tan leather and chrome chairs, like new, \$100, 871-7224.

For sale -- soft brown full-size pull-out couch/bed. \$125 delivered. Excellent condition. 839-3878 leave message.

For sale: twin bed \$25; two cream dressers \$50 each. Call Kathy 681-1633.

King size waterbed bookcase headboard with mirror & flou flotation. Walnut color, 1 set of sheets. \$100. Call Michelle at 681-5906

MICROWAVE, brand new never used Sharp Carousel 2 with turntable, perfect size for dorm or apartment, \$75, 871-7224.

Royal blue sofa and chair contemporary style. Call 852-5278-after 6pm or leave message.

Tired of sleepless nights? KING SIZE WATERBED. 6ftx7ft. Includes headboard, pads and heater, comfortable sleeper, see to appreciate. \$150. (912) 871-7660. Statesboro. Troy after 7pm.

Whirlpool microwave for sale: \$45. 764-3836, Jeff.

11-Help Wanted

ATTENTION: EARN MONEY READING BOOKS! Up to \$500 weekly. Choose subject matter. For more details call: 1-(206)-362-4304 ext E0055.

CRUISE SHIPS HIRING-Travel the world while earning an excellent income in the Cruise Ships & Land Tour Industry. Seasonal & full-time employment available. No exp necessary. For info. Call 1-206-634-0468 ext. C53945

HELP WANTED!!!! ATTENTION! GSU STUDENTS FULL TIME INCOME, PART TIME WORK CALL! 489-5998.

If you are going to Miami, Pompano Beach, or Ft. Lauderdale for Easter, please call Mona at 871-4981. I will help with gas. Thanks.

Job opening for Cotton Pest Management. Scout to work with farmers in Candler County. Applicants must be able to travel within the county. Job will begin the 2nd week of June and continue for the next 14 weeks. Salary for full time \$250/week. Interested person should pick up applications at the Candler County Extension Office in Metter, located at 316 W. Broad St. Or call 685-7408.

LIFEGUARDS, POOL MANAGERS, SWIM COACHES, SWIM INSTRUCTORS, SUMMER POSITIONS AVAILABLE IN NORTH METRO SUBURBAN ATLANTA AREA. CERTIFICATIONS CLASSES AVAILABLE. CALL SWIMATLANTA POOL MANAGEMENT, 992-7665.

LIFEGUARDS: Trinity Pools is now hiring lifeguards, managers, swim coaches, swim instructors, communication directors, and service technicians for the Metro Atlanta, Nashville, and Birmingham areas. Full and part time summer positions are available. For info call (404) 242-3800.

Mature and responsible person with Day-care experience seeking baby sitting job. Call 681-9577 and ask for Michele.

MODELS needed for drawing class 1 pm to 5pm Tues. And Thurs. 4/11 thru 6/1. Contact Pat Walker 681-5918 or Cindy Brogdon 681-5358 to leave message.

NOW HIRING!!! LIFEGUARDS!!! Salary ranges -- \$1,500 to \$4,000. Send resumes to: Professional Pool Care, Inc., 3390 Old Klondike Road, Conyers, GA 30207 or call 404-981-0892

Part-time position. News reporter/writer. Must have flexible schedule, good grammar, language, typing, and note-taking skills. Contact Mandy Byram, Editor, The Claxton Enterprise, (912)739-2132.

RESIDENTIAL CAMP STAFF. Camp Jened serves adults who have a wide range of disabilities. Join our summer staff and have an incredible experience working in the Catskill Mountains in New York. Jobs available for counselors, program staff, cooks and nurses. Season runs from June 1 through August 17. Good salary, room and board, and partial travel expense. Call 914-434-2220, or write Camp Jened P.O. Box 483, Rock Hill, New

The George-Anne is looking for experienced photographers. Pick up an application top floor of the Williams Center Rm. 223.

12-Lost & Found

Lost one pearl earring and one gold elephant earring. If found, please call 681-7991.

Lost Sunday 4/9/95. Tortoise shell eyeglasses lost in the library. Call Rodney 681-8587.

13-Miscellaneous for Sale

\$350, computer system: Mac Plus, 4MB RAM, 45MB hard drive, ImageWriter II printer, modem. Call Dr. Hu 681-0891 or e-mail Ykh at GSU. Cs. Gasou. Edu.

1995 Specialized Rockhopper with Ultra components. 15.5" frame. Selling because too big. 871-3943. Ask for Becky or leave message.

Bridgestone Mountain Bike. Excellent condition. Hardly ridden. Park green. Call Russell 871-4611.

For sale -- calculator TI-81 for only \$60. It has been used on one quarter. If interested call 681-7171 and ask for Dayvener. Thank you.

FOR SALE: TI-81 graphing calculator, brand new, 50 features. Retail at \$90. Yours for just \$60 OBO. Call Rizzo at 681-6666.

For Sale: Beaded dress. Perfect for pageant or formal. 681-2170, must sell.

For Sale: Dorm size refrigerator, brand new, still in box \$100. Washing machine, large capacity, good condition. \$50. Call 823-3957. Leave message.

For sale: Panasonic KX-PI080i dot matrix printer, excellent condition only \$60. Smart One 2400/1200 modem only \$20, with Bitcom Software and free compuserve membership. Contact Mike 681-5541 or 764-8621.

FOR SALE: Snowboard-Burton Air \$225-get ready for next season. Also, camouflage Army uniforms, ammo pouches, web belt, and combat boots size 10 1/2. Cheap prices on equipment.

For sale: Women's wetsuit. Fathom, 5 mm, size 5, blue, pink, black, 2 piece. Worn only three times. \$400 and up new. Asking \$250, negotiable. 489-6524. Rachel.

Kawasaki JS550 Jet-ski. Strong running and virtually maintenance free. 40+ mph \$1300. Yamaha 250cc Exciter, under 5000 miles. Excellent cond. Blu/chrome. \$750. Call 489-2557.

Laser computer /monitor and printer, good condition \$250. Call after 7:30pm.

Specialized M2 Stumpjumper 94 Red LX Group Mavic Rims Umma Grey, new tires, Mag 21, shock ringle sten, seatpost, Call Lee 871-6971, price nego.

Wanted to sell Minolta 3XI Autofocus camera, 70-210 AF, 35-70 AF, Minolta 3500XI flash. Asking \$400 OBO. Call 681-6540.

15-Musical

Bass player needed for original rock band. Alternative and classic rock influences. Call Dave 855-5228 or Nate 871-7296.

Fender Stratocaster guitar, mint condition, must sell, \$200. Call Dan

16-Personal

Any Junior Political Science major interested in attendin Impact Energy at Lake Lanier Islands contact Connie at 871-7117 by April 10.

17-Pets & Supplies

10x20 dog pen for sale. Great condition. \$200. 871-4462, 489-2837

A cage for any type of small animal. Gives them room to run. 5x2x2. Must see to appreciate. Perfect for snakes, bunnies, birds, reptiles or others. \$150obo. Call Renee 681-2524.

Attention Pet Owners! Do you have an exotic Pet? If so, then we would like to write about it. Call Julie at the Reflector at 681-5305.

For Sale: Ball Python, very tame with 45 gallon tank and many accessories. Asking \$125 nego. Ask for Matt 681-8529. Also for sale small Iguana.

For sale: Iguana w/ custom-built cage. Heat rock, bowls, heater, light. Everything \$150. Call 842-5527. Leave message

Red tail boa and tank for sale \$150. Call 681-6572 or come by Campus Courtyard 119.

18-Photography

Nikon EM, 50mm lkens, 70-162mm zoom, Vivitar 200mm zoom. Thristor 2500 flash \$200 obo. Call Bryan 681-7840.

19-Rentals & Real Estate

\$539 FOR THE QTR \$160/mon with \$60 deposit. Across the street from campus. Microwave, own bedroom/shared bath, washer/dryer, dishwasher, great roommates. Call Hughie 681-2417 + leave message.

3 bedroom Double wide mobile home \$500, W/D hook up central H/A, call Mary Bishop 764-6774 day, Charlotte Shuman 842-2750 after 5:00.

Apartment for sublease starting June. One bedroom, 1 bath, tennis courts, swimming pool across 301 from campus. 871-3562 or 871-4517. Leave message.

Available Fall Qtr. Park Place Apt. 2 bedroom, 2 bath. Furnished or unfurnished \$475/mon. Small deposit. 681-7769, leave message.

Campus Courtyard Apt. #106, has a large bedroom available with a 1/2 bath and spacious closet. The apartment is furnished. Please call 681-7098 or (813) 799-4415 for information.

Campus Courtyard/2 bedroom, 2 bath townhouse. Need to sublease July and August. \$600/mon. Freshly painted/furnished/clean. Call 681-8312, leave a message.

Condo for sale: Eagles COURT, 2br, 2ba, freshly painted, new carpet, room up to four. Under \$40,000 -- call 681-8771 or (912) 953-4266.

Desperately seeking two people to sublease! June rent PAID! Great 2br, 1ba across from campus. Call Heather or Anna at 681-8495.

Female sublesser needed for summer quarter. Share bedroom and bathroom. Campus Courtyard. \$125/mon. Fully furnished. Call 681-8343. Ask for Amie.

For rent: female needed to sublease for spring and summer quarters. Own bedroom and bath. \$160/mon plus utilities. Call 681-4494 for more info. Needed ASAP.

HOUSE FOR SUBLEASE!!!! 3 bedroom house in quiet area needed to sublease for Summer. Bedrooms bigger than any apartments and not far from campus. \$150/mon + utilities. 3 bedrooms available. Fully furnished. Call Melissa at 764-3421 if interested.

HOUSES & APTS AVAILABLE SEPT. 1, NO PETS ALL UTILITIES FURNISHED AT 602 S. COLLEGE APTS. NEED RELATED STUDENTS FOR 4 BR HOUSES. JAMES M. HOOD, 764-6076.

Male sub-leaser needed for summer qtr. \$150/mon + util. At Player's Club. Call Ryan at 871-3867 or leave message.

Need a room this summer? Try Bermuda Run Apartments! I'm subleasing an Apt. For summer qtr! You get: Private room, bathroom, W/D! Only \$200/mon + util! LB 20304.

Need an apartment summer quarter? 1 bdrm apt. At Pinehaven. \$300/mon. Furnished if needed. Lease for 3 months or year. Call Bryan at 681-8655. Leave message.

Need to sub-let room for spring/summer 95. Campus Courtyard, 4 bedroom, 2 bath apt. Call Leanne 706-235-3014.

Need WF to sublease apartment near campus. \$200/mon + 1/2 utilities. Own bedroom. Share bathroom. W/D. Call Kristin at 764-4267.

Needed someone to sublease for summer qtr. Fully loaded with private bedroom and bath. Will work out deal for the whole quarter. Call Chad 764-3836.

New 3 bdrm, 2 1/2 bath apt for sublease starting June1; fully furnished; opt for yr lease in Sept; opt to purchase furnishings at end of sublease; close to GSU; call 681-0855 or 764-3402.

Sub-lease for spring and summer in Southern Villa Apt. #8. Rent is \$205/mon per person. Unfurnished. Call Rhonda at 681-9202. Leave a message.

Sublease 2 bedroom townhouse in Player's Club this summer. Fully furnished. \$150/mon. Call Joey 871-3667.

Sublease a 2 bedroom, furnished apartment for summer quarter. \$300 for 2 people or \$200 for 4 people. Call 681-7653, leave message.

Sublease for Spring, Summer, or either for \$150/mon. 1 bedroom at University Place. Call Shelley 681-8632.

Sublease for Summer only \$200/mon. Park Place #263. Call Shelley. 681-8632.

Sublease for summer: Park Place #237, private bedroom and shared bath. Just \$216/mon +1/3 util. Call Laurie at 871-4311. ASAP.

Sublease one bedroom in Campus Courtyard for Summer Qtr. \$225/mo plus utilities. Call Kevin @871-6971. Thanks.

Sublease own bedroom. Players Club townhome. \$161.25/mo plus 1/3 utilities for summer quarter. Call Jennifer at 681-5136. Thanks.

Sublease Plantation Villa Apartment #10 for summer quarter: Two bedroom, one bath at \$410/mon; walking distance to GSU; call 681-8400 or 871-4959.

Sublease your own bedroom in Player's Club townhome Summer Qtr. Only \$161.25/mon + 1/3 util. Please call Jennifer 871-5136. Thanks.

Sublease: 2 bdrm, 2 bath W/D, \$158/mon + 1/3 util. Shared room. Possibly own room. Willing to compromise on June rent. Can be out ASAP. 681-8451

Summer sublease at Player's Club Apartments. Two roommates needed. Only \$145/mon. + util. Call Kara or Jana 681-9088, leave a message!

Tired fo roommates? Tired of paying too much? 1BR/1BA with new carpet. Available march 19th. Stadium Place. 871-7554 please leave message.

Two sub-leasers needed for summer quarter. Fully furnished apartment with private bedroom in Stadium Walk. Call Jajuna or Vernanda at 871-7783 and leave a message.

Wanted: 3 or 4 people to sublease apartment for the summer with option to lease next year. Apartment has been remodeled! New carpet, paint & wallpaper! Located in Towne Club. Will negotiate price & free couch! Call 871-7792.

20-Roommates

1 female roommate needed to sublease for summer quarter. \$490/qtr. Willing to negotiate. Free water, HBO and cable. Call 871-7988.

2 females for Fall 1995. Own bedroom. Share bathroom. W/D. 1994 trailer in Johnson's Mobile Court. 1 mile from campus. Call Renee at 871-7955.

Christian roommate wanted for summer -- private room in a new home only 2 1/2 miles from campus. \$235/mo includes all utilities. Call Lisa 489-5902.

Female roommate needed ASAP to sublease summer qtr. Hawthorne 2. Own bdrm and bath. Rent \$225 neg. 871-3979. Ask for Kristi.

Female roommate needed for 96-97 year. 2 bdrm, 1 bath furnished. \$220/mon at Stadium View. Please call Tracie at 681-7011, non-smoker and heat. Living habits preferred.

Non-smoker. Furnished room. Washer/dryer. Rent negotiable. Share utilities. 5 miles from campus. Leave message Annette 488-2273.

Roommate needs: Own bed, bath, washer, dishwasher, 1/2 util., \$175/mon. Call Eric 871-7348

Roommate needed ASAP for 2 bdrm apt. Female preferred. W/D, DW, close to campus. Call Mary at 764-3553. \$200/mon.

Roommate needed ASAP! Georgia Villas #17. Fully furnished shared bedroom close to campus. \$135/mo please call Regina or Valerie 681-6766.

Roommate needed for summer, fall, and winter. Private room in a new home only 2 1/2 miles from campus. \$225/mon. Call Lisa 489-5902.

Roommate needed to sublease spring quarter at Stadium Walk \$225 plus utilities. 871-4684 ask for Jaime.

21-Services

For cleaning or small repairs to your guns, call 681-9803, ask for Brian.

If you would like to have BRAIDS call Chastidy at 681-9264. I have affordable prices and 2 years experience. Call for an appointment today!

Lawn care, not lawn cutting. Professional work, fair prices. Fee estimates weed trimming, fertilizing, edging, yard cleanup. Flexible hours, weekends. Call 764-3742. Ask for Doug or James.

Need gifts for spring! Mary Kay baskets are available. Free facials! Men are welcomed too. Call Leslye at 681-9745.

Word Perfect Typing in my home. Quick turnaround. Good prices. Penny 681-6967.

22-Sports & Stuff

For sale: Sinisale chest protector brand new \$75 obo; motocross boots Alpine Stars Tech3 \$150 oro -- new size 13. Call 842-5527.

23-Stereo & Sound

2 12" KICKERS IN CARPETED BOX WITH GRILLS. GREAT SOUND. \$125 NEGOTIABLE. 681-7861.

Fender Twin Chorus Amp 100 watts. Excellent cond. Sounds great. \$400 or best offer. 681-8108, leave message.

For Sale: Kenwood Pro logic Receiver 210 watts with remote. Used only 1 month. Still have box and manual. Asking \$250. 489-5353.

For sale: Rockford Fosgate 15" woofers and punch 75 amp. Excellent condition! \$350 price negotiable. Call 871-3681.

FOR SALE: Two 15" kicker competition speakers. Great condition. \$200 or best offer. Call Donnie at 681-3003.

27-Wanted

Need person(s) to take over lease. Stadium Walk Apt. #77. \$430/mon. 2 bedrooms, 1 bath, Contact Michelle 681-8397.

Bicycle child carrier(seat)-852-5278.

For those who live in Sussex Commons and don't feel safe call 871-7766.

Leslye would like to be your Mary Kay Consultant. FREE facials! We have products for MEN. Don't be shy. Call 681-9745. Gift baskets for Spring.

To Buy: Bootleg and rare CD's from Bob Dylan, 10,000 maniacs, Pink Floyd. Call 871-5499.

Want to play tennis, so do I! Call Ben at 681-8686.

Wanted: Mtn. Bike, no more than two years old. Must be in good shape Trek, G.T., etc. No Huffies! Call after 12 noon. Phillip 681-3504.

Wanted: Software and/or hardware for IBM 286 computer. Call 871-7348.

Would like to buy TI-82 or TI-85 calculator. Call Beverly 681-8771. Leave a message.



That's Right!
You can find that roommate by placing an ad in the
George Anne's
Classified Ads section
Come by room 223 of the Williams Center.
As an added plus if you're a student it's free!



BIKES

Continued from page 1

said. "If you (students) don't ride in a wheelchair, you don't know what they have to deal with."

GSU Public Safety Captain Michael Russell offered a different view on the availability of the bike racks.

"The excuse that there aren't enough bike racks is just not valid," Russell said. "Usually when we get a bike (off of a railing) there is an open bike rack right near the railing."

He also said since there has been an increase in the enrollment, there have been more students riding their bikes on campus.

SGA

Continued from page 1

for vice-president of academic affairs. He promises to make sure the school becomes more consumer conscience with the students' educational money. He plans to listen to the students and hold a lot more forums than in the past.

"I hope the whole ticket gets elected," Dickerson said. "I plan to make SGA more accessible to the student body and more active at GSU."

Shook is running for vice-president of academic affairs. He could not be reached for comment as press time.

At the polling sites, students will present their student ID and receive a Scantron form to fill out their choices for officers.

"Last year about 8 to 9 percent of the student body came out and voted," said Zan Smith, SGA publicity coordinator.

A debate will be held Monday at the Union Rotunda.

QUALIFIED TO RIDE.

MOTORCYCLE OPERATOR LICENSE
Unlicensed riders account for 80% of the fatalities in some states. So get your motorcycle operator license today. And prove that you can ride safely.
MOTORCYCLE SAFETY FOUNDATION

Guide dog problems

"Another problem we have complaints about is from the blind students on campus who have guide dogs," Williams said. "Students will start petting the dogs while they are working, they get distracted and then sometimes they have to be retrained."

Recent Additions due to ADA

"We now have a Braille machine for all the campus buildings so we can make Braille signs," Williams said. "Any building built after 1992 must have Braille signs."

Williams also said the school

has added \$50,000 worth of equipment to the library and they have moved classes from the third floor of Hollis to the first.

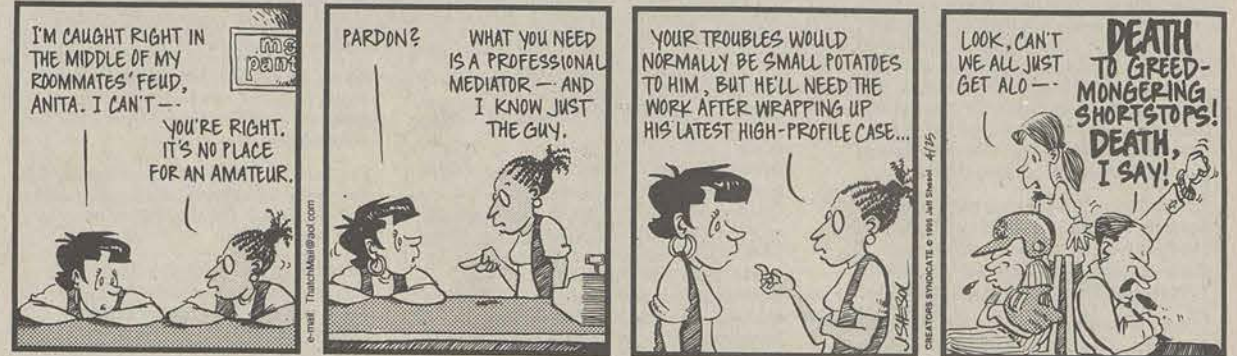
"It doesn't sound like a big deal (moving a class to the main floor) but it is," Williams said.

GSU and ADA

"GSU has really been super (when it comes to following ADA regulations)," Williams said. "They (GSU administrators) have always given 100 percent. I spoke at a national convention in San Diego and GSU is known all over the country as being very pro-active."

CREATORS SYNDICATE

THATCH by Jeff Shesol



PAGES
Production And Graphics Editorial Services
The Graphics department of The George Anne newspaper is taking applications for training positions in Williams Center room 216

SPORTS EMPORIUM
"Statesboro's largest selection of athletic footwear"
GET ANY T-SHIRT FOR \$10.00 WITH PURCHASE OF ANY SHOE
EXPIRES 4/20/95 ; VALID WITH COUPON ONLY !

ATTENTION GSU WRITERS

The George-Anne is looking for a few dedicated writers. There are positions available in News, Features, Sports and Opinions.

If you are interested, stop by RM 223 in the Williams Center and pick up an application.






ATTENTION GSU PHOTOGRAPHERS

The George-Anne is looking for experienced photographers.

If you are interested, stop by RM 223 in the Williams Center and pick up an application.

HOW TO GET STUFF CHEAPER.

(WITHOUT POSING AS A SENIOR CITIZEN.)

-  **Check expiration dates.**
If it's going bad tomorrow, it's probably on sale today.
-  **Look for product flaws.**
A scratch or a missing button means bargain savings at the register.
-  **Go generic.**
Same as name brands, without the cartoon mascots.
-  **Buy in bulk with friends.**
Connect the leftover boxes to make a human Habitrail.®
-  **Use a Citibank Classic card.**
If you find out you didn't pay the lowest price, Citibank Price Protection can pay you back up to \$150.*

*Naturally, conditions and exclusions apply. Learn all about it when you become a cardmember.

WE'RE LOOKING OUT FOR YOU.™
To apply, call 1-800-CITIBANK.



DOMINO'S STUDY BREAK SPECIALS!

HUNGRY AFTER A LONG DAY OF STUDYING?
CALL DOMINO'S-- WE'LL DELIVER YOU A HOT FRESH PIZZA OR BUFFALO WINGS!

CALL US TODAY!
Serving Statesboro/GSU
681-4326

<p>\$12⁹⁹ Plus Tax</p> <p>TWO LARGE PIZZAS Each with Up to 2-Toppings</p> <p><small>Add 99¢ for each Deep Dish Valid at participating locations. Not valid with any other offers. Customer pays sales tax where applicable. Our driver's carry less than \$20. Delivery areas limited to ensure safe driving. * 1995 Domino's Pizza, Inc. CALL NOW! Offer ends 4/30/95</small></p>	<p>\$11⁹⁹ Plus Tax</p> <p>Medium Pizza with Up to 3 Toppings & a 10 Piece Order of Buffalo Wings</p> <p><small>Add 99¢ for Deep Dish Valid at participating locations. Not valid with any other offers. Customer pays sales tax where applicable. Our driver's carry less than \$20. Delivery areas limited to ensure safe driving. * 1995 Domino's Pizza, Inc. CALL NOW! Offer ends 4/30/95</small></p>
<p>\$10⁹⁹ Plus Tax</p> <p>LARGE PIZZA WITH UP TO 3-TOPPINGS</p> <p><small>Add 99¢ for Deep Dish Valid at participating locations. Not valid with any other offers. Customer pays sales tax where applicable. Our driver's carry less than \$20. Delivery areas limited to ensure safe driving. * 1995 Domino's Pizza, Inc. CALL NOW! Offer ends 4/30/95</small></p>	<p>\$5⁹⁹ Plus Tax</p> <p>CARRY OUT SPECIAL! Large 1-Topping Pizza</p> <p><small>Add 99¢ for Deep Dish Valid at participating locations. Not valid with any other offers. Customer pays sales tax where applicable. Our driver's carry less than \$20. Delivery areas limited to ensure safe driving. * 1995 Domino's Pizza, Inc. CALL NOW! Offer ends 4/30/95</small></p>