

Georgia Southern University

Digital Commons@Georgia Southern

The George-Anne

Student Media

3-2-1995

The George-Anne

Georgia Southern University

Follow this and additional works at: <https://digitalcommons.georgiasouthern.edu/george-anne>

Recommended Citation

Georgia Southern University, "The George-Anne" (1995). *The George-Anne*. 1356.
<https://digitalcommons.georgiasouthern.edu/george-anne/1356>

This newspaper is brought to you for free and open access by the Student Media at Digital Commons@Georgia Southern. It has been accepted for inclusion in The George-Anne by an authorized administrator of Digital Commons@Georgia Southern. For more information, please contact digitalcommons@georgiasouthern.edu.

After Tuesday, no mo'!



Time's a'wastin' to get your free classifieds and announcements printed this quarter. Tuesday is the last edition, so have your information to *The G-A* by Friday!

BRIEFLY...

Poll says Georgians worried about footing Olympic bill

The Associated Press

ATLANTA — A new Georgia State University Poll says Georgians are increasingly worried about a possible post-Olympic event — paying the tab.

Respondents were asked to rate the likelihood their taxes would be raised to pay for the Olympics.

On a scale of 1 to 10, with 10 being the highest likelihood, the average response was 6.88 — up from 6.59 a year ago.

"That might not seem like much, but statistically it's very significant," said Brian Mihalik, an associate professor at Georgia State's Cecil B. Day School of Hospitality Administration, who oversees the poll.

Organizers of the Games have promised to use only private funds and have rounded up 60 percent of their \$1.58 billion budget — with event tickets still to be sold.

A recent audit by the state's Olympic oversight committee found the committee was on track, but with only a tiny margin for error.

The poll of 753 Georgia adults was conducted by telephone Jan. 11-25 by the Applied Research Center at Georgia State.

CLARIFICATION

In the Tuesday, Feb. 28 edition, a front-page headline was inaccurate. The title "Show sells out" regarding the Irish play "Dancing at Lughnase" was not accurate because only two of the shows have sold out, including the final performance Saturday night. However, as of press time, tickets were still available for Thursday and Friday night shows. They can be obtained from the GSU ticket office, located next to the Southern Boosters trailer.

WORD OF THE DAY

maleficence (me-lef' i-sens) *n.* 1. The doing of evil or harm; mischief. 2. Harmful or evil nature or quality.

Source: The American Heritage College Dictionary

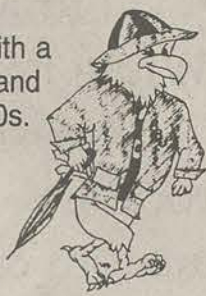
'BORO WEATHER

TODAY

Variably cloudy, with a high in the mid-60s and a low in the upper 40s.

FRIDAY

There will be drizzle, with a high in the mid-50s and a low in the mid-40s.



INDEX

Announcements	2
Classifieds	9
Comics	9
Crossword	9
G-A Mailbag	2
G-A Spotlight	3
Opinions	4
Police Beat	2
Q and A	3
Sports	6

It is a desire of *The George-Anne* to print the news of Georgia Southern University as accurately as possible. If you feel that something covered is in error, contact a member of the editorial staff at 681-5246 as soon as possible. Thank you.

FOR ADVERTISING INFO.: 681-5418
STORY OR PHOTO IDEA: 681-5246
FAX NUMBERS: 871-1357 and 681-0863

The George-Anne

*Liked By Many, Cussed By Some ...
Read By Them All*



The George-Anne

Georgia Southern University's Official Student Newspaper

Statesboro, Georgia 30460

Founded 1927

Golf team allowed back at private club

By Chris Sherwood
News Editor

The GSU golf team can once again play at Forest Heights Country Club. The Eagles will host the Southern Conference men's golf tournament April 10 to 11.

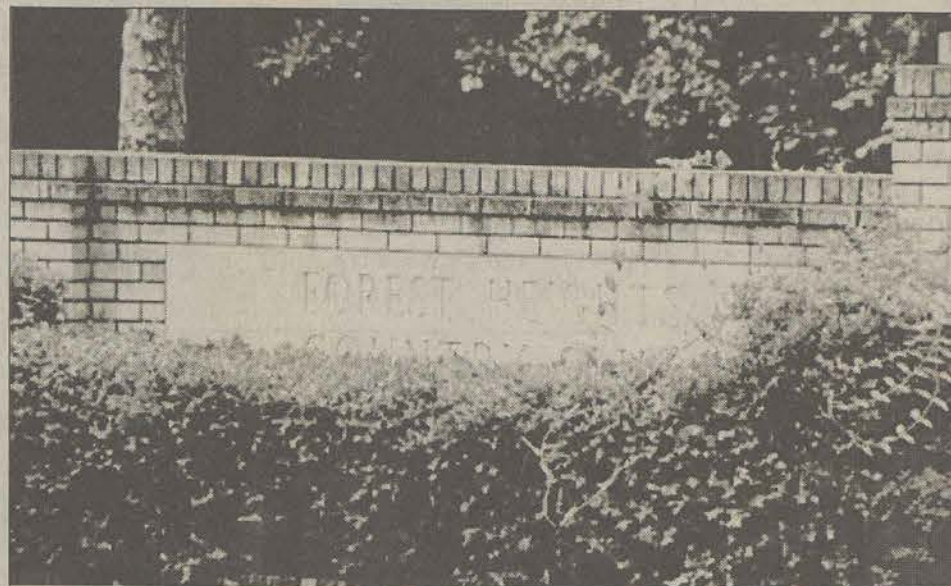
The last time the team was allowed to play on the private course was June, 15 1992. The Department of Education ruled the university had to sever its ties with the private country club because there were no minority members.

The last collegiate tournament held at the private club was the Chris Shenkel Golf Tournament, which GSU co-sponsored with the club. It was founded in 1971 and was considered one of the premier collegiate tournaments in the South.

"It's critical for our golf team to have an opportunity to use the wonderful facilities," said GSU Athletic Director David "Bucky" Wagner. "We have had a long term relationship with the club."

Wagner said the team began playing on the course this past fall, and the club had invited them at no charge on a limited basis to play.

"GSU has never hosted the tournament, the commissioner (of the Southern Conference) came down and played on the course and was impressed,"



File photo

The GSU golf team will play at Forest Heights Country Club in April despite past accusations by the Department of Education that the club discriminated.

Wagner said. "We talked to them (Forest Heights) and set the date."

The Southern Conference women's golf tournament will be held at the Furman University golf course.

In February 1992, the GSU Faculty Senate also voted to sever all ties with the club because of its discriminatory practice of denying minorities membership or the use of its facilities, according to Department of Education documents.

On June 15, 1992, the GSU golf team ended its contractual agreement with the private club, and at that time, the school no longer had any contractual agreements with the club.

In official Department of Education documents from a June 6, 1991, telephone interview, Wagner informed the Office of Civil Rights, the university continued to compensate the country club for use of its facilities by golf team

members, but had discontinued hosting the Chris Schenkle Golf Tournament at the club.

According to the same Department of Education documents, in February 1990, GSU President Nicholas Henry responded that he would continue to allow the golf team to contract with the club for the use of its facilities.

In June 1991, the university compliance director said the university had severed all its ties with the club with the exception of the golf team's contract.

On April 9, 1992, the university provided a written assurance it would discontinue all of its contractual relationships with the Country Club at the conclusion of the current golf season which ended on June 15, 1992.

GSU was advised by the OCR it could not enter into any contractual relations with the Country Club until such time as the university has determined that the Country Club had implemented a nondiscrimination policy.

The university would be allowed to resume its contractual relationship when it presented the OCR that the Country Club's membership and other practices had been amended to afford all persons an opportunity to apply for membership.

Turnout at forum 'great,' SGA says

By John Munford
Assistant News Editor

Student participation in the SGA forum held in the Russell Union Commons Area Tuesday left SGA President Rylan Traylor impressed.

The forum on proposed fee increases was paneled by Auxiliary Services Director Larry Davis, Vice President of Student Affairs Jack Nolen, Food Services Director Tom Palfy, and Athletic Director David "Bucky" Wagner.

"I'd say we had about 25 or 30 questions asked," Traylor said. "The panelists finished their presentations after the first 15 minutes and I expected them to have to go into more detail, but we had great student participation. I was very pleased."

"We had two forums last quarter with low turnout — the last one had about five participants — so I went out on a limb to have this one. If we can build student interest,

we can do this more often ... I guess there were a lot of students interested in this particular issue."

During the forum, which ran from noon-1 p.m., students wrote questions down on index cards and gave them to Traylor, who read the questions to the panelists.

"We did that to avoid shouting matches and to keep things from getting out of hand," Traylor said.

Dr. Wagner addressed the issue of the proposed athletic fee increase by saying that since GSU will not play a large team like the University of Miami this year, the athletic department will have to make up for the money lost in order to keep operating.

Palfy fielded questions about GSU food services bringing brand-name franchise restaurants on campus, such as the Freshens Yogurt outlets that were just opened this quarter.

Concert to be held in Paulson

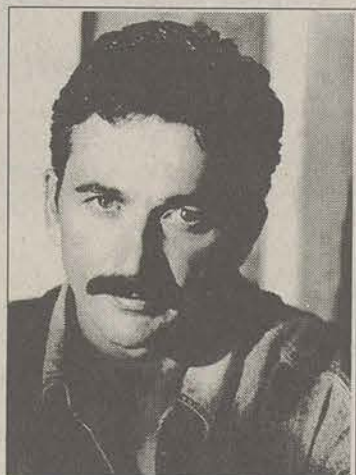
By Jana Mobley
Staff Writer

Musicfest '95 will be held in Paulson Stadium featuring country music singer Aaron Tippin on April 22. The gates will open at 3 p.m. and local restaurants will provide food and beverages while local entertainers perform. At 5:30 p.m., the main stage performance will begin with the winner of the battle of the bands contest and the Kinchafonee Cowboys, who will be the opening band for Tippin.

The event, which will be a major musical event in South Georgia, will be sponsored by R&B productions in conjunction with the Statesboro Bulloch Chamber of Commerce and GSU's Union Productions. Tickets will go on sale to the public on March 13 at the GSU ticket office and Walker Pharmacy. A service charge will be added to each ticket.

The general admission tickets will be sold to GSU students with valid student ID's for \$8.50. General Admission for all non-GSU students will

be \$10 and reserve seating will be \$12.



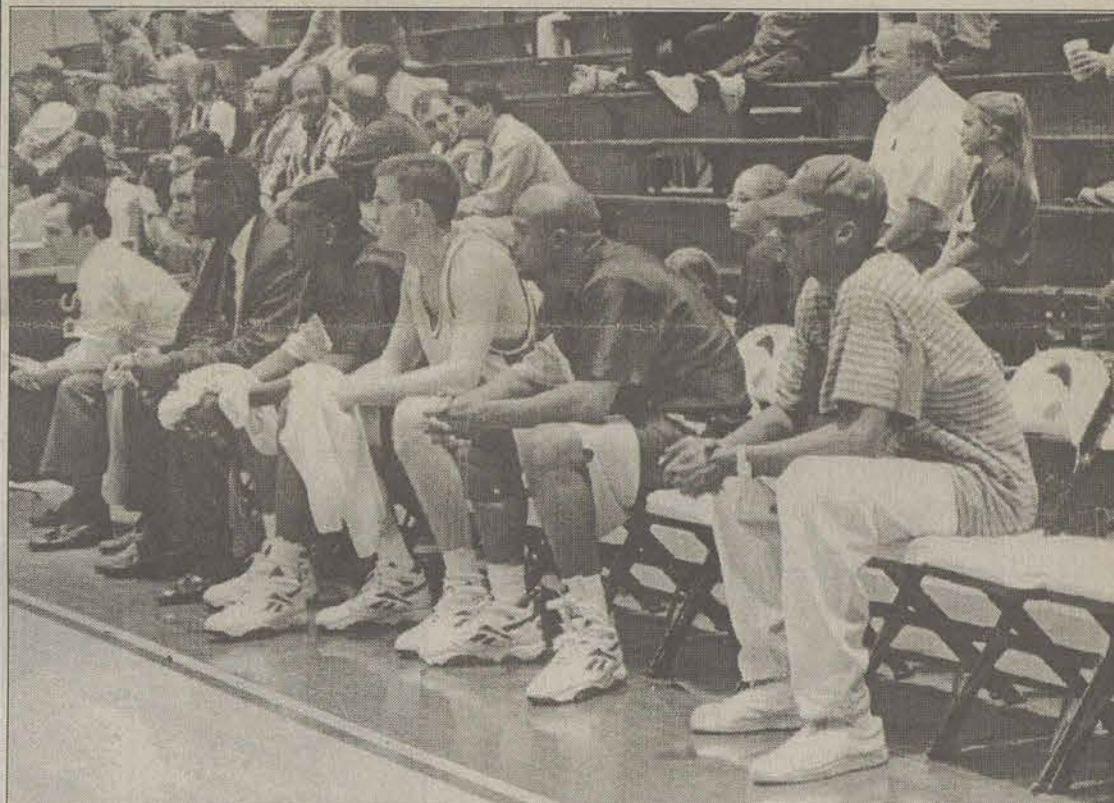
Aaron Tippin

The festival will be the first event of its type to be held at Paulson Stadium. GSU President Nicholas Henry and several members of the Chamber of Commerce agreed by contract to let R&B productions use the facility.

"We're happy to put the stadium to good use in the community," Henry said. "The lights make the stadium much more available and easier to use in the future."

The Statesboro Chamber of Commerce will be sponsoring the battle of the bands contest winner. This band will perform at 5 p.m.

Waiting for some enthusiasm?



Brandee Nickodem

Injured forwards Kim Brown (center-right) and Wilson Winters (right) might be wondering why there are few fans behind them as of late, both literally and figuratively.

Seniors aren't using Career Services

By Ashley Hunt
Features Editor

Seniors aren't listening. At least, that is what Trish Bergmaier, acting director of career services said.

"The concern that I have is that we have a lot of students who come through our office for individual career counseling and come to our programs and use our resource center and co-op and full time employment," she said. "But for them to sign up for an interview, it's not happening."

The problem, Bergmaier said, is seniors aren't signing up for interviews with companies coming to the campus.

"Last quarter, we had 36 companies approach us to interview our students and we had to cancel 10 because we didn't have enough sin ups and of those 26, probably have did not have full schedules," she said.

They had the same problem again this quarter. Out of about 21 companies, some had to cancel because there were not enough students on the sign up sheets to interview.

"If you continue to cancel companies who already plan on coming may not come back to campus," Bergmaier said.

She doesn't know why seniors aren't paying attention to career opportunities, but she does have some ideas. She said students, especially seniors, may not know about Career Services and the programs and other services they offer.

Bergmaier also said some seniors don't want to think about graduating or getting a job.

"They don't want to think about finding a job," she said. "They need to think about it because it takes the average college grad nine months to a year to find employment."

and they think they will be cashing in, when in fact, it is a manager trainee position.

"There are many different areas when you talk about a corporation," she said.

Bergmaier is encouraged to bring in more companies to campus, but said it is hard to do when she is not able to fill interview lists for the companies that do come. She wants to bring in a variety of companies for all kinds of majors.

"I would like to get a variety of companies, and they are looking for a variety of majors," she said. "People assume they are looking for one type of major, but they aren't."

Bergmaier gave an example of Wachovia bank, who will consider people of any major that have had at least two classes that deal with financial aspects of banking.

"The vice president that interviewed students had an English degree," she said. "So students normally think you have to be finance or finance with an emphasis in banking to work there, or marketing or business, and that's not it at all," she said.

Next quarter, Bergmaier is hoping for a better turnout.

"So far we have had IBM approach us, and IBM has never recruited on campus," she said.

But she is wary of bringing in big companies like IBM.

"Your fearful of bringing some of the bigger companies because if they don't have good experiences, they can go poo-poo to Georgia Southern, and not come back," Bergmaier said.

She wants to find out what seniors are doing and what their plans are.

"I want to find out what are some of their fears about employment," she said. "Are they looking at the news and saying that it's dismal, and therefore I'm not going to try?" she said.

But Bergmaier said this is not true. In Georgia, she said, there has been a growth of employment, and the opportunities are expanding.

She said faculty are very important in helping students in choosing a career.

POLICE BEAT

GSU Division of Public Safety

February 27, 1995

•Terry Terrell Pickney, 19, of Lewis Hall, was charged with disorderly conduct.
 •Christopher S. Williams, of Lewis Hall, was charged with disorderly conduct.
 •Robert Mann reported \$27 stolen from his wallet in Lewis Hall.

February 26, 1995

•A Residence Life employee reported a fight at an apartment in The Pines.

February 25, 1995

•Julius Ariail reported a fight at Henderson Library.

February 24, 1995

•Leonard Inzirilla reported some keys missing from Henderson Library.

Statesboro Police Department

February 27, 1995

•Paul Gregory Marks, 21, of Vidalia, was charged with forgery and theft by taking.
 •Robert Bryan Moore, 20, of Lawrenceville, was charged with possession and discharge of fireworks.
 •Marnee Ann Allen, 18, of Olliff Hall, reported her keys were stolen from Legends Bar.

February 26, 1995

•Jo Mindy Walck, 17, of Hesperus, Colo., was charged with shoplifting and giving false information to a police officer.
 •A case of aggravated assault and criminal trespass was reported on Pitt-Moore Drive.

Bulloch County Sheriff's Office

No Reports Filed

ANNOUNCEMENTS

Things to do at GSU

Today, March 2

•The Center for International Studies presents "Quebec and Canada: Nation Building to the North?" Marc Boucher, director of the Quebec government office in Atlanta, will head the discussion at 2 p.m. in the Russell Union room 280. All interested individuals are invited to attend.

•There will be a faculty recital at the Foy Recital Hall beginning at 8 p.m. It will feature trumpeter Bill Schmidt and Michael Braz. For information, contact the music department at 681-5396.

Saturday, March 4

•Visitation Day will be held at GSU.

•The Saturday Family Workshop Series: B. and P. McLean, "Sights and Sounds of the Rain forest" will be held at the GSU Museum. It is part of the Saturday series.

Monday, March 6

•The Statesboro-GSU Symphony will perform in the Russell Union Ballroom at 8 p.m. It is free for students.

•A lecture on "Multicultural Classrooms" will be given at 7:30 p.m. in the Conference Center Auditorium. For more information, contact the Campus Life Enrichment Committee Office at 681-0830.

Tuesday, March 7

•CLEC will present "Dancetime" at the Russell Union Ballroom at 8 p.m. General admission tickets will be available, while they last, two weeks prior to the event. Students, faculty and staff will be allowed one free ticket for the event upon presentation of valid GSU ID. Persons without tickets and CLEC season ticket patrons will be guaranteed seating for the performance up until 10 minutes prior to the start. For more information, contact the CLEC Office at 681-0830.

ON CAMPUS

Fraternity sponsors soccer tournament

By Stephen Kirven
Staff Writer

GSU's Pi Kappa Alpha fraternity will host the first annual Holland Cup soccer tournament on May 5-7. The tournament will consist of 16 to 20 men teams approximately six women teams. Teams from Florida, South Carolina and all over Georgia will participate in the three-day event.

Before April 11, the cost to enter will be \$80 a team, between April 12 and 23, the cost is \$100, and between the April 24 and May 1, the cost is \$120. No

registrations will be accepted after May 1.

Included in the entry fee are plastic cups for all participants, trophies, T-Shirts for the winners, and a band party on Saturday night. There is a three-game guarantee.

Part of the money raised will go to Special Olympics, the charity of PKA.

"We are going to make a large donation of approximately \$1,000 to the local Special Olympics," said Marc Herrick, a member of the Pi Kappa Alpha.

THE GEORGE-ANNE

STATEMENT OF OPERATIONS

The George-Anne is the official student newspaper of Georgia Southern University, owned and operated by GSU students and utilizing the facilities provided by GSU. The newspaper is the oldest continuously published weekly newspaper in Bulloch County and Statesboro, Ga. The ideas expressed herein are those of the editor or the individual authors and do not necessarily represent the views of the Student Media Committee, the administration, the faculty and staff of Georgia Southern University, or the University System of Georgia. The George-Anne is published twice weekly during the academic year and three times during summers. Any questions regarding content should be directed to the editor (681-5246).

OFFICES, MAIL, PHONES

Room 223, F. I. Williams Center. The George-Anne, Landrum Center Box 8001, Georgia Southern University, Statesboro, Ga. 30460. 912/681-5246 (News) or 912/618-5418 (Advertising) or by fax 912/671-1357.

ADVERTISING INFORMATION

The George-Anne reserves the right to refuse any advertisement. The George-Anne's advertising rates are as follows:

•Students and student groups:	\$2.50 per column inch
•GSU faculty, departments or affiliates:	\$3.00 per column inch
•Statesboro area businesses & groups:	\$4.50 per column inch*
•National rate:	\$7.00 per column inch

*Five inch minimum ad size, otherwise classified display rates (\$5.00 per column inch) apply.

DEADLINE: The deadline for reserving space and submitting advertising copy is Noon, one-week prior to the intended publication date. For more information, rate cards, sample publications, contact: Brooks Clements, Advertising Manager, ADS, (912) 681-5418; or Bill Neville, Student Publications Coordinator, (912) 681-0069.

CLASSIFIED ADVERTISING INFORMATION

The George-Anne reserves the right to refuse any advertisement. The George-Anne's classified advertising rates are as follows:

•Students, student groups, faculty and departments:	Free (25 words or less)
•Others groups or businesses:	10¢ per word per edition (\$5.00 minimum)
•Retail classified display:	\$5.00 per column inch

DEADLINE: The deadline for reserving space and submitting classified advertising copy is Noon, one-week prior to the intended publication date. Free classified ads from students, faculty and staff must be submitted in writing, with the name of the sender and local address. No free ads taken via telephone. One free ad per person per week.

CIRCULATION INFORMATION

Subscription rates for home delivery of The George-Anne are six dollars per quarter, or \$18 per year, delivered bulk mail. Please address all inquiries to Stephanie Wylie, Business Manager. The George-Anne is distributed free of charge on the Georgia Southern University campus through delivery sites located in campus buildings and residence halls.

*We gratefully acknowledge the theft of our slogan from Robert Williams of the Blackshear Times. Call Bob and he can tell you who he stole it from originally.

The G-A Mailbag

From our home offices in Loris, SC.

•Evans County public fishing area opens

The Evans County Public Fishing Area will open Wednesday, March 1. The area is located 3.5 miles East of Daisy in Evans County just South of U.S. Highway 280. The area will be open seven days a week from sunrise to sunset.

All fisherman 16 years of age or older, except honorary fishing license holders, must have on their persons a valid Wildlife Management Area stamp which must be in addition to their regular sport fishing license or a One-Day Resident/Non-Resident Fishing License. No license or permits will be sold at the area.

It shall be unlawful to take largemouth bass less than 14 inches in total length.

Boats with electric motors may be used, however gasoline motors may not be used. Minnows may be used as bait in the 84 and 30 acre lakes. Other regulations may be posted.

•Sports Illustrated gives freebies

Daytona Beach, Fla.- Ask the average college student to describe spring break and he or she may mention something about the beach, the sun, nightclubs and meeting members of the opposite sex. However, this year, students traveling to Daytona Beach for spring break may have something dynamic and some what different to add to their definition: *Sports Illustrated*.

In addition to the standard sun and fun activities of Spring Break, vacationing students can don padded suits for a sumo wrestling match, take out opponents in a jousting match, get stuck in an obstacle course or pick up free samples and product information from the *Sports Illustrated* Beach Club in Daytona Beach March 13-18 and March 20-23.

•National Lawn Care Month

Marietta- As winter's chill and drab colors recede, among the first plants to reflect the hues of spring are lawn grasses. To celebrate the arrival of spring and the nation's focus on outdoor activities, the Professional Lawn Care Association of America has designated April as National Lawn Care Month.

According to PLCAA, the North American lawn care season officially starts in April when more than 25 million acres of lawns are turning green just about everywhere.

Facing an Alcohol or Drug Offense?
We can help.

Call today for an appointment.

- Confidential Alcohol/Drug Assessments
- Alcohol/Drug Education
- Outpatient Counseling
- Flexible Counseling Hours for Students

Willingway
Outpatient311 Jones Mill Road • Statesboro, GA 30458
764-6236

tion, contact the CLEC Office at 681-0830.

•The Cinema Arts Program will show "A Street Car Named Desire" at 4:45 p.m. and 7 p.m. in the Russell Union Theater. For ticket prices or other information, contact the English Department at 681-5471.

Thursday, March 9

•There will be a Jazz Ensemble with trumpeter Bobby Shew at 8 p.m. in the Russell Union Ballroom. The show will be free for students. For more information, contact the music department at 681-5396.

•A Group Exhibit will be shown in the Foy Fine Arts Building, room 303, located on the third floor. It will be on display through March 31. There will be a reception today from noon-1 p.m. The gallery will be open from 9 a.m. - 5 p.m. on weekdays, and admission is free.



WHITE WATER and AMERICAN ADVENTURES invite you to our JOB FAIR on
March 4th from 10-4 and
March 5th from 12-4
Hiring for all departments and positions including:
+ Aquatics + Security
+ Foods + Merchandise
+ Customer Services
+ And more...
Competitive Pay and Benefits

Lee's Restaurant

Featuring:

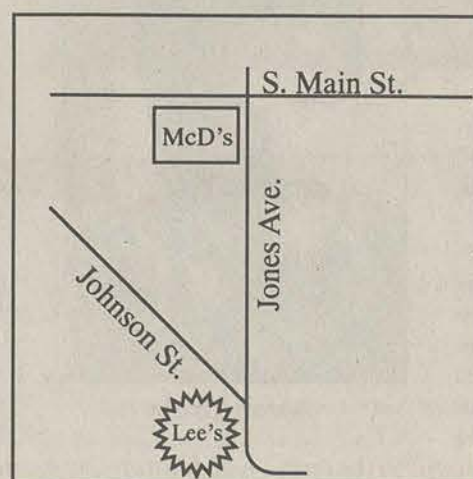
Fried Chicken
 Baked Chicken
 Smothered Steak
 Meat Loaf
 Stewbeef
 Oxtails
 Beef Liver
 Teriyaki Chicken
 Bar-B-Q Chicken

Candied Yams

Blackeye Peas
 Sweet Peas
 Cabbage
 Cut Beans
 Lima's
 White Potatoes
 Dressing
 Broccoli & Cheese
 Macaroni & Cheese

Dine-In Location: 458 W. Jones Ave.

Mon-Sat. 7:30am-9pm



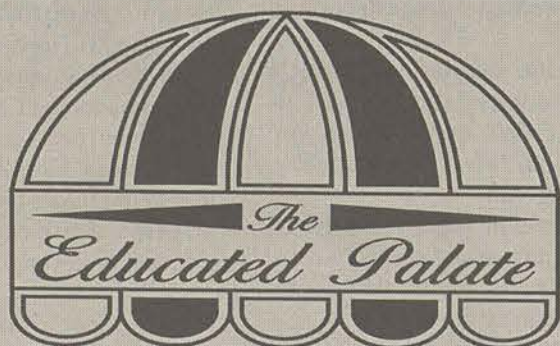
H. Way 67 ➔ 301 N
 ➔ Towards downtown
 ➔ Left at McDonalds
 ➔ Thru 4 way stop
 ➔ Cross R.R. Tracks
 ➔ Right hand side.

Pick-Up Location: (Next to Fitness Extension)

Mon-Fri. 11am-9pm

871-4384

* Discounted Prices on All Items.



Special This Week

Shrimp & Angel Hair Casserole

Shrimp, Cheese & Salsa

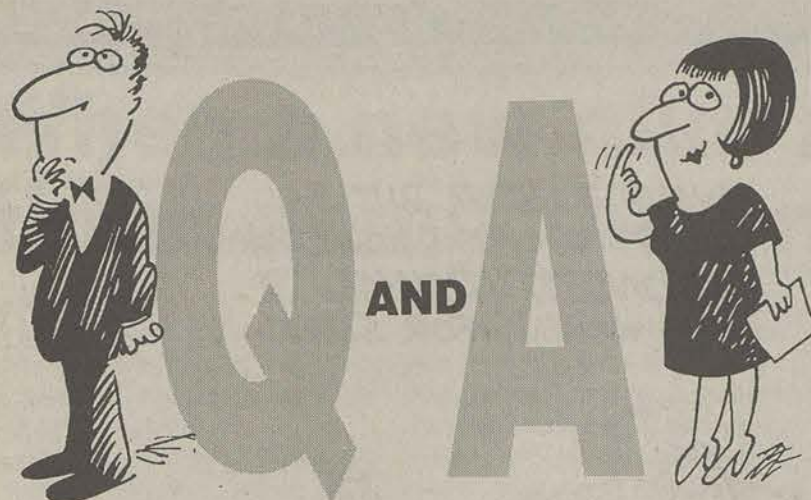
\$4.95

Check for our weekly Specials.

Check out our office delivery service 11-2:00 M-F

Lunch 11-2:30 Dinner 5-8:00

Call 681-5303



All You Need to Know about GSU

Q: Has our football team ever played outside of the United States?

A: No, but yes. Since the program was resurrected in 1982 it has never played outside of the country, but the Georgia Teacher's College team of 1939 did. They traveled to Havana, Cuba, and beat the University of Havana.

Well, here's your big chance. Ask us what you want to know, and we'll do our journalistic best to dig up some answers. Send your questions to "Q&A" at L.B. 8001, or come by Williams Center room 223. You could even FAX it to us at 871-1357. After all, the only stupid question is the one that wasn't asked.

IN GEORGIA

Senator announces plans for Presidency

The Associated Press

COLUMBUS, Ga. — With Georgia supporters cheering wildly, Republican Sen. Phil Gramm returned to the school where he failed three grades to open his 1996 presidential bid.

Standing in front of the Wynnton Elementary School, where he flunked the third grade, Gramm discussed his position on taxes, crime and the federal deficit.

"We are just one victory away from getting our country back and that victory is defeating Bill Clinton in 1996," he said.

Gramm said his childhood here helped shape his views and taught him that the United States is a country of opportunity.

He spoke of flunking the third, seventh and ninth grades and going on to earn a doctorate in economics because "in the America we grew up in, mothers' dreams did not die easily." His 81-year-old mother, Florence, nodded as Gramm spoke.

About 1,000 supporters gathered on the school's grassy lawn for the announcement, which came after an announcement in his home state of Texas.

A teacher told his mother that he'd never get a high school diploma, Gramm said.

"I'm very happy to be back at Wynnton School," he said. "What I learned here is that there's always a second chance in America."

Gramm later won support from Sen. Paul Coverdell, R-Ga., who called him "an instrument of change for our nation."

Francis Douglas, a 62-year-

old military retiree, said he supports Gramm because of his conservative views.

"I'm pro-life," Douglas said. "I'm concerned about the future of our country. The direction it's been going is not right."

Joyce Foree, waving a Gramm poster, attended the rally with her three children, Elaina, 10, Joshua, 3, and Allison, 1.

"I don't know much about him, but I'm going to study on it," she said. "I don't like Clinton. He hasn't done anything he said he was going to do."

Before Gramm arrived, the crowd chanted "Gramm for President" and waved signs reading, "We love Gramm" and "Vote for Phil." Then the Wynnton School band, a couple of dozen 10-to-12-year-olds on guitars, drums and violins, played the standard, "Stand By Me."

"Everything he said needs to be done and I believe he can do it," said Joseph Fuller, 21, a student at the University of Alabama-Birmingham.

"I was impressed," said Mike Pennington of Auburn University. "I agree with everything he said. He knows what he is doing and he's got what it takes."

The last George-Anne of the quarter is next Tuesday. We'll return on April 1. If you are interested in writing, come by the Williams Center, room 223 and fill out an application.

G-A SPOTLIGHT

•Professor discusses theory at lecture

Susan Baker, an assistant professor of English, discussed "Darwin, Einstein and You: The Implications of Creativity Theory for You and Your Students" in the Humanitas lecture.

•Consortium invites professor to join

Diane Hamilton, an assistant professor of health science education, has been invited to serve on the Georgia Prevention Credentialing Consortium. The state mandated committee is charged with developing criteria for prevention certification that are objective and inclusive of various ethnic and cultural groups.

•Sorority student given award

Natalie Nelson, a member of Zeta Tau Alpha at GSU, was named the outstanding senior out of all other senior members in Georgia. From Martinez, she has a cumulative 3.96 GPA. Among her honors: Dean's List, Phi Eta Sigma Honor Society and Order of Omega Greek Honor Society.

The George-Anne would like your help in order to recognize special people, organizations and activities on campus.

Anyone who would like to make suggestions for our G-A Spotlight feature may call Chris Sherwood, news editor, at 681-5246. Letters may also be sent to Landrum Box 8001.

IN GEORGIA

Mercer school paper convicted by council

The Associated Press

MACON, Ga. — Mercer University's student newspaper appealed its student judiciary council conviction for disorderly conduct.

Robert Twilley, editor-in-chief of *The Mercer Cluster*, said the appeal was filed Monday with J. Barry Jenkins, dean of student affairs.

He said the appeal cited two points: The council had no jurisdiction and it misused federal law.

The conviction followed the paper's publication of a story about a basketball player who

was cited for DUI and leaving the scene of an accident.

The council cited a federal law that prohibits the disclosure of a student's name who faces disciplinary action.

The council also cited university regulations that prohibit publication of a student's name.

Since the council's decision was handed down, Twilley said, newspaper officials have received a copy of a letter from the U.S. Department of Education which said the federal law used by the judicial council to convict the newspaper doesn't apply to student publications.



Cold Care Kits

available at the Health Center
through our

Cold Care **Express Lane**

- No long waits to see a physician
- Express Lane moves at high speeds
- No worries

Kits are now reduced from the normal \$6.00 to only \$3.00 while supplies last.

GEORGIA SOUTHERN UNIVERSITY

HEALTH SERVICES

681-5641



Experience embroidered apparel and monogramming that is out of this world. Create your own universe of personalized designs at Eagle Print Shop. Located across from Russell Union. "On The Loading Dock"

Phone: 681-5697

Fax: 681-0795

UNION PRODUCTIONS
GEORGIA SOUTHERN UNIVERSITY

Activities

March 8 Wed

Keep an eye on

Craig Anton

as he Stretches
the Boundaries
of Humor!

Showtime's
Funniest Person



Union Ballroom, 8pm

Spring Quarter

Union Productions
is Proud to Welcome

The Wailers

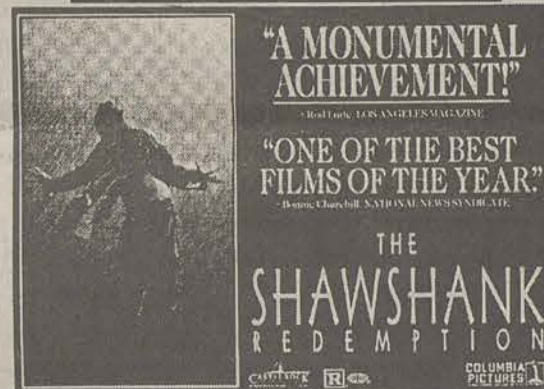
(Formerly Bob Marley and The Wailers)

For Reggae Fest 1995
Spring Quarter!

Movies

February 26 Sun & 27 Mon

March 1 Wed & 2 Thur



March 5 Sun, 6 Mon,
8 Wed & 9 Thur

Tom Hanks is
Forrest Gump



• 7:00 pm & 9:30 pm

Union Theatre

- \$1 with GSU Student ID
- \$2 General Admission

Coming Soon!

Aaron Tippin
Spring Quarter

Union Productions Committee
Interest Form

Yes! I want to be involved in Union Productions!
Here are the committees that I am interested in!!

Coffeehouse _____ Contemporary _____
Concerts _____ Issues _____
Films _____ Special Events _____

Name _____
Landrum Box _____
Local Phone _____

For more information on Union Productions
call 681-5442 or mail interest forms to L.B. 8066

Information Hotline

681-0461

Office 681-5442 • Union Productions
Landrum Box 8066 • Statesboro, Ga 30460

PARTY WITH OVER 500,000 SPRING BREAKERS Panama City Beach, FLORIDA

The Finest Beachfront Properties!
SUMMIT CONDOMINIUMS
AND
THE BOARDWALK BEACH
RESORT

Located next to Spinnaker
& Club La Vela
COMPLETE PACKAGES FROM:

\$159.00 Per Person

Includes daily beach parties,
evening club parties with
beverages, discounts and more.
Call now for details:

Theron 871-7607
Travel Associates

The leader in Student Ski
& Beach Tours since 1979
Member Panama City Beaches
Chamber of Commerce

Our Opinion

Minorities still the issue

The ties to a virtually all-white Forest Heights Country Club may have been officially knotted back together with a decision to allow the Southern Conference the right to hold their annual tournament on its 18-hole golf course, but the consequences of the move may be more detrimental than productive.

Concerns over GSU's involvement with the club surfaced in February 1990 when an application of a black GSU employee, reportedly Mike Backus, the former associate men's basketball coach, was denied club membership, based allegedly upon the color of his skin. At that time the GSU Faculty Senate cast a non-binding 45-2 vote to sever ties with the club. This was a school decision, but not an individual decision as faculty and staff continued to hold memberships to the private club.

The Chris Schenkel Invitational Collegiate Golf Tournament, which GSU co-sponsored with the club, was canceled less than a week later, with officials citing schedule problems. The tournament, which was founded in 1971 and considered one of the premier collegiate tournaments in the South, has not been played since.

GSU's severance of its relationship with the club was prompted by the U.S. Department of Education's 1992 ruling that the absence of minority members at the club offered no substantive evidence for change.

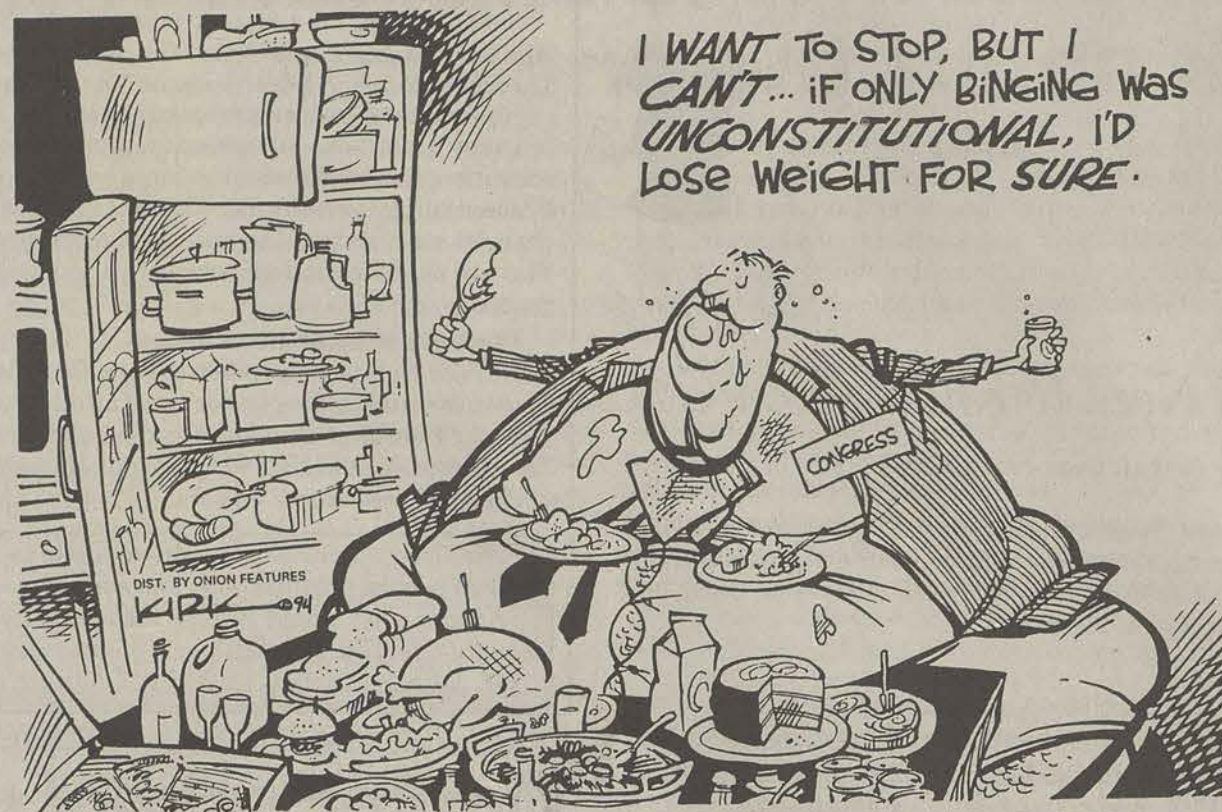
Then, during fall 1993, Clifford Lewis, the defensive line coach for the GSU football team, became the first minority member admitted into the club. Following his admittance, Lewis commented that someone had to be the first and he saw the move as an opportunity for Statesboro to close an unhappy chapter in its history. The admission helped the club erase some of the past allegations of discrimination. But in April 1994, Lewis decided to leave GSU to take a post at his alma mater, Southern Mississippi University.

Since Lewis' exit, no published reports of minority members have been noted. But there is still an outside chance at least one Asian member may still be a member if an undocumented report from May 1993 could be substantiated. At the same time, that person may have removed his or her name from the listing. The policy of the club is not to discuss membership because of its private club status, according to a club official.

Bringing the tournament to Statesboro and the school is a highly impressive advancement for our golf program and the community as a whole. It allows our South Georgia learning institution an opportunity to shine in the limelight among our conference counterparts. The Forest Heights Country Club golf course was acclaimed with a prestigious marking when the Conference Commissioner Wright Waters is impressed with the outfit. And, obviously since this is the first tournament ever hosted by GSU, it says a lot about our program that has qualified for the NCAA tournament 11 times since 1972.

But the question still remains. By playing at Forest Heights Country Club, with its despicable past, are we actually advancing in the right direction or are we taking a giant step backward to where we once were?

Even with the unbelievable stature this tournament will have for the area, we cannot and will not condone this act of blatant defiance of the past. We ask our athletic department, our administrators, our city and county leaders to take a stern, but objective look at what our school is doing to us.



THE BALANCED BUDGET AMENDMENT WONDER DIET FAD

Penis makes small town appearance

Entertainment.
Sometimes it is difficult to find it, but sometimes it comes right up to you.

Doing my usual 24-hour-a-day, seven-days-a-week job, I had the opportunity to read an article that I found extremely intriguing and rather darn funny.

In *The Berkeley Independent*, a weekly South Carolina newspaper in the small town of Moncks Corner, I noticed that a track team had to gasp for air and not because of exerting themselves on the oval rubber-conditioned track.

The headline read "Flasher bares his member to track team," while the subhead read "Parents say coach did not report crime to police soon enough." First of all, the "flasher" portion was very prominent. Second, "bares" is a good action verb. Third, the word "member" is not meant to be a team member, but instead a penis. Fourth, I was on the track team a while back when I was in high school, where I think I practiced with Jim Thorpe. Fifth, "parents" is always an authoritative word for a headline. Sixth, the "coach" has to be involved, if not no real story. Seventh, the phrase "did not report" means somebody screwed up. Eighth, "crime" is bad for the regular people, but good for journalists. Ninth, the "police" have to have some investigation going. Finally, "soon enough" means somebody was pretty slow or better yet, lackadaisical. In short, real good head and subhead.

The article notes that four female athletes were running to-

IN THE EDITOR'S OWN WORDS

ENOCH W. AUTRY



ward the Stratford High School track Valentine's Day when a man exposed his genitals to them.

According to the police report, the girls were returning to the school from a long practice on the hiker/biker trail and were about a mile from the high school when they saw a man standing near the trail with his back to them. When the runners got within 10 feet of the man, he turned and the girls saw that his pants were partially open and his penis exposed.

The girls left the trail and raced to the school to tell their coach, Lloyd Schlager, what happened. An assistant drove to the area to search for the man, but found no one.

Then it gets kind of screwy. Neither the coaches nor the girls' parents contacted the Goose Creek Police Department until the next day. On Feb. 15, a detective took statements from two of the young women at Stratford. The other two runners are students at College Park Middle School, the police interviewed them later.

The police got the normal description.

Both young women described a white man in his 20s, about six

feet tall, clean shaven, with a medium build and shoulder-length, dark brown, curly hair.

Well, the basic stuff is out of the way. So how about some unusual stuff.

One of the young women told police the flasher's penis was erect and about six to eight inches long and he had dark pubic hair. I am not an authority, nor do I want to be an authority on such topics, but that sure sounds like about 85 percent of the entire male race. Oh, well, I proceed to the next female's statement.

The other girl recalled the man wore gray slacks, but she could not recall whether his penis was erect or flaccid. However she said he had his hand on his penis.

Time for police comments. The Goose Creek Police Chief said over the past year his department has received two or three complaints of a flasher in Crowfield, but he does not know if any of the incidents are related.

"We take the complaints very seriously and investigate them to our fullest extent. This is the first time we have gotten a detailed description of a suspect," said Chief Harvey Becker.

The coach's delay in reporting

the incident has prompted outrage on at least one parent's part.

"The coaches did not call the cops and they didn't even call the girls' parents. They didn't even report it to school authorities until the next morning," said an unidentified parent.

The parent also accused Schlager of teasing the girls about the incident and making insensitive remarks to them at the next day's practice.

"My daughter said he told them 'If you see our perverted friend out there, just wave and keep going,'" he said.

Indecent exposure is a misdemeanor and may be punished upon conviction with a fine up to \$760 or 30 days in jail according to Goose Creek city ordinances.

Has even the small towns gone penis crazy? Of course, there was that Lorena - John Wayne thing, but that is old.

This South Carolina article ran on page one. It wasn't the lead story, but it was on page one. This preempted an article entitled "Search for fisherman ends after 31 days" — a body was found after he had been thrown overboard when a steering cable snapped. I'll give them the benefit of the doubt and guess they must have covered the first 30 days like maniacs.

This article had its funny moments, tragic moments, suspenseful moments and downright kooky moments, but the penis issue has been taken a little far.

Did anyone ever think the guy might have just been urinating on the roadside?

Empathize with him, but remember his mistake

BETWEEN THE LINES

JOHN MUNFORD

The best of athletes exhibit heroic qualities: desire, competitiveness and most of all courage — the ability to stand up to adversity.

He was the hero then, epitomizing the very essence of a successful athlete.

He exhibited charm, grace and courage.

He was quick to flash a warm smile while America watched him win the gold medal in the 1988 Olympics, as he came back from a nasty head injury which occurred during the springboard competition.

He was the hero. Now, he has proven that he is human.

I admire the man who takes the risk of suffering public persecution (because of his admitted homosexuality) to further educate and inform the public.

He's written a book entitled "Breaking the Surface."

He's going on a publicity tour — all to promote AIDS awareness.

But there are risks Olympic diver Greg Louganis took earlier in his life, risks to keep secrets... risks that endangered others.

Louganis knew he was HIV-

positive before the '88 Olympics, before his skull crashed into that concrete diving platform. He bled into the pool with full knowledge that his blood carried the HIV virus. A doctor immediately stitched him up without wearing latex protective gloves. Yet Louganis told no one, beyond his coach and his personal doctor, who both already knew his secret and encouraged him not to tell anyone.

Louganis said in an interview with Barbara Walters on "20/20" that he was afraid if anyone knew his secret, it would send the '88 Olympics into a "state of alarm."

Secrets such as these can be very dangerous. By not disclosing his condition to the doctor, Louganis put the doctor's life at risk. No one in the medical community is absolutely certain about all the attributes of the HIV virus. They do know the

disease is spread via contact with HIV-contaminated blood.

Experts say the other divers were not at risk because of the chlorine in the water, which kills the virus. Also, the blood was diluted by the other thousands of gallons of water that floated in the pool.

But that poor doctor. He recently passed an AIDS test, but his life was placed in a compromising position. And just imagine the emotional agony he went through waiting for the results of that test. All because Louganis wanted to keep a secret.

No doubt this will spur further debate over whether those with AIDS or the HIV virus should be required by law to disclose their illness. It has the makings of a classic U.S. Supreme Court battle: one person's right to privacy versus the other's right to be protected from con-

tamination. But there is more to the story here. Louganis should be cheered for his courage to stand up and admit his wrongdoing. He should be cheered for his efforts to show that AIDS, HIV and homosexuality are more commonplace than most people realize. Most of all, Louganis should be cheered on for the battle that lies ahead of him: the battle for life is more important than any medal he's ever won.

He will need every whoop, holler and wave that is sent his way.

Greg Louganis, the hero, proved he was human by selfishly keeping a secret to protect himself. Moreover, he has proven that HIV and AIDS affect real, live human beings. He serves as a great example by thrusting himself in the media spotlight to promote awareness of the mysterious affliction.

But the fact he endangered another human's life should not be lost in the media spotlight. The public should empathize for him, but remember his mistake — if only to prevent a similar mistake from occurring again.

STAFF

NEWS

Copy Editors: John Kluttz; Anna Murdock; Layout Editor: Mandy Crews; Assistant News Editor: John Munford; Senior Staff Writer: Kim Wagner; Staff: Jan Boulware, Sharon Grier, Stacy Jordan, Jana Mobley, Ayana Thomas, Melanie Weinberg, Meredith Whitt

FEATURES

Features Editor: Ashley Hunt; Arts & Entertainment Editor: Josh Bass; Senior Staff Writer: Derek Lewis; Staff: Erika Anderson, Maggie Bedient, Eric Bray, Stacy Clemons, Mandi Cody, Judith Cunningham, Kwaseera Dixie, Suneae Euell, Chris Hall, James Salter, Tijuana Thomas

SPORTS

Sports Editor: Jeff Whitten; Senior Staff Writer: Ronnie Swinford; Staff: Scott Cullen, Tonya Hilton, Aaron Solomon, Carolyn Wynn

OPINIONS

Staff: Josh Bass, Christopher Cole, Julie Collins, Ashley Hunt, Derek Lewis, John Munford, Jana Newsome, Amy Staats

PHOTOGRAPHY

Chief Photographer: James Hill; Staff: Elizabeth Hayes, Holly McCaig, Jerome New; Contributing Photographers: Mardee Coyle, Michelle Hess, Randy Trujillo

ARTWORK

Leigh Braddy, Teth Burns, Shawn Chavis, Adam Nelson, Anna Murdock, Michelle Underwood

CIRCULATION

Supervisor: Steve Taliaferro; Staff: David Hillis, Bruce Karr, Scott Newton

ADVERTISING/DISTRIBUTION SERVICES (ADS)

Advertising Manager: Brooks Clements; Business Manager: Stephanie Wylie; Marketing Coordinators: Leigh Braddy, Jana Mobley; Sales Representatives: Melissa Goodman, Steve Keller, James Salter, Heather Turner, Michelle Underwood, Carolyn Wynn

PRODUCTION AND GRAPHICS EDITORIAL SERVICES (PAGES)

Production Managers: Ron Lair, Scott Mulkey; Staff: David Beck, Aquila Bookhart, Tamara Gilbert, Mitch Mitchell, Shawn Sunderland; Classified Ads Manager: Melissa Goodman; Darkroom Manager: Randy Trujillo

STUDENT PUBLICATIONS COORDINATOR

Robert Bohler: News, Editorial Advisor; Bill Neville: General Manager

In Your Opinion

When a new club appears, think about the ones lost

Dear Editor,

I have been going to school on and off for six years at GSU and in general, Statesboro nightlife has become pathetic.

At the end of February, Chena's Cantina, home of a small, loud, but fun place to see a live band closed its doors. I used to work at Chena's and this hit me hard, not only because I lost my job, but now there is just one less place to go in this town for entertainment. The main point of this letter is not to complain about losing my job, but

instead to say that just like when the Rockin' Eagle closed its doors, people and students alike are going to start complaining about "having nothing to do" and "gosh, it sure does stink that Chena's closed" when these are the same exact people who never supported the damn place. I like to go out and party just as much as the next person. Paying \$3 for as much as you can consume is fun but think about it, why not just wait have the party later and go out, support music and clubs in town and maybe, just maybe

more things will start happening here because people will actually want to come to Statesboro.

In any case, I hope everybody who enjoyed having the Eagle or Chena's around will think about this and when the next club rolls into town; go check it out and show the band and club that we, as students, support places in town, otherwise there will be nothing left!

Aaron Klein
senior, communications arts (radio)

Nice guys do indeed finish last

Dear Editor,

I'm writing in response to Ms. Collins' column in the Feb. 2 issue of *The George-Anne*. The column was entitled "Looking for that special someone? Me too."

I can't believe how blind you are. You ask a question that takes you only three paragraphs in your column to answer. Where are all the nice guys? They are your friends. I don't know the relationship status of the friends you mention in your article. They may have girlfriends and therefore off the "market." However, generally many nice guys are friends of women who are looking for nice guys. Sound ironic?

Nice guys generally believe that friendship is a good foundation to a lasting relationship. However, friendship usually becomes a foundation for an even longer, lasting friendship. The nice guy is forever doomed to be "just friends." The girl sees qualities in the nice guy that she would like to find in a man; but, she no longer sees the nice guy as a man. He has become her confidant, her FRIEND. She can no longer see the nice guy as a potential love interest because she "doesn't think of him in that way." The girl will usually assign a family-like relationship to the nice guy; he is like a brother.

On the dating scene the kind and gentle qualities of your two friends become a liability. The nice guy does indeed finish last. Your friends may be the exception; but, that's the rule. The gesture of opening the door for you at your English class by the nice guy is quickly forgotten when the guy in the bar asks in his animal-like way, "Hey baby, do you want I should buy you another beer?" Many of the nice traits of your friends are not easily found on the dance floor; but maybe, a little closer to home.

Jack Finney
a nice guy

Dining & Entertainment Guide

Found Exclusively in The George-Anne's Gold Edition • Thursday, February 9, 1995

Legends Bar & Grill

Old Register Road
871-5349

Thur - GSU Nite with Tripp
Fri - Kinchafoonee Cowboys call for specials

Wed March 8 - Allgood - \$7
Fri March 10 - Swingin Medallions - \$5
Wed April 5 - .38 Special

Buffalo's Cafe

Lanier Drive
681-3030

Thurs - Ladies Night - 25¢ Wings - Bring Your Change
Fri - New Found Daze
Sat - PC & Burke - Bring Your Change
Sun - 25¢ Wings - Kids Eat FREE
Mon - Kids Eat FREE
Tues - Bash Night with Mayhem Blues
Wed - Bring your Change

The Country Club

Hwy 301 S.
681-9000

Tues. Pool Tournament
Wed. No Cover & More!
Thurs. Ladies Night and Mechanical Bull
Fri. & Sat. Call for details

Cinema 9 Mugs & Movies

Statesboro Mall
489-4492

Tuesday	Thursday
Ladies Night	Wing It!
1/2 Price	25¢ Buffalo Wings

Franklin's

Hwy 301 N.
764-2316

One pound channel catfish dinner
with choice of potato or vegetable and salad bar
\$7⁹⁵

March 2 - March 30

Pizza Inn

711 S. Main
681-9066

Nightly Grill Specials - Call For Details
March Managers Special:
Large Specialty Pizza for **\$10⁹⁹**
Good for Dine In • Pick Up • Delivery

Y-Drive

871-5693



Get on
All Night
for the
BAR-HOP - \$3

Vandy's

Statesboro Mall
764-3033

Pit Cooked BBQ Since 1929
Best Chicken Fingers in Town
Daily Specials
Ribs on Tuesdays

Catering Service Available
22 W. Vine St. & Statesboro Mall
764-2444 764-3033

Video Warehouse

120 Northside Dr. E
489-4279

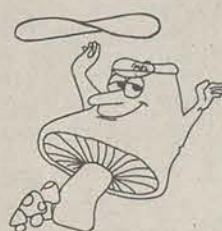
FREE Membership

Sun. - Thurs. 8:30 - 11 pm • Fri. & Sat. 8:30 - Midnight

NOW SHOWING:
The Lion King

Previously Viewed
Movies and used
Video Games for Sale

Mellow Mushroom

#6 University Plaza
681-8788

98% Fat Free
Call For Specials
and Band Info!



Seasons on the line

Eagles and Lady Eagles going for SoCon titles this week. Read all about it in G-A Sports.



THE SPECTATOR

JEFF WHITTEN

Payback time

(Note: The George-Anne does not encourage or like what I'm about to do, period.)

The sports editor of *The Eagle* is a guy named Scott Garner, who also suddenly popped up and called himself T. Scott Garner on the pages of *The Miscellany*.

T? What does it stand for and where'd it come from? Is it an initial or the whole thing?

T. You think you get used to a guy, reading his stuff all year and then you see a T in front of his name in another publication and you can't help but wonder what in hell it might stand for.

Theodore? Talmadge? Twinkletoes? Toby?

That's it. Garner's first name is Toby.

Which raises the question of what's wrong with a name like Toby — hell, lots of labrador retrievers like it — or why Garner never used a T in front of his name on the sports page.

HE COULD BE TWO GUYS AT ONE TIME (A SPLIT PERSONALITY DISORDER), WHICH WOULD EXPLAIN LOTS OF STUFF, LIKE THE TIME I SAW HIM IN A SKIRT TALKING TO SAILORS.

Maybe T. Scott Garner, Sports Editor, wasn't macho enough.

Imagine Garner approaching an athlete for an interview:

Garner: Hi, I'm T. Scott Garner, Sports Editor for the Eagle and if you could sum up this season in for our five nice cliches for me and then....

Athlete: Huh?

Garner: Huh?

Athlete: I said, huh?

Garner: I know you said, huh?

Athlete: Yup.

Garner: Huh?

Athlete: What'd you say your name was?

Garner: When?

Athlete: Just now.

Garner: (sticking out his hand) T. Scott....

Athlete: (starts to giggle) You get married or something? Was plain Scott your maiden name? (can't stop giggling) Man you should be smoking a pipe and wearing turtle necks (shakes his head) and writing books about Lassie the dog. T. Scott...man, give me a break. Go interview some playwright or something and leave me alone. Where's Whitten. I know that guy ain't gonna up and change names on somebody.

But. Garner could be two guys at one time (a split personality disorder), which would explain lots of stuff, like the time I saw him in a skirt talking to a couple of sailors.

Or there could be two Garners who look a lot alike skulking around campus trying to avoid one another.

It would be funny if it weren't so sinister. One Garner is more than enough.

(Garner, I wrote this column sober.

Told you I'd get you back. Your turn to buy the beer.)

GSU can't stop Marshall

By Jeff Whitten
Sports Editor

The regular season is over. Somebody call an ambulance.

In what was the last regular season contest for both teams, Marshall outscored GSU 17 - 2 in the opening minutes of the second half and went on to an 83 - 63 win over the injury-plagued Eagles Monday night in Hanner Fieldhouse.

Earlier this season Marshall handed GSU its worst loss in 14 years by beating the Eagles 103 - 53 in Huntington, W.Va.

This time GSU — with only two healthy players on the bench — managed to keep it close until Marshall broke the game open in the second half, and the game was over.

One of our problems has been when somebody's getting a run on us. We can turn a 6-0 run into a 12-0 run in a minute, because we will not regroup," said head coach Doug Durham. "They punched us out in the second half, and the game was over."

If the game was a punchout, then Marshall senior Malik Hightower had the biggest fist. The 6-5 guard scored a season-high 28 points and almost single-handedly ended GSU's hopes of winning by scoring 11 of Marshall's 17 points during the Thundering Herd's game breaking run.

Hightower hit five of six 3-pointers, and had four slam-dunks in the game. One dunk, in particular, defied the laws of gravity and brought the sparse crowd of 1,257 in Hanner Fieldhouse to their feet. GSU drew just 18,276 fans in 11 home games this season, an average of 1,662 fans a game.

Those in attendance saw one of the top players in the Southern Conference.

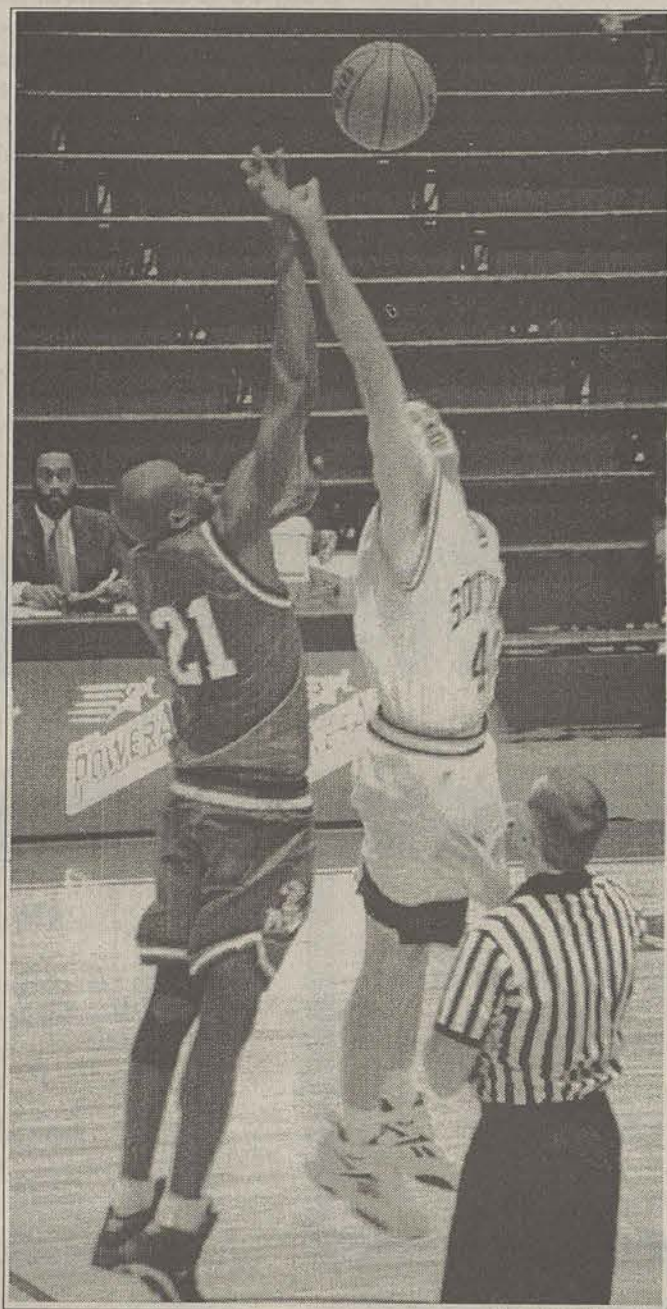
"Hightower's one of those players I like to watch if I'm in the stands," point guard Lonnie Edwards said. "I mean, he's a great player to watch, but he was doing that to us."

Edwards led GSU in scoring with 21 points.

"I thought Lonnie did really good," Durham said. "He's a player."

Forward Emmanuel Christophe had 12 rebounds to lead the Eagles, and reserves Dave Coradini and Brian Wallace scored eight and five points respectively.

"Dave Coradini made me look like an idiot,



Marshall's Curtis Raymond and GSU's Dave Coradini fight for a rebound Monday night in Hanner.

because he should be playing," Durham said. "He did a nice job."

Coradini played a season-high 19 minutes against Marshall. He had been averaging three minutes of playing time a game this season.

GSU ended the regular season with a 7 - 19 record (3 - 11 in the conference). Marshall finished 18 - 8 (10 - 4 in the conference).

SoCon hoops: GSU opens tonight vs. VMI

By Jeff Whitten
Sports Editor

The men's basketball team begins its quest for the Southern Conference tournament championship, and an automatic bid to the 64-team NCAA playoffs, when it squares off tonight against the Virginia Military Institute in Asheville, N.C. The game begins at 7 p.m.

Advancing in the SoCon tournament won't be easy. Injuries and inconsistent play have dogged GSU throughout the 1994-95 season.

The latest blow to GSU's tournament hopes came when it was announced that senior forward Wilson Winters will not play the rest of the season after tearing cartilage in his knee during practice Feb 24. Winters, who did not play against Marshall on Monday night, was among the team leaders in scoring (11.3 ppg) and rebounding (6.8 rpg).

Point guard Lonnie Edwards said Winters will be missed. "That was a big let down," Edwards said, referring to Winters' injury. "We need everybody on this team. We don't have a Jordan, we're a team."

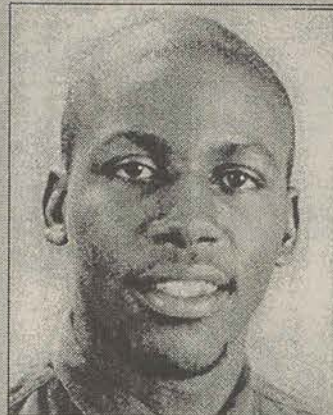
Edwards said Winters' injury meant the rest of the team will have to "pick up their games" in order for the Eagles to do well against VMI.

Also among the missing in action during Monday night's game was senior forward Kim Brown, who reaggavated an

ankle injury but will play in the tournament.

"Kim Brown will play because he does not want not to play," said head coach Doug Durham. "He's in a lot of pain. He's broken the same foot twice before, and sprained that ankle three times this year. He'll play because he's a warrior."

Junior forward Pierre McKisic, GSU's leading rebounder (6.9 rpg) and shot blocker (12), missed the game after being suspended by Durham for breaking team rules. Durham said there was a small chance McKisic could play in the tournament.



Lonnie Edwards

Despite the disappointing regular season, Edwards remains upbeat about GSU's postseason chances.

"We had a lot of bad breaks," Edwards said. "If we go there and play hard as we can, then win or lose this is all about giving it your all. But if we give it our all, we can be victorious in a couple of games."

The sophomore said he learned through adversity.

"There were a lot of things to learn from this season," he said. "Positives don't come one after another after another. I think as a group we handled this year pretty well considering the circumstances."

Edwards refused to name a tournament favorite.

"If we win, maybe we'll be called the best team," he said.

SOFTBALL

GSU splits twin bill with Owls

By Ronnie Swinford
Senior Staff Writer

The Lady Eagles split a non-conference double-header against Division II power Kennesaw State Monday afternoon at the softball complex.

The Lady Eagles won the first game 4 - 0 behind pitcher Vanessa Fawcett's two-hit shut-out.

All the offense the Lady Eagles would need came in the fifth inning when they used a lead-off walk by Tonya Whitted, a bunt by Missy Boyd and an RBI double by Kiersten Somerlot to go up 1 - 0.

In the next inning the Lady Eagles again took advantage of an Owl's miscue.

Karen Petit led off the sixth

inning and was hit by a pitch, then stole second. Whitted walked with two outs, then Missy Boyd singled in Petit. Somerlot followed with her second double of the game to drove in both Whitted and Boyd.

The second game was a little different. In the opening inning Kennesaw State benefited from a questionable call. With a runner on first, Kennesaw State's Cara Dornstauder hit a ball to deep right field. Lady Eagle rightfielder Debbie Hensley caught the ball, but fell over the temporary fence. As she tried to get up the ball fell out of her glove. The umpire still called it a homerun. That call apparently shook up freshman pitcher Mandi Dunn.

The defense then hurt her when, with two outs in the second inning and a runner on third, they could not produce an out without allowing a run.

Kennesaw State scored in the fourth inning and again in the fifth inning to increase their lead to 5-0.

In the sixth Fawcett came in for the Lady Eagles and shut down Kennesaw State.

The Lady Eagles' lone score came in the seventh inning. Debbie Hensley singled, then stole second and got to third on a passed ball. A sacrifice fly by Sheri Russo drove in Hensley.

"We played well in the first game," said head coach Kelly Kirkland. "We just have to learn to play both games."

GOLF

Eagles tee off in March

By Mark Harrington
Staff Writer

Under the guidance of first-year coach Drew Pittman, GSU's golf team is ready to perform well in the spring season. Pittman is also the assistant pro at Southern Links and a former GSU golfer.

GSU finished fourth in the Southern Conference last season and missed the NCAA finals. Pittman said the team hoped to make the finals this year.

The golf team will be competing in seven tournaments all over the East this season, including the Southern Conference Tournament at Forest Heights in Statesboro on April 10 and 11.

The teams that will be coming to Statesboro include East Tennessee State, Furman, The Citadel and Western Carolina.

"East Tennessee State will be our toughest opponent this year," Pittman said.

The team carries 12 players. In tournaments, five players compete against other five from the other schools, and the best four scores from each team count.

JUCO transfer Greg Green Jr. is GSU's top golfer. Green, a

junior from Sydney, Australia, started playing golf for fun at the age of eight and seriously took up the game at 13.

"Golf is pretty much played on your own time in Sydney," Green said. "There was only one high school tournament and we organized it on our own."

Last season Green placed third in the Middle Tennessee State tournament, ninth in the Duke Tournament and sixth in the Old Dominion Tournament. The team will be counting on Green to keep shooting low scores in the spring tournaments.

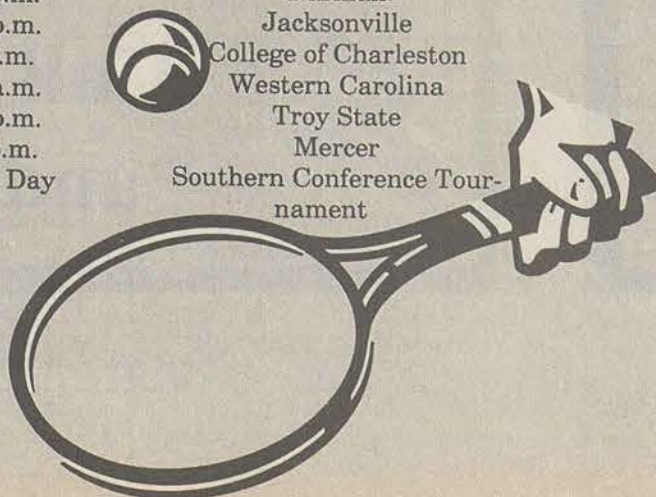
Other team members are senior Bill Knight, juniors Shawn Hodge, Henric Warholm, Neil Gibson and Scott Johnson; sophomore Jamie Maguire, and freshmen Jason Bennett, Tim Passmore and Rich Taylor.

1995 Spring Schedule: Florida Southern, March 3rd, 4th, and 5th; Fripp Island, March 10th, 11th, and 12th; Furman, March 24th, 25th, and 26th; Augusta College, April 1st and 2nd; Southern Conference (Statesboro), April 10th and 11th; and Virginia, April 28th, 29th, and 30th.

Women's Tennis 1995 Schedule

(Does not include matches already played)

Date/Time	Opponent	Site
Mar. 3/3:00 p.m.	Georgia Tech	Atlanta
Mar. 4/2:00 p.m.	Tennessee-Chattanooga	Chattanooga, TN
Mar. 7/2:00 p.m.	Marshall	Statesboro
Mar. 11/10:00 a.m.	East Carolina	Statesboro
Mar. 13/2:00 p.m.	East Tennessee State	Statesboro
Mar. 20/2:00 p.m.	Davidson	Davidson, NC
Mar. 21/2:30 p.m.	Appalachian State	Boone, NC
Mar. 22/2:30 p.m.	Furman	Greenville, NC
April 2/12:00 p.m.	Jacksonville	Statesboro
April 5/2:00 p.m.	College of Charleston	Charleston, SC
April 8/10:00 a.m.	Western Carolina	Statesboro
April 9/12:00 p.m.	Troy State	Statesboro
April 9/ 2:30 p.m.	Mercer	Statesboro
April 21-23/ All Day	Southern Conference Tournament	Davidson, NC



WOMEN'S BASKETBALL

Lady Eagles win by four

G-A Staff Reports

The GSU Lady Eagles basketball team edged Appalachian State 81 - 72 in Boone, N.C., Monday night in the final regular season game for both teams.

Appalachian State's Andrea Hinton led all scorers with 26 points. GSU's Andrea Autrey led the Lady Eagles with 18 points and 11 rebounds.

Tara Anderson hit on three of six 3-point attempts and finished with 17 point

GSU led at the half, 45 - 31, but ASU, behind Greg Green and

Mearet Artosalo, fought back in the second half. ASU outscored the Lady Eagles 46 - 34 in the final period.

Both teams shot 44-percent from the field in the game.

The Lady Eagles finished the regular season with a 15-11 record.

Note: GSU's opening round Southern Conference tournament game against Western Carolina was played last night in Hanner Fieldhouse, too late to make the deadline for this edition of *The George-Anne*.

THEATER REVIEW

Actors bring 'Dancing' to life

By Angela J. Cain
Staff Writer

"Dancing at Loughnasa" is a very conversational type play similar to Tennessee Williams' works. There are a wide range of personalities to keep clear and very quick dialogue, which is in an Irish dialect that sometimes makes it hard to understand if the actor is turned away from you.

This is certainly not a criticism of the play, on the contrary, the dialects, which were coached by GSU professor Donna Saunders, were extremely convincing.

So convincing, that I initially criticized actor Alex Boney on his Welsh accent as sounding Germanic, until someone corrected me by telling me that is how a Welsh accent is supposed to sound like. Mr. Boney, you have my apologies.

The appearance of the play is very accurate and real. The story takes place in the fictitious town of Ballybeg, Ireland in the late 1930s.

It is a true story of author Friel's family, so he was very specific on how he wanted the set and the costumes to look.

Costume designer Brenda Dartt made the characters plain enough to fit the time period and their economic status, but she also made them attractive enough whereas the audience can see their feminine potential in other circumstances. The Scene Shop did a wonderful job on an awkward set.

The play takes place in the family's kitchen and garden. Now if you've ever been to the Communication Arts Room 101, you know how difficult this would be and still have room for the audience.

The curved garden floor appeared very accessible and soft. We had to step on it to get to some of the seats, but I was surprised at how sturdy a garden can feel.

I must say what I enjoyed most about 'Loughnasa' was the characters themselves. I of course had read the play before I saw it in person and it felt like I was

seeing an entirely different family.

Don't get me wrong, the production crew did not alter the script in any way, but in my eyes the characters changed drastically. Due to either beautiful direction by Gary Dartt or the actors' insights into their own characters' lives.

There are five sisters in the Mundy family, an older brother, a son out of wedlock and the 'love-child's' long, lost father.

'LOUGHNASA' IS MOVING AND BEAUTIFUL TO WATCH AND LISTEN. THE CHARACTERS ARE BELIEVABLE AND LIKABLE BROUGHT TO LIFE BY THE SCRIPT AND THE ACTING OF A WONDERFUL ENSEMBLE CAST.

The eldest of the sisters is Kate, the typical school marm in every sense of the word. She is too hard on her family and herself. She worries about how the community thinks of them and is always trying hard to improve that opinion.

But Jacqueline Oglesby gives Kate such a tenderness that you find yourself feeling sorry for her in the end.

Reading the play I found myself judging her and thinking she was, in the words of one of the sisters, "a righteous bitch!" but Oglesby's performance reveals Kate's sacrifices for her family and also her girl-like whimsies that she'll only reveal in private.

Jennifer Bolt's portrayal of Margaret Mundy was exactly as I had envisioned—comic relief and more. You see that she keeps the family ties strong even when the others try their best to rip them apart. But Bolt's expressions in a scene in which she hears of an old friend returning

as beautiful as ever, married with children, which none of the Mundy women are except the youngest having the 'love-child', invite the audience into her heart. You'll love her character more and more with every scene.

Agnes was a character which I had honestly had not really thought about when I read it, but Kalee Embler changed my mind with her motherly tendencies towards her closest sister Rose and also her unseen expressions.

You'll begin to see Agnes as a woman of many secrets and dreams just through the subtle smiles and sometimes saddening frowns of Embler's talent.

The three male characters are very likable. Alex Boney's Gerry Evans, the father of Christina's son, in one of familiarity for most women. He says things will be different, but of course they never are and Boney's performance exemplifies these qualities beautifully.

Father Jack's story, flawlessly executed by Robert Meguiar, is one of such sadness and sympathy you'll find yourself wanting to help him in any way you can.

But the character of the seven year old boy Michael was portrayed discreetly—he wasn't. Not like you would expect anyway.

The play is narrated by Michael as an adult, played by Joseph Giddens, whom you'll swear is from Ireland himself with his accent.

He also provides the voice for young Michael. Giddens' expressions towards the characters of his aunts are extremely tender and loving. Especially when he is offstage, Giddens never loses that tenderness towards the women.

It's as if he is getting a chance to see and speak to his family as an adult and he wants to console them, but he can't.

'Loughnasa' is moving and beautiful to watch and listen. The characters are believable and likable brought to life by the script and the acting of a wonderful ensemble cast.

RELIGION

Coffee, country music and business loans available through new church programs

The Associated Press

LOGANVILLE, Ga.—Need a little bit of religion with your morning coffee? The Rev. William Tenny-Brittian may be the answer.

Every Monday morning, Tenny-Brittian heads to the parking lot of his small Loganville church, where he dispenses hot coffee and the Holy Word to commuters on U.S. 78 east of Atlanta.

For two hours starting at 5:30 a.m., the black-robed preacher waves at passing motorists, most of whom never stop. Those who do stop can get a cup of coffee and a blessing, then head off again.

Tenny-Brittian, 37, started greeting commuters last September. His roadside ministry is successful, he said, because people want their religion to apply to their everyday lives.

"People are more concerned about the here and now and not the hereafter," he said. "They want to hear something inspirational to help get them through the work week."

Some motorists simply flash their high beams or honk.

Tenny-Brittian, who graduated from Emory University divinity school in 1992, said his congregation at Loganville Christian Church first thought he was nuts when he brought up the idea of greeting commuters. But the church agreed to buy the coffee and cups.

"I used to make 10 cups of coffee. Now, it's 20 to 30 cups," he said. "People are coming by and calling me their pastor."

Concerts held to aid attendance

NAUGATUCK, Conn. — Cheatin' hearts, revenge, forgiveness and redemption are not the only things the Bible and country music have in common:

The Hillside Covenant Church is another link.

Led by the Rev. John Simpson,

the church features some of the state's top country music bands once a month for evenings of "music and reflection for people interested in spiritual growth."

Since the series started striking chords in April, church attendance is up, Simpson said. "I've wanted to do something to reach secular people as long as I have been a minister and before," he said. "Once I looked around at the people in a bar — all dark and smoky — and wondered, 'How do we connect with them?'"

Average attendance at Sunday morning services is between 85 and 100, and a dozen worshippers found the church through its music, Simpson said.

Fans come from miles around for the free country music program, which is paid for by attendees' donations and church contributions.

"Our message is still worth hearing and life-changing, but if we don't do anything about our approach, people are not going to come to us," Simpson said. "Jesus always went to where people were and we take our cue from that."

Help exists for businesses

FORT WAYNE, Ind. — A clergy group is trying to help

people who dream of owning their own business but are a little short of cash.

"When you talk to most people, they have dreams and aspirations and many times don't qualify for some very good programs in our area," said the Rev. Mike Nickleson of the Interdenominational Ministerial Alliance of Fort Wayne. "We're talking about people \$500 or \$1,000 from (owning) their own business."

The alliance, a coalition of 42 pastors of black churches, is trying to set up a loan program that entrepreneurs could use to set up shop in their inner-city neighborhoods.

Spurred in part by federal re-investment laws, banks such as Fort Wayne National, Northwest and NBD have met with the church leaders to discuss the project. Church leaders also are planning a trip to Chicago next month to check out a similar program there.

The alliance's goal is to launch a \$100,000 community loan fund by February 1996.

"Economic empowerment is the battle cry for the balance of the '90s," Nickleson said. "The black church must participate in economic empowerment."

CELEBRITY ROUNDUP

Kennedy edits political mag, Locklear gets away to cabin

The Associated Press

NEW YORK — John F. Kennedy Jr. isn't joining the family business—just writing about it.

Kennedy will be editor in chief of a new political magazine that's tentatively titled George—as in the first president.

He's been developing the idea for about a year with former advertising executive Michael Berman. They've signed a partnership with Hachette Filipacchi Magazines, part of the Paris-based Matra Hachette media conglomerate that also publishes Car and Driver, Woman's Day and Elle.

The first edition is expected to hit newsstands in September, the company said Thursday.

"George aims to reach an audience interested in politics in a

way that no other magazine currently does," Berman said.

Locklear enjoys cabin

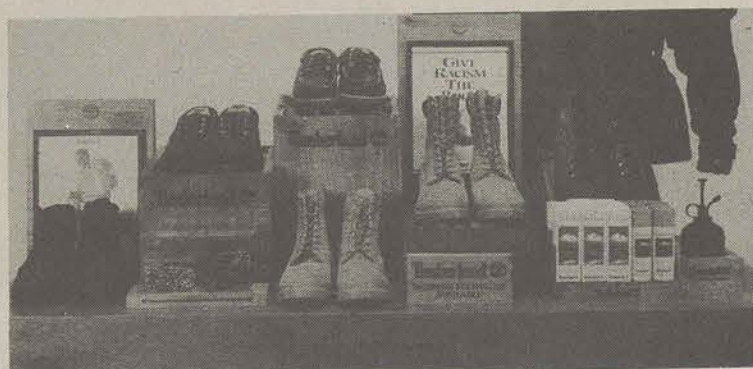
NEW YORK — Heather Locklear's favorite place is 100 miles east, 5,000 feet above and a world apart from "Melrose Place"—a cabin at a quiet California ski resort.

"I have so many plans when I come up here," Locklear says in the March issue of In Style maga-

zine. "And I end up staying home and eating, watching a movie, and falling asleep at 9."

Buying a cabin near Lake Arrowhead was a childhood dream for the 33-year-old actress. Now that she's found and redecorated her mountain getaway, Locklear loves to share it with family, friends and her new husband, Bon Jovi guitarist Richie Sambora.

Spring Break at The Sir Shop



Timberland

Polo Ralph Lauren

Columbia Sportswear Company

Ray-Ban

nautica

Bass Sandals • Assorted T-Shirts

Exclusively at....

The Sir Shop

420 Gentilly Place • Statesboro
764-6924



After hours of trying, Greg found a way to get pi out of his head.



Domino's



Serving GSU/Statesboro

681-4326

\$11.99 Plus Tax

Medium Pizza with 3-Toppings, & a 10 Piece Order of Buffalo Wings

Add a 2nd Medium Pizza for \$5. Valid at participating locations. Not valid with any other offer. Customer pays sales tax where applicable. Our driver's carry less than \$20. Delivery areas limited to ensure safe driving. © 1995 Domino's Pizza, Inc. CALL NOW! Offer ends 3/15/95

\$12.99 Plus Tax

TWO LARGE PIZZAS Each with 2 Toppings

Add 99¢ for each Deep Dish. Valid at participating locations. Not valid with any other offer. Customer pays sales tax where applicable. Our driver's carry less than \$20. Delivery areas limited to ensure safe driving. © 1995 Domino's Pizza, Inc. CALL NOW! Offer ends 3/15/95

FROM SIX TO NINE YOU PAY THE TIME!

Large 1-Topping Pizza

The Time You Call (Plus Tax) is the Price You Pay! Valid Monday - Thursday 6p.m. - 9p.m.

Valid at participating locations. Not valid with any other offer. Customer pays sales tax where applicable. Our driver's carry less than \$20. Delivery areas limited to ensure safe driving. © 1995 Domino's Pizza, Inc. CALL NOW! Offer ends 3/15/95

\$4.99 \$5.99 \$6.99 Plus Tax

SMALL MEDIUM LARGE

1-Topping Pizza

Add 99¢ for Deep Dish on Medium & Large. *Small Pizza available in Classic Original Only. Valid 11a.m. - 4p.m. & 9p.m. - Close. Valid at participating locations. Not valid with any other offer. Customer pays sales tax where applicable. Our driver's carry less than \$20. Delivery areas limited to ensure safe driving. © 1995 Domino's Pizza, Inc. CALL NOW! Offer ends 3/15/95

Attention!

The G-A is looking for a few good writers. If you've got what it takes then come by Williams Center rm. 223 to apply.

FOR RENT

- 34 N. Easy St.-- 2 Bd, 1 B House ...\$400/m.
- Langston Chapel Rd.--3 Bd, 2 B Mobile Home...\$450/m
- 214 E. Grady St.--1 Bd, 1 B Apt. ...\$260/m
- DUPLEX-- Burkhalter Rd. (Off Hwy. 80, behind new convenience store) Front part has 3 Bd, 2 B... \$650/m Back part has 2 Bd, 1 1/2 B...400/m
- Small office space *1 Year lease, No Pets* Call 764-6213 / 842-2298

This week's Top 10 Country-Western singles for the week

1. "Old Enough To Know Better" Wade Hayes
2. "My Kind of Girl" Collin Raye
3. "Tender When I Want To Be" Mary Chapin Carpenter
4. "You Can't Make A Heart Love Somebody" George Strait
5. "Bend It Until It Breaks" John Anderson
6. "Between An Old Memory And Me" Travis
7. "Upstairs Downtown" Toby Keith
8. "As Any Fool Can See" Tracy Lawrence
9. "Here I Am" Patty Loveless
10. "For A Change" Neal McCoy

Source: Cashbox Magazine

Arts & Entertainment

Page 8 — Thursday, March 2, 1995



JOSH BASS

Chena's last show was a packed house, killer show. Snap Neck Carnival is gaining a good fan base. It's a sin to not support a great place like Chena's. Support local music.

This week has some old and some new.

Tonight, King Fryday is playing at Blind Willie's. I haven't heard them and don't know what they sound like, but it's the only live show of the night.

Friday night has The Kinchofoonee Cowboys playing Legends.

Blind Willie's hosts Florida youngsters Spider Monkey. They just got signed to Chrysalis Records and are planning a big tour.

Saturday has one choice. The Positions play Blind Willie's. The shag/swing/lounge act has been here a couple times before and are a lot of fun.

Wednesday has two very popular veteran acts.

Legends is hosting Allgood. Expect to hear some new tunes. Blind Willie's has EROK.

Homestyle grub from Tom and Jim

By Brian Myler
Staff Writer

The Ogeechee Diner is a landmark in Statesboro that serves some of the best food in the GSU campus area.

Located at 9 Windsor Village near the GSU Campus, Ogeechee used to serve breakfast Monday through Friday 7 a.m. to 10 a.m. Now the diner is exclusively serving lunch Monday through Friday 11 a.m. to 3 p.m. This dine-and-dash establishment is the best place for a good hot meal while you have a break between those grueling afternoon classes.

Ogeechee serves freshly prepared diner-style food in a nice relaxed homestyle atmosphere. They serve an entree and two vegies for \$3.59, an entree and three vegies for \$3.99, and a vegie plate for \$2.99. You can also get an entree plate for \$2.99, with each serving of extra vegies costing 79 cents.

Atmosphere

When inside, you will notice there are two tables that seat seven, five tables that seat four, and two picnic tables on the outside. The tables are covered with checkered tablecloths and there are plenty of pictures and inter-

esting nic-nacs to check out while you have your meal.

When you step up to the hot serving line you are greeted by Tom and Jim, the owner/operators. These guys are more than anxious to serve you up some pipin' hot groceries.

The food

On this trip to Ogeechee, the menu was full of my favorite

THERE ARE PLENTY OF PICTURES AND INTERESTING NIC-NACS TO CHECK OUT WHILE YOU HAVE YOUR MEAL.

things to eat. Entrees included hamburger steak with grilled onions, fried chicken and Brunswick Stew.

The vegies of the day were green beans, field peas, macaroni and cheese, baked beans and rice and gravy, with cornbread along with peach cobbler for desert.

This particular lunch started around noon with a decision to have the hamburger steak, mac

and cheese and field peas. The hamburger steak was sensational. It was tender and juicy and served with grilled onions on top that added to the overall flavor of the steak.

After having some of the field peas I discovered that they were a little underdone and lukewarm, so I didn't finish them. The mac and cheese on the other hand was great. It was a blend of cheeses and macaroni noodles baked so there was a nice outer crust on it.

I washed all of this down with some of Ogeechee's tart and tangy lemonade.

Although the hamburger steak was excellent, my lunch companion opted for the Brunswick stew served on a bed of rice. The stew was brimming with plenty of vegies and pork, and to our surprise was devoid of any fat.

He also chose the field peas, and the feeling that they were underdone was mutual.

The remaining vegie was green beans, and unlike the field peas, these were tender and warm with a nice black pepper taste to them. This meal was accompanied by some sweet southern iced tea.

Final word

Don't let this tucked away little diner pass you by. Ogeechee serves up great food that is ready for your fast-paced college lifestyle. They serve a large variety of food, even taking the time

to grill out on occasions for great grilled chicken. It's very economical and they treat you like part of the family.

So don't be afraid to go get served up some good hot groceries with a smile.

Suntanners



One visit - \$4.00
Four visits - \$12.00
Six visits - \$16.50

Ten visits - \$25.00
Fifteen visits - \$35.00
Twenty visits - \$40.00

5 East Kennedy Street
Monday - Friday
8:30 am - 10:00 pm
- Closed Weekends -

HOW TO GET STUFF CHEAPER.

(WITHOUT POSING AS A SENIOR CITIZEN.)



Check expiration dates.

If it's going bad tomorrow, it's probably on sale today.



Look for product flaws.

A scratch or a missing button means bargain savings at the register.



Go generic.

Same as name brands, without the cartoon mascots.



Buy in bulk with friends.

Connect the leftover boxes to make a human Habitat.



Use a Citibank Classic card.

If you find out you didn't pay the lowest price, Citibank Price Protection can pay you back up to \$150.*

*Naturally, conditions and exclusions apply. Learn all about it when you become a cardmember.

WE'RE LOOKING OUT FOR YOU.™

To apply, call 1-800-CITIBANK.



© 1995 Citibank (South Dakota), N.A.

Union Productions & Quest for Excellence presents:

HARLEM GLOBETROTTERS

Everyone Can Be A Kid...Again!

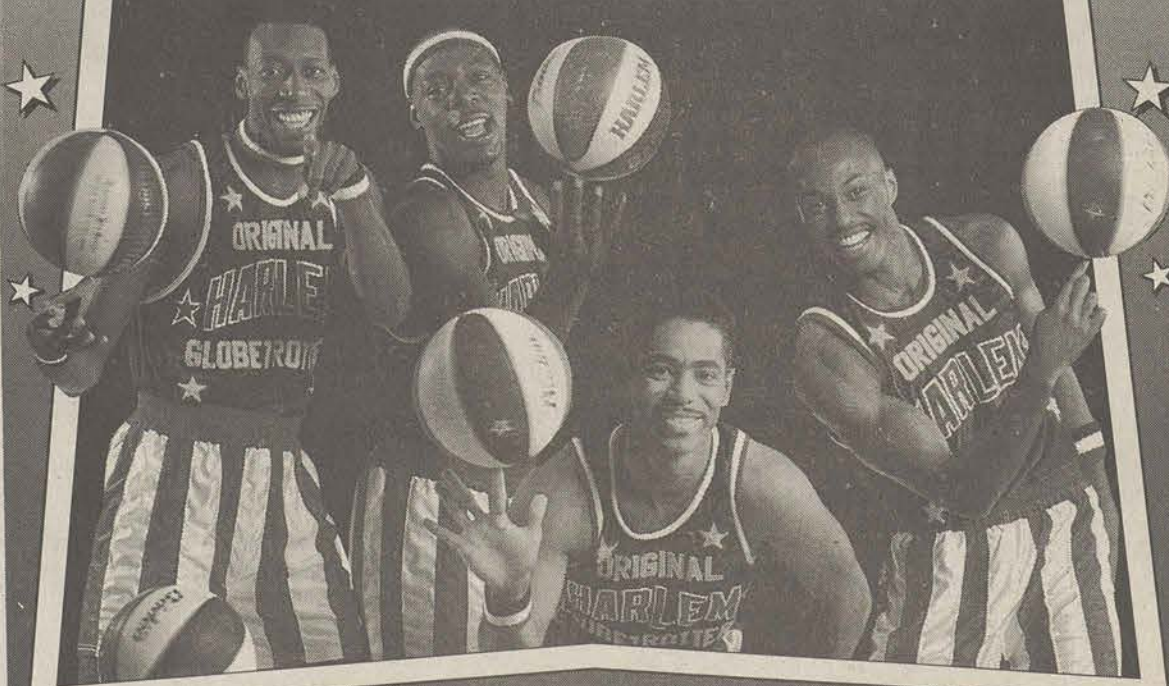
Thursday, March 16
7:30 pm
Hanner Fieldhouse

Tickets:

\$12.50 Adult
\$10.50 GSU Students
\$ 8.50 Children (12 and under)

Tickets Now On Sale

Master Card & Visa accepted over the phone.
1-800-GSU-WINS



"WE SALUTE THE FAMILY"

CARTOONS

CLASSIFIEDS

CROSSWORD

01-Announcements

ATTENTION: The George-Anne screens all classified ads prior to publication. The newspaper strives to accept ads for legitimate products & services only. Students are urged to exercise caution when replying to ads, particularly those which ask for money or a credit card number in advance of delivery of products or services. Students are also urged to report to the newspaper (at 681-5418) any suspicious offers they might see in the classifieds. Remember, if an offer seems too good to be true, it probably is.

Ex-baseball players and very good softball players are needed to form a team to compete in A-league. Tryouts will be held, call 852-9055 if interested. Leave message.

Female softball players WANTED. Need to be Catholic or belong to St. Matthews. Call 681-8804. Please leave message I will call you back.

Listen to Marianne on WVGS 91.9 Tues. Nights from 9-11 for an alternative mood swing.

Reward offered for information leading to arrest of person(s) who took wheels and tires off Blue Sentra at Towne Club apts. On 2/17/95. Contact LB 9560

Sorority Spring Rush sign-up March 1 11-2pm, March 2 2-4pm in Russell Union. \$10 registration fee. Checks only please.

Wanna go whitewater rafting? Come join the Outdoor Adventure Club! Discussing upcoming trips tonight in Union rm 272 at 6:30. All members requested to attend.

Yoga Club meets Wednesdays, 5-6pm in Russell Union. Check at info desk. Wear loose, comfortable clothes. Beginners welcome. Relax your body and your mind - release stress and reduce tension. Have a mystical experience.

03-Autos for Sale

'83 Toyota Corolla, stickshift, 2 dr, Air, Radio, in good shape. \$1,200. 871-7597(day) 681-0693.

'86 Chevy Cavalier, 4dr, Auto, Radio, Clean inside, runs good. \$950 OBO, 681-5536 (Day), 681-6341.

1987 Acura Integra RS., excellent condition. 88K miles. New tires. \$3,850. Moving. 681-8948.

For sale: 1981 Mazda 626. Full power. Cruise control, good condition. \$900. Call 681-8848.

For Sale: 68 Mustang V8, Automatic transmission. In good shape, asking \$4,000. 654-1597. Glennville.

White 1984 Toyota SE-5(wagon) needs new home! Standard shift, 4WD, new tires. \$750 OBO. 839-3878 LV MSG.

08-Freebies

For free: Black and white stripped Siamese mix cat. Interested? Call Nicole or Stacey-871-3933.

09-Furniture & Appliances

FOR SALE: Refrigerator \$185., exc. Cond.; Ladies 10 sp. Bike \$65. Call JJ at 764-9310. Leave message if no answer.

For sale: Twin bed; mattress, box spring, and frame. Price neg. Two and half years old. Call Lisa at 764-8604.

Furniture 6 drawer dresser, good condition. \$50 OBO. Call Angie 681-8415.

Single size mattress and box springs less than a year old \$100. OBO. Call 681-7880 ask for Russ.

10-Garage Sales

Garage Sale! Sat. Feb. 25 from 7-1pm across from Wendy's in the soccer field parking lot. Great bargains sponsored by Gamma Beta Phi. More info: 764-6476.

11-Help Wanted

500 SUMMER CAMP OPPORTUNITIES IN NY, PA, NEW ENGLAND. Choose from over 30 camps. Instructors needed: Tennis, Baseball, Hockey, Rollerblading, Soccer, Lacrosse, Softball, Volleyball, Basketball, PE Majors, Gymnastics, Riding, Lifeguard, WSI, Water-skiing, Sailing, Windsurfing, Fitness, Archery, Mountain Biking, Pioneering, Rockclimbing, Ropes, Dance, Piano Accompiast, Dramatics, Ceramics, Stained Glass, Jewelry, Wood-working, Photography, Radio, Nature, RN's, Chefs, Food Service. Call Arlene: 1-800-443-6428; 518-433-8033.

ALASKA SUMMER EMPLOYMENT-Students Needed! Fishing Industry. Earn to \$3,000 to \$6,000+ per month. Room and Board! Transportation! Male or Female. No experience necessary. Call (206) 545-4155. Ext A53942

CRUISE SHIPS HIRING- Travel the world while earning an excellent income in the Cruise Ship and Land-Tour Industry. Seasonal and full-time employment available. No exp necessary. For info., call 1-206-634-0468 ext. C53944.

Female companion sitter needed for in-home experience with daily care and transfers helpful but not necessary. Some weekends and overnight stays a must!!! Need to have own reliable transportation,

flexible school schedule, and be trustworthy. References will be checked. For more information call 764-7313.

Homeworkers needed! Excellent money-making opportunities based on the comfort of your own home. For information send a self-addressed stamped envelope to : KMEOS LB 10601 GSU.

LIFEGUARDS, POOL MANAGERS, SWIM COACHES, SWIM INSTRUCTORS, SUMMER POSITIONS AVAILABLE IN NORTH METRO SUBURBAN ATLANTA AREA. CERTIFICATIONS CLASSES AVAILABLE. CALL SWIMATLANTA POOL MANAGEMENT, 992-7665.

Lifeguards: Trinity Pools is now hiring lifeguards, managers, swim coaches, swim instructors, communication directors, and service technicians for the Metro Atlanta, Nashville, and Birmingham areas. Full and part time summer positions are available. For info call (404) 242-3800.

MODELS needed for drawing class 1pm to 5pm. Tues. And Thurs. 4/11 thru 6/1. Contact Pat Walker 681-5918 or Cindy Brogdon 681-5358 to leave message.

RESIDENTIAL CAMP STAFF. Camp Jened serves adults who have a wide range of disabilities. Join our summer staff and have an incredible experience working in the Catskill Mountains in New York. Jobs available for counselors, program staff, cooks and nurses. Season runs from June 1 through August 17. Good salary, room and board, and partial travel expense. Call 914-434-2220, or write Camp Jened P.O. Box 463, Rock Hill, New

SUMMER JOBS IN YELLOWSTONE! Now hiring approximately 3,000 seasonal employees to work in hotels, restaurants, and other guest services. Please write or call for applications. TW Recreational Services Inc., P.O. Box 165, Yellowstone National Park, WY 82190. (307) 344-5324. AA/EOE/M/F/D/V. Please contact me as soon as possible with rate and billing information. Thanks for your help!

Summer Positions-Girl Scout Camp: general counselors, assistant cook, lifeguard, horseback riding instructors. Min. Age 18. GSWWC, Attn: CN, 3535 Prkmmr Vill, Colo. Springs, CO 80917. (719)597-8603.

12-Lost & Found

FOUND: Eye glasses by Winburn Hall. Tortoise shell by Pearle Vision with gray case. Call 681-2948.

Gold and Silver watch found in women's locker room in Hanner. Call 871-7278 to identify.

13-Miscellaneous for Sale

Bridgestone Mountain Bike Dark Green-almost brand new. Excellent condition. \$200. Call Russell 681-2543.

Comic books for sale: X-man, Punisher, Batman, Groo, and many more. Call Jeff or Scott anytime at 764-8120. Peace!

For sale: 20 different Nintendo games, together or separate. Also VCR for \$10-doesn't work. Call and make offer on games. 871-4854 Toby.

FOR SALE: Camo Army uniforms, canteens, web belt, ammo pouches, etc. Priced to sell. Travis. 871-4382.

If you would like to Purchase Dudley's Q+ hair products, contact Natalie at 681-1277 for more information and to place an order!

Mountain bike for sale. \$50 good condition. Call 681-8848.

Quilted, black, leather jacket. Like new, asking \$35. Call Melissa at 489-4010.

Sears STAMINA GYM 5000X. MULTI-USE MACHINE and STEPPER with ELECTRONIC READOUTS. ALL ATTACHMENTS AND WEIGHT BANDS. IN VERY GOOD SHAPE. ALREADY ASSEMBLED. WELL DELIVER LOCALLY. New was \$300, sell for \$150. Call 839-3711 AND LEAVE MESSAGE.

Smith Corona PWP 3800 Personal Word Processor. Used very little. Comes with book and box of disks. Small enough for dorm room. New was \$300., sell for \$150. Call 839-3711 and leave message. Will deliver on campus.

15-Musical

Guitar amp: Peavey "classic" head, all tube, 50W, \$350. 4x12 twice cab. \$150. 1x15 tweed cab. \$125 or everything for \$600. Call Jeremy 748-6220.

16-Personal

Jamie, I hope this week you learned that I always tell the truth no matter what. Luv ya Robby P.S. Thanks for the \$50.

Marianne, love the show and the fudge was a wonderful way to make Valentine's alone bearable. Hope your love life improves and you do not become to philosophical. "O.K. Lady, I love you, Bye Bye" Me.

SNOWY-DWBH! If you ever need anything, I'm here for you. Besides, the world UST's for you! Love, Rosebud

17-Pets & Supplies

2 Tegus; 1 small 1 large. Unbelievable eaters. Complete w/new 55 gal. Aquarium, heat rock, lights. Brian 489-3839.

For Sale: White baby dwarf rabbit \$50. Includes new cage and additional supplies. Must sell, please call 681-8775. Leave message.

19-Rentals & Real Estate

2 Bd/2 ba Resort Condo for rent with full kitchen and 5 miles of private beach. Palm Coast, FL 20 miles from Daytona Beach. March 19-25th. Call for details 912-889-9452.

Available now off campus. 1 BR apt-2BR, 1 bath apt- office and trailer space. 764-5003.

Female sublesser needed ASAP in Player's Club. Rent negotiable. Spring/summer qtr. Own room, telephone line, cable, W/D. Please call Hannah at 871-7278. Leave a message.

FOR RENT: 2 bedroom, 2 1/1 bath, fireplace, pool, private patio, new dishwasher, stove, refrig. Available on or before April 6 \$575/mon. Call 681-1166.

For rent: Fall Sussex \$200. Furnished. Sagebrush \$190. Furnished. Redecorating both. Need one male roommate immediately 764-5982. Local 739-1132. 7674668 (W)

FREE RENT FOR MARCH, 1995. MOVE IN NOW!!!! NO DEPOSIT REQUIRED ROOM WITH PRIVATE BATH

PARK PLACE VILLAS (ASSUME LEASE THRU AUGUST, 1995) CALL: 404-938-0536

GRADUATING! Must sublease! Large one bedroom, upstairs apartment. \$290/mon. Available spring qtr. Can leave some furniture if needed. Call 681-8475.

HOUSES & APTS AVAILABLE SEPT. 1, NO PETS ALL UTILITIES FURNISHED AT 602 S. COLLEGE APTS. NEED RELATED STUDENTS FOR 4 BR HOUSES. JAMES M. HOOD, 764-6076.

If you want to move into Sussex spring qtr contact Taffi or Tonia at 871-2792. \$200/mon.

Looking for your own apt.? Perfect place next to Stadium. 1Br, 1Ba. Call anytime, leave message. 681-9517 Jason or 871-7201 Alison.

Mobile home space for rent. City water and cable \$65/mon. In Brooklet. Call after 5pm. 842-9052.

Need to sub-lease immediately!!! Park Place apt. Spring/summer qtr. \$475/month. Deposit negotiable, very clean and well-kept. 871-3452. Leave a

Room for rent, private entrance, share bath and kitchen, W/D, heat/air. Walk to GSU. \$200/mon or \$550 term. 764-3210 or 404-872-5671.

STOP LOOK! one or two people needed ASAP to sublease apartment spring/summer. Davis apartments, fully furnished for two. Rent \$300/mon. Call 765-2160.

Sub-lessees needed for summer qtr. 2BR, 2BA, ground floor at Player's Club Apartments. Please call Jennifer at 681-8734.

Take over lease spring and summer qtrs-One large bedroom. Fully furnished for one or two people. \$300/mon or \$150pp Davis Apts #6, across from Stratford Hall. Call Monica Watkins at 871-3571

20-Roommates

1 or 2 female roommates needed for summer. Furnished apt. Low rent. Call 489-6834.

Female needed to sublease in Player's Club Summer qtr. Private bdr. And bath. June rent paid. Completely furnished. Call 871-3668 for Julie. Leave message if no answer.

Female roommate needed for Player's Club sublease for spring and or summer qtrs. \$140/mon +1/4 utilities. Call 871-4499.

Female roommate needed for Spring qtr. Own room and bath. 1/3 utilities. \$200/mon. House @ 10 min. From campus. Call Amy 489-6275. Rent negotiable.

Female roommate needed for now til end of summer. \$116/mon + 1/3 utilities, plus your own room and bath. Call 842-9740-anytime!

Female roommate needed spring-summer qtr. Great location, furnished, own room and bathroom. Call 681-8576.

Female roommate needed spring/summer qtr. Duplex, private room, bath \$225/mon + 1/2 utilities. Sagebrush Apts. Call Angie 681-8415.

Female roommate to sublease at Player's Club apt. For spring and summer qtr. Own room with cable. Call 681-8985 or (706)861-9422.

GRADUATING!-roommate needed to take over lease at clean, roach free, and quiet Colony CT #15 Apt. \$200/mon. 871-3526. Leave message.

Male roommate needed. \$165/mon + 1/2 utilities. Not far from school. Call Charlie 489-6948.

Needed female roommate to sublease spring and summer qtr. At Campus Courtyard. Private bedroom, fully furnished, \$225/mon + utilities. Call 871-3881. Ask for Amy.

1 roommate needed for spring and summer qtrs. For a 2BR, 2BA, ground floor. Player's Club Apartment. 681-2056.

2 WF needed to share 4 bedroom Bermuda Run apartment for 95-96 year. Furnished except bedrooms. \$225/mon + 1/4 utilities. Call 871-7127. Kristie

Female needed to sublease in Bermuda Run for summer qtr. Private bedroom, bath, and own phone line. Bedroom unfurnished. Rent \$200. Call Amy 871-7866.

Roommate needed ASAP to sub-lease one bedroom in a three bedroom/2 bath house. For more info, please call and leave message. 681-9087.

Roommate needed during Spring and Summer qtrs. Furnished room, cable, bath, washer, dryer, kitchen; call Brad. Williamson Johnson's Trailer Park Lot #35 871-3795. \$250/mon. Utilities included.

Roommate needed for '95-'96 school year to share 4br, 4ba townhouse in Campus Courtyard with 3 females. MUST have neat living habits. Non-smoker. Call Laura 871-2803 or Amy 681-8229.

Roommate needed for '95-'96 school year to share a 4br, 3ba townhouse in Hawthorne with 3 females. No drug users or smokers. Neat living habits is a must. Call Julie at 871-3668. Leave message if no answer.

Roommate needed for Spring and Summer. Call 871-3581. Ask for Lincoln or Ron.

Roommate needed for Spring Qtr or ASAP. 3 bedroom/2bath mobile home. 3 miles from campus. \$133/mon +1/3 util. Call 488-2386 for more info.

Roommate needed immediately! Player's Club townhouses \$200/mon + 1/3 utilities. Have own bedroom. Call Karen, 681-9163 or leave message.

Roommate needed share 2bdr townhouse apartment in College Vue Apartments. Includes 1 1/2 bath microwave, utility room, refrigerator, dishwasher. For more info., call Gary at 681-8486.

SWF nonsmoker needed spring qtr. To share large 2 BD/2 BA mobile home with SWF. \$185/MON + 1/2 utilities. 852-5851. Leave message if no answer.

SWF roommate needed for 2br furnished apt. \$150 + utilities. Call 489-4516. Shea.

TAKE OVER REMAINDER OF LEASE \$426 FOR THE QUARTER MICROWAVE, WASHER/DRYER, OWN BEDROOM SHARED BATH ACROSS THE ST. FROM CAMPUS CALL HUGHIE 681-2417 OR CAROLYN 404/463-3729 LEAVE NAME/NUMBER

Tired of roommates? Stadium Place is the place for you!!! I need someone to take over my lease for Spring and Summer qtr. If interested, call 871-3217.

21-Services

If you would like to have Braids, call Chastidy at 681-9264. Two years experience and affordable prices! Call for an appointment today!

LIMOUSINE FOR RENT: PLEASE CALL 489-5925.

Mary Kay consultant is here! Contact Leslye at 681-9745 with all your inquiries. Free facials. We also carry products for MEN! Don't be shy.

PERFECT PRESENTATIONS: Let us typeset thesis or term papers, resumes, flyers, business cards, letterhead, graphic designs. Leave message concerning job for Carl at 681-1235.

TYPING-Overnight guaranteed. Lesson plans, resumes, term papers, etc. Call Brenda, 764-1486.

Want help with English? Go to the LRC tutorial center for help. It is free and if you want private tutoring, the tutors can help you.

23-Stereo & Sound

For sale: New never used RockFond Fosgate 10" woofers for 175 and Rockford Tweekers for 85 call 871-5033.

Tweed 4-10's 200w. Classic Amp and new sunburst strat. For sale. Call 681-6658.

27-Wanted

Wanted-Dorm size refrigerator. In good shape. Call 839-3711 and leave message.

28-Weekends & Travel

ATTENTION SPRING BREAKERS! New up-to-date listings, complete with address and phone# for Panama City Beaches or Biloxi/Gulfport Casinos. Send SASE or check or mo for \$5.95 to JT ENTERPRISES, 653 W 23rd St, #130, Panama City, FL 32405-3922. Info mailed out within 24 hours.

THATCH

By Jeff Shesol



From 90210 to your zip code, safe motorcycle riding is essential. So take a *Motorcycle RiderCourse* like Brian Austin Green of Fox T.V.'s *Beverly Hills, 90210*. You'll learn techniques that not only make you a safer rider, but a better rider as well. Call 1-800-447-4700 to be the star of your class. **MOTORCYCLE SAFETY FOUNDATION**

Tropical Tan and Total Image

Tanning Special

- 5 Sessions \$18
- 10 Sessions \$30
- Hair, Nail, Facial and Waxing
- \$2 OFF Any Haircut



404 S. Zetterower • Statesboro
Mon. -Th 9-9 Fri. 9-6 Sat. 10-2
Call 489-2826 (489-BTAN)



Must present this coupon

Expires 3-9-95

submissions for Miscellany 95

georgia southern's magazine of the arts

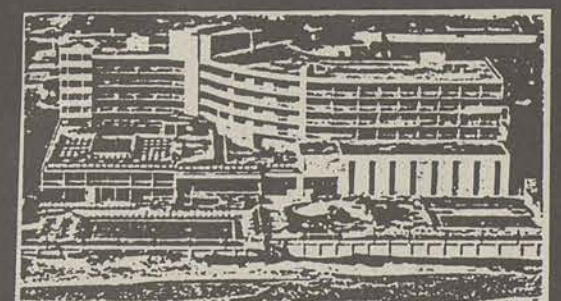
categories:

- short stories
- foreign language
- theater
- poetry
- visual art.

submit works to williams rm.209 or l.b.8001.

submissions due mar.10.

DAYTONA BEACH SPRING BREAK '95 HEADQUARTERS



Special Discount for Georgia Students FROM \$39.00 PER NIGHT UP TO 5 STUDENTS
DELUXE OCEANFRONT
Spend your Spring Break where the action is.
FREE concerts on pool deck • Contests daily
• Parties • Olympic size pool
• Sunning on a 700 ft. deck • Restaurant • Lounge
Health Club • Free Admission To "Club Mirage"
DESERT INN RESORT MOTEL
1-800-826-1711

Want to be part of THE REFLECTOR?

Staff Meeting for ALL Photographers, Writers and interested candidates

6:00 pm Thursday March 2nd
Room 215 Williams Center

TODAY

GSU

Georgia Southern University

This Month's Highlights
Study Hard for Finals!
Play Safe for Spring Break!
Spring Quarter Classes
Begin March 29th

1995 March Activities

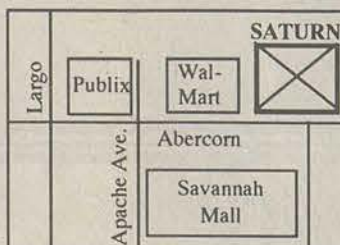
Sunday	Monday	Tuesday	Wednesday	Thursday	Friday	Saturday
			<ul style="list-style-type: none">Early registraion for Spring Quarter 1995, Williams CenterMOVIE: <i>Shawshank Redemption</i>, 7 & 9:30pm, Union TheaterMUSIC: Symphonic Wind Ensemble, Union Ballroom, 8pm	<ul style="list-style-type: none">Early registraion for Spring Quarter 1995, Williams CenterMOVIE: <i>Shawshank Redemption</i>, 7 & 9:30pm, Union TheaterMUSIC: Faculty Recital, Foy Fine Arts, 8pmBASKETBALL: Men & Women at Coca Cola Southern Conference Tourney (thru 3/6), Asheville, NCCatch <i>The George-Anne</i> today	<ul style="list-style-type: none">Schedule Adjustment for Spring Quarter 1995, Williams CenterSOFTBALL vs Marshall, 3pm	<ul style="list-style-type: none">VISITATION DAYMUSEUM: <i>Sights & Sounds of the Rainforest</i>, call 681-0147 to register.BASEBALL vs. Marshall (Double Header), 1pmSOFTBALL vs Marshall, 1pm
<ul style="list-style-type: none">MOVIE: <i>Forrest Gump</i>, 7 & 9:30pm, Union TheaterBASEBALL vs. Marshall, 1pm	<ul style="list-style-type: none">MOVIE: <i>Forrest Gump</i>, 7 & 9:30pm, Union TheaterMUSIC: General Student Recital, Foy Fine Arts, 1pmMUSIC: Statesboro-Georgia Southern Symphony, Union Ballroom, 8pmLECTURE: <i>Multicultural Classrooms</i>, C. Gooden, Southern Center, 7:30pm	<ul style="list-style-type: none">CINEMA ARTS: <i>A Streetcar Named Desire</i>, 4:30 & 7:30pm, Union TheaterCLEC: <i>Dancetime!</i> Union BallroomBASEBALL vs. Georgia State, 7pmCatch <i>The George-Anne</i> today	<ul style="list-style-type: none">COMEDY: Craig Anton, Union Ballroom, 8pmMOVIE: <i>Forrest Gump</i>, 7 & 9:30pm, Union TheaterBASEBALL vs. Georgia State, 4pm	<ul style="list-style-type: none">MOVIE: <i>Forrest Gump</i>, 7 & 9:30pm, Union TheaterMUSIC: GSU Jazz EnsembleART EXHIBIT: Group Show (thru 3/31), reception noon-1pm		<ul style="list-style-type: none">YOUTH ARTS FESTIVAL, Sweetheart Circle, 10am-4pmBASEBALL vs VMI (Double Header), noonSOFTBALL vs Furman, noon
<ul style="list-style-type: none">MUSEUM: <i>Animals as Architects</i> (thru 5/7)BASEBALL at VMI, 1pmSOFTBALL vs Furman, 1pm	<ul style="list-style-type: none">MUSIC: Percussion Ensemble, Foy Fine Arts, 8pmSOFTBALL vs. Augusta College, 3pm	<ul style="list-style-type: none">LAST DAY of classesMUSIC: University Singers, Foy Fine Arts, 8pm	<ul style="list-style-type: none">EXAMINATIONS for regular day classes	<ul style="list-style-type: none">EXAMINATIONS for regular day classesBASKETBALL: World Famous Harlem Globetrotters, Hanner Fieldhouse, 7:30pm	<ul style="list-style-type: none">Saint Patrick's DayEXAMINATIONS for regular day classes	<ul style="list-style-type: none">EXAMINATIONS for regular day classesBASEBALL vs Western Carolina (Double Header), 5pm
<ul style="list-style-type: none">SPRING BREAK for students beginsResidence Halls close at 10amBASEBALL vs Western Carolina, 1pm	<ul style="list-style-type: none">SPRING BREAK for students	<ul style="list-style-type: none">SPRING BREAK for studentsBASEBALL vs New York Tech, 7pm	<ul style="list-style-type: none">SPRING BREAK for studentsBASEBALL vs New York Tech, 7pm	<ul style="list-style-type: none">SPRING BREAK for studentsBASEBALL vs New York Tech, 1pm	<ul style="list-style-type: none">SPRING BREAK for students	<ul style="list-style-type: none">SPRING BREAK for studentsBASEBALL at Appalachian State (Double Header), noon
<ul style="list-style-type: none">SPRING BREAK for students concludesResidence Halls open at 10amBASEBALL at Appalachian State, noon	<ul style="list-style-type: none">New Student Orientation & Advisement, Union 7:30amNew Student Registration, Williams Center, 11amFinal Registration for former students, Williams Center, 1-7pm	<ul style="list-style-type: none">Drop/Add, 8am-4pm, Williams Center\$50 Late Registration fee beginsBASEBALL at UGa, 7pm	<ul style="list-style-type: none">Classes beginBASEBALL at UGa, 4pm	<ul style="list-style-type: none">Catch <i>The George-Anne</i> today!		<ul style="list-style-type: none">April Fool's Day



A Different Kind of Company. A Different Kind of Car.

Sponsored by

Saturn of Savannah



February						
S	M	T	W	T	F	S
		1	2	3	4	
5	6	7	8	9	10	11
12	13	14	15	16	17	18
19	20	21	22	23	24	25
26	27	28				

April						
S	M	T	W	T	F	S
						1
2	3	4	5	6	7	8
9	10	11	12	13	14	15
16	17	18	19	20	21	22
23	24	25	26	27	28	29

Stop by for a visit!

912.920.6500

Cut out for your convenience.