

Georgia Southern University

Digital Commons@Georgia Southern

The George-Anne

Student Media

1-19-1995

The George-Anne

Georgia Southern University

Follow this and additional works at: <https://digitalcommons.georgiasouthern.edu/george-anne>

Recommended Citation

Georgia Southern University, "The George-Anne" (1995). *The George-Anne*. 1344.
<https://digitalcommons.georgiasouthern.edu/george-anne/1344>

This newspaper is brought to you for free and open access by the Student Media at Digital Commons@Georgia Southern. It has been accepted for inclusion in The George-Anne by an authorized administrator of Digital Commons@Georgia Southern. For more information, please contact digitalcommons@georgiasouthern.edu.



► Let's make a deal

Faculty member says he'll pay his parking fines — if the ticket office makes biking easier

Please see "Letter to the Editor," page 5

► Be kind!

Nice people come out of the woodwork as "Kindness Week" on campus draws near

Please see story, page 7



► Honky Tonk

Get the latest Billboard information on the top country music singles playing in the U.S.

Please see "Arts & Entertainment," page 8

EAGLELINE

GOLD EDITION

Thursday, January 19, 1995
Vol. 67, No. 41

Rap star to be prosecuted on drug charges

The Associated Press

LAKE CHARLES, La. — The Calcasieu Parish district attorney will prosecute misdemeanor drug charges against rap star Snoop Doggy Dogg and three members of his band.

"We have just today accepted the charges," First Assistant District Attorney Ronnie Rossitto said Thursday after a review of the charges against Calvin Broadus, 23, the rap star's real name, and the others.

Broadus and band members Delmar Arnaud, 21; Darryl Daniel, 26; and Ricardo Brown, 22, all of Long Beach, Calif., were arrested Dec. 21 by the Calcasieu Parish Sheriff's Office for misdemeanor violations of possession of marijuana and possession of drug paraphernalia.

Deputies made the arrests at Players Riverboat Casino Hotel when they found marijuana gleanings and other drug paraphernalia in the hotel rooms while serving legal civil papers.

The band was in Lake Charles for a concert that was canceled after the arrests.

Rossitto said the maximum sentence for each misdemeanor charge is a \$500 fine and six months in jail. Although the charges have been accepted, Rossitto said he did not know, at this time, when an arraignment will be scheduled.

CLARIFICATION

In the Tuesday, Jan. 10 edition, in the story "Pines and Sussex make changes to improve security," there was an inaccurate statement. Gail Meyer is an agent for Century 21 rather than Re/Max.

WEATHER

TODAY

Scattered thunderstorms, with a high in the mid-70s and a low in the upper 40s.

WEEKEND FORECAST

Friday, it will be sunny, with a high in the mid-50s and a low in the mid-30s.
Saturday, it will be windy, with a high in the mid-50s and a low in the mid-30s.



INDEX

Announcements	2
Arts & Entertainment	8
Classifieds	9
Crossword	9
G-A Spotlight	3
Opinions	4
Police Beat	2
Sports	6

It is a desire of The George-Anne to print the news of Georgia Southern University as accurately as possible. If you feel that something covered is in error, contact a member of the editorial staff at 681-5246 as soon as possible. Thank you.

FOR ADVERTISING INFO.: 681-5418
STORY OR PHOTO IDEA: 681-5246
FAX NUMBERS: 871-1357 and 681-0863

The George-Anne

Liked By Many, Cussed By Some ...
Read By Them All



The George-Anne

Georgia Southern University's Official Student Newspaper

Statesboro, Georgia 30460

Founded 1927

Students cry: 'I want my MTV!'

By Christopher Cole
Managing Editor

Some students see it as discrimination — an insult to their consumer needs and a backlash against their philosophy of what entertainment is all about.

But the company sees it as an important move to satisfy an audience dominated by customers who have often complained about the content of cable TV.

Northland Cable Television, effective Dec. 30, moved Music Television from its basic service package into an optional "tier" of channels that charge an extra fee per month.

Regional Manager Rick Hutchison said the action was ordered by the Northland Communications corporate office in Seattle last year. He said he had the option either to remove MTV altogether or move it into a tier. He decided to move it into the tier which includes SportsSouth, Turner Network Television and American Movie Classics.

The tier costs an extra \$2.60



Elizabeth Hayes

Northland Cable Television is under fire from some students for moving MTV off basic cable.

per month. The basic cable package that once included MTV costs \$24.16 per month.

Hutchison said the move was in response to numerous complaints from the community about the content of MTV. But some students, who see the channel as a media outlet for their generation, have com-

plaints of their own.

"We think it's unfair," said Ryan Traylor, president of the Student Government Association. "It's extremely unfair."

Traylor was speaking on behalf of the SGA Executive Board, not the entire student senate, following a board meeting Tuesday night. He planned

to bring the matter up at the general SGA meeting Wednesday night.

"Our biggest problem is that we weren't informed it was going to be taken off," he said. "One day we had access and the next day it was gone."

Hutchison said customers were informed of the change

through the newspaper and in the character generator that runs 24 hours along with a weather report on Channel 2.

He said he has heard a few complaints from students, but "not nearly a percent" of what would be needed to have influence over the corporate decision.

"Students are a very small portion of the people who subscribe," Hutchison said. He would not discuss the specific number of student customers over the telephone.

"There have been more complaints about that one channel than any other channel," he said. "The majority of the community is not college students."

Jason Sabatino, a junior broadcasting major and frequent disc jockey at WVGS college radio, said he is trying to organize a protest against Northland Cable.

"The only reason the cable company put MTV on that tier was so that they could make more money off college students," he said. "If they truly

Please see MTV, page 10

More changes now in the works for Food Services

By Melanie Weinberg
Staff Writer



Jerome New

Blanche's restaurant was moved into Landrum cafeteria last quarter to raise profits, but the changes haven't yet lived up to expectations.

Last fall, Food Services implemented several changes to their restaurants in order to better serve the students. A quarter later, not all of those changes have been as successful as hoped.

The most noticeable change was Blanche's move to the other side of Landrum. This move decreased the size of the Landrum cafeteria by half, and was made because the cafeteria was losing money. A salad bar was added in Blanche's along with several menu items to enhance the overall quality.

"[The changes] were not as good as hoped, but the cafeteria is doing better," said Food Service Director Tom Palfy.

One new offering on campus is Freshens Yogurt, which is located in the Russell Union and also at the Lakeside Café.

"I was concerned with the pricing, because I had to stay under Baskin Robins'

price range," Palfy said.

Freshens Yogurt is the first franchise to be on campus, but there are plans to bring more fast food chains to GSU.

"I have to be very careful with what I do because a lot of the fast food restaurants in Statesboro donate money to GSU, and I don't want to stab a knife in their back [by directly competing with them]," Palfy said.

In Lakeside, the salad bar has become an obstacle to the students forming lines. "We will solve this problem by moving the salad bar to where the beverage counter is, and putting the soft drink dispensers at the end of each food counter."

Food Services is in the process of redesigning Landrum. Palfy said the 1968 building is "the typical institution-type cafeteria." Future plans include a food court type establishment, with an ala carte selection.

Wooden nickels to be used for free refills have also been terminated because "students weren't returning them," Palfy said.

Professor raising questions about parking tickets, appeals process

By Kim Wagner
Senior Staff Writer

Recently, a GSU professor raised questions about the guidelines followed by GSU parking and transportation when issuing tickets and the procedure that is followed when reviewing ticket appeals.

The majority of the concerns that Florence Ferguson, an assistant professor in the political science department has stems from \$25 in tickets she received last winter quarter, resulting from what she said are inconsistencies in the parking and transportation office.

"Most of my tickets I got for parking on the grass," Ferguson said. "Now if you go out there, they don't even give tickets for parking on the grass. My problem was the inconsistency in the ticket writing."

The tickets Ferguson received for parking on the grass pushed the total of her parking tickets over \$35, which placed her name on "The Worst Offenders" list in the Jan. 10 issue of The George-Anne.

"The last two tickets I got I was responsible for, but my name would not have been on the list had it not been for those tickets I accumulated for parking in areas where it is now okay to park," she said.

"The turnover of ... ticket writers is large, so there are a lot of inconsistencies in terms of how tickets are written," Ferguson said.

"I wouldn't say there's a large turnover, but there is a turnover, just like other jobs on campus because peoples' schedules change and

other people graduate," said Bob Chambers, director of parking and transportation.

However, Chambers said there has been a problem with inconsistencies concerning ticket writing. In an attempt to combat this problem, two full-time staff members have been hired. Before becoming ticket writers, students have in-house training where they become familiar with parking rules and regulations and also customer service. Students also must go through on the job training, which could last anywhere from one week to three, Chambers said.

Each time Ferguson received these tickets for parking in an unmarked space she unsuccessfully appealed the tickets.

"Who's making decisions on that and where's my due process of the law?" Ferguson said. "I should have my say. If this was a regular traffic court, I would have won, I know I would have."

In a normal appeals process the recipient can verbally appeal the ticket at the parking and transportation department, Chambers said.

"If we feel the ticket was written improperly, then they'll give (the person receiving the ticket) an appeals form to fill," Chambers said.

Then the appeals committee, which consists of faculty, staff and students, reviews the appeals and decides if they are granted.

"We don't really have a committee meeting, each different member of the committee comes to the office to review the appeals," he said.

Two out of three of the people who review the appeal must agree on the outcome before a decision is reached, he said.

Former governor gets a place in the library

By Chris Sherwood
News Editor

A signed portrait of former Georgia Governor and U.S. Senator Herman Talmadge is being presented to the Special Collections Department in the Henderson Library by history professor Frank Saunders today.

The Special Collections department in the Henderson Library was begun during the early 1980s when Dale Lick was president. It has served as a way to collect materials like autographed books, signed portraits and personal papers from this region.

"One of the responsibilities of the history department at GSU is to find items which can be added to the special collections department," library director Julius Ariail said. "We have a fair number of photographs, but we rarely have signed portraits."

Ariail said it is hard to put an exact value on the portrait and on other parts of the special collections.

"We have a lot of the papers

from Bo Ginn, when he was in office," Ariail said. "Things we have in the collection will be more appreciated 100 years down the road. Things like the letters from the Civil War will be here long after you and I are gone, and our descendants will have these pieces of history."

Talmadge was born in McRae on Aug. 9, 1913. His first stint as governor lasted for only a short time. His father, Gene Talmadge, was on the ballot for the election, but died that November.

The younger Talmadge was put on the ballot in place of his father. After the state legislature named him governor, the decision was struck down and Talmadge would have to wait until the next year to be elected. He won the election in 1947 and once again in 1950.

In 1956, Talmadge served in the US Senate until he was defeated in 1980.

Despite several attempts, Frank Saunders could not be reached for comment.

POLICE BEAT

GSU Division of Public Safety

January 17

• A report of simple battery was reported at Lewis Hall.

January 16

• Michael Warren, age unknown, reported a refrigerator was missing from Oxford Hall.

January 14

• Miles Minor, age unknown, reported a Cobra C.B. radio was taken from his vehicle in the Johnson Hall parking lot.
• Timothy William Young, 22, of Claxton, was charged with driving with a suspended license.

January 13

• Cleon Mobley, age unknown, reported an Alltel Cellular telephone was taken from his vehicle in the MPP staff parking lot.

• Rebecca McGadrew, age unknown, reported her wallet was missing from Johnson Hall.

Statesboro Police Department

January 15

• William D. Lillis, 20, of Players Club, reported someone threw a bottle through his kitchen window.
• Jason Edward Miller, age unknown, of Players Club, was

charged with disorderly conduct.

• Laquita Griffin, 19, of Stadium Walk, reported a case of criminal damage to her car. Damages to her fender and windshield were estimated at \$800.

• Andrew Hunt, 19, of Stadium Club, reported a case of theft by taking. A CD player was taken from his car.

• Kelly V. Lewis, 21, of Pine Haven Apts., reported a case of simple battery.

• Bennie Bruce Hogan, 20, of Hawthorne II, was charged with disorderly conduct.

Bulloch County Sheriff's Office

• No reports.

ANNOUNCEMENTS

Month Committee.

Things to do at GSU

Today

• The Gamma Beta Phi Honor Society will hold its first meeting of winter quarter at 7 p.m. in the Biology lecture hall. For more information contact Jennifer at 764-6476.

• The Baptist Student Union will have a yard sale from 2-6 p.m. at the BSU Center on Lanier Drive.

• Karaoke and Casino Nite. Las Vegas has come to GSU in the Russell Union Ballroom at 7 p.m.

Saturday, January 21

• Sigma Nights: a semi-formal/formal event presented by Sigma Gamma Rho. It will be held at the Lakeside Cafe at 8 p.m. Tickets will be sold in the Russell Union on Jan. 12, 17 and 18.

Monday, January 23

• "Match Made in Heaven Dating Game." Find your perfect match. It will be held through Feb. 3. For more information contact Union Productions.

• Wingfield and Davis Blues, Jazz and Contemporary music all mixed into one. Hand clapping and foot stomping fun at the Foy Theater at 7 p.m.

Wednesday, January 25

• Don't forget to catch "An introduction to the stars" at the GSU Planetarium. The doors will open at 11 a.m. It will be a 30-minute program, no charge.

• The first Scuba Club meeting of winter quarter will be held at 7:30 p.m. in the Russell Union room 242. Those interested in the next trip, to Crystal River, can sign up tonight. For more information contact Marc at 764-3424.

Monday, January 30

• An Evening with Poet Mari Evans at Foy Recital Hall at 7 p.m. It is sponsored by CLEC and the Communication Arts Department.

Tuesday, January 31

• Greek Founder's Day Ceremony will be held in the Russell Union Ballroom at 7 p.m. It is sponsored by Zeta Phi Beta Sorority and the Black Awareness

Wednesday, February 1

• Don't forget to catch "An introduction to the stars" at the GSU Planetarium. The doors will open at 11 a.m. It will be a 30-minute program, no charge.

• Mari Evans' "A Dark and Splendid Mass" in Communication Arts room 101 at 8 p.m. It is sponsored by CLEC and the Communication Arts Department and will run through Feb. 4.

• The Public School Art Exhibit opens at the GSU Museum and will continue through Feb. 28.

Thursday, February 2

• Relationship lecture by Robin Blake entitled "Love and Relationships" at the Russell Union Ballroom at 7 p.m.

Friday, February 3

• Psychic Readings by Robin Blake helps you meet your future. From 11 a.m. until 3 p.m. Location to be announced.

• The Ms. African-American Pageant will be held at 7 p.m. in the University Union Ballroom.

Monday February 6

• "Fort Mose: Colonial America's Black Fortress of Freedom" will be at the GSU Museum. It is sponsored by the Black Awareness Month Committee and the GSU Museum and will continue through March 31.

• Psychic Readings by Robin Blake, meet your future from 11 a.m. - 3 p.m. Location to be announced.

• Keynote Address: E. Lynn Harris "The Invisible Life" and "Just as I Am" will be at 7 p.m. in the Russell Union Ballroom.

Tuesday, February 7

• Battle of the Bands wit guest appearance by "On Four" at the Union Ballroom from 7 - 10 p.m.

• "Black Women in History." This program will be held at 7 p.m. in the Southern Center for Continuing Education.

Wednesday, February 8

• "Black Women in History" will be in the Southern Center at 7 p.m. It is presented by Delta Sigma Theta Sorority, Inc.

Monday, February 13

• Don't forget to catch "An introduction to the stars" at the GSU Planetarium. The doors will open at 11 a.m. It will be a 30-minute program, no charge.

Tuesday, February 14

• Valentine Video Buttons at the Russell Union Commons from 11 a.m. until 3 p.m.

• "Black As You Want To Be" will be at 7 p.m. in Russell Union room 247. It is presented by Alpha Kappa Alpha Sorority, Inc.

Thursday, February 16

• A Keynote Address by Dr. Dennis Kimbro entitled "Voices of Triumph: Motivations for African Americans" will be held in the Southern Center at 7 p.m.

Saturday, February 18

• Miss GSU Pageant at the Russell Union Ballroom at 7 p.m.

Sunday, February 19

• The African American Gospel Choir in Concert at the Russell Union Ballroom at 6 p.m.

Monday, February 20

• A Faculty/Staff Talent Show will be held in the Russell Union Ballroom at 7 p.m. It is presented by UMOJA.

Tuesday, February 21

• Fettucini Brothers. A variety show with a touch of comedy at the University Ballroom at 7 p.m.

• The Southern Center for Continuing Education will have a luncheon seminar at RJ's Seafood from 11:30 a.m. - 1 p.m. The lecture is entitled "Are You Listening?" and it will examine the critical distinctions between listening and hearing as well as suggest reasons for why people are poor listeners. The cost is \$29 which includes lunch and the seminar at RJ's.

Wednesday, February 22

• The second annual Housing Fair will be held today at the Russell Union Prefunction Area from 10 a.m. - 2 p.m. It is open to all students, faculty and staff.

• A Keynote Address by Dr. Claud Anderson entitled "Let Us Stitch Together a Story of a People" will be held at Russell Union Ballroom at 7 p.m.

OVERSEAS

Libel suit filed against Georgian

By Vijay Joshi

The Associated Press

SINGAPORE — A Georgia scholar who wrote an article critical of Singapore's legal system went on trial today for contempt of court — only he wasn't there.

Christopher Lingle, a former National University of Singapore economics professor, fled to the United States after a police interrogation in October rather than face prison for allegedly libeling Singapore's judiciary.

Lingle, a native of Atlanta, said he was advised not to return to Singapore.

The row over his article has soured Singapore-U.S. relations, already lukewarm since the May caning of American teen-ager Michael Fay, who was convicted of vandalism.

Lingle could be fined, given a jail term or both for ignoring court summonses.

In a procedural step today, Judge Goh Joon Seng said there was enough evidence to allow the trial to go on. The proceedings resume Jan. 17.

Singapore sued over the article, which appeared in the Paris-based *International Herald Tribune* newspaper Oct. 7. Lingle wrote that some East Asian governments used a "compliant judiciary to bankrupt opposition politicians."

"He scandalized the judiciary by calling it compliant," Attorney General Chan Sek Keong, the top government lawyer, told the Supreme Court today.

Chan said that it is well known that Singaporean officials have

sued 11 opposition members for defamation since 1971, and that damages awards have driven some of them to bankruptcy.

But Lingle "imputed that judges would willingly order damages," Chan said.

Senior Minister Lee Kuan Yew has filed a libel suit against the newspaper.

Also on trial were Michael Richardson, the *Tribune's* Singapore correspondent and Asian editor, and publisher Richard McClean.

Singapore Press Holdings, which publishes the local edition of the newspaper, also is charged.

Singapore's leadership has been traditionally sensitive to criticism from the West and says no one has the right to defame its judiciary or government.

IN GEORGIA

Gingrich not popular with all students

The Associated Press

KENNESAW — For the second time in little more than a year, Newt Gingrich has drawn unwelcome attention to the campus of Kennesaw State College.

And some folks at the Cobb County college resent it.

"This is just another Newt Gingrich incident that takes away from the school," Lisa Brooks, a senior English major from Atlanta, complained after Gingrich fired Christina Jeffrey, an assistant professor here, as official historian of the U.S. House of Representatives.

"It makes us look bad," said Dan Dreiske, a sophomore communications major from Chicago.

Jeffrey, who was on leave from her teaching job, was ousted from the \$85,000-a-year job after Gingrich learned that she once complained that Nazi and Ku Klux Klan views weren't represented in a Holocaust course.

The firing came just a few days after news of Jeffrey's appointment by Gingrich became

public. Colleagues and students defended Jeffrey as an academic trying to ensure that even unpopular parts of history were represented in discussions of the Holocaust.

Students praised Jeffrey for

**"THIS IS JUST ANOTHER
NEWT GINGRICH
INCIDENT THAT TAKES
AWAY FROM THE
SCHOOL."**

— LISA BROOKS,
KENNESAW STATE SENIOR

her teaching ability.

"As an historian, you've got to look at all sides of an issue," said senior Jan Bethards of Chicago, who took a public-policy course from Jeffrey two years ago.

Where she failed, the students and associates said, was in not

understanding that the rules are different outside the classroom of the 30-year-old school in Gingrich's 6th District.

"I tried to remind her that the political sphere is different from the academic one," Jim Fleming, a vice president and spokesman for the school, said after speaking with Jeffrey by telephone.

"She's hurt. She's stunned. She's shocked," Fleming said.

Jeffrey's academic world is one of commuter students — some 12,500 — drawn from the surrounding conservative Cobb County. Many of the students are working their way through school and are older the average age is 27.

Kennesaw State's majors in business, international relations and political science are popular, and draw foreign dignitaries as speakers and visitors. South Korea's ambassador to the United States was visiting to help students on a model United Nations team to prepare for national competition.



Cold Care Kits

available at the Health Center
through our
Cold Care

Express Lane

• No long waits to see a physician

• No worries

• Express Lane moves at high speeds

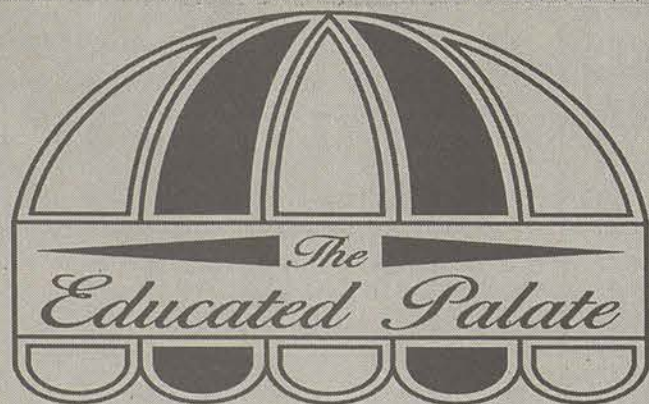
Kits are now reduced from the normal \$6⁰⁰ rate

to only \$3⁰⁰
while supplies last

Also, Flu Shots are available for \$5⁰⁰
til the end of January

GEORGIA SOUTHERN UNIVERSITY HEALTH SERVICES

681-5641



Special This Week
Egg Plant Parmesan

\$4.50

Check out our office delivery service 11-2:00 M-F

Lunch 11-2:30 Dinner 5-8:00

Call 681-5303

IN SOUTH CAROLINA

Clemson president search narrows

The Associated Press

COLUMBIA, S.C. — Finalists for Clemson University's presidency will begin visiting the campus this weekend, and the university's trustees expect to announce the new president Jan. 20.

Clemson's search committee announced Monday that college executives from Georgia, Iowa, Louisiana and Florida have advanced to the final stage of the search process, which includes a tour of the campus and meetings with students, faculty and staff.

The finalists are Horace Fleming, executive vice president of Mercer University; Constantine Curris, president of the University of Northern Iowa; Greg O'Brien, chancellor of the University of New Orleans; and Morris Marx, president of the University of West Florida.

They were chosen from a list of 12 and will begin visiting the

campus Sunday, selection committee chairman Lawrence Gressette said.

Fleming is a former director of the Strom Thurmond Institute at Clemson and has been at Mercer since 1992.

Curris has been president of the University of Northern Iowa for 11 years and is director of the American Association of State Colleges and Universities.

O'Brien has been the University of New Orleans' chancellor since 1987. He also is a professor of psychology.

Marx has been president and a mathematics professor at the University of West Florida in Pensacola for six years.

Philip H. Prince, a retired American Express executive and a Clemson trustee, has served as the school's interim president since President Max Lennon left in July to become chief executive of Eastern Foods in Atlanta.

G-A SPOTLIGHT

GSU graduate receives scholarship

•Teresa Robertson, a recent GSU graduate, was awarded the Irene Burt Boole Botany Scholarship. Robertson holds a Bachelor of Music and Bachelor of Science in biology from GSU. Next fall, Robertson will begin studies toward a Master of Science degree. The scholarship was endowed in 1989 by Professor Emeritus John Boole in honor of his wife and is given to students whose emphasis is in the plant sciences.

Sorority elects officials

•The Zeta Xi Chapter of Zeta Tau Alpha installed their 1995-96 executive officers. New officers are Cherilyn Woods, president; Brandi Brown, vice-president; Melissa Colton, director of new members; Dana Parrish, membership; Renee Boyd, secretary; Jennifer Livingston, treasurer; Jennifer Newman, rituals; Vanessa Fawcett, panhellenic; Mardee Coyle, historian/reporters. The new officers attended an officer training weekend where chapter goals and next year's plans were made.

Sociology professor publishes articles

•William Smith, associate professor of sociology, recently published articles on subcultures and countercultures, cults, ethnicity and ethnic groups in *Survey of Social Science: Sociology*.

Chemistry professors are elected

•Bill Ponder, department head and professor of chemistry, and Norman Schmidt, assistant professor of chemistry were elected officers of the Coastal Empire Section of the American Chemical Society. Ponder will serve a three-year term as councilor and Schmidt was elected chairman-elect and will assume the chairmanship next year.

Physical Education professor to attend conference

•Sandy Gallemore, professor of physical education, attended the annual conference of the National Association for Physical Education in Palm Springs, Ca. Gallemore, who will serve as president during 1995-96, chaired a commemorative lecture program and introduced the featured lecturer.

GSU professor to give Humanitas lecture

•Richard Flynn, an associate professor of English, will speak on *From the Playground to the Waiting Room: Childhood as Construct at a Humanitas lecture*. The lecture will be Jan. 18, at RJ's Steakery. The dinner will begin at 6 p.m. and the lecture will begin at 7 p.m. Faculty and staff are encouraged to attend and to submit papers or ideas for future programs. For more information, contact Caren Town at 681-5471.

The George-Anne would like your help in order to recognize special people, organizations and activities on campus.

Anyone who would like to make suggestions for our G-A Spotlight feature may call Chris Sherwood, news editor, at 681-5246. Letters may also be sent to The George-Anne at Landrum Box 8001.

IN THE USA

Cotton crop is hurt by rainy fall weather

By Elliot Minor

The Associated Press

ALBANY, Ga. — Part of this year's banner cotton crop rotted or turned yellow while waiting to be ginned. There are no estimates on the amount of loss.

Growers blame soggy fall weather and inadequate ginning capacity, despite the addition of six gins to help process Georgia's largest cotton crop in 57 years.

"It's a problem," said Mike Bader of the University of Georgia Extension Service in Tifton.

Bader, an agricultural engineer, said some of the damaged cotton may have been wet when farmers compressed it into modules.

Modules are giant cotton loaves that are formed in the field, covered with tarps and hauled to gins.

"The gins just couldn't get it ginned as quickly as last year," he said. "Some of it may have stayed out there a little longer than they should have."

Generally, cotton is ginned on a first-come, first-serve basis. If a "hot module" is discovered, it gets ginned more quickly.

Hot modules result when moisture causes the cotton to decompose.

No one is sure how much cotton was damaged because ginners are still ginning the crop. They normally finish in December, but some will have to continue through February.

Robert Tucker, executive director of the Southern Cotton Growers-Southeastern Ginners Association, said the problem has not caused a major loss so far.

Barbara Hoelscher, a supervisor at the U.S. Department of Agriculture's cotton classification office in Macon, said a higher percentage of the cotton is discolored this year. Gins send

samples to her office to be tested and graded.

"It's not what we consider to be white cotton," she said. "It is a lower grade."

Bobby Webster, who farms and operates a gin in Burke County near Augusta, said some of his cotton rotted.

"It's a combination of trying to get your crop out of the field with wet conditions," said Webster, chairman of the Georgia Cotton Commission.

"It's possibly the backlog of cotton, because it's the biggest crop we've had in many years. We can't blame the ginners for this."

HOMESTYLE BUFFET & SALAD BAR

The Hot Bar

SERVED WITH SOUTHERN HOSPITALITY

Real Home Cooking

4 or 5 Meats a Day

Lunch: \$4.29
Dinner: \$4.99
Sunday: \$4.99

Real Macaroni & Cheese

The Hot Bar

Buy 1 Dinner Buffet At Regular Price & Get 2nd Dinner Buffet at 1/2 Price

With This Coupon
Offer good from 5 P.M. to Close

TO-GO ORDERS CALL

111 N. Main St. • 489-7009 • Statesboro

Next To Pine Trace Inn

Open: Sun-Thur 10:30 a.m. - 9:00 p.m.

Fri & Sat 10:30 a.m. - 11:00 p.m.

UNION PRODUCTIONS
GEORGIA SOUTHERN UNIVERSITY

Activities

TONIGHT

Kareoke and Casino Night

Try your luck at Blackjack or just have fun on the mic!

Union Ballroom 7pm

Monday 23 - February 3

Match Made in HEAVEN

Dating Game

Find your Perfect Match

Monday 23

Wingfield and Davis

Blues, Jazz, and Contemporary Music all mixed into one!

Hand clapping, foot stomping fun!

Union Ballroom 8pm



Union Productions 1995 - 1996 executive board applications are available in the Union room 207 The deadline is January 31!

Movies

Wed 18 & Sat 21



January Sun 29, Mon 30, February Wed 1, & Thur 2

Corrina, Corrina

Movies

• 7:00 pm & 9:30 pm

Union Theatre

• \$1 with GSU Student ID
• \$2 General Admission

Coming Soon!

Jason's Lyric

Information Hotline

☎ 681-0461

☎ Office 681-5442 • Union Productions
Landrum Box 8066 • Statesboro, Ga 30460

NOBODY DOES SPRING BREAK BETTER!

SPRING BREAK

AS SEEN LAST APRIL ON CBS NEWS "48 HOURS"

DRIVE YOURSELF & SAVE!
COMPLETE FIVE & SEVEN NIGHT TRIPS

ROAD TRIP

\$58
as low as

14TH
SELLOUT
YEAR!

PARTY

SOUTH PADRE ISLAND
PANAMA CITY BEACH
DAYTONA BEACH
KEY WEST
STEAMBOAT
VALE/BEAVER CREEK

* PER PERSON DEPENDING ON DESTINATION / BREAK DATES / LENGTH OF STAY

1-800-SUNCHASE
TOLL FREE INFORMATION & RESERVATIONS



Our Opinion

Moving channel to another tier is a penalty against us

The life of a college student entails two separate entities.

The first of which is, of course, the educational process. The drudgery of navigating across campus to sit through one's classes for 15 hours of credit does not even hint to the number of countless hours of reading, calculating and practicing homework.

We, after graduating from our respected high schools, understood the commitment that was set for us — to broaden our minds so we could eventually walk down the aisle for the fabled college diploma.

The second entity is our social lives. Sometimes students attempt to ease themselves away from their courseloads by conversing with comrades at local eateries and drinking establishments. But times do arise rather often when a nice, enjoyable time merely consists of lending back in the recliner to watch television.

Television has continuously expanded into the quickest, most-used source of information and entertainment. Taking an aspect of TV away from viewers unless an added fee accompanies your next bill is a travesty. To take MTV away from students is a travesty. The channel has been moved to another tier.

The cost — \$2.60 extra a month — is not the central point behind why the removal of a channel is so devastating. The real issue lies beyond a monetary total that could be found on a roommate dresser. The issue questions how many more business organizations in the Statesboro community and other small communities across the nation will continue to push the 18-24 age group on the back burner.

The MTV decision was handed down from the corporate headquarters in Seattle, which simply means members of Generation X are being penalized for just being themselves. The only salvation for us is to become educated and not ridiculed. The choice is yours.



Backtalk

Now you have a chance to "talk back" to *The George-Anne* on any topic of interest, from pedestrian traffic congestion to cafeteria food. Simply fill out this form and send it to Landrum Box 8001, or drop it by *The George-Anne* office at Williams Center room 223.

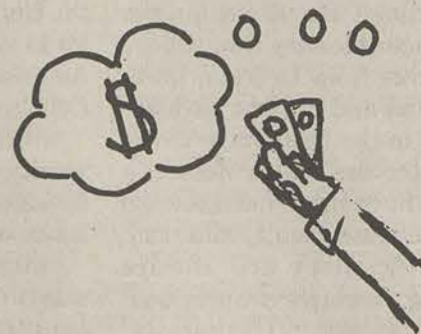
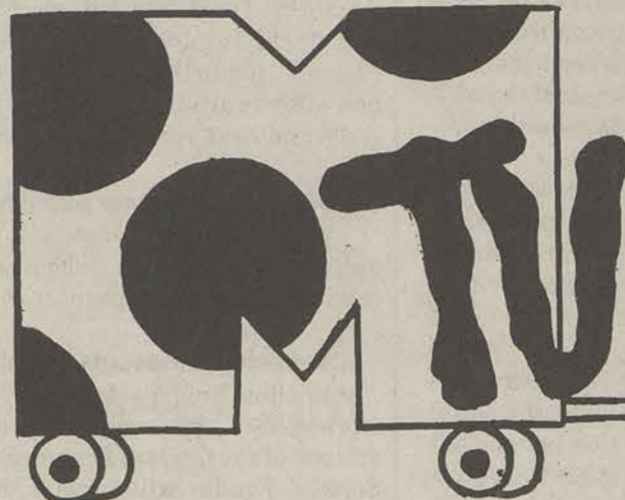
Name: _____

Telephone: _____

Landrum Box: _____

Your 'words of wisdom'...

Seattle
2,832 miles



Students, get out your cash for the 'Real World'!

Promises are not honored in society

With the beginning of a new year, many of us made resolutions and promises to ourselves. No one really knows who started this tradition or why it still kept.

We usually make promises for a new year so we can change from the year before and so we can better ourselves with each new year. Each year is thought of by many people as turning over a new leaf and setting goals. Some believe we set goals because the way we lived our life the past year was unsatisfactory in our own eyes. Many of the goals and promises we make are broken after two or three weeks of trying desperately to keep them. Some of us don't last New Year's Day itself without falling back into the old habits and breaking the promises we made to ourselves.

Some people believe promises are meant to be broken, well, if this is true then why make them in the first place?

Promises are filled with trust from one person to another or from a leader to the public. Politicians make promises during their fight to be elected but once elected, those campaign promises are usually nothing but hot air and empty trusts between the public and the politician.

All of us have made a promise sometime or another to be some where or do something and be-

THE HIGH NOTE

AMY STAATS



cause of forgetfulness or just plain laziness we don't follow through. People don't take dependability very seriously.

By the Webster's dictionary, dependability means "trustworthy and reliable." People need to know they can depend on you to be there or to back them up. There is no sense in having friends if you cannot depend on them to keep the promises they make to you.

I believe trustworthiness is dying out in the United States. Everywhere I turn there is double-crossing and back stabbing — two-faced people who just don't give a damn about trust or the promises they've made. Everyone has become so selfish and concerned about what they are going to get out of something that trust and dependability have been pushed to the back burners and greed and getting to the top no matter who you step on have taken the forefront. Granted, you have to protect yourself these days, but you have to give a little

to get anything back.

Unfortunately, I have had to learn (the hard way) that I cannot trust anyone on this campus. If I do, I end up getting stabbed in the back. There are a few exceptions, though. I've learned that I can trust my best friend, my roommate, a few people I've met in marching band and others who I met through my classes. Other than that, I know people can turn on you, literally, on a dime. Some people don't even wait until your back is turned to talk about you.

There is also the promise not to tell a secret. I don't think people take you seriously when you say "Don't tell anyone." But if you promise not to tell something, then simply don't tell it! Not your mother, your brother, not your roommates nor your best friend — not even your dog! Because if it gets back to the person you promised, they might lose their trust in you. And without trust, friendship will eventually die. So it's better to keep that secret

inside than to blab it all over creation and maybe lose a friend and gain an enemy. No one needs enemies.

It feels good to be able to depend on people and know that they will be there through thick and thin. But when you trust people there is a certain vulnerability in it. Trusting people is like putting yourself out on a limb and setting yourself up for disappointment. And when you find someone who keeps their promises to you, that's someone to keep in touch with.

There are other ways to be trusted. When you borrow anything from anyone, it is common courtesy to return the item borrowed in the same condition it was in when you borrowed it. And of course if it's money, the lender trusts that you will pay it back. Those who can't be trusted in other ways really shouldn't be loaned anything, because you probably won't get it back.

The point is, promises are not honored in this society as much as they have been in the past. You can't trust a handshake anymore. There has to be a blown up, written and signed legal document when anything important goes on. It's a sad situation when you can't trust someone you are to do business with, let alone people who are supposed to be friends.

STAFF

NEWS

Copy Editors: John Kluttz; Anna Murdock; Layout Editor: Mandy Crews; Assistant News Editor: John Munford; Senior Staff Writer: Kim Wagner; Staff: Jan Boulware, Carolyn Duttweiler, Sharon Grier, Stacy Jordan, Lauren Mestel, Jana Mobley, Ayana Thomas, Meredith Whitt

FEATURES

Features Editor: Ashley Hunt; Arts & Entertainment Editor: Josh Bass; Senior Staff Writer: Derek Lewis; Staff: Eric Bray, Stacy Clemons, Judith Cunningham, Kurt Deen, Dana Hinterliter, Kym Reynolds, Mark Runyon, James Salter, Tijuana Thomas

SPORTS

Sports Editor: Jeff Whitten; Senior Staff Writer: Ronnie Swinford; Staff: Tom Harrington, Tonya Hilton, Bart Hiter, Donald Jordan, Heather Mullins, Aaron Solomon, Will Van Kleef, Carolyn Wynn

OPINIONS

Staff: Josh Bass, Christopher Cole, Julie Collins, Ashley Hunt, Derek Lewis, John Munford, Jana Newsome, Amy Staats

PHOTOGRAPHY

Chief Photographer: James Hill; Staff: Elizabeth Hayes, Holly McCaig, Jerome New; Contributing Photographers: Stephen Burt, Randy Trujillo

ARTWORK

Leigh Braddy, Teth Burns, Shawn Chavis, Anna Murdock, Michelle Underwood

CIRCULATION

Supervisor: Steve Taliaferro; Staff: David Hillis, Bruce Karr, Scott Newton

ADVERTISING/DISTRIBUTION SERVICES (ADS)

Advertising Manager: Brooks Clements; Business Manager: Stephanie Wylie; Marketing Coordinators: Leigh Braddy, Jana Mobley; Sales Representatives: Melissa Goodman, Steve Keller, James Salter, Heather Turner, Michelle Underwood, Carolyn Wynn

PRODUCTION AND GRAPHICS EDITORIAL SERVICES (PAGES)

Production Managers: Ron Lair, Scott Mulkey; Staff: David Beck, Aquila Bookhart, Mitch Mitchell, Shawn Sunderland, Reggie Taylor; Classified Ads Manager: Melissa Goodman; Darkroom Manager: Randy Trujillo

STUDENT PUBLICATIONS COORDINATOR

Robert Bohler: News, Editorial Advisor; Bill Neville: General Manager

The memoirs of the great friendship

Perhaps the finest man I've ever known died recently. His death has affected me in a number of ways, not the least of which was it's the first time someone close to me has died.

William Hammonds was his name, but he'd been Mr. Bill to me since I was 13. He was my grandfather's best friend. They'd known each other for many years.

He was an outdoors man like Granddad and myself. Mr. Bill hunted on our place, The Farm. He had his own deer stands and turkey blinds and knew the land almost as good as Granddad.

I'd see Mr. Bill whenever I went to Tennessee to visit the grand folks. In the summers, he would bring bar-b-que from R&L Meat Company (people came from Arkansas just to get five pounds of that meat), or a catfish dinner from the Catfish Cabin.

That was when we were building the house my grandparents live in now. It was unfinished and Grandma hadn't moved in yet. We would sit at a folding table eating dinner and talking about the things two old men and a kid are supposed to talk about: fishing, bad jokes, hunt-

REFLECTIONS FROM THE EDGE

JOSH BASS



ing, the way things used to be.

Sometimes we would take walks through the woods or drive to the Back Field to check for signs of the size of the Turkey population or if the bear was back. All three of us went sometimes, sometimes just me and Mr. Bill. I learned a lot whatever we did.

On a few occasions, I took the old farm truck into town to Mr. Bill's house for dinner with him and Ethel Lee, his wife.

Mr. Bill did all the cooking; and damn fine food it was. Ethel Lee doesn't cook. Mr. Bill cooked with the stove and the microwave. He used small kitchen appliances, gadgets. Many people of his age would shy away from "new-fangled things," clouded by intimidation. He had many of the latest products.

Mr. Bill never lost touch with the old ways; even though his boots were the latest 100% Cordura nylon.

I killed my first deer, not with Granddad, but with Mr. Bill beside me reminding me in a whisper to "squeeze, don't pull the trigger." I even used his gun. It was a muzzle-loading black powder carbine.

One summer, he taught me how to Jigger Pole for bass on our lake. It's kind of cheating — a guaranteed way to catch fish. It's a lot of fun and thoroughly engaging. Jigger Poling is a lost art. I used to read about, in the 1960's "Field and Stream" magazines in the attic at my grandparents' old house.

There's one reason especially why I'm saddened. It had been a number of months since I'd seen

or had any contact with Mr. Bill. With everything I'm into here there just didn't seem to be time for it.

I had a letter sitting on my night stand waiting a reply. I kept telling myself once or twice a week to write back or just take time for a call. I never did.

Mr. Bill was a great man because he was real. His knees had been rebuilt. He and Ethel Lee were still happily married. He was at the point where it meant more to be a guest in a deer or turkey's home than it did to kill and eat it. He said a curse-word every now-and-then.

Mr. Bill loved his children. He loved his wife. He loved me and my Grandparents. He was involved in many projects with the church because it gave him satisfaction, not because he felt he owed something. And he was proud of the work I've done.

I miss him because he was all this and so much more. I miss him because no one else ever taught me how to Jigger Pole.

I never got to say "Good-bye."

No one ever really does.

"Good-bye Mister Bill. And thank you for so much."

Thursday
Wing It!
25¢ Buffalo Wings



TALES FROM THE HARDWOOD

AARON SOLOMON

I was sitting on my couch the other day, reading my sports page. It actually was not my sports page — it was probably Will's or John's, or maybe even Rusty's, though I can't imagine Rusty buying a sports page, unless Star Trek was a sport.

But, I digress. It must look as if I am stalling. A warning: reading this column may be hazardous to your health. (Editor's note: I couldn't agree more.)

I am avoiding the subject, so I will get to the point. Which is that I was reading one of my beloved roommates' sports pages.

My motivation was to see the line on the Super Bowl. San Fran by 19 over the Chargers.

For those of you who are familiar with The Atlanta Constitution's sports section, you know how they show the latest odds from Las Vegas. They had the Super Bowl, NBA, and NCAA basketball odds listed.

GSU IS ON A ROLL AND HAS A CHANCE TO GO 3-0 IN THE CONFERENCE. THERE IS ABSOLUTELY NO WAY THE CITADEL CAN BEAT US. . .

I looked over the list of schools, and I saw that The Citadel was favored by five over GSU.

First, I was stunned to see that we were on the latest line. Some guy named Louie in Vegas actually included us among all those ACC, Big Ten, and Top 25 schools.

Second, what do you mean five point underdogs? To The Citadel?

GSU is on a roll and has a chance to go 3-0 in the conference. There is absolutely no way The Citadel can beat us. . . They crushed us.

GSU could not do anything right, and everything was falling into place for The Citadel.

At half-time it was 42-18 in favor of The Citadel. It was the Eagles' worst half-time score of the season, and their streak of 162 games with a three-point field goal was in jeopardy.

The Eagles got back on track in the second half. They even outscored The Citadel 41-29, but it was too little too late.

If the Eagles expect to compete in the conference it is going to take a whole game and total team effort.

This team showed what it is capable of against UIC, but even in that game a poor first half kept them from possibly winning.

The Eagles are going to have to gel.

Dante Gay has to be solid from three point land, and Winters and the rest of the team are going to have to score.

That includes hitting from the charity stripe — something the team did not do against The Citadel.

Teams get thumped. Now the Eagles have to regroup. Before it's too late.

Lady Eagles lose on road

By Jeff Whitten Sports Editor

After blowing out Marshall in a regionally televised game Saturday afternoon, the Lady Eagles failed to hold off a last second rally by rival Southern Conference member Eastern Tennessee State University Monday night in Johnson City.

The Lady Eagles lost 98-97, after leading by four with less than a minute to play.

ETSU cut the lead to two, then won the game from the free throw line after GSU's Denise Primeaux missed the front end of a one-and-one free throw opportunity. A desperation 3-point try by Lady Eagle Tara Anderson missed the mark as time ran out.

The loss drops GSU to 2-1 in SoCon play. They are 6-8 overall.

ETSU is 13-2, and 4-0 in the conference.

Head women's basketball coach Drema Greer gave poor rebounding and a "lackadaisical" first half of play as reasons the Lady Eagles lost.

"We didn't do a good job in the first half," Greer said, "we weren't intense and didn't play our usual game."

The Lady Buccaneers easily outmuscled GSU on the boards, 51-32. ETSU was led by senior forward Deshawne Blocker, who scored 20 points and pulled down 15 rebounds.

Greer called Blocker ETSU's "big gun" and said the forward was in the running for conference player of the year honors.

Blocker was All-Conference last season.

Andrea Autrey led the Lady Eagles with 20 points and seven rebounds. Janice Johnson added 19 points. Guard Tara Anderson



James Hill

Guard Tarsha Askew, shown here against South Carolina, and teammates had a tough time of it against ETSU Monday night.

The Lady Eagles did not go to the foul line in the first half. ETSU, on the other hand, was 15-18 from the free throw line in the opening half.

Center Marysue James blocked two shots for the Lady Eagles. Guard Tarsha Askew recorded three steals.

The official attendance was 677.

GSU plays Furman and then Davidson on the road before returning to Hanner to open an eight-game homestand. Appalachian State visits first on Jan. 28 at 4:30 p.m. Tickets are free to students.

There's no love lost between us," she said.

COURTSIDE NOTES: GSU shot 39.5 percent (36-83) from the field. ETSU shot 55.6 percent (35-63).

NCAA NEWS

Debate over Prop. 16 isn't new

By Jeff Whitten Sports Editor

First of three parts.

Call it intercollegiate athletics' own 100-year war. Or call it a long-lasting agreement to disagree.

The truth is, universities and, since its founding in 1906, the NCAA, have been wrangling over the issue of exactly who is (and conversely who isn't) eligible to play collegiate sports, and under what criteria.

From the start much of the fuss has been over freshmen. In today's jargon "initial-eligibility" is the most often repeated catch phrase, but the eligibility of freshmen is the issue.

According to a recent edition of The NCAA News, the debate over the freshman rule can be

traced directly to what historians consider to be the first intercollegiate football game ever played, an 1869 matchup between Rutgers University and Princeton. In a 1987 NCAA-funded study, researchers from Penn State reported that Rutgers beat Princeton with the help of 10 freshmen. Three were failing algebra.

The term "ringer" comes from this era.

Harvard was first to ban freshmen from athletic competition in 1903. Other schools followed, and by the 1920's most major college conferences banned freshmen from participation in athletics.

In 1939 the NCAA decreed that freshmen were ineligible to participate in championships.

By the 1960's, athletic pro-

grams at many universities were complaining that the cost of providing scholarships to non-participating freshmen athletes was too much of a financial burden, and in 1972 the NCAA decided that freshmen were eligible to compete in all intercollegiate sports.

Which raised the question: which freshmen? Over time, entrance requirements for athletes were examined and reexamined, and the rules have been changed over the years, from the '1.6' rule, which meant that a freshman's high school work would have to "predict" a minimum college GPA of 1.600, to one that set as a minimum a 2.000 GPA for incoming student-athletes, to the controversial Proposition 48.

To be continued.

Men 'lose ugly' to The Citadel, 71-59

G-A Staff Reports

About the only thing in doubt in the second half of GSU's Tuesday night game against The Citadel in Charleston, S.C. was whether or not the Bulldogs could manage to sink a 3-point field goal.

The game's outcome had long since been decided, as the Bulldogs whipped GSU handily, 71-59.

The loss was the Eagles' first to The Citadel since joining the Southern Conference.

Senior forward Wilson Winters and senior guard Dante Gay had 19 points each to lead GSU.

The Eagles did hit a 3-pointer late in the second half, extending the number of games in which they have made at least one to 163 straight.

In a post-game interview with WMCD's Nate Hirsch, Head Coach Doug Durham said, "We're either going to win easy, or lose ugly, and we lost this one ugly."

Next up for GSU is the University of Tennessee at Chattanooga at 7:30 p.m. on Jan. 21 in Hanner Fieldhouse. The SportsSouth Network will televise the game live to a regional audience. As always, students with valid IDs get in free.

(This summary is based on what could be gleaned from a local airing of the GSU-Citadel game on WCMD. The George-Anne regrets that a more complete report could not be made due to the Tuesday night/Wednesday morning deadline.)

COURTSIDE NOTES:

The loss to The Citadel drops GSU to 6-9 for the season. The Eagles are 2-1 in conference play.

Upcoming opponent UTC was the coaches' preseason pick to win the Southern Division of the conference.

Through its first 13 games, GSU was next-to-last in the Southern Conference in scoring with a 69.2 ppg average. Furman was last, while Marshall led the league with an 87.9 ppg average in 11 games.

After 13 games, GSU's average of 12.9 assists per game was last in the conference. Marshall averaged 16.1 assists over its first 11 games.

The Eagles are 2-10 against this Saturday's opponent, the University of Tennessee-Chattanooga. They first met in 1979. GSU lost by a point in overtime.

The Eagle's all-time leading scorer is Chester Webb, who played from 1952-56. Webb owns the record for most points in a season (883) and career (2,542), as well as the season (30.5) and career (24.0) scoring average marks. Further, Webb owns the following free throw records:

— 24 free throws made in a game;
— 301 in a season;
— 776 in a career.

He once hit 21 consecutive freethrows, setting two records (game percentage and consecutive free throws made in a single game).

BRIEFLY . . .

FSU coming to town

G-A staff reports

GSU Softball:

The 1995 GSU softball schedule has been released, and it looks like an interesting year. The season opens Feb. 11, when powerhouse Florida State comes to Statesboro for a noon game. GSU plays in four tournaments this year, the last being the SoCon Tournament in Greenville, S.C. The highlight might be the Georgia Tech Buzz Classic in Atlanta in March-April.

Men's Basketball:

GSU recently announced the signing of two guards, 6-2 Kevin Clark from Richmond Hill High School, and 6-4 Leon Stroy, from Florida's Orange Park High School.

Miscellaneous:

Perhaps "Sports Illustrated" knew something no one else did when it ran a photo of Jerry Rice on the cover of its Dec. 26-Jan. 2 issue. Also in the photo is a San Diego Charger defensive back. What remains to be seen is who wins the Super Bowl, but for once "Sports Illustrated" got the contestants right, whether it meant to or not.

During the Fox network's coverage of the NFC Championship game John Madden had what might have been his best moment of the season when, during a replay of a fight between the Cowboys and 49ers that clearly showed one player kneeling another in the groin, the ex-football coach said, "The referees don't have a signal for that penalty, and it's probably a good thing."

1995 Lady Eagle Softball Schedule

Date	Opponent	Site	Time
FEB 11	Florida State	Statesboro	12 p.m.
16	Georgia College	Milledgeville	2 p.m.
17	Campbell	Statesboro	2 p.m.
18	Florida A & M	Statesboro	1 p.m.
20	Troy State	Troy, Ala.	3 p.m.
21	Faulkner	Montgomery, Ala.	1 p.m.
22	South Carolina	Statesboro	1 p.m.
25	Charleston Southern	Statesboro	1 p.m.
27	Kennesaw State	Statesboro	1 p.m.
MAR 3,4	Marshall	Statesboro	3 p.m./1 p.m.
11,12	Furman	Statesboro	12 p.m./1p.m.
13	Augusta College	Statesboro	3 p.m.
20	South Carolina State	Orangeburg, SC	2 p.m.
21	Augusta College	Augusta	2 p.m.
24,25,26	Winthrop Tournament	Winthrop, SC	TBA
31	Georgia Tech Buzz Classic	Atlanta	TBA
APR 1,2	Georgia Tech Buzz Classic	Atlanta	TBA
5	South Carolina State	Statesboro	2 p.m.
8,9	*Tennessee-Chattanooga	Chattanooga	2 p.m./1p.m.
11	Georgia Tech	Statesboro	1 p.m.
14,15,16	Frost Cutlery Tournament	Chattanooga	TBA
21,22	SoCon Tournament	Greenville, SC	TBA

*Southern Conference game
All dates except tournaments are doubleheader games.



Hey, GSU Sports Fans!

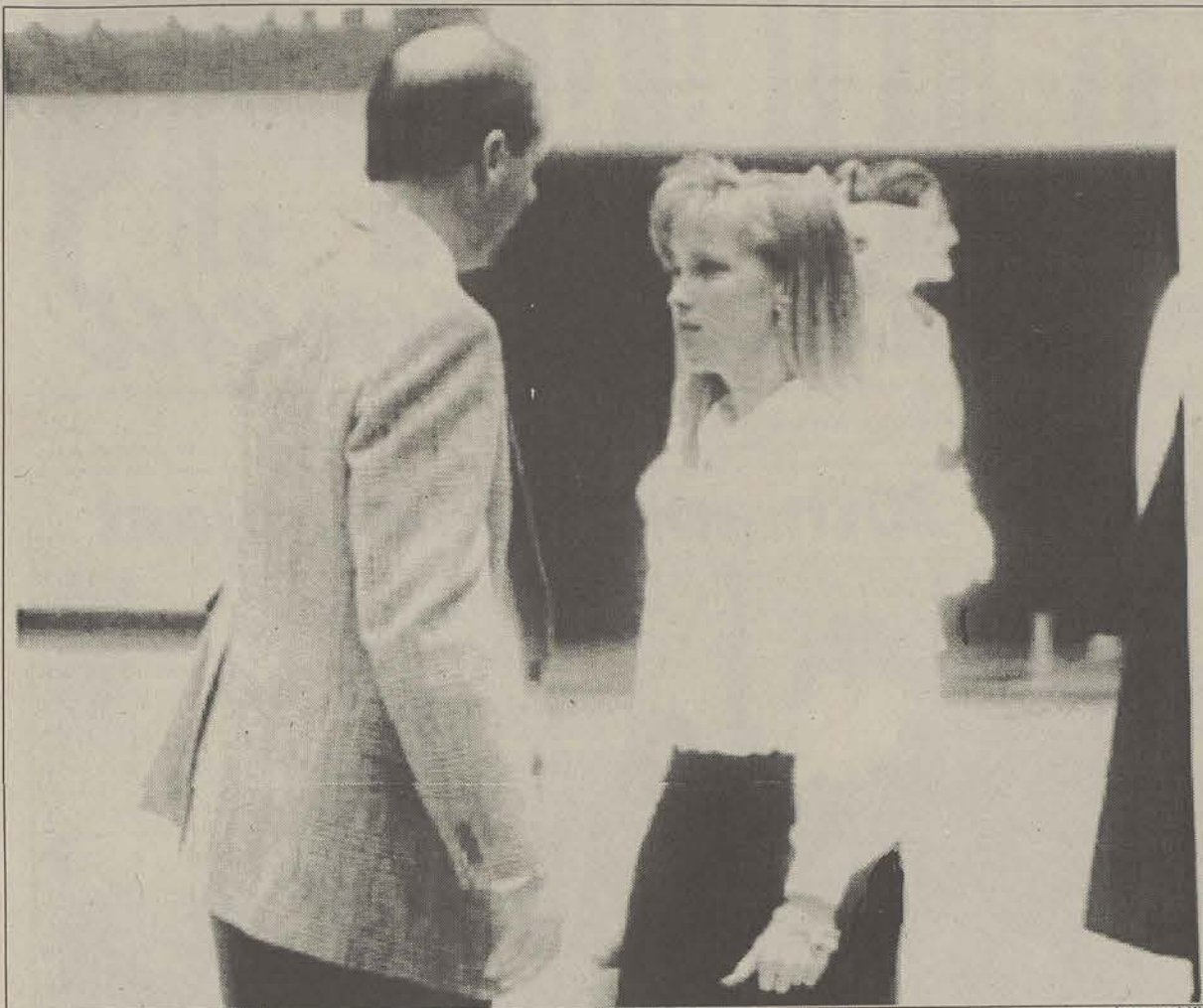
The George-Anne wants to know who you think will win the Superbowl.

- ☐ San Francisco 49ers.
☐ San Diego Chargers.
☐ A bunch of overpaid, steroid-addled Neandertals who should probably be in jail.
☐ Bud Light.
☐ Couldn't care less.

Rules: There are no rules. Simply check a box, clip, then get this to The George-Anne, LB #8001 or bring by Room 223 in the Williams Center. Results will be published Jan. 26.

IN SPORTS

Lady Eagle player turns coach



James Hill

Childers talks to Assistant Basketball Coach Rusty Cram concerning Lady Eagle strategy.

By Ronnie Swinford
Senior Staff Writer

For all the Lady Eagles basketball fans out there, if you go to a game this year you may notice a change of personnel. If you see last year's starting point guard sitting on the bench looking a lot like a coach — well, if you do, you'll be right. She is now a student assistant.

Stacy Childers was the returning starter at point guard coming into this year.

"On the first day of practice someone fell on me, and that is when I hurt my knee," Childers said. "I have a torn lateral meniscus."

Childers limped through pre-season camp and played in seven games, but the injury finally took too much of a toll. She was told by the doctors that she should not play any more.

To stay in the game, she became a student assistant coach.

"I talked to the coaches and told them that I wanted to be part of the team — I love the team and still want to be part of it," said Childers.

"With Stacy as a coach, I can now get a point guard's perspective on what's happening on the court," said Head Coach Drema Greer.

"My major is sports and physical education and I am thinking of becoming a coach, so this will help with some extra experience," Childers said.

Childers, 23, is from Tunnel Hill, Georgia, which is near Dalton. She attended Northwest Whitfield High School and holds many records there, including the single game record for assists with 16. She was named the 7-AAA Player-of-the-Year in

1990 by *The Atlanta Journal and Constitution*.

She started her career at the University of Tennessee at Chattanooga, where she was red-shirted for one year and played for a year. She was a member of the 1991-92 UTC team that won the Southern Conference title and advanced to the NCAA tournament where they lost to Clemson.

Childers then transferred to Tennessee State Junior College for one year before coming to GSU.

Her first season here was last year when she started all 30 games. She averaged 21 minutes and 5.8 points along with 2.03 assists per game. She took 130 three pointers and connected on 45 which gave her a 34.6 three-point percentage that was second best on the team last year.

ON CAMPUS

'Trouble in Tahiti' plays Foy tonight

By Derek Lewis
Senior Staff Writer

Leonard Bernstein is coming to Statesboro.

Well, not Bernstein himself, but one of his works.

Joseph Robbins of the music department will be directing Bernstein's 1952 classic "Trouble in Tahiti." This is an opera that has survived the test of time. *Opera News* says it is a "beautiful, affecting music, and a story that is as strong today as it was 35 years ago."

"Trouble in Tahiti" is an opera in seven scenes by Leonard Bernstein "West Side Story" that was written in 1952. The characters consist of Sam and Dinah, a middle-aged couple, and a trio comparable to a Greek Chorus "born of the radio commercial."

"Tahiti" is a play which *The New Yorker* called "a small but important landmark in the course of American opera."

The couple squabbles about their unhappy life. They argue and complain, and the play follows how they deal with their problems.

Sam, played by J. Bradley

Hood (previously seen in "Down in the Valley") turns to the comforts of the gym punching bag. Dinah, played by Joan Taylor (who appeared in last year's "The Night Bell") relies on the comfort of her psychiatrist's couch.

Also appearing in the play is a trio, which resembles a sort of hybrid of a Greek chorus and a radio commercial, played by debuting singer Betsy Dalton, Stacy Milligan (also in "Down in the Valley"), and Tiffany Peavy (last seen in "The Cheater").

This "experimental" production is presented as a learning experience for his Opera Theater class. They are responsible for the acting, set, publicity, as well as anything else that arises.

"The whole thing is a bit of an experiment," Robbins said. "Everything about this show was done by the seven of us. We started from scratch building the set."

The set is another part of the experimental aspects of the production.

"The set was painted by the cast," Robbins said. "We went down there and pretended like we were all 8-year-olds. The ef-

fect I wanted was that it was all done by children."

The cast has spent a lot of time together and have become a close knit group during this rehearsal time.

"The whole cast is welded together, but the fact the everybody loves everybody else," Robbins said. "Everybody goes out together after rehearsals. It is a very nice group to work with."

The cast hopes to travel to the public schools with this production later in the year.

Robbins provides the artistic direction while Larry Mercer is the musical director. The cast ranges in age from 19-33. They will also be presenting "Captain Lovelock" in the spring.

The admission-free production runs less than an hour. This short-time frame helps to prevent the production from dragging out too long, Robbins said.

"Trouble" will be playing in the Foy Recital Hall tonight at 8 and Saturday at 2 p.m. There will not be a Friday performance.

THE UNIVERSITY STORE

BRINGS BACK A BLAST FROM THE PAST!
BRING IN YOUR OLD "GEORGIA SOUTHERN"
SWEATSHIRTS, TEE-SHIRTS, MUGS OR GLASSES

JAN. 17 - JAN. 21 FOR
VALUABLE COUPONS

TOWARD THE
PURCHASE OF NEW
MERCHANDISE.

THE OLDEST OF THE
OLD WILL WIN GREAT
PRIZES! WINNERS
WILL BE NOTIFIED

JAN. 23, 1995



Under the Green Roof!
681-5181

Mon - Thur 7:45 a.m. - 6:00 p.m.

Fri 7:45 a.m. - 5:00 p.m.

Sat 10:00 a.m. - 4:00 p.m.



ON CAMPUS

Kindness Week begins on our campus

By Kim Wagner
Senior Staff Writer

For all those people who have the desire to visit hospitals with treats, friendly conversation, clean graffiti off walls and buildings or to just do good things for strangers with no apparent reason, a special week has been designated at GSU to promote good deeds such as these. One week during the month of February has been designated as a week to encourage people to do kind things for others.

"This week is not intended to get people to only be nice for a week, but to stimulate people to think about ways they can be nice to people," explained Audrey Campbell, a counselor at the GSU counseling center and sponsor of the event.

A "Random Act of Kindness" could be anything from helping people load groceries in their car at the grocery store, anonymously paying for someone's dessert at a restaurant, writing a special professor a thank you note or holding a tree planting party.

"The acts of kindness can be very small things, but there's always a ripple effect from them," Campbell said. "An act of kindness could be as simple as smiling at a stranger and saying 'Good Morning.'"

"There are 12,245 daytime students and 1,000 faculty members at GSU," Campbell said. "If everyone of these people said they're going to speak to three people each day of the 'kindness week' there would be 198,675 acts of random kindness at GSU."

Campbell came up with the idea of incorporating this week at GSU after reading the "Random Acts of Kindness" book published by Conari Press.

The "kindness week," which will be held on Feb. 13-17 coincides with the National Random Acts of Kindness Day officially declared by Congress on Feb. 17.

Several meetings have been held by Campbell at which students from different campus organizations were invited. Among other things the participants of the group discussed possible names for the week of kindness.

The students attending the meetings are supposed to get together with other members of their organization to generate ideas about the upcoming week, or the organizations can get to-

gether with Victoria Futch, the administrative coordinator of special programs and show their kindness by volunteering in the community, Campbell explained.

"It's amazing how many ideas can be generated when people get together and begin discussing this," she said.

Anyone interested in participating during the week of kindness should contact Campbell at 681-5541.

ATTENTION ALL STUDENTS!

SGA SENATE POSITIONS NOW OPEN

APPLICATIONS AVAILABLE IN SGA OFFICE 207 RUSSELL UNION

DEADLINE: JAN. 26



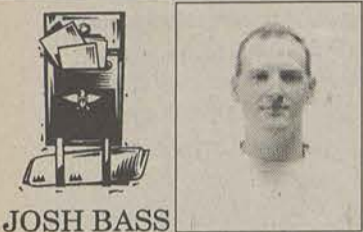
Billboard's Top 10 Country singles

1. "Not a Moment Too Soon," Tim McGraw (Curb)
2. "Goin' Through the Big D," Mark Chesnutt (Decca)
3. "Till You Love Me," Reba McEntire (MCA)
4. "Gone Country," Alan Jackson (Arista)
5. "Doctor Time," Rick Trevino (Columbia)
6. "Mi Vida Loca," Pam Tillis (Arista)
7. "Pickup Man," Joe Diffie (Epic)
8. "This is Me," Randy Travis (Warner)
9. "I'll Never Forgive My Heart," Brooks and Dunn (Arista)
10. "Night Is Fallin' in My Heart," Diamond Rio (Arista)

Copyright 1995, Billboard-Broadcast Data Systems

Arts & Entertainment

Page 8 — Thursday, January 19, 1995



JOSH BASS

A movie that we should relate to

By Eric Bray
Staff Writer

Thanks to everyone who bought tickets to the WVGS showcase and special thanks to those who actually showed up.

A huge thanks goes to Chena's for providing the food.

There is no higher level of goodness than supporting local music.

This week has some damn fine offers once again.

Chena's especially will be rocking.

Thursday they are hosting Skirt. They're planning to go into the recording studio in early February and the word is a record is in the works.

Those Athens madmen, The Fuzzy Sprouts, play Friday night. Expect lowbrow mayhem.

Monday, newly signed with Geffen Records, James Hall warms up for his European tour Tuesday. He'll be playing material from the new album due out in the fall.

Legend's has David Allan Coe back for a repeat performance Friday. His last show drew a couple thousand.

Blind Willie's has a full docket with Blue Miracle on Wednesday.

Roscoe plays tonight, probably to the usual standbys.

Former Boroite Vibe is opening for Spider Monkey Friday. Considering the similar styles of the two, the show will probably have the house moving to the beat of the same drummer from start to finish.

The outdoor Statesboro Blues Festival looks like it's going to happen. I'll have more as it develops.

Writer/director John Singleton ("Boyz n the Hood," "Poetic Justice") has delivered another masterpiece to the big-screen with "Higher Learning," a film portraying racial tensions in a typical college called Columbus University.

The film does not just address racism, around which much of the hype has formed, it analyzes other topical events in today's society such as sexual preference, rape and sexism.

The story is masterfully portrayed in a way that contrasts the differences in the separate lifestyles on campus. Because of this, the storyline does not revolve completely around any one character.

Most focused on, though, is Malik, played by Omar Epps ("Juice," "The Program"). Epps portrays a black athlete struggling with the conflicts of selling out his racial integrity while harboring a resentment toward other races, and an internal standard of true equality and understanding.

Kristy Swanson ("The Chase") plays a white girl who is raped and seeks support in a feminist discussion group. Through this she becomes involved in an amorous relationship with the group's leader, played by Jennifer Connelly ("Career Opportunities").

Ice Cube fills the role of an intelligent, but academically unmotivated, supporter of black power. He encourages Epps to buck the system in adherence to a distinct set of principles.

Michael Rapaport ("Zebrahead," "True Romance") portrays a freshman experienc-

ing difficulty making friends, who seeks refuge in a group of Nazi skinheads. It is this group which instigates the racial tensions that ensue.

Singleton did a good job in character development. Though you hate Rapaport's actions, you can't help feeling particularly sorry for him in a scene that reveals psychological problems.

Also, not one of these characters is 100 percent right in every scene. Ultimately it is the political science professor, in a superb performance by Laurence Fishburne ("Deep Cover," "Boyz n the Hood"), who is truly mentally liberated. He provides the enlightened contrast and model for the other characters.

The movie is a little exaggerated (though not implausible) in its depiction of police injustice and somewhat unfair in the portrayal of white people. Whites are either depicted as superficial socialites or Nazis. More disturbing than this, however, is the frequency of these types on the campus (trading in nazism for redneck prejudice).

I was also alarmed by audience reaction. I witnessed too many people simply rooting for one race to beat up the other in a fist fight. If you watch this movie, bear in mind that Singleton is trying to bridge the racial gap. His purpose is not to incite violence, but to end it.

The cinematography is visually stimulating, and the screenplay is genius. With a cool soundtrack to boot, this film is a winner. More importantly Singleton has delivered a socially conscious movie which will help progress the mentality of our generation. We need more films like this.

WVGS 20th anniversary blast



Snap Neck Carnival was a highly charged opening act.

James Hill

G-A staff reports

The WVGS 20th Anniversary Showcase in the Union Ballroom Friday had a less than expected turn-out with a peak attendance of around 120. Strong competition from the Ron & Ron cast at Legend's.

There were some minor technical problems with sound, primarily with Pulse. It was a

case of too many sound sources, not enough separation.

As a whole, Snap Neck Carnival, Pulse and Donkey were pleased with the show.

Donkey performed a few numbers off their new album "Ten Cent Freaks."

A few eager attendants danced energetically during most

of Donkey's set.

Food for Donkey was supplied by Chena's Cantina and the WVGS staff.

The student-run campus radio station brought in little money with the fund-raiser. However, plans are under way for a second showcase spring quarter.

DON'T LET THE FRESHMAN 15
BECOME THE FRESHMAN 25
By JOINING

TOTAL BODY ENHANCEMENT

Beginning Jan. 25
5-6 p.m. • The Union
This 8-Week Program Will Meet Every
Wednesday From 5-6 p.m. In The Union
Jan. 25 thru March 15

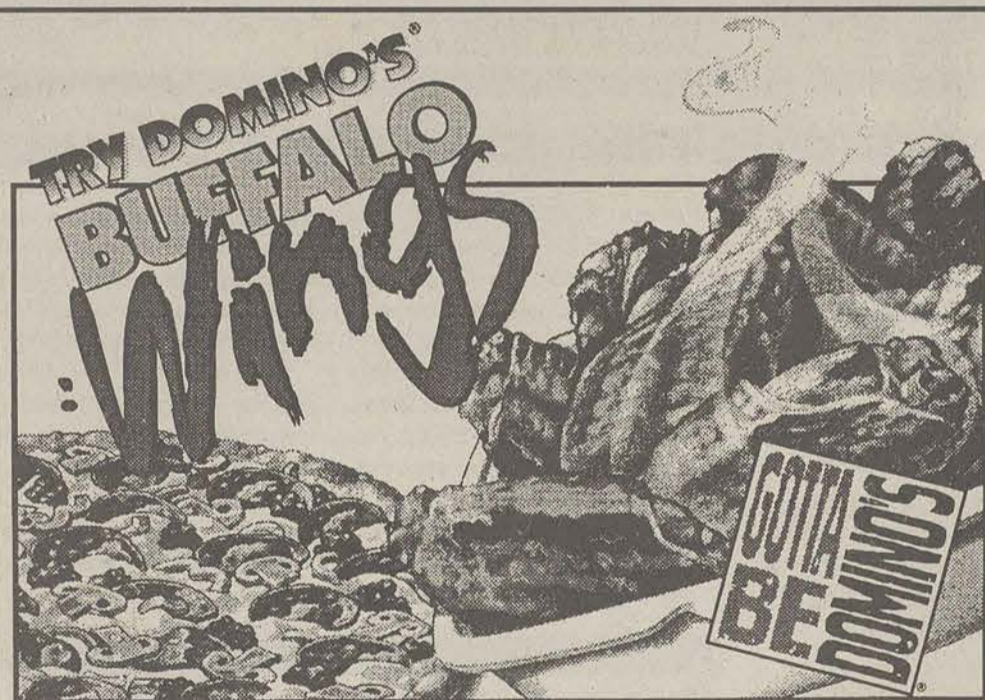
• Learn How To Improve Your
Body Image & Self Esteem By
Setting Positive Goals That Are Lasting

• End Your Battle With The Scale And Yo-Yo
Weight Loss-Weight Gain

• Develop A Whole New Relationship
With Food

Sponsored by the
GSU Health Center

For more information
please call 681-5641



For a Limited Time!

\$3⁹⁹
Plus Tax

**10 Piece Order of
Buffalo Wings with Any
Pizza Purchase**



Serving GSU/Statesboro

681-4326

\$11⁹⁹
Plus Tax

Medium Pizza with 3-Toppings, and
a 10 Piece Order of Buffalo Wings

Valid at participating locations. Not valid with any other offer. Customer pays sales tax where applicable. Our driver's carry less than \$20. Delivery areas limited to ensure safe driving. © 1995 Domino's Pizza Inc. CALL NOW! Offer ends 1/31/95

\$8⁹⁹
Plus Tax

**MEDIUM
3-TOPPING PIZZA**

Valid at participating locations. Not valid with any other offer. Customer pays sales tax where applicable. Our driver's carry less than \$20. Delivery areas limited to ensure safe driving. © 1995 Domino's Pizza Inc. CALL NOW! Offer ends 1/31/95

\$12⁹⁹
Plus Tax

**TWO LARGE PIZZAS
Each with 2 Toppings**

Add 99c for each Deep Dish

Valid at participating locations. Not valid with any other offer. Customer pays sales tax where applicable. Our driver's carry less than \$20. Delivery areas limited to ensure safe driving. © 1995 Domino's Pizza Inc. CALL NOW! Offer ends 1/31/95

\$5⁹⁹
Plus Tax

**CARRY OUT SPECIAL!
Large 1-Topping Pizza**

Add 99c for Deep Dish

Valid at participating locations. Not valid with any other offer. Customer pays sales tax where applicable. Our driver's carry less than \$20. Delivery areas limited to ensure safe driving. © 1995 Domino's Pizza Inc. CALL NOW! Offer ends 1/31/95

CARTOONS

CLASSIFIEDS

CROSSWORD

01-Announcements

ATTENTION GSU STUDENTS
Summer Applications for Financial Aid
will be available beginning January 23,
1995.
DEADLINE FOR APPLYING FOR
SUMMER FINANCIAL AID IS MARCH 1,
1995

ATTENTION: The George-Anne screens
all classified ads prior to publication. The
newspaper strives to accept ads for
legitimate products & services only.
Students are urged to exercise caution
when replying to ads, particularly those
which ask for money or a credit card
number in advance of delivery of products
or services. Students are also urged to
report to the newspaper (at 681-5418) any
suspicious offers they might see in the
classifieds. Remember, if an offer seems
too good to be true, it probably is.

For the latest underground rap, listen to
Da Underground Bandits, E-man, Native,
and Taz on WVGS 91.9fm Sundays
9-11pm and Mondays 5-7pm.

If you are a college student and are raising
a child please contact Aletha Yoho at the
Southern Reflector at 681-5305. If you are
unable to reach me please leave a message
with your name and phone number. Your
help is needed on a story in the upcoming
edition.

Interested in acting? Directing? Stage
managing? Play writing? Stage craft?
Costumes? Improvisation? Lighting/sound
design? Theater memberships? Make-up?
Join us every Tuesday at 5:30 in Studio
101 of Communication Arts Building for
"Theater and Performance"

Interested in Acting? Directing?
Stagemanaging? Improvisation? Play
writing? Stage Craft? Set design?
Lighting? Sound Design? Costuming?
Make-up? Join us Monday 9 @ 5:30 in rm.
101 Comm. Arts Bldg. For Theatre and
Performance.

Reflector staff meeting today at 5pm in
upstairs Williams Center rm. 215. Writers
needed!

STOLEN- 1984 Pontiac Fiero Red stolen
in Publix parking lot at 7 pm. It has
fragile on trunk over left tail light. There
will be a reward offered for information.
(912) 863-7870.

The Gamma Beta Phi Society will hold its
first meeting on January 19 at 7:00pm in
the Biology Lecture Hall.

The Late Show with Patih late night
Fridays at 1am on Southern's own WVGS.
91.9fm.

Yoga Club meets Wednesdays, 5-6pm in
Russell Union. Check at info desk. Wear
loose, comfortable clothes. Beginners
welcome. Relax your body and your mind
-- release stress and reduce tension. Have
a mystical experience.

03-Autos for Sale

1986 VW Jetta good condition, sunroof,
powerlock, power windows, \$3,000. Call
afternoons 489-8935 before 5pm 871-1315
ask for Jocelyn.

1987 Mercury Sable LE (SW), new trans.,
power seats and windows. \$3100. 1981
Mazda 626 rebuilt engine, runs good,
power windows, sunroof. \$900. Call
681-8848

1993 Ford Explorer. Beige and loaded.
852-5278.

1993 Toyota Tercel for sale. Exc. Cond.
Call 489-4516 leave message.

83 Lincoln Towncar Maroon Leather A-I
shape, recently spent \$1700 to replace
many parts. Hate to part w/, but just
purchased new TC \$3450, 764-7421.

For sale 1986 300zx Turbo. All the options.
Have all records. \$5500. Contact kevin at
681-6355.

For sale: 1982 Toyota Celica 2 door
hatchback w/sunroof. Runs good, excellent
gas mileage. \$1,200 firm. Call 489-2557.

04-Auto Parts, Repair

For sale: BBS Enki Rims Black/chrome
trim, Size 13, four lugs, FWD. Exc. Cond.
\$200 OBO. Call 489-3130, ask for Darrell
or leave message. Day or evening.

05-Business Opportunities

Want to earn extra income? Want to own
your own business?
Want more free time from previous
professional? Interested? Call Brian
(912)489-1031 or pager at 1-800-502-6682.
A few hours on the side can make your
dreams come true.

06-Child Care

Need a babysitter? Give us a call at
681-6965. Ask for Monica or Jacquelyne or
leave a message.

07-Education

FREE GYM MEMBERSHIP to anyone
willing to participate in a 10 week weight
training study. Exercise science grad
student needs males and females, ages
35-50, with little or no weight training
experience to volunteer for this study. Also
willing to use people who have experience
but have not lifted weights for over one
year. If interested, call Diane Hurlbut at
681-1773 or Dr. Kent Guion at 681-0200.

09-Furniture & Appliances

For sale: A pair of elegant wooden bar
stools, approximately six mon. Old., with
concave seat and raised back. Asking \$60
OBO. Call 489-1890

For sale: Sleeper sofa, double size. Exc.
Cond. \$125, will deliver. Pine bench-style
table, bench, and 2 chairs, \$175. Call
839-3878, leave message.

For sale: Waterbed mattress, queen size.
489-8721 or 489-8722, L.A. Van Keuren.

Glass coffee table with Greek style
columns. Asking \$50. Frank 871-4169

Graduated -- must move and sell items:
queen size water bed, single beds, all three
w/ comforter & sheets -- much more. Call
871-6580 -- no answer, call (904) 693-1032.

King size waterbed, bookcase headboard
w/mirror, full flotation, walnut color, \$100,
Call Michelle 681-5906.

New! Washer & Dryer,
White-Westinghouse. Heavy Duty. Only
used 6 mon. Paid \$600, asking \$400 OBO.
Call Kate at 764-6648

10-Garage Sales

Baptist Student Union Yardsale --
Thursday, Jan. 19, 2-6pm. Additional
information -- call the BSU. Yardsale will
be at the BSU Center.

11-Help Wanted

Immediat Openings
The Georgia Army National Guard needs
high school juniors, seniors, and
graduates. We also need prior military
service veterans. Many skills available.
*EARN EXTRA \$\$\$ IN PART TIME PAY.
*\$6,840. GI BILL AVAILABLE
*LIFE INSURANCE, DISTINCTIVE CAR
TAG AND MANY OTHER BENEFITS.
Enjoy civilian live and a rewarding
military career at home! For additional
info. Call SFC Chuck Yeater at 681-5313
or 681-5244 or stop by our office located at
highway 301 North, Statesboro, Georgia.
GEORGIAN'S AT THEIR BEST!

CRUISE SHIPS HIRING-Travel the world
while earning an excellent income in the
Cruise Ship & Land-Tour Industry.
Seasonal & full-time employment
available. No exp necessary. For info. Call
1-206-634-0468 ext. C53943.

Frisbee Golf enthusiasts, G-A Sports
Editor looking for a Winter Qtr Reflector
Story. Call Jeff at the G-A, 681-5246.

LIFEGUARDS, POOL MANAGERS,
SWIM COACHES, SWIM
INSTRUCTORS, SUMMER POSITIONS
AVAILABLE IN NORTH METRO
SUBURBAN ATLANTA AREA.
CERTIFICATIONS CLASSES
AVAILABLE. CALL SWIMATLANTA
POOL MANAGEMENT, 992-7665.

Lifeguards: Trinity Pools is now hiring
lifeguards, managers, swim coaches, swim
instructors, communication directors, and
service technicians for the Metro Atlanta,
Nashville, and Birmingham areas. Full
and part time summer positions are
available. For info call (404) 242-3800.

Need computer lessons. The basics and the
most popular programs. Will pay.
681-1299.

SCHOLARSHIPS AVAILABLE for
Freshmen(min. 850 SAT) &
sophomores(2.5 GPA). Pays tuition, fees,
\$150/qtr books, &100/mon. Information
seminar on Jan. 18 at 5:15pm in rm. 119
of South bldg. Questions? Call ROTC
Dept. At 681-5320.

Wanted: Upperclassman, 3.5 or better
GPA to tutor Math, biology, and history, 4
hrs/wk. Will pay reasonable hourly rate.
681-1624

12-Lost & Found

Black and gray striped cat missing near
Player's Club since 1-5-95. Wearing a
yellow collar with a bell. If found, please
call Stacie 871-4931.

Found; wrist watch. Call to identify --
871-6810.

13-Miscellaneous for Sale

35mm Canon camera. 852-5278.

Awsome sufwoofer box only \$60. Collector
Budwiser Pilsner glass 1 dozen for \$30 or
\$2.50 a piece. Great for parties and very
durable. Call 681-7841. Michael

Bike for sale: Trek 800 \$200. Call
681-9113. S-TH after 6pm.

Brother typewriter, LCD Display 65,00
word dictionary built in and many more
features. Call Martin at 681-8794. Only
\$75

Computer. Laser 386SX33, math-co; 280
MB HD, 4MB RAM, VGA, internet S/R
Fax modem and over \$1000 worth of
software. Frank 871-4169.

DTK 286 computer w/monitor, modem,
software and Panasonic printer only \$275.
Call Mike 681-5541 or 764-8621.

For sale: A brand new, never used
Panasonic KX-P2123 "quiet" dot matrix
printer. Reasonable price. Call
681-0641(11-11:30 mornings) or 489-1890
evenings.

For sale: Camo uniforms, army
equipment, and combat boots-size 10 1/2.
Best offer wins. 871-4382, Travis.

For Sale: Packard Bell 386sx computer,
SVGA, modem, Windos, etc., Panasonic 24
pin printer. \$800 for the system. Call Eric
764-8482.

Game gear wall plug, magnifier, and 7
games. Will sell separately or all together.
Game prices vary. Will negotiate.
884-2841 leave message.

IBM computer for sale, inc. Color monitor,
modem, Word Perfect 5.1, paradox, etc.
Exactly like Henderson Library. \$550
OBO. Call Martin 681-8794

Large college cap & gown for sale \$25,
764-7421.

Mountain bike. Brand new, Hunter green,
Bridgestone. Best offer. Call Russell
681-2543

Pioneer car stereo \$175; Rip-Curl wet suit,
\$100; 1982 Toyota Celica -- new brakes
and clutch (must see) \$600. Call afternoon
681-6039 leave message.

Skateboards and accessories. Colby Carter
H-Street deck and gullwing trucks, and
much, much more. Prices negotiable,
884-2841, leave message.

TI-81 calculator and manual for sell, like
new. \$55 OBO. Please call 681-7169.

Trek customized loaded with everything.
Air/oil shock, etc. Deal of the year. Best
offer! Must see. Call 764-9931. Must sell!

Two leather jackets in good condition.
Brown, medium Gloval Identity G-111,
and dark brown, x-large, New Order. \$90
each or \$150 for both OBO. 884-2841,
leave message.

14-Motorcycles

1992 Ninja 600R 5000miles, \$4,000.
754-3696. Jeffrey.

15-Musical

Drummer needed for country/southern
rock band. Call Dan 871-4113.

Hondo stratacaster -- black with case.
\$100, 681-2013 ask for John.

Lead singer/front person available.
Searching for guitarist for Duo or band.
Wanting to play clubs ASAP. Serious
inquiries only please. Call now! 489-4022.

Wanted: experienced guitarist and basist.
Skills in singing and improvising is a
must. Call 489-2599.

16-Personal

F250 I saw you at Craig Karges and hoped
to see you at the Improv. I'd like to see you
again! Casino night is tonight. Will you be
there?

Kevin- Thanks for the wonderful
holidays. I'm looking foward to a perfect
Winter Quarter and our one year. Love
Always, Jen

RED HEAD WITH CLEFT CHIN. Lost my
Citibank Photocard at intramural bocce.
Easily recognizable. Bears name Linda
Walker. Sentimental value. Reward: year's
supply of sunblock.

To the great guy in the white truck who
got back in his car to give me his parking
space in the gravel lot on 1/10/95 at 9am --
you made my day. I hope good deeds come
your way. Thanks again.

17-Pets & Supplies

5FT Boa constrictor. Very tame. \$100 with
cage and other accessories \$150. Call
871-2882.

AKC Dalmation puppies for sale. Six wks
old. 1/2/95. \$150. Call 587-5862, if no
answer leave message.

Boa -- Colombian red-tail, 5-feet long, very
tame, comes with large cage. \$200,
681-2013 ask for Matt.

Free puppies. 6 wks old. Call 764-1485.
Ask for Moon or Brian

19-Rentals & Real Estate

Large one bedroom apartment for rent at
Pinehave Apartments, No. 184 (upstairs)
\$290/month unfurnished; \$310/month
furnished. Call 764-7618.

LOOK NO FURTHER!
TAKE OVER LEASE \$426 FOR THE QT
(INCLUDES DEPOSIT) ACROSS THE
STREET FROM CAMPUS. OWN
BEDROOM, SHARED BATH,
MICROWAVE, WASHER/DRYER,
DISHWASHER CALL HUGHIE 681-2417
OR
CAROLYN 404/463-3729 LEAVE NAME
AND NUMBER

Nice 1BR, 1BA furnished apartment at
Pinehaven Apartment; approximately 1
mile off campus; no deposit required; take
over lease; Call Mary Parker 681-4312.

Nice spacious 1Br apartment, furnished,
ceiling fans, low monthly utilities; 1/2 mile
off campus; no deposit required. Available
immed.! Call 681-6453 or (912) 764-7522.

One bedroom apartment for rent starting
Spring qtr. W/D included. \$350/mon. Call
681-7897.

Sub-leaser needed for summer qtr at
Player's Club #108. 2br, 2ba, ground floor.
Please call Jennifer at 681-8734.

20-Roommates

1 female needed to sublease ASAP. Big
room w/private bath. Call Stacey at
871-7289. Leave message.

1 female/non-smoker, need to sublease
Winter-Summer qtr. Campus Courtyard. 2
bdm townhouse. \$215/mon. + util. Call
681-9262.

Christian roommate wanted to rent
private room spring quarter. Rent is
\$250/month (includes utilities). Please call
489-5902.

Female roommate needed ASAP! Larage
house, minutes from campus. Large
private room, W/D, inc. \$175/mon. Call
now! Ask for Heather 489-4022.

Female roommate needed for Spring.
\$180/mon. Call 681-6682. Leave message
and phone #.

Female roommate needed to sublease in
Towne Club Spring/Summer. Own
bedroom, own bath. W/D \$220 w/one
roommate 871-8289.

Female roommate needed. Private room,
W/D, off campus so trans. Is a must. Rent
neg. Annette 488-2273. Leave message.

Female roommate needed: Player's Club
APT/town house, share bedroom and bath.
\$161.25 mon +plus 1/4 utilities.
Optimistic/friendly environment.
Whatcha waitin' for! Call now 871-5136.
Ask for Amy, Jennifer or Tina.

Looking for people to sublease two
bedroom apartment at Stadium Walk for
Spring qtr. Call Monica at 681-8848.

Looking for white female to take over
lease on or before March 1, 1995. Nice
trailer on Langston Chapel Rd. (behind
stadium). Rent \$150. Call 871-1193
between 10-1 and 3-5.

Male or female roommate needed ASAP
for Sussex Cond. \$210/mon. Water+cube
w/HBO free. Needed for Winter qtr only.
We cook. Call Josh. or Noel at 681-9037

Male or female roommate needed. Private
bedroom and bath, partly furnished.
\$210/mo Park Place 681-4599 or
766-737-3148. (January rent free.)

Needed roommate for spring and summer
quarters. Rent negotiable. Hawthorne II.
Large private room and bath. Call
681-7375.

Needed: roommate for Eagles Nest
Apartments. Own bedroom. Non cigarette
smoker. Half of bills. Easy to get along
with. Call Mike 681-4780.

One or two people desperately needed to
sublease an apartment from Jan 95 to
June 95. Park Place. 2 bedrooms, 2 baths,
kitchen. \$250/mo. 871-5998.

Roommate needed to take over lease.
Across the street from campus. Own
bedroom, shared bath. \$163/mon w/\$100
deposit with first month free. Call Carolyn
at 681-9798 or (404) 463-3729.

Roommate needed ASAP. Ga. Villas #17
fully furnished, shared bedroom. Rent
\$135 central fan, W/D. Contact Valarie or
Regina 681-8766.

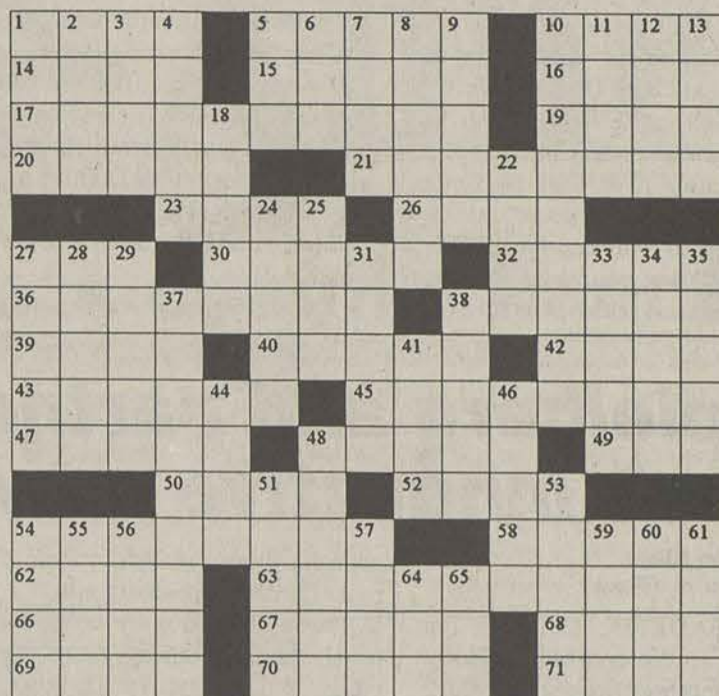
Roommate needed immediately to take
over lease at Players Club. Own bedroom.
Will negotiate rent! Call Kelly at

Roommate needed three bedroom
townhouse \$167.08 monthly plus 1/3
utilities. Call 764-7290. If no answer, leave
message.

" Sports & Leisure "

By Gerry Frey

- ACROSS
1 Game city
5 Plow inventor
10 Guys and ____
14 *Lawless tennis serv-
er*
15 ____ ski party
16 Pirate's Matty
17 *Tossing game*
19 Precipitation
20 Woman's headband
21 *Winter sport*
23 Verne's Captain
26 Understanding words
27 Pre grads
30 Actress Erin
32 ____ Gay: WWII
Bomber
36 *Party game*
38 Soul
39 Play part
40 Upper crust
42 Late ____ Show
43 Astaire et al
45 Vandals
47 The ____ & the Papas
48 *Baseball's Fielder*
49 *Tennis term*
50 Fifty two weeks
52 Norwegian capital
54 Messers. Chan & Brown
58 Angry
62 *Jewish dance*
63 *Wimbledon game*
66 Oil org.
67 French stage
68 Small bills
69 Knowing
70 Man in Spain
71 Ripped
DOWN
1 Cheerleader shouts
2 Bus. subject
3 Rome's fiddler
4 Comedian Bean
5 Prosecuting attys



- 6 Ephesians:abbrev
7 Cupid
8 *Land a fish:2 wds*
9 *Slalom shapes*
10 *Out door hobby*
11 *Jai*
12 Meat cut
13 Chanted
18 Accumulation of fluid
22 Profound
24 Fashions
25 *Dodgers' Hersher*
27 Beat it!
28 Mary Tylor Moore spin off
29 Witch town
31 Stage whisper
33 Bay window
34 British measure
35 "This is only ____
"____"
37 *Track event*
38 Eighteen wheelers
41 Pedro's sandwich
44 German donkey
46 Kate's partner
48 Build
51 Roger ____ :Journalist
53 Believe it ____
54 Dog breed
55 Arizona Indian tribe
56 God of war
57 Graceful bird
59 Cornerstone word
60 Rank
61 Being
64 ____ Dinh Diem ;
vietnam Pres.
65 Rain or mite preceder

Quotable Quote

"Spring is when you feel like
whistling even with a
shoe full of slush "

DOUG LARSON

© 1994 All rights reserved GFR Associates
P.O. Box 461, Schenectady, NY 12301

Roommate needed to sublease apt.
Immediately in Player's Club. Call Karen
681-9163.

Roommate needed Winter and Spring qtrs.
Own bedroom in lg duplex near high
school. \$225/mon. + 1/2 util. W/D,
dishwasher, cable. Prefer older student.
Call 764-7636

Roommate needed, Private Bedroom and
Bath, furnished, Park Place, \$210/mon.
Call 681-4599 or (706) 737-3148.

Roommate needed. Located at Campus
Courtyard 96. Own room, share 1/5
utilities/mo. \$240/mo., no security deposit.
Female preferred. Please call 871-4703,
ask for Sandy.

Roommates-SWM 162.50/mon. +1/4 util.
2B, share room, Hawthorne Ct. Donnie
681-3003.

SWF roommate needed for 2br apt. \$150 +
1/2 util. Ask for Shea 489-4516. Leave
message.

TAKE OVER REMAINDER OF LEASE
\$426 FOR THE QUARTER
MICROWAVE, WASHER/DRYER,
OWN BEDROOM SHARED BATH
ACROSS THE ST. FROM CAMPUS
CALL HUGHIE 681-2417
OR CAROLYN 404/463-3729 LEAVE
NAME/NUMBER

Tired of roommates? Stadium Place is the
place for you!!! I need someone to take
over my lease for Spring and Summer qtr.
If interested, call 871-3217.

Two roommates needed for 3-bedroom
house. Furnished water included. \$120 per
person. Sublease from January until
August 1995. Contact Jennie at 489-8299.

21-Services

GSU male student needs work, part time
and weekends. Willing to do manual labor,
odd jobs. Call 681-3108, ask for Abdul.

Happy New Year from your favorite typist
Mary Lee. \$4 first page, \$2 suc. Pgs.
681-6967

If you would like to have Braids, call
Chastidy at 681-9264. Two years
experience and affordable prices! Call for
an appointment today!

Resume, lesson plans, term papers, etc.
Call Brenda at 764-1486. \$2 per page.
Overnight guaranteed.

23-Stereo & Sound

Brand new Boss 240 watt, 4 channel car
amp, 4ohm or 2 ohm stable. 35 RMS
watts, 60 max watts per channel. \$100
OBO 884-2841, leave message.

For sale: JL audio 10" \$50, Punch 45 \$125.
Coastic 3 way crossover and coastic amp
\$75 or all for \$200 firm. Call 681-8752.

25-Television & Radio

19-inch color television \$100. Call
afternoons 489-8935 or leave message.

27-Wanted

Do you record the Jon Stewart Show
nightly? If so I desperately need a copy of
the Monday (16th) program. Denny
Sowell, LB 9057.

Looking for anyone who has had
encounters with UFO or abnormal ariel
sightings send serious remittance to L.B.
20880.

28-Weekends & Travel

*****SPRING BREAK*****
America's #1 Spring Break Company!
Cancun, Bahamas, or Florida! 110%
LOWEST PRICE GUARANTEED!
Organize 15 friends and TRAVEL FREE!
Call for our finalized 1995. Party
schedules!! (800) 95-BREAK.

JAMAICA Spring Break from \$295 Miami
or \$395 Atlanta each with air/tax,
hotel(inc. Taxes & svc.), tfrs. (800) *U*
REGGAE...800-873-4423. ReggaeJAM
24hr. FREE info.

Deadheads will compete with skiers for rooms

The Associated Press

SALT LAKE CITY — Skiers and Deadheads may be competing for hard-to-find hotel rooms next month.

The Grateful Dead concert, scheduled in part for the Presidents Day weekend, falls near the busiest ski weekend of the year, said Rick Davis, director of the Salt Lake Convention and Visitors Bureau.

"Hotels over that particular weekend are almost always booked to near capacity," Davis said. "They would be full even without any added pressure from

the concerts."

Almost as soon as it was announced that Salt Lake City was to be the first concert stop for the Grateful Dead in 1995, the Deadheads started calling the Doubletree Hotel.

"A lot of the people who were calling were telling us they planned to attend all three concerts and take in a little skiing as well," said David Scott, director of marketing at the Doubletree, the hotel closest to the Delta Center, where the band will perform.

The concerts are scheduled for

Sunday, Monday and Tuesday.

"Depending upon how many people attend, we should at least have enough rooms for the last two nights," he said.

The Grateful Dead played in Denver late last year and that city did not have any problem handling the visitors.

"We have 21,000 hotel rooms in Denver, so it was not that big of a thing for us," said Rich Grant of the Denver Convention Bureau. "It was not even the equivalent of one of our major conventions."

IN HOLLYWOOD

Spielberg and partners name their innovative new studio

By Lynn Elber

The Associated Press

PASADENA, Calif. — The young studio created by Hollywood hotshots Steven Spielberg, Jeffrey Katzenberg and David Geffen finally has a name: They're calling it DreamWorks SKG.

The trio is shopping now for a site that will feature grassy, tree-dotted areas to work in, Spielberg said at a news conference.

Their vision, outlined by Spielberg and Katzenberg — Geffen was unable to attend — is a campus-like setting that fosters creativity.

"It's going to be a wonderful environment, more like a college

campus" than the factory look of most studios, Spielberg said.

Those studios were modeled on the auto industry plants of early 20th century Detroit, Spielberg said.

Current studio operating methods seem equally unappealing to the partners.

"What is interesting to us, how our dream was born, is whether or not we can do it differently," former Disney studio head Katzenberg told a Television Critics Association gathering.

That means less bureaucracy to hinder project development at DreamWorks SKG — a name that cleared final copyright hurdles last Thursday.

An ad in the Hollywood Reporter to run Friday announcing the name showed a logo of a crescent moon holding a tiny fisherman and the slogan "A future of opportunities."

Their studio represents the first opportunity "in several generations to have the principal decision about what to make and what not to make resting in the hands of the artists," Katzenberg said.

There will also be more attention to the development — and financial rewarding — of new talent, they said.

At the outset, however, profit is not at issue, Katzenberg and Spielberg maintained.

IN THE USA

Gingrich a natural with television

The Associated Press

NEW YORK — The personality on your television screen is unmistakable. The snowy hair. The crackling energy. The call to arms: Stop the insanity!

But wait, this isn't Susan Powter razzing you about your flabby thighs.

No, it's another take-charge TV presence. A history prof, racy novelist and the brand-new Speaker of the House.

Say hello to Newt Gingrich, who wants nothing less than for America to trim its flabby government, and who never tires of saying so, particularly to a television audience that recently may have begun to wonder if Newt-TV is taking over the air-

waves.

"When something's hot, it's hot," Gingrich acknowledged on last week's "Nightline" edition, "Newt: Superstar." "For the moment, I'm a little bit like the Teenage Mutant Ninja Turtles were three years ago, or the Mighty Morphin Power Rangers are now."

Mighty, indeed.

Just hours earlier, Connie Chung had called Gingrich "the man who could be the most powerful leader in the country" in her lead-in to an "Eye to Eye" visit with Kathleen and Robert Gingrich, "America's hottest political parents."

If they really were as hot as she claimed, it was largely thanks

to Gingrich's heated pre-emptive strike to her segment about them. Hours before it aired, he had taken to television to rail about her interview with his mother, who, Gingrich charged, was tricked by Chung into telling the world what he had privately called Hillary Rodham Clinton (rhymes with "Gingrich").

ONION

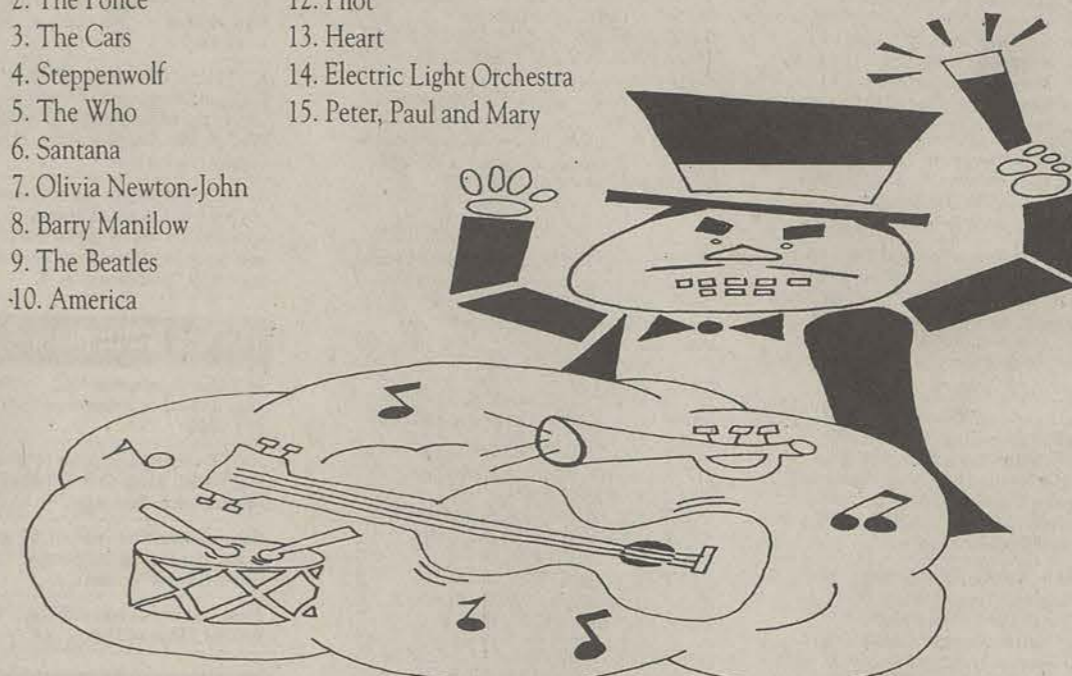
the CULTURAL IDIOCY QUIZ

by Rich Dahm

Abra-Ca-Dabra

Directions: Each of the musical artists listed below has recorded a song with the word *magic* in the title. If you name all the songs correctly, we might reveal all of David Copperfield's trade secrets. (Hint: Three of the artists below recorded a song entitled simply "Magic.")

- | | |
|------------------------|------------------------------|
| 1. The Lovin' Spoonful | 11. The Platters |
| 2. The Police | 12. Pilot |
| 3. The Cars | 13. Heart |
| 4. Steppenwolf | 14. Electric Light Orchestra |
| 5. The Who | 15. Peter, Paul and Mary |
| 6. Santana | |
| 7. Olivia Newton-John | |
| 8. Barry Manilow | |
| 9. The Beatles | |
| 10. America | |



© 1994 Onion Features Syndicate

QUIZ ANSWERS

- | | |
|---|----------------------------------|
| 1. "Do You Believe In Magic" | 7. "Magic" |
| 2. "Every Little Thing She Does Is Magic" | 8. "Could It Be Magic" |
| 3. "Magic" | 9. "Magical Mystery Tour" |
| 4. "Magic Carpet Ride" | 10. "You Can Do Magic" |
| 5. "Magic Bus" | 11. "You've Got The Magic Touch" |
| 6. "Black Magic Woman" | 12. "Magic" |
| | 13. "Magic Man" |
| | 14. "Strange Magic" |
| | 15. "Puff the Magic Dragon" |

CULTURAL IDIOCY QUIZ ANSWERS

The George-Anne....it's not your parents' newspaper.

Do you

... need money for Spring Break?

... need money to pay off Christmas bills?

... need work experience and references for your resumé?

... want to increase the value of your diploma?

... want to help strengthen GSU's academic programs?

If your answer to any of these questions is "yes," have we got a job for you!

Jeffrey Delk of the Office of Development & University Relations is looking for 50 energetic, enthusiastic, and persistent students to telephone alumni and ask for their financial support of GSU.

INTERESTED?

Call 681-5680 for more information or an application form. You must apply by Tues., Jan. 31, 1995.

ATTENTION

GSU Students, Faculty, and Staff will receive a 10% discount on Tuesday Jan. 17, 1995 and Thursday Jan 19, 1995 on all merchandise and related services at

Western Auto

Hwy 80 East
Statesboro, GA
764-6531

Hours:

Mon. - Sat. 8:00 a.m. - 8:00 p.m.
Sun. 9:00 a.m. - 6:00 p.m.