

Georgia Southern University

Georgia Southern Commons

The George-Anne

1-5-1995

The George-Anne

Georgia Southern University

Follow this and additional works at: <https://digitalcommons.georgiasouthern.edu/george-anne>

Recommended Citation

Georgia Southern University, "The George-Anne" (1995). *The George-Anne*. 1341.
<https://digitalcommons.georgiasouthern.edu/george-anne/1341>

This newspaper is brought to you for free and open access by Georgia Southern Commons. It has been accepted for inclusion in The George-Anne by an authorized administrator of Georgia Southern Commons. For more information, please contact digitalcommons@georgiasouthern.edu.



► For safer sex

Newspaper argues for condom machines to be placed in dorms

Please see editorial, page 4

► Holiday helpers

Students, faculty and others in community donate to the needy during Christmas season

Please see story, page 3



► All-Americans!

GSU players Paul Carroll and Franklin Stephens were named to the 1994 team

Please see story, page 6

EAGLELINE

GOLD EDITION

Thursday, January 5, 1995
Vol. 67, No. 38

Verdict: GSU will be reaccruited for 10 years

GSU News Service

GSU was reaccruited for 10 more years by the Southern Association of Colleges and Schools.

"Despite all the growth, GSU has done a good job of managing all the changes," said Hal Fulmer, communication arts professor and director of the self-study team.

"During the site visit, we were cited for only a handful of minor violations, many of which we were already in the process of correcting," Fulmer said.

The team gave 14 recommendations and nine suggestions for improvements, equal to three percent of the 428 required standards.

"Universities like GSU are complex entities," Fulmer said. "Having to correct only 14 items, many of which were relatively minor, is outstanding."

The SACS representatives were on campus for a week, interviewing personnel, examining supporting documentation and validating the findings of the self-study report.

The school's accreditation is valid until 2004.

"It's a great feeling to have the sense of closure that the announcement of reaffirmation brings," Fulmer said. "Now it's time to use the information we gleaned from the self-study as we look forward to the next 10 years."

SACS has been accrediting Georgia Southern College and now University since the 1930's and oversees compliance by more than 12,000 public and private educational institutions from Virginia to Texas. It is one of six regional accrediting agencies in the country.

WEATHER

TODAY

Mostly cloudy with a high in the upper 40s and a low in the lower 30s. Gusty, with northeast winds 10 to 20 mph.



WEEKEND FORECAST

Friday, there will be afternoon showers with a high in the upper 50s and a low in the mid-30s. **Saturday**, there will be thunderstorms, with a high in the mid-60s and a low in the lower 50s. **Sunday**, it will be sunny, with a high in the upper 50s and a low in the mid-40s.

INDEX

Announcements	2
Classifieds	7
Comics	7
Opinions	4-5
Police Beat	2
Sports	6

It is a desire of The George-Anne to print the news of Georgia Southern University as accurately as possible. If you feel that something covered is in error, contact a member of the editorial staff at 681-5246 as soon as possible. Thank you.

FOR ADVERTISING INFO.: 681-5418
STORY OR PHOTO IDEA: 681-5246
FAX NUMBERS: 871-1357 and 681-0863

The George-Anne

Liked By Many, Cussed By Some ...
Read By Them All



The George-Anne

Georgia Southern University's Official Student Newspaper

Statesboro, Georgia 30460

Founded 1927

Student pleads guilty in DUI-related death

By Enoch W. Autry
Editor

Before a courtroom of Ernest Edwin Tootle's family and friends, former GSU baseball pitcher Clinton Earl Fair entered a plea of guilty and received a sentence of five years in the state penitentiary for Tootle's automobile-related death.

With the plea, Fair declined a 30-member jury trial that would have been held Dec. 28.

Fair, a Cincinnati Reds 14th round draft pick, was sentenced the morning of Dec. 14 and will begin his prison time Jan. 15. A 30-day portion of Fair's probation was allowed by Bulloch County Superior Court Judge William J. Neville in order to attend to personal affairs. The first early release date is not expected until 1998.

Fair, a Gainesville, Ga. native, pleaded guilty to one count of vehicular homicide, reckless driving, driving on the wrong side road in exchange for five years in prison followed by five years' probation.

A driving under the influence charge and a second vehicular homicide charge were dropped.

Neville said Fair is ordered to pay a supervisory fee of \$20 and a \$5,000 fine, to avoid alcohol, to stay away from alcohol activity, to adhere to 500 hours of community service under the supervision of the probation department to speak on the "awareness of drunk driving and reckless abuse of public authority."

The 22-year-old Fair apologized publicly to the Tootle family and the court after Neville agreed to the attorneys' compromise.

"Your honor, I'm truly sorry for all that happened ... but it was an accident because I would never purposely do this," Fair said. "I want the Tootle family to know my heart is with them. I



Enoch W. Autry

Following Judge Neville's ruling, Fair (far left) talks to family, friends and attorneys prior to meeting with his probation officer. Fair begins his prison sentence Jan. 15.

wish they would have had the chance to meet me on other circumstances."

Neville said the death of Tootle could not be considered an "accident" because Fair made a decision to drink alcohol and then operated a motorized vehicle.

As a first-time offender, all of Fair's convictions in the case

will be dismissed from his record if he stays trouble-free for the next 10 years.

Sonya Tootle, widow of Ernest Tootle, told the court of her sadness.

"Words can't express how it feels to suddenly lose your husband and the father of your children," she said. "All I can say is that I hope that the courts can stop this from ever happening to other families."

According to reports, Fair left a fraternity party where he had been drinking and entered the parking lot of Gold's Gym on Georgia 67. Upon exiting the lot, Fair turned widely onto the southbound lane at a high rate of speed and lost control of his father's 1994 Chevrolet Silverado. The vehicle struck Tootle's 1987 Ford Ranger head-on.

Tootle, 45, of Statesboro, was unconscious at the accident scene and then transported to Bulloch Memorial Hospital where he was pronounced dead. Tootle suffered multiple internal injuries in the wreck.

A spokesperson for the Reds said the conviction may end Fair's chance of playing professional baseball, but he may be able to continue his career in 1998.

Jolene Forehand, head of the Bulloch County Chapter of Mothers Against Drunk Driving, said she, Mrs. Tootle and 19-year-old son Jason, who were in attendance, did not agree with the plea, but Ogeechee Circuit District Attorney Joe Martin, the prosecutor, and the defense attorney Michael Classens, a Statesboro attorney, agreed with it. Tootle also has a 6-year-old daughter.

"Usually 10 years to serve fall short of the norm and Clint is only set to go to prison for five," Forehand said.

She said Mrs. Tootle received no notification that a plea would be rendered.

Please see DUI, page 8

GSU returns some grad programs to Savannah

By Chris Sherwood
News Editor

GSU has to return some graduate degree programs to the Savannah State and Armstrong State colleges according to a recent Board of Regents decision.

After the Board of Regents met to discuss the issue, they determined that Savannah State and Armstrong State colleges will no longer be affiliates of GSU.

Under the original plan, GSU became the state's first regional university in 1990, and thus took control of the two colleges graduate programs. Some of the graduate programs were still taught at Savannah State and Armstrong State, but the advanced degrees came from GSU.

After GSU became affiliated with the graduate programs at the two schools, Savannah

State and Armstrong State were the only senior colleges in the state without graduate programs.

New changes

The official designation of Armstrong State and Savannah State as affiliates of GSU will be rescinded.

Savannah State and Armstrong State will be reauthorized to offer several graduate programs.

Savannah State will be able to offer master's degrees in social work and public administration. The school will continue to participate with GSU in a local business administration graduate degree program.

Armstrong State will offer a master's degree program in education for early elementary and middle grades and selected secondary subjects. They will also be able to offer graduate

Please see PROGRAMS, page 8

Tim Stowers no longer vying for Alabama coaching position

GSU Staff Reports

Tim Stowers has withdrawn his name from the University of Alabama at Birmingham coach search.

Stowers said the move was due to the lengthy nature of the search and his desire to remain as head coach at GSU.

Other people considered were North Alabama Head Coach Bobby Wallace, Alabama Assistant Woody McCorvy, former Pittsburgh Head Coach Mike Gottfried, and former Vanderbilt Head Coach Watson Brown.

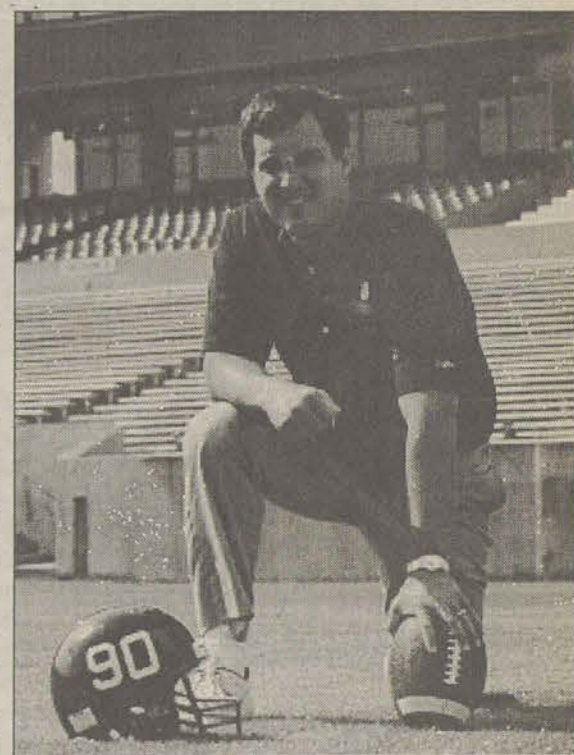
Brown was named as the head coach of the UAB Blazers Monday.

Stowers has led the Eagles to a 42-19 record in five years as head coach. The Eagles have reached the playoffs twice in the five years and won a national championship in 1990 under Stowers.

Stowers was named Coach of the Year in 1990. Stowers led the team to a 10-3 record and a Southern Conference title in 1993.

The Eagles finished at 6-5 this year, tied for the worst record since the reinstatement of football in 1982.

Stowers has been at GSU for the past 10 years having coached the offensive line for the



GSU Head Coach Tim Stowers

five seasons before serving as offensive coordinator in 1988 and 89.

'Boro sets the stage for part of Demi Moore movie



The crew sets up for filming "Gaslight Addition" in downtown Statesboro.

James Hill

Most of movie will be produced in Savannah; work here ends Jan. 13

G-A Staff Reports

The filming for the movie "Gaslight Addition" continued in downtown Statesboro Tuesday afternoon. The main actress in the movie will be Demi Moore.

The movie, billed as a coming-of-age story, will also star Rosie O'Donnell, Melanie Griffith and Jamie Lee Curtis.

"They are filming today and tomorrow, but they will be filming their big exterior shots on Saturday," Coordinator of

Main Street program Tina Hendrix said. "They will be using a lot of extras on Saturday for the shooting around the Courthouse, but they've already chosen who they need for it."

The filming will continue on Jan. 11, 12 and 13 in Statesboro, according to Hendrix.

According to a source in the production department, most of the movie has been filmed in Savannah.

While the filming has taken place, East Main Street has been blocked off because of all the equipment by the Statesboro Police Department.

The crew filmed on Wednesday afternoon until 10 p.m., according to Hendrix.

POLICE BEAT

GSU Division of Public Safety

been broken.

December 7, 1994

•Eva Nicole Asashta, of In The Pines, was charged with a Felony Violation of the Georgia Controlled Substance Act and Misdemeanor count of possession of marijuana.

December 1, 1994

•Kaytreys Pertillo reported a case of simple battery In The Pines.

•Kimberly Fountain reported a book bag was missing from the University Bookstore.

•Angela Lott reported a book bag was missing from the University Bookstore.

•Torrilyn Williams, 19, of Forest Drive, was charged with simple battery.

•John Benjamin Bloom, 18, of Oxford Hall, was charged with reckless conduct.

•Joshua Joseph Peresta, 18, of Grayson, was charged with minor in possession of alcohol, using false information and reckless conduct.

•Brandon Asher Park, 19, of Grayson, was charged with minor in possession of alcohol, reckless conduct, and theft of lost or mislaid property.

•Luther Patrick Nelson, 21, of Peachtree City, was charged with DUI (.09), a stop sign violation and weaving.

Statesboro Police Department

January 2, 1995

•Mark Schrader, of South College Street, reported someone broke into his apartment and took three television sets, a VCR and a stereo, total value estimated at \$2,400.

•Christine Carleton, of Park Place Apartments, reported several items were taken from her apartment, total value estimated at \$590.

•Virginia Thomas, of Park Place Apartments, reported a CD player and a Macintosh computer were stolen from her apartment.

•John Purcell, of South College Street, reported a CD player valued at \$130 was stolen from his apartment.

January 1, 1995

•Jason Sabatino, of Players Club Apartments, reported the door frame to his bedroom had

December 29, 1994

•Amanda Huffand, of South College Street, reported someone had broken the driver side rear window of her car while it was parked at the Statesboro Mall.

December 20, 1994

•A resident of Loretha Street reported receiving harassing phone calls.

December 17, 1994

•Scott Edwards, of Lanier Drive, was charged with Disorderly Conduct.

•Michael Ryan, of Players Club Apartments, reported someone had broken into an apartment in Players Club.

December 13, 1994

•Larry Phillips, of Georgia Villas Apartments, reported someone had taken a gold bracelet valued at \$329.

December 12, 1994

•Jason Bott, of Hawthorne II, reported someone had done damage to his apartment rear door.

December 10, 1994

•A resident of Campus Court-yard reported receiving harassing phone calls.

December 9, 1994

•Jan Boulware, of Lodge Apartments, reported someone stole her purse from her apartment.

December 7, 1994

•Frank Smith, of Hill Street, was charged with battery.

•Mike Skibicki, of Towne Club Apartments, reported several items had been taken from his back porch, total value estimated at \$15.

•Kareem Jackson, of Eagles Court Apartments, reported someone had taken \$450 cash from his apartment.

December 5, 1994

•LeAnrea Simpson, of Atlanta, reported someone had forged a check from her account at Wal-Mart worth \$202.03

•Justin Adair, of Bermuda Run, reported his bike was missing, value was estimated at \$1,100.

ANNOUNCEMENTS

Things to do at GSU

Monday, January 9

•Interested in acting, directing, stage managing, playwriting, improvisation, lighting, sound design, stagecraft, costuming or make up? Join Theatre and Performance today at 5:30 p.m. in the communication arts department room 101.

Tuesday, January 10

•Craig Karges, Mind Reader and Mentalist. Campus Entertainer of the Year. Southern Center for continuing education auditorium at 7 p.m.

Friday, January 13

•WVGS 91.920th anniversary Showcase. Featuring Donkey, Snap Neck Carnival and Pulse. At the University Union Ballroom. Admission is \$5. Contact WVGS for details.

Saturday, January 14

•Come see Doris Mager, "The Eagle Lady" at the Oatland Island Educational Center from 11 to 5. In addition, a variety of related activities have been planned and Oatland's trails will be open. Don't miss this unique chance to learn about birds of prey. For more information please call (912) 897-3773. The admission is a cash donation.

Tuesday, January 17

•Whole World Improv Comedy Troupe. Audience participation! At the University Union Ballroom at 8 p.m.

Thursday, January 19

•Karaoke and Casino Nite. Las Vegas has come to GSU! At the University Union Ballroom at 7 p.m.

Monday, January 23

•Match Made in Heaven Dating Game. Find your perfect match. It will be held through Feb. 3. For more information contact Union Productions.

•Wingfield and Davis Blues, Jazz and Contemporary music all mixed into one. Hand clapping and foot stomping fun. At the Foy theater at 7 p.m.

February

Thursday, February 2

•Relationship lecture by Robin Blake entitled "Love and Relationships" at the University Union Ballroom at 7 p.m.

Friday, February 3

•Psychic Readings by Robin Blake, meet your future. From 11 a.m. until 3 p.m. Location to be announced.

Tuesday, February 7

•Battle of the Bands. Guest appearance by "On Four". At the Union Ballroom from 7 until 10 p.m.

Tuesday, February 14

•Valentine Video Buttons at the University Union Commons from 11 a.m. until 3 p.m.

Saturday, February 18

•Miss GSU Pageant at the University Union Ballroom at 7 p.m.

ON CAMPUS

GSU professors save endangered sea turtles on St. Catherine's Island

GSU News Service

A GSU research project to save endangered sea turtles may also benefit another struggling species - young scientist.

University professors direct a sea turtle conservation program on St. Catherine's Island and invite 15 to 20 teachers to help them monitor nests and hatchlings each summer. One of the goals is for teachers, most from grades four through eight, gain renewed research skills and enthusiasm for finding projects to excite their own students.

GSU geologist Gale Bishop said a national trend of declining test scores, freshman ill-prepared for college science courses, and "science anxiety" are signaling an endangered course of study. He and Nancy Marsh, a science education professor, direct the turtle research project. "A lot of people look at science

as an enormously difficult content area, so they tend to be anxious about taking too much science," said Marsh.

books about how we're going to solve the problems, we've made the opportunity available for teachers to work as scientists in

eight days on the island monitoring nests and recording data.

Bishop and Marsh have spoken at national conferences exploring science reform and have written about the program for journals.

"We're trying to reinforce 'process skills' - making observations in the field, documenting those observations, and then thinking about the implications. We focus on decisions we make in the field, and we talk about alternatives to those decisions," Marsh said.

Teachers take back to classrooms shell collections and slide presentations on turtles and other endangered species on the island.

The program is funded by GSU, the Eisenhower Higher Education Program, the GA Department of Natural Resources and St. Catherine's Island Foundation, Inc.

"WE'RE TRYING TO REINFORCE 'PROCESS SKILLS' - MAKING OBSERVATIONS IN THE FIELD, DOCUMENTING THOSE OBSERVATIONS, AND THEN THINKING ABOUT THE IMPLICATIONS."

— NANCY MARSH
SCIENCE EDUCATION PROFESSOR

She and Bishop hope teachers leave St. Catherine's internship confident of their research abilities and eager to undertake field projects that could bring science to life for students.

"Several national reforms have been instituted...but we're working at quite a different level. Instead of setting standards, holding workshops and writing

a field environment," Bishop said. "They take back to their schools the knowledge that they functioned as a scientist in the field. They actually did it."

The program finished its third year with a record number of nests and the second highest number of sea turtle hatchlings at 8,110. To date, 53 teachers have participated, spending the

ON CAMPUS

Students get chance to visit former CEO

G-A Staff Reports

A Master of Business Administration strategy class taught by Bernie Keys, Callaway professor of business, recently visited with one of Dean Carl Gooding's Associates and Advisory Board members, Bob Parrish. Parrish is the former CEO of Ameriscribe Corporation.

During the visit, Parrish took the class for a ride in the inland waterway for a picnic dinner and then hosted them in his home in Savannah.

They discussed the Ameriscribe Case Study written from interviews with Parrish by one of Keys' Executive MBA students, Joyce Powers.

The group included Keys, Parrish, Rebecca Malcolm, Yaman Genc, Nabil Trabelsi, Laurence Ginestet, Karol Rollins and Michele Cutforth.



Former CEO of Ameriscribe, Bob Parrish (far right) is visited by a GSU business class during December at his residence in Savannah.

WAL-MART

New distribution facility opens, will eventually employ approximately 250

G-A Staff Reports

The Wal-Mart Distribution facility located off of Highway 301 South in Bulloch County was opened during the last month.

Originally designed as a 750,000 square foot building, the plans were changed last year and it was doubled in size.

Eventually, the center will employ up to 250 people.

There is only one other distribution center in the state and it is located in Douglas. The Wal-Mart chain has a total of 27 distribution facilities in the country and over 2,300 stores. There are 83 Wal-Mart stores in the state

including the one in Statesboro. The distribution facility is split into three equal sections. One of the sections contains shoes, while the other two contain seasonal merchandise and staple goods.

The Statesboro distribution center ships to the regional distribution facilities east of the

Mississippi.

The Wal-Mart facility was not the only major corporation which decided to open in Bulloch County.

Lawnmower giant, Briggs and Stratton also pegged the county as the site for a new plant in 1994.

STATE SENATE

Local Senator is named to committees

Special to G-A

Lieutenant Governor Pierre Howard appointed Sen. Jack Hill of Reidsville chairman of the Senate Higher Education Committee for the 1995-96 term of the General Assembly.

As chairman of the Higher Educational Committee, Sen. Hill will have an influential role in recommending legislation affecting the operation of the 34 institutions in the University System.

"Sen. Hill has done an excellent job as chairman of the Education Committee," Howard said. "I know the Senate will continue to benefit from his leadership and foresight in his new position."

Hill previously served as chairman of the Education Committee.

Hill was also renamed vice-chairman of the State Institutions Committee and reappointed to the Appropriations, Ethics and Transportation Committees.

As an officer of the State Institutions Committee, Hill will lead the Senate's review of legislation affecting Georgia's prison system as well as its probation and parole programs. Georgia's

prison system currently houses more than 28,000 inmates.

The Appropriations committee sets spending priorities and determines the Senate's position on how Georgia's budget of nearly \$11 billion will be spent.

The Ethics Committee ensures compliance on the part of

Senators and Senate staff with the body's strict code of conduct. It has the authority to investigate ethics complaints against Senators and to issue advisory opinions on ethics issues.

The Transportation Committee considers legislation that affects Georgia's more than

100,000 miles of roads and highways as well as its airports, ports and rail systems.

He was recently elected to a third term from the 4th Senatorial District which includes Bulloch, Evans, Jenkins, Screven, Tattnall counties and portions of Effingham county.

WANNA BE "ZIT-FREE" ?

Doctor Greenfield's

SELF-TREATMENT

FOR A CLEANER CLEARER COMPLEXION

YOU'LL FIND **Doctor Greenfield's** AT THESE CONVENIENT LOCATIONS:

COLLEGE PHARMACY — Plaza East
COLLEGE PHARMACY — Downtown

IN THE USA

King family wants to open museum

By Marc Rice
The Associated Press

ATLANTA — Almost 27 years after Martin Luther King Jr.'s assassination, a fight over a tourist attraction has revealed there are limits to his hometown's once unswerving adulation for the King family name.

At the heart of the dispute are plans by the National Park Service for an \$11.8 million King-themed visitors center across from the King Center in Atlanta.

The King family opposes the project and wants to build its own museum on the site.

As the feud escalated last week, the family banished the park service — which has been conducting tours on King property for 11 years — from King's birth home and the King Center, where the King's tomb sits.

That did not sit well with elected officials and neighborhood business leaders who helped draw up the plan. The park

service already has acquired the land from the city of Atlanta in a deal approved by Congress, and local officials want the center open before the 1996 Olympics.

"The King Center, or Mrs. King, somehow got the notion that they're the only ones who have the right, divine or otherwise, to do something with interpreting Dr. King's life and accomplishments," said state Rep. Bob Holmes, D-Atlanta, a political science professor at the historically black Clark-Atlanta University.

"People have given them deference since 1968," Holmes said. "Now, people are thinking in terms of their community and they will not let them have their way. ... I think that's over."

The family insists its opposition has nothing to do with hoped-for museum profits or its unsuccessful request that the park service raise the annual fee for tour rights from \$500,000 to \$1.5 million.

ON CAMPUS

GSU students lend hand to needy

By Stacy Jordan
Staff Writer

December is the time when many people reflect on the year and look forward to a new one. And in the season of giving, many members of the GSU community took part in the Holiday Helpers campaign during the break.

"The event was very successful," said Victoria Futch, co-chair of the project. "One of the agencies which helped was the Concerned Services, who run many programs like Meals on Wheels and the Senior Companion."

Eileen Sconyers, director of the project, said, "Approximately 300 individuals received donations of either food or clothing as a result of the project. A family of eight received 100 canned goods and a smoked ham."

A total of 125 senior citizens

and 53 families were selected by the Bulloch County Family and Children Services.

their participation. Without them, it could not have been the major success that it was,"

"IN ADDITION, I CANNOT SAY ENOUGH ABOUT GSU STUDENTS AND THEIR PARTICIPATION. WITHOUT THEM, IT COULD NOT HAVE BEEN THE MAJOR SUCCESS THAT IT WAS."

— EILEEN SCONYERS
DIRECTOR

"I would like to express sincere appreciation to all staff, and students who made donations and faculty who spread the word about the project to their students and gave donations," said Sconyers.

"In addition, I cannot say enough about GSU students and

Sconyers said. "With all the negative publicity about students these days, when everyone reads this, maybe they will see students want to help."

GSU students who participated:
Lisa Roling, Valencia Goldin,

Amy Saliba, Kerri Haley, Greg Rollins, Ray Powell, Jeffrey Farmer, Kymm Reynolds, Stephanie Marsh, Cecilia Phillips, Latricia Simmons, Dee Allen, David Derryberry, Lee Maxwell, and other students who walked by and manned the tree.

Groups that participated:

National Society of Black Engineers, SGA, Alpha Omicron Pi, Kappa Kappa Gamma, GSU Public Safety, which adopted a family; Residence Life, Delta Sigma Theta, College of Liberal Arts and Sciences, AKA, Kelly Griffin and the residents of Bermuda Run apartments, Justice Studies Club, and Delta Sigma Pi.

Delta Sigma Pi not only adopted a family but made a food donation as well.

G-A SPOTLIGHT

Biology professor speaks at conference

• Frank French, a professor in the biology department, presented a talk and a poster of research results at the tenth International Congress of the International Organization for Mycoplasma in Bordeaux, France. The research results were obtained by him, graduate student Jimmy Wedincamp, five undergraduates and four colleagues from the USDA Beltsville, Md., Cancer Research Center in Frederick, Md., and SUNY in Stony Brook, NY.

Professor's work published in journal

• Doyce Cotten, a professor of sport science and physical education, published "Ambiguity as a Factor in the Validity of Exculpatory Agreements" in the fall issue of *Journal of Legal Aspects of Sport*.

Grant workshop presented by GSU faculty

• Howard Kaplan, director of the Office of Research, and Rebecca Ryan, coordinator of research, projects and grants in the Center for Rural Health and Research, presented a full-day workshop, titled "Grant Proposal Development for the Research Administrator: The Buck Starts and Stops Here," at the annual meeting of the National Council of University Research Administrators in Washington, DC.

Sociology/Anthropology professor attends conference

• H. Stephen Hale, an assistant professor of sociology and anthropology, attended the 51st annual meeting of the Southeastern Archaeological Conference in Lexington, Ky., and presented a research paper which was part of a symposium on late archaic archaeology.

Southern Booster assistant speaks at class

• Carlene Akins, administrative assistant for Southern Boosters spoke at a "New Connection" class at Ogeechee Tech. The title of her presentation was "Organization."

Convention includes GSU assistant professor

• Tom Pearsall, an assistant professor of music, was a presenter recently at the Georgia Music Teachers Association convention in Atlanta with a session entitled "Approaching the Adult Student in the Class and Studio." Prior to that, he attended the National Conference on Piano Pedagogy in Chicago. In addition, he recently attended "Project Discovery" at Mississippi State University, a national conference series on music technology for piano teachers, public school music teachers and administrators.

The George-Anne would like your help in order to recognize special people, organizations and activities on campus.

Anyone who would like to make suggestions for our G-A Spotlight feature may call Chris Sherwood, news editor, at 681-5246. Letters may also be sent to *The George-Anne* at Landrum Box 8001.

Dear Students,

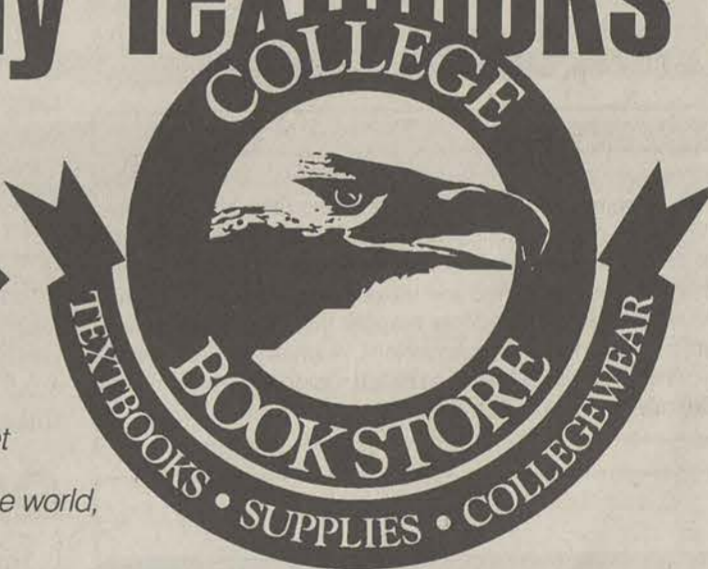
We extend our warmest "Thanks" to you for shopping with us this past quarter and look forward to servicing your needs this quarter, for textbooks, school supplies, and college clothing. Also, we would like your suggestions for ways that we could improve our products and services to make our store more attractive for you.

Thank you

There's More Than One Place To Buy Textbooks

Don't Get Locked Into One Bookstore SHOP

We accept all ATM cards — Don't get snared by "Eagle Express"
If you need a debit card—go to the bank and get a REAL debit card—they're accepted almost everywhere on campus, at home, and around the world, plus your money will probably earn interest.



**NEW AND USED TEXTBOOKS • SCHOOL SUPPLIES • GSU CLOTHING • DORM SUPPLIES
PACKAGE MAILING SERVICE (UPS) • SPECIAL BOOK ORDERS • COPY SERVICE • FAX SERVICE
Class Rings • Invitations**



"We Buy & Sell New and Used Books Anytime"

6 8 1 - 6 2 9 5

<p>With this coupon Exclusive Backpacks Values to \$28.95</p> <p>\$19.95</p> <p>while quantities last</p>	<p>Leather Bottom Backpacks Values to \$34.95</p> <p>\$24.95</p> <p>while quantities last</p>	<p>With this coupon \$2.00 off any T-shirt</p> <p>Offer good till 1/25/95</p>	<p>With this coupon \$5.00 off any Sweat-shirt</p> <p>Offer good till 1/25/95</p>
--	--	--	--

WELCOME BACK STUDENTS!
HAPPY NEW YEAR!

From the Bulloch County Board of Commissioners

E. Raybon Anderson, Chairman

Gordon Alston	A. Frank Beacham, JR.
J. Bird Hodges, JR.	W. John Lee
Anthony D. Simmons	W. H. "Bill" Smith, III

E. Scott Wood, County Manager

4 Enoch W. Autry
Editor

Christopher Cole
Managing Editor

Chris Sherwood
News Editor

Our Opinion

Life-saving machines needed

In early April, vending machines supplying shampoo, pain relievers, laundry detergent and Sheik and Headgear condoms were introduced at three University of Georgia residence halls. As of the end of fall quarter, all campus dorms had received their dispensers.

The machines at UGA obviously offer more alternatives than just "safe sex." They allow students the chance to purchase the normal day-in, day-out essentials of life. But it is the condoms that are lifesavers against AIDS and protective devices against syphilis and gonorrhea.

The condom machines were installed following a student-initiated proposal made to the Residence Hall Association. The RHA then voiced its agreement with the proposal to the housing director. Now the machines are located in the laundry rooms and next to other vending machines for anyone's use.

Sexual intercourse cannot be stopped on a college campus or anywhere else in our country for that matter. A 1988 national study conducted by the Centers for Disease Control reported 75 percent of all women and 86 percent of all men asked are sexually active by age 20. But why can't we also propose a measure to protect our generation and the generations to follow from getting diseases that accompany intercourse?

We as a student body rarely stand up for our beliefs and we practically never fight for something that will benefit students that will enroll later on to this South Georgia campus, but it is high time to make a change.

The staff of *The George-Anne* empathically requests students to make a proposal to the Georgia Southern University RHA and Student Government Association to save some lives through safe sex. Simply ask how feasible it would be to make this campus a more disease-free environment for students, faculty and staff with the addition of condom-supplying vending machines.

This is a proposal that would make a positive change for GSU, as an institution, forever.

Bringing the news to you in 1995

A new year has begun. All of the holiday festivities have come to a close. Now it is time to get back down to work as students of higher learning.

The George-Anne is scheduled to bring to you 17 issues of your student-run publication throughout winter quarter. If sometime during the next three months you feel disgruntled or pleased with this newspaper, we hope you will inform us of your opinion. We make every effort to bring the most up-to-date available news to GSU students, faculty and staff. We want to extend this tradition into our 68th year of production and beyond. With assistance, our goal will be achieved as we remain the longest continuously published newspaper in the county.

LETTER AND SUBMISSION POLICY

The George-Anne welcomes letters to the editor, story submissions and guest columns from people both inside and outside the Georgia Southern University Community. All copy submitted should be typed (double-spaced, please), preferably on Macintosh disk in Microsoft Word or Microsoft Works format. All submissions must be signed and include a mailing address and phone number for verification. The editors reserve the right to reject any submission. There is no word limit on submissions. A writer may request to remain anonymous. However, it will be the editor's decision whether or not to print the name. Submissions are run on a space-available basis.

STAFF

NEWS

Copy Editors: John Klutz; Robin Johnson; Layout Editor: Mandy Crews; Senior Staff Writers: David Hillis, Kim Wagner; Staff: Stacy Jordan, Lauren Mestel, Jana Mobley, Michelle Thomas

FEATURES

Features Editor: Ashley Hunt; Arts & Entertainment Editor: Josh Bass; Senior Staff Writer: Derek Lewis; Staff: Eric Bray, Stacy Clemons, Judith Cunningham, Kurt Deen, Lakeisha Fair, Dana Hinterliter, Kymm Reynolds, Mark Runyon, James Salter, Tijuana Thomas

SPORTS

Sports Editor: Jeff Whitten; Senior Staff Writer: Ronnie Swinford; Staff: Tom Harrington, Tonya Hilton, Bart Hiter, Donald Jordan, Heather Mullins, Aaron Solomon, Will Van Kleef, Carolyn Wynn

OPINIONS

Staff: Josh Bass, Christopher Cole, Julie Collins, Ashley Hunt, Derek Lewis, John Munford, Jana Newsome, Amy Staats

PHOTOGRAPHY

Chief Photographer: James Hill; Staff: Elizabeth Hayes, Holly McCaig, Jerome New; Contributing Photographers: Stephen Burt, Randy Trujillo

ARTWORK

Leigh Braddy, Teth Burns, Shawn Chavis, Michelle Underwood

CIRCULATION

Supervisor: Steve Taliaferro; Staff: David Hillis, Bruce Karr, Scott Newton

ADVERTISING/DISTRIBUTION SERVICES (ADS)

Advertising Manager: Brooks Clements; Business Manager: Stephanie Wylie; Marketing Coordinators: Leigh Braddy, Michelle Underwood; Sales Representatives: Melissa Goodman, Jana Mobley; James Salter, Heather Thatcher, Michelle Underwood, Carolyn Wynn

PRODUCTION AND GRAPHICS EDITORIAL SERVICES (PAGES)

Production Managers: Ron Lair, Scott Mulkey; Staff: David Beck, Aquila Bookhart, Mitch Mitchell, Shawn Sunderland, Reggie Taylor, Classified Ads Manager: Melissa Goodman; Darkroom Manager: Randy Trujillo

STUDENT PUBLICATIONS

Robert Bohler, News, Editorial Adviser; Bill Neville, General Manager



The newest party is right around the corner

Eat, drink and be merry was definitely a phrase heard repeatedly during the holidays — just like all the years prior to the 1994 finale.

But does this mean eating, drinking and merry-making is totally out of the question due to the mere fact school has started back?

Not exactly.

The partaking of turkey, dressing, cranberry sauce and sweet potato pie can simply be replaced with Frito's, Cheeto's, Crunch 'n Munch and Butterfingers.

The consumption of too much eggnog, or some other concocted, alkaline-tainted beverage that most likely was produced in the basement of some 1920's-built home on Savannah Avenue will be replaced with some less inebriated-type fluids.

The party-till-you-drop emotions of the festive season will be replaced with the mere company of classmates who seemingly want to gain better knowledge of their classwork and collect those educational essentials.

Just where could a college student be a part of this celebration? Why, it is your campus library. Yes, you read this column correctly, the Zach Henderson Library.

In a designated area on the first floor to the left of the computer section, near the water fountain and stairwell and directly in front of the lockers is a quaint "refreshment" area. For those of you who have a bit of

IN THE EDITOR'S OWN WORDS

ENOCH W. AUTRY



difficulty envisioning the exact location of the area may need to visit the library a little more often.

The area is complimented with four vending machines. From the left to the right, first there is a machine housing blue books, scantrons, memo pads, index cards, pens, pencils, markers and disks.

The second machine serves cold drinks from Welch's and a couple of sports drinks.

The third machine supplies the snacks with chips, cookies, candy bars and crackers.

The final dispenser is from Coke, who purchased the rights to distribute their soft drinks on campus prior to fall 1990.

Having the chance to converse with fellow students about not being able to eat and drink in Henderson through my many college years, I was able to come to one conclusion: something had to be changed.

It is no secret that people would sneak food and/or drinks into the library in order to take care of their hunger and thirst desires along with a desire for knowledge. I know some individuals who used to make going to a study session in a third-floor

conference room a buffet style, all-you-can-eat serving line on the room's 8-foot long table, complete with plastic utensils. There has been chicken, pizza, fish, burgers, subs, sweet and sour shrimp, beef burritos, and scattered, smothered and covered hashbrowns all brought inconspicuously hidden in a bag supposedly carrying a shipment of textbooks for three five-hour classes. (Note: Always wrap food in aluminum foil or plastic bags to defuse the engulfing smell.) Now things are different.

Along with the machines, the cubby-hole has two tables, each with four swivel chairs, two paper towel dispensers mounted on the wall and a trash can for added convenience. It is still not permissible to have luncheons or dinner parties within the confines of the table area, so don't get the idea of throwing a 21st birthday party complete with streamers, balloons and those miniature dunce hats.

Eatibles and beverages (non-alcoholic, of course) are limited to the first floor, behind the elevator, to dismiss the thought of ruining the computers. You'll have messed up pretty bad the day you see smoke resembling

the stream emitted from manholes in New York and smell something like the burning of human hair coming out of the computers from a spilt drink. The use of closed and/or insulated containers is encouraged.

Transported items through the library need to be in a bag or closed container to prevent any spillage. If spillage does occur, it should be cleaned up immediately. One other restriction cites bringing strong smelling food into the building is discouraged out of the consideration for others — sounds like sardines are out of the picture.

Why did I run through all those guidelines?

Well the food and drink privileges are being allowed on a trial basis during winter and spring quarters. If everything is kept clean, food and drink will continue. If not, it will be taken away.

Lots of things on this campus are seemingly done without any consideration toward students, but this is unique. Somebody somewhere actually thought about this one. To that person or persons, you have done very well and you should commended. Of course, I have no control over who receives raises on this campus, but if I could, you would see a pay increase.

Now I ask the student body to take this new area to heart so we can keep it. Even though you may not need it now, remember finals bring with them a very healthy appetite.

GSU 'closet Christians' simply just don't cut it

How many people on this campus claim to be Christians? How many of them actually are?

There is a large gaping hole that fills the space in between. If you "talk the talk" you better "walk the walk." Otherwise, you are in the way — God's way. I'm speaking to people who think just because they went to church when they were little and they are "nice people," they have the right to call themselves "Christians." There's a lot more to it than that, folks. The word "Christian" means "little Christ." There is a potentially dangerous number of individuals who pin on the name tag of Christianity and live like a "little corrupt Christ." These are the very people who muddy the image of Christians and what they stand for. It's time for these "closet Christians" to take a hike! Get real or get out!

Yes, I am a Christian. No, I am not perfect. But, I realize the seriousness of what I stand for. I don't play around with it. No, I am not a "Bible Beater." No one is going to listen to someone shoving a Bible up their nose. I am simply not ashamed of being a Christian. I am actually a loving person. I am also an angry person. I am angry that people have

IN OTHER WORDS

JANA NEWSOME



a bitter taste in their mouths for Christianity because they have seen a person with a Christian bumper sticker cussing out someone over a parking place at Wal-Mart.

How can we blame people for not taking Christians seriously when most Christians don't take Christianity seriously?

I wonder how many students went to church with their parents when they lived at home or sometime during their childhood? I wonder how many of them came to college and became "closet Christians," afraid of what people would think of them if they knew they were Christians? On party night they say, "OK, Christianity stays at home," and they gag Jesus and tie Him up and put Him in the closet while they go scarf down a couple of "cold ones" and smoke a couple of joints. On Sunday, though, they go home and go to church with

Mom as if it never happened. You're only fooling yourself if you think it doesn't matter. Jesus had a lot of time to evaluate your life while He was bound and gagged in your closet.

An experience that I had recently made a lasting impression on me. At the beginning of fall quarter, I was standing in line to receive my printout at registration. There was an irate guy in front of me because he had not gotten the classes he wanted. Stark raving mad and waving his printout around he slung a fit, cursing and stomping toward the door. The Gideons had a table set up just inside the exit. An older man was smiling at everyone and handing out Gideon Bibles. The student, still fuming, snatched the Bible from the man and spit out a few more cuss words, flying out the door in his fury. As I stepped out behind him, he looked for the first time

at what he had been given. The gold words "New Testament" must have jumped off of the little green Bible at him. Turning to his friend, he retorted, "Oh great! I just cussed out a guy for giving me a Bible!" A wave of embarrassment swept over his face. I couldn't help but wonder what he was thinking. All too often, we tell on ourselves. This guy told on himself with his attitude to none other than someone handing him a Bible. The truth will catch up with you. It will find you out.

So what exactly am I trying to say? I'm calling all Christians to step out onto the truth. If you're in the closet, come out with your hands up. Either get in line, or get out of the way. There is no way to call yourself a Christian without having an affect on others. If you're not making a good example, then you're burying Christianity with the dirt that you're kicking up. I commend you if you are a Christian striving to march to the beat of God's drum. It's a difficult beat to follow, but it's worth it to be in God's army. If you're a little out of a step, don't look back. Go home and get God out of the closet.

Your Opinion

Pastor: homosexuality is wrong

Dear Editor,

There has been a lot of publicity on the subject of homosexuality since President Clinton took office. I don't think his promotion of this lifestyle has helped him very much. Some people have shown little interest for this topic, however, others feel very strongly and have been voicing their opinions on this subject. The question is "Does it really matter?" The answer is yes! According to God, this immoral lifestyle will cause one not to inherit the kingdom of God.

I Corinthians 6:9-11: "Do you not know that the unrighteous will not inherit the kingdom of God? **Do not be deceived.** Neither fornicators (sex between two unmarried persons) nor idolaters, nor adulterers (sex involving a married person and someone other than their spouse), nor homosexuals (those who allow themselves to be used unnaturally) nor sodomites (active homosexuals), nor thieves, nor covetous, nor drunkards, nor revilers, nor extortioners will inherit the kingdom of God. **And such were some of you.** But you were washed, but you were sanctified, but you were justified in the name of the Lord Jesus and by the Spirit of our God."

First of all, please note that far more than homosexuality is mentioned. All sex outside of marriage is included. God hates adultery and fornication as much as homosexuality. However, God doesn't hate the person. Sex outside of marriage leads to a breakdown of the family unit, illegiti-

mate children, diseases, guilt, depression and even suicide for some individuals. When people try to find happiness through sexual encounters, they end up feeling dirty, defiled, empty and used. According to the Centers for Disease Control, "nearly two-thirds of all AIDS cases in the U.S. are directly attributable to homosexual conduct. Surprisingly, however, AIDS has had only a modest affect on the average life expectancy of a homosexual male. According to a recent study of 5,246 obituaries in 16 homosexual newspapers from coast to coast, the average age of men dying from AIDS is 39." The average age of homosexuals dying from all other causes is even more revealing: 41 (a publication of the Family Research Council, Family Policy, Sexual Disorientation, page 6). Our nation can only survive if the family unit is strong. Our politicians can legislate anything they desire, but a nation full of broken families will deliver more violent youth than our police forces can handle.

Secondly, notice God says "**Don't be deceived.**" Now there are people telling others they are born homosexuals. God says don't deceive yourself. Should fornicators and adulterers also excuse their sin on an uncontrollable desire from birth? The Bible states we are born with something. It is called a **sin nature**. In other words, we are bent toward sinning. How can we overcome this propensity to sin? Through a relationship with

Jesus Christ. People who claim to know Christ but are involved in sin have chosen not to obey Christ. It does not make Christianity invalid or Christ ineffective. Christ gives us a choice to obey or not obey. When we obey, we live the victorious life that is very fulfilling.

Third, notice this passage of scripture says "**such were some of you.**" In other words, some of these Christians had been homosexuals as well as the other lifestyles mentioned. However, they had been washed (sins forgiven and cleansed) and sanctified (set apart for God). How? By the Lord Jesus Christ. You can change! Jesus is very real and has the power to set us free from the penalty, power and presence of sin. Then, we really have a reason to live. We live to fulfill his will and purposes for our lives. I know this is true. I was once much in sin and Jesus came and made himself real to me. I invited him to take over my life and it has never been the same. He empowered me to overcome my sinful lifestyle. My heart goes out to those caught in a sinful lifestyle. There is a better way. The key is receiving the life of Christ.

Phillippians 4:13 states, "I can do all things through Christ who strengthens me." This article is written not to condemn anyone, but to defend the **truth** and offer hope.

Pastor Matt Kunkel
Brooklet First Baptist Church

Rush sending misguided message

Dear Editor,

Rush Limbaugh is a very useful asset for the wealthy corporate elite. He keeps people thinking "femi-Nazis," homosexuals, etc., while the corporations cut wages, layoff employees and transfer jobs to low-wage countries. While the infrastructure crumbles, education gets worse and worse, pollution spreads and poverty and inequality grow, he panders to people's prejudices about other groups in society. It is the old divide and conquer strategy used for centuries by the wealthy to keep poor and working people fighting among themselves, instead of investigating the real causes for their distress. A prime example is in South Africa, where the previous government had been arming the Inkatha Freedom Party to fight the ANC because the rich are very afraid of the ANC's socialist ideology. Another example is Rwanda, where the Belgian colonialists played favorites and fostered hatred between Hutus and Tutsis as a way of ruling the country.

If this country and the world

are in bad and deteriorating condition, and they are, it is only logical that the fault lies not with poor and powerless people like welfare recipients, but with those who have held economic and political power for the past hundred years—the large corporations! To put it another way, welfare recipients did not flood the world with weapons with the disastrous consequences we can see today. Illegal immigrants did not manufacture the land mines that, even as I write this, are blowing children's legs off and maiming them horribly all over the world. This was done by large corporations for profits!

I know some of Rush Limbaugh's supporters are upper middle class people living comfortably in the suburbs, who view themselves more as capitalists than workers, although they realize that it is not only blue collar jobs disappearing or blue collar workers taking pay cuts? *The Los Angeles Times* reported on foreign computer programmers who were working for one-fifth or less of what American programmers were charging.

Because of their immigration status, some were being held as virtual slaves. Highly skilled professional, technical and scientific workers from foreign universities are either coming to the United States or U.S. corporations are moving to take advantage of the cheap labor.

Will these Rush Limbaugh supporters still be cheering on capitalism when their job disappears, their house is repossessed and they are standing in a soup line some place? How will they feel when their sons and daughters are asked to fight overseas for the interests of the big defending democracy, etc?

In my opinion, the greatest stupidity in the universe is fighting against one's own best interests. Workers of all educations, races, cultures and incomes should stick together. It is the only way to make a better world for future generations and save our planet from the wealthy chowderheads currently running it!

Gary Sudborough
Bellflower, Ca.

Time for students to work for equality

Dear Editor,

I am a 24-year-old white female who is very concerned by the discrimination tendencies of our society. In my His 253 class, we studied and discussed the various parts of the Civil Rights Movement which occurred throughout the 1950's and 1960's. I was born in Georgia, and am very proud of my heritage, but I am not proud of the opposition blacks were forced to endure at the hands of many white leaders. It frightens me to think that we are in danger of repeating past mistakes instead of working together for a common goal. There has been much said regarding the fact that our SGA is fun by blacks, and that our Homecoming Court was all black. This does not show that the black student population supports its candidates more than we, as whites, do. I do not want to talk about "us versus them." I have a 2-and-a-half-year-old son whom I don't want to be faced with the same racial tensions as I am faced

with today. Many white political leaders signed the Southern Manifesto in 1956, in which they promised to use all legal means to preserve segregation and prevent integration. These men are still around today and you will find that most of them have altered their views considerably. We were fortunate enough to have grown-up without knowing firsthand. The widespread segregation our parents grew up with, and yet we can't seem to move toward the future for looking at the past and what our forefathers did to one another. I for one, propose that we bury the hatchet (not in each other) and start fresh, right here at GSU, working side by side as equals. What we can build by working together in our SGA can then go with us as we graduate and as we take our respective places in society. This is not an instant answer, but its a start, one that I hope each student will pray for so we might take our future into our own hands and build a na-

tion which we are proud to live, where racism is not tolerated in any form, and where we work together toward the same goals.

I believe that if we could work together as students to elect a more diverse SGA to represent all members of the student body, we can work toward a solution (to racial tensions) which ensures equality to all our students. If we can do this, we stand a much better chance of succeeding once we graduate and have the opportunity to spread these ideas and concepts to other areas of the United States. Let's stop being black, white, Asian, African-American, native American, and any others I forgot to name, and just be students working together for equality in our future. We are the future and we need to decide now whether we will build (and move forward) based on our knowledge, or hurt and destroy based on our prejudices.

Jacinda R. Kirkland
Christian, wife, mother, student

Dining & Entertainment Guide

Found Exclusively in The George-Anne's Gold Edition • Thursday, January 5, 1995

Legends Bar & Grill

Old Register Road
871-5349

Thursday "Beat the Clock"
Welcome back party
Friday **Memory Dean**
Call for specials
Tuesday **Retro Disco Night**
Ladies No Cover! Double Deuce!

Pizza Inn

711 S. Main
681-9066

**All you can eat
lunch buffet \$3⁹⁹**

11:00 am - 2:00 pm
Mon. - Fri.

Buffalo's Cafe

Lanier Drive
681-3030

Fri. The Positions
Sat. 25¢ Wings

The Country Club

Hwy 301 S.
681-9000

Tues. Pool Tournament
Wed. No Cover & More!
**Thurs. Ladies Night and
Mechanical Bull**
Fri. & Sat. Call for details

Vandy's

Statesboro Mall
764-3033

Pit Cooked BBQ Since 1929
Best Chicken Fingers in Town
Daily Specials
Ribs on Tuesdays
Catering Service Available

Video Warehouse

120 Northside Dr. E
489-4279

FREE Membership
Sun. - Thurs. 8:30 - 11 pm • Fri. & Sat. 8:30 - Midnight
NOW SHOWING: **Previously Viewed**
Renaissance Man **Movies on Sale for**
Air Heads **\$9⁹⁹**

Cinema 9 Mugs & Movies

Statesboro Mall
489-4492

Tuesday **Thursday**
Ladies Night **Wing It!**
1/2 Price **25¢ Buffalo Wings**



The men host University of Illinois-Chicago tonight at 7:30 p.m. The ladies host Liberty University tomorrow at 5:15 p.m.

THE SPECTATOR

JEFF WHITTEN

Call 1994 the year that things got a little weirder in the weird world of sports. Weird as in Tonya Harding versus Nancy Kerrigan. Weird as in no World Series. Weird as in no professional hockey, either. In 1994 it seemed like everyone but the teamsters were striking. But there's more. There always is.

1994 was the year that The Citadel, soon to become a girl's school, shot down GSU's hunt for a football playoff bid, after Shannon Faulkner allegedly scored on an end with around seven minutes left in the game. The Citadel football team also scored, and the Eagles couldn't and didn't, and in both Faulkner's and the Citadel's case it can be assumed the Earth moved. At least in Charleston.

1994 was also the year when Frank Kerns and two assistants resigned after some improprieties over a junior college transfer were discovered. His replacement, Assistant Coach Doug Durham, who has the head coaching job on an interim basis, coached his first game against his father, who won handily.

1994 was when Sterling Sharpe, a Glennville native and University of South Carolina graduate, suffered a career threatening injury to his spinal cord after trying to block Tampa Bay safety Brad Edwards.

Edwards was Sharpe's teammate at USC.

1994 was the year when Jason Kidd left the University of California a year early to play for the Dallas Mavericks of the NBA, and then was quoted in Sports Illustrated as saying he planned on turning the Mavericks around "360 degrees."

Which if you stop to think about it means that Kidd plans on leading the Mavericks to the same place they already were.

1994 was the year Bobby Bowden finally won a National Championship, but it wasn't easy. The game clock had to be reset in the final seconds, giving the University of Nebraska and Head Coach Tom Osborne one last shot at winning the game. But fortune smiled on Bowden, and Nebraska's last-second field goal try sailed wide left.

1994 was George Foreman beating Michael Moorer to become the oldest and funniest man ever to win a heavyweight title while doing Midas commercials and eating everything in sight. Foreman also is the first heavyweight champion with four sons named George.

And as weird as 1994 was, it was also tragic. The Colombian soccer player who scored for the American team during the World Cup was murdered, proving once and for all that America doesn't have a monopoly on obnoxious fans.

GSU pitcher Clint Fair drove drunk and did what everyone who ever drove drunk ought to fear most; he killed a man.

Which means that 1995 can only be a better year.

Even if we still don't have a baseball season, and especially if Tonya Harding follows through on her alleged promise to become Japan's first five-foot-two-inch figure skating, knee-bashing, cigarette-smoking, topless dancing, professional wrestling cover girl, and the 1998 Olympic gold medalist in training.

Keep your fingers crossed.

GSU men off to lackluster start

Eagles open basketball season 4-7 under head coach Doug Durham

By Jeff Whitten
Sports Editor

The GSU men's basketball team will begin 1995 as they ended 1994; on the road. The Eagles open the Southern Conference portion of their schedule at Furman tonight at 7:30 p.m.

This after spending much of Christmas break in gymnasiums from Alabama to Chicago to Green Bay, Wis.

While the rest of us were taking a break from studies, the Eagles were busy getting schooled by the likes of Santa Clara University, University of Illinois-Chicago and Indiana State University.

What follows is a brief game-by-game summary of the Eagles' holiday schedule.

• Dec 13: GSU vs Valdosta State University.

The Eagles whipped the Division II Blazers 95-68 in Hanner Fieldhouse before roughly 1,500 fans. Senior guard Dante Gay led the Eagles with 26 points, while senior guard Tim Heath chipped in with 17. GSU shot a season high 56.3 percent from

the field. At that point the Eagles sported what in retrospect looks positively gaudy: a 4-2 record.

• Dec 16-17: GSU vs Santa Clara in the opening round of the University of Alabama Birmingham Classic at Birmingham, Ala.

Santa Clara beats GSU by twenty. Dante Gay scored 26 and Tim Heath 25 for the Eagles, who slip a game closer to the .500 mark.

The following evening the Eagles played against Mississippi Valley State University in the losers bracket of the UAB classic. Mississippi Valley wins, 64-61, after scoring last 9 points of game. Tim Heath pumped in 26 for GSU, while Dante Gay scored 22 and Lonnie Edwards had 19.

The Eagles are 4-4.

• Dec 22 at University of Illinois-Chicago:

The Eagles fall one game under .500 after losing to UIC 89-73. Senior forward Wilson Winters led the Eagles in scoring.

GSU drops to 4-5 after losing third straight game.

• Dec 30 and 31 at University of Wisconsin, Green Bay:

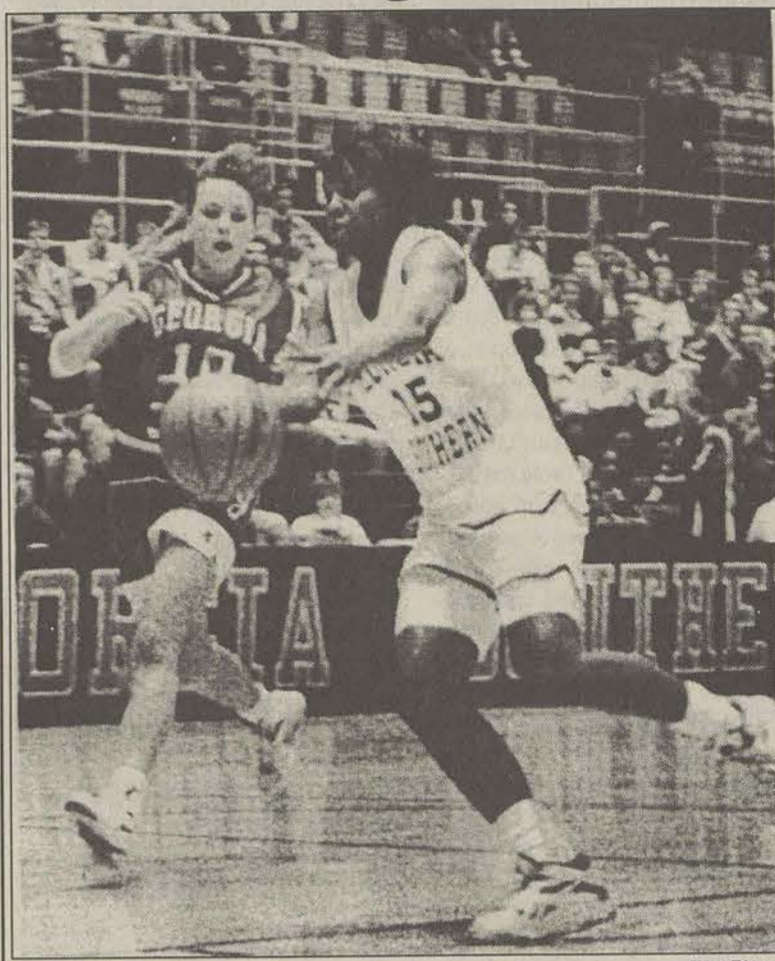
The Eagles take on Canisius College in the opening round of the Great Northern Classic. Canisius sends GSU into the consolation bracket by beating the Eagles 68-62. Dante Gay tossed in 19 and Lonnie Edwards 18 as GSU kept this one close till the end.

The Eagles are 4-6.

The next night they fall to 4-7 after losing to Indiana State University. Once upon a time Larry Bird played for the Sycamores, and took them to within a game of winning the NCAA National Championship. This was a long time ago, but even without Larry ISU has enough to beat GSU, 85-66. Tim Heath led the Eagles with 24 points (and went 4-4 from 3-point land). Wilson Winters scored 14 and forward Emmanuel Christophe 10, but the Eagles close out 1994 on a sad note.

The men play their next home game on Jan. 9, when they host Illinois Chicago in Hanner Fieldhouse. The game starts at 7:30 p.m., and students get in free with a valid student I.D.

Lady Eagles capture third straight victory



Senior forward Andrea Autrey, shown here against UGA, has returned to action for the Lady Eagles.

By Ronnie Swinford
Senior Staff Writer

The Lady Eagle basketball team has gotten off to a slow start this year with a 3-6 record. The ladies lost their first six and are now on a three game winning streak. Their losses came to Eastern Kentucky, Tennessee State, UNC-Charlotte, Stetson, Central Florida, and Georgia Tech.

The wins have come against Georgia State, Armstrong State, and UT-Chattanooga.

The Lady Eagles have been bitten hard by the injury bug. Andrea Autrey, the team's top rebounder and scorer has missed five games. Janice Johnson, the slashing two guard, has missed two games and not started in three others due to injury. Also, last year's starting point guard Stacy Childers has missed two games

and has not been able to start five others due to a knee problem. Childers will now be out for the rest of the season with the problem.

The Eagles have fought valiantly against some big name competition. Tennessee State is a tournament team and will probably be there again, and Georgia Tech was a tournament team last year.

The Lady Eagles won their first SoCon game Monday against UT-Chattanooga 76-60.

It gives them a 1-0 conference record. Last year, they only lost two conference games so perhaps this is the turning point of the season.

The Lady Eagles play Liberty College Friday in the first game of the Hampton Inn Tournament. Other teams in the tournament are Drexel and West Virginia.

1995 Georgia Southern Baseball Schedule

Date	Opponent	Site	Time
Feb. 10	#Tennessee	Charleston, SC	2 p.m.
11	#South Carolina	Charleston, SC	6 p.m.
12	#Kentucky	Charleston, SC	10 a.m.
15	AUGUSTA	Statesboro	4 p.m.
18, 19	GA TECH	Statesboro	1 p.m.
21, 22	CHARLESTON SO.	Statesboro	4 p.m.
25, 26	GEORGIA	Statesboro	4 p.m./1 p.m.
28	at Charleston So.	Charleston, SC	3 p.m.
March 1	at Charleston So.	Charleston, SC	3 p.m.
4, 5	*MARSHALL (DH)	Statesboro	1 p.m.
7, 8	GEORGIA ST.	Statesboro	7 p.m./4 p.m.
11, 12	at*VMI	Lexington, VA	noon/1 p.m.
18, 19	*WCU (DH)	Statesboro	5 p.m./1 p.m.
21-23	NEW YORK TECH	Statesboro	7 p.m./7 p.m./1 p.m.
25, 26	at*Appalachian St.	Boone, NC	noon/1 p.m.
28, 29	at Georgia	Athens	7 p.m./1 p.m.
April 1, 2	*THE CITADEL	Statesboro	5 p.m./1 p.m.
4, 5	at Georgia St.	Atlanta	6 p.m./4 p.m.
8, 9	at*Davidson (DH)	Davidson, NC	noon/1 p.m.
11, 12	TENNESSEE TECH	Statesboro	7 p.m./3 p.m.
15, 16	*ETSU (DH)	Statesboro	5 p.m./1 p.m.
18	SOUTH CAROLINA	Statesboro	7 p.m.
19	at South Carolina	Columbia, SC	7 p.m.
22, 23	at*Furman (DH)	Greenville, SC	noon/1 p.m.
27-30	Socon Tournament	Charleston, SC	TBA
May 4	AUGUSTA	Statesboro	7 p.m.
7, 8	CLEMSON	Statesboro	7 p.m./4 p.m.
9, 10	at Ga Tech	Atlanta	7 p.m./5:30 p.m.
12, 13	EAST CAROLINA	Statesboro	7 p.m./1 p.m.

For home games, visiting team in capital letters.
denotes Southern Conference-SEC Challenge
* denotes Southern Conference game

COLLEGE FOOTBALL

South Carolina wins first bowl ever

The Associated Press

MIAMI — A freshman defensive back who hadn't intercepted a pass all season came up with one that shifted the momentum in the Carquest Bowl and helped South Carolina win its first bowl game ever.

West Virginia had driven for one third-quarter touchdown and was en route for what would have been the go-ahead score when Ben Washington grabbed a tipped pass and returned it 42 yards to West Virginia's 49.

South Carolina drove for a touchdown that gave it a 24-14 lead. While the game had several shifts in momentum after that, South Carolina won 24-21.

"There were so many quick changes out there that it was tough to keep track of things,"

South Carolina coach Brad Scott said. "But I thought the interception by Ben was the key — Ben getting the pick, being able to run it back and then us converting the score."

West Virginia running back Robert Walker agreed.

"It was a great runback," Walker said. "When I turned around he was halfway down the field, dipping and moving. It kind of took the air out of us for a second."

No one who saw Washington play running back at Tallahassee's Lincoln High School would have been surprised at his ability to run. Washington gained 754 yards as a prep senior in addition to playing defense.

Washington said the play de-

veloped just like a high school run.

"It was great," he said. "I give all the credit to my teammates. They got out there and made it happen with some key blocks."

West Virginia receiver Raheem Vanterpool was one of the Mountaineer offensive players turned defender on the play.

"He had his big linemen out there blocking for him and little skill people trying to tackle him," Vanterpool said. "He was moving back and forth a lot. ... I was a running back in high school, and he looked pretty good."

Still, Washington said he isn't thinking about switching to running back next season.

"I'm here to do what I came to South Carolina to do," he said. "I want to hit people."

watched more games than I care to count. Saalam from Colorado, and Kez Mcorvey from Florida State completely stole all my attention during the holidays.

His eyes stayed focused, limiting conversation for commercials and half-time. He was in a deep trance and nothing or no one could have broken this. This is a feeling that I am sure a lot of other women could identify with this holiday.

It is bad enough that even

after the bowls are over there is still no clear champion. So this leads me to this point: if these games really may not affect the season's end poll why make all of us suffer through these endless all day games.

However, in early preparation for next year, I offer some suggestions: 1. Unplug the TV and act like it doesn't work. 2. Try to convince him that he has missed the game that he wanted to see. 3. Bribery (you have to fill in the blanks).

POST & PRESEASON HONORS

Football, baseball players snag performance awards

G-A Staff Reports

Franklin Stephens and Paul Carroll were recently named to the 1994 Sports Network Division I-AA All-America football team.

Stephens, a senior center, was named to the third team. Carroll, a senior middle linebacker, made honorable mention.

Both players were permanent captains of the 1994 GSU football team.

Earlier, Stephens was named to *The Associated Press* and American Football Coaches All-America teams. He also won the 1994 Jacobs Blocking Trophy, which is given to the top offensive lineman in the Southern Conference.

Carroll, a former walk-on player, leads GSU in career tackles with 392. He is the 13th walk-on in school history to earn All-American honors.

Collegiate Baseball magazine has picked GSU to win the 1995

Southern Conference Championship.

The Eagles were 31-25 in 1994, and had a 15-7 conference record.

Collegiate Baseball also picked sophomore first baseman Tommy Peterman to win SoCon player-of-the-year honors.

Peterman was a freshman All-America last year. The first baseman hit .360, with 12 home runs and 54 runs batted in.

A total of seven position players and four pitchers are returning from last season's squad.

Senior left-hander William Rushing is expected to be the ace of GSU's staff. Rushing was 9-2 with a 3.14 earned run average in 1994, and turned down a chance to sign with the Milwaukee Brewers.

1995 will be Coach Jack Stalling's 20th year at GSU, and his 35th as a head coach.

The Eagles open the 1995 baseball season against the University of Tennessee on Feb. 10, in Charleston S.C.

FROM THE SIDELINES

CAROLYN WYNN

Now that Nebraska is the National Champion, can I please have my boyfriend back? The collegiate football season is finally over, and not a minute too soon. I have

pick a game that you guys want to see, and schedule other activities around it because all jokes aside just like those teams on the field, you and your significant other are a team, too.

If all else fails, though, think of it this way: when else can you see a bunch of guys dressed in tight uniforms? Hey, they have Pamela Anderson (Baywatch). It is only fair after all. At least we know they didn't purchase their figures.

CARTOONS

CLASSIFIEDS

CROSSWORD

01-Announcements

ATTENTION: The George-Anne screens all classified ads prior to publication. The newspaper strives to accept ads for legitimate products & services only. Students are urged to exercise caution when replying to ads, particularly those which ask for money or a credit card number in advance of delivery of products or services. Students are also urged to report to the newspaper (at 681-5418) any suspicious offers they might see in the classifieds. Remember, if an offer seems too good to be true, it probably is.

Interested in Acting? Directing? Stagemanaging? Improvisation? Play writing? Stage Craft? Set design? Lighting? Sound Design? Costuming? Make-up? Join us Monday 9 @ 5:30 in rm. 101 Comm. Arts Bldg. For Theatre and Performance.

Join Theatre and performance on Monday at 5:30 in Comm. Arts Bldg. Rm. 101 for an Irish Playwright workshop. Gary Dartt to speak about Brian Friel and the Irish Play Dancing at Lughnasa.

03-Autos for Sale

1983 Cadillac de Ville for sale: great cond., new electronic systems, loaded! \$2,300 (firm) call 1-800-402-7546 (beeper) or 368-4980 (Hinesville) after 7:00pm

85 GJ-7 Jeep for sale. Powerful engine, runs great, good condition. Call 681-8578

MUST SELL! '84 Mitsubishi 4x4 Looks and runs good. 2,900 Firm! Work 764-8922. Home 764-7952. Ask for Hayward.

04-Auto Parts, Repair

Four Goodyear Wrangler tires, P205 75 R15. Only 5,000 miles-low wear, and new 1994 Jeep rims accompanying. \$300 Call Scott 764-4238

09-Furniture & Appliances

For sale: Couch and swivel rocker. Tan w/floral pattern. Good condition. \$75 both. Call 823-3957

For sale: Sleeper sofa, double size. Exc. Cond. \$125, will deliver. Pine bench-style table, bench, and 2 chairs, \$175. Call 839-3878, leave message.

For sale: Waterbed mattress, queen size. 489-8721 or 489-8722, L.A. Van Keuren.

King size waterbed 8 drawer 2 cabinet pedestal. Double mirror headboard w/cabinet. 1 set of sheets \$200. 681-2232

King size waterbed, bookcase headboard w/mirror, full flotation, walnut color, \$100, Call Michelle 681-5906.

New! Washer & Dryer, White-Westinghouse. Heavy Duty. Only used 6 mon. Paid \$600, asking \$400 OBO. Call Kate at 764-6648

Rust colored swivel rocker \$20. Firm. 681-2232

Sleeper sofa Autumn colored fabric \$75 Firm. 681-2232

11-Help Wanted

Immediat Openings
The Georgia Army National Guard needs high school juniors, seniors, and graduates. We also need prior military service veterans. Many skills available. *EARN EXTRA \$\$\$ IN PART TIME PAY. *\$6,840. GI BILL AVAILABLE *LIFE INSURANCE, DISTINCTIVE CAR TAG AND MANY OTHER BENEFITS. Enjoy civilian live and a rewarding military career at home! For additional info. Call SFC Chuck Yeater at 681-5313 or 681-5244 or stop by our office located at highway 301 North, Statesboro, Georgia. **GEORGIANS AT THEIR BEST!**

Are you an actor or actress? Need money? Call Nancy at 489-3161 from 1pm to 5:30pm Mon-Fri, Sat. 10am to 3:10pm

Frisbee Golf enthusiasts, G-A Sports Editor looking for a Winter Qtr Reflector Story. Call Jeff at the G-A, 681-5246.

LIFEGUARDS, POOL MANAGERS, SWIM COACHES, SWIM INSTRUCTORS, SUMMER POSITIONS AVAILABLE IN NORTH METRO SUBURBAN ATLANTA AREA. CERTIFICATIONS CLASSES AVAILABLE. CALL SWIMATLANTA POOL MANAGEMENT, 992-7665.

13-Miscellaneous for Sale

BCA Rocky- Shimano Components, Bar Ends, Lock, need to sell fast, \$125, call Marc or Eric at 681-7389.

Brother Word Processor #3400, Kitchen table + 4 chairs, chest of drawers, coffee table, prices negotiable. PLEASE CALL 489-8807 and leave message.

Cannondale Sport road bike-Good shape \$125 OBO. Call Joda at 852-5550 or 681-6780.

Computer and color printer for sale. \$650 for computer and \$150 for printer. For more info call Frank at 871-4169

For Sale: 2 formal dresses. Sizes 6 & 8. Call Amy at 871-7215

For sale: Red Peugeot Racing Bike tuned up 2 months ago. New: Brake levers, cables, tires, back rim, peddles-\$175. Call 681-3794 or leave message.

Graphic Calculator TI-82 w/Instruction Booklet. \$55. Call 681-6595 for info.

Set of Wilson Staff irons 3-PW, Wilson 1200GE metal driver + Wilson 3+5 wood, bag, matching headcovers all for \$170. Call Jay Mac 681-6039. Good starter set.

Soundblaster 8-bit sound card. All original software and registration materials included. Call David at 681-1130.

Trek 930 for sale: 1 year old/great cond. \$300 OBO. Call Sue 489-8784.

14-Motorcycles

1989 Ninja 250. 4000 miles. \$1800 OBO 489-8240 or 754-7267. Chris

16-Personal

A Happy New Year to: Angela, Leslie, Chad, Trici, Angelia, Kenyette, Stacy, Andrea, Kent, LeAnn, Jennifer, and Samona. A Phi O's Best Pledge Class, Fall '95.

Bahai seeks other Bahai's and/or people interested in personal investigation of truth and spiritual development. Please call 681-7783.

Congratulations new sisters of Alpha Xi Delta. We love you!

Craig: Thank you for spending a wonderful X-mas with me. Your the best thing that could have ever happened to me. I love you! Love always, Amy

Dearest Steve I am waiting for my surprise. I did make you brownies.

Kevin: Thanks for the wonderful holiday's. I'm looking forward to a perfect Winter Quarter and our one year. Love Always, Jen

Liz, I love you sweetheart and I want to spend the rest of my life with you! Love, Drewfuss

Mary and Carrie: You are loved. Your lasagna eating buddies

To our future A Phi O brothers, may this New Year bring new inspirations, more closeness and more successes to our fine brotherhood. A Phi O Wtr. 95 P.C.

19-Rentals & Real Estate

Nice 1BR, 1BA furnished apartment at Pinehaven Apartment; approximately 1 mile off campus; no deposit required; take over lease. Call Mary Parker 681-4312.

Nice spacious 1BR apartment, furnished, ceiling fans, low monthly utilities; 1/2 mile off campus; no deposit required. Available immed! Call 681-6453 or (912) 764-7522.

Tired of your roommates or the dorm? Your bed's waiting at Eagle's Court. Shared 2 bdrm, 2 bth, completely furnished, \$160/month, \$200 sec.dep. Perfer white, non-smoker, female. Now through Summer lease. Call Beverly 681-8771.

Very nice, new, 2 bdrm duplex off campus. Available January 1. Pets allowed \$425/month. 852-5299

20-Roommates

1 female/non-smoker, need to sublease Winter-Summer qtr. Campus Courtyard. 2 bdrm townhouse. \$215/month. + util. Call 681-9262.

Female roommate needed! 4 bdrm townhouse, furnished! Please call Chase or Becky at 871-3943

Female roommate needed. ASAP. 21 or older. Rent \$187.50 and deposit plus 1/2 util. Contact Dorene 764-6372

Female roommate needed: Player's Club APT/town house, share bedroom and bath. \$161.25 mon + plus 1/4 utilities. Optimistic+friendly environment. Whatcha waitin' for! Call now 871-5136. Ask for Amy, Jennifer or Tina.

Male roommate needed for Winter and Spring qtrs. At Stadium Walk. \$112.50/month. + 1/4 util. Please call 764-6119 ask for John.

Need female roommate \$200/month + util. Master bdrm, own bathroom, great roommates, Hawthorne 2. Call 871-7201. Ask for Jill.

Needed female roommate to sublease Player's Club 3 bdrm. Apt. Private room bathroom. W/D, inc. Only \$200/month. Call Stacy 871-6999. ASAP

One or two people desperately needed to sublease an apartment from Jan 95 to June 95. Park Place. 2 bedrooms, 2 baths, kitchen. \$250/month. 871-5998.

Responsible female needed to share spacious 3 bdrm house on Fair Rd. Only \$166.67 + 1/3 util. Local and friendly roommates. 681-9414. Leave message.

Roommate needed to take over lease. Across the street from campus. Own bedroom, shared bath.\$100 deposit, \$163 a month with first month free. Call Carolyn at 681-9798 or (404) 463-3729.

Roommate needed Winter and Spring Qtr. Own bdrm in large duplex near high school \$225/month + 1/2 util. No smoking, drugs, parties, or pets. Ben Sides LB 21230

Roommate needed, Private Bedroom and Bath, furnished, Park Place, \$210/month. Call 681-4599 or (706) 737-3148.



That's Right!
You can find that roommate by placing an ad in the **George Anne's Classified Ads section** Come by room 223 of the Williams Center. As an added plus if you're a student it's free!

21-Services

FINANCIAL AID FOR COLLEGE: Results 100% guaranteed. \$49.95. Write for free details and application: Tower Enterprises, 2904-G N. Patterson St., Suite 152, Valdosta, GA 31602.

Happy New Year from your favorite typist Mary Lee. \$4 first page, \$2 suc. Pgs. 681-6967

23-Stereo & Sound

For sale: Pioneer car stereo. Cass w/CD changer controls and remote. \$300 OBO. Pioneer CD changer-6 disk \$300 OBO. Call 823-3957

27-Wanted

Wanted: French 151, 152 textbook. Will negotiate price. Call 681-8167. Ask for Derek.

Wanted: students with sales ability. For info. Call Jirily Inc. 1-800-279-6866.

Crossword 101

By Gerry Frey

1	2	3	4	5	6	7	8	9	10	11	12	13
14				15					16			
17				18					19			
20			21				22					
23							24					
25	26					27			28	29	30	31
32												
33				34								
35			36						37			38
39			40						41			42
43												
44									45			
46												
47												
48												
49	50	51							52			53
54												
55									56			
57												
58												
59												
60												
61												
62												
63												

"Headstrong"

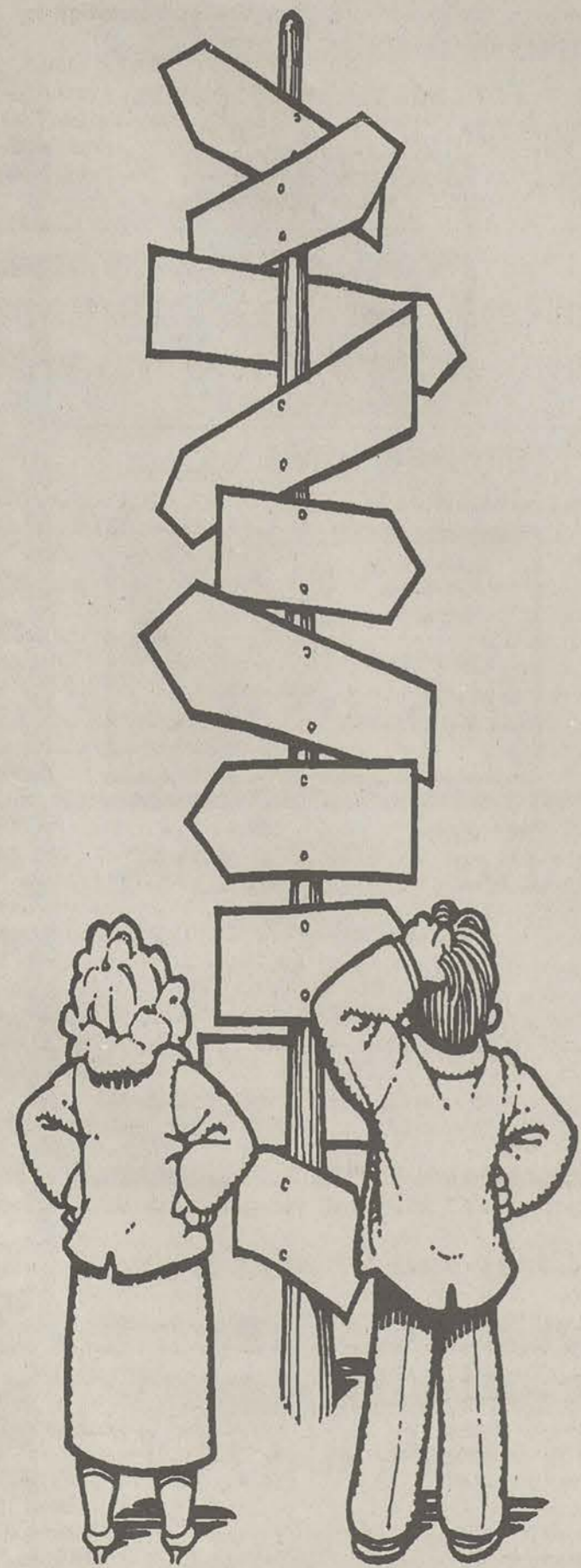
- ACROSS**
- 1 Pain
 - 5 Sends a letter
 - 10 Fair
 - 14 Srod
 - 15 Approximately
 - 16 Cookie type
 - 17 Sultor
 - 18 Numskull
 - 20 Revolutionary British soldier
 - 22 Pugilist Sugar Ray
 - 23 Hand part
 - 24 Highway fees
 - 25 Matching furniture
 - 27 Immediately
 - 28 Parochial
 - 32 Leg joint
 - 33 Plant
 - 34 Designate
 - 35 Trans. Regulatory agency
 - 36 Forgetful person
 - 38 Parent's org.
 - 39 Chooses
 - 41 Hearing aid
 - 42 Twirl
 - 43 Alter the clock
 - 44 Dative:Abbrev.
 - 45 Eyeglasses
 - 46 Stirred up
 - 48 Weeder
 - 49 Clipped the sheep
 - 52 Fasteners
 - 55 Type of shark
 - 57 Celtic
 - 58 Vocal solo
 - 59 Dull finish
 - 60 Superior, e.g.
 - 61 Lass
 - 62 Accumulate
 - 63 Paradise
- DOWN**
- 1 A short abbreviation
 - 2 Ontario Indian tribe

- 3 Fancy hats
- 4 Teach
- 5 Lady's title
- 6 Adjoin
- 7 Charged atom
- 8 Massachusetts town
- 9 Structural material
- 10 36th President
- 11 Fertilizer ingredient
- 12 Scorch
- 13 Mary ____ Lincoln
- 19 Turned over
- 20 Barcelona cheer
- 24 White-blond person
- 25 Alberto Tomba
- 26 Aunt's mate
- 27 Neither's partner
- 29 Venemous snake
- 30 Storage area
- 31 Tilts
- 33 Sibling
- 34 Genealogical org.
- 36 Garb

Quotable Quote

"The best number for a dinner party is two —myself and a dam' good head waiter."

Nubar Gulbenkian



Attention GSU Students...

The Food Services I.D. Office has relocated to the Lakeside Cafe (in the Lakeside Copies area). Winter Quarter Hours for the I.D. Office are 8:00 a.m. - 6:45 p.m., Monday - Friday. Limited services are available after 4:30 p.m.

EAGLEXPRESS deposits may also be made at the University Store, Books Plus, and at the Lakeside Cafe (when the I.D. Office is closed).

ON CAMPUS

GSU students feast on wild recipes

GSU News Service

To make his famous Jumpin' Chocolate Chip Cookies, biology major Jeremy Simmons roasted crickets.

The cookies, along with grasshopper fudge, cricket creole, hoppin' cricket hush puppies, and other culinary creations from the wild, made the menu at the university's annual Catch 'n' Cook Cafe, where the field biology students served as chefs.

"Instead of nuts, I used crickets," Simmons said. "I roasted

the crickets, then took off the legs, wings and heads, and mixed them in with the cookie dough. They taste pretty good."

The students found recipes for the wild recipes in books like *Wilderness Survival* and *Free for the Eating*.

JoEllen Horsington made rose syrup by steeping rose petals in sugar water.

Elizabeth Fuller made cream mealworm cookies, which were topped with strawberry preserves and worms.

But Rob Gelmini thought his cricket creole was the best.

"I used the recipe for shrimp creole and replaced the shrimp with crickets, and there are about 75 crickets in the whole thing," he said.

Professor Frank French made Liberty Golden Rod Tea, which originated in the late 1700's as a new way to make tea.

"One thing they used to make tea were golden rod leaves. All I did was take dried leaves, like they did, and threw hot water on

them. The tea gained so much popularity that they called it Liberty Tea, and actually began to export it," he said.

The Catch 'n' Cook Cafe is just for fun, but French said some insects and wild plants are good food for wilderness survivors.

"Insects in general have a very high lipid content, and so they have a very high food value. Compared to beef steak, an equal amount of crickets have about 25 percent more nutrition," French said.

PROGRAMS

Continued from page 1

degrees in health science and history.

•GSU will still have the authority over other currently authorized graduate programs with classes in Savannah.

A study which was compiled for the Board of Regents this past summer concluded that these changes could possibly help benefit all the schools involved.

The study, done by former University of North Carolina Academic Vice President Raymond Dawson, was completed last May. He was responsible for the original study which was compiled in 1989. The report by Dawson was just a study, and it was not officially a Board of Regent's plan for implementation.

In 1990 when GSU gained university status, the school assumed the responsibility for all the graduate degree programs offered in Savannah.

Prior to the courtship, both Savannah State and Armstrong had offered some well established master's programs.

The arrangement made the graduate degree programs which were offered at Armstrong State and Savannah State affiliated programs. This affiliation placed the responsibility for conferring all of these degrees on GSU.

"We have made quite a lot of progress in the four years with the arrangement, and there has been an increase in the number of programs offered," GSU Vice President of Graduate Studies and Research Wilson Bradshaw said.

Along with the number of programs increasing, there have been several other positive effect due to the affiliation.

The graduate enrollment at all three schools has increased by 16 percent since the fall of 1989 according to the study.

"The faculty at all three schools should be commended due to their commitment to the programs," Bradshaw said.

With the affiliation between the schools, there have been some problems.

"The main problem I found was the two institutions, Armstrong State and Savannah State, did not have the authorization to have any programs on their own," Dawson said. "I think it would work better if those schools had some of the programs restored with GSU still playing a central role."

The study was for the most part positive. Dawson pointed to several items between the schools which have had many important success. They included greater access to more programs, an increased quality in the programs offered, improved program accreditation's have been

DUI

Continued from page 1

"The victims normally are contacted, especially when the victim has been involved in the court cases as such as Mrs. Tootle," Forehand said. "I find it appalling that the plea was made without informing her."

Mrs. Tootle filed a law suit in July against Fair, Fair's father, Dennis Fair, and the GSU chapter of Kappa Sigma International. The fraternity held the "Luau Party" where Fair attended and allegedly produced a blood alcohol content above the legal .08. Fair registered a .17.


added in Savannah and the three institutions have themselves prospered by some basic measures.

One of the problems which was pointed out was the faculty at Savannah State and Armstrong State may devote a good part of their time in a term to teaching in the graduate degree programs, but the important decisions about them affecting their careers are really made by supervisors at the home institution.

Distance learning is one of newer aspects to the teaching of the graduate programs by GSU.

"We are offering some distance learning to the classrooms in Savannah, and we will absolutely continue to use it," Bradshaw said. "It's not new to us as we have used it in other locations other the Savannah."

Attention!
The G-A is looking for a few good writers. If you've got what it takes then come by Williams Center rm. 223 to apply.



SOME OF OUR STUDENTS ARE STAR PUPILS.

From 90210 to your zip code, safe motorcycle riding is essential. So take a *Motorcycle Rider Course* like Brian Austin Green of Fox T.V.'s *Beverly Hills, 90210*. You'll learn techniques that not only make you a safer rider, but a better rider as well. Call 1-800-447-4700 to be the star of your class. **MOTORCYCLE SAFETY FOUNDATION**

CROSSWORD ANSWERS

HEADSTRONG

A	C	H	E	M	A	I	L	S	J	U	S	T	
B	R	E	D	A	B	O	U	T	O	R	E	O	
B	E	A	U	D	U	N	D	E	R	H	E	A	D
R	E	D	C	O	A	T	L	E	O	N	A	R	D
P	A	L	M	T	O	L	L	S					
S	U	I	T	E	N	O	W	L	O	C	A	L	
K	N	E	E	S	O	W	D	E	N	O	T	E	
I	C	C	A	I	R	H	E	A	D	P	T	A	
E	L	E	C	T	S	E	A	R	S	P	I	N	
R	E	S	E	T	D	A	T	S	P	E	C	S	
R	I	L	E	D	H	O	E	R					
S	H	E	A	R	E	D	C	A	T	C	H	E	S
H	A	M	M	E	R	H	E	A	D	K	E	L	T
A	R	I	A	M	A	T	T	E	L	A	K	E	
G	I	R	L	A	M	A	S	S	E	D	E	N	



TRY DOMINO'S BUFFALO WINGS

SO TASTY BE DOMINO'S

For a Limited Time!
\$3.99 10 Piece Order of Buffalo Wings with Any Pizza Purchase



Serving GSU/Statesboro

681-4326

\$11.99
Medium Pizza with 3-Toppings, and a 10 Piece Order of Buffalo Wings

Valid at participating locations. Not valid with any other offer. Customer pays sales tax where applicable. Our driver's carry less than \$20. Delivery areas limited to ensure safe driving. © 1995 Domino's Pizza, Inc. CALL NOW Offer ends 1/15/95

\$8.99
MEDIUM 3-TOPPING PIZZA

Valid at participating locations. Not valid with any other offer. Customer pays sales tax where applicable. Our driver's carry less than \$20. Delivery areas limited to ensure safe driving. © 1995 Domino's Pizza, Inc. CALL NOW Offer ends 1/15/95

\$12.99
TWO LARGE PIZZAS Each with 2 Toppings

Add 99c for each Deep Dish

Valid at participating locations. Not valid with any other offer. Customer pays sales tax where applicable. Our driver's carry less than \$20. Delivery areas limited to ensure safe driving. © 1995 Domino's Pizza, Inc. CALL NOW Offer ends 1/15/95

\$5.99
CARRY OUT SPECIAL! Large 1-Topping Pizza

Add 99c for Deep Dish

Valid at participating locations. Not valid with any other offer. Customer pays sales tax where applicable. Our driver's carry less than \$20. Delivery areas limited to ensure safe driving. © 1995 Domino's Pizza, Inc. CALL NOW Offer ends 1/15/95

UNION PRODUCTIONS
GEORGIA SOUTHERN UNIVERSITY

Activities

Tuesday 10

Mindreader:

Craig Karges

See it to believe it!
So see it for yourself!
Southern Center 7pm!

Tuesday 17

Whole World Improve the Comedy Troup

Audience Participation!

Be a Comedian for a night!

Live at the Union Ballroom 8pm

Thursday 19

Kareoke and Casino Night

Try your luck at Blackjack or just have fun on the mic!

Union Ballroom 7pm

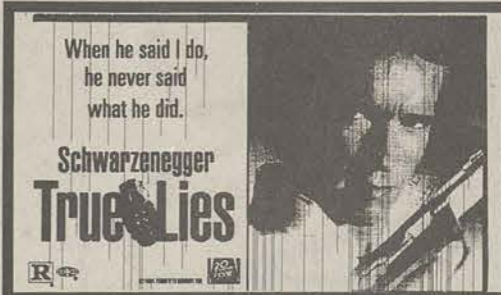


Movies

Thursday & Saturday
Jan. 5 Jan. 7



Sun, Mon, Wed & Thur.
Jan 8, 9, 11, & 12



Movies

- Wednesday & Thursday
- Sunday & Monday
- 7:00 pm & 9:30 pm

Union Theatre

- \$1 with GSU Student ID
- \$2 General Admission

Coming Soon!

Clear and Present Danger

Information Hotline

681-0461

Office 681-5442 • Union Productions
Landrum Box 8066 • Statesboro, Ga 30460