

Georgia Southern University

Digital Commons@Georgia Southern

The George-Anne

Student Media

11-17-1994

The George-Anne

Georgia Southern University

Follow this and additional works at: <https://digitalcommons.georgiasouthern.edu/george-anne>

Recommended Citation

Georgia Southern University, "The George-Anne" (1994). *The George-Anne*. 1338.
<https://digitalcommons.georgiasouthern.edu/george-anne/1338>

This newspaper is brought to you for free and open access by the Student Media at Digital Commons@Georgia Southern. It has been accepted for inclusion in The George-Anne by an authorized administrator of Digital Commons@Georgia Southern. For more information, please contact digitalcommons@georgiasouthern.edu.



➔ Confronting gender

A new theater series will bring out sexual issues in collection of Shakespeare's work

Please see story, page 7



➤ Berthright?

Columnist ponders the odds of Head Coach Tim Stowers leading GSU to the playoffs

Please see "The Spectator," page 6



➤ Prison drama

Movie review says 'The Shawshank Redemption' is a flick worth watching

Please see "Arts and Entertainment," page 8

EAGLELINE

GOLD EDITION

Thursday, November 17, 1994
Vol. 67, No. 35

Gingrich warns Clinton that Republican Congress won't always compromise

By Alan Fram
The Associated Press

WASHINGTON — Rep. Newt Gingrich, the prospective new House speaker, is warning President Clinton that while the two parties may cooperate, Republicans who will run the next Congress won't budge on many issues.

"On those things where we believe we represent the vast majority of Americans, there will be no compromise," the Georgia Republican said Friday in his first speech since Election Day. "So let me draw the distinction: Cooperation, yes; compromise, no."

Just three days after the GOP captured control of both houses of Congress for the first time since 1954, the combative Gingrich broadly sketched the new, conservative direction in which he will try to steer the House. The 104th Congress, which convenes Jan. 4, presents Clinton with a hostile majority and questions about the prospects for legislation.

In a dramatic swipe at Democratic orthodoxy, Gingrich said many federal anti-poverty programs are not helping the poor and need to be replaced.

"We simply need to reach out, erase the slate and start over," he said in a luncheon address to financial investors that drew a crowd of about 50 reporters.

In remarks later, he said Medicaid, Head Start and Job Corps were among the programs that need to be scrutinized, adding that re-examining a program "doesn't mean it has to be abolished."

GOP efforts to dramatically revamp those programs would be sure to run into stiff Democratic opposition.

White House chief of staff Leon Panetta, appearing on PBS' "MacNeil-Lehrer NewsHour" Friday night, said it's easy for Gingrich to say he wants to "start from scratch and build from the bottom up."

WEATHER

TODAY

Showers, with a high in the mid-70s and a low in the lower 60s.

WEEKEND FORECAST

Friday, there will be rain with gusty winds, with a high in the mid-70s and a low in the mid-60s. Saturday, it will be breezy with scattered showers, with a high in the mid-70s and a low in the mid-60s.



INDEX

Announcements	2
Arts & Entertainment	8
Classifieds	9
Crossword	9
G-A Spotlight	3
Opinions	4
Police Beat	2
Sports	6

It is a desire of The George-Anne to print the news of Georgia Southern University as accurately as possible. If you feel that something covered is in error, contact a member of the editorial staff at 681-5246 as soon as possible. Thank you.

FOR ADVERTISING INFO: 681-5418
STORY OR PHOTO IDEA: 681-5246
FAX NUMBERS: 871-1357 and 681-0863

The George-Anne

Liked By Many, Cussed By Some ...
Read By Them All



Georgia Southern University's Official Student Newspaper

Statesboro, Georgia 30460

Founded 1927

The George-Anne

Theater students, faculty want more

By Ashley Hunt
Assistant Features Editor

First of a two-part series

GSU offers a theater major, but the theater students and some communication arts professors say they don't have an adequate facility. They also say they should have their own theater and not have to share the one in the new Performing Arts Building that should be completed by 1997.

The theater students currently use the McCroan Auditorium in the Administration Building, one of the oldest buildings on campus. The students held a protest last month that included theater and non-theater students. According to Theater and Performance president Kim Anderburg, the protest was a way to educate people about the problems of the theater.

Many problems exist with the theater. It has fire code violations, a condemned balcony and no air conditioning.

Gary Dartt, a scene designer for the theater and a communication arts professor, said the theater has been in violation of fire codes for years. The fire

"IF THE AUDIENCE HAS TO SUFFER DURING A TWO TO TWO-AND-A-HALF-HOUR THEATER PRODUCTION, YOU SHOULD AT LEAST LET THEM HEAR THE SHOW."

— GARY DARTT
SCENE DESIGNER

marshal told theater officials a fire wall separating the stage from the auditorium was needed.

"A stage like this should have a sealed wall between the stage house and the auditorium," he said.

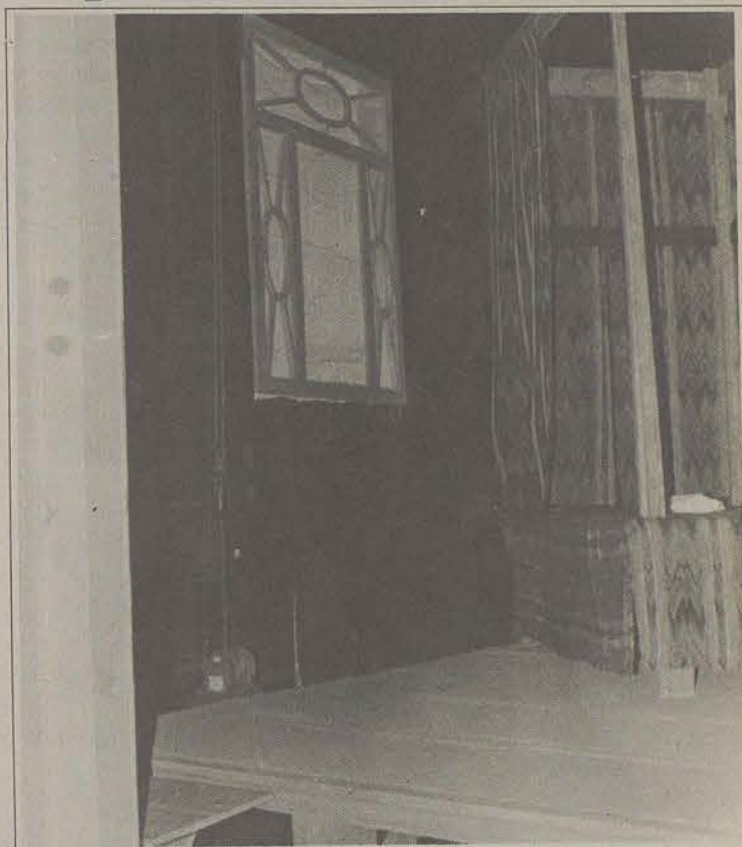
Dartt also said the fire marshal told them they had to create a new fire line at the front portion of the stage, the proscenium arch, and to fire proof their scenery. The administration came in this summer and put in the fire wall made of sheetrock on the back of the arch.

The balcony presents another problem as well. According to Dartt, it has been condemned for four years, since it has fallen four inches and is no longer safe.

However, Philip Hodge, director of facilities planning and space utilization, says the balcony is not actually condemned. He said the theater staff takes necessary precautions to ensure the safety of others.

But Dartt said the biggest problem is the lack of air conditioning in the theater.

"We have to open the windows to cool the audience, and they can hear the air-conditioning going to keep the offices and the basement cool,"



James Hill

Some say GSU theater facilities such as this are inadequate. he said. "If the audience has to suffer during a two-to-two-and-a-half-hour theater produc-

Please see THEATER, page 10

Over 100 nativity scenes to be shown in museum

By Chris Sherwood
News Editor

With the Christmas season coming soon, the GSU Museum has gotten into the holiday spirit and will be showing a collection of over 100 nativity scenes from around the world starting this Sunday from 3 p.m. to 5 p.m.

The exhibit is entitled "A Christmas in Miniature," and will be on display through Christmas Eve. Also on exhibit with the nativity scenes will be a train collection and a Santa Clause collection.

"We're able to show the art of the United States, which represents the majority of the students, but we do have around 300 international students here and now we're able to show the art of their countries as well," GSU Museum Director Delma Presley said.

The exhibits will be kicked

off with a reception beginning at 3 p.m. Sunday which will honor former University of Georgia Vice President Virginia Trotter, who has spent the better part of her life collecting the various scenes while traveling throughout the world.

"During the Nixon and Ford administrations, she (Trotter) held the position which is today known as Secretary of Education," Presley said. "She traveled extensively during that time and when she arrived in another country she would spend days tracking down local artists who made nativity scenes."

Her collection, which began in 1956, represents nativity scenes from every region, and she is still collecting today according to Presley.

"With the spread of Christianity, it's interesting to see how each country depicts the



James Hill

This miniature nativity scene is one of many that will be on display at the GSU Museum from Sunday until Christmas Eve.

scene," Trotter said. "It is a form of art, and I still enjoy collecting some if I don't have them."

The collection has only been shown in Athens and in Ma-

con.

"We're proud to bring a quality exhibit to the people of South Georgia," Presley said. "It is rare for her to show this because it is a private collection."

Henry unveils Holiday Tree this morning at Lakeside

GSU News Service

GSU President Nicholas Henry will unveil on Thursday the university's Holiday Helpers' Tree, decorated with paper cut-outs inscribed with the needs of local families. Faculty, staff and students will be asked to take one, to purchase the needed item, and then replace the cut-out by choosing an ornament to hang on the tree.

The unveiling ceremony is Thursday at 9 a.m. in the Lakeside Cafe.

Nursing department plans for reception

By Kim Wagner
Senior Staff Writer

In an effort to show appreciation, the nursing department has scheduled a holiday reception to honor its clinical agencies and preceptors on Nov. 30 at the GSU Museum from 4-7 p.m.

"These are the agencies where our (GSU) nursing students gain clinical experience while in the nursing program," Cathy Shriver, assistant professor in undergraduate program said.

Examples of these agencies include hospitals, health departments, home health agencies, and nursing homes.

The preceptors being honored are individuals who work one on one with the students, usually without a faculty instructor being present, said Charlene Hanson, associate professor in nursing and director of center for rural health and research.

Since the program was implemented in 1980, the number of facilities and the differ-

ent types of preceptors that are utilized has grown over the years, just as the nursing program has expanded to include the graduate level, Hanson explained.

"In the masters level students work one on one with the doctors, nurse midwives and nurse practitioners," Shriver said.

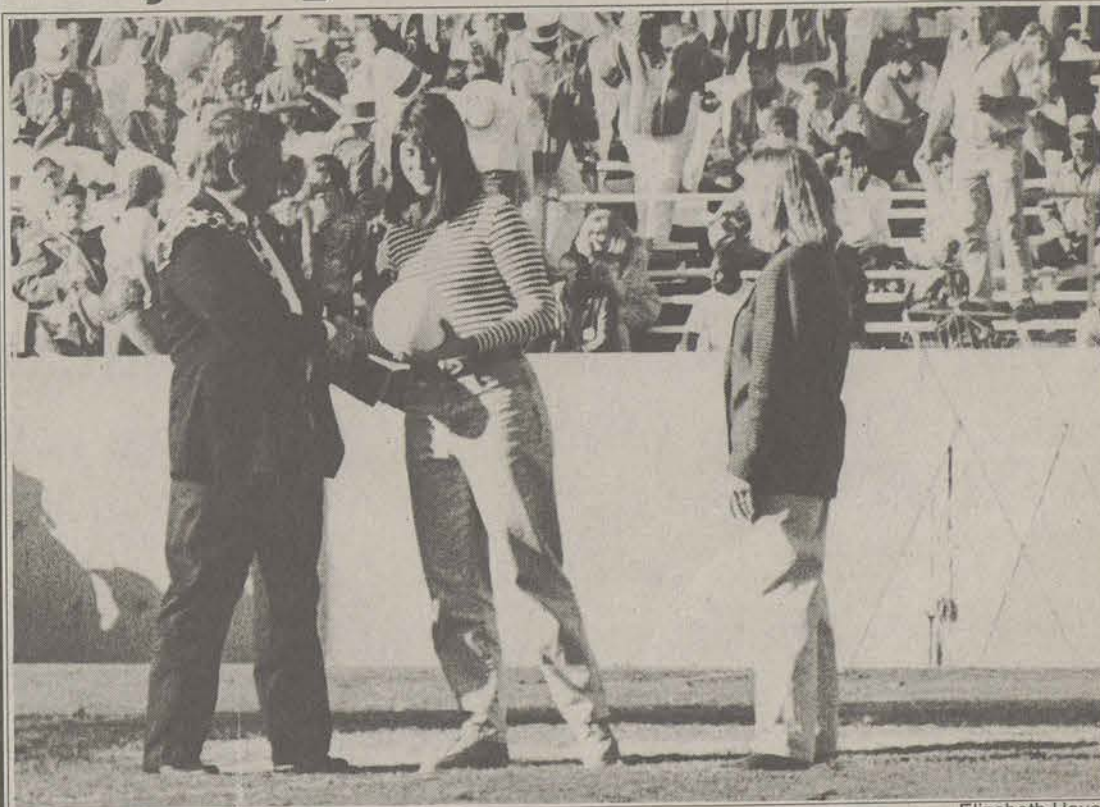
Through this reception Hanson, hopes to build a collaborative relationship with agencies and individuals who help with the educational process and also express the department's gratitude.

Close to 100 invitations were sent out to the individuals and agencies who work with the 300 plus nursing students at GSU.

The clinics and preceptors receive no monetary compensation for their time and expertise.

"We couldn't complete the students' education without the support of these individuals and agencies," Hanson said.

Lady Eagle soars to 2,000 kills



Elizabeth Hayes

Senior Lady Eagle Volleyball player Alexis Dankulic receives a commemorative volleyball after becoming the first ever Lady Eagle to have 2,000 kills in a career. She currently leads the Southern Conference in kills per game at (3.99) and digs per game at (4.15). The Lady Eagles will travel to Chattanooga, Tenn., to play in the Southern Conference Tournament this weekend. GSU enters the tournament as the third seeded team and will play Western Carolina in the first round. Their first game is a 7:30 p.m. Friday.

POLICE BEAT

GSU Division of Public Safety

November 14, 1994

•William Atkins reported someone had cut two tires on his 1992 Mitsubishi in the Oxford Hall parking lot.

•Heath Rose reported someone had taken the seat from his bike at the Brannen Hall bike rack.

•Billy Fowler reported a case of financial card theft at the Russell Union.

•Jotonna Vanise Horton, 18, of Cone Hall, was charged with simple battery.

public drunkenness.

November 11, 1994

•Roosevelt Timothy Moore, 23, of Anthony Street, was charged with driving with a suspended license and failure to dim lights.

•Christopher Todd Wilson, 19, of Brannen Hall, was charged with DUI (.11) and a stop sign violation.

•Jason Ellis Terrell, 20, of In The Pines, was charged with simple battery.

Statesboro Police Department

November 13, 1994

•Agatha Hall, 20, of Players Club Apartments, was charged with failure to report an accident/injuries in which she was involved in at Chandler Square Apartments.

November 12, 1994

•Cheryl Lynn Avinger, 19, of Orange Park, Fl., was charged with DUI (results pending) and weaving over the roadway.

•Spencer William Doyle, 19, of Oxford Hall, was charged with

ANNOUNCEMENTS

Things to do at GSU

Today

•Southern Chorale Concert will be held at the First United Methodist Church at 8 p.m.

•A lecture entitled "Outside Visionary Folk Art," will be held in the Union Ballroom at 7:30 p.m.

•R. Manley will speak on "Outside Visionary Folk Art" in the Union Ballroom at 7:30 p.m. Contact J. Hines for more information at 681-5930.

•J. Carpenter presents "Do as I Say AND as I Do" in the Herty Building room 116 at 7 p.m. Contact G. Bishop for more information at 681-5546.

•The colloquium on International Topics will be "Ghandi and the Modern Age," at the Forest Drive Building room 1233 at 3 p.m.

•A meeting for existing industries in Bulloch County will be held in the Hollis Building room 102. The meeting will discuss the Georgia Business Expansion Support Act of 1994. The meeting is designed to bring the existing industries in the state up-to-date on the program. The meeting for this area will be an interactive video presentation at the Hollis Building.

Friday, November 18

•Special Olympics will be held at Grady Street Gym 9:30 a.m.-2 p.m.

•The African-American Gospel Choir Concert will be held in

the Union Ballroom at 7:30 p.m. Admission is free.

Sunday, November 20

•The opening of the "Christmas in Miniature" will be at 3 p.m. at the GSU Museum. The exhibit is comprised of three different collections, that include a Santa Clause collection, a train collection and a nativity scene collection. It will be on display through Christmas Eve. Admission is free.

Monday, November 28

•An art exhibit opening will be held at Foy, and will extend through Dec. 9. There will also be a photography exhibit in the small gallery.

Tuesday, November 29

•Southern Pride will have a concert at the Union Ballroom at 8 p.m.

IN GEORGIA

Civil War re-enactment to be held

GSU News Service

One hundred and thirty years ago, Federal forces under the command of General William T. Sherman embarked on a campaign that would take them from the ruins of Atlanta to the earthen walls of Fort McAllister. This campaign became known as the "March to the Sea." On Dec. 13, 1864, overwhelming Federal forces captured the garrison of Fort McAllister, thus ending the Confederate control of the Ogeechee river.

On Dec. 10 and Dec. 11, civil war re-enactors from throughout the southeast will join the staff at Fort McAllister Historic State Park to commemorate the anniversary of these events.

Fort McAllister Historic State Park can be reached from I-95 by taking Georgia State Highway 144 East to Spur 144 East.

Admission is \$2 for adults and 75 cents for children ages 6-18.

For more information please contact Fort McAllister Historic State Park at (912) 727-2339.



Special photo

IN THE USA

Flag heads to state supreme court

By Jesse Holland
The Associated Press

COLUMBIA, S.C. - The Confederate battle flag atop the Statehouse is easily visible from the nearby state Supreme Court. On Tuesday the court's justices will be asked to change that view.

In preparation, flag supporters have held almost weekly demonstrations around the state to drum up support. At least one pro-flag group says it will try to pack the hearing.

Sons of Confederate Veterans state commander Christopher Sullivan said all 1,300 state members have been invited to the hearing, which will begin the day after the state organization's centennial celebration.

The courtroom holds about 120 people, said Andy Surles, a member of the state Judicial Services Commission.

Sullivan said he hopes a crowded courtroom will send a message, though not necessarily to the justices.

"We want our presence to be a show of force to the Legislature, who are the ones who put the flag up there three decades ago," Sullivan said. "One hundred

years ago, our founders were fighting to keep their heritage alive against the Union army down here. Today we're still fighting, only this time against our own people here in the state."

no chance of a solution coming before we go to court Tuesday."

Coble said the Confederate flag is a detriment to the city's and the state's economic growth. It's also an inappropriate re-

or economics on Tuesday.

The case comes down to how the flag got on the Statehouse dome and who has the authority to bring it down, both sides say.

The Legislature passed a resolution 32 years ago that first put the controversial banner above the dome. Lawmakers said it was meant to celebrate the Civil War's centennial.

Coble and the businessmen argue that it takes more than a resolution to permanently fly the Confederate flag above the dome.

Flag supporters say only the legislature can remove the flag now that it's there.

"This is not an executive matter or a judicial matter," said state Sen. Verne Smith (D-Greer), Statehouse Committee chairman. "This is solely a matter for the Legislature. The Legislature has been in control of what goes on inside or outside the Statehouse since Colonial days and it should stay that way."

The Legislature failed this year to approve a compromise plan that would have lowered the battle flag and replaced it with two similar flags on the Statehouse grounds.

"ONE HUNDRED YEARS AGO, OUR FOUNDERS WERE FIGHTING TO KEEP THEIR HERITAGE ALIVE AGAINST THE UNION ARMY DOWN HERE. TODAY WE'RE STILL FIGHTING, ONLY THIS TIME AGAINST OUR OWN PEOPLE HERE IN THE STATE."

— CHRISTOPHER SULLIVAN

SONS OF CONFEDERATE VETERANS STATE COMMANDER

The lawsuit was filed by Columbia Mayor Bob Coble and a group of businessmen against the state, the attorney general and a Statehouse Committee employee.

Coble and the businessmen hoped for a court-mediated settlement before the trial, but the justices refused to appoint a mediator and talks with defense lawyers failed.

"There will be no last-second solutions," Coble said. "There is

mind of slavery to minority groups, he said.

Sullivan and other flag defenders argue it is a part of the South's history.

South Carolina is the last state to fly the Confederate flag above its Statehouse, although the Georgia and Mississippi state flags incorporate the blue X with the red background and white stars.

The justices aren't expected to hear arguments about history

**Facing an Alcohol or Drug Offense?
We can help.
Call today for an appointment.**

- Confidential Alcohol/Drug Assessments
- Alcohol/Drug Education
- Outpatient Counseling
- Flexible Counseling Hours for Students

W Willingway
Outpatient

311 Jones Mill Road • Statesboro, GA 30458
764-6236

The Educated Palate

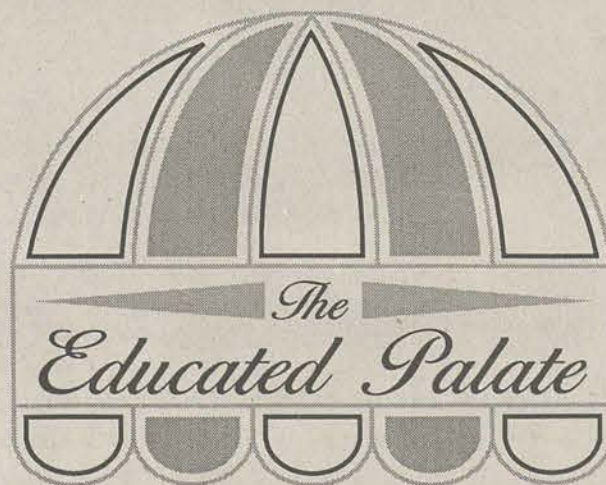
Lunch 11-2:30 • Dinner 5-8
Monday thru Friday

Special of the week
Grilled Chicken Caesar Salad
\$4.⁷⁵

**Now Available: On-Campus
Pizza Office Delivery Service**

Featuring our full line of individual and 14" pizzas,
side salads, and beverages.

Call 681-5303
Delivery Monday thru Friday 11am-2pm



Enjoy the Feast Not the Fat!

The GSU Health Center

Invites You To Learn How to make Holiday
Eating A Healthy Occasion
Stop by a

"Total Body Enhancement Seminar"

to learn healthy eating habits, improve your
body image, and tips to enjoy your holiday
feasts without all the fat!

Seminars offered at the Health Center every
Wed. at 3pm & Thurs. at 4pm.

For more information call the GSU Health Center.

ON CAMPUS

'Kitchen Science' at museum Saturday

G-A News Service

The GSU Museum will present "Kitchen Science" with chemistry professor Jessica Orvis Saturday morning at the Museum, beginning at 10 a.m.

"We hope to have fun with it, we will be doing several experiments," Orvis said. "Any child who signs up can come."

Orvis will lead the participants in science experiments using ordinary household ingre-

dients.

The cost of the program for Museum members is \$2.50 for one adult and one child and \$1 for each additional child. Non-member cost is \$5 for one adult and one child and \$2 for each additional child. The workshop size is limited and registration is required.

"The GSU Museum has several books on kitchen science for children," Orvis said.

IN GEORGIA

Items readmitted to sex-ed curriculum

The Associated Press

MACON, Ga. — A Bibb County school board committee voted Thursday to readmit 24 items, including materials on AIDS and other sexually transmitted diseases, to the sex education curriculum.

The items had been deleted last summer, along with nine others that were permanently removed, at the request of board member Susan Cable and several parents.

The board had agreed to meet during the summer to discuss the items, but never did.

Superintendent Tom Madison said he didn't distribute the curriculum to teachers because he had received no direction from the board.

Raynette Evans, health education curriculum director, said

the materials should reach students before the end of the semester if the board completes the curriculum next week.

The board's instructional services committee approved such items as a paperback book called "Risky Times: How to be AIDS Smart and Stay Healthy - A Guide for Teen-agers"; "Sex Education - A Practical Teachers Guide," a reference book for kindergarten through sixth-grade teachers; and "AIDS-HIV Prevention Education for Puberty," a teacher reference book that stresses abstinence and safe sex.

The committee also recommended "Kids to Kids," a video first used in the fourth grade when discussing menstruation and fertilization, with boys and girls separated during discussions.

IN GEORGIA

Coverdell backs program

The Associated Press

ATLANTA — Sen. Paul Coverdell, R-Ga., says congressional Republicans support the peanut price-support program as well as Democrats, despite fears expressed this week by Georgia's agriculture commissioner.

"I plan to work with my colleagues on both sides of the aisle in Congress so that they see the importance of this program to our state and national economy,"

he said Friday.

Coverdell took exception to comments made by Agriculture Commissioner Tommy Irvin, who said the peanut program is in danger because the Republican who is likely to lead the Senate Agricultural Committee beginning next year opposes it.

"Cooperation, not criticism, will help us accomplish much more in the 104th Congress," Coverdell said.

G-A SPOTLIGHT

GSU professor named president

Marky Lloyd, of the department of psychology, is serving as President of Division two (Teaching of Psychology) of the American Psychological Association during 1994-95.

Professor participates in symposium

Debra Sabia, an assistant professor of political science, recently participated in a symposium addressing the need to develop the outreach dimensions of Latin American universities at the Universidad del Salvador in Buenos Aires, Argentina.

Grant awarded to GSU professor

John Murray, of the department of psychology, was awarded a grant from the Spencer Foundation for a project entitled, "Predictive Inferences and Text Processing." The one year grant totals \$12,000.

Professor participates in conference

George Cox, a professor of public administration, co-directed a discussion of prospective new standards for graduate students advising at the 18th National Conference on Academic Advising.

Awards of Merit given

- Emma Robins - a custodian in the Physical Plant.
- Gloria Joiner - a staff assistant in special programs.
- Marian Martin - an administrative assistant with the Regents Center for Learning Disorders.
- Sandra Ellwood - administrative secretary in Math and Computer Science.
- Donna Hutcheson - head of the Registrar's publications and class scheduling department.
- Billy Collins - lock and sign shop foreman.
- Edward Ellis - chief cook with catering services.
- Crystal Hotchkiss - payroll assistant.
- Diane Wagner - of the Registrar's Office.

The awards are funded by the GSU Foundation.

The George-Anne would like your help in order to recognize special people, organizations and activities on campus. Anyone who would like to make suggestions for our G-A Spotlight feature may call Chris Sherwood, news editor, at 681-5246. Letters may also be sent to The George-Anne at Landrum Box 8001.

IN THE USA

Obscenity evidence dismissed

The Associated Press

CINCINNATI — A judge Thursday threw out the evidence in the trial of a bookstore charged with obscenity for renting a videotape of an Italian film depicting the sexual torture of teens.

Barring an appellate court reversal, that ends the case, *The Cincinnati Enquirer* will report

in Friday's edition.

Judge William Mallory Jr. of Hamilton County Municipal Court said he threw out the evidence because he was "bothered by police conduct."

Mallory earlier had rejected the defense request to suppress the same evidence on different constitutional grounds.

ATTENTION!

GSU Students, Faculty, and Staff will receive a 10% discount on Tuesday Nov. 15, 1994 and Thursday Nov. 17, 1994 on all merchandise and related services at

Western Auto

Hwy 80 East
Statesboro, GA
764-6531

Hours
Mon. - Sat. 8:00 am - 9:00 pm
Sun 9:00 am - 6:00 pm

Psychic Readings by MRS. GRACE

Tarot Card & Palm Readings

- Have you ever wanted a psychic to analyze you and tell you what is right & wrong in your life?
- Do you want an expert in the field of psychic phenomenon to gaze into your past, explain your present & tell your future?
- Mrs. Grace advises on love, business matters & marital problems.



Special \$5 All Readings

113 Hwy. 301 South, Statesboro
Across from Ogeechee Tech

912-871-4487

Did you know that you can avoid the flu for only \$5.00 or treat your cold for only \$3.00?

FLU SHOTS

will be given to eligible students any weekday

Until End of Fall Quarter

\$5.00 Per Shot

Get Them While They Last

The flu shot should not be given to anyone who is allergic to chicken, eggs, or Garamycin, or to pregnant women in the first trimester (unless they have a chronic illness like diabetes or asthma).

Georgia Southern University Health Services
681-5641

Don't wait until it's too late. Get immunized Now!

UNION PRODUCTIONS

GEORGIA SOUTHERN UNIVERSITY

Activities

TOMORROW!

Acappella Sensation!



Friday Nov. 18 Rotunda 11 am - 1 pm

Friday Nov. 18

African American Gospel concert choir
7:30 pm Union Ballroom

Monday Nov. 21

THE WORLD'S FAIR



Celebrate cultures all over the world.

Rotunda 11 am - 3 pm

The Step show will be rescheduled for winter quarter!

December 5 - 9

The Union will be open as a Study Hall during the week of FINALS!

7 am - 11 pm Regular Programming

11 pm - 7 am Quiet/Study Hours

Quiet Hours will be enforced!

Movies

Wednesday & Thursday
November 16 & 17

THE MONEY PIT

TOM HANKS & SHELLY LONG

Sunday & Monday
November 20 & 21

BAD GIRLS

Movies

- Wednesday & Thursday
- Sunday & Monday
- 7:00 pm & 9:30 pm

Union Theatre

- \$1 with GSU Student ID
- \$2 General Admission

Coming Soon!

Blue Chips

Information Hotline

☎ 681-0461

☎ Office 681-5442 • Union Productions
Landrum Box 8066 • Statesboro, Ga 30460

Our Opinion

The standards should be lit

GSU ranks as the safest major college campus in the state in "Crime at College: The Student Guide to Personal Safety." There were approximately 4.02 crimes per 100 residents at GSU.

Reasons for this illustrious ranking come from a rural setting, the visible University Police, a bike patrol, night escort and close workings with the Bulloch County Sheriffs Office and Statesboro Police Department.

Spring quarter, the Student Government Association proposed to make the campus a more lighted area and began in such an effort.

Now, GSU is one of the best lit learning institutions in the state, but certain areas are still in question. The question does not revolve around whether lighting standards are available in certain locations, but instead whether the lights are casting illumination.

One example of "poor" lighting is evident in the student parking lot behind the University Bookstore, closest to Fair Road. On, at least two occasions this quarter, students upon leaving out the parking lot late at night have collided with the light standard at the exit onto the roadway. The standard is gray in color which makes it extremely difficult to see in the dark. Add a little drizzle and some fog and the pole to virtually unseeable.

Being a light standard, it would normally be assumed that the lights would be on during the night hours in order for students driving and those walking extra safety. But for some reason, the lights were not on and from reports, they have not been lit on a regular basis this quarter. This must change.

GSU is listed as a safe campus, but if the lighting standards around campus like this one are not generating light, then why even have the standards?

Even though it has been preached to every department on campus to turn off their lights when not in use, some departments continue to leave them on. If no one plans to stop those offices for burning the midnight oil, then please at least consider providing students with acceptable lighting as well.

We, *The George-Anne*, ask that the light standards be used for what they are meant in an effort to keep the safest major college campus in the state still safe.

Congrats, Alexis ... on everything

We, *The George-Anne*, want to acknowledge our appreciation for the hard work of the Lady Eagles volleyball team and especially Alexis Dankulic. Alexis has proven extra effort does make a gigantic contribution to a total-team effort. Over the weekend, Alexis recorded her 2,000th career kill, a GSU record that will undoubtedly stand for several decades to come.

Thanks Alexis!

LETTER AND SUBMISSION POLICY

The George-Anne welcomes letters to the editor, story submissions and guest columns from people both inside and outside the Georgia Southern University Community. All copy submitted should be typed (double-spaced, please), preferably on Macintosh disk in Microsoft Word or Microsoft Works format. All submissions must be signed and include a mailing address and phone number for verification. The editors reserve the right to reject any submission. There is no word limit on submissions. A writer may request to remain anonymous. However, it will be the editor's decision whether or not to print the name. Submissions are run on a space-available basis.

STAFF

NEWS

Copy Editors: John Kluttz; Robin Johnson; Layout Editor: Mandy Crews; Senior Staff Writers: David Hillis, Kim Wagner; Staff: Sunae Euell, Stacy Jordan, Teri Minter, Jana Mobley, Michelle Thomas

FEATURES

Features Editor: Derek Lewis; Assistant Features Editor: Ashley Hunt; Arts & Entertainment Editor: Josh Bass; Staff: Eric Bray, Stacy Clemons, Judith Cunningham, Kurt Deen, Lakeisha Fair, Dana Hinterliter, Kymm Reynolds, Mark Runyon, James Salter, Tijuana Thomas

SPORTS

Sports Editor: John Munford; Assistant Sports Editor: Ronnie Swinford; Staff: Tom Harrington, Tonya Hilton, Bart Hiter, Donald Jordan, Heather Mullins, Aaron Solomon, Will Van Kleef, Jeff Whitten, Carolyn Wynn

OPINIONS

Staff: Cory Andrews, Josh Bass, Teth Burns, Christopher Cole, Ashley Hunt, John Munford, Amy Staats

PHOTOGRAPHY

Chief Photographer: James Hill; Staff: Holly McCaig, Jerome New; Contributing Photographers: Stephen Burt, Jason Chandler, Randy Trujillo

ARTWORK

Leigh Braddy, Teth Burns, Shawn Chavis, Michelle Underwood

CIRCULATION

Supervisor: Steve Taliaferro; Staff: David Hillis, Bruce Karr, Scott Newton

ADVERTISING/DISTRIBUTION SERVICES (ADS)

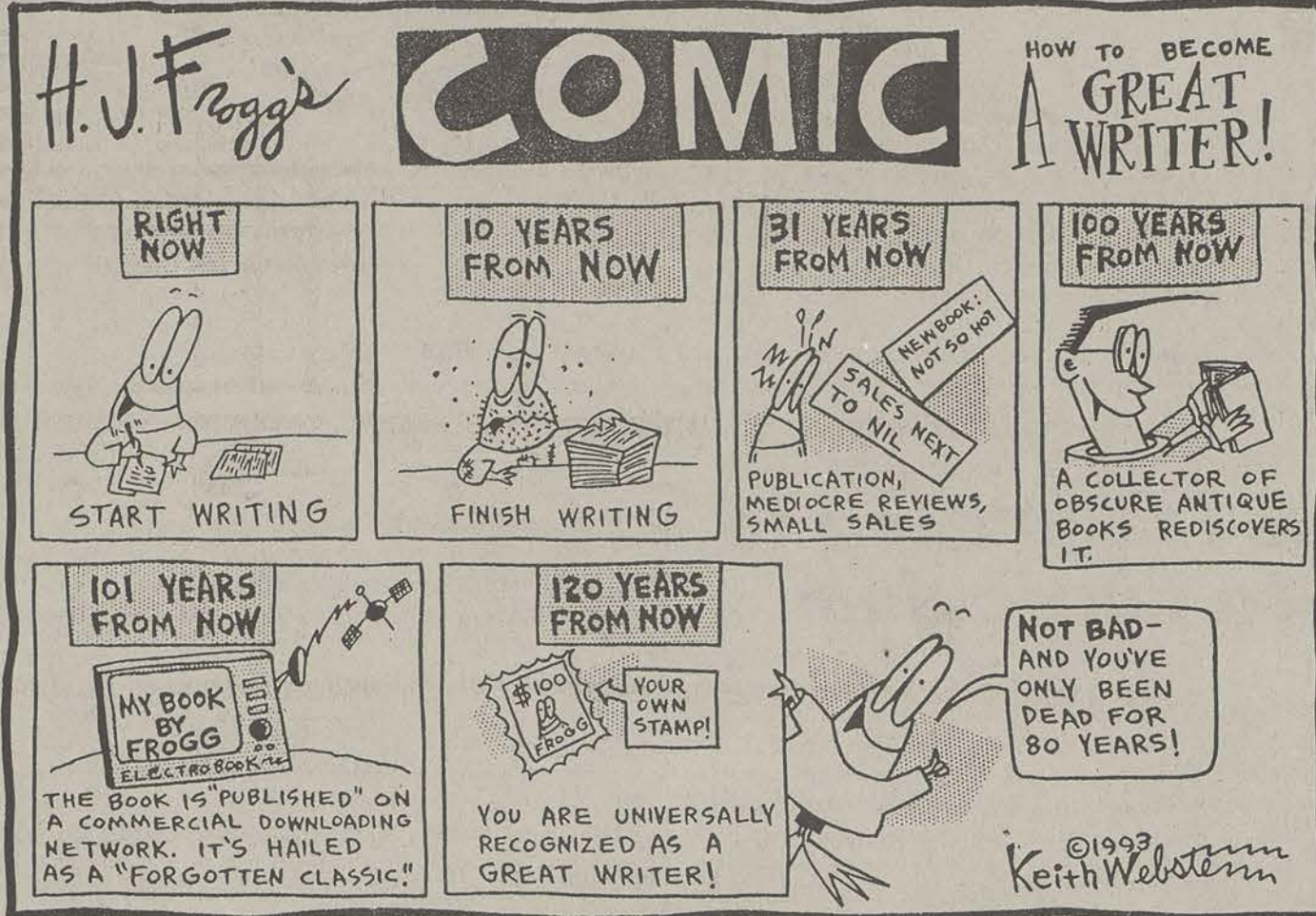
Advertising Manager: Brooks Clements; Business Manager: Stephanie Wylie; Marketing Coordinators: Leigh Braddy, Michelle Underwood; Sales Representatives: Melissa Goodman, Jana Mobley; James Salter, Heather Thatcher, Michelle Underwood, Carolyn Wynn

PRODUCTION AND GRAPHICS EDITORIAL SERVICES (PAGES)

Production Managers: Jason Adams, Ron Lair; Assistant Production Manager: Mitch Mitchell; Staff: David Beck, Aquila Bookhart, Scott Mulkey, Shawn Sunderland, Reggie Taylor; Classified Ads Manager: Melissa Goodman; Dark-room Manager: Randy Trujillo

STUDENT PUBLICATIONS COORDINATOR

Bill Neville



Your Opinion

Editor's Note: As of Wednesday morning, The George-Anne had received 27 "Letters to the Editor" addressing a Nov. 8 submission entitled "If reverse discrimination exists, good" or aspects revolving around the issue of race. In an attempt to express the written response to this letter, we are running the five rebuttals starting on this page and going to page 5 in their entirety. We appreciate the campus' willingness to write in concern of this and other issues and plan to make an effort to acknowledge each submission. We do remind you that your name and Landrum box must be included with your letter so we have documentation of the identity of the writer. Thank you once again for the letters.

Dear Editor,
Dear Fellow GSU students,
In surveying the racial issues that have come forth on this campus, I feel that the issue of race is

as delicate as ever. Since this is such a delicate matter, we must address this issue with extreme caution.

This history of the African-American race has and continues to be a very controversial one. It is important for all individuals to learn, recognize, and accept the differences among the different races and cultures. Ignorance continues to be the major hurdle in overcoming racism. I encourage all people, of all color, to attempt to look at other cultures with open minds and understanding hearts.

Day to day living is very difficult. We, as students on this campus, should try to minimize that difficulty. The best way to decrease the hate, is to increase ones knowledge. Learning about and understanding other cultures may ease many difficult situations that may arise on our campus. Since I am black, of course I am going to respond to

something so important to me, racial tolerance. But it is also crucial that all people feel the importance of racial tolerance. Our campus is very diverse, and as our student body grows more and more, so does the diversity. It is important for all students to get involved and put forth an effort toward growing up culturally, "TOGETHER." We must recognize the importance of the heritage within all cultures. Then we must become united and create a "heritage" within mixed cultures for future generations to reflect upon. If one were simply to look at a map one would obviously recognize the different geographical regions. With this "sectionalizing," it is obvious that even in terms of geographical aspects, there are differences everywhere. Although this country is "broken down" in many ways, we are all one country, thank God, and we should all attempt to act as one.

Please join me in an attempt to decrease ignorance and increase tolerance. I challenge each of you to find at least one "different" person, once a week, and tell that person a fact concerning your heritage/culture. If you can accept this challenge, in just five weeks, five more "different" people will know and hopefully understand "your" people (black, white, Asian, etc.) just a little better. In doing this, the walls of ignorance can be broken, building a chain of understanding hearts that can surround and protect our campus.

Decrease the ignorance—Increase the tolerance!
Georgia Southern University—United Racial Diversity.
Accept the Challenge.

Ryan Traylor
Student Government President
A very concerned student

Dear Editor,
I am writing this letter in reply to the article "If reverse discrimination exists, good" printed on Nov. 8. Believe it or not there is such a thing as reverse discrimination. It is everywhere, even on this campus. Yes, let's talk about discrimination. It comes in all ways and forms, and affects everyone at some point in time. It is rather pointless. What is the point of hating someone just because their skin is black, white, yellow and so on? What is the point of hating someone for the way that they talk, dress or look? I'll tell you, there is none! In the article it states "Now back to reverse discrimination, if it did exist, I say good." You are

proving yourself to be just as ignorant as the ones you are angered with. Discrimination will never end if we keep pointing fingers at each other. It is time we stopped looking at ourselves as skin colors, but instead as human beings! There are major problems in this world such as poverty, over-population and environmental issues that are going to need everyone's support in fighting. But how can we do this if we keep separating ourselves?

You also mentioned in your letter that black men and women can't come out of college making the same wages as a white male. Statistics do prove this, but the same holds true for white and

black women. This is a problem of society. You can't blame every white for this. You also said "My people built this country while yours told them that they were nothing." This is partially true. My family too came over in boats. They were dehumanized at Ellis Island, and had their names changed. They too were told that they were nothing, and were paid practically nothing. Then you bring up "Your people altered history to make yourselves look good." Who is "your people?" Do you mean whites? Because "whites" aren't all the same. There is no such place as Whiteland. We all have different views, just like everyone else. When you say "your people" op-

pressed my people for years, this is incorrect. Only a certain percentage of ignorant people oppressed Africans. Not all whites agree with what happened. This was the past. It is important to know the past so it doesn't happen again. But at the same time, if you live in the past, how can you progress into the future? So people let's wake up, and lose our parents' attitudes and opinions. Let's work together as fellow humans, and stop all of this ignorant bullshit for a peaceful future.

Shannon B.
"Pissed off Human"

Dear Editor,
Everyday I hear something about black this and white that and I am sorry that others weren't raised in a similar manner to myself. You see, I was blessed to be raised by a man and woman who were smart enough to not let injustices of the past blind the future for which they were raising their children to be a part of.

My father, the youngest of seven children, grew-up in a very small town in Alabama and though he has never mentioned it, I'm sure he experienced a few hardships as a child due to his color. However, he never mentioned this to his children. Instead, my father made sure we grew-up in an environment which let us know that it is OK to be different as long as you believe in yourself. We were sent to

schools which broadened our minds and our futures. I grew-up interacting everyday with people from a variety of backgrounds.

My mother, also from the South, grew up in a small city in Georgia. Just as my father may have experienced hardships because of his color, I'm sure my mother did as well. At the same time, my mother instilled in me a philosophy, "I don't care if you are black, white, purple or green, as long as you treat me with respect I'm happy."

So you see, if all parents thought this way, I feel that we all would be a lot better off. We should not judge someone we don't know based on their color, we should inquire about who they are. For we are all of the same race, the human race, and blacks being raised to hate is just as bad

as whites being raised to hate.

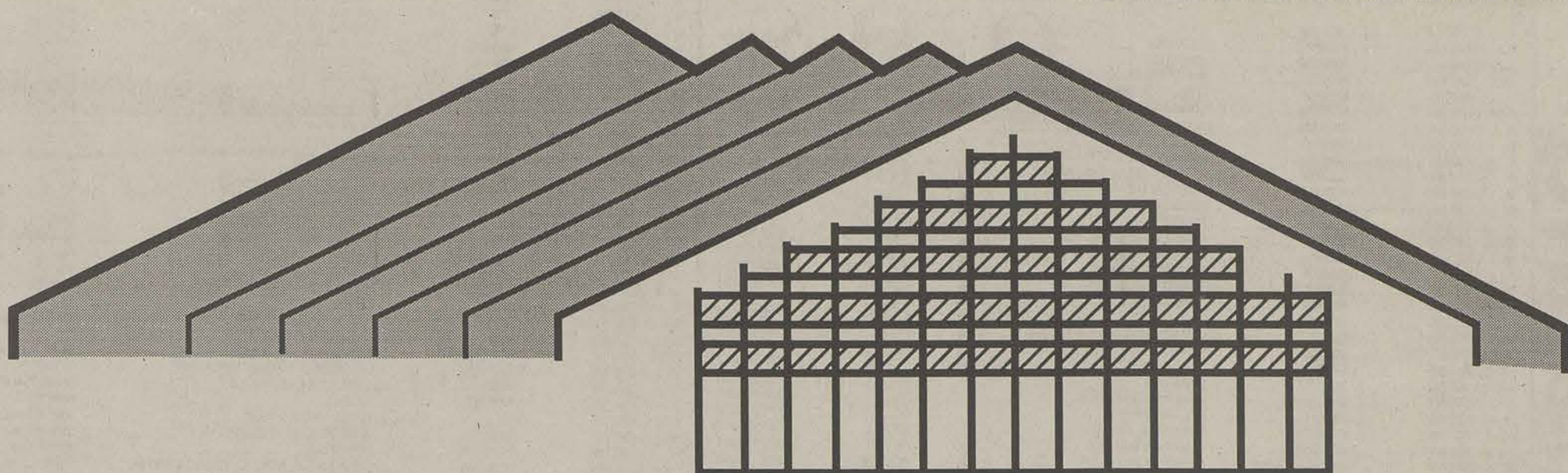
And as for the confederate flag issue, I do not see it as a symbol of racism, nor as a representative of slavery. I see it as a part of heritage. I believe that by being from America we all share a past. This past for us all includes slavery, separation and union. What I feel is some fail to realize is that slavery and separation are a part of the past and union is of the present and future. At the same time I am by no means asking anyone to forget where they came from, just to pay more attention to where we need to go.

Though I have much more to say on the above topics I would like to enclose yet another assertion, the only people on this campus that are African American are those international students who are visiting the U.S. from Africa. I am black and I prefer to

go by the term "Black American," because just as you go on about your forefathers being from Africa, you need to realize that most Americans' fore fathers are from somewhere else also. But now we are all hear, and just as you don't here people calling themselves British, Irish, German, Polish, etc. American, you should notice that they are not ever emphasizing where they came from but working to better where they are. Think about it, to truly be an African American don't you think you should share some of their cultural aspects?

Tasha Richardson
A Concerned GSU Student

University Store Fall Quarter Buyback Listing



GEORGIA SOUTHERN UNIVERSITY STORE

"UNDER THE GREEN ROOF"
PHONE: 912-681-5181

To: Georgia Southern Students:

Below is a listing of textbooks that were used Fall Quarter and will be bought at BUYBACK (November 28 through December 9). This listing is intended to give you, the student, an idea of what you can expect at BUYBACK. Please note the following conditions:

1. Categories are subject to change without notice.
2. Prices paid are subject to quantities needed.
3. Books in poor condition may be rejected at our discretion.
4. Books that have fill-in or tear-out pages generally will not be bought.
5. Some books that are listed as Wholesale will be switched to Half price as they are adopted by the faculty. **The information on this list is limited to information we have received from the faculty at press time.**

Pricing explanation:

HALF — this means the book will be bought at one half (1/2, 50%) of the new retail price (see condition 2 above). This generally means that the book is being used Winter Quarter.

W — this means the book will be bought by a wholesaler. The prices will vary from 0% to 33% (25% average) of the new retail price. This generally indicates that the book is NOT being used Winter Quarter.

***** — this means the book has fill-in or tear-out pages and may be bought by a wholesaler. These books usually have very little to no value.

****** — this means the book is an old edition. These books usually have no value.

Conditions may change, so please check with us before discarding any of your books.

NOTE: WE ARE UNABLE TO GIVE PRICES OVER THE PHONE.

Buyback Course	Author	Title	Publisher	ISBN	Buyback Course	Author	Title	Publisher	ISBN
W AAAS 350	CONNIFF	AFRICANS IN THE AMERICAS	ST MARTIN	0-312-04254-X	W BCC 350	OLIN	CONSTRUCTION	WNR	0-442-00431-1
W AAAS/CAF 399	DIAWARA	AFRICAN CINEMA	INDIANA U	0-253-20707-X	W BCC 350	RAMSEY	ARCHITECTURAL GRAPHIC STANDARDS	WILEY	0-471-01284-X
* ACC 251	HORNGREN	ACCOUNTING WORKING PAPERS CHAP.1-13	PH	0-13-006776-8	W BCC 431	SBCC	STANDARD BUILDING CODE	SBCC	
HALF ACC 251	HORNGREN	STUDY GUIDE ACCOUNTING CHAP.1-13	PH	0-13-006750-4	W BCC 431	SBCC	STANDARD BUILDING CODE	SBCC	
* ACC 251	HOLT	CASE MUSIC STORE	IVY	0-934427-15-1	W BCC 432	BENT	APPLIED COST & SCHEDULE CONTROL	M DEKKER	0-8247-1654-X
HALF ACC 251,252	HORNGREN	ACCOUNTING	PH	0-13-061334-7	W BCC 444	CALLAHAN	CONSTRUCTION PROJECT SCHEDULING	MCGRAW	0-07-009701-1
* ACC 252	HORNGREN	ACCOUNTING WORKING PAPERS CHAP. 14-28	PH	0-13-006784-9	W BCC 452	CLOUGH	CONSTRUCTION CONTRACTING	WILEY	0-471-30968-0
HALF ACC 252	HORNGREN	STUDY GUIDE ACCOUNTING CHAP.14-28	PH	0-13-006788-7	W BE 853	DUBBIN	CONTEMPORARY APPLIED MANAGEMENT	IRWIN	0-256-10528-6
HALF ACC 260	MARSHALL	SURVEY OF ACCOUNTING	IRWIN	0-256-11301-7	HALF BIO 151/152	STARR	BIOLOGY	WADS	0-534-18991-5
HALF ACC 260	MARSHALL	SURVEY OF ACCOUNTING STUDY GUIDE	IRWIN	0-256-11301-7	W BIO 151/152	KRISSINGER	BIOLOGY LAB EXPERIENCES	BURGESS	
HALF ACC 353	SMITH	FINANCIAL ACCOUNTING	ACCOUNTING PUB	0-917537-45-9	W BIO 161	CAMPBELL	BIOLOGY	AW	0-8053-1880-1
* ACC 353	GLEIM	INTERMEDIATE ACCOUNTING	IRWIN	0-538-81337-7	* BIO 161	MORGAN(CAMPBELL)	INVESTIGATING BIOLOGY LAB	AW	0-8053-1830-5
W ACC 353	MANSUETTI	WILD GOOSE MARINA INC.	IRWIN	0-538-81338-5	W BIO 165	MILLER	LIVING IN THE ENVIRONMENT	WADS	0-534-19950-X
HALF ACC 353	SMITH	STUDY GUIDE INTERMEDIATE ACCOUNTING	SW	0-13-018069-5	W BIO 211	TORTORA	PRINCIPLES OF ANATOMY & PHYSIOLOGY	HC	0-06-046702-9
HALF ACC 355	HORNGREN	COST ACCOUNTING	PH	0-13-018069-5	W BIO 272	DONNELLY	LAB MANUAL ANATOMY & PHYSIOLOGY WICAT DIS	HC	0-06-500903-7
HALF ACC 355	HORNGREN	STUDY GUIDE COST ACCOUNTING	PH	0-13-018069-5	W BIO 272	TORTORA	STUDY GUIDE PRINCIPLES ANATOMY & PHYSIOLOGY	HC	0-06-501197-X
HALF ACC 451	WILKINSON	ADVANCED ACCOUNTING	WILEY	0-471-58888-1	W BIO 281	HARRIS	CONCEPTS IN ZOOLOGY	HC	0-06-042699-4
HALF ACC 451	WILKINSON	ACCOUNTING INFORMATION SYSTEMS	WILEY	0-471-57573-9	W BIO 281	HICKMAN	LAB STUDIES IN INTEGRATED PRINC OF ZOOLOGY	WCB	0-697-23522-X
HALF ACC 453	HAYEN	COMPREHENS LOTUS 123 REL 4 F.WINDOWS WIDISK	COURSE TECH	1-56527-144-0	W BIO 281	WALKER	DISSECTIONS OF THE RAT (6 PART PKG.)	SOUTHWEST ED ENT	
HALF ACC 455	RITTENBERG	AUDITING	HBC	0-03-029919-5	W BIO 281/282	RUST	GUIDE TO BIOLOGY LAB	WCB	0-697-23522-X
* ACC 455	ARENS	INTEGRATED AUDIT PRACTICE CASE	ARMON DALTON	0-912-50309-2	W BIO 282	DEAN	BIOLOGY OF PLANT LAB EXPERIENCES	WCB	0-697-23522-X
W ACC 455	BARR	SHORT AUDIT CASE-VALLEY PUB.CO	IRWIN	0-256-07725-8	W BIO 282	STERN	INTRODUCTORY PLANT BIOLOGY	WCB	0-697-23522-X
W ACC 455	GLEIM	CPA REVIEW-AUDITING COMPLETE STUDY	GLEIM		W BIO 282	BORROR	DICTIONARY OF WORDROOTS & COMBINING FORMS	MAYFIELD	0-674-84-053-8
HALF ACC 552	HOFFMAN	WEST FEDERAL TAXATION-INDIVIDUAL INCOME TAX	WEST	0-314-02992-3	W BIO 282	VAN DE GRAFF	PHOTOGRAPHIC ATLAS FOR BOTANY LAB	MORTON	0-89582-248-2
HALF ACC 552	HOFFMAN	INTERNAL REVENUE CODE	CH	5199	W BIO 284	ALCANTO	FUNDAMENTALS OF MICROBIOLOGY	AW	0-8053-03025-1
W ACC 553	HOFFMAN	WEST'S FEDERAL TAXATION CORPORATIONS, PARTNER	WEST	0-314-03227-4	W BIO 284	BENSON	MICROBIOLOGICAL APPLICATIONS-SHORT VERSION	WCB	0-697-13764-3
W ACC 558	HENDRIKSEN	ACCOUNTING THEORY	IRWIN	0-256-08146-8	HALF BIO 355	PETERSON	FIELD GUIDE TO BIRDS EAST OF ROCKIES	HM	0-395-26619-X
HALF AD 168	READERS DIGEST	COMPLETE GUIDE TO SEWING	RANDOM	0-89577-026-1	W BIO 355	MITCHELL	GOLDEN GD TO BUTTERFLIES & MOTHS	WESTERN	0-307-24052-5
W AD 250	KAISER	SOCIAL PSYCHOLOGY OF CLOTHING	MACM	0-02-361882-5	W BIO 355	BROCKMAN	GOLDEN GD TO TREES OF AMERICA	WESTERN	0-307-24052-5
W ADM 452	GLOCK	APPAREL MANUFACTURING	MAC	0-02-344131-3	W BIO 355		AUDUBON GUIDE TO N AMERICAN REPTILES & AMPHIB	KNOFF	0-394-50824-6
W AED 757	ELIAS	PHILOSOPHICAL FOUNDATIONS OF ADULT EDUCATION	KRIEGER	0-88275-971-X	W BIO 355		GOLDEN GUIDE TO INSECTS	GOLDEN	0-307-24055-X
W ANT 150	PODOLFSKY	APPLYING ANTHROPOLOGY	MAYFIELD	1-559-34317-6	W BIO 370	BECKER	WORLD OF THE CELL	AW	0-8053-0807-9
W ANT 150	GROSS	DISCOVERING ANTHROPOLOGY	MAYFIELD	0-87484-909-8	W BIO 382	BURT	FIELD GUIDE TO THE MAMMALS	HM	0-395-24084-0
W ANT 150	HAVLAND	SG TO ACCOMPANY ANTHROPOLOGY	HARCOURT BRACE	0-15-00688-X	W BIO 382	NATIONAL GEOGRAPHIC	FIELD GUIDE TO THE BIRDS OF NORTH AMERICA	NAT GEOGRAPHIC	
W ANT 150	HAVLAND	ANTHROPOLOGY	HARCOURT BRACE	0-15-00688-X	W BIO 382	ROBINS	ATLANTIC COAST FISHES	HM	0-395-39198-9
W ANT 150	WEINER	TROBRIANDERS OF PAPUA NEW GUINEA	HBC	0-03-011919-7	W BIO 382	CONANT	REPTILES AND AMPHIBIANS	HM	0-395-56389-6
W ANT 150	CHAGNON	YANOMAMO	HBC	0-03-02819-5	W BIO 382	PAGE	FRESHWATER FISHES	HM	0-395-53933-1
W ANT 150	OMOHUNDRO	MYSTERY FOSSIL I	MAYFIELD	1-55934-264-1	W BIO 383	BOLD	MORPHOLOGY OF PLANTS & FUNGI	W C BROWN	0-06-040839-1
W ANT 150	PRICE	ADVENTURES IN FUGAWILAND	MAYFIELD	0-87484-948-9	W BIO 383	PRESCOTT	HOW TO KNOW THE FRESHWATER ALGAE	W C BROWN	0-697-04754-7
W ANT 150	GROSS	DISCOVERING ANTHROPOLOGY STUDY GUIDE	MAYFIELD	0-87484-814-8	HALF BIO 431	MOORE	SCIENCE AS A WAY OF KNOWING	HARVARD UNIV PRESS	0-674-79481-8
W ANT 351	PRICE	DOBE JUPHOANSI	HBC	0-03-032284-7	W BIO 470/670	HUGUENARD	ELECTROPHYSIOLOGY OF THE NEURON	OXFORD	0-19-509167-1
W ANT 353	SPRADLEY	COCKTAIL WAITRESS	MCGRAW	0-07-554784-3	W BIO 470/670	SHEPHERD	NEUROBIOLOGY	OXFORD	0-19-508843-3
W ANT 353	ROSMAN	TAPESTRY OF CULTURE	MCGRAW	0-07-553955-3	W BIO 472/672	GRIFFITHS	STUDY GUIDE INTRO GENETIC ANALYSIS	FREEMAN	0-7167-2475-8
W ANT 399	PERNA	GUESTS OF THE SHEIK	DO	0-385-01485-6	W BIO 472/672	GRIFFITHS	INTRODUCTION TO GENETIC ANALYSIS	FREEMAN	0-7167-2285-2
W ANT 399	BECK	NOMAD YEAR IN LIFE OF QASHOAI TRIBESMAN	U CALIF	0-520-27495-5	HALF BIO 473	BREWER	SCIENCE OF ECOLOGY	SALUNDERS	0-03-068575-6
HALF ANT 399	BATES	PEOPLES AND CULTURES OF MIDDLE EAST	PH	0-13-656793-2	W BIO 473/673	BECON	ECOLOGY	BLACKWELL SCIENTIF	0-65542-111-0
W ANT 399	ANDERSON	IMAGINED COMMUNITIES	RCH	0-86091-546-8	W BIO 480/880	MARIEB	HUMAN ANATOMY	BENJ CUMMINGS	0-8053-4060-2
W ANT 453/653	JENNINGS	PREHISTORY OF NORTH AMERICA	MAYFIELD	0-87484-865-2	W BIO 480/880	GILBERT	PICTORIAL ANATOMY OF DOGFISH	U WASHINGTON	0-295-95148-6
W ANT 461	PARADES	INDIANS OF THE SE US IN THE 20TH CENTURY	UNIV OF ALA PRESS	0-8173-0534-3	W BIO 480/880	ALLEN	BASIC ANATOMY	FREEMAN	0-7167-1755-7
W ANT 461	HUDSON	SOUTHEASTERN INDIANS	UNIV OF TENN PRESS	0-8704924-8-9	HALF BIO 481/881	WITHERS	COMPARATIVE ANIMAL PHYSIOLOGY	HBC	0-03-012847-1
W ART 152	JONES	FRACTALS FOR THE MACINTOSH	WAITE BOOKS	1-878739-46-8	W BIO 484/884	BROCK	BIOLOGY OF MICROORGANISMS	PH	0-13-042169-3
W ART 152	ADDOE	ILLUSTRATOR-CLASSROOM IN A WORKBOOK	MAC	1-5683-0056-5	W BIO 484/884	DEKRUJ	MICROBE HUNTERS	HBI	0-15-659413-7
** ART 160	GILBERT	LIVING WITH ART	MCGRAW	0-07-023454-X	W BIO 831	PECHENIK	SHORT GUIDE TO WRITING ABOUT BIOLOGY	HC	0-873-52128-1
HALF ART 160	SAVRE	WORLD OF ART	PH	0-13-953845-3	W CA 250	DOMINICK	DYNAMICS OF MASS COMMUNICATION	MCGH	0-07-017805-4
W ART 160	WILKINS	ART PAST ART PRESENT	PH	0-13-062084-X	W CA 250	VIVIAN	MEDIA OF MASS COMMUNICATION	PH	0-205-14152-8
W ART 160	PRIEBLE	ARTFORMS	HC	0-06-500834-0	W CA 250	HUNT	MASS COMMUNICATION	HC	0-06-500528-8
W ART 255	SPIEGEL	HANDS IN CLAY	MAYFIELD	0-87484-848-2	W CA 252	VERDERBER	COMMUNICATE	WADS	0-534-17928-2
W ART 258	LONDON	PHOTOGRAPHY	HC	0-873-52223-7	W CA 252	GAMBLE	COMMUNICATION WORKS	MCGH	0-07-022793-4
W ART 280	DELAEROX	GARDNER'S ART THRU AGES VOL 1	HBC	0-15-030770-6	* CA 254	VAN RIPER	AN INTRO TO GENERAL AMERICAN PHONETICS	WAYLAND	0-881-331-67-8
W ART 354/495	SAFF	PRINTMAKING	HBC	0-03-065663-9	W CAB 340	LYLE	COMMUNICATION MEDIA & CHANGE	MAYFIELD	1-87484-835-7
W ART 354/495	LYONS	ARTISTS' BOOKS	VISUAL STUDIES	0-89822-041-6	W CAB 340	PAWK	DEMYSTIFYING MEDIA TECHNOLOGY	MAYFIELD	1-559-34145-9
W ART 355/489	RHODES	CLAY & GLAZES FOR THE POTTER	CHILTON	0-8019-5533-1	HALF CAB 422	MILLERSON	LIGHTING FOR VIDEO	FOCAL PRESS	0-240-51303-7
W ART 355/489	PETERSON	CRAFT AND ART OF CLAY	PH	0-13-188475-1	W CAB 444	ZETTL	TELEVISION PRODUCTION HANDBOOK	WADS	0-534-14826-3
W ART 370	HERBERHOLZ	ARTWORKS FOR ELEMENTARY TEACHER	WCB	0-697-12525-4	W CAB 444	ZETTL	TELEVISION PRODUCTION WORKBOOK	WADS	0-534-14827-1
W ART 493	MCCREIGHT	COMPLETE METALSMITH	DAVIS	0-8719224-0-1	W CAB 445	SHOOK	BROADCAST NEWS PROCESS	MORTON	0-89582-225-0
W AS 355	LUETKE	MAKING AMERICA	UNC	0-8078-4370-9	W CAB/CAJ 345	HOLSINGER	MEDIA LAW	MCGRAW	0-07-02673-1
** BA 450	THOMPSON	STRATEGIC MANAGEMENT	IRWIN	0-256-12707-7	W CAB/CAJ 447	MEESKE	COPYWRITING FOR THE ELECTRONIC MEDIA	WADS	0-832617-07-7
W BA 450	JENSEN	BUSINESS MANAGEMENT LABORATORY	IRWIN	0-256-10183-3	W CAB/CAJ 447	MATRAZZO	CORPORATE SCRIPTWRITING BOOK	COMMUNICOM	0-87484-829-6
W BA 740	SCHULT	FINANCIAL SHENANIGANS	MCGH	0-07-056131-1	W CAF 256	BOGGS	ART OF WATCHING FILMS	MAYFIELD	0-87484-829-6
W BA 740	COLLETT	ACOSTING THE GOLDEN SPIRE	THOMAS HORTON	0-913878-43-X	W CAF 256	RIVERS	WRITING FOR THE MEDIA	AP	
HALF BA 740	INGRAM	FINANCIAL ACCOUNTING	SW	0-538-82702-5	HALF CAJ 252	ASSOC PRESS	NEWS REPORTING & WRITING	ST MARTIN	0-312-04768-1
HALF BA 743	CASE	PRINCIPLES OF ECONOMICS	PH	0-13-095886-7	W CAJ 343	MISSOURI GROUP	NEWS REPORTING & WRITING WORKBOOK	SMP	0-312-06061-0
W BA 745	BATEMAN	MANAGEMENT-FUNCTIONS AND STRATEGY	IRWIN	0-256-10020-9	W CAJ 348	CLICK	MAGAZINE EDITING AND PRODUCTION	WCB	0-697-05188-9
HALF BA 746	KOTLER	PRINCIPLES OF MARKETING	PH	0-13-030560-X	W CAJ 348	CLICK	PUBLIC RELATIONS	HC	0-06-500100-1
HALF BA 747/940	HANKE	UNDERSTANDING BUSINESS STATISTICS	IRWIN	0-256-06627-2	* CAP 340	BOURLAND	MASTERING PUBLIC RELATIONS	KH	0-8403-6922-0
HALF BA 747/940	TURBAN	FUNDAMENTALS OF MANAGEMENT SCIENCE	IRWIN	0-256-08373-8	W CAP 342	NEWSOM	PUBLIC RELATIONS WRITING	WADS	0-534-14388-1
W BA 897	COSTIN	READINGS IN TOTAL QUALITY MANAGEMENT	HBC	0-03-097301-5	W CAP 342	CARRELL	PUBLIC RELATIONS WRITING EXERCISE BOOK	WADS	0-534-14389-X
W BA 897	JURAN	JURAN ON QUALITY BY DESIGN	FREE PRESS	0-02-916683-7	W CAP 399	BARTON	CRISIS IN ORGANIZATIONS	SW	0-538-81818-2
W BA 941	BURCH	COST AND MANAGEMENT ACCOUNTING	WEST	0-314-02773-4	HALF CAP 399	TOFFLER	POWERSHIFT	BANTAM	0-553-29215-3
W BA 941	BURCH	STUDY GUIDE COST & MANAGEMENT ACCOUNTING	WEST		HALF CAP 440	CENTER	PUBLIC RELATIONS PRACTICES	PH	0-13-78477-7
HALF BA 942	KEATING	MANAGERIAL ECONOMICS	HBC	0-15-554709-7	W CAP 440	KENDALL	PUBLIC RELATION CAMPAIGN STRATEGIES	HARPER COLLINS	0-06-043645-X
W BA 942	RUHEN	MANAGING BUSINESS TRANSACTIONS	MACM	0-02-927595-1	HALF CAP 445	CULBERTSON	SOCIAL-POLITICAL & ECONOMIC CONTEXTS IN P.R.	ERLBAUM	0-8058-1288-1
W BA 943	PETERS	LIBERATION MANAGEMENT	KNOFF	0-394-55999-9	HALF CAP 445	STACKS	ESSENTIALS OF COMMUNICATION RESEARCH	HC	0-06-046424-0
W BA 944	VAN HORNE	FINANCIAL MANAGEMENT AND POLICY	PH	0-13-022074-5	W CAS 251	GRONBECK	PRINCIPLES OF SPEECH COMMUNICATION - BRIEF	HC	0-873-48508-X
W BA 945	KREITNER	ORGANIZATIONAL BEHAVIOR	IRWIN	0-256-08500-5	W CAS 251	BRYDON	BETWEEN ONE AND MANY	MAYFIELD	1-55934-105-X
W BA 946	EVANS	APPLIED PROD & OPER MGT W/OPERATIONS MGR DISK	WEST		* CAS 251	GEYERMAN	COMMUNICATING IN PUBLIC	KH	0-8403-8172-7
W BA 949	KEYS	MULTINATIONAL MANAGEMENT GAME	MICRO BUS PUB		W CAS 251	OSBORNE	PUBLIC SPEAKING	HM	0-395-67578-2
W BA 949	PEARCE	STRATEGIC MANAGEMENT	IRWIN	0-256-11362-9	W CAS 251	LUCAS	ART OF PUBLIC SPEAKING	MCGRAW	0-07-028978-0
W BASIC ACCOUNTING	SLATER	COLLEGE ACCOUNTING CHAPT.1-15	PH	0-13-143363-6	W CAS 341	STERN	PERFORMANCE	AW	0-8013-0787-2
HALF BCC 230	WOLF	APPLIED STATISTICS & STRENGTH OF MATERIALS	MERRILL	0-02-414961-6	HALF CAS 342	GIBBALDI	MULTIHANDBOOK FOR WRITERS OF RESEARCH PAPERS	MLA	0-87362-379-2
W BCC 251	WOLF	ELEMENTARY SURVEYING	HC	0-06-500399-3	W CAS 342	CRAGAN	COMMUNICATION IN SMALL GROUP DISCUSSIONS	WEST	0-314-72205-X
W BCC 341	PARKER	SIMPLIFIED SITE ENGINEERING	WILEY	0-471-52809-9	W CAS 342	JENSEN	SMALL GROUP COMMUNICATION	WADS	0-534-13140-9
W BCC 342	DAGOSTINO	ESTIMATING IN BUILDING CONSTRUCTION	PH	0-13-287806-2	W CAS 343	RIEKE	ARGUMENTATION & DECISION MAKING PROCESS	HC	0-673-46490-3

University Store Fall Quarter Buyback Listing

W	CAS 443	PALMER	SEMANTICS	CAMBRIDGE	0-521-28376-0	W	ENG 151	HACKER	WRITER'S REFERENCE	SMP	0-312-05254-5
HALF	CAS 443	HURFORD	SEMANTICS	CAMBRIDGE UNIV	0-521-28949-1	W	ENG 151	VEIT	WRITING, READING & RESEARCH	MAC	0-02-422921-0
HALF	CAS 444	INFANTE	BUILDING COMMUNICATION THEORY	WAVELAND	0-881-33773-3	HALF	ENG 151	AGEE	DEATH IN THE FAMILY	BANTAM	0-553-27011-7
W	CAS 447	STEWART	PERSUASION AND SOCIAL MOVEMENTS	WAVELAND	0-881-33773-3	HALF	ENG 151	ANGELOU	I KNOW WHY THE CAGED BIRD SINGS	BANTAM	0-553-27937-8
HALF	CAT 121	CORSON	STAGE MAKEUP	PH	0-13-940539-5	HALF	ENG 151	ATWOOD	HANDMAID'S TALE	FAWCETT	0-449-21260-2
W	CAT 251	GILLETTE	STAGE SCENERY	PH	0-06-042332-3	HALF	ENG 151	BRADBURY	FAHRENHEIT 451	BALLANTINE	0-345-34296-8
W	CAT 257	COHEN	THEATRE	MAYFIELD	1-559-34142-4	HALF	ENG 151	DIEHL	27	BALLANTINE	0-345-37073-2
W	CAT 257	COHEN	TWELVE PLAYS FOR THEATRE	MAYFIELD	1-559-34144-0	HALF	ENG 151	FLAGG	FRIED GREEN TOMATOES	MOGH	0-07-021257-0
W	CAT 257	ALLISON	MASTERPIECES OF THE DRAMA	MACMILLAN	0-02-301975-1	HALF	ENG 151	FORSTER	ROOM WITH A VIEW	BANTAM	0-553-21323-7
W	CAT 257	PROCKETT	ESSENTIAL THEATRE	HBC	0-03-055333-9	HALF	ENG 151	GOLDING	LORD OF THE FLIES	PUTNAM	0-399-50148-7
W	CAT 257	GILLETTE	DESIGNING WITH LIGHT	MAYFIELD	0-87484-853-9	HALF	ENG 151	LEGUIN	DISPOSSESSED	AVON	0-380-00382-1
W	CED 591	BLUMING	RESIDENT ASSISTANT	KH	0-8403-8828-4	HALF	ENG 151	NAYLOR	WOMEN OF BREWSTER PLACE	NAL	0-451-82202-1
HALF	CED 852	COREY	MANUAL TIA THEORY & PRACT OF COUNS & PSYCH.	WADS	0-534-13316-9	HALF	ENG 151	PATON	CRY THE BELOVED COUNTRY	MACM	0-02-053210-5
HALF	CED 852	COREY	THEORY & PRACT. OF COUNSELING & PSYCHOTHERAPY	WADS	0-534-13314-2	HALF	ENG 151	SHELLEY	FRANKENSTEIN	NAL	0-451-82336-9
W	CED 853	ZUNKER	CAREER COUNSELING	BROOKS/COLE	0-534-21205-0	W	ENG 151	THWIN	ADVENTURES OF HUCKLEBERRY FINN	BANT	0-553-21079-3
W	CED 853	SUKIENNEK	CAREER FITNESS PROGRAM	GROSSUCH	0-89787-816-7	W	ENG 151	DIHL	THAI HORSE	BALLANTINE	0-345-32745-4
HALF	CED 855	COREY	CASE APPROACH TO COUNSELING & PSYCHOTHER.	WADS	0-534-13782-2	HALF	ENG 151	HEMINGWAY	FAREWELL TO ARMS	S&S	0-315-52151-5
HALF	CED 894	MYRICK	DEVELOPMENTAL GUIDANCE & COUNSELING	ED MEDIA	0-932796-53-2	W	ENG 151	GOSHGARIAN	EXPLORING LANGUAGE	FAWCETT	0-449-20810-9
HALF	CED 894	FAVER	COUNSELOR INTERNS HANDBOOK	WADS	0-534-24870-5	HALF	ENG 151/152	ACHEBE	THINGS FALL APART	FB	0-671-89445-5
W	CED/EDP 865	COHEN	PSYCHOLOGICAL TESTING & ASSESSMENT	MAYFIELD	0-87484-983-7	W	ENG 152	GROOM	FORREST GUMP	SIMON & SCHUSTER	0-13-813757-6
HALF	CET 345	DAVIS	INTRODUCTION TO ENVIRONMENTAL ENGINEERING	MCGRW	0-07-0159114-1	HALF	ENG 152	TROYKA	HANDBOOK FOR WRITERS	HC	0-06-080983-3
HALF	CET 352	MOFFITT	SURVEYING	HC	0-06-500059-5	HALF	ENG 152	ROTTENBERG	BRAVE NEW WORLD	SMP	0-312-08940-7
W	CET 361	LIU	SOILS AND FOUNDATIONS	PH	0-13-816182-8	HALF	ENG 152	ABCARIAN	ELEMENTS OF ARGUMENT	ST MARTIN	0-312-08408-0
W	CET 361	LIU	SOIL PROPERTIES	PH	0-13-815051-6	HALF	ENG 152	DUBE	LITERATURE THE HUMAN EXPERIENCE	HOUGHTON MIFFLIN	0-395-32570-6
W	CET 363	HBBELER	STRUCTURAL ANALYSIS	MACM	0-02-354031-1	W	ENG 152	FORSTER	MAURICE	NORTON	0-393-31032-9
W	CET 458	MCSEANE	TRAFFIC ENGINEERING	PH	0-13-926148-8	W	ENG 152	LEE	TO KILL A MOCKINGBIRD	WARNER BOOKS	0-446-31078-6
W	CHE 160	AMERICAN CHEMICAL	CHEMISTRY IN CONTEXT	WCBROWN	0-897-21948-8	HALF	ENG 152	MEYER	BEDFORD INTRO TO LITERATURE	ST MARTINS	0-312-06546-9
HALF	CHE 171	SEAGER	INTRODUCTORY CHEMISTRY FOR TODAY	WEST	0-314-02522-7	W	ENG 152	POKERING	LITERATURE	MACMILLAN	0-02-395581-3
HALF	CHE 172	SEAGER	STUDY GUIDE TA INTRO CHEMISTRY FOR TODAY	WEST	0-314-02522-7	HALF	ENG 152	ROBERTS	LITERATURE AN INTRO TO READING & WRITING	PRENTICE HALL	0-13-535683-0
W	CHE 172	MCNURRY	FUNDAMENTALS OF GENERAL ORGANIC AND BIO CHEM	PH	0-13-351867-1	HALF	ENG 152	WESTERMAN	LITERATURE AN INTRO TO CRITICAL READING	HBJ	0-03-046914-7
W	CHE 172	MCNURRY	STUDY GUIDE TIA GEN ORG AND BIO CHEM	PH	0-13-351891-4	HALF	ENG 152	WARREN	ALL THE KING'S MEN	HBJ	0-15-04762-4
W	CHE 182	EBBING	STUDY GUIDE FOR GENERAL CHEMISTRY	HM	0-395-63697-3	HALF	ENG 152	WHARTON	HOUSE OF WIRTH	ST MARTINS	0-312-06234-6
HALF	CHE 181, 182, 183	EBBING	GENERAL CHEMISTRY	HM	0-395-61353-1	HALF	ENG 152	PERLINE	LITERATURE: STRUCTURE, SOUND & SENSE	HBJ	0-15-51070-3
HALF	CHE 181, 182, 183	HARRIS	QUANTITATIVE CHEMICAL ANALYSIS	FREEMAN	0-7167-2170-8	HALF	ENG 152	GRIFITH	WRITING ESSAYS ABOUT LITERATURE	HBC	0-15-500157-4
HALF	CHE 251	WADE	SOLUTIONS MANUAL FOR ORGANIC CHEMISTRY	PH	0-13-843382-6	W	ENG 152	WILLIAMS	IMMORTAL POEMS OF ENGLISH LANGUAGE	WASHINGTON SQUARE	0-671-49610-7
HALF	CHE 371	WADE	ORGANIC CHEMISTRY	PH	0-13-842588-7	HALF	ENG 152	RICHTER	FALLING INTO THEORY	SMP	0-312-08122-7
W	CHE 371	ZUBRICK	ORGANIC CHEMISTRY LAB SURVIVAL MANUAL	WILEY	0-471-57504-6	HALF	ENG 152	KENNEDY	BEDFORD READER	SMP	0-312-08637-7
W	CHE 377, 378	LINSTRONBERG	ORGANIC CHEMISTRY A BRIEF COURSE	HEATH	0-669-12690-8	W	ENG 152	BUTLER	KINDRED	BEACON	0-8070-8305-4
W	CHE 377, 378	LINSTRONBERG	STUDY GUIDE ORGANIC CHEMISTRY	HEATH	0-669-12661-6	HALF	ENG 152	KESSEY	ONE FLEW OVER THE CUCKOO'S NEST	SIGNET	0-451-16396-6
HALF	CHE 377, 378	SOLOMONS	FUNDAMENTALS OF ORGANIC CHEMISTRY	WILEY	0-471-58987-X	HALF	ENG 152	GAINES	GATHERING OF OLD MEN	RH	0-679-73890-8
HALF	CHE 377, 378	SOLOMONS	STUDY GUIDE FUND ORGANIC CHEMISTRY	WILEY	0-471-58946-2	HALF	ENG 152	CHOPIN	AWAKENING	BANTAM	0-553-21330-X
W	CHE 377, 378	LINSTRONBERG	ORGANIC EXPERIMENTS	HEATH	0-669-12662-4	W	ENG 152	HUNT	RIVERSIDE ANTHOLOGY OF LITERATURE	HM	0-395-47285-7
HALF	CHE 581/781	MORTIMER	PHYSICAL CHEMISTRY	BC	0-8053-4560-4	W	ENG 152	WILLIAMS	STREET CAR NAMED DESIRE	SIGNET	0-451-16778-3
HALF	CHE 586/786	SIME	BIOCHEMISTRY	HBC	0-03-009499-2	W	ENG 152	CHOPIN	AWAKENING (CRITICAL)	NORTON	0-393-98057-9
W	CHE 586/786	ROBYT	BIOCHEMICAL TECHNIQUES	PH	0-13-814443-5	W	ENG 152	TOLKIE	HOBBIT	BALLANTINE	0-345-33688-1
W	CINEMA ARTS	DICKENS	GREAT EXPECTATIONS	WAVELAND	0-88133-556-8	HALF	ENG 152	KEATING	LIVES THROUGH LITERATURE	NAL	0-451-62712-X
W	CIS 251	LARSEN	FIRST LOOK AT LOTUS PERFECT 5.1	SIGNET	0-451-62824-8	HALF	ENG 152	PAYNE	LIVELY ART OF WRITING	PENG	0-14-03095-6
HALF	CIS 251	SMITH	UNDERSTANDING COMPUTER & INFORMATION PROC	MCGRW	0-07-036587-3	HALF	ENG 152	ANDERSON	WINEBURGH, OHIO	DELL	0-440-34060-8
HALF	CIS 381	PICKETT	PASCAL PROGRAMMING FOR INFORMATION SYSTEMS	SW	0-07835-503-0	HALF	ENG 152	BALDWIN	IF BEALE STREET COULD TALK	BANT	0-553-21258-3
W	CIS 382	BOILLIT	UNDERSTANDING STRUCTURED COBOL	WEST	0-314-39155-4	HALF	ENG 152	FAULKNER	WUTHERING HEIGHTS	VINT	0-394-74745-3
HALF	CIS 384	KENDALL	SYSTEMS ANALYSIS & DESIGN	PH	0-13-855867-1	HALF	ENG 152	GAINES	GATHERING OF OLD MEN	VINT	0-394-72591-3
HALF	CIS 384	CROCKETT	EXCELERATING SYSTEMS ANALYSIS & DESIGN	BOYD & FRASER	0-87835-883-8	HALF	ENG 152	MORRISON	SONG OF SOLOMON	NAL	0-451-15828-8
W	CIS 470	MALLACH	UNDERSTANDING DECISION SUPPORT SYSTEMS	IRWIN	0-256-11896-5	HALF	ENG 152	PRISG	ZEN AND THE ART OF MOTORCYCLE MAINTENANCE	BANT	0-553-27472-2
W	CIS 484	FITZGERALD	BUSINESS DATA COMMUNICATIONS	WILEY	0-471-58485-0	HALF	ENG 152	STEINBECK	OF MICE AND MEN	PENG	0-14-017320-X
HALF	CONTE	BITTEL	WHAT EVERY SUPERVISOR SHOULD KNOW	MCGRW	0-07-005589-0	W	ENG 152	TAN	KITCHEN GOD'S WIFE	IVY	0-8041-0753-X
HALF	CSC 230	SCHNEIDER	QBASIC W/INTRODUCTION TO VISUAL BASIC	MCGRW	0-07-005589-0	W	ENG 152	IBSEN	DOLL'S HOUSE AND OTHER PLAYS	PENGUIN	0-14-044146-8
HALF	CSC 232	NHYOFF	FORTRAN 77 FOR ENGINEERS & SCIENTISTS	MACMILLAN	0-02-407734-8	W	ENG 152	SOPHOCLES	THREE THEBAN PLAYS	PENGUIN	0-14-04425-4
W	CSC 283	SWITCH	PASCAL AN INTRO TO THE ART & SCIENCE OF PROG.	MACMILLAN	0-02-386655-2	W	ENG 152	HEROCHES	HEATH INTO POETRY	HEATH	0-669-24074-7
W	CSC 285	HORN	COMPREHENSIVE STRUCTURED COBOL	BENJAMIN	0-8053-7450-7	W	ENG 152	DICKENS	HARD TIMES	BANTAM	0-553-21016-5
W	CSC 399	CLEMENTS	68000 FAMILY ASSEMBLY LANGUAGE	SOUTH WESTERN	0-87835-857-9	W	ENG 152	CONRAD	HEART OF DARKNESS AND SECRET SHARER	BANTAM	0-553-21016-5
W	CSC 399	SACHS	HANDS-ON INTERNET	PWS	0-534-93275-4	W	ENG 152	HEMINGWAY	SUN ALSO RISES	SCRIBNERS	0-02-051870-6
W	CSC 399	SHUMAN	SHUMAN'S WINDOWS WORKSHOP	PRENTICE HALL	0-13-06932-7	HALF	ENG 251	HAMILTON	MYTHOLOGY	NEW AMERICAN LIB	0-451-62803-9
W	CSC 450/850	SEDEGWICK	ALGORITHMS	ADDISON WESLEY	0-201-06673-4	HALF	ENG 251	HOWATSON	OXFORD COMPANION TO CLASSICAL LITERATURE	OXFORD UNIV. PRS	0-19-282708-1
W	CSC 462/862	TANENBAUM	MODERN OPERATING SYSTEMS	PRENTICE HALL	0-13-588187-0	HALF	ENG 251	METZGER	OXFORD COMPANION TO THE BIBLE	OXFORD UNIV. PRS	0-19-504645-5
W	CSC 467/887	KORTH	DATABASE SYSTEM CONCEPTS	MCGRW HILL	0-07-044754-3	W	ENG 251	SNODGRASS	CLIFFS NOTES ON GREEK CLASSICS	CLIFF NOTES INC	0-8220-0566-2
W	CSC 467/887	PRATT	MICROCOMPUTER DATABASE MANAGEMENT	BOYD & FRASER	0-077-09558-2	HALF	ENG 251	ZIMMERMAN	DICTIONARY OF CLASSICAL MYTHOLOGY	BANTAM BOOKS	0-553-25776-5
W	CSC 560	HEARN	COMPUTER GRAPHICS	PRENTICE HALL	0-13-161530-0	HALF	ENG 251	WILKIE	LITERATURE OF THE WESTERN WORLD, VOL 1	MACMILLAN	0-02-427825-4
W	CSC 890	QUINN	PARALLEL COMPUTING	MCGRW	0-07-051294-9	W	ENG 251	OVID (GREGORY)	METAMORPHOSES	MENTOR	0-451-62822-2
W	CUR 851	ENGLISH	DECIDING WHAT TO TEACH & TEST	CORWIN	0-8039-6019-0	W	ENG 251/252	CAWS	HARPERCOLLINS WORLD READER ANTIQUITY EARLY	HARPER COLLINS	0-06-501382-4
HALF	CUR 851	MCNEIL	CURRICULUM	HC	0-673-52021-8	W	ENG 252	MILTON	PORTABLE MILTON	PENGUIN	0-14-015044-7
W	CUR 852	DOLL	POST-MODERN PERSPECTIVE ON CURRICULUM	TEACHERS COLL PR	0-8077-3217-6	HALF	ENG 252	CAWS	NORTON ANTHOLOGY OF WORLD MASTERPIECES VOL 1	NORTON	0-393-98140-0
W	CUR 852	STANLEY	CURRICULUM FOR UTOPIA	SUNY PRESS	0-7914-0972-4	W	ENG 252	MILTON	ISSUES IN WORLD LITERATURE	HC	0-06-095625-X
W	CUR 852	EISNER	EDUCATIONAL IMAGINATION	MACM	0-02-332131-8	HALF	ENG 253	KUMDERA	JOKE	HARPER	0-02-358426-2
HALF	ED 437	SEBRANEK	WRITE SOURCE 2000	WRITE SOURCE	0-939045-79-6	HALF	ENG 253	KUNELL	HANDBOOK TO LITERATURE	MACMILLAN	0-88001-137-8
HALF	ED 453	TURNER	ESSENTIALS OF CLASSROOM TEACHING ELEM S.S.	A&B	0-205-14190-0	HALF	ENG 253	WILKIE	NORTON ANTHOLOGY OF WORLD MASTERPIECES, VOL 2	NORTON	0-393-98142-7
HALF	ED 454	ELIASON	PRACTICAL GUIDE TO EARLY CHILDHOOD CURRICULUM	MACM	0-02-332223-3	HALF	ENG 253	BRUSAW	LITERATURE OF THE WESTERN WORLD, VOL 2	MACMILLAN	0-02-427827-0
HALF	ED 454	ELIASON	NONGRADED PRIMARY	AASA	0-02-420852-3	HALF	ENG 271	BRUSAW	HANDBOOK OF TECHNICAL WRITING	ST MARTINS	0-312-05733-4
HALF	ED 455	TOMPKINS	LANGUAGE ARTS	MACM	0-02-420852-3	HALF	ENG 271	ESSENBERG	EFFECTIVE TECHNICAL COMMUNICATION	MCGRW HILL	0-07-019431-9
W	ED 457	KENNEDY	GUIDING CHILDREN'S LEARNING OF MATH	WADS	0-534-21409-6	HALF	ENG 271	LANNON	TECHNICAL WRITING	HC	0-673-52294-6
HALF	ED 460	KOSTELNIK	DEV APPROPRIATE PROGRAMS IN EARLY CHILD ED	MACM	0-675-2127-4	HALF	ENG 290	WOLFF	BACK IN THE WORLD	BANTAM	0-553-34325-4
HALF	ED 461	ORLICH	TEACHING STRATEGIES	HEATH	0-669-34960-7	W	ENG 290	ALLISON	TRASH	FIREBRAND BKS	0-932379-51-6
HALF	ED 462	CURWIN	DISCIPLINE WITH DIGNITY	ASCD	0-87120-154-2	HALF	ENG 290	DUBUS	SELECTED STORIES	GODINE	0-87923-736-8
HALF	ED 462	CUMMINGS	MANAGING TO TEACH	TEACHING INC.	0-9814574-0-8	HALF	ENG 290	CARVER	WHAT WE TALK ABOUT WHEN WE TALK ABOUT LOVE	VINTAGE	0-679-72305-6
HALF	ED 462	GRADY	PORTFOLIO APPROACH TO ASSESSMENT PASTBACK 341	PHI DELTA KAPPA	0-87367-341-7	HALF	ENG 290	CONROY	WATER IS WIDE	BANTAM	0-553-26893-7
HALF	ED 462	MONKS	LEGAL BASICS FOR TEACHERS PASTBACK 285	PHI DELTA KAPPA	0-87367-235-6	W	ENG 290	TYLER	ACCIDENTAL TOURIST	BERKLEY	0-425-09291-7
HALF	ED 462	SPARZO	PREPARING BETTER TEACHER MADE TEST PASTBK 311	PHI DELTA KAPPA	0-87367-311-5	W	ENG 290	KOONTZ	WATCHERS	BERKLEY	0-425-10746-9
HALF	ED 462	ANTES	PREPARING STUDENTS FTKING TEST PASTBK 291	PHI DELTA KAPPA	0-87367-291-7	W	ENG 290	TYLER	SAINT MAYBE	IVY	0-8041-0874-9
HALF	ED 463	GULLINAN	LITERATURE AND THE CHILD	MACM	0-02-341302-6	W	ENG 3400/CAF 399	CONRAD	SECRET SHARER & OTHER STORIES	DOVER	0-486-27546-9
W	ED 753	FARRIS	ELEMENTARY SCHOOL STUDIES	HBC	0-15-000680-0	W	ENG 3400/CAF 399	POE	SELECTED TALES	OXFORD	0-19-281522-9
W	ED 753	HELLER	READING-WRITING CONNECTIONS	BROWN	0-687-16198-6	W	ENG 3400/CAF 399	KAWIN	HOW MOVIES WORK	U CALIF PR	0-520-07696-6
HALF	ED 763	GEGA	CONCEPTS & EXPERIENCES IN ELEM SCHOOL SCIENCE	LONGMAN	0-801-0139-4	W	ENG 3400/CAF 399	CORRIGAN	SHORT GUIDE TO WRITING ABOUT FILMS	HC	0-673-52299-7
HALF	ED 763	KOBER	ED TALK	MAC	0-02-341331-X	HALF	ENG 3400/CAF 399	SHELLEY	FRANKENSTEIN	ST MARTIN	0-312-04469-0
W	ED 763	KOBER	BENCHMARKS FOR SCIENCE LITERACY	COUNCIL ED RESEAR	0-02-341331-X	W	ENG 3400/CAF 399	WILDE	PICTURE OF DORIAN GRAY & OTHERS	BANTAM	0-553-21254-0
W	ED 763	K									

University Store Fall Quarter Buyback Listing

HALF	ES 351	WARK	THERMODYNAMICS	MOGH	0-07-068286-0	W	HIS 463	BERMAN	PLANNING A TRAGEDY	NORTON	0-393-95326-2
HALF	ES 354	MOTT	APPLIED FLUID MECHANICS	MACM	0-02-384231-8	W	HIS 463	KAUFMAN	KOREAN WAR	KNOFF	0-07-554655-6
W	ES 355	COGDELL	FOUNDATIONS OF ELECTRICAL ENGINEERING	PH	0-13-329525-7	W	HIS 463	AMROSE	RISE TO GLOBALISM	PENGIN	0-14-017536-9
W	ESL 151	WILLIAMS	CAT ON A HOT TIN ROOF	PENGUIN	0-451-17112-8	W	HIS 463	HOGAN	END OF THE COLD WAR	CAMBRIDGE	0-521-43731-8
HALF	ESL 151	SPACK	INTERNATIONAL STORY	HC	0-06-501152-4	W	HIS 463	WOODS	DAWNING OF THE COLD WAR	U OF GA PRESS	0-8203-1266-5
HALF	ESL 93/95	CARINO	RESEARCHED PAPER SIMPLIFIED	PH	0-13-948233-4	W	HIS 489/689	ESPOSITO	ISLAMIC THREAT	OXFORD UNIV PR	0-19-508666-X
HALF	ESL 93/95	AZAR	CHARTBOOK	SMP	0-312-04115-2	W	HIS 489/689	CLEVELAND	HISTORY OF THE MODERN MIDDLE EAST	WESTVIEW	0-8133-0563-2
HALF	EXC 450	BATES	TRANSITIONS	HM	0-395-61599-2	W	HIS 489/689	BOWEN	EVERDAY LIFE IN THE MUSLIM MIDDLE EAST	INDIANA UNIV PR	0-253-20779-7
W	EXC 453	KIRK	EDUCATING EXCEPTIONAL CHILDREN	MACMILLAN	0-02-307883-9	W	HIS 489/689	COZZO	ISRAEL	GREENHAVEN PRESS	1-56510-132-4
HALF	EXC 457	BEIRNE-SMITH	MENTAL RETARDATION	MERRILL	0-675-21156-5	W	HIS 858	ESKOTT	MAJOR PROB IN HISTORY OF AMER SOUTH VOL II	LEATH	0-689-19924-9
HALF	EXC 470,471	MAGER	ASSESSMENT IN SPECIAL EDUCATION	LAKE	1-561-03341-3	W	HIS 858	KIRBY	RURAL VILLAGES LOST	LSU PRESS	0-8071-1360-3
HALF	EXC 478	GARGIULO	PREPARING INSTRUCTIONAL OBJECTIVES	HM	0-395-36767-5	W	HIS 858	CHINSEY	SUBDULING SATON	UNIV NC PRESS	0-8078-4429-2
HALF	EXC 478	SHEA	PARENTS & TEACHERS OF CHILDREN W/EXCEPTION	PH	0-205-12789-4	W	HIS 858	BRUNDAUGE	LYNCHING IN THE NEW SOUTH	UNIV ILLINOIS PR	0-252-05345-7
HALF	EXC 481	LENER	LEARNING DISABILITIES	HM	0-395-62225-5	W	HIS 858	TOTMAN	JAPAN BEFORE PERRY	U CAL	0-526-04134-8
HALF	EXC 481	KAUFMAN	STUDY GUIDE TIA LEARNING DISABILITIES	MACM	0-395-64011-3	W	HON 133	CASTIGLIONE	BOOK OF THE COURTIER	DOUBLEDAY	0-385-09421-3
W	EXC 483	KAUFMAN	CHARACTERISTICS OF EMOTIONAL & BEH DISORDERS	MACM	0-02-362141-9	W	HON 133	HOBBS (MACPHERSON)	LEVIATHAN	PENGUIN	0-14-043195-0
W	EXC 483	KNOX	ENCYCLOPEDIA OF MENTAL AND PHYSICAL HANDICAPS	PRO-ED	0-88079-269-0	W	HON 133	DIDEROT	RAFAEL'S NEPHEW & D'ALEMBERT'S DREAM	PENGUIN	0-14-044173-5
HALF	FCO 271	KNOX	CHOICES IN RELATIONSHIPS	WEST	0-314-02855-3	W	HON 133	BURKE	REFLECTIONS OF REVOLUTION IN FRANCE	PENGUIN	0-14-043204-3
HALF	FCO 371	PAPALLIA	HUMAN DEVELOPMENT	MOGAW	0-07-048780-X	W	HON 133	WOLLSTONECRAFT	VINDICATION OF RIGHTS OF WOMAN (CRITICAL)	NORTON	0-393-95572-9
HALF	FCO 433	STONE	GUIDE TO DISCIPLINE	NAEYC	0-912674-62-8	W	HON 133	LUTHER (DILLENBERGER)	SELECTIONS OF WRITING OF MARTIN LUTHER	DOUBLEDAY	0-385-09876-6
HALF	FCO 433	BREDEKAMP	DEV APPROPRIATE PRACTICE IN EARLY CHILD PROG	NAEYC	0-935969-11-0	W	HON 151	DILLARD	PILGRIM AT TINKER CREEK	HC	0-60-091545-5
HALF	FCO 433	HILDEBRAND	INTRO TO EARLY CHILDHOOD EDUCATION	MACM	0-02-354535-6	W	HON 151	GOMBRIH	ART AND ILLUSION	PRINCETON	0-691-01750-6
HALF	FCO 433	LASKY	ART, BASIC FOR YOUNG CHILDREN	NAEYC	0-912674-73-3	W	HON 151	ROTH	GOODYE, COLUMBUS	BANTAM	0-553-26365-X
HALF	FCO 471/671	KRANTZ	CHILD DEVELOPMENT	WADSWORTH	0-534-13170-0	W	HON 151	FOWLES	EBONY TOWER	NAL	0-452-26710-2
HALF	FCO 472/672	MAYESKY	CREATIVE ACTIVITIES FOR YOUNG CHILDREN	DELMAR	0-8273-3958-5	W	HON 211	PAGE	NORSE MYTH	U TEXAS	0-292-75546-5
W	FCO 474/674	BROOKS	PARENTING IN THE 90'S	MAYFIELD	1-55934-251-X	W	HON 211	SHAW	PERFECT WAGNERITE	DOVER	0-485-21707-8
W	FCO 476/676	TAYLOR	EARLY CHILDHOOD PROGRAM MANAGEMENT	MACM	0-02-419731-9	W	HON 211	BOLEN	RING OF POWER	HARPER	0-06-250210-7
W	FCO 476/676	VERGERONT	PLACES & SPACES FOR PRESCHOOL & PRIMARY-311	NAEYC	0-935969-25-0	W	HON 211	GRAY	WAGNER	OMNIBUS	0-7119-1687-X
W	FCO 476/676	VERGERONT	PLACES & SPACES FOR PRESCHOOL & PRIMARY-310	NAEYC	0-935969-07-2	W	HON 211	RACKHAM	COLOR ILLUSTRATION FOR WAGNER'S RING	DOVER	0-485-23779-6
W	FCO 576	JACOBS	BE AN OUTRAGEOUS OLDER WOMAN A P A S P	KT	1-879196-03-7	W	HON 311	TREVOR	FOOLS OF FORTUNE	PENGUIN	0-14-006982-8
W	FCO 576/776	STEVENS-LONG	ADULT LIFE	MAYFIELD	1-55934-082-7	W	HON 311	OONANOR	COLLECTED STORIES	VINTAGE	0-394-71048-7
W	FCO 576/776	DUSHKIN (DICKINSON)	DYING, DEATH AND BEREAVEMENT	DUSHKIN	1-56134-269-6	W	HON 311	BRADLEY	CONTEMPORARY IRISH POETRY	U CAL PRESS	0-520-05874-7
HALF	FED 251	HESSONG	INTRO TO THE FOUNDATIONS OF EDUCATION	MACM	0-02-354395-7	W	HON 411	GIANNETTI	UNDERSTANDING MOVIES	PH	0-13-953795-3
HALF	FED 251	TOZER	SCHOOL & SOCIETY	MOGAW	0-07-557043-2	HALF	HTH 120	KRUMHANS	OPPORTUNITIES IN PHYSICAL THERAPY CAREERS	NTC	0-8442-4055-2
HALF	FED 251	REED	IN THE CLASSROOM AN INTRO TO EDUCATION	DUSHKIN	0-87967-931-X	HALF	HTH 131	PRUITT	HEALTH STYLES DEC FOR LIVING WELL	HARCOURT BRACE	0-03-615503-7
HALF	FED 251	MENGERT	INSTITUTION OF EDUCATION	PH	0-636-58626-8	HALF	HTH 130	APC	PRINCIPLES OF HEALTH EDUCATION & HEALTH PROMO	MORTON	0-95952-263-6
HALF	FED 260	BEE	DEVELOPING CHILD	HC	0-06-040628-3	W	HTH 321	LAFLAUR-BROOKS	EXPLORING MEDICAL LANGUAGE W/TAPE	MOSEY	0-8016-7675-7
W	FED 260	BJORKLUND	LOOKING AT CHILDREN	WADS	0-534-13704-0	HALF	HTH 350	HAMANN	DISEASE IDENTIFICATION, PREVENTION & CONTROL	MOSEY	0-8016-6364-4
W	FED 260	BJORKLUND (CASSEL)	STUDY GUIDE TIA LOOKING AT CHILDREN	WADS	0-534-13705-9	W	HTH 451	GREEN	COMMUNITY HEALTH	MOSEY	0-8016-7897-6
W	FED 260	SANTROCK	CHILDREN	WCB	0-897-12738-9	W	HTH 495	OTIS	CAMPUS HEALTH GUIDE	COLLEGE BOARD	0-87447-317-9
W	FED 260	SANTROCK	CHILDREN STUDY GUIDE	WCB	0-897-12740-0	HALF	HTH 531	MILLER	HEALTH EDUCATION IN ELEM SCHOOL	WCB	0-697-11517-1
HALF	FED 260	BEE	STUDY GUIDE TIA DEVELOPING CHILD	HC	0-06-05016-3	HALF	HTH 550	BEVER	SAFETY PERSONAL FOCUS	MOSEY	0-8016-6376-8
HALF	FED 260	GAUVAIN	READING ON DEVELOPMENT OF CHILDREN	PREMAN	0-7167-2482-8	W	HTH 555	MECKS-HEIT	COMPREHENSIVE SCHOOL HEALTH EDUCATION	MECKS HEIT	0-9630009-0-X
HALF	FED 260	MCCOWAN	EDUCATIONAL PSYCHOLOGY & CLASSROOM PRACTICE	ALYNN BACON	0-205-13144-1	HALF	HTH 555	MCKENZIE	PLANNING, IMPLM & EVAL HEALTH PROMO PROGRAMS	MACM	0-675-22162-5
W	FED 361	BEHLER	PSYCHOLOGY APPLIED TO TEACHING	HM	0-395-61598-4	W	HTH 764	BRUESS	SEXUALITY EDUCATION THEORY & PRACTICE	BROWN	0-697-17124-8
W	FED 851	OWIMPOD	HUMAN LEARNING	MACM	0-675-21044-5	W	HTH 764	KELLY	SEXUALITY TODAY	DUSHKIN	1-561-34299-8
W	FED 851	GOOD	EDUCATIONAL PSYCHOLOGY	AW	0-8013-0351-6	HALF	IDH 281	ALLEN	BEGINNINGS OF INTERIOR ENVIRONMENT	MACM	0-02-301821-6
W	FED 874	CREMIN	TRANSFORMATION OF THE SCHOOL	MOGH	0-07-553704-4	W	IDH 282	LEINBACH	VISUALIZATION TECHNIQUES	PH	0-13-946518-9
W	FED 874	SPRING	AMERICAN SCHOOL	MOGH	0-07-049667-6	W	IDH 282	KARLEN	SPACE PLANNING BASICS	VNR	0-442-20643-7
HALF	FIN 351	PATERSON	FINANCIAL MANAGEMENT & ANALYSIS	MOGH	0-07-049667-6	W	IDH 282	AREND	INTERIOR PRESENTATION SKETCHING F/ARCH & DES	VNR	0-442-20643-7
HALF	FIN 351	PETERSON	FINANCIAL MANAGEMENT & ANALYSIS	MOGAW	0-07-049667-6	W	IDH 283	GAREY	SUPCOVER CHIC	HEARST	0-688-11433-4
W	FIN 352	KOHN	FINANCIAL INSTITUTIONS AND MARKETS	MOGH	0-07-035904-0	HALF	IDH 283	PAINE	FABRIC MAGIC	PANTHEON	0-394-55713-1
HALF	FIN 355	AMUNG	INVESTMENT FUNDAMENTALS	HBC	0-03-047092-7	HALF	IDH 380	KADOLPH	TEXTILES	MACMILLAN	0-02-361601-6
W	FIN 356	SMITH	REAL ESTATE PERSPECTIVES	IRWIN	0-256-07914-5	HALF	IDH 381	DECHIARA	TIME SAVERS STANDARDS FOR INTERIOR DESIGN	MOGH	0-07-616299-9
W	FIN 358	REIDA	PRINCIPLES OF RISK MANAGEMENT AND INSURANCE	HC	0-673-46541-1	HALF	IDH 382	WHITON	INTERIOR DESIGN	LIPPINCOTT	0-397-47302-8
HALF	FIN 359	WILLIAMS	RISK MANGEMENT AND INSURANCE	MOGH	0-07-070567-4	HALF	IDH 385	PICKETT	HOUSEHOLD EQUIPMENT IN RESIDENTIAL DESIGN	WAPLEND	0-88133-520-7
W	FIN 452	HARRISON	APPRAISING RESIDENTIAL & INCOME PROPERTIES	H2 CO	0-07-070567-4	W	IDH 487	SMITH	BRINGING INTERIORS TO LIGHT	WATSON-GUPTILL	0-8230-7080-8
W	FIN 454	ROSE	COMMERCIAL BANK MANAGEMENT	IRWIN	0-256-11557-5	W	IDH 487	PIOTROWSKI	PROFESSIONAL PRACTICE FOR INTERIOR DESIGNERS	VNR	0-442-27519-8
HALF	FIN 457	BRIGHAM	INTERMEDIATE FINANCIAL MANAGEMENT	WCB	0-03-075482-8	W	IE 333	HICKS	INDUSTRIAL ENGINEERING & MANAGEMENT	MOGAW	0-07-028807-4
W	FL 399	WILSON	ESSENTIALS OF LATIN GRAMMAR	NTC	0-8442-8540-4	HALF	IE 451	MEYERS	PLANT LAYS AND MATERIAL HANDLING	PH	0-13-013475-9
W	FL 399	WILSON	CASSELL'S LATIN DICTIONARY	MAC	0-02-522580-4	HALF	IE 481	NEWMAN	ENGINEERING ECONOMIC ANALYSIS W/EXAM FILE	ENGINEERING PR	0-910554-83-8
HALF	FL 399	OVID	METAMORPHOSES	INDIANA U	0-253-20001-6	W	IM 352	BARNE	MANUFACTURING ORGANIZATION AND MANAGEMENT	PH	0-13-554556-6
HALF	FM 360	JARROW	INSIDE THE FASHION BUSINESS	MACM	0-02-360002-0	W	IM 352	FLOG	STATISTICAL ANALYSIS F/ENGINEERS & SCIENTIST	MOGAW	0-07-630606-5
W	FM 363	GOSCHIE	FASHION DIRECTION AND COORDINATION	GLENCOE	0-02-682900-2	W	IM 552	HEIZER	FUND OF INDUSTRIAL HYGIENE	NATL SAFETY	0-87912-082-7
W	FRE 151/152/153	CAPELLE	ESPACES CAHIER D'EXERCICES	HACHETTE	2-01-015321-9	W	IM 554/754	HAMMER	PRODUCTIONS AND OPERATIONS MANAGEMENT WIDSK	ALYNN AND BACON	0-205-15035-7
W	FRE 151/152/153	CAPELLE	ESPACES	HACHETTE	2-01-015320-0	HALF	INTENSIVE ENGLISH	JONES	OCCUPATIONAL SAFETY MANAGEMENT & ENGINEERING	IRWIN	0-13-629379-4
W	FRE 262	COURTILLON	ARCHIPEL LIVRE 2	DIDIER	0-07-553704-4	HALF	INTENSIVE ENGLISH	PARNEWELL	FEDERAL TAXES & MANAGEMENT DECISIONS 95/96	PH	0-256-14211-4
W	FRE 350	CHAMBERLAIN	GUIDE PRATIQUE DE LA COMMUNICATION W/TAPE	HURTBURSE	2-89045-913-6	HALF	INTENSIVE ENGLISH	ROBERTSHAW	NEW OXFORD PICTURE DICTIONARY	OXFORD UNIV PRESS	0-19-434199-2
W	FRE 350	BESCHERELLE	L'ART DE CONJUGUER	HURTBURSE	2-89045-913-6	HALF	INTENSIVE ENGLISH	ORION	PRONOUNCING AMERICAN ENGLISH	NEWBURY HOUSE	0-8384-2699-9
W	FRE 459/659	LAGARDE	XIX SIECLE	BORDAS	0-07-063787-3	HALF	INTENSIVE ENGLISH	OSHIMA	INTRODUCTION TO ACADEMIC WRITING	AW	0-201-14507-3
HALF	GER 151	TERRELL	KONKATTE	MOGAW	0-07-063787-3	HALF	INTENSIVE ENGLISH	AZAR	BASIC ENGLISH GRAMMAR	PH	0-13-060434-8
HALF	GER 152/153	SEVIN	KONKATTE WORKBOOK	MOGAW	0-07-063787-3	HALF	INTENSIVE ENGLISH	BLANTON	ELEMENTARY COMPOSITION PRACTICE BOOK 2	NEWBURY HOUSE	0-8384-2942-4
HALF	GER 152/153	SEVIN	WIE GEHT'S?	HRW	0-03-049493-2	HALF	INTENSIVE ENGLISH	AZAR	UNDERSTANDING AND USING ENGLISH GRAMMAR	PH	0-13-943614-6
W	GER 252	MOELLER	CONCISE GERMAN REVIEW GRAMMAR	HM	0-395-54666-9	HALF	INTENSIVE ENGLISH	DUNKEL	ADVANCED LISTENING COMPREHENSION	NEWBURY	0-8384-2963-7
W	GER 355	CASSELL	ENGLISH GERMAN GERMAN ENGLISH DICTIONARY	MAC	0-02-822930-3	HALF	INTENSIVE ENGLISH	ABRAHAM	CONTACT USA	PH	0-13-169616-5
W	GER 355	CASSELLS	GERMAN DICTIONARY	MGR	0-02-822930-3	HALF	INTENSIVE ENGLISH	DUNKEL	START WITH LISTENING	NEWBURY HOUSE	0-8384-2820-7
W	GER 450	DURRELL	HAMMER'S GERMAN GRAMMAR AND USAGE	EDWARD ARNOLD	0-340-50129-4	HALF	INTENSIVE ENGLISH	TOGLIA	PICTURE IT	PH	0-13-676149-6
W	GER 450	CLAUSING	GERMAN GRAMMAR	HBC	0-03-001897-8	HALF	INTENSIVE ENGLISH	DUNKEL	INTERMEDIATE LISTENING COMPREHENSION	WADS	0-8384-2966-1
HALF	GGY 250	DEBLU	GEOGRAPHY/REALMS, REGIONS & CONCEPTS	WILEY	0-471-58089-9	HALF	INTENSIVE ENGLISH	TOGLIA	COMPOSITION PRACTICE BOOK 4	WADS	0-8384-4075-4
W	GGY 250	FISHER	GEOGRAPHY & DEVELOPMENT	MACEY	0-02-337935-9	W	INTENSIVE ENGLISH	RAY	REAL THING	MAC	0-02-398610-7
W	GGY 250	KAPIT	GEOGRAPHY COLORING BOOK	HPR	0-06-043482-1	W	INTENSIVE ENGLISH	DUBIN	READING BY ALL MEANS	AW	0-201-0305-2
W	GGY 358	CASTILLON	CONSERVATION OF NATURAL RESOURCES	BROWN	0-697-11229-2	HALF	INTENSIVE ENGLISH	AZAR	FUNDAMENTALS OF ENGLISH GRAMMAR	PH	0-13-060434-8
W	GGY 360	HIDORE	CLIMATOLOGY	MAC	0-02-354514-1	W	INTENSIVE ENGLISH	ALTHEN	AMERICAN WAYS	MACM	0-02-365931-X
W	GGY 453	ESCOTT	SOUTH FOR NEW SOUTHERNERS	UNC	0-8078-4293-1	W	INTENSIVE ENGLISH	HOPPE	RELIGIONS OF THE WORLD	MACM	0-02-365931-X
W	GGY 453	HART	LAND THAT FEEDS US	NORTON	0-393-30950-9	W	INTENSIVE ENGLISH	TOCHAKU	YOKOSKO	MOGH	0-07-072291-9
W	GLY 151	PRESS	UNDERSTANDING EARTH	FREEMAN	0-7167-2239-9	HALF	INTENSIVE ENGLISH	JENNING	YOKOSKO WORKBOOK LAB MANUAL PART A	MOGH	0-07-072291-9
W	GLY 151	ZUMBERGE	LAB MANUAL FOR PHYSICAL GEOLOGY	WCB	0-697-09844-3	HALF	INTENSIVE ENGLISH	TOCHAKU	INTRODUCTION TO CRIMINAL JUSTICE	WEST	0-314-01145-5
W	GLY 152	DOTT	EVOLUTION OF THE EARTH	MOGH	0-07-017803-8	HALF	INTENSIVE ENGLISH	SENNIA	STUDY GUIDE TIA INTRO TO CRIMINAL JUSTICE	WEST	0-314-01633-3
HALF	GLY 152	POORT	HISTORICAL GEOLOGY	MACM	0-02-395995-9	W	INTENSIVE ENGLISH	BRASWELL	JUSTICE CRIME & ETHICS	ANDERSEN	0-87084-093-2
W	GLY 165	KELLER	ENVIRONMENTAL GEOLOGY	MACM	0-02-395995-9	HALF	INTENSIVE ENGLISH	POLLOCK	ETHICS IN CRIME & JUSTICE	WADS	0-534-21456-8
W	GLY 451	CLARKSON	INVERTEBRATE PALAEOLOGY & EVOLUTION	CHAPMAN & HALL	0-412-47990-7	W	INTENSIVE ENGLISH	SAMAH	CRIMINAL LAW	WEST	0-314-00774-1
W	GLY 451	THWISS	STRUCTURAL GEOLOGY	FREEMAN	0-7167-2252-6	W	INTENSIVE ENGLISH	WALKER	SENSE & NONSENSE ABOUT CRIME & DRUGS	WADS	0-534-18966-0
W	GLY 453	MARSHAK	BASIC METHODS OF STRUCTURAL GEOLOGY	PH	0-13-065178-8	W	INTENSIVE ENGLISH	FISHER	CRIME SCENE INVESTIGATION	CRC	0-444-

HALF	MKT 375	JOHNSON	CONTEMPORARY LOGISTICS	MACM	0-02-360851-X	W	PSC 368	FOWLER	DANCE WITH COMMUNITY	U PRESS KANSAS	0-70064-93-6
HALF	MKT 452	MALHOTRA	MARKETING RESEARCH	PH	0-13-555350-4	W	PSC 379	ROTHCHILD	PRECARIOUS BALANCE	WESTVIEW	0-8133-0869-9
HALF	MKT 455	KOTLER	MARKETING MANAGEMENT	PH	0-13-722851-1	W	PSC 381	CHAZAN	POLITICS & SOCIETY IN CONTEMPORARY AFRICA	LYNNE RIEMER	1-555-87283-2
W	MKT 461	HAWKINS	CONSUMER BEHAVIOR	IRWIN	0-256-09409-8	W	PSC 381	WITTYOFF	DOMESTIC SOURCES OF AMERICAN FOREIGN POLICY	SMP	0-312-10315-8
W	MKT 463	MULLER	INTERMODAL FREIGHT TRANSPORTATION	END FOUNDATION	0-911-382-09-7	W	PSC 381	SNOW	PUZZLE PALACES & FOGGY BOTTOM	SMP	0-312-08654-7
W	MKT 463	MCKENZIE	INTERMODEL TRANSPORTATION	IRWIN	0-256-10513-9	W	PSC 481/681	DUSHKIN	AMERICAN FOREIGN POLICY 94/95	DUSHKIN	1-56134-238-6
W	MKT 465	CATEORA	INTERNATIONAL MARKETING	IRWIN	0-256-10513-9	W	PSC 481/681	HACKETT	CAUTIOUS REVOLUTION	PRAEGER	0-275-93065-8
W	MUA 114/116-836	SCHMIDT	BASICS OF SINGING	SCHIRMER	0-02-872837-6	W	PSC 481/681	KEOHANE	NEW EUROPEAN COMMUNITY	WESTVIEW	0-8133-8271-8
W	MUA 116-836	SPERRY	AMERICAN ART SONGS OF THE TURN OF THE CENTURY	DOVER	0-486-26749-0	W	PSC 481/681	WISTRICH	UNITED STATES OF EUROPE	ROUTLEDGE	0-415-09324-4
W	MUA 116-836	COFFIN	PHONETIC READINGS OF SONGS AND ARIAS	HAL LEONARD	0-8106-1533-8	W	PSC 481/681	KIM	CHINA & THE WORLD	WESTVIEW	0-8133-1569-4
W	MUA 123	GOLDENBERG	MODERN SCHOOL FOR SNARE DRUM	MEREDITH MUSIC PUB		W	PSC 481/681	BUCHAN	EUROPE STRANGE SUPERPOWER	DARTMOUTH	1-85521-439-3
W	MUA 123	WHALEY	RECITAL SOLOS FOR SNARE DRUM	HAMAR PERCUSSION		W	PSC 481/681	CLARKE	UNDERSTANDING FOREIGN POLICY	ELGAR	1-85278-125-4
W	MUA 123	MEYER	MULTIPLE Mallet Studies for Marimba	CHAPPEL & CO		W	PSC 481/681	CURTIS	JAPAN'S FOREIGN POLICY AFTER THE COLD WAR	ME SHAPPE	1-56324-217-6
W	MUA 123	GOLDENBERG	MODERN SCHOOL ZYLOPHONE/MARIMBA VIBRAPHON	ALFRED PUB		W	PSC 481/681	DUSHKIN	RUSSIA EURASIA & CENTRAL/EASTERN EUROPE	DUSHKIN	1-56134-293-9
W	MUA 123	MOYER	FOUR Mallet Method for Marimba	AMBERSON ENT.		W	PSY 150	GOLDSTEIN	PSYCHOLOGY	BROOKS	0-534-13608-7
W	MUE 304-804	BERNSTEIN	TRIOLE IN TAHITI	CARL FISCHER	HL50453180	W	PSY 150	MYERS	PSYCHOLOGY: AN INTRODUCTION	WORTH PUB	0-87901-506-3
W	MUE 304-804	DUKE	CAPTAIN LOVELOCK	G. SCHIRMER		W	PSY 150	MORRIS	STUDY GUIDE AND WORKBOOK	PRENTICE HALL	0-13-735465-7
HALF	MUS 116	STECHER	KEYBOARD STRATEGIES - MASTER TEXT I	BROWN	0-697-12530-0	W	PSY 150	GRAM	PSYCHOLOGY	HARPER COLLINS	0-06-501417-0
W	MUS 127	BENWARD	MUSIC IN THEORY & PRACTICE VOL. 1 W/TAPE	WEST	0-314-00779-2	W	PSY 150	ZIMBARDO	PSYCHOLOGY	PH	0-205-15248-1
W	MUS 131	WRIGHT	LISTENING TO MUSIC (BOOK W/ 3 TAPES)	WEST	0-314-00779-2	W	PSY 150	LEFTON	UNDAUNTED PSYCHOLOGIST	MOGRAW	0-07-041531-5
HALF	MUS 152	KAMEN	MUSICIAN APPRECIATION (BRIEF) W/TAPE	WEST	0-314-00779-2	W	PSY 150	BRANNIGAN	STUDY GUIDE INTRO TO PSYCHOLOGY	WADS	0-534-16448-X
HALF	MUS 152	WRIGHT	STUDY GUIDE T/A LISTENING TO MUSIC	WEST	0-314-00779-2	W	PSY 150	PLATNIK (ENOS)	ELECTRONIC STUDY GUIDE INTRO TO PSYCHOLOGY	WADS	0-534-16448-X
HALF	MUS 216	STECHER	KEYBOARD STRATEGIES - MASTER TEXT II	WEST	0-314-00779-2	W	PSY 150	PLATNIK	INTRO TO PSYCHOLOGY	WADS	0-534-16448-X
W	MUS 227	BENJAMIN	MUSIC FOR SIGHT SINGING	WGS	0-534-20823-1	W	PSY 210	HOLLAND	MAJORS FINDER FOR SDS	PAR	
W	MUS 231	BENWARD	MUSIC IN THEORY & PRACTICE VOL. 2 W/TAPE	BROWN	0-697-12526-2	W	PSY 210	HOLLAND	CAREERS FINDER FOR SDS	PAR	
W	MUS 339	STOLBA	DEVELOPMENT OF WESTERN MUSIC	BROWN & BENCHMARK	0-697-25458-5	W	PSY 210	HOLLAND	CAREERS IN PSYCHOLOGY	PAR	
W	MUS 339	STOLBA	COMPACT DISK VOL. 1 DEVWEST MUSIC	WCB	0-697-12553-X	W	PSY 280	HEIMAN	BASIC STATISTICS F/BEHAVIORAL SCIENCES W/DISK	APA	0-395-62127-5
W	MUS 462	GREEN	MODERN CONDUCTOR	PH	0-13-594458-9	W	PSY 350	WEITEN	PSYCHOLOGY APPLIED TO MODERN LIFE	HM	
W	MUS 464	PELLMAN	INTRO TO CREATION OF ELECTROACOUSTIC MUSIC	WADS	0-534-21450-9	W	PSY 358	HYDE	HALF THE HUMAN EXPERIENCE: THE PSYCH OF WOMEN	B/C	0-534-19890-2
W	MUS 553/753	WATKINS	SOUNDINGS MUSIC IN THE TWENTIETH CENTURY	MCMILLAN	0-02-873290-1	HALF	PSY 371	HOLMES	ABNORMAL PSYCHOLOGY	DC HEATH	0-669-20896-5
HALF	NFS 151	BENHON	HANDBOOK OF FOOD PREPARATION	MACM	0-02-308181-3	W	PSY 371	BERGER	DRUGS, SOCIETY, & BEHAVIOR	HARPER COLLINS	0-673-46903-9
HALF	NFS 151	AHEA	PERSONAL NUTRITION	WEST	0-403-8670-2	W	PSY 376	BURGER	DEVELOPING PERSON THROUGH THE LIFE SPAN	MOSEY	0-9016-6563-9
HALF	NFS 251	BOYLE	NUTRITION AND DIET THERAPY	WEST	0-314-93333-6	W	PSY 376	BURGER	PERSONALITY	WORTH	0-87901-554-2
W	NFS 252	CATALO	UNDERSTANDING NUTRITION	WEST	0-314-93333-6	W	PSY 376	BURGER	STUDY GUIDE T/A PERSONALITY	WADS	0-534-17220-2
W	NFS 351	WHITNEY	NUTRITION THROUGHOUT THE LIFE CYCLE	MOSEY	0-8016-6477-2	W	PSY 382	MCBURNIE	WRITING EMPIRICAL RESEARCH REPORTS	B/C	0-534-17222-9
W	NFS 354	WILLIAMS	KRAUSE'S FOOD, NUTRITION AND DIET THERAPY	SAUNDERS	0-7216-5508-4	W	PSY 382	MARTIN	RESEARCH METHODS	WADSWORTH	0-534-17646-1
HALF	NFS 452	MAHAN	PROFESSIONAL COOKING	WILEY	0-471-83848-9	W	PSY 382	MCBURNIE	DOING PSYCHOLOGY EXPERIMENTS	BROOKS	0-534-14490-X
W	NFS 457	GISSEN	FUNDAMENTALS OF NURSING	AW	0-201-09202-6	W	PSY 382	PARROT	EXPERIMENTAL PSYCHOLOGY	BROOKS	0-534-14490-X
HALF	NUR 251	THOMAS	TABER'S CYCLOPEDIA MEDICAL DICTIONARY	DAVIS	0-8036-8313-8	W	PSY 382	PARROT	HOW TO WRITE PSYCHOLOGY PAPERS	HC	0-06-501798-6
HALF	NUR 251	CARNEVALI	NURSING MANAGEMENT FOR ELDERLY	DAVIS	0-397-54898-2	HALF	PSY 382	APA	PUBLICATION MANUAL	APA	1-557-98241-4
W	NUR 322	ADLER	LOOKING OUTLOOKING IN	HBC	0-03-076544-7	W	PSY 455	DOMAN	PRINCIPLES OF LEARNING AND BEHAVIOR	BROOKS	0-534-18912-1
W	NUR 330	HALES	AN INVITATION TO HEALTH	AW	0-8053-5480-8	W	PSY 455	ALCOCK	ANIMAL BEHAVIOR	SINAUER	0-87893-017-5
W	NUR 350	ARNOLD	INTERPERSONAL RELATIONSHIP	SAUNDERS	0-7216-2048-5	W	PSY 552/752	EYSENCK	COGNITIVE PSYCHOLOGY A STUDENT'S HANDBOOK	LAWRENCE ERLBAUM	0-86377-154-8
W	NUR 351/341	SEIDEL	MOSEY'S GUIDE TO PHYSICAL EXAMINATION	MOSEY	0-8016-0443-5	W	PSY 555/755	MILLER	DEVELOPMENTAL RESEARCH METHODS	PRENTICE HALL	0-13-208133-4
W	NUR 351/341	OLDS	MATERNAL-NEONATAL NURSING	AW	0-8053-5580-4	W	PSY 556	AGNEW	SCIENCE GAME	PRENTICE HALL	0-13-096883-X
W	NUR 351/341	FISCHBACH	MANUAL OF LABORATORY & DIAGNOSTIC TESTS	UPPINCOTT	0-397-54831-1	HALF	PSY 556	CALDINI	INFLUENCE	HC	0-673-46751-1
HALF	NUR 352	BETZ	FAMILY CENTERED NURSING CARE OF CHILDREN	SAUNDERS	0-7216-4489-9	W	PSY 556	SCHULTZ	HISTORY OF MODERN PSYCHOLOGY	HBJ	0-15-537467-2
W	NUR 352	WILSON	PSYCHIATRIC NURSING	AW	0-8053-9400-1	W	PSY 799	FISKE	SOCIAL COGNITION	MOGRAW HILL	0-07-021191-4
HALF	NUR 352	HORNE	FLUID, ELECTROLYTE & ACID BASE BALANCE	MOSEY	0-8016-5479-3	W	PSY 850	KACHIGAN	STATISTICAL ANALYSIS	RADIIUS PRESS	0-942154-94-9
HALF	NUR 352	LONG	MEDICAL-SURGICAL NURSING	MOSEY	0-8016-6672-4	W	PSY 850	NORRIS	SPSS GUIDE TO DATA ANALYSIS P/SPSS/PC	PH	0-13-178443-9
W	NUR 421	REDMAN	PROCESS OF PATIENT EDUCATION	MOSEY	0-8016-6670-8	W	PSY 850	BORNSTEIN	DEVELOPMENTAL PSYCHOLOGY AN ADVANCED TEXT	L. ERLBAUM	0-8658-1037-2
W	NUR 445	SPECTOR	CULTURAL DIVERSITY IN HEALTH & ILLNESS	PH	0-6385-1396-4	W	PSY 850	THORPE	BEHAVIOR THERAPY	PH	0-205-12241-4
W	NUR 456	SWANSON	COMMUNITY HEALTH NURSING	SAUNDERS	0-7216-1312-8	W	PSY 850	RABIN	ASSESSMENT WITH PROJECTIVE TECHNIQUES	SPRINGER	0-8261-3550-1
W	NUR 456	STANHOPE	HANDBOOK OF COMMUNITY & HOME HEALTH NURSING	UPPINCOTT	0-397-54831-1	W	PSY 850	TALLET	PSYCHOLOGICAL REPORT WRITING	PH	0-13-720319-5
W	NUR 750	NICOLL	PERSPECTIVES ON NURSING THEORY	MOSEY	0-8016-6767-4	W	PSY 850	GLAZIER	DSM-IV DIAGNOSTIC & STATISTICAL MANUAL	AM PSY	0-89042-062-9
W	NUR 750	MARRIHER-TOMEY	NURSING THEORISTS AND THEIR WORK	MOSEY	0-8016-6767-4	W	PSY 850	MILAN	LEAST YOU SHOULD KNOW... WORD ROOTS	HBC	0-15-500220-1
W	NUR 751	WRIGHT	NURSES & FAMILY	DAVIS	0-8036-8313-8	W	PSY 850	HEWETT	DEVELOPING READINGS SKILLS	MOGRAW	0-07-041901-9
W	NUR 751	BOHAR	NURSES & FAMILY HEALTH PROMOTION	W&W	0-7216-3794-9	HALF	PSY 850	CUNNINGHAM	COMING OF AGE	HOLLOWAY	0-07067-364-5
W	NUR 751	STANHOPE	COMMUNITY HEALTH NURSING	MOSEY	0-8016-4774-6	W	PSY 850	BURNS	PHONICS THEY USE	HC	0-673-46433-4
W	NUR 751	FRIEDMAN	FAMILY NURSING	ALL	0-8385-2543-1	W	PSY 850	MCKENNA	PROGRAMMED WORD ATTACK FOR TEACHERS	MERRILL PUB CO	0-675-21237-5
W	NUR 751	WEGNER	READINGS IN FAMILY NURSING	UPPINCOTT	0-397-55033-2	W	PSY 850	NODEN	TEACHING READING IN TODAY'S ELEM. SCHOOLS	HM	0-395-59010-8
HALF	NUR 861	RAXEL	CONV'S CURRENT THERAPY 1994	HBC	0-03-076544-7	W	PSY 850	MAY	TEACHING THROUGH TEXT	AW	0-8013-0584-5
HALF	NUR 861	US PREVENTIVE SERV	GUIDE TO CLINICAL PREVENTIVE SERVICES	WILLIAMS & WILKINS	0-683-08507-7	W	PSY 850	ARTHUR	WHOLE LANGUAGE IN MIDDLE & SECONDARY CLASSRM	HC	0-06-500071-4
W	NUR 861	UBIN	RAPID INTERPRETATION OF EKG'S	COVER PUB	0-912-91201-4	W	PSY 850	WHIMBEY	READING AS COMMUNICATION	MERRILL	0-02-378242-0
HALF	NUR 861	UPHOLD	CLINICAL GUIDELINES IN FAMILY PRACTICE	BARNHARRE BOOKS		W	PSY 850	SMITH	READING TEST MASTERY OF GA. REGENTS EXAM	K/H	0-8403-7035-0
HALF	NUR 861	DERSEWITZ	AMBULATORY PEDIATRIC CARE	UPPINCOTT	0-397-51196-5	W	PSY 850	WIENER	ANALYTICAL READING & REASONING	INNOVATIVE	0-916825-20-5
HALF	NUR 861	MCCANCE	PATHOPHYSIOLOGY	MOSEY	0-8016-6902-2	W	PSY 850	EPSTEIN	BRIDGING THE GAP	HC	0-673-46691-4
W	NUR 873	GLANTZ	PRIMER OF BIOSTATISTICS	MOGRAW	0-07-023511-2	W	PSY 850	MCWHORTER	SIDE BY SIDE	HM	0-395-63684-1
W	NUR 873	EDLMAN	HEALTH PROMOTION THROUGH LIFESPAN	MOSEY	0-8016-7786-6	W	PSY 850	NIST	PROFICIENT READER	HM	0-395-63177-7
W	NUR 873	VALANIS	EPIDEMIOLOGY IN NURSING & HEALTH CARE	APPLETON LANGE	0-8385-2226-2	W	PSY 850	MCWHORTER	DEVELOPING VOCABULARY CONCEPTS	HEATH	0-669-27914-5
W	NURSING	OLDS	CLINICAL HANDBOOK MATERNAL NEONATAL NURSING	AW	0-8053-5588-X	W	PSY 850	LANGAN	EFFICIENT & FLEXIBLE READING	HC	0-673-46032-0
W	PA 862	HENRY	PUBLIC ADMINISTRATION AND PUBLIC AFFAIRS	PH	0-13-081779-1	W	PSY 850	WEINSTEIN	TEN STEPS TO ADVANCING COLLEGE READING SKILLS	TOWNSEND	0-944210-56-2
HALF	PA 862	DEHARDT	THEORIES OF PUBLIC ORGANIZATION	WADS	0-534-20070-2	W	PSY 850	CONROY	LEARNING AND STUDY STRATEGIES INVENTORY	H & H PUBLISHING	0-89042-062-9
W	PA 862	STILLMAN	PUBLIC ADMINISTRATION	HM	0-395-59015-9	W	PSY 850	NIST	LORDS OF DISCIPLINE	BANTAM	0-553-27136-9
HALF	PA 870	WELCH	QUANTITATIVE METHODS FOR PUBLIC ADMIN.	WADS	0-534-10888-1	W	PSY 850	MCCALL	DEVELOPING TEXTBOOK THINKING	HEATH	0-669-29779-9
HALF	PA 870	BABBIE	PRACTICE OF SOCIAL RESEARCH	WADS	0-534-15576-6	W	PSY 850	GOODEY	MAKES ME WANT TO HOLLER	PH	0-679-41268-9
W	PA 874	BYRON	STRATEGIC PLAN. FOR PUBLIC & NONPROFIT ORG.	JOSSEY-BASS	1-55542-087-7	W	PSY 850	KRAUS	LEISURE IN YOUR LIFE	VENTURE	0-910251-36-3
W	PA 874	BENVENISTE	MASTERING THE POLITICS OF PLANNING	JOSSEY-BASS	1-55542-167-9	W	PSY 850	BLANKENBAKER	RECREATION AND LEISURE IN MODERN SOCIETY	SOUTHERN UNIV PR	0-86584-403-9
W	PA 884	ROGERS	JUVENILE DELINQUENCY AND JUVENILE JUSTICE	PH	0-13-12393-3	W	PSY 850	HITT	GAMES & REC. ACTIVITIES FOR ALL OCCASIONS	BATTLE	0-910251-40-1
W	PA 893	SCHWARTZ	JUVENILE JUSTICE & PUBLIC POLICY	MACM	0-669-26902-6	W	PSY 850	FARRELL	LEADER MANAGER GUIDELINES FOR ACTION	VENTURE	0-910251-40-1
W	PA/PSO 871	ROSSI	EVALUATION	SAGE	0-8039-4458-6	W	PSY 850	MOINTOSH	PROCESS OF RECREATION PROGRAMMING	WILEY	0-471-62259-5
W	PA/PSO 871	WHOLEY	PERFORMANCE AND CREDIBILITY	FREE PRESS	0-669-11680-7	W	PSY 850	KOENEN	TOURISM	HC	0-06-501502-8
W	PE 230	HARRIS	DANCE A WHILE	MACMILLAN	0-02-350581-8	W	PSY 850	KENNEDY	HUMAN SIDE OF ORGANIZATIONS	BROWN	0-697-10965-8
W	PE 232	ARNHEIM	PRINCIPLES OF ATHLETIC TRAINING	MOSEY	0-8016-6964-7	W	PSY 850	LEOPOLD	SPECIAL RECREATION	BROWN	0-697-10965-8
W	PE 332	ARC	LIFEGUARDING	ARC	0-86536-161-9	W	PSY 850	LEOPOLD	SAND COUNTY ALMANAC	BALLANTINE	0-345-34503-3
W	PE 332	ARC	STANDARD FIRST AID	ARC		W	PSY 850	LEOPOLD	HOTEL AND TRAVEL INDEX	REED TRAVEL GROUP	
HALF	PE 336	STALLINGS	TEACHING BASEBALL	SOUTHERN UNIV PR		W	PSY 850	WEISSINGER	HOTEL/MOTEL OPERATIONS	SW	0-538-70013-0
HALF	PE 337	NICHOLS	MOVING & LEARNING	MOSEY	0-8016-7770-X	W	PSY 850	AMROSE	MUSEUM BASICS	ROUTLEDGE	0-415-05770-1
W	PE 338	PANGRAZI	DYNAMIC PHYSICAL EDUCATION FOR ELEM CHILDREN	MACM	0-02-360891-X	W	PSY 850	FINK	HOW TO CONDUCT SURVEYS	SAGE	0-8039-2456-9
W	PE 352	LUMPKIN	PE & SPORT	MOSEY	0-8016-7822-6	W	PSY 850	PUBLIC INT. PUBLIC RE.	PROMOTING ISSUES AND IDEAS	FOUNDATION CENTER	0-87954-192-X
W	PE 354	HALL	BASIC BIOMECHANICS	MOSEY	0-8016-2087-2	W	PSY 850	PETERSON	THE THERAPEUTIC RECREATION PROGRAM DESIGN	PH	0-13-914839-6
W	PE 354	PAUL	LAB GUIDE FOR ANATOMY AND APPLIED KINESIOLOGY	SOUTHERN UNIV PR		W	PSY 850	AUSTIN	LEARNING MEDICAL TERMINOLOGY	MOSEY	0-8016-0175-4
W	PE 435	STALLINGS	PSYCHOLOGY OF COACHING AND PLAYING SPORTS	SOUTHERN UNIV PR		W	PSY 850	AUSTIN	THE THERAPEUTIC RECREATION AN INTRODUCTION	PH	0-13-914771-3
W	PE 551/751	AUTER	PRINCIPLES & METHODS OF ADAPTED PE & REC	MOSEY	0-8016-6749-6	W	PSY 850	HOWARD	FINANCING, MANAGING & MARKETING REC & PARK RE	WCB	0-69

LETTERS TO THE EDITOR

Dear Editor,

This letter is in response to the letter by Saudia Jameelah Abdullah in the Tuesday, Nov. 8 paper. There are several questions that Miss Abdullah has asked in her letter and there are several things that I'd like to shed some light on for her.

First of all, she asked how can there be reverse discrimination on this campus. This is a good question because no question is stupid, but follows the question with "What the hell is it (reverse discrimination)?" How can you know if reverse discrimination exists or not if you don't even know what it is? So just in case you never learned who Noah Webster is, I took the liberty of looking up the definition for you.

Reverse Discrimination: noun discrimination against white persons or males resulting from preferential policies intended to remedy past discrimination against minorities or females.

Again Miss Abdullah, since your vocabulary consists of mostly four letter words, I'd like to explain this to you. In simpler terms, reverse discrimination is discrimination by minorities or females that have been oppressed and want to "make things better" by treating their oppressors, which are white people or males, the way they were treated in the past.

So now that I have answered your question "what is it?", I'd like to answer your question "How can there be reverse discrimination on this campus?" The answer is easy because there is reverse discrimination all over the United States, not just Georgia Southern University.

For example, my father was filling in as head of the English department at a college here in Georgia. He occupied this position for a full year. Then the position became open for applicants, so my dad having taught at this school for 20 years with his Ph.D. applied for the position. Unfortunately, my father was rejected for this reason ... he

was not black or female. This, my friend, is a perfect example of reverse discrimination. If my father had been black or female, he would have gotten the position whether he was qualified or not.

Miss Abdullah also said not to "worry if she calls her boy a nigga as long as we don't call him one." So be it! If she wants to degrade her race, then let her! It is not hurting us that she thinks "her people" are not worthy of being referred to as anything less insulting.

I'd also like to address the girl that wrote the part of the letter regarding the Georgia flag. I know it wasn't Miss Abdullah because I heard an African-American girl in the Union bragging that she wrote it. She said to her friend, "That part about the flag, that's mine! She (Miss Abdullah) made me do it ... she forced me to do it!" Now I ask, how can anybody MAKE you do it?

It's true that the flag is part of our heritage, however, it is part of your heritage too because you live here. It is also true that our ancestors were fighting for states' rights, your ancestors were fighting for freedom. However, you should consider yourselves lucky because our ancestors lost the cause they were fighting for. If the South had won, you yourself may have been a slave today! So the flag should mean something to you as well as us! Every time that flag flies it represents struggles we as a state have overcome.

This country wasn't built by one group of persons. And Christopher Columbus wasn't white. He was Italian. He gets recognition for "discovering America" because he was educated and could communicate back to other parts of the world. The Indians didn't know there were other countries and if they did they could only communicate with themselves!

So you see, there is more to history than just your side! What about the Irish, the French, the

Spanish ... all the people that came here and made us what we are today?

I also have a hard time understanding why you say your people are still in bondage when bondage means 1) slavery or involuntary servitude, 2) the state of being bound by some external power or control, 3) the state of being tied up for sexual gratification. As far as, I can see there is no need to say you are in bondage when no one here has slaves, no one is controlling you and unless you are into kinky sex no one is tying you up.

African men and women have the same opportunities as white men and women in this country. Many African American people have taken these opportunities to become who they are today. No one puts down someone who is successful. They usually admire them, unless they are jealous of them.

So it seems to me Miss Abdullah and friend, that you are so worried about the white people that you are not taking actions for yourselves. If you would stop living in the past and start living now and for the future, then maybe there wouldn't be so much tension.

It is a fact that slavery happened. I don't agree with it, but I was not there and neither were you! The only way that things will change is if we make them change! There is an old saying that history repeats itself and I believe that it could be true if people's attitudes don't start changing. We can't change the past but we do have control of the future and are responsible for it.

Like me, there are many white students on this campus who are not prejudice. However, there are a lot of people who are tired of this kind of attitude. I have spoken with several of my African-American friends and they agree with me. Things won't change unless attitudes change! The choice is yours!

Jennifer Thurman
An Educated White Woman

Dear Editor,

In regards to the letter "If reverse discrimination exist, good," written in *The George-Anne* on Nov. 8, why did you even print it?

You, as an editor, should have known better than to print something like that. If Saudia Jameelah Abdullah, or anybody else thinks that they have to be

racist, then let them, but don't print any of that racist crap in the student paper. This world has enough problems as it is.
A concerned student

NOVEMBER IS SONIC
JUMBO COMBO MONTH
JUMBO SAVINGS MONTH
WHY PAY MORE?

Offers Not Good With Any Other Coupons or Offers

- Deluxe Sonic Burger \$2.39 PLUS TAX
- Regular French Fries
- Regular Soft Drink
- Ex-Long Chili Cheese Cone \$2.49 PLUS TAX
- Regular French Fries
- Regular Soft Drink
- Country Fried Steak Sandwich \$2.89 PLUS TAX
- Large French Fries
- Large Soft Drink
- Breaded Chicken Filet Sandwich \$3.39 PLUS TAX
- Large French Fries
- Large Soft Drink
- Super Sonic Cheeseburger \$3.59 PLUS TAX
- Large French Fries
- Large Soft Drink
- Char Grill Chicken Sandwich \$3.59 PLUS TAX
- Large French Fries
- Large Soft Drink
- 2 Junior Burgers \$3.29 PLUS TAX
- 2 Small Fries
- 2 20 oz. Soft Drinks

DRIVE-IN • 322 South Main • DRIVE-THRU

TURKY'S AUTO SALES

WE RENT U-HAUL

TRUCKS & TRAILERS

We Sell U-Haul Boxes!

Across Town or Across Country

Reservations Accepted

Call 489-2808
Across from Wal-Mart

WANNA BE "ZIT-FREE" ?

Doctor Greenfield's

SELF-TREATMENT

FOR A CLEANER CLEARER COMPLEXION

YOU'LL FIND **Doctor Greenfield's** AT THESE CONVENIENT LOCATIONS:

COLLEGE PHARMACY — Plaza East
COLLEGE PHARMACY — Downtown

Dining & Entertainment Guide

Found Exclusively in The George-Anne's Gold Edition • Thursday, November 17, 1994

Cinema 9 Mugs & Movies

Statesboro Mall
489-4492

Tuesday
Ladies Night
1/2 Price

Thursday
Wing It!
25¢ Buffalo Wings

The Friendly Diner

In Front of Wal-Mart Parking Lot
489-3307

All You Can Eat Breakfast \$3⁵⁰

Cafeteria Style Lunch Buffet
Menu Service Available

Best Country Cookin' in Statesboro

Open 6:30 am - 3 pm • Mon-Fri

Legends Bar & Grill

Old Register Road
871-5349

Th Max's Birthday Party
F Swinging Medallions
S Ladies Night

11/18 Swinging Medallions
11/30 Dean Dollar tickets = \$3
12/2 Kichafoonee Cowboys
12/9 The Voice of Ted Nugent: Dereck St. Holmes

Buffalo's Cafe

Lanier Drive
681-3030

Thurs. Angie's Hope
Fri. The Drunks - their final Statesboro Performance
Monday Night Football with QB1
Tues. Bash Night - All U Can Eat Wings \$6⁹⁵
Wed. The Positions

The Country Club

Hwy 301 S.
681-9000

Thur, Fri, & Sat - DJ

Thur. Ladies Night
Mon. Monday Night Football
Tue. Pool Tournament
Wed. Dime Time

Vandy's

Statesboro Mall
764-3033

Pit Cooked BBQ Since 1929

Best Chicken Fingers in Town
Daily Specials
Ribs on Tuesdays

Catering Service Available

Video Warehouse

120 Northside Dr. E
489-4279

FREE Membership

Sun - Thurs 8:30 - 11 pm • Fri & Sat 8:30 - Midnight

NOW SHOWING:
Speed
Wyatt Erp

Previously Viewed
Movies on Sale for
\$9⁹⁹



Volleyball Tournament

GSU goes to Chattanooga, Tenn., to the Southern Conference Volleyball tournament. GSU will take on Western Carolina in the first round Friday at 7:30 p.m.

FROM THE SIDELINES

CAROLYN WYNN

Thank you, seniors

For our Eagle seniors, last Saturday's home game was more than just another victory at Paulson Stadium. For them it was the last time they may ever play on Glenn Bryant Field, in Paulson Stadium.

And so as I watched the Eagles crush Glenville State it occurred to me that this is the last class of seniors who were members of the team that brought home the last National Championship. In that instant I couldn't help but feel a little sad. It is almost as if it is the end of an era.

It also occurred to me that with this year's shaky season the talents and efforts of these 18 gentlemen may have been overlooked. How quickly the fans have forgotten that just last year we did win the Southern Conference title. And just in case you haven't noticed, we are passing more, the offense looks a lot better and the potential and talent that will remain on the field next year is incredible.

THE REAL FANS OF EAGLE FOOTBALL KNOW THAT YOU ARE ALL CHAMPIONS BECAUSE "REAL MEN DO BLEED BLUE."

In the midst of all the finger-pointing we have forgotten a very special group of guys. A group of guys that have nothing to do with who's on the scoreboards, or whether you dislike the coaching staff. I am talking about the players.

Saturday may have been the last time you will ever hear the announcer yell out names like Michael Morris, Paul Carroll and Joe Dupree over the loud speaker. But instead of acknowledging the contribution by these student athletes we rather point out the negative.

When these men got here they arrived in the shadow of three National Championships and the Erk Era. However, even under all this pressure these men have produced memorable moments for all of us.

For a number of years the seniors have endured early morning workout and afternoon practices. They have endured the sweltering heat of early August football camp with sweat pouring from their temples as their bodies are pushed for that last drop of energy. They have suffered the pain of injury and endured the fickle favor of the crowd. All for the sake of the "TEAM."

To these men, Saturday was the beginning and the end for a way of life they have known for the past four to five years. No one knows what the outcome of this season will be, but this 1994 class of seniors have proven that they don't give up easily.

So to all the seniors on behalf of all the true fans, thank you for four years of excitement. Thanks for all the hits you've ever taken. Thanks for every ball you've ever thrown or caught, every yard you've ever ran and every quarterback you've ever sacked.

We know it hasn't been easy, but somehow you've made it through. The real fans of Eagle football know that you are all champions because "Real Men Do Bleed Blue."

Citadel is last stop on GSU schedule

After beating VMI last week, Bulldogs are hoping to trounce GSU

By Carolyn Wynn
Staff Writer

This week the Eagles travel to Charleston, S.C. to face off against the Bulldogs of The Citadel for the last regular season game. The Bulldogs are currently 5-5 and are ranked fifth in the Southern Conference.

After defeating VMI last week, the military cadets are planning to march over our Eagles to avenge last year's 16-6 defeat. This is the last game of the regular season for both teams, and it stands to be a tough one. The Citadel leads the nation in rushing with an average of 394.6 yards per game and offensively is one of the toughest teams in the Southern Conference.

However, with the talent of the Eagle defensive squad, this Bulldog-Eagle match-up will be well worth a trip to Charleston. This will be the first time The Citadel will host the Eagles in the "Boneyard" of Johnson Hagood Stadium.

One highlight of this week is that senior linebacker Paul Carroll has been selected team captain by the Eagle travel squad. The other co-captains named were senior linebacker Danny Britt, senior defensive end Michael Morris and senior offensive lineman Frank Stephens.

With regards to Saturday's game, GSU Head Coach Tim Stowers said, "There is no doubt

that The Citadel will be ready to play."

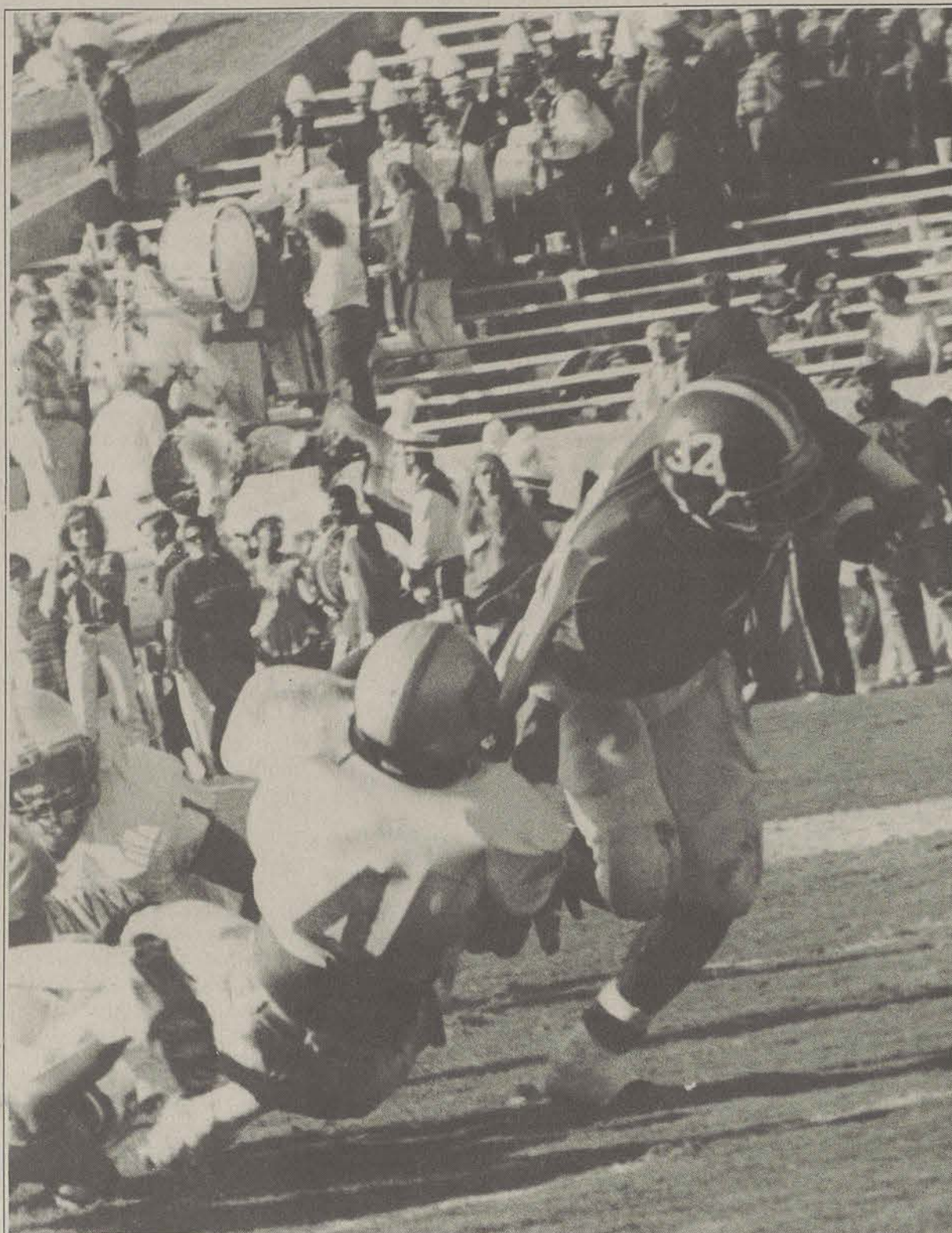
The Citadel's Head Coach Charlie Taaffe said that the game "Is the first chance we have had to host Georgia Southern. They are on a roll. We need to play inspired football to have a chance to win."

Bulldog players to watch are sophomore offensive lineman Levi Davis and quarterback C.J. Haynes. Defensively, players to watch for the Bulldogs are: T. Derek Beres, and senior linebacker Tracey Gamble.

Currently, the Eagles are ranked 24th in the nation and are ranked third in the Southern Conference.

FOOTBALL NOTES: GSU

ran for a conference and school-record 665 yards and nine touchdowns in Saturday's 66-13 victory over Glenville State last Saturday ... The 665 yards broke the conference record of established by East Carolina against Virginia in 1975 ... GSU also set records for scoring and total offense — the previous high for points was against Marshall in 1989 and the record for total yardage was set against East Carolina in 1984 ... GSU and Glenville State combined for a I-AA record by having a total of 779 yards rushing in the game ... With the win, GSU clinched its 13th consecutive winning season ... the Eagles have not had a losing season dating back to their 2-8 record in 1941 before the football program was discontinued.



Elizabeth Hayes
Slotback Marlow Warthen is taken down by Glenville State linebacker Brian Johnson. Warthen rushed for 75 yards on eight carries for the day.

VOLLEYBALL

'New season' to begin with Western Carolina

By John Munford
Sports Editor

To hear Volleyball Head Coach Dee Nichols tell it, the Lady Eagles are about to embark on an entirely new season. In reality, they are heading to face off against sixth-seeded Western Carolina in the first round of the Southern Conference Tournament this Friday in Chattanooga, Tenn.

Nichols said thinking about the tournament as a new season gives a mental advantage to the Lady Eagles.

"We started talking about that last spring," she said. "We knew we were coming back this season with a lot of experience and there wouldn't be much of a change. Just like every team we have our roller-coaster ups-and-downs, but I think the ladies know when it's time to get serious and play hard."

The Lady Eagles got a break in the tournament before it even began as they received the third seed by virtue of a tie-breaker rule. After the season ended on Sunday, GSU was tied for third place with East Tennessee State University — both teams had identical 8-6 conference records.

Southern Conference officials then chose to give a look at the team's head-to-head records, which didn't help any since the two teams split their season series with one win each. To make

matters even further complicated, the next tie-breaker would have gone to the team with the best record against the top team in the conference, Appalachian State. But no team in the conference could beat the Lady Mountaineers this season, who were a perfect 14-0 in conference play.

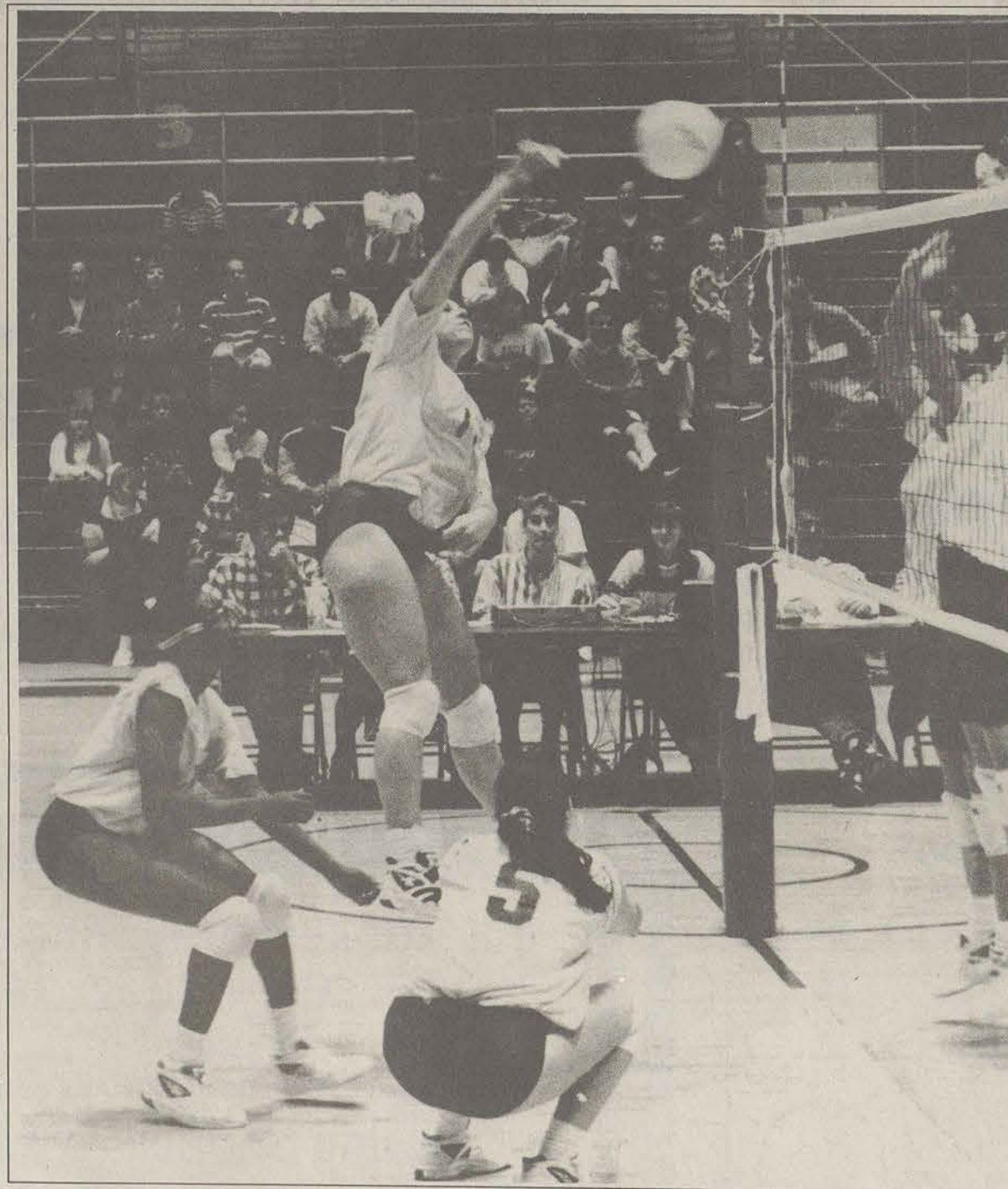
Officials then deferred to the third tie-breaker rule which finally settled the matter. The Lady Eagles topped ETSU by the virtue of defeating Furman once this season, while the Lady Buccaneers lost both of their matches against the Lady Paladins.

After Monday's practice, Nichols told the Lady Eagles to take the tournament one game at a time. Nichols feels that Western Carolina's 5-9 record doesn't correctly indicate the threat that they pose to GSU, who lost to the Lady Cats on the road in a five-game match earlier in the season.

"They run a really quick offense," Nichols said. "They have a really good setter, Kristin Baxter, who is kind of the quarterback of the team. They also have middle hitter Emily Tillotson (.254 hitting percentage) who has been player-of-the-week and she is really strong."

The Lady Eagles seem to have the upper hand, at least on pa-

Please see SEASON, page 10



James Hill
Outside hitter Alexis Dankulic takes to the air for a kill attempt. Dankulic recorded her 2000th kill this weekend, a GSU record.

SPORTS OPINION

I'm dreaming of a playoff berth (and Coach Stowers giving birth)

THE SPECTATOR

JEFF WHITTEN

It was one of those dreams that didn't make much sense. First the GSU football team

makes the 16-team playoff field, then my dog Bubba digs up Sammy Davis Jr.'s corpse, which somehow had gotten into dad's backyard.

Then a lovely-chested girl in a leopard-skin bikini gives me a case of Schlitz beer and the keys to a tail-finned Cadillac convertible and I'm stupid enough in the middle of this dream to ask why. And then

Tim Stowers delivers quadruplets, his own, and afterwards proves he's okay by eating everyone's pocket change and drinking my Schlitz.

I think serial killers have dreams like these.

And probably third-rate sportswriters, like me.

But the dream, especially the part about GSU making the playoffs, got me to think-

ing.

Would it be so bad if GSU didn't make the playoffs?

For some the answer would be yes, because they think a season isn't successful unless GSU wins the national championship. These are also those folks who plan their autumn Saturdays around Eagle football and when it ends in the middle of November (as this

season might) they are left with nothing much worth doing except boring stuff like planning Thanksgiving dinners, Christmas shopping and studying for finals.

And who in their right mind would want to do that when they could be watching Kenny Robinson and company

Please see PLAYOFF, page 10

IN THE ARTS

GSU dramatic duo presents political aspects of Shakespeare

By Derek Lewis
Features Editor

Rohan Quince and Dando Kluever, the dramatic duo who brought Jonson's work "Volpone" to the stage earlier this year, will be presenting a collection of Shakespearean works called "Sexual Politics in Shakespeare."

Three years ago the duo presented another collection of Shakespeare's plays entitled "Shakespeare: Mask and Meaning." This work was taken to several colleges in South Carolina, Virginia and Georgia.

"We are interested in the control of female sexuality by men," Quince said.

The duo will be presenting selections from "The Tempest," "Hamlet," "Romeo and Juliet," "The Taming of the Shrew," and many others.

One interesting aspect of this production is the presentation of different interpretations of a particular scene. For example, Quince said they would be presenting the same scene in "The Tempest" in order to show different interpretations of a scene.

"We are interested in the idea of performance as interpretation, so that the meaning of the play is constructed in performance," Quince said. "You have the text as a sort of blueprint, but you can

take it into different directions. And it isn't until you actually put it on the stage that you fix the meaning.

"That is not to say that a play has only one meaning, it can be

**"WE ARE ASSUMING
THAT MOST OF THE
AUDIENCE WILL NOT
HAVE READ ANY OF
THE PLAYS SO WE GIVE
PLOT BACKGROUND."**

— ROHAN QUINCE

seen in a variety of ways, but you can certainly direct the way that you want to interpret it and respond to it," he said.

The pair then moves into the idea of males playing females on stage in the Elizabethan theatre. Quince said they are playing with these gender roles in order to see whether the play reinforces the idea that women are controlled in a patriarchal system, or whether it softens the impact by showing it in a more comical light.

The final section will explore the humor of misogyny through

what Quince described as "a very humorous send-up of ugly women."

The thespian two-some have made sure the audience will not be left in the dark concerning these works or the interpretations which follow.

"We are assuming that most of the audience will not have read any of the plays so we give plot background all the way through, including who the characters are, what has happened so far, and what happen afterwards," Quince said.

He said he hopes that the presentation will draw in all types of people.

"We are trying to pitch it at a wide range from the people who haven't seen Shakespeare before and know nothing about theory, and hopefully, also to professors who find this work interesting and illuminating as well," Quince said.

Quince has been a fan of Shakespeare for a long time. Quince explained "there are so many wonderful roles in Shakespeare's plays."

The play will be presented this Monday at 8 p.m. in Communication Arts Building room 101. It is free to the public. Seating is limited.

IN ENTERTAINMENT

'Hamburger' hams it up at GSU

By Chris Hall
Staff Writer

Last Thursday, GSU got a taste of the big time when Alonzo "Hamburger" Jones turned the Union Ballroom on its ear.

The Ballroom was filled to an approximately 600-person capacity to hear the unique style of comedy which "Hamburger" brings with him everywhere he goes.

After the show, Jones hung out for a while signing autographs and talked to people about how he got started in comedy.

Jones began honing his comedic edge in his hometown of Elizabeth, N. J.

"I got started in comedy because I hated my job and people have always told me that I was funny," Jones said.

Jones has made a name for himself in the comedy world with his biting humor which addresses everything from "track and field hair" to how a man should treat a woman.

"Hamburger" has made several appearances on Russell Simon's "Def Comedy Jam."

His next project is another performance on "Def Comedy Jam," which is set for taping in January. Jones said it should be on the air "toward the beginning of next year."

Jones had a lot of good things

to say about the audience at GSU. some other prominent comedians headed in this direction. It's a great school and the students deserve it."

"It was a great crowd, very responsive and energetic. I had a lot of fun," Jones said. "I'm going to try to get



Union Productions brought a great talent and a night of incredible laughs to GSU when Alonzo "Hamburger" Jones came to town.

Art Search

Miscellany

Prizes offered for exceptional submissions in short stories theater poetry visual art.

entered works will be considered for

Miscellany 95

Submissions due
Nov. 18

IN COMMUNITY

Special Olympic kids need a helping hand

By Kim Wagner
Senior Staff Writer

After lots of hard work and practice, 90 to 100 well-trained Olympians are scheduled to compete in the Special Olympics that will be held at Grady Street Gym tomorrow from 9:30 a.m. to 2 p.m.

Special Olympics are intended for children with special needs, explained Laura Rouse, coordinator of this year's Special Olympics.

These participants are children with intellectual and physical disabilities.

But "most of all, this (Special Olympics) is just for the kids to go out and have a good time," Rouse said. "This is really a rewarding event for the kids."

The participants in the Special Olympics range in age from kindergarten to high school seniors.

The events featured in the Special Olympics include basketball, floor hockey, bowling and roller skating skills.

At this time, more volunteers are needed to help out with the upcoming event.

"Volunteers will work as scorekeepers. They'll greet parents and other people at the door. They'll time some of the events, and some will cheer and encourage the kids," Rouse said.

So far there are about 40 volunteers.

"We need people at all places at all times, so anyone who wants to volunteer can," Rouse said. "This is also a very rewarding experience for the volunteers."

In addition to the volunteers and the Olympians, the mayor of Statesboro, the fire and police chief, a pep band from GSU, the GSU cheerleaders and the well-known GSU Eagle will also be attending the event.

Plans for this year's Special Olympics began in August.

"We've been working on this for a long time," Rouse explained. "We had to go around and train the kids at the schools, and people had to be certified before they could become coaches."

Anyone interested in volunteering at the event should call the Statesboro and Bulloch County Recreation Department at 764-5637.

Attention!

The G-A is looking for a few good writers. If you've got what it takes then come by Williams Center rm. 223 to apply.

Fall Concert
GEORGIA SOUTHERN UNIVERSITY
DEPARTMENT OF MUSIC

PRESENTS THE

Southern Choral

and

Southern Womens Choral

Anita P. Davis, Conductor

Sheila McKee, Piano

Faculty Brass Ensemble:
William Schmid, trumpet
Alice Schmid, trumpet
Amy Handelman, french horn
Harry Arling, trombone

Tonight - 8:00 pm
First United Methodist Church
Statesboro, Georgia

"The Feel Good Emporium"

Invites you to choose from the most unique and interesting selection of
Clothing And Gift Items
this Holiday Season with a special offer.

\$5⁰⁰ Off

any purchase of \$30⁰⁰ or more with this coupon.
Offer expires 11/23/94

Monday-Friday 10-7
Saturday 10-6
Sunday 1-6

600 Northside Dr.
Statesboro, GA
764-2794

Looks like a Vivarin night.

The big one's only 12 hours away. You could have paid more attention in class, but tonight you've gotta cram. First, you better keep those eyes from closing.

Revive with Vivarin.

Safe as coffee, it helps keep you awake and mentally alert for hours.

So when your most difficult problem to solve is how to stay awake...make it a Vivarin night!



Revive with VIVARIN®

Use only as directed. Contains caffeine equivalent to 2 cups of coffee. © 1993 SmithKline Beecham.

Top 10 on-campus hang-out spots

10. Newton Commons.
9. Comm Arts Building.
8. Landrum lounge.
7. Front of Biology Building.
6. Henderson Library.
5. Foy Building.
4. Union Rotunda.
3. Lakeside Café.
2. University Store commons.
1. Russell Union.



JOSH BASS

It was good to see so many people at the Pulse show last Thursday at Blind Willie's. The PA sucked but the support for local music was great.

Everyone that heard Taj Mahal Monday was highly impressed. Thank's to UP for making a good choice.

This week has way too much to offer; such a difficult decision should not have to be made by one person in one night.

Blind Willie's has some southern boogie Friday with Uncle Mingo and Roscoe.

Friday is also a good night at Legends. Adored party-pleasers The Swingin' Medallions headline with Elysian Fields opening up.

The Medallions need no introduction and Elysian (pronounced lesion) are out of Atlanta and are said to be pretty damn good; along the same lines as Donkey and the Medallions. Count on a good beverage deal as an added bonus.

Chena's is a winner Friday again with Athens mad-men the Fuzzy Sprouts. A cross between Chickasaw Mudpuppies, Flotsam and Jetsam and Elvis, the Trio have the unique talent of getting into trouble without really doing anything wrong. Good stuff, lotta fun.

Anyone interested in having an outdoor concert with at least four bands such as Widespread Panic, Allgood, etc. needs to drop me a line here at the G-A.

It could decide whether or not it happens.

Oh, yeah it would be off-campus.

'Shawshank' is just better

By Eric Bray
Staff Writer

I highly recommend "The Shawshank Redemption" to everyone who's not a member of the entourage of schmucks (including myself) who caused "Interview With the Vampire" to sell out every cotton-picking showing this past weekend. I might even venture to say "The Shawshank Redemption" is by far a better movie.

Tim Robbins ("Jacob's Ladder") stars as a wealthy banker who is framed for the death of his wife and her lover. He is convicted and sent to Shawshank Prison where he befriends Morgan Freeman ("Driving Miss Daisy"), the penitentiary's resident black market procurer.

The movie is based on the short story "Rita Hayworth and the Shawshank Redemption," a Stephen King story from the same anthology as "The Body," on which "Stand by Me" was based.

Both show that King is actu-

ally capable of writing drama material in addition to thick horror novels. It's not all story though. The screenplay is remarkable; many scenes are powerful and moving. The cinematography, lighting and music are all competent.

This may be my favorite performance by Robbins. Not only is his acting effective, but his character is a cool, silent type. He manages to remain dignified, even after being sodomized by four male Caucasians in prison.

Freeman delivers his usual excellent skill as the simple yet wise and moral old codger. The bond that forms between the two is touching.

Robbins never goes all goopy and says, "You're my best friend," but he conveys an undeniable kinship nonetheless through his cold exterior.

The plot unravels well, follows Robbins as he becomes accustomed to and accepted into his new environment, shifting to utter despair as he becomes sub-

ject to the exploitation of the warden and the chief guard, two of the most evil characters you would ever want to serve time under. These and the other acting performances are superb with few big-name actors to boast of other than Robbins and Freeman.

Robbins is repeatedly thrown into solitary confinement, and the time takes its toll on him. By the end of the movie he is gaunt and graying, thanks to an excellent make-up job. The story reveals itself in an excellent fashion. Scenes are replayed again later in the movie with a hindsight that explains everything.

Parts of the movie are disturbingly realistic through the portrayal of prison life, but ultimately the film is fantastic. This is intended, though, and fits in with the escapist moral of hope.

The movie concludes with a happy ending, and you won't mind feeling satisfied with this when you walk out of the theater.

A sweet innocent voice

Superstar
Superstar
(SBK Records)

By Kymm Reynolds
Staff Writer

I can't help thinking of Jellyfish when hearing this group of four fresh guys from Glasgow, Scotland. They've got that same syrupy sweet sound your body can only take so much of.

Though Superstar has been described as sounding like the Beach Boys-meet-Big Star, I just don't see, or rather, hear it. But then again, I'm not too familiar with "Help Me Rhonda."

The 11-track CD doesn't quite make me want to hurl. Lead singer and songwriter Joe McAlinden does have a sweet, innocent voice perhaps too sweet. There's no twist to his voice to make it stand out from any other good singer.

One of the pleasant surprises is the wide variety of instruments used, from the French horn to a cowbell. The use of trombone during the chorus on track 6, so cleverly titled "I Can't Help It," was different (different being good).

"Don't Want to Die" was one of the most enlightening and pleasing-to-the-ear songs. It starts off with a burst of beautiful classical music, then violins drift you effortlessly into the mel-

lowness of the song that is hiding around the corner. Once you get there, you sink into McAlinden's thickly drowning voice raising into a soft soprano. The song is pure delight.

"Feels Like Forever" is annoying. The monotony and stupidity of lyrics like "It goes on and on and on... feels like forever" simply annoy me, even when I'm pre-PMS.

There are some simply marvelous guest performances on the album from Big Star's Alex Chilton, who drips coolness, and McAlinden's 62-year-old father.

When all of my neurotic impressions of this CD fall together, it is somewhat clear that I think Superstar could be worse and has the potential to be better. If you've got a sweet tooth, then McAlinden's voice and the intermingling classical instruments could prove satisfying.

In order to avoid sugar overload, I'll have to limit my Superstar intake to one song a day.

These four young guys had the wit and cleverness to christen themselves with the pretentious name Superstar and then put out a self-titled CD. With a little raw talent thrown in with the wit and cleverness, this band just might live up to their name. But then again Clinton might grow his hair long and join a rock group.

MUSIC REVIEWS

French has nothing to do with it

Janet Speaks French
The Planet Janet
(7 Records)

By Paul Ferlita
Staff Writer

A self-proclaimed rock'n'roll band based in New York City, Janet Speaks French's music is a mix of soul, rock, and hippie guitar ballads. Often, J.S.F. tries to imitate bands such as: Pearl Jam, Collective Soul, Stone Temple Pilots, or even The Velvet Underground, in an attempt to carve their niche in "alternative" music.

Their latest release is a sad attempt at a rock opera. The story

is based on a sinister physicist, Dr. Enrico, and his attempt to take over the world. The band is recruited by a woman, code named "Janet", to defeat the evil doctor.

The story is told through the songs on the record, but for those who just can't figure out what they are talking about, a comic book is included in the CD.

This is what I found to be the most innovative part of the album, because it helped to keep my mind off the music.

Just when I thought the music was the worst part of the band I discovered something interesting. I read that the

vocalist's proudest achievement is a month of vocal lessons with Michael Bolton. Then I truly understood this band's problem with originality.

\$3 RIDE ALL NIGHT

FROM PARTY TO PARTY, BAR TO BAR, AROUND CAMPUS

WE CHARTER GROUP TRAVEL FOR ALL OCCASIONS

Y-DRIVE SHUTTLE SERVICES



• DAY & NIGHT SERVICES AROUND STATESBORO
• HAPPY HOUR OR ALL NIGHTS TO SAVANNAH
• FRATERNITY AND SORORITY SOCIALS
• BEACH TRIPS
• LARGE GROUP MULTI VAN RATES

CALL FOR MORE INFORMATION

SPORTS TEAM TRANSPORTATION
BUSINESS - STUDENTS - PARTIES

meineke®
Discount Mufflers
Quality Undercar Specialists

FREE Inspection

- Professional Service
- Shocks
- CV Joints
- Exhaust Service
- Brake Service



Maximum protection against viscosity and thermal breakdown

Castrol® Oil Change
\$17.95

5 Qts. Oil • Filter • Lube

489-1881

219 S. Main St., Statesboro (across from Shoney's)

EXHAUST SPECIAL

\$15.00 OFF

Complete System Including Muffler, Connector Pipe, Tail Pipe

Coupon Expires 12-30-94

BRAKE SPECIAL

\$10.00 OFF

Including new shoes or pads, resurface drums or rotors and any other parts or service to restore the system to proper operating condition.

Coupon Expires 12-30-94

The Late-Nite Munchies change



Late Night Munchies

ed the way Rita felt about her goldfish.

Specials

Serving GSU/Statesboro

681-4326



PIZZA/WINGS
\$11.99 Plus Tax
Medium Pizza with 3-Toppings, and a 10 Piece Order of Buffalo Wings

Valid at participating locations. Not valid with any other offer. Customer pays sales tax where applicable. Our driver's carry less than \$20. Delivery areas limited to ensure safe driving. © 1994 Domino's Pizza, Inc. CALL NOW! Offer ends 11/30/94

LG. DOUBLE DEAL
\$12.99 Plus Tax

TWO Large Pizzas, Each with 2 of Your Favorite Toppings

Add 99c for each Deep Dish. Valid at participating locations. Not valid with any other offer. Customer pays sales tax where applicable. Our driver's carry less than \$20. Delivery areas limited to ensure safe driving. © 1994 Domino's Pizza, Inc. CALL NOW! Offer ends 11/30/94

YOU TOP'EM

\$5.99 Plus Tax **\$7.99** Plus Tax **\$9.99** Plus Tax

SMALL MEDIUM LARGE With Up to 3 Toppings

Add 99c for Deep Dish on Medium & Large. *Small Pizza available in Classic Original Only

Valid at participating locations. Not valid with any other offer. Customer pays sales tax where applicable. Our driver's carry less than \$20. Delivery areas limited to ensure safe driving. © 1994 Domino's Pizza, Inc. CALL NOW! Offer ends 11/30/94

CARRY OUT

\$5.99 Plus Tax

Large 1-Topping Pizza

Add 99c for Deep Dish. Valid at participating locations. Not valid with any other offer. Customer pays sales tax where applicable. Our driver's carry less than \$20. Delivery areas limited to ensure safe driving. © 1994 Domino's Pizza, Inc. CALL NOW! Offer ends 11/30/94

CARTOONS

CLASSIFIEDS

CROSSWORD

01-Announcements

ATTENTION: The George-Anne screens all classified ads prior to publication. The newspaper strives to accept ads for legitimate products & services only. Students are urged to exercise caution when replying to ads, particularly those which ask for money or a credit card number in advance of delivery of products or services. Students are also urged to report to the newspaper (at 681-5418) any suspicious offers they might see in the classifieds. Remember, if an offer seems too good to be true, it probably is.

GSU Equestrian Club and Wolfpen Equestrian Centres host a local horse show on Nov. 12, 1994. Call CRI at 681-5436 for more info.

OM-Odyssey of the Mind, is holding tryouts for new team members to represent GSU in World Competition. If you can act, sing, write scripts, build small sets, can make people laugh, or just love to have fun. Come tryout Monday Nov. 21 at 6pm in the Henderson Library Rm. 331. For info call Scott 681-6146

The last meeting of Gamma Beta Phi Society will be held Thurs. Nov. 10 at 7:00pm at Marvin Pittman Auditorium.

03-Autos for Sale

1983 Black Ford Ranger Pick-up for sale \$1000. Call Adam at 681-9075. Runs good needs slight work.

1983 Cadillac de Ville for sale: great cond., new electronic systems, loaded! \$2,300 (firm) call 1-800-402-7546 (beeper) or 368-4980 (Hinesville) after 7:00pm

1987 Mercury Sable (station wagon), LE, New transmission, V6, great appearance. Call 681-8848 for details.

1988 Cutlass Supreme Int'l. Excellent condition. Buying new car. Power everything at a low, low price \$4495 or best offer. 681-9106

For Sale: '86 Pontiac Sunbird 4dr, \$950 or best offer. Call Jeff at 489-5877. Leave message.

MUST SELL! '84 Mitsubishi 4x4 Looks and runs good. 2,900 Firm! Work 764-8922 Home 764-7952. Ask for Hayward.

04-Auto Parts, Repair

Four Goodyear Wrangler tires, P205 75 R15. Only 5,000 miles-low wear, and new 1994 Jeep rims accompanying. \$300 Call Scott 764-4238

09-Furniture & Appliances

For sale: King size waterbed \$100. Call 681-7841

King size waterbed 8 drawer 2 cabinet pedestal. Double mirror headboard w/cabinet. 1 set of sheets \$200. 681-2232

Rust colored swivel rocker \$20. Firm. 681-2232

Sleeper sofa Autumn colored fabric \$75 Firm. 681-2232

Wanting to sell: One satellite dish, Uniden receiver and decoder. Also one color T.V., sofa, bedroom set.

11-Help Wanted

\$FINANCIAL AID\$
ATTENTION ALL STUDENTS
Over \$5 billion in FREE Financial Aid is now available for students nationwide from private sector grants & scholarships! All students are eligible regardless of grades, income, or parent's income. For more info. Call 1-800-959-1605 ext. F53941.

Wanted!!!!
Individuals, Student Organizations and Small Groups to Promote SPRING BREAK '95. Earn substantial MONEY and FREE TRIPS. CALL THE NATION'S LEADER, INTER-CAMPUS PROGRAMS 1-800-327-6013.

HOLIDAY EMPLOYMENT

IN ATLANTA
Retail Xmas tree lots. Looking for 4 students. 15-20 hours per week. Must be hardworking + reliable w/ good references. \$5.50/hour + commission. (404)924-2824.

Are you an actor or actress? Need money? Call Nancy at 489-3161 from 1pm to 5:30pm Mon-Fri, Sat. 10am to 3:10pm

CRUISE SHIPS HIRING: Earn up to \$2,000+/mon on Cruise Ships or Land-Tour companies. Seasonal & Full-Time employment available. No exp necessary. For info. Call 1-206-634-0468 ext. C53942

STUDENTS
Over 120 American manufacturers need you to assemble products at home. Circuit boards, jewelry, holiday decorations, etc. Earn \$280 to \$652 weekly. Part time/full time. Experience unnecessary/will train. You're paid weekly. Call 1-602-680-7444 Ext. 1001C

The Dept. Of Residence Life is currently seeking qualified individuals for the position of Resident Assistant. Qualified applicants must have a minimum GPA of a 2.25, one quarter on campus living exp., good oral communication skills and the desire to work with students. Employment requires on campus living. Applications can be picked up at the Residence Life Office (Rosenwald rm. 10)

12-Lost & Found

Found: 2 pieces of jewelry. Have turned into South Building 116. Come in to describe and claim. 8-3pm.

Found: one gold necklace found between Herty Building and Williams Center. Respond to L.B. 18441 to claim

13-Miscellaneous for Sale

12" MTX woofer \$35. Call 681-7841

1994 SPECIALIZED STUMPJUMPER M2. Ringle, Onza, Grip shift equipped. New clipless pedals, shoes, cranks, bars, seat, Must see. \$900 OBO. Call Frank or Matthew 871-7030 leave message.

2 badminton rackets for sale. One was never used and the other was used for one quarter. Paid \$10 each. Only asking \$5. Call 681-8909

Cannondale Sport road bike-Good shape \$125 OBO. Call Joda at 852-5550 or 681-6780.

For sale: '94 Cannondale M800 18" Mtn. Bike. Great cond. Must see w/extras. \$800 neg. Call or leave message 871-6608

For sale: 1194 Cannondale M400 Black in excellent condition. \$450 complete w/car rack and lock. Call Jennifer 871-3320

For sale: Camo Army uniforms and some equipment. Call Travis 871-4382 for prices.

For sale: Drafting table(solid wood), mat, light, and instruments inc. LIKE NEW. \$350. Call 842-2484.

For sale: Radar detector. Bel 630. \$50. Call 681-8848

Graphic Calculator TI-82 w/Instruction Booklet. \$55. Call 681-6595 for info.

I am offering the ultimate Xmas present for the true college football fan. I have a limited amount of FSU Notre Dame official game posters for sale. LB 18769-Mike Engelberg.

MacIntosh Classic Computer for sale. \$400 OBO. For more info. Call Cindy at 681-3073

MTB for sale: 1992 Trek 930, lots of extras, \$600. OBO. Will nego. Price, you must see it to believe it, call Jake at 871-6971

Oceanic aquarium stand, fits 125 or 135 gal. Tanks, never used \$140. Also 2 AquaClear 802's, and 2 penguin 1140 powerheads, never touched-for more info. Call 681-8612

Set of Wilson Staff irons 3-PW, Wilson 1200GE metal driver + Wilson 3+5 wood, bag, matching headcovers all for \$170. Call Jay Mac 681-6039. Good starter set.

Soundblaster 8-bit sound card. All original software and registration materials included. Call David at 681-1130.

15-Musical

Bass player needed for country/southern rock band. Call Dan 871-4113.

Wanted: Lead guitar, bass, and fiddle/violin players interested in playing some up-beat country and southern rock. Don't wait, call today. 681-6601 ask for Steve or leave message.

16-Personal

Congratulations new sisters of Alpha Xi Delta. We love you!

Congrats to Delta Sigma Pi on their chapter B-Day on Nov 9; Delta sig Founder's Day on Nov 7.

Dearest Steve I am waiting for my surprise. I did make you brownies.

Good luck Delta Sigma Pi Fall Pledge Class. You've almost made it! Keep up the good work!

Mary and Carrie: You are loved. Your lasagna eating buddies

To my Town Club Princess. I brought you a pizza, but you were a sleep. Do you still think I am a cock?

17-Pets & Supplies

29 gal. Aquarium, full set-up, stand and extras. Plus 2 full grown oscars for \$190 w/o oscars \$170. Call Kristie 764-2021. Come see it.

For sale: male dwarf rabbit, litter trained, very affectionate. \$35 w/cage and accessories. Call Christa 681-6230 or 488-2500

19-Rentals & Real Estate

2br apts., 2br houses, 2br MHS-furnished and unfurnished and nice office. 764-5003

3 bedroom apartment w/pool for rent starting Winter Qtr. Call 764-1476.

Quiet neighborhood near mall. Duplex, available Jan 1, 1995. 2brm, 1ba, stove, ref., dishwasher, W/D hookup. 681-1252

Sublease for Winter needed. Own bedroom furnished. Free water, deposit will be paid first month. Rent also paid. For info., call Les 871-4274. Leave message.

Tired of your roommates or the dorm? Your bed's waiting at Eagle's Court. Shared 2 brdm, 2 bth, completely furnished, \$160/mon, \$200 sec.dep. Perfer white, non-smoker, female. Now through Summer lease. Call Beverly 681-8771.

20-Roommates

1 female roommate needed start January, own room. \$150 fully furnished except your room, quiet place on Valley rd condos, call Shanann 489-5978

1 roommate needed for Winter and Spring Quarters. Call Sharon Doster at (404)448-5246.

Female roommate needed for winter qtr. Private brdm, fully furnished except brdm. W/D, dishwasher, microwave, cable in brdm. Pets allowed. Minimum 3 mon. Lease. \$175/mon. 1/3 util. Please call Michelle 764-4326

Female roommate needed from Winter to Summer Qtr. Own bedroom at Player's Club \$222.50/mon. Split util. Apartment next to Pool. Call 681-3719

Please...
If you drink,
DON'T
DRIVE

" Up in the Air "

By Gerry Frey

ACROSS
1 Davenport
5 Broom
10 Mr. Flintstone
14 Cross words
15 Suit of
16 Excuse type
17 Close to
18 Poet John
19 Opera solo
20 Airplane manufacturer
22 Former airline
24 At the age of: Latin
25 Harass
26 Author Gertrude
29 Petrol
30 Memos
34 Type of surgery
35 Actor Holbrook
36 Dream
37 Aaron's tool
38 Early aircraft
40 Bikini part
41 Exemplars
43 NY's neighbor
44 Row
45 Bottle resident
46 Comes before voyage
47 Small nails
48 Played the film again
50 Snake
51 Whirlybird
54 Airplane engine type
58 Huge sandwich
59 Concur
61 Leisure
62 U.S. citizen
63 Dogma
64 Pasta
65 Plant part
66 Accomodate
67 Type of sch.

DOWN
1 Carol
2 Sunday punch
3 Wife in Munich
4 Lofty letters

© 1994 All rights reserved GFR Associates
P.O. Box 461, Schenectady, NY 12301

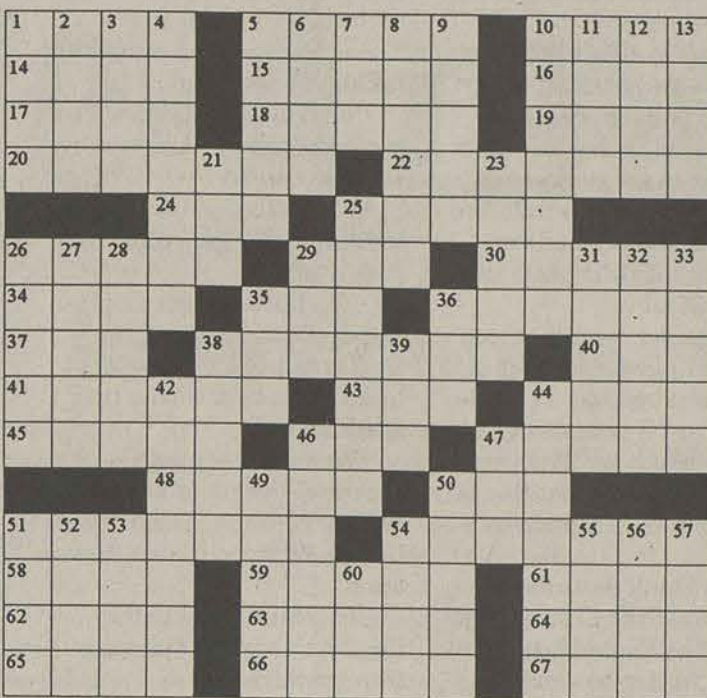
Female roommate needed to live in a 4 brdm townhouse in Campus Courtyard. Separate rooms! For more info, call 871-4907

Female roommate(smoking & non-smoking rooms avail.) Winter 95, Player's Club, \$161.25/mon., partly furnished. Pool, W/D, microwave. 871-7346 ask for Sonja.

Need 1 non-smoking female roommate for Winter-Summer Qtr. Campus Courtyard 2 brdm flat. \$200/mon. Fully furnished. Call 871-4164. If no answer, leave message.

Need female roommate \$200/mon + util. Master brdm, own bathroom, great roommates. Hawthorne 2. Call 871-7201. Ask for Jill.

Needed female roommate to sublease Player's Club 3 brdm. Apt. Private room bathroom. W/D, inc., Only \$200/mon. Call Stacy 871-6999. ASAP



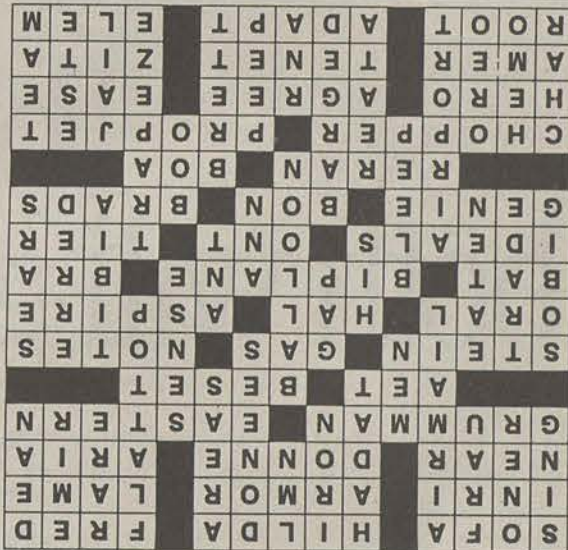
5 Assailed: 2 wds
6 Mangle
7 Follows "K"
8 Gift recipients
9 Regions
10 Aircraft carrier
11 Uncommon
12 Mideast prince
13 College official
21 Chess pieces
23 Common or horse
25 Gondola carrier
26 Ferber's novel
27 Commerce
28 Consumed
29 Mountain pass
31 Leg bone
32 Miscued
33 Montgomery Ward competitor
35 Towel word
36 Picnic pest
38 TV word censor
39 Columnist Landers

42 Hangar locale
44 Circus aerial
46 Entered rudely
47 Catcall
49 Lariat
50 Kansas City's George
51 Scorch
52 Blood prefix
53 Cookie type
54 Bird sound
55 Prison
56 Italian city
57 Athletic group
60 Ribonucleic acid:Abbr.

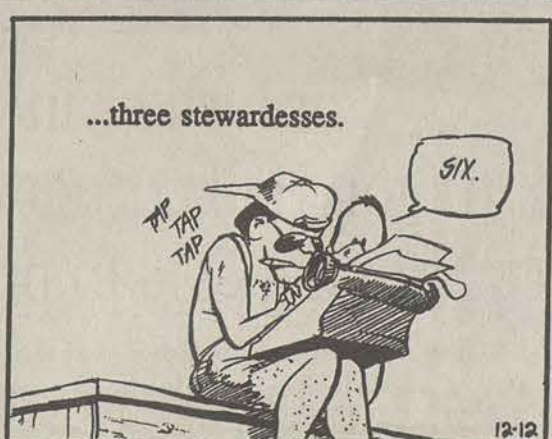
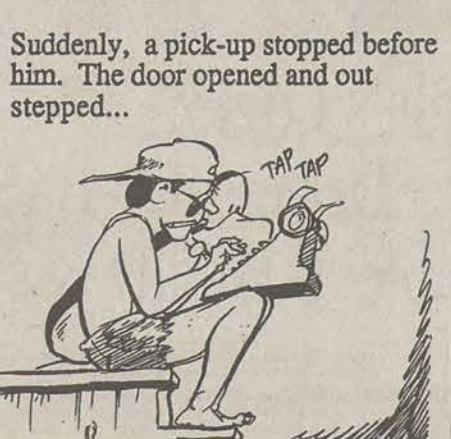
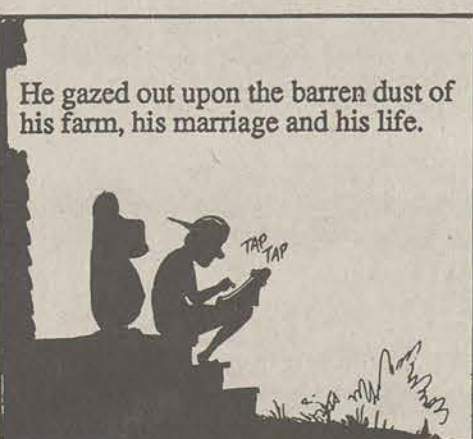
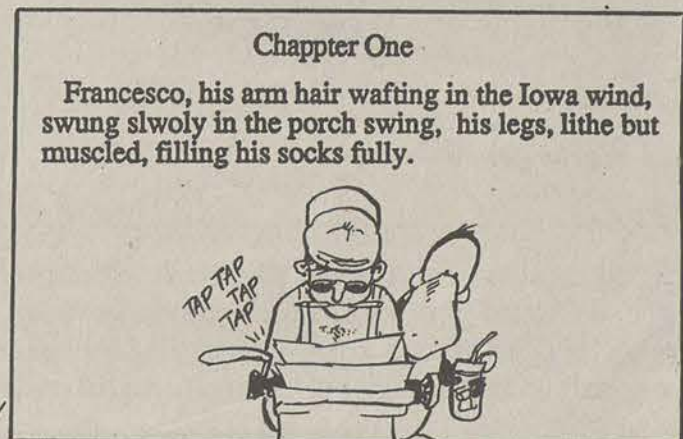
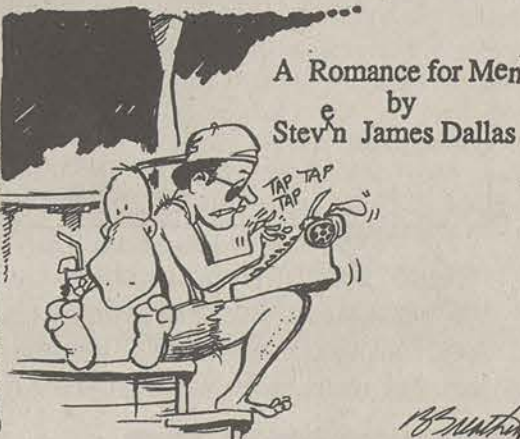
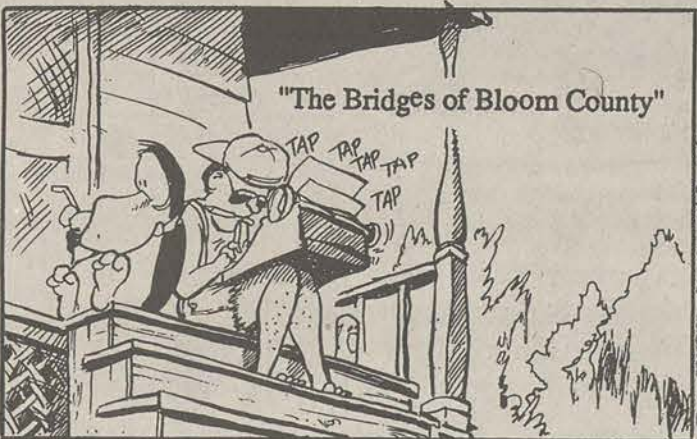
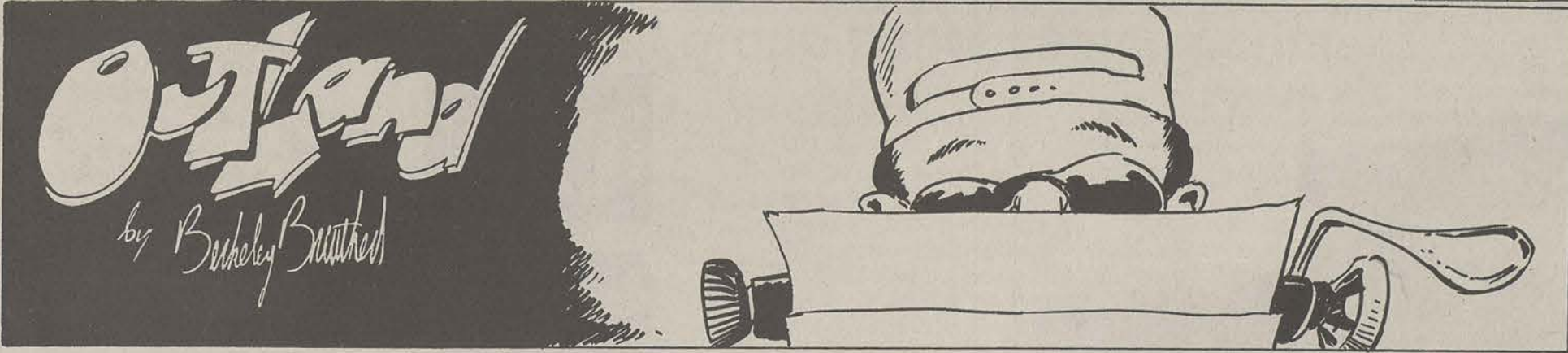
Quotable Quote

"It's only during an eclipse that the Man in the Moon has a place in the sun."

Anonymous



UP IN THE AIR



One roommate needed for Winter and Spring qtrs. Call Sharen at (404)448-5246.

Responsible female needed to share spacious 3 brdm house on Fair Rd. Only \$166.67 + 1/3 util. Local and friendly roommates. 681-9414. Leave message.

Roommate needed immediately. Georgia Villas #17 Fully furnished, W/D, shared bedroom. Only \$135/mon. Contact Regina or Valarie 681-6766

Roommate needed Spring Quarter. Move into house. Own room. \$180 rent per mon. Call 681-6682. Leave message.

Roommate needed Winter and Spring Qtr. Own brdm in large duplex near high school \$225/mon + 1/2 util. No smoking, drugs, parties, or pets. Ben Sides LB 21230

21-Services

PROFESSIONAL TYPING by Peggy Smith, secretary in History Dept. Please call at 681-6520. Leave message. Resumes, lesson plans, books, theses, etc. Competitive rates!

Resumes, lesson plans, research papers, etc. Word Perfect with laser printer. Call Brenda at 764-1486

23-Stereo & Sound

Kenwood 730 High Power Cassette Receiver has CD changer controls almost new in box \$225 Pioneer 4 way 6x9 speakers 160 watt new. \$100 Call Jay aft. 6 764-2609

24-Swap & Trade

Have many hrs of G D, Phish and WSP tapes to trade. Call 764-5664. Ask for Todd.

27-Wanted

One child's outdoor gym/play set. 852-5278

WANTED-Copy of 1978 and 1980 Reflector yearbook. Call Michael Dean (912)537-3196

Wanted: French 151, 152 textbook. Will negotiate price. Call 681-8167. Ask for Derek.

PLAYOFF

Continued from page 6
get another crack at Marshall or Youngstown State in the playoffs?

Besides, the Eagles deserve a shot. One problem is that there are a lot of other teams out there that are at least as deserving and GSU hasn't been treated kindly in the past by the selection committee or the pollsters. So the odds against the Eagles are probably long.

Now this is admittedly some premature speculating, because GSU has to beat The Citadel on Saturday before we can expect to get even semi-serious consideration from the playoff selection committee.

But what if GSU beats the Citadel 136-0?

Chances are even that won't make the Eagles a lock for a playoff spot, because as a rule teams with 7-4 records don't usually make it in. What we have to hope for is that this is the year for an exception to that rule.

Since I think Saturday's game against the Citadel is going to be the Eagles' last for 1994 (no matter how much I try to convince myself we're playoff bound), I've made a short list of reasons why GSU

won't get in.

Here goes.

•Bulloch County won't allow sales of liquor by the drink, by the bottle and any collection of bureaucrats so dead set against bourbon are bound to offend some pollster somewhere.

•Too many students wear ties to games, and certain parts of the stadium look like a Young Republicans convention taking a Coke break.

•The Bulldogs, Yellow Jackets and Falcons suck, so why shouldn't we?

•Newt Gingrich might come to a game and get stupid in a luxury box.

•Zell Miller might ask to throw out the first pitch.

•Our state lottery symbol looks like a butt with a twig stuck up it.

•We've already got Olympic beach volleyball, or wait a second, no we don't. That's Tybee Island. Wait, no it isn't. Never mind.

Congratulations to the Eagles, though, for playing through adversity and putting together a good season.

CHENA'S
CANTINA

LIVE MUSIC!

Friday (11/18) - Fuzzy Sprouts

Friday (12/2) - Labrea Stompers

Saturday (12/3) - Ottoman Empire

Home of the World Famous

Shrimp & Bean Burrito

Dine-in • Take-out

871-6978

200 Lanier Drive

(across from EnZone)

THEATER

Continued from page 1

tion, you should at least let them hear the show."

There have been a few repairs to the theater. New stage doors were put in on the stage, and they were given a new set of fire proof black curtains for the front of the stage. The theater will also receive a new light-dimmer board.

Patricia Pace, director of the theater and communication arts professor, said they had to have public safety officials at every performance, but due to smoke traps that were put in over the summer this is no longer necessary. These smoke traps open up to allow smoke to go up in case of fire. However, Dartt said the roof now leaks because of this.

"They destroyed the integrity of the ceiling of the auditorium, because now it leaks," he said.

However, Bob Devar, who works with the physical plant, said this problem has been fixed. Smoke hatches were put in to cover the holes that occurred during construction, which caused the leak. The other leaks are a cause of other problems in the roof, and they are "patching them up as identified."

Theater students and faculty also said that it is important they have their own theater because a theater should also be a learning experience.

"We feel a theater should be dedicated to us because it needs

Editor's note: This is the first of a two-part series. Next week, we will examine administration plans to address the issue of inadequate theater facilities.

Please Don't Drink and Drive

SGA SUPPORTS
THE UNITED WAY
IN THEIR 1994
FUND DRIVE
NOV. 7-21



UNITED WAY

GET A DIRECTORY AND
SUPPORT THE UNITED WAY!

The new Student Directories have arrived!
They will be available Nov 17-18
at the Union and Lakeside Cafe.

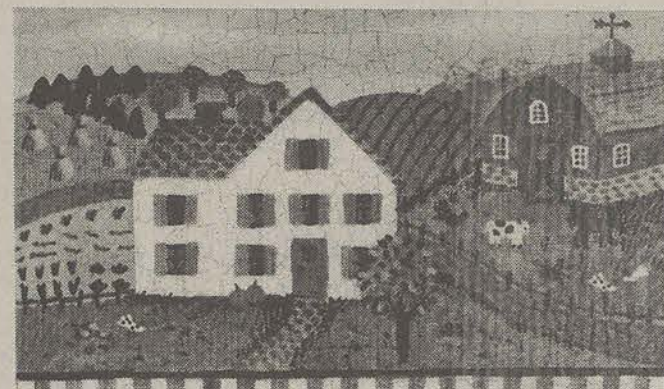
SGA will also be accepting donations for
their United Way Fund Drive

COME OUT AND SHOW
YOUR SUPPORT!



BROUGHT TO YOU BY SGA

From our roof to
your roof... A
harvest of thanks
to our valued
customers



The University
Store

Under The Green Roof
681-5181

SEASON

Continued from page 6
per. Senior outside hitter Alexis Dankulic leads the conference in kills per game with 3.99 and in digs with 4.15 per game. She is also fifth in service aces per game with 0.42 and sixth in hitting percentage with a .260 clip.

Teammate Litonya Thompson is fourth in digs with 3.10 per game, fifth in hitting percentage (.269) and ninth in kills per game with 3.29.

In addition, Megan Pfeiffer and Kim Woods, who have led GSU's blocking scheme all year, are in the top two in the conference with 1.44 and 1.24 blocks per game respectively, and the team leads the conference in blocks per game with 3.06.

For about a dollar a day,*
both will give you the power you need to
survive this semester.



One java, piping hot, no sugar and bold the moo juice.

Only \$33.00 a month*



Macintosh Performa® 636CD
8MB RAM/250MB hard drive, CD-ROM drive, 14" color monitor,
keyboard, mouse and all the software you're likely to need.

With the Apple Computer Loan and 90-Day Deferred Payment Plan, you can take advantage of already great student pricing on a Mac* — for about \$33 per month* with no payments for 90 days! Students who qualify can take home any Macintosh® personal computer, printer, CD-ROM drive or other peripherals with no hassle and no complicated forms. Let's face it, the holidays aren't exactly

conducive to saving money. In fact, they can leave you broke. But you can still buy the computer you want and not worry about payments until long after the decorations are down. The Apple Computer Loan and 90-Day Deferred Payment Plan. The solution that gives you the power every student needs. The power to be your best.*



PAY NOTHING FOR 90 DAYS

For further information visit Eagle's Logic
Hampton Hall corner of Knight & Harvey Drive • 871-1145
Special pricing & loan program also available to faculty & staff

*Deferred Apple Computer Loan offer expires February 17, 1995. No payment of interest or principal will be required for 90 days. (Some resellers may require a deposit to hold merchandise while loan is being approved.) Interest accruing during this 90-day period will be added to principal, and the principal amount, as so increased, will thereafter bear interest which will be included in the repayment schedule.
Monthly payment is an estimate based on a purchase price of \$1,931.52, which includes 8.5% sales tax, for the Macintosh Performa 636CD system shown above. Including loan fees, the total loan amount is \$2,044.00, which results in a monthly payment obligation of \$33.50. The monthly payment above was calculated using an estimate of sales tax in San Francisco. If the applicable sales tax is 8.25% (Chicago) or 7.0% (Philadelphia), the monthly payment would be \$33.58 or \$33.04, respectively. Computer system prices, loan amounts and sales taxes may vary. See your authorized Apple Campus Reseller or representative for current system prices, loan and tax amounts. Loans are for a minimum of \$1,000 to a maximum of \$10,000. You may take out more than one loan, but the total of all loans cannot exceed \$10,000 annually. A 5% loan origination fee will be added to the requested loan amount. The interest rate is variable, based on the commercial paper rate plus 5.55%. For the month of November, 1994, the interest rate was 10.85% and the Annual Percentage Rate was 12.44%. 8-year loan term with no prepayment penalty. The monthly payment and the annual percentage rate shown assumes the 90-day deferral of principal and interest described above and no other deferral of principal or interest. Students may defer principal payments up to 4 years, or until graduation. Deferral will change your monthly payments. The Apple Computer Loan is subject to credit approval. Apple Computer Loan and 90-Day Deferred Payment Plan offers available only to qualifying students, faculty and staff. Offers available only from Apple or an authorized Apple Campus Reseller or representative. © 1994 Apple Computer, Inc. All rights reserved. Apple, the Apple logo, Macintosh, Performa and "The power to be your best" are registered trademarks of Apple Computer, Inc. Mac is a trademark of Apple Computer, Inc.