

Georgia Southern University

Digital Commons@Georgia Southern

---

The George-Anne

Student Media

---

11-10-1994

## The George-Anne

Georgia Southern University

Follow this and additional works at: <https://digitalcommons.georgiasouthern.edu/george-anne>

---

### Recommended Citation

Georgia Southern University, "The George-Anne" (1994). *The George-Anne*. 1336.  
<https://digitalcommons.georgiasouthern.edu/george-anne/1336>

This newspaper is brought to you for free and open access by the Student Media at Digital Commons@Georgia Southern. It has been accepted for inclusion in The George-Anne by an authorized administrator of Digital Commons@Georgia Southern. For more information, please contact [digitalcommons@georgiasouthern.edu](mailto:digitalcommons@georgiasouthern.edu).





## → They do it all

The newly re-activated Student Nursing Association is involved in the community

Please see story, page 2



## → Preparations

Split end Alfonza Harris says the Eagles must 'take care of business' this Saturday

Please see story, page 6



## → GSU blues

Guitarist Taj Majal ready to jam Monday in the Union Ballroom

Please see story, page 8

## EAGLELINE

### BLUE EDITION

Thursday, November 10, 1994  
Vol. 67, No. 33

### Fair's trial postponed due to DA's family emergency

The trial of Clint Fair, the former GSU student who was charged in the fatal wreck last May which took the life of Ernest Tootle, was postponed indefinitely Wednesday morning due to a family emergency in the District Attorney's office.

The delay won't affect the case according to Clint Fair's attorney Francis Allen.

According to the District Attorney's office, the new date for the trial will be set by the judge in the case, William J. Neville.

Another jury will have to be picked for the case because the judge released them from duty Wednesday.

Allen said the trial might come up next week, but he wasn't sure. He (Judge Neville) will be in Effingham next month and then he will be on vacation the following month.

Mrs. Tootle's attorney declined to comment on the matter because they said they are defending their client on the civil matter in the case and not the criminal.

### Kerrigan now involved romantically with agent

The Associated Press

BOSTON — Nancy Kerrigan's relationship with her agent, Jerry Solomon, has expanded from business into romance.

But the pairing had nothing to do with the breakup of Solomon's marriage, Dewey Blanton, a spokesman for the ProServ sports management group, said Friday.

Solomon said the romance began in July. Solomon and his ex-wife, Cathy, had separated in October 1993 and the divorce was settled last week, Blanton said.

After becoming a household name thanks to Tonya Harding and company, Kerrigan won a figure skating silver medal at the Winter Olympics in Norway. She won a bronze in 1992.

## WEATHER

### TODAY

Scattered thunderstorms, with a high in the mid-70s and a low in the lower 60s.

### WEEKEND FORECAST

**Friday**, there will be morning showers with a high in the mid-70s and a low in the upper 50s. **Saturday**, it will be partly cloudy, with a high in the mid-60s and a low in the mid-50s.



## INDEX

Announcements	2
Arts & Entertainment	7
Classifieds	9
Crossword	9
G-A Spotlight	3
Opinions	4
Police Beat	2
Sports	6

It is a desire of The George-Anne to print the news of Georgia Southern University as accurately as possible. If you feel that something covered is in error, contact a member of the editorial staff at 681-5246 as soon as possible. Thank you.

FOR ADVERTISING INFO.: 681-5418  
STORY OR PHOTO IDEA: 681-5246  
FAX NUMBERS: 871-1357 and 681-0863

# The George-Anne

Liked By Many, Cussed By Some ...  
Read By Them All



# The George-Anne

Georgia Southern University's Official Student Newspaper

Statesboro, Georgia 30460

Founded 1927

## Crime heavy in Oxford

G-A Staff Reports

This year, as in the past, there has been more crime reported at Oxford than any other residence hall at GSU. One of the main reasons for this is the fact the hall is separated from campus and is in a remote area.

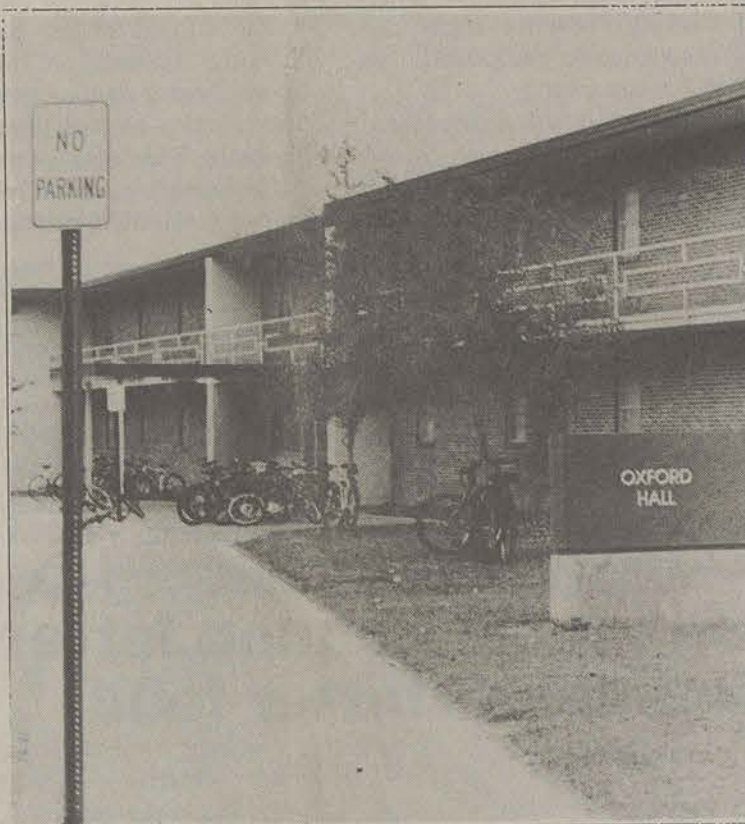
"It's a unique situation because of where it's located," Director of GSU Public Safety Ken Brown said. "We have more patrols out there and we have people watching on stakeouts from time to time."

Incoming freshman may not realize how easily they can become victims of crime.

"We talk to all the GSU 120 classes and also at orientation about crime prevention," Brown said. "There is just a certain criminal element which preys on college students because they generally have nicer stereos and nicer cars."

To help eliminate the crime which occurs at Oxford, the GSU Public Safety Department has increased bike patrols and occasionally will perform stakeouts according to Brown.

Last year, Public Safety apprehended many criminals in



Elizabeth Hayes

Oxford Hall is the most crime-ridden residence hall at GSU.

the act due to their beefed up security. If someone is caught, they will be prosecuted in the Superior Court in Bulloch County.

"Occasionally we do catch students," Brown said. "If that happens, they will also have to go before the Judicial Affairs board."

According to Brown, most of the criminals who are caught are not students.

Please see OXFORD, page 10

## GSU taking steps to reduce hazardous waste

Campus is currently considered a 'large-quantity generator' of waste, but has several changes in the works

By Dana Hinterliter  
Staff Writer

GSU and Environmental Safety Director Jay Burdett are reducing hazardous waste levels on campus.

The Environmental Protection Department (EPD) has classified GSU as a "large-quantity generator" of hazardous waste. A large quantity is considered more than 200 pounds of hazardous waste per month.

Steps are being taken to evaluate the products and replace them, if possible, with less hazardous products.

One change the department is making is the use of latex paints instead of oil-based paints. Mineral spirits and paintbrushes are associated with oil-based paints and are also being abolished. By doing so the department eliminates

55 gallons a month from the waste stream.

The second change being made is that the chemistry labs will be divided into two separate labs. Having two labs separates the hazardous chemicals from each other and only when being mixed will the two come together.

Concerns about waste management are public liability and regulatory compliance.

Public liability concerns are the handling of hazardous wastes and endangerment of employees and the general public.

Regulatory compliance is the second issue concerning the environmental safety office. Keeping up with all the regulations set by the Environmental Protection Agency and Department of transportation is the hardest part of the job and the most important. The largest producer of hazardous waste at GSU is the physical plant. Sixty-five gallons of mineral spirits are generated a month, which costs around \$500 to dispose of.

## \$1 million donated to wildlife education center

By John Munford  
Sports Editor

The anonymous \$1 million contribution to fund the building of GSU's Wildlife Education Center has been well received by GSU officials.

Dr. Charlene Black, associate vice president and dean of academic affairs, said that the grant allows for the further enhancement of the center's goal: to educate the public about the importance of wildlife to our community.

"The Bald Eagle and raptors that will be housed there give us an excellent indication of the overall quality of the local environment," Black said.

"We want to help people learn to identify the birds because the birds are on the protected list."

GSU now has two bald eagles along with one barred owl and one screech owl. The proposed center will be a dual park/com-



File photo

An anonymous \$1 million grant to the bird sanctuary will help director Steve Hein realize his dream of finding a home for Bald Eagles and raptors, along with wildlife education for GSU.

plex that will house the raptors in a natural environment called an eco-island in which visitors will be allowed to walk in and view the birds.

Steve Hein, the director of the Eagle Sanctuary and Rap-

tor Center, said that the benefits of giving the University's birds a home are many. Currently Hein, a licensed falconer, keeps the birds at his residence and he takes the birds on the road to make edu-

cational presentations.

"Now, I'm restrained by what I can take in my vehicle," Hein said. "At the facility, we will be able to communicate through audio/visual displays and static displays to further

enhance the educational process.

"The era of caged animals is gone — it is inhumane. Each raptor/bird of prey has particular needs that differ it from the others. When you walk into the center, you will get a better understanding of how their environments are used to support life."

In addition to providing an up-close and personal view of the raptors, the center will have a building for holding classes and exhibits in along with an amphitheater for live bird shows. Dr. Black also said that she hopes to have internship opportunities for GSU students who might be interested in wildlife management.

"I'm quite happy about the grant," Hein said. "My efforts 'on the road' have been well received, but the center will only help our education efforts."

## Newest voting precinct draws students to the polls

Bulloch County goes against statewide grain, choosing Millner over incumbent Miller for governor's seat

By Chris Sherwood  
News Editor

GSU students, along with many local residents, turned out to vote at the Kiwanis Fairgrounds precinct on Tuesday. As of 6 p.m. over 1,800 voters had already cast their ballots, just short of the goal of 2,000 which had been set by the poll officers.

Overall in Bulloch County the race for Governor saw Republican candidate Guy Millner (51 percent-4,626 votes) edge out incumbent Zell Miller (48 percent-4,350 votes).

However, Miller went on to win the race statewide.

US Representative Jack Kingston received nearly 75 percent of the local vote and easily won re-election.

Statewide results — Winners in bold  
81 percent of precincts reporting

<b>Miller (D)</b>	51 percent
Millner (R)-	49 percent

### Governor

### US House

<b>Jack Kingston (R)</b>	73 percent
R. Beckworth (D)	27 percent

<b>Sanford Bishop (D)</b>	66 percent
John Clayton (R)	34 percent

<b>Mac Collins (R)</b>	64 percent
Fred Overby (D)	36 percent

<b>John Lewis (D)</b>	71 percent
Dale Dixon (R)	29 percent

(Only 29 percent reporting)

<b>Newt Gingrich (R)</b>	60 percent
Ben Jones (D)	40 percent

<b>Saxby Chambliss (R)</b>	60 percent
Craig Mathis (D)	40 percent

More statewide results ... please see VOTE, page 10



File photo

Although Bulloch County didn't choose Gov. Zell Miller, he beat back a tough challenge and won a second term Tuesday night.



## POLICE BEAT

## GSU Division of Public Safety

November 6, 1994

• Mitchell Brady Burdett, 24, of Atlanta, was charged with DUI (.09) and weaving.

November 7, 1994

• Michael Butts reported a Huffy bike was missing from Oxford Hall.

• Lavato Uzekiel Byrd, 20, of In The Pines Apartments, was charged with simple battery.

• William Hacobus Mouzon, 19, of In The Pines Apartments, was charged with simple battery.

## Statesboro Police Department

November 6, 1994

• Erica Edwards, of Park Place Apartments, reported someone known to her kicked the trunk of her car and dented it.

• Jessica Motz, of Robin Hood Trail, reported someone stole her bike.

## ANNOUNCEMENTS

## Things to do at GSU

## Today

• Faculty Recital with Linda Cionitti, clarinetist, and Natalia da Roza, pianist, in Foy Recital Hall at 8 p.m.

• Early registration for winter quarter continues at the Williams Center and runs through Nov. 17.

## Monday, Nov. 14

• Taj Mahal, blues guitarist performs in the Union Ballroom at 8 p.m.

• Statesboro-Georgia Southern Symphony in concert in the Foy Recital Hall at 8 p.m.

## Tuesday, Nov. 15

• Jazz Ensemble Concert in the University Union at 8 p.m.

## Thursday, Nov. 17

• Southern Chorale Concert in Foy at 8 p.m.

• R. Manley, will speak on "Outside Visionary Folk Art" in the Union Ballroom at 7:30 p.m. Contact J. Hines for more information at 681-5930.

• J. Carpenter, presents "Do as I Say AND as I Do" in Herty 116 at 7 p.m. Contact G. Bishop for more information at 681-5546.

• A meeting for existing industries in Bulloch County will be held in the Hollis Building room 102. The meeting will discuss the Georgia Business Expansion Support Act of 1994. The meeting is designed to bring the existing industries in the state up-to-date on the program. The meeting for this area will be an interactive video presentation at the Hollis Building.

## ON CAMPUS

## Nursing program resumes at GSU

By Kim Wagner  
Senior Staff Writer

After being inactive for about a year, the GSU Student Nursing Association has been reactivated and members are working to make the association more of a campus organization.

"A group of seniors this year decided that we needed to try to get back to what the Student Nursing Association was prior to when it became inactive," said Public Relations Coordinator Joe Flanders.

The association, which consists of about 50 members, helps nursing students apply their knowledge on campus and also in the community.

"One of the things you learn in nursing is that you have to interact with the people in the community," Flanders said. "This (the association) helps people start to develop the skills that they'll need later on."

Some senior nursing majors, several of which are members of the organization, volunteer at the Rural Community Health Clinic in Portal.

"We also try to keep in contact with the community agencies like

American Heart, American Cancer Society and The American Red Cross," Flanders said. "We find out what activities they have planned, then we volunteer our services."

Members are encouraged to take part in different things on campus and in the community, Flanders said.

"Since we (the association) are program-based and department-based as far as the organization, we try to let the campus and community know that we are there if volunteers are needed," he said.

The officers of the Student Nursing Association include: Krista Packer as the president, Amy Moxley as vice president, Michelle Roach as secretary, Carla Cowart as treasurer, Joe Flanders as public relations coordinator.

Cathy Shriver is the academic advisor.

"This year is just an organizational year. We've just been 'getting our feet wet' to try to get started back up. After it builds back up, hopefully it will become really active on the campus and in the community again."

## IN THE USA

## Actors are more politically active

The Associated Press

CULVER CITY, Calif. — Most Hollywood activists simply open their checkbooks. Alexandra Paul opens students' minds.

A vanguard in the intersection between show business and politics, the 31-year-old "Baywatch" star single-handedly has launched an educational campaign focused on population growth.

Paul personally calls local elementary and high schools offering her speaking services for free, and with a local college professor crisscrosses Southern California campuses talking about the dangers of unchecked birthrates.

"Partisan politics are tough and really heart-wrenching," says Paul, a longtime environmentalist. "It's much easier to

believe in an issue than a candidate."

The activism for many show business personalities begins and ends with campaign contributions or an RSVP to a fancy fund-raiser. A growing number of people, however, are taking their political involvement one step further — attending educational forums, speaking publicly and donating time and energy to such projects as being mentors to pupils from inner-city neighborhoods.

"People will write checks and that's good and well, but it has to go further than that," says Mark Gill, the president of Show Coalition, a nonpartisan organization whose 430 members include Richard Dreyfuss, Harrison Ford and Sally Field.

## IN THE USA

## Six-page Lennon letter unmasks bitter feud

The Associated Press

LOS ANGELES — After the breakup of the Beatles, John Lennon wrote a six-page letter to Paul and Linda McCartney that reveals deep anger and bitterness over the couple's rejection of Yoko Ono.

The undated letter is Lennon's reaction to a note Linda McCartney wrote that chided him for critical remarks he made in interviews after the group's acrimonious 1970 breakup.

"I hope you realize what (expletive) you and the rest of my kind and unselfish friends laid on Yoko and me since we have been together," Lennon wrote in the letter that will be sold Dec. 3 at the Butterfield and Butterfield auction house.

"Linda — if you don't care what I say, shut up! Let Paul write or whatever," Lennon continued.

The name of the owner of the letter, which is expected to bring up to \$60,000, wasn't released by the auction house.

Linda McCartney's dislike for Ono apparently stemmed from personality differences, and Lennon resented that.

The Encyclopedia of Pop Rock and Soul states that fans believed Yoko Ono exerted too much influence on Lennon, contributing to the band's breakup.

However, members of the group also were taking independent paths in their artistic development, which may have contributed to the breakup.

At one point, Lennon wrote to Linda: "They ask me about Paul and I answer — I know some of it gets personal — but whether

you believe it or not — I try to answer straight — and the bits they use are obviously the juicy bits — I don't resent your husband — I'm sorry for him.

"I know the Beatles are 'quite nice people' — I'm one of them — they're also just as big bastards as anyone else, so get off your high horse!" Lennon wrote, exhorting Linda not to act so superior.

Lennon concludes with, "Love to you both, from us two."

## IN THE USA

## Woman claims she is Hemingway's daughter

By Lisa Duchene  
The Associated Press

FREEMONT, Maine — It was 1940, in New York's Central Park. He had just published "For Whom the Bell Tolls." She had just finished a modeling assignment and saw him sitting on a park bench, writing.

Is that your grocery list? she asked him. No, notes for a book, he said. She asked him if he was a famous writer.

Some people think so, he said. They made love, right there in the park.

So began a 20-year love affair between Julia Farris and Ernest Hemingway. And that's what Carole Hemingway, who was conceived on that day, has come to a town park by the sea to write a book about.

But, is it fact or fiction? There's no way to know for sure, since both Ernest Hemingway and Farris are dead. Hemingway killed himself with a shotgun on July 2, 1961. Julia Farris died on July 27, 1981.

And up until that morning, Carole Hemingway — whose name then was Carol Kowalewski — was a happily married housewife in suburban New Jersey. An astrologer. A recovered alcoholic.

Early that morning, Julia Farris called her daughter to her bedside. Farris cleared the room of all family members. When her husband said "don't you tell her,"

she said she'd tell her what she damn well pleased and hurled a lamp across the room.

"She said, 'Sit down, I have something to tell you,'" said Hemingway, who changed her last name in 1985 and recently added an "e" to distinguish herself from Ernest's sister, Carol, who lives in Maine.

"She said, 'A long time ago, I had an affair with a man and he was a famous man. He is your father and I met him in a park and my life has never been the same,'" said Hemingway.

At first, her mother didn't tell her the man's identity. "Mother liked to play head games even when she was sick," said Hemingway.

Then she told her the man was Ernest Hemingway. When Carole asked her mother if she was kidding, she said, "A woman in this condition doesn't kid." She had to make things right.

She added a caveat — Carole could not repeat her secret until Hemingway's wife and three ex-wives were dead.

"I said, 'Mother, if you weren't so damn sick, I'd kill you,'" said Hemingway.

To her, Ernest Hemingway was the guy who wrote all those books she read as a child when she was sick and couldn't play.

When she asked her mother why she never married him, her mother said it was because she was Catholic.

## WANNA BE "ZIT-FREE" ?

Doctor  
Greenfield's

## SELF-TREATMENT

## FOR A CLEANER CLEARER COMPLEXION

YOU'LL FIND

Doctor  
Greenfield's

AT THESE CONVENIENT LOCATIONS:

COLLEGE PHARMACY — Plaza East  
COLLEGE PHARMACY — Downtown

## The Educated Palate

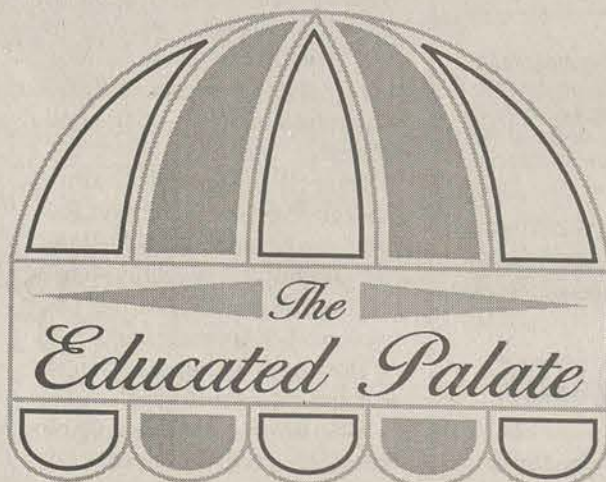
Lunch 11-2:30 • Dinner 5-8

Monday thru Friday

Special of the week  
Tortellini  
with Mushroom Sauce  
\$4.<sup>50</sup>Now Available: On-Campus  
Pizza Office Delivery ServiceFeaturing our full line of individual and 14" pizzas,  
side salads, and beverages.

Call 681-5303

Delivery Monday thru Friday 11am-2pm











**The George-Anne**

For 67 years, Georgia Southern's Official Student Newspaper

4

**Enoch W. Autry**  
Editor

**Christopher Cole**  
Managing Editor

**Chris Sherwood**  
News Editor

# OPINIONS

Liked By Many,  
Cussed By Some...  
Read By Them All

Thursday, November 10, 1994

## Our Opinion

### Live up to the promises

Now that the elections are over, the politicians who have taken office must live up to thier campaign promises.

Getting tough on crime and working to improve the welfare and health care situations are just some of the promises the public was saturated with in the weeks leading up to Nov. 8.

We the editors of *The George-Anne* hope that these issues are addressed, not only locally but also statewide and nationally.

Bipartisanship needs to be recognized as the only way these issues can be addressed and worked on in a timely manner. We hope that Democrats and Republicans alike will work together for the good of the people and will compromise on the important issues which effect their constituents.

We also hope that Republican control of Congress will not result in even more gridlock in Washington. If both parties are truly interested not in moving right or left, but forward (in the words of new House Speaker Newt Gingrich), then they should work together on most issues. The name of the game is compromise, not combat.

Of the Democrats, we expect their campaign promises to be fulfilled. Governor Miller was given another four years to lead Georgia into the future. We want him to continue supporting a crackdown on crime, the lottery and his own educational programs.

We also ask for the continued support by our local representatives who have helped make GSU a thriving educational center.

### Donations to GSU stress importance of education

The two donations which were made this past week to GSU have proven the importance of education at this regional university.

The College of Business Administration (COBA) receieved nearly \$1 million worth of computer software from the Lotus Development Corporation and it was included in the company's the Adopt A School program.

More good news was recieved when President and CEO Douglas Ivester of the Coca-Cola company announced a \$100,000 check would be given to the (COBA). The money from Coca-Cola will be used to assist in meeting the costs for the new facility which is set to be completed by the Spring.

We, the editors of *The George-Anne*, hope that other companies will see the benefit of working closely with not only the College of Business Administration, but also the other colleges which comprise GSU.

The \$1 million anonymous donation to the Eagle Sanctuary and Raptor Center should also be commended, although we don't know whom to thank. The wildlife education center will enhance GSU in the years to come. Director Steve Hein should be thanked for his seemingly endless devotion to the sanctuary. It is truly a blessing for GSU to have this project on campus.

We also hope these donations represent a movement of businesses, locally and nation-wide, to invest in the future of tomorrow's leaders. What better a place to invest than in the students of GSU?

### Desperate and about to mutiny, hope is found ...



## In the midst of change comes tragic victory

Picture this:  
You're a voter.  
You live in one of the most crime-ridden cities in the country.

Corruption is aplenty in this town. Serious illegal drug abuse abounds.

And then one day, the mayor, to your amazement, is caught on tape in possession of crack cocaine. And not just in possession, but using it in the presence of a hired prostitute. He spends time in prison.

Then, after serving his sentence, the man has the audacity to enter public life again and run for office. First, he tries for a seat on City Council — and wins.

Oh, but that's only the beginning. You could possibly shrug off his election as the foolish mistake of one segment of the city that was just ignorant about all the charges against him.

But he doesn't just sit on City Council for the rest of his life. This year, he decides he liked the job of mayor a whole lot more. So he runs for the seat he once held before being arrested. Yep, you heard right — even though he's been involved with crack, one of the most dangerous drugs ever invented, he feels qualified to be mayor of a major city.

But that's not all. He begins politicking. He goes out to the people. He campaigns. He reminds them of his past service to the city. And then it's election night. Before you know it, the votes are tallied and the returns come in.

That's right, you guessed it.

### THE RIGHT SIDE

CHRISTOPHER COLE



This convict is re-elected as mayor of the city.

Does the whole scenario seem too far-fetched for you to imagine? Don't be surprised to learn that's it's all true. What's more, it happened just the other night.

Marion Barry was elected mayor of Washington, DC, even

refreshing new angle to American politics. But the Washington, DC, election is a frightening symbol of the ignorance that still runs rampant through parts of the country.

When I saw the latest results in Barry's election, it was during his victory speech. At that point,

### I WONDER HOW MR. BARRY (I SHUDDER TO USE THE TITLE "MAYOR") IS GOING TO HANDLE CRIME ISSUES IN WASHINGTON. HOW CAN HE BE ANYTHING CLOSE TO AN APPROPRIATE ROLE MODEL?

after being convicted of cocaine possession with clear evidence against him.

And why did I choose this rather negative subject to feed upon when this midterm election had much more startling news, such as the entire face of Congress changing before our eyes? It's very simple: While many people across the country opened their minds and voted for something new, there remains a crude, ignorant segment of voters who don't want change.

The election Tuesday was a watershed; it brought about a

CNN estimated that Barry, a Democrat, beat his Republican opponent 55 percent to 45 percent. Not even a very tight race.

A heavy majority of Washington voters chose Barry even though he was convicted of his charges. What does this indicate? I'm tempted to say that most of the voters were on crack themselves when they went to the polls. But more seriously, I think it means two things.

First: A lot of people are totally ignorant and narrow-minded about their leaders. They don't keep up with events and

they only know names. The public has a short-term memory.

Second: And this is more disturbing. How many DC voters knew about the charges, *but didn't care*? Did they convince themselves the charges just weren't true, or did they simply forgive him for it? It's a lot like these people who get so attached to a celebrity that when he's accused of a crime, he's automatically innocent — even in the eyes of people who know nothing about the case. It's a bad omen for the direction our society is heading.

I wonder how Mr. Barry (I shudder to use the title "Mayor") is going to handle crime issues in Washington. How can he be anything close to an appropriate role model? He'll certainly never be able to address drug-related issues without being haunted by his past.

Across the country, other accused and convicted criminals were losing their election bids. But this one slipped through the net because the voters didn't know or care about what he had done.

Oh, by the way, another one slipped through, too. Rep. Mel Reynolds, a Democrat from Illinois, has been accused of sexual abuse, child pornography and obstruction of justice. And yet, he was re-elected.

Am I the only one who sees these things as tragic?

The only consolation I have is a new government — obviously not in the city of Washington, but at least on Capitol Hill.

## STAFF

### NEWS

Copy Editors: John Kluttz; Robin Johnson; Layout Editor: Mandy Crews; Senior Staff Writers: David Hillis, Kim Wagner; Staff: Sunae Euell, Stacy Jordan, Derek St. Hilaire, Doug Jones, Teri Minter, Jana Mobley, Michelle Thomas

### FEATURES

Features Editor: Derek Lewis; Assistant Features Editor: Ashley Hunt; Arts & Entertainment Editor: Josh Bass; Staff: Eric Bray, Stacy Clemons, Judith Cunningham, Kurt Deen, Lakeisha Fair, Dana Hinterliter, Kymm Reynolds, Mark Runyon, James Salter, Tijuana Thomas

### SPORTS

Sports Editor: John Munford; Assistant Sports Editor: Ronnie Swinford; Staff: Tom Harrington, Tonya Hilton, Bart Hiter, Donald Jordan, Heather Mullins, Aaron Solomon, Will Van Kleef, Jeff Whitten, Carolyn Wynn

### OPINIONS

Staff: Cory Andrews, Josh Bass, Teth Burns, Christopher Cole, Ashley Hunt, John Munford, Amy Staats

### PHOTOGRAPHY

Chief Photographer: James Hill; Staff: Holly McCaig, Jerome New; Contributing Photographers: Stephen Burt, Jason Chandler, Randy Trujillo

### ARTWORK

Leigh Braddy, Teth Burns, Shawn Chavis, Michelle Underwood

### CIRCULATION

Supervisor: Steve Tallaferro; Staff: David Hillis, Bruce Karr, Scott Newton

### ADVERTISING/DISTRIBUTION SERVICES (ADS)

Advertising Manager: Brooks Clements; Business Manager: Stephanie Wylie; Marketing Coordinators: Leigh Braddy, Michelle Underwood; Sales Representatives: Melissa Goodman, Jana Mobley, James Salter, Heather Thatcher, Michelle Underwood, Carolyn Wynn

### PRODUCTION AND GRAPHICS EDITORIAL SERVICES (PAGES)

Production Managers: Jason Adams, Roni Lair; Assistant Production Manager: Mitch Mitchell; Staff: David Beck, Aquila Bookhart, Scott Mulkey, Shawn Sunderland, Reggie Taylor; Classified Ads Manager: Melissa Goodman; Dark-room Manager: Randy Trujillo

### STUDENT PUBLICATIONS COORDINATOR

Bill Neville

## The guys with the big bucks have nothing on me

Ya know, I'm allegedly all set to be graduating from this fine institution this coming spring. Everyone says that the job market out there, especially for young journalists, doesn't look too good.

Well, "MAD Magazine's" Alfred E. Neumann said it best when he said: "What, me worry?"

I read in the sports section the other day that a basketball player signed a contract in excess of \$68 million. That's right: 68 million simoleons. BIG bucks. Normally, that wouldn't surprise me, except that this "kid" is coming to the NBA fresh out of college. Talk about a starting salary.

And just yesterday I read about Rafael "Pac-man" Belliard's new \$1.1 million deal. I guess that's really not too bad, either. Especially when you consider the fact that they didn't even make him finish out the season. I really don't think he'll get a chance to play next year

### BETWEEN THE LINES

JOHN MUNFORD

either, but that's because I have become a very cynical sports-writer—it comes with the territory.

So I got to thinking (something I haven't been able to do clearly in quite a while): what do these two guys have in common that could possibly have benefited their salaries?

1. **Cute girlfriends.** I've got one, too, but I don't see the sports editor of the *Atlanta Journal and Constitution* breathing down my neck to sign me to a long-term deal.

2. **Talent for what they do.** Sure, I'll buy that, but I'm talented in my own respects as well. I can crank out readable stories

with the best of them. I can't hit a three-pointer to save my life, though, so I guess I'll just have to work on my fielding up the middle.

3. **Fast cars.** Okay, so the closest thing I have to wheels now is a Schwinn bike that was made before I was born. So sue me. If I was getting paid a gazillion dollars to go to work every day, I would surely buy myself the best wheels I could possibly buy.

Believe me, the peanuts I am fed here at *The George-Anne* wouldn't even pay for a pack of baseball cards, much less a Lamborgini or Maserati.

4. **Fans.** I'll try not to be too

conceited here, but a few people actually bother to read this spot on a regular basis. No one sends me their underwear in the mail, mind you, but I'm actually glad they don't. I wouldn't know where to put it. I certainly wouldn't put it on.

5. **Agents.** This is what I need the most. I need somebody in my corner to find me a job and exaggerate my value to ensure receiving a huge salary. Yeah, this has got to be the way to go. I'll gladly pay an agent 10 percent of my cut if he can negotiate a long-term deal with incentive clauses for over \$10 million.

Actually, to tell the truth, I'm really not too worried about the job market for journalists. I'm versatile. I can do a lot of different things: news, sports, features, layout and design, et cetera, ad nauseam.

I just hope that I don't add flipping burgers to that list.



ON CAMPUS

# Life Ministries: offering help and hope to GSU students

By Mark Runyon  
Staff Writer

Many religious organizations on the GSU campus offer students fellowship through outreach, Bible studies, praise and worship, as well as recreational activities.

One of the most distinct of these is Life Ministries — a well-known student organization at GSU since 1990.

Life Ministries is an outreach of Statesboro New Covenant Church in affiliation with Campus Harvest Ministry.

"Our organization is a little bit different, in that it comes out of a local church, whereas (Thessley) and Wesley are affiliated with a denomination over all," said Doug Watson, Life's campus minister. "Those students worship in affiliation with other churches in town whereas Life Ministries is solely out of Statesboro New Covenant Church."

But Life Ministries by no means limits its students to Statesboro New Covenant Church, nor does it concentrate on one fixed religion.

Instead, they encourage students to find a place they can get involved and come to feel like its part of their family, providing stability in the students' lives while they are away from home.

Life Ministries offers countless programs and activities in which students can get actively involved.

Through these opportunities, they hope the students will grow to become a part of the ministry.

"We don't want a ministry where students just come to be entertained," said Don Williams, a member of Life's campus staff. "We want to get them plugged in where we can help to build them up and equip them for what God has planned for their lives, so they can move into those areas and grow."

One of the key elements they hope to accomplish as a ministry is to help students develop a solid and stable foundation in which they will remain steadfast in troubled times and in turn bring others into the light of Christ.

"A lot of students come from different places where there haven't been any kind of morals taught in the family," said Kim Burkhalter, a member of Life's

campus staff. "Therefore, when placed in an atmosphere where there are a lot of different morals and beliefs, they have no foundation and they can be easily swayed from one way to the another."

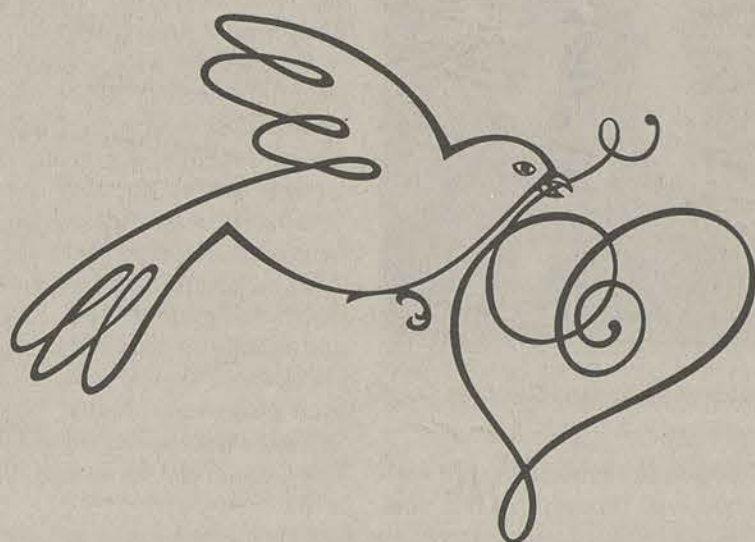
"We want to show them these morals through Jesus and scriptures, and help them to grow so they will have that foundation not only in college, but in their careers," she said.

Many students today believe

going to find real joy and happiness is through a relationship with God."

"This is an institution in America which has so much potential for so many future leaders coming through it," he said. "We can help provide relationships, fellowships, meetings and friendships. We are there for them, to help. Our nation will be better also."

"Society isn't going to be changed by laws," he said. "You



in God, but see Him in a rather abstract and distant sense. Because of these feelings of remoteness, they fail to see the significance He has on our day to day lives.

"Some college students never realize that God is somebody you can actually attain right here, who wants to live right here with you and help you through this life," said Don Williams. "A lot of it is through a lack of knowledge and ignorance. They don't realize that God can actually be there in their lives and bless them abundantly."

For some students, the transition stage that college presents is a time of looking at and experiencing new things. Through this they may come to question their traditional principals and values, which might cause them, in a sense, to fall away from the church.

"A lot of students who are involved in this or that scene on the college campus find that it didn't bring them any happiness," said Watson. "Through coming back to their roots, they can see that the only place they're

can't legislate morality. If society is going to be changed in any way it has to be because lives are being changed through the presence of God within them."

Dennis Tinerino, a four-time Mr. Universe, will be speaking in a special service held at Statesboro New Covenant Church on Nov. 13-15. He will be talking about his fall from glory as a result of a life in crime due to taking and selling steroids, and how he came to know Jesus in prison.

Life Ministries meets every Monday evening at 7:30 p.m. in the Williams Center in Room 122. Anyone desiring further information about Life Ministries can call 681-6777.

## Attention!

The G-A is looking for a few good writers. If you've got what it takes then come by Williams Center rm. 223 to apply.

# Dining & Entertainment Guide

Found Exclusively in The George-Anne's Gold Edition • Thursday, November 10, 1994

## The Friendly Diner

In Front of Wal-Mart Parking Lot  
489-3307

All You Can Eat Breakfast \$3<sup>50</sup>

Cafeteria Style Lunch Buffet

Menu Service Available

Best Country Cookin' in Statesboro

Open 6:30 am - 3 pm • Mon-Fri

## Legends Bar & Grill

Old Register Road  
871-5349

11/11 Donkey tickets = \$4

11/16 Jupiter Coyote tickets = \$5

11/18 Swinging Medallions

11/30 Dean Dollar tickets = \$3

12/2 Kichafonee Cowboys

12/9 The Voice of Ted Nugent: Dereck St. Holmes

## Buffalo's Cafe

Lanier Drive  
681-3030

Thurs. Tommy Thompson

Fri. John & the Guys

Sat. \$25 Wings

Monday Night Football with QB1

Tues. Bash Night - All U Can Eat Wings \$6<sup>95</sup>

Wed. The Positions

## The Country Club

Hwy 301 S.  
681-9000

Thur, Fri, & Sat - Alibi Band

Mon. Monday Night Football

Wed. Dime Time

## Vandy's

Statesboro Mall  
764-3033

Pit Cooked BBQ Since 1929

Best Chicken Fingers in Town

Daily Specials

Ribs on Tuesdays

Catering Service Available

## Video Warehouse

120 Northside Dr. E  
489-4279

FREE Membership

Sun - Thurs 8:30 - 11 pm • Fri & Sat 8:30 - Midnight

NOW SHOWING:

City Slickers 2

With Honors

Previously Viewed

Movies on Sale for

\$9<sup>99</sup>

## Cinema 9 Mugs & Movies

Statesboro Mall  
489-4492

Tuesday

Ladies Night

1/2 Price

Thursday

Wing It!

25¢ Buffalo Wings

\$3 RIDE ALL NIGHT  
FROM PARTY TO PARTY,  
BAR TO BAR,  
AROUND CAMPUS

WE CHARTER GROUP TRAVEL  
FOR ALL OCCASIONS

Y-DRIVE  
SHUTTLE SERVICES



- DAY & NIGHT SERVICES
- AROUND STATESBORO
- HAPPY HOUR OR ALL NIGHTS TO SAVANNAH
- FRATERNITY AND SORORITY SOCIALS
- BEACH TRIPS
- LARGE GROUP MULTI VAN RATES

CALL FOR MORE INFORMATION

SPORTS TEAM TRANSPORTATION  
BUSINESS - STUDENTS - PARTIES

# Parents Weekend



Third Street Kids

Introduces

"A Plaid Fad"

Under the Green Roof at....

The University Store

Mon-Fri 7:45-7:00pm

Sat 11/12/94 10-7:00pm

681-5181



Block seating for the Glenville State game will be on Saturday from 10 a.m. COACH representatives must enter the stadium through the gate across from the EnZone. No one will be admitted to block seats after 10:30 a.m.

### FROM THE FAIRWAY

RONNIE SWINFORD

#### CRI needs to make a level playing field

This week I am going to spread our focus to something that most students might actually be interested in, CAMPUS RECREATION AND INTRAMURALS.

I think that the folks at CRI might want to try to run their department a little better. For example, I play on a pretty bad flag football team, we just made the playoffs and did not score. Yes that's right, my team went 3-2 and will be in the playoffs without having crossed the goal line. We have lost 12-0 and about 42-0 in the other game. We won two forfeits and a rain out. Now does this system seem a bit odd?

I realize that these people who run CRI are trying to do an impossible job. I worked for a city recreation department and I do know how big of a pain in the backside that scheduling can be. I also realize that weather is the one constant that can not be depended on. Sometimes both teams just don't get to play. In this case, give both teams a tie not a win. Giving both teams a win is not the right way to do handle a rain out. If a win is given then the act of winning is degraded and that is the reason that most people play intramurals is to participate and try to win.

Another thing that is disturbing is that the refereeing is at best poor. I am not wanting major league quality, but these referees are not even Southern Conference quality and that is about as low as you can sink before you are told to hang up the striped shirts. Of course, I have many examples of this but I will just share a few with you.

In my first year here, I played flag football. We had a pretty good team and went 4-2 for the year. We made it into the play-offs and had to play one of the fraternities in the first round. At the half, we had a 21-0 lead. But at halftime there was a change of referees and there went the game.

When the refs walked out on the field, they went over to the other team and started talking to them and asking how they could be losing to a bunch of freshmen.

The refs then started the second half. We then had nine straight penalties called on us and we realized that the fix was on. The calls got so bad that one of our receivers got tackled before the ball got to him and the refs called offensive pass interference on him. Also the refs stopped the clock after every play. This led to a rather long and drawn out second half. The half lasted about 50 minutes and we lost 22-21.

This is a little hint to the administrators who decide on the softball policy: softball has three strikes and four balls just like baseball. Not this pathetic three balls and two strikes bull that they pull on us. If you want to save time, then start the games on time, but don't change the rules to serve your purposes.

Another good example of the ineptitude of some of the refs is demonstrated every spring at the softball fields. Last year, we had some real idiots umpire our games. One thought that a strike consisted of the ball hitting the plate. Another thought that if the ball hit behind the

Please see FAIRWAY, page 10

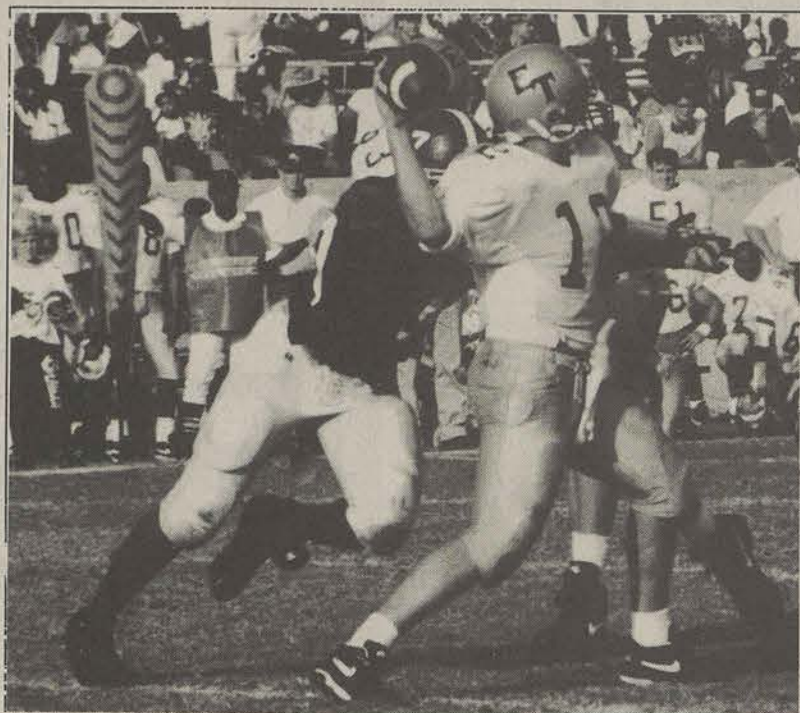
## Eagles to face NAIA's Glenville State

By Carolyn Wynn  
Staff Writer

After their close win against Furman, the Eagles will face the Pioneers of Glenville State this weekend for Parents' Day for their first meeting. Glenville State is a member of the West Virginia Intercollegiate Conference and finished second in the nation for the NAIA title last year.

This first meeting with GSU marks the end of the regular season for the Pioneers who are currently undefeated. Glenville State is a much smaller school than GSU, but should not be taken for granted. Their main strength is their offense, particularly their passing ability.

Offensive players to watch are senior wide receiver, All-American candidate Chris George, and junior quarterback Scott Otis who has a passing efficiency rating of 60.2 percent. Defensively, the Pioneers run the same 4-3



File Photo

Defensive end Edward Thomas hopes to put a hit on the Glenville State Pioneers Saturday.

defense as we do.

Alfonza Harris, GSU's 5'9"

186-pound sophomore split end, says even though this is a non-

conference game, "We still must go into this game, and take care of business."

Harris also said the I-offense of the Pioneers is not much different from our own Multiple-I offense.

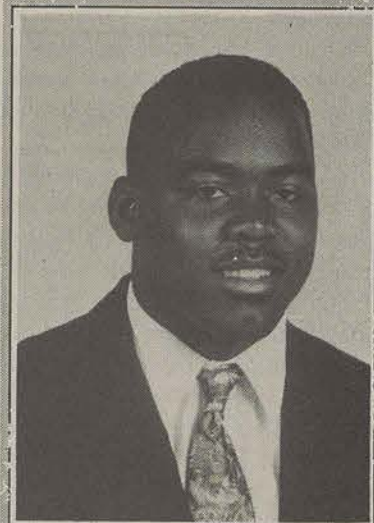
So far this season Harris has demonstrated that he is a valuable member of this Eagle squad, and is described as having "exceptional speed that makes him a legitimate deep threat."

On a sadder note, cornerback Travis Taylor will not be able to return after re-injuring his knee during practice last week. Taylor was sitting out this season because of a pre-season injury where he shattered his kneecap.

This Parents' Day game is the last home game for the Eagles and stands to be a very important game if they are to continue their post-season playoff hopes.

Next week the Eagles will face The Citadel in Charleston, S.C.

### Moses works in the trenches



Stacy Moses

By Aaron Solomon  
Staff Writer

The Eagles' offense has been rejuvenated with the presence of quarterback Kenny Anderson and a strong running attack. Behind this attack there has to be an offensive line to produce the holes for Chris Wright or Marlow Warthen to run through. One of these offensive linemen is junior tackle Stacy Moses.

As a redshirt freshman from Blakely, Ga., Moses originally was a defensive player. As a defensive lineman at Early County High School, he earned Southwest Georgia defensive player-of-the-year honors in classes A and AA, in addition to all-state honors from *The Atlanta Constitution*.

The season started out slow for the Eagles, and after Joe Dupree went down with a knee injury, the offense had to adjust to a new quarterback. Usually this would mean a major adjustment for an offensive lineman, but Moses disagrees.

"It is more of a mental change," Moses said on the change of quarterbacks. "Our assignments do not change regardless of who the quarterback is."

This season has been rough on the Eagles. With a goal of repeating as Southern Conference champions, the Eagles have now taken a new focus. Moses said what change the Eagles have made to keep their playoff hopes alive.

"One thing that has changed is that we are taking one game at a time," said

Please see MOSES, page 10

### VOLLEYBALL

## Watson provides spark for volleyball team

By John Munford  
Sports Editor

Tracy Watson is a bundle of positive energy. She flashes a smile on her face almost everywhere she goes, at least until her classwork gets her down. But the 20-year-old performance/voice major fully realizes that all of the voice lessons, Italian lessons and recitals will pay off when she graduates.

And so will performing in front of crowds, which Watson already does as a defensive specialist for the Lady Eagle volleyball team. In addition to her contributions on the court, she also sings the National Anthem before each home volleyball match. That's a real experience that she can put on her resumé.

Watson has also performed Francis Scott Key's work before GSU home basketball games. She said the larger crowds there make her a little bit more nervous than the smaller crowds found at volleyball matches.

"The larger the crowd, the more nervous I get," she said. "But once I get into the song, I'm okay."

So a singing career is definitely in her future. In the present, however, Watson routinely substitutes in volleyball games for middle-hitter Kim

Woods in order to help out on defense. Watson relishes her opportunities to help out offensively as well.

"I'm constantly calling for balls when I'm on the back row," she said. "I enjoy helping out however I can whenever I can."

Head Coach Dee Nichols said that Watson — last year's only walk-on — serves as the spark plug for the team when she enters a game.

"She's the one that comes in and gets everybody fired up," Nichols said. "She keeps our rallies going. There are just some balls that no one can get to, but people like Tracy find a way to get to them. Without Tracy, balls are going to hit the floor."

Watson said it is the team's togetherness that keeps her passion for playing alive — because the team gets along just like a family.

"We can all be ourselves," she said. "We all know each other well enough to know just how far we can take a joke. We get along so well off the court that we work well together on the court."

And like all families, the Lady Eagles take the time to talk seriously. On long, grueling road trips they have "team talks" about anything and everything.

"Once, we had a discussion



James Hill

Tracy Watson belts out the National Anthem before a Lady Eagle volleyball game.

about date rape and we talked about how to keep ourselves out of situations like that," Watson said. "We also talk about what everyone wants to do when they graduate: like Kim Woods, who wants to go into the Air Force or Jen McNally who wants to be a teacher. Coach Nichols likes to

keep us thinking about more than just volleyball."

And just like families play together, so do the Lady Eagles.

"If we win, we're winning together," she said. "If we're losing, we lose together. It's always a team effort in a loss and always a team effort in a win."

### SWIMMING

## Head women's swimming coach: Pitts is as 'good as they come'

By Jeff Whitten  
Staff Writer

"Oh to be a swimmer, now that winter's here;

Oh to be a swimmer, chasing after beer..."

— anonymous 17th century sea shanty

The following has nothing to do with the above, and everything to do with Decatur native Pitts, who swims both the 100 and 200-meter backstroke for GSU's Lady Eagles swim team.

Ask GSU Head Swimming Coach Scott Farmer about Sherlonda Pitts and you get a string of superlatives for an answer. "She'll be a winner in life when she graduates."

"She's as good as they come."

"Sherlonda has her priorities straight."

And perhaps most telling of all, Coach Farmer said "If every coach had a team filled with Sherlondas, we'd all coach for a hundred years, and we wouldn't have gray hairs and ulcers."

In other words, her coach thinks Pitts is a fine swimmer and good student. And he said she had a burning desire to win, not just in swimming, but in life.

You get the feeling Coach Farmer could talk all day about Pitts.

Pitts is a junior and an economics major. She carries a 15 hour load and practices close to 20 hours a week, and her cumulative GPA is 3.06. She might go on to graduate school, and if she does

it will be at Georgia State University because she misses Atlanta.

"Atlanta is my favorite city," she said, "I want to live there forever."

Pitts also talks in superlatives, from time to time.

She said she's an economic major because she "loves economics," but it is the way she said it, and the way she described Atlanta, that makes you think in capital letters.

It also makes you think in terms of the superlative, the better than ordinary, the outstanding.

And Pitts wakes up every morning convinced that every day is a good day. She tries hard to stay positive.

Not that life is perfect for Pitts. Most days are good, but she has bad days, too. What might make her bad days different than the norm is that she does not blame hers on external circumstances.

"My bad days are when I don't do well on a test, or don't do well in practice or at a swim meet," she said.

You get the idea that her bad days are probably few and far between.

Seek Pitts and chances are you'll find her in the pool. Eagle swimmers practice

hard. In this case substitute the word "work" for the word "practice" and you'll get the message.

Their first practice is at 6 a.m. They swim laps, seven miles of laps a day except for Wednesdays when they go about half that distance. And if 66 laps make up a mile, then that is 462 laps a day every day save Wednesdays.

They do get weekends off.

But the laps are not the whole story. The swimmers do what Pitts called "jumping boxes" twice a week (on the same days they run steps). Jumping boxes is, well, jumping boxes. You have a box roughly three feet high and you jump onto it, then you jump off. Then you do it again and again and again, until your calf and thigh muscles self-destruct. Remember that this is on top of the laps in the pool, apart from time spent in the weight room, and the time spent running up and down steps.

Remember that and then realize that probably a decided majority of people on this campus know little about the swim team.

They toil in the shadow of obscurity, and this bothers Pitts a little bit.

"We're the hardest working sports team on campus and we don't get much

fan support," she said, "but it's getting better. It could be a lot better."

Fan support is deserved, if for no other reason than the Lady Eagle swimmers are good. They have won six straight Southern States Swimming Championships. They blew out Florida State two weeks ago.

Pitts said the Florida State meet gave her confidence that the team could compete with anyone on Florida State's level.

She also won the 200-meter backstroke, and set a pool record in the meet against the Seminoles.

Which brings to mind something she said about practice.

"Nobody really likes to practice, but it's something you have to go through to get better," she said, and then threw in another superlative, another set of capital letters.

"I LOVE swimming, though," she said. She compared swimming to being on cloud-nine.

"It's like I'm on top of the water," she said.

Sometimes, though, she isn't properly rested and then swimming is not so good.

"When I'm tired I feel like a rock, like I'm going to sink in the pool."

But that would be a bad day for Sherlonda, and those do not come all that often.

Pitts is an African-American, and that

Please see PITTS, page 10



## CMJ'S Top 10 music videos

1. Craig Mack, Flava In Ya Ear. (Bad Boy-Arista)
2. R.E.M., What's The Frequency, Kenneth? (Warner Bros.)
3. Cranberries, Zombie. (Island)
4. Veruca Salt, Seether. (Minty Fresh-DGC)
5. Hole, Doll Parts. (DGC)
6. Nirvana, About A Girl. (DGC)
7. Janet Jackson, You Want This. (Virgin)
8. Jade, 5-4-3-2(Yo! Time's Up). (Giant-Reprise)
9. Offspring, Self Esteem. (Epitaph)
10. Toad The Wet Sprocket, Something's Always Wrong. (Columbia)

Source: CMJ New Music Report

# Arts & Entertainment

Page 7 — Thursday, November 10, 1994



JOSH BASS

There's a whole lotta stuff going on for the next week. There is a good performance choice every day of the week.

Soulhat is not playing tomorrow night at Legends. They are currently shooting their video for Preacher Man. Their show has simply been postponed until Friday Nov. 30.

Donkey was scheduled as the opening act and they will still play.

"Transformations: A Fairy Tale Masque" runs from Tuesday to Friday. It will be every night at 8 in Comm Arts room 101. A weird take on fairy tale favorites, it should prove quite entertaining.

Tonight comedian Hamburger Jones does the funny-bone thing at 8 in the Ballroom.

If comedy is not your first choice, Pulse is playing at Blind Willie's. See the Highlight story below for more on the local band.

Friday has hippie band DSF Earth Corps at BW's, while hard-rocking Downright tears up Chena's.

Saturday, Blind Willie's has local youngsters Won By One. They say they've dropped their covers and do originals now. Labrea Stompers' pals Redneck Greece Deluxe will be doing their best Elvis.

You've all seen the stuff on Taj Mahal. He brings his music show to the Ballroom at 8 Monday. This is a must, the guy is legendary.

The Statesboro-Georgia Southern Symphony is also performing Monday at 8 in Foy Recital Hall.

Tuesday has the GSU Jazz Ensemble finding the magic groove in the Ballroom at 8.

Wednesday is the Step Show at 7 in the Ballroom. If you haven't seen one yet, definitely take the time out for this one.

### HIGHLIGHT

## Pulse-local pop

By Paul Ferlita  
Staff Writer

Pulse is a pop sextet with heavy gothic overtones.

Musically, they take their influences from Dead Can Dance and The Cocteau Twins, and add their own power-pop melody.

Lyrical, the most recognizable comparison is to Morrissey; yet, the group's lyrics are original.

## 'The Wiz,' one hell of a play

By Paige Haggard  
Staff Writer

The second performance of "The Wiz" Friday night at McCroan Auditorium had a large turnout. At 7:45, the ticket line reached onto Sweetheart Circle. The auditorium was packed.

One of the 70's most popular Broadway productions, "The Wiz" is an Afro-centric adaptation of the original Anglo-centric "Wizard of Oz" adventure.

The GSU Theater Company's season opener was almost 40 people strong and was the biggest event of their year.

As the play started, the lights shone on an Expressionistic set; just a stark farmhouse in exaggerated perspective sitting on a large, round, revolving platform. The backdrop was a sheet of white scrim.

For scene changes, the scrim would rise and stagehands turned the platform. This glimpse into the workings of the stage reflected a Brecht influence.

The rest of the scenes were just as sparse: red balloons for poppy fields, a large green head with disco-ball eyes in the Wiz's lair and a Voodoo-inspired throne for Evillene's kingdom.

The gate to Emerald City was one of the most interesting props. It was green and delicate with an intricate lotus-like pattern.

The lighting complemented the sparse set. With ample use of disco ball lighting for Emerald City scenes, it seemed like the seventies all over again.

The costumes provided most of the color on the stage. There

were the obvious choices of simple dress for Dorothy and the Scarecrow's patched outfit, but some of the choices were quirky and surprising.

Addaperle wore purple robes with a worn red boa. Evillene's costume was powerful, with strong colors such as black and orange. The Munchkins wore bright colors. Of course, everyone in Emerald City wore green.

The acting was outstanding, and the energy was high. It was campy in the extreme with everyone upstaging everyone else. Shenica Bridges made a perky Dorothy.

**IT WAS CAMPY IN THE  
EXTREME WITH  
EVERYONE UPSTAGING  
EVERYONE ELSE.**

Robert Meguiar played the Lion with an Elvis twist, and Kail Kemp was a smart-aleck scarecrow. Jennifer Bolt's Addaperle was a street-smart, second-rate Vegas magician and Mario D. Webb was a highly convincing evangelistic Wiz.

The singing was excellent as well. Shaunta Ellis-Rock, D'mitri Mosley and Tiwana Turner practically stole the show with their solos.

Keisha York's opening song as Aunt Em was touching and pretty. Even the pit singers stood out, not simply because of their great voices, but because of their personalities.

There seemed to be a few nine-

ties twists to this disco-era musical. The Emerald city citizens stood in Vogue poses while acting very hip. The Winged Monkeys were ninja monkeys. There was even a recurring costume theme of high-top Converse.

One of the best things about the performances was the audience. They were very responsive. They enjoyed every minute and laughed enthusiastically.

There were a few problems. The live instruments, though very good, did at times overwhelm the singing. This is a typical problem with live music. However, the musicians added more to than detracted from the performance.

The choreography for the tornado dancers was ineffective. They simply didn't reflect a tornado's fierce winds. Also, the Winged Monkey fight scene was somewhat flat.

The main problem was the heat. McCroan's only cooling sources are fans. The fans had to be stopped for the performance, so the audience and the performers had to endure the stifling heat.

Overall, the performance was wonderful. It was very funny and highly involving. It was impossible not to get caught up in the campy funk of the play and energy of the cast.

The George-Anne. It's not just for breakfast any more.

## Psychic Readings by MRS. GRACE

Tarot Card & Palm Readings

- Have you ever wanted a psychic to analyze you and tell you what is right & wrong in your life?
- Do you want an expert in the field of psychic phenomenon to gaze into your past, explain your present & tell your future?
- Mrs. Grace advises on love, business matters & marital problems.



**Special \$5 All Readings**

113 Hwy. 301 South, Statesboro  
Across from Ogeechee Tech

912-871-4487

## SOAR '95

Orientation Leader Interest Sessions:

Monday, November 14th 8:00 pm Union 242  
Tuesday, November 15th 6:00 pm Union 244  
Tuesday, November 15th 8:00 pm Union 244  
Wednesday, November 16th 7:00 pm Union 247

You MUST attend one of the interest sessions to receive an application. Please call the Office of Special Programs for additional information -- 681-5409.

## Fashion Sewing & Alterations Center

Open 10am-6pm  
Located 29 James  
2-Day Service

- Cuffs \$5.00
- Pants Hemmed \$4.00
- Jeans Hemmed \$5.00
- Zippers Replaced for Jeans and Pants \$5.00

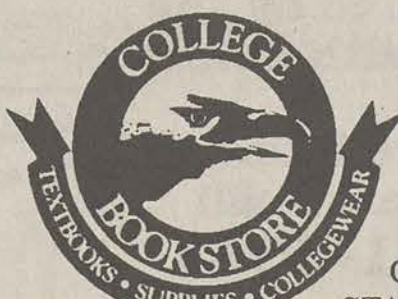
Alterations payed in advance

## COLLEGE BOOK STORE

WELCOMES

## ALL PARENTS

GREAT SALE ON  
ALL GSU CLOTHINGS  
ADULTS & CHILDRENS



1598  
CHANDLER ROAD  
STATESBORO, GA 30458

## KICK OFF YOUR TAILGATE! SHOP AT BI-LO!

10	Freshly Sliced To Order <b>Butterball Turkey Breast</b> <b>\$3.99</b> lb.	<b>BI-LO</b> The name fits.	Freshly Sliced To Order <b>Bryan Cajun Or Italian Roast Beef</b> <b>\$3.99</b> lb.	10
20				20
30	Salad Of The Week <b>Delicious Chicken Salad</b> <b>\$3.49</b> lb.	10 oz. <b>Cracker Barrel Cheese</b> <b>\$1.99</b>	All Varieties Cake Or <b>Glazed Cidermill Donuts</b> <b>\$1.99</b> doz.	30
40				40
50	12 oz. Curtis Porterhouse <b>Thick Bologna</b> BUY ONE, GET ONE <b>FREE!</b>	16 oz. <b>Oscar Mayer Bacon</b> BUY ONE, GET ONE <b>FREE!</b>	16 oz. <b>Bryan Juicy Jumbo Franks</b> BUY ONE, GET ONE <b>FREE!</b>	50
60				60
70	32 oz. BI-LO <b>Tater Tots</b> BUY ONE, GET ONE <b>FREE!</b>	All Varieties <b>Pepsi 2 Liter</b> <b>79¢</b>	7 oz. Baked Or Crunchy <b>Moore's Cheese Snacks</b> BUY ONE, GET ONE <b>FREE!</b>	70
80				80
90				90
100				100

Limit 4 With Each \$10 Purchase

These BI-LO 7 Day Specials Are Good... At Our Statesboro Location.

November	W	T	F	S
13	14	15	16	17

**WESTERN UNION**

The fastest way to send money is right up our aisle. Western Union Money Transfer. Available at BI-LO!

We Reserve The Right To Restrict Quantities Of Merchandise. No Sales To Dealers. BI-LO, Inc. Copyright 1994©.

NOVEMBER IS SONIC  
JUMBO COMBO MONTH  
JUMBO SAVINGS MONTH  
WHY PAY MORE?

- Deluxe Sonic Burger \$2.39 PLUS TAX
- Regular French Fries
- Regular Soft Drink
- Ex-Long Chili Cheese Cone \$2.49 PLUS TAX
- Regular French Fries
- Regular Soft Drink
- Country Fried Steak Sandwich \$2.89 PLUS TAX
- Large French Fries
- Large Soft Drink
- Breaded Chicken Flet Sandwich \$3.39 PLUS TAX
- Large French Fries
- Large Soft Drink
- Super Sonic Cheeseburger \$3.59 PLUS TAX
- Large French Fries
- Large Soft Drink
- Char-Grill Chicken Sandwich \$3.59 PLUS TAX
- Large French Fries
- Large Soft Drink
- 2 Junior Burgers \$3.29 PLUS TAX
- 2 Small Fries
- 2 20 oz. Soft Drinks

DRIVE-IN • 322 South Main • DRIVE-THRU



IN ENTERTAINMENT

# Blues man Taj Mahal comes to GSU

By Melissa Jameson  
Staff Writer

The Union Ballroom is sure to be jamming Monday night as well-known blues guitarist Taj Mahal takes the stage and captures the audience.

Mahal has been performing for over 30 years, producing 22 albums, and going on tours some 200 dates a year. Somehow he managed to squeeze in TV appearances on "Farm Aid" and "Saturday Night Live."

From a family background of gospel and jazz, Mahal's musical career took flight in California, mostly on L.A.'s Sunset Strip.

Among his other accomplishments are composing scores for such works as "Sounder," "Brothers" and George Lucas' animated series "The Ewoks."

He also created the original music for the Broadway production of "Mule Bone," which was written by Harlem Renaissance legends Zora Neale Hurston and Langston Hughes.

Mahal is much more than just a blues guitarist. He plays banjo, piano and harmonica. His music is influenced by a variety of cultures such as Caribbean, West African, American jazz and Southern folk.

No one word can describe the music he creates. It is a mixture of jazz, folk, country, gospel, rock, reggae, calypso and blues. Not only does he incorporate all these different musical styles into his performance, he puts his entire soul and personality into it; he enables the audience to "feel" the music. Mahal keeps alive a musical tradition that seems to be dying with the changing times.

Mahal has been described as a "unique performer" where "anything goes" and his shows are guaranteed to be exciting energetic and moving.

His blues are not just "crying blues" either. They are also "jump for joy blues" or

"just sit around on the porch" blues.

Tickets for the Monday's show are on sale now at the Union ticket booth. Admission is free for GSU students and faculty. Children are \$3 and adults are \$5. The show begins at 8 p.m.



Special Photo

Legendary blues guitarist Taj Mahal will perform his multi-mixed compositions for students and faculty Monday at 8 p.m. in the Union Ballroom.

ONLY IN HOLLYWOOD

## Adult films becoming big business

The Associated Press

LOS ANGELES- Adult films have grown into a \$3 billion-a-year business, and it's not hard to find the boom if you know where to look and listen.

On any given day, hundreds of Southern Californians from performers to shipping clerks to carpenters punch the clock in a burgeoning world whose terrain is sex and axis is profit. More than 2,400 new titles are produced annually, turning parts of Southern California into full-tilt palaces of porn production.

Paul Little has transformed his leased Rubio Highlands mansion into one such venue.

Set against the San Gabriel mountains above Pasadena in postcard-perfect suburbia, Little's showcase house would blend in beautifully with the orderly neighborhood — if it weren't for the unmistakable sounds of sex drifting down from the estate for everyone on the

block to hear.

"We need a little bit more sound - louder!" orders the director of the adult film "Total Abandon," who calls himself Phil M. Noir.

Actors performing an explicit sex scene near an outdoor whirlpool tub readily comply, and their theatrical wails ratchet up a few

When videocassette recorders brought adult movies out of sleazy theaters and into the privacy of the bedroom in the 1980s, profits skyrocketed.

With annual sales and rentals climbing steadily every year, filmed and videotaped pornography has become one of Hollywood's fastest-growing but

"It's 24 hours of recess where the bell never goes off," says William Margold, a veteran porn producer and actor ("Dracula Sucks," "Broadcast Nudes"). "We sell our soul to be immortal — and we thrive on it."

Adult Video News says more than 2,400 new adult movies and compilations were released in 1993.

Few people openly admit renting them, but adult videos claim about 11 percent of all videotape rentals, AVN says, and the mail-order business is thriving.

Adult film companies are among the busiest developers of high-tech interactive programs, including CD-ROM games and pay-per-view cable channels.

Although filmmakers and performers almost always work under often preposterous pseudonyms (Lynden Johnson, Leatha Weapons) and live in frequent fear of criminal obscenity prosecution, their business is quietly becoming legitimate.

### WHEN VIDEOCASSETTE RECORDERS BROUGHT ADULT MOVIES OUT OF SLEAZY THEATERS AND INTO THE PRIVACY OF THE BEDROOM IN THE 1980s, PROFITS SKYROCKETED.

more decibels.

Police, Little says, have visited the premises and deemed it in compliance with local ordinances.

To keep it that way, posted house rules warn the steady stream of adult film performers: "If nude, remain away from front windows and balconies."

least understood exports.

From veteran actor-director Ron Jeremy ("Cheerleader Nurses," "The Maddams Family") to actress-stripper Tori Welles ("Mystic Pieces," "Where the Boys Aren't"), porn stars are recognized by fans wherever they go, yet the performers still chase dreams of fame in Hollywood.

CLUB NEWS

## Scuba club dives into GSU

By Marc Solomon  
Guest Writer

The "Rodale's Scuba Diving Magazine" Associate Editor Keith Phillips came to talk to the scuba club's first meeting Nov. 2.

Prior to the meeting, the club ate pizza and had a chance to meet Phillips and discuss favorite diving spots. There was also a chance for members to sign up for the Winter trip to the Florida Keys. The trip has a limit of 18

people and deadline for the trip is Nov. 21.

During the meeting Phillips talked to the students about Paradise Reef in Cozumel, Mexico. Cozumel divers are struggling to save the reef from destruction. Cruise ship companies that service the area have made plans to build a peer through the reef.

Phillips explained that the club could be of assistance by

writing letters to the cruise ship companies.

The scuba club plans to meet every first and third Wednesday of each month. The meetings take place at 7:30 p.m. and are held in room 242 of the Union.

For more information on what can be done to help save the reef in Cozumel or to find out more about the trip to the Keys, contact the Club President Marc Solomon at 764-3424.

IN HISTORY

## Margaret Mitchell's letters to be auctioned at Christie's in NY

The Associated Press

ATLANTA — In 1936, Margaret Mitchell admitted in a letter to a young student that not all of the characters in her forthcoming novel, "Gone With the Wind," were noble and brave. In fact, she said, some were scoundrels.

"But I hope you like my scoundrels," she wrote.

The letter and seven others, all written by Miss Mitchell to Martha Angley Cook, will be auctioned Dec. 2 at Christie's in New York.

Mrs. Cook, later an English teacher, was a 19-year-old junior at Georgia State College for Women in Milledgeville when she corresponded with the au-

thor in 1936. She kept the letters private, showing them only to her students. When she died at 77 last year, she left them to her son, Atlanta businessman Tommy Cook.

"I think the letters show a human side of Margaret Mitchell that I have not gleaned from the press," said Cook, 51.

Christie's spokeswoman Kirsten Schabacker said she expects the letters to bring \$2,000 to \$3,000 each, although one could bring as much as \$7,000.

The letters were nearly destroyed twice in fires, Cook said. "I decided the third time is the charm and I'd better not fool around with them any longer."

## TURKY'S AUTO SALES

WE RENT **U-HAUL**  
TRUCKS & TRAILERS

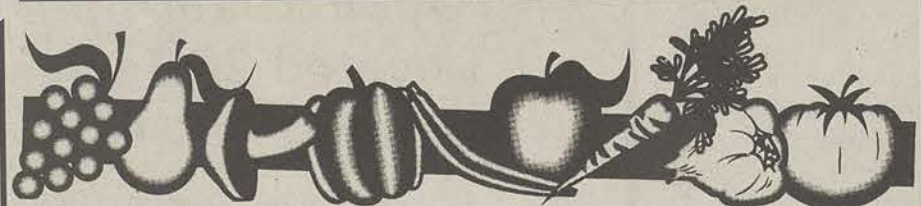
We Sell U-Haul Boxes!  
Across Town or Across Country  
Reservations Accepted

Call 489-2808  
Across from Wal-Mart

## Parents Weekend Schedule!!!! Get Involved

<b>Friday, November 11:</b>		
7:00-9:00 p.m.	Check-In	Russell Union Commons
7:00-8:30 p.m.	Opening Reception	Russell Union Commons
<b>Saturday, November 12:</b>		
9:00-10:30 a.m.	Check-In/Coffee and Doughnuts	Russell Union Commons
9:30-10:30 a.m.	GSU Parents Association Meeting	Russell Union Ballroom
10:30-11:00 a.m.	Parents' Weekend Welcome	Russell Union Ballroom
11:00-1:00 p.m.	Pre-Game Tailgate (Students may use their meal plan)	Landrum Center Grounds
2:00 p.m.	GSU Football vs Glenville State	Allen E. Paulson Stadium
8:00 p.m.	Free Movie <i>The Big Chill</i>	Russell Union Theater

For more information call the Office of Special Programs at 681-5409 or stop by Rosenwald 289.



## DON'T LET THE FRESHMAN 15 BECOME THE FRESHMAN 25 BY JOINING

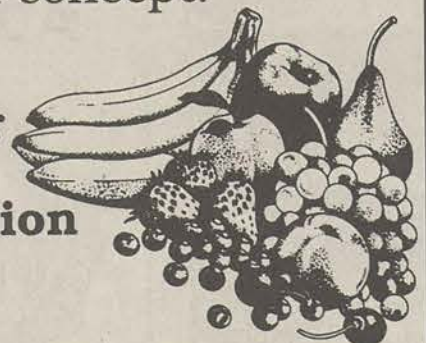
## TOTAL BODY ENHANCEMENT

This is a free personalized program that is designed to help you learn healthy eating habits and lose weight in the process.

The **Total Body Enhancement** program includes all components of nutrition and fitness - it's the total concept.

Sponsored by the  
GSU Health Center

For more information  
please call  
**681-5641**



I placed it next to  
Thatch in.....  
The George Anne  
GSU's Official  
Student Newspaper

## MR. HANEY'S

Stadium Walk Plaza  
next to Neal Graphics  
681-9393

Open 4pm-10pm Monday-Friday &  
10am-10pm on Saturday's

### T-Shirts from:

Far Side  
Looney Tunes  
Beavis & Butthead

### All Music:

NIN  
Grimmy  
Nirvana  
Duckman  
Green Day  
Forrest Gump  
Grateful Dead  
Rolling Stones

### Unique Gifts

Lava Lamps  
(\$30.00 while they  
last!)

Giggs  
Jewelry  
Novelties  
Black Lites  
Skateboards  
Airbrushes &  
Supplies

Select Posters \$1.00

AIRWALK & DOC  
MARTIN  
COMING SOON!



# CARTOONS

# CLASSIFIEDS

# CROSSWORD

## 01-Announcements

African American Gospel Chior Concert  
Nov. 18. Union Ballroom at 7:30pm.  
Admission free.

ATTENTION: The George-Anne screens  
all classified ads prior to publication. The  
newspaper strives to accept ads for  
legitimate products & services only.  
Students are urged to exercise caution  
when replying to ads, particularly those  
which ask for money or a credit card  
number in advance of delivery of products  
or services. Students are also urged to  
report to the newspaper (at 651-5418) any  
suspicious offers they might see in the  
classifieds. Remember, if an offer seems  
too good to be true, it probably is.

GSU Equestrian Club and Wolfpen  
Equestrian Centres host a local horse  
show on Nov. 12, 1994. Call CRI at  
681-5436 for more info.

The last meeting of Gamma Beta Phi  
Society will be held Thurs. Nov. 10 at  
7:00pm at Marvin Pittman Auditorium.

The Outdoor Adventure Club will have a  
mtg at 6:30pm in Union rm 270. New  
members are encouraged to attend.  
Florida trip will be discussed.

YOGA CLUB meets 5pm Tues. In Union.  
Beginners welcome. Wear comfortable  
clothing. Check info. Desk for room  
number. For more info. Call 681-5511

## 03-Autos for Sale

1987 Mercury Sable (station wagon), LE,  
New transmission, V6, great appearance.  
Call 681-8848 for details.

1988 Outlass Supreme Itn'l. Excellent  
condition. Buying new car. Power  
everything at a low, low price \$4495 or  
best offer. 681-9106

For Sale: '86 Pontiac Sunbird 4dr. \$950 or  
best offer. Call Jeff at 489-5877. Leave  
message.

## 09-Furniture & Appliances

For sale: King size waterbed \$100. Call  
681-7841

Kingsize waterbed w/darkwood frame. 2  
sets of sheets. \$190 or best offer. Call  
Michelle 764-7441

## 11-Help Wanted

**\$FINANCIAL AIDS**  
**ATTENTION ALL STUDENTS**  
Over \$5 billion in FREE Financial Aid is  
now available for students nationwide  
from private sector grants & scholarships!  
All students are eligible regardless of  
grades, income, or parent's income. For  
more info. Call 1-800-959-1605 ext.  
F53941.

**Wanted!!!!**  
Individuals, Student Organizations and  
Small Groups to Promote SPRING  
BREAK '95. Earn substantial MONEY  
and FREE TRIPS. CALL THE NATION'S  
LEADER, INTER-CAMPUS PROGRAMS  
1-800-327-6013.

**HOLIDAY EMPLOYMENT**  
**IN ATLANTA**  
Retail Xmas tree lots. Looking for 4  
students. 15-20 hours per week. Must be  
hardworking + reliable w/ good references.  
\$5.50/hour + commission. (404)924-2824.

**CRUISE SHIPS HIRING.** Earn up to  
\$2,000+/mon on Cruise Ships or  
Land-Tour companies. Seasonal &  
Full-Time employment available. No exp  
necessary. For info. Call 1-206-634-0468  
ext. C53942

Shuttle Drivers needed. Over 23 with no  
more than one ticket. Call 871-5693, leave  
message.

## 13-Miscellaneous for Sale

12" MTX woofer \$35. Call 681-7841

Firenze Mountain bike for sale, great  
condition, a steal at \$80. Call Jennifer at  
871-3059

For sale: '94 Cannondale M800 18" Mtn.  
Bike. Great cond. Must see w/extras. \$800  
neg. Call or leave message 871-6608

For sale: Camo Army uniforms and some  
equipment. Call Travis 871-4382 for  
prices.

For sale: Radar detector. Bel 630. \$50.  
Call 681-8848

MTB for sale: 1992 Trek 930, lots of  
extras, \$600. OBO. Will nego. Price, you  
must see it to believe it, call Jake at  
871-6971

## 15-Musical

Bass player needed for country/southern  
rock band. Call Dan 871-4113.

## 16-Personal

Congratulations Jessica! 1994 Fall Phi  
Delt Sweetheart. Love Steven, Brian B.,  
Roy, Brian K., Justin, Glenn, Brian M.,  
Stephano, Cesar, and Trey.

Suzanne Rollen, I'm so happy to have a  
great Big like you. How about lunch this  
Friday. Your lil Samona.

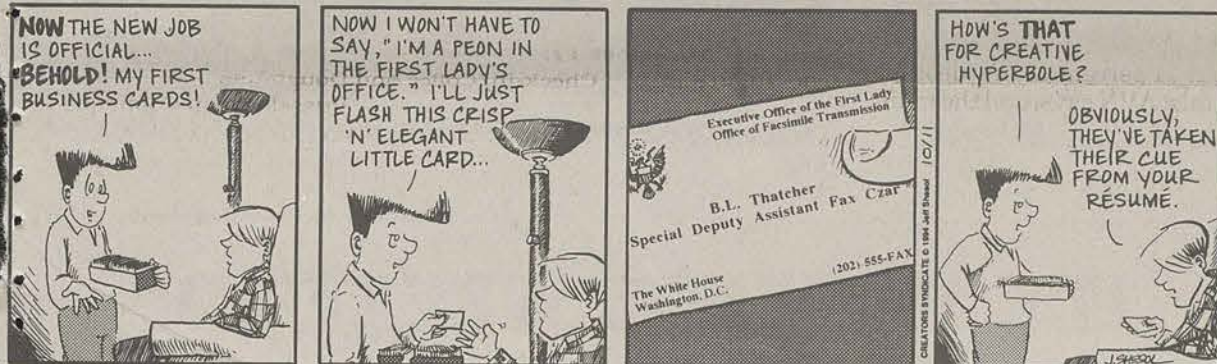
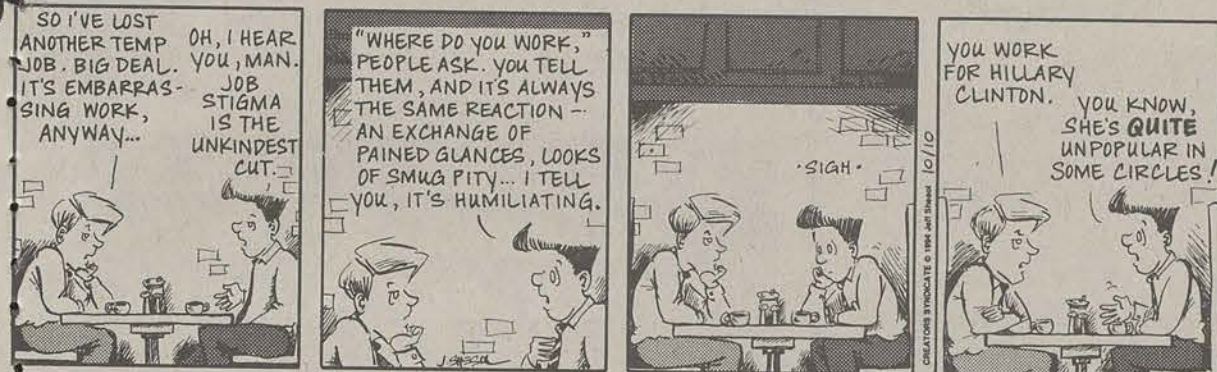
To my Town Club Princess. I brought you  
a pizza, but you were a sleep. Do you still  
think I am a cock?

Tuwan Pollard, I'm glad you liked the  
dozen roses I sent you. Love your big.

Tuwan Pollard, it's so easy giving you the  
moon and the stars. It's all I see when I  
look at you. Love your big.

## THATCH

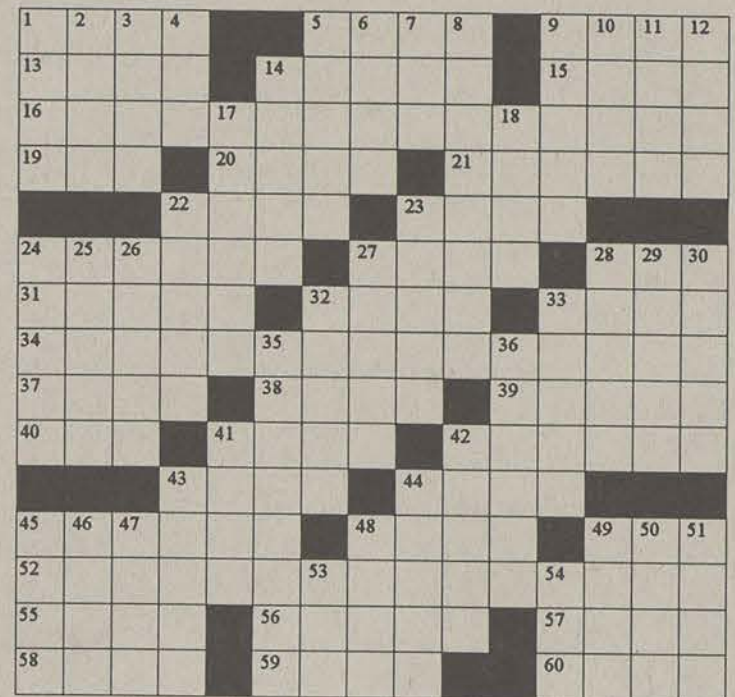
By Jeff Shesol



## "As a General Rule"

By Gerry Frey

- ACROSS**
- 1 Sightseeing trip
  - 5 Praise
  - 9 Actress e.g.
  - 13 Sole
  - 14 Martini and
  - 15 Scrabble piece
  - 16 Soap opera
  - 19 Notre Dame's Par-seghian
  - 20 French girl
  - 21 Marking posts
  - 22 Poor grades
  - 23 Ernie's friend
  - 24 Accelerates
  - 27 Trig function
  - 28 Allow
  - 31 Serenity
  - 32 Prohibits
  - 33 Polynesian dance
  - 34 Janet Reno
  - 37 Bambi for one
  - 38 Double curve
  - 39 Choice
  - 40 Sea eagle
  - 41 General Bradley
  - 42 Stockholm residents
  - 43 Norse god
  - 44 Actress Verdon
  - 45 Singer Frankie
  - 48 Actress Charlotte & family
  - 49 Dallas Univ.
  - 52 Universally held ideas
  - 55 Sicilian volcano
  - 56 Potato:Slang
  - 57 gln fizz
  - 58 Shortly
  - 59 French summers
  - 60 Congressmen
- DOWN**
- 1 Caesar's gown
  - 2 Unique thing
  - 3 Arm bone
  - 4 Bread type
  - 5 Slouches



- 6 Tennis world's Arthur
- 7 Servicemen's org.
- 8 Distribute
- 9 Walking stick
- 10 Yugoslavia's Marshall
- 11 Mr. Alda
- 12 Bro & sis
- 14 Chest sounds
- 17 Caner e.g.
- 18 Cremation site
- 22 Room style
- 23 Drunken spree
- 24 Garden tool
- 25 An apostle
- 26 Devoured
- 27 Speaker
- 28 Gruesome
- 29 Cheer
- 30 Stories
- 32 Started
- 33 Ms. Keller
- 35 Designate
- 36 Just discovered

- 41 Aroma
- 42 Curse
- 43 New York city
- 44 Stares
- 45 Ripens
- 46 Reject a bill
- 47 Year:Latin
- 48 Ceremony
- 49 Lone
- 50 Follows "L"
- 51 Employs
- 53 Earthly line:Abn.
- 54 Neighbor of Syr.

## Quotable Quote

"The hardest thing in life  
is to learn which bridge to  
cross and which to burn."

David Russell

© 1994 All rights reserved GFR Associates  
P.O. Box 461, Schenectady, NY 12301

## 17-Pets & Supplies

29 gal. Aquarium, full set-up, stand and  
extras. Plus 2 full grown oscar for \$190  
w/o oscar \$170. Call Kristie 764-2021.  
Come see it.

55 gal. Tank saltwater set up. Filters,  
custom stand, fish. \$150. Gray 871-7046

Savannah Monitor 11". 2 gal critter tank.  
Vitalite esu day + esu night lights. Heat  
rock + extras. 150+ value - \$75 OBO Call  
Michele 681-8618

## 19-Rentals & Real Estate

2br apts., 2br houses, 2br MHS-furnished  
and unfurnished and nice office. 764-5003

Apartment for rent 2B, 1B, W/D,  
dishwasher. Great location off campus.  
Available December 1st \$420/mo. Call  
soon 489-6285. Leave a message.

Need 2 people to take over lease for  
Winter-Summer Qtr. \$490/quarter per  
person! Free cable and HBO. Call  
871-4304.

Quiet neighborhood near mall. Duplex,  
available Jan 1, 1995. 2brm, 1ba, stove,  
ref., dishwasher, W/D hookup. 681-1252

Sublease for Winter needed. Own bedroom  
furnished. Free water, deposit will be paid  
first month. Rent also paid. For info., call  
Les 871-4274. Leave message.

Very nice, new, 2 bedroom duplex off  
campus. Available January 1. Pets allowed  
\$425/mo. 852-5299.

## 20-Roommates

1 female roommate needed to take over  
lease starting winter quarter. Own  
bdrm+bath. W/D. \$237/mo + 1/2 util. Call  
Cindy or Hope at 871-3836.

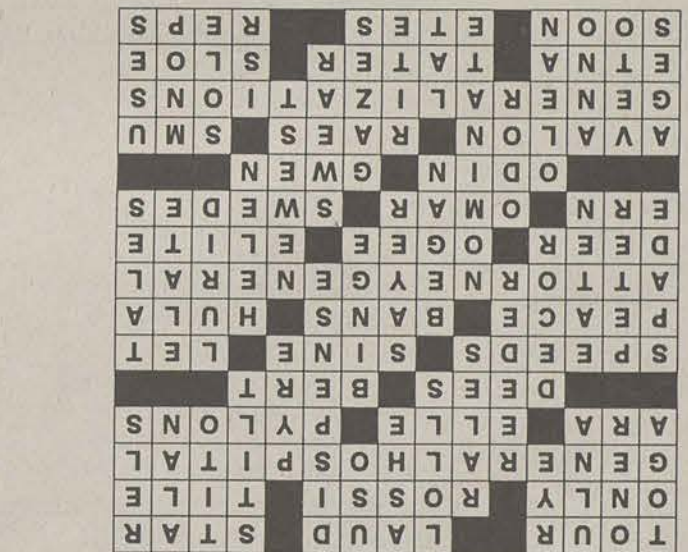
1 roommate needed for Winter and Spring  
Quarters. Call Sharon Doster at  
(404)448-5246.

Bermuda Run roommate needed! Own  
room + bath, own phone line, W/D, fun  
roommates! \$225/mo. Close to campus.  
Call Barbara at 871-4819.

Female Christian Roommate needed,  
\$130/mo. If interested please call Kim at  
489-6285.

Female roommate needed for winter qtr.  
Private bdrm, fully furnished except bdrm.  
W/D, dishwasher, microwave, cable in  
bdrm. Pets allowed. Minimum 3 mon.  
Lease. \$175/mo. 1/3 util. Please call  
Michelle 764-4326

Female roommate needed to live in a 4  
bdrm townhouse in Campus Courtyard.  
Separate rooms! For more info, call  
871-4907



## AS A GENERAL RULE

Female Roommate needed to take over  
lease Winter Qtr. At Players Club own  
bdrm/bath. Call Nicole 871-3602

Female roommate needed to take over  
lease Winter Qtr. Players Club, own bdrm,  
vanity, large closet, W/D, \$225/mo. Great  
roommates! April at 681-1836

Female roommate needed Winter, Spring  
95. Stadium Walk 215/mo + 1/2 util.  
Fully furnished. Own room. W/D. Call  
681-7414

Female roomtne needed. Hawthorne 2.  
Large bdr., 2 closets, Large private bath.  
Starting Spring quarter. Great  
roommates. \$200/mo + 1/4 util. Call Jodi  
871-7046

Looking for female roommate-Campus  
Courtyard. \$225/mo + 1/4 util. Private  
room fully furnished. Please call 681-8711.  
Ask for Lee, Missy, Mandy, or  
Kierstin. Leave message.

Needed! M or F roommate for Winter and  
Spring. \$200 + 1/2 util. Must like dogs!  
Please call Ryan at 681- 9776. LB 12134

One roommate needed for Winter and  
Spring qtrs. Call Sharen at (404)448-5246.

Roommate needed immediately. Georgia  
Villas #17 Fully furnished, W/D, shared  
bedroom. Only \$135/mo. Contact Regina  
or Valarie 681-6766

Roommate needed, males. Campus  
Courtyard to sublease. Neat easy-going  
and preferably a non-smoker. Call  
871-6991

## 21-Services

Expert typing, word processing, speed  
checked- grammar checked. 681-6967,  
Penney.

**PROFESSIONAL TYPING** by Peggy  
Smith, secretary in History Dept. Please  
call at 681-6520. Leave message. Resumes,  
lesson plans, books, theses, etc.  
Competitive rates!

Resumes, lesson plans, research papers,  
etc. Word Perfect with laser printer. Call  
Brenda at 764-1486

## 23-Stereo & Sound

For Sale: Coustic 380 amp 150w/ch. 200  
OBO. Crutchfield 4x50 \$250 OBO.  
Crutchfield 4x30 \$200 OBO. Call  
823-3957. Leave message.

Magnavox 6-disk changer w/remote. \$150  
Gray 871-7046.

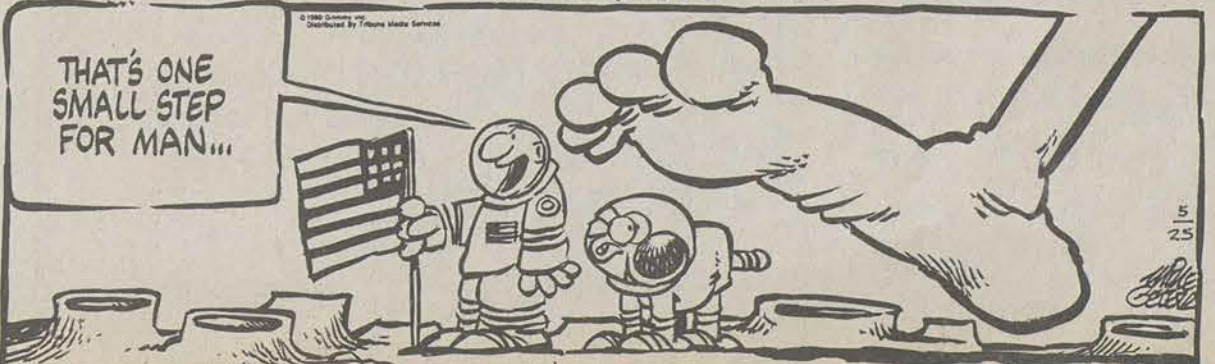
Speaker box (sealed) for 2 10" woofers 2  
chambered, 4x3 made of DMS wood +  
carpeted \$200 new- \$75 mint cond. Must  
sell. Call Dawn 681-8518

## 24-Swap & Trade

Have many hrs of G D, Phish and WSP  
tapes to trade. Call 764-5664. Ask for  
Todd.

## 27-Wanted

WANTED-Copy of 1978 and 1980  
Reflector yearbook. Call Michael Dean  
(912)537-3196





# VOTE

Continued from page 1

<i>District 9</i>		
Nathan Deal (D)	58 percent	
Robert Castello (R)	42 percent	
<i>District 10</i>		
Charlie Norwood (R)	65 percent	
Don Johnson (D)	35 percent	
<i>District 11</i>		
Cynthia McKinney (D)	58 percent	
Woodrow Lovett (R)	42 percent	

## Attorney General

Michael Bowers (R)	65 percent
Wesley Dunn (D)	35 percent

## Lieutenant Governor

(Only 37 percent reporting)

Pierre Howard (D)	55 percent
Nancy Schaefer (R)	42 percent
Walker Chandler (I)	3 percent

## Secretary of State

Max Cleland (D)	71 percent
Keith Mahoney (R)	29 percent

## Agriculture Commissioner

Tommy Irvin (D)	79 percent
Sharon Harris (R)	21 percent

## Labor Commissioner

(Only 32 percent reporting)

David Poythress (D)	56 percent
Richard Robinson (R)	44 percent

## School Superintendent

(Only 32 percent reporting)

Werner Rogers (D)	52 percent
Linda Schrenko (R)	48 percent

## Insurance Commissioner

(Only 32 percent reporting)

Tim Ryles (D)	51 percent
John Oxendine (R)	49 percent

## Public Service Commission

### PSC Seat 1

(Only 24 percent reporting)

David Baker (R)	51 percent
Earleen Sizemore (D)	45 percent
Dick Lib (I)	4 percent

### PSC Seat 2

24 percent reporting

Robert Rowan (D)	54 percent
Stancil Wise (R)	46 percent

# PITTS

Continued from page 6

is a rare thing in competitive collegiate swimming. Of the 40 swimmers on GSU's team, only four are African-American.

It was not so rare in high school. Pitts grew up in what she described as an all-black neighborhood, attended an all-black high school, and swam on its all-black team. Because she was good she was also able to swim for an amateur, predominately white team.

"It opened a lot of doors for me," she said.

It also gave her a different

# MOSES

Continued from page 6

Moses. "We had our goals set too high."

One of the main reasons that Moses has enjoyed his last three seasons at GSU are his teammates, and he feels that he has built a lot of friendships on the team. His attitude towards football reflects a lot about how he feels.

"Football is a unique sport," he said. "There are 11 guys on the field who want to win regardless of how they feel about each other."

Moses feels that to get to the playoffs the Eagles' one goal is to win. Since their recent return to the polls, he feels that there may be light at the end of the tunnel. This Saturday the Eagles take on NAIA powerhouse Glenville State. Although this is an NAIA team, Moses said he never underestimates an opponent.

"You can look at West Georgia as an example of why not to underestimate an opponent," he said. "Whether it is Miami or Glenville State, I block just as hard."

Moses has one more season at GSU, and plans to do it as a fifth year senior. He feels that playing football and going to graduate school, "is a way to take advantage of a situation that I have been given."

perspective on life. It wasn't just black or just white, it was both. Together.

And if that sounds corny, so be it. When asked what her philosophy might be, or how she might want to be remembered after she is long gone from GSU, Pitts put her head on her knees and thought for a moment.

After a while, her head came up.

"You can do anything you want to do if you put your mind to it," she said.

Unfortunately, Moses will not do his thesis on playing offensive line for a collegiate football team. If he did, it would be required reading for anyone who wants to learn what type of attitude it takes to play at Paulson Stadium.



- 11/10 Erok
- 11/11 C. Jazon Brazell Band
- 11/12 C. Jazon Brazell Band
- 11/14 Blue Monday w/ Clauce Rhea & CeeCee
- 11/15 Open Mike Jam
- 11/16 Ladies Night - Playing for Keeps

# OXFORD

Continued from page 1

The theft of bikes is one of the problems which does occur at Oxford, but it is a campus-wide problem according to Brown.

"We tell students not to buy the locks which you can break with a pair of wire cutters," Brown said. "We also have people call up and tell us that most of their bike was stolen because they locked their U-lock to the front tire and that is all that's left."

One of the ways the Public Safety Department is attempting to stop bike thefts on campus is by having decoys.

"We have some bikes that are there and want to be stolen," Brown said. "When the thieves take these bikes, they'll be on candid camera so to speak."

# QUALIFIED TO RIDE.

## MOTORCYCLE OPERATOR LICENSE

Howard G. Nichols  
8381 Center Ave.  
Hometown 27670  
ANY STATE, USA



Unlicensed riders account for 80% of the fatalities in some states. So get your motorcycle operator license today. And prove that you can ride safely.

MOTORCYCLE SAFETY FOUNDATION

Please Don't Drink and Drive

# THE SOUTHERN REFLECTOR RECEPTION

FOR CURRENT STAFF AND ANYONE INTERESTED IN THE MAGAZINE

THURSDAY 6:00 PM WILLIAMS CENTER ROOM 213

# FAIRWAY

Continued from page 6

plate that it must be a strike. This is true if the ball passed between the shoulders and the thighs of the hitter, but not over their heads. I am six-foot-two and if the ball is even with my eyes when it crosses the plate then it has to be a ball. Maybe this is just my personal feelings, but calling balls and strikes in softball is about as demanding as watching leaves change color in South Georgia. I should know because I have done it from time to time.

But the one thing that really

steams me more than anything about CR/I is that they consider how much you pay for your team when they decide if there is going to be a forfeit. Last year in the softball tournament, we were supposed to play a Greek organization in the co-ed league. We were 20 minutes early so we warmed up. After 20 minutes we asked the refs where the other team was, and they did not know. So they asked us if we wanted to take the forfeit since the other

team did not show up and we said sure.

So as we started to wander off with our win, one of the officials says that the other team will be here in about five minutes and that we should wait. By this time some of our players had left and we were left with a skeleton team.

Alcohol quickly affects your judgment, balance, and coordination. Don't drink and ride. Or your last drink might be your last drink.

MOTORCYCLE SAFETY FOUNDATION

# Lee's Restaurant

Introductory Special:

\$3.60

NEWLY LOCATED:

Next to Fitness  
Extension for pick-up  
and delivery only!

## Menu:

### Meats:

Baked Chicken, Fried Chicken, Smothered Steak, Meat Loaf, Teriyaki Chicken, Stewed Beef, Fried Porkchops

### Vegetables:

Cut Beans, Cabbage, Okra, Candied Yams, Sweet Peas, Field Peas, Creamed Corn, Turnip Greens, White Potatoes, Rice & Gravy AND MUCH, MUCH MORE!!

CALL 871-4384

OPEN FROM 11 A.M. - 9 P.M.

MONDAY - FRIDAY

"I went from house to house, getting any food or clothes they would give me. I handed it all out to any needy people in the neighborhood."

—Jack Powell  
Salisbury, MD

Jack Powell is one of the little answers to the big problems facing every community in America. And because there are more people than problems, things will get done. All you have to do is something. Do anything. To find out how, call 1 (800) 677-5515.

IT'S PARENTS WEEKEND!  
and what's the best way to  
impress your parents?

# ORDER DOMINO'S PIZZA!

We have something for the  
Whole Family!



Serving GSU/Statesboro

681-4326

## PIZZA/WINGS

\$11.99  
Plus Tax

Medium Pizza with 3-Toppings, and a 10 Piece Order of Buffalo Wings

Valid at participating locations. Not valid with any other offer. Customer pays sales tax where applicable. Our driver's carry less than \$20. Delivery areas limited to ensure safe driving. © 1994 Domino's Pizza, Inc. CALL NOW! Offer ends 11/30/94

## DOUBLE DEAL

\$12.99  
Plus Tax

TWO Large Pizzas, Each with 2 of Your Favorite Toppings

Add 99¢ for Deep Dish  
Valid at participating locations. Not valid with any other offer. Customer pays sales tax where applicable. Our driver's carry less than \$20. Delivery areas limited to ensure safe driving. © 1994 Domino's Pizza, Inc. CALL NOW! Offer ends 11/30/94

## YOU TOP'EM

\$5.99 \$7.99 \$9.99  
Plus Tax Plus Tax Plus Tax

SMALL MEDIUM LARGE

With Up to 3 Toppings

Add 99¢ for Deep Dish on Medium & Large  
\*Small Pizza available in Classic Original Only

Valid at participating locations. Not valid with any other offer. Customer pays sales tax where applicable. Our driver's carry less than \$20. Delivery areas limited to ensure safe driving. © 1994 Domino's Pizza, Inc. CALL NOW! Offer ends 11/30/94

## CARRY OUT

\$5.99  
Plus Tax

Large 1-Topping Pizza

Add 99¢ for Deep Dish

Valid at participating locations. Not valid with any other offer. Customer pays sales tax where applicable. Our driver's carry less than \$20. Delivery areas limited to ensure safe driving. © 1994 Domino's Pizza, Inc. CALL NOW! Offer ends 11/30/94