

Georgia Southern University

Digital Commons@Georgia Southern

The George-Anne

Student Media

11-3-1994

The George-Anne

Georgia Southern University

Follow this and additional works at: <https://digitalcommons.georgiasouthern.edu/george-anne>

Recommended Citation

Georgia Southern University, "The George-Anne" (1994). *The George-Anne*. 1334.
<https://digitalcommons.georgiasouthern.edu/george-anne/1334>

This newspaper is brought to you for free and open access by the Student Media at Digital Commons@Georgia Southern. It has been accepted for inclusion in The George-Anne by an authorized administrator of Digital Commons@Georgia Southern. For more information, please contact digitalcommons@georgiasouthern.edu.



The real thing

The president of Coca-Cola tells GSU today why it's 'more than a soft drink'

Please see story, page 2



Choreography

Mical Whitaker directs the GSU production of 'The Wiz,' a major Broadway hit

Please see story, page 7



Ready to swing

The GSU Lady Eagles tennis team gears up for the Southern Conference

Please see story, page 6

EAGLELINE

GOLD EDITION

Thursday, November 3, 1994
Vol. 67, No. 31

Georgia State scientist says apes have primitive human intellect, abilities

The Associated Press

ATLANTA — There is enough evidence that apes' intellect, emotions and ability to use language are close enough to humans to grant them rights that would keep them out of zoos and scientific experiments, a scientist says.

Gorillas, chimpanzees and bonobos, or pygmy chimpanzees, exhibit traits that are the moral equivalent of a severely retarded child, said Dr. Sue Savage-Rumbaugh, a Georgia State University scientist whose language research with the animals has garnered international acclaim.

In a new book she says that after nearly two decades of working with them, she is convinced that they deserve the same respect, dignity and legal protection as profoundly retarded children.

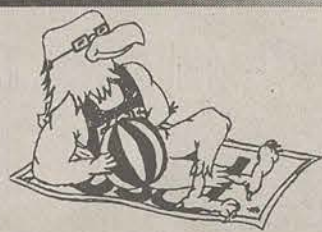
"We certainly would not put these children in a zoo to be gawked at as examples of nature," she says, "nor would we permit medical experimentation to be conducted on them."

Savage-Rumbaugh says her studies at Emory University's Yerkes Primate Center, many of which have been done in conjunction with her husband, Duane Rumbaugh, shattered the notion that only humans can acquire language.

Her new book, "Kanzi: The Ape at the Brink of the Human Mind," written with science writer Roger Lewin, focuses on a bonobo by that name.

Born at Yerkes, Kanzi has shown an amazing ability to acquire language, communicate with humans by punching symbols on a special keyboard, express sadness, joy, anger and other emotions and even make jokes and tell little white lies, she said.

WEATHER



TODAY

Mostly sunny, with a high in the upper 70s and a low in the mid-50s.

WEEKEND FORECAST

Friday, it will be sunny, with a high in the lower 80s and a low in the mid-50s. **Saturday**, it will be variably cloudy with a small chance of showers, with a high in the upper 70s and a low in the mid-50s. **Sunday**, there will be showers, with a high in the mid-70s and a low in the mid-50s.

INDEX

Announcements	2
Arts & Entertainment	8
Classifieds	9
Crossword	9
G-A Spotlight	3
Opinions	4
Police Beat	2
Sports	6

It is a desire of The George-Anne to print the news of Georgia Southern University as accurately as possible. If you feel that something covered is in error, contact a member of the editorial staff at 681-5246 as soon as possible. Thank you.

FOR ADVERTISING INFO: 681-5418
STORY OR PHOTO IDEA: 681-5246
FAX NUMBERS: 671-1357 and 681-0863

The George-Anne

Liked By Many, Cussed By Some ...
Read By Them All



The George-Anne

Georgia Southern University's Official Student Newspaper

Statesboro, Georgia 30460

Founded 1927

A tragic reminder of the past



Holly McCaig

The ruins of the late Ernest Edwin Tootle's pickup truck served as a constant reminder to passersby about the dangers of students driving under the influence.

G-A Staff Reports

A chilling symbol of the effects of drinking and driving was placed on campus Tuesday afternoon when a victim's truck was displayed.

Last May, Ernest Edwin Tootle died following a wreck which involved a GSU student who was charged with driving under the influence of alcohol.

"We made arrangements for a wrecked vehicle to be brought to the campus, but we didn't know which one it would be until it was delivered," GSU Public Safety Captain Michael Russell said. "During Alcohol Awareness Week we work with Judicial Affairs and bring the vehicle in and do some billboards for the Union."

Bulloch County Mothers Against Drunk Driving President Jolene Forehand said by using such a powerful visual helps bring home the seriousness of driving drunk.

"It gives students a first hand look at the results of impaired driving," Forehand said. "If people are aware that it was the vehicle in-

involved in the wreck then that will make them take a second look at it."

The annual Alcohol Awareness Week was kicked off last Monday when GSU President Nicholas Henry signed the proclamation. The week has annually been one of the best throughout the country according to GSU Judicial Affairs Director Edward Bayens.

"For the last three years our programs have received honorable mention in the National Collegiate Alcohol Awareness competition," Bayens said. "I think the alcohol problem at GSU is no different from that of any schools comparable to us in size. Over the last three years the number of alcohol violations have gone down here."

Bayens also said, while not condoning the consumption of alcohol by those under 21, he does realize this will take place.

"We want to focus on the misuse and abuse of alcohol among college students," Bayens said. "We want students to be responsible when they do drink."

Union will 'be an all-night study hall during finals week

By Chris Sherwood
News Editor

Students will now have another place to study for their finals, the Russell Union.

Starting this quarter during finals week, the Union will be open 24 hours a day.

"Until 11 p.m. it will be business as usual with all the regular activities," Russell Union Assistant Director Duane Grooms said. "From 11 p.m. on, we will have total quiet hours, and we will possibly serve doughnuts and coffee."

In the past, the only places for students to study were the library and possibly their residence.

"Students have stressed their concerns that they need another place to study besides the Waffle House, the library or their residence," Grooms said. "I've been at other schools and their student centers have done this, and

we're hoping it is successful here too. We don't want to be open 24 hours and have nobody show up for it."

The Union employs roughly 60 to 70 students who will work during the extra hours. They will receive pay for the hours they do work during the finals according to Grooms.

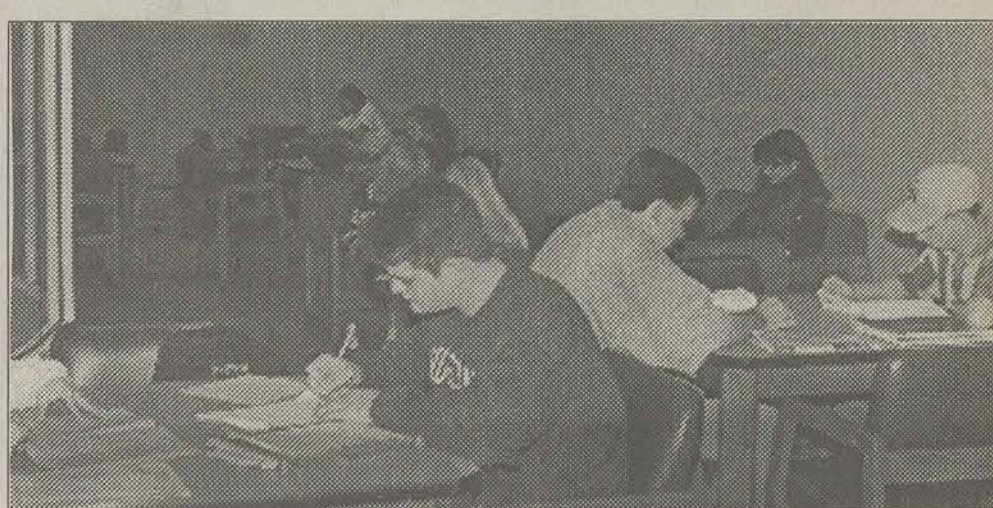
"It's a chance for them to earn some extra money while they study for their finals," Grooms said.

"In the past, students have been studying in the Union until the usual closing hours, but they have had to leave because we have closed."

Grooms hopes that some students won't ruin the quiet hours for everyone else.

"We're trying to serve the students and their needs, and we feel that in the long run this will do that," Grooms said. "We're hoping that a few people don't blow this for everyone."

The meeting rooms in the Union



Holly McCaig

Students such as these who choose the Union as a place to break open the books will have all night to do it during this quarter's week of final exams.

will all be open for groups of students to study together in groups according to Grooms.

The Union will begin the study schedule on the night of the last day of

classes which is on a Monday. It will extend through the Thursday night of that week.

"If it is successful we will most certainly do it again," Grooms said. "We definitely hope students use this service."

Controversy surrounds newly-passed Bulloch County zoning law

By David S. Hillis
Senior Staff Writer

In the presence of an overflow crowd filled with angered citizens, the Bulloch County Commission narrowly approved a countywide zoning ordinance Tuesday night that will effectively limit the uses of a majority of the county's unincorporated land.

Commission Chairman Raybon Anderson cast the deciding vote in favor of the ordinance after listening to pleas from several citizens for more than an hour, and watching the county commissioners' votes result in deadlock.

Commissioners Frank Beacham, Anthony Simmons, and Bill Smith voted in favor of its passage, while commissioners Gordon Alston, John Lee,

and Bird Hodges cast votes against the proposal.

Though Chairman Anderson said he was pleased with the turnout of citizens at the meeting, he said the concerns of the people will continue to be heard, as always.

"And I don't foresee any problems in the county implementing it (the ordinance). Anyone can still file a variance, and of course we'll hear those concerns and weigh them carefully," Anderson said.

The variances, Anderson said, may be filed by anyone with special problems in following the ordinance.

County Planner Susan Hill said the ruling will place about 75 percent of county lands in an "Ag-5" zone. According to the ordinance, mobile homes

can not be set up in "Ag-5" zones, unless the land owner

"I JUST FELT THAT THERE WERE SOME CONCERNS BEING EXPRESSED BY SEVERAL OF THE CITIZENS THAT I THOUGHT WE NEEDED TO RECONSIDER."
— GORDON ALSTON
COUNTY COMMISSION

has at least five acres on which to place it.

"Agriculture is the backbone of this county," Hill said. "Be-

sides, there are other agricultural counties in Georgia that have more restrictions than this; some counties have 'Ag-10' and 'Ag-15' areas."

Commissioner Alston's concerns prompted him to vote against the proposal, he said.

"I just felt that there were some concerns being expressed by several of the citizens that I thought we needed to reconsider," he said.

Most of these citizens in attendance felt that zoning of this sort was designed to keep poor people out of the county, because many locals in lower-income brackets can not afford a mobile home and still purchase five acres of land, at current rates.

Ron Bussey, a local resident who currently offers affordable

housing to many Bulloch County residents, used the case of one of his customers to explain the problems with the zoning proposal.

"I have a GSU non-traditional student with a family who can't buy a home in the county with this provision. If you pass this five-acre thing, you're going to have riots," he said.

Meanwhile many other county citizens, like Stilson resident Louise Burney, were pleased with the commission's zoning decision.

"I feel like we needed the zoning to protect the rights of everybody," Burney said.

"As it stands now (before the ordinance), anybody can put anything next to your property," she said.

POLICE BEAT

GSU Division of Public Safety

November 1, 1994

•Keith Logan Scott, 18, of Veazey Hall, was charged with disorderly conduct.

October 29, 1994

•Jamie Lynn Snyderman, 19, of Marietta, was charged with possession of marijuana.
•Bryn Sterling Park, 19, of Dunwoody, was charged with DUI (drugs), possession of marijuana, possession of a drug ob-

ject and defective equipment.

Statesboro Police Department

November 1, 1994

•Brian Shepard, 21, of Marietta, was charged with refusal to disperse and fined \$350.
•Jennifer Johnson, 22, of Marietta, was charged with refusal to disperse and fined \$350.
•Julie Lynn Flynt, 20, of Pelham, was charged with possession of alcohol by an underage person and fined \$350.

ANNOUNCEMENTS

Things to do at GSU

Today

•The Red Cross will have a blood drive from noon to 6 p.m. in the Williams Center. It is sponsored by the Alpha Phi Omega Service Fraternity, Gamma Beta Phi and the GSU Volunteer Services. For more information contact Jennifer Futch at Landrum Box 18581.

•Gallery 303 invites you to attend the opening reception for Images of the Intangible at noon. Photography by Jeff Murphy and ceramic pieces by Ivy Fletcher will be featured. In the small gallery, photographs by GSU faculty member Curtis Hames will be on display. The exhibit will show through Nov. 22. The hours are from 8 a.m. to 5 p.m., Monday through Friday. For more information please contact the Art Department.

Friday, Nov. 4

•GSU faculty and staff can learn how to rappel during the

"Fall Rappel Day." It will be held today from 11 a.m. to 3 p.m. at the ROTC tower. Each faculty and staff member will be required to present their identification card in order to participate.

Saturday, Nov. 5

•Habitat for Humanity will begin the third home in Bulloch County. Anyone interested in participating in this event should meet at 10 Dawn Dr. (off of Pulaski Highway) at 8 a.m. For more information contact Leslie at 489-2076.

Thursday, Nov. 17

•A meeting for existing industries in Bulloch County will be held in the Hollis Building room 102. The meeting will discuss the Georgia Business Expansion Support Act of 1994. The meeting is designed to bring the existing industries in the state up-to-date on the program. The meeting for this area will be an interactive video presentation at the Hollis Building.

ON CAMPUS

Coke president to visit GSU today

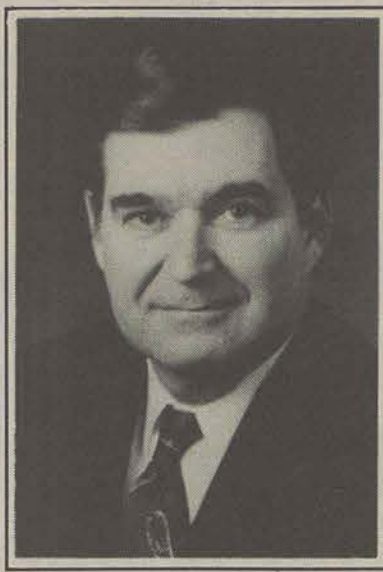
G-A News Service

In his first official visit to a college campus since being named president of the Coca-Cola Company in July, Douglas Ivester will speak to GSU students, faculty and the public in the auditorium of the Southern Center for Continuing Education at 7 p.m. tonight.

His lecture, "Giving the World More Than a Soft Drink," is the inaugural presentation of the Chick-Fil-A Distinguished Lecture Series, a program that brings top-ranking executives of major firms to GSU. He will take questions from the audience at its conclusion.

He is credited with making the company one of the most technologically advanced in the world. He instituted voice mail, then videoconferencing and now is having top executives at the headquarters and elsewhere "wired" so they can talk face-to-face from their PC's, each of which sports a small camera on top.

The lecture series was estab-



Douglas Ivester

lished through a gift from the restaurant corporation by GSU alumnus Dan Cathy who is the executive vice president of Chick-fil-A. It is designed to enrich the knowledge of students, faculty and business leaders through visits from top-ranking executives of national retail, restaurant and other firms.

Profile

1979: Joined company as assistant controller and director of corporate auditing.
1980: Served as executive assistant to the chief financial officer.
1981: Was elected vice president and controller.
1983: Was elected senior vice president of finance.
1985: Was elected chief financial officer.
1989: Assumed the position of president, Coca-Cola European Community Group.
1990: Named president of Coca-Cola, USA.
1991: Named president of the company's North American Business Sector.
1993: Became executive vice president and principal operating officer, North America.
1994: Elected president and chief operating officer and a director of the company. He serves on the Boards of Directors of Coca-Cola Enterprises Inc., Georgia-Pacific Corporation, the National Soft Drink Association, the High Museum of Art and the Atlanta Chamber of Commerce. He also serves as a trustee of Morehouse College, the University of Georgia Foundation, Brenau College and the American Enterprise Institute for Public Policy Research.

Cathy will attend the lecture, where he will introduce Ivester in the lecture hall. Ivester will hold discussion sessions with several classes on Friday morning.

The lecturers for the series

are chosen by a committee headed by the director of the University Center for Retailing Studies Bill Bolen. Jack Beasley, who oversees the Restaurant, Hotel, and Institutional Administration program.

ON CAMPUS

Construction discussed with faculty

By Derek St. Hilaire
Staff Writer

Many students walk to class every day and don't even notice the construction which has overtaken GSU. The sight of trucks and cranes has become an every day event. The office of Facilities Planning and Space Utilization held an information session Oct. 13. The purpose of the meeting was to allow faculty members to ask questions and give suggestions about construction plans.

One of the new buildings planned for the South end of campus is the College of Education. It will be designed as a square, with a water ellipse in the front of the complex. Students will be able to drive up to this complex on a new road that is currently being designed.

Coming from this road will be another road which will be built to connect to the stadium parking lot. This will allow traffic to disperse more easily after home football games.

Branching off to the opposite side of the stadium parking lot will be a new Physical Education Building which will strictly be guided toward student use for intramural sports. These sports will include aerobics, handball, a climbing wall, a track and a sports field.

"To help solve the traffic problems around campus, new roads

will be built," said Philip Hodge, Director of Facilities Planning and Space Utilization. "Eventually there will be a complete loop on campus, allowing students to

the end of Chandler Road near Dorman Hall.

The space created from the closing may be used to build a new museum closer to the exist-

"WITHIN THE NEXT THREE YEARS, THE CAMPUS SHOULD BE TAKING SHAPE NICELY."

— PHILIP HODGE

FACILITIES PLANNING AND SPACE UTILIZATION DIRECTOR

drive from one side of campus to the other without going out onto the highways."

One of the current proposals is to connect Gently Road with Lanier Drive, which would close

ing Botanical Gardens.

"This would be a terrific idea," said GSU Museum Director Del Presley. "We need a new museum, however there are no plans in the immediate future for this

construction. It will probably take close to 10 years for a new museum to be built."

He said there were many factors which would play into the building of a new museum.

"It takes time to get everything approved and put it on line for construction," Presley said. "It's a refined and deliberate process going through the Board of Regents."

A Performing Arts Center has also been included as something which will one day be built. This structure will be complete with a corking stage and fly loft and will have a capacity of around 800.

IN GEORGIA

Three Paine students charged with hazing

By Karyn Spellman
The Associated Press

ATLANTA — Three students at Paine College in Augusta were charged with hazing after a 20-year-old fraternity pledge became at least temporarily paralyzed.

Rodney Brown, 24, Abdul Sabir, 23, and Byron Hatney, 24, all members of Omega Psi Phi fraternity, turned themselves in to the Richmond County Sheriff's Department after warrants were issued for their arrest, said Chief Deputy Ronald Strength.

All three were released on bond.

Gary Ross, an Augusta College student who was pledging the fraternity, checked himself into Veteran Affairs Medical Center on Saturday after complaining of numbness and back pain.

Ross, a former Paine student, has been paralyzed since arriving at the hospital and was listed in good condition.

The center notified the sheriff's department after doctors became suspicious of Ross' injuries.

"His first statement was to his parents, that he was hurt wrestling, horsing around," Strength said. "The doctor determined it couldn't have happened that way, so Ross admitted to the hazing."

In an initiation ritual at Hatney's Augusta home, fraternity members kicked, struck and beat seven inductees with paddles for about 30 minutes, Strength said.

"This is ludicrous to be one of the things to make you get into a fraternity," Strength said.

Paine College President Shirley A.R. Lewis said that although the fraternity has been registered with the school in past years, it was not this year because it had no advisor and did not have enough members.

She said the college has a strict policy against hazing.

"We are all aware that hazing has nationally been a source of great problems, so we have talked to our students and they are

aware," Ms. Lewis said. "But what the frats do on their own is another matter."

She said any student proven to have been involved in hazing could be expelled by the college's disciplinary committee.

Calls to the National Panhellenic Council, which oversees Omega Psi Phi and other fraternities, were not returned.

Strength said this is the first time anyone has been charged with hazing in Richmond County. Eleven members of the Clark Atlanta University chapter were arrested in 1991 after a pledge suffered kidney damage.

**Facing an Alcohol or Drug Offense?
We can help.
Call today for an appointment.**

- Confidential Alcohol/Drug Assessments
- Alcohol/Drug Education
- Outpatient Counseling
- Flexible Counseling Hours for Students

W Willingway
Outpatient

311 Jones Mill Road • Statesboro, GA 30458
764-6236

Eagle's Corner

Check out our selection of beautiful handmade...

- Wreaths
- Baskets
- Birdcages

Decorate Apartments!

Corner of Langston Chapel Rd &
Hwy 301
Across from Ogeechee Tech

The Educated Palate

Lunch 11-2:30 • Dinner 5-8
Monday thru Friday

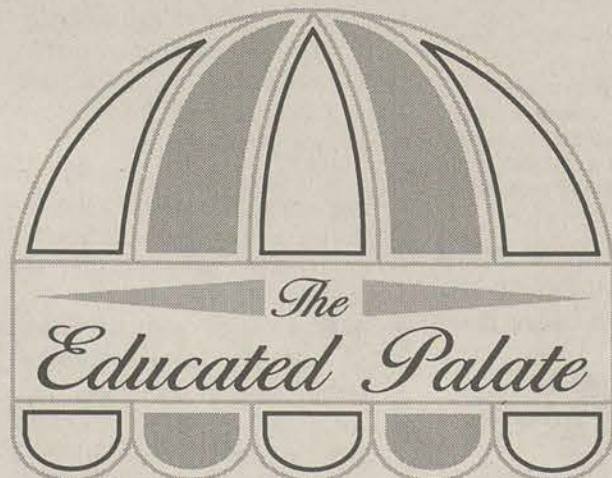
Special of the week
Italian Sandwich
Ham, Salami, Pepperoni and
Provolone Cheese baked in the oven.
Includes a side of pasta salad.

\$4.⁵⁰

**Now Available: On-Campus
Pizza Office Delivery Service**

Featuring our full line of individual and 14" pizzas,
side salads, and beverages.

Call 681-5303
Delivery Monday thru Friday 11am-2pm



IN POLITICS

Theodore taking his message on the road

By Robert Tanner
The Associated Press

LEXINGTON, S.C. — Riding high on polls that show him gaining on his opponent in the race for governor, Nick Theodore took his campaign on the road to put him face-to-face with as many South Carolina voters as physically possible.

"The more they see me, the more they love me," Theodore said. He said private polls show him in a dead heat with Republican David Beasley.

A poll released showed Beasley over Theodore 38 percent to 34 percent. But a margin of error of 3 percentage points made the lead statistically insignificant.

"The momentum is moving. We're going to win this one,"

Theodore told about 50 supporters — about half of whom he brought on his bus — at a Belk parking lot in Sumter.

Cheers and signs greeted him as he traveled from Orangeburg to Lexington, Columbia, Camden and Sumter. Theodore plans to crisscross the state by bus and plane until the election Nov. 8, taking days off for more limited campaigning on the weekend.

However, many onlookers were less than enthusiastic about the 66-year-old lieutenant governor's campaign.

"We're fed up with all politicians," Gene Turner, who lives outside the city of Lexington, said as he sat in his car on Main Street with wife Devon. "But I'd say (Beasley) is the lesser of two evils."

IN POLITICS

Candidates do battle on cutting New Jersey taxes

By Barbara Fitzgerald
The Associated Press

TRENTON, N.J. — Ghostly tax-cutting promises dominated the U.S. Senate campaign as candidates zigzagged the state in the hope of corraling undecided votes.

Each candidate accused the other of evading the real issue of how and where to cut taxes.

Republican candidate Garabed "Chuck" Haytaian handed out his flat tax postcards to prospective voters in a sub shop and train station while Democrat incumbent Frank Lautenberg assailed the plan as a measure that will balloon the

federal deficit.

"Every piece of evidence says it will lead to a tax increase or huge budget deficits," Lautenberg said.

Lautenberg offered a U.S. Treasury Department analysis that maintains the flat-tax plan will increase the federal deficit by \$1 trillion over five years.

The internal analysis was leaked to *The Washington Post*, which published a story on the flat tax. The article quotes a Clinton administration official as saying tax rates would have to soar for workers earning under \$200,000 to make up for expected revenue losses.

IN POLITICS

Keating raises most in Republican history

The Associated Press

OKLAHOMA CITY — Campaign officials for governor's candidate Frank Keating said his campaign has raised more money than any GOP gubernatorial campaign in state history.

Keating meets Democratic nominee Jack Mildren and independent Wes Watkins in the Nov. 8 general election.

Keating's campaign expenditure report shows that as of Oct. 24 his campaign has raised \$1.6 million and has just under \$100,000 cash on hand. The campaign raised \$544,350.75 since the September report was filed.

Campaign manager Mike Osburn said the money left would

be used to beef up media purchases in the final days of the campaign.

NOVEMBER IS SONIC JUMBO COMBO MONTH JUMBO SAVINGS MONTH WHY PAY MORE?	
<small>Offers Not Good With Any Other Coupons or Offers</small>	
• Deluxe Sonic Burger • Regular French Fries • Regular Soft Drink	\$2.39 <small>PLUS TAX</small>
• Ex-Long Chili Cheese Coney • Regular French Fries • Regular Soft Drink	\$2.49 <small>PLUS TAX</small>
• Country Fried Steak Sandwich • Large French Fries • Large Soft Drink	\$2.89 <small>PLUS TAX</small>
• Breaded Chicken Filet Sandwich • Large French Fries • Large Soft Drink	\$3.39 <small>PLUS TAX</small>
• Super Sonic Cheeseburger • Large French Fries • Large Soft Drink	\$3.59 <small>PLUS TAX</small>
• Char-Grill Chicken Sandwich • Large French Fries • Large Soft Drink	\$3.59 <small>PLUS TAX</small>
• 2 Junior Burgers • 2 Small Fries • 2 20 oz. Soft Drinks	\$3.29 <small>PLUS TAX</small>
<small>DRIVE-IN • 322 South Main • DRIVE-THRU</small>	

The G-A, it's not your parents' newspaper.

G-A SPOTLIGHT

IAP researcher elected research associate

Lance Durden, member of the Institute of Arthropodology and Parasitology was recently elected to Research Associate status within the Department of Mammalogy at the American Museum of Natural History in New York. Mr. Durden also serves as Research Associate in the department of entomology at the Smithsonian Institute's U.S. National Museum of Natural History in Washington, D.C.

GSU professor published on liability legislation

Doyce Cotten, professor in the sport science and physical education department, published an article in the June edition of the Sport, Parks, and Recreation Law Reporter. The article was entitled "Texas Expands the Express Negligence Doctrine" and reported on a recent change in Texas law regarding the validity of liability waivers. The article has been reprinted in the September issue of *The Exercise Standards and Malpractice Reporter*.

Staff awards ceremony is set for Thursday

GSU's annual staff awards ceremony is Thursday from 2-4 p.m. in the Russell Union Ballroom. The ceremony will be followed by an open campus reception outside the ballroom to honor nominees and winners of Service Awards, Suggestion Awards and Awards of Excellence.

GSU professors to read for hunger relief

Georgia Southern professors who are also poets and writers will join "Writers Harvest: The National Reading," on Wednesday by reading portions of their works to raise money for hunger relief projects. Professors Charles Bonds, Eric Nelson, Richard Flynn, Theresa Norman, Abasi Malik, Angela Hodge, and Jim Ferris will read at 8 p.m. in Room 101 of the Communication Arts Building. Tickets cost \$5 and will be available at the door.

The George-Anne would like your help in order to recognize special people, organizations and activities on campus. Anyone who would like to make suggestions for our G-A Spotlight feature may call Chris Sherwood, news editor, at 681-5246. Letters may also be sent to *The George-Anne* at Landrum Box 8001.

Lee's Restaurant

Introductory Special:
\$3.60

NEWLY LOCATED:
Next to Fitness
Extension for pick-up
and delivery only!

Menu:

Meats:

Baked Chicken, Fried Chicken, Smothered Steak, Meat Loaf, Teriyaki Chicken, Stewed Beef, Fried Porkchops

Vegetables:

Cut Beans, Cabbage, Okra, Candied Yams, Sweet Peas, Field Peas, Creamed Corn, Turnip Greens, White Potatoes, Rice & Gravy AND MUCH, MUCH MORE!!

CALL 871-4384

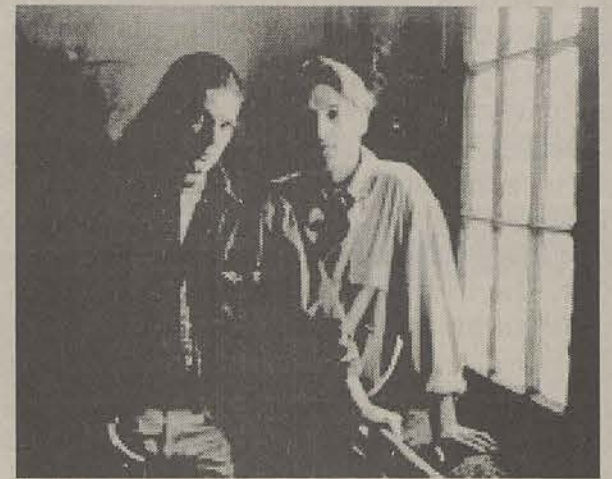
OPEN FROM 11A.M. - 9P.M.
MONDAY - FRIDAY

UNION PRODUCTIONS
GEORGIA SOUTHERN UNIVERSITY

Activities

TODAY

CRUNETTE AND MAHER



Acoustic Guitar Duet
Rotunda 11:00 am - 1:00 pm

You Haven't seen it All,
Until you've Experienced
JOHN P. HOPKINS
A one - man comedy - variety show.
"The Zany Side of Magic!"
Union Ballroom 8 pm

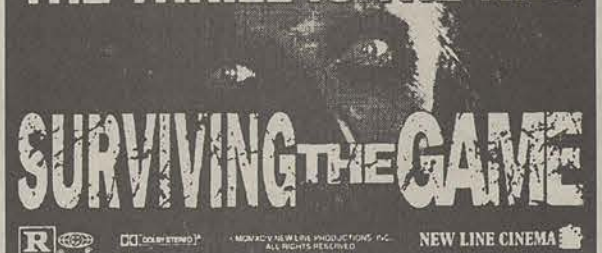
Monday Nov. 7
NFL Football Party Night!
NY Giants at Dallas
Tabletop football!
Union Commons 7:30 pm

Thursday Nov. 10
Hamburger Jones
Need a good Laugh? Come see this
comedian in action!
100% USDA Prime Choice!
Union Ballroom 8 pm

Movies

Wednesday & Thursday
November 2 & 3

THE THRILL IS THE KILL



Sunday & Monday
November 6 & 7



FERRIS BUELLER'S DAY OFF

Movies

• Wednesday & Thursday
• Sunday & Monday
• 7:00 pm & 9:30 pm
Union Theatre
• \$1 with GSU Student ID
• \$2 General Admission

Oct 30 - Nov 4
SOBERFEST 94:
Promoting Healthy Lifestyles

Information Hotline

681-0461

Office 681-5442 • Union Productions
Landrum Box 8066 • Statesboro, Ga 30460

Did you know that you can avoid the flu for only \$5.⁰⁰



FLU SHOTS

will be given to
eligible students any
weekday until the end of fall
quarter. **\$5.⁰⁰** per shot

Get them while they last!

WARNING: The flu shot should not be given to anyone who is allergic to chicken, eggs, or Garamycin, or to pregnant women in the first trimester (unless they have a chronic illness like diabetes or asthma).

GSU HEALTH SERVICES 681-5641

Don't wait until it's too late! Get immunized now!



Our Opinion

Allow the jury to decide

Alcohol Awareness Week was kicked off Monday. Traditionally, one of the tools Mothers Against Drunk Driving uses to stress the seriousness of driving drunk is to bring an automobile that was involved in a wreck to campus for students, faculty and staff to see.

This year, the truck in which Ernest Edwin Tootle died in on May 21 is currently displayed outside the Russell Union. He was hit head-on by a GSU student who was charged with driving under the influence.

We, the staff of *The George-Anne*, believe there is no better way to emphasize the harsh reality of drunk driving than to display a victim's car, but in this case the timeliness of the display is totally inappropriate.

Clint Fair, the individual who was charged in the wreck, will begin his trial within a month. As the trial date edges closer, we believe by displaying the victim's car, this would be detrimental to the case. The possibility of influencing a potential juror's decision beforehand is just too great.

Despite how people may feel about Fair's innocence or guilt in the case, we do live in a democratic society—a society that prides itself on the theory of one being innocent until proven guilty in a court of law.

Simply put, even if MADD believed displaying Tootle's car would have the most impact on this campus because of who was involved in the wreck, it does not allow them to inhibit a person's right to a fair trial.

Ordinance not the county's cure

Keeping the "poor people" out of the county is not the answer to the growth of Bulloch.

Tuesday night before a capacity crowd, the County Commission passed an ordinance by a 4-3 vote that implies only those mobile home owners who buy five or more acres of land can reside in the county. This vote came primarily due to the excessive usage and grave importance of the agriculture industry in this South Georgia county.

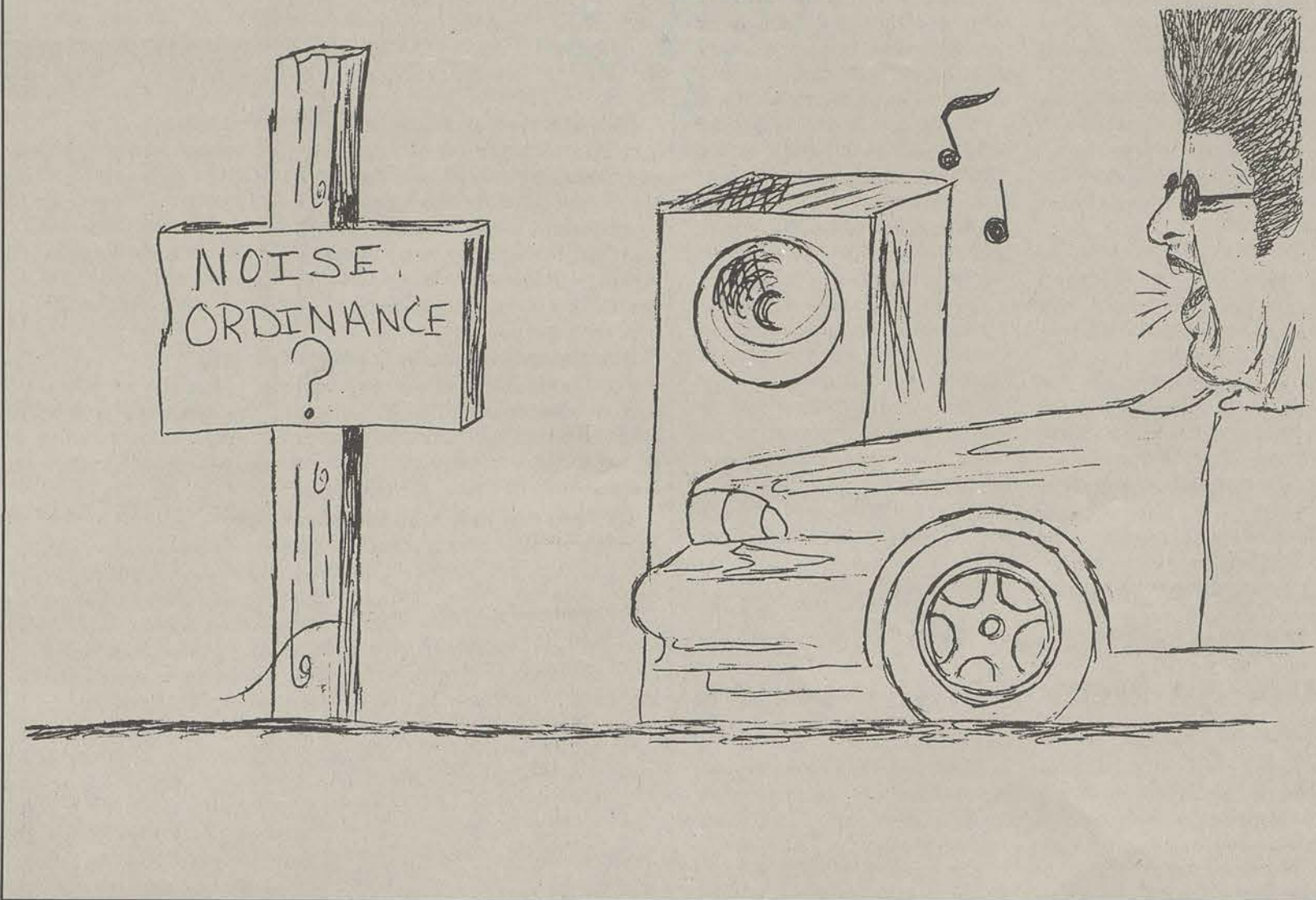
The problem that arises from such an ordinance deals directly with those individuals are being left out. If people cannot live in the county, then they must move their belongings into the city limits or leave Bulloch.

As many will obviously set up residence in Statesboro, the total population will increase, but a bigger issue is the number of poor will skyrocket. When a larger than average rush of poor people flow into an area, the result is lower property values.

What this ordinance will invariably mean to the university is a lesser commercial appeal. The college-type restaurants that may have come to Statesboro will now have to take a serious second look at whether establishing an eatery here is worth their trouble.

The poor have every right as citizens to decide where they would like to live if the housing cost is within reason. They should not be susceptible to a seven-member board whose primary and seemingly only idea was to strengthen area crops.

We, the staff of *The George-Anne*, believe Bulloch County agriculture is crucial, but the lives of individuals and the well being of GSU are more important. In short, the commission made the wrong choice.



Friendships: Watch them age with time

This past weekend, I went home to Marietta. I did the usual things — spent time with the folks, saw my old friends from high school and spent time with my best friend Melinda.

There really wasn't anything different about this weekend, except that I started thinking about my friendships, particularly between me and Melinda.

Melinda and I have known each other since the 8th grade. We were always together in high school. We did everything together. We talked alike, and we even dressed alike on occasion. We were known as the "Bobsey Twins." However, toward the middle of high school we started to drift apart. Melinda started hanging out with another group of friends and so did I. We eventually stopped hanging out together. When we did see each other, we often fought.

Towards the end of our senior year, we started talking again. Slowly, we started to become friends again. When I went away to college, it seems our friendship got better. She would call

THE LIGHTER SIDE

ASHLEY HUNT



me often at school just to talk, and when I came home on the weekend, we would always see each other.

Three years later, we are now better friends than when we were in high school. I always figured that eventually Melinda and I would grow apart, but just the opposite has occurred.

Our friendship is much stronger now than it was a couple of years ago. I guess this is partly because we never really ended our friendship or wanted to, it was just put on hold for a while. Now we are both a lot older and more mature. We have both changed. Melinda and I see each other more often, and we talk a lot more. We talk on the phone for hours. Every time I go home, we always see each other. We

can't wait to find out what is happening in each other's lives—now we tell each other everything.

Sometimes, coming to school with your best friend can end a friendship (although this isn't always true). When I first started at GSU three years ago, I became good friends with two girls who were roommates and best friends: Karen and Janet (that is what I'll call them). They were just like me and Melinda. They did everything together — they even had the same friends. I was envious of them. They had each other, someone who was always there. But through the course of the year, they started drifting apart. Karen and I eventually became good friends. Karen and Janet became very distant from

each other. Eventually they started fighting continually over petty little things — they could not stand each other anymore. Karen moved out and did not associate with Janet anymore. To this day, they still do not speak. They hate each other.

It's kind of sad what happened to them. A lot of people come to school with their best friend, and it does not always turn out this way. My point is that sometimes friends, even best friends, need time to grow apart from each other — they need to grow up. You see things differently when you've been on your own for awhile. Sometimes friendships can strengthen when the two friends are apart.

I learned a lot about being away from Melinda. I don't always need a friend everywhere I go. I needed to learn to be on my own, and I did. Our friendship is stronger now. We can't wait to see each other, and when we do see each other, we have so much to talk about. I know that we will always be friends no matter where we are.

Halloween is over you Ghostbuster cretins

Every year the Haunted Forest is put together with countless hours of effort from the recreation majors. And every year most of the student's get kicked in the face for their efforts. Literally.

The recreation majors spend more than a month doing manual labor to prep the trail itself and then take time out from their own social time in order to provide the entertainment.

It seems that a great number of students disregard the amount of work that actually went into the show.

Many students forget that it is, in fact, just entertainment. These wads seem to think it's a fight, or a chance to get a free shot at someone under the pretense of being startled into an involuntary defensive reaction.

Too many times one of the workers that is working gets kicked, punched, grabbed, scratched or otherwise mauled by some ninny.

Some of these would-be Tysons

REFLECTIONS FROM THE EDGE

JOSH BASS



are boyfriends or dates that have too much pent-up testosterone. Maybe they have to prove that they can better some guy in a zombie outfit to make up for their failure to defend their mothers' honor against big rednecks at Bubba's.

There are some idiots that get good and boozed before they go. Their reactions are slowed, but intensified. They end up falling and hurting themselves or somebody, or they take a blind swing at something that startles them.

It seems that if a person has to get tanked in order to enjoy it, they didn't have a good reason for going in the first place. Then again, I guess it's the same as

getting drunk before going to a bar.

The most surprising group of strikers are the girls. One person that worked in the forest this year got hit twice, once by a guy, and once by a girl. He said a lot of the injuries occur from girls kicking.

Are these girls not with it enough to understand that the whole thing is make-believe? It's not real, and the things coming out of the woods are not going to hurt you so don't hurt them.

I can almost understand the sudden reaction of fright when a big black cape with glowing eyes suddenly appears beside you. But the people who lash out at the

drop of an arm are completely over-blowing things.

I think it's like this. If you don't jab at the person who has just scared you by almost running over you as you round the corner at the library at 1 a.m., then don't swing at the person who jumps out from behind a tree in camouflage and says "BOO!"

If anything, maybe you should punch the guy at the library.

Those people worked hard to provide you with something other than the typical party. They deserve respect.

The bottom line is: if you hurt one or some of the workers at the Haunted Forest, you're either an over-reactive fool, a scumbag or both. If you hurt one of them to prove that you're tough, you're definitely an idiot because they're not allowed to strike back. You are also the real puss.

So, to all those who struck at a member of the Haunted Forest this year, I extend the following label: MORONS.

STAFF

NEWS

Copy Editors: John Klutz; Robin Johnson; Layout Editor: Mandy Crews; Senior Staff Writers: David Hillis, Kim Wagner; Staff: Kwaseera Dixie, Sunae Euell, Stacy Jordan, Derek St. Hilaire, Doug Jones, Teri Minter, Jana Mobley, Michelle Thomas

FEATURES

Features Editor: Derek Lewis; Assistant Features Editor: Ashley Hunt; Arts & Entertainment Editor: Josh Bass; Staff: Stacy Clemons, Judith Cunningham, Lakeisha Fair, Dana Hinterlitter, Kym Reynolds, Mark Runyon, James Salter, Tijuana Thomas

SPORTS

Sports Editor: John Munford; Assistant Sports Editor: Ronnie Swinford; Staff: Tonya Hilton, Bart Hiter, Donald Jordan, Heather Mullins, Aaron Solomon, Will Van Kleef, Jeff Whitten, Carolyn Wynn

OPINIONS

Staff: Cory Andrews, Josh Bass, Teth Burns, Christopher Cole, Ashley Hunt, John Munford, Amy Staats

PHOTOGRAPHY

Chief Photographer: James Hill; Staff: Holly McCaig, Jerome New; Contributing Photographers: Stephen Burke, Jason Chandler, Randy Trujillo

ARTWORK

Leigh Braddy, Teth Burns, Shawn Chavis, Michelle Underwood

CIRCULATION

Supervisor: Steve Taliaferro; Staff: David Hillis, Bruce Karr, Scott Newton

ADVERTISING/DISTRIBUTION SERVICES (ADS)

Advertising Manager: Brooks Clements; Business Manager: Stephanie Wylie; Sales Representatives: Leigh Braddy, Brooks Clements, Melissa Goodman, James Salter, Heather Thatcher, Michelle Underwood, Carolyn Wynn

PRODUCTION AND GRAPHICS EDITORIAL SERVICES (PAGES)

Production Managers: Jason Adams, Ron Lair; Assistant Production Manager: Mitch Mitchell; Staff: David Beck, Aquila Bookhart, Scott Mulkey, Shawn Sunderland, Reggie Taylor; Classified Ads Managers: Melissa Goodman, Juanika Mainor; Darkroom Manager: Randy Trujillo

STUDENT PUBLICATIONS COORDINATOR

Bill Neville

Backtalk

In an effort to allow students, faculty and staff the chance to "talk back," *The George-Anne* runs its supplement of "Backtalk," which will appear in the opinions section of this student newspaper, will run without recognizing the writer's name. The purpose is simply to give more freedom. Entries may be submitted by mail at Landrum Box 8001, or by dropping by the G-A office in Williams Center room 223. You may even fax a "Backtalk" to the G-A at 871-1357. The G-A retains the right to refuse the publishing of any "Backtalk" entries.

LETTER AND SUBMISSION POLICY

The George-Anne welcomes letters to the editor, story submissions and guest columns from people both inside and outside the Georgia Southern University Community. All copy submitted should be typed (double-spaced, please), preferably on Macintosh disk in Microsoft Word or Microsoft Works format. All submissions must be signed and include a mailing address and phone number for verification. The editors reserve the right to reject any submission. There is no word limit on submissions. A writer may request to remain anonymous. However, it will be the editor's decision whether or not to print the name. Submissions are run on a space-available basis.

IN GEORGIA

Rogers on the road at state's expense

The Associated Press

ATLANTA — Georgia School Superintendent Werner Rogers has been hitting the road — or more appropriately, the air — at taxpayer expense as the election nears.

He's flown to almost two dozen cities, dedicating new schools, presenting merit checks, meeting with educators and, critics note, getting much-needed publicity for his re-election campaign.

In the process, he ran up a state airplane travel tab in one two-month period that was larger than his air expenses for either 1992 or 1993, according to Department of Transportation records reviewed by Morris News Service.

Rogers, a Democrat, claims that all the trips were for state business. His opponent on the Nov. 8 ballot, Grovetown educator Linda Schrenko, says he's abusing tax dollars.

"He's definitely using the power of his position," she said. "The fact is, he has never left Atlanta for eight years, and all of a sudden, he shows up."

Republicans charge that Rogers is hoping to boost his name recognition among voters

and save his campaign funds by using events such as school openings to gain publicity.

"The problem is we have incumbents like Werner Rogers who are spending the taxpayer's money freely without accountability. It's a complete waste of money and it's an abuse of power," said Rich Golick, political director of the state GOP.

This year, transportation records show Rogers' state airplane flights have cost about \$13,000 through the end of September. In August and September alone, he took at least 17 trips costing about \$7,200.

In all of 1993, his air usage amounted to less than \$6,400. In the same two-month period, Rogers' air travels cost the state only \$2,400.

Rogers said most trips were for school dedications and other official state business.

"Basically, I do that every year," he said. "We are growing in Georgia and we have a lot of new school openings."

Rogers isn't the only incumbent who is flying high this election year.

Gov. Zell Miller's state airplane usage — almost \$30,000 through September — has al-

ready surpassed his previous mark.

Miller's 1993 tab for his state airplane usage reached \$25,000. But during the first nine months of 1994, the total hit \$29,600, according to transportation records.

"It's indicative of a system that's rife with the politics as usual mentality and the feeling that the public's money belongs to each incumbent," Golick said.

As in Rogers' case, the governor's spokesman said he's just doing his job, keeping in touch with the public.

"He's the governor of all of Georgia," said Rick Dent, the governor's campaign press secretary. "He's not a governor who is going to stay in Atlanta."

Meanwhile, campaign officials for other incumbents say they're being extra careful in their use of state planes to avert public criticism.

"We know there is public scrutiny," said Brent Layton, campaign manager for Insurance Commissioner Tim Ryles.

"It's campaign time and the public does not appreciate someone using taxpayer money to make what has even the semblance of being a campaign trip."

IN POLITICS

'Nannygate' hurts Senate candidate's chances

The Associated Press

ELK GROVE, Calif. — "Hey you!" an angry man yelled at a reporter questioning U.S. Senate candidate Michael Huffington. "Why don't you leave the poor guy alone?"

Huffington, his campaign wounded by "nannygate," probably wonders the same thing.

After nearly two years and a record \$25 million, the Republican Huffington's attempt to win a Senate seat has come down to one thing: his children's former nanny. At every public event, that is the focus of reporters' questions.

"I apologize the last couple of days for taking so much media attention away from O.J. Simpson," Huffington quipped Monday at a campaign stop.

The Los Angeles Times' recent disclosure that Huffington, a strident opponent of illegal immigration, employed an undocumented immigrant as a nanny for at least four years has sent his campaign into a tailspin.

There were also reports in the Santa Barbara News-Press that his family employed other illegals, although Huffington, a Texas-born multimillionaire, denies it.

Illegal immigration is a hot issue in California this year. A proposition on the Nov. 8 ballot would deny public schooling, social services and medical care to illegal immigrants. Huffington is a supporter of the proposition, and the nanny revelations leave him open to charges of hypocrisy.

As the campaign entered its final week, Huffington clearly is in trouble.

Feinstein has steered clear of the controversy, except to deny Huffington's unsubstantiated suggestions that she, too, employed illegals.

The 47-year-old Huffington insists the issue and the way he handled it has not hurt his campaign.

"I've said I take the responsibility (for the hiring)," Huffington said Sunday at a GOP barbecue in suburban Elk Grove. "But in the end it won't have any significance."

"Most people are more concerned about their taxes going up."

"I think these things come and go," he joked Monday in a speech to a Fresno Rotary Club. "My wife and I feel we have a good chance to win if we can just maintain our honeymoon with the press."

But political professionals aren't so sure.

According to published reports, and comments from Huffington and his staff, Marisela Garcia, a Guatemalan national in her early 20s, was hired in May 1989 by Arianna Huffington to serve on the Huffingtons' 12-member domestic staff. Garcia worked as a nanny to the Huffingtons' two daughters. She earned up to \$37,224 annually, according to copies of tax documents.

Huffington at first denied the hiring, then admitted it, then said his wife hired her.

Huffington said Garcia was let go in July 1993, six months after Huffington was elected to the U.S. House from the Santa Barbara district and just as he was gearing up for his Senate campaign. There were published reports that she returned to work earlier this year, briefly, but Huffington said those reports were false.

Just after Garcia was hired, according to the Huffingtons' former bookkeeper, the family briefly employed the nanny's illegal immigrant husband, Fermin Garcia, as a gardener and handyman for five months in 1990.

Dining & Entertainment Guide

Found Exclusively in The George-Anne's Gold Edition • Thursday, November 3, 1994

Legends Bar & Grill

Old Register Road
871-5349

Fri. - Crooked River Band

From Athens • Featuring Southern Rock & Roll

Thurs. GSU Mug Night
Sat. Ladies Night - \$1 cover

Buffalo's Cafe

Lanier Drive
681-3030

Thurs. Angie Aparo
Fri. Kermit & Bob on deck at 5 pm
Avalon at 9 pm
Monday Night Football with QB1
Tues. Bash Night - All U Can Eat Wings

The Country Club

Hwy 301 S.
681-9000

Mon. Monday Night Football
Wed. Dime Time

Thur, Fri, & Sat - DJ • Call for Details

Vandy's

Statesboro Mall
764-3033

Pit Cooked BBQ Since 1929
Best Chicken Fingers in Town
Daily Specials
Ribs on Tuesdays
Catering Service Available

Video Warehouse

120 Northside Dr. E
489-4279

FREE Membership

Sun - Thurs 8:30 - 11 pm • Fri & Sat 8:30 - Midnight
NOW SHOWING: Selling previously viewed movies at \$9.99 each
Black Beauty
Brainscan

Cinema 9 Mugs & Movies

Statesboro Mall
489-4492

Tuesday Ladies Night 1/2 Price
Thursday Wing It! 25¢ Buffalo Wings

PaPa John's

Piggly Wiggly Shopping Center
871-7272



\$5.99

Large, One Topping,
Delivery Special

\$3 RIDE ALL NIGHT
FROM PARTY TO PARTY,
BAR TO BAR,
AROUND CAMPUS

WE CHARTER GROUP TRAVEL FOR ALL OCCASIONS

Y-DRIVE SHUTTLE SERVICES

CALL FOR MORE INFORMATION

SPORTS TEAM TRANSPORTATION
BUSINESS - STUDENTS - PARTIES

- DAY & NIGHT SERVICES AROUND STATESBORO
- HAPPY HOUR OR ALL NIGHTS TO SAVANNAH
- FRATERNITY AND SORORITY SOCIALS
- BEACH TRIPS
- LARGE GROUP MULTI VAN RATES

the **CROOKED RIVER BAND** from Athens, Ga.

LIVE AT **Legend's Bar & Grill**

FRIDAY, NOVEMBER 4th

featuring **SOUTHERN ROCK**

CALL FOR DETAILS 871-5349



■ Dive in!

The Eagle swim teams hope to sink the Florida Atlantic Dolphins in their home swim meet 1 p.m. Saturday at Hanner Natatorium. Admission is free with your student I.D.

Page 6

THURSDAY, November 3, 1994

THE SPECTATOR

JEFF WHITTEN

Now we have the lights, but where are the fans?

Forget the terminally-hip. Forget the tie-wearers and those students who come to Paulson to be seen and find parties. They seem not to care much for football.

It does not matter to them whether the game is played at all, let alone if it might happen early or late.

And forget the powers-that-be, those who are responsible for the lighting of Paulson. They ought not to matter.

What does matter is that night football at Paulson has not brought back the fans.

What also matters is that the diehard fans who have come win or lose, and who continue to come, are not happy with night football.

And in a very real sense, the Eagles are more their team than it is the student's or the big-time boosters', or anyone else's.

WITHOUT ERK RUSSELL AND WITHOUT THE NATIONAL CHAMPIONSHIPS, THE FRONT-RUNNING FANS WON'T COME BACK.

The fans didn't ask for night football, and they didn't suspect night football might happen. To them Eagle football was a daytime happening. You came to the game early, tailgated early, watched good football early, and still had time to make it back to Savannah, Hinesville or Swainsboro before it got too late.

This is no more. The school, seeing declining attendance, most notably the student attendance fading to ridiculously small numbers, figured the games were played at the wrong time. Maybe they polled a few students and were told it was too hot to watch football at Paulson. Or maybe they asked the faculty, or maybe each other.

Maybe they should've just looked at the team's record.

Without Erk Russell and without the national championships, the front-running fans won't come back.

The diehards still come — those boosters who donate \$150 or so a year because they fell in love with GSU football and can't kick the habit are here every home game, no matter how far they have to come or how late they have to drive back home on a Saturday night.

But give them a few more years of GSU football mediocrity combined with football played beneath Glenn Bryant's lights, and maybe then even they won't show up.

Float us a line...



Are you upset about how much money Shaquille O'Neal is making these days?

Are you distraught about the baseball strike?

Or are you just ticked off about sports in general?

Write to the G-A Sports Mailbag at L.B. 8001.

Eagles crack Top 25 poll

Stowers and company to face off against Furman on Saturday

By Carolyn Wynn
Staff Writer

The football Eagles are still hanging on for a possible playoff spot after being ranked 25th in the latest Division I-AA poll.

But Head Coach Tim Stowers insists the Eagles' future exists on a game-by-game basis.

"I think we have to take care of our own business," he said. "I think that winning on the road in the Southern Conference is the hardest thing to do in I-AA football. The best thing for us to do is to take it one game at a time. Our most important game now is against Furman."

After having last weekend off, the Eagles are back on the gridiron preparing for the Paladins of Furman. The Paladins will be celebrating their homecoming this Saturday, and are looking to avenge the 31-19 the Eagles handed them last year.

The Paladins are currently 2-3 in the Southern Conference (3-5 overall) and are ranked in sixth place after defeating East Tennessee State University 33-21.

This is Paladin Head Coach Bobby Johnson's first year. However, from 1976-92 Johnson served

as the Paladin defensive back coach. He then became the defensive coordinator, moved up to assistant coach, and then defensive coach for the Paladins. Last season Johnson left Furman to serve as defensive coordinator at Clemson before his return to Furman this year.

Furman uses a multiple offense, while using a multiple 50 defense similar to that of number-three ranked Western Carolina. One of the keys to the Paladin offense is tight end Luther Broughton. On defense the Paladins will rely on the talents of All-American candidate Mark Tate who had a total of nine tackles against ETSU with five being unassisted. Another defensive team leader is team captain Clayton Gibson, a 5-11, 228 lb. senior linebacker. Gibson is a Columbus native who played at Hardaway High School with Eagle senior linebacker Paul Carroll.

"If there is a team in the Southern Conference that is a natural rival for Georgia Southern, it would be Furman," Stowers said.

Because of the rivalry, this match-up may shape up to be a gridiron war. First shots will be fired this Saturday at Paladin Stadium in Greenville, S.C. at 1:30 p.m.

WOMEN'S SOCCER

Tolliver shapes up and breaks assist record

By Tonya Hilton
Staff Writer

The Lady Eagle soccer team, in only their second year of existence, is starting to produce some top Southern Conference talents. Of course, everyone knows about Debbie Hensley, who leads the team in goals scored, but someone you may not know about is Rachel Tolliver.

Tolliver, from Conyers, Ga., is a 20-year-old transfer student. She first attended Mercer and then later moved on to Georgia Tech for one quarter.

Tolliver came to GSU during winter quarter and tried out for the girls' soccer team last spring. But she was not in shape at all, so Head Coach Tom Norton told her to come back and try again. When Tolliver returned for her second try-out, she ran the three-mile test in approximately twenty-five minutes.

Tolliver has already broken last year's soccer record for assists. Madi Gatherer held the record last year with eight as-

sists and last week Tolliver broke the record with her ninth.

Tolliver has played soccer since she was eight years-old. She first got started when she attended one of her cousin's soccer games, and she just fell for it.

Her family is very supportive of her and her athletic ability, especially her 11-year-old brother and 16-year-old sister. She said that her model for perseverance and motivation over the years has been her father.

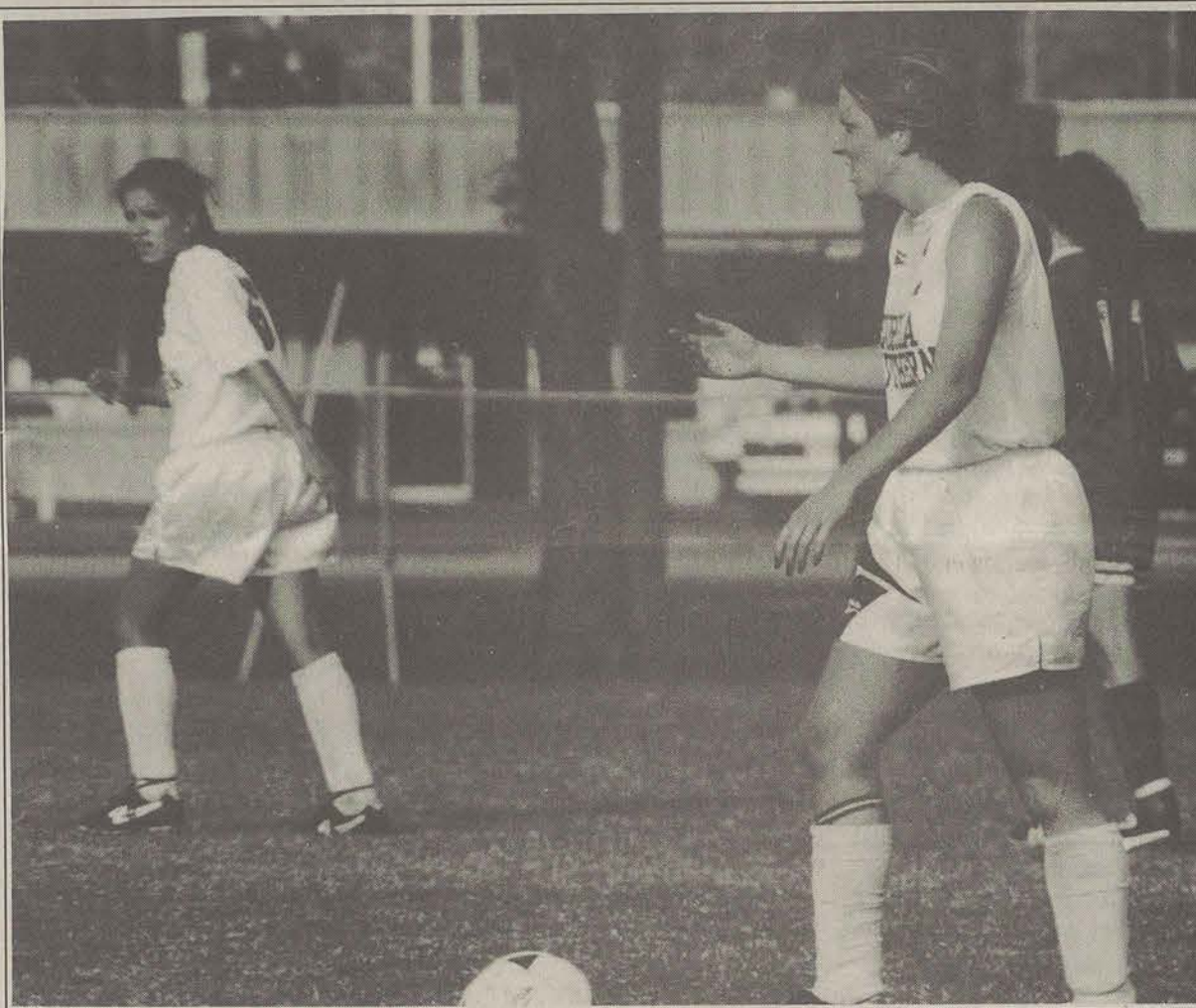
Tolliver, along with her other teammates, practices six times a week for two hours, and she also practices during the soccer team's road trips.

When soccer is not in season, Tolliver will be practicing five times a week.

Tolliver said that her most memorable experience was, "In 1990 when her high school team won the state championship."

Norton describes Tolliver as a spark for the team.

"She's a fiery and very aggressive player on the field," he said.

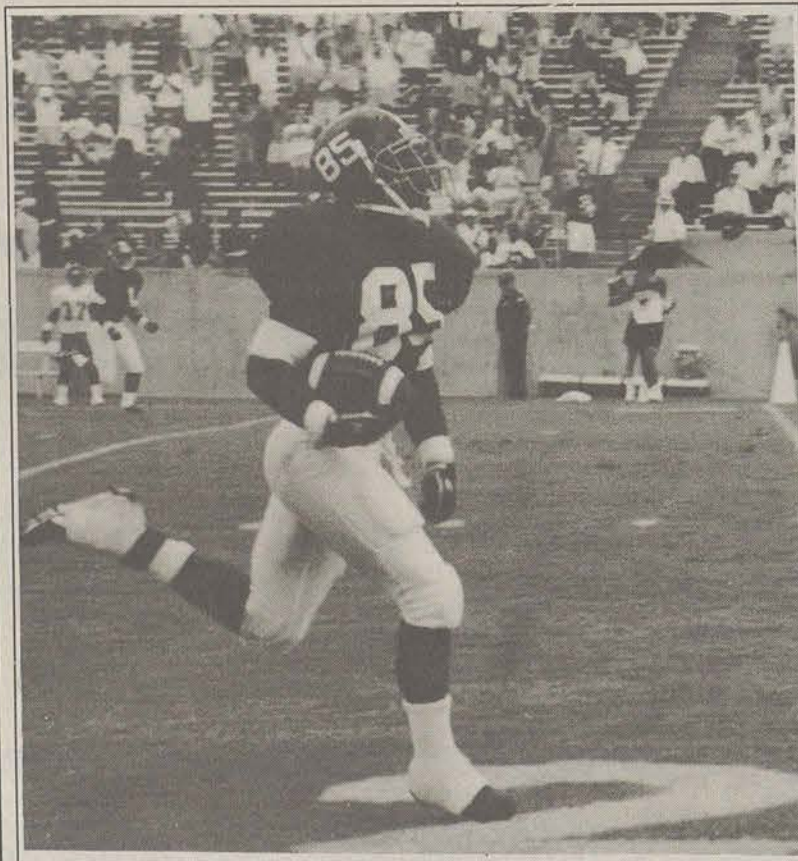


Holly McCaig

Rachel Tolliver brings the ball upfield, scanning for holes in the opposing defense.

FOOTBALL

Wide open!



File Photo

Dexter Dawson leads the Eagles in punt returns and receiving yardage.

Dawson just wants to win

By Ronnie Swinford
Assistant Sports Editor

There are many talented players on the Eagles football team. GSU has Kenny Robinson and Joe Dupree at quarterback. Also, the backfield is full with Chad Holmes and Roderick Russell at fullback. Not to mention the abundance of talent at slotback with Chris Wright, Marlow

Warthen and Shafton Fraley. But one position that goes unnoticed is the wide receiver spot occupied by Dexter Dawson.

Dawson, a junior from Camilla Ga., was selected to the All-Southern-Conference team as a punt returner last year. His longest return of the year was a 57-

Please see DAWSON, page 9

WOMEN'S TENNIS

Lady netters have worldly experience

By Janika Floyd
Staff Writer

It's tennis time again. In January, the GSU season will begin with some of the finest college teams around. Luckily we have one of the best teams under our noses. GSU will be represented very well this year by our women's tennis team.

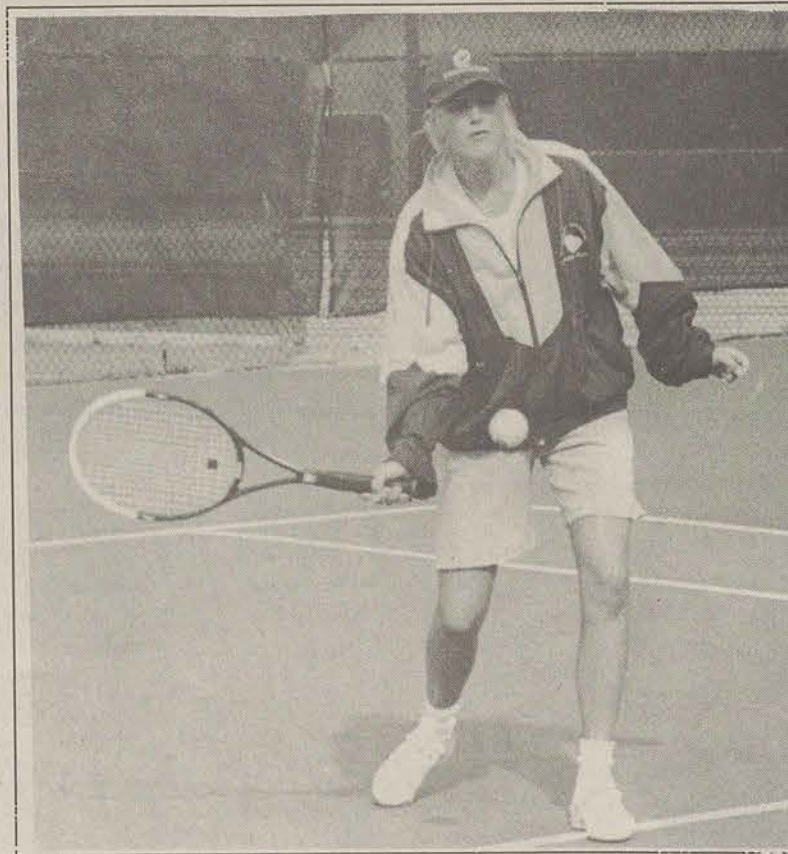
The women's team is an international team that works like a finely oiled machine, consisting of Elizabeth Nieto, Tracy Turnbull, Anita Buggins, Britta Wilms, Melanie St. Pierre, Camilla Rahm, Leila Castro, Jill Walker, and Iris Kraft. This united women's team is led by the unique coaching talent of Gary Glassman, who has players from Venezuela, Germany, Canada, England, Sweden, and of course the United States. They all have a common goal this season, and that goal is to win the Southern Conference.

"We really want to win the Southern Conference, become ranked nationally as a team, and have some of our girls ranked nationally for all their hard work," he said.

The big factor so far in his team's flight to success would have to be his system of focusing on the positives.

"We are going to concentrate on a good, winning attitude, which the girls already display, and on conditioning," he said.

Everything seems to be going really well for this big cluster of international talent. The only



Jerome New

The ladies' tennis team has a lot to look forward to this coming season.

bad side to the season seen by Glassman would be the lack of support by the students of the university.

"A lot of people don't realize that they are missing out on a real exciting game," he said. "These players work hard and they really need to see some people out there when we compete."

The results from the tournament were very high on behalf of the team. In singles competition,

Nieto won her bracket with the final set scores of 4-6, 6-4 and 6-3. Wilms won her bracket with scores of 6-1 and 7-6, while St. Pierre hit away with 6-0 and 6-3. Turnbull ended her match with scores of 6-1 and 6-0.

In doubles competition, Nieto and Wilms destroyed the competition with a 6-3 victory. While total chaos was going on for other teams ours was calm, cool, and collected as Rahm and Turnbull won 8-4.

IN THE ARTS

Theater season opens with the all-time favorite 'The Wiz'

By Mark Runyon
Staff Writer

One of the all-time great Broadway theater productions, "The Wiz", opens for the first time on the campus today and runs throughout this weekend.

This is a large, spectacular production being undertaken by the GSU theater company. They have a cast of almost 40 people including a band, choreographer, elaborate set designs and even a magician to help out with all those little tricks.

"We wanted to do a big show as our 94-95 season opener," said the play's director, Mical Whitaker.

"Of course it's not an all-black cast. I don't believe in that in an integrated university system," Whitaker said. "But, I hope it retains the funkiness and soulfulness of the original production."

Whitaker has truly managed to assemble a extremely talented cast being led by Shenica Bridges,

playing the part of Dorothy, and Mario Webb as the Wiz.

The play itself is probably best known for being the first professional outing that discovered the

time as well as attending the first stage presentation of the Wiz in 1975. The play had a large impact on him personally, and helped shape his ideas con-

ally controversial show in New York," Whitaker said. "Several critics thought that this adaptation of the Wizard of Oz, in some way, was blasphemous to the memory of Judy Garland. They were really annoyed that Jeffrey Holden (the plays director), in his concept, had blackened, so to speak, 'the Wizard of Oz' and made it into a black experience."

"In the 70's many people in the Broadway arena, being largely conservative and the considerable expense involved in doing a show, were not comfortable in accepting this kind of adaptation of what before was a traditionally white anglo-saxon sphere," said Whitaker.

"The play was definitely funky. It had you up on your feet and shouting 'amen' and 'yeah' as though it were a Baptist church," Whitaker said, "The music is straight out of Motown and it is a very soulful rendition of the original play."

The Wiz has already been

performed this past Monday through Wednesday for the local area school children.

"We try to do one production a year that addresses a children's audience and its just an added bonus if it can be entertaining for adults as well," said Whitaker.

"The Wiz" opens to the general public tonight at 8:00 in McCroan auditorium and will also play Friday and Saturday nights at 8:00. Admission for university students is \$2 with ID. Tickets for faculty and staff are \$4 and the general admission to the public is \$6.

"WE TRY TO DO ONE PRODUCTION A YEAR THAT ADDRESSES A CHILDREN'S AUDIENCE AND ITS JUST AN ADDED BONUS IF IT CAN BE ENTERTAINING FOR ADULTS AS WELL."

— MICAL WHITAKER
DIRECTOR OF 'THE WIZ'

talents of Stephanie Mills, who is presently a major recording artist. It has received some of its highest acclaim from its widely popularized songs like "Ease on Down the Road" and "If You Believe."

Whitaker has considerable experience on the topic due to his involvement in his own theater productions in New York at the

cerning black adaptations.

"At first I thought the play was such a sell-out," Whitaker said. "But through it, I saw that a play could be relevant, an adaptation of a white story so to speak, and still be good. That it could be entertaining and could keep me mesmerized by the sheer artistry."

"When it opened it was a re-

IN NATURE

Harvest festival a success despite rain

By Kwaseera Dixie
Staff Writer

The rain on Saturday did not deter visitors from coming to the fall harvest festival at the Georgia Southern Botanical Gardens.

"At 8:00 this morning I thought ... this is never going to happen," said Bob Randolph, acting director of the gardens, "but by 10:00 it got nice, the sun came out and it felt like a summer day."

The harvest festival took place on Saturday from 10 a.m.

to 4 p.m. and was free of charge. It offered a vast array of activities.

For children, there were activities such as storytelling, bubbles, vegetable seeds to take home and plant, and scavenger hunts.

Adults enjoyed the arts and crafts vendors displayed. There were handmade dolls, hand carved animals and furniture, African jewelry, and paintings just to name a few.

The festival also had a plant

sale, produce stand, and garden tours. The cottage at the Botanical gardens called the Bland cottage has a gift shop and also carries information about how the gardens began.

The smell of cotton candy wafted through the air as it was being made; there were also hot dogs, apples and hot chocolate, all for \$1.

There were also several musical groups on hand. The African American Choir performed from the opening of the festival until

11 a.m. The Georgia Southern Jazz Ensemble and Statesboro High School Choir also performed.

Visitors at the gardens had their choice of listening to the entertainment while on a hayride or sitting on the porch of the cottage.

Randolph explained that the botanical gardens are open throughout the year.

"Anyone is welcome in the botanical gardens anytime during daylight hours seven days a week," Randolph said. "The gates are open from 9 to 5 Mon.-Fri. and 2 to 5 on Sunday."

OFF CAMPUS

Students 'treat' St. Joseph's boys home

By Derek Lewis
Features Editor

For some, Halloween is nothing but candy, goblins and ghouls. For the children at St. Joseph's Boys Home it meant a little more than that. It meant friendship, attention, and caring people.

Pi Sigma Epsilon, a business fraternity for Marketing Sales Management majors, has been visiting the St. Joseph's Boys Home for years now. They send about 10 members on a regular basis to visit the children and spend time with them. The home provides a place to live for five boys currently.

"We had a pizza party for them and played games," Gail Branch said. "We shot pool and had contests for them with prizes."

"We've been visiting with them for over two years now," said Branch. "We show up, spend time with them, and play games. It's an ongoing project for us."

The fraternity visits the boys on a regular basis; every Wednesday to be exact.

This week the group consisted of: Michelle Reeves, Cris 'na Gaddoni, Jennifer Byrd, E Wolpert, Dana West, Amy Schwahn, Maceo Lennon and Gail Branch.

"They need role models, especially a male role model and we try to provide that for them," Branch said.

The fraternity also conducts several other activities with these boys.

"We take them to the football

game once a year," Michelle Reeves said. "But we haven't this year because it rained."

The program is helpful not only to the children but to the

college students as well. It provides a sense of good-natured caring as well as a feeling of pride that they helped to make others a little happier.

Campus Interviews November 15, 1994

OLDE, America's Full Service Discount BrokerSM is looking for motivated people to establish a career in the brokerage business.

OLDE offers:
12-18 month paid training program
Potential six-figure income
Excellent benefits

If you possess excellent communication skills, general market knowledge and the desire to excel, sign up for an on-campus interview on November 15, 1994 in the Career Center.

If you are unable to arrange an interview call:

1 800 937-0606

or send resume to:

OLDE Discount Stockbrokers
National Recruiting
751 Griswold Street
Detroit, MI 48226

OLDE
DISCOUNT STOCKBROKERS
Member NYSE and SIPC
An Equal Opportunity Employer

GEORGIA SOUTHERN SENIORS

Meet And Interview With
Outstanding Employers Like These

Aetna Life & Casualty	CIGNA	Chase Manhattan Bank
Dow Jones & Co.	Hewitt Associates	Eastman Kodak
Andersen Consulting	Northern Telecom	Booz, Allen & Hamilton
U.S. Secret Service	IBM	The Prudential
SONY	Eveready Battery	American Management Systems
U.S. Department of Energy	ADP	The Timken Company
E&J Gallo Winery	Hormel Foods Corp.	AT&T
Board of Governors of the Federal Reserve System		

AND MANY OTHERS WITH EXCELLENT CAREER

OPPORTUNITIES AT *Careers '95*

<i>New York</i>	<i>Atlanta</i>	<i>Washington, DC</i>	<i>Chicago</i>
1/9 & 1/10/95	1/17/95	1/27/95	2/6/95

Absolutely no charge to attend!!!

To be considered for an invitation to *Careers '95* please send your resume to *Careers '95*, P.O. Box 840, North Haven, CT 06473-0840 or fax it to Ms. LaTanya Gibson, Manager, Student Relations at (203) 239-3472 **by November 22, 1994**. Students whose qualifications and interests best match participating employer requirements will be personally invited to attend. **PLUS** every student who attends *Careers '95* will have our entire network of over 200 employer contacts at their disposal! Through our *Student Network Service* we will send your resume to our client contacts at the companies you want **AT NO CHARGE**. Your resume will be reviewed by key decision-makers, enhancing your chance of obtaining interviews and job offers. **This service is only available to students who attend Careers '95!**

If you are interested in being considered for a seat in an honors section of English 151 during Winter Quarter '94,

Follow these easy steps:

1) Call 681-5471 (the English Department office) to set up an appointment to write a brief placement essay.

2) Remember to make your call between Monday, November 7 and Friday, November 11, 1994.

3) Mark your calendar!

For more information, call Sandra Rabitsch (681-5911) or Neal Saye (681-0374).

WE NEED HELP!

The Honey Baked Ham Co. is in search of help during the holidays to fill our Sales Counter and Production positions. We have stores located in the following states: Alabama, Arkansas, Colorado, Florida, Georgia, Louisiana, Mississippi, Missouri, Nevada, North and South Carolina, Tennessee and Utah. Please stop by immediately to inquire about seasonal help. Check the white pages for information on the store nearest you.

Did You Say STYLE?

If it's style you want, we've got the selection.

Come and visit our shop today to find only the newest trends in mens casual wear and formal wear.



The Sir Shop

420 Gentilly Place, Statesboro
(Across from Winn-Dixie)
764-6924



New Releases

In stores this Tuesday:

Aerosmith, "Big Ones" (Geffen). Best of Collection.
Pat Benatar, "Very Best of" (EMI). Two CDs.
Black Crowes, "Amorica" (American).
Blondie, "Platinum Collection" (EMI). Two CDs.
INXS, "Greatest Hits" (Atlantic).
Megadeth, "Youthanasia" (Capitol).
Nirvana, "Unplugged in New York" (DGC).
Tom Petty, "Wildflowers" (Warner Bros.).
Red Hot Chili Peppers, "Out in L.A." (EMI). Rarities Collection.

Willie Nelson, "Healing Hands of Time" (Liberty).
Ricky Van Shelton, "Love and Honor" (Columbia).
 Source: Atlanta CD

Arts & Entertainment

Page 8 — Thursday, November 3, 1994

Stargate will bridge gap until trilogy appears

By Eric Bray
Staff Writer

About eight years ago, "Stargate" would have been a great movie.

Nowadays, it's just pretty good. But it's still nice to return to a classic premise every once in a while.

"Stargate" stars James Spader ("Wolf") as a cryptologist hired to decipher an ancient Egyptian relic which turns out to be a portal to another galaxy. After activating this gate, a reconnaissance mission led by Kurt Russell is sent through.

The story reminds me of an earlier Steven Spielberg-type Sci-Fi movie. It's not so much original as it is merely upgraded. The plot involves Spader and Russell leading a band of tribal slaves in a rebellion against an alien overlord.

The whole concept is quite hokey, but it's been so long since we've seen a classic sci-fi movie (excluding the "Star Trek" films). It's been just long enough to keep this one entertaining.

Disappointingly, the only non-human creatures in the film are huge, bison-like animals. But, the effects on these (actually done completely without animatronics) are so good you wish there were more.

The rest of the special effects are top of the line also. Visually the movie is stunning, especially the scenes traveling through the portal and the mechanized attire of the overlord's henchmen.

The cinematography is well done as well as the music by David Arnold, whose themes have a quality similar to John Williams' "Indiana Jones." It's too bad the acting wasn't up to

snuff, though.

Russell's character showed very little development or depth, though Goodness knows they tried with the torment over the death of his son, who shot him-

with in the role of the typical scatter-brained professor.

Jaye Davidson ("The Crying Game"), as the mysterious tyrant, is extremely under-exploited. He has no lines either in English or unsynthesized.

Without the dress he actually appears somewhat masculine, though a little pre-pubescent nonetheless.

I think most of the shortcomings in these performances can be attributed to poor directorial guidance by Roland Emmerich. Fortunately, they're not bad enough to ruin the movie.

The story moves at an excellent pace in the beginning, building the right amount of suspense without dragging it out.

It's near the end that the story slows down, leading to the slave revolt where the peasants charge over a hill in a scene reminiscent

of "Zulu Dawn."

Tell her you love her,
tell him to get lost,
find out what your friends
have been up to, or just run
your mouth!

Get the message
across...
send a personal!

Landrum Box
8001

25 words or less FREE!

**SPADER'S
PERFORMANCE WAS
OKAY, CONSIDERING
WHAT HE HAD TO
WORK WITH IN THE
ROLE OF THE TYPICAL
SCATTER-BRAINED
PROFESSOR.**

self. Basically, he just comes off as a stiff-jawed silent type. Spader's performance was okay, considering what he had to work

MUSIC NOTES

Brits move ahead of pop

By James Salter
Staff Writer

Pulp

His n' Hers

(Island)

Out with the recently defunct Suede and in with Pulp to drive the youth into a frenzy.

Jarvis' mannerisms and musical performance have been compared to Marc Almond's early work in Soft Cell.

"Babies" has an oddly similar sound to early New Order. David Bowie's vocal influence is apparent on "Happy Endings."

Pulp is a step forward for current pop music.

Distorted guitar is replaced by organs and violins, which add a tasteful and downright sensual touch.

Signature early eighties beats are utilized and iced with an array of synthesizers.

Pulp exhibit potential to be a

very significant band.

The only pitfall for them is their predictability and the testosterone based riffs that have been prevalent since the invention of rock'n'roll and the cotton gin.



JOSH BASS

Friday night Skirt played at Chena's. They are great live and have plans to release new material soon. Don't miss them next time.

Tonight at Chena's, Statesboro's newest group plays at the Mexicali Mecca. Stroma, will bring their show into the light. Their sound can be tagged as U2 and Vigilantes of Love influenced.

Union Productions is sponsoring two draws today. From 11 a.m. to 1 p.m., acoustic guitar trio Crunette and Maher will be harmonizing at the Rotunda. At 8 p.m., magician/comedian John P. Hopkins is performing in the Ballroom.

Saturday has mosh monsters Kill Factor and Smack at Chena's.

Thursday, Oct. 10 and Friday, Oct. 11 promise to be huge nights for music.

Thursday, Pulse plays Blind Willie's. The Goth/pop group has expanded to six members with the addition of a keyboardist/vocalist. Recent gigs in Athens, Atlanta, and Augusta have bolstered their confidence and the new songs are more diverse in their construct.

Oct. 11 at Legends, Soulhat is playing. Their latest single Bonecrusher is getting pretty heavy play on Q-102 and I-95. Their sound has hardened a bit from their last album and the show is supposed to be high-energy.

The Symphony performance is not this Monday but next Monday, Nov. 14. Mark your calendar.

My picks for the week are comedy tonight and Stroma tomorrow night.

Oh yeah. The bull is back at Bubba's.

Despite apathy, many local bands continue to offer entertainment

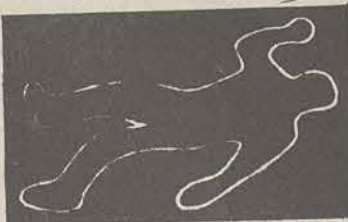
There are Statesboro bands. Pulse, Pigfat, Won By One, Kill Factor, Knucklehead and newly formed Stroma all are legitimate bands playing in the Boro and beyond.

Knucklehead is a Zeppelin flavored rock group. Pulse is an intelligent pop sextet. Won By One does a tight cover act with a few originals.

On the harder end, Kill Factor is the only speed/thrash band around and Pigfat is a hardcore act that integrates some mixing for a cross-over sound.

Stroma is the latest entity and does some covers but mostly U2-ish originals.

We have a music scene, it just takes a back seat to cheap beer.



Alcohol quickly affects your judgment, balance, and coordination. Don't drink and ride. Or your last drink might be your last drink.
MOTORCYCLE SAFETY FOUNDATION

Psychic Readings by MRS. GRACE

Tarot Card & Palm Readings

- Have you ever wanted a psychic to analyze you and tell you what is right & wrong in your life?
- Do you want an expert in the field of psychic phenomenon to gaze into your past, explain your present & tell your future?
- Mrs. Grace advises on love, business matters & marital problems.

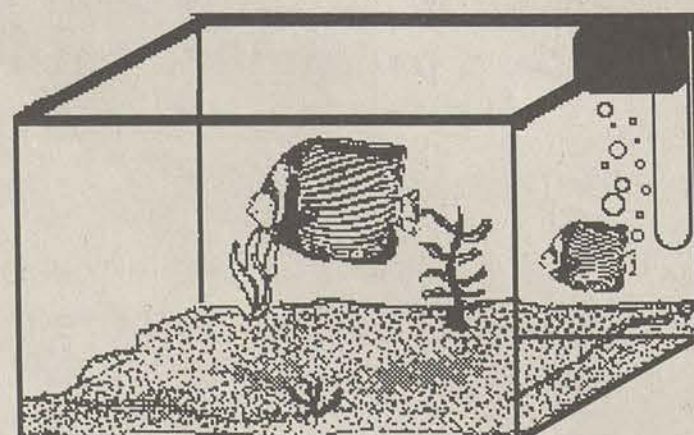


Special \$5 All Readings

113 Hwy. 301 South, Statesboro
Across from Ogeechee Tech

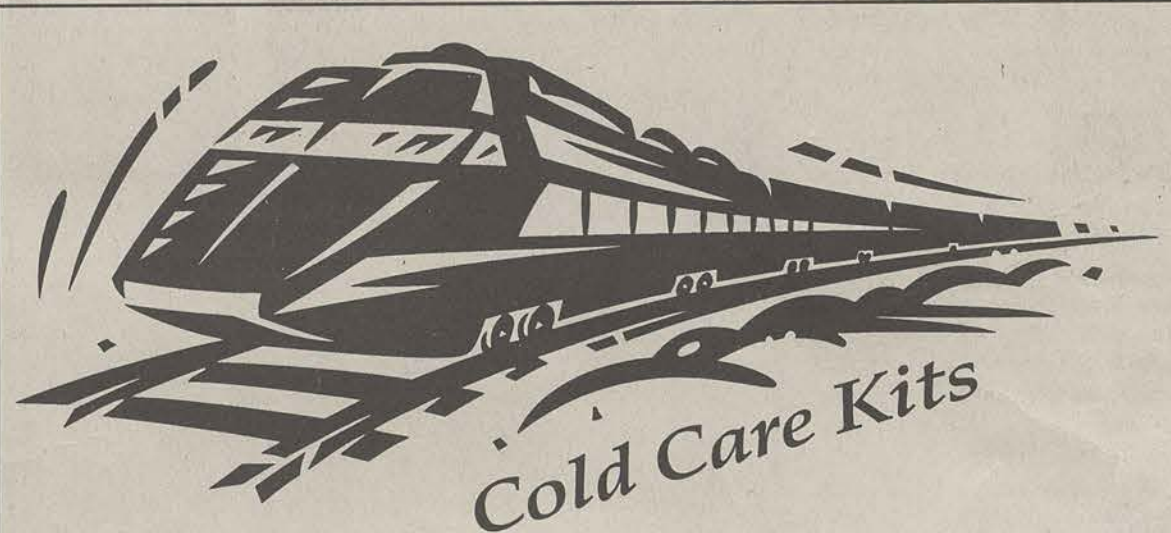
912-871-4487

Tropical Fish



Thompsons Pools
Wide Selection of Tropical
Fish
& Supplies

29 N. Zetterower 764-3442
(NEXT TO BUS STATION)



Cold Care Kits

available at the Health Center
through our
Cold Care **Express Lane**

• No long waits to see a physician

• No worries

• Express Lane moves at high speeds

Kits are now reduced from the normal \$6⁰⁰ rate

to only **\$3⁰⁰**

while supplies last

GEORGIA SOUTHERN UNIVERSITY HEALTH SERVICES
681-5641

CARTOONS

CLASSIFIEDS

CROSSWORD

01-Announcements

African American Gospel Chior Concert
Nov. 18. Union Ballroom at 7:30pm.
Admission free.

Anyone witnessing an accident on
Sweetheart Circle on Tuesday, October
18th involving a vehicle and a bicyclist call
Captain Peaster at GSU Police 681-5234.

Attention golfers: Adoption Services Inc.
Needs golfers for a 4 man scramble Golf
Tournament. It will be held at Willow
Lakes Golf Club Nov. 18. For further
details call Laurie Bradford at 764-8130

ATTENTION: The George-Anne screens
all classified ads prior to publication. The
newspaper strives to accept ads for
legitimate products & services only.
Students are urged to exercise caution
when replying to ads, particularly those
which ask for money or a credit card
number in advance of delivery of products
or services. Students are also urged to
report to the newspaper (at 681-5418) any
suspicious offers they might see in the
classifieds. Remember, if an offer seems
too good to be true, it probably is.

Red Cross Blood Drive certification course
is Oct. 25 from 5-7pm in the Residence
Life area of the Rosenwald Building.
Everyone welcome!

The Outdoor Adventure Club will have a
mtg at 6:30pm in Union rm 270. New
members are encouraged to attend.
Florida trip will be discussed.

WHAT IS A RUGGER HUGGER? GIRLS.
For more info. Call Kara and Reasey at
871-6604 or Daphne at 489-6452. Come
and support GSU Rugby!

YOGA CLUB meets 6pm Tues. In Union.
Beginners welcome. Wear comfortable
clothing. Check info. Desk for room
number. For more info. Call 681-5511

03-Autos for Sale

1971 VW Super Beetle Convertible. Red
w/ tan top and tan interior. Just restored.
858-3302

1975 Lancia Beta Coupe (Italian made),
silver w/red leather interior, body
excellent, new remanufactured engine, 5
spd. Runs! \$990 firm. 681-7152

1978 VW Super Beetle convertible White
inside and out. Beautiful car. 858-3302

1986 Nissan Sentra XE. White, great
trans! \$1,500. Danielle 489-6206.

For sale: 1976 MGB convertible, Black,
looks rough but is in good mechanical
shape. \$850 Call Jeff 871-3281.
(912)876-9667 weekends.

HONDA ACCORD 8h, 4dr, overdrive, up
to date maintenance including timing belt
and trans., runs exc. 92K. Drive
anywhere. 2600 OBO. Jahan 871-4289

Olds 1991 88 Royale. 4 dr sedan. Show
room condition, 66,000 original mileage,
fully loaded, new cellular alltel telephone,
new tires, new brakes. 764-3034

09-Furniture & Appliances

Kingsize waterbed w/darkwood frame. 2
sets of sheets. \$190 or best offer. Call
Michelle 764-7441

Mattress for sale: Good condition. Asking
\$40. Call Mike at 681-4056

11-Help Wanted

FINANCIAL AID
ATTENTION ALL STUDENTS
Over \$5 billion in FREE Financial Aid is
now available for students nationwide
from private sector grants & scholarships!
All students are eligible regardless of
grades, income, or parent's income. For
more info. Call 1-800-959-1605 ext.
F53941.

Wanted!!!!
Individuals, Student Organizations and
Small Groups to Promote SPRING
BREAK '95. Earn substantial MONEY
and FREE TRIPS. CALL THE NATION'S
LEADER, INTER-CAMPUS PROGRAMS
1-800-327-6013.

HOLIDAY EMPLOYMENT
IN ATLANTA
Retail Xmas tree lots. Looking for 4
students. 15-20 hours per week. Must be
hardworking + reliable w/ good references.
\$5.50/hour + commission. (404)924-2824.

BABYSITTER-needed Dec 12- Dec15
8am-5pm. Near campus location. Send
letter of interest to S.A.M. LB 8105.

CRUISE SHIPS HIRING- Earn up to
\$2,000+/mon on Cruise Ships or
Land-Tour companies. Seasonal &
Full-Time employment available. No exp
necessary. For info. Call 1-206-634-0468
ext. C59942

FUNDRAISING - Choose from 3 different
fundraisers lasting either 3 or 7 days. No
investment. Earn \$\$\$ for your group plus
personal cash bonuses for yourself. Call
1-800-932-0528, EXT 65

Shuttle Drivers needed. Over 23 with no
more than one ticket. Call 871- 5693, leave
message.

12-Lost & Found

Found: 1 pair of Oakly sunglasses on the
1st floor of the library. Call Hank at
681-3425 to identify and pick up.

Found: 1 purple Huffy 18spd "shock pro"
bike and 1 blue Motobecane 10spd bike at
Union. Call GSU Police at 681-5234 to
identify.

Lost 3 rings 1 aquamarine, 2 amethyst.
Very sentimental. Reward. If found please
call Stacey 681-8401.

13-Miscellaneous for Sale

Firenze Mountain bike for sale, great
condition, a steal at \$80. Call Jennifer at
871-3059

For sale: 18 spd mountain bike like new.
\$75 OBO. Call Richard 871-6380

For sale: Black velvet formal dress, size 4.
Worn once \$30. White nursing uniform
w/nursing patch already sewn on sleeve,
size 4, worn once, \$25. White nursing
shoes, size 7-7 1/2, worn once, \$25. Call
681-4720. Leave message.

For sale: Entite bicycle rack from REI for
hatchback cars. Almost brand new-\$50
Call Kelley at 871-7435

For sale: MacIntosh Classic Computer. For
more info., call Cindy at 681-3073

IBM CLONE 286/16 math coprocessor,
4MEG Ram, VGA, MOUSE, MODEM, 80
meg hard, 2 floppys, 6.2 DOS, WINDOWS
3.1, Word Perfect 6.0 DOS \$495. Leave
message 681-9204

15-Musical

Guitar player/singer looking for guitarist,
bassist, keyboard player, and drummer to
form country band. Call Dan 871-4113,
leave message.

16-Personal

Angelia- Busy bee am I, so how you been?
Just 2 weeks then you shall know!

Baby, I love you with all my heart! I'll
always be your girl! Will you marry me?
Love a.P.

Hey Kerri,
Thanks for everything.
Your Little, Jennifer.

Jennifer- Busy bee am I, so how you been?
Your taking all the fun away by asking
who I am. Just 2 weeks then you shall
know. Clue: I live with other brothers.

17-Pets & Supplies

55 gal. Tank saltwater set up. Filters,
custom stand, fish. \$150. Gray 871-7046

For sale: Hatching Chinese water dragon
with 30-gallon long tank, screen top and
light, heat rock, live plants and lots of
extras. \$130. Call Jerry 871-6554

Male banded gecko with 10-gallon tank,
lighted hood, and goodies. \$50. Call Jerry
at 871-6554

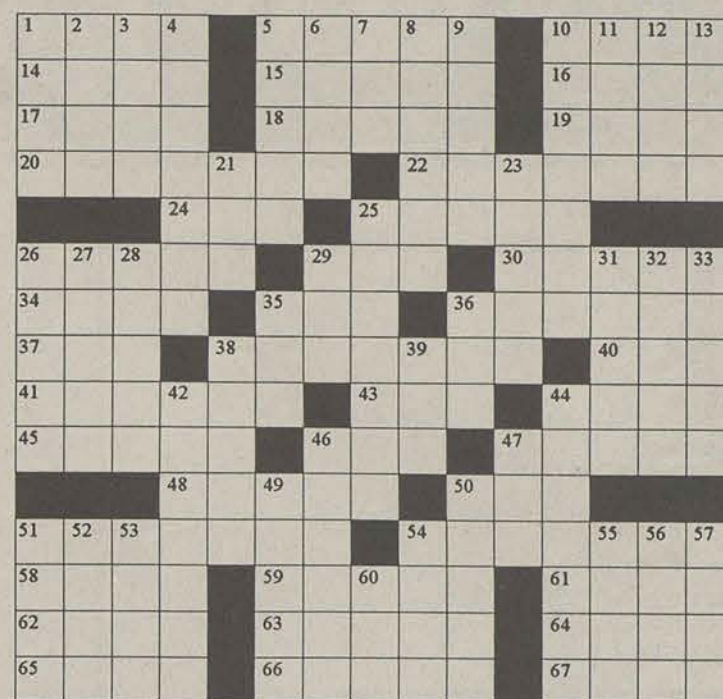
Medium sized iguana and custom built
cage for sale. \$70.00. 871-6060

Savannah Monitor 11". 2 gal critter tank.
Vitalite esu day + esu night lights. Heat
rock + extras. 150+ value - \$75 OBO Call
Michele 681-8618

" Name Games "

By Gerry Frey

- ACROSS
- Prod
 - Vaulted
 - The greastest amount
 - Barking mammal
 - Zeal
 - Mime
 - Ms. Adams
 - Singer Peter
 - Stir up
 - Sutherland & Duck
 - Boone & Webster
 - Negative responses
 - position
 - Spanish bulls
 - Blunder
 - Mimicking bird
 - Brewer
 - Golf org.
 - Upper house
 - Word with cup
 - Bernstein or Sugar Ray
 - Hosp. term
 - Singer Frankie
 - Sharkey's rank
 - Crooked
 - Beauty parlor
 - Broadcast
 - Merchandise
 - Anglers needs
 - Auto
 - Gore & Einstein
 - Victor or Hoover
 - Navy recruit
 - Despised
 - U S citizen
 - Prepare for publication
 - Pierre's school
 - Get up
 - Eichhorn or Stansfield
 - Tears
 - Lawyer:Abrev.
- DOWN
- Employed
 - Change the decor
 - Profit
 - Roosevelt or Powell
 - Touches down
 - Cupid
 - Fuss



- Deliberate
- Halloween goal
- Monroe or Horne
- Ron Howard role
- Market
- Very in France
- Angeles
- Appointed
- Ann or Connie
- English goodbyes
- Singer John
- Pertaining to the kidneys
- Pride
- Consumer advocate
- Make amends
- Warms
- Writing tool
- Broadway sign
- One who avoids others
- 4th mo.
- Swift or Young
- Walters or Bush
- French region
- Prolonged fighting
- Anesthetic

- Abdicates
- Cain's victim
- City in Italy
- de Boulogne
- Possessed
- Give off
- Break
- Card with three pips
- Cargo unit

Quotable Quote

"No steel can pierce the
human heart so chillingly
as a period at the
right moment."
Isaac Babel

© 1994 All rights reserved GFR Associates
P.O. Box 461, Schenectady, NY 12301

19-Rentals & Real Estate

2br apts., 2br houses, 2br MHS-furnished
and unfurnished and nice office. 764-5003

Apartment for rent 2B, 1B, W/D,
dishwasher. Great location off campus.
Available December 1st \$420/mo. Call
soon 489-6285. Leave a message.

Female Christian Roommate needed,
\$130/mo. If interested please call Kim at
489-6285.

Need 2 people to take over lease for
Winter- Summer Qtr. \$490/quarter per
person! Free cable and HBO. Call
871-4304.

Very nice, new, 2 bedroom duplex off
campus. Available January 1. Pets allowed
\$425/mo. 852-5299.

20-Roommates

1 female roommate needed to take over
lease starting winter quarter. Own
bdm+bath. W/D, \$237/mo + 1/2 util. Call
Cindy or Hope at 871-3836.

Female Roommate needed to take over
lease Winter Qtr. At Players Club own
bdm+bath. Call Nicole 871-3602

Female roommate needed to take over
lease Winter Qtr. Players Club, own bdrm,
vanity, large closet, W/D, \$225/mo. Great
roommates! April at 681-1836

Female roommate needed Winter, Spring
95. Stadium Walk 215/mo + 1/2 util. Private
room fully furnished. Please call 681-8711.
Ask for Lee, Missy, Mandy, or
Kierstin. Leave message.

Female roomtne needed. Hawthorne 2.
Large bdr., 2 closets, Large private bath.
Starting Spring quarter. Great
roommates. \$200/mo + 1/4 util. Call Jodi
681-7414

Looking for female roommate-Campus
Courtyard. \$225/mo + 1/4 util. Private
room fully furnished. Please call 681-8711.
Ask for Lee, Missy, Mandy, or
Kierstin. Leave message.

Bermuda Run roommate needed! Own
room + bath, own phone line, W/D, fun
roommates! \$225/mo. Close to campus.
Call Barbara at 871-4819.

DAWSON

Continued from page 6

yarder against Marshall and he
was expected to be a double
threat for the Eagles this year.
But the early season collapse of
the offense and the reverting
back to the old days of running
the ball almost every play has
hurt Dawson's numbers.

"I feel that I could really show
more of my talents if I could just
touch the ball five times a game,"
Dawson said. "I feel that my per-
formance has been decent this
year, but I would like to get the
ball more."

Dawson's punt return num-
bers have dropped this year be-
cause the special teams have not
concentrated on the return.

"We have been trying to block
most of the punts this year," he
said. When you try to block a
punt and miss, then the returner
is all alone, so that is the reason
that my returns are down this
year," he said. "We have a policy
that we don't call for a fair catch
on a punt so when I run three

yards and duck my head for the
hit I don't want people to think
that I am just giving up.

"The coaches have not de-
signed any special plays for me
to get the ball so I just wait my
turn to get the ball. If it means
that I have to block all game then
that's fine if we win."

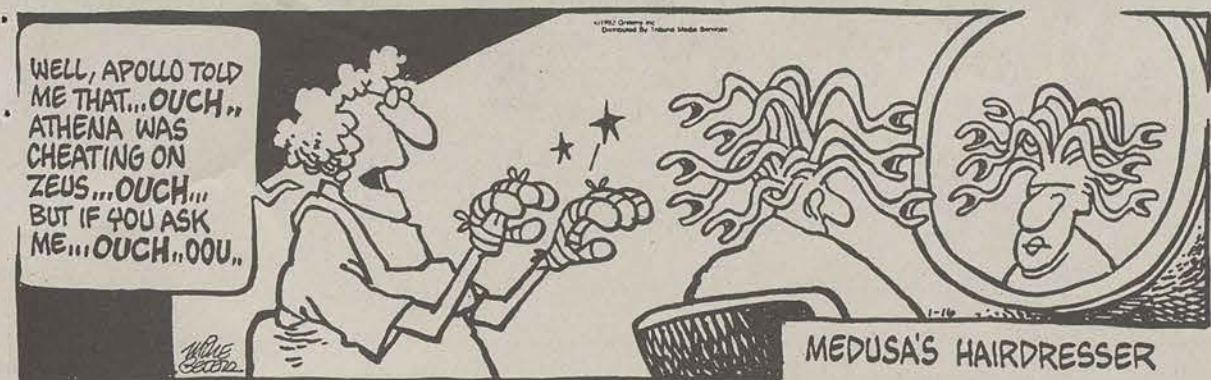
One thing that Dawson

wanted known was that he is not
selfish, but like all good athletes
he just wants to show off his
talent. He is the Eagles' leading
receiver this year and he is also
the top return man.

Just imagine if he played with
Alcorn State's Steve McNair.

Dawson can: "I feel that if I
played with him we would both
be talking about our contract of-
fers."

"The most important part of
the game for me is winning. If I
have to be a decoy or if I have to
block to accomplish the win, then
I am willing to do that."



THATCH

By Jeff Shesol



Georgia Southern University
Student Programs

NOVEMBER ACTIVITIES

SUNDAY	MONDAY	TUESDAY	WEDNESDAY	THURSDAY	FRIDAY	SATURDAY
		<ul style="list-style-type: none">Masquerade Party, Union Ballroom, 8pmCINEMA ARTS: <i>Much Ado About Nothing</i>, Union Theatre, 7pmRead the <i>George-Anne</i> today	<ul style="list-style-type: none">MOVIE: <i>Surviving the Game</i>, Union Theater, 7:30 & 9:30pm	<ul style="list-style-type: none">MUSICAL: <i>The Wiz</i>, through 11/5Crunette & Maher guitar duet, Lakeside Cafe, 11:30am-1:30pmMOVIE: <i>Surviving the Game</i>, Union Theater, 7:30 & 9:30pmCOMEDY—John P. Hopkins, Union Ballroom, 8pmRead the <i>George-Anne</i> today		<ul style="list-style-type: none">FOOTBALL: Eagles at Furman U., 1:30pm
		1	2	3 today	4	5
<ul style="list-style-type: none">MOVIE: <i>Ferris Bueller's Day Off</i>, Union Theater, 7:30 & 9:30pm	<ul style="list-style-type: none">NFL Football Party Night, NY Giants vs. Dallas, Union Commons, 7:30pmMOVIE: <i>Ferris Bueller's Day Off</i>, Union Theater, 7:30 & 9:30pm	<ul style="list-style-type: none">ELECTION DAYCINEMA ARTS: <i>Olivier, Olivier</i>, Union Theatre, 7pmRead the <i>George-Anne</i> todayEarly registration for Winter 95, Williams Ctr.	<ul style="list-style-type: none">MOVIE: <i>Beaches</i>, Union Theater, 7:30 & 9:30pmEarly registration for Winter 95, Williams Ctr.	<ul style="list-style-type: none">COMEDY: Hamburger Jones, Union Ballroom, 8pmMOVIE: <i>Beaches</i>, Union Theater, 7:30 & 9:30pmBASKETBALL Men vs. Foreign Team (Exhibition), Hanner, 7:30pmRead the <i>George-Anne</i> todayEarly registration for Winter 95, Williams Ctr.	<ul style="list-style-type: none">VETERANS DAYEarly registration for Winter 95, Williams Ctr.	<ul style="list-style-type: none">PARENTS' WEEKENDFOOTBALL vs. Glenville State, 2pm, Paulson Stadium
6	7	8	9	10	11	12
<ul style="list-style-type: none">PARENTS' WEEKENDMOVIE: <i>Serial Mom</i>, Union Theater, 7:30 & 9:30pm	<ul style="list-style-type: none">CLEC: Taj Mahal, blues guitarist, Union Ballroom, 8pmStatesboro-Georgia Southern Symphony, Foy Recital Hall, 8pmMOVIE: <i>Serial Mom</i>, Union Theater, 7:30 & 9:30pmEarly registration for Winter 95, Williams Ctr.	<ul style="list-style-type: none">EVENT: Blizzard of Bucks 2, Union Ballroom, 8pmMUSIC: Jazz Ensemble, Union Ballroom, 8pmCINEMA ARTS: <i>Great Expectations</i>, Union Theatre, 7pmRead the <i>George-Anne</i> todayEarly registration for Winter 95, Williams Ctr.	<ul style="list-style-type: none">STEP SHOW, Union Ballroom, 7pmMOVIE: <i>The Money Pit</i>, Union Theater, 7:30 & 9:30pmEarly registration for Winter 95, Williams Ctr.	<ul style="list-style-type: none">PREMIER Event for <i>Southern Reflector Magazine</i>, Union Commons, NoonMOVIE: <i>The Money Pit</i>, Union Theater, 7:30 & 9:30pmRead the <i>George-Anne</i> todayEarly registration for Winter 95, Williams Ctr.	<ul style="list-style-type: none">MUSIC: Earthtones, a'capella performance, Rotunda, 11am-1pmEarly registration for Winter 95, Williams Ctr.Schedule Adjustment, for Winter Qtr. 95	<ul style="list-style-type: none">FOOTBALL: Eagles at The Citadel, 2pm
13	14	15	16	17	18	19
<ul style="list-style-type: none">MOVIE: <i>Bad Girls</i>, Union Theater, 7:30 & 9:30pm	<ul style="list-style-type: none">WORLD's FAIR – Cultural Celebration, Union Rotunda, 11am-3pmMOVIE: <i>Bad Girls</i>, Union Theater, 7:30 & 9:30pm	<ul style="list-style-type: none">Read the <i>George-Anne</i> today	<ul style="list-style-type: none">Thanksgiving holidays, administrative offices will be closedResidence Halls close at 9am	<ul style="list-style-type: none">THANKSGIVING DAY	<ul style="list-style-type: none">BASKETBALL Men vs. Brewton-Parker, Hanner, 7:30pmBASKETBALL Women vs. E. Kentucky, 5pmThanksgiving holidays, administrative offices will be closed	<ul style="list-style-type: none">BASKETBALL Women vs. Tennessee State, Hanner 5pmThanksgiving holidays
20	21	22	23	24	25	26
<ul style="list-style-type: none">Thanksgiving holidaysResidence Halls open at 1pmMOVIE: <i>Blue Chips</i>, Union Theater, 7:30 & 9:30pm	<ul style="list-style-type: none">BASKETBALL Men at UGA, Athens, 7:30pmBASKETBALL Women at UNC-Charlotte, 7:30pmMOVIE: <i>Blue Chips</i>, Union Theater, 7:30 & 9:30pm	<ul style="list-style-type: none">MUSIC: Southern Pride Marching Band Showcase, Union Ballroom, 8pmCINEMA ARTS: <i>Au Revoir, Les Enfants</i>, Union Theatre, 7pmRead the <i>George-Anne</i> today (Last ed. of quarter)	<ul style="list-style-type: none">MOVIE: <i>National Lampoon's Christmas Vacation</i>, Union Theater, 7:30 & 9:30pmPLAY: <i>A Christmas Carol</i> through 12/3	<div>UPCOMING DATES...</div> <ul style="list-style-type: none">DEC. 5 – Last Day of ClassesDEC.6-9 – Examinations for regular classes (see schedule in Fall Quarter Schedule of Classes.DEC. 10 – Holidays for students beginDEC. 11 – Graduation, 4pmJAN. 2 – Residence Halls check in at 10am, administrative office remain closedJAN. 3 – Registration for New and Former StudentsJAN. 4 – Drop/Add, 8am - 4pmJAN. 5 – Classes begin		
27	28	29	30			

"A different kind of company requires teamwork. That is the Saturn difference - our commitment to the people inside and outside our Retail Facilities."

-Sterling Dixon
General manager, Saturn of Aurora



Brought to you by
SATURN of Savannah
Call for an appointment:
912-920-6500

