

Georgia Southern University

Digital Commons@Georgia Southern

---

The George-Anne

Student Media

---

10-13-1994

## The George-Anne

Georgia Southern University

Follow this and additional works at: <https://digitalcommons.georgiasouthern.edu/george-anne>

---

### Recommended Citation

Georgia Southern University, "The George-Anne" (1994). *The George-Anne*. 1328.  
<https://digitalcommons.georgiasouthern.edu/george-anne/1328>

This newspaper is brought to you for free and open access by the Student Media at Digital Commons@Georgia Southern. It has been accepted for inclusion in The George-Anne by an authorized administrator of Digital Commons@Georgia Southern. For more information, please contact [digitalcommons@georgiasouthern.edu](mailto:digitalcommons@georgiasouthern.edu).





## Who's that?

Nominations are now being taken for the 1994-1995 collegiate Who's Who

Please see story, page 2



## Showbiz

Fox 48's Jackie Boatwright brings her talk show to the campus of GSU



## Artistic touch

The Faculty Art Exhibit premiered in Foy's Gallery 303 ... read the reviews

Please see "Arts & Entertainment," page 10

## EAGLELINE

### GOLD EDITION

Thursday, October 13, 1994  
Vol. 67, No. 25

## Kennedy in a dead heat race for re-election

By Melissa B. Robinson  
The Associated Press

WASHINGTON — Never one to retreat from a fight, Sen. Phil Gramm came out swinging at Democrats Friday, tarring Sen. Edward Kennedy as a "poster child" for what's wrong with the federal government.

Gramm, the Texas Republican who chairs the National Republican Senatorial Committee, the arm of the GOP that works on Senate elections, said Kennedy was emblematic of a Democratic Party out of touch with the public.

"Ted Kennedy is the epitome of what is wrong with American government," Gramm said at a news conference on the 1994 Senate races. "He's a poster child for change."

Months ago, Gramm included Massachusetts on a list of GOP Senate targets. Republicans need seven seats to win control of the chamber.

Back then, Gramm gave his party a "pretty good chance" of taking the seat Kennedy has held since 1962. But with some recent polls showing Kennedy and Republican venture capitalist Mitt Romney in a statistical dead heat, Gramm's optimism has turned to outright confidence.

"When we have Ted Kennedy and his family and his supporters attacking a candidate on his religion, you know two things," said Gramm, referring to the fracas that erupted after Rep. Joseph P. Kennedy II, Kennedy's nephew, said Romney, a Mormon, should answer for his church's policies toward women and minorities.

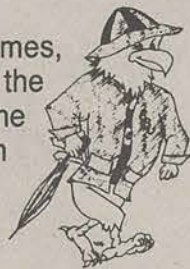
"You know they're desperate," Gramm said, "you know they're losing, and you know they deserve to do both."

Kennedy's campaign did not immediately respond to a request for comment, although campaign manager Michael Kennedy previously had dismissed similar remarks, arguing that it's hardly surprising for conservative Republicans to make Kennedy a target.

## WEATHER

### TODAY

Rain, heavy at times, windy with fog in the morning. High in the lower 70s and low in the lower 60s.



### WEEKEND FORECAST

**Friday**, scattered showers. High in the mid-70s and low in the mid-60s.  
**Saturday**, morning showers turning breezy in the afternoon. High in the mid-60s and low in the mid-50s.

## INDEX

Announcements	2
Classifieds	11
Crossword	11
G-A Spotlight	3
Opinions	4
Police Beat	2
Sports	6

It is a desire of The George-Anne to print the news of Georgia Southern University as accurately as possible. If you feel that something covered is in error, contact a member of the editorial staff at 681-5246 as soon as possible. Thank you.

FOR ADVERTISING INFO.: 681-5418  
STORY OR PHOTO IDEA: 681-5246

# The George-Anne

Liked By Many, Cussed By Some ...  
Read By Them All



# The George-Anne

Georgia Southern University's Official Student Newspaper

Statesboro, Georgia 30460

Founded 1927

## Rain doesn't stop ceremony for new building extension

By Chris Sherwood  
News Editor

The groundbreaking for the new wing of the Math-Physics-Psychology building took place Tuesday despite the rain, as Governor Miller and many other dignitaries were on hand to unveil the artists rendition of the \$3 million addition.

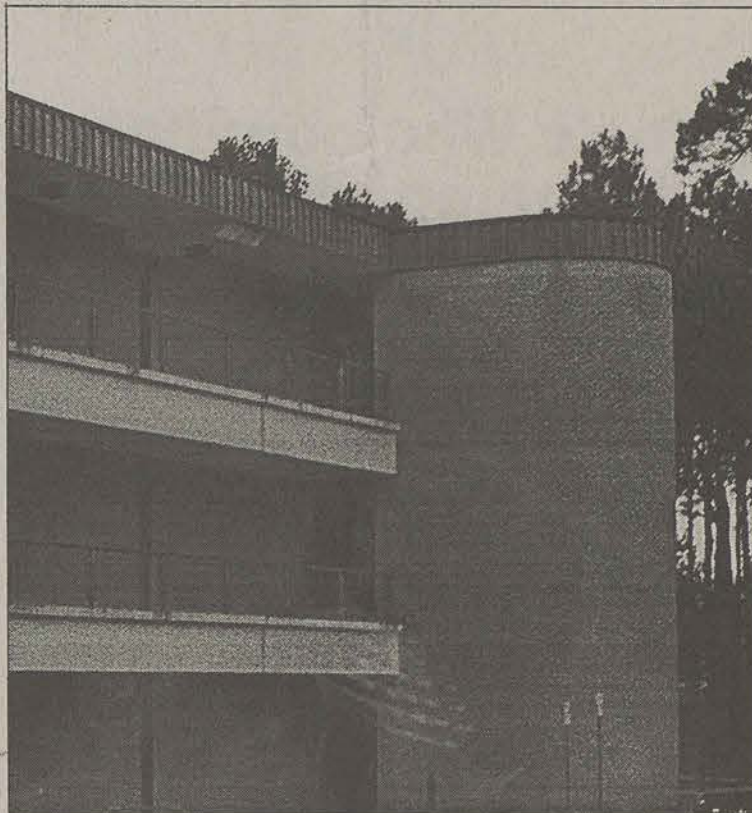
"This is a glorious morning for GSU," GSU President Nicholas Henry said. "We spend \$1.2 million a year on the renting of modular buildings, which is more than any other school in the state."

The Math-Physics-Psychology building was built in 1972 when the schools enrollment was only 6,000.

"We've come a long way since then, and this project would not have been possible if it weren't for the hard work of many of the people who are here today," Henry said.

One of the first to speak, and according to Henry, one of the key people involved in the money for the new wing, was State Representative Terry Coleman.

"When Jeff Layne and John Godbee (State Senators) came to me last session, they told me of the \$1.2 million spent yearly by GSU on the temporary buildings, we then proceeded to talk to Tom Murphy (State Speaker of the House) to see what we could do," Coleman said. "We worked with the Governor's Office of Planning and Budget."



Jerome New

### Site of the Math-Physics-Psychology extension

Originally, GSU had hoped to cut some of the cost in construction by using prison labor.

"That plan ran into the bureaucracy of the Georgia State Investment Committee," Coleman said.

Governor Miller has been a champion of higher education in Georgia and has set a new standard, according to Henry.

"Governor Miller is the best friend that higher education has ever had in this state," Henry said. "His work represents more than just one build-

ing, it also represents the HOPE scholarships which have allowed 900 students to attend GSU (781 last year) and 50,000 plus to attend colleges throughout the state."

The state of Georgia has over \$1.5 billion in the construction program for all of the schools in the University System according to Miller.

"This is the largest construction project ever in the state of Georgia," Miller said. "Besides the new wing, there will be a new recreation facility, a 500

Please see MPP, page 11

## Despite delays, new recreation center on track

G-A Staff Reports

Despite some unexpected delays, the new Campus Recreation and Intramurals (CRI) facility is still on track to open by the fall quarter of 1996 or winter quarter of 1997.

The original concept of the facility came seven years ago when the Assistant Dean of Students Lynch proposed such a project.

"The idea just took off from there," CRI coordinator William Ehling said. "We knew there was a need because in seven years we jumped from 7,000 to 14,000 in enrollment."

According to Ehling, the latest target date for completion of the recreation facility is sometime in the fall of 1996. When open, the hours will be

from 6 a.m. until whenever the students want to leave.

"The facility will be able to service around 2,500 students daily, and we should be able to offer our services to between 16,000 and 18,000 total,"

**"RIGHT NOW IT IS KIND OF HARD TO IMAGINE, BUT IT REALLY WON'T BE THAT HARD TO GET TO BY THE TIME IT OPENS."**

— WILLIAM EHLING  
CRI COORDINATOR

Ehling said. "The funding for the \$8 million facility has come from the students tuition for the past three years."

According to Ehling, \$20 a quarter has been taken from students' activity fee to fund the project.

The new facility will offer an indoor four lane walking track (seven laps will equal a mile), three basketball courts, an auxiliary gym with rounded walls for field hockey and soccer, five indoor racquetball courts, an indoor

climbing wall, a 9,000 square foot weight room, a 5,000 square foot aerobics center and a combative room for the judo and fencing type sports.

"Approximately one-third of our staff will have there offices located in the

facility," Ehling said.

One of the questions some students have now is about the accessibility of the facility.

"Right now it is kind of hard to imagine, but it really won't be that hard to get to by the time it opens," Ehling said.

"We will have some bike paths that will go out that way and some new roads will be in that area," he said.

Ehling said with the expansion of the academic buildings on the South end of campus, transportation to the facility will be a lot easier because some of the wooded area will not be there anymore.

"Currently the project is half way through the design of the construction documents," Ehling said.

## Mother of murder victim argues against the death penalty

By Chris Sherwood  
News Editor

Reconciliation. That could best describe the feelings of Aba Gayle, a member of the Journey of Hope group, as she addressed 50 or so students in the Union on Monday.

The Journey of Hope is made up of individuals who have had family members murdered, but are against capital punishment. The group is its second year, and it involves victims who travel around and tell of their experiences and why they do not want to see the murderers of their family members killed.

Aba Gayle, not her real name, had three children. Two of them had left for medical school, but her daughter Catherine still lived at home.

During a night in September of 1980, she received the

phone call that would change her life. She picked up the receiver and on the other end was a police officer's voice.

The man asked her what she thought about her daughter being shot.

"The officer said she wasn't shot, but was dead," Gayle said. "He told me he would have someone call me back."

Three long, lonely and frantic hours passed, and she still hadn't been called back. Finally, she had to call.

"I was told she was murdered, and that began my journey of darkness," Gayle said.

Her journey of darkness lasted for eight years. In that time, she felt rage and anger. She didn't know where to turn.

She was not a member of a church so she didn't have anyone she could go to.

"It was unhealthy for me

during that time because I felt like I wanted revenge for my daughter," Gayle said.

After eight years of pain and suffering, she enrolled in a meditation class.

Little did she know, but her journey of darkness was coming to an end and her journey of life was beginning.

"That little step opened me up to stuff that I hadn't learned about," Gayle said. "I had started taking care of my mother at the time and one of the things I did for her was take her to church."

Once she started attending church, she realized she had found a "new home".

"I found that I could forgive the man who had murdered my daughter after I took a miracle class," Gayle said. "Not too long after that, one of my friends called and told me they



Jason Chandler

Aba Gayle speaks to a large crowd of students about why she is against capital punishment even after her daughter's murder.

had set a date for the execution."

She felt no one had more of a right to be there than her. There was a six month delay on the execution, and in that time she wrote a letter asking that she be allowed there.

The letter was never mailed. "I didn't mail it, I never

needed to," Gayle said. "That night I received my first miracle."

She had heard a voice that night, a voice that came in so loud and so clear that she knew the importance of its message.

The meaning of the message was unmistakable, it told

Please see MOTHER, page 11



## POLICE BEAT

## GSU Division of Public Safety

## October 10, 1994

•An employee of the Russell Union reported a case of simple battery outside of the Union.

•Leslie Cram reported \$1,100 missing from a safe at the Booster Trailer.

•Johns Joseph Hamilton III, 24, of Allenwood Drive, was charged with DUI (.20) and a stop sign violation.

## October 9, 1994

•Andy Ciordia reported a Giant bike missing from Veazey Hall.

•Rasool Karim Muhammad, 19, of Campus Courtyard, was charged with driving with a suspended license, improper backing and giving false information to an officer.

•Warren Steven Ritter, 18, of Crystal River, Fl., was charged with minor in possession of alcohol.

•Barry Clinton Watson, 17, Jacksonville, Fl., was charged with DUI (.08) and weaving.

•Jonathan Michael Renfroe, 18, of Dalton, was charged with minor in possession of alcohol.

•Justin Patrick Johnson, 19, of Brannen Hall, was charged with minor in possession of alcohol.

•Christopher Roman Edwards, 18, of Dalton, was charged with minor in possession of alcohol.

## October 8, 1994

•Takashi Usmid reported a bike missing from the Russell Union building.

•Dwayne Virgil Lewis, 19, of Sussex Apartments, was charged with minor in possession of alcohol.

•Otis Leon Story II, 20, Chandler Road, was charged with minor of possession of alcohol and obstruction of an officer.

## Statesboro Police Department

## October 11, 1994

•Kenneth Jenkins, of Players Club Apartments, reported a criminal trespass, but nothing was taken from his apartment.

•Brandi Reeves, of Four Seasons Apartments, reported that items had been taken from her apartment totaling \$1,080.

## ANNOUNCEMENTS

## Things to do at GSU in October

## Today

•“Win, lose, or draw” will be held at the Union Commons at noon.

•A faculty showcase recital will be held in the Foy Recital Hall at 8 p.m.

## Monday, October 17

## HOMECOMING WEEK BEGINS

•Mini-Carnival and Banner Contest. Check out the dunking booth, temporary tattoos and water wars to kick off that Mardi Gras spirit.

•Come out to Sweetheart Circle between 12 and 5 p.m. to catch all the action.

•The Rocky Horror Picture Show will be shown at the Union Rotunda at 9 p.m.

•“Camp Logan” will be shown in the Union Ballroom at 8 p.m. It's a performing arts series with general admission tickets available while they last.

The tickets will be available two weeks prior to the show, with the first week distribution strictly for students.

Contact the CLEC office at 681-0830 or send for information at Landrum Box 8028.

## Tuesday, October 18

•Step into another world and star in your own fantasy.

•Check out virtual reality in the Union Commons from 11 a.m. until 5 p.m.

•The Philosophy Club will meet at 7 p.m. in the Russell Union room 245. For more information, contact Dr. Weiss at 681-5471.

•Talent Show time at the Williams Center Dining Hall at 7:30 p.m.

•The movie “The Seventh Seal” will be shown in the University Union at 7 p.m. Only \$2 with student I.D. Special note: Swedish with English subtitles.

•BSA meets today at 7 p.m. in the Russell Union room 252.

## Wednesday, October 19

•The department of English and Philosophy presents a performance of Ben Johnson's viciously hilarious comedy, *Volphone*, at 8 p.m. in Foy Auditorium.

•Support your organization's Homecoming representatives with your vote from 10 a.m.-6 p.m. at the Union Rotunda.

•Doo Dah Contest at the Union Rotunda 5 p.m.

## ON CAMPUS

## Prospective students to visit campus

G-A Staff Reports

Approximately 500 high school seniors will be visiting the GSU campus this weekend for the fall quarter open house.

There will be a reception for the visiting students and their parents followed by a chance for students to speak with faculty members and representatives from the departments of Housing, Residence Life, Financial Aid and the Success in “U” program.

The tours for the prospective students will leave the Union every 15 minutes from 9 to 10:30 with one leaving at 12:45 p.m.

Students and parents get a chance to talk with faculty from 9 to 11 a.m. Informational ses-

sions with Financial Aid, Housing, and Residence Life will be at 9 a.m., 9:40 a.m., 10:20 a.m., and 11 a.m.

Financial Aid sessions are in the Union Theater. Housing, Residence Life and Success in “U” will meet with prospective students and parents in the Union Ballroom.

A transfer student question and answer session will begin at 11 a.m. in the Union room 241.

Question and answer sessions for parents and students run concurrently starting at 11:30 a.m. in the Union Ballroom and Theater, respectively.

Tickets will be on sale for visitors who would like to attend the GSU-Appalachian State game.

## ON CAMPUS

## Who's Who nominations now being accepted

By Derek St. Hilaire  
Staff writer

The time of the year has come again for nominations for the “Who's Who Among Students In American Universities And Colleges.”

This program was designed to acknowledge academic, as well as leadership qualities that set students above the norm.

Selection of honors will be made based upon the following criteria:

- A cumulative grade point average of 2.80 or above
- Campus and/or community leadership and service
- Achievement or recognition in area of study
- Junior or Senior status

Nominees at GSU will be chosen during the fall quarter and recipients of the award will be recognized next year on May 3 at the Honor Day.

These recipients will not only get a certificate, but they will

also gain local and national publicity when their names are listed in the 1995 edition of “Who's Who” publication. Also, these recipients will have a referral service provided, designed to help them find employment after college.

Based on the current enrollment at GSU, 99 students are eligible to apply for nomination in “Who's Who.” In the past, GSU has not reached the quota of 99 students however nominees are now being solicited. Flyers have been sent to the faculty/staff and student organizations in search of all potential nominees.

“I know we have a lot of students on campus who may have been overlooked, but hopefully this year all deserving students will be recognized,” Degree Program Specialist Cecil Perkins said.

**SOME OF OUR STUDENTS ARE STAR PUPILS.**



Brian Austin Green of Fox TV's Beverly Hills, 90210

## ON CAMPUS

## Diversity a key at GSU

G-A Staff Reports

When one examines the enrollment at GSU, they see a very diverse group of students and faculty. For this reason, once again this year there will be a University Council on Diversity.

“When we started this last year, we wanted to examine the various meanings of the concept of diversity,” Council Chair Larry Taylor said. “Diversity isn't just relegated to black and white, we want to look into the religious diversity, racial diversity, gender and the diverse sexual orientation on campus and in the community.”

The council is composed of six faculty, four staff and two students who serve two year terms.

“It is important that there is a lot of enthusiasm on the council,” Taylor said. “Its got the right mix to make the most of the meetings because it is small enough to talk about a lot of different things.”

The goal is to advise President Nicholas Henry and the Executive Planning Council on diversity issues at GSU and will meet twice each year with the Executive Planning Council.

The council is designed to reinforce GSU's commitment to

diversity across all areas of the University community.

It is intended that the council review GSU's progress on diversity issues, provide an ongoing forum for discussion on those issues, and recommend implementation of appropriate education and training programs.

“We will invite people to come speak to the council about different issues,” Taylor said. “We extend what people consider the GSU environment and the Statesboro environment to think of it as one community.”

So far this year, the council has met once, and they spoke about how important diversity is as far as managing diversity and valuing diversity.

The current members with terms ending in November include Mary Woods, Robert Haney, Fred Richter, Constance Campbell and Bryan Stone.

Members with terms ending in November of 1995 are Johnny Tremble, Jane Thompson, Mical Whitaker, Janice Steirn and James Barta.

If any students, faculty or staff are interested in becoming a member of the Council they need to send a letter to the President's Office at LB 8033.

**Facing an Alcohol or Drug Offense?  
We can help.  
Call today for an appointment.**



**Willingway  
Outpatient**

311 Jones Mill Road • Statesboro, GA • 30458

**764-6236**

DUI Assessments • Alcohol/Drug Education

## The Educated Palate

Lunch 11-2:30 • Dinner 5-8  
Monday thru Friday

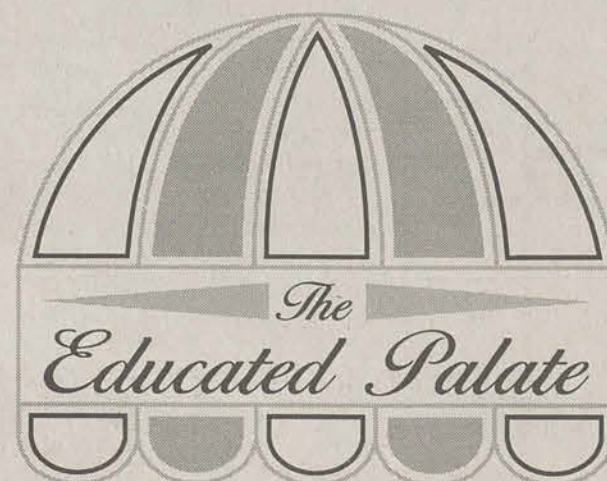
Come try our new Caesar Salad,  
Grilled Chicken Salad, and Chef Salad

**Special of the week  
Chicken Caesar Salad  
\$4<sup>75</sup>**

**Now Available: On-Campus  
Pizza Office Delivery Service**

Featuring our full line of individual and 14” pizzas,  
side salads, and beverages.

**Call 681-5303**  
Delivery Monday thru Friday 11am-2pm

VISIT  
THE UNIVERSITY STORE

**VISITATION DAY  
OCTOBER 15th, 1994  
MON - FRI 7:45am - 7:00pm  
SAT OCT 15 10:00am - 7:00pm  
681-5181**



IN THE U.S.A.

## Civil rights laws now apply to House

The Associated Press

WASHINGTON — The House decided it could withstand public pressure no longer and voted to apply worker safety, civil rights and other laws to the thousands of people it employs.

With Election Day just a month off, the House voted 348-3 Friday night to change its internal rules and apply 10 worker-protection laws to itself.

But legislation that would have applied the 10 measures to all of the nearly 40,000 employees of Congress died in the Senate, where it was being tied up by Sen. Ted Stevens, R-Alaska. Congress adjourned Saturday until after Election Day, when it will return briefly to work on a world trade treaty.

Congress has exempted itself from the laws for decades. Lawmakers have argued that because the statutes are enforced by executive agencies such as the Justice Department, presidents could use the laws to threaten individual members of Congress.

But at a time of escalating public distaste for Congress, legislators decided that the time was ripe for a change.

Failure to apply the laws to Congress is "the single most glaring problem we have," said Rep. Barney Frank, D-Mass.

The measure left some reform-

minded lawmakers unhappy, however. They complained that a two-year bipartisan effort to change congressional procedures had produced other recommendations that were being ignored, including reducing the number of congressional committees and making budget and spending measures cover two years, not just one.

They also noted that because the protections were enacted as a House rule and not law, employees dissatisfied with their treatment will not be able to seek redress in the courts.

"This resolution will not subject members of Congress to the laws of the land," said Rep. Porter Goss, R-Fla., who voted against the measure. "All it will do is make it harder for us to implement real reform next year, because people may believe reform has already happened."

Among the laws that will now apply to the thousands of House employees are the 1964 Civil Rights Act, the 1938 Fair Labor Standards Act and the 1970 Occupational Safety and Health Act.

The measure would create a five-member board, to be appointed by congressional leaders, that would write regulations applying the laws to the House. The board would also judge complaints.

## G-A SPOTLIGHT

### Showcase tonight at Foy

Members of the GSU music department faculty will present the Showcase Recital tonight at 8 p.m. in the Foy Fine Arts Recital Hall. Performers will include Joseph Robbins, Lisa Weinhold, Bill Schmid, Linda Cionitti, Natalia da Roza, Doug Graves, Sandra McClain, Tom Pearsall, Michael Braz and Matt Fallin.

### GSU professor receives appointment

Dr. Lynda Hamilton, director of GSU's Center for International Business was named to the Savannah District Export Council of the U.S. Department of Commerce.

As Center director, she has been active in promoting business ties between South Georgians and foreign business people. The Council seeks to increase U.S. exports by linking public and private trade development groups.

### Professor gets writings published

Dr. Craig Roell, a professor in the History Department, has had a chapter published in a new book by the University of Tennessee Press.

The chapter is titled, "The Piano in the American Home," and appears in the book *The Arts and the American Home, 1890-1930*, edited by Jessica H. Foy and Karal Ann Marling.

The material in the chapter explores the importance of music and the piano in the home, especially the role of women within this musical culture.

### Professor publishes work in journal

Doyce J. Cotten, professor in the Department of Sport Science and Physical Education, published two articles in the spring issue of the *GAHPERD Journal*.

One article was entitled "Effectiveness of Pre-Injury Waivers in Georgia."

The other was "Duty to Protect," which dealt with the legal duty of public school teachers to protect students from injury.

The *George-Anne* would like your help in order to recognize special people, organizations and activities on campus.

Anyone who would like to make suggestions for our *G-A Spotlight* feature may call Chris Sherwood, news editor, at 681-5246. Letters may also be sent to *The George-Anne* at Landrum Box 8001.

IN THE SOUTH

## Federal employee faces indictment

The Associated Press

FULTON, Miss. — A Soil Conservation Service employee arrested earlier this week on federal charges is accused of submitting false documents to a U.S. Department of Agriculture agency for financial gain.

James Terry Farris, a technician with the Soil Conservation Service office in Fulton, was charged earlier this week with four counts of making false statements to the Agricultural Stabilization and Conservation Service, another USDA agency.

The ASCS office oversees crop loan programs, price support programs that provide payments when market prices fall below specified levels, and cost-sharing programs that assist farmers during natural disasters.

The Soil Conservation Service, on the other hand, provides assistance in carrying out locally adapted soil and water conservation programs.

According to the indictment:

— In March 1991, Farris allegedly signed and submitted papers certifying he had owned a 50-acre tract of land in Itawamba County for three years when he actually acquired the land only a year earlier on April 2, 1990.

— In May 1991, Farris allegedly submitted a letter to the Mississippi state ASCS office enclosing an invoice dated Sept. 2, 1989, showing the purchase of 30 bushels of wheat by Jerry Wilburn, representing that a wheat crop had been planted in fall 1989 on six acres of the 50 acres.

"When in truth and in fact, as he then and there well knew, no wheat crop was planted on said tract in the fall of 1989," the indictment states.

— In July 1992, Farris allegedly signed and submitted a crop report form to the ASCS office certifying that soybeans were planted on six of the 50 acres in 1992. No such soybean crop was planted, according to the indictment.

— In November 1992, Farris allegedly submitted to the ASCS office a false receipt from the Union County Cooperative dated June 2, 1992, for the purchase of 30 pounds of soybeans and a ton of fertilizer. No soybeans and fertilizer were purchased from the cooperative, according to the

indictment.

If convicted on the charges, Farris could face on each count up to \$250,000 in fines and/or five years in prison.

Farris is free on \$5,000 bond.

### Brakes

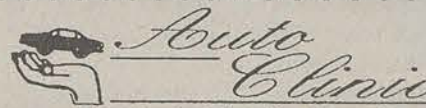
We install Premium pads or shoes, surface rotor or drums, repacking bearing where applicable.

\$64.95 Per Axle

### OIL CHANGE, CHASSIS LUBE, OIL FILTER

Drain oil, refill with up to five quarts major brand motor oil, lubricate chassis and install new oil filter. Most vehicles. Valid 10-13 thru 10-30-94

\$10.95



1305 Hwy. 301 S.  
1 1/2 Miles  
from Ogeechee Tech

ASE Certified  
681-7355

Mon.- Fri.  
8 A.M. - 5:30 P.M.  
Sat. 8 A.M. - 1 P.M.

## KICK OFF YOUR TAILGATE! SHOP AT BI-LO!



White, Wheat Or Pumpernickel

Fresh Baked Loaf Bread

99¢ ea.

The name fits.



Fresh Made-Daily Jumbo Turkey Sub Sandwich

\$2.99 ea.

Fresh Sliced To Order

Russer Wunderbar Bologna

\$1.99 lb.

Fresh Sliced To Order Or Pre-Package

Yellow Or White American Cheese

\$3.99 lb.

Fresh Sliced To Order

Jennie-O Turkey Breast

\$4.99 lb.

24 oz. BI-LO Sandwich Bread

2/\$1.19

1 Roll Mardi Gras Paper Towels

2/\$.88¢

16 oz. Old El Paso Cheese Salsa

\$2.39

All Varieties Pepsi 2 Liter

79¢

22 - 24 oz. Asst. Varieties Red Baron Pizzas

\$3.59

20 oz. Super Size Ruffles

2/\$5

Limit 4 With Each \$10 Purchase

These BI-LO 7 Day Specials Are Good... At Our Statesboro Location.

October						
		W	T	F	S	
16	17	18				

Easy Choice Payment System

We Gladly Accept: HONOR VISA MasterCard

Not Available In All Stores

We Reserve The Right To Restrict Quantities Of Merchandise. No Sales To Dealers. BI-LO, Inc. Copyright 1994©

UNION PRODUCTIONS  
GEORGIA SOUTHERN UNIVERSITY

## Activities

Thursday Oct 13

Win, Lose, or Draw —Live!

An Interactive Game Show!

12 Noon Union Commons

## Homecoming Week

October 17 - 22

Monday Oct 17

MINI CARNIVAL & BANNER CONTEST

Dunking Booth, Temporary Tattoos & Water Wars to kick off that Mardi Gras Spirit  
Sweetheart circle 12pm - 5pm



Rotunda 9pm

"Let's do the time warp again!"

Tuesday October 18

VIRTUAL REALITY

Step into another world and live your fantasies!

Union commons 11am - 5pm

King / Queen Voting

Lakeside Café 10am - 6pm

TALENT SHOW

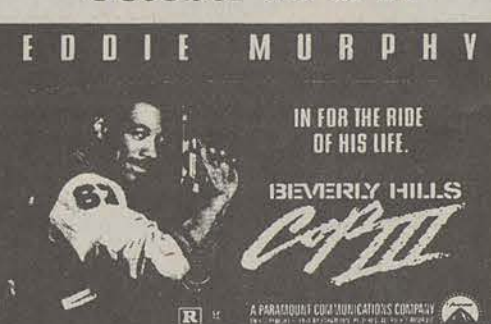
Horn tootin! Rip roarin' fun!

Williams Center 7:30pm

Wednesday & Thursday  
October 12 & 13



Sunday & Monday  
October 16 & 17



## Movies

• Wednesday & Thursday  
• Sunday & Monday  
• 7:00 pm & 9:30 pm

Union Theatre

• \$1 with GSU Student ID  
• \$2 General Admission

Coming Soon!

HOMECOMING 1994 - Mardi Gras in the Southern Quarter

Information Hotline

681-0461

Office 681-5442 • Union Productions  
Landrum Box 8066 • Statesboro, Ga 30460



## Our Opinion

### This BS has to stop NOW

The apathy must stop.

We, the staff of *The George-Anne*, believe the student body of GSU over the last few years has become lackadaisical concerning their interests in campus events and life in general.

This observation has not been made overnight, but rather by our staff covering the campus from a objective news standpoint throughout the 1990's. Although, we as journalists do not entitle ourselves to address issues of the lack of student enthusiasm, it is extremely noticeable.

This absence of interest does not rest solely within the realms of athletic events, which is most commonly discussed. The absence is quite evident judging by the astronomically small numbers that participate in campus organizations, local productions and volunteer work. Tuesday, the first day of voting, only 600 students cast ballots at the Lakeside Café for Homecoming King and Queen, which is only 4.3 percent of the campus. In short, GSU students have no life about themselves whatsoever.

We not only urge, but insist the GSU students finally get out of their own personal world and begin to broaden their minds. We want the students on this campus of 14,000 plus to prove something to us, if that is at all possible.

Your mission is before you, now you must take it.

## The search begins: Where's Saddam?



## Backtalk

Now you have a chance to "talk back" to *The George-Anne* without fear of campus-wide persecution. Simply write out your "words of wisdom" in the space below and send it to Landrum Box 8001, or drop it by *The George-Anne* office at Williams Center room 223.

### LETTER AND SUBMISSION POLICY

*The George-Anne* welcomes letters to the editor, story submissions and guest columns from people both inside and outside the Georgia Southern University Community. All copy submitted should be typed (double-spaced, please), preferably on Macintosh disk in Microsoft Word or Microsoft Works format. All submissions must be signed and include a mailing address and phone number for verification. The editors reserve the right to reject any submission. There is no word limit on submissions. A writer may request to remain anonymous. However, it will be the editor's decision whether or not to print the name. Submissions are run on a space-available basis.

### STAFF

#### NEWS

Copy Editors: John Klutz; Robin Johnson; Layout Editor: Mandy Crews; Senior Staff Writer: Kim Wagner; Staff: Kari Cameron, Melanie Cooper, Stacy Jordan

#### FEATURES

Features Editor: Derek Lewis; Assistant Features Editor: Ashley Hunt; Arts & Entertainment Editor: Josh Bass; Staff: Stacy Clemons, Judith Cunningham, Lakeisha Fair, Dana Hinterliter, Kymm Reynolds, Mark Runyon, James Salter, Tjuana Thomas

#### SPORTS

Sports Editor: John Munford; Assistant Sports Editor: Ronnie Swinford; Staff: Janika Floyd, Tom Harrington, Bart Hitter, Donald Jordan, Heather Mullins, Aaron Solomon, Carolyn Wynn

#### OPINIONS

Staff: Cory Andrews, Josh Bass, Teth Burns, Christopher Cole, Ashley Hunt, John Munford, Amy Staats

#### PHOTOGRAPHY

Chief Photographer: James Hill; Staff: Jason Chandler, Holly McCaig, Jerome New; Contributing Photographers: Mardee Coyle, Randy Trujillo

#### ARTWORK

Leigh Braddy, Teth Burns, Michelle Underwood

#### CIRCULATION

Supervisor: Steve Taliaferro; Staff: David Hillis, Bruce Karr, Scott Newton

#### ADVERTISING/DISTRIBUTION SERVICES (ADS)

Advertising Manager: Brooks Clements; Business Manager: Stephanie Wylie; Sales Representatives: Leigh Braddy, Brooks Clements, Melissa Goodman, James Salter, Heather Thatcher, Michelle Underwood, Carolyn Wynn

#### PRODUCTION AND GRAPHICS EDITORIAL SERVICES (PAGES)

Production Managers: Jason Adams, Ron Lair; Assistant Production Manager: Mitch Mitchell; Staff: David Beck, Aquila Bookhart, Scott Mulkey, Shawn Sunderland, Reggie Taylor; Classified Ads Managers: Melissa Goodman, Juanika Mainor; Darkroom Manager: Randy Trujillo

#### STUDENT PUBLICATIONS COORDINATOR

Bill Neville

## The missing aspect of an agenda

### A WAY OUT

CORY ANDREWS



Each fall some 13 million students, some 2.5 million of them minorities, enroll in American colleges and universities. Most are living away from home for the first time, yet their apprehension is mixed with excitement and anticipation. At the university, they hope to share themselves as whole human beings, both intellectually and morally. Brimming with idealism, they hope to prepare themselves for full and independent lives in the workplace, at home and as citizens who are shared rulers of a democratic society.

In short, what they seek is a true liberal education. What they are treated to, however, is a lesson in separatism and divisiveness.

Although university officials and other leaders speak of the self-evident virtues of diversity, it is not at all obvious to me why it is necessary to a top-notch education. Universities such as Brandeis, Notre Dame and Mount Holyoke, which were all founded on principles of religious or gender homogeneity, still manage to provide an excellent education. Howard, Morehouse, and Spelman (although clearly not reflecting the racial or ethnic composition of the greater population) are among the nation's finest. Similarly, foreign institutions such as Oxford, Cambridge, Bologna, Salamanca,

Paris and Tokyo display considerable cultural singularity and uniformity yet they are regarded as among the most prestigious in the world.

It would seem to me that what the university should be encouraging more than anything else is the diversity of intellect for which it was so well known at one time. This is, however, the one aspect of diversity that seems to be exempt from the university agenda of accrediting boards and administration.

With regard to political and philosophical composition, the American university faculty is remarkably homogeneous and decidedly left-wing and agnostic. Indeed, they tend to regard a true difference of opinion, based upon convictions that are firmly and intensely held, as dangerously dogmatic and an offense against the social etiquette of tolerance. Universities are apparently not concerned with their lack of diversity with regard to ideology.

Whenever I raise this prob-

lem with university officials, their usual response is that the imbalance is irrelevant, or that there cannot be litmus tests for recruitment. But universities (and ours especially) do take VERY seriously the issue of racial under-representation. Here they are quite willing to consider and use litmus tests, goals, quotas, and anything else to correct the imbalance. But does racial diversity necessarily lead to intellectual diversity? And even more important, is skin pigment an accurate measure of culture?

By the time today's students graduate, very few colleges have met their need for all-round development. Instead, by precept and example, universities have taught them that "all rules are unjust" and "all preferences are discriminatory; that justice is simply the will of the stronger party; that standards and values are all either arbitrary or authoritarian; that the ideal of a truly educated person is largely a figment of bourgeois white male ideology who should be cast down

and trampled upon; that individual rights are a red flag signaling social privilege, and should be subordinate to the claims of racial or ethnic group interests; that all knowledge can be reduced to politics and should be pursued not for its own sake but for the end of political power; that convenient myths and benign lies can substitute for truth; that double standards are acceptable so long as they benefit minority "victims;" that debates are best conducted not by a rational and civil discourse, but by accusation, intimidation and even official prosecution; that the university stands for absolutely nothing in particular and has no legitimate claim to be exempt from outside pressures; and that a true multi-racial society cannot and must not be based on fair rules that apply across the board to everyone, but rather must be constructed through a forced rationing of power among separatist racial groups.

In short, instead of a liberal education, what Americans are getting is its diametrical opposite, an education in closed-mindedness and intolerance.

If the universities model is replicated in society at large, far from bringing ethnic harmony, it will reproduce and magnify the bigotry, intolerance, and balkanization of campus life in the broader culture.

## Barbecue and barber shop linked to idiocy

I hate stupidity.

It comes in many forms from many different people and places. Some places you almost expect it from, like the Ku Klux Klan. From other places, you don't expect it at all.

For instance, let's look at the slogan of the *New York Times*, allegedly one of the best newspapers in the world. It has a world-famous slogan, too: "All the news that's fit to print." Please note here that the key word here is fit. Not fit in the sense that it meets proper physical specifications, but fit in the sense that someone finds it suitable to be printed.

I've got a problem with whoever makes that decision at the *Times*. The person (I'm assuming here that this is a human being) that is in charge of the editorial department up there is responsible for continuing stereotypes of Southern people. Consider the following passage from an article in the Sept. 18 edition that is supposedly about Marietta (Georgia) citizens' opinions on President Clinton's send-

### BETWEEN THE LINES

JOHN MUNFORD



ing troops to Haiti.

"It's a political thing," said Elgin Doss, 22, owner of It's a Man's World, a barbershop where black customers watch hip-hop videos on the two color television sets hanging from the ceiling. They don't give a damn about the Haitians. They didn't care about Aristide until he got help from the black leaders in the United States. But the Democrats need the black vote. Otherwise they'd never help a third-world country like Haiti."

Now, I'll ask you a question. What does it matter that Doss owns a barbershop where black customers watch hip-hop videos? It has nothing to do with his

views on the situation in Haiti. If his barbershop were actually in Haiti, I could understand some of the relevance. But it is not in Haiti; it is in Marietta.

So why is that irrelevant fact in there? I don't know. Maybe the writer, Peter Applebome, felt that it would make Doss more credible if the reader knew he had a barbershop in the 'hood.

Or maybe Applebome is just an idiot. Here's another excerpt.

"Anthony Williams, a 29-year-old black veteran, ate some barbecue at a street-corner snack shop as he said: 'The Persian Gulf, a war for oil, I don't know about that. But this is a case where someone has to do some

thing for some people."

So here we have a black guy eating barbecue and supporting Clinton's Haiti policy at the same time. Wow! I really wish Applebome would have told me what kind of car Mr. Williams drives. Or maybe he should have included his astrological sign — he's probably a Libra.

Since we don't need to know these interesting little tidbits, I think there are two conclusions that we can make: either Peter Applebome is a racist and/or he lacks intelligence. I hate to separate the two judgments here because usually those who are racist generally lack a lot of intelligence.

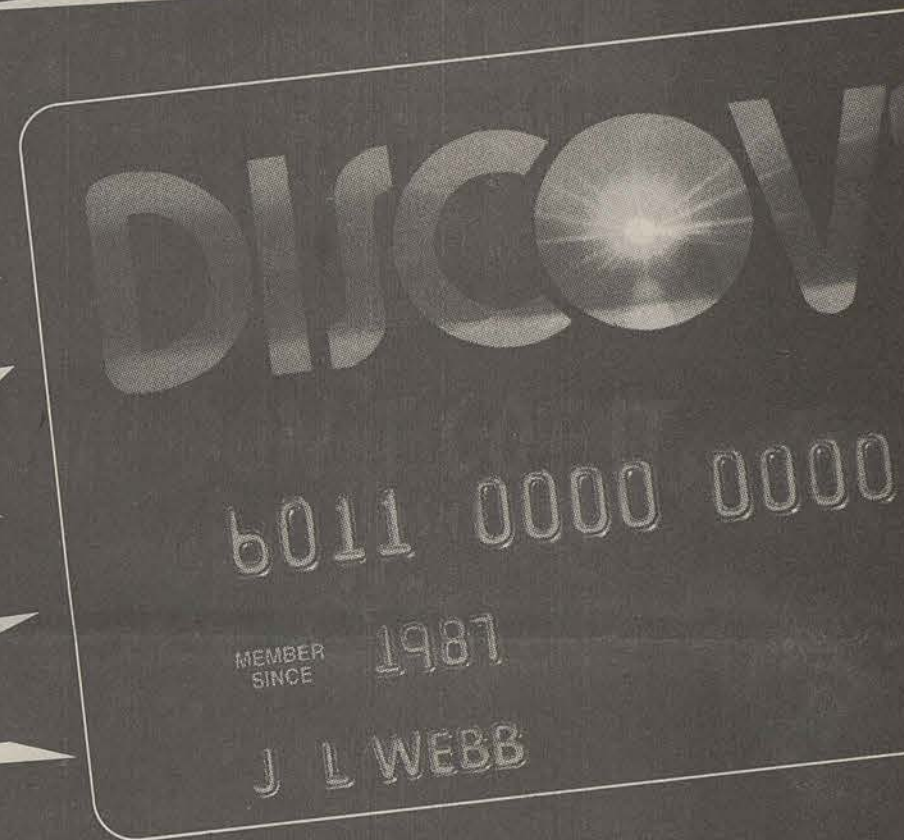
Racism is the disgusting and degrading habit of looking down on a person or group of people just for the color of their skin. It is ignorant and immoral.

The worst part of racism is that it still exists, even in such "esteemed" publications as the *New York Times*.

So don't believe everything you read.



# ANNOUNCING THE DISCOVER® CARD \$25 NEW MEMBER REBATE.



(Hurry, it won't be here for long.)

Apply for the Discover® Card

by November 10.

Spend \$75. Get \$25 back\*.

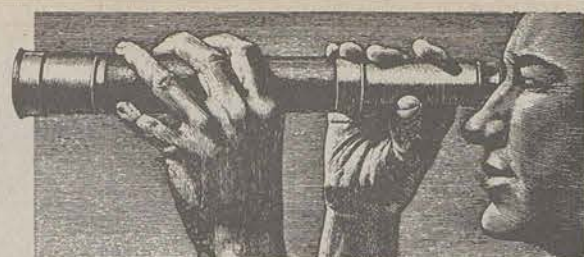
NO Annual Fee.

Look for applications and certificates on campus.



IF YOU DON'T GOT IT,  
GET IT.<sup>SM</sup>





### FROM THE FAIRWAY

RONNIE SWINFORD

#### Where are you guys?

There is an attendance problem in all of our sports events—I am not talking about that fiasco over at Paulson, but the real sports on campus. That was a joke, but this attendance thing is a problem and I think that I know a reason.

ATTENTION: to all these so-called "protesters" who call yourselves "grunge" people, wake up. You go to this school, and you should support it. Whether you are interested in sports or not, it just might be time for you to attend something on campus.

The only reason that we have these sports is because of you, the students. Yes, I know that football makes huge money for the athletic department, no matter what the athletic department says, but that is the only real money maker at this school. We don't make much money off of basketball, because we play in a circa 1970 arena that no one wants to go to a game in.

But back to my point about the support; these non-supporting, non-joining, people are getting on my nerves. You are enrolled here for a reason, so at least care a little about the other students upon whom your actions effect.

For example, last year we could not outbid Youngstown State for a football playoff game, because we couldn't get enough people to show up. As a result, the football team had to go to Ohio and play in the cold in November. We lost the game. Maybe they would have beaten us here too, but we could not find this out because we could not promise that we could jam in more fans than Youngstown St. This is pathetic since they only had 9,503 people at the game. Without fans the sports are in trouble.

Our school is based in the sports capital of the U.S. The southeast has always been the place in the U.S. for sports champions. Last year Florida St. won the football title and Arkansas won the basketball title. This is nothing new for the south, since there is always a sports title residing in the south. So I know that you people have been exposed to sports in some way. But the support of fans here at GSU is dwindling because people are into this retro-hippie stage that shows their "disappointment" with society. The only thing that this lack of involvement does is hurt other students who care about these sports. I am not saying that you should go to every game, but one would be a good place for you to start.

Another group on campus that really irritates me is the Greeks. This is where all the so-called big wigs are supposed to be, but where is their support for our athletics? Sure, they come to the football games a quarter late and a few sheets to the wind. They stay until half-time and then return to frat row or some place even more sleazy to wallow in their alcohol.

This is not supporting your school but rather being an obnoxious (posterior). But the only thing worse than the frat boys is the sorority girls who think that the games are a place to parade around and show off their clothes to their "sisters." This is also not support but it is socializing which can be done later on frat row. At least the Greeks show up.

## Mountaineers back for first time in 60 years

By Carolyn Wynn  
Staff Writer

The Appalachian State Mountaineer football team will journey to Statesboro this Saturday to play here for the first time in 60 years. The Mountaineers come to Statesboro with only one loss (to Wake Forest 10-12). Appalachian State is looking to maintain their winning streak by avenging last year's 28-34 GSU win.

### FOOTBALL

#### Carroll refuses to give in, playoffs or no playoffs

By Aaron Solomon  
Staff Writer

For four seasons of football senior linebacker Paul Carroll has been the driving force behind GSU's defense. After this season Carroll will be saying good-bye to GSU football.

For Carroll, his last season may end without an opportunity to capture a I-AA national championship. After a 35-31 loss to Western Carolina, the Eagles play-off chances have greatly diminished.

"Last week was a big time loss," Carroll said about the Western Carolina game. "Looking at the statistics we won, but statistics are for losers."

"It is hard to take but that is reality. But we are going to play hard because there is always a chance."

Carroll has had an impressive career on the field. He joined the team as a walk-on and first saw action as a middle linebacker in 1990 against Valdosta State. He became a full-time starter in 1991, and his ability was immediately seen as he had six tackles against the Auburn Tigers and an interception against Savannah State.

In 1992 Carroll continued to be a dominant force on the field. He had 15 tackles against the Georgia Bulldogs and he returned an interception 30 yards for a touchdown later in the season. Carroll also had 14 tackles in an important upset of Middle Tennessee State, the victory that put the Eagles back in the polls. All in all, Carroll had five games with double figures in tackles.

In 1993, Carroll and the Eagles were back in the playoffs. Carroll averaged 9.1 tackles per game, which was the 13th best in

Mountaineer Head Coach Jerry Moore hopes that sophomore linebacker Derrick Coaxley (5'11", 205 pounds) will help to hold the improved Eagle offense. The Mountaineers run a "Multiple I" offense similar to that of VMI, West Georgia, and Marshall. It is not much different from GSU's own "Flexbone" offense. The defensive standout for the Mountaineers is line-backer Brad Ohrt, a 6'1" 268

pound senior from Sebring, Florida. Ohrt leads the team in tackles with 60.

Shafton Fraley, an Eagle senior slotback from Milledgeville said that in order to be victorious, "We have to maintain last week's efforts, while stabilizing Appalachian State's defense."

Even though Appalachian State seems to be a tough opponent, GSU will depend on the talent and skill of team veterans

like center Frank Stephens, split end Dexter Dawson, and defensive end Michael Morris.

Last year Morris had an impressive game against the Mountaineers with 3 solo tackles and a quarterback sack. He also forced a fumble, picked off a pass, and broke up another pass.

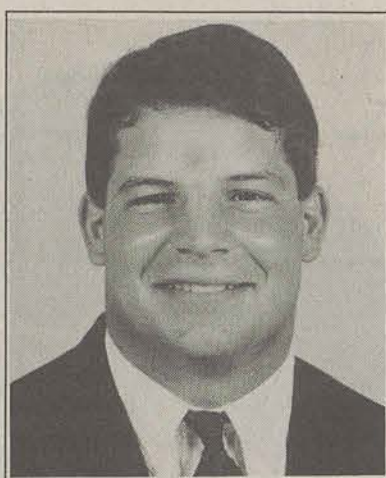
"I am pleased so far," Morris said. "I feel like I have been a more consistent player."

With the Western Carolina

defeat behind them and the chances of post-season play seeming like a distant dream, the biggest concern for many is how this will affect the Eagles.

"There are feelings of depression regarding post season chances," Morris said.

"We must pull together as a team — remembering that we are playing for our pride, with a slight hope for playoff contention."



Paul Carroll

the Southern Conference. That included his eight tackles against the Miami Hurricanes.

Now in his senior year, Carroll and the Eagles are faced with not going to the post season and he is part of a large group of seniors who comprise a large part of the Eagles success on the field.

Carroll feels that his fellow seniors "never say die" attitude helps build the confidence of the younger players on the team.

"We have guys like Michael LeBlanc and others who are learning more day in and day out. They make me better because I compete against them in practice."

And even though the playoffs are out of the picture, Carroll is still going to play each game like he has always done.

With big games left against Appalachian State and Furman, Carroll will be out on the field leading the defense. Carroll feels that every game is equally important to the success of the Eagles and he says that he, nor his fellow seniors, are about to give up.

"In the whole senior class there is not one quitter."



Special Photo

Working out on the GSU cross country course are (l-r) Jessica and Jody Lloyd, David and Rodney Stokes.

## Twin harriers stay the course for GSU

GSU News Service

Have you ever heard a coach tell an athlete: "I wish the rest of your teammates could be just like you?"

Well, GSU cross country coach Brad Simmons has his wish. Both the men's and women's cross country teams have a set of twins.

Running for the men's team are freshmen David and Rodney Stoker of Kensington, Ga. Both came to GSU from Ridgeland High School in Rossville, where they ran track and cross country. Rodney's best times in high school were 14:58 (3K), 15:27 (5K) and 33:15 (10K).

This season Rodney has led the Eagles with top finishes in the first three meets. At the Western Carolina Invitational, he finished 42nd overall with a time of 28:17 in the five-mile event. He placed eighth at the

Winthrop Invitational 8K (27:16) and 16th in the 8K at the UNC-Charlotte Invitational.

Rodney's twin brother David is usually not more than a minute behind. In high school, he finished the Baylor Championships in 16:59. In addition to running track and cross country, David also played basketball for the Panthers.

The other set of twins, Jessica and Jody Lloyd, have been running with the Lady Eagles for four years. The seniors from Winter Park, Fla. ran track and cross country in high school. Jessica was captain and MVP of the cross country squad her senior year and Jody was co-captain of the track team and received sprinter-of-the-year honors.

Jody, a History major, will attend graduate school while sister Jessica is majoring in Health

Science and plans to pursue a career in the physical therapy field.

This season, Jessica and Jody have finished seconds apart from each other. At the Winthrop Invitational, Jody finished 49th (22:54) while Jessica placed 50th (23:01). At UNC-Charlotte, Jody came in 46th (23:21) and Jessica finished 47th (23:26).

The twins like to be around a lot of people because being alone with the sibling is like being by themselves.

"It's hard to explain, but we are like one person," Jessica said. "Even when we're together, it's like we're by ourselves."

David Stoker revealed a rivalry on the cross country course.

"When I see Rodney ahead, which is usually when he's having a bad race, I push myself harder to catch him."

### SPORTS BRIEFS

#### MSU to host '95 MEAC Tourney

The Associated Press

GREENSBORO — Morgan State University will host the 1995 Mid-Eastern Athletic Conference basketball tournament, conference officials said Thursday.

The 24th annual MEAC basketball conference will be held March 1-4. All men's and women's games will be played at Morgan State's T.L. Hill field house.

Commissioner Ken Free said ESPN, which has televised the MEAC men's title games for the past six years, is scheduled to broadcast next year's title game as well.

#### Thames goes under the knife

The Associated Press

COLUMBIA, Mo. — Missouri's Kelly Thames, last year's Big Eight freshman of the year, has undergone successful knee surgery, the university said

Friday.

Thames, who will miss the upcoming season, tore a ligament in his right knee last month when he slipped on a wet spot on the floor during a conditioning drill.

The surgery was performed Thursday in Inglewood, Calif., and Thames is expected to return to Missouri this weekend. The surgery was performed by Dr. Clarence Shields of the Kerlan-Jobe Orthopedic Clinic.

The loss of Thames leaves Missouri with only one returning starter, Julian Winfield.

### VOLLEYBALL

#### Practice becomes harder for Borisek after knee injury

By John Munford  
Sports Editor

Volleyball practice is almost over at 5:25 Monday afternoon, but for senior outside hitter Nicci Borisek, the hardest part is the only thing left on the agenda: running drills.

Her first steps from the starting line are taken with strength. It is only when she has to apply the brakes quickly that a slight twinge of pain can be seen cutting across her face. Then you notice the brace around her left knee — there to protect it after the injury she incurred against South Carolina State earlier this year.

Needless to say, she was the last Lady Eagle to cross the finish line. But it is her senior year, so she wants to get back in shape as quickly as possible.

"It (the knee) bothered me a lot today because it was the first day I had really ran ... it was my first full practice since I've been back," she said.

"I said to myself that I need to keep going and finish up, even though I was slow. I needed to be a teammate."

She is familiar with the rehabilitation procedure because she incurred the same injury during

her freshman season. It begins with daily visits to the training room for treatment — even right after the surgery when she was still on crutches. She eventually progressed to doing leg lifts and from there it was time to hit the weight room for hip inductions, hip abductions, calf raises and leg extensions to build her knee strength back up.

Borisek said that the hard work is worth it because of her love for the game — a game that she has played since sixth grade when she made her school's seventh grade squad. It also kept her mind off of the other problems in her life.

"It was hard for me when I was younger because my parents got divorced then. I lived with my mother and older brother and sisters; it was hard for her to raise all four of us."

"I was always involved in sports. Volleyball has kept me busy and kept my mind off of other things that are going on, like my family life."

She came to GSU all the way from Peru, Ill. "looking for a change." And she found what she was looking for when she first

Please see INJURY, page 7



VOLUNTEER SERVICES

# Homeless issue addressed by volunteer services

By Mark Runyon  
Staff Writer

The Office of Volunteer Services with the assistance of Community Improvement Club for Students, a newly formed student organization will sponsor the first "Homeless and Hunger Week", Oct. 17-21.

This is a week that students can identify with the problems of those less fortunate than themselves and help all to see this need that exists in all of our communities.

"Through the brown bag presentations and other activities offered throughout the week it is hoped that a heightened awareness among students and faculty can be encouraged," said Jennifer Futch, secretary of CICS.

This heightened sense of awareness to the homeless situation hopes to draw attention, not only to the homeless areas of metropolitan areas of Atlanta and Savannah, but particularly to the often overlooked need within our own community.

The destitute and homeless populous have been forced to take on further obstacles in new anti-

homeless laws. This new trend of law making is springing up in cities across America.

This growing distaste and ill sympathy for the homeless has by no means restricted itself to the West Coast. Cities, such as Baltimore, Miami, Washington, D.C., Philadelphia, New York and even Atlanta's, policy makers and police have been seriously cracking down on the homeless in their perspective cities.

In the past three years, the Atlanta City Council has passed three new ordinances that particularly target the homeless. These are laws that prohibit an individual from remaining on or crossing a public parking lot, restrict panhandling, and forbid individuals from lying down on a park bench.

With Atlanta's successful bid to hold the 1996 Olympic games, it comes to no surprise that undesirable elements of the city would be swept from the streets to portray a city with more appeal to prospective incoming businesses. This form of "private revitalization" looks to remove obstacles such as

Techwood/Clark Howell homes by proposing to build the Olympic Village (to house athletes during the games) in their place.

less and Hunger Week" include a discussion and slide show presentation of "The Wall of Hopes and Dreams," a mural recently

**"MANY PEOPLE, UNDER THE IMPRESSION THAT BECAUSE THERE IS NO SHELTER OR MISSION FOR HOMELESS PEOPLE IN BULLOCH COUNTY THAT THERE IS NO PROBLEM HERE."**

— VICTORIA FUTCH  
DIRECTOR OF VOLUNTEER SERVICES

After the games, the Villiage would be converted into student dormitories for the campus of Georgia Tech and the low-income predomanenly African-American communities, which stand where the Olympic Stadium is to be built.

This type of ignorance on the part of our city leaders is a perfect example of why people must inform themselves on the conditions and situation of the homeless. People must always counteract this form of bigotry.

Presentations that are currently planned for the "Home-

completed at the Union Mission in Savannah with the help of local artist Nina Freifield. The presentation will be held Monday, Oct. 17, at 11:00 am in the Russell Union room 244. A display of Nina Freifield's works will also be on display in the museum for the entire week during regular museum hours.

Other events include a presentation by a representative of the Live Oak Migrant Education agency will be presenting their views of health and literacy issues related to the homeless and migrant worker. This event will

be held on Oct. 18 at noon in the Russell Union room number 244.

On Oct. 19 at 11:30am, in the same location, Angela Viney from the Red Cross will be presenting a video on the recent floods this past summer in central Georgia.

On Oct. 20 at noon, there will be a presentation given by Professor Sabia giving an overview of the criminalization of poverty, a widely controversial subject.

On Oct. 21 at 11:00am in the Russell Union room 244, the Bulloch County Habitat for Humanity will be giving a presentation homelessness in our community.

Flyers and posters will be circulating and on bulletin boards throughout the campus announcing various other musical presentations and readings about the homeless condition by the homeless themselves.

"We'd hoped to provide students an opportunity to pledge to live in a tent city on campus as a means of raising contributions for the homeless cause this year," Director of Volunteer Services Victoria Futch said, "but we had to put that one on the slate of events for next year's 'Homeless

and Hunger Week.' There turned out to be just too many people who had to be involved to be able to do it this time."

The proceeds of these events will be donated equally between the food bank and the union in Atlanta. They also hope to make a donation to the Metro Atlanta Task Force for the Homeless.

"Someone pointed out that this was also the week of Homecoming," said Jennifer Futch. "But we felt that being homeless, as opposed to having a place to 'come home to,' simply highlighted the whole issue."

"Many people, under the impression that because there is no shelter or mission for homeless people in Bulloch County that there is no problem here, may question the relevance of such a focus week," Victoria Futch said.

"The truth of the matter is that many rural or semi-rural areas of the country do experience the problem," she said, "but those citizens who find themselves without shelter or resources are forced to migrate to more metropolitan areas such as Savannah or Atlanta where help is available."

CELEBRITY

## Glen Frey 'doing fine' after surgery

The Associated Press

LOS ANGELES — Eagles singer-guitarist Glenn Frey was in fair condition 24 hours after abdominal surgery to repair a gastrointestinal disorder, a hospital spokesman said.

"He's doing fine. He's continuing to make a very smooth recovery," said Ron Wise, spokesman for Cedars-Sinai Medical Center.

Frey, 45, will be released sometime next week, Wise said.

Frey has suffered for several years from diverticulitis, a painful inflammation of the colon, and doctors this week recommended immediate surgery.

## INJURY

Continued from page 6

visited the campus.

"The players, the team and the atmosphere were just outstanding. They had just what you call 'Southern Hospitality.' I got down here, fell in love and I didn't want to go anywhere else."

And despite her injury setback, things are going fine this year: the Lady Eagles are 12-5 overall and 2-1 early on in conference competition.

But Borisek is still anxious to return.

"I just see that our team is so confident. I want to push myself to get better so I can help them out and be a part of it."

"I want to finish my senior year being the best I can be."



**Southern Explosion JV Dance Team Tryouts**  
Fri., Oct. 14, 4:00-7:00 and  
Sat., Oct. 15, 10:00-2:00  
Hanner Old Gym.

# Here's Something To Cut Besides Class.

## Students Save Up To \$75 On American Airlines Tickets.

This certificate is valid for one of the discounts shown below when you purchase your ticket and travel on American Airlines/American Eagle in the 48 contiguous states, and when the following fare and class requirement is met:

**\$45**

**\$60**

**\$75**

**OFF any individual student or adult round-trip excursion fare from \$125 to \$175.**

**OFF any individual student or adult round-trip excursion fare from \$176 to \$225.**

**OFF any individual student or adult round-trip excursion fare of \$226 or more.**

**American Airlines American Eagle**

For reservations or instructions, call your Travel Agent or American Airlines at 1-800-237-7981.

TICKET DESIGNATOR <b>H45</b>	SERIAL NUMBER <b>800136553433942</b>
TICKET DESIGNATOR <b>H60</b>	STAR FILE <b>N*/COLLEGE94</b>
TICKET DESIGNATOR <b>H75</b>	FOCUS <b>F*TKT/FA194</b>

Passenger Signature/School \_\_\_\_\_

**FOR OFFICE USE ONLY**

Ticket Number \_\_\_\_\_

Date Of Ticket Issuance \_\_\_\_\_

AA Agent Die/Location \_\_\_\_\_

Travel Agency Name/IATA# \_\_\_\_\_

Travel Agency Location \_\_\_\_\_

EXPIRATION DATE: AIR TRAVEL MUST BE COMPLETED BY MAY 15, 1995.

Ready for a little off-campus activity? Just present the above certificate along with your valid student I.D., and save big on air fare to anywhere we fly in the 48 contiguous states. Use it for a road trip. Take a weekend vacation. Or if you want to, visit your parents. Either way, your certificate is good for travel between October 3, 1994, and May 15, 1995. Even better, these discounts apply to round-trip excursion fares and student fares. It doesn't take an accounting major to appreciate a deal like this. So if you need a break, fly the airline that's willing to give you one. American Airlines. For reservations and details, call your Travel Agent or American at 1-800-237-7981 and refer to STAR File N\*/COLLEGE94.

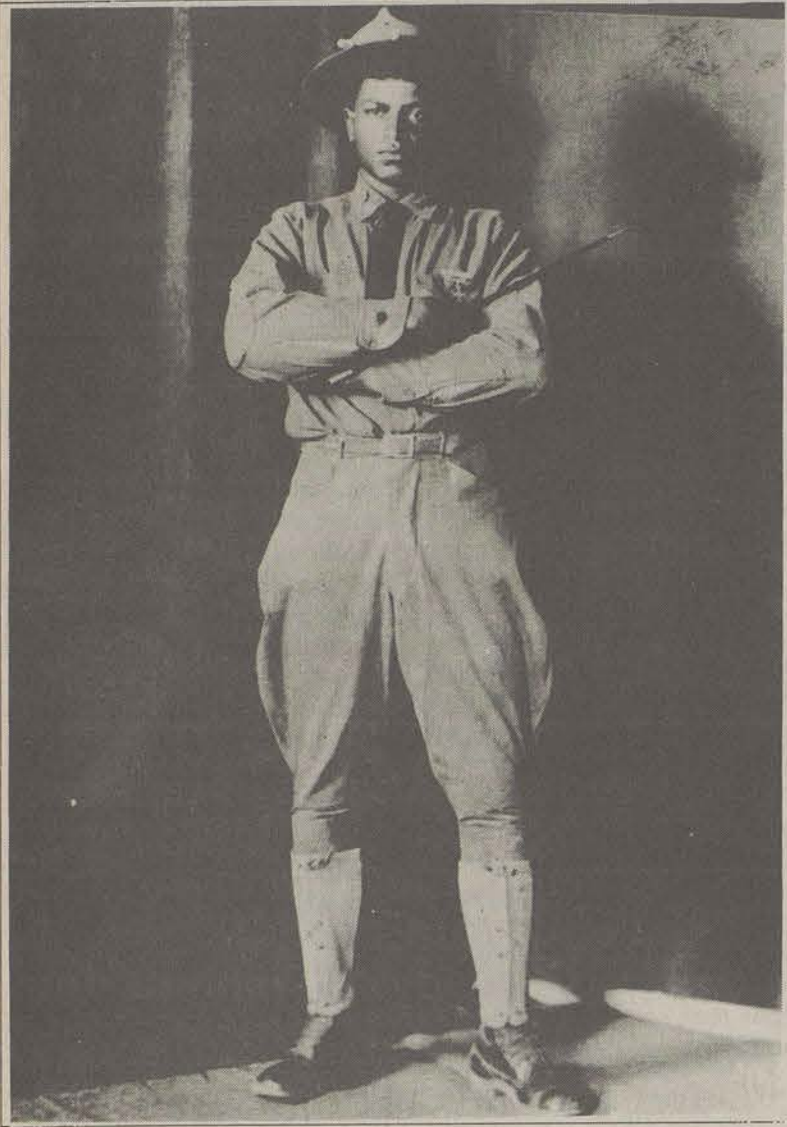
**American Airlines**  
*Something special in the air.*

Terms and Conditions: All travel must be completed by midnight May 15, 1995. This certificate and a valid student I.D. must be presented when a round-trip ticket is purchased. Redemption is limited to one certificate per passenger per ticket. Airport passenger facilities fees of up to \$12 and fuel surcharges, if applicable, are not included in minimum fare requirements and must be paid at the time the ticket is purchased. A round-trip ticket purchased with this certificate will have an advance purchase requirement. Saturday night stay required. Seats are limited and a cancellation penalty will apply. No travel will be permitted on the following inclusive blackout dates: November 22-27, December 15-31, 1994, and January 1-2, February 18-19, 25-26, March 4-5, 11-12, March 18-April 9, 1995. Prior to departure, changes to your ticket may be made if you pay a \$35 service charge and meet the restrictions applicable to the new fare. A ticket issued against this certificate may not be combined with any other special or promotional fare offer, "K" fares, discount certificate, coupon, Senior Citizen discount or AAdvantage award. This certificate is void if sold for cash or other consideration. It is also void if altered, counterfeited, obtained or used improperly, or where prohibited by law. An open ticket may not be issued and stopovers are not permitted. Travel on a ticket issued under this promotion will be by the most direct American Airlines or American Eagle routing between the origin and destination, and must be on a routing where American maintains a fare. Unnecessary and circuitous routing, connecting points, and/or segments are prohibited. Travel is valid as referenced on this certificate to American Airlines/American Eagle destinations in the contiguous 48 states. American Airlines and AAdvantage are registered trademarks of American Airlines, Inc. American Eagle is American's regional airline associate. American Airlines reserves the right to change the AAdvantage program at any time without notice. NOTE: for additional information about the rules and restrictions of your excursion ticket, call American Airlines at 1-800-237-7981, and refer the representative to STAR File N\*/COLLEGE94.



CLEC ANNOUNCEMENT

## 'Camp Logan' brings civil injustices to stage



Special Photo

"Camp Logan", one of seven CLEC events this year, will be presented Monday night in the Russell Union Ballroom.

By Kim Wagner  
Senior Staff Writer

During the hot, muggy summer of 1917, 100 men in the all-black 24th Infantry Regiment received orders to travel from Columbus, New Mexico to Houston, Texas to oversee the construction of Camp Logan; however, no one suspected the tragedy that would soon occur.

While in Houston, the black men were forced to endure racial insults, violence and abuse from the white civilians and officers.

The men in the 24th Infantry were also angered by the army when they were denied the glory of fighting in the trenches of France, despite their eagerness to defend their country.

After about a month of bigoted harassment and the brutal beating of one of the black soldiers by a white policeman, the black men were "pushed over the edge."

On the horrifying night of August 23, 1917, which is examined in Celeste Walker's play, "Camp Logan," some of the men from the 24th Infantry armed themselves, left camp and marched to town.

Gunfire broke loose, and 17 white civilians were killed.

"The town became completely darkened as the firing knocked

out all the street lights throughout the city," Walker said, after talking to Texans who lived through the incident.

Less than four months after the riot, 13 of the black soldiers were secretly hanged in the banks of Salado Creek at Fort Sam Houston in San Antonio.

During the play, Walker avoids extensive historical reenactment and, instead, examines the actions of six fictional men who later participate in the riot in Houston.

"Camp Logan" takes a closer look at the injustices that the men in the 24th Infantry had to endure, and the reasons leading up to the only U.S. race riot to have claimed more white lives than black.

"Camp Logan" will be presented by the Campus Life Enrichment Committee (CLEC) in the Union Ballroom on Oct. 17 at 8 p.m. GSU students, faculty, staff and retirees receive one free ticket with a valid GSU ID. The general public may purchase tickets at the door or at the GSU ticket office at 681-0123. The cost for adults is \$5 and for non-GSU students, children and "other" retirees, the cost is \$3.

Those people requiring special accommodations should call (912) 681-5259.

ON CAMPUS

## Nature Trekkers wanted by Museum

By Derek Lewis  
features Editor

Nature lovers listen up! Cynthia Humphrey will be leading a walk through the campus Nature Preserve from 10 a.m. to noon this Saturday.

The program is designed to increase awareness among children of the natural habitat around us.

Humphrey will be helping with the second Saturday morning workshop which is sponsored by the GSU Museum.

The journey is planned to open the horizons of youngsters by exposing them to various plants and wildlife.

They will also be playing nature related games and learning how to identify various plant and animal species.

The workshop is limited to 30 participants and advanced registration is required. Cost for members is \$2.50 for one adult and one child.

## Faculty Showcase Recital tonight

G-A News Service

The Showcase Recital, presented by members of the GSU music department faculty, will be held tonight in the Foy Fine Arts Recital Hall at 8 p.m.

The performers are (standing left to right): Linda Cionitti, Natalia da Roza, Douglas Graves, Sandra McClain, Tom Pearsall, and Michael Braz, (seated) Joseph Robbins, Lisa Weinhold, and Bill Schmid.



Special Photo

## Garage Sale

Sponsored by: Alpha Phi Omega

To Benefit: The Harvest Ball  
for the  
Young Adult Club

GSU Soccer Parking Lot  
across from Wendy's  
Saturday, October 15, 7:30am-12:30pm

# A GSU Celebration

## Gaining Strength Through Unity Week



CULTURAL DIVERSITY WEEK

October 20-27  
GEORGIA SOUTHERN UNIVERSITY

Interested in making a couple extra dollars a week? Join The George-Anne staff. Come by Williams Center room 223 to fill out an application.

Next to Publix  
489-3756

**Andrews  
Klean  
Korner**

Across from Paulson  
Stadium  
681-3639

101 West Main Street  
764-6126

Professional Laundry and Dry Cleaning

## Psychic Readings by MRS. GRACE

Tarot Card & Palm Readings

- Have you ever wanted a psychic to analyze you and tell you what is right & wrong in your life?
- Do you want an expert in the field of psychic phenomenon to gaze into your past, explain your present & tell your future?
- Mrs. Grace advises on love, business matters & marital problems.



**Special \$5 All Readings**

113 Hwy. 301 South, Statesboro  
Across from Ogeechee Tech

912-871-4487

### Thursday, October 20

- Diversity Fair, Russell Union Commons, 10am-Noon
- Diversity of Opinion, "Sexism in Religion," Russell Union 247, Noon
- "Dating Across Cultures," Russell Union 247, 2pm
- "Diversity is Us Too," Southern Center, 7pm (CLEC program)

### Friday, October 21

- Cultural Pursuit: The Ultimate Trivia Challenge, Russell Union Commons Stage, Noon

### Monday, October 24

- Diversity Fair, Russell Union Commons, 10am-Noon
- Diversity of Opinion, "Population Control," Russell Union Commons Stage, Noon
- Model United Nations, Russell Union 247, 2pm
- Model Organization of African Unity, Russell Union 280, 4pm
- The Wok Express Debut, Landrum Cafeteria, 4-7:15pm
- "Vive L'Difference: A Cultural Talent Show," Marvin Pittman Theatre, 8pm

### Tuesday, October 25

- Uniting our Diversity: One Blood, A Blood Drive Adjacent to Russell Union, 11-4pm
- Diversity of Opinion: "The Adoption Option: Should it be Open to Anyone?" Russell Union Commons Stage, Noon
- Diversity of Opinion: "Does Prayer/Religion Have a Place in Public Schools?" Russell Union 248, 4pm

### Wednesday, October 26

- Freedom Fashion Show, Russell Union Commons Stage, Noon
- "Words Not Weapons: A Guide to Cross-Cultural Communication, Russell Union 248, 4pm

### Thursday, October 27

- Diversity of Opinion: "Should English be the Official Language of the U.S.?" Russell Union Commons, Noon
- Open Houses 2-4 pm
- American with Disabilities Act Office and the Office of Disabled Student Services,

Hampton Hall (located on Knight Drive)

- Department of African/African-American Studies, Forest 1113
- International Student Programs, Rosenwald 32 (formerly Housing)
- Multicultural Programs, Rosenwald 289
- Dances Around the World, Williams Center Ballroom, 8-11pm

### Ongoing Events:

- Books Plus - 15% off Selected Books
- GSU Library Third Floor Bulletin Board Display
- GSU Museum "A Display of Cultural Notions"

Sponsors: Office of Multicultural Programs, Office of International Student Programs, Americans with Disabilities Act Office, Disabled Student Services, Center for International Studies, Hillel Affiliate, Campus Life Enrichment Committee, Russell Union, African/African-American Studies, Landrum Cafeteria, Triangle, Minority Adviseement Program.

In compliance with the Americans With Disabilities Act, GSU will honor requests for reasonable program accommodations. Requests can be served more effectively if we are provided with significant advance notice, at least two weeks prior to the event. Please direct requests to Sue Williams at (912) 681-5259 (voice) or (912) 681-0666 (TTY)



UNION PRODUCTION NEWS

# 'Jackie Boatwright Show' comes to GSU



Boatwright (second to left) with the Union Productions crew.

Holly McCaig

By Sunae Euell  
Staff Writer

First there was Johnny Carson, David Letterman, and Arsenio Hall ... now meet Fox 28's very own Jackie Boatwright.

"The Jackie Boatwright Show" was taped live at the Russell Student Union Ballroom last Thursday. The entertainment began at 7 p.m.

For Jackie's very first show she included such guests as: the first runner-up for Miss America, Kara Martin; disc jockey Lester White from E-93, a well known gospel station in Savannah; and the comedic styling of Dirty Diaper Productions.

There were performances by recording artist Tony Howard and by the Godfather of Soul's

daughter Miss Yama Brown, who did a remake of her father's song "Baby I got the feelin'."

Who is Jackie Boatwright? Just a little small town girl from Millen, Ga. who is trying her best to make it in the business. That shouldn't be too hard for her to accomplish with the help of her family and the influence of God.

"Jackie Boatwright is about setting goals, pursuing dreams, no matter where you come from," Boatwright said. "I'm real people, I like to get out there, I like to touch the people. People look at the glamour end, but it is very hard to put on a show like this."

But hard work does not discourage Boatwright at all. She likes the challenge. It will be a

challenge for her to measure up to her competition in the talk show business, but she is the one who is going to make it stand and make it work.

As for the future of the "Jackie Boatwright Show," she hopes to be syndicated.

"I want to reach the young black women, especially from small towns," Boatwright said, "that are told just because you are from a small town, that you can not achieve anything — the women that are told that just because you started a family that is the end of everything — to let them know that, hey, it's not over."

"You can do it; you can still make something of yourself, and it's never too late."

GET ON  
ALL NIGHT  
FOR THE  
BAR-HOP  
\$3.00



CALL FOR MORE  
INFORMATION

WE CHARTER GROUP TRAVEL  
FOR ALL OCCASIONS

- DAY & NIGHT SERVICES AROUND STATESBORO
- HAPPY HOUR OR ALL NIGHTS TO SAVANNAH
- FRATERNITY AND SORORITY SOCIALS
- BEACH TRIPS
- LARGE GROUP MULTI VAN RATES

SPORTS TEAM TRANSPORTATION  
BUSINESS - STUDENTS - PARTIES

## How to interview with the Fortune 500 without even getting out of bed.

OK, graduate-to-be. You can get up early or you can get Career/NET™. It's simple: You give us your resumé in a personal profile on the disk we provide. And we guarantee to deliver it to 10,000 employers (including the Fortune 500) in exactly the form they're looking for. Your Career/NET enrollment kit—a preprogrammed disk and a booklet of step-by-step instructions—is \$99.95.\* To be in the next nationwide distribution to employers, order today. Call 1-800-682-8539.



Career/NET

\*Plus \$4.95 for shipping and handling.

## Dining & Entertainment Guide

Found Exclusively in The George-Anne's Gold Edition • Thursday, October 13, 1994

### Buffalo's Cafe

Lanier Drive  
681-3030

- Thurs. Scott Munn's from Atlanta  
Fri. Kermit & Bob on the deck at 5 pm  
Old River Road at 9:30 pm  
Sat. 25¢ wings • Kermit & Bob on the deck at 5 pm  
Tues. Bash Night - All U Can Eat Wings  
Wed. Fransisco

### The Country Club

Hwy 301 S.  
681-9000

- Thurs. Ladies' Night  
Fri. & Sat Call for Details  
Mon. Monday Night Football  
Tues. Pool Tournament  
Wed. Ice Night

### Legends Bar & Grill

Old Register Road  
871-5349

- Thurs. GSU Mug Night  
Sat. Ladies' Night - "Ladies U call it"  
Wed. Dash-Rip-Rock

Info Line • 871-5349

### Vandy's

Statesboro Mall  
764-3033

Pit Cooked BBQ Since 1929  
Best Chicken Fingers in Town  
Daily Specials  
Ribs on Tuesdays  
Catering Service Available

### Video Warehouse

120 Northside Dr. E.  
489-4279

#### FREE Membership

Sun - Thurs 8:30 - 11 pm • Fri & Sat 8:30 - Midnight

Coming this week:

The Paper  
The Inkwell

### Cinema 9 Mugs & Movies

Statesboro Mall  
489-4492

Tuesday  
Ladies Night  
1/2 Price

Thursday  
Wing It!  
25¢ Buffalo Wings

### PaPa John's

Piggly Wiggly Shopping Center  
871-7272



\$5.99

Large, One Topping,  
Carry Out Special



## This Week's Billboard Top Five

The Associated Press

C. 1994, Billboard-Soundscan Inc.-  
Broadcast Data Systems.

1. (1) "I'll Make Love to You," Boyz II Men (Motown)
2. (2) "All I Wanna Do," Sheryl Crow (A and M)
3. (3) "Endless Love," Luther Vandross and Mariah Carey (Columbia)
4. (4) "When Can I See You," Babyface (Epic) (Gold)
5. (9) "Never Lie," Immature (MCA) (Gold)



# Arts & Entertainment

Thursday, October 13, 1994



JOSH BASS

## A full slate of the coming week's events

The big surprise of last week was Snap-neck Carnival. They played Chena's Saturday night. The turnout was better than expected.

The guys said they were "really pleased."

I'm happy that there seems to be some interest in seeing bands in Statesboro. Most of the people I talked to said they enjoyed the show and were impressed with the music.

The coming days, and nights, hold some treats, albeit for different interests.

Everyone should attend the performance of Camp Logan Monday at 8 p.m. in the Union Ballroom. It's a play about an all black infantry division in 1917 that rioted and killed a bunch of whites in retaliation for being used as slave labor. Subsequently, some of the black soldiers were mysteriously hung a few months later. Go see the play.

Tonight in the Foy Recital Hall there is a faculty showcase. The performing faculty of the music department do little samples of their individual recitals that will be performed throughout the year.

It will last about an hour and starts at 8 p.m. So go find out which performances you need to catch and which you don't.

Also tonight, local pork-personalities PiG FaT will slop it up at Chena's. It's metal/mixing cross-over power stuff.

Friday night has two possibilities. Chena's is host to Soul Food. I don't know what they sound like but I'd bet ska-peppered-funk-rock.

For the Dead-Heads, White Buffalo is at Blind Willie's. They're kind of a not-as-famous version of Widespread Panic. Same sound, less cover, cheap beverage.

Tuesday night Legends has Phil Hogan and Jayce Faulk for Comedy Night. The guys are supposed to be quite funny. Call Monday for details.

Wednesday night Legends is home to Bash Rip-Rock. A few of your older friends you might not have talked with in a while may be there.

My picks are Soul Food Friday, the Camp Logan performance Monday, and Comedy night on Tuesday.

Some points to note: Legends does have a killer light show and smoking hot dj Tripp West on Thursday nights.

Reuben & Ed's is in full swing. They had Won By One Friday and played until 3 a.m.

The b.y.o.b. joint does have a good selection of juices and is open until 2 or later at least three or four nights of the week. It is the late-niter for the keg-weary.

Pulp Fiction should be opening at Cinema 9 in a couple of weeks.

A quick reminder: Anyone interested in writing for Arts & Entertainment can contact me, Josh Bass, by calling 681-5246 or by stopping by the Williams Center room 223.

## Eclectic collection highlights 303's season opener

By Erin Garrett  
Staff Writer

Foy's Gallery 303 premiered the annual Faculty Art Exhibit on Friday. Seventeen different artists are showcased in the exhibit, most current faculty members, but a few former faculty are included. There was a high turnout throughout the reception, averaging about 100 people.

If you could squeeze through the various conversation groups, you could see an eclectic collection of artworks in various media. The gallery was devoted to Marie Cochran's "Learning," one in a series of installment pieces.

The series is an ongoing work depicting the struggles and effects of desegregation in schools. Photographs show the installation of "Freedom School," part of

this series that was on display at Atlanta's High Museum earlier this year. The work includes open encyclopedias on the floor and some spare but compelling charcoal drawings on the walls.

Not only did the art department allow wall hanging, they also let Julie McGuire put sand on the floor for her two works, "Timepiece I" and "Timepiece II." Columns rising out of sand have thin layers of paint over book passages and images of her family members. One column appears to have a picture of Pat Sajak.

The works, described by McGuire as "autobiographical," depict chaos caught between structure and order.

The columns portray the order of academic life, while the

objects suspended between them convey chaos.

McGuire relates this to the difficulty in writing her dissertation. The "Timepiece"s also

**"MY GRANDMOTHER  
IN NIGERIA WOULD  
NOT APPRECIATE MY  
WORK."**

— ONYILE B. ONYILE  
FACULTY ARTIST

have a sense of humor; look for the plastic ants in the sand and the touching fingers of God and Adam from Michelangelo's Sistine Chapel.

McGuire's is not the only col-

orful and humorous art in the show. Henry Iler's "Pale Horse No Ryder" is a textured collage of images. The more you stare at it, the more things you can find; it's a bit like looking for Waldo.

New faculty member Onyile B. Onyile's artworks have a sense of color that he credits to his Nigerian upbringing. He says that Nigerian masquerade costumes juxtapose different colors than what Americans are used to.

However, he credits his abstract style to American influences and stated that "My grandmother in Nigeria would not appreciate my work."

Other standouts of the exhibit include Patricia Carter's "Carry East" and "Carry West," which have the rich jewel-toned look of

religious icons. Both works make use of three-dimensional objects such as dried flowers and shells to create a mosaic effect.

Parts of the exhibit, however, are typical art show standbys. Scenic watercolors, new age jewelry, lumpy ceramic figures, abstract and inscrutably named paintings, and endless black and white photographs of policemen are some of the least inspiring works in the exhibit.

Also in this group are Jessica Hines' well-executed but typical photos of rock formations (how many times have you opened up a book of photography and not seen pictures of rock formations?).

The Gallery will be housing the Faculty Exhibit through November 2.

### ON REEL

## Sheen's latest flick could be terminal to movie-goers

By Eric Bray  
Guest Writer

"Terminal Velocity" has little to offer other than action. The plot is extremely unoriginal and none of the performances will win any awards. The action almost compensates for these shortcomings if you don't mind unrealistic action sequences.

The plot seems to be loosely set up around these sequences. Sheen plays Richard "Ditch" Brodie, a gymnast who missed his chance at a gold medal in 1984 when America boycotted the Olympics.

Brodie becomes a professional skydiver, performing at parties and teaching willing applicants.

Brodie is ruthlessly cocky, apparently aware of his own charm and wit. His bravado takes a plunge when one of his trainees falls to her death during a lesson.

Convinced that he is faultless, he tries to clear his name by investigating the girl's apartment.

He is subsequently knocked around by a thug in a grotesque bleach-blond hair-helmet who turns out to be an ex-KGB agent.

Brodie miraculously manages to escape and find the answers he is looking for.

Nastassia Kinski (Tess, Cat People) promises to help clear Brodie's name if he helps her

thwart the ex-KGB criminals. One wonders why Kinski, an ex-agent herself, would need a goon like Sheen to help in her plan.

The movie's action barely overshadows these setbacks.

The most enthralling scenes involve high-altitude skydiving performances. The rapid falling lends an intense rush to the fighting but takes away from the real-

ism of the movie as a whole.

The final sequence involves Sheen freeing Kinski from the trunk of a free-falling car.

Not that this is totally implausible; it just seems to take him so long that they would have had to drop from the moon to keep from crashing into the earth and dying for real.

Sheen's acting skills pick up

near the end, but it mostly relies on humor, reminiscent of his roles in movies such as "Hot Shots" and "Men at Work." Many of his lines are genuinely funny, but most of them consist of witty remarks that hardly seem spurious.

The movie's humor and action save what would otherwise be a truly poor film.

### ATTENTION FRESHMEN

If you have not received a copy of

*"Fresh Faces at Georgia  
Southern"*

Please come by the SGA office  
in the Union Room 207  
and pick one up

## IF YOU WANT TO MAKE IT IN THE REAL WORLD, SPEND A SEMESTER IN OURS.

Walt Disney World Co. representatives will be on campus to present an information session for Undergraduate Students on the WALT DISNEY WORLD Spring '95 College Program.

WHEN: THURSDAY, OCT. 20 AT 7:00PM  
WHERE: RUSSELL STUDENT UNION, ROOM 247

Attendance at this presentation is required to interview for the Spring '95 College Program.

Interviews will be Friday, October 21. The following majors are encouraged to attend: All majors welcome. Euro Disney positions are also available.

For more information contact:  
Cooperative Education Office  
Phone: 681-5197



Walt Disney World Co.  
Where students spend a semester getting ready for the rest of their lives.  
© The Walt Disney Co. An equal opportunity employer

**Order a large Crunchy Thin Crust Pizza with 2 toppings at regular price and get a medium 1-topping pizza, FREE!**

**DOMINO'S ORIGINAL**

**Serving GSU/Statesboro**

**681-4326**

<p><b>FREE PIZZA</b></p> <p><b>FREE</b></p> <p><b>MEDIUM 1-TOPPING PIZZA</b></p> <p>When You Buy a Large 2-Topping Crunchy Thin Crust Pizza at Regular Price!</p> <p><small>Valid at participating locations. Not valid with any other offer. Customer pays sales tax where applicable. Our driver's carry less than \$20. Delivery areas are limited to ensure safe driving. © 1994 Domino's Pizza, Inc. CALL NOW! Offer ends 10/16/94</small></p>	<p><b>YOU TOP'EM</b></p> <p><b>\$5.99</b> <b>\$7.99</b> <b>\$9.99</b></p> <p><small>Plus Tax</small></p> <p><b>SMALL MEDIUM LARGE</b></p> <p><b>With Up to 3 Toppings</b></p> <p>Add 99¢ for Deep Dish on Medium &amp; Large</p> <p><small>*Small Pizza available in Classic Original Only</small></p> <p><small>Valid at participating locations. Not valid with any other offer. Customer pays sales tax where applicable. Our driver's carry less than \$20. Delivery areas are limited to ensure safe driving. © 1994 Domino's Pizza, Inc. CALL NOW! Offer ends 10/16/94</small></p>
<p><b>LUNCH/LATE NIGHT</b></p> <p><b>\$4.99</b> <b>\$5.99</b> <b>\$6.99</b></p> <p><small>Plus Tax</small></p> <p><b>SMALL MEDIUM LARGE</b></p> <p><b>1-Topping Pizza</b></p> <p>Add 99¢ for Deep Dish on Medium &amp; Large</p> <p><small>*Small Pizza available in Classic Original Only</small></p> <p><small>Valid 11 a.m. - 4 p.m. &amp; 9 p.m. - Close</small></p> <p><small>Valid at participating locations. Not valid with any other offer. Customer pays sales tax where applicable. Our driver's carry less than \$20. Delivery areas are limited to ensure safe driving. © 1994 Domino's Pizza, Inc. CALL NOW! Offer ends 10/16/94</small></p>	<p><b>PIZZA/WINGS</b></p> <p><b>\$11.99</b></p> <p><small>Plus Tax</small></p> <p><b>Medium Pizza with 3-Toppings, and a 10 Piece Order of Buffalo Wings</b></p> <p><small>Valid at participating locations. Not valid with any other offer. Customer pays sales tax where applicable. Our driver's carry less than \$20. Delivery areas are limited to ensure safe driving. © 1994 Domino's Pizza, Inc. CALL NOW! Offer ends 10/16/94</small></p>



## CARTOONS

## CLASSIFIEDS

## CROSSWORD

## 01-Announcements

ATTENTION: The George-Anne screens all classified ads prior to publication. The newspaper strives to accept ads for legitimate products & services only. Students are urged to exercise caution when replying to ads, particularly those which ask for money or a credit card number in advance of delivery of products or services. Students are also urged to report to the newspaper (at 681-5418) any suspicious offers they might see in the classifieds. Remember, if an offer seems too good to be true, it probably is.

LIST-A-BOOK invites you to buy your book for less, sell your book for more individually. Sign up now! Call 681-1235 and leave name and LB.

NAACP meeting every first and third Monday in Union Room 218 at 7 pm.

**NURSING SCHOLARSHIPS** for Freshman (minimum 850 SAT) & Sophomores (2.5 GPA). Pays tuition, fees, \$150 quarter books, & \$100/month. Information seminar on October 19 at 5:15pm room 119 of the South Building. Questions? Call the ROTC Dept. At 681-5320

Students may nominate deserving Junior or Senior for Who's Who. Contact Cecil Perkins for criteria 681-0432. Selection made by Honors Committee.

The GSU Student Chapter of the Society of Human Resource Management will have its first guest speaker on Thursday, Oct. 13 at 4pm in Hollis Room 7. Dr. Linda Bleicken will present the topic "Human Resource Management: Can It Be Your Ticket To A Leadership Position?" Students wanting to join the organization will receive information and applications at this meeting.

Yoga Club meets 5pm Tuesdays in Union. Check Info Desk for room number. Beginners welcome. Wear comfortable clothing. For more info call 681-5511.

## 03-Autos for Sale

For sale: 1984 Chevy Cavalier, 4dr, A/C, stereo cassette, Auto. Clean \$1,400. For more info. 681-6341

For Sale: 1984 Subaru GI Hatchback. \$1300/OBO. Excellent condition. 4-speed, 113,000 miles. For more info: Call 681-0884 & leave message.

For sale: 1986 Chevy Cavalier. 4dr, auto. Body fair, runs good. \$900. For more info. 681-6341.

For sale: Toyota Tercel 1988. \$2800 Cash. A/C, good engine. Please call for more info. Sandy 871-4703

## 04-Auto Parts, Repair

"Wheels" Fitipaldi "Fitti-Indy" 15" fits Honda, Toyota, VW & more. Also Honda CRX SI alloy wheels w/ tires. Make offer. CHris at Pyramid Masonry, 681-6929, leave message.

Fittipaldi wheels 15 inch. Honda CRX/SI alloy wheels & tires. Punch 150 amp. Punch 5 1/4 inch coaxial Bose sub-bass systems for home & car. Chris, 681-6929, leave message.

Radio from 1991 Ford Escort. \$20. For more info. 681-6341.

## 09-Furniture &amp; Appliances

For sale: Couch, chair, Loveseat-\$75. Other items. Call 489-5720.

For sale: Glass and brass dinnette w/4 brass chairs. Rose tone cushions. Call Amy at 681-8270. \$75.

For sale: King size waterbed with waveless mattress, dark wood frame. 2 sets of sheets. \$190. Call Michelle at

High quality futon for sale: converts to sofa, lounge, and bed. Used only one year. Exc. Cond. Best of accepted. Call 871-6870 or L.B. 19155

King-size bed w/brass headboard-\$200. White double dresser w/mirror-\$50. Brown dresser w/mirror-\$75. Brown chest of drawers \$50. Bedside table \$35. Call Lisa at 842-2970 or 682-0556.

## 11-Help Wanted

**SPRING BREAK 95**  
**AMERICA'S #1 SPRING BREAK CO.**  
Cancun, Bahamas, Daytona, & Panama! 110% Lowest Price  
Guarantee! Organize 15 friends and travel FREE!  
Earn high commissions!  
(800) 32-TRAVEL

**ALASKA EMPLOYMENT** - Students Needed! Fishing Industry. Earn up to \$3000-\$6000+ per month. Room and Board! Transportation! Male or Female. No experience necessary. Call (206)545-4155 ext A53941

Attn: Get paid \$475 weekly clipping newspaper articles for magazine editors. Immediate openings. Free details call 1-800-731-3902 EXT C5500

Attn: Get paid for reading books. \$500 weekly. Choose subject matter. Free details call 1 (206) 649-5987 EXT E8500.

**CRUISE SHIP JOBS!** Up to \$900 weekly. Free room/board. Now hiring skilled/unskilled men and women. No experience necessary. Call (601)000-0000, Ext. 0000, 24 hours.

**CRUISE SHIPS NOW HIRING** - Earn up to \$2000+/month working on Cruise Ships or Land-Tour companies. World travel. Seasonal & Full-Time employment available. No experience necessary. For more information call 1-206-634-0468 ext. C53941

**FUNDRAISING** - Choose from 3 different fundraisers lasting either 3 or 7 days. No investment. Earn \$\$\$ for your group plus personal cash bonuses for yourself. Call 1-800-932-0523, EXT 65

George-Anne needs dedicated feature writers. Come by Williams Center Rm 223 to apply.

**NURSERY ATTENDENT** during worship service. 10:15 am till noon on Sundays. St. Paul's Lutheran Church 764-5450.

Wanted!! America's fastest growing travel company is now seeking individuals to promote Spring Break to Jamaica, Cancun, Bahamas, Florida, South Padre. Fantastic Free Travel and Commissions! Call SunSplash Tours 1-800-426-7710

## 12-Lost &amp; Found

Lost a pentax IQ60 Auto Focus Camera at the rotunda on Bid day. If anyone found it please call Andrea 871-4166. Cash reward if found.

Lost Dog, brown boxer, answers to Temple. Lost 9/16/94 on Greek Row. \$50 reward. Call Lee 871-3467.

## 13-Miscellaneous for Sale

Bike for sale: Excellent 10 spd bike for riding to and from class. \$75. 681-8398 after 5 and before 10.

Black formal dress, size 4, worn once, \$30. White nursing uniform, 4, worn once \$25. White nursing shoes, size 7-7 1/2 worn once. \$25. Call 681-4720 leave message.

Casio fx-7700G power graphic calculator with manual for sale. Equivalent to Texas Instrument TI81. Good condition. \$40, negotiable. Call 681-7303.

Eureka vacuum cleaner w/att. 1.5 years old. Excellent condition. \$75. (H) 489-2588/(W)871-1193.

For sale: 1993 Mongoose alta mountain bike. Bar ends, chrome cranks. Hardly used. Best offer 681-9105.

For sale: Recurve takedown bow. Contact James after 6pm on weekdays. 488-2251.

Formal dress Size 4. Like new! 681-0698/982-1743

Haro 21 spd. Mountain bike. Shimano Deore XT. Comp., mint cond. \$375, 871-7781. Ask for Billy.

Macintosh Classic Computer with programs for sale. Call Cindy at 681-3073 for more info.

Mountain bike for sale: Great cond. \$150 OBO. 871-3059, ask for Jennifer.

Scuba Gear for sale: regulator mask, snorkel, fins, bc, wet suit, boots, gloves-all size large. \$1000 for all or sell separately. Call 764-7636.

**SURFBOARD FOR SALE:** 6'5" squashtail thruster. Shaped in North Carolina by Mike Beveridge himself. Discover epic Tybee. Free surfing lessons. \$100 OBO Frank 871-7030

## 15-Musical

Bass player/Vocalist needed for band. 764-4759 and 865-9143. Leave message.

Drum lessons, private and professional. Call Mike at 764-7441.

Guitar for sale: Oscar Schmidt Electric guitar w/bag, amp, tuner, etc. 9 mon. Old. Good con. Elvie at 681-8226. \$250

**GUITARIST** looking to form mostly original rock band. Influenced by Zeppelin, Aerosmith, Kiss, and some newer bands. Call Rob at 871-3689. Serious inquiries only.

## 16-Personal

Asian male, professional, looking for a SF, 26 and up for pleasant conversation and friendship. Write to LB 21842.

Do you have a Statesboro ghost story? Call Paige at the Reflector at 681-5305.

Jennifer, here is week 1's clues: I have brown hair and live off campus. Have a good weekend. Your big?

## 17-Pets &amp; Supplies

5 ft. Boa. Very tame \$100 w/large cage and necessary accessories-\$175. Call 871-2882

For sale: Ferret, cage, supplies. \$100 Call 871-5203 after 5:30.

## 19-Rentals &amp; Real Estate

2br apts., 2br houses, 2br MHS-furnished and unfurnished and nice office. 764-5003

3 BDR. 3 1/2 bath. 1 year old. All bathrooms have telephones. Vanity w/marble tops. Room size 12x16. 2 double beds. 42 in. Wood burning marble fireplace. Central heat + air. Appliances in kitchen. 18 cubic feet. Refrigerator, frost free ice maker, stove w/cleaning oven, dishwasher, W/D. Great location. 764-2525.

Large mobile home lots for rent 3/4 mile from stadium. Some rental units available. No pets. 871-6573.

**NICE REASONABLE RENTALS**  
764-5003 Walker Enterprise

Roommate needed ASAP. Own room, Own bath, close to campus, plenty of space, \$175/month + 1/2 util. Must be non-smoker + not a slob. Call 871-7348.

Roommate needed Park Place. Own room and bath. \$175+1/2 util. 681-1853.

Roommate needed: Georgia Villas. Need immediately! Fully furnished, W/D. Shared room and bathroom. Rent \$135. Contact Valarie or Regina 681-6766.

Roommate wanted:Female to share. 2brm apt. With W/D, DW, close to campus. \$250/month util. Included. Furnished. 764-3553.

E	K	S	S	D	E	S	S	E	L	E	L
E	L	E	R	D	O	E		R	G	E	
N	E	L	E	S	T	R	O	N	E	M	I
S	M	R	S	E	I	C		L	A	R	S
	R	E	S	L	A	S	N	E	H		
N	E	R	E	C	A	R	L	T	B	A	L
E	L	E	B	S	V	A	R	E	V	I	A
P	O	S		S	L	R	B	E	R	L	E
	U	M		P	O	P	D	S	R	E	D
				C	U	C	U	E	D	I	D
			E	N	S	A	V	A	R	O	M
S	M	O	L	A		S	L	A	P	Z	O
S					S	S	V	C	V	Z	I
V	L	I	R		E	T	C	O	L	E	V
L				P	H	I	L	B	O	R	E

" Food for Thought "

## 21-Services

Carpool Savannah-Statesboro. Flexible schedule. Please call Mike at 912-925-9891.

If you need your apartment cleaned call Ms. Miller 489-5720. \$20 and up.

Mary Lee will type your term paper again this year! 681-6967. Leave your phone number.

Typing- Professional typing by Peggie Smith, secretary in History Department. Please call at 681-6520 leave message. Resumes, lesson plans, books, theses, papers, applications, etc.

## 20-Roommates

1 female roommate needed to take over lease in Player's Club Apts for winter, spring, and summer. Own bdrm, 1/4 util., no deposit, \$210/month. Call Stacy or Kim 871-3147

1 Female roommate starting winter quarter. Rent only \$116.77/ +1/3 util. No water bill. Call Susan or Amy at 842-9740

Male roommate needed now! Have your own room and enjoy many extras for \$225/month + 1/4 util. Call 681-9187.

Room for rent: \$200/month + 1/4 util. Huge house on Zetty. All wood floors. Very spacious W/D, dishwasher. Call 681-4415. Ask for Megyn. Cool roommates.

## 23-Stereo &amp; Sound

Complete System: Kenwood Cassette deck, 2 kicker 12s in box, Blaupunkt & Rockford tweets, Crunch 6 1/2s, Alpine Amp \$550/OBO. Can Separate. Call Rob 489-6098.

For sale: New Rockford Fosgate pro punch 10" woofers. \$175 OBO + pro punch tweeters \$85 OBO. Call 871-5033.

Fosgate Punch 150. Punch 5 1/4" w/ tweeters make offer. Bose sub-bass systems for home or car. Several designs \$50-\$150. Call Chris at Pyramid must leave message 681-6929.

Selling Prince live 1981 in New Orleans on tape! (Also contains studio remixes of the future & electric chair). Wanting -- Nine Inch Nails 1994 live downward spiral coverage. Leave message 681-6091.

## 25-Television &amp; Radio

Peep WVGS 91.9 FM Sundays 9-11 PM + Mondays 5-7 PM with Da Underground bandits, Native, Taz, and E-man, Kickin' bran nu flava in ya ear for Fall '94, boyee!

## 27-Wanted

Wanted!! Pilots and nonpilots to join the GSU Pilots Association. Meetings are every Tues. 7:00pm, Union 275.

## 29-Etcetera

Do you have a Statesboro ghost story? Call Paige at the Reflector at 681-5305.

## MPP

## Continued from page 1

bed dorm and a new Education building in the near future. If I am still in office in January, you can count on the continued funding for education in the budget."

In July, Steven Portch was appointed as the new chancellor of the Board of Regents.

"These are exciting times for the University Systems of Georgia

## MOTHER

## Continued from page 1

her that she must forgive him and let him know.

"That voice permeated every cell of my body, and I couldn't sleep that night," Gayle said. "I typed a letter that night to him."

The letter was mailed on April 19, 1992, four years after her 'new' journey had begun.

"It wasn't an easy thing to do," Gayle said. "I can still remember to this day that little 'dink' sound the letter made when it landed in the mailbox."

When she mailed the letter, she had her second miracle.

"The black, cold, angry cloud that had surrounded my heart and soul was replaced with joy and peace," Gayle said. "I knew at that time I didn't have to have

someone else murdered."

The letter was sent, but she didn't even care if there ever was a reply.

"If I had never gotten an answer, it would have been ok, but I did," Gayle said. "He did sent me a letter back and he invited me to come to the prison."

One of her most frightening days was when she made the drive to the San Quentin Prison.

When you visit a prisoner at the prison, you sit next to them in a room.

"I knew from that point on that if it took the rest of my life, I would work to abolish the death penalty," Gayle said. "I don't want people to think I didn't love my daughter just because I am

against the death penalty. I loved Catherine more than anyone."

She does not want someone to kill in the name of her daughter as an act of getting even.

"Don't dishonor my daughter with another killing," Gayle said. "Forgiveness is a gift you give yourself, not someone else."

Although the visit lasted three hours, it seemed like only five minutes to her.

"Hewep, and I did too," Gayle said. "I still go back to visit him."

In many cases, according to Gayle, the police tell victims they will get the maximum punishment for their family member's killers.

"After something like this happens, you are in shock and you

## Weekly Crossword

## " Food for Thought "

By Gerry Frey

**ACROSS**  
1 Explosive device  
5 Driller  
10 Mr. Donahue  
14 Medicinal plant  
15 French school  
16 Ms. Hayworth  
17 Ms. Minnelli  
18 Baked dishes  
20 Twelve:Abv.  
21 Buddies  
22 Tiny bits  
23 Fragrance  
25 Sensible  
27 Ridicule  
29 Salad ingredient  
33 Sax and oboe needs  
34 Type of toaster  
35 Japanese apricot  
36 Perry's author  
37 Mr. Convy & others  
38 Halt  
39 Be ill  
40 Regions  
41 City in Montana  
42 Spaghetti adornment  
44 Swerve  
45 Female fowl  
46 Type of printer  
47 Sting  
50 Name as a reference  
51 Mr.'s lady  
54 Rome soup specialty  
57 Legal claim  
58 Egg on  
59 Delaware's Capital  
60 French girl  
61 Golfer's needs  
62 Sows  
63 \_\_\_\_\_ terrier

**DOWN**  
1 Hairless  
2 Mixture  
3 Pizza topping  
4 Ms. Arthur  
5 Changed into  
6 City in Florida

© 1992 All rights reserved GFR Associates  
P.O. Box 461, Schenectady, NY 12301

1	2	3	4		5	6	7	8	9		10	11	12	13
14					15						16			
17					18					19				
20				21						22				
	23	24				25	26							
27	28					29					30	31	32	
33					34						35			
36				37						38				
39				40					41					
42			43					44						
		45						46						
47	48	49				50					51	52	53	
54					55	56					57			
58					59						60			
61					62						63			

7 Diana \_\_\_\_\_  
8 Some trains  
9 Caddoan Indian  
10 For the time being  
11 Hawaiian City  
12 Piece of news  
13 Scottish gal  
19 "The mouse \_\_\_\_\_"  
21 Pea places  
24 Astronaut Sally \_\_\_\_\_  
25 Bldg. officials  
26 Pin:Latin  
27 Nightmare  
28 Uncanny  
29 Orangish pink  
30 Pancake ingredient  
31 Express feeling  
32 Write the letter again  
34 Pares  
37 Broken grain husks  
38 Certain  
40 Encourages  
41 Baseball need

43 " \_\_\_\_\_ Company"  
44 Supplies with food  
46 Covered the inner surface  
47 Indecent matter  
48 Bog down  
49 Angel in France  
50 Bay  
52 Depend on  
53 Knife  
55 QB's aims  
56 Fish eggs  
57 " \_\_\_\_\_ Miserables"

arship program."

Along with the new programs and funding, Miller stressed the importance of old values.

"We're doing things in Georgia that we haven't done before, but it is also important to maintain the old values that have made this state and this country great," Miller said.

have all these people telling you they will get the suspect and give them the maximum sentence," Gayle said. "Many times, the people who are on death row have never done anything wrong before."

Her daughters' murderer had never done anything illegal before the incident.

"We need to spend the money on educating the children in second and third grade instead of spending it on prisons," Gayle said.

Her religious experience has brought her to starting her own ministry for prisoners on death row.

"Somewhere the violence has to stop," Gayle said.





GEORGIA SOUTHERN UNIVERSITY  
STUDENT PROGRAMS  
OCTOBER ACTIVITIES

SUNDAY	MONDAY	TUESDAY	WEDNESDAY	THURSDAY	FRIDAY	SATURDAY
						<ul style="list-style-type: none"><li>• FOOTBALL: Eagles vs. VMI, 7pm, Paulson Stadium</li></ul>
2	3	4	5	6	7	8
<ul style="list-style-type: none"><li>• MOVIE: <i>Naked Gun 33 1/3</i> 7:30 &amp; 9:30pm, Russell Union Theatre</li></ul>	<ul style="list-style-type: none"><li>• MOVIE: <i>Naked Gun 33 1/3</i> 7:30 &amp; 9:30pm, Russell Union Theatre</li></ul>	<ul style="list-style-type: none"><li>• CINEMA ARTS: <i>Like Water for Chocolate</i>, 7pm, Union Theater</li><li>• Minority Advisement Program Social, 5pm, Union</li><li>• LECTURE: E. Alvarado &amp; J. Caraballo, 2-10pm, Southern Center</li><li>• Catch <i>The George-Anne</i> today!</li></ul>	<ul style="list-style-type: none"><li>• MOVIE: <i>War of the Roses</i>, 7:30 &amp; 9:30pm, Russell Union Theatre</li></ul>	<ul style="list-style-type: none"><li>• Catch <i>The George-Anne</i> today!</li><li>• MOVIE: <i>War of the Roses</i>, 7:30 &amp; 9:30pm, Russell Union Theatre</li><li>• VARIETY: The Jackie Boatright Show, 7pm, Union Ballroom</li></ul>	<ul style="list-style-type: none"><li>• ART EXHIBIT: GSU Faculty Show, 7-9pm, Gallery 303 (through Oct. 28)</li><li>• MOVIE: <i>Samba Traore</i>, African American Film Series, 6pm, Union Theater</li></ul>	<ul style="list-style-type: none"><li>• FOOTBALL: Eagles at Western Carolina, 2pm</li></ul>
9	10	11	12	13	14	15
<ul style="list-style-type: none"><li>• MOVIE: <i>Pretty Woman</i>, 7:30 &amp; 9:30pm, Russell Union Theatre</li></ul>	<ul style="list-style-type: none"><li>• Columbus Day (Observed)</li><li>• MOVIE: <i>Pretty Woman</i>, 7:30 &amp; 9:30pm, Russell Union Theatre</li><li>• NFL Football Party Night, 7:30pm, Union Commons</li></ul>	<ul style="list-style-type: none"><li>• Homecoming King &amp; Queen Voting, 10am-6pm, Lakeside Cafe</li><li>• Disco Dance Party, 8-11:59pm, Union Ballroom</li><li>• CINEMA ARTS: <i>Days of Heaven</i>, 7pm, Union Theater</li><li>• Catch <i>The George-Anne</i> today!</li></ul>	<ul style="list-style-type: none"><li>• Homecoming King &amp; Queen Voting, 10am-6pm, Union</li><li>• MOVIE: <i>City Slickers II</i>, 7:30 &amp; 9:30pm, Russell Union Theatre</li><li>• LECTURE: "General Sherman," 7pm, Union Room 270</li></ul>	<ul style="list-style-type: none"><li>• MUSIC: Faculty Showcase Recital, 8pm, Foy Recital Hall</li><li>• Win, Lose or Draw – Live! Noon, Union Commons</li><li>• Catch <i>The George-Anne</i> today!</li><li>• MOVIE: <i>City Slickers II</i>, 7:30 &amp; 9:30pm, Russell Union Theatre</li></ul>		<ul style="list-style-type: none"><li>• VISITATION DAY</li><li>• FOOTBALL: Eagles vs. Appalachian State, 7pm, Paulson Stadium</li></ul>
16	17	18	19	20	21	22
<ul style="list-style-type: none"><li>• MOVIE: <i>Beverly Hills Cop 3</i>, 7:30 &amp; 9:30pm, Russell Union Theatre</li></ul>	<ul style="list-style-type: none"><li>• HOMECOMING: Mini-Carnival &amp; Banner Contest, noon-5pm, Sweetheart Circle</li><li>• MOVIE: <i>Rocky Horror Picture Show</i>, 9pm, Rotunda</li><li>• MOVIE: <i>Beverly Hills Cop 3</i>, 7:30 &amp; 9:30pm, Russell Union Theatre</li><li>• DRAMA: <i>Camp Logan</i>, 8pm, Union</li></ul>	<ul style="list-style-type: none"><li>• HOMECOMING: Virtual Reality, 11am-5pm, Union Commons</li><li>• TALENT SHOW: 7:30pm, Williams Ctr.</li><li>• CINEMA ARTS: <i>The Seventh Seal</i>, 7pm, Union Theater</li><li>• Catch <i>The George-Anne</i> today!</li></ul>	<ul style="list-style-type: none"><li>• HOMECOMING: King &amp; Queen Voting, 10am-6pm, Union</li><li>• Doo-Dah Contest, 5pm, Rotunda</li><li>• Bonfire &amp; Pep Rally, 8:30pm, Paulson Parking Lot</li></ul>	<ul style="list-style-type: none"><li>• HOMECOMING: Battle of Wits II, 11am-1pm, Union Commons</li><li>• Spirit Games, 3pm, Sweetheart Circle</li><li>• LECTURE: "Diversity Is Us, Too," 7pm, Southern Center</li><li>• Catch <i>The George-Anne</i> today!</li></ul>	<ul style="list-style-type: none"><li>• HOMECOMING: Blue &amp; Gold Spirit Day (Show Your Colors)</li></ul>	<ul style="list-style-type: none"><li>• HOMECOMING: Parade, 10am, on campus</li><li>• FOOTBALL: Eagles vs. East Tennessee State, 3:30pm, Paulson Stadium</li></ul>
23	24	25	26	27	28	29
<ul style="list-style-type: none"><li>• MOVIE: <i>Creepshow</i>, 7:30 &amp; 9:30pm, Russell Union Theatre</li></ul>	<ul style="list-style-type: none"><li>• United Nations Day</li><li>• Diversity Week (through Oct. 28)</li><li>• LECTURE: "New Look A Reading in Schools," 2pm &amp; 6:30pm, Carroll Room 22</li><li>• MOVIE: <i>Creepshow</i>, 7:30 &amp; 9:30pm, Russell Union Theatre</li><li>• NFL Football Party Night, 7:30pm, Union</li></ul>	<ul style="list-style-type: none"><li>• COMEDY: Patrick Murray &amp; Maltida, 8pm, Union Ballroom</li><li>• Catch <i>The George-Anne</i> today!</li></ul>	<ul style="list-style-type: none"><li>• MOVIE: <i>Candyman</i>, 7:30 &amp; 9:30pm, Russell Union Theatre</li></ul>	<ul style="list-style-type: none"><li>• Catch <i>The George-Anne</i> today!</li><li>• MOVIE: <i>Candyman</i>, 7:30 &amp; 9:30pm, Russell Union Theatre</li><li>• MUSCI: Faculty Recital, 8pm, Foy Recital Hall</li></ul>		
30	31	<p>"Teamwork means that our Saturn family of owners are the most satisfied and enthusiastic in the world."</p> <p>-Don Hickman- General manager, Saturn of Tuscon</p>				



Brought to you by  
**SATURN of Savannah**  
Call for an appointment:  
**912-920-6500**

Largo	Publix	Wal-Mart	SATURN
	Apache Ave.	Abercorn	
		Savannah Mall	

A DIFFERENT KIND OF COMPANY. A DIFFERENT KIND OF CAR. 14080 Abercorn Street • Savannah