

Georgia Southern University

Digital Commons@Georgia Southern

The George-Anne

Student Media

9-20-1994

The George-Anne

Georgia Southern University

Follow this and additional works at: <https://digitalcommons.georgiasouthern.edu/george-anne>

Recommended Citation

Georgia Southern University, "The George-Anne" (1994). *The George-Anne*. 1323.
<https://digitalcommons.georgiasouthern.edu/george-anne/1323>

This newspaper is brought to you for free and open access by the Student Media at Digital Commons@Georgia Southern. It has been accepted for inclusion in The George-Anne by an authorized administrator of Digital Commons@Georgia Southern. For more information, please contact digitalcommons@georgiasouthern.edu.



A new scene

Three new bars are open in the 'Boro ... discover them here
Please see Arts & Entertainment, page 1C



Ambitions

GSU student vying for Miss Georgia crown
Please see story, page 10A



Eagles fall

Football team starts the season 0-3
Please see Sports, page 1B

EAGLELINE

BLUE EDITION

Tuesday, September 20, 1994
Vol. 67, No. 20

GSU named safest major college in Georgia

G-A Staff Reports

GSU was ranked the safest major college in the state in a new book about collegiate crime.

"Crime at College: The Student Guide to Personal Safety," determines the rankings by FBI figures for each county.

There were approximately 4.02 crimes per 100 residents at GSU. West Georgia College was second in reported crimes with 4.86. Kennesaw State (5.80), Valdosta State (7.10) and Augusta College (7.30) rounded out the top five safest colleges.

"We've always known this to be a safe campus partly because this is a rural environment," GSU University Police Chief Ken Brown said. "The University Police are also highly visible and that helps."

There are many services offered by the GSU police which have helped to lower the rate according to Brown.

"We have our bike patrol, night escort and we work closely with the Bulloch County police department and the Statesboro police department," Brown said.

"We have a mutual aid agreement which allows us to share our radio channels with the other police departments (Statesboro and Bulloch County)," he said, "so our officers can have direct contact with the other departments."

There is a certain criminal element that will prey on college students according to Brown.

"Many students come to us from the Atlanta area and are used to locking their doors," Brown said. "The problem is that you have students from small towns who have never had to lock their doors."

Students usually have more expensive things like stereos and television sets.

"Students have those expensive things like stereos, and instead of trying to break into a store in a city, they try to break into cars or apartments of students which they think would have less security," Brown said.

WEATHER

TODAY

Mostly cloudy with a 20 percent chance of rain. High of 83 and a low of 60.

MID-WEEK FORECAST

Wednesday, considerably cloudy with a small chance of rain, with a high of 80 and a low 62. **Thursday**, partly cloudy with a slight chance of showers, with a high of 83 and a low of 61.

INDEX

Announcements	2A
Arts and Entertainment	1C
Classifieds	6C
Crossword	7C
Only in America	8A
Opinions	6A
Police Beat	2A
Sports	1B

It is a desire of The George-Anne to print the news of Georgia Southern University as accurately as possible. If you feel that something covered is in error, contact a member of the editorial staff at 681-5246 as soon as possible. Thank you.



FOR ADVERTISING INFO.: 681-5418
STORY OR PHOTO IDEA: 681-5246

The George-Anne

Liked By Many, Cussed By Some ...
Read By Them All



The George-Anne

Georgia Southern University's Official Student Newspaper

Statesboro, Georgia 30460

Founded 1927

Back to the dark ages!



James Hill

The lights are upon us, but our GSU Eagles may still be in total darkness as they dropped their first three games. Please see details section B. (Thanks to Ralph Andrews for the flight)

Growing pains evident on Sweetheart



James Hill

Most students have noticed the changes to Sweetheart Circle by now. The approval for the change came this summer, and the repainting of the lines was completed late last week. The two lane traffic was put in the bottom portion as part of the eventual loop road.

Declining 'HOPE' at GSU

By Christopher Cole
Managing Editor

It was at the heart of Governor Zell Miller's plan to boost education in Georgia, a program hailed by many as one of the best ways to send students to college and a chief argument for passing a state lottery.

But when the grades came in for the 1993-94 school year, nearly a third of HOPE scholarship recipients at GSU alone lost their chance to collect money from the program.

According to Vice President for Student Affairs Jack Nolen, 287 of the 965 GSU students on the HOPE scholarship failed to make "satisfactory academic progress" and were dropped from the financial aid program. Nolen's information was provided by Alvin Riggs, the HOPE scholarship coordinator for GSU.

Nolen said 785 freshman and 180 sophomores were granted scholarships from the state program, which requires that a "B" average be maintained with a regular course load. Students are re-evaluated after they earn 45 hours, and only those with a 3.0 or better

remain eligible.

According to Nolen, 256 freshmen and 31 sophomores lost their scholarships outright because they had not attained a 3.0 after 45 hours. The total of 287 students constitutes approximately 30 percent of those enrolled in the program at GSU.

But substandard grades are not the only way to lose a HOPE scholarship. If recipients do not earn a minimum number of hours in a specified period of time, they also become ineligible. Nolen said there are currently 180 "bridge students" who will lose their scholarships if they do not earn enough hours this quarter.

Nolen said some of the numbers may include recipients who failed to re-apply for the program, or who are no longer enrolled at GSU. He said some may not have known they had to re-apply the second year.

The large numbers of HOPE recipients losing their eligibility is not isolated at GSU, but is consistent throughout colleges in Georgia.

At the University of Georgia, please see HOPE, page 11A

GSU will force faculty and staff to pay parking tickets

By Chris Sherwood
News Editor

Faculty and staff that have outstanding parking tickets will be required to pay their fines or they will not be issued their hang tags according to Parking and Transportation Director Bob Chambers.

"GSU recently approved a parking and transportation committee request that faculty and staff would not be issued their hang tags until they pay their fines," Chambers said. "The administration met with the Board of Regents earlier in the summer and gave their approval."

This summer the Parking and Transportation department sent out flyers informing faculty and staff that they were planning to institute this policy according to Chambers.

"We are sending out more information now to tell them this is now the policy," Chambers said.

Despite the fact the faculty and staff will now be forced to pay their fines in order to receive their hang tags, Chambers

The Worst Offenders

(Faculty and staff with \$35 or more in unpaid parking tickets as of Friday, Sept., 16)

Source: Parking and Transportation	•Amanda Seel - 3 tickets-\$45
•Adelle S. Sawyer - 8 tickets-\$95	•Julie Watkins - 3 tickets-\$45
•Bonnie F. Fields - 12 tickets-\$80	•Kimberly Henson - 4 tickets-\$40
•Kim Mock - 9 tickets-\$80	•Frank Kerns - 5 tickets-\$40
•Georgia Smith - 10 tickets-\$80	•Frederick Kitchens - 7 tickets-\$40
•Mical R. Whitaker - 9 tickets-\$75	•Freddie J. Lovett - 4 tickets-\$40
•Marie Cochran - 8 tickets-\$70	•Penny L. Morris - 2 tickets-\$40
•James E. Randall - 9 tickets-\$65	•Frank R. Radovich - 6 tickets-\$40
•Mary Kettler Black - 7 tickets-\$60	•Thomas Steadman - 5 tickets-\$40
•Gwendolyn Curry - 11 tickets-\$60	•Leslie Zoellner - 4 tickets-\$40
•Debra Bryan - 7 tickets-\$55	•Verdery Kennedy - 4 tickets-\$35
•Douglas Durham - 4 tickets-\$55	•Marilyn J. Leon - 4 tickets-\$35
•Steve Forney - 5 tickets-\$55	•Gladys B. Love - 4 tickets-\$35
•Ruthie M. Hill - 8 tickets-\$50	•Homer Parrish - 3 tickets-\$35
•Patricia Pace - 4 tickets-\$50	•Delois Reddick - 4 tickets-\$35
•Teri Brantley - 3 tickets-\$45	•Ronald H. Rushing - 5 tickets-\$35
•Michael Lonetto - 3 tickets-\$45	•Patricia J. Walker - 4 tickets-\$35
•Alison M. Rushing - 4 tickets-\$45	•Linda Williams - 4 tickets-\$35

bers would like to see the policy taken further.

"As it is, we will check them at the start of each year when we issue the new hang tags," Chambers said. "I would like to be able to do it every quarter."

Once a faculty or staff member receives their hang tag, they will not be forced to pay their fines until next year when they purchase a new hang tag, he said.

New residence hall opens

Students settle their belongings into G-56, a home without a name

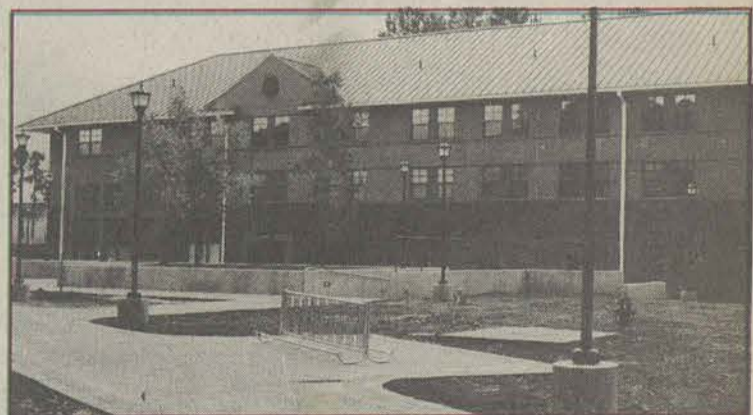
By Chris Sherwood
News Editor

The opening of the newest residence hall at GSU marked the first time such an event has occurred in over 20 years.

Despite the fact the new hall has yet to be named, currently being referred to as G-56, the first students moved into their rooms last Saturday.

Prior to Saturday, the last hall to be opened was Johnson Hall in 1971.

In years past, students have thought of their living quarters simply as dorms. According to the speakers at the ceremony, including GSU President Nicholas Henry, the dreaded "D" word does not ad-



James Hill

The G-56 residence hall

equately describe the goal of residence life at GSU.

"When I was a student, I knew dorms, and this is no dorm," Henry said. "Serving students is why we are here." GSU Vice President of Stu-

dent Affairs expressed his feelings about why it is important to refer to G-56 as a residence hall and not a dorm.

"We call them residence halls, not dorms," Nolen said.

Please see G-56, page 11A

POLICE BEAT

GSU Division of Public Safety

September 15, 1994

•Michael Victor Mincey, 22, Rt. 1, Box 212, Perkins, Ga., was charged with DUI (.14), second offense.

September 10, 1994

•Jeremy Mathew White, 17, 7 Willow Oak, Hilton Head, S.C., was charged with DUI (.12) and weaving over the roadway.

September 8, 1994

•Marlow Warthen reported his 1979 Pontiac Grand Prix was taken from the Dorman Hall parking lot sometime between 8 p.m. on Sept., 9, and 9:57 p.m. Sept., 8.

•Tamara Brooks reported that a personal check had been forged at the University Store in the amount of \$50.

•Graham Rueben Terry, 22, 9 Pine Haven, was charged with DUI (.09) and making an improper turn.

September 6, 1994

•Michael Keith Burrell, 18, 4561 Glennwood Drive, Evans, was charged with DUI (.08) and making improper turn.

August 30, 1994

•Matthew Lee Skinner, 21, 211 Oak Street, was charged with DUI (.10).

•Richard Benjamin Rogers, 21, 2945 Point West Drive, Augusta, was charged with DUI (.21) and a stop sign violation.

•Jason Richard Lovett, 19, 729 Summerfield Abbey Court, Martinez, was charged with minor in possession of alcohol.

August 24, 1994

•Elizabeth Williams reported several food items and a fan were missing from the Marcin Pittman kitchen area.

•Anthony Rice, 37, 241 N. Main Street, was charged with DUI (results pending), possession of less than an ounce of marijuana, a stop sign violation and weaving.

August 23, 1994

•Russell Burton Gray, 20, 2525 Pheasant Drive, Albany,

was charged with DUI (.15), expired license and improper right turn.

August 20, 1994

•Lisa Ann McElveen Lee, 32, 20 Henry Street, was charged with DUI (.20) and weaving.

August 18, 1994

•Tyrone Stephens reported someone entered his 1989 Mercury Topaz in the Sports Complex parking lot and took several compact discs and keys.

•Tammy Rippy reported several bedding items were missing from her room in Johnson Hall.

•Shirley Hughes reported \$250 was missing from Room 104-2 Biology Building.

August 17, 1994

•William Alphonso Cope, 18, 100 Whippoor Will Drive, was charged with DUI (results pending) and laying drag.

August 11, 1994

•Dr. Richard Tichich reported a Murray bike was missing from the bike rack near the Hanner Gym.

•Christopher Michaels reported a Clarion AM/FM stereo was taken from his 1991 Jeep Wrangler while parked in the Hanner Gym parking lot.

August 10, 1994

•Stacy Collins reported a Trek bike missing from the Russell Union Building.

August 7, 1994

•Michael Shawn Durden, 17, 114 Lincoln Street, was charged with possession of marijuana, minor in possession of alcohol and obstruction.

•Matthew Crum, 19, 210 South College Street, was charged with possession of marijuana and obstruction.

August 3, 1994

•Tamara Makeba Parker, 22, 136 University Point, was charged with obstruction of a police officer.

August 2, 1994

•Ruth Sanders reported a Panasonic telephone was miss-

ing from the Forrest Building.

August 1, 1994

•Tracy Favors reported an AT&T Calling Card was missing from her Landrum Box.

•Aimee Marquette reported her Olympic license plate was taken from her 1991 Chevrolet in the MPP Commuter parking lot.

•Dr. Wayne Kissenger reported two compound Nikon Microscopes and a Zenith VCR were missing from the Biology Department.

Statesboro Police Department

September 17, 1994

•Jeromy Simmons, of Park Place, reported a criminal trespass, \$150 damage to the front window of his apartment.

•Mindy Persinger, of Park Place, reported a criminal trespass, \$150 damage to the front window of her apartment.

•Trey Britt, was charged with a violation of the city ordinance advertising beer and wine specials, and paid a \$350 fine.

•Deanna Mills, reported someone unknown to her did \$1000 damage to her 1994 Toyota Corolla in the Blind Willies parking lot.

September 13, 1994

•Derrick Wilcock, of Eagle Gate Apartments, reported a theft by taking. The items reported missing totaled \$1700.

September 11, 1994

•Chris Wiggins, of Greenbriar Apartments, reported damage to all the windows in the apartment, valued at \$300.

September 10, 1994

•Edwin T. Thomas Jr., of Cambridge Apartments, reported his car was stolen.

•Laura Lopez, of Park Place, reported someone had stolen several items valued at \$1000.

September 5, 1994

•Jeff McPhail, of Players Club Apartments, reported theft of several items valued at \$300.

ANNOUNCEMENTS

Things to do at GSU September through October

Tuesday, September 20

•Former student registration will begin at 10:30 in the Williams Center.

•GSU men's soccer at 2 p.m. vs. Brewton-Parker.

•GSU women's soccer at 5 p.m. vs. Brewton-Parker.

Wednesday, September 21

•Drop-add will be held in the Williams Center beginning at 8 a.m.

•A bike auction will be held in the Landrum Plaza beginning at 12 p.m.

•An outdoor cookout BBQ will be held at the Landrum Plaza beginning at 4 p.m. There will be a live band, palm reader and much more.

Thursday, September 22

•Classes begin.

•A business expo will be held in the Union Rotunda beginning at 10 a.m.

•A reception for out-of-state new students will be held in Room 280 of the Union.

•Hypnotist Ken Whitener will entertain students beginning at 7 p.m. in the Union Ballroom.

•GSU volleyball vs. Furman University at Hanner Field House. The first match starts at 7 p.m.

Friday, September 23

•Mary B. Ziegler, "Vernacular Speech Choices: Language, Dialect, and Pedagogy" will be at

the Southern Center for Continuing Education Room 124 from 10 a.m.-noon, and 2 p.m.-5 p.m. For more information contact M. Pate, Developmental Studies Dept., 681-5865.

•Fun Flicks will be held at the Union Commons from 11 a.m.-5 p.m. They provide the background, you provide the movies. Star in a video of your favorite song. You keep the tape.

Saturday, September 24

•Mary B. Ziegler, "Vernacular Speech Choices: Language, Dialect, and Pedagogy" will be held at the Southern Center for Continuing Education Room 124 from 9 a.m.-noon, and 2 p.m.-5 p.m. For more information contact M. Pate, Developmental Studies Dept., 681-5865.

Sunday, September 25

•Biology seminar series: Dates not available-please call D. Hagan, Biology Dept., 681-5495.

•The movie "Above the Rim" will be shown in the University Union at 7 p.m. and 9:30 p.m. Only \$1 with student I.D.

Monday, September 26

•NFL Football party night at the Union Commons. Denver takes on Buffalo on the bigscreen television. You can participate

in a tabletop football trivia game. Winners have a shot at winning Super Bowl XXIX tickets. The action starts at 7:30 p.m.

Tuesday, September 27

•GSU volleyball vs. Armstrong State at Hanner Field House. The first match begins at 6 p.m.

•The movie "The Last of the Mohicans" will be shown in the University Union at 7 p.m. and 9:30 p.m. Only \$1 with student I.D.

Thursday, September 29

•An Organizational Fair will take a look at all the involvement opportunities at GSU. Make friends and develop skills for your career. It will be held from 11 a.m.-2 p.m.

•An off-campus mixer will be held from 4-5 p.m. at the Union.

Tuesday, October 4

•The movie "Like Water for Chocolate" will be shown in the University Union at 7 p.m. and 9:30 p.m. Only \$1 with student I.D.

•E. Alvarado and J. Caraballo, at the Southern Center for Continuing Education from 2-10 p.m. For more information please contact D. Sabia, Political Science Dept., 681-5725.

ATTENTION:

INFORMATION CLASSES ON
THE CATHOLIC APPROACH TO BEING
CHRISTIAN
BEGIN OCT. 4 - NOV. 22
7:00-9:00 p.m.

FOR THOSE INTERESTED IN MORE
INFORMATION OR ANY CATHOLIC WHO
NEEDS TO RECEIVE THE SACRAMENT
OF CONFORMATION

THIS COURSE WILL BE OFFERED AGAIN IN
THE WINTER QUARTER ON
WEDNESDAYS 7-9 p.m.



COLLEGE NEWMAN ASSOCIATION

IN THE BORO

Fraternity denies liability

G-A Staff Reports

The fraternity which sponsored a party where former GSU student Clint Fair allegedly became "highly intoxicated" denied responsibility for his drunken driving wreck.

The Kappa Sigma International fraternity was named in a civil suit involving former GSU student Clint Fair filed in the Bulloch County Courthouse July 14.

"We don't feel that the fraternity is liable for the accident because we believe they adhered to the condition of our alcohol policy and that of GSU," Kappa Sigma International Fraternity Risk

Manager Frank Patek said.

"It was certainly a regrettable incident, but we believe the fraternity acted in a responsible manner and GSU has looked into it and feels the same."

The suit, filed by Sonya Tootle, was filed almost two months after her husband Ernest Edwin Tootle died due to injuries sustained in a near head-on collision with Fair on May 21 on Highway 67.

Fair was charged in the accident with driving under the influence (.17 grams/percent), first degree vehicular homicide, reckless driving and driving on the wrong side of the road.

Mrs. Tootle is asking for

\$6,294 in order to take care of medical and burial expenses. She is also asking that "she is entitled to recover an amount determined by the enlightened conscience of the jury for the economic value of her husband's life and for the intangible loss resulting from his death."

According to the suit, as owner of the 1994 Chevrolet that his son was driving, Dennis Fair is liable for the negligent acts of Clint as related to the operation of the Chevrolet under the Family Purpose Doctrine.

The local Kappa Zeta chapter of the Kappa Sigma Interna-

Please see FAIR, page 11A

ABSOLUTELY FANTASTIC APARTMENT

Share a 4-bedroom apartment with 3 other people — minutes from GSU on Hwy 67

Kitchen is fully equipped with microwave, self-defrost refrigerator, ice-maker, dishwasher, self-cleaning oven, separate utility room with full size washer and dryer.

- Private Bedroom
- Private Bathroom
- Walk-In Closet

Plus:

- Clubhouse with tanning beds & pool tables...
- Security guards seven (7) days per week...
- Community Advisors on premises...
- Many planned activities and intramural sports...
- Sand volleyball court, playing field, basketball court, swimming pool, deck and much more...



FREE MEMBERSHIP
In GOLD'S GYM

681-6994

WELCOME BACK TO THE STATESBORO MALL!

Check out all we have to offer...

Apparel,
Jewelry, Accessories,
Shoes of all kinds, Alterations,
Hair & Nail Salons, Cards & Gifts,
Restaurants, Nutrition Center, Groceries,
Cinema, Music, Sporting Goods, Banking,
Optical & Pharmaceutical Needs, Shoe Repair
& Keys, Video Games, Variety & Specialty Shops

We're Here For YOU - See You At The Mall!

Thursday, October 6

•The Jackie Boatright Show will be at the Union Ballroom. You've seen the Arsenio Hall show... now it's time to check out Fox 28's own Jackie Boatright. Guests include two former Miss GSU's and the singing talents of Yama Brown. Catch all the action beginning at 7 p.m.

Friday, October 7

•An GSU faculty art exhibit will be held at Room 303 in the Foy Building. The room is located on the third floor of the building. The reception will be held from 7-9 p.m. It will be open through October 28 from 9 a.m.-5 p.m. Admission is free. For more information please call the GSU Art Dept., 681-5358.

•An African/African-American film series *Samba Traore* will be shown in the Union at 6 p.m. For more information contact A.Young, 681-0254.

Monday, October 10

•NFL Football party night at the Union Commons. Minnesota takes on New York on the big screen television. You can participate in a table top football trivia game. Winners have a shot at winning Super Bowl XXIX tickets. The action starts at 7:30 p.m.

Tuesday, October 11

•The movie "Day of Heaven" will be shown in the University Union at 7 p.m. and 9:30 p.m. Only \$1 with student I.D.

•It's Disco Dance Party time. Bring out that polyester and do the hustle with platform shoes in the Union Ballroom. Video show-robotic lights-live camera! You can start "Cutting the Rug" at 8 p.m and disco the night away until 11:59 p.m.

Wednesday, October 12

•It's time to vote for the King and Queen of Homecoming. Make your selections at the Union Commons between 10 a.m.-6 p.m.

•John F. Marszalek will speak on, "General William Tecumseh Sherman" in the Union Room 270 from 7-8:30 p.m. For more information call Alan Downs in the History Dept., at 681-0242.

Thursday, October 13

•"Win, lose, or draw" will be held at the Union Commons at noon.

•A faculty showcase recital will be held in the Foy Recital Hall at 8 p.m.

Monday, October 17 HOMECOMING WEEK

•Mini-Carnival and Banner Contest. Check out the dunking booth, temporary tattoos and water wars to kick off that Mardi Gras spirit. Come out to Sweetheart Circle between 12 and 5 p.m. to catch all the action.

•The Rocky Horror Picture Show will be shown at the Union Rotunda at 9 p.m.

•"Camp Logan" will be shown in the Union Ballroom at 8 p.m. It's a performing arts series with general admission tickets available while they last. The tickets will be available two weeks prior to the show, with the first week distribution strictly for students. Contact the CLEC office at 681-0830 or send for information at Landrum Box 8028.

Tuesday, October 18

•Step into another world and star in your own fantasy. Check out virtual reality in the Union Commons from 11 a.m. until 5 p.m.

•Talent Show time at the Williams Center Dinning Hall at 7:30 p.m.

•The movie "The Seventh Seal" will be shown in the University Union at 7 p.m. and 9:30 p.m. Only \$1 with student I.D. Special note-Swedish with English subtitles.

Wednesday, October 19

•Support your organization's Homecoming representatives with your vote from 10 a.m.-6 p.m. at the Union Rotunda.

•Doo Dah Contest at the Union Rotunda 5 p.m.

•Bonfire and Pep Rally at 8:30 p.m.

Thursday, October 20

•Who's funnier? Who ever thought laughing could be so funny! Battle of Wits II at the Union Commons from 11 a.m.-1 p.m.

•Spirit Games at Sweetheart Circle beginning at 3 p.m.

•"Diversity is Us Too" will be offered at the Southern Center

for Continuing Education Auditorium from 7-9 p.m. For more information contact the English and Philosophy Dept., at 681-5803.

Friday, October 21

•Spirit Day, wear that GSU paraphernalia.

Saturday, October 22

•Homecoming Parade. Floats and marching bands, it's Eagle mania. Begins at 10 a.m.

•GSU football vs. ETSU. King and Queen are crowned. Action starts at 3:30 p.m.

Monday, October 24

•Jackie Echols, "A New Look at Reading in the Schools" will be held in the Carroll Bldg. Room 22 at 2 p.m. and 6:30 p.m. For more information contact W. Peach in the Student Development Programs at 681-5301.

•NFL Football party night at the Union Commons. Houston at Philadelphia on the big screen television. You can participate in a table top football trivia game. Winners have a shot at winning Super Bowl XXIX tickets. The action starts at 7:30 p.m.

SIGN UP...

Join College Pharmacy's **StudentAssist** program

SAVE MONEY...

Get a 15% discount on everything at College Pharmacy—from prescriptions to perfume, & candy to cosmetics.

SEE MICKEY & MINNIE...

Enroll before Oct. 28 & you're eligible to win a 3 night trip for two to Disney World, including airfare & resort hotel.

Stop by College Pharmacy to join **StudentAssist** for year-round savings & a chance to win a trip to see Mickey & Minnie.



Call 764-5421 or 489-8683 for details!

End of Summer Sale...

MENS WALK SHORTS
VALUE \$50.00
NOW **\$9.95**

MENS DRESS PANTS
VALUES UP TO \$59.95
NOW **\$9.95**

MENS SPORTS & DRESS SHIRTS
VALUES UP TO \$65.00
NOW **\$9.95**



The Sir Shop

420 Gentilly Place • 764-6924
across from Wynn Dixie

Tommy Hilfiger introduces



Bonus CD Offer

Purchase \$50 of
Tommy Hilfiger apparel
and receive "The Tip"
compact disc sampler.

Featuring 17 songs from major artists.
Valid while supplies last.

(Retail value \$15.99)

Belk
All For You!

Jamie Walters'
debut album including
"Hold On" as featured
on "The Tip" available
September 20.

Statesboro Mall

SOUTHEAST GEORGIA

Eyes on the Prize

GSU student's goal is to win Miss Georgia

By Enoch W. Autry
Editor

The local television audience has been able to watch Savannah ABC affiliate WJCL intern Seleta Hayes tackle issues ranging from professional beach volleyball to the christening of a naval ship since July, but this GSU student is more than just a broadcast journalist.

Hayes presides as Miss Southeast Georgia 1995.

With her platform to teach ballet to inner-city youth through an "Arts Alive" program, the 23-year-old Hayes captured the crown in largest open state pageant the Swainsboro Middle School Auditorium Aug. 13.

"I want to instruct them on a voluntary basis. I want to give them the opportunity to prove themselves and achieve something they would not be able to," she said from the office of WJCL anchor woman Natalie Hendrix Strickland, a 1989 Miss Southeast Georgia.

Hayes, who succeeds the 1994 Miss Southeast Georgia Julie Gilmer, has been a spokesperson for Georgia Council Child Abuse.

"I hope I can share a piece of me and open their minds," she said of the children. But this is not easily done, she said, noting that one little girl came up to her after class to say her mother had recently been murdered.

Being an accomplished dance instructor and choreographer proved beneficial in the pageant.

"I have been taking dance classes since I was 5-years-old," she said. "I have performed all around the state of Georgia."

Her dancing experience led

her to choose a pointe ballet routine to the music of "I Still Believe in You" from the play "Miss Saigon."

Hayes, the daughter of Keary Hayes of Alpharetta and oldest of five, received an \$850 educational scholarship from the Miss Southeast Georgia Scholarship Fund that will pay for her last quarter at GSU which is going to be this quarter.

Scholarships from Swainsboro

**"THEY SECLUDE YOU
FROM YOUR FAMILY
AND FRIENDS FOR
EIGHT DAYS, EXCEPT
FOR 15 MINUTES
WHEN YOU GET TO SEE
PEOPLE ONCE A
NIGHT."**

— SELETA HAYES
MISS SOUTHEAST GEORGIA

Technical Institute and East Georgia College and 24 gifts from Swainsboro merchants are also awarded to the winner.

The next step is the Miss Georgia Pageant that is set for June 1995, but Hayes may have a step up on the other contestants.

She was at the Columbus-based event previously as the 1992 Miss GSU.

"They seclude you from your family and friends for eight days, except for 15 minutes when you get to see people once a night," she said. "They want to keep us

in the same mode for the three-day preliminaries."

Those visiting must get a special pass to see the contestants.

According to Hayes, contestants are so busy during the Miss Georgia preliminaries, it is hard to feel any emotions.

She said she has weekly conversations with the Swainsboro Jaycees, who sponsored the Miss Southeast Georgia pageant and the Miss Emanuel County Pageant held the same night.

"They make arrangements for me to make emcee appearances in hopes that when I do win Miss Georgia, people will already know me. I am really aiming to Miss Georgia," she said with a smile.

One such appearance will be at the annual Rattlesnake Roundup in Claxton in March which normally entices numbers of queens to attend.

She has another goal as well. "I am here until December and ideally I want to stay here," she said. "But I guarantee you, you will see me on television somewhere."

Before she packed up and moved to Wilmington Island, just outside of Savannah, Hayes got her experience in broadcast at CNN-Northland Cable and TV 48 in Statesboro.

"This is a very high pressure job and a lot of things are not in your control," she said. "It is a real rush."

Hayes has been able to spend some of her free time participating in different organizations in Savannah like the new Coastal Republicans club.

She simply said, "I am a staunch Republican."

The George-Anne welcomes you back to Southern

Belk
All For You!EASTPAK®
MADE IN U.S.A.

EASTPAK® BACKPACKS
29.99 To 74.99

Choose From Our Wide
Selection Of Quality
EASTPAK® Backpacks

"...totally EASTPAK."
Bags made to last a lifetime, designed to hold more stuff, fashioned to look great. Nobody has it totally together like EASTPAK.



America's best backpacks.™

Shop Mon.-Sat. 10:00 a.m. to 9:00 p.m.
Sunday - 1:00 p.m. to 6:00 p.m.
764-7575

YOUR CREDIT CARD MAKES IT EASY!



Statesboro Mall

We accept Belk charge,
American Express Card, MasterCard, VISA



**WELCOME
BACK
GSU
STUDENTS!**

*Belk Has The Latest
Fashions For You And
Your New Home!*

**Bring In Your CURRENT
GSU I.D. and Receive
AN EXTRA 10% OFF
All Regular And Sale Merchandise
Throughout The Store!***

Offer Valid Through Sunday, September 25

HAVE A GREAT YEAR!

*Due To Manufacturer's Policies, Some Exclusions May Apply. Discount Does Not Apply To Previously Purchased Merchandise.

Belk
All For You!

Statesboro Mall

Briefs

Reunited at last

GSU News Service

Sara Upchurch of Stilson and Annie Gay of Ocala, Fla., have not seen each other in 78 years when they met again recently in Statesboro, where the two graduated in 1916 from the school that became GSU.

The women, who lived on the same hall in a campus residence hall, laid their canes aside and gently held hands as they talked about riding buggies to school picnics, sewing their school uniforms, and tending campus flowers beds. The women said students marched on a schedule of bells to class, the dining hall, and to their room for study hours. The final bell announced lights out.

"Sometimes we'd get into bed, wait a little while and get up. We just had to be quiet," Upchurch said.

The women have been writing letters since spring 1993, when Gray's nephew Jim Evans saw a newspaper story about Upchurch and her memories of the school. He sent a clipping to his aunt.

The two believe they are the only survivors of their graduating class of 22, at the time the largest ever of the First District Agricultural and Mechanical School, today GSU with 14,100 students.

"She was so smart, she never took an exam," Upchurch said of Gray, when the two met at Evans' home. Students with very high grades could exempt the final tests.

GSU Expo

GSU News Service

Local businesses will be exhibiting their products and services to GSU students at the school's Business Information Expo Sept. 22.

The Expo, sponsored by Russell Union and Auxiliary Services Division, is set for 10 a.m. to 2 p.m. on the Pedestrium.

"This is an opportunity for local businesses to show Georgia Southern students what they have to offer in the way of products and services," Russell Union Director Earl Cashon said.

"Every fall 14,000 potential customers arrive in town," he said, "and this provides a great chance for those retail and service units to put themselves in front of new customers."

Vendors will be provided with tables on which to display their products. Any form of one-to-one advertising including free samples, brochures, flyers, coupons or handouts is encouraged.

Sales or contractual agreements are not permitted at the Expo, nor are samples or promotion of alcoholic beverages.

Information on the Expo may be obtained by calling the Russell Union at 681-0399.

GSU professor to head AAASP

GSU News Service

Charles J. Hardy, newly appointed chair of the Department of GSU Sport Science and Physical Education, is the past president of the Association for the Advancement of Applied Sport Psychology. He is in charge of the overall organization of the Association's Ninth Annual Conference to be held at Lake Tahoe, Nev., on Oct. 5-9.

Hardy, who came GSU from the University of North Carolina-Chapel Hill, is a charter member and fellow of AAASP. He has been instrumental in the rise of AAASP since its inception in 1984.

According to Jean M. Williams, AAASP president, Hardy has served on many committees and has made important contributions to the growth of the 800-member organization.

Although sport psychology is a young science, there is growing evidence that psychological factors play a key role in athletic competition.

By Christopher Cole

Managing Editor

Thousands of GSU students who drive their vehicles on campus will have to begin watching their speedometers and the posted speed limits this year or risk being ticketed by the University Police.

Chief Kenneth Brown at public safety said the police force will use a radar gun to monitor traffic in specific areas on campus beginning this quarter.

"There have been recurring complaints about speeding violations on campus," he said. "We have had this capability for some time now, and just didn't pursue it."

Brown said the police will focus on enforcing the speed limits posted in three areas: Sweetheart Circle, Herty Drive in front of Hanner, and Forest Drive (which is termed "Snake Road" by the police). The speed limit is 25 miles per hour in all three areas.

Although the University Police have full authority to issue tickets, Brown said they "are not going to jump everyone when they come fall quarter ... I want some publicity about it. No medicine is easy to take."

"We issue many times more

warnings than citations," he said. "But if someone is driving 40 miles per hour or above (in a 25 zone), that's bordering on what we would call a flagrant violation. Whenever someone becomes a threat to the public safety, pedestrians, cyclists, and other motorists, we will issue a state citation."

The tickets issued for speeding are handled in Bulloch County State Court, not by the GSU administration.

Brown said motorcyclists have become a serious problem because they are often seen riding at 45 to 50 miles per hour on campus. But he said cars are the biggest problem because there are so many of them.

According to Brown, it has taken about one year to begin using the radar gun because of "legal obligations" that had to be fulfilled.

"Any (law enforcement) agency can do it," he said. "But we had to get licensed, do traffic studies for the State Department of Public Safety, get a radar certification, and have training of officers."

There will only be one radar gun used on campus, but ten officers are trained to use it be-



GSU's latest traffic control device.

James Hill

cause of changing shifts and schedule demands. He said the speed monitoring will begin "some time after classes start."

Brown said the university's radar gun will have no impact on the relationship between the GSU and Statesboro police forces.

"The University Police have primary jurisdiction on campus

... the law says we can make arrests within 500 yards of Board of Regents property, which is a one-third mile arresting authority," he said. "But we don't do that. We call the city (to handle off-campus traffic)."

Statesboro Police Chief Richard Malone said the city has not been enforcing GSU campus

speed limits.

"We've never used the radar on campus," he said. "But speed is a contributing factor to serious accidents."

Malone said the new 301 bypass, the Veterans Memorial Highway, remains under a 30-day grace period for speeding violations which ends Sept. 25.

Here's Something To Cut Besides Class.

Students Save Up To \$75 On American Airlines Tickets.



This certificate is valid for one of the discounts shown below when you purchase your ticket and travel on American Airlines/American Eagle in the 48 contiguous states, and when the following fare and class requirement is met:

\$45

OFF any individual student or adult round-trip excursion fare from \$125 to \$175.

\$60

OFF any individual student or adult round-trip excursion fare from \$176 to \$225.

\$75

OFF any individual student or adult round-trip excursion fare of \$226 or more.

American Airlines
American Eagle

For reservations or instructions, call your Travel Agent or American Airlines at 1-800-237-7981.

TICKET DESIGNATOR H45	SERIAL NUMBER 800136553433942
TICKET DESIGNATOR H60	STAR FILE N*/COLLEGE94
TICKET DESIGNATOR H75	FOCUS F*TKT/FAILL94
Passenger Signature/School _____	
FOR OFFICE USE ONLY	
Ticket Number _____	
Date Of Ticket Issuance _____	
AA Agent Day/Location _____	
Travel Agency Name/IATA# _____	
Travel Agency Location _____	

EXPIRATION DATE:
AIR TRAVEL MUST BE COMPLETED BY MAY 15, 1995.

Ready for a little off-campus activity? Just present the above certificate along with your valid student I.D., and save big on air fare to anywhere we fly in the 48 contiguous states. Use it for a road trip. Take a weekend vacation. Or if you want to, visit your parents. Either way, your certificate is good for travel between October 3, 1994, and May 15, 1995. Even better, these discounts apply to round-trip excursion fares and student fares. It doesn't take an accounting major to appreciate a deal like this. So if you need a break, fly the airline that's willing to give you one. American Airlines. For reservations and details, call your Travel Agent or American at 1-800-237-7981 and refer to STAR File N*/COLLEGE94.

American Airlines
Something special in the air.

Terms and Conditions: All travel must be completed by midnight May 15, 1995. This certificate and a valid student I.D. must be presented when a round-trip ticket is purchased. Redemption is limited to one certificate per passenger per ticket. Airport passenger facilities fees of up to \$12 and fuel surcharges, if applicable, are not included in minimum fare requirements and must be paid at the time the ticket is purchased. A round-trip ticket purchased with this certificate will have an advance purchase requirement. Saturday night stay required. Seats are limited and a cancellation penalty will apply. No travel will be permitted on the following inclusive blackout dates: November 22-27, December 15-31, 1994, and January 1-2, February 18-19, 25-26, March 4-5, 11-12, March 18-April 9, 1995. Prior to departure, changes to your ticket may be made if you pay a \$35 service charge and meet the restrictions applicable to the new fare. A ticket issued against this certificate may not be combined with any other special or promotional fare offer, "K" fares, discount certificate, coupon, Senior Citizen discount or AAdvantage award. This certificate is void if sold for cash or other consideration. It is also void if altered, counterfeited, obtained or used improperly, or where prohibited by law. An open ticket may not be issued and stopovers are not permitted. Travel on a ticket issued under this promotion will be by the most direct American Airlines or American Eagle routing between the origin and destination, and must be on a routing where American maintains a fare. Unnecessary and circuitous routing, connecting points, and/or segments are prohibited. Travel is valid as referenced on this certificate to American Airlines/American Eagle destinations in the contiguous 48 states. American Eagle and AAdvantage are registered trademarks of American Airlines, Inc. American Eagle is American's regional airline associate. American Airlines reserves the right to change the AAdvantage program at any time without notice. NOTE: For additional information about the rules and restrictions of your excursion ticket, call American Airlines at 1-800-237-7981, and refer the representative to STAR File N*/COLLEGE94.

Our Opinion

A little notice next time

With the ever-expanding GSU campus, changes are inevitable. Changes are seen in the students that enroll. Changes are seen in the construction of learning facilities and changes are seen in our modes of transportation. Changes are considered improvements, but not with lack of campus communication. Absence of knowledge is senseless.

Sweetheart Circle, a campus area that has stood the test of time since the 1920s when our institution was merely a teachers college, has recently been changed. Students may now travel in both directions at the lower half between Forest Drive and Herty Drive. The top Circle portion will remain one-way in front of the Administration Building, but it was narrowed to just a single lane. This opens the door for 30 new diagonal parking spaces.

This will eventually benefit campus drivers, but where was the notice of change?

After a year of delays, the money for the construction did not become available until July, according to officials. This postponement left the campus believing a change would never happen. Those who headed home for the summer had no knowledge whatsoever of the change. Put simply, an institution cannot and should not be run with such mismanagement.

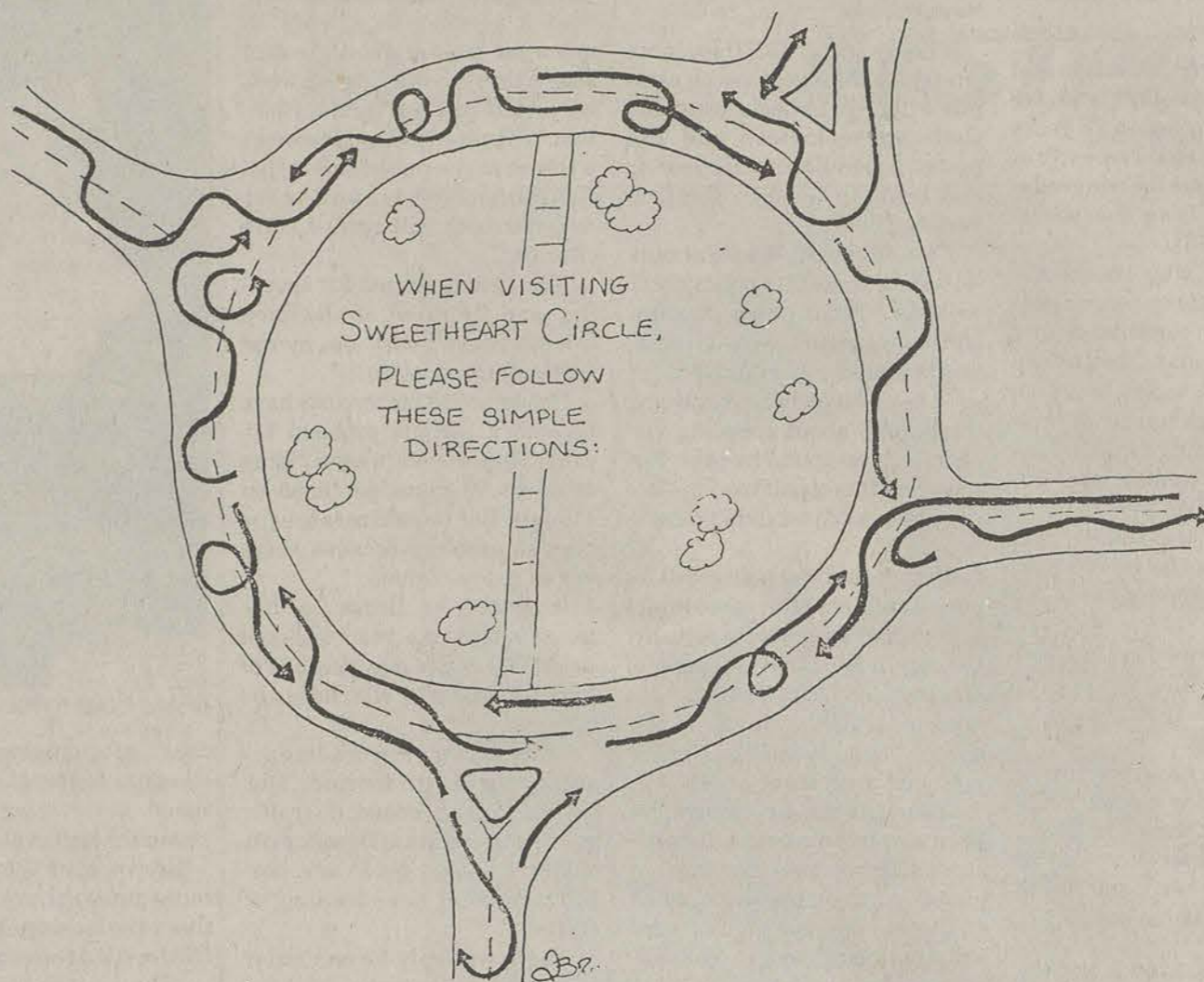
A notice could have easily been posted at the end of spring about the possible change because officials knew the Circle would probably receive a facelift soon. Even a letter mailed to students would suffice. Students needed to know.

The GSU Division of Public Safety will most certainly be inconvenienced by the change. Any difference in our highways and byways will undoubtedly force GSU Police to write more accident reports involving students in fender-benders.

It is high time some people think before they act. University dignitaries want to make GSU, ranked third in enrollment in the state colleges, a top level school where high school scholars would want to enroll. For this idea to come to the forefront some leaders may want to use some intelligence themselves.

They're back in the 'Boro

We, *The George-Anne*, the official student newspaper of GSU, want to extend a welcome to all incoming freshmen and transfers. For all of you returning to campus, remember you are one quarter closer to that graduation date.



Let's take some lessons from another 'Boro

Over three years of marriage had passed when Karin and Keith Screws decided the time was right to raise a family. Unlike most couples, the two could not do this through traditional means because Keith had contracted a form of cancer known as non-Hodgkin's lymphoma that destroys the body's lymph nodes. The chemotherapy and radiation treatment he was receiving for the illness had left him infertile.

Still hoping to create a family, Keith had his semen frozen in a sperm bank. But because his sperm was "poor" according to a fertility specialist at University Hospital in Augusta that attempt was blocked.

The next option was "in vitro" fertilization where conception occurs outside the womb courtesy of a test tube. Keith's sperm was given an enrichment medium to improve its strength and the procedure began.

The rest is history, or history-making to be precise.

At 2:40 p.m., Dec. 17, 1992, after a difficult birth that had confirmed Karin to a hospital bed since Oct. 26 due to cramps, the first of four children were born.

These were the first quadruplets born at University Hospital; from the Screws' hometown of Swainsboro, a 45-minute drive from here; and the state.

IN THE EDITOR'S OWN WORDS

ENOCH W. AUTRY



One month later, Keith lost his battle with cancer which left Karin to care for all four youngsters. Living in a small three-bedroom farmhouse off of a dirt road in the country where she and Keith had lived since their marriage, Karin set herself to provide for her new family. Then came to cavalry.

High school classmates of Keith began to bring in mass quantities of food for them. Karin was able to locate some reliable individuals to care for the babies and a local group of contractors organized to build a new spacious five-bedroom, three bathroom home with a large playroom for the children.

Hopefully, according to one of the house coordinators, the Screws will be in their new residence in a few weeks. The home would have cost \$100,000 to construct if no one had assisted in the effort.

Why did I select a story of a 33-year-old Karin Screws, who

has a teaching certificate from GSU, and her ready-made family? Well, there is a lesson to be learned from such an event.

Like the Swainsboro residents, GSU students need to get motivated to do something for ourselves and the community.

Our campus offers an extensive array of activities far beyond the normal classroom exercises. Some are only a matter of a couple steps outside your doorway, while others lead you to assisting with the reading capabilities of small children.

Albeit true, our football team is not playing up to lofty expectations set for them prior to the season, fan support is incredibly vital if you truly want them to improve. Fan support has not been there lately.

If you really want to see vacant seats at sporting events, look in the direction of the cross country, volleyball and soccer teams.

Each of the estimated 14,100

students on this campus have interests, so use those interests to your advantage. Clubs for practically anything exist here and if for some reason it is not here, then one can be started. If you have a major, there is a club for you. If you blink your eyes and breathe on occasion, there is a club for you.

Entertainment is something everybody wants and that spark of glittering lights is only a stone's throw away. Union Productions, or UP for short, weekly have a comedian, a hypnotist, a magician, a underwater basket-weaver or a machete swallower to see. Check it out.

All right, I wouldn't be the editor of *The George-Anne* if I didn't plug Student Publications which includes the newspaper you are currently reading, the "Southern Reflector," the "Miscellany," and WVGS on 91.9 FM.

Off campus — think Volunteer Services. Construct a home, assist flood victims, feed the homeless, and tutor a youngster through Top Step. These are only a few things that are available.

Hopefully, you won't think I gave you this information just to waste your time, but instead maybe you will take what is given and expand on it. The world awaits you, so get motivated, like those Swainsboroites, in an effort to advance GSU and you.

STAFF

NEWS

Copy Editor: John Kluttz; Staff: Kari Cameron, Melanie Cooper, Tim Henschel, Stacy Jordan, Crissy Shaw

FEATURES

Features Editor: Josh Bass; Staff: Stacy Clemons, David Day, Ashley Hunt, Derek Lewis, Justin Miller, James Salter, Tijuana Thomas

SPORTS

Sports Editor: John Munford; Assistant Sports Editor: Ronnie Swinford; Staff: J.J. O'Meara, Aaron Solomon, Will Van Kleef

OPINIONS

Staff: Josh Bass, Teth Burns, Christopher Cole, Chris Sherwood, Aaron Solomon, Kim Wagner

PHOTOGRAPHY

Chief Photographer: Mardee Coyle; Staff: James Hill, Holly McCaig, Jerome New; Contributing Photographer: Randy Trujillo

ARTWORK

Artists: Leigh Braddy, Teth Burns, Michelle Underwood

CIRCULATION

Supervisor: Steve Taliaferro; Staff: David S. Hillis, Bruce Karr, Scott Newton

ADVERTISING/DISTRIBUTION SERVICES (ADS)

Advertising Manager: Brooks Clements; Business Manager: Stephanie Wylie; Sales Representatives: Leigh Braddy, Brooks Clements, Melissa Goodman, James Salter, Heather Thatcher, Michelle Underwood, Carolyn Wynn

PRODUCTION AND GRAPHICS EDITORIAL SERVICES (PAGES)

Production Managers: Jason Adams, Ron Lair; Assistant Production Manager: Mitch Mitchell; Staff: David Beck; Classified Ads Managers: Melissa Goodman, Juanika Mainor; Darkroom Manager: Randy Trujillo

STUDENT PUBLICATIONS COORDINATOR

Bill Neville

Residence hall? Take a better look because it's a dorm

It's a new year, my friends, and I could drone on and on about how great it is to be back on this beautiful campus, and how much I'm looking forward to those classes, and why all of you should be, too.

Instead, I'll get to the point. Which, quite simply, is this: there is NO SUCH THING as a "residence hall" at Georgia Southern University, and I'm ready for people to start calling all those brick buildings exactly what they are — dorms.

I know this revelation will come as some surprise to thousands of on-campus freshmen, along with the staff at Residence Life. But this is no time to be politically correct. No, sirree, those things are DORMS.

Our collegiate sensitivity training would tell us it isn't fair to say people live in dorms. It might hurt their feelings and cause strife among the student body. But I lived in a dorm my first year, and let me tell you, the REAL insult was that the school called it a "residence hall."

The basis for calling it that was to foster a community spirit among those who live together. I understand why that's advisable, but if there isn't community spirit and people only hang around with their chosen buddies, the end result is a dormitory.

THE RIGHT SIDE

CHRISTOPHER COLE



"I lived in a dorm, and this is no dorm," said a blissful President Henry at the grand ribbon-cutting of the Park Avenue Pod Villas. That may be the case with a new building that looks like the Marriott Marquis compared to other living quarters on campus. But most of the other places to live at GSU haven't half-earned the label of "residence hall," and I'm going to keep on calling them dorms.

The "residence hall" I chose to inhabit was a place where drunken brawls broke out at four in the morning. A place where the walls were so thin you could hear faucets dripping in the next area code. A place where someone left dead fish in the handicapped bathtub over the weekend while the janitors were gone. Sure, it was fun sometimes, but let's face it—it was a dorm.

Before I'm accused of negativism, please note that there are a few benefits to living in dorms. If

you forgot to set your alarm so you could get up for class, someone blaring Metallica was sure to wake you up (this tends to be less helpful on the weekends). And the standing water outside the shower stall was sure to get your feet squeaky clean if you missed them with the soap.

Dorm life was usually pretty good. There was always someone to socialize with, from the burnout who lived down the hall to the coed who lived across the street. There were times we all got together, like when the Braves made it to the Series and the whole thing came to us live on the big screen in the commons room. But come on, for most of us there was no "residence" to it; we lived in the place a few months and then it was time to get off-campus and live with our friends.

All of those feel-good programs, funded by the university to promote community involvement, weren't worth a dime be-

cause it's too hard to keep people from partying among themselves. They only sparked interest if the subject matter included sex or drugs.

Boy, have I become a cynic. But I just think money could be better spent. I didn't care about passing time with a bunch of people that I'd never be compatible with, and neither did anyone else. You figured out who among them you liked, and you developed friendships with them. The wide variety of people living in a dorm made complete harmony impossible.

It goes to the heart of why the "beauty of diversity" euphoria spreading across college campuses everywhere is the most annoying trend of the 90s. And it explains the vicious vexation of political correctness. Calling a dorm a "residence hall" is like calling a garbage man a "sanitation engineer." They're not the same thing.

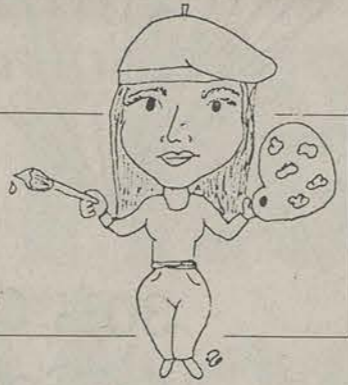
So don't let your R.A. or someone else out of the housing department finagle you into calling those buildings "residence halls." All you're doing is lying to yourself and those who are naive enough to believe there's something special about those concrete walls.

Besides, "dorm" is a whole lot easier to say.

It's time for new Foy art

ILLUSTRATIONS

TETH BURNS



Georgia Southern University takes great pride in its campus. The grass is always cut, the shrubbery is always trimmed nice and neat, and the sidewalks are clear of leaves and dirt. Each area even has its own unique characteristics. The Russell Union has a Rotunda where students like to gather between classes to socialize. A lovely fountain is located in front of the Blue Building and the Henderson Library overlooks the Lakeside Pond.

And then there is the Foy Building with its abstract collection of rusty, dirty, tacky-looking iron art. Who's bright idea was it to build this art out of a rustable material and then stick them outside where they would be subject to rain and weathering? As an art student, it is embarrassing to be represented by those heaps of rust. They make the Foy Building look like a scrap yard.

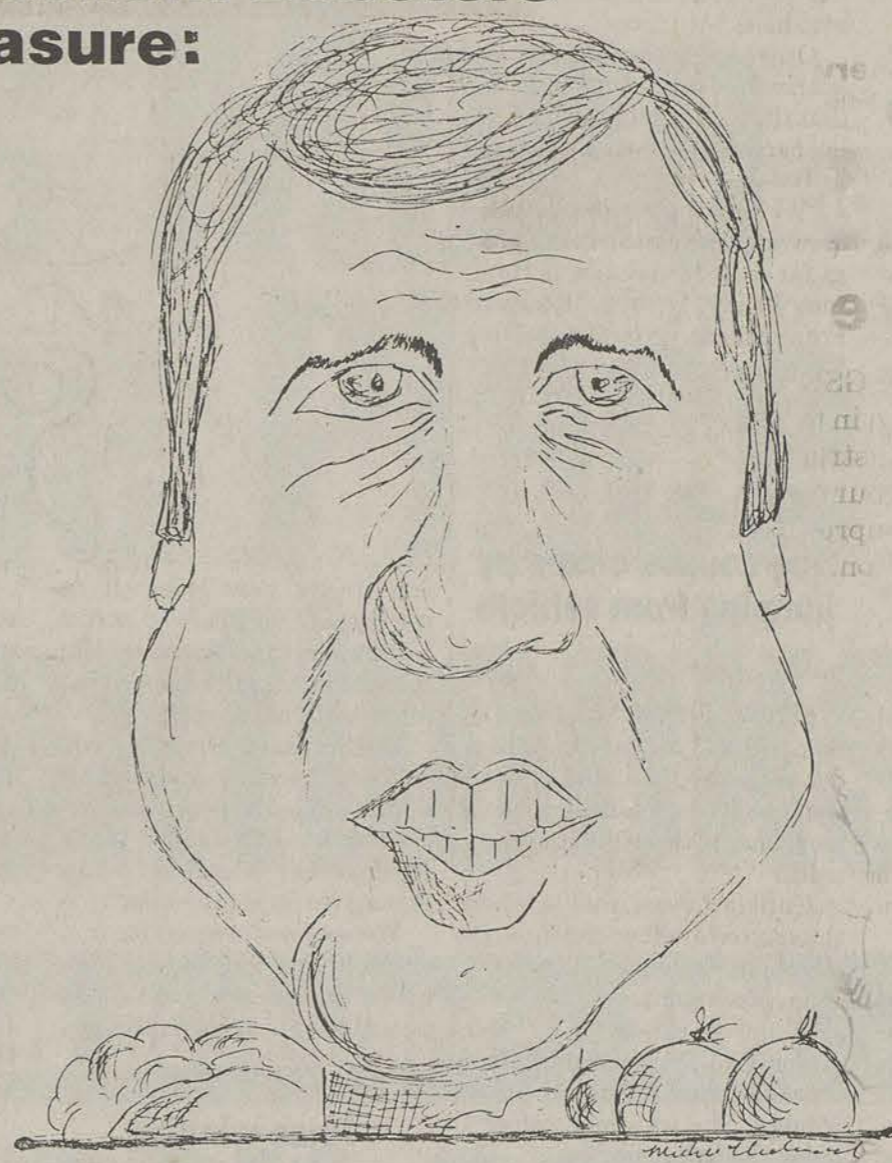
I know that Georgia Southern is mostly a teaching, nursing and

technical school and that art is not one its main areas of interest, but we are still part of the campus and if you are going to take pride in something, you should take pride in the whole thing.

Why not throw away those scraps that are falling apart anyway and put something there that can take everyday weathering a little better like wood or plastic. The Foy Building is not that old (it was dedicated Nov. 4, 1967), but with those iron sculptures around it, it looks like it should be condemned.

If Georgia Southern wants to spend anymore money, they should spend it on getting rid of the iron art around Foy and work on getting something a little more attractive to replace them. Make it a project for of the art classes. Get the art department to sell some of the students' works to raise money for the project. Do something. Anything. But whatever you do, get rid of the iron works.

Current Southern Boosters dining pleasure:



Football Coach Tim Stowers on a silver platter

Backtalk

In an effort to allow students, faculty and staff the chance to "talk back," *The George-Anne* runs its supplement of "Backtalk," "Backtalk," which will appear in the opinions section of this student newspaper, will run without recognizing the writer's name. The purpose is simply to give more freedom. Entries may be submitted by mail at Landrum Box 8001, or by dropping by the G-A office in Williams Center room 223. You may even fax a "Backtalk" to the G-A at 871-1357. The G-A retains the right to refuse the publishing of any "Backtalk" entries.

LETTER AND SUBMISSION POLICY

The George-Anne welcomes letters to the editor, story submissions and guest columns from people both inside and outside the Georgia Southern University Community. All copy submitted should be typed (double-spaced, please), preferably on Macintosh disk in Microsoft Word or Microsoft Works format. All submissions must be signed and include a mailing address and phone number for verification. The editors reserve the right to reject any submission. There is no word limit on submissions. A writer may request to remain anonymous. However, it will be the editor's decision whether or not to print the name. Submissions are run on a space-available basis.



Backtalk

Do sorority girls really have to sing those songs and frolic around like displaced fish?

Why do we start school at the end of a week? Monday sounds pretty good to me.

Let us note that Sept. 10, 1994, was the worst day in GSU athletic history and possibly the end of Tim Stowers' career here.

Does everybody who comes to Southern have to own a car? It seems like they do because I sure as hell can't get anywhere.

The lights at Paulson may make it cooler, but it doesn't make us win.

I noticed they drained the beautiful fountain again. I think they should leave it that way. The empty fountain could now be used as a skateboard rink.

Why don't people think about their responsibilities until it is too late?

I think that Nick Henry was the man that posed for the Lucky Charms box leprechaun.

I need TP for my bung hole. Huh, huh, that was pretty cool. Come out with your pants down.

I am fair. I am an equal opportunity hater.

I think that when the national anthem is sung people should take off their caps to pay respect because you do live in this country.

If this is the "Year of the Student," shouldn't we get to go to school free of charge.

When the hell is our Eagle mascot going to get a name?

The Communication Arts Building still needs those pink flamingos.

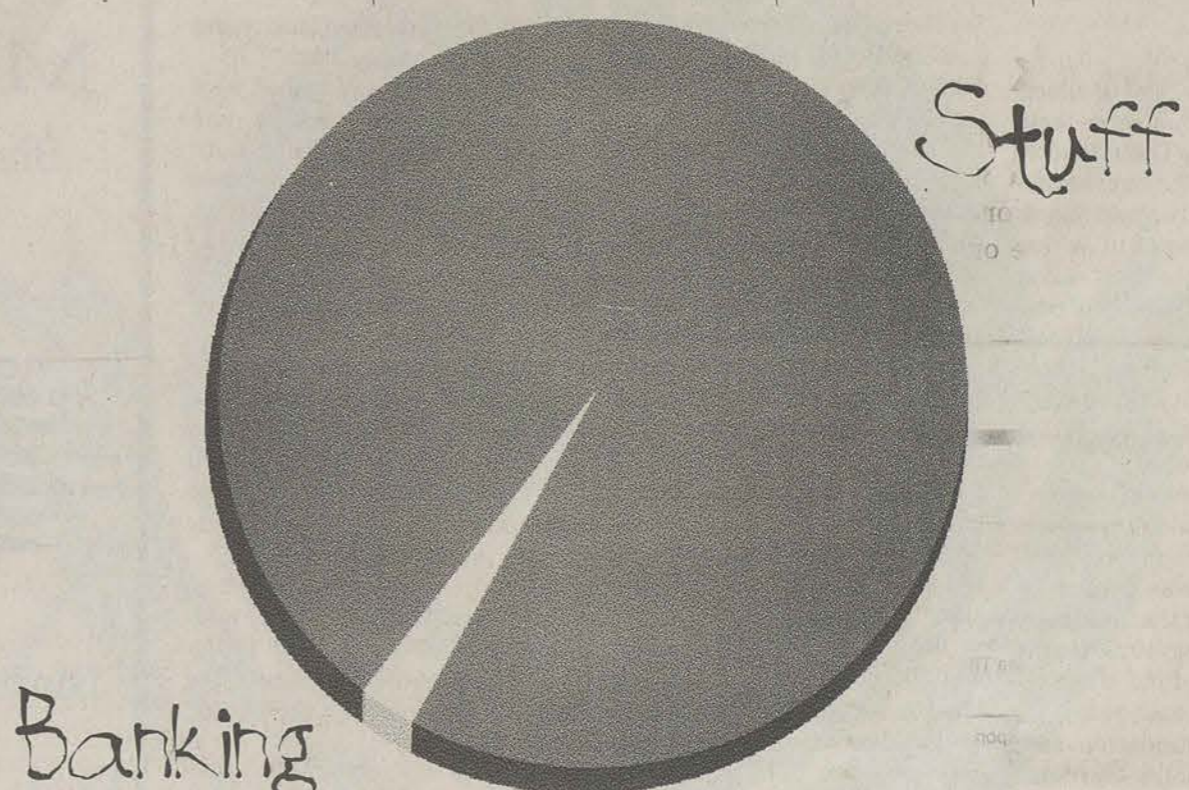
If our football team practiced as hard as the band does, then maybe we could win a couple here and there.

I wish we all had pretty buildings like the College of Business Administration and College of Technology.

I really like the mosquito catcher located on the side of the Williams Center. It is that little touch of class that counts.

I sure am glad the bypass is completed. Now I can drive all the way around this city which has no clubs to party at.

WE BASED THE WACHOVIA COLLEGE ACCOUNT ON THE COMPLICATED PRINCIPLE OF STUDENT TIME MANAGEMENT.



NO HASSLES. NO KIDDING. OH YEAH. FREE CHECKING.

We created the Wachovia College Account specifically for the student who has better things to do than worry about banking. Our College Account includes use of Wachovia ATMs at no charge and the Wachovia Banking Card with Visa Check (it looks like a credit card but works like a check). Other features include your own credit card, a savings account, overdraft protection, and get this, free checking. Stop by your local Wachovia branch to set up a hassle-free College Account. After all, there's more to life than banking.

WACHOVIA

1 Ohio

Millionaire advertises for wife on billboard

The Associated Press

COLUMBUS, Ohio — An anonymous advertiser is hoping he can stop traffic long enough for some woman to notice him. Or at least draw her attention to his wealth.

A billboard on U.S. 33 on the city's west side reads: "Millionaire Looking for a Wife! Ages 35 to 45." The sign, between the Franklin County engineer's office and "A" Plumbing, lists a phone number.

The number is for an automatic voice-mail service. A call made early today was answered by a recorded female voice asking for information about: religious preference, age, occupation, education, number of times married, number of children and ages. The voice requests a recent photo.

Callers are told to send the information to a post office box in Columbus. The ad, which was posted Tuesday and faces eastbound drivers, is the only one of its kind in Columbus, outdoor advertisers said.

"We only put up one, and it will be up for about a month," said Rick David, sales manager for Donrey Outdoor Advertising.

David said he met the man who paid for the ad, but cannot reveal his name.

"We were kind of kept in the dark," he said. "I don't know

who he is."

Other agencies said they have not received similar business and that the only other billboard-using bachelors they knew of were in Texas.

"We've had advertisements for anniversaries and birthdays, but as far as personal ads, nothing too crazy," said Richard Frankenberg, account executive for Whiteco Metrocom Outdoor Advertising. "That's about as nuts as you get — asking for a wife."

2 Indiana

Dog causes chaos by jumping from vehicle

The Associated Press

CROWN POINT, Ind. — Samantha, a 3-year-old Labrador retriever, has always been well-behaved while riding beside her owner in the cab of his dump truck.

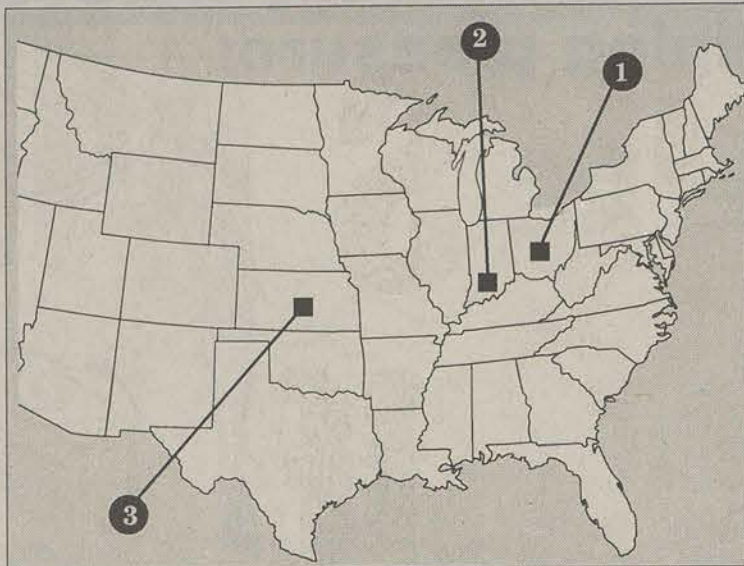
Until last week, that is, when she spotted another dog through the open window and started a chain of accidents.

"I never expected it," her owner, Paul Wilson, said. "All of a sudden she darted out of that window. She was gone before I knew she was gone."

The 78-pound dog landed on Troy Weberg, who had the misfortune to be on a lawn tractor near the edge of the road, cutting his front lawn.

"She hit him square in the chest and knocked him off his lawn mower," Wilson said.

Weberg and Samantha were rolling in the grass as the rider-



less tractor kept going. It careened onto the roadway, struck a 1992 Mercury driven by Kim Rimkus and finally stopped in a ditch north of the road.

Wilson said Rimkus, who watched the whole thing, was so dumbfounded he nearly ran into the back of Wilson's truck. Rimkus' car sustained minor damage to its right fender.

Weberg was treated for injuries at St. Anthony Medical Center and released. Samantha appears to be all right, Wilson said.

3 Kansas

Prize-winning pumpkin weighs 402

The Associated Press

HUTCHINSON, Kan. (AP) — The prize-winning pumpkin at the Kansas State Fair could make one big jack-o'-lantern.

At 402 pounds, Doug Bush's pumpkin dwarfed the runner-up, a measly 164-pounder.

The Melvern man started the pumpkin — now the holder of a state fair record — in a greenhouse from an Atlantic Giant variety seed. He transplanted it outside on May 13, and by July 30 the infant pumpkin appeared on a 75-foot vine.

It gained about 11 pounds a day.

"It almost grew before your eyes," Bush said, noting that the pumpkin's girth grew about an inch a day. Once it reached 100 pounds, Bush applied Miracle-Gro plant food to the pumpkin each week.

He credited the weather and good luck for helping his pumpkin prosper.

But how do you get the fruit to the fair? Teamwork and tarp.

Bush and four other men rolled the pumpkin onto a tarpaulin, which had handles sewn to it. The five men then heaved the pumpkin into the back of a pickup truck for the drive to Hutchinson.

Sylvania Jewelers
125 North Main Street
Sylvania, Georgia 30467
(912) 564-7446

**30% OFF ALL
14k Gold Jewellery
with lifetime warranty
with this coupon.**

DEADRA FROST - Manager RANDY CHILDS - Owner

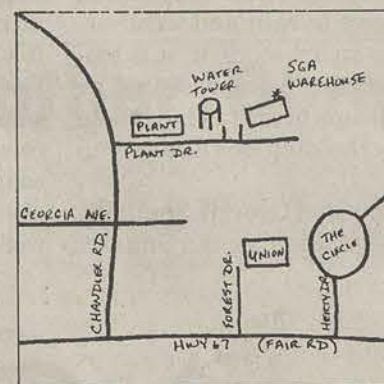
NEED A REFRIGERATOR?

The Rentals Manager will be at the SGA Warehouse on:

Tuesday, September 20
10:00 a.m. - 12:00 p.m.

Wednesday, September 21
2:00 p.m. - 4:00 p.m.

Saturday, September 24
2:00 p.m. - 5:00 p.m.



Refundable Deposit	\$20.00
Rental Fee per Year	\$40.00

For additional information, contact the Russell Union -- 681-0399

Fundraiser exceeds goal



By Stacy Jordan
Staff Writer

Approximately 150 Bulloch County citizens volunteered their time to be "True To Their School" for the 1994 Day for Southern.

This year's event, held Sept. 13, marked 21 years in which Bulloch County has been called upon to support a variety of programs not funded by the state.

Since 1990, A Day for Southern has served as a joint venture between the GSU Foundation and Southern Boosters.

At the same time, GSU undertook its first capital funds project called a "Campaign for Excellence." The goal was to raise 15 million dollars for the university in five years. The groups use the money raised to fund their respective budgets each year.

"The GSU Foundation supports the Magnolia Gardens,

Southern Pride Marching Band, and the Bell Honors Program," Acting Director of the foundation Jeff Delk said.

Athletic scholarship and facilities also get a boost through the fund-raising effort. The main goal is to collect unrestricted dollars.

"Both the Southern Boosters and the Foundation's budgets are based [on this]" Southern Booster Chairman Julian Deal said. "Unrestricted donations are those made by donors who do not specify where their contribution goes."

"Unrestricted dollars are our life blood and the way we function," Deal said.

"Before the Day for Southern, \$14,350,000 had been raised," GSU Vice President Department and University Relations Perk Robins said. "Of that total,

\$1,000,000 came from faculty and staff, active and retired."

The event was kicked off by a volunteer breakfast in the Russell Union Ballroom. Volunteers received their packet and met other team members. Day for Southern Coordinator Marilyn Bruce gave a brief orientation information session to the volunteers.

Robins issued the volunteer charge, which was to reach the goal of \$650,000. If raised, this would match the amount needed to fulfill the 15 million dollar campaign for excellence, in four years instead of five.

Volunteers returned back to the Union for lunch and by mid-day \$522,659 was raised. Donations were received up until the victory celebration in the Lupton Building.

Good with English and know a little about journalism? Then apply for a copy editor position at the G-A in Williams Center room 223.



Moved and Improved!!

Blanche's has moved to its Expanded Location inside Landrum next to the Mail Center.

All New!! Salad Bar
Meatball Subs
A La Carte Items
Additional Seating

Blanche's will continue to serve your favorites—

Deli Sandwiches and Subs • Chicken and Tuna Salad Sandwiches • Fresh Salads • Fresh-Baked Bread • Pastries • Cookies • Danish • Muffins • Brownies • Cheesecake • Ice Cream Sundaes • Waffle Cones • Banana Splits • Frozen Yogurt • Milk Shakes • And Much More

Hours: 7:00 a.m.-8:00 p.m. Monday through Friday
Dine-In or Carry-Out

Blanche's is a unit of GSU Auxiliary Services

the DIET CENTER WORKS!...

408 S. Zetterower Ave. 489-8377

Start losing weight today with a diet so successful, it's worked for more than four million people. On the Diet Center program you can lose pounds and inches safely, without feeling hungry or frustrated. With our Gift Certificate, what have you got to lose?

Get serious, call Diet Center.

Free Consultation

Diet Center Gift Certificate (New Clients)
for: _____
from: the Staff at Diet Center®
\$25
Welcome to Diet Center! Please present this certificate at your Diet Center consultation. Good toward any Diet Center Reducing Program. Coupon expires Oct. 15, 1994. NOT TRANSFERABLE. NOT VALID ON FOOD PRODUCTS.



Jim Hanger lost 75 pounds. Anne LaFever lost 95 pounds.

There's More Than One Place To Buy Textbooks

Don't Get Locked Into One Bookstore—SHOP...

COLLEGE BOOK STORE

► **We accept all ATM cards—Don't get snared by "Eagle Express"**
If you need a debit card—go to the bank and get a REAL debit card—they're accepted almost everywhere on campus, at home, and around the world, plus your money will probably earn interest.

► **We'll reserve your books if you'd like**
You'd probably rather shop to make sure you're getting the best deal

CHANDLER ROAD NEXT TO DINGUS MAGEE'S

NEW AND USED TEXTBOOKS • SCHOOL SUPPLIES • GSU CLOTHING

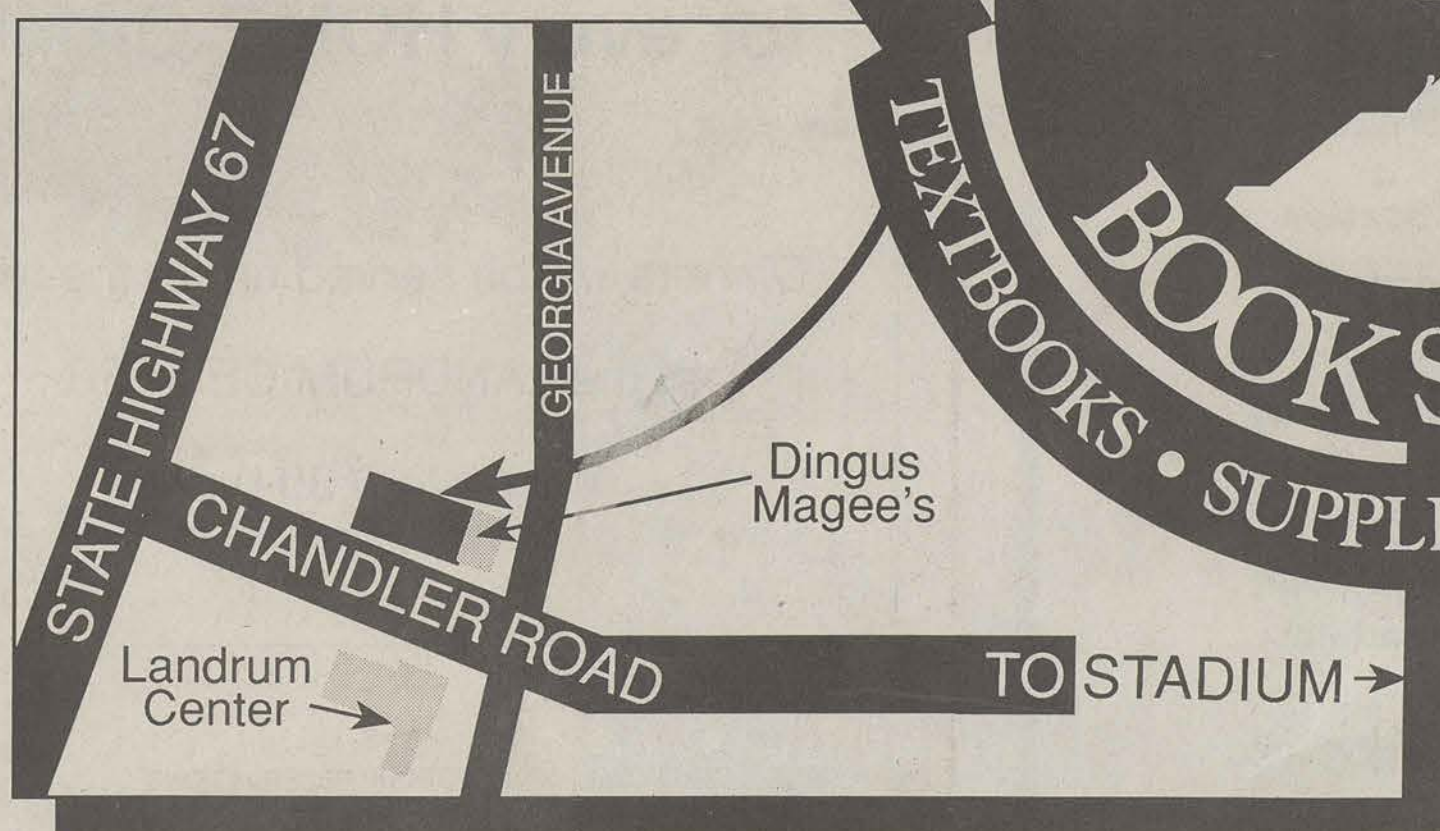
PACKAGE MAILING SERVICE (UPS)

SPECIAL BOOK ORDERS

DORM SUPPLIES

COPY SERVICE

FAX SERVICE



681-6295

"We Buy & Sell New and Used Books Anytime"

Restaurant changes offer different choices

By Chris Sherwood
News Editor

The best way to describe food services this year is change.

Most students have noticed the changes at Landrum and Blanche's, but those aren't the only changes.

This year is "The Year of the Student" at GSU, and the food services department have taken steps to improve the quality of service and food selection.

One of the biggest changes is the moving of Blanches into the old Landrum Cafeteria.

The Landrum Cafeteria will still be open to offer the all-you-can-eat style buffet according to GSU Food Services Director Tom Palfy.

"The all-you-can-eat style cafe is a dying breed and it's kind of like an albatross around food service directors' necks," Palfy said. "We have kept Landrum available, but we have moved Blanches in so it can serve more people."

Blanches will have a new salad bar, which will be the divider between the two. The salad bar will remain available for Landrum, but it will be a one trip bar for Blanches.

"We are trying to make Blanches into more of a C-Store

concept (convenience store)," Palfy said.

Blanche's Cafe Manager Judy Connelly said they would offer candy, gum, Mistic drinks, chips and popcorn also this year.

"We have a lot of students who would like a couple of pieces of chicken, but don't want to pay the \$3.50 for it as they would with Landrum, so we will be looking to expand Blanches with a hot item like that for an a-la-carte deal," Palfy said. "One of our fears is Blanche's will lose some of its ambiance, so we will add some things to hopefully retain that."

Landrum will have an all new menu for this year according to Landrum Manager Mary Woods.

"Every day we will offer Chicken, a vegetable, a low fat item, a taco bar, a baked potato, buffalo wings and a made to order omelet," Woods said. "Sometime this fall we will offer a Southern Walk express and oriental entrees."

Another added feature this year for food services will be the addition of a free refill on drinks. Each customer will receive a wooden token which can be used at any time or any restaurant.

"We've never done refills like this and we had a problem with

proving people had purchased the drink, so now when someone buys a drink they will receive the token," Palfy said.

This year, the food service department will also allow students to use their 22 oz. mugs they purchased last year.

"We will extend the expiration date of August 1994 on the cups to August 1995," Palfy said. "We didn't see the point in ordering more cups, so we will allow the students continued use."

A new hot dog specialty store is now available in the Union. It will offer over 25 hot dog, potato combinations.

"We will have 28 different varieties of hot dog combos and five or six potato combinations," Palfy said. "They are all very nice combos, and we will also offer a big potato for breakfast."

In the near future, GSU will look to the branding franchising.

"The move of the future is to go to branded service," Palfy said. "Things like Taco Bell, Freshens Yogurt, Pizza Hut, those type places are what colleges are looking at adding on their campuses."

Currently there is a search for a yogurt store to be located on campus.

"We would like to get Freshens to open a store here, but



James Hill

Blanche's has now expanded its dining facility and its menu to better serve students. Landrum will still offer its all-you-can-eat buffet.

currently we are in the bidding process," Palfy said. "The problem you have with getting a branded store to come, is we don't want to open one that is located in town. It is not our desire to compete with something which

exists in town."

A goal of the future for the food service department is to get the Eagle Express back on the registration process.

When the Eagle Express was taken from the registration process,

a decline was noticed in the number of people who used it according to Palfy.

"We have noticed that sharp decline, and we are trying to restore the Eagle Express to the registration," Palfy said.

IN THE BORO

Jones hoping for November referendum on legal liquor

By Chris Sherwood
News Editor

The petition for a liquor referendum currently has around 1,500 signatures according to Jarell Jones, a spokesman for the Committee for a Progressive Statesboro.

"We need to get the 2,100 signatures by the end of September, really, so we can get the referendum on the November 8 ballot," Jones said.

"This isn't really a question of being for or against liquor, this is a question of people having the

right to cast their vote and participate in the political process."

"I talked to both political parties on campus and the SGA at the end of last year, and they were interested in trying to organize a project," Jones said. "I am hopeful they want to get involved in the political process."

According to Jones, several businesses have expressed interest in opening restaurants in Statesboro.

"I've been contacted by several chains that have discussed the possibility of coming to

Statesboro pending the passing of the referendum," Jones said.

"I'm really not at liberty to give you there names, but several have contacted me."

The owner of Wet Willie's in Savannah stated that he really didn't know much about Statesboro as far as demographics are concerned and whether the population could support an operation here, but he said that Statesboro would be a place that he would look at if expansion was in his plans.

He added that it's a what if

question, and he really couldn't say anything right now about it.

In February, the Statesboro-Bulloch County Chamber of Commerce stated their position is to fully support the calling of a public referendum for the purpose of allowing the citizens of the City of Statesboro to determine, through the democratic process, the legality of the sale of alcohol in the form of liquor within the City of Statesboro.

According to their official statement, while not endorsing the consumption or sale of alco-

hol, they do maintain the position that the allowance of said sale and/or consumption should be determined by the people of Statesboro and Bulloch County.

The Statesboro community has been divided on the issue from the beginning.

"I believe people in the community support the idea of economic growth and the referendum, but they are afraid of the stigmatism which is attached to a mixed drink referendum," Jones said.

If the 2,100 petitions are not

collected in time for the November vote, the next chance for a referendum will be in March according to Jones.

An employee of Johnson's Beer and Wine on Fair Road stated that he believed passing the referendum would have many positive effects.

"As far as benefits you would have to look at the extra revenue through the taxes which would be generated from the sale of liquor, and of course it would benefit our store," Johnson's employee Chris Logan said.

WHY SETTLE

For A Prepackaged Snack

When You Can Have

Something Hot and Fresh

Made Just For You?



The Lakeside Cafe & Union Station
Are Open on Sunday

Union Station: 11:00 a.m. - 9:00 p.m.
The Lakeside Cafe: 4:00 p.m. - 10:00 p.m.

Let us fix you something hot off our grill, or maybe a deli-fresh sandwich.

Just the way you like it.

Contract Meal Plans, EAGLEXPRESS, Cash, Check,
Mastercard and Visa Debit Cards and Credit Cards are Accepted.

The Lakeside Cafe and Union Station
are units of GSU Auxiliary Services

GEORGIA SOUTHERN UNIVERSITY

TAILGATING



NEW FOR 1994

SOUTHERN TAILGATE DINNERS

for every HOME GAME

Dinners will be served under the tent
at the LANDRUM CENTER

4 p.m. - 6:30 p.m.



Call (912) 681-5201 for GROUP RESERVATIONS
MEAL CARDS ACCEPTED



HOPE

Continued from page 1A

gia, the rate of those being dropped from the program is over twice as high as at GSU. Ray Tripp, the university's director of student financial aid, said "just over 60 percent" of HOPE recipients at UGA lost their scholarships this year.

"We weren't expecting it to be that high of an attrition rate," Tripp said. "But after only the first year, we don't know exactly what to expect ... we were disappointed and surprised. That was higher than we anticipated."

Tripp said he had "read somewhere" that the Board of Regents revealed the statewide HOPE attrition rate as 65 percent. The Regents office did not return a telephone call by press time to confirm the statistic.

Troy Martin, technical analyst for the HOPE agency, said his office in Atlanta had not conducted a study to determine a statewide attrition rate.

"The first year is a founda-

fluctuation after one year to make a report ... we will make one after two years."

HOPE, which stands for Helping Outstanding Pupils Educationally, was first funded under Miller's 1993 "Lottery for Education" budget and was expanded this year. Miller's press secretary, Rob Rickles, was unavailable to comment on the statewide attrition of HOPE recipients.

Nolen said he was "disappointed" to learn of so many GSU students losing their scholarship, but offered a possible explanation.

"It's an unbelievable program, and no other state in the country has anything like it, but many students who earned just a 3.0 in high school are not likely to make it in college," he said. "That's the difficulty of this situation. Some of them will really, really have to buckle down to make a 3.0 at the college level."

G-56

Continued from 1A

"A residence hall is a planned community where a student can develop academically and personally."

The plans for the new residence hall began in 1985 according to Auxiliary Service Director Larry Davis said.

"When we first found out about the federal loan program we attended workshops on how to apply for the money," Davis said. "We knew then we would have to build a new residence hall to help meet our ballistic growth."

With the older residence halls on campus, Davis said there was a concern to replace many of the aging halls. The construction of another residence hall will begin sometime in 1995.

A closer look at G-56

*The two building complex contains 246 beds and offices for the Department of Housing.

*One 93 room building known as "The Pod", has three floors of rooms arranged in clusters, or

Pods, around common living areas. Only residents of each pod have access to their area.

The Pod: A three story building which includes 87 double rooms and six single rooms arranged in six sections. Each of the six section, two per floor, has two community baths, a television lounge and a study room.

The Commons: The first floor of the building consists of public areas: a large lobby, a small activity room, a small computer lab, the hall staff office, a laundry room, a snack bar and the Department of Housing's new offices.

The second floor has 12 rooms with semi-private baths, two rooms with private baths, an efficiency apartment, a television lounge, a study room and a kitchen area. The third floor is arranged in the same pattern, but has 16 rooms with semi-private baths.

ON CAMPUS

Planning begins for MPP expansion

G-A Staff Reports

An expansion of the Math-Physics-Psychology building, which was approved by the Board of Regents at a meeting this summer, is slated to begin sometime in November.

"The July session of the Board of Regents approved the addition," Vice President of Academic Affairs Harry Carter said. "The reason we got the July Board to approve it was so we could select an architect in time to begin the work in November."

The vote will allow for an additional 23,000 square feet to be added to the Department of Mathematics and Computer Science.

The Georgia General Assembly, which approved the \$3 million last winter, approved the appropriation for the construction to be used for this project in this vote.

be approximately 30 to 40 feet apart from the existing math-physics building on the southeast side," Director of Facilities Planning and Space Utilization at GSU Philip Hodge said. "It will be three stories tall and will

24 offices and one computer lab in the new building," Hodge said. Some faculty/staff parking spaces are currently located in the area of the new building. The plan is to have a new parking area which will have a couple

would have an access to the lot between Fair road and the Southern Booster office."

During the summer when the announcement was made about the additional building, a date of November was set as the hopeful construction date, but due to a question over the use of prison labor, the exact starting date is still unknown.

"They have been busy and haven't been able to meet to discuss the use of prison labor," Hodge said.

"The legislature provided the \$3 million and hoped we could use the prison labor, but that has complicated the issue," he said.

The scheduled construction probably won't begin until the early part of next year according to Hodge.

"It will probably be several months after the original target date of November before we can bid out the construction and ac-

"THERE WILL BE 14 CLASSROOMS, 24 OFFICES AND ONE COMPUTER LAB IN THE NEW BUILDING."

— PHILIP HODGE
PLANNING DIRECTOR

connect to the existing building via walkways and bridges."

The plan is for the new math and computer science wing to have its heating and ventilation system connected to the one in the existing math-physics building according to Hodge.

With the new building, numerous classrooms and teachers offices will be added for the math and computer science department.

hundred spaces available open prior to construction.

The outline of where those parking spaces would be located has been drawn up and sent to the Board of Regents.

"We have sent a conceptual plan to the Board of Regents, which simply states where the building might sit and where the parking spaces would be," Hodge said. "The new parking would extend toward the wooded area

Fall '94

Are You Ready?

EAGLEXPRESS

& Contract Meal Plans

✓ PENCILS
✓ BOOKS
✓ PAPER
✓ EAGLEXPRESS

Special photo.

Experience one of the most exciting courses offered at GSU and receive a PE credit. Learn basic rappelling and climbing skills in MS 101 Mountaineering. Then put your skills to use on a weekend rappelling trip to Mr. Yonah in north Georgia. Come see how easy it is at the rappelling demonstration off of the Henderson Library on Thursday and Friday between 11 a.m. and 1 p.m.

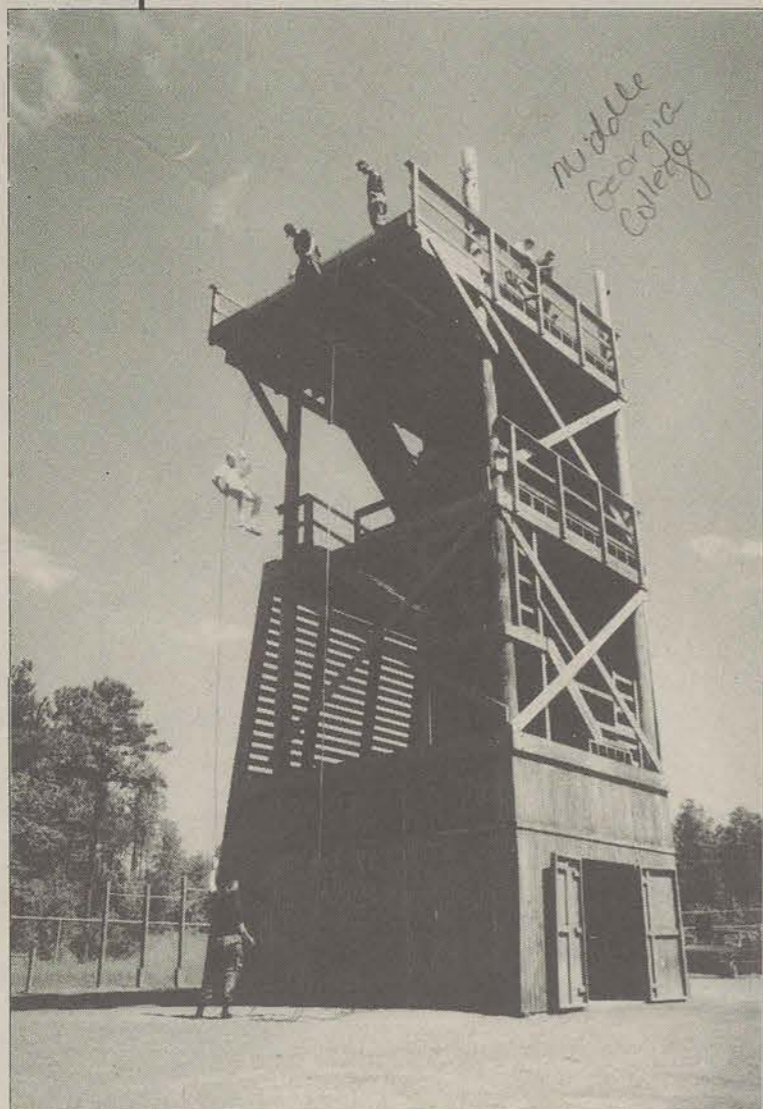
EAGLEXPRESS

- Cash, Checks or Credit Cards Accepted
- No Minimum Deposit Required
- 4 Convenient Deposit Locations
- And, Toll-Free Number for Parents - 1-800-767-7666

Contract Meal Plan

- \$3.50 Value per Meal
- No Time Restrictions on When Meals are Eaten

Drop in to GSU



Special photo.

Experience one of the most exciting courses offered at GSU and receive a PE credit. Learn basic rappelling and climbing skills in MS 101 Mountaineering. Then put your skills to use on a weekend rappelling trip to Mr. Yonah in north Georgia. Come see how easy it is at the rappelling demonstration off of the Henderson Library on Thursday and Friday between 11 a.m. and 1 p.m.



SOME OF OUR STUDENTS ARE STAR PUPILS.

From 90210 to your zip code, safe motorcycle riding is essential. So take a Motorcycle Rider Course like Brian Austin Green of Fox T.V.'s Beverly Hills, 90210. You'll learn techniques that not only make you a safer rider, but a better rider as well. Call 1-800-447-4700 to be the star of your class. **MOTORCYCLE SAFETY FOUNDATION**

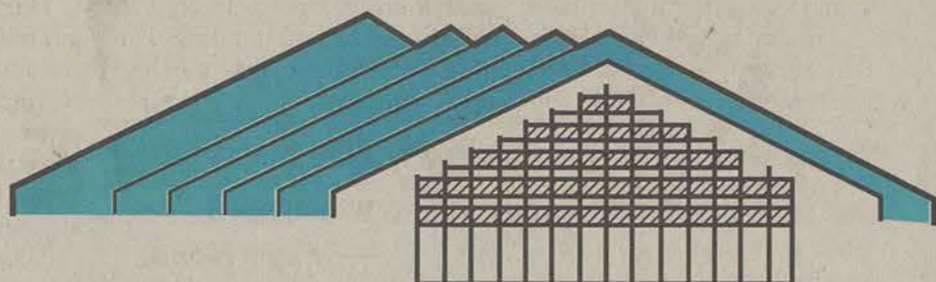
To Use These and Other GSU Services...

You Must Have a GSU I.D. Card...



Visit the ID Card Center in the Landrum Center Today!
Or, Call 681-5311 for Full Information.

From Our Roof to Your Roof...



GEORGIA SOUTHERN
UNIVERSITY STORE

We Welcome You 'Home' to the University Store Where You Will Receive The Best Customer Service In The House...

- Book Reserve Program
- Art Supplies
- Greek Novelties
- Snacks and Drinks
- Health & Beauty Aids
- Greeting Cards & Gift Wrap
- Cash Checks Up To \$50 / or Over Purchase Amount



Get a running start back to the University Store for Backpacks that are on the right track...

Our Backpack Values
are Out of This World



15% OFF On All Backpacks
at University Store

Offer Expires 9/30/94

Set the style on the Southern scene with Sweatshirts from the University Store...

Save Big on Stylish
Southern Sweatshirts



20% OFF On Sweatshirts
at University Store

Offer Expires 9/30/94



**GEORGIA SOUTHERN
UNIVERSITY STORE**

681-5181

School, Office, and Art Supplies
Gifts and Cards

GSU Sportswear, Greek Items, and Textbooks

Hours: M-F
7:45-7:00 PM
Sat: 10:00-4:00 PM

Football Saturday Hours:
Oct. 1, 15, 22 12:00-7:00 PM
Nov. 12 10:00-7:00 PM

We Accept



Personal Checks & Checks From Mom or Dad

Coming Up This Week in GSU Sports:

TUESDAY:	Men's Soccer vs. Brewton-Parker	2 p.m. at the GSU soccer field
	Women's Soccer vs. Brewton-Parker	5 p.m. at the GSU soccer field
THURSDAY:	Women's Volleyball vs. Furman	7 p.m. at the Hanner Activity Room

TALES FROM THE GRIDIRON

AARON SOLOMON

It's not over yet...

Stop whining! I know it is hard to handle, and to tell you the truth it kind of surprised me too. After the Eagles' little faux faux at the hands of West Georgia there are a lot of questions to be answered. Questions like: were they that good, or did we screw up? You can answer that question for yourself. All I can do is tell you what happened.

Ever since my editor told me I could write this column there has been a new found sense of hope on this campus. I can walk the hallowed halls of this fine institution and hear "Shhh! I am reading 'Tales from the Gridiron'." What could be more interesting than telling my fellow students about GSU football, and the occasional Super Bowl blow-out. Last year, I enjoyed writing about the team's triumphs, and of course the mild setbacks.

I am going to make a serious error that no sports writer or any journalist should ever do. (Cover your eyes John!) I am going to sugar-coat. I know that Coach Stowers was not at his best, and the team was being knocked all over the field, but when we used our weapons, we could not be stopped.

I never saw them contain our option, and when Joe Dupree ran the ball they never touched him.

In other words, we screwed up big time, but not because of lack of talent. We just did not use our weapons. It happens, and now there is nothing we can do about it. Except, of course, win the rest of our ballgames. Now that is easy for me to say, especially considering that I'm 5' 3" and spend the whole game in the press box.

Maybe that is why I sugar-coat our team's problems. I have never had the privileged of getting the snot knocked out of me on the football field. I have never stood on the side-line and called plays wondering what will happen to my job security when I lose a big game. Hell, I'm not even a journalism major. I am not even from Georgia, so why should I be telling Coach Tim Stowers what to do?

I do feel we were capable of beating Marshall. Stowers and the football team have been in a similar predicament. The team did get off to a 1-3 start in 1990 before winning 11 straight games and capturing our fourth National Championship.

Yes, there is a heartbeat; we do have a chance. It is not going to be easy, but it can be done. You know, I kind of felt like Winston Churchill when I wrote this column.

Although I do think Churchill would have kicked the field goal.

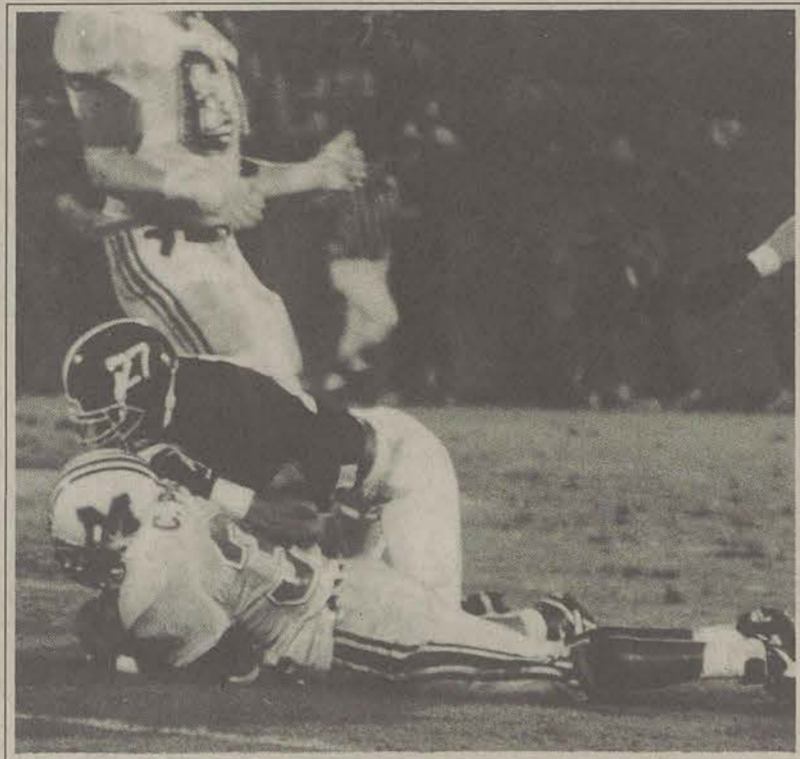
Part Two

I am currently surrounded by people debating about how they would coach your Georgia Southern Eagles. About an hour has passed since the loss to Marshall, and I am really pissed about my editor telling me to extend my column. It's late and I am in a bad mood.

The Eagles are 0-3, and the play-offs seem far away.

But that does not bother me. Stowers' play calling does not bother me. Over 100 yards of penalties in a game does not bother me. I know what this team is capable of doing. After looking at the schedule I am pretty sure that there is a heartbeat. What bothers me is the team's fan support. What else are you people doing that can keep you from coming to the game? You sure as hell can't be watching the Braves.

Top-ranked Herd tramples Eagles



James Hill

GSU strong safety Eric Thigpen puts the stop on Marshall running back Chris Parker, who ran for 157 yards on 35 carries.

Eagles drop to 0-3, their worst start since the team's inception in 1982

By Ronnie Swinford
Assistant Sports Editor

Lights or not, the Eagles had major problems trying to handle the Marshall offense, and fell to their chief Southern Conference rivals 34-13.

The last two home games have not been kind to the Eagles, who have been outscored by a combined 49-27. Again the vaunted GSU rushing game looked anemic and the passing game was virtually undetectable. The Eagles were out gained on the ground 206-163, with most of Marshall's damage coming from junior running back Chris Parker who gained 157 yards on 35 attempts.

The best Eagle carrier was junior slotback Marlow Warthen

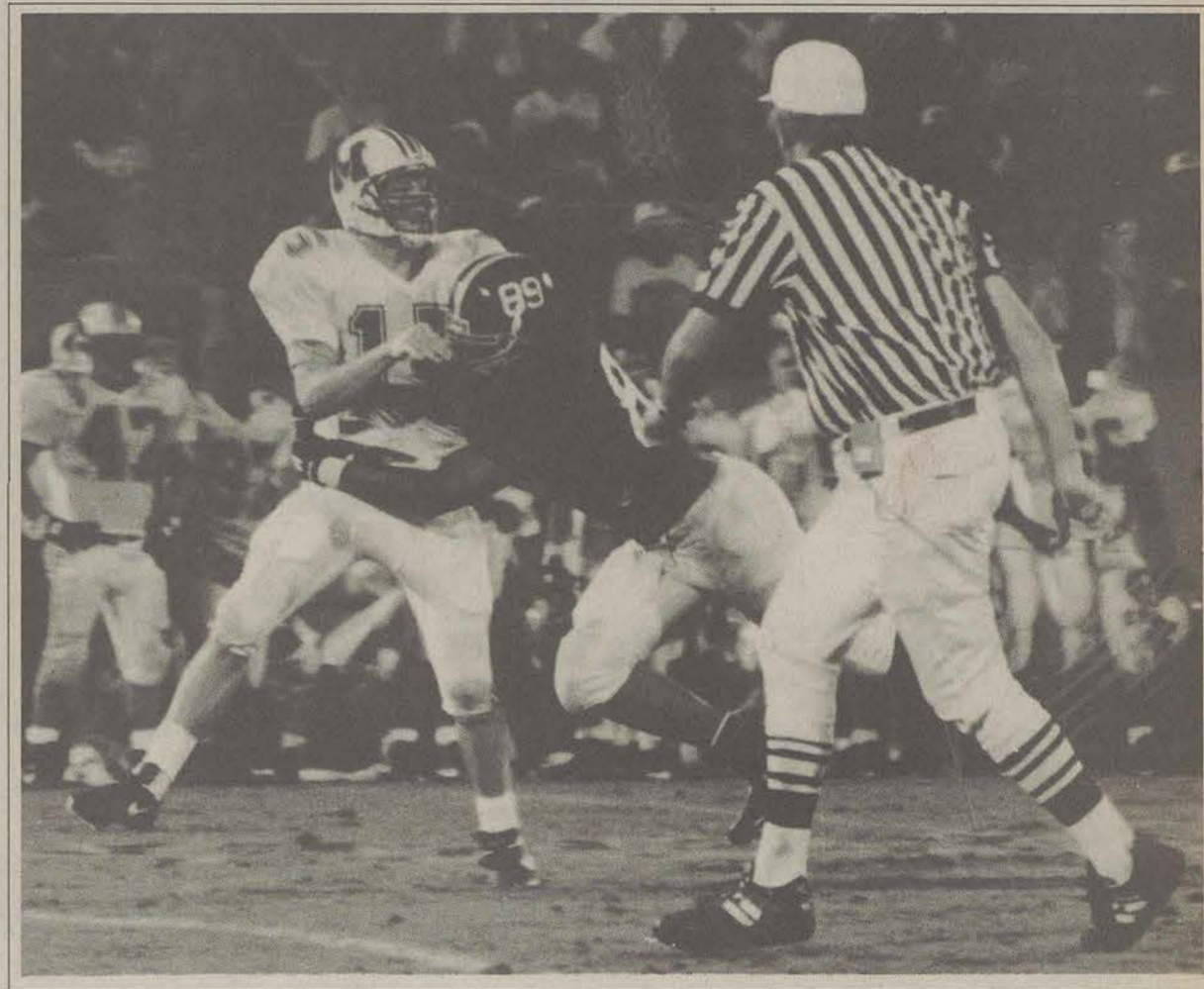
who gained 96 yards on just 10 carries.

The Herd, while not efficient, was effective through the air and managed to gain 192 yards in the air. Senior quarterback Todd Donnan just didn't make any big mistakes and with Parker in the backfield that is all he had to have for the win.

Freshman quarterback Kenny Robinson looked a little shaky in his first start for the Eagles. Kenny completed seven of 21 for 103 yards and two interceptions.

"Kenny made a few mistakes, but we are happy with his performance," said Head Coach Tim Stowers.

The reason for Robinson's surprise start was an injury to starter Joe Dupree during prac-



James Hill

Freshman defensive end Derrick Reeves puts a little bit of pressure on Marshall quarterback Todd Donnan.

tice. Stowers said that Dupree is scheduled to have arthroscopic surgery on his knee this Monday.

But the most influential factor in the game was the 130 yards of penalties that were charged to the Eagles.

"We have to eliminate the stupid penalties this week in practice," Stowers said. "The two penalties in the kicking game were not good to start the game."

The Eagles were just out-classed by the number-one ranked Herd. The only statistics that GSU led in were punts (8), yards per punt (34.8), and the afore mentioned penalties.

"They are the best team that we have seen this year, and I will probably say the same thing at the end of the year," Stowers said. "Chris Parker is the best running back in the nation at division I-AA. He could play in the Southeastern Conference and he will probably be playing on Sundays (in the NFL) later in his career."

"We were very happy to come into this stadium and pull out a win," said Marshall Head Coach Jim Donnan. "We have a lot of respect for this team (GSU) and to win a conference game anywhere is nice, but to win here is a good sign for our program."

"Our kids fought hard to come back after getting down early, and we are pleased with their effort, but effort does not always win ballgames," Stowers said.

With the loss to Marshall, GSU falls to an 0-3 start for the first time since the resurrection of the program in 1981. The loss also drops the Eagles out of the top twenty-five rankings and virtually destroys any hope of winning the Southern Conference unless Marshall steps on a few land mines along the road to the playoffs.

GSU's next game is next Saturday at 7 p.m. at the University of Tennessee at Chattanooga.

GAME ANALYSIS

Option offense must be used to produce wins

By Aaron Solomon
Staff Writer

The Georgia Southern Eagles are off to a 0-3 start, and there are many questions surrounding this losing streak. After the 34-13 loss to Marshall the question of whether or not the offense can score effectively becomes relevant.

Granted that this was Quarterback Kenny Robinson's first start, and Marshall is ranked number one in the nation. But, the offense that relies on the option should be more effective when it comes to moving the ball.

A concern on the offense in the game was whether or not they could get into the endzone. After Marlow Warthen picked up 31 yards and set up a first and goal at the Marshall two, it looked as GSU would score. They did, but it took a fourth and goal quarterback keeper to get the touchdown.

The Eagles' offensive highlight of the game was Warthen's 15-yard touchdown run.

"I had a great block by the fullback, and basically read the blocks and was fortunate enough

to get into the endzone," Warthen said of his run for the score.

The offense has to make plays like this the rest of season. The schedule is in the team's favor now that Marshall is out of the way. Warthen proved that the offense is capable of scoring, but the same effort that was given against Marshall has to be given against all of the Eagles opponents.

The offense must also concentrate on the time of possession. If the defense can get adequate rest their effectiveness is much greater. The defense made some big plays, but they probably could have done more with some rest.

An offense should rely on its weapons, and GSU has always been effective with the option. Running back Chris Wright was out of the most of the game with shoulder trouble, but Warthen showed that he can run the option.

There is nothing wrong with an effective passing attack, but 7-21 for 103 yards passing is not effective. The option has to be utilized. It is the one true weapon that this offense has.

QUITE A SHOCKER

Division II Braves scalp football Eagles 15-14

By Ronnie Swinford
Assistant Sports Editor

The Eagles were shocked on Sept. 10 by the Division II West Georgia Braves. The 15-14 loss dropped the Eagles record to 0-2 for the early season.

The Eagles were out passed by the Braves 248 yards to just 91. GSU did out rush the Braves 258 to 186, but they were plagued by the option football curse, three lost fumbles.

"We have been trying to pass the ball more, but we did not do a good job today," said a bewildered coach Stowers. "We got outcoached today."

West Georgia used their multi-set offense to dissect the Eagles defense for 434 total yards. Their leading player was tailback Felix Addo who gained 82 yards on the ground and then added 88 more on five pass receptions.

The Braves used two quarterbacks to baffle the GSU defense.

Mark Eldred was their starter, a transfer from Southern Methodist University, but he got knocked out half way through the second quarter with a concussion. The Braves then brought in fifth year senior Jay Cawthon who lead them to the win.

The Eagle standouts offensively were quarterback Joe Dupree who had 109 yards rushing on 13 carries and fullback Roderick Russell who had 67 yards rushing. Unfortunately the three lost fumbles — two inside the 10-yard line — killed any scoring chances. The last fumble happened on the Braves' one-yard line with :07 left showing on the clock in the fourth quarter.

"We were trying to score a touchdown, but we also were trying to run time off the clock so if we didn't score (the touchdown) then we could kick the field goal and get out with the win,"

Stowers said. "The fumble, however, ruined our strategy."

The defensive standouts for the Eagles were cornerback Brancis Williams who had 13 tackles and linebacker Paul Carroll with seven tackles and one assist.

The Braves' defense had six people with at least three tackles. Their leading tackler was middle linebacker Tim McClain with seven, including one for a loss.

"We were more concerned with trying to stop their running game," said West Georgia head coach Charlie Fisher. "We thought that we had a chance to win if we could force them to pass to beat us."

This loss, combined with the loss at Miami to open the season, puts the Eagles in a big hole to start the season. In 1990, the Eagles started off at 1-3 and won a national championship.

CROSS COUNTRY

Injury and illness hurt teams at first meet

By Chris Sherwood
News Editor

First year GSU Head Cross Country Coach Brad Simmons inherited two programs which were as different as night and day when he accepted the coaching position last spring.

Entering this season the women's program only lost one runner, Angie Stewart, to graduation. Five seniors, three sophomores and two freshmen make up the experienced squad. Among the returnees for the women is senior Heather Gordon, who was named the GSU representative for the NCAA

Woman of the Year competition.

The first meet of the year for both squads was the Western Carolina Invitational which was held on Sept. 10. Year in and year out, the WCU meet attracts such high powered programs as Clemson, UGA, East Tennessee State, Furman and Malone College.

"We only had three days of training camp prior to the race, so we were at a disadvantage because most of the teams there have raced a couple of times," Simmons said. "Also, the majority of the schools there are on the semester system, and they have

been able to train for a month so they were more race-ready than us."

In the women's race, injury and illness took their toll as only six of the ten GSU runners competed.

Heather Gordon was the top finisher, and despite battling a nagging injury she still finished the 3.1 mile course in 21:21. Freshman Melissa Burnette finished second for GSU in 22:12, followed by senior Melanie Jarvis (22:39), senior Gail McLeroy (24:01), senior Jody Lloyd (24:12)

CHANGES AROUND IN ATHLETIC DEPARTMENT

Bryant resigns as pitching coach

By Ronnie Swinford
Assistant Sports Editor

GSU lost a valuable baseball man this summer when longtime pitching coach Larry Bryant resigned.

Coach Bryant has been in charge of the Eagles pitching staff for 20 years. Bryant has gained a reputation as one of the best pitching coaches in the nation. Some of his students are Joey Hamilton who is a currently a rookie pitcher for the San Diego Padres and Paul Thornton who is currently playing in the Florida Marlins' system.

Bryant is resigning so that he can devote more time to his teaching in the Health Department.

Jack Stallings and his staff are in the process of finding a new pitching coach to take over for Bryant. In the interim assistant coaches Scott Baker and Buddy Holder will be in charge of the pitching staff when Fall practice begins Oct. 3.

Kirkland named new softball coach

By Ronnie Swinford
Assistant Sports Editor

Athletic Director David "Bucky" Wagner has announced that Kelley Kirkland will be the new head softball coach.

"My first goal is to win the Southern Conference," she said. "That is a lofty goal, but there is no reason that we can't attain it. This should be an exciting time for GSU softball."

Kirkland will replace Debbie Williamson, who left GSU in June with her husband Stan, who took the job of head ticket manager at the University of Houston. Williamson was replacing the retiring Bill Speith who was the only coach that GSU softball had ever had.

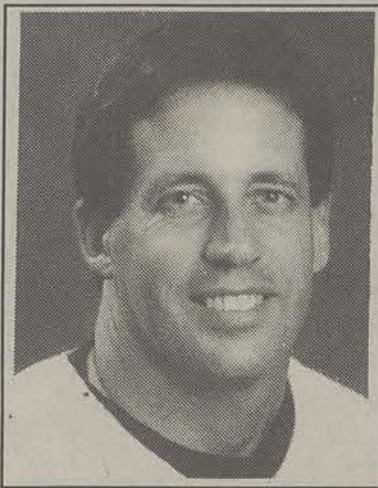
Kirkland came to GSU from Florida State University, where she served as a graduate assistant for the Lady Seminoles softball program from 1991 to 1993. FSU went to the College World Series in 1992 and 1993 and also hauled in the Atlantic Coast Conference title in 1992 and 1993.

Kirkland graduated from the University of South Carolina in 1991. She was a member of the 1989 College World Series team at USC which finished seventh. She earned her masters in physical education at FSU in 1991.

Wagner gives State of Athletics report

By Ronnie Swinford
Assistant Sports Editor

On Aug. 3, Dr. David "Bucky" Wagner gave his annual State of the Athletics report.



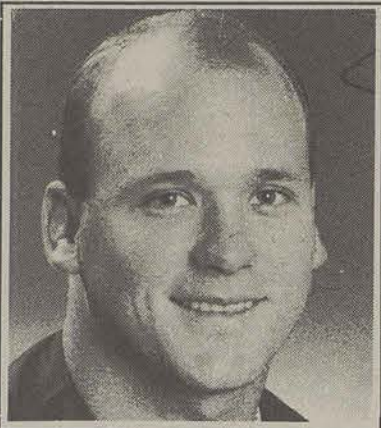
Larry Bryant



Kelley Kirkland



Dr. David A. "Bucky" Wagner



Todd Greene

the outfield to behind the plate at catcher.

Greene had a .294 average with 31 homeruns, 110 RBI's, along with 32 doubles, and 65 extra-base hits this season.

Greene also earned league Rookie of the Year honors.

The main points of the address are to inform the press of the accomplishments of the athletic department and the Southern Boosters.

One of the goals of Southern Boosters is to try to build as many of our facilities as possible with private funds. Examples are Paulson Stadium, Eagle Creek practice area, the Iron Works weight room, and the new baseball offices and locker room areas.

Another achievement is the formation of the largest I-AA football radio network in the nation.

The athletic teams' successes were discussed, especially the football, women's basketball and women's tennis teams.

They also explained the objectives for the next fiscal year. Some of the objectives are : to evaluate the night football experience, increase student involvement in all aspects of athletics, and also to improve student attendance at all events.

Former Eagle Greene voted MVP honors

G-A Staff Reports

Former GSU baseball Eagle Todd Greene earned MVP honors in the California League.

Greene has been given this honor for the second time in as many years, but not in the same league. Last year Greene earned MVP honors in the Northwest League last year and was named Baseball America's single A short-season "Player of the Year."

Greene has been moved from

The George-Anne... covers Southern sports like a cloud of gnats.

SOUTH GEORGIA

Fitness & Aerobics

"We Invite You to Join Us for the Fitness Experience of a Lifetime"

FREE TRIAL VISIT

With Coupon
Expires 11-30-94

\$60

Student Qtr. Rate
With Coupon
Expires 11-30-94

- Circuit Training
- State of the Art Cardiovascular Equipment
- Proshop
- Juice Bar
- Body Composition Testing
- Lockers
- Aerobics (Step, High, Low, Combo, Funk & Body Sculpting)

NO LONG TERM CONTRACTS

- Quarterly Memberships for \$60.00
- Monthly Memberships for \$25.00
- 6 Month Memberships for \$99.95
- 1 Year Membership for \$179.95

871-6660

TANNING MEMBERSHIP IS SEPARATE

1523

FAIR RD.

For long distance calls. Savings based on a 3 minute AT&T operator dialed interstate call.



1-800-COLLECT

The Polite Way to Call Collect

"Chewing gum while calling collect is as rude as dialing zero." Please use the space provided above to store gum for after conversation enjoyment. And always dial 1-800-COLLECT when calling collect. You'll save the people you call up to 44%.

NIKE FILA ASICS SAUCONY CONVERSE ADIDAS TIMBERLAND	<h2>SPORTS EMPORIUM</h2> <p>Statesboro's Largest Selection of Athletic Footwear</p>	REEBOK K-SWISS NEW BALANCE TRETORN SEBAGO KEDS KARL LANI
--	---	--

SPORTS EMPORIUM & GSU - A WINNING COMBINATION!

EASTPAK BACKPACKS

20% OFF

New Styles of Basic T-Shirts

- Nike Swoosh
- Reebok Vector
- Fila & More!

RAY BANS EVERY STYLE

25% OFF

Great Selection of CAPS!
One for \$7
or
Two for \$10
Visors Included!

BACK-TO-SCHOOL BLOWOUT
Sept. 18 - 30

WE CARRY:
• Soccer Cleats
• Shin Guards
• Umbro Shorts
• Balls
• Plus Much More

Need A Racket for Class?
We've got'em
-Tennis
-Racketball
-Badminton

Have YOU Seen Our New Johnson T's
• Pup tents
• Jackhammers
• Biggest Johnson
• Stand Back Baby

Two Tales of Clearance Shoes
20% to 60% off
-All Sales Final

- Visa
- MasterCard
- Discover
- Layaways

Statesboro Mall

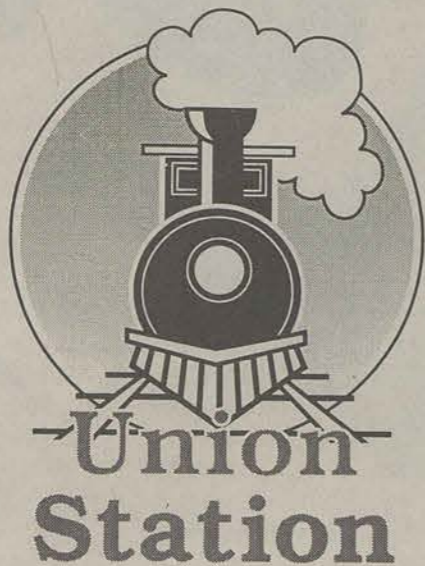
764-6869

Mon. - Sat.
10-9
Sunday
1-6

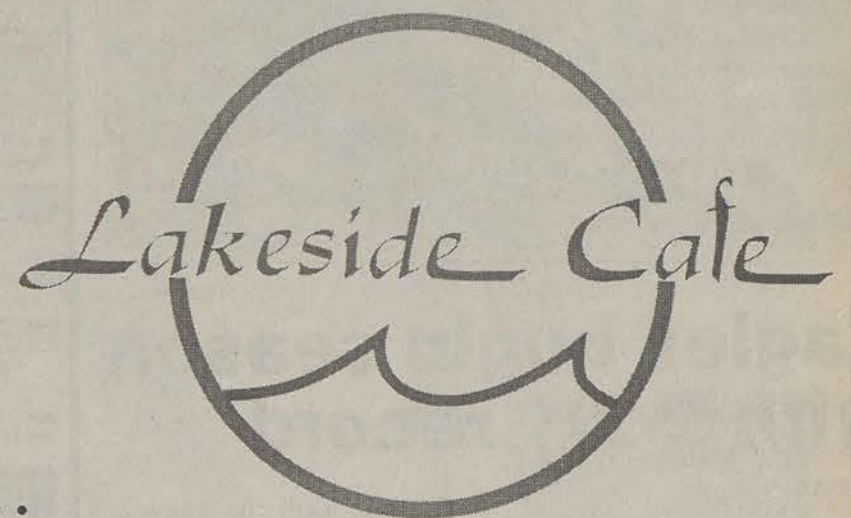
GSU CAMPUS RESTAURANTS

All New for '94-'95!!

You Won't Believe the Changes We've Made This Summer!

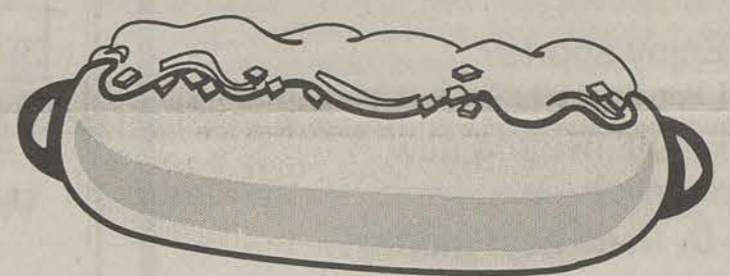


- **Value-Priced Menus** in Union Station, the Lakeside Cafe, & Blanches Deli & Bakery...



- **A New Location** for Blanches Deli & Bakery (inside Landrum Center) with an Expanded Menu and Seating...

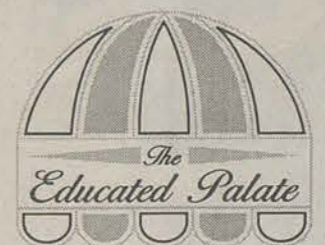
- **Spud's Doghouse** in the Russell Union- Serving over 50 combinations of Hotdogs and Potatoes!!



- **Tailgate Parties** Under the tents at the Landrum Cafeteria...
- Tokens for **Free Drink Refills** at all Campus Restaurants!



- **Office Deliveries** from the Lakeside Cafe and the Educated Palate...



- **Coming Soon** to the GSU Campus- **Freshen's Yogurt** in two Locations!!
- **Extended Deadline** for **EAGLEXPRESS** Mugs!!

We will honor last year's mugs all year!



Accepted at All Campus Restaurants

MEN'S SOCCER



Holly McCaig

Eagles begin season with 2-2-1 record

G-A Staff Reports

The soccer Eagles have started the season as even as they could and after five games they stand 2-2-1.

The Eagles have beaten George Washington and Berry College and have lost to Central Florida and Stetson. Their only tie came to Radford College.

The leading scorers for the Eagles are Robb Brotemarkle and Chris Sklar with two. However, sophomore striker Johan

Soderstrom leads the teams in shots on goal with 12, and he has scored one goal and has one assist.

The goal keeping chores are being left to Tim Boarman and Kris Trainor who have allowed six goals on 54 shots.

The team has plenty of time to gel, because their first Southern Conference game is not until September 25th when they face Marshall in Huntington, West Virginia.

WOMEN'S SOCCER

Hensley leads team to 2-2 mark

G-A Staff Reports


The Lady Eagles soccer team is off to a good start this year with a 2-2 record.

For the second consecutive year, Debbie Hensley leads the team in scoring and in points. Also, Rachel Tolliver is leading the team in assists with five.

Amanda Sandling is the lead goalie for the Eagles and has

played every minute of the four games this year, allowing 13 goals on 45 shots.

The Lady Eagles have wins against Stetson and Radford, with their losses coming to Southeastern Conference powerhouse Alabama and Davidson. The loss to Davidson puts the Eagles in a 0-1 hole in the Southern Conference but the year is still young.



Snooky's

Home Cooked Meals

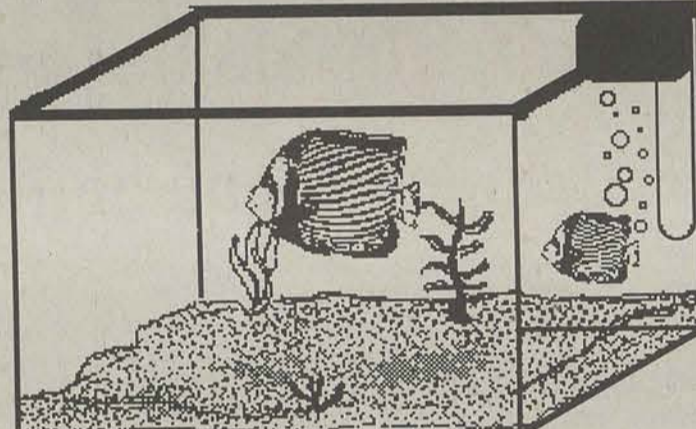
MONDAY	THURSDAY
• Chicken N Dumplings • Fried Chicken • Country Fried Steak Mashed Potatoes Green Beans Cabbage Rice/Gravy Field Peas Yam Patties	• Fried Chicken • Meat Loaf • Country Fried Steak Mashed Potatoes Green Beans Butter Beans Rice/Gravy Stewed Squash Mustard Greens
TUESDAY	FRIDAY
• Fried Chicken • Shepherd's Pie • Smothered Steak Mashed Potatoes Creamed Corn Mac. & Cheese Rice/Gravy Turnips Green Beans	• Baked Sea Trout • Fried Chicken • Beef & Potato Casserole Mashed Potatoes Green Beans Turnips Rice/Gravy Mac. & Cheese Fried Squash
WEDNESDAY	SATURDAY
• Baked Chicken • Pork Chops • Pepper Steak Mash. Pot/Gravy Green Beans Broccoli w/Cheese Dressing Candied Yams Fried Okra	

Cook's Choice:
Buffet Featuring A Variety Of Meats And Vegetables

Lunch & Evening Buffet From \$3⁷⁰ to \$4²⁰

11 E. Kennedy St. 764-7190 Mon.-Sat. 6 am - 10 pm

Tropical Fish



Thompsons Pools

Wide Selection of Tropical Fish & Supplies

29 N. Zetterower 764-3442
(NEXT TO BUS STATION)

Do you:

- A. Enjoy sports?
- B. Like to write?
- C. Enjoy meeting new people?
- (or) D. Need beer money?

If you answered yes to any of the above questions, you might want to consider becoming a sportswriter for The George-Anne. If you are interested, call John at 681-5246.

Walk on Over... to the

2nd Annual
Georgia Southern University

Business Information Expo

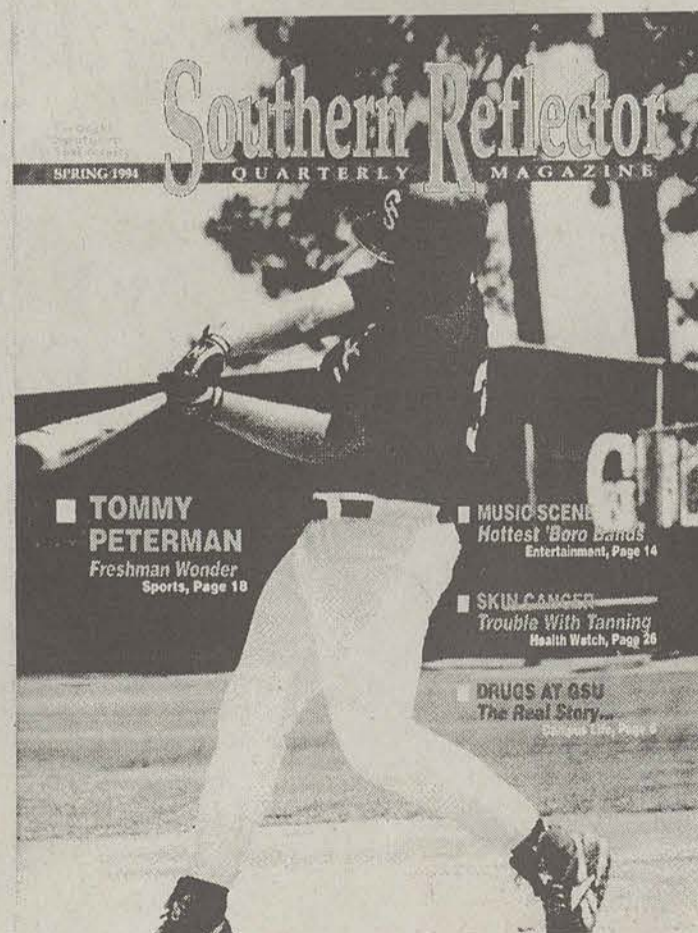
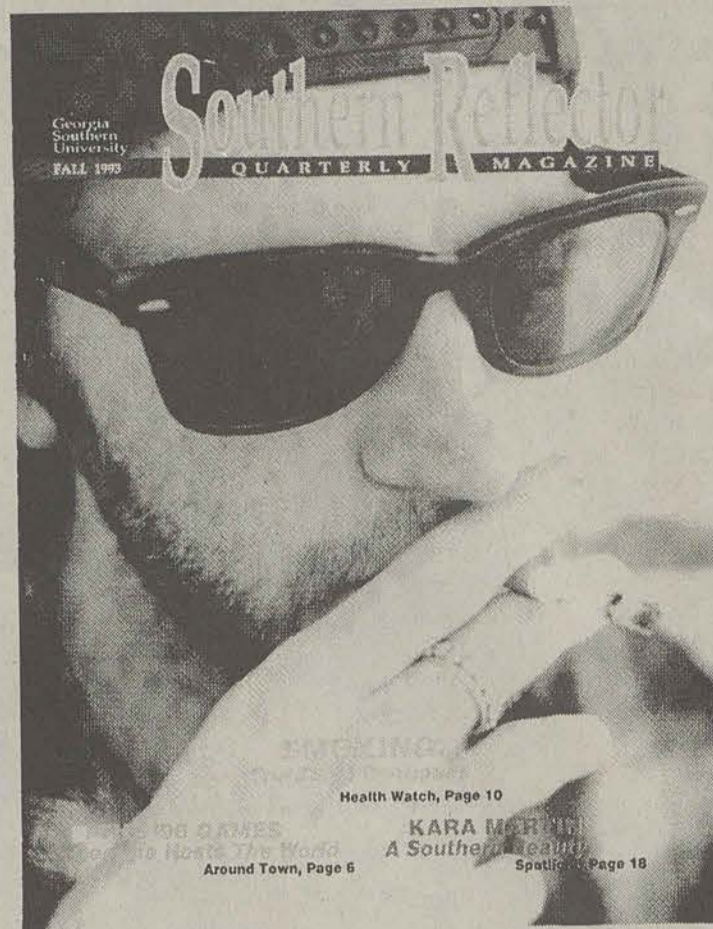
Thursday
Sept. 22, 1994

10am - 2pm
Union Rotunda & Pedestrium

Meet Local Business People and
Supporters of Georgia Southern
University!

Free Popcorn & Soft Drinks
provided by the Russell Union.

Are You Ready for Fun?
Are You Ready for Excitement?
Are You Ready for Reflector '94?



The Reflector is a student run magazine that has replaced the traditional yearbook. If you need money or if you just like to write, come by the Williams Center (upstairs) in room 215 on September 29th at 5:00 pm for a staff meeting when interested people should stop by.

IN THE TRENCHES

WILL VAN KLEEF

My summer vacation

Hello fellow Southernites, this is your new voice of couch potato sports coming to you delayed from a non-live George-Anne news office. In my guest appearances, I plan to share my views of all sports on a local and national level.

There is a whole lot to talk about, and I will begin with what I did on my summer vacation.

Well, everyday I woke up (DUH!), then I went downtown to work at my summer job. After ending my day of hard labor, I came home to eat and watch the Braves on television. I enjoyed getting to do this until AUGUST 12th, the most recent day that will live in infamy. STRIKE!!!

The debacle of the 1994 season is the subject of my first unfavorable verbal explosion of the school year. I feel that I need to give my TWO CENTS WORTH! That is exactly what the half-ass 1994 season was worth.

First, to the owners of the 28 major league clubs...there is not a whole lot to say but— GET A LIFE! Your money-grubbing is ruining the game of baseball, and I can't stand listening to y'all cry over the stupid salary cap!

Second, to the players... Oh

you poor babies! Your millions of dollars a year are not enough for you, HUH!?! GIVE ME A BREAK! These fools do not know how good they have it. Getting paid to play our national pastime would be enough for me.

Hey! I have an idea. Maybe the players should get a real 40 hour a week job and earn a real living. I would like to see Barry Bonds get a little grime underneath those manicured fingernails. Then, maybe just maybe, the players will see where their salaries really come from. If they only cared about the fan who brought their family to a game to spend an entire paycheck to watch their sorry butts, they might be thankful for what they have and quit acting like spoiled brats.

Finally, to Donald Fehr and Richard Ravitch...thank you both for what you did for the game of baseball in its 125th season. Both of you were able to represent your respective sides with such hate and stubbornness that I will certainly never forget. If you two idiots would have really tried to get something accomplished rather than blowing smoke out of your rear-ends, I could be looking forward to another exciting and enjoyable post-season.

Have you guessed what I really did on my summer vacation yet? I was able to formulate this obvious statement of displeasure toward the people involved with baseball. I am going to have a tough time getting over what they did to the game, but I will continue to be a fan of GSU and minor league baseball.

Lady Eagles at 4-1 after two home wins

By Ronnie Swinford
Assistant Sports Editor

The GSU volleyball team is off to a great start this year with their doubleheader win against Jacksonville University and South Carolina State University.

The Lady Eagles were led by Alexis Dankulic with 14 kills and 18 digs against Jacksonville University. Litonya Thompson also had 13 kills and 13 digs.

GSU battled Jacksonville to a 15-12 win in the first two games and cruised to a 15-6 win in the last game.

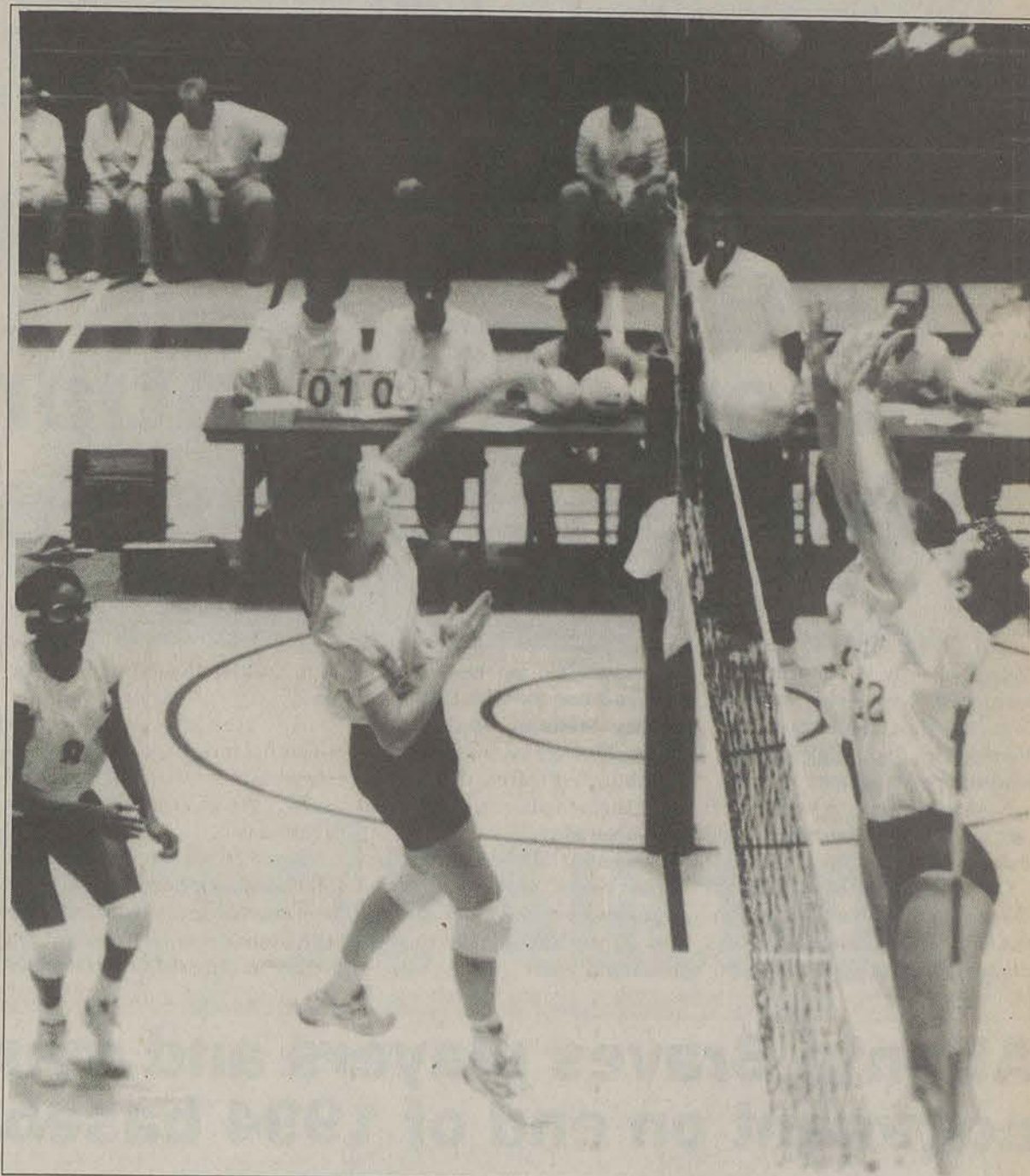
The volleyball Eagles routed the South Carolina St. Bulldogs 15-11, 15-1, and 15-9 for their fourth win of the season.

The stars of the game were Megan Pfeiffer with seven kills and seven digs and Bev Copeland who had four kills and five digs.

The Eagles are 4-1 after their last two home wins. The Eagles have beaten Augusta College and Coastal Carolina and their only loss of the season was to the University of North Carolina at Charlotte where they lost 11-15 in the fifth game.

Hey!

The George-Anne wants to consider your application as a writer. Please apply in person in the Williams Center room 111.



Megan Pfeiffer leaps up for a kill attempt while two Jacksonville players try to block it.

James Hill

CROSS COUNTRY

Continued from page 1B

and sophomore Amy James (25:48). Sophomores Ashley Carter and Amy Frazier, senior Jessica Lloyd and freshman Elisha Gray did not compete.

"I think Melanie had one of her best races ever, and that is a credit to the work she did this summer," Simmons said. "Mel-

issa is a great addition and she had a strong performance, and Heather's time was probably two to three minutes off of where she will be because of the injury."

Overall, Simmons was pleased with the way the women's team performed especially considering the circumstances.

The men's team has faced adversity early this season due to injury and illness as well.

"Injuries are definitely our major problem right now on the men's side," Simmons said. "Dejon Drinks did not run at the WCU meet, but I feel he will come around soon."

The top performer for the men's squad at the meet was freshman Rodney Stoker. He finished in 28:17 over the five mile course.

"Rodney will not immediately fill the void of Mike King (the number one runner from last year and three time All-Confer-

ence performer), but his times are comparable to what Kingraff as a freshman," Simmons said.

Other finishers for the men were sophomore Wade Council (29:40), freshmen Mike Dumas (30:23), freshmen David Stoker (31:27) and senior Greg Hannah (33:24).

"I was pleased with Wade's performance because that isn't really his kind of course," Simmons said. "He is more suited to the flatter, faster courses."

"I think we had a strong performance as a team, but it may not show because of the level of competition at the meet.

MAKE IT FIRST AND TEN

Only \$10 kicks off First Bulloch's Varsity Checking.

- The best student checking at Georgia Southern!
- With a \$25 minimum deposit, you pay only \$10 for the following benefits:
- No monthly service charge and no other charge till you re-order checks.
- 200 personalized checks (must be ordered through First Bulloch Bank).
- The official GSU Eagle on your checks.
- Unlimited check writing.
- First 24™ Automatic Teller card.
- No charge to access your First Bulloch Bank account at any of our five convenient First 24 locations in Statesboro: inside the University Union Building, Chandler Road (near campus), College Plaza, Statesboro Mall and Northside Drive at Highway 301 N.
- Your printed bank statement 24 hours a day via any First 24 ATM.
- 88 friendly First Bulloch Bank officers and staff who are eager to serve you.
- Come see us!

Stop by First Bulloch Bank and ask for complete information.

FIRST BULLOCH BANK

DOWNTOWN • COLLEGE PLAZA • THE MALL • NORTHSIDE • GSU • CHANDLER RD • PORTAL • MEMBER FDIC



The Great American Strikeout

Season cancellation puts many fans' plans on hold

The Associated Press

ATLANTA — First, it was a Fourth of July rainstorm that postponed 4-year-old Marquis Younger's first chance to see the Braves. The flood that followed delayed it even longer.

Now, he'll have to wait until next season — if there is a next season.

On the day after baseball's 1994 strike-shortened season was formally canceled, Marquis' mother, Doretha Younger, stood

in line to exchange four pavilion tickets.

Marquis had a new Braves T-shirt and hat to see his first Braves game at Atlanta-Fulton County Stadium, an Independence Day game against the Pittsburgh Pirates. He'll now wear them to play in, his mother said Thursday.

"I went to hell and back to get these tickets," she said, describing her wait in long lines in April and July. "Now I have to wait until next year."

She doesn't plan to tell Marquis that he'll miss the 1994 Braves. "I'm going to try to get him to a (Falcons) game," she said.

A steady stream of ticketholders kept Braves' employees busy with returns and exchanges at stadium windows Thursday.

Some Braves fans said they won't be back next year.

Toby Cochran, who came to the stadium to exchange his tickets for an Aug. 14 games against

the Houston Astros, said he's happier watching the game at home on television.

"It's been years and years since I've been" to a game, he said. And now, with the strike, "I just don't care to come back."

Pearl Sandow, 92, who didn't miss a Braves game from 1966 until she was injured in 1992, said she doesn't even want to talk about the team now.

"I liked baseball when it was a sport and not a business," she said by telephone from her home.



What you can do with your cancelled Braves tickets

The Associated Press

ATLANTA — The Atlanta Braves have an exchange or refund ticket policy for games canceled by the strike.

Season ticket subscribers may request either a refund or a credit toward 1995 season tickets for games canceled.

Fans who hold non-season tickets have two options: refund or exchange.

For a refund:

—If tickets were purchased directly through the Braves, take them to the stadium or mail them to: Braves Ticket Office, P.O. Box 4064, Atlanta, Ga. 30302.

—If tickets were purchased through Ticketmaster by telephone, mail the tickets to the Braves ticket office. The credit card used to purchase the tickets will be credited.

—If tickets were purchased at a Ticketmaster outlet, return the tickets to the site for a refund.

To exchange for 1995 tickets:

—Keep the tickets and call 404-577-9100 in December for a 1995 schedule. Then, either return the tickets to the stadium ticket window when daily tickets go on sale for 1995, or mail the tickets and game selections to the ticket office.

WHAT THE PLAYERS THINK

Atlanta Braves players and management comment on end of 1994 baseball season

The Associated Press

Atlanta Braves reaction to the cancellation of the baseball season:

"If I was on a team that wasn't going to make the playoffs, I wouldn't have the personal feelings I have right now. You miss the opportunity to win the World Series. That's a hard thing to swallow. I miss that a lot more than the paycheck."

— Greg Maddux, pitcher.

"(If) we resume play, we have a great shot at winning the series. It's one of those years. ... It's been eating at me for the last 10 days, and I hate to see the '95 season jeopardized."

— Bobby Cox, manager.

"It's a sad situation because a lot of us take pride in winning, wanting to take it all. We felt we have a good chance to win it. This will be one offseason you

will not forget. ... We'll never know what could have been."

— Mark Lemke, second baseman.

"Deep down I thought we'd at least get the playoffs. That's really disappointing. I usually don't feel sorry for other teams, but I feel for Cleveland and the Montreal Expos, who haven't had too many chances to make the playoffs."

— Steve Avery, pitcher.

"No matter what happens, we have already done enough damage to the public trust that we have to work hard, management and players together. ... We have to work very hard together to assure our fans that when baseball is back, we have learned from our mistakes and problems. We have to do everything we can to assure them this will not happen again."

— John Schuerholz, general manager.

POINTING THE FINGER

Marlins owner blames the players

The Associated Press

MIAMI — Florida Marlins owner H. Wayne Huizenga blames the players union for the labor stalemate that led management to cancel the rest of the season.

"The players walked out, and they didn't want to negotiate on

the necessary issues," Huizenga told the Sun-Sentinel of Fort Lauderdale for Thursday's editions. "The owners had no power to make them come back to work unless we gave them everything they wanted."

"Remember, none of these guys are standing in the bread lines."

Accepted at
more schools
than you were.



It's everywhere
you want to be.®

PRINCIPLES of SOUND RETIREMENT INVESTING

"CREF Stock Account ★★★★★"
"CREF Bond Market Account . . . ★★★★★"
"CREF Social Choice Account . . . ★★★★★"

—Morningstar

ISN'T IT NICE WHEN THE EXPERTS DISCOVER SOMETHING YOU'VE KNOWN ALL ALONG.

Over 1.6 million people in education and research know that choosing TIAA-CREF was a smart move. And now everyone else does too. Because Morningstar—one of the nation's leading sources of variable annuity and mutual fund information—has some stellar things to say about our retirement investment accounts.

"This comfortable combination of risk and return has earned the CREF Stock Account a five-star rating."*

After studying CREF's performance history, Morningstar gave five-stars—its highest rating—to both the CREF Stock and Bond Market Accounts, and an impressive four-stars to the CREF Social Choice Account.** In fact, the CREF Stock Account was singled out as having "...one of the best 10-year records among variable

annuities."*** Of course, past performance is no guarantee of future results.

"...CREF is far and away the cheapest variable annuity out there."

Morningstar also called attention to CREF's "...rock-bottom" fees—something that can really add to the size of your nest-egg down the road.

What's more, TIAA's traditional annuity—which offers guaranteed principal and interest plus the opportunity for dividends—was cited as having the highest fixed account interest rate among all annuities in its class.

We're happy to accept Morningstar's glowing ratings. But nice as it is to focus on stars, we'll keep focusing on something more down-to-earth: building the financial future you want and deserve.

For more information about our Morningstar ratings or TIAA-CREF, just call 1 800 842-2776.



Ensuring the future
for those who shape it.™

*Source: Morningstar's Comprehensive Variable Annuity/Life Performance Report January, 1994.
**Source: Morningstar Inc. for periods ending March 31, 1994. Morningstar is an independent service that rates mutual funds and variable annuities on the basis of risk-adjusted performance. These ratings are subject to change every month. The top 10% of funds in each class receive five stars, the following 22.5% receive four stars.
***Among the variable annuity accounts ranked by Morningstar, the CREF Stock Account was 1 of 12 growth-and-income accounts with 10 years of performance. Morningstar ranks the performance of a variable annuity account relative to its investment class based on total returns. CREF certificates are distributed by TIAA-CREF Individual and Institutional Services. For more complete information, including charges and expenses, call 1-800-842-2776, ext. 5509 for a prospectus. Read the prospectus carefully before you invest or send money.

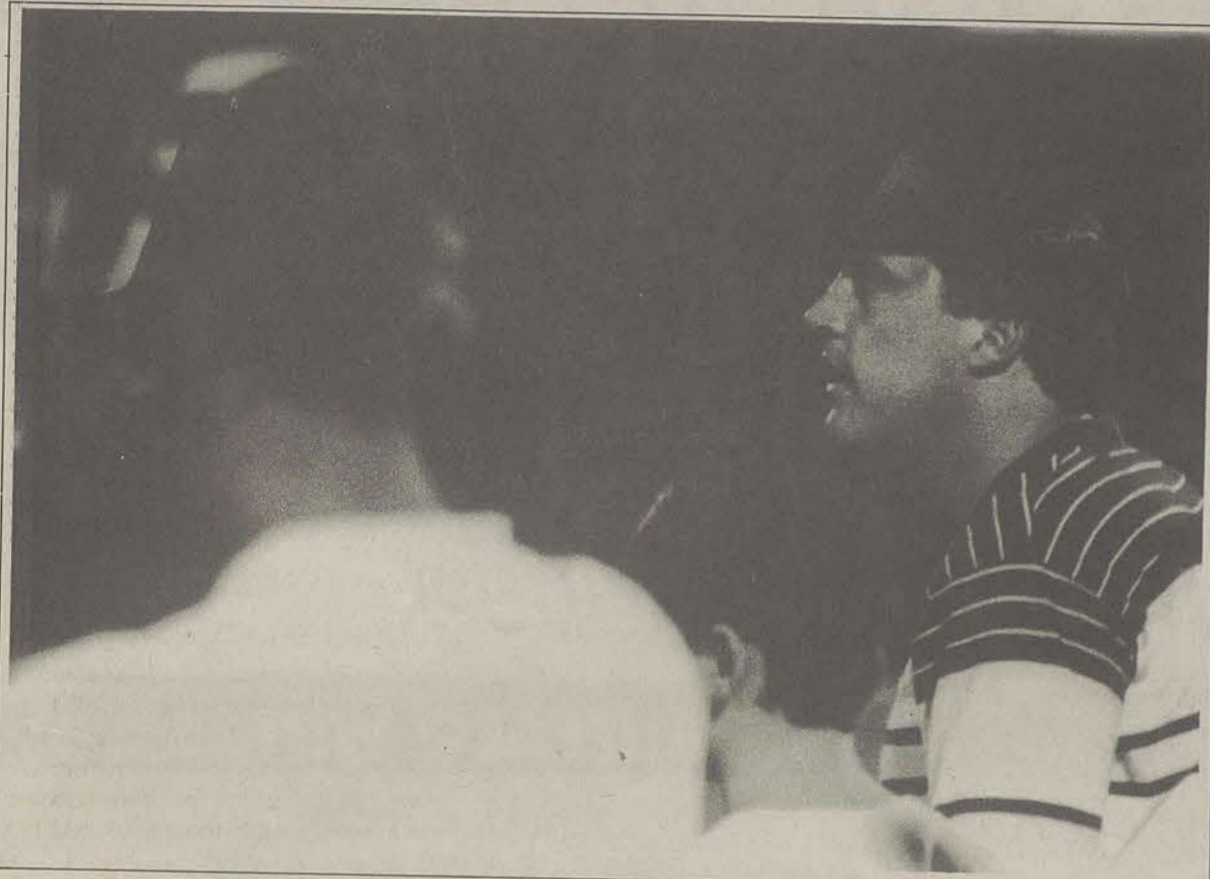
Scenes from another simply Southern Saturday night



Randy Trujillo



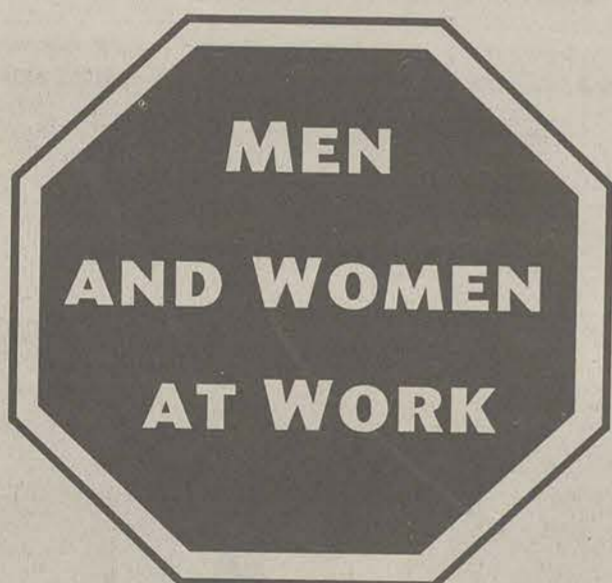
Above: The GSU Marching Band played on despite the threat of rain.
 Right: Freshman quarterback Kenny Robinson took the snaps all game in place of the injured Joe Dupree.
 Below: Eagle Head Coach Tim Stowers kept his eyes peeled on the field, but nothing came together for his team.



Randy Trujillo

Bicycle Auction

There will be a Bicycle Auction in front of the Landrum Center on Sept. 21st from Noon- 3:00 pm. The bicycles will be delivered at 11am for the public to view.



CONSTRUCTION AHEAD!!

**RESIDENCE LIFE
 IS BUILDING A NEW PROGRAM
 WITH 50-60 NEW JOBS!!**

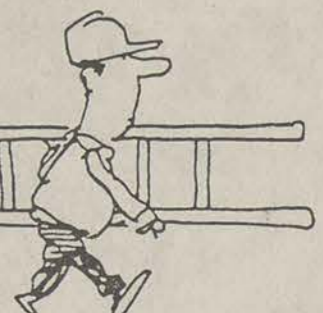
** VARYING LEVELS OF RESPONSIBILITY*

** VARYING LEVELS OF PAY*

**Get in on the ground floor of a brand new
 program with dozens of on-campus openings built just for YOU!**

**Put on your Hard Hat, Grab your Tool Box
 and Head over to the Residence Life Office, 10 Rosenwald
 and complete an application for the new**

*RESIDENCE HALL
 NIGHT SUPERVISOR PROGRAM*



APPLICATIONS SHOULD BE COMPLETED ASAP

WELCOME BACK STUDENTS!

Domino's Pizza® has Something NEW for YOU!

• Domino's now offers a SMALL 10" Classic Original Pizza!

• We've also LOWERED are Prices!

• Try our NEW Original Buffalo Wings!

PIZZA				SUPER SUBS		BUFFALO WINGS					
CREATE YOUR OWN				6" SUB \$3.99	12" SUB \$5.99	Choose From: MILD • MEDIUM • HOT					
	SMALL 6 SLICES	MEDIUM 8 SLICES	LARGE 10 SLICES	Ham & Cheese Turkey & Cheese	ZZesty Italian Club Sub						
Cheese	\$5.36	\$ 6.84	\$ 7.78	All Domino's Super Subs are served on our custom sub rolls • Mayonnaise, Mustard, Hot peppers, or salt & pepper are available upon request • Extra meat \$1.00 • Double cheese \$1.00 • Potato Chips available		10 PIECE	20 PIECE	30 PIECE	40 PIECE	50 PIECE	100 PIECE
1-Topping	\$6.11	\$ 7.64	\$ 8.78			\$4.69*	\$8.39	\$11.99	\$15.39	\$18.99	\$36.99
2-Toppings	\$6.76	\$ 8.44	\$ 9.78			All Wing Orders include Bleu Cheese Dressing					
3-Toppings	\$7.36	\$ 9.24	\$10.78			*MINIMUM PURCHASE OF \$7.99 MAY BE REQUIRED FOR DELIVERY					
4-Toppings	\$8.08	\$10.24	\$12.28								
5 or More	\$8.59	\$10.84	\$12.78	SIDE ORDERS Twisty Bread • \$1.99		Menu prices do not include tax					
2ND PIZZAS	\$4.00	\$ 5.00	\$ 6.00								
(Add 99¢ for Deep Dish)											

**GOING
BELOW**

CALL US!
Serving GSU/Statesboro
681-4326



FREE PIZZA

FREE

MEDIUM 1-TOPPING PIZZA

When You Buy a Large Thin Crust Pizza with 2 or More Toppings at Regular Price



Valid at participating locations. Not valid with any other offer. Customer pays sales tax where applicable. Our driver's carry less than \$20. Delivery areas limited to ensure safe driving. © 1994 Domino's Pizza, Inc. CALL NOW! Offer ends 9/30/94

LUNCH/LATE NIGHT

\$4.99* Plus Tax **\$5.99** Plus Tax **\$6.99** Plus Tax
SMALL MEDIUM LARGE
1-Topping Pizza

Add 99¢ for Deep Dish on Medium & Large (*Valid in Classic Original Only)
Valid 11a.m. - 4p.m. & 9p.m. Close



Valid at participating locations. Not valid with any other offer. Customer pays sales tax where applicable. Our driver's carry less than \$20. Delivery areas limited to ensure safe driving. © 1994 Domino's Pizza, Inc. CALL NOW! Offer ends 9/30/94

YOU TOP'EM

\$5.99* Plus Tax **\$7.99** Plus Tax **\$9.99** Plus Tax
SMALL MEDIUM LARGE

With Up to 3 of Your Favorite Toppings

Add 99¢ for Deep Dish on Medium & Large

*Valid in Classic Original Only



Valid at participating locations. Not valid with any other offer. Customer pays sales tax where applicable. Our driver's carry less than \$20. Delivery areas limited to ensure safe driving. © 1994 Domino's Pizza, Inc. CALL NOW! Offer ends 9/30/94

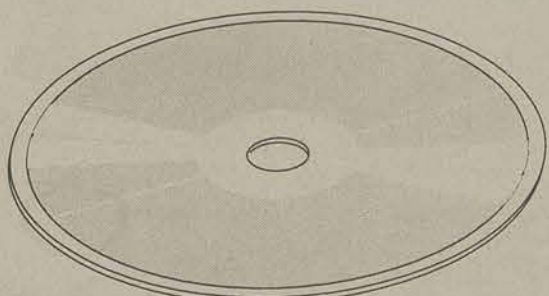
PIZZA/WINGS

\$11.99 Plus Tax

Medium Pizza with Up to 3 of Your Favorite Toppings, and a 10 Piece Order of Buffalo Wings



Valid at participating locations. Not valid with any other offer. Customer pays sales tax where applicable. Our driver's carry less than \$20. Delivery areas limited to ensure safe driving. © 1994 Domino's Pizza, Inc. CALL NOW! Offer ends 9/30/94



→ Covering the beat

Find reviews of several bands with a variety of musical specialties in our entertainment section

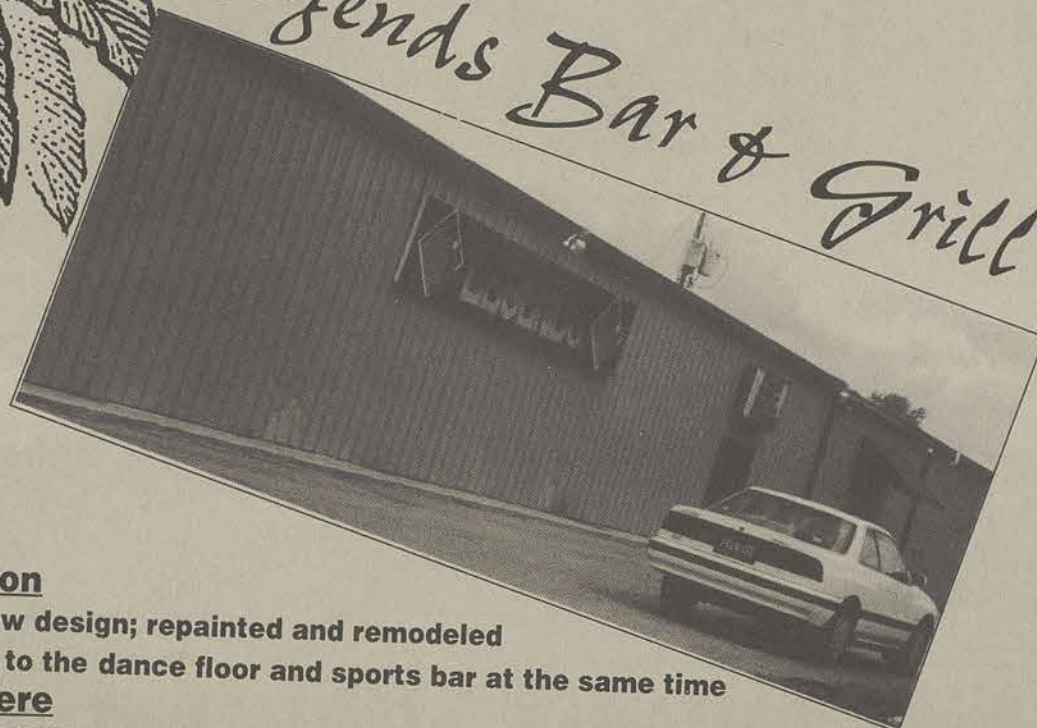
Please see pages 2C and 3C

Arts & Entertainment

Tuesday, September 20, 1994

Discover something new...

Legends Bar & Grill



Description

Boasts a new design; repainted and remodeled with access to the dance floor and sports bar at the same time

Atmosphere

Tropical atmosphere with pool out back converted into a fountain

Food and Beverages

Specialties are pizza, chicken, and hamburgers - dine-in, carry-out or delivery; standard favorite beverage selection

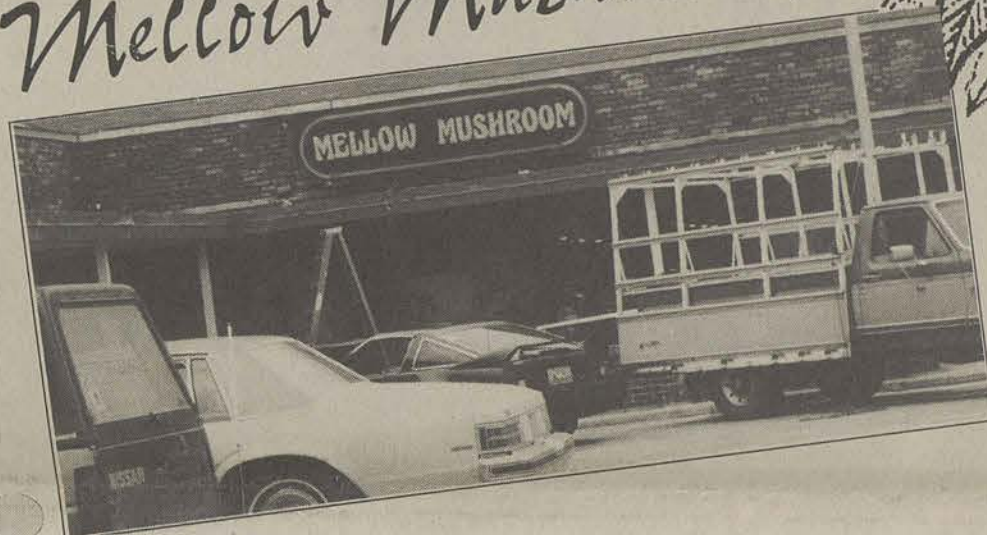
Special Features

- Monday night football - beverages, pizza, and wings for \$6
- Tuesday - Comedy Night from Comedy House Theater
- Thursday - GSU Night from Trip West

Formerly

T.C.'s Hangar and Sgt. Pepper's

Mellow Mushroom



Description

New establishment in the corner of University Plaza, it's a franchise out of Atlanta

Atmosphere

Laid-back restaurant atmosphere

Food and Beverages

Pizza and hoagie sandwiches - counter service, dine-in, pick-up; 18 to 25 beverage varieties on draft and over 100 bottled varieties

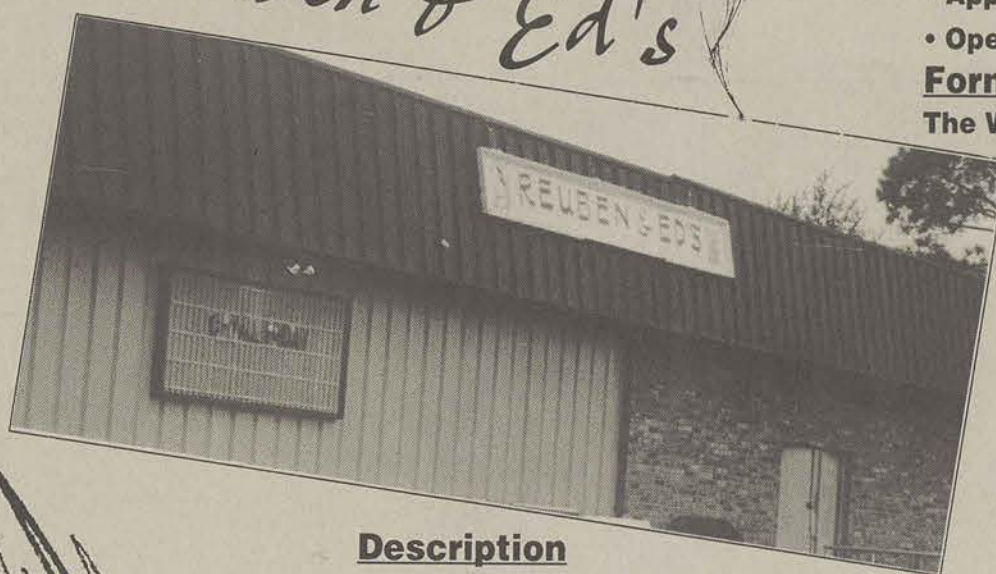
Special Features

- Health-oriented; 98 percent fat-free cheese; everything fresh
- Appeals to both families and college crowd
- Open 11 a.m. to 12:30 a.m. Mon. to Sat., starting this week

Formerly

The World Café

Reuben & Ed's



Description

Repainted, new tables added, converted to a juice bar in which brown bags can be carried in by those over 21

Atmosphere

Low-key, late-night hangout atmosphere

Food and Beverages

Wings, pizza, hot dogs, sandwiches, popcorn; selected drinks are Pepsi and Fruitopia - no alcohol served, carry-in to tables only

Special Features

- House band is The Drunks; other live acts will play
- Two full stages and a dance floor
- Open 10 p.m. to 2 or 3 a.m., starting this weekend

Formerly

The Animal House

in the 'boro

PUNK

Crain delivers pure energy to listeners

Crain Heater (Restless/Automatic Wreckords)

By Donald Miller Guest Writer Crain is a hardcore band that hails from Louisville, Kentucky. Their latest release, "Heater," is simply outstanding. One reason for this is that the band sounds very similar to the ever popular Fugazi. The sound they put out is much like that of the straight-edge, early eighties D.C. sound.

INDUSTRIAL

Band's message is hard to decipher

Passafist Passafist (R.E.X)

By David Day Staff Writer Passafist, the self-titled, seven track release is a work that attempts to describe the times we are living in. The problem is that the band conveys their commentary in an average way. Though having been described as a Christian industrial band,

R&B

Resurrecting the rhythm and blues

Nu Soul Habits Meant To Be (Motown Records)

By Carlton Parks Staff Writer The field of rhythm and blues has, over time, lost some of its integral feeling and meaning. The sound of Rhythm & Blues that was personified in performers such as Marvin Gaye and Stevie Wonder, is now nowhere to be found in an era that features music with a more defined dance beat. The group which brings back the sound of the older R & B groups that brought the music to the forefront is the Nu Soul Habits. This two member group, Eddie Towns and Tonye Hilman, pride themselves in their attempts to bring back the soul feel that is the essence of R & B music. The group, influenced by such legends as George Clinton and the Isley Brothers succeed in making this sound work without sounding like any of the artists that they admired in their emergence as performers. The voices of both Towns and Hilman are injected with a laid back, yet energetic and emphatic style that the listener cannot help but relish. The lyrics, similar in style to the crooners of the late 60's and early 70's, were written solely by the members of the Nu Soul Habits and had one particular purpose: not to conform to the ways of today's R & B groups and dangle on the edge of explicitness. In the words of Towns,

This ten song release contains simple, scratchy guitar licks complimented by a strong voiced frontman. There is an incredible amount of energy that these bluegrass punks give to the listener. Hardcore fans should really dig this album due to the classic style in which it is done. Crain has simple power that is not too buzzy or obnoxiously loud. Besides the "Heater" release Crain has two other albums and four E.P.'s, so this is not just a one time fluke band. Crain will be pleasing hardcore fans for many years to come. one might have trouble extracting any religious meaning from the album. Regardless of the classification, the album covers nine-ties themes such as nuclear war, urban violence, and phone sex hot-lines. The artists may be trying to make some kind of comment on life in today's society. Message seekers beware, the lyrics are almost indecipherable amidst the numerous dub-overs. Throbbing bass lines, pseudo mechanical and techno noises are

MAINSTREAM

This music belongs in the big-money, no-class file

I Mother Earth Dig (Capitol Records)

By James Salter Staff Writer I Mother Earth feature all the elements necessary for a Beavis and Butthead experience. Clad in their 60's psychedelia and ever so fashionable infrared photos, the group launch themselves into an image more vile than the typical LA Metal Band. It's too bad that people actually sink money into fashion trends, but then again let's consider the target audience. Maybe those Capitol producers are a little more cunning than one

would expect. Upon hearing the recently released single "Levi-tate," images of Chris Cornell in spandex arise, and the smell of a sweaty Eddie Vedder permeates from the source.

FUN SHIRTS STATESBORO, MALL CUSTOM SCREEN PRINTING 764-2226 TEE SHIRTS FOR ALL YOUR NEEDS COMPUTER GENERATED ARTWORK 6 COLOR PRINTING IN HOUSE GREEK & INTRAMURAL TEAM DISCOUNTS

COUPON REDEEMABLE FOR ORDERS OF 25 T'S OR MORE 10% OFF or Team Shirts 10 or more with front print & #ers \$8.50 each

EXPIRES 12/20/94

overlaid with whining guitar, and distorted lyrics. Of course, one should not forget the voice loops that are so popular in music today. The album could be compared to a tired, less appealing Nine Inch Nails. To top it all off, the production is over polished and that may be what is responsible for the lack of intensity and rawness. To put it plainly, the listener anticipates all of Passafist's moves before they make them. one that the pioneers of R & B, as well as the life long fans of the music, can appreciate.

Georgia Southern University Student Programs

SEPTEMBER ACTIVITIES

SUNDAY	MONDAY	TUESDAY	WEDNESDAY	THURSDAY	FRIDAY	SATURDAY
				1	2	3
4	5	6	7	8	9	10
11	12	13	14	15	16	17
18	19	20	21	22	23	24
25	26	27	28	29	30	

"We believe that all people want to be involved in decisions that affect them, care about their jobs and each other, take pride in themselves and in their contributions and want to share in the success of their efforts."

— C. L. Sullivan, Saturn Powertrain Operations Technician

Georgia Southern University Department of Choral Activities Dr. Anita P. Davis, Director

invites you to enroll in the UNIVERSITY SINGERS

Fall Quarter MTWTh 2:00-2:50pm MUE 320 DD 6043020

(all vocal/choral abilities welcome)

Brought to you by SATURN of Savannah Call for an appointment: 912-920-6500

A DIFFERENT KIND OF COMPANY. A DIFFERENT KIND OF CAR. 14080 Abercorn Street • Savannah

Map showing locations: Largo, Publix, Wal-Mart, Abercorn, Savannah Mall, Apache Ave.

IN ALTERNATIVE

Group deserves attention

The Go Figures
Shock Box
(Self Release)

By James Salter
Staff Writer

Picture this: fantastic band, with the potential to be one of Georgia's premier bands, plays Statesboro on more than one occasion, and is greeted by less than forty people each time. An all-to-common scenario for groups like The Go Figures, whose latest album features all the necessary ingredients for college music stardom.

Shock Box is the first CD format release for the Athens based trio/quartet (they seem to be plagued with changes on bass).

The album opens with "How Long?" which seems like the harmless college pop sound featured on the earlier "Thesaurus Rex" album, but cracks into a full scale attack. "The Hardest Thing" is a very insightful piece, which is to say the least thought provoking for anyone who pays attention to the actual words.

All preconceptions that The

Go Figures are one of those mushy, boring, wanna-be-you-know-who Athens bands are shattered on the title track. The song begins with a gripping guitar, and dives into the most powerful piece the band has done to date.

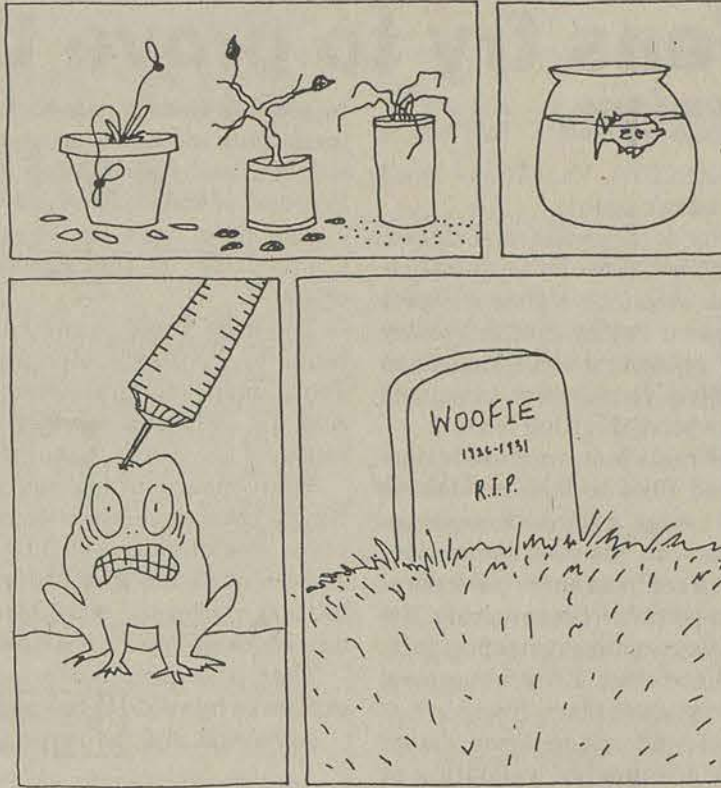
Bassist David Barbe lent his production skills as well as a masterful hand at Bass on three of the nine songs. In the event you don't know about Dave he also plays in a band called Sugar and used to be in the Statesboro regular Mercyland.

Lyricaly, The Go Figures represent what will hopefully be a new trend in songwriting: meaning. David Ferguson's words top off the solid musical backing with a R&B influenced delivery which is quite eloquent.

Obviously the band has the potential to be a huge success as well as a high command of respect. But, the lack of a full-time bassist and support in shows has slowed their evolution from an acoustic duo to the current setup.

Do yourself and the music world a favor, pass up the kegger and go see The Go Figures.

DR. KEVORKIAN'S EARLY HOBBIES.



DIST. BY ONION FEATURES ©1993 BY P.S. MUELLER

THE EMPORIUM

new and used cds and tapes
posters and art prints
sterling hoops - jewelry
stickers - incense - candles
t-shirts - used levis
grateful dead merchandise

STATESBORO'S SHOPPING ALTERNATIVE
1607 CHANDLER RD.

681-4441

OPEN MON-SAT 10-8

IN JAZZ

Laswell does another one

Material
Hallucination Engine
(Axiom Records)

By James Salter
Staff Writer

Bill Laswell's latest project under the Material alias features a who's who list of artists. The album features more than 20 contributors, including the legendary Wayne Shorter and William S. Burroughs.

Considering the sheer diversity of musical styles, Hallucination Engine is a masterpiece. The music melds new age electronic whirl with middle eastern rhythm and instruments. Shankar's electric violin adds an extra eclectic

touch while Bootsy Collins' funk mastermind contributes 'space bass' on selected tracks for a little extra groove.

Laswell's catalogue of achievements includes one of the most impressive lists of performers. He has produced and performed with artists ranging from John Zorn to P.I.L. Laswell's studio magic is especially apparent on the Hallucination Engine track 'Mantra'. The song has also been remixed by English techno/ambient gurus the Orb.

Material's Hallucination Engine is a fabulous find for new music disciples, pop oriented listeners will also be pleased with the danceable grooves and flawless overall sound of the album. Have fun in outer space.

The Educated Palate

Opening Thursday 9/22

Lunch 11-2:30 • Dinner 5-8 • Monday thru Friday

Come try our new Caesar Salad, Grilled Chicken Salad, and Chef Salad.

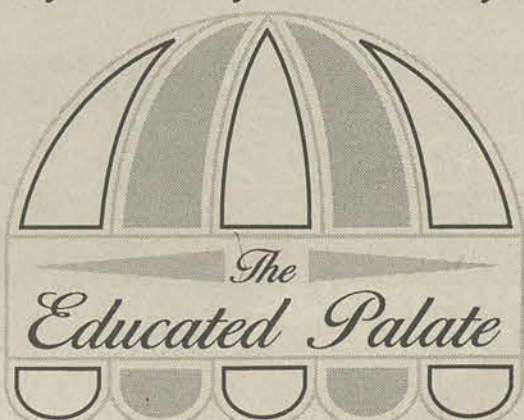
Special of the Week
Shrimp and Vegetable Fettuccine
\$4.⁹⁵

Introducing Campus Pizza Office Delivery Service
starting Sept. 26th

Featuring our full line of individual and 14" pizzas, side salads, and beverages.

Call 681-5303

Delivery Monday thru Friday 11am-2pm



UNION PRODUCTIONS
GEORGIA SOUTHERN UNIVERSITY

Activities

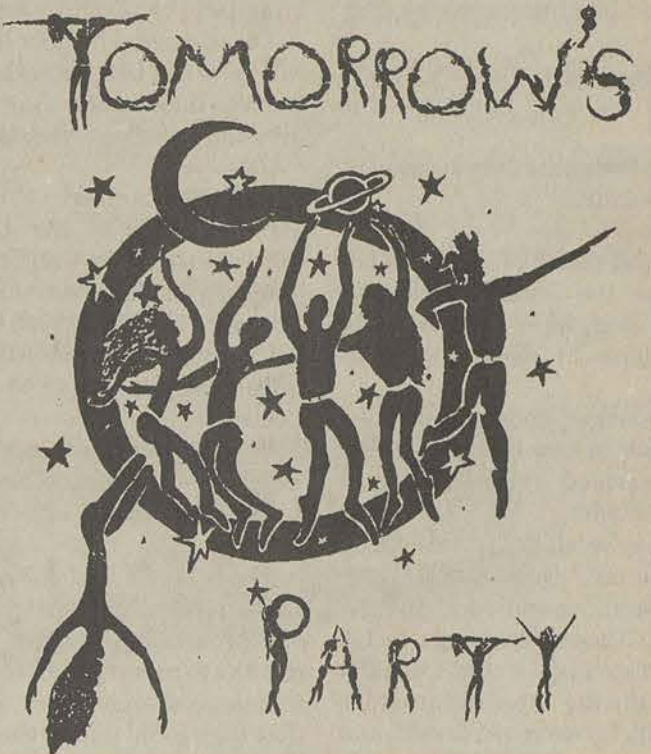
Wednesday Sept 21

Outdoor Concert

Landrum Plaza

5-8 pm

Tomorrow's Party



Thursday Sept 22

Hypnotist

Union Ballroom

7 pm

Ken Whitener



Movies At The Union!

Wednesday & Thursday

Above the Rim

Movies

• Wednesday & Thursday
• 7:00 pm & 9:30 pm

Union Theatre

• \$1 with GSU Student ID
• \$2 General Admission

Coming Soon!

Fun Flicks Sept 23

Information Hotline

681-0461

Office 681-5442 • Union Productions
Landrum Box 8066 • Statesboro, Ga 30460

PEOPLE IN THE NEWS

The 'Reagan Revolution'? His daughter breaks all the rules — but this isn't the first time

The Associated Press

LOS ANGELES — Patti Davis is at it again, this time appearing in the buff on video.

The rebel stepdaughter of former President Ronald Reagan said she liked her Playboy magazine layout so much that she made a Playboy video.

The video, due to be released in early 1995, features Davis kick-boxing in a gym, in the nude, with a young man.

In an interview broadcast Thursday on "Entertainment Tonight," Davis said women seem to like her magazine photos.

"I think a lot of women appreciated that at 41 I did this," she said.

The Reagans had no comment Wednesday.

NASHVILLE, Tenn. — Garth Brooks, the American country music icon, likes the friends in low places he discovered overseas.

The singer, known for hits like "Friends in Low Places," said he was warmed by local customs Down Under.

"They've all got traditions on how to act," Brooks said Tuesday, recalling audiences in Australia. "They have chants — this olay, olay, olay — that's usually used during Australian rules football. It's more rehearsed, and it's really intense. They get into it."

Brooks' tour resumes later this month with concerts in Spain, Denmark, Germany, England and Scotland.

NEW YORK — What's eating Johnny Depp?

An alleged pre-dawn tantrum in a fancy hotel landed the actor in jail Tuesday.

The 31-year-old star of "What's Eating Gilbert Grape" and "Benny and Joon" was accused of causing \$9,767 in damage to a posh hotel room he shared with his supermodel girlfriend, Kate Moss. She was not arrested.

Depp was charged with criminal mischief. Police said he may have been drunk.

Depp appeared briefly in Manhattan Criminal Court on Tuesday and agreed to pay for the damage. At the prosecution's suggestion, the judge will consider dropping the charge if Depp stays out of trouble for six months.

"There appeared to be a lot of glass shattered all over the room," Sgt. Robert Volonino said.

Depp's lawyer, David Breitbart, had no comment.

IN THE MUSIC WORLD

Charges against leader of Pearl Jam dropped

The Associated Press

BOULDER, Colo. — A judge has thrown out a charge against Pearl Jam lead singer Eddie Vedder.

Vedder was issued a summons for a misdemeanor charge of obstructing government operations several months after a concert at the University of Colorado's Balch Fieldhouse.

CU police accused Vedder, 29, of interfering with officers who were removing a rowdy fan from

IN THE ENTERTAINMENT WORLD

Brinkley getting ready for marriage vows ... again

The Associated Press

TELLURIDE, Colo. — Christie Brinkley has already taken one plunge with her new man. She's ready for another.

The supermodel who divorced Billy Joel last month — she's his "Uptown Girl" — is engaged to millionaire Telluride developer Richard Taubman.

Brinkley suffered minor injuries April 1 when she and Taubman were in a helicopter

MIAMI — With the U.S. Major League Baseball season scuttled by a strike, Cuban-born slugger Jose Canseco is spending his time trying to help youngsters from his homeland.

The Texas Rangers ballplayer, who came from Cuba when he was an infant, said Tuesday he is leading a campaign to collect toys and sports equipment for Cuban and Haitian children held at U.S. refugee camps in Cuba and Panama.

A Sept. 23 telethon on a Spanish-language radio station in Miami will be held to collect toys.

Canseco, who lives in Miami, will go to the U.S. naval base at Cuba's Guantanamo Bay to deliver the donations on Oct. 6.

LEEDS, England — Rejecting arguments by the J. Paul Getty Museum in California, a judge ruled Tuesday that the government was entitled to give British museums more time to raise money to buy "The Three Graces."

The Getty Museum in Malibu, which bought the marble statue for \$11.8 million, said it would appeal.

The Victoria and Albert Museum and the National Gallery of Scotland were given three months to raise funds to buy the statue, and announced Sept. 2 that they could match the Getty Museum price.

The government delayed issuing an export license for the statue to give the British museums time to put in a competing bid for the statue, which depicts the three daughters of Jove.

COLUMBUS, Ohio — The ballet master of the German Opera Ballet will become artistic director of the city's professional ballet company.

The board of BalletMet voted unanimously Tuesday to hire David Nixon, who is under contract to the Berlin company until next year. He will replace John McFall, who left last spring after squabbling with board members.

"My tenure here really started four months ago when I applied," said Nixon. "I felt if I was serious about getting the job, I had to behave like I was the director."

Nixon, 35, a native of Windsor in the Canadian province of Ontario, will be responsible for selecting BalletMet's repertoire for the 1995-96 season and will participate in all other artistic decisions, said William H. Carter, board president.

Nixon is negotiating his salary with BalletMet.

a "mosh pit," an area for dancing in front of the stage.

Boulder County Judge Marsha Yeager dismissed the charge at the request of the Boulder District Attorney's office. A deputy district attorney, in a motion filed with the court, said it was "in the best interests of justice to dismiss this case."

Vedder and his band had played two sold-out shows Nov. 26 and Nov. 27 at CU. The band cancelled a third show after the incident.

crash. He was unhurt. They were on a heli-ski trip, in which skiers are flown to remote peaks.

Brinkley, 40, said in Wednesday's USA Today that she and Taubman got engaged only a few weeks after they met.

"He's a wonderful, honest, generous, great person," she said.

Brinkley and Joel have not disclosed the arrangements they have made for custody of their 8-year-old daughter, Alexa Ray.

ELVIS THEORIES

Fans try to prove the King is still alive

By David Reed
The Associated Press

MONETA, Va. (AP) — Dead men don't sweat.

Nor do they write on their own death certificates or tap into their bank accounts, claims a report released Friday by the Presley Commission, a sleuthing group of Elvis fans, which claims to have proof the King lives.

Threats from organized crime forced Elvis to fake his demise and stage a phony funeral replete with his wax likeness inside a coffin to enter the federal witness protection program, the Presley Commission report said.

Since then, Elvis has moved from place to place, living in disguises and using a dozen aliases and, presumably, validating at least some of the sightings reported in supermarket tabloids, the report contends.

There was no immediate comment Friday from officials at Graceland, which oversees the interests of the Presley estate.

After working on the conspiracy theory for 2 1/2 years, the commission's largely unidentified corps of writers, researchers, federal officials and other assorted gumshoes unveiled their report at Camper's Paradise Restaurant and Marina in Moneta before reporters and about 30 Elvis fans. They wanted to hold it at the elegant Patrick Henry Hotel in nearby Roanoke, but decided to do it on the cheap instead.

But Phil Aitcheson, a freight trucking broker and self-described armchair detective who put the non-profit organization together, did it all with a straight face. "This was a very serious effort. A lot of people spent a great deal of money and time and effort to determine the truth," he said.

Joan Clark, president of the Looking For Elvis Fan Club, drove 900 miles from Mobile, Ala., to pick up a copy of the inch-thick report and repeatedly nodded her head in accord when Aitcheson summarized the contents.

"If people would only take the time to read the proof and use a little common sense, they would believe too," he said. (The report sells for \$29.95 and proceeds go to the Multiple Sclerosis Society, Aitcheson said.)

Diana Holland of Rocky Mount wore her "I've Been To Graceland" T-shirt and held her Elvis scrapbook — she started it the day he died, when she was a second-grader — tight to her chest as she attested to the findings.

"Some may think he (Aitcheson) is crazy, but I've read all the books on Elvis and I say that man got it right on the nose," she said.

The 15 members used materials from several best-selling books purporting to show that Elvis faked his death and ob-

tained hundreds of new government and medical documents surreptitiously and through the Freedom of Information Act.

And here, says the Presley Commission, is the shocking truth:

The body found in the bathroom of Presley's Memphis, Tenn., mansion, Graceland, on Aug. 16, 1977 was actually the cousin of the King's manager.

What mourners passing the King's catafalque actually saw was a wax dummy cooled by an elaborate system of dry ice and battery-powered, soundproof fans concealed inside the casket.

That, the commission says, explains why a dead Elvis sweats. Aitcheson and the investiga-

tive coordinator performed their own experiment by cooling a wax candle in the freezer and then taking it out into room temperature. Condensation formed on the candle's surface.

"The results were very similar to the way it looked on the brow of the alleged body as described by Elvis' cousin, Jean Smith," Aitcheson said.

The investigative coordinator used the alias Deborah Story and wore dark sunglasses at the news conference. She's a federal law enforcement officer, Aitcheson explained, and doesn't want to jeopardize her job or her continuing undercover efforts to get the goods on Elvis' faked death.

Elvis wanted people to think

he was dead to protect himself and his family from death threats.



NEAL Graphics & Greek Shop

Custom Screen Printing & Greek Supplies

Ma Futch Greek Supplies

Paulette Neal Screen Printing

200 Lanier Drive • Statesboro, GA 30458 • (912) 681-1274

Magazine covergirl

Magazine centerfold

Classy Cats

ADULT ENTERTAINMENT

Presents:

Maxine Monroe

LIMITED ENGAGEMENT

Sept. 20 - 24

MUST BE 21

Monday Night Football

Pick the winner and get a free table dance

Drink specials all night

23 West Fairmount Ave. Savannah (912) 925-8313

All major credit cards accepted

SHOWTIMES

Today - Friday

5:30 PM 7:30 PM 10 PM midnight

Saturday

8 PM 10 PM midnight 1 AM

40DD • 22 • 34

Classy Cats

ADULT ENTERTAINMENT

2 for 1 admittance with coupon

IN THE MOVIES

Charleston a 'Die Hard' city in third Bruce Willis flick

The Associated Press

COLUMBIA, S.C. (AP) — Bruce Willis saved an L.A. skyscraper and Washington's Dulles Airport from terrorists in his first two "Die Hard" movies. Can he save Charleston in the third?

The answer comes next month, when "Die Hard III" be-

gins filming in Charleston and Berkeley Counties.

As Detective John McClane, Willis this time will try to stop a terrorist played by English actor Jeremy Irons.

Parts of the movie will be filmed at the State Ports Authority and General Dynamics Corp. facilities in Charleston, Isabel

Hill, director of the state film office, announced Wednesday.

Other recent movies made in South Carolina include "Forrest Gump" and "Renaissance Man." Ms. Hill said that in the fiscal year that ended June 30, a record \$24.7 million was spent in the state by film makers, compared with \$22.6 million a year earlier.

IN THE CINEMA

Taking a journey through a serial killer's mind

By Hillel Italie
The Associated Press

TORONTO — It's 1:30 a.m. at this downtown movie theater and the "press conference" is just getting started. The film was called "Schramm," a surreal, blood-soaked journey through the mind of a German serial killer.

First question. "Why did you call it 'Schramm'?"

"It's just a German name," responds director Jorg Buttgerit, standing on the stage. "I took it because it sounded dirty."

"Did you research any serial killers?"

"The guy I did the script with, a friend of mine, just finished his studies. His subject was (American serial killer) Ted Bundy."

"That scene where he witnesses the suicide doesn't really

work."

"I know," Buttgerit says with a smile, "I wrote it for another movie."

"That was a bizarre movie, man," Ian Hurlbut, a college student, said afterward. "There's a lot of weird people out there, and that guy (Buttgerit) is one of them, for sure."

It was a typical night of "Midnight Madness," one of the most popular series at the Toronto International Film Festival. For the past six years, fans have been cheering on — and jeering on — this after-hours sampling of horror flicks, martial arts movies, banned music videos and other works that often don't fit in with the art-house cinema screened during the day.

"Each of us signs the program notes, and we have to defend the decisions we make," Noah Cowan, the founder and pro-

grammer of "Midnight Madness," said Thursday.

"There are movies the others pick for the regular screenings I wouldn't want my name associated with. And there are movies I pick I'm sure nobody else wants to know about. There's no attempt at consensus at this festival."

Besides "Schramm," this year's midnight screenings include "The Eagle-Shooting Hero," described by Cowan as a "demented send-up" of Hong Kong flying swordsman movies; "Naked Killer," the "logical extreme" of "Thelma and Louise," and "Dellamorte Dellamore," a campy graveyard comedy.

Cowan said he doesn't seek outrageousness for its own sake — he draws the line at real-life execution films — but likes movies that are serious as movies, made by directors who appreci-

IN ENTERTAINMENT

Top video sales and rentals

The Associated Press

Weekly charts for the nation's most popular videos as they appear in this week's issue of Billboard magazine. Reprinted with permission:

Video sales:

Copyright 1994, Billboard Publications Inc.

1. "Beethoven's 2nd," (MCA-Universal)
2. "D2: The Mighty Ducks," (Disney)
3. "Thumbelina," (Warner)
4. "Playboy Celebrity Centerfold: LaToya Jackson," (Playboy)
5. "The 3 Tenors in Concert 1994," (AVision)
6. "Ace Ventura: Pet Detective," (Warner)
7. "Yanni: Live at the Acropolis," (BMG)
8. "Little Rascals Collection, Vol. 1," (Cabin

- Fever Entertainment)
9. "3 Chains of Gold," (Warner-Reprise)
10. "Playboy: Wet & Wild - The Locker Room," (Playboy)

Video rentals:

Copyright 1994, Billboard Publications Inc.

1. "Schindler's List," (MCA-Universal)
2. "Four Weddings and a Funeral," (PolyGram)
3. "Philadelphia," (Columbia TriStar)
4. "On Deadly Ground," (Warner)
5. "Grumpy Old Men," (Warner)
6. "The Ref," (Touchstone)
7. "The Pelican Brief," (Warner)
8. "D2: The Mighty Ducks," (Disney)
9. "Blue Chips," (Paramount)
10. "Intersection," (Paramount)

Music video sales:

Copyright 1994, Billboard Publications Inc.

1. "The 3 Tenors in Concert 1994," (AVision)
2. "Live at the Acropolis," Yanni (BMG) (Platinum)
3. "Kiss My A—," Kiss (PolyGram)
4. "Live," Ray Stevens (Curb)
5. "The Sign," Ace of Base (Arista) (Gold)
6. "Our First Video," Mary-Kate & Ashley Olsen (Dualstar) (Platinum)
7. "Comedy Video Classics," Ray Stevens (Curb) (Platinum)
8. "Livin', Lovin', & Rockin' That Jukebox," Alan Jackson (Arista) (Platinum)
9. "Zoo TV: Live From Sydney," U2 (Polygram)
10. "Live Sh—: Binge & Purge," Metallica (Elektra/proof), (Warner Reprise)

STOP THE HATE.

Dining & Entertainment Guide

Found Exclusively in The George-Anne's Blue Edition • Tuesday, September 20, 1994

Buffalo's Cafe

Lanier Drive
681-3030

Tuesday Francisco & Shine
Wednesday The Drunks
Thursday Memory Dean
Friday Live Reggae with Iron Lion

Cinema 9 Mugs & Movies

Statesboro Mall
489-4492

Tuesday
Ladies Night
1/2 Price

Thursday
Wing It!
25¢ Buffalo Wings

The Country Club

Hwy 301 S.
681-9000

September 22, 23, 24
The Savannah
Band

Monday Night Football
Tuesday No Cover
Wednesday "Ice" Night
Thursday Ladies Night

Vandy's

Statesboro Mall
764-3033

Pit Cooked BBQ Since 1929
Best Chicken Fingers in Town
Daily Specials
Ribbs on Tuesdays
Catering Service Available

Legends Bar & Grill

Old Register Road
871-5349

Wednesday
The Freddy Jones
Band
Tickets \$5 in Advance &
\$6 at the Door

Thursday
I-95 Welcome Back
Party & Mug Night

Call For Specials • 871-5349

Video Warehouse

120 Northside Dr. E
489-4279

FREE Membership
Sun - Thurs 8:30 - 11 pm • Fri & Sat 8:30 - Midnight
Coming this week:
Naked Gun 33^{1/3}
Farewell My Concubine

Legends Bar & Grill

Old Register Road
871-5349

Friday
Kinchafonee Cowboys
Tickets \$5

Call For Specials • 871-5349

If You Are Going to Drink Don't Drive
AND
If You Are Going to Drive Don't Drink

CARTOONS

CLASSIFIEDS

CROSSWORD

01-Announcements

ATTENTION GSU students: Are you interested in being a D.J.? If you are come to the WVGS station meeting Thursday the 22nd at the University Union Theatre at 5pm.

ATTENTION: The George-Anne screens all classified ads prior to publication. The newspaper strives to accept ads for legitimate products & services only. Students are urged to exercise caution when replying to ads, particularly those which ask for money or a credit card number in advance of delivery of products or services. Students are also urged to report to the newspaper (at 681-5418) any suspicious offers they might see in the classifieds. Remember, if an offer seems too good to be true, it probably is.

03-Autos for Sale

1992 Suzuki Sidekick JX-4-door loaded with extras, including 4-wheel drive. Lots of fun to drive, only \$8,900 (below loan value). 706/554-7957 (after 6 p.m.). Can be seen in lot beside Marvin Pittman during the day.

09-Furniture & Appliances

FOR SALE - matching sofa and loveseat. Decent condition, \$200. Call 852-9022 leave message

FOR SALE: Almost new wood kitchen table with four fabric covered chairs. \$150. Call 871-3177.

FOR SALE: Double bed - box spring and mattress with bookcase type headboard \$65.00. Call 764-3645 evenings.

FOR SALE: Queen size water bed, 3 pad railings, 6 drawers underneath h, nice head unit with mirror and 2 cabinets. \$100. Call 871-7968, ask for Scott.

Very pretty Bassett solid oak dresser and matching desk with chair. The pair for \$150. Full length mirror and framed prints for sale. Caroline, 681-6747.

11-Help Wanted

ALASKA EMPLOYMENT - Students Needed! Fishing Industry. Earn up to \$3000 - \$6000+ per month. Room and Board! Transportation! Male or Female. No experience necessary. Call (206)545-4155 ext A53941

CRUISE SHIPS NOW HIRING - Earn up to \$2000+/month working on Cruise Ships or Land-Tour companies. World travel. Seasonal & Full-Time employment available. No experience necessary. For more information call 1-206-634-0468 ext. C53941

FUNDRAISING - Choose from 3 different fundraisers lasting either 3 or 7 days. No investment. Earn \$\$\$ for your group plus personal cash bonuses for yourself. Call 1-800-932-0528, EXT 65

National Wholesale Electronics Company seeks campus sales Representative. Gain valuable experience plus substantial earning potential. Call

Wanted! America's fastest growing travel company is now seeking individuals to promote Spring Break to Jamaica, Cancun, Bahamas, Florida, South Padre, Fantastic Free Travel and Commissions! Call SunSplash Tours 1-800-426-7710

12-Lost & Found

Found -- bracelet on first floor Psychology wing at M/P/P. To claim send description to LB 11053.

13-Miscellaneous for Sale

1977 2BR, 2 bath mobile home (next to Paulson Stadium) in excellent shape for sale. Great price. Call after 6 p.m. Or before 9:30 a.m. 681-4179.

For Sale: Trek 7000 SHX. Aluminum Frame with suspension fork. Silver and Blue. Too many extras to list. Come and see. \$1200 Scott 681-2349.

FOR SALE: 3 formal dresses. One green velvet, one blue sequins, one black with different colored sequins. Sizes 6-8. Call Amy at 871-7215.

14-Motorcycles

1982 Kawasaki KZ2440, \$800, nice bike, call for details. 871-5472, ask for Daniel.

19-Rentals & Real Estate

Are you still trying to find a place for next year. 2BR, 2BA, close to campus, pool, volleyball. Call Shaun at 681-6827.

For Rent: 2BR/1 bath house nice location on 304 Florence Ave. Ideal for a young family. For further info: contact Chris Dunagin at 489-2939.

NICE REASONABLE RENTALS 764-5003 Walker Enterprise

20-Roommates

3 roommates (prefer Christians) to share large 2-story house outside of town. Fireplace, swimming pool, secluded & quiet, overlooking a large private lake. Sound too good to be true? For more info, call Jason at 842-5436 or 764-9350 (leave message).

Female roommate needed for 94-95 year at Park Place. Fully furnished -- complete with washer and dryer. Pvt room & bath, \$265/mo + 1/2 utilities. Call Mykki at 871-6183.

FEMALE ROOMMATE NEEDED! 3-bedroom house, fully furnished. \$120 only for a PRIVATE ROOM. Utility included except electricity. Sublease for 3 months and up from Fall '94 til August '95. Call Jennie or Yenny at 489-8299

Looking for 3 roommates for next year starting in Fall. Campus Courtyard 2 shared bedrooms 2 full baths. Rents \$200 a month/ Call Jenn at (803)536-1992. If no answer leave message!

Roommate needed for 94-95 school year. Campus Courtyard, 4 bedroom townhouse, fully furnished, \$235/mo plus 1/4 utilities. Call Christie at 871-7440 or Stephanie (404) 477-0740.

Roommate wanted: share 3 BR house in nice, safe neighborhood. Washer/dryer, microwave, swimming pool, \$160/mo plus share of utilities. Call 764-8792, leave message or call after 7 p.m.

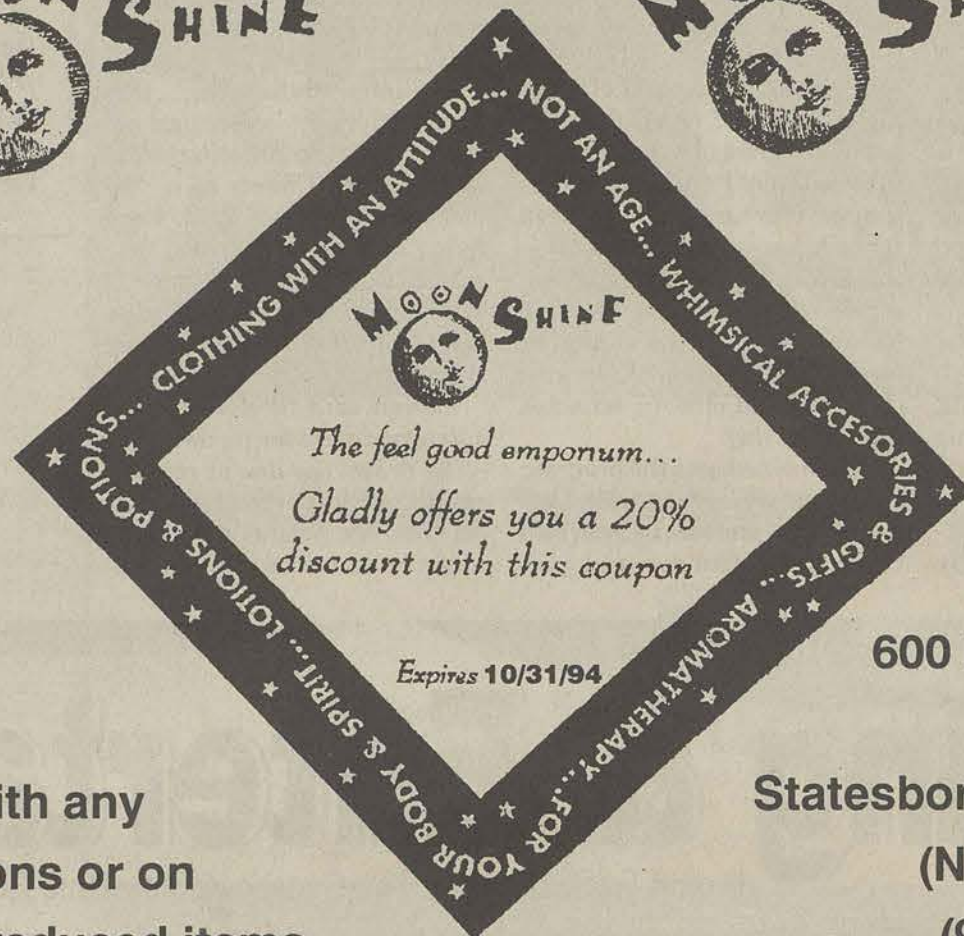
ROOMMATE NEEDED!! #45 Player's Club \$161.25 monthly 2 bedrooms 2 1/2 baths and utilities. Call 871-3537

23-Stereo & Sound

'93 Sony High Powered pull-out cassette player. \$80 obo. 681-7637, ask for Allison.

FOR SALE: Fisher CD Player with remote. Good condition. Comes with original box. Asking \$100, Call Mitch at 871-4099 after 6 p.m.

If You're Going to Drink ... Please, Don't Drive



Not good with any other coupons or on previously reduced items.

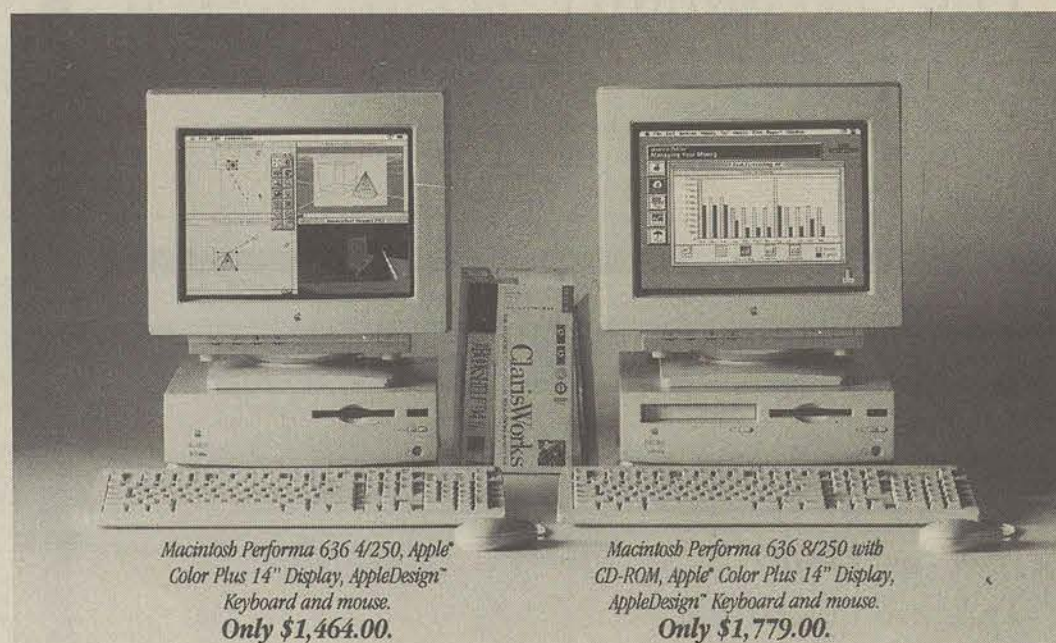
600 Northside Dr.
Suite H
Statesboro, Ga. 30458
(Next to Publix)
(919) 764-2794

Two of the most popular bundles on campus this year.



A distinctively fragrant assortment of wool, denim, rayon and poly-cotton blends.

Now you can really clean up when you buy a select Macintosh® Performa®. For a limited time, it comes bundled with a unique new student software set available only from Apple. It's all the software you're likely to need in college. You'll get software that takes you through every aspect of writing papers, the only personal organizer/calendar created for your student lifestyle and the Internet Companion to help you tap into on-line



Macintosh Performa 636 4/250, Apple Color Plus 14" Display, AppleDesign® Keyboard and mouse.
Only \$1,464.00.

Macintosh Performa 636 8/250 with CD-ROM, Apple® Color Plus 14" Display, AppleDesign® Keyboard and mouse.
Only \$1,779.00.

research resources. Plus ClarisWorks, an intuitive, integrated package with a spreadsheet, word processor, database and more. Buy a select Performa with CD-ROM, and you'll also get a multimedia library of essential reference tools. And now, with an Apple Computer Loan, you can own a Macintosh for less than a dollar a day.* It's the power every student needs. The power to be your best.*



POWER
through it.

For further information visit Eagle's Logic
Hampton Hall corner of Knight & Harvey Drive • 871-1145
Special pricing & loan program also available to faculty & staff

Offer expires October 17, 1994; available only while supplies last. ©1994 Apple Computer, Inc. All rights reserved. Apple, the Apple logo, Macintosh, Performa and "The power to be your best" are registered trademarks of Apple Computer, Inc. AppleDesign is a trademark of Apple Computer, Inc. ClarisWorks is a registered trademark of Claris Corporation. *An estimate based on an Apple Computer Loan of \$1,549.15 for the Performa 636, and \$1,882.59 for the Performa 636 with CD-ROM system shown above. Prices and loan amounts are subject to change without notice. See your Apple Campus Reseller or representative for current system prices. A 5.5% loan origination fee will be added to the requested loan amount. The interest rate is variable, based on the commercial paper rate plus 5.35%. For the month of August 1994, the interest rate was 10.10%, with an APR of 11.36%. 8-year loan term with no prepayment penalty. The monthly payment shown assumes no deferral of principal or interest. Students may defer principal payments up to 4 years, or until graduation. Deferral will change your monthly payments. The Apple Computer Loan is subject to credit approval.

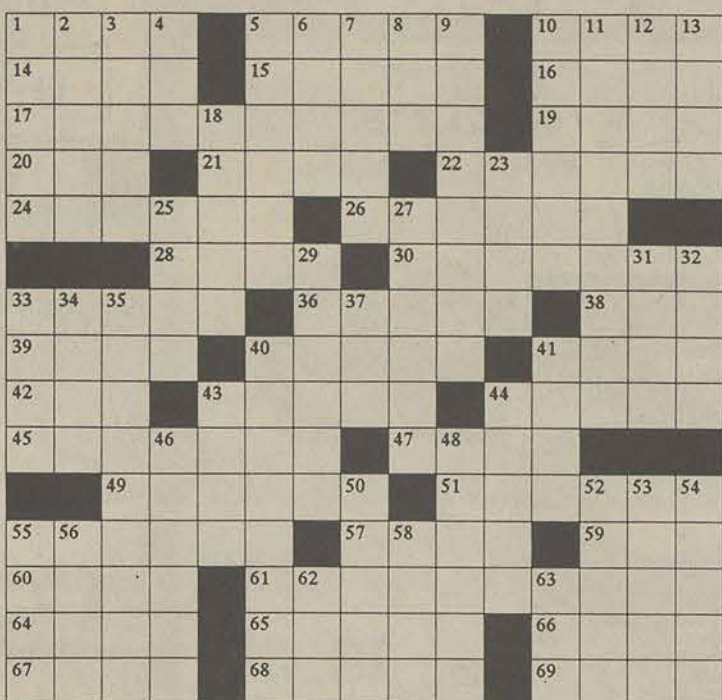
CARTOONS, CLASSIFIEDS, CROSSWORD

Weekly Crossword

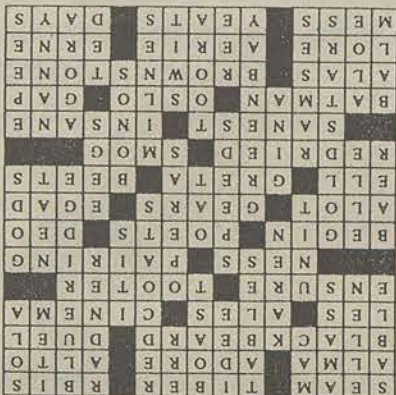
"Crayola"

By Gerry Frey

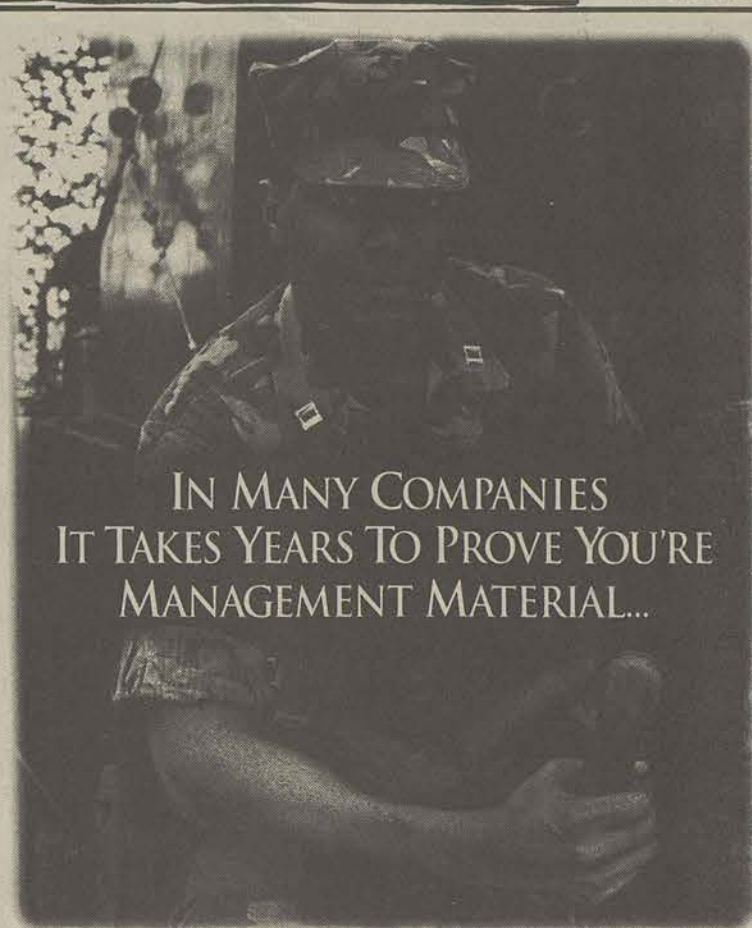
- ACROSS**
- 1 Joint
 - 5 Rome's river
 - 10 Baseball stats
 - 14 _____ mater
 - 15 Worship
 - 16 Glee club member
 - 17 Colorful pirate
 - 19 Burr & Hamilton contest
 - 20 _____ Paul
 - 21 Pub offerings
 - 22 Movie theater
 - 24 Guarantee
 - 26 Doc Severson, eg
 - 28 Loch _____ monster
 - 30 Wedding
 - 33 Start
 - 36 Bards
 - 38 God:latin
 - 39 Thanks _____!
 - 40 Toothed wheels
 - 41 Mild expletive
 - 42 Building extension
 - 43 Ms. Garbo
 - 44 Root vegetables
 - 45 Put it through the Maytag again?
 - 47 California problem
 - 49 Most sensible
 - 51 Mad
 - 55 Robin's pal
 - 57 Norway's Capital
 - 59 Breach
 - 60 Woe is me
 - 61 Colorful building
 - 64 Traditional knowledge
 - 65 Eagle's nest
 - 66 Sea eagle
 - 67 Army meal
 - 68 William Butler _____
 - 69 Doris & Dennis
- DOWN**
- 1 Black
 - 2 McGovern
 - 3 Gather
 - 4 IBM competitor



- 5 Follows multiplication
- 6 A French idea
- 7 Brag
- 8 Be wrong
- 9 Colorful soldiers
- 10 Gilda
- 11 Colorful mountains
- 12 Piece of news
- 13 By oneself:Latin
- 18 Ms. Black
- 23 Inflammatory suffix
- 25 Smallest whole number
- 27 Musical dramas
- 29 Velocities
- 31 Uncluttered
- 32 Supreme beings
- 33 Former heavyweight Max _____
- 34 Little girl in Paris
- 35 Colorful awards
- 37 Cereal grain
- 40 Colorful Wisconsin City
- 41 Brain tests
- 43 Ms. Lolobrigida
- 44 Sonny & Chastity
- 46 Ancient Egyptian king
- 48 Pooh's creator & family
- 50 _____ loora, loora
- 52 Greek marketplace
- 53 Female goat
- 54 Fencing swords
- 55 Soothing preparation
- 56 Medicinal plant
- 58 Loretta
- 62 Dakota Indian
- 63 Mr. Danson



© 1993 All rights reserved GFR Associates
P.O. Box 461, Schenectady, NY 12301



IN MANY COMPANIES
IT TAKES YEARS TO PROVE YOU'RE
MANAGEMENT MATERIAL...

WE'LL GIVE YOU 10 WEEKS.

Ten weeks may not seem like much time to prove you're capable of being a leader. But if you're tough, smart and determined, ten weeks and a lot of hard work could make you an Officer of Marines. And Officer Candidates School (OCS) is where you'll get the chance to prove you've got what it takes to lead a life full of excitement, full of challenge, full of honor. Anyone can say they've got what it takes to be a leader, we'll give you ten weeks to prove it.

Marines
The Few. The Proud. The Marines.

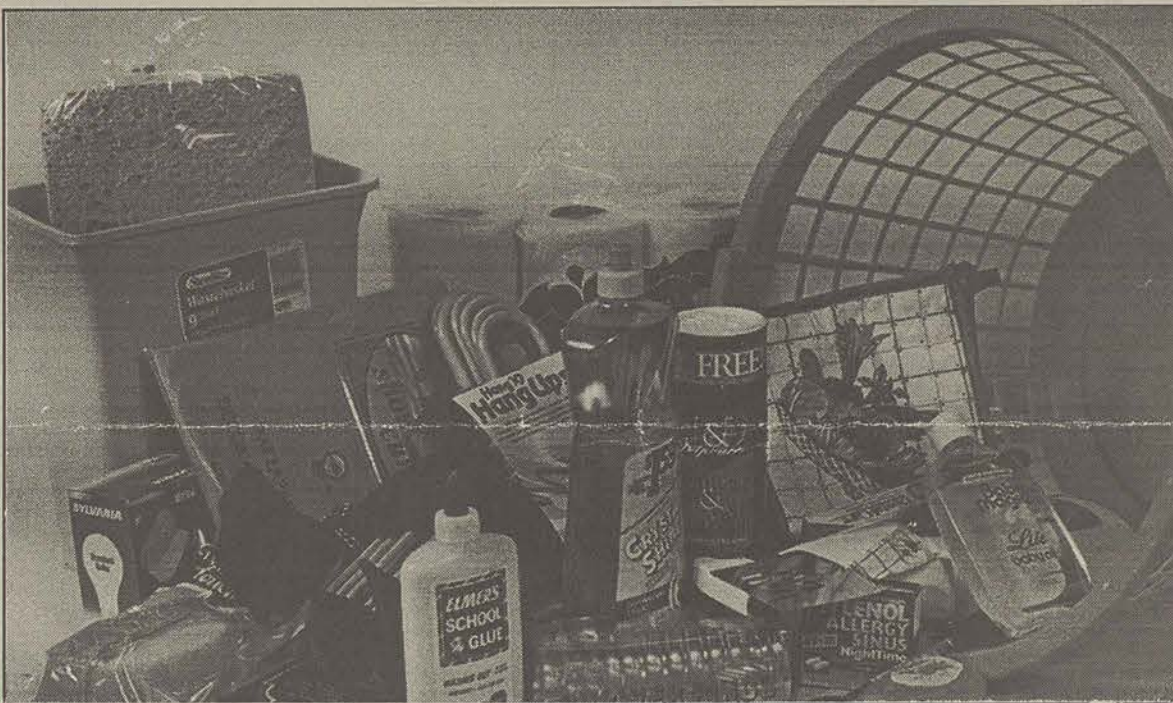
MARINE OFFICER

If you think you can handle this crash course in management, see Captain Summerlin on September 27th, 1994 from 10:00 am to 2:00 pm under the Rotunda, next to the Student Union.

\$1⁰⁰ EVERY ITEM. EVERY DAY.

OVER 40,000 ITEMS TO CHOOSE FROM

- Cleaning Supplies
- Plastic Items
- Hair Bows
- Earrings
- Kitchen Utensils
- School Supplies
- Hardware
- and much more

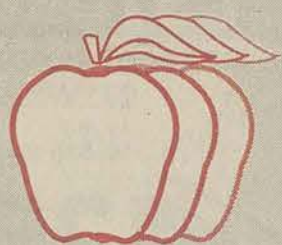


FREE

Hairbow when you
buy 5 hairbows

FREE

Pair of Earrings
when you buy 4 pairs



Apple's \$1⁰⁰ Store

Statesboro Mall, Hwy. 80 East

912-489-6021

STUDY THIS PAGE... FOR BACK-TO-SCHOOL SAVINGS!

BUILDING MATERIALS CENTER...CUSTOMER SATISFACTION GUARANTEED SINCE 1892!



MIRROR STORE

**Framed 14"x50"
DOOR MIRROR**

4⁹⁹

Each #636563

CRATE STORE

**PLASTIC STORAGE
CRATES**

- Available in blue, white or black
- Excellent for organizing and storing
- Stackable - can be used for shelves, dividers or closet organizers

1⁹⁹

Each #947564

LOCK STORE

COMBO BIKE LOCK

- 5 1/16" Long Shackle
- Vinyl shackle cover

1⁹⁹

Each #873380

**COMBINATION
LOCK**

1⁴⁷

Each #780494

BATH STORE

SHOWER CURTAINS

Choose from:

- Clear, White, Dusty Rose, Pale Blue, Vanilla/ Tan

2⁴⁹

Each #937060, #937061, #937062, #937063

**SHOWER
CURTAIN RINGS**

1⁸⁸

Per Set #937011, #936997, #937029, #937037, #937003

DESK LAMP STORE

DESK LAMP

- 60 Watt rated
- Dome shade
- Weighted base

7⁹⁹

Each #931220 Stk#2600

LIGHTBULB STORE

Long Life

LIGHT BULBS
40, 60, 75, or
100 Watt
YOUR CHOICE:

94¢

#767731, 49, 56, 64

MINI BLIND STORE

MINI BLINDS
Ivory or White (PVC)

3²⁹

23"x42"
Ea. #1024
#1099

23"x64"	#1487 #1052	4.59
27"x64"	#1495 #1040	4.99
29"x64"	#1594 #1057	4.99
30"x64"	#781211 #781229	4.99
31"x64"	#1719 #1065	4.99
35"x64"	#1727 #1073	5.39
36"x64"	#1743 #1081	5.39

YOUR PAINT STORE!

Latex

**Flat Wall
Paint**

Off White

**Interior
Flat Latex
WALL PAINT**

- Easy to apply
- Cleans up with soap and water

3⁹⁹

2 Gal. **9.29** 5 Gal. **19.45**

2 Gallon #129742 5 Gallon #643049

**4" HEAVY
DUTY BRUSH
or
3 PIECE
ROLLER KIT**
Plastic

99¢

Each #807545 Per Set #854026

**SPACKLING
PUTTY POWDER**

99¢

Per 1 lb. #902643

**QUICK DRY
SPRAY PAINT**

**11
ounce**

88¢

Per Can

Choose From:

- Gloss White.....#828780
- Gloss Black.....#828798
- Flat White.....#828772
- Flat Black.....#828764
- Royal Blue.....#828814
- Fire Red.....#828806
- Battleship Grey.....#828822

**PREPASTED
WALLPAPER**

2⁴⁹

Per single roll #671248

No mixing or
messy paste!

Sold in double rolls for 4.98

"SHELF YOURSELF!"

**PINE
SHELVING**
1" X 12"

85¢

Ln. Ft. #23481

**CINDER
BLOCKS**
8"X8"X16"

99¢

Each #446708

**8"X10" GREY SHELF
BRACKETS**

63¢

Each #605121

74¢

Each #562884

**TRIPLE SHELF
BRACKETS**

1⁰⁹

Each #187138

Add storage
space quickly.

VENTILATED SHELVING

12" Linen

Great for
linen closets,
laundry rooms
and any storage
space

75¢

Ln. Ft. #28845

12" Shelf & Rod **89¢** Ln. Ft. #276287

16" Shelf & Rod **1.49** Ln. Ft. #457358

GREY UTILITY SHELF UNIT

- Easy assembly
- Versatile
- No tools required
- Each unit supports 3,000 lbs.

4 Shelf
12"x30"x60"
9⁶⁶
#948208
Mod. #69401

5 Shelf
Deluxe Unit Heavy Duty
16"x36"x72"
17⁸⁸
#948224
Mod. #67570

WEST BUILDING MATERIALS CENTER

111 S. College St.
Statesboro, Ga. 30458
764-6762

All items are not available at all stores. Limited quantities on others. We reserve the right to limit quantities on sale items, and not to sell to dealers or wholesalers. Prices quoted are based on customer picking up merchandise at store. Delivery available for small charge. Stores are not responsible for typographical errors. Art is representative - may vary from actual merchandise. Refunds, cheerfully given when register receipt is presented.

Prices May Vary After 9-28-94. If there are market variations.

All WEST Stores
Proudly Accept:



PLANT STORE

**INDOOR
TROPICAL PLANTS**

Choose from:
Scheffleras, Dieffenbachias,
Rubber Tree, Coleus, Philodendron

6⁹⁹

10 inch
container

Each #283721

ELECTRICAL STORE

**5 Outlet
POWER CENTER
for Computers
With Fax/Phone**

19⁹⁷

#903013
25365 F

- 5 outlet
- 3 mode surge and spike protection
- 15 amp circuit breaker
- EMI/RFI noise filter
- 6 power cord
- Fax/phone protection

FURNITURE STORE

**EASY
ASSEMBLY**

**TV/VCR
CART,
BOOKCASE,
or
STUDY DESK**

22⁶⁷

Each #947986
#947994
#947978

Your
Choice:

BATH STORE

**SHOWER
CADDY**

10⁸⁷

Each #937094
Stk#371

INSECTICIDE STORE

INDOOR FOGGER

Fogmaster II

**BONUS
BUY**

1⁴³

Per can #518357

*6 ounces
in each can

Sold in 3 pack for 4.29

CLEAN-UP STORE

TRASH BAGS
15 count 13 Cal Kitchen
10 count 30 Cal Trash
10 count 33 Cal Leaf

Your Choice:

99¢

#829275 #829283 #829291

CARPET STORE

CARPET RUNNER
27" Wide

- 1 Year
No-Fade Warranty

1²⁹

Ln. Ft. #902098 Grey
#902080 Brown

Rubber,
Non-Skid
Back