

Georgia Southern University

Digital Commons@Georgia Southern

The George-Anne

Student Media

2-18-1992

The George-Anne

Georgia Southern University

Follow this and additional works at: <https://digitalcommons.georgiasouthern.edu/george-anne>

Recommended Citation

Georgia Southern University, "The George-Anne" (1992). *The George-Anne*. 1262.
<https://digitalcommons.georgiasouthern.edu/george-anne/1262>

This newspaper is brought to you for free and open access by the Student Media at Digital Commons@Georgia Southern. It has been accepted for inclusion in The George-Anne by an authorized administrator of Digital Commons@Georgia Southern. For more information, please contact digitalcommons@georgiasouthern.edu.

Hoop Eagles secure TAAC title with win over SE Louisiana

See Story, Page 5

Blood Drive:

Students, faculty and staff are all urged to donate blood at the Red Cross blood drive to be held Thursday, Feb. 20 from noon to 6 p.m. This drive is sponsored by Delta Tau Delta, and is co-sponsored by SGA and Resident Life.



Liked By Many,
Cussed By Some,
...Read By Them All



The George-Anne

BLUE EDITION
Action Ads 8 Comics 9
Announcements 2 Features 3
Baseball 6 Police Beat 2
Basketball 5 Opinions 4
Tuesday, February 18, 1992
Vol. 64 No. 32

912/681-5246

Celebrating 65 years as Georgia Southern's Official Student Newspaper

Georgia Southern University • Statesboro, GA 30460

NEWS BRIEFS

University of Georgia sets winter enrollment record

ATHENS, Ga. (AP)—A total of 27,432 students enrolled for winter quarter classes at the University of Georgia, setting a new record for the period.

Registrar Bruce Shutt said the quarter's enrollment exceeded the record set in winter quarter 1991 by 124 students, or 0.5 percent.

Undergraduate enrollment totals 19,905, an increase of 1 percent over 1991, and graduate enrollment totals 5,247, up 5.9 percent. Enrollment in professional schools fell by 71 students, or 3.2 percent, to 2,149.

House approves lottery bill including sales tax

ATLANTA (AP) — Lottery tickets would carry a sales tax under a proposed law governing how a state-run lottery would operate in Georgia if voters approve the concept next fall.

The Georgia House tacked the sales tax provision onto Gov. Zell Miller's lottery bill before approving it 127-32 Friday and sending it to the Senate.

Last year, the Legislature agreed to Miller's plan to allow voters to decide in next November's general election whether they want the state to operate a lottery with the proceeds earmarked for educational purposes.

This year, Miller is trying to go ahead and set up the lottery in advance of the vote.

"This makes sure we tell the people that, if they approve the lottery, this is where the money is going and it's going for education," said Miller's floor leader, Rep. DuBose Porter, D-Dublin.

But Porter said it wasn't fair to charge a tax on a state-sponsored lottery ticket.

"Take the lottery for what a lottery is, it's a voluntary tax. And to tax a voluntary tax is doing something that I don't think the people want," he said.

Porter noted the state doesn't charge a sales tax on its hunting and fishing licenses. "I think we're being a little inconsistent," he said.

Supporters argued that this would offset any reduction in sales tax the state might suffer if people spent their money on lottery tickets instead of items already subject to sales tax.

They also pointed out the potential windfall to the state's general treasury and to counties with local option sales taxes.

Harvard denies request to put logo on condoms

CAMBRIDGE, Mass. (AP) — Harvard University has rejected an entrepreneur's request to market condoms emblazoned with the school's insignia.

University officials said they denied the request by EuroPacific International because they feared potential legal problems if the condoms proved defective.

"If the condom is not effective, the University does not want to be liable for it," said Sylvia J. Struss, a Harvard trademark administrator.

In addition, the student newspaper, the Harvard Crimson, reported Friday, a University Health Services official told the company that using "the Harvard logo on the side of condoms would be an unacceptable and inappropriate use of the Harvard name and marks."

Harvard's insignia is a shield bearing with the word "veritas," the Latin word for truth, across three open books.

Computer virus invading GSU

By Ken Ward
Staff Writer

Picture this: It's around midnight on a star-filled evening in Statesboro. A student, Clark, adds the final touches to his 34 page term paper.

Just before typing the last sentence, a picture of Ronald Reagan suddenly bursts on the screen. Clark tries for several hours to remove Ron; however, no matter what he does, Ron will not go away. Clark's computer, like many computers around campus, is suffering from a viruses.

Like a biological virus that attacks and takes over a living human cell, a computer virus contains a set of coded instructions that allow it to invade a host, replicate and infect new hosts.

Numerous viruses spread undetected for an extended amount of time, waiting for a signal to begin destroying data or producing images of ex-presidents. The signals vary;

A computer virus is the equivalent of a drive-by shooting. The people who create viruses are like Jeffrey Dahmer; they're out to hurt innocent people. These people get a real joy out of causing pain.

— Mark Stewart, GSU's micro consultant

for instance, one common virus is programmed to unleash upheaval on Friday the 13th.

"A computer virus is the equivalent of a drive-by shooting," explained GSU's micro consultant and virus warrior, Mark Stewart. "The people that create viruses are like Jeffrey Dahmer; they're out to hurt innocent people. These people get a real joy out of causing pain."

"Many viruses are created on college campuses because students go to class three hours a day and then they have nothing better to do than create viruses."

Not all viruses are designed

for laughs. In fact, many of them are downright destructive. Both GSU Mac and IBM computers have suffered from viruses. GSU IBMs have experienced one of two devastating viruses: Stoned or Slow.

The Stoned virus rearranges files and eventually destroys the hard drive of a computer. When this occurs, a brief message appears on the screen: "Your computer is stoned, Ha Ha Ha!" Like most viruses, the easiest way for Stoned to enter a computer is for the user to insert a contaminated disk.

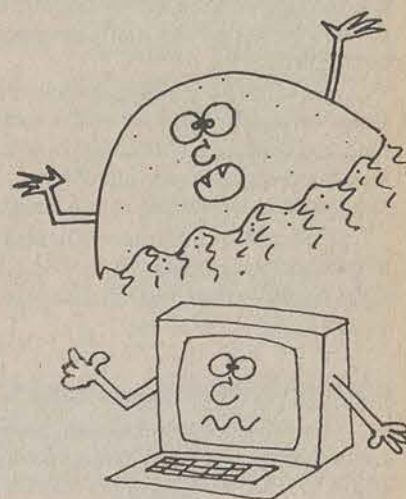
With the Slow virus, the overall functions of a computer are literally slowed down.

Ultimately, Slow destroys all the information stored in a computer. Slow also has the capability to attack anti-viral software.

The threat of viruses has invoked a strong response in the form of anti-viral software. Most of these programs claim to protect personal computers from damage should they be attacked by a virus. The two most well respected anti-viral disk utility programs are PC Central and Scan.

According to Stewart, one of the hardest hit locations on campus is the LRC, which scans their disks everyday; however, due to the large number of students using the facility, there is almost no way to stop the virus from spreading.

"The main problem we are having in the LRC is students passing viruses from one to the other," said LRC Technical Resources Coordinator Luis Tovar. "We have had problems with Stoned and other viruses



that damage data. Our Mac network is well protected by two virus programs that check all inserted disks."

Despite all the recent publicity, viruses are not new. Since the 1950s, computer researchers have experimented with viruses. The term "virus" showed up in science-fiction novels in the early 1970s. Viruses have even appeared in comic strips and an episode of Star Trek.

Students seek policy changes from Regents

ATLANTA (AP) — Georgia college students want a vote in how student fees are spent and a way to complain about professors who don't make the grade.

Student government leaders from the state's public colleges and universities asked the Board of Regents on Tuesday to consider changes they say will improve campus life.

The requests will be considered by the regents in the coming

year, but the board is not required to act on them.

In addition to dealing with student fees and poor professors, the students asked the regents to consider:

—Evaluating campus employees so that employees can be shifted to other colleges rather than fired in case of layoffs.

—Adding a clause about sexual orientation to colleges' anti-

SEE REGENTS, PAGE 10



Block and Tackle

A GSU rugby player is tackled at one of last weekend's tournament games. The GSU rugby team won with a 3-0 record for the tournament. (Photo by Bob Schwindler)

Five plans discussed for Bulloch County courthouse expansion

By Brent Parrott
Associate News Editor

A public hearing was held Tuesday to determine the feasibility of expanding the Bulloch County Courthouse.

In expanding the courthouse, the Citizens Courthouse Committee, which was appointed three years ago by the county commission, is considering five plans.

The first plan is to expand toward East Main Street on the south lawn with an addition that would be attached to the courthouse.

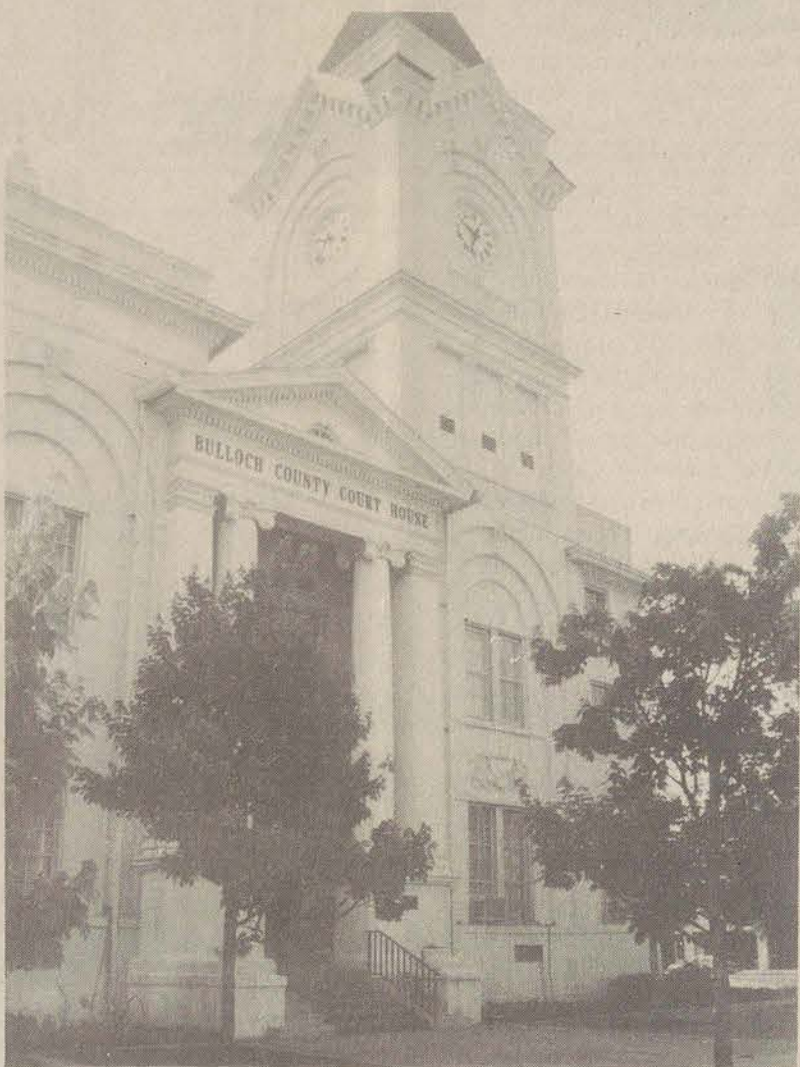
The second plan would be to buy the old Buggy and Wagon building and convert it into a three-story annex.

The third plan would be to either renovate or rebuild the Emergency Medical Services building on the corner of Courtland and Siebald Streets.

The fourth plan is building an addition eastward on Siebald Street.

The fifth plan is to buy the historic Bank of Statesboro and possibly the Georgia Theater, then renovate them. The buildings would then be used as an annex.

The county needs the new courthouse space because of



The Bulloch County courthouse is no longer large enough for needed court services, so several expansion plans are being considered. (File Photo)

Sign of the times

Big resumé may find job for UGA graduate

ATLANTA (AP)—A would-be marketing executive who took to the streets wearing his enlarged resumé on a sandwich sign was overwhelmed Wednesday with offers to interview for work.

Pete Condon said he received 15 calls on his answering machine one day after he advertised himself in downtown Atlanta's rush hour traffic.

"I'm quite satisfied," Condon said. "I'd say most definitely I will get a job from this."

Condon said he has been looking for a decent-paying job in marketing and advertising since he graduated in 1989 from the University of Georgia with a degree in finance and a 3.5 grade point average. He has been trying to make a living as a valet parking cars.

On Tuesday, he put on his long underwear, covered it with a navy blue Brooks Brothers suit, left the suburban apartment he shares with two roommates and traveled to Atlanta.

He was on the streets by 7:30 a.m., wearing the sandwich-sign version of his resumé that included his name and

telephone number in big letters. He also held a sign reading: "I Will Work for \$25,000 a Year."

The head of a public relations firm jotted down Condon's telephone number and immediately called him with an interview offer. Condon said the interview Wednesday morning went well, and he expected to be offered a job.

*I'm quite satisfied.
I'd say most definitely I will get a job from this.*

— Pete Condon, UGA marketing graduate

Condon said the company was mainly looking for interns, though, and he wasn't sure he was interested. First, he wants to see what else is available.

"I've been accused of being too particular because I want to stay with the career I wish," he said. "Just because I went about this yesterday, I don't intend to change my philosophy and grab whatever comes along."

CAMPUS BRIEFS

Martial Arts Club sponsors
USA Goju karate seminar

The GSU Martial Arts Club is sponsoring a USA Goju karate seminar Feb. 22, from noon until 4 p.m., at the GSU Gymnastics Center.

The seminar will be run by Sensei Keith Taylor, a sixth degree black belt USA Goju. Teller has 18 years experience in the martial arts and currently runs the USA Goju Dojo in Gainesville, which he opened in 1984.

The aim of the seminar is to expose other karate practitioners to the hard (go) and the soft (ju) system of karate. USA Goju karate has its roots in the Okinawan and Japanese styles of Goju-ryu, Kyokushin-kai and Shorinji-ryu.

The first hour of the seminar will be a traditional, fast paced USA Goju workout. The rest of the seminar will cover bare-handed self-defense, defense against weapons (knives, sticks, etc.) and basic stick fighting techniques as time allows.

Previous training in the martial arts is essential.

Teller is the instructor of Sensei Stacey Boyette (third degree black belt USA Goju), who teaches USA Goju karate at the GSU Martial Arts club. Anyone attending who has plastic knives or a set of ascrima sticks please bring them along.

Sorority celebrates Founder's Day

On Feb. 9, Alpha Omicron Pi sorority celebrated it's Founder's Day at the Georgia Railroad Station in Atlanta, with chapters from Georgai State, University of Georgia and LaGrange College.

Alpha Omicron Pi got to relive their past with inspirational words from thier International President Barbara Hunt.

The Wyman Award, given to an alumna who has been outstanding in her profession, in the arts or in service to humanity, was presented to Virginia Carr.

Carr is and English professor at GSU and a novelist who has written three books, including two biographies. She is working on her fouth book, a biography about Tennessee Williams.

The program also included rose recognition awards given to outstanding members in each chapter.



ANNOUNCEMENTS

Tuesday, Feb. 18

•Revisions will meet at 6 p.m. in the Union room 247.

•Eagle Baseball team plays Georgia at 4 p.m. at Clements Stadium.

•Sigma Tau Delta, GSU's English honors society, will hold a meeting at 4:15 p.m. in Newton 17. If you are interested but can't attend the meeting contact Nancy Remler or Diana Burke at 681-5879.

•Dr. J.B. Claiborne of the Biology department will lecture on *Acid Base Balance in Seawater Fish* at noon in room 218 of the Biology building.

Wednesday, Feb. 19

•GSU Placement Office will hold a resume writing workshop at 2 p.m. in Union room 244. The workshop is open to all GSU students.

•Men's and women's tennis teams will take on Armstrong State College at 2:30 p.m.

•A general student recital will be held in the Foy Fine Arts Auditorium at 1 p.m.

•Gamma Lambda chapter of Pi Sigma Epsilon is going to create the "World's Largest S'more" in front of Landrum. Proceeds will go to Camp Sunshine, a charity for children with cancer. Georgia Avenue will be closed for the event.

•Psi Chi will sponsor their second annual job fair for all students planning on graduat-

ing with a Bachelor's degree in Psychology from 9 a.m. to 1 p.m. in room 166 of the MPP building.

Thursday, Feb. 20

•There will be a poetry workshop in room 101 of the Williams Center at 6 p.m. To participate, bring ten copies of a single poem.

•*Yaaba* will be shown as part of the African film series in the Union Theater at 7 p.m.

•Lady Eagle Basketball team plays Bethune-Cookman at 7:30 p.m. in Hanner Fieldhouse.

•There will be a blood drive in the Williams Center from noon to 6 p.m. Students are reminded to eat breakfast before giving blood.

Friday, Feb. 21

•*The Color Purple* will be shown at 7 and 9:30 p.m. in the Union Theater.

•Symphonic Wind Ensemble will perform at 8 p.m. in the Foy Fine Arts auditorium.

•There will be a workshop on foreign service careers featuring Mike Oreste of the U. S. State Department Office of Mexican Affairs at 10 a.m. in the University Union room 275.

Saturday, Feb. 22

•Visitation Day will start at 8 a.m. at Hanner Fieldhouse.

•Lady Eagle Basketball team plays Stetson at 5:15 p.m.

in Hanner Fieldhouse.

•Eagle Basketball team plays Mercer at 7:30 p.m. in Hanner Fieldhouse.

Sunday, Feb. 23

•The movie *Other People's Money* will be shown at 7 and 9:30 p.m. in the Union Theater.

Monday, Feb. 24

•*Other People's Money* will be shown at 7 and 9:30 p.m.

Tuesday, Feb. 25

•The film *The Hiring* will be shown at 7 p.m. in the Union Theater.

•There will be a faculty recital at 8 p.m. in the Foy

Recital Hall featuring W. Schmid on trumpet and M. Braz on piano.

•Dr. Michael P. Moulton will present the lecture *Density Dependent Habitat Selection* at noon in room 218 of the Biology building.

Wednesday Feb. 26

•The NAACP Miss African American Pageant will be held in the Union Ballroom at 7 p.m.

•There will be a skating party at the Statesboro Skate Inn at 7 p.m.

Thursday, Feb. 27

•The Eagle basketball team will take on Stetson at 7:30 p.m. in the Hanner Fieldhouse.

THE GEORGE-ANNE

STATEMENT OF OPERATIONS

The George-Anne is the official student newspaper of Georgia Southern University, owned and operated by GSU students and utilizing the facilities provided by GSU. The newspaper is the oldest continuously published weekly newspaper in Bulloch County and Statesboro, Ga. The ideas expressed herein are those of the editor or the individual authors and do not necessarily represent the views of the Student Media Committee, the administration, the faculty and staff of Georgia Southern University, or the University System of Georgia. The George-Anne is published twice weekly during the academic year and three times during summers. Any questions regarding content should be directed to the editor (681-5246).

OFFICES, MAIL, PHONES

Room 111, F. I. Williams Center. The George-Anne, Landrum Center Box 6001, Georgia Southern University, Statesboro, Ga. 30460. 912/681-5246 (News) or 912/618-5418 (Advertising)

ADVERTISING INFORMATION

The George-Anne reserves the right to refuse any advertisement. The George-Anne's advertising rates are as follows:

•Students and student groups:	\$2 per column inch
•GSU faculty, departments or affiliates:	\$3 per column inch
•Statesboro area businesses & groups:	\$4 per column inch*
•National rate	\$7 per column inch

*Five inch minimum ad size, otherwise classified display rates (\$5.00 per column inch) apply.

DEADLINE: The deadline for reserving space and submitting advertising copy is Noon, one-week prior to the intended publication date. For more information, rate cards, sample publications, contact: Stacy Graham, Advertising Manager, ADS, (912) 681-5418; or Bill Neville, Student Publications Coordinator, (912) 681-0069.

CLASSIFIED ADVERTISING INFORMATION

The George-Anne reserves the right to refuse any advertisement. The George-Anne's classified advertising rates are as follows:

•Students, student groups, faculty and departments:	Free (25 words or less)
•Others groups or businesses:	10¢ per word per edition (\$5.00 minimum)
•Retail classified display:	\$5.00 per column inch)

DEADLINE: The deadline for reserving space and submitting classified advertising copy is Noon, one-week prior to the intended publication date. Free classified ads from students, faculty and staff must be submitted in writing, with the name of the sender and local address. No free ads taken via telephone. One free ad per person per week.

CIRCULATION INFORMATION

Subscription rates for home delivery of The George-Anne are six dollars per quarter, or \$18 per year, delivered bulk mail. Please address all inquiries to Jeff White, Business Manager. The George-Anne is distributed free of charge on the Georgia Southern University campus through delivery sites located in campus buildings and residence halls.

POLICE BEAT

GSU Department of Public Safety

February 13, 1992

• Matthew N. Bird was charged with minor in possession/consumption.

• Charles K. Beasley was charged with minor in possession/consumption.

• Randall G. Jarrell was charged with driving under the influence.

• Diane F. Kelly and Christopher A. Lewis were involved in an accident in the Veazy Hall parking lot.

• Robert R. Back reported someone hit his vehicle in the Dorman hall parking lot and left.

• Eric N. Daniel reported several compact discs missing from his Dorman Hall room.

February 12, 1992

• Vernon E. Browning was

charged with minor in possession/consumption and weaving over the roadway.

• Kerrick J. Trendle was charged with minor in possession/consumption.

• Clifford S. Lewis reported someone entered his vehicle in the in the Hanner parking lot and took a faculty/staff parking permit.

February 11, 1992

• Sharon Burris was charged with 12 counts of transaction card fraud.

• James D. Hay III, Stacy E. Lynn and Jay P. Shue were involved in an accident in the Oxford Hall parking lot.

• A resident of Johnson hall reported receiving harassing phone calls.

• Susan L. Sweat reported her purse missing from Henderson library.

• Officers responded to a

false fire alarm at Lewis Hall at 11:11 p.m.

Statesboro Police Department
February 16, 1992

• Joel Gordonworth of Ashburn was charged with driving under the influence and weaving on the roadway.

February 14, 1992

• Leonard Linardos of University Place was charged with pedestrian under the influence.

• Stephen Brett Henderson of Waycross was charged with possession of alcohol by a minor.

• Daniel Scott Lindsey of Waycross was charged with possession of alcohol by a minor.

• Jonathan Randall Love of Doraville was charged with driving under the influence and running a stop sign.

Georgia schools enter agreement with
U.S. Department of Energy

WASHINGTON (AP) — The U.S. Department of Energy and a group of six Georgia colleges and universities have agreed to work together to develop ways to improve health and safety at the Savannah River Site near Aiken, S.C.

The 4 1/2-year agreement signed Tuesday will fund faculty, graduate and undergraduate researchers through DOE's subcontractor, Westinghouse. It also allows SRS personnel to obtain advanced degrees in such fields as nuclear engineering, health physics and epidemiology.

The agreement was signed with the Education, Research and Development Association of Georgia Universities, a consortium made up of the University of Georgia, Georgia Institute of Technology, Emory University, the Medical College of Georgia, Georgia State University and Clark Atlanta University.

DOE already has a similar agreement with four South Carolina universities. That

agreement focuses primarily on environmental restoration and waste management.

Under the agreement with the Georgia schools, the Energy Department will provide up to \$3 million during the current fiscal year — through Sept. 30. Students, faculty and SRS employees may apply for grants to further their studies.

"We are very pleased to link the significant research and education capabilities at these major Georgia institutions with our technology and education needs at Savannah River," Energy Secretary James Watkins said in a prepared statement Tuesday.

"We envision the potential for a new research and development relationship that can provide needed technologies for the future, and enhance the health and safety mission of the site," he said.

Research projects included in the funding are robotics, health physics, industrial hygiene, regional environmental

and economic impacts and medicine and ecology studies.

Meanwhile, motorists traveling through the Savannah River Site on South Carolina 125 will soon be able to make the 17-mile trip without stopping to get a pass.

The decision eases a major headache for motorists and will save the federal government about \$450,000 annually.

Traffic on highway has been controlled since the nuclear materials production plant was built in the early 1950s.

Motorists were required to stop at a guard gate, obtain a pass that listed the number of occupants and time, and then return the pass at the other end of the plant.

The practice ends at midnight Saturday.

"Lessening of tensions in the world provides us a new opportunity to assess and adjust the traffic policy that has been in effect here for years," Plant Manager Peter Hekman Jr. said in a prepared statement. "The cost of issuing passes is too excessive for the security gained."

LIKED BY MANY, CUSSSED BY SOME, READ BY THEM ALL

GET
SHOT!

WHO:

All Student Organizations
(with the exception of Greeks)

WHEN:

February 25-27, 1992
4:00-8:00 pm

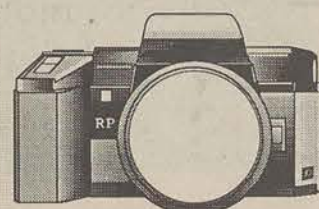
WHERE:

Williams Center,
Room 101

WHY:

To include your group in
the Spring 1992 edition of
the...

Southern Reflector
QUARTERLY MAGAZINE



•Call 681-5305 to make an appointment to have your group shot! Deadline to call is February 24, 1992.

Cartoonist wins *Atlanta Journal/Constitution* Impact Award

GSU's Patrick O'Kelley chosen top among college cartoonists in Georgia

By Donna D'Ambrosio
Staff Writer

Some people doodle. Other people sketch. Patrick O'Kelley draws. In fact, he draws so well he recently won a prestigious award for his work.

O'Kelley won the 1991 *Atlanta Journal and Constitution* Impact Award for the cartoons he drew for *The George-Anne*. An awards ceremony in Athens, Ga., this past weekend honored those who won.

O'Kelley won a plaque for his work, but the recognition associated with the award is a prize in itself.

"[The award] is prestigious among journalists, because only one person in the state gets each award," he said. "It's also a real good thing to have on my resumé if I ever truly get a job [drawing cartoons]."

O'Kelley has been drawing

for as long as he can remember but recalls getting recognition for his work as early as elementary school.

"I remember being able to draw and everybody would like me because of it," he said. "They'd always say, 'How can you draw that?' I'd say, 'I don't know - just look at it and draw it.'"

For some, drawing well takes hours of hard work and dedication. For others, drawing is a task that will never be mastered. For O'Kelley, drawing is a natural talent.

"Basically everything I've learned I've taught myself," he said. O'Kelley, however, does not credit himself for all his ability.

"My grandmother has always been able to draw and paint, so maybe I got it from her," he said.

O'Kelley started working



Patrick O'Kelley, right, is presented with the *Atlanta Journal and Constitution* Impact Award at the Georgia College Press Association Awards Conference in Athens on Feb. 15. (Photo by Randy Trujillo.)

for *The George-Anne* fall quarter. Although he has not submitted a drawing for the paper recently, he is considering a

few topics for new cartoons.

"I should do something about the presidential [election], and I'm thinking about ideas for the Tyson trial," O'Kelley said.

A comic strip of his own may be possible in the future; O'Kelley is currently pondering about concepts for a weekly strip for *The George-Anne*. Deciding on a set of characters and situations, however, may prove harder for O'Kelley to do than actually drawing the strip.

"It's hard for me to do stuff like that," he said.

O'Kelley is majoring in business, in which he hopes to get a masters degree, and plans to eventually earn an art degree. For now, he draws solely for the enjoyment and does not consider any monetary rewards it could bring in

the future.

"I'm not [drawing] for the money; I'm doing it for the fun of it," he said. "I feel like I want to draw, and that way it's fun. Otherwise it is just work. I don't want to do it if it's just work."

Although O'Kelley draws because he enjoys it, there seems to be another key motivator for him when he sits down to draw.

"I like to do cartoons that make people stop and think," he said. "Even if it hurts, at least I make them think for a little bit. That's what's [going to] make people pick up the newspaper next time."

**Write your
Congressman!**

Advances occurring in study of sickle cell anemia

Sickle cell anemia is a hereditary condition in which red blood cells take on a sickled shape, rather than their normal round shape. The sickle cells block blood flow through the capillaries (tiny blood vessels), reducing oxygen to vital organs and other tissues and causing fever and excruciating pain in the arms, legs, stomach and back.

Occlusions of the circulatory system by clumps of the cells can cause permanent damage to the spleen, strokes, and carry sickle cells to nearly any organ with significant damage. Recent evidence shows that

HEALTH AND FITNESS

Donald Jordan



the mechanism of this sickling is the aggregation of groups of hemoglobin S molecules, which are the oxygen-carrying molecules in red blood cells that have the sickling abnormality. Certain other inherited disorders of hemoglobin are actually helpful to sickle cell patients, because they decrease the amount of other abnormal hemoglobin that do not cause such severe damage," says The

Journal of the American Medical Association.

Treatment of sickle cell disease involves careful monitoring for the particular infections to which these patients are most prone, and giving the vitamin folic acid, which is needed when there is increased turnover of red blood cells (as in sickle cell anemia). Large volumes of fluid and appropriate doses of narcotics are

necessary in the treatment of acute sickle cell crisis.

Studies are ongoing to find ways to treat the disease, such as the use of hydroxyurea, normally used as chemotherapy for cancer, which increases the level of fetal hemoglobin (hemoglobin F) in sickle cell patients, therefore decreasing the level of hemoglobin S. Some studies are examining the use of human erythropoietin, a protein that promotes synthesis of hemoglobin F.

Previous success with these treatments have led the way to

SEE ANEMIA, PAGE 10

Culturally stimulating opportunities abundant

By Mike Donohoe
GSU News Service

This quarter is really wearing me down. As you probably know, the instability of college life and the maniacal schedules we as college students keep can seriously intrude on



one's personal leisure time. When I get a moment, I like to relax and enjoy some wholesome, touching family entertainment like the CLEC committee provides.

This week you can be whisked away to Africa for that wholesome entertainment as CLEC and the African and African-American Studies Program present the film *Yaaba* as part of their African Film Series. Made in 1989, the film won the International Critics Prize at the Cannes Film Festival. *Yaaba* tells a story of invincible love and the

ECLECTIC COLUMN

unique bond between the very old and the very young. In an expanse of desert outside their native village, a young boy and girl befriend an old and lonely woman who has been rejected by the villagers. She is called *Yaaba*, which means "grandmother."

The film will be shown in the Union Theater on Thursday, Feb. 29 at 7 p.m.

On Feb. 27, CLEC and the Art Department present John Steers, Executive Director of the British National Art and Design Association. Mr. Steers has been extensively published in various art journals. He is currently the Vice-President of the International Society for Education through Art. Mr. Steers's lecture will be titled "Politics in Britain and its Impact on the Arts" and will take place in the Union Theater at 7 p.m.

Mr. Steers will address such

topics as the right-wing stronghold on the education system in his country, how art fits into the curriculum, and also, show a few slides on art and

design work created in British schools.

For more information on any CLEC event, call our office at 681-5434.

Enjoy Spring
Break in Style...

with fashions from
The Sir Shop!

Famous Brands Include:

Ralph Lauren

nautica

Ray Ban

Flying
Scottsman

Q.H. Bass

420 Gentilly Place
Across from Wins Drive
764-6924

Be a part of the Union Team

Applications are available, beginning February 3, 1992 from the Union Productions office Rm. 207, Student Union. Applications are due February 21, 1992.

APPLICATIONS BEING ACCEPTED FOR:

- Coffeehouse Chair
- Concerts Chair
- Films Chair
- Homecoming Chair
- Multi-Cultural Coordinator
- Publicity Coordinator
- Special Events Chair
- Student Director

For more information call the Union Production office at 681-5442 or Anthony Rice at 681-0399.

**UNION
PRODUCTIONS**
GEORGIA SOUTHERN UNIVERSITY

Don't just
sit there...



...Read
Something!
The
George-Anne

WINTER
1992
W ♦ I ♦ T ♦ H

**UNION
PRODUCTIONS**

GEORGIA SOUTHERN UNIVERSITY

UPcoming EVENTS

Skating Party Wednesday, Feb. 26
7 pm Statesboro Skate Inn

Comedian: Rene Bray Tuesday, March 3
8 pm Union Ballroom

"Rapture" & Afro-American Choir Thursday, March 5
7 pm Union Ballroom

MOVIES

Friday & Saturday
The Color Purple
It's about life.
It's about love.
It's about us.
PG-13

Sunday & Monday
DANNY DEVITO
Other People's Money
R

Friday & Saturday
Sunday & Monday
7:00 p.m. & 9:30 p.m.
Union Theatre
\$1 with GSU Student I.D.
\$2 General Admission

Information Hotline
681-0461

UP BOARD

Student Director	Heidi Graef	Films Chair	Bill Waller
Publicity Coordinator	Marly Hays	Multicultural Chair	Lynwood Holmes
Concerts Chair	Stephanie Scott	Homecoming Chair	Cheryl Stephens
Coffeehouse Chair	Mike Bowden		

Office 681-5442 • **UNION PRODUCTIONS**
LANDRUM BOX 8066 • STATESBORO, GA 30460



Finding a gem in the TV wasteland

I am not a TV junkie.
I am not a TV junkie.

Honest, there are only four shows I really go out of my way to watch during the week.

Well, OK, maybe five if you count *In Living Color*.

But no matter what I may be doing on a Saturday night, I make a concerted effort to find a television so I can watch the latest episode of *Star Trek: The Next Generation*.

Yes, I know the stereotype. "Trekkies" are geeks and weirdos who wouldn't know real life if it beamed down into the middle of their parents' living room.

I am not one of those people.

I have not, I repeat NOT, memorized every name of every episode of the original series. I can't quote the intergalactic Klingon menu or tell you who James Kirk's parents were.

But I do enjoy both the old and new series and have very little patience for those old fogies who dismiss the new series out of hand, or think that all science fiction shows have no more cultural value than the *Buck Rogers* television series.

There was an article in a recent *Omni* in which a writer lambasted the new show, calling it "a reflection of the Bush 'new world order'" and a "kinder, gentler" *Star Trek* which did not equal the swash-buckling original.

Terrible article.

The funny thing was, I would have agreed with the writer when the show first came on. I had anticipated disaster when I first heard that they were doing this new series; my fears coming true when I watched the first episode.

I hated the jumpsuit-like uniforms. I thought that Picard (Patrick Stewart), the new Captain, was a wimp. The first two episodes were blatant ripoffs of the old series.

The characters were awkward, and there seemed to be too many of them. I thought that Counselor Troy was a babbling irritation that worked worse than a red alert.

She would announce that she sensed hostility from the alien ship with her psychic empathy about 2.5 seconds before they hit the *Enterprise* with a photon torpedo. My friends and I called her "mood ring."

FROM THE EDITOR'S DESK...

Gary A. Witte



I never went out of my way to see the program, and would only catch the program once in a while.

Slowly, I began to see improvements.

Without trying to re-create the shoot-em-up mentality of the original series, it began to interject a healthy sense of action and adventure.

The characters learned that nonviolence didn't always solve their problems. The storylines became more realistic (in their context, of course) and more emotionally effective.

Picard, somewhere along the line, grew out of the wimp stage and still managed to retain his noble ideals. His Shakespearean acting training began to shine through even the flimsiest of episodes.

The characters grew instead of continuing their cardboard status. This growth even spread to the minor extras. When a character would die, it had an emotional impact that the original series lacked.

The writing has become mature without losing its sense of humor or action. The show itself has become serious, without being pompous. *ST:NG* is—most of all—intelligent, without being boring.

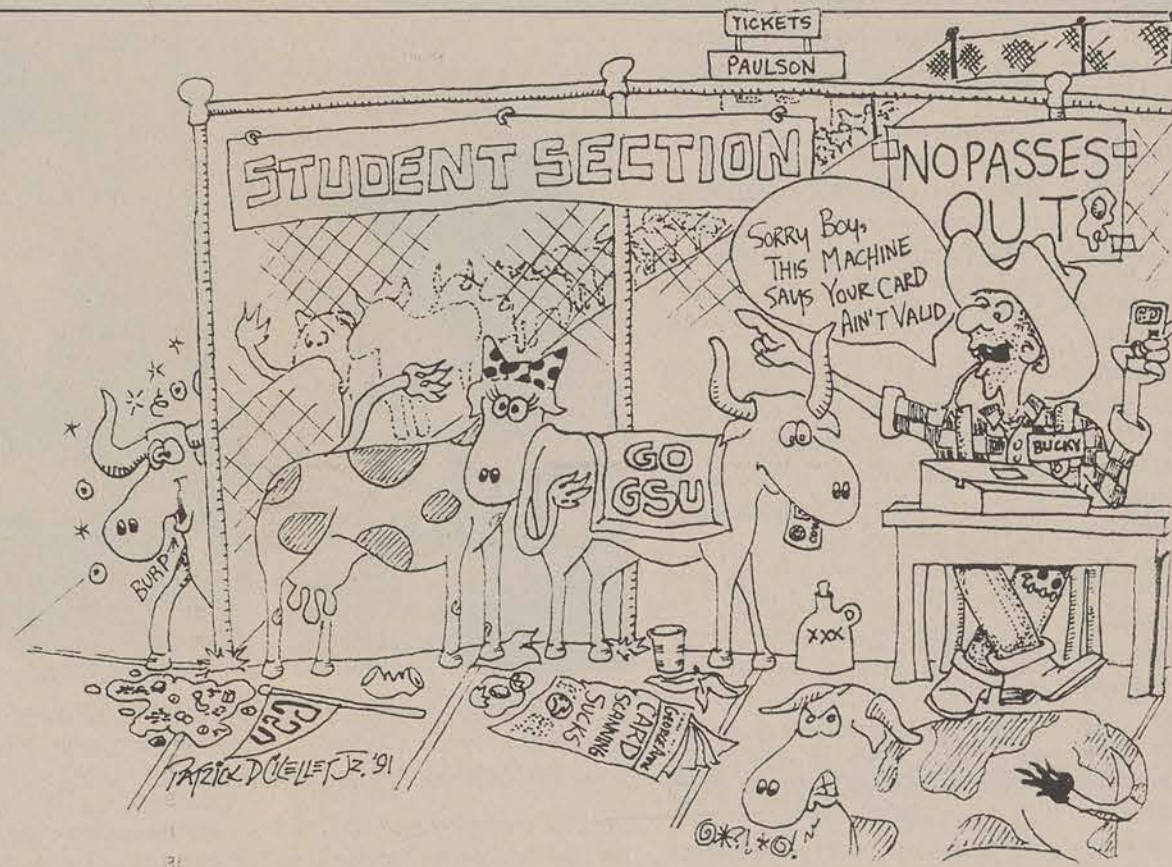
I won't pretend that *ST:NG* is the cure for cancer or will solve the world's problems, but for those of you who might have given up on television as a cultural wasteland, or just want a hour of solid and intelligent entertainment, *ST:NG* might just be what you're looking for.

I would encourage those of you who grew up with the old *Star Trek* (and what kid didn't?) to give *ST:NG* a try.

If nothing else it beats watching *Rin Tin Tin: K9 Cop* on a Saturday night.

Actually, I doubt anything can be worse than that.

Recommended Reading:
Beyond the Blue Event Horizon
— By Frederick Pohl



Congratulations to **Pat O'Kelley** for winning the prestigious *Atlanta Journal-Constitution* Impact Award at Saturday's Georgia College Press Association banquet. The above cartoon is the winning entry, and first ran in the Oct. 1, 1991 issue of the *George-Anne*. The related story involved problems with the scanning of student IDs at football games.

OTHER VOICES

Valdosta is next in line

People in this area can sympathize with Valdosta State College's aspirations to become a university. They longed for the designation of Georgia Southern as a regional university and welcomed the state's decision to grant that status to the Statesboro institution.

It has been understood for some time that the next university in South Georgia would be Valdosta State. That was even discussed in the legislature when Georgia Southern won university status.

But the state's current budget crunch makes it impossible to deal with Valdosta State's ambitions at this time. The state funding simply isn't available.

Existing universities face the risk of tightening of the purse-strings even though Gov. Zell Miller is ad-

vocating increased spending for higher education. They are, unfortunately, in an uncertain position because of the economy. To create another university now would be out of the question.

Just as Georgia Southern supporters once had to wait even though their college obviously had earned the designation, Valdosta State partisans must now have patience.

The issue arises because language added to the state's supplemental appropriations bill calls for a feasibility study to determine if Valdosta State can become a university. This action, initiated by Valdosta lawmaker Loyce Turner, is really a way of reminding legislators that Valdosta State is standing in line. They should not forget, but realization of the dream must be delayed.

—Savannah Morning News

LETTERS TO THE EDITOR

Women should voice opinion about abortion issue

Dear Editor,

I would like to use this forum to ask the women on this campus one simple question. Why are they not writing in with their opinions on the subject of abortion? Why is it that only men are making their voices heard, when this issue so directly affects women?

I am not suggesting that men shouldn't voice their opinions. That is an inalienable right in this country — everyone is allowed to have and to openly declare their personal position on any issue. Why aren't more women exercising their rights?

There is another inalienable right that is not expressly defined in the Constitution or in the Bill of Rights, that of freedom of choice. America was founded on the right to choose

one's religion, and that basic right has been extended through the years and through countless legal decisions in every court in the land to the freedom of choice over one's actions, within certain limitations.

I am in favor of allowing women the right to choose what becomes of their own bodies, a position that is now called pro-choice. I am not pro-abortion, other than realizing that it is a valid option that must be allowed to remain legal. Pushing abortion into the back alleys and into the offices of butchers who will do it illegally will not stop it, merely make it more dangerous for the women who choose it.

Abortion was relegated to back alleys and butchers once before, with disastrous results.

Even a popular romantic movie of a few years ago touched on that subject, and showed the dark side of an illegal abortion. Fortunately for Penny in *Dirty Dancing*, there were people who could help nearby. How many young women will go through that same experience in real life if abortion is removed from the list of legal alternatives?

Adoption is certainly an alternative as well. Another is keeping the baby and raising it on one's own, or with the help of the father. America is no longer a county in which a woman is ashamed to be a single mother, for which everyone can be thankful. Neither should it be a country where it is shameful to make another choice.

There are choices, and it

should be kept that way. No one has the right to force their religious beliefs down someone else's throat, either in the form of actual teachings or with their morals. Make your decisions based on your moral creed, on what you feel to be right for you. Don't try to take away someone else's right to choose. Please.

The Puritans accepted other religions in a budding nation over two hundred years ago, and that nation has accepted many differences in many beliefs and lifestyles since then. Don't let that history of choice be overturned now when so many other places are moving toward our mark. Let choice remain.

Melissa Lukehart
Senior English major

STAFF

NEWS

Assistant News Editors: Doug Gross, Brent Parrott; Copy Editors: Missy Lukehart, Mike Strong; News Staff: Jennifer Booth, Scott Crockett, Tanya Emerson, Johnnie Goolsby, Stacy Graham, Roger Lee, Dennis Smith, Michelle Thomas, Kim St. Hilaire, Ken Ward

FEATURES

Features Editor: Teresa Roach; Staff: Donna D'Ambrosio, Doug Gross, Carolyn McWilliams, Trey Decker, Donald Jordan

SPORTS

Sports Editor: Eric Weisenmiller; Assistant Sports Editor: Michael Strong; Staff: John Munford, Rod Swinson, Eddie Womack

OPINIONS

Staff: B. Birdseye, Philana Griffin, Jason Lewis, Pat O'Kelley, D.J. Smith

PHOTOGRAPHY

Head Photographer: Randy Trujillo; Staff: Robby Weatherly, Jesse Stribling, Robert Cooper

CIRCULATION

Supervisor: Glenn Burgess; Staff: Laura Morgan, Cindy Keever, Mike Bowden, Chris Shelnett, Robby Weatherly

ADVERTISING/DISTRIBUTION SERVICES (ADS)

Advertising Manager: Stacy Graham; Business Manager: Jeff White; Sales Manager: Jay Knight; Business Assistant: Kelley Hare; Sales Representatives: Kerry Calhoun, Christy Emig, Matt Fastick, Andrew Flurry, Shelly Robbins, Philip Williams

PRODUCTION AND GRAPHICS EDITORIAL SERVICES (PAGES)

Production Manager: Sherry Dyal; Production Assistant Managers: Stephen Sundersen, Barbie Westberry; Production Staff: Jason Adams, Keisha Davis, Brenna Dowling, James Kilkelly, Lynn Kirkland, Adrian McDaniel, Mitch Mitchell, Cathy Siler, Joseph Smith; Darkroom Manager: Randy Trujillo

STUDENT PUBLICATIONS COORDINATOR

Bill Neville

Pro-choice and Christian

Dear Editor,

I would like to voice my opinion on the abortion issue that has been popularized by your editorial [Jan. 28, "The problem with 'pro-life' arguments"] I am a Christian, but I am also pro-choice. I feel that there are certain circumstances in which abortion is a valid option for a woman. I am referring to rape and incest.

However, I do not feel that abortion should be used as a type of contraception. Mr. Ellison's idea of adoption is good, but I feel that we would quickly run out of people to adopt all 4,384 babies that are supposedly aborted daily. [Feb. 7, "Adoption, not abortion, should be the alternative"] Anyone with any mathematical ability can see that by the end of one year, social services

would have to place 1,560,704 babies.

My other concern is that if there were law prohibiting abortion, and all of these babies were born then it would be up to us as taxpayers to support these unwanted children in every way, from health care to education. These children would not have very good lives if they came into the world unwanted.

I know that God can work miracles, but let's be realistic. I would also like to say that Tom [Scarborough; Feb. 11, "Bible clearly states that abortion is murder"] is wonderful at proof-texting and that you can support anything with the Bible, including homosexuality.

Name Withheld By Request

LETTER AND SUBMISSION POLICY

The *George-Anne* welcomes letters to the editor, story submissions and guest columns from people both inside and outside the Georgia Southern University Community. All copy submitted should be typed (double-spaced, please), preferably on Macintosh disk in Microsoft Word or Microsoft Works format. All submissions must be signed and include a mailing address and phone number for verification. The editors reserve the right to reject any submission. There is no word limit on submissions. A writer may request to remain anonymous. However, it will be the editor's decision whether or not to print the name. Submissions are run on a space-available basis.

Hit and run is not funny

Dear Editor,

The other day (on Wednesday, Feb. 12 at approximately 10 a.m.) I was deliberately hit by a car in a crosswalk between Hanner and Hollis.

This person had stopped to let people cross the street and I was the last person to walk by. As I crossed, he accelerated and hit me in my legs. Although it did not hurt me or knock me down, it upset me to see the person laughing. He clearly did it on purpose.

Hitting someone in a crosswalk is not funny! This is a serious offense and is handled accordingly by the police. Crosswalks are sacred areas for pedestrians to cross streets and vehicles must stop to allow them to cross. Students, staff, faculty, and residents of Statesboro need to be aware of this if they do not already know this.

Name Withheld By Request

**ROD'S
REVIEW**

Rod Swinson



**Eagles
appreciate
your support**

First of all, I would like to congratulate the Eagle basketball team for an outstanding comeback and performance against the Panthers of Georgia State.

You really showed a lot of heart and character by not giving up and it paid off.

But I must take this time to thank the sixth man (fans) for showing up in large numbers to support your team.

You, the fans, showed a lot of character by staying behind the Eagles. Even when the picture started to get dim (Eagles trailing by 17 points) you maintained your support and it proved to be a determining factor.

You really put a large stake in your claim to be the REAL GSU.

I want to urge you to keep up the good work.

Last Saturday night could be the beginning of the atmosphere that brings in television contracts and media exposure.

I spoke to some of the players after the game and they expressed their appreciation for the atmosphere and support the fans gave.

Wendell Charles, who played an important role in the outcome of the game, made a few positive comments about the fan support.

"My ears are still ringing from the screaming and yelling out there," he said. "That is what it is all about. The excitement and enthusiasm out there makes me want to play even harder. We knew we could come back, and with that support we knew we had to do it for the fans. I just want to say one thing to the fans... Thanks and COME BACK."

Charlton "CY" Young, who played an excellent game especially the way he handled the ball under intense pressure with all of the excitement, had some things to say about the fans.

"That's the kind of atmosphere we have been looking for all year," he said.

"We appreciate it so much the way the fans came out and stayed with us throughout the entire game. They were a motivational factor in sparking us to a comeback. It's a great win for us and they were a part of it. I just want them to keep coming and we'll keep working hard to become better and better. Thanks."

Tony Windless was his usual consistent self, rising to the challenge whenever it presents itself also commented on the fan support.

"Oh, the excitement and enthusiasm really helped us out a lot. This type atmosphere makes us want to work harder to please ourselves and the fans. It was a great win for us and the fans had a lot to do with it. We just want them to keep coming back to help us even more as we move into post-season," he added.

Now as you notice, the players recognized that the fans support was a big factor.

They noticed you and I sensed in their comments that they genuinely need to know that they do have some support out there.

I think we could be on the brink of something big and what better time than when nearing March Madness when the Eagles will need us the most.

Oh, by the way, I told you that the games hold some exciting sites and sounds.

SEE SUPPORT, PAGE 10

Eagles clinch TAAC title despite loss

By Rod Swinson
Staff Writer

Centenary 110,
GSU 107 OT

The Eagles blew a 25-point lead and a chance at TAAC history when they lost to the Gents of Centenary in overtime 110-107 Thursday in Shreveport, Louisiana.

GSU could have become the first team in the history of their conference to go 10-0 but Centenary outscored the Eagles 65-49 in the second half and overtime to send the historical hopes down the drain.

The Eagles led throughout the first half, but seemed unfocused in the second half.

The Eagles got out to their customary fast start behind senior Tony Windless who scored a career high 32 points in pursuit of an early 17-2 lead.

The Eagles extended their lead to 18 with a score of 33-12.

Just minutes later the Eagles spurred and the Gents found themselves trailing 40-15 and eventually down 49-29.

The Eagles led 58-45 at the half.

The Gents refused to give up though and it paid off in the end.

The Eagles led 84-64 with 11:33 left in the game, but the Gents went on a 32-14 run the remainder of regulation to force overtime.

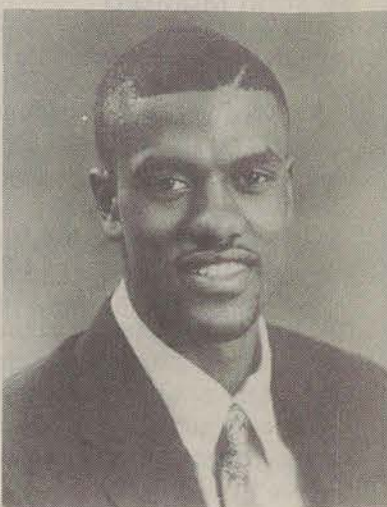
Centenary got a pair of free throws to cut the lead to 86-77 and shift the momentum to the sides of the Gents.

The Eagles led 88-77 with 7:00 left in regulation, but they could not hold the lead.

Within a matter of minutes GSU found themselves fighting for their lives when the Gents cut the lead to five at 94-89.

Windless hit two free throws to give the Eagles a 96-95 lead with only a couple of minutes left in regulation.

Just seconds later, Louis Lumpkin hit a free throw to tie the game 96-96 but the Eagles



Wendell Charles hit three key last minute free throws to secure victory over SE Louisiana.

had the final opportunity of regulation to win.

The Eagles missed at the final buzzer and the Gents of Centenary who once trailed by 25 had found a new life and a new game in overtime.

Centenary won the new game.

Dexter Abrams added 23 points for the Eagles, Charlton Young scored 18 and Wendell Charles netted 14.

The Eagles drop to 18-5 overall (9-1 in the conference) while the Gents improved their record to 8-14 overall (3-6 in the conference.)

GSU 79,

SE Louisiana 72

The Eagles rebounded from a tough loss Thursday to defeat the Southeastern Louisiana Lions 79-72 and clinch the regular season TAAC title.

A loss by Florida International to Samford and a win by the Eagles combined to give the Eagles homecourt advantage throughout the conference tournament.

The Lions slowed the Eagles usual fast start and managed to stay close to the Eagles, even leading 19-18 with 7:00 left in the half.

Tony Windless was sizzling early, as he scored 11 of the Eagles first 14 points, but scoring honors for the night went to Calvin Sinkfield who

scored 20.

The Lions managed to slow the pace of the game and trailed only two at 27-25 late in the first half.

The Eagles led at the half 35-27.

The Eagles came out fast to start the second half scoring seven unanswered points to give them a 42-27 lead their biggest of the game.

With 17:00 remaining to be played the Eagles led 44-29 and had their sights on blowing the Lions out.

With 14:51 left in the contest, the Eagles held a 14-point lead at 52-38, but the Lions would not give up.

The Eagle lead was cut to 12 at 60-48 with 10:00 remaining and the Lions kept coming.

Southeastern Louisiana outscored GSU 17-9 over the course of the next eight minutes and the Eagles found themselves fighting for their

lives again with the lead at just four, 69-65, with 2:07 left in the game.

Windless showed his senior leadership when he followed a missed shot to build the lead to 74-67.

The Lions were just about through roaring about that point.

Wendell Charles hit three of

five free throws in the final 1:03 of the game and Windless capped the scoring to give the Eagles the 79-72 win.

Windless ended the game with 17 points, while Charles finished with 12.

The Eagles improved their overall record to 19-5 (10-1 in the TAAC) and the Lions drop to 5-18 overall (3-7 in the TAAC.)

Spring Break '92
North Myrtle Beach
Myrtle Beach
The Grand Strand

You've Got The Time...

We've Got The Beach!



So, Pack your bags, grab your friends, find any mode of transportation and join the **Spring Break Beach Blast** in North Myrtle Beach, Myrtle Beach, and The Grand Strand.

We have sun and surf, trendy nightclubs, and a festive party atmosphere. You won't want to miss this most excellent adventure!

For more information about how you can join the Spring Break Beach Blast call:

1-800-356-3016, ext. 700

*Sports Emporium, formerly the Sports Buff is now under new ownership and management.

Sports
EMPORIUM

Greek and Team Lettering Available...

FOOTWEAR

Nike Air
Reebok
Converse
Asics
K-Swiss
Ellesse

Air Huarache



Statesboro Mall
764-6869
Mon.-Sat.
10am-9pm

Air Jordan



SPORTSWEAR

The Game
Russell
Umbro
Starter
Reebok
Nike

HATS

Starter
The Game
New Era
Apex One
Pro Line
Signature

Your Complete Sporting Goods Store!!!

Pro Sound
ENTERTAINMENT

Disc Jockeys For Any Occasion

Book Now For:

**Winter
Quarter
Formals**



Light Show
Included

681 - 7665

**BLACK
HERITAGE**

Black History Month

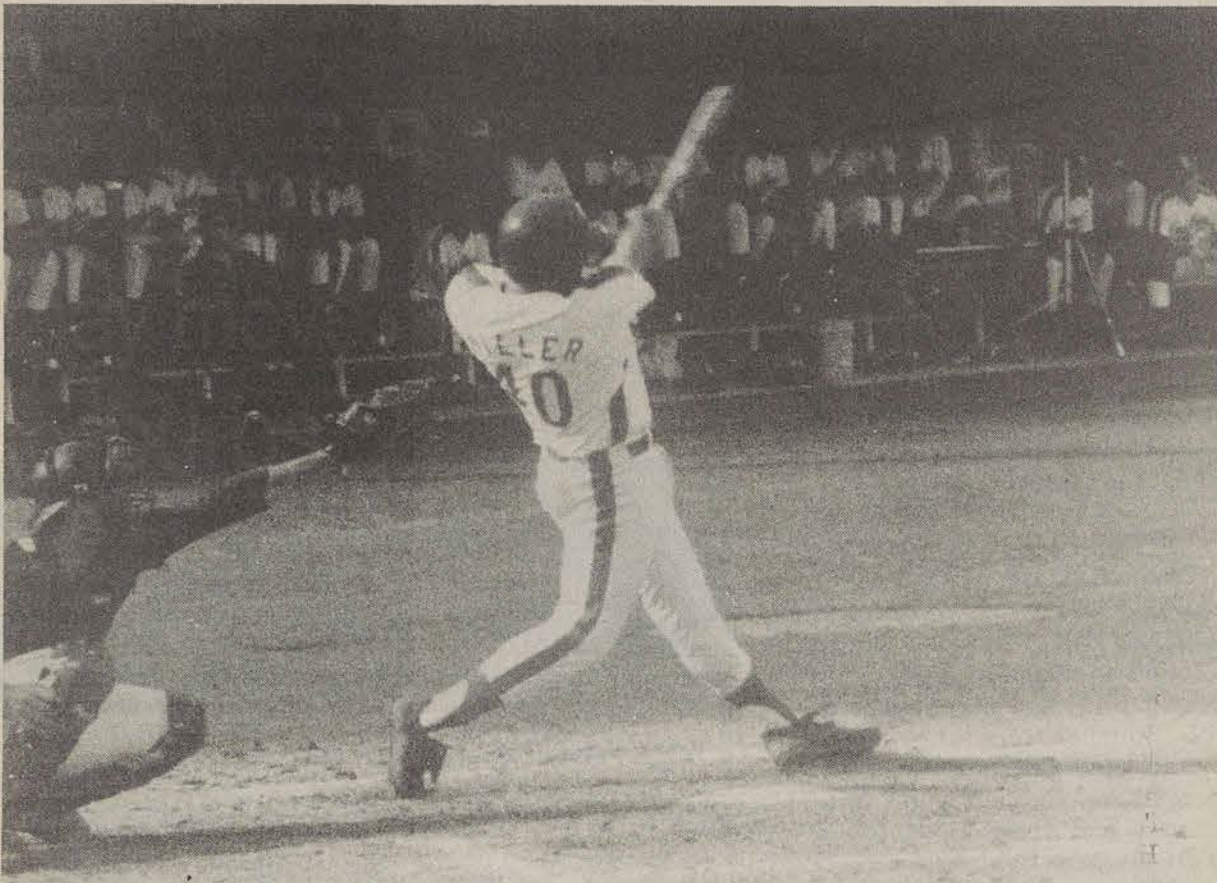
**10% off all Black
History Books through**

2/28/92

Books Plus...

912-681-0450
LB 8007

Diamond Eagles open with two losses



Firstbaseman Mike Miller swings for the fence. The Eagles' were defeated 4-2 and 6-0 in two Sunday afternoon games versus Georgia Tech. (Photo by Danny Runion)

By John Munford
Staff Writer

The GSU Eagle baseball team lost their first two games of the year to Georgia Tech this Sunday at J.I. Clements Stadium.

Georgia Tech won the first game with a final score of 4-2.

Starting pitcher Tim Roth (0-1) allowed three earned runs in five innings, walking three and striking out four. His counterpart for Tech, David Albert (2-0) held the Eagles to four hits, one walk and two earned runs while going the full seven innings for the victory.

Ronald Stanford mopped up for Roth in the sixth, pitching the last two innings, while watching his team be overpowered by Tech's pitching.

The Eagles got on top in the first, when Todd Greene's RBI single scored Matt Wilson, and when Doug Eder scored after reaching base on a double in the seventh.

Tech was led by Jason

Varitek's leadoff homerun in the second inning to tie the Eagles at one run apiece. The Yellow Jackets took the lead for good after Carlton Fleming's RBI groundout and Michael Wolff's sacrifice fly in the fifth.

Tech also took the victory in the second game, 6-0.

Brad Rigby (2-0) went six innings for Tech, allowing only three Eagle hits while walking five and striking out five. Chris Myers relieved him, pitching the final inning and picking up two strikeouts in the process of shutting out the Eagles.

Starter Jake Greene (0-1) took the loss for the Eagles

going six innings, allowing five earned runs, walking three and striking out three.

He was relieved by Dave Masi in the seventh who finished the game, pitching one inning, allowing a solo homer to Fleming.

The only offense the Eagles could muster up was in the form of three singles, one each from Eder, Chris Peterson and Bryan Wiggins.

The Eagles will close out a two-game series with the University of Georgia today at 4 p.m. at J.I. Clements Stadium.

THIS WEEK IN GSU ATHLETICS

(Home Games are in All Caps)

Feb.		
18	BASEBALL VS. GEORGIA	4p.m.
19	M&W TENNIS VS. ARMSTRONG STATE	2:30 p.m.
20	W-B-BALL VS. BETHUNE-COOKMAN	7:30 p.m.
	Softball at Charleston Southern	2:30 p.m.
21	SOFTBALL VS. VALDOSTA STATE	3 p.m.
	Baseball at U. of New Orleans	5 p.m.
	Golf Nat'l. Collegiate Inv. (Miami, Fla.)	all day

FIU shuts down Lady Eagles

By Eric Weisenmiller
Sports Editor

GSU Ladies Basketball head coach Drema Greer expressed frustration at her team's lackluster performance in a 100-74 home loss to Trans America Athletic Conference rival Florida International last Thursday evening.

"It's really frustrating at this point in the season when you have the as much individual talent as the other team on the floor, but you don't come out and play with intensity in games," said Greer.

The Lady Eagles (2-8 in conference, 10-14 overall) were plagued by turnovers

throughout the game.

The half court pressure applied by the FIU defense forced several bad passes which were converted by the Golden Panthers on the transition.

In the first half, GSU was guilty of 14 turnovers.

At halftime FIU had built a 47-33 lead, yet coach Greer felt as if her team was still in the game. However, the Lady Eagles were unable to put it together in the final 20 minutes.

"It's almost appeared as if we backed down tonight,"

continued Greer. "It's very frustrating when we don't have any one that will step up and show that 'gung-ho' demeanor that it takes to win."

In the second half GSU came out of the locker room and surrendered the first four points of the period before cutting the deficit to 13 points on a Subaricca Smith lay up three minutes into the half.

Things got out of hand from then on though. Beginning at the 15:48 point the Golden Panthers out scored GSU 23-9 in just over five minutes.

At the half way mark in the

second half FIU was on top with a commanding 83-51 lead.

FIU surpassed the century mark with :20.0 seconds remaining to coast to the 26-point victory.

Jennifer Bell led the way for FIU scoring 23 points and grabbing seven rebounds.

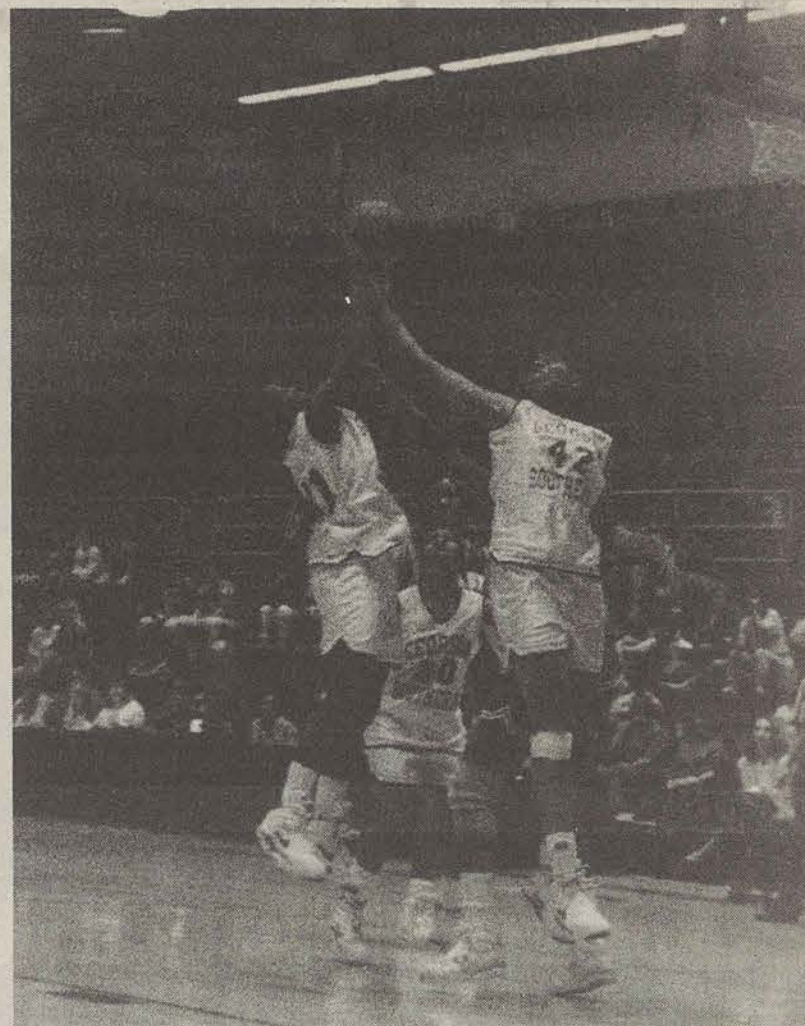
Tidra Hardy and Dessislava Dakova both contributed 16 for the Golden Panthers, who shot 48 percent from the field as a team.

Jill Dunn, Beverly Copeland and Toy Williams shared top-scoring honors for the Lady Eagles with ten points apiece. Dunn was two for four from three-point land.

Andrea Autry and Janice Johnson both scored eight points.

Florida International improved their record to 7-2 in the TAAC and 16-8 overall. They are currently in second place in the conference behind Mercer.

The Lady Eagles will face non-conference opponent Bethune-Cookman this Thursday at 7:30 p.m. in Hanner Fieldhouse.



Janice Johnson and Stephanie Christmas go up for a rebound. The Lady Eagles lost to Florida International 100-74 Thursday evening. (Photo by Jesse Stribling)

CR/I BASKETBALL

Men's Top 10:

1. Leaders of the New School
2. Southern Sound
3. Dingus Magees
4. Pi Kappa Phi
5. The Heat
6. Scabinis
7. 8-Ballers
8. Showtime
9. Redskins
10. IYA

Game of the Week:

The CR/I "game of the week" for the week of February 10-16 was an eagerly awaited shootout between what many consider to be the best two teams in the league. Last year's All-Campus Champion Southern Sound took on the undefeated Leaders of the New

School in "A" league action that promised not to disappoint and didn't. Running the fast break to perfection, Southern Sound took a nine point halftime lead. In a run and gun second half the Leaders of the New School set the net on fire and when the smoke had cleared handed Southern Sound an 84-83 loss. Leaders of the New School's Ben Pierce led all scorers with 42 points. Michael Stokes of Southern Sound followed closely with 41.

Women's Top 5:

1. Lady Pines
2. Woody's
3. OPP
4. Too Legit
5. WWA

Braves may move to 'burbs

ATLANTA (AP) - A top Atlanta Braves official said Monday the team may abandon downtown for the suburbs if it can't get the lease it wants on the downsized Olympic stadium after the 1996 Games.

Terry McGuirk, executive vice president of Turner Broadcasting System Inc. and president of Turner Sports, told the Rotary Club of Atlanta that the Braves have a long-standing commitment to playing downtown.

But he added, "It doesn't take a genius to know that by being in the northern suburbs we would attract a higher socio-economic group and have the ability to attract more dollars."

Meanwhile, the Atlanta-Fulton County Recreation Authority announced the selection of Peter Bynoe, an experienced stadium lease negotiator, as its representative in talks with the Braves. Bynoe helped negotiate a lease for the Chicago White Sox to use the new Comiskey Park.

The 85,000-seat stadium is to be built with Olympic funds, adjacent to the present Atlanta stadium, but will be downsized to a 45,000-seat horseshoe stadium for the Braves. The current stadium will be razed after the Olympics.

A major obstacle to reaching an agreement is the Braves' reluctance to accepting the recreation authority, which manages the existing stadium, as landlord. The authority has had a stormy relationship with the baseball team.

"We want the stadium to be operated by baseball people for baseball people," McGuirk said.

SPRING BREAK!!



HURRY! SPACE IS LIMITED!!

For reservations and information call:

"Kelly" at
764-3621

Our 8th
Sell-Out
Year!

Hawthorne DISTINCTIVE DUPLEXES

NEAR CAMPUS, YET OUT OF THE "HUSTLE-BUSTLE"

10 + 2 Leases

EACH SPACIOUS UNIT CONTAINS:

- 1150 Heated Square Feet
- Two Full Baths With Double Vanities
- 10' x 10' Screened Porch
- Large Closets
- Extra Storage Space

**LOW POWER
BILLS**

"Stretch Out"
On Our Landscaped
Grounds

**WITH FOUR
\$162.50/ MONTH
EACH**

681-1166

Sign **NOW** to Guarantee For Fall

THE NATION

Catch of the day provides mystery thumb

ROCK SPRINGS, Wyo. (AP) — The catch of the day turned into the mystery of the day when the fisherman discovered a human thumb in his 6 1/2 pound mackinaw.

Blake Robinson of Afton was fishing about a half-mile from shore in the Flaming Gorge Reservoir Thursday night when he caught the lake trout, said Sweetwater County Coroner Mike Vase.

"I think that a fish being caught that has a human thumb in it ... is basically less likely than winning the California lottery," Vase said Friday.

The digit most likely belongs to a person who lost a thumb in a boating accident last summer, he said. But authorities also say more than five people drowned in the gorge and were never recovered.

Vase said he's trying to get a fingerprint from the thumb but it appears to have been in water a long time. Vase believed it belongs to a man, but he may have to use X-rays or DNA tests to discover who the mystery thumb truly belongs to, which could take some time.

"There are so many variables involved," Vase said. "For it to happen at all is unusual but for it to turn up like this is one of the oddest things that I've ever been involved in."

Cops smell pot, find muffins instead

PULLMAN, Wash. (AP) — Police got a search warrant to check out a parcel that smelled like marijuana. But instead of contraband, they found muffins, cookies and cashews.

Washington State University police telephoned a judge for the warrant Wednesday after dormitory workers at Streit Hall reported that a 12- by 6-inch box in the mail room smelled like marijuana.

Four police officers also sniffed the suspect package.

"We didn't just smell it once or twice," Sgt. Steve Huntsberry said Thursday. "We took a real good look at it."

Warrant in hand, the officers opened the package.

They found five bran muffins, a pound of cashews, two dozen cinnamon cookies, a note and check sent to a student by his father.

Freshman Joshua Walker of Rainier, Wash. said he didn't notice any unusual odor when he finally got his dad's package.

"I smelled it and my girlfriend smelled it, and it smelled like cardboard," Walker said.

Police theorize the box came into contact with a marijuana shipment in the mail and took on some of the smell.

"You can't always be 100 percent," Huntsberry said.

Mysterious noises investigated in Ware County

WAYCROSS, Ga. (AP) — Residents in southeast Georgia have reported loud, earth-shaking noises, prompting authorities to launch an investigation.

Some believe the noises may have been earthquakes, swamp gas explosions or sonic booms.

Ware County's Civil Defense director, Jim Wheeler, said he will conduct "fly-overs of the entire county to look for sinkholes or tree damage that may have occurred during the booms."

Scores of citizens have reported seeing and hearing loud booms in recent weeks. Two on Wednesday violently shook windows and doors of buildings, including the county fire station.

Wheeler said no one knows what is causing them, but there are several ideas.

One links the booms to earthquakes.

"Waycross is only about 200 miles from the fault line where earthquakes have been predicted in Georgia," Wheeler said.

But Georgia Tech geologist Timothy Long said booms aren't consistent with earthquake tremors, and a seismograph showed no unusual activity at the time of the booms.

"My initial feeling is that it's a sonic boom," Long said. "They (military aircraft) may have been practicing 100 miles away, over the ocean. Under some atmospheric conditions there are 'skip distances,' or focusing of the (sound) waves. A plane hitting the sound barrier over the ocean may not be heard 50 miles away, but it may be heard very clearly at 100 miles."

Officials at three military installations — Jacksonville Naval Air Station, Moody Air Force Base and Robins Air Force Base — said they had no supersonic aircraft close enough to Ware County to have caused booms on the days the noises were heard.

Some residents think pockets of methane gas under an old county landfill are exploding, but no physical evidence at the landfill's surface supports the theory.

Resident listening to Surf 107 against her will

GULFPORT, Miss. (AP) — Jane Maten listens to local radio station WXLs every day — whether she wants to or not.

The tunes from Surf 107 FM come in on Maten's telephone because she lives near the radio tower that broadcasts the station's signal.

"You hear that?" she asked a telephone caller. "That's (Surf) 107. I don't like it, and I like it even less with it on my telephone. If I heard that stuff on the radio, I'd turn it off."

Conversation is difficult at best.

"Do you know how frustrating it is to have to keep asking, 'What did ya say?'" Maten asked.

Interference is common around radio station towers, and the company will do what it can to solve the problem, said South Central Bell spokesman Tim Ryan.

"I'm sure it's wild and obnoxious on her phone," WXLs General Manager Jim Carlow said. "And we want to help her as much as we can."

Maten said South Central Bell had installed what technicians call a suppressor, designed to keep radio signals from coming in through the phone lines.

"I shouldn't have to go out and buy another phone because of a radio station," Maten said.

Voter education project shutting down

ATLANTA (AP) — The Voter Education Project, which had a six-figure budget when it worked to register Southern black voters in the 1970s and 1980s, is out of money and about to shut down.

Executive Director Ed Brown and one other staff member now work without pay at the Atlanta-based organization. He said it probably will close within a month, as soon as he assembles papers, boxes them and presents them to Clark Atlanta University for posterity.

Rep. John Lewis, D-Ga., a former director of the project, said its funding dried up.

"I've tried to encourage foundations, but black issues are not the 'in thing' now," Lewis said. "People tend to respond to crisis."

"The demise of the VEP will be a great loss to the Southern region of the country and to the nation," he added. "It has been like a bridge over troubled political waters."

The organization, which once had operating budgets ranging up to \$800,000, sent staff members through 11 Southern states to conduct non-partisan voter registration workshops.

Whiskey bag pants were not a poke at MADD

ATLANTA (AP) — Sen. Culver Kidd says he wasn't trying to poke fun at Mothers Against Drunk Driving when he praised their work while wearing pants made of whiskey bags.

MADD wasn't sure what to make of Kidd's stunt. The governor shrugged it off as another antic from the lawmaker nicknamed "The Silver Fox."

"I really don't know how to take it," said Bob Shearouse, MADD's former state chairman. "It's kind of a mixed message, isn't it?"

The unconventional garb, the Milledgeville Democrat said Thursday, was reverse psychology at work. He wanted his fellow senators to stay in their seats, to hear his urgings that they join MADD.

"Sometimes, you feel like they're not paying attention," he said Thursday. "I felt like I was using reverse psychology. The MADD membership in this body is somewhere around 1 percent. I think it ought to be 100 percent."

"If he was applauding MADD as a meritorious organization, then we appreciate the support," Shearouse said. "If he was trying to make light of MADD or mock MADD, I think it was in poor taste."

Said Gov. Zell Miller: "Governors have been trying to control Culver Kidd since the 1940s. None of them have succeeded, and I don't guess I'll be able to, either."

Kidd, 77, has been a mem-

ber of the Legislature for 42 years. He has served in the Senate since 1962. He introduces more proposed new laws each session than any other lawmaker.

On Wednesday, Kidd rose to commend MADD for their efforts to curb drunk driving in Georgia, and urged senators to join. He was dressed in an ensemble that made him a walking advertisement for Crown Royal whiskey.

He wore purple pants made out of 160 cloth bags in which bottles of the liquor are sold. His purple sports shirt, white sports jacket and cap also bore the Crown Royal label.

He told his colleagues, "We all may take a nip now and then, but we also all know people who've had their lives destroyed because they couldn't get a handle."

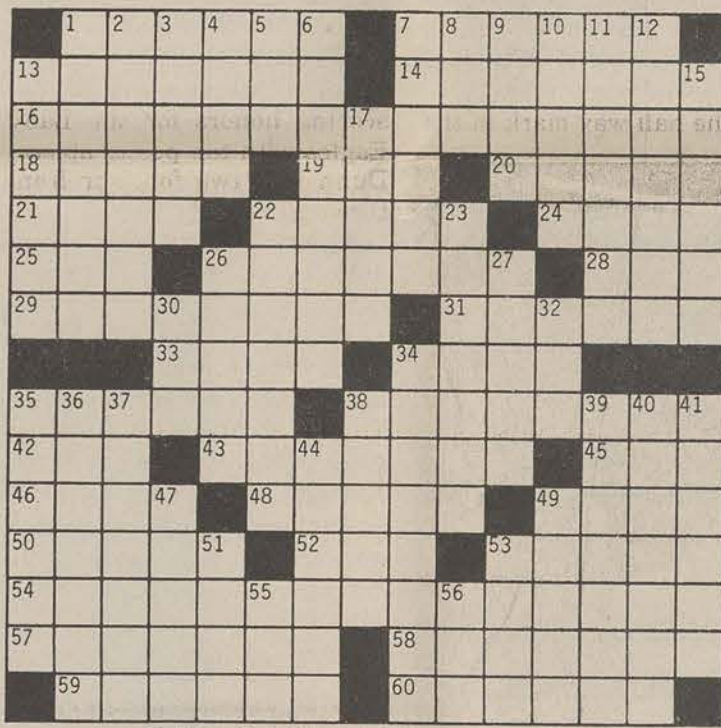
Kidd's attire caught Lt. Gov. Pierre Howard by surprise.

"I didn't know the outfit would look like that," Howard said. "He said, 'If I embarrassed you, I'm sorry.' And I just let it go. It's not a big deal."

Kidd said people had contacted his office commending him for praising MADD. But Kidd's endorsement didn't sit well with Joan Conley, state chairwoman of the group.

"We just know he opposes us," Ms. Conley said. "He went against our victims compensation bill. Needless to say, I don't know where he's coming from."

WEEKLY CROSSWORD



© Edward Julius Collegiate CW83-9

ACROSS

1 Vulgar in language
7 Lollipop
13 Cure-all
14 Sang like Bing
16 By means of nature
18 Fred Astaire's sister
19 Phoenix athlete
20 Murdered
21 Detroit inventory
22 Refers to
24 Wild buffalo of India

25 Overhead trains
26 Jabs (2 wds.)
28 Precious stone
29 Did detective's work
31 City on the Rio Grande
33 Afternoon receptions
34 " — the Mood for Love"
35 Magnificent
38 "A, You're —..."
42 Alfonso's queen
43 Hardware store supply
45 West coast airport

DOWN

46 Math course, for short
48 Hebrew letters
49 Military cap
50 Oscar or Tony
52 Baby talk
53 Whip
54 Petroleum, e.g. (2 wds.)
57 Slander
58 Pointed beards
59 Writ of execution
60 Mr. Pyle, et al.

DOWN

1 Actor Tony
2 Opposite
3 Parachutes, with out
4 "God's Little —"
5 Zodiac sign
6 Famous golfer (2 wds.)
7 Emotional displays
8 Coffee maker
9 Small beds
10 Australian tree dweller
11 Increase in size

12 Maintained one's brakes
13 Warless periods
15 Electrical energy machine
17 Softened the sound of
22 Live together
23 Food fishes
26 Prefix: wing
27 Himalayan goats
30 Shoshonean Indian
32 Genetic material
34 Boise farm product? (2 wds.)
35 Trigonometric ratio
36 Not informed
37 Of the roof of the mouth
38 Thespian
39 Dimmer, said of tearful eyes
40 Pencils, in Peru
41 Banishes
44 Garter, e.g.
47 Unrefined
49 Jane Fonda movie
51 Slip a Mickey to
53 — rubber
55 Chemical prefix
56 Actor Jack —

CROSSWORD PUZZLE SOLUTION



LIFEGUARDS
Apply now for summer employment
Call or Write:
SwimAtlanta Pool Management
1210 Warsaw Road, Suite 800
Roswell, Georgia 30076
CERTIFICATION CLASSES AVAILABLE
404-992-POOL (7665)
EXCELLENT WAGES and INCENTIVES

Your Eyes Have It!
Specializing In
Eyecare
& Contact Lenses
for GSU Students
and Faculty
Dr. Sherri Becker
OPTOMETRIST
Office Hours:
Mon-Wed 8:30am - 5:30pm
Thurs 9:30am - 7:00pm
Fri 8:30 - 3:00pm
9 Lester Road • 764 - 5609

Precision Auto

10%
discount with this coupon
764-8691
Hrs. Mon.-Fri. 8-6
Sat. 8-12
64-B East Main St.
2 Blocks East of Court
House

POP QUIZ
Q: What is a double good deal?
A: A Sonic Brown Bag Special!
Q: What is a Sonic Brown Bag Special?
A Junior Sonic Burger x 2
A Regular French Fries x 2
A Regular Soft Drink x 2
✓ D All of the above!
Sonic Brown Bag Special
\$3.99 plus tax
February 1 - February 29
Drive-In Drive-Thru Phone 489-4544 322 S. Main St. North of the Triangle

THE GEORGE-ANNE
LIKED BY MANY, CUSSSED BY SOME, READ BY THEM ALL

ACTION ADS

The George-Anne

CLASSIFIED AD POLICY

• **FREE CLASSIFIEDS**—The George-Anne provides free classified listings to students faculty and staff members of Georgia Southern University as a campus-community service. Free classified ads **MUST** be written in 25 words or less. Students, faculty and staff will be billed 10¢ a word for ads in excess of 25 words. The advertiser's name, Landrum Box, and the classified category (listed below), **MUST BE INCLUDED** with your ad copy. All communication regarding free classified ads must be in writing (absolutely NO free classified ads will be accepted by phone... at this price we don't take dictation). Free classified ads (except personals and dated submissions) will be inserted into the newspaper in four consecutive issues. Ads must be resubmitted in writing for additional insertions. Free ads should be non-commercial in nature. Free classified listings should be mailed to The George-Anne, Landrum Box 8001, GSU. Deadline is noon TUESDAY or noon FRIDAY prior to publication.

• **COMMERCIAL LISTINGS**—are available at \$2.50 per 25 words with a minimum charge of \$5.00. Classified display advertising is available at \$5.00 per column inch per edition, with a one inch minimum size required. Payment should accompany ad, unless advertiser has established credit. Tear sheets will be mailed upon written request A charge of \$1.00 per tear sheet requested is assessed to cover mailing and handling. Contact the Advertising Department: ADS, L.B. 8001, GSU, Statesboro, GA 30460 or call 912/681-5418.

• **GENERAL CLASSIFIED POLICY**—The advertiser is responsible for proof-reading ads upon publication. Any errors will be corrected upon written notice. Ads should be in good taste, and are subject to standard editing procedures. The editors reserve the right to refuse any classified ad.

CLASSIFIED CATEGORIES

- | | |
|-----------------------------|----------------------------|
| 01 - Announcements | 15 - Musical |
| 02 - Arts & Crafts | 16 - Personal |
| 03 - Autos for Sale | 17 - Pets & Supplies |
| 04 - Auto Parts, Repair | 18 - Photography |
| 05 - Business Opportunities | 19 - Rentals & Real Estate |
| 06 - Child Care | 20 - Roommates |
| 07 - Education | 21 - Services |
| 08 - Freebies | 22 - Sporting Goods |
| 09 - Furniture/Appliances | 23 - Stereo & Sound |
| 10 - Garage Sales | 24 - Swap & Trade |
| 11 - Help Wanted | 25 - Television & Radio |
| 12 - Lost & Found | 26 - Vans & Trucks |
| 13 - Miscellaneous for Sale | 27 - Wanted |
| 14 - Motorcycles | 28 - Weekend Entertainment |

01-Announcements

Are you creative T-shirt design contest. Design a humorous and tasteful psychology slogan. Applications available in Psychology office. Call Dr. Steirn for info at 681-5505.

Celebrate National Engineers Week, Feb. 16-22, A.S.M.E. Egg Drop Contest on Feb. 18 at 3pm at Henderson Library rear. Cash Prizes. For info call 681-7622 or 489-1642.

Photographs will be taken for campus organizations with the exception of Greeks on Feb. 25-27 from 4-8 in the President's Dining Hall in the Williams Center.

Raising Roofs, awareness, and money! Need volunteers- meeting, Feb. 18, Rm 242, Student Union-4pm. Groups and individuals needed for community projects! Need more info? Write LB 12502.

STUDENTS, FACULTY & STAFF ONLY: YOU can put your own message in this space for FREE! 25 words or less, please. Drop by the Wms Center, Rm 111, or send your classified ad to LB 8001. For free ads you MUST include your name and Landrum Box number.

Triangle Gay and Lesbian Informal Discussion Group meets 7pm Mondays. Call Counseling Center for further details at 681-5541.

YOGA CLUB meets 5 pm Mondays, in Union. Wear loose clothing & bring a mat or blanket. Beginners welcome. Phone 681-0226 for details.

03-Autos for Sale

1981 BMW 320i: For sale, good condition, new tires, stereo system, durable. Need to sale. Call anytime at 681-9528. \$2500.

1984 Turbo 200sx Nissan, alarm system, electric windows, PS, PB, AC, looks great, 30 mpg highway; 20mpg, city. Sporty, economical, reliable. \$2300 OBO. Call 681-2822.

05-Business Opportunities

EARN \$500 or more weekly stuffing envelopes at home. Send SASE to Country Living Shoppers, Dept. D18, PO Box 1779, Denham Springs, LA 70727-1779.

Wanted: Members to serve on th Union Productions board for the 1992-93 school year. Applications available at the Union Productions Office, Rm 207 of the University Union and are due Feb. 21. Call for more info- 681-5442.

Wanted: Tutor Counselors (4) for the Georgia Southern University Upward Bound Summer Program. Upward Bound is a program designed to motivate and prepare high school students for post-secondary education. In working with the Upward Bound Program, you will gain valuable experience as well as enjoy lots of fun. Applicants must (1) have achieved college sophomore status, or better by May 1992 (2) have a 2.30 GPA or better (3) be available daily from June 15 thru July 30, 1992 -no summer school students please (4) be committed to working with young people (5) applicants must be available to live on campus (in dorm) with student from June 15 thru July 30 (6) be conscientious and dedicated. Salary is \$1,600 (\$1,000 plus room and board). Applications will be accepted thru April 12, 1992. If interested apply at Upward Bound Office Williams Center-Upper Level Landrum Box 8071 Statesboro, Georgia 30460 (912) 681-5458.

12-Lost & Found

FOUND: Ladies Carvele quartz watch. Found in Carroll Building. Come to Dean's office to claim.

Glasses found- Found at FoodMax one week ago. Prescription glasses. 871-6146 or 681-4613.

Lost!! Pentax Zoom 70-R Camera. Reward if found. Please call 852-5683.

F A S T
FUNDRAISING
PROGRAM

Fraternities, sororities, student clubs. Earn up to \$1000 in one week. Plus receive a \$1000 bonus yourself. And a **FREE WATCH** just for calling 1-800-932-0528 Ext. 65.

Lifeguards, Swim Coaches, Swim Instructors: Summer positions available in North Atlanta Area. Certification classes available. Call SwimAtlanta, (404)992-7665, for information.

Stop!! Need cash? We need students to stuff our dieting Sales Circulars! Excellent Wages- \$3 per envelope! No experience required! Start immediately! Send Long S.A.S. Envelope: Galaxee Distributors P.O. Box 1157 Forked River, NJ 08731.

13-Miscellaneous for Sale

Attention Sports Card Collectors- I have approximately 2,000 common baseball and football cards. Most 1980-1984. Good condition. 3¢ each/nego. 681-3571.

For Sale- Clean red carpet for dormitory room -\$40. Refrigerator, almost new for \$60. Just call me and we negotiate!! Telephone 681-3890.

For Sale: Red Schwinn mountain bike in practically new condition. Call Cassie at 681-4044.

For Sale: Three evening gowns and one black T-Length gown. Work 489-8727, Home 693-7581. Sizes 6-8. Contact Tish.

General Electric Color Television For Sale: 19 inch, price negotiable. Contact Mickey at 489-4136. Good value for a television!!

Raleigh men's road bike- 58cm, 531 Reynolds, Shimano 501 comp., cateye cyclocomputer, OGG microshield helmet all for \$300. 764-3621-Kelly

Two sequined gowns- perfect for formals. Teal, Size 5, \$75. Fuschia, Size 7, \$50. 489-3186.

14-Motorcycles

Honda V-30 Magna 1984. 13k. Very Clean. Burgandy, adult ridden & well taken care of. \$600. 764-3621, ask for Kelly or leave message.

15-Musical

Female guitarist needed immediately. Please call either 764-7040 or 489-2951. Thanks.

Music is good for your Karma-support Statesboro's local bands: Jive Socket, Crashin', Abbey, Ophelia, Daze, Midnight Sun, Home of the Thousands, etc.

16-Personal

Amy- Don't think I forgot you!! You are on my hit list too. -Kelli

Angel- Be afraid, be very afraid. Dizzy, Blonde, Yankee revenge is the worse. (Don't worry I may not use your last name)- Kelli

Craig Evans- Gee, your eyes are beautiful- not to mention the rest of your body! Love- A Secret Admirer

Hey A-Frame: I know we're just friends, but I'd still like to know where the only place you take your hat off is!!!!

Michael Gilbert- What does Doodle-bug mean? Glad to have you in Pi Sig. Good luck! -Your Pi Sig Big. Guess Who?

Natalie, Becky, Liz- I heard there was a Wet T-shirt Contest at Thursday's this weekend. Wanna try again?

SPRING BREAK TO FLORIDA BEACHES Fun in the sun, 4/rm. Prices. Daytona \$149, Panama City \$139. Kitch, wtrfrt & trans available. Call CMI at 1-800-423-5264.

Tab- I am glad to have had the chance to know and become a close friend to you. Happy Valentine's Day! -Your evening friend

17-Pets & Supplies

Juvinile Iguana- 16" including tail. Healthy. Call Mark at 681-6961. \$55

19-Rentals & Real Estate

Apartment for sale: 2 br, 1 bath, furnished. 57 Southern Villas. Call (404) 428-9595.

Brand new apt. For sublease in Spring & Summer. 2 bedroom, 1 bath, vanity with sink in each bedroom \$350/month. Close to campus. 764-6494, leave message.

For Rent: Spring & Summer Quarters- Eagle's Court, new townhouse. Pool, volleyball, girls. 2 bedroom, 2 1/2 baths. Negotiable price. 681-2451.

Sublease: 1 bedroom apartment. Central location. Pets allowed. \$300/month. 1 mile from campus. 489-3069.

Sublease: 2 bedroom apartment, with washer/dryer, across from campus. \$240/month. Call 681-6136.

University Place Duplex: Room for rent: Walking distance from campus. Own room, 1/2 utilities, \$200/month. Start Spring Quarter (April thru August). 681-1852. Leave message.

Wanted: People wanted to sublease apt. For summer. Washer/dryer. Rent neg.!!! Call ASAP. 681-1632 #82 Park Place

20-Roommates

Female roommate needed ASAP to sublease Bermuda Run apartment. Own room and washer/dryer, 1/4 utilities. Call 764-6639 or (404) 933-0778.

Female roommate needed for Spring Qtr. Fully furnished including bedroom. Very nice. Hawthorne II 62. Call Michele at 681-3440.

Female roommate needed immediately - \$100 per month + 1/3 utilities. Fully furnished- great roommate 489-4228. Ask for Lynn or Colleen.

Female roommate needed starting Spring Quarter in Hawthorne II. 681-2424.

Female roommate needed to take over lease at Chandler Square Apartments beginning Spring Quarter. No security deposit. Please call 681-6994.

Looking for a friendly, female sublease ASAP. Own bedroom with a larger closet, share large bathroom, apartment fully furnished except your room, washer/dryer, microwave. Hawthorne II four bedroom. \$500 per quarter- which is only \$166.66 each month. Call Stephanie at 681-7527 for more info.

Male roommate needed for Spring Qtr. Half mile from Stadium in a duplex. \$162.50 per month plus half utilities. Call 681-6639 or Richard or Leo.

Mature, honest couple seeks couple with similar abilities to share apartment next school year. Looking to sign lease early. Call 871-8264, ask for Dwayne.

Need 1 or 2 female roommates. Eagles Court starting Spring Quarter. \$200 for own room in 340 to share room. Own bathroom. 681-9887, leave message.

Nonsmoker female roommate needed immediately. 2 bedroom bath. Furnished except for your bedroom. Rent includes water and trash pick-up. Call 764-6251 and leave message.

Roommate needed ASAP! Sublease Sussex Commons- own bedroom and bathroom. Call 681-6763.

Roommate needed Spring and Summer! Chandler Sq. Furnished except for your bedroom and bath. \$215 per month + 1/4 utilities. Call Jan at 681-8314.

Roommate needed to share 1990 2 br trailer 1 mile from school. \$150/month + 1/2 utilities. Call 537-1187, ask for Brian.

Roommate needed: own bedroom in furnished apartment. Close to campus. For more info call Shawn at 681-1396. Call anytime ASAP.

Sublease: Park Place #7 ASAP. 2 bedroom, 2 bath. Get my deposit back at the end of July. Call 681-9242. Ask for Drew.

21-Services

Auto Detailing- Clean inside and out. Wash, wax, vacuum, & Armor All. Most cars only \$20. Call Eric for appointment. 681-2294.

Custom knives made to your specifications. Free estimates. Sheaths extra. Great for Hunters and collectors. Write LB 11744 or call 1-685-5946 after 4pm M-F for more info.

Daily announcement of Intramurals available on CR/I Hotline at 681-5261.

Excellent typing done. Only 75¢ per page. Printed on a laser printer. The ultimate typing experience. Call 764-7225. Ask for Elmer.

Holes is your wall need repair? Good work! Reasonable price! Call Stephen at 871-6144.

Intelligent English major with excellent composition and language skills seeking employment as English editor, proofreader, and/or office assistant. Local, campus references available. Call 764-7560.

Lah and Textbooks printed! Fast affordable service. Profit to you or your department. Free estimates. 40 years experience. Retired GSU professor. Arv 764-7421 (before

LONE ASSASSIN **J.F.K.** **CONSPIRACY**

Lee Harvey Oswald
"the magic bullet"

Triangular Crossfire
Mafia
Castro CIA

The Warren Commission

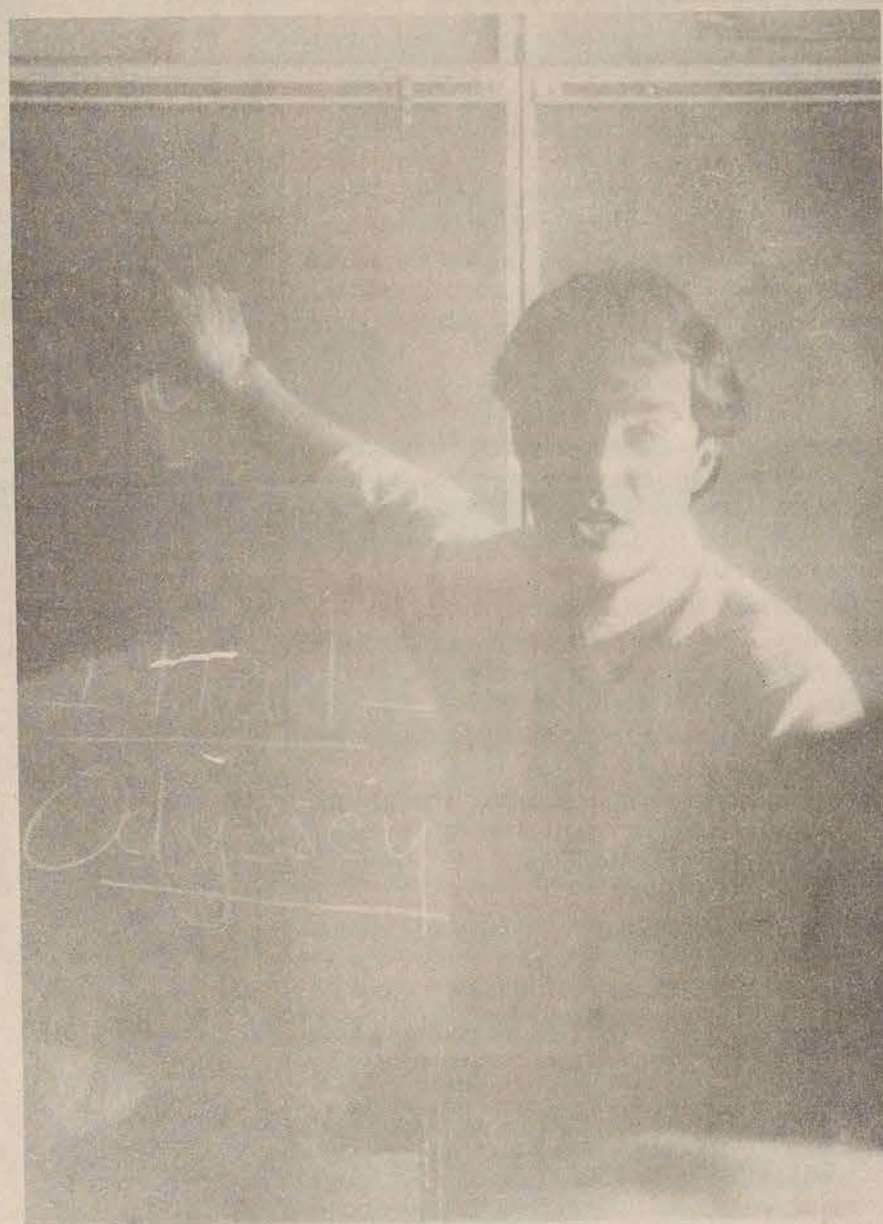
AMIDST ALL THE CONTROVERSY...

THE ONE THING EVERYONE CAN AGREE ON IS...

The Beaver House Restaurant

Judge for Yourself. Taste the Evidence.
The Case is in the Cooking!!!

Now Serving Lunch 11-2:30 & Dinner 3:30-8:30 Monday - Friday. TO's 764-2821
Students: 10% off with Student ID Tues - Fri thru February



**REACH
FOR THE POWER.
TEACH.**

No other profession has this power. The power to wake up young minds. The power to wake up the world. Teachers have that power. Reach for it. Teach. For information call

1-800-45-TEACH.

Recruiting Young Teachers, Inc.



**Summer
is just around
the corner!**

Eagle Tanning

**\$40 gets you one month of
unlimited tanning**

423 Fair Road 764-4206

FIRST ANNUAL SUBWAY SUB EATING CONTEST

Contest to be held at
CITY LIMITS

Begins Tuesday, Feb. 11th - Ends on March 17th
6 Consecutive Weeks

Listen to WMCD (FM 100) for Details

GRAND PRIZE FOR TWO

7 Days - 6 Nights at Quality Inn on Daytona Beach during Spring Break
1/2 Day Deep Sea Fishing
\$25.00 Dinner Certificate
\$300.00 Cash - Spending Money

Sponsored By: **WMCD** FM 100 **Quality Inn** ON THE BEACH **City Limits**

COURTHOUSE

CONTINUED FROM PAGE 1

increases in crime and court-related functions.

Various groups and citizens expressed their opinions on the courthouse expansion.

The Bulloch County Bar Association, Bulloch County Historical Society, Garden Club of Georgia, Statesboro-Bulloch Convention and Visitors Bureau and the Statesboro Service League all made presentations to the board.

Jim Rutledge, president of the Bulloch County Bar Association, said the bar passed a resolution last Friday to endorse expansion eastward onto Siebald Street. The eastern expansion would

provide the best functional and safest arrangement for jurors, judges, lawyers and law enforcement officers who transport inmates.

Rod Nebel, of the Historic Society, said the group is opposed to anything that is detrimental to the courthouse and its listing on the National Historic Register.

The courthouse was put on the Register in 1980.

Nebel urged the committee to use existing facilities as much as possible.

The possibility of putting the addition on the east side was raised because the it could accomodate the most growth. The eastward expansion would

also keep the courthouse on the National Historic Register.

While there was no agreement over expansion projects, the consensus was that nobody wanted anything done that would obstruct the view or appearance of the courthouse.

One citizen commented to another that "anywhere you put a three story structure, it'll block the view (of the courthouse.)"

County Commission Chairman Robert Cox said, "It's not going to be an easy task to satisfy everybody's wants and concerns."

POLICE BEAT

CONTINUED FROM PAGE 2

Inman Street reported two bicycles stolen.

Bulloch County Sherriff's Department

February 14, 1992

• Thomas Andrew Bostic of Turner Street was charged with possession of marijuana with intent to distribute. Bond

was set at \$5000.

• David Donald reported someone attempted to enter his Pinehaven apartment by prying the back window. No access was gained to the apartment.

• Molly Riddle reported someone took three hubcaps worth approximately \$300

from her automobile in the Chandler Square parking lot.

February 13, 1992

• Paul Craig Reddick of Catherine Avenue was charged with driving under the influence, running a stop sign and driving with a suspended license.

ANEMIA

CONTINUED FROM PAGE 3

being used in treatment of beta thalassemia, another inherited blood disorder, which is fre-

quently fatal in early childhood. Greater understanding of sickle cell disease and its

treatments may provide benefits in other hemoglobin abnormalities.

SUPPORT

CONTINUED FROM PAGE 5

I mean just think in one night you watch an Eagle fly (half time dunk) a cheerleader fly (ask the cheerleaders how it feels about 20ft up) and players takeoff and land with emphasis (ask Calvin Sinkfield how it feels to slam.)

What more could you ask for

in a two and a half hour time span?

Let's keep up the support and show the team that we appreciate their winning attitude and record.

See you at the game Thursday and Saturday.


REGENTS

CONTINUED FROM PAGE 1

discrimination policy.

-Allowing students a voice in the way a college deals with financial emergencies. This is in response to the regents' vote last year to allow colleges to fire tenured faculty members in times of budget crunches.

SNOOKY'S
Restaurant



"Good Home Cooking!"
Open Mon.-Sat. 6 a.m. to 10 p.m.
SERVING BREAKFAST, LUNCH & DINNER
(LUNCH & DINNER BUFFET)
Student Meal Tickets -
10% Discount on purchase of \$100 or more meal ticket.
11 E. Kennedy St. Statesboro

LOW AIRFARES TO EUROPE AND ASIA

SPECIAL STUDENT & FACULTY AIRFARES
SCHEDULED MAJOR AIRLINES
NO CHARTERS

50 U.S. DEPARTURE CITIES
75 DESTINATIONS

- International Student Exchange ID Cards
- International Faculty ID Cards
- International Youth Hostel Handbooks
- Let's Go Europe Guides
- American Express Travelers Cheques

EURAIL AND BRITRAIL PASSES

GROUPS/INDIVIDUALS

ASK ABOUT OUR EXPRESS ID CARD SERVICE

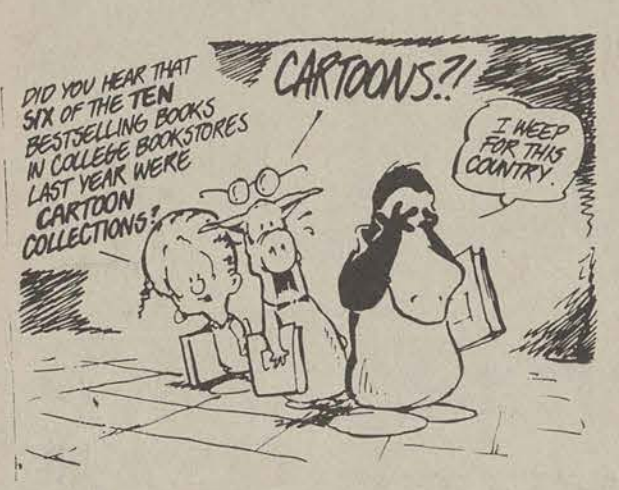
"Celebrating our 33rd Year in Student Travel"

For your FREE Student Travel Catalog mail this coupon to:
INTERNATIONAL STUDENT EXCHANGE FLIGHTS, INC.
5010 E. Shea Blvd., Suite A-104
Scottsdale, AZ 85254 USA
or call: 602/951-1177

883

NAME: _____
STREET: _____
CITY: _____
STATE: _____ ZIP: _____

WARP YOUR MIND!




READ OUTLAND
ONLY IN THE GEORGE-ANNE





The George-Anne

LIKED BY MANY... CUSSSED BY SOME... READ BY THEM ALL.

Coming March 2



The PLACE to **PLAY**



PLAYERS CLUB
JBD
John Barrett Development

Experience The Difference!
NOW PRE-LEASING!



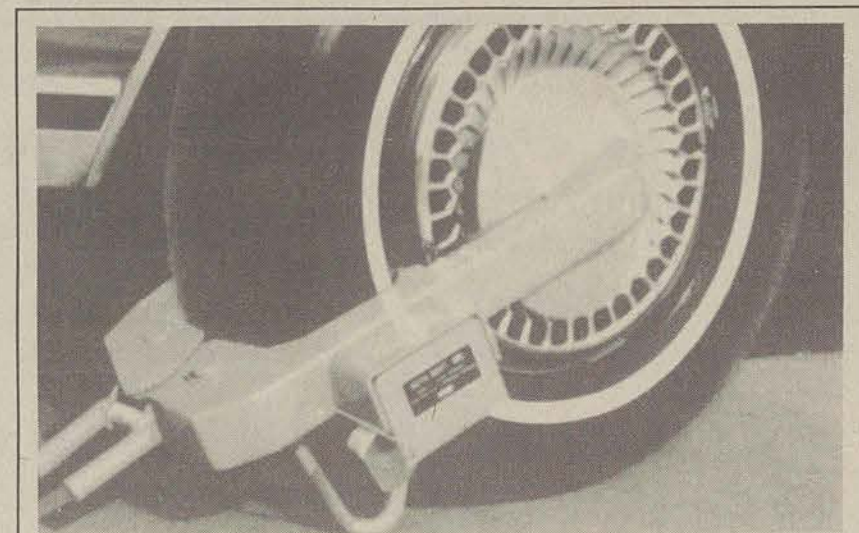
CHANDLER SQUARE APARTMENTS

- Flats
- Townhouses
- Washer/Dryer
- Pool
- Volleyball
- Clubhouse
- 4 Bedroom
- 2-3 Bath

Come by & tour our model unit...or call 681-6765

Located next to Paulson Stadium.

WARNING: Don't Get The Boot!



- **This is the week that Georgia Southern Parking and Transportation will begin the immobilization program. All vehicles parked on campus with three or more unpaid tickets are eligible to be booted.**
- **We don't want you to get the boot!**
- **Please come into our office as soon as possible if you have any unpaid parking tickets.**

If you would like to check your status, please call...

GSU Parking and Transportation
681-0702