

Georgia Southern University

Digital Commons@Georgia Southern

---

The George-Anne

Student Media

---

2-11-1992

## The George-Anne

Georgia Southern University

Follow this and additional works at: <https://digitalcommons.georgiasouthern.edu/george-anne>

---

### Recommended Citation

Georgia Southern University, "The George-Anne" (1992). *The George-Anne*. 1260.  
<https://digitalcommons.georgiasouthern.edu/george-anne/1260>

This newspaper is brought to you for free and open access by the Student Media at Digital Commons@Georgia Southern. It has been accepted for inclusion in The George-Anne by an authorized administrator of Digital Commons@Georgia Southern. For more information, please contact [digitalcommons@georgiasouthern.edu](mailto:digitalcommons@georgiasouthern.edu).

# Eagles reign over cats and dogs

Thursday's win over the Samford Bulldogs readied the Eagles for Saturday's game against the Georgia State Panthers where GSU improved their conference standings to a TAAC record 9-0. See stories, page 8.

Liked By Many,  
Cussed By Some,  
...Read By Them All



## The George-Anne

### BLUE EDITION

Action Ads .....14 Police Beat .....2  
Comics .....11 Opinions .....4  
Announcements 2 Sports .....8  
Features .....6 Lifestyles .....7  
Tuesday, February 11, 1992  
Vol. 64 No. 30

912/681-5246

Celebrating 65 years as Georgia Southern's Official Student Newspaper

Georgia Southern University • Statesboro, GA 30460

### NEWS BRIEFS

#### House makes Pogo Georgia's state possum

ATLANTA (AP)—Opossum jokes abounded Friday as the Georgia House voted to make the comic strip character Pogo the official Georgia State Possum.

"We're out of money so we might as well do something," said Rep. Harry Dixon, D-Waycross, referring to the state's budget woes as he took the floor to explain his proposal.

Pogo, the creation of the late Walt Kelly, resides with a group of other politically aware creatures in the Okefenokee Swamp near Waycross in southeast Georgia.

Dixon told the House that Waycross officials, who put on a Pogo Festival every year, wanted the official designation for Pogo "for whatever promotional purposes there might be."

#### Beer giant recycles as many cans as it produces

ST. LOUIS (AP) — Anheuser-Busch says it's now recycling enough aluminum to produce all of the 17 billion aluminum cans it turns out worldwide each year.

The world's largest brewer said its recycling subsidiary recycled more than 600 million pounds of aluminum last year, saving enough energy to power a city the size of St. Louis for more than three years.

August A. Busch III, president and chairman of the board of Anheuser-Busch Cos. called it an "important milestone in the history of our company."

Busch said that recycled aluminum now makes up 66 percent of the aluminum sheet now used to make cans for Anheuser-Busch.

#### Savannah council: Two beers or not two beers?

SAVANNAH, Ga. (AP) — Here's the question brewing in Savannah: Can revelers guzzle from 32-ounce beer mugs during one of the nation's largest St. Patrick's Day celebrations?

The City Council hasn't been able to decide.

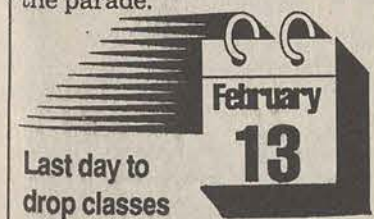
The council on Thursday considered an ordinance to prevent the sale of 32-ounce beer mugs on St. Patrick's Day but allow the sale of 16-ounce cups.

River Street bar owners — whose biggest day of the year is St. Patrick's Day — opposed the measure. They said it would do little to reduce public drunkenness and would instead result in revellers buying two 16-ounce beers rather than a single quart brew.

The ordinance was developed by the city, the St. Patrick's Day Parade Committee, the Savannah Area Convention and Visitors Bureau and the Savannah Waterfront Association. It also would prohibit the sale of alcohol in a "festival zone" after 1 a.m. on St. Patrick's Day night.

After lengthy debate, the council postponed a decision until its next meeting, Feb. 20, and encouraged bar owners to suggest how the proposed ordinance could be improved.

Savannah's traditional March 17 celebration is among the largest in the nation, drawing nearly 300,000 people for the parade.



Thursday is the last day to drop classes without academic penalty.

## GSU fire extinguishers inadequate

### New safety specialist making plans to tackle problems found in G-A study

By Kevin Hudson  
Managing Editor

After visually inspecting 225 fire extinguishers at GSU, the *George-Anne* found a deficiency in the upkeep of those extinguishers.

About 67 percent were not in compliance with the guidelines of the National Fire Protection Association.

According to Jay Burdett, GSU's new environmental safety specialist, the GSU Department of Public Safety is working on improving the situation, but correcting all the problems and potential problems will likely take several months.

Among the buildings with the most fire safety problems were the Biology, Math Physics and Psychology (MPP), South, North and Herty buildings. Landrum Center also showed some major problems.

A lack of monthly inspections and annual maintenance was the most common problem, with approximately 60 percent of extinguishers checked not having valid maintenance tags. This was apparently the only problem in the University Union, in which all extinguishers appeared to be in working order, but had not had annual maintenance performed in almost two



Jay Burdett

years. Annual maintenance involves taking the extinguisher to a licensed person to be disassembled and thoroughly inspected, said Burdett.

### See related story, page 3

Monthly inspections are a visual check that the extinguisher is in working order and has not been removed or tampered with.

The South building had only one extinguisher which had been maintained in the past year. The other 12 were either not tagged or had not been maintained since October of 1988. One was damaged and four were not

adequately charged. Many of the South building's extinguishers were on the floor, rather than in wall cabinets or brackets as prescribed by law.

"I had some reservations about it at that time and I still have reservations about it," said Bulloch County Fire Chief Joe Beasley after being told of the conditions in the South building. "The structure imposes a great danger if fire ever were to occur in it."

Other temporary buildings were also lacking in fire safety equipment.

Of the seven extinguishers located in the Tech-3 building behind Carruth, five had not had been maintained since 1990 and two had no tags at all. Additionally, one of the seven was not charged and another was damaged.

The North building, located behind the Hanner Complex had no visible fire extinguishers and one of the hallway smoke detectors was missing.

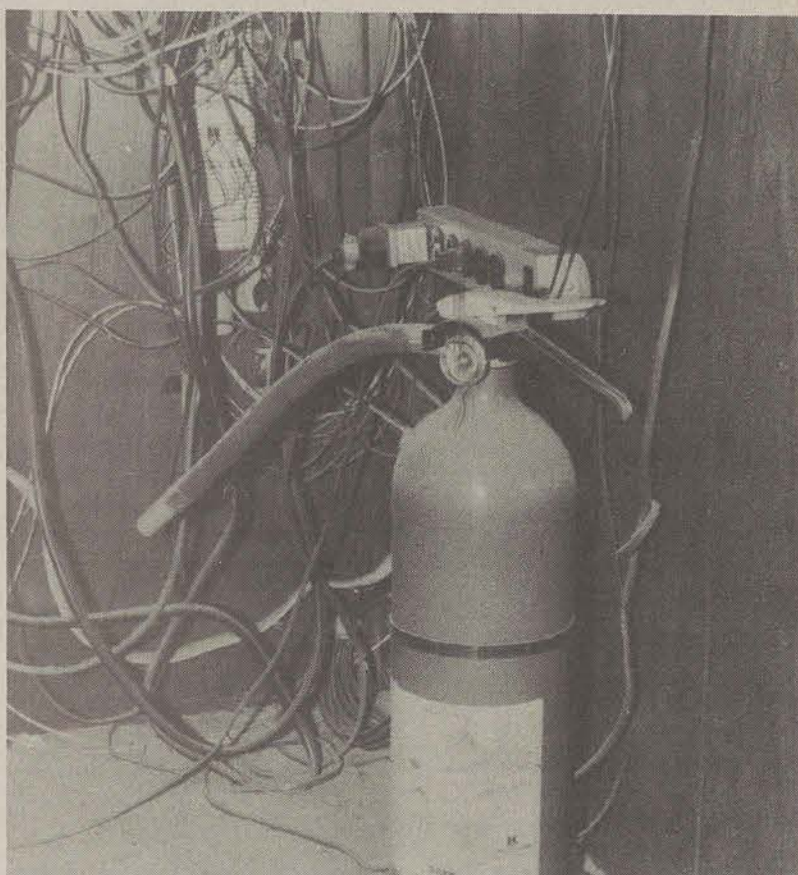
Most extinguishers in the MPP and Biology buildings had not been maintained since 1986 or 1988. Several were not properly charged and others appeared not to have been hydrostatically tested in nearly 20 years. By law, hydrostatic tests usually

should be performed every six years, depending on the extinguisher type.

Landrum Center had only one extinguisher in the hall-

way area, located across from the entrance to Blanche's restaurant. Two additional extinguishers were located inside the

SEE FIRE, PAGE 12



This extinguisher in the WVGS radio broadcast booth has a low charge, a missing pin, no maintenance tag and is sitting on the floor. All are violations of Georgia law. (Photo by Kevin Hudson)

## SGA keeping busy with numerous projects

By Dennis Smith  
Staff Writer

The Student Government Association is currently keeping busy with a number of different events slated for winter quarter.

Five members of SGA attended a meeting with a group of state legislators in Atlanta this past weekend to discuss several topics.

Among these was the request that the state re-evaluate its policy on tenure for faculty. SGA is proposing that all members of faculty be re-evaluated every year.

They also discussed recommending the bylaws that deal with testing for developmental programs.

Along with Health Services and the Triangle Club, SGA is sponsoring National Condom Week beginning on Feb. 14. Campus events are scheduled to start tomorrow in the Student Union.

SGA publicity coordinator Jeff Barker said one of the primary reasons for SGA's support is their push to have condom machines installed in the residence halls.

"Our biggest problem is that people don't want to take it seriously," Barker said concerning the condom machines being placed on campus.

"Residence Life has been real supportive," he said.

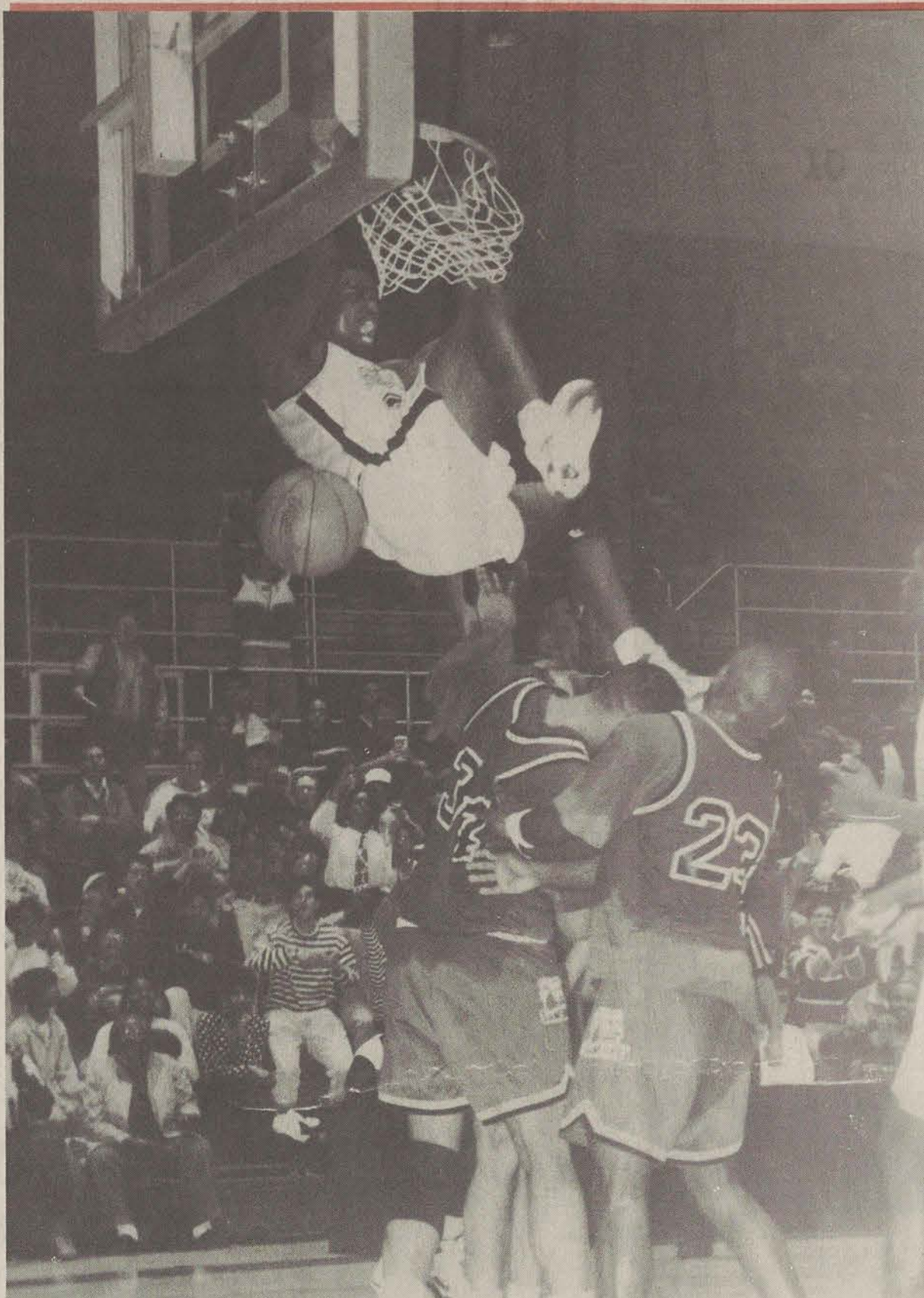
Barker said one long-term thing that SGA is working on right now is the proposed athletic facility.

"It's the biggest project that SGA has ever done" he said. He added that they hope construction on the new facility will begin as soon as next year.

A voter registration drive will be held Feb. 24-28 in the William's Center from 9 a.m. until 4 p.m.

"We are attempting to register as many voters as possible

SEE SGA, PAGE 12



## Sink' does a slam

Calvin Sinkfield slams for two points in Thursday's GSU vs. Samford game. The Eagles won 73-62 to go 8-0 in TAAC play. The Eagles made it 9-0 Saturday in a 91-84 win over the Georgia State Panthers. Over 4,000 fans "Jammed the Gym" for Saturday's game. (Photo by Jesse Stribling)

## CONDOM WEEK SCHEDULE

### Wednesday, Feb. 12

- Win, Lose or Draw will be held from 10 a.m. to 3 p.m. in the Union Commons. It will continue through Thursday.
- Literature tables and videos on how to become a sexually responsible person will be in the Union Commons from 10 a.m. until 3 p.m. National Condom Week boxer shorts will also be on sale through Friday.

### Friday, Feb. 14

- Banner Judging in the Union Rotunda at noon. Sign-up deadline is Feb. 12 and entry deadline is Feb. 13.
- Condom Toss in the Union Rotunda at noon.

### Monday, Feb. 17

- Win, Lose or Draw will be from 10 a.m. to 3 p.m. in the Union Commons. It will continue through Wednesday.
- Literature tables and videos on how to become a sexually responsible person will be in the Union Commons from 10 a.m. until 3 p.m. National Condom Week boxer shorts will also be on sale through Wednesday.

CAMPUS BRIEFS

Nominations for Leadership/ Unselfish award being accepted

Any member of the faculty, staff or student body may nominate students for Leadership/ Unselfish Service Awards. These will be presented on Honors Day to students selected from the nominees. Nominees must have at least a 2.5 Grade Point Average, Notable service and leadership on campus or at the state, regional or national level. Students selected for WHO's WHO are not eligible for the award. To nominate someone, send the nominee's name, social security number, Landrum Box and local phone to the Office of Special Programs, LB 8068 by Feb. 21. Nominees will be contacted for additional information.

GSU winter visitation day upcoming

GSU will host its Winter Visitation Day Feb. 22 for prospective students, their parents and guest. Admissions officials are expecting about 400 participants for the event, which allows students to tour the campus, gather information on academic requirements and opportunities, admissions and housing. A registration session and reception for the visitors will begin at 9 a.m. at Hanner Fieldhouse. President Nicholas Henry and Dean Warren Jones of Arts and Science will address the group between 9:30-10 a.m. Other events are scheduled throughout the day.

Georgia Poetry Circuit Competition announced

Eric Nelson, assistant professor of English and Creative Writing at GSU and Jack B. Hayes of Roswell have been chosen as the co-winners of the 1991-92 Georgia Poetry Circuit Competition. The award carries with it an \$1,800 prize and a reading tour of nine Georgia colleges and universities. Nelson and Hayes will give their readings during the winter and spring quarters of 1992. The judge of the competition, Rovert Pack, is a professor of English at Middlebury College in Vermont. He also directs the well-known Bread Loaf Writers' Conference and is the author of nine books of poetry.

How to read "foreign" signs

We are confronted daily by "foreign" signs that is, languages or practices that are unfamiliar to us. These signs surface naturally when we come into contact with people from a foreign country, social class, geographic region or religious background different from ours. Peter Schofer will lecture Feb. 13 at 4:30 p.m. in the Foy Recital Hall at GSU discussing how to understand these signs. Schofer earned his BA at Hamilton College, and his MA and Ph.D at Princeton University. "How Do We Read Different Cultural Signs?" has been Schofer's focus since the mid-70's. He has taught film classes about this topic in both the United States and France. The event is sponsored by the Foreign Languages Department and the Campus Life Enrichment Committee of GSU and is free of charge.

ANNOUNCEMENTS

Tuesday, February 11

- Comedienne Caroline Rhea will perform at 8 p.m. in the Union Ballroom.
- "Jump Rope for Heart" will be held in the Hanner Fieldhouse at 6 p.m.
- Dr. Kishwar M. Maur will give a lecture entitled, "Common Plant Diseases in the Southeast U.S.," at noon in room 218 of the Biology building.

Wednesday, February 12

- Rabbi Raphael Gold will lecture at 6 p.m. in the Union, room 254. The event is sponsored by the Hillel Affiliate of GSU. The public is welcome.
- The GSU Pilot's Association will meet at 8 p.m. in room 244 of the Union.

Thursday, February 13

- The Lady Eagle Basketball team will take on Florida International University at 7:30 p.m. in the Hanner Fieldhouse.
- The Sweetheart Ball will be held at 8 p.m. in the Williams Center.
- Dr. Peter Schofer will give a lecture, "How Do We Read Different Cultural Signs?" at 4:30 p.m. in Foy Recital Hall. The lecture is sponsored by CLEC and the Foreign Languages Department.

Friday, February 14

- International Coffee Hour will be held in University Union room 241 at 11 a.m.
- Video Buttons will be done in the Union Commons from 11-3 p.m.

- The Wizard of Oz will be shown in the Union Theater at 7 and 9:30 p.m. The movie will be shown through Saturday.

Saturday, February 15

- The Eagle Baseball team will play against Georgia Tech at 2 p.m. at J. I. Clements Stadium.
- The Miss GSU Pageant will be held in the Union Ballroom at 7 p.m.

Sunday, February 16

- Willy Wonka & The Chocolate Factory will be shown at 7 and 9:30 p.m. in the Union Theater. The movie will be shown through Monday.
- African American Gospel Choir will perform in concert at 6 p.m. in the Union Ballroom.

Monday, February 17

- NAACP Afro-American Pageant will be held in the University Union Ballroom at 7 p.m.
- Falla Guitar Trio will perform at 8 p.m. in the Foy Recital Hall.
- "Too Smooth" will perform in concert at noon in the University Union Commons.
- The Eagle Baseball team will play against Georgia at 4 p.m. at Clements Stadium.
- There will be an African American Student Art Exhibit held at the Southern Center. The exhibit will be shown through Feb 21.
- The Yoga club will meet at 5 p.m. in the University Union. For more information contact Rohan Quince at 681-0226.

Tuesday, February 18

- The Eagle Baseball team will play against Georgia at 4 p.m. at Clements Stadium.
- Sigma Tau Delta, GSU's English honors society, will hold a meeting at 4:15 p.m. in Newton 17. If you are interested but can't attend the meeting contact Nancy Remler or Diana Burke at 681-5879.
- Dr. J.B. Claiborne of the Biology department will lecture on Acid Base Balance in Seawater Fish at noon in

room 218 of the Biology building.

Wednesday, Feb. 19

- Men's and women's tennis teams will take on Armstrong State College at 2:30 p.m.
- A general student recital will be held in the Foy Fine Arts Auditorium at 1 p.m.
- The Gamma Lambda chapter of Pi Sigma Epsilon are going to create the "World's Largest S'more" at Landrum.

SEE ANNOUNCEMENTS, PAGE 10

THE GEORGE-ANNE

STATEMENT OF OPERATIONS

The George-Anne is the official student newspaper of Georgia Southern University, owned and operated by GSU students and utilizing the facilities provided by GSU. The newspaper is the oldest continuously published weekly newspaper in Bulloch County and Statesboro, Ga. The ideas expressed herein are those of the editor or the individual authors and do not necessarily represent the views of the Student Media Committee, the administration, the faculty and staff of Georgia Southern University, or the University System of Georgia. The George-Anne is published twice weekly during the academic year and three times during summers. Any questions regarding content should be directed to the editor (681-5246).

OFFICES, MAIL, PHONES

Room 111, F. I. Williams Center. The George-Anne, Landrum Center Box 8001, Georgia Southern University, Statesboro, Ga. 30460. 912/681-5246 (News) or 912/618-5418 (Advertising)

ADVERTISING INFORMATION

The George-Anne reserves the right to refuse any advertisement. The George-Anne's advertising rates are as follows:

•Students and student groups:	\$2 per column inch
•GSU faculty, departments or affiliates:	\$3 per column inch
•Statesboro area businesses & groups:	\$4 per column inch*
•National rate	\$7 per column inch

\*Five inch minimum ad size, otherwise classified display rates (\$5.00 per column inch) apply. DEADLINE: The deadline for reserving space and submitting advertising copy is Noon, one-week prior to the intended publication date. For more information, rate cards, sample publications, contact: Stacy Graham, Advertising Manager, ADS, (912) 681-5418; or Bill Neville, Student Publications Coordinator, (912) 681-0069.

CLASSIFIED ADVERTISING INFORMATION

The George-Anne reserves the right to refuse any advertisement. The George-Anne's classified advertising rates are as follows:

•Students and student groups:	Free (25 words or less)
•GSU faculty, departments or affiliates:	Free (25 words or less)
•Others groups or businesses:	\$5.00 (25 words or less, 2 issues)*
•Retail classified display:	\$5.00 per column inch)

DEADLINE: The deadline for reserving space and submitting classified advertising copy is Noon, one-week prior to the intended publication date. Free classified ads from students, faculty and staff must be submitted in writing, with the name of the sender, a local address and telephone number. No free ads will be accepted via telephone. Only one free ad per person per week.

CIRCULATION INFORMATION

Subscription rates for home delivery of The George-Anne are six dollars per quarter, or \$18 per year, delivered bulk mail. Please address all inquiries to Jeff White, Business Manager. The George-Anne is distributed free of charge on the Georgia Southern University campus through delivery sites located in campus buildings and residence halls.

\*We gratefully acknowledge the theft of our slogan from Robert Williams of the Blackshear Times. Call Bob and he can tell you who he stole it from originally.

POLICE BEAT

GSU Department of Public Safety

February 6, 1992

- Scotty A. Chambers was charged with driving under the influence.
- Stephanie D. Vinson was charged with minor in possession.
- Eddie Shaver reported someone had expended a fire extinguisher in the kitchen area of Brannen Hall.
- Dale Grant reported a purse missing from the Carroll Building.
- Kim Dunagan reported a bracelet missing from Blanche's.

- A resident of Lewis Hall reported receiving harassing phone calls.
- Katrina O. Moultrie and Rosalind D. Russell were involved in an accident in the Deck Shoppe parking lot.

February 5, 1992

- Daniel B. Tarver was charged with theft by shoplifting regarding an incident at the University Store.
- A resident of Hendricks Hall reported receiving harassing phone calls.
- Christopher H. Woodall was charged with disobedience to an authorized person directing traffic.

ing traffic.

- Michelle T. Roberts and Marina L. Gentile were involved in an accident in the Newton commuter parking lot.

- Christopher B. Evans and Heather C. Cole were involved in an accident in the Landrum parking lot.

Statesboro Police Department  
February 9, 1992

Brian William Culpepper, 19, of Atlanta was charged with driving under the influence and weaving in lane.

February 7, 1992

- Jesse William Coursey, 19, Savannah, charged with possession of alcohol by minor.

February 6, 1992

- S. Walter Lynch, College Boulevard, reported a handgun missing from his auto.

Hawthorne  
DISTINCTIVE DUPLEXES

NEAR CAMPUS, YET OUT OF THE "HUSTLE-BUSTLE"

10 + 2 Leases

EACH SPACIOUS UNIT CONTAINS:

- 1150 Heated Square Feet
- Two Full Baths With Double Vanities
- 10' x 10' Screened Porch
- Large Closets
- Extra Storage Space

LOW POWER  
BILLS

"Stretch Out"  
On Our Landscaped  
Grounds

WITH FOUR  
\$162.50/ MONTH  
EACH

VALENTINE OPEN HOUSE

HAWTHORNE CT. #38

FRIDAY, FEB. 14, 10-2

681-1166

Sign NOW to Guarantee For Fall

Express Copies  
has  
Valentine  
Balloon  
Bouquets



Inside the  
University Union  
Hours:  
Mon- Fri  
7:45 am- 7:00 pm

# Officials respond to campus fire safety study

By Kevin Hudson  
Managing Editor

In a recent campus-wide survey, 67 percent of the fire extinguishers inspected were not up to legal standards.

The primary problem found was a lack of monthly inspections and annual maintenance as prescribed by law. Other problems included poor placement and obstructed access to the extinguishers.

Less than half the extinguishers inspected were up to established standards, while other buildings showed no obvious problems with the extinguishers.

After being presented with a copy of the *George-Anne's* survey, Jay Burdett, GSU's new environmental safety specialist, said he plans on making drastic improvements in fire safety on campus.

"The first thing I'm going to do here is I'm going to be inspecting all the dorms because those are the areas that are occupied 24 hours a day by students," said Burdett, who began working for GSU last week.

He plans to implement a policy for monthly inspections of all areas on campus. According to the plan, GSU will select departmental

safety representatives charged with inspecting their areas to make sure fire doors close properly and to make sure extinguishers haven't been tampered with.

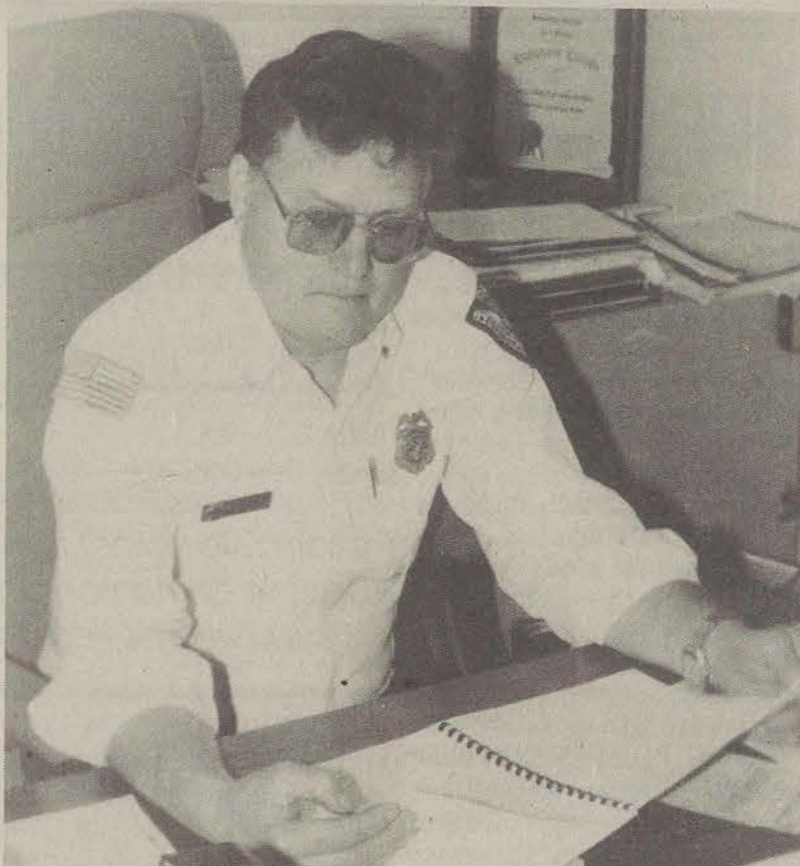
One or two people from the physical plant will be assigned to handle the monthly inspections required by law, said Burdett. The monthly inspections should include visual inspection of the outside of the extinguisher to see that seals are intact, the pin is in place, and hoses and nozzles are in good shape. The person doing the inspection should also pick the extinguisher up to make sure it is not empty.

Burdett said he has talked to Dick Mellett, director of the physical plant, about the fire safety problems on campus. He said Mellett seems excited to do something about the problems.

A copy of the study was presented Friday to Joe Beasley, Bulloch County fire chief. He said his department has basically relinquished its jurisdiction on campus, and it is primarily the state's responsibility.

Beasley said the local department still has a vested interest in fire safety on campus, though.

The state does not have to



Bulloch County Fire Chief Joe Beasley looks at the *George-Anne* fire study. (Photo by Kevin Hudson)

comply with some local ordinances which apply to buildings owned by private citizens or businesses, said Beasley.

"The school should have something in place to be sure [extinguishers] are kept up

and maintained and be sure they have the adequate number," he said. "We recommend they be checked every 30 days, through a visual check, and that's prescribed by law anyway."

Building	Total fire extinguishers	Number up to standards*
Administration Bldg.	8	7
Anderson Hall	10	6
Apparel & Home Fashions	1	0
Biology Building	9	0
Blue Building	2	1
Carroll Building	10	10
Carruth Building	5	0
Communication Arts	4	0
Deal Hall	12	5
Developmental Studies	3	0
Family Life	2	0
Foy Building	14	10
Hanner Complex	9	7
Health Center	3	2
Herty Building	12	0
Health Sciences	3	3
Hollis Building	11	7
Landrum Center	3	0
Library	11	0
Math, Physics, Psych.	14	0
Newton Building	12	10
Nursing Building	4	0
Political Science	3	0
Rosenwald Building	4	1
Skate-R-Bowl	3	0
Southern Center	2	0
South Building	13	0
Tech III	7	0
Tech Annex	1	0
University Store	3	0
University Union	25	0
Williams Center	2	0

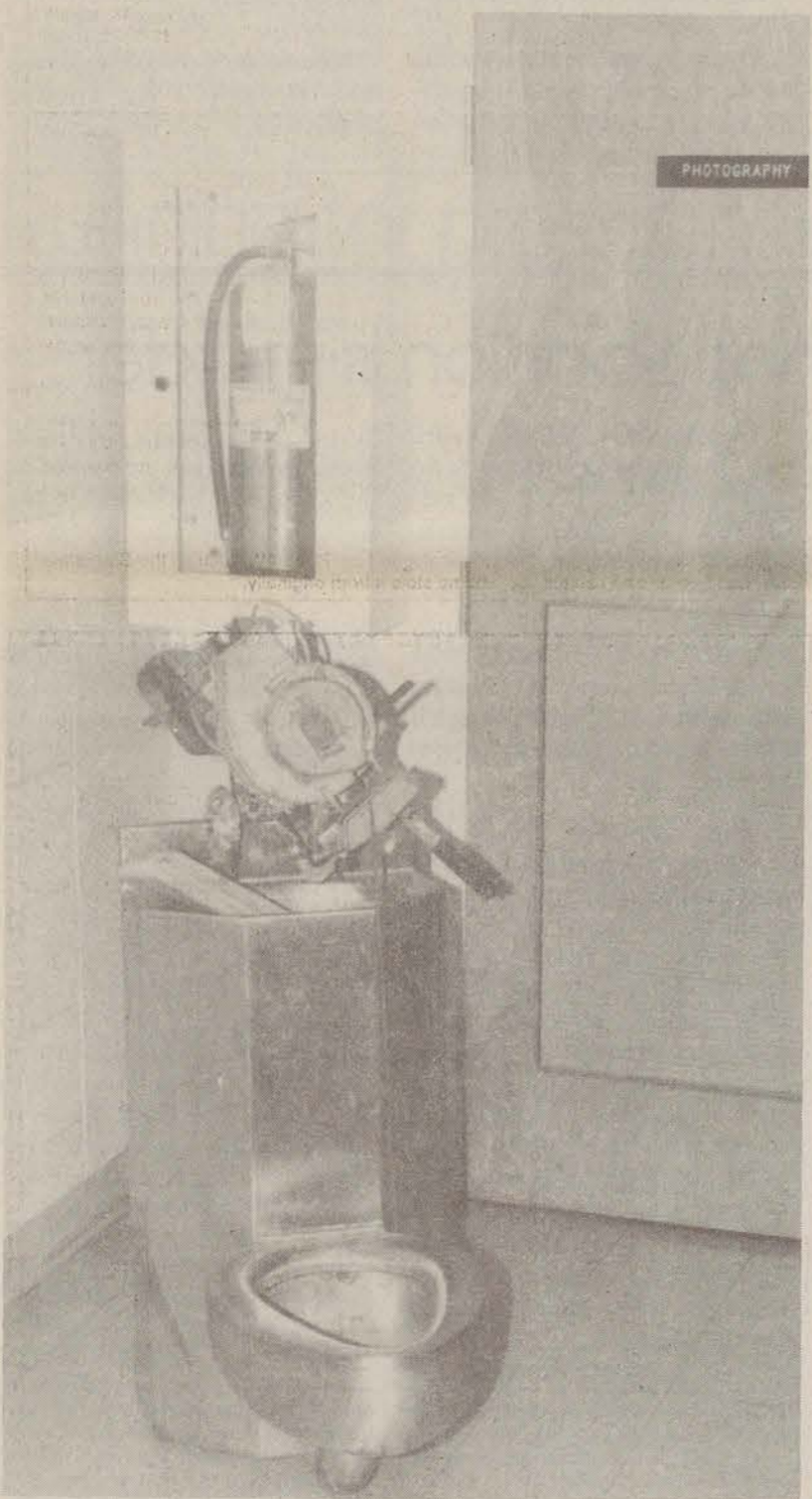
\* Most extinguishers listed are operable, but are not up to guidelines established by the National Fire Protection Association.

## How the study was done

Approximately 90 percent of the general student access areas on campus were inspected. Hallways and similar areas were checked; offices, classrooms, labs, maintenance rooms and other areas of limited student access were not included. Residence halls were also not included.

The buildings were checked between Jan. 26 and Feb. 6 by *George-Anne* managing editor Kevin Hudson, with the assistance of assistant news editor Brent Parrott and photographer Randy Trujillo.

Since an estimate was desired, rather than a comprehensive study, the researchers determined that any extinguishers missed would not skew the results significantly. No extinguishers were intentionally passed-over, however.



A stainless steel toilet with a motor sitting on top are blocking access to this fire extinguisher located on the fourth floor of the Foy Building. (Photo by Kevin Hudson)

## ATTENTION JEWISH STUDENTS!!

Hillel Meetings every second and fourth Wednesdays at 5 p.m. in Room 275 in the University Union.

Georgia Southern Hillel Affiliate  
c/o The Art Department  
Georgia Southern University  
Landrum Box 8032  
Statesboro, Georgia 30460-8032  
912-681-5696 or 912-764-5234  
Co Advisors: Bernie and Paula Solomon  
If not now, when?  
Hillel

## Be a part of the Union Team

Applications are available, beginning February 3, 1992 from the Union Productions office Rm. 207, Student Union. Applications are due February 21, 1992.

**UNION PRODUCTIONS**  
GEORGIA SOUTHERN UNIVERSITY

## APPLICATIONS BEING ACCEPTED FOR:

- Coffeehouse Chair
- Concerts Chair
- Films Chair
- Homecoming Chair
- Multi-Cultural Coordinator
- Publicity Coordinator
- Special Events Chair
- Student Director

For more information call the Union Production office at 681-5442 or Anthony Rice at 681-0399.

WINTER 1992

W + I + T + H

## UNION PRODUCTIONS

GEORGIA SOUTHERN UNIVERSITY



CAROLINE RHEA

## UPcoming EVENTS

### TONIGHT

Comedian: Caroline Rhea Tuesday, Feb. 11  
8 pm Union Ballroom

Sweetheart Ball Thursday, Feb. 13  
8 pm Williams Center

Concert: "Too Smooth" Monday, Feb. 17  
Noon Union Commons

Skating Party Wednesday, Feb. 26  
7 pm Statesboro Skate Inn

Comedian: Rene Bray Tuesday, March 3  
8 pm Union Ballroom

"Rapture" & Afro-American Choir Thursday, March 5  
7 pm Union Ballroom

## MOVIES

Friday & Saturday

### The Wizard of Oz

Sunday & Monday

"WILLY WONKA & THE CHOCOLATE FACTORY"

## MOVIES

Friday & Saturday  
Sunday & Monday  
7:00 p.m. & 9:30 p.m.  
Union Theatre

\$1 with GSU Student I.D.  
\$2 General Admission

## Information Hotline

☎ 681-0461

### UP BOARD

Student Director	Heidi Graef	Films Chair	Bill Waller
Publicity Coordinator	Marly Hays	Multicultural Chair	Lynwood Holmes
Concerts Chair	Stephanie Scott	Homecoming Chair	Cheryl Stephens
Coffeehouse Chair	Mike Bowden		

☎ Office 681-5442 • UNION PRODUCTIONS  
LANDRUM BOX 8066 • STATESBORO, GA 30460



The  
**George-Anne**

For 65 years, Georgia Southern's Official Student Newspaper

**Gary A. Witte**  
Editor

**Kevin Hudson**  
Managing Editor

**Misty McPherson**  
News Editor

# OPINIONS

Liked By Many,  
Cussed By Some...  
Read By Them All

Tuesday, February 11, 1992

## A burning question

What happened to fire safety over the past few years at GSU?

In a recent *George-Anne* survey, 67 percent of the fire extinguishers inspected were not up to legal standards.

Incidentally, the Administration Building, Anderson and Deal Halls had better, more recently inspected fire safety equipment than did many – more student-related – facilities, including the South Building, the Carruth Building and the Math, Physics and Psychology Building.

Is it only coincidence that administrative facilities seemed to be in better condition, at least in the area of fire safety, than classroom facilities?

Regardless, there is a problem that must be addressed on campus – the safety of the students and others that live, work and learn here.

We wish luck to Jay Burdett, who was hired last week and put in charge of fire safety on campus, and we commend him for any steps he may take toward improving the situation.

He has his work cut out for him.

## OTHER VOICES

### Auburn's intolerant students

Gay and lesbian students are attacked with pellet guns. Student leaders fight to deny them legitimacy. This is no Hollywood plot line, but reality today at Auburn University.

In an ironic reversal of the roles often expected on college campuses, many students are fighting to keep gay and lesbian students down while the administration is trying to grant them equal standing in student life.

The student senate recently voted overwhelmingly to reject a charter for a homosexual umbrella group. The administration immediately stepped in and granted the charter over the senate's objection.

The approval ignited a storm of protest. Some students have petitioned the university's trustees to overrule the administration. Others opened fire with pellet guns on several homosexual students hanging posters.

This behavior is not only a blot on Auburn, but it also defies an important part of what a university education should be about: erasing intolerance bred by ignorance.

Luckily, Auburn is the exception, not the rule. About a hundred universities nationwide have adopted policies forbidding discrimination based on sexual orientation. Nearly 50 of these schools offer programs in gay and lesbian studies.

Auburn would not have to look far for a good role model. The University of Alabama in Tuscaloosa granted a charter to the Gay Student Alliance in 1983.

It's time for Auburn's students to put down the pellet guns and petitions—and pick up the cause of civil rights for their homosexual classmates. They'd not be alone.

—The Atlanta Constitution

## STAFF

### NEWS

Assistant News Editors: Doug Gross, Brent Parrott; Copy Editors: Missy Lukehart, Mike Strong; News Staff: Jennifer Booth, Scott Crockett, Tanya Emerson, Johnnie Goolbsy, Stacy Graham, Roger Lee, Dennis Smith, Michelle Thomas, Kim St. Hilaire, Ken Ward

### FEATURES

Features Editor: Teresa Roach; Staff: Donna D'Ambrosio, Doug Gross, Carolyn McWilliams, Trey Decker, Donald Jordan

### SPORTS

Sports Editor: Eric Weisenmiller; Assistant Sports Editor: Michael Strong; Staff: John Munford, Rod Swinson, Eddie Womack

### OPINIONS

Staff: B. Birdseye, Philana Griffin, Jason Lewis, Pat O'Kelley, D.J. Smith

### PHOTOGRAPHY

Head Photographer: Randy Trujillo; Staff: Robby Weatherly, Jesse Stribling, Robert Cooper

### CIRCULATION

Supervisor: Glenn Burgess; Staff: Laura Morgan, Cindy Keever, Mike Bowden, Chris Shelnett, Robby Weatherly

### ADVERTISING/DISTRIBUTION SERVICES (ADS)

Advertising Manager: Stacy Graham; Business Manager: Jeff White; Sales Manager: Jay Knight; Business Assistant: Kelley Hare; Sales Representatives: Kerry Calhoun, Christy Emig, Matt Fastick, Andrew Flurry, Shelly Robbins, Philip Williams

### PRODUCTION AND GRAPHICS EDITORIAL SERVICES (PAGES)

Production Manager: Sherry Dyal; Production Assistant Managers: Stephen Gundersen, Barbie Westberry; Production Staff: Jason Adams, Keisha Davis, Brenda Dowling, James Kikelly, Lynn Kirkland, Adrian McDaniel, Mitch Mitchell, Cathy Siler, Joseph Smith; Darkroom Manager: Randy Trujillo

### STUDENT PUBLICATIONS COORDINATOR

Bill Neville

## Bundy for Dahmer: Mass murder's 'all-stars'

### FROM THE EDITOR'S DESK...

Gary A. Witte



...baseball cards were meant to give kids a chance to collect their heroes – not losers like Dahmer or Manson whose great accomplishment in life is having killed several people.

I honestly can't claim the moral high ground on this topic (one of my favorite films last year was *Silence of the Lambs*), but I think I understand the difference between reading Stephen King stories and keeping a picture of Charles Manson in one's wallet, or on a T-shirt, as I saw one young gentleman doing a couple of years ago.

The way I always understood it, baseball cards were meant to give kids a chance to collect their heroes—not losers like Dahmer or Manson whose great accomplishment in life is having killed several people.

But since this will probably be a fairly popular series, I think I have some even better suggestions for new trading card series.

How about a "True War Criminals" series? Kids could trade two Lt. William Calleys for a Dr. Joseph Mengele.

Then we could have the spin-off "Real Nazis" with David Duke (sort of the Dan Quayle version of Hitler), Himmler and Goring.

How about "Drug Dealers: The Series?"

There comes a natural point where we have villains we admire or become fascinated

with. Jesse James and Billy the Kid became folk heroes and Jack the Ripper became the bogeyman of the 20th Century.

But something is screwed up when people start thinking that the *Friday the 13th* movies are actual films, when in reality they have as about much plot as a public hanging.

Its become the sort of world where we "examine" people like Manson, instead of executing them. We put down rabid dogs, don't we?

We've even shown that all you have to do to get your picture on the cover of *Newsweek* is kill and cannibalize 15 people, a la Dahmer.

Even still, I think I can safely say that this card series won't turn any kids into mass murders or gangsters. Kids just aren't as easily twisted as adults think they are.

I have been told I have a macabre sense of humor, but it fails me when I think about children trading a John Wayne Gacy for a Charles Whitman during recess.

**Recommended Reading:**  
*Red Dragon* – By Thomas Harris

## LETTERS TO THE EDITOR

### The Bible clearly states that abortion is murder

Dear Editor,

On Jan. 28, I read an opinion by Gary A. Witte titled "The problem with pro-life arguments." Everyday you read or hear people talking about either taking a stance for abortion or taking a stance for pro-life.

You hear from people who are looking for a cause to believe in that they feel is for the "welfare of man." I believe now is the time for the children of God to simply take a stand that will last for all eternity – a stand for Jesus Christ.

Jesus is Lord. He came to this world so that we might have salvation and understanding of his Father's Word. We are given a choice to either accept God's Word from the Holy Bible or to accept the ways of the world; but, we cannot serve two masters.

The "religious and biblical arguments" that Witte mentioned are not arguments but a

means to provide light and truth in a world of darkness and deceit. Seek the truth from God. Ask Jesus to enter your life and to give you answers. Knock on the gates of Heaven and find "Life."

God's Word clearly states, from the Ten Commandments, that "You shall not murder." The Hebrew for this verb usually refers to a premeditated and deliberate act such as abortion. In the New Testament, Jesus reinstated this ancient commandment in his Sermon on the Mount and in no way nullified it.

Matthew 5:21– "You have heard that it was said to the people long ago; Do not murder, and anyone who murders will be subject to judgment." The Sixth Commandment lifts human life to the highest possible level because it recognizes that life is sacred. Life is God's gift, and we must not tamper with it.

I believe with all my heart the message expressed in Jeremiah 1:5– "Before I(God) formed you in the womb, I(God) knew you." and in Psalm 138:13– "For you(God) created my inmost being; You(God) knit me together in my Mother's womb." God alone is the Creator of Life. Likewise God alone has the right to determine the end of Life.

The "radicals" that Witte mentioned are potentially misunderstood and generalized. Jesus does warn of many false prophets and teachers that would distort and misrepresent his Father's ways. Most, however, are apparently like myself who are "radical" – radical for Jesus and dedicated to fulfill their commission by being the "Salt and the Light" of the world.

But it is not any of us "radicals" that you have to believe in. You just have to

"open" your heart to Jesus, "open" your eyes and ears to the Lord, and be "open" to the teachings of the Holy Spirit.

It is important to understand Matthew 8:13-14: "Enter through the Narrow Gate. For Wide is the gate and Broad is the road that Leads to Destruction, and Many enter through it. But Small is the gate and Narrow the road that Leads to Life, and only a Few find it."

I do not judge or condemn anyone. The Bible says there is only one Lawgiver and Judge, the One who is able to save and destroy. I just ask that the Lord gives me the strength to lift people like Gary Witte in prayer so that they might "see" Jesus; then and only then will anyone understand "Life."

**Tom Scarborough**  
Member, Brooklet First Baptist

### Paper should tighten up

Dear Editor,

Congratulations to the staff of the *George-Anne* on their nomination for eight awards from the Georgia [College] Press Association. I understand that these awards are very prestigious and I applaud you for achieving this honor.

However, after reading the Feb. 4 edition of the *George-Anne*, I, as a college man, am forced to question the Georgia [College] Press Association's method of selecting it's [sic] nominees.

Do not get me wrong, I thought the article on the College Republicans was very informative. Nevertheless, printing it twice in succession was a gross oversight. Especially when in the same issue it was pointed out that Mr. Rod Swinson had a critical concluding sentence cut from his article, *Rod's Review*, in order to conserve space.

Also on page two of the same edition, the opening paragraph of the article concerning the GSU Scholastic Art Awards was reprinted at the end of the article on the summer teachers institute.

Again an oversight which wasted space that could have

been used to print the line or two which was omitted from Mr. Swinson's article, or any other bit of information which the *George-Anne's* readers had not already read. (The total number of wasted words were 217, not including punctuation or spacing.)

These examples of wasted space do not include the numerous times I have noticed, two or three, phrases which were printed twice in succession. Come on guys, reiteration is one thing but redundancy is another thing completely.

Secondly, in each edition of the *George-Anne* there are innumerable instances of misspelled words. Very seldom in my academic career has one thing been stressed so often as the need to spell correctly.

Admittedly, I am a terrible speller, but don't the computers you guys use have "spell check?" And if not, aren't editors supposed to catch spelling errors if nothing else?

If anyone were to make mistakes such as these while writing a paper for their classes it is likely that they would be kicked out of school due to their poor grades. Moreover, it is very doubtful

SEE PAPER, PAGE 10

### LETTER AND SUBMISSION POLICY

The *George-Anne* welcomes letters to the editor, story submissions and guest columns from people both inside and outside the Georgia Southern University Community. All copy submitted should be typed (double-spaced, please), preferably on Macintosh disk in Microsoft Word or Microsoft Works format. All submissions must be signed and include a mailing address and phone number for verification. The editors reserve the right to reject any submission. There is no word limit on submissions. A writer may request to remain anonymous. However, it will be the editor's decision whether or not to print the name. Submissions are run on a space-available basis.

## Editorial was immature

Dear Editor,

Re: your editorial "Mixed Reviews"

You comment, in the editorial, "...The requirement (to attend the workshop) only served to make the groups not want to listen to what they were being told." This observation, if true, shows a lack of maturity.

All citizens must realize that they have social responsibilities. These responsibilities go hand-in-hand with their every-day actions. The university stands to become involved in litigation and be held liable should any actions of the individual, belonging to a campus group, cause harm to others or to property.

The requirement to attend was a good move on the part of the university to meet with compliance of their request for attendance.

Any person who feels that their freedom of choice was

usurped, or that their feelings were hurt because they were facing a threat of having their organization's name removed from the official list of organizations, seems to me to be in need of just such an order.

If the order was not required, then a person of maturity would have understood, would not have been upset, and would have LISTENED. Only an immature or irresponsible person could possibly be upset by such a request.

The editorial ended with a petulant remark, "...but they went about it the wrong way." I say like a petulant child because you offered no proposal as to how it should have been done. Chances are that some would not have attended had they not been required to do so.

**Ronald Lyall**  
Development and University Relations

# Lottery would end financial woes of Georgia's school system

I was looking through the Jan. 28 issue of the *George-Anne* and right there on the front page was an article about the lottery.

Bobby Smith, assistant professor in the department of finance and economics, stated that he is opposed to the lottery because it is a regressive tax, meaning it targets those with less money rather than those with more money.

That made me start thinking about lotteries. I have lived in states that didn't have lotteries and I have heard the arguments that went on there about whether or not they should have one. I have also lived in states that had a lottery and I have seen what happened in those states as a result.

First of all, Smith is right, and all the surveys are right. It is mostly the lower income folks that buy those lottery tickets. They aren't the exclusive customers, but they are in the majority.

But the fact of the matter is that folks are going to gamble. Maybe they will get together for a game of poker, maybe they will bet on a football pool or maybe they will throw coins at a line, but they will always find a way to gamble. When the state legislates against such activities, the only thing it does is guarantee that the

## LET ME SEE IF I GOT THIS STRAIGHT

D.J. Smith



state won't get the house cut of the winnings. The gambling keeps going on.

I personally believe that the state of Georgia should have a lottery. There are several reasons that I feel this way.

First, there's a lot of people in this state that feel the same way that I do. Since this is supposedly a representative form of government, the good folks up in Atlanta should get busy and get a lottery going.

Being the evangelistic types that they are, I'm sure our legislators feel they are saving us from ourselves. After all, who is more qualified than a politician to decide what is best for us?

Of course, if those politicians would take their heads out of the sand and look around, they would realise that folks all over the state of Georgia are already playing the lottery - Florida's lottery. I'm sure the folks down in Florida appreciate getting all that extra revenue from the folks up here in Georgia. Like I said, folks are going to gamble.

Another reason I am in favor of the lottery is really the very reason that Smith is against it: it targets the folks in the lower socio-economic brackets. That may sound a little heartless, but here's why I say that.

Every time that the issue of the lottery comes up, it is mentioned in connection with gaining revenue to support our educational system (which is what Florida is doing with their lottery money). Our educational system is presently supported mainly by land taxes.

That means that our schools are mainly being financed by the folks who own land. The folks who rent, many of whom are in the lower socio-economic brackets, do not pay land taxes. But their kids go to school. A lottery would get some of their dollars into our schools. Better our schools than Florida's schools.

Like I said, I have lived in states that have a lottery and I think Georgia should join those ranks. But, I also think that we should not make the

same mistakes all over again.

Again, using Florida as the example, many states have targeted education as the recipient of lottery profits. I wholeheartedly support that idea, but Florida made a big mistake with their lottery.

Instead of supplementing their tax support with lottery dollars, they replaced their tax support with lottery dollars. The result was that educational funding only increased by about two percent after their lottery went into effect.

Moreover, research has shown that lottery profits are huge at first, because it is a novelty and everybody wants to get in on it. But after a few years, as the novelty wears off, the profits start to drop. Whereas you can legislate an increase in taxes if need be, it's difficult to legislate an increase in lottery profits.

If a state has replaced its tax support with lottery profits, as Florida has done, it may find itself hard pressed to raise additional funds for its education system in the future.

I see it as absolutely essential to maintain the present tax support of our schools, then add lottery profits to it. If Georgia did that, they could put an immediate end to the financial woes of our school systems. We could have a public school and state university

system that would be the envy of every state in the nation.

I also see it as essential that lottery profits be protected from those who would divert them into other programs at some point in the future.

The article also pointed out that there is a possibility that abuse, corruption and organized crime could get into the

lottery system. In fact, lottery systems have been abolished for those very reasons in the past.

Well, the way I figure it, if we follow that line of reasoning to its logical conclusions, we should abolish our state and federal governments. Hmmm... maybe that's not such a bad idea.

### SNOOKY'S Restaurant

**"Good Home Cooking!"**  
Open Mon.-Sat. 6 a.m. to 10 p.m.  
SERVING BREAKFAST, LUNCH & DINNER  
(LUNCH & DINNER BUFFET)  
**Student Meal Tickets -**  
10% Discount on purchase of \$100 or more meal ticket.  
11 E. Kennedy St. Statesboro

# Running for president isn't as easy as it looks

Today, as a leading presidential contender, I am pleased to present my Economic Package.

I realize I'm late. The other 53 leading contenders turned in their Economic Packages weeks ago. But I have an excuse: The dog ate my Economic Package.

No, really, my excuse is that I've been busy trying to notify the government that I'm running for president. I thought this would be a simple procedure. I mean, look at the other contenders. These people are not all nuclear physicists. Some of them aren't even vertebrate life forms.

(We'll pause here while the Duke supporters look up "vertebrate.")

Anyway, I called the Federal Election Commission in Washington, D.C., and told the person who answered the phone that I was running for president. I figured she'd just make a note of this, then assign some Secret Service agents to follow me around, beat up people who cut me off in traffic, maybe do some work on my yard, etc.

Instead, she mailed me some forms, which demanded to know the name of the committee that handles my campaign contributions and the bank where these are deposited. I frankly had not thought that a committee was necessary, since

Dave Barry



my contributions consist of about \$30 in small bills and coins from various nations including (this is true) Bolivia. These funds are currently deposited in the box for the Nerf Ping Pong set that I maintain in my office in case of emergency.

So in an effort to satisfy the FEC forms, I tried to open a bank account, but the bank - and you wonder why our banking system is in trouble - refused to take the money. The bank person said I couldn't have an account because I didn't have a Federal Identification Number. (For the record, neither did Abraham Lincoln.) The irony here is that I'm located in Miami, where banks have a tradition of accepting huge cash deposits delivered in trucks that say "ACME COCAINE DEALERSHIP." But God forbid they should take money from a declared presidential candidate.

So I applied for a federal identification number, which you get from the Internal Revenue Service by filling out Form SS-4. Here's an actual quotation from the instructions:

"6. With respect to which there are reasonable arrangements designed to ensure that (a) residual interests are not held by disqualified organizations (as defined in section 860E(e)(5)), and (b) information necessary for the application of section 805E(e) will be made available."

The instructions also say: "If you have ... suggestions for making this form more simple, we would be happy to hear from you." My suggestion is, "Shoot the extraterrestrial being who wrote these instructions in the head, if it has one." Of course I wouldn't tell the IRS that, because I'd probably be selected for the Special Audit, which involves fire ants.

My point is that there's a lot of tricky paperwork involved in running for president, which is why I'm late with my Economic Package.

I've studied the other candidates' packages, and they're all designed to appeal to middle-class Americans, technically defined as "Americans who own VCRs but cannot program them." Most of the packages involve "tax breaks," which is when the government, amid

great fanfare, generously decides not to take quite so much of your income. In other words, these candidates are trying to buy your votes with your own money.

Well, as Abraham Lincoln once said: "If you're going to take a bribe, hold out for top dollar." Which is why I'm proud to present:

MY ECONOMIC PACKAGE  
1. Every middle-class

SEE PRESIDENT, PAGE 10

\*Sports Emporium, formerly the Sports Buff is now under new ownership and management.

## Sports EMPORIUM

**Greek and Team Lettering Available...**

Statesboro Mall  
764-6869  
Mon.-Sat.  
10am-9pm

<b>FOOTWEAR</b> Nike Air Reebok Converse Asics K-Swiss Ellesse	<b>Air Huarache</b> 	<b>SPORTSWEAR</b> The Game Russell Umbro Starter Reebok Nike	<b>HATS</b> Starter The Game New Era Apex One Pro Line Signature
--	-------------------------	--	--

**Air Jordan**

**Your Complete Sporting Goods Store!!!**

# Are your grades an A+ and your life a D-?

Improve your average. If the never-ending cycle to be your best has you almost at rock bottom, call us at The Clark Center. Our doctors, counselors and support groups can help put your life in the proper balance.

The Clark Center

23 Lester Road, Statesboro, Georgia  
489-3605

## Value Menu

11-2 Mon.-Fri.

Spaghetti Plate \$1.<sup>49</sup>

Soup -n- Salad \$1.<sup>49</sup>

Blue Plate Special \$3.<sup>99</sup>

All You Can Eat Buffet & Salad \$3.<sup>99</sup>

**Pizza Inn**

**EVERYBODY'S RUNNING TO HEEL**

**A NATIONAL FRANCHISE Shoe Repair & Clothing Alterations**

## SEW QUIK!®

Statesboro Mall 489-1111

**At our new high-tech repair store you will receive...**

- Speedy service- no need to wait
- Competitive pricing
- Heels are not all we do...

Prime Leather Soles	Zippers
Neoprene Soles	Cuffs, Buttons
Vibram Soles	Hems, Coats

...and more

**10% discount with student I.D.**

# Ophelia Daze releases *Tasty*

Local band's debut album party at the Collegiate a success



Lead singer Donald Painter belts it out while bassist Ronnie Thornton keeps in the groove. The group is the first local band to produce a cassette with a "Parental Advisory" sticker. (Photo by Jesse Stribling)

By Doug Gross  
Assistant News Editor

When one thinks of the Collegiate, a nightclub frequented by a large portion of the GSU populace, live original music is not usually the first image which comes to mind. But Thursday night, dance tunes and ladies' drink specials gave way to the not-ready-for-prime-time sounds of Ophelia Daze, a local rock act celebrating the release of their debut cassette, *Tasty*.

The group, whose style fuses the "grunge" sound recently popularized by such acts as Nirvana and Soundgarden with layers of psychedelic guitar, was pleased with their reception at a club which has not featured local rock acts since last fall's Battle of the Bands.

"This was the crossover gig of the century," said guitarist Hans Gutknecht. "I think a lot of people heard us tonight who have never heard us before."

"The crowd was incredible," added bassist Ronnie Thornton, noting that the

group had been invited to perform at the Collegiate again in the near future.

Throughout two one-hour sets, Ophelia Daze entertained a diverse group of music fans with a slew of original tunes and a handful of tastefully chosen cover songs, including the Plasmatics' "A Pig is a Pig," a song held very dear to the hearts of several band members.

"The song does happen to have a deep meaning to me," vocalist Donald Painter said. "One night I happened to get a little too drunk and ... flip my car, and [local law enforcement officers] had the audacity to be rude to me."

Of the original songs performed by the band, the crowd

reacted most favorably to the selections included on the group's tape, a 7-song effort recorded at Atlanta's Tree Studios and produced by Charles Holloman of Atlanta rock act So Inclined.

On such tracks as "America" and "S.P.D." Gutknecht's distorted guitar style shines and Painter's lyrics take on such diverse subjects as police department corruption, the works of children's author Dr. Suess and the injustices of European settlers to the Native Americans.

These lyrics, combined with cover art that would make deceased photographer Robert Mapplethorpe proud, give Ophelia Daze the distinction of

See OPHELIA, page 12



**LATE NIGHT  
IN THE BORO!**

Serving famous  
**Krystals 'til:**

Midnight Sun. - Wed.  
2 a.m. Thurs. - Sat.

**Krystal**

NOW OPEN NEXT TO WAL-MART!

## Landolphi: 'Hot, Sexy, and Safer'

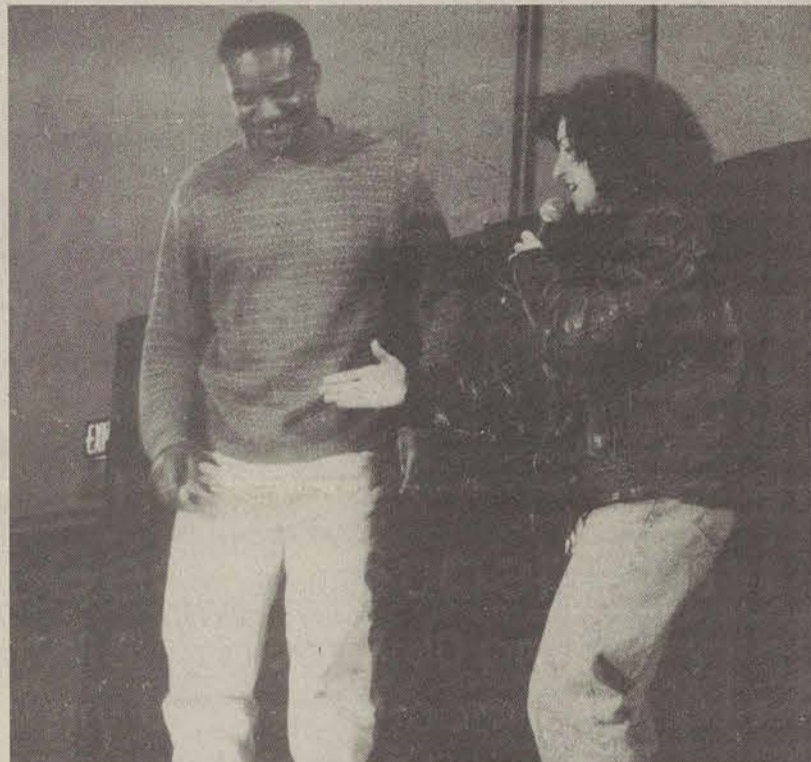
By Teresa Roach  
Features Editor

How do you feel about talking with your parents about sex? If you're like me, you avoid the subject at all costs. You may even get embarrassed when a kissing scene comes on television and your parents are watching the program with you. Could you ever imagine having a mother who visited college campuses nationwide giving a comedy routine about safe sex, and in addition, owned two condom specialty stores?

That's what Suzie Landolphi does. She performed her show "Hot, Sexier, and Safer" last Thursday night in the Union Ballroom for a very receptive crowd. Her act included showing the audience how to put on a condom, performing a dialogue about sexual desires with a brave volunteer from the audience, and actually putting a condom on someone's head (yes, it fits on an adult-size human head!).

Landolphi, formerly a video and film producer and director, was trained to work with AIDS patients and to educate high school students on the disease. While speaking at the schools, she started to use humor.

"I noticed that when I talked about sex, if I used little humor, ... it made me feel more comfortable and it made them



Suzie Landolphi gives student Mike Bailey some pointers on how to be "hot, sexy, and safer." Landolphi has appeared regularly on the "Home" show on the ABC network. (Photo by Denny Runnion.)

### The Friendly Diner

Home Cooked  
Starting at  
**\$3.49**  
Buffet

January Special  
**2/ \$1.50**  
Sausage,  
Country Ham,  
or Bacon Biscuit

Country Breakfast  
• Waffles  
• Blueberry  
Pancakes  
• & more

**489 - 3307**

Hours:  
6:30 am - 3:00 pm

Located across from  
Wal-Mart next  
Franklin Chevrolet

## Miss Georgia Southern University Scholarship Pageant

"Only In America"

Featuring 1991 Miss Georgia  
Kim Hardy  
and the

1991 Miss Georgia Superstars

February 15, 1992 • 7:00 pm

University Union Ballroom

\$2.00 with GSU I.D.

\$3.00 General Admission

## Southern Floral

"Special Things for Special People"

18 College Plaza - Next Door to Domino's  
Statesboro, GA 30458  
681-7378

Out of town or in town,  
don't forget your special someone.

Order early for Valentine's Day!

Assorted colors of Roses, Valentine Arrangements  
Stuffed Animals, Candy Baskets, Mugs and Ballons

We Deliver!

**10% OFF with this Coupon**

Remember that  
Someone "Special"  
with a gift from  
**Books  
plus**

This COUPON entitles

**YOU**

to **15% off**

your Valentine purchases

2/11/92 through 2/14/92

Book Plus... LB 8007 912-681-0450

# Falla Guitar Trio to perform on Feb. 17

Group has received outstanding reviews in U.S., Europe, and Far East



The Falla Guitar Trio is Kenton Youngstrom, Terry Graves, and Dusan Bogdanovic. (Special Photo.)

GSU News Service

The sound of guitar strings being tuned offstage finally comes to an end, and the auditorium becomes very quiet. Shortly, the concert hall comes alive with the works of great composers being played on guitar by the three performers on-stage.

The performance continues with a wide variety of musical selections. The group's ability to maneuver through musical eras and styles has the crowd intrigued. The performers might begin with a work by Bach and next play a well-known blues tune as if it were emanating right out of a smoke-filled bar in New Orleans. This variety is what makes the Falla (pronounced FAH yuh) Guitar Trio such a hit.

The Falla Guitar Trio consist of Kenton Youngstrom, Terry Graves, and Dusan Bogdanovic. The three of them, after establishing exceptional solo careers, decided to form the trio and begin touring in 1979. Since then, they have

been receiving outstanding reviews everywhere they have group has been featured on television and radio throughout the U.S. as well as in Europe and in the Far East. They currently have several albums out, and their debut in 1984 received the Record of the Year Award from *Stereo Review* Magazine and was used in the soundtrack of the Blake Edward's film *Skin Deep*.

Tickets for The Falla Guitar Trio are available at the Information Counter in the University Union. Tickets are free to students, faculty, staff, and GSU retirees with the presentation of a GSU i.d. Students may obtain tickets exclusively through Feb. 9 and everyone else may pick up tickets beginning Feb. 10. Beginning Feb. 10, those needing to purchase tickets may do so at the CLEC office, located in room 111 of the Foy Building, or by calling 681-5434.

Single admission charges are \$5 for non-GSU adults; \$3

for the spouse of a GSU employee or retiree; and \$2 for pre-college students. If available, tickets may also be bought at the performance.

Those holding tickets for the performance are reminded that seating is only guaranteed until 7:50 p.m.

## Cultural symbols vary in meaning

By Mike Donohoe  
GSU News Service

Have you ever wondered why the Japanese bow or the French kiss one another on the cheek? I was suprised to find out that in some European countries it is common for female friends to hold hands while walking down the street. These things may seem

### ECLECTIC COLUMN

"How Do We Read Different Cultural Signs?" The lecture, presented by CLEC and the Foreign Language Department, will take place Thursday, Feb. 13 at 4:30 p.m. in the Foy Recital Hall. Dr. Schofer will place emphasis on understanding foreign signs which may result from social class, geographic region, race, religion, or sexual differences.

Dr. Schofer earned his Ph.D. at Princeton and has taught French language and literature at the University of Wisconsin-Madison since 1968.

Also, be reminded that the Falla Guitar Trio will be here Feb. 17 in Foy Recital Hall at 8 p.m. Their debut album won a Record of the Year award from *Stereo Review* and their latest release was described in *Guitar Review* as "brilliantly colored, full of textural detail and unremittingly energetic."

Free tickets for students, faculty and staff are available at the Union Information desk. Tickets for purchase may be picked up at the CLEC office, room 111 in the Foy Building.

For more information on any CLEC event, call our office at 681-5434. See you next week!



strange to us, but they're perfectly normal among members of that particular culture. For example, a rose is a symbol of love in this country, but to a Frenchman it is the socialist party symbol. I went to high school with a guy from Spain who always stood about twelve inches from someone's face when he was talking to them. It made people really nervous, but in Spain twelve inches is adequate personal space.

Dr. Peter Schofer will be here to talk about cultural differences in a lecture titled

**Hughes & Jones**  
T-Shirts: \$7 & \$8  
Sweatshirts: \$15  
Caps: \$8 & \$10  
GSU Student discount with ID  
T-Shirts: \$6  
Sweatshirts: \$12  
Caps: \$8

*T-Shirt Shop*

New Location  
8 Simmons Shopping Center  
Statesboro, GA 30408  
764-6040  
Leroy Jones, Jr.  
Open 6 days a week!

We Specialize in Afro-American T-Shirts, sweatshirts, and caps. Our selection includes 27 different types of shirts and sweatshirts. Also NFL, NBA, college, baseball, and Malcolm X caps.

**Pro Sound**  
ENTERTAINMENT

Disc Jockeys For Any Occasion  
Book Now For:  
**Winter Quarter Formals**

Light Show Included  
681-7665

**POP QUIZ**

Q: What is a double good deal?  
A: A Sonic Brown Bag Special!

Q: What is a Sonic Brown Bag Special?

(A) Junior Sonic Burger x 2

(B) Regular French Fries x 2

(C) Regular Soft Drink x 2

✓(D) All of the above!

**Sonic Brown Bag Special**  
\$3.99 plus tax

February 1 - February 29

Drive-In Phone 322 S. Main St.  
Drive-Thru 489-4544 North of the Triangle

**SPRING BREAK!!**

**Bahamas/Cruise**

**HURRY! SPACE IS LIMITED!!**

For reservations and information call:  
**"Kelly" at 764-3621**

Our 8th Sell-Out Year!

This Valentine's Day, give twice the love.

Give them Classic Sweets Chocolates now...

...and Hallmark mails them the Classic Sweets reminder later!

An exclusive selection of the finest milk and dark chocolates now, a delicious reminder of your love a few weeks later. Supplies are limited, so get yours today.

All for \$3.95 with any Hallmark card purchase

**Hallmark**  
**THE HEN HOUSE**  
Statesboro Mall

These selections are Sound Insured at Turtle's! If you don't like what you hear, return it within 7 days with receipt for another cassette or cd of equal value! Prices insured thru March 4 1992.

**INSURANCE**  
BUY IT AND TRY IT!

**JOE DIFFIE**  
Regular Joe 6.99cassette  
10.99 cd

**YO-YO MA & BOBBY MCFERRIN**  
Hush 6.99cassette  
11.99 cd

**MR. BIG**  
Lean Into It 6.99cassette  
10.99 cd

**PEARL JAM**  
Ten 6.99cassette  
10.99 cd

**ALISON MOYET**  
Hoodoo 6.99cassette  
10.99 cd

**TALL STORIES**  
Tall Stories 6.99cassette  
10.99 cd

**SALE ENDS March 4th, 1992**

**TURTLE'S**

VISA  
DISCOVER  
TICKETMASTER  
SOUTHEAST

**ROD'S  
REVIEW**

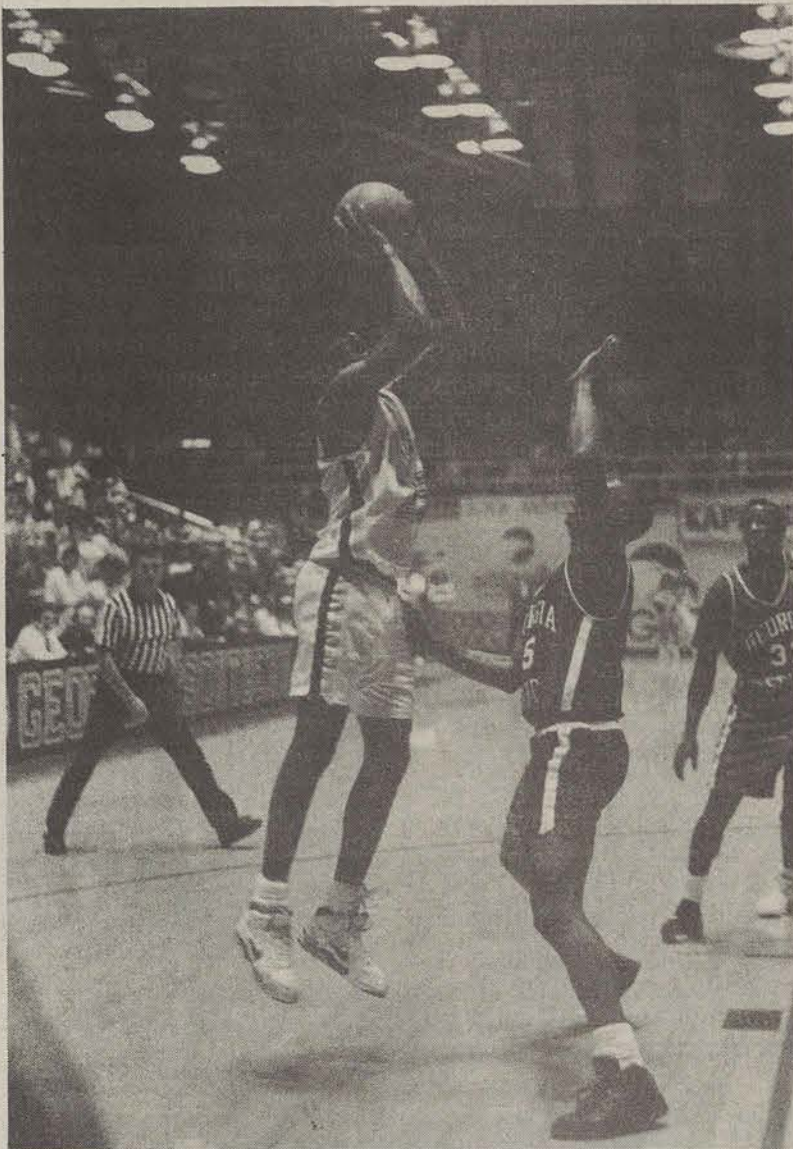


Rod Swinson

**Freedom?!?!?**

Freedom?? What is it?  
Who loses their rights for the rights to freedom?  
(I know you're probably saying "what in the world does that have to do with the world of sport?")  
No, it's not that "Magic" thing again.  
No, it's not a black/white issue.  
But freedom is an issue in sports?  
During the NFL season on numerous occasions many players from opposing teams would gather in the middle of the field (pre- and post- game) join hands and say a prayer.  
Maybe one of the most televised and talked about occasions was following the fifth game of the NBA World Championship, (the Bulls won) when Michael Jordan fell on his knees in the locker room and he and the entire Bulls team said a prayer.  
Since then, I have read many articles in sports magazines expressing major dissent by people who were offended by these actions.  
As we know, "public" prayer has been *banned* before a sporting event.  
Was that not enough?  
Are we going to try and take "individual" prayer?  
The issue here is involving the rights of a person to express his or her belief in they way he or she chooses.  
Who's freedom is being infringed upon?  
How can we as a so called "nation under God," take prayer away from an individual?  
Is that right?  
I know we have people in this country that want absolutely nothing to do with God, but do we infringe upon the rights of everyone else to accommodate.  
I mean the participants and advocates of prayer have rights also.  
These players are the major participants in these events so should they have to be subject to the rights of those who choose to come and watch.  
The major participants should have their rights observed as priority.  
If someone doesn't want to participate in the prayer, then don't but don't deprive someone else of their right.  
Is "freedom of religion" not in the Constitution?  
Sometimes we in this country are so hypocritical.  
It's okay for everyone to give thanks to God on national television as they receive their awards for their different accomplishments: (music, sports, theatre)  
It's okay to spend the money that bears the words "in God we trust."  
But it's not okay to allow a person to say a prayer when he wants to.  
Some say, "I don't like those things that bear the name of God, but I have to live with them if I'm going to live in this country."  
Well why can "some" not just live with the prayer.  
I know "some" have their rights but "others" have their rights too.  
Who's rights do we infringe upon to ensure freedom?  
I don't know.  
Do I even have the right to write about the issue?  
At the rate we're going now the word "God" will be banned from the lips of every American citizen.  
I know everyone doesn't like the sports world, but even that world is made up of people.  
People who should have rights.  
When we begin to ban everything, what concept are we building upon?  
Freedom???

# Hoop Eagles still flying high



Tony Windless shoots over a Georgia State defender. Windless scored 21 points in Saturday night's 91-84 victory. An enthusiastic crowd of 4,056 witnessed the triumph over "the other GSU." (Photo by Robby Weatherly)

## GSU claws past Samford, 73-64

By Rod Swinson

Staff Writer

The Eagles overcame a sluggish first half to defeat the Samford Bulldogs 73-62 Thursday night in Hanner Fieldhouse.

GSU trailed by a point at the half before putting together a spurt late to protect their unblemished conference record.

The Eagles started out playing a hard nose man-to-man defense to combat the Bulldogs motion offense.

Both teams started slowly with the first points of the game coming on a layup by Samford's Herman Davis with 18:00 remaining in the half.

By the first radio time-out with 14:48 left in the half the Eagles managed to tie the score at 6-6 with Calvin Sinkfield hampered by two quick fouls.

The Eagles moved out to a 14-8 lead at the 12:00 mark of the half on the flight of a couple of three-pointers by Wendell Charles and Tony Windless.

The Eagles went to their bench early to combat fatigue. With 10:48 Joby Powell followed his own miss to give the leaders an 18-12 lead.

Samford came right back.

With 9:05 remaining in the half, Herman went back door and scored a layup to tie the score 18-18.

Kenya Franklin got free for a layup to give the Bulldogs a lead at 22-20 with 7:41 left in the half.

But Windless tied the game 22-22 when he went baseline and drained a jumper.

Samford answered.

With 4:30 remaining in the half Windless hit a rainbow three-pointer to give the Eagles the lead at 27-24.

Following a Bulldog turnover, Charles threw a rope pass under the basket to Charlton "CY" Young for a reverse layup to move the lead to 29-24.

But the Bulldogs came storming back to score six consecutive points.

With 2:00 left before the break, Kevin Moore hit a three-pointer from the right wing and the Bulldogs led 30-29.

The Eagles regained the lead 31-30 with 1:43 left on a Windless turn around jumper.

But the Bulldogs took the lead 32-31 going in at the half on a couple of free throws by David Truss.

The Eagle and the "Explosion" entertained the crowd at the half.

The Bulldogs came out and scored five unanswered points to start the second half and led 37-31 with 18:22 left in the game.

The Eagles put the brakes on right there.

"CY" drained a three with 18:00 left to cut the lead to 37-34.

Dexter Abrams muscled up a layup to cut the lead to one at 37-36.

Windless drove baseline and hit a beautiful reverse layup to give the Eagles by one at 38-37.

The Bulldogs were forced to call a time-out.

With 13:21 left, Chris Birden got a hoop and some harm and the Eagles moved out to a 40-37 lead.

The Bulldogs took the lead back on a Herman jumper from the side of the key and the score was 41-40.

"CY" came through again.

At the 11:00 mark, Young hit another three-pointer to give the Eagles a lead of 43-41.

A lead they would not relinquish again.

SEE SAMFORD, PAGE 10

## Eagles cage panthers, 91-84

By Rod Swinson

Staff Writer

The Eagles overcame a 17 point deficit in the second half to defeat Georgia State 91-84 in a thrilling game Saturday night in Statesboro.

An excited crowd of 4,056, the fifth largest in Hanner Fieldhouse history, played an important role in the Eagles tying a conference record with their ninth straight victory in the TAAC.

"We really appreciate the fans support," said Eagle forward Tony Windless. "They really gave us a big boost with their enthusiasm."

Charlton Young started the game with a three-pointer to give the Eagles a 3-0 lead at the 19:30 mark.

The Panthers scored six unanswered points to lead the Eagles 6-3 with 17:15 left in the half.

Wendell Charles, who would come up big late in the game, tied the score at 6-6 with a three-pointer from the right wing with just under 17 minutes left in the half.

The Panthers moved out to a 10-6 lead with 15:30 left when Corey Gauff scored on a layup.

Tyrice Wright gave the Panthers a 13-9 lead by draining a trifecta from the left wing with 14:55 left in the half.

Following a jumper by Dexter Abrams the Eagles trailed by two (13-11) at the first media time-out.

Coming out of the time-out, Young picked up two quick fouls and had to sit forcing

Charles into taking over the point.

"I knew I had to take over running the offense," said Charles. "I just wanted to up the tempo because they had slowed us down some."

The Panthers controlled the next eight minutes of the game.

Garrett Coley hit a jumper with 12:00 left in the half to give the Panthers a 17-11 lead.

The Eagles cut the lead to 17-14 when Young hit Abrams inside for a layup with 10:30 remaining before the break.

Phillip Luckydo's drive and layup inside extended the Panthers lead to 21-14 going into another time-out with 9:41 left in the half.

Windless cut into the lead with a turn around jumper with 8:02 left to make the score 23-18.

Young picked up his third foul with 7:46 and was forced to sit for the remainder of the half.

Charles took control once again and threw a nice pass inside to Windless for a reverse layup to make the score 26-21 with 6:31 before the half.

The Eagles cut the lead to two at 29-27 on a jumper from Windless at the 4:57 mark.

But the Panthers went on a run.

A driving layup by Don Smiley with 3:00 left gave the Panthers an eight point lead at 35-27.

Smiley struck again one minute later hitting a three-pointer from the wing to give the Panthers a 38-29 lead with

only a couple of minutes left in the half.

The last 1:24 of the half belonged to Luckydo as he drained back to back rainbow 3-pointers to give the Panthers a 44-31 lead going in at the half.

The Eagles knew they had there work cut out for them in the second half.

"We knew we had to buckle down if we wanted to win this one," said Young.

Windless who showed great leadership tried to encourage his teammates.

"I told them that we had to stay together and keep playing hard," he said.

The Panthers got two quick layups by Brad Boykin and Luckydo to extend their lead to 17 points at 48-31.

Following a three-pointer by Windless the Eagles frustration showed as the bench picked up a technical foul and lead was pushed to 51-34.

SEE PANTHERS, PAGE 10

**JOCKEY**  
Tapered Boxer

HOW CAN YOU SAY NO?

To: Sweetheart  
From: Me

**GARFIELD**

Available At:

**The Sir Shop**  
764-6924 420 Gentilly Place Plenty of Free Parking



We're your

### VALENTINE HEADQUARTERS

- Largest selection of Hallmark Valentine cards in Southwest Georgia
- Russell Stover Chocolates
- Cute Stuffed Animals and Valentine Gifts
- Silk Rose Arrangements
- Balloons, Balloons, and More Balloons!



### THE HEN HOUSE

Statesboro Mall

Mon - Sat 10-9  
764-3525

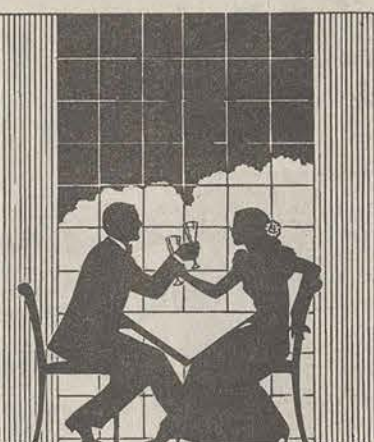


### Looking for the perfect Valentine?

### The Statesboro Inn and Restaurant

provides fine cuisine in a romantic atmosphere.

- Entrees from \$11.95
- Fresh seafood daily
- Entree w/ Salad & Bread - \$11.00
- Reservations



489-8628

106 S. Main St.

# Lady Eagle softball opens season Friday

By Tammy Scroggins  
Staff Writer

Head Coach Bill Spieth and the Lady Eagle Softball team are back and ready to improve on last year's 27-26-1 record and second place finish in the New South Women's Athletic Conference.

Six of last year's starters are joined by 10 newcomers to GSU. The 1992 squad will rely on its speed and enthusiasm "to attempt more bunting and stealing, as well as more hit and run," said Spieth.

The only negative aspect this team has to face is inexperience. The Lady Eagles lost Mickey Paul, Beth Williams, Christy Hill and Tammie Lanier to graduation. Paul was GSU's Female Athlete of the Year in 1991 and led the Lady Eagles in scored runs, home runs and stolen bases. Hill was tops in hits and RBI's with 52 and 29, respectively. Lanier provided steady pitching with a 9-10 record.

Sophomores Carrie Collins and Melissa Williams will lead the Lady Eagles pitching staff this season. Williams pitched 18.2 innings last season and

finished with a 1-1 record.

Collins pitched 186.3 innings and finished with 13-13. According to Spieth, "Out of four pitchers, [Collins] has the best body for pitching and the physical leverage to do very well."

Gretchen Koehler, who pitched 39.3 innings and ended with a 4-2 record, and Heather McAdam will also see time on the mound.

Behind the plate, Heather Olejcek and Brooke O'Meara will alternate at the starting position.

Last season, Olejcek was among team leaders with 24 RBI's and is working to better a .237 batting average. O'Meara is a transfer student from Massasoit Community College in Massachusetts where her team was the New England and Regional Champions in 1990 and 1991. In 1991, O'Meara led that league in steals.

The infield has no definite starters. There are at least two players fighting for every position, according to Spieth.

At first base, O'Meara, Koehler and freshman Debbie Hensley are expected to share



Centerfielder Melissa Williams

some time. During 1991, Koehler started at first base in 37 games and ended the season with only three errors.

Catty Stinson, this year's only returning senior, and freshman Mindy Futrelle will battle it out at second. Stinson started in 44 games at second last season batting .267. Futrelle earned three letters as a second baseman at Roswell High School.

Julie Ciekowski, along with freshman Amy Barnett and

Michelle Amazon will contend for the position at shortstop. Ciekowski started in 28 games in 1991 and saw time at both shortstop and third base. Barnett was a two-year letter winner at Orange Park High School in Florida.

Freshman Cara Taylor is vying for the position at third base along with Olejcek, Ciekowski and Amazon. Amazon earned letters in two sports, softball and volleyball, at Linton High School in Schenectady, New York. Taylor is a native of Byron where she attended Crawford County High School.

Williams will start in centerfield. Sophomore Kim Holden, a transfer student from Abilene Christian University in Texas, may also see playing time there as well. Holden batted lead-off for the Austin Travelers Fast-Pitch team and ended with a .300 batting average. Williams started in 53 games last season and was among team leaders in hits, stolen bases and RBI's.

Marginia Kemp and Holden will share time in left field. Last season, Kemp led the Lady Eagles in batting average (.367), slugging percentage (.411), was second in hits (51) and tied for second in stolen bases (11).

McAdam will start in right field. She's a transfer student from Nassau Community College in New York where she had 13 home runs, 38 RBI's and a .367 batting average.

Other outfielders who are expected to see some playing time are freshmen Beth Shelby and Mary Cain, sophomore Tina Spears and junior Barbara Lange. Shelby hails from Macon. Cain, from Sterling, Virginia, earned three letters in track and soccer at Broadrun High School. Spears is a transfer student from Louisiana Tech

University in Ruston, La. and Lance is from St. Simons Island.

Spieth has great expectations of the outfielders, who will be big contributors this season. "Holden, Kemp, McAdam and Williams can run, have strong arms, are quick and should be able to hit the ball", according to Spieth.

The squad also welcomes back Assistant Coach Jim Waits, who had his first season with the Lady Eagles in 1991.

Waits is confident that this year's team will hit the ball well, but "they will have to play great defense and get good pitching" to win games.

The Lady Eagles will start off their season on Feb. 12 at Valdosta State at 3 p.m. They will host their first home game on Friday, Feb. 21 at 3 p.m.

## Lady Eagles struggle on the road

By Eric Weisenmiller  
Sports Editor

Last week was not a good one for the Lady Eagle basketball team.

GSU dropped their conference record to 2-7 after losing to Trans America Athletic Conference opponents Georgia State on Thursday and Mercer on Saturday. Their overall record now stands at 10-13.

The Lady Eagle have won only three of their last 12 games.

Gwen Thomas scored 21 points in Thursday's 77-66 downfall to Georgia State in

Atlanta.

The Lady Panthers held a 35-30 advantage at halftime, but the Lady Eagles came out in the second half and managed to go out in front by two points 47-45.

San Kegler and Georgia State then embarked on a 23-7 run which gave the Lady Panthers a lock on the victory.

Kegler was the game's leading scorer with 24 points.

Thomas' 21 points led the Lady Eagles.

Gwenda Smith and Stephanie Cristmas each had

13 points.

With the win the Georgia State improved to 4-4 in the TAAC and 10-11 overall.

Saturday evening the GSU Lady Eagles travelled to Macon and were soundly defeated by the Mercer Lady Bears 93-71.

Mercer's Andrea Congreaves scored an impressive 38 points and pulled down 15 boards in the game.

After a distressing falling behind early in the game, GSU found themselves trailing by 21 points at the half.

The Mercer lead remained uncontested in the second half. The Lady Eagles managed to chip away only two points from the Lady Bears' 21 point buffer in the latter half.

Gwen Thomas was the leader in the scoring department for GSU with 15 second half points. Toy Williams had 12, Jill Dunn contributed 11 and Janice Johnson scored 10.

The Lady Eagles return to their home court this Thursday evening to take on Florida International at 7:30 p.m.

## SPORTS BRIEFS

The GSU rugby club improved their record to 2-0 by upsetting the Augusta men's club 7-6 on Saturday afternoon at Oxford field.

Neil Olson led GSU scoring with one try (four points). Kevin McHugh added three points with a dig.

Todd Coleman and Charles Martin also had excellent performances.

This Saturday GSU will host the Black Rose Tournament. GSU will face Georgia State at 10 a.m. at Oxford Field in their first match of the tournament.

..

The GSU men's and women's tennis teams swept Georgia College in their first match of the year on Saturday afternoon.

The men won all of their singles matches and two out of three doubles matches.

The ladies won four of the six singles matches and all three of their doubles matches.

Both teams will take the court again next Wednesday, Feb. 19 against Armstrong State at 2:30 p.m.

.....

The GSU women's swim team defeated the College of Charleston 139-101 last Saturday in Charleston.

The aqua Eagles won seven of the 10 events in the meet.

Stacy Sheible won the 100-meter breaststroke and the 200-meter individual medley and Karen Hurley won the 100-meter and 200-meter freestyle events.

This Friday both the men's and women's teams will travel to Davidson, NC to compete in the Southern States Championships.

## CR/I BASKETBALL

### Men's Top 10

1. Southern Sound
2. Leaders of the New School
3. Dingus Magees
4. Pi Kappa Phi
5. The Heat
6. Scabinis
7. 8-Ballers
8. Showtime
9. Redskins
10. Da Funky Bunch

### Women's Top 5

1. Lady Pines
2. Woody's
3. WWA
4. OPP
5. Too Legit

### Game of the Week:

The Game of the Week for February 3-9 was a shootout between "A" league teams: Showtime and Room 141. With about five seconds left in regulation, Showtime's Anthony Jackson banked in a running three-pointer to send the game into overtime.

Showtime went on to win the game 54-53. The leading scorer for Showtime was

Anthony Jackson with 15 points, six coming off free throws. Alan Dorsey led Room 141 with 20.

In another game of interest, eighth ranked Da Funky Bunch edged Sister Garrett & the Franciscans 56-54 last Wednesday evening. Sis Garrett led by about 5-10 points most of the game until Da Funky Bunch found their range with about two minutes left.

With seven seconds remaining DFB took a one point lead. At five seconds, Sis G's Alan Carlson made a crucial lay-up. DFB called a time out with three seconds left in regulation down by one. As the buzzer sounded DFB's Don Hudson threw up a 40 footer with a defender in his face—"swoosh."

## THIS WEEK IN GSU ATHLETICS

(Home Games are in All Caps)		
Feb. 12	Softball at Valdosta State (DH)	3 p.m.
13	W-BASKETBALL VS. FLA INT'L	7:30 p.m.
	M-Basketball at Centenary	8:05 p.m.
	M&W Swimming (Thurs. through Sat.)	
	<i>Southern States Championships</i>	all day
15	BASEBALL VS. GEORGIA TECH	2 p.m.
	M-Basketball at SE Louisiana	8 p.m.
16	BASEBALL VS. GEORGIA TECH	2 p.m.

## Precision Auto

Specializing in Computerized Engine Analysis



- FRONT END ALIGNMENTS
- BRAKES
- TUNE-UPS
- MUFFLERS
- WHEEL BALANCING

Hours: Monday- Friday 8-6, Sat 8-12 Foreign & Domestic

VISA

MasterCard

764-8691

64-B East Main, 2 Blocks East of Courthouse

## Summer is just around the corner!

### Eagle Tanning

\$40 gets you one month of unlimited tanning



423 Fair Road 764-4206

## Dee's Book & Balloon Gallery

Balloons and other Valentine Gift Ideas

Remember Your Sweetheart

403 B S. Zetterower Ave  
Statesboro, GA 30458

489-3161

## Connie's Create-A-Cake

"Your Valentine's Day Headquarters"  
Cakes, Balloons, Flowers, Catering & Supplies

We Deliver

13 College Plaza  
Statesboro

10% Discount with Student I.D. 681-2392



WASTED YOUTH.



ONLY YOU CAN PREVENT FOREST FIRES  
A Public Service of the USDA Forest Service and your State Forester

FIRST ANNUAL SUBWAY

SUBWAY SUB EATING CONTEST

Contest to be held at  
CITY LIMITS

Begins Tuesday, Feb. 11<sup>th</sup> - Ginsld on zmsvth 17<sup>th</sup>  
6 Consecutive Weeks

Listen to WMCD (FM 100) for Details

GRAND PRIZE FOR TWO

7 Days - 6 Nights at Quality Inn on Daytona Beach during Spring Break

1/2 Day Deep Sea Fishing

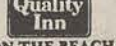
\$25.00-0 Dinner Certificate

\$300.00 Cash - Spending Money

Sponsored



By:



NEWS BRIEFS

Football players use legislature appearance to seek jobs

ATLANTA (AP) — Job prospects were on the minds of the University of Georgia football team's three captains, all graduating seniors, during a visit to the Georgia General Assembly Friday.

Defensive back Chuck Carswell told members of the Georgia House that he and Larry Ware had ousted fellow captain Greg Talley as their designated speaker after Talley's remarks to the Senate a few minutes earlier.

"He failed to mention that we would be looking for jobs soon," Carswell explained. "So if you have any jobs, just line up over there so we can talk to you."

The players, who were accompanied by coach Ray Goff, were mobbed by lawmakers wanting to get a picture taken with them.

But, Carswell said later, he only got one response to his job plea.

"I got one business card," he said, looking at the card from House Majority Leader Larry Walker, D-Perry. "He said to call him."

Carswell, Ware and Talley are all graduating within six months.

Gun found in UGA linebacker's car not used in frat shooting

ATHENS, Ga. (AP) — A gun found in the car of a University of Georgia linebacker last month was not used in a drive-by shooting at a fraternity house the same night, police said.

Dwayne Simmons was arrested on misdemeanor charges of carrying a concealed weapon and marijuana possession Jan. 25.

Police had said they were investigating whether the gun they found in his car was used to fire shots over the Kappa Alpha Psi house moments before his arrest.

But Athens Police Chief Ronnie Chandler now says it appears the gun was not fired that night. "That's our belief," he said.

Fraternity members told police that former football player Greg Jackson got into a fight at the house and left saying he was seeking Simmons to help him get revenge. Later, members told police Simmons' car drove by the house and several shots were fired.

Simmons, 21, is free on \$2,000 bail and is scheduled to appear in court March 25.

Legislators nudge idea of Valdosta State University

ATLANTA (AP) — Plans for elevating Valdosta State College to university-level status have been put on hold because of the state's budget crunch. But legislative budget-writers want to give the idea a nudge.

Language added to the supplemental appropriations bill Wednesday by leaders of the Senate Appropriations Committee would initiate a financial feasibility study to be completed by July 1.

The Board of Regents, governing board of the university system, originally set a July 1 target for elevating the 7,436-student school to university status. But the state's budget crunch caused the plan to fall by the wayside.

The language amendment, pushed by Sen. Loyce Turner, D-Valdosta, carries little weight other than to express legislative interest.

Turner told fellow members of the "continuation committee," which sets policy for the budget-writing panel, supporters of a Valdosta State University "have done everything they were supposed to do. ... I think this is in order at this time."

Valdosta State was to follow Georgia Southern, which gained university rank in 1990, as the second south Georgia university.

House bill could track crimes against college students

Atlanta (AP) — The state could better gauge the number of crimes occurring against college students under legislation approved Wednesday in the Georgia House.

The bill, adopted 156-0 and sent to the Senate, would change crime incident reports so police officers could note if the victim is a college student and which school they attend.

"The purpose is to give a broader, more realistic picture of crimes occurring against students," said its sponsor, Rep. Larry Walker, D-Perry.

Walker said student interns with an Athens-based group called Safe Campuses Now would examine the reports once they have been given to the Georgia Crime Information Center. The interns would calculate the number of crimes occurring against students from specific schools.

PAPER

CONTINUED FROM PAGE 4

that they would receive any positive recognition for their writing.

Therefore, should a newspaper which allows such obvious errors be given any award of merit? And if they DO receive an award, should this award be regarded as one of merit?

The advertisements say that the *George-Anne* does not re-

quire its employees to be journalism majors, and I BEEEEELIEVE IT!!!! Come on guys, tighten up.

Matthew T. McCall

*Editor's Note: After finding nine mistakes in his letter, not including the style errors that we corrected, we would like to thank Matthew McCall for his careful readership.*

PRESIDENT

CONTINUED FROM PAGE 5

American will receive \$10,000 cash from the government.

2. Make that \$20,000.

3. Sometimes, without warning, U.S. Air Force bombers will fly over randomly chosen middle-class communities and drop bales of money.

4. I see no reason why the IRS has to know about any of this.

Also I would create jobs. As president, I'd gather up the top U.S. auto executives, and I'd depart for Japan as the head of a Special Trade Mission. Midway across the Pacific, these executives would be given parachutes and life rafts, and be shoved out of the plane,

thereby freeing up millions of dollars in salary money that the auto companies could use to hire people to make better cars.

Then I'd continue on to Japan, where, in tough, high-level talks with Japanese officials, I'd demand that they make VCRs that a normal human could program. Then I'd attend a formal dinner where I'd suddenly fall under the table and barf, but the members of my official entourage would just leave me there because they'd be used to it.

COMING SOON: The Federal Budget Deficit -- Let's Let Our Children Worry About It.

ANNOUNCEMENTS

CONTINUED FROM PAGE 2

Proceeds will go to Camp Sunshine, a charity for children with cancer.

Thursday, Feb. 20

•The film *Yaaba* will be shown as part of the African film series in the Union Theater at 7 p.m.

•The Lady Eagle Basketball team will play Bethune-

SAMFORD

CONTINUED FROM PAGE 8

foul and lead was pushed to 51-34.

Young commented on the comeback

"Our team showed a lot of character with the comeback," he said.

Windless netted another three-pointer from the left wing to give the Eagles a 48-43 lead with 9:00 remaining in the game.

The Bulldogs came back again when Herman drained a three to cut the Eagles lead to 53-52 with 6:00 left.

Young said the crowd really helped the team when they got in trouble.

"We just want this type atmosphere and we'll keep playing as hard as we can," he said.

"CY" answered Herman's three with a rainbow of his own to move the lead back up to 56-52 with 5:30 left.

Herman answered with another three-pointer.

With 4:00 left "CY" took the

rock coast to coast and the Eagles lead was five at 60-55.

Windless extended the Eagles lead to seven on a layup and the Eagles led 64-57.

Charles put the game away for the Eagles with a steal and subsequent break away slam to make the score 66-57.

Samford coach John Brady picked up a technical foul on the play.

"CY" hit the free throws and the Eagles led 70-59.

The game ended with an exclamation point.

"CY" weaved his way through the defense and threw a no-look lob to Sinkfield who capped off the play with a MONSTER MASH!!!!

The Eagles won 73-62.

GSU was led by Windless with 18 points and Young with 17. Birden added 11 and Sinkfield 10.

GSU moved to 8-0 in the TAAC (17-4 overall).

PANTHERS

CONTINUED FROM PAGE 8

But the technical seemed to be the turning point for the Eagles.

The Eagles went on a 22-0 run.

In just 5:37, the Eagles went from trailing 52-36 to leading 58-52 and GSU never trailed again.

A Windless baseline jumper cut the lead to 14 at 52-38 going into a radio time-out.

Young got a hoop and some harm to cut the lead to 52-41 with 14:35 left in the game.

Calvin Sinkfield, who had a monster second half with 16 points, scored on a pass from Charles to cut the lead to 52-43.

Sinkfield stepped to the line and hit two free throws to cut the lead to six at 52-46 with 13:22 left.

Chris Birden, who made a steal and was fouled, hit two more free throws to reduce the lead to four with 13:13 left.

Following a travel by Luckydo, Sinkfield hit a jumper from the top of the key to make the score 52-50.

A follow-up by Birden tied the game at 52-52 and forced the Panthers to call a time-out with 12:00 left in the game.

Coming out of the time-out, Sinkfield gave the Eagles the lead 54-52 on an emphatic slam.

The crowd went crazy with chants of "The REAL GSU."

An offensive foul on Luckydo brought out the his frustration and a technical foul was called.

Young went to the line and drained four free throws and the Eagles led 58-52 with 11:15 left.

The Panthers finally scored again on a layup to make the score 58-54 with 10:21 left in the contest.

The teams traded baskets for the next five minutes until the Panthers tied the game at 72-72 with 4:45 left in the game.

Abrams who struggled in the first half, rose to the occasion in the second.

He scored the Eagles next five points and pulled down big rebounds to keep the Eagles on top 77-74 with 3:37 left.

A Luckydo jumper cut the lead to one at 77-76 with 2:09 left in the contest.

Following a layup by Windless, Abrams scored four more big points to give the Eagles an 83-76 lead with 39.7 seconds left.

The Panthers went to the fouls.

Charles was up to the challenge though, as he stepped to the line and drained six free throws to secure the victory at 91-84.

"I knew the free throws were crucial, but I was very comfortable going to the line," said Charles.

The Eagles improve their record to 18-4 overall (9-0 in the TAAC) while the Panthers drop to 10-12 overall (4-5 in the TAAC.)

LIKED BY MANY, CUSSSED BY SOME, READ BY THEM ALL!

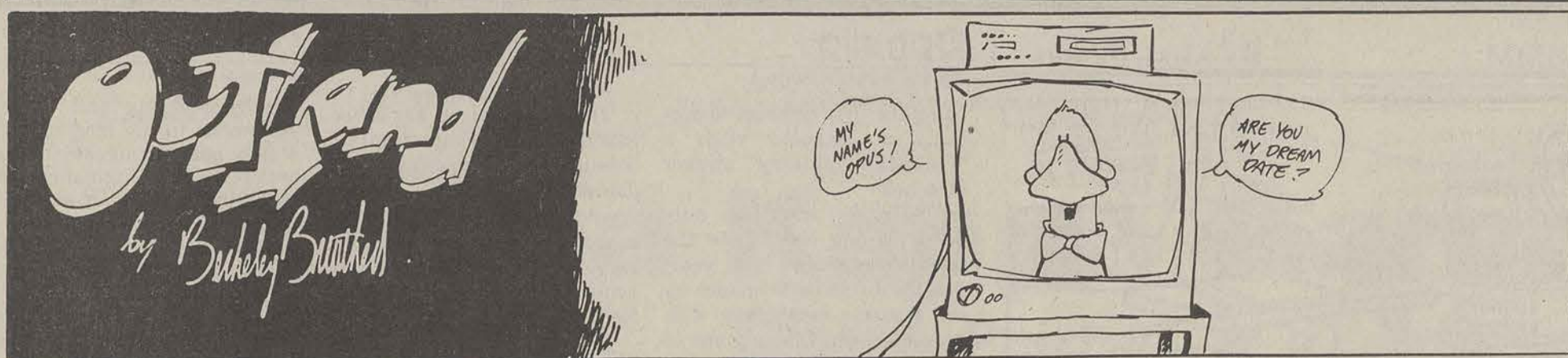
LONE ASSASSIN J.F.K. CONSPIRACY  
Lee Harvey Oswald "the magic bullet" The Warren Commission  
AMIDST ALL THE CONTROVERSY  
THE ONE THING EVERYONE CAN AGREE ON IS...  
The Beaver House Restaurant  
Judge for Yourself. Taste the Evidence.  
The Case is in the Cooking!!!  
Now Serving Lunch 11-2:30 & Dinner 5:30-8:30 Monday - Friday. TO's 764-2821  
Students 10% off with Student ID Tues - Friday February

OGEECHEE CLINIC, P.A.  
OBSTETRICS AND GYNECOLOGY  
C.R. RICHARDSON, M.D., F.A.C.O.G. P.O. BOX 1066  
WILLIAM F. KENT, M.D. 301 DONEHOO STREET  
JAMES A. ROSHTO, M.D., F.A.C.O.G. STATESBORO, GEORGIA 30458  
GARY B. SULLIVAN, M.D., F.A.C.O.G. TELEPHONE: 764-6206  
Women and Smoking  
The number one killer of American women is now lung cancer with fifty-one thousand deaths per year attributable to this disease. This is largely due to increased smoking habits among women. Today, more teenage women smoke than teenage men!  
Smoking adversely effects pregnancy in several ways. It increases the risk of premature separation of the placenta (abruption) that can result in the death of the mother and child. It has been shown to effect the birth weight of newborns and can even result in a lower IQ in children who's mothers smoked during their pregnancies.  
It is very important that young women be warned of the health risks associated with tobacco use.  
Patricia V. Law R. FNP-C

Four Seasons Florist  
Valentine Roses  
27.50/doz  
Cash & Carry  
373 Savannah Avenue  
(912) 764-9839  
WE SEND FLOWERS Worldwide

Your Eyes Have It!  
Specializing In Eyecare & Contact Lenses for GSU Students and Faculty  
Dr. Sherri Becker  
OPTOMETRIST  
Office Hours:  
Mon-Wed 8:30am - 5:30pm  
Thurs 9:30am - 7:00pm  
Fri 8:30 - 3:00pm  
9 Lester Road • 764 - 5609

Tone up your body with weights, aerobics, in the pool, or on our cardiovascular equipment.  
Memberships  
Adults' \$70 per quarter  
Students \$50 per quarter  
EAGLE HEALTH CLUB  
Ask About Memberships  
Located Behind Burger King For More Information Call 681-7871



## LOW AIRFARES TO EUROPE AND ASIA

SPECIAL STUDENT & FACULTY AIRFARES  
SCHEDULED MAJOR AIRLINES  
NO CHARTERS

50 U.S. DEPARTURE CITIES  
75 DESTINATIONS

- International Student Exchange ID Cards
- International Faculty ID Cards
- International Youth Hostel Handbooks
- Let's Go Europe Guides
- American Express Travelers Cheques

EURAIL AND  
BRITRAIL PASSES

GROUPS/INDIVIDUALS

ASK ABOUT OUR EXPRESS ID  
CARD SERVICE

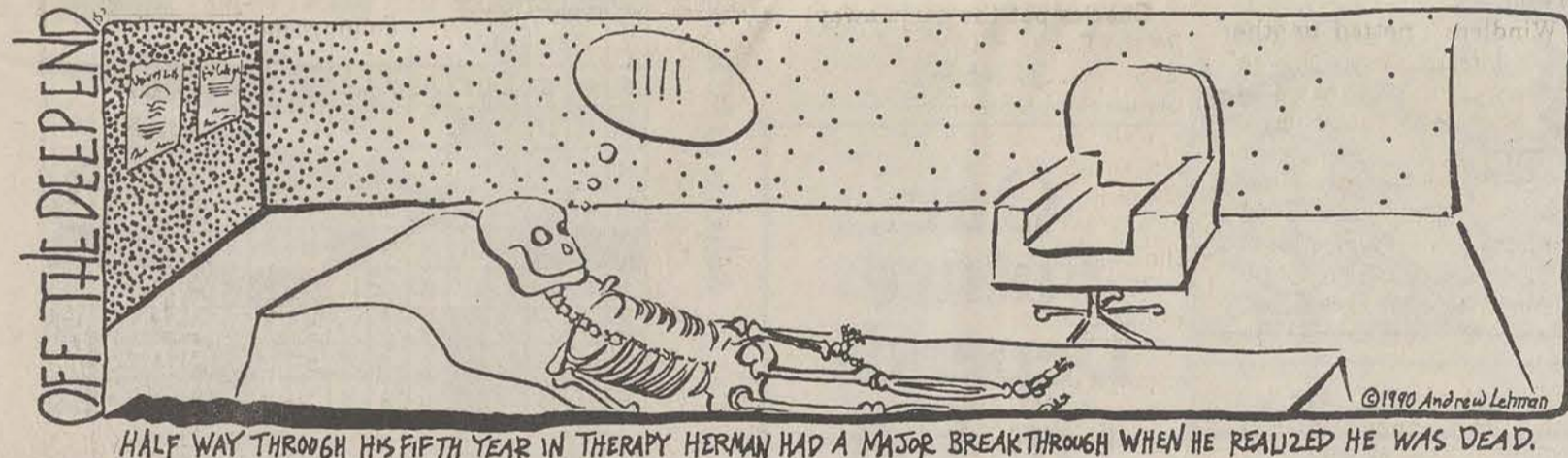
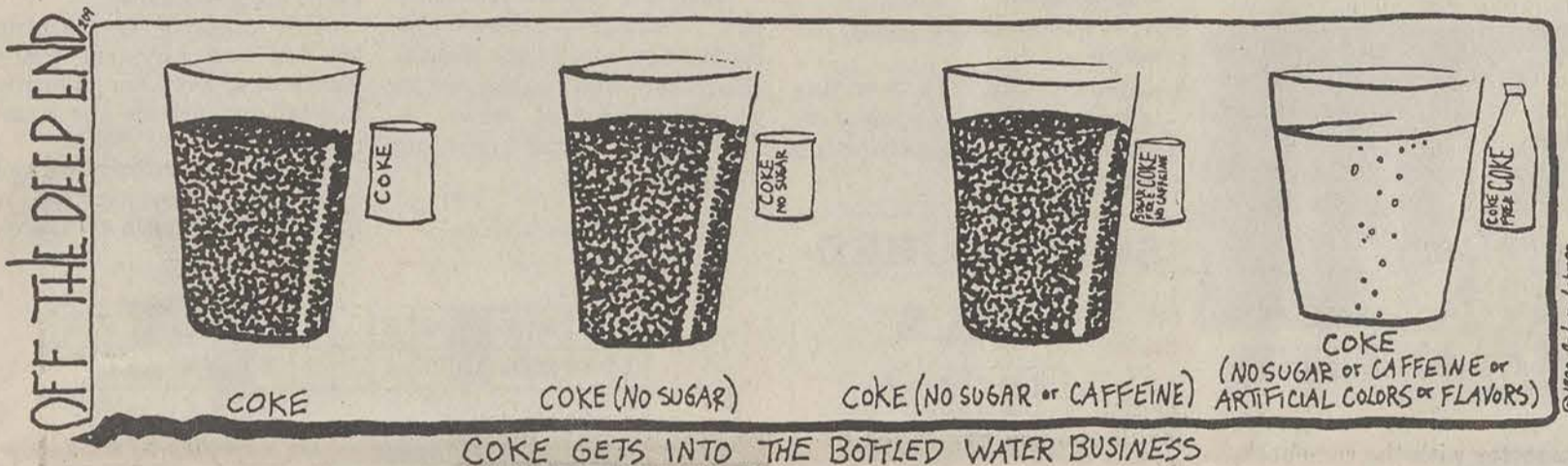
"Celebrating our 33rd Year  
in Student Travel"

For your FREE Student Travel Catalog mail this coupon to:

INTERNATIONAL STUDENT  
EXCHANGE FLIGHTS, INC.  
5010 E. Shea Blvd., Suite A-104  
Scottsdale, AZ 85254 USA  
or call: 602/951-1177

883

NAME: \_\_\_\_\_  
STREET: \_\_\_\_\_  
CITY: \_\_\_\_\_  
STATE: \_\_\_\_\_ ZIP: \_\_\_\_\_



## THE FALLA GUITAR TRIO

"A smooth synergy and a hearty camaraderie." THE NEWYORK TIMES



Feb. 17<sup>th</sup>

8pm

GSU's

Foy

Recital

Hall

A Campus Life Enrichment Performing Arts Series event  
Free tickets to GSU students, faculty, staff and retirees  
from the Union information desk.



Tell us your Secrets...  
CALL THE GEORGE-ANNE AT 681-5246

IF YOU WANT  
A SLIM, SEXY  
BODY, HERE  
ARE A FEW  
HOT  
NUMBERS.

Lose 6-10 lbs in 2 weeks  
or 17-25 lbs in 6 weeks.

Diet Center  
The weight-loss professionals.

408 S. Zetterower Ave.

489-8377  
489-8377  
489-8377

Call for FREE  
consultations  
10% Discount  
for GSU  
Students and  
Faculty



# Send Your Love With:

Stuffed Animals

Boxers

Trinket Boxes

Cups

Giant Cards

Balloons

Candy

Trolls

Picture Frames

Mugs

Available At:

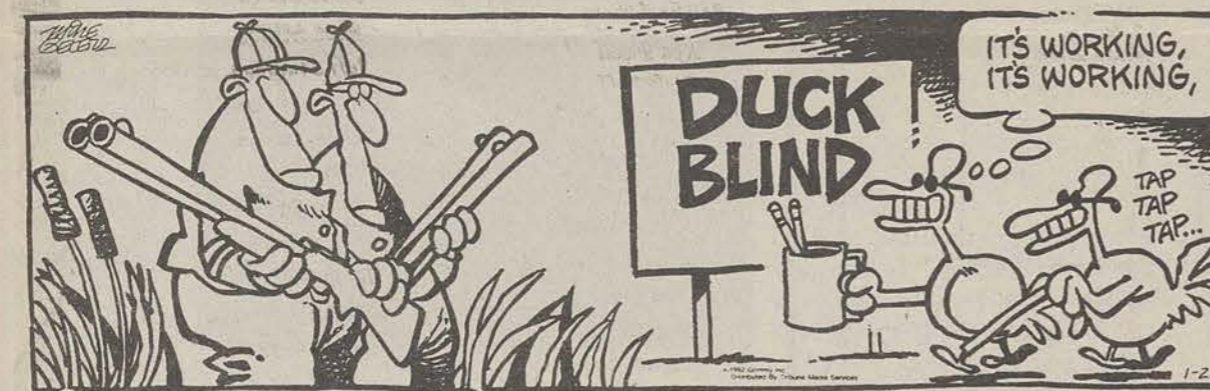
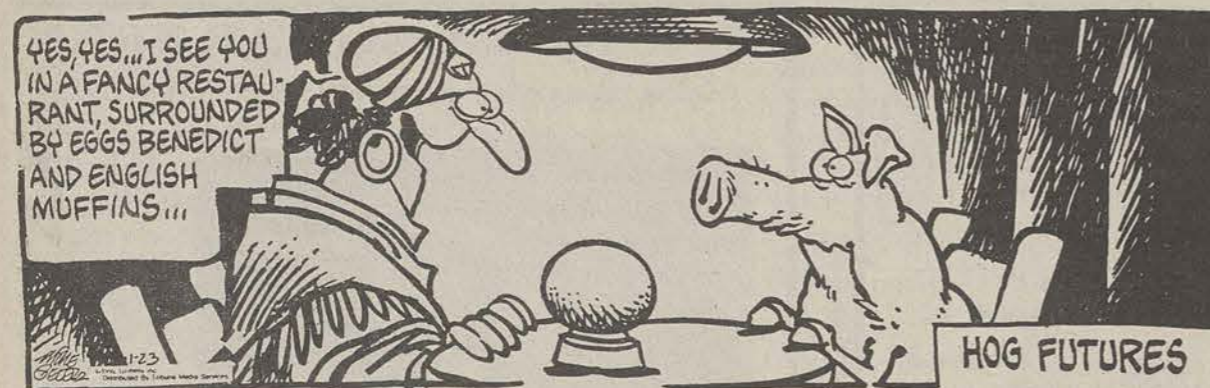
# The University Store

681-5181 Hours: M - F 7:45 - 7:00  
Sat 10:00 - 4:00



MOTHER GOOSE & GRIMM

By Mike Peters



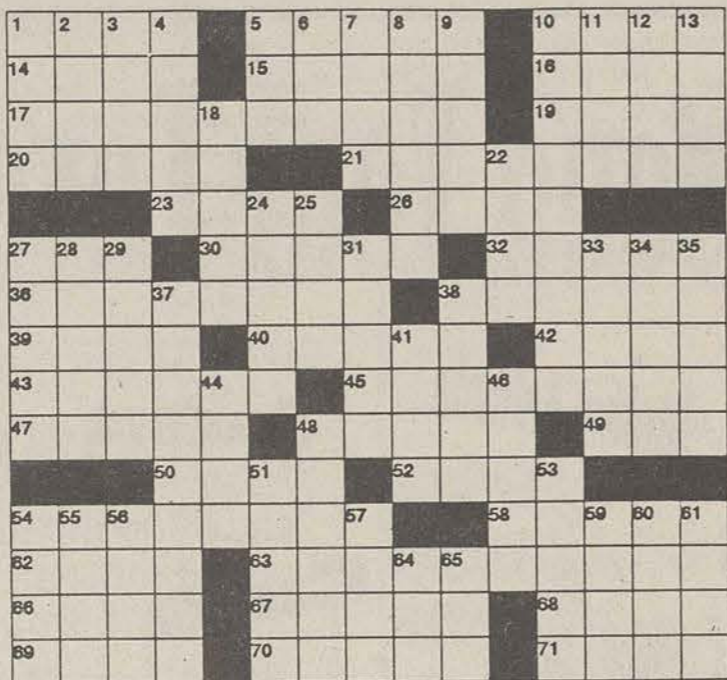
WEEKLY CROSSWORD

By Gerry Frey

" Dr. Seuss "

ACROSS

- "The 500 \_\_\_\_"
- Cash
- Small fresh water fish
- Reverberate
- Cat In The Hat Character
- Detest
- \_\_\_\_ Pool: Seuss Book
- Genetic initials
- Edie's partner
- Grinch shoe size
- Deserve
- Compass abbrevs.
- Sun. talk
- Chairs
- A moral principle
- "He Took The Who"
- Not quite \_\_\_\_\_, lesser
- Verdi opera
- Merry Christmas



- Film critic James
- Rich biscuits
- Editors
- Actor Broderick & others
- Having hustle bustle
- Follows OPQ
- NRA eg
- Uppity person
- NASA era
- The Grinch Hated This
- Edward \_\_\_\_\_:Brit. political scientist
- Suess Book
- Aleutian Island
- Upper crust
- Night in Paris
- Joan \_\_\_\_\_:Folk singer
- Classified
- Supersonic transports
- DOWN
- Sews the edges
- CPA concern
- Biblical pronoun
- Unravel
- Air spd. indicator
- Droop
- Vegas machine
- Mr. John & family
- Iron Mike
- The Grinch's Pet Peeve
- Suspend
- The Beehive State
- Choice
- Rent
- Plumbing joints
- Leases
- Treaty org.
- Involuntary muscular contraction
- Female name
- Place the period again
- Nicholas and Peter
- Much larger
- Hockey players
- Word with hope or medicine
- California city
- Head Chipmunk
- Tennis terms
- Being:Latin
- Presses
- African republic
- More secure
- Gifts
- Strikebreaker
- \_\_\_\_\_ cake
- Comedian Johnson
- Way out
- Intensive Care Units
- Short play
- Superlative endings
- Citizen of
- Actor Beatty

© 1991 All rights reserved GFR Associates  
P.O. Box 461, Schenectady, NY 12301

Ophelia

Continued from page 6

being the first local act to produce a cassette with a "Parental Advisory" sticker attached.

Thornton, who has only been playing bass since the band's inception last year, puts in a fine performance on the cassette, combining with drummer Ann Clayton, one of only two female musicians in Statesboro bands, to form a solid, driving rhythm section.

Landolphi

Continued from page 6

feel more comfortable," Landolphi said. "That's how it all started."

Landolphi, in addition to educating students about safer sex, owns two condom stores, one in New York and one in Los Angeles. She has a 19-year-old daughter who manages the store in New York, which was the first condom store in the U.S., if not in the world.

She recently got married and said that her new husband is very supportive of her work.

SGA

CONTINUED FROM PAGE 1

According to Barker, the event is an academic quiz bowl. Questions range anywhere from current pop artists to geography.

"It's a lot like Jeopardy," he added.

Barker said SGA is willing to help out any student organization with co-sponsorship and publicity.

The tape will be available locally at the Emporium or through the group's manager, James Bickert.

According to Painter, the group, while pleased with the local success they have achieved, have lofty ambitions for the future.

"My main goal is to achieve pop mainstream ... no sleep 'til Vegas," Painter said.

"Not only did he like what I did, but he also helped fund it for two years.... He now tells all his buddies to use a condom and not to be so sexist and chauvinistic," Landolphi said. Wow, what a guy!

Landolphi said that she hopes her message will get through to people without sounding like a lecture. "It's so easy to talk about sex when humor is used, and I think it means more. Sex is embarrassing to most of us, and it does make us giggle and laugh, so why not utilize that?"

in Bulloch County," Barker said. "We want to have an overabundance of students voting ... so we can have a voice."

SGA will also be attending the College Bowl in Bainbridge later in the month. From there they could move on to the regional bowl in Montgomery at the beginning of March.

FIRE

CONTINUED FROM PAGE 1

Landrum dining hall. There were none in the mail center, which has no access to the areas with extinguishers at night, but is open to the public 24 hours a day.

A total of 17 extinguishers had either been used and not recharged or had lost their charge over time. This was a particular problem in the MPP and South buildings.

Burdett plans changes

After only a week at GSU, Burdett has already compiled a list of changes he would like to see at GSU

First, he plans to thoroughly inspect the residence halls and start the process for replacing mis-located extinguishers and making sure the right types of extinguishers are present in all locations.

Another plan concerning residence halls will directly involve the residents. "Extension cords used by students in the dorm areas will not be allowed. Overloading electrical circuits is one of the major causes of fires," said Burdett.

Each student will be allowed one breaker bar with at least a 15 amp circuit breaker. No more than two breaker bars will be allowed per room.

Burdett said he wants each department to have a representative who will do weekly checks of fire equipment in their assigned areas.

Also planned is training one or two physical plant workers to perform monthly inspections across the campus.

Annual maintenance could be done in-house or through an outside company,

SCULPTURED  
NAILS

\$25.00

WITH THIS AD

FILL-IN'S \$10.00

871-6412

Our  
Future  
Depends  
On You



Georgia  
ParkPass

Purchase an annual ParkPass at your favorite state park or historic site, or send \$25.00 plus \$1 handling fee to: Georgia State Parks, 205 Butler Street, Suite 1352 East, Atlanta, Georgia 30334. (For information on Senior Citizen and Disabled Veteran discounts, call 404-656-2753.)



GEORGIA STATE PARKS  
& HISTORIC SITES

Solution to " Dr. Seuss "

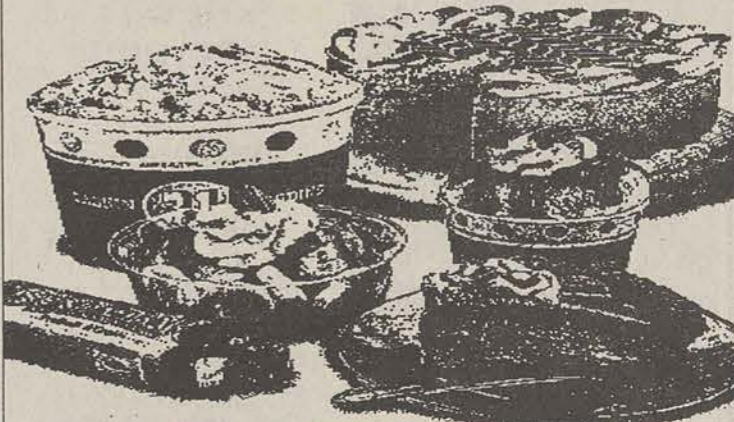
S	L	S	S	D	E	L	V	R	Z	E	V	E
L	I	N	E	L	I	T	E	N	L	L	V	
S	K	O	S	N	I	X	O	F	R	R	V	C
E	S	I	O	N	E	D	V	E	C	V	D	S
		B	O	N	S	N	S	S	V			
L	S	R	R	I	L	S	V	S	L	L	V	W
S	R	E	S	I	A	E	R	S	E	N	O	C
E	E	D	V	T	T	V	O	L	V	D	I	V
H	C	O	N	S	V	S	L	N	E	S	E	R
C	I	H	L	E	S	L	V	E	S	R	E	R
		S	E	N	N	N	R	V	E			
L	H	O	I	L	O	O	L	E	A	E	L	S
S	V	N	R	S	L	O	D	I	T	L	E	C
E	L	V	H	A	T	T	V	S	O	H	C	E
B	N	H	C	L	E	S	S	V	S	L	V	H

WARP YOUR MIND!



READ OUTLAND  
ONLY IN THE GEORGE-ANNE

Come Taste The  
Cream of The CROP



10% OFF  
No sale  
items.

Baskin 31 Robbins  
Ice Cream  
606 Fair Road  
681-1227

# Kappa Kappa Gamma

## Crush Party

*You are cordially invited to spend an evening under the stars with the girls of Kappa Kappa Gamma at their annual Hayride Crush Party. Transportation will be provided to and from the crush party by bus, which will leave from Lower Hanner Parking Lot beginning at 8:00 pm and will return every half hour until 1:00 am. Dress is casual. Entertainment will be provided.*

Shane Abney	Adam Clark	Zack Geer	James Kilkelly	Austin Newman	Jason Smaha
Shane Adams	Allan Clark	Kurt George	Paul Kirday	Jason Newton	Dan Smith
Wesley Adams	Benji Clark	Jock Gibb	Daniel Kirkland	Thom Nezheda	Doug Smith
Scott Aiers	Corey Clark	Frank Giles	Chuck Klusmeyer	Gary Nipper	Jason Smith
Chris Aldridge	Gordon Clark	Mark Giles	Brad Knole	Jeff Nix	Jeff Smith
Chad Alexander	Mark Clark	Steve Gillis	Jim Knock	Nick Nixon	Joel Smith
David Alexander	Dave Cobbern	Sean Glaze	Matt Koldewey	Dave Norris	Prackston Smith
Jim Allen	Simon Cohen	Jim Glazier	Mike Kovulsky	Jeremy North	Scott Smith
Bryan Almond	Dale Cole	Richard Goering	Mike Kuykendall	Robin Odom	Steve Smith
Jason Alvarez	Keith Collins	John Good	Dennis Laba	Arnie Page	Trek Smith
Mike Anderson	Kevin Connolly	Alan Graham	Jay Lake	Todd Pallo	Zan Smith
Chad Avert	Sean Connolly	Stacy Graham	Mike Lambert	Gregg Palone	Chris Snyder
Clint Avert	Sonny Conner	Mike Gramley	Brant Lane	Jeff Paschial	Pat Snyder
Barry Avery	Jay Cooper	Ethan Grant	Jimmy Lane	Randy Peacock	Tommy Sollosi
Richard Ayres	Bubba Copeland	Eric Graphner	Paul Lanier	Berry Peavy	Chris Spain
David Barnhardt	Jack Cotney	Jimmy Grayson	Jonathan Langford	Don Pennelli	Neil Spence
Stan Baylock	Jesse Coursey	Chris Griffin	Biff Langly	Drew Pennington	Ashley Spillers
Scott Beach	Russ Covington	Dave Griffin	Richard Lanphere	Matt Pepper	Jeff Spruiell
Ricky Beall	Jason Cowan	Jay Guy	Chris Laxon	Sam Perkins	Donny Stacks
James Beasley	Jason Craig	Steve Haferkamp	Robbin Leckadson	Shannon Perkins	Thomas Stair
Marc Becker	Steve Crawford	Micheal Hahn	Darrell Lettice	Christian Peterson	Ronnie Stalker
Christian Bennett	Chad Crenshaw	Clay Hall	Bobby Lewis	Peter Pettijohn	Bobby Stewart
Steve Benton	Andy Crowder	Doug Hall	Jeff Lewis	Micheal Pierce	Steve Stokes
Tim Berny	Bill Cryter	Greg Hall	Mark Lively	Ken Pisell	Alan Stroud
Aaron Bernard	Micheal Culpepper	Scott Hall	Ron Livingston	Rick Poff	Jeff Sturgeon
David Berny	Beau Cunningham	Mitch Hambrick	Phillip Lofgren	Mark Poppell	John Stynchula
Tim Berny	Chris Curro	Troy Hansen	Mike Lofton	Mike Poppell	Scott Sutton
Dave Berry	Dave the Wave	Jerry Hargrove	Jason Lott	David Porter	Mark Swain
Sam Berry	Andy Davis	William Harn	Sloan Lott	Michael Pound	Ryan Swain
Tom Berry	Brian Davis	Derek Harnage	Jason Lovett	Jeff Pouvo	Rob Sweeney
Dennis Bieter	Buck Davis	Brant Harold	Jay MacElrath	Lionel Prather	Blake Swicord
Justin Bjork	Mark Davis	Brant Harrell	Chris Margelli	Greg Presley	Steven Tanner
Connor Black	Mike Davis	Will Harrell	Pan Margelli	David Price	Jason Taylor
Glen Blackburn	Patton Davis	Craig Harris	Steve Marcovecchio	Neely Pruitt	Walt Terry
Kevin Blampied	Mike Deese	Eric Harrison	Jason Martin	Rob Raines	Tommy Teusaw
Adam Blank	Mike Deniston	Ron Harrison	Farrell Martin	Jamie Ramsey	Bill Thatcher
Chris Blossfeld	Marc Dickman	Sean Harrison	Kerry Martin	Kevin Ratcliffe	Zeke Theraba
Lee Blum	Jay Dingbom	Chuck Hayes	Mark Martin	Chad Redd	Brian Thomas
Tim Boarman	Robby Dinkins	Joe Heaton	Michael Martin	Will Redd	Van Thompson
Dennis Bogumill	Doug Dirst	Jeff Heidt	Neil Martin	Brad Reddick	Shannon Thorton
Ernie Bonistall	Steve Doster	Todd Helms	Sean Martin	Jeff Reinhart	Fred Tomlinson
Randall Boone	Todd Drake	Jeff Helton	Steve Martin	Brian Riggins	Mike Townsend
Scott Bowen	Chris Drazba	Jim Hepner	Rex Martin	Chris Riley	Steven Union
Brian Bowman	Joe Doer	Chuck Herbert	Troy Mashburn	Mike Roberts	Brent Vaccaro
Rob Bowmaster	Hue Duggan	Chris Hilton	Gill Massey	Sean Roberts	David Vanover
Bob Boyd	John Duhig	Bryan Hobbs	Mike Matre	Randy Robinson	Fred Vincelli
Scott Brannen	Greg Duke	Andy Hodom	Biair Matthews	Scott Robinson	John Voight
Shel Brennan	Jim Dunbar	Todd Hodgson	Craig Matthews	Charlton Rogers	Brad Wadell
Ethan Brent	Chris Duncan	Cori Holdrich	Shane Maxwell	Terry Rogers	Scott Wagner
Tony Brown	Mike Dunlap	Russ Hollander	Casey Maybry	Greg Rollins	Ben Walker
Dean Bucci	Brannndon Dyer	Eric Homanski	Randy McCall	Pete Rorabaugh	Rob Walker
Ron Buffington	Heath Dykes	Micheal Houze	A.J. McArthur	Matt Rose	Barry Warden
Blair Burch	Doug Eder	Bill Howard	Brian McArthur	Slade Rowland	John Washnock
Brett Burch	Daniel Edwards	Kevin Hudson	John McClendon	Robert Royal	John Weaver
Dennis Burgess	Tripp Ellis	Jay Hunt	Steve McCormick	Trey Royal	Mark Weimann
Glenn Burgess	Bill Elmore	John Hunter	J.D. McCuarry	Denny Runnin	Casey Wells
Jodi Burnett	Copper Ethridge	Greg Hutchinson	Tripp McGhin	Brent Russell	David Wells
David Burton	Charlie Evans	Jeff Hylton	Tony McNease	Russ Russell	Mike Windsor
Rob Butcher	Freddy Evans	Rich Ingram	John McNeil	Bret Ryan	Corey West
Jody Butler	Eric Faison	Scott Irwin	Chris Merrill	Redd Ryan	Donald Wheeler
Andy Caldwell	Bobby Falony	Danny Jane	John Milhous	Brad Sampey	Chris White
Joel Caldwell	Dale Farrow	Mike Jennings	Brian Miller	Jody Saylor-Smith	Jeff White
Mark Collier	Greg Faucett	Scott Jobin	Frank Mitchell	Damon Scharff	Joey White
David Cannady	Rob Ferdinand	Jason Johnson	Greg Mobley	Aaron Schauble	Matt White
Garratt Cannon	Craig Fickle	Scott Johnson	Randy Moody	Chris Schroder	Will White
Jarett Cannon	Scott Fields	Brett Jones	Billy Moore	Clark Scott	Pat Wiley
Alan Carlson	Rob Fischman	Stan Jones	Phillip Moore	Billy Shape	Alex Williams
Richie Carnes	Tot Fitzpatrick	Troy Jordan	Trey Morrison	Lance Shelfer	Christopher Williams
Jason Carrington	Jimmy Floyd	Alex Kaminski	Richie Morton	Chris Shelnutt	David Williams
Steven Carter	Keith Forrest	Billy Kech	Phil Mulanax	Danny Shepard	Matt Williams
Kyle Cassidy	Rob Forrest	Brad Kefim	Danny Mulcay	David Shepard	Phillip Williams
Rich Cellino	John Fowler	Danny Kelly	Brad Mullis	Clint Shiver	Greg Willis
Scott Chaffin	David Frasier	Kyle Kelly	Pete Muir	Greg Shiver	Jimmy Willis
Kevin Chambers	Ben Free	Vince Kelly	Jay Murchison	Skipper Short	Ken Wilson
Brett Champman	Chad Fulk	Brandon Kempt	Don Murphy	John Shuman	Jimbo Wilkins
Justin Chandler	Mark Funderburk	Jason Kennedy	Rusty Kennedy	Derek Sills	Tripp Wingate
Clint Chatam	Robert Gastiaburo	John Kieffer	Jason Nestlehu	Steve Sloan	Chris Winters
Pat Chichester	Greg Gardner			Bobby Slater	Brian Woods
David Christopher	Billy Gary			Craig Smades	Paul Woodberry
					Brent Worley

T-Shirts available on a first come, first serve basis for \$6 each.

# ACTION ADS

The George-Anne

## CLASSIFIED AD POLICY

• **FREE CLASSIFIEDS**—The George-Anne provides free classified listings to students faculty and staff members of Georgia Southern University as a campus-community service. Free classified ads MUST be written in 25 words or less. Students, faculty and staff will be billed 10¢ a word for ads in excess of 25 words. The advertiser's name, Landrum Box, and the classified category (listed below), **MUST BE INCLUDED** with your ad copy. All communication regarding free classified ads must be in writing (absolutely NO free classified ads will be accepted by phone... at this price we don't take dictation). Free classified ads (except personals and dated submissions) will be inserted into the newspaper in four consecutive issues. Ads must be resubmitted in writing for additional insertions. Free ads should be non-commercial in nature. Free classified listings should be mailed to The George-Anne, Landrum Box 8001, GSU. Deadline is noon TUESDAY or noon FRIDAY prior to publication.

• **COMMERCIAL LISTINGS**—are available at \$2.50 per 25 words with a minimum charge of \$5.00. Classified display advertising is available at \$5.00 per column inch per edition, with a one inch minimum size required. Payment should accompany ad, unless advertiser has established credit. Tear sheets will be mailed upon written request A charge of \$1.00 per tear sheet requested is assessed to cover mailing and handling. Contact the Advertising Department: ADS, L.B. 8001, GSU, Statesboro, GA 30460 or call 912/681-5418.

• **GENERAL CLASSIFIED POLICY**—The advertiser is responsible for proof-reading ads upon publication. Any errors will be corrected upon written notice. Ads should be in good taste, and are subject to standard editing procedures. The editors reserve the right to refuse any classified ad.

## CLASSIFIED CATEGORIES

- |                             |                            |
|-----------------------------|----------------------------|
| 01 - Announcements          | 15 - Musical               |
| 02 - Arts & Crafts          | 16 - Personal              |
| 03 - Autos for Sale         | 17 - Pets & Supplies       |
| 04 - Auto Parts, Repair     | 18 - Photography           |
| 05 - Business Opportunities | 19 - Rentals & Real Estate |
| 06 - Child Care             | 20 - Roommates             |
| 07 - Education              | 21 - Services              |
| 08 - Freebies               | 22 - Sporting Goods        |
| 09 - Furniture/Appliances   | 23 - Stereo & Sound        |
| 10 - Garage Sales           | 24 - Swap & Trade          |
| 11 - Help Wanted            | 25 - Television & Radio    |
| 12 - Lost & Found           | 26 - Vans & Trucks         |
| 13 - Miscellaneous for Sale | 27 - Wanted                |
| 14 - Motorcycles            | 28 - Weekend Entertainment |

## 01-Announcements

GSU's Non-Traditional Student meeting is Tuesday, February 11, 1992, at 5:15 in Room 244 of the Student Union. Refreshments will be served.

Raising Roofs, awareness, and money! Need volunteers—meeting, Feb. 18, Rm 242, Student Union—4pm. Groups and individuals needed for community projects! Need more info? Write LB 12502.

Riding Eagles Motorcycle Club meetings Thursdays 5-7. Come join. Call Jon Love at 489-1553. Club agenda—lower parking costs, better and more motorcycle spaces.

STUDENTS, FACULTY & STAFF ONLY: YOU can put your own message in this space for FREE! 25 words or less, please. Drop by the Wms Center, Rm 111, or send your classified ad to LB 8001. For free ads you MUST include your name and Landrum Box number.

Triangle Gay and Lesbian Informal Discussion Group meets 7 pm Mondays. Call Counseling Center for further details.

Wanted: Any persons interested in starting a video game club. Call Mitch at 681-4552 after 6pm.

YOGA CLUB meets 5 pm Mondays, January 27 in Union. Wear loose clothing & bring a mat or blanket. Beginners welcome. Phone 681-0226 for details.

## 03-Autos for Sale

1983 Ford T-Bird, good condition, many extras. Well taken care of. Must sell. Call 681-3209, ask for Mark.

1984 Nissan 200sx turbo Electric windows, alarm system, A.C. PS, PB, good gas mileage, runs great, looks sharp. Steal it for \$2500 OBO. Call 681-2822.

1984 Turbo 200sx Nissan, alarm system, electric windows, PS, PB, A.C. looks great, 30 mpg highway; 20mpg city. Sporty, economical, reliable. \$2300 OBO. Call 681-2822.

1989 Sunbird SE, 2 door, great condition, automatic transmission, 37,000 miles. Call 681-1940.

For sale: '88 Toyota Four-Runner 4x4 SR5, V6, loaded, 50k, \$12,000. 764-6169.

## 05-Business Opportunities

EARN \$500 or more weekly stuffing envelopes at home. Send SASE to Country Living Shoppers, Dept. D18, PO Box 1779, Denham Springs, LA 70727-1779.

## 07-Education

**COLLEGE SCHOLARSHIPS GRANTS • LOANS**  
Results Guaranteed  
1-800-527-1496

## 11-Help Wanted

\*EXTRA INCOME\* Earn from \$200 - \$500 weekly mailing 1992 Travel Brochures. For more information send an addressed stamped envelope to: ATW Travel, P.O. Box 430780, Miami, FL 33143

Alaska Summer Employment—fisheries. Earn \$5,000+/month. Free transportation! Room & Board! Over 8,000 openings. Male or female. For employment program call 1-206-545-4155 ext. 312.

English editing needed occasionally. \$10/hr. Call Dora at 681-9119 after 6pm.

FOUND: Man's watch near Hanner. Call 681-0429 to claim.

Lifeguards, Swim Coaches, Swim Instructors: Summer positions available in North Atlanta Area. Certification classes available. Call SwimAtlanta, (404)992-7665, for information.

Wanted: Tutor Counselors (4) for the Georgia Southern University Upward Bound Summer Program. Upward Bound is a program designed to motivate and prepare high school students for post-secondary education. In working with the Upward Bound Program, you will gain valuable experience as well as enjoy lots of fun. Applicants must (1) have achieved college sophomore status, or better by May 1992 (2) have a 2.30 GPA or better (3) be available daily from June 15 thru July 30, 1992—no summer school students please (4) be committed to working with young people (5) applicants must be available to live on campus (in dorm) with student from June 15 thru July 30 (6) be conscientious and dedicated. Salary is \$1,600 (\$1,000 plus room and board). Applications will be accepted thru April 12, 1992. If interested apply at Upward Bound Office Williams Center—Upper Level Landrum Box 8071

Statesboro, Georgia 30460 (912) 681-5458.

Read books for pay! \$100.00 per title! Amazing Recorded Message Reveals details. 205/283-3469

Wanted: Members to serve on the Union Productions board for the 1992-93 school year. Applications available at the Union Productions Office, Rm 207 of the University Union and are due Feb. 21. Call for more info- 681-5442.

## 12-Lost & Found

Found: Gold bracelet at Thursday's on Sat. 25 during Sexual Olympics. Call Tom at 681-8916 to identify.

FOUND: Ladies Carvele quartz watch. Found in Carroll Building. Come to Dean's office to claim.

Lost- Gold charm bracelet. Sentimental value. If found please call Teresa at 681-2391.

Lost: 1990 class ring in the South Building or going to North Building. Green Peridot stone—sterling silver. Name engraved on it, call Tom 681-8916.

Lost: A silver, opal and sapphire ring. This ring is a family heirloom. Cash reward. If found please call Heidi at 681-2967.

LOST: Gitano watch with black band and silver pearl bracelet. If found please contact Teresa at 681-2391.

Lost: In desperate search for a beige male lab puppy with a black nose. Only 2 months old. He wandered off onto Cawana/Bulhalter Road area. If found please contact 871-6405.

Lost: One cream long sleeved Limited-express cotton shirt. Lost at Oxford Wash and Shop. If you have it please call 681-7562. Size L.

Lost: Thick gold bracelet. Reward if returned. Has sentimental value. If found please contact Dana at 739-4467. Thanks.

## 13-Miscellaneous for Sale

.22 pistol for sale. 9 shot, 4" barrel. Made by New England Firearms. \$60 OBO. Call 764-7382.

2 new beer signs: Budweiser and Miller Genuine Draft. Asking \$125 OBO. Ask for Frank at 681-2434.

Attention Sports Card Collectors— I have approximately 2,000 common baseball and football cards. Most 1980-1984. Good condition. 3¢ each/nego. 681-3571.

Cool it this quarter with a pair of like-new Ray-Bans. Black metal frames, black lenses. Make offer. 764-7312, leave message for Eric.

Excellent buys for 83-86 Monte Carlo: Bra \$40, speakers w/ 10" MTX woofers/tweeters in box \$200, 4 spiked hub caps \$15. 681-2259 ask for Kelly.

For Sale: Point Blank body armor vest—\$300. 764-6169.

For Sale: Scuba Gear. BCD 1st and 2nd Stage Reg Air II, Dive Light, etc. Plus dive bag, entire package—\$500. 764-6169.

For Sale: Three evening gowns and one black T-Length gown. Work 489-8727, Home 693-7581. Sizes 6-8. Contact Tish.

For sale: two truck boxes, 8 inches full range. 2 1/2 inch tweeter \$99 OBO. Contact Pete 681-9728, leave message.

For Sale: World Book Encyclopedia Set, New, \$400 OBO. 764-6169.

Ladies 14k gold engagement set for sale. Unique 3/8k solitaire with 10 diamonds and band. Solid 14k gold matching wedding band. Only asking \$500. Call 764-7382.

One pair of Avia (Arc Technology) aerobic shoes. Bought wrong size and cannot return. Size 9. Price negotiable. Please call 681-7562.

Raleigh men's road bike—58cm, 531 Reynolds, Shimano 501 comp., cateye cyclocomputer, OGG microshield helmet all for \$300. 764-3621-Kelly

Selling NES Console with 40 games, two controllers, and laser gun. \$350 OBO. For info call Fernando at 681-4351. In great condition.

Smith-Corona Typewriter SD66 with memory and spellright, \$150. 764-6169.

Two sequined gowns—perfect for formals. Teal, Size 5. \$75. Fuschia, Size 7, \$50. 489-3186.

Winter Jackets: 1 green suede and 1 brown leather—\$75 each. 681-2281-cash only.

## 14-Motorcycles

Honda V-30 Magna 1984. 13k. Very Clean. Burgandy, adult ridden & well taken care of. \$600. 764-3621, ask for Kelly or leave message.

## 15-Musical

Female guitarist needed immediately. Please call either 764-7040 or 489-2951. Thanks.

## 16-Personal

Michael Gilbert- What does Doodle-bug mean? Glad to have you in Pl Sig. Good luck!—Your Pl Sig Big. Guess Who?

Would you like to place a personal for Valentine's Day? If so, drop by the Williams Ctr, upper level, in the George-Anne office, or mail it to LB# 8001 to place one. It's free to students and faculty for the first 25 words. Deadline is Tuesday, Feb. 11.

## 17-Pets & Supplies

Free to good home—beautiful grey male cat. 9-12 months old. Very lovable. We found him, can't keep him. 489-3434.

Free to good home—male grey cat. 9-12 months old. Very affectionate. We found him, can't keep him. 489-3434, leave message.

Free: Black female Retriever puppy, 7 weeks old. Call 681-6116, ask for Shell.

Juvenile Iguana—16" including tail. Healthy. Call Mark at 681-6961. \$55

Puppies for sale: Black and fluffy. 6 wks old. Had 1st vaccinations. Will be medium sized. \$35. call 681-2253.

## 19-Rentals & Real Estate

2 bedroom, 1 bath apartment for rent. Available Spring Qtr. Located near Franklin's Restaurant. \$250 a month. 489-2916 or 489-1483. Leave message.

2 bedrooms to rent in 3 bedroom, 2 bath mobile home. \$160 per month, \$100 deposit (refundable). Rooms have beds. Call Jamie at 681-6413.

Apartment for sale: 2 br, 1 bath, furnished. 57 Southern Villas. Call (404) 428-9595.

Brand new apt. For sublease in Spring & Summer. 2 bedroom, 1 bath, vanity with sink in each bedroom \$350/month. Close to campus. 764-6494, leave message.

Room for rent: Across from campus, own room, 1/2 utilities, free water, \$200/month (OBO). Lease negotiable. Call Jennifer at 681-1270 or 681-3291.

Sublease: 1 bedroom apartment. Central location. Pets allowed. \$300/month. 1 mile from campus. 489-3069.

## 20-Roommates

Female nonsmoker roommate needed for Spring & Summer quarters. Eagle Run Apts. Fully furnished except for your own room. Share bath, washer/dryer. \$175 per month + 1/4 utilities. For more info call Karen at 681-6633.

Female roommate needed for Spring Qtr. Fully furnished including bedroom. Very nice. Hawthorne II 62. Call Michele at 681-3440.

Female roommate needed immediately—\$100 per month + 1/3 utilities. Fully furnished—great roommate 489-4228. Ask for Lynn or Colleen.

Female roommate needed to share ASAPI Greenbriar townhouse. 3 bedroom, 2 1/2 baths. \$200 for remainder of quarter. Call 871-6119.

Female roommate needed to share big 3 br house Spring Quarter. Own room and washer/dryer. \$150 rent plus 1/3 utilities. Please call 764-2136 and leave message.

Female roommate needed to take over lease at Chandler Square Apts. First month's rent free or pay no security deposit. Call 681-1593 for Stacy.

Male roommate needed—Park Place Villas. Totally furnished. \$167 per month plus 1/3 utilities. Call 681-1720, ask for Ricky.

Male Roommate needed Spring and Summer quarters. \$225 a month. Own bedroom, bathroom, phone line, washer/dryer. Call 681-9895.

Mature, honest couple seeks couple with similar qualities to share apartment next school year. Looking to sign lease early. Call 871-6264, ask for Dwayne.

Roommate needed ASAPI Sublease Sussex Commons—own bedroom and bathroom. Call 681-6703.

Roommate needed for 1990 trailer. 2br, 1ba. Located 1 mile from college. \$150/month + 1/2 utilities. Call 871-6362 after 2 pm. Ask for Brian.

Roommate needed: own bedroom in furnished apartment. Close to campus. For more info call Shawn at 681-1396. Call anytime ASAP.

## 21-Services

Auto Detailing—Clean inside and out. Wash, wax, vacuum, & Armor All. Most cars only \$20. Call Eric for appointment. 681-2294.

Daily announcement of Intramurals available on CR/I Hotline at 681-5261.

Lab and textbooks printed! Fast affordable service. Profit to you or your department. Free estimates. 40 years experience. Retired GSU professor. Arv 764-7421 (Before 5:00)

Maid Service—Only \$25 for an apartment. Call today! Leave message! 842-2640.

PREGNANT? Parent and Child Adoption Services Car Help. Free counseling, medical and housing assistance available. Call Collect (912)238-2777.

TYPING—Drop-off & pick-up on campus. See Peggy 116 South Bldg., call 681-5586 or 681-6520. Quick service (usually overnight), very good rates

TYPING—Fast & Reasonable. Call Jean 852-5405

TYPING—Reasonable rate. Resumes, term papers, etc. Letter quality or Dot Matrix printers. Call Brenda, 681-5301, or drop by Carroll, Rm 86

University Typing Svc—Word proc. for faculty & students. Term papers to books. Editing included. Letter quality printing. Majorie Bell, Ed.D. 681-3716

Wake-Up service—Never miss another class or study session. If you have a telephone, I'll wake you up. 50¢ per call billed to you weekly. Call today! Leave message 842-2640.

Will do TYPING—Essays, Reports, Term Papers. Done on computer, rough draft available. \$2.50 per page. Call Mrs. Linda Chambers at 237-2000.

## 22-Sports & Stuff

Anyone interested in playing rugby come out to practice Tuesdays, Wednesdays, Thursdays at 4pm Oxford Field. No experience necessary.

FOR SALE: Weider Weight Set 310 lbs. And Marcy Pro Weight Bench, asking \$260 for both. OBO. Call 489-4531, if no answer leave message. Ask for Michael.

Needed girl soccer players to play Mondays, Tuesdays, or Wednesday at 5:00 ASAP. Call Stacey at 871-6469.

## 23-Stereo & Sound

2 competition kickers 15"—\$225. One hot set-up 2.125—500 watt amp made by Orion—\$250. Call J at 489-4263 evenings.

Car stereo: Coustic 300 watt bridgeable amp, Technics high power deck, 12" Pyle Driver speakers, Technic 6x9", Pioneer 4", & Crossover. All for \$400. Call 764-7382.

Pair Blaupunkt 5" speakers—\$50. Bell radar detector—\$30. Escort radar detector—\$65. Call Kristen at 681-9839, leave message or call Chris at 681-7406.

Precision Power 2000 Amplifier—brand new, never been used. Must sell. Receipts available, also noise reduction box. Call Til at 681-2964. \$275.

Sony boombox—dual cassette w/ programmable CD and laser remote. Carve car amp, 120 watt stereo, 240 mono. Make offer. Call 764-5512 for Doug.

Two 12" Fosgate subs, \$140. 7th order box wit 10" subs, \$150. Call 489-4404.

Two Rockford Fosgate Punch 10" in box—\$125. One punch 45 amplifier, may install—\$125. Escort Radar detector—\$65. Call Chris Denman at 681-7406.

## 27-Wanted

Needed: 20 gallon aquarium or larger. Call Trey at 681-2301.

POETRY SOUGHT FOR BOOK. General poetry is being accepted for possible publishing in our upcoming book "Ride the Wind". Please submit one or two original poems 28 lines or less (any subject or style) by March 15, 1992 to: The Inner Press, 9481 Canal Road, Gulfport, MS 39503. (601) 831-4367. There is no reading fee.

Wanted to buy: Computer games for the Commodore 64. Call 587-2335 after 6pm or 681-5890 from 9am-4pm daily.

We're looking for a top fraternity, sorority, or student organization that would like to earn \$500-\$1500 for a one week on-campus marketing project. Must be organized and hard working. Call Lee at 800-592-2121 ext. 115.

## 28-Weekends & Travel

A Bahamas Party Cruise 6 days \$2791 Panama City \$99. Padre \$199, Cancun \$499, Jamaica \$399! David 681-6415, or 1-800-638-6786.

You've only got one week to live! Do it right! Spring Break Travel in Jamaica from only \$429!! Hotel, air, transfers, hot parties! Organize group, travel free!! Sun Splash Tours 1-800-426-7710.

## 29-Etcetera

Carpool: Ft. Stewart to GSU, there are quite a few of us riding back and forth—let's ride together. Please contact Bonnie 884-3227.

**FREE**



Classified Ads  
25 words or less  
Students & Faculty

**HAPPY VALENTINE'S DAY!**

*from*  
**BERMUDA RUN**  
APARTMENTS

4 BR/4 BATH  
INCLUDING:  
MICROWAVE  
WASHER/DRYER  
AIR CONDITIONER  
POOL  
VOLLEYBALL  
BASKETBALL  
CLUBHOUSE WITH GAME ROOM

Deana Martin  
681-6994

**GREEN DEVELOPMENT**

*Experience The Difference!*

**NOW LEASING!**

**CHANDLER SQUARE**  
APARTMENTS

- Flats
- Townhouses
- Washer/Dryer
- Pool
- Volleyball
- Clubhouse
- 4 Bedroom
- 2-3 Bath

*Come by & tour our model unit...or call 681-6765*

**Located next to Paulson Stadium.**