

Georgia Southern University

Digital Commons@Georgia Southern

The George-Anne

Student Media

11-15-1991

The George-Anne

Georgia Southern University

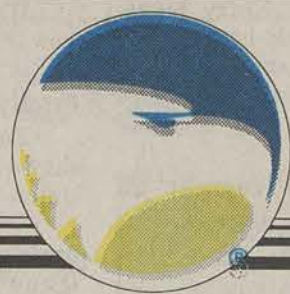
Follow this and additional works at: <https://digitalcommons.georgiasouthern.edu/george-anne>

Recommended Citation

Georgia Southern University, "The George-Anne" (1991). *The George-Anne*. 1250.
<https://digitalcommons.georgiasouthern.edu/george-anne/1250>

This newspaper is brought to you for free and open access by the Student Media at Digital Commons@Georgia Southern. It has been accepted for inclusion in The George-Anne by an authorized administrator of Digital Commons@Georgia Southern. For more information, please contact digitalcommons@georgiasouthern.edu.

Liked By Many,
Cussed By Some,
...Read By Them All



The George-Anne

912/681-5246

Vol. 64 No. 19 • Friday, November 15, 1991

For 65 years, Georgia Southern's Official Student Newspaper

Georgia Southern University • Statesboro, GA 30460

Campus police report 14 auto break-ins

By Brent Parrott
Assistant News Editor

Over a two day period, Nov. 7-8, GSU police reported 14 cases of illegal entry of vehicles.

On Nov. 8 four students reported break-ins of their vehicles, which were parked in the "A" parking lot.

Jane Corwin reported that someone had broken a window in her 1974 Honda Accord, apparently with intent to commit theft. Nothing was reported missing.

Alison Hayes reported a broken window in her 1987 Honda Prelude and that her Alpine stereo and a tape case had been removed.

Mihoko Ikedo reported a broken window also. Nothing, however, was reported missing from the 1982 Chevrolet Chevette.

Melissa Daniel reported that a pair of sunglasses had been removed from her 1990 Ford Escort, which also had a broken window.

Besides the owners of the vehicles, GSU policemen Russel, Jones, Girardey and Holloway were listed as witnesses in the cases. The incidents reportedly occurred between 2:30 and 3:30 a.m.

Charles Richard Price, Jr., a freshman currently living in Brannen Hall, was arrested and charged with four counts of entering auto. Price is not a suspect in any of the other break-ins. He was released from the Bulloch County jail on \$4,000 bond.

Price had no comment, except that he did plan on staying in school.

At Oxford Hall on Nov. 7 there were three cases of vehicles being entered.

Jonathan W. Fendley reported that someone entered his vehicle and took a stereo and speakers.

Scott Donovan reported a fishing rod and two reels missing from his vehicle.

Jim T. Porter reported his stereo stolen, also from his automobile.

On Nov. 8 there was another break-in at Oxford Hall. Corey S. Wray reported that someone had entered his vehicle in the parking lot and took his wallet.

At Olliff Hall, Michelle Scott reported her stereo equipment and a cellular phone missing from her car.

Stephanie Blackburn reported a broken window on her vehicle, while it was parked in the Newton commuter lot. Nothing was missing.

Shelly A. Childers reported her stereo missing from her vehicle.

Pam Ramasute reported that someone had entered her vehicle while it was parked in the Library parking lot and had taken a jacket. The theft occurred on Nov. 8.

In an break-in still under investigation, Chris C. Lynch reported that someone had broken a window on her vehicle while it was parked in the "A" lot. Nothing was reported missing from the vehicle.

According to Captain Russell of the GSU University Police, all cases, except for the four break-ins at "A" parking lot, are still under investigation.

In response to the increased number of break-ins, campus police have increased their patrols in various areas, according to Russell.

He reminds students to always lock their cars and not to leave valuables in them. He also urges students to periodically check on their vehicle and to report any suspicious activity they spot.

Liquor vote could be held in March

By Doug Gross

Staff Writer

Students, faculty and local residents spoke out this week regarding a proposed liquor-by-the-drink referendum for Statesboro and Bulloch County.

The county referendum, which would require a petition to be signed by approximately 5,000 registered Bulloch County voters, will be voted upon on March 10, if the petition is filed with the superintendent of elections by Jan. 10. The petition must then be verified to see that all of the signatures are valid.

Local businessman Chris Sampson met with GSU fraternity and sorority leaders last Monday

at a local nightclub to discuss the referendum, and since that time Sampson has continued his efforts to organize students and encourage them to register to vote.

"We want to make sure people understand it's not too late to register," said Sampson, who in the next week will be sending flyers encouraging voter registration to every GSU student enrolled this quarter.

Sampson, who admitted to a certain degree of disappointment after his meeting with Greek leaders last week, said that he was encouraged by responses he has received recently regarding the referendum.

"I've gotten a lot of phone calls

from people in town who are in support of [the referendum]," said Sampson. "I have not had one negative comment from anyone."

Local businessman Sam Johnson, owner of the County Line liquor store, the Collegiate, and the building which was formerly T-Bird's, was quoted as saying that, despite rumors to the contrary, he was not opposed to referendum plans.

Several individuals involved in the effort to pass the liquor referendum felt that Johnson would be in opposition to their efforts due to the potential loss in revenue at

See Liquor, page 12

Orr denies rumors

By Doug Gross

Staff Writer

James Orr, advisor to the Interfraternity Council and the Panhellenic Council, denied rumors that he attempted to dissuade fraternity and sorority leaders from attending a meeting last Monday night to discuss the possibility of liquor referendum.

Orr stated that Greek leaders may have misinterpreted what he said regarding the meeting.

"We wholeheartedly encouraged them to find out what the issues are," said Orr, who stated

that less than a minute at the last IFC meeting was devoted to discussion of the referendum meeting.

Orr said that individuals in the fraternities and sororities were encouraged to register and vote their conscience, but said he was uncomfortable with Greek organizations taking a stand as a whole on a particular issue.

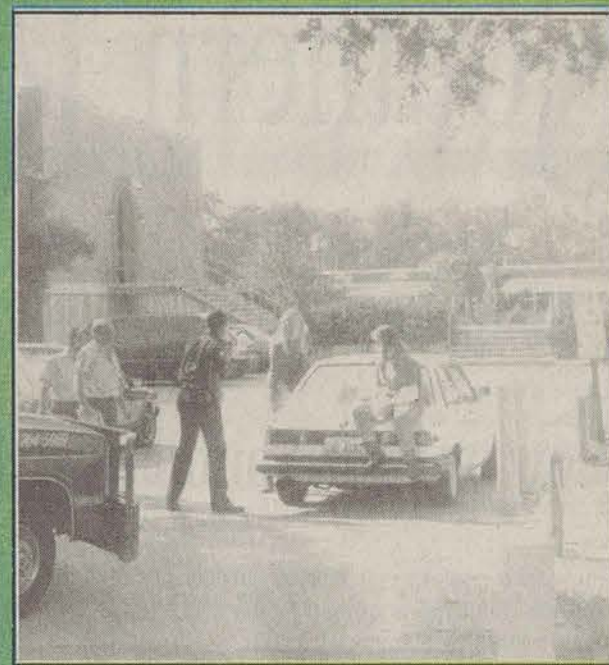
"I'm not comfortable with that," he said. "It suggests that everyone within that organization agrees with that position."

See Orr, page 12



Local band performs for a lunch time crowd outside the University Union. (Photo by Kevin Hudson)

Crashin' Abbey plays rotunda



The band's cars were nearly towed until band manager Guy Owens spoke with police. (Photo by Kevin Hudson)

G-A Staff Reports

Local band Crashin' Abbey played at the Union Rotunda Wednesday.

The band includes James Daniel on lead guitar and vocals, Dennis Smith on the bass guitar and Kevin Duncan at the drums.

While the band was performing before approximately 40 students, their cars, which were parked at the entrance of the small Foy parking lot were almost towed by Howell's Wrecker Service. The wreckers had reportedly been called by a student assistant from the GSU department of transportation and parking. An ambulance had approached the lot after receiving a call from the Union concerning an illness, but was blocked out by the automobiles.

Band manager Guy Owens spoke with campus police and arranged to not have the cars towed if they were moved. Two of the band members did have to pay the standard \$20 tow call fees according to Smith.

Black Image Awards to be given Saturday

GSU News Release

In its first year, the GSU African-American caucus' Black Image awards banquet has completely sold out.

Proceeds from the event will benefit minority programs at the university according to event organizer Curtis Woody, a marketing professor at GSU.

The African-American caucus solicited nominations from surrounding counties to recognize people who have made outstanding contributions to the community. More than 30 people were nominated for the awards, which will be presented at a \$20 per person black-tie banquet Saturday at 7:30 p.m. in the University Union Ballroom.

Malena Cunningham, news anchor for WSAV-TV in Savannah, will emcee the event, which is being called an evening of "edutainment and entertainment."

Cunningham is a native of Laurens, S.C., and a 1980 journalism graduate of the University of Georgia. She worked for Turner Broadcasting System in Atlanta as a writer, videotape editor and producer at the Cable News Network and as a promotion writer, producer and reporter for WTBS' public affairs program "Between The Lines."

Cunningham was a television news reporter for WTVQ in Lexington, KY and WHTM in Harrisburg, PA before joining WSAV in Savannah as a weekday news anchor. In 1988, she won the United Press International's first place award and the Associated Press' third place award in spot news reporting for the state of Pennsylvania. She was also rec-



Malena Cunningham

ognized by the Atlanta Chapter for the National Association of Media Women as an outstanding journalist.

Cunningham is a member of the National Association of Black Journalists, the Society of Professional Journalists/ Sigma Delta Chi, the National Association of Media Women and Delta Sigma Theta sorority.

She also serves on the board of director of the R.E.A.C.H. program of the Greenbriar Children's Center, as well as on the board of directors of the Coastal Empire chapter of the American Diabetes Association. Cunningham serves as honorary co-chair of the Chatham County PTA membership drive.

Eugene B. Redmond, poet laureate of East St. Louis, Illinois Author of the Year and full professor of English at Southern Illinois University will entertain guests with a reading of his

See Black, page 12

Talent search gaining momentum in area

GSU News Service

GSU's grant-funded Educational Talent Search Program, designed to encourage low-income and potential first generation college students to stay in school and to seek higher education, is fully underway and gaining momentum.

"Our staff has been on the job for over a month now," said Upward Bound director Randy Gunter, who is also overseeing the Educational Talent Search. "We have begun our efforts in the middle and high schools in our five-county service area."

"I'm really impressed with the level of cooperation and the positive reception we have received the schools," he said.

Funded by a \$199,150 grant from the U.S. Department of Education, the program serves some 900 middle school, high school and out-of-school youths in Bulloch, Emanuel, Screven, Jenkins and Burke counties.

The students are targeted by the

program's educational and motivational efforts which include admissions and financial aid assistance, counseling, tutoring, career planning, college visitation, basic skills preparation, self-esteem building, academic advisement and drop-out prevention.

"One of our major thrusts in the next two months will be working with high school seniors, preparing them for the standardized SAT and ACT tests," Gunter said. "We will also be working with the on college selection."

To be eligible for assistance in the program students must be at least 13 years of age and not have attended college.

Gunter feels positively about the staff: Renata Newbill-Jallow, coordinator; counselors Mildred Alexander, Tony Wells and Debbie Kruk and secretary April Smith. "All three of our counselors have excellent communica-

See Talent, page 12



PAWS president Cindy Natzke (left) and Michelle Brown, PAWS historian, show one of the dogs which was up for adoption Wednesday by the Union. (Photo by Kevin Hudson)

Adopt-a-Dog is big success

By Kevin Hudson

Managing Editor

Two student groups sponsored Adopt-a-Dog Day Wednesday, and reported it as a "tremendous success."

PAWS (Providing Animals With Support) and the Student Government Association brought over a dozen dogs, young and old, to campus hoping to find homes for them. The animals had been held at the Statesboro Humane Society.

According to PAWS president Cindy Natzke, all 12 puppies from the humane society were adopted by students, as were three grown dogs.

To adopt the animals, PAWS requested a 15 dollar donation. The puppies had already had their first set of shots Natzke said.

"Because of the fantastic response, Adopt-a-Dog Day will

See PAWS, page 12

Announcements

Friday, November 15

• All CRI facilities will close at 6:00 p.m. due to Homecoming.
• No classes due to Homecoming activities.
• There will be a parade on Perimeter Road starting at 3 p.m.
Parade line-up will begin at 1 p.m. with judging at 1:45 p.m.
• AC Black will perform at the Landrum Commons at 8 p.m.
• *Point Break* will be shown at 7 and 9:30 p.m. at the Union Theater. The movie will run through Saturday.
• A dance will be held at Landrum Commons at 8 p.m.

Saturday, November 16

• GSU vs Troy State at 1 p.m. at Allen E. Paulson Stadium.
During half time ceremonies 1991 Homecoming Queen will be crowned.
Sunday, November 17
• *Terminator 2* will be shown at the University Union Theater at 7 and 9:30 p.m. The movie runs through Monday.
• Arnold L. Mitchem will give a lecture, "Educational Equality: An Agenda for the '90's," at 7 p.m. at Foy Fine Arts Recital Hall.

Monday, November 18

• CRI pre-registration for winter quarter basketball. Entries are due Jan 7 and play will begin on Jan 13.
The entry fee is \$50 and only a limited number of entries will be accepted.
• "The Light Inside," paintings by Peter Clive, a Savannah artist, will be on display at Gallery 303 until December 6, 1991.
Gallery 303 is located on the third floor of the Foy Fine Arts building.
The art gallery is open from 9 a.m. to 5 p.m. weekdays. Admission is free.
• Statesboro-GSU Symphony will perform at Foy at 4 and 8 p.m.

• "A Poetry Reading" will be held at Gallery 303 in Foy at 7 p.m.
• E. Redmond will give a lecture, "The 1960's," at noon in Union room 247.
• A lecture, "History of the Multiculturalism," will be given at 4 p.m. in Union room 247.
Tuesday, November 19
• Dr. Keith Walters of the University of Georgia Marine Institute will give a lecture, "Trophic Complexity and Effects of Predation on Microbial Assemblages in an Australian Seagrass Bed."
The seminar will be held in room 218 of the Biology Building at noon.
For additional information,

contact Dr. Daniel V. Hagan at 681-5487.
• "Rachel, Rachel" will be performed at Union Theater at 7 p.m.
• CRI Basketball Tournament entries are due. Entry fee is \$15.00 and the field is limited to the first 12 teams only.
Play begins on December 1 at 6 p.m. and will continue through Tuesday.
Wednesday, November 20
• Student talk show will be held at 7 p.m. at Union Ballroom.
Thursday, November 21
• CRI Turkey Trot will be held with check-in starting at 3 p.m. Participants should meet in Hanner parking lot. The race

begins at 4 p.m.
Winners receive tee-shirts and a turkey.
• Gamma Beta Phi will hold a meeting at 7 p.m. in the Biology Lecture Hall.
• African Film Series will show *Finzan*, will be shown at 7 p.m. in the Union Theater.
Friday, November 22
• *Boys N the Hood* will be shown at 7 and 9:30 p.m. in Union Theater.
• GSU Opera Theater will present, "An evening with Good Queen Bess, William Shakespeare and Friends," an Elizabethan banquet, at 6:30 p.m. in the Union Ballroom.

See Announcements, page 9

Police Beat

Bulloch County Sheriff's Department 11/08/91

• Ronald Ryan Holmes reported that someone entered his vehicle. Missing from the vehicle were a cellular phone and ten compact discs.
• Joseph Marino, 21, reported damage to property. Marino, John Peterson, and Jack Pearson were sitting in the living room of their apartment when some unknown subjects drove by their residence and shot into the front window.
• Cindy Ryals filed a complaint of entering auto. A radio was taken from her vehicle.

• Mark Occhialini filed a complaint of theft by taking. His bicycle was stolen.
11/06/91
• Lance Alworth Paxton filed a complaint of simple battery at the Collegiate nightclub. Paxton said that he did not know or see the assailants. The attack took place in the parking lot of the club.
**Statesboro Police Department
11/10/91**
• Police responded to a kitchen fire at 77 University Village. Statesboro Fire department personnel took over at the scene of the fire.

GSU Division of Public Safety 11/11/91

• Henry C. Bron was charged with failure to stop at a stop sign.
• Jonathan A. Robbins was charged with theft by shoplifting, resulting from an incident at the University Store.
• Chris M. Landers reported a bicycle missing from a bike rack at Dorman Hall.
• James E. Casey reported a bicycle missing from a post at Oxford Hall.
• Lori E. Peck reported a bicycle missing from Warwick Hall.
• Joseph S. Vanderbeek reported a set of keys missing from the Williams Center.
• A resident of Sanford Hall reported receiving harassing phone calls.

• Allison M. Woodard and Leona M. Bridget were involved in an accident in the Union parking lot.
• Tracy L. Smith and Brian K. Daniel were involved in an accident in the Union parking lot.
11/10/91
• Hugh K. Dugan was charged with driving with an expired tag.
11/09/91
• Michael C. Zofko was charged with driving with an expired tag.
11/08/91
• Todd T. Downs was charged with making an improper left turn and no license on person.
• Janice L. Lanier was charged with passing on a solid

See Police, page 9

Campus Briefs

Activity fee increase of \$20 to be voted on

The Student Government Association will vote on Nov. 20 at 6 p.m. in Union room 244 whether or not to increase student fees to \$20 for the funding of the proposed Student Recreation Facility.
The fees will not affect classes that do not utilize the building. If the proposal passes in the senate vote then the facility will begin the next stages of planning and building.
Students wishing to be on the meeting's agenda must notify SGA by Nov. 18 at 4 p.m. These students will be able to voice their opinions during the forum.
"We have been meeting with group leaders and various organizations to get students responses as well as conducting a campus wide survey," said Chris Clark, SGA president. "The response is overwhelming. Most students fully support the proposal when they realize what exactly the scope of this project is."
"The facility is for students only, it is not a facility for collegiate athletes," said Jeff Barker, SGA publicity coordinator. "Most students think this is another facility for the football players but it is run by students, planned by students and managed by students."
If approved the facility will be located adjacent to the Paulson Stadium parking lot.

Museum hosts Christmas Card Retrospective

The 55-year old collection of personally designed Christmas cards by Frieda Gernant will be exhibited at the GSU Museum Nov. 24 through Dec. 20.
"A Christmas Card Retrospective" will feature the work of Gernant, professor emeritus of art who was a member of the GSU faculty from 1974-76.
She designed her first card in 1935 as a college art class assignment and has produced her own cards every year since.
The majority of the cards have a religious theme featuring angels, wise men, shepherds. Musical compositions — particularly religious vocal music — inspired the artist to create several designs.
Gernant was chair of the GSU Art Department and a leading art educator who received her art education degree from Western Michigan University, her masters from the University of Michigan and her doctorate from Columbia University.

Statesboro-GSU Symphony performs

The Statesboro-Georgia Southern Symphony will soon open its doors to the 1991-92 concert season.
The symphony is sponsored by two organizations: United Way of Bulloch County and the Georgia Council for the Arts. With the help of the United Way, two youth concerts, the outdoor pops concerts and the school outreach program will be presented in the 1991-92 season.
The Georgia Council for the Arts is funded in part through appropriations of the Georgia General Assembly and the National Endowment for the Arts.
Douglas Graves is beginning his fourth year as the conductor for the symphony orchestra. He holds degrees from Westchester State, Indiana University and Michigan State University. In addition, he is an accomplished cello soloist and chamber musician who has performed throughout Michigan and the mid-west.
The symphony has created five exciting performances that will be of much interest to the students and the community. The first concert is scheduled for Nov. 18 and is entitled, "Music From Great Britain."
Season tickets are available and can be obtained through the ticket sales committee chairman Paula Williamson at 681-2721, or through the GSU Music Department at 681-5396. The matinee performances are free to GSU students with their ID.

Organization hosts the 'Eagle Feud'

By Rod Swinson

Staff Writer

Pi Sigma Epsilon fraternity are urging all Greek and campus organizations to come and participate in "Eagle Feud."

The game, which is similar to Family Feud, will be held Nov. 18-19 at 7:30 p.m. in the auditorium of Marvin Pittman School.

For an entry fee of \$15, any organization can enter a team of five members. Each group will be competing against one another by answering questions which were gathered from a student survey.

The first team to reach 300 points will be the winner of that particular game. The teams will be eliminated until two teams are left to compete for the grand prize.

The games will be supervised by the fraternity with a panel of faculty members to judge the technical issues.

The event will be open to the public for with an admission fee of \$1.

Write your
Congressman!

Khaki's



Statesboro
Mall

489 - 2881



Door prizes will be awarded and the proceeds will go to charity organizations.

The George-Anne

STATEMENT OF OPERATIONS

The George-Anne is the official student newspaper of Georgia Southern University, owned and operated by GSU students and utilizing the facilities provided by GSU. The newspaper is the oldest continuously published weekly newspaper in Bulloch County and Statesboro, Ga. The ideas expressed herein are those of the editor or the individual authors and do not necessarily represent the views of the Student Media Committee, the administration, the faculty and staff of Georgia Southern University, or the University System of Georgia. The George-Anne is published twice weekly during the academic year and three times during summers. Any questions regarding content should be directed to the editor (681-5246).

OFFICES, MAIL, PHONES

Room 111, F.I. Williams Center. The George-Anne, Landrum Center Box 8001, Georgia Southern University, Statesboro, Ga. 30460. 912/681-5246 (News) or 912/618-5418 (Advertising)

ADVERTISING INFORMATION

The George-Anne reserves the right to refuse any advertisement. The George-Anne's advertising rates are as follows:

• Students and student groups:	\$2 per column inch
• GSU faculty, departments or affiliates:	\$3 per column inch
• Statesboro area businesses & groups:	\$4 per column inch*
• National rate	\$7 per column inch

*Five inch minimum ad size, otherwise classified display rates (\$5.00 per column inch) apply.
DEADLINE: The deadline for reserving space and submitting advertising copy is Noon, one-week prior to the intended publication date. For more information, rate cards, sample publications, contact: Stacy Graham, Advertising Manager, ADS, (912) 681-5418; or Bill Neville, Student Publications Coordinator, (912) 681-0069.

CLASSIFIED ADVERTISING INFORMATION

The George-Anne reserves the right to refuse any advertisement. The George-Anne's classified advertising rates are as follows:

• Students and student groups:	Free (25 words or less)
• GSU faculty, departments or affiliates:	Free (25 words or less)
• Others groups or businesses:	\$5.00 (25 words or less, 2 issues)*
• Retail classified display:	\$5.00 per column inch

DEADLINE: The deadline for reserving space and submitting classified advertising copy is Noon, one-week prior to the intended publication date. Free classified ads from students, faculty and staff must be submitted in writing, with the name of the sender, a local address and telephone number. No free ads will be accepted via telephone. Only one free ad per person per week.

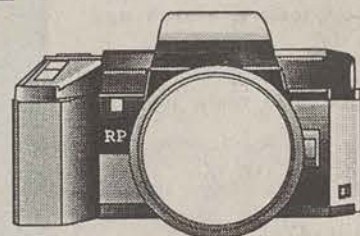
CIRCULATION INFORMATION

Subscription rates for home delivery of The George-Anne are six dollars per quarter, or \$18 per year, delivered bulk mail. Please address all inquiries to Jeff White, Business Manager. The George-Anne is distributed free of charge on the Georgia Southern University campus through delivery sites located in campus buildings and residence halls.

*We gratefully acknowledge the theft of our slogan from Robert Williams of the Blackshear Times. Call Bob and he can tell you who he stole it from originally.

Southern Reflector

Snapshot Photo Contest



Show us your Southern style!

- Simply take a color or black and white snapshot that reflects the South and mail it to Landrum Box 8163 or bring it by our office in the Williams Center, Room 108.
- Your snapshot will be judged by our "celebrity" judges. The winner will have their creativity displayed in the winter issue of the Southern Reflector Quarterly Magazine and receive a Reflector T-shirt and a bound edition of the magazines.
- The following restrictions apply:
 1. All photos become the property of the Southern Reflector.
 2. Photos can be any size up to 8x10. (B&W or Color).
 3. The applicant must provide a written description of the photo, including identification of persons in the photo.
 4. The photo must not include displays of alcoholic beverages.
 5. Photographer is responsible for the content of the photograph.
 6. Photographer must be a student of Georgia Southern University.
 7. DEADLINE FOR ENTRIES IS DECEMBER 8, 1991.

We know you have style so show us what you can shoot!

Please submit this application with your photo (photo copy as necessary).		Return To:
NAME:	LANDRUM BOX:	GSU
LOCAL ADDRESS:		LB 8163
PHONE:		Statesboro, GA 30460
MAJOR:		
DESCRIPTION OF YOUR PHOTO:		
I hereby release my photo to the Southern Reflector Quarterly Magazine.		
Applicant's Signature		

The
George-Anne
We're looking out for you...





Don't deny emotions when a loved one dies

By Trey Decker
Staff Writer

Look there. Right over that hill. Can you see it? You can't? Then look harder. Give yourself a few minutes. Can you see it now? You can? I see it, but I can't see its face because it has so many faces and comes in so many shapes. What I see and what you see is death.

But look. There's something else. It is following closely behind death, attached as if it is one. Can you see it? What I see is grief. Death and grief are one, it seems. They are best friends. Always have been, always will be.

Before I begin what I am going to talk about, I will justify my information by telling you what I do and where I live.

Recently I moved into a funeral home here in Statesboro. Among the things I do there is embalm dead bodies, pick up bodies in the middle of the night at nursing homes or residences, and attend funerals.

My daily routine consists of

waking up, drinking three cups of coffee, smoking two to three packs of cigarettes a day, and experiencing other people's grief. But, as I just recently learned, a man does not know grief until it knocks upon his own door.

I answered my door just a month ago.

Contrary to many authors who tell you how to deal with grief and what they have been taught in school, it seems pretty different from my perspective.

Let me tell you a small story. It is a conversation between my mother and I over a pay phone at a Waffle House near Alabama the morning after my grandmother died. Here is the conversation:

"Hi, Mom," I said.

"Hi, Honey."

"Ashley and I are just outside of Alabama and we should be in Jackson about seven this morning."

"Trey, don't come to Jackson. Come to Tupelo."

"Why?"

"Trey, Nena died last night."

I started to breathe heavy and



sank to my knees, the phone falling out of my hand. I started to cry loudly but my sister could not. The people inside the restaurant could hear me. I took about five minutes on my knees, my face in my hands until I was able to gather my self together and return to the phone.

What many psychologists tell people is that they deny it first; but with me, and with a family I saw a few days ago, acceptance came immediately. Soon after came the reverse process, and now I am in denial — telling myself that my dear grandmother is still alive somewhere.

About a week ago there was a man I picked up who had died after a short illness.

His son held up very well, greeting people with an attitude that surprised almost everyone. But when we exchanged glances for a brief second I knew that his pain was fighting to get out and that, if not tonight when he went to sleep, then soon he would break down in class or while eating dinner one night. It was the people thinking he was taking it well that caused him to hold back, which is what always happens at funerals. I can relate to him because that was exactly what I did.

My point is is that even the people who take it well and who have accepted it go through as much pain as the ones who have not.

I have seen people fall to the ground, scream at others, and try to climb inside the casket with their loved one.

After my grandmother died I came back to school only to find one of my professors didn't like

the fact that I was gone so long. He told me he wanted me to call from Mississippi and tell him where I was and when I would be back, like I was some child reporting to his mother. We had a small argument and he told me that my attitude was bad and that I should consider dropping the class, which I soon did.

What I wanted to tell him was that I was grieving and that he should try to understand, but understandably he was more concerned about his class than he was about me.

In the next days I tried to stay busy. Many of the funerals I worked brought back tears that I thought had long since gone.

I have accepted the death of my grandmother, but I still wonder if she is really dead. I saw her in her coffin — I even helped dress her and closed her casket, taking one final look at her. But I never saw her casket lowered into the grave so my mind is telling me that she could have gotten out of that casket and gone somewhere.

As far as my own grief goes, I put it before school or any damn teacher. If I had to drop out of school, then I would. I have not done well this quarter because of her death, but I think I have a good excuse.

So many people I see hide their grief, as my sister has done. Now she is in more pain than I am.

They don't want to accept it just yet, but the longer they wait, the more their pain grows.

My first piece of advice to you is to recognize your pain and not to hide it. Do whatever you have to do. I smoke close to three packs of cigarettes a day to deal with mine and it helps.

Remember that nobody is going to know how you feel because you are unique and only you know of your pain. Don't conform to anybody who tells you to "Just deal with it," but deal with it in your own way.

Remember, don't hide your grief because if you do then it will grow and soon burst inside of you.

GSU student chosen to go on archaeology dig in Kenya

GSU News Service

Digging up old bones is not a fascination for most people, but for Margaret Baker, a GSU senior, it is her life's ambition.

She is one of 16 students chosen world-wide to attend the Koobi Fora Field School in Kenya, a paleontology program jointly sponsored by Harvard University and the National Museum of Kenya.

Baker will spend six weeks in Africa studying under Drs. H.V. Merrick and Richard and Meave Leakey. "The Leakeys are well-known and well-respected for their investigations of the early hominid (pre-human) origins and behavior in this region. Also, this will be an international group with varying levels of skill and all with a strong interest in paleoanthropology, which is the study of pre-human fossils," Baker said.

The program will consist of graduate and undergraduate

"This kind of work helps you to put things into perspective with time," Margret Baker said.

students who will be introduced to the multidisciplinary approaches of modern human origins research.

The first two weeks will be used for museum study, visits to archaeological sites, and to examine the ecology of the savanna environments in which early hominids lived. Richard Leakey will be lecturing about methods of research and hominid anatomy.

Baker's eyes widened with excitement as she talked. "The idea of pre-human life forms, millions of years old — and being a part of the discovery process — is really exciting," she said.

Only one afternoon will be free for the students to shop and go on tours. The rest of the time will be devoted to research and

study in preparation for the field work of the following weeks.

Baker will then travel to Koobi Fora, the National Museums' field facilities to do actual work under the supervision of Meave Leakey and a permanent crew of excavators. The temperature customarily reaches over 100 degrees, so the students will be working in the early mornings and late afternoons. There are some aspects that she does not look forward to. "We will have to deal with snakes, scorpions, and all kinds of dreadful animals," she said.

Originally, the field study was awarded for last summer, but when funding fell short she was unable to attend. Instead, Baker traveled west on a dig with GSU paleontologist Dr. Gale Bishop and several other GSU

students. They spent about three and a half weeks traveling in Wyoming, South Dakota, Canada, and Montana.

In South Dakota they spent two days on a dig of a sauropod — a creature Baker described as "a dinosaur over 40 feet long that looks like Dino on *The Flintstones*." Working on the thoracic vertebrae and leg bones, they scraped away enough to see the bones taking shape.

After the dig, the small group moved on to the field in search of fossil crabs, lobsters, and fish. "Everyone else knew what to do and I got really frustrated because I had worked for several

hours and hadn't found anything. Then I found five crabs in a row," she said. "To most people they just look like dirt globs, but they actually have a place in time. This kind of work helps you put things into perspective with time instead of space."

The group also toured the Royal Tyrell Museum of Paleontology. "This was kind of fun because the bones that you've been digging suddenly begin to take dimensions," Baker said.

The 22-year-old anthropology major became intrigued by paleontology while in the tenth grade. A simple movie shown

during a biology class sparked this interest, along with encouragement from her father, a biologist.

"The more I've done, the more I like it," she said. "I love genetics and anatomy; the body is such an amazing structure. When I'm in the fossil fields, I feel like I could do this forever and be happy."

Although Baker grew up in Leesburg, Georgia, she attended a prep school in Westtown, Pennsylvania for most of her high school years. She worked in public relations for the American Lung Association in

See Archaeology, page 12

New tradition started at GSU

By Teresa Roach
Features Editor

Who says that good deeds always go unnoticed? Although that may be how it has been in the past, things are about to change.

This Saturday the first annual Black Image Awards ceremony will be held at 7:30 p.m. in the University Union. The awards were created in an effort to increase awareness of achievements made by blacks in the community according to Curtis Woody, founder of the awards.

"They [the awards] provide an opportunity for us to recognize positive role models in the community," he said.

Nominations for the Black Image Awards are open to citi-



zens of Bulloch, Evans, Candler, Screven, and Jenkins counties. Organizers of the event sent notices soliciting nominees out to various civic clubs and organizations in the six counties, Woody said.

Awards are given in six different categories, including business, education, community service, cultural development, spiritual outreach, and political action. An overall excellence

award, the Melisma award, is also presented.

Proceeds from the awards ceremony will go toward scholarship funds at GSU.

The organizers of the ceremony have had good participation and support from various campus organizations and from the African-American caucus, which is sponsoring the event, says Woody.

The event has been sold out for over a week, so attendance is expected to be good.

Hopefully the Black Image Awards will become a regular event that is anticipated by the community.

"It will be nice to have an event that distinguishes our community and makes it unique," Woody said.

Look and Feel
your Best for
Formals!



50% OFF All Programs



Physicians Weight Loss
601 Brannen
(across from Winn
Dixie)
764-9019

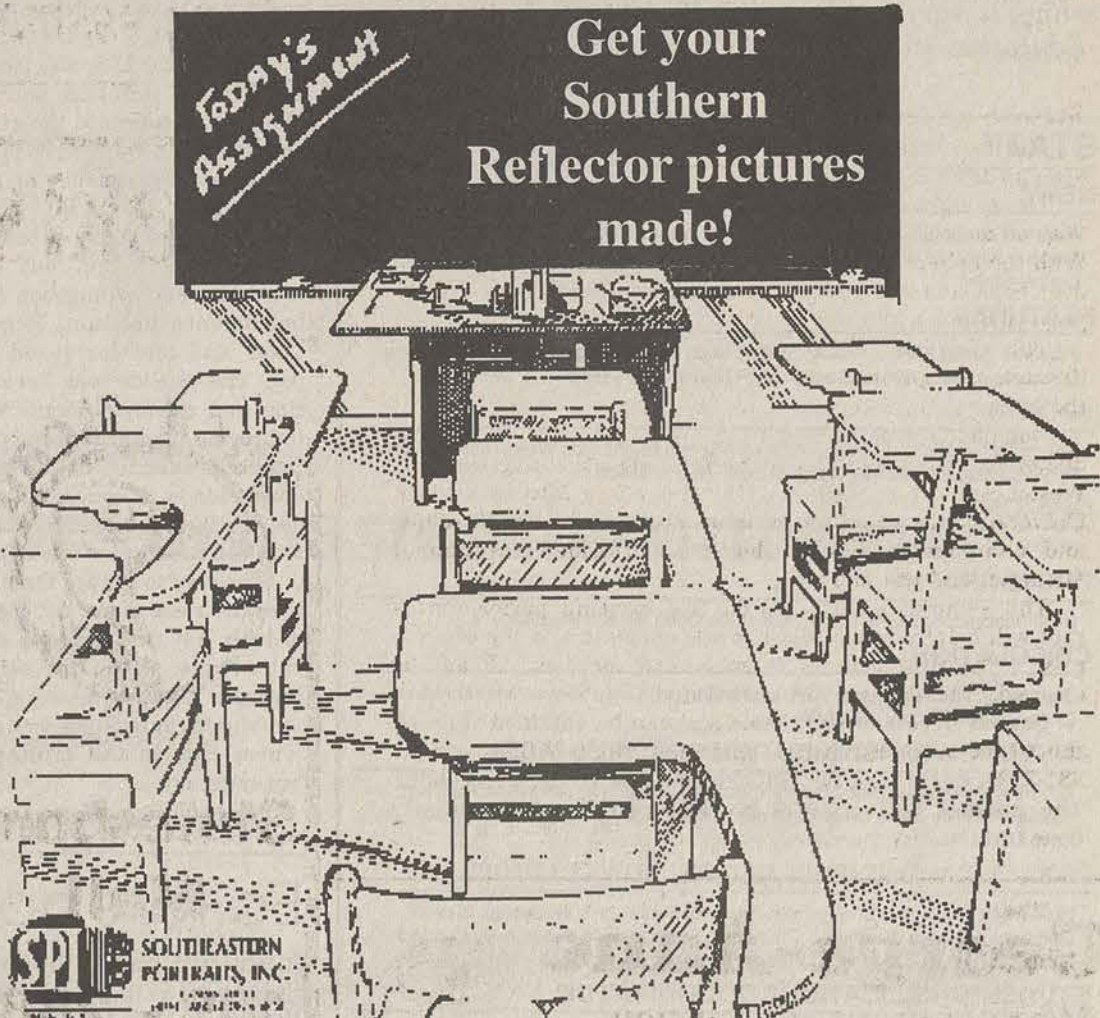
DON'T BE LEFT OUT
MAKE YOUR PLANS TO BE IN YOUR MAGAZINE

ATTENTION: GEORGIA SOUTHERN
1991-1992

SOUTHERN REFLECTOR PORTRAITS
will be taken
Closed Today

Photographer will be back Monday.
8:30-11am & Noon-5pm

Room 108 Williams Center
Come by and pick up your Fall copy of the
Southern Reflector!





The George-Anne

Since 1927, Georgia Southern's Official Student Newspaper

Gary A. Witte
Editor

Kevin Hudson
Managing Editor

Misty McPherson
News Editor

4

Opinions

Liked By Many,
Cussed By Some...
Read By Them All

Friday, November 15, 1991

Open letter to Dave Barry

Editor's note: Tom Llewellyn is the Editor of the Tallahassee, a Florida newspaper. Dave Barry, the nationally syndicated humor columnist, wrote this quarter about the "U.S. National Tick Collection" at GSU.

Guest Columnist

Tom Llewellyn

Dear Dave,
Enjoyed your column on the National Tick Collection. Thought I'd bring you up to date with a follow-up. We newspaper types always like FOLLOW-UPS. They give our readers the impression we don't just "hit-n-run," depositing stories with them and forgetting about the matter until there's another crisis. Makes it look like we REALLY CARE. Don't you agree?

You remember you said the Tick Collection, a million tiny cadavers in jars, was housed at GSU in Statesboro? And that the whole collection probably would fit in a living room? Well, I went to GSU recently. Even got a picture of my daughter by the sign on the front lawn of the fancy-named building where the ticks rest. The ticks are dead, but we were alive with anticipation, knowing we were about to see a MAJOR COLLECTION.

Dave, you told us the government is spending A MILLION DOLLARS over a five year period to care for the dead little arthropods. But you didn't tell us when we could make a pilgrimage to see them.

Naturally, figuring a \$200,000 annual budget is pretty hefty, we walked right up to the door. WOW, WERE WE DISAPPOINTED. Here it was a Monday afternoon, and we were out of luck.

You know what that \$200,000 budget let the curators purchase, Dave? They got this CRUDE COMPUTER-PRINTER NOTICE taped to the door. The

output on a goldenrod-color sheet of paper was like your kid can make with Print Shop on his little 64K Apple.

Although it was tough to read because of the plastic-wrap taped over it (for protection from the elements, you know), the single page carried the simple message that the collection was available for perusal "EVERY WEDNESDAY - 1:30 TO 2:30 P.M." For further information, it gave a phone number. We didn't have the heart to call. We were fearful it would be intertemperate.

EVERY WEDNESDAY? For ONE HOUR? What gives here, anyway?? Were these dead little suckers RESTING OR SOMETHING?? Do they need a lot of QUIET TIME??

Have you been to the institute, Dave? We're talking about a building smack-dab in the of a campus of 12,000 students. We were prepared to sidestep GAZILLIONS OF CURIOUS MATRICULATORS who had read your column and raced, unshaven, hair-wrapped-in-a-towel, to the Institute only to be HEARTBROKEN!

Fortunately, I guess the picketers and protesters had gone home to watch the Falcons on TV. Somehow, downtown Statesboro avoided an ugly protest scene, too. They apparently are taking this government restriction thing in stride.

Well, Dave, gotta run. We'll try again if we get a chance to be in Statesboro on a Wednesday at 1:30. GEEZ...

Other voices...

Gunfire has turned many school grounds into battlegrounds.

Between 1986 and 1990, 65 students and six school employees were killed with guns in schools; 201 were severely wounded; 242 were held hostage.

As many as a half-million students pack guns, according to some estimates.

Across the USA, in rural townships, urban areas and suburban communities, kids with guns are turning the once placid school experience into jolting, bloody shootouts. Recently:

In a Houston suburb, the 17-year-old captain of the football team was gunned down in the school cafeteria by a 15-year-old girl.

In Salt Lake City, a high school coach was wounded trying to break up a fight.

In Washington, D.C., a student kidnapped by two youths near his school was found with five bullets in his head.

This explosive mix has many ingredients: proliferation of guns, drugs, loss of family control, and disregard for human life. It has turned education into an afterthought in some schools, where the first concern is learning to survive.

Education officials are fighting back with beefed-up

See Other voices, page 12

STAFF

NEWS

Assistant News Editor: Brent Parrott; Copy Editor: Missy Lukehart; News Staff: Marlene Allen, Jennifer Booth, Johnnie Goolsby, Nicholyn Hutchinson, Roger Lee, Dennis Smith

FEATURES

Features Editor: Teresa Roach; Staff: Nancy Rowell, Angela McConnell, Donna D'Ambrosio, Doug Gross, Carolyn McWilliams, Trey Decker

SPORTS

Sports Editor: Michael Strong; Assistant Sports Editor: Eric Weisenmiller; Staff: Ricky Coolidge, Cris Smith, Hern Sneed, Rod Swinson

OPINIONS

Staff: B. Birdseye, Philana Griffin, Jason Lewis, Pat O'Kelley, D.J. Smith

PHOTOGRAPHY

Head Photographer: Tony Tocco; Staff: Brice Orrell, Robby Weatherly

CIRCULATION

Supervisor: Glenn Burgess; Staff: Laura Morgan, Cindy Kever, Mike Bowden, Chris Shelnett, Robby Weatherly

ADVERTISING/DISTRIBUTION SERVICES (ADS)

Advertising Manager: Stacy Graham; Business Manager: Jeff White; Business Assistant: Kelley Hare; Sales Representatives: Kerry Calhoun, Kelly Dotson, Jay Knight, Clint Rushing, Brent Sammons

PRODUCTION AND GRAPHICS EDITORIAL SERVICES (PAGES)

Production Manager: Sherry Dyal; Production Assistant: Managers: Steven Gundersen, Barbie Westberry; Production Staff: Keisha Davis, Kelly Kendrick, Debi Dow, Brenda Dowling; Darkroom Manager: Tony Tocco

STUDENT PUBLICATIONS COORDINATOR

Bill Neville

Put gun deaths into perspective

It recently occurred to me that we are presently being subjected to a propaganda blitz the likes of which would leave Joseph Goebbels stunned, but proud. I am speaking of the anti-gun crusade.

Every incident involving firearms is given maximum coverage and publicity by the media and is responded to with a flood of legislative proposals to restrict or ban firearms in some way.

The number of prime-time entertainment programs that have had the evils of firearms worked into their plots is myriad.

Of course, it is difficult to go against such proposals. After all, who wants to appear to be in favor of continued mass-murder? But I think it is time that we tried to put all this in some kind of perspective.

The main reason everyone cites for banning firearms is to stop the needless killing. We are told by the activists it's time we did something about it. But even though it has proven nearly

Let me see if I got this straight

D. J. Smith



worthless for stopping crime in such states as New York, the solution offered most often by the activists is some form of ban.

And how many deaths are we talking about here? Well, in Savannah we've seen about sixty this year - a record breaking year. In Houston, once the nation's worst for homicides, averages about one death per day.

Nationwide, it is estimated that 23,000 deaths result from firearms annually (keep in mind that figure includes all deaths, criminal, accidental, and justifiable). But for the sake of argument, to keep the numbers even, and to make sure that I don't have a low estimate, let's use the figure of 25,000 deaths due to fire-

arms each year.

I'll admit that's a lot of people dead, and it's our own American brand of tragedy, but it's still only one-half the number of people killed on the nation's highways. I don't hear anyone suggesting that we should ban the family station wagon, or have our sports cars confiscated.

But when it comes to mass death, we're still dealing in child's play. We could give every man, woman, and child a handgun and a rifle, 5000 rounds of ammunition for each, a case of whiskey, a bag of dope, and the keys to 500-horsepower sports cars, and let them all run rampant for a year (sounds like L.A.), and I daresay the resulting

carnage still wouldn't approach the number of people who die from illnesses related to the use of tobacco each year.

According to a little news item I recently heard on the radio, that figure presently stands at 350,000 per year, and I feel sure that careful analysis would reveal that to be a low figure.

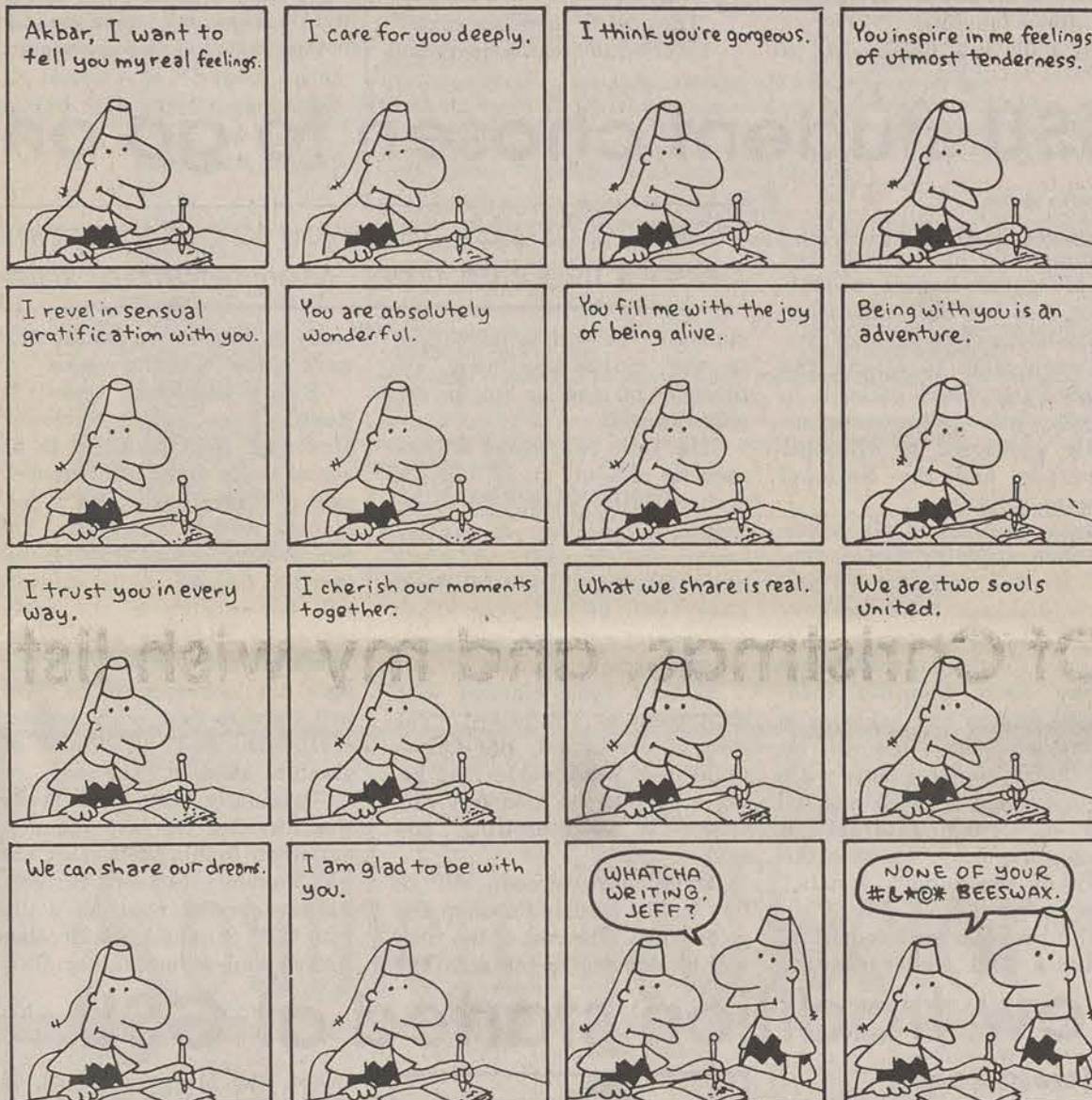
And far from banning tobacco, we presently subsidize the tobacco industry with Federal Tax Dollars! That's right, folks. The same fine leaders who gave us a multi-trillion dollar national debt also see fit to give our tax dollars to people who sell highly addictive poisonous substances, at tremendous profit, to our family, friends, children - and us.

While millions starve worldwide, we use thousands of acres of farmland to grow tobacco instead of corn, soybeans, and wheat.

Here's another way of putting it into perspective. Ask yourself how

See Gun deaths, page 12

LIFE IN HELL



©1991 BY MATT GROENING

Letters to the Editor

Pointing fingers at Republicans doesn't solve problems

Dear Editor,

Jason Lewis went looking for a scapegoat for all of today's problems, and he chose the Republican party. First he blamed the so-called rise in racism on the GOP, then the economy. Let's focus on the economy first.

In 1981, the U.S. was faced with the highest inflation and unemployment rates since the great depression. We were also facing a weak national defense at a time when U.S.-U.S.S.R. relations could be called shaky at best.

In order to get out of the recession, and strengthen our global defense position, Regan cut taxes and increased spending. The up-side was lower inflation and unemployment. We also improved our bargaining power at the peace summits of the '80s. The down-side is, of course, the budget deficit. But this country has been running a deficit since FDR.

The way to reduce the deficit is to either raise taxes, cut spending, or both. Yet raising taxes is political suicide, which leaves spending cuts. Cutting social spending is political suicide as well, which leaves cuts in the military and bureaucracy.

Recent Bush efforts to cut de-

fense spending have been well received. But government fat-cats, both Democrats and Republicans, have continually voted themselves raises and perquisites like free mail, long distance calling, use of public funds for vacations (i.e., the ever-popular "fact-finding mission"), and the privilege of not paying parking tickets, bounced check fees, or restaurant tabs.

Not even laws like Gramm-Rudman-Hollings could put actions like these in check.

Now let me turn to racism. First of all, in our free society, the GOP could not prevent David Duke from joining their party. In fact, Republicans have done everything they can do to distance themselves from a man who has based so much of his life on hate. Bush himself said that if he lived in Louisiana, he would vote for Duke's Democratic opponent.

Secondly, I have no idea as to how you can blame Regan, Bush, and the entire Republican party for racism in America today.

Racism has invaded every society in the world since time began. It is spread by ignorant and intolerant people. In fact, some famous racists who come to mind are George Wallace, Lester

Maddox, and Orval Faubus, all Democrats.

What all open-minded, mature Americans should be aiming for is a society in which, to paraphrase Martin Luther King, Jr., people are judged not by the color of their skin, but by the content of their characters.

And if this nation is to truly be equal, we must eliminate all discrimination. That means giving every person an equal opportunity.

We cannot continue to grant favors to people based solely on their skin color, white or black.

Use of quotas perpetuates the idea that minorities are incapable of getting jobs without government intervention.

Such use also gives people such as David Duke an outlet through which to foster hate for others.

In closing, let me say that I don't entire disagree with Lewis. This country is faced with serious problems ... But when people choose to pick sides and blindly accuse large groups of people, instead of placing differences aside to work together, we fail to grow

See Republicans, page 12

Witch article accurate

Dear Editor,

On behalf of the Coven of the Red Dragon, I would like to express my thanks... My confidence and that of many other Wiccans has been completely restored in the fact that the truth can be reported accurately and without prejudice.

A copy of the articles ["Local witch speaks out," Oct. 29] have been sent to the Witches League of Public Awareness (WLPA) to add to their files and public awareness

profiles.

If the articles are approved, they will be put in the monthly newsletter that the WLPA sends out to people all over the United States.

You might be reaching more people than you ever imagined... May your life be full of many different paths lighted with love.

Name withheld by request

LETTER AND SUBMISSION POLICY

The George-Anne welcomes letters to the editor, story submissions and guest columns from people both inside and outside the Georgia Southern University Community. All copy submitted should be typed (double-spaced, please), preferably on Macintosh disk in Microsoft Word or Microsoft Works format. All submissions must be signed and include a mailing address and phone number for verification. The editors reserve the right to reject any submission. There is no word limit on submissions. A writer may request to remain anonymous. However, it will be the editor's decision whether or not to print the name. Submissions are run on a space-available basis.

The year and quarter (angrily) in review

Well now, it's near the end of the quarter, and this boy, for one, is durn glad of it.

It's been one misery after another — first off, there was that Dahmer knucklehead (and I don't mean nothing perverse in that word — it just come out) set me to wondering during the summer, and you got yer Clarence Thomas hearings, which was to government about the same as Moms Mabley was to Leontyne Price.

For you younguns, what I mean is that them confirmation hearings just has to remind you of what Pee Wee Herman got caught doing in that theatre, except it didn't feel good even when it was all done, and it was a sight sloppier, too.

And it gets worse, not better. One of the Kennedys gets accused of rape, which in itself ain't no big deal, but then it's like we got to think of horny drunks as news, which they ain't on account of there ain't nothing more common and even Baptists know it.

But what stiffens my grits is that I got to see "serious TV journalists" acting like it's news that one horny drunk in particular got some woman back to "the Kennedy Compound" — what I want to know is who gives a shit?

But then, it comes to Buck — it comes home right here at GSU. Well, I about kicked a puppy over it.

See, I had whatchacall yer CPC deficiency on account of I took too much auto shop in high school (back when the average American could make a living knowing about American cars that was actually made in America), and so I could tell you about blown gaskets (no reference to nothing about the Kennedys), but I could not tell you the difference between schist and garnet.

So I signed up for Physics 151, which the advisor tole me was for ignoramuses who needed a CPC fix-up.

Well, it weren't no gut course

Man about campus...

Buck Birdseye



— and the professor had us measuring the distance to Pluto in centimeters, and my term project was an atom bomb plan, I go through this entire quarter watching po' young folk hyperventilating like gut-shot deer, and then Dr. Happy Man (not his real name — his real name sounds like some drinking game) tell us he gone fail our slack butts on account we ain't scientific.

Looky here, Dr. Happy Man, my buddy over to Dow has got himself some of that explosive I wrote on in my atom bomb project. Guess what you gone get for Christmas: that's right, some scientific method in yo' backyard.

But I'm just grinding my gears on that feller. See, the thing is, the bad news keep on coming. No sooner has Jeff Dahmer evaporated from the headlines than a misguided firearm owner has to go and ruin a whole bunch of folks' lunch in Texas.

That 'bout made me puke, but the next day, George Bush has the gall to write a memorandum telling congress how essential it is that we keep our right to have semi-automatic pistols with seventeen-round clips.

I been deer hunting since I could wipe my own fenders, people, and I own me a fine bolt-action infantry rifle. Fact is, the best hunter I know shoots him a muzzle-loading flintlock he made hisself. And to tell you the stone truth, if someone was out to kill me, I'd be worried if he had a sixty dollar surplus single-shot rifle that was sighted right.

But I swear before God that I don't never think I'm gone see a serious hunter using a pistol with a seventeen round clip, unless he's hunting people in a crowded

room.

Mr. Bush, I hope somebody uses pictures of the twenty-three dead texans from that restaurant the way used Willie Horton's picture in 1988.

And you ain't no Texan, you Connecticut-Yankee-son-of-a-U.S.senator-Yale-graduated-butt-kissing-rich-folk-loving-abortion-is-murder-but-the-death-penalty-is-just-oil-baron-jackleg. You never was and never will be one of the people. And I'll come out and say it, but I will admit that the Democrats ain't got hawk, much less spit.

But I guess I'm just getting ornery now. Maybe it's on account of Magic Johnson having tested HIV positive. See, I got ears, and I'll admit I'm a country honky (or is that honkey, or is it something with redneck and mother in it?), but I hate to say it — I sorta wish it was Larry Bird or Bill Laimbeer who had gotten it.

Wait! I can explain. It's been a long time now that all them righteous and perfectly pure christian folk been saying things just shy of it's all right that fags and drug-shooters get AIDS. So now what do I hear? I hear some folks saying that Magic's queer. I hear others saying that it's par for the course, on account of he's an African-American.

I only got this to say: I am a Sorry Christian and I admit it, but when lepers was cast out, Jesus loved them. And I am sick to death of the kinds of Christians who keep on qualifying their damned love — like, let's love and fight for fudal, muslim, oil-rich sheikdoms, but let the Serbs blow away the Croatians, who have perposterous wants like freedom and indopendance.

Of Christmas, and my wish list

I strongly wish for what I faintly hope:

Like the day dreams of melancholy men,

I think and think on things impossible,

Yet love to wander in that golden maze.

John Dryden

This is the last Friday edition of the *George-Anne* for this quarter, so you won't hear from me again until 1992.

Okay, hold the cheering down until I get through.

Before I go, I'd like to pontificate a little about that glorious holiday we call Christmas.

Personally, I don't think anyone should mention Christmas until the first of December. Unfortunately those unmerciful commercials for Christmas albums have already started.

Whoever came up with the idea of dogs barking carols should be hung by their mistletoes.

Anyway, this is my last chance, so here it goes.

First of all, let me come to the defense of my beleaguered editor. You may have read his Halloween column in which he pointed out the non-Christian origins of Christmas.

One reader wrote in to warn him about stepping on certain toes. Was she referring to God's toes? I assume she meant that figuratively.

At any rate, I think he was making the point that we should just lighten up and not worry so much about about "paganistic" influences.

Of course he could be "Satan's little helper" in a crusade to possess all our souls. Just kidding... I think.

I don't claim to know Gary's religious convictions — if he has any — but I think it's rather presumptuous for someone else to question his values, as this reader did in her letter.

If he doesn't share that reader's values, it's none of her business. This is still America.

Now, for the fun stuff. As is the custom in our culture, I'll make a Christmas wish list.

Here are my top ten wishes.

10) I wish the economy would make a miraculous recovery, so we can all have a bountiful holiday.

9) I wish game seven of the

Points to ponder...

Jason Lewis



World Series would be replayed — in Atlanta.

8) I wish George Bush wouldn't drop Dan Quayle in '92.

7) I wish GSU's basketball team would win a national championship. We need to diversify.

6) I wish for a brand new, remote control laser disc player. (Can't I be selfish sometimes?)

5) I wish I could be more un-

derstanding of people with conservative views, NOT!

4) If wish #10 doesn't come true, I wish the Democrats would milk it for all it's worth and win a crushing victory over Bush in '92.

3) I wish for world peace. (Obligatory)

2) I wish that about half the student body would decide to drop out over the Christmas break. It's too damn crowded here.

1) I wish it would snow — a whole bunch. Don't you just love that?

Now start making out your wish list. But while you're doing that, take time to count your blessings as well. I have.

Does this look familiar?

Our computers can solve your problems?



Apple Macintosh,

Zenith (IBM compatible),

IBM Laptops, and our newest

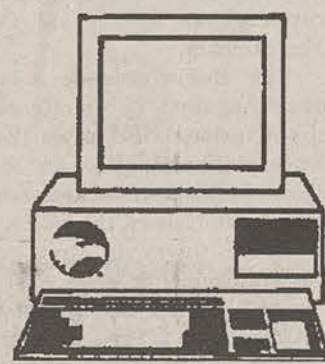
Creative computer

(IBM compatible).

Wordperfect 5.1 —

\$135.00 Quattro Pro

\$69.95 Paradox — \$69.95

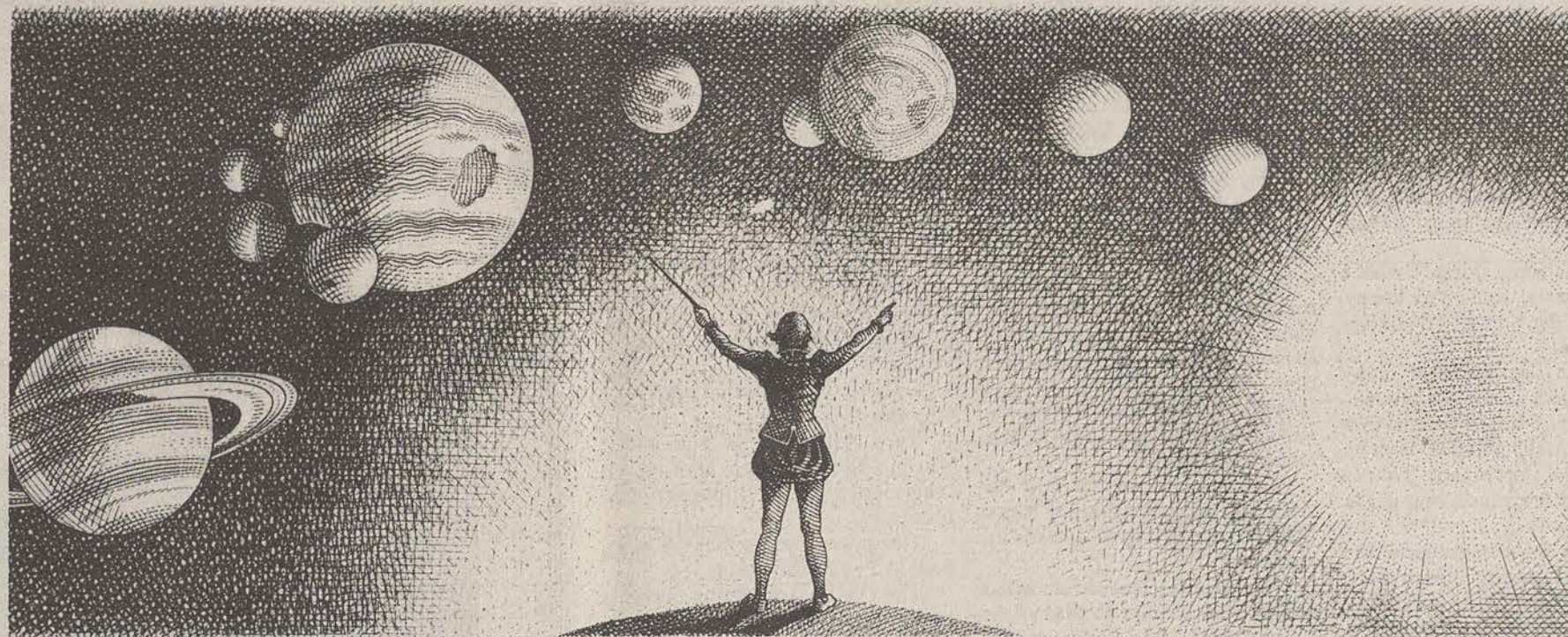


EAGLE'S LOGIC

UNIVERSITY COMPUTER STORE

Monday — Friday
8:00 — 5:00

Phone: 681-0454



It took Galileo 16 years to master the universe. You have one night.

It seems unfair. The genius had all that time. While you have a few short hours to learn your sun spots from your satellites before the dreaded astronomy exam.

On the other hand, Vivarin gives you the definite advantage. It helps keep you awake and mentally alert for hours. Safely and conveniently. So even when the subject matter's dull, your mind will stay razor sharp.

If Galileo had used Vivarin, maybe he could have mastered the solar system faster, too.

Revive with VIVARIN®



Use as directed. Contains caffeine equivalent of two cups of coffee. © 1990 Smithline Beecham



Strong Points

By Michael Strong
Sports Editor (for the moment)

Well, my reign of obnoxiousness around the *George-Anne* is drawing to an end.

This will be my last column — probably.

My trusty assistant Eric Weisenmiller will occupy this space starting next quarter, as I will be stepping down as sports editor.

Over the past two years or so I've seen a lot of things happen here at GSU. Buildings have been built, the trailer park over by South Building got bigger, a new football coach came to replace the legend that was here and we even got a new parking lot (not that anybody uses it because it's so far away from anything, but I guess it's the thought that counts.)

I've seen the football team win two championships, the baseball team get to the College World Series and the basketball team lose three years in a row in the first round of the TAAC tournament.

The men's soccer team, the ladies volleyball team and men's golf team all made significant improvements.

I can say I was here when GSU decided to join the Southern Conference. If we don't make it to the playoffs, I may see another football coach leave.

I've held three or four positions here at the newspaper, three of them at one time this past summer. I think that is some sort of record for the *George-Anne*.

I guess I've seen a lot in my two years plus here at GSU, but there are some things I wish I could have seen some other things like: An NCAA playoff berth from the basketball team, Mike Dowis kick the championship winning field goal in person instead of sitting on the couch at 11 p.m. after working at the mall for eight hours, Erk Russell shave his head, Tim Stowers shave his head, Jeff "Slim" Hagans make a three-pointer.

There are other non-sports things I would've liked to have seen, such as: The administration show a spine and build a new dorm on campus instead of giving in to pressure from local developers and giving up on the project, CAB (now UP) schedule somebody other than Taylor Dayne, the library have a book that I need for a term paper and Dave Moskowitz speak with a southern accent for an entire class period.

I would have loved to have seen a real snow down here. Not one of those quarter on an inch blizzards that normally occurs, but the kind where you have to go out and shovel for three hours to get it off the driveway.

It's an odd wish list, but if you worked up here as long as I did, you'd like see some weird things too.

I've done some things I wish I did differently, some I'm happy with, but I don't think I'd change any of them.

It's been two years of many changes and exciting times. Fortunately, I was a part of this time in a unique position, both as observer and participant. That is a view point few people ever get to enjoy.

I'll miss the camaraderie and the constant teasing of each other up here in the office. I won't get to pick on Gary for being such a ROTC geek, Teresa for being

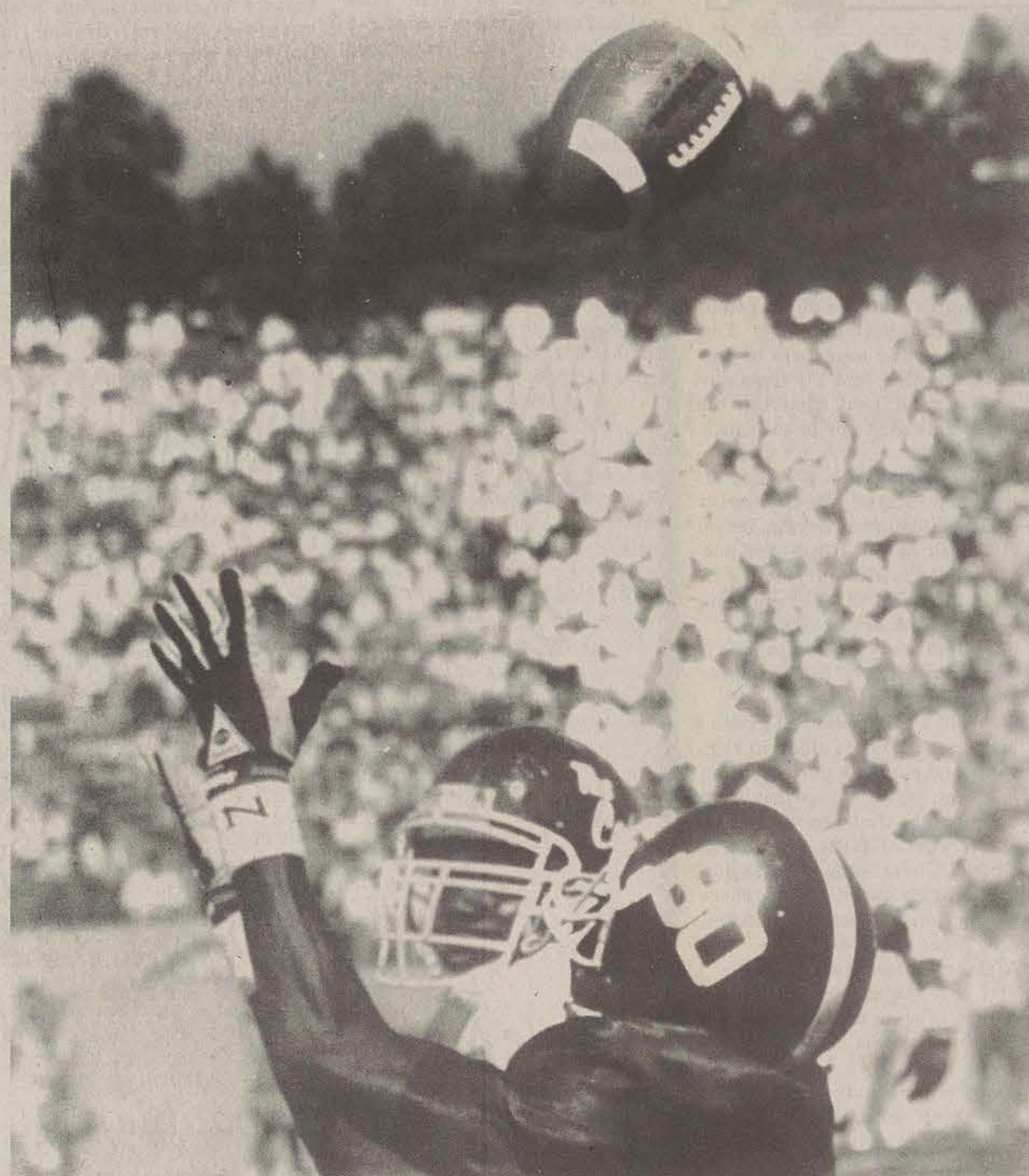
Teresa, Clint for having a bad haircut everyday of his life, Tony for being a brainless slob and Misty for reasons I cannot list here. I do have some ethics. All of which were done in jest, except for Gary being a ROTC geek. He is, but I guess better him than me.

I won't miss being up here late on Sunday nights or the world's slowest computer, "George."

I have no piece of advice, no words of wisdom or even anything clever to say as I leave because I'm going to miss this and it's hard to be eloquent or witty when you stop doing something that you enjoy it so much.

Good bye.

Eagles to pop Trojans



Split end Deryl Belser makes another spectacular catch. The Eagles will be in action against Troy State for the Homecoming Game this weekend. The Eagles need a win to keep their playoff hopes alive. (File photo)

Eagles play Trojans

By Eric Weisenmiller
Assistant Sports Editor

The 5-4 Eagles will be looking to project their best image on the football field this Saturday.

Besides being the Homecoming game, this week's match-up will be an opportunity for the Eagles to plead their case for playoff life.

GSU enters the game with only an outside shot at regaining a post-season appearance. They will be aiming to impress the pollsters and muster some crucial top 20 votes.

GSU fell out of the polls two weeks ago after a loss to Youngstown State, 19-17.

Even if the voters take into consideration the strength of GSU's schedule, the Eagles will have to win both of remaining games in impressive fashion to have any chance to slip into the playoffs with a 7-4 record.

The Eagles will take on the Division I-AA Troy State Trojans who are currently 5-5.

Troy State's athletic program is currently in a transitional phase.

Coach Larry Blakeney's team is in the first year of a two-year compliance period which will move the Trojan program from Division II to the I-AA classification. TSU is looking to use Georgia Southern as a stepping stone toward recognition in the higher division.

The strength of the TSU defense lies in its linebacker corps. Junior Scott Collins will head up that unit.

The Trojans feature an offensive scheme similar to that of the Youngstown State Penguins. The

Eagles will be looking to shut down the option based attack with the same defensive unit that has carried them all season long.

"If they are going to beat us, they are gonna have to beat us by running the ball," said Coach Tim Stowers.

The Eagle defense was adequate against YSU's offense. In characteristic GSU style the defense stiffened after an initial shaky start, and became revitalized to shut down the option. The offensive flurry in that game, however, came too late.

As has been the case throughout the course of the season, the offensive unit is still trying to find some consistency. They have yet to played four full quarters of efficient football.

Statesboro native Derrick McGrady will be expected to get the starting nod at quarterback for the Eagles.

McGrady has proven that he can be effective in leading the offense. He has sparked the offense twice this year with fourth quarter comeback attempts.

He will need to get the offense off to a quick start on Saturday against the Trojans. Then the offense will continue to function on all cylinders to gather the needed support.

GSU returns to action after an off week.

They will need to win—and win big—to plead their case as a team deserving of a playoff opportunity.

The game is set to kick-off at 1 p.m. at Paulson Stadium.

The GSU Homecoming Queen will be crowned during the halftime festivities.

Do
something
good.

Feel
something
real.

From now on in America, any definition of a successful life must include serving others. To find out how you can help in your community, call 1 (800) 677-5515.

POINTS OF LIGHT
FOUNDATION



Take part of Statesboro home
for Thanksgiving and Christmas

Make Mom & Dad happy for less than \$10⁹⁹

Statesboro Christmas
Ornament



Gift Baskets with
Regional Products



Statesboro Visitors Bureau 204 S. Main 489-1869

EAGLETM

GOLF CENTER

LOCATED BEHIND PAULSON
STADIUM NEXT TO THE
SOUTHERN BOOSTERS
WATER TOWER



- LARGE PUTTING GREEN
- RANGE BALLS \$2.00 PER BUCKET
- PRIVATE GOLF LESSONS
- GOLF SUPPLIES FOR SALE

- RANGE IS OPEN DURING GOLF CLASSES

GEORGIA SOUTHERN GOLF COACH
DOUG GORDIN WILL BE GLAD TO ASSIST
YOU IN ANY WAY, FROM CHURCH
GROUPS TO PRIVATE INSTRUCTION

OPEN DAILY, MONDAY-SATURDAY
(except for home football games)

PRO SHOP - 681-9100



Seniors



Come find out about
The College Graduate
Program

- Easy Financing
- A low Down Payment,
(if you purchase)
- A \$500 Certificate

ALTMAN



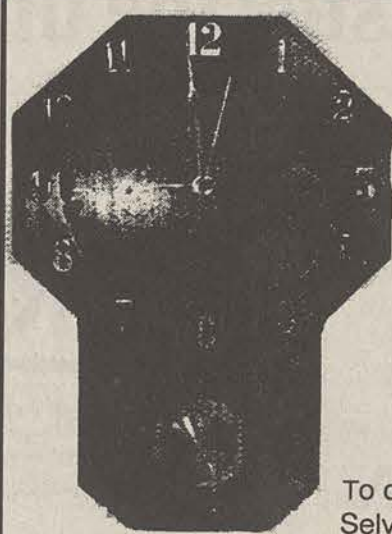
PONTIAC BUICK GMC

CAMBRIDGE DRY GOODS



The
Traffic
Light.

764-7677
Statesboro Mall



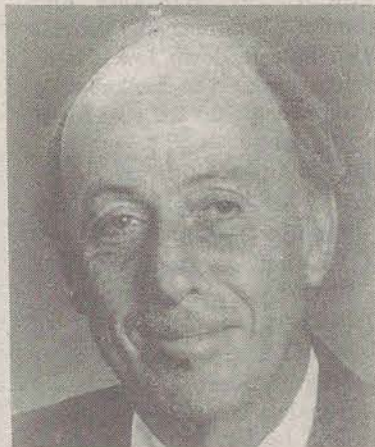
GSU CLOCK
\$45

Place your order today!
Limited supply

Southern Consolidated Industries is producing a GSU Eagle clock with 8" golden pendulum. The clock has arabic numerals surrounding the authentic Georgia Southern University Eagle logo. The stain is early American and the total length of the clock will be 17 1/4".

To order, Contact: SCI c/o Lewis Selvidge LB# 8044 (912) 681-5422

Q & A with men's coach Frank Kerns



Q: Do you see any problems developing because of the quantity of all the new faces coming into the program? You have six players returning but are adding eight.

A: We have a lot of new faces, but by the same token, we have a lot of experience on the perimeter (entire outside game returns). I think it is a positive thing within a program and I don't think it will be a problem.

Q: What are your thoughts on last season-- finishing third in the league, not participating in post-season play for the second consecutive year and winding up with a 14-13 record?

A: I thought it was a disappointment even though we had a decent season. I felt like we were more talented than the way we played. We lost a lot of close games and underachieved.

Q: What are your early feelings heading into the 1991-92 season?

A: We are excited about the return of most of our perimeter players so we are going to have a lot of depth and experience there. We improved at the four (power forward) and five (center) spots although we do not have the size and depth there. We have and did sign some really sound players with great talents there. They all appear to really want to play and be successful.

Q: On paper, one weakness evident is the lack of size in the paint. Last season you had a front line which consisted of 7-0, 6-10, 6-10. This year, a look at the roster shows no one over 6-6. How will you deal with that?

A: I think a 6-6 player with strength can give a 7-0 kid just as many problems as someone as big. It enables us to have a lot of versatility because usually they are better runners and, quite often, are quicker to the ball. That's one of the reasons why we are not concerned about that. We might run into certain teams where this could be a problem but I think overall we like the concept of 6-6, 6-7 athletes playing. I'm looking forward to seeing them play.

Q: What are your thoughts about the schedule and the Trans America Athletic Conference? Do you see any differences in the league because it is your last year in the league?

A: I think the TAAC will be like it always is. Every night will be a real struggle whether you are at home or on the road. The way conference basketball ought to be. I don't see a change in anything because it's our last year. I hope we can be competitive and win it because it is our last season. We'll strive for that. I think it'll be the old TAAC -- very competitive basketball.

Q: What about the loss of Arkansas-Little Rock and Texas-San Antonio?

Those teams were very talented teams throughout most of its years in the league. By the same token, I think Florida International and Southeastern Louisiana are going to be much better than some people are anticipating. They have some excellent players, experience and are extremely well-coached so I think it will be an exciting entry for them into the league. I think the talent in this league will be very even so I see a dogfight every night-- as it always has been.

Q: What about the non-conference schedule?

A: We're playing Appalachian State and Furman in anticipation of going into the Southern Conference (official start is 1993). Those will certainly be one of the better, more experience teams in the Southern Conference. We have mixed emotions about that (going against two of the better SoCon teams that early in the season). That should give us a barometer of where we are in comparison to the top teams in that league.

Q & A with women's coach Drema Greer



Q: How will you fill the void left by the graduation of Tracy Wilson?

A: What we've concentrated on this year is filling that void by teamwork. We have much more depth this year than we've ever had. We have more depth at each position than we've ever had, so we feel that we should have some other people besides the post people to step-up and produce points and make more of a contribution. Our guards are going to become more offensive minded.

In addition to our retuning offensive threats, the people that we recruited this year should be able to step-up and put the ball in the hole for us more effectively this year than ever before. Stephanie Christmas--a partial starter last year--has come back much stronger this year. Toy Williams is also playing well.

One of the new post players that we are surprised with is Marysue James. She has improved drastically since she has been here. We feel that Marysue could possibly be a contender for a starting role later on in the season.

Q: How do you feel about the strength of this year's schedule?

A: Our schedule, year in and year out, has always been tough. We'll be going to the N.C. State tournament--of course they are a national powerhouse. South Carolina is also a powerhouse. We will play Florida from the SEC who is an improved team. These teams will be enough to handle. We also have some games with NAIA opponents.

Georgia Southern is in a position right now where teams don't want to play us. We are on that level where if we beat them it makes them look bad and if they beat us it really doesn't do much for them. It's kind of like GSU playing Auburn in football. It's

tough for us to continue to schedule games with quality Division I teams.

Q: What preparations have you made as far as recruiting looking toward the move to the Southern Conference next year?

A: That was the sole intent of our recruiting this past year. We decided to go ahead and sign those nine players last year rather than sign five or six and then hold some of those off until this year's recruiting class. We decided to go ahead and sign all of those people this year so that we would be prepared going into the Southern Conference. Those youngsters would already have a year of experience rather than throwing a group of freshmen to the wolves.

Q: How large of a role will Gwen Thomas play on this team?

A: Gwen is going to play a large role, but I think that it's something that may even be a bit of a let down for some people this year. Gwen is the senior with all the impressive stats and experience, yet their is so much intersquad competition on this team. Because of our depth we should be able to keep five fresh people on the floor for forty minutes. Gwen will play a large role, but I think that it's important for us to note that our depth is going to make people that last year played for forty minutes, not play for forty minutes. It will give our players more of a rest.

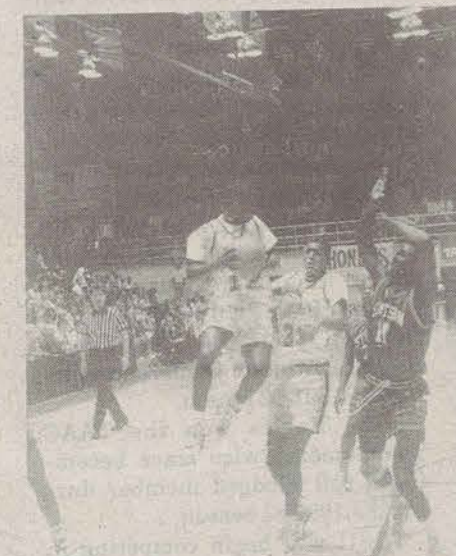
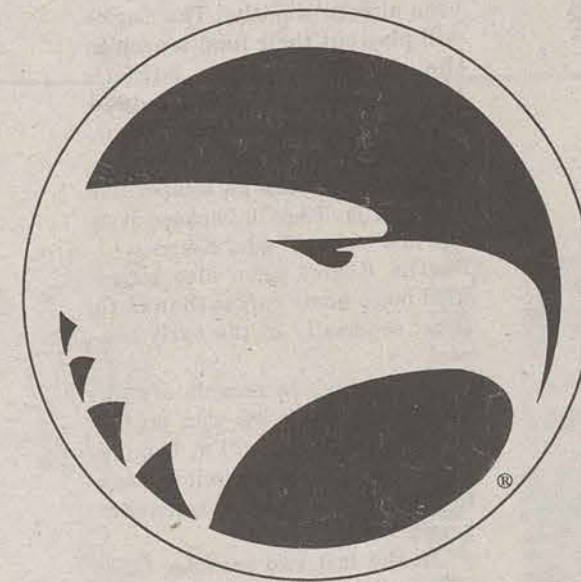
Q: How will the other returning starters--Andrea Stults and Jill Dunn--fit in to the scheme?

A: Andrea has returned from playing the point last year understanding what I want out of her more this year. She is doing a better job of running the point guard position right now.

Jill Dunn is playing right now with much more confidence than she has ever played with in the past. People are going to have to contend with Jill's shooting; she is a pure shooter. This year we have the situation where if the opposition keys on Gwen it leaves the perimeter open where Jill can knock it dead. If they key on her then it'll open up the inside game. So finally we possess an inside and an outside game.

Eagle Basketball 91-92

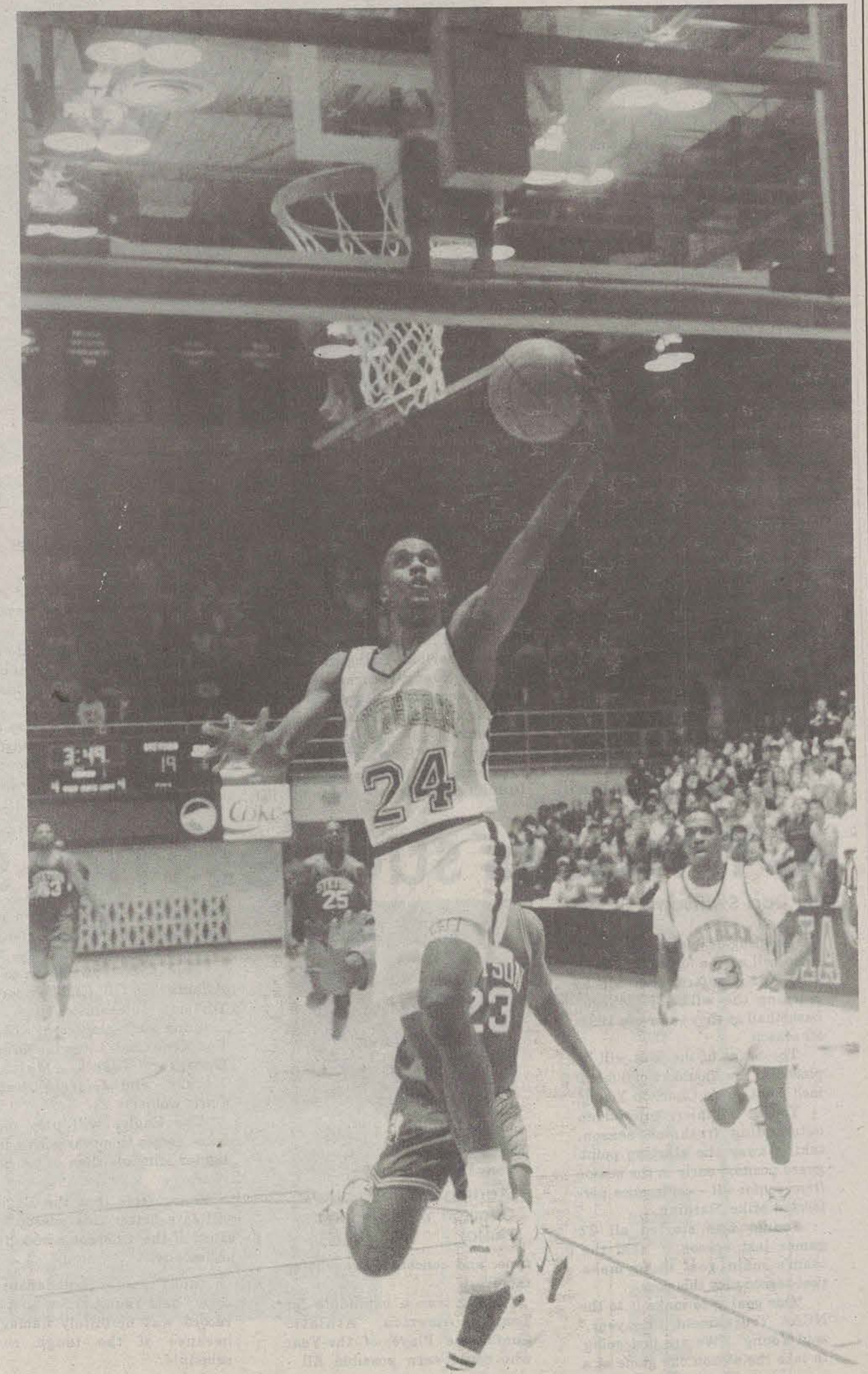
A preview of the upcoming season



Eagles hungry for NCAA's. See page 2.



Lady Eagles to use depth. See page 3.



Men's team looking for NCAA berth

By Rod Swinson

Staff Writer

The 1991-92 version of the GSU men's basketball team will not have its traditional look.

GSU fans are accustomed to seeing a big man in the middle surrounded by a complementing cast.

This years team will break that tradition.

Head Coach Frank Kerns and staff have spent the off-season searching for talent to revive a program which strayed off course the last two seasons.

The team has made some wholesale changes that has changed the usual structure of the team.

This years team will be missing the traditional big man in the middle. Last year the Eagles had 7 feet center Emmett Smith, 6 feet 10 inch Cal Ferguson and 6 feet 10 inch Jeff Hagans.

But this year eight of the 15 roster slots will be filled by GSU's tallest players at 6 feet 6 inch.

"I think a 6-6 player with strength can give a 7 feet kid just as many problems as someone as big," said Kerns. "I think overall we like the concept of 6-6, 6-7 athletes playing. I'm looking forward to seeing them play."

The Eagles also made wholesale changes in personnel.

The staff went out and recruited eight new faces to infiltrate the roster to allow a few more options to find a power forward and center.

These new faces did not travel far. Seven roster players hail from the state of Georgia. Only



Senior forward Tony Windless snags a rebound for the Eagles. (Photo by Tony Tocco)

two of the 15 players come from areas outside of the Southeast.

The Eagles will return a solid leader with two-time All-TAAC choice Charlton Young at point guard. Young returns as the Eagles' second leading scorer averaging 13.8 points and 4.5 assists per game.

Senior forward Tony Windless, who is the Eagles top returning scorer, is expected to have

an outstanding season and lend some stability to the new players.

Also expected to contribute are Monty Noblitt and Wendell Charles who hopes to make his final season his best.

The coaching staff is also expected big things from transfer Roger Montgomery who they say has the ability to play every position on the floor.

Another thing in the Eagles favor this year is their regular season schedule.

The scheduling philosophy has been altered slightly. The Eagles will play out their final season in the Trans America Athletic Conference and have added games against several local, non-NCAA I opponents.

"I hope we can be competitive and win it (TAAC), because it is our last season," said Kerns.

The Eagles have also scheduled more home games than in the past, especially in the early season.

"Our previous records are impressive because we won on the road," said Kerns. "I'm looking forward to this because it lessens to some degree the pre-conference grind."

In the last two seasons, GSU has had 11 total home games. They have played a combined four home games before the Christmas holidays.

This seas the Eagles have 15 home events and for the first time since the 1985-86 season, the Eagles have six games at Hanner Fieldhouse before Dec. 25.

The Eagles are expected to display a quicker and more exciting offense than in previous years.

The team will conduct its farewell tour of the Trans America Athletic Conference during the 1991-92 season.

The Eagles won the TAAC Tournament twice since becoming a full Fledged member during the 1980-81 season.

GSU will begin competing in the Southern Conference in the winter of the 1992-93 year.

CY wants success not stardom

By Rod Swinson

Staff Writer

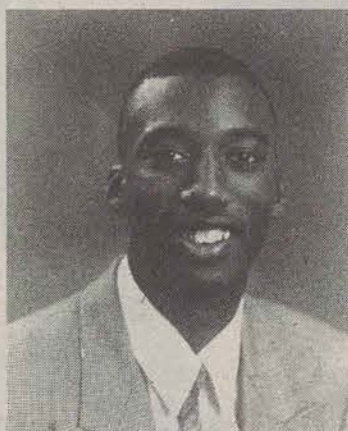
The Eagles men's basketball team will need a force to help stabilize the new faces that will be learning the wilds of "college" basketball as they enter the 1991-92 season.

The brunt of the load will be placed on the shoulders of 6 feet 2 inch point guard Charlton Young.

Young, a junior, enjoyed an outstanding freshmen season, taking away the starting point guard position early in the season from senior all-conference performer Mike Harding.

Young, who started all 27 games last season, said the team's main goal is to make post-season play this year.

"Our goal is to make it to the NCAA Tournament this year," said Young. "We are just going to take the season one game at a



Starting point guard Charlton Young. (Special Photo)

time, and concentrate on being there."

Young was a candidate for Trans America Athletic Conference Player-of-the-Year who could earn possible All-

America honors after two successful seasons as the Eagles top point guard.

Young was also chosen to the Atlanta Tip-Off Club's Georgia Division I Team-of-the-Year. (Joining such players as UGA's Rod Cole and Litterial Green, Georgia Tech's Malcolm Mackey, and Georgia State's Chris Collier)

The Eagles will play more home games this year with a little lighter schedule than in previous years.

Young feels that the Eagles will fare better this season because of the different scheduling philosophy.

"Road games will drain a team," said Young. "I feel that our record was definitely damaged because of the tough road schedule."

"Coach realized we had nine new players," said Young. "Our non-conference schedule will allow for those players to adjust to our type ball."

The Eagles have had some rough practices during the pre-season with high emotions from both the players and coaches.

"Coach Kerns is trying to motivate us," said Young. "He knows what it takes to get us going and he does what it takes."

Young does want to play basketball at the next level, but is now just focussed on doing what he can to better his current team.

"Sure, I would love to play at the next level because I just love to play the game," said Young. "But right now, I'm just focussing on the season at hand and doing what I can to help the Eagles win."

Depth key to ladies success

By Eric Weisenmiller

Assistant Sports Editor

Some mighty big shoes were left vacant on Georgia Southern's Womens Basketball team after last year's season. The empty pair of Nike's in question are those which belonged to Tracy Wilson—last year's team leader and biggest impact player for the Lady Eagles.

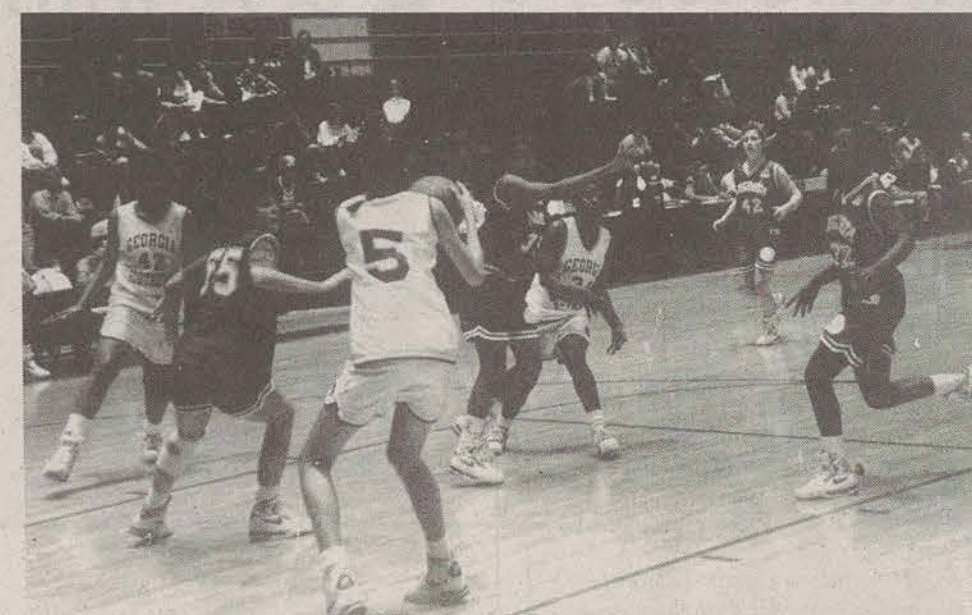
By taking her diploma—and subsequently, her leave of the GSU campus—Wilson has left Coach Drema Greer with the task of filling those shoes as she prepares to embark upon the 1991-92 season.

However, by the looks of the amount of talent she has to work with, Coach Greer may not have such a difficult time patching-up the holes in the line-up after all. This is due to the fact that this year's team may "collectively" possess an even greater amount of talent than that of last year's squad.

In fact, this year the Lady Eagles may field one of their most talented team ever.

No one person on this year's version of the Lady Eagles basketball team will singularly fill the role that Wilson played last season.

The philosophy of the team will have to bear some revision though. Instead of relying upon one person to carry the team, the Lady Eagles will have to develop a more sound, cohesive, five-player unit on the court.



Forward Toy Cook looks to drive to the hoop for an easy layup. (Photo Tony Tocco)

This year's squad will feature a more "team oriented" style of play. GSU will rely heavily upon the contributions of all five starters as well as the second stringers.

The plan will more fully utilize a three-guard system and a man-to-man defense. This should provide for a more fast-paced style of play. It will enable the Lady Eagles to apply more pressure on defense and take advantage of more fastbreak opportunities.

The Lady Eagles return six players from last year—three of whom were starters.

Nine of the members of this

year's squad are new to the team. Among the newcomers, five players are true freshmen while the remaining four join the Lady Eagles from the junior college ranks.

Senior Gwen Thomas from Thomasville is the Lady Eagle's top returning player.

The three-year letter winner at forward averaged 15.7 points and 8.3 rebounds per game last season. She will be expected to take up some of the slack left by Wilson while providing leadership to the young team.

Junior Andrea Stults will run the point for GSU. She averaged 8.8 points and 3.8 rebounds per

game in 1990-91.

At the other guard position Jill Dunn is expected to be a key scoring threat.

Junior Toy Williams and Stephanie Christmas will provide a little muscle down low. Their presence under the basket will help compensate for the absence of Tracy Wilson.

Among the rookies are junior college transfers Shenise Crockett and Gwenda Smith. They both bring a bit college playing experience to the team and will add depth at the guard positions.

Crockett has not played ball competitively for over two years. She played half of a season at Anderson Junior College before transferring to GSU.

In high school Crockett was an All-South Carolina selection.

Gwenda Smith will be instrumental in GSU's defensive effort.

Valarie James and Subricca Smith—the other two transfers—will provide help inside the lane.

The Ladies get their season started on November 23 at Hanner Fieldhouse versus Brewton Parker at 5:15p.m.

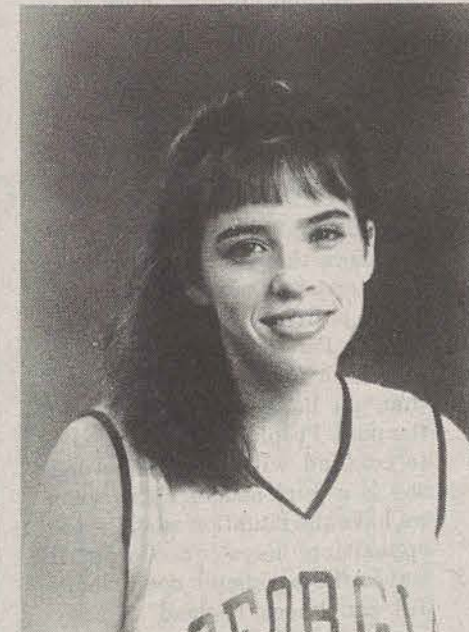
They will travel to Raleigh, N.C. on November 29 to compete in the N.C. State Tournament. Their first round opponent will be the University of Minnesota.

The Lady Eagles are currently working to overcome the legacy of last season. And as appearances reveal they do possess the potential to make a run at the TAAC title.

Stults stirs Lady Eagles

By Eric Weisenmiller

Assistant Sports Editor



Starting point guard Andrea Stults. (Special Photo)

The 1991-92 Georgia Southern Ladies basketball team will be taking to the court as a "team" in the truest sense of the word. The concept of "teamwork" pervades the Ladies unit.

The Lady Eagles perceive their lack of a distinguished "star" player as perhaps an advantage. More specifically, they feel that their group works better as a unit than a bunch of individuals.

Andrea Stults along with Jill Dunn and Gwen Thomas return as starters this year. They will add some measure of leadership to the team. However, their roles as leaders will probably not up-

stage the contributions of the youthful majority of the team which will definitely be an integral part of the team.

"Our team is so balanced this year," said junior point-guard Andrea Stults. "We have begun to play together well as a team without a key "star" player."

Stults returns to the team as the point-guard of last year's squad. She has come to realize her role as a leader on the court this year.

"Coach Greer wants whoever her point guard is to be a leader on the court. I feel more comfortable filling this role on the team this year," added Stults.

The Lady Eagle team concept will extend deep into its bench. This team could possibly go 10-deep into its line-up.

Heavy substitutions will keep

a well-rested team on the court at all times. This factor will call upon each player to carry more of an equal load than last year's team which tended to center around Tracy Wilson.

This year's team seems to enjoy the close-knit game plan. In fact togetherness seems to agree with the Lady Eagles.

"Practice so far this year has almost been fun," commented Stults. "This team is very unusual in that we all get along very well."

Stults and her teammates have the talent to make a run at the TAAC championship according to Coach Greer.

The plan is to involve the entire Lady Eagle unit in pursuit of success.

We will see when the season begins if they have formulated the correct unit for success.

Lady Eagles club their way to best finish

By Eddie Womack

Sports Writer

The Lady Eagle Volleyball team did not win the national championship but it was far from a disappointing season for the ladies of GSU.

Three year Head Coach J.B. Clairborne spoke of the successful season.

"We had our best year ever. It is the first time we finished over .500," said Clairborne.

The beginning of the season did not foreshadow what was to come for GSU.

The Lady Eagles could not manage only one win in their first eight matches.

But then came Sept. 30 and the Lady Eagle express started rolling.

GSU won their next eleven matches and in the process they captured their first ever by defeating South Carolina State in the final.

"That was a good win for us," said Clairborne. "It was a team we had never beaten before."

The Lady Eagles kept their winning ways by adding three more wins to bring their record to 13-8.

Unfortunately for GSU they dropped seven out of their next twelve but it was good enough to earn them a number two seed in the TAAC tournament.

Although the Lady Eagles were put out of the tourney early on two straight losses the season was highlighted with some outstanding individual play.

Freshman Alexis Dankulic was earned all-tournament honors at the College of Charleston

Soccer team slumps

By Eddie Womack

Sports Writer

Though the Eagle Soccer team turned in a record of 4-11-4 do not think this team is disappointed about the 1991 season.

Playing with only three seniors, a young Eagle team played six teams ranked in the nation in their respective divisions.

Head Coach Tom Norton seemed to be pleased with the play of his young team.

"Our young players showed some good play at this level. Sometimes recruits come in and don't perform, but I've been pleased with our team," said Norton.

The off-season is going to be spent trying to replace the three seniors lost this year. One of the toughest to have to fill is going to be goalkeeper Kevin Chambers according to Coach Norton.

"Kevin provided great leadership to the young team. He was a four year starter and it is going to be tough to replace him," said Norton.

Other seniors the Eagles are going to have to replace are Ted Davidson and Scott Sutton.

Coach Norton was sorry to lose them also.

"Both players helped the team a lot this year with their leadership and steady play," praised Norton.

The Eagles dropped four of their first six games, but three of those games were one goal matches that could have been easily reversed.

GSU returned back to the comfort of Eagle Field hoping to improve on their 2-5-2 record against pre-season TAAC favorite Florida International.

Though GSU lost that decision the home field advantage helped the Eagles. They managed two wins and a tie to improve their record to 4-6-3.

After a lost to Berry, GSU headed home again looking toward to playing on familiar ground.

Looking to move into position to go to the playoffs after playing TAAC rival Georgia State to a tough tie the Eagles dropped their last four contests.

With last season behind them Coach Norton is looking forward to playing in the Southern Conference next year.

"Their is a lot of emphasis put on soccer in the Southern Conference," said Norton. "The conference has better caliber teams as a whole."

See Soccer, page 9

Tournament and at a tournament hosted by SCAD.

Senior Julie Ciezkowski also earned all-tournament honors at the Paine College Tournament.

One of the key ingredients to this years winning ways was senior Dee Cardell who received MVP honors in Paine College Tournament.

Coach Clairborne commented losing certain players at the end of the season.

"Dee was our captain and very good team leader. It is going to be difficult to replace her next year," said Clairborne.

After looking at Dee's stats for the year one can understand the difficulty of this task.

Miss. Cardell had an outstanding final year. She had 938 assists for the year. This broke her record she set last year of 324 almost tripling her total.

The other side of the coin is that the Lady Eagles have basically a young team.

"We have a good strong young unit," said Clairborne. "We lost only one senior starter and we

will be returning three freshman starters and two Sophomore starters."

Coming of their best season ever Coach Clairborne is looking forward to moving to the Southern Conference.

"It is a tougher conference overall," said Clairborne. "One good aspect is the winner of the Southern Conference gets a auto-

matic bid National Invitational Tournament."

The Lady Eagles had two goals at the beginning of last year. One was to have a winning season and the other was to win twenty games. They nailed one down this year so maybe Coach Clairborne and his young team can achieve number two next year.



AT&T's long distance savings plan can take you to this location.



AT&T has always helped college students call the places they want to call. In fact, one of our savings

plans, the *SelectSaver*™ Plan, lets you direct-dial the one out-of-state area code you call most often. For just \$1.90 a month,

and 12 cents a minute, evenings, nights and weekends. 20 cents a minute, weekdays.* ☐ And now AT&T can take you to

another place you've always wanted to go. Just enter the AT&T "It Can Happen To Me" Sweepstakes. You could win a trip for

you and a guest to any U.S. and any European rock concert. All you have to do is fill out the coupon below. ☐ So let us help

choose the savings plan that's right for you. And then try your luck at our Sweepstakes. Both will be music to your ears.

To sign up for an AT&T savings plan, call 1 800 654-0471, Ext. 7437.

To enter the AT&T "It Can Happen To Me" Sweepstakes, fill out the coupon below.



*Includes continental U.S., Alaska, Hawaii, Puerto Rico and the U.S. Virgin Islands. Savings based on calls over 56 miles. Actual savings potential depends on subscriber calling patterns. Processing fee of \$2.00 applies. Day rates apply from 8 am to 5 pm.
© 1991 AT&T

OFFICIAL RULES—NO PURCHASE NECESSARY

1. To enter, handprint your name, address, phone number and zip code on an official entry form or a plain piece of paper. Official entry forms can be found in the October 31st, 1991 issue of *Rolling Stone*, the October 18th, 1991 issue of *Entertainment Weekly*, the November 1991 issue of *US* magazine, the November/December 1991 issue of *U. The National College Newspaper*, and the Fall issue of *Directory of Classes*. You may enter as often as you wish, but each entry must be mailed separately to: AT&T "IT CAN HAPPEN TO ME" SWEEPSTAKES, P.O. Box 4870, Grand Central Station, New York, NY 10163. All entries must be received by December 30, 1991.
2. Winners will be selected in a random drawing from among all entries received. Drawing will be conducted on or about January 15, 1992 by MediaAmerica, Inc., an independent organization whose decisions are final on all matters relating to this sweepstakes. (1) Grand Prize: A 4-day/3-night trip for two to see the concert of winner's choice anywhere in the continental U.S., including roundtrip coach air transportation to and from the nearest major city, first class hotel accommodations, hotel and airport transfers, tickets to the concert, backstage/VIP passes, limousine service to and from the concert, meal allowance and sightseeing; plus a 5-day/4-night trip for two to see the concert of winner's choice anywhere in Europe, including roundtrip coach air transportation to and from the nearest major city, first class hotel accommodations, hotel and airport transfers, tickets to the concert, backstage/VIP passes, limousine service to and from the concert, meal allowance, and sightseeing, plus one year's worth of AT&T Long Distance Service awarded as \$800 in AT&T Long Distance Gift Certificates and an AT&T Cordless Phone (total approximate retail value of Grand Prize = \$15,940.00); (15) First Prizes: An AT&T Cordless Phone, \$25 in AT&T Long Distance Gift Certificates and five compact discs of winner's choice (total retail value = \$200). All prizes will be awarded and winners notified by mail. Trips subject to availability and confirmation of reservations and must be taken by December 31, 1992. Choice of concert locations is subject to artists' performance schedules, availability of tickets and backstage/VIP passes, and final approval by MediaAmerica, Inc. Limit of one prize per person. Prizes are nontransferable and no substitutions or cash equivalents are allowed. Taxes, if any, are the responsibility of the individual winners. Grand Prize Winner and travel companion consent to the use of their names and likenesses for publicity or trade purposes without further compensation. No responsibility is assumed for lost, misdirected or late entries or mail.
3. Sweepstakes open to residents of the U.S., 18 years of age or older, except employees and their families of AT&T, its affiliates, subsidiaries, advertising agencies, MEDIAAMERICA, INC. and their program suppliers. This offer is void wherever prohibited, and subject to all federal, state and local laws.
4. For a list of winners, send a stamped, self-addressed envelope to: AT&T "IT CAN HAPPEN TO ME" WINNERS LIST, P.O. Box 5019, Grand Central Station, New York, NY 10163 by January 30th, 1992.

Enter the AT&T "It Can Happen To Me" Sweepstakes.

To enter, complete this form and mail to:
AT&T "It Can Happen To Me" Sweepstakes,
Box 2501, Cedar Grove, New Jersey 07009-2501

Name _____

College _____ Year in school _____

Address _____

City _____ State _____ Zip _____

Phone (____) _____

Current Long Distance Company AT&T _____ MCI _____ SPRINT _____ OTHER _____

Current Calling Card Company AT&T _____ MCI _____ SPRINT _____ OTHER _____

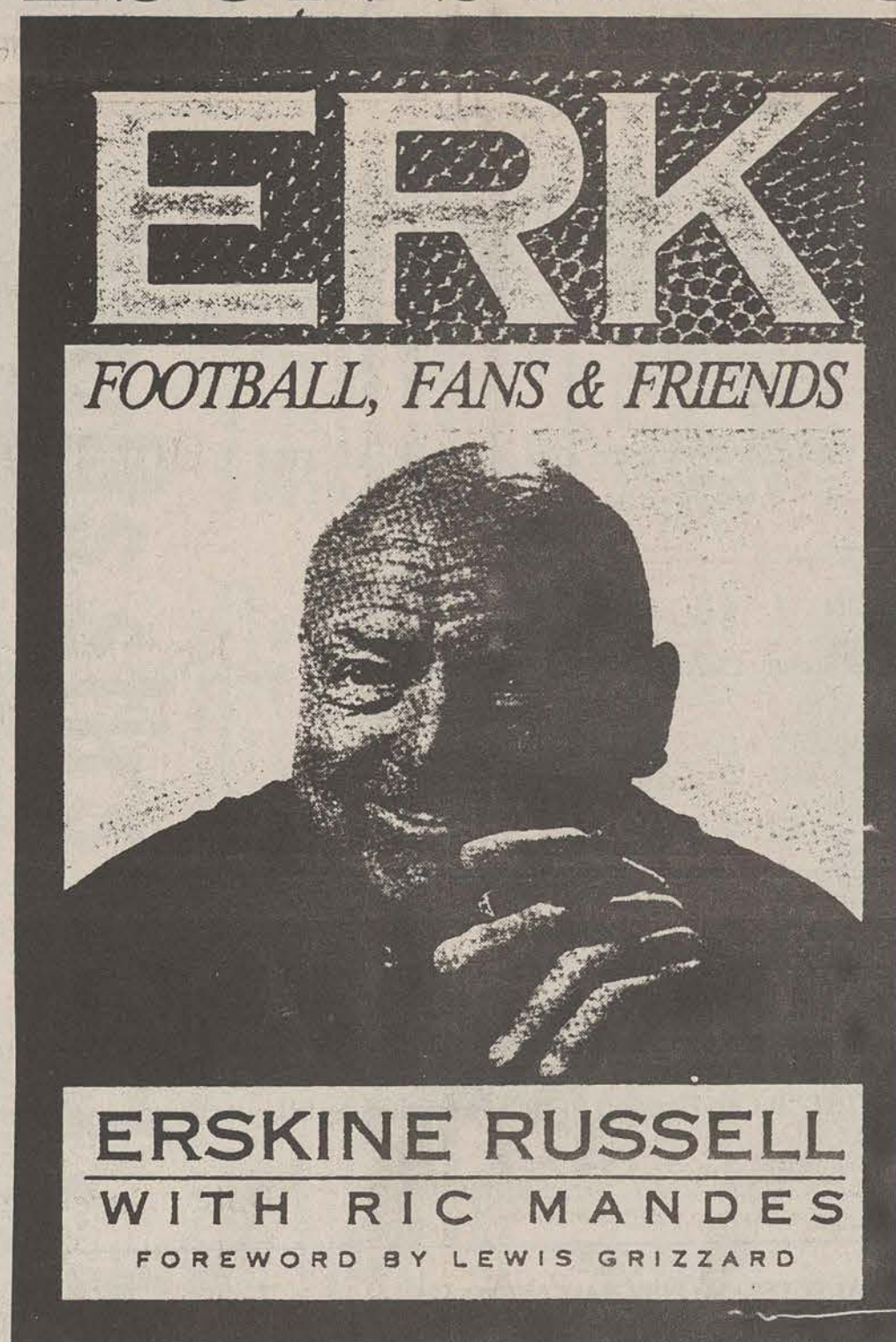
☐ On Campus Student ☐ Off Campus Student (7437)

All entries must be received by 12/30/91. No purchase necessary. Void where prohibited. You must be 18 years of age or older to enter.
© 1991 AT&T

IT'S FINALLY HERE! THE BOOK WE'VE ALL BEEN WAITING FOR!

AVAILABLE SAT. NOV. 16th.
AT THE UNIVERSITY STORE,
BOOKS PLUS...

AND
AT THE CONCESSION STAND,
PAULSON STADIUM



THE IDEAL CHRISTMAS PRESENT!

UNIVERSITY STORE - (912) 681 5181 - MON - FRI: 7.45 - 7.00 SAT: 10.00 - 4.00
GAME SAT: 9.00 - 6.00

BOOKS PLUS... UNIVERSITY UNION - (912) 681 0450 -
MON - FRI: 8.00 - 7.00 SAT: 10.00 - 2.00

By L. T. Horton



\$1 with
Student ID
\$2 General
Admission

Reminder: Today is the deadline for submission of free student classified ads. The last regular fall quarter issue of *The George-Anne* will be published Tuesday, But watch for our special "National Championship" edition next month!

Find out about AIDS Testing
Schedule Workshops
Condoms Available

CROSSWORD PUZZLE

OFF THE DEEP END By Andrew Lehman

"SHAKESPEARE 101"

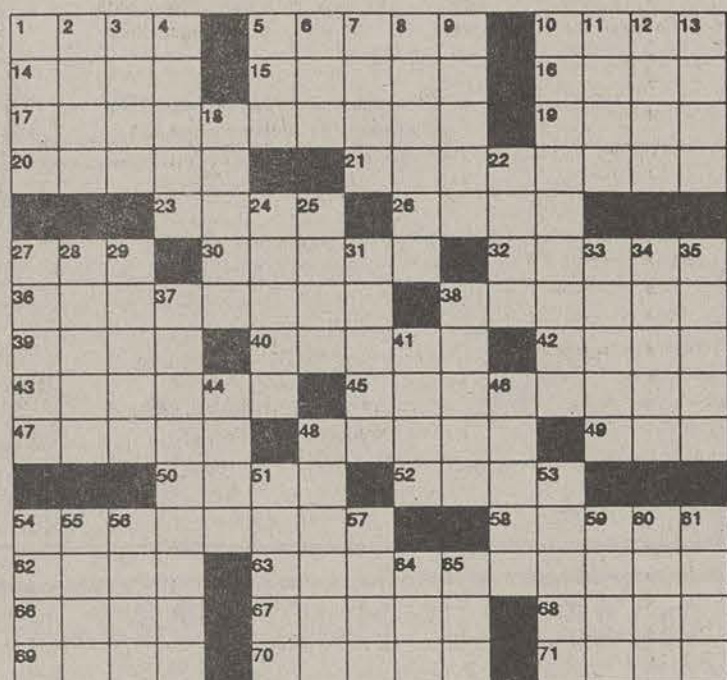
By Gerry Frey

ACROSS

- 1 Shakespeare's job
5 Lowest point
10 Edmund ____: former Shakespearean actor
14 Adrift
15 Skirt type
16 Thomas ____ Edison
17 Shakespearean comedy
19 Pedro's uncles
20 Flowering plant
21 "The ____ of Venice"
23 Manufacture
26 Nucleus
27 Pkwy. intersector
30 Billet
32 Got up
36 Shakespearean tragedy
38 Lingerer
39 Elec. Engineer's org.
40 Trims the lawn
42 ____ contendere
43 Ecumenical Council & English river
45 Buck, eg
47 Environmental day
48 zzzzzzz
49 Vane initials
50 "____ For Life"
52 Afternoon TV fare
54 "As You Like It" and "Twelfth Night", eg
58 Yankee's foe
62 First mate
63 Caesar's eulogizer
66 Normal no. of innings
67 "Wash this ____ from my hand": Macbeth
68 Ms. Gorme
69 Soon
70 Syrian president
71 Cincinnati ball team

DOWN

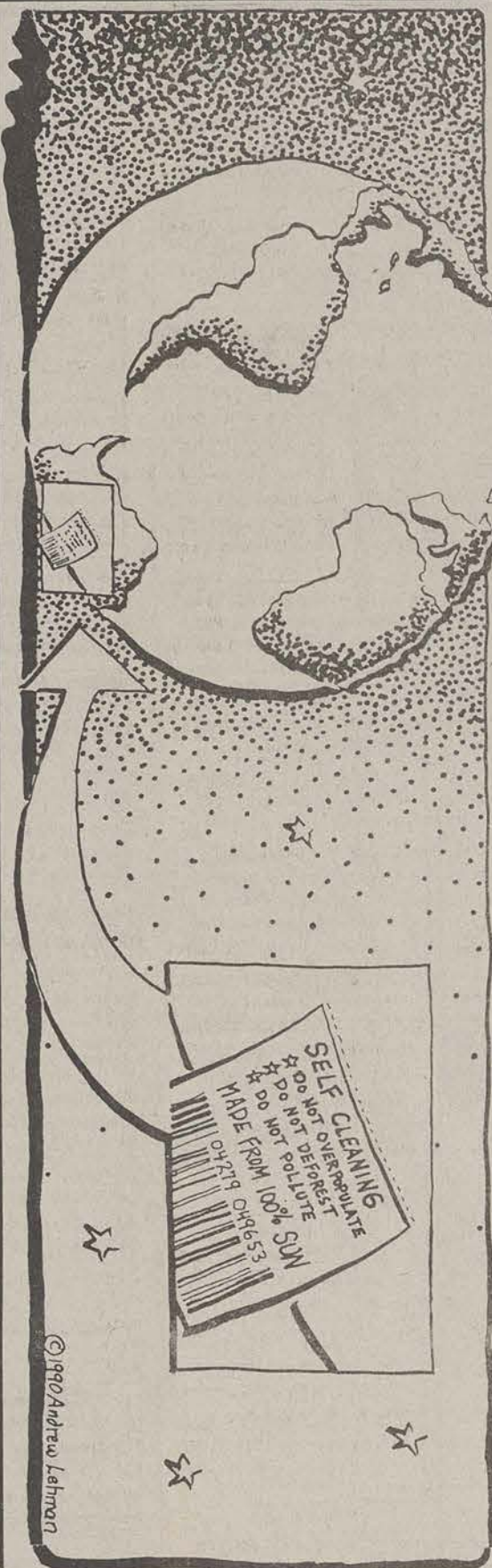
- 1 Baseball implements
2 Former tennis ace
3 A stick in the mud
4 Computer fodder
5 Viet ____



- 6 Swiss mountain
7 Per ____
8 Six legged bug
9 Precedes active or fit
10 Shakespeare's shrew
11 Mr. Kazan
12 Shakespeare's river
13 Thomas ____: Cartoonist
18 Computerized mail
22 Maryland specialty
24 Praying joints
25 Mild expletive
27 Word with good & cheap
28 Ms. America's crown
29 Smile scornfully
31 Choir accompaniment
33 Aromas
34 Tennis star Monica
35 Rot away
37 "The Two ____ of Verona"
38 Houston player
41 Baseball's Slaughter
44 Dull sound
46 Find out
48 Robs
51 Lion in Swahili
53 One of the Fondas
54 Miracle site
55 Scandinavian God
56 Mano a ____: Rivalry
57 Broadway signs
59 Portend
60 Oklahoma city
61 Corrosive substances
64 Campground org.
65 Find a sum

See Puzzle
Solution,
Page 12

© 1991 GFR Associates All Rights reserved



Exam Schedule for Fall Quarter 1991

Day Classes

Wednesday, December 4

9 a.m. - 11 a.m.
12 noon - 2 p.m.
3 p.m. - 5 p.m.
6 p.m. - 8 p.m.

1st period classes
5th period classes
8th period classes
Conflict exam period*

Thursday, December 5

9 a.m. - 11 a.m.
12 noon - 2 p.m.
3 p.m. - 5 p.m.
6 p.m. - 8 p.m.

2nd period classes
6th period classes
9th period classes
Conflict exam period*

Friday, December 6

9 a.m. - 11 a.m.
12 noon - 2 p.m.
3 p.m. - 5 p.m.
6 p.m. - 8 p.m.

3rd period classes
7th period classes
10th period classes
Conflict exam period*

Saturday, December 7

9 a.m. - 11 a.m.

4th period classes

Two, three, four and five hour classes will have their exams at the time scheduled for that class period. One hour classes will have their exams on the last scheduled day of classes.

Double period classes which meet on Monday, Wednesday and/or Friday will have their exams at the scheduled exam time for the first of the double periods.

Double period classes which meet on Tuesday and Thursday will have their exams at the scheduled exam time for the second of the double periods.

Evening Classes

Exams will be held at the scheduled class meeting times as follows:

- | | |
|-----------------------|--|
| Monday, December 2 | Monday and Monday/Wednesday evening classes |
| Tuesday, December 3 | Tuesday and Tuesday/Thursday evening classes |
| Wednesday, December 4 | Wednesday evening classes |
| Thursday, December 5 | Thursday evening classes |

*Final Exam Conflicts

A conflict is defined as three exams in a calendar day or two exams at the same time.

Conflict periods will be scheduled at 6 p.m. of each final exam day except the last one.

To resolve a conflict in which a student has **two examinations scheduled for the same period**, the instructor of the lower numbered course shall reschedule the exam to another time mutually agreed on by the instructor and the student or to one of the conflict periods.

To resolve a conflict in which a student has **three examinations scheduled in one calendar day**, the exam scheduled for the middle period may be rescheduled to another time mutually agreed on by the instructor and the student or to one of the conflict periods.

Any Questions should be directed to the Registrars office at 681-5151

Does this look familiar?

Our computers
can solve your
problems!

Discover
Eagle's
Logic
Computer
Store in
The
University
Union
Monday-
Friday
8am-5pm
681-0454



Apple Macintosh, Zenith (IBM Compatible), IBM, Laptops, and our newest Creative computer (IBM Compatible)



EAGLE'S LOGIC

UNIVERSITY COMPUTER STORE

Has dieting become a huge problem? If someone you love has become dangerously obsessed with losing weight, call us.

The
Clark
Center

at Memorial
Medical Center
In Statesboro, call
(912) 489-3605

George-Anne Action Ads

The Liveliest Classified Ad
Section in Georgia

Friday, November 15, 1991

01-Announcements

An informal political discussion group is held Mondays noon, rm 1 of Political Sci. Bldg. Open to students and faculty.

Are you hurting and don't know where to turn... Turn to God. For more information come to LIFE, Mondays at 7:30pm, Union Rm 284.

Are you interested in Wicca? Do you want to meet others that are? If so write C.R.D. PO Box 2799, Statesboro, GA 30458

Attention Students! Help start Lutheran Student Fellowship. Pizza and Volleyball, Sunday, Nov. 17 at 4:00pm at St. Paul's Lutheran Church.

Business Student? Join Delta Sigma Pi Casual smoker Nov 21, 1991 at University Union Rm 280.

Butch Kunzer, You're about to graduate from college. Where are you gonna go? Disneyworld? Take care. You can spend the night anytime Gotchal Sanford 107.

Concerned about the environment? If interested in forming an organization for students about the environment with me, write SEIT, LB 8241. Include your name, LB, phone.

GSU's Non-traditional Student meeting Tuesday, Nov. 19, 1991 at 5:15 pm Rm 271, Student Union. Refreshments will be served.

Habitat for Humanity needs more volunteers. For more info, write c/o LB 12502. Meetings 1st & 3rd Wednesday ea month at Union

Hal, I hope you enjoyed your pizzal I have been watching you. Your a great A-Phi-O neophyte.

-Love Ya, Your BIG

IEEE 7th Annual BBQ Chicken Dinner will be held on Nov 21 form 4 to 7 pm. For tickets call 681-2527.

Looking for that perfect Christmas gift? How about a handsome GSU Message Board equipped with a cork board, note pad, pencil holder, key hooks, GSU logo, mail slot, brass trim, & made with quality craftsmanship? For more info call 764-8779.

Organizations get ready! Collect funds for SGA United Way Homecoming fund drive. Info: Amber or Jeff, SGA, Union 207, 681-5631.

STUDENTS, FACULTY & STAFF ONLY: YOU can put your own message in this space for FREE! 25 words of less, please. Drop by the Wms Center, Rm 111, or send your classified ad to LB 8001. For free ads you MUST include your name and Landrum Box number.

TURKEY SHOOT!! November 8, 15, 22 from 7:30pm-11:30pm at the VFW grounds. Sponsored by Alpha Phi Omega National Service Fraternity. For more info call 681-4042 for Deana.

02-Arts & Crafts

Looking for that perfect Christmas gift? How about a handsome GSU Message Board equipped with a cork board, note pad, pencil holder, key hooks, mail slot, and made with quality craftsmanship. For more info call 764-8779.

Attention Students, Faculty & Staff: Choose Hand-made pottery for your holiday shopping. Call 681-4092 after 4pm M-F or all day Sat-Sun.

Poetry writers attention! Anyone interested in gathering to talk about or workshop their poetry: Mail in name, LB, phone* to CMT at 10445.

03-Autos for Sale

1972 Ford van. "The Eagle Express" 3 speed manual transmission. 45,000 miles on drive train. \$1,000. Call nights only 764-7823.

1977 Landcruiser Dark Green, 4wd, soft top, full cage, rebuilt engine, 258 1-6, new clutch, headers, AM/FM cassette, Holley carb., many extras. \$4200. Call Jay at 681-9080.

1981 VW Rabbit 5-Speed, AC, AM-FM, excellent interior, runs great. \$1000 OBO. Call Bart at 681-7777.

1983 Audi Coupe GT, mars red, fuel-injected, racing engine, 5 speed, 15" BBS wheels & new low profile tires. European body kit by Kamei and BBS. Power everything, black leather Recaro seats, sun roof, \$2500 CD system, and alarm, asking \$4500. Call 681-1643, Joe.

1983 Nissan Maxima 4DR, AC, PW, Automatic, runs great. Excellent condition. Must sell. \$2500 Call 681-2176. Leave message.

1985 Mazda RX7 72k Blue with tinted windows, CD player & alarm system, new paint. \$5500. Excellent condition inside and out. 764-5653.

1986 Chevy Celebrity Eurosport loaded 2 door, excellent condition. Asking \$4000 OBO. Call 764-2802 after 6pm.

86 Honda CRX-Si excellent condition, electric sunroof, 104K, \$3850. Call 681-4300, ask for Peter.

For Sale: 1984 White Honda CRX. Call Sean 681-8756.

05-Business Opportunities

Earn up to \$400 weekly while working at home. Great for college students w/ need for supplemental income. For details send SASE to: WPP, Box 19585, Atlanta, GA 30325.

07-Education

Course: Contemporary American Short Fiction 290B. 2 credit hours winter qtr 6th per Mon & Wed. Instructor: Olivia Carr Edenfield. 681-5350. Call for more info.

Financial Aid Available immediately! Special grants program. Every student eligible. No one turned down. Simple application. Send name, address and \$1 P&H fee (refundable) to: Student Services, POB 22-4026, Hollywood, FL 33022.

COLLEGE SCHOLARSHIPS GRANTS • LOANS Results Guaranteed 1-800-527-1496

09-Furniture & Appliances

FOR SALE: Household refrigerator (GR-23) \$50. Call 681-7434 after 6 pm.

11-Help Wanted

Assemble our products from home! Easy work, top pay!! 24 hr recording. call today!!! (919)990-2941 EXT 210

EARN \$500 or more weekly stuffing envelopes at home. Send SASE to Country Living Shoppers, Dept. D18, PO Box 1779, Denham Springs, LA 70727-1779.

WE NEED HELP!

THE HONEY BAKED HAM CO.

is in search of help during the holidays to fill our Sales Counter and Production positions. We have stores located in the following states: Alabama, Arkansas, Colorado, Florida, Georgia, Louisiana, Mississippi, Missouri, Nevada, North and South Carolina, Tennessee and Utah. Please stop by during your Thanksgiving break to inquire about Christmas help. Check the white pages for information on the store nearest you.

12-Lost & Found

Lost/stolen- Gold rope bracelet and black onyx heart-shaped ring with three diamonds on left side. Reward offered no questions asked. Call Debbie at 489-8670.

LOST: Black Berenger man's watch in Eagle's Court Halloween Night. Great Sentimental Value. Reward offered. No questions asked. If found please call Keith at 681-7741.

Lost: female's gold watch w/ white face around 9am Oct. 29. If found, please call Sue at 681-6587 or mail it to LB 14077. Reward offered.

LOST: Gold linked nugget bracelet at Collegiate on Wed. Nov. 6. Reward offered. Please call 681-6367.

LOST: Keys lost during registration on Monday, Nov. 11. Please return them to Public Safety. Seven keys on separable keyring. Reward offered. Call 764-2972 for info.

LOST: Short black dog w/small white spot on chest-no collar. Part Poodle w/wavy hair. Lost near downtown area. Friendly, answers to "Beauty"-call Bill at 764-2899.

13-Miscellaneous for Sale

Brother word procesor 3400. \$300 OBO. Lots software. Call Tom at 681-8916 for info. Real bargain. Paid \$500 less than year ago. Call Now C-J5 for sale. \$2000 Call Robby at 681-4674.

Dorm refrig for sale. Call 681-4559

Engagement/wedding set for sale. Engagement ring has 3/8 carat solitaire with ten diamonds on the band. Matching wedding band. Must see. \$550 764-7382.

For sale: Casio fx-7000GA Graphics Calculator. Less than one year old. Need money for bills. \$50. Call 681-3567 leave message.

For Sale: White, Diamond back, sand streak bicycle \$100 OBO. Call Jennifer 681-2091.

Looking for that perfect Christmas gift? How about a handsome GSU Message Board equipped with cork board, note pad, pencil holder, key hooks, mail slot and made with quality craftsmanship? For more info call 764-8779.

New & used 35-55 gallon tanks & parts filters, pumps, heaters, etc. By Dec. 15, 681-2349. Ask for Shannon or leave message.

Sanyo VCR for sale. Excellent condition. \$60. Call 681-2176, leave message.

Schwin Impact MTB bike for sale. \$150 Call 681-4674 for Robby.

Two formal gowns: one hot pink sequin (sz 8) \$50, other royal blue (sz 5) \$20. Worn once. 681-4720, ask for Lynn.

Typewriter (Smith Corona), excellent condition. \$95. Call 681-7434 after 6pm.

14-Motorcycles

For Sale: 1986 Ninja 250R, Black/Red, excellent condition, fast, economical, great city transportation. \$1400 OBO. Call 681-4057 for Jeremy or Scott C.

FOR SALE: Yamaha FJ1200. \$2,600 OBO. Call 685-4861.

15-Musical

Bassist and drummer needed immediately (alternative influences). Don't have to be a pro. Call Rob at 681-9069 or Dave at home 764-5014 or at office 681-5704.

White Dixon P. Bass Guitar with 35 watt amp; gig bag included \$200- good condition and quality. Call Heather at 681-2017.

16-Personal

"Boo" Kunzer, The Lord Bless you and keep you. The Lord shine his face down upon you and give you peace...forever. Love D-group 107.

Andy Barwick: Pi Sig's great isn't it? Have you figured out who I am yet? Maybe... Maybe not! You'll find out soon enough! Love, Your BIG.

Angie Robertson- Surprisel Didi you ever think you'd go "nuts" over PSE. Good luck. Get those sigs & we'll see you at the banquet.

Audrey- I guess I got the hint; have a Happy Thanksgiving and tell the folks back home I said "hi". Moink

Barbara, You are the greatest little a person could have. Can't wait to see you soon. Love your A-Phi-O BIG.

BuBu- My ship o' life needs your navigational expertise to be complete. Come aboard and I'll be the best

"first-mate" your captain-ness ever had (grin). Hugs and Sloppy. Wet Kisses

CAMI. Congrats on a great performance this weekend. I'm really proud! The future's so bright I gotta wear shades. N.Y. Plus S.A. -Yours, R.

Christy, I owe you one. Thanks a lot. You're a great friend. Jeff

Christy, or Scarlett, if you prefer. I yearn for you. My days and nights are filled with visions of your beauty and grace. An enthralled admirer.

Craig and Bo: That which does not destroy you makes you stronger. You will survive this quarter and be stronger. Good luck, your friend, Troll.

David- Funny Face- I love you! - Becky

Deb, words can not make up for what I have done to our friendship - Good luck in CA with Tom. I Love You, Nis.

Jason D. - I told you about playing with electric hedge clippers. OUCH! Just think of the money you'll save in Stuart Avenue. -KLH

Jason D. I am sorry about the accident. At least the Boys Choir is now a possibility. Remeber to wear loose jeans -Your Friend DeWayne.

Juliette, Juliette, wherefore art thou my love? What he got that I don't? Call me and leave message. -Romeo

Kelly Br-er. Thanks for the movie Sunday Night. I had a great time. Lets go out again. Sean.

Kelly, You are just too great! Thanks for the friendship. Your Preppy Family Man!

Laura, Julie, Chris, and Noel- I love my bigs and littles! You are all fabulous! I'm so proud of each of you! Love Julie

Malcolm X- Thurgood Marshall etc. Are a few of the books within your reach. If you are interested call Melinda at 681-1472.

Michael "Marathon Man" Dunn- Thanks for a wonderful weekend in Daytona. Everything was perfect. I love you! -Jackie

Missy. Do you smell something burning? Hammer

Missy, You've got one hot roommate! In fact, you've got one hot room. I love a girl who likes a "hot oil" treatment. -Kevin

My Pi Sig Big is awesome. The class is rising. Good luck to everyone on Eagle Feud. Jeff

Nat-Bone, I had a great weekend! Sorry I was a... on Sat. Night. You obviously are very special to me; I wore underwear. Love ya, PTCM.

Penny- Aren't you so glad to have that car back! Bermuda will be rocking tonight! Your best buddy. Love ya lots, girll- Amy.

Seeking to meet the ultimate feamle. If this sound slike you call Matt Baldwin at 681-4213. Ask for the love master.

What's up "Grunge"? You know who you are. Big Bad B of the Cwants a peice of that Misery. We love ya, Bo & Dean-Get it?

William, Hurry and find a girl friend so you can get off my couch. P.S. I like you but no back rubs.-Kelli

17-Pets & Supplies

Ball Python, four feet long with accessories. \$200. John McNeill 681-7836.

FREE: Six loveable Tabby kittens & two adorable puppies. Call 653-2327 and ask for Buster or Susan.

19-Rentals & Real Estate

Efficiency apt. For rent. Available Dec. 1st. \$350 including all utilities. For more info call 764-4206.

Free \$100 at end of June. Take over my lease at Stadium Club Apts. And get my deposit. \$209 monthly. Call Dave 681-6333.

FREE \$100 at the end of June! Just take over my lease at Stadium Club and get my deposit. \$209/month includes water. Male/Female call 681-9241.

Free \$100 at the end of June. Just take over my lease at Stadium Club Apts. & get my deposit. \$209/mo. Call Tom 681-8916.

FREE DECEMBER RENT!!! Sussex Apts. 4 br, 3 ba, W/D, DW, Ref., stove. Rent \$210/person. 764-3104 after 6pm.

Free washer and dryer if you take over lease at Park Place. Call 764-5936 after 6pm for more information.

Needed: Someone to take over my lease starting Wtr. Qtr. Studio apt. Reasonable rent. Low utilities. Call 681-9585. Leave message.

One bedroom apartment for rent Wtr. Qtr. Assume lease. \$250/month. Call Jim at 764-9592 for more information.

Starting Winter Quarter, sublease a 2 br apt for \$400/ month. Is walking distance to classes and adjacent to laundry facilities. Call 681-7999.

Studio apt available Wtr. Qtr. Take over my lease. Reasonable rent, low utilities. Call 681-9585. Please leave message.

Take over lease at Heritage Square, starting Wtr. Qtr. \$420/month. Two bedroom, one bath. Call 681-2747.

Take over lease on one bedroom apt. Want to sell a king-size waterbed & furnishings to new tenant. Call 489-1671, please leave message.

Trailer spaces for rent near college, students only. Day phone 764-2912 or Night 489-3311.

20-Roommates

1 or 2 Female roommates needed beginning Wtr. Qtr. \$125/month + 1/2 utilities. Will have own room. Washer/dryer. Call 681-3571.

1 or 2 female roommates needed immediately. Fully furnished except for your room. Park Place Apts. Call 681-3232.

1 Roommate Needed: Free rent til Wtr. Qtr., own room, washer/dryer, furnished. Take over lease. Call 681-6864, leave message.

2 Female roommates needed: Sussex #56 Wtr., Spr., and/or Summer quarters. Immaculately decorated. Washer/dryer, and piano. \$200/month. Call Lori at 681-4744.

CHRISTIAN female roommate needed for Wtr., Spring, and Summer quarters. 2 Bedroom, 1 1/2 bath townhouse. \$100/month rent + 1/4 of utilities. If interested call 489-3296, if no answer leave message.

Female needed to take over lease at Sussex. Available now. Free rent until January. Private bedroom. Rent reduced. Deposit paid. Call Jenny at 681-8747.

Female needed to take over lease at Sussex. Private bedroom and bath. Deposit paid. Available now \$215/mth. Call Jenny at 681-8747.

Female roommate needed ASAP for Wtr and Spr quarters to share large 1 br apt. & 1/2 utilities. Off-campus. Close to GSU. \$150/month. Call 681-3294 anytime.

Female roommate needed ASAP. Quiet surroundings, own room, no deposit & no lease. \$175/mo + 1/2 utilities. Call 681-1732.

Female roommate needed for Wtr. Qtr. Own rm. \$137.50/ month + 1/2 utilities. 3 mi from campus (duplex). Melissa 764-2835 & leave message.

Female roommate needed immediately: 3 br, 2 bath apt. At Park Place. Private Room & bath. \$216/month + utilities. Call Meri at 681-2502.

Female roommate needed starting Wtr. Qtr. In Park Place Apts. \$125/mth plus 1/4 utilities. Call 681-3345.

Female roommate needed starting Wtr. Qtr. Large townhouse. A must see! \$195/ mth. Call Jennifer 489-3286.

Female roommate needed starting Wtr. Qtr. Plantation Villas. 2br, 1 bath. Furnished except for your part of the room. Washer/dryer. \$112.50/month plus 1/4 of utilities. Call Kelley at 681-2180.

Female roommate needed. \$200/mo + utilities. Own bedrm. Have washer & dryer. Must like cats! Call 681-3616 for Cynthia or Karen. Sussex No 10

Female Roommate needed: Completely furnished. Own room. No lease. No deposit. \$135/mth plus 1/2 utilities. Call Kim at 681-3255.

Female roommates needed starting Wtr. Qtr. Plantation Villas. 2 br, 1 ba. Furnished except for your part of the room. Washer/dryer. \$112.50/month

plus 1/4 utilities. Call Kelley at 681-2180.

HELPI Female roommate needed immediately starting Winter Quarter. Campus Courtyard two story condo, two br, two bath, very nice. Reasonable rent + 1/4 utilities. Please contact Sissy at 681-6548.

HELPI Roommate needed for Wtr. Thru summer quarters. Fully furnished at Stadium Walk. \$140/month + utilities. Call and leave message for Jody 681-3490.

I'll give you \$100 to take over my lease, fully furnished 4 br, 2 ba. \$209 mth. + 1/4 utilities. Call Brenda at 681-9860. Female only.

Male or female roommate needed for Wtr. Qtr. At Southern Villas #58. \$200/month + 1/2 utilities. No deposit needed. Furnished. Call Greg at 681-9088.

Male roommate needed ASAP to share a 3 br house within walking distance of campus. If interested call anytime 681-9079.

Male roommate needed Stadium Club apartment. Fully furn, carpet, free water, central heat & air. Only \$209/mo. No deposit needed. Call Tom at 681-8916

Male roommate needed to take over lease Winter & Spring Qtr. \$210/month + 1/2 utilities. Call 681-7850 & leave message.

Male roommate needed Wtr. Qtr. \$100 a month plus utilities. 57 Southern Villas.

Male roommate needed. \$100/month plus 1/4 utilities. Washer/dryer. Call 681-9341 at #57 Southern Villas.

Mature, honest couple with similar qualities to share apt. next year. Looking to sign early lease whenever possible. 681-7107 ask for Dewayne.

Needed: Male roommate to sublease apartment at Stadium Club for Wtr. Qtr. Room furnished \$200/month. Please call Tony at 681-6138.

One or two female roommates needed for Wtr. Qtr. Nonsmoker. Large townhouse on campus. 681-3165.

Please Help! Available Wtr. Qtr. At Bermuda Run. Includes own room, bathroom, phone line, furnished and reduced rent. Contact Michelle at 681-7697.

Roommate needed (male or female) ASAP. To share nice trailer. Fully furnished. Not far from campus. For more info call 871-6405.

Roommate needed immediately! Three bedroom house, have your own room. \$113/ mth- 1/3 utilities. Call 681-3345 leave message for John.

Roommate needed today!!! Private room, bath, washer/dryer, dishwasher, pool, etc. No deposit. Call 764-8581 for more info.

Roommate needed: 2br, 2 1/2 bath, washer/dryer at Greenbriar. Need to take over remainder of lease. \$180/month. \$540/quarter. 681-6344.

Roommates needed for Wtr. Qtr. Male or female. Park Place #7. Call 681-9242. Ask for Darby or Lori.

URGENT! Roommate needed now, FREE RENT until January. Take over lease at Chandler Square, own room, washer/dryer, fully furnished. Please help! Leave a message 681-6864.

White female roommate needed beginning Spring Qtr. Nonsmoker, own room, rent \$175/mth. + utilities. Washer/ Dryer included. For more info call Karen at 681-6633.

21-Services

Babysit: White mature Christian wants to babysit in your home or mine. Love kids, lots of experience, have references. Call 681-6589 ask for Jennifer.

Daily announcement of Intramurals available on CR/1 Hotline at 681-5261.

Legal secretaries will type your term paper or resume. Contact Ann or Kay at (912) 237-2271, 8:30am-5:30pm

Mother's Helper: White Mature Christian. I want to run your errands, babysit, cook or clean, lots of experience. References. Call 681-6589 Jennifer.

TYPING - Drop-off & pick-up on campus. See Peggy 116 South Bldg., call 681-5586 or 681-6520. Quick service (usually overnight), very good rates

TYPING - Fast & Reasonable. Call Jean 852-5405

RAISE \$500...\$1000...\$1500

FOOL PROOF FUND RAISING

For your fraternity, sorority, team or other campus organization.

ABSOLUTELY NO INVESTMENT REQUIRED! CALL 1-800-950-8472, ext. 50

TYPING - Reasonable rate. Resumes, term papers, etc. Letter quality or Dot Matrix printers. Call Brenda, 681-5301, or drop by Carroll, Rm 86

Typing- Reasonable rates, Term papers, essays, and resumes. Call Eleanor at 681-5266.

University Typing Svc - Word proc. for faculty & students. Term papers to books. Editing included. Letter quality printing. Majorie Bell, Ed.D. 681-3716

Want to improve the look of your posters? Get them framed. Lowest prices around. Call Rob at 681-7818.

22-Sports & Stuff

Masters Golf Tournament-Two passes for Saturday's Round. Twenty Dollars each. Call Richard "The Old Pro" Russell at 681-2451.

TURKEY SHOOT!! November 8, 15, 22 at 7:30pm-11:30pm at the VFW grounds outside Brooklet. Sponsored by Alpha Phi Omega National Service Fraternity. For more info call 681-4042 for Deana.

Women's Rollerblades for sale. Excellent condition. Only worn once. \$200 OBO. Call after 2 pm 764-2317 leave a message.

23-Stereo & Sound

Car stereo for sale. Technics deck, Coustic 380 amp, Pyle Driver woofers, 6x9 and 3" speakers, crossover. Nice system for \$450. Call anytime 764-7382.

Sony CDX 6020 in dash car CD player for sale. Still under warranty. Sacrifice \$275 OBO 681-9808 ask for Sanders.

28-Weekends & Travel

Gun deaths

Continued from page 4

many people you personally know who have been killed or injured by firearms, off the battlefield? Now ask yourself how many people you personally know who have died from, suffered with, or who presently have cancer or emphysema?

So why aren't our fearless leaders going after the real killers in America? That question almost answers itself when you consider that the Tobacco Industry Lobby is the most powerful lobby in Washington (translation: they hand out the most money to Congress).

The anti-gun issue is too big and too complex to really go into in depth in just one column, and so is the tobacco question, so I'll probably have more to say on these topics next quarter. This will be the last time this quarter I get to write about all the things I'm trying to keep straight.

Republicans

Continued from page 4

and change as a society.

Instead, we continue to wallow in petty spite and name calling.

Additionally... it is also detrimental to blame the actions of individuals on the groups to which they belong, instead of holding those individuals accountable for themselves.

How would the GSU student

So to end the quarter on a lighter note, my hero, Pee Wee Herman, is back in the news. He worked out a deal on his charges. He paid a fifty dollar fine, agreed to do fifty hours of community service, and comes out of it with a clean record.

His fifty hours of community service will take the form of making an appearance in an anti-drug film. Now here's another example of a government agency failing to properly utilize the resources available.

Here's a guy who dresses strange, wears lipstick, plays with dolls (among other things), and acts like he's whacked out on about five different kinds of drugs at once, and he's going to be in a film where he tells kids not to do drugs.

I say if they really had been using their heads, they would have had Pee Wee do a film about safe sex.

Well, I think I got all that straight. Y'all be sure to let me know if I messed up on anything.

body react if we held them responsible for every activity or opinion of yours, mine, or any other student's?

Let's stop pointing fingers and start working together to find real solutions.

Jess Hornsby

Sophomore, Political Science

Other voices

Continued from page 4

security and metal detectors. But more must be done.

To keep guns out of the schools, they must be kept out of the streets, out of homes.

Schools should:

- Automatically suspend students caught with guns in school.

- Provide lessons that teach respect for life and the dangers of guns.

- Seek better police protection of students going to and from school; many students arm themselves out of fear.

Parents should keep guns out of the reach of children at home and support gun control laws that:

- Require a waiting period for the purchase of guns.
- Impose tough sentences for crimes committed with guns.

- Ban military-style assault weapons.

Guns in school teach a deadly lesson.

The victims are our kids - and our future.

- USA Today

Talent

Continued from page 1

tion skills and are committed to our mission of assisting young people in preparing for college."

"We are very fortunate to have Ms. Newbill-Jallow coordinating the program. Her former work with the Georgia Health Sciences Consortium lends itself well to the kinds of activities we will be involved in with Talent Search.

"We are endeavoring to moti-

vate and convince these students that college is within their reach," Gunter said. "Many students leave high school with no ideas beyond the working world. They do not recognize that they can go to college."

"We are extremely excited about the program," Gunter said. Of the 400 plus schools applying for Talent Search Project fundings, only 250 received it.

Black

Continued from page 1

works.

GSU faculty/staff members Georgene Bess, Charlotte Parrish Woody and Kay Walters will perform readings from the poets Maya Angelou, Ruby Dee and Nikki Giovanni.

Soprano vocalist Shaunta Ellis, a well-known gospel contemporary music singer, will open and close the show.

Alpha Phi Alpha fraternity will do a "step" show and Hazel Smith, a freshman at GSU, will perform a blues number.

Presenters for the evening include Alethia Lewis, president of the local chapter of the National Association for the Advancement of Colored People, Statesboro attorney Lorenzo Merritt, GSU faculty members Charles Bonds, Lella Bonds, Patricia Gillis, Fred Richter, Larry Taylor, Abiodun Goke-Pariola, GSU President Nicholas Henry, Kevin McWhorter, past president of the campus chapter of the NAACP, and Peemoy Walters, past president of the Multi-Cultural Association.

HOME COMING FUND DRIVE

All organizations and individuals must have donations turned in to the SGA office by 5:00 today.

-For questions 681-5631

-ask for Jeff or Amber-

Solution to "Shakespeare 101"

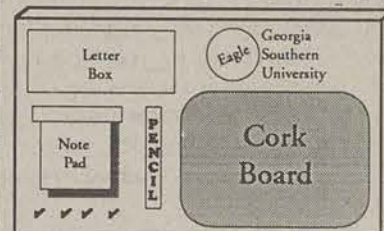
B	A	R	D	N	A	D	I	R	K	E	A	N
A	S	E	A	A	L	I	N	E	A	L	V	A
T	H	E	T	E	M	P	E	S	T	I	O	S
S	E	D	U	M	M	E	R	C	H	A	N	T
				M	A	K	E	C	O	R	E	
S	T	S	I	N	G	O	T	A	R	O	S	E
K	I	N	G	L	E	A	R	A	B	I	D	E
A	A	E	E	E	D	G	E	S	N	O	L	O
T	R	E	N	T	S	A	N	T	L	E	R	E
E	A	R	T	H	S	N	O	R	E	S	S	E
				L	U	S	T	S	O	A	P	
C	O	M	E	D	I	E	S	R	E	B	E	L
A	D	A	M	M	A	R	K	A	N	T	O	N
N	I	N	E	B	L	O	O	D	E	D	I	E
A	N	O	N	A	S	S	A	D	R	E	D	S

See Puzzle, Page 10

Georgia Southern Industries

presents

The GSU Message Board Features:



Only \$25.00, tax included. For more info call Glenn or Tim at 681-6893

- Large Cork Board
- Letter Box
- Note Pad
- Pencil Holder
- Key Hooks
- Brass Trim
- Early American Stain

Great Christmas gift for Georgia Southern Fans!

Archaeology

Continued from page 3

Albany, Georgia for six months after attending Vanderbilt for a semester. When she was accepted into the Bell Honors Program, she transferred to GSU. The program provides tuition for exceptionally creative and motivated students. It accepts only 18 new members each year.

"Margaret is easily one of our most outstanding students in a long time," said Dr. Sue Moore, an associate professor of anthropology.

Baker has a double minor in English and geology. She currently works for the GSU

Botanical Garden and for the English department film series. She is also active in Model United Nations and serves as vice-president for the Student Anthropology Society.

After graduation, Baker hopes to spend a year working in Washington for a lobby group, the Friends Committee on National Legislation, which is affiliated with the Religious Society of Friends (Quakers). She plans to attend graduate school and her ultimate goal after getting her doctorate is to do research in Africa and work as an anthropology professor.

Orr

Continued from page 1

Orr also said fraternities and sororities on campus would be restricted by their national boards from co-sponsoring any event with an organization responsible for the sale of alcoholic beverages. This, according to Orr, would prevent Greek groups from assisting in an official capacity with voter registration drives in conjunction with Thursday's, the bar owned by Chris Sampson. Sampson is the liquor referendum's main proponent.

PAWS

Continued from page 1

be held every quarter, and there are also plans to have a day for cat lovers too," said Natzke.

There are about 50 active members of PAWS, which is funded by member dues and fund-raisers.

One on-going fund-raiser is the planned give-away of a giant stuffed dog. Tickets for the prize may be purchased from PAWS.

The group meets in the Union Tuesdays at 8 p.m.

Rip Us Off.

That's right - you heard right. Rip us off. Get something for nothing. Say hello to a friend. Find a roommate. Get a job. Find a home for a litter of kittens. Buy a wombat. Or sell your Beamer (right, like you expect us to believe you - and not your folks - actually have the title to that BMW). Regardless of your purpose (or even if you are a congenital liar like the Beamer owner), Georgia's liveliest classified ad section is for you. Students, faculty and staff can have 25-word action ads published for nothing. Fill out the little rectangles at left, and send your ad to G-A Action Ads, LB 8001, GSU or drop it by the Williams Center, Room 111. You MUST include your name and Landrum Box number to qualify for a freebie. Remember, keep it short: students, faculty and staff will be billed at 10 cents a word for words in excess of the 25 word limit.

18 HOLES PUBLIC

Meadow Lakes GOLF CLUB

Church
Langston Chapel Road
Meadow Lakes
Paulson Stadium
CAMPUS

LOCATED NEAR CAMPUS • OPEN 7 DAYS A WEEK
839-3191

OPEN
7 Days A Week
M - F • 8 AM until...
Sat-Sun • 7 AM until...
Wednesdays
"Georgia Southern Student Day"
(\$10⁰⁰ ALL DAY • 8 AM until...)

YOUR UNCLE WANTS TO PAY FOR COLLEGE. BUT ONLY IF YOU'RE GOOD ENOUGH.

Army ROTC offers qualified students two-year and three-year scholarships that pay for tuition and required educational fees and provide an allowance for textbooks and supplies.

You'll also receive up to a \$1000 grant each school year the scholarship is in effect. So find out today if you qualify.

Contact: Major John Farrell
South Building Room 134 or call 681-5320



Treasurer of the United States FOR ACADEMIC EXCELLENCE

1927 Great Moments In History

"BABE" RUTH

Pioneer of aviation's new age, Charles Lindbergh, a former postal pilot, captures the imagination of the world as he flies solo across the Atlantic Ocean, non-stop from New York to Paris, in a single-engine plane called *The Spirit of St. Louis*. In the world of sports, the legendary George "Babe" Ruth, earns the title "The Sultan of Swat" as he smashes 60 home runs for the New York Yankees in a single season - a feat which remains untouchable for over three decades. In Hollywood, a milestone in filmmaking marks an end to the golden era of silent movies through the addition of sound to cinema with the release of *The Jazz Singer*. "Oscar" symbolizes the fledgling Academy of Motion Picture Arts & Sciences as the films produced this year are honored with the first Academy Awards. And, in Statesboro, Georgia, a Southern tradition is born, a tradition which, over the years, leaves many speechless. Today, this proud student voice, on the threshold of 65 years of steadfast service on behalf of students, school, and community, continues to inform, to challenge, to amuse... and to be "liked by many, cussed by some, but read by them all..." a newspaper called...

"OSCAR"

An Administrator Reading an Early Edition of The GEORGE-ANNE

The George-Anne

Celebrating 65 years of service to Georgia Southern University

☐ Yes, I can't wait to become a part of history. Please enter my subscription to the twice weekly *George-Anne* at the special student rate of \$12 per year (50 issues) or \$18 per year for non-students. A subscription makes the perfect budget-minded gift. Let 'em know what's happening at Georgia Southern University through the pages of the award-winning *George-Anne*, the oldest continuously published newspaper in Statesboro and Bulloch County.

☐ Regular Rate \$18 for 50 issues
☐ Student Rate \$12 for 50 issues
For student rate, list name & box
Name _____
Box _____

Name _____
Address _____
City _____ State _____ Zip _____
☐ GIFT? Check here we'll send a gift card & pocket calendar from:

ORDERING INFORMATION: Checks or Money Orders Only! Please Make Payable to The *George-Anne*, and mail to The *George-Anne*, Landrum Box 8001, Georgia Southern University, Statesboro, GA 30460. For information, please call 912/681-0069. Please allow 2 to 4 weeks for start of your new subscription.

Grab "A Piece of History" Today!